

## RESEARCH ARTICLE

## Open Access

# Increased diacylglycerol kinase $\zeta$ expression in human metastatic colon cancer cells augments Rho GTPase activity and contributes to enhanced invasion

Kun Cai<sup>1</sup>, Kirk Mulatz<sup>1</sup>, Ryan Ard<sup>1,2</sup>, Thanh Nguyen<sup>1</sup> and Stephen H Gee<sup>1\*</sup>

## Abstract

**Background:** Unraveling the signaling pathways responsible for the establishment of a metastatic phenotype in carcinoma cells is critically important for understanding the pathology of cancer. The acquisition of cell motility is a key property of metastatic tumor cells and is a prerequisite for invasion. Rho GTPases regulate actin cytoskeleton reorganization and the cellular responses required for cell motility and invasion. Diacylglycerol kinase  $\zeta$  (DGK $\zeta$ ), an enzyme that phosphorylates diacylglycerol to yield phosphatidic acid, regulates the activity of the Rho GTPases Rac1 and RhoA. DGK $\zeta$  mRNA is highly expressed in several different colon cancer cell lines, as well as in colon cancer tissue relative to normal colonic epithelium, and thus may contribute to the metastatic process.

**Methods:** To investigate potential roles of DGK $\zeta$  in cancer metastasis, a cellular, isogenic model of human colorectal cancer metastatic transition was used. DGK $\zeta$  protein levels, Rac1 and RhoA activity, and PAK phosphorylation were measured in the non-metastatic SW480 adenocarcinoma cell line and its highly metastatic variant, the SW620 line. The effect of DGK $\zeta$  silencing on Rho GTPase activity and invasion through Matrigel-coated Transwell inserts was studied in SW620 cells. Invasiveness was also measured in PC-3 prostate cancer and MDA-MB-231 breast cancer cells depleted of DGK $\zeta$ .

**Results:** DGK $\zeta$  protein levels were elevated approximately 3-fold in SW620 cells compared to SW480 cells. There was a concomitant increase in active Rac1 in SW620 cells, as well as substantial increases in the expression and phosphorylation of the Rac1 effector PAK1. Similarly, RhoA activity and expression were increased in SW620 cells. Knockdown of DGK $\zeta$  expression in SW620 cells by shRNA-mediated silencing significantly reduced Rac1 and RhoA activity and attenuated the invasiveness of SW620 cells *in vitro*. DGK $\zeta$  silencing in highly metastatic MDA-MB-231 breast cancer cells and PC-3 prostate cancer cells also significantly attenuated their invasiveness.

**Conclusion:** Elevated DGK $\zeta$  expression contributes to increased Rho GTPase activation and the enhanced motility of metastatic cancer cells. These findings warrant further investigation of the clinical relevance of DGK $\zeta$  upregulation in colon and other cancers. Interfering with DGK $\zeta$  function could provide a means of inhibiting invasion and metastasis.

**Keywords:** Colon carcinoma, Diacylglycerol kinase, Rho GTPase, Metastasis

\* Correspondence: [stevegee@uottawa.ca](mailto:stevegee@uottawa.ca)

<sup>1</sup>Department of Cellular and Molecular Medicine, University of Ottawa, 451 Smyth Rd, Ottawa, ON K1H 8 M5, Canada

Full list of author information is available at the end of the article

## Background

Colorectal carcinoma (CRC) is one of the leading causes of mortality in Western countries. The number of new cases in the United States was predicted to reach 103,170 in the year 2012, with 51,690 deaths expected [1]. CRC frequently metastasizes into a systemic disease, often invading the lymph nodes and other visceral organs. The occurrence of metastases due to tumour progression is responsible for the vast majority of cancer-related deaths.

The progression of normal colonic epithelium into adenoma and later, into malignant adenocarcinoma, is associated with diverse genetic and epigenetic alterations [2,3]. However, the vast majority of CRCs share a well characterized sequence of inactivating mutations in tumor suppressor genes and gain-of-function alterations in oncogenes [2,4]. The molecular pathways perturbed by these key genetic changes are relatively well understood. In contrast, there is limited information about the molecular changes that give rise to the subsequent stages of colorectal progression, from carcinoma *in situ*, to invasive carcinoma, to lymph node and visceral metastasis [5]. Understanding how CRC metastases develop is critical for the ultimate control of this cancer.

Metastasis is a complex process that begins with the invasion of cancer cells into the surrounding tissues. The acquisition of enhanced cell motility and invasiveness enable a tumor cell to break away from the primary site, enter and exit the circulation, and successfully establish a metastatic colony [6]. Cancer cells acquire migratory and invasive properties through disruption of cell-cell junctions, changes in focal adhesion complexes, and extensive reorganization of the actin cytoskeleton [7,8]. In mammalian cells, the generation of actin-based dynamic motile structures is regulated by the Rho family of small GTPases, of which the best studied members are Cdc42, Rac1 and RhoA. RhoA is involved in the maintenance of actin stress fibers and focal adhesions, Rac1 in the formation of lamellipodia and membrane ruffles and Cdc42 in the formation of filopodia [9,10]. The coordinated activation of these GTPases is thought to be required for efficient migration [11,12].

Mutations in Rho GTPases are rarely the cause of cancer; however the increased expression or activation of Rho GTPases is associated with a variety of cancer types [13], with enhanced invasion and metastatic potential, [14–18] and disease progression [19,20]. RhoA is overexpressed in colon carcinoma [19]. In contrast, Rac1 levels are normal in colorectal tumors, but truncated mutants of adenomatous polyposis coli (APC), which is the cause of sporadic and familial colorectal tumors [21], stimulate the activity of Asef, a Rac-specific guanine exchange factor [22]. The finding that Rho GTPase overexpression or hyperactivity, rather than activating mutations, are involved in human cancer

suggests their regulatory proteins have a prominent role in deregulated signaling in cancer [23].

Rho GTPases cycle between inactive GDP-bound and active GTP-bound conformations, which enables them to function as binary switches. GTP-bound Rho proteins interact with multiple downstream effectors to elicit a variety of cellular responses including cytoskeletal reorganization, gene transcription, cell cycle regulation, and vesicular traffic [24]. The Rho GTPase cycle is tightly regulated by three classes of proteins. Guanine nucleotide exchange factors (GEFs) activate GTPases by promoting the exchange of GTP for GDP, whereas GTPase activating proteins (GAPs) inactivate Rho proteins by enhancing their intrinsic GTPase activity. Guanine nucleotide dissociation inhibitors (GDIs) prevent the dissociation of GDP and maintain the GTPases in an inactive state. GDIs also sequester Rho GTPases as soluble cytosolic complexes in which the C-terminal membrane-targeting lipid moiety of the GTPase is prevented from interacting with membranes [25,26]. Since the vast majority of Rho GTPase protein exists in a biologically inactive cytosolic complex with RhoGDI, this is a major point of regulation of Rho GTPase activity and function. A thorough understanding of the mechanisms that regulate Rho GTPases is therefore paramount for understanding deregulated Rho GTPase signaling in cancer.

Diacylglycerol kinases (DGKs) phosphorylate the lipid second messenger diacylglycerol (DAG) to yield PA. There are ten mammalian DGK isoforms ( $\alpha$ ,  $\beta$ ,  $\gamma$ , etc.), each with specific patterns of expression, localization within cells and distinct structural domains [27]. Our previous studies demonstrated that DGK $\zeta$  regulates both Rac1 and RhoA activation [28,29]. DGK $\zeta$  forms two independent multiprotein signaling complexes with Rac1 and RhoA that function as selective RhoGDI dissociation factors. In DGK $\zeta$ -deficient fibroblasts, Rac1 and RhoA activation are decreased and cell migration is significantly reduced [28,29]. In light of these findings, we hypothesized that increased DGK $\zeta$  expression in cells would lead to enhanced Rho GTPase activity and increased migratory potential. DGK $\zeta$  mRNA is highly expressed in colon cancer tissue relative to normal colonic epithelium [30]. To investigate potential roles of DGK $\zeta$  in colon cancer metastasis, we used a cellular, isogenic model of human CRC metastatic transition. The SW480 and SW620 cell lines were established from biopsies taken at different intervals from the same 50-year-old CRC male patient [31]. SW480 cells derive from the primary tumor, a poorly differentiated (grade 4) CRC invading the muscularis propria. SW620 cells derive from a lymph node metastasis taken from the same individual six months later, when recurrent cancer with liver and mesenteric lymph node metastases was discovered.

Gene expression profile data available in the National Center for Biotechnology Information Gene Expression Omnibus (NCBI GEO) repository show the DGK $\zeta$  transcript is increased in the metastatic SW620 cell line relative to the SW480 primary tumor line [5]. Here, we demonstrate that increased DGK $\zeta$  protein levels in SW620 cells are associated with increased Rho GTPase activity and downstream signaling. Silencing of DGK $\zeta$  expression in SW620 cells decreased Rac1 and RhoA activity and attenuated cell invasion. DGK $\zeta$  silencing also attenuated the invasiveness of PC-3 prostate cancer and MDA-MB-231 breast cancer cells. Collectively, our findings suggest interfering with DGK $\zeta$  function or expression may be a potential route to block the invasiveness of metastatic cancer cells.

## Methods

### Cell lines and culture conditions

Human colorectal tumor cell lines SW480 (ATCC CCL-227) and SW620 (ATCC CCL-228), prostate cancer cell line PC-3 (ATCC CRL-1435), and breast cancer cell line MDA-MB-231 (ATCC HTB-26) were obtained from the American Type Culture Collection (ATCC, Manassas, VA). The cells were verified according to ATCC Technical Bulletin No. 8 (2008) and grown at 37°C, 5% CO<sub>2</sub> in Dulbecco's modified Eagle's medium (DMEM) supplemented with 10% fetal bovine serum (FBS), 2 mM L-glutamine, 100 units/ml penicillin and 100 µg/ml streptomycin.

### Antibodies

Affinity-purified antibody to the N-terminus of DGK $\zeta$  was prepared from DGK $\zeta$  antisera and has been thoroughly characterized [28,32–34]. Monoclonal Rac1 antibody (Catalogue number: 610650) was purchased from BD Biosciences (San Jose, CA). A polyclonal antibody to PAK1 (Catalogue number: 2602) was purchased from Cell Signaling Technologies (Danvers, MA). Anti-pPAK1 was a gift from Dr. Jonathan Chernoff (Fox Chase Cancer Center, Philadelphia, PA) [28,35]. Monoclonal anti  $\alpha$ -tubulin antibody (Catalogue number: T5168) was purchased from Sigma-Aldrich (St. Louis, MO). Horseradish peroxidase-conjugated anti-rabbit (Catalogue number: 711-035-152) and anti-mouse (Catalogue number: 715-035-150) secondary antibodies were from Jackson ImmunoResearch Laboratories, Inc. (West Grove, PA).

### Establishment of DGK $\zeta$ -knockdown SW620 and PC-3 cell lines

A lentiviral vector containing a small hairpin RNA (shRNA) construct targeted to human DGK $\zeta$  gene (Catalog no. RHS3979-9569052) and a pLKO.1 empty lentiviral vector were purchased from Open Biosystems. The empty pLKO.1 vector (Catalog #RHS4080) contains a 18 bp stuffer

sequence between the AgeI and EcoRI restriction sites. The shRNA oligonucleotides (oligo ID: TRCN000000668, Open Biosystems) corresponding to the sequence on human DGK $\zeta$  gene are: sense, 5' TCG CAC AGG ATG AGA TTT ATA 3'; antisense, 5' TAT AAA TCT CAT CCT GTG CGA 3'. Ultra-pure plasmid DNAs were prepared according to the manufacturer's protocol. To generate stable knockdown cell lines, SW620 cells were transfected with the shRNA vector using FuGENE 6 Transfection Reagent (Roche-applied-science). After transfection, cells were incubated for 24 h. Transfectants were then selected with 7 µg/ml puromycin (Cellgro Catalog no. 61-385-RA). After two weeks, the stable clones were transferred to 96-well plates using sterile cloning discs (Bel-Art Products), grown until confluent, and then transferred to 60 mm cell plates. DGK $\zeta$  levels in various clones were analyzed by immunoblotting. Clones with DGK $\zeta$  protein levels that were substantially reduced compared to the controls were selected and maintained in medium containing 7 µg/ml puromycin. SW620 cells stably transfected with pLKO.1 empty vector were used as a control. DGK $\zeta$  knockdown PC3 cell lines were generated in the same manner using Attractene transfection reagent to transfect the cells and 2.2µg/ml puromycin for selection.

### Lentiviral knockdown of DGK $\zeta$ expression in MDA-MB-231 cells

A set of 3 lentiviral vectors containing shRNA targeted to the DGK $\zeta$  gene (Thermoscientific; Catalogue no. RHS4531-EG8525) were used to generate lentivirus using the second generation packaging plasmids pMD2.G and psPAX2 from Addgene. MBA-MD-231 cells were infected with mixture of the 3 lentivirus and incubated for 30 hours at 37°C with 5% CO<sub>2</sub> before being used in the invasion assays or extracted for western analysis.

### Rac1 activity assay

Levels of active Rac1 and RhoA were measured using a GST-PAK1 PBD and GST-Rhotekin RBD pull-down assay, respectively [36]. Cells were immediately harvested in chilled lysis buffer (50 mM Tris-HCl, pH 7.4, 150 mM NaCl, 1% Triton X-100, 20 mM MgCl<sub>2</sub>, and protease inhibitors). Lysates were centrifuged at 12,000 × *g* for 5 min. Equivalent amounts of protein were incubated with GST-PBD or -RBD beads for 30 min at 4°C. The beads were washed with lysis buffer, boiled in reducing sample buffer, and eluted proteins assayed for bound Rac1 or RhoA by immunoblotting.

### Western blot

Cells were lysed in an ice-cold lysis buffer (50 mM Tris-HCl, pH7.5, 150 mM NaCl, 50 mM MgCl<sub>2</sub>, 1% Triton X-100, 1 µg/ml antipain, 1 µg/ml pepstatin, 1 µg/ml leupeptin, 0.5 mM AEBSF, and 1 mM benzamidine hydrochloride).

Cellular debris was removed by centrifugation ( $14,000 \times g$  for 10 min at  $4^{\circ}\text{C}$ ). Total protein concentration of the supernatants was determined using a colorimetric assay method (Bio-Rad). 100  $\mu\text{g}$  of total protein from each sample was resolved by SDS-PAGE, transferred onto PVDF membrane (Millipore), immunoblotted with the affinity-purified polyclonal antibodies to DGK $\zeta$  (1:100) and horseradish peroxidase-conjugated goat anti-rabbit secondary antibodies (1:800), and detected using enhanced chemiluminescence (Pierce Biotechnology). Differences in protein loading were monitored by probing membranes with monoclonal anti- $\alpha$ -Tubulin antibody.

### Invasion assay

Cellular invasive ability was evaluated using Corning 6.5 mm Transwell inserts (8  $\mu\text{m}$  pore size, 24 well plate, Fisher Scientific). For the SW620 and SW480 cell lines, the upper surface of the inserts was coated with 100  $\mu\text{l}$  of 500  $\mu\text{g}/\text{ml}$  Matrigel and the underside was treated with either 15  $\mu\text{g}/\text{ml}$  (SW480 versus SW620) or 100  $\mu\text{g}/\text{ml}$  (vector control versus shRNA) collagen type I. The cells were serum starved for 24 hours in DMEM containing 0.25% FBS, then re-suspended in DMEM/0.25% FBS/20 mM HEPES [pH 7.5] and seeded at 50,000 cells per insert. The medium in the lower chamber consisted of 600  $\mu\text{l}$  DMEM/20% FBS/20 mM HEPES [pH 7.5], and 10  $\mu\text{g}/\text{ml}$  collagen type I as chemoattractants. The cells were incubated at  $37^{\circ}\text{C}$  in a humidified atmosphere containing 5%  $\text{CO}_2$  for approximately 70 hours. The PC-3 cell lines were starved in serum-free DMEM, then resuspended in DMEM/0.1% FBS/20 mM HEPES [pH 7.5], and 25,000 cells each were seeded on inserts coated with 50  $\mu\text{l}$  of 2  $\text{mg}/\text{ml}$  Matrigel on the upper surface and 15  $\mu\text{g}/\text{ml}$  collagen type I on the lower surface. The media in the lower chamber was the same as for the SW620 and SW480 lines. MDA-MB-231 cells were seeded at 25,000 cells per insert in serum-free DMEM/20 mM HEPES [pH 7.5] on inserts coated with 50  $\mu\text{l}$  of 1  $\text{mg}/\text{ml}$  Matrigel on the upper surface and 15  $\mu\text{g}/\text{ml}$  collagen type I on the lower surface. The lower chamber contained DMEM/10% FBS/10  $\mu\text{g}/\text{ml}$  collagen type I. Both the PC3 and the MDA-MB-231 assays were incubated for 24 hrs. Following incubation, the Matrigel was removed from the upper chambers using a cotton swab and the cells were fixed with 4% paraformaldehyde in PBS for 10 minutes, permeabilized with 0.5% Triton X-100 in PBS for 15 minutes, and stained with 30  $\mu\text{g}/\text{ml}$  propidium iodide in PBS with 0.03% Triton X-100 for 6 hours. To compare the invasiveness of the cell lines, the inserts were placed on  $24 \times 50$  mm coverslips and imaged on a Zeiss Observer D1 microscope fitted with a  $10\times$  objective. For each insert, five fields of view were imaged in a cross pattern and the number of invading cells counted. The counts were then averaged to obtain an invasive index. For each invasion

assay plate, the invasive index of the inserts was normalized to the vector control cell lines (or to the SW620 cell line when compared to the SW480 line). Two control SW620/vector and two SW620/shRNA knock down lines were compared as well as three PC-3/vector and three PC-3/shRNA lines. Lentiviral shRNA infected versus vector infected MDA-MB-231 cells were also compared and the average reduction in DGK $\zeta$  expression following infection was determined by western analysis.

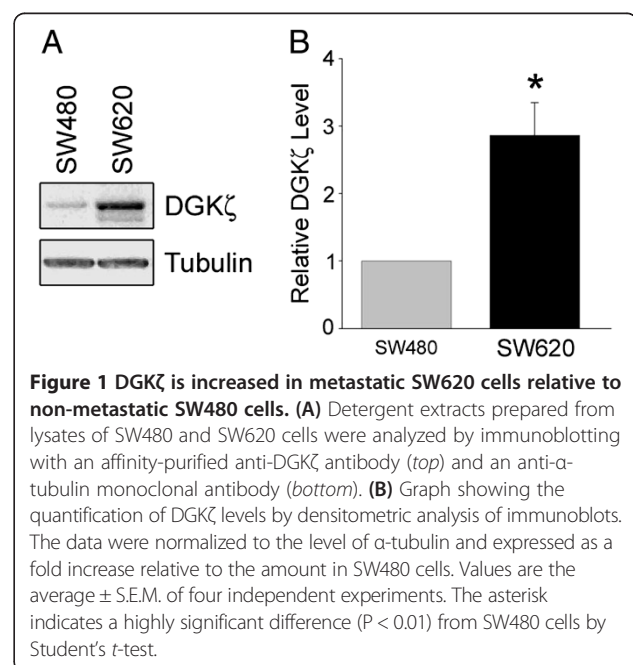
## Results

### DGK $\zeta$ expression is increased in a model of colorectal cancer progression to metastasis

Analysis of endogenous DGK $\zeta$  protein expression in SW480 and SW620 cells by immunoblotting cell lysates with an affinity purified anti-DGK $\zeta$  antibody revealed a marked increase in DGK $\zeta$  expression in SW620 cells (Figure 1A). Quantification of the band intensities after normalization to tubulin levels revealed DGK $\zeta$  was elevated  $\sim 3$ -fold in SW620 cells (Figure 1B). These data are consistent with the increased DGK $\zeta$  mRNA polysomal recruitment in SW620 cells compared to SW480 cells [5].

### Increased Rho GTPase activation in SW620 cells

Since DGK $\zeta$  contributes to Rac1 and RhoA activation by promoting their release from RhoGDI [28,29], we next determined if the increased DGK $\zeta$  expression in SW620 cells results in increased Rac1 and RhoA activity. The levels of GTP-bound Rac1 and RhoA were measured using effector pull-down assays, with the GTPase binding domains of PAK1 and Rhotekin, respectively [36]. There was a significant increase (approximately 5-fold)



in Rac1 activity in SW620 cells despite the fact that total Rac1 levels were unchanged (Figure 2A and B). RhoA activity was increased approximately 3-fold, mirroring a similar increase in total RhoA protein levels (Figure 2C, D and E). Thus, the increases in active Rac1 and RhoA in SW620 cells parallel the increased DGK $\zeta$  expression.

#### Increased expression and phosphorylation of PAK1

The p21-activated kinases (PAKs) are Ser/Thr protein kinases whose activity is regulated by binding of active Rac or Cdc42 [37]. Since Rac1 activity was increased in SW620 cells, we evaluated whether PAK1 activity was similarly increased. Binding of active Rac1 or Cdc42 to PAK1 relieves autoinhibition and stimulates autophosphorylation, leading to increased kinase activity [37]. To evaluate PAK1 activity in SW480 and SW620 cells, detergent extracts of cell lysates were immunoblotted with a phospho-specific PAK1 antibody. Two pPAK1 bands were evident in SW480 cells; a faint upper band (Figure 3A, top panel, *arrow*), which represents hyper-phosphorylated PAK1, and a more prominent lower band, which is a less phosphorylated version [35]. The intensity of the hyper-phosphorylated band was significantly increased in SW620 cell lysates, while that of the lower band was unchanged, indicative of increased PAK1 phosphorylation in SW620 cells (Figure 3B). In contrast to Rac1, whose levels remained unchanged, total PAK1 levels were substantially (~10-fold) increased in SW620 cells (Figure 3A, bottom

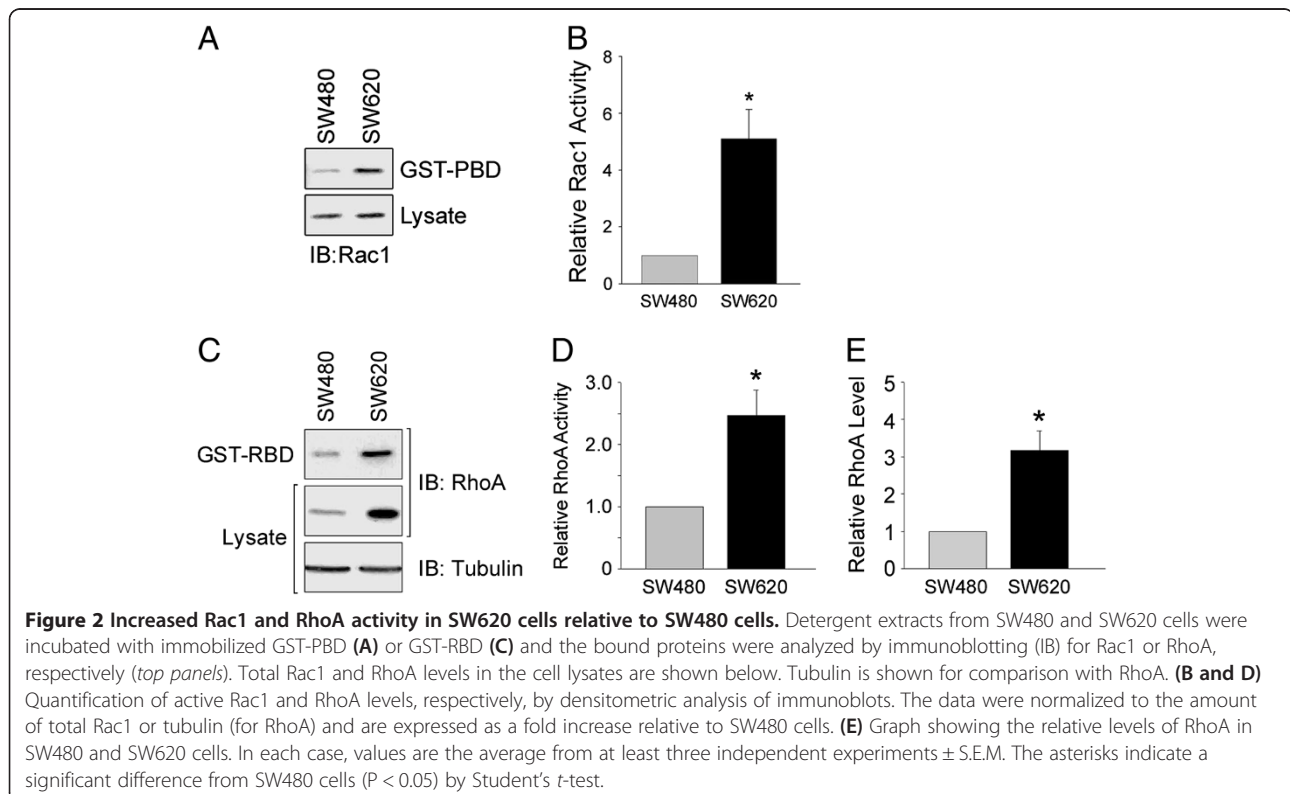
panel and Figure 3C). The increased PAK1 expression is consistent with the increase in polysomal PAK1 mRNA in SW620 versus SW480 cells [5].

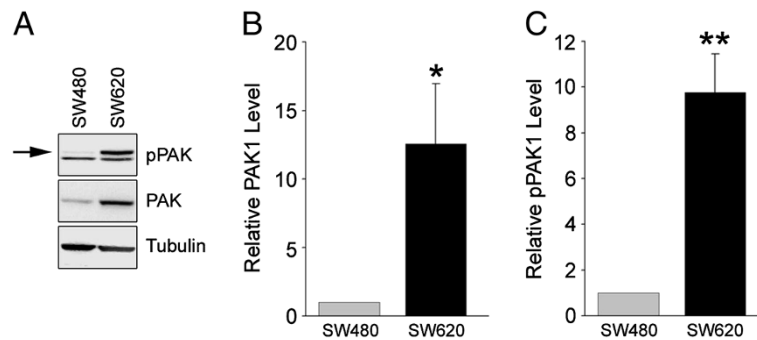
#### Establishment of SW620 cells with stable knockdown of DGK $\zeta$ expression

To investigate potential roles for DGK $\zeta$  in the regulation of colon cancer cell invasion, we created stable SW620 cell lines that harbour either a lentiviral vector (pLKO) containing a short hairpin RNA (shRNA) sequence targeted to the DGK $\zeta$  mRNA or the pLKO vector with no shRNA insert. Two control cell lines (SW620/Vector1 and 2) and two knockdown lines (SW620/shRNA1 and 2) were chosen for further analysis. Immunoblotting of cell lysates with the anti-DGK $\zeta$  antibody revealed a marked decrease in DGK $\zeta$  expression in the SW620/shRNA cell lines compared to the SW620/Vector lines (Figure 4A). Quantification of immunoblots revealed average decreases of 40 and 50%, for the shRNA1 and 2 knockdown lines, respectively (Figure 4B), whereas the non-targeting shRNA vector control cells did not show significantly decreased DGK $\zeta$  expression.

#### Rac1 and RhoA activity are decreased by silencing DGK $\zeta$ expression

Rac1 and RhoA activity were assayed in the stable cell lines. For these experiments, we chose the shRNA2 line because it showed the greatest reduction in DGK $\zeta$





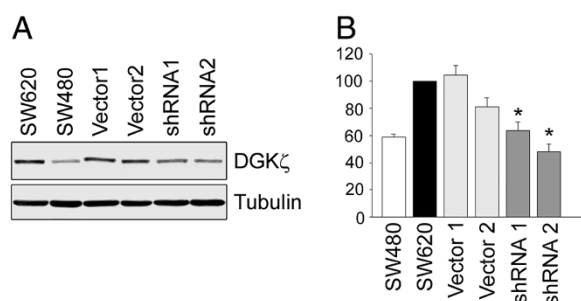
**Figure 3 Increased PAK1 expression and phosphorylation in SW620 cells.** (A) Detergent extracts prepared from SW480 and SW620 cells were analyzed by immunoblotting for phosphorylated (p)PAK1, total PAK1 and tubulin. (B) Graph showing the quantification of total PAK1 levels by densitometric analysis of immunoblots. (C) Quantification of pPAK1 levels. The intensity of the upper pPAK1 band (arrow in A) was measured and normalized to the level of tubulin. Values are the average  $\pm$  S.E.M. of four independent experiments. One asterisk denotes a significant difference ( $P < 0.05$ ) and two asterisks, a highly significant difference ( $P < 0.01$ ) from SW480 cells by Student's *t*-test.

expression. The levels of GTP-bound Rac1 and RhoA were significantly decreased in SW620/shRNA2 cells, as compared with SW620 cells, while cells with non-targeting shRNA (SW620/Vector1) showed no significant change in either Rac1 or RhoA activity (Figure 5A-D). Notably, Rac1 and RhoA total protein levels were not affected by shRNA against DGK $\zeta$ . These results suggest decreased DGK $\zeta$  levels lead to decreased Rac1 and RhoA activity, but not expression.

#### Decreased invasion of SW620 cells by stable knockdown of DGK $\zeta$

We recently reported that DGK $\zeta$ -null mouse embryonic fibroblasts migrate less in two- and three-dimensional

migration assays than their wild type counterparts [28]. To determine if silencing DGK $\zeta$  expression affects the invasion of SW620 cells through a 3-D matrix, we compared SW480, SW620, SW620/vector and SW620/shRNA cells in an *in vitro* invasion assay. In agreement with previous reports [38–40], SW620 cells consistently invaded more through Matrigel-coated Transwell inserts than SW480 cells (Figure 6A). On average, the SW620/shRNA cells lines had DGK $\zeta$  protein levels that were reduced by approximately 40% compared to SW620 cells, whereas SW620/Vector lines had DGK $\zeta$  levels comparable to SW620 cells as expected (Figure 6B). The average invasion of the SW620/shRNA cell lines through the Transwell inserts was significantly less than SW620/vector cell lines ( $P < 0.05$ ), suggesting siRNA-mediated silencing of DGK $\zeta$  expression decreases the invasiveness of SW620 colon cancer cells (Figure 6C). Taken together, these results suggest DGK $\zeta$  contributes to the overall invasive potential of SW620 colon cancer cells.

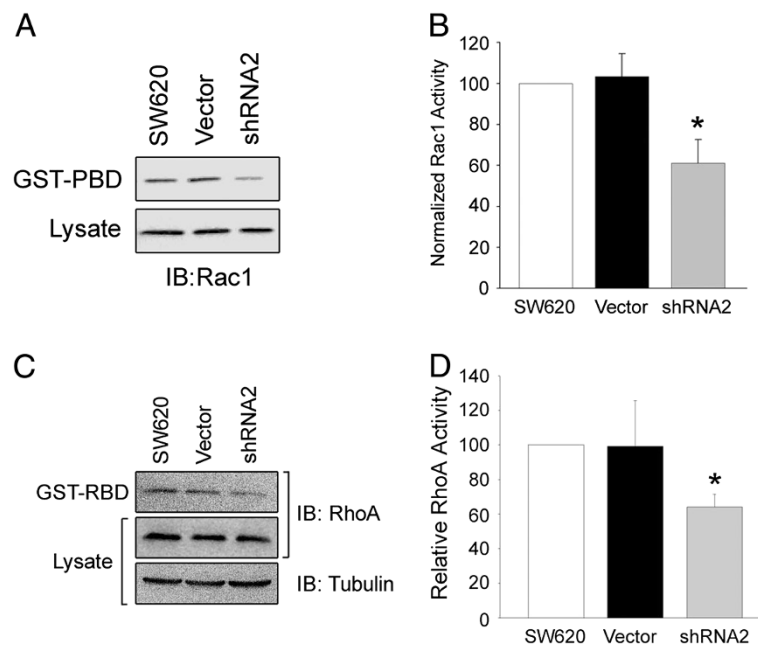


**Figure 4 Stable shRNA expression reduces DGK $\zeta$  levels in SW620 cells.** (A) Equivalent amounts of protein from detergent extracts of SW620 cells, SW620 cells stably expressing an empty lentiviral vector (Vector1 and 2), or SW620 cells expressing an shRNA against DGK $\zeta$  (shRNA1 and 2) were immunoblotted with anti-DGK $\zeta$  (top) and anti-tubulin (bottom) antibodies. (B) Graph showing DGK $\zeta$  protein levels in each cell line as measured by densitometric analysis of western blots. The data were normalized to the level of tubulin and are expressed as a percentage of DGK $\zeta$  in SW620 cells. Values are the average of at least three independent experiments  $\pm$  S.E.M. Statistical analysis was performed by a one-way ANOVA followed by a Tukey post-hoc multiple comparison test. The asterisks denote a highly significant difference ( $P < 0.001$ ) from SW620 cells.

#### DGK $\zeta$ depletion decreases the invasiveness of prostate cancer and metastatic breast cancer cells

To validate and extend the generality of our findings in colon cancer cells, DGK $\zeta$  was depleted from two additional cell lines, the PC-3 prostate cancer line and the highly metastatic breast cancer line MDA-MB-231. Three stable cell lines each of PC-3/Vector and PC-3/shRNA were chosen for analysis. Western blotting of cell lysates revealed DGK $\zeta$  expression was reduced in the PC-3/shRNA lines compared to PC-3/Vector lines (Figure 7A). Quantification of the western blot signals revealed an average decrease of approximately 40% in the shRNA lines (Figure 7B). The average invasiveness of the PC-3/shRNA was reduced by approximately 60% compared to PC-3/Vector lines (Figure 7C).

To silence DGK $\zeta$  expression in MDA-MB-231 cells, three different DGK $\zeta$  shRNA constructs cloned into the

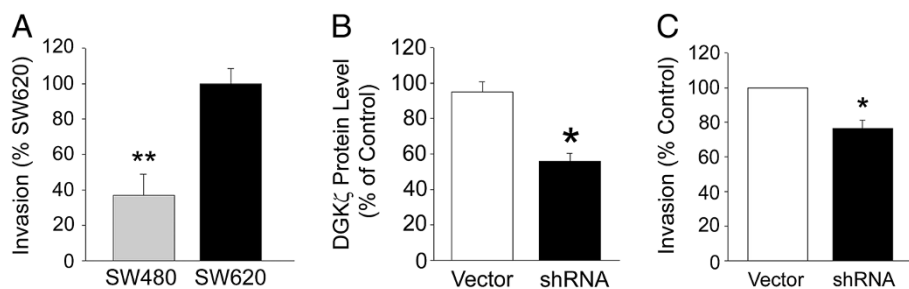


**Figure 5 Decreased Rac1 and RhoA activity in DGK $\zeta$  knockdown cells.** Assay of global Rac1 and RhoA activity. Detergent extracts from the indicated cell lines were incubated with immobilized GST-PBD or GST-RBD and the bound proteins were analyzed by immunoblotting (IB) for Rac1 (A) or RhoA and tubulin (C). Total Rac1 and RhoA levels in the cell lysates are shown. (B and D) Quantification of active Rac1 and RhoA levels, respectively, by densitometric analysis of immunoblots. The data were normalized to the amount of total Rac1 or RhoA protein and are expressed as a percentage of the activity in SW620 cells. Values are the average of at least three independent experiments  $\pm$  S.E.M. The asterisks indicate a highly significant difference from SW620 cells ( $P < 0.005$ ) by Student's *t*-test.

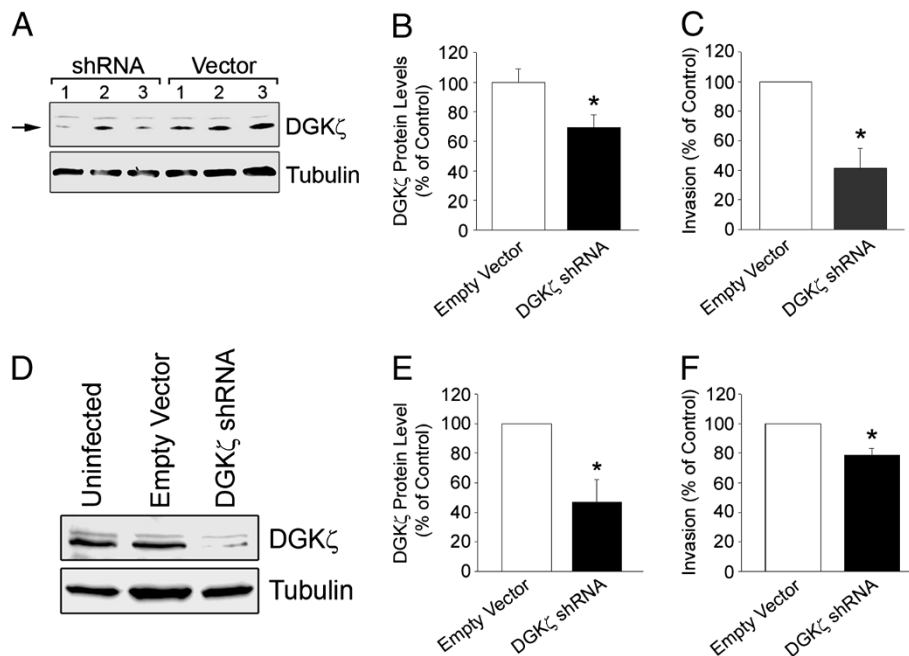
pGIPZ lentiviral vector were used to produce separate lentivirus stocks (see Materials and Methods). MDA-MB-231 cells infected with a mix of the three virus particles showed a substantial decrease in DGK $\zeta$  expression (approximately 60%) compared to cells infected with the pGIPZ vector alone (Figure 7D and E). The invasion of MDA-MB-231/shRNA cells was significantly reduced compared to MDA-MB-231/Vector cells (Figure 7F). Collectively, the results from silencing studies in SW620, PC-3 and MDA-MB-231 cells strongly suggest DGK $\zeta$  has a stimulatory role in cell invasion.

## Discussion

The development of metastatic tumors is a major cause of death in many human cancers. CRC progresses from adenoma to malignant adenocarcinoma to invasive carcinoma, and finally, to metastatic cancer. The origin of the SW480 and SW620 cell lines from the spontaneous progression of a human CRC in a single patient makes this a useful system for the analysis of gene expression changes during the transition from invasive carcinoma to metastasis. This isogenic, cellular model of CRC has been extensively validated and several studies showed



**Figure 6 Silencing DGK $\zeta$  Expression Decreases Invasiveness of SW620 Cells.** SW480, SW620, SW620/Vector, and SW620/shRNA cells were placed in the upper chamber of a Transwell invasion plate and allowed to migrate across a Matrigel-coated, porous membrane for approximately 72 hrs. (A) Graph comparing the invasion of SW480 and SW620 cells. (B) Graph showing the average DGK $\zeta$  level in SW620/Vector and SW620/shRNA cell lines normalized to the DGK $\zeta$  level in SW620 cells. (C) Graph showing the average invasion of SW620/Vector and SW620/shRNA cell lines. Values are the mean  $\pm$  S.E.M. from seven independent experiments. One asterisk indicates a significant difference ( $P < 0.05$ ) and two asterisks, a highly significant difference ( $P < 0.005$ ) from SW620 cells by Student's *t*-test.



**Figure 7 DGK $\zeta$  Silencing Attenuates Invasion of PC-3 Prostate and MDA-MB-231 Breast Cancer Cells.** (A) Western blot of DGK $\zeta$  (arrow) in three PC-3/Vector and three PC-3/shRNA cell lines. Tubulin is shown for comparison. (B and C) Graphs showing the average DGK $\zeta$  level (B) and invasion through Matrigel-coated Transwell inserts (C) of PC-3/Vector and PC-3/shRNA cell lines. The data were normalized to Empty Vector control cells. Values in B and C are the mean  $\pm$  S.E.M. from five independent experiments. (D) Western blot of DGK $\zeta$  in MDA-MB-231/Vector and MDA-MB-231/shRNA cells. Tubulin is shown for comparison. (E and F) Graphs showing the average DGK $\zeta$  level (E) and invasiveness (F) of MDA-MB-231/Vector and MDA-MB-231/shRNA cells, normalized to the level in Empty Vector control cells. Values in E and F are the mean  $\pm$  S.E.M. from four independent experiments. An asterisk indicates a significant difference ( $P < 0.05$ ) from Vector cells by Student's *t*-test.

SW620 cells are more invasive than SW480 cells *in vitro* [38,39]. In this study, we documented a ~3-fold increase in the level of DGK $\zeta$  protein in SW620 cells, as compared to SW480 cells. Silencing of DGK $\zeta$  expression by ~50% reduced the invasiveness of SW620 cells, suggesting DGK $\zeta$  contributes significantly to the increased motility of this cancer cell line. Moreover, silencing DGK $\zeta$  expression in PC-3 and MDA-MB-231 cells also lead to reductions in their invasiveness. Taken together, these findings strongly suggest DGK $\zeta$  contributes to the overall invasive potential of SW620, PC-3 and MDA-MB-231 cells.

The significance of these findings relates to our previous work, which established DGK $\zeta$  as a critical regulator of both Rac1 and RhoA activity [28,29]. In the former case, we showed DGK $\zeta$ -derived PA activates PAK1, which phosphorylates RhoGDI, allowing for the release and subsequent Rac1 activation. Mouse embryonic fibroblasts deficient in DGK $\zeta$  have reduced Rac1 activity and reduced Rac1-related structures such as lamellipodia and membrane ruffles [28]. Consistent with these findings, knockdown of DGK $\zeta$  expression in SW620 cells significantly reduced Rac1 activity. Rac1 protein levels remained constant however, suggesting DGK $\zeta$  acts primarily at the level of Rac1 activation. In DGK $\zeta$ -null

fibroblasts, even the complete absence of DGK $\zeta$  only decreased Rac1 activity by ~50% suggesting other mechanisms contribute to Rac1 activation. Indeed, at least two additional DGK isoforms, DGK $\kappa$  and DGK $\lambda$  reportedly contribute to the regulation of Rac1 activation. DGK $\zeta$ -dependent activation of atypical PKC $\zeta$ / $\eta$  mediates the release of Rac from RhoGDI in epithelial cells in response to hepatocyte growth factor [41,42], while DGK $\zeta$  acts as an upstream suppressor of Rac1 activity in fibroblasts [43]. However, the polysomal mRNA expression of DGK $\zeta$  or DGK $\lambda$  was not substantially different in SW480 and SW620 cells and therefore the increased migration of SW620 cells is not likely due to changes in the expression of these isoforms.

RhoA activity was increased approximately 3-fold in SW620 cells compared to SW480 cells. Furthermore, there was a comparable increase in both RhoA and DGK $\zeta$  expression. Since DGK $\zeta$  is required for efficient RhoA activation [29], the combination of increased DGK $\zeta$  and RhoA expression likely accounts for the increased RhoA activity in SW620 cells. However, since the level of RhoA activity but not protein was decreased by DGK $\zeta$  silencing, it appears unlikely that DGK $\zeta$  directly regulates RhoA expression. Thus, our findings in SW620 cells are consistent with our previous studies in



mouse embryonic fibroblasts, which indicated that DGK $\zeta$  regulates RhoA activity [29].

Activating mutations in Rho GTPases are rarely detected in human cancers. More frequently however, overexpression and/or hyperactivation of Rho proteins contribute to tumor progression and metastasis [19,20,44–48]. One study found that Rac1 plays a key role in the progression of CRC *in vivo*: decreased Rac1 expression blocked tumor formation in an orthotopic model of colorectal adenocarcinoma, whereas its overexpression in SW620 cells accelerated colorectal adenocarcinoma progression when the cells were injected into athymic nude mice [49]. In another study, RhoA activity correlated with lymph node metastasis in human colorectal cancer. More active RhoA in tumors with lymph node involvement than in those that did not metastasize suggests increased RhoA function is associated with enhanced tumor cell motility [46]. Together, these findings suggest decreasing Rac1 or RhoA expression, or alternatively, interfering with their ability to achieve or maintain the active GTP-bound state [50], is a viable strategy to reduce CRC progression and metastasis. The results presented herein suggest decreasing DGK $\zeta$  expression or function is a potential route to reducing Rac1 and RhoA activity and the migratory ability of colon cancer cells. This strategy may be beneficial not only in cancers where DGK $\zeta$  is overexpressed, but possibly also in cases where DGK $\zeta$  is expressed at normal levels but Rac1 or RhoA are overexpressed or hyperactive.

Analysis of data deposited in the Oncomine database reveals DGK $\zeta$  mRNA is highly expressed in several different colon cancer cell lines and in colon cancer tissue relative to normal colonic epithelium [30,51]. Moreover, DGK $\zeta$  expression in CRC is high in comparison with other cancer types [52]. Thus, DGK $\zeta$  and its downstream signaling pathways may be important factors influencing colon cancer progression. However, a limitation of our studies is the lack of correlative clinical data showing the DGK $\zeta$  protein level is elevated in metastatic cancer. Thus, it will be important to validate our findings by comparing DGK $\zeta$  protein levels in primary and metastatic tumor specimens. Moreover, the effect of silencing DGK $\zeta$  expression on the *in vivo* metastatic potential of tumor cells with elevated DGK $\zeta$  levels or high Rho GTPase activity remains to be investigated.

Finding that DGK $\zeta$  is upregulated in other metastatic cancers would suggest interfering with its function might allow for a more general role in inhibiting tumor cell motility and invasion. DGK $\zeta$  is also overexpressed several-fold in a variety of breast carcinoma and breast adenocarcinoma cell lines [53]. We found that silencing DGK $\zeta$  expression in highly metastatic MDA-MB-231 cells decreased their invasiveness, suggesting DGK $\zeta$  signaling also plays a role in the overall invasive potential

of these cells. Similar results were obtained with PC-3 prostate cancer cells. Therefore, targeting DGK $\zeta$  function in these cancers as well may provide new avenues for therapeutic strategies.

## Conclusion

In conclusion, our findings suggest DGK $\zeta$  overexpression by colon carcinoma and other cancer cells plays an important role in tumor cell invasion, a key requirement for metastasis. Few molecular markers have proven to correlate well with stage and prognosis in colon cancer, particularly at later stages. It will be interesting to see if elevated DGK $\zeta$  expression proves to be a predictive biomarker for patients with metastatic CRC or other cancer types.

## Abbreviations

ATCC: American Type Culture Collection; DAG: Diacylglycerol; DGK: Diacylglycerol kinase; DMEM: Dulbecco's Modified Eagle Medium; FBS: Fetal bovine serum; PA: Phosphatidic acid; PAK1: p21-activated kinase 1.

## Competing interests

The authors declare that they have no competing interests.

## Authors' contributions

KC, KM, RA and TN performed the experiments and analyzed the data. SG prepared the manuscript. All authors approved the final version of the manuscript.

## Acknowledgements

We thank Helga Agah for technical assistance and Dr. Jonathan Chernoff (Fox Chase Cancer Center, Philadelphia, PA) for providing antibodies to pPAK1. The PAK1 GST-PBD construct was a gift from Dr. John Collard (The Netherlands Cancer Institute, Amsterdam). This work was supported by an operating grant from the Cancer Research Society (Montreal, Canada).

## Author details

<sup>1</sup>Department of Cellular and Molecular Medicine, University of Ottawa, 451 Smyth Rd, Ottawa, ON K1H 8 M5, Canada. <sup>2</sup>Present address: Institute of Cell Biology, School of Biological Sciences, University of Edinburgh, 6.34 Swann Building, Edinburgh EH9 3JR, UK.

Received: 30 May 2013 Accepted: 12 March 2014

Published: 19 March 2014

## References

1. Siegel R, Naishadham D, Jemal A: **Cancer statistics, 2012.** *CA Cancer J Clin* 2012, **62**:10–29.
2. Fearon ER, Vogelstein B: **A genetic model for colorectal tumorigenesis.** *Cell* 1990, **61**:759–767.
3. Kinzler KW, Vogelstein B: **Lessons from hereditary colorectal cancer.** *Cell* 1996, **87**:159–170.
4. Vogelstein B, Fearon ER, Hamilton SR, Kern SE, Preisinger AC, Leppert M, Nakamura Y, White R, Smits AM, Bos JL: **Genetic alterations during colorectal-tumor development.** *N Engl J Med* 1988, **319**:525–532.
5. Provenzani A, Fronza R, Loreni F, Pascale A, Amadio M, Quattrone A: **Global alterations in mRNA polysomal recruitment in a cell model of colorectal cancer progression to metastasis.** *Carcinogenesis* 2006, **27**:1323–1333.
6. Hanahan D, Weinberg RA: **The hallmarks of cancer.** *Cell* 2000, **100**:57–70.
7. Thiery JP, Sleeman JP: **Complex networks orchestrate epithelial-mesenchymal transitions.** *Nat Rev Mol Cell Biol* 2006, **7**:131–142.
8. Yilmaz M, Christofori G: **EMT, the cytoskeleton, and cancer cell invasion.** *Cancer Metastasis Rev* 2009, **28**:15–33.
9. Hall A: **Rho GTPases and the Actin Cytoskeleton.** *Science* 1998, **279**:509–514.

10. Ridley AJ, Paterson HF, Johnston CL, Diekmann D, Hall A: **The small GTP-binding protein rac regulates growth factor-induced membrane ruffling.** *Cell* 1992, **70**:401–410.
11. Hall A: **The cytoskeleton and cancer.** *Cancer Metastasis Rev* 2009, **28**:5–14.
12. Raftopoulos M, Hall A: **Cell migration: Rho GTPases lead the way.** *Dev Biol* 2004, **265**:23–32.
13. Gomez del Pulgar T, Benitah SA, Valeron PF, Espina C, Lacal JC: **Rho GTPase expression in tumorigenesis: evidence for a significant link.** *Bioessays* 2005, **27**:602–613.
14. Clark EA, Golub TR, Lander ES, Hynes RO: **Genomic analysis of metastasis reveals an essential role for RhoC.** *Nature* 2000, **406**:532–535.
15. Keely PJ, Westwick JK, Whitehead IP, Der CJ, Parise LV: **Cdc42 and Rac1 induce integrin-mediated cell motility and invasiveness through PI(3)K.** *Nature* 1997, **390**:632–636.
16. Knight-Krajewski S, Welsh CF, Liu Y, Lyons LS, Faysal JM, Yang ES, Burnstein KL: **Deregulation of the Rho GTPase, Rac1, suppresses cyclin-dependent kinase inhibitor p21(CIP1) levels in androgen-independent human prostate cancer cells.** *Oncogene* 2004, **23**:5513–5522.
17. Kurisu S, Suetsugu S, Yamazaki D, Yamaguchi H, Takenawa T: **Rac-WAVE2 signaling is involved in the invasive and metastatic phenotypes of murine melanoma cells.** *Oncogene* 2005, **24**:1309–1319.
18. Michiels F, Habets GG, Stam JC, van der Kammen RA, Collard JG: **A role for Rac in Tiam1-induced membrane ruffling and invasion.** *Nature* 1995, **375**:338–340.
19. Fritz G, Just I, Kaina B: **Rho GTPases are over-expressed in human tumors.** *Int J Cancer* 1999, **81**:682–687.
20. Suwa H, Ohshio G, Imamura T, Watanabe G, Arai S, Imamura M, Narumiya S, Hiai H, Fukumoto M: **Overexpression of the rhoC gene correlates with progression of ductal adenocarcinoma of the pancreas.** *Br J Cancer* 1998, **77**:147–152.
21. Fearhead NS, Britton MP, Bodmer WF: **The ABC of APC.** *Hum Mol Genet* 2001, **10**:721–733.
22. Kawasaki Y, Sato R, Akiyama T: **Mutated APC and Asef are involved in the migration of colorectal tumour cells.** *Nat Cell Biol* 2003, **5**:211–215.
23. Lazer G, Katzav S: **Guanine nucleotide exchange factors for RhoGTPases: good therapeutic targets for cancer therapy?** *Cell Signal* 2011, **23**:969–979.
24. Jaffe AB, Hall A: **RHO GTPASES: Biochemistry and Biology.** *Annu Rev Cell Dev Biol* 2005, **21**:247–269.
25. Dermardirossian C, Bokoch GM: **GDI: central regulatory molecules in Rho GTPase activation.** *Trends Cell Biol* 2005, **15**:356–363.
26. Dovas A, Couchman JR: **RhoGDI: multiple functions in the regulation of Rho family GTPase activities.** *Biochem J* 2005, **390**:1–9.
27. Topham MK, Epand RM: **Mammalian diacylglycerol kinases: molecular interactions and biological functions of selected isoforms.** *Biochim Biophys Acta* 2009, **1790**:416–424.
28. Abramovici H, Mojtabaie P, Parks RJ, Zhong XP, Koretzky GA, Topham MK, Gee SH: **Diacylglycerol kinase zeta regulates actin cytoskeleton reorganization through dissociation of Rac1 from RhoGDI.** *Mol Biol Cell* 2009, **20**:2049–2059.
29. Ard R, Mulatz K, Abramovici H, Maillet JC, Fottinger A, Foley T, Byham MR, Iqbal TA, Yoneda A, Couchman JR, Parks RJ, Gee SH: **Diacylglycerol kinase zeta regulates RhoA activation via a kinase-independent scaffolding mechanism.** *Mol Biol Cell* 2012, **23**:4008–4019.
30. Sabates-Bellver J, Van der Flier LG, de Palo M, Cattaneo E, Maake C, Rehrauer H, Laczko E, Kuroski MA, Bujnicki JM, Menigatti M, Luz J, Ranalli TV, Gomes V, Pastorelli A, Faggiani R, Anti M, Jiricny J, Clevers H, Marra G: **Transcriptome profile of human colorectal adenomas.** *Mol Cancer Res* 2007, **5**:1263–1275.
31. Leibovitz A, Stinson JC, McCombs WB III, McCoy CE, Mazur KC, Mabry ND: **Classification of human colorectal adenocarcinoma cell lines.** *Cancer Res* 1976, **36**:4562–4569.
32. Abramovici H, Hogan AB, Obagi C, Topham MK, Gee SH: **Diacylglycerol kinase-zeta localization in skeletal muscle is regulated by phosphorylation and interaction with syntrophins.** *Mol Biol Cell* 2003, **14**:4499–4511.
33. Topham MK, Bunting M, Zimmerman GA, McIntyre TM, Blackshear PJ, Prescott SM: **Protein kinase C regulates the nuclear localization of diacylglycerol kinase-zeta.** *Nature* 1998, **394**:697–700.
34. Yakubchik Y, Abramovici H, Maillet JC, Daher E, Obagi C, Parks RJ, Topham MK, Gee SH: **Regulation of neurite outgrowth in N1E-115 cells through PDZ-mediated recruitment of diacylglycerol kinase zeta.** *Mol Cell Biol* 2005, **25**:7289–7302.
35. Sells MA, Pfaff A, Chernoff J: **Temporal and spatial distribution of activated Pak1 in fibroblasts.** *J Cell Biol* 2000, **151**:1449–1458.
36. Sander EE, van Delft S, ten Klooster JP, Reid T, van der Kammen RA, Michiels F, Collard JG: **Matrix-dependent Tiam1/Rac signaling in epithelial cells promotes either cell-cell adhesion or cell migration and is regulated by phosphatidylinositol 3-kinase.** *J Cell Biol* 1998, **143**:1385–1398.
37. Bokoch GM: **Biology of the p21-activated kinases.** *Annu Rev Biochem* 2003, **72**:743–781.
38. Kim HR, Wheeler MA, Wilson CM, Iida J, Eng D, Simpson MA, McCarthy JB, Bullard KM: **Hyaluronan facilitates invasion of colon carcinoma cells in vitro via interaction with CD44.** *Can Res* 2004, **64**:4569–4576.
39. Liu L, Wu DH, Ding YQ: **Tiam1 gene expression and its significance in colorectal carcinoma.** *World J Gastroenterol* 2005, **11**:705–707.
40. Zhu XL, Liang L, Ding YQ: **Overexpression of FMNL2 is closely related to metastasis of colorectal cancer.** *Int J Colorectal Dis* 2008, **23**:1041–1047.
41. Chianale F, Cutrupi S, Rainero E, Baldanzi G, Porporato PE, Traini S, Filigheddu N, Gnocchi VF, Santoro MM, Parolini O, van Blitterswijk WJ, Sinigaglia F, Graziani A: **Diacylglycerol kinase-alpha mediates hepatocyte growth factor-induced epithelial cell scatter by regulating Rac activation and membrane ruffling.** *Mol Biol Cell* 2007, **18**:4859–4871.
42. Chianale F, Rainero E, Cianflone C, Bettio V, Pighini A, Porporato PE, Filigheddu N, Serini G, Sinigaglia F, Baldanzi G, Graziani A: **Diacylglycerol kinase alpha mediates HGF-induced Rac activation and membrane ruffling by regulating atypical PKC and RhoGDI.** *Proc Natl Acad Sci USA* 2010, **107**:4182–4187.
43. Tsushima S, Kai M, Yamada K, Imai S, Houkin K, Kanoh H, Sakane F: **Diacylglycerol kinase gamma serves as an upstream suppressor of Rac1 and lamellipodium formation.** *J Biol Chem* 2004, **279**:28603–28613.
44. Friedl P, Wolf K: **Tumour-cell invasion and migration: diversity and escape mechanisms.** *Nat Rev Cancer* 2003, **3**:362–374.
45. Kamai T, Tsujii T, Arai K, Takagi K, Asami H, Ito Y, Oshima H: **Significant association of Rho/ROCK pathway with invasion and metastasis of bladder cancer.** *Clin Cancer Res* 2003, **9**:2632–2641.
46. Takami Y, Higashi M, Kumagai S, Kuo PC, Kawana H, Koda K, Miyazaki M, Harigaya K: **The activity of RhoA is correlated with lymph node metastasis in human colorectal cancer.** *Dig Dis Sci* 2008, **53**:467–473.
47. van Golen KL, Davies S, Wu ZF, Wang Y, Bucana CD, Root H, Chandrasekharappa S, Strawderman M, Ethier SP, Merajver SD: **A novel putative low-affinity insulin-like growth factor-binding protein, LIBC (lost in inflammatory breast cancer), and RhoC GTPase correlate with the inflammatory breast cancer phenotype.** *Clin Cancer Res* 1999, **5**:2511–2519.
48. Wang L, Yang L, Luo Y, Zheng Y: **A Novel Strategy for Specifically Down-regulating Individual Rho GTPase Activity in Tumor Cells.** *J Biol Chem* 2003, **278**:44617–44625.
49. Espina C, Cespedes MV, Garcia-Cabezas MA, Gomez del Pulgar MT, Boluda A, Oroz LG, Benitah SA, Cejas P, Nistal M, Mangués R, Lacal JC: **A critical role for Rac1 in tumor progression of human colorectal adenocarcinoma cells.** *Am J Pathol* 2008, **172**:156–166.
50. Walker K, Olson MF: **Targeting Ras and Rho GTPases as opportunities for cancer therapeutics.** *Curr Opin Genet Dev* 2005, **15**:62–68.
51. Shankavaram UT, Reinhold WC, Nishizuka S, Major S, Morita D, Chary KK, Reimers MA, Scherf U, Kahn A, Dolginov D, Cossman J, Kaldjian EP, Scudiero DA, Petricoin E, Liotta L, Lee JK, Weinstein JN: **Transcript and protein expression profiles of the NCI-60 cancer cell panel: an integrative microarray study.** *Mol Cancer Ther* 2007, **6**:820–832.
52. Su AI, Welsh JB, Sapinoso LM, Kern SG, Dimitrov P, Lapp H, Schultz PG, Powell SM, Moskaluk CA, Frierson HF Jr, Hampton GM: **Molecular classification of human carcinomas by use of gene expression signatures.** *Can Res* 2001, **61**:7388–7393.
53. Barretina J, Caponigro G, Stransky N, Venkatesan K, Margolin AA, Kim S, Wilson CJ, Lehár J, Kryukov GV, Sonkin D, Reddy A, Liu M, Murray L, Berger MF, Monahan JE, Morais P, Meltzer J, Korejwa A, Jane-Valbuena J, Mapa FA, Thibault J, Bric-Furlong E, Raman P, Shipway A, Engels IH, Cheng J, Yu GK, Yu J, Aspesi P Jr, de Silva M, et al: **The Cancer Cell Line Encyclopedia enables predictive modelling of anticancer drug sensitivity.** *Nature* 2012, **483**:603–607.

doi:10.1186/1471-2407-14-208

**Cite this article as:** Cai et al.: Increased diacylglycerol kinase  $\zeta$  expression in human metastatic colon cancer cells augments Rho GTPase activity and contributes to enhanced invasion. *BMC Cancer* 2014 **14**:208.