



University  
of Glasgow

Van Agtmael, T. and Bruckner-Tuderman, L. (2010) *Basement membranes and human disease*. Cell and Tissue Research, 339 (1). pp. 167-188. ISSN 0302-766X

<http://eprints.gla.ac.uk/35275/>

Deposited on: 30 August 2010

## **Basement membranes and human disease**

Tom van Agtmael§ and Leena Bruckner-Tuderman\*

§ Faculty of Biomedical and Life Sciences, University of Glasgow, Glasgow, U.K.  
and \* Dept. of Dermatology, University Medical Center Freiburg and Freiburg Institute for  
Advanced Studies, Freiburg, Germany

Corresponding authors: Tom Van Agtmael Faculty of Biomedical and Life Sciences,  
Davidson Building, University of Glasgow, University Avenue, Glasgow UK,  
[tom.van.agtmael@bio.gla.ac.uk](mailto:tom.van.agtmael@bio.gla.ac.uk),. Leena Bruckner-Tuderman Department of Dermatology,  
University Medical Center Freiburg, Hauptstr. 7, 79104 Freiburg, Germany. E-mail:  
[bruckner-tuderman@uniklinik-freiburg.de](mailto:bruckner-tuderman@uniklinik-freiburg.de)

Keywords: basement membrane, laminin, collagen, laminin, nidogen

### Abbreviations

BM: basement membrane, NMJ neuromuscular junction, DEJ dermo epidermal junction,  
SJS Schwartz Jampel syndrome, DDSH Dyssegmental dysplasia silverman handmaker  
type, EB epidermolysis bullosa, GBM glomerular basement membrane

## **Abstract**

In 1990 the role of basement membranes in human disease was established by the identification of *COL4A5* mutations in Alport's syndrome. Since then the number of diseases caused by mutations in basement membrane components has steadily increased as has our understanding of the roles of basement membranes in organ development and function. However, many questions remain as to the molecular and cellular consequences of these mutations and how they lead to the observed disease phenotypes. Despite this, exciting progress has recently been made with potential treatment options for some of these so far incurable diseases.

## **Introduction**

Basement membranes (BM) are specialised extracellular matrices that provide tissue structure and influence cell behaviour. They are present throughout the body and form compartments within tissues by separating endothelial and epithelial cells from underlying mesenchyme. In general BMs are composed of collagens, perlecan, nidogens and laminins, but individual BMs differ in their composition leading to an abundance of different interacting partners and added complexity. Consequently BMs are crucial to life and mutations in their components lead to a wide variety of clinical phenotypes affecting different organs. In this review we will cover after a short overview of the main BM components, the current knowledge of diseases caused by abnormalities of these molecules in the eye, kidney, vasculature, skin and neuro-muscular junction.

## Laminins

Laminin is besides collagen type IV the most abundant basement membrane component and is present in all BMs. A laminin network links the BM to the cell surface through interactions with cell surface receptors, which enables it to influence cell signalling and behaviour besides providing a structural role. Laminins are heterotrimeric glycoproteins consisting of an  $\alpha$ ,  $\beta$  and  $\gamma$  chain, and 5  $\alpha$ , 3  $\beta$  and 3  $\gamma$  chains are encoded by the genes *LAMA1-5*, *LAMB1-3* and *LAMC1-3* (Durbeej 2009). The chains can assemble into at least 15 laminin proteins (Miner 2008) which are named in the new nomenclature according to their composition such that LM-111 consists of the  $\alpha$  1,  $\beta$  1 and  $\gamma$  1 chains (Aumailley et al. 2005). As some chains are components of multiple laminins, e.g. laminin  $\alpha$ 5 chain is a component of LM-511, LM-521 and LM-523, characterising the role of individual laminins is difficult as mutations may affect multiple laminins.

Generally, laminins are cruciform shaped proteins (Fig. 1), although rod- or Y-shaped laminin molecules occur (Durbeej 2009). The N-terminal end of the chains contains globular domains separated by laminin epidermal growth factor-like repeats (LEa, LEb, LEc). All chains contain laminin N-terminal (LN) domains which are important for laminin network formation. The  $\alpha$  chain also contains the L4a and L4b globular domains whilst  $\beta$  and  $\gamma$  chains contain the LF and L4 domains respectively. The central coiled coil region is flanked by the C-terminal end of the  $\alpha$  chain which forms the globular LG domain, consisting of five LG domains which mediate cell adhesion through binding receptors including integrins, dystroglycan, syndecan and heparin (Miner 2008). These interactions can be modulated by the proteolytical cleavage of LG domains 3-5.

Because laminin, collagen type IV, nidogen and perlecan are key BM components, one can imagine that aberrations in any of these components would prohibit BM formation. The absence of BM formation in mice deficient for laminin  $\gamma$ 1 or  $\beta$ 1 (Miner et al. 2004; Smyth et al. 1999) shows indeed that laminin is required for initial BM formation and early development. In contrast, collagen type IV (Poschl et al. 2004), nidogen (Bader et al. 2005) and perlecan (Arikawa-Hirasawa et al. 1999) are required for BM maintenance rather than initial formation. Laminin's role in development is not limited to early development as both the interaction between nidogen and laminin  $\gamma$ 1 and laminin  $\alpha$ 5 are required for kidney formation (Miner and Li 2000; Willem et al. 2002). In addition, laminin  $\alpha$ 5 plays a role in the development of placenta, brain, limb and lung (Miner 2008), and elegant rescue experiments have begun to address how laminin  $\alpha$ 5 functions. These data showed that during development its role is mediated through the LG1-2 domains whilst the LG3-5 domains functions in the glomerular filtration barrier (Kikkawa and Miner 2006).

One of the central concepts observed following laminin deficiency is the induced expression of other laminins. The effectiveness of this for organ function depends on the redundancy of the different laminin molecules as illustrated by the successful compensatory expression in notochord development of laminin  $\alpha$ 4 following laminin  $\alpha$ 1 deficiency in zebrafish (Pollard et al. 2006). However this compensation may not always restore organ function as laminin  $\beta$ 1 expression in the glomerular basement membrane (GBM) of *Lamb2*<sup>-/-</sup> mice does not rescue filtration barrier function despite producing a structurally intact BM (Noakes et al. 1995b).

BMs underlying stratified epithelia, such as skin, contain laminins with  $\alpha 3$  and  $\alpha 5$  chains (Aumailley et al. 2006) which form LM-332 (previously known as laminin 5) and LM-311 (laminin 6) which together with the ectodomain of collagen XVII constitutes the anchoring filaments (Nonaka et al. 2000; Rousselle et al. 1991). LM- 511 (laminin 10), more ubiquitous than the preceding laminins, is also present at the dermal-epidermal junction. The N-termini of LM-332 binds to collagen VII, a major component of the anchoring fibrils thereby connecting anchoring filaments with fibrils. In contrast to other laminin molecules, LM-332 may rely on the association with LM-331 to form oligomers as it can not self-polymerize (Aumailley et al. 2006). In addition nidogen 1, fibulin-1 and -2 can bind the recombinant N-terminal region of the  $\gamma 2$  chain of laminin 332 (Sasaki et al. 2001). These interactions may be important for integration of LM-332 into the extracellular matrix before maturation of the  $\gamma 2$  chain (Gagnoux-Palacios et al. 2001), as a substantial portion of the N-terminus of the  $\gamma 2$  chain is cleaved in human adult skin (Tunggal et al. 2002).

## **Collagens**

Collagens are the major structural component of the extracellular matrix but are also important for tissue architecture organisation and cellular processes such as adhesion and migration. The interactions of collagens with extracellular matrix proteins and cell surface receptors are important during processes such as development, growth, tissue remodelling and disease pathologies. Currently 28 different types of collagen are known, which can be grouped in subfamilies such as fibrillar collagens, FACITs (fibril-associated collagens with interrupted triple helices), transmembrane collagens and network forming collagens (Mylyharju and Kivirikko 2004) (see also (Gordon and Hahn 2009) in this issue). All

collagen proteins contain one or more collagenous domains consisting of GLY-X-Y amino acid repeats and many human mutations affect this glycine residue, which is crucial for formation of the triple helical structure of collagen (Myllyharju and Kivirikko 2004).

### **Collagen type IV**

Collagen type IV is the most abundant structural BM component and vertebrates express six  $\alpha$ (IV) chains, encoded by the genes *COL4A1-COL4A6*, which are genomically organised in pairs in a head to head fashion (*COL4A1* with *COL4A2*, *COL4A3* with *COL4A4* and *COL4A5* with *COL4A6*). In each alpha chain the central collagen domain is flanked by an N-terminal 7S domain and a C-terminal non-collageneous domain (NC1) (Fig 2A) (Khoshnoodi et al. 2008).

In the endoplasmic reticulum (ER) three alpha chains fold to form a heterotrimeric molecule, called protomer, and despite the 56 possible combinations, only three different protomers,  $\alpha 1.\alpha 1.\alpha 2$ (IV),  $\alpha 3.\alpha 4.\alpha 5$ (IV) and  $\alpha 5.\alpha 5.\alpha 6$ (IV), have been described. Protomer formation occurs through the interaction of three NC1 domains and protomer composition is determined by the relative affinity of NC1 domains for different alpha chains and the presence of recognition sites on NC1 domains (Khoshnoodi et al. 2006). Following establishment of the NC1 trimer, triple helix formation occurs in a zipper like fashion and protomer secretion occurs. Once secreted, a complex set of interactions occurs between protomers forming a collagen type IV network in the shape of a lattice. Two protomers interact to form a dimer with a NC1 hexamer and four protomers interact through interactions between residues of the 7S domains. Finally, triple helical domains can also interact with each other (Khoshnoodi et al. 2008).

The collagen type IV networks are differentially expressed with  $\alpha 1.\alpha 1.\alpha 2(\text{IV})$  being the most widely expressed throughout embryonic development. The onset of  $\alpha 3.\alpha 4.\alpha 5(\text{IV})$  and  $\alpha 5.\alpha 5.\alpha 6(\text{IV})$  expression is later in development and in some renal and testicular basement membranes  $\alpha 3.\alpha 4.\alpha 5(\text{IV})$  replaces  $\alpha 1.\alpha 1.\alpha 2(\text{IV})$  (Harvey et al. 2006; Kalluri et al. 1997).

Despite being a predominant component of all BMs, collagen type IV is not required for BM formation but is necessary for BM maintenance (Poschl et al. 2004). The important structural role of collagen type IV is illustrated by the clinical consequences of collagen IV mutations (see below), and the defective placental structure and haemorrhaging, due to BM defects, in  $\alpha 1.\alpha 1.\alpha 2(\text{IV})$  deficient mice (Poschl et al. 2004).

In addition, collagen type IV mediates cell adhesion to the BM through binding to integrin and non-integrin receptors. Collagen type IV interacts mainly with  $\beta 1$  integrin receptors (Leitinger and Hohenester 2007), in particular  $\alpha 2\beta 1$  and  $\alpha 1\beta 1$  integrin, through sequences in the collagen and NC1 domains (Khoshnoodi et al. 2008) (Fig. 2A). Integrin binding is important during angiogenesis as the NC1 derived fragments of  $\alpha 1(\text{IV})$  (arresten), and  $\alpha 3(\text{IV})$  (tumstatin) rely on  $\alpha 1\beta 1$  and  $\alpha_v\beta_3$  integrin interactions respectively for their antiangiogenic capabilities (Mundel and Kalluri 2007). Finally during angiogenesis, exposure of cryptic integrin binding sites may occur due to the proteolytic degradation or denaturation of collagen type IV, and antibodies against these sites may inhibit angiogenesis (Xu et al. 2001).

Besides integrin receptors, collagen type IV also binds DDR1 (Discoidin Domain Receptor I), a tyrosine kinase receptor that becomes phosphorylated following collagen binding (Leitinger and Hohenester 2007). The physiological importance of the interaction is underlined by the different renal phenotypes including proteinuria and GBM thickening of



DDR1-deficient animals, (Gross et al. 2004), similar to phenotypes relevant to collagen type IV pathology (see below).

### **Collagen type XVIII, XV and endostatin**

Collagen type XVIII belongs to the multiplexin (multiple triple-helix domains with interruptions) subfamily of collagen proteins and is a heparin sulphate proteoglycan, consisting of a protein core with negatively charged heparan sulphate side chains. Besides perlecan and agrin, it is the third main heparan sulphate proteoglycan of the BM and is structurally similar to the chondroitin sulphate proteoglycan collagen type XV (Iozzo 2005).

Collagen type XVIII is expressed in BMs underlying epithelial and endothelial cells and has three isoforms, with different N-terminal fragments, that exhibit specific expression patterns (Marneros and Olsen 2005). Collagen type XVIII displays a polarised position in BMs as its C-terminal domain is embedded in the lamina densa, where it interacts with perlecan and laminins, whilst in most BMs, the N-terminal domain extends into the matrix below the lamina densa of the BM (Elamaa et al. 2005).

The central domain of collagen type XVIII consists of collagenous repeats separated by non-collagenous regions. This central domain is flanked by an N-terminal domain with thrombospondin-1-like and frizzled motifs which can inhibit Wnt signalling (Quelard et al. 2008), and a C-terminal trimerisation domain which harbours the fragment endostatin, also present in collagen type XV (Sasaki et al. 2000). The release of endostatin, through cleavage of the hinge that separates the C-terminal domain from the triple helical domain occurs in vivo as endostatin can be detected in plasma and tissue extracts (Iozzo 2005).

Endostatin has been heavily investigated due to its anti angiogenic activity (Iozzo 2005), although the absence of a difference in tumour growth in endostatin deficient mice challenged with fibrosarcoma and melanoma (Fukai et al. 2002) questioned the anti-angiogenic role of endogenous endostatin. However evidence showing increased vascular outgrowth in aortic explant cultures (Li and Olsen 2004) and increased levels of corneal neovascularisation (Marneros et al. 2007) in *Coll8a1*<sup>-/-</sup> mice, do support an antiangiogenic role for endogenous endostatin which relies at least in part on binding heparan sulphate proteoglycans such as perlecan and  $\alpha_v\beta_5$ -integrin (Iozzo 2005).

In contrast to the C-terminal end, the function of the N-terminal domain is much less characterised but analysis of the inner limiting membrane (ILM) in eyes suggests it may function in anchoring the BM to underlying structures (Fukai et al. 2002).

Despite their structural similarity collagen type XVIII and XV, have separate biological roles as *Coll5a1*<sup>-/-</sup> animals display muscle defects (Eklund et al. 2001) compared to the eye phenotype of *Coll18*<sup>-/-</sup> mice (see below).

### **Epithelial specific collagens, types VII and XVII**

Collagen type VII and XVII, and their ligand LM-332, occur mainly in BMs below stratified squamous epithelia in skin and mucous membranes of the orifices, where they function as components of the hemidesmosome-anchoring filament–anchoring fibril adhesion complex, which attaches the epithelium to the underlying dermal mesenchyme.

Collagen type XVII belongs to the family of transmembrane collagens and is a homotrimer of  $\alpha 1(XVII)$  chains (Fig 2C) (Franzke et al. 2005). The intracellular domain of collagen type XVII co-localises and interacts with the intracellular tail of integrin  $\beta_4$ , BP230 and

plectin (Hopkinson and Jones 2000; Koster et al. 2003) in the cytoplasmic plaque of hemidesmosomes. The ectodomain of human collagen type XVII, contains collagenous domains (Col1-15), interspaced by non-collagenous (NC1 to NC16) segments and its tertiary structure is longitudinal with a C-terminal flexible tail (Franzke et al. 2005) (Fig. 2C). Sheddases of the ADAMS (a disintegrin and metalloproteinase) family release the ectodomain from the cell surface by cleavage within the NC16 domain (Franzke et al. 2005) which can also interact with the extracellular stalk of integrin  $\alpha_6$  (Hopkinson and Jones 2000), at least in vitro. The ectodomain of collagen type XVII co-localizes with LM-332 in the anchoring filaments, and its C-terminus reaches the lamina densa (Nonaka et al. 2000) and binds to laminin 332 (Tasanen et al. 2004), suggesting that the C-terminal end of collagen type XVII is important for the spatial orientation of laminin 332 and its localization in the collagen type IV-containing lamina densa.

Collagen type VII is the largest collagen and the main structural component of the anchoring fibrils, which attach the BM with the papillary dermis in the skin (Aumailley et al. 2006). It is synthesized as a pro $\alpha 1$ (VII) polypeptide chain that contains an amino-terminal globular domain named NC-1, a central triple-helical domain and a small c-terminal globular domain termed NC-2 (Fig. 2D). The pro-collagen type VII molecule is a homotrimer of pro $\alpha 1$ (VII)-chains and each pro-collagen molecule forms an anti-parallel dimer, with a short C-terminal overlap and disulfide-bonding (Chen et al. 2001). Finally, dimers aggregate laterally to form the anchoring fibrils. During the biosynthesis and the supra-molecular aggregation of the fibrils, pro-collagen type VII is processed to mature collagen via proteolytic processing of the NC-2 domain by BMP-1 (bone morphogenic

protein-1) (Rattenholl et al. 2002). Both keratinocytes and fibroblasts can synthesize collagen type VII and interactions between collagen VII and laminin 332 (Chen et al. 1997; Rousselle et al. 1997; Tasanen et al. 2004) or banded collagen fibrils (Villone et al. 2008) in the skin stabilize the DEJ (dermo epidermal junction).

### **Perlecan**

Perlecan (*HSPG2*) is a large heparan sulphate proteoglycan (see also (Schäfer and Schäfer 2009) in this issue) that is present in BMs. It can also be found at the cell surface and in tissues such as cartilage and connective tissue stroma (Iozzo 2005; Schäfer and Schäfer 2009). Numerous binding partners have been identified including other BM components (nidogen and collagen type IV), integrins and growth factors (Fig. 3) which may underlie some of the functions of perlecan such as cell and growth factor signalling, direction of neurite outgrowth, ligand internalisation signal and BM maintenance (Schäfer and Schäfer 2009).

Perlecan consists of 5 domains (Fig. 4). Domain I is the attachment site for the heparan sulphate chains whilst domain II is homologous to the low density lipoprotein receptor ligand binding domain. Domain III has laminin-like domain modules and epidermal growth factor (EGF)-like repeats whilst domain IV is important for BM integration by binding other BM components (Hopf et al. 1999). The C-terminal domain V contains the fragment endorepellin (Iozzo 2005).

Analysis of perlecan functions has been greatly aided by the generation of the perlecan knock-out mouse model, which develops a lethal multi organ phenotype affecting heart, brain and cartilage development (Costell et al. 1999) underscoring the importance of

perlecan for development. A viable mouse model (*Hspg2*<sup>Δ3/Δ3</sup>) harbouring a deletion of exon 3, which greatly reduces the amount of heparan sulphate side chains (Tran et al. 2004), has enabled the elucidation of the relative contributions of the core protein versus the side chains to perlecan function.

Similarly to the C-terminal fragments of collagens type IV (tumstatin, arresten), XV and XVIII (endostatin), endorepellin possesses anti-angiogenic activity (see also (Pihlajaniemi and Soininen 2009) in this issue), both *in vitro* and *in vivo* which is mediated through the interaction with  $\alpha 2\beta 1$  integrin (Iozzo 2005; Woodall et al. 2008). In contrast to endorepellin, perlecan itself seems to support tumour and developmental angiogenesis as it promotes tumour growth (Iozzo 2005) and perlecan knockdown in zebrafish affects the sprouting of intersegmental vessels (Zoeller et al. 2008). This activity seems to be mediated through binding of fibroblast growth factors by its heparan sulphate side chains (Mongiat et al. 2000; Zhou et al. 2004), FGF2 and bFGF (Aviezer et al. 1994; Sharma et al. 1998).

## **Nidogen**

All basement membranes contain nidogen and vertebrates express two nidogens, nidogen 1 and nidogen 2, which are sulphated glycoproteins. Although in some BMs, e.g. kidney and blood vessels, both proteins co-localise in general the expression of nidogen 2 is more restricted than that of nidogen 1 (Ho et al. 2008).

Nidogens consist of 3 globular domains (G1-3) connected by rod-like or thin segment domains (Ho et al. 2008), which can interact with BM components and integrin receptors (Fig. 4). The ability to bind perlecan, laminin and collagen type IV (Gerl et al. 1991; Mayer et al. 1993), led to the hypothesis that nidogen acts as an essential bridge between BM

components (Ho et al. 2008). However, this was challenged by the results that a loss of function mutation of nidogen in *C. elegans* does not affect BM assembly (Kang and Kramer 2000; Kim and Wadsworth 2000) and that *Nid1*<sup>-/-</sup> mice have a normal BM structure and no pathological features (Murshed et al. 2000). The presence of cardiac, kidney, lung, and limb defects in perinatal lethal *Nid1*<sup>-/-</sup>*Nid2*<sup>-/-</sup> mice associated with BM defects (Bader et al. 2005; Bose et al. 2006) showed that nidogen 2 compensates for the absence of nidogen 1 (Bader et al. 2005).

At least some of the functions of nidogen are mediated through its interacting partners. Deletion of the nidogen binding site in laminin  $\gamma$ 1 (formerly known as  $\gamma$ 1III4 but in new nomenclature  $\gamma$ 1LEb3) demonstrated that nidogen functions mediated through laminin are important for lung and kidney development, as both  $\gamma$ 1LEb3 and *Nid1*<sup>-/-</sup> *Nid2*<sup>-/-</sup> mice exhibited delayed lung development (Bader et al. 2005; Willem et al. 2002) and renal agenesis was observed in  $\gamma$ 1LEb3 mice (Willem et al. 2002). In limb development, nidogen may function through perlecan as limb defects in *Nid1*<sup>-/-</sup>*Nid2*<sup>-/-</sup> mice are associated with aberrant FGF8 signalling (Bose et al. 2006) and perlecan plays a role in growth factor signalling. The observation of defective BMs in these models show that nidogen 1 and the laminin nidogen interaction are not required for BM formation but are necessary for the maintenance of particular BMs but not for other BMs (Kang and Kramer 2000; Kim and Wadsworth 2000; Mokkapati et al. 2008). The necessity of nidogen for BM function may depend on the composition of individual BMs and/or compensation by other BM proteins. Detailed investigation of animal models should enable the elucidation of this important question and may identify putative disease processes caused by nidogen abnormalities as thus far no nidogen mutations have been described in human disease.

## **Human diseases caused by mutations in basement membrane components**

Mutations in BM proteins result in phenotypes in a few organs, and the molecular disease mechanisms are still not fully understood. The restricted number of affected tissues is perhaps surprising considering the wide expression patterns of BM proteins. Future research will likely disclose phenotypic, functional variations that depend on the exact location of the mutation within the BM molecule, e.g. at ligand binding sites, and the role of genetic modifiers in different organs and diseases. Below, the current knowledge of BM diseases is summarized.

### ***Kidney***

The kidney contains three BMs; a tubular BM, the glomerular BM (GBM) and the BM of Bowman's capsule, in addition to the vascular BMs. The GBM is an integral part of the filtration apparatus, as it separates the glomerular endothelial cells from the podocytes (specialised epithelial cells) and their foot processes. In addition to structural support, the GBM plays an important functional role in the filtration process by forming an albumin barrier (Jarad et al. 2006).

### **Alport's syndrome, thin basement nephropathy and diffuse leiomyomatosis**

Alport's syndrome affects mainly the kidney, with hematuria, interstitial nephritis and progressive renal failure as major symptoms, but patients can also develop sensorineural deafness, lenticulus of the anterior capsule (a protrusion of the lens) and dot fleck reflection (retinopathy) (Gubler 2008; Hudson et al. 2003). Kidneys display progressive

thickening of the GBM resulting in splitting and multilamellations, and areas of BM thinning leading to a basket weave appearance.

Alport's syndrome is caused by *COL4A5*, *COL4A3* or *COL4A4* mutations. *COL4A3* or *COL4A4* mutations only impact on the  $\alpha3.\alpha4.\alpha5(\text{IV})$  network, but *COL4A5* mutations affect both the  $\alpha3.\alpha4.\alpha5(\text{IV})$  and  $\alpha5.\alpha5.\alpha6(\text{IV})$  networks (Gubler 2008). The inheritance can be X-linked (*COL4A5* mutations, 85% of all cases), autosomal recessive (*COL4A3* or *COL4A4* mutations, 10-15%) or autosomal dominant (*COL4A3* or *COL4A4* mutations, 0-5%) (Hudson et al. 2003). Deletion, insertion, splice site and missense mutations have been described and the majority of missense mutations affect the glycine residues of the Gly-X-Y repeat. Patients with autosomal recessive disease carry compound heterozygous or homozygous *COL4A3* or *COL4A4* mutations (Gubler 2008; Hudson et al. 2003).

The age of onset and phenotypic severity of Alport's syndrome is variable and depends on inheritance pattern and type and location of the mutation. In general, early onset end stage renal disease is observed in autosomal recessive Alport's syndrome, whereas the autosomal dominant form may not progress to end stage renal disease (Hudson et al. 2003). In addition insertion and deletion *COL4A5* mutations result in a juvenile age of onset whilst the position of missense mutation affects the age of onset and disease severity (Gubler 2008). Finally, X chromosome inactivation greatly influences severity in female carriers of X-linked Alport's syndrome and lends the disease a wide range of phenotypes (Gubler 2008). It has been widely regarded that the main causative mechanism in Alport's syndrome is the absence of the  $\alpha3.\alpha4.\alpha5(\text{IV})$  network in the adult mature GBM as observed by a lack of immunostaining (Gubler 2008). This can also be observed in female



carriers of *COL4A5* mutations and female *Col4a5*<sup>-/-</sup> mice which have a characteristic mosaic expression pattern due to X chromosome inactivation.

In contrast to the  $\alpha1.\alpha1.\alpha2(\text{IV})$  network in the foetal GBM, the  $\alpha3.\alpha4.\alpha5(\text{IV})$  network of the mature GBM has a higher degree of crosslinking and resistance to proteolysis (Kalluri et al. 1997) which may be required to cope with the increased stress of the adult kidney. This hypothesis is supported by the presence of structural abnormalities in mature GBM in X-linked Alport's syndrome that contain  $\alpha1.\alpha1.\alpha2(\text{IV})$ , and filtration defects in *Col4a3*<sup>-/-</sup> mice in areas of the GBM that are structurally normal (Abrahamson et al. 2007).

Analysis of *Col4a3*<sup>-/-</sup> mice revealed that genetic modifiers can influence phenotype severity by inducing the expression of  $\alpha5.\alpha5.\alpha6(\text{IV})$  in the GBM, thereby resulting in a delayed age of onset of renal failure (Kang et al. 2006). Moreover, although the actual contribution to the phenotype of altered laminin  $\alpha5$  and  $\alpha1$  expression in the GBM of *Col4a3*<sup>-/-</sup> mice (Abrahamson et al. 2007) remains to be determined, the above data do suggest that clinical severity and disease progression in Alport's syndrome is subject to multiple modifiers. This knowledge may shed light on potential treatment options.

Carriers in families with autosomal Alport's syndrome may present with hematuria and basement membrane thinning (Hudson et al. 2003). These symptoms also occur in individuals diagnosed with "thin basement membrane nephropathy (TBMN)" (also known as benign familial hematuria). The clinical similarity may not be surprising as 40% of TBMN cases are due to *COL4A3* or *COL4A4* mutations (Gubler 2008). Traditionally TBMN has been considered a benign disorder as it often does not progress to renal failure. However, longitudinal analysis of patients challenged this assumption, since 30% develop

chronic renal failure and 20% end stage renal disease (Voskarides et al. 2007), compared to 24% of autosomal dominant Alport's syndrome patients that develop end stage renal disease (Maccocci et al. 2009). In addition, heterozygous *Col4a3*<sup>+/-</sup> mice, which exhibit TBMN, develop chronic renal failure and have a reduced life expectancy (Beirowski et al. 2006). Consequently, these data question the separate entity of TBMN and suggest it could be considered a mild form of Alport's syndrome (Hudson et al. 2003).

X-linked Alport's syndrome may occur combined with diffuse leiomyomatosis, a disorder characterized by benign smooth muscle tumours leading to oesophageal dysfunction and genital leiomyomas (Hudson et al. 2003). Diffuse leiomyomatosis is caused by deletions affecting both *COL4A5* and the first two exons of *COL4A6* due to deletion breakpoints in intron 2 of *COL4A6*. Although the deletions abrogate both  $\alpha3.\alpha4.\alpha5(\text{IV})$  and  $\alpha5.\alpha5.\alpha6(\text{IV})$ , dominant negative effect are also possible as deletions extending beyond exon 3 of *COL4A6* do not cause diffuse leiomyomatosis (Heidet et al. 1995), indicating that *COL4A6* deficiency is not responsible for tumour formation. A further possibility is that the deletions may alter expression of other genes through removal of regulatory elements such as silencers/enhancers or non coding RNAs which may increase cell proliferation (Hammond 2006).

### ***COL4A1* mutations, HANAC syndrome and polycystic kidney disease**

The role of  $\alpha1.\alpha1.\alpha2(\text{IV})$  in human disease was unknown until the recent analysis of ENU (N-ethyl-N-nitrosourea, a powerful mutagen that results in single base pair mutations) mouse models with *Col4a1* mutations which led to the identification of patients with

*COL4A1* mutations. In mice, *Col4a1* missense mutations caused a mild glomerulopathy with extensive BM defects in Bowman's capsule (Fig. 5) (Van Agtmael et al. 2005), mild BM abnormalities in the GBM, and proteinuria (Favor et al. 2007; Gould et al. 2006). Some of these phenotypes were also observed in HANAC syndrome (hereditary angiopathy with nephropathy, aneurysm and cramps) caused by *COL4A1* missense mutations. The patients exhibit a normal GBM but display defects in the BM of Bowman's capsule, tubules and arterioles (Plaisier et al. 2007). Clinically, HANAC patients develop kidney phenotypes, including hematuria, reduced glomerular filtration rate (although no kidney failure is observed) and cystic kidney disease, in addition to eye and vascular pathology (see below). Some phenotypes may develop with age, as the cystic kidney disease was observed only in older patients (Plaisier et al. 2007).

Currently all mutations identified in HANAC syndrome are located in *COL4A1* exons 24 or 25 (Plaisier et al. 2007). Other *COL4A1* mutations have been described in families with vascular and eye disease (Breedveld et al. 2006; de Vries et al. 2009; Gould et al. 2005; Gould et al. 2006; Shah et al. 2009; Vahedi et al. 2007b; van der Knaap et al. 2006) (see below), but it is not known whether these patients have renal phenotypes. Analysis of patients and ENU mouse models with *COL4A1* mutations has revealed that the mutations result in a spectrum of phenotypes determined by the individual mutation (Van Agtmael et al. 2005), its location within the gene and genetic and environmental modifiers (Gould et al. 2007; Gould et al. 2006). Mutations affecting the Y residue of the G-X-Y repeat or residues in the NC1 domain result in milder phenotypes than mutations affecting glycine residues (Favor et al. 2007; Van Agtmael et al. 2005). This difference was also observed at the BM level suggesting BM defects underlie the phenotypes (Van Agtmael et al. 2005). In this

case the mutation may result in focal absence of  $\alpha 1.\alpha 1.\alpha 2(\text{IV})$  and/or affect interactions with collagen type IV receptors such as integrins and DDR1, or other BM components. However, the presence of swollen ER vesicles (Gould et al. 2005; Van Agtmael et al. 2005) and increased expression of chaperones and intracellular retention of mutant protein (Gould et al. 2007) suggest that ER stress may also play a role in disease pathogenesis. Currently the contributions of ER stress and BM defects to phenotypes remains to be determined. Either way the mutations act in a dominant fashion as the absence of a phenotype in *Col4a1/Col4a2*<sup>+/-</sup> (Poschl et al. 2004) mice excludes haploinsufficiency as an underlying mechanism. Moreover, the phenotypes are influenced by genetic modifiers, as in mice the anterior segment dysgenesis (see below) is dependent on genetic background (Gould et al. 2007).

The observations of polycystic kidney disease in HANAC syndrome, and in a hypomorphic mouse model of Laminin alpha 5 (*Lama5*<sup>neo/neo</sup>) (Shannon et al. 2006), has placed emphasis on the role of the BM in cystic kidney disease. However, the mechanisms underlying cyst formation remain elusive and may be different in the two models. Whilst HANAC syndrome patients have altered tubular BMs, suggesting a structural defect (Plaisier et al. 2007), *Lama5*<sup>neo/neo</sup> mice do not display overt BM abnormalities raising the hypothesis that laminin  $\alpha 5$  plays a role in tubular epithelium homeostasis (Shannon et al. 2006). Further analysis of these models may reveal novel insights into the pathogenesis of cystic kidney disease.

### ***LAMB2* gene mutations, Pierson syndrome and the GBM as filtration barrier**

Pierson syndrome is an autosomal recessive congenital disorder characterised by microcoria (extremely narrow non-responsive pupils), additional ocular abnormalities, and nephrotic syndrome leading to kidney failure before or immediately after birth (Gubler 2008). It is caused by *LAMB2* gene mutations, which result in absence or severe reduction of laminin  $\beta 2$  in tissues (Zenker et al. 2004). Different missense and nonsense mutations result in great clinical variability, possibly due to variations in expression levels, as not all patients with missense mutations have ocular defects (Choi et al. 2008; Hasselbacher et al. 2006).

Due to better management of renal problems, Pierson syndrome patients' life expectancy has increased and led to the manifestation of a neuromuscular phenotype in some individuals (Maselli et al. 2009; Wuhl et al. 2007). These defects include invasion of Schwann cell in the synaptic space and structural defects leading to muscle weakness and fatigability (Maselli et al. 2009), symptoms also observed in *Lamb2*<sup>-/-</sup> mice (Patton et al. 1998). The mice also exhibit congenital nephrosis (Noakes et al. 1995b), retinal defects (Libby et al. 1999) and failure to thrive. Elegant transgenic rescue experiments in *Lamb2*<sup>-/-</sup> mice showed that restoring renal and synaptic *Lamb2* expression is required for a complete recovery and that the NMJ defects cause a failure to thrive (Miner et al. 2006). The congenital nephrosis is characterised by the effacement of podocyte foot processes reflecting the important structural role of laminin  $\beta 2$  in the GBM for anchoring the foot processes (Noakes et al. 1995b). Importantly, proteinuria and GBM permeability preceded podocyte defects in *Lamb2*<sup>-/-</sup> animals showing that the GBM is an active filtration barrier, in addition to the slit diaphragm present between foot processes (Jarad et al. 2006).

## **Proteoglycans and kidney function**

The presence of mild glomerular, tubular and filtration defects in *Coll8a1*<sup>-/-</sup> mice (Utriainen et al. 2004) and renal abnormalities in Knobloch syndrome (see below) (Williams et al. 2008) indicate the importance of collagen type XVIII, a proteoglycan, in kidney function and urine filtration.

The kidney filtration barrier provides both a size and charge selective barrier and the GBM and its charge were considered to be important in this context. The negative charge of the GBM is provided by side chains of the heparin sulphate proteoglycans (Kanwar et al. 1980) perlecan, collagen type XVIII and agrin. Charge barrier dysfunction may contribute to glomerular diseases (Myers et al. 1982) as a loss of heparan sulphate has been observed in diseases such as diabetic nephropathy (Tamsma et al. 1994). This hypothesis was supported by the presence of proteinuria in mice following enzymatic removal of heparan sulphate side chains (Comper and Glasgow 1995) and in *HSPG2*<sup>Δ3/Δ3</sup> mice following administration of super physiological levels of BSA (Morita et al. 2005). However, the role of heparan sulphate side chains remains elusive as *HSPG2*<sup>Δ3/Δ3</sup> mice have normal basal kidney function and no pathology under unchallenged conditions (Rossi et al. 2003). In addition, agrin deficiency, which affects the anionic charge of the BM, does not affect the filtration of a negatively charged tracer (Harvey et al. 2007) and *HSPG2*<sup>Δ3/Δ3</sup> *Agrn*<sup>del/del</sup> mice, deficient for both perlecan heparin sulphate side chain and agrin, do not present with proteinuria (Goldberg et al. 2009). Therefore, the results cast doubt on the role of the GBM in charge selection and suggest a role for the endothelial glycocalyx (Harvey et al. 2007).

## ***Eye***

### **Knobloch Syndrome**

Knobloch syndrome is an autosomal recessive disease characterised by high myopia (short sightedness), vitreoretinal degeneration, retinal detachment, macular abnormalities and occipital encephalocele. It can be caused by *COL18A1* mutations resulting in truncation or loss of protein due to nonsense mediated decay (Sertie et al. 2000; Suzuki et al. 2002) but is genetically heterogeneous as additional loci have been identified (Khaliq et al. 2007; Menzel et al. 2004). This genetic heterogeneity combined with genetic modifiers (Utriainen et al. 2004) may underlie the highly variable clinical presentation of Knobloch syndrome.

Due to the rarity of the syndrome and subsequent lack of human histopathology, most of what we know about Knobloch syndrome and its pathways has been based on analysis of *Coll18a1*<sup>-/-</sup> mice.

The persistence of the hyaloid vasculature, which is present in the vitreous body during development but regresses subsequently, is a feature of Knobloch syndrome (Duh et al. 2004) and *Coll18a1*<sup>-/-</sup> mice in which it is associated with defective growth of the retinal vasculature (Fukai et al. 2002). The hyaloid vasculature abnormalities may be due to changes in the inner limiting membrane leading to abnormal retinal attachment (Fukai et al. 2002; Hurskainen et al. 2005) and/or due to a loss of frizzled domain function as observed due to a loss of function of frizzled 5 (Liu and Nathans 2008) and frizzled 4 (Marneros and Olsen 2005). Altered VEGF signalling (Fukai et al. 2002; Hurskainen et al. 2005) may then cause the retinal vasculature defects as VEGF mutant animals exhibit persistence of hyaloid vasculature (Stalmans et al. 2002) and VEGF can bind to heparan sulphate, suggesting a role for collagen type XVIII in VEGF signalling (Hurskainen et al. 2005). Normal retinal vascularisation is driven by hypoxia induced VEGF expression in astrocytes. The persistent hyaloid vasculature could then cause an absence of hypoxia (Fukai et al. 2002) and/or

alterations in endothelial cell or astrocyte function or behaviour (Hurskainen et al. 2005), thereby affecting VEGF signalling and retinal vasculature development.

It is unlikely that these vascular defects underlie the progressive loss of vision in Knobloch syndrome patients and *Col18a1*<sup>-/-</sup> animals (Marneros and Olsen 2005) as they do not affect retinal perfusion or function (Marneros et al. 2004). A more likely explanation may be the accumulation of deposits between the retinal pigment epithelium and Bruch's membrane, which are also observed in age related macular degeneration, possibly due to BM defects in Bruch's membrane (Marneros et al. 2004).

### **Eye diseases and collagen type IV mutations**

Given the wide expression pattern of  $\alpha1.\alpha1.\alpha2(\text{IV})$  it is not surprising that *COL4A1* mutations affect multiple tissues, including the eye. The ocular aspects of HANAC syndrome include retinal tortuosities (a tortuous appearance of the retinal vasculature) and haemorrhaging (Plaisier et al. 2007), which have also been observed in adult small vessel disease and porencephaly caused by *COL4A1* mutations (Gould et al. 2005; Gould et al. 2006), indicating that retinal tortuosities may be a common and characteristic phenotype of *COL4A1* mutations. The retinal tortuosities is one of a number of vascular phenotypes affecting the eye that include a silvery appearance of the arterioles, retinal bleeding, and neovascularisation (Favor et al. 2007; Van Agtmael et al. 2005). Besides the vascular BM, *COL4A1* and *Col4a2* mutations also affect BMs of the anterior structures of the eye resulting in cataract formation and anterior segment dysgenesis including Axenfeld-Rieger anomaly (Favor et al. 2007; Gould et al. 2007; Sibon et al. 2007; Van Agtmael et al. 2005).



Although Alport's syndrome is primarily a renal disease, patients can display ocular phenotypes including dot fleck retinopathy, lenticonus and cataract (Hudson et al. 2003). The formation of cataracts in patients with Alport's syndrome or *COL4A1* mutations indicates that the different collagen type IV networks present in the lens capsule are not redundant. However, the mechanisms underlying cataract formation remain elusive as both BM defects (Van Agtmael et al. 2005) and ER stress (Gould et al. 2007; Van Agtmael et al. 2005) may contribute to the phenotype. Currently it is not clear how collagen type IV mutations result in the ocular phenotypes.

#### ***Vascular disease and collagen type IV mutations***

The vascular BM surrounds the smooth muscle cells and separates them from endothelial cells. The importance of BM proteins in vascular disease was identified by the identification of *COL4A1* mutations in porencephaly (cerebral spinal fluid filled cavities due to haemorrhagic stroke), recurrent cerebral and retinal microbleeds, leukoencephalopathy, retinal tortuosities and ischemic lacunar infarcts (Breedveld et al. 2006; Favor et al. 2007; Gould et al. 2005; Plaisier et al. 2007; van der Knaap et al. 2006). *Col4a1* mutations also weaken the vessel wall of the major vasculature as shown by intracranial aneurysms in the carotid artery (Plaisier et al. 2007; van der Knaap et al. 2006). These vascular defects may occur in isolation or be part of wider syndrome affecting the eye and kidneys (Plaisier et al. 2007; Sibon et al. 2007; Vahedi et al. 2007a).

Thus far, no human *COL4A2* mutations have been identified, but in mice *Col4a2* mutations result in similar but less severe phenotypes than *Col4a1* mutations. The milder phenotype

may be due to  $\alpha1.\alpha1.\alpha2(\text{IV})$  network composition, with the mutant alpha chain being present in 50% of protomers, as compared to 75% in case of a *Col4a1* mutation.

The variable clinical severity of patients with *COL4A1* mutations depends on the type and position of the mutation, and genetic and environmental modifiers (Gould et al. 2007; Gould et al. 2006; Van Agtmael et al. 2005). The reduced penetrance of perinatal cerebral haemorrhaging (Gould et al. 2005), and increased survival in mouse pups born by Caesarean delivery (Gould et al. 2006) indicates birth trauma is an environmental risk factor, at least in some cases as embryonic porencephaly does occur (Favor et al. 2007). In addition, the occurrence of cerebral haemorrhages during sports activities (Vahedi et al. 2007b) also suggests exercise as a risk factor.

These data combined with the identification of a *COL4A1* mutation in patients without a family history of haemorrhagic stroke (Vahedi et al. 2007b) and the association of extracellular matrix proteins with intracranial aneurysms (Ruigrok et al. 2006) raise the important question whether collagen type IV plays a role in stroke in general.

### ***Muscle and the neuromuscular junction (NMJ)***

Each muscle fibre is ensheathed by a BM, and at the NMJ a highly specialised BM is present in the synaptic cleft. The BM is not only important for NMJ development but also for the functions of the NMJ and the muscle.

### **Merosin deficient congenital muscular dystrophy**

Merosin-deficient congenital muscular dystrophy 1A (MDC1A) is the most frequent form of congenital muscular dystrophy in which patients present with hypotonia, muscle

weakness and joint contractures at birth or within the first months of life and is caused by *LAMA2* mutations (Helbling-Leclerc et al. 1995; Xu et al. 1994b). MDC1A patients also display central and peripheral neuropathy including white matter changes, and neuromigration and nerve conduction abnormalities probably due to myelination defects which have also been observed in the mouse models. The majority of *LAMA2* mutations (Helbling-Leclerc et al. 1995; Xu et al. 1994b) result in the absence or severe reduction of LM-211 staining in the BM although recently a mouse model was described carrying a *Lama2* missense mutation with normal *Lama2* expression (Patton et al. 2008). In muscle the dystrophin-glycoprotein complex, links the cytoskeleton to the basement membrane through the binding of dystroglycan with the LG domains of laminin  $\alpha 2$ . Similar to mutations that affect the structure of the complex and the glycosylation of dystroglycan (which binds laminin  $\alpha 2$ ) (Jimenez-Mallebrera et al. 2005), the *LAMA2* mutations may result in muscular dystrophy by affecting the interaction between the dystrophin-glycoprotein complex and the BM (Hall et al. 2007; Moll et al. 2001), by the failure to form a laminin network (Colognato and Yurchenco 1999) and by forming an abnormal BM due to defects in LN domain function (Patton et al. 2008). The description of mutations in integrin  $\alpha 7$ , which binds laminin, in muscular dystrophy patients (Jimenez-Mallebrera et al. 2005) underlines the central role of the interactions between laminin and its cell surface receptors. Importantly improving the interaction between laminin and dystroglycan through the administration of linker molecules or agrin ameliorates the dystrophy in mice (Meinen et al. 2007; Moll et al. 2001), which was also observed through inhibition of apoptosis by increased BCL2 expression (Dominov et al. 2005; Girgenrath et al. 2004), thereby providing potential therapeutic avenues.

### **Schwartz- Jampel Syndrome and dyssegmental dysplasia Silverman-Handmaker type**

Two allelic disorders, Schwartz-Jampel syndrome (SJS) and dyssegmental dysplasia silverman handmaker type (DDSH), are caused by *HSPG2* mutations. SJS is a non lethal recessive disorder characterised by myotonia (muscle stiffness) with repetitive muscle discharges and chondrodysplasia (Nicole et al. 2000). DDSH is a neonatal lethal autosomal recessive syndrome characterised by short limbed dwarfism and encephalocele. The clinical outcome is determined by the amount of perlecan in the tissue as absence of perlecan secretion results in DDSH (Arikawa-Hirasawa et al. 2001), whilst a reduced secretion and partially functional perlecan underlies SJS (Nicole et al. 2000).

Both DDSH and SJS patients, and *Hspg2*<sup>-/-</sup> and *Hspg2*<sup>C1532Y</sup> (carrying a C1532Y *HSPG2* mutation causing SJS) mice (Arikawa-Hirasawa et al. 1999; Rodgers et al. 2007; Stum et al. 2008) display chondrodysplasia which is characterised by severe disorganisation of chondrocytes and reduced extracellular matrix deposition. The requirement of perlecan for collagen fibrillogenesis in chondroblasts (Kvist et al. 2006) suggest that defective deposition of fibrillar collagen underlies the reduced matrix deposition. Moreover it indicates that perlecan anchors the BM to connective tissue (Bengtsson et al. 2002).

In the NMJ acetylcholine excites the muscle and is degraded by acetylcholinesterase (AChE). Clustering of AChE in the NMJ is dependent on perlecan (Arikawa-Hirasawa et al. 2002). The permanent myotonia in SJS patients is caused by reduced perlecan secretion leading to partial AChE deficiency. This may result in re-excitation of muscle leading to myotonia in SJS and muscle potentiation and a prolonged decay time of the potential in *Hspg2*<sup>C1532Y</sup> mice (Stum et al. 2008). In mice both myotonia and chondrodysplasia

phenotype severity is determined by the level of perlecan secretion and may also be influenced by age and genetic modifiers (Rodgers et al. 2007; Stum et al. 2008). However the spontaneous muscle activity at rest in SJS patients may not be caused by AChE deficiency as it did not result in spontaneous activity in diaphragm muscle in mice (Stum et al. 2008), but may be due to axonal defects (Echaniz-Laguna et al. 2009).

Although NMJ disorganisation does not underlie the myotonia in SJS patients, the basement membrane plays a crucial role in NMJ organisation, maturation and function (Patton 2003; Sanes 2003). A complete review of this is outside the scope of this article but a few examples will be mentioned. For example laminin  $\alpha 4$  is important for the alignment of pre and post synaptic nerve endings (Patton et al. 2001) whilst laminin  $\alpha 5$  is required for postsynaptic maturation (Nishimune et al. 2008). *Lamb2* mutations result in presynaptic defects (Noakes et al. 1995a) leading to failure to thrive in *Lamb2*<sup>-/-</sup> mice, a model for Pierson syndrome. In addition *Coll18a1* mutations result in neuromigration and axon guidance defects (Ackley et al. 2001) which may underlie the exencephaly in Knobloch syndrome and collagen type IV is important for clustering of synaptic vesicles and maintenance of mature synapses (Fox et al. 2007).

### ***Skin***

The dermal-epidermal junction (DEJ) in skin is an example of a highly complex form of BM and of specific divergence in its structure. This type of BM underlies stratifying squamous epithelia in the skin and mucous membranes of the orifices. It binds the basal cells of the epidermis with the dermis and provides structural adhesion and regulates epithelial-mesenchymal interactions (Aumailley et al. 2006). The DEJ contains

ultrastructurally recognizable suprastructures, such as the hemidesmosome complex in the basal cells, the anchoring filaments extending throughout the lamina lucida, and the anchoring fibrils emanating into the dermis. The molecular components of hemidesmosomes, anchoring filaments, and anchoring fibrils in the DEJ are quite well characterized, and mutations in their genes lead to diminished adhesion of the epidermis and the dermis, and to skin blistering.

### **Epidermolysis bullosa**

The term epidermolysis bullosa (EB) covers genetic skin disorders characterised by mucocutaneous blistering and chronic epithelial fragility induced by minor shearing forces or trauma (Aumailley et al. 2006). The clinical symptoms vary from mild to severe and include continuous skin blistering, persistent erosions and mucosal involvement, nail dystrophy, alopecia, progressive soft tissue scarring, mutilating deformities and increased risk of epithelial cancer. Complications occur, since many organs are secondarily affected, e.g. the eye, the gastrointestinal, respiratory and urogenital tracts, scarring contractures of the joints, and even muscles to some extent.

Depending on the affected molecular suprastructure, four main categories of EB are recognized: EB simplex, junctional EB, dystrophic EB and the Kindler syndrome (Fine et al. 2008). Whilst EB simplex and Kindler syndrome result from intracellular anomalies in keratinocytes, the junctional and dystrophic forms can be considered true BM diseases.

### **Junctional epidermolysis bullosa**

Junctional EB is caused by mutations in the genes encoding laminin 332 (*LAMA3*, *LAMB3*, and *LAMC2*), and collagen XVII (*COL17A1*) (Kern and Has 2008). Dermal-epidermal

separation occurs at the level of the lamina lucida within the BM, and the hemidesmosome-anchoring filament complex appears rudimentary. The most severe EB subtype, the Herlitz variant, results from absence of LM-332 from the skin due to null mutations in the laminin genes *LAMA3*, *LAMB3*, or *LAMC2*. The majority of mutations are found in *LAMB3* (Varki et al. 2006) and the disease is characterized by congenital muco-cutaneous fragility leading to widespread blisters and erosions. At some stage, the healing of the skin ceases due to depletion of epidermal stem cells (Mavilio et al. 2006), and large chronically erosive areas lead to extensive fluid and protein loss, infection and lethal complications within the first year of life.

In less severe junctional EB cases, the symptoms range from localized to generalized skin blistering, with onset at birth or later in life. These milder cases are due to missense mutations in *LAMA3*, *LAMB3*, *LAMC2* or *COL17A1* which result in truncated or misfolded LM-332 or collagen type XII proteins. These may become degraded intracellularly (Bateman et al. 2009) or, if secreted, interfere with ligand interactions between LM-332 and collagen XVII, or other extracellular matrix proteins (McGrath et al. 1995; Nakano et al. 2002). Alternatively, misfolded molecules may be subjected to secondary degradation by tissue proteinases (Tasanen et al. 2000).

Rare variants include junctional EB with pyloric atresia and the laryngo-onycho-cutaneous (LOC) syndrome. The former results from mutations of  $\alpha_6\beta_4$  integrin, a LM-332 ligand, and the latter from *LAMA3* frame shift mutations, which abrogate the laminin  $\alpha_3A$  isoform. This isoform is secreted by the basal keratinocytes of stratified epithelia suggesting that LOC is caused by dysfunction of keratinocyte-mesenchymal communication (McLean et al. 2003).

### **Dystrophic epidermolysis bullosa**

Mutations in the gene for collagen type VII, *COL7A1*, cause recessive and dominant forms of dystrophic EB and the spectrum of biologic and clinical phenotypes is very broad (Kern and Has 2008). Tissue separation occurs at the level of the anchoring fibrils in the uppermost dermis, and the fibrils, if present, exhibit an altered ultrastructure. In all forms of dystrophic EB the blisters heal with scarring, i.e. dermal fibrosis. Patients with dominant dystrophic EB have a rather mild phenotype, mostly limited to hand and feet which is usually caused by dominant negative interference by glycine substitutions within the triple helical domain. Recessive dystrophic EB is caused by homozygosity or compound heterozygosity for two different *COL7A1* mutations which can be nonsense, missense or splice site mutations. In the majority of severe generalized recessive dystrophic EB cases, both mutations generate premature termination codons leading to nonsense mediated decay and complete absence of collagen type VII. In this severe EB subtype progressive blistering leads to chronic wounds, extensive scarring and mitten deformities of hands and feet. Oral and gastrointestinal involvement leads to malnutrition, which in combination with protein loss through ulcerations, results in growth retardation and anaemia.

### **Mouse models for epidermolysis bullosa**

Ablation or disruption of genes coding for the  $\alpha 3$ ,  $\beta 3$  or  $\gamma 2$  chains of LM-332, or for the integrin  $\alpha 6$  or  $\beta 4$  subunits in mice lead to junctional EB with absence of hemidesmosomes, severe detachment of the epidermis from the dermis and in perinatal death (Aumailley et al. 2006). Deficiency of collagen type XVII leads to a milder phenotype of junctional EB



displaying moderate skin blistering, nail dystrophy, alopecia and dental anomalies (Nishie et al. 2007), similar to the human pathologies caused by *COL17A1* mutations. The clinical and morphologic characteristics of recessive dystrophic EB in humans were recapitulated in two different mouse models with complete (Heinonen et al. 1999) or partial deficiency of collagen type VII (Fritsch et al. 2008). The mice with abrogation of LM-332,  $\alpha 6\beta 4$  integrin or collagen type VII expression, with phenotypes of severe blistering and perinatal lethality, have been helpful for understanding the functional role of these proteins in skin morphogenesis and homeostasis. Particularly interesting are mice with milder phenotypes, e.g. the collagen type VII hypomorph or the collagen type XVII knockout mouse, which are useful for testing novel biologically valid therapeutic strategies, including protein, cell and gene based therapies, which have already shown some promising results (Fritsch et al. 2008; Kern et al. 2009; Mavilio et al. 2006).

## **Acquired autoimmune diseases targeting basement membranes**

### **Goodpasture's syndrome**

Goodpasture syndrome is an autoimmune disease with anti-GBM antibodies that results in glomerulonephritis and frequently lung haemorrhaging. The renal injury is the consequence of complement and protease activation which disrupts the filtration barrier leading to proteinuria, and an immune response ultimately causing fibrosis (Hudson et al. 2003). The antibodies react with two major epitopes in the NC1 domain of the  $\alpha 3(\text{IV})$  chain. These are located near the junction of the NC1 and triple helical domains, where they are masked by the hexamer structure (Borza et al. 2002). Consequently, antibodies only gain access to the epitopes following hexamer dissociation (Borza et al. 2002). Unmasking of the epitopes

may be influenced by additional external factors such as reactive oxygen species (Kalluri et al. 2000) but in vitro evidence also shows that hexamer structure and stability determines at least in part the ability of the antibodies to unmask the epitopes (Borza et al. 2005). Moreover, MHC class is a modifier of the disease (Hudson et al. 2003) as the severity of Goodpasture syndrome is determined by MLC class.

The production of antibodies against the GBM can also occur in Alport's syndrome patients. Following kidney transplantation, the presence of “foreign” collagen IV chains can cause Alport's posttransplantation anti-GBM nephritis. In autosomal recessive Alport's syndrome the epitopes are located in the NC1 domains of Col4a3 or Col4a4 (Hudson et al. 2003; Wang et al. 2005) whilst X-linked patients develop alloantibodies targeting epitopes on COL4A5 (Brainwood et al. 1998; Kang et al. 2007). However in contrast to the cryptic Goodpasture epitopes, the epitopes are accessible in the NC1 hexamer indicating that separate mechanisms may exist (Kang et al. 2007).

### **Bullous pemphigoid**

Bullous pemphigoid (BP) is the most common autoimmune blistering skin disease, which typically affects the elderly and is associated with circulating and tissue-bound autoantibodies to collagen XVII. Clinically, tense serous blisters on inflamed skin give rise to erosions and wounds. During the course of the disease, localized blister formation progresses into generalized erosive dermatitis. The pathogenicity of autoantibodies against collagen type XVII in BP is supported by extensive clinical and experimental evidence (Sitaru 2009). The major pathogenic epitopes are located in the juxtamembranous NC16A domain of collagen type XVII (Fig 2D). The NC16 domain is also the site of cleavage for

the ectodomain shedding (Franzke et al. 2009; Franzke et al. 2002) and this shedding and epitope recognition by pemphigoid autoantibodies is regulated by the phosphorylation status of collagen type XVII (Zimina et al. 2008).

### **Epidermolysis bullosa acquisita**

Epidermolysis bullosa acquisita is a rare acquired autoimmune subepidermal blistering disease of the skin, which derives its name from the similar phenotype to dystrophic EB (Mihai and Sitaru 2007; Woodley et al. 2007). It is characterized by IgG autoantibodies against epitopes located in the NC1 domain of collagen type VII, the major component of anchoring fibrils. Murine models have demonstrated the pathogenicity of the autoantibodies (Sitaru et al. 2005), which are likely to perturb the functions of ligand binding sites within the NC1 domain, e.g. for LM-332.

### **Therapeutic perspectives**

The rapid increase of knowledge about causes and mechanisms of certain BM diseases has allowed the scientific community to embark on development of molecular therapy strategies. Indeed, many genetic BM disorders are very severe, and the development of molecular therapy approaches is urgently needed. Although the clinical application of such therapies is still in the future, new technologies hold promise for individually designed and biologically valid, evidence-based treatments. Based on present knowledge, treatments with protein-, cell- and gene-based therapies seem possible. However, it is also clear that a large gap still exists between laboratory experiments and the successful treatment of a patient. For most diseases there is an urgent need to acquire the higher level of understanding of the

molecular and cellular consequences of the mutations. However, despite this some marked progress has been made.

Skin disorders have been the prime focus of therapy developments, since the target organ is easily accessible for both therapeutic measures and for analysis of their macroscopic, microscopic and molecular effects. Recent studies in animal models revealed that relatively small biological changes, e.g. moderately increased levels of a missing protein in the skin, can have substantial clinical effects. Therefore, a large number of patients with genetic skin disorders will at this point not expect a complete cure, but welcome any biologically valid advances that reduce symptoms, improve functionality or increase quality of life

A relatively broad spectrum of approaches— ranging from protein therapy (Ortiz-Urda et al. 2003; Remington et al. 2009) and viral-mediated gene transfer (Baldeschi et al. 2003; Ortiz-Urda et al. 2002; Seitz et al. 1999) to cell therapy (Fritsch et al. 2008; Kern et al. 2009; Wong et al. 2008) and bone marrow transplantation (Tolar et al. 2009) – has been employed in mouse models and single patients. The correction of junctional EB by transplantation of genetically modified epidermal stem cells in one patient represents the first long-term clinical therapeutic success in genetic BM disease (Mavilio et al. 2006). A cell-therapy approach with intradermal injections of allogeneic wild type or gene-corrected fibroblasts in mice and humans with recessive dystrophic EB showed that these cells can increase collagen VII content at the DEJ (Fritsch et al. 2008; Kern et al. 2009; Wong et al. 2008; Woodley et al. 2003). A long-term study with fibroblast treatment of the collagen VII hypomorphic mouse, a model for recessive dystrophic EB, demonstrated that high stability of collagen VII contributes to positive long-term effects. The injected fibroblasts synthesized collagen VII for 3-4 weeks and increased its levels to about 35 % of normal.

The newly synthesized collagen persisted in the skin up to 4 months, stabilized it substantially against shearing forces and ameliorated the phenotype significantly (Kern et al. 2009) without notable adverse effects. As similar observations were made in a pilot study in human skin (Wong et al. 2008), intradermal injections of normal fibroblasts may represent a first causal therapy for dystrophic EB that could be expected to increase the resistance of the skin against external shearing forces and alleviate skin blistering and scarring in trauma-exposed skin areas.

Yet another approach has been direct intradermal injection of recombinant human collagen type VII into the *Col7a1*<sup>-/-</sup> mouse (Remington et al. 2009). The injected collagen was present at the DEJ but it also diffused into distant sites and persisted in the skin for about 2 months. This improved the phenotype, as shown by decreased skin blistering and prolonged survival of the animals. The findings are intriguing as they suggest that injections of monomeric collagen type VII, a component of highly specific supramolecular polymers, can result in phenotypic improvement. However, it remains unclear, how collagen type VII homes to the DEJ and how long it and its specific aggregates, the anchoring fibrils, would remain stable and functional in the skin (Bruckner-Tuderman 2009).

Very recent reports have implicated bone marrow/stem cell transplantation as a promising therapeutic approach in mouse models with different forms of EB or in Alport's syndrome. The *Col7a1*<sup>-/-</sup> mouse, which is lethal within days after birth if untreated (Heinonen et al. 1999), was transplanted with SLAM family receptor-positive (CD150<sup>+</sup>/CD48<sup>-</sup>) adult bone marrow or mesenchymal stem cells. This led to the survival of some mice, to skin engraftment of donor cells and to improved skin stability (Tolar et al. 2009). However, collagen type VII was not detected at the DEJ. Embryonic bone marrow transplantation in

*Col7a1*<sup>-/-</sup> mice resulted in detection of bone marrow-derived fibroblasts in the dermis, ameliorated the clinical phenotype of the mice and led to collagen type VII deposition primarily in the follicular BM (Chino et al. 2008).

Similarly, wild-type bone marrow-derived cells can ameliorate the phenotype in Alport mice by secreting the missing collagen  $\alpha3(\alpha4)\alpha5(\text{IV})$  network (Gross et al. 2009). It was postulated that circulating bone marrow-derived cells are recruited to glomeruli where they can cross the GBM, become podocytes, secrete the missing collagen chains, repair the GBM defects, and slow (if not reverse) disease. Intriguingly, Katayama *et al* (Katayama et al. 2008) reported that bone marrow transplantation following lethal irradiation with either wild-type or *Col4a3*<sup>-/-</sup> bone marrow prolonged the lifespan of Alport mice with similar efficiencies. Sublethal irradiation alone also provided significant benefits (Gross et al. 2009).

Taken together, exciting advancements in designing effective therapies, such as described above, provide new avenues for research on these incurable diseases that ultimately will facilitate translation to clinics and establishing therapy protocols for the management of genetic BM diseases.

## **Acknowledgements**

We would like to thank N. Gray for critical reading of the manuscript and T. Pinner for assistance with generating the figures. We would like to apologise to our colleagues whose publications we could not cite due to space limitations. TVA is sponsored by a MRC New Investigator Research Grant and LBT by the Excellence Initiative of the German Federal and State Governments (Freiburg Institute for Advanced Studies, FRIAS, School of Life Sciences), by the Network Epidermolysis bullosa grant from the Federal Ministry for Education and Research (BMBF), and by Debra International.

## References

- Abrahamson DR, Isom K, Roach E, Stroganova L, Zelenchuk A, Miner JH, St John PL (2007) Laminin compensation in collagen alpha3(IV) knockout (Alport) glomeruli contributes to permeability defects. *J Am Soc Nephrol* 18: 2465-72
- Ackley BD, Crew JR, Elamaa H, Pihlajaniemi T, Kuo CJ, Kramer JM (2001) The NC1/endostatin domain of *Caenorhabditis elegans* type XVIII collagen affects cell migration and axon guidance. *J Cell Biol* 152: 1219-32
- Arikawa-Hirasawa E, Rossi SG, Rotundo RL, Yamada Y (2002) Absence of acetylcholinesterase at the neuromuscular junctions of perlecan-null mice. *Nat Neurosci* 5: 119-23
- Arikawa-Hirasawa E, Watanabe H, Takami H, Hassell JR, Yamada Y (1999) Perlecan is essential for cartilage and cephalic development. *Nat Genet* 23: 354-8
- Arikawa-Hirasawa E, Wilcox WR, Le AH, Silverman N, Govindraj P, Hassell JR, Yamada Y (2001) Dyssegmental dysplasia, Silverman-Handmaker type, is caused by functional null mutations of the perlecan gene. *Nat Genet* 27: 431-4
- Aumailley M, Bruckner-Tuderman L, Carter WG, Deutzmann R, Edgar D, Ekblom P, Engel J, Engvall E, Hohenester E, Jones JC, Kleinman HK, Marinkovich MP, Martin GR, Mayer U, Meneguzzi G, Miner JH, Miyazaki K, Patarroyo M, Paulsson M, Quaranta V, Sanes JR, Sasaki T, Sekiguchi K, Sorokin LM, Talts JF, Tryggvason K, Uitto J, Virtanen I, von der Mark K, Wewer UM, Yamada Y, Yurchenco PD (2005) A simplified laminin nomenclature. *Matrix Biol* 24: 326-32
- Aumailley M, Has C, Tunggal L, Bruckner-Tuderman L (2006) Molecular basis of inherited skin-blistering disorders, and therapeutic implications. *Expert Rev Mol Med* 8: 1-21
- Aviezer D, Hecht D, Safran M, Eisinger M, David G, Yayon A (1994) Perlecan, basal lamina proteoglycan, promotes basic fibroblast growth factor-receptor binding, mitogenesis, and angiogenesis. *Cell* 79: 1005-13
- Bader BL, Smyth N, Nedbal S, Miosge N, Baranowsky A, Mokkaapati S, Murshed M, Nischt R (2005) Compound genetic ablation of nidogen 1 and 2 causes basement membrane defects and perinatal lethality in mice. *Mol Cell Biol* 25: 6846-56
- Baldeschi C, Gache Y, Rattenholl A, Bouille P, Danos O, Ortonne JP, Bruckner-Tuderman L, Meneguzzi G (2003) Genetic correction of canine dystrophic epidermolysis bullosa mediated by retroviral vectors. *Hum Mol Genet* 12: 1897-905
- Bateman JF, Boot-Handford RP, Lamande SR (2009) Genetic diseases of connective tissues: cellular and extracellular effects of ECM mutations. *Nat Rev Genet* 10: 173-83
- Beirowski B, Weber M, Gross O (2006) Chronic renal failure and shortened lifespan in COL4A3<sup>+/-</sup> mice: an animal model for thin basement membrane nephropathy. *J Am Soc Nephrol* 17: 1986-94
- Bengtsson E, Morgelin M, Sasaki T, Timpl R, Heinegard D, Aspberg A (2002) The leucine-rich repeat protein PRELP binds perlecan and collagens and may function as a basement membrane anchor. *J Biol Chem* 277: 15061-8
- Borza DB, Bondar O, Colon S, Todd P, Sado Y, Neilson EG, Hudson BG (2005) Goodpasture autoantibodies unmask cryptic epitopes by selectively dissociating



- autoantigen complexes lacking structural reinforcement: novel mechanisms for immune privilege and autoimmune pathogenesis. *J Biol Chem* 280: 27147-54
- Borza DB, Bondar O, Todd P, Sundaramoorthy M, Sado Y, Ninomiya Y, Hudson BG (2002) Quaternary organization of the goodpasture autoantigen, the alpha 3(IV) collagen chain. Sequestration of two cryptic autoepitopes by intrapromoter interactions with the alpha4 and alpha5 NC1 domains. *J Biol Chem* 277: 40075-83
- Bose K, Nischt R, Page A, Bader BL, Paulsson M, Smyth N (2006) Loss of nidogen-1 and -2 results in syndactyly and changes in limb development. *J Biol Chem* 281: 39620-9
- Brainwood D, Kashtan C, Gubler MC, Turner AN (1998) Targets of alloantibodies in Alport anti-glomerular basement membrane disease after renal transplantation. *Kidney Int* 53: 762-6
- Breedveld G, de Coo IF, Lequin MH, Arts WF, Heutink P, Gould DB, John SW, Oostra B, Mancini GM (2006) Novel mutations in three families confirm a major role of COL4A1 in hereditary porencephaly. *J Med Genet* 43: 490-5
- Bruckner-Tuderman L (2009) Can type VII collagen injections cure dystrophic epidermolysis bullosa? *Mol Ther* 17: 6-7
- Chen M, Keene DR, Costa FK, Tahk SH, Woodley DT (2001) The carboxyl terminus of type VII collagen mediates antiparallel dimer formation and constitutes a new antigenic epitope for epidermolysis Bullosa acquisita autoantibodies. *J Biol Chem* 276: 21649-55
- Chen M, Marinkovich MP, Veis A, Cai X, Rao CN, O'Toole EA, Woodley DT (1997) Interactions of the amino-terminal noncollagenous (NC1) domain of type VII collagen with extracellular matrix components. A potential role in epidermal-dermal adherence in human skin. *J Biol Chem* 272: 14516-22
- Chino T, Tamai K, Yamazaki T, Otsuru S, Kikuchi Y, Nimura K, Endo M, Nagai M, Uitto J, Kitajima Y, Kaneda Y (2008) Bone marrow cell transfer into fetal circulation can ameliorate genetic skin diseases by providing fibroblasts to the skin and inducing immune tolerance. *Am J Pathol* 173: 803-14
- Choi HJ, Lee BH, Kang JH, Jeong HJ, Moon KC, Ha IS, Yu YS, Matejas V, Zenker M, Choi Y, Cheong HI (2008) Variable phenotype of Pierson syndrome. *Pediatr Nephrol* 23: 995-1000
- Colognato H, Yurchenco PD (1999) The laminin alpha2 expressed by dystrophic dy(2J) mice is defective in its ability to form polymers. *Curr Biol* 9: 1327-30
- Comper WD, Glasgow EF (1995) Charge selectivity in kidney ultrafiltration. *Kidney Int* 47: 1242-51
- Costell M, Gustafsson E, Aszodi A, Morgelin M, Bloch W, Hunziker E, Addicks K, Timpl R, Fassler R (1999) Perlecan maintains the integrity of cartilage and some basement membranes. *J Cell Biol* 147: 1109-22
- de Vries LS, Koopman C, Groenendaal F, Van Schooneveld M, Verheijen FW, Verbeek E, Witkamp TD, van der Worp HB, Mancini G (2009) COL4A1 mutation in two preterm siblings with antenatal onset of parenchymal hemorrhage. *Ann Neurol* 65: 12-8
- Dominov JA, Kravetz AJ, Ardelt M, Kostek CA, Beermann ML, Miller JB (2005) Muscle-specific BCL2 expression ameliorates muscle disease in laminin {alpha}2-deficient, but not in dystrophin-deficient, mice. *Hum Mol Genet* 14: 1029-40

- Duh EJ, Yao YG, Dagli M, Goldberg MF (2004) Persistence of fetal vasculature in a patient with Knobloch syndrome: potential role for endostatin in fetal vascular remodeling of the eye. *Ophthalmology* 111: 1885-8
- Durbeej M (2009) Laminins. *Cell Tissue Res: This Issue*
- Echaniz-Laguna A, Rene F, Marcel C, Bangratz M, Fontaine B, Loeffler JP, Nicole S (2009) Electrophysiological studies in a mouse model of Schwartz-Jampel syndrome demonstrate muscle fiber hyperactivity of peripheral nerve origin. *Muscle Nerve* 40: 55-61
- Eklund L, Piuholta J, Komulainen J, Sormunen R, Ongvarrasopone C, Fassler R, Muona A, Ilves M, Ruskoaho H, Takala TE, Pihlajaniemi T (2001) Lack of type XV collagen causes a skeletal myopathy and cardiovascular defects in mice. *Proc Natl Acad Sci U S A* 98: 1194-9
- Elamaa H, Sormunen R, Rehn M, Soininen R, Pihlajaniemi T (2005) Endostatin overexpression specifically in the lens and skin leads to cataract and ultrastructural alterations in basement membranes. *Am J Pathol* 166: 221-9
- Favor J, Gloeckner CJ, Janik D, Klempt M, Neuhauser-Klaus A, Pretsch W, Schmahl W, Quintanilla-Fend L (2007) Type IV Procollagen Missense Mutations Associated With Defects of the Eye, Vascular Stability, the Brain, Kidney Function and Embryonic or Postnatal Viability in the Mouse, *Mus musculus*: An Extension of the Col4a1 Allelic Series and the Identification of the First Two Col4a2 Mutant Alleles. *Genetics* 175: 725-36
- Fine JD, Eady RA, Bauer EA, Bauer JW, Bruckner-Tuderman L, Heagerty A, Hintner H, Hovnanian A, Jonkman MF, Leigh I, McGrath JA, Mellerio JE, Murrell DF, Shimizu H, Uitto J, Vahlquist A, Woodley D, Zambruno G (2008) The classification of inherited epidermolysis bullosa (EB): Report of the Third International Consensus Meeting on Diagnosis and Classification of EB. *J Am Acad Dermatol* 58: 931-50
- Fox MA, Sanes JR, Borza DB, Eswarakumar VP, Fassler R, Hudson BG, John SW, Ninomiya Y, Pedchenko V, Pfaff SL, Rheault MN, Sado Y, Segal Y, Werle MJ, Umemori H (2007) Distinct target-derived signals organize formation, maturation, and maintenance of motor nerve terminals. *Cell* 129: 179-93
- Franzke CW, Bruckner-Tuderman L, Blobel CP (2009) Shedding of collagen XVII/BP180 in skin depends on both ADAM10 and ADAM9. *J Biol Chem*
- Franzke CW, Bruckner P, Bruckner-Tuderman L (2005) Collagenous transmembrane proteins: recent insights into biology and pathology. *J Biol Chem* 280: 4005-8
- Franzke CW, Tasanen K, Schacke H, Zhou Z, Tryggvason K, Mauch C, Zigrino P, Sunnarborg S, Lee DC, Fahrenholz F, Bruckner-Tuderman L (2002) Transmembrane collagen XVII, an epithelial adhesion protein, is shed from the cell surface by ADAMs. *Embo J* 21: 5026-35
- Fritsch A, Loeckermann S, Kern JS, Braun A, Bosl MR, Bley TA, Schumann H, von Elverfeldt D, Paul D, Erlacher M, Berens von Rautenfeld D, Hausser I, Fassler R, Bruckner-Tuderman L (2008) A hypomorphic mouse model of dystrophic epidermolysis bullosa reveals mechanisms of disease and response to fibroblast therapy. *J Clin Invest* 118: 1669-79

- Fukai N, Eklund L, Marneros AG, Oh SP, Keene DR, Tamarkin L, Niemela M, Ilves M, Li E, Pihlajaniemi T, Olsen BR (2002) Lack of collagen XVIII/endostatin results in eye abnormalities. *Embo J* 21: 1535-44
- Gagnoux-Palacios L, Allegra M, Spirito F, Pommeret O, Romero C, Ortonne JP, Meneguzzi G (2001) The short arm of the laminin gamma2 chain plays a pivotal role in the incorporation of laminin 5 into the extracellular matrix and in cell adhesion. *J Cell Biol* 153: 835-50
- Gerl M, Mann K, Aumailley M, Timpl R (1991) Localization of a major nidogen-binding site to domain III of laminin B2 chain. *Eur J Biochem* 202: 167-74
- Girgenrath M, Dominov JA, Kostek CA, Miller JB (2004) Inhibition of apoptosis improves outcome in a model of congenital muscular dystrophy. *J Clin Invest* 114: 1635-9
- Goldberg S, Harvey SJ, Cunningham J, Tryggvason K, Miner JH (2009) Glomerular filtration is normal in the absence of both agrin and perlecan-heparan sulfate from the glomerular basement membrane. *Nephrol Dial Transplant* 24: 2044-51
- Gordon M, Hahn R (2009) Collagens. *Cell Tissue Res: This issue*
- Gould DB, Marchant JK, Savinova OV, Smith RS, John SW (2007) Col4a1 mutation causes endoplasmic reticulum stress and genetically modifiable ocular dysgenesis. *Hum Mol Genet* 16: 798-807
- Gould DB, Phalan FC, Breedveld GJ, van Mil SE, Smith RS, Schimenti JC, Aguglia U, van der Knaap MS, Heutink P, John SW (2005) Mutations in Col4a1 cause perinatal cerebral hemorrhage and porencephaly. *Science* 308: 1167-71
- Gould DB, Phalan FC, van Mil SE, Sundberg JP, Vahedi K, Massin P, Bousser MG, Heutink P, Miner JH, Tournier-Lasserre E, John SW (2006) Role of COL4A1 in small-vessel disease and hemorrhagic stroke. *N Engl J Med* 354: 1489-96
- Gross O, Beirowski B, Harvey SJ, McFadden C, Chen D, Tam S, Thorner PS, Smyth N, Addicks K, Bloch W, Ninomiya Y, Sado Y, Weber M, Vogel WF (2004) DDR1-deficient mice show localized subepithelial GBM thickening with focal loss of slit diaphragms and proteinuria. *Kidney Int* 66: 102-11
- Gross O, Borza DB, Anders HJ, Licht C, Weber M, Segerer S, Torra R, Gubler MC, Heidet L, Harvey S, Cosgrove D, Lees G, Kashtan C, Gregory M, Savige J, Ding J, Thorner P, Abrahamson DR, Antignac C, Tryggvason K, Hudson B, Miner JH (2009) Stem cell therapy for Alport syndrome: the hope beyond the hype. *Nephrol Dial Transplant* 24: 731-4
- Gubler MC (2008) Inherited diseases of the glomerular basement membrane. *Nat Clin Pract Nephrol* 4: 24-37
- Hall TE, Bryson-Richardson RJ, Berger S, Jacoby AS, Cole NJ, Hollway GE, Berger J, Currie PD (2007) The zebrafish candyfloss mutant implicates extracellular matrix adhesion failure in laminin alpha2-deficient congenital muscular dystrophy. *Proc Natl Acad Sci U S A* 104: 7092-7
- Hammond SM (2006) MicroRNAs as oncogenes. *Curr Opin Genet Dev* 16: 4-9
- Harvey SJ, Jarad G, Cunningham J, Rops AL, van der Vlag J, Berden JH, Moeller MJ, Holzman LB, Burgess RW, Miner JH (2007) Disruption of glomerular basement membrane charge through podocyte-specific mutation of agrin does not alter glomerular permselectivity. *Am J Pathol* 171: 139-52

- Harvey SJ, Perry J, Zheng K, Chen D, Sado Y, Jefferson B, Ninomiya Y, Jacobs R, Hudson BG, Thorner PS (2006) Sequential expression of type IV collagen networks: testis as a model and relevance to spermatogenesis. *Am J Pathol* 168: 1587-97
- Hasselbacher K, Wiggins RC, Matejas V, Hinkes BG, Mucha B, Hoskins BE, Ozaltin F, Nurnberg G, Becker C, Hangan D, Pohl M, Kuwertz-Broking E, Griebel M, Schumacher V, Royer-Pokora B, Bakkaloglu A, Nurnberg P, Zenker M, Hildebrandt F (2006) Recessive missense mutations in LAMB2 expand the clinical spectrum of LAMB2-associated disorders. *Kidney Int* 70: 1008-12
- Heidet L, Dahan K, Zhou J, Xu Z, Cochat P, Gould JD, Leppig KA, Proesmans W, Guyot C, Guillot M, et al. (1995) Deletions of both alpha 5(IV) and alpha 6(IV) collagen genes in Alport syndrome and in Alport syndrome associated with smooth muscle tumours. *Hum Mol Genet* 4: 99-108
- Heinonen S, Mannikko M, Klement JF, Whitaker-Menezes D, Murphy GF, Uitto J (1999) Targeted inactivation of the type VII collagen gene (*Col7a1*) in mice results in severe blistering phenotype: a model for recessive dystrophic epidermolysis bullosa. *J Cell Sci* 112 ( Pt 21): 3641-8
- Helbling-Leclerc A, Zhang X, Topaloglu H, Cruaud C, Tesson F, Weissenbach J, Tome FM, Schwartz K, Fardeau M, Tryggvason K, et al. (1995) Mutations in the laminin alpha 2-chain gene (*LAMA2*) cause merosin-deficient congenital muscular dystrophy. *Nat Genet* 11: 216-8
- Ho MS, Bose K, Mokkalapati S, Nischt R, Smyth N (2008) Nidogens-Extracellular matrix linker molecules. *Microsc Res Tech* 71: 387-95
- Hopf M, Gohring W, Kohfeldt E, Yamada Y, Timpl R (1999) Recombinant domain IV of perlecan binds to nidogens, laminin-nidogen complex, fibronectin, fibulin-2 and heparin. *Eur J Biochem* 259: 917-25
- Hopkinson SB, Jones JC (2000) The N terminus of the transmembrane protein BP180 interacts with the N-terminal domain of BP230, thereby mediating keratin cytoskeleton anchorage to the cell surface at the site of the hemidesmosome. *Mol Biol Cell* 11: 277-86
- Hudson BG, Tryggvason K, Sundaramoorthy M, Neilson EG (2003) Alport's syndrome, Goodpasture's syndrome, and type IV collagen. *N Engl J Med* 348: 2543-56
- Hurskainen M, Eklund L, Hagg PO, Fruttiger M, Sormunen R, Ilves M, Pihlajaniemi T (2005) Abnormal maturation of the retinal vasculature in type XVIII collagen/endostatin deficient mice and changes in retinal glial cells due to lack of collagen types XV and XVIII. *Faseb J* 19: 1564-6
- Iozzo RV (2005) Basement membrane proteoglycans: from cellar to ceiling. *Nat Rev Mol Cell Biol* 6: 646-56
- Jarad G, Cunningham J, Shaw AS, Miner JH (2006) Proteinuria precedes podocyte abnormalities in *Lamb2*<sup>-/-</sup> mice, implicating the glomerular basement membrane as an albumin barrier. *J Clin Invest* 116: 2272-9
- Jimenez-Mallebrera C, Brown SC, Sewry CA, Muntoni F (2005) Congenital muscular dystrophy: molecular and cellular aspects. *Cell Mol Life Sci* 62: 809-23
- Kalluri R, Cantley LG, Kerjaschki D, Neilson EG (2000) Reactive oxygen species expose cryptic epitopes associated with autoimmune goodpasture syndrome. *J Biol Chem* 275: 20027-32

- Kalluri R, Shield CF, Todd P, Hudson BG, Neilson EG (1997) Isoform switching of type IV collagen is developmentally arrested in X-linked Alport syndrome leading to increased susceptibility of renal basement membranes to endoproteolysis. *J Clin Invest* 99: 2470-8
- Kang JS, Kashtan CE, Turner AN, Heidet L, Hudson BG, Borza DB (2007) The alloantigenic sites of alpha3alpha4alpha5(IV) collagen: pathogenic X-linked alport alloantibodies target two accessible conformational epitopes in the alpha5NC1 domain. *J Biol Chem* 282: 10670-7
- Kang JS, Wang XP, Miner JH, Morello R, Sado Y, Abrahamson DR, Borza DB (2006) Loss of alpha3/alpha4(IV) collagen from the glomerular basement membrane induces a strain-dependent isoform switch to alpha5alpha6(IV) collagen associated with longer renal survival in Col4a3<sup>-/-</sup> Alport mice. *J Am Soc Nephrol* 17: 1962-9
- Kang SH, Kramer JM (2000) Nidogen is nonessential and not required for normal type IV collagen localization in *Caenorhabditis elegans*. *Mol Biol Cell* 11: 3911-23
- Kanwar YS, Linker A, Farquhar MG (1980) Increased permeability of the glomerular basement membrane to ferritin after removal of glycosaminoglycans (heparan sulfate) by enzyme digestion. *J Cell Biol* 86: 688-93
- Katayama K, Kawano M, Naito I, Ishikawa H, Sado Y, Asakawa N, Murata T, Oosugi K, Kiyohara M, Ishikawa E, Ito M, Nomura S (2008) Irradiation prolongs survival of Alport mice. *J Am Soc Nephrol* 19: 1692-700
- Kern JS, Has C (2008) Update on diagnosis and therapy of inherited epidermolysis bullosa. *Exp Rev Dermatol*: 721-733
- Kern JS, Loeckermann S, Fritsch A, Hausser I, Roth W, Magin TM, Mack C, Muller ML, Paul O, Ruther P, Bruckner-Tuderman L (2009) Mechanisms of Fibroblast Cell Therapy for Dystrophic Epidermolysis Bullosa: High Stability of Collagen VII Favors Long-term Skin Integrity. *Mol Ther*
- Khaliq S, Abid A, White DR, Johnson CA, Ismail M, Khan A, Ayub Q, Sultana S, Maher ER, Mehdi SQ (2007) Mapping of a novel type III variant of Knobloch syndrome (KNO3) to chromosome 17q11.2. *Am J Med Genet A* 143A: 2768-74
- Khoshnoodi J, Cartailier JP, Alvares K, Veis A, Hudson BG (2006) Molecular recognition in the assembly of collagens: terminal noncollagenous domains are key recognition modules in the formation of triple helical protomers. *J Biol Chem* 281: 38117-21
- Khoshnoodi J, Pedchenko V, Hudson BG (2008) Mammalian collagen IV. *Microsc Res Tech* 71: 357-70
- Kikkawa Y, Miner JH (2006) Molecular dissection of laminin alpha 5 in vivo reveals separable domain-specific roles in embryonic development and kidney function. *Dev Biol* 296: 265-77
- Kim S, Wadsworth WG (2000) Positioning of longitudinal nerves in *C. elegans* by nidogen. *Science* 288: 150-4
- Koster J, Geerts D, Favre B, Borradori L, Sonnenberg A (2003) Analysis of the interactions between BP180, BP230, plectin and the integrin alpha6beta4 important for hemidesmosome assembly. *J Cell Sci* 116: 387-99
- Kvist AJ, Johnson AE, Morgelin M, Gustafsson E, Bengtsson E, Lindblom K, Aszodi A, Fassler R, Sasaki T, Timpl R, Aspberg A (2006) Chondroitin sulfate perlecan enhances collagen fibril formation. Implications for perlecan chondrodysplasias. *J Biol Chem* 281: 33127-39

- Leitinger B, Hohenester E (2007) Mammalian collagen receptors. *Matrix Biol* 26: 146-55
- Li Q, Olsen BR (2004) Increased angiogenic response in aortic explants of collagen XVIII/endostatin-null mice. *Am J Pathol* 165: 415-24
- Libby RT, Lavalley CR, Balkema GW, Brunken WJ, Hunter DD (1999) Disruption of laminin beta2 chain production causes alterations in morphology and function in the CNS. *J Neurosci* 19: 9399-411
- Liu C, Nathans J (2008) An essential role for frizzled 5 in mammalian ocular development. *Development* 135: 3567-76
- Marcocci E, Uliana V, Bruttini M, Artuso R, Silengo MC, Zerial M, Bergesio F, Amoroso A, Savoldi S, Pennesi M, Giachino D, Rombola G, Fogazzi GB, Rosatelli C, Martinhago CD, Carmellini M, Mancini R, Di Costanzo G, Longo I, Renieri A, Mari F (2009) Autosomal dominant Alport syndrome: molecular analysis of the COL4A4 gene and clinical outcome. *Nephrol Dial Transplant* 24: 1464-71
- Marneros AG, Keene DR, Hansen U, Fukai N, Moulton K, Goletz PL, Moiseyev G, Pawlyk BS, Halfter W, Dong S, Shibata M, Li T, Crouch RK, Bruckner P, Olsen BR (2004) Collagen XVIII/endostatin is essential for vision and retinal pigment epithelial function. *Embo J* 23: 89-99
- Marneros AG, Olsen BR (2005) Physiological role of collagen XVIII and endostatin. *Faseb J* 19: 716-28
- Marneros AG, She H, Zambarakji H, Hashizume H, Connolly EJ, Kim I, Gragoudas ES, Miller JW, Olsen BR (2007) Endogenous endostatin inhibits choroidal neovascularization. *Faseb J* 21: 3809-18
- Maselli RA, Ng JJ, Anderson JA, Cagney O, Arredondo J, Williams C, Wessel HB, Abdel-Hamid H, Wollmann RL (2009) Mutations in LAMB2 causing a severe form of synaptic congenital myasthenic syndrome. *J Med Genet* 46: 203-8
- Mavilio F, Pellegrini G, Ferrari S, Di Nunzio F, Di Iorio E, Recchia A, Maruggi G, Ferrari G, Provasi E, Bonini C, Capurro S, Conti A, Magnoni C, Giannetti A, De Luca M (2006) Correction of junctional epidermolysis bullosa by transplantation of genetically modified epidermal stem cells. *Nat Med* 12: 1397-402
- Mayer U, Nischt R, Poschl E, Mann K, Fukuda K, Gerl M, Yamada Y, Timpl R (1993) A single EGF-like motif of laminin is responsible for high affinity nidogen binding. *Embo J* 12: 1879-85
- McGrath JA, Gatalica B, Christiano AM, Li K, Owaribe K, McMillan JR, Eady RA, Uitto J (1995) Mutations in the 180-kD bullous pemphigoid antigen (BPAG2), a hemidesmosomal transmembrane collagen (COL17A1), in generalized atrophic benign epidermolysis bullosa. *Nat Genet* 11: 83-6
- McLean WH, Irvine AD, Hamill KJ, Whittock NV, Coleman-Campbell CM, Mellerio JE, Ashton GS, Dopping-Hepenstal PJ, Eady RA, Jamil T, Phillips RJ, Shabbir SG, Haroon TS, Khurshid K, Moore JE, Page B, Darling J, Atherton DJ, Van Steensel MA, Munro CS, Smith FJ, McGrath JA (2003) An unusual N-terminal deletion of the laminin alpha3a isoform leads to the chronic granulation tissue disorder laryngo-onycho-cutaneous syndrome. *Hum Mol Genet* 12: 2395-409
- Meinen S, Barzaghi P, Lin S, Lochmuller H, Ruegg MA (2007) Linker molecules between laminins and dystroglycan ameliorate laminin-alpha2-deficient muscular dystrophy at all disease stages. *J Cell Biol* 176: 979-93

- Menzel O, Bekkeheien RC, Reymond A, Fukai N, Boye E, Kosztolanyi G, Aftimos S, Deutsch S, Scott HS, Olsen BR, Antonarakis SE, Guipponi M (2004) Knobloch syndrome: novel mutations in COL18A1, evidence for genetic heterogeneity, and a functionally impaired polymorphism in endostatin. *Hum Mutat* 23: 77-84
- Mihai S, Sitaru C (2007) Immunopathology and molecular diagnosis of autoimmune bullous diseases. *J Cell Mol Med* 11: 462-81
- Miner JH (2008) Laminins and their roles in mammals. *Microsc Res Tech* 71: 349-56
- Miner JH, Go G, Cunningham J, Patton BL, Jarad G (2006) Transgenic isolation of skeletal muscle and kidney defects in laminin beta2 mutant mice: implications for Pierson syndrome. *Development* 133: 967-75
- Miner JH, Li C (2000) Defective glomerulogenesis in the absence of laminin alpha5 demonstrates a developmental role for the kidney glomerular basement membrane. *Dev Biol* 217: 278-89
- Miner JH, Li C, Mudd JL, Go G, Sutherland AE (2004) Compositional and structural requirements for laminin and basement membranes during mouse embryo implantation and gastrulation. *Development* 131: 2247-56
- Mokkapati S, Baranowsky A, Mirancea N, Smyth N, Breitzkreutz D, Nischt R (2008) Basement membranes in skin are differently affected by lack of nidogen 1 and 2. *J Invest Dermatol* 128: 2259-67
- Moll J, Barzaghi P, Lin S, Bezakova G, Lochmuller H, Engvall E, Muller U, Ruegg MA (2001) An agrin minigene rescues dystrophic symptoms in a mouse model for congenital muscular dystrophy. *Nature* 413: 302-7
- Mongiati M, Taylor K, Otto J, Aho S, Uitto J, Whitelock JM, Iozzo RV (2000) The protein core of the proteoglycan perlecan binds specifically to fibroblast growth factor-7. *J Biol Chem* 275: 7095-100
- Morita H, Yoshimura A, Inui K, Ideura T, Watanabe H, Wang L, Soinen R, Tryggvason K (2005) Heparan sulfate of perlecan is involved in glomerular filtration. *J Am Soc Nephrol* 16: 1703-10
- Mundel TM, Kalluri R (2007) Type IV collagen-derived angiogenesis inhibitors. *Microvasc Res* 74: 85-9
- Murshed M, Smyth N, Miosge N, Karolat J, Krieg T, Paulsson M, Nischt R (2000) The absence of nidogen 1 does not affect murine basement membrane formation. *Mol Cell Biol* 20: 7007-12
- Myers BD, Okarma TB, Friedman S, Bridges C, Ross J, Asseff S, Deen WM (1982) Mechanisms of proteinuria in human glomerulonephritis. *J Clin Invest* 70: 732-46
- Myllyharju J, Kivirikko KI (2004) Collagens, modifying enzymes and their mutations in humans, flies and worms. *Trends Genet* 20: 33-43
- Nakano A, Chao SC, Pulkkinen L, Murrell D, Bruckner-Tuderman L, Pfindner E, Uitto J (2002) Laminin 5 mutations in junctional epidermolysis bullosa: molecular basis of Herlitz vs. non-Herlitz phenotypes. *Hum Genet* 110: 41-51
- Nicole S, Davoine CS, Topaloglu H, Cattolico L, Barral D, Beighton P, Hamida CB, Hammouda H, Cruaud C, White PS, Samson D, Urtizberea JA, Lehmann-Horn F, Weissenbach J, Hentati F, Fontaine B (2000) Perlecan, the major proteoglycan of basement membranes, is altered in patients with Schwartz-Jampel syndrome (chondrodystrophic myotonia). *Nat Genet* 26: 480-3

- Nishie W, Sawamura D, Goto M, Ito K, Shibaki A, McMillan JR, Sakai K, Nakamura H, Olasz E, Yancey KB, Akiyama M, Shimizu H (2007) Humanization of autoantigen. *Nat Med* 13: 378-83
- Nishimune H, Valdez G, Jarad G, Moulson CL, Muller U, Miner JH, Sanes JR (2008) Laminins promote postsynaptic maturation by an autocrine mechanism at the neuromuscular junction. *J Cell Biol* 182: 1201-15
- Noakes PG, Gautam M, Mudd J, Sanes JR, Merlie JP (1995a) Aberrant differentiation of neuromuscular junctions in mice lacking s-laminin/laminin beta 2. *Nature* 374: 258-62
- Noakes PG, Miner JH, Gautam M, Cunningham JM, Sanes JR, Merlie JP (1995b) The renal glomerulus of mice lacking s-laminin/laminin beta 2: nephrosis despite molecular compensation by laminin beta 1. *Nat Genet* 10: 400-6
- Nonaka S, Ishiko A, Masunaga T, Akiyama M, Owaribe K, Shimizu H, Nishikawa T (2000) The extracellular domain of BPAG2 has a loop structure in the carboxy terminal flexible tail in vivo. *J Invest Dermatol* 115: 889-92
- Ortiz-Urda S, Lin Q, Green CL, Keene DR, Marinkovich MP, Khavari PA (2003) Injection of genetically engineered fibroblasts corrects regenerated human epidermolysis bullosa skin tissue. *J Clin Invest* 111: 251-5
- Ortiz-Urda S, Thyagarajan B, Keene DR, Lin Q, Fang M, Calos MP, Khavari PA (2002) Stable nonviral genetic correction of inherited human skin disease. *Nat Med* 8: 1166-70
- Patton BL (2003) Basal lamina and the organization of neuromuscular synapses. *J Neurocytol* 32: 883-903
- Patton BL, Chiu AY, Sanes JR (1998) Synaptic laminin prevents glial entry into the synaptic cleft. *Nature* 393: 698-701
- Patton BL, Cunningham JM, Thyboll J, Kortessmaa J, Westerblad H, Edstrom L, Tryggvason K, Sanes JR (2001) Properly formed but improperly localized synaptic specializations in the absence of laminin alpha4. *Nat Neurosci* 4: 597-604
- Patton BL, Wang B, Tarumi YS, Seburn KL, Burgess RW (2008) A single point mutation in the LN domain of LAMA2 causes muscular dystrophy and peripheral amyelination. *J Cell Sci* 121: 1593-604
- Pihlajaniemi T, Soininen R (2009) Angiogenesis and the matrix. *Cell Tissue Res: This issue*
- Plaisier E, Gribouval O, Alamowitch S, Mougnot B, Prost C, Verpont MC, Marro B, Desmettre T, Cohen SY, Rouillet E, Dracon M, Fardeau M, Van Agtmael T, Kerjaschki D, Antignac C, Ronco P (2007) COL4A1 mutations and hereditary angiopathy, nephropathy, aneurysms, and muscle cramps. *N Engl J Med* 357: 2687-95
- Pollard SM, Parsons MJ, Kamei M, Kettleborough RN, Thomas KA, Pham VN, Bae MK, Scott A, Weinstein BM, Stemple DL (2006) Essential and overlapping roles for laminin alpha chains in notochord and blood vessel formation. *Dev Biol* 289: 64-76
- Poschl E, Schlotzer-Schrehardt U, Brachvogel B, Saito K, Ninomiya Y, Mayer U (2004) Collagen IV is essential for basement membrane stability but dispensable for initiation of its assembly during early development. *Development* 131: 1619-28



- Quelard D, Lavergne E, Hendaoui I, Elamaa H, Tirola U, Heljasvaara R, Pihlajaniemi T, Clement B, Musso O (2008) A cryptic frizzled module in cell surface collagen 18 inhibits Wnt/beta-catenin signaling. *PLoS One* 3: e1878
- Rattenholl A, Pappano WN, Koch M, Keene DR, Kadler KE, Sasaki T, Timpl R, Burgeson RE, Greenspan DS, Bruckner-Tuderman L (2002) Proteinases of the bone morphogenetic protein-1 family convert procollagen VII to mature anchoring fibril collagen. *J Biol Chem* 277: 26372-8
- Remington J, Wang X, Hou Y, Zhou H, Burnett J, Muirhead T, Uitto J, Keene DR, Woodley DT, Chen M (2009) Injection of recombinant human type VII collagen corrects the disease phenotype in a murine model of dystrophic epidermolysis bullosa. *Mol Ther* 17: 26-33
- Rheault MN, Kren SM, Thielen BK, Mesa HA, Crosson JT, Thomas W, Sado Y, Kashtan CE, Segal Y (2004) Mouse model of X-linked Alport syndrome. *J Am Soc Nephrol* 15: 1466-74
- Rodgers KD, Sasaki T, Aszodi A, Jacenko O (2007) Reduced perlecan in mice results in chondrodysplasia resembling Schwartz-Jampel syndrome. *Hum Mol Genet* 16: 515-28
- Rossi M, Morita H, Sormunen R, Airene S, Kreivi M, Wang L, Fukai N, Olsen BR, Tryggvason K, Soininen R (2003) Heparan sulfate chains of perlecan are indispensable in the lens capsule but not in the kidney. *Embo J* 22: 236-45
- Rousselle P, Keene DR, Ruggiero F, Champlaud MF, Rest M, Burgeson RE (1997) Laminin 5 binds the NC-1 domain of type VII collagen. *J Cell Biol* 138: 719-28
- Rousselle P, Lunstrum GP, Keene DR, Burgeson RE (1991) Kalinin: an epithelium-specific basement membrane adhesion molecule that is a component of anchoring filaments. *J Cell Biol* 114: 567-76
- Ruigrok YM, Rinkel GJ, van't Slot R, Wolfs M, Tang S, Wijmenga C (2006) Evidence in favor of the contribution of genes involved in the maintenance of the extracellular matrix of the arterial wall to the development of intracranial aneurysms. *Hum Mol Genet* 15: 3361-8
- Sanes JR (2003) The basement membrane/basal lamina of skeletal muscle. *J Biol Chem* 278: 12601-4
- Sasaki T, Gohring W, Mann K, Brakebusch C, Yamada Y, Fassler R, Timpl R (2001) Short arm region of laminin-5 gamma2 chain: structure, mechanism of processing and binding to heparin and proteins. *J Mol Biol* 314: 751-63
- Sasaki T, Larsson H, Tisi D, Claesson-Welsh L, Hohenester E, Timpl R (2000) Endostatins derived from collagens XV and XVIII differ in structural and binding properties, tissue distribution and anti-angiogenic activity. *J Mol Biol* 301: 1179-90
- Schäfer L, Schäfer R (2009) Proteoglycans. *Cell Tissue Res*: This issue
- Seitz CS, Giudice GJ, Balding SD, Marinkovich MP, Khavari PA (1999) BP180 gene delivery in junctional epidermolysis bullosa. *Gene Ther* 6: 42-7
- Sertie AL, Sossi V, Camargo AA, Zatz M, Brahe C, Passos-Bueno MR (2000) Collagen XVIII, containing an endogenous inhibitor of angiogenesis and tumor growth, plays a critical role in the maintenance of retinal structure and in neural tube closure (Knobloch syndrome). *Hum Mol Genet* 9: 2051-8

- Shah S, Kumar Y, McLean B, Churchill A, Stoodley N, Rankin J, Rizzu P, van der Knaap M, Jardine P (2009) A dominantly inherited mutation in collagen IV A1 (COL4A1) causing childhood onset stroke without porencephaly. *Eur J Paediatr Neurol*
- Shannon MB, Patton BL, Harvey SJ, Miner JH (2006) A hypomorphic mutation in the mouse laminin alpha5 gene causes polycystic kidney disease. *J Am Soc Nephrol* 17: 1913-22
- Sharma B, Handler M, Eichstetter I, Whitelock JM, Nugent MA, Iozzo RV (1998) Antisense targeting of perlecan blocks tumor growth and angiogenesis in vivo. *J Clin Invest* 102: 1599-608
- Sibon I, Coupry I, Menegon P, Bouchet JP, Gorry P, Burgelin I, Calvas P, Orignac I, Dousset V, Lacombe D, Orgogozo JM, Arveiler B, Goizet C (2007) COL4A1 mutation in Axenfeld-Rieger anomaly with leukoencephalopathy and stroke. *Ann Neurol* 62: 177-84
- Sitaru C (2009) Bullous pemphigoid: a prototypical antibody-mediated organ-specific autoimmune disease. *J Invest Dermatol* 129: 822-4
- Sitaru C, Mihai S, Otto C, Chiriac MT, Hausser I, Dotterweich B, Saito H, Rose C, Ishiko A, Zillikens D (2005) Induction of dermal-epidermal separation in mice by passive transfer of antibodies specific to type VII collagen. *J Clin Invest* 115: 870-8
- Smyth N, Vatansever HS, Murray P, Meyer M, Frie C, Paulsson M, Edgar D (1999) Absence of basement membranes after targeting the LAMC1 gene results in embryonic lethality due to failure of endoderm differentiation. *J Cell Biol* 144: 151-60
- Stalmans I, Ng YS, Rohan R, Fruttiger M, Bouche A, Yuce A, Fujisawa H, Hermans B, Shani M, Jansen S, Hicklin D, Anderson DJ, Gardiner T, Hammes HP, Moons L, Dewerchin M, Collen D, Carmeliet P, D'Amore PA (2002) Arteriolar and venular patterning in retinas of mice selectively expressing VEGF isoforms. *J Clin Invest* 109: 327-36
- Stum M, Girard E, Bangratz M, Bernard V, Herbin M, Vignaud A, Ferry A, Davoine CS, Echaniz-Laguna A, Rene F, Marcel C, Molgo J, Fontaine B, Krejci E, Nicole S (2008) Evidence of a dosage effect and a physiological endplate acetylcholinesterase deficiency in the first mouse models mimicking Schwartz-Jampel syndrome neuromyotonia. *Hum Mol Genet* 17: 3166-79
- Suzuki OT, Sertie AL, Der Kaloustian VM, Kok F, Carpenter M, Murray J, Czeizel AE, Kliemann SE, Rosemberg S, Monteiro M, Olsen BR, Passos-Bueno MR (2002) Molecular analysis of collagen XVIII reveals novel mutations, presence of a third isoform, and possible genetic heterogeneity in Knobloch syndrome. *Am J Hum Genet* 71: 1320-9
- Tamsma JT, van den Born J, Bruijn JA, Assmann KJ, Weening JJ, Berden JH, Wieslander J, Schrama E, Hermans J, Veerkamp JH, et al. (1994) Expression of glomerular extracellular matrix components in human diabetic nephropathy: decrease of heparan sulphate in the glomerular basement membrane. *Diabetologia* 37: 313-20
- Tasanen K, Floeth M, Schumann H, Bruckner-Tuderman L (2000) Hemizygoty for a glycine substitution in collagen XVII: unfolding and degradation of the ectodomain. *J Invest Dermatol* 115: 207-12

- Tasanen K, Tunggal L, Chometon G, Bruckner-Tuderman L, Aumailley M (2004) Keratinocytes from patients lacking collagen XVII display a migratory phenotype. *Am J Pathol* 164: 2027-38
- Tolar J, Ishida-Yamamoto A, Riddle M, McElmurry RT, Osborn M, Xia L, Lund T, Slattery C, Uitto J, Christiano AM, Wagner JE, Blazar BR (2009) Amelioration of epidermolysis bullosa by transfer of wild-type bone marrow cells. *Blood* 113: 1167-74
- Tran PK, Tran-Lundmark K, Soininen R, Tryggvason K, Thyberg J, Hedin U (2004) Increased intimal hyperplasia and smooth muscle cell proliferation in transgenic mice with heparan sulfate-deficient perlecan. *Circ Res* 94: 550-8
- Tunggal L, Ravaux J, Pesch M, Smola H, Krieg T, Gaill F, Sasaki T, Timpl R, Mauch C, Aumailley M (2002) Defective laminin 5 processing in cylindroma cells. *Am J Pathol* 160: 459-68
- Utriainen A, Sormunen R, Kettunen M, Carvalhaes LS, Sajanti E, Eklund L, Kauppinen R, Kitten GT, Pihlajaniemi T (2004) Structurally altered basement membranes and hydrocephalus in a type XVIII collagen deficient mouse line. *Hum Mol Genet* 13: 2089-99
- Vahedi K, Boukobza M, Massin P, Gould DB, Tournier-Lasserre E, Bousser MG (2007a) Clinical and brain MRI follow-up study of a family with COL4A1 mutation. *Neurology* 69: 1564-8
- Vahedi K, Kubis N, Boukobza M, Arnoult M, Massin P, Tournier-Lasserre E, Bousser MG (2007b) COL4A1 mutation in a patient with sporadic, recurrent intracerebral hemorrhage. *Stroke* 38: 1461-4
- Van Agtmael T, Schlotzer-Schrehardt U, McKie L, Brownstein DG, Lee AW, Cross SH, Sado Y, Mullins JJ, Poschl E, Jackson IJ (2005) Dominant mutations of Col4a1 result in basement membrane defects which lead to anterior segment dysgenesis and glomerulopathy. *Hum Mol Genet* 14: 3161-8
- van der Knaap MS, Smit LM, Barkhof F, Pijnenburg YA, Zweegman S, Niessen HW, Imhof S, Heutink P (2006) Neonatal porencephaly and adult stroke related to mutations in collagen IV A1. *Ann Neurol* 59: 504-11
- Varki R, Sadowski S, Pfindner E, Uitto J (2006) Epidermolysis bullosa. I. Molecular genetics of the junctional and hemidesmosomal variants. *J Med Genet* 43: 641-52
- Villone D, Fritsch A, Koch M, Bruckner-Tuderman L, Hansen U, Bruckner P (2008) Supramolecular interactions in the dermo-epidermal junction zone: anchoring fibril-collagen VII tightly binds to banded collagen fibrils. *J Biol Chem* 283: 24506-13
- Voskarides K, Damianou L, Neocleous V, Zouvani I, Christodoulidou S, Hadjiconstantinou V, Ioannou K, Athanasiou Y, Patsias C, Alexopoulos E, Pierides A, Kyriacou K, Deltas C (2007) COL4A3/COL4A4 mutations producing focal segmental glomerulosclerosis and renal failure in thin basement membrane nephropathy. *J Am Soc Nephrol* 18: 3004-16
- Wang XP, Fogo AB, Colon S, Giannico G, Abul-Ezz SR, Miner JH, Borza DB (2005) Distinct epitopes for anti-glomerular basement membrane alport alloantibodies and goodpasture autoantibodies within the noncollagenous domain of alpha3(IV) collagen: a janus-faced antigen. *J Am Soc Nephrol* 16: 3563-71

- Willem M, Miosge N, Halfter W, Smyth N, Jannetti I, Burghart E, Timpl R, Mayer U (2002) Specific ablation of the nidogen-binding site in the laminin gamma1 chain interferes with kidney and lung development. *Development* 129: 2711-22
- Williams TA, Kirkby GR, Williams D, Ainsworth JR (2008) A phenotypic variant of Knobloch syndrome. *Ophthalmic Genet* 29: 85-6
- Wong T, Gammon L, Liu L, Mellerio JE, Dopping-Hepenstal PJ, Pacy J, Elia G, Jeffery R, Leigh IM, Navsaria H, McGrath JA (2008) Potential of fibroblast cell therapy for recessive dystrophic epidermolysis bullosa. *J Invest Dermatol* 128: 2179-89
- Woodall BP, Nystrom A, Iozzo RA, Eble JA, Niland S, Krieg T, Eckes B, Pozzi A, Iozzo RV (2008) Integrin alpha2beta1 is the required receptor for endorepellin angiostatic activity. *J Biol Chem* 283: 2335-43
- Woodley DT, Krueger GG, Jorgensen CM, Fairley JA, Atha T, Huang Y, Chan L, Keene DR, Chen M (2003) Normal and gene-corrected dystrophic epidermolysis bullosa fibroblasts alone can produce type VII collagen at the basement membrane zone. *J Invest Dermatol* 121: 1021-8
- Woodley DT, Remington J, Chen M (2007) Autoimmunity to type VII collagen: epidermolysis bullosa acquisita. *Clin Rev Allergy Immunol* 33: 78-84
- Wuhl E, Kogan J, Zurowska A, Matejas V, Vandevoorde RG, Aigner T, Wendler O, Lesniewska I, Bouvier R, Reis A, Weis J, Cochat P, Zenker M (2007) Neurodevelopmental deficits in Pierson (microcoria-congenital nephrosis) syndrome. *Am J Med Genet A* 143: 311-9
- Xu H, Christmas P, Wu XR, Wewer UM, Engvall E (1994a) Defective muscle basement membrane and lack of M-laminin in the dystrophic dy/dy mouse. *Proc Natl Acad Sci U S A* 91: 5572-6
- Xu H, Wu XR, Wewer UM, Engvall E (1994b) Murine muscular dystrophy caused by a mutation in the laminin alpha 2 (Lama2) gene. *Nat Genet* 8: 297-302
- Xu J, Rodriguez D, Petitcherc E, Kim JJ, Hangai M, Moon YS, Davis GE, Brooks PC (2001) Proteolytic exposure of a cryptic site within collagen type IV is required for angiogenesis and tumor growth in vivo. *J Cell Biol* 154: 1069-79
- Zenker M, Aigner T, Wendler O, Tralau T, Muntefering H, Fenski R, Pitz S, Schumacher V, Royer-Pokora B, Wuhl E, Cochat P, Bouvier R, Kraus C, Mark K, Madlon H, Dotsch J, Rascher W, Maruniak-Chudek I, Lennert T, Neumann LM, Reis A (2004) Human laminin beta2 deficiency causes congenital nephrosis with mesangial sclerosis and distinct eye abnormalities. *Hum Mol Genet* 13: 2625-32
- Zhou Z, Wang J, Cao R, Morita H, Soininen R, Chan KM, Liu B, Cao Y, Tryggvason K (2004) Impaired angiogenesis, delayed wound healing and retarded tumor growth in perlecan heparan sulfate-deficient mice. *Cancer Res* 64: 4699-702
- Zimina EP, Hofmann SC, Fritsch A, Kern JS, Sitaru C, Bruckner-Tuderman L (2008) Bullous pemphigoid autoantibodies preferentially recognize phosphoepitopes in collagen XVII. *J Invest Dermatol* 128: 2736-9
- Zoeller JJ, McQuillan A, Whitelock J, Ho SY, Iozzo RV (2008) A central function for perlecan in skeletal muscle and cardiovascular development. *J Cell Biol* 181: 381-94

Table 1: Human diseases and basement membrane proteins

Table 2; Phenotypes of mouse models of BM components covered in text

Figure 1. Schematic diagram of the general cruciform shape of laminin proteins. Rod shaped and Y shaped laminin occur due to incorporation of truncated  $\alpha 3$  and  $\alpha 4$ , and  $\gamma 2$  chains respectively. The N-terminal end of the chains contains globular domains separated by laminin epidermal growth factor-like repeats (LEa, LEb, LEc). All chains contain laminin N-terminal (LN) domains which are important for laminin network formation. The  $\alpha$  chain also contain the L4a and L4b globular domains whilst  $\beta$  and  $\gamma$  chains contain the LF and L4 domains respectively. The C-terminal end of the  $\alpha$  chain forms the globular LG domain consisting of five LG (numbered 1-5).

Figure 2. Schematic diagram of BM collagens (A) Collagen type IV protomer structure consists of a central collagen domain flanked by the N-terminal 7S domain and C-terminal NC1 domain. Interactions with integrin receptors occur through sequences in the GB3 domain and NC1 domain. (B) The central collagen domain of Collagen type XVIII contains interruption in Gly-X-Y repeat and is flanked by the N-terminal non collagenous domain and a C-terminal NC1 domain harbouring the endostatin fragment. The N-terminal domain contains the heparan sulphate side chains. (C) The intracellular domain of collagen type XVII contains four tandemly arranged 24-amino-acid repeats and four membrane-proximal cysteine residues. The ectodomain contains interrupted collagenous domains, the NC16a domain which harbours the ADAMS cleavage site, and a flexible tail. (D) Collagen type

VII has a central collagen domain flanked by the N-terminal NC1 domain and the NC2 domain which is proteolytically cleaved.

Figure 3 Schematic diagram of perlecan structure. Perlecan Domain I is the attachment site for the heparan sulphate chains and contains a SEA (Sperm protein, Enterokinase, Agrin) module and three, closely-spaced SGD (Ser-Gly-Asp) tripeptide sequences. Domain II is homologous to the low density lipid (LDL) receptor ligand binding domain whilst domain III has three laminin-like domain modules and 8 epidermal growth factor (EGF)-like repeats. Domain IV contains N-CAM-like Ig repeats and binds other BM components. Domain V consists of laminin-like globular domains separated by four EGF like repeats.

Figure 4. Nidogen consists of globular domains, important for interaction with other BM molecules, separated by rod like domains.

Figure 5: (A) Col4a1 mutations lead to defects in Bowman's Capsule consisting of hypertrophy of parietal epithelium. B) Anterior segment dysgenesis due to Col4a1 mutation includes corneal opacity (arrow) and Neovascularisation (arrowhead). (C) Buphthalmos and iris hypoplasia (arrow) can be observed in some animals.

Figure 6 Dystrophic EB: consequences of mutations of the epidermal BM in the skin. (A) A trauma-induced skin blister. (B) Scarring, inflammation and loss of nails are consequences of repeated blistering. (C) Immunofluorescence staining of normal human skin with antibodies to collagen type VII. Note the linear signal along the epidermal BM.

(D) In the skin of an individual with severe dystrophic EB, collagen type VII is missing as a consequence of nonsense mutations in the *COL7A1* gene.

Figure 1

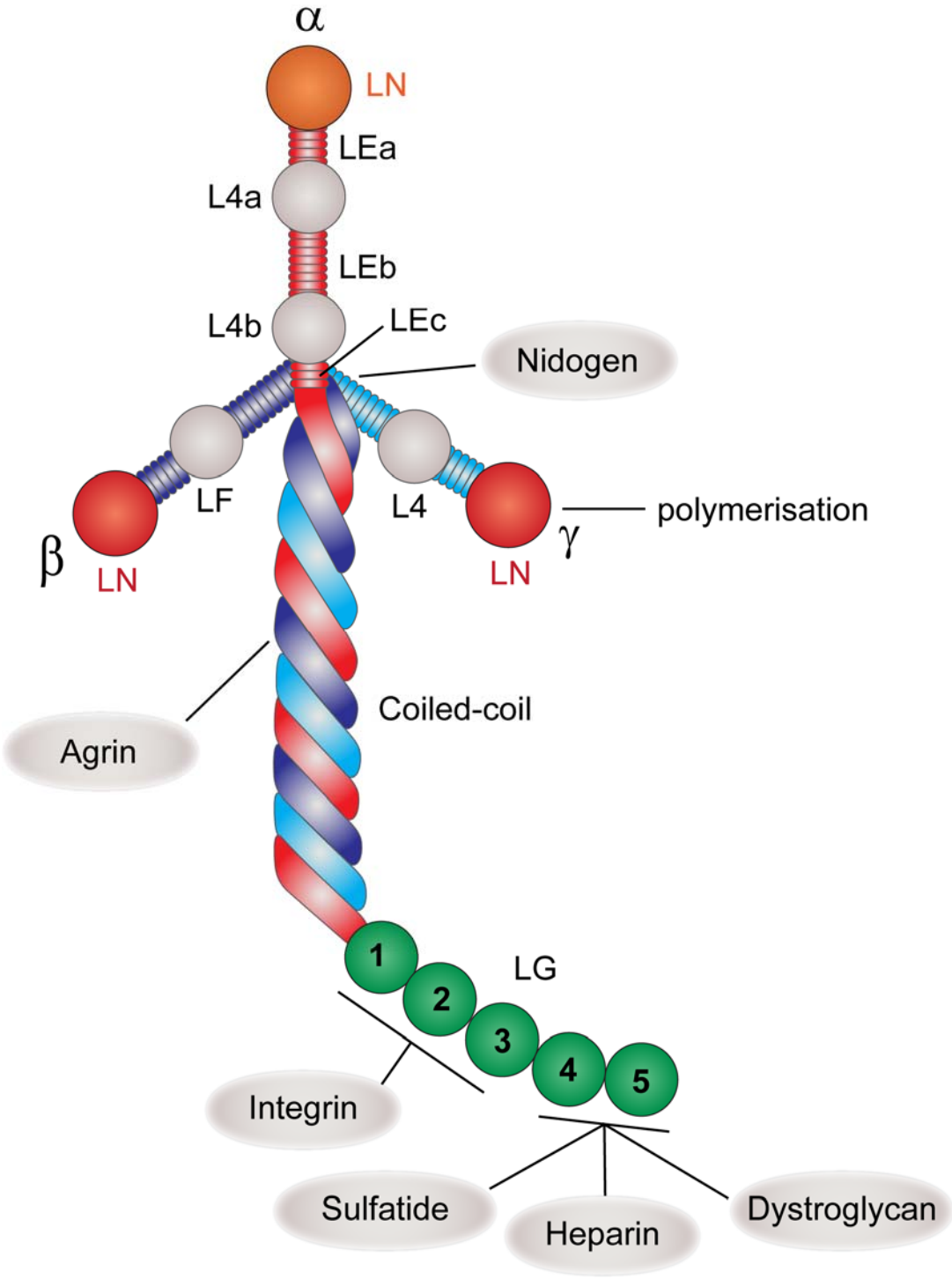
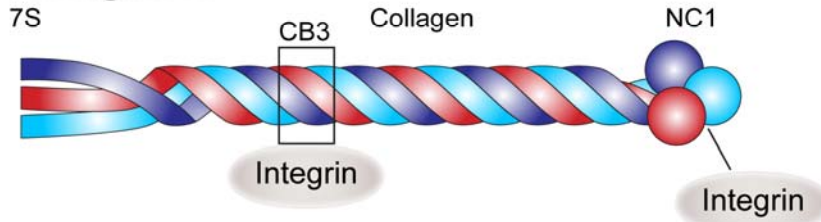


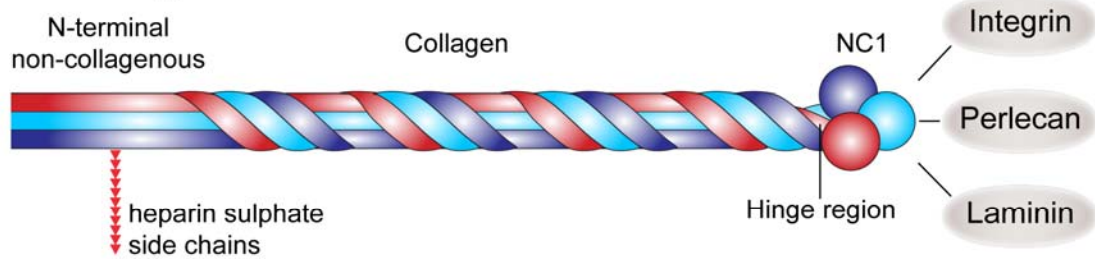


Figure 2

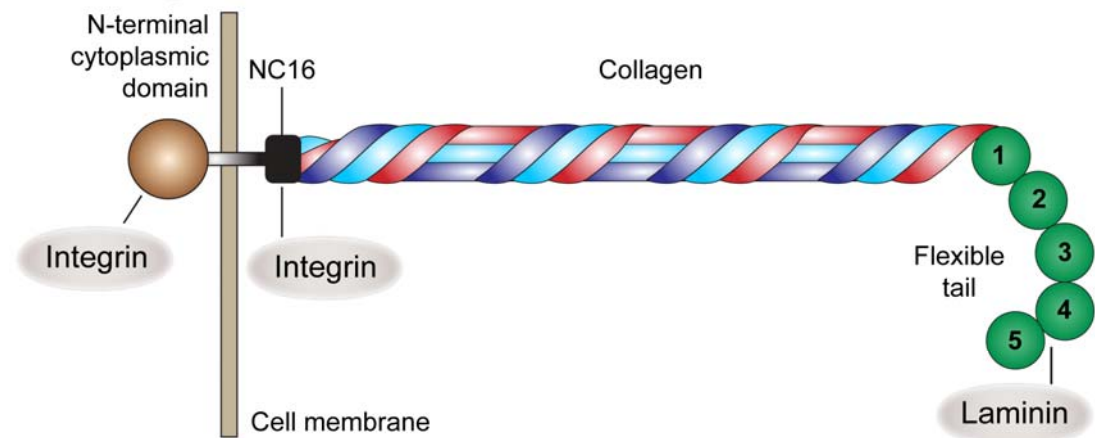
### A Collagen IV



### B Collagen XVIII



### C Collagen XVII



### D Collagen VII

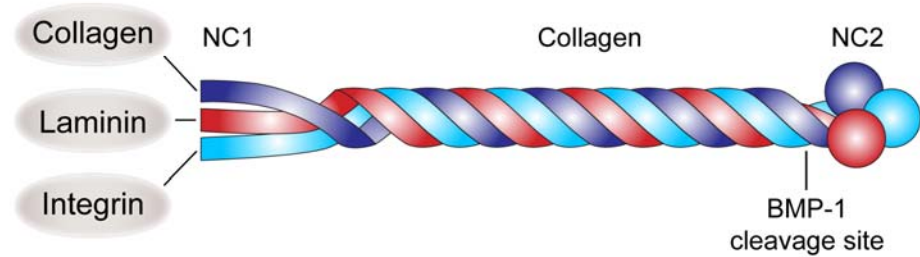


Figure 3

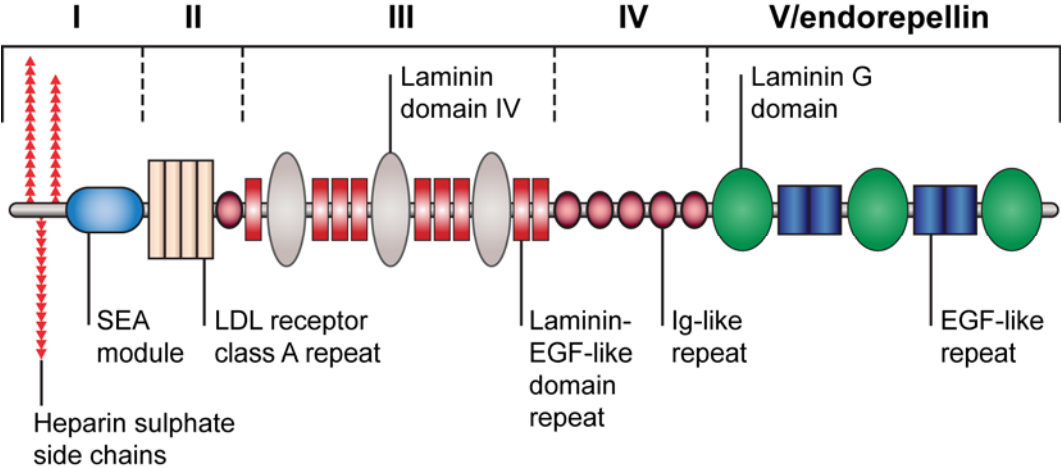


Figure 4

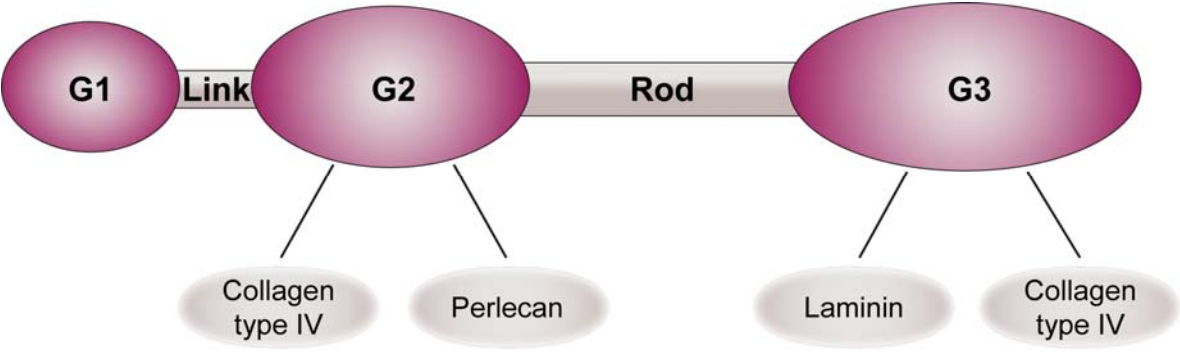


Figure 5

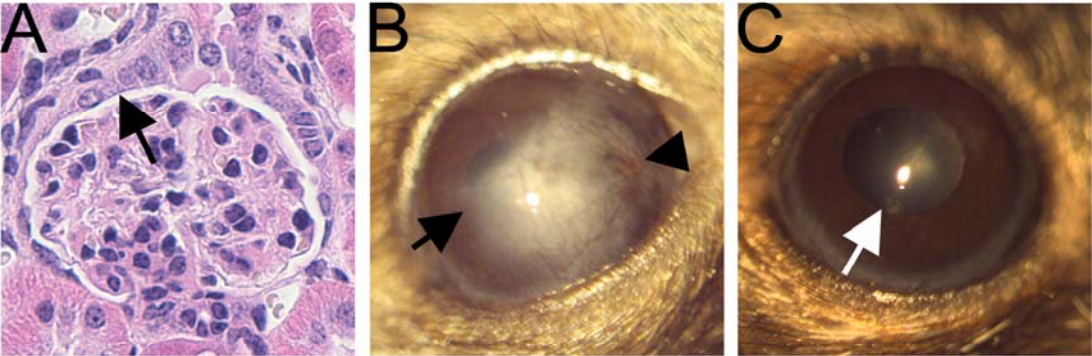
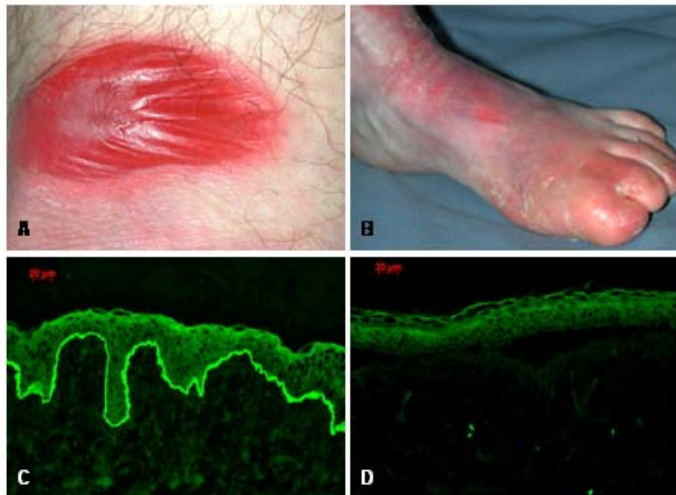


Figure 6



**Table 1:****Basement membrane protein targets in inherited human diseases**

Organ	BMZ* component	Affected gene(s)	Disease
<b>Eye</b>	Collagen type IV	<i>COL4A3</i> <i>COL4A4</i> <i>COL4A5</i>	Alport syndrome Cataract Axelfeld Rieger disease
	Collagen type XVIII		Knobloch syndrome
<b>Kidney</b>	Collagen type IV	<i>COL4A1</i>  <i>COL4A3</i> <i>COL4A4</i> <i>COL4A5</i>	HANAC syndrome  Alport's syndrome TBMN*/
	Laminin $\beta$ 2	<i>LAMB2</i>	Pierson syndrome
<b>Vasculature</b>	Collagen type IV	<i>COL4A1</i>	Hemorrhagic stroke Porencephaly HANAC syndrome
<b>Muscle</b>	Laminin $\alpha$ 2	<i>LAMA2</i>	Merosin congenital muscular dystrophy
	Perlecan	<i>HSPG2</i>	Schwartz-Jampel syndrome Dystrophic dysplasia Silverman Handmaker
<b>Skin</b>	Collagen type XVII	<i>COL17A1</i>	Junctional EB
	Laminin 332	<i>LAMA3</i> <i>LAMB3</i> <i>LAMC2</i>  <i>LAMA3</i>	Junctional EB  LOC** syndrome
	Collagen type VII	<i>COL7A1</i>	Dystrophic EB

\* TBMN: thin basement membrane nephropathy

\*\* LOC: laryngo-oculo-cutaneous syndrome

**Table 2**  
**Phenotypes of mouse models of BM components covered in text**

<b>BMZ component</b>	<b>Affected Gene</b>	<b>Phenotype</b>	<b>Reference</b>
<b>Laminin</b>	<i>Lama2</i>	Merosin congenital muscular dystrophy	(Patton et al. 2008; Xu et al. 1994a; Xu et al. 1994b)
	<i>Lama5</i>	Tooth and lung development, glomerulogenesis polycystic kidney disease	(Miner and Li 2000; Shannon et al. 2006)
	<i>Lamb1</i>	Early embryonic lethal, lack of BM formation	(Miner et al. 2004)
	<i>Lamb2</i>	NMJ defect, congenital nephrosis, failure to thrive, retinal defects	(Libby et al. 1999; Miner et al. 2006; Noakes et al. 1995a; Noakes et al. 1995b; Patton et al. 1998)
	<i>Lamc1</i>	Early embryonic lethal, lack of BM formation, Renal agenesis, delayed lung development	(Smyth et al. 1999; Willem et al. 2002)
<b>Collagen type IV</b>	<i>Col4a1</i>	Anterior segment dysgenesis, glomerulopathy, porencephaly, haemorrhagic stroke	(Gould et al. 2007; Gould et al. 2005; Gould et al. 2006; Poschl et al. 2004; Van Agtmael et al. 2005)
	<i>Col4a2</i>	Anterior segment dysgenesis, haemorrhaging, porencephaly	(Favor et al. 2007)
	<i>Col4a3</i>	Proteinuria, kidney failure, Alport syndrome, thin basement nephropathy	(Abrahamson et al. 2007; Beirowski et al. 2006; Kang et al. 2006)
	<i>Col4a5</i>	X-linked Alport's syndrome	(Rheault et al. 2004)
<b>Collagen type VII</b>	<i>Col7a1</i>	recessive dystrophic EB	(Fritsch et al. 2008; Heinonen et al. 1999)
<b>Collagen type XV</b>	<i>Coll5a1</i>	Cardiac and muscle phenotype	(Eklund et al. 2001)
<b>Collagen type XVII</b>	<i>Coll17a1</i>	non-Herlitz EB, growth retardation	(Nishie et al. 2007)

<b>Collagen type XVIII</b>	<i>Col18</i>	Knobloch syndrome, hydrocephalus, , renal filtration defect	(Fukai et al. 2002; Hurskainen et al. 2005; Marneros et al. 2004; Utriainen et al. 2004)
<b>Perlecan</b>	<i>HSPG2</i>	Developmental cardiac and cephalic defects, skeletal dysplasia, exencephaly, vascular defect, SJS, DDSH	(Costell et al. 1999; Rodgers et al. 2007; Stum et al. 2008; Tran et al. 2004)
<b>Nidogen</b>	<i>Nid1</i>	No phenotype	(Murshed et al. 2000)
	<i>Nid 1 Nid2</i>	NMJ maturation, syndactyly, cardiac phenotypes, delayed lung development, Bm defects in vasculature	(Bader et al. 2005; Bose et al. 2006; Mokkalapati et al. 2008)