

Syddansk Universitet

Cerebral blood flow and A-amyloid estimates by WARM analysis of [11C]PiB uptake distinguish among and between neurodegenerative disorders and aging

Rodell, Anders B.; O'Keefe, Graeme; Rowe, Christopher C.; Villemagne, Victor L.; Gjedde, Albert

Published in:
Frontiers in Aging Neuroscience

DOI:
[10.3389/fnagi.2016.00321](https://doi.org/10.3389/fnagi.2016.00321)

Publication date:
2017

Document version
Publisher's PDF, also known as Version of record

Document license
CC BY

Citation for published version (APA):
Rodell, A. B., O'Keefe, G., Rowe, C. C., Villemagne, V. L., & Gjedde, A. (2017). Cerebral blood flow and A-amyloid estimates by WARM analysis of [11C]PiB uptake distinguish among and between neurodegenerative disorders and aging. *Frontiers in Aging Neuroscience*, 8, [321]. DOI: 10.3389/fnagi.2016.00321

General rights

Copyright and moral rights for the publications made accessible in the public portal are retained by the authors and/or other copyright owners and it is a condition of accessing publications that users recognise and abide by the legal requirements associated with these rights.

- Users may download and print one copy of any publication from the public portal for the purpose of private study or research.
- You may not further distribute the material or use it for any profit-making activity or commercial gain
- You may freely distribute the URL identifying the publication in the public portal ?

Take down policy

If you believe that this document breaches copyright please contact us providing details, and we will remove access to the work immediately and investigate your claim.



Cerebral Blood Flow and A β -Amyloid Estimates by WARM Analysis of [11 C]PiB Uptake Distinguish among and between Neurodegenerative Disorders and Aging

Anders B. Rodell^{1,2*}, Graeme O'Keefe³, Christopher C. Rowe³, Victor L. Villemagne³ and Albert Gjedde^{4,5,6,7,8}

¹ Centre for Clinical Research, University of Queensland, Brisbane, QLD, Australia, ² Department of Nuclear Medicine & PET-Centre, Aarhus University Hospital, Aarhus, Denmark, ³ Department of Molecular Imaging and Therapy, Centre for PET, Austin Health, Heidelberg, VIC, Australia, ⁴ Department of Neuroscience and Pharmacology, University of Copenhagen, Copenhagen, Denmark, ⁵ Department of Neurology and Neurosurgery, McGill University, Montréal, QC, Canada, ⁶ Division of Nuclear Medicine, Department of Radiology and Radiological Science, Johns Hopkins University, Baltimore, MD, USA, ⁷ Neurosciences Research Center, Tabriz University of Medical Sciences, Tabriz, Iran, ⁸ Department of Clinical Medicine – Department of Nuclear Medicine, University of Southern Denmark, Odense, Denmark

OPEN ACCESS

Edited by:

Aurel Popa-Wagner,
University of Rostock, Germany

Reviewed by:

Danny J. J. Wang,
University of Southern California, USA
Raluca Sandu Vintilescu,
University of Medicine and Pharmacy
of Craiova, Romania

*Correspondence:

Anders B. Rodell
anders.rodell@gmail.com

Received: 01 August 2016

Accepted: 12 December 2016

Published: 11 January 2017

Citation:

Rodell AB, O'Keefe G, Rowe CC, Villemagne VL and Gjedde A (2017) Cerebral Blood Flow and A β -Amyloid Estimates by WARM Analysis of [11 C]PiB Uptake Distinguish among and between Neurodegenerative Disorders and Aging. *Front. Aging Neurosci.* 8:321. doi: 10.3389/fnagi.2016.00321

Background: We report results of the novel Washout Allometric Reference Method (WARM) that uses estimates of cerebral blood flow and amyloid load from the same [11 C]Pittsburgh Compound B ([11 C]PiB) retention maps in brain to distinguish between patients with different forms dementia, including Alzheimer's disease, and healthy volunteers. The method introduces two approaches to the identification of brain pathology related to amyloid accumulation, (1) a novel analysis of amyloid binding based on the late washout of the tracer from brain tissue, and (2) the simultaneous estimation of absolute cerebral blood flow indices (sCBF) from the early accumulation of the tracer in brain tissue.

Objective: We tested the hypothesis that a change of cerebral blood flow is correlated with the degree of tracer [11 C]PiB retention, reflecting dendritic spine pathology and consequent inhibition of brain energy metabolism and reduction of blood flow by neurovascular coupling in neurodegenerative disorders, including Alzheimer's disease.

Methods: Previously reported images of [11 C]PiB retention in brain of 29 subjects with cognitive impairment or dementia [16 Alzheimer's Disease (AD), eight subjects with dementia with Lewy bodies (DLB), five patients with frontotemporal lobar degeneration (FTLD), five patients with mild cognitive impairment, and 29 age-matched healthy control subjects (HC)], underwent analysis of PiB delivery and retention by means of WARM for quantitation of [11 C]PiB's binding potentials (BP_{ND}) and correlated surrogate cerebral blood flow (sCBF) estimates, based on the [11 C]PiB images, compared to estimates by conventional Standard Uptake Value Ratio (SUVR) of [11 C]PiB retention with cerebellum gray matter as reference. Receiver Operating Characteristics (ROC) revealed the power of discrimination among estimates.

Results: For AD, the discriminatory power of [11 C]PiB binding potential (BP_{ND}) by WARM exceeded the power of SUVR that in turn exceeded the power of sCBF estimates. Differences of [11 C]PiB binding and sCBF measures between AD and HC

both were highly significant ($p < 0.001$). For all the dementia groups as a whole, sCBF estimates revealed the greatest discrimination between the patient and HC groups. WARM resolves a major issue of amyloid load quantification with [¹¹C]PiB in human brain by determining absolute sCBF and amyloid load measures from the same images. The two parameter approach provides key discriminatory information in AD for which [¹¹C]PiB traditionally is used, as well as for the distinct flow deficits in FTLD, and the marked parietal and occipital lobe flow deficits in DLB.

Conclusion: We conclude that WARM yields estimates of two important variables that together discriminate among patients with dementia, including AD, and healthy volunteers, with ROC that are superior to conventional methods of analysis. The distinction between estimates of flow and amyloid load from the same dynamic emission tomograms provides valuable pathogenetic information.

Keywords: Alzheimer's disease, CBF, amyloid- β , [¹¹C] PiB, flow normalization, parametric imaging

INTRODUCTION

Two properties characterize different forms of dementia, i.e., the degree of functional decline, and the specific pathology leading to the functional decline. In humans, dementia is defined by deficiency in at least two cognitive domains. The functional decline, in turn, is linked to disturbances of brain energy metabolism and blood flow, with changes of glucose consumption and cerebral blood flow held to occur in parallel. However, the pathological processes underlying the different types of dementia in humans are poorly understood, in part because specific evidence of the pathology and quantitative measures of brain energy metabolism and cerebral blood are not always available for simultaneous scrutiny, not the least when the evidence derives from different methods that typically are not applied at the same time.

The loss of functional integrity associated with dementia is reflected in impairments of brain energy metabolism and blood flow that commonly are determined by mapping of one or more indices of brain function, including maps of brain glucose consumption obtained by means of positron emission tomography (PET; Rodell et al., 2013), or maps of cerebral blood flow obtained by any one of a number of PET and magnetic resonance imaging (MRI) techniques (Johannsen et al., 2000; Rodell et al., 2012). Brain functional decline may result from different pathogenetic processes in different forms of dementia, however. Damage to dendritic spines with impairment of the coupling of flow and metabolism to the excitation of post-synaptic neurons may be common to processes of brain functional decline in dementia (Penzes et al., 2011).

Alzheimer's disease (AD) is the most common type of dementia, afflicting more than 20 million victims worldwide. The definitive diagnosis of AD requires post-mortem identification of senile plaques of amyloid-beta ($A\beta$) protein and neurofibrillary tangles of tau protein (McKhann et al., 1984; Dubois et al., 2007), but the etiology of AD is poorly understood, and the causative role of senile plaques is debated.

The amyloid cascade hypothesis claims that erroneous cleavage of the amyloid precursor protein (APP) generates $A\beta$

that accumulates as senile plaques, associated with damage to dendritic spines and loss of functional connectivity (Hardy and Higgins, 1992; Hardy and Selkoe, 2002, Harrison and Owen, 2016). The resulting dementia of Alzheimer's type is associated with degeneration of specific functional networks, and regionally differentiated degrees of amyloid deposition that may explain part of the clinical heterogeneity of symptoms (Lehmann et al., 2013) and hence may be important to diagnosis and prognosis.

Of the multiple potential paths to functional decline, amyloid deposition is not the exclusive marker, with markers of other pathogenetic processes suggesting paths to other types of dementia, such as Lewy Body Dementia (DLB) or frontotemporal lobar degeneration (FTLD). The diversity of pathologies underlying the functional decline in dementia raises the need for comparative evidence from functional and pathological markers that distinguish among the different types of dementia. In these disorders, the relationship between the pathological changes and the changes of brain energy metabolism and blood flow is not fully understood. An appropriate approach would assess both markers of brain pathology and functional integrity.

The pathology associated with specific types of dementia, notably AD, can be detected by means of a specific marker of the presence of $A\beta$, by means of Pittsburgh Compound B, [¹¹C]PiB, a tracer used with PET (Cohen et al., 2012), or widespread clinically with [¹⁸F]-labeled amyloid PET tracers. While [¹¹C]PiB is useful in the differential diagnosis between AD and FTLD, it is not alone useful in differentiating AD from DLB, where 70–80% of the cases present with $A\beta$ pathology.

Recently, we exploited a particular property of the brain uptake of [¹¹C]PiB to show that it is possible to simultaneously extract a functional index in terms of an absolute measure of cerebral blood flow, as well as a pathological index in terms of the absolute degree of binding of [¹¹C]PiB in brain tissue, both obtained with the Washout Allometric Reference Method (WARM; Rodell et al., 2013). By application of WARM, we showed that it is possible to use maps of brain uptake of [¹¹C]PiB to simultaneously determine a surrogate measure of absolute cerebral blood flow and a measure of amyloid-beta accumulation in brain. The quantitation depends on the rapid initial clearance

of [¹¹C]PiB from the circulation, which is consistent with the initial flow-limited uptake of [¹¹C]PiB, such that kinetic analyses of the uptake and binding take both blood flow and washout into account in a manner that couples A β plaque load to the cerebral blood flow (Johannsen et al., 2000), including the loss of flow variability observed in AD (Rodell et al., 2012).

Given the novel WARM-based identification of both [¹¹C]PiB binding, estimated from the rate of tracer washout as an index of amyloid load, and an index of blood flow, estimated from the initial flow-dependent [¹¹C]PiB brain distribution as a marker of functional activity, we here test the hypothesis that the degree of correlation between plaque load and the blood flow index accurately differentiates among the four different forms of dementia or degeneration examined here.

MATERIALS AND METHODS

The flow-independent WARM (Rodell et al., 2013) addresses both the flow-dependent accumulation and the rapid clearance of [¹¹C]PiB from the circulation. Here, we evaluate the estimates of the two variables generated by WARM, in order to determine the usefulness of each as a diagnostic of dementia, and specifically of DAT. We weighed the estimates against the conventional Standard Uptake Value Ratio (SUVR). In order to make the analysis independent of a specific threshold, we report the Receiver Operating Characteristic (ROC) curves for each method, as calculated from a data set of subjects with different dementias and healthy age-matched volunteers.

Subjects

Twenty-nine aged individuals with well-documented normal cognitive function (HC), 16 patients with mild to moderate AD, 8 patients with DLB, 5 patients with FTLD, and 5 subjects with MCI, previously described by Rowe et al. (2007), were re-analyzed for flow-independent BP_{ND} and sCBF estimates, using WARM (Rodell et al., 2013). Normal volunteers originally recruited from a cohort of subjects participating in the longitudinal Healthy Aging Study at the Mental Health Research Institute of Victoria were shown to have normal cognitive performance on neuropsychological testing that included California Verbal Learning Test (CVLT II), Rey figure, Logical Memory, verbal and categorical fluency, Boston Naming Task, and digit span. All subjects in the current study were assessed with this neuropsychological test battery, the Mini-Mental State Examination (MMSE), and the Clinical Dementia Rating within 1 week of the PiB PET acquisition. All AD patients met National Institute of Neurological and Communication Disorders and Stroke and the AD and Related Disorders Association criteria for probable Alzheimer's disease (pAD), whereas all subjects in the DLB group met the consensus criteria for probable DLB of cognitive fluctuation, visual hallucinations, and parkinsonism. FTLD subjects had characteristic clinical presentation and frontal lobe or temporal lobe atrophy on MRI with concordant hypometabolism on fluorodeoxyglucose PET. The MCI subjects met the Petersen criteria of subjective and objective cognitive difficulties, predominantly affecting memory, in the absence of

dementia or significant functional loss (Petersen et al., 1999). All patients were recruited from the Austin Health Memory Disorders and Neurobehavioral Clinics, and further details can be found in Rowe et al. (2007). The SUVR measures of [¹¹C]PiB retention previously were published for subjects and healthy volunteers used in the present study (Rowe et al., 2007) while BP_{ND} and sCBF measures were not previously obtained or reported.

Positron Emission Tomography Image Acquisition

All subjects had dynamic [¹¹C]PiB PET acquisitions. [¹¹C]PiB was produced at Centre for PET, Austin Hospital, using the one-step [¹¹C]methyltriflate approach (Wilson et al., 2004). The average radiochemical yield was 30% after 45 min synthesis with radiochemical purity of >98% and specific activity of 30 ± 7.5 GBq/ μ mol. Each subject received 375 MBq [¹¹C]PiB by IV injection over 1 min. PET acquisitions were carried out on a Phillips Allegro PET device. Rotation transmission sinogram acquisition in three-dimensional mode was made with a single [¹³⁷Cs] point source before the injection of the radiotracer for attenuation correction. A 90-min list-mode emission acquisition was performed in three-dimensional mode after injection of [¹¹C]PiB. List-mode raw data were sorted off line into 4×30 -s, 9×1 -min, 3×3 -min, 10×6 -min, and 2×10 -min frames. The sorted sinograms were reconstructed using a three-dimensional RAMLA algorithm.

Image Registration and Segmentation

Summed emission scans of [¹¹C]PiB uptake were automatically co-registered to a standardized mean [¹¹C]PiB image in common stereotactic space (ICBM, Montreal Neurological Institute; Mazziotta et al., 2001) using a six-parameter affine transformation. We did not use individual MR anatomical images. After calculation of the final linear PET-Talairach transformations, dynamic emission scans were re-sampled into common coordinates. Regional BP_{ND} , R_1 , SUVR, and sCBF measures (see below) were obtained from parametric PET image maps using standard model-based segmentation (Collins et al., 1994; Grabner et al., 2006). The regions analyzed included left and right frontal (FL), occipital (OL), parietal (PL), and temporal (TL) lobes, as well as white matter (WM) and the cerebellar grey matter (CERB).

Quantification of [¹¹C]PiB Variables Reference Region Ratio Measure (SUVR)

[¹¹C]PiB retention can be calculated by determining the accumulation relative to a reference tissue, to obtain a ratio measure (SUVR). The ratio measure is the fraction of the region-of-interest integral of [¹¹C]PiB accumulation at steady-state, assumed to have been established no later than this time after injection ($t_s = 40$ min), extended to the end ($t_e = 60$ min), relative to the integral of the [¹¹C]PiB accumulation observed in the same period in the reference region. In the reference region, the accumulated tracer as function of time, $m_{ND}(t)$, represents the non-specific bound tracer after delivery by homogeneous flow to all voxels of the reference region. We further assumed the interval

from $t_s = 40$ min to $t_e = 60$ min to be sufficient to establish steady-state (secular equilibrium) in all regions, as required by the definition of the volume of distribution of the tracer, V_T , as the sum of the volumes of distribution of non-displaceable tracer (V_{ND}) and the additional volume of distribution of reversibly bound tracer.

Washout Allometric Reference Method (WARM)

In the case of negligible contribution from the circulation after the initial brief uptake, the tissue time-activity curves of the radio ligand are established by the radioactivity initially dispersed to the tissue and the subsequent washout from the brain regions of uptake. WARM (Rodell et al., 2013) specifically takes this property into account and uses only the differences among washout rates from regions with different properties of binding, blood flow rates, and blood-brain barrier permeability to determine the binding of the tracer. For direct calculation without linearization, BP_{ND} can be found using the operational equation (Rodell et al., 2013),

$$BP_{ND}(T) = \frac{m(0) \int_0^T ((\ln(m_{ND}(t))) - (\ln(m_{ND}(0)))) dt}{m_{ND}(0) \int_0^T ((\ln(m(t))) - (\ln(m(0)))) dt} - 1 \quad (1)$$

where $m_{ND}(t)$ represents the non-specifically bound tracer following delivery by the circulation, and $m(t)$ represents the tracer in any other region as function of time t , where T represents the specific time T after injection of the tracer. Due to the rapid clearance of the tracer from the circulation, analysis of the dynamic [¹¹C]PiB image data revealed an initial high-frequency signal of arterial origin in the first 2 min of acquisition, followed first by a peak within the time frame 2–10 min, from which time washout prevailed. For WARM, we split the signal into the three time frames of, first, arterial phase, second, peak uptake, and third, washout. We used the peak value within the 2–10 min interval for estimation of the relative uptake coefficient R_{PiB} relative to the cerebellum grey matter value. In order to calculate the calibrated sCBF, we estimated the slope of the rise to the peak as the ratio of the peak value to the time spent to reach the peak (peak value/time to peak) of the [¹¹C]PiB signal.

We used the phase of washout from the peak in the time interval 2–60 min of dynamic image data for estimation of the binding potential BP_{ND} (Rodell et al., 2013). BP_{ND} is derived in Eq. (1). When log-transformed, in the fraction part of the equation, the nominator is the accumulated log-signal for the reference tissue, relative to the tracer present before washout (i.e., the tracer that is left, compared to the tracer initially deposited in the reference region). We scaled this difference by the initial tracer uptake into the ROI region. The denominator similarly describes the accumulated log-signal for a ROI or voxel relative to how much was initially present before washout. This difference is scaled by the start amount of the reference region. Thus the fraction is corrected both for flow, i.e., initially deposited tracer, and for the exponential behavior of the washout (Rodell et al., 2013).

In order to test the power of WARM to distinguish the dementia (AD, DLB, FTL) and MCI from the HC group by quantification of the amount of retention, we extracted regional

parametric values for the [¹¹C]PiB retention from the parametric images with the different approaches of WARM and SUVR. For WARM, we reported mean absolute BP_{ND} values, and for SUVR we extracted fractional values of the area under the curves (40–60 min), relative to the cerebellum gray matter values. As no calibration values of sCBF from PET measures based on [¹⁵O]water were available for this data set, we used a site-specific scale factor to obtain a simulated absolute flow estimate from the peak tracer arrival characteristics. The factor was derived as an offset for the blinded data set, with a target of the corresponding mean CBF value reported by Rodell et al. (2013). While the use of a scaling factor may not yield absolute flow measures, the test-specific values are stable as intrasubject comparisons when adhered to a particular site and protocol, also without a [¹⁵O]water calibration, in contrast to the fractional R_{PiB} values. We used the scaling factor in order to facilitate comparison to the findings reported by Rodell et al. (2013).

Receiver Operating Characteristics

Receiver operating characteristic curves define a cutoff value for clinical testing (Senanarong et al., 2012). Here, we determined the test threshold as the coordinates of the point of the ROC curve closest to the upper left corner of the ROC curve. We obtained an additional important measure of the accuracy of the clinical test as the area under the ROC curve. This discrimination is reliable when both sensitivity and specificity are close to 1.0, with minimal false positive and negative findings.

RESULTS

Separate Brain Images from the Two Phases of Tracer Kinetics

Due to the rapid clearance of the tracer from the circulation, the dynamic [¹¹C]PiB image data revealed an initial high-frequency signal of arterial origin in the first 2 min, consistent with a peak within the 2–10 min interval, followed by the washout phase. For the application of WARM, we split the signal into three time intervals of arterial phase, peak uptake phase, and washout phase. We used the maximum peak within the 2–10 min peak uptake phase to estimate the relative uptake coefficient R_1 and the calibrated surrogate CBF index (sCBF) directly from the [¹¹C]PiB signal. We used the washout phase from the maximum of the peak phase within the 2–60 min dynamic acquisition to estimate the binding potential BP_{ND} of [¹¹C]PiB. The two derived images are then defined as the sCBF image obtained from the initial uptake, and the BP_{ND} image obtained from the washout part when the tracer deposit is complete and washout occurs relative to the initial deposit. **Figure 1** presents the two time-averaged images of sCBF and BP_{ND} for each of the groups.

High Amyloid Deposition and Decreased Blood Flow in AD

For AD, we confirmed very significant ($P < 0.0001$) increases of [¹¹C]PiB binding by both the SUVR and BP_{ND} measures in

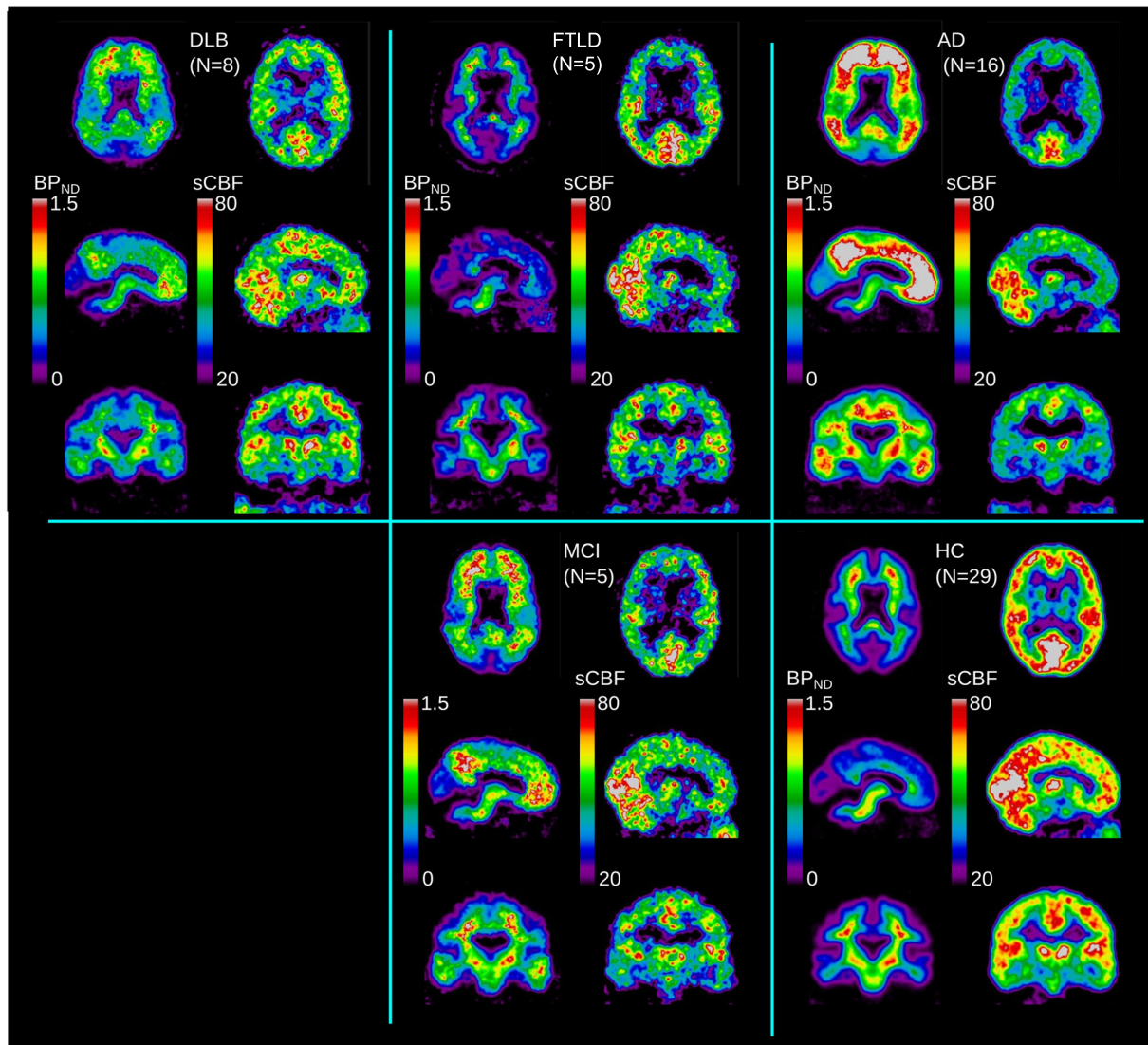


FIGURE 1 | Average images for each diagnostic group (DLB, AD, FTLD, MCI) and HC, for binding potential (BP_{ND}) and $sCBF$ measures.

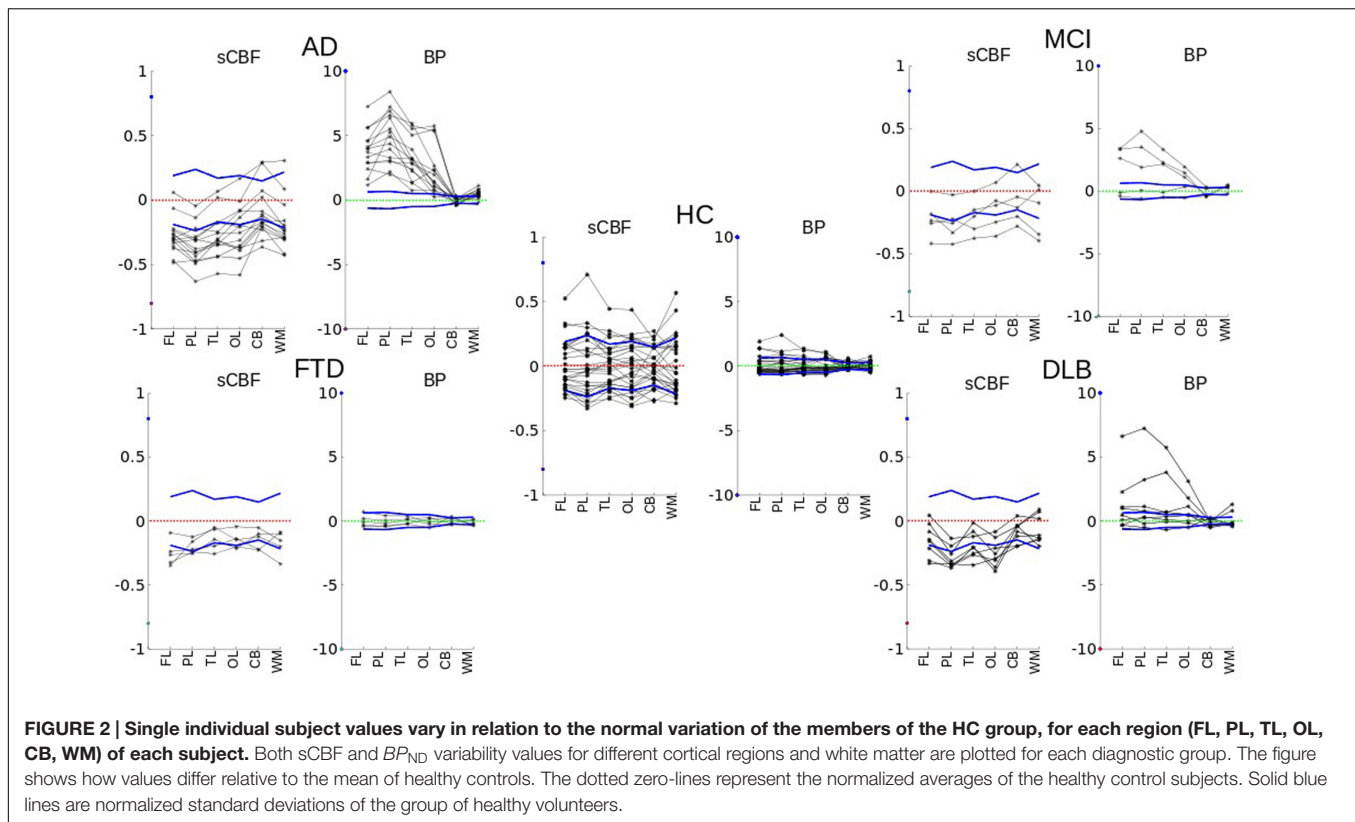
the FL, PL, TL, and OL regions, and for the SUVR measure also a significant ($P < 0.01$) difference in the reference region where we had predicted no specific binding. The BP_{ND} measure revealed increased binding in WM, assumed to represent radioactivity spillover from the significant cortical binding in general. Examination of individual contributions revealed less binding estimated as BP_{ND} in the OL region than in the FL, TL, and PL regions in every individual. Three individuals with markedly high binding in the OL region also revealed the highest retention in the remaining regions, suggesting that the OL region might be the last region to be affected by amyloid deposition. Although the binding in the AD patients was the more significant measure, the group as a whole had marked decrease of the $sCBF$ estimate, particularly in FL and PL.

In the MCI category, BP_{ND} estimates were significantly higher ($P < 0.001$), with three of the five patients having AD-like tracer

retention in the PL, TL, FL, and OL regions as shown in **Figure 2** (MCI). As seen in **Figure 3**, the BP_{ND} measure was an order of magnitude higher than for the SUVR measure. Of all cortical lobes, the OL region was the least affected. This pattern was similar for the $sCBF$ measure that was not significantly different in the OL region but was significantly lower ($P < 0.05$) in the TL, PL, and FL regions.

Low Amyloid Deposition and Decreased Blood Flow in DLB

Only two of the eight patients diagnosed with DLB had high [¹¹C]PiB retention, as shown in **Figure 2** (DLB), sufficient to distinguish the group as a whole from the HC for the FL, PL, TL, and OL regions. The BP_{ND} obtained with WARM distinguished the group more significantly from HC than the SUVR measure, as shown in **Figure 3**. In contrast, the $sCBF$ measure revealed very



significantly reduced blood flow compared to healthy volunteers. The decrease was most pronounced ($P < 0.001$) for the OL region, followed by the PL region ($P \sim 0.002$), while the TL ($P < 0.01$) and FL ($P < 0.05$) regions had less markedly reduced blood flow. The decrease in this group is in contrast to the findings in the AD and MCI groups, in which the OL region remained the least affected of the cortical lobes.

No Amyloid Deposition and Markedly Reduced Frontal Lobe Blood Flow in FTL D

Patients with FTL D had low [¹¹C]PiB retention when compared to the HC group, expressed as the binding potential BP_{ND} , in agreement with findings previously reported as SUVR by Rowe et al. (2007). In contrast, this small group of patients had significantly reduced blood flow measured as sCBF in the FL region ($P < 0.007$) and cerebellum ($P < 0.05$), presented in Figures 2 and 3. When normalized to cerebellum, the decrease of sCBF in FL remained significant. The SUVR measure indicated significant increases in the WM, but the BP_{ND} measure by WARM did not confirm the increase.

Correlations between BP_{ND} and sCBF Measures

While all dementia groups on average revealed lower cortical blood flow regardless of diagnosis, only the AD and MCI groups had unequivocal correlations with [¹¹C]PiB retention, expressed

as the tracer BP_{ND} and sCBF measures, respectively. Figure 4 shows the mean images of the R_1 and sCBF values for the AD and HC groups, as well as the distinguishing relations of the R_1 and sCBF estimates to the BP_{ND} binding measures for unilateral values in the FL, PL, TL, and OL regions of each subject. The BP_{ND} measure was inversely related to the sCBF measure in AD, but the relative flow measure R_1 had no correlation.

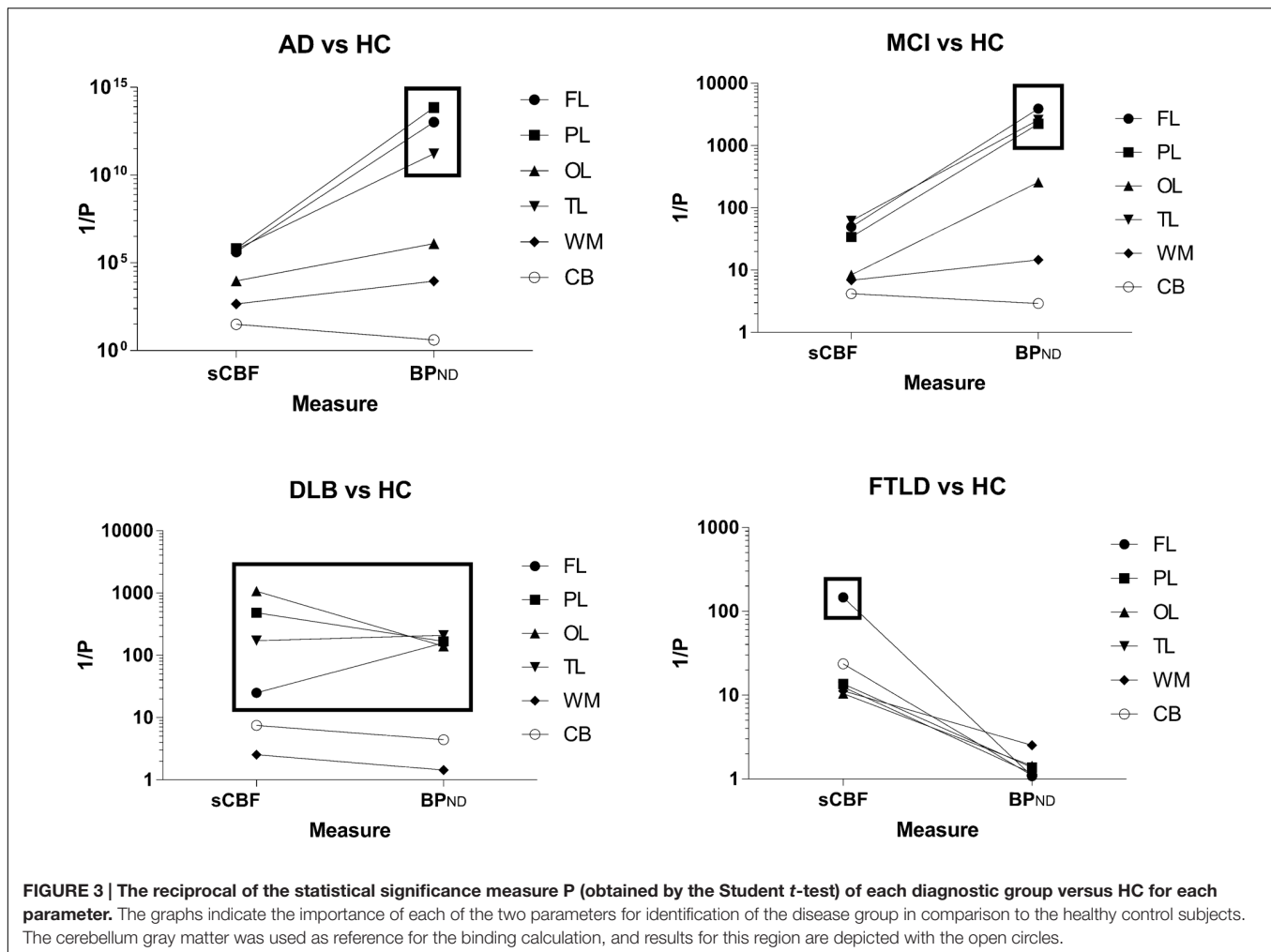
Of the eight DLB subjects, two had very high values of cortical [¹¹C]PiB binding, but only one had a marked decrease of the sCBF estimate, compared to the healthy control condition. Three DLB subjects had moderate binding of [¹¹C]PiB together with decreased sCBF values, while two had normal cortical BP_{ND} values as well as slightly decreased sCBF values, as illustrated in Figure 2 (DLB).

The images of members of the FTL D group were interpreted as normal with respect to [¹¹C]PiB binding, but they all had marked frontal sCBF deficits, as illustrated in Figures 2 and 3. The deficits were also visible on the relative (R_1) flow images (not shown). The [¹¹C]PiB binding and sCBF indices in cerebellum and occipital cortex appeared unaffected by FTL D.

As 60% of the MCI patients had the typical AD pattern with high cortical [¹¹C]PiB binding and low flow, the group result is comparable to the AD but with less marked findings, as illustrated in Figures 2 and 3.

Receiver Operating Characteristics

Figure 5 shows the areas under the ROC curves for all cortical regions, as well as cerebellum gray matter and WM. Separate



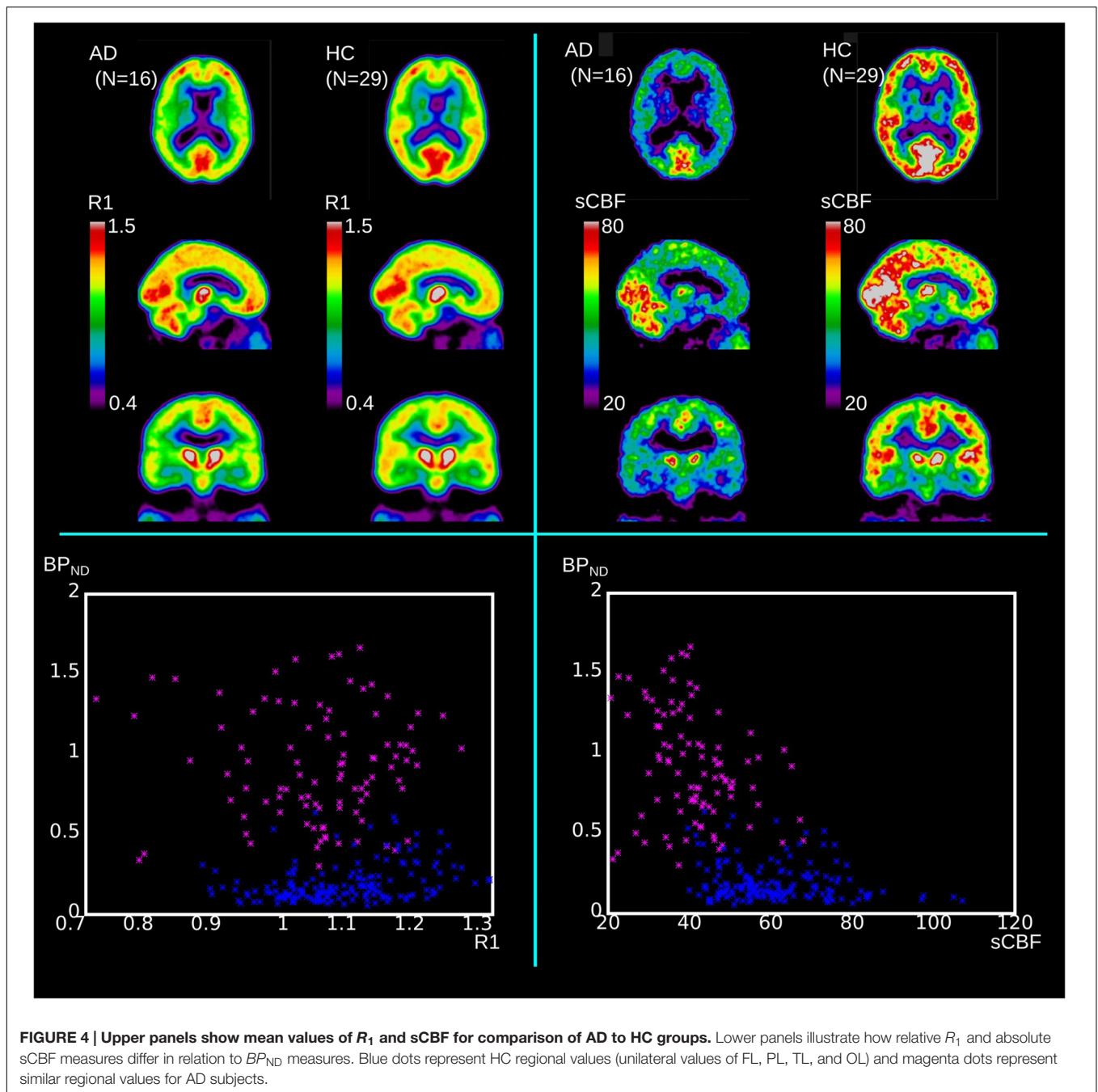
plots represent a separate diagnostic group, with the integral of the ROC curve plotted for each of them. Areas close to unity represent high incidences of true positives and low incidences of false negatives, consistent with higher diagnostic accuracy. Areas close to 0.5 indicate ROC curves close to the line of identity at which there is no difference between the distributions of the values of patients and healthy volunteers, i.e., a minimum of diagnostic discrimination, as expected of a true reference region.

AUC measures are shown in **Figure 5**. For the AD group of subjects, ROC areas for the cortex implied that BP_{ND} estimates determined with WARM had the highest power of discrimination among patients and healthy volunteers, followed by the SUVR and sCBF but only the BP_{ND} estimates were significantly different ($P < 0.05$) from sCBF estimates in pairwise ROC comparisons of the three methods (DeLong et al., 1988). Interestingly, only the BP_{ND} measures were significantly superior ($P < 0.05$) determinants to the MMSE scores (data not shown). For the MCI group, the ROC areas were not significantly different for the SUVR and BP_{ND} estimates, but somewhat higher for the FL, PL, and TL regions. However, for the FL region, the sCBF estimates as determinants were significantly superior to the SUVR estimates ($P < 0.05$).

For the DLB group of subjects, the measures that most significantly distinguished the patients from the HC group of subjects included declines of the sCBF values in the CORTEX ($P < 0.05$ compared to BP_{ND}) and PL and TL ($P < 0.05$ compared to BP_{ND} and SUVR) regions, in contrast to the MCI and AD groups of subjects in whom flow declines in FL and [¹¹C]PiB retention in the PL, TL, and FL regions were more distinct than in the OL region, although all three measures for the AD group of subjects were not significantly different in single regions alone. Also for the AD and MCI groups of subjects, the sCBF measure in the OL region was less affected than in the PL, TL, and FL regions. For FTLD, the ROC area of the sCBF measure was a significantly superior ($P < 0.05$) discriminator compared to the SUVR measure of the FL only.

DISCUSSION

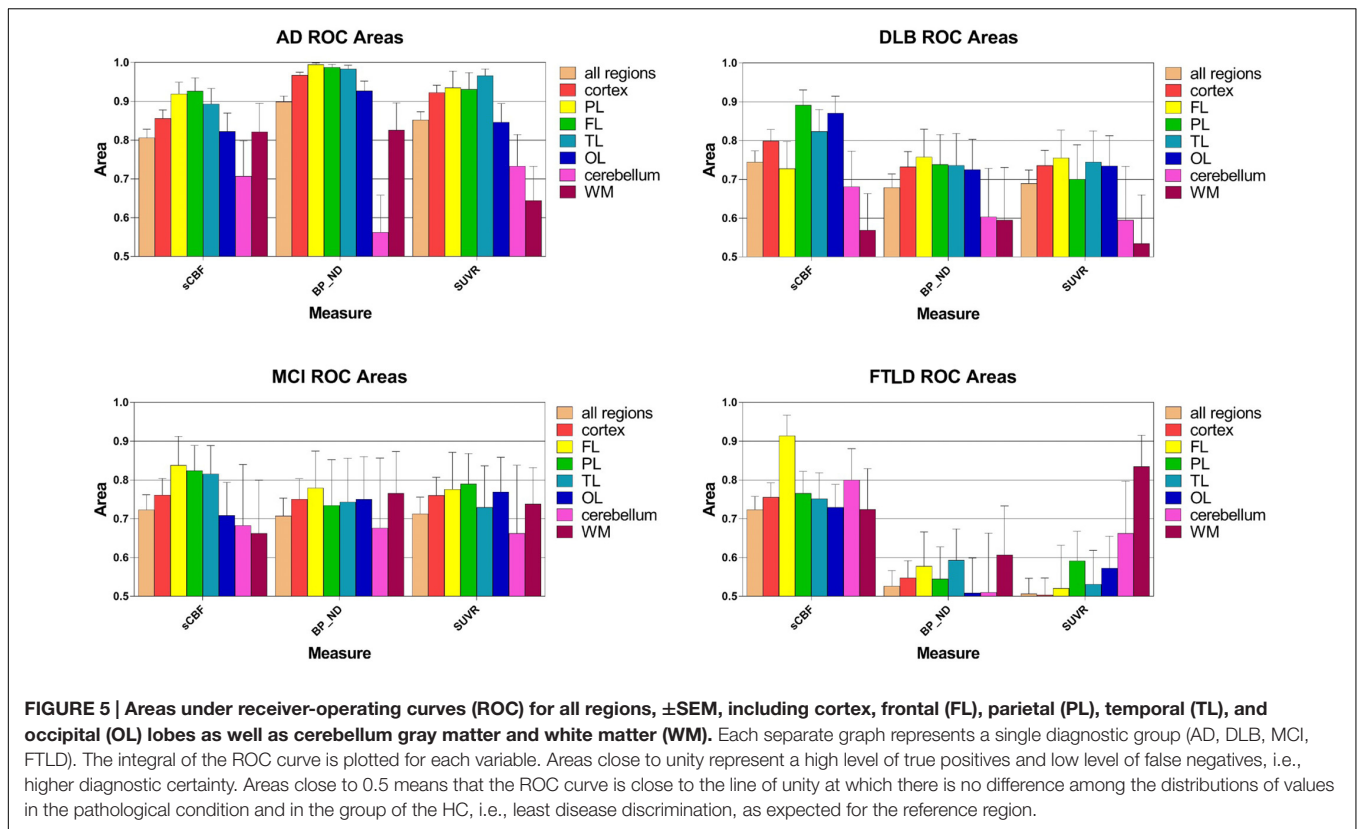
The novel WARM analysis (Rodell et al., 2013) yields quantitative measures both of the surrogate absolute blood flow value and of the binding potential of the amyloid- β -avid tracer [¹¹C]PiB. The aim of this study was to evaluate the power of the



analysis to distinguish among and between aging and different diagnostic groups associated with neurodegenerative disorders (Fast et al., 2013; Gjedde et al., 2013). The major findings of the study include the delineation of the pathophysiology of the individual diagnostic groups along the two orthogonal axes of the measure of $A\beta$ deposits and the measure of cerebral blood flow. This property of WARM allowed us to distinguish among the different forms of dementia by two-dimensional plotting of the results. The distinctive patterns were evident from the relationships among the magnitudes of functional decline, identified from the measure of blood flow, and the

degree of pathology, identified from the measure of amyloid- β load, both obtained from a single dynamic PET imaging session.

We determined the two key measures from different temporal intervals of the PiB uptake dynamics. The two measures included the sCBF, the patient-specific blood flow measure that is decisively different from the relative perfusion measure R_1 , and the binding potential BP_{ND} , both revealed by WARM. All dementia groups, regardless of diagnosis, had significantly lower cortical flow, expressed as sCBF than the healthy volunteers, while only the AD and MCI diagnostic groups had unequivocally



elevated [¹¹C]PiB retention, expressed as the binding potential of the tracer (BP_{ND}).

Importantly, this observation implies that the reduction of blood flow is the functionally relevant measure, while the elevated BP_{ND} is the result of an etiologically specific pathological process of AD and MCI on one hand, and of DLB on the other. In the AD and MCI groups, the BP_{ND} measure discriminated the patients from the HC group to a greater extent than the conventional late-timepoint SUVR measure, in part because of the flow sensitivity of the SUVR measure, as apparent from the WM binding of healthy controls.

Three different patterns of relative change of the two chief measures distinguished the diagnostic group members from the healthy control subjects, as illustrated in **Figure 3**. The FTLD and DLB group members had significantly reduced flow (FTLD), or significantly reduced flow with equally raised binding (DLB), respectively. The AD and MCI group members had significantly increased binding with much smaller degrees of flow reduction. The MCI group members were characterized by the primary but less pronounced increased binding of the tracer, compared to the AD group members. The binding in the AD patients was the more significant measure, but the group as a whole had marked decrease of the sCBF estimates, particularly in FL and PL, as previously reported by Johannsen et al. (2000). This finding is of considerable interest because a matching decline of glucose metabolism generally is not present (Edison et al., 2007), although lowered metabolism generally is evident also in FL in addition to the pathognomonic decline in parietal lobe (Gejl et al., 2012,

2013, 2014, 2016). The low flow may be a physiological reaction to the functional decline of the diseased brain, as oxygen delivery is commensurate with the reduced consumption of oxygen (Rodell et al., 2012). More or less normal glucose consumption therefore implies that a greater fraction of the glucose undergoes aerobic glycolysis only.

The [¹¹C]PiB-derived sCBF deficits in the frontal lobe distinguished FTLD patients from the members of the HC group that were otherwise indistinguishable with respect to the binding of [¹¹C]PiB. The combination of the two measures therefore improves the ability of [¹¹C]PiB to discriminate between AD (including MCI), DLB, and FTLD. A link between A β pathology and functional decline in AD and MCI might be the most likely reason for the high correlation between the flow and binding measures in AD. The different correlations distinguished accurately among the remaining diagnostic groups. Although based on a small number of subjects, the finding has implications for future combinations of other absolute flow measures using PET or MR techniques with amyloid PET imaging, also for the more clinically applicable [¹⁸F]-labeled tracers.

The use of WARM to derive multiparametric measures from a single dynamic dataset more clearly differentiates among functional and pathological features than the SUVR measure for the individuals analysed in the present study. The study also demonstrates that care must be taken to interpret relative measures such as R_1 with caution, as they had no determining power, compared to the subject specific quantitative measure of sCBF in this study (Borghammer et al., 2009a,b). The two variable

approach is promising for other PET tracers where the rapid disappearance from the blood stream decouples the inflow and outflow phases of the kinetics.

ETHICS STATEMENT

Approval for the study was obtained from the Austin Health Human Research Ethics Committee. All patients were recruited from the Austin Health Memory Disorders and Neurobehavioral Clinics. Written informed consent for participation in this study was obtained prior to the scan.

REFERENCES

- Borghammer, P., Aanerud, J., and Gjedde, A. (2009a). Data-driven intensity normalization of PET group comparison studies is superior to global mean normalization. *Neuroimage* 46, 981–988. doi: 10.1016/j.neuroimage.2009.03.021
- Borghammer, P., Cumming, P., Aanerud, J., Förster, S., and Gjedde, A. (2009b). Subcortical elevation of metabolism in Parkinson's disease—a critical reappraisal in the context of global mean normalization. *Neuroimage* 47, 1514–1521. doi: 10.1016/j.neuroimage.2009.05.040
- Cohen, A. D., Rabinovici, G. D., Mathis, C. A., Jagust, W. J., Klunk, W. E., and Ikonomic, M. D. (2012). Using Pittsburgh compound B for in vivo PET imaging of fibrillar amyloid-beta. *Adv. Pharmacol.* 64, 27–81. doi: 10.1016/B978-0-12-394816-8.00002-7
- Collins, D. L., Neelin, P., Peters, T. M., and Evans, A. C. (1994). Automatic 3D intersubject registration of MR volumetric data in standardized talairach space. *J. Comput. Assist. Tomogr.* 18, 192–205. doi: 10.1097/00004728-199403000-00005
- DeLong, E. R., DeLong, D. M., and Clarke-Pearson, D. L. (1988). Comparing the areas under two or more correlated receiver operating characteristic curves: a nonparametric approach. *Biometrics* 44, 837–845. doi: 10.2307/2531595
- Dubois, B., Feldman, H. H., Jacova, C., Dekosky, S. T., Barberger-Gateau, P., Cummings, J., et al. (2007). Research criteria for the diagnosis of Alzheimer's disease: revising the NINCDS-ADRDA criteria. *Lancet Neurol.* 6, 734–746. doi: 10.1016/S1474-4422(07)70178-3
- Edison, P., Archer, H. A., Hinz, R., Hammers, A., Pavese, N., Tai, Y. F., et al. (2007). Amyloid, hypometabolism, and cognition in Alzheimer disease: an [¹¹C]PIB and [¹⁸F]FDG PET study. *Neurology* 68, 501–508. doi: 10.1212/01.wnl.0000244749.20056.d4
- Fast, R., Rodell, A., Gjedde, A., Mouridsen, K., Alstrup, A. K., Bjarkam, C. R., et al. (2013). PiB fails to map amyloid deposits in cerebral cortex of aged dogs with canine cognitive dysfunction. *Front. Aging Neurosci.* 5:99. doi: 10.3389/fnagi.2013.00099
- Gejl, M., Egefjord, L., Lerche, S., Vang, K., Bibby, B. M., Holst, J. J., et al. (2012). Glucagon-like peptide-1 decreases intracerebral glucose content by activating hexokinase and changing glucose clearance during hyperglycemia. *J. Cereb. Blood Flow Metab.* 32, 2146–2152. doi: 10.1038/jcbfm.2012.118
- Gejl, M., Gjedde, A., Egefjord, L., Møller, A., Hansen, S. B., Vang, K., et al. (2016). In Alzheimer's disease, 6-month treatment with GLP-1 Analog prevents decline of brain glucose metabolism: randomized, placebo-controlled, double-blind clinical trial. *Front. Aging Neurosci.* 8:108. doi: 10.3389/fnagi.2016.00108
- Gejl, M., Lerche, S., Egefjord, L., Brock, B., Møller, N., Vang, K., et al. (2013). Glucagon-like peptide-1 (GLP-1) raises blood-brain glucose transfer capacity and hexokinase activity in human brain. *Front. Neuroenergetics* 5:2. doi: 10.3389/fnene.2013.00002
- Gejl, M., Rungby, J., Brock, B., and Gjedde, A. (2014). At the centennial of Michaelis and Menten, competing Michaelis-Menten steps explain effect of GLP-1 on blood-brain transfer and metabolism of glucose. *Basic Clin. Pharmacol. Toxicol.* 115, 162–171. doi: 10.1111/bcpt.12240

AUTHOR CONTRIBUTIONS

AR and AG: Did the data-analysis, method development, and manuscript preparation. VV, CR and GO: Did the recruiting, data-collection, and manuscript preparation.

FUNDING

Supported in part by funds from the Austin Hospital Medical Research Foundation, Neurosciences Victoria, the University of Melbourne, and Department of Health and Ageing, Commonwealth Government of Australia.

- Gjedde, A., Aanerud, J., Braendgaard, H., and Rodell, A. (2013). Blood-brain transfer of pittsburgh compound B in humans. *Front. Aging Neurosci.* 5:70. doi: 10.3389/fnagi.2013.00070
- Grabner, G., Janke, A. L., Budge, M. M., Smith, D., Pruessner, J., and Collins, D. L. (2006). "Symetric atlas and model based segmentation: an application to the hippocampus in older adults," in *Medical Image Computing and Computer Assisted Intervention (MICCAI)*, eds R. Larsen, M. Nielsen, and J. Sparring (Berlin: Springer).
- Hardy, J. A., and Higgins, G. A. (1992). Alzheimer's disease: the amyloid cascade hypothesis. *Science* 256, 184–185. doi: 10.1126/science.1566067
- Hardy, J. A., and Selkoe, D. J. (2002). The amyloid hypothesis of Alzheimer's disease: progress and problems on the road to therapeutics. *Science* 297, 353–356. doi: 10.1126/science.1072994
- Harrison, J. R., and Owen, M. J. (2016). Alzheimer's disease: the amyloid hypothesis on trial. *Br. J. Psychiatry* 208, 1–3. doi: 10.1192/bjp.bp.115.167569
- Johannsen, P., Jakobsen, J., and Gjedde, A. (2000). Statistical maps of cerebral blood flow deficits in Alzheimer's disease. *Eur. J. Neurol.* 7, 385–392. doi: 10.1046/j.1468-1331.2000.00088.x
- Lehmann, M., Ghosh, P. M., Madison, C., Laforce, R. Jr., Corbetta-Rastelli, C., Weiner, M. W., et al. (2013). Diverging patterns of amyloid deposition and hypometabolism in clinical variants of probable Alzheimer's disease. *Brain Mar.* 136(Pt 3), 844–858. doi: 10.1093/brain/aws327
- Mazziotta, J. A., Toga, A. W., Evans, A. C., Fox, P. T., Lancaster, J., Zilles, K., et al. (2001). A probabilistic atlas and reference system for the human brain: international consortium for brain mapping (ICBM). *Philos. Trans. R. Soc. Lond. B Biol. Sci.* 356, 1293–1322. doi: 10.1098/rstb.2001.0915
- McKhann, G., Drachman, D., Folstein, M., Katzman, R., Price, D., and Stadlan, E. M. (1984). Clinical diagnosis of Alzheimer's disease: report of the NINCDS-ADRDA work group under the auspices of department of health and human services task force on Alzheimer's disease. *Neurology* 34, 939–944. doi: 10.1212/WNL.34.7.939
- Penzes, P., Cahill, M. E., Jones, K. A., VanLeeuwen, J. E., and Woolfey, K. M. (2011). Dendritic spine pathology in neuropsychiatric disorders. *Nat. Neurosci.* 14, 285–293. doi: 10.1038/nn.2741
- Petersen, R. C., Smith, G. E., Waring, S. C., Ivnik, R. J., Tangalos, E. G., and Kokmen, E. (1999). Mild cognitive impairment: clinical characterization and outcome. *Arch. Neurol.* 56, 303–308. doi: 10.1001/archneur.56.3.303
- Rodell, A., Aanerud, J., Braendgaard, H., and Gjedde, A. (2013). Washout allometric reference method (WARM) for parametric analysis of [¹¹C]PIB in human brains. *Front. Aging Neurosci.* 5:45. doi: 10.3389/fnagi.2013.00045
- Rodell, A. B., Aanerud, J., Braendgaard, H., and Gjedde, A. (2012). Low residual CBF variability in Alzheimer's disease after correction for CO(2) Effect. *Front. Neuroenergetics.* 4:8. doi: 10.3389/fnene.2012.00008
- Rowe, C. C., Ng, S., Ackermann, U., Gong, S. J., Pike, K., Savage, G., et al. (2007). Imaging beta-amyloid burden in aging and dementia. *Neurology* 68, 1718–1725. doi: 10.1212/01.wnl.0000261919.22630.ea
- Senanarong, V., Siwasriyanon, N., Washirutmangkur, L., Pongvarin, N., Ratanabunakit, C., Aoonkaew, N., et al. (2012). Alzheimer's disease dementia as the diagnosis best supported by the cerebrospinal fluid biomarkers: difference in cut-off levels from thai experience. *Int. J. Alzheimers Dis.* 2012:212063. doi: 10.1155/2012/212063

Wilson, A. A., Garcia, A., Chestakova, A., Kung, H., and Houle, S. (2004). A rapid one-step radiosynthesis of the β - amyloid imaging radiotracer N-methyl- [¹¹C]2(40-methylaminophenyl)-6- hydroxybenzothiazole ([¹¹C]- 6-OH-BTA-1). *J. Labelled Comp. Radiopharm.* 47, 679–682. doi: 10.1002/jlcr.854

Conflict of Interest Statement: The authors declare that the research was conducted in the absence of any commercial or financial relationships that could be construed as a potential conflict of interest.

Copyright © 2017 Rodell, O’Keefe, Rowe, Villemagne and Gjedde. This is an open-access article distributed under the terms of the Creative Commons Attribution License (CC BY). The use, distribution or reproduction in other forums is permitted, provided the original author(s) or licensor are credited and that the original publication in this journal is cited, in accordance with accepted academic practice. No use, distribution or reproduction is permitted which does not comply with these terms.