

Syddansk Universitet

Baryogenesis in the two doublet and inert singlet extension of the Standard Model

Alanne, Tommi; Kainulainen, Kimmo; Tuominen, Kimmo; Vaskonen, Ville

Published in:
Journal of Cosmology and Astroparticle Physics

DOI:
[10.1088/1475-7516/2016/08/057](https://doi.org/10.1088/1475-7516/2016/08/057)

Publication date:
2016

Document version
Publisher's PDF, also known as Version of record

Document license
CC BY

Citation for published version (APA):
Alanne, T., Kainulainen, K., Tuominen, K., & Vaskonen, V. (2016). Baryogenesis in the two doublet and inert singlet extension of the Standard Model. *Journal of Cosmology and Astroparticle Physics*, 2016(8), [57]. DOI: 10.1088/1475-7516/2016/08/057

General rights

Copyright and moral rights for the publications made accessible in the public portal are retained by the authors and/or other copyright owners and it is a condition of accessing publications that users recognise and abide by the legal requirements associated with these rights.

- Users may download and print one copy of any publication from the public portal for the purpose of private study or research.
- You may not further distribute the material or use it for any profit-making activity or commercial gain
- You may freely distribute the URL identifying the publication in the public portal ?

Take down policy

If you believe that this document breaches copyright please contact us providing details, and we will remove access to the work immediately and investigate your claim.

Baryogenesis in the two doublet and inert singlet extension of the Standard Model

This content has been downloaded from IOPscience. Please scroll down to see the full text.

JCAP08(2016)057

(<http://iopscience.iop.org/1475-7516/2016/08/057>)

View [the table of contents for this issue](#), or go to the [journal homepage](#) for more

Download details:

IP Address: 130.226.87.174

This content was downloaded on 26/05/2017 at 09:49

Please note that [terms and conditions apply](#).

You may also be interested in:

[A strong electroweak phase transition from the inflaton field](#)

Tommi Tenkanen, Kimmo Tuominen and Ville Vaskonen

[Scalar representations in the light of electroweak phase transition and cold dark matter phenomenology](#)

Shehu S. AbdusSalam and Talal Ahmed Chowdhury

[Detectable gravitational waves from very strong phase transitions in the general NMSSM](#)

Stephan J. Huber, Thomas Konstandin, Germano Nardini et al.

[A model for dark matter, naturalness and a complete gauge unification](#)

Kimmo Kainulainen, Kimmo Tuominen and Jussi Virkajärvi

[Signatures from scalar dark matter with a vector-like quark mediator](#)

Federica Giacchino, Alejandro Ibarra, Laura Lopez Honorez et al.

[Asymmetric dark matter models and the LHC diphoton excess](#)

Mads T. Frandsen and Ian M. Shoemaker

[Lower bound on the electroweak wall velocity from hydrodynamic instability](#)

Ariel Mégevand, Federico Agustín Membiela and Alejandro D. Sánchez

[Fermi Bubbles under Dark Matter Scrutiny Part II: Particle Physics Analysis](#)

Wei-Chih Huang, Alfredo Urbano and Wei Xue

[The electroweak phase transition in the Inert Doublet Model](#)

Nikita Blinov, Stefano Profumo and Tim Stefaniak

Baryogenesis in the two doublet and inert singlet extension of the Standard Model

Tommi Alanne,^a Kimmo Kainulainen,^{b,d} Kimmo Tuominen^{c,d} and Ville Vaskonen^{b,d}

^aCP³-Origins, University of Southern Denmark,
Campusvej 55, DK-5230 Odense M, Denmark

^bDepartment of Physics, University of Jyväskylä,
P.O. Box 35 (YFL), FI-40014 Jyväskylä, Finland

^cDepartment of Physics, University of Helsinki,
P.O. Box 64, FI-00014 Helsinki, Finland

^dHelsinki Institute of Physics, University of Helsinki,
P.O. Box 64, FI-00014 Helsinki, Finland

E-mail: alanne@cp3.sdu.dk, kimmo.kainulainen@jyu.fi,
kimmo.i.tuominen@helsinki.fi, ville.vaskonen@jyu.fi

Received July 13, 2016

Accepted August 21, 2016

Published August 25, 2016

Abstract. We investigate an extension of the Standard Model containing two Higgs doublets and a singlet scalar field (2HD SM). We show that the model can have a strongly first-order phase transition and give rise to the observed baryon asymmetry of the Universe, consistent with all experimental constraints. In particular, the constraints from the electron and neutron electric dipole moments are less constraining here than in pure two-Higgs-doublet model (2HDM). The two-step, first-order transition in 2HD SM, induced by the singlet field, may lead to strong supercooling and low nucleation temperatures in comparison with the critical temperature, $T_n \ll T_c$, which can significantly alter the usual phase-transition pattern in 2HD models with $T_n \approx T_c$. Furthermore, the singlet field can be the dark matter particle. However, in models with a strong first-order transition its abundance is typically but a thousandth of the observed dark matter abundance.

Keywords: baryon asymmetry, cosmological phase transitions

ArXiv ePrint: [1607.03303](https://arxiv.org/abs/1607.03303)



Contents

1	Introduction	1
2	The model	2
2.1	Reparametrization invariance and tree-level vacuum stability	4
2.2	Spontaneous symmetry breaking	6
2.3	Finite-temperature potential	8
3	Results	8
3.1	Theoretical and experimental constraints	9
3.2	Dark matter abundance and direct detection limits	9
3.3	Electroweak phase transition	11
3.4	Electron EDM constraint	12
3.5	Baryogenesis	13
3.6	Bubble nucleation	15
4	Conclusions and outlook	17
A	Diagonalization of mass matrices	19
B	1-loop beta functions for scalar couplings	20
C	Singlet scalar annihilation cross sections	21

1 Introduction

The matter-antimatter asymmetry in the universe presents one of the major quests for particle cosmology. Due to cosmic inflation, such asymmetry cannot be an initial condition for the thermal history of the universe, but calls for a dynamical explanation. The Standard Model (SM) of elementary particle interactions fails in providing a successful mechanism for baryogenesis, and one must look at different extensions of the SM. In this paper we address these issues in the context of a 2HDSM featuring an extended scalar sector with two gauged Higgs doublets and an extra singlet.

Generation of the matter-antimatter asymmetry in connection with the electroweak phase transition, i.e. electroweak baryogenesis, is a particularly appealing scenario due to the possibility of connecting it with the collider experiments. Generic 2HDMS have been studied earlier in connection with the electroweak baryogenesis problem [1–9]. They provide both a new source of CP violation arising from complex parameters in the 2HDM potential and a strong first-order phase transition arising from the one-loop effective potential. However, observational constraints are placing stringent limits also on 2HDMS [8]. Here we show that these constraints are alleviated when the model is further extended by a real scalar singlet field.

A generic feature of 2HDM, also inherited by the 2HDSM, is the danger of generating large flavour changing neutral currents. To avoid these, one has to constrain the Higgs-fermion couplings in one way or the other. Here we choose to work in the context of universal

Yukawa alignment, which may be argued for by a requirement that the whole Lagrangian is invariant under the group $GL(2, \mathbb{C})$ of linear reparametrization transformations in the doublet space. We also use the reparametrization invariance to develop an elegant way to explore the vacuum stability and the phase-transition pattern in the model.

In the 2HDM context large CP violation requires that scalar couplings have large complex phases and strong transition requires that couplings are large in magnitude. When combined, these requirements tend to give too large electron and neutron electric dipole moments (EDMs). We will show that the presence of the additional scalar allows for a strong two-step electroweak phase transition, which does not rely on large radiative corrections to the effective potential. This alleviates the burden on the scalar self-couplings and significantly increases the phase space consistent with EDM constraints in the 2HDSM.

The singlet scalar can also be a dark matter (DM) candidate when a discrete Z_2 symmetry is imposed to stabilize it. However, we will find that a strong first-order phase transition is not consistent with a dominant singlet scalar DM particle. The problem is that a strong two-step transition requires a large coupling between the singlet and doublet sectors and this implies so large an annihilation rate for the DM that its relic abundance becomes too small to account for the full observed DM density. This conclusion is generic for all models of this type.

We observe that two-step transitions may also give rise to *too strong* transitions. It is possible that fields get trapped in the metastable minimum so that electroweak symmetry remains unbroken. Also, the latent heat released in the transition may be so large that the transition walls necessarily become supersonic. However, we find also parameters for which walls may be subsonic, consistent with the electroweak baryogenesis scenario. Overall, we are able to find models that satisfy all observational and experimental constraints and can also give rise to a successful electroweak baryogenesis, accompanied by a subleading DM in the 2HDSM context.

The structure of the paper is as follows: in section 2 we introduce the model and discuss the most general $GL(2, \mathbb{C})$ -reparametrization invariant 2HDSM Lagrangian including Yukawa couplings. Here we also develop methods to study the vacuum stability and the phase-transition patterns in the theory. In section 3 we first go through the experimental constraints on the model and evaluate the DM relic abundance and the DM search limits on model parameters. We then evaluate the strength of the transition and compute the baryon asymmetry created in the electroweak phase transition. The section is concluded by a study of bubble nucleation in the 2HDSM and in the singlet extension of the SM. In section 4 we conclude and outline some directions for future research.

2 The model

We start from the most general two-Higgs-doublet and inert-singlet extension of the SM with the scalar field Lagrangian:

$$\mathcal{L}_{\text{scalar}} = Z^{ij} (D^\mu H_i)^\dagger D_\mu H_j + \frac{1}{2} (\partial_\mu S)^2 - V(H_1, H_2, S), \quad (2.1)$$

where Z^{ij} is an arbitrary Hermitian 2×2 matrix and the most general potential is given by

$$\begin{aligned}
 V(H_1, H_2, S) = & -m_1^2 |H_1|^2 - m_2^2 |H_2|^2 - \left(m_{12}^2 H_2^\dagger H_1 + \text{h.c.} \right) - \frac{1}{2} m_S^2 S^2 \\
 & + \lambda_1 |H_1|^4 + \lambda_2 |H_2|^4 + \lambda_3 |H_1|^2 |H_2|^2 + \lambda_4 (H_1^\dagger H_2)(H_2^\dagger H_1) \\
 & + \left(\lambda_5 (H_2^\dagger H_1)^2 + \lambda_6 |H_1|^2 (H_2^\dagger H_1) + \lambda_7 |H_2|^2 (H_2^\dagger H_1) + \text{h.c.} \right) \\
 & + \frac{1}{4} \lambda_S S^4 + \frac{1}{2} \lambda_{S1} S^2 |H_1|^2 + \frac{1}{2} \lambda_{S2} S^2 |H_2|^2 + \left(\frac{1}{2} \lambda_{S12} S^2 H_2^\dagger H_1 + \text{h.c.} \right).
 \end{aligned} \tag{2.2}$$

Both doublets H_i are assumed to be gauged under $SU(2)_L \times U(1)_Y$, while the scalar S is a singlet under all SM gauge interactions. The singlet S is a crucial ingredient in the model because it will disentangle the source of a strongly first-order transition from that of sufficiently strong CP violation.

The Lagrangian (2.1) is invariant under a reparametrization transformation $\Phi \rightarrow \Phi' \equiv P\Phi$ (and a simultaneous rescaling of S), where P is an element of the general linear group $GL(2, \mathbb{C})$, and Φ is the Higgs hyperdoublet:

$$\Phi \equiv (H_1, H_2)^T. \tag{2.3}$$

$GL(2, \mathbb{C})$ is the semidirect product of special linear transformations $SL(2, \mathbb{C})$ and multiplicative group of dilatations \mathbb{C}^\times . We can always use the dilatation and a hyperbolic $SL(2, \mathbb{C})$ transformation to bring the kinetic term into the canonical form, $Z^{ij} \rightarrow \text{diag}(1, 1)$, i.e.

$$Z^{ij} (D^\mu H_i)^\dagger D_\mu H_j \rightarrow |D_\mu H_1|^2 + |D_\mu H_2|^2.$$

The resulting Lagrangian is still invariant under elliptic $SL(2, \mathbb{C})$ transformations, i.e. the usual $SU(2)$ rotations of the doublets.

A generic 2HDM gives rise to unacceptably large flavour-changing neutral currents (FCNCs) and the presence of a singlet does not change the situation. One way to avoid FCNCs is the Yukawa alignment [10], which assumes that both doublets couple to fermions with the same matrix structure (since S is a singlet under SM gauge interactions its couplings to charged SM fermions are excluded):

$$\mathcal{L}_{\text{Yukawa}} = y_u C_u^i \bar{Q}_L \tilde{H}_i u_R + y_d C_d^i \bar{Q}_L H_i d_R + y_e C_e^i \bar{L}_L H_i e_R + \text{h.c.}, \tag{2.4}$$

where $\tilde{H}_2 \equiv i\sigma_2 H_2^*$. Here y_a are flavour matrices independent of the doublet index, and C_i^a are doublet-index dependent complex numbers. In general the alignment may be different in different fermion sectors: $C_i^a \neq C_i^b$. However, for simplicity, we choose to work in the special case of *universal Yukawa alignment*, where $C_i^a \equiv C_i$. In this case we can, without a further loss of generality, choose the basis where only the H_2 field couples to fermions. This corresponds to setting $C_1 = 0$ and $C_2 = 1$,¹ so that:

$$\mathcal{L}_{\text{Yukawa}} = y_u \bar{Q}_L \tilde{H}_2 u_R + y_d \bar{Q}_L H_2 d_R + y_e \bar{L}_L H_2 e_R + \text{h.c.} \tag{2.5}$$

¹This actually involves a rotation and a redefining of the scale of y^a matrices.

The choice of basis leading to (2.5) can be effected by an $SU(2)$ rotation of Φ , and it exhausts our remaining freedom to perform elliptic $SL(2, \mathbb{C})$ -reparametrization transformations after diagonalizing the kinetic term.²

Let us stress that while the Yukawa sector (2.5) appears to be of type-I 2HDM, we did not impose any discrete symmetry to derive it. This is why we have kept the λ_6 and λ_7 terms in the scalar potential. Note that renormalization does not change the form of the theory; while it both re-introduces a kinetic mixing between doublets and a coupling of H_1 to fermions, these changes can be countered by another $GL(2, \mathbb{C})$ transformation. Also, we point out that the universal Yukawa alignment can be argued for based on reparametrization invariance: only in the context of universal alignment is the *complete* Lagrangian including the 2HDM and Yukawa sectors invariant under $GL(2, \mathbb{C})$ transformations.

Interestingly, the universal alignment structure arises as a low-energy effective theory in models of dynamical electroweak symmetry breaking [11–18]. In the bosonic technicolor [11–13], the ultraviolet theory contains a new gauge theory responsible for dynamically breaking the electroweak symmetry and an elementary scalar doublet H , which communicates the symmetry breaking to the SM fields through its renormalizable Yukawa couplings. At low energies the strong technicolor dynamics is described in terms of an effective Lagrangian for a composite Higgs doublet, which couples with the elementary one through a Lagrangian of the form (2.1), including the non-trivial kinetic mixing. Only the elementary scalar couples to SM fermions, which naturally introduces Yukawa alignment. Moreover, when the kinetic mixing is removed by a non-unitary transformation, the Yukawa Lagrangian becomes naturally of the *universally* Yukawa-aligned form with $C_i^a = C_i$. After a final $SU(2)$ rotation, the model has a diagonal kinetic term, type-I Yukawa sector (2.5), and the most general potential of eq. (2.2).

2.1 Reparametrization invariance and tree-level vacuum stability

The original Lagrangian with the most general potential, kinetic term, and the universally aligned Yukawa sector has 27 real parameters (not counting the parameters entering the Yukawa-flavour-mixing matrices). We removed the four arbitrary parameters from kinetic terms and three from the complex Yukawa coefficients C_i by the use of the $GL(2, \mathbb{C})$ invariance of the theory. This still leaves us with 15 real couplings and five real mass parameters in the model potential $V(H_1, H_2, S)$. Our next task is to find out which sets of these parameters correspond to physically viable models with a stable potential.

We can use the reparametrization invariance to our advantage in constructing the stable potentials. To this end, it is convenient to rephrase the invariance in terms of Lorentz invariance of the potential, written in terms of bilinears formed from hyperdoublets. Following the analysis of ref. [19–21], we define

$$r^\mu \equiv \Phi^\dagger \sigma^\mu \Phi, \quad \text{where } \sigma^\mu = (1, \sigma_i). \quad (2.6)$$

The bilinear four-vector r^μ is positive definite.³ That is, r^μ vectors span the future light cone, LC^+ , of a Minkowski space. Thus, in bilinear representation the elliptic and hyperbolic $SL(2, \mathbb{C})$ basis transformations of fields $\Phi \rightarrow \Phi' \equiv P\Phi$ correspond to proper orthochronous

²Note that in the case of general Yukawa alignment, where $C_i^a \neq C_i^b$, one could still use the $SU(2)$ rotation to set $C_1^u = 0$, so that up-type quarks couple only to H_2 . Most of our subsequent analysis would hold also for this scenario, because it is mostly sensitive only to the large top-quark coupling. The only exception is the electron EDM, for which our analysis covers only a part of the full phase space available in the context of general alignment.

³Clearly $r_0 = \sum_i |H_i|^2 \geq 0$. Also $r_\mu r^\mu = 4(|H_1|^2 |H_2|^2 - (H_1^\dagger H_2)(H_2^\dagger H_1)) \geq 0$, by Schwartz inequality.

Lorentz transformations $r^\mu \rightarrow r'^\mu = (\Lambda_P)^\mu{}_\nu r^\nu$, where $(\Lambda_P)^\mu{}_\nu \in \text{SO}(1,3)^+$. In this notation one can rewrite the Higgs potential (2.2) in a very compact form:

$$V = -\frac{1}{2}m_S^2 S^2 - \frac{1}{2}M_\mu^2 r^\mu + \frac{1}{4}r^\mu \lambda_{\mu\nu} r^\nu + \frac{1}{4}\lambda_{S\mu} r^\mu S^2 + \frac{1}{4}\lambda_S S^4, \quad (2.7)$$

where we defined mass and coupling four-vectors

$$\begin{aligned} M_\mu^2 &\equiv (m_1^2 + m_2^2, 2m_{12R}^2, -2m_{12I}^2, m_1^2 - m_2^2), \\ \lambda_{S\mu} &\equiv (\lambda_{S1} + \lambda_{S2}, 2\lambda_{S12R}, -2\lambda_{S12I}, \lambda_{S1} - \lambda_{S2}) \end{aligned} \quad (2.8)$$

and a symmetric coupling tensor

$$\lambda_{\mu\nu} \equiv \begin{pmatrix} \lambda_1 + \lambda_2 + \lambda_3 & \lambda_{6R} + \lambda_{7R} & -\lambda_{6I} + \lambda_{7I} & \lambda_1 - \lambda_2 \\ \lambda_{6R} + \lambda_{7R} & \lambda_4 + 2\lambda_{5R} & -2\lambda_{5I} & \lambda_{6R} - \lambda_{7R} \\ -\lambda_{6I} + \lambda_{7I} & -2\lambda_{5I} & \lambda_4 - 2\lambda_{5R} & -\lambda_{6I} - \lambda_{7I} \\ \lambda_1 - \lambda_2 & \lambda_{6R} - \lambda_{7R} & -\lambda_{6I} - \lambda_{7I} & \lambda_1 + \lambda_2 - \lambda_3 \end{pmatrix}, \quad (2.9)$$

where the subscripts R and I refer to the real and imaginary parts of the couplings, respectively. The reparametrization invariance is manifest in eq. (2.7), because V depends only on Lorentz-invariant products of vectors and tensors. This form is particularly suitable for a study of the vacuum stability and phase-transition patterns of the model.

First consider the direction $S = 0$ in the potential (2.7). Here the term $r^\mu \lambda_{\mu\nu} r^\nu$ must be bounded from below. In [19] it was shown that this is the case precisely when $\lambda_{\mu\nu}$ is positive definite in the future light cone. That is, all stable potentials can be written as $\lambda_{\mu\nu} \equiv \Lambda_\mu{}^\alpha \lambda_{\alpha\beta}^D \Lambda^\beta{}_\nu$, where $\Lambda_\mu{}^\alpha$ is an $\text{SO}(1,3)^+$ transformation and

$$\lambda_{\alpha\beta}^D = \text{diag}(\lambda_{00}^D, -\lambda_{11}^D, -\lambda_{22}^D, -\lambda_{33}^D), \quad \text{with } \lambda_{00}^D > 0 \quad \text{and} \quad \lambda_{00}^D > \lambda_{ii}^D. \quad (2.10)$$

Note that the four parameters in $\lambda_{\alpha\beta}^D$ together with the six parameters in $\Lambda^\beta{}_\nu$ add up to the ten real degrees of freedom in the most general 2HDM potential. Second, if we set $r^\mu = 0$ ($H_1 = H_2 = 0$), we see that we must have

$$\lambda_S > 0. \quad (2.11)$$

Finally, we have to consider the directions where both S and H_i are nonzero. First, if the vector $\lambda_{S\mu}$ of couplings which mix S and H_i lies in the future light cone, $\lambda_{S\mu} \in \text{LC}^+$, i.e.

$$\lambda_{S\mu} \lambda_S^\mu = 4(\lambda_{S1}\lambda_{S2} - |\lambda_{S12}|^2) > 0 \quad \text{and} \quad \lambda_S^0 = \lambda_{S1} + \lambda_{S2} > 0, \quad (2.12)$$

then the mixing term $\frac{1}{4}\lambda_{S\mu} r^\mu S^2$ in the potential, eq. (2.7), is always positive, and no new conditions arise. However, if $\lambda_{S\mu} \notin \text{LC}^+$, there are always directions $r^\mu \in \text{LC}^+$ along which the product $\lambda_{S\mu} r^\mu$ is negative. If we in such cases rewrite the quartic part of the potential as

$$V_{\text{quartic}} = \frac{1}{4}r^\mu \left(\lambda_{\mu\nu} - \frac{1}{4\lambda_S} \lambda_{S\mu} \lambda_{S\nu} \right) r^\nu + \frac{1}{4}\lambda_S \left(S^2 + \frac{\lambda_{S\mu} r^\mu}{2\lambda_S} \right)^2, \quad (2.13)$$

we see that the potential is most negative as a function of S along direction $2\lambda_S S^2 = -\lambda_{S\mu} r^\mu$. In this subspace, the potential reduces to the form $4V_{\text{quartic}} = r^\mu \lambda_{\mu\nu}^S r^\nu$, with a new coupling matrix:

$$\lambda_{\mu\nu}^S \equiv \lambda_{\mu\nu} - \frac{1}{4\lambda_S} \lambda_{S\mu} \lambda_{S\nu}. \quad (2.14)$$

The matrix $\lambda_{\mu\nu}^S$ is not in general diagonalizable by an $\text{SO}(1,3)^+$ rotation, and it may have also complex eigenvalues. Unfortunately we cannot restrict its properties like we did for $\lambda_{\mu\nu}$, because $\lambda_{\mu\nu}^S$ does not need not be positive definite in the entire future light cone, but only in the subset of LC^+ where $\lambda_{S\mu}r^\mu$ is negative. Instead of covering the full range of possibilities, we will require a sufficient (but not necessary) condition that $\lambda_{\mu\nu}^S$ is positive definite in the future light cone whenever $\lambda_{S\mu} \notin \text{LC}^+$.

We now have the recipe to construct the space of stable potentials: we first choose a $\lambda_{\alpha\alpha}^D$ which satisfies eqs. (2.10). Then we generate a vector $\lambda_{S\mu}^D$ and check if it satisfies the positivity constraint (2.12), or if the matrix $\lambda_{\mu\nu}^S$ in eq. (2.14) is positive definite in the subset of LC^+ where $\lambda_{S\mu}r^\mu < 0$. Having found an acceptable set, we generate a random Lorentz transformation and define

$$\lambda_{\mu\nu} \equiv \Lambda_\mu^\alpha \lambda_{\alpha\beta}^D \Lambda^\beta_\nu \quad \text{and} \quad \lambda_S^\mu \equiv \Lambda^\mu_\nu (\lambda_S^D)^\nu, \quad (2.15)$$

where $\Lambda^\mu_\nu \in \text{SO}(1,3)^+$.

Let us comment on the role of the kinetic and Yukawa terms in the above construction of the potential. We implicitly assumed that kinetic term becomes diagonal, and the Yukawa term becomes of type-I form in the final frame, after the Lorentz transformation. Thus, they necessarily must be nontrivial in the original, diagonal frame. Indeed, the six degrees of freedom “missing” in the diagonal potential are in this frame evenly divided between the C_i coefficients in the Yukawa Lagrangian and the mixing parameters in the kinetic term, which in the bilinear notation can be written as

$$K_\mu (D^\alpha \Phi)^\dagger \sigma^\mu (D_\alpha \Phi). \quad (2.16)$$

Here K_μ is some positive definite, but otherwise arbitrary four-vector of unit length (here α refers to the usual space-time indices and μ to potential indices).⁴ It is amusing to see that exactly a Lorentz boost (a hyperbolic $\text{SL}(2,\mathbb{C})$ transformation on fields) is needed to bring an arbitrary K_μ into the canonical form: $K_\mu \rightarrow (1; 0, 0, 0)$, after which the kinetic term is manifestly invariant under Lorentz rotations (elliptic $\text{SL}(2,\mathbb{C})$ transformations on fields). These boosts and rotations into the canonical frame activate the whole $\text{SO}(1,3)^+$ group discussed above and thus create all physically viable Lagrangians with bounded potentials.

2.2 Spontaneous symmetry breaking

Since we are interested in the cases where the singlet scalar S is a DM candidate, we restrict our considerations to the cases where the potential is unbroken in S direction and hence Z_2 symmetric at low temperatures. However, to enhance the strength of the latter phase transition, we also need the S symmetry to be broken at high temperatures before the symmetry breaks in the doublet direction. To this end, we must have negative quadratic term in the S direction in the potential ($m_S^2 > 0$). This implies that there may be other minima away from the $\langle S \rangle = 0$ vacuum, and we must check that none of these minima is the global one at zero temperature. The extremization conditions are:

$$\frac{\partial V}{\partial S} = S\zeta_S = 0, \quad \text{where} \quad \zeta_S \equiv -m_S^2 + \lambda_S S^2 + \frac{1}{2}\lambda_{S\mu}r^\mu, \quad (2.17)$$

⁴In the most general case K_μ has four free parameters, but one parameter is here assumed to be removed by a dilatation, used to bring the length of K_μ to unity.

and

$$\frac{\partial V}{\partial H_i^\dagger} = \sigma_{ij}^\mu H_j \zeta_\mu = 0, \quad \text{where} \quad \zeta_\mu = -\frac{1}{2} \left(M_\mu^2 - \frac{1}{2} \lambda_{S\mu} S^2 \right) + \frac{1}{2} \lambda_{\mu\nu} r^\nu. \quad (2.18)$$

Eqs. (2.18) are complex, so we have five equations relating vacuum fields to the parameters of the theory. Our goal is to have an unbroken singlet and a broken neutral doublet vacuum at zero temperature. In [19] it was shown that the neutral and charged vacua cannot coexist in the pure 2HDM case. When $S = 0$, our potential reduces to the pure 2HDM case, and so the above statement applies here as well. Therefore, if we find a neutral vacuum, we know it is the global one in the doublet space and the charged extremum may at best be a saddle point. Moreover, even with $S \neq 0$, the doublet-symmetry-breaking pattern is formally similar to the pure 2HDM case, only with an effective mass parameter

$$-m_\mu^2 \equiv -M_\mu^2 + \frac{1}{2} \lambda_{S\mu} S^2. \quad (2.19)$$

This implies that also any neutral minimum with S breaking is the lowest one in the doublet space.

The most general neutral vacuum in 2HDM field space is given by

$$\langle H_1 \rangle = \frac{1}{\sqrt{2}} \begin{pmatrix} 0 \\ v_1 e^{i\theta_1} \end{pmatrix}, \quad \text{and} \quad \langle H_2 \rangle = \frac{1}{\sqrt{2}} \begin{pmatrix} 0 \\ v_2 e^{i\theta_2} \end{pmatrix}. \quad (2.20)$$

Of course the local $SU(2)$ -gauge invariance guarantees that only the relative phase $\theta \equiv \theta_2 - \theta_1$ is physical, and one could rotate for example $\theta_1 \rightarrow 0$. Explicitly we find that this corresponds to

$$r_0^\mu = (v_1^2 + v_2^2, 2v_1 v_2 \cos \theta, 2v_1 v_2 \sin \theta, v_1^2 - v_2^2), \quad (2.21)$$

so that $r_0^2 = 0$ as it should for a neutral vacuum [19]. This construction actually only ensures that the special point (2.20) is an *extremum* of the potential. To check that this extremum is also a minimum, one needs to compute second derivative matrices of the potential corresponding to scalar field masses and require that there are no negative eigenvalues. For the mass of the physical excitation in the singlet direction, this corresponds to requiring that

$$\left. \frac{d^2 V}{dS^2} \right|_{\text{vev}} = -m_S^2 + \frac{1}{2} \lambda_{S\mu} r_0^\mu \equiv M_S^2 > 0, \quad (2.22)$$

where the left hand side is evaluated at the extremum $\langle S \rangle = 0$ and $\langle H_i \rangle \neq 0$ as defined in eq. (2.20). These requirements on the spectrum allow one to set the Lagrangian mass parameters in terms of physical masses and vacuum expectation values (vevs) of the fields. However, it still remains to check that the vacuum with $S = 0$ is the global minimum for any given set of parameters. It is straightforward to show that the value of the potential at the desired $\langle S \rangle = 0, \langle H_i \rangle \neq 0$ vacuum is

$$V(\langle S \rangle = 0, \langle H_i \rangle \neq 0) = -\frac{1}{4} r_0^\mu \lambda_{\mu\nu} r_0^\nu. \quad (2.23)$$

In the direction $H_i = 0$, the potential has at least a directional minimum at $\langle S \rangle^2 = m_S^2 / 2\lambda_S$, and the value of the potential in this directional minimum is

$$V(\langle S \rangle \neq 0, \langle H_i \rangle = 0) = -\frac{1}{4\lambda_S} \left(M_S^2 - \frac{1}{2} \lambda_{S\mu} r_0^\mu \right)^2. \quad (2.24)$$

We impose the condition that the minimum in eq. (2.23) is below that in eq. (2.24). Finally, there is an extremum where both $\langle S \rangle \neq 0$ and $\langle H_i \rangle \neq 0$, but this is a local maximum.

In addition to the massive scalar S , the physical spectrum contains the usual states arising from the two Higgs doublets: the three neutral scalars h_0 , H_0 and A_0 , and two charged scalars H^\pm . The diagonalization of the mass matrices is presented in detail in appendix A. The lightest neutral scalar state h_0 is identified with the 125 GeV Higgs particle observed LHC, while the masses of the heavier neutral and charged scalar states are constrained to lie above the current limits.

2.3 Finite-temperature potential

The final ingredient we need for our analysis is the effective potential at finite temperature. Here we only consider the leading corrections to the potential, which bring about the symmetry restoration at high temperatures. In the high-temperature limit, these corrections are accounted for by the thermal masses:

$$m_a^2(T) = -m_a^2 + c_a \frac{T^2}{12}, \quad (2.25)$$

where ($a = 1, 2, 12, S$):

$$\begin{aligned} c_1 &= c_{\text{SM}} + 6\lambda_1 + 2\lambda_3 + \lambda_4 + \frac{1}{2}\lambda_{S1} \\ c_2 &= c_{\text{SM}} + 6\lambda_2 + 2\lambda_3 + \lambda_4 + \frac{1}{2}\lambda_{S2} \\ c_{12} &= c_{\text{SM}} + 3\lambda_{6R} + \lambda_{7R} + \frac{1}{2}\lambda_{S12R} - i \left(3\lambda_{6I} - \lambda_{7I} + \frac{1}{2}\lambda_{S12I} \right) \\ c_S &= 3\lambda_S + 2(\lambda_{S1} + \lambda_{S2}), \end{aligned} \quad (2.26)$$

and

$$c_{\text{SM}} = \frac{9}{4}g_L^2 + \frac{3}{4}g_Y^2 + 3y_t^2 \quad (2.27)$$

is the common SM contribution from the $\text{SU}(2)_L$ and $\text{U}(1)_Y$ gauge fields and the top quark.

3 Results

We now test our model against experimental constraints and for the consistency of its cosmological predictions. We scan the parameter space by solving m_1^2 , m_2^2 and m_{12}^2 from the vacuum conditions and create Monte Carlo chains in the coupling constant space by the algorithm described in the previous section. We first subject the models to various theoretical and experimental constraints. For models that pass these constraints, we compute the DM abundance and the strength of the phase transition. We find that the model can provide either the observed DM abundance or a strong transition, but not both simultaneously. For the points providing a strong transition, we compute the prediction for the baryon-to-entropy ratio η_B . We show that the parameter space where η_B is sufficiently large is strongly constrained but not excluded by the current experimental limit on the electric dipole moment of the electron. Finally, we compute the nucleation temperatures T_n and show that typically, and in particular for strong transitions, T_n is much smaller than the critical temperature T_c .

3.1 Theoretical and experimental constraints

The couplings between scalar fields tend to run strongly, which typically leads to a relatively low cut-off scale for the validity of the effective theory. To be specific, we demand that our model is consistent up to $\Lambda = 1.5$ TeV, i.e. we check that the vacuum is stable and that all couplings remain perturbative⁵ up to Λ . The 1-loop renormalization-group equations needed for this calculation are summarized in appendix B. Moreover, at zero temperature we impose

$$|\langle H_1 \rangle|^2 + |\langle H_2 \rangle|^2 = v_0^2, \quad \langle S \rangle = 0 \quad (3.1)$$

and check that this choice gives the global minimum of the potential as detailed in previous section.

Second, we address the current experimental constraints. We only accept points that give a light scalar of mass $m_{h_0} = 125$ GeV, and for which the heavy scalars satisfy the mass limits from direct searches at LEP on charged particles, $m_{H^\pm} > 500$ GeV [22], and at LHC on heavy neutral scalars, $m_{H_0}, m_{A_0} > 600$ GeV [23]. For consistency, we also constrain the heavy scalar masses to be below the cut-off $\Lambda = 1.5$ TeV. We also take into account the electroweak precision data using the S and T parameters [24]. The necessary formulae for computing S and T can be extracted from [25], where the oblique parameters have been calculated for models with extra doublets and extra singlets. The current values of S and T parameters are $S = 0.00 \pm 0.08$, $T = 0.05 \pm 0.07$ with a correlation factor $\rho = 0.90$ [26]. We accept points that lie within the 2σ region in the (S, T) plane.

Moreover we take into account constraints on the Higgs boson couplings to SM particles using the signal-strength data from the LHC and Tevatron experiments [27–29]. First, we impose the constraint from the invisible width of the Higgs boson from LHC at 2σ level:

$$R_I = \frac{\Gamma_I}{\Gamma_I + \Gamma_{\text{SM, tot}}} < 0.020, \quad (3.2)$$

which here implies $\Gamma_{h_0 \rightarrow SS} \lesssim 1.0$ MeV. Second, we allow for modifications to the Higgs couplings and parametrize the deviations from the SM with parameters a_f and a_V ,

$$\mathcal{L}_{\text{eff}} = a_V \left(\frac{2M_W^2}{v_0} h_0 W^+ W^- + \frac{M_Z^2}{v_0} h_0 Z Z \right) - a_f \sum \frac{m_\psi}{v_0} h_0 \bar{\psi} \psi. \quad (3.3)$$

We accept points which are within 2σ from the best fit values

$$a_V = 0.993, \quad a_f = 0.968, \quad (3.4)$$

which we obtain by performing a χ^2 fit to the Higgs boson signal strength data. We have neglected the imaginary part of a_f and the $h_0 H^+ H^-$ coupling in the fit, since we have checked that these couplings are very small.⁶

3.2 Dark matter abundance and direct detection limits

We compute the relic abundance of the S bosons for all models passing the experimental constraints described above. We assume that S is a thermal relic, i.e. we assume that at

⁵For perturbativity we use the upper limit $(4\pi)^2$ on all scalar couplings. Over large portion of our data points the couplings will remain small also at larger scales $\mu \gg \Lambda$; the value 1.5 TeV is chosen for concreteness.

⁶As a comparison, we have performed the χ^2 fit of a_f and a_V with maximum values of the imaginary part of a_f and $h_0 H^+ H^-$ coupling for our data points, and we find that the best-fit value does not change significantly.

least some the portal couplings λ_{S1} , λ_{S2} and λ_{S12} are sufficiently large (larger than about 10^{-7} [30]). We then apply the standard freeze-out formalism [31], employing the accurate approximation scheme introduced in [32]. The relevant annihilation channels of our WIMP candidate are

$$SS \rightarrow h_0 h_0, H_0 H_0, A_0 A_0, h_0 H_0, h_0 A_0, H_0 A_0, H^+ H^-, W^+ W^-, ZZ, \bar{f} f. \quad (3.5)$$

Cross-sections for all these processes are given in a very compact form in appendix C. To treat cases where S is a subdominant DM candidate, we define the ratio [33]

$$f_{\text{rel}} = \frac{\Omega_S h^2}{0.12}, \quad (3.6)$$

which expresses how large fraction of the observed DM abundance is in form of S bosons. All annihilation channels are directly proportional to the couplings between the S boson and the Higgs fields, although the precise dependence is rather complicated (see appendix C). Since the relic abundance is roughly proportional to the inverse of the annihilation cross section, large (small) couplings corresponds to a small (large) relic abundance.

Direct search limits for S follow from the bound on the spin-independent cross section for S scattering off nucleons. It is given by

$$\sigma_{\text{SI}} = \frac{\lambda_{\text{eff}}^2 f_N^2 \mu m_N^2 v_0^2}{4\pi m_h^4 M_S^2}, \quad (3.7)$$

where $m_N = 0.939 \text{ GeV}$ is the nucleon mass, $\mu = m_N M_S / (m_N + M_S)$ is the reduced mass of the nucleon-scalar system, and $f_N \approx 0.30$ [32] gives the strength of the Higgs-nucleon coupling: $g_{h_0 N \bar{N}} = f_N m_N / v_0$. Finally, the effective SSh_0 coupling is given by

$$\begin{aligned} \lambda_{\text{eff}} \equiv & \frac{1}{2} \left[(R_{N44} \cos \beta \sin \theta - R_{N42} \cos \beta \cos \theta + R_{N41} \sin \beta) \lambda_{S12I} \right. \\ & + (R_{N42} \cos \beta \sin \theta - R_{N44} \cos \beta \cos \theta - R_{N43} \sin \beta) \lambda_{S12R} \\ & \left. + \cos \beta (R_{N43} \cos \theta + R_{N41} \sin \theta) \lambda_{S1} - \sin \beta R_{N44} \lambda_{S2} \right], \end{aligned} \quad (3.8)$$

where β is the vacuum mixing angle and θ the phase between the doublet vevs, and $R_{N_{ij}}$ are the components of the 4×4 -mixing matrix between the neutral scalar fields given in eq. (A.8).

Currently the most stringent limit for σ_{SI} come from the LUX experiment [34]. However, in the case of a subdominant DM, the LUX bound is not directly related to σ_{SI} shown in eq. (3.7). Instead, assuming that all DM components cluster similarly, the actual signal strength from S bosons is suppressed by the fraction f_{rel} . The relevant quantity to compare with the LUX limit then is

$$\sigma_{\text{eff}} = f_{\text{rel}} \sigma_{\text{SI}}. \quad (3.9)$$

We show the effect of this limit on the models passing all experimental bounds on figure 1. Note that the scatter in σ_{eff} as a function of m_S is much larger here than in the singlet extension of the SM [33]. Note how also the models with relatively low abundance are constrained by the LUX data.

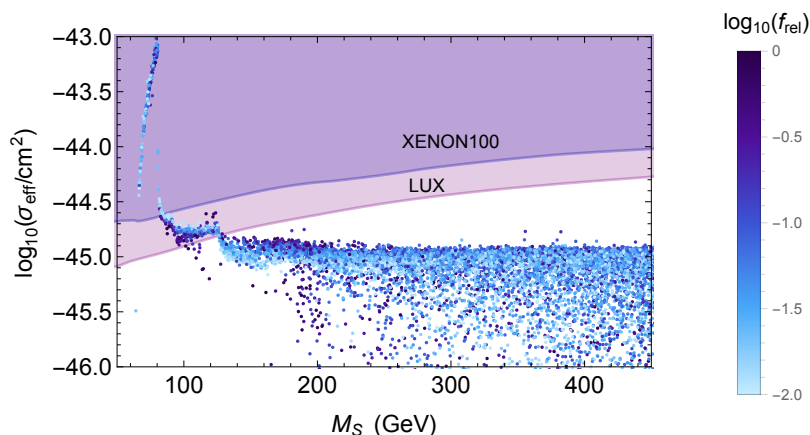


Figure 1. Shown is the LUX bound on a set of models passing all experimental constraints described in section 3.1 and for which $f_{\text{rel}} \geq 0.01$.

3.3 Electroweak phase transition

One of the necessary conditions for a successful baryogenesis scenario is the departure from thermal equilibrium. In EWBG this is provided by a strong first-order phase transition. In pure 2HDMs, with only leading thermal corrections (i.e. with thermal masses), the phase transition is of second order. While full one-loop effects may induce a first-order transition, it still tends to be rather weak [8, 9]. In a model with a singlet scalar, a strong transition may take place with just the leading corrections (2.25), given a specific two-step symmetry-breaking pattern [35]. This means that, when passing from high towards low temperatures, a minimum of the potential is generated first along the singlet direction. At lower temperature, then, the potential develops a minimum where the doublets have non-zero vevs while the singlet symmetry is restored, $(\langle h_1 \rangle, \langle h_2 \rangle; \langle s \rangle) = (0, 0; 0) \rightarrow (0, 0; w(T)) \rightarrow (v_1(T), v_2(T); 0)$, ensuing the actual electroweak phase transition. This pattern of minima should of course develop in such a way that the true ground state at $T = 0$ is given by eq. (3.1).

Including the thermal mass corrections of eq. (2.25) to the potential, we find the transition temperatures. In particular the electroweak transition temperature, T_c , where the two minima are degenerate is determined by

$$V(0, 0, w_c, T_c) = V(v_{1c}, v_{2c}, 0, T_c), \quad (3.10)$$

where $w_c = w(T_c)$ and $v_{ic} = v_i(T_c)$. To determine when the transition is strong enough, we require, as usual, that

$$v_c/T_c \geq 1, \quad (3.11)$$

where $v_c = \sqrt{v_{1c}^2 + v_{2c}^2}$. It turns out not to be possible to have simultaneously strong transition and dominant DM candidate in the model with $f_{\text{rel}} \approx 1$. This is because having a strong transition requires that at least some of the mixing couplings λ_{S_i} are large. However, as we noted above, large mixing introduces large annihilation cross sections for S bosons and hence small relic abundances. Qualitatively the behaviour is the same as in the pure singlet model [32, 33]: a strong first-order EWPT and large $f_{\text{rel}} \approx 1$ are realized in different portions of the parameter space.

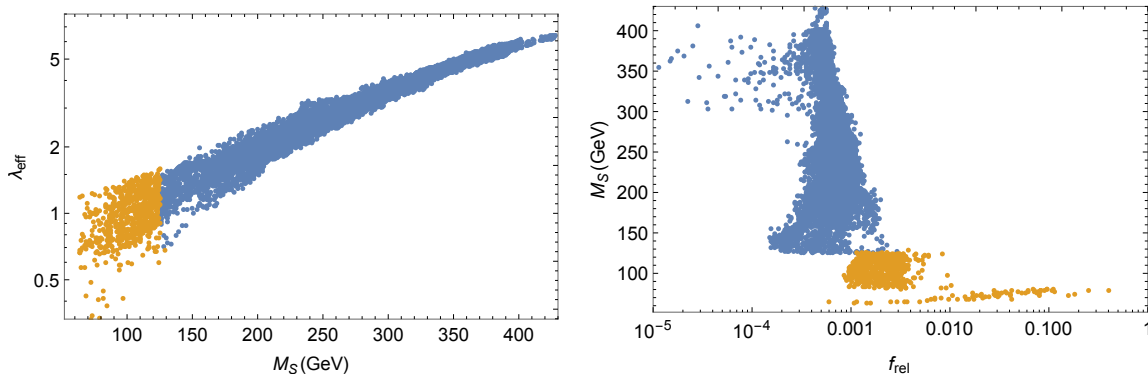


Figure 2. Scanned data points which give a strong first-order EWPT. Yellow points are excluded by direct DM searches.

Left panel of figure 2 shows the correlation between the DM particle mass M_S and the effective coupling λ_{eff} for models with strong EWPT. Accepted values of λ_{eff} increase as a function of M_S because both quantities are linearly proportional to the mixing couplings λ_{S_i} . Right panel of figure 2 shows the correlation between M_S and the relative relic abundance f_{rel} for the same set. Note that for M_S between the Higgs resonance and M_W , both a strong transition and a relatively large DM abundance, $f_{\text{rel}} \approx 0.15$ could be obtained, but this region is now excluded by LUX.

The fact that LUX most strongly constrains models with *small* λ_{eff} is because f_{rel} is roughly inversely proportional to the square of λ_{eff} , and this to large extent cancels the direct λ_{eff} dependence in σ_{SI} . Larger mass region beyond the Higgs resonance is less constrained because the DM-number density falls with increasing mass.

3.4 Electron EDM constraint

The non-observation of electric dipole moments (EDMs) of electrons, neutrons and atoms gives stringent bounds on CP-violating interactions in multi-Higgs models. As shown in [36], currently the most stringent bound for 2HDMs arises from the electron EDM, for which the ACME experiment gives an upper limit

$$|d_e| < 8.7 \times 10^{-29} \text{ ecm}, \quad (3.12)$$

with 90% confidence level [37]. We calculate d_e for the points which give a strong first-order EWPT using the results from ref. [38], where Barr-Zee type contributions to fermionic EDM were calculated in 2HDM. These results are directly applicable here as well, because the singlet scalar S does not directly couple to gauge fields. In figure 3, we show the distribution of models passing all previous cuts as a function of d_e and the neutral scalar mixing matrix element $R_{N_{42}}$, which expresses the projection of h_0 to complex part of the second doublet:

$$R_{N_{42}} \equiv \langle H_{2I}^0 | h_0 \rangle \equiv \sin \Delta_{\text{CP}}. \quad (3.13)$$

$\sin \Delta_{\text{CP}}$ is given in terms of the various mixing angles in eq. (A.8). The red region is excluded by the electron EDM constraint. Small d_e naturally correlates with small $\sin \Delta_{\text{CP}}$, because the size of $\sin \Delta_{\text{CP}}$ is proportional to the size of the CP-violating mixing in the model.

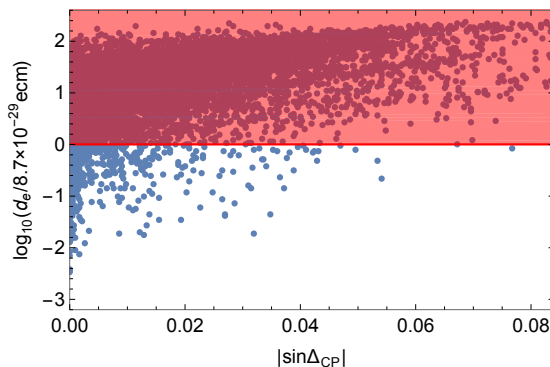


Figure 3. Scatter plot of all models with strong enough EWPT as a function of the mixing parameter $\sin \Delta_{\text{CP}}$ and the electron EDM d_e . The red region is excluded by the eEDM limit.

3.5 Baryogenesis

The actual baryogenesis mechanism in our model relies on CP-violating interactions of the top quark with the expanding phase-transition walls. The CP violation comes directly from the spatial evolution of the complex phases of the Higgs field H_2 , which renders the top mass a complex-valued function of the spatial coordinate across the wall. The first step for us is then to work out the evolution of the scalar fields over the bubble wall.

We shall approximate the true phase-transition-wall profile in the usual way, by the stationary path that extremizes the Euclidean one-dimensional action

$$\int dz \left(|D_z H_1| + |D_z H_2| + \frac{1}{2} |\partial_z S| + V + \dots \right), \quad (3.14)$$

between two degenerate minima at critical temperature $T = T_c$, for which the condition (3.10) holds. The covariant derivatives involve the classical Z_μ field: $D_\mu = \partial_\mu - ig/(2 \cos \theta_W) Z_\mu$. We write the neutral components of the doublets as $h_j e^{i\varphi_j}$ and observe that the effective potential can depend only on the relative phase $\varphi \equiv \varphi_1 - \varphi_2$. Following ref. [8], we work in the gauge $Z_\mu = 0$, whereby we need to account for four fields: h_1, h_2, S and φ , while solving the path. The relevant reduced action is

$$S_1 = \int dz \left(\sum_i \frac{1}{2} (\partial_z h_i)^2 + \frac{1}{2} (\partial_z S)^2 + \frac{1}{2} \frac{h_1^2 h_2^2}{h_1^2 + h_2^2} (\partial_z \varphi)^2 + V(h_1, h_2, S, \varphi, T_c) \right). \quad (3.15)$$

The invariance of the potential under the change of the total phase $\varphi_1 + \varphi_2$ implies a conservation law, which in the $Z_\mu = 0$ gauge allows us to work out the phase φ_2 in terms of the relative phase φ [8]:

$$\partial_z \varphi_2 = - \frac{h_1^2}{h_1^2 + h_2^2} \partial_z \varphi. \quad (3.16)$$

The complex, spatially-varying top mass can now be constructed from the phase $\varphi_2(x)$ and the modulus $h_2(z)$:

$$m_t(z) = \frac{y_t}{\sqrt{2}} h_2(z) e^{i\varphi_2(z)}. \quad (3.17)$$

In fact, one does not need to solve for the top phase, since only its derivative, given by eq. (3.16), appears in the source term for the diffusion equations for chemical potentials:

$$S_t = \xi_w (K_{8,t} (x_t^2 \varphi_2') - K_{9,t} x_t^2 x_t' \varphi_2'). \quad (3.18)$$

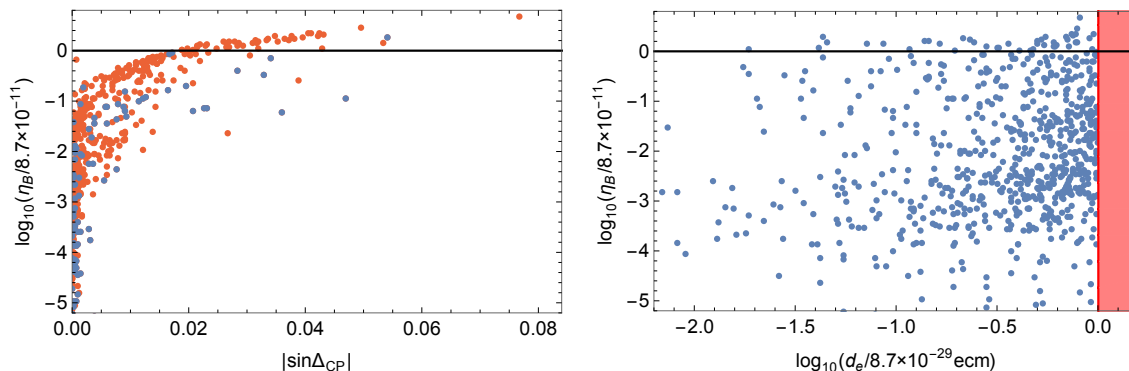


Figure 4. Left: shown is the correlation between the baryon-to-entropy ratio η_B and the mixing matrix element $\sin \Delta_{\text{CP}}$. Red dots correspond to models for which T_n cannot be found (in the thin-wall approximation). Right: the correlation between η_B and d_e . The red region is excluded by the eEDM limit and the black line shows the observed baryon-to-entropy ratio.

Here ξ_w is the wall velocity, primes denote $\partial_z T$ and $K_{n,t}$ are dimensionless functions of $x_t \equiv |m_t|/T$ arising from phase-space averaging of certain kinematic variables defined in [39].

Given the source, one can calculate chemical potentials $\mu_j(z)$ for top, bottom, anti-top and Higgs by solving a set of transport equations defined in [7]. Finally the baryon-to-entropy ratio $\eta_B \equiv n_B/s$ is given by

$$\eta_B = \frac{405}{4\pi^2 \xi_w g_* T_c} \int_0^\infty dz \Gamma_{\text{sph}}(z) \mu_{B_L}(z) e^{-45\Gamma_{\text{sph}}(z)z/4\xi_w}. \quad (3.19)$$

We take $\xi_w = 0.1$ for the wall velocity and $g_* = 106.75$ for the number of degrees of freedom in the plasma. The left-chiral baryon chemical potential is

$$\mu_{B_L} = \frac{1}{2}(1 + 4K_{1,t})\mu_t + \frac{1}{2}(1 + 4K_{1,b})\mu_b - 2K_{1,t} \mu_{t_c}. \quad (3.20)$$

For the sphaleron rate we use a formula interpolating between the symmetric and the broken phase [8],

$$\Gamma_{\text{sph}}(z) = \min(10^{-6}T_c, 2.4T_c e^{-40v(z)/T_c}), \quad (3.21)$$

where $v(z)^2 = h_1(z)^2 + h_2(z)^2$.

In the left panel of figure 4 we show how the baryon-to-entropy ratio relative to the observed value $\eta_B^{\text{obs}} = 8.7 \times 10^{-11}$ [40] correlates with the CP-violation-sensitive parameter $\sin \Delta_{\text{CP}}$ defined in (3.13). Shown are only the points which survive the eEDM bound. As expected, the size of $\sin \Delta_{\text{CP}}$ correlates with the size of η_B . This trend is similar to the correlation between $\sin \Delta_{\text{CP}}$ and d_e shown in figure 3. However, a large η_B does not always imply a large d_e , as is clear from the right panel of figure 4, where we show the correlation between d_e and η_B , again for points that pass the EDM bound. Apparently, while both quantities are sensitive to the CP-violating parameters in the model, they can be sensitive to different linear combinations of them, so that large η_B may be obtained simultaneously with a small enough d_e .

Figure 5 shows the distributions of various physical parameters in our parametric scan. Orange colour refers to models that pass all experimental cuts described in sections 3.1 and 3.2, and give a strong EWPT, blue to models that in addition satisfy EDM constraint and green to models which also give large baryon-to-entropy ratio $\eta_B/\eta_B^{\text{obs}} \in [0.5, 2]$. These plots

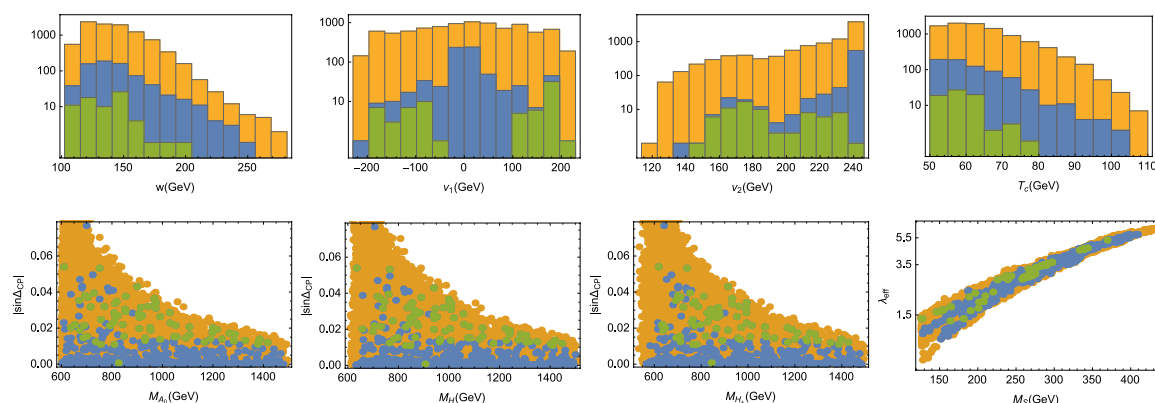


Figure 5. Shown are the frequency distributions of the vevs of the scalar fields and the critical temperature as well as scatter plots for the masses of the new heavy scalar particles in our parameter scan. For details see the text.

must be interpreted with care, since our scans were partly tuned by hand. Nevertheless, we see that none of the vevs can be very large and in particular both v_1 and v_2 need to be nonzero. Also the critical temperature is bounded from above: $T_c \lesssim 100$ GeV. Finally for the models with large η_B , the new scalar masses are in general bound from above: $m_H, m_{A_0}, m_{H^\pm} \lesssim 1.4$ TeV and $m_S \lesssim 400$ GeV, which is encouraging from the point of view of experimental verifiability of the model.

3.6 Bubble nucleation

So far we have implicitly assumed that the bubble nucleation takes place at a temperature not too different from the critical temperature. This is typically the case in models where the first-order phase transition is effected by cubic corrections to potential from infrared modes, which leads to rather mild supercooling and small latent heat release. Here the situation is different, because the barrier between the degenerate minima is essentially due to a tree-level term. Thus a stronger supercooling and more latent heat release may be expected, or even a possibility of a formation of a metastable vacuum where the electroweak breaking never takes place.

We study the nucleation problem in the thin-wall limit [41]. The bubble nucleation rate is given by

$$\Gamma \sim T^4 \left(\frac{S_3(T)}{2\pi T} \right)^{3/2} \exp \left(-\frac{S_3(T)}{T} \right), \quad (3.22)$$

where $S_3(T)$ is the three-dimensional action for an O(3)-symmetric bubble. In the thin-wall limit, it is given by

$$S_3(T) = \frac{16\pi}{3} \frac{\sigma^3}{\Delta V(T)^2}, \quad (3.23)$$

where $\Delta V(T)$ is the potential energy difference between the electroweak-symmetric and electroweak-broken minima and σ is the surface tension,

$$\sigma = \int d\phi \sqrt{2V}, \quad (3.24)$$

integrated along the path from the symmetric to the broken minimum at temperature $T = T_c$. The bubble nucleation temperature T_n is defined as the temperature at which creating at

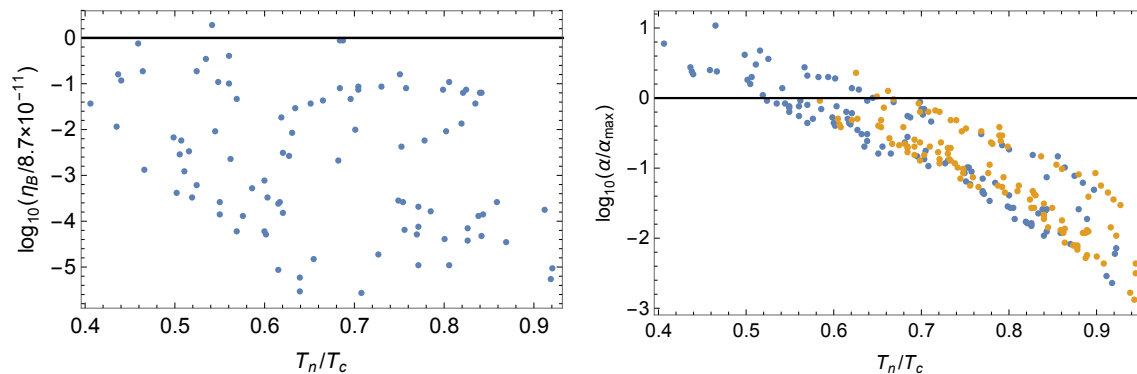


Figure 6. Left: shown is the baryon asymmetry η_B as a function of the ratio of the nucleation and critical temperatures T_n/T_c . Right: shown is the bound for finding a deflagration wall. Only models below the line $\alpha/\alpha_{\max} = 1$ are allowed. For yellow points the nucleation temperatures were rescaled by $\kappa = 0.7$. See text for details. We used $\alpha_{\max} = 0.38$, corresponding to $\xi_w \approx 0.1$.

least one bubble per horizon volume is of order one. This condition can be written as

$$\frac{S_3(T_n)}{T_n} = -\log \left(\frac{3}{4\pi} \left(\frac{H(T_n)}{T_n} \right)^4 \left(\frac{2\pi T_n}{S_3(T_n)} \right)^{3/2} \right). \quad (3.25)$$

We show the results of the nucleation-temperature calculation for our data set on the left panel of figure 6. Obviously, a large number of points displayed in figure 4 are missing in figure 6. The reason is that for these models, indicated by red dots in figure 4, no solution to eq. (3.25) was found. In these cases, in the thin-wall approximation, the fields were trapped in the false vacuum. Moreover, of the surviving models only four give large η_B .

The situation is actually more dire than this: another implicit assumption in our baryon asymmetry calculation is that the transition walls are subsonic deflagrations, which is required for efficient diffusion of particle asymmetries across the bubble wall. However, with a large latent heat release the walls tend to be supersonic detonations instead. A full microscopic analysis of wall dynamics including a computation of the wall friction is beyond the scope of this paper. However, a deflagration wall must necessarily satisfy a condition [42]

$$\alpha \equiv \frac{\Delta V(T_n)}{\rho(T_n)} < \frac{1}{3} (1 - \xi_w)^{-13/10} \equiv \alpha_{\max}, \quad (3.26)$$

where $\rho(T_n)$ is the radiation energy density in the symmetric phase. We show this condition in the right panel of figure 6 (blue dots) for the set of models shown in the left panel. As expected, for the models with the lowest nucleation temperatures, deflagrations are not possible. This applies in particular to all four surviving models with a large baryon-to-entropy ratio.

There are two issues that ameliorate the situation. First, the validity of the thin-wall limit actually requires a small latent heat and/or a large surface tension, which is often not the case here. When not applicable, thin-wall limit tends to overestimate the action $S_3(T)$, and hence underestimate the nucleation rate and eventually T_n . Accurate calculation of the nucleation rate is quite complicated in the full model, however, and we do not pursue it here. Instead, we compare the nucleation temperatures found in the thin-wall limit and in the full calculation in the simpler, singlet extension of the SM, studied for example in [32, 33]. In

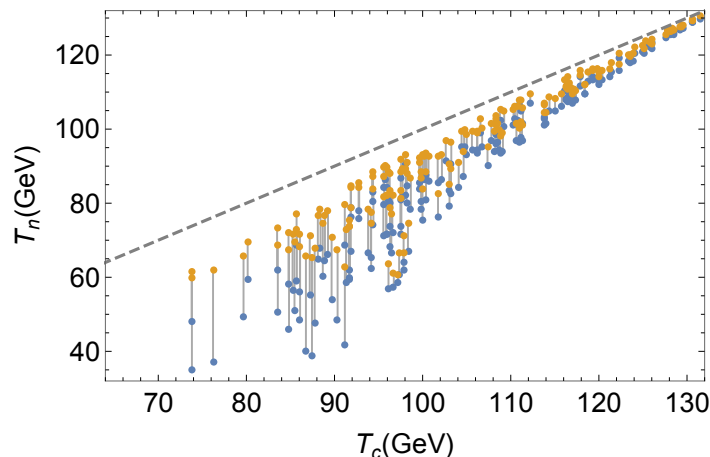


Figure 7. Shown are the nucleation temperatures in a scan over the parameters of the singlet extension of the SM. Blue dots correspond to the thin-wall temperature and the yellow dots to a full calculation. Gray lines connect pairs corresponding to the same physical parameters. The dotted line corresponds to $T_n = T_c$.

practice we minimize the action

$$S_3(T) = 4\pi \int r^2 dr \left(\frac{1}{2} \left(\frac{dh}{dr} \right)^2 + \frac{1}{2} \left(\frac{dS}{dr} \right)^2 + V_{\text{SSM}}(h, S, T) \right), \quad (3.27)$$

where h is the SM-Higgs field, and $V_{\text{SSM}}(h, S, T)$ is the singlet-model potential.

The results of this analysis are shown in figure 7. The blue dots show the nucleation temperature in the thin-wall approximation and the yellow dots the same quantity found from the solving minimizing the action (3.27). As expected, the thin-wall approximation underestimates nucleation temperatures significantly. We find that the true nucleation temperature T_n and the thin-wall value T_n^{tw} are related by $T_n = T_c - \kappa(T_c - T_n^{\text{tw}})$, where the coefficient κ to some extent depends on M_S and λ_S , but is less than 0.7. We anticipated this result in the deflagration limit shown in the right panel of figure 6, where the yellow dots were found by redefining all thin-wall nucleation temperatures by the above equation with $\kappa = 0.7$. We believe that this scaling conservatively represents the effect of going beyond thin-wall approximation in the full 2HDM and singlet model, and hence shows that most parameter sets may in fact be deflagrations.

We can also tune our search to prefer models with a higher critical temperatures. Indeed, as is clearly seen from figure 7, the nucleation temperature approaches the critical temperature when T_c gets higher in the singlet extension of the SM and this feature persists also in the full 2HDSM. Hence, we made a new parametric scan, where we accept only models with $T_c > 80$ GeV. The result of this scan is seen in figure 8, where the left panel again shows the baryon-to-entropy ratio and in the right panel the deflagration bound. We now found more points with large asymmetry and, in particular after one rescales the thin-wall nucleation temperatures as explained above, these points are now well below the deflagration bound eq. (3.26).

4 Conclusions and outlook

We have studied the viability of a two-Higgs-doublet and inert-singlet model for EWBG and for DM, taking into account also all existing observational and collider constraints. Our model

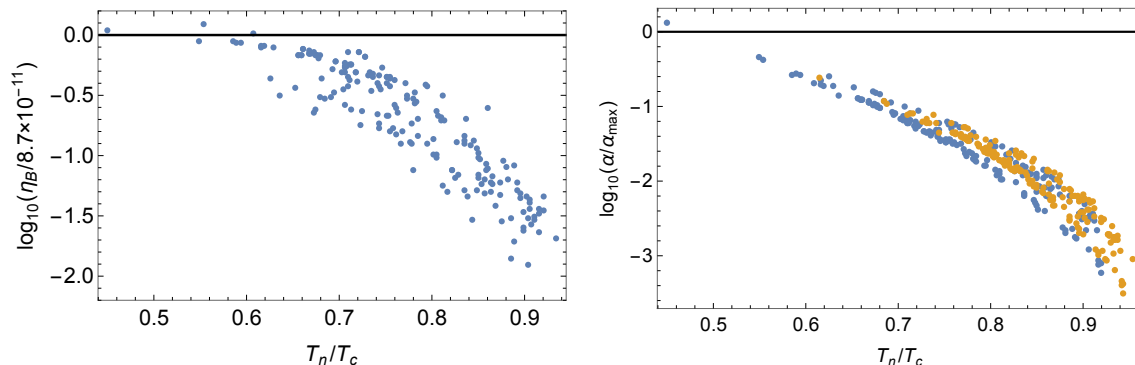


Figure 8. Left: shown is the baryon asymmetry η_B as a function of T_n/T_c for the new scan with $T_c > 80\text{GeV}$ (here T_n is the thin-wall nucleation temperature). Right: the deflagration bound for the set displayed in the left plot as a function of T_n/T_c . We again used $\alpha_{\text{max}} = 0.38$.

is based on the maximal $\text{GL}(2, \mathbb{C})$ reparametrization symmetry. This implies a universal Yukawa-alignment scheme, where both Higgs fields couple similarly to all fermions and there are no FCNCs. Exploiting the $\text{GL}(2, \mathbb{C})$ symmetry, the model can, in a particular basis, be written with a type-I Yukawa sector combined with the most general CP-violating potential.

Following [19–21] we implemented a novel way to construct potentials with a tree-level stability and to study the symmetry breaking patterns at finite temperatures. This construction was based on the Lorentz symmetry induced by the reparametrization symmetry on bilinears formed from Higgs doublets. These techniques are applicable to all 2HDM models, and they proved extremely useful when performing large-scale parametric scans over the multidimensional phase space of the model.

Dark matter and the strength of the electroweak phase transition in the model follow a similar pattern to the pure singlet extension: in accordance with [33], we find that strong two-step phase transitions are easily found, but they are consistent only with a subleading DM. Likewise, we find that experimental and observational constraints are fairly easy to avoid, with the outstanding exception of the electron-EDM bound, which strongly constrains the CP-violating parameters on the model. EDM constraints are particularly important because creating a large baryon asymmetry during the electroweak phase transition requires large CP-violating parameters; we found that the electron EDM indeed strongly constrains the phase space consistent with baryogenesis. Yet the bounds are not as strong here as in the pure 2HDM case [8], and we found a number of models consistent with all requirements.

Finally, we observed that two-step transitions may suffer from an unexpected problem of providing a *too strong* phase transition. We found that fields may get trapped in the metastable minimum, and transition walls may not be subsonic as required by a successful baryogenesis scenario. However, our analysis in the full model was restricted to the thin-wall approximation. We then studied the bubble nucleation in full generality in the case of a pure singlet extension of the SM. While the generic problem of too strong transitions remained, we found that thin-wall limit tends to overestimate the strength of the transition. Based on these results we argued that, when corrected for the thin-wall bias, the walls may well remain subsonic in the full 2HDSM. In a revised scan concentrating to models with a large critical temperature, we found many models potentially consistent with all available constraints.

While our results are not a definite proof, they provide a strong indication of a success of baryogenesis in the 2HDM and an inert singlet model. Settling the issue beyond any doubt

would require two significant improvements. First is a detailed analysis of the bubble wall dynamics, including a microscopic computation of the friction on the wall. Second is going beyond the T_c -bounce solution, when solving the scalar field profiles over the bubble wall to compute the top quark mass profile and eventually the baryogenesis source. These are both very interesting topics that deserve to be studied in detail in the future.

Acknowledgments

We thank Jim Cline for useful comments and discussions and collaboration at the early stages of this work. KK would like to thank Stephan Huber, Mikko Laine and Jose M. No for useful discussions during the 2016 MIAPP programme ‘‘Why is there more Matter than Antimatter in the Universe?’’. This work was financially supported by the Academy of Finland projects 278722 and 267842. The CP³-Origins centre is partially funded by the Danish National Research Foundation, grant number DNRF90. VV is supported by the Magnus Ehrnrooth foundation. TA acknowledges partial funding from a Villum foundation grant.

A Diagonalization of mass matrices

In this appendix we show in detail the diagonalization of the scalar mass matrices. Following [43], we write

$$r^\mu = \phi_x \Sigma_{xy}^\mu \phi_y, \quad (\text{A.1})$$

where

$$\phi = (H_{1I}^+, H_{2I}^+, H_{1R}^+, H_{2R}^+, H_{1I}^0, H_{2I}^0, H_{1R}^0, H_{2R}^0), \quad (\text{A.2})$$

where the subscripts R and I again denote the real and imaginary parts, respectively, and the matrices Σ^μ are block diagonal matrices consisting of 4×4 elements

$$\Sigma^0 = 1_4, \quad \Sigma^1 = \begin{pmatrix} \sigma_1 & 0 \\ 0 & \sigma_1 \end{pmatrix}, \quad \Sigma^2 = \begin{pmatrix} 0 & -i\sigma_2 \\ i\sigma_2 & 0 \end{pmatrix}, \quad \Sigma^3 = \begin{pmatrix} \sigma_3 & 0 \\ 0 & \sigma_3 \end{pmatrix}. \quad (\text{A.3})$$

Now the (a, b) element of the mass matrix is

$$\left. \frac{\partial^2 V}{\partial \phi_a \partial \phi_b} \right|_{\phi=\langle \phi \rangle} = -\Sigma_{ab}^\mu M_\mu + \Sigma_{ab}^\mu \lambda_{\mu\nu} \langle r^\nu \rangle + 2\Sigma_{ax}^\mu \langle \phi_x \rangle \lambda_{\mu\nu} \langle \phi_y \rangle \Sigma_{yb}^\nu, \quad (\text{A.4})$$

and the minimum conditions are

$$\left. \frac{\partial V}{\partial \phi_a} \right|_{\phi=\langle \phi \rangle} = (-\Sigma_{ax}^\mu M_\mu + \Sigma_{ax}^\mu \lambda_{\mu\nu} \langle r^\nu \rangle) \langle \phi_x \rangle = 0. \quad (\text{A.5})$$

Let us consider the neutral part of the mass matrix. The eigenstate corresponding to eigenvalue zero is $G_0 = N_G \Sigma^5 \langle \phi^0 \rangle$, where $\Sigma^5 = \Sigma^0 \Sigma^1 \Sigma^2 \Sigma^3$ and N_G is the normalization factor. Now

$$G_0 = \cos \beta \cos \theta H_{1R}^0 + \sin \beta H_{1I}^0 - \cos \beta \sin \theta H_{2R}^0, \quad (\text{A.6})$$

where

$$\beta = \arctan \frac{v_2}{v_1}. \quad (\text{A.7})$$

Hence we can diagonalize the neutral mass matrix by

$$R_N = \begin{pmatrix} 1 & 0 & 0 & 0 \\ 0 & c_y c_z & -c_y s_z & s_y \\ 0 & s_x s_y c_z + c_x s_z & c_x c_z - s_x s_y s_z & -s_x c_y \\ 0 & s_x s_z - c_x s_y c_z & c_x s_y s_z + s_x c_z & c_x c_y \end{pmatrix} \begin{pmatrix} c_\beta c_\theta & s_\beta & -c_\beta s_\theta & 0 \\ -s_\beta c_\theta & c_\beta & s_\beta s_\theta & 0 \\ s_\theta & 0 & c_\theta & 0 \\ 0 & 0 & 0 & 1 \end{pmatrix}, \quad (\text{A.8})$$

where we have used the short-hand notations $s_\alpha \equiv \sin \alpha$, $c_\alpha \equiv \cos \alpha$, and the neutral mass eigenstates are

$$\begin{pmatrix} G_0 \\ A_0 \\ H_0 \\ h_0 \end{pmatrix} = R_N \begin{pmatrix} H_{1I}^0 \\ H_{2I}^0 \\ H_{1R}^0 \\ H_{2R}^0 \end{pmatrix}. \quad (\text{A.9})$$

On the charged sector there are two eigenstates with eigenvalue zero: $G_1 = N_{G_1} \Sigma^5 \langle \phi^0 \rangle$ and $G_2 = N_{G_2} \langle \phi^0 \rangle$. Now

$$\begin{aligned} G_1 &= \cos \beta \sin \theta H_{1R}^+ + \cos \beta \cos \theta H_{1I}^+ + \sin \beta H_{2I}^+, \\ G_2 &= \cos \beta \cos \theta H_{1R}^+ - \cos \beta \sin \theta H_{1I}^+ + \sin \beta H_{2R}^+. \end{aligned} \quad (\text{A.10})$$

Hence charged Goldstone bosons are $G_\pm = \cos \beta e^{\pm i\theta} H_1^\pm + \sin \beta H_2^\pm$. The charged mass matrix in the basis $\{H_1^+, H_2^+\}$ can be diagonalized by

$$R_C = \begin{pmatrix} c_\beta e^{i\theta} & s_\beta \\ -s_\beta e^{i\theta} & c_\beta \end{pmatrix}, \quad (\text{A.11})$$

and charged mass eigenstates are

$$\begin{pmatrix} G_+ \\ H_+ \end{pmatrix} = R_C \begin{pmatrix} H_1^+ \\ H_2^+ \end{pmatrix}. \quad (\text{A.12})$$

B 1-loop beta functions for scalar couplings

For completeness we show the 1-loop beta functions,

$$\beta_{\lambda_i} \equiv \frac{d\lambda_i}{d \ln \mu}, \quad (\text{B.1})$$

we used to compute the perturbativity limits on the model parameters:

$$16\pi^2\beta_{\lambda_1} = 24\lambda_1^2 + 2\lambda_3^2 + 2\lambda_3\lambda_4 + \lambda_4^2 + 4|\lambda_5|^2 + 12|\lambda_6|^2 + \frac{1}{2}\lambda_{S1}^2 - 3(3g_L^2 + g_Y^2)\lambda_1 + \frac{3}{8}(3g_L^4 + 2g_L^2g_Y^2 + g_Y^4), \quad (\text{B.2})$$

$$16\pi^2\beta_{\lambda_2} = 24\lambda_2^2 + 2\lambda_3^2 + 2\lambda_3\lambda_4 + \lambda_4^2 + 4|\lambda_5|^2 + 12|\lambda_7|^2 + \frac{1}{2}\lambda_{S2}^2 - 3(3g_L^2 + g_Y^2)\lambda_2 + \frac{3}{8}(3g_L^4 + 2g_L^2g_Y^2 + g_Y^4) + 12y_t^2\lambda_2 - 6y_t^4, \quad (\text{B.3})$$

$$16\pi^2\beta_{\lambda_3} = (\lambda_1 + \lambda_2)(12\lambda_3 + 4\lambda_4) + 4\lambda_3^2 + 2\lambda_4^2 + 8|\lambda_5|^2 + 4|\lambda_6|^2 + 16\text{Re}(\lambda_6^*\lambda_7) + 4|\lambda_7|^2 + \lambda_{S1}\lambda_{S2} - 3(3g_L^2 + g_Y^2)\lambda_3 + \frac{3}{4}(3g_L^4 - 2g_L^2g_Y^2 + g_Y^4) + 6y_t^2\lambda_3, \quad (\text{B.4})$$

$$16\pi^2\beta_{\lambda_4} = 4(\lambda_1 + \lambda_2)\lambda_4 + 8\lambda_3\lambda_4 + 4\lambda_4^2 + 32|\lambda_5|^2 + 10(|\lambda_6|^2 + |\lambda_7|^2) + 4\text{Re}(\lambda_6^*\lambda_7) + |\lambda_{S12}|^2 - 3(3g_L^2 + g_Y^2)\lambda_4 + 3g_L^2g_Y^2 + 6y_t^2\lambda_4, \quad (\text{B.5})$$

$$16\pi^2\beta_{\lambda_5} = (4\lambda_1 + 4\lambda_2 + 8\lambda_3 + 12\lambda_4)\lambda_5 + 5\lambda_6^2 + 2\lambda_6\lambda_7 + 5\lambda_7^2 + \frac{1}{2}\lambda_{S12}^2 - 3(3g_L^2 + g_Y^2)\lambda_5 + 6y_t^2\lambda_5, \quad (\text{B.6})$$

$$16\pi^2\beta_{\lambda_6} = (24\lambda_1 + 6\lambda_3 + 8\lambda_4)\lambda_6 + (6\lambda_3 + 4\lambda_4)\lambda_7 + (20\lambda_6^* + 4\lambda_7^*)\lambda_5 + \lambda_{S1}\lambda_{S12} - 3(3g_L^2 + g_Y^2)\lambda_6 + 3y_t^2\lambda_6, \quad (\text{B.7})$$

$$16\pi^2\beta_{\lambda_7} = (6\lambda_3 + 4\lambda_4)\lambda_6 + (24\lambda_2 + 6\lambda_3 + 8\lambda_4)\lambda_7 + (4\lambda_6^* + 20\lambda_7^*)\lambda_5 + \lambda_{S2}\lambda_{S12} - 3(3g_L^2 + g_Y^2)\lambda_7 + 9y_t^2\lambda_7, \quad (\text{B.8})$$

$$16\pi^2\beta_{\lambda_S} = 18\lambda_S^2 + 2\lambda_{S1}^2 + 2\lambda_{S2}^2 + 4|\lambda_{S12}|^2, \quad (\text{B.9})$$

$$16\pi^2\beta_{\lambda_{S1}} = (12\lambda_1 + 6\lambda_S)\lambda_{S1} + (4\lambda_3 + 2\lambda_4)\lambda_{S2} + 4\lambda_{S1}^2 + 12\text{Re}(\lambda_6^*\lambda_{S12}) + 4|\lambda_{S12}|^2 - \frac{3}{2}(3g_L^2 + g_Y^2)\lambda_{S1}, \quad (\text{B.10})$$

$$16\pi^2\beta_{\lambda_{S2}} = (4\lambda_3 + 2\lambda_4)\lambda_{S1} + (12\lambda_2 + 6\lambda_S)\lambda_{S2} + 4\lambda_{S2}^2 + 12\text{Re}(\lambda_7^*\lambda_{S12}) + 4|\lambda_{S12}|^2 - \frac{3}{2}(3g_L^2 + g_Y^2)\lambda_{S2} + 6y_t^2\lambda_{S2}, \quad (\text{B.11})$$

$$16\pi^2\beta_{\lambda_{S12}} = (2\lambda_3 + 4\lambda_4 + 6\lambda_S + 4\lambda_{S1} + 4\lambda_{S2})\lambda_{S12} + 12\lambda_5\lambda_{S12}^* + 6\lambda_6\lambda_{S1} + 6\lambda_7\lambda_{S2} - \frac{3}{2}(3g_L^2 + g_Y^2)\lambda_{S12} + 3y_t^2\lambda_{S12}. \quad (\text{B.12})$$

C Singlet scalar annihilation cross sections

Here we give compact expressions for singlet pair annihilation rates used in the computation of the DM abundances. In the mass eigenbasis, the relevant Lagrangian may be written as

$$\mathcal{L} = \sum_{j,k} \left(c_0 S^2 H_j H_k + \sum_i c_{ijk} H_i H_j H_k \right) + \sum_i c_i S^2 H_i + \sum_{i,f} (y_{if} H_i \bar{f}_R f_L + \text{h.c.}) + \sum_i (g_{Wi} W^+ W^- H_i + g_{Zi} Z Z H_i), \quad (\text{C.1})$$

where $H = (A_0, H_0, h_0, H^+)$. Now the singlet scalar annihilation cross section to scalars is given by:

$$\sigma(SS \rightarrow H_j H_k) = \frac{1}{16\pi s^2 v_s} (A_{jk}^2 I_{0,j,k} + 2A_{jk} B_{jk} I_{1,j,k} + B_{jk}^2 I_{2,j,k}) . \quad (\text{C.2})$$

The rate into fermion-antifermion pairs is given by:

$$\begin{aligned} \sigma(SS \rightarrow \bar{f}f) &= \frac{I_{0,f,f}}{4\pi s^2 v_s} \sum_{i,j} \frac{c_i c_j}{(s - m_i^2)(s - m_j^2)} \times \\ &\times \left((y_{i f R} y_{j f R} - y_{i f I} y_{j f I}) \frac{s}{2} - 2y_{i f R} y_{j f R} m_j^2 \right) , \end{aligned} \quad (\text{C.3})$$

and the annihilation to vector bosons is:

$$\sigma(SS \rightarrow VV) = \frac{I_{0,V,V}}{4\pi s^2 v_s} \sum_{i,j} \frac{c_i c_j g_{V_i} g_{V_j}}{(s - m_i^2)(s - m_j^2)} \left(3 + \frac{s(s - 4M_V^2)}{4M_V^2} \right) \left(1 - \frac{\delta_{V,Z}}{2} \right) , \quad (\text{C.4})$$

where

$$\begin{aligned} I_{0,j,k} &= \sqrt{s^2 + (m_j^2 - m_k^2)^2 - 2s(m_j^2 + m_k^2)} , \\ I_{1,j,k} &= \frac{4I_{0,j,k}}{m_j^2 + m_k^2 - s} , \\ I_{2,j,k} &= \frac{2I_{0,j,k}}{m_j^2 m_k^2 - M_S^2(2m_j^2 + 2m_k^2 - s) + \frac{M_S^2}{s}(m_j^2 - m_k^2)^2} + \frac{8I_{0,j,k}}{(m_j^2 + m_k^2 - s)^2} , \end{aligned} \quad (\text{C.5})$$

and

$$\begin{aligned} A_{jk} &= 2(1 + \delta_{jk})c_0 + 2 \sum_i (1 + \delta_{ij} + \delta_{jk} + \delta_{ki} + 2\delta_{ij}\delta_{jk}) \frac{c_i c_{ijk}}{s - m_i^2} , \\ B_{jk} &= 4c_j c_k . \end{aligned} \quad (\text{C.6})$$

References

- [1] N. Turok and J. Zadrozny, *Electroweak baryogenesis in the two doublet model*, *Nucl. Phys. B* **358** (1991) 471 [[INSPIRE](#)].
- [2] N. Turok and J. Zadrozny, *Phase transitions in the two doublet model*, *Nucl. Phys. B* **369** (1992) 729 [[INSPIRE](#)].
- [3] K. Funakubo, A. Kakuto and K. Takenaga, *The effective potential of electroweak theory with two massless Higgs doublets at finite temperature*, *Prog. Theor. Phys.* **91** (1994) 341 [[hep-ph/9310267](#)] [[INSPIRE](#)].
- [4] A.T. Davies, C.D. Froggatt, G. Jenkins and R.G. Moorhouse, *Baryogenesis constraints on two Higgs doublet models*, *Phys. Lett. B* **336** (1994) 464 [[INSPIRE](#)].
- [5] J.M. Cline, K. Kainulainen and A.P. Vischer, *Dynamics of two Higgs doublet CP-violation and baryogenesis at the electroweak phase transition*, *Phys. Rev. D* **54** (1996) 2451 [[hep-ph/9506284](#)] [[INSPIRE](#)].
- [6] M. Laine and K. Rummukainen, *Two Higgs doublet dynamics at the electroweak phase transition: a nonperturbative study*, *Nucl. Phys. B* **597** (2001) 23 [[hep-lat/0009025](#)] [[INSPIRE](#)].

- [7] L. Fromme, S.J. Huber and M. Seniuch, *Baryogenesis in the two-Higgs doublet model*, *JHEP* **11** (2006) 038 [[hep-ph/0605242](#)] [[INSPIRE](#)].
- [8] J.M. Cline, K. Kainulainen and M. Trott, *Electroweak baryogenesis in two Higgs doublet models and B meson anomalies*, *JHEP* **11** (2011) 089 [[arXiv:1107.3559](#)] [[INSPIRE](#)].
- [9] G.C. Dorsch, S.J. Huber and J.M. No, *A strong electroweak phase transition in the 2HDM after LHC8*, *JHEP* **10** (2013) 029 [[arXiv:1305.6610](#)] [[INSPIRE](#)].
- [10] A. Pich and P. Tuzon, *Yukawa alignment in the two-Higgs-doublet model*, *Phys. Rev. D* **80** (2009) 091702 [[arXiv:0908.1554](#)] [[INSPIRE](#)].
- [11] E.H. Simmons, *Phenomenology of a technicolor model with heavy scalar doublet*, *Nucl. Phys. B* **312** (1989) 253 [[INSPIRE](#)].
- [12] A. Kagan and S. Samuel, *Renormalization group aspects of bosonic technicolor*, *Phys. Lett. B* **270** (1991) 37 [[INSPIRE](#)].
- [13] M. Antola, M. Heikinheimo, F. Sannino and K. Tuominen, *Unnatural origin of fermion masses for technicolor*, *JHEP* **03** (2010) 050 [[arXiv:0910.3681](#)] [[INSPIRE](#)].
- [14] T. Alanne, S. Di Chiara and K. Tuominen, *LHC data and aspects of new physics*, *JHEP* **01** (2014) 041 [[arXiv:1303.3615](#)] [[INSPIRE](#)].
- [15] M. Geller, S. Bar-Shalom and A. Soni, *Hybrid dynamical electroweak symmetry breaking with heavy quarks and the 125 GeV Higgs boson*, *Phys. Rev. D* **89** (2014) 035012 [[arXiv:1302.2915](#)] [[INSPIRE](#)].
- [16] M. Hashimoto and V.A. Miransky, *Dynamical electroweak symmetry breaking with superheavy quarks and 2 + 1 composite Higgs model*, *Phys. Rev. D* **81** (2010) 055014 [[arXiv:0912.4453](#)] [[INSPIRE](#)].
- [17] H.S. Fukano and K. Tuominen, *A hybrid 4th generation: technicolor with top-seesaw*, *Phys. Rev. D* **85** (2012) 095025 [[arXiv:1202.6296](#)] [[INSPIRE](#)].
- [18] H.S. Fukano and K. Tuominen, *126 GeV Higgs boson in the top-seesaw model*, *JHEP* **09** (2013) 021 [[arXiv:1306.0205](#)] [[INSPIRE](#)].
- [19] I.P. Ivanov, *Minkowski space structure of the Higgs potential in 2HDM*, *Phys. Rev. D* **75** (2007) 035001 [*Erratum ibid.* **D 76** (2007) 039902] [[hep-ph/0609018](#)] [[INSPIRE](#)].
- [20] I.P. Ivanov, *Minkowski space structure of the Higgs potential in 2HDM II. Minima, symmetries and topology*, *Phys. Rev. D* **77** (2008) 015017 [[arXiv:0710.3490](#)] [[INSPIRE](#)].
- [21] I.P. Ivanov, *Thermal evolution of the ground state of the most general 2HDM*, *Acta Phys. Polon. B* **40** (2009) 2789 [[arXiv:0812.4984](#)] [[INSPIRE](#)].
- [22] ALEPH collaboration, A. Heister et al., *Search for charged Higgs bosons in e^+e^- collisions at energies up to $\sqrt{s} = 209$ GeV*, *Phys. Lett. B* **543** (2002) 1 [[hep-ex/0207054](#)] [[INSPIRE](#)].
- [23] ATLAS collaboration, *Combined search for the Standard Model Higgs boson in pp collisions at $\sqrt{s} = 7$ TeV with the ATLAS detector*, *Phys. Rev. D* **86** (2012) 032003 [[arXiv:1207.0319](#)] [[INSPIRE](#)].
- [24] M.E. Peskin and T. Takeuchi, *A new constraint on a strongly interacting Higgs sector*, *Phys. Rev. Lett.* **65** (1990) 964 [[INSPIRE](#)].
- [25] W. Grimus, L. Lavoura, O.M. Ogreid and P. Osland, *The oblique parameters in multi-Higgs-doublet models*, *Nucl. Phys. B* **801** (2008) 81 [[arXiv:0802.4353](#)] [[INSPIRE](#)].
- [26] PARTICLE DATA GROUP collaboration, K.A. Olive et al., *Review of particle physics*, *Chin. Phys. C* **38** (2014) 090001 [[INSPIRE](#)].
- [27] CDF and D0 collaborations, T. Aaltonen et al., *Higgs boson studies at the Tevatron*, *Phys. Rev. D* **88** (2013) 052014 [[arXiv:1303.6346](#)] [[INSPIRE](#)].

- [28] CMS collaboration, *Precise determination of the mass of the Higgs boson and tests of compatibility of its couplings with the Standard Model predictions using proton collisions at 7 and 8 TeV*, *Eur. Phys. J. C* **75** (2015) 212 [[arXiv:1412.8662](#)] [[INSPIRE](#)].
- [29] ATLAS collaboration, *Measurements of the Higgs boson production and decay rates and coupling strengths using pp collision data at $\sqrt{s} = 7$ and 8 TeV in the ATLAS experiment*, *Eur. Phys. J. C* **76** (2016) 6 [[arXiv:1507.04548](#)] [[INSPIRE](#)].
- [30] K. Kainulainen, S. Nurmi, T. Tenkanen, K. Tuominen and V. Vaskonen, *Isocurvature constraints on portal couplings*, *JCAP* **06** (2016) 022 [[arXiv:1601.07733](#)] [[INSPIRE](#)].
- [31] P. Gondolo and G. Gelmini, *Cosmic abundances of stable particles: improved analysis*, *Nucl. Phys. B* **360** (1991) 145 [[INSPIRE](#)].
- [32] J.M. Cline, K. Kainulainen, P. Scott and C. Weniger, *Update on scalar singlet dark matter*, *Phys. Rev. D* **88** (2013) 055025 [[arXiv:1306.4710](#)] [[INSPIRE](#)].
- [33] J.M. Cline and K. Kainulainen, *Electroweak baryogenesis and dark matter from a singlet Higgs*, *JCAP* **01** (2013) 012 [[arXiv:1210.4196](#)] [[INSPIRE](#)].
- [34] LUX collaboration, D.S. Akerib et al., *Improved limits on scattering of weakly interacting massive particles from reanalysis of 2013 LUX data*, *Phys. Rev. Lett.* **116** (2016) 161301 [[arXiv:1512.03506](#)] [[INSPIRE](#)].
- [35] J.R. Espinosa, T. Konstandin and F. Riva, *Strong electroweak phase transitions in the Standard Model with a singlet*, *Nucl. Phys. B* **854** (2012) 592 [[arXiv:1107.5441](#)] [[INSPIRE](#)].
- [36] S. Inoue, M.J. Ramsey-Musolf and Y. Zhang, *CP-violating phenomenology of flavor conserving two Higgs doublet models*, *Phys. Rev. D* **89** (2014) 115023 [[arXiv:1403.4257](#)] [[INSPIRE](#)].
- [37] ACME collaboration, J. Baron et al., *Order of magnitude smaller limit on the electric dipole moment of the electron*, *Science* **343** (2014) 269 [[arXiv:1310.7534](#)] [[INSPIRE](#)].
- [38] T. Abe, J. Hisano, T. Kitahara and K. Tobioka, *Gauge invariant Barr-Zee type contributions to fermionic EDMs in the two-Higgs doublet models*, *JHEP* **01** (2014) 106 [Erratum *ibid.* **04** (2016) 161] [[arXiv:1311.4704](#)] [[INSPIRE](#)].
- [39] L. Fromme and S.J. Huber, *Top transport in electroweak baryogenesis*, *JHEP* **03** (2007) 049 [[hep-ph/0604159](#)] [[INSPIRE](#)].
- [40] PLANCK collaboration, P.A.R. Ade et al., *Planck 2015 results. XIII. Cosmological parameters*, [arXiv:1502.01589](#) [[INSPIRE](#)].
- [41] A.D. Linde, *Decay of the false vacuum at finite temperature*, *Nucl. Phys. B* **216** (1983) 421 [Erratum *ibid.* **B 223** (1983) 544] [[INSPIRE](#)].
- [42] J.R. Espinosa, T. Konstandin, J.M. No and G. Servant, *Energy budget of cosmological first-order phase transitions*, *JCAP* **06** (2010) 028 [[arXiv:1004.4187](#)] [[INSPIRE](#)].
- [43] A. Degee and I.P. Ivanov, *Higgs masses of the general 2HDM in the Minkowski-space formalism*, *Phys. Rev. D* **81** (2010) 015012 [[arXiv:0910.4492](#)] [[INSPIRE](#)].