



APPLICATION OF MODULATED CHLOROPHYLL FLUORESCENCE AND MODULATED CHLOROPHYLL FLUORESCENCE IMAGING TO STUDY THE ENVIRONMENTAL STRESSES EFFECT

GUIDI L.^{1*}, LANDI M.¹, PENELLA C.², CALATAYUD A.²

¹*Department of Agriculture, Food and Environment, University of Pisa, Via del Borghetto 80 - 56124 Pisa (Italy)*

²*Instituto Valenciano de Investigaciones Agrarias (IVIA). Departamento de Horticultural Ctra. Moncada-Naquera km. 4.5. 46113, Moncada, Valencia (Spain)*

*Corresponding author: Telephone: +39 050 2216613; e-mail lucia.guidi@unipi.it

(RECEIVED 11 NOVEMBER 2015; RECEIVED IN REVISED FORM 27 DECEMBER 2015; ACCEPTED 12 JANUARY 2016)

ABSTRACT – Chlorophyll (Chl) *a* fluorescence is a widely used tool to monitor the photosynthetic process in plants subjected to environmental stresses. This review reports the theoretical bases of Chl fluorescence, and the significance of the most important Chl fluorescence parameters. It also reports how these parameters can be utilised to estimate changes in photosystem (PS) II photochemistry, linear electron flux and dissipation mechanisms. The relation between actual PSII photochemistry and CO₂ assimilation is discussed, as is the role of photochemical and non-photochemical quenching in inducing changes in PSII activity. The application of Chl fluorescence imaging to study heterogeneity on leaf lamina is also considered. This review summarises only some of the results obtained by this methodology to study the effects of different environmental stresses, namely water availability, nutrients, pollutants, temperature and salinity.

KEYWORDS: CHLOROPHYLL, DROUGHT, HEAVY METALS, NON-PHOTOCHEMICAL QUENCHING, OZONE, PHOTOCHEMICAL QUENCHING, PHOTOSYNTHESIS, SALINITY

INTRODUCTION

Brief description of Chl fluorescence

In 1984, Krause & Weis wrote a review entitled “Chlorophyll fluorescence as a tool in plant physiology” and defined chlorophyll (Chl) as an intrinsic fluorescent probe of photosynthesis. To date, many research works have utilised this technique to determine the effects of environmental stress on photosynthetic apparatus. Certainly its utilisation has greatly increased in recent few decades, even for relatively simple available instrumentations.

The basic mechanism is light absorption of photons energy by a Chl molecule that induces the excitation of the electron. Consequently, fluorescence represents the light re-emitted by Chl during the return from excited to non-excited states. Kautsky & Hirsch (1931) evidenced for the first time that

changes in Chl fluorescence emission are strictly linked to changes in photosynthetic rates. Duysens & Sweers (1963) evidenced how the quencher of fluorescence was the primary quinone electron acceptor of photosystem II (PSII) in the oxidised state, but not in the reduced state. These authors built a simple PSII model in which Chl fluorescence, photochemistry and non-radiative energy dissipation mechanisms all competed for excitation energy within PSII antenna. Consequently, it became clear that Chl fluorescence could be a useful tool for determining changes in the photosynthetic process when considering both Chl fluorescence and the non-radiative process to be stable. However, the non-radiative decay rate is far from being

stable, but changes in relation to light (Krause & Weiss 1991). As a result, if we are to relate Chl fluorescence with changes in the photosynthetic system, we must be able to quantify the extent to which Chl fluorescence decreases by photochemistry (photochemical quenching; q_P) and non-radiative decay (non-photochemical quenching; q_{NP}). A widely used method to determine the relative contribution to q_P and q_{NP} to total Chl fluorescence quenching was that estimated for the first time by Bradbury & Baker (1984). These authors determined photochemical quenching from measurements of the superimposed fast-induction kinetics that occurred in response to applying a second strong illumination at an appropriate time of the underlying induction curve, the so-called light-doubling method. The basic concept that underlies this method is that illumination by strong light causes the transitory complete removal of q_P at any time during induction.

In vivo variable Chl fluorescence (i.e., fluorescence increase upon illumination) derives from Chl *a* in PSII. For this reason, changes in the Chl fluorescence yield primarily represent the properties of excitation and energy conversion at the PSII level (Figure 1).

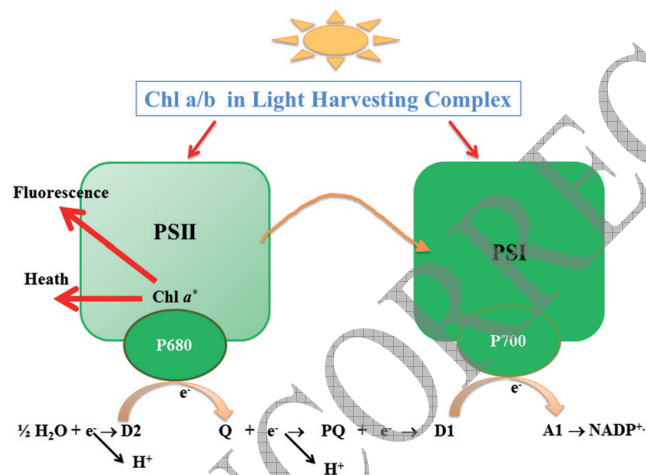


Figure 1. Schematic representation of mechanisms of energy transfer and primary electron transport reactions. Abbreviations: PSII, photosystem II; D2 and D1: proteins D2 and D1; Q: plastoquinone; A1: primary acceptor of PSI.

Clearly the functional connection of PSII to other components of the electron transport chain determines that Chl fluorescence yield provides information on the whole process. Chl fluorescence was studied for the first time during a dark-light transition and emission was connected with photosynthesis induction. This approach had different limits; in fact, while it was possible to obtain an accurate value of the minimal fluorescence, F_0 or O (fast kinetics induction), the determination of the maximal values of Chl

fluorescence (or P), induced by the rapid re-oxidation of PSII reaction centres, from sunlight- or light-exposed leaves proved difficult.

The revolution in Chl fluorescence use was determined by modulated measuring apparatus (Quick & Horton, 1984). In this application the light source used to determine the Chl fluorescence yield is modulated (switched on and off at a high frequency), and only the fluorescence excited by the measuring light is detected. This permits the determination of Chl fluorescence in the presence of illumination, and even in the presence of full sunlight.

Modulated Chl *a* fluorescence

The basic technique for determining the Chl fluorescence yield is widely reported in the literature (Schreiber, 2004; Kalaji et al., 2014). Essentially after a period of dark adaptation (30–60 min) when all reaction centres are open, exposure to modulated weak light ($< 1.0 \mu\text{mol photons m}^{-2}\text{s}^{-1}$) induces an increase in the Chl fluorescence yield, namely F_0 . This light intensity is not sufficient to induce the electron transport chain. Afterwards, a strong saturating light pulse (from 8000–15000 $\mu\text{mol photons m}^{-2}\text{s}^{-1}$ per millisecond) is applied and induces a strong rapid increase in the Chl fluorescence yield, F_m . If the saturation pulse is strong enough, all the reaction centres completely reduce. Then the Chl fluorescence yield decreases and, in the presence of actinic light, it reaches steady-state values (F_s) that correspond to a balance between the reduced and oxidised state of primary electron acceptor Q_A . Such Chl fluorescence quenching is attributable to photochemical and non-photochemical dissipation, which can be easily measured by the light-doubling method. Briefly, during Chl fluorescence relaxation in the presence of actinic light, a super-imposed strong pulse completely removes the photochemistry by determining the F_m' value, which corresponds to maximal fluorescence under light conditions, and is usually lower than the dark reference value F_m . The lowering of F_m' is a measure of non-photochemical quenching, assuming that this non-radiative process does not change during a short period. However during curve induction, the F_0 value lowers and is attributable to the energy-dependent quenching of F_0 (Bilger & Schreiber, 1987). For this reason, the determination of F_0' under light conditions requires the use of far-red light to transiently and selectively excite PSI, and to thus enhance the oxidation of the electron transport chain. This induces complete quick Q_A oxidation before complete non-photochemical quenching relaxation. F_0 determination is sometimes problematic, for example, in field conditions or by the Chl fluorescence imaging technique. In this case the extent of non-radiative

energy dissipation can be described by the NPQ parameter $[(F_m - F_m')/F_m']$; Bilger & Bjorkman, 1990], which does not require knowledge of F_0' . For NPQ calculations, the existence of non-radiative energy dissipation traps (for example, zeaxanthin) in the antenna matrix should be assumed (Demmig-Adams, 1990; Demmig-Adams & Adams, 1992).

The photochemical quenching q_P coefficient is determined as $(F_m' - F_s)/(F_m' - F_0')$, whereas the non-photochemical quenching coefficient is established as $1 - (F_m' - F_0')/(F_m - F_0)$, and both vary between 0 and 1. The q_{NP} coefficient consists of three different components: energy-dependent quenching related to the build-up of the trans-thylakoidal pH-gradient, q_E ; quenching due to the state II-I transition of the phosphorylated light harvesting complex of PSII, q_T ; photo-inhibitory quenching, q_I (Horton & Hague, 1988; Walters & Horton, 1991).

Quenching analyses also determine an estimate of the quantum yield of energy conversion into PSII. The potential quantum yield, usually determined after the sample's dark adaptation, is well-described by F_v/F_m [= $(F_m - F_0)/F_m$]. This ratio is widely used as an indicator of plant photosynthetic performance, with optimal values at around 0.83 for most plant species (Bjorkman & Demmig, 1987).

Under light conditions, the PSII quantum yield is reduced by the closure of reaction centres and non-radiative dissipation, and the resulting actual PSII quantum yield for photochemistry is determined by parameter F_{PSII} [= $(F_m' - F_s)/F_m'$ or $q_P \times (F_v'/F_m')$; Genty et al., 1989]. Under some conditions, i.e. at a saturating CO_2 concentration and 1% O_2 , a linear relationship between F_{PSII} and F_{CO_2} (the quantum yield of CO_2 assimilation) is observed (Genty et al., 1989). Harbinson et al. (1990) evidenced that this relationship is non-linear at the 20% O_2 concentration, and also indicated, in addition to CO_2 fixation, that photorespiration and other electron flows dependent on O_2 could be estimated by F_{PSII} . The relative electron transport rate (ETR) can be calculated as $F_{PSII} \times 0.5 \times \text{axPPFD}$, where 0.5 accounts for the partitioning between the two photosystems, a is the absorption coefficient of the leaf, and PPFD is photosynthetic photon flux density.

Chl *a* fluorescence imaging

The Chl fluorescence imaging (CFI) technique was pioneered by Omasa et al. (1987) and Daley et al. (1989). The capacity to resolve photosynthetic performance over the whole leaf surface distinguishes CFI from integrative methods, such as gas exchange or non-imaging Chl fluorescence. The molecular and physiological processes that alter the photosynthesis caused by external and/or internal factors can vary their impact on the leaf surface, and give rise to spatial

heterogeneity (Nedbal & Whitmarsh, 2004). In other words, CFI presents an immediate overview of the fluorescence emission pattern of cells, leaves or plants, and provides fast, intuitive, visual and precise information on PSII functionality (Omasa, 1990; Calatayud et al. 2006b).

There are many different commercially available Chl image fluorimeters with pulse amplitude modulation light. The CFI technique depends on four basic processes according to Nedbal & Whitmarsh (2004): i) image capture through illumination, data capture, image digitalisation and transferring data and images to the computer; ii) defining areas of interest in the sample(s) for the CFI parameters analysis; iii) calculating the CFI parameters in these areas; iv) displaying data and images.

The basics of CFI are the same as those previously described, but both modulated measuring light and actinic and saturated light derive from LEDs. The duration of flashes and the intensity of the actinic light produced by LEDs can be controlled down to the microsecond range, and from low to high light (exceeding sunlight), respectively.

A typical charge coupled device camera captures fluorescence emission synchronised with the pulse modulated measuring light. Image digitalisation occurs in the camera and data are transferred to a computer. False colour palettes, where different colours encode for numerical values of different fluorescence parameters, are commonly used to represent heterogeneity in samples, pixel by pixel, in images.

For instance, CFI has been used to assess the dynamics and heterogeneity of leaf stomatal responses, known as stomatal patchiness. This event determines non-uniform stomatal conductance and, in turn, non-homogeneous CO_2 fixation and electron transport through PSII (Omasa & Takayama, 2003). CFI is employed to visualise leaf heterogeneity and reveals local effects caused by abiotic stress, like nutrient deficiency (Donnini et al., 2013; Osório et al., 2014), water deficit (Calatayud et al., 2006b), high or low temperatures (Hogewoning & Harbinson, 2007; Mishra et al., 2014), high and low light intensity (Guidi & Degl'Innocenti, 2008; Hughes et al., 2008; Harbinson et al., 2012), herbicides (Barbagallo et al. 2003) and pollutants (Guidi & Degl'Innocenti, 2008). Damage induced by biotic stress, such as fungi, virus and bacteria, is also not often homogeneously distributed in leaf lamina, so its invasion and progression in leaves can be analysed by CFI (Scholes & Rolfe, 1996; Chaerle et al., 2007; Guidi et al., 2007). The extreme sensitivity of this technique allows photosynthesis impairment to be also detected in asymptomatic leaves or non-green plant tissue (low Chl content), such as fruits (Nedbal et al., 2000), and to detect the heterogeneity of pigment accumulation (Agati et al., 2008). Another relevant application of CFI is its capacity to select genotypes with tolerance to different abiotic and biotic stresses (Gorbe &

Calatayud, 2012), and for screening a large number of samples for their photosynthetic performance (Barbagallo et al., 2003).

In spite of the goodness and performance of the CFI technique, some technical limitations still remain. One major technical challenge is uniform light illumination over a large sample area since non-homogeneous illumination can impair the distribution of the Chl fluorescence signal over the sample, and can consequently change data interpretation (Roháček et al., 2008; Nebal & Whitmarsh, 2004). As a result, most CFI fluorimeters limit signal detection to a relatively small area (approximately 100 cm²), where F_m and F_m' can be correctly measured. The calculation of parameters q_{NP} and q_P requires calculating F_0' , which is a critical point in CFI. Correct F_0' determination requires the application of far-red light, which could penetrate the camera detector and seriously disturb fluorescence imaging. Therefore instead of measuring F_0' , it is estimated by the approach of Oxborough & Baker (1997), where $F_0' = F_0 / (F_v/F_m + F_0/F_m')$. This approach relies on the assumption that the same mechanism that causes F_0 quenching is also responsible for F_m quenching; for this reason, it is possible to estimate F_0' from F_m' measurements. Non-flat tissues and samples with strongly reflecting surfaces (like wax or hair) are another problem for the CFI technique. In the first case, a non-homogeneous signal of Chl fluorescence is yielded because of the different distances of the leaf portion to light sources, unlike reflecting surface disturbs and/or altering Chl fluorescence signals.

The blue light emitted by LEDs (frequently utilised in CFI fluorimeters) can also be a problem when assessing photosynthesis in pigmented tissues (for example, anthocyanin-rich tissues) since blue light can be partially absorbed by these pigments (Logan et al., 2007). In this way, non-imaging instruments overcome this limitation by utilising red light.

It is clear that imaging techniques offer advantages for detecting photosynthesis on leaf lamina, but also some disadvantages. So choice of an imaging or a non-imaging technique should be carefully weighed according to plant material, stress symptoms and effects on photosynthetic apparatus.

APPLICATION OF CHLOROPHYLL FLUORESCENCE IN ENVIRONMENTAL STRESSES

Chl *a* fluorescence is a good tool to detect the effects of environmental factors on the photosynthetic process. In most works, Chl *a* fluorescence is utilised concomitantly with a gas exchange system to also detect CO₂ photoassimilation.

By using gas exchange, it is possible to understand the stress-induced limitations to the CO₂ assimilation rate, and also the type of limitation to this process; i.e.. stomatal, mesophyll and biochemical (Flexas et al., 2004; Chaves et al., 2009). Chl *a* fluorescence provides information on PSII photochemistry. In this way, it is possible to draw a detailed picture of the stress effects on the photosynthetic process. By Chl fluorescence it is also possible to understand mechanisms based on the dissipation of excess excitation energy, which normally occurs under stress conditions (Gorbe & Calatayud, 2012; Guidi & Calatayud, 2014).

This technique is non-invasive and permits the detection of effects of stress on intact leaves/plants. There is no doubt that Chl fluorescence measurements, when carefully applied, can provide useful information about leaf photosynthetic performance. An examination of the literature overwhelmingly reveals more than 400,000 papers on Chl fluorescence, most of which are relevant for eco-physiological performance and can be considered to have implications for agricultural or plant science issues.

Light is the determinant factor in the photosynthetic process and represents the energy by which plants synthesise all organic molecules. However, light intensity and quality are extremely variable in space (geography, leaf canopy and cell position in leaves) and in time terms during the season, but also during the day. So plants have evolved a wide variety of regulatory mechanisms that aim to accommodate the photosynthetic process to such fluctuations, which also play a key role in plants' ability to assimilate carbon over long time periods and to produce biomass under stressed conditions. These mechanisms are well evidenced by the light curve response of CO₂ assimilation in relation to light intensity: the greater light intensity is, the greater photoassimilation remains until a steady-state is reached and photosynthetic CO₂ assimilation is saturated. Solar energy is defined in excess when its intensity exceeds the photosynthetic process's ability to use it for CO₂ assimilation. To cope with excess light, plants modify their leaf area and leaf exposure by modifying the angle of leaf insertion and chloroplast movements, but by also amending the size of light harvesting complex (LHC) antenna or chlorophyll content (Takahashi & Badger, 2011). Dissipation is an important mechanism by which plants can eliminate excess absorbed light by increasing thermal dissipation or reactions in chloroplast that act as sinks for electrons. Thus few changes in Chl fluorescence can reflect altered PSII photochemistry. A key point of regulation is represented by the LHClI antenna matrix in which carotenoids, i.e. zeaxanthin, represent the most important accessory pigments. In fact, apart from absorbing light energy and transmitting it to Chl molecules, they are also able to quench the triplet state of Chl by releasing absorbed energy by heat via the well-known xanthophyll cycle (Demmig-Adams & Adams,

1992, 1996). There have been reports of a relation between this cycle and NPQ activation (Demmig-Adams & Adams, 1992, 1996; Demmig-Adams et al., 2014). Another important mechanism that plays a key role during short shade/light fluctuations is represented by spillover, i.e. the transition of LHCII to the phosphorylated state, which allows them to move away from PSII to PSI (state II-I), and enables them to transfer excitation energy to PSI (Walters & Horton, 1991; Ruban & Johnson, 2009). In this way, PSII, which is usually more photo-damaged under excess light, can be preserved by overreduction.

Acclimation mechanisms can be divided into two distinct groups: long-term (adaptation) and short-term (regulatory or acclimation) mechanisms. Plants utilise feedback control mechanisms to regulate short-time acclimation responses. Under light conditions, overabsorption of light energy and then overproduction of reducing power cause protons to accumulate in the lumen of chloroplast, which determines the inhibition of a number of key electron transport enzymes; i.e., Cyt b_6/f and the oxygen-evolving complex of PSII. The result is lower electron transport rates because of a feedback mechanism for balancing ATP and NADPH production with electron transport. Even photon-to-electron energy conversion needs to be controlled and is represented by a reduced Chl fluorescence yield in PSII antenna (NPQ, Genty et al., 1989; Schreiber, 1986). NPQ is a most efficient process that protects PSII reaction centres from photo-inhibition because of the dissipation of excess energy and the consequential relief of excitation pressure. On the contrary, if leaves are unable to form transthylakoidal ΔpH , the generated NPQ is not photoprotective since nearly half of all reaction centres remain in a reduced state (Ruban, 2015). In conclusion, the NPQ generated in the absence of ΔpH is not photoprotective and is named photoinhibitory quenching, which generally causes permanent damage to reaction centres (for a detailed review, see Ruban et al., 2012).

Water availability

Drought represents an environmental factor that impairs photosynthesis (Chaves et al., 2009; Flexas et al., 2014). In addition, drought stress is frequently coupled with high solar irradiation and high temperature (as in the Mediterranean Region), conditions under which its effects are strongly exacerbated (Misson et al., 2010; Flexas et al., 2014). The first article reported in Scopus was that of Havaux and Lannoye (1983), and it showed that Chl fluorescence is a good tool for investigating effects of drought on plants. By applying this technique, the authors concluded that drought induces irreversible damage to chloroplastic membranes. From this work onwards, much progress has been made and

new more sophisticated instrumentation allow us to conclude and highlight changes in chloroplast membranes, whose recording at that time seemed impossible.

It has been established that in plants, drought induces reduced stomatal aperture (Grassi & Magnani, 2005; Pinheiro & Chaves, 2011), which impairs the photosynthetic process for decreased ATP and NADPH consumption for CO_2 assimilation. This event inevitably lowers the linear electron transport rate and, consequently, the actual PSII quantum yield for photochemistry. Sometimes the water-water cycle and, in C3 plants, the increase in photorespiration under drought, may maintain similar electron transport rates to those observed in control leaves, despite a lower CO_2 assimilation rate (Flexas et al., 1998, 2002; Noctor et al., 2002; Ort & Baker, 2002; Guidi et al., 2008). This results in little or no change in F_{PSII} . Flexas et al. (2002) identified such buffering effects of electron sinks, in addition to CO_2 assimilation, in field-grown grapevine under mild drought stress, where a 75% decrease in stomatal conductance resulted in a 54% reduction in CO_2 assimilation, but the estimated electron transport rate only lowered by 19%.

Differences in the response of Chl fluorescence parameters exist in relation to stress intensity. In fact, if the potential PSII quantum yield for photochemistry F_v/F_m is scarcely affected under mild water stress conditions, reduction in CO_2 assimilation due to stomatal restriction can determine alterations in fluorescence induction (Fini et al., 2012; Nogues et al., 2014; Tattini et al., 2015). When water loss in leaves increases, a decline in the photosynthetic potential can be observed, and mesophyll and biochemical limitation can overcome stomatal limitation. Under these conditions, the sharp drop in ATP and NADPH utilisation can induce alterations in F_v/F_m , but also in F_{PSII} , if alternative electron sinks (water-water cycling, photorespiration and other electron sinks) are not better able to compensate the electron transport chain (Driever & Baker, 2011).

In grapevine, Flexas et al. (2002) reported that NPQ may be gradually activated during steady stomata closure, while drought stress increases, which indicates that NPQ contributes to protect from photodamage. However, Mishra et al. (2012) reported that when drought is severe and the water potential goes below -1.5 MPa, NPQ is significantly suppressed. The same authors also demonstrated that F_v/F_m , Φ_{PSII} and NPQ could be used potentially for routine assays of plant health performance and for the quantification of drought tolerance in different genotypes.

Galmés et al. (2007) reported that some Mediterranean species strongly resist the photo-inactivation of PSII under drought. The obtained results revealed that Mediterranean plants have similar needs and photoprotection capacity when they face episodic water stress, which consists in maintaining or increasing the photorespiration rate under mild stress and in increasing thermal energy dissipation under more severe

stress. Increased thermal energy dissipation due to water stress depends mostly on the de-epoxidation state of xanthophylls. Other studies have reported the role of photorespiration as an alternative electron sink under mild water stress (Bai et al., 2008, Wilhelm & Selmar, 2011; Beis & Patakas, 2012), but also under severe drought stress (Silva et al., 2015).

Other authors (Golding & Johnson, 2003) have observed an increase in NPQ and a drop in the electron transport rate in *Hordeum vulgare* L. subjected to water stress, and an increase in active PSII centres. These authors speculated that active centres may be involved in cyclic electron flow, which generating DpH, permits NPQ and protects PSII. They also demonstrated that regulation occurs between the two photosystems; in particular, PSI becomes more oxidised compared to PSII. At the same time, NPQ increases by reducing the excitation pressure to PSII.

Drought stress results in patchy CO₂ fixation over small leaf areas (Downton et al., 1988), despite Wise et al. (1992) finding that spatial heterogeneity in photosynthesis in cotton leaves decreases with drought stress severity. Since patches are characterised by uniform stomatal conductance, which is distinct from neighbouring patches (Mott & Buckley, 2000), and as stomatal conductance is closely related to the photosynthetic rate (and therefore also to F_{PSII}), the heterogeneity of F_{PSII} along the leaf blade is presumable. Clearly in this context, CFI is a useful technique for evaluating the patchiness of photosynthesis along leaf blades. However, Massacci et al. (2008) did not find the heterogeneity for F_{PSII} and F_v/F_m to be considerable, nor in moderately drought-stressed leaves or in leaves from well-irrigated cotton plants. These authors concluded that photorespiration probably acts as a kind of buffer to keep the spatial and temporal heterogeneities of F_{PSII} low. Similarly, the heterogeneity of F_{PSII} was low in the leaves of rose plants that had been subjected to drought stress (Calatayud et al., 2006b).

Nutrients

In the last few decades, agriculture has steadily increased because of increased nutrient availability (Marschner, 2012). Macro- and micro-nutrients are essential for plant life, and their deficiency can strongly compromise plant life cycles and yields (Marschner, 2012). Plant growth and mineral nutrients are well described by the dose-response curve (Berry & Wallace, 1981). When the concentration is lower or higher than this optimum, plant growth is stunted, and the general range between optimum and toxicity is extremely narrow for micronutrients.

The photosynthetic process is influenced directly by nutrient

deficiency. For example, iron is an essential element for plants and its deficiency causes perturbations in the photosynthetic process for it to play its role as a constituent of the complexes involved in the electron transport rate (Guerinot & Yi, 1994; Msilini et al., 2011; Yadavalli et al., 2012). Reduced iron availability determines reduced actual photosystem II efficiency for steady-state photosynthesis (Belkhdja et al., 1998; Donnini et al., 2013; Osório et al., 2014). The use of CFI has evidenced spatial changes in leaf lamina of cucumber plants grown under Fe-deficiency conditions (Donnini et al., 2013). Osório et al. (2014) reported that Fe stress generates spatio-temporal heterogeneity in the fluorescence response, and that F_{PSII} measured in interveinal mesophyll areas can be used as an early fast indicator of Fe deficiency, and can be applied to fertilisation management.

Even excess nutrients can detrimentally influence the photosynthetic process. Despite the final effect often caused by the luxury availability of nutrients being an impairment of CO₂ assimilation, it is sometimes the last event of a series of specifically induced metabolic perturbations caused by different elements available in excess. The toxic effects induced on photosynthesis by different nutrients warrant a detailed description, but are beyond the scope of the present review. This report provides the following results on the use of Chl fluorescence as a diagnostic tool for screening the effect of boron toxicity in plants.

It has been recently demonstrated that an anthocyanin-rich cultivar of sweet basil (Red Rubin) is less prone to photo-inhibition and maintains higher Φ_{PSII} compared to a green (anthocyanin-less; Tigullio) counterpart when subjected to high B concentrations in the medium (Landi et al., 2013a). By means of CFI, it is now possible to localise the effect of B toxicity on leaf lamina margins, where B tends to accumulate. A similar heterogeneity in B distribution on leaf lamina has also been reported in two *Cucurbitaceae* species (Landi et al., 2013b). It was suddenly demonstrated that another purple cultivar of sweet basil (Dark Opal) displayed a low level of photodamage compared to eight other green basil genotypes (Landi et al., 2013c). These results have allowed the authors to speculate that epidermally-located anthocyanins can limit damage to PSII by absorbing the excess photons that reach PSII when partially compromised by B toxicity.

Pollutants

Chl fluorescence measurements have been used for decades to determine the effects of environmental pollutants [heavy metals, ozone (O₃), sulphur dioxide (SO₂), nitric oxides (NO_x)] on plants. Plant exposure to heavy metals, mainly Cd,

Cu and Zn, results in alterations in the photosynthetic process due to a single phenomenon or cumulative phenomena of: i) the direct interaction of heavy metals with the protein thioyl-, histidyl- and carboxyl-groups; ii) displacement of essential cations in protein-active centres; iii) formation of reactive oxygen species (ROS) (Nagajyoti et al., 2010; Prasad, 2013). Reduced photosynthetic pigment is another possibility by which heavy metals, particularly Hg, Cu, Cd, Ni or Zn, interfere with photosynthesis. These metals may indeed substitute the central Mg ion in chlorophyll molecule to form chlorophyll-metal complexes, and thus lower PSII quantum efficiency (Sharma & Dietz, 2009; Dietz & Pfanschmidt, 2011).

Of the different heavy metals, Cd is certainly one of the most toxic elements (Sanità di Toppi & Gabrielli, 1999; Lin & Aarts, 2012). Most plants show sensitivity to low Cd, which alters the chloroplast ultrastructure and the photosynthesis rate, and disturbs the Calvin cycle, antioxidant enzymes, and the uptake and distribution of macro- and micronutrients (Di Cagno et al., 1999, 2001; Mobin & Khan, 2007; Kahn et al., 2007; Anjum et al., 2008; Márquez-García et al., 2010; Degl'Innocenti et al., 2014). Photosynthetic pigment and Chl fluorescence responses of *Quercus suber* L. at high Cd concentrations are impaired F_v/F_m , F_{PSII} and q_p decrease, and when NPQ increases, which occur with a concomitant increase in the amount of the pigments involved in the xanthophyll cycle (Gogorcena et al., 2011). On the contrary, no alterations in the F_v/F_m ratio have been observed in sunflower plants subjected to Cd stress, even though q_p and F_{PSII} under steady-state conditions were significantly depressed and non-photochemical quenching increased (Di Cagno et al., 1999, 2001). In poplar and willow clones, the use of CFI has allowed areas inside leaves to be visualised, where Cd accumulates and corresponds to the dark area in which F_{PSII} comes close to zero (Pietrini et al., 2010). In general terms, Chl fluorescence has long since been utilised to detect the influence of heavy metal ions on plant species grown in heavy metals-contaminated soil. For example, Zurek et al. (2014) tested perennial grasses as potential phytoremediators, which they grew in contaminated soils. The F_v/F_m ratio lowered in these plants, which indicated reduced PSII efficiency strictly in relation to heavy metal uptake. It was noteworthy that no differences in the F_v/F_m parameter were found for the cultivars that limited ion uptake.

Other metals, like Cu or Zn, cause alterations to Chl fluorescence parameters. Wodala et al. (2012) investigated the effect of moderate Cu and Cd stress on *Pisum sativum* L. plants. Both metals slightly inhibited PSII photochemistry (decrease in Φ_{PSII}) and the electron transport rate. Redondo-Gómez et al. (2011) induced excess zinc in the C4 halophytic species *Spartina densiflora* Brogn. Zinc concentrations $> 1 \text{ mmol l}^{-1}$ stunted the growth of

S. densiflora through reduced CO_2 assimilation, and a marked overall effect on photochemical PSII efficiency was noted.

In the air pollutants context, tropospheric O_3 is one of the most relevant pollutants mainly in the Mediterranean climate (Ferretti et al., 2007; Paoletti, 2009). The first study on the relationship between O_3 stress and Chl fluorescence was published by Schreiber et al. in 1978. To date, much research has utilised Chl fluorescence to monitor changes in photosynthetic apparatus in plants subjected to O_3 (Guidi & Calatayud, 2014). Clearly the response of plants to O_3 differs among plants, and even among cultivars of the same species (Calatayud et al., 2002a, 2002b; Calatayud & Barreno, 2004; Guidi et al., 1997, 2009). Recently Bussotti et al. (2011) reported the overall reassessment of the results obtained from fluorescence transient and modulated fluorescence analyses on tree species subjected to treatment with O_3 . Their review aimed to identify the damage mechanisms and repair/avoidance strategies adopted by different plant species that have been reported in the existing literature. In another work, Gottardini et al. (2014) studied the concurrent measurements of Chl fluorescence transient parameters together with O_3 -specific visible foliar symptoms. They concluded that Chl fluorescence parameters provide a set of valuable diagnostic indicators for the early identification and assessment of O_3 effects on native vegetation and, potentially, for phenotyping ozone-sensitive individuals.

Heterogeneities in leaves by O_3 can be seen under CFI, which allows the identification of damaged (localized) areas and provides detailed information about leaf disturbance. An images analysis in *Lupinus albus* L. leaves fumigated with O_3 has shown spatial damage distribution (Guidi et al., 2007). In this study, the fluorescence yield was lower in leaf veins than in the interveinal area. This suggests that the leaf area close to the veins is more sensitive to the ozone. CFI has also been used for distinguishing between acute (high level of O_3 concentration $> 100 \text{ nL L}^{-1}$ for a short-period, i.e. hours; Guidi et al., 2007) and chronic effects (O_3 concentration $< 100 \text{ nL L}^{-1}$ over long-term exposure). Damage by an acute O_3 concentration (400 nL L^{-1} for 6 h) in *Glycine max* Merr. has been characterised by small local areas where photosynthesis decreases, most of which are located in the areas near major veins (Chen et al., 2009). In chronic O_3 treatment, the worst photosynthetic capacity has been found in the interveinal areas, associated with more variable sizes and shapes of the chlorotic/necrotic area (Chen et al., 2009).

Studies into watermelon (Calatayud et al., 2006a) have also shown that the interaction between O_3 and N fertiliser can occur. At a high O_3 concentration and with strong N fertilisation, a significant drop in the F_v/F_m ratio and in F_{PSII} , and an increase in NPQ, were observed.

In addition to the quantum yield of PSII photochemistry

under light conditions, Φ_{PSII} , other useful parameters have been represented by the quantum yield of regulated energy dissipation in PSII, Φ_{NPQ} , and the quantum yield of non-regulated energy dissipation in PSII, Φ_{NO} (Kramer et al., 2004). Two bean cultivars with different sensitivities to the ozone, i.e. O_3 -sensitive Cannellino and O_3 -tolerant Top Crop, have been exposed to acute O_3 -stress. The ability to dissipate excess energy via regulated Φ_{NPQ} , and unregulated non-photochemical quenching (Φ_{NO}) mechanisms, has been reported to be greater in Top Crop than in Cannellino. These physiological-traits have allowed the O_3 -tolerant cultivar to compensate for the light-induced declines in Φ_{PSII} , to preserve PSII from excitation-energy, and to likely prevent ROS generation to a lesser extent than the O_3 -sensitive cultivar (Guidi et al., 2010).

Nitrogen oxides (NOx) are the air pollutants precursors of O_3 , mainly at high light intensity (Chameides et al., 1992). NOx have been considered less toxic to plants, compared to SO_2 and O_3 , since exposure to NOx does not always lead to deleterious effects on plants (Capron & Mansfield, 1976). NO_2 inside leaves can form strong acids, such as HNO_2 and HNO_3 (Schmidt et al., 1990). Furthermore, cellular acidification causes nitrate reductase to lower (Padidam et al., 1991). The lower activity of this enzyme and the presence of HNO_3 and HNO_2 might enhance accumulation of nitrates, with negative effects on the photosynthetic process (Qiao & Murray, 1998). However, NO_2 exposure on rice has no effect on Chl fluorescence parameters, and only stomatal conductance reduction has been reported compared with the control plants (Maggs and Ashmore, 1998). van Hove et al. (1992) have reported a lower electron transport rate in Douglas firs subjected to chronic NO_2 treatment compared to the control shoots (filtered air).

Sulphur dioxide is a primary product of fossil fuel combustion or from refining sulphur-containing minerals. SO_2 can easily penetrate chloroplast, which affects plant growth and development (Darrall, 1989; Surówka et al., 2007). It can react with water on the leaf surface to produce bisulphate and enter through the cuticle, where it is converted into sulphite in chloroplast (Laisk et al., 1988), and can be oxidised to sulphate. *Pinus sylvestris* L., a popular Mediterranean pine grown in an industrial polluted area, has shown a reduced F_v/F_m ratio compared to the control area (Pukacki, 2004). These results agree with those of Strand (1995), who showed a lower F_v/F_m ratio after exposing *P. sylvestris* to low concentrations of SO_2 and NO_2 for four consecutive years.

Temperature

The effect of high temperature on plants primarily affects photosynthetic functions, and the heat tolerance limit of

leaves coincides with the thermal sensitivity of primary photochemical reactions that occur in the thylakoid membrane system (Chen et al., 1982). High temperature modifies structure and damages PSII, and the oxygen evolving complex is particularly deactivated, even at slightly elevated temperatures (Yamane et al., 1998). Furthermore, the separation of LHCII from the core centre induces grana destacking (Gounaris et al., 1984) and induces the migration of LHCII to the non-appressed region.

Chl fluorescence has been used as a biomonitoring technique to test the effects of future warming events or sporadic hot waves on photosynthetic performance in several plant species (see Gorbe & Calatayud, 2012; Guidi & Calatayud, 2014). The optimal temperatures for maximum PSII quantum yields are generally broad and match the average daytime growth temperature (Larcher, 1995). For example, the leaves of *Phalaenopsis* Blume, *Deschampsia antarctica* E. Desv., *Larrea tridentate* (DC.) Coville, *Gossypium hirsutum* L. or *Nicotiana tabacum* L. maintain a constant F_v/F_m over a wide range of temperatures (Salvucci & Crafts-Brandner, 2004). A drop in F_v/F_m occurs at temperatures above those that inhibit a net photosynthetic rate (Georgieva et al., 2000), which indicates that the F_v/F_m ratio is quite a sensitive Chl fluorescence parameter. These results have been observed in barley (Oukarroum et al., 2009), strawberry (Kadir et al., 2006), tomato (Willits & Peet, 2001), grape (Kadir et al., 2007) and raspberry (Mochizuki et al., 2010; Molina-Bravo et al., 2011). In general, the tolerant varieties to heat temperature have shown a higher F_v/F_m , and have maintained higher rates of photosynthesis and F_{PSII} or zeaxanthin accumulation than sensitive varieties (Frachebound & Leipner, 2003).

However, plants that inhabit different environments have evolved mechanisms to optimise growth within defined temperature ranges. High temperature, in addition to a higher risk of heat damage, also enhances water shortage to plants. In fact, plants increase evaporation of water from stomata to cool leaves to minimise heat damage. Clearly in the era of global change, in which heat stress occurs contemporarily to drought, this event enhances the negative effects induced by water shortage (Allen et al., 2010).

Even low temperature or freezing can decrease, or even stop, biochemical activity in chloroplast. When comparing *Quercus ilex* L. and *Phyllirea latifolia* L. (Ogaya et al., 2011), the effect of cold temperature was stronger in *P. Latifolia*, and was associated with a lower F_v/F_m . High irradiance, along with low temperatures, spells overexcitation of the electron transport chain, which produces photo-chilling (Garcia-Plazaola et al., 1999). Photo-chilling occurs when a large amount of energy is trapped by Chls, but cannot be dissipated safely by heat. Consequently, carbon assimilation is limited and overproduction of oxygen free radicals takes place.

Cold-induced limitations on photosynthesis (i.e. reduced photochemical use of absorbed light energy, and an imbalance between the reducing equivalents produced in excess and the consumption capacity of photosynthesis) lead to photosynthesis photo-inhibition (Powles, 1984; Baker, 1994). Increased susceptibility to photo-inhibition has been well established during exposure of photosynthetic organisms to low temperatures in combination with even moderate photon flux density (Öquist & Martin, 1986; Osmond, 1994). It has been suggested that persistent photosynthetic efficiency depression in cold-acclimated maize may also result from the higher proportion of inactive PSII centres and the lesser capacity of repair and/or replacement of damaged PSII centres (Fryer et al., 1995).

Salinity

Salinity is one of the biggest limiting factors for agriculture in semi-arid environments. Nowadays saline soils cover more than 10 million ha only in the 22 countries that surround the Mediterranean Basin (Zdruli, 2014). Soils are classified as saline when electrical conductivity is 4 dS m^{-1} (about 40 mM of NaCl) or higher (USDA-ARS, 2008). This condition makes it harder for roots to extract water from soil, and can also cause hyperaccumulation of Na^+ and Cl^- in whole plants (Munns & Tester, 2008). Both these effects can reduce plant growth and photosynthesis (Long & Baker, 1986; Chaves et al., 2009).

Chl fluorescence has been widely utilised for two reasons: firstly, as an applicative tool for screening tolerant vs. salt-sensitive genotypes (a few exemplifiable works are: Penella et al., 2013; Hanachi et al., 2014; Khayyat et al., 2014; Sing & Sarkar 2014); secondly, for more in-depth studies into plant physiology which aim to evaluate the effect of salt excess on photosynthetic machinery (Homann, 1969; Murata, 1969; Gross & Prasher, 1974; Mehta et al., 2010; Guidi et al., 2011; Penella et al., 2015).

For the first aim, simple F_v/F_m measurements suffice in some cases to distinguish salt-sensitive from salt-tolerant genotypes, particularly under severe salinity. For example, Singh and Sarkar (2014) used 12 rice cultivars to find a decline in F_v/F_m in the salt-sensitive, but not in the salt-tolerant, genotypes following 3-day exposure to 80 mM NaCl. Similarly, Khayyat et al. (2014) reported a good correlation between the decline in F_v/F_m and the salt concentration supplied to two pomegranate cultivars characterised by different salt sensitivity, where the decline for sensitive cultivar Shishe Kab was steeper. Conversely while screening pepper genotypes subjected to mild-prolonged salt stress (40 mM NaCl for 5 months),

Penella et al. (2013) evidenced that the widely used F_v/F_m ratio was not a useful parameter alone for assessing damage to photosynthetic apparatus, while gas exchange was more sensitive for this purpose. In addition, Netondo et al. (2004) observed no significant changes in F_v/F_m in response to salt stress between a sensitive and more tolerant cultivar of sorghum, but found a more marked increase in q_{NP} and a less decreased ETR in the salt-sensitive cultivar. The F_v/F_m ratio is a useful parameter, but its reduction can be attributed to regulated or damaged PSII units. Thus in some cases, using Chl fluorescence at the in-depth level (i.e., fast/slow kinetics and/or light curves) could provide a much more informative and detailed picture of PSII status and allow genotypes to be compared (Guidi et al., 1999).

For the second aim, Chl fluorescence has been used in particular to: (i) assess the direct effect of salt excess on photosynthetic apparatus and highlight the special localisation of salt-induced effects on whole leaf lamina; (ii) confirm that the species which adopt different mechanisms to cope with salt excess are healthier than the plant species that lack these mechanisms, or to evaluate the interaction of the factors that occur with salinity.

Pioneering works into the effect of salt excess on photosynthetic apparatus date back to late 1960s, when it was established that changes in Chl fluorescence in salt-treated thylakoids correlate with an energy spillover from PSII to PSI (Homann, 1969; Murata, 1969). It was suddenly demonstrated that excess cations induce conformation changes in the thylakoid structure (Barber, 1976) and staking (Gross & Prasher, 1974). More recently in detached wheat leaves exposed to high salt stress (0.1-0.5 M NaCl) for 1 h, it has been demonstrated that the number of inactive PSII reaction centres rose with increasing salt concentrations, and the damage caused by a high salt influx was more prominent on the donor side than on the acceptor side of PSII (Mehta et al., 2010). The effects of high salt stress are largely reversible as acceptor side damage completely recovered, while donor side recovery was below 85% (Mehta et al., 2010). As explained above, it has been revealed that F_v/F_m is not a useful indicator of salt stress in some plant species, while other parameters, such as Φ_{PSII} , q_p and NPQ, are more sensitive to salt stress (Bongi & Loreto, 1989; Zribi et al., 2009; Guidi et al., 2011). The latter parameters can also allow the spatial localisation of salt-induced symptoms to PSII centres on the leaf area to be distinguished. For example by CFI, Guidi et al. (2011) found that high salinity did not change the values of either F_v/F_m or NPQ in the whole leaves of tomato irrigated with a saline solution that contained 550 mg L^{-1} NaCl compared to the controls. Conversely, higher Φ_{PSII} values were found in salt stressed-leaves, and notably the Φ_{PSII} values in central area of leaves were higher than those found in the marginal area. This finding suggests heterogeneous salt-induced effects on whole leaf lamina.

The adaptive mechanisms adopted by plant species to cope with salinity stress, as well as the effect of the simultaneous concomitance of salinity to other stressors, have been intensively explored in recent years. As many publications on this matter exist, only a few key examples that highlight the versatility of Chl fluorescence are reported below. It has been found that, for example, Φ_{PSII} and carbon gains remain higher in *Pistacia lentiscus* L. than in *Myrtus communis* L. when exposed to mild-prolonged salt stress either alone or in combination with strong light (Tattini et al., 2006). The better performance of *P. lentiscus* derives from the better ability to use Na^+ and Cl^- for osmotic adjustment and by morpho-anatomical traits. Consequently, the biosynthesis of flavonoids and the incremented carotenoids/chlorophyll content ratio are likely adopted to compensate the inherent lower ability of *M. communis* to cope with salt accumulation in leaf tissues, especially when grown under full sunlight. Conversely, *Olea europea* L. leaves have been photo-inhibited; enhanced q_{NP} and reduced PSII efficiency have been reported only when plants were grown with 125 mM NaCl and in partial shade (15% full sunlight), while no differences in any Chl fluorescence parameters have been detected in plants grown in full sunlight (Melgar et al., 2009). In this species, changes in the $\text{Ca}^{2+}/\text{Na}^+$ ratios have been reported to take place in the root zone, a condition that usually occurs in calcareous soils where *O. europea* is largely cultivated, and which can further increase its salinity tolerance (Tattini et al., 2009).

CONCLUSION

Chl fluorescence represents a good useful technique to detect photosynthetic responses of plants grown under environmental stresses. It also provides useful information about the extent to which plant performance is limited by photochemical and non-photochemical processes. When utilised with other non-invasive techniques, such as gas exchange, it can provide insights into limitation to photosynthesis. Its use in plant physiology under environmental stresses has been widely reported. However, care must be taken because it is easy to make mistakes and obtain meaningless results, even though it is easy to utilise Chl fluorimeters and to obtain Chl fluorescence parameters (Murchie & Lawson, 2013).

In addition to the above-reported utilisation in plant ecophysiology, Chl fluorescence is widely utilised in other fields, such as studies into the physiology of algae (Roháček et al., 2014) cyanobacteria (Campbell et al., 1998) and lichens (Manrique et al., 1993).

Some Chl fluorescence applications have even focused on the quality, chemistry and physical characteristics of fruits (Nedbal & Withmarsh, 2004; Gorbe & Calatayud, 2012). Indeed Chl fluorescence has been utilised to detect the vitality and healthy of flesh kiwi fruits upon storage as fresh-cut produce (Figure 2). Chl fluorescence has also been employed to detect cut flower quality under different storage conditions (Gorbe & Calatayud, 2012).

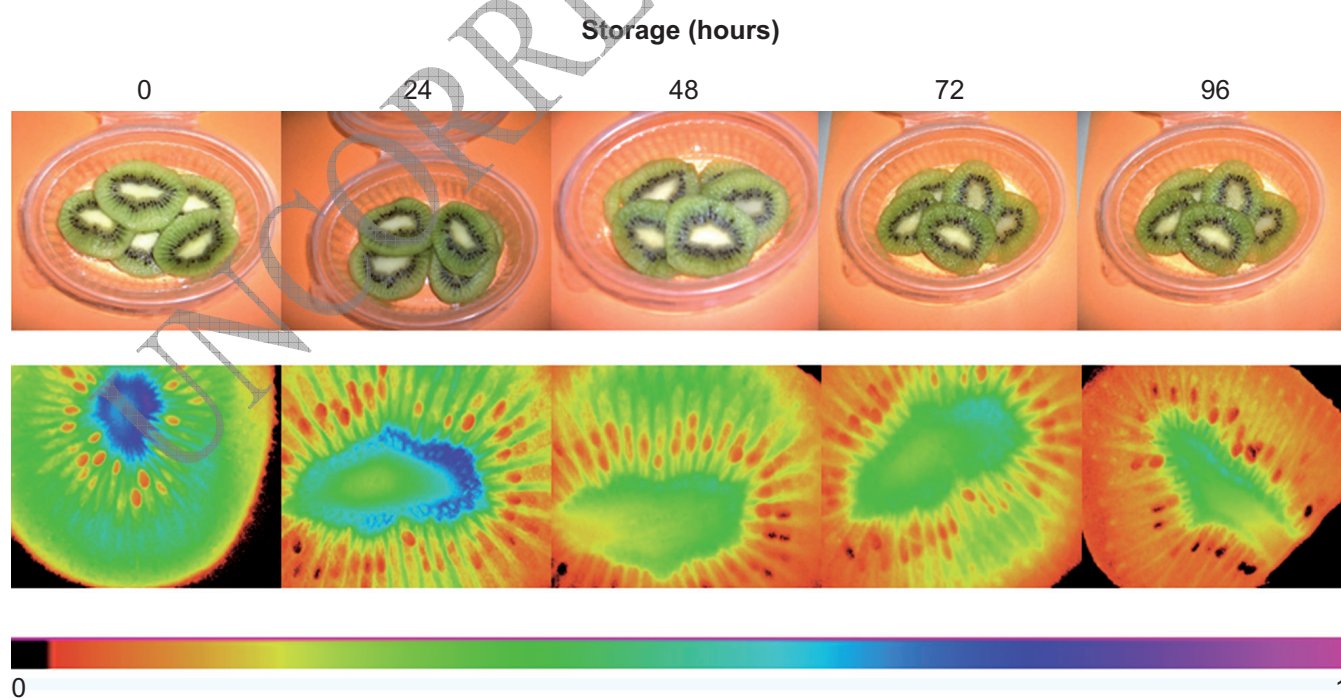


Figure 2. Flesh kiwi fruit upon storage as fresh-cut produce (top) and Chl fluorescence imaging of F_{PSII} recorded on fruit slices (bottom). Bar ranges from 0 to 1, and indicates the false colour palette.

Another recent Chl fluorescence application has been to provide information on the (in-)compatibility between rootstocks and scions in herbaceous plants, such as grafted melon plants (Calatayud et al., 2013) and pepper grafted

plants. Figure 3 depicts the greater compatibility between pepper plants grafted onto pepper (compatible union) or onto tomato rootstocks (incompatible combination) measured as an F_v/F_m ratio.

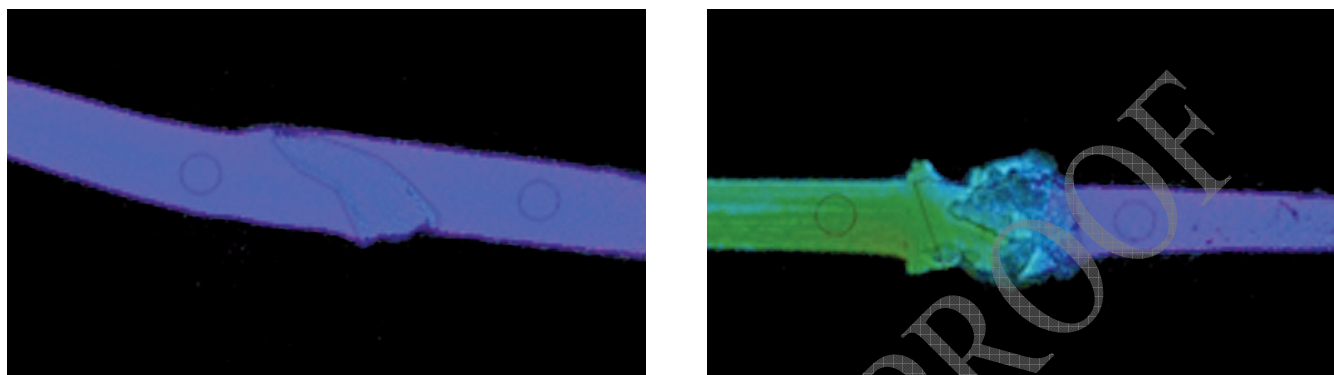


Figure 3. Chl fluorescence images of F_v/F_m recorded in stems of pepper (cultivar Adige) grafted onto pepper rootstock *Capsicum annuum* (left) or onto tomato rootstock Beaufort (right).

REFERENCES

- Agati G., Traversi M.L., Cerovic Z.G., 2008. Chlorophyll fluorescence imaging for the noninvasive assessment of anthocyanins in whole grape (*Vitis vinifera* L.) bunches. *Photochemistry and Photobiology* 84, 1431-1434.
- Allen C.D., Macalady A.K., Chenchouni H., Bachelet D., McDowell N., Vennetier M., Kitzberger T., Rigling A., Breshears D.D., Hogg E.H. (Ted), Gonzalez P., Fensham R., Zhang Z., Castro J., Demidova N., Lim J.-H., Allard G., Running S.W., Semerci A., Cobb N., 2010. A global overview of drought and heat-induced tree mortality reveals emerging climate change risks for forests. *Forest Ecology and Management* 259, 660-684.
- Anjum N.A., Umar S., Ahmad A., Iqbal M., Nafees N.A., 2008. Sulphur protects mustard (*Brassica campestris* L.) from cadmium toxicity by improving leaf ascorbate and glutathione. *Sulphur protects mustard from cadmium toxicity*. *Plant and Growth Regulation* 54, 271-279.
- Bai J., Xu D.H., Kang H.M., Chen K., Wang G., 2008. Photoprotective function of photorespiration in *Reaumuria soongorica* during different levels of drought stress in natural high irradiance. *Photosynthetica* 46, 232-237.
- Baker N.R., 1994. Chilling stress and photosynthesis. In: C.H. Foyer, P.M. Mullineaux (Eds.) *Causes of Photooxidative Stress and Amelioration of Defense System in Plants*, pp. 127-154. CRC Press, Boca Raton, FL.
- Barbagallo R.P., Oxborough K., Pallet K.E., Baker N.R., 2003. Rapid, non-invasive screening for perturbations of metabolism and plant growth using chlorophyll fluorescence imaging. *Plant Physiology* 132, 485-493.
- Barber J., 1976. The intact chloroplast. In: J. Barber (Ed), *Topics in Photosynthesis*, pp. 89-134. Elsevier/North-Holland, Amsterdam, NY.
- Beis A., Patakas A., 2012. Relative contribution of photoprotection and anti-oxidative mechanisms to differential drought adaptation ability in grapevines. *Environmental and Experimental Botany* 78, 173-183.
- Belkhdja R., Morales F., Quílez R., López-Millán A.F., Abadía J., Abadía J., 1998. Iron deficiency causes changes in chlorophyll fluorescence due to the reduction in the dark of the Photosystem II acceptor side. *Photosynthesis Research* 56, 265-276.
- Berry L., Wallace A., 1981. Toxicity: The concept and relationship to the dose response curve. *Journal of Plant Nutrition* 3, 13-19.
- Bilger W., Björkman O., 1990. Role of the xanthophyll cycle in photoprotection elucidated by measurements of light-induced absorbance changes, fluorescence and photosynthesis in leaves of *Hedera canariensis*. *Photosynthesis Research* 25, 173-185.
- Bilger W., Schreiber U., 1987. Energy-dependent quenching of dark-level chlorophyll fluorescence in intact leaves. In: Govindjee, J. Barber, W.A. Cramer, J.H.C. Goedheer, J.

- Lavorel, R. Marcelle, B.A. Zilinskas (Eds.) Excitation Energy and Electron Transfer in Photosynthesis, pp. 157-162. Springer, The Netherlands.
- Björkman O., Demmig B., 1987. Photon yield of O₂ evolution and chlorophyll fluorescence characteristics at 77 K among vascular plants of diverse origins. *Planta* 170, 489-504.
- Bongi L., Loreto F., 1989. Gas-exchange properties of salt-stressed olive (*Olea europaea* L.) leaves. *Plant physiology*, 90, 1408-1416.
- Bradbury M., Baker N.R., 1984. A quantitative determination of photochemical and non-photochemical quenching during the slow phase of the chlorophyll fluorescence induction curve of bean leaves. *Biochimica et Biophysica Acta*, 765, 275-281.
- Bussotti F., Desotgiu R., Cascio C., Pollastrini, M., Gravano E., Gerosa G., Marzuoli R., Nali C., Lorenzini G., Salvatori E., Manes F., Schaub M., Strasser R.J., 2011. Ozone stress in woody plants assessed with chlorophyll a fluorescence. A critical reassessment of existing data. *Environmental and Experimental Botany* 73, 19-30.
- Calatayud A., Alvarado J.W., Barreno E., 2002a. Differences in ozone sensitivity in three varieties of cabbage (*Brassica oleracea* L.) in the rural Mediterranean area. *Journal of Plant Physiology* 159, 863-868.
- Calatayud A., Barreno E., 2004. Response to ozone in two lettuce varieties on chlorophyll a fluorescence, photosynthetic pigments and lipid peroxidation. *Plant Physiology and Biochemistry* 42, 549-555.
- Calatayud A., Pomares F., Barreno E., 2006a. Interactions between nitrogen fertilization and ozone in watermelon cultivar Reina de Corazones in open-top chambers. Effects on chlorophyll a fluorescence, lipid peroxidation, and yield. *Photosynthetica* 44, 93-101.
- Calatayud A., Ramirez J.W., Iglesias D.J., Barreno E., 2002b. Effects of ozone on photosynthetic CO₂ exchange, chlorophyll a fluorescence and antioxidant systems in lettuce leaves. *Physiologia Plantarum* 116, 308-316.
- Calatayud A., Roca D., Martínez P.F., 2006b. Spatial-temporal variations in rose leaves under water stress conditions studied by chlorophyll fluorescence imaging. *Plant Physiology and Biochemistry* 44, 564-573.
- Calatayud A., San Bautista A., Pascual B., Maroto J.V., López-Galarza S., 2013. Use of chlorophyll fluorescence imaging as diagnostic technique to predict compatibility in melon graft. *Scientia Horticulturae* 149, 13-18.
- Campbell D., Hurry V., Clarke A.K., Gustafsson P., Öquist G., 1998. Chlorophyll fluorescence analysis of cyanobacterial photosynthesis and acclimation. *Microbiology and Molecular Biology Reviews* 62, 667-683.
- Capron T.M., Mansfield T. A., 1976. Inhibition of net photosynthesis in tomato in air polluted with NO and NO₂. *Journal of Experimental Botany* 27, 1181-1186.
- Chaerle L., Leinonen I., Jones H.G., Van Der Straeten D., 2007. Monitoring and screening plant populations with combined thermal and chlorophyll fluorescence imaging. *Journal of Experimental Botany* 58, 773-784.
- Chameides W.L., Fehsenfeld F., Rodgers M.O., Cardelino C., Martinez J., Parrish D., Lonneman W., Lawson D.R., Rasmussen R.A., Zimmerman P., Greenberg J., Middleton P., Wang T., 1992. Ozone precursor relationships in the ambient atmosphere. *Journal of Geophysical Research* 97, 6037-6055.
- Chaves M.M., Flexas J., Pinheiro C., 2009. Photosynthesis under drought and salt stress: regulation mechanisms from whole plant to cell. *Annals of Botany* 103, 551-560.
- Chen C.P., Frank T.D., Long S.P., 2009. Is a short, sharp shock equivalent to long-term punishment? Contrasting the spatial pattern of acute and chronic ozone damage to soybean leaves via chlorophyll fluorescence imaging. *Plant, Cell & Environment* 32, 327-335.
- Chen H.-H., Shen Z.-Y., Li P.H., 1982. Adaptability of crop plants to high temperatures stress. *Crop Science* 22, 719-725.
- Daley P., Raschke K., Ball J., Berry J., 1989. Topography of photosynthetic activity of leaves obtained from video images of chlorophyll fluorescence. *Plant Physiology* 90, 1233-1238.
- Darrall N.M., 1989. The effect of air pollutants on physiological processes in plants. *Plant, Cell & Environment* 12, 1-30.
- Degl'Innocenti E., Castagna A., Ranieri A., Guidi L., 2014. Combined effects of cadmium and ozone on photosynthesis of *Lycopersicon esculentum*. *Photosynthetica* 52, 179-185.
- Demmig-Adams B., 1990. Carotenoids and photoprotection in plants: A role for the xanthophyll zeaxanthin. *Biochimica et Biophysica Acta (BBA) - Bioenergetics* 1020, 1-24.
- Demmig-Adams B., Adams III W.W., 1992. Photoprotection and other responses of plants to high light stress. *Annual Review of Plant Physiology and Plant Molecular Biology* 43, 599-626.
- Demmig-Adams B., Adams III W.W., 1996. The role of xanthophyll cycle carotenoids in the protection of photosynthesis. *Trends in Plant Science* 1, 21-26.
- Demmig-Adams B., Garab G., Adams III W.W., Govindjee, 2014. Non-Photochemical Quenching and Energy Dissipation in Plants, Algae and Cyanobacteria. *Advances in Photosynthesis and Respiration*. Springer, The Netherlands.

- Di Cagno R., Guidi L., De Gara L., Soldatini G.F., 2001. Combined cadmium and ozone treatments affect photosynthesis and ascorbate-dependent defences in sunflower. *New Phytologist* 151, 627-636.
- Di Cagno R., Guidi L., Stefani A., Soldatini G.F., 1999. Effects of cadmium on growth of *Helianthus annuus* seedlings: physiological aspects. *New Phytologist* 144, 65-71.
- Dietz K.-J., Pfannschmidt T., 2011. Novel regulators in photosynthetic redox control of plant metabolism and gene expression. *Plant Physiology* 155: 1477-1485.
- Donnini S., Guidi L., Degl'Innocenti E., Zocchi G., 2013. Image changes in chlorophyll fluorescence of cucumber leaves in response to iron deficiency and resupply. *Journal of Plant Nutrition and Soil Science* 176, 734-742.
- Downton W.J.S., Loveys B.R., Grant W.J.R., 1988. Non-uniform stomatal closure induced by water stress causes putative non-stomatal inhibition of photosynthesis. *New Phytologist* 110, 503-509.
- Driever S.M., Baker N.R., 2011. The water-water cycle in leaves is not a major alternative electron sink for dissipation of excess excitation energy when CO₂ assimilation is restricted. *Plant, Cell & Environment* 34, 837-846.
- Duysens L.N.M., Sweers H.E., 1963. Mechanism of two photochemical reactions in algae as studied by means of fluorescence. In: Japanese Society of Plant Physiologists (Ed.) *Studies on Microalgae and Photosynthetic Bacteria*, pp. 353-372. University of Tokyo Press, Tokyo.
- Ferretti M., Fagnano M., Amoriello T., Badiani M., Ballarin-Denti A., Buffoni A., Bussotti F., Castagna A., Cieslik S., Costantini A., De Marco A., Gerosa G., Lorenzini G., Manes, Merola G., Nali C., Paoletti E., Petriccione B., Racalbuto S., Rana G., Ranieri A., Tagliaferro A., Vialeto G., Vitale M., 2007. Measuring, modelling and testing ozone exposure, flux and effects on vegetation in southern European conditions – what does not work? A review from Italy. *Environmental Pollution* 146, 648-658.
- Fini A., Guidi L., Ferrini F., Brunetti C., Di Ferdinando M., Biricolti S., Pollastri S., Calamai L., Tattini M., 2012. Drought stress has contrasting effects on antioxidant enzymes activity and phenylpropanoid biosynthesis in *Fraxinus ornus* leaves: An excess light stress affair? *Journal of Plant Physiology* 169, 929-939.
- Flexas J., Bota J., Escalona J.M., Sampol B., Medrano H., 2002. Effects of drought on photosynthesis in grapevines under field conditions: an evaluation of stomatal and mesophyll limitations. *Functional Plant Biology* 29(4), 461-471.
- Flexas J., Bota J., Loreto F., Cornic G., Sharkey T.D., 2004. Diffusive and metabolic limitations to photosynthesis under drought and salinity in C3 plants. *Plant Biology* 6, 269-279.
- Flexas J., Diaz-Espejo A., Gago J., Gallé A., Galmés J., Gulías J., Medrano H., 2014. Photosynthetic limitations in Mediterranean plants: A review. *Environmental and Experimental Botany* 103, 12-23.
- Flexas J., Escalona J.M., Medrano H., 1998. Down-regulation of photosynthesis by drought under field conditions in grapevine leaves. *Australian Journal of Plant Physiology* 25(8), 893-900.
- Fracheboud Y., Leipner J., 2003. The application of chlorophyll fluorescence to study light, temperature, and drought stress. In: J.R. DeEll, P.M.A. Toivonen (Eds.) *Practical Applications of Chlorophyll Fluorescence in Plant Biology*, pp. 125-150. Springer, The Netherlands.
- Fryer M.J., Oxborough K., Martin B., Ort D.R., Baker N.R., 1995. Factors associated with depression of photosynthetic quantum efficiency in maize at low growth temperature. *Plant Physiology* 108, 761-767.
- Galmés J., Medrano H., Flexas J., 2007. Photosynthetic limitations in response to water stress and recovery in Mediterranean plants with different growth forms. *New Phytologist* 175, 81-93.
- García-Plazaola J.I., Artetxe U., Becerril J.M., 1999. Diurnal changes in antioxidant and carotenoid composition in the Mediterranean sclerophyll tree *Quercus ilex* (L) during winter. *Plant Science* 143, 125-133.
- Genty B., Briantais J.-M., Baker N.R., 1989. The relationship between the quantum yield of photosynthetic electron transport and quenching of chlorophyll fluorescence. *Biochimica et Biophysica Acta (BBA) - General Subjects* 990, 87-92.
- Georgieva K., Tsonev T., Velikova V., Yordanov I., 2000. Photosynthetic activity during high temperature treatment of pea plants. *Journal of Plant Physiology* 157, 169-176.
- Gogorcena Y., Larbi A., Andaluz S., Carpena R.O., Abadía A., Abadía J., 2011. Effects of cadmium on cork oak (*Quercus suber* L.) plants grown in hydroponics. *Tree Physiology* 31, 1401-1412.
- Golding A.J., Johnson G.N., 2003. Down-regulation of linear and activation of cyclic electron transport during drought. *Planta* 218, 107-114.
- GORBE E., CALATAYUD A., 2012. Applications of chlorophyll fluorescence imaging technique in horticultural research: A review. *Scientia Horticulturae* 138, 24-35.
- Gottardini E., Cristofori A., Cristofolini F., Nali C., Pellegrini E., Bussotti F., Ferretti M., 2014. Chlorophyll-

- related indicators are linked to visible ozone symptoms: Evidence from a field study on native *Viburnum lantana* L. plants in northern Italy. *Ecological Indicators* 39, 65-74.
- Gounaris K., Brain A.R.R., Quinn P.J., Williams W.P., 1984. Structural reorganisation of chloroplast thylakoid membranes in response to heat-stress. *Biochimica et Biophysica Acta* 766, 198-208.
- Grassi G., Magnani F., 2005. Stomatal, mesophyll conductance and biochemical limitations to photosynthesis as affected by drought and leaf ontogeny in ash and oak trees. *Plant, Cell and Environment* 28, 834-849.
- Gross E.L., Prasher S.H., 1974. Correlation between monovalent cation-induced decreases in chlorophyll *a* fluorescence and chloroplast structural changes. *Archives of Biochemistry and Biophysics*, 164, 460-468.
- Guerinot M.L., Yi Y., 1994. Iron: nutritious, noxious, and not readily available. *Plant Physiology* 104, 815-820.
- Guidi I, Degl'Innocenti E., Giordano C., Biricolti S., Tattini M., 2010. Ozone tolerance in *Phaseolus vulgaris* depends on more than one mechanism. *Environmental Pollution* 158, 3164-3171.
- Guidi L., Bonghi G., Ciompi S., Soldatini G.F., 1999. In *Vicia faba* leaves photoinhibition from ozone fumigation in light precedes a decrease in quantum yield of functional PSII centres. *Journal of Plant Physiology* 154, 167-172.
- Guidi L., Calatayud A., 2014. Non-invasive tools to estimate stress-induced changes in photosynthetic performance in plants. Inhabiting Mediterranean areas. *Environmental and Experimental Botany* 103, 42-52.
- Guidi L., Degl'Innocenti E., 2008. Ozone effects on high light-induced photoinhibition in *Phaseolus vulgaris*. *Plant Science* 174, 590-596.
- Guidi L., Degl'Innocenti E., Carmassi G., Massa D., Pardossi A., 2011. Effects of boron on leaf chlorophyll fluorescence of greenhouse tomato grown with saline water. *Environmental and Experimental Botany* 73, 57-63.
- Guidi L., Degl'Innocenti E., Martinelli F., Piras M., 2009. Ozone effects on carbon metabolism in sensitive and insensitive *Phaseolus cultivars*. *Environmental and Experimental Botany* 66, 117-125.
- Guidi L., Degl'Innocenti E., Remorini D., Massai R., Tattini M., 2008. Interactions of water stress and solar irradiance on the physiology and biochemistry of *Ligustrum vulgare*. *Tree Physiology* 28, 873-883.
- Guidi L., Mori S., Degl'Innocenti E., Pecchia S., 2007. Effects of ozone exposure or fungal pathogen on white lupin leaves as determined by imaging of chlorophyll *a* fluorescence. *Plant Physiology and Biochemistry* 45, 851-857.
- Guidi L., Nali C., Ciompi S., Lorenzini G., Soldatini G.F., 1997. The use of chlorophyll fluorescence and leaf gas exchange as methods for studying the different responses to ozone of two bean cultivars. *Journal of Experimental Botany* 48, 173-179.
- Hanachi S., Van Labeke M.C., Mehouchi T., 2014. Application of chlorophyll fluorescence to screen eggplant (*Solanum melongena* L.) cultivars for salt tolerance. *Photosynthetica*, 52, 57-62.
- Harbinson J., Genty B., Baker N.R., 1990. The relationship between CO₂ assimilation and electron transport in leaves. *Photosynthesis Research* 25, 213-224.
- Harbinson J., Prinzenberg A.E., Kruijer W., Aarts M.G.M., 2012. High throughput screening with chlorophyll fluorescence imaging and its use in crop improvement. *Current Opinion in Biotechnology* 23, 221-226.
- Havaux M., Lannoye R., 1983. Chlorophyll fluorescence induction. A sensitive indicator of water stress in maize plants. *Irrigation Science* 4, 147-151.
- Hogewoning S.W., Harbinson J., 2007. Insights on the development, kinetics, and variation of photoinhibition using chlorophyll fluorescence imaging of a chilled, variegated leaf. *Journal of Experimental Botany* 58, 453-463.
- Homann P.H., 1969. Cation effects on the fluorescence of isolated chloroplasts. *Plant physiology*, 44, 932-936.
- Horton P., Hague A., 1988. Studies on the induction of chlorophyll fluorescence in isolated barley protoplasts. IV. Resolution of non-photochemical quenching. *Biochimica et Biophysica Acta (BBA) - Bioenergetics* 932, 107-115.
- Hughes N.M., Vogelmann T.C., Smith W.K., 2008. Optical effects of abaxial anthocyanin on absorption of red wavelengths by understorey species: revisiting the back-scatter hypothesis. *Journal of Experimental Botany* 59, 3435-3442.
- Kadir S., Sidhu G., Al-Khatib K., 2006. Strawberry (*Fragaria × ananassa* Duch.) growth and productivity as affected by temperature. *HortScience* 41, 1423-1430.
- Kadir S., Von Weihe M., Al-Khatib k., 2007. Photochemical efficiency and recovery of photosystem II in grapes after exposure to sudden and gradual heat stress. *Journal of the American Society of Horticultural Science* 132, 764-769.
- Kalaji H.M., Schansker G., Ladle R.J., Goltsev V., Bosa K., Allakhverdiev S., Brestic M., Bussotti F., Calatayud A., Dąbrowski P., Elsheery N., Ferroni L., Guidi L., Hogewoning S.W., Jajoo A., Misra A.N., Nebauer S., Pancaldi S., Penella C., Poli D.B., Pollastrini M.,

- Romanowska-Duda Z.-B., Rutkowska B., Serôdio J., Suresh K., Szulc W., Tambussi E., Yannicari M., Zivcak M., 2014. Frequently asked questions about in vivo chlorophyll fluorescence: practical issues. *Photosynthesis Research* 122, 121-158.
- Kautsky H., Hirsch A., 1931. Neue Versuche zur Kohlendioxidassimilation. *Naturwissenschaften* 19, 964-964.
- Khan N.A., Singh S.S., Nazar R., 2007. Activities of antioxidative enzymes, sulphur assimilation, photosynthetic activity and growth of wheat (*Triticum aestivum*) cultivars differing in yield potential under cadmium stress. *Journal of Agronomy and Crop Science* 193, 435-444.
- Khayyat M., Tehranifar A., Davarynejad G.H., 2014. Vegetative growth, compatible solute accumulation, ion partitioning and chlorophyll fluorescence of 'Malas-e-Saveh' and 'Shishe-Kab' pomegranates in response to salinity stress. *Photosynthetica*, 52, 301-312.
- Kramer D.M., Johnson G., Kiirats O., Edwards G.E., 2004. New fluorescence parameters for the determination of QA redox state and excitation energy fluxes. *Photosynthesis Research* 79, 209-218.
- Krause G.H., Weis E., 1984. Chlorophyll fluorescence as a tool in plant physiology II. Interpretation of fluorescence signals. *Photosynthesis Research* 5, 139-157.
- Krause G.H., Weis E., 1991. Chlorophyll Fluorescence and photosynthesis: the basics. *Annual Review of Plant Physiology and Plant Molecular Biology* 42, 313-349.
- Laisk A., Pfaniz H., Heber U., 1988. Sulfur-dioxide fluxes into different cellular compartments of leaves photosynthesizing in a polluted atmosphere. II. Consequences of SO₂ uptake as revealed by computer analysis. *Planta* 173, 241-252.
- Landi M., Pardossi A., Remorini D., Guidi L., 2013a. Antioxidant and photosynthetic response of a purple-leaved and a green-leaved cultivar of sweet basil (*Ocimum basilicum*) to boron excess. *Environmental and Experimental Botany* 85, 64-75.
- Landi M., Remorini D., Pardossi A., Guidi L., 2013b. Boron excess affects photosynthesis and antioxidant apparatus of greenhouse *Cucurbita pepo* and *Cucumis sativus*. *Journal of Plant Research* 126, 775-786.
- Landi M., Remorini D., Pardossi A., Guidi L., 2013c. Purple versus green-leaved *Ocimum basilicum*: Which differences occur with regard to photosynthesis under boron toxicity? *Journal of Plant Nutrition and Soil Science* 176, 942-951.
- Larcher W., 1995. Photosynthesis as a tool for indicating temperature stress events. In: E.-D. Schulze, M.M. Caldwell, *Ecophysiology of Photosynthesis*, Volume 100, pp. 261-277. Springer, The Netherlands.
- Lin Y.-F., Aarts M.G.M., 2012. The molecular mechanism of zinc and cadmium stress response in plants. *Cellular and Molecular Life Sciences* 69: 3187-3206.
- Logan B.A., Adams W.W., Demmig-Adams B., 2007. Avoiding common pitfalls of chlorophyll fluorescence analysis under field conditions. *Functional Plant Biology* 34, 853-859.
- Long S.P., Baker N.R., 1986. Saline terrestrial environments. In: N.R. Baker, S.P. Long (Eds), *Photosynthesis in contrasting environments*, pp. 63-102. Elsevier, New York.
- Maathuis F.J.M., Diatloff E., 2012. Roles and functions of plant mineral nutrients. *Plant Mineral Nutrients*. In: Maathuis F.J.M. (Ed.) *Method in Molecular Biology*, pp. 1-21. Humana Press, Clifton, New Jersey (USA).
- Maggs R., Ashmore M.R., 1998. Growth and yield responses of Pakistan rice (*Oryza sativa* L.) cultivars to O₃ and NO₂. *Environmental Pollution* 103, 159-170.
- Manrique E., Balaguer L., Barnes J., Davison A.W., 1993. Photoinhibition studies in lichens using chlorophyll fluorescence analysis. *The Bryologist* 96, 443-449.
- Marquez-García B., Horemans N., Cuypers A., Guisez Y., Córdoba F., 2010. Antioxidants in *Erica andevalensis*: a comparative study between wild plants and cadmium-exposed plants under controlled conditions. *Plant Physiology and Biochemistry* 49, 110-115.
- Marschner P., 2012. *Marschner's mineral nutrition of higher plants*. Academic Press, London.
- Massacci A., Nabiev S.M., Pietrosanti L., Nematov S.K., Chernikova T.N., Thor K., Leipner J., 2008. Response of the photosynthetic apparatus of cotton (*Gossypium hirsutum*) to the onset of drought stress under field conditions studied by gas-exchange analysis and chlorophyll fluorescence imaging. *Plant Physiology and Biochemistry* 46, 189-195.
- Mehta P., Jajoo A., Mathur S., Bharti S., 2010. Chlorophyll *a* fluorescence study revealing effects of high salt stress on photosystem II in wheat leaves. *Plant Physiology and Biochemistry*, 48, 16-20.
- Melgar J.C., Guidi L., Remorini D., Agati G., Degl'innocenti E., Castelli S., Baratto M.C., Faraloni C., Tattini M., 2009. Antioxidant defences and oxidative damage in salt-treated olive plants under contrasting sunlight irradiance. *Tree Physiology* 29, 1187-1198.
- Mishra A., Heyer A.G., Mishra K.B., 2014. Chlorophyll fluorescence emission can screen cold tolerance of cold acclimated *Arabidopsis thaliana* accessions. *Plant Methods*

10, 38 doi:10.1186/1746-4811-10-38.

Mishra K.B., Iannacone R., Petrozza A., Mishra A., Armentano N., La Vecchia G., Trtílek M., Cellini F., Nedbal L., 2012. Engineered drought tolerance in tomato plants is reflected in chlorophyll fluorescence emission. *Plant Science* 182, 79-86.

Misson L., Rocheteau A., Rambal S., Ourcival J.-M., Limousin J.-M., Rodriguez R., 2010. Functional changes in the control of carbon fluxes after 3 years of increased drought in a Mediterranean evergreen forest? *Global Change Biology* 16, 2461-2475.

Mobin M., Khan N.A., 2007. Photosynthetic activity, pigment composition and antioxidative response of two mustard (*Brassica juncea*) cultivars differing in photosynthetic capacity subjected to cadmium stress. *Journal of Plant Physiology* 164, 601-610.

Mochizuki M.J., Daugovish O., Ahumada M.H., Ashkan S., Lovatt C.J., 2010. Carbon dioxide enrichment may increase yield of field-grown red raspberry under high tunnels. *HortTechnology* 20, 213-219.

Molina-Bravo R., Arellano C., Sosinski B.R., Fernandez G.E., 2011. A protocol to assess heat tolerance in a segregating population of raspberry using chlorophyll fluorescence. *Scientia Horticulturae* 130, 524-530.

Mott K.A., Buckley T.N., 2000. Patchy stomatal conductance: emergent collective behaviour of stomata. *Trends in Plant Science* 5, 258-262.

Msilini N., Zaghdoudi M., Govindachary S., Lachaâl M., Ouerghi Z., 2011. Inhibition of photosynthetic oxygen evolution and electron transfer from the quinone acceptor QA – to QB by iron deficiency. *Photosynthesis Research* 107, 247-256.

Munns R., Tester M., 2008. Mechanisms of salinity tolerance. *Annual Review of Plant Biology* 59, 651-681.

Murata N., 1969. Control of excitation transfer in photosynthesis. II. Magnesium ion-dependent distribution of excitation energy between two pigment systems in spinach chloroplasts. *Biochimica et Biophysica Acta (BBA)-Bioenergetics*, 189, 171-181.

Murchie E.H., Lawson T., 2013. Chlorophyll fluorescence analysis: a guide to good practice and understanding some new applications. *Journal of Experimental Botany* 64, 3983-3998.

Nagajyoti P.C., Lee K.D., Sreekanth T.V.M., 2010. Heavy metals, occurrence and toxicity for plants: a review. *Environmental Chemistry Letters* 8, 199-216.

Nedbal L., Soukupová J., Kaftan D., Whitmarsh J., Trtílek M.,

2000. Kinetics imaging of chlorophyll fluorescence using modulated light. *Photosynthesis Research* 66, 3-12.

Nedbal L., Whitmarsh J., 2004. Chlorophyll fluorescence imaging of leaves and fruits. In: Papageorgiou, G.C. Govindjee (Eds.), *Chlorophyll a Fluorescence. A Signature of Photosynthesis*, pp. 389–407. Springer, The Netherlands.

Netondo G.W., Onyango J.C., Beck E., 2004. Sorghum and salinity: II. Gas exchange and chlorophyll fluorescence of sorghum under salt stress. *Crop Science*, 44, 806-811.

Noctor G., Veljovic Jovanovic S., Driscoll S., Novitskaya L., Foyer C.H., 2002. Drought and oxidative load in the leaves of C3 plants: a predominant role for photorespiration? *Annals of Botany* 89, 841-850.

Nogués I., Llusà J., Ogaya R., Munné-Bosch S., Sardans J., Peñuelas J., Loreto F., 2014. Physiological and antioxidant responses of *Quercus ilex* to drought in two different seasons. *Plant Biosystem* 148, 268-278.

Ogaya R., Peñuelas J., Asensio D., Llusà J., 2011. Chlorophyll fluorescence responses to temperature and water availability in two co-dominant Mediterranean shrub and tree species in a long-term field experiment simulating climate change. *Environmental and Experimental Botany* 73, 89-93.

Omasa K., 1990. Images instrumentation methods of plant analysis. In: H.F. Linskens, J.F. Jackson (Eds.), *Physical Methods in Plant Science*, pp. 203–243. Springer-Verlag, Berlin.

Omasa K., Shimazaki K.I., Aiga I., Larcher W., Onoe M., 1987. Image analysis of chlorophyll fluorescence transients for diagnosing the photosynthetic system of attached leaves. *Plant Physiology* 84, 748-752.

Omasa K., Takayama k., 2003. Simultaneous measurement of stomatal conductance, non-photochemical quenching, and photochemical yield of photosystem II in intact leaves by thermal and chlorophyll fluorescence imaging. *Plant and Cell Physiology* 44, 1290-1300.

Oquist G., Martin B., 1986. Cold climates. In: N.R. Baker, S.P. Long (Eds.) *Photosynthesis in Contrasting Environments, Topics in Photosynthesis*. Vol. 7, pp. 237-293. Elsevier Science, The Netherlands.

Ort D.R., Baker N.R., 2002. A photoprotective role for O₂ as an alternative electron sink in photosynthesis? *Current Opinion in Plant Biology* 5, 193-198.

Osmond C.B., 1994. What is photoinhibition? Some insights from comparison of shade and sun plants. In: N.R. Baker, J.R. Bowyer (Eds.) *Photoinhibition of Photosynthesis: From Molecular Mechanisms to the Field*, pp. 1-24. BIOS Scientific, Oxford.

- Osório J., Osório M.L., Correia P.J., de Varennes A., Pestana M., 2014. Chlorophyll fluorescence imaging as a tool to understand the impact of iron deficiency and resupply on photosynthetic performance of strawberry plants. *Scientia Horticulturae* 165, 148-155.
- Oukarroum A., Schansker G., Strasser R.J., 2009. Drought stress effects on photosystem I content and photosystem II thermotolerance analyzed using Chl *a* fluorescence kinetics in barley varieties differing in their drought tolerance. *Physiologia Plantarum* 137, 188-199.
- Oxborough K., Baker N., 1997. Resolving chlorophyll *a* fluorescence imaging of photosynthetic efficiency into photochemical and nonphotochemical components - calculation of q_p and F_v'/F_m' without measuring F_0' . *Photosynthesis Research* 54, 135-142.
- Padidam M., Venkateswarlu K., Johri M.M., 1991. Ammonium represses NADPH nitrate reductase in the moss *Funaria hygrometrica*. *Plant Science* 75, 185-194.
- Paoletti E., 2009. Ozone and urban forests in Italy. *Environmental Pollution* 157, 1506-1512.
- Penella C., Nebauer S.G., Quiñones A., SanBautista A., López-Galarza S., Calatayud A., 2015. Some rootstocks improve pepper tolerance to mild salinity through ionic regulation. *Plant Science*, 230, 12-22.
- Penella C., Nebauer S.G., SanBautista A., Gorbe E., Calatayud A., 2013. Evaluation for salt stress tolerance of pepper genotypes to be used as rootstocks. *Journal of Food, Agriculture & Environment*, 11, 1101-1107.
- Pietrini F., Zacchini M., Iori V., Pietrosanti L., Ferretti M., Massacci A., 2010. Spatial distribution of cadmium in leaves and its impact on photosynthesis: examples of different strategies in willow and poplar clones. *Plant Biology* 12, 355-363.
- Pinheiro C., Chaves M.M., 2011. Photosynthesis and drought: can we make metabolic connections from available data? *Journal of Experimental Botany* 62, 869-882.
- Powles S.B., 1984. Photoinhibition of photosynthesis induced by visible light. *Annual Review of Plant Physiology* 35, 15-44.
- Prasad M.N.V., 2013. Heavy metal stress in plants: from biomolecules to ecosystems. Springer Science & Business Media, Berlin.
- Pukacki P.M., 2004. The effect of industrial air pollution on membrane lipid composition of Scots pine (*Pinus sylvestris* L.) needles. *Acta Societatis Botanicorum Poloniae* 73, 187-191.
- Qiao Z., Murray F., 1998. The effects of NO₂ on the uptake and assimilation of nitrate by soybean plants. *Environmental and Experimental Botany* 10, 33-40.
- Quick W.P., Horton P., 1984. Studies on the induction of chlorophyll fluorescence in barley protoplasts. II. resolution of fluorescence quenching by redox state and the transthylakoid pH gradient. *Proceedings of Royal Society of London B* 220, 371-382.
- Redondo-Gómez S., Andrades-Moreno L., Mateos-Naranjo E., Parra R., Valera-Burgos J., Aroca R., 2011. Synergic effect of salinity and zinc stress on growth and photosynthetic responses of the cordgrass, *Spartina densiflora*. *Journal of Experimental Botany* 62, 5521-5530.
- Roháček K., Bertrand M., Moreau B., Jacquette B., Caplat C., Morant-Manceau A., Schoefs B., 2014. Relaxation of the non-photochemical chlorophyll fluorescence quenching in diatoms: kinetics, components and mechanisms. *Philosophical Transactions of the Royal Society of London B: Biological Sciences* 369. DOI: 10.1098/rstb.2013.0241.
- Roháček K., Soukupová J., Barták M. 2008. Chlorophyll fluorescence: a wonderful tool to study plant physiology and plant stress. *Plant Cell Compartments-Selected Topics. Research Signpost*, 41-104.
- Ruban A.V., 2015. Evolution under the sun: optimizing light harvesting in photosynthesis. *Journal of Experimental Botany* 66, 7-23.
- Ruban A.V., Johnson M.P., 2009. Dynamics of higher plant photosystem cross-section associated with state transitions. *Photosynthesis Research* 99, 173-183.
- Ruban A.V., Johnson M.P., Duffy C.D.P., 2012. The photoprotective molecular switch in the photosystem II antenna. *Biochimica et Biophysica Acta (BBA) - Bioenergetics* 1817, 167-181.
- Salvucci M.E., Crafts-Brandner S.J., 2004. Relationship between the heat tolerance of photosynthesis and the thermal stability of Rubisco activase in plants from contrasting thermal environments. *Plant Physiology* 134, 1460-1470.
- Sanità di Toppi L., Gabbriellini R., 1999. Response to cadmium in higher plants. *Environmental and Experimental Botany* 41, 105-130.
- Schmidt W., Neubauer C., Kolbowski J., Schreiber U., Urbach W., 1990. Comparison of effects of air pollutants (SO₂, O₃, NO₂) on intact leaves by measurements of chlorophyll fluorescence and P700 absorbance changes. *Photosynthesis Research* 25, 241-248.
- Scholes J.D., Rolfe S.A., 1996. Photosynthesis in localised regions of oat leaves infected with crown rust (*Puccinia coronata*): Quantitative imaging of chlorophyll fluorescence. *Planta* 199, 573-582.

- Schreiber U., 1978. Chlorophyll fluorescence assay for ozone injury in intact plants. *Plant Physiology* 61, 80-84.
- Schreiber U., 1986. Detection of rapid induction kinetics with a new type of high-frequency modulated chlorophyll fluorometer. In: Amesz J., Hoff A.J., Van Gorkum H.J. (Eds.) *Current topics in photosynthesis*, pp. 259-270. Springer Netherlands.
- Schreiber U., 2004. Pulse-Amplitude-Modulation (PAM) fluorometry and saturation pulse method: an overview. In G.C. Papageorgiou & Govindjee (Eds.), *Advances in Photosynthesis and Respiration, Chlorophyll fluorescence. A signature of photosynthesis*, pp. 279-319. Springer, The Netherlands.
- Sharma S.S., Dietz K.-J., 2009. The relationship between metal toxicity and cellular redox imbalance. *Trends in Plant Science* 14: 43-50.
- Shaw P.J.A., McLeod A.R., 1995. The effects of SO₂ and O₃ on the foliar nutrition of Scots pine, Norway spruce and Sitka spruce in the Liphook open-air fumigation experiment. *Plant. Cell & Environment* 18, 237-245.
- Silva E.N., Silveira J.A.G., Ribeiro R.V., Vieira S.A., 2015. Photoprotective function of energy dissipation by thermal processes and photorespiratory mechanisms in *Jatropha curcas* plants during different intensities of drought and after recovery. *Environmental and Experimental Botany* 110, 36-45.
- Singh D.P., Sarkar R.K., 2014. Distinction and characterization of salinity tolerant and sensitive rice cultivars as probed by the chlorophyll fluorescence characteristics and growth parameters. *Functional Plant Biology* 41, 727-736.
- Strand M., 1995. Persistent effects of low concentrations of SO₂ and NO₂ on photosynthesis in Scots pine (*Pinus sylvestris*) needles. *Physiologia Plantarum* 95, 581-590.
- Surówka E., Karolewski P., Niewiadomska E., Libik M., Miszalski Z., 2007. Antioxidative response of *Mesembryanthemum crystallinum* plants to exogenous SO₂ application. *Plant Science* 172, 76-84.
- Takahashi S., Badger M.R., 2011. Photoprotection in plants: a new light on photosystem II damage. *Trends in Plant Science* 16, 53-60.
- Tattini M., Loreto F., Fini A., Guidi L., Brunetti C., Velikova V., Gori A., Ferrini F., 2015. Isoprenoids and phenylpropanoids are part of the antioxidant defense orchestrated daily by drought-stressed *Platanus × acerifolia* plants during Mediterranean summers. *New Phytologist* 207, 613-626.
- Tattini M., Remorini D., Pinelli P., Agati G., Saracini E., Traversi M.S., Massai R., 2006. Morpho-anatomical, physiological and biochemical adjustments in response to root zone salinity stress and high solar radiation in two Mediterranean evergreen shrubs, *Myrtus communis* and *Pistacia lentiscus*. *New Phytologist*, 170, 779-794.
- Tattini M., Traversi M.L., 2009. On the mechanism of salt tolerance in olive (*Olea europaea* L.) under low-or high-Ca²⁺ supply. *Environmental and Experimental Botany*, 65, 72-81.
- USDA-ARS, 2008. United States Department of Agriculture. Research Databases. Bibliography on Salt Tolerance. <http://www.ars.usda.gov/Services/docs.htm?docid=8908>.
- van Hove L.W.A., Bossen M.E., Mensink M.G.J., van Kooten O., 1992. Physiological effects of a long term exposure to low concentrations of NH₃, NO₂ and SO₂ on Douglas fir (*Pseudotsuga menziesii*). *Physiologia Plantarum* 86, 559-567.
- Walters R.G., Horton P., 1991. Resolution of components of non-photochemical chlorophyll fluorescence quenching in barley leaves. *Photosynthesis Research* 27, 121-133.
- Wilhelm C., Selmar D., 2011. Energy dissipation is an essential mechanism to sustain the viability of plants: The physiological limits of improved photosynthesis. *Journal of Plant Physiology* 168, 79-87.
- Willits D.H., Peet M.M., 2001. Measurement of chlorophyll fluorescence as a heat stress indicator in tomato: laboratory and greenhouse comparisons. *Journal of American Society of Horticultural Science* 126, 188-194.
- Wise R.R., Ortiz-Lopez A., Ort D.R., 1992. Spatial distribution of photosynthesis during drought in field-grown and acclimated and nonacclimated growth chamber-grown cotton. *Plant Physiology* 100, 26-32.
- Wodala B., Eitel G., Gyula T.N., Ördög A., Horváth F., 2012. Monitoring moderate Cu and Cd toxicity by chlorophyll fluorescence and P700 absorbance in pea leaves. *Photosynthetica* 50, 380-386.
- Yadavalli V., Neelam S., Rao A.S.V.C., Reddy A.R., Subramanyam R., 2012. Differential degradation of photosystem I subunits under iron deficiency in rice. *Journal of Plant Physiology* 169, 753-759.
- Yamane Y., Kashino Y., Koike H., Satoh K., 1998. Effects of high temperatures on the photosynthetic systems in spinach: Oxygen-evolving activities, fluorescence characteristics and the denaturation process. *Photosynthesis Research* 57, 51-59.
- Zdruli P., 2014. Land resources of the Mediterranean: status, pressures, trends and impacts on future regional development. *Land Degradation and Development*, 25, 373-384.
- Zribi L., Fatma G., Fatma R., Salwa R., Hassan N., Nejib

R.M., 2009. Application of chlorophyll fluorescence for the diagnosis of salt stress in tomato "*Solanum lycopersicum* (variety Rio Grande)". *Scientia Horticulturae*, 120, 367-372.

Zurek G., Rybka K., Pogrzeba M., Krzyzak J., Prokopiuk K., 2014. Chlorophyll a fluorescence in evaluation of the effect of heavy metal soil contamination on perennial grasses. *PLoS ONE* 9(3): e91475. doi:10.1371/journal.pone.0091475.

UNCORRECTED PROOF