

Genomewide meta-analysis identifies loci associated with IGF-I and IGFBP-3 levels with impact on age-related traits

Alexander Teumer,^{1,2,*} Qibin Qi,^{3,*} Maria Nethander,⁴ Hugues Aschard,⁵ Stefania Bandinelli,⁶ Marian Beekman,⁷ Sonja I. Berndt,⁸ Martin Bidlingmaier,⁹ Linda Broer,^{10,11} CHARGE Longevity Working Group, Anne Cappola,¹² Gian Paolo Ceda,^{13,14} Stephen Chanock,² Ming-Huei Chen,^{15,16} Tai C. Chen,¹⁷ Yii-Der Ida Chen,¹⁸ Jonathan Chung,¹⁹ Fabiola Del Greco Miglianico,^{20,21} Joel Eriksson,²² Luigi Ferrucci,²³ Nele Friedrich,²⁴ Carsten Gnewuch,²⁵ Mark O. Goodarzi,²⁶ Niels Grarup,²⁷ Tingwei Guo,¹⁹ Elke Hammer,² Richard B. Hayes,²⁸ Andrew A. Hicks,²⁰ Albert Hofman,²⁹ Jeanine J. Houwing-Duistermaat,³⁰ Frank Hu,^{31,32} David J. Hunter,^{31,33} Lise L. Husemoen,³⁴ Aaron Isaacs,^{35,36} Kevin B. Jacobs,² Joop A. M. J. L. Janssen,³⁷ John-Olov Jansson,³⁸ Nico Jehmlich,^{2,39} Simon Johnson,¹⁹ Anders Juul,⁴⁰ Magnus Karlsson,⁴¹ Tuomas O. Kilpelainen,²⁷ Peter Kovacs,⁴² Peter Kraft,^{32,33,43} Chao Li,¹⁹ Allan Linneberg,^{34,44,45} Yongmei Liu,⁴⁶ Ruth J. F. Loos,⁴⁷ Body Composition Genetics Consortium, Mattias Lorentzon,²² Yingchang Lu,⁴⁷ Marcello Maggio,^{13,14} Reedik Magi,^{48,49} James Meigs,^{50,51} Dan Mellström,²² Matthias Nauck,^{31,33} Anne B. Newman,⁵² Michael N. Pollak,⁵³ Peter P. Pramstaller,^{20,21} Inga Prokopenko,⁵⁴ Bruce M. Psaty,⁵⁵ Martin Reincke,⁹ Eric B. Rimm,^{31,32} Jerome I. Rotter,¹⁸ Aude Saint Pierre,⁵⁶ Claudia Schurmann,^{57,58} Sudha Seshadri,^{15,16} Klara Sjögren,²² P. Eline Slagboom,⁷ Howard D. Strickler,³ Michael Stumvoll,⁴² Yousin Suh,^{19,59,60} Qi Sun,^{31,32} Cuilin Zhang,⁶¹ Johan Svensson,²² Toshiko Tanaka,²³ Archana Tare,¹⁹ Anke Tönjes,⁶² Hae-Won Uh,³⁰ Cornelia M. van Duijn,^{35,36} Diana van Heemst,⁶³ Liesbeth Vandenput,²² Ramachandran S. Vasani,^{64,65} Uwe Völker,² Sara M. Willems,³⁵ Claes Ohlsson,²² Henri Wallaschofski²⁴ and Robert C. Kaplan³

¹Institute for Community Medicine, University Medicine Greifswald, 17475, Greifswald, Germany

²Interfaculty Institute for Genetics and Functional Genomics, University Medicine Greifswald, 17475, Greifswald, Germany

³Department of Epidemiology and Population Health, Albert Einstein College of Medicine, Bronx, NY 10461, USA

⁴Bioinformatics Core Facility, The Sahlgrenska Academy, University of Gothenburg, Gothenburg 40530, Sweden

⁵Program in Genetic Epidemiology and Statistical Genetics, Department of Epidemiology, Harvard School of Public Health, Boston, MA 02115, USA

⁶Geriatric Unit, Azienda Sanitaria di Firenze (ASF), Florence, Italy

⁷Molecular Epidemiology, Leiden University Medical Center, Leiden 2300 RC, The Netherlands

⁸Division of Cancer Epidemiology and Genetics, National Cancer Institute, Bethesda, MD 20892, USA

⁹Medizinische Klinik und Poliklinik IV, Klinikum der Universität München, 80336, Munich, Germany

¹⁰Department of Epidemiology, Subdivision Genetic Epidemiology, Erasmus Medical Center, Postbus 2040, 3000 CA, Rotterdam, The Netherlands

¹¹Department of Internal Medicine, Erasmus Medical Center, Postbus 2040, 3000 CA, Rotterdam, The Netherlands

¹²Division of Endocrinology, Diabetes, and Metabolism, Department of Medicine, Center for Clinical Epidemiology and Biostatistics, University of Pennsylvania School of Medicine, Philadelphia, PA 19104, USA

¹³Section of Geriatrics, Department of Clinical and Experimental Medicine, University of Parma, Parma, Italy

¹⁴Geriatric Rehabilitation Department, University-Hospital of Parma, Parma, Italy

¹⁵Framingham Heart Study, Framingham, MA 01702, USA

¹⁶Department of Neurology, Boston University School of Medicine, Boston, MA 02118, USA

¹⁷Section of Endocrinology, Diabetes & Nutrition, Boston University School of Medicine, Boston, MA 02118, USA

¹⁸Institute for Translational Genomics and Population Sciences, Los Angeles BioMedical Research Institute at Harbor-UCLA Medical Center, Torrance, CA 90502, USA

¹⁹Department of Genetics, Albert Einstein College of Medicine, Bronx, NY 10461, USA

²⁰Center for Biomedicine, European Academy Bozen/Bolzano (EURAC), Bolzano 39100, Italy

²¹Affiliated Institute of the University of Lübeck, 23562, Lübeck, Germany

²²Department of Internal Medicine and Clinical Nutrition, Institute of Medicine, Sahlgrenska Academy, University of Gothenburg, 41345, Gothenburg, Sweden

²³Translational Gerontology Branch, National Institute on Aging, Baltimore, MD 21225, USA

²⁴Institute of Clinical Chemistry and Laboratory Medicine, University Medicine Greifswald, 17475, Greifswald, Germany

²⁵Institute for Clinical Chemistry and Laboratory Medicine, Regensburg University Medical Center, D-93053, Regensburg, Germany

²⁶Division of Endocrinology, Diabetes and Metabolism, Department of Medicine, Cedars-Sinai Medical Center, Los Angeles, CA 90048, USA

²⁷The Novo Nordisk Foundation Center for Basic Metabolic Research, Section of Metabolic Genetics, Faculty of Health and Medical Sciences, University of Copenhagen, 2100, Copenhagen, Denmark

²⁸Division of Epidemiology, Department of Population Health, New York University School of Medicine, New York, NY 10016, USA

²⁹Department of Epidemiology, Erasmus University Medical Center, Rotterdam 3000 CA, The Netherlands

³⁰Leiden University Medical Center, Medical Statistics and Bioinformatics, Leiden 2300 RC, The Netherlands

³¹Department of Nutrition, Harvard School of Public Health, Boston, MA 02115, USA

³²Channing Division of Network Medicine, Department of Medicine, Brigham and Women's Hospital and Harvard Medical School, Boston, MA 02115, USA

³³Department of Epidemiology and Statistical Genetics, Harvard School of Public Health, Boston, MA 02115, USA

³⁴Research Centre for Prevention and Health, Capital Region of Denmark, Copenhagen DK-2600, Denmark

³⁵Genetic Epidemiology Unit, Department of Epidemiology, Erasmus University Medical Center, Rotterdam 3000 CA, The Netherlands

³⁶Centre for Medical Systems Biology, Leiden 2300 RC, The Netherlands

³⁷Department of Internal Medicine, Erasmus University Medical Center, Rotterdam 3000 CA, The Netherlands

³⁸Department of Physiology, Institute of Neuroscience and Physiology, Sahlgrenska Academy, University of Gothenburg, 41345, Gothenburg, Sweden

Correspondence

Robert C. Kaplan, 1300 Morris Park Avenue, Albert Einstein College of Medicine, Bronx, NY 10461, USA. Tel.: 718 430 4076; fax: x718-430-3588;

e-mail: robert.kaplan@einstein.yu.edu

*These authors contributed equally to this work.

Accepted for publication 1 April 2016

³⁹Department of Proteomics, Helmholtz – Centre for Environmental Research – UFZ, 04318, Leipzig, Germany

⁴⁰Department of Growth and Reproduction, Rigshospitalet, University of Copenhagen, Copenhagen DK-2100, Denmark

⁴¹Clinical and Molecular Osteoporosis Research Unit, Department of Clinical Sciences, Lund University, 20502, Malmö, Sweden

⁴²IFB Adiposity Diseases, University of Leipzig, 04103, Leipzig, Germany

⁴³Department of Biostatistics, Harvard School of Public Health, Boston, MA 02115, USA

⁴⁴Department of Clinical Experimental Research, Glostrup University Hospital, Copenhagen DK-2600, Denmark

⁴⁵Department of Clinical Medicine, Faculty of Health and Medical Sciences, University of Copenhagen, Copenhagen DK-2200, Denmark

⁴⁶Division of Public Health Sciences, Department of Epidemiology and Prevention, Wake Forest School of Medicine, Winston-Salem, NC 27157, USA

⁴⁷The Genetics of Obesity and Related Metabolic Traits Program, The Charles Bronfman Institute for Personalized Medicine, The Icahn School of Medicine at Mount Sinai, New York, NY 10029, USA

⁴⁸Estonian Genome Center, University of Tartu, Tartu, Estonia

⁴⁹Wellcome Trust Centre for Human Genetics, University of Oxford, Oxford, UK

⁵⁰General Medicine Division, Department of Medicine, Massachusetts General Hospital, Boston, MA 02114, USA

⁵¹Division of General Medicine, Harvard Medical School, Boston, MA 02115, USA

⁵²Department of Epidemiology, School of Public Health, University of Pittsburgh, Pittsburgh, PA 15261, USA

⁵³Departments of Experimental Medicine and Oncology, McGill University, Montréal, Québec Canada, H3A 0G4

⁵⁴Department of Genomics of Common Disease, School of Public Health, Imperial College London, London W120NN, UK

⁵⁵Departments of Epidemiology, Medicine and Health Services, University of Washington, Seattle, WA 98101, USA

⁵⁶INSERM U1078, Brest, France

⁵⁷The Charles Bronfman Institute for Personalized Medicine, Icahn School of Medicine at Mount Sinai, New York, NY 10029, USA

⁵⁸The Genetics of Obesity and Related Metabolic Traits Program, Icahn School of Medicine at Mount Sinai, New York, NY 10029, USA

⁵⁹Department of Medicine, Albert Einstein College of Medicine, Bronx, NY 10461, USA

⁶⁰Institute of Aging Research, Guangdong Medical College, Dongguan, China

⁶¹Epidemiology Branch, Division of Epidemiology, Statistics and Prevention Research, Eunice Kennedy Shriver National Institute of Child Health and Human Development, National Institutes of Health, 6100 Executive Blvd, Rockville, MD 20852, USA

⁶²Medical Department, University of Leipzig, 04103, Leipzig, Germany

⁶³Gerontology and Geriatrics, Leiden University Medical Center, Leiden 2300 RC, The Netherlands

⁶⁴Boston University and National Heart, Lung & Blood Institute's Framingham Heart Study, Framingham, MA 01702, USA

⁶⁵Preventive Medicine & Epidemiology Section, Boston University School of Medicine, Boston, MA 02118, USA

Summary

The growth hormone/insulin-like growth factor (IGF) axis can be manipulated in animal models to promote longevity, and IGF-related proteins including IGF-I and IGF-binding protein-3 (IGFBP-3) have also been implicated in risk of human diseases including cardiovascular diseases, diabetes, and cancer. Through genome-wide association study of up to 30 884 adults of European ancestry from 21 studies, we confirmed and extended the list of previously identified loci associated with circulating IGF-I and IGFBP-3 concentrations (*IGF1*, *IGFBP3*, *GCKR*, *TNS3*, *GHSR*, *FOXO3*, *ASXL2*, *NUBP2/IGFALS*, *SORCS2*, and *CELSR2*). Significant sex

interactions, which were characterized by different genotype–phenotype associations between men and women, were found only for associations of IGFBP-3 concentrations with SNPs at the loci *IGFBP3* and *SORCS2*. Analyses of SNPs, gene expression, and protein levels suggested that interplay between *IGFBP3* and genes within the *NUBP2* locus (*IGFALS* and *HAGH*) may affect circulating IGF-I and IGFBP-3 concentrations. The IGF-I-decreasing allele of SNP rs934073, which is an eQTL of *ASXL2*, was associated with lower adiposity and higher likelihood of survival beyond 90 years. The known longevity-associated variant rs2153960 (*FOXO3*) was observed to be a genome-wide significant SNP for IGF-I concentrations. Bioinformatics analysis suggested enrichment of putative regulatory elements among these IGF-I- and IGFBP-3-associated loci, particularly of rs646776 at *CELSR2*. In conclusion, this study identified several loci associated with circulating IGF-I and IGFBP-3 concentrations and provides clues to the potential role of the IGF axis in mediating effects of known (*FOXO3*) and novel (*ASXL2*) longevity-associated loci.

Key words: aging; genome-wide association study; growth hormone axis; IGF-I; IGFBP-3; longevity.

Introduction

The insulin-like growth factor (IGF) axis is an evolutionarily conserved system that plays important biologic roles in embryonic development, growth, and adulthood (Le Roith, 1997). IGF-I mediates most of the activity of growth hormone (GH). The GH/IGF system consists of two ligands (IGF-I and IGF-II), six IGF-binding proteins (IGFBP-1–6), and three IGF receptor subtypes (IGF-I receptor, IGF-II receptor, and insulin receptor) (Jones & Clemmons, 1995). IGF-I promotes mitosis and cell cycle progression and is involved in human postnatal growth and development. Circulating IGF-I is mainly bound to IGF-binding proteins (IGFBPs) (Fowlkes, 1997), which affect activity (Lee *et al.*, 1997) and half-life of IGF-I (Guler *et al.*, 1989). From the clinical point of view, the measurement of IGF-I and IGFBP-3 blood concentrations is an important tool in establishing the diagnosis as well as monitoring treatment of GH-related diseases (Ho & Participants, 2007; Cohen *et al.*, 2008; Melmed *et al.*, 2009).

Circulating concentrations of IGF-I and IGFBP-3 have been associated with risk of type 2 diabetes, cardiovascular diseases, cancer, and mortality in epidemiological studies (Juul *et al.*, 2002; Vasan *et al.*, 2003; Renahan *et al.*, 2004; Kaplan *et al.*, 2007; Friedrich *et al.*, 2009; Burgers *et al.*, 2011; Rajpathak *et al.*, 2012). In animal models, diminished IGF-I/insulin signaling has been associated with extended lifespans (Ziv & Hu, 2011), although the role of the IGF axis in human longevity remains inconclusive. Human genetic studies have suggested an association between polymorphisms in IGF-I signaling pathway genes and longevity (Willcox *et al.*, 2008; Ziv & Hu, 2011; Di Bona *et al.*, 2014). Heritability studies have provided evidence for a substantial genetic contribution to circulating concentrations of IGF-I (with heritability estimates ~40–60%) and IGFBP-3 (80%) (Harrela *et al.*, 1996; Hong *et al.*, 1996; Souren *et al.*, 2007). Identifying genetic determinants of circulating IGF-I and IGFBP-3 could lead to a better understanding of the biological basis of these factors in relation to human health and might identify pathways or susceptibility biomarkers that may assist with the development of interventions that target IGF-I, its receptors, and binding proteins.

Our prior genome-wide association study (GWAS) ($N = 10\,280$) identified four loci with genome-wide significant ($P < 5 \times 10^{-8}$)

associations with circulating IGF-I and IGFBP-3 concentrations, including SNPs in or near *IGFBP3*, *TNS3*, *SORCS2*, and *NUBP2/IGFALS*, as well as three additional loci with suggestive associations ($P < 1 \times 10^{-6}$) in or near *RPA3*, *SPOCK2*, and *FOXO3* (Kaplan et al., 2011). Some of these genes are involved in well-described IGF regulatory or signaling pathways (such as *IGFBP3* and *IGFALS*) (Deal et al., 2001; Gu et al., 2010; Schumacher et al., 2010) and are believed to influence traits that are also associated with concentrations or bioactivity of IGFs (e.g., *FOXO3* locus associated with longevity (Willcox et al., 2008) and *IGFBP3* locus associated with hip osteoarthritis (Evans et al., 2014)). To identify additional genetic variants with smaller effect sizes and enable sex specific analyses, we expanded our GWAS meta-analysis to include up to a total of 30 884 individuals of European ancestry from 21 studies with measured circulating concentrations of IGF-I and IGFBP-3. In addition, using published GWAS data, we also performed lookups of associations of identified IGF-I and IGFBP-3 loci with survival beyond 90 years and other age-related clinical traits.

Results

Characteristics of study samples

An overview of the study samples and data collection methods can be found in Tables S1 and S2 (Supporting information). Analyses of IGF-I included up to 30 884 individuals (14 424 men and 16 460 women) from 21 studies and analyses of IGFBP-3 included up to 18 995 individuals (8053 men and 10 942 women) from 13 studies.

Loci associated with circulating IGF-I and IGFBP-3 concentrations

An overview of the GWAS meta-analysis results is given by the Manhattan plots in Fig. 1 and in Fig. S1 (Supporting information). There was no indication of inflated test statistics (i.e., due to unaccounted population stratification) as seen by the quantile–quantile (QQ) plots, and genomic control lambda ranged from 1.02 to 1.08 for the meta-analysis results (Fig. S2, Supporting information) and from 0.98 to 1.08 (median 1.01) for the individual GWAS results. All lead SNPs (independent SNPs with the smallest P -value within a locus, see Methods) had a good imputation quality across the studies (median imputation quality >0.9).

After the final stage, which combines results of stages 1 and 2 plus *de novo* genotyping in stage 3, we found seven genomewide significant loci ($P < 5.0 \times 10^{-8}$) associated with circulating IGF-I concentration (Table 1). In addition to the known locus near *TNS3*, we identified new loci in or near *GCKR*, *IGF1*, *FOXO3*, *ASXL2*, *NUBP2*, and *GHSR* associated with IGF-I concentrations.

We found genomewide significant associations with IGFBP-3 concentration for SNPs in or near *IGFBP3*, *TNS3*, *NUBP2*, and *SORCS2*, thus confirming all four previously known loci (Table 1). The SNPs at *TNS3* and *NUBP2* were genomewide significantly associated with both IGF-I and IGFBP-3 concentrations and had the same direction of effect for each circulating protein.

For six of ten genomewide significant SNPs, effects were in the same direction of association for IGF-I concentrations and IGFBP-3 concentrations (Table 1).

Detailed results of the significant associations after the final stage can be found in Table 1. Results of the individual analysis stages appear in Table S3 (Supporting information). Regional association plots are shown in Figs S3 and S4 (Supporting information).

Bivariate analysis of IGF-I and IGFBP-3

We performed a bivariate analysis of IGF-I and IGFBP-3. By leveraging shared variance between the two outcomes, this analysis can have improved power to identify SNPs associated with both IGF-I and IGFBP-3 concentrations, especially in the case of SNPs that have opposite effects on positively correlated traits (Aschard et al., 2014). The bivariate analysis identified a new locus at *CELSR2* (Table 1), which had nominal association with IGFBP-3 ($P = 2.08 \times 10^{-05}$) and IGF-1 ($P = 0.0096$) in the univariate analysis. SNP rs646776 at *CELSR2* had opposite effects on the two traits, being negatively associated with IGF-1 and positively associated with IGFBP-3 (Table S4 and Fig. S5, Supporting information). In addition, SNPs at *IGFBP3*, *TNS3*, *NUBP2*, *SORCS2*, *GCKR*, *IGF1*, and *FOXO3*, identified in the univariate analysis, also showed genomewide significant associations in the bivariate analysis.

Interaction by sex

The sex-stratified analyses revealed no additional discoveries that were not detected in the overall population. Although the direction of effect was similar for *IGFBP3* and *SORCS2* SNPs within sex subgroups, these two SNPs were found to have significantly different association effect sizes between men and women for IGFBP-3, consistent with stronger associations in women. These findings of sex interaction maintained statistical significance after Bonferroni correction for the 12 tested genomewide significant lead SNPs ($P < 0.004$) (Table S5, Supporting information).

Gene-based analysis (VEGAS)

Gene-based analyses showed several significant IGF-I-associated genes within or close to the *GCKR* GWAS locus: *EIF2B4*, *FNDC4*, *GCKR*, *IFT172*, *PPM1G*, *SNX17*, *ZNF513*, *GTF3C2*, *KRTCAP3*, *MPV17*, and *NRBP1* (associated with IGF-I). New gene-based associations that were not covered by a single SNP GWAS association were found for *C6orf173* (chromosome 6) on IGF-I concentration. The following genes of the *NUBP2* GWAS locus were associated with circulating IGFBP-3 concentration: *EME2*, *IGFALS*, *MAPK8IP3*, *MRPS34*, *NME3*, *NUBP2*, *H53ST6*, *RPL3L*, *SEPX1*, and *SPSB*. Two genes, *IGFBP1* and *IGFBP3*, at the *IGFBP3* locus were associated IGFBP-3 concentration.

Lookup for expression quantitative trait loci associations

A lookup of the lead SNPs for *cis* expression quantitative trait loci (eQTL) was performed in the publicly available database of whole blood eQTL associations (Westra et al., 2013). For the following SNPs, one or more *cis* eQTL associations were found: rs1065656 (*NUBP2*), rs11977526 (*IGFBP3*), rs2153960 (*FOXO3*), rs509035 (*GHSR*), rs780093 (*GCKR*), rs934073 (*ASXL2*), and rs978458 (*IGF1*) (Table 2).

Additionally, using a similar strategy we performed lookup in the MuTHER consortium (Grundberg et al., 2012) for *cis* eQTL associations found in fat cell, skin cell, and lymphoblastic cell lines (LCL). After Bonferroni correction for 297 lookups of three different traits ($P < 5.6 \times 10^{-5}$), rs1065656 (*NUBP2*) showed significant associations, specifically with *FAHD1* (all tissues) and *HAGH* (fat cells and LCL) (Table S6, Supporting information). Furthermore, both genes were also significant in whole blood *cis* eQTL for the SNP rs1065656 (*NUBP2*) (Table 2).

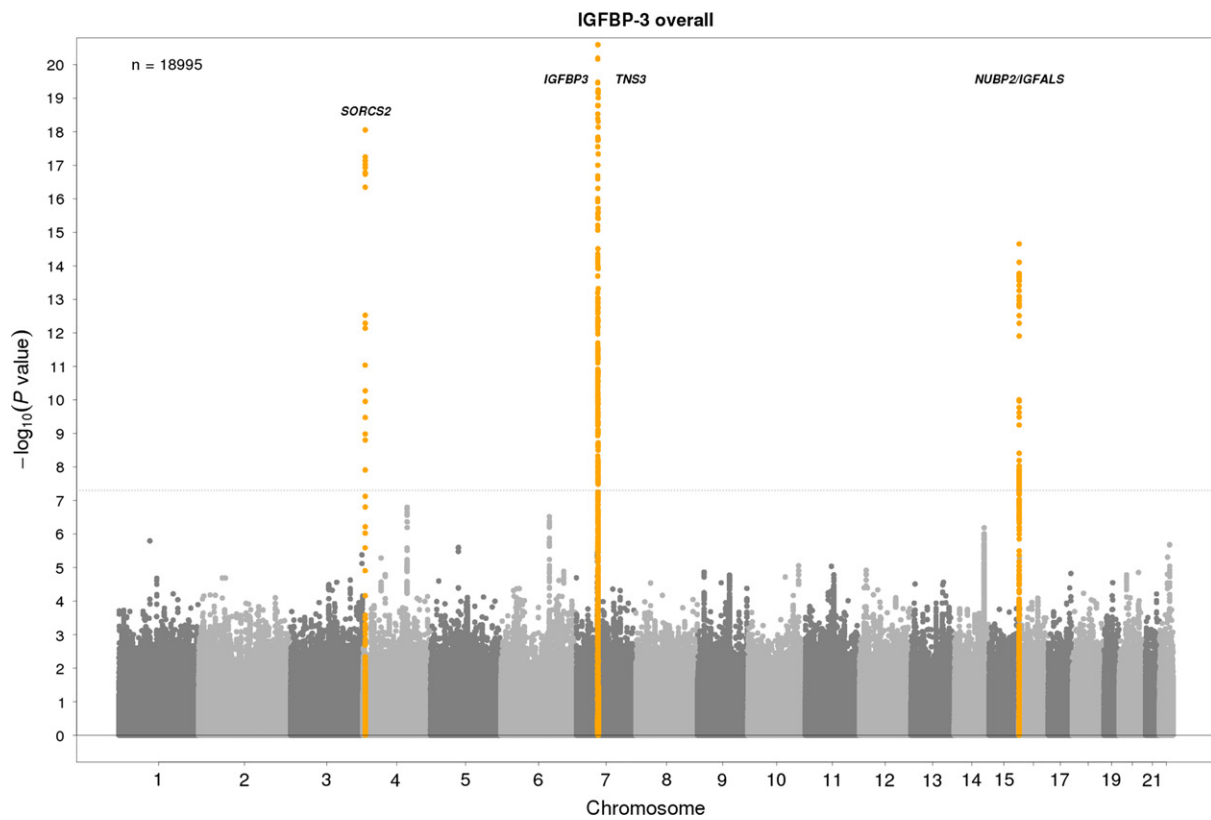
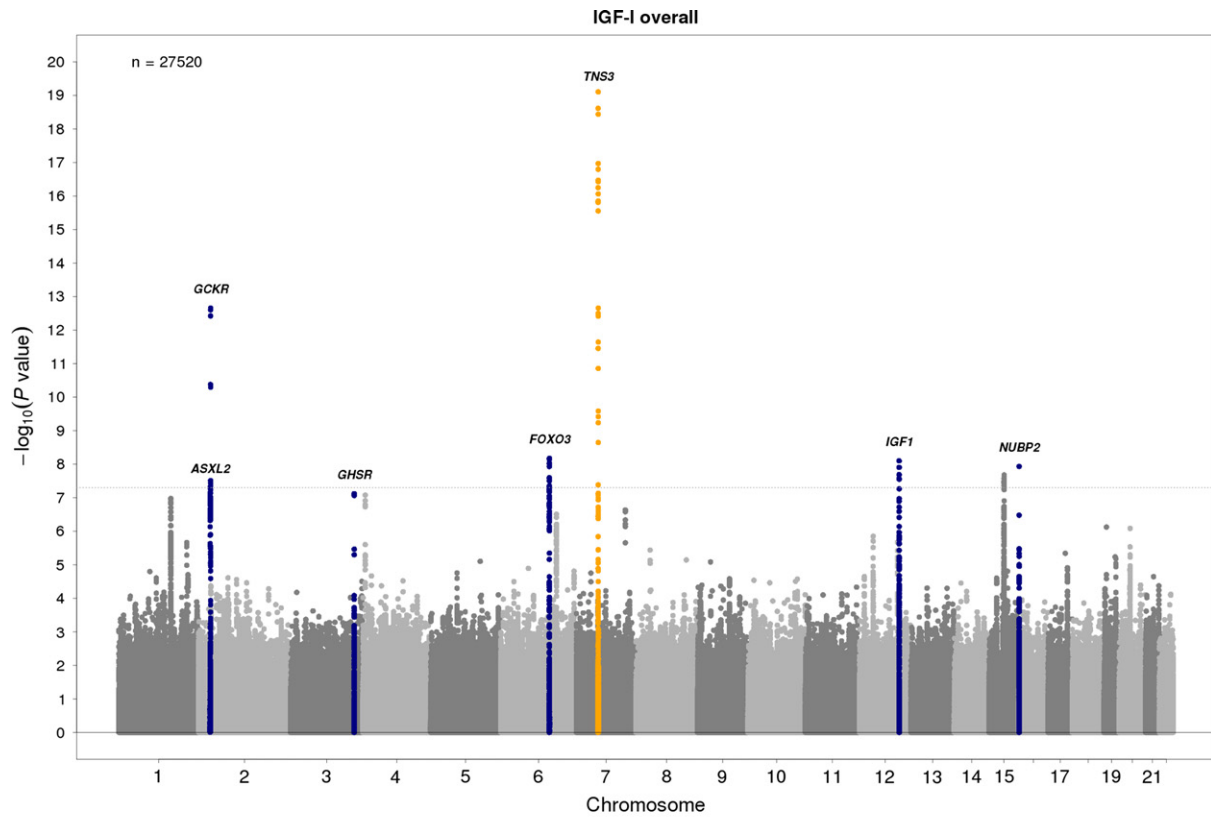


Fig. 1 Manhattan plots of the combined stage 1 and 2 meta-analysis results of IGF-I and IGFBP-3 traits in the men and women combined sample. SNPs are plotted on the x-axis according to their position on each chromosome with the $-\log_{10}$ association P -value on the y-axis. The upper solid horizontal line indicates the threshold for genomewide significance. Known hits are colored in orange and new findings in blue. Plots are truncated on the y-axis to 20.

Table 1 Loci associated with IGF-I and IGFBP-3 concentrations in men and women combined samples at genomewide significance ($P < 5 \times 10^{-8}$) after final stage

Trait	SNP	A1	A2	F1	P	I ²	Chr	Position	Nearest gene	Gene distance	Direction effect	
											IGF-I	IGFBP-3
IGF-I*	rs700753	C	G	0.35	1.60E-23	4.2	7	46,720,209	<i>TNS3</i>	561067	-	-
IGF-I	rs780093	T	C	0.41	2.19E-13	24.5	2	27,596,107	<i>GCKR</i>	0	-	+
IGF-I	rs978458	T	C	0.26	1.56E-10	0.0	12	101,326,369	<i>IGF1</i>	0	+	-
IGF-I	rs2153960	A	G	0.69	5.16E-09	22.5	6	109,082,339	<i>FOXO3</i>	0	+	+
IGF-I	rs934073	C	G	0.71	6.48E-09	21.8	2	25,790,669	<i>ASXL2</i>	25087	-	-
IGF-I	rs1065656	C	G	0.31	1.17E-08	47.9	16	1,778,837	<i>NUBP2</i>	0	-	-
IGF-I	rs509035	A	G	0.31	2.09E-08	0.0	3	173,646,143	<i>GHSR</i>	0	+	+
IGFBP-3*	rs11977526	A	G	0.41	4.16E-161	51.5	7	45,974,635	<i>IGFBP3</i>	47239	-	-
IGFBP-3*	rs700753	C	G	0.35	1.11E-46	26.7	7	46,720,209	<i>TNS3</i>	561067	-	+
IGFBP-3*	rs1065656	C	G	0.31	8.55E-23	24.1	16	1,778,837	<i>NUBP2</i>	0	-	-
IGFBP-3*	rs4234798	T	G	0.39	8.86E-19	0.0	4	7,270,834	<i>SORCS2</i>	0	-	-
Bivariate analysis	rs646776	T	C	0.78	6.87E-9	26.1/43.1	1	109,620,053	<i>CELSR2</i>	152	-	-

'-' = coding allele associated with lower IGF-1 and IGFBP-3 levels (indicated by bold italicized text were genomewide significant); '+' = coding allele associated with higher IGF-1 and IGFBP-3 levels (indicated by bold italicized text were genomewide significant); Chr = chromosome; A1 = coding allele; A2 = other allele; F1 = frequency of coding allele.

*Known association.

Table 2 Results of significant whole blood eQTL associations of the genomewide significant lead SNPs

SNP	GWAS locus	eQTL p-value	Chr	Probe center position	Probe name	SNP alleles	Effect allele	Effect direction	eQTL gene
rs1065656	<i>NUBP2</i>	3.66E-04	16	1,829,861	1710332	C/G	C	+	<i>FAHD1</i>
rs1065656	<i>NUBP2</i>	4.28E-12	16	1,799,259	4900333	C/G	C	-	<i>HAGH</i>
rs1065656	<i>NUBP2</i>	3.78E-04	16	1,809,162	1780356	C/G	C	-	<i>HAGH</i>
rs1065656	<i>NUBP2</i>	9.35E-04	16	1,760,172	5270575	C/G	C	+	<i>MAPK8IP3</i>
rs1065656	<i>NUBP2</i>	3.34E-05	16	1,762,997	6110307	C/G	C	+	<i>MRPS34</i>
rs1065656	<i>NUBP2</i>	7.75E-34	16	1,760,510	6450424	C/G	C	+	<i>NME3</i>
rs1065656	<i>NUBP2</i>	1.09E-14	16	1,778,738	6960730	C/G	C	-	<i>NUBP2</i>
rs1065656	<i>NUBP2</i>	9.87E-05	16	1,766,816	2850433	C/G	C	-	<i>SPSB3</i>
rs2153960	<i>FOXO3</i>	2.95E-06	6	109,129,272	7200189	G/A	G	-	<i>HS.133419</i>
rs509035	<i>GHSR</i>	5.97E-05	3	173,706,575	870202	G/A	A	+	<i>TNFSF10</i>
rs780093	<i>GCKR</i>	2.46E-04	2	27,440,911	5960546	T/C	T	-	<i>EIF2B4</i>
rs780093	<i>GCKR</i>	5.70E-04	2	27,440,904	6370494	T/C	T	-	<i>EIF2B4</i>
rs780093	<i>GCKR</i>	2.69E-05	2	27,518,384	430239	T/C	T	+	<i>NRBP1</i>
rs780093	<i>GCKR</i>	1.00E-10	2	27,453,289	3360468	T/C	T	+	<i>SNX17</i>
rs934073	<i>ASXL2</i>	5.96E-04	2	25,816,038	650075	G/C	G	+	<i>ASXL2</i>
rs978458	<i>IGF1</i>	1.71E-03	12	101,115,257	990136	T/C	T	+	<i>C12ORF48</i>
rs11977526	<i>IGFBP3</i>	1.84E-05	7	45,918,692	6840372	G/A	A	-	<i>IGFBP3</i>

Chr, chromosome; eQTL, expression quantitative trait loci; GWAS, genomewide association study.

mRNA of probe and gene names marked in bold showed also significant association with circulating IGFBP-3 levels ($P < 3.5 \times 10^{-4}$).

Associations of gene expression with circulating IGF-I and IGFBP-3 concentrations

We next sought to link associations between SNPs and circulating IGF-I and IGFBP-3 concentrations, with *cis* eQTL associations of the same SNPs. In the 986 samples of the SHIP-TREND cohort, we examined associations between whole blood mRNA expression levels of the genes located in a 500-kb vicinity of our significant lead SNPs and circulating

IGF-I and IGFBP-3 concentrations. Significance of the 323 array probe trait associations was defined by a false discovery rate (FDR) <0.05. Only mRNA levels of genes in vicinity of the *NUBP2* GWAS locus were significantly associated with IGF-I concentration (gene *SEPX1*) or IGFBP-3 concentration (genes *HAGH* and *RPS2*). Of note, *HAGH* was the gene on which the corresponding lead SNP (rs1065656) had also a significant *cis* eQTL. The complete gene expression association results are listed in Table S7 (Supporting information).

Association with plasma protein levels

In 197 samples of the SHIP-TREND cohort, peptides of the following proteins that were encoded by genes in a 500-kb vicinity of the lead SNPs were examined for protein quantitative trait analyses (pQTL): insulin-like growth factor-binding protein complex acid labile subunit (ALS encoded by *IGFALS* at the *NUBP2* locus), 28S ribosomal protein S34, mitochondrial (RT34 encoded by *MRPS34* at the *NUBP2* locus), insulin-like growth factor-binding protein 3 (IBP3 encoded by *IGFBP3* at the *IGFBP3* locus), and coiled-coil domain-containing protein 121 (CC121 encoded by *CCDC121* at the *GCKR* locus). Of the 32 tested SNP peptide pairs, peptides of the ALS protein had significant pQTL at FDR <0.05 (Table S8, Supporting information). Furthermore, strong associations were found in the same samples for the pQTL-associated peptides of ALS and IBP3 with circulating levels of IGF-I and IGFBP-3 ($P < 1.0 \times 10^{-6}$).

Allelic heterogeneity of the *NUBP2* locus

To further examine the *NUBP2* locus, we performed a conditional analysis of this locus based on the meta-analysis results adjusting for the lead SNP rs1065656. The analyses revealed an independent genome-wide significant association of a second SNP rs11644716 with IGFBP-3 ($P = 6.3 \times 10^{-14}$) and an opposite effect direction of the minor allele C (MAF = 0.05) compared with the lead SNP rs1065656 (MAF = 0.31) ($r^2 = 0.03$ between these two SNPs based on the HapMap R22 reference data). Although not genomewide significant, rs11644716 was also associated with circulating IGF-I concentration ($P = 1.8 \times 10^{-6}$) and has an eQTL for *HAGH* (probe 4900333: $P = 3.2 \times 10^{-5}$; probe 1780356: $P = 0.003$) and a pQTL with ALS (eight peptides with P -value <0.01). In all cases, the effect directions based on the minor allele of rs11644716 were opposite of that for the minor allele of rs1065656.

Figure 2 summarizes the relationship between the lead SNPs at the *NUBP2* locus and gene expression levels, protein levels, and circulating IGF-I and IGFBP-3 concentrations.

Associations with serum metabolites

Lead SNPs associated with IGF-I and IGFBP-3 concentrations were examined in a published metabolite-SNP association database (Suhre *et al.*, 2011; Shin *et al.*, 2014). The IGF-I-associated SNP rs780093 at *GCKR* locus was associated with glucose/mannose ratio ($P = 9.4 \times 10^{-143}$), and the IGFBP-3-associated SNP rs4234798 at *SORCS2* locus was associated with caprylate (8:0)/phenylalanine ratio ($P = 7.3 \times 10^{-7}$).

Associations of top loci with age-related traits

We also examined the associations of the IGF-I- and IGFBP-3-associated SNPs with anthropometric traits (height, BMI, waist-to-hip ratio, and fat percentage) (Heid *et al.*, 2010; Lango Allen *et al.*, 2010; Speliotes *et al.*, 2010), bone mineral density (Estrada *et al.*, 2012), risk of type 2 diabetes (Voight *et al.*, 2010; Morris *et al.*, 2012) and related traits (fasting glucose, 2-h glucose, HbA1c, fasting insulin, proinsulin, HOMA-IR, and HOMA-B) (Dupuis *et al.*, 2010; Saxena *et al.*, 2010; Soranzo *et al.*, 2010), and coronary artery disease (Coronary Artery Disease Genetics C, 2011; Schunkert *et al.*, 2011; Consortium CAD and Deloukas, 2013) (Table S9, Supporting information). Many nominal associations were expected because of the known influence of the IGF system on these traits. Of note is the finding that for rs780093 in the *GCKR* locus, the allele associated with higher IGF-I concentration was already known to be associated with elevated risk of type 2 diabetes ($P = 3.7 \times 10^{-6}$), as well as higher levels of fasting glucose, fasting insulin, and HOMA-IR (all $P < 2.0 \times 10^{-4}$), lower 2-h glucose levels ($P = 1.7 \times 10^{-6}$), increased height ($P = 2.0 \times 10^{-4}$), lower waist-to-

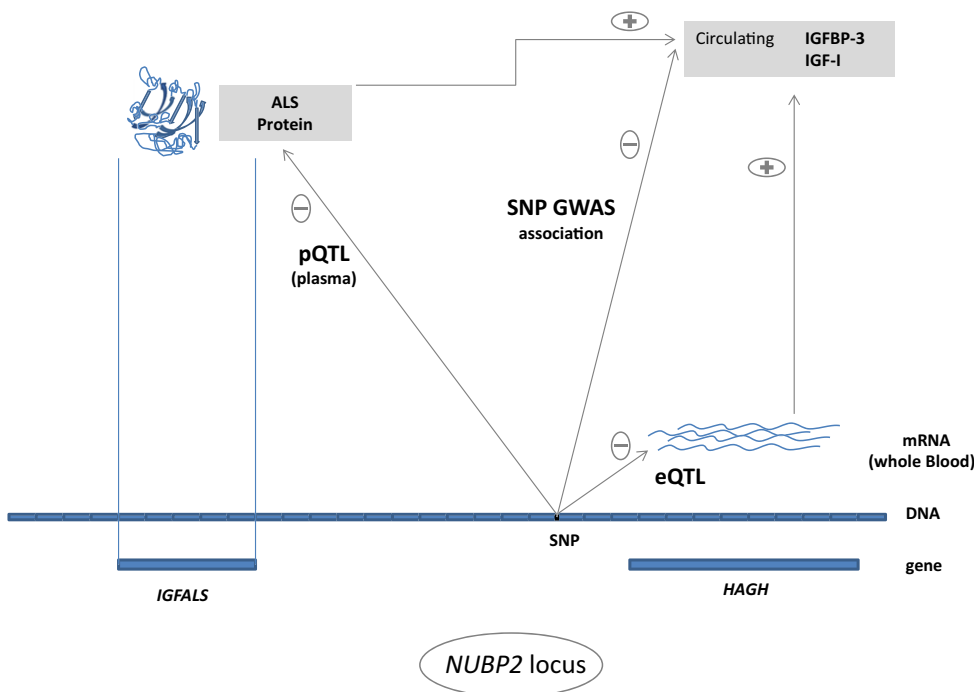


Fig. 2 Overview of the *NUBP2* locus that shows the relations of gene expression levels, protein levels and circulating IGF-I and IGFBP-3 with respect to the SNP. Effect directions (\pm) are given for the minor C-allele of SNP rs1065656 (MAF 31%). Note: the second signal rs11644716 (MAF 5%) has opposite expression quantitative trait loci (eQTL) and protein quantitative trait analyses (pQTL) effect directions to rs1065656, but they are consistent.

hip ratio ($P = 0.0003$), and higher lumbar spine bone mineral density ($P = 0.002$).

Three additional loci (*GHSR*, *CELSR2*, and *FOXO3*) showed strong associations with height (all $P < 1.0 \times 10^{-4}$). The IGFBP-3-increasing allele of SNP rs646776 (*CELSR2* locus) was associated with increased risk of coronary artery disease ($P = 9.4 \times 10^{-15}$). The IGF-I-decreasing allele of SNP rs934073 at *ASXL2* showed a nominal association with survival beyond 90 years ($P = 0.018$) as well as higher levels of BMI ($P = 0.008$) and fat percentage ($P = 9.4 \times 10^{-5}$) and lower lumbar spine bone mineral density ($P = 0.004$).

We further performed lookups of top IGF-I- and IGFBP-3-associated SNPs ($P < 10^{-6}$ in the meta-analysis of stage 1 and stage 2) for associations with survival beyond 90 years using published GWAS data (Broer et al., 2014) (Tables S10 and S11, Supporting information). Among 15 independent circulating IGF-I-associated SNPs defined based on linkage disequilibrium (LD) (settings $r^2 > 0.01$, 1 Mb distance), the SNP rs10457180 ($r^2 = 0.96$ with the lead SNP rs2153960) at *FOXO3* ($P = 8.6 \times 10^{-5}$) and SNP rs11892454 ($r^2 = 0.71$ with the lead SNP rs934073) at *ASXL2* ($P = 0.003$) reached statistical significance after Bonferroni correction for 15 independent tests. Among 13 independent circulating IGFBP-3-associated SNPs, the SNP rs9398172 ($r^2 = 1$ with the lead SNP rs2153960) at *FOXO3* ($P = 2.5 \times 10^{-4}$) remained significantly associated with survival beyond 90 years after Bonferroni correction.

Enrichment of putative regulatory elements among loci associated with circulating IGF-1 and IGFBP-3 concentrations

We examined whether the identified SNPs fall within regulatory elements in the epigenetic ENCODE and ROADMAP data for associated SNPs using Haploreg (<http://www.broadinstitute.org/mammals/haploreg/haploreg.php>) (Ward & Kellis, 2012) and RegulomeDB (<http://regulomedb.org/>) (Boyle et al., 2012) (Table S11, Supporting information). Lower scores indicate stronger evidence for the presence of a regulatory element. To determine whether these IGF-I- and IGFBP-3-associated loci are enriched for regions likely to affect gene expression, we further examined the distribution of scores among these SNPs compared with all RegulomeDB SNPs. We found that these identified SNPs are highly enriched for low Regulome scores ($P < 2.2 \times 10^{-16}$ by multinomial method, Fig. 3A). The genomic and representative epigenetic context surrounding rs646776 (*CELSR2* locus), a SNP with a Regulome score of 1f, is shown as an example (Fig. 3). SNP rs646776 localizes to a genomic region of high LD (Fig. 3B) and lies within peaks of histone marks associated with regulatory elements, and a DNase hypersensitivity region (Fig. 3C) (Kent et al., 2002). In addition, SNP rs646776 falls in ChIP identified binding regions for CTCF, POLR2A, REST, and TAF7 (data not shown).

Discussion

Our second GWAS report from the CHARGE IGF Working Group, here expanded to include more than >30 000 individuals, revealed several SNPs influencing circulating levels of IGF-I and IGFBP-3 which also have been associated with other metabolic and age-related traits. These included several loci already implicated in the biology of GH/IGF-I (*IGF1*, *IGFBP3*, *IGFALS*, *GHSR*, *FOXO3*) as well other novel findings including rs934073 SNP on chr 2, which is an eQTL for polycomb group gene *ASXL2* associated with reduced circulating IGF-I. Cross-reference of IGF-I- and IGFBP-3-associated SNPs against published GWAS of age-related traits identified the *ASXL2* SNP as a (to our knowledge) novel locus for

longevity as defined as survival beyond 90 years. All genome-wide significant associations with IGFBP-3 and IGF-I levels that were reported in our preceding study (Kaplan et al., 2011) could be confirmed here using a larger sample. Additionally, our preliminary finding of an association of circulating IGF-I level with rs2153960 in the *FOXO3* gene reached genome-wide significance using this larger sample size. Moreover, bioinformatics analysis also suggests enrichment of putative regulatory elements among these IGF-I- and IGFBP-3-associated loci, particularly of rs646776 at *CELSR2*.

Our study reveals clues about mechanisms of IGF system regulation through the interplay of IGFBP-3 and genes within the *NUBP2* locus, including *IGFALS* and *HAGH*. The *IGFALS* encodes the insulin-like growth factor-binding protein complex, acid labile subunit protein (ALS) which forms a ternary complex with IGF-I and IGFBP-3 (Firth et al., 1998; Twigg & Baxter, 1998). Like in most GWAS, our analyses cannot establish which is the causative SNP or gene of a locus. However, *IGFALS* seems to be a strong candidate supported by the associations of SNPs in the vicinity of *IGFALS* with both circulating IGFBP-3 and plasma levels of the protein coded by *IGFALS*. Although the sample size for the plasma proteome analyses was restricted to 197 probands of SHIP-TREND, the observed associations of the second signal rs11644716 achieved a moderately high level of statistical significance ($P < 0.0015$). *IGFALS* was not abundantly expressed in whole blood cells, and its transcript levels were neither associated with IGF-I nor IGFBP-3 concentration. Certainly, the protein ALS encoded by *IGFALS* is abundant in serum, but the gene is translated in liver. In contrast to *IGFALS*, *HAGH* (hydroxyacylglutathione hydrolase) was sufficiently expressed in whole blood cells and the amount of its mRNA was strongly correlated with circulating IGFBP-3 serum concentration. Taking into account the eQTL association of the lead SNP rs1065656 with *HAGH* and the correlation with the mRNA and IGFBP-3, this SNP might influence the IGFBP-3 levels by modulating the amount of *HAGH* mRNA, whereas both the levels of mRNA and IGFBP-3 are reduced per copy of the minor allele. Although this chain of associations was revealed in whole blood, it might be present in other tissues as well because significant eQTL for rs1065656 with *HAGH* were observed in other tissues studied in the MuTHER dataset (Grundberg et al., 2012). Given the more pronounced association with ALS and the less significant eQTL with *HAGH* of the second signal compared with the lead SNP, rs11644716 might reduce the level of circulating IGFBP-3 indirectly by reducing the amount of ALS per minor allele. Of note, there was no nonsynonymous SNP in LD in the 1000 Genomes v3 dataset ($R^2 > 0.8$, SHIP cohort) for both SNPs which could have helped narrow down the functional mechanism.

Taken together with genotype–phenotype association data assembled by others, our study revealed that IGF-I- and IGFBP-3-associated SNPs had expected associations with anthropometric and age-related chronic disease traits (e.g., bone mineral density, disordered carbohydrate metabolism). We also found that SNPs associated with reduced IGF-I levels tended to be associated with longer survival defined as death after 90 years (Broer et al., 2014). This is consistent with an observation from prior analysis of candidate genes associated with the insulin and IGF signaling axis (van Heemst et al., 2005). In addition, rs934073, an eQTL for additional sex comb-like 2 (*ASXL2*), was a genome-wide significant SNP associated with lower IGF-I level which also has enriched frequency in adults older than 90 years of age (Broer et al., 2014). Other traits associated with the IGF-I-decreasing allele of rs934073 included greater adiposity and reduced lumbar spine (but not femoral neck) bone mineral density. *ASXL2* is a polycomb group protein with known functions in development that has also been associated with pediatric cancer, but to our knowledge has not before been suggested as a

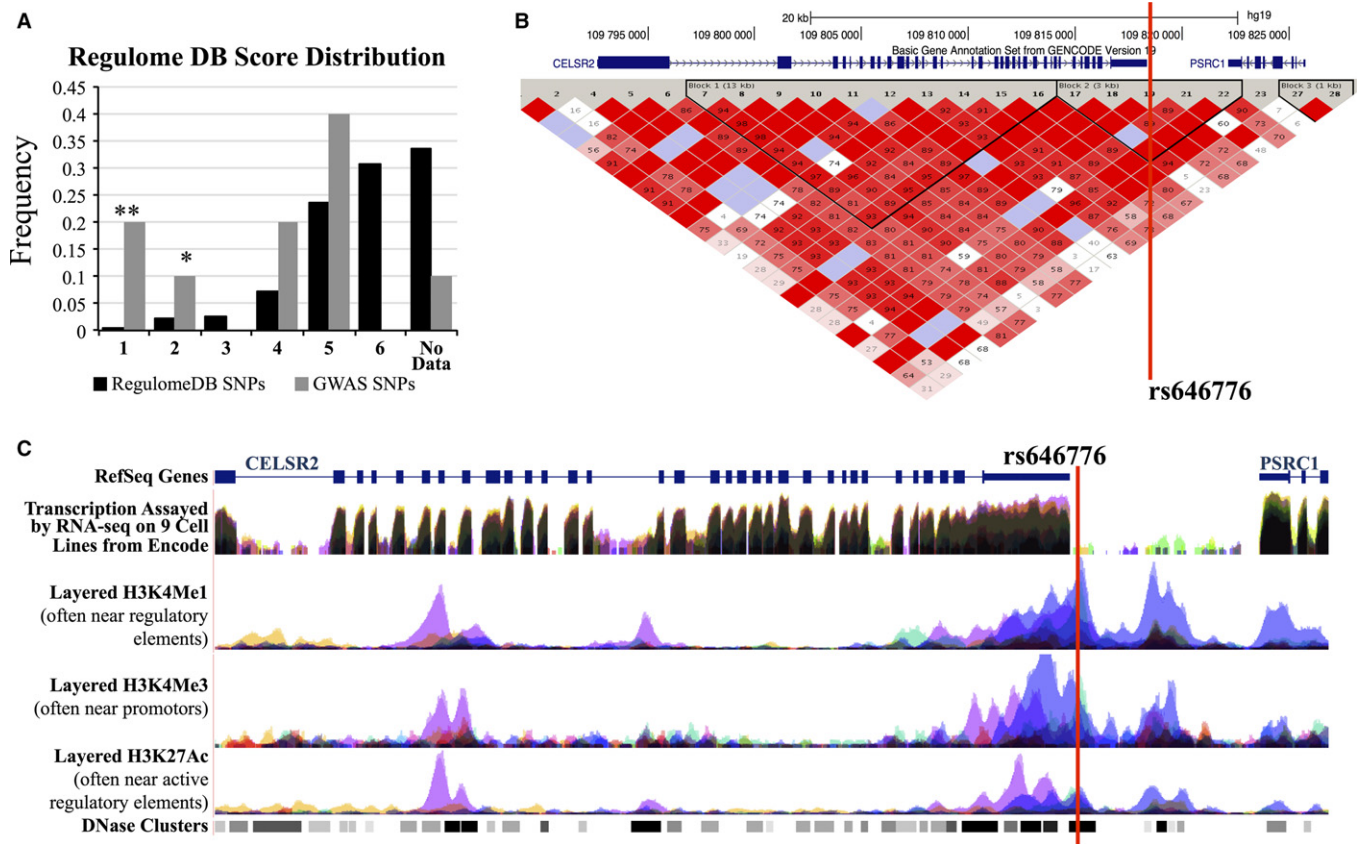


Fig. 3 Analysis of regulatory element marks in loci associated with serum IGF-1 and IGFBP-3 concentrations. (A) IGF-1- and IGFBP-3-associated SNPs are enriched for putative regulatory elements compared with all SNPs in RegulomeDB. $**P < 0.005$, $*P < 0.05$ (Monte Carlo). Overall distribution of genomewide association study (GWAS) SNPs vs. RegulomeDB SNPs $P < 2.2E-16$, multinomial method. (B) Genomic context surrounding rs646776 showing R^2 values. (C) Representative regulatory motif tracks from USCS Genome Browser and ENCODE showing histone mark peaks and DNase hypersensitivity at the location of rs646776.

longevity gene (Huether *et al.*, 2014). The SNP in the known longevity gene *FOXO3* has not only been previously associated with reduced fasting insulin and HOMA-IR (Willcox *et al.*, 2008), but here it was found to produce lower circulating IGF-1 levels. Multiple genetic determinants for circulating IGF-1 in normal and IGF1R resistance states might partially explain the U-shaped association of circulating IGF-1 concentration with mortality (Suh *et al.*, 2008; Burgers *et al.*, 2011).

While our meta-analysis encompasses a large number of samples from multiple cohorts, this may lead to limitations. Given the different origin of the cohorts (Table S1, Supporting information), heterogeneity in the association results might occur due to the different genetic background and the patterns of intake of nutrients across the individual studies.

In summary, this project extends our prior work (Kaplan *et al.*, 2011) through the identification of several new loci related to circulating IGF-1 and IGFBP-3 levels that also may affect aging. While the effects of insulin/IGF-1 signaling on survival often displays sex dimorphism in humans and other organisms, we found similar genetic determinants of IGF protein levels in men and women, even with relatively large sample size finding interaction by sex only for two loci (*IGFBP3* and *SORCS2*) in association with circulating IGFBP-3. Finally, a novel identified gene candidate for long-term survival, *ASXL2*, requires further study. Taking into account the design of our study, most of the findings should be considered as important and well-grounded hypotheses to work on.

Experimental procedures

Participating studies

In total, the CHARGE IGF Working Group included 21 and 13 studies that participated in the association analysis for IGF-1 ($N = 27\,520$, 53% women) and IGFBP-3 ($N = 18\,995$, 58% women), respectively. Four of the cohorts ($N = 10\,280$) were previously included in a GWAS meta-analysis of IGF-1 and IGFBP-3 levels (Kaplan *et al.*, 2011). Imputed SNPs for chromosome X were available for 16 670 and 11 959 individuals with IGF-1 and IGFBP-3 measurements, respectively. Additionally, up to 3364 individuals (55% women) with IGF-1 from one study were available for *de novo* genotyping of selected SNPs. Detailed information on participant characteristics, IGF-1 and IGFBP-3 measurements, and genotyping of all studies participated in the different analyses and stages is given in Table S2 (Supporting information). All participants provided informed consent, and human subjects' research review was obtained from each participating cohort.

Statistical analyses

GWAS in individual studies

Each study of the GWAS stages performed genotyping on genomewide arrays and imputed SNPs using the HapMap2 reference panel. Detailed

information on genotyping and imputation is provided in Table S2 (Supporting information). Association analyses in individual studies were performed on IGF-I and IGFBP-3 levels measured in ng mL⁻¹ using a multiple linear regression with an additive genetic model based on allele dosages adjusted for age and stratified by sex. All cohorts accounted for relatedness, population substructure using genetic principal components, study center, and laboratory batch of IGF measurement where applicable. Individuals of non-European ancestry, with missing phenotypic data, diagnosed growth hormone deficiency, or known use of human growth hormones were excluded prior to the analyses.

Meta-analysis

From each cohort's result file, monomorphic SNPs as well as SNPs with an imputation quality below 0.3 were excluded prior to the meta-analysis. All study-specific GWAS results were corrected by the genomic inflation factor λ_{GC} if >1 . Due to the IGF-I and IGFBP-3 assay-based differences in both effect sizes and variances of measurements across cohorts, a sample size-weighted z-score-based meta-analysis implemented in METAL (Willer *et al.*, 2010) was conducted, and the meta-analysis *P*-values were corrected for genomic inflation. After meta-analysis, SNPs with a MAF $\leq 1\%$ were removed from subsequent analyses.

Our multistage design had two GWAS stages (stages 1 and 2) and an additional stage (stage 3) with *de novo* genotyping data ($N = 3364$ individuals) to confirm novel loci. After stage 1 GWAS, all 19 lead SNPs from all traits with a $P < 10^{-6}$ were taken forward to stage 2. All IGF-I lead SNPs of novel loci that had a combined stage 1 and stage 2 $P < 10^{-8}$ (except *GCKR*) were selected for *de novo* replication in an additional cohort. An overview of the design and the significantly associated loci at each stage is provided in Fig. S6 (Supporting information). Details on SNP selection and quality control are given in the Appendix S1 (Supporting information). Regional association plots were generated using LocusZoom (Pruim *et al.*, 2010).

Assessment of independent signals

To define a lead SNP of each locus, the association results of a GWAS stage with *P*-values $< 1 \times 10^{-5}$ were grouped based on the LD structure of the HapMap release 28 CEU dataset using PLINK (settings $r^2 > 0.01$, 1 Mb distance) (Purcell *et al.*, 2007). Due to the strong association of the *IGFBP3* locus with IGFBP-3, only one lead SNP was selected regardless of several grouped results.

The analysis of secondary signals in the *NUBP2* locus was performed using the software *GCTA* (Yang *et al.*, 2011) and the genotypes of the SHIP cohort as a reference, and was verified by an analysis using the genotypes of the NHS/HPFS cohorts as a reference.

Sex interaction analysis

Sex interactions on IGF-I and IGFBP-3 levels were obtained by comparing, for each SNP, the stage 2 meta-analysis z-scores from men (z_{men}) (IGF-I: $N = 12\,917$, IGFBP-3: $N = 8052$) and women (z_{women}) (IGF-I: $N = 14\,602$, IGFBP-3: $N = 10\,942$) using the formula $z_{interaction} = (z_{men} - z_{women})/\sqrt{2}$, assuming independent effect sizes between men and women, and matched to a common effect allele.

Bivariate meta-analysis of IGF-I and IGFBP-3

The stage 2 meta-analysis z-scores of the combined samples IGF-I and IGFBP-3 were used to calculate a bivariate meta-analysis implemented in the function `multiPheno.T2` of the R-package `gtx` (version 0.0.8. <http://CRAN.R-project.org/package=gtx>). The function corresponds closely with Hotelling's T^2 test and calculates a multiphenotype association test

for each marker based on the meta-analysis result z-statistics that is equivalent to using the subject-specific data to perform a multivariate analysis of variance.

Gene-based analysis

Genomewide gene-based tests which account for both gene length and LD between SNPs were performed by *VEGAS* 0.8.27 (Versatile Gene-Based Association Study) (Liu *et al.*, 2010) using SNP *P*-value results from the overall meta-analyses. SNPs were allocated to one or more autosomal genes using gene boundaries ± 50 kb. We performed 1×10^7 permutations and defined a gene-based *P*-value $< 1 \times 10^{-6}$ as gene-based genomewide significant.

Gene expression and eQTL analysis

For each of the lead SNPs of the significant loci after final stage, significant cis eQTL associations in whole blood, lymphocytes, subcutaneous fat, muscle, and skin were looked up in the publically available association result databases (Grundberg *et al.*, 2012; Westra *et al.*, 2013). Association analysis of whole blood gene expression data with serum IGF-I and IGFBP-3 levels was conducted in 986 samples of the SHIP-TREND cohort (Schurmann *et al.*, 2012).

Association with plasma protein levels

Plasma proteome data were obtained as described in Appendix S1 (Supporting information) using liquid chromatography–mass spectrometry (LC-MS). *MASCOT* (in-house *MASCOT* server v2.3.2; Matrix Science, London, GB) search algorithm was used to match the generated peak lists with a human *FASTA*-formatted database containing 20 268 unique sequence entries (reviewed human database, release of October 2011). Prior to data analyses, all peptide intensity values were log₁₀-transformed and median–median-normalized. Association analyses between peptides and serum IGF-I and IGFBP-3 levels were performed by linear regression, adjusted for age, sex, and the MS processing batch. Associations of a SNP with the peptides were conducted by linear regression, adjusted for age, sex, and the first four principal components of a peptide-level-based principal component analysis. Protein intensities used for analyses were obtained by averaging the corresponding peptide intensities that passed the QC filter, and were put instead of the peptide intensities into the association model. All measured peptides that passed QC and that belonged to proteins which were encoded by genes located in a 500-kb vicinity of our lead SNPs were selected for association analyses. The assignment of protein names (uniprot identifiers) to the corresponding genes was performed using the DAVID gene conversion tool (<http://david.abcc.ncifcrf.gov/>). Finally, after QC the following proteins measured in 197 SHIP-TREND samples were available: ALS, CC121, IBP3, and RT34.

Lookups of top loci in association with IGF correlated traits

Top SNPs associated with levels of IGF-I and IGFBP-3 were examined in relationship to other phenotypes using published data on serum metabolites (Suhre *et al.*, 2011; Shin *et al.*, 2014), anthropometric traits (Heid *et al.*, 2010; Lango Allen *et al.*, 2010; Speliotes *et al.*, 2010), bone mineral density (Estrada *et al.*, 2012), diabetes (Voight *et al.*, 2010; Morris *et al.*, 2012) and glycemic traits (Dupuis *et al.*, 2010; Saxena *et al.*, 2010; Soranzo *et al.*, 2010), coronary artery disease (Coronary Artery Disease Genetics C, 2011; Schunkert *et al.*, 2011; Consortium CAD and Deloukas, 2013), and survival beyond 90 years (Broer *et al.*, 2014). Detailed information of the published datasets used including its references is given in Table S9 (Supporting information).

Assessment of regulatory elements associated with identified loci

ENCODE and ROADMAP data were assessed using HAPLOREG (<http://www.broadinstitute.org/mammals/haploreg/haploreg.php>) and REGULOMEDB (<http://regulomedb.org/>). Statistical analysis of individual Regulome scores was performed using Monte Carlo sampling of 10 SNPs (the size of our 'observed data' pool). RegulomeDB assigns scores to SNP loci based on the presence of histone marks, predicted and experimentally validated transcription factor binding, DNase hypersensitivity, and other evidence for regulatory function. Scores range from 1 to 7, with lower scores indicating stronger evidence for the presence of a regulatory element. For the purpose of this analysis, score subcategories (1a, 1b, etc.) were merged. A multinomial test was performed for a statistical comparison between the observed distribution and the background distribution. The LD plot in Fig. 3B was generated using HAPLOVIEW 4.2 with genetic data downloaded from version 3, Release 2, using the genomic region Chr1:109590000-109630000, and analysis panel CEU + TSI. Histone mark and DNase tracks in Fig. 3C were downloaded from UCSC Genome Browser.

Funding

Funding sources for the individual studies included in this work are listed in Supporting information.

Conflict of interest

The authors do not have conflict of interests.

References

Aschard H, Vilhjalmsson BJ, Greliche N, Morange PE, Tregouet DA, Kraft P (2014) Maximizing the power of principal-component analysis of correlated phenotypes in genome-wide association studies. *Am. J. Hum. Genet.* **94**, 662–676.

Boyle AP, Hong EL, Hariharan M, Cheng Y, Schaub MA, Kasowski M, Karczewski KJ, Park J, Hitz BC, Weng S, Cherry JM, Snyder M (2012) Annotation of functional variation in personal genomes using RegulomeDB. *Genome Res.* **22**, 1790–1797.

Broer L, Buchman AS, Deelen J, Evans DS, Faul JD, Lunetta KL, Sebastiani P, Smith JA, Smith AV, Tanaka T, Yu L, Arnold AM, Aspelund T, Benjamin EJ, De Jager PL, Eiriksdottir G, Evans DA, Garcia ME, Hofman A, Kaplan RC, Kardia SL, Kiel DP, Oostra BA, Orwoll ES, Parimi N, Psaty BM, Rivadeneira F, Rotter JJ, Seshadri S, Singleton A, Tiemeier H, Uitterlinden AG, Zhao W, Bandinelli S, Bennett DA, Ferrucci L, Gudnason V, Harris TB, Karasik D, Launer LJ, Perls TT, Slatopolsky PE, Tranah GJ, Weir DR, Newman AB, van Duijn CM, Murabito JM (2015) GWAS of Longevity in CHARGE Consortium Confirms APOE and FOXO3 Candidacy. *J. Gerontol. A Biol. Sci. Med. Sci.* **70**, 110–118.

Burgers AM, Biermasz NR, Schoones JW, Pereira AM, Renehan AG, Zwahlen M, Egger M, Dekkers OM (2011) Meta-analysis and dose-response metaregression: circulating insulin-like growth factor I (IGF-I) and mortality. *J. Clin. Endocrinol. Metab.* **96**, 2912–2920.

Cohen P, Rogol AD, Deal CL, Saenger P, Reiter EO, Ross JL, Chernausek SD, Savage MO, Wit JM, Participants ISSCW (2008) Consensus statement on the diagnosis and treatment of children with idiopathic short stature: a summary of the Growth Hormone Research Society, the Lawson Wilkins Pediatric Endocrine Society, and the European Society for Paediatric Endocrinology Workshop. *J. Clin. Endocrinol. Metab.* **93**, 4210–4217.

Consortium CAD, Deloukas P, Kanoni S, Willenborg C, Farrall M, Assimes TL, Thompson JR, Ingelsson E, Saleheen D, Erdmann J, Goldstein BA, Stirrups K, Konig IR, Cazier JB, Johansson A, Hall AS, Lee JY, Willer CJ, Chambers JC, Esko T, Folkersen L, Goel A, Grundberg E, Havulinna AS, Ho WK, Hopewell JC, Eriksson N, Kleber ME, Kristiansson K, Lundmark P, Lytikainen LP, Rafelt S, Shungin D, Strawbridge RJ, Thorleifsson G, Tikkanen E, Van Zuydam N, Voight BF, Waite LL, Zhang W, Ziegler A, Absher D, Althuler D, Balmforth AJ, Barroso I, Braund PS, Burgdorf C, Claudi-Boehm S, Cox D, Dimitriou M, Do R, Consortium D, Consortium C, Doney AS, El Mokhtari N, Eriksson P, Fischer K, Fontanillas P, Franco-Cereceda A, Gigante B, Groop L, Gustafsson S, Hager J, Hallmans G, Han

BG, Hunt SE, Kang HM, Illig T, Kessler T, Knowles JW, Kolovou G, Kuusisto J, Langenberg C, Langford C, Leander K, Lokki ML, Lundmark A, McCarthy MI, Meisinger C, Melander O, Mihailov E, Maouche S, Morris AD, Muller-Nurasyid M, Mu TC, Nikus K, Peden JF, Rayner NW, Rasheed A, Rosinger S, Rubin D, Rumpf MP, Schafer A, Sivananthan M, Song C, Stewart AF, Tan ST, Thorgeirsson G, van der Schoot CE, Wagner PJ, Wellcome Trust Case Control C, Wells GA, Wild PS, Yang TP, Amouyel P, Arveiler D, Basart H, Boehnke M, Boerwinkle E, Brambilla P, Cambien F, Cupples AL, de Faire U, Dehghan A, Diemert P, Epstein SE, Evans A, Ferrario MM, Ferrières J, Gauguier D, Go AS, Goodall AH, Gudnason V, Hazen SL, Holm H, Iribarren C, Jang Y, Kahonen M, Kee F, Kim HS, Klopp N, Koenig W, Kratzer W, Kuulasmaa K, Laakso M, Laaksonen R, Lee JY, Lind L, Ouweland WH, Parish S, Park JE, Pedersen NL, Peters A, Quertermous T, Rader DJ, Salomaa V, Schadt E, Shah SH, Sinisalo J, Stark K, Stefansson K, Tregouet DA, Virtamo J, Wallentin L, Wareham N, Zimmermann ME, Nieminen MS, Hengstenberg C, Sandhu MS, Pastinen T, Syvanen AC, Hovingh GK, Dedoussis G, Franks PW, Lehtimäki T, Metspalu A, Zalloua PA, Siegbahn A, Schreiber S, Ripatti S, Blankenberg SS, Perola M, Clarke R, Boehm BO, O'Donnell C, Reilly MP, Marz W, Collins R, Kathiresan S, Hamsten A, Kooner JS, Thorsteinsdottir U, Danesh J, Palmer CN, Roberts R, Watkins H, Schunkert H, Samani NJ (2013) Large-scale association analysis identifies new risk loci for coronary artery disease. *Nat. Genet.* **45**, 25–33.

Coronary Artery Disease Genetics C (2011) A genome-wide association study in Europeans and South Asians identifies five new loci for coronary artery disease. *Nat. Genet.* **43**, 339–344.

Deal C, Ma J, Wilkin F, Paquette J, Rozen F, Ge B, Hudson T, Stampfer M, Pollak M (2001) Novel promoter polymorphism in insulin-like growth factor-binding protein-3: correlation with serum levels and interaction with known regulators. *J. Clin. Endocrinol. Metab.* **86**, 1274–1280.

Di Bona D, Accardi G, Virruso C, Candore G, Caruso C (2014) Association between genetic variations in the insulin/insulin-like growth factor (Igf-1) signaling pathway and longevity: a systematic review and meta-analysis. *Curr. Vasc. Pharmacol.* **12**, 674–681.

Dupuis J, Langenberg C, Prokopenko I, Saxena R, Soranzo N, Jackson AU, Wheeler E, Glazer NL, Bouatia-Naji N, Gloyn AL, Lindgren CM, Magi R, Morris AP, Randall J, Johnson T, Elliott P, Rybin D, Thorleifsson G, Steinthorsdottir V, Henneman P, Grallert H, Dehghan A, Hottenga JJ, Franklin CS, Navarro P, Song K, Goel A, Perry JR, Egan JM, Lajunen T, Grarup N, Sparso T, Doney A, Voight BF, Stringham HM, Li M, Kanoni S, Shrader P, Cavalcanti-Proenca C, Kumari M, Qi L, Timpson NJ, Gieger C, Zabena C, Rocheleau G, Ingelsson E, An P, O'Connell J, Luan J, Elliott A, McCarroll SA, Payne F, Roccascella RM, Pattou F, Sethupathy R, Ardlie K, Ariyurek Y, Balkau B, Barter P, Beilby JP, Ben-Shlomo Y, Benediktsson R, Bennett AJ, Bergmann S, Bochud M, Boerwinkle E, Bonnefond A, Bonnycastle LL, Borch-Johnsen K, Bottcher Y, Brunner E, Bumpstead SJ, Charpentier G, Chen YD, Chines P, Clarke R, Coin LJ, Cooper MN, Cornelis M, Crawford G, Crisponi L, Day IN, de Geus EJ, Delplanque J, Dina C, Erdos MR, Fedson AC, Fischer-Rosinsky A, Forouham NG, Fox CS, Frants R, Franzosi MG, Galan P, Goodarzi MO, Graessler J, Groves CJ, Grundy S, Gwilliam R, Gyllenstein U, Hadjadj S, Hallmans G, Hammond N, Han X, Hartikainen AL, Hassanali N, Hayward C, Heath SC, Hercberg S, Herder C, Hicks AA, Hillman DR, Hingorani AD, Hofman A, Hui J, Hung J, Isomaa B, Johnson PR, Jorgensen T, Julia A, Kaakinen M, Kaprio J, Kesaniemi YA, Kivimäki M, Knight B, Koskenvuo S, Kovacs P, Kyvik KO, Lathrop GM, Lawlor DA, Le Bacquer O, Lecoeur C, Li Y, Lyssenko V, Mahley R, Mangino M, Manning AK, Martinez-Larrad MT, McAteer JB, McCulloch LJ, McPherson R, Meisinger C, Melzer D, Meyre D, Mitchell BD, Morken MA, Mukherjee S, Naitza S, Narisu N, Neville MJ, Oostra BA, Orru M, Pakyz R, Palmer CN, Paoilso G, Pattaro C, Pearson D, Peden JF, Pedersen NL, Perola M, Pfeiffer AF, Pichler I, Polasek O, Posthuma D, Potter SC, Pouta A, Province MA, Psaty BM, Rathmann W, Rayner NW, Rice K, Ripatti S, Rivadeneira F, Roden MA, Rolandsson O, Sandbaek A, Sandhu M, Sanna S, Sayer AA, Scheet P, Scott LJ, Seedorf U, Sharp SJ, Shields B, Sigurdsson G, Sijbrands EJ, Silveira A, Simpson L, Singleton A, Smith NL, Sovio U, Swift A, Syddall H, Syvanen AC, Tanaka T, Thorand B, Tichet J, Tonjes A, Tuomi T, Uitterlinden AG, van Dijk KW, van Hoek M, Varma D, Visvikis-Siest S, Vitart V, Vogelzangs N, Waeber G, Wagner PJ, Walley A, Walters GB, Ward KL, Watkins H, Weedon MN, Wild SH, Willemssen G, Witteman JC, Yarnell JW, Zeggini E, Zelenika D, Zethelius B, Zhai G, Zhao JH, Zillikens MC, Consortium D, Consortium G, Global BC, Borecki IB, Loos RJ, Meneton P, Magnusson PK, Nathan DM, Williams GH, Hattersley AT, Silander K, Salomaa V, Smith GD, Bornstein SR, Schwarz P, Spranger J, Karpe F, Shuldiner AR, Cooper C, Dedoussis GV, Serrano-Rios M, Morris AD, Lind L, Palmer LJ, Hu FB, Franks PW, Ebrahim S, Marmot M, Kao WH, Pankow JS, Sampson MJ, Kuusisto J, Laakso M, Hansen T, Pedersen O, Pramstaller PP, Wichmann HE, Illig T, Rudan I, Wright AF, Stumvoll M, Campbell H, Wilson JF, Anders Hamsten on behalf of Procardis C, Investigators M, Bergman RN, Buchanan TA, Collins FS, Mohlke KL,

- Tuomilehto J, Valle TT, Althuler D, Rotter JI, Siscovick DS, Penninx BW, Boomsma DI, Deloukas P, Spector TD, Frayling TM, Ferrucci L, Kong A, Thorsteinsdottir U, Stefansson K, van Duijn CM, Aulchenko YS, Cao A, Scuteri A, Schlessinger D, Uda M, Ruokonen A, Jarvelin MR, Waterworth DM, Vollenweider P, Peltonen L, Mooser V, Abecasis GR, Wareham NJ, Sladek R, Froguel P, Watanabe RM, Meigs JB, Groop L, Boehnke M, McCarthy MI, Florez JC, Barroso I (2010) New genetic loci implicated in fasting glucose homeostasis and their impact on type 2 diabetes risk. *Nat. Genet.* **42**, 105–116.
- Estrada K, Styrkarsdottir U, Evangelou E, Hsu YH, Duncan EL, Ntzani EE, Oei L, Albagha OM, Amin N, Kemp JP, Koller DL, Li G, Liu CT, Minster RL, Moayyeri A, Vandenput L, Willner D, Xiao SM, Yerges-Armstrong LM, Zheng HF, Alonso N, Eriksson J, Kammerer CM, Kaptoge SK, Leo PJ, Thorleifsson G, Wilson SG, Wilson JF, Aalto V, Alen M, Aragaki AK, Aspelund T, Center JR, Daijiana Z, Duggan DJ, Garcia M, Garcia-Giralt N, Giroux S, Hallmans G, Hocking LJ, Husted LB, Jameson KA, Khusainova R, Kim GS, Kooperberg C, Koromila T, Kruk M, Laaksonen M, Lacroix AZ, Lee SH, Leung PC, Lewis JR, Masi L, Mencej-Bedrac S, Ngyuen TV, Noguez X, Patel MS, Prezelj J, Rose LM, Scollen S, Siggeirsdottir K, Smith AV, Svensson O, Trompet S, Trummer O, van Schoor NM, Woo J, Zhu K, Balcells S, Brandi ML, Buckley BM, Cheng S, Christiansen C, Cooper C, Dedoussis G, Ford I, Frost M, Goltzman D, Gonzalez-Macias J, Kahonen M, Karlsson M, Khusnutdinova E, Koh JM, Kollia P, Langdahl BL, Leslie WD, Lips P, Ljunggren O, Lorenc RS, Marc J, Mellstrom D, Obermayer-Pietsch B, Olmos JM, Pettersson-Kymmer U, Reid DM, Riancho JA, Ridker PM, Rousseau F, Slagboom PE, Tang NL, Urreitzti R, Van Hul W, Viikari J, Zarrabeitia MT, Aulchenko YS, Castano-Betancourt M, Grundberg E, Herrera E, Ingvarsson T, Johannsdottir H, Kwan T, Li R, Luben R, Medina-Gomez C, Palsson ST, Reppe S, Rotter JI, Sigurdsson G, van Meurs JB, Verlaan D, Williams FM, Wood AR, Zhou Y, Gautvik KM, Pastinen T, Raychaudhuri S, Cauley JA, Chasman DI, Clark GR, Cummings SR, Danoy P, Dennison EM, Eastell R, Eisman JA, Gudnason V, Hofman A, Jackson RD, Jones G, Jukema JW, Khaw KT, Lehtimäki T, Liu Y, Lorentzon M, McCloskey E, Mitchell BD, Nandakumar K, Nicholson GC, Oostra BA, Peacock M, Pols HA, Prince RL, Raitakari O, Reid IR, Robbins J, Sambrook PN, Sham PC, Shuldiner AR, Tylavsky FA, van Duijn CM, Wareham NJ, Cupples LA, Econs MJ, Evans DM, Harris TB, Kung AW, Psaty BM, Reeve J, Spector TD, Streeten EA, Zillikens MC, Thorsteinsdottir U, Ohlsson C, Karasik D, Richards JB, Brown MA, Stefansson K, Uitterlinden AG, Ralston SH, Ioannidis JP, Kiel DP, Rivadeneira F (2012) Genome-wide meta-analysis identifies 56 bone mineral density loci and reveals 14 loci associated with risk of fracture. *Nat. Genet.* **44**, 491–501.
- Evans DS, Cailotto F, Parimi N, Valdes AM, Castano-Betancourt MC, Liu Y, Kaplan RC, Bidlingmaier M, Vasani RS, Teumer A, Tranah GJ, Nevitt MC, Cummings SR, Orwoll ES, Barrett-Connor E, Renner JB, Jordan JM, Doherty M, Doherty SA, Uitterlinden AG, van Meurs JB, Spector TD, Lories RJ, Lane NE (2015) Genome-wide association and functional studies identify a role for IGFBP3 in hip osteoarthritis. *Ann. Rheum. Dis.* **74**, 1861–1867.
- Firth SM, Ganeshprasad U, Baxter RC (1998) Structural determinants of ligand and cell surface binding of insulin-like growth factor-binding protein-3. *J. Biol. Chem.* **273**, 2631–2638.
- Fowlkes JL (1997) Insulinlike growth factor-binding protein proteolysis an emerging paradigm in insulinlike growth factor physiology. *Trends Endocrinol. Metab.* **8**, 299–306.
- Friedrich N, Haring R, Nauck M, Ludemann J, Roskopf D, Spilcke-Liss E, Felix SB, Dorr M, Brabant G, Volzke H, Wallaschofski H (2009) Mortality and serum insulin-like growth factor (IGF)-I and IGF binding protein 3 concentrations. *J. Clin. Endocrinol. Metab.* **94**, 1732–1739.
- Grundberg E, Small KS, Hedman AK, Nica AC, Buil A, Keildson S, Bell JT, Yang TP, Meduri E, Barrett A, Nisbett J, Sekowska M, Wilk A, Shin SY, Glass D, Travers M, Min JL, Ring S, Ho K, Thorleifsson G, Kong A, Thorsteinsdottir U, Ainali C, Dimas AS, Hassanali N, Ingle C, Knowles D, Krestyaninova M, Lowe CE, Di Meglio P, Montgomery SB, Parts L, Potter S, Surdulescu G, Tsaprouni L, Tsoka S, Bataille V, Durbin R, Nestle FO, O'Rahilly S, Soranzo N, Lindgren CM, Zondervan KT, Ahmadi KR, Schadt EE, Stefansson K, Smith GD, McCarthy MI, Deloukas P, Dermizakis ET, Spector TD, Multiple Tissue Human Expression Resource C (2012) Mapping cis- and trans-regulatory effects across multiple tissues in twins. *Nat. Genet.* **44**, 1084–1089.
- Gu F, Schumacher FR, Canzian F, Allen NE, Albanes D, Berg CD, Berndt SI, Boeing H, Bueno-de-Mesquita HB, Buring JE, Chhabert-Buffet N, Chanock SJ, Clavel-Chapelon F, Dumeaux V, Gaziano JM, Giovannucci EL, Haiman CA, Hankinson SE, Hayes RB, Henderson BE, Hunter DJ, Hoover RN, Johansson M, Key TJ, Khaw KT, Kolonel LN, Lagiou P, Lee IM, LeMarchand L, Lund E, Ma J, Onland-Moret NC, Overvad K, Rodriguez L, Sacerdote C, Sanchez M, Stampfer MJ, Stattin P, Stram DO, Thomas G, Thun MJ, Tjonneland A, Trichopoulos D, Tumino R, Virtamo J, Weinstein SJ, Willett WC, Yeager M, Zhang SM, Kaaks R, Riboli E, Ziegler RG, Kraft P (2010) Eighteen insulin-like growth factor pathway genes, circulating levels of IGF-I and its binding protein, and risk of prostate and breast cancer. *Cancer Epidemiol. Biomarkers Prev.* **19**, 2877–2887.
- Guler HP, Zapf J, Schmid C, Froesch ER (1989) Insulin-like growth factors I and II in healthy man. Estimations of half-lives and production rates. *Acta Endocrinol. (Copenh).* **121**, 753–758.
- Harrela M, Koistinen H, Kaprio J, Lehtovirta M, Tuomilehto J, Eriksson J, Toivanen L, Koskenvuo M, Leinonen P, Koistinen R, Seppala M (1996) Genetic and environmental components of interindividual variation in circulating levels of IGF-I, IGF-II, IGFBP-1, and IGFBP-3. *J. Clin. Invest.* **98**, 2612–2615.
- van Heemst D, Beekman M, Mooijaart SP, Heijmans BT, Brandt BW, Zwaan BJ, Slagboom PE, Westendorp RG (2005) Reduced insulin/IGF-1 signalling and human longevity. *Aging Cell* **4**, 79–85.
- Heid IM, Jackson AU, Randall JC, Winkler TW, Qi L, Steinthorsdottir V, Thorleifsson G, Zillikens MC, Speliotes EK, Magi R, Workalemahu T, White CC, Bouatia-Naji N, Harris TB, Berndt SI, Ingelsson E, Willer CJ, Weedon MN, Luan J, Vedantam S, Esko T, Kilpelainen TO, Kutalik Z, Li S, Monda KL, Dixon AL, Holmes CC, Kaplan LM, Liang L, Min JL, Moffatt MF, Molony C, Nicholson G, Schadt EE, Zondervan KT, Feitosa MF, Ferreira T, Lango Allen H, Weyant RJ, Wheeler E, Wood AR, Magic Estrada K, Goddard ME, Lettre G, Mangino M, Nyholt DR, Purcell S, Smith AV, Visscher PM, Yang J, McCarrroll SA, Nemes J, Voight BF, Absher D, Amin N, Aspelund T, Coin L, Glazer NL, Hayward C, Heard-Costa NL, Hottenga JJ, Johansson A, Johnson T, Kaakinen M, Kapur K, Ketkar S, Knowles JW, Kraft P, Kraja AT, Lamina C, Leitzmann MF, McKnight B, Morris AP, Ong KK, Perry JR, Peters MJ, Polasek O, Prokopenko I, Rayner NW, Ripatti S, Rivadeneira F, Robertson NR, Sanna S, Sovio U, Surakka I, Teumer A, van Wingerden S, Vitart V, Zhao JH, Cavalcanti-Proenca C, Chines PS, Fisher E, Kulzer JR, Lecoeur C, Narisu N, Sandholt C, Scott LJ, Silander K, Stark K, Tammesoo ML, Teslovich TM, Timponi NJ, Watanabe RM, Welch R, Chasman DI, Cooper MN, Jansson JO, Kettunen J, Lawrence RW, Pellikka N, Perola M, Vandenput L, Alavere H, Almgren P, Atwood LD, Bennett AJ, Biffar R, Bonnycastle LL, Bornstein SR, Buchanan TA, Campbell H, Day IN, Dei M, Dorr M, Elliott P, Erdos MR, Eriksson JG, Feimer NB, Fu M, Gaget S, Geus EJ, Gjesing AP, Gyllert H, Grasser J, Groves CJ, Guiducci C, Hartikainen AL, Hassanali N, Havulinna AS, Herzig KH, Hicks AA, Hui J, Igl W, Jousilahti P, Julia A, Kajantie E, Kinnunen L, Kolcic I, Koskinen S, Kovacs P, Kroemer HK, Krzjel V, Kuusisto J, Kvaloy K, Laitinen J, Lantieri O, Lathrop GM, Lokki ML, Luben RN, Ludwig B, McArdle WL, McCarthy A, Morken MA, Nelis M, Neville MJ, Pare G, Parker AN, Peden JF, Pichler I, Pietilainen KH, Platou CG, Pouta A, Ridderstrale M, Samani NJ, Sarnies J, Sinisalo J, Smit JH, Strawbridge RJ, Stringham Song HM, Swift AJ, Teder-Laving M, Thomson B, Usala G, van Meurs JB, van Ommen GJ, Vatn V, Volpato CB, Wallaschofski H, Walters GB, Widen E, Wild SH, Willemsen G, Witte DR, Zgaga L, Zitting P, Beilby JP, James AL, Kahonen M, Lehtimäki T, Nieminen MS, Ohlsson C, Palmer LJ, Raitakari O, Ridker PM, Stumvoll M, Tonjes A, Viikari J, Balkau B, Ben-Shlomo Y, Bergman RN, Boeing H, Smith GD, Ebrahim S, Froguel P, Hansen T, Hengstenberg C, Hveem K, Isomaa B, Jorgensen T, Karpe F, Khaw KT, Laakso M, Lawlor DA, Marre M, Meitinger T, Mitternatter M, Midtjell K, Pedersen O, Salomaa V, Schwarz PE, Tuomi T, Tuomilehto J, Valle TT, Wareham NJ, Arnold AM, Beckmann JS, Bergmann S, Boerwinkle E, Boomsma DI, Caulfield MJ, Collins FS, Eiriksdottir G, Gudnason V, Gyllensten U, Hamsten A, Hattersley AT, Hofman A, Hu FB, Illig T, Iribarren C, Jarvelin MR, Kao WH, Kaprio J, Launer LJ, Munroe PB, Oostra B, Penninx BW, Pramstaller PP, Psaty BM, Quertermous T, Rissanen A, Rudan I, Shuldiner AR, Soranzo N, Spector TD, Syvanen AC, Uda M, Uitterlinden A, Volzke H, Vollenweider P, Wilson JF, Witteman JC, Wright AF, Abecasis GR, Boehnke M, Borecki JB, Deloukas P, Frayling TM, Groop LC, Haritunians T, Hunter DJ, Kaplan RC, North KE, O'Connell JR, Peltonen L, Schlessinger D, Strachan DP, Hirschhorn JN, Assimes TL, Wichmann HE, Thorsteinsdottir U, van Duijn CM, Stefansson K, Cupples LA, Loos RJ, Barroso I, McCarthy MI, Fox CS, Mohlke KL, Lindgren CM (2010) Meta-analysis identifies 13 new loci associated with waist-hip ratio and reveals sexual dimorphism in the genetic basis of fat distribution. *Nat. Genet.* **42**, 949–960.
- Ho KK, Participants GHDCW (2007) Consensus guidelines for the diagnosis and treatment of adults with GH deficiency II: a statement of the GH Research Society in association with the European Society for Pediatric Endocrinology, Lawson Wilkins Society, European Society of Endocrinology, Japan Endocrine Society, and Endocrine Society of Australia. *Eur. J. Endocrinol.* **157**, 695–700.
- Hong Y, Pedersen NL, Brismar K, Hall K, Hall K, de Faire U (1996) Quantitative genetic analyses of insulin-like growth factor I (IGF-I), IGF-binding protein-1, and insulin levels in middle-aged and elderly twins. *J. Clin. Endocrinol. Metab.* **81**, 1791–1797.
- Huether R, Dong L, Chen X, Wu G, Parker M, Wei L, Ma J, Edmonson MN, Hedlund EK, Rusch MC, Shurtleff SA, Mulder HL, Boggs K, Vadordaria B, Cheng J, Yergeau D, Song G, Becksfort J, Lemmon G, Weber C, Cai Z, Dang J, Walsh M, Gedman AL, Faber Z, Easton J, Gruber T, Kriwacki RW, Partridge JF, Ding L, Wilson RK, Mardis ER, Mullighan CG, Gilbertson RJ, Baker SJ, Zambetti G, Ellison

DW, Zhang J, Downing JR (2014) The landscape of somatic mutations in epigenetic regulators across 1,000 paediatric cancer genomes. *Nat. Commun.* **5**, 3630.

Jones JI, Clemmons DR (1995) Insulin-like growth factors and their binding proteins: biological actions. *Endocr. Rev.* **16**, 3–34.

Juul A, Scheike T, Davidsen M, Gyllenberg J, Jorgensen T (2002) Low serum insulin-like growth factor I is associated with increased risk of ischemic heart disease: a population-based case-control study. *Circulation* **106**, 939–944.

Kaplan RC, McGinn AP, Pollak MN, Kuller LH, Strickler HD, Rohan TE, Cappola AR, Xue X, Psaty BM (2007) Association of total insulin-like growth factor-I, insulin-like growth factor binding protein-1 (IGFBP-1), and IGFBP-3 levels with incident coronary events and ischemic stroke. *J. Clin. Endocrinol. Metab.* **92**, 1319–1325.

Kaplan RC, Petersen AK, Chen MH, Teumer A, Glazer NL, Doring A, Lam CS, Friedrich N, Newman A, Muller M, Yang Q, Homuth G, Cappola A, Klopp N, Smith H, Ernst F, Psaty BM, Wichmann HE, Sawyer DB, Biffar R, Rotter JI, Gieger C, Sullivan LS, Volzke H, Rice K, Spyroglou A, Kroemer HK, Ida Chen YD, Manolopoulos J, Nauck M, Strickler HD, Goodarzi MO, Reincke M, Pollak MN, Bidlingmaier M, Vasan RS, Wallaschofski H (2011) A genome-wide association study identifies novel loci associated with circulating IGF-I and IGFBP-3. *Hum. Mol. Genet.* **20**, 1241–1251.

Kent WJ, Sugnet CW, Furey TS, Roskin KM, Pringle TH, Zahler AM, Haussler D (2002) The human genome browser at UCSC. *Genome Res.* **12**, 996–1006.

Lango Allen H, Estrada K, Lettre G, Berndt SI, Weedon MN, Rivadeneira F, Willer CJ, Jackson AU, Vedantam S, Raychaudhuri S, Ferreira T, Wood AR, Weyant RJ, Segre AV, Speliotes EK, Wheeler E, Soranzo N, Park JH, Yang J, Gudbjartsson D, Heard-Costa NL, Randall JC, Qi L, Vernon Smith A, Magi R, Pastinen T, Liang L, Heid IM, Luan J, Thorleifsson G, Winkler TW, Goddard ME, Sin Lo K, Palmer C, Workalemahu T, Aulchenko YS, Johansson A, Zillikens MC, Feitosa MF, Esko T, Johnson T, Ketkar S, Kraft P, Mangino M, Prokopenko I, Absher D, Albrecht E, Ernst F, Glazer NL, Hayward C, Hottenga JJ, Jacobs KB, Knowles JW, Kutalik Z, Monda KL, Polasek O, Preuss M, Rayner NW, Robertson NR, Steinthorsdottir V, Tyrer JP, Voight BF, Wiklund F, Xu J, Zhao JH, Nyholt DR, Pelikka N, Perola M, Perry JR, Surakka I, Tammesoo ML, Altmajer EL, Amin N, Aspelund T, Bhargava T, Boucher G, Chasman DI, Chen C, Coin L, Cooper MN, Dixon AL, Gibson Q, Grundberg E, Hao K, Juhani Junttila M, Kaplan LM, Kettunen J, Konig IR, Kwan T, Lawrence RW, Levinson DF, Lorentzen M, McKnight B, Morris AP, Muller M, Suh Ngwa J, Purcell S, Rafel S, Salem RM, Salvi E, Sanna S, Shi J, Sovio U, Thompson JR, Turchin MC, Vandenput L, Verlaan DJ, Vitart V, White CC, Ziegler A, Almgren P, Balmforth AJ, Campbell H, Citterio L, De Grandi A, Dominiczak A, Duan J, Elliott P, Elosua R, Eriksson JG, Freimer NB, Geus EJ, Glorioso N, Haiqing S, Hartikainen AL, Havulinna AS, Hicks AA, Hui J, Igl W, Illig T, Jula A, Kajantie E, Kilpelainen TO, Koiranen M, Kolcic I, Koskinen S, Kovacs P, Laitinen J, Liu J, Lokki ML, Marusic A, Maschio A, Meitinger T, Mulas A, Pare G, Parker AN, Peden JF, Petersmann A, Pichler I, Pietilainen KH, Pouta A, Ridderstrale M, Rotter JI, Sambrook JG, Sanders AR, Schmidt CO, Sinisalo J, Smit JH, Stringham HM, Bragi Walters G, Widen E, Wild SH, Willemsen G, Zagato L, Zgaga L, Zitting P, Alavere H, Farrall M, McArdle WL, Nelis M, Peters MJ, Ripatti S, van Meurs JB, Aben KK, Ardlie KG, Beckmann JS, Beilby JP, Bergmann RN, Bergmann S, Collins FS, Cusi D, den Heijer M, Eiriksdottir G, Gejman P, Hall AS, Hamsten A, Huikuri HV, Iribarren C, Kahonen M, Kaprio J, Kathiresan S, Kiemeny L, Kocher T, Launer LJ, Lehtimäki T, Melander O, Mosley TH Jr, Musk AW, Nieminen MS, O'Donnell CJ, Ohlsson C, Oostra B, Palmer LJ, Raitakari O, Ridker PM, Rioux JD, Rissanen A, Rivolta C, Schunkert H, Shuldiner AR, Siscovick DS, Stumvoll M, Tonjes A, Tuomilehto J, van Ommen GJ, Viikari J, Heath AC, Martin NG, Montgomery GW, Province MA, Kayser M, Arnold AM, Atwood LD, Boerwinkle E, Chanock SJ, Deloukas P, Gieger C, Gronberg H, Hall P, Hattersley AT, Hengstenberg C, Hoffman W, Lathrop GM, Salomaa V, Schreiber S, Uda M, Waterworth D, Wright AF, Assimes TL, Barroso I, Hofman A, Mohlke KL, Boomsma DI, Caulfield MJ, Cupples LA, Erdmann J, Fox CS, Gudnason V, Gyllensten U, Harris TB, Hayes RB, Jarvelin MR, Mooser V, Munroe PB, Ouwehand WH, Penninx BW, Pramstaller PP, Quertermous T, Rudan I, Samani NJ, Spector TD, Volzke H, Watkins H, Wilson JF, Groop LC, Haritunians T, Hu FB, Kaplan RC, Metspalu A, North KE, Schlessinger D, Wareham NJ, Hunter DJ, O'Connell JR, Strachan DP, Wichmann HE, Borecki IB, van Duijn CM, Schadt EE, Thorsteinsdottir U, Peltonen L, Uitterlinden AG, Visscher PM, Chatterjee N, Loos RJ, Boehnke M, McCarthy MI, Ingelsson E, Lindgren CM, Abecasis GR, Stefansson K, Frayling TM, Hirschhorn JN (2010) Hundreds of variants clustered in genomic loci and biological pathways affect human height. *Nature* **467**, 832–838.

Le Roith D (1997) Seminars in medicine of the Beth Israel Deaconess Medical Center. Insulin-like growth factors. *N. Engl. J. Med.* **336**, 633–640.

Lee PD, Giudice LC, Conover CA, Powell DR (1997) Insulin-like growth factor binding protein-1: recent findings and new directions. *Proc. Soc. Exp. Biol. Med.* **216**, 319–357.

Liu JZ, McRae AF, Nyholt DR, Medland SE, Wray NR, Brown KM, Investigators A, Hayward NK, Montgomery GW, Visscher PM, Martin NG, Macgregor S (2010) A versatile gene-based test for genome-wide association studies. *Am. J. Hum. Genet.* **87**, 139–145.

Melmed S, Colao A, Barkan A, Molitch M, Grossman AB, Kleinberg D, Clemmons D, Chanson P, Laws E, Schlechte J, Vance ML, Ho K, Giustina A, Acromegaly Consensus G (2009) Guidelines for acromegaly management: an update. *J. Clin. Endocrinol. Metab.* **94**, 1509–1517.

Morris AP, Voight BF, Teslovich TM, Ferreira T, Segre AV, Steinthorsdottir V, Strawbridge RJ, Khan H, Grallert H, Mahajan A, Prokopenko I, Kang HM, Dina C, Esko T, Fraser RM, Kanoni S, Kumar A, Lagou V, Langenberg C, Luan J, Lindgren CM, Muller-Nurasyid M, Pechlivanis S, Rayner NW, Scott LJ, Wiltshire S, Yengo L, Kinnunen L, Rossin EJ, Raychaudhuri S, Johnson AD, Dimas AS, Loos RJ, Vedantam S, Chen H, Florez JC, Fox C, Liu CT, Rybin D, Couper DJ, Kao WH, Li M, Cornelis MC, Kraft P, Sun Q, van Dam RM, Stringham HM, Chines PS, Fischer K, Fontanillas P, Holmen OL, Hunt SE, Jackson AU, Kong A, Lawrence R, Meyer J, Perry JR, Platou CG, Potter S, Rehnberg E, Robertson N, Sivapalaratnam S, Stancakova A, Stirrups K, Thorleifsson G, Tikkanen E, Wood AR, Almgren P, Atalay M, Benediktsson R, Bonnycastle LL, Burt N, Carey J, Charpentier G, Crenshaw AT, Doney AS, Dorkhan M, Edkins S, Emilsson V, Eury E, Forsen T, Gertow K, Gigante B, Grant GB, Groves CJ, Guiducci C, Herder C, Hreidarsson AB, Hui J, James A, Jonsson A, Rathmann W, Klopp N, Kravic J, Krjutskov K, Langford C, Leander K, Lindholm E, Lobbens S, Mannisto S, Mirza G, Muhleisen TW, Musk B, Parkin M, Rallidis L, Saramies J, Sennblad B, Shah S, Sigurdsson G, Silveira A, Steinbach G, Thorand B, Trakalo J, Veglia F, Wennaauer R, Winkler W, Zabaneh D, Campbell H, van Duijn C, Uitterlinden AG, Hofman A, Sijbrands E, Abecasis GR, Owen KR, Zeggini E, Trip MD, Forouhi NG, Syvanen AC, Eriksson JG, Peltonen L, Nothen MM, Balkau B, Palmer CN, Lyssenko V, Tuomi T, Isomaa B, Hunter DJ, Qi L, Wellcome Trust Case Control C, Meta-Analyses of G, Insulin-related traits Consortium I, Genetic Investigation of ATC, Asian Genetic Epidemiology Network-Type 2 Diabetes C, South Asian Type 2 Diabetes C, Shuldiner AR, Roden M, Barroso I, Wilsgaard T, Beilby J, Hovingh K, Price JF, Wilson JF, Rauramaa R, Lakka TA, Lind L, Dedoussis G, Njolstad I, Pedersen NL, Khaw KT, Wareham NJ, Keinänen-Kiukkaanniemi SM, Saaristo TE, Korpi-Hyovalti E, Saltevo J, Laakso M, Kuusisto J, Metspalu A, Collins FS, Mohlke KL, Bergman RN, Tuomilehto J, Boehm BO, Gieger C, Hveem K, Cauchi S, Froguel P, Baldassarre D, Tremoli E, Humphries SE, Saleheen D, Danesh J, Ingelsson E, Ripatti S, Salomaa V, Erbel R, Jockel KH, Moebus S, Peters A, Illig T, de FU, Hamsten A, Morris AD, Donnelly PJ, Frayling TM, Hattersley AT, Boerwinkle E, Melander O, Kathiresan S, Nilsson PM, Deloukas P, Thorsteinsdottir U, Groop LC, Stefansson K, Hu F, Pankow JS, Dupuis J, Meigs JB, Althuler D, Boehnke M, McCarthy MI, Replication DIG, Meta-analysis C (2012) Large-scale association analysis provides insights into the genetic architecture and pathophysiology of type 2 diabetes. *Nat. Genet.* **44**, 981–990.

Pruim RJ, Welch RP, Sanna S, Teslovich TM, Chines PS, Glied TP, Boehnke M, Abecasis GR, Willer CJ (2010) LocusZoom: regional visualization of genome-wide association scan results. *Bioinformatics* **26**, 2336–2337.

Purcell S, Neale B, Todd-Brown K, Thomas L, Ferreira MA, Bender D, Maller J, Sklar P, de Bakker PI, Daly MJ, Sham PC (2007) PLINK: a tool set for whole-genome association and population-based linkage analyses. *Am. J. Hum. Genet.* **81**, 559–575.

Rajpathak SN, He M, Sun Q, Kaplan RC, Muzumdar R, Rohan TE, Gunter MJ, Pollak M, Kim M, Pessin JE, Beasley J, Wylie-Rosett J, Hu FB, Strickler HD (2012) Insulin-like growth factor axis and risk of type 2 diabetes in women. *Diabetes* **61**, 2248–2254.

Renehan AG, Zwahlen M, Minder C, O'Dwyer ST, Shalet SM, Egger M (2004) Insulin-like growth factor (IGF)-I, IGF binding protein-3, and cancer risk: systematic review and meta-regression analysis. *Lancet* **363**, 1346–1353.

Saxena R, Hivert MF, Langenberg C, Tanaka T, Pankow JS, Vollenweider P, Lyssenko V, Bouatia-Naji N, Dupuis J, Jackson AU, Kao WH, Li M, Glazer NL, Manning AK, Luan J, Stringham HM, Prokopenko I, Johnson T, Grarup N, Boesgaard TW, Leccoer C, Shrader P, O'Connell J, Ingelsson E, Couper DJ, Rice K, Song K, Andreassen CH, Dina C, Kottgen A, Le Bacquer O, Pattou F, Taneera J, Steinthorsdottir V, Rybin D, Ardlie K, Sampson M, Qi L, van Hoek M, Weedon MN, Aulchenko YS, Voight BF, Grallert H, Balkau B, Bergmann RN, Bielinska SJ, Bonfante A, Bonnycastle LL, Borch-Johnsen K, Bottcher Y, Brunner E, Buchanan TA, Bumpstead SJ, Cavalcanti-Proenca C, Charpentier G, Chen YD, Chines PS, Collins FS, Cornelis M, G J C, Delplanque J, Doney A, Egan JM, Erdos MR, Firmann M, Forouhi NG, Fox CS, Goodarzi MO, Graessler J, Hingorani A, Isomaa B, Jorgensen T, Kivimäki M, Kovacs P, Krohn K, Kumari M, Lauritzen T, Levy-Marchal C, Mayor V, McAteer JB, Meyre D, Mitchell BD, Mohlke KL, Morcken MA, Narisu N, Palmer CN, Pakyz R, Pascoe L, Payne F, Pearson D, Rathmann W, Sandbaek A, Sayer AA, Scott LJ, Sharp SJ, Sijbrands E, Singleton A,

- Siscovick DS, Smith NL, Sparso T, Swift AJ, Syddall H, Thorleifsson G, Tonjes A, Tuomi T, Tuomilehto J, Valle TT, Waeber G, Walley A, Waterworth DM, Zeggini E, Zhao JH, consortium G, investigators M, Illig T, Wichmann HE, Wilson JF, van Duijn C, Hu FB, Morris AD, Frayling TM, Hattersley AT, Thorsteinsdottir U, Stefansson K, Nilsson P, Syvanen AC, Shuldiner AR, Walker M, Bornstein SR, Schwarz P, Williams GH, Nathan DM, Kuusisto J, Laakso M, Cooper C, Marmot M, Ferrucci L, Mooser V, Stumvoll M, Loos RJ, Altschuler D, Psaty BM, Rotter JI, Boerwinkle E, Hansen T, Pedersen O, Florez JC, McCarthy MI, Boehnke M, Barroso I, Sladek R, Froguel P, Meigs JB, Groop L, Wareham NJ, Watanabe RM (2010) Genetic variation in GIPR influences the glucose and insulin responses to an oral glucose challenge. *Nat. Genet.* **42**, 142–148.
- Schumacher FR, Cheng I, Freedman ML, Mucci L, Allen NE, Pollak MN, Hayes RB, Stram DO, Schunkert H, Hendersen BE, Hunter DJ, Virtamo J, Manjer J, Gaziano JM, Kolonel LN, Tjonneland A, Albanes D, Calle EE, Giovannucci E, Crawford ED, Haiman CA, Kraft P, Willett WC, Thun MJ, Le Marchand L, Kaaks R, Feigelson HS, Bueno-de-Mesquita HB, Palli D, Riboli E, Lund E, Amiano P, Andriole G, Dunning AM, Trichopoulos D, Stampfer MJ, Key TJ, Ma J (2010) A comprehensive analysis of common IGF1, IGFBP1 and IGFBP3 genetic variation with prospective IGF-I and IGFBP-3 blood levels and prostate cancer risk among Caucasians. *Hum. Mol. Genet.* **19**, 3089–3101.
- Schunkert H, König IR, Kathiresan S, Reilly MP, Assimes TL, Holm H, Preuss M, Stewart AF, Barbalic M, Gieger C, Absher D, Aherrahou Z, Allayee H, Altschuler D, Anand SS, Andersen K, Anderson JL, Ardisino D, Ball SG, Balmforth AJ, Barnes TA, Becker DM, Becker LC, Berger K, Bis JC, Boekholdt SM, Boerwinkle E, Braund PS, Brown MJ, Burnett MS, Buyssschaert I, Cardiogenics, Carlquist JF, Chen L, Cichon S, Codd V, Davies RW, Dedoussis G, Dehghan A, Demissie S, Devaney JM, Diemert P, Do R, Doering A, Eifert S, Mokhtari NE, Ellis SG, Elosua R, Engert JC, Epstein SE, de Faire U, Fischer M, Folsom AR, Freyer J, Gigante B, Girelli D, Gretarsdottir S, Gudnason V, Gulcher JR, Halperin E, Hammond N, Hazen SL, Hofman A, Horne BD, Illig T, Iribarren C, Jones GT, Jukema JW, Kaiser MA, Kaplan LM, Kastelein JJ, Khaw KT, Knowles JW, Kolovou G, Kong A, Laaksonen R, Lambrechts D, Leander K, Lettre G, Li M, Lieb W, Loley C, Lotery AJ, Mannucci PM, Maouche S, Martinelli N, McKeown PP, Meisinger C, Meitinger T, Melander O, Merlini PA, Mooser V, Morgan T, Muhleisen TW, Muhlestein JB, Munzel T, Musunuru K, Nahrstaedt J, Nelson CP, Nothen MM, Olivieri O, Patel RS, Patterson CC, Peters A, Peyvandi F, Qu L, Quyyumi AA, Rader DJ, Rallidis LS, Rice C, Rosendaal FR, Rubin D, Salomaa V, Sampietro ML, Sandhu MS, Schadt E, Schafer A, Schillert A, Schreiber S, Schrezenmeir J, Schwartz SM, Siscovick DS, Sivananthan M, Sivapalaratnam S, Smith A, Smith TB, Snoop JD, Soranzo N, Spertus JA, Stark K, Stirrups K, Stoll M, Tang WH, Tennstedt S, Thorgerisson G, Thorleifsson G, Tomaszewski M, Uitterlinden AG, van Rij AM, Voight BF, Wareham NJ, Wells GA, Wichmann HE, Wild PS, Willenborg C, Wittman JC, Wright BJ, Ye S, Zeller T, Ziegler A, Cambien F, Goodall AH, Cupples LA, Quatermous T, Marz W, Hengstenberg C, Blankenberg S, Ouwehand WH, Hall AS, Deloukas P, Thompson JR, Stefansson K, Roberts R, Thorsteinsdottir U, O'Donnell CJ, McPherson R, Erdmann J, Consortium CA, Samani NJ (2011) Large-scale association analysis identifies 13 new susceptibility loci for coronary artery disease. *Nat. Genet.* **43**, 333–338.
- Schurmann C, Heim K, Schillert A, Blankenberg S, Carstensen M, Dorr M, Endlich K, Felix SB, Gieger C, Grallert H, Herder C, Hoffmann W, Homuth G, Illig T, Kruppa J, Meitinger T, Muller C, Nauck M, Peters A, Rettig R, Roden M, Strauch K, Volker U, Volzke H, Wahl S, Wallaschofski H, Wild PS, Zeller T, Teumer A, Prokisch H, Ziegler A (2012) Analyzing illumina gene expression microarray data from different tissues: methodological aspects of data analysis in the metaxpress consortium. *PLoS ONE* **7**, e50938.
- Shin SY, Fauman EB, Petersen AK, Krumsiek J, Santos R, Huang J, Arnold M, Erte I, Forgetta V, Yang TP, Walter K, Menni C, Chen L, Vasquez L, Valdes AM, Hyde CL, Wang V, Ziemek D, Roberts P, Xi L, Grundberg E, Multiple Tissue Human Expression Resource C, Waldenberger M, Richards JB, Mohney RP, Milburn MV, John SL, Trimmer J, Theis FJ, Overington JP, Suhre K, Brosnan MJ, Gieger C, Kastenmuller G, Spector TD, Soranzo N (2014) An atlas of genetic influences on human blood metabolites. *Nat. Genet.* **46**, 543–550.
- Soranzo N, Sanna S, Wheeler E, Gieger C, Radke D, Dupuis J, Bouatia-Naji N, Langenberg C, Prokopenko I, Stoleran E, Sandhu MS, Heeney MM, Devaney JM, Reilly MP, Ricketts SL, Stewart AF, Voight BF, Willenborg C, Wright B, Altschuler D, Arking D, Balkau B, Barnes D, Boerwinkle E, Boehm B, Bonnefond A, Bonnycastle LL, Boomsma DI, Bornstein SR, Bottcher Y, Bumpstead S, Burnett-Miller MS, Campbell H, Cao A, Chambers J, Clark R, Collins FS, Coresh J, de Geus EJ, Dei M, Deloukas P, Doring A, Egan JM, Elosua R, Ferrucci L, Forouhi N, Fox CS, Franklin C, Franzosi MG, Gallina S, Goel A, Graessler J, Grallert H, Greinacher A, Hadley D, Hall A, Hamsten A, Hayward C, Heath S, Herder C, Homuth G, Hottenga JJ, Hunter-Merrill R, Illig T, Jackson AU, Jula A, Kleber M, Knouff CW, Kong A, Kooner J, Kottgen A, Kovacs P, Krohn K, Kuhnel B, Kuusisto J, Laakso M, Lathrop M, Lecoeur C, Li M, Li M, Loos RJ, Luan J, Lyssenko V, Magi R, Magnusson PK, Malarstig A, Mangino M, Martinez-Larrad MT, Marz W, McArdle WL, McPherson R, Meisinger C, Meitinger T, Melander O, Mohlke KL, Mooser VE, Morken MA, Narisu N, Nathan DM, Nauck M, O'Donnell C, Oexle K, Olla N, Pankow JS, Payne F, Peden JF, Pedersen NL, Peltonen L, Perola M, Polasek O, Porcu E, Rader DJ, Rathmann W, Ripatti S, Rocheleau G, Roden M, Rudan I, Salomaa V, Saxena R, Schlessinger D, Schunkert H, Schwarz P, Seedorf U, Selvin E, Serrano-Rios M, Shrader P, Silveira A, Siscovick D, Song K, Spector TD, Stefansson K, Steinthorsdottir V, Strachan DP, Strawbridge R, Stumvoll M, Surakka I, Swift AJ, Tanaka T, Teumer A, Thorleifsson G, Thorsteinsdottir U, Tonjes A, Usala G, Vitart V, Volzke H, Wallaschofski H, Waterworth DM, Watkins H, Wichmann HE, Wild SH, Willemsen G, Williams GH, Wilson JF, Winkelmann J, Wright AF, WTCCC, Zabena C, Zhao JH, Epstein SE, Erdmann J, Hakonarson HH, Kathiresan S, Khaw KT, Roberts R, Samani NJ, Fleming MD, Sladek R, Abecasis G, Boehnke M, Froguel P, Groop L, McCarthy MI, Kao WH, Florez JC, Uda M, Wareham NJ, Barroso I, Meigs JB (2010) Common variants at 10 genomic loci influence hemoglobin A1(C) levels via glyceic and nonglyceic pathways. *Diabetes* **59**, 3229–3239.
- Souren NY, Paulussen AD, Loos RJ, Gielen M, Beunen G, Fagard R, Derom C, Vlietinck R, Zeegers MP (2007) Anthropometry, carbohydrate and lipid metabolism in the East Flanders Prospective Twin Survey: heritabilities. *Diabetologia* **50**, 2107–2116.
- Speliotes EK, Willer CJ, Berndt SJ, Monda KL, Thorleifsson G, Jackson AU, Lango Allen H, Lindgren CM, Luan J, Magi R, Randall JC, Vedantam S, Winkler TW, Qi L, Workalemahu T, Heid IM, Steinthorsdottir V, Stringham HM, Weedon MN, Wheeler E, Wood AR, Ferreira T, Weyant RJ, Segre AV, Estrada K, Liang L, Nemesh J, Park JH, Gustafsson S, Kilpelainen TO, Yang J, Bouatia-Naji N, Esko T, Feitosa MF, Kutalik Z, Mangino M, Raychaudhuri S, Scherag A, Smith AV, Welch R, Zhao JH, Aben KK, Absher DM, Amin N, Dixon AL, Fisher E, Glazer NL, Goddard ME, Heard-Costa NL, Hoesel V, Hottenga JJ, Johansson A, Johnson T, Ketkar S, Lamina C, Li S, Moffatt MF, Myers RH, Narisu N, Perry JR, Peters MJ, Preuss M, Ripatti S, Rivadeneira F, Sandholt C, Scott LJ, Timpson NJ, Tyrer JP, van Wieringen S, Watanabe RM, White CC, Wiklund F, Barlassina C, Chasman DI, Cooper MN, Jansson JO, Lawrence RW, Pellikka N, Prokopenko I, Shi J, Thiering E, Alavere H, Ailbrandt MT, Almgren P, Arnold AM, Aspelund T, Atwood LD, Balkau B, Balmforth AJ, Bennett AJ, Ben-Shlomo Y, Bergman RN, Bergmann S, Biebermann H, Blakemore AI, Boes T, Bonnycastle LL, Bornstein SR, Brown MJ, Buchanan TA, Busonero F, Campbell H, Cappucco FP, Cavalcanti-Proenca C, Chen YD, Chen CM, Chines PS, Clarke R, Coin L, Connell J, Day IN, den Heijer M, Duan J, Ebrahim S, Elliott P, Elosua R, Eiriksdottir G, Erdos MR, Eriksson JG, Facheris MF, Felix SB, Fischer-Posovszky P, Folsom AR, Friedrich N, Freimer NB, Fu M, Gaget S, Gejman PV, Geus EJ, Gieger C, Gjesing AP, Goel A, Goyette P, Grallert H, Grasser J, Greenawald DM, Groves CJ, Gudnason V, Guiducci C, Hartikainen AL, Hassanali N, Hall AS, Havulinna AS, Hayward C, Heath AC, Hengstenberg C, Hicks AA, Hinney A, Hofman A, Homuth G, Hui J, Igl W, Iribarren C, Isomaa B, Jacobs KB, Jarick I, Jewell E, John U, Jorgensen T, Jousilahti P, Jula A, Kaakinen M, Kajantie E, Kaplan LM, Kathiresan S, Kettunen J, Kinnunen L, Knowles JW, Kolcic I, König IR, Koskinen S, Kovacs P, Kuusisto J, Kraft P, Kvaloy K, Laitinen J, Lantieri O, Lanzani C, Launer LJ, Lecoeur C, Lehtimäki T, Lettre G, Liu J, Lokki ML, Lorentzon M, Luben RN, Ludwig B, MAGIC, Manunta P, Marek D, Marre M, Martin NG, McArdle WL, McCarthy A, McKnight B, Meitinger T, Melander O, Meyre D, Midtthjell K, Montgomery GW, Morken MA, Morris AP, Mulic R, Ngwa JS, Nelis M, Neville MJ, Nyholt DR, O'Donnell CJ, O'Rahilly S, Ong KK, Oostra B, Pare G, Parker AN, Perola M, Pichler I, Pietiläinen KH, Platou CG, Polasek O, Pouta A, Rafelt S, Raitakari O, Rayner NW, Ridderstrale M, Rief W, Ruokonen A, Robertson NR, Rzehak P, Salomaa V, Sanders AR, Sandhu MS, Sanna S, Saramies J, Savolainen MJ, Scherag S, Schipf S, Schreiber S, Schunkert H, Silander K, Sinaloa J, Siscovick DS, Smit JH, Soranzo N, Sovio U, Stephens J, Surakka I, Swift AJ, Tammesoo ML, Tardif JC, Teder-Laving M, Teslovich TM, Thompson JR, Thomson B, Tonjes A, Tuomi T, van Meurs JB, van Ommen GJ, Vatn V, Viikari J, Visvikis-Siest S, Vitart V, Vogel CI, Voight BF, Waite LL, Wallaschofski H, Walters DK, Widen E, Wiegand S, Wild SH, Willemsen G, Witte DR, Wittman JC, Xu J, Zhang Q, Zgaga L, Ziegler A, Zitting P, Beilby JP, Farooqi IS, Hebebrand J, Huikuri HV, James AL, Kahonen M, Levinson DF, Maciardi F, Nieminen MS, Ohlsson C, Palmer LJ, Ridker PM, Stumvoll M, Beckmann JS, Boeing H, Boerwinkle E, Boomsma DI, Caulfield MJ, Chanock SJ, Collins FS, Cupples LA, Smith GD, Erdmann J, Froguel P, Gronberg H, Gyllensten U, Hall P, Hansen T, Harris TB, Hattersley AT, Hayes RB, Heinrich J, Hu FB, Hveem K, Illig T, Jarvelin MR, Kaprio J, Karpe F, Khaw KT, Kiemenev LA, Krude H, Laakso M, Lawlor DA, Metspalu A, Munroe PB, Ouwehand WH, Pedersen O, Penninx BW, Peters A, Prentiss PP, Quatermous T, Reinehr T, Rissanen A, Rudan I, Samani NJ, Schwarz PE, Shuldiner AR, Spector TD, Tuomilehto J, Uda M, Uitterlinden A, Valle TT,

- Wabitsch M, Waeber G, Wareham NJ, Watkins H, Procardis C, Wilson JF, Wright AF, Zillikens MC, Chatterjee N, McCarroll SA, Purcell S, Schadt EE, Visscher PM, Assimes TL, Borecki IB, Deloukas P, Fox CS, Groop LC, Haritunians T, Hunter DJ, Kaplan RC, Mohlke KL, O'Connell JR, Peltonen L, Schlessinger D, Strachan DP, van Duijn CM, Wichmann HE, Frayling TM, Thorsteinsdottir U, Abecasis GR, Barroso I, Boehnke M, Stefansson K, North KE, McCarthy MI, Hirschhorn JN, Ingelsson E, Loos RJ (2010) Association analyses of 249,796 individuals reveal 18 new loci associated with body mass index. *Nat. Genet.* **42**, 937–948.
- Suh Y, Atzmon G, Cho MO, Hwang D, Liu B, Leahy DJ, Barzilai N, Cohen P (2008) Functionally significant insulin-like growth factor I receptor mutations in centenarians. *Proc. Natl. Acad. Sci. U S A.* **105**, 3438–3442.
- Suhre K, Shin SY, Petersen AK, Mohny RP, Meredith D, Wagele B, Altmaier E, CardioGram DP, Erdmann J, Grundberg E, Hammond CJ, de Angelis MH, Kastenmuller G, Kottgen A, Kronenberg F, Mangino M, Meisinger C, Meitinger T, Mewes HW, Milburn MV, Prehn C, Raffler J, Ried JS, Romisch-Margl W, Samani NJ, Small KS, Wichmann HE, Zhai G, Illig T, Spector TD, Adamski J, Soranzo N, Gieger C (2011) Human metabolic individuality in biomedical and pharmaceutical research. *Nature* **477**, 54–60.
- Twigg SM, Baxter RC (1998) Insulin-like growth factor (IGF)-binding protein 5 forms an alternative ternary complex with IGFs and the acid-labile subunit. *J. Biol. Chem.* **273**, 6074–6079.
- Vasan RS, Sullivan LM, D'Agostino RB, Roubenoff R, Harris T, Sawyer DB, Levy D, Wilson PW (2003) Serum insulin-like growth factor I and risk for heart failure in elderly individuals without a previous myocardial infarction: the Framingham Heart Study. *Ann. Intern. Med.* **139**, 642–648.
- Voight BF, Scott LJ, Steinthorsdottir V, Morris AP, Dina C, Welch RP, Zeggini E, Huth C, Aulchenko YS, Thorleifsson G, McCulloch LJ, Ferreira T, Grallert H, Amin N, Wu G, Willer CJ, Raychaudhuri S, McCarroll SA, Langenberg C, Hofmann OM, Dupuis J, Qi L, Segre AV, van Hoek M, Navarro P, Ardlie K, Balkau B, Benediktsson R, Bennett AJ, Blagieva R, Boerwinkle E, Bonnycastle LL, Bengtsson Bostrom K, Bravenboer B, Bumpstead S, Burt NP, Charpentier G, Chines PS, Cornelis M, Couper DJ, Crawford G, Doney AS, Elliott KS, Elliott AL, Erdos MR, Fox CS, Franklin CS, Ganser M, Gieger C, Grarup N, Green T, Griffin S, Groves CJ, Guiducci C, Hadjadj S, Hassanal N, Herder C, Isomaa B, Jackson AU, Johnson PR, Jorgensen T, Kao WH, Klopp N, Kong A, Kraft P, Kuusisto J, Lauritzen T, Li M, Lieve A, Lindgren CM, Lyssenko V, Marre M, Meitinger T, Midtthjell K, Morcken MA, Narisu N, Nilsson P, Owen KR, Payne F, Perry JR, Petersen AK, Platou C, Proenca C, Prokopenko I, Rathmann W, Rayner NW, Robertson NR, Rocheleau G, Roden M, Sampson MJ, Saxena R, Shields BM, Shriver P, Sigurdsson G, Sparso T, Strassburger K, Stringham HM, Sun Q, Swift AJ, Thorand B, Tichet J, Tuomi T, van Dam RM, van Haften TW, van Herpt T, van Vliet-Ostapchouk JV, Walters GB, Weedon MN, Wijmenga C, Witteman J, Bergman RN, Cauchi S, Collins FS, Gloyn AL, Gyllenstein U, Hansen T, Hide WA, Hitman GA, Hofman A, Hunter DJ, Hveem K, Laakso M, Mohlke KL, Morris AD, Palmer CN, Pramstaller PP, Rudan I, Sijbrands E, Stein LD, Tuomilehto J, Uitterlinden A, Walker M, Wareham NJ, Watanabe RM, Abecasis GR, Boehm BO, Campbell H, Daly MJ, Hattersley AT, Hu FB, Meigs JB, Pankow JS, Pedersen O, Wichmann HE, Barroso I, Florez JC, Frayling TM, Groop L, Sladek R, Thorsteinsdottir U, Wilson JF, Illig T, Froguel P, van Duijn DC, Stefansson K, Althuler D, Boehnke M, McCarthy MI, Investigators M, Consortium G (2010) Twelve type 2 diabetes susceptibility loci identified through large-scale association analysis. *Nat. Genet.* **42**, 579–589.
- Ward LD, Kellis M (2012) HaploReg: a resource for exploring chromatin states, conservation, and regulatory motif alterations within sets of genetically linked variants. *Nucleic Acids Res.* **40**, D930–D934.
- Westra HJ, Peters MJ, Esko T, Yaghoobkar H, Schurmann C, Kettunen J, Christiansen MW, Fairfax BP, Schramm K, Powell JE, Zernakova A, Zernakova DV, Veldink JH, Van den Berg LH, Karjalainen J, Withoff S, Uitterlinden AG, Hofman A, Rivadeneira F, t Hoen PA, Reinmaa E, Fischer K, Nelis M, Milani L, Melzer D, Ferrucci L, Singleton AB, Hernandez DG, Nalls MA, Homuth G, Nauck M, Radke D, Volker U, Perola M, Salomaa V, Brody J, Suchy-Dicey A, Gharib SA, Enquobahrie DA, Lumley T, Montgomery GW, Makino S, Prokisch H, Herder C, Roden M, Grallert H, Meitinger T, Strauch K, Li Y, Jansen RC, Visscher PM, Knight JC, Psaty BM, Ripatti S, Teumer A, Frayling TM, Metspalu A, van Meurs JB, Franke L (2013) Systematic identification of trans eQTLs as putative drivers of known disease associations. *Nat. Genet.* **45**, 1238–1243.
- Willcox BJ, Donlon TA, He Q, Chen R, Grove JS, Yano K, Masaki KH, Willcox DC, Rodriguez B, Curb JD (2008) FOXO3A genotype is strongly associated with human longevity. *Proc. Natl. Acad. Sci. U S A.* **105**, 13987–13992.
- Willer CJ, Li Y, Abecasis GR (2010) METAL: fast and efficient meta-analysis of genomewide association scans. *Bioinformatics* **26**, 2190–2191.
- Yang J, Lee SH, Goddard ME, Visscher PM (2011) GCTA: a tool for genome-wide complex trait analysis. *Am. J. Hum. Genet.* **88**, 76–82.
- Ziv E, Hu D (2011) Genetic variation in insulin/IGF-1 signaling pathways and longevity. *Ageing Res. Rev.* **10**, 201–204.

Supporting Information

Additional Supporting Information may be found online in the supporting information tab for this article:

Appendix S1. Materials and methods.

Fig. S1 Manhattan plots of men and women strata.

Fig. S2 QQ plots of meta-analysis results.

Fig. S3 Regional association plots for IGF-I traits.

Fig. S4 Regional association plots for IGFBP-3 traits.

Fig. S5 Results of bivariate analysis of IGF-I and IGFBP-3.

Fig. S6 Flow chart of the study's design.

Table S1 Characteristics of study cohorts.

Table S2 Assay and genotyping information of study cohorts.

Table S3 GWAS results with P -value $< 10^{-6}$ in stage 1.

Table S4 Genome-wide significant loci of bivariate analysis.

Table S5 Sex interaction results of the 12 genome-wide significant SNPs.

Table S6 Results of eQTL lookup in the Muthur dataset.

Table S7 Results of gene expression analysis of the genome-wide significant loci with IGF-I and IGFBP-3 in the SHIP-TREND cohort.

Table S8 Results of pQTL analysis in the SHIP-TREND cohort.

Table S9 Lookup of genome-wide significant lead SNPs in IGF-I/IGFBP-3 correlated traits.

Table S10 Lookup of Top IGF-I associated SNPs in associations with survival beyond age 90 years old.

Table S11 Lookup of Top IGFBP-3 associated SNPs in associations with survival beyond age 90 years old.

Table S12 Enrichment of putative regulatory elements among IGF-1 and IGFBP-3 associated loci.