

Anticancer effect of linalool via cancer-specific hydroxyl radical generation in human colon cancer

著者	Iwasaki Kenichi, Zheng Yun-Wen, Murata Soichiro, Ito Hiromu, Nakayama Ken, Kurokawa Tomohiro, Sano Naoki, Nowatari Takeshi, Villareal Myra O, Nagano Yumiko N, Isoda Hiroko, Matsui Hirofumi, Ohkohchi Nobuhiro
journal or publication title	World journal of gastroenterology
volume	22
number	44
page range	9765-9774
year	2016-11
権利	(C) 2016 Baishideng Publishing Group Inc. All rights reserved. This article is an open-access article which was selected by an in-house editor and fully peer-reviewed by external reviewers. It is distributed in accordance with the Creative Commons Attribution Non Commercial (CC BY-NC 4.0) license, which permits others to distribute, remix, adapt, build upon this work non-commercially, and license their derivative works on different terms, provided the original work is properly cited and the use is non-commercial. See: http://creativecommons.org/licenses/by-nc/4.0/
URL	http://hdl.handle.net/2241/00144939

doi: 10.3748/wjg.v22.i44.9765

Basic Study

Anticancer effect of linalool *via* cancer-specific hydroxyl radical generation in human colon cancer

Kenichi Iwasaki, Yun-Wen Zheng, Soichiro Murata, Hiromu Ito, Ken Nakayama, Tomohiro Kurokawa, Naoki Sano, Takeshi Nowatari, Myra O Villareal, Yumiko N Nagano, Hiroko Isoda, Hirofumi Matsui, Nobuhiro Ohkohchi

Kenichi Iwasaki, Yun-Wen Zheng, Soichiro Murata, Ken Nakayama, Tomohiro Kurokawa, Naoki Sano, Takeshi Nowatari, Nobuhiro Ohkohchi, Department of Surgery and Organ Transplantation, Faculty of Medicine, University of Tsukuba, Tsukuba-shi, Ibaraki 305-8575, Japan

Yun-Wen Zheng, Regenerative Medicine Research Center, Jiangsu University Hospital, Zhenjiang 212001, Jiangsu Province, China

Yun-Wen Zheng, Department of Regenerative Medicine, Graduate School of Medicine, Yokohama City University, Yokohama-shi, Kanagawa 236-0004, Japan

Hiromu Ito, Yumiko N Nagano, Hirofumi Matsui, Department of Gastroenterology, Faculty of Medicine, University of Tsukuba, Tsukuba-shi, Ibaraki 305-8575, Japan

Myra O Villareal, Hiroko Isoda, Faculty of Life and Environmental Sciences, Alliance of Research on North Africa, University of Tsukuba, Tsukuba-shi, Ibaraki 305-8572, Japan

Author contributions: Iwasaki K, Murata S, Nagano YN, and Matsui H designed the procedure; Iwasaki K, Ito H, and Orlina VM conducted the *in vitro* experiments; Iwasaki K, Nakayama K, Kurokawa T, Sano N, and Nowatari T conducted the *in vivo* experiments; Isoda H, Matsui H, Zheng YW, and Ohkohchi N reviewed the data; Iwasaki K wrote the manuscript.

Supported by (in part) Ministry of Education, Culture, Sports, Science, and Technology of Japan, KAKENHI, No. 25462069 and No. 16K15604; The Jiangsu innovative and entrepreneurial project for the introduction of high-level talent; The Jiangsu science and technology planning project, No. BE2015669; Novartis Pharma Research Foundation (to Zheng YW); and Japan Science and Technology Research Partnership for Sustainable Development (SATREPS) project FY2015 (to Isoda H).

Institutional review board statement: Animal experiments were performed in accordance with the university's Regulations for Animal Experiments and Fundamental Guidelines for Proper Conduct of Animal Experiment and Related Activities

in Academic Research Institutions, under the jurisdiction of the Japanese Ministry of Education, Culture, Sports, Science, and Technology.

Institutional animal care and use committee statement: Animal experiments were performed in a humane manner after receiving approval from the Institutional University Experiment Committee of the University of Tsukuba (protocol number: 15-254).

Conflict-of-interest statement: The authors report no relevant conflicts of interest.

Data sharing statement: No additional data are available.

Open-Access: This article is an open-access article which was selected by an in-house editor and fully peer-reviewed by external reviewers. It is distributed in accordance with the Creative Commons Attribution Non Commercial (CC BY-NC 4.0) license, which permits others to distribute, remix, adapt, build upon this work non-commercially, and license their derivative works on different terms, provided the original work is properly cited and the use is non-commercial. See: <http://creativecommons.org/licenses/by-nc/4.0/>

Manuscript source: Invited manuscript

Correspondence to: Yun-Wen Zheng, PhD, Associate Professor, Department of Surgery and Organ Transplantation, Faculty of Medicine, University of Tsukuba, Tsukuba-shi, Ibaraki 305-8575, Japan. ywzheng@md.tsukuba.ac.jp
Telephone: +81-29-8533221
Fax: +81-29-8533222

Received: July 21, 2016
Peer-review started: July 22, 2016
First decision: September 20, 2016
Revised: October 5, 2016
Accepted: October 27, 2016
Article in press: October 27, 2016
Published online: November 28, 2016

Abstract

AIM

To investigate the anticancer mechanisms of the monoterpene alcohol linalool in human colon cancer cells.

METHODS

The cytotoxic effect of linalool on the human colon cancer cell lines and a human fibroblast cell line was examined using the WST-8 assay. The apoptosis-inducing effect of linalool was measured using the terminal deoxynucleotidyl transferase dUTP nick-end labeling assay and flow cytometry with Annexin V. Oxidative stress was investigated by staining for diphenyl-1-pyrenylphosphine, which is a cellular lipid peroxidation marker, and electron spin resonance spectroscopy. Sixteen SCID mice xenografted with human cancer cells were randomized into 3 groups for *in vivo* analysis: control and low-dose and high-dose linalool groups. The control group was administered tap water orally every 3 d. The linalool treatment groups were administered 100 or 200 $\mu\text{g}/\text{kg}$ linalool solution orally for the same period. All mice were sacrificed under anesthesia 21 d after tumor inoculation, and tumors and organs were collected for immunohistochemistry using an anti-4-hydroxynonenal antibody. Tumor weights were measured and compared between groups.

RESULTS

Linalool induced apoptosis of cancer cells *in vitro*, following the cancer-specific induction of oxidative stress, which was measured based on spontaneous hydroxyl radical production and delayed lipid peroxidation. Mice in the high-dose linalool group exhibited a 55% reduction in mean xenograft tumor weight compared with mice in the control group ($P < 0.05$). In addition, tumor-specific lipid peroxidation was observed in the *in vivo* model.

CONCLUSION

Linalool exhibited an anticancer effect *via* cancer-specific oxidative stress, and this agent has potential for application in colon cancer therapy.

Key words: Colorectal cancer; Linalool; Oxidative stress; Electron spin resonance; Lipid peroxidation

© The Author(s) 2016. Published by Baishideng Publishing Group Inc. All rights reserved.

Core tip: We elucidated the anticancer mechanism of the monoterpene alcohol, linalool, which induces apoptosis specifically in cancer cells *via* lipid peroxidation. Electron spin resonance (ESR) spectroscopy, which enables the real-time visualization of free radicals in live cells, revealed that oxidative stress developed immediately after treatment only in cancer cells. This study demonstrated that the natural compound linalool exerted an anticancer effect without causing serious side effects, and that the further utilization of ESR may support the

application of linalool as a new and cost-effective cancer therapy.

Iwasaki K, Zheng YW, Murata S, Ito H, Nakayama K, Kurokawa T, Sano N, Nowatari T, Villareal MO, Nagano YN, Isoda H, Matsui H, Ohkohchi N. Anticancer effect of linalool *via* cancer-specific hydroxyl radical generation in human colon cancer. *World J Gastroenterol* 2016; 22(44): 9765-9774 Available from: URL: <http://www.wjgnet.com/1007-9327/full/v22/i44/9765.htm> DOI: <http://dx.doi.org/10.3748/wjg.v22.i44.9765>

INTRODUCTION

Colorectal cancer is the fourth most common cause of cancer-related deaths globally, and the number of deaths has increased to approximately 700000 annually^[1]. Chemotherapy is an effective treatment for colorectal cancer, but its side effects, such as hair loss, low blood counts, hand-foot syndrome, and neuropathy, may depress the patient's quality of life^[2,3]. In addition, the current anticancer drugs are expensive^[4]. Therefore, efforts are underway worldwide to identify new, effective, and inexpensive anticancer compounds with fewer side effects, and several types of natural compounds have recently been recognized as possible sources for anticancer drugs^[5-9].

This study examined the anticancer effects of the monoterpene alcohol linalool, which is commonly used as a flavoring agent. Linalool is found abundantly in red wine, essential oil of lavender, and coriander fruits^[10]. Several studies have reported the anticancer potential of linalool against solid tumor cell lines, such as gastric cancer, lung cancer, skin cancer^[11], and hepatic cancer (HepG2)^[12], as well as several leukemia cell lines^[13]. Some of these studies reported that linalool also exerted an apoptotic effect^[11,13], induced oxidative stress^[12,14], and exhibited immunomodulation^[15]. However, the mechanism by which linalool exerts its cytotoxic effect has not yet been elucidated^[14]. We hypothesized that linalool's anticancer effects are mediated through the cancer-specific generation of hydroxyl radical followed by apoptosis. We investigated the cytotoxic effects of linalool in the human colon cancer cell line HCT 116 by analyzing the cell death mechanisms and measuring oxidative stress.

We focused on the detection of instant reactive oxygen species (ROS) production by using electron spin resonance (ESR) spectroscopy. ESR is a highly sensitive and the most definitive method for the detection of short-lived ROS using the spin-trapping technique, such as the hydroxyl radical, superoxide, and hydroperoxyl radical^[16-18]. ESR was developed in the early 1970s, and it is often used in research of ischemia-reperfusion injury^[19-21] and oxidative stress after exercise^[22]. The method is not commonly used in cancer biology studies, but it has potential for

wide application in cancer screening and therapeutic evaluation in the near future, because it is becoming evident that both the ROS levels and redox signaling can affect the phenotypic profile of cancer cells and their responsiveness to therapeutic interventions^[23,24].

MATERIALS AND METHODS

Drugs

Linalool (97% pure; Sigma Aldrich, St. Louis, MO, USA), diphenyl-1-pyrenylphosphine(DPPP) (Dojindo, Kumamoto, Japan), 5,5-dimethyl-1-pyrroline-N-oxide(DMPO) (Radical Research Inc., Tokyo, Japan), dimethyl sulfoxide (DMSO) (Wako, Osaka, Japan), and Dulbecco's modified Eagle's medium (DMEM) (Wako, Osaka, Japan) were purchased.

Animals and xenograft tumors

Six-week-old male severe combined immune deficiency (SCID) mice (Clea, Tokyo, Japan) were maintained in plastic cages in a temperature-controlled room on a 12-h light/dark cycle with free access to water and a standard pellet diet throughout the experiment. After an acclimation period of 7 d, the solid tumor was developed by the subcutaneous inoculation of 1×10^6 HCT 116 cells on the right flank of each mouse. The mice were divided into the following three groups: control group ($n = 5$), mice treated with saline; low-dose linalool group ($n = 5$), mice treated with 100 mg/kg linalool; and high-dose linalool group, mice treated with 200 mg/kg linalool ($n = 6$). Seven days after tumor injection, saline, low-dose linalool, and high-dose linalool were administered orally *via* gavage every 3 d in a volume of 25 μ L. All the animals were sacrificed 21 d after tumor inoculation. The serum levels of aspartate aminotransferase (AST) and alanine aminotransferase (ALT) were detected. All animal experiments were performed in a humane manner after approval from the Institutional University Experiment Committee of the University of Tsukuba (protocol number: 15-254).

Cell culture and viability

Human colon cancer cell lines, *e.g.*, HCT 116, and a human fibroblast cell line CCD18Co were obtained from American Type Culture Collection (ATCC, Manassas, VA, USA) and subdivided into multiple tubes for stocking in liquid nitrogen. HCT 116: a human colon cancer cell line that is commonly used to study cancer invasion and tumorigenesis (passage 4), WiDr: colon adenocarcinoma cell line established from a 78 year old female (passage 6), RKO: a poorly differentiated colon carcinoma cell line (passage 4), HCT-15: a quasidiploid human colon cancer cell line (passage 6), SW480: established from Dukes' type B, colorectal adenocarcinoma cells (passage 5), and CCD18Co: a human fibroblast cell line used as a substitute for normal cells (passage 6), were grown in Dulbecco's

modified Eagle's medium (DMEM) supplemented with inactivated 10% fetal bovine serum and 1% penicillin/streptomycin. All cells were cultured in a 5% CO₂ cell culture incubator at 37 °C.

Cell viability was examined using the Cell Counting Kit-8 (Dojindo, Kumamoto, Japan), according to the manufacturer's instructions. Cancer cells were seeded in a 96-well dish at 3000 cells/well, incubated overnight, and incubated with different concentrations of linalool for 24 h. The medium was replaced with the medium containing 10% WST-8, and the cells were incubated further for 2 h. The absorbance of each well at 450 nm was measured by a SUNRISE Rainbow microplate reader (TECAN, Groedig, Austria).

Apoptosis assays

The In Situ Cell Death Detection kit(Roche Diagnostics, Basel, Switzerland) was used to detect apoptosis in the cell culture. HCT 116 cells were seeded at 3000 cells/well onto Lab-Tek II Chamber Slides (Nalge Nunc International, Tokyo, Japan) and incubated overnight. Cells were incubated with linalool (0, 100 μ mol/L) or 50 nM staurosporine as a positive control for 24 h. Cells were incubated with the terminal deoxynucleotidyl transferase-mediated dUTP nick end labelling (TUNEL) reaction mixture according to the manufacturer's instructions.

A flow cytometer (Muse Cell Analyzer) and Muse Annexin V & Dead Cell Kit (Merck Millipore, Darmstadt, Germany) were used for quantitative analyses of live, early and late apoptosis, and cell death in suspension cell lines. HCT 116 cells were seeded at a density of 1×10^5 cells per dish (diameter, 6 cm) and incubated overnight. Cells were incubated with different concentrations of linalool (0, 10, 100, 1000 μ mol/L) and 50 nM staurosporine as the positive control for 24 h. Cells were prepared with Annexin V and Dead Cell reagent according to the manufacturer's instructions, and the samples were evaluated using the MUSE analyzer with the appropriate thresholds for cell size and apoptotic profile.

Lipid peroxidation test using the diphenyl-1-pyrenylphosphine assay

HCT 116 cells and CCD18Co cells were seeded at a density of 3000 cells/well each onto Lab-Tek Chambered Borosilicate Coverglass Slides (Nalge Nunc International, Tokyo, Japan) and incubated overnight. CCD18Co cells were used as a normal cell control. diphenyl-1-pyrenylphosphine (DPPP) (5 mmol/L) was dissolved in DMSO, and the solution was diluted using DMEM without Phenol red or FBS. The final concentration was adjusted to 50 μ mol/L. A volume of 500 μ L of the solution was added to each well and incubated for 10 min. Cells were incubated with different concentrations of linalool for 2 h. The oxidation of DPPP was monitored using KEYENCE BZ-X700 (Keyence, Osaka, Japan). Wavelengths of

excitation and emission were set at 352 nm and 380 nm, respectively.

Electron spin resonance spectroscopy

HCT 116 cells were cultured on rectangular cover slides and incubated overnight. Cells were incubated for 15 min with different concentrations of linalool (0, 250, 500, 1000 $\mu\text{mol/L}$) and were immersed in a culture medium with 5 mmol/L respiratory substrates (succinate, glutamate, and malate), 5 mmol/L nicotinamide adenine dinucleotide (NADH), and 10 mmol/L DMPO. Immersed-slide glasses were placed on the tissue glass and measured using the EPR apparatus for 10 min, 30 min, 1 h, and 2 h after treatment. All spectra were recorded using a JEOL-TE X-band spectrometer (JEOL Ltd., Tokyo, Japan) and analyzed using Win-Rad Radical Analyzer System (Radical Research, Inc., Tokyo, Japan).

Histological and immunohistochemical assays

Immunohistochemistry for 4-HNE was performed in all samples as follows. Paraffin was removed with xylene, and endogenous peroxidase was blocked in tissues using 3% of H_2O_2 in methanol. All tissue sections were pretreated in citrate buffer (pH 6.0) for 10 min at 100 $^\circ\text{C}$ in a microwave oven. Nonspecific binding sites were blocked using 10% BSA before incubation with the primary antibody. Slides were washed, incubated with biotinylated secondary IgG for 30 min and exposed to a biotin-peroxidase complex.

Statistical analysis

Statistical analysis was performed using GraphPad Prism 5. Significant probability (*P* value) was calculated using ANOVA followed by Dunnett's test. The results are expressed as the mean \pm SD, and *P* < 0.05 was considered statistically significant.

The statistical methods of this study were reviewed by Isao Muraki, MD, PhD, an epidemiologist in the Department of Cardiovascular Disease Prevention, Osaka Center for Cancer and Cardiovascular Disease Prevention.

RESULTS

Linalool induces apoptosis in human colon cancer cells

Phase contrast microscopy was used to observe the morphologic changes of HCT 116 cell line, and the WST assay was performed for each cell line to evaluate cytotoxicity after exposure to linalool. Cancer cells exhibited rapid proliferation under control conditions (Figure 1A). In contrast, cancer cells stopped proliferating after treatment with 250 $\mu\text{mol/L}$ linalool and exhibited fragmentation of chromatin, bleb formation on the cell surface, and shrinkage, which are representative of apoptosis (Figure 1B). We observed a dose-dependent increase in the cytotoxic effect of linalool in all cancer cell lines and fibroblast cell lines,

but the cell viability of CCD18Co was suggested to be higher than that of HCT 116 at 100-500 $\mu\text{mol/L}$ (Figure 1C). Micrographs of HCT 116 cells treated with different linalool concentrations for 24 h revealed shrinkage of cells and tightly packed organelles at concentrations over 100 $\mu\text{mol/L}$ (data not shown).

TUNEL staining was performed using HCT 116 cells to clarify the mechanism of linalool cytotoxicity. The cells were divided into the following three groups: control, linalool, and staurosporine groups. The corresponding percentages of TUNEL-positive cells were 0.7% \pm 0.7% (Figure 2A), 10.5% \pm 7.7% (with 100 $\mu\text{mol/L}$ linalool treatment; Figure 2B), and 25.1% \pm 11.2% (with 100 $\mu\text{mol/L}$ staurosporine treatment; Figure 2C). The percentage of apoptotic cells in each group is shown as a column graph with error bars (Figure 2D).

The Annexin V assay was performed for a further quantitative analysis of live cells and cells showing early and late apoptosis, and cell death. Figure 2E and 2F shows the percentage of gated cells in each quadrant, and the data revealed a dose-dependent increase in cells in early and late apoptosis phases.

These results clearly demonstrated that linalool induced apoptosis of human colon cancer cells in a dose-dependent manner *in vitro*.

Linalool inhibits the growth of human xenografted tumor mouse model without side effects

A human cancer xenografted mouse model was established, and linalool was administered orally to investigate whether linalool exhibited an anticancer effect *in vivo*. Treatment with linalool caused a decrease in the size and weight of subcutaneous tumors (Figure 3A). And the difference in the resected tumor weight between the control group and the high-dose (200 mg/kg) linalool treatment group was significant (Figure 3B). No changes in the mean body weight and serum AST and ALT levels among the three groups were detected (Figure 3C). Skin damage, hair loss, intestinal bleeding, and other abnormal symptoms were not observed in any of the three groups. These results demonstrated that linalool exhibited an anti-proliferation effect on transplanted human cancer cells without significant weight loss or damage to organs.

Linalool induces cancer-specific oxidative stress and apoptosis

An oxidative stress assay was performed to further confirm the mechanism of the apoptotic effect of linalool. ESR spectroscopy was performed in HCT 116 and CCD18Co cells using DMPO as a spin-trapping reagent. The signal intensity of DMPO reflects linalool-induced hydroxyl radical production. Cancer-specific signal intensity gain was observed only for 500 $\mu\text{mol/L}$ linalool 30 min after treatment (Figure 4A), which was diminished at an earlier time point (10 min) and at later time points (1 and 2 h). The signal intensity of

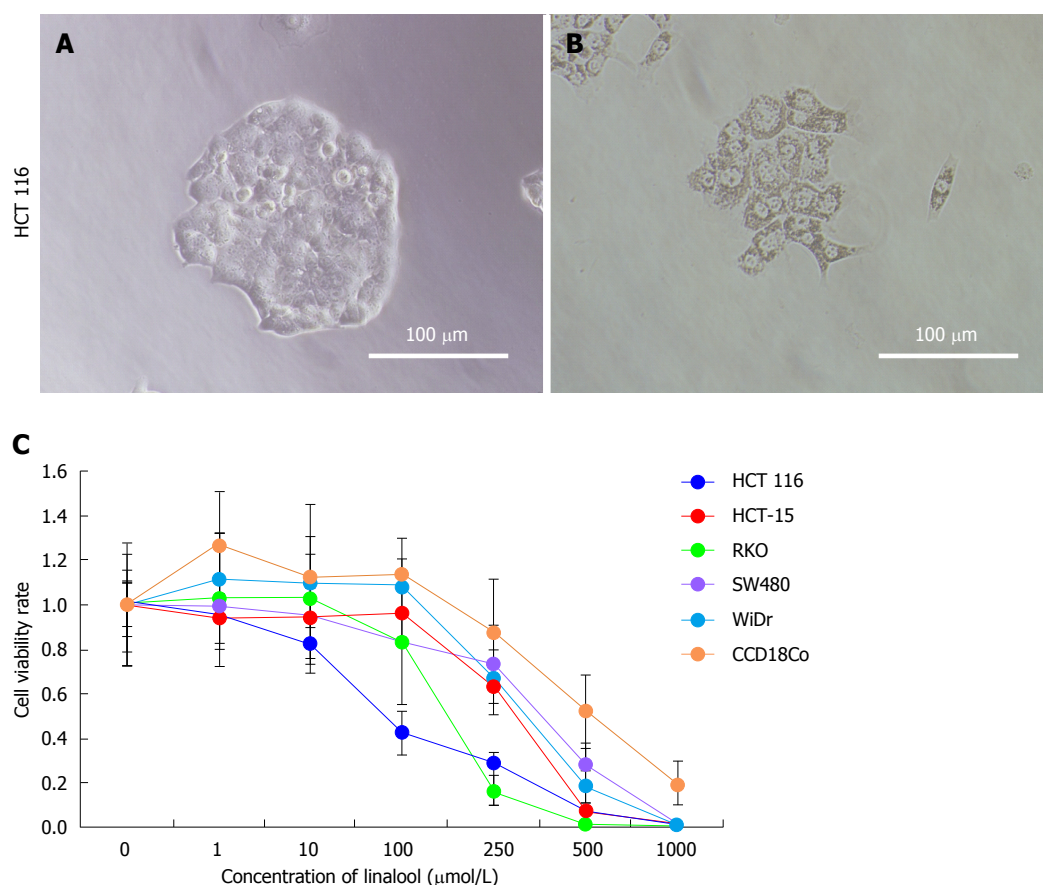


Figure 1 Anticancer effect of linalool. A: HCT 116 cells in the control group showing rapid proliferation; B: HCT 116 cells treated with 250 μmol/L linalool for 24 h showed shrinkage of cells and tightly packed organelles; C: A dose-dependent increase in the cytotoxic effect of linalool was observed in all cancer cell lines. Values are expressed as mean ± SD ($n = 3$).

control is shown in (Figure 4B). There was no gain in signal intensity for CCD18Co cells at any time point (data not shown). The DPPH assay was performed to detect lipid peroxidation as green fluorescence on the cell surface. Linalool induced HCT 116 cell membrane lipid peroxidation (Figure 4C), whereas the signal was not observed without linalool (Figure 4D). CCD18Co also showed no lipid peroxidation by linalool (data not shown).

Histological analyses of mouse tumor samples demonstrated a reduction of cancer cells and a relatively large area of necrotizing tissue inside the tumor. Immunohistochemistry for 4-HNE, which is a marker of oxidative stress due to increased lipid peroxidation, revealed an accumulation of 4-HNE in tumors from the high-dose linalool group compared to tumors from the control group. However, no significant difference in 4-HNE accumulation in stomach or liver tissues was observed between any of the groups (Figure 5).

These results revealed that linalool induced cancer-specific oxidative stress that was first induced in the form of hydroxyl radical production, followed by lipid peroxidation, and exhibited a selective anticancer apoptotic effect.

DISCUSSION

In this study, we have demonstrated for the first time that the rapid induction of ROS by linalool as a trigger of subsequent apoptotic cascade *via* lipid peroxidation with living-cellular ESR technique. We also revealed that this mechanism was cancer specific and significant weight loss or damage to normal organs were not observed in the human cancer xenografted mice with oral administration of linalool. These results raise the possibility that linalool is applicable as a new resource for cancer therapy.

The anticancer activity of some essential oils from various plants has received substantial attention in recent years because these essential oils are likely to serve as new sources of chemotherapeutic drugs^[25]. Existing chemotherapeutic agents exert cytotoxic effect not only on cancer cells but also on normal cells, and various side effects are observed. In contrast, some essential oils exhibit maximum efficacy against cancer cells and cause minimal toxic effects in normal cells^[26]. The elucidation of the mechanism by which these essential oils exert the anticancer effect possibly contribute to the improvement in survival rate and quality of life (QOL) of cancer patients. Monoterpenes

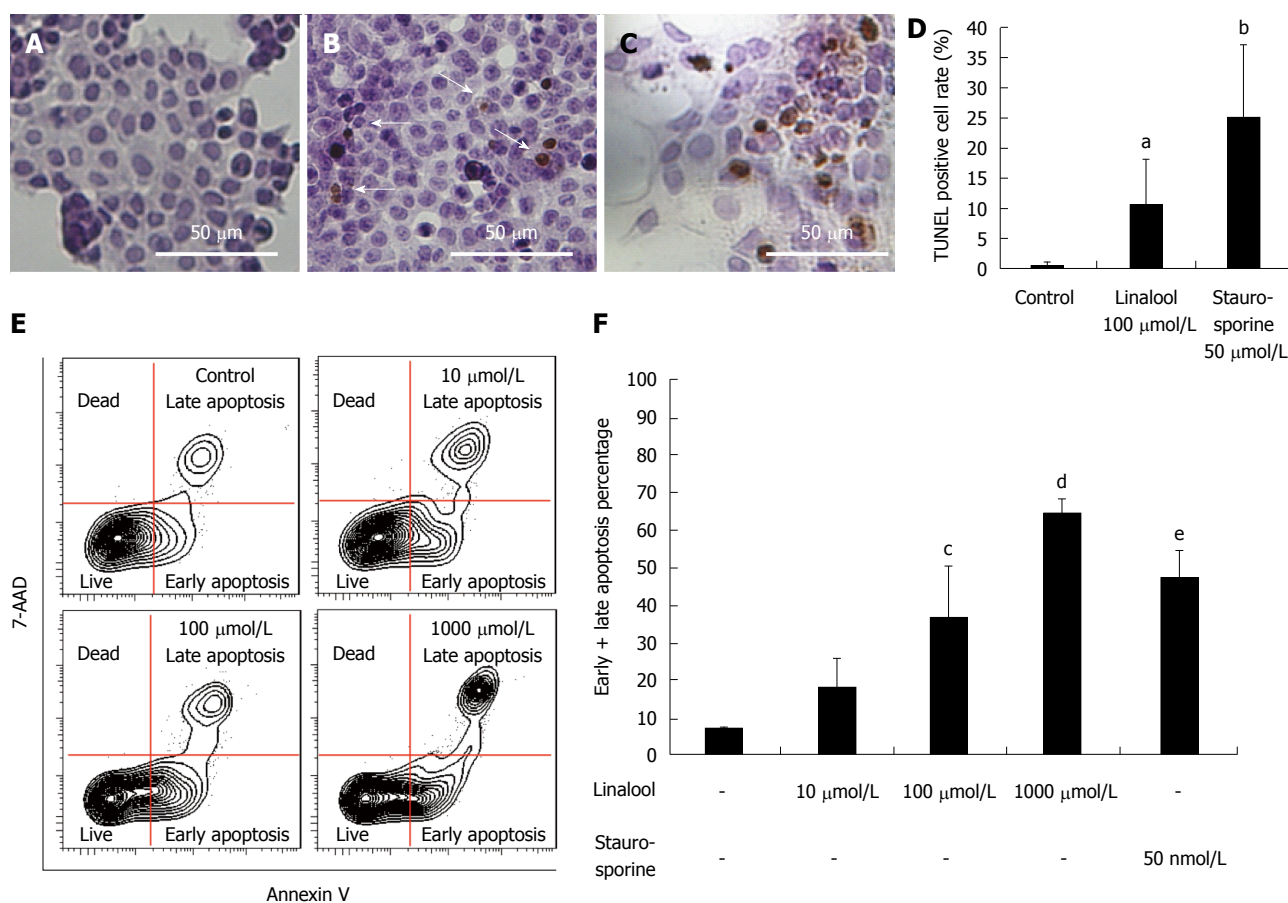


Figure 2 Anticancer mechanism of linalool. A: TUNEL staining of HCT 116 cells in the control group; B: Staining of HCT 116 cells treated with 100 μmol/L linalool; C: Staining of HCT 116 cells treated with 50 nmol/L staurosporine. The corresponding percentage of TUNEL-positive cells (white arrow) was 0.7% ± 0.7% (A), 10.5% ± 7.7% (B), and 25.1% ± 11.2% (C); D: The percentage of apoptotic cells in each group (mean ± SD, n = 10). ^aP < 0.05 vs control group; ^bP < 0.05 vs 100 μmol/L linalool group; E: Flow cytometry using Annexin V for the detection of live cells, cells showing early and late apoptosis, and cell death; F: Percentages of early and late apoptosis fraction. ^cP < 0.05 vs control group; ^dP < 0.01 vs control group; ^eP < 0.05 vs control group; one-way ANOVA followed by Dunnett's test, n = 3.

are non-nutritive dietary component found in the essential oils of citrus fruits, mints and herbs and belong to a group of chemical compounds named "terpenes", representing a group of natural compounds whose basic structure consists of two linked isoprene units, which are formed by a 5-carbon base each^[27]. Linalool is an acyclic monoterpene alcohol with a chemical formula of C₁₀H₁₈O and molecular mass of 154.25 g/mol, and has widely been used for its fragrance and odorant qualities in cosmetics, soaps, and perfumes. It is an inexpensive, familiar, and well-known chemical with little toxicity for a human body. According to the aforementioned references, there are three phenomena as anticancer activities of linalool: apoptotic effect^[11,13], induction of oxidative stress^[12,14], and immunomodulation^[15]. However, its underlying mechanism and the reason why linalool exerts cancer selective cytotoxicity have not been confirmed. Therefore, we focused on the detection of instant reactive oxygen species (ROS) production by using ESR spectroscopy.

Free electrons of ROS align with their low energy status (βspin) or high energy status (αspin) in an external magnetic field. A transition between low-

and high-energy states may occur when sufficient microwave energy is absorbed^[28]. An ESR spectrum is obtained and recorded by observing variations in magnetic field strength at a fixed microwave frequency. ROS are generally present at low concentrations and very reactive, and the use of spin-trapping reagents solves these problems. The ESR spin-trapping technique involves the use of chemical species called spin traps, which react with short-lived free radicals to form relatively stable adducts with a half-life that is adequate to observe the ESR spectrum^[29]. This study used DMPO as a spin trap to specifically detect hydroxyl radicals with a signal intensity of 1:2:2:1^[29]. Furthermore, more than 90% of intracellular ROS are generated from mitochondria, and these ROS peroxidize lipids at the same location and produce HNE around the mitochondria, which leads to apoptosis^[30]. ROS was detected almost immediately and directly after treatment by using an ESR system. The findings of our *in vitro* experiments following ESR signal detection are consistent with the aforementioned findings, which means that ROS generation, as a sign of apoptosis of cancer cells. The result of our study indicates that detection of ROS by

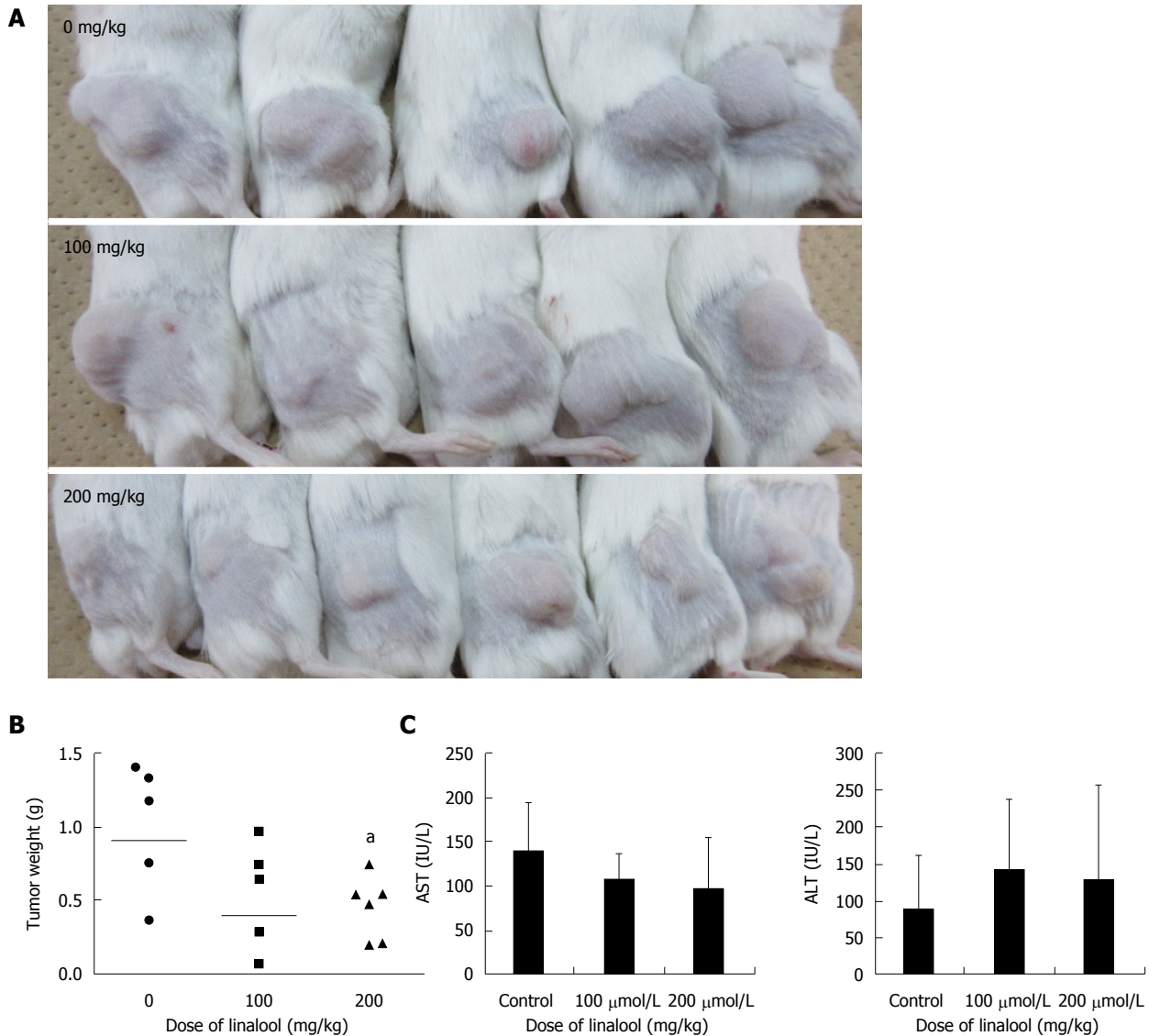


Figure 3 Changes in mouse tumor size and weight after drug administration. A: The pictures show the size of the tumors in each group. Upper: control group. Middle: 100 mg/kg linalool group. Lower: 200 mg/kg linalool group. As concentration of linalool increased, the xenografted tumor size decreased macroscopically; B: Tumor weight after removal showed a significant decrease in the group of 200 mg/kg administration, compared to that of control group [expressed as geometric mean, $n = 5$ (control), 5 (100 mg/kg linalool), 6 (200 mg/kg linalool)], $^aP < 0.05$ vs control group; one-way ANOVA followed by Dunnett's test; C: No significant change was detected in serum AST and ALT level in each group; values are expressed as mean \pm SD, $n = 5$ (control), 5 (100 mg/kg linalool), 6 (200 mg/kg linalool).

ESR is applicable to the screening and therapeutic evaluation of anticancer agents.

The results obtained from this study showed that linalool has distinct roles in lipid peroxidation in cancer and other tissues such as the stomach and the liver. It has been described that such a cancer selective effect probably depend on the redox state of the cell^[31]. The cancer cellular concentrations of ROS used to be higher than that of normal cells because the cancer cellular metabolism is completely different: it is well known as the Warburg effect^[32]. Under such condition, cancer cells should have a higher ability for ROS regulation as its survival strategy^[33,34]. This is a reason why cancer cells can endure the oxidative stress environments. In addition, one recent study reported an inhibitory effect of linalool on mitochondrial complexes I and

II, the electron transport, followed by mitochondrial derangements and cell death in HepG2 cells^[12]. Thus, the difference of the redox, metabolic, and mitochondrial states between the cancer and normal organ tissues might be responsible for linalool's selective oxidative stress induction and selective cytotoxicity to cancer cells. Although we focused on the instant generation of ROS using ESR, which produced complementary findings, further studies are required to establish the strategy to produce a state of selective oxidative stress in cancer cells.

In conclusion, we demonstrated that linalool induced apoptosis of human colon cancer cells *via* cancer-specific oxidative stress, which was detectable as an ESR signal. The further utilization of ESR can reveal novel uses for natural compounds, such as linalool, as

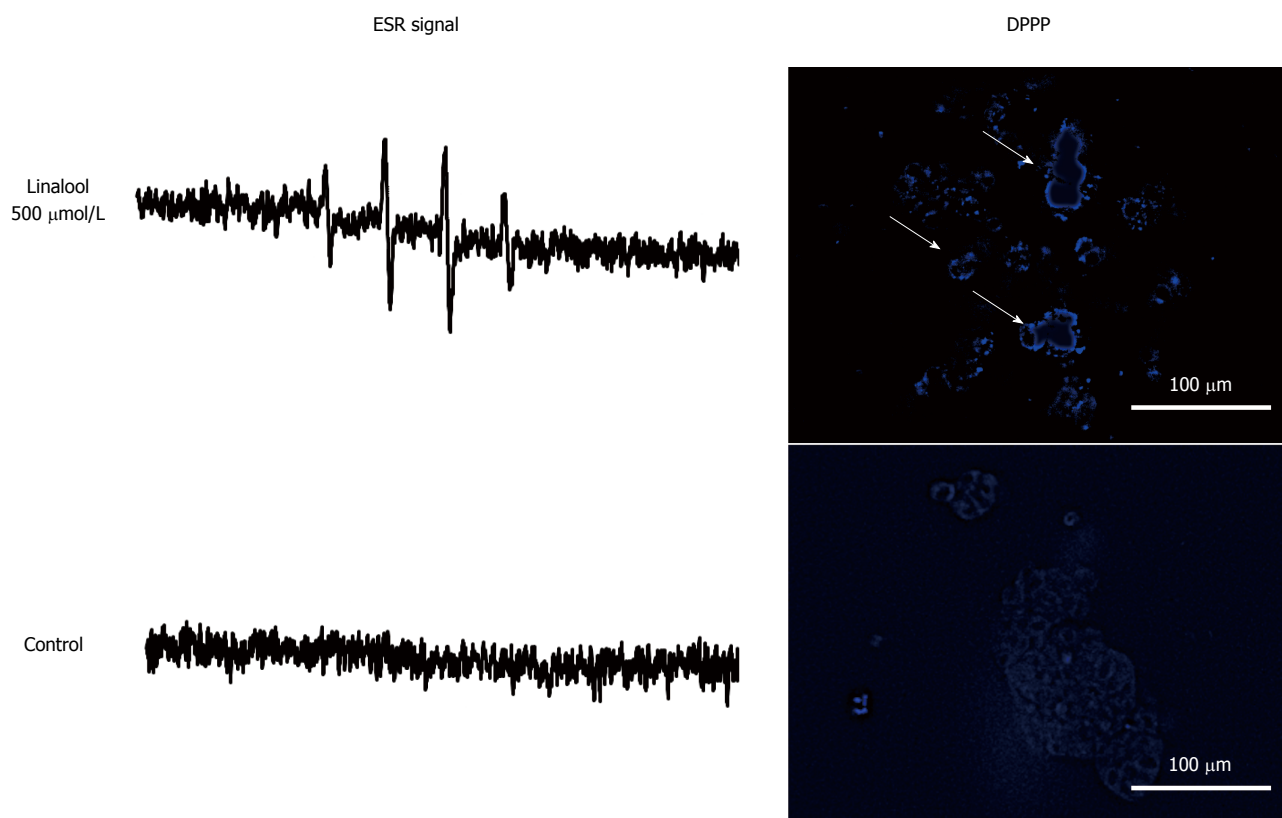


Figure 4 Oxidative stress assay *in vitro*. A: Electron spin resonance (ESR) spectroscopy performed 30 min after linalool treatment. The signal intensity of 1:2:2:1 suggests generation of hydroxyl radical, the strongest reactive oxygen species (ROS); B: The signal of HCT 116 without linalool at the same time period; C: Diphenyl-1-pyrenylphosphine (DPPP) assay performed to detect lipid peroxidation showed that linalool induced cell membrane lipid peroxidation as green fluorescent on the cell surface(white arrow); D: The cell membrane lipid peroxidation was not observed in without linalool treatment group.

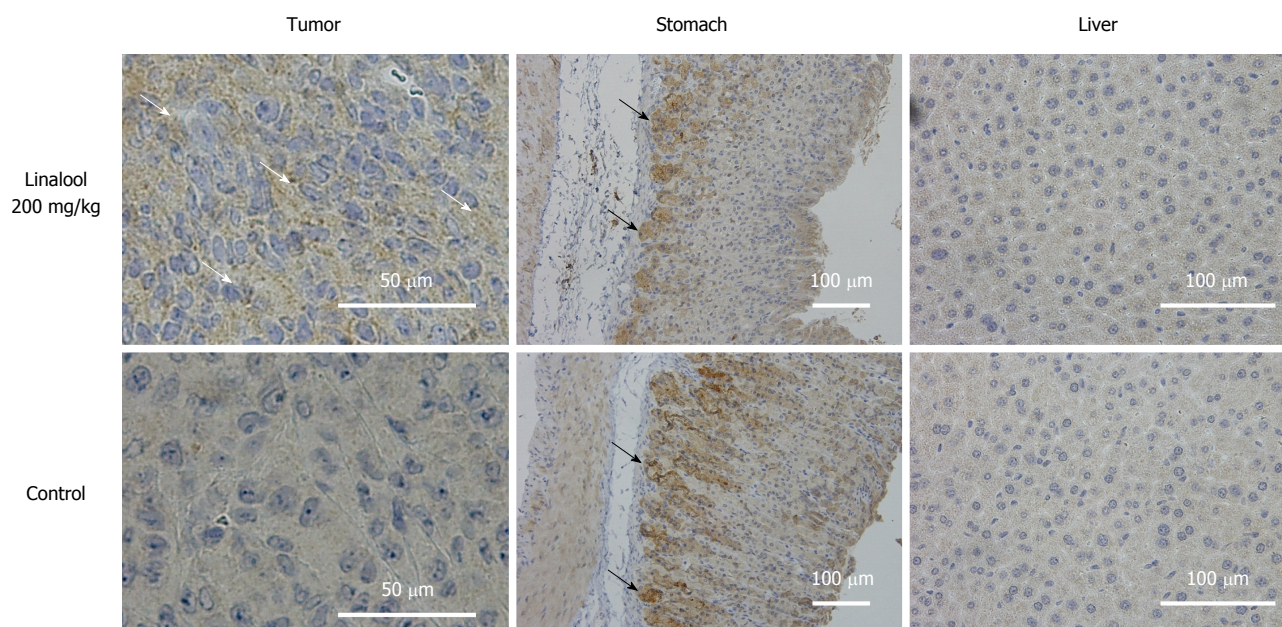


Figure 5 Oxidative stress assay *in vivo*. Although accumulation of 4-hydroxynonenal (4-HNE) was observed in the tumors from the high-dose linalool group, it was not observed in stomach or liver tissues, except for the physiological accumulation (black arrow) of 4-HNE near the basal membrane of the stomach.

new, cost-effective cancer therapies.

ACKNOWLEDGMENTS

The authors thank Ako Takahashi for providing technical assistance.

COMMENTS

Background

Colorectal cancer is a major public health problem, and its mortality is very high globally. Chemotherapy is the most effective treatment for colorectal cancer, but the problems of side effects and high costs remain unresolved.

Research frontiers

There is a growing interest in the search for the cancer preventive or therapeutic potential of natural compounds, which are not expensive and exhibit few side effects. Linalool is a monoterpenoid alcohol that is present abundantly in red wine and coriander and exhibits anticancer effects in some types of human cancer. However, the mechanisms of this effect are not clear.

Innovations and breakthroughs

The authors focused on the detection of instant reactive oxygen species (ROS) production using electron spin resonance (ESR) spectroscopy, which is a highly sensitive and definitive method for the detection of short-lived ROS. We revealed that the first sign of apoptosis in cancer cells induced by linalool may be detected almost immediately and directly after treatment by using an ESR system. This result is an important finding for the screening and therapeutic evaluation of new anticancer agents.

Applications

This study was designed to evaluate the anticancer mechanisms of linalool on human colon cancer cell lines for the development of new effective anticancer strategies.

Terminology

Linalool is an acyclic monoterpenoid alcohol with a chemical formula of $C_{10}H_{18}O$ and molecular mass of 154.25 g/mol. Approximately 12000 T of linalool is produced for the industrial use annually, and its natural biosynthesis through plants, primarily herbs, trees and fruits, is higher by dimension. More than 95% of synthetic linalool is used for its fragrance and odorant qualities in cosmetics, soaps, and perfumes, and only approximately 1% is added to food and beverages for aroma and flavoring. Linalool is an inexpensive, familiar, and well-known chemical with great prospects for medical application.

Peer-review

Article "Anticancer activity of linalool *via* cancer-specific hydroxyl radical generation in human colon cancer", provides significant and interesting results regarding the anticancer mechanism of linalool by inducing apoptosis specifically in cancer cells *via* lipid peroxidation.

REFERENCES

- 1 **Brody H.** Colorectal cancer. *Nature* 2015; **521**: S1 [PMID: 25970450 DOI: 10.1038/521S1a]
- 2 **Braun MS, Seymour MT.** Balancing the efficacy and toxicity of chemotherapy in colorectal cancer. *Ther Adv Med Oncol* 2011; **3**: 43-52 [PMID: 21789155 DOI: 10.1177/1758834010388342]
- 3 **Teker F, Demirag G, Erdem D, Kemal Y, Yucel I.** Quality of life in colorectal cancer patients during chemotherapy in the era of monoclonal antibody therapies. *J BUON* 2015; **20**: 443-451 [PMID: 26011334]
- 4 **Hoyle M, Crathorne L, Peters J, Jones-Hughes T, Cooper C, Napier M, Tappenden P, Hyde C.** The clinical effectiveness and cost-effectiveness of cetuximab (mono- or combination chemotherapy), bevacizumab (combination with non-oxaliplatin chemotherapy) and panitumumab (monotherapy) for the treatment of metastatic colorectal cancer after first-line chemotherapy (review of technology appraisal No.150 and part review of technology appraisal No. 118): a systematic review and economic model. *Health Technol Assess* 2013; **17**: 1-237 [PMID: 23547747 DOI: 10.3310/hta17140]
- 5 **Tan BL, Norhaizan ME, Huynh K, Yeap SK, Hazilawati H, Roselina K.** Brewers' rice modulates oxidative stress in azoxymethane-mediated colon carcinogenesis in rats. *World J Gastroenterol* 2015; **21**: 8826-8835 [PMID: 26269672 DOI: 10.3748/wjg.v21.i29.8826]
- 6 **Maruyama T, Murata S, Nakayama K, Sano N, Ogawa K, Nowatari T, Tamura T, Nozaki R, Fukunaga K, Ohkohchi N.** (-)-Epigallocatechin-3-gallate suppresses liver metastasis of human colorectal cancer. *Oncol Rep* 2014; **31**: 625-633 [PMID: 24337301 DOI: 10.3892/or.2013.2925]
- 7 **Murata S, Shiragami R, Kosugi C, Tezuka T, Yamazaki M, Hirano A, Yoshimura Y, Suzuki M, Shuto K, Ohkohchi N, Koda K.** Antitumor effect of 1, 8-cineole against colon cancer. *Oncol Rep* 2013; **30**: 2647-2652 [PMID: 24085263 DOI: 10.3892/or.2013.2763]
- 8 **Samet I, Han J, Jlaiei L, Sayadi S, Isoda H.** Olive (*Olea europaea*) leaf extract induces apoptosis and monocyte/macrophage differentiation in human chronic myelogenous leukemia K562 cells: insight into the underlying mechanism. *Oxid Med Cell Longev* 2014; **2014**: 927619 [PMID: 24803988 DOI: 10.1155/2014/927619]
- 9 **Boulaaba M, Tsolmon S, Ksouri R, Han J, Kawada K, Smaoui A, Abdely C, Isoda H.** Anticancer effect of *Tamarix gallica* extracts on human colon cancer cells involves Erk1/2 and p38 action on G2/M cell cycle arrest. *Cytochromeology* 2013; **65**: 927-936 [PMID: 23801270 DOI: 10.1007/s10616-013-9564-4]
- 10 **Burdock GA, Carabin IG.** Safety assessment of coriander (*Coriandrum sativum* L.) essential oil as a food ingredient. *Food Chem Toxicol* 2009; **47**: 22-34 [PMID: 19032971 DOI: 10.1016/j.fct.2008.11.006]
- 11 **Cherng JM, Shieh DE, Chiang W, Chang MY, Chiang LC.** Chemopreventive effects of minor dietary constituents in common foods on human cancer cells. *Biosci Biotechnol Biochem* 2007; **71**: 1500-1504 [PMID: 17587681 DOI: 10.1271/bbb.70008]
- 12 **Usta J, Kreydiyyeh S, Knio K, Barnabe P, Bou-Moughlabay Y, Dagher S.** Linalool decreases HepG2 viability by inhibiting mitochondrial complexes I and II, increasing reactive oxygen species and decreasing ATP and GSH levels. *Chem Biol Interact* 2009; **180**: 39-46 [PMID: 19428344 DOI: 10.1016/j.cbi.2009.02.012]
- 13 **Gu Y, Ting Z, Qiu X, Zhang X, Gan X, Fang Y, Xu X, Xu R.** Linalool preferentially induces robust apoptosis of a variety of leukemia cells via upregulating p53 and cyclin-dependent kinase inhibitors. *Toxicology* 2010; **268**: 19-24 [PMID: 19922762 DOI: 10.1016/j.tox.2009.11.013]
- 14 **Srithar G, Sudha M, Nalini N.** Linalool exerts dose dependent chemopreventive effect against 1, 2-dimethylhydrazine induced rat colon carcinogenesis. *Int J Pharm Biol Arch* 2013; **4**: 758-770
- 15 **Chang MY, Shen YL.** Linalool exhibits cytotoxic effects by activating antitumor immunity. *Molecules* 2014; **19**: 6694-6706 [PMID: 24858101 DOI: 10.3390/molecules19056694]
- 16 **Kominami S, Rokushika S, Hatano H.** Studies of short-lived radicals in the gamma-irradiated aqueous solution of uridine-5'-monophosphate by the spin-trapping method and the liquid chromatography. *Int J Radiat Biol Relat Stud Phys Chem Med* 1976; **30**: 525-534 [PMID: 187548]
- 17 **Kohno M, Mizuta Y, Kusai M, Masumizu T, Makino K.** Measurements of superoxide anion radical and superoxide anion scavenging activity by electron spin resonance spectroscopy coupled with DMPO spin trapping. *Bull Chem Soc Jpn* 1994; **67**: 1085-1090 [DOI: 10.1246/bcsj.67.1085]
- 18 **Noda Y, Anzai K, Mori A, Kohno M, Shinmei M, Packer L.** Hydroxyl and superoxide anion radical scavenging activities of natural source antioxidants using the computerized JES-FR30 ESR

- spectrometer system. *Biochem Mol Biol Int* 1997; **42**: 35-44 [PMID: 9192083 DOI: 10.1080/15216549700202411]
- 19 **Li XY**, McCay PB, Zughaib M, Jeroudi MO, Triana JF, Bolli R. Demonstration of free radical generation in the “stunned” myocardium in the conscious dog and identification of major differences between conscious and open-chest dogs. *J Clin Invest* 1993; **92**: 1025-1041 [PMID: 8394382 DOI: 10.1172/JCI116608]
 - 20 **Zini I**, Tomasi A, Grimaldi R, Vannini V, Agnati LF. Detection of free radicals during brain ischemia and reperfusion by spin trapping and microdialysis. *Neurosci Lett* 1992; **138**: 279-282 [PMID: 1608539]
 - 21 **Arroyo CM**, Kramer JH, Dickens BF, Weglicki WB. Identification of free radicals in myocardial ischemia/reperfusion by spin trapping with nitron DMPO. *FEBS Lett* 1987; **221**: 101-104 [PMID: 3040465]
 - 22 **Ashton T**, Young IS, Peters JR, Jones E, Jackson SK, Davies B, Rowlands CC. Electron spin resonance spectroscopy, exercise, and oxidative stress: an ascorbic acid intervention study. *J Appl Physiol* (1985) 1999; **87**: 2032-2036 [PMID: 10601146]
 - 23 **Santos J**, Alonso C, Guilarte M, Vicario M, Malagelada JR. Targeting mast cells in the treatment of functional gastrointestinal disorders. *Curr Opin Pharmacol* 2006; **6**: 541-546 [PMID: 16956793 DOI: 10.1016/j.coph.2006.08.001]
 - 24 **Schumacker PT**. Reactive oxygen species in cancer: a dance with the devil. *Cancer Cell* 2015; **27**: 156-157 [PMID: 25670075 DOI: 10.1016/j.ccell.2015.01.007]
 - 25 **Miyashita M**, Sadzuka Y. Effect of linalool as a component of *Humulus lupulus* on doxorubicin-induced antitumor activity. *Food Chem Toxicol* 2013; **53**: 174-179 [PMID: 23220514 DOI: 10.1016/j.fct.2012.11.035]
 - 26 **Jana S**, Patra K, Sarkar S, Jana J, Mukherjee G, Bhattacharjee S, Mandal DP. Antitumorigenic potential of linalool is accompanied by modulation of oxidative stress: an in vivo study in sarcoma-180 solid tumor model. *Nutr Cancer* 2014; **66**: 835-848 [PMID: 24779766 DOI: 10.1080/01635581.2014.904906]
 - 27 **Almeida JR**, Souza GR, Silva JC, Saraiva SR, Júnior RG, Quintans Jde S, Barreto Rde S, Bonjardim LR, Cavalcanti SC, Quintans LJ. Borneol, a bicyclic monoterpene alcohol, reduces nociceptive behavior and inflammatory response in mice. *ScientificWorldJournal* 2013; **2013**: 808460 [PMID: 23710149 DOI: 10.1155/2013/808460]
 - 28 **He W**, Liu Y, Wamer WG, Yin JJ. Electron spin resonance spectroscopy for the study of nanomaterial-mediated generation of reactive oxygen species. *J Food Drug Anal* 2014; **22**: 49-63 [PMID: 24673903 DOI: 10.1016/j.jfda.2014.01.004]
 - 29 **Buettner GR**. Spin trapping: ESR parameters of spin adducts. *Free Radic Biol Med* 1987; **3**: 259-303 [PMID: 2826304 DOI: 10.1016/s0891-5849(87)80033-3]
 - 30 **Indo HP**, Davidson M, Yen HC, Suenaga S, Tomita K, Nishii T, Higuchi M, Koga Y, Ozawa T, Majima HJ. Evidence of ROS generation by mitochondria in cells with impaired electron transport chain and mitochondrial DNA damage. *Mitochondrion* 2007; **7**: 106-118 [PMID: 17307400 DOI: 10.1016/j.mito.2006.11.026]
 - 31 **Lee JC**, Kim J, Park JK, Chung GH, Jang YS. The antioxidant, rather than prooxidant, activities of quercetin on normal cells: quercetin protects mouse thymocytes from glucose oxidase-mediated apoptosis. *Exp Cell Res* 2003; **291**: 386-397 [PMID: 14644160 DOI: 10.1016/S0014-4827(03)00410-5]
 - 32 **Szatrowski TP**, Nathan CF. Production of large amounts of hydrogen peroxide by human tumor cells. *Cancer Res* 1991; **51**: 794-798 [PMID: 1846317]
 - 33 **Warburg O**, Wind F, Negelein E. THE METABOLISM OF TUMORS IN THE BODY. *J Gen Physiol* 1927; **8**: 519-530 [PMID: 19872213 DOI: 10.1097/00000441-193107000-00022]
 - 34 **Kroemer G**. Mitochondria in cancer. *Oncogene* 2006; **25**: 4630-4632 [PMID: 16892077 DOI: 10.1038/sj.onc.1209589]

P- Reviewer: Gopcevic KR, Lakatos PL **S- Editor:** Yu J
L- Editor: A **E- Editor:** Wang CH





Published by **Baishideng Publishing Group Inc**

8226 Regency Drive, Pleasanton, CA 94588, USA

Telephone: +1-925-223-8242

Fax: +1-925-223-8243

E-mail: bpgoffice@wjgnet.com

Help Desk: <http://www.wjgnet.com/esps/helpdesk.aspx>

<http://www.wjgnet.com>



ISSN 1007-9327

