

THE CENTRE FOR MARKET AND PUBLIC ORGANISATION

The Centre for Market and Public Organisation (CMPO) is a leading research centre, combining expertise in economics, geography and law. Our objective is to study the intersection between the public and private sectors of the economy, and in particular to understand the right way to organise and deliver public services. The Centre aims to develop research, contribute to the public debate and inform policy-making.

CMPO, now an ESRC Research Centre was established in 1998 with two large grants from The Leverhulme Trust. In 2004 we were awarded ESRC Research Centre status, and CMPO now combines core funding from both the ESRC and the Trust.



Centre for Market and Public Organisation
Bristol Institute of Public Affairs
University of Bristol
2 Priory Road
Bristol BS8 1TX

Tel: (0117) 33 10799

Fax: (0117) 33 10705

E-mail: cmo-office@bristol.ac.uk

Birth Spacing, Fertility and Neonatal Mortality in India: Dynamics, Frailty and Fecundity

Sonia Bhalotra and Arthur van Soest

Updated April 2007
Working Paper No. 07/168

Published in Journal of Econometrics 143 (2)
pp.274-290 (April 2008)
Published as IZA Discussion Papers number
2163 (June 2006)

ISSN 1473-625X

Birth Spacing, Fertility and Neonatal Mortality in India: Dynamics, Frailty and Fecundity

Sonia Bhalotra¹
and
Arthur van Soest²

¹*University of Bristol*
²*RAND and Tilburg University*

Updated April 2007

Abstract

A dynamic panel data model of neonatal mortality and birth spacing is analyzed, accounting for causal effects of birth spacing on subsequent mortality and of mortality on the length of the next birth interval, while controlling for unobserved heterogeneity in mortality (frailty) and birth spacing (fecundity). The model is estimated using micro data on almost 30,000 children of 7,300 Indian mothers, for whom a complete retrospective record of fertility and child mortality is available. Information on sterilization is used to identify an equation for completion of family formation that is needed to account for right-censoring in the data. We find clear evidence of frailty, fecundity, and causal effects of birth spacing on mortality and vice versa, but find that birth interval effects can explain only a limited share of the correlation between neonatal mortality of successive children in a family. We also predict the impact of mortality on total fertility. Model simulations suggest that, for every neonatal death, an additional 0.37 children are born, of whom 0.3 survive.

Keywords: fertility, birth spacing, neonatal mortality, health, dynamic panel data models, siblings

JEL Classification: I12, J13, C33

Electronic version: <http://www.bris.ac.uk/Depts/CMPO/workingpapers/wp168.pdf>

Acknowledgements

We are grateful to Wiji Arulampalam for helpful discussions, and to John Geweke, an Associate Editor and an anonymous referee for their suggestions. We also received helpful comments from Julie DaVanzo, Helene Turon, and Mike Veall. The paper has benefited from presentations made at the World Congress of the Econometric Society, the ESRC Econometric Study Group, the PAA meetings, RAND, Bristol, Tilburg and the Cambridge Panel Data conference.

Address for Correspondence

CMPO, Bristol Institute of Public Affairs
University of Bristol
2 Priory Road
Bristol
BS8 1TX
s.bhalotra@bristol.ac.uk
vansoest@rand.org
www.bris.ac.uk/Depts/CMPO/

1 Introduction

Interest in the determinants of child mortality has recently surged, with the inclusion of targets for child mortality amongst the Millennium Development Goals (Lawn et al. 2005, UNDP 2003), and short birth-spacing and high fertility are widely regarded as among the most important causes of early childhood death. However, reproductive behaviour is endogenous to mortality and both are influenced by characteristics and choices of families, some of which are difficult to observe. For these reasons, there is limited evidence of the true causal associations of these variables.

In developing countries, 30% of deaths are of children under five, compared to less than 1% in rich countries (Cutler et al. 2005). Almost half of child deaths are in the neonatal period, the first month of life, when the tie between mortality and fertility is closest (Cleland and Sathar 1984). About 4 million neonates died in 2000, 99% of them in developing countries, and 27% in India. The proportion of neonatal in under-5 deaths has increased, since interventions like immunization, control of acute respiratory infection, or oral rehydration have had more of an effect on post-neonatal death (Lawn et al. 2005). It is thus important to focus attention on the causes of neonatal death.

Despite a long-standing interest of economists and demographers in the relation between childhood mortality and reproductive behaviour, the literature is scarce in a complete micro-data analysis of all inter-relations of these variables (Wolpin 1997). The main contribution of this paper is to use panel data based on retrospective fertility histories to estimate causal effects of birth interval length on subsequent neonatal mortality risk *and* of neonatal mortality on subsequent birth interval length, controlling for unobserved heterogeneity in both processes (referred to as *frailty* and *fecundity*, respectively). It also provides estimates of the effects of expected mortality (hoarding) and realized mortality (replacement) on fertility. Third, we model the mortality dynamics within families, estimating both the extent to which observed persistence in death risk is explained by state dependence, and the contribution of endogenously determined birth-spacing to state dependence effects. Other contributions are methodological, relating to the way in which we deal with right-censoring of birth intervals and with the initial conditions problem that arises in dynamic models with unobserved heterogeneity.

Understanding the way in which biological and behavioural factors shape the family-

level relation between reproductive behaviour and childhood mortality is crucial to understanding the demographic transition that has historically preceded economic growth (Kalemlı-Ozcan 2002), and the endogenous processes by which societies evolve past the Malthusian spectre (Galor and Weil 2000). Time series analyses of historical data for today's industrialized countries suggest that declining mortality stimulated fertility decline (e.g. Ben-Porath 1976, Eckstein et al. 1999), and a similar tendency can be seen in recent data for developing countries (e.g. Nyarko et al. 2003). Cross-sectional studies using household survey data have emphasized the reverse direction of causation, namely that high fertility, associated with close birth spacing or an early start to childbearing, causes an increase in childhood mortality (e.g. Cleland and Sathar 1984).

In families with multiple children, there is a recursive bi-causal relation of these variables. The death of a child is often followed by a shorter interval to the next birth, which may be explained either by volitional replacement (e.g. Olsen 1988) or by the fact that the mother stops breastfeeding, enabling her to conceive the next child sooner than otherwise (e.g. Chen et al. 1974). A short birth interval, in turn, increases the mortality risk of the *next* child in the family, possibly because the mother has not recuperated from the previous birth (e.g. DaVanzo and Pebley 1993). Thus vulnerable families are caught in a *death trap*, creating persistence in death risk within families. This mechanism operates by the endogenous shortening of intervening birth intervals. Of course a birth interval is only observed if the mother has another birth, and this fertility decision is also influenced by whether her previous birth survived or not. While these relationships have each been studied, their interactions have rarely been studied jointly, and unobserved heterogeneity, another potential source of correlation of death risks within a family, is often ignored.

The analysis in this paper provides estimates, using survey data from India, of a dynamic panel data model that describes the complete process of child survival and birth spacing (and thus fertility), allowing for endowment heterogeneity, input endogeneity, right-censoring and accounting for the initial conditions problem. We find evidence that childhood mortality risk is influenced by the pattern of childbearing, that is, by the timing and spacing of births, and that birth-spacing and fertility are, in turn, a function of realized mortality. We find a replacement effect of 0.37, in line with the few available estimates in the literature. The results suggest that the full impact of family planning interventions

extends to reducing mortality and that mortality-reducing interventions like provision of piped water also affect birth spacing and fertility. Our finding of causal effects of sibling mortality on both mortality and reproductive behaviour implies that interventions that reduce mortality or lengthen birth intervals will have multiplier effects.

The paper is organized as follows. Section 2 summarizes related research. Section 3 describes the data. The econometric model is presented in section 4 and estimation and simulation results are reported in section 5. Section 6 summarizes and concludes.

2 Related Literature and Contributions

Previous demographic research provides estimates of some of the main effects analyzed in this paper, although not in a unified framework: for example, see Curtis et al. (1993), Madise and Diamond (1995), Hobcraft et al. (1985), and Whitworth and Stephenson (2002) for analysis of the effects of birth-spacing on mortality, and Olsen (1988), Zenger (1993) or Frankenberg (1998) for analysis of the effects of mortality on birth-spacing. The limitation of these studies is that their estimates cannot be given a causal interpretation (see Moffitt 2003).

There is limited previous research in economics in this area. Bhargava (2003) estimates a single-equation probit model of infant mortality in India, and argues that endogeneity of birth spacing is taken care of by controlling for the survival status of older siblings, which is instrumented using household possessions and number of previous births. Maitra and Pal (2004) estimate a simultaneous hazards model of birth-spacing and child mortality, relying upon similarly strong identifying assumptions. Rosenzweig and Schultz (1983b) estimate a model of infant mortality in which birth-spacing is instrumented using household incomes and local prices. However, as discussed in Rosenzweig and Wolpin (1988, 1995), the implied exclusion restrictions typically do not hold. Rosenzweig and Wolpin (1988, 1995) instead use sibling differences to eliminate the mother-specific endowment. To allow for differences across siblings in frailty, they instrument inputs into the health of the index child using inputs relating to older siblings and parental characteristics. The econometric strategy in our paper is similar in that it relies upon natural information restrictions associated with the sequencing of births.

Estimates of the effects of childhood mortality on subsequent birth spacing and fertility have mostly relied on the implausible assumption that parents have no influence on the survival chances of their offspring (Ben-Porath 1976, Wolpin 1997, Cigno 1998), although there are exceptions (Olsen 1980, 1988; Olsen and Wolpin 1983). Our approach is different, in that we use a dynamic panel data framework and provide estimates of causal effects in both directions, between mortality and reproductive behaviour, and for both birth spacing and total fertility. The recent demographic literature has highlighted the widespread phenomenon of sibling death clustering, emphasizing the role of unobserved heterogeneity, estimated using multi-level models that incorporate a random effect at the mother-level (Guo 1993, Zenger 1993, Curtis et al. 1993, Sastry 1997, Whitworth and Stephenson 2002). Arulampalam and Bhalotra (2006a,b) contribute to this introducing state dependence in mortality. They identify state dependence effects in 13 of 15 Indian states using a single-equation model for mortality. Otherwise, there is little previous research on state-dependence effects in analysis of sibling data, although sibling correlations in outcomes have been widely studied (e.g. Solon et al. 1991).

3 Data & Descriptive Statistics

The data are from the second round of the National Family Health Survey of India (NFHS-II) which recorded complete fertility histories for ever-married women aged 15-49 in 1998-99, including the time and incidence of child deaths.¹ Mothers constitute the cross-sectional dimension of the data. As mothers are observed repeatedly, in relation to every birth, birth-order creates the time dimension of the (unbalanced) panel. We use data for Uttar Pradesh (UP), the largest Indian state, which, in the year 2000, contained 17.1% of the country's population (approximately 165 million people). It has social and demographic indicators that put it well below the Indian average (Drèze and Sen 1997). After dropping mothers with at least one multiple birth, the sample contains 29,747 live births of 7286 mothers, that occurred between 1963 and 1999.²

Strictly, neonatal death refers to death in the first four weeks of life. We include deaths up to a month to allow for age-heaping. The birth interval is the interval between reported

¹ For details on sampling strategy and context, see IIPS and ORC Macro (2000).

dates of birth, rather than the inter-conception interval. As a result, measured birth intervals will be shorter on account of premature births (Gribble 1993) and longer on account of miscarriage or stillbirth (Madise and Diamond 1995). The first problem is dealt with by removing intervals shorter than 9 months; the second is harder to address. Ignoring miscarriage and stillbirth may lead to under-estimation of the mortality-raising effect of short birth intervals if women who have these problems also tend to produce weaker live births, since then falsely long intervals will be associated with higher mortality. However, this bias may be expected to be small once we control for mother-specific frailty and fecundity.

Means and standard deviations of all variables used in the analysis are in Appendix Table 1. The incidence of neonatal death over the sample period in UP was 7.39%, compared with an all-India average of 5.21%. Previous research on developing country data suggests that preceding birth intervals less than 24, and especially 18, months raise mortality risk. In our sample, 17.5% of birth intervals are shorter than 18 months, 18.3% are 18-23 months long. The mean number of births per mother is 4.04, the median is 4, and the maximum is 14. The mean age of mothers at first birth is 18.4, and the mean age of mothers at (any) birth is 22.2. As many as 28.3% of all live births are to mothers under 19 and 14.3% to mothers under 18.

Although contraceptive prevalence is increasing, contributing to the fertility decline witnessed in India since the mid-1980s, it seems to have had little impact on neonatal mortality (James et al. 2000). This is because contraception is used primarily to limit fertility rather than to control early childbearing and lengthen birth intervals. At the time of the survey, women were asked what their current contraceptive method was. In the state of UP, 65.8% were using no method, and 19.6% reported female sterilization, which is the predominant form of contraception, as in other parts of India. In section 4 we will argue that information on sterilization helps identify the fertility equation.

Figure 1 is a non-parametric regression of neonatal death on the log of the preceding birth interval. The curve declines monotonically. At short birth intervals, the probability of neonatal death is highest, and the gains from an additional month's spacing are largest.

² Elimination of multiple births is in line with the demographic literature on mortality. Children of a multiple birth face hugely higher odds of dying, other things equal.

Figure 2 plots the kernel density function of the birth interval separately for whether or not the previous child in the family survived its first month. The birth interval distribution for the case where the preceding child has died clearly lies to the left of the other, with median birth intervals of 23 months after a neonatal death and 27 months otherwise (the means are 24.3 and 31.2 months). The raw data thus suggest the patterns that, as argued in section 1, contribute to “*death traps*” at the family level: short birth intervals raise subsequent mortality risk (Fig. 1), and mortality results in a shorter subsequent birth interval (Fig. 2).

In the sample of second and higher-order children, the average probability of neonatal death is 6.28%. In the sub-sample in which the previous sibling survived, this probability is 5.20%, but amongst those whose previous sibling died, it is a remarkable 18.80%. Thus the death of a preceding sibling is associated with an increase in mortality risk of 13.6%-points. This can be explained by both unobserved heterogeneity and genuine state dependence, and state dependence can, in turn, be explained by short birth-spacing or other mechanisms. Our analysis will disentangle these three explanations.

4 The Model

The model has a recursive dynamic structure: the risk of neonatal mortality depends upon mortality of the previous sibling and on the preceding birth interval, while the birth interval depends upon survival of the preceding sibling. Similarly, the probability of continuing fertility depends on previous mortality. Identification of the main causal effects rests on exploiting the natural sequencing of the birth and mortality processes, avoiding the need for exclusion restrictions. Amongst other covariates in the model are maternal age at birth of the child, and the year of birth of the child. Together with birth order, these are endogenous because they depend upon the entire history of birth intervals and maternal age at first birth. The model accounts for this endogeneity. A limitation of our approach is that it does not readily extend to analysis of infant or under-5 mortality since, for e.g., infant mortality may occur after the next birth. As discussed in section 1, this is not a strong restriction since neonatal mortality is particularly closely tied to reproductive behaviour.

The mortality equation can be regarded as a health production function in which the birth interval is an endogenous input, as in Rosenzweig and Schultz (1983a,b). The birth spacing equation is an input equation, but it also describes an outcome that depends upon

tastes and technology. These two equations are estimated jointly with an equation for continued fertility that accounts for right-censoring of birth intervals, and an equation for mortality risk of the first-born child, that addresses the initial conditions problem.

The estimation allows for endowments (persistent mother-specific traits), unobservable by the econometrician but potentially known to the mother, and for the agency of the parent in influencing outcomes. The health endowment is referred to as *frailty*. We also incorporate inter-family unobserved heterogeneity in the birth spacing and fertility equations (for convenience both of these terms are henceforth referred to as *fecundity*), and allow this to be correlated with frailty since, for e.g., women who are more careful about contraception may also better maintain the health of their children. Ignoring unobserved heterogeneity would bias estimates of the dynamics of each process (Heckman 1981; Hyslop 1999) and of the causal effect of each variable on the other (Alessie et al. 2004).

The econometric model is an extension of the univariate model of Heckman (1981) and is broadly similar to the bivariate model of Alessie et al (2004). Our approach to dealing with right-censoring is new, exploiting data on sterilization. The way in which the initial conditions problem is addressed is also novel. To take account of the sampling design, we use random effects at the community (cluster) level. The model is estimated by simulated maximum likelihood.

Let n_i be the number of live births of mother i at the time of the survey. Let M_{ij} be an indicator variable with value 1 if child j in family i suffers neonatal death, and 0 otherwise. B_{ij} is the log of the length of the interval between the birth of child $j-1$ and child j in family i . Thus B_{ij} refers to the interval closed by the birth of child j . As it is the preceding birth interval for child j , it is, by definition, predetermined with respect to M_{ij} . The rest of this section describes the equations and the model in detail.

4.1 Neonatal Mortality

For child j ($j=2, \dots, n_i$) in family i ($i=1, 2, \dots, N$), the equation for neonatal mortality is

$$(1) \quad M_{ij}^* = g(\mathbf{x}_i, \mathbf{x}_{i1}, \mathbf{x}_{ij}, M_{i1}, \dots, M_{i,j-1}, B_{i2}, \dots, B_{ij}; \mathbf{q}_m) + \mathbf{a}_{mi} + u_{mij};$$

$$M_{ij}=1 \text{ if } M_{ij}^* > 0 \text{ and } M_{ij}=0 \text{ if } M_{ij}^* < 0$$

To explain the assumptions needed for consistent estimation, it is initially written in a general form. \mathbf{a}_{mi} is mother specific unobserved heterogeneity, reflecting the child's health

endowment or “*frailty*”, which may derive from genetic sources (e.g. maternal propensities to low birth weight and prematurity), environmental factors, or child-care behaviours (e.g., Sastry 1997; Rosenzweig and Schultz 1983a,b). As emphasized in Rosenzweig and Wolpin (1988), the fact that endogenous inputs like breastfeeding are not explicitly incorporated implies that the estimated mother-effect will also reflect inter-family heterogeneity in preferences. The error term u_{mij} varies over mothers as well as children. It is revealed at the birth of child j and assumed not to influence parental inputs to child j in the one month of life during which parental choices can influence neonatal mortality risk. However, we allow u_{mij-1} to influence parental inputs into child j through past mortality in the family, M_{ij-1} .

The vectors x_i , x_{i1} , and x_{ij} are exogenous explanatory variables, partitioned into variables that vary over children ($x_{ij}, j=2, \dots, n$), are specific to the first child (x_{i1}), or do not vary over children (x_i). The vector of unknown parameters is denoted by q_m . The variables $M_{i1}, \dots, M_{i,j-1}, B_{i2}, \dots, B_{ij}$ are realized at or before the birth of child j .

We will specify g as a linear function of x_i , x_{ij} , $M_{i,j-1}$, B_{ij} , and include quadratic terms in the year of birth of the child, and in the age of the mother at birth of the index child, both of which are functions of x_{i1} and B_{i2}, \dots, B_{ij} .³ Since the age of the mother at birth of child j depends upon her age at birth of child $j-1$ and the length of the intervening birth interval, B_{ij} , it is clear from recursivity of the model that maternal age at birth of j can be expressed as a function of maternal age at first birth (in x_{i1}) and the history of birth intervals up until that date (B_{i2}, \dots, B_{ij}). Thus, by allowing for endogeneity of birth intervals and conditioning on x_{i1} , we also allow for endogeneity of maternal age. Since our data include births that occurred across a span of about 30 years, a quadratic in the year of birth of the child is included to capture technological change in health production. This is also a function of the birth year of the first child and previous birth intervals.

We expect a negative effect of B_{ij} on M_{ij} , consistent with the hypotheses of maternal depletion (section 1) and competition amongst closely spaced siblings (Cleland and Sathar 1984). The effect of lagged mortality, $M_{i,j-1}$, on M_{ij} can be negative if learning or sibling-competition effects dominate, or positive if there is a strong role for factors like maternal depression. The first-order Markov assumption implicit in our specification of g is justified

³ Interactions and squares of other terms gave no significant improvement.

by the nature of the mechanisms driving state dependence (that is, a causal effect of $M_{i,j-1}$ on M_{ij}): see Zenger (1993).

We assume that \mathbf{x}_i , \mathbf{x}_{iI} , and \mathbf{x}_{ij} are independent of \mathbf{a}_{mi} and u_{mij} . Mean independence of $(\mathbf{x}_i, \mathbf{x}_{iI})$ and \mathbf{a}_{mi} is the usual assumption in a random effects model, needed for identification; the conditional mean of \mathbf{a}_{mi} given \mathbf{x}_i and \mathbf{x}_{iI} is subsumed in g . In \mathbf{x}_i , we include variables reflecting education levels of the mother and father, and caste and religion dummies. In \mathbf{x}_{iI} we also include calendar year and age of mother at first birth.

A potential drawback of random effects models as compared with fixed effects models is the assumption that the “*time-varying*” (in this context, varying across siblings) regressors \mathbf{x}_{ij} are assumed to be independent of the individual effects \mathbf{a}_{mi} . In our case, however, the only variables included in \mathbf{x}_{ij} are child gender and birth-order, which will be uncorrelated with mother-level frailty, so the independence assumption seems plausible.

4.2 Birth Spacing

The log length of the birth interval is modeled in a similar way as mortality:

$$(2) \quad B_{ij} = h(\mathbf{x}_i, \mathbf{x}_{iI}, \mathbf{x}_{i,j-1}, M_{i1}, \dots, M_{i,j-1}, B_{i2}, \dots, B_{i,j-1}; \mathbf{q}_b) + \mathbf{a}_{bi} + u_{bij};$$

The family-specific effect, \mathbf{a}_{bi} , is referred to as “*fecundity*” though it will include not only biological fecundity but also, e.g., variation in preferences for family planning or desired fertility. A causal effect of mortality of child $j-1$ on the birth interval to child j is allowed through $M_{i,j-1}$. We include $\mathbf{x}_{i,j-1}$ since gender of child ($j-1$) may affect the interval to the birth of child j . The function h is specified as a linear combination of \mathbf{x}_i , $\mathbf{x}_{i,j-1}$, $M_{i,j-1}$, and the calendar year and age of the mother at the time of the birth of child $j-1$ and their squares, as in section 4.1. Biomedical and demographic research give no argument for a causal effect of $B_{i,j-1}$ on B_{ij} , conditional on \mathbf{a}_{bi} so we do not allow for this.⁴ Assumptions on family-specific effects and errors u_{bij} are similar to those for equation (1). We assume that \mathbf{x}_i , \mathbf{x}_{iI} , and \mathbf{x}_{ij} are independent of \mathbf{a}_{bi} and u_{bij} and that u_{bij} is independent of the past.

We allow for correlation between the unobserved heterogeneity terms \mathbf{a}_{bi} and \mathbf{a}_{mi} in equations (1) and (2). This allows an alternative, non-causal explanation for the correlation between birth interval lengths and mortality in the raw data and for the potential

endogeneity of the preceding birth interval in equation (1), which may be correlated with frailty, \mathbf{a}_{mi} . For example, parents with weak endowments may choose shorter birth intervals to meet their target number of children in a given time. Similarly, our model allows M_{ij-1} in equation (2) to be correlated with family-level fecundity, \mathbf{a}_{bi} .

The distribution of the family effects (\mathbf{a}_{mi} , \mathbf{a}_{bi}) is assumed to be bivariate normal with mean zero, variances \mathbf{s}_m^2 , \mathbf{s}_b^2 , and covariance $\mathbf{s}_m\mathbf{s}_b\mathbf{r}_a$. The child-specific error terms u_{mij} and u_{bij} are assumed to be independent of \mathbf{a}_{mi} and \mathbf{a}_{fi} and normally distributed with mean zero. Without loss of generality, the variance of u_{mij} is set to 1.

4.3 Right-Censoring

Inclusion of the birth spacing equation, (2), in the model demands a correction for right-censoring because some mothers will not have completed their fertility at the time of the survey. To account for this, we model the probability that mother i will have another child after the birth of child j , as follows:

$$(3) \quad F_{ij}^* = f(\mathbf{x}_i, \mathbf{x}_{i1}, \mathbf{x}_{ij}, M_{i1}, \dots, M_{i,j-1}, B_{i2}, \dots, B_{ij}; \mathbf{q}_f) + \mathbf{a}_{fi} + u_{fij};$$

$$F_{ij}=1 \text{ if } F_{ij}^* > 0 \text{ and } F_{ij}=0 \text{ if } F_{ij}^* < 0$$

We specify f as a linear combination of \mathbf{x}_i , the calendar year and age of the mother at the time of the birth of child $j-1$ and their squares (functions of \mathbf{x}_{i1} and B_{i2}, \dots, B_{ij-1}), dummies for the presence of boys and girls in the family that did not suffer neonatal death, and the total numbers of boys and girls in the family who survived the neonatal period (functions of j , $M_{i1}, \dots, M_{i,j}$, and B_{i2}, \dots, B_{ij-1}). The variables are gender specific to allow for son-preference, of which there is considerable evidence for UP (e.g. Drèze and Gazdar 1997). Endogeneity of the sibship variables is taken care of in the same way as in the other equations – they are functions of lagged dependent variables. Moreover, confounding unobserved factors are controlled for by allowing arbitrary correlations of \mathbf{a}_{fi} with \mathbf{a}_{mi} and \mathbf{a}_{bi} , assuming joint trivariate normality with arbitrary covariance matrix and independence of exogenous variables. We make similar assumptions on u_{fij} as on the other error terms: normality, independence of individual effects and error terms for other birth-orders or other equations, and independence of exogenous variables.

⁴ Heckman *et al.* (1985) show, for a sample of (married) Swedish mothers, that there is no state

The data contain information on whether a mother is sterilized at the time of the survey, which helps to estimate the parameters of the model more efficiently. For sterilized mothers (19.6% of the sample), the complete birth process is observed. Of the remaining mothers, some will have another child after the survey date, and others will not. Sterilization is an incomplete indicator of whether the mother will have another child; it is an implicit dependent variable in our model but not a variable of interest as such, as it is the decision to have another child or not that is modelled here. To identify equation (3) with data on sterilization, we assume that women who have decided to have no more children get sterilized with a fixed probability θ (a nuisance parameter).

To be precise: If mother i has more than j children, we know she has given birth to another child after child j , and the likelihood will incorporate the probability that $F_{ij}=1$. If the mother reports that she has had exactly j children and was sterilized after the birth of the j -th child, then the likelihood will incorporate the probability that $F_{ij}=0$ and the probability θ . If, at the time of the survey, the mother had j children but was not (yet) sterilized, then it is unclear whether child j is the last child or not - the birth interval after the birth of child j may extend beyond the time of the survey. The probability that this will happen, given that there will be another birth and given unobserved heterogeneity components, follows from (2) and is given by $F([T - \{h(\mathbf{x}_i, \mathbf{x}_{i1}, \mathbf{x}_{i,j-1}, M_{i1}, \dots, M_{i,j-1}, B_{i2}, \dots, B_{i,j-1}; \mathbf{q}_b) + \mathbf{a}_{bi}\}]/\mathbf{s})$, where T is the length of the time interval elapsed between the birth of child j and the time of the survey, and \mathbf{s} is the standard deviation of the error term in (2). In this case, the likelihood (conditional on unobserved heterogeneity) contains a factor that accounts for the fact that we do not observe whether or not there will be another birth after birth j .⁵

The usual approach to right-censoring is to assume that the same process continues but is not observed after the time of the survey (e.g. Wooldridge, 2002, Chapter 20). This approach does not work well here since the fertility process is necessarily finite and ended well before the time of the survey for many women in the sample.⁶ In the absence of information on sterilization, an alternative would be to assume that fertility

dependence in the birth spacing process once controls for unobserved heterogeneity are introduced.

⁵ An appendix with likelihood details is available at <http://www.efm.bris.ac.uk/www/ecsr/b/bhalotra.htm>

⁶ Initial experimentation with our data showed that the usual procedure produces a poor fit, being unable to explain why so many women suddenly completely stop having children.

stops at a given age (e.g. 40) for all mothers, or to estimate equation (3) without the sterilization information. In the latter case, the fertility equation would only be indirectly identified and the estimates are likely to be much less precise.

4.4 The Initial Conditions Problem

“Lagged” mortality, M_{ij-1} , is endogenous in equation (1) by virtue of being correlated with frailty, \mathbf{a}_{mi} . This creates the initial conditions problem common in this type of model (e.g. Heckman 1981). This is addressed by formulating a separate equation for the mortality risk of the first-born child of every mother:

$$(4) \quad M_{i1}^* = g_1(\mathbf{x}_i, \mathbf{x}_{i1}; \mathbf{q}_{m,1}) + I_m \mathbf{a}_{mi} + I_b \mathbf{a}_{bi} + I_f \mathbf{a}_{fi} + u_{mi1};$$

$$M_{i1} = 1 \text{ if } M_{i1}^* > 0 \text{ and } M_{i1} = 0 \text{ if } M_{i1}^* < 0$$

In most applications of this type of models (e.g., Hyslop, 1999) the true process is ongoing and the first observation is generated in the same way as later observations. Heckman et al. (1985) is an exception. They model birth spacing and observe the process from its natural start, the start of menarche. Here, similarly, we observe the birth and mortality processes from their beginning for each mother, and the first child is a genuine starting point of that process. This makes Heckman’s approach quite natural compared to, for example, the alternative approach of Wooldridge (2000).

We will work with a linear specification of g_1 , in line with the specification of (1). It is likely that M_{i1} will be correlated with \mathbf{a}_{mi} and we also allow it to be correlated with the other family specific effects \mathbf{a}_{bi} and \mathbf{a}_{fi} . The error term u_{mi1} is assumed to be standard normal and independent of the other error terms in the model, of the individual effects, and of the exogenous regressors \mathbf{x}_{ij} and \mathbf{x}_i . I_m , I_b and I_f are auxiliary parameters. Equation (4) is a flexible function of the exogenous variables. We do not impose restrictions on the relation of the parameters in (4) to those in (1).

4.5 Community Effects and Estimation

The data are collected in 333 geographical clusters (“communities”) with, on average, 24.4 mothers per cluster. To allow for the possibility that mothers (and children) within a cluster share unobservable traits (for example, sanitation or social norms), we need to

include a cluster-level term in the equation error.⁷ As the large number of clusters makes it infeasible to use cluster dummies, we incorporate random cluster effects in equations (1) and (2) and (3) in the same way as the mother-specific effects, with similar assumptions.⁸ A linear combination of the cluster effects in (1), (2) and (3) is added to equation (4), with three additional auxiliary parameters as coefficients. For identification, it is assumed that the cluster effects are independent of mother-specific effects.

The complete model can be estimated by maximum likelihood, including the nuisance parameters of the initial conditions equation, and the fertility equation.⁹ Conditional on the random effects, the likelihood contribution of a given mother can be written as a product of univariate normal probabilities and densities over all births of a mother, and the likelihood for a given cluster can be written as the product over all mothers in that cluster. The actual likelihood contribution is the expected value of the conditional likelihood contribution, taking the expectation over all (unobserved) random effects (three in the model without cluster effects, six in the model with cluster effects). This is a three or six-dimensional integral, which could in principle be approximated numerically using, for example, the Gauss-Hermite-quadrature.

In this paper, we instead use (smooth) simulated ML, drawing multivariate errors from $N(0, I_3)$, transformed into draws of the random effects using the parameters of the random effects distribution. The conditional likelihood contribution is averaged over R independent draws. If $R \rightarrow \infty$ with the number of clusters, this gives a consistent estimator; if draws are independent across households and $R \rightarrow \infty$, the estimator is asymptotically equivalent to exact ML (see, e.g., Hajivassiliou and Ruud 1994). We use Halton draws, which give more accurate results for given R than independent random draws (Train 2003). The results we present use $R=100$. Using $R=50$ gives very similar results.

5 Results

This section presents the results of the complete “benchmark” model (Table 1)

⁷ The data has some information on community characteristics at the time of the survey. We did not use this since it may not reflect community characteristics at the time of birth.

⁸ That is, trivariate normal with arbitrary covariance structure to be estimated, independent of exogenous variables and error terms.

5.1 Neonatal Mortality

The left hand panel of Table 1 reports the estimates of the equation for neonatal mortality. In the discussion, we focus on the implied marginal effects for the second child, assuming that the first child survived the first month of life, and setting all family characteristics to benchmark values (boy, Hindu, not of a backward caste, maternal and paternal education zero average date of birth (1986.8), age of mother at birth (21.3 years), and previous log birth interval (3.32). The estimated probability of neonatal mortality for this benchmark child is 4.84%.

A 10% increase in the length of the preceding birth interval reduces the probability of death by about 0.45 percentage-points in the benchmark case (and the marginal effect is similar for higher birth-orders). Some studies have found that the deleterious effects of short birth intervals are enhanced if the previous sibling has survived (e.g Zenger 1993, Cleland and Sathar 1984). We therefore included an interaction of lagged mortality with the birth interval. This was insignificant- a result that contrasts with Whitworth and Stephenson (2002). Our results suggest that maternal depletion is more important than sibling competition in explaining the mortality-increasing effects of short birth intervals. Maternal depletion will be especially pronounced amongst poor women who need longer to replenish stocks of nutrients like calcium and iron that are needed to support a healthy pregnancy.

Neonatal mortality of the previous sibling makes neonatal death significantly more likely for the index child, even with the birth interval held constant. For the benchmark second child, the estimated difference is 4.16 percentage-points. Similar effects are found for the third and later children.¹⁰ This suggests that, for neonatal mortality, learning effects (a mother is better able to avoid a further child death once she has experienced one) or reduced competition for scarce resources are dominated by state dependence mechanisms that create a positive association of sibling deaths and do not operate via birth spacing. We hypothesize that the loss of a child may create psychological effects that the mother may not have recovered from by the time she conceives her next child, as a result of which there

⁹ An explicit specification of the likelihood function is in the online Appendix referred to in footnote 5.

¹⁰ A similar positive effect of lagged mortality on current mortality is reported in Whitworth and Stephenson (2002), who do not interpret this finding. They use earlier data for all India and control for unobserved heterogeneity and birth intervals, but take birth intervals to be exogenous.

may be physiological effects that make this child more vulnerable both in the womb and after birth. Several studies report negative effects of depression on pregnancy outcomes (Steer et al. 1992) and early childhood mortality (Chung et al. 2004, Drewett et al. 2004). Rahman et al. (2004) find that maternal depression in the prenatal and postnatal periods is a risk factor for malnutrition and illness in infants in Pakistan. Mental health is increasingly recognised as an important health problem that is often neglected in poor countries (WHO 2001). Overall, depression is a plausible causal mechanism, but further research is merited to investigate this and other potential pathways.

Conditional on the other covariates, gender and birth-order are insignificant. Over the period 1963-99, neonatal mortality exhibits a trend reduction of 0.16 percentage-points per year. It is U-shaped in mother's age at birth, a familiar pattern in developing country data. The minimum is at about 29 years of age. On average, mothers are much younger than this when giving birth to their second child (21.3 years). Mortality risk is decreasing in both maternal and paternal education, with larger effects of maternal education. We find no significant differences between castes. A striking result, that deserves further investigation, is that children of Muslim families (who, on average, have higher fertility, shorter birth-spacing and lower socio-economic status) are significantly less likely to die in the first month than Hindu children, with an estimated difference of about 1.7 %-points.

Estimates of the "reduced form" probit equation for mortality of *first-born* children (equation 4) are available in the online Appendix. The female dummy is now negative and significant at the two-sided 10% level, consistent with the fact that girls are born with a survival advantage, and with research that shows that discrimination against girls is smallest for first-borns (DasGupta 1990). Other effects are broadly similar.

5.2 Birth Spacing

Estimates of the birth spacing equation are in the second panel of Table 1. Since the dependent variable is in logs, the interpretation of the parameters is in terms of percentage changes in the expected length of the birth interval. Note that all covariates in this model refer to the preceding child (i.e. the child born at the start of the birth interval). Neonatal death of the previous child reduces the subsequent birth interval by about 21%, consistent with replacement behaviour (e.g. Ben-Porath 1976). Feeding this into equation (1), we find

that the effect of M_{ij-1} operating via B_{ij} results in an increase in M_{ij} of about 1.06%-points. Since the direct effect of M_{ij-1} on B_{ij} in equation (1) is 4.16% -points, total state dependence increases the risk of death by 5.2%-points. Thus genuine state dependence accounts for 37% of the clustering of sibling deaths (“raw persistence”), which was 14%-points on average (section 2). The residual 63% is (observed and unobserved) heterogeneity.

The gender of the last-born child is significant and its sign is consistent with son-preference. If the last birth was a girl, the expected birth interval is about 3% shorter than if it was a boy. There is a significant hump shaped trend in birth spacing, with a maximum in 1980. That birth intervals got shorter in the last 20 years might be because rising nutritional standards for mothers allow them to support shorter intervals. Birth spacing is hump-shaped in maternal age, with a maximum at about 29 years. For the average mother, birth intervals increase until the sixth child is born. Parental education and caste have no significant effect. Birth intervals of Muslim families are 7.6% shorter than for similar Hindu families. Other things equal, birth-order exhibits a non-monotonic pattern, with the shortest birth intervals preceding the birth of the fourth child.¹¹

5.3 Fertility Equation

Table 3 presents estimates of the probability of having another child after each birth. Of particular interest are the family composition variables, which indicate son-preference. The probability of continued fertility is decreasing in the number of surviving children, but more than three times as rapidly in the number of surviving boys than in the number of surviving girls. Similar results have been reported for other countries in Asia and North Africa (e.g. Rahman and DaVanzo 1993, Nyarko et al 2003).¹²

Fertility is hump-shaped in time, with a maximum at about 1981. The quadratic in mother’s age is decreasing over the age range, until age 47. Fertility falls with the level of education of both mother and father, with mother’s education having larger effects. Muslims show a higher tendency to continue fertility. Mothers in backward castes other

¹¹ It is well-known that breastfeeding lengthens birth intervals (Habicht et al., 1985), and its effects are, in this study, subsumed in the birth interval effect. Direct investigation of the role of breastfeeding is difficult because of incomplete data and since breastfeeding is a choice variable.

¹² Angrist and Evans (1998) find no such asymmetry for the US.

than scheduled castes and tribes have lower fertility than others, not in the raw data, but after conditioning upon covariates.

5.4 Unobserved Heterogeneity

We find that the covariance structure of the mother and community-specific effects is sensitive to specification choices (like the number of draws in simulated ML), but the covariance structure of the *sum* of these terms is not. We therefore focus on the latter (see Table 2). There is significant evidence of both effects in the mortality and birth interval equations, but only community-specific effects are significant in the fertility equation.

Overall, the heterogeneity terms are statistically significant but small compared to the idiosyncratic errors. Compared to the idiosyncratic noise term (with variance 1), the two heterogeneity terms in the mortality equation capture about 15% of the total unsystematic variation in M_{ij}^* ($0.173/(1+0.173)$). More than half of this is heterogeneity across communities. In the birth interval equation, the idiosyncratic noise term has estimated variance 0.206, and total heterogeneity is about 11% of the total unsystematic variation. The estimated covariance between the total unobserved heterogeneity terms in the birth spacing and mortality equations is virtually zero, implying a correlation coefficient of -0.004 .

The heterogeneity terms in the fertility equation explain about 15% of the unsystematic variation in F_{ij}^* , but this estimate is not very accurate. We find a large negative correlation between the total heterogeneity terms in the fertility and birth interval equations of -0.73 . This suggests that mothers who desire many children tend to use shorter birth intervals to achieve this, other (observed) explanatory variables constant. This is consistent with replacement behaviour in, for example, the target fertility model (see Wolpin 1997). On the other hand, the small correlations between unobserved heterogeneity in the mortality equation and both the birth interval and the fertility equations suggest that hoarding does not play much of a role: there is hardly any evidence that mothers who perceive their children to have relatively high mortality risk react *ex ante* by having persistently shorter birth intervals.

5.5 Robustness of the state dependence effect and other specification checks

A challenging finding is the strong positive effect of lagged mortality on mortality in equation (1), even after unobserved heterogeneity and the length of the preceding birth interval are controlled for. There are three potential sources of positive correlation between lagged mortality and current mortality: unobserved heterogeneity, the causal mechanism operating through the birth interval, and other sources of state dependence. We would probably overestimate the importance of the last one if we underestimated the importance of the first two because of model misspecification. We therefore investigated model extensions generalizing either the specification of unobserved heterogeneity, or the mechanism through which birth intervals affect mortality.

In the first category, we considered auto-correlated error terms, which can be seen as unobserved heterogeneity that changes gradually over time, and a more general distribution of unobserved heterogeneity. In the second category, we considered correlation between errors in birth interval and mortality equations (which may be due to measurement error in reported birth intervals), other functional forms of the relationship between birth intervals and neonatal mortality, and interactions of the birth interval with socio-demographics. Finally, we also looked at interactions between lagged mortality and socio-demographics in order to see whether the positive effect of lagged mortality can be attributed to specific groups. The changes in the estimates are discussed in detail in the online Appendix. The upshot is that the coefficient on lagged mortality is robust to all these specification checks.

We also investigated robustness of the main coefficients of interest (those on the lagged endogenous variables) to several simplifications of the model. The results are generally as expected. For example, failing to control for unobserved heterogeneity or not controlling for the birth interval leads to overestimation of state dependence in equation (1). See the online Appendix for details.

5.6 Simulations

Table 3 shows the results of simulations performed with the benchmark model, to investigate the effects of neonatal mortality on birth intervals and fertility, and the importance of state dependence and hoarding. Column 1 is the benchmark simulation where all mechanisms at work in the estimated model are active (see the online Appendix

for details). Other columns present percentage deviations from the benchmark for scenarios in which some behavioural or non-behavioural mechanisms are “switched off.”

Switching off the effect of previous mortality on the birth interval (col. 2) increases average birth interval length by 1.7%. Since longer birth intervals depress subsequent mortality, neonatal mortality falls by almost 3.2%. The longer birth intervals also imply that women have their children later and, through the negative effect of mother’s age on the decision to have another child, this reduces the number of births by 0.72%. Due to the fall in mortality, the reduction in the number of surviving children is smaller (0.47%).

The next simulation (col. 3) shows what happens if mortality affects neither birth intervals, nor the probability of having another child. Mainly because of longer birth intervals, mortality falls by 4.4%. Comparing these results with the benchmark, the total size of the *replacement* effect can be estimated: total simulated mortality is 7.08% of births. Births as a result of replacement are about 2.6% of all births, that is, 0.37 births for every neonatal death. Because replacement increases mortality, the replacement effect on the number of surviving children is smaller, about 0.30 surviving replacement children for every death. These estimates, although they refer to neonates only, are in line with existing estimates, which lie between 0.2 and 0.5 (Schultz 1997:384-385). In particular, Olsen (1988) finds a replacement effect of 0.35 using Malaysian data, and shows that replacement is greatest for children who die soon after birth.

In addition to suppressing the effects of mortality on birth interval and fertility, the next simulation (col. 4) also suppresses the effect of previous mortality on index child mortality (M_{ij-1} on M_{ij}), so that *all* effects of previous mortality are eliminated. Mainly because of suppressing the replacement effects, the average length of birth intervals increases by 0.50 months and the total number of children born falls by 2.6%. Neonatal mortality falls by about 0.66 %-points, because of suppressing state dependence and the longer birth intervals. Since the negative fertility effect dominates the positive mortality effect on surviving children, the total number of surviving children falls.

In column 5, we further eliminate *hoarding*. High frailty mothers are now not expected, *ex ante*, to have shorter birth intervals or higher probabilities of having another child. Thus all behavioural and non-behavioural relations between mortality and birth spacing/fertility are eliminated. The total reduction in neonatal mortality compared to the

benchmark is 10.9%, most of which is due to eliminating state dependence. On average, birth intervals are 2.6% longer, mainly because the replacement effect is eliminated. The total number of children born falls by 3.3%; the number surviving falls by less, because of the reduced mortality probability.

6 Summary and Conclusions

The main findings are as follows. The difference in neonatal mortality according to whether or not the preceding sibling died in the neonatal period is 14 %-points. This is enormous, given that the average risk of neonatal death in our sample is 7.4 percent. We estimate that genuine state dependence accounts for 37% of this, the remaining 63% being explained by inter-family heterogeneity. The analysis confirms that endogenously determined birth spacing is a mechanism generating state dependence in mortality, but it explains only about a fourth of total state dependence. Identification of the mechanisms driving the remaining state dependence is an important avenue for further research, not addressed in the demographic literature. We suggest maternal depression as a possibility.

We find direct evidence of replacement behaviour: a child death results in a shortening of the interval to the next birth, and also increases the probability of a next birth. Our model simulations imply that, accounting for direct and indirect effects, 37 in 100 children who die during the neonatal period are replaced by new births. Of these, about 30 survive. There is no evidence that frailty is correlated with fecundity. This suggests that couples do not practice hoarding, i.e., we find no evidence that women who know that their children are at relatively large risk of neonatal death anticipate this by reducing the length of their birth intervals *ex ante*.

As a measure of the importance of allowing for the joint determination of death risk and reproductive behaviour, we estimated the effects on the main outcomes of eliminating all behavioural and non-behavioural relations between the mortality process and the birth interval and fertility processes. The predicted reduction in neonatal mortality is 10.9%, most of which is due to eliminating state dependence. On average, birth intervals are 2.6% longer, mainly because the replacement effect is eliminated. The total number of children born falls by 3.3%, while the total number of children surviving the neonatal period falls by 2.5% (because of the reduced mortality probability).

Our estimates of fertility behaviour are consistent with son-preference. These are probably the first estimates of son-preference in fertility that allow for endogeneity of mortality. We find that mortality falls with maternal age for most of range of the sample, indicating benefits to interventions that delay first birth (and lengthen birth intervals). The literature is scarce in estimates of maternal age effects on mortality that account for its endogeneity. Maternal education decreases both mortality and fertility, but has no effect on birth spacing. Paternal education depresses the probability of another birth but has no significant effect on the other endogenous variables. There are strong religion effects: Muslims exhibit higher fertility, shorter birth intervals and, yet, lower mortality. In contrast, fixed effects associated with caste are weak. Conditional upon all covariates, we estimated a trend reduction in mortality of 0.16%-points p.a. during 1963-99, which is about 3.3% of the benchmark probability. Fertility decline in India seems to have set in from 1981. Despite this, birth intervals have got shorter since about then.

Future work could extend the framework to analyze infant or under-5 mortality. This creates the additional complication that mortality events and births can take place in overlapping time periods, requiring a different modelling approach. These results are for one Indian state, albeit a state with the largest population (166 million in 2001) and the highest neonatal death rate in India. Extension of the analysis to consider other Indian states or other developing countries will lend important insight into the mechanisms driving the key relationships analysed here. Many countries in sub-Saharan Africa have higher rates of neonatal mortality and persistently higher fertility than in India. It would be interesting to investigate this “demographic trap”. And this is easily done. The Indian survey used in this paper is one of about 70 Demographic and Health Surveys conducted across the developing world (see www.measuredhs.com). The methods used in this paper are therefore immediately applicable to a vast array of countries with different profiles of the structural processes.

References

Alessie, R., S. Hochguertel and A. van Soest, 2004, Ownership of stocks and mutual funds: A panel data analysis. *Review of Economics and Statistics* 86, 783-796.

Angrist, J.D. and B. Evans, 1998, Children and their parents' labor supply: Evidence from exogenous variation in family size. *American Economic Review* 88, 450-477.

Arulampalam, W. and S. Bhalotra, 2006a, Sibling death clustering in India: Genuine scarring vs unobserved heterogeneity. *Journal of the Royal Statistical Society, Series A*, 169(4), 829-848.

Arulampalan, W. and S. Bhalotra, 2006b, Persistence in infant mortality: Evidence for the Indian states, Discussion Paper 2488, IZA: Bonn.

Ben-Porath, Y., 1976, Fertility response to child mortality: Micro data from Israel. *Journal of Political Economy* 84, S163-S178.

Bhargava, A., 2003, Family planning, gender differences and infant mortality: Evidence from Uttar Pradesh, India. *Journal of Econometrics* 112, 225-240.

Chen, L., S. Ahmed, M. Gesche and W. Mosley, 1974, A prospective study of birth interval dynamics in Rural Bangladesh. *Population Studies* 28, 277-297.

Chung EK, McCollum KF, Elo IT, Lee HJ, Culhane JF. (2004) Maternal depressive symptoms and infant health practices among low-income women. *Pediatrics*, 113(6):523-529.

Cigno, A ,1998, Fertility decisions when infant survival is endogenous. *Journal of Population Economics* 11, 21-28

Cleland, J. and Z.A. Sathar, 1984, The effect of birth spacing on childhood mortality in Pakistan. *Population Studies* 38, 401-418.

Curtis, S.L., I. Diamond and J.W. McDonald, 1993, Birth interval and family effects on postneonatal mortality in Brazil. *Demography* 33, 33-43.

Cutler, D., A. Deaton and A. Lleras-Muney, 2005, The determinants of mortality. *Journal of Economic Perspectives*, forthcoming.

DasGupta, M., 1990, Death clustering, mothers education and the determinants of child-mortality in rural Punjab, India. *Population Studies* 44, 489-505.

DaVanzo, J. and A.R. Pebley, 1993, Maternal depletion and child survival in Guatemala and Malaysia. Labor and Population Program Working Paper 93-18, RAND.

Drewett R, P. Blair, P. Emmett and A. Emond; ALSPAC Study Team (2004), Failure to thrive in the term and preterm infants of mothers depressed in the postnatal period: A population-based birth cohort study. *Journal of Child Psychol Psychiatry*, 45(2):359-66.

Drèze, J. and H. Gazdar, 1997, Uttar Pradesh: The burden of inertia, in: J. Drèze and A. Sen, (Eds.), *Indian Development: Selected Regional Perspectives*, Oxford University Press, pp. 33-128.

Drèze, J. and A. Sen, 1997, *Indian Indian Development: Selected Regional Perspectives*, Clarendon Press, Oxford.

Eckstein, Z., P. Mira and K. Wolpin, 1999, A quantitative analysis of Swedish fertility dynamics, 1751-1990. *Review of Economic Dynamics* 2, 137-165.

Frankenberg, E., 1998, The relationship between infant and child mortality and subsequent fertility in Indonesia, 1971-1991, in: M. Montgomery and B. Cohen, (Eds.), *From Death To Birth: Mortality Decline And Reproductive Change*, National Research Council, National Academy Press, Washington DC, pp. 254-315.

Galor, O. and D. Weil, 2000, Population, technology, and growth: From Malthusian stagnation to the demographic transition and beyond. *American Economic Review* 90, 806-828.

Gribble, J.N., 1993, Birth intervals, gestational age and low birth weight: are the relationships confounded? *Population Studies* 47, 133-146.

Guo, G., 1993, Use of sibling data to estimate family mortality effects in Guatemala. *Demography* 30, 15-32.

Habicht, J.-P., J. DaVanzo, W.P. Butz, and L. Meyers, 1985, The Contraceptive Role of Breastfeeding. *Population Studies* 39, 213-232.

Hajivassiliou, V. and P. Ruud, 1994, Classical estimation methods for LDV models using simulation, in: R. Engle and D. McFadden, (Eds.), *Handbook of Econometrics*, Vol. IV, North-Holland, New York, pp. 2384-2443.

Heckman, J.J., 1981, The incidental parameters problem and the problem of initial conditions in estimating a discrete time-discrete data stochastic process, in: C.F. Manski and D.L. McFadden, (Eds.), *Structural Analysis Of Discrete Data With Econometric Applications*, MIT Press, London, pp. 179-195.

Heckman, J., V.J. Hotz and J. Walker, 1985, New evidence on the timing and spacing of births. *American Economic Review* 75, 179-184.

Hobcraft, J.N., J.W. McDonald, S.O. Rutstein, 1985, Demographic determinants of infant and early child mortality: A comparative analysis. *Population Studies* 38, 193-223.

Hyslop, D.R., 1999, State dependence, serial correlation and heterogeneity in inter-temporal labor force participation of married women. *Econometrica* 67, 1255-1294.

IIPS and ORC Macro, 2000, *National Family Health Survey (NFHS-2) 1998-9: India*. International Institute for Population Sciences (IIPS), Mumbai.

James, K.S., I. Aitken and S.V. Subramanian, 2000, Neonatal mortality in India: Emerging paradoxes. *Harvard Center for Population and Development Studies Working Paper Series*: 10, 13.

Kalemli-Ozcan, S., 2002, Does mortality decline promote economic growth? *Journal of Economic Growth* 7, 411-439.

Lawn, J.E., S. Cousens, J.Zupan (2005), Neonatal Survival 1- 4 million neonatal deaths: When? Where? Why?, *Lancet*, 365: 891-900.

Madise, N.J. and I. Diamond, 1995, Determinants of infant mortality in Malawi: An analysis to control for death clustering within families. *Journal of Biosocial Science* 27, 95-106.

Maitra, P. and S. Pal, 2004, Birth spacing and child survival: Comparative evidence from India and Pakistan. Working paper, Monash University, Melbourne.

Moffitt, R., 2003, Causal analysis in population research: An economist's perspective. *Population and Development Review* 29, 448-458.

Nyarko, P., N.J. Madise and I. Diamond, 2003, Child loss and fertility behaviour in Ghana. Social Statistics Research Centre Working Paper, A03/08, University of Southampton.

Olsen, R., 1980, Estimating the effect of child mortality on the number of births. *Demography* 17, 429-443.

Olsen, R. (1988), Cross-sectional methods for estimating the replacement of infant deaths, *Research in Population Economics*, 6, 111-136.

Olsen, R. and K. Wolpin, 1983, The impact of exogenous child mortality on fertility: A waiting time regression with exogenous regressors. *Econometrica* 51, 731-749.

Preston, S.H., 1985, Mortality in childhood: Lessons from WFS. In: J. Cleland and J. Hobcraft, (Eds.), *Reproductive Change In Developing Countries*, Oxford University Press, Oxford, 46-59.

Rahman, A., Z. Iqbal, J. Bunn, H. Lovel and R. Harrington, 2004, Impact of maternal depression on infant nutritional status and illness. *Archives of General Psychiatry* 61, 946-952.

Rahman, M. and J. DaVanzo, 1993, Gender preference and birth spacing in Matlab, Bangladesh. *Demography* 30, 315-332.

Rosenzweig, M. and T.P. Schultz, 1983a, Consumer demand and household production: The relationship between fertility and child mortality. *American Economic Review* 73, 38-42.

Rosenzweig, M. and T.P. Schultz, 1983b, Estimating a household production function: Heterogeneity, the demand for health inputs, and their effects on birth weight. *Journal of Political Economy* 91, 723-746.

Rosenzweig, M. and T.P. Schultz, 1989, Schooling, information and nonmarket productivity: Contraceptive use and its effectiveness. *International Economic Review* 30, 457-477.

Rosenzweig, M. and K. Wolpin, 1988, Heterogeneity, intrafamily distribution and child health. *The Journal of Human Resources* 23, 437-461.

Rosenzweig, M. and K. Wolpin, 1995, Sisters, siblings and mothers: The effect of teenage childbearing on birth outcomes in a dynamic family context. *Econometrica* 63, 303-326.

Sastry, N., 1997, A nested frailty model for survival data, with an application to the study of child survival in Northeast Brazil. *Journal of the American Statistical Association* 92, 426-435.

Schultz, T.P., 1997, Demand for children in low income countries, in: M. Rosenzweig and O. Stark, (Eds.), *Handbook Of Population And Family Economics*, Vol. 1A, North Holland, Amsterdam, pp. 349-432.

Solon, G., M. Corcoran, R. Gordon and D. Laren, 1991, A longitudinal analysis of sibling correlations in economic-status. *Journal of Human Resources* 26, 509-534.

Steer, R.A., Scholl, T.O. Hediger, M.L. and R.L. Fischer, 1992, Self-reported depression and negative pregnancy outcomes. *Journal of Clinical Epidemiology* 45, 1093-1099.

Train, K., 2003, *Discrete Choice Methods With Simulation*, Cambridge University Press, Cambridge.

UNDP, 2003, *Human Development Report: Millennium development goals: A compact among nations to end human poverty*, Geneva: UNDP.

Whitworth, A. and R. Stephenson, 2002, Birth spacing, sibling rivalry and child mortality in India. *Social Science and Medicine* 55, 2107-2119.

WHO, 2001. *The World Health Report. Mental health: New Understanding, New Hope*, Geneva: World Health Organization.

Wolpin, K., 1997, Determinants and consequences of the mortality and health of infants and children. In: M. Rosenzweig and O. Stark, (Eds.), *Handbook Of Population And Family Economics*, Vol. 1A, North Holland, Amsterdam, pp. 483-558.

Wooldridge, J., 2000, A framework for estimating dynamic, unobserved effects panel data models with possible feedback to future explanatory variables. *Economics Letters* 6, 245-250.

Wooldridge, J., 2002, *Econometric Analysis Of Cross-Section And Panel Data*, MIT Press, Cambridge, MA.

Zenger, E., 1993, Siblings' neonatal mortality risks and birth spacing in Bangladesh. *Demography* 30, 477-488.

Table 1: Model Parameter Estimates

	Neonatal Mortality		Log Birth Interval		Prob(Further Birth)	
	Parameter	s.e	Parameter	s.e	Parameter	s.e
lagged mortality	0.320*	0.068	-0.237*	0.017		
log birth interval	-0.447*	0.050				
Religion:						
Muslim	-0.197*	0.065	-0.076*	0.014	0.379*	0.045
other	-0.043	0.338	-0.098	0.070	-0.404	0.242
Caste:						
scheduled caste	0.098	0.136	0.025	0.034	0.101	0.088
scheduled tribe	0.100	0.054	0.001	0.013	-0.044	0.039
other backward caste	-0.061	0.052	-0.005	0.012	-0.158*	0.038
caste missing	0.063	0.099	0.001	0.024	-0.038	0.074
Maternal education:						
incomplete primary	-0.029	0.094	0.011	0.024	-0.115	0.070
complete primary	-0.197*	0.093	0.034	0.021	-0.136*	0.059
incomplete secondary	-0.093	0.099	0.013	0.024	-0.266*	0.067
secondary & higher	-0.297*	0.144	0.034	0.022	-0.544*	0.062
Paternal education:						
incomplete primary	-0.004	0.083	0.013	0.020	0.116*	0.057
complete primary	-0.109	0.076	0.002	0.015	-0.035	0.049
incomplete secondary	-0.103	0.059	0.004	0.015	-0.098*	0.042
complete secondary	-0.134*	0.067	-0.001	0.016	-0.198*	0.048
higher than secondary	-0.031	0.066	0.010	0.016	-0.228*	0.047
Gender:						
female	-0.043	0.038	-0.028*	0.008		
Birth year of child:						
year of birth of child/10	-0.028	0.62	0.415*	0.121	14.462*	0.850
(year/10) squared	-0.008	0.036	-0.026*	0.007	-0.895*	0.051
Maternal age:						
maternal age at birth/10	-0.817*	0.341	0.308*	0.072	-1.195*	0.190
(age/10) squared	0.143*	0.063	-0.054*	0.015	0.126*	0.033
Child birth-order:						
birth-order	0.044	0.049	-0.025*	0.008		
square of birth-order	-0.001	0.004	0.003*	0.001		
Surviving children:						
1 if no boys					0.206*	0.049
1 if no girls					0.147*	0.041
number of boys					-0.249*	0.025
number of girls					-0.072*	0.020
<i>Constant</i>	1.633	2.706	1.402*	0.509	-53.872*	3.420
<i>sigma error</i>			0.454*	0.002		

Notes: s.e. denotes standard error. * indicates that the parameter is significant at the two-sided 5% level.

**Table 2. Unobserved Heterogeneity:
Mother plus community level effects**

Covariance matrix			
	Mortality	Birth interval	Fertility
Mortality	0.173		
Birth interval	-0.000	0.025	
Fertility	0.003	-0.049	0.181
Correlation matrix			
	Mortality	Birth interval	Fertility
Mortality	1.000		
Birth interval	-0.004	1.000	
Fertility	0.015	-0.725	1.000

Notes: See section 5.4 of the text

Table 3. Simulations

	(1)	(2)	(3)	(4)	(5)
Neonatal mortality (%)	7.404	-3.17	-4.40	-8.92	-10.86
Birth interval (months)	30.586	1.70	1.66	1.66	2.63
Number of births (fertility)	4.125	-0.72	-2.59	-2.59	-3.34
Number of survivors	3.819	-0.47	-2.25	-1.90	-2.50

Notes: Column 1 presents sample averages of the simulated outcomes for the benchmark model. Columns 2-5 show percentage deviations from the benchmark that arise when selected mechanisms are “switched off” as follows:

2: No effect of mortality on birth interval.

3: No effect of mortality on birth interval or probability of having another child.

4: No effect of mortality on birth interval, probability of having another child, or next child’s mortality.

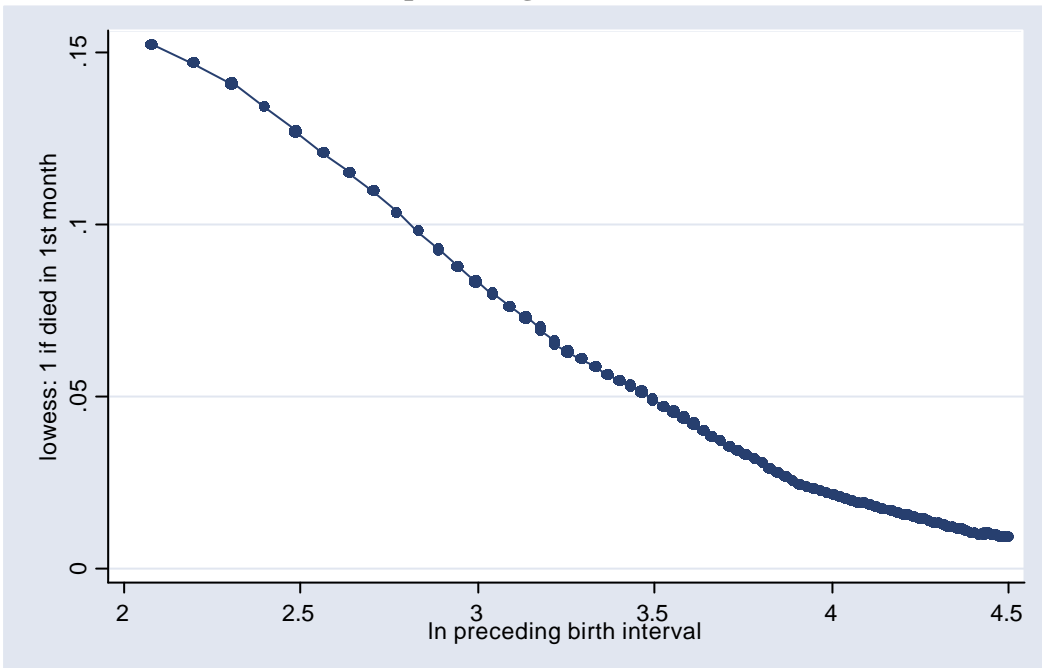
5: No effect of mortality on birth interval, probability of having another child, or next child’s mortality; no hoarding (i.e. unobserved heterogeneity in the mortality equation is not correlated with unobserved heterogeneity in the equations for birth spacing and fertility).

Appendix Table 1
Variable Definitions and Summary Statistics

Variable	Mean	Std. Dev.	Min	Max
neonatal mortality	0.069		0.0	1.0
lagged neonatal mortality	0.060		0.0	1.0
log birth interval*	3.306	0.486	2.1	5.7
<i>Hindu</i>	0.824		0.0	1.0
Muslim	0.168		0.0	1.0
other religions	0.007		0.0	1.0
<i>not backward caste</i>	0.454		0.0	1.0
scheduled caste	0.196		0.0	1.0
scheduled tribe	0.022		0.0	1.0
other backward caste	0.276		0.0	1.0
<i>mother has no education</i>	0.753		0.0	1.0
ma has incomplete primary	0.045		0.0	1.0
ma has completed primary	0.075		0.0	1.0
ma has incomplete secondary	0.061		0.0	1.0
ma has secondary or higher	0.064		0.0	1.0
<i>father has no education</i>	0.334		0.0	1.0
pa has incomplete primary	0.068		0.0	1.0
pa has completed primary	0.110		0.0	1.0
pa has incomplete secondary	0.195		0.0	1.0
pa has completed secondary	0.125		0.0	1.0
pa has higher than secondary	0.164		0.0	1.0
Female	0.475		0.0	1.0
year of birth of child*	86.992	7.394	630	99.0
maternal age at birth*	23.224	5.539	12.0	47.0
birth-order*	3.179	2.051	1.0	14.0
dummy no surviving boys	0.122		0.0	1.0
dummy no surviving girls	0.188		0.0	1.0
number of surviving boys*	1.962	1.386	0.0	8.0
number of surviving girls*	1.782	1.461	0.0	10.0

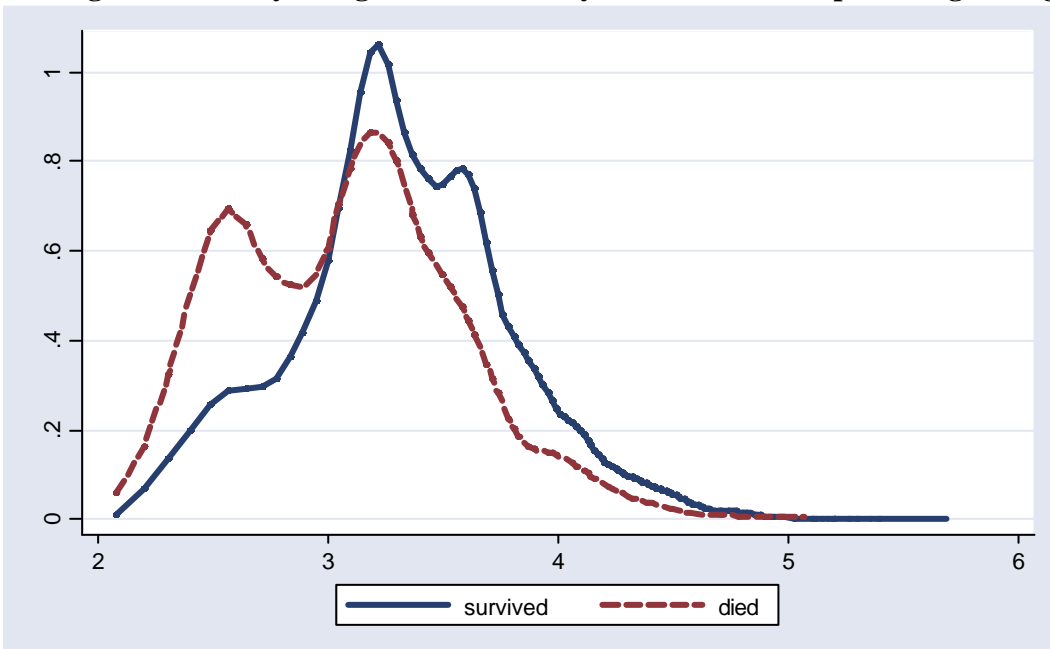
Notes: All variables other than those with a * are dummies. Lagged mortality refers to the mortality status of the preceding sibling. Italics indicate reference category omitted in the regressions.

Figure 1: Nonparametric (lowess) relation of (predicted) neonatal mortality and the preceding birth interval



Notes: The top 1% of observations were deleted.

Figure 2: Density of log birth interval by survival status of preceding sibling



Online Appendix

Birth Spacing, Fertility and Neonatal Mortality in India: Dynamics, Frailty and Fecundity

Sonia Bhalotra, University of Bristol,

Arthur van Soest, RAND and Tilburg University

This Appendix includes details of the likelihood function (section 4 of the text), robustness checks (section 5.5), the benchmark simulation (section 5.6) and some auxiliary results (relating to section 5). A longer version of our paper is available as a CMPO (Bristol) Working Paper on this link:

<http://www.bris.ac.uk/Depts/CMPO/workingpapers/workingpapers.htm>

Appendix 2: Specification Checks

Here we present in more detail the results of the robustness checks summarized in section 5.5 of the paper. First we consider checks on robustness of the coefficient of lagged mortality. Then we consider robustness of the main parameters to some simplifications, in order to assess the importance of alternative features of the model.

1. Robustness of the Coefficient on Lagged Mortality

It is striking that we find a positive effect of lagged neonatal mortality on current neonatal mortality even though we control for the birth interval and for unobserved heterogeneity. There are three potential sources of positive correlation between lagged mortality and current mortality: unobserved heterogeneity, the causal mechanism operating through the birth interval, and other sources of state dependence. A reason for overestimating the last one might be that the roles of the first two are underestimated, because of model misspecification. We therefore focus on model extensions that generalize either the specification of unobserved heterogeneity, or the mechanism through which birth intervals affect mortality.

In the first category, we consider: *auto-correlated error terms*, which can be seen as unobserved heterogeneity that is not purely persistent but gradually changes over time, and a *more general distribution of unobserved heterogeneity*, relaxing the normality assumption. In the second category, we consider *correlation between errors in birth interval and mortality equations* (which may be due to measurement error in reported birth intervals), *other functional forms of the relationship between birth intervals and neonatal mortality*, and *interactions of the birth interval with socio-demographics*. Finally, we also looked at *interactions between lagged mortality and socio-demographics* in order to see whether the positive effect of lagged mortality can be attributed to specific groups.

We describe the results of these additional estimations below. The bottom line is that the positive estimate of the effect of lagged mortality in the benchmark model (0.320 with standard error 0.068) is quite robust.

Auto-correlated errors

As we know since Heckman (1981) and as emphasized by Arulampalam and Bhalotra (2006a) for the single equation mortality model, ignoring or underestimating the

importance of unobserved heterogeneity may lead to an upward bias in the state dependence coefficient. One form of misspecification would be that heterogeneity varies over time, which can be captured by introducing autocorrelation in the error terms. As in an ARMA(1,1) time series model, the AR coefficient (on the lagged dependent variable) might be overestimated if the MA coefficient is set to zero and an AR(1) model with error terms that are uncorrelated over time is estimated. In the current context, the family may have suffered a temporary shock such as a poor harvest or an episode of maternal illness that spans two or more births. This will result in correlated risks of death for successive births. Thus we extended the benchmark model to allow for non-zero autocorrelation in the error terms u_{mij} in the neonatal mortality equation (eq. (1)). The model was estimated using the GHK simulator to obtain the simulated likelihood contributions.

We found an estimate of the autocorrelation coefficient of -0.004 with t-value -0.10. Correspondingly, the estimates of the other parameters were virtually identical to those in the benchmark model with autocorrelation coefficient set to zero. Only the standard errors increased (as expected). The estimate of the parameter of interest, the effect of lagged mortality on current mortality, was 0.320 with standard error 0.094.

More flexible distribution of unobserved heterogeneity

Another form of misspecification arises if the normality assumption on the unobserved heterogeneity terms is not satisfied. We looked at a more general distribution for the vector of unobserved heterogeneity terms in the three equations (1)-(3), a mixture of (3-variate) normals. Indeed we found some evidence for a second point of support, albeit the second point of support has rather small probability 0.079 (standard error 0.034). The other coefficients, including the parameters of main interest in Table 5, however, are hardly affected. The estimated coefficient of lagged mortality in the mortality equation becomes 0.319 with standard error 0.067.

Correlation between errors in mortality and birth interval equations

A potential source of a correlation between the error terms in the mortality equation and the equation for the preceding birth interval might be measurement error in the retrospectively reported birth intervals. This might induce attenuation bias on the coefficient on the birth interval in the mortality equation, attributing a too small role to

the birth interval mechanism, and thus leaving too much for the remaining effect of lagged mortality on mortality. In the model extended with this correlation, the estimated correlation coefficient is not significant (-0.256 with a t value of -0.87). Moreover, in contrast to the measurement argument, the effect of the birth interval on neonatal mortality falls and, accordingly, the effect of lagged mortality on mortality rises (0.463 with standard error 0.177). Standard errors in this model are much larger than in the benchmark model, because identification now relies on excluding lagged independent variables from the mortality equation. In particular, the only lagged independent variable is gender of the index child, so the identifying assumption is that gender of the previously born child does not have a direct effect on neonatal mortality.

A more flexible effect of the birth interval on mortality

If the effect of the birth interval in the mortality equation is mis-specified, this may also induce a bias in the coefficient on lagged mortality. In the benchmark model, we simply include the log birth interval in the mortality equation. Other studies have worked with dummies for short and long birth intervals. We added dummies for short (<12 months) and long (>36 months) to the model, retaining log birth interval as well. The extension is not a significant improvement. Both dummies are insignificant and hardly change the other coefficients. In particular, the effect of lagged mortality now becomes 0.326 with standard error 0.068. We also included the square of the log birth interval, but there was no improvement.

Another way of allowing for a more flexible effect of the birth interval on mortality is to interact it with other variables in the mortality equation. Interactions with lagged mortality and with socio-demographics such as education, religion or ethnicity were insignificant. The state dependence effect of lagged mortality on mortality is hardly changed (estimate 0.322; standard error 0.071).

Interactions of lagged mortality with socio-demographics

To explore whether the large effect of lagged mortality is specific to a certain socio-demographic group, we re-estimated the model with interactions of lagged mortality and basic socio-demographics. Because of the limited number of neonatal deaths in certain cells, we could not interact with all variables simultaneously. We included interactions with birth date, mother's age, and birth order, but not with the

squares of these variables, and with dummy variables indicating gender of the newborn child, lower caste, religion other than Hindu (mainly Muslim), and higher than basic education of mother and father (but not with all separate dummies for higher education levels).

A likelihood ratio test shows that the eight interactions are jointly insignificant at the 5% level. Only three interactions have absolute t -values larger than 1: with date of birth (in 0.1 years; point estimate -0.144 with t -value -1.91), with the dummy for more than basic education of the mother (0.156 with t -value 1.16) and with the dummy for more than basic education of the father (-0.156 with t -value -1.44).

These additional results confirm that there is a substantial positive effect of the neonatal death of one child on the neonatal survival probability of the next child that does not work through the birth interval, even after controlling in a flexible way for unobserved heterogeneity. The effect is robust to many features of the specification, and is of similar order of magnitude to that in Whitworth and Stephenson (2002). A behavioural reaction of the mother to the death of a child, e.g. induced by depression (cf. Steer et al., 1992), is a mechanism that may explain at least part of this. (References are in the paper.)

2. Other Specification Checks

Here we discuss the estimates in Table A1 (below), which consider sensitivity of the main parameters to various simplifications of the model. The benchmark case is named Model 1. First, we excluded the community effects (*Model 2*). There is now a positive correlation of 0.21 between the unobserved heterogeneity terms in equations (1) and (2), which explains why we find somewhat larger negative effects of the birth interval on mortality and *vice versa* than in the benchmark model. The main difference is that this model underestimates the standard errors. *Model 3* does not allow for unobserved heterogeneity at the community or mother level. This creates some significant changes. The most salient is the effect of lagged on current mortality, which is about 80% larger than in the benchmark model (and 67% larger than in Model 2). This is consistent with the traditional argument that ignoring heterogeneity leads to

overestimation of state-dependence (Heckman 1981).¹³ There is little change in the effect of mortality on the next birth interval, because the correlation between the total unobserved heterogeneity terms is close to zero.

We also considered the consequences of omitting the birth interval from the mortality equation (*Model 4*). This increases the estimated effect of lagged mortality in the mortality equation, consistent with the mechanisms described in section 1. It also biases the effect of lagged mortality on the birth interval in equation (2). This is because omission of the birth interval induces a significant negative correlation (of -0.43) between the (total) unobserved heterogeneity terms in equations (1) and (2), which creates an upward simultaneity adjustment on the coefficient of lagged mortality. In Model 1, this correlation was small and insignificant (at -0.004). *Model 5* combines the restrictions imposed in arriving at Models 3 and 4. The two positive biases on the effect of lagged mortality on mortality together lead to an estimate that is twice as large as in the benchmark model. There is hardly any bias on the coefficient of mortality in the birth interval equation, for the same reason as in Model 4.]

¹³ Similarly, if the effect of lagged mortality on current mortality is set to zero, the estimated standard deviation of the unobserved heterogeneity term in the mortality equation increases from 0.173 to 0.279.

**Table A1. Sensitivity Analysis:
Endogenous coefficients in simplified specifications**

	Mortality equation Mi,j-1	Birth interval equation Ln Bi,j	Mi,j-1
Model 1			
Benchmark model	0.32 (-0.068)	-0.447 (-0.05)	-0.237 (-0.017)
Model 2			
No community cluster effects	0.369 (-0.055)	-0.482 (-0.046)	-0.246 (-0.016)
Model 3			
No mother-level or community unobserved heterogeneity	0.585 (-0.042)	-0.411 (-0.039)	-0.243 (-0.013)
Model 4			
No lagged birth interval	0.39 (-0.065)		-0.211 (-0.016)
Model 5			
No lagged birth interval & no mother-level or community unobserved heterogeneity	0.643 (-0.042)		-0.243 (-0.013)

Notes: See section 5.5 of the text. Figures are parameter values, with standard errors in parentheses. Model 1 is that reported in Table 1. The effects of the other variables are not shown since they do not change much compared to the benchmark estimates.

Appendix 3: Benchmark Simulation

This appendix describes the benchmark simulation mentioned in Section 5.6. The benchmark simulation has all mechanisms at work as specified in equations (1)-(4). Observations for the exogenous variables are taken from the data: 7286 mothers in 333 clusters, with their ethnicity, their and their partner's education levels, their date of birth, and the date of birth of their first child; all the explanatory variables in the equation for mortality of the first child. The mother specific effects, the neighborhood specific effects, and all error terms in the equations for mortality, birth interval, and the decision to have another child are drawn from their estimated joint distribution.¹⁴

Dependent variables are then simulated recursively for each mother: the mortality outcome of the firstborn child; the decision to have a second birth or not; if this decision is positive, the birth interval until the second birth; the mortality outcome of the second birth; the decision to have a third birth or not; and so on until the mother decides to have no more births, or until the maximum number of births (14) is reached. Table A1 presents the benchmark simulation results by birth order. The second and third columns present the frequency distributions of births and neonatal-survivors. By design, the sample consists of women who gave birth at least once. About 12% have only one birth, 17.2% have two births, etc. About 0.6% of all women have no surviving children – they have one or two births, but all their children die within 30 days. The simulated average of 4.12 births is somewhat larger than the average number in the sample, because the numbers in the sample are truncated at the time of the interview.¹⁵ The overall mean of simulated birth intervals is 30.59 months, somewhat smaller than the observed mean of 30.78 in the data, the difference being due to a small number of large outliers. The average number of surviving children (3.82) is 7.4% smaller than the average number of births. Thus the average neonatal mortality rate in this simulation is 7.4%. Column 4 presents simulated mortality by birth order. Neonatal mortality is largest among firstborn children and

¹⁴ The maximum number of births in the data is 14; we thus draw 14 error terms for each equation, 42 in total, although not all of them will actually play a role. (E.g., if the mother decides not to have more children after her fifth birth, errors in birth intervals and mortality equations for the sixth and further children play no role.)

¹⁵ If we apply the same truncation in the simulation, the average number in the simulations is virtually very similar to the observed number.

among children of birth order higher than six. The estimates for high birth orders, however, become rather inaccurate due to small numbers of mothers with so many children; this is also why the Table only presents results up to birth order 10.

Column 5 presents the average length of the simulated preceding birth interval by birth order. On average, intervals are shorter for higher birth orders. This is primarily a selection effect. In other words, it reflects that fact that women who have high-order births (i.e. high fertility) tend to have shorter birth intervals.

Table A2. Benchmark Simulation

Birth order	Births (frequency, %)	Survivors (frequency, %)	Mortality risk (%)	Average birth interval (months)
0		0.62		
1	12.01	13.50	9.17	
2	17.22	17.90	6.89	30.90
3	17.17	18.24	5.93	31.04
4	15.26	15.87	6.79	30.73
5	12.63	12.31	6.34	30.42
6	9.44	9.50	5.98	29.89
7	6.60	5.60	8.61	29.17
8	4.63	3.60	10.37	29.65
9	2.24	1.59	10.35	28.07
10	1.54	0.70	8.33	30.24

Appendix 4: Some Auxiliary Tables

Table A3: Neonatal Mortality of the first-born child (equation 3)

	Parameter	Std error	t-value
Religion:			
Muslim	-0.132	0.103	-1.28
Other	-0.070	0.423	-0.17
Caste:			
scheduled caste	0.139	0.225	0.62
scheduled tribe	0.121	0.094	1.30
other backward caste	-0.031	0.092	-0.34
caste missing	0.056	0.165	0.34
Maternal education:			
incomplete primary	0.108	0.148	0.73
complete primary	-0.119	0.139	-0.86
incomplete secondary	0.063	0.130	0.48
secondary & higher	-0.298	0.160	-1.87
Paternal education:			
incomplete primary	-0.245	0.164	-1.49
complete primary	-0.008	0.114	-0.07
incomplete secondary	-0.093	0.099	-0.94
complete secondary	-0.107	0.113	-0.94
higher than secondary	-0.163	0.116	-1.41
Gender:			
Female	-0.143	0.076	-1.88
Trend effects:			
year of birth of child/10	-0.722	0.814	-0.89
(year/10) squared	0.036	0.048	0.76
Maternal age:			
maternal age at birth/10	-1.340	0.963	-1.39
(age/10) squared	0.250	0.236	1.06
<i>Constant</i>	3.645	3.517	1.04

Table A4: Unobserved Heterogeneity: Underlying Parameter Estimates

	Parameter	Std error	t-value
p_{mm}	0.283*	0.061	4.67
p_{bm}	0.084*	0.023	3.67
p_{bb}	0.041	0.027	1.49
p_{fm}	-0.091	0.072	-1.27
p_{fb}	0.086	0.103	0.83
p_{ff}	0.110	0.139	0.79
p_{0m}	0.480	0.266	1.80
p_{0b}	-0.345	0.261	-1.32
t_{mm}	0.305*	0.069	4.41
t_{bm}	-0.079*	0.027	-2.95
t_{bb}	0.099*	0.025	3.96
t_{fm}	0.094	0.071	1.31
t_{fb}	-0.372	0.106	-3.51
t_{ff}	0.072	0.150	-0.48
t_{0m}	0.037	0.173	0.21
t_{0b}	-0.235	0.215	-1.09

Notes: Refer section 5.4 of the text.

*: parameter (and marginal effect) significant at the two-sided 5% level

Mother-specific effects are parameterized as follows:

$$\begin{aligned} \text{Mortality:} & \quad a_{mi} = p_{mm}u_{mi}; \\ \text{Birth interval:} & \quad a_{bi} = p_{bm}u_{mi} + p_{bb}u_{bi}; \\ \text{Fertility:} & \quad a_{fi} = p_{fm}u_{mi} + p_{fb}u_{bi} + p_{ff}u_{fi}; \end{aligned}$$

u_{mi} , u_{bi} , u_{fi} independent standard normal, independent of exogenous variables and error terms. The parameters p_{0m} and p_{0b} are the coefficients of u_{mi} and u_{bi} in the equation for neonatal mortality of the first child.

Community-specific effects are parameterized as follows:

$$\begin{aligned} \text{Mortality:} & \quad (mi = t_{mm}v_{mi}; \\ \text{Birth interval:} & \quad (bi = t_{bm}v_{mi} + t_{bb}v_{bi}; \\ \text{Fertility:} & \quad (fi = t_{fm}v_{mi} + t_{fb}v_{bi} + t_{ff}v_{fi}; \end{aligned}$$

v_{mi} , v_{bi} , v_{fi} independent standard normal, independent of u_{mi} , u_{bi} , u_{fi} , exogenous variables, and error terms. The parameters t_{0m} and t_{0b} are the coefficients of v_{mi} and v_{bi} in the equation for neonatal mortality of the first child.