

# Intestinal Dysbiosis Associated with Systemic Lupus Erythematosus

Arancha Hevia,<sup>a</sup> Christian Milani,<sup>b</sup> Patricia López,<sup>c</sup> Adriana Cuervo,<sup>d</sup> Silvia Arbolea,<sup>a</sup> Sabrina Duranti,<sup>b</sup> Francesca Turrioni,<sup>b\*</sup> Sonia González,<sup>d</sup> Ana Suárez,<sup>c</sup> Miguel Gueimonde,<sup>a</sup> Marco Ventura,<sup>b</sup> Borja Sánchez,<sup>a\*</sup> Abelardo Margolles<sup>a</sup>

Instituto de Productos Lácteos de Asturias, Consejo Superior de Investigaciones Científicas, Villaviciosa, Asturias, Spain<sup>a</sup>; Laboratory of Probiogenomics, Department of Life Sciences, University of Parma, Parma Italy<sup>b</sup>; Immunology Area<sup>c</sup> and Physiology Area,<sup>d</sup> Department of Functional Biology, University of Oviedo, Asturias, Spain

\* Present address: Francesca Turrioni, Alimentary Pharmabiotic Centre and Department of Microbiology, Bioscience Institute, National University of Ireland, Cork, Ireland; Borja Sánchez, Department of Analytical Chemistry and Food Science, Faculty of Food Science and Technology, University of Vigo, Ourense, Spain.

**ABSTRACT** Systemic lupus erythematosus (SLE) is the prototypical systemic autoimmune disease in humans and is characterized by the presence of hyperactive immune cells and aberrant antibody responses to nuclear and cytoplasmic antigens, including characteristic anti-double-stranded DNA antibodies. We performed a cross-sectional study in order to determine if an SLE-associated gut dysbiosis exists in patients without active disease. A group of 20 SLE patients in remission, for which there was strict inclusion and exclusion criteria, was recruited, and we used an optimized Ion Torrent 16S rRNA gene-based analysis protocol to decipher the fecal microbial profiles of these patients and compare them with those of 20 age- and sex-matched healthy control subjects. We found diversity to be comparable based on Shannon's index. However, we saw a significantly lower *Firmicutes/Bacteroidetes* ratio in SLE individuals (median ratio, 1.97) than in healthy subjects (median ratio, 4.86;  $P < 0.002$ ). A lower *Firmicutes/Bacteroidetes* ratio in SLE individuals was corroborated by quantitative PCR analysis. Notably, a decrease of some *Firmicutes* families was also detected. This dysbiosis is reflected, based on *in silico* functional inference, in an overrepresentation of oxidative phosphorylation and glycan utilization pathways in SLE patient microbiota.

**IMPORTANCE** Growing evidence suggests that the gut microbiota might impact symptoms and progression of some autoimmune diseases. However, how and why this microbial community influences SLE remains to be elucidated. This is the first report describing an SLE-associated intestinal dysbiosis, and it contributes to the understanding of the interplay between the intestinal microbiota and the host in autoimmune disorders.

Received 25 June 2014 Accepted 29 August 2014 Published 30 September 2014

**Citation** Hevia A, Milani C, López P, Cuervo A, Arbolea S, Duranti S, Turrioni F, González S, Suárez A, Gueimonde M, Ventura M, Sánchez B, Margolles A. 2014. Intestinal dysbiosis associated with systemic lupus erythematosus. *mBio* 5(5):e01548-14. doi:10.1128/mBio.01548-14.

**Invited Editor** Nicola Segata, University of Trento **Editor** Maria Gloria Dominguez Bello, New York University School of Medicine

**Copyright** © 2014 Hevia et al. This is an open-access article distributed under the terms of the [Creative Commons Attribution-NonCommercial-ShareAlike 3.0 Unported license](https://creativecommons.org/licenses/by-nc-sa/4.0/), which permits unrestricted noncommercial use, distribution, and reproduction in any medium, provided the original author and source are credited.

Address correspondence to Borja Sánchez, borja.sanchez@uvigo.es, or Abelardo Margolles, amargolles@ipla.csic.es.

Metagenomic studies on gut microbiota burst onto the scientific scene during the last decade, due to the advent of next-generation sequencing techniques. In a very short period of time, microbiologists moved from the study of single, isolated, cultivable microorganisms, specifically, those able to grow under standard laboratory conditions, to the investigation of very complex microbial communities, mainly composed of uncultivable bacteria (1, 2). The first metagenomics reports enabled an overview of the complexity of our gut microbial communities (3, 4). Further studies focused on establishing the correlation between the human gut microbiome, the collective genomes of all microbes inhabiting the gut (5), and different physiological states, including those having an influence on health. Currently, we know that the gut microbiota might affect food and drug metabolism (6), influences human behavior (7), shifts during the course of pregnancy (8), displays age-associated changes (9–12), and possesses distinctive features depending on geographical location (12, 13), among other features. It is also becoming clear that there is a strong link between dietary patterns and the gut microbial profile (14, 15). Furthermore, some links have been established between some disorders (for example, obesity and metabolic syndrome) and an

imbalance in the gut microbial ecology, also called dysbiosis (16–18). Remarkably, intestinal dysbiosis has also been associated with autoimmune diseases, such as rheumatoid arthritis, type 1 diabetes, and inflammatory bowel disease (IBD) (19–21).

Systemic lupus erythematosus (SLE) is a prototypical autoimmune disease in humans that is characterized by the presence of hyperactive immune cells and aberrant antibody responses to nuclear and cytoplasmic antigens. Genetic, immunological, hormonal, and environmental factors contribute to disease susceptibility (22), and its prevalence varies greatly depending on the population under study, although a prevalence of 2 to 5 cases per 10,000 inhabitants is reportedly considered normal (23). Among the environmental factors, growing evidence suggests that molecular mimicry as a result of viral infection may contribute to the development of lupus (24). Also, some reports have highlighted intestinal infections that may ameliorate SLE symptoms (25), and a marked difference in the specificity of antibodies to bacterial DNA in healthy people and SLE patients has been indicated (26). In fact, there is early evidence of a different abundance of cultivable intestinal bacteria in SLE (27). Remarkably, it has been suggested that novel SLE biomarkers can be potentially found in the

TABLE 1 Demographic, clinical, and immunological features of SLE patients

Subject no.	Age (yrs)	Disease duration (yrs)	Anti-dsDNA titer (U/ml) <sup>a</sup>	Complement C3 (g/liter) <sup>a</sup>	Complement C4 (g/liter) <sup>a</sup>	Clinical and immunological features <sup>b</sup>
SLE1	43	2	0.3	0.93	0.2	MR, PH, HD, ANA
SLE2	68	3	0.7	0.96	0.18	MR, DL, PH, AR
SLE4	35	4	7.7	1.53	0.22	PH, OU, RD, ANA
SLE5	50	5	18	1.67	0.44	PH, OU, HD, ANA, anti-SSa
SLE6	35	3	48	0.81	0.13	MR, OU, AR, HD, ANA, anti-dsDNA, anti-SSa
SLE7	70	3	27	1.74	0.37	PH, OU, HD, ANA, anti-dsDNA
SLE11	54	24	99.1	1.43	0.28	MR, DL, PH, AR, HD, ANA, anti-dsDNA, anti-Sm
SLE12	58	6	13	0.84	0.22	DL, PH, AR, HD, ANA, anti-SSa, RF
SLE13	40	6	0.6	0.83	0.25	MR, OU, ANA
SLE14	40	12	4	0.92	0.18	AR, SE, RD, ANA, anti-SSb
SLE15	51	24	104	0.83	0.14	MR, DL, PH, AR, SE, HD, ANA, anti-dsDNA, anti-SSa, anti-SSb, anti-Sm, anti-RNP, anti-CLP
SLE16	54	24	45	1.76	0.3	PH, AR, ANA, anti-dsDNA, anti-SSa
SLE17	46	13	19	0.8	0.11	MR, DL, PH, OU, AR, ANA, anti-dsDNA, anti-SSa, RF
SLE18	43	12	4.1	1.04	0.16	DL, PH, OU, AR, SE, HD, ANA, anti-SSa, RF
SLE19	34	4	0	1.19	0.25	MR, PH, OU, ANA
SLE20	51	7	5.8	0.67	0.14	PH, OU, ANA, anti-SSa
SLE21	59	11	1.2	1.16	0.17	PH, ANA, anti-dsDNA, anti-SSa, anti-CLP
SLE22	64	11	4.4	1.17	0.25	MR, PH, AR, ANA, anti-dsDNA, anti-SSa
SLE24	46	14	0.4	1.08	0.4	MR, PH, HD, ANA, anti-SSa, RF
SLE26	46	20	38	0.89	0.18	MR, PH, OU, RD, HD, ANA, anti-dsDNA.

<sup>a</sup> At the time of sampling.

<sup>b</sup> Cumulatively registered. Abbreviations: ANA, antinuclear antibodies; anti-RNP, antiribonucleoprotein antibodies; anti-Sm, anti-Smith antigen antibodies; anti-CLP, anticardiolipin antibodies; RF, rheumatoid factor; AR, arthritis; DL, discoid lesions; HD, hematological disorder; MR, malar rash; OU, oral ulcers; PH, photosensitivity; RD, renal disorder; SE, serositis.

human microbiota (28). However, a study of the potential dysbiosis associated with SLE had not been tackled until now. Therefore, in this report we took advantage of next-generation sequencing techniques to explore the potential interplay of the human microbiome and SLE. We have proven, for the first time, that there is a gut microbial dysbiosis associated with SLE.

## RESULTS AND DISCUSSION

Despite all the scientific knowledge generated in the last few years, and although few studies published so far support the dysbiosis theory as a key factor promoting chronic inflammation in autoimmune diseases (29–32), there is no scientific work that has taken advantage of next-generation sequencing techniques to explore the potential interplay of the human microbiome and SLE, the prototypical autoimmune disease in humans. Therefore, we designed our work with the aim of answering if there is an SLE-associated intestinal dysbiosis and, if so, which microbial population groups are related to the dysbiosis.

We defined the SLE population group by considering that there is a census of about 300 SLE patients in Asturias (from a total population of about 1,000,000 inhabitants). Thus, we were able to obtain a group of SLE patients from a well-defined geographical location to compare them with a similar group of healthy controls (HC), considering factors such as sex, age, medication (absence of antibiotic, steroid, and immunological treatments during the last 6 months), medical history (presenting a wide variety of clinical SLE manifestations), duration of the disease (2 to 24 years), and absence of flares of disease activity at the time of sampling (systemic lupus erythematosus disease activity index [SLEDAI] score of  $\leq 8$  at the time of sample collection). The group of SLE patients included individuals with a large variety of symptoms (Table 1), allowing us to establish correlations between the microbial profile

and SLE, which are very likely independent of a specific pattern of symptoms. This variability in the phenotype of the disease is an intrinsic characteristic of SLE (22). We also selected patients with no active disease at the time of sampling, because the clinical manifestations of the disease in this population group are not biased by the pharmacological treatment necessary to treat SLE individuals during disease relapse. Furthermore, mean dietary intakes of energy, macronutrients, micronutrients, fiber, and phytochemicals were recorded, both from patients with SLE and healthy subjects, and we found that there was no significant difference between the 2 groups (Table 2). Also, no significant difference was found between the 2 groups regarding lifestyle-related factors (smoking, alcohol consumption, physical activity, and use of vitamin and mineral supplements [data not shown]). This reduced the possibility that our analysis was affected by factors shown to have an influence on the gut microbial profile, such as age (9), diet (15), or phenolic compound intake (33, 34).

Our work is based on 16S rRNA gene-based data for fecal microbiota and the bioinformatic analysis of the results. In a previous work (35), we optimized protocols to study the human fecal microbial population by using an Ion Torrent PGM sequencing platform. This methodology was applied in the current study, and we obtained an average of 592,305 high-quality reads per fecal sample (see Table S1 in the supplemental material). Rarefaction curves obtained by plotting the Shannon, Chao1, and phylogenetic diversity indexes against the number of sequences (see Fig. S1 in the supplemental material) showed that a large part of the diversity of the samples was detected. The microbiota composition at the phylum and family levels was obtained (Fig. 1; see also Fig. S2 in the supplemental material). Remarkably, even considering the broad heterogeneity of the clinical manifestations of SLE

**TABLE 2** General characteristics and mean dietary intake of energy, macronutrients, fiber forms, and phyto-compounds in patients with SLE and healthy controls

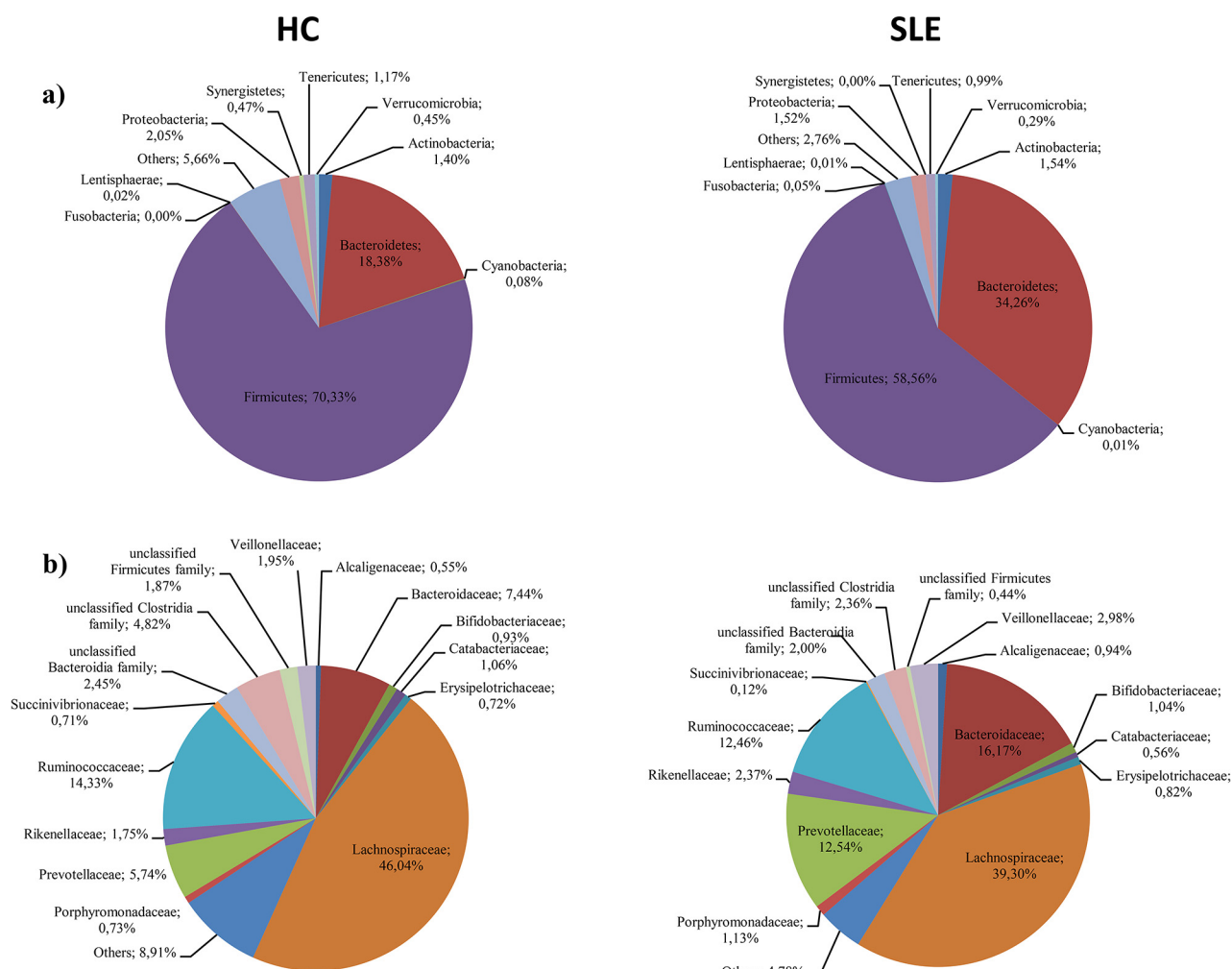
Characteristic	SLE patients (n = 20)	Healthy controls (n = 20)
Female sex (%)	100	100
Age (yrs)	49.2 ± 10.7 <sup>b</sup>	46.9 ± 8.6
BMI (kg/m <sup>2</sup> )	26.1 ± 5.3	25.2 ± 4.2
Energy (kcal/day)	2,173.1 ± 722.4	1,875.9 ± 332.8
Lipid (g/day) <sup>a</sup>	84.5 ± 41.0	85.4 ± 20.5
MUFA (g/day) <sup>a</sup>	35.3 ± 19.7	35.7 ± 7.6
PUFA (g/day) <sup>a</sup>	17.2 ± 9.7	17.5 ± 9.4
SFA (g/day) <sup>a</sup>	24.9 ± 14.1	25.0 ± 6.0
Protein (g/day) <sup>a</sup>	104.9 ± 27.6	100.6 ± 20.9
Carbohydrates (g/day) <sup>a</sup>	205.0 ± 75.6	203.5 ± 47.0
Dietary fiber (g/day) <sup>a</sup>	24.9 ± 10.4	25.3 ± 9.1
Insoluble fiber (g/day) <sup>a</sup>	16.0 ± 8.6	16.6 ± 7.5
Soluble fiber (g/day) <sup>a</sup>	2.9 ± 1.5	2.8 ± 1.1
Total isoflavones (mg/day) <sup>a</sup>	2.4 ± 2.4	2.5 ± 2.7
Total phenolics (mg/day) <sup>a</sup>	833.2 ± 527.3	916.3 ± 437.8

<sup>a</sup> Model was adjusted for energy and BMI. PUFA, polyunsaturated fatty acids; MUFA, monounsaturated fatty acids; SFA, saturated fatty acids.

<sup>b</sup> Values are means ± SD.

in the individuals under study (Table 1), we obtained a particular type of microbiota for the SLE group. In this regard, the presence of anti-double-stranded DNA (dsDNA) antibodies and other clinical data were organized in a metadata file for all the microbiota profiles. A principal component analysis (PCoA) was performed with both metadata/microbiota profiles, using the variability of the 16S rRNA gene profiling at different taxonomic levels. Sample classification according to the metadata revealed no specific clustering of the samples or correlations with the different clinical features or anti-dsDNA antibodies (data not shown).

*In silico* analysis of the sequences highlighted the key findings of our work. A high-quality filtering approach was used in order to process the Ion Torrent-generated sequencing data (see Table S1 in the supplemental material); a total of 293,436 unfiltered operational taxonomic units (OTUs) were identified by using *de novo* OTU picking. Based on each of five alpha-diversity measures (Chao1, PD whole tree, observed species, Shannon, and Simpson indexes), patients and controls were not significantly different (data not shown). Notably, one of the main results was the identification of a clear dysbiosis between the two study groups which was characterized by a higher relative abundance of



**FIG 1** Aggregate microbiota composition in fecal samples from control (HC) and lupus-affected (SLE) subjects at the phylum level (a) and family level (b). In panel b, only taxonomic groups representing >0.5% are shown.

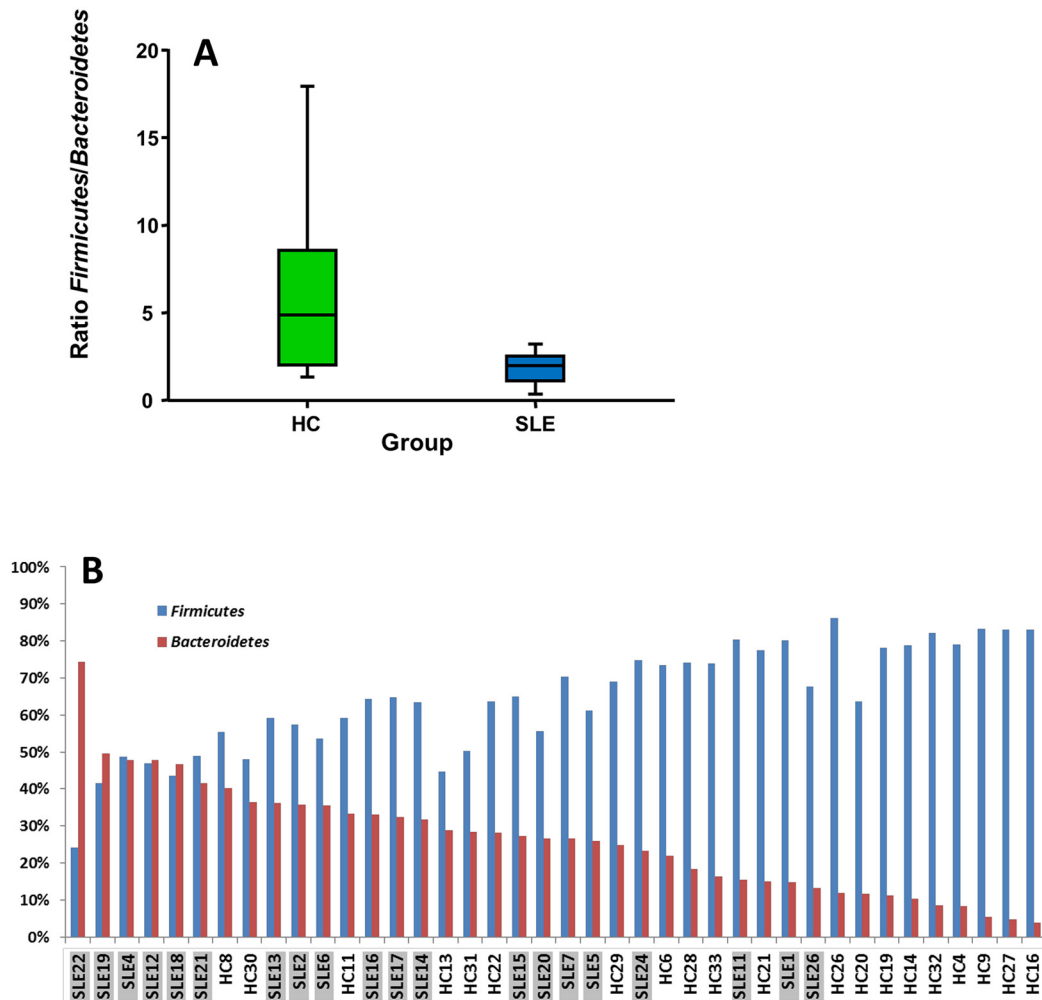


FIG 2 (A) Box plot of *Firmicutes/Bacteroidetes* ratios (median  $\pm$  IQR) in SLE patients versus healthy controls. (B) Percentages of 16S rRNA reads of *Bacteroidetes* (red bars) and *Firmicutes* (blue bars) in the DNA extracted from fecal samples of SLE patients (SLE codes) and healthy controls (HC codes). Ratios are significantly different ( $P < 0.002$ ).

*Bacteroidetes* in the SLE group. Overall, we detected a significant decrease in the *Firmicutes/Bacteroidetes* ratio in SLE individuals: the microbiota of SLE patients, compared with controls, had an almost-2.5-fold-decreased ratio (Fig. 2A) ( $P < 0.002$ ). Looking at the different individuals, a gradient from lower (SLE) to higher (HC) *Firmicutes/Bacteroidetes* ratios was observed (Fig. 2B). These 16S rRNA gene-based analyses were corroborated by quantitative PCR (qPCR) analysis. The levels (reported as the log cells/g, with the interquartile range [IQR] in parentheses) of total fecal bacteria were 10.62 (9.46 to 10.80) in SLE patients and 10.35 (10.07 to 10.59) in controls. *Firmicutes* levels in the SLE and control groups reached 9.69 (8.86 to 10.38) and 9.99 (9.68 to 10.31), respectively, while those of *Bacteroidetes* were 10.52 (9.56 to 10.83) and 9.89 (9.59 to 10.23), respectively. No statistically significant differences in these levels of microbial groups were found between SLE patients and controls. However, when the data were expressed as the relative percentages of *Firmicutes* and *Bacteroidetes* with respect to the total bacterial level, a significantly higher ( $P < 0.05$ ) percentage of *Bacteroidetes* was observed in the SLE group. Moreover, when the *Firmicutes/Bacteroidetes* ratio was calculated, a statisti-

cally significant ( $P < 0.01$ ) decrease in the SLE group with respect to the control group was found (0.94 [0.90 to 0.98] versus 1.01 [0.96 to 1.06], respectively). The differences in the ratios based on qPCR were less pronounced than the differences obtained with the 16S rRNA profiling, likely because the two techniques provide different kinds of information: a relative proportion of sequences (from the 16S rRNA gene-based analysis) versus an absolute quantification of sequences (via qPCR). Thus, the fact that we obtained clear evidence for a significantly lower *Firmicutes/Bacteroidetes* ratio in SLE patients when we used two different culture-independent techniques supports the soundness and reliability of our analyses. The phyla *Bacteroidetes* and *Firmicutes* include the most abundant components of the human gut microbiota (36). Dysbiosis between *Firmicutes* and *Bacteroidetes* in the human gut has been described in previous studies in association with some disorders. The ratio between *Firmicutes* and *Bacteroidetes* decreases in human type 2 diabetes compared with controls (37). Also, most studies of the microbiota in people with Crohn's disease report a decrease in the abundance of *Firmicutes* and an increase in *Bacteroidetes* in association with the disease (38). An



opposite situation is observed in obesity, in which the dysbiosis is characterized by an increase in the *Firmicutes/Bacteroidetes* ratio (17). Therefore, this specific microbial balance between the more abundant phyla in the human gut seems to be dependent on the physiology of the disorder. In relation to this, it has been reported that this equilibrium is susceptible to modification by shifts in the dietary pattern. Wu et al. (15) reported that *Firmicutes* levels were positively associated with a low-fat/high-fiber diet. Also, dietary interventions, including whole grain in the diet, increase the *Firmicutes/Bacteroidetes* ratio (39).

We prepared scatter plots (see Fig. S3A in the supplemental material), and they clearly highlighted a positive association between *Firmicutes* in healthy controls ( $P < 0.01$ ) and *Bacteroidetes* in SLE patients ( $P < 0.001$ ). This association was confirmed at lower taxonomic levels, and normalized abundances of the classes *Bacteroidia* (phylum *Bacteroidetes*) and *Clostridia* (phylum *Firmicutes*) and the orders *Bacteroidales* and *Clostridiales* differed significantly between the SLE patients and the healthy controls (see Fig. S3B). At the family level, *Lachnospiraceae* ( $P < 0.05$ ) and *Ruminococcaceae* ( $P < 0.05$ ) were positively associated with healthy controls (see Fig. S4 and S5 and Table S2 in the supplemental material).

Statistical differences between the two groups (HC and SLE) were calculated by a PERMANOVA test, with the distance data obtained after ordination analysis (PCoA) using PAST v 3.1 (40). In all cases, data from the relative taxa abundances were used, and distances were computed according to the Bray-Curtis similarity index. The groups of SLE and HC differed statistically whenever phylum- or family-level data were used ( $P < 0.01$  or  $P < 0.02$ , respectively).

Unsupervised PCoA of the 16S rRNA sequence data identified the phyla *Bacteroidetes* and *Firmicutes* as the main gradients for SLE and healthy control groups, respectively (Fig. 3A). PCoA at the family level showed that the families *Lachnospiraceae* and *Ruminococcaceae* were located near the healthy controls (Fig. 3B). Interestingly, *Lachnospiraceae* was the most abundant family in the feces of both study groups (Fig. 1; see also Fig. S2 in the supplemental material). Depletion of *Lachnospiraceae* and *Ruminococcaceae* has been associated with *Clostridium difficile* infections and nosocomial diarrhea (41). Also, several studies showed a decrease of *Lachnospiraceae* in IBD patients, and this family has been suggested as a biomarker of disease activity (42–44). However, the functional consequences of the depletion of these bacteria in the previously mentioned intestinal diseases remain to be investigated. Although the amplicons of the 16S rRNA sequences could be relatively short to perform a totally reliable population structure analysis at the genus/species level, it is noteworthy that the relative abundance of sequences assigned to *Bacteroides* spp. were significantly higher in SLE samples ( $P < 0.02$ ). In the control group, we also found a significantly higher ( $P < 0.05$ ) relative abundance of sequences tentatively assigned to *Desulfovibrio*, the most common genus of sulfate-reducing bacteria in the human gut (45). It is worth mentioning that some authors have described how dysbiosis could affect mucosal barrier function and impair immunoregulatory mechanisms, leading to pathological effects in systemic immunity. Using animal models, a direct involvement of components of the microbiota in chronic intestinal inflammation (46) and the protective role of specific commensals in avoiding bacterial translocation (47) have been demonstrated. Finally, we should bear in mind that nonsteroidal anti-inflammatory drugs

and the antimalarial treatment of SLE patients could have an influence on the observed dysbiosis.

In our study, we also determined the tentative metagenomes from phylogenetically associated reference genomes. Our aim was to highlight metabolic pathways and shifts associated with the SLE population compared with controls. We inferred the functionality of the different putative metagenomes by using PICRUSt software, which allows the prediction of metabolic pathways from the 16S rRNA reads (48). A functional analysis using the data obtained from the KEGG pathways at level 3 allowed us to detect certain processes potentially associated with either healthy controls or SLE. KEGG levels are the different hierarchical subdivisions in which the functions of a biological system (cell, organism, or ecosystem) are arranged according to information organized in the KEGG database (<http://www.genome.jp/kegg/kegg1a.html>). Pathways displaying a difference in mean proportions between healthy controls and SLE groups of at least 0.1% are represented in Fig. S6 in the supplemental material. Some glycan degradation pathways are slightly overrepresented in the microbiota of SLE patients, probably due to the higher abundance of *Bacteroidetes* in these samples. *Bacteroidetes*, and specifically the main genus of this phylum, *Bacteroides*, have been shown to display broad glycan-degrading abilities (49). The same occurs with lipopolysaccharide biosynthesis proteins, which is in direct relation to the higher abundance of *Bacteroidetes* in the SLE samples. Remarkably, oxidative phosphorylation processes seem to be associated with SLE patients. This finding indicates that some bacteria able to perform oxidative phosphorylation may be better adapted to the intestinal ecosystem of individuals with SLE, and this could be related to the imbalance in the oxidative stress environment at the intestinal level that has been linked to some autoimmune diseases (48).

In summary, understanding and potentially manipulating immune responses through the action of intestinal microbiota comprise one of the most active fields in probiotic and prebiotic research. Most likely, the dysbiosis defined in this work is the consequence of the altered immune function of SLE patients. At present, the treatment of SLE patients is exclusively performed with drugs, and our findings could indicate that challenging the immune system with the bacteria depleted in SLE, or substances promoting their growth, could influence SLE physiology. To the best of our knowledge, experimental papers about the relationship of the human gut microbiome and SLE have not been published, and this is the first report describing an SLE-associated intestinal dysbiosis. Thus, our results establish the basis to delve deeper into the understanding of the relationship between the human gut microbiota and autoimmune diseases.

## MATERIALS AND METHODS

**Ethics statement.** Ethics approval for this study (reference code AGL2010-14952; grant title “Towards a better understanding of gut microbiota functionality in some immune disorders”) was obtained from the Bioethics Committee of CSIC (Consejo Superior de Investigaciones Científicas) and from the Regional Ethics Committee for Clinical Research (Servicio de Salud del Principado de Asturias) in compliance with the Declaration of Helsinki. All determinations were performed with fully informed written consent from all participants involved in the study.

**Study subjects.** The study sample comprised 20 patients with SLE (SLE codes) and 20 healthy controls (HC codes). SLE patients were selected from the updated Asturian Register of Lupus (Asociación Lúpica de Asturias, Oviedo, Spain). All of them fulfilled at least four of the American College of Rheumatology criteria for SLE (50). The individuals re-

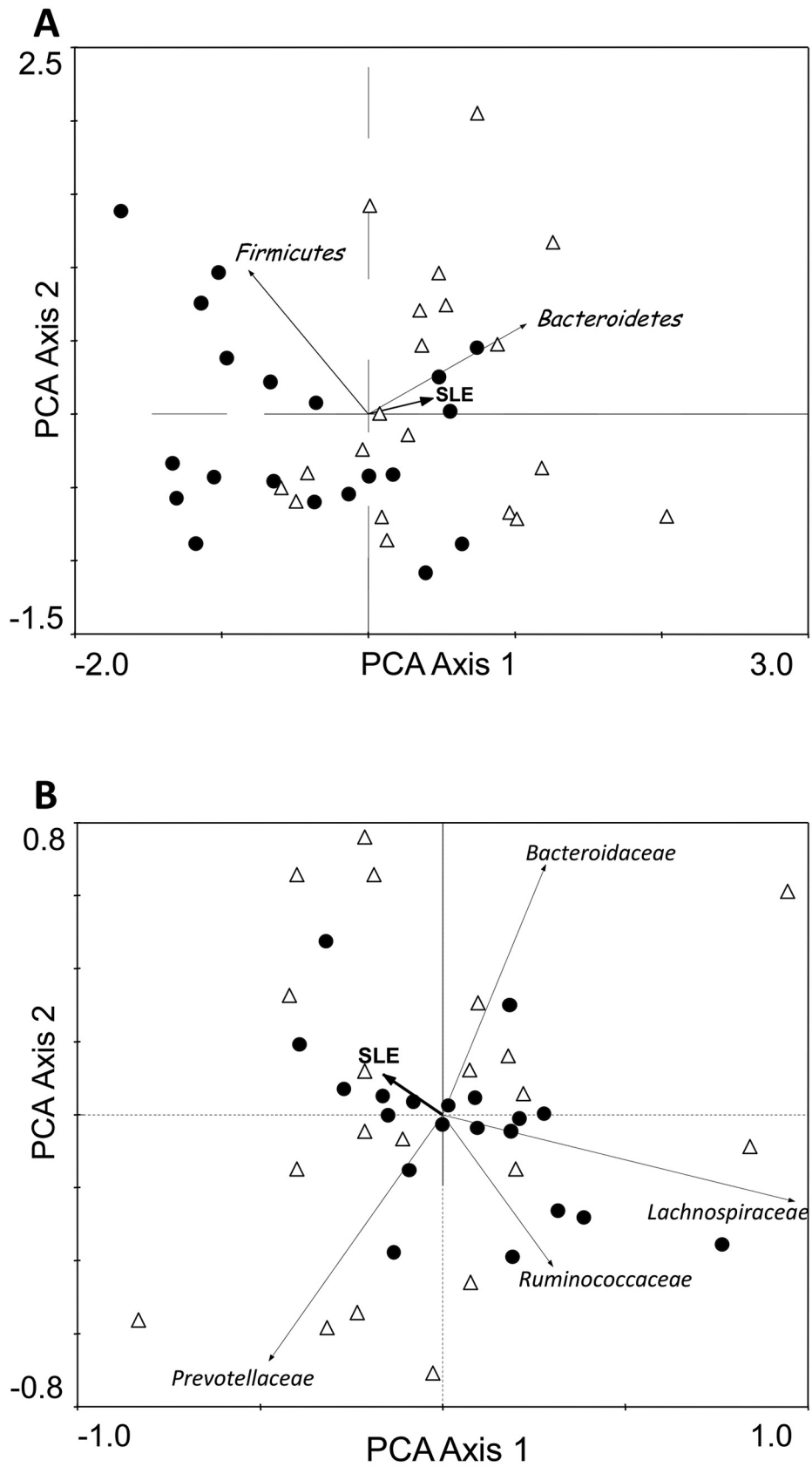


FIG 3 PCoA results for the 16S rRNA profiles at the phylum (A) and family (B) level. The presence or absence of SLE was further included as metadata. HC, closed circles; SLE, open triangles.

cruited for the SLE group were in remission and had not had any immunotherapy or corticoid treatment during the previous months, since those are the treatments that could have the strongest influence on the physiology of the patients. All patients were women of Caucasian origin,  $49.2 \pm 10.7$  years old (mean  $\pm$  standard deviation [SD]), and had no active disease at the time of sampling (SLEDAI score of  $\leq 8$ ). Information on clinical manifestations was obtained by reviewing clinical records (Table 1). Patients were also asked precise questions regarding treatment received during the previous 6 months. Only those individuals who had not used antibiotics, glucocorticoids, immunosuppressive drugs, monoclonal antibodies, or other immunotherapies were recruited for the study. Eighteen patients were receiving antimalarial treatment, and all of them were regular consumers of nonsteroidal anti-inflammatory drugs. Twenty age-matched healthy women ( $46.9 \pm 8.6$  years old) from the same population were recruited as controls.

**(i) Nutritional assessment.** Variables of macro- and micronutrient intakes were collected by means of a semiquantitative food frequency questionnaire that included 160 items. During a personal interview, carried out within 7 days after the collection of the fecal sample, subjects were asked item by item whether they usually ate the food and, if so, how much they ate. For this purpose, three different serving sizes of each cooked food were presented in pictures to the participants so that they could choose from up to 7 serving sizes (from “less than the small one” to “more than the large one”). For some of the foods consumed, amounts were recorded in household units, by volume, or by measuring with a ruler. Special attention was paid to cooking practices and number and amount of ingredients used in each recipe, as well as questions concerning menu preparation (e.g., type of oil or milk used).

Food intake was analyzed for energy and macro- and micronutrient contents by using the nutrient food composition tables developed by CESNID (51). Total, soluble, and insoluble fiber intake was completed based on Marlett food composition tables (52), and polyphenol content was calculated from the U.S. Department of Agriculture (USDA) Nutrient Database (53).

**(ii) Anthropometric measures.** The body mass index (BMI) was calculated from the following formula:  $\text{weight}/(\text{height})^2$  (in  $\text{kg}/\text{m}^2$ ). Height was registered by using a stadiometer with an accuracy of  $\pm 1$  mm (Año-Sayol, Barcelona, Spain). Subjects were barefoot, in an upright position, and with the head positioned in the Frankfurt horizontal plane. Weight was measured on a scale with an accuracy of  $\pm 100$  g (Seca, Hamburg, Germany).

**(iii) Lifestyle-related factors.** During the interview, other factors associated with the lifestyle of the subject were registered. Smoking habit, physical activity, alcohol consumption, and supplements use were included in the questionnaire. Smoking status was categorized as non-smoker (including exsmokers and occasional smokers) or current smoker. Those subjects who reported that they never exercised were categorized as physically inactive. “Regular alcohol consumer” refers to those subjects who declared a regular consumption of alcoholic drinks. Also, the use of vitamin and mineral supplements during the last month was self-reported.

**Fecal sample collection and DNA extraction.** Fresh fecal material (between 10 and 50 g per person) was collected in a sterile container and immediately manipulated and homogenized within a maximum of 3 h from defecation. During the waiting period, from defecation to homogenization, samples were kept at  $4^\circ\text{C}$ . Thirty milliliters of RNAlater solution (Applied Biosystems, Foster City, CA) was added to 10 g of sample, and the mixture was homogenized in a sterile bag, using a stomacher apparatus (IUL Instruments, Barcelona, Spain) with three cycles at high speed, 1 min per cycle. Homogenized samples were then stored at  $-80^\circ\text{C}$  until use.

For DNA extraction, samples were thawed and the QIAamp DNA stool minikit (Qiagen Ltd., Strasse, Germany) was used as previously described (35).

**16S rRNA gene amplification.** Partial 16S rRNA gene sequences were amplified from extracted DNA by using the primer pair Probio\_Uni (5'-CCTACGGGSRGACAG-3')/Probio\_Rev (5'-ATTACCGCGGCTGC T-3') (35), which targets the V3 region of the 16S rRNA gene sequence. The PCR conditions used were 5 min at  $95^\circ\text{C}$ , 35 cycles of 30 s at  $94^\circ\text{C}$ , 30 s at  $55^\circ\text{C}$ , and 90 s at  $72^\circ\text{C}$ , followed by 10 min at  $72^\circ\text{C}$ . Amplification was carried out using a Verity thermocycler (Applied Biosystems). The integrity of the PCR amplicons was analyzed by electrophoresis on an Experion workstation (Bio-Rad, Hertfordshire, United Kingdom).

**Ion Torrent PGM sequencing of 16S rRNA gene-based amplicons.** The PCR products derived from amplification of specific 16S rRNA gene hypervariable regions were purified by electrophoretic separation on a 1.5% agarose gel and the use of a Wizard SV Gen PCR cleanup system (Promega, Madison, WI), followed by a further purification step involving Agencourt AMPure XP DNA purification beads (Beckman Coulter Genomics GmbH, Bernried, Germany) in order to remove primer dimers. The DNA concentration of the amplified sequence library was estimated through use of the Experion system (Bio-Rad). From the concentration and the average size of each amplicon library, the amount of DNA fragments per microliter was calculated and libraries for each run were diluted to  $3 \times 10^9$  DNA molecules prior to clonal amplification. Emulsion PCR was carried out using the Ion OneTouch 200 template kit v2 DL (Life Technologies, Guilford, CA) according to the manufacturer's instructions. Sequencing of the amplicon libraries was carried out on 316 chips by using the Ion Torrent PGM system and employing the Ion Sequencing 200 kit (Life Technologies) according to the supplier's instructions at the DNA sequencing facility, GenProbio s.r.l. After sequencing, the individual sequence reads were filtered with the PGM software to remove low-quality and polyclonal sequences. Sequences matching the PGM 3' adaptor were also automatically trimmed. All PGM quality-approved, trimmed, and filtered data were exported as SFF files.

**Sequence-based microbiota analysis.** The SFF files were processed using QIIME (54). Quality control retained sequences had lengths between 150 and 200 bp, a mean sequence quality score of  $>25$ , and with truncation of a sequence at the first base if a low-quality rolling 10-bp window was found. Presence of homopolymers of  $>7$  bp and sequences with mismatched primers were omitted. In order to calculate downstream diversity measures (alpha and beta diversity indices, Unifrac analysis), 16S rRNA OTUs were defined at  $\geq 97\%$  sequence homology by using uclust (55). Chimeric sequences were removed using ChimeraSlayer (56). Furthermore, OTUs that included less than 10 sequences were filtered using QIIME (54). All reads were classified to the lowest possible taxonomic rank by using QIIME and a reference data set from the Ribosomal Database Project (57). The sequence data features of all the samples are included in Table S1 in the supplemental material.

Different alpha diversity indexes were calculated using QIIME and information from the OTU tables using the `alpha_diversity.py` script. The different diversity metrics were set by passing the option `-s` to the script. The following indexes were calculated for every sample and compared between groups by using a two-sided Student's *t* test: Chao1, PD whole tree, observed species, Shannon, and Simpson.

**Analysis by qPCR.** Quantification of total fecal bacteria, *Firmicutes*, and *Bacteroidetes* by qPCR was performed by using previously described primers and conditions (58–60). Analyses were done in duplicate in a 7500 Fast real-time PCR system (Applied Biosystems) using Sybr green PCR master mix (Applied Biosystems). Standard curves were made with pure cultures, grown under anaerobic conditions at  $37^\circ\text{C}$ , of *Escherichia coli* LMG 2092 in Gifu anaerobic medium (GAM; Nissui Pharmaceutical Co., Tokyo, Japan), *Faecalibacterium prausnitzii* DSMZ 17677 in RCM formula (Oxoid Ltd., Basingstoke, Hampshire, United Kingdom), and *Bacteroides thetaiotaomicron* DSMZ 2079 in GAM.

**Functional inference.** The functionality of the different metagenomes, grouped by disease status (healthy control versus SLE), was predicted using the software PICRUSt 0.9.1 (<http://picrust.github.io>), which has been explained in detail elsewhere (48). In short, this software allows

the prediction of functional pathways from the 16S rRNA reads. First, a collection of closed-reference OTUs was obtained from the filtered reads by using QIIME v 1.7.0 (54) and by querying the data against the IMG/GG reference collection (GreenGenes database, May 2013 version; <http://greengenes.lbl.gov>). Reverse-strand matching was enabled during the query, and OTUs were picked at a 97% identity. A BIOM-formatted table (biological observation matrix [61]) was obtained with the `pick_closed_reference_otus.py` script. This table, containing the relative abundances of the different reference OTUs in all the metagenomes, was normalized based on the predicted 16S rRNA copy number by using the script `normalize_by_copy_number.py`. Final functional predictions, inferred from the metagenomes, were created with the script `predict_metagenomes.py`. When necessary, tab-delimited tables were obtained with the script `convert_biom.py`.

**Analysis of predicted metagenomes.** PICRUSt and QIIME provide a number of scripts that can be useful for analyzing both 16S rRNA gene relative abundances and the predicted metabolic data. Predicted metagenomic contents were collapsed at KEGG pathway level 3 (<http://www.genome.jp/kegg/pathway.html>) with the `categorize_by_function.py` script, and the data were analyzed statistically by using STAMP v 2.0.0 (62). STAMP allows data filtering and the application of different statistical tests and corrections, including PCoA. It also generates different graphics, including box plots, error plots, and scatter plots. Data of the KEGG pathway distributions were plotted by using the script `summarize_taxa_through_plots.py`. Associations of different taxonomic categories to SLE were statistically analyzed with the script `otu_category_significance.py`.

**Statistical analyses.** Statistical analysis was performed using IBM-SPSS version 19.0 (IBM SPSS, Inc., Chicago, IL). For descriptive purposes, in Table 2 the mean values are presented as means  $\pm$  SD on untransformed variables. Differences between SLE patients and controls were compared by using a multivariate linear model, including energy intake and BMI as covariates.

Individuals were ordered according to their sequence data composition by principal component analysis using the taxonomic data at the phylum and family levels. Patterns were extracted using all the variations from the taxonomic data via an indirect method as a model and SLE as metadata. To analyze the associations between inferred metabolic pathways and SLE, metabolic pathways with very low abundance levels ( $<0.001$  in 50% of the samples) were excluded from all analyses. Association of KEGG pathways to SLE were identified by running two-sided Welch tests on every pair of means. This test is a variation of Student's *t* test and is used when equal variance cannot be assumed in both groups. Confidence intervals (95%) were obtained by inverting the Welch's tests. The false discovery rate (FDR) correction (48, 63) was finally applied in all cases, and significant differences between healthy controls and SLE patients were only considered when below a *P* value of 0.05 or a *q* value below 0.2. *P* and *q* values at the phylum and family levels are included in Table S2 in the supplemental material. In the particular case of the family *Desulfovibrionaceae* (with *P* < 0.05), further statistical analysis was carried out for sequences tentatively assigned to the genus *Desulfovibrio* by using a one-sided *t* test.

In relation to qPCR results, not all the bacterial groups showed normal distribution; therefore, differences in bacterial levels between groups of individuals were analyzed using a nonparametric test (Mann-Whitney *U* test).

**Nucleotide sequence accession number.** The raw sequences reported in this article have been deposited in the NCBI Short Read Archive (SRA; study accession number SRP028162).

## SUPPLEMENTAL MATERIAL

Supplemental material for this article may be found at <http://mbio.asm.org/lookup/suppl/doi:10.1128/mBio.01548-14/-/DCSupplemental>.

Figure S1, DOC file, 0.2 MB.

Figure S2, DOC file, 0.1 MB.

Figure S3, DOC file, 0.3 MB.

Figure S4, DOC file, 0.2 MB.

Figure S5, DOC file, 0.5 MB.

Figure S6, DOCX file, 0.2 MB.

Table S1, PDF file, 0.04 MB.

Table S2, PDF file, 0.4 MB.

## ACKNOWLEDGMENTS

This study was financed by European Union FEDER funds and the Spanish Plan Nacional de I+D (grant AGL2010-14952). Arancha Hevia was the recipient of an FPI grant, and Borja Sánchez was the recipient of a Juan de la Cierva postdoctoral contract, both from the Spanish Ministerio de Ciencia e Innovación.

## REFERENCES

- Fraher MH, O'Toole PW, Quigley EM. 2012. Techniques used to characterize the gut microbiota: a guide for the clinician. *Nat. Rev. Gastroenterol. Hepatol.* 9:312–322. <http://dx.doi.org/10.1038/nrgastro.2012.44>.
- Weinstock GM. 2012. Genomic approaches to studying the human microbiota. *Nature* 489:250–256. <http://dx.doi.org/10.1038/nature11553>.
- Gill SR, Pop M, Deboy RT, Eckburg PB, Turnbaugh PJ, Samuel BS, Gordon JI, Relman DA, Fraser-Liggett CM, Nelson KE. 2006. Metagenomic analysis of the human distal gut microbiome. *Science* 312:1355–1359. <http://dx.doi.org/10.1126/science.1124234>.
- Xu J, Mahowald MA, Ley RE, Lozupone CA, Hamady M, Martens EC, Henrissat B, Coutinho PM, Minx P, Latreille P, Cordum H, Van Brunt A, Kim K, Fulton RS, Fulton LA, Clifton SW, Wilson RK, Knight RD, Gordon JI. 2007. Evolution of symbiotic bacteria in the distal human intestine. *PLoS Biol.* 5:e156. <http://dx.doi.org/10.1371/journal.pbio.0050156>.
- Bäckhed F, Ley RE, Sonnenburg JL, Peterson DA, Gordon JI. 2005. Host-bacterial mutualism in the human intestine. *Science* 307:1915–1920. <http://dx.doi.org/10.1126/science.1104816>.
- Holmes E, Kinross J, Gibson GR, Burcelin R, Jia W, Pettersson S, Nicholson JK. 2012. Therapeutic modulation of microbiota-host metabolic interactions. *Sci. Transl. Med.* 4:137rv6. <http://dx.doi.org/10.1126/scitranslmed.3004244>.
- Collins SM, Surette M, Bercik P. 2012. The interplay between the intestinal microbiota and the brain. *Nat. Rev. Microbiol.* 10:735–742. <http://dx.doi.org/10.1038/nrmicro2876>.
- Koren O, Goodrich JK, Cullender TC, Spor A, Laitinen K, Bäckhed HK, Gonzalez A, Werner JJ, Angenent LT, Knight R, Bäckhed F, Isolauri E, Salminen S, Ley RE. 2012. Host remodeling of the gut microbiome and metabolic changes during pregnancy. *Cell* 150:470–480. <http://dx.doi.org/10.1016/j.cell.2012.07.008>.
- Claesson MJ, Jeffery IB, Conde S, Power SE, O'Connor EM, Cusack S, Harris HM, Coakley M, Lakshminarayanan B, O'Sullivan O, Fitzgerald GF, Deane J, O'Connor M, Harnedy N, O'Connor K, O'Mahony D, van Sinderen D, Wallace M, Brennan L, Stanton C, Marchesi JR, Fitzgerald AP, Shanahan F, Hill C, Ross RP, O'Toole PW. 2012. Gut microbiota composition correlates with diet and health in the elderly. *Nature* 488:178–184. <http://dx.doi.org/10.1038/nature11319>.
- Sharon I, Morowitz MJ, Thomas BC, Costello EK, Relman DA, Banfield JF. 2013. Time series community genomics analysis reveals rapid shifts in bacterial species, strains, and phage during infant gut colonization. *Genome Res.* 23:111–120. <http://dx.doi.org/10.1101/gr.142315.112>.
- Turroni F, Peano C, Pass DA, Foroni E, Severgnini M, Claesson MJ, Kerr C, Hourihane J, Murray D, Fuligni F, Gueimonde M, Margolles A, De Bellis G, O'Toole PW, van Sinderen D, Marchesi JR, Ventura M. 2012. Diversity of bifidobacteria within the infant gut microbiota. *PLoS One* 7:e36957. <http://dx.doi.org/10.1371/journal.pone.0036957>.
- Yatsunenko T, Rey FE, Manary MJ, Trehan I, Dominguez-Bello MG, Contreras M, Magris M, Hidalgo B, Baldassano RN, Anokhin AP, Heath AC, Warner B, Reeder J, Kuczynski J, Caporaso JG, Lozupone CA, Lauber C, Clemente JC, Knights D, Knight R, Gordon JI. 2012. Human gut microbiome viewed across age and geography. *Nature* 486:222–227.
- De Filippo C, Cavalieri D, Di Paola M, Ramazzotti M, Poullet JB, Massart S, Collini S, Pieraccini G, Lionetti P. 2010. Impact of diet in shaping gut microbiota revealed by a comparative study in children from Europe and rural Africa. *Proc. Natl. Acad. Sci. U. S. A.* 107:14691–14696. <http://dx.doi.org/10.1073/pnas.1005963107>.



14. Arumugam M, Raes J, Pelletier E, Le Paslier D, Yamada T, Mende DR, Fernandes GR, Tap J, Bruls T, Batto JM, Bertalan M, Borruel N, Casellas F, Fernandez L, Gautier L, Hansen T, Hattori M, Hayashi T, Kleerebezem M, Kurokawa K, Leclerc M, Levenez F, Manichanh C, Nielsen HB, Nielsen T, Pons N, Poulain J, Qin J, Sicheritz-Ponten T, Tims S, Torrents D, Ugarte E, Zoetendal EG, Wang J, Guarner F, Pedersen O, de Vos WM, Brunak S, Doré J, MetaHIT Consortium, Antolin M, Artiguenave F, Blottiere HM, Almeida M, Brechot C, Cara C, Chervaux C, Cultrone A, Delorme C, Denariuz G, Dervyn R, Foerster KU, Friss C, van de Guchte M, Guedon E, Haimet F, Huber W, van Hylckama-Vlieg J, Jamet A, Juste C, Kaci G, Knol J, Lakhdari O, Layec S, Le Roux K, Maguin E, Mérieux A, Melo Minardi R, Mrini C, Muller J, Oozeer R, Parkhill J, Renault P, Rescigno M, Sanchez N, Sunagawa S, Torrejon A, Turner K, Vandemeulebrouck G, Varela E, Winogradsky Y, Zeller G, Weissenbach J, Ehrlich SD, Bork P. 2011. Enterotypes of the human gut microbiome. *Nature* 473:174–180. <http://dx.doi.org/10.1038/nature09944>.
15. Wu GD, Chen J, Hoffmann C, Bittinger K, Chen YY, Keilbaugh SA, Bewtra M, Knights D, Walters WA, Knight R, Sinha R, Gilroy E, Gupta K, Baldassano R, Nessel L, Li H, Bushman FD, Lewis JD. 2011. Linking long-term dietary patterns with gut microbial enterotypes. *Science* 334:105–108. <http://dx.doi.org/10.1126/science.1208344>.
16. Ley RE. 2010. Obesity and the human microbiome. *Curr. Opin. Gastroenterol.* 26:5–11. <http://dx.doi.org/10.1097/MOG.0b013e328333d751>.
17. Turnbaugh PJ, Ley RE, Mahowald MA, Magrini V, Mardis ER, Gordon JI. 2006. An obesity-associated gut microbiome with increased capacity for energy harvest. *Nature* 444:1027–1031. <http://dx.doi.org/10.1038/nature05414>.
18. Vijay-Kumar M, Aitken JD, Carvalho FA, Cullender TC, Mwangi S, Srinivasan S, Sitarman SV, Knight R, Ley RE, Gewirtz AT. 2010. Metabolic syndrome and altered gut microbiota in mice lacking Toll-like receptor 5. *Science* 328:228–231. <http://dx.doi.org/10.1126/science.1179721>.
19. Manichanh C, Borruel N, Casellas F, Guarner F. 2012. The gut microbiota in IBD. *Nat. Rev. Gastroenterol. Hepatol.* 9:599–608. <http://dx.doi.org/10.1038/nrgastro.2012.152>.
20. Scher JU, Sczesnak A, Longman RS, Segata N, Ubeda C, Bielski C, Rostron T, Cerundolo V, Pamer EG, Abramson SB, Huttenhower C, Littman DR. 2013. Expansion of intestinal *Prevotella copri* correlates with enhanced susceptibility to arthritis. *Elife* 2:e01202. <http://dx.doi.org/10.7554/eLife.01202>.
21. Wen L, Ley RE, Volchkov PY, Stranges PB, Avanesyan L, Stonebraker AC, Hu C, Wong FS, Szot GL, Bluestone JA, Gordon JI, Chervonsky AV. 2008. Innate immunity and intestinal microbiota in the development of type 1 diabetes. *Nature* 455:1109–1113. <http://dx.doi.org/10.1038/nature07336>.
22. Agmon-Levin N, Mosca M, Petri M, Shoenfeld Y. 2012. Systemic lupus erythematosus one disease or many? *Autoimmun. Rev.* 11:593–595. <http://dx.doi.org/10.1016/j.autrev.2011.10.020>.
23. López P, Mozo L, Gutiérrez C, Suárez A. 2003. Epidemiology of systemic lupus erythematosus in a northern Spanish population: gender and age influence on immunological features. *Lupus* 12:860–865. <http://dx.doi.org/10.1191/0961203303lu469xx>.
24. James JA, Robertson JM. 2012. Lupus and Epstein-Barr. *Curr. Opin. Rheumatol.* 24:383–388. <http://dx.doi.org/10.1097/BOR.0b013e3283535801>.
25. Francis L, Perl A. 2010. Infection in systemic lupus erythematosus: friend or foe? *Int. J. Clin. Rheumatol.* 5:59–74. <http://dx.doi.org/10.2217/ijr.09.72>.
26. Pisetsky D, Drayton D, Wu ZQ. 1999. Specificity of antibodies to bacterial DNA in the sera of healthy human subjects and patients with systemic lupus erythematosus. *J. Rheumatol.* 26:1934–1938.
27. Gul'neva M, Romanov VA, Shilkina NP. 2007. Intestinal microecology in some systemic connective tissue diseases. *Zh. Mikrobiol. Epidemiol. Immunobiol.* 4:38–41. (In Russian.).
28. Proal AD, Albert PJ, Marshall T. 2009. Autoimmune disease in the era of the metagenome. *Autoimmun. Rev.* 8:677–681. <http://dx.doi.org/10.1016/j.autrev.2009.02.016>.
29. Berer K, Mues M, Koutrolas M, Rasbi ZA, Boziki M, Johner C, Wekerle H, Krishnamoorthy G. 2011. Commensal microbiota and myelin autoantigen cooperate to trigger autoimmune demyelination. *Nature* 479:538–541. <http://dx.doi.org/10.1038/nature10554>.
30. Frank DN, St. Amand AL, Feldman RA, Boedeker EC, Harpaz N, Pace NR. 2007. Molecular-phylogenetic characterization of microbial community imbalances in human inflammatory bowel diseases. *Proc. Natl. Acad. Sci. U. S. A.* 104:13780–13785. <http://dx.doi.org/10.1073/pnas.0706625104>.
31. Markle JG, Frank DN, Mortin-Toth S, Robertson CE, Feazel LM, Rolle-Kampczyk U, von Bergen M, McCoy KD, Macpherson AJ, Danska JS. 2013. Sex differences in the gut microbiome drive hormone-dependent regulation of autoimmunity. *Science* 339:1084–1088. <http://dx.doi.org/10.1126/science.1233521>.
32. Proal AD, Albert PJ, Marshall TG. 2013. The human microbiome and autoimmunity. *Curr. Opin. Rheumatol.* 25:234–240. <http://dx.doi.org/10.1097/BOR.0b013e32835cedbf>.
33. Moco S, Martin FP, Rezzi S. 2012. Metabolomics view on gut microbiome modulation by polyphenol-rich foods. *J. Proteome Res.* 11:4781–4790. <http://dx.doi.org/10.1021/pr300581s>.
34. Queipo-Ortuño MI, Boto-Ordóñez M, Murri M, Gomez-Zumaquero JM, Clemente-Postigo M, Estruch R, Cardona Diaz F, Andrés-Lacueva C, Tinahones FJ. 2012. Influence of red wine polyphenols and ethanol on the gut microbiota ecology and biochemical biomarkers. *Am. J. Clin. Nutr.* 95:1323–1334. <http://dx.doi.org/10.3945/ajcn.111.027847>.
35. Milani C, Hevia A, Foroni E, Duranti S, Turroni F, Lugli GA, Sanchez B, Martín R, Gueimonde M, van Sinderen D, Margolles A, Ventura M. 2013. Assessing the fecal microbiota: an optimized Ion Torrent 16S rRNA gene-based analysis protocol. *PLoS One* 8:e68739. <http://dx.doi.org/10.1371/journal.pone.0068739>.
36. Qin J, Li R, Raes J, Arumugam M, Burgdorf KS, Manichanh C, Nielsen T, Pons N, Levenez F, Yamada T, Mende DR, Li J, Xu J, Li S, Li D, Cao J, Wang B, Liang H, Zheng H, Xie Y, Tap J, Lepage P, Bertalan M, Batto JM, Hansen T, Le Paslier D, Linneberg A, Nielsen HB, Pelletier E, Renault P, Sicheritz-Ponten T, Turner K, Zhu H, Yu C, Li S, Jian M, Zhou Y, Li Y, Zhang X, Li S, Qin N, Yang H, Wang J, Brunak S, Doré J, Guarner F, Kristiansen K, Pedersen O, Parkhill J, Weissenbach J, MetaHIT Consortium, Bork P, Ehrlich SD, Wang J. 2010. A human gut microbial gene catalogue established by metagenomic sequencing. *Nature* 464:59–65. <http://dx.doi.org/10.1038/nature08821>.
37. Larsen N, Vogensen FK, van den Beg FW, Nielsen DS, Andreasen AS, Pedersen BK, Al-Soud WA, Sørensen SJ, Hansen LH, Jakobsen M. 2010. Gut microbiota in human adults with type 2 diabetes differs from non-diabetic adults. *PLoS One* 5:e9085. <http://dx.doi.org/10.1371/journal.pone.0009085>.
38. Man SM, Kaakoush NO, Mitchell HM. 2011. The role of bacteria and pattern-recognition receptors in Crohn's disease. *Nat. Rev. Gastroenterol. Hepatol.* 8:152–168. <http://dx.doi.org/10.1038/nrgastro.2011.3>.
39. Martínez I, Lattimer JM, Hubach KL, Case JA, Yang J, Weber CG, Louk JA, Rose DJ, Kyureghian G, Peterson DA, Haub MD, Walter J. 2013. Gut microbiome composition is linked to whole grain-induced immunological improvements. *ISME J.* 7:269–280. <http://dx.doi.org/10.1038/ismej.2012.104>.
40. Hammer Ø, Harper DAT, Ryan PD. 2001. Past: paleontological statistics software package for education and data analysis. *Palaentol. Electron.* 4:1–9.
41. Antharam VC, Li EC, Ishmael A, Sharma A, Mai V, Rand KH, Wang GP. 2013. Intestinal dysbiosis and depletion of butyrogenic bacteria in *Clostridium difficile* infection and nosocomial diarrhea. *J. Clin. Microbiol.* 51:2884–2992. <http://dx.doi.org/10.1128/JCM.00845-13>.
42. Berry D, Reinisch W. 2013. Intestinal microbiota: a source of novel biomarkers in inflammatory bowel diseases? *Best Pract. Res. Clin. Gastroenterol.* 27:47–58. <http://dx.doi.org/10.1016/j.bpg.2013.03.005>.
43. Tannock GW, Lawley B, Munro K, Lay C, Taylor C, Daynes C, Baladjay L, McLeod R, Thompson-Fawcett M. 2012. Comprehensive analysis of the bacterial content of stool from patients with chronic pouchitis, normal pouches, or familial adenomatous polyposis pouches. *Inflamm. Bowel Dis.* 18:925–934. <http://dx.doi.org/10.1002/ibd.21936>.
44. Ye J, Lee JW, Presley LL, Bent E, Wei B, Braun J, Schiller NL, Straus DS, Borneman J. 2008. Bacteria and bacterial rRNA genes associated with the development of colitis in IL-10(-/-) mice. *Inflamm. Bowel Dis.* 14:1041–1050. <http://dx.doi.org/10.1002/ibd.20442>.
45. Rey FE, Gonzalez MD, Cheng J, Wu M, Ahern PP, Gordon JI. 2013. Metabolic niche of a prominent sulfate-reducing human gut bacterium. *Proc. Natl. Acad. Sci. U. S. A.* 110:13582–13587. <http://dx.doi.org/10.1073/pnas.1312524110>.
46. Tlaskalová-Hogenová H, Stěpanková R, Kozáková H, Hudcovic T, Vannucci L, Tučková L, Rossmann P, Hrnčič T, Kverka M, Zákostelská Z, Klimešová K, Příbylová J, Bártová J, Sanchez D, Fundová P, Borovská D, Srůtková D, Zidek Z, Schwarzer M, Drastich P, Funda DP. 2011. The role of gut microbiota (commensal bacteria) and the mucosal barrier in the pathogenesis of inflammatory and autoimmune diseases and

- cancer: contribution of germ-free and gnotobiotic animal models of human diseases. *Cell. Mol. Immunol.* 8:110–120. <http://dx.doi.org/10.1038/cmi.2010.67>.
47. Othman M, Agüero R, Lin HC. 2008. Alterations in intestinal microbial flora and human disease. *Curr. Opin. Gastroenterol.* 24:11–16. <http://dx.doi.org/10.1097/MOG.0b013e3282f2b0d7>.
  48. Morgan XC, Tickle TL, Sokol H, Gevers D, Devaney KL, Ward DV, Reyes JA, Shah SA, LeLeiko N, Snapper SB, Bousvaros A, Korzenik J, Sands BE, Xavier RJ, Huttenhower C. 2012. Dysfunction of the intestinal microbiome in inflammatory bowel disease and treatment. *Genome Biol.* 13:R79. <http://dx.doi.org/10.1186/gb-2012-13-9-r79>.
  49. Martens EC, Lowe EC, Chiang H, Pudlo NA, Wu M, McNulty NP, Abbott DW, Henrissat B, Gilbert HJ, Bolam DN, Gordon JI. 2011. Recognition and degradation of plant cell wall polysaccharides by two human gut symbionts. *PLoS Biol.* 9:e1001221. <http://dx.doi.org/10.1371/journal.pbio.1001221>.
  50. Tan EM, Cohen AS, Fries JF, Masi AT, McShane DJ, Rothfield NF, Schaller JG, Talal N, Winchester RJ. 1982. The 1982 revised criteria for the classification of systemic lupus erythematosus. *Arthritis Rheum.* 25:1271–1277. <http://dx.doi.org/10.1002/art.1780251101>.
  51. Palma I, Farran A, Cantos D, CESNID (Centre d'Ensenyament Superior de Nutrició i Dietètica). 2008. Tablas de composición de alimentos por medidas caseras de consumo habitual en España. McGraw-Hill/Interamericana de España, Barcelona, Spain.
  52. Marlett JA, Cheung TF. 1997. Database and quick methods of assessing typical dietary fiber intakes using data for 228 commonly consumed foods. *J. Am. Diet. Assoc.* 97:1139–1148. [http://dx.doi.org/10.1016/S0002-8223\(97\)00275-7](http://dx.doi.org/10.1016/S0002-8223(97)00275-7).
  53. U.S. Department of Agriculture Agricultural Research Service. 2011. Database for the flavonoid content of select foods. USDA Agricultural Research Service, Washington, DC. <http://www.nal.usda.gov/fnic/foodcomp>.
  54. Caporaso JG, Kuczynski J, Stombaugh J, Bittinger K, Bushman FD, Costello EK, Fierer N, Peña AG, Goodrich JK, Gordon JI, Huttley GA, Kelley ST, Knights D, Koenig JE, Ley RE, Lozupone CA, McDonald D, Muegge BD, Pirrung M, Reeder J, Sevinsky JR, Turnbaugh PJ, Walters WA, Widmann J, Yatsunenko T, Zaneveld J, Knight R. 2010. QIIME allows analysis of high-throughput community sequencing data. *Nat. Methods* 7:335–336. <http://dx.doi.org/10.1038/nmeth.f.303>.
  55. Edgar RC. 2010. Search and clustering orders of magnitude faster than BLAST. *Bioinformatics* 26:2460–2461. <http://dx.doi.org/10.1093/bioinformatics/btq461>.
  56. Haas BJ, Gevers D, Earl AM, Feldgarden M, Ward DV, Giannoukos G, Ciulla D, Tabbaa D, Highlander SK, Sodergren E, Methé B, DeSantis TZ, Microbiome, Human Consortium, Petrosino JF, Knight R, Birren BW. 2011. Chimeric 16S rRNA sequence formation and detection in Sanger and 454-pyrosequenced PCR amplicons. *Genome Res.* 21:494–504. doi:10.1101/gr.112730.110. PubMed.
  57. Cole JR, Wang Q, Cardenas E, Fish J, Chai B, Farris RJ, Kulam-Syed-Mohideen AS, McGarrell DM, Marsh T, Garrity GM, Tiedje JM. 2009. The Ribosomal Database Project: improved alignments and new tools for rRNA analysis. *Nucleic Acids Res.* 37(Database issue):D141–D145. <http://dx.doi.org/10.1093/nar/gkn879>.
  58. Arboleya S, Binetti A, Salazar N, Fernández N, Solís G, Hernández-Barranco A, Margolles A, de los Reyes-Gavilán CG, Gueimonde M. 2012. Establishment and development of intestinal microbiota in preterm neonates. *FEMS Microbiol. Ecol.* 79:763–772. <http://dx.doi.org/10.1111/j.1574-6941.2011.01261.x>.
  59. Denman SE, McSweeney CS. 2006. Development of a real-time PCR assay for monitoring anaerobic fungal and cellulolytic bacterial populations within the rumen. *FEMS Microbiol. Ecol.* 58:572–582. <http://dx.doi.org/10.1111/j.1574-6941.2006.00190.x>.
  60. Guo X, Xia X, Tang R, Zhou J, Zhao H, Wang K. 2008. Development of a real-time PCR method for *Firmicutes* and *Bacteroidetes* in faeces and its application to quantify intestinal population of obese and lean pigs. *Lett. Appl. Microbiol.* 47:367–373. <http://dx.doi.org/10.1111/j.1472-765X.2008.02408.x>.
  61. McDonald D, Clemente JC, Kuczynski J, Rideout JR, Stombaugh J, Wendel D, Wilke A, Huse S, Hufnagle J, Meyer F, Knight R, Caporaso JG. 2012. The Biological Observation Matrix (BIOM) format or: how I learned to stop worrying and love the ome-ome. *Gigascience* 1:7. <http://dx.doi.org/10.1186/2047-217X-1-7>.
  62. Parks DH, Beiko RG. 2010. Identifying biologically relevant differences between metagenomic communities. *Bioinformatics* 26:715–721. <http://dx.doi.org/10.1093/bioinformatics/btq041>.
  63. Benjamini Y, Hochberg Y. 1995. Controlling the false discovery rate—a practical and powerful approach to multiple testing. *J. R. Stat. Soc. B Stat. Methodol.* 57:289–300.