



Demographic Research a free, expedited, online journal
of peer-reviewed research and commentary
in the population sciences published by the
Max Planck Institute for Demographic Research
Konrad-Zuse Str. 1, D-18057 Rostock · GERMANY
www.demographic-research.org

, citation and similar papers at core.ac.uk

brought to

provided by Research P

DEMOGRAPHIC RESEARCH

VOLUME 14, ARTICLE 18, PAGES 429-452
PUBLISHED 23 MAY 2006

<http://www.demographic-research.org/Volumes/Vol14/18/>

DOI: 10.4054/DemRes.2006.14.18

Research Article

Neonatal mortality in the developing world

Kenneth Hill

Yoonjoung Choi

© 2006 Max-Planck-Gesellschaft.

Table of Contents

1	Introduction	430
2	Data	430
3	Methods	432
3.1	Examination of data quality	432
3.2	Adjusting for the effects of age at death heaping	433
3.3	Models based on historical data	435
3.4	Neonatal mortality trends	436
4	Results	437
4.1	Data quality	437
4.2	Comparison of age patterns of neonatal mortality with historical data	437
4.3	Level of neonatal mortality	441
4.4	Trends in neonatal mortality	442
5	Discussion	443
6	Acknowledgements	445
	References	446
	Appendix	447

Neonatal mortality in the developing world

Kenneth Hill¹

Yoonjung Choi²

Abstract

This paper examines age patterns and trends of early and late neonatal mortality in developing countries, using birth history data from the Demographic and Health Surveys (DHS). Data quality was assessed both by examination of internal consistency and by comparison with historic age patterns of neonatal mortality from England and Wales. The median neonatal mortality rate (NMR) across 108 nationally-representative surveys was 33 per 1000 live births. NMR averaged an annual decline of 1.9 % in the 1980s and 1990s. Declines have been faster for late than for early neonatal mortality and slower in Sub-Saharan Africa than in other regions. Age patterns of neonatal mortality were comparable with those of historical data, indicating no significant underreporting of early neonatal deaths in DHS birth histories.

¹ Department of Population and Family Health Sciences, Bloomberg School of Public Health, Johns Hopkins University

² Department of International Health, Bloomberg School of Public Health, Johns Hopkins University

Address for correspondence: Yoonjung Choi, Department of International Health, Bloomberg School of Public Health, Johns Hopkins University, 615 North Wolfe Street, Baltimore, MD 21205, U.S.A. Email: ychoi@jhsph.edu.

1. Introduction

Over one third of the global 10.8 million deaths of children under age 5 in the year 2000 occurred in the neonatal period (Black 2003). Declines in neonatal mortality over the last three decades have been slower than declines in postneonatal or early child (1 to 5 years) mortality. In order to achieve the Millennium Development Goal target of a two-thirds reduction in under-five mortality from 1990 to 2015 (United Nations 2001), major reductions are going to be required in neonatal mortality (Lawn 2005). However, few developing countries have vital registration systems that are complete enough to provide accurate estimates of neonatal mortality, or of its early and late components. Causes of death in the neonatal period in the developing world are poorly measured also, though major components are believed to be birth asphyxia, severe infections, complications of prematurity and tetanus (Lawn 2005). The standardized birth histories collected by the Demographic and Health Surveys (DHS), however, conducted in over 58 developing countries over the last two decades, provide information on neonatal deaths by day of age at death. These data could fill the gap in our knowledge of levels, trends and age patterns of neonatal death. However, these data have not been systematically analyzed, primarily because of concerns about data quality, specifically the possible omission from birth histories of children who die in the neonatal period and a tendency to systematically misreport age at death, “heaping” deaths onto age seven days at the expense of neighboring days.

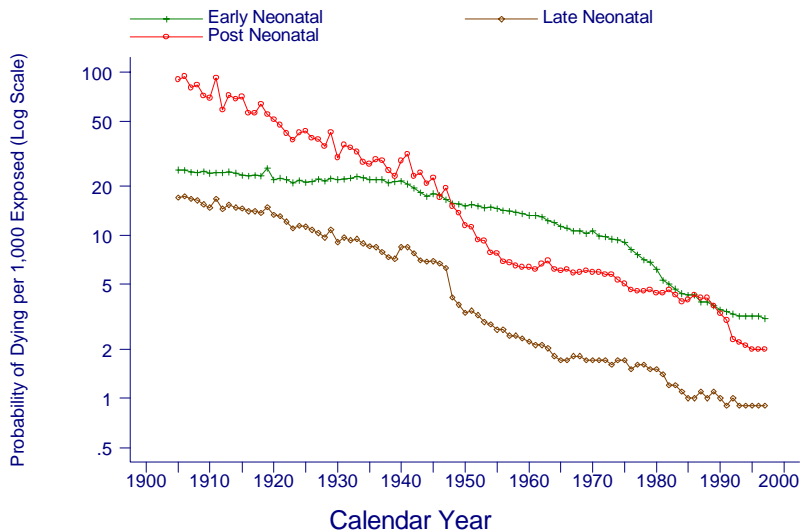
The purpose of this paper is to examine levels, trends and age patterns of neonatal mortality in developing countries. Of particular interest for both substantive and data quality assessment reasons are relations between early neonatal and neonatal mortality and between neonatal and infant mortality, by overall level of infant mortality. Specific aims are: (1) examining DHS data quality by computing indicators of internal consistency and by comparing patterns of early childhood mortality with historical series; and (2) exposing the magnitude of the problem of neonatal mortality by estimating indicators, adjusted for errors in age at death reporting, of early and late neonatal mortality and postneonatal mortality and calculating recent trends in these indicators.

2. Data

Data come from the full birth histories collected from eligible women aged 15 to 49 years in sampled households by Demographic and Health Surveys (DHS). For each live birth, the month and year of the birth are reported. If the child has died, the mother is asked for the age of the child at death: in days for deaths in the first 28 days of life, in

months for deaths between 1 and 23 months, and in years for deaths at ages 2 and over. Here we report on patterns of neonatal mortality from 108 DHS's conducted in 58 countries, including 26 countries with only a single survey and 32 countries with multiple surveys. In addition to national surveys, the 1992-93 and 1997-98 National Family Health Surveys of India used samples large enough to support a state-level analysis for most states, so we include a state level analysis for India.

Figure 1: Early neonatal, late neonatal and postneonatal probabilities of dying by year: England and Wales, 1905 to 1997



We use early childhood mortality data from England and Wales covering the period 1905 to 1997 to compare contemporary patterns of neonatal mortality with historical patterns in a country with good data⁴ covering a long time period during which the infant mortality rate declined from 132 to 6 per 1000 live births,

⁴ These data are thought to be of good quality, but are not immune to omission of early neonatal deaths.

encompassing the levels of almost all the contemporary DHS's. Trends of early neonatal (ENMR), late neonatal (LNMR) and postneonatal (PNMR) mortality in England and Wales are illustrated (Figure1). On a logarithmic scale, the sequences for LNMR and PNMR approximately follow parallel straight lines, indicating approximately equal rates of decline. The ENMR, however, shows a very different pattern, with very slow decline to about 1950, somewhat faster decline to about 1975, and then sharply faster decline since 1975.

3. Methods

In this paper, an early neonatal death is any death before seven completed days of life, a neonatal death is any death before 28 completed days and an infant death is any death before first birthday. The measures we calculate here are probabilities of dying: thus the ENMR is the probability of dying by age seven days, the LNMR is the conditional probability of dying between seven and 28 days, and the neonatal mortality rate (NMR) is the probability of dying by age 28 days. The measures are calculated for the birth cohort born between two months and five years before a given survey, and are thus averages over an approximately 5 year period. For some surveys with relatively small samples in low mortality settings, the numbers of deaths reported over a 5 year period are small. In general, we have restricted analysis to countries with at least 30 neonatal deaths in the reference period. We have categorized countries by WHO regions (subdivided in the case of Africa, and combined in the case of South-East Asia and the Western Pacific; see Table A1 for the countries included) to explore differences in patterns by area.

3.1 Examination of data quality

As noted in the Introduction, we anticipate two types of data error that may have a major impact on measures of early neonatal and overall neonatal mortality: omission of live births that die in the first few days of life; and "heaping" on age at death 7 days (which in the case of a death at less than 7 days removes a death from the early neonatal category and adds it to the late neonatal category). Substantial omission might be evident from implausibly low ratios of early to late neonatal mortality risks, whereas "heaping" will be evident from an examination of the distribution of neonatal deaths by day of death. To quantify the magnitude of the preference for using certain digits to report age at death we have calculated a simple "heaping index," the number of deaths at seven days divided by one-fifth of the deaths at ages 5 to 9 days. Table 1 shows that

the “heaping index,” which should fall somewhere close to 1.0 in the absence of error if the number of deaths by day is a linear function, exceeds 1.5 in 79 out of 106 surveys. Similar calculations cannot be made for the next age of interest, 28 days, because the unit used in DHS surveys to report age at death changes at this point from days to months.

Table 1: Numbers of surveys by index of heaping on seven days by WHO region

Region	Heaping Index					Total
	< 0.5	0.5 - 1.5	1.5 - 2.5	2.5 - 3.5	> 3.5	
Africa, East & South	0	1	1	17	7	26
Africa, Central & West	0	9	14	2	1	26
Latin America	3	6	13	3	0	25 ^a
N. Africa & Middle East	0	0	2	6	1	9
Europe	2	1	2	0	1	6 ^a
South-East Asia & Western	0	5	5	4	0	14
Total	5	22	37	32	10	106

^a One survey from the Americas (Dominican Republic 1999) and one from Central Asia (Kazakhstan 1995) were excluded from this table because the number of (sample-weighted) neonatal deaths was less than 30

3.2 Adjusting for the effects of age at death heaping

The substantial heaping of deaths at seven days in many DHS’s and evident from the “heaping index” shifts early neonatal deaths into the late neonatal category, biasing the ENMR downwards and the LNMR upwards. Table A2 presents reported number of deaths by day and month for selected surveys.

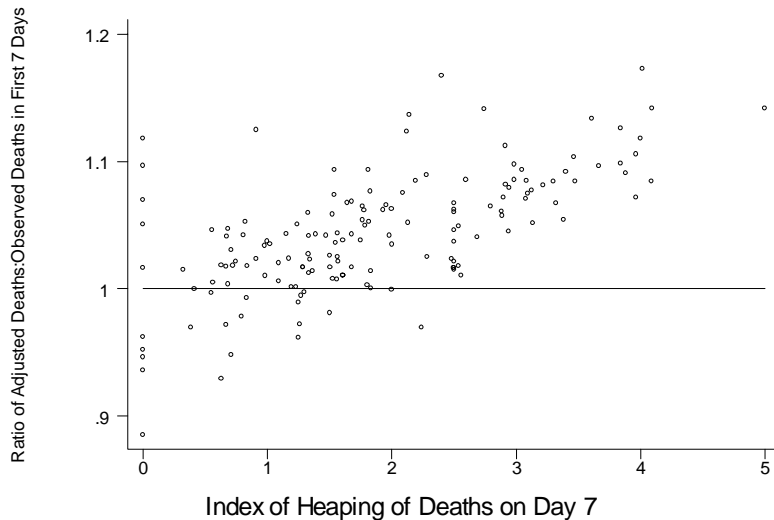
Our approach to redistributing deaths from 7 days to surrounding ages at death was to assume that the number of deaths by day declines exponentially between exact ages 5 days and 10 days, and to fit such a function to cumulated deaths up to exactly five days (D(5)) and 10 days (D(10)). There is no straightforward way to fit the exponential distribution function to cumulated deaths. However, simulations using models with a range of rates of decline in numbers of deaths by day indicated that the ratio of D(7), deaths up to seven days, to D(10) can be estimated (for hazards within a plausible range) from the ratio of D(5) to D(10) from the following regression equation:

$$D(7)/D(10) = 0.1359 + 1.3786\{D(5)/D(10)\} - 0.5084\{D(5)/D(10)\}^2 \quad (1)$$

For each survey, we have estimated $D^a(7)$, adjusted deaths by age 7 days, from the observed $D^o(5)/D^o(10)$ using this expression⁵.

The ratio of $D^a(7)/D^o(7)$, where $D^o(7)$ is observed deaths in the first seven days of life, is plotted against the heaping index in Figure 2. As expected, there is a positive relationship: the larger the heaping index, the larger $D^a(7)/D^o(7)$. In what follows, the breakdown between early and late neonatal mortality is based on the adjusted values $D^a(7)$.

Figure 2: Early neonatal, late neonatal and postneonatal probabilities of dying by year: England and Wales, 1905 to 1997

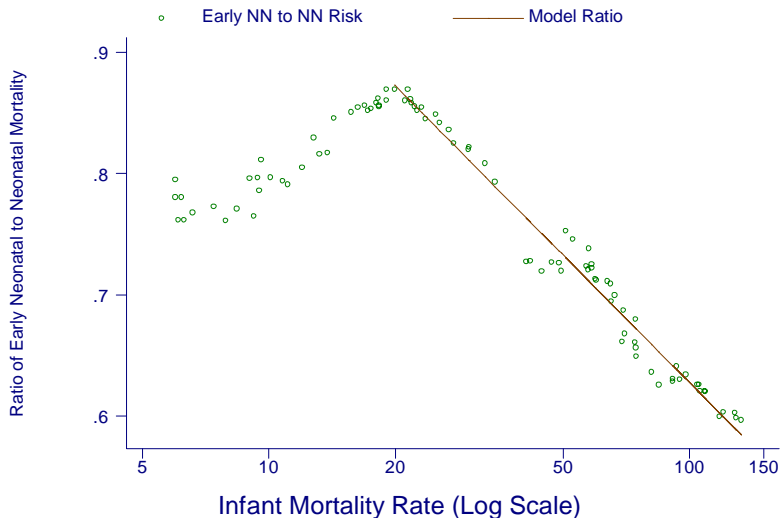


⁵ We further conducted a sensitivity analysis by comparing $D^a(7)$ based on a wider range of fitting, cumulated deaths up to exactly three days ($D(3)$) and 12 days ($D(12)$), using an equation: $D(7)/D(12) = 0.227 + 1.672\{D(3)/D(12)\} - 0.926\{D(3)/D(12)\}^2$. With the wider fitting range ENMR increased by 2.7 % and LNMR decreased by 7.0 % on average. However there was no significant association between a difference in estimated rates and heaping on day 7 or neonatal mortality rate (Figure A1).

3.3 Models based on historical data

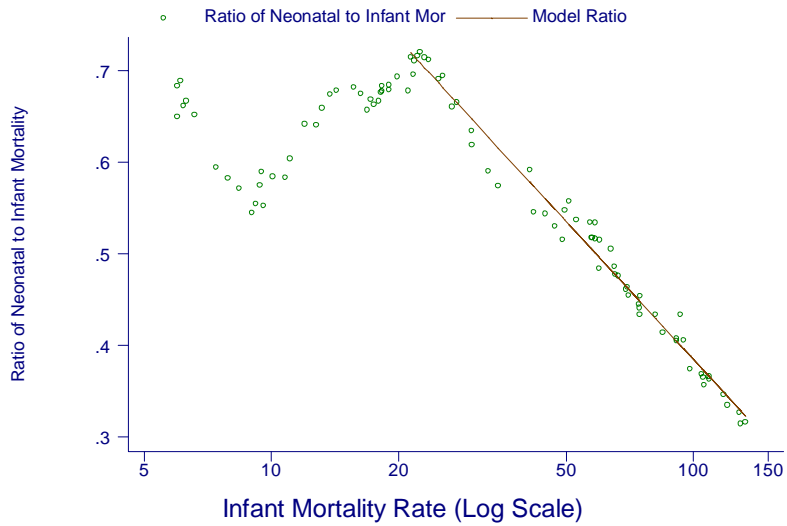
To provide a basis for comparison of the DHS measures, in order to identify possible omission of early neonatal deaths, we modeled historic age patterns of early child mortality from England and Wales from the early 20th century (when infant mortality in England and Wales was as high as that observed in any DHS) on the level of infant mortality rate (IMR). We examined the relationship with IMR of the ratio of ENMR to NMR (Figure 3) and the ratio of NMR to IMR (Figure 4) on a logarithmic scale. At levels of IMR above 20 per 1000 live births, there is an almost perfect linear relationship between each of these ratios and the log of the infant mortality rate. Since all the DHS populations have IMR's over 20, we use these relationships to assess the plausibility of patterns reported in developing country surveys. The patterns can also be used to break down an estimate of IMR into early neonatal, late neonatal and postneonatal components for countries that lack suitable birth histories for direct measurement.

Figure 3: Ratio of early neonatal to neonatal probability of dying by level of infant mortality rate (log scale): England and Wales, 1905 to 1997



The straight line shows fitted values from the regression.

Figure 4: Ratio of neonatal to infant probabilities of dying by infant mortality rate (log scale): England and Wales, 1905 to 1997



The straight line shows fitted values from the regression.

3.4 Neonatal mortality trends

Trends in neonatal mortality are examined for the 31 countries with multiple surveys. Average trends for each region have been estimated by regressing the natural logarithms of “heaping”-adjusted ENMR, LNMR and NMR on the mid-point of the time period (2 months to 5 years before the survey) to which each estimate refers using a country fixed effects model. The coefficient on time period is interpreted as the average annual rate of change of the indicator across the countries covered, controlling for unobserved but invariant country characteristics.

4. Results

4.1 Data quality

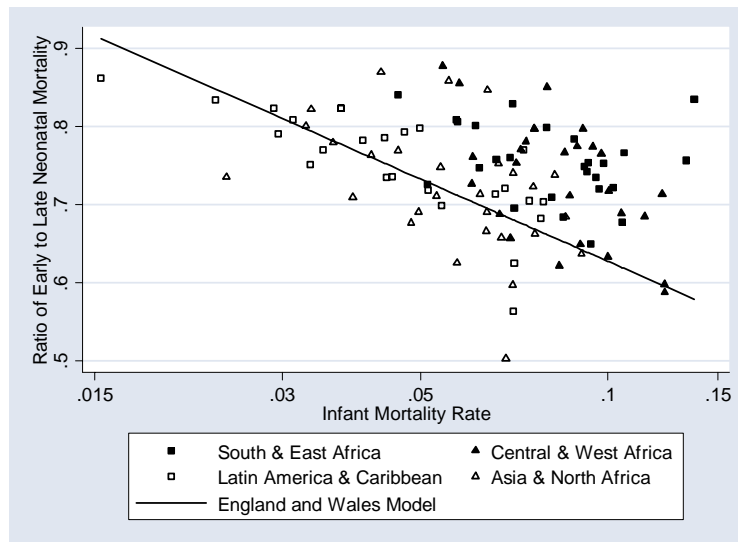
Table 1 showed the heaping indices summarized by WHO regions. In the absence of error, this index would be close to 1.0. For example, assuming an exponential rate of decline of numbers of deaths by day of 0.2, such that the number of deaths on day 9 would be less than half the number on day 5, the ratio would be 0.96. For a typical DHS with a sample of 10,000 households, a crude birth rate of 30 per 1,000 and a mortality rate between day 5 and day 10 of 20 per 1,000 survivors to age 5, the 95% confidence intervals around the ratio would be approximately ± 0.3 , making values outside the range 0.66 to 1.26 unlikely to be the result of chance. In 40 % of the surveys, however, the index exceeds 2.5, implying that one-half or more of all deaths between five and nine days are reported at seven days. Reporting quality varies by region, being worst in South-East Africa (92 % ≥ 2.5) and the Middle East (78 % ≥ 2.5). Digital preference is quite modest in the Indian surveys, with the heaping index never exceeding 2.5, and there is no strong evidence of a difference between two broad regions, North and East versus South and West, of the country⁶.

4.2 Comparison of age patterns of neonatal mortality with historical data

Ratios of “heaping-adjusted” ENMR to LNMR are plotted against log(IMR) (Figure 5). The points for Asia, North Africa, and Latin America and the Caribbean are broadly scattered around the historic model line based on the historical series for England and Wales. Points for both Eastern and Southern Africa and Central and West Africa, on the other hand, are almost all above the model line – indicating higher early neonatal than late neonatal mortality relative to the model – and show no apparent trend in the relationship as IMR changes. These results do not suggest substantial omission of early neonatal deaths relative to later deaths, even in the highest mortality settings, but the lack of pattern for South-East Africa and Central-West Africa may be explained by substantial random error in the reporting of age at death in days in these regions.

⁶ The states included in northern and eastern region are: Arunachal Pradesh, Assam, Bihar, Chattisgarh, Delhi, Haryana, Himachel Pradesh, Jammu and Kashmir, Jharkhand, Manipur, Meghalaya, Mizoram, Nagaland, Orissa, Punjab, Rajasthan, Sikkim, Tripura, Uttar Pradesh, and West Bengal. States included in West and South region are Andhra Pradesh, Goa, Gujarat, Karnataka, Kerala, Madhya Pradesh, Maharashtra, and Tamil Nadu.

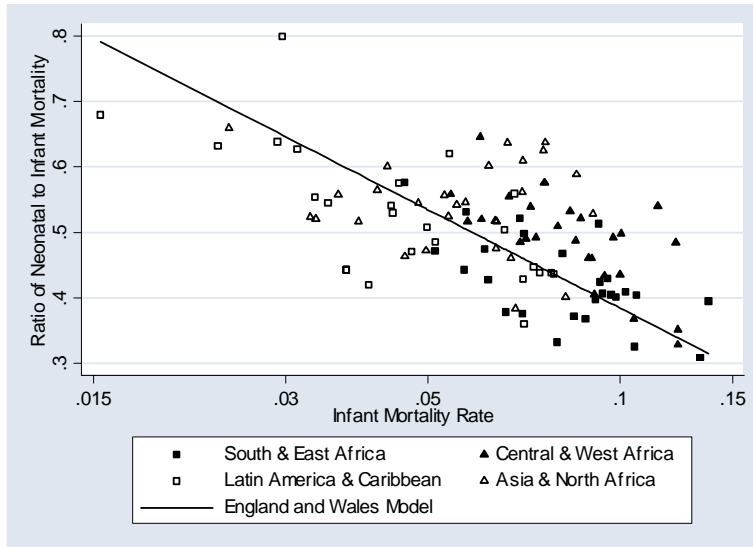
Figure 5: Ratio of adjusted early neonatal to late neonatal mortality by level of infant mortality rate: DHS Country Surveys (N=106)



The straight line is the England and Wales model relationship.

Ratios of NMR to IMR are plotted against $\log(\text{IMR})$ (Figure 6). Once again, the points for surveys in Asia, North Africa, and Latin America and the Caribbean follow the historic model's general pattern, whereas the points for surveys in Central-West Africa show no clear relationship to IMR, and are all very close to or above the model relationship. What is different from the early to late neonatal mortality comparison in Figure 5, however, is the pattern for South-East Africa: the relation of neonatal to infant mortality is scattered around the model line, and does show a relationship with level of IMR. Once again, the analysis does not suggest widespread omission of neonatal deaths relative to later deaths, but does suggest the possibility of large random error in reporting age at death in surveys conducted in Central-West Africa.

Figure 6: Ratio of neonatal to infant mortality by level of infant mortality rate: DHS Country Surveys (N=106)

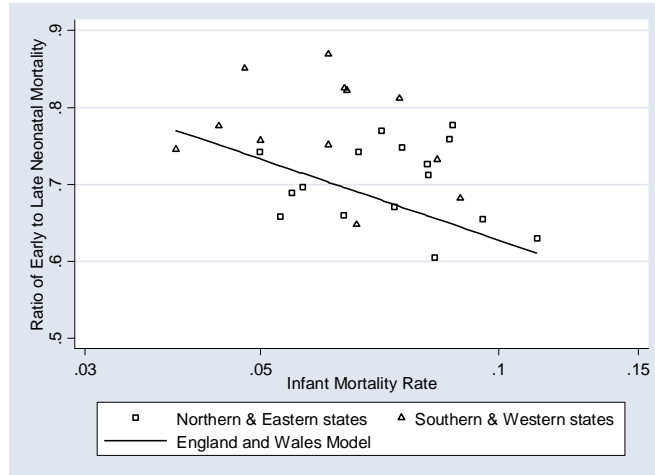


The straight line is the England and Wales model relationship.

The same exercise is repeated for 14 Indian states⁷. The ratios of ENMR to LNMR are scattered widely around the historic model without apparent regional pattern (Figure 7). The relation between neonatal and infant mortality (Figure 8), however, seems to indicate different patterns in the two groups of states. The southern and western states broadly parallel the model pattern, but at a higher level of neonatal relative to infant mortality. The northern and western states, on the other hand, are at a higher level of neonatal relative to infant mortality than the southern and western states but show a less clear negative relationship with the IMR.

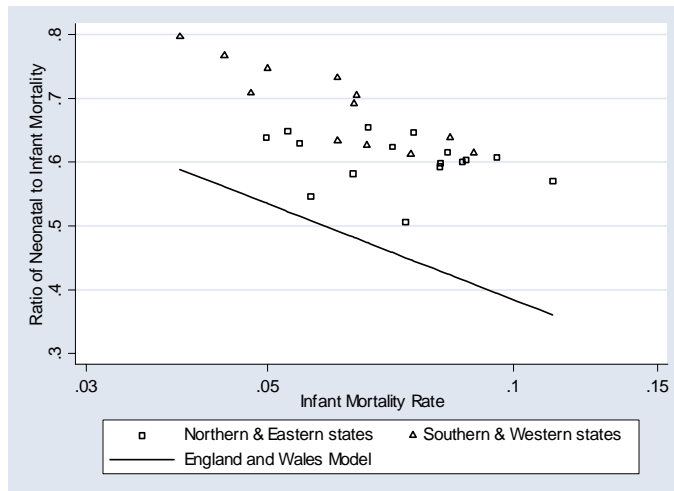
⁷ Only states with 30 or more sample-weighted neonatal deaths were included.

Figure 7: Ratio of adjusted early neonatal to late neonatal mortality by level of infant mortality rate: India NFHS State Surveys (N=28)



The straight line is the England and Wales model relationship.

Figure 8: Ratio of neonatal to infant mortality by level of infant mortality rate: India NFHS State Surveys (N=28)



The straight line is the England and Wales model relationship.

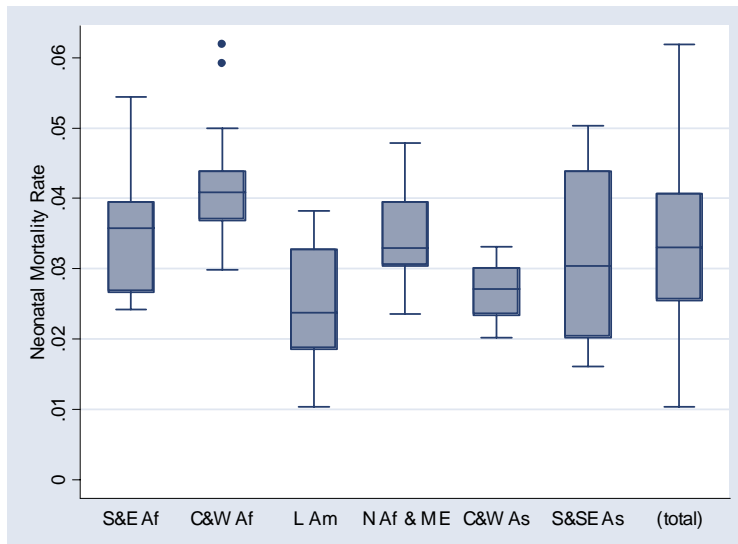
4.3 Level of neonatal mortality

Across 106 national DHS surveys, the NMR varies from 10 to 62 per 1000 live births, with a median value of 33. By region, the median value is highest in Central and Western Africa (41), followed by Eastern and Southern Africa (36) and Middle East-North Africa (33), and lowest in Latin America and the Caribbean (24). ENMR averages 24 per 1000 live births, ranging from 9 to 45, and LNMR averages 9 per 1000 survivors to 7 days, ranging from 1 to 20.

Table A1 shows the estimates of ENMR, LNMR and NMR for each survey included in the analysis.

Figure 9 summarizes the estimates of NMR by region in a boxplot showing both the median value for the region and the range of country estimates. Central and West Africa has the highest average NMR (mean = 41, median = 41) and Latin America and the Caribbean the lowest (mean = 25, median = 24), closely followed by Central and West Asia (mean = 27, median = 27, and the narrowest range). Average NMRs for the remaining regions are all in the 30s, ranging from a median of 30 in South and South-East Asia and the Western Pacific (mean = 32) to 36 in South and East Africa (mean = 35).

Figure 9: Neonatal mortality rates by WHO region



(Total N=106)

4.4 Trends in neonatal mortality

Table 2 shows the average annual rates of change across all countries and by region. Across all 31 countries with two or more surveys (a total of 80 surveys), from the late 1980s to the early 2000s, NMR averaged a significant decline of 1.9 % per year. By region, South and East Africa, Central and West Africa and South and South-East Asia and the Western Pacific show slight but non-significant declines. Latin America and the Caribbean and North Africa and the Middle East showed significant annual declines in excess of 3 % per annum. Declines in LNMR are faster than declines in ENMR both overall and in all regions, though the declines in LNMR are not significant in either of the two sub-Saharan African regions. The only regions to show significant declines in ENMR are Latin America and the Caribbean and North Africa and the Middle East. Declines in NMR are generally smaller than the declines in IMR estimated elsewhere, except in the two sub-Saharan African regions. The slower rates of decline of IMR than NMR in sub-Saharan Africa may represent the effects of the HIV epidemic (Black 2003).

Table 2: Annual rate of change (%) in neonatal mortality and its components by region

Region	Number of Countries	Number of Surveys	Early Neonatal Mortality	Late Neonatal Mortality	Neonatal Mortality	Infant Mortality Rate
All Countries	31	80	-1.2*	-4.1**	-1.9**	-2.1**
Africa, East & South	8	20	0.0	-1.3	-0.3	0.6
Africa, Central & West	9	20	-0.1	-2.0	-0.5	-0.2
Latin America	6	20	-2.5*	-4.5*	-3.0*	-3.7*
N. Africa & Middle East	2	5	-2.9*	-7.7*	-4.3**	-5.1*
Eastern Europe & Central Asia [§]	1	2	1.3	-13.8	-1.7	-4.3
South-East Asia & Western Pacific	5	12	0.7	-7.5**	-2.1	-3.2*
North and East India (States)	8	16	-0.7	-4.1*	-1.8	-2.8*
South and West India (States)	6	12	-1.9	-0.9	-1.8*	-2.2*

Significance levels: ** P<0.01 * P<0.05 † P<0.10

[§] Turkey is the only country with multiple surveys in this region that meet inclusion criteria (sample-weighted neonatal deaths ≥30).

Annual rates of change are simply calculated based on two the surveys.

In India, both regions show declines in NMR, though the decline is only significant in the southern and western states. The northern and eastern states show a very rapid and marginally significant decline in LNMR, but little decline in ENMR, whereas the southern and western states show a larger though non-significant decline in ENMR and a smaller decline in LNMR. Both groups of states show significant reductions in IMR, at faster rates than the declines in NMR.

5. Discussion

Millennium Development Goal 4, to reduce child mortality, sets a target of reducing the under-5 mortality rate (U5MR, the probability of dying by age 5 per 1,000 live births) by two-thirds by the year 2015 from a base line in 1990. This target requires that U5MR decline on average by 4.4 percent per annum. The World Health Organization estimates that 38 percent of all under-5 deaths occur in the neonatal period (World Health Organization 2005). Achieving the MDG-4 target will clearly require major progress on reducing neonatal mortality. If the average rate of decline of neonatal mortality estimated above of 1.9 percent per annum is maintained, mortality between the ages of one month and five years will have to fall at about 6.5 percent per annum, a tall order.

Despite using exponential smoothing to adjust for effects of age heaping, data problems remain. First, the DHS birth histories exclude stillbirths⁸. It is possible that very early neonatal deaths may not be reported in the birth history. Such an error, however, is hard to detect unless it is so pronounced as to result in fewer deaths reported in the first day or two of life than in say the period from 2 days to 4 days. Further analysis of the reporting of stillbirths in pregnancy histories, and the possible misreporting of early neonatal deaths as stillbirths, is required.

Second is the issue of selection bias. Since only surviving women are interviewed, deaths of children of mothers who have died will not be reported. A positive correlation between death of the child and death of the mother will result in underestimates of child mortality risks. This is of greatest concern in countries severely affected by HIV. However, a comparison for Zimbabwe of estimates for the 3 years before the 1994 survey with those for the same time period from the 1999 survey suggests that the error is not great. A recent modeling exercise also indicates that the effect of survivor bias on reports of neonatal mortality for the recent past should be negligible (Artzrouni 2003).

⁸ In many recent surveys, a reproductive calendar collects information about pregnancies: live births and pregnancy losses, covering the period of approximately 5 years before the survey.

Thirdly, retrospective reporting can suffer from recall lapse. In an analysis of data quality in DHS birth histories, omission of early neonatal deaths in the more distant periods was noted (Curtis 1995). Although in this study we only used information about births in 5 years prior to the survey, we have compared the estimates of neonatal mortality from a later survey with estimates from an earlier survey for the same time period, using a subset of countries with multiple surveys. We did not find any systematic pattern of difference between the estimates by recall period.

Lastly, there is a problem of systematic misreporting of dates of birth, shifting births backwards to avoid additional questions about health and use of health services for recent births (Arnold 1990). This error may affect our analysis, though it is not clear whether there is a net effect on mortality estimates.

As an additional data quality check, we compared the level and age pattern of neonatal mortality with measures from high-quality surveillance data. Results from the 1999 Bangladesh DHS were compared with measures from the Matlab Health and Demographic Surveillance System (HDSS). Although the Matlab area is not nationally representative, patterns of early childhood mortality may be similar to those of Bangladesh at large. The NMR for the 5 years before the 1999 DHS is 42.6 per 1000 live births, and the proportion of neonatal mortality that occurs in the early neonatal mortality period is 78.4 %. Comparable measures were estimated from the HDSS; the neonatal mortality rate for 2000 is 38.1 per 1000 and the proportion early neonatal is 77.6 % (ICDDR-B 2002; El Arifeen 2003).

Bang et al. (2002) use data from a study of 13 sites in Maharashtra, India, conducted by the Child Deaths Study and Action Group (CDSAG), to argue that official statistics, including the Sample Registration System and the NFHS, underestimate both neonatal and infant mortality. Our cohort estimate of IMR for the period 1993 to 1998 for Maharashtra is 39, compared to CDSAG's estimate for 1999-2000 of between 61 and 69 (Bang 2002). However, the ratios of neonatal to infant mortality are similar: 0.75 from CDSAG and 0.80 from the NFHS. Thus CDSAG implies a similar pattern of mortality in the first year of life as the NFHS, but arrives at a very different estimate of IMR. It is difficult to interpret this difference, however, since the 13 study sites were selected purposively rather than at random and did not include any non-slum urban populations; state-level estimates were calculated from weighted strata-specific estimates. Since the sites are not necessarily representative of strata, however, it is not clear what population the final result represents. There are also some questions about data collection procedures used in the studies (informants were paid for reports of death, which could lead to over-reporting). Although we cannot be sure that the NFHS did not under-report infant and child mortality in Maharashtra, we can be reasonably sure that it did not differentially under-report neonatal relative to post-neonatal mortality.

This analysis examines data quality of DHS birth histories in two ways: by quantifying the excess reporting of ages at death on seven days; and by comparing recorded age patterns of early childhood mortality with historical patterns from England and Wales. Heaping on seven days is widespread, particularly in Africa and the Middle East. Adjusted early neonatal and late neonatal mortality risks are computed by exponential smoothing of the cumulative death distribution.

Comparisons of these adjusted risks with those observed in England and Wales do not suggest widespread omission from the birth histories of early neonatal deaths relative to late neonatal or postneonatal deaths. On the contrary, the ratios of early to late neonatal deaths and of neonatal to infant deaths are generally higher in the birth histories than in the historical record. Patterns for Africa, the Middle East, and northeastern India do suggest, however, substantial random error in reporting age at death. Patterns for Latin America, South-East Asia and the Pacific conform more closely to the historical record.

Early childhood mortality has been declining in the developing world over the last decade at slightly less than 2% per annum. This is less than half the annual rate of decline required (for all under-5 mortality) to achieve the 2015 target for Millennium Development Goal 4. Broadly mirroring historical patterns of change, declines have been faster for late neonatal mortality than for early neonatal mortality, and for postneonatal mortality than for neonatal mortality. Declines have not been distributed equally among regions. Countries of Latin America and the Caribbean, of North Africa and the Middle East, of South and South-East Asia, and of the Pacific, have seen the fastest declines. Declines in sub-Saharan Africa have been slower, particularly in the early neonatal period.

6. Acknowledgements

This research was supported by a grant from the World Health Organization and conducted for the Child Health Epidemiology Reference Group. We received helpful comments on an earlier draft of this paper from Dr. Joy Lawn and two anonymous reviewers.

References

- Artzrouni M, Zaba B. HIV-induced bias in the estimation of child mortality using birth history reports. Presented at the Technical Meeting on HIV and Child Mortality. London: March 2003.
- Bang A, Reddy MH, Deshmukh MD. Child mortality in Maharashtra. *Economic and Political Weekly* 2002; 37(49):4947-4965.
- Black RE, Morris SS, Bryce J. 2003. Where and why are 10 million children dying every year? *The Lancet* 361(9376):2226-2234.
- Curtis S. Assessment of the quality of data used for direct estimation of infant and child mortality in DHS-II surveys. Occasional Papers 3. 1995. Calverton, MD, Macro International Inc. Arnold F, Blanc A. Fertility levels and trends. DHS Comparative Studies 2. 1990. Columbia, MD, Institute for Resource Development.
- El Arifeen S. 2003. Personal Communication
- ICDDR B. Health and demographic surveillance system - Matlab: Registration of health and demographic events 2000. 2002. Dhaka, Bangladesh, ICDDR,B.
- Lawn JE, Cousens S, Zupan J; Lancet Neonatal Survival Steering Team. 4 million neonatal deaths: when? Where? Why? *Lancet*. 2005 Mar 2;365(9462):891-900.
- United Nations. 2001. General Assembly, 56th session. Road map towards the implementation of the United Nations millennium declaration: report of the Secretary-General (UN document no. A/56/326). New York: United Nations.
- World Health Organization. 2005. *World Health Report 2005- Make Every Mother and Child Count*. Geneva: World Health Organization.

Appendix

Table A1: List of 108 surveys by region and country: Estimated ENMR, LNMR, and NMR

Region	Country	Survey year	Heaping-Adjusted ENMR	Heaping - Adjusted LNMR	NMR	Live births *	Neonatal deaths **
Africa, East & South							
	Burundi	1987	0.024	0.011	0.035	3764	133
	Comoros	1996	0.028	0.009	0.036	1925	70
	Eritrea	1995	0.019	0.006	0.025	4027	101
	Ethiopia	2000	0.035	0.013	0.048	11904	567
	Kenya	1989	0.020	0.007	0.027	6929	184
	Kenya	1993	0.020	0.005	0.025	5974	151
	Kenya	1998	0.022	0.005	0.026	5401	143
	Madagascar	1992	0.025	0.014	0.038	5511	211
	Madagascar	1997	0.028	0.011	0.039	6267	246
	Malawi	1992	0.031	0.010	0.041	4404	182
	Malawi	2000	0.030	0.010	0.040	11828	468
	Mozambique	1997	0.045	0.009	0.054	7153	389
	Namibia	1992	0.025	0.006	0.031	3734	114
	Rwanda	1992	0.027	0.011	0.038	5498	209
	Rwanda	2000	0.033	0.010	0.043	7963	342
	Tanzania	1992	0.027	0.009	0.036	7875	286
	Tanzania	1996	0.022	0.010	0.032	6709	211
	Tanzania	1999	0.030	0.010	0.039	3180	125
	Uganda	1988	0.030	0.011	0.041	4886	201
	Uganda	1995	0.021	0.005	0.027	7276	193
	Uganda	2000	0.025	0.007	0.033	7466	243
	Zambia	1992	0.030	0.012	0.042	6085	254
	Zambia	1996	0.023	0.011	0.034	6959	239
	Zimbabwe	1988	0.022	0.004	0.027	3278	87
	Zimbabwe	1994	0.018	0.007	0.024	3850	93
	Zimbabwe	1999	0.023	0.006	0.029	3445	100
Africa, Central & West							
	Benin	1996	0.029	0.008	0.037	4915	181
	Burkina Faso	1992	0.027	0.015	0.042	6165	256
	Burkina Faso	1998	0.027	0.012	0.039	6040	234
	Cameroon	1991	0.024	0.008	0.032	3383	107
	Cameroon	1998	0.028	0.008	0.036	4072	148
	CAR	1994	0.032	0.010	0.041	4634	190
	Chad	1996	0.028	0.016	0.044	7266	317

Hill & Choi: Neonatal mortality in the developing world

Region	Country	Survey year	Heaping-Adjusted ENMR	Heaping - Adjusted LNMR	NMR	Live births *	Neonatal deaths **
Africa, Central & West (continued)							
	Cote d'Ivoire	1994	0.032	0.010	0.041	6618	272
	Cote d'Ivoire	1998	0.042	0.020	0.062	2166	134
	Gabon	2000	0.027	0.004	0.030	3921	119
	Ghana	1988	0.035	0.009	0.044	4013	176
	Ghana	1993	0.028	0.011	0.039	3664	143
	Ghana	1998	0.026	0.004	0.030	3118	93
	Guinea	1999	0.037	0.012	0.048	5627	270
	Liberia	1986	0.032	0.014	0.045	2976	135
	Mali	1987	0.036	0.015	0.050	3313	166
	Mali	1995	0.042	0.018	0.059	9976	590
	Niger	1992	0.024	0.017	0.041	6937	281
	Niger	1998	0.025	0.018	0.043	8065	350
	Nigeria	1990	0.032	0.010	0.042	7932	330
	Nigeria	1999	0.026	0.009	0.035	5998	210
	Senegal	1986	0.028	0.017	0.044	4180	186
	Senegal	1992	0.022	0.012	0.034	5472	185
	Senegal	1997	0.026	0.012	0.037	6853	255
	Togo	1988	0.030	0.009	0.039	3047	119
	Togo	1998	0.035	0.006	0.041	6499	264
Latin America							
	Bolivia	1989	0.023	0.011	0.034	5627	193
	Bolivia	1994	0.014	0.003	0.017	4658	77
	Bolivia	1998	0.024	0.010	0.033	6720	223
	Brazil	1986	0.025	0.008	0.033	3399	111
	Brazil	1991	0.016	0.010	0.025	3324	85
	Brazil	1996	0.014	0.003	0.017	4658	77
	Colombia	1986	0.016	0.004	0.020	2620	51
	Colombia	1990	0.009	0.001	0.010	3651	38
	Colombia	1995	0.015	0.003	0.019	4949	92
	Colombia	2000	0.012	0.002	0.015	4450	66
	Dominican Republic	1986	0.028	0.011	0.038	4305	165
	Dominican Republic	1991	0.019	0.005	0.024	3744	89
	Dominican Republic	1996	0.019	0.007	0.026	4240	110
	Dominican Republic ***	1999			0.015	578	8
	Ecuador	1987	0.023	0.010	0.034	2977	100
	Guatemala	1987	0.023	0.010	0.033	4481	147
	Guatemala	1995	0.020	0.005	0.025	8864	225

Region	Country	Survey year	Heaping-Adjusted ENMR	Heaping - Adjusted LNMR	NMR	Live births *	Neonatal deaths **
Latin America (continued)							
	Guatemala	1998	0.018	0.005	0.022	4412	98
	Haiti	1994	0.017	0.013	0.030	3518	106
	Nicaragua	1997	0.013	0.004	0.017	7811	133
	Paraguay	1990	0.015	0.004	0.019	3882	74
	Peru	1986	0.024	0.010	0.034	3052	105
	Peru	1992	0.018	0.007	0.025	8318	208
	Peru	1996	0.017	0.006	0.023	15272	356
	Peru	2000	0.014	0.005	0.018	11916	220
	Trinidad & Tobago	1987	0.019	0.005	0.024	1903	45
N. Africa & Middle East							
	Egypt	1992	0.022	0.011	0.033	8490	280
	Egypt	1995	0.021	0.010	0.030	11118	338
	Egypt	2000	0.018	0.006	0.024	10992	259
	Morocco	1987	0.024	0.016	0.040	5945	235
	Morocco	1992	0.020	0.012	0.031	5046	158
	Pakistan	1990	0.030	0.018	0.048	6245	299
	Sudan	1990	0.032	0.012	0.043	6375	274
	Tunisia	1988	0.018	0.009	0.026	4362	115
	Yemen	1991	0.024	0.009	0.033	7251	239
Eastern Europe & Central Asia							
	Armenia	2000	0.014	0.006	0.020	1621	33
	Kazakhstan ***	1995			0.020	1377	27
	Kazakhstan	1999	0.028	0.005	0.033	1421	47
	Kyrgyz Republic	1997	0.026	0.004	0.030	1973	59
	Turkey	1993	0.021	0.007	0.028	3637	103
	Turkey	1998	0.023	0.003	0.026	3356	87
	Uzbekistan	1996	0.016	0.007	0.023	2414	57
South-East Asia & Western Pacific							
	Bangladesh	1993	0.034	0.016	0.050	6965	350
	Bangladesh	1996	0.035	0.009	0.044	4013	176
	India	1992	0.034	0.014	0.047	59999	2845
	India	1998	0.032	0.011	0.043	54666	2324
	Indonesia	1987	0.013	0.013	0.026	8018	211
	Indonesia	1991	0.020	0.011	0.031	14109	439
	Indonesia	1994	0.021	0.009	0.030	16489	487
	Indonesia	1997	0.016	0.005	0.021	15769	336
	Nepal	1996	0.032	0.017	0.049	7088	345
	Nepal	2001	0.027	0.011	0.038	6811	255

Hill & Choi: Neonatal mortality in the developing world

Region	Country	Survey year	Heaping-Adjusted ENMR	Heaping - Adjusted LNMR	NMR	Live births *	Neonatal deaths **
South-East Asia & Western Pacific (continued)							
	Philippines	1993	0.014	0.003	0.017	8661	148
	Philippines	1998	0.014	0.003	0.017	7379	128
	Sri Lanka	1987	0.012	0.004	0.016	3873	62
	Thailand	1987	0.016	0.005	0.020	3568	72

* Total number of live births between 2 to 59 months prior to the survey (sample-weighted)

** Total number of neonatal deaths among those live births (sample-weighted)

*** Dominican Republic 1999 and Kazakhstan 1995 were excluded from heaping adjustment analyses because the number of (sample-weighted) neonatal deaths was less than 30

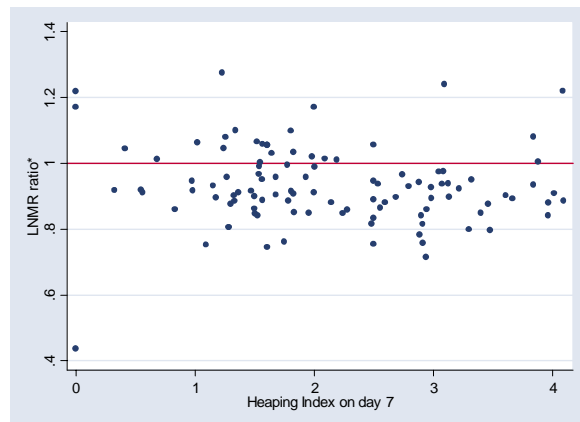
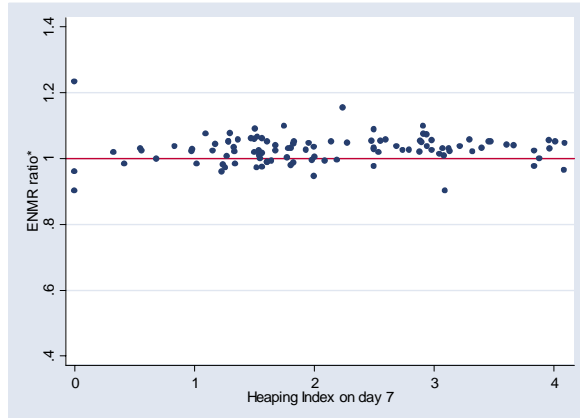
Table A2: Percent distribution (sample-weighted) of neonatal deaths in the 1-59 months before the survey by month and day, selected surveys by heaping index on day 7

Survey	Benin 1996	India 1998/99	Mali 1995/96	Cameroon 1998	Bolivia 1998	Zimbabwe 1999
Births*	5124	56259	10158	3896	7231	3606
Neonatal Deaths**	193	2256	589	141	229	102
Heaping Index	0.56	0.97	1.50	2.48	3.46	3.48
Deaths by day						
0	20.1	26.3	20.4	27.6	17.6	33.9
1	25.2	16.9	22.1	21.1	22.8	23.9
2	9.7	7.1	6.5	10.5	12.0	9.7
3	9.5	10.3	5.9	5.6	6.0	2.4
4	4.7	3.9	3.9	4.3	1.7	0.8
5	5.8	4.9	6.0	2.5	2.5	2.2
6	3.2	4.7	5.5	4.2	2.1	1.0
7	1.9	3.6	6.8	7.1	14.6	11.4
8	5.6	4.1	3.3	0.0	1.3	1.8
9	0.0	1.4	1.1	0.6	0.6	0.0
10	1.8	2.2	3.3	2.5	0.5	0.0
11	1.2	1.5	0.2	1.2	0.0	0.0
12	0.0	1.6	1.2	0.8	0.8	0.0
13	1.1	0.5	0.0	0.0	0.0	0.5
14	0.4	0.7	1.0	3.4	6.5	8.1
15	3.5	4.6	7.2	1.4	3.1	0.0
16	0.0	0.2	0.2	0.8	0.5	0.0
17	0.0	0.4	0.2	0.8	0.0	0.0
18	0.0	0.8	0.6	1.7	0.1	0.0
19	0.0	0.2	0.0	0.0	0.0	0.0
20	1.1	1.4	2.8	0.0	1.1	0.0
21	0.7	0.6	0.3	1.7	4.4	2.2
22	1.3	0.5	0.2	0.0	0.0	0.0
23	0.0	0.1	0.5	0.8	0.0	0.0
24	0.5	0.3	0.0	0.0	0.0	0.0
25	1.0	0.5	0.4	0.0	0.7	0.0
26	0.0	0.1	0.0	0.0	0.0	0.0
27	0.0	0.1	0.0	0.0	0.0	0.0
28	0.9	0.2	0.2	1.4	0.6	0.0
29	0.7	0.1	0.2	0.0	0.0	0.0
30	0.0	0.0	0.0	0.0	0.0	0.0
unknown	0.0	0.1	0.0	0.0	0.6	1.0

* Live births between 1 to 59 months prior to the survey

** Of those who died in the first month of life

Figure A1: Ratio* of adjusted rates based on two fitting ranges by level of heaping on day 7



*ratio of the adjusted rate based on D(3)/D(12) to the adjusted rate based on D(5)/D(10)

** For Armenia DHS 2000, sample-weighted total neonatal deaths were 32.6 and the adjusted number of early neonatal deaths were 28.5 and 23.1 based on the fitting ranges (D(3)/D(12) and D(5)/D(10), respectively), resulting in a 57 % decrease in LNMR. N=106 (country level surveys with number of (sample-weighted) neonatal deaths ≥ 30)