

Estimation of the economic impact of temperature changes induced by a shutdown of the thermohaline circulation: an application of *FUND*

Working Paper FNU-103

P. Michael Link ^{a,b} & Richard S.J. Tol ^{c,d,e,f}

- ^a Research Group Climate Change and Security, KlimaCampus Hamburg, Hamburg University, Hamburg, Germany
- ^b Research Unit Sustainability and Global Change, Center for Marine and Atmospheric Sciences, Hamburg University, Hamburg, Germany
- ^c Economic and Social Research Institute, Dublin, Ireland
- ^d Institute for Environmental Studies, Vrije Universiteit, Amsterdam, The Netherlands
- ^e Department of Spatial Economics, Vrije Universiteit, Amsterdam, The Netherlands
- ^f Department of Engineering and Public Policy, Carnegie Mellon University, Pittsburgh, PA, USA

Correspondence to P.M. Link:

Tel. +49 (40) 42838-7719

Fax +49 (40) 42838-7721

eMail: michael.link@zmaw.de

Abstract

The integrated assessment model *FUND 2.8n* is applied in an assessment to estimate the magnitude of the general market and non-market impacts of temperature changes caused by a possible shutdown of the thermohaline circulation (THC). The monetized impacts of this change in environmental conditions are determined for 207 individual countries for two scenarios: one warming scenario in which the THC weakens but remains intact, and another in which the THC breaks down. Eight different response patterns are identified. The dominant pattern is that a THC shutdown has an offsetting effect on the underlying warming trend. Depending on whether the impacts of warming are initially beneficial or detrimental, the economic effects of a THC shutdown show distinct regional variability. Key economic sectors affected are water resources and energy consumption, as well as cardiovascular and respiratory diseases among health impacts. The maximum national impact of a shutdown of the THC turns out to be of the magnitude of a few per cent of GDP, but the average global impact is much smaller. The results indicate that the temperature effect of a THC shutdown does not create an insurmountable economic threat on a global scale, but may cause severe damages to individual countries. However, a consideration of other climatic impacts such as precipitation and sea level changes is likely to alter the identified trends in economic development.

Key words

climate change, climate change impacts, thermohaline circulation, integrated assessment

1 Introduction

The potential weakening of the thermohaline circulation (THC) due to climate change has captured the public mind. Often referred to as a collapse of the ocean conveyor belt that brings warmth to Europe, the public picture is one of an impending ice-age. Based on more sophisticated analysis, scientists and policy makers worry about the unprecedented impacts this scenario of climate change would have.

Indeed, the THC can be considered to be one of the tipping elements of the planet's climate system (Lenton *et al.* 2008). Depending on the extent of additional freshwater input into the North Atlantic, the THC may shift from one stable condition (THC on) to another (THC off). The rate of freshwater input is important in determining the effectiveness of bringing the THC to a halt (Stocker and Schmittner 1997). The higher the additional freshwater input, the more readily any mechanisms stabilizing the THC will be overcome and the circulation breaks down.

Model ensemble simulations of the fate of the THC show that already a small additional freshwater flux into the North Atlantic leads to a weakening but not to a complete shutdown of the THC (Stouffer *et al.* 2006). The response of the THC to climate change is usually a gradual spin-down (Manabe and Stouffer 1994; Mikolajewicz *et al.* 2007). Although it has to be noted that there is a large uncertainty connected to this quantity, the critical freshwater input necessary for such a shutdown of the THC is on the order of 0.1 Sv or higher (Kuhlbrodt *et al.* 2009). Based on expert opinion, a weakening of the THC as a consequence of global warming is much more likely to occur than a complete shutdown, even though some of the experts that were interviewed about their view of the fate of the THC assess the probability of a complete shutdown in scenarios of a multiplication of the atmospheric CO₂ concentration as significantly different from zero (Zickfeld *et al.* 2007).

A shutdown of the THC would create a substantial cooling over the North Atlantic. In hosing experiments, in which a large pulse of freshwater is added to the northern North Atlantic, the reduction of the mean air temperature can locally exceed 15°C (Wood *et al.* 2003; Vellinga 2004; Wood *et al.* 2006). In addition, the entire hemisphere is subject to cooling. Model intercomparisons indicate that the pattern of temperature change as a consequence of a THC shutdown is complex with cooling over the western North Atlantic and some warming further east (Stouffer *et al.* 2006). However, it has to be noted that if an underlying global warming trend is considered, this trend dominates any effects of a weakened THC. Consequently, a weakening of the THC then only has a slightly offsetting effect on the overall warming (Gregory *et al.* 2005).

In addition to temperature changes, altered rainfall patterns can also be observed (Vellinga and Wood 2002). The Northern Hemisphere is likely to experience reduced rainfall while the shift of the Intertropical Convergence Zone, which follows a THC shutdown, leads to sometimes pronounced precipitation increases over South America and Africa. Concerning the oceans, sea level height is also expected to be affected. In the North Atlantic region, such changes in hydrographic conditions would cause an increase in sea level of approximately 25-50 cm (Levermann *et al.* 2005; Vellinga and Wood 2008). This would augment the effects of global warming on global sea level height and predominately occurs in the North Atlantic and the Arctic Seas. Coinciding with the overall rise in sea level is a regional acceleration of this change in hydrography, which can reach up to 25 mm/a near the American Atlantic coast in case of a THC shutdown. This effect adds to the environmental stress by changes in temperature and precipitation.

In an assessment of ecosystem responses to a shutdown of the THC, Higgins and Vellinga (2004) show that the implications of such a drastic environmental change is not confined to the region of the North Atlantic, in which the change in THC strength actually takes place. Through particular teleconnections, the ecological impacts are likely to occur globally and are quite heterogeneously distributed geographically. Such ecological impacts are not only

driven by changes in temperature but also by changes in precipitation patterns, on which changes in net primary productivity are predominantly dependent.

Among the most pronounced ecological consequences of Northern hemisphere cooling following a shutdown of the THC is a southward shift of the forest line and a change of temperate biome distribution (Köhler *et al.* 2005), which in turn has implications on agricultural production as well. Model results indicate that forests are likely to expand in regions that experience increases in precipitation such as eastern South America while growth of deserts and biome losses will occur in regions like the Sahel that would receive less precipitation (Higgins and Vellinga 2004). While changes of terrestrial carbon storage are expected to be small (Köhler *et al.* 2005), the overall production of terrestrial vegetation is expected to decline slightly (Vellinga and Wood 2002). The resulting effect on the atmospheric CO₂ content is, however, hard to predict as it is critically dependent on the underlying climatic conditions when the THC shuts down (Köhler *et al.* 2005).

In an analysis of possible economic implications of a shutdown of the THC, Nævdal and Oppenheimer (2007) define a model that considers several possible thresholds for THC change and assess the optimal regulation of CO₂ emissions to possibly prevent a THC shutdown. Results indicate that in order to avoid a “catastrophic” risk of a THC shutdown, specific acceptable values of temperature and temperature increase may not be exceeded. However, in the model simulations only the maximum acceptable rate of temperature increase was surpassed in finite time while the threshold with regard to temperature itself was never reached. Keller and others (2004) assess abatement policies to prevent a collapse of the THC in the context of uncertainty and show that the influence of incomplete knowledge on the optimal CO₂ abatement strategy is critically dependent on the importance given to ecological and economic investment irreversibilities.

The assessment of economic consequences of a THC shutdown in this paper focuses on the impacts of temperature changes. Obviously, there are economic impacts arising from altered precipitation patterns and sea level rise as well. So far, assessments of such effects have always been conducted without considering changes in THC strength.

Changes in precipitation patterns directly influence agricultural production (Fischer *et al.* 2005). A global assessment indicates that climate change has little impact on agricultural cereal production at a global scale. However, a regional differentiation shows that some regions can be significantly affected, with the most severe changes occurring in tropical semi-arid developing countries.

Sea level changes affect coastal zones in all regions of the world. An analysis with a CGE model of the economy-wide impacts of a sea level rise of 25 cm until the year 2050 shows that neglecting coastal protection leads to land losses that have detrimental implications for the entire economy (Bosello *et al.* 2007). Furthermore, public utility is also negatively affected. In contrast, full coastal protection would lead to regional increases in GDP. It has to be noted, though, that the geographic distribution of sea level rise following a THC shutdown differs substantially from a general increase in sea level of 25 cm world wide. An application of *FUND*, which looks at the economic impacts of sea level changes following a catastrophic event like the collapse of the West Antarctic ice sheet, shows that there would be a magnification of the effects of sea level rise on the world’s coasts by an order of magnitude due to rapidly rising costs for coastal protection and very high damages stemming from land losses and forced migration (Nicholls *et al.* 2008; Tol 2009).

Fankhauser and Tol (2005) draw attention to the fact that direct market and non-market impacts of climate change are not the only economic consequences of altered environmental conditions. Longer term effects include changes in people’s willingness to save, capital accumulation, and technological progress. Climate change impacts on capital and savings

are generally negative, thus disregarding these quantities in climate change assessments causes impacts to be underestimated.

In this paper, we estimate the general magnitude of monetized market and non-market impacts of temperature changes induced by a shutdown of the THC. This extends the assessments of Link and Tol (2004) and Ceronsky *et al.* (2005). In Link and Tol (2004), we use *FUND 2.7* to estimate total impacts and compare two scenarios: one without and one with a THC shutdown. These two scenarios are superimposed on a global warming scenario generated with the earth system model of intermediate complexity CLIMBER-2 (Rahmstorf and Ganopolski 1999) that is based on the IPCC IS92e scenario (Houghton *et al.* 1995). No sensitivity analysis was reported, indeed done. In Ceronsky *et al.* (2005), *FUND 2.8* was used to estimate marginal impacts. The THC scenario applied is but one in a whole range of extreme climate scenarios. Both papers conclude that a THC shutdown is not dramatic; it may even be locally beneficial as warming slows down but does not turn into cooling, which would e.g. enhance agricultural production in large parts of Europe (Kuhlbrodt *et al.* 2009). However, they have the distinct disadvantage that the spatial resolution is crude. Iceland, Ireland, and Norway, the countries most at risk of a THC shutdown, are grouped with Western Europe – when Iceland and Greece are averaged, any effects get lost in the aggregation. In the current paper, we use *FUND 2.8*, but study each country separately.

2. The model

The *FUND* model has been used for many purposes, but its main strength has always been the impacts of climate change. Earlier versions had 9 regions, and later versions 16. In this paper, we discard most of the model, and only retain the impact module. This part, however, is reparameterized for 207 countries. The impact module of *FUND 2.8* is described extensively in Tol (2002a, 2002b)¹. However, the data presented in those studies were aggregated to a regional level. For some impacts, this was just a summation of country-based data. For other impacts, only regional information was available. We now present the national impacts module of *FUND 2.8n*. The source code, in Excel, can be found at www.fnu.zmaw.de/FUND.5679.0.html.

The climate change induced impact on cardiovascular mortality is based on Martens (1998). Impacts are assumed to vary linearly with the deviation of the actual temperature in the warmest or coldest month (for heat- and cold-related cases, respectively) in a given annual period from the temperature that the population is acclimatized to. This baseline temperature to which people are accustomed is based on the long-term temperature development in each geographic entity considered. It increases with warming too, using a geometric update procedure of the temperature, in which the gap between the temperature that people are used to and the actually observed temperature decreases by 10% per year. Thus, the impact is more than linear in the rate of warming². Heat- and cold-related cases are modeled separately, as are effects on people below and above 65 years of age. Heat-related cardiovascular disorders are assumed to be an urban phenomenon only. Respiratory mortality is treated in the same way as heat-related cardiovascular disorders, but is not limited to urban areas.

Schistosomiasis, dengue fever and malaria are assumed to be linearly related to warming. The vulnerability is based on the 1995 data in WHO (1995). These data have been used to calibrate *FUND* and to derive the income elasticities subsequently used in the assessments.

¹ Further information, including publications, technical descriptions, and source codes, can be found at www.fnu.zmaw.de/FUND.5679.0.html

² In the regional version of *FUND*, cardiovascular and respiratory impacts are quadratic in the level of temperature, but insensitive to the rate of warming. Intra-regional variation does not allow for consistent parameterization with acclimatization.

Vulnerability is assumed to decline with per capita income growth, with an elasticity of 2.65. Diarrhea mortality is more than linear in warming with a power of 1.14, while vulnerability falls with an income elasticity of 1.58. Diarrhea morbidity follows the same pattern, but with different parameters: 0.70 for the climate effect, and 0.42 for the income effect.

For all diseases except diarrhea, morbidity is assumed to be proportional to mortality, using the ratio given in WHO (1995). Mortality is valued at 200 times the annual per capita income of each deceased, morbidity at 0.8 times the annual per capita income of the diseased.

Cooling demand is based on Downing *et al.* (1996), who report regional results only. Impacts are assumed to be more than linear in warming, with a power of 1.5, and to increase with economic growth with an elasticity of 0.8. This income elasticity is used to downscale regional sensitivities to a national level. Heating demand is based on the same source and follows the same procedure, but the sign is opposite and it is less than linear in warming with a power of only 0.5. Water resources are also based on Downing *et al.* (1996). Impacts are assumed to change linearly with global warming; the assumed income elasticity is 0.85.

Species loss varies quadratically with the rate of warming. The value of species loss is logistic in the rate of warming. The maximum amount that people are willing to pay to prevent climate change-induced species loss is set to be \$50 per person per year for people with the average income in the OECD in 1990. This maximum is proportional to income, and inversely proportional to the number of remaining species. So if people become richer, the willingness to pay increases and also if biodiversity decreases. This applies to all countries, not just those who lie below the OECD average. Poorer countries approach the maximum willingness to pay for biodiversity logarithmically as they grow richer.

The impacts of sea level rise are derived from Hoozemans *et al.* (1993) and Bijlsma *et al.* (1996). There are no more recent global impact studies; see Nicholls and Tol (2006) for a current review. Without coastal protection, wetland and dry land losses are assumed to be linearly related to sea level rise. The global mean sea level is determined by a geometric series depending on temperature that is calibrated based on the IS92a scenario in Kattenberg *et al.* (1996). Dry land losses decline linearly with protection, but wetland losses increase linearly with protection. The costs of dry land loss change linearly with per capita income and population density. The value of wetland losses follows the same logic as the value of species loss. Protection costs are assumed to be constant. The level of protection is set by a cost-benefit analysis, based on Fankhauser (1994), trading off the benefits of less dry land loss against the costs of protection and additional wetland loss. Dry land loss induces migration. Relocation is assumed to occur domestically. The cost of migration is assumed to equal 3.4 times the per capita income (Tol 1995).

The impacts of climate change on agriculture are based on the rate and level of climate change and on effects from CO₂ fertilization. All are functions of temperature and are calibrated to Darwin *et al.* (1995), Fischer *et al.* (1996), Kane *et al.* (1992), and Tsigas *et al.* (1996). The impacts are split into three parts since there are various effects of climate and climate change influencing agricultural productivity. The first part is linearly related to the rate of warming and denotes the impact of the rate of climate change. These impacts are always negative. The second part is quadratic with respect to temperature, with an explicit climate optimum for agriculture for each country. Impacts are positive (negative) if a country moves towards (away from) its optimum. This denotes the impact of the level of climate change on agriculture, which assumes that for each country there is an optimal temperature for agriculture at which production is greatest. The third part is logarithmic in the atmospheric concentration of carbon dioxide, as CO₂ fertilization is generally positive but there is a tendency for saturation. The national parameters equal the parameters of the region to which the country belongs in *FUND* 2.8. However, the climate scenario analyzed is resolved at country level. Impacts are expressed as fraction of national agricultural production. The share of agriculture in GDP is country-specific. It falls with an income elasticity of 0.31.

Climate change impacts on forestry are calibrated to Perez-Garcia *et al.* (1997) and Sohngen *et al.* (2001). Impacts are assumed to vary linearly with warming and logarithmically with the atmospheric concentration of carbon dioxide, each with a weight of one half. Sensitivities decrease with economic growth with an income elasticity of 0.31. This elasticity was used to downscale regional to national sensitivities.

3. Scenarios

The analysis of the impacts of a shutdown of the THC is based on the hosing experiment of Vellinga and Wood (2002), which was conducted using the *HadCM3* model (Gordon *et al.* 2000), where the THC collapsed after one strong pulse of freshwater was added. After that, the simulation covered a century in which the THC could recover to some extent. In our assessment, we determine the difference in average temperature per country between the *HadCM3* hosing scenario and the control run with stable THC conditions for the time period of the first three decades after the THC shutdown (Fig. 1). The magnitude of the temperature effect of a THC shutdown is then placed in context of a warming scenario.

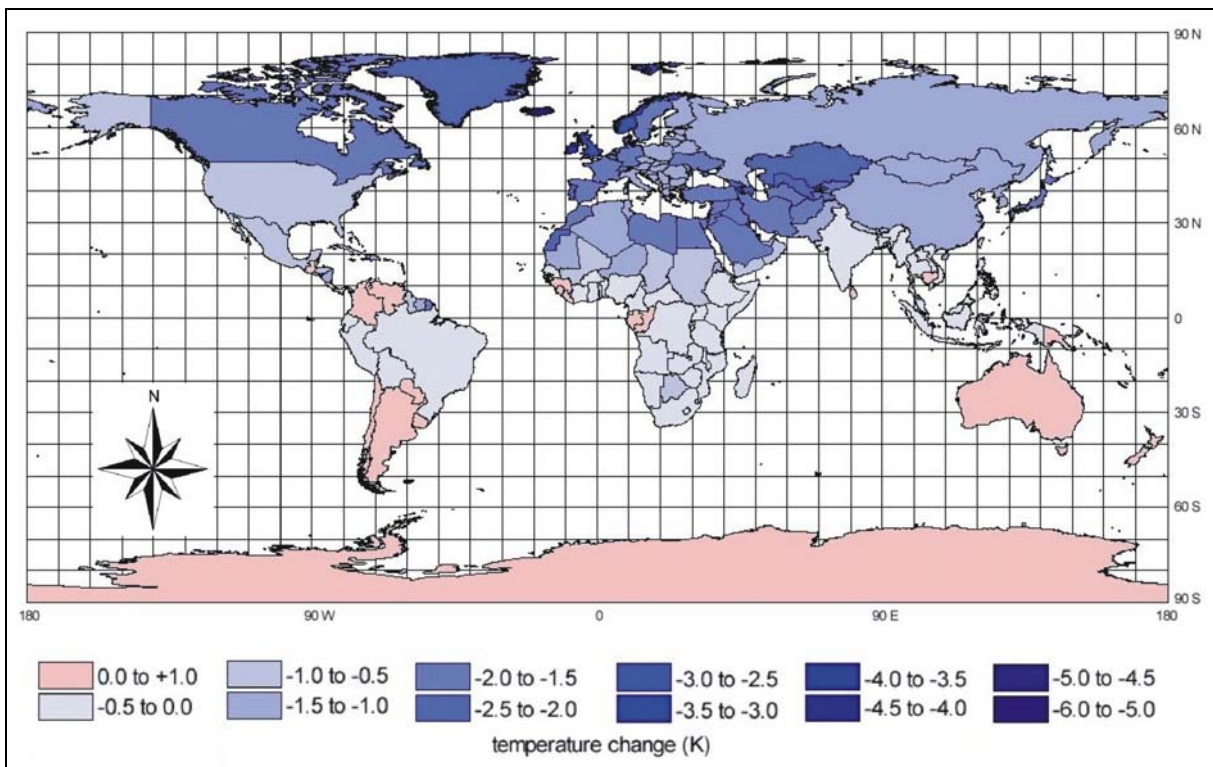


Figure 1. The difference of the 2100-2129 average annual temperature between the *HadCM3* THC shutdown scenario and the control scenario.

We superimpose the obtained temperature difference on a *FUND* scenario of climate change, using a spatial pattern that is calibrated to the *HadCM3* model. The *FUND* scenario of climate change (Tol 1999) follows the IPCC IS92a scenario (Leggett *et al.* 1992) for the economic and demographic development, and the emissions trajectory of the IS92f scenario. In such scenarios of rising greenhouse gas concentrations in the atmosphere, the THC gradually weakens (Wood *et al.* 1999; Vellinga and Wood 2008). In contrast, the THC shuts down rapidly and takes a long time to recover if scenarios are used that contain applications of large pulses of freshwater into the North Atlantic. In this assessment, it is therefore plausible to apply a gradual linear transition between the two states of the THC. It is

assumed that the THC functions until 2070. After that, it slows down. In 2100, the full climate effect of the THC shutdown is assumed to take hold. Note that the dynamic effect of a THC shutdown on the sea level is disregarded in this assessment.

4. Results

Starting from present, the simulation extends through the 21st century. The market and non-market impacts of climate change are determined for the year 2100 and related to the initial conditions. Figure 2 shows the impact of the THC shutdown in 2100. The impact is measured as the difference between the monetized impact of climate change with and without a THC shutdown. Eight different situations can be distinguished.

In some places, a THC shutdown implies additional warming (1). If warming is already negative without a change in THC strength, additional warming is worse, and a THC shutdown has a negative impact (1N). This is the case in West-Africa. Figure 3 shows the welfare impacts in Gambia as an example. If warming is generally positive, additional warming induced by a THC change is even better, and a THC shutdown has a positive impact (1P). This is the case for Australia and New Zealand (Fig. 3).

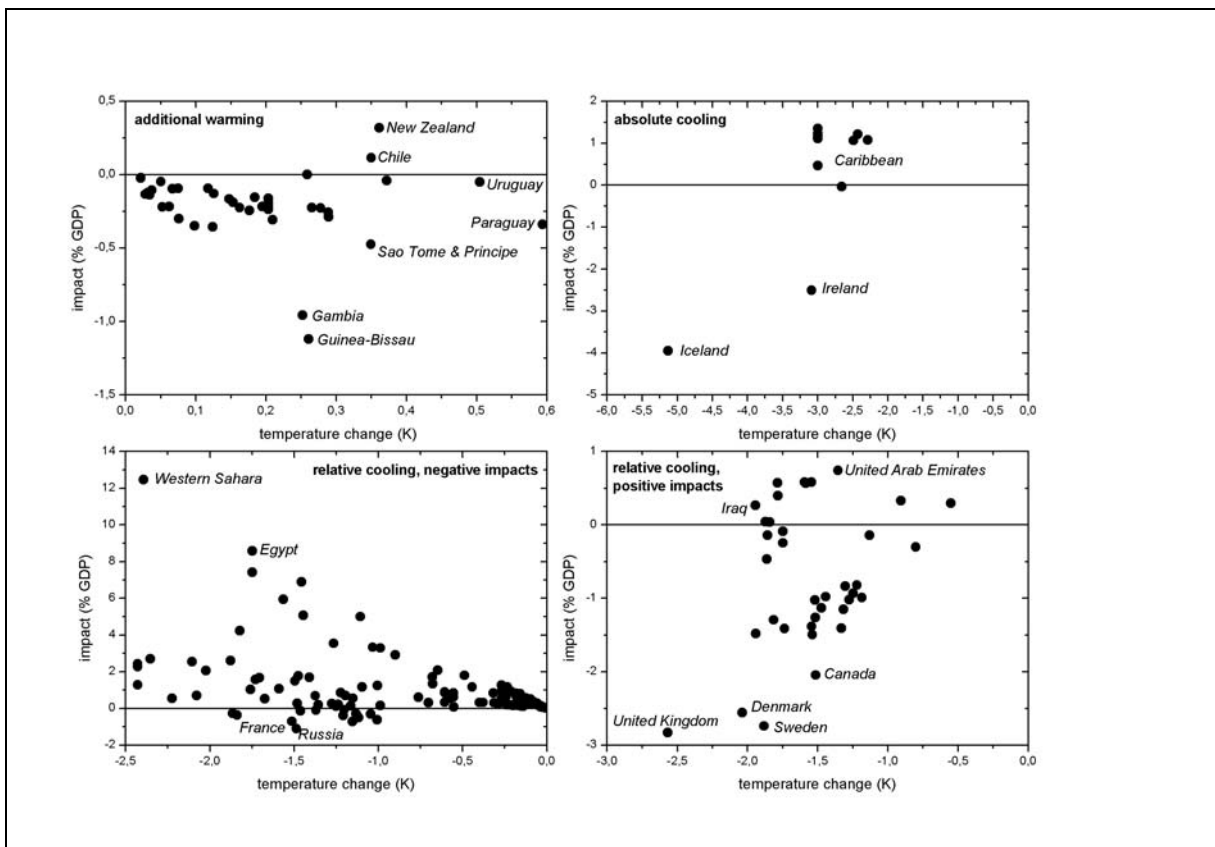


Figure 2. The effect per country of a shutdown of the thermohaline circulation on the welfare impacts of climate change in 2100. In the top panels, countries warm faster (left panel) or cool (right panel). In the bottom panels, countries warm slower. The bottom left panel displays countries that benefit from climate change, the bottom right panel countries that are damaged by climate change.

In some places, a THC shutdown implies absolute cooling (2). In temperate or subarctic countries, further cooling has negative impacts (2N). This is the case in Ireland and Iceland (Fig. 3). In subtropical or tropical countries, cooling has positive impacts that can be quite

substantial in some countries (2P). This is the case in the Caribbean. Figure 3 shows results for Barbados as an example.

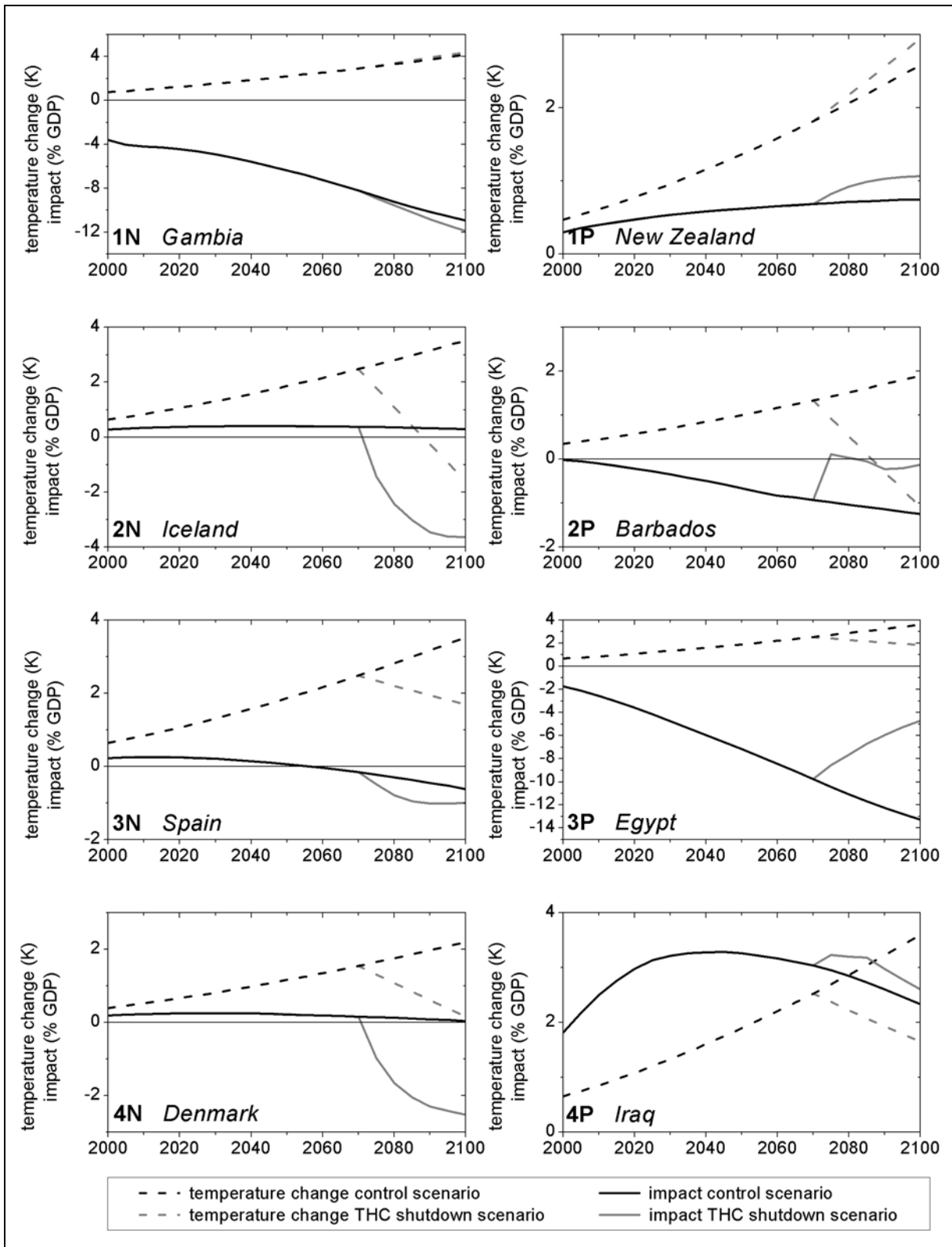


Figure 3. The welfare impacts of climate change with and without a thermohaline circulation shutdown for eight countries. The solid lines denote welfare impacts, the dashed lines temperature change. The scale of the left y-axis applies to both quantities.

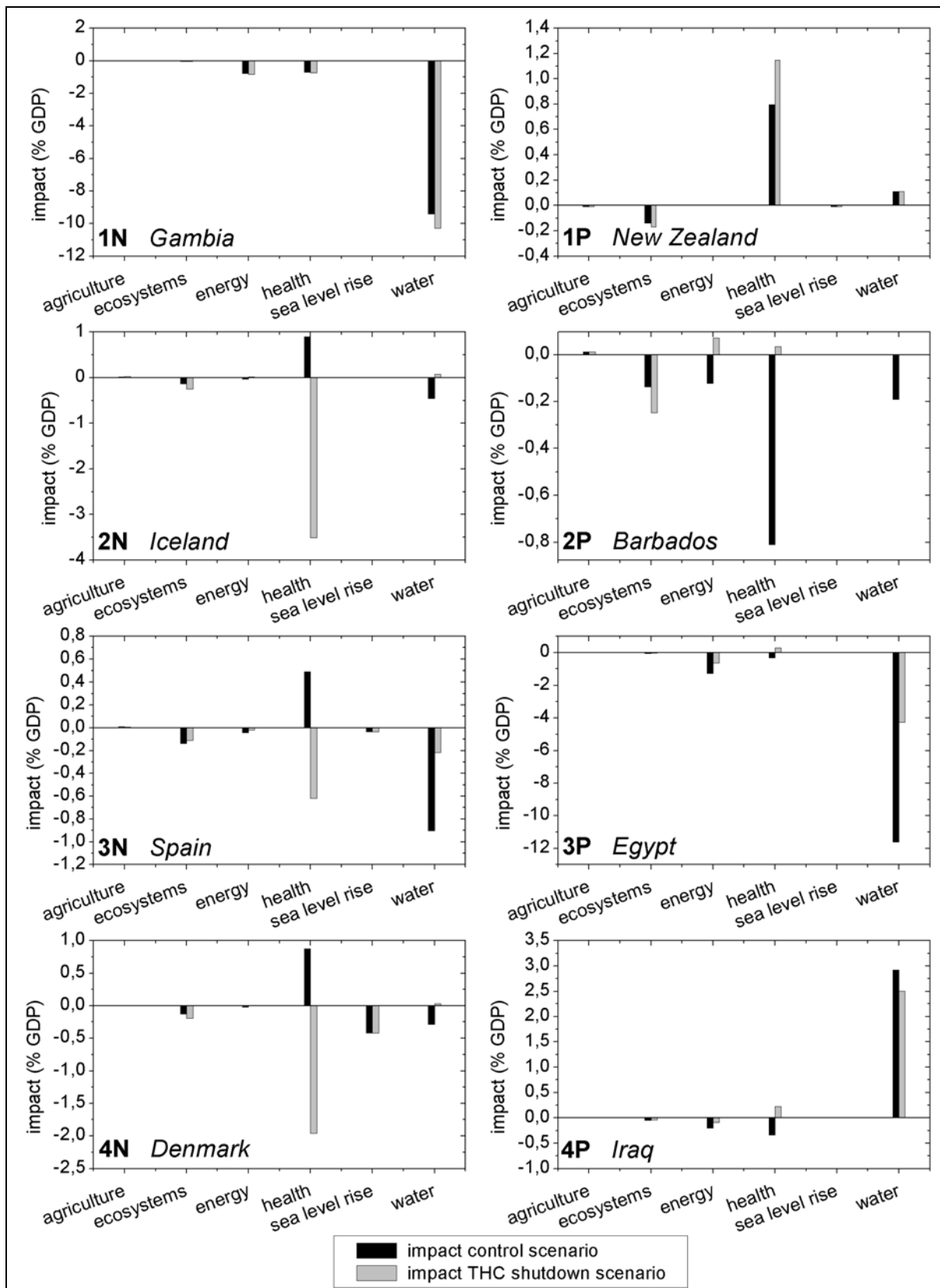


Figure 4. The welfare impacts of climate change in 2100 with and without a thermohaline circulation for eight countries per sector.

So far, the emerging pattern has been straightforward. However, in many countries the development is not as simple. It is often the case that a THC shutdown has an offsetting effect on a regional warming trend (3). If the impacts of climate change are negative to start

with, one would expect a shift toward the better resulting from slower warming (3P). This is indeed the case in most countries. Figure 3 shows Egypt as an example. There are a few exceptions, however, e.g. France, Russia, and Spain (Fig. 2). The reason is that without a THC shutdown, the decreasing number of cold-related cardiovascular deaths resulting from warmer conditions contributes significantly to positive welfare impacts. With a THC shutdown, this effect disappears, and the overall impacts become much more negative (3N).

If the impacts of climate change are positive without any change in THC strength, one would expect a worse overall impact as a consequence of slower warming (4). Again, this is the case in many countries. Figure 3 shows Denmark as an example (4N). Here, the positive effect of global warming is not only weakened but reversed completely as the THC shutdown brings about considerable economic damages. However, there are exceptions to this development as well, e.g. in Iraq (Fig. 3). There, a weakening of the THC is actually initially beneficial, but the positive effect of a collapsed THC disappears over time as the difference in climate-related economic impacts between the THC shutdown scenario and the control run diminishes (4P).

Figure 4 shows the impact per sector of a THC shutdown in 2100 for the eight selected countries. The most important impacts of a THC shutdown are on human health, energy consumption, and water resources, with economic impacts on ecosystems playing a smaller role. The impact on agriculture is negligible. Also, the impacts on sea level rise shown represent only part of the actual magnitude as this assessment disregards the dynamic sea level rise effects of the THC shutdown to start with.

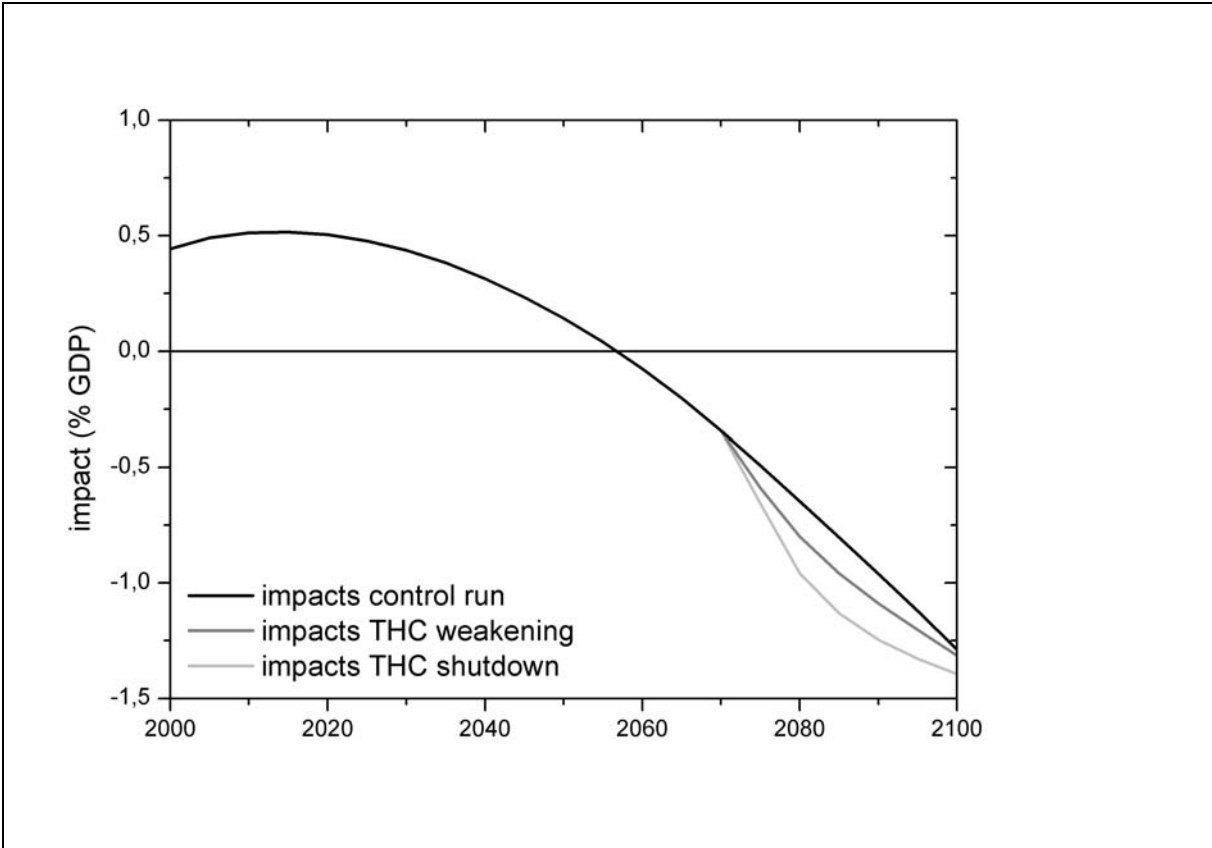


Figure 5. The global welfare impacts of climate change for scenarios with no impact on the thermohaline circulation, a slowdown, and a shutdown.

Figure 5 depicts the impact of a change in THC strength aggregated to a global level by adding dollars without correcting for inequity aversion (Fankhauser *et al.* 1997, 1998). At this

highly aggregate level, the differences seen in Figures 3 and 4 are obviously hidden. The dominant pattern resembles that of Spain. Climate change first brings benefits, but the benefits start to decline after 2015, and turn into damages in 2060. A THC shutdown would bring about additional damages. The gap between the two scenarios widens rapidly, as the health benefits of warmer climates disappear. The gap then narrows again as the benefits of slowed warming become more important at the end of the simulation period.

5. Sensitivity analysis

In the analysis presented above, there are many assumptions about the parameters in *FUND 2.8n*, the scenarios that drive the model, and the shutdown of the THC. Some of these assumptions have little influence on the results. Other assumptions are very important. In this section, we report sensitivity analyses on the key parameters.

	Impact (% GDP) control scenario	Impact (% GDP) THC weakening	Impact (% GDP) THC shutdown
1N Gambia	-10.94	-11.42	-11.90
1P New Zealand	0.75	0.91	1.07
2N Iceland	0.30	-1.44	-3.65
2P Barbados	-1.25	0.22	-0.13
3N Spain	-0.62	-0.55	-0.99
3P Egypt	-13.27	-8.94	-4.69
4N Denmark	0.04	-1.04	-2.52
4P Iraq	2.34	2.53	2.61

Table 1. The welfare impact of climate change in 2100 on selected countries for scenarios with no impact on the thermohaline circulation, a slowdown to 0.5 THC_{init} , and a complete shutdown.

One of the crucial inputs is the assumed climate change due to the shutdown of the THC. Table 1 shows the 2100 welfare impacts for eight selected countries for the base scenario (no effect on the THC), the scenario used in Section 4 (THC shutdown), and a scenario halfway in between (THC slowdown). The eight selected countries are representative for the variety of responses observed. In a few countries, such as Spain, a slowdown of the THC has a positive effect, but a shutdown has a negative effect. In a larger number of countries, such as Denmark and Iceland, a weakening of the THC to half of its original strength leads to less than half the impact of a complete shutdown. Figure 5 shows that this pattern dominates at global scale. Furthermore, unreported experiments show that this impact pattern also holds for a weaker slowdown of the THC. In other countries, such as Egypt, Gambia and New Zealand, the response is approximately linear. There are some countries, such as Iraq, in which the response is less than linear. In most of those countries, the impact of a slowdown is positive; and although the overall effect of a shutdown of the THC is still positive, the positive impacts begin to saturate while the negative impacts start to escalate. It is therefore no surprise that there are a few countries, such as Barbados, in which the difference between no change and a slowdown of the THC is positive, while the difference between slowdown and a shutdown is negative, even though the difference between no change and a THC shutdown is positive.

Table 2 shows a sensitivity analysis of the parameters that govern the estimated impacts on water resources, energy consumption, and cardiovascular and respiratory diseases. If either the sensitivity of water resources to climate change or the income elasticity is doubled, damages vary only slightly, and the impacts of a THC shutdown are just a little worse than in the reference scenario.

	Impact (% GDP) control scenario	Impact (% GDP) THC shutdown scenario	Difference (% GDP)	Change from Base control scenario (%)	Change from Base THC shutdown scenario (%)
Base	1.29	1.39	0.10		
Water: Sensitivity	1.31	1.42	0.11	+1.7	+1.7
Water: Income elasticity	1.23	1.35	0.12	-4.5	-3.3
Heating: Sensitivity	0.49	0.73	0.24	-61.7	-47.7
Heating: Non-linearity	0.56	0.96	0.40	-56.3	-31.0
Heating: Income elasticity	1.59	1.65	0.06	+23.5	+18.2
Cooling: Sensitivity	3.48	2.93	-0.55	+170.3	+110.1
Cooling: Non-linearity	0.23	0.73	0.50	-82.2	-47.7
Cooling: Income elasticity	0.44	0.80	0.36	-65.7	-42.7
Respiratory	1.40	1.39	-0.01	+9.0	-0.1
Cardiovascular, heat	1.66	1.51	-0.15	+29.1	+8.2
Cardiovascular, cold	0.54	1.36	0.82	-58.4	-2.3
Urbanization	1.33	1.41	0.08	+3.6	+1.1
Aging	1.21	1.43	0.22	-6.4	+2.7
Value of a statistical life	0.72	1.60	0.88	-43.9	+14.9
Value of a year disabled	1.33	1.43	0.10	+3.7	+2.5

Table 2. The global welfare losses of climate change in 2100 with and without a thermohaline circulation shutdown for a range of parameter choices.

A doubling of the sensitivity of heating energy to changes in temperature causes damages to decrease because savings on heating are beneficial; however, the temperature change due to a THC shutdown becomes more important as the world cools. If heating were linearly related to temperature, rather than the square root as in the base scenario, the result would be qualitatively the same. The opposite effects are observed when the income elasticity is doubled so that future energy use for heating is smaller. Doubling the sensitivity of cooling energy leads to increased damages both due to climate change and due to a THC shutdown. If cooling changed linearly with temperature, rather than proportional to the 1.5th power of the temperature as in the base case, damages would fall in both scenarios, but less in the scenario with the THC shutdown, so that the difference between the scenarios increases over time. The same pattern is observed for a doubling of the income elasticity, which causes energy use for cooling to decrease over time.

A twofold increase of the sensitivity of heat-related cardiovascular or respiratory mortality causes climate change impacts to increase (Tab. 2). A THC shutdown would have positive effects, as warming is less pronounced. If the sensitivity of cold-related cardiovascular mortality is doubled, the opposite pattern can be observed. A doubling of the rate of urbanization leads to higher climate change impacts as the number of heat-related deaths rises; by the same token, the effect of a THC shutdown is reduced. A doubling of the rate of aging has the opposite effect, by particularly increasing cold-related cardiovascular mortality. Doubling the value of a statistical life reduces the impact of climate change because of the higher weight placed on the avoided cold-related deaths in the rich and temperate countries. These benefits disappear with a THC shutdown.

6. Discussion and conclusion

In this paper, we present estimates of the welfare losses incurred from a rapid shutdown of the THC. This assessment considers only the temperature effect of such development. However, there are also considerable impacts of a weaker THC on other components of the earth's ocean-atmosphere system, such as altered precipitation patterns and a significantly augmented background sea level rise. These developments also have profound socio-

economic consequences but are not yet incorporated in this model. Consequently, the results presented in this paper can by no means be considered as concrete predictions of welfare impacts of a THC shutdown on a country level. Instead, they should rather be viewed as an indicator of the regional heterogeneity of such impacts, in which the emerging patterns and trends are of greater importance than the actual absolute values. It might very well be possible that the inclusion of impacts from precipitation and sea level rise effects would point to trends in welfare impacts that are qualitatively different from the results shown here.

In some places, a THC shutdown reduces the rate of warming, and this may well be a benefit. Such is the case in Northern Africa, in which the particularly negative socioeconomic impacts of global warming are offset to a large degree in case of a THC shutdown. This effect dominates the result presented in Link and Tol (2004). However, Link and Tol (2004) ignored the additional warming in some parts of the world that is here shown to have mostly negative impacts. Furthermore, the crude spatial resolution of the assessment in Link and Tol (2004) did not allow the investigation of places where a THC shutdown would not lead to slowed warming but to an absolute cooling that also increases damages. Finally, at the finer spatial scale used here, health impacts are modeled in a more realistic way – particularly, a shutdown of the THC causes a considerable change in cold-related cardiovascular mortality.

Overall, we find that a complete THC shutdown has a negative effect on welfare; the same is true, but to a lesser extent, for a partial THC slowdown. The best guess estimate is -0.1% of global GDP for a THC shutdown by the end of the simulation period. However, this additional effect is quite small in comparison to the total socioeconomic impact of globally changing climate conditions. In the late 21st century, the loss in global GDP incurred by a THC shutdown is approximately twice as large as the effect on GDP by THC weakening, even though this still amounts to less than 0.5% of global GDP (Fig. 5). Sensitivity analyses of the key parameters of *FUND* show estimates in the range of -0.9% GDP to +0.6% GDP. On the national scale impacts are, of course, in some regions somewhat larger. However, only in very few countries does the influence of a THC shutdown reach levels that exceed two per cent of GDP. As expected, this is the case in the Scandinavian countries, Great Britain and Ireland, and in Canada, the countries most directly affected by the changing circulation pattern in the vicinity.

Yet, it has to be noted that a scenario that leads to a THC shutdown within the 21st century such as the one used in this paper is rather unlikely to actually come true. In the 4th IPCC Assessment Report, the probability of such an event is estimated to be only 5-10% (Meehl *et al.* 2007). Also, the simulation results indicate that the magnitude of welfare impacts induced by temperature changes following a THC shutdown is quite limited compared to the consequences of greenhouse gas induced warming itself, which suggests that the latter is a much greater danger to human welfare. This evaluation, however, is likely to be considerably affected if precipitation and sea level changes following a THC shutdown are considered in the model as well, which is beyond the scope of the assessment presented here.

Our results are obviously specific to the model and scenario chosen, even though a model intercomparison of the response of the THC to climate change shows that the *HadCM3* model, on which our THC shutdown scenario is based, is well in line with other GCMs (Stouffer *et al.* 2006). However, since the THC shutdown scenario is moderate over land, other impact models applying this scenario would have to be very nonlinear to lead to drastically different results than *FUND 2.8n*.

The assessment with this model version only looks at the overall economic impacts but does not explicitly include economic sectors that are of particular importance for the North Atlantic region. E.g., fisheries are omitted. While fisheries are only a small part of the world economy – and therefore do not bias the global results much – they are particularly important for the economy of those countries that are considerably affected by a shutdown of the THC; therefore, their national results are likely to be biased. Assessments of the development of

the Barents Sea cod fishery in scenarios of global warming with and without a shutdown of the THC show that fisheries benefit from increased reproductive success and stock growth due to temperature increases of the cod spawning grounds (Link and Tol 2006, Link and Tol 2009). This positive effect is offset if the THC breaks down causing the cod fishery to become unprofitable in the long run. Nonetheless, the overall economic consequences remain rather limited. Similarly, tourism is omitted. Here, impacts mostly consist of redistribution, so the global impact would not be affected much; however, with global warming, the cool countries in the North Atlantic region would become more popular destinations of summer tourism (Hamilton *et al.* 2005). This advantage vanishes with a THC shutdown.

The simplifications made by *FUND 2.8n* introduce a bias of unknown sign and size. Our results should therefore be interpreted with the necessary caution. Future research should address these caveats. Nonetheless, while the total global effect of temperature changes of a THC shutdown appears to be limited, some national results are quite substantial. Note that the THC shutdown is the only aspect of climate change, so far, for which the impacts are larger in rich and temperate countries. The policy implications arising from this fact are also subject of future research.

Acknowledgements

The data of the THC hosing experiment and the control run have been supplied by the Climate Impacts LINK Project (DEFRA Contract EPG 1/1/154) on behalf of the Hadley Centre and U.K. Meteorological Office. Financial support by the Hamburg University Innovation Fund and the Princeton Environmental Institute is gratefully acknowledged.

References

- Bijlsma L *et al* (1996) Coastal Zones and Small Islands. In: Watson RT *et al* (eds) *Climate Change 1995: Impacts, Adaptation and Mitigation of Climate Change: Scientific Technical Analyses – Contribution of Working Group II to the Second Assessment Report of the Intergovernmental Panel on Climate Change*. Cambridge University Press, Cambridge, pp 289-324
- Bosello F, Roson R, Tol RSJ (2007) Economy-wide Estimates of the Implications of Climate Change: Sea Level Rise. *Environmental & Resource Economics* **37**:549-571
- Ceronsky M, Anthoff D, Hepburn CJ, Tol RSJ (2005) *Checking the price tag on catastrophe: the social cost of carbon under non-linear climate response*. Working Paper **FNU-87**, Research Unit Sustainability and Global Change, Hamburg University
- Darwin RF *et al* (1995) *World Agriculture and Climate Change - Economic Adaptations*. U.S. Department of Agriculture, Washington, DC
- Downing TE *et al* (1996) *Full Fuel Cycle Study: Evaluation of the Global Warming Externality for Fossil Fuel Cycles with and without CO₂ Abatement and for Two Reference Scenarios*. Environmental Change Unit, Oxford University
- Fankhauser S (1994) Protection vs. Retreat – The Economic Cost of Sea Level Rise. *Environment and Planning A* **27**:299-319
- Fankhauser S, Tol RSJ (2005) On climate change and economic growth. *Resource and Energy Economics* **27**:1-17

- Fankhauser S, Tol RSJ, Pearce DW (1997) The Aggregation of Climate Change Damages: A Welfare Theoretic Approach. *Environmental and Resource Economics* **10**:249-266
- Fankhauser S, Tol RSJ, Pearce DW (1998) Extensions and Alternatives to Climate Change Impact Valuation: On the critique of IPCC Working Group III's Impact Estimates. *Environment and Development Economics* **3**:59-81
- Fischer G *et al* (1996) Impacts of Potential Climate Change on Global and Regional Food Production and Vulnerability. In: Downing TE (ed) *Climate Change and World Food Security*. Springer, Berlin, pp 115-159
- Fischer G, Shah M, Tubiello FN, van Velhuizen H (2005) Socio-economic and climate change impacts on agriculture: an integrated assessment, 1990-2080. *Philosophical Transactions of The Royal Society B* **360**:2067-2083
- Gordon C *et al* (2000) The simulation of SST, sea-ice extents and ocean heat transport in a version of the Hadley Centre coupled model without flux adjustments. *Climate Dynamics* **16**:147-168.
- Gregory JM *et al* (2005) A model intercomparison of changes in the Atlantic thermohaline circulation in response to increasing atmospheric CO₂ concentration. *Geophysical Research Letters* **32**:L12703
- Hamilton JM, Maddison DJ, Tol RSJ (2005) The Effects of Climate Change on International Tourism. *Climate Research* **29**:255-268
- Higgins PAT, Vellinga M (2004) Ecosystem responses to abrupt climate change: teleconnections, scale and the hydrological cycle. *Climatic Change* **64**:127-142
- Hoozemans FMJ, Marchand M, Pennekamp HA (1993) *A Global Vulnerability Analysis: Vulnerability Assessment for Population, Coastal Wetlands and Rice Production on a Global Scale*, 2nd edn. Delft Hydraulics, The Netherlands
- Houghton JT *et al* (1995) *Climate Change 1995*. Cambridge, Cambridge University Press
- Kane S, Reilly JM, Tobey J (1992) An Empirical Study of the Economic Effects of Climate Change on World Agriculture. *Climatic Change* **21**:17-35
- Kattenberg A *et al* (1996) Climate models - projections of future climate. In: Houghton JT *et al* (ed) *Climate Change 1995: The Science of Climate Change*, Cambridge University Press, Cambridge, UK, pp 285-357
- Keller K, Bolker BM, Bradford DF (2004) Uncertain climate thresholds and optimal economic growth. *Journal of Environmental Economics and Management* **48**:723-741
- Köhler P, Joos F, Gerber S, Knutti R (2005) Simulated changes in vegetation distribution, land carbon storage, and atmospheric CO₂ in response to a collapse of the North Atlantic thermohaline circulation. *Climate Dynamics* **25**:689-708
- Kuhlbrodt T *et al* (2009) An Integrated Assessment of Changes in the Thermohaline Circulation. *Climatic Change* **96**:489-537
- Leggett J, Pepper WJ, Swart RJ (1992) Emissions Scenarios for the IPCC: An Update. In: Houghton JT, Callander BA, Varney SK (eds.) *Climate Change 1992 - The Supplementary Report to the IPCC Scientific Assessment*, vol 1, 1st edn, Cambridge University Press, Cambridge, UK, pp 71-95

- Lenton TM *et al* (2008) Tipping elements in the Earth's climate system. *Proceedings of the National Academy of Sciences* **105**:1786-1793
- Levermann A, Griesel A, Hofmann M, Montoya M, Rahmstorf S (2005) Dynamic sea level changes following changes in the thermohaline circulation. *Climate Dynamics* **24**:347-354
- Link PM, Tol RSJ (2004) Possible economic impacts of a shutdown of the thermohaline circulation: an application of *FUND*. *Portuguese Economic Journal* **3**:99-114
- Link PM, Tol RSJ (2006) Economic impacts on key Barents Sea fisheries arising from changes in the strength of the Atlantic thermohaline circulation. *ICES Journal of Marine Science* **63**(4):611-625
- Link PM, Tol RSJ (2009) Economic impacts on key Barents Sea fisheries arising from changes in the strength of the Atlantic thermohaline circulation. *Global Environmental Change* Doi:10.1016/j.gloenvcha.2009.07.007
- Manabe S, Stouffer RJ (1994) Multiple-Century Response of a Coupled Ocean-Atmosphere Model for an Increase of Atmospheric Carbon Dioxide. *Journal of Climate* **7**:5-23
- Martens WJM (1998) Climate change, thermal stress and mortality changes. *Social Science and Medicine* **46**(3):331-344
- Meehl GA *et al* (2007) Global climate projections. In: Solomon S *et al* (eds) *Climate Change 2007: the physical science basis. Contribution of working group I to the fourth assessment report of the intergovernmental panel on climate change*. Cambridge University Press, Cambridge, UK
- Mikolajewicz U, Gröger M, Maier-Reimer E, Schurgers G, Vizcaíno M, Winguth AME (2007) Long-term effects of anthropogenic CO₂ emissions simulated with a complex earth system model. *Climate Dynamics* **28**:599-633
- Nævdal E, Oppenheimer M (2007) The economics of the thermohaline circulation – A problem with multiple thresholds of unknown locations. *Resource and Energy Economics* **29**:262-283
- Nicholls RJ, Tol RSJ (2006) Impacts and responses to sea-level rise: a global analysis of the SRES scenarios over the twenty-first century. *Philosophical Transactions of the Royal Society A* **364**:1073-1095
- Nicholls RJ, Tol RSJ, Vafeidis AT (2008) Global estimates of the impact of a collapse of the West Antarctic ice sheet: an application of *FUND*. *Climatic Change* **91**:171-191
- Perez-Garcia JM *et al* (1997) Economic Impacts of Climatic Change on the Global Forest Sector: An Integrated Ecological/Economic Assessment. *Critical Reviews in Environmental Science and Technology* **27**:S123-S138
- Rahmstorf S, Ganopolski A (1999) Long-term global warming scenarios computed with an efficient coupled climate model. *Climatic Change* **43**:353-367
- Sohngen B, Mendelsohn R, Sedjo R (2001) A Global Model of Climate Change Impacts on Timber Markets. *Journal of Agricultural and Resource Economics* **26**(2):326-343

- Stocker TF, Schmittner A (1997) Influence of CO₂ emission rates on the stability of the thermohaline circulation. *Nature* **388**:862-865
- Stouffer RJ *et al* (2006) Investigating the Causes of the Response of the Thermohaline Circulation to Past and Future Climate Changes. *Journal of Climate* **19**:1365-1387
- Tol RSJ (1995) The Damage Costs of Climate Change – Towards More Comprehensive Calculations. *Environmental and Resource Economics* **5**:353-374
- Tol RSJ (1999) Spatial and Temporal Efficiency in Climate Change: Applications of *FUND*. *Environmental and Resource Economics* **14**:33-49
- Tol RSJ (2002a) Estimates of the damage costs of climate change. Part I: Benchmark estimates. *Environmental and Resource Economics* **21**:47-73
- Tol RSJ (2002b) Estimates of the damage costs of climate change. Part II: Dynamic estimates. *Environmental and Resource Economics* **21**:135-160
- Tol RSJ (2009) The Economic Effects of Climate Change. *Journal of Economic Perspectives* **23**:29-51
- Tsigas ME, Frisvold GB, Kuhn B (1996) Global climate change in agriculture. In: Hertel TW (ed) *Global Trade Analysis: Modelling and Applications*. Cambridge University Press, Cambridge
- Vellinga M (2004) *Robustness of climate response in HadCM3 to various perturbations of the Atlantic meridional overturning circulation*. Hadley Centre technical notes, Exeter, UK
- Vellinga M, Wood RA (2002) Global climatic impacts of a collapse of the Atlantic thermohaline circulation. *Climatic Change* **54**:251-267
- Vellinga M, Wood RA (2008) Impacts of thermohaline circulation shutdown in the twenty-first century. *Climatic Change* **91**:43-63
- Wood RA, Keen AB, Mitchell JFB, Gregory JM (1999) Changing spatial structure of the thermohaline circulation in response to atmospheric CO₂ forcing in a climate model. *Nature* **399**:572-575.
- Wood RA, Vellinga M, Thorpe RB (2003) Global warming and thermohaline circulation stability. *Philosophical Transactions of the Royal Society A* **361**:1961-1975
- Wood RA *et al* (2006) Towards a Risk Assessment for Shutdown of the Atlantic Thermohaline Circulation. In: Schellnhuber *et al* (eds) *Avoiding Dangerous Climate Change*. Cambridge University Press, Cambridge, UK
- World Health Organization (WHO) (1995) *Global burden of disease database*. http://www.who.int/topics/global_burden_of_disease/en/. Cited 8 May 2008
- Zickfeld K *et al* (2007) Expert judgments on the response of the Atlantic meridional overturning circulation to climate change. *Climatic Change* **82**:235-265

Working Papers
Research Unit Sustainability and Global Change
Hamburg University and Centre for Marine and Atmospheric Science

- Link, P.M., C.I. Ramos, U.A. Schneider, E. Schmid, J. Balkovic and R. Skalsky (2008) *The interdependencies between food and biofuel production in European agriculture - an application of EUFASOM*, **FNU-165**
- Schneider, U.A. and P. Smith (2008) *Greenhouse Gas Emission Mitigation and Energy Intensities in Agriculture*, **FNU-164** (submitted)
- Maddison, D. and K. Rehdanz (2008) *Carbon Emissions and Economic Growth: Homogeneous Causality in Heterogeneous Panels*, **FNU-163** (submitted)
- Osmani, D. and R.S.J. Tol (2008) *Evolution in time of Farsightedly Stable Coalitions: An Application of FUND*, **FNU-162** (submitted)
- Schneider U.A., P. Havlik, E. Schmid, I. Huck, M. Obersteiner, T. Sauer, C. Lull, R. Skalsky, J. Balkovic, S. Fritz, B. Dorin, and S. Leduc (2008), *Global interdependencies between population, water, food, and environmental policies*, **FNU-161** (submitted)
- Calzadilla, A, K. Rehdanz and R.S.J. Tol (2008), *Water Scarcity and the Impact of Improved Irrigation Management: A CGE Analysis*, **FNU-160** (submitted)
- Schleupner, C. and U.A. Schneider (2008), *A cost-effective spatial wetland site-selection model for European biotope restoration*, **FNU-159** (submitted)
- Schleupner, C. and U.A. Schneider (2008), *Evaluation of European wetland restoration potentials by considering economic costs under different policy options*, **FNU-158** (submitted)
- Bigano, A., J.M. Hamilton and R.S.J. Tol (2008), *Climate Change and Tourism in the Mediterranean*, **FNU-157** (submitted).
- Schneider U.A., J. Balkovic, S. De Cara, O. Franklin, S. Fritz, P. Havlik, I. Huck, K. Jantke, A.M.I. Kallio, F. Kraxner, A. Moiseyev, M. Obersteiner, C.I. Ramos, C. Schleupner, E. Schmid, D. Schwab, R. Skalsky (2008), *The European Forest and Agricultural Sector Optimization Model – EUFASOM*, **FNU-156**.
- Schneider, U.A. and P. Kumar (2008), *Greenhouse Gas Emission Mitigation through Agriculture*, **FNU-155**.
- Tol, R.S.J. and S. Wagner (2008), *Climate Change and Violent Conflict in Europe over the Last Millennium*. **FNU-154** (submitted).
- Schleupner, C. (2007). *Regional Spatial Planning Assessments for Adaptation to accelerated sea level rise – an application to Martinique’s coastal zone*. **FNU-153** (submitted).
- Schleupner, C. (2007). *Evaluating the Regional Coastal Impact Potential to Erosion and Inundation caused by Extreme Weather Events and Tsunamis*. **FNU-152** (submitted).
- Rehdanz, K. (2007), *Species diversity and human well-being: A spatial econometric approach*, **FNU-151** (submitted).
- Osmani, D. and R.S.J. Tol (2007), *A short note on joint welfare maximization assumption*, **FNU-150** (submitted).
- Osmani, D. and R.S.J. Tol (2007), *Towards Farsightedly Stable International Environmental Agreements: Part Two*, **FNU-149** (submitted).
- Ruane, F.P. and R.S.J. Tol (2007), *Academic Quality, Power and Stability: An Application to Economics in the Republic of Ireland*, **FNU-148** (submitted).
- Tol, R.S.J. (2007), *A Rational, Successive g-Index Applied to Economics Departments in Ireland*, **FNU-147** (forthcoming, *Journal of Informetrics*).
- Tol, R.S.J. (2007), *Of the h-Index and its Alternatives: An Application to the 100 Most Prolific Economists*, **FNU-146** (forthcoming, *Scientometrics*).
- Yohe, G.W. and R.S.J. Tol (2007), *Precaution and a Dismal Theorem: Implications for Climate Policy and Climate Research*, **FNU-145** (submitted).
- Tol, R.S.J. (2007), *The Social Cost of Carbon: Trends, Outliers and Catastrophes*, **FNU-144** (submitted, *economics*).
- Tol, R.S.J. (2007), *The Matthew Effect Defined and Tested for the 100 Most Prolific Economists*, **FNU-143** (submitted, *Journal of the American Society for Information Science and Technology*).
- Berritella, M., K. Rehdanz, R.S.J. Tol and J. Zhang (2007), *The Impact of Trade Liberalisation on Water Use: A Computable General Equilibrium Analysis*, **FNU-142** (forthcoming, *Journal of Economic Integration*).
- Lyons, S., K. Mayor and R.S.J. Tol (2007), *Convergence of Consumption Patterns during Macroeconomic Transition: A Model of Demand in Ireland and the OECD*, **FNU-141** (submitted).
- Osmani, D. and R.S.J. Tol (2007), *Towards Farsightedly Stable International Environmental Agreements*, **FNU-140** (submitted).
- Rehdanz, K. and S. Stöwhase (2007), *Cost Liability and Residential Space Heating Expenditures of Welfare Recipients in Germany*, **FNU-139** (submitted).
- Schleupner, C. and P.M. Link (2007), *Potential impacts on bird habitats in Eiderstedt (Schleswig-Holstein) caused by agricultural land use changes*, **FNU-138** (*Applied Geography*, doi: 10.1016/j.apgeog.2008.04.001).
- Link, P.M. and C. Schleupner (2007), *Agricultural land use changes in Eiderstedt: historic developments and future plans*, **FNU-137** (*Coastline Reports*, **9**, 197-206).
- Anthoff, D., R.J. Nicholls and R.S.J. Tol (2007), *Global Sea Level Rise and Equity Weighting*, **FNU-136** (submitted).
- Schleupner, C. (2007), *Wetland Distribution Modelling for Optimal Land Use Options in Europe*, **FNU-135** (submitted).
- Mayor, K. and R.S.J. Tol (2007), *The Impact of the EU-US Open Skies Agreement on International Travel and Carbon Dioxide Emissions*, **FNU-134** (*Journal of Air Transport Management*, **14**, 1-7).

Schneider, U.A., M. Obersteiner, and E. Schmid (2007), *Agricultural adaptation to climate policies and technical change*, **FNU-133** (submitted).

Lychnaras, V. and U.A. Schneider (2007), *Dynamic Economic Analysis of Perennial Energy Crops - Effects of the CAP Reform on Biomass Supply in Greece*, **FNU-132** (submitted).

Mayor, K. and R.S.J. Tol (2007), *The Impact of the UK Aviation Tax on Carbon Dioxide Emissions and Visitor Numbers*, **FNU-131** (*Transport Policy*, **14** (6), 407-513).

Ruane, F. and R.S.J. Tol (2007), *Refined (Successive) h-indices: An Application to Economics in the Republic of Ireland*, **FNU-130** (forthcoming, *Scientometrics*).

Yohe, G.W., R.S.J. Tol and D. Murphy (2007), *On Setting Near-Term Climate Policy as the Dust Begins to Settle: The Legacy of the Stern Review*, **FNU-129** (*Energy & Environment*, **18** (5), 621-633).

Maddison, D.J. and K. Rehdanz (2007), *Happiness over Space and Time*, **FNU-128** (submitted).

Anthoff, D. and R.S.J. Tol (2007), *On International Equity Weights and National Decision Making on Climate Change*, **FNU-127** (submitted).

de Bruin, K.C., R.B. Dellink and R.S.J. Tol (2007), *AD-DICE: An Implementation of Adaptation in the DICE Model*, **FNU-126** (submitted, *Climatic Change*).

Tol, R.S.J. and G.W. Yohe (2007), *The Stern Review: A Deconstruction*, **FNU-125** (submitted).

Keller, K., L.I. Miltich, A. Robinson and R.S.J. Tol (2007), *How Overconfident Are Current Projections of Anthropogenic Carbon Dioxide Emissions?*, **FNU-124** (submitted, *Energy Journal*).

Cowie, A., U.A. Schneider and L. Montanarella (2006), *Potential synergies between existing multilateral environmental agreements in the implementation of Land Use, Land Use Change and Forestry activities*, **FNU-123** (submitted).

Kuik, O.J., B. Buchner, M. Catenacci, A. Gorla, E. Karakaya and R.S.J. Tol (2006), *Methodological Aspects of Recent Climate Change Damage Cost Studies*, **FNU-122** (forthcoming, *Climate Policy*).

Anthoff, D., C. Hepburn and R.S.J. Tol (2006), *Equity Weighting and the Marginal Damage Costs of Climate Change*, **FNU-121** (submitted, *Ecological Economics*).

Tol, R.S.J. (2006), *The Impact of a Carbon Tax on International Tourism*, **FNU-120** (*Transportation Research D: Transport and the Environment*, **12** (2), 129-142).

Rehdanz, K. and D.J. Maddison (2006), *Local Environmental Quality and Life Satisfaction in Germany*, **FNU-119** (forthcoming, *Ecological Economics*).

Tanaka, K., R.S.J. Tol, D. Rokityanskiy, B.C. O'Neill and M. Obersteiner (2006), *Evaluating Global Warming Potentials as Historical Temperature Proxies: An Application of ACC2 Inverse Calculation*, **FNU-118** (submitted, *Climatic Change*).

Berritella, M., K. Rehdanz and R.S.J. Tol (2006), *The Economic Impact of the South-North Water Transfer Project in China: A Computable General Equilibrium Analysis*, **FNU-117** (submitted, *China Economic Review*).

Tol, R.S.J. (2006), *Why Worry about Climate Change? A Research Agenda*, **FNU-116** (forthcoming, *Environmental Values*).

Hamilton, J.M. and R.S.J. Tol (2006), *The Impact of Climate Change on Tourism in Germany, the UK and Ireland: A Simulation Study*, **FNU-115** (*Regional Environmental Change*, **7** (3), 161-172).

Schwoon, M., F. Alkemade, K. Frenken and M.P. Hekkert (2006), *Flexible transition strategies towards future well-to-wheel chains: an evolutionary modelling approach*, **FNU-114** (submitted).

Ronneberger, K., L. Criscuolo, W. Knorr and R.S.J. Tol (2006), *KLUM@LPJ: Integrating dynamic land-use decisions into a dynamic global vegetation and crop growth model to assess the impacts of a changing climate. A feasibility study for Europe*, **FNU-113** (submitted).

Schwoon, M. (2006), *Learning-by-doing, Learning Spillovers and the Diffusion of Fuel Cell Vehicles*, **FNU-112** (submitted).

Strzepek, K.M., G.W. Yohe, R.S.J. Tol and M. Rosegrant (2006), *The Value of the High Aswan Dam to the Egyptian Economy*, **FNU-111** (forthcoming, *Ecological Economics*).

Schwoon, M. (2006), *A Tool to Optimize the Initial Distribution of Hydrogen Filling Stations*, **FNU-110** (*Transportation Research D: Transport and the Environment*, **12** (2), 70-82).

Tol, R.S.J., K.L. Ebi and G.W. Yohe (2006), *Infectious Disease, Development, and Climate Change: A Scenario Analysis*, **FNU-109** (forthcoming, *Environment and Development Economics*).

Lau, M.A. (2006), *An analysis of the travel motivation of tourists from the People's Republic of China*, **FNU-108** (submitted).

Lau, M.A. and R.S.J. Tol (2006), *The Chinese are coming – An analysis of the preferences of Chinese holiday makers at home and abroad*, **FNU-107** (submitted).

Röckmann, C., R.S.J. Tol, U.A. Schneider, and M.A. St.John (2006), *Rebuilding the Eastern Baltic cod stock under environmental change - Part II: The economic viability of a marine protected area*, **FNU-106** (forthcoming, *Natural Resources Modelling*).

Ronneberger, K., M. Berritella, F. Bosello and R.S.J. Tol (2006), *KLUM@GTAP: Introducing biophysical aspects of land-use decisions into a general equilibrium model. A coupling experiment*, **FNU-105** (submitted).

Link, P.M. and Tol, R.S.J. (2006), *Economic impacts on key Barents Sea fisheries arising from changes in the strength of the Atlantic thermohaline circulation*, **FNU-104** (submitted).

Link, P.M. and Tol, R.S.J. (2006), *Estimation of the economic impact of temperature changes induced by a shutdown of the thermohaline circulation: an application of FUND*, **FNU-103** (submitted, *Climatic Change*).

Tol, R.S.J. (2006), *Integrated Assessment Modelling*, **FNU-102** (submitted).

Tol, R.S.J. (2006), *Carbon Dioxide Emission Scenarios for the USA*, **FNU-101** (*Energy Policy*, **35**, 5310-5326).

Tol, R.S.J., S.W. Pacala and R.H. Socolow (2006), *Understanding Long-Term Energy Use and Carbon Dioxide Emissions in the USA*, **FNU-100** (submitted).

Sesabo, J.K., H. Lang and R.S.J. Tol (2006), *Perceived Attitude and Marine Protected Areas (MPAs) establishment: Why households' characteristics matters in Coastal resources conservation initiatives in Tanzania*, **FNU-99** (submitted).

- Tol, R.S.J. (2006), *The Polluter Pays Principle and Cost-Benefit Analysis of Climate Change: An Application of FUND*, **FNU-98** (submitted)
- Tol, R.S.J. and G.W. Yohe (2006), *The Weakest Link Hypothesis for Adaptive Capacity: An Empirical Test*, **FNU-97** (*Global Environmental Change*, **17**, 218-227)
- Berritella, M., K. Rehdanz, R. Roson and R.S.J. Tol (2005), *The Economic Impact of Water Pricing: A Computable General Equilibrium Analysis*, **FNU-96** (forthcoming, *Water Policy*)
- Sesabo, J.K. and R. S. J. Tol (2005), *Technical Efficiency and Small-scale Fishing Households in Tanzanian coastal Villages: An Empirical Analysis*, **FNU-95** (submitted)
- Lau, M.A. (2005), *Adaptation to Sea-level Rise in the People's Republic of China – Assessing the Institutional Dimension of Alternative Organisational Frameworks*, **FNU-94** (submitted)
- Berritella, M., A.Y. Hoekstra, K. Rehdanz, R. Roson and R.S.J. Tol (2005), *The Economic Impact of Restricted Water Supply: A Computable General Equilibrium Analysis*, **FNU-93** (*Water Research*, **42**, 1799-1813)
- Tol, R.S.J. (2005), *Europe's Long Term Climate Target: A Critical Evaluation*, **FNU-92** (*Energy Policy*, **35** (1), 424-434)
- Hamilton, J.M. (2005), *Coastal Landscape and the Hedonic Price of Accommodation*, **FNU-91** (*Ecological Economics*, **62** (3-4), 594-602)
- Hamilton, J.M., D.J. Maddison and R.S.J. Tol (2005), *Climate Preferences and Destination Choice: A Segmentation Approach*, **FNU-90** (submitted)
- Zhou, Y. and R.S.J. Tol (2005), *Valuing the Health Impacts from Particulate Air Pollution in Tianjin*, **FNU-89** (submitted)
- Röckmann, C. (2005), *International Cooperation for Sustainable Fisheries in the Baltic Sea*, **FNU-88** (forthcoming, in Ehlers, P./Lagoni, R. (Eds.): *International Maritime Organisations and their Contribution towards a Sustainable Marine Development*)
- Ceronsky, M., D. Anthoff, C. Hepburn and R.S.J. Tol (2005), *Checking the price tag on catastrophe: The social cost of carbon under non-linear climate response* **FNU-87** (submitted, *Climatic Change*)
- Zandersen, M. and R.S.J. Tol (2005), *A Meta-analysis of Forest Recreation Values in Europe*, **FNU-86** (submitted, *Journal of Forest Economics*)
- Heinzow, T., R.S.J. Tol and B. Brümmer (2005), *Offshore-Windstromerzeugung in der Nordsee -eine ökonomische und ökologische Sackgasse?* **FNU-85** (*Energiewirtschaftliche Tagesfragen*, **56** (3), 68-73)
- Röckmann, C., U.A. Schneider, M.A. St.John, and R.S.J. Tol (2005), *Rebuilding the Eastern Baltic cod stock under environmental change - a preliminary approach using stock, environmental, and management constraints*, **FNU-84** (*Natural Resources Modelling*, **20** (2), 223-262)
- Tol, R.S.J. and G.W. Yohe (2005), *Infinite uncertainty, forgotten feedbacks, and cost-benefit analysis of climate policy*, **FNU-83** (*Climatic Change*, **83**, 429-442)
- Osmani, D. and R.S.J. Tol (2005), *The case of two self-enforcing international agreements for environmental protection*, **FNU-82** (submitted)
- Schneider, U.A. and B.A. McCarl, (2005), *Appraising Agricultural Greenhouse Gas Mitigation Potentials: Effects of Alternative Assumptions*, **FNU-81** (submitted)
- Zandersen, M., M. Termansen, and F.S. Jensen, (2005), *Valuing new forest sites over time: the case of afforestation and recreation in Denmark*, **FNU-80** (submitted)
- Guillerminet, M.-L. and R.S.J. Tol (2005), *Decision making under catastrophic risk and learning: the case of the possible collapse of the West Antarctic Ice Sheet*, **FNU-79** (submitted, *Climatic Change*)
- Nicholls, R.J., R.S.J. Tol and A.T. Vafeidis (2005), *Global estimates of the impact of a collapse of the West Antarctic Ice Sheet: An application of FUND*, **FNU-78** (forthcoming, *Climatic Change*)
- Lonsdale, K., T.E. Downing, R.J. Nicholls, D. Parker, A.T. Vafeidis, R. Dawson and J.W. Hall (2005), *Plausible responses to the threat of rapid sea-level rise for the Thames Estuary*, **FNU-77** (submitted, *Climatic Change*)
- Poumadère, M., C. Mays, G. Pfeifle with A.T. Vafeidis (2005), *Worst Case Scenario and Stakeholder Group Decision: A 5-6 Meter Sea Level Rise in the Rhone Delta, France*, **FNU-76** (submitted, *Climatic Change*)
- Olsthoorn, A.A., P.E. van der Werff, L.M. Bouwer and D. Huitema (2005), *Neo-Atlantis: Dutch Responses to Five Meter Sea Level Rise*, **FNU-75** (forthcoming, *Climatic Change*)
- Toth, F.L. and E. Hizsnyik (2005), *Managing the inconceivable: Participatory assessments of impacts and responses to extreme climate change*, **FNU-74** (submitted, *Climatic Change*)
- Kasperson, R.E. M.T. Bohn and R. Goble (2005), *Assessing the risks of a future rapid large sea level rise: A review*, **FNU-73** (submitted, *Climatic Change*)
- Schleupner, C. (2005), *Evaluation of coastal squeeze and beach reduction and its consequences for the Caribbean island Martinique*, **FNU-72** (submitted)
- Schleupner, C. (2005), *Spatial Analysis As Tool for Sensitivity Assessment of Sea Level Rise Impacts on Martinique*, **FNU-71** (submitted)
- Sesabo, J.K. and R.S.J. Tol (2005), *Factors affecting Income Strategies among households in Tanzanian Coastal Villages: Implication for Development-Conservation Initiatives*, **FNU-70** (submitted)
- Fisher, B.S., G. Jakeman, H.M. Pant, M. Schwoon. and R.S.J. Tol (2005), *CHIMP: A Simple Population Model for Use in Integrated Assessment of Global Environmental Change*, **FNU-69** (*Integrated Assessment Journal*, **6** (3), 1-33)
- Rehdanz, K. and R.S.J. Tol (2005), *A No Cap But Trade Proposal for Greenhouse Gas Emission Reduction Targets for Brazil, China and India*, **FNU-68** (submitted, *Climate Policy*)
- Zhou, Y. and R.S.J. Tol (2005), *Water Use in China's Domestic, Industrial and Agricultural Sectors: An Empirical Analysis*, **FNU-67** (*Water Science and Technology: Water Supply*, **5** (6), 85-93)
- Rehdanz, K. (2005), *Determinants of Residential Space Heating Expenditures in Germany*, **FNU-66** (*Energy Economics* **29**)

- Ronneberger, K., R.S.J. Tol and U.A. Schneider (2005), *KLUM: A Simple Model of Global Agricultural Land Use as a Coupling Tool of Economy and Vegetation*, **FNU-65** (submitted, *Climatic Change*)
- Tol, R.S.J. (2005), *The Benefits of Greenhouse Gas Emission Reduction: An Application of FUND*, **FNU-64** (submitted, *Global Environmental Change*)
- Röckmann, C., M.A. St.John, U.A. Schneider, F.W. Köster, F.W. and R.S.J. Tol (2006), *Testing the implications of a permanent or seasonal marine reserve on the population dynamics of Eastern Baltic cod under varying environmental conditions*, **FNU-63-revised** (*Fisheries Research*, **85**, 1-13)
- Letsoalo, A., J. Blignaut, T. de Wet, M. de Wit, S. Hess, R.S.J. Tol and J. van Heerden (2005), *Triple Dividends of Water Consumption Charges in South Africa*, **FNU-62** (*Water Resources Research*, **43**, W05412)
- Zandersen, M., Termansen, M., Jensen, F.S. (2005), *Benefit Transfer over Time of Ecosystem Values: the Case of Forest Recreation*, **FNU-61** (submitted)
- Rehdanz, K., Jung, M., Tol, R.S.J. and Wetzel, P. (2005), *Ocean Carbon Sinks and International Climate Policy*, **FNU-60** (*Energy Policy*, **34**, 3516-3526)
- Schwoon, M. (2005), *Simulating the Adoption of Fuel Cell Vehicles*, **FNU-59** (submitted)
- Bigano, A., J.M. Hamilton and R.S.J. Tol (2005), *The Impact of Climate Change on Domestic and International Tourism: A Simulation Study*, **FNU-58** (submitted, *Integrated Assessment Journal*)
- Bosello, F., R. Roson and R.S.J. Tol (2004), *Economy-wide estimates of the implications of climate change: Human health*, **FNU-57** (*Ecological Economics*, **58**, 579-591)
- Hamilton, J.M. and M.A. Lau (2004) *The role of climate information in tourist destination choice decision-making*, **FNU-56** (forthcoming, Gössling, S. and C.M. Hall (eds.), *Tourism and Global Environmental Change*. London: Routledge)
- Bigano, A., J.M. Hamilton and R.S.J. Tol (2004), *The impact of climate on holiday destination choice*, **FNU-55** (*Climatic Change*, **76** (3-4), 389-406)
- Bigano, A., J.M. Hamilton, M. Lau, R.S.J. Tol and Y. Zhou (2004), *A global database of domestic and international tourist numbers at national and subnational level*, **FNU-54** (*International Journal of Tourism Research*, **9**, 147-174)
- Susandi, A. and R.S.J. Tol (2004), *Impact of international emission reduction on energy and forestry sector of Indonesia*, **FNU-53** (submitted)
- Hamilton, J.M. and R.S.J. Tol (2004), *The Impact of Climate Change on Tourism and Recreation*, **FNU-52** (forthcoming, Schlesinger et al. (eds.), Cambridge University Press)
- Schneider, U.A. (2004), *Land Use Decision Modelling with Soil Status Dependent Emission Rates*, **FNU-51** (submitted)
- Link, P.M., U.A. Schneider and R.S.J. Tol (2004), *Economic impacts of changes in fish population dynamics: the role of the fishermen's harvesting strategies*, **FNU-50** (submitted)
- Berritella, M., A. Bigano, R. Roson and R.S.J. Tol (2004), *A General Equilibrium Analysis of Climate Change Impacts on Tourism*, **FNU-49** (*Tourism Management*, **27** (5), 913-924)
- Tol, R.S.J. (2004), *The Double Trade-Off between Adaptation and Mitigation for Sea Level Rise: An Application of FUND*, **FNU-48** (*Mitigation and Adaptation Strategies for Global Change*, **12** (5), 741-753)
- Erdil, E. and Yetkiner, I.H. (2004), *A Panel Data Approach for Income-Health Causality*, **FNU-47**
- Tol, R.S.J. (2004), *Multi-Gas Emission Reduction for Climate Change Policy: An Application of FUND*, **FNU-46** (*Energy Journal* (Multi-Greenhouse Gas Mitigation and Climate Policy Special Issue), 235-250)
- Tol, R.S.J. (2004), *Exchange Rates and Climate Change: An Application of FUND*, **FNU-45** (*Climatic Change*, **75**, 59-80)
- Gaitan, B., Tol, R.S.J., and Yetkiner, I. Hakan (2004), *The Hotelling's Rule Revisited in a Dynamic General Equilibrium Model*, **FNU-44** (submitted)
- Rehdanz, K. and Tol, R.S.J. (2004), *On Multi-Period Allocation of Tradable Emission Permits*, **FNU-43** (submitted)
- Link, P.M. and Tol, R.S.J. (2004), *Possible Economic Impacts of a Shutdown of the Thermohaline Circulation: An Application of FUND*, **FNU-42** (*Portuguese Economic Journal*, **3**, 99-114)
- Zhou, Y. and Tol, R.S.J. (2004), *Evaluating the costs of desalination and water transport*, **FNU-41** (*Water Resources Research*, **41** (3), W03003)
- Lau, M. (2004), *Küstenzonenmanagement in der Volksrepublik China und Anpassungsstrategien an den Meeresspiegelanstieg*, **FNU-40** (*Coastline Reports* (1), 213-224.)
- Rehdanz, K. and D.J. Maddison (2004), *The Amenity Value of Climate to German Households*, **FNU-39** (submitted)
- Bosello, F., Lazzarin, M., Roson, R. and Tol, R.S.J. (2004), *Economy-wide Estimates of the Implications of Climate Change: Sea Level Rise*, **FNU-38** (*Environmental and Resource Economics*, **37**, 549-571)
- Schwoon, M. and Tol, R.S.J. (2004), *Optimal CO₂-abatement with socio-economic inertia and induced technological change*, **FNU-37** (*Energy Journal*, **27** (4), 25-60)
- Hamilton, J.M., Maddison, D.J. and Tol, R.S.J. (2004), *The Effects of Climate Change on International Tourism*, **FNU-36** (*Climate Research*, **29**, 255-268)
- Hansen, O. and R.S.J. Tol (2003), *A Refined Inglehart Index of Materialism and Postmaterialism*, **FNU-35** (submitted)
- Heinzow, T. and R.S.J. Tol (2003), *Prediction of Crop Yields across four Climate Zones in Germany: An Artificial Neural Network Approach*, **FNU-34** (submitted, *Climate Research*)
- Tol, R.S.J. (2003), *Adaptation and Mitigation: Trade-offs in Substance and Methods*, **FNU-33** (*Environmental Science and Policy*, **8** (6), 572-578)
- Tol, R.S.J. and T. Heinzow (2003), *Estimates of the External and Sustainability Costs of Climate Change*, **FNU-32** (submitted)
- Hamilton, J.M., Maddison, D.J. and Tol, R.S.J. (2003), *Climate change and international tourism: a simulation study*, **FNU-31** (*Global Environmental Change*, **15** (3), 253-266)
- Link, P.M. and R.S.J. Tol (2003), *Economic impacts of changes in population dynamics of fish on the fisheries in the Barents Sea*, **FNU-30** (*ICES Journal of Marine Science*, **63** (4), 611-625)

- Link, P.M. (2003), *Auswirkungen populationsdynamischer Veränderungen in Fischbeständen auf die Fischereiwirtschaft in der Barentssee*, **FNU-29** (*Essener Geographische Arbeiten*, **35**, 179-202)
- Lau, M. (2003), *Coastal Zone Management in the People's Republic of China – An Assessment of Structural Impacts on Decision-making Processes*, **FNU-28** (*Ocean & Coastal Management*, No. 48 (2005), pp. 115-159.)
- Lau, M. (2003), *Coastal Zone Management in the People's Republic of China – A Unique Approach?*, **FNU-27** (*China Environment Series*, Issue 6, pp. 120-124; <http://www.wilsoncenter.org/topics/pubs/7-commentaries.pdf>)
- Roson, R. and R.S.J. Tol (2003), *An Integrated Assessment Model of Economy-Energy-Climate – The Model Wiagem: A Comment*, **FNU-26** (*Integrated Assessment*, **6** (1), 75-82)
- Yetkiner, I.H. (2003), *Is There An Indispensable Role For Government During Recovery From An Earthquake? A Theoretical Elaboration*, **FNU-25**
- Yetkiner, I.H. (2003), *A Short Note On The Solution Procedure Of Barro And Sala-i-Martin for Restoring Constancy Conditions*, **FNU-24**
- Schneider, U.A. and B.A. McCarl (2003), *Measuring Abatement Potentials When Multiple Change is Present: The Case of Greenhouse Gas Mitigation in U.S. Agriculture and Forestry*, **FNU-23** (submitted)
- Zhou, Y. and Tol, R.S.J. (2003), *The Implications of Desalination to Water Resources in China - an Economic Perspective*, **FNU-22** (*Desalination*, **163** (4), 225-240)
- Yetkiner, I.H., de Vaal, A., and van Zon, A. (2003), *The Cyclical Advancement of Drastic Technologies*, **FNU-21**
- Rehdanz, K. and Maddison, D. (2003) *Climate and Happiness*, **FNU-20** (*Ecological Economics*, **52** 111-125)
- Tol, R.S.J., (2003), *The Marginal Costs of Carbon Dioxide Emissions: An Assessment of the Uncertainties*, **FNU-19** (*Energy Policy*, **33** (16), 2064-2074).
- Lee, H.C., B.A. McCarl, U.A. Schneider, and C.C. Chen (2003), *Leakage and Comparative Advantage Implications of Agricultural Participation in Greenhouse Gas Emission Mitigation*, **FNU-18** (submitted).
- Schneider, U.A. and B.A. McCarl (2003), *Implications of a Carbon Based Energy Tax for U.S. Agriculture*, **FNU-17** (submitted).
- Tol, R.S.J. (2002), *Climate, Development, and Malaria: An Application of FUND*, **FNU-16** (forthcoming, *Climatic Change*).
- Hamilton, J.M. (2003), *Climate and the Destination Choice of German Tourists*, **FNU-15** (revised and submitted).
- Tol, R.S.J. (2002), *Technology Protocols for Climate Change: An Application of FUND*, **FNU-14** (*Climate Policy*, **4**, 269-287).
- Rehdanz, K (2002), *Hedonic Pricing of Climate Change Impacts to Households in Great Britain*, **FNU-13** (*Climatic Change* **74**).
- Tol, R.S.J. (2002), *Emission Abatement Versus Development As Strategies To Reduce Vulnerability To Climate Change: An Application Of FUND*, **FNU-12** (*Environment and Development Economics*, **10**, 615-629).
- Rehdanz, K. and Tol, R.S.J. (2002), *On National and International Trade in Greenhouse Gas Emission Permits*, **FNU-11** (*Ecological Economics*, **54**, 397-416).
- Fankhauser, S. and Tol, R.S.J. (2001), *On Climate Change and Growth*, **FNU-10** (*Resource and Energy Economics*, **27**, 1-17).
- Tol, R.S.J. and Verheyen, R. (2001), *Liability and Compensation for Climate Change Damages – A Legal and Economic Assessment*, **FNU-9** (*Energy Policy*, **32** (9), 1109-1130).
- Yohe, G. and R.S.J. Tol (2001), *Indicators for Social and Economic Coping Capacity – Moving Toward a Working Definition of Adaptive Capacity*, **FNU-8** (*Global Environmental Change*, **12** (1), 25-40).
- Kemfert, C., W. Lise and R.S.J. Tol (2001), *Games of Climate Change with International Trade*, **FNU-7** (*Environmental and Resource Economics*, **28**, 209-232).
- Tol, R.S.J., W. Lise, B. Morel and B.C.C. van der Zwaan (2001), *Technology Development and Diffusion and Incentives to Abate Greenhouse Gas Emissions*, **FNU-6** (submitted).
- Kemfert, C. and R.S.J. Tol (2001), *Equity, International Trade and Climate Policy*, **FNU-5** (*International Environmental Agreements*, **2**, 23-48).
- Tol, R.S.J., Downing T.E., Fankhauser S., Richels R.G. and Smith J.B. (2001), *Progress in Estimating the Marginal Costs of Greenhouse Gas Emissions*, **FNU-4**. (*Pollution Atmosphérique – Numéro Spécial: Combien Vaut l'Air Propre?*, 155-179).
- Tol, R.S.J. (2000), *How Large is the Uncertainty about Climate Change?*, **FNU-3** (*Climatic Change*, **56** (3), 265-289).
- Tol, R.S.J., S. Fankhauser, R.G. Richels and J.B. Smith (2000), *How Much Damage Will Climate Change Do? Recent Estimates*, **FNU-2** (*World Economics*, **1** (4), 179-206)
- Lise, W. and R.S.J. Tol (2000), *Impact of Climate on Tourism Demand*, **FNU-1** (*Climatic Change*, **55** (4), 429-449).