

A&A 518, L67 (2010)  
 DOI: [10.1051/0004-6361/201014613](https://doi.org/10.1051/0004-6361/201014613)  
 © ESO 2010

**Astronomy  
&  
Astrophysics**  
 Special feature

*Herschel: the first science highlights*

LETTER TO THE EDITOR

## PACS and SPIRE photometer maps of M 33: First results of the *HERschel* M 33 Extended Survey (HERM33ES)<sup>★</sup>

C. Kramer<sup>1</sup>, C. Buchbender<sup>1</sup>, E. M. Xilouris<sup>2</sup>, M. Boquien<sup>3</sup>, J. Braine<sup>4</sup>, D. Calzetti<sup>3</sup>, S. Lord<sup>5</sup>, B. Mookerjee<sup>6</sup>, G. Quintana-Lacaci<sup>1</sup>, M. Relaño<sup>7</sup>, G. Stacey<sup>8</sup>, F. S. Tabatabaei<sup>9</sup>, S. Verley<sup>10</sup>, S. Aalto<sup>11</sup>, S. Akras<sup>2</sup>, M. Albrecht<sup>12</sup>, S. Anderl<sup>12</sup>, R. Beck<sup>9</sup>, F. Bertoldi<sup>12</sup>, F. Combes<sup>13</sup>, M. Dumke<sup>14</sup>, S. Garcia-Burillo<sup>15</sup>, M. Gonzalez<sup>1</sup>, P. Gratier<sup>4</sup>, R. Güsten<sup>9</sup>, C. Henkel<sup>9</sup>, F.P. Israel<sup>16</sup>, B. Koribalski<sup>17</sup>, A. Lundgren<sup>14</sup>, J. Martin-Pintado<sup>18</sup>, M. Röllig<sup>19</sup>, E. Rosolowsky<sup>20</sup>, K. F. Schuster<sup>21</sup>, K. Sheth<sup>22</sup>, A. Sievers<sup>1</sup>, J. Stutzki<sup>19</sup>, R. P. J. Tilanus<sup>23</sup>, F. van der Tak<sup>24</sup>, P. van der Werf<sup>16</sup>, and M. C. Wiedner<sup>13</sup>

(Affiliations are available in the online edition)

Received 31 March 2010 / Accepted 3 May 2010

### ABSTRACT

**Context.** Within the framework of the HERM33ES key program, we are studying the star forming interstellar medium in the nearby, metal-poor spiral galaxy M 33, exploiting the high resolution and sensitivity of *Herschel*.

**Aims.** We use PACS and SPIRE maps at 100, 160, 250, 350, and 500  $\mu\text{m}$  wavelength, to study the variation of the spectral energy distributions (SEDs) with galacto-centric distance.

**Methods.** Detailed SED modeling is performed using azimuthally averaged fluxes in elliptical rings of 2 kpc width, out to 8 kpc galacto-centric distance. Simple isothermal and two-component grey body models, with fixed dust emissivity index, are fitted to the SEDs between 24  $\mu\text{m}$  and 500  $\mu\text{m}$  using also MIPS/*Spitzer* data, to derive first estimates of the dust physical conditions.

**Results.** The far-infrared and submillimeter maps reveal the branched, knotted spiral structure of M 33. An underlying diffuse disk is seen in all SPIRE maps (250–500  $\mu\text{m}$ ). Two component fits to the SEDs agree better than isothermal models with the observed, total and radially averaged flux densities. The two component model, with  $\beta$  fixed at 1.5, best fits the global and the radial SEDs. The cold dust component clearly dominates; the relative mass of the warm component is less than 0.3% for all the fits. The temperature of the warm component is not well constrained and is found to be about  $60 \text{ K} \pm 10 \text{ K}$ . The temperature of the cold component drops significantly from  $\sim 24 \text{ K}$  in the inner 2 kpc radius to 13 K beyond 6 kpc radial distance, for the best fitting model. The gas-to-dust ratio for  $\beta = 1.5$ , averaged over the galaxy, is higher than the solar value by a factor of 1.5 and is roughly in agreement with the subsolar metallicity of M 33.

**Key words.** galaxies: individual: M 33 – galaxies: evolution – Local Group – galaxies: ISM – galaxies: evolution – dust, extinction

### 1. Introduction

In the local universe, most of the observable matter is contained in stellar objects that shape the morphology and dynamics of their “parent” galaxy. In view of the dominance of stellar mass, a better understanding of star formation and its consequences is mandatory. There exists a large number of high spatial resolution studies related to individual star forming regions of the Milky Way, as well as of low linear resolution studies of external galaxies. For a comprehensive view onto the physical and chemical processes driving star formation and galactic evolution it is, however, essential to combine local conditions affecting individual star formation with properties only becoming apparent on global scales.

At a distance of 840 kpc (Freedman et al. 1991), M 33 is the only nearby, gas rich disk galaxy that allows a coherent survey at high spatial resolution. It does not suffer from any distance ambiguity, as studies of the Milky Way do, and it is not as inclined as the Andromeda galaxy. M 33 is a regular, relatively unperturbed

disk galaxy, as opposed to the nearer Magellanic Clouds, which are highly disturbed irregular dwarf galaxies.

M 33 is among the best studied galaxies; it has been observed extensively at radio, millimeter, far-infrared (FIR), optical, and X-ray wavelengths, ensuring a readily accessible multi-wavelength database. These data trace the various phases of the interstellar medium (ISM), the hot and diffuse, the warm and atomic, as well as the cold, dense, star forming phases, in addition to the stellar component. However, submillimeter and far-infrared data at high angular and spectral resolutions have been missing so far.

In the framework of the open time key program “*HERschel* M 33 Extended Survey (HERM33ES)”, we use all three instruments onboard the ESA *Herschel* Space Observatory (Pilbratt et al. 2010) to study the dusty and gaseous ISM in M 33. One focus of HERM33ES is on maps of the FIR continuum observed with PACS (Poglitsch et al. 2010) and SPIRE (Griffin et al. 2010), covering the entire galaxy. A second focus lies on observing diagnostic FIR and submillimeter cooling lines [C II], [O I], [N II], and H<sub>2</sub>O, toward a  $2' \times 40'$  strip along the major axis with PACS and HIFI (de Graauw et al. 2010).

<sup>★</sup> *Herschel* is an ESA space observatory with science instruments provided by European-led Principal Investigator consortia and with important participation from NASA.

In this first HERM33ES paper, we use continuum maps covering the full extent of M 33, at 100, 160, 250, 350, and 500  $\mu\text{m}$ . These data are an improvement over previous data sets of M 33, obtained with ISO and *Spitzer* (Hippelein et al. 2003; Hinz et al. 2004; Tabatabaei et al. 2007), in terms of wavelength coverage and angular resolution.

The total bolometric luminosity of normal galaxies is only about a factor of 2 larger than the total IR continuum emission (Hauser & Dwek 2001), which in turn accounts for more than  $\sim 98\%$  of the emission of the ISM (dust+gas) (e.g. Malhotra et al. 2001; Dale et al. 2001). Massive star formation heats the dust mainly via its far-ultraviolet (FUV) photons and the absorbed energy is then reradiated in the IR. FIR continuum fluxes are therefore often used as a measure of the interstellar radiation field (ISRF) (e.g. Kramer et al. 2005) and the star formation rate (SFR) (e.g. Schuster et al. 2007). However, a number of authors have suggested that half of the FIR emission or more is due to dust heated by a diffuse ISRF, and not directly linked to massive star formation (Israel et al. 1996; Verley et al. 2009).

Another disputed topic is the evidence for a massive, cold dust component in galaxies. The SCUBA Local Universe Galaxy Survey (Dunne & Eales 2001) identified a cold dust component at an average temperature of 21 K. A number of studies of the millimeter continuum emission of galaxies found indications for even lower temperatures (Misiriotis et al. 2006; Weiß et al. 2008; Liu et al. 2010). In order to estimate the amount of dust at temperatures below about 20 K, and to improve our understanding of the physical conditions of the big grains, well calibrated observations longward of  $\sim 150 \mu\text{m}$  wavelength are needed.

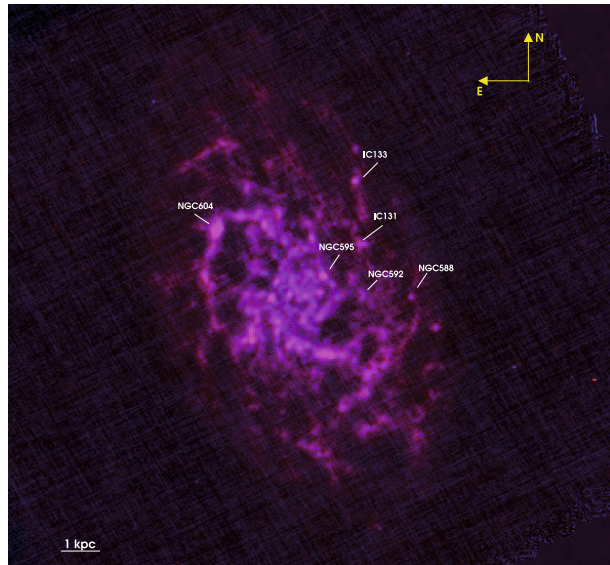
## 2. Observations

M 33 was mapped with PACS & SPIRE in parallel mode in two orthogonal directions, in 6.3 h on January 7, 2010. Observations were executed with slow scan speed of  $20''/\text{s}$ , covering a region of about  $70' \times 70'$ . Data were taken simultaneously with the PACS green and red channel, centered on 100 and 160  $\mu\text{m}$ . SPIRE observations were taken simultaneously at 250, 350, and 500  $\mu\text{m}$ . The PACS and the SPIRE data sets were both reduced using the *Herschel* interactive processing environment (HIPE) 2.0, with in-house reduction scripts based on the two standard reduction pipelines.

### 2.1. PACS data

The maps are produced with “photproject”, the default map maker of the PACS data processing pipeline, and a two-step masking technique. First we generate a “naive” map, i.e. not properly taking into account partial pixel overlaps and geometric deformation of the bolometer matrix, and build a mask considering that all pixels above a given threshold do not belong to the sky. Then we use this mask to run the high-pass filter (HPF) taking into account this map. The mask helps to preserve the diffuse component to some extent. With new HIPE tools becoming available, we will try improving data processing to fully recover the diffuse emission in the PACS maps (cf. Fig. 1). The final map is built using the filtered, deglitched frames. They have a pixel size of  $3.2''$  at 100  $\mu\text{m}$  and  $6.4''$  at 160  $\mu\text{m}$ . The spatial resolutions of the PACS data are  $6.7'' \times 6.9''$  at 100  $\mu\text{m}$  and  $10.7'' \times 12.1''$  at 160  $\mu\text{m}$ . The pipeline processed data were divided by 1.29 in the red band and 1.09 in the green one, as this correction is not yet implemented in HIPE 2.0.<sup>1</sup> The rms

<sup>1</sup> PACS photometer – Prime and Parallel scan mode release note. V.1.2, 23 February 2010.



**Fig. 1.** A composite 500  $\mu\text{m}$  (red) and 160  $\mu\text{m}$  (blue) map of M 33. The most extended emission is traced by the longest wavelength map revealing the presence of the cold dust in the outskirts of the galaxy. The shorter wavelengths mostly trace the branched spiral structure as well as distinct warm H II regions and star-forming complexes (such as the ones labeled).

noise levels of the PACS maps are  $2.6 \text{ mJy pix}^{-2}$  at 100  $\mu\text{m}$  and  $6.9 \text{ mJy pix}^{-2}$  at 160  $\mu\text{m}$ . The background of the PACS maps of M 33 shows perpendicular stripes in each scanning direction due to  $1/f$  noise.

### 2.2. SPIRE data

A baseline fitting algorithm (Bendo et al. 2010) was applied to every scan of the maps. Next, a “naive” mapping projection was applied to the data and maps with pixel size of  $6''$ ,  $10''$ , and  $14''$  were created for the 250, 350, and 500  $\mu\text{m}$  data, respectively. Calibration correction factors of 1.02, 1.05, and 0.94 were applied to the 250, 350, and 500  $\mu\text{m}$  maps, as this is not yet implemented in HIPE 2.0. The spatial resolutions are  $18.7'' \times 17.5''$ ,  $26.3'' \times 23.4''$ , and  $38.1'' \times 35.1''$  at 250, 350, and 500  $\mu\text{m}$ , respectively. The calibration accuracy is  $15\%^2$ . The rms noise levels of the SPIRE maps of M 33 are 14.1, 9.2, and 8 mJy/beam, at 250, 350, 500  $\mu\text{m}$ .

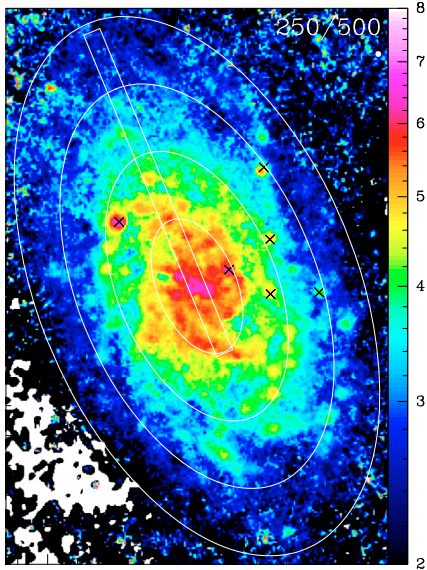
## 3. Results

### 3.1. Maps

Figure 1 shows a composite image of the 160  $\mu\text{m}$ , 250  $\mu\text{m}$ , and 500  $\mu\text{m}$  PACS and SPIRE maps. All data sets show the flocculent and knotted spiral arm structure, extending slightly beyond 4 kpc radial distance. The PACS 160  $\mu\text{m}$  map provides the most detailed view, thanks to its unprecedented linear resolution of 50 pc, allowing to resolve individual giant molecular clouds (GMCs) over the entire disk of M 33. A large number of distinct sources delineates the spiral arms. The properties of these sources are studied by Verley et al. (2010) and Boquien et al. (2010). The SPIRE data show a faint, diffuse disk, extending out to  $\sim 7$  kpc. Outside of 8 kpc, both maps show some weak emission.

<sup>2</sup> SPIRE Beam Model Release Note V0.1, SPIRE Scan-Map AOT and Data Products, Issue 2, 21-Oct.-2009.





**Fig. 2.** Ratio map of the 250  $\mu\text{m}$  over 500  $\mu\text{m}$  maps, at 40'' resolution. Ellipses denote 2, 4, 6, 8 kpc galacto-centric distances with inclination 56° (Regan & Vogel 1994) and position angle 22.5° (Paturel et al. 2003). The rectangle delineates the 2'  $\times$  40'' wide strip along the major axis, which will be mapped with HIFI and PACS in spectroscopy mode. Crosses mark the H II regions shown in Fig. 1.

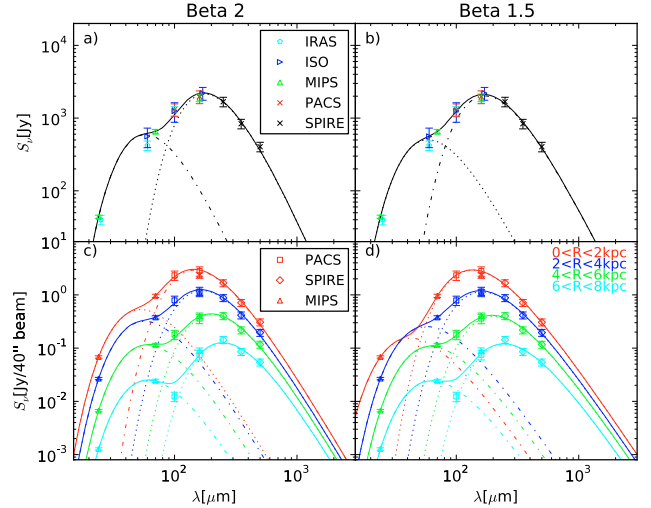
Galactic cirrus is evident only in the outermost part of the galaxy beyond 6 kpc radial distance, showing an average contamination of the order of 2% which can go up to 8% at the very faint levels at 500  $\mu\text{m}$ . This is still below the 15% calibration error, which is the dominant part of the uncertainty. We did not correct the M 33 data for Galactic Cirrus emission.

The  $S(250 \mu\text{m})/S(500 \mu\text{m})$  ratio of flux densities (Fig. 2) drops from about 6 in the inner spiral arms, to  $\sim 4$  at  $\sim 4$  kpc radius, continuing to less than  $\sim 3$  at more than 6 kpc radial distance. This drop is also seen in the radially averaged spectral energy distributions (Fig. 3, Table 1). In addition, the inner spiral arms and a couple of prominent H II regions (cf. Fig. 1), out to about 5 kpc radius, show an enhanced ratio of  $\sim 6$  relative to the inter-arm ISM, exhibiting a ratio of typically  $\sim 4$ . This shows that dust is mainly heated by the young massive stars rather than the general interstellar radiation field in M 33. This is in agreement with a multi-scale study of MIPS data (Tabatabaei et al. 2007), where the 160  $\mu\text{m}$  emission was found to be well correlated with H $\alpha$  emission.

### 3.2. Spectral energy distributions (SEDs)

Figure 3 shows the total flux densities of M 33 and radially averaged SEDs. The SEDs at different annuli were created by smoothing all data to a common resolution of 40'', and averaging the observed flux densities in radial zones of 2 kpc width:  $r_i \leq R < r_i + 2$  kpc with  $r_i = 0, 2, 4, 6$  kpc (cf. Fig. 2). The *Herschel* data agree in general well with the data from the literature. The MIPS data at 160  $\mu\text{m}$  agree within 20% with the corresponding PACS data, for all radial zones. The 100  $\mu\text{m}$  PACS flux density, measured in the outermost annulus, is far below the expected value, indicating that extended, diffuse emission is at present lost by the data processing. We do not use these data for the fits.

Figures 3c,d shows the drop of emission by almost two orders of magnitude between the center and the outskirts at 8 kpc radial distance. One striking feature of the radially averaged



**Fig. 3.** Spectral energy distributions (SEDs) of M 33 at wavelengths between 24  $\mu\text{m}$  and 500  $\mu\text{m}$ . **a), b):** total integrated SED of M 33, combining data of PACS & SPIRE, with data of MIPS/*Spitzer* (Tabatabaei et al. 2007), ISOCAM (Hippelien et al. 2003), and IRAS (Rice et al. 1990). **c), d):** radially averaged SEDs in zones of 2 kpc width. Here, we show the MIPS, PACS, and SPIRE data. **a), c):** drawn lines show two-component grey body model fit results. The 100  $\mu\text{m}$  PACS flux density, measured in the outermost zone, was not used for the fits (see the text). The dust emissivity index was set to  $\beta = 2$ . **b), d):** drawn lines show two-component models for  $\beta = 1.5$ . **a)–d):** all fits are weighted by the assumed uncertainties: 7% for MIPS 24, 70  $\mu\text{m}$  (*Spitzer* Observers Manual v8.0), 20% for PACS, 15% for SPIRE. The SEDs have not been de-projected.

SEDs is the change of the 160/250 PACS/SPIRE flux density ratio (color), which drops systematically with radial distance, from 1.7 in the inner zone, to 0.5 in the outer zone. At the same time, the slope of the SPIRE data turns shallower with distance, as already seen in Fig. 2.

We fit simple isothermal and two-component grey body models to the data. Each component is described by  $S_\nu = B(\nu, T)\tau_\nu = B(\nu, T)\kappa_\nu M_d/D^2$ , assuming optically thin emission, with the flux  $S_\nu$ , the Planck function  $B_\nu$ , the opacity  $\tau_\nu$ , the dust mass  $M_d$ , the distance  $D$ , and the dust absorption coefficient  $\kappa_\nu = 0.4(\nu/(250 \text{ GHz}))^\beta \text{ cm}^2 \text{ g}^{-1}$  (Kruegel & Siebenmorgen 1994; Kruegel 2003),  $\beta$  is the dust emissivity index. The fit minimizes the function  $\chi^2 = \sum ((S_{\nu, \text{obs}} - S_\nu)/\Delta S_{\nu, \text{obs}})^2$  using the Levenberg-Marquardt algorithm (Bevington & Robinson 1992), with the assumed calibration error  $\Delta S_{\nu, \text{obs}}$ . The fits are conducted at 7 wavelengths using the SPIRE, PACS, and the MIPS data at 70 and 24  $\mu\text{m}$ . The 24  $\mu\text{m}$  data helps in constraining the warm component, though its emission partly stems from stochastically heated small grains, not only from grains in thermal equilibrium. To maintain at least two degrees of freedom (Bevington & Robinson 1992) in the 2-component fit, we kept  $\beta$  fixed to values between 1 and 2. These values are typically found in models and observations of interstellar dust (see literature compiled by Dunne & Eales 2001).

The fits of isothermal models do not reproduce the data well, the values of the reduced  $\chi^2$  are very high. To a large extent, this is because of the 24  $\mu\text{m}$  points, which clearly require a second, warm dust component. Two-component grey body models result in a much better agreement with the data. The best fitting model is the two-component model with  $\beta = 1.5$ . The  $\chi^2_{\text{red}}$  values are better than 0.2 for all annuli out to 6 kpc, and 1.8 for the outermost annulus. However, these values are only slightly better or equal to the  $\chi^2_{\text{red}}$  values of the two other two-component models.

**Table 1.** Results of fits of one and two emission components to the measured spectral energy distributions (SEDs) of the MIPS, PACS, SPIRE data of M33 shown in Fig. 3.

	Total	(1)	(2)	(3)	(4)
<b>Isothermal fits</b>					
$T_c$ /[K]	29	25	28	105	37
$\beta$	0.5	1.4	0.8	-1.8	-0.8
$\chi^2_{\text{red}}$	45	44	45	3	6
<b>Two-component fits with <math>\beta = 2</math></b>					
$T_c$ /[K]	16	20	17	14	12
$T_w$ /[K]	50	55	51	49	48
$M_c$ /[ $10^6 M_\odot$ ]	8.0	1.0	2.4	3.6	4.0
$M_c/M_w$	1000	900	900	1700	5600
$\chi^2_{\text{red}}$	0.41	0.23	0.33	0.42	1.8
$M_{\text{gas}}/M_c$	250	230	180	160	200
<b>Two-component fits with <math>\beta = 1.5</math></b>					
$T_c$ /[K]	19	24	20	16	13
$T_w$ /[K]	55	77	57	52	51
$M_c$ /[ $10^6 M_\odot$ ]	10	1.2	3.0	4.6	4.9
$M_c/M_w$	500	3800	480	730	2200
$\chi^2_{\text{red}}$	0.14	0.10	0.12	0.20	1.8
$M_{\text{gas}}/M_c$	200	190	150	120	160
<b>Two-component fits with <math>\beta = 1</math></b>					
$T_c$ /[K]	23	28	24	19	15
$T_w$ /[K]	62	-	67	57	55
$M_c$ /[ $10^6 M_\odot$ ]	12	1.6	3.6	5.7	5.8
$M_c/M_w$	300	-	440	330	870
$\chi^2_{\text{red}}$	0.22	0.6	0.26	0.30	2.4
$M_{\text{gas}}/M_c$	170	140	120	100	140
<b>Total gas mass</b>					
$M_{\text{gas}}$ /[ $10^6 M_\odot$ ]	2020	230	440	560	790

**Notes.** For the two-component fits, the dust emissivity index was kept fixed.  $T_c$ ,  $T_w$  are the temperatures of the cold and warm component.  $M_c$  is the total cold dust mass per annulus.  $M_c/M_w$  is the dust mass ratio of both components.  $\chi^2_{\text{red}}$  is the  $\chi^2$  divided by the number of observed parameters minus the number of fitted parameters minus 1. The  $100 \mu\text{m}$  flux density measured in the outermost zone was not used for the fits. The columns give the radial annuli: Total:  $0 < R < 8$  kpc, (1):  $0 < R < 2$  kpc, (2):  $2 < R < 4$  kpc, (3):  $4 < R < 6$  kpc, (4):  $6 < R < 8$  kpc. The last line at the bottom of the table gives the total gas masses  $M_{\text{gas}} = 1.36 (M(\text{H}_2) + M(\text{H}\text{I}))$  (Gratier et al. 2010).

We find higher temperatures of the cold component for lower values of  $\beta$ , rendering it difficult to determine both parameters at the same time. This degeneracy between dust temperature and dust emissivity is a common problem (e.g. Kramer et al. 2003). Note, however, that the total mass of the cold component, is rather well determined. For  $\beta$ -values varying between 1 and 2, this mass only varies by  $\sim 20\%$ . The masses in each annulus were determined by fitting the observed SEDs. As the fitted temperatures are slightly different, the sum over the four annuli does not exactly agree with the fitted total cold dust mass in Table 1.

The cold dust component dominates the mass for the galaxy for all annuli. Though the warm component is needed to reproduce the data shortwards of  $\sim 100 \mu\text{m}$ , its relative mass is less than 0.3% for all cases. Therefore, its temperature is not well constrained. It is found to be about  $60 \text{ K} \pm 10 \text{ K}$ . The temperature of the cold component is determined to an accuracy of about 3 K, as estimated from a Monte Carlo analysis using the observed data with the estimated accuracies. It drops significantly from  $\sim 24 \text{ K}$  in the inner 2 kpc radius to 13 K beyond 6 kpc radial distance, using the best fitting model.

Table 1 also gives the total gas masses  $M_{\text{gas}}$  of the entire galaxy, and of the elliptical annuli. These are calculated from HI and CO data presented in Gratier et al. (2010). They assume a constant CO-to- $\text{H}_2$  conversion factor. But note that this  $X_{\text{CO}}$  factor does not strongly affect the total gas masses, as the HI is dominating. The gas-to-dust mass ratio for the entire galaxy, using the best fitting dust model with  $\beta = 1.5$ , is  $\sim 200$ , about a factor of 1.5 higher than the solar value of 137 (cf. Table 2 in Draine et al. 2007), and a factor of 2 higher than recent dust models for the Milky Way (Weingartner & Draine 2001; Draine et al. 2007). A factor of about 2 is expected, as the metallicity is about half solar (Magrini et al. 2009). The gas-to-dust ratio for  $\beta = 1.5$  varies between 200 and 120 in the different annuli. Within our errors this is consistent with the shallow O/H abundance gradient found by Magrini et al. (2009). The gas-to-dust ratios found in M33 are similar to the typical values found in nearby galaxies (e.g. Draine et al. 2007; Bendo et al. 2010). Braine et al. (2010) combine the dust and gas data of M33 to study the gas-to-dust ratios in more detail and derive dust cross sections.

**Acknowledgements.** HIPE is a joint development by the *Herschel* Science Ground Segment Consortium, consisting of ESA, the NASA *Herschel* Science Center, and the HIFI, PACS and SPIRE consortia. We would like to thank all those who helped us processing the PACS and SPIRE data. In particular we would like to acknowledge support from Pierre Royer, Bruno Altieri, Pat Morris, Bidushi Bhattacharya, Marc Sauvage, Michael Pohlen, Pierre Chaniel, George Bendo. MR acknowledges the MC-IEF within the 7th European Community Framework Programme.

## References

- Bendo, G. J., et al. 2010, A&A, 518, L65  
 Bevington, P., & Robinson, D. 1992, Data reduction and error analysis for the physical sciences (McGraw-Hill, Inc.)  
 Boquien, M., Calzetti, D., Kramer, C., et al. 2010, A&A, 518, L70  
 Braine, J., Gratier, P., Kramer, C., et al. 2010, A&A, 518, L69  
 Dale, D. A., Helou, G., Contursi, A., Silbermann, N. A., & Kolhatkar, S. 2001, ApJ, 549, 215  
 de Graauw, Th., et al. 2010, A&A, 518, L6  
 Draine, B. T., Dale, D. A., Bendo, G., et al. 2007, ApJ, 663, 866  
 Dunne, L., & Eales, S. A. 2001, MNRAS, 327, 697  
 Freedman, W. L., Wilson, C. D., & Madore, B. F. 1991, ApJ, 372, 455  
 Gratier, P., Braine, J., Rodriguez-Fernandez, N., et al. 2010, A&A, accepted  
 Griffin, M. J., et al. 2010, A&A, 518, L3  
 Hauser, M. G., & Dwek, E. 2001, ARA&A, 39, 249  
 Hinz, J. L., Rieke, G. H., Gordon, K. D., et al. 2004, ApJS, 154, 259  
 Hippelein, H., Haas, M., Tuffs, R. J., et al. 2003, A&A, 407, 137  
 Israel, F. P., Bontekoe, T. R., & Kester, D. J. M. 1996, A&A, 308, 723  
 Kramer, C., Mookerjee, B., Bayet, E., et al. 2005, A&A, 441, 961  
 Kramer, C., Richer, J., Mookerjee, B., Alves, J., & Lada, C. 2003, A&A, 399, 1073  
 Kruegel, E. 2003, The physics of interstellar dust, ed. E. Kruegel  
 Kruegel, E., & Siebenmorgen, R. 1994, A&A, 288, 929  
 Liu, G., Calzetti, D., Yun, M. S., et al. 2010, AJ, 139, 1190  
 Magrini, L., Stanghellini, L., & Villaver, E. 2009, ApJ, 696, 729  
 Malhotra, S., Kaufman, M., Hollenbach, D., et al. 2001, ApJ, 561, 766  
 Misiriotis, A., Xilouris, E. M., Papamastorakis, J., Boumris, P., & Goudis, C. D. 2006, A&A, 459, 113  
 Paturel, G., Petit, C., Prugniel, P., et al. 2003, A&A, 412, 45  
 Pilbratt, G. L., et al. 2010, A&A, 518, L1  
 Poglitsch, A., et al. 2010, A&A, 518, L2  
 Regan, M. W., & Vogel, S. N. 1994, ApJ, 434, 536  
 Rice, W., Boulanger, F., Viallefond, F., Soifer, B. T., & Freedman, W. L. 1990, ApJ, 358, 418  
 Schuster, K. F., Kramer, C., Hirschfeld, M., Garcia-Burillo, S., & Mookerjee, B. 2007, A&A, 461, 143  
 Tabatabaei, F. S., Beck, R., Krause, M., et al. 2007, A&A, 466, 509  
 Verley, S., Corbelli, E., Giovanardi, C., & Hunt, L. K. 2009, A&A, 493, 453  
 Verley, S., Relano, M., Kramer, C., et al. 2010, A&A, 518, L68  
 Weingartner, J. C., & Draine, B. T. 2001, ApJ, 548, 296  
 Weiß, A., Kovács, A., Güsten, R., et al. 2008, A&A, 490, 77

- 
- <sup>1</sup> Instituto Radioastronomía Milimétrica, Av. Divina Pastora 7, Nucleo Central, 18012 Granada, Spain  
e-mail: kramer@iram.es
- <sup>2</sup> Institute of Astronomy and Astrophysics, National Observatory of Athens, P. Penteli, 15236 Athens, Greece
- <sup>3</sup> Department of Astronomy, University of Massachusetts, Amherst, MA 01003, USA
- <sup>4</sup> Laboratoire d'Astrophysique de Bordeaux, Université Bordeaux 1, Observatoire de Bordeaux, OASU, UMR 5804, CNRS/INSU, BP 89, Floirac 33270
- <sup>5</sup> IPAC, MS 100-22 California Institute of Technology, Pasadena, CA 91125, USA
- <sup>6</sup> Department of Astronomy & Astrophysics, Tata Institute of Fundamental Research, Homi Bhabha Road, Mumbai 400005, India
- <sup>7</sup> Institute of Astronomy, University of Cambridge, Madingley Road, Cambridge CB3 0HA, England
- <sup>8</sup> Department of Astronomy, Cornell University, Ithaca, NY 14853, USA
- <sup>9</sup> Max Planck Institut für Radioastronomie, Auf dem Hügel 69, 53121 Bonn, Germany
- <sup>10</sup> Dept. Física Teórica y del Cosmos, Universidad de Granada, Spain
- <sup>11</sup> Department of Radio and Space Science, Onsala Observatory, Chalmers University of Technology, 43992 Onsala, Sweden
- <sup>12</sup> Argelander Institut für Astronomie. Auf dem Hügel 71, 53121 Bonn, Germany
- <sup>13</sup> Observatoire de Paris, LERMA, CNRS, 61 Av. de l'Observatoire, 75014 Paris, France
- <sup>14</sup> ESO, Casilla 19001, Santiago 19, Chile
- <sup>15</sup> Observatorio Astronómico Nacional (OAN) - Observatorio de Madrid, Alfonso XII 3, 28014 Madrid, Spain
- <sup>16</sup> Leiden Observatory, Leiden University, PO Box 9513, 2300 RA Leiden, The Netherlands
- <sup>17</sup> ATNF, CSIRO, PO Box 76, Epping, NSW 1710, Australia
- <sup>18</sup> Centro de Astrobiología (INTA-CSIC), Ctra de Torrejón a Ajalvir, km 4, 28850 Torrejón de Ardoz, Madrid, Spain
- <sup>19</sup> KOSMA, I. Physikalisches Institut, Universität zu Köln, Zülpicher Straße 77, 50937 Köln, Germany
- <sup>20</sup> University of British Columbia Okanagan, 3333 University Way, Kelowna, BC V1V 1V7, Canada
- <sup>21</sup> IRAM, 300 rue de la Piscine, 38406 St. Martin d'Hères, France
- <sup>22</sup> California Institute of Technology, MC 105-24, 1200 East California Boulevard, Pasadena, CA 91125, USA
- <sup>23</sup> JAC, 660 North A'ohoku Place, University Park, Hilo, HI 96720, USA
- <sup>24</sup> SRON Netherlands Institute for Space Research, Landleven 12, 9747 AD Groningen, The Netherlands