

# MPRA

Munich Personal RePEc Archive

## A Semi-Analytical Parametric Model for Dependent Defaults

Balakrishna, B S

16. August 2006

Online at <http://mpa.ub.uni-muenchen.de/14918/>  
MPRA Paper No. 14918, posted 29. April 2009 / 14:27

# A Semi-Analytical Parametric Model for Dependent Defaults

B. S. BALAKRISHNA\*

August 16, 2006, Revised: May 15, 2007

## Abstract

A semi-analytical parametric approach to modeling default dependency is presented. It is a multi-factor model based on instantaneous default correlation that also takes into account higher order default correlations. It is capable of accommodating a term structure of default correlations and has a dynamic formulation in the form of a continuous time Markov chain. With two factors and a constant hazard rate, it provides perfect fits to four tranches of CDX.NA.IG and iTraxx Europe CDOs of 5, 7 and 10 year maturities. With time dependent hazard rates, it provides perfect fits to all the five tranches for all three maturities.

Credit derivatives market has grown rapidly in recent years in response to the growing need for transferring and hedging credit risk. Growing innovations in this market has made understanding these products more urgent than ever. Various models have been developed to understand the role of default correlation on the prices of such products referencing a portfolio of underlying assets. A method for pricing these correlation products that has become standard is based on the Gaussian copula. There are some well known shortcomings in this approach. It deals effectively with default time correlation rather than default correlation itself. There is no straightforward way to accommodate correlation term structures. The correlation smile implied from the market is quite significant, an indication that the method is inadequate to price nonstandard products. These and other issues have been discussed by various authors, for instance by Finger [2004], Friend and Rogge [2004], Gregory and Laurent [2004], Hager and Schöbel [2005]. Better models addressing these issues have also been developed. Some recent work in this direction involves implying the copulas by Hull and White [2006], modeling the distance to default variables as in Albanese, Chen and DAlessandro [2005], Baxter [2006], modeling the default intensities as in Joshi and Stacey [2005], Chapovsky, Rennie and Tavares [2006], Errais, Giesecke and Goldberg [2006], and modeling the loss distributions as in Bennani [2005], Sidenius, Piterbarg and Andersen [2005], Schönbucher [2005], Brigo, Pallavicini and Torresetti [2006].

Here in this article, a semi-analytical parametric multi-factor model for pricing such correlation products is discussed incorporating default correlation rather than default time correlation. Being based on instantaneous default correlation, it is capable of handling correlation term structures in addition to a term structure of default probabilities. It also takes into account higher order default correlations in terms of a parameter that could explain clustering tendency of credit defaults. It has a dynamic formulation in the form of a continuous time Markov chain that has the potential to be useful for further development.

It is based on conditional independence of defaults at differing times. That is, if a credit name has survived an instant, an event at that instant does not have any further influence on the credit name. All defaults associated with an event would occur instantaneously at the same instant as

---

\*Email: balak\_bs@yahoo.co.in

that of the event. Simultaneous defaults have been discussed before, see for instance Duffie and Singleton [1999]. It is a characteristic feature of the so called shock models based on Marshall-Olkin copula that have been in use in reliability theories. Here we present a self-contained, a more convenient and an instantaneous approach to modeling such default dependencies, attempting to extract its power by formulating it in a parametric setting. A semi-analytical representation of the default probability distribution for a homogeneous collection of credit names lets us price CDOs accurately and efficiently using arbitrary precision arithmetic. A two factor model with four free parameters and a constant hazard rate is used to provide perfect fits to the four non-equity tranches of CDX.NA.IG and iTraxx Europe CDOs of 5, 7 and 10 year maturities. Allowing for time varying hazard rates obtains perfect fits to all the five tranches of both CDX.NA.IG and iTraxx Europe CDOs for all three maturities. These fits could be useful for hedging purposes and pricing non-standard instruments.

First, some results are derived in section 1 for the intermediate objects involved in this approach, followed by a factor based approach to motivating and building the model in a multi-factor setting for a general collection of credit names. Section 2 discusses the multi-factor model for homogeneous credit names, specializes to two factors, and provides fits to CDX.NA.IG and iTraxx Europe CDO tranches. Section 3 discusses a dynamic formulation of the model in terms of a continuous time Markov chain. Section 5 discusses a scaled correlation model potentially applicable for heavily correlated collections with non-uniform hazard rates. Section 6 concludes with some remarks.

## 1 Modeling Simultaneous Defaults

Let us first derive some results that follow from the assumption of conditional independence of defaults at differing times. Consider  $n$  credit names,  $i = 1, \dots, n$ , with default times  $\tau_i$ 's and hazard rates  $\lambda_i(t)$ 's. Let

$$Q(t_1, \dots, t_n) = \text{Prob}(\tau_1 > t_1, \dots, \tau_n > t_n) \quad (1)$$

be the joint survival probability up to times  $t_1, \dots, t_n$ . As assumed, given that credit names  $i$  and  $j$  have survived up to times  $t_i$  and  $t_j$  respectively,  $t_i \neq t_j$ , their respective defaults at  $t_i$  and  $t_j$  are independent of each other. Under this assumption,  $Q$  can be expressed as

$$\text{Ln}Q(t_1, \dots, t_n) = - \sum_{i=1}^n \int_{t_{(i-1)}}^{t_{(i)}} dt \pi_{(i)\dots(n)}(t), \quad (2)$$

where  $t_{(i)}$ 's are ordered times,  $0 = t_{(0)} \leq t_{(1)} \leq \dots \leq t_{(n)}$ , and  $(i)$  refers to the credit name associated with the  $i^{\text{th}}$  ordered time.  $\pi_{ij\dots}(t)dt$  is the conditional probability that at least one of the names in the list  $\{i, j, \dots\}$  defaults during the interval  $(t, t + dt)$  (unlisted names are not looked at). Note that  $1 - \pi_{ij\dots}(t)dt$  is the conditional probability that the listed names do not default during  $(t, t + dt)$  (unlisted names are not looked at). Hence, under our assumption of conditional independence of defaults at differing times, the above expression for  $Q$  can be obtained by building it up infinitesimally from  $t = 0$  to  $t_n$  as a product of terms of the form  $1 - \pi_{(i)\dots(n)}(t)dt$ . It can also be derived directly from our assumption as detailed in appendix A. It turns out this joint survival probability in fact corresponds to the multi-variate version of the Marshall-Olkin copula in a convenient representation and generalized to time dependent conditional probability densities. For a discussion of such shock models as applied to credit risk, see Duffie and Singleton [1999], Elouerkhaoui [2003], Lindskog and McNeil [2003].

The  $\pi$  density is related to  $p_{ij\dots}(t)dt$ , the conditional probability that all the listed names default during  $(t, t + dt)$  (unlisted names are not looked at). First three of these relations are

$$\pi_i(t) = p_i(t) = \lambda_i(t),$$

$$\begin{aligned}
\pi_{ij}(t) &= p_i(t) + p_j(t) - p_{ij}(t), \\
\pi_{ijk}(t) &= p_i(t) + p_j(t) + p_k(t) - p_{ij}(t) - p_{ik}(t) - p_{jk}(t) + p_{ijk}(t).
\end{aligned} \tag{3}$$

Remaining relations can analogously be written down. The two-point default probability density lets us express the instantaneous correlation  $\rho_{ij}(t)$  between credit names  $i$  and  $j$  as

$$\rho_{ij}(t) = \frac{p_{ij}dt - (p_i dt)(p_j dt)}{\sqrt{p_i dt(1 - p_i dt)p_j dt(1 - p_j dt)}} \approx \frac{p_{ij}(t)}{\sqrt{\lambda_i(t)\lambda_j(t)}}. \tag{4}$$

If say  $\lambda_i(t) \leq \lambda_j(t)$ ,  $\rho_{ij}(t)$  has an upper bound of  $\sqrt{\lambda_i(t)/\lambda_j(t)}$ . This is because  $p_{ij}(t)/\lambda_i(t)$ , conditional probability of finding credit name  $j$  defaulted during  $(t, t + dt)$  knowing that  $i$  has defaulted, should not exceed unity. Note that  $\rho_{ij}(t)$  can be interpreted as  $\sqrt{\lambda_i(t)/\lambda_j(t)}$  times that probability. Negative correlations are not supported.

Given the joint survival probability, we can get the joint survival and default probability  $P_{ij\dots}$ . This is the probability that the names listed in  $\{i, j, \dots\}$  default before their times, that is  $\tau_i < t_i, \tau_j < t_j, \dots$ , while the others survive up to their times. Probability that no names default before their times is of course given by  $Q$  itself. The others are related to  $Q$  as

$$\begin{aligned}
P_i(t_1, \dots, t_n) &= Q_i - Q, \\
P_{ij}(t_1, \dots, t_n) &= Q_{ij} - Q_i - Q_j + Q, \\
P_{ijk}(t_1, \dots, t_n) &= Q_{ijk} - Q_{ij} - Q_{ik} - Q_{jk} + Q_i + Q_j + Q_k - Q.
\end{aligned} \tag{5}$$

Remaining relations can analogously be written down.  $Q_{ij\dots}$  is obtained from  $Q(t_1, \dots, t_n)$  by setting  $t_i, t_j, \dots$  to zero for the names in the list  $\{i, j, \dots\}$ . The dependence of  $Q_{ij\dots}$ 's on the remaining times is not shown for simplicity. If those times are all the same, say  $t$ , then we have from (2)

$$\text{Ln}Q_{ij\dots}(t) = - \int_0^t ds \pi_{\neq ij\dots}(s), \tag{6}$$

where  $\{\neq i, j, \dots\}$  lists out the names not in  $\{i, j, \dots\}$ . For a homogeneous collection of credit names, equation (5) for the probability  $P_{ij\dots}$  having  $\nu$  names in the list  $\{i, j, \dots\}$  gets simplified to

$$P_{[\nu]} = \sum_{k=0}^{\nu} (-1)^k \binom{\nu}{k} Q_{[\nu-k]} = \sum_{k=0}^{\nu} (-1)^k \binom{\nu}{k} \exp\left(- \int_0^t ds \pi_{[n-\nu+k]}(s)\right), \tag{7}$$

where only the number of names are shown as subscripts. When concerned with just the number of defaults, this should be multiplied by the number of combinations of  $\nu$  out of  $n$  credit names.

Thus, in general, if we have a model or some prescription for determining  $p_{ij\dots}(t)$ 's, we can use them in (3) to determine  $\pi_{ij\dots}(t)$ 's that can be used in (6) to determine  $Q_{ij\dots}(t)$ 's which in turn can be used in (5) to determine  $P_{ij\dots}(t)$ 's.  $P_{ij\dots}(t)$ 's are useful in pricing multi-name credit products. For instance, for a  $\nu^{\text{th}}$  to default credit product, we need to know the probability that less than  $\nu$  names have defaulted before  $t$ . This is given by

$$Q + \sum_i P_i + \sum_{ij} P_{ij} + \sum_{ijk} P_{ijk} + \dots + \sum_{ijk\dots} P_{ijk\dots}, \tag{8}$$

where the summations are over all combinations of names and the last term has  $\nu - 1$  names listed. Being a sum of exponentials, this can be handled using one-name CDS expressions as detailed in Appendix B for a homogeneous collection.

Let us now introduce a parametric model for dependent defaults. As a motivation, let us assume that the collective dynamics is governed by  $m$  event types called factor names, that are independent of each other capable of generating events potentially causing joint defaults. Because joint arrivals of such independent events during an infinitesimal interval  $(t, t + dt)$  have probabilities of order  $(dt)^2$  or higher, they would be treated individually.

Let us assume for the moment that a credit default during  $(t, t + dt)$  implies that a factor name has generated an event during that interval. Let  $\zeta_r(t)dt$  be the conditional probability that factor name  $r$  generates an event during  $(t, t + dt)$ . Let  $\gamma_{ir}(t)$  be the conditional probability of finding  $i$ th credit name defaulted knowing that factor name  $r$  has generated an event during  $(t, t + dt)$ . This suggests that  $\lambda_i(t)dt$  gets a contribution  $\gamma_{ir}(t)\zeta_r(t)dt$  from the  $r$ th factor name. Adding up similar contributions from other factor names, we get<sup>1</sup>

$$\lambda_i(t) = \bar{\lambda}_i(t) + \sum_{r=1}^m \gamma_{ir}(t)\zeta_r(t), \quad (9)$$

where an additional contribution  $\bar{\lambda}_i(t)$  is included, coming from relaxing our assumption that a credit default implies that a factor name has generated an event. All name-specific contributions to  $\lambda_i(t)$  are expected to be included in  $\bar{\lambda}_i(t)$ . Under the assumption that credit names are conditionally independent given that an event of certain type has arrived, we can express the conditional probability density of joint defaults during  $(t, t + dt)$  as

$$p_{ij\dots}(t) = \sum_{r=1}^m (\gamma_{ir}(t)\gamma_{jr}(t)\dots)\zeta_r(t). \quad (10)$$

There are no additional terms here, since name-specific contributions to joint defaults during  $(t, t + dt)$  are of order  $(dt)^2$  or higher, and all order  $(dt)$  contributions are expected to be taken care of by a sufficient number of factor names. With these  $p_{ij\dots}(t)$ 's, one could sum up the terms in the expansion of  $\pi_{ij\dots}(t)$  in (3) to obtain

$$\pi_{ij\dots}(t) = \sum_k \bar{\lambda}_k(t) + \sum_{r=1}^m \zeta_r(t) \left[ 1 - \prod_k (1 - \gamma_{kr}(t)) \right], \quad (11)$$

where  $k$  runs over only those credit names that are in the subscripted list  $\{i, j, \dots\}$ . This can also be obtained directly by noting that the first term is the contribution from name-specific issues and the term under square brackets is the probability that at least one of the names defaults during  $(t, t + dt)$  given that an event of type  $r$  has arrived.

If  $\lambda_i(t)$ 's are inputs to the model, equation (9) can be used to imply  $\bar{\lambda}_i(t)$ . Because  $\bar{\lambda}_i(t)$ 's can not be negative, it places a constraint on the parameters  $\gamma$ 's and  $\zeta$ 's. As for the instantaneous correlation  $\rho_{ij}(t)$  between credit names  $i$  and  $j$  discussed earlier, we have

$$\rho_{ij}(t)\sqrt{\lambda_i(t)\lambda_j(t)} = \sum_{r=1}^m \gamma_{ir}(t)\gamma_{jr}(t)\zeta_r(t). \quad (12)$$

These correlations could be treated as inputs to the model constraining the parameters  $\gamma$ 's and  $\zeta$ 's further, or this equation could be considered simply as defining implied correlations.

---

<sup>1</sup>Such a break up of the hazard rate has been considered before by various authors, as in, for example, Duffie and Singleton [1999], Duffie and Garleanu [2001].

## 2 Homogeneous Credit Names

The above formalism simplifies in the case of a homogeneous collection of credit names. Dropping the credit name subscripts but retaining those for the factor names, equations (9) and (12) read

$$\begin{aligned}\lambda(t) &= \bar{\lambda}(t) + \sum_{r=1}^m \gamma_r(t) \zeta_r(t), \\ \rho(t)\lambda(t) &= \sum_{r=1}^m \gamma_r(t)^2 \zeta_r(t).\end{aligned}\tag{13}$$

For the higher order conditional probability densities, we have<sup>2</sup>

$$p_{ij\dots}(t) = \sum_{r=1}^m \gamma_r(t)^\nu \zeta_r(t),\tag{14}$$

where  $\nu$  is the number of names listed in  $\{i, j, \dots\}$ . Equation (11) for the  $\pi$ -densities simplifies to

$$\pi_{ij\dots}(t) = \nu \bar{\lambda}(t) + \sum_{r=1}^m \zeta_r(t) [1 - (1 - \gamma_r(t))^\nu].\tag{15}$$

As noted earlier, these can be used (7) to determine the joint default probability distribution useful in pricing multi-name credit products. It is also useful to introduce  $\gamma(t)$  through the definition

$$\gamma(t) = \frac{\sum_{r=1}^m \gamma_r(t)^2 \zeta_r(t)}{\sum_{r=1}^m \gamma_r(t) \zeta_r(t)}.\tag{16}$$

Note that the numerator above is  $\rho(t)\lambda(t)$  and the denominator is  $\lambda(t) - \bar{\lambda}(t)$ . Because  $\bar{\lambda}(t)$  can not be negative this implies  $\rho(t) \leq \gamma(t) \leq 1$ .

The conditional probability  $\chi_\nu(t)$  for  $\nu \geq 3$  of finding an additional credit name defaulted during  $(t, t + dt)$  knowing that  $\nu - 1$  of them have defaulted during that interval is

$$\chi_\nu(t) = \frac{\sum_{r=1}^m \gamma_r(t)^\nu \zeta_r(t)}{\sum_{r=1}^m \gamma_r(t)^{\nu-1} \zeta_r(t)}.\tag{17}$$

This could be referred to as default cluster coupling and could explain the clustering tendency of credit defaults known as default contagion. It is related to higher order correlations present in the model, namely the instantaneous correlation between a credit name and a cluster of  $\nu - 1$  names. It is expected to increase with the number of credit names in the cluster. This is not the case with the one-factor model, but naturally holds in multi-factor models. One can prove that  $\chi_\nu(t) \geq \chi_{\nu-1}(t)$ , with the equality holding only when nonzero  $\gamma_r(t)$ 's,  $r = 1, \dots, m$ , are all the same, in which case the model effectively reduces to one-factor. The largest value  $\chi_\nu(t)$  takes is  $\chi_n(t)$  for the  $n$ -name cluster, which itself has an upper bound given by the largest of  $\gamma_r(t)$ ,  $r = 1, \dots, m$ , as can be seen by taking  $n \rightarrow \infty$ . The smallest  $\chi_\nu(t)$  is  $\chi_3(t)$  for a 3-name cluster, that has a lower bound given by  $\gamma(t)$ . Because  $\gamma(t) \geq \rho(t)$ , cluster coupling is never less than  $\rho(t)$ , the probability of a second default knowing the first. An explanation is, two or more defaults during the same infinitesimal interval  $(t, t + dt)$  (in reality, during a short period) is an indication that common factors, rather

---

<sup>2</sup>It is interesting to observe here that this multi-factor expansion of the conditional probability densities is mathematically natural being just an expansion in simple poles along the positive real line in the complex  $z$ -plane of the generating function  $\sum_{\nu=1}^{\infty} p_{[\nu]} z^{\nu-1}$  where  $p_{[\nu]} = p_{ij\dots}$  and  $\nu$  is the number of names listed in  $\{i, j, \dots\}$ .

than name-specific issues, are more likely to be the causes. In our terminology, factor names, rather than  $\bar{\lambda}(t)$ 's, are likely to be causing the defaults. However, such contagious features as jumps in hazard rates are not apparent in these types of models because all clustering of defaults takes place instantaneously. Information driven default contagion exhibiting such features has been discussed before in Giesecke [2001] and Schönbucher [2003] in different contexts. For alternate mechanisms, see Davis and Violet [2000] and Jarrow and Yu [2000].

Apart from  $\lambda(t)$ , there are  $2m$  parameters in the model,  $\gamma_r(t)$  and  $\zeta_r(t)$ ,  $r = 1, \dots, m$ , to be determined empirically. It is illustrative to use the parameterization  $\rho$ ,  $\gamma_r$ ,  $r = 1, \dots, m$  and  $\theta_s$ ,  $s = 1, \dots, m - 1$  such that

$$\zeta_{r < m} = \frac{\rho\lambda}{\gamma_r^2} \cos^2\theta_r \prod_{s=1}^{r-1} \sin^2\theta_s, \quad \zeta_m = \frac{\rho\lambda}{\gamma_m^2} \prod_{s=1}^{m-1} \sin^2\theta_s. \quad (18)$$

Note that  $\sqrt{\rho\lambda}$  is the magnitude and  $\theta_s$ 's are the angles of a  $m$ -dimensional vector with components  $\gamma_r\sqrt{\zeta_r}$ ,  $r = 1, \dots, m$ . During calibration of the model at the computation level, it is convenient use  $x_0$  and  $x_r$ 's, along with  $\theta_s$ 's, related to the model parameters via the relations  $\rho = \gamma x_0$  and  $\gamma_r = x_1 x_2 \dots x_r$  with the box constraints

$$0 \leq x_r \leq 1, \quad r = 0, \dots, m, \quad 0 \leq \theta_s \leq \frac{\pi}{2}, \quad s = 1, \dots, m - 1. \quad (19)$$

In particular, for the two factor model, it is convenient use  $x_0, x_1, x_2$  and  $\theta$  such that  $\rho = \gamma x_0$ ,  $\gamma_1 = x_1$ ,  $\gamma_2 = x_1 x_2$ , and

$$\zeta_1 = \frac{\rho\lambda}{\gamma_1^2} \cos^2\theta, \quad \zeta_2 = \frac{\rho\lambda}{\gamma_2^2} \sin^2\theta, \quad \frac{1}{\gamma} = \frac{1}{\gamma_1} \cos^2\theta + \frac{1}{\gamma_2} \sin^2\theta. \quad (20)$$

Note that  $\gamma_1 \geq \gamma \geq \gamma_2$ . Hence  $\gamma_1$  is the upper bound on the cluster coupling discussed earlier. Angle  $\theta$  determines the contribution of the second factor. It also controls the distribution of cluster coupling over cluster sizes from three to  $n$ , that decreases as  $\theta$  increases from a uniform  $\gamma_1$  for  $\theta = 0$  to a uniform  $\gamma_2$  for  $\theta = \pi/2$ . For  $\theta \neq 0, \pi/2$ , the intermediate distribution increases with cluster size from  $\gamma_1 \cos^2\theta + \gamma_2 \sin^2\theta$  for a 3-name cluster to its limiting value  $\gamma_1$  for a large  $n$ -name cluster.

Computations are done using equation (7). This involves summing up a lot of exponentials with alternating signs that requires great care to ensure that significance is not lost due to machine limitations. In fact, using the popular computers, it is difficult to go beyond the equity tranche. It is safer to use arbitrary precision arithmetic to get to the remaining ones. Arbitrary precision software is readily available and their use lets us price CDOs efficiently. Simplified results for homogeneous names useful in the computations are presented in Appendix B.

A one-factor model does not suffice to provide a good fit to more than two of the CDO tranches. Apart from  $\lambda(t)$ , it has two parameters,  $\rho(t)$  and  $\gamma(t)$ , and can provide a fit to two of the tranches. It is not able to capture the market perceptions when pricing more than two tranches, perhaps because the tranches are sensitive to a richer correlation structure. Obviously more than two parameters are needed and these are supplied by multi-factor models, in particular a two-factor model chosen for the following analysis.

Table 1 presents the results for the four non-equity tranches of CDX.NA.IG and iTraxx Europe CDOs, assuming homogeneous names and constant parameter values. Because there are four parameters in the two-factor model,  $\lambda$  being determined by the index spread, one would expect to get a perfect fit to four of the tranches. This is indeed found to be the case with all the maturities studied: 5, 7 and 10 year. It is nontrivial that a model can provide such perfect fits within its constraints. Besides, the values obtained for the parameters are consistent with their roles.

There are however significant differences with the predicted upfront fees for the equity tranches. The discrepancies become severe as we go to higher maturities. Going to three factors does not appear to provide much improvement. Other choices for the recovery rate give different parameter values, but don't seem to affect the quality of the fits. The origin of the discrepancies lies in our assumption of a constant hazard rate. An increasing index spread term structure suggests an increasing time dependence for the hazard rate. A constant hazard rate makes defaults more likely at earlier times than as indicated by the index spreads. An increasing time dependence for the hazard rate should give better prices for the equity tranches.

Table 2 presents the results assuming a log-linear time-dependence for the hazard rate,  $\lambda(t) = \lambda(0)\exp(\kappa_\lambda t)$  and the same time dependence for  $\zeta_r(t)$ 's maintaining their proportionality to  $\lambda(t)$  according to (20). For ease of computations, the hazard rate is discretized to be piecewise constant annually with  $\lambda(0)$  the first year multiplied by  $\exp(\kappa_\lambda)$  year to year. The presence of an additional parameter  $\kappa_\lambda$  enables us to calibrate the model to all the five tranches. Supporting our observations above, the model gets calibrated perfectly to all the five tranches, for both CDX.NA.IG and iTraxx Europe CDOs and for all three maturities. Of course, a log-linear hazard rate is not expected to realistically describe the term structure of index spreads. Its purpose here is just to identify an effective hazard rate time dependence that consistently prices the CDO tranches along with the index CDS of the same maturity. When the hazard rate term structure is exogenously supplied, an additional free parameter is not available for calibration. Under such circumstances, it may not be possible to get a perfect fit, but an acceptable best fit could still be possible.

The model is in principle capable of handling a term structure of default probabilities and default correlations. However, implying such term structures from the market data can be a challenging task, and it would be too ambitious to look for a well-behaved perfect fit calibrated simultaneously to all the maturities. One may look for a best fit assuming a continuous hazard rate term structure that is log-linear in-between maturities, and term structures for the other parameters that are piecewise constants, so that only the first maturity log-linear coefficient  $\kappa_\lambda$  is additionally available for calibration. An attempt in this direction, though successful, resulted in significant discrepancies, perhaps suggesting that it is important to include bid-ask spreads during calibration or have a more flexible model of the term structure of hazard rates.

Figure 1 shows the joint default probability distribution as a function of the number of defaults over a time period of 5, 7 and 10 years using the model parameters from Table 2 calibrated to iTraxx Europe CDOs of the corresponding maturities. The distribution has a large body of mass contributing mainly to the first few tranches. As we go to higher maturities, this body of mass moves to the right contributing more and more to the remaining tranches. The shape of this mass is largely determined by the term structure of hazard rates. For low maturities such as 5 year, it affects mainly the equity tranche. This explains why we are able to get realistic values for the model parameters assuming a constant hazard rate and calibrating to only the non-equity tranches, and why the discrepancies get larger as we go to higher maturities.

An important feature of the default probability distribution is its long tail. To get a better understanding of the distribution along the tail, a logarithmic plot is presented in Figure 2. It exhibits an unusual bumpy distribution that has a direct impact on the prices of the non-equity tranches. Such bumpy tail distributions have also been encountered by other researchers in the field before. The bumpy feature appears to be more pronounced for smaller maturities. As can be noted from Figure 3, it is also dependent on the number of credit names, becoming visible for a few tens or so credit names and getting more bumpy as their number increases. These characteristics can be analytically understood as in Appendix C.

It has not become necessary for us to interpret the factors making up the multi-factor model, but it is appealing to do so as others have realized before. The first factor name could be identified



with the economy and the second one with the industry. The implied parameters are consistent with this interpretation. The first factor name couples more strongly to the credit names compared to the second factor name, at the same time being less likely to generate default causing events. The implied default correlations turn out to be somewhat larger compared to the historical default correlations as expected in a risk neutral world.

### 3 Markov Chain Formulation

There is another approach to the model that has the potential to be useful for further development. Our approach so far could be termed static as it involves working with the joint survival probability distribution describing the default environment for all times. It turns out that there is an alternate formulation that could be termed dynamic being capable of accommodating additional features such as stochasticity of parameters. Let  $x(t)$  be a column vector representing the state of the system at time  $t$ , evolving according to

$$\frac{dx^T(t)}{dt} = -x^T(t)G(t), \quad (21)$$

where a superscript  $T$  denotes transpose and the matrix  $-G(t)$  is the generator of this continuous time Markov chain<sup>3</sup>. The entries of  $x(t)$  are the probabilities that the system will be found in their associated states at time  $t$ . Because these probabilities should add up to one, we require  $x^T(t)v = 1$  where  $v$  is a column vector containing ones for all its entries. Besides, these probabilities should remain non-negative at all times. These requirements are ensured by the constraints  $G(t)v = 0$  and that the diagonal elements of  $G(t)$  are non-negative and the off-diagonal elements non-positive. The above linear system could in general involve a time-dependent  $G(t)$ , but we would be concerned with time-independence, or utmost a time dependence such that  $G(t)$ 's commute among themselves for different  $t$ 's, that is  $G(s)G(t) = G(t)G(s)$  for any two times  $s$  and  $t$ . Then (21) solves to

$$x^T(t) = x^T(0)e^{-\int_0^t ds G(s)}, \quad (22)$$

where the column vector  $x(0)$ , representing the state of the system at time zero, contains the probabilities that the system starts off in various states.

To start with, consider a two-state system for one credit name with  $u = (1, 0)^T$  representing the undefaulted and  $d = (0, 1)^T$  representing the defaulted states, and with

$$G(t) = \lambda(t)A, \quad A = \begin{pmatrix} 1 & -1 \\ 0 & 0 \end{pmatrix}. \quad (23)$$

Note that  $v$  is a right eigenvector of  $A$  with zero eigenvalue. Another right eigenvector is  $u$  with eigenvalue one. If we are interested in the probability that the system is in the defaulted state  $d$  at time  $t$ , we can express  $d$  in terms of  $v$  and  $u$  as  $d = v - u$  to determine that probability,

$$x^T(t)d = x^T(0)e^{-\int_0^t ds \lambda(s)A}(v - u) = x^T(0) \left( v - e^{-\int_0^t ds \lambda(s)} u \right) = 1 - e^{-\int_0^t ds \lambda(s)} x^T(0)u. \quad (24)$$

That is, if the credit name started off at time zero in the undefaulted state with  $x(0) = u$ , it would end up in the defaulted state at time  $t$  with probability  $1 - \exp\left(-\int_0^t ds \lambda(s)\right)$ .

---

<sup>3</sup>Markov chains have been used in credit risk modeling. See Jarrow, Lando and Turnbull [1997] and more recently Schönbucher [2005], Albanese, Chen and DAlessandro [2005], Di Graziano and Rogers [2005].

This approach can be extended to a collection of  $n$  credit names, the state space of which is a tensor product of individual state spaces spanned by

$$\otimes_{i=1}^n (u_i \text{ or } d_i), \quad (25)$$

where  $u_i$  and  $d_i$  represent respectively the  $i^{\text{th}}$  individual undefaulted and defaulted states. For the vector  $v$  in the collective state space with ones for all its entries, we have  $v = \otimes_{i=1}^n v_i$ . Motivated by our results in the previous sections, in particular equation (11), we set

$$G(t) = \sum_{i=1}^n \bar{\lambda}_i(t) A_i + \sum_{r=1}^m \zeta_r(t) \left[ 1 - \prod_{i=1}^n (1 - \gamma_{ir}(t) A_i) \right]. \quad (26)$$

Here  $A_i$  acts as  $A$  on the  $i^{\text{th}}$  individual state space and as identity on all others. It is easily checked that  $G(t)v = 0$ . For the parameter constraints discussed earlier, it can be verified that the diagonal and the off-diagonal requirements on  $G(t)$  are also satisfied. Eigenvalues of  $G(t)$  are given by  $\pi_{ij\dots}(t)$  as expressed in (11) with the right eigenvector as a tensor product of  $u$ 's for each of the names in the list  $\{i, j, \dots\}$  and  $v$ 's for the rest of the names. The probability that credit names, say  $1, 2, \dots, \nu$ , are in the defaulted state at time  $t$  and the rest are not is given by

$$x^T(t) [\otimes_{r=1}^{\nu} d_r] [\otimes_{r=\nu+1}^n u_r] = x^T(0) e^{-\int_0^t ds G(s)} [\otimes_{r=1}^{\nu} (v_r - u_r)] [\otimes_{r=\nu+1}^n u_r]. \quad (27)$$

This can be evaluated by expanding the product containing  $(v - u)$ 's. Because each state vector in the expansion is a right eigenvector of  $G(t)$ , the result is a sum of exponentials. For a collection with all the names starting off as undefaulted, this result agrees with our earlier result of equation (5). For a homogeneous collection of credit names, one finds for this probability

$$P_{[\nu]} = \sum_{r=0}^{\nu} (-1)^r \binom{\nu}{r} p^{n-\nu+r} Q_{[\nu-r]}, \quad (28)$$

where  $P$  and  $Q$  are as defined earlier, but with only the number of names as subscripts. Each credit name is assumed to have started off at time zero in the undefaulted state with probability  $p$ . For  $p = 1$ , this result agrees with equation (7). When concerned with only the number of defaults, it should be multiplied by the number of combinations of  $\nu$  out of  $n$  credit names.

To appreciate the usefulness of this approach, let us allow for some probability that the defaulted state can recover to become undefaulted, with

$$A = \begin{pmatrix} 1 - \epsilon & -1 + \epsilon \\ -\epsilon & \epsilon \end{pmatrix}. \quad (29)$$

Note that  $v$  is still a right eigenvector of  $A$  with eigenvalue zero. The other right eigenvector is  $w = (1 - \epsilon, -\epsilon)^T$  with eigenvalue one. In terms of these,  $u$  and  $d$  can be expressed as

$$u = \epsilon v + w, \quad d = (1 - \epsilon)v - w. \quad (30)$$

For the probability that given  $\nu$  names in a homogeneous collection are in the defaulted state at time  $t$  and the rest are not, we find

$$P_{[\nu]} = \sum_{r=0}^{\nu} \sum_{s=0}^{n-\nu} (-1)^r \binom{\nu}{r} \binom{n-\nu}{s} (1 - \epsilon)^{\nu-r} \epsilon^{n-\nu-s} (p - \epsilon)^{r+s} Q_{[n-r-s]}, \quad (31)$$

where again each credit name is assumed to have started off at time zero in the undefaulted state with probability  $p$ . It is not straightforward to obtain this result from our earlier approach.

Given a homogeneous collection at time  $t$  with  $\nu$  names defaulted, the probability of additional  $k$  names defaulting during  $(t, t + dt)$  is

$$\left[ 1 - (n - \nu)\bar{\lambda}dt - \sum_{r=1}^m \zeta_r dt \right] \delta_{k0} + \left[ (n - \nu)\bar{\lambda}dt \right] \delta_{k1} + \binom{n-\nu}{k} \sum_{r=1}^m \zeta_r \gamma_r^k (1 - \gamma_r)^{n-\nu-k} dt, \quad (32)$$

where  $0 \leq k \leq n - \nu$  and the parameters could in general be time dependent. This perhaps obvious result can be obtained from a Markov chain representation of the model discussed above. These transition probabilities, from  $\nu$  defaults at time  $t$  to  $\nu + k$  defaults at time  $t + dt$ , can be used to simulate default paths from time zero onwards. Average of prices computed for these default paths gives the desired price as an alternative to the sem-analytical approach. One can also derive an evolution equation for the joint default probability from these transition probabilities,

$$\frac{dP_{\{\nu\}}}{dt} = - \left[ (n - \nu)\bar{\lambda} + \sum_{r=1}^m \zeta_r \right] P_{\{\nu\}} + (n - \nu + 1)\bar{\lambda}P_{\{\nu-1\}} + \sum_{r=1}^m \zeta_r (1 - \gamma_r)^{n-\nu} \sum_{k=0}^{\nu} \binom{n-\nu+k}{k} \gamma_r^k P_{\{\nu-k\}}, \quad (33)$$

where  $P_{\{\nu\}}$  is the probability that  $\nu$  names are in the defaulted state at time  $t$  summed over all combinations of  $\nu$  out of  $n$  credit names. This equation is also in the form of a continuous time Markov chain as can easily be verified.

For a general collection of credit names, a recursion relation can be derived from the expression for  $G(t)$  to obtain the probability that any  $\nu$  credit names are in the defaulted state at time  $t$  and the rest are not. Considering the cases where, say, the  $n^{\text{th}}$  credit name is in the  $u_n$  or  $d_n = v_n - u_n$  states, we get

$$P_{\{\nu, n\}}(\bar{\lambda}, \zeta) = P_{\{\nu-1, n-1\}}(\bar{\lambda}, \zeta) + e^{-\int_0^t ds \lambda_n(s)} \left[ P_{\{\nu, n-1\}}(\bar{\lambda}, \zeta') - P_{\{\nu-1, n-1\}}(\bar{\lambda}, \zeta') \right], \quad (34)$$

where a subscript  $\{\nu, n\}$  denotes sum of all combinations of  $\nu$  out of  $n$  credit names,  $\lambda_n$  in the exponential is to be expressed in terms of  $\bar{\lambda}_n$  and  $\zeta_r$ 's, and

$$\zeta_r' = \zeta_r (1 - \gamma_{nr}). \quad (35)$$

The recursion relation can be used to update the default probability distribution recursively, adding the credit names one by one to the collection. With the appropriate boundary conditions, for instance  $P_{\{0,0\}} = 1$ ,  $P_{\{\nu, n\}} = 0$  for  $\nu < 0$  and  $\nu > n$ , and continuing through the recursion, all the credit names can be taken care of to yield the desired probability. These recursive procedures are computationally intensive and are expected to be useful for a small number of credit names, or when a few hazard rates are either all smaller or larger in an otherwise homogeneous collection of credit names.

Though we have confined ourselves to two-state systems for each of the credit names, the approach is extendable to a collection of credit names with more than two states for each, such as a collection of credit names with different ratings, to obtain probability distributions at time  $t$  for defaulted states or states under various ratings. The expressions for  $G$  could be generalized further by introducing new matrices to replace  $A_i$  in  $\gamma_{ir}A_i$ , or perhaps  $\gamma_{ir}A_i$  itself, but this is expected to make the analysis much more complicated.

## 4 Instantaneous Correlation Matrix

The model in general contains a large number of parameters. They are however necessary to account for a rich structure of default correlations. Note that equation (12) for  $\rho_{ij}(t)$  specifies only off-diagonal elements to a matrix of correlations. To make it complete, one could introduce diagonal elements  $\rho_i(t)$  by

$$\rho_i(t)\lambda_i(t) = \sum_{r=1}^m \gamma_{ir}(t)^2 \zeta_r(t). \quad (36)$$

Together with  $\rho_{ij}(t)\sqrt{\lambda_i(t)\lambda_j(t)}$ 's, these form a symmetric matrix  $\Sigma$ , referred to in the following as the correlation matrix. An  $n \times m$  matrix  $\Gamma$  can be formed with  $\Gamma_{ir}(t) = \gamma_{ir}(t)\sqrt{\zeta_r(t)}$ , so that we can write (12) in matrix notation as  $\Sigma = \Gamma\Gamma^T$  where a superscript  $T$  denotes transpose. Thus, given a general set of  $\gamma$  and  $\zeta$  parameters,  $\Sigma$  is of rank  $m$  or  $n$  whichever is smaller. In order to generate correlations that can form a matrix of rank not less than  $r$ , one would need a multi-factor model with at least as many factors as  $r$ . The equation  $\Sigma = \Gamma\Gamma^T$  relates a subset of the parameters to  $\Sigma$ . Others play a role in higher order correlations.

The matrix relation  $\Sigma = \Gamma\Gamma^T$  implies that the model generates an instantaneous correlation matrix that is completely positive. A completely positive matrix is one that can be decomposed as  $\Gamma\Gamma^T$  where  $\Gamma$  is (entry-wise) non-negative. Consequently, it is both positive semidefinite and non-negative (called doubly non-negative). Characterizing a given matrix so that it is completely positive is an open problem in matrix theory. It is known however that diagonal dominance is sufficient for a non-negative symmetric matrix to become completely positive. Thus, an instantaneous correlation matrix, if supplied, can be diagonally completed to become completely positive. But not all diagonally completed completely positive  $\Sigma$ 's are acceptable to the model as correlation matrices. In order that the implied  $\bar{\lambda}(t)$ 's can be non-negative, the matrix  $\Gamma$  should obey

$$\sum_{r=1}^m \Gamma_{ir}(t) \text{Max}_k(\Gamma_{kr}(t)) = \sum_{r=1}^m \gamma_{ir}(t)\zeta_r(t) \text{Max}_k(\gamma_{kr}(t)) \leq \sum_{r=1}^m \gamma_{ir}(t)\zeta_r(t) \leq \lambda_i(t), \quad (37)$$

where, for each  $r$ ,  $\text{Max}_k(\Gamma_{kr})$  is the largest of  $\Gamma_{kr}$ ,  $k = 1, \dots, n$ . Because a non-negative  $\Gamma$  solving  $\Sigma = \Gamma\Gamma^T$  is in general not unique,  $\Gamma$  itself should be made available to the model when  $\Sigma$  is supplied.

Instantaneous correlations are subject to certain constraints as a consequence of (37) besides being part of a completely positive matrix. One of them is an upper bound on  $\rho_{ij}$  inferred earlier from the requirement on the conditional two-point joint default probability density,  $p_{ij} \leq \lambda_i$ . In general, the requirement on a higher order conditional joint default probability density is  $p_{ijk\dots} \leq p_{ij\dots}$  where the later list  $\{i, j, \dots\}$  is a subset of the former  $\{i, j, k, \dots\}$ . Analogous requirement holds for the dual density,  $\pi_{ijk\dots} \geq \pi_{ij\dots}$ , since having another name in the list can not decrease the probability of at least one name defaulting. For three-point joint defaults,  $\pi_{ijk} \geq \pi_{ij}$  implies

$$\begin{aligned} p_{ij} &\geq p_{ijk} \geq p_{ik} + p_{jk} - p_k, \\ \text{or } p_i + p_j - 2p_{ij} &\leq (p_i + p_k - 2p_{ik}) + (p_j + p_k - 2p_{jk}). \end{aligned} \quad (38)$$

This is the triangle inequality for a distance measure  $d_{ij}$  between names  $i$  and  $j$  given by

$$d_{ij} = p_i + p_j - 2p_{ij} = \lambda_i + \lambda_j - 2\rho_{ij}\sqrt{\lambda_i\lambda_j}. \quad (39)$$

Equality holds only when  $p_{ij} = p_{ijk}$ . Credit name  $k$  is then maximally correlated with the two-name cluster  $\{i, j\}$  and the three names  $i, j, k$  can be said to be collinear. Because  $\rho_{ij}$  can take

values from zero to  $\sqrt{\lambda_i/\lambda_j}$  when  $\lambda_i \leq \lambda_j$ ,  $d_{ij}$  takes values from  $|\lambda_i - \lambda_j|$  to  $\lambda_i + \lambda_j$ . This distance measure is also derivable from (37) because of

$$\Sigma_{ik} + \Sigma_{jk} - \Sigma_{ij} = \sum_{r=1}^m [g_{kr} - g_{ir}g_{jr}(1 - g_{kr}) - (1 - g_{ir})(1 - g_{jr})g_{kr}] z_r \leq \sum_{r=1}^m g_{kr} z_r, \quad (40)$$

where  $z_r = (\text{Max}_k(\Gamma_{kr}))^2$  and  $g_{ir} = \Gamma_{ir}/\sqrt{z_r} \leq 1$ . Using (37) and identifying  $\Sigma_{ij}$  with  $p_{ij}$ , this relation can be rearranged to obtain the triangle inequality.

The distance measure (39) is a special case of a distance measure  $P_A + P_B - 2P_{AB}$  between two binomial events  $A$  and  $B$  where  $P_A$  and  $P_B$  are probabilities of  $A$  and  $B$  respectively and  $P_{AB}$  is their joint probability. We could define other distance measures for credit names making use of, for instance, default probability densities of  $i$  and  $j$  given that some other names have defaulted. A distance measure that has the familiar look is the distance between two ‘‘vectors’’ of lengths  $\sqrt{\lambda_i}$  and  $\sqrt{\lambda_j}$  with  $\rho_{ij}$  as the cosine of the angle between them. This is the square root of  $d_{ij}$  that does satisfy the triangle inequality because of  $d_{ij}$  but the triangle inequality for  $d_{ij}$  is stronger. However,  $d_{ij}$  is not a good distance measure for determining a correlated neighborhood to a credit name when there are significant variations in the hazard rates, since it is not just the correlations that define it but the hazard rates as well.

## 5 A Scaled Correlation Model

A simple generalization of the homogeneous model to heterogeneity is to allow for non-uniform hazard rates but to keep the  $\gamma$  parameters uniform across all credit names, so that the instantaneous default correlations are

$$\rho_{ij}(t) = \frac{1}{\sqrt{\lambda_i(t)\lambda_j(t)}} \sum_{r=1}^m \gamma_r(t)^2 \zeta_r(t). \quad (41)$$

These form part of a rank one matrix. However, in this framework,  $\rho_{ij}$  can not reach its upper bound discussed earlier unless one of the names  $i$  or  $j$  has the lowest hazard rate. Hence this approach could run into trouble for collections with widely varying hazard rates and relatively large default correlations. A maximally correlated collection of credit names could be the limiting case of a suitably defined uniform correlation structure, but one would need  $n$  factor names to model even such a simple setup because differing hazard rates would result in a correlation matrix of rank  $n$ . An upper bound on the correlations suggests a coupling of the two aspects of heterogeneity, namely, non-uniform hazard rates and a non-uniform structure of default correlations. Let us discuss here one possible approach addressing the issue of non-uniform hazard rates by decoupling them from the correlations. This could be applicable, for instance, to collection of directly dependent credit names forming a chain of supplier-consumer dependency. With the credit names ordered according to  $\lambda_1(t) \leq \lambda_2(t) \dots \leq \lambda_n(t)$ , let us rewrite the correlations as

$$\rho_{ij}(t) \sqrt{\lambda_i(t)\lambda_j(t)} = \lambda_i(t) \rho'_{ij}(t), \quad i < j, \quad (42)$$

so that the scaled correlations  $\rho'_{ij}(t)$  can take values from zero to one. Now consider  $n \times m$  factor names, a cross product of two sets, the first responsible for the hazard rate structure and the second for the correlations. With  $a = 1, \dots, n$  and  $r = 1, \dots, m$  together labeling the factor names, let

$$\begin{aligned} \gamma_{ir}(t) &\rightarrow \gamma_{iar}(t) = \gamma_{ir}(t) \text{ for } a \leq i, \quad 0 \text{ for } a > i, \\ \zeta_r(t) &\rightarrow \zeta_{ar}(t) = (\lambda_a(t) - \lambda_{a-1}(t)) \zeta_r(t), \end{aligned} \quad (43)$$

with  $\lambda_0(t) = 0$ . This makes  $\zeta$ 's “dimensionless”. In this setup, the equations for the first two conditional probability densities read

$$\begin{aligned}\lambda_i(t) &= \bar{\lambda}_i(t) + \lambda_i(t) \sum_{r=1}^m \gamma_{ir}(t) \zeta_r(t), \\ \rho'_{ij}(t) &= \sum_{r=1}^m \gamma_{ir}(t) \gamma_{jr}(t) \zeta_r(t).\end{aligned}\tag{44}$$

Hazard rates are now decoupled from the scaled correlations as expected. For the higher order conditional probability densities, we get

$$p_{ij\dots}(t) = \lambda_i(t) \sum_{r=1}^m (\gamma_{ir}(t) \gamma_{jr}(t) \dots) \zeta_r(t), \quad i < \{j, \dots\}.\tag{45}$$

The  $\pi$ -densities in equation (11) can now be expressed as

$$\pi_{ij\dots}(t) = \sum_k \left[ \bar{\lambda}_k(t) + \lambda_k(t) \sum_{r=1}^m \gamma_{kr}(t) \zeta_r(t) \prod_{l>k} (1 - \gamma_{lr}(t)) \right],\tag{46}$$

where  $k$  and  $l$  run over only those credit names that are in the subscripted list  $\{i, j, \dots\}$ . Thus, out of the  $n \times m$  factor names,  $n$  of the component factors are now “forgotten” and the model has become what may be simply called a  $m$ -factor model.

For a homogeneous collection of credit names, this formalism reduces to the homogeneous model discussed in section 2. It can now be used to model non-uniform hazard rates with a “uniform” correlation structure, that is, a uniform structure of scaled correlations. Dropping the subscripts for the credit names for all the parameters, except for the hazard rates, one obtains expressions looking very similar to those for the homogeneous names. Parameterization could be done along the same lines as in equations (18) or (20) for homogeneous names. The approach however is computationally slow while computing  $P_{ij\dots}$ 's in (5) where one needs to keep track of all combinations of credit names. Recursive approach discussed below, though still computationally intensive, could be a better alternative.

Our remarks of the previous section on the correlation matrix  $\Sigma$  are applicable to the scaled correlation matrix  $\Sigma'$  as well. That is, a scaled correlation matrix, if supplied, should be completely positive with the matrix  $\Gamma'$  obeying

$$\sum_{r=1}^m \Gamma'_{ir}(t) \text{Max}_k(\Gamma'_{kr}(t)) \leq 1.\tag{47}$$

When these hold, it can be shown along steps similar to (43) that there exists a  $\Gamma$  satisfying (37), yielding a completely positive correlation matrix  $\Sigma = \Gamma \Gamma^T$ . When the system admits a decoupling of the hazard rates from the correlations as discussed above, we can also deduce from (47) a stronger distance measure  $d'_{ij} = 1 - \rho'_{ij}$  (that implies  $d_{ij}$  of equation (39)) based on just the scaled correlations, perhaps a better candidate for determining correlated neighborhoods.

In this model, the expression for  $G(t)$  of the Markov chain formulation is

$$G(t) = \sum_{i=1}^n \left[ \bar{\lambda}_i(t) A_i + \lambda_i(t) A_i \sum_{r=1}^m \gamma_{ir}(t) \zeta_r(t) \prod_{j=i+1}^n (1 - \gamma_{jr}(t) A_j) \right],\tag{48}$$

where again the credit names are ordered according to  $\lambda_1(t) \leq \lambda_2(t) \leq \dots \lambda_n(t)$ . Eigenvalues of  $G(t)$  are given by  $\pi_{ij\dots}(t)$  as expressed in (46) with the right eigenvector as a tensor product of  $u$ 's for each of the names in the list  $\{i, j, \dots\}$  and  $v$ 's for the rest of the names. Recursion relation (34), that has been derived for a general  $G(t)$ , can be used to update the default probability distribution, but in terms of our original  $\gamma$  and  $\zeta$  parameters. For a “uniform” correlation structure discussed above, it can be used in terms of our new  $\gamma$  and  $\zeta$  parameters with

$$\zeta'_r = \zeta_r \frac{1 - \gamma_r}{1 - \sum_{s=1}^m \gamma_s^2 \zeta_s}. \quad (49)$$

Here the default probability distribution is updated by adding to the collection a credit name with the next largest hazard rate. Analogous, but less convenient, recursion relations can be derived for adding credit names with the next smallest hazard rates or for the case of non-uniform scaled correlation structures.

## 6 Conclusion

In this article, a semi-analytical parametric model for dependent defaults is presented. It is based on instantaneous default correlation and is hence capable of handling a term structure of default correlations that could be helpful in accommodating a series of instruments of increasing maturities into a single framework. It involves a probability parameter representing higher order correlations that could explain clustering tendency of credit defaults known as default contagion. It admits a formulation in terms of a continuous time Markov chain that could be useful for incorporating additional dynamical features such as stochasticity of model parameters.

It is a multi-factor model but multiplicity of factors does not introduce major complexities. A two factor model with four free parameters and a constant hazard rate is used to provide perfect fits to the four non-equity tranches of CDX.NA.IG and iTraxx Europe CDOs of 5, 7 and 10 year maturities. Allowing for log-linear time dependence for the hazard rate enables us to obtain perfect fits to all the five tranches of both CDX.NA.IG and iTraxx Europe CDOs for all three maturities. These fits could be useful for pricing non-standard products and performing sensitivity analysis for hedging purposes.

The model is based on the assumption of conditional independence of defaults at differing times. That is, if a credit name has survived an instant, an event at that instant does not have any further influence on the credit name. This ignores response times to events causing defaults and the model as such is expected to be applicable at relatively larger time scales. The unrealistic implication that all defaults associated with an event would occur instantaneously could be addressed by introducing time delays in responding to events. This issue will be discussed elsewhere.

The approach pursued in the article could be applicable in other situations where a collection of events influence taking certain decisions. Usually such situations are handled with Gaussian distributions, but it is not straightforward to incorporate higher order correlations into such a framework. Higher order correlations have a direct impact on the distribution along the tail. Tail distributions have turned out to be important under various disciplines in different contexts as in, for instance, the computation of value-at-risk. The present approach provides a simpler, but a powerful, framework to address tail distributions by incorporating higher order correlations. Perhaps even an individual company could be modeled as a collection of correlated units so that the volatility smile exhibited by the options on the company's stocks could be explained. These and other issues remain to be investigated.

## A Expression for Joint Survival Probability

Here, let us derive expression (2) for the joint survival probability  $Q(t_1, \dots, t_n)$ . As discussed in the article, let us assume that defaults at differing times are conditionally independent. In other words, given that credit names  $i$  and  $j$  have survived up to times  $t_i$  and  $t_j$  respectively,  $t_i \neq t_j$ , their respective defaults at  $t_i$  and  $t_j$  are independent of each other. This means

$$Q^{-1}(t_i, t_j) \frac{\partial^2 Q(t_i, t_j)}{\partial t_i \partial t_j} dt_i dt_j = \left[ -Q^{-1}(t_i, t_j) \frac{\partial Q(t_i, t_j)}{\partial t_i} dt_i \right] \left[ -Q^{-1}(t_i, t_j) \frac{\partial Q(t_i, t_j)}{\partial t_j} dt_j \right], \quad (50)$$

where we have shown only the dependence on  $t_i$  and  $t_j$  for simplicity. Rearranging the terms,

$$\left[ \frac{\partial Q(t_i, t_j)}{\partial t_i} \right]^{-1} \left[ \frac{\partial^2 Q(t_i, t_j)}{\partial t_i \partial t_j} \right] = Q^{-1}(t_i, t_j) \left[ \frac{\partial Q(t_i, t_j)}{\partial t_j} \right]. \quad (51)$$

This can be simplified to read

$$\frac{\partial}{\partial t_j} \text{Ln} \left( -\frac{\partial Q(t_i, t_j)}{\partial t_i} \right) = \frac{\partial}{\partial t_j} \text{Ln} Q(t_i, t_j). \quad (52)$$

Further simplification leads to

$$\frac{\partial}{\partial t_j} \text{Ln} \left( -\frac{\partial}{\partial t_i} \text{Ln} Q(t_i, t_j) \right) = 0. \quad (53)$$

This implies, for ordered times, as long as time ordering is maintained, that  $-\partial \text{Ln} Q / \partial t_{(i)}$  is independent of  $t_{(j)}$  for all  $j \neq i$ . With all the  $t_{(j)}$ 's reaching  $t_{(i)}$  in the limit, it becomes a function of  $t_{(i)}$  only. It is in fact the probability density that credit name ( $i$ ) defaults at  $t_{(i)}$ , given that names ( $i+1$ )... have not defaulted at  $t_{(i)}$  while names (1)...( $i-1$ ) are not looked at (considering models where it is independent of the ordering among names not defaulted, or not looked at). In terms of  $\pi_{i\dots}(t)$ 's introduced in (2), we may write

$$\frac{\partial}{\partial t_{(i)}} \text{Ln} Q(t_{(1)} \dots) = - \left( \pi_{(i)\dots(n)}(t_{(i)}) - \pi_{(i+1)\dots(n)}(t_{(i)}) \right). \quad (54)$$

To see this, note that  $1 - \pi_{(i+1)\dots}(t) dt$  is the conditional probability that none of the credit names ( $i+1$ )... default during the interval  $(t, t+dt)$  (names (1)...( $i$ ) are not looked at). It exceeds  $1 - \pi_{(i)\dots}(t) dt$  (here, names (1)...( $i-1$ ) are not looked at) by exactly the probability density that credit name ( $i$ ) defaults at  $t$ , given that names ( $i+1$ )... have not defaulted. Let us first integrate the above for  $i=1$  from time zero to  $t_{(1)}$ . We do not encounter other  $t_{(i)}$ 's during this since  $t_{(1)}$  is the smallest of the ordered times. We get

$$\text{Ln} Q(t_{(1)} \dots) = \text{Ln} Q_{(1)}(t_{(2)} \dots) - \int_0^{t_{(1)}} ds \pi_{(1)\dots(n)}(s) + \int_0^{t_{(1)}} ds \pi_{(2)\dots(n)}(s), \quad (55)$$

where  $Q_{(1)}$  is obtained from  $Q$  by setting  $t_{(1)} = 0$ . Equation (54) holds for  $Q_{(1)}$  as well, because, for  $i \geq 2$ , its right hand side is independent of  $t_{(1)}$  and we can set  $t_{(1)} = 0$  in  $Q$ . Integrating it for  $i=2$  from time zero to  $t_{(2)}$ , we get an expression for  $Q_{(1)}$  as an integral up to  $t_{(2)}$ ,

$$\text{Ln} Q_{(1)}(t_{(2)} \dots) = \text{Ln} Q_{(1)(2)}(t_{(3)} \dots) - \int_0^{t_{(2)}} ds \pi_{(2)\dots(n)}(s) + \int_0^{t_{(2)}} ds \pi_{(3)\dots(n)}(s), \quad (56)$$

where  $Q_{(1)(2)}$  has both  $t_{(1)}$  and  $t_{(2)}$  set to zero. Combining the two equations, we get

$$\text{Ln} Q(t_{(1)} \dots) = \text{Ln} Q_{(1)(2)}(t_{(3)} \dots) - \int_0^{t_{(1)}} ds \pi_{(1)\dots(n)}(s) - \int_{t_{(1)}}^{t_{(2)}} ds \pi_{(2)\dots(n)}(s) + \int_0^{t_{(2)}} ds \pi_{(3)\dots(n)}(s). \quad (57)$$

Continuing this procedure, we obtain expression (2) for the joint survival probability  $Q(t_1, \dots, t_n)$ .



## B Expressions for Homogeneous Pricing

Here, let us derive some simplified results for homogeneous names useful in the computation. For a  $\nu^{\text{th}}$  to default premium leg, the probability that less than  $\nu$  names have defaulted before  $t$  can be obtained from (7). Keeping only the number of names as subscripts, it reads

$$\sum_{r=0}^{\nu-1} \binom{n}{r} P_{[r]} = \sum_{r=0}^{\nu-1} \binom{n}{r} \sum_{s=0}^r (-1)^s \binom{r}{s} Q_{[r-s]} = \sum_{r=0}^{\nu-1} \binom{n}{r} C_{\nu r} Q_{[r]},$$

$$\text{where } C_{\nu r} = \sum_{s=0}^{\nu-1-r} (-1)^s \binom{n-r}{s}. \quad (58)$$

For the default leg, we need the probability that less than  $\nu$  names have defaulted before  $t$  and the number of defaults during  $(t, t + dt)$  makes it  $\nu$  or more. This is obtained by differentiating the above with respect to time. The results are a weighted sum of exponentials. For unit notional per name, uniform constant recovery rate  $R$ , and spread premium  $s$ , the legs can be computed as a sum of one-name CDS expressions,

$$\text{Default Leg} = (1 - R) \sum_{r=0}^{\nu-1} \binom{n}{r} C_{\nu r} \mathcal{D}(\pi_{[n-r]}),$$

$$\text{Premium Leg} = s \sum_{r=0}^{\nu-1} \binom{n}{r} C_{\nu r} \mathcal{P}(\pi_{[n-r]}), \quad (59)$$

where, for constant model parameters, constant interest rate  $r$ , time to maturity  $T$  and uniform period lengths  $\delta$ , the one-name CDS expressions are

$$\mathcal{D}(\lambda) = \frac{\lambda}{\lambda + r} \left[ 1 - e^{-(\lambda+r)T} \right], \quad \mathcal{P}(\lambda) = \delta \left( 1 + \lambda \frac{\delta}{2} \right) \frac{1 - e^{-(\lambda+r)T}}{e^{(\lambda+r)\delta} - 1}. \quad (60)$$

Next consider a CDO tranche. Under the homogeneous setting with uniform notionals and a uniform constant recovery rate, we can determine  $\nu_L$  and  $\nu_H$ , the number of defaults corresponding to the attachment and detachment points of the tranche respectively, the next closest integers if they turn out to fractional. Then the legs can be computed as a sum of  $\nu^{\text{th}}$  to default legs,

$$\text{Default Leg} = \sum_{\nu=\nu_L}^{\nu_H} w_{\nu} \left( \nu^{\text{th}} \text{to Default Leg} \right), \quad (61)$$

where  $w_{\nu} = 1$ , except perhaps for  $\nu = \nu_L$  or  $\nu_H$  where it could be a fraction  $w_{\nu_L}$  or  $w_{\nu_H}$  respectively. Substituting for the  $\nu^{\text{th}}$  to default leg and simplifying,

$$\text{Default Leg} = (1 - R) \sum_{r=0}^{\nu_H-1} \binom{n}{r} C'_r \mathcal{D}(\pi_{[n-r]}),$$

$$\text{Premium Leg} = s(1 - R) \sum_{r=0}^{\nu_H-1} \binom{n}{r} C'_r \mathcal{P}(\pi_{[n-r]}),$$

$$\text{where } C'_r = \sum_{\nu=\text{Max}(\nu_L, r+1)}^{\nu_H} w_{\nu} C_{\nu r}. \quad (62)$$

These can be used to obtain the upfront fee or the par spreads for the CDO tranches.

## C Structure of the Default Distribution

Here, let us try to understand the structure of the joint default probability distribution, in particular the bumps visible on its long tail. The probability of finding  $\nu$  defaults over time  $T$  in the homogeneous case with constant parameters can be expressed as

$$\begin{aligned}
P_{\{\nu\}} &= \binom{n}{\nu} \sum_{k=0}^{\nu} (-1)^k \binom{\nu}{k} Q_{[\nu-k]} = \binom{n}{\nu} \sum_{k=0}^{\nu} (-1)^k \binom{\nu}{k} \exp\left(-\pi_{[n-\nu+k]}T\right) \\
&= \binom{n}{\nu} \sum_{k=0}^{\nu} (-1)^k \binom{\nu}{k} \exp\left\{-\left(n-\nu+k\right)\bar{\lambda}T - \sum_{r=1}^m \zeta_r T \left[1 - \left(1-\gamma_r\right)^{n-\nu+k}\right]\right\} \\
&= \binom{n}{\nu} \sum_{k=0}^{\nu} (-1)^k \binom{\nu}{k} \left(e^{-\bar{\lambda}T}\right)^{n-\nu+k} \prod_{r=1}^m e^{-\zeta_r T} \exp\left[\zeta_r T \left(1-\gamma_r\right)^{n-\nu+k}\right] \\
&= \binom{n}{\nu} \sum_{k=0}^{\nu} (-1)^k \binom{\nu}{k} \left(e^{-\bar{\lambda}T}\right)^{n-\nu+k} \sum_{i_1 \dots i_m=0}^{\infty} \prod_{r=1}^m e^{-\zeta_r T} \frac{(\zeta_r T)^{i_r}}{i_r!} \left[\left(1-\gamma_r\right)^{i_r}\right]^{n-\nu+k} \\
&= \sum_{i_1 \dots i_m=0}^{\infty} \prod_{r=1}^m \left[e^{-\zeta_r T} \frac{(\zeta_r T)^{i_r}}{i_r!}\right] \binom{n}{\nu} \left[e^{-\bar{\lambda}T} \prod_{r=1}^m \left(1-\gamma_r\right)^{i_r}\right]^{n-\nu} \left[1 - e^{-\bar{\lambda}T} \prod_{r=1}^m \left(1-\gamma_r\right)^{i_r}\right]^{\nu} \quad (63)
\end{aligned}$$

This is a mixture of binomial distributions. This result can also be inferred from our assumption of conditional independence of defaults given the factor states, by writing it down as binomial distributions conditional on the arrival of a number of events generated by the factor names, summed over the Poisson distributed probabilities of arrival of those events. The binomial distributions are positioned at

$$\nu_i \approx n \left[1 - e^{-\bar{\lambda}T} \prod_{r=1}^m \left(1-\gamma_r\right)^{i_r}\right] \quad (64)$$

with the mixing weights

$$w_i = \prod_{r=1}^m \left[e^{-\zeta_r T} \frac{(\zeta_r T)^{i_r}}{i_r!}\right]. \quad (65)$$

These contribute to the bumps in our joint default probability distribution. The width of the bumps are  $\approx 2\sigma_i$  where  $\sigma_i = \sqrt{\nu_i(n-\nu_i)/n}$ , that increases with  $\nu_i$  for  $\nu_i < n/2$ . The peaks are  $\approx w_i/\sqrt{2\pi\sigma_i}$ . The width increases only as  $\sqrt{n}$  with  $n$ , making the bumps more pronounced as  $n$  increases. For very large  $n$ , one could approximate the joint default probability distribution as a set of weights concentrated at the above positions.

In a two-factor model with  $\gamma_1 > \gamma_2$ , the positions of the bumps as a fraction of  $n$  are

$$1 - e^{-\bar{\lambda}T}, 1 - e^{-\bar{\lambda}T}(1-\gamma_2), \dots, 1 - e^{-\bar{\lambda}T}(1-\gamma_2)^{i_2}, 1 - e^{-\bar{\lambda}T}(1-\gamma_1), \dots \quad (66)$$

The first bump is due to  $\bar{\lambda}$ . It is followed by  $\gamma_2$ -bumps due to the second factor name. The number of  $\gamma_2$ -bumps before we encounter a  $\gamma_1$ -bump due to the first factor name is given by the largest  $i_2$  such that  $(1-\gamma_2)^{i_2} > 1-\gamma_1$ . As an example, if  $\gamma_1=26\%$  and  $\gamma_2=7\%$ , we get four  $\gamma_2$ -bumps before we encounter a  $\gamma_1$ -bump. These bumps may not be all visible unless we go to sufficiently large  $n$ . We thus see that the second factor name attempts to fill up the gaps left over by the first factor name. Additional factors in the model only provide more fine structure to the default probability distribution.

## D Arbitrary Precision Code for CDO Pricing

The code below is written for a simple to use, but a powerful, arbitrary precision calculator available from “<http://directory.fsf.org/calc.html>”. On copying into a file, say “cdo.txt”, and running the command “calc -f cdo.txt”, it prints out iTraxx Europe 5-year CDO tranche premiums.

```
m = 2; n = 125; R = 0.40;
T = 5; ir = 0.035; dc = 0.25; dt = 1.0;
mat tra[] = {0.0,0.03,0.06,0.09,0.12,0.22};
mat gam[m]; mat zta[m]; mat tht[m];
rho = 1.862/100; gam[0] = 26.150/100;
if (m > 1) gam[1] = 7.047/100;
tht[0] = 39.606*pi()/180;
lam0 = 29.2121/10000; mulam = 0.25985;
for (r = 0; r < m; r++) {
  tmp = (r<m-1)? power(cos(tht[r]),2) : 1.0;
  for (s = 0; s < r; s++) tmp *= power(sin(tht[s]),2);
  zta[r] = tmp*rho/(gam[r]*gam[r]);
}
expmu = exp(mulam*dt);
ntraL = 0; ntraH = 4; eps = epsilon(1.0e-10);
for (ntra = 0; ntra < ntraL; ntra++) epsilon(epsilon()*1e-10);
for (ntra = ntraL; ntra <= ntraH; ntra++) {
  dleg = pleg = 0.0; epsilon(epsilon()*1e-10);
  atL = n*tra[ntra]/(1-R); nuL = ceil(atL+eps);
  atH = n*tra[ntra+1]/(1-R); nuH = ceil(atH-eps);
  for (r = 0; r < nuH; r++) {
    cpr = 0; nufr = (r < nuL)? nuL : r+1;
    for (nu = nufr; nu <= nuH; nu++) {
      cnur = 0; sign = 1;
      for (s = 0; s < nu-r; s++) { cnur += sign*comb(n-r,s); sign *= -1; }
      cpr += cnur*((nu<atL+1)?(nu-atL):(nu>atH)?(atH-nu+1):1);
    }
  }
  mult = comb(n,r)*cpr;
  for(pinr = n-r, s = 0; s < m; s++)
    pinr += zta[s]*(1.0-(n-r)*gam[s]-power(1.0-gam[s],n-r));
  for (pinr *= lam0, t = 0.0; t < T-eps; t += dt) {
    temp = exp(-(pinr+ir)*dt);
    dleg += mult*(1.0-temp)*(pinr/(pinr+ir));
    pleg += mult*(1.0-temp)*dc*(1.0+0.5*pinr*dc)/(exp((pinr+ir)*dc)-1.0);
    mult *= temp; pinr *= expmu;
  }
}
premium = (atL<eps)? 100*(dleg-0.05*pleg)/atH : 10000*dleg/pleg;
printf("%2.0f -%2.0f%%: %6.2f\n", 100*tra[ntra], 100*tra[ntra+1], premium);
}
```

## References

- [1] Albanese, C., O. Chen and A. DAlessandro (2005), “Dynamic Credit Correlation Modeling”, Working paper, [http://defaultrisk.com/pp\\_corr\\_80.htm](http://defaultrisk.com/pp_corr_80.htm).
- [2] Albanese, C., G. Campolieti, O. Chen and A. Zavidonov (2003), Credit Barrier Models, *Risk* 16 (6), pp. 109-113.
- [3] Andersen, L., J. Sidenius and S. Basu (2003), All Your Hedges in One Basket, *Risk*, November, pp. 67 - 72.
- [4] Arvanitis, A. and J. Gregory (2001), “Credit: The Complete Guide to Pricing, Hedging and Risk Management”, Risk Publications.
- [5] Avellaneda, M. and J. Zhu (2001), Distance to Default, *Risk* 14 (12), pp. 125-129.
- [6] Baxter, M. (2006), “Levy Process Dynamic Modeling of Single-Name Credits and CDO Tranches”, Working paper, [http://defaultrisk.com/pp\\_crdrv\\_110.htm](http://defaultrisk.com/pp_crdrv_110.htm).
- [7] Bennani, N. (2005), “The Forward Loss Model: A Dynamic Term Structure Approach for the Pricing of Portfolio Credit Derivatives”, Working paper, [http://defaultrisk.com/pp\\_crdrv\\_95.htm](http://defaultrisk.com/pp_crdrv_95.htm).
- [8] Berman, A. and N. Shaked-Monderer (2003), “Completely Positive Matrices”, World Scientific, New Jersey.
- [9] Brigo, D., A. Pallavicini and R. Torresetti (2006), “Calibration of CDO Tranches with the Dynamical Generalized-Poisson Loss Model”, Working paper, [http://www.defaultrisk.com/pp\\_crdrv117.htm](http://www.defaultrisk.com/pp_crdrv117.htm).
- [10] Chapovsky, A., A. Rennie and P. A. C. Tavares (2006), “Stochastic Intensity Modeling for Structured Credit Exotics”, Working paper, [http://defaultrisk.com/pp\\_crdrv\\_136.htm](http://defaultrisk.com/pp_crdrv_136.htm).
- [11] Das, S. R., D. Duffie and N. Kapadia (2005), “Common Failings: How Corporate Defaults are Correlated”, Working Paper, Santa Clara University, February, 2005.
- [12] Davis, M. and L. Violet (2000), “Modeling Default Correlation in Bond Portfolios”, Working paper, Imperial College, London, 2000.
- [13] Di Graziano, G. and C. Rogers (2005), “A Dynamic Approach to the Modeling of Correlation Credit Derivatives Using Markov Chains”, Working paper, [http://www.defaultrisk.com/pp\\_crdrv\\_88.htm](http://www.defaultrisk.com/pp_crdrv_88.htm).
- [14] Duffie, D. and N. Garleanu (2001), “Risk and the Valuation of Collateralized Debt Obligations”, *Financial Analysts Journal*, 57, pp. 41-59.
- [15] Duffie, D. and K. Singleton (1999), “Modeling Term Structures of Defaultable Bonds”, *Review of Financial Studies*, 12, pp. 687-720.
- [16] Elouerkhaoui, Y. (2003), “Pricing and Hedging in a Dynamic Credit Model”, Citigroup Working paper.
- [17] Errais, E., K. Giesecke and L. Goldberg (2006), “Pricing Credit from the Top Down with Affine Point Processes”, working paper.

- [18] Finger, C. C. (2004), "Issues in the Pricing of Synthetic CDOs", *The Journal of Credit Risk*, 1(1): pp. 113-124.
- [19] Friend, A. and E. Rogge (2004), *Correlation at First Sight*, Working Paper, ABN AMRO.
- [20] Gregory, J. and J.P. Laurent (2004), *In the Core of Correlation*, Risk, October, pp. 87-91.
- [21] Giesecke, K. (2001), "Correlated Default with Incomplete Information", *Journal of Banking and Finance*, Humboldt Universitat Berlin, October 2001.
- [22] Hager, S. and R. Schöbel (2005), *A Note on the Correlation Smile*, Tbinger Diskussionsbeitrag 297.
- [23] Hull, J and A. White (2006), "Valuing Credit Derivatives Using an Implied Copula Approach", Working Paper, Joseph L. Rotman School of Management, May 2006.
- [24] Jarrow, R. and F. Yu (2000), "Counterparty Risk and the Pricing of Defaultable Securities", *Journal of Finance*, 56, pp. 1765-1799.
- [25] Jarrow, R., D. Lando and S. M. Turnbull (1997), "A Markov Model for the Term Structure of Credit Risk Spreads", *Review of Financial Studies* 10, pp. 481-523.
- [26] Joshi, M. and A. Stacey (2005), "Intensity Gamma: A New Approach to Pricing Credit Derivatives".
- [27] Li, D. X. (2000), *On Default Correlation: a Copula Function Approach*, *The Journal of Fixed Income*, Vol. 9, March, pp. 43-54.
- [28] Lindskog, F. and A. McNeil (2003), "Common Poisson Shock Models: Applications to Insurance and Credit Risk Modeling", *ASTIN Bulletin*, 33(2), pp. 209-238.
- [29] Marshall, A. and I. Olkin (1967), "A Multivariate Exponential Distribution", *Journal of the American Statistical Association*, 62, 30-44.
- [30] Mashal, R., M. Naldi and G. Tejwani (2004), *The Implications of Implied Correlation*, Lehman Brothers, Quantitative Credit Research, Working Paper.
- [31] McGinty, L., E. Beinstein, R. Ahluwalia and M. Watts (2004), *Introducing Base Correlations, Credit Derivatives Strategy*, JP Morgan, March 2004.
- [32] OKane, D. and L. Schlögl (2003), *The Large Homogeneous Portfolio Approximation with the Student-t Copula*, Working Paper, Lehman Brothers International, July 2003.
- [33] Schmidt, W. and I. Ward (2002), *Pricing Default Baskets*, *Risk* 15 (1), pp. 111-114.
- [34] Schönbucher, P. (2003), "Information Driven Default Contagion", Working paper, D-MATH, ETH Zürich, December 2003.
- [35] Schönbucher, P. (2005), "Portfolio Losses and the Term Structure of Loss Transition Rates: A New Methodology for the Pricing of Portfolio Credit Derivatives", Working paper, [http://defaultrisk.com/pp\\_model\\_74.htm](http://defaultrisk.com/pp_model_74.htm).
- [36] Schönbucher, P. and D. Schubert (2001), "Copula Dependent Default Risk in Intensity Models", Working Paper, Department of Statistics, Bonn University.

[37] Sidenius, J., V. Piterbarg and L. Andersen (2005), “A New Framework for Dynamic Credit Portfolio Loss Modeling”, Working paper, [http://defaultrisk.com/pp\\_model.83.htm](http://defaultrisk.com/pp_model.83.htm).

[38] Vasicek, O. (1987), Probability of Loss on Loan Portfolio, Working Paper, KMV Corporation.

Table 1: Two-factor perfect fits to the four non-equity tranches of CDX.NA.IG and iTraxx Europe CDOs for the market quotes on June 2, 2006 computed in the semi-analytical approach assuming a constant hazard rate. There are 125 names with a uniform recovery rate of 40%. Premiums are paid quarterly. Interest rate is assumed at a constant 5% for CDX.NA.IG and 3.5% for iTraxx Europe CDOs. Equity tranche is quoted as an upfront fee in percent (plus 500bp per year running) and the other tranches are quoted as spreads per year in bp.

CDX.NA.IG Series 6						
Tranches :	0-3%	3-7%	7-10%	10-15%	15-30%	0-100%
5y Quotes :	30	97	20	10	5	40.3
$\rho = 2.74\%$ , $\gamma_1 = 36.32\%$ , $\gamma_2 = 7.46\%$ , $\theta = 34.57^0$ , $\lambda = 66.75$ , 0-3%:						34.0
7y Quotes :	48	240	45	20	7	49.5
$\rho = 3.09\%$ , $\gamma_1 = 31.24\%$ , $\gamma_2 = 6.42\%$ , $\theta = 33.81^0$ , $\lambda = 81.99$ , 0-3%:						53.1
10y Quotes :	55	575	114	52	16	62.5
$\rho = 4.00\%$ , $\gamma_1 = 27.29\%$ , $\gamma_2 = 3.70\%$ , $\theta = 22.20^0$ , $\lambda = 103.52$ , 0-3%:						68.1
iTraxx Europe Series 5						
Tranches :	0-3%	3-6%	6-9%	9-12%	12-22%	0-100%
5y Quotes :	23	70	19	9	4	31.0
$\rho = 1.89\%$ , $\gamma_1 = 26.19\%$ , $\gamma_2 = 7.07\%$ , $\theta = 39.85^o$ , $\lambda = 51.44$ , 0-3%:						23.9
7y Quotes :	41	186	46	25	8	41.0
$\rho = 2.40\%$ , $\gamma_1 = 22.14\%$ , $\gamma_2 = 5.81\%$ , $\theta = 32.32^o$ , $\lambda = 68.03$ , 0-3%:						46.4
10y Quotes :	50	515	119	54	21	51.9
$\rho = 3.27\%$ , $\gamma_1 = 21.52\%$ , $\gamma_2 = 2.25\%$ , $\theta = 25.94^o$ , $\lambda = 86.12$ , 0-3%:						64.0

Table 2: Two-factor perfect fits to all the five tranches of CDX.NA.IG and iTraxx Europe CDOs for the market quotes on June 2, 2006 computed in the semi-analytical approach assuming a log-linear time dependence for the hazard rate. There are 125 names with a uniform recovery rate of 40%. Premiums are paid quarterly. Interest rate is assumed at a constant 5% for CDX.NA.IG and 3.5% for iTraxx Europe CDOs. Equity tranche is quoted as an upfront fee in percent (plus 500bp per year running) and the other tranches are quoted as spreads per year in bp.

CDX.NA.IG Series 6						
Tranches :	0-3%	3-7%	7-10%	10-15%	15-30%	0-100%
5y Quotes :	30	97	20	10	5	40.3
$\rho = 2.47\%$ , $\gamma_1 = 35.95\%$ , $\gamma_2 = 7.64\%$ , $\theta = 31.26^\circ$ , $\lambda(0) = 0.012$ , $\kappa_\lambda = 2.560$						
7y Quotes :	48	240	45	20	7	49.5
$\rho = 3.30\%$ , $\gamma_1 = 52.84\%$ , $\gamma_2 = 14.08\%$ , $\theta = 33.87^\circ$ , $\lambda(0) = 13.34$ , $\kappa_\lambda = 0.491$						
10y Quotes :	55	575	114	52	16	62.5
$\rho = 7.09\%$ , $\gamma_1 = 65.72\%$ , $\gamma_2 = 14.21\%$ , $\theta = 25.33^\circ$ , $\lambda(0) = 30.23$ , $\kappa_\lambda = 0.246$						
iTraxx Europe Series 5						
Tranches :	0-3%	3-6%	6-9%	9-12%	12-22%	0-100%
5y Quotes :	23	70	19	9	4	31.0
$\rho = 1.86\%$ , $\gamma_1 = 26.15\%$ , $\gamma_2 = 7.05\%$ , $\theta = 39.61^\circ$ , $\lambda(0) = 29.21$ , $\kappa_\lambda = 0.260$						
7y Quotes :	41	186	46	25	8	41.0
$\rho = 2.08\%$ , $\gamma_1 = 22.52\%$ , $\gamma_2 = 8.87\%$ , $\theta = 30.25^\circ$ , $\lambda(0) = 5.52$ , $\kappa_\lambda = 0.633$						
10y Quotes :	50	515	119	54	21	51.9
$\rho = 4.58\%$ , $\gamma_1 = 41.79\%$ , $\gamma_2 = 10.65\%$ , $\theta = 27.79^\circ$ , $\lambda(0) = 12.46$ , $\kappa_\lambda = 0.351$						

Figure 1: Joint default probability distributions over 5, 7 and 10 years for 125 credit names for the model parameters from Table 2 calibrated to iTraxx Europe CDOs of corresponding maturities.

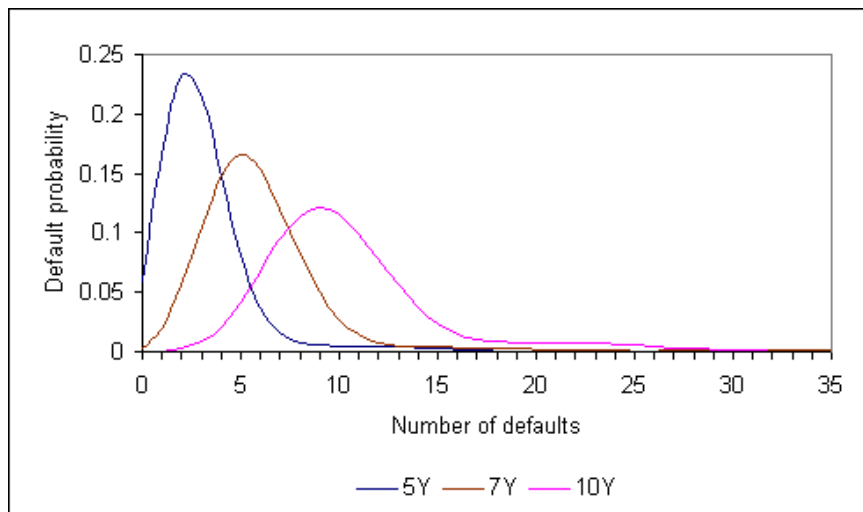


Figure 2: Logarithmic plot of the joint default probability distributions over 5, 7 and 10 years for 125 credit names for the model parameters from Table 2 calibrated to iTraxx Europe CDOs of corresponding maturities.

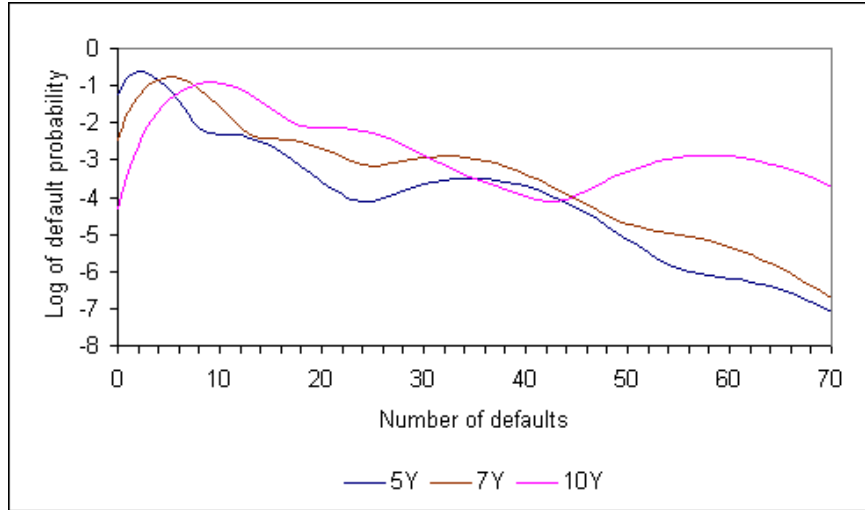


Figure 3: Logarithmic plot of the 5-year joint default probability distributions for different numbers of credit names for the model parameters from Table 2 calibrated to 5-year iTraxx Europe CDOs.

