

Center
for
Economic Research

No. 2000-69

THE ECONOMICS OF SHALLOW LAKES

By Karl-Göran Mäler, Anastasios Xepapadeas and
Aart de Zeeuw

August 2000

ISSN 0924-7815

The Economics of Shallow Lakes¹

Karl-Göran Mäler

The Beijer International Institute of Ecological Economics

Anastasios Xepapadeas

Department of Economics, University of Crete

Aart de Zeeuw

Department of Economics and CentER, Tilburg University²

Abstract

Ecological systems such as shallow lakes are usually non-linear and display discontinuities and hysteresis in their behaviour. These systems often also provide conflicting services as a resource and a waste sink. This implies that the economic analysis of these systems requires to solve a non-standard optimal control problem or, in case of a common property resource, a non-standard differential game. This paper provides the optimal management solution and the open-loop Nash equilibrium for a dynamic economic analysis of the model for a shallow lake. It also investigates whether it is possible to induce optimal management in case of common use of the lake, by means of a tax. Furthermore, an interesting property for the feedback Nash equilibrium is derived.

Key words: non-linear differential games, ecological systems.

JEL-codes: 020, 720.

¹This research was initiated at a meeting of the Resilience Network which had financial support from the MacArthur Foundation. We are very grateful for the advice and comments of (in alphabetical order) William Brock, Steve Carpenter, Davis Dechert, Marten Scheffer, Perry Shapiro, Sjak Smulders, Robert Solow, David Starrett and Florian Wagener.

²Mailing address: P.O. Box 90153, 5000 LE Tilburg, the Netherlands; e-mail: A.J.deZeeuw@kub.nl

1. Introduction

The purpose of this paper is to develop an economic analysis of the shallow lake. Lakes have been studied intensively and the shallow lake model is well tested and documented, so that the analysis has a direct meaning. However, the lake model can also be viewed as a metaphor for many of the ecological problems facing mankind today, so that the analysis developed in this paper will have a wider applicability. The economic analysis is especially challenging because of the non-linear dynamics of the lake (which yields non-convex decision problems) and the gaming aspects related to the common property character of the lake.

It has been observed that shallow lakes, due to a heavy use of fertilizers on surrounding land and an increased inflow of waste water from human settlements and industries, at some point tend to flip from a clear state to a turbid state with a greenish look caused by a dominance of phytoplankton (Carpenter and Cottingham, 1997; Scheffer, 1997). The release of nutrients, especially phosphorus, into the lake stimulates the growth of phytoplankton and in addition to that, the resulting turbidity prevents light to reach the bottom of the lake so that submerged vegetation disappears. With the vegetation many species disappear such as waterfleas which graze on phytoplankton. It has also been observed that shallow lakes are hard to restore in the sense that the nutrient loads have to be reduced below the level where the flip occurred before the lake flips back to a clear state. The positive feedback through the effect on the submerged vegetation is one explanation for this so-called hysteresis effect.

Ecological systems often display discontinuities in the equilibrium states of the system over time. A seminal paper in this area models the sudden outbreak of an insect, called the spruce budworm, and the long time it takes before the budworm density jumps back to a low number again (Ludwig, Jones and Holling, 1978). Technically, this hysteresis effect can be modelled by a non-linear differential equation which has multiple equilibria with separated domains of attraction in a certain range of the exogenous variable. Other examples of ecological systems with hysteresis are described in Ludwig, Walker and Holling (1997).

In the ecological literature, management of shallow lakes is mostly interpreted as preventing the lake to flip or, if it flips, as restoring the lake in its original state. However, this approach denies the

economics of the problem in the sense of the trade-offs between the utility of the agricultural activities, which are responsible for the release of phosphorus, and the utility of a clear lake. When the lake flips to a green turbid state, the value of the ecological services of the lake (e.g. the intake of water and recreation) decreases but this situation corresponds to a high level of agricultural activities. It depends, of course, on the relative weight attached to these welfare components whether it is better to keep the lake clear or not. Note that if it is better to keep the lake clear, it is very costly to let the lake flip first because of the hysteresis. A second economic issue is that lakes are usually common property resources and therefore suffer from sub-optimal use, in the absence of coordination.

In the first part of the paper, very simple welfare analysis is done on the possible equilibria of the lake model. Relative weights are chosen such that it is optimal to manage the lake in one of its clear states, called oligotrophic states. It is shown, however, that when the lake is shared by more than one community, two Nash equilibria occur: one in an oligotrophic state and one in a dirty state, called a eutrophic state. In the second part of the paper, intertemporal welfare is maximized subject to the dynamics of the lake. It is shown that in case the discount rate is low enough, an optimal path for phosphorus loadings exists, from each initial condition of the lake, which moves the lake towards its optimal steady-state. When the lake is shared by more than one community, a non-linear differential game has to be solved. The phase-diagram for the open-loop Nash equilibrium has three steady-states, two of which are saddle-point stable and correspond to the Nash equilibria found in the first part of the paper. The third point is unstable and displays complex dynamics. However, it is shown that a so-called Skiba point exists which splits the possible initial conditions of the lake in an area from where the Nash equilibrium loading trajectory will approach the oligotrophic saddle-point, and an area from where the eutrophic saddle-point results.

The question arises whether it is possible, by levying a tax on the loading of phosphorus, to induce the communities to follow an optimal management path. Note that if the communities are locked in the eutrophic Nash equilibrium, a straight path to the optimal steady-state is not feasible due to the hysteresis. Assuming that it is not possible to implement a time-varying tax, the answer depends on the number of communities. It is shown that if the number is low enough, a constant tax yields a Nash equilibrium path that moves towards the optimal steady-state (although this path will not be the same as the optimal management path, of course). If the number is high, however, more saddle-points arise again and the dynamics becomes very complex, so that there is no guarantee that

a constant tax can induce optimal management of the lake in the long run.

A final issue regards the type of Nash equilibrium employed in the analysis. It is well-known that the open-loop Nash equilibrium is not strongly time-consistent and therefore a feedback Nash equilibrium is preferred. However, due to the non-linear dynamics of the lake, it is very difficult to find a feedback Nash equilibrium. In the last section of the paper, an interesting property of the equilibrium is derived, in case it exists and under certain conditions, but it is left for further research to try to identify this equilibrium.

The paper is organized as follows. Section 2 describes the shallow lake model. Section 3 is concerned with the economics of the lake equilibria and section 4 with the dynamic welfare analysis of the lake. Section 4 contains the case of optimal management, the open-loop Nash equilibrium, the effect of taxes and the feedback Nash equilibrium. Section 5 concludes the paper.

2. The Lake Model

Shallow lakes have been studied intensively over the last two decades and it has been shown that the essential dynamics of the eutrophication process can be modelled by the differential equation

$$\ddot{P}(t) = L(t) - sP(t) + r \frac{P^2(t)}{P^2(t) + m^2}, \quad P(0) = P_0, \quad (1)$$

where P is the amount of phosphorus in algae, L is the input of phosphorus (the “loading”), s is the rate of loss consisting of sedimentation, outflow and sequestration in other biomass, r is the maximum rate of internal loading and m is the anoxic level (see for an extensive treatment of the lake model Carpenter and Cottingham (1997) or Scheffer (1997)). Less is known about deep lakes but from what is known now, it can be expected that the same type of model will be adequate. However, estimates of the parameters of this differential equation for different lakes vary considerably, so that a wide range of possible values has to be considered.

By substituting $x = P/m$, $a = L/r$, $b = sm/r$ and by changing the time scale to rt/m , equation (1) can be rewritten as

$$\ddot{x}(t) = a(t) - bx(t) + \frac{x^2(t)}{x^2(t) + 1}, \quad x(0) = x_0. \quad (2)$$

In order to understand some of the important features of this model, suppose that the loading a is constant. For high values of a , differential equation (2) has one stable equilibrium. For low values of a , three situations can occur, depending on the value of the parameter b . If $b \geq 3\sqrt{3}/8$, all values of a lead to one stable equilibrium (see figure 1). If $b \leq 1/2$, low values of a yield two equilibria for the differential equation (2). The third root of the right-hand side of equation (2) determines the domains of attraction: above this point, the high equilibrium will result and below this point the low equilibrium (see figure 2). If $1/2 < b < 3\sqrt{3}/8$, low values of a first yield one stable equilibrium again, followed by a range of a 's with two equilibria (see figure 3).

It is easy to see a hysteresis effect now for $b < 3\sqrt{3}/8$. If the loading a is gradually increased, at first the equilibrium level of phosphorus remains low: the lake remains in an oligotrophic state with a high level of ecological services. At a certain point, however, the lake *flips* to a high equilibrium level of phosphorus. To put it differently, the lake *flips* to a eutrophic state with a low level of ecological services. If it is then decided to lower the loading a in order to try to bring the lake back to an oligotrophic state, it is not enough to reduce a just below that flip-point. If b is high enough ($1/2 < b < 3\sqrt{3}/8$, figure 3), it can still be done, but a has to be reduced further until the lake flips back to an oligotrophic state. If $b \leq 1/2$ (figure 2), however, then the lake is trapped in high equilibrium levels of phosphorus which means that the first flip is irreversible. In that case, only a change in the parameter b (e.g., by releasing a certain type of fish and thus changing the fauna) can restore the lake. In the sequel of the paper, it is assumed that the parameter $b = 0.6$ so that the lake displays hysteresis but a flip to a eutrophic state is reversible. Furthermore, the loading a will not be exogenous anymore but subject to control. In section 3, a is still constant and the trade-off is considered between the benefits of being able to release that constant amount of phosphorus, on the one hand, and the resulting damage to the lake, on the other hand. Section 4 provides a full dynamic analysis where a can change over time.

[Insert figures 1, 2, 3 about here]

3. Economic Analysis of the Lake Equilibria

Several interest groups operate in relation with the lake, modelled in section 2. Because the release of phosphorus into the lake is due to agricultural activity, at least the farmers have an interest in being able to increase the loading. In that way, the agricultural sector can grow without the need

to invest in new technology in order to decrease the emission-output ratio. On the other hand, a clean lake is preferred by fishermen, drinking water companies, other industry that makes use of the water, and people who spend leisure time on or along the lake. Suppose a community or country, balancing these different interests, can agree on a welfare function of the form $\ln a - cx^2$, $c > 0$. The lake has value as a waste sink for agriculture ($\ln a$) and it provides ecological services that decrease with the amount of phosphorus ($-cx^2$). The parameter c reflects the relative weight of these welfare components. Suppose, furthermore, that the lake is shared by n communities or countries with the same welfare function. In this section it is assumed that the communities choose constant loading levels a_i , $i = 1, \dots, n$, and that the amount of phosphorus adjusts instantaneously to its equilibrium level. A logarithmic functional form is used, because then the optimal management outcome has the invariance property in the sense that it is independent of the number of communities and does not change when this number is varied. It is assumed that the area around the lake is large enough so that adding new communities does not lead to crowding out, and it is assumed that the objectives are additive in the number n .

Optimal management of the lake requires to solve

$$\text{maximize } \sum_{i=1}^n \ln a_i - ncx^2 \text{ s.t. } a - bx + \frac{x^2}{x^2 + 1} = 0, \quad a = \sum_{i=1}^n a_i \quad (3)$$

Simple calculus shows that the optimal amount of phosphorus is determined by

$$b - \frac{2x}{(x^2 + 1)^2} - 2cx\left(bx - \frac{x^2}{x^2 + 1}\right) = 0. \quad (4)$$

Optimal management, of course, does not necessarily yield an oligotrophic state for the lake. If the communities attach a relatively low weight c to ecological services, it can be optimal to choose a eutrophic state with a high level of agricultural activities. It is easy to show that for large values of c , the optimal management problem has one maximum for an x below the flip-point. As the value of c is decreased, first a local maximum appears for a high x whereas the global maximum is still achieved for a low x , but for c low enough (i.e. $c \leq 0.36$) the global maximum occurs for a high x beyond the flip-point. In the sequel of the paper it is assumed that enough weight (i.e. $c = 1$) is attached to the services of the lake to make it optimal to aim for an oligotrophic state.

If $c = 1$, equation (4) yields $x^* = 0.33$ with total loading $a^* = 0.1$. Note that the same level of total

loading can also lead to the eutrophic state $x = 1$, if the initial amount of phosphorus is in the upper domain of attraction (see figure 3). A flip occurs when total loading is increased to $a = 0.1021$, so that the lake is managed not far from what is called the “edge of hysteresis” (Brock, Carpenter and Ludwig, 1997). A small mistake may cause a flip with high costs, not only directly because of a jump to a high x but also indirectly because of the long return path.

If the communities do not cooperate in managing the lake, it is assumed a Nash equilibrium results which requires to solve

$$\text{maximize } \ln a_i - cx^2, \quad i=1,\dots,n, \quad \text{s.t. } a - bx + \frac{x^2}{x^2 + 1} = 0, \quad a = \sum_{i=1}^n a_i \quad (5)$$

Simple calculus shows that the Nash equilibrium level of phosphorus is determined by

$$b - \frac{2x}{(x^2 + 1)^2} - \frac{2c}{n}x\left(bx - \frac{x^2}{x^2 + 1}\right) = 0. \quad (6)$$

If $c = 1$ again and if the number of communities $n = 2$, equation (6) has three solutions, two of which correspond to a Nash equilibrium. The first Nash equilibrium yields $x^N_1 = 0.36$ with total loading $a^N_1 = 0.1012$. The lake is still in an oligotrophic state but closer to the edge of hysteresis. However, the second Nash equilibrium yields an eutrophic state $x^N_2 = 1.51$ with total loading $a^N_2 = 0.2108$. Welfare under optimal management and in the oligotrophic Nash equilibrium are comparable, but welfare in the eutrophic Nash equilibrium is much lower. Moreover, when the communities are locked into the second Nash equilibrium and decide to coordinate, it is much more difficult to reach the optimal management outcome, due to the hysteresis. It is not enough to reduce total loading to 0.1 . It has to be reduced to 0.0898 first, in order to flip back to an oligotrophic state, and can then be increased to 0.1 again.

If $n > 2$, these numbers change of course, but it is easy to see that for all b in the range with hysteresis and reversibility ($\frac{1}{2} < b < 3\sqrt{3}/8$), on which this paper focuses, always two Nash equilibria occur. In fact, equation (6) intersects the curve for the lake equilibria with the curve described by $(n/2cx)(b - 2x/(x^2 + 1)^2)$. For b in the range given above, this curve has a negative part for x in a positive range. Furthermore, it approaches infinity for $x \downarrow 0$ and it approaches zero from above for $x \rightarrow \infty$. Increasing the number of communities n implies that the curve is stretched out but the three intersection points remain, two of which are Nash equilibria.

In the next section the loading a can change over time and the amount of phosphorus does not adjust instantaneously to its equilibrium level but gradually according to equation (2), which turns the optimal management problem into an optimal control problem and the static game into a differential game. The Nash solutions found in this section return (approximately) as saddle-point stable steady-states with solution trajectories that may have to bend around the flip-point.

4. Dynamic Economic Analysis of the Lake Model

Suppose that the problem has an infinite horizon, so that the objectives become

$$W_i = \int_0^{\infty} e^{-\tilde{n}t} [\ln a_i(t) - cx^2(t)] dt, \quad i = 1, \dots, n, \quad (7)$$

where $\tilde{n} > 0$ is the discount rate.

4.1 Optimal management

Optimal management requires to maximize the sum of the objectives W_i , subject to equation (2) with $a = \hat{O}a$. This is an optimal control problem and the maximum principle yields the necessary conditions

$$\frac{1}{a_i(t)} + \dot{\tilde{e}}(t) = 0, \quad i = 1, \dots, n, \quad (8)$$

$$\ddot{\tilde{e}}(t) = \left[(b + \tilde{n}) - \frac{2x(t)}{(x^2(t) + 1)^2} \right] \dot{\tilde{e}}(t) + 2ncx(t), \quad (9)$$

with a transversality condition on the co-state \tilde{e} , and equation (2). Substitution of (8) into (9), symmetry and multiplication by n yields

$$\ddot{\tilde{e}}(t) = - \left[(b + \tilde{n}) - \frac{2x(t)}{(x^2(t) + 1)^2} \right] a(t) + 2cx(t)a^2(t). \quad (10)$$

The solution is given by the set of differential equations (2) and (10), and the transversality condition. Note that $b = 0.6$ (see section 2) and $c = 1$ (see section 3). The phase-diagram in the (x, a) -plane is drawn in figure 4a. One curve represents the steady-states for x and can be recognized as the lake equilibria, which were discussed in sections 2 and 3. The other curve represents the steady-states for a . Its position depends on the discount rate \tilde{n} . If the discount rate is low enough ($\tilde{n} < 0.1$), this curve intersects the first curve only once in a point that is saddle-point stable. If the discount rate is higher, the second curve moves up, it intersects the first curve three times, and the analysis becomes similar to the analysis of the open-loop Nash equilibrium below. It is assumed here that the discount rate $\tilde{n} = 0.03$, which yields the graph in figure 4a. The steady-state is close to the static optimal management solution in section 3, and converges to that point when the discount rate goes to 0. The optimal solution prescribes to jump, at any initial state of the lake, to the stable manifold and to move towards the steady-state. Given the non-linearity of the problem, it is not easy to obtain an analytical expression for the stable manifold but a numerical approximation is not difficult to develop. Starting at the steady-state point, the characteristic vector corresponding to the negative eigenvalue of the Jacobian matrix determines the direction of the stable manifold. Working backwards from the steady-state in small steps, a piecewise linear approximation of the stable manifold is then found and the approximation gets better the smaller the steps. With Mathematica (Wolfram, 1999), the stable and unstable manifolds for the set of differential equations (2) and (10) can be drawn (see figure 4b). Note that the stable manifold can be reached from all initial states x_0 and bends around the lower flip-point (see also section 3).

[Insert figures 4a, 4b about here]

4.2 Open-loop Nash equilibrium

The open-loop Nash equilibrium (Başar and Olsder, 1982) is found by applying the maximum principle to each objective W_i , $i = 1, \dots, n$, separately (fixing a_j for $j \neq i$) subject to equation (2) with $a = \hat{a}_i$. The set of necessary conditions becomes

$$\frac{1}{a_i(t)} + \ddot{e}_i(t) = 0, \quad i = 1, \dots, n, \quad (11)$$

$$\ddot{e}_j(t) = [(b + \tilde{n}) - \frac{2x(t)}{(x^2(t) + 1)^2}] \ddot{e}_i(t) + 2cx(t), \quad i = 1, \dots, n, \quad (12)$$

with transversality conditions on the co-states \dot{e}_i , and equation (2). Substitution of (11) into (12), symmetry and multiplication by n yields

$$\ddot{a}(t) = -[(b + \tilde{n}) - \frac{2x(t)}{(x^2(t) + 1)^2}] a(t) + 2\frac{c}{n} x(t) a^2(t). \quad (13)$$

The open-loop Nash equilibrium is given by the set of differential equations (2) and (13), and the transversality conditions. The phase-diagram for two communities $n = 2$ (and $b = 0.6$, $c = 1$, $\tilde{n} = 0.03$) in the (x, a) -plane is drawn in figure 5a. The steady-state curves for x and a now have three intersection points. The intersection points on the left and on the right are saddle-point stable and yield possible steady-states for the Nash equilibrium in an oligotrophic and in a eutrophic area, respectively. The intersection point in the middle is unstable with complex eigenvalues. Again with Mathematica (Wolfram, 1999), the stable and unstable manifolds for the set of differential equations (2) and (13) can be drawn (see figure 5b). The trajectories of the stable manifold curl a while from the intersection point in the middle and then go either to the steady-state on the left or to the steady-state on the right. It is clear that when the initial state x_0 lies to the right of the set of curls, the open-loop Nash equilibrium follows the upper trajectory to the steady-state on the right, and when the initial state lies to the left of that area, it follows the lower trajectory to the steady-state on the left. However, it is more difficult to see what happens in the range in between. It can be shown (Appendix A) that a state x_S exists such that for $x_0 < x_S$, the open-loop Nash equilibrium jumps to the lower trajectory and moves towards the oligotrophic steady-state whereas for $x_0 > x_S$, it jumps to the upper trajectory and moves towards the eutrophic steady-state. The point x_S is called a Skiba point because it was introduced by Skiba in an optimal growth model with a convex-concave production function (Skiba, 1978, Brock and Malliaris, 1989).

[Insert figures 5a, 5b about here]

If $n > 2$, the same arguments as in section 3 can be used to show that always two open-loop Nash equilibria occur. Note, however, by inspection of equation (13), that the arguments do not hold for all b in the range $(\frac{1}{2}, 3\sqrt{3}/8)$ anymore, because of the positive discount rate \tilde{n} , but only for $b + \tilde{n} < 3\sqrt{3}/8$, which holds for the specific values chosen for b and \tilde{n} .

Before turning to the question whether a tax can induce the communities to choose loadings according to the optimal management trajectory, it is useful to make a few general remarks on the analysis above. First, when comparing equations (10) and (13), it is immediately clear that the open-loop Nash equilibrium also results under optimal management with parameter c/n instead of c . It is an example of a potential game where a Nash equilibrium results when some constructed objective is maximized (Monderer and Shapley, 1996; Dechert and Brock, 1999). Second, it also means that all outcomes (optimal management with varying relative weight c , and symmetric open-loop Nash equilibria with fixed c but varying number of communities n) can be traced by solving an optimal control problem leading to a set of differential equations with parameter c/n . This parameter can be denoted as a bifurcation parameter and it can be shown that only saddle-node and heteroclinic bifurcations can occur (Wagener, 1999; Brock and Starrett, 1999). Third, similar dynamics is found in models for external economies with multiple equilibria but in these models the solution is not driven by maximizing an objective but by self-fulfilling expectations. The idea in these models is to show that outside the curls, only history (initial conditions) determines which equilibrium is reached but in the range with curls, expectations play a role (Krugman, 1991; Matsuyama, 1991). In this paper, however, an objective is maximized which yields a Skiba point, so that only initial conditions determine the outcome both for optimal management and the symmetric open-loop Nash equilibrium.

4.3 Taxes

Consider the case of achieving the unique steady-state amount of phosphorus under optimal management by a tax \hat{o} on phosphorus loading. Under the tax scheme the objectives (7) of the open-loop differential game change to

$$W_i = \int_0^{\infty} e^{-\hat{n}t} [\ln a_i(t) - \hat{\alpha}(t)a_i(t) - cx^2(t)] dt, \quad i = 1, \dots, n. \quad (14)$$

The maximum principle requires for the optimal choice of phosphorus loading at each point in time that

$$\frac{1}{a_i(t)} - \hat{\alpha}(t) + \ddot{e}_i(t) = 0, \quad i = 1, \dots, n. \quad (15)$$

In order to obtain the loading that corresponds to optimal management, it is immediately clear by comparing (8) to (15) that the tax on loading should be chosen such that $\hat{\sigma}(t) = -\dot{e}(t) + \dot{e}_i(t)$. This implies that the tax bridges the gap between the social shadow cost of the accumulated phosphorus $\dot{e}(t)$ and the private shadow cost of the accumulated phosphorus $\dot{e}_i(t)$ that causes the steady-state phosphorus levels in the open-loop Nash equilibrium to exceed the (unique) steady-state phosphorus level under optimal management. The tax rate will, however, be time dependent, since it has to equalize cooperative and non-cooperative loading at every point in time. Although optimal, such a tax will be very difficult to implement, since it would require a regulating institution to continuously change the tax rate. Another, more realistic, approach would be to choose a fixed tax rate on loading, defined such that the non-cooperative steady-state phosphorus level under the constant tax equals the steady-state phosphorus level under optimal management. This tax will be called the optimal steady-state tax (OSST).

By comparing (9) to (16) and using (10), it is easy to see that the OSST $\hat{\sigma}^*$ is given by

$$\hat{\sigma}^* = -\frac{(n-1)\dot{e}^*}{n} = \frac{(n-1)}{a^*}, \quad (16)$$

where \dot{e}^* is the value of the co-state and a^* is total loading in the steady-state under optimal management. Under this constant tax scheme, the open-loop Nash equilibrium will be given by the set of differential equations (2) and, instead of (13),

$$\ddot{x}(t) = -[(b + \tilde{n}) - \frac{2x(t)}{(x^2(t) + 1)^2}][a(t) - \frac{\hat{\sigma}^*}{n}a^2(t)] + 2\frac{c}{n}x(t)a^2(t) \quad (17)$$

with a transversality condition.

It is easy to check that the steady-state (x^*, a^*) for the set of differential equations (2) and (10) under optimal management is also a steady-state for the set of differential equations (2) and (17) in the open-loop Nash equilibrium under the constant tax $\hat{\sigma}^*$. By substituting $a(t) = a^*$ and $\hat{\sigma}^* = (n-1)/a^*$ in the second term between brackets of the right-hand side of equation (17), this term reduces to a^*/n . It is then easy to see that (x^*, a^*) is also a point on the curve representing the steady-states for total loading a in the open-loop Nash equilibrium under the OSST. However, the rest of this curve differs from the one under optimal management.

It should be made clear that the OSST leads to the optimal management steady-state but the path under the OSST that determines the transition to the steady-state *is not the same* as the optimal

management path. Coincidence of the optimal management path and the regulated path requires to use the time-dependent tax. To put it differently, the stable manifold of the optimal management problem is not the same as the stable manifold of the regulated problem, although both approach the same saddle-point.

If the number of communities $n = 2$, the phase-diagram under the OSST in the (x, a) -plane is drawn in figure 6a. Although this figure differs from figure 4a for optimal management, it is qualitatively the same. It has one saddle-point and a corresponding stable manifold. Starting at both unregulated Nash equilibrium steady-states, the two communities will change their loadings under the OSST and the equilibrium path will follow this stable manifold and move towards the optimal management steady-state. Starting at the oligotrophic Nash equilibrium, this is a short trajectory, but starting at the eutrophic Nash equilibrium, the path has to bend around the flip-point.

[Insert figures 6a, 6b, 6c about here]

Increasing the number of communities n , at a certain point the phase-diagram under the OSST becomes very complicated. From equation (17), the curve representing the steady-states for a is given by

$$a = \frac{(b + \tilde{n}) - \frac{2x}{(x^2 + 1)^2}}{\frac{2c}{n}x + [(b + \tilde{n}) - \frac{2x}{(x^2 + 1)^2}] \frac{(n-1)}{na^*}}. \quad (18)$$

The denominator of the right-hand side of equation (18) is zero if and only if

$$\frac{2cx}{(n-1)} + [(b + \tilde{n}) - \frac{2x}{(x^2 + 1)^2}] \frac{1}{a^*} = 0. \quad (19)$$

For $n = 2$ the left-hand side of equation (19) is positive, but for $n > 7$ equation (19) has two roots which yield two vertical asymptotes for the curve given by equation (18). Note that this phenomenon occurs because the term between brackets is partly negative which is caused by the specific choice of b and \tilde{n} (see also section 4.2). Moreover, if n goes to infinity, the curve approaches $a = a^*$, but this convergence is not uniform, due to the two discontinuities. An example of such a phase-diagram under the OSST is drawn in figure 6b where $n = 10$. This case still has only one

saddle-point stable steady-state. If n gets large, it is to be expected that the curve has more intersection points with the curve representing the lake equilibria, because of the convergence to a^* . This implies the possibility that multiple steady-states occur under the OSST. An example is drawn in figure 6c where $n = 100$. This case has three steady-states again, two of which are saddle-point stable, whereas the middle one is unstable. For a lower discount rate \tilde{n} and a higher number of communities n , it may happen that two more steady-states occur between the asymptotes, one unstable and one saddle-point. The existence of a second steady-state characterized by saddle-point stability leads to the conclusion that if the number of communities n is high, the optimal steady-state tax may not work. Depending on the initial conditions, the OSST may direct the equilibrium path towards a steady-state with a higher phosphorus level than in the optimal management steady-state.

4.4 Feedback Nash equilibrium

The open-loop Nash equilibrium is weakly time-consistent but not strongly time-consistent which implies that the equilibrium is not robust against unexpected changes in the state of the lake (Başar, 1989). To obtain an equilibrium with the Markov perfect property, the feedback Nash equilibrium has to be found which means that the Hamilton-Jacobi-Bellman equation for the game has to be solved. This is a very difficult problem because it is not clear what the value function will look like due to the non-linearity of the lake model. However, assuming that a symmetric feedback Nash equilibrium exists, it is possible to consider the properties, which is the topic of this section.

Suppose that the loading strategies in the feedback Nash equilibrium are given by $a_i = h_i(x)$, $i = 1, \dots, n$. The maximum principle then yields, instead of equation (12),

$$\ddot{e}_j(t) = [(b + \tilde{n}) - \frac{2x(t)}{(x^2(t) + 1)^2} - \sum_{j \neq i}^n h_j'(x(t))] \dot{e}_j(t) + 2cx(t), \quad i = 1, \dots, n, \quad (20)$$

and, instead of equation (13),

$$\ddot{a}(t) = -[(b + \tilde{n}) - \frac{2x(t)}{(x^2(t) + 1)^2} - (n-1)h'(x(t))]a(t) + 2\frac{c}{n}x(t)a^2(t), \quad (21)$$

where h denotes the symmetric feedback Nash equilibrium loading strategy and h' denotes the

derivative of h with respect to the state x of the lake.

It can be seen from (21) that if $h'(x) < 0$, the steady-state curve for a in figure 5a moves up so that the intersection points with the steady-state curve for x move to the right. It follows that the steady-state amount of phosphorus and total loadings will be higher in the feedback Nash equilibrium than in the open-loop Nash equilibrium. This would confirm the intuition derived in similar type of problems (van der Ploeg and de Zeeuw, 1992). If a community knows that the other communities will respond to a higher amount of phosphorus in the lake with lower loadings, it can load more at the margin because the extra loading will be partly offset by the reactions of the other communities. Since all communities argue in this way, total loading in equilibrium is higher than in the case the loadings are not conditioned on the state of the lake as in the open-loop Nash equilibrium.

The question is whether it can be shown that $h'(x) < 0$. It is very difficult to explicitly solve for $h(x)$ but by exploiting the first-order condition of maximization in the Hamilton-Jacobi-Bellman equation, a relation can be established with concavity of the value function.

The HJB-equation for community i , $i = 1, \dots, n$, is given by

$$\tilde{n} V(x) = \max \left[\ln a_i - cx^2 + V_x(x) \left[a_i + (n-1)h(x) - bx + \frac{x^2}{x^2 + 1} \right] \right], \quad (22)$$

where V denotes the value function. The first-order condition yields

$$\frac{1}{a_i} = -V_x(x) \Rightarrow a_i := h(x) = \frac{-1}{V_x(x)} \Rightarrow h'(x) = \frac{V_{xx}(x)}{V_x^2(x)}. \quad (23)$$

It follows that the feedback Nash equilibrium strategy h has a negative slope in the region of concavity of the value function. In Appendix B it is shown that, under certain conditions, the value function is concave in the oligotrophic region. This would then imply that if a feedback Nash equilibrium exists below the flip-point, it must lead to a higher steady-state amount of phosphorus, with higher total loadings, than the open-loop Nash equilibrium.

5. Conclusion

Economics of ecological systems is a much neglected area in the literature. Furthermore, nonlinearities in the dynamics of these systems and the common property aspect of the function as a resource and a waste sink, present interesting challenges to economic theory. This paper focuses on the shallow lake as an example, but also because much is known about shallow lakes in the ecological literature. However, the analysis applies to all models that are driven by convex-concave relations, and models with this feature are very typical for mathematical models in ecology (see Murray, 1989).

Internal loading of phosphorus in shallow lakes causes the lake model to be non-linear. As a consequence, even in the case that optimal management of the lake has only one steady-state with saddle-point stability, either an increase in the discount rate or an increase in the number of communities, sharing the lake, leads to more saddle-points and complicated dynamics in between. However, a Skiba point exists, which means that in these cases the initial level of accumulated phosphorus determines whether the lake will end up in a clear or a turbid state. For a small number of communities, a constant tax on the loading of phosphorus can induce optimal behaviour and a return to a clear state, but for a large number this may not work. The analysis employs the open-loop Nash equilibrium to characterize non-cooperative behaviour. The feedback Nash equilibrium would be more appropriate but is very difficult to identify for this problem. It is shown, however, that it is to be expected that this equilibrium will result in even higher equilibrium amounts of phosphorus.

References

Başar, T. and G.J. Olsder (1982), *Dynamic Noncooperative Game Theory*, Academic Press, New York.

Başar, T. (1989), Time consistency and robustness on equilibria in noncooperative dynamic games, in F. van der Ploeg and A.J. de Zeeuw (eds.), *Dynamic Policy Games in Economics*, Contributions to Economic Analysis 181, North Holland, Amsterdam, 9-54.

Brock, W.A., S.R. Carpenter and D. Ludwig (1997), Notes on optimal management of a lake subject to flips, *Working Paper*, University of Wisconsin.

Brock, W.A. and D. Starrett (1999), Nonconvexities in ecological management problems, *Working*

Paper, University of Wisconsin.

Brock, W.A. and A.G. Malliaris (1989), *Differential Equations, Stability and Chaos in Dynamic Economics*, North Holland, Amsterdam.

Carpenter, S.R. and K.L. Cottingham (1997), Resilience and restoration of lakes, *Conservation Ecology* 1:2.

Crandall, M.G., H. Ishii and P.-L. Lions (1992), User's guide to viscosity solutions of second order partial differential equations, *Bulletin of the American Mathematical Society* 27, 1-25.

Dechert, W.D. and W.A. Brock (1999), Lakegame, *Working Paper*, University of Houston.

Krugman, P. (1991), History versus expectations, *Quarterly Journal of Economics*, CVI, 651-667.

Ludwig, D., D.D. Jones and C.S. Holling (1978), Qualitative analysis of insect outbreak systems: the spruce budworm and forest, *Journal of Animal Ecology* 47, 315-332.

Ludwig, D., B.H. Walker and C.S. Holling (1997), Sustainability, stability and resilience, *Conservation Ecology* 1:7.

Matsuyama, K. (1991), Increasing returns, industrialization, and indeterminacy of equilibrium, *Quarterly Journal of Economics* CVI, 617-650.

Monderer, D. and L.S. Shapley (1996), Potential games, *Games and Economic Behaviour* 14, 124-143.

Murray, J.D. (1989), *Mathematical Biology*, Springer Verlag, Berlin.

van der Ploeg, F. and A.J. de Zeeuw (1992), International aspects of pollution control, *Environmental & Resource Economics* 2, 117-139.

Scheffer, M. (1997), *Ecology of Shallow Lakes*, Chapman and Hall, New York.

Skiba, A.K. (1978), Optimal growth with a convex-concave production function, *Econometrica* 46, 3, 527-539.

Wagener, F.O.O. (1999), Shallow lakes, *Working Paper*, University of Amsterdam.

Wolfram, S. (1999), *The Mathematica Book*, 4th ed., Wolfram Media / Cambridge University Press, Cambridge.

Appendix A: The Skiba point

As also noted later in the main text, the open-loop Nash equilibrium results from maximizing the welfare objective (a potential function)

$$W = \int_0^{\infty} e^{-\tilde{n}t} \left[\sum_{i=1}^n \ln a_i(t) - cx^2(t) \right] dt. \quad (\text{A1})$$

What follows is strongly based on Wagener (1999).

Define the Hamiltonian function

$$H = e^{-\tilde{n}t} g(x, a_1, \dots, a_n) + \mu f(x, a_1, \dots, a_n), \quad (\text{A2})$$

where

$$g(x, a_1, \dots, a_n) = \sum_{i=1}^n \ln a_i - cx^2, \quad f(x, a_1, \dots, a_n) = \sum_{i=1}^n a_i - bx + \frac{x^2}{x^2 + 1}, \quad (\text{A3})$$

and define the current value Hamiltonian function

$$\tilde{H} = g(x, a_1, \dots, a_n) + \tilde{e} f(x, a_1, \dots, a_n), \quad \tilde{e} = e^{\tilde{n}t} \mu. \quad (\text{A4})$$

The maximum principle yields the necessary conditions (8), (9) and (2) with the parameter c replaced by c/n , which then yields the set of differential equations (2) and (13) for the open-loop Nash equilibrium with the phase-diagram given in figure 5a and the stable and unstable manifolds in figure 5b.

Denote the x -coordinate of the oligotrophic steady-state as x_1 and of the eutrophic steady-state as x_4 , and denote the range with curls as $[x_2, x_3]$, where x_2 and x_3 are the x -coordinates of the intersection points of the outer upper curl and the outer lower curl with the curve representing the steady-states for x ($f = 0$), respectively.

Along trajectories, it holds that

$$\frac{dH}{dt} = \frac{\partial H}{\partial x} \frac{dx}{dt} + \frac{\partial H}{\partial \mu} \frac{d\mu}{dt} + \frac{\partial H}{\partial t} = \frac{\partial H}{\partial x} \frac{\partial H}{\partial \mu} - \frac{\partial H}{\partial \mu} \frac{\partial H}{\partial x} + \frac{\partial H}{\partial t} = -\tilde{n}e^{-\tilde{n}t}g \quad (\text{A5})$$

It follows that

$$\tilde{H}(0) = H(0) = -\int_0^{\infty} \frac{dH}{dt} dt = \int_0^{\infty} \tilde{n}e^{-\tilde{n}t}g dt = \tilde{n}W. \quad (\text{A6})$$

Furthermore,

$$\frac{dW}{dx} = \frac{dW}{dt} \frac{dt}{dx} = \frac{1}{\tilde{n}} \frac{d\tilde{H}}{dt} \frac{1}{f} = \frac{1}{\tilde{n}} \left[\frac{\partial \tilde{H}}{\partial x} f + f(\tilde{n}\ddot{e} - \frac{\partial \tilde{H}}{\partial x}) \frac{1}{f} \right] = \ddot{e}. \quad (\text{A7})$$

Condition (8) yields

$$\ddot{e} = -\frac{1}{a_i}, \quad i=1,\dots,n, \Rightarrow \ddot{e} = -\frac{n}{a} \left(a = \sum_{i=1}^n a_i \right). \quad (\text{A8})$$

The proof of the existence of a unique Skiba point takes four steps.

1) Suppose the initial condition x_0 is in the interior of the range $[x_2, x_3]$.

It is better to jump immediately to the upper trajectory instead of to the *same* trajectory some point earlier, or to the lower trajectory instead of to the *same* trajectory some point earlier, because the welfare difference

$$\int \frac{dW}{dx} dx = \int \ddot{e} dx = \int -\frac{n}{a} dx < 0. \quad (\text{A9})$$

2) Suppose the initial condition is x_2 . The choice is either to jump to the upper trajectory and start at the intersection point with $f = 0$ or to jump to the lower trajectory, by a proper choice of initial loadings a . Because

$$\frac{\partial W}{\partial a} = \frac{1}{\tilde{n}} \frac{\partial \tilde{H}}{\partial a} = \frac{1}{\tilde{n}} \sum_{i=1}^n \frac{\partial}{\partial a_i} (g + \tilde{e}f) = \frac{1}{\tilde{n}} \sum_{i=1}^n \frac{1}{a_i^2} f = \frac{1}{\tilde{n}} \frac{n^3}{a^2} f \quad (\text{A10})$$

and $f < 0$ below the intersection point, the welfare difference between the upper trajectory and the lower trajectory is negative, so that it is better to jump to the lower trajectory at x_2 .

3) Suppose the initial condition is x_3 . The choice is either to jump to the lower trajectory and start at the intersection point with $f = 0$ or to jump to the upper trajectory. Because above the intersection point $f > 0$, it follows from equation (A10) that the welfare difference between the upper trajectory and the lower trajectory is positive, so that it is better to jump to the upper trajectory at x_3 .

4) Compare now the upper trajectory leading to steady-state on the right, with co-state \tilde{e}_2 , and the lower trajectory leading to the steady-state on the left, with co-state \tilde{e}_1 . Denote the welfare difference as $\ddot{A}W$. Using the results in steps 2-3 and equations (A7)-(A8), it follows that

$$\ddot{A}W(x_2) < 0, \quad \ddot{A}W(x_3) > 0, \quad \frac{d}{dx} \ddot{A}W = \tilde{e}_2 - \tilde{e}_1 > 0. \quad (\text{A11})$$

From (A11) it follows that a point x_S in the interior of the range $[x_2, x_3]$ exists, such that

$$\ddot{A}W(x_S) = 0; \quad \ddot{A}W(x) < 0, \quad x \in [x_2, x_S]; \quad \ddot{A}W(x) > 0, \quad x \in (x_S, x_3]. \quad (\text{A12})$$

The point x_S is called a Skiba point and (A12) implies that if the initial amount of phosphorus x_0 is on the left-hand side of the Skiba point, the equilibrium jumps to the lower trajectory and moves towards the steady-state on the left and if the initial amount of phosphorus x_0 is on the right-hand side of the Skiba point, the equilibrium jumps to the upper trajectory and moves towards the steady-state on the right.

Appendix B: Concavity of the value function

The value function $V(x)$ is concave if for any two initial states x_0' and x_0'' of the lake and for all $\tilde{e} \in [0, 1]$, it holds that

$$V(\tilde{e}x_0' + (1 - \tilde{e})x_0'') \geq \tilde{e}V(x_0') + (1 - \tilde{e})V(x_0''). \quad (\text{B1})$$

The right-hand side of inequality (B1) can be written as the left-hand side of next inequality (B2), which holds because the objectives W_i are concave in the first and second argument:

$$\bar{e} W_i(h(x'), x') + (1 - \bar{e}) W_i(h(x''), x'') \leq W_i(\bar{e}h(x') + (1 - \bar{e})h(x''), \bar{e}x' + (1 - \bar{e})x''), \quad (\text{B2})$$

where h denotes the feedback Nash equilibrium strategy, and x' and x'' denote the resulting state trajectories from the initial states x'_0 and x''_0 , respectively.

The left-hand side of inequality (B1) can be written as the left-hand side of next inequality (B3), which holds because h is the best response for community i :

$$W_i(h(\hat{x}), \hat{x}) \geq W_i(\bar{e}h(x') + (1 - \bar{e})h(x''), y), \quad (\text{B3})$$

where \hat{x} denotes the state trajectory resulting in the feedback Nash equilibrium from the initial state $\bar{e}x'_0 + (1 - \bar{e})x''_0$, and y denotes the solution trajectory of the differential equation

$$\ddot{x} = \bar{e}h(x') + (1 - \bar{e})h(x'') + (n - 1)h(x) - bx + \frac{x^2}{x^2 + 1}, \quad x(0) = \bar{e}x'_0 + (1 - \bar{e})x''_0. \quad (\text{B4})$$

It is clear from (B1), (B2) and (B3) that the value function $V(x)$ is concave if

$$W_i(\bar{e}h(x') + (1 - \bar{e})h(x''), \bar{e}x' + (1 - \bar{e})x'') \leq W_i(\bar{e}h(x') + (1 - \bar{e})h(x''), y), \quad (\text{B5})$$

which holds if

$$y \leq \bar{e}x' + (1 - \bar{e})x'', \quad (\text{B6})$$

because W_i is decreasing in the second argument.

In inequality (B6) two state trajectories are compared that start in the same initial state $\bar{e}x'_0 + (1 - \bar{e})x''_0$ and are driven by the same controls $\bar{e}h(x') + (1 - \bar{e})h(x'')$. The following lemma gives conditions under which this inequality holds.

Lemma: If h'' is not strongly negative, inequality (B6) holds in the oligotrophic region.

Proof: In the oligotrophic region

$$b - \frac{2x}{(x^2 + 1)^2} \geq 0. \quad (\text{B7})$$

Define

$$F(x, \tilde{y}; a) := -(n-1)h(x) + bx - \frac{x^2}{x^2 + 1} + \tilde{y} - a. \quad (\text{B8})$$

The differential equation $F = 0$ is called *proper* if F is non-decreasing in the first argument or

$$-(n-1)h'(x) + b - \frac{2x}{(x^2 + 1)^2} \geq 0. \quad (\text{B9})$$

If $h'(x) \leq 0$, (B9) follows immediately from (B7) and if $h'(x) > 0$, (B9) follows from (B7) and the stability condition of the state equation in the feedback Nash equilibrium, given by

$$-nh'(x) + b - \frac{2x}{(x^2 + 1)^2} > 0. \quad (\text{B10})$$

F is concave in the first argument if

$$-(n-1)h''(x) - \frac{2-6x^2}{(x^2 + 1)^3} \leq 0. \quad (\text{B11})$$

In the oligotrophic region, the second term of the left-hand side of (B11) is negative, so that inequality (B11) holds, if h'' is not strongly negative.

The second part of the proof is to show that if F is proper and concave in the first argument, inequality (B6) holds, where an argument from Crandall, Ishii and Lions (1992) is used.

First, note from (B4) that y is a solution of $F = 0$ with $a = \tilde{\epsilon}h(x') + (1 - \tilde{\epsilon})h(x'')$.

Second, because F is concave in the first argument and linear in the other arguments,

$$F(z, \tilde{y}; \tilde{\epsilon}h(x') + (1 - \tilde{\epsilon})h(x'')) \geq \tilde{\epsilon}F(x', \tilde{y}'; h(x')) + (1 - \tilde{\epsilon})F(x'', \tilde{y}''; h(x'')), \quad (\text{B12})$$

where $z = \tilde{\epsilon}x' + (1 - \tilde{\epsilon})x''$. The right-hand side of (B12) is 0, because x' is a solution of $F = 0$ with $a = h(x')$ and x'' is a solution of $F = 0$ with $a = h(x'')$: z is called a supersolution of F .

It follows that

$$F(z, \ddot{y}, \ddot{e}h(x') + (1 - \ddot{e})h(x'')) \geq F(y, \ddot{y}, \ddot{e}h(x') + (1 - \ddot{e})h(x'')) = 0. \quad (\text{B13})$$

Because F is proper,

$$y \leq z, \text{ if } \ddot{y} = \ddot{z}. \quad (\text{B14})$$

Consider the difference $y - z$ on the time axis $[0, \infty)$. First, note that $z(0) = y(0)$ and that z and y both converge to the steady-state of the feedback Nash equilibrium. The difference $y - z$ has therefore a maximum 0 at $t = 0$ or an interior maximum at a time $t^* \in (0, \infty)$. The result (B14) implies that if the difference $y - z$ has an interior maximum at t^* , then $y(t^*) \leq z(t^*)$, so that the maximal difference is non-positive. It follows that 0 is the maximum and that $y(t) \leq z(t)$ for all $t \in [0, \infty)$. Inequality (B6) has been proven.

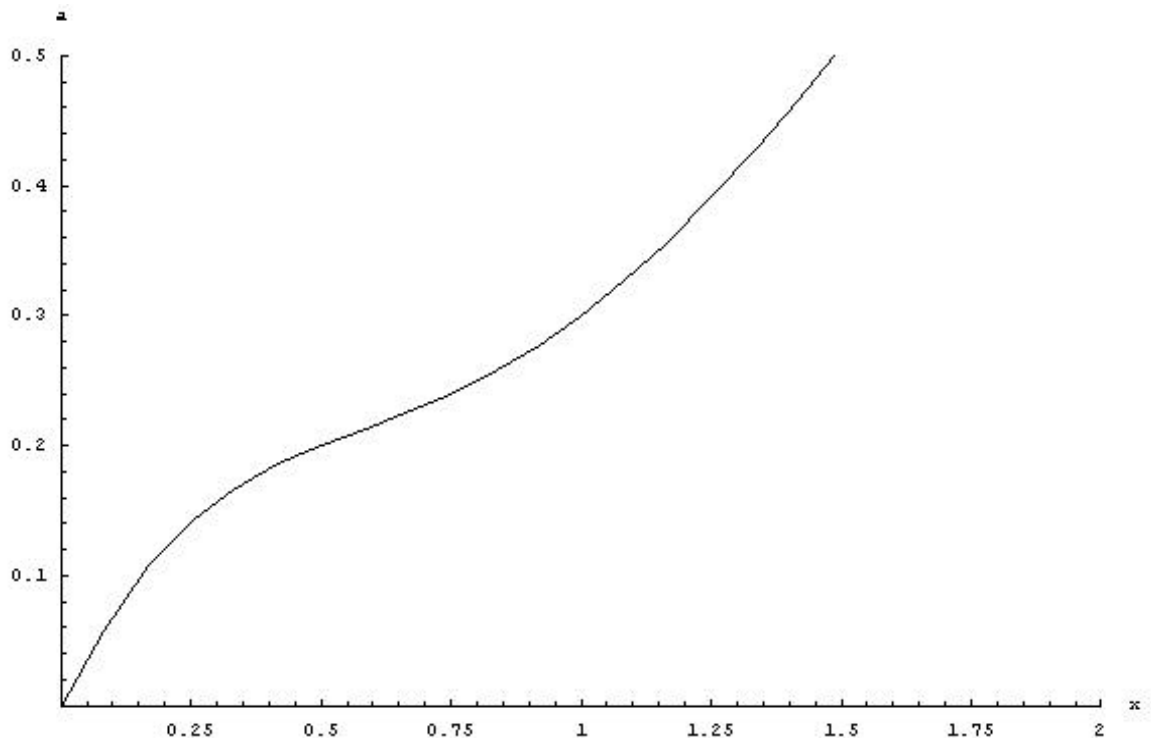


Figure 1

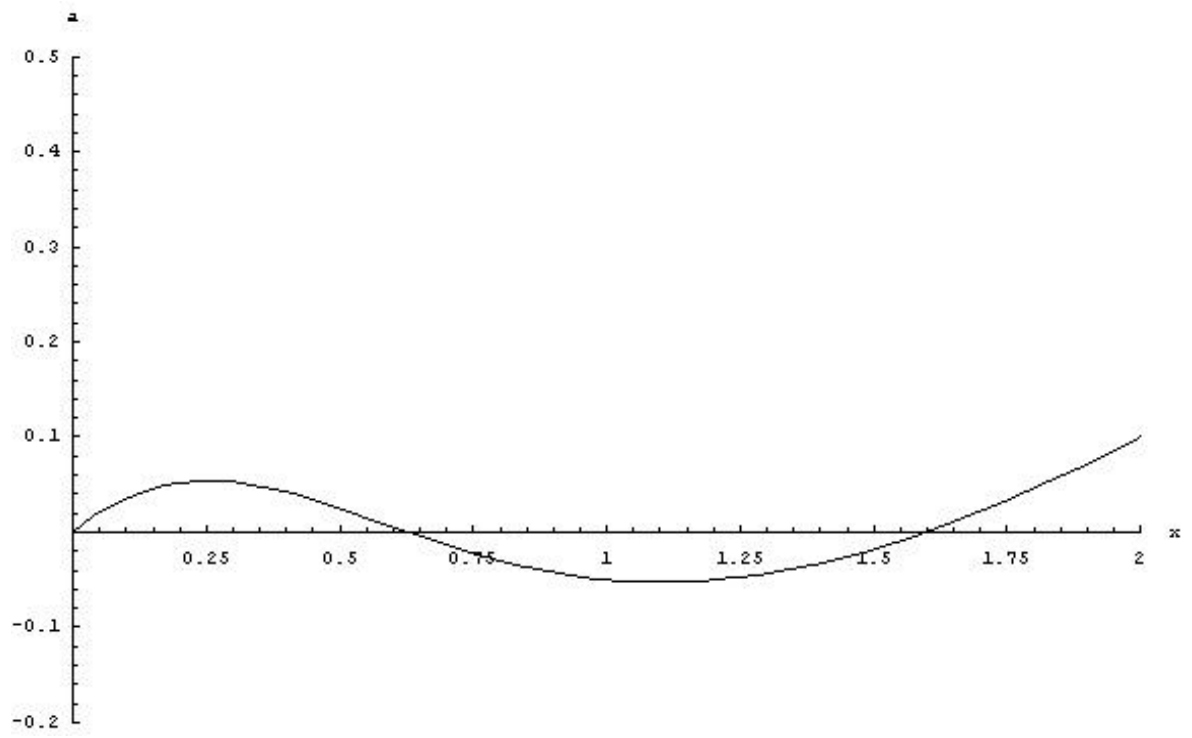


Figure 2

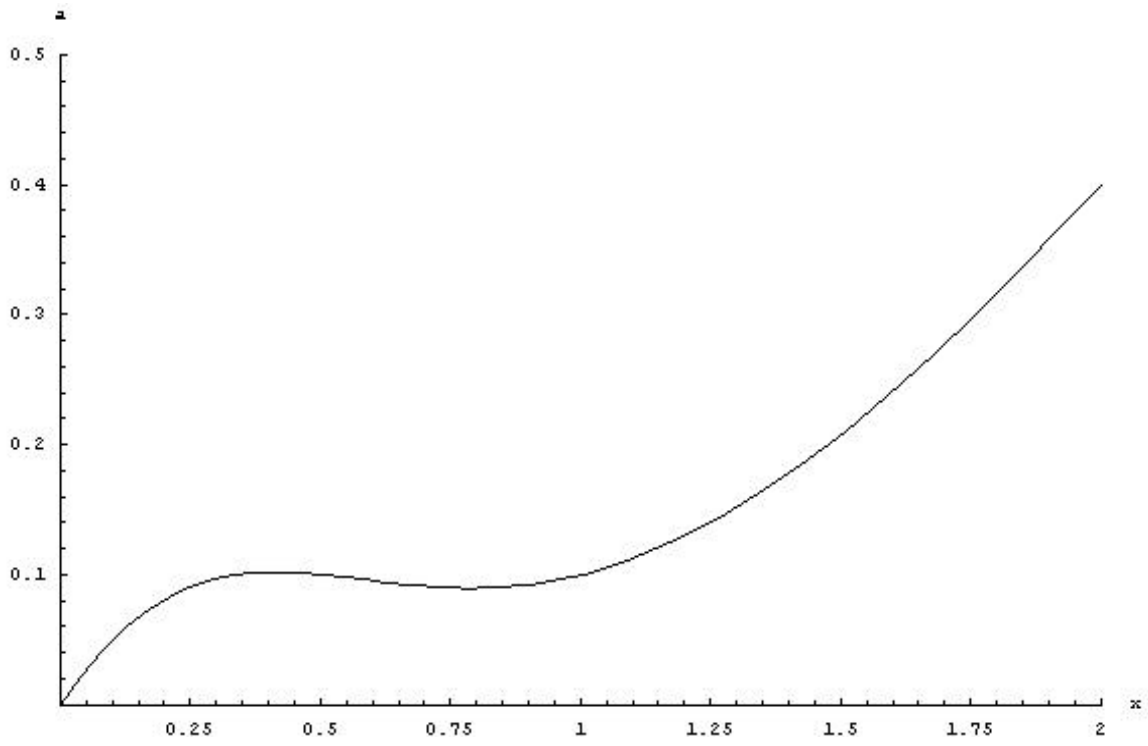


Figure 3

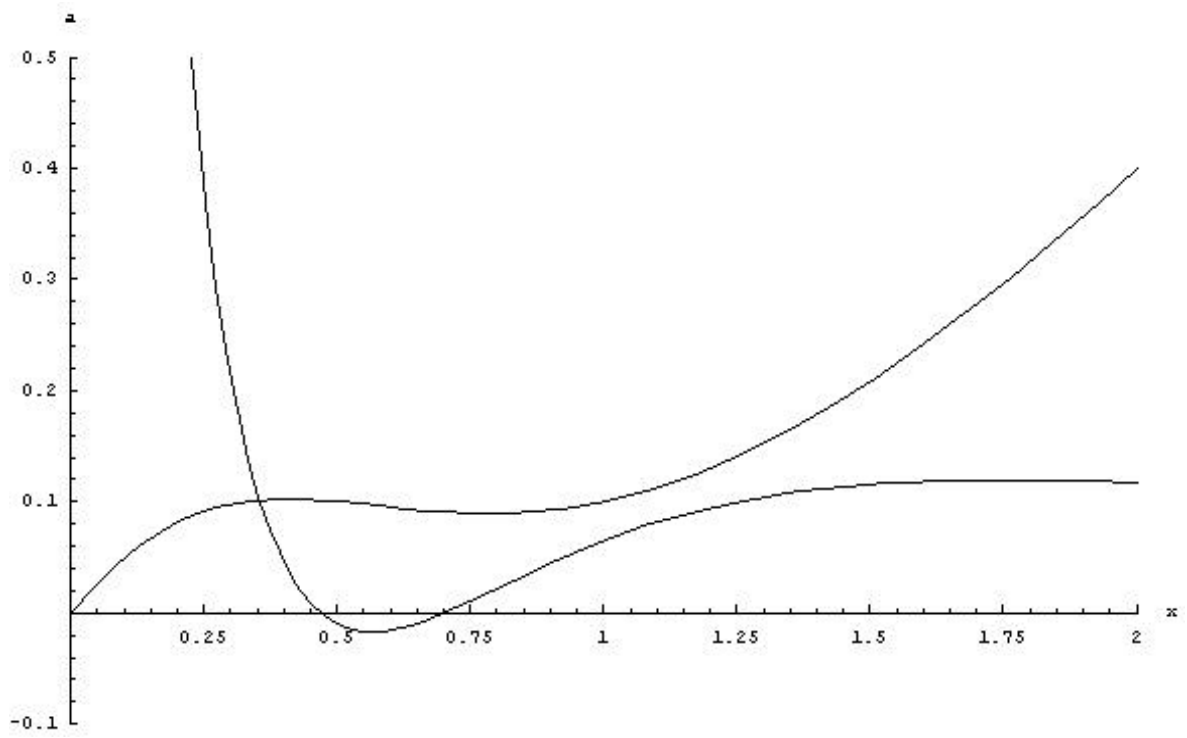


Figure 4a ($x^*=0.353432$)

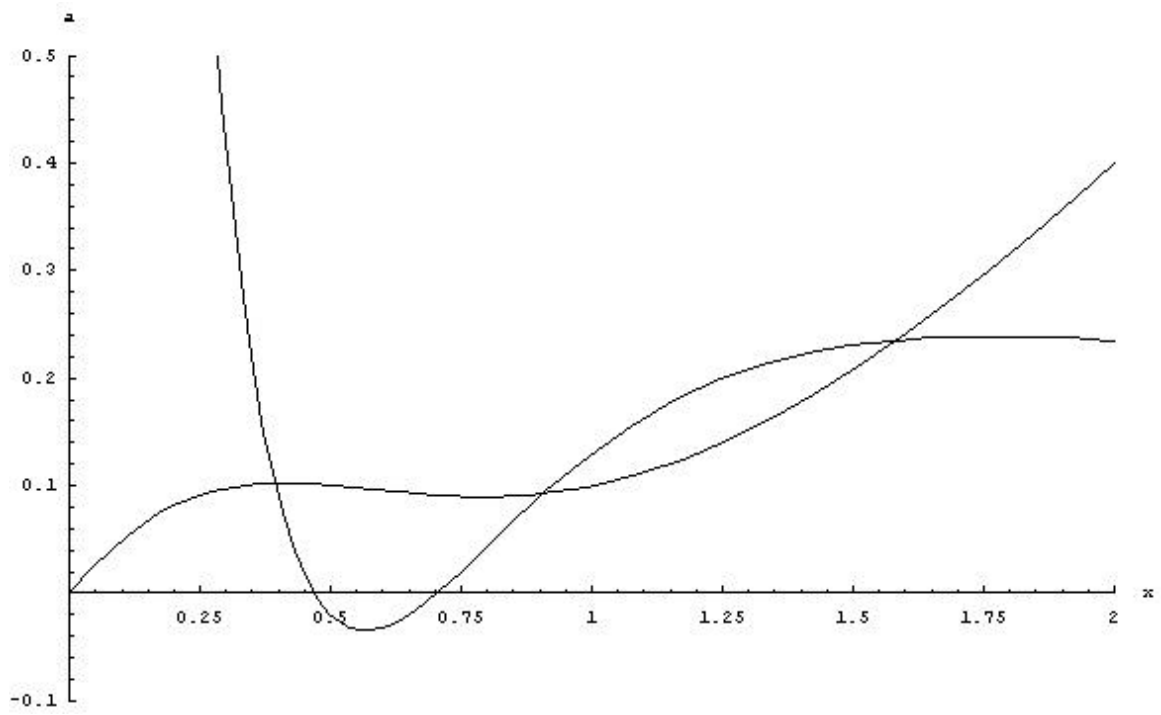


Figure 5a ($x_1^*=0.393189$, $x_2^*=0.907773$, $x_3^*=1.58376$)

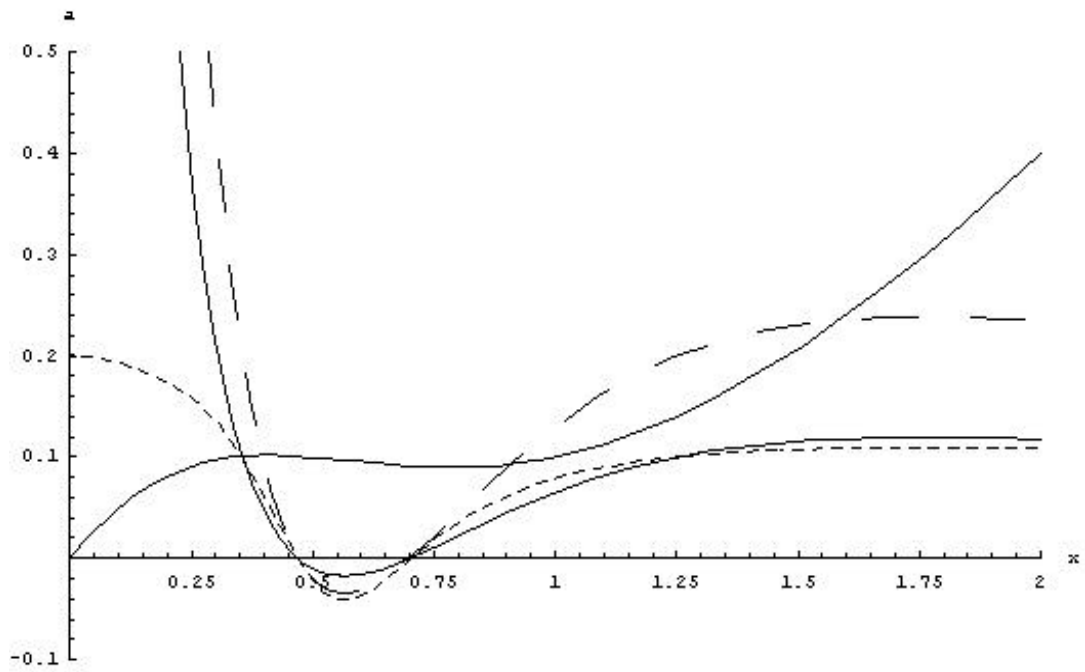


Figure 6a ($x^*=0.353432$)

Optimal Management: _____

Open Loop Nash Equilibrium: - - - -

Optimal Steady State Tax: - - - -

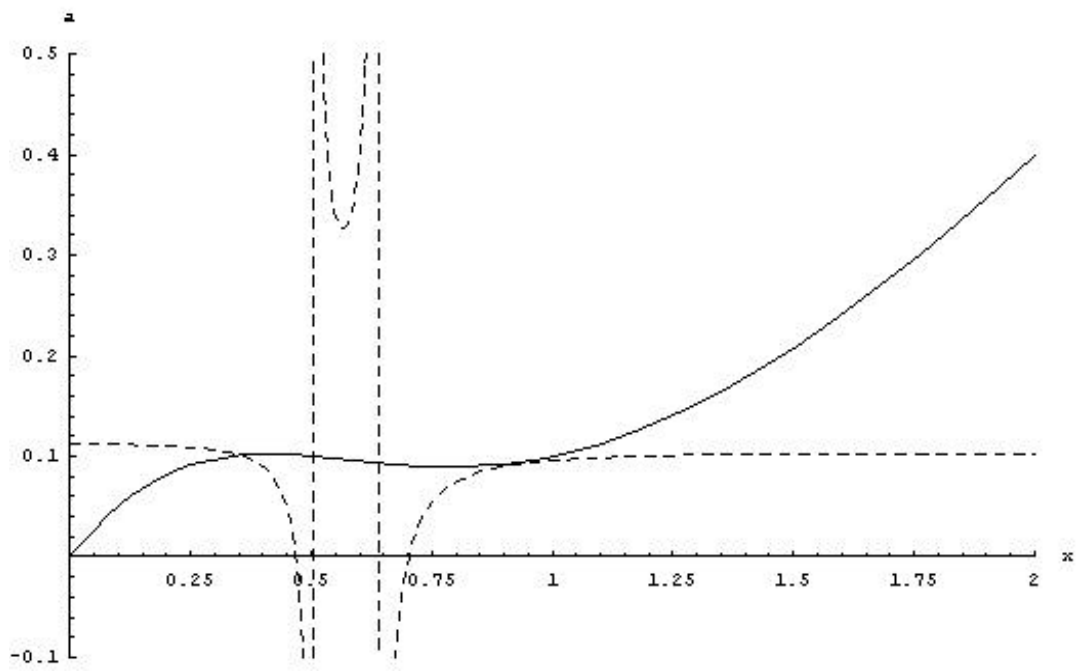


Figure 6b ($x^*=0.353432$)

Optimal Steady State Tax: - - - -

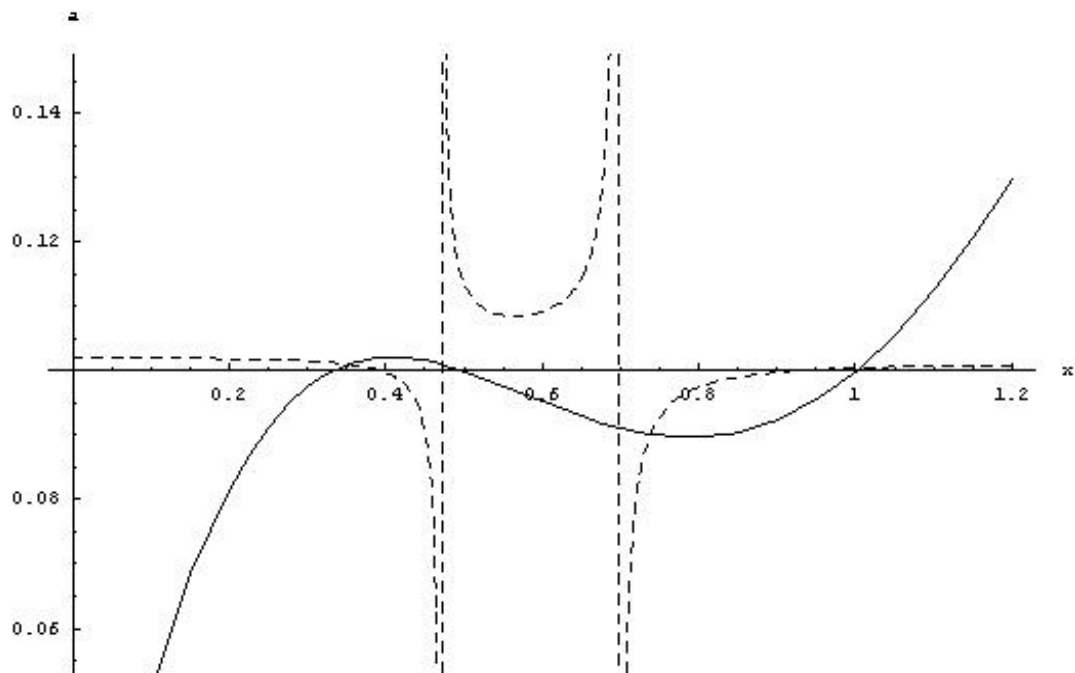


Figure 6c ($n=100$, $x_1^*=0.353432$, $x_2^*=0.738296$, $x_3^*=1.00474$)

Optimal Steady State Tax: - - - -

