

MPRA

Munich Personal RePEc Archive

An analysis of at-home demand for ice cream in the United States

Davis, Chris; Blayney, Don; Yen, Steven and Cooper, Joseph C.

Economic Research Service, USDA, Department of Agricultural Economics, University of Tennessee

December 2009

Online at <http://mpra.ub.uni-muenchen.de/24782/>

MPRA Paper No. 24782, posted 03. September 2010 / 19:15

An analysis of at-home demand for ice cream in the United States¹

C. G. Davis,^{*2} D. P. Blayney,^{*} S. T. Yen,[†] and J. Cooper^{*}

^{*}Markets and Trade Economics Division, Economic Research Service, US Department of Agriculture, Washington, DC 20036

[†]Department of Agricultural Economics, University of Tennessee, Knoxville 37996

ABSTRACT

Ice cream has been manufactured commercially in the United States since the middle of the 19th century. Ice cream and frozen dessert products comprise an important and relatively stable component of the United States dairy industry. As with many other dairy products, ice cream is differentiated in several dimensions. A censored translog demand system model was employed to analyze purchases of 3 ice cream product categories. The objective of this study was to determine the effect that changes in retail prices and consumer income have on at-home ice cream consumption. The analysis was based on Nielsen 2005 home scan retail data and used marital status, age, race, education, female employment status, and location in the estimations of aggregate demand elasticities. Results revealed that price and consumer income were the main determinants of demand for ice cream products. Calculated own-price elasticities indicated relatively elastic responses by consumers for all categories except for compensated bulk ice cream. All expenditure elasticities were inelastic except for bulk ice cream, and most of the ice cream categories were substitutes. Ongoing efforts to examine consumer demand for these products will assist milk producers, dairy processors and manufacturers, and dairy marketers as they face changing consumer responses to food and diet issues.

Key words: Nielsen home scan retail data, dairy demand, elasticity, ice cream

INTRODUCTION

Ice cream has been manufactured in the United States since at least the time of the Revolutionary War. However, a commercial ice cream industry did not emerge until the middle of the 19th century. As with many other dairy products, ice cream is differentiated in several dimensions. Fat content is perhaps the most obvious of

the ways to categorize ice cream, but others categorizations, including texture, flavor(s), and sweetness, are also used. The factors that affect consumer decisions among the types of ice creams, which are essentially close substitutes, are of interest to many. In addition to economic variables such as prices, other factors such as demographics and location are important.

It is impossible to pin down with certainty the first appearance of most food products. Products prepared and consumed in the past may be the precursors of what today is recognized as ice cream. Trager (1997) noted ice cream production as early as 1560 in Italy, where it was found that combining salt and ice resulted in a frozen product. The first public mention was in 1774 when a caterer advertised in a New York newspaper that he had arrived from London and was prepared to supply various confections, including ice cream. Many famous people of the time, including George Washington, listed ice cream among their favorite foods.

It was not until the 1800s that technological advancements provided the support for a larger scale ice cream industry, with the invention of a hand-cranked freezer. The wholesale ice cream industry is generally dated to 1851 and has since been spurred by technological changes in refrigeration, milk testing, and packaging. The development and introduction of the continuous freezer in the late 1920s was an important factor in continued industry growth. Until the 1930s, ice cream was mainly sold through soda fountains, but by the 1950s and 1960s, widespread establishment of supermarkets and specialty ice cream stores had significantly changed ice cream merchandising—consumers could purchase packaged ice cream to take home. Ready availability of ice cream for both at-home and away-from-home consumption continues to affect purchases today (Manchester and Blayney, 1997).

Ice cream production has been quite stable over the past several years. Although there is some trade in ice cream products, the categories defined for this study are generally assumed to be consumed domestically. As Figure 1 shows, production trends for 4 types of ice cream products—hard full-fat (sometimes called hard regular), hard low-fat (reduced fat), sherbet, and other (novelty items)—have been relatively flat or slowly

Received July 1, 2009.

Accepted September 1, 2009.

¹Disclaimer: The opinions and analysis presented represent the authors' ideas and do not necessarily reflect those of Economic Research Service or the U.S. Department of Agriculture.

²Corresponding author: chrisdavis@ers.usda.gov

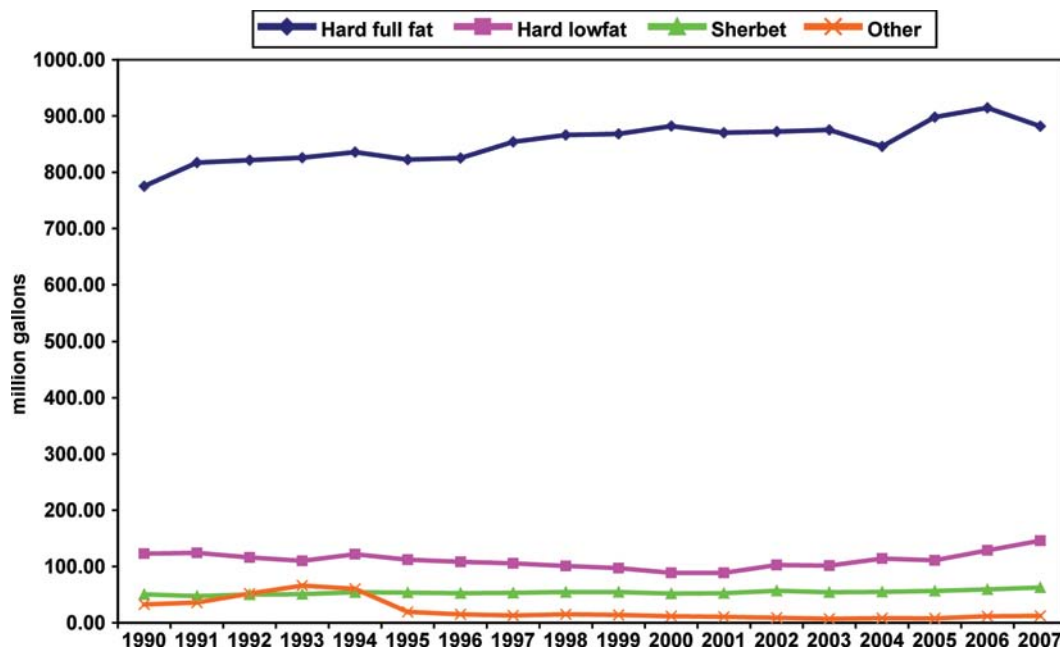


Figure 1. Selected frozen product production, 1990–2007. Color version available online at <http://jds.fass.org/content/vol92/issue12/>.

increasing over time. Given a rising population, this implies a relatively flat or slowly declining per capita consumption of the individual product categories.

The United Dairy Industry Association (n.d.) published a series of dairy product studies based on purchase information collected from April 1972 to March 1973 (reported results are based on the 6-mo period of March to September 1972). Ice cream and related product purchases were reported and analyzed in one of those published studies. The sample used for the analysis represented purchases by household consumers of regular bulk or packaged products and novelties that did not reflect away-from-home purchases. Results were summarized for the United States, 5 major regions, and 3 metropolitan areas (Chicago, Los Angeles, and New York). Only the United States and regional results are reported here.

During the 6-mo period, 81% of households purchased ice cream and 26% purchased novelty products. Converting volumes to half-gallon equivalents, the average United States ice cream price was \$0.775 per half-gallon—only 1 region, the Northeast, had a higher price: \$0.876. Even with the higher price, households in the Northeast reported a greater buying frequency: 9.6 purchases compared with the United States average of 8.2. Purchasing frequency was lowest in the South.

Ice cream, ice milk (reduced-fat ice cream), and sherbet were analyzed separately and exhibited some interesting regional characteristics. Compared with the United States average purchases, ice cream was

purchased more in the North Central and Northeast regions; ice milk was purchased more often in the South and Pacific regions, and sherbet purchases were higher in the Mountain, Southwest, Pacific, and North Central regions. Smaller households (1 or 2 members) reported the highest purchases of ice cream, whereas households of 4 or 5 had the highest purchases of novelties. The results based on age indicated that older (55 and over) purchasers reported higher ice cream purchases, whereas those in the 25 to 34 age category reported higher novelty purchases. No summary statistics were reported by income category (although data were provided).

A study by Boehm and Babb (1975) examined price responses of frozen desserts as a subset of perishable manufactured dairy products. The frozen products were defined in 4 categories: ice cream, ice milk, total bulk-packaged products, and novelties. Household data were used to obtain both long- and short-run estimates of price and expenditure elasticities. The long-run analysis was a cross-section analysis, whereas short-run results were obtained using time series analysis. The own-price responses estimated in the study were -0.42 for ice cream, -0.56 for ice milk, -0.47 for total bulk-packaged products, and -0.75 for novelties in the long-run (all statistically significant) and -0.69 , -1.05 , -0.42 , and -1.48 , respectively, in the short-run (with only the bulk product result not statistically significant). The calculated income elasticities were reported to be 0.047 , -0.009 , 0.070 , and 0.149 , respectively, suggesting that income increases did not generate substantial

changes in consumption, although they were generally positive. It was found that consumers were particularly responsive to specials for ice cream and bulk products. As mentioned, regional patterns of consumption were noted.

A study of Canadian dairy demand by Veeman and Peng (1997) using quarterly data from 1984 to 1993 in a dynamic “almost ideal demand system” (AIDS) model specification with 5 dairy categories, 1 category including ice cream, yogurt, cottage cheese, and cream, found an estimated Marshallian own-price elasticity of demand for ice cream of -0.6241 (statistically significant). An expenditure elasticity, which was significant, was calculated to be 1.4604.

There has been much research on the consumption of differentiated products. Maynard and Venkat Narayanan (2002) examined the frozen desserts category, particularly the 7 products defined as ice cream, frozen yogurt, sherbet, sorbet, branded frozen novelties, private label frozen novelties, and other packaged frozen products. An ordinary (quantity-dependent) synthetic conditional demand system model framework was used to estimate elasticities. The estimates of compensated own-price elasticities for the categories, in the order presented, were -1.30 , -1.72 , -1.43 , -0.71 , -2.39 , -1.59 , and -2.37 . Kaiser and Forker (1993) also estimated a price and income elasticity for frozen products of -0.356 and 0.08 , respectively. Other related studies include, among others, Dong and Kaiser (2005, 2008), Schmit et al. (2003), and Dong et al. (2004).

It is not possible to directly compare these models and results. The time spans are different, as are the methodological and empirical approaches. Thus, the objective of this study was to determine the effect that changes in retail prices and consumer income have on at-home ice cream consumption using Nielsen (2005) retail household purchase data. The following section describes our analysis based on the 2005 household purchase data. The results may be compared in a very general way with those of other authors noted here.

MATERIALS AND METHODS

Assuming that most people shop for the household once a week, it is unlikely that every person who buys food will purchase bulk ice cream, ice cream novelties, and ice milk or sherbet every time he or she shops. Because the likely occurrence is that household shoppers will not buy all 3 ice cream products each time they shop, zero purchases are recorded. Thus, to address the 0/1 problem that is a frequent issue with cross-sectional retail data, we employed a censored demand system.

To streamline our estimation procedures, we estimated a censored demand system using a multivariate sam-

ple selection model developed by Yen and Lin (2006), which was estimated with a 2-step procedure proposed by Shonkwiler and Yen (1999). One advantage of this approach is that it accommodated zero purchases and simplified the computational burden while still producing consistent parameter estimates.

The demographic variables used by Nielsen (2005) to characterize ice cream purchases were all based on a representative sample of the 2005 United States population. A representative sample was used in the selection of consumers who agreed to scan retail grocery receipts of purchases made during a 12-mo period. Although some researchers have heavily criticized the reliability of Nielsen data, the overall accuracy of self-reported data by Homescan panelists seems to be in line with many other surveys of this type (Einav et al., 2008). The Economic Research Service sample contained purchase data from a representative group of 8,000 households for the year 2005. All 8,000 households that purchased ice cream within a 12-mo period were included in the analysis, whether they purchased ice cream 1 time or 500 times. Nielsen's demographic file contained sample weights (projection factors) that were used to project product purchases to the United States national level, and these weights were used in the probit analysis described below.

For this study, we analyzed the effects of demographic variables, including employed female head of household, Southern region of the United States, non-Hispanic Whites, female college graduates, children present in the home, size of household, and married individuals because of the effect they have had on ice cream purchases in other studies (Tables 1 and 2). Studies that have analyzed dairy products in the past (Huang and Lin, 2000; Chouinard et al., 2005; and others) have used the above or similar demographic variables in their analyses. Table 3 shows the percentage of demographic variables of interest represented in the United States census, the Nielsen Homescan Fresh Foods panel (unweighted), and the subset of those households who purchased ice cream as reported in the data (also unweighted).

Consumers' decisions to purchase ice cream products were based on the sign of the demographic variables. For example, assume race is the demographic variable being examined. Also, assume married people are (1) and widowed, divorced or separated, and single people are (0), as the base. If the coefficient for married people is positive, then it is expected that people with this characteristic will purchase ice cream. According to the probit analysis, the first step of the 2-step procedure showed that the above demographic variables do play an important role in determining whether people purchase ice cream products (Table 2). These variables are

Table 1. Variable definitions and sample statistics (sample size = 7,254)

Variable	Mean	SD
Quantity (n per household)		
Bulk ice cream	728.39	898.52
Ice cream novelties	0.42	1.71
Ice milk and sherbet	25.63	100.50
Expenditure (dollar value)		
Bulk ice cream	39.15	48.68
Ice cream novelties	0.68	2.53
Ice milk and sherbet	1.22	4.81
Price (dollar value)		
Bulk ice cream	0.08	0.88
Ice cream novelties	1.89	0.40
Ice milk and sherbet	0.05	0.01
Dummy variables (1 = yes; 0 otherwise)		
Southern United States	0.39	
Non-Hispanic white	0.77	
Female with college degree	0.40	
Employed female head	0.49	
Household size	2.42	
Children present in home	0.25	
Married	0.60	

statistically significant in some of the binary ice cream models. The same demographic variables were used in the second step, which consisted of the maximum likelihood estimates of the multivariable, sample selection model (censored translog demand system). In our analysis, we found that whereas demographic variables were important factors that must be accounted for in the demand estimations, the major drivers of ice cream demand were price and income. The next section reveals and discusses the price and income elasticities related to the 3 ice cream products.

RESULTS AND DISCUSSION

The compensated price elasticities derived from the censored translog demand system are shown in Table 4. To make the Results and Discussion segment easier to understand, we will present some definitions of economic terms. In particular, the following terms are important: complements, substitutes, compensated demand elasticities, and uncompensated demand elasticities. If 2 products are complements, an increase in the price of one of them results in a decrease in the demand for the other. In contrast, substitute products are those in which an increase in the price of one increases the demand for the other. The terms compensated and uncompensated are generally applied to demand curve descriptions. From economic theory, both price and income changes influence demand. A compensated demand curve describes behavior of consumers if they were somehow compensated for income effects related to price changes (also known as the Hicksian demand curve). Uncompensated demand curves are not adjusted

for the income effects (the Marshallian demand curve; Black, 2002).

All of the own-price elasticities were statistically significant at the 1% level and negative, as expected according to the theory of demand (Table 4). Demands for ice milk or sherbet and frozen novelty ice cream were notably elastic, with own-price elasticities of -1.16 and -2.00 , respectively, which meant that a 1% change in the price of these products would have a change greater than 1% in quantity demanded. The bulk ice cream category was inelastic and would have a very small response to changes in its own price (at -0.05).

All of the compensated cross-price elasticities were less than unity except for the relationship between novelty ice cream and ice milk or sherbet. A mixture of complements and substitutes among the ice cream product categories was found, based on the compensated demand elasticities, with 2 of the 6 being statistically significant. Ice milk and sherbet were substitutes for bulk ice cream, whereas ice cream novelties were substitutes for ice milk or sherbet. The inelastic cross-price elasticities reported for the compensated demand implied that changes in the price of one product would yield small changes in the purchase of the other product, and vice versa.

Table 5 presents the estimated uncompensated price and expenditure elasticities derived from the censored demand model. The own-price elasticities for the 3 ice cream categories were all significant at the 1% level and negative. In contrast to elasticities from the compen-

Table 2. Probit estimates of the translog demand system

Parameter	Coefficient	SEM
Bulk ice cream		
Southern United States	0.06	0.08
Non-Hispanic White	0.21***	0.09
College degree	0.10	0.08
Employed female head	0.03	0.08
Household size	0.13***	0.06
Children present in home	-0.21	0.14
Married	0.11	0.10
Frozen novelty ice cream		
Southern United States	-0.01	0.04
Non-Hispanic White	-0.04	0.04
College degree	-0.20***	0.04
Employed female head	0.01	0.04
Household size	0.10***	0.02
Children present in home	0.26***	0.06
Married	0.09***	0.04
Ice milk and sherbet		
Southern United States	0.01	0.04
Non-Hispanic White	-0.04	0.04
College degree	-0.07*	0.04
Employed female head	0.02	0.04
Household size	0.07***	0.02
Children present in home	0.03	0.06
Married	0.06	0.04

* $P = 0.1$; *** $P = 0.01$.

Table 3. Average size and share of selected demographic variables in the ice cream analysis

Demographic variable (%, unless otherwise noted)	2005 census	2005 Homescan (unweighted)	Homescan ice cream purchasers
Household size (n)	2.6	2.4	2.4
Employed female head	63	54	49
Southern United States	36	38	39
Non-Hispanic White	76	76	77
Married	53	57	60
Children present in home	25	24	25
Female with college degree	32	34	40

sated own-price elasticities, these elasticities were all numerically larger except for ice cream novelties. The own-price elasticities from the uncompensated demand ranged from -1.00 for bulk ice cream to -1.28 for ice milk or sherbet to -1.96 for ice cream novelties. Similar to our study, the own-price elasticities of Maynard and Venkat Narayanan (2002) for ice cream (-1.30), sherbet (-1.43), branded frozen novelties (-2.39), and private label frozen novelties (-1.59) were all elastic and close in magnitude. Boehm and Babb (1975) own-price elasticities for ice cream product categories were inelastic (-0.42 for ice cream, -0.56 for ice milk, -0.47 for total bulk-packaged products, and -0.75 for novelties) and were much smaller in comparison with the present study and Maynard and Venkat Narayanan (2002).

The estimated uncompensated demand cross-price elasticities from the censored demand model had more statistically significant relationships than did the compensated demand cross-price elasticities. All of the uncompensated demand cross-price elasticities were less than unity except for the substitution relationship that existed between ice cream novelties and ice milk or sherbet, similar to the results found for the compensated demand. A substitution relationship also existed between ice milk or sherbet and ice cream novelties. Some of the ice cream products served as complements to others. Complementary relationships were found between frozen ice cream novelties and bulk ice cream, as well as between bulk ice cream and ice milk or sherbet.

Expenditure elasticities from the censored demand model were all positive and statistically significant at the 1% level (Table 5). The estimated expenditure elasticities from the specified model produced elasticities that were greater in magnitude than estimates reported in other studies. In particular, the results reported by Boehm and Babb (1975) were considerably smaller at 0.047, -0.009 , 0.070, and 0.149 for ice cream, ice milk, total bulk packaged products, and novelties, respectively. Veeman and Peng (1997) found the expenditure elasticity for ice cream to also be elastic (1.46). One reason for the difference in magnitude of these elasticity estimates over time may be changing demand trends.

Over the past 4 decades, there have been large increases in household disposable income as well as an increase in the varied selection of products, which enhances the possibility for more substitution among commodities.

CONCLUSIONS

Empirical analysis of the Nielsen (2005) purchase data for 3 ice cream categories suggested that regional and demographic characteristics may play a role in determining estimates of aggregate national demand price and income factors that influence demand for the products. Results revealed that price and income were the main driving force in determining the demand for bulk ice cream, frozen novelties, and ice milk or sherbet. Estimates from the censored translog demand system provided similar results for the own-price to those that Maynard and Venkat Narayanan (2002) reported. The relative elasticity of the own-price elasticities suggested that ice cream manufacturers and marketers must carefully evaluate any price-changing strategies. Our expenditure elasticity for bulk ice cream was elastic and somewhat comparable to that reported by Veeman and Peng (1997). As noted, it is not possible to make direct comparisons between the results derived in this study and the results from other analytical works. However, our results do seem comparable to some of the previously derived results. Ice cream and frozen dessert products make up an important and, over time, relatively stable component of the United States dairy industry. Ongoing efforts to examine consumer demand for these products will assist milk producers, dairy processors and manufacturers, and dairy marketers as they face changing consumer responses to food and diet issues.

Table 4. Censored demand compensated price elasticities

Product ¹	Bulk ice cream	Ice milk	Ice cream novelty
Bulk ice cream	-0.05^{***}	0.12	-0.07
Ice milk	0.85^{***}	-1.16^{***}	0.31
Ice cream novelty	0.19	1.81^{***}	-2.00^{***}

¹Ice milk includes all low-fat products along with sherbets.

$^{***}P = 0.01$.

Table 5. Censored demand uncompensated price and expenditure elasticities

Product ¹	Bulk ice cream	Ice milk	Ice cream novelty	Expenditure
Bulk ice cream	-1.00***	-0.02***	0.00	1.01***
Ice milk	0.07	-1.28***	0.37***	0.84***
Ice cream novelty	-0.27**	1.74***	-1.96***	0.50***

¹Ice milk includes all low-fat products along with sherbets.

** $P = 0.05$; *** $P = 0.01$.

REFERENCES

- Black, J. 2002. Oxford Dictionary of Economics. 2nd ed. Oxford University Press, Oxford, UK.
- Boehm, W. T., and E. M. Babb. 1975. Household consumption of perishable manufactured dairy products: Frozen desserts and specialty products. Station Bulletin 105. Department of Agricultural Economics, Agricultural Experiment Station, Purdue University, West Lafayette, IN.
- Chouinard, H. H., J. T. LaFrance, D. E. Davis, and J. M. Perloff. 2005. Milk marketing order winners and losers. CUDARE Working Papers, University of California, Berkeley. http://repositories.cdlib.org/are_ucb/1006 Accessed April 14, 2009.
- Christensen, L. R., D. W. Jorgenson, and L. J. Lau. 1975. Transcendental logarithmic utility functions. *Am. Econ. Rev.* 65:367-383.
- Dong, D., C. Chung, and H. M. Kaiser. 2004. Modeling milk purchasing behavior with a panel data double-hurdle model. *Appl. Econ.* 36:769-779.
- Dong, D., and H. M. Kaiser. 2005. Coupon redemption and its effect on household cheese purchases. *Am. J. Agric. Econ.* 87:689-702.
- Dong, D., and H. M. Kaiser. 2008. Studying household purchasing and non-purchasing behavior for a frequently consumed commodity: Two models. *Appl. Econ.* 40:1941-1951.
- Einav, L., E. Leibtag, and A. Nevo. 2008. On the accuracy of Nielsen Homescan data. Economic research report no. 69, Dec. 2008. USDA, Washington, DC.
- Huang, K. S., and B.-H. Lin. 2000. Estimation of food demand and nutrient elasticities from household survey data. Technical bulletin no. 1887, Aug. 2000. USDA, Washington, DC.
- Kaiser, H. M., and O. D. Forker. 1993. Analysis of generic dairy advertising scenarios on retail, wholesale, and farm milk markets. Department of Agricultural Economics, Cornell University Agricultural Experiment Station, New York State College of Agriculture and Life Sciences, Cornell University, Ithaca, NY. (unpublished document)
- Manchester, A. C., and D. P. Blayney. 1997. The structure of dairy markets: Past, present, future. Agricultural economic report no. 757, Sept. 1997. USDA, Washington, DC.
- Maynard, L. J., and V. Venkat Narayanan. 2002. Price sensitivities for U.S. frozen dairy products. Paper presented at the annual meetings of the American Agricultural Economics Association, Long Beach, CA.
- Nielsen. 2005. Consumer panel. <http://www.Nielsen.com/services/consumer/> Accessed Oct. 28, 2006.
- Schmit, T. M., B. W. Gould, D. Dong, H. M. Kaiser, and C. Chung. 2003. The impact of generic advertising on household cheese purchases: A censored autocorrelated regression approach. *Can. J. Agric. Econ.* 51:15-37.
- Shonkwiler, J. S., and S. T. Yen. 1999. Two-step estimation of a censored system of equations. *Am. J. Agric. Econ.* 81:972-982.
- Trager, J. 1997. The Food Chronology: A Food Lover's Compendium of Events and Anecdotes, from Prehistory to Present. Henry Holt and Co., New York, NY.
- United Dairy Industry Association. n.d. The Household Market for Ice Cream and Related Products. USDA, Rosemont, IL.
- Veeman, M., and Y. Peng. 1997. Canadian dairy demand. Project report 97-03. Department of Rural Economy, Faculty of Agriculture, Forestry, and Home Economics. University of Alberta, Edmonton, Canada.

Yen, S. T., and B. Lin. 2006. A sample selection approach to censored demand systems. *Am. J. Agric. Econ.* 88:742-749.

APPENDIX

For the purpose of this study, ice cream products were assumed to be separable from all other goods. In the first step of the procedure, censoring of each commodity was governed by the following stochastic sample selection process:

$$w_i = d_i [f_i(x; \theta) + e_i], i = 1, \dots, n, \quad [1]$$

where $d_i = 1$ if $z'\gamma_i + u_i > 0$ and $d_i = 0$ if $z'\gamma_i + u_i \leq 0$; w_i is the expenditure share of the i th commodity; x and z are vectors of explanatory variables; θ and γ_i are vectors of parameters; and e_i and u_i are random errors.

Using a translog utility function (Christensen et al., 1975), the translog demand system in expenditure share form can be derived as

$$w_i = \frac{\alpha_i + \sum_{j=1}^n \beta_{ij} \log v_j}{\sum_{j=1}^n \alpha_j + \sum_{k=1}^n \sum_{j=1}^n \beta_{kj} \log v_j}, i = 1, \dots, n, \quad [2]$$

where β and α are parameters and v_j is expenditure-normalized price for commodity j . By using normalized prices for all commodities, homogeneity is implied in the above equation and symmetry is imposed with the restrictions

$$\beta_{ij} = \beta_{ji} \quad \forall \quad i, j. \quad [3]$$

We allowed the intercepts α_i to vary with demographic variables h_ℓ such that

$$\alpha_i = \alpha_{i0} + \sum_{\ell=1}^L \alpha_{i\ell} h_\ell, i = 1, \dots, n-1, \quad [4]$$

where $\ell = 1, \dots, L$.

One of the challenges of working with the censored system approach specified above is that the adding-up restriction cannot be imposed. Following the approach suggested by Yen and Lin (2006), we estimated the first $n - 1$ equations and calculate elasticities for the n th equation using the adding-up property in demand theory. Even though the estimates are not invariant to the equation excluded, Yen and Lin (2006) showed that the elasticity estimates are stable regardless of which commodity is treated as the residual category.

The system of demand equations in share form can be written as

$$w_i = E(w_i) + \xi_i = \Phi(z'\gamma_i)f_i(x;\theta) + \delta_i\phi(z'\gamma_i) + \xi_i, \quad [5]$$

where δ_i is the covariance between the error terms e_i and u_i ; $\Phi(z'\gamma_i)$ and $\phi(z'\gamma_i)$ are the normal cumulative distribution and probability density functions, respec-

tively; and $\xi_i = w_i - E(w_i)$ is a heteroskedastic error term, with $E(\xi_i) = 0$ (Shonkwiler and Yen, 1999).

The system can be estimated using the 2-step procedure. First, we obtained maximum likelihood estimates for γ_i based on binary probit for $w_i = 0$ and $w_i > 0$. Second, assuming that the disturbances (e_i, u_i) were distributed bivariate normal with $\text{cov}(e_i, u_i) = \delta_i$, we estimated the demand parameters θ and covariances δ_i in the system

$$w_i = \Phi(z'\hat{\gamma}_i)f_i(x;\theta) + \delta_i\phi(z'\hat{\gamma}_i) + \xi_i \quad [6]$$

using iterated, seemingly unrelated regressions. Demand elasticities for the $n - 1$ goods can be derived by differentiating equation [6]. The elasticities for the residual good are calculated using the adding-up restriction. To derive compensated demand elasticities, we used Slutsky's equation.