



FUNDAÇÃO
GETULIO VARGAS

EPGE

Escola de Pós-Graduação
em Economia

Ensaio Econômicos

Escola de

Pós Graduação

em Economia

da Fundação

Getulio Vargas

Nº 585

ISSN 0104-8910

Trade Liberalization and the Evolution of Skill Earnings Differentials in Brazil

***Gustavo Gonzaga, Naércio Menezes Filho, Maria
Cristina Terra***

Abril de 2005

Os artigos publicados são de inteira responsabilidade de seus autores. As opiniões neles emitidas não exprimem, necessariamente, o ponto de vista da Fundação Getulio Vargas.

Trade Liberalization and the Evolution of Skill Earnings Differentials in Brazil*

Gustavo Gonzaga Naércio Menezes Filho Cristina Terra[†]
PUC-Rio IBMEC and USP EPGE/FGV

JEL classification: F13, J31

Keywords: Skill Earnings Differentials, Trade Liberalization,
Tariffs Pass-through, Stolper-Samuelson

March 15, 2005

Abstract

Skilled labor earnings differentials decreased during the trade liberalization implemented in Brazil from 1988 to 1995. This paper investigates the role of trade liberalization in explaining these relative earnings movements. We perform several independent empirical exercises that check the traditional trade transmission mechanism, using disaggregated data on tariffs, prices, earnings, employment and skill intensity. We find that: i) employment shifted from skilled to unskilled intensive sectors, and each sector increased its relative share of skilled labor; ii) relative prices fell in skill intensive sectors; iii) tariff changes across sectors were not related to skill intensities, but the pass-through from tariffs to prices was larger in skill intensive sectors; iv) the decline in skilled earnings differentials mandated by the price variation predicted by trade was even larger than the observed one. The results are compatible with trade liberalization accounting for the observed relative earnings changes in Brazil. They also highlight the importance of considering the effects of differentiated pass-through from tariffs to prices.

*The authors are grateful to Honório Kume for providing tariffs data; Maurício Mesquita Moreira for help with price data; IBRE-FGV for providing domestic price data; Daron Acemoglu, Jorge Arbache, Carlos Cinquetti, Jonathan Eaton, Marc Muendler, Raymond Robertson, two anonymous referees, and participants at seminars in CEDEPLAR, EEA, EPGE-FGV, LACEA, Latin American Meeting of the Econometric Society, PUC-Rio, UNB, and USP for useful comments and suggestions; and Andrea Curi and Rogério Mazali for able research assistance. We thank CNPq for financial support. Terra is also sponsored by PRONEX.

[†]Corresponding author: EPGE-Fundação Getulio Vargas, Praia de Botafogo 190 sala 1108, Rio de Janeiro, RJ, 22250-900, phone: (5521) 2559-5844, fax: (5521) 2553-8821, e-mail: terra@fgv.br.

1 Introduction

From 1988 to 1995 the Brazilian economy underwent a massive trade liberalization process. Non-tariff barriers were replaced by tariffs, and tariffs were reduced from an average of 42.6% in 1988 to 13.4% in 1995. Neoclassical trade theory, based on factor endowments differences, has very clear predictions on how relative factor prices should change in response to trade liberalization. Over the same period, a decrease in earnings inequality was observed in Brazil: more educated workers' average earnings declined 15.5% in relation to that of less educated workers. This paper investigates the role of trade liberalization on relative earnings movements in Brazil, through a Heckscher-Ohlin-style mechanism.

Brazil is particularly well suited for studying the effects of trade on earnings inequality. First, Brazil moved from being a very protected economy to an open one in a relatively short period of time. Second, earnings inequality *decreased* in Brazil over the liberalization period, contrary to evidence for most other developing countries. Third, relative prices have displayed substantial variation over this period, mostly due to very high inflation rates (the average monthly inflation rate in the 1988-95 period was 20,7%). This is important because Stolper-Samuelson effects work through relative prices changes, and relative prices tend to be more flexible under high inflation. Finally, Brazil has very high-quality and relatively unexplored establishment and household data sets.

One crucial step in relating trade liberalization to wage differentials movements is the link between relative tariffs changes and relative prices changes. This link depends not only on the pattern of relative tariffs changes but also on their pass-through to prices. Even an homogeneous tariff reduction could impact relative prices when pass-through from tariffs to prices differs across sectors. We develop a version of Dornbusch et al. (1980), adding to it import tariffs and aggregating goods into sectors. The model predicts that the pass-through from tariffs to prices depends on the share of imported goods in each sector. The model also delivers the Stolper-Samuelson result that trade liberalization increases the relative price of the relatively abundant production

factor. We implement this empirically by adjusting tariffs changes by import penetration. This is an important theoretical feature that has been overlooked in the literature, and proved to be relevant in our empirical analysis.

We perform several independent empirical exercises that check the trade transmission mechanism, using disaggregated data on tariffs, prices, earnings, employment and skill intensity from 1988 to 1995. First, through an employment share changes decomposition analysis into within- and between-industry effects, we show that employment shifted from skilled to unskilled intensive sectors, and each sector increased its skilled labor relative share. Second, we perform consistency checks on the relationship among relative prices, tariffs and skill intensities. We show that relative prices fell in skill-intensive sectors, and that tariffs changes were unrelated to skill intensities. However, by adjusting for the differentiated pass-through from tariffs to prices across sectors, the trade liberalization pattern with respect to skill intensity was consistent with that of relative prices changes. Finally, we apply a mandated wage analysis. We show that the decline in skilled earnings differentials mandated by the price variation predicted by trade was even larger than the observed one.

There is a wide empirical literature examining the relationship between observed changes in skill premium and international trade. Most of it studies the rising skill premium in developed countries (see Slaughter, 2000). For developing countries, the literature is far scantier. Differently from the evidence for Brazil presented in this paper, studies on Mexico (Hanson and Harrison, 1999, and Robertson, 2004) and Chile (Beyer *et al.*, 1999) show that these countries have experienced increases in wage differentials after having opened their economies to trade.

A possible problem with the studies for developing countries is the use of the share of nonproduction workers from establishment surveys as a proxy for skill intensity. As we argue in Section 2, we consider education attainment a more adequate measure of skill. Krueger (1997) uses both high education and nonproduction share measures of skill intensity for U.S. data, where both measures are available, and obtains qualitatively the same results. Slaughter

(2000) shows that the results of studies that use either measure are comparable. This paper shows that this is not the case for Brazil. When education attainment is used to measure skill intensity, we find a reduction in earnings inequality, while a slight increase is observed for the nonproduction measure. This should be taken as a warning on how to interpret the results of studies for other developing countries.

A competing view attempts to associate the rising skill premium to skill biased technological changes - SBTC (see Acemoglu, 2002). One interpretation in the literature for the findings of an increase in the earnings differentials in developing countries is that SBTC is pervasive in those countries, as in the more developed ones. Some authors have argued that trade opening can induce SBTC in developing countries (Acemoglu, 2003 and Thoenig and Verdier, 2003). Note, however, that, as earnings differentials *decreased* in Brazil, SBTC could not have been its only driving force. Therefore, this paper focuses on the role of trade liberalization in explaining these movements.

This paper is organized as follows. Section 2 presents some stylized facts on earnings differentials and trade liberalization in Brazil. Section 3 discusses the theoretical framework for the empirical exercises, including the role of differentiated pass-through from tariffs to prices across sectors. Section 4 presents the various empirical exercises linking trade liberalization to earnings differentials and Section 5 concludes.

2 Stylized Facts

2.1 Earnings differentials

We put together data from several different sources. For the education and earnings data we use a particularly rich data set, consisting of repeated cross-sections of an annual household survey (*Pesquisa Nacional de Amostras por Domicílio - PNAD*) from 1981 to 2001, conducted each September by the Brazilian Census Bureau (IBGE) and used in several studies about the Brazilian labor market. Each cross-section is a representative sample of the Brazilian population and

contains about 100,000 observations on households, from which around 330,000 individuals are interviewed.

From the original data, we kept only individuals with positive hours worked in the reference week in the manufacturing sector and with positive monetary remuneration. The main variable used is real hourly earnings, defined as the normal labor income in the main job in the reference month, normalized by normal weekly working hours. The sample also includes self-employed and workers with informal contracts. We measure education by completed years of formal schooling.

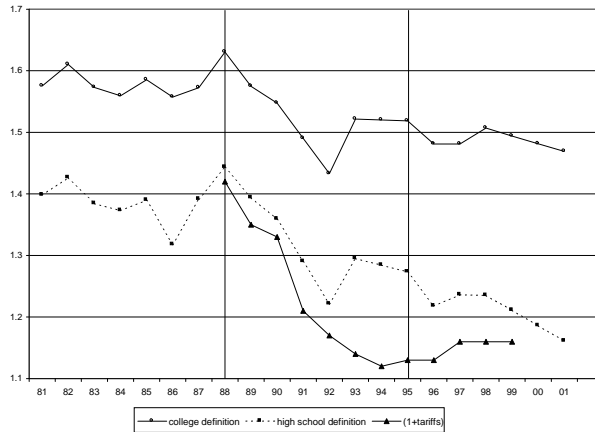
Figure 1 shows the evolution of earnings differentials (in log differences) between skilled and unskilled workers in Brazil between 1981 and 2001 and of average tariffs from 1988 to 1999.¹ As the figure illustrates, the bulk of trade liberalization occurred from 1988 to 1995, with minor tariff changes since then. The figure also presents data for two alternative education thresholds to define skill: high-school (at least 11 years of education) and college (at least 15 years of education). For both measures of skill, earnings differentials followed the same pattern from 1981 to 1995. They presented no relevant changes between 1981 and 1988, and dropped from 1988 to 1995. After 1995, earnings differentials remained basically constant for the college skill measure. For the high-school definition, they continued to decrease, but at a lower pace than before.

It is clear that the period of drastic reduction in tariffs (1988-1995) coincided with the period of pronounced decline in earnings differentials for both skill measures.² In what follows, we intend to investigate the role of trade liberalization in explaining these relative earnings movements. We use the high-school threshold to define skill in our empirical exercises for two reasons. First, as will be shown in Figure 3, less than 10% of the workforce had completed college edu-

¹Prior to 1988, there were several quantitative trade restrictions and import tariff waivers that rendered official tariff data uninformative about actual trade barriers. Hence, we do not present those data here.

²Trade liberalization was, of course, not the only event in Brazil during the period studied. A privatization program began in the early 1990's, while the economy experienced periods of high inflation alternated with short-lived inflation stabilization attempts. However, we have no reason to believe that the implications of these other changes to relative prices movements were correlated with those coming from trade liberalization.

Figure 1: Tariffs and Education Earnings Differentials

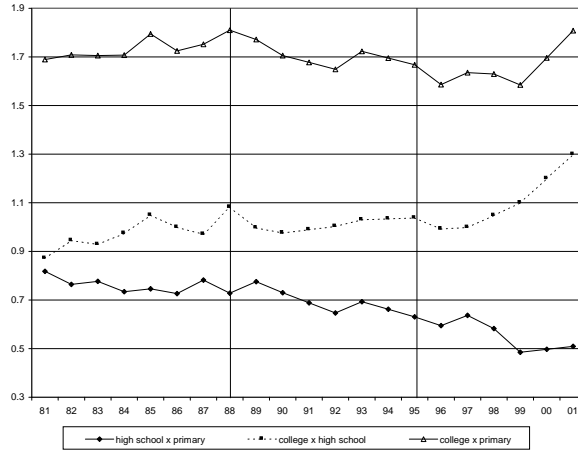


cation over the period studied, which is clearly too small a fraction of the labor force when compared to more than 20% of workers with complete high school. Second, as shown in Figure 1, both skill measures followed the same pattern over the trade liberalization period.

Behrman *et al.* (2000) have shown that returns to college education rose in Latin American countries, on average, over the 1990s. Duryea *et al.* (2002) qualify this evidence, presenting earnings data for tertiary, secondary and primary education groups for each country in the region. They show that, not only the skill premium pattern differs across countries, but several countries alternate periods of rising with periods of declining wage differentials. A close look at the data shows that skill earnings differentials in Brazil followed a different pattern from the Latin American average. We analyze the evolution of earnings differentials, splitting the data into three different education groups: workers with primary, high-school (secondary) and college (tertiary) education.

As shown in Figure 2, college/primary and high-school/primary earnings differentials followed basically the same decreasing pattern during the trade liberalization period. Before 1988, the college/primary earnings gap showed a slight increase, while for the high-school/primary the differential remained unchanged.

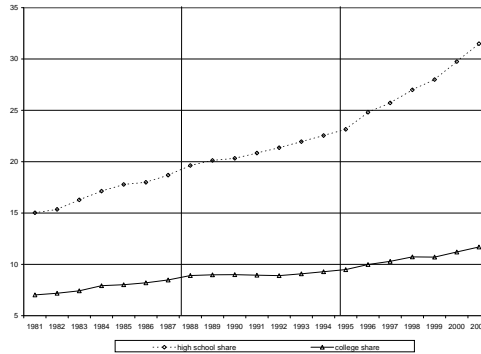
Figure 2: Education Earnings Differentials



After 1995, the two measures took different directions. The high-school/primary earnings gap continued its decreasing trend, specially after 1998, and the college/primary remained constant until 1999 and increased steeply afterwards. The difference in patterns between these two measures can be explained by the evolution of the college/high-school earnings differentials, which increased before 1988 and after 1997, and remained constant between 1988 and 1997. The fact that high-school and college skill measures diverged after the trade liberalization period is an indication that other forces affecting those variables may be at play, such as skill biased technological changes and relative skill supply changes. The behavior of earnings differentials after 1995 is not the focus of this paper, since their movements are not related to the effects of trade liberalization.

One could wonder whether the drop in skilled-labor relative earnings during trade opening illustrated in Figure 1 could have been caused solely by a rise in skilled labor relative supply. Figure 3 shows that, indeed, there was a rise in the share of skilled workers over the same time period, specially for the high-school skill measure. The figure also suggests that, although labor supply could have a say in the decline of earnings differentials, it cannot be its only explanation. The relative supply of skilled workers rose steadily over the period,

Figure 3: Education Labor Supply Share (%)



while earnings differentials started to decline only at the very beginning of the trade liberalization period. This suggests that trade liberalization could be a key factor behind the behavior of earnings differentials. It is also interesting to note that the rate of growth of skilled labor supply increased after 1995, specially for high-school workers. This is compatible with the increase of the college/high-school earnings differentials after trade liberalization observed in Figure 2.

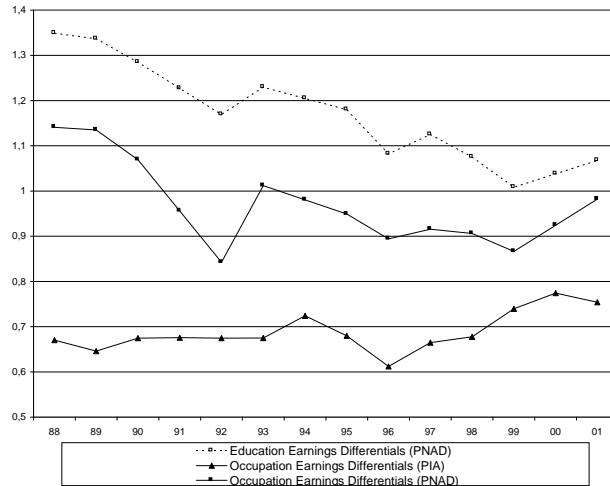
As we mentioned in the introduction, most studies that investigated the effects of trade liberalization in developing countries used the share of nonproduction workers as a proxy for skill intensity³. Obviously, neither education nor occupation measures perfectly reflect skill intensity, which is unobservable to the econometrician. On the one hand, education attainment fails to reflect skill intensity when, for instance, a highly educated worker is performing tasks that do not require skill. On the other hand, some blue-collar workers can have highly skill demanding assignments and they would be misclassified as unskilled workers if one uses the occupation measure as a proxy for skill. The occupation measure is specially problematic in developing countries, since, as unskilled labor wages in these countries tend to be low, firms are more likely to hire workers for nonproduction tasks that do not require skills, such as janitors and phone

³Behrman *et al.* (2000) is a notable exception.

operators. We believe that education attainment is a more accurate proxy for skill and therefore use it to construct our skill composition measure in the empirical exercises that follow, although we also report results of some experiments using the occupation measure.

Figure 4 displays the evolution of different measures of the skill earnings differentials, using education and occupation as proxies for skill. We present data on the nonproduction/production earnings differentials from two different sources: i) the Brazilian Industrial Surveys (*Pesquisa Industrial Anual-PIA*); and ii) the PNAD household surveys.⁴ The figure shows that the two earnings differentials computed using occupation as a proxy for skill followed different patterns between 1988 and 1995. The PNAD-defined differentials followed a decreasing pattern, similar to that of the educational earnings differentials described above. In contrast, the PIA-defined differentials *slightly rose* over the trade liberalization period.

Figure 4: Earnings Differentials: Education vs. Occupation Measures

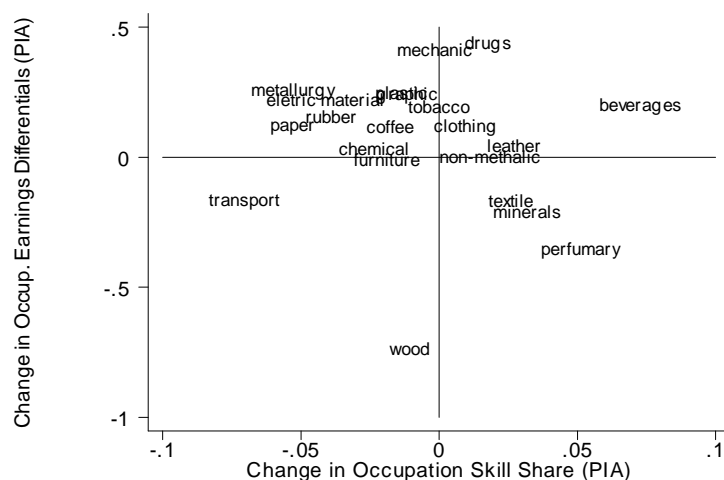


One explanation for this difference could be skill upgrading among the non-

⁴In the case of PNAD, we classified workers to production and nonproduction using the classification given by Muendler *et al.* (2004). The level of disaggregation in the industrial surveys is higher (60 industries) than in the household surveys (21 sectors). The table in the appendix shows how the data in the two surveys are matched.

production workers in PIA data. Within-occupation skill upgrading could be the result of outsourcing of service workers that were previously employed in industrial-sector firms, a phenomenon pervasive in Brazil in the early 1990s. In data from establishment surveys, such as PIA, workers that were subcontracted to service-sector firms were removed from the questionnaires answered by the industrial firms. This may not be the case in household surveys, since the worker is the respondent and may perceive herself as still working in the industrial sector, even when subcontracted. These workers are more likely to be in the nonproduction group, but performing unskilled tasks. Between 1988 and 1995, total industrial employment declined by 31% in PIA data and by only 7.7% in PNAD data, which is compatible with this explanation.

Figure 5: Occupation Earnings Diff. and Skill Share Changes (PIA): 1988-95



We cannot directly test this hypothesis due to the lack of education data in the industrial surveys, but, as shown in Figure 5, occupation earnings differentials increased mostly in sectors in which there was a decrease in the share of nonproduction workers. This is consistent with skill upgrading within nonproduction workers due to outsourcing, but it could be consistent with other forms of selection as well. Nonetheless, the evidence presented above challenges the

use of occupation wage differentials from industrial surveys as a measure for skill remuneration. The choice of skill proxy turns out to be crucial, since the evolutions of the two measures are very different in Brazil.⁵

2.2 Trade Liberalization in Brazil

Brazil has a long tradition of restrictive trade policies. Trade barriers were built over several decades, responding to different policy orientations. Trade policy before 1974 was designed as an incentive to selected industries as part of the import substitution strategy. After 1974, the increase in both tariff and non-tariff barriers was a reaction to macroeconomic instability caused first by the oil shocks and later by the debt crisis. By the end of the 1980s a maze of trade policy was in place, distorting price, and, hence, microeconomic incentives.

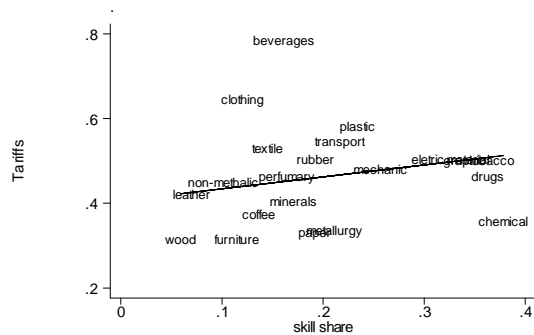
An important question for our purposes is whether the tariff structure before trade liberalization favored skill-intensive industries. In order to answer this question, we use data on tariffs for 60 industries (PIA classification) between 1988 and 1995, from Kume (2002). We organized them into 21 sectors to match the aggregation level of the education attainment skill measure computed from PNAD (see the data matching in the appendix). Figure 6 shows that the Brazilian tariff protection pattern in 1988 had only a mildly positive relationship with skill-intensity, but with considerable variance. This comes as no surprise, given that trade barriers were raised to cope with macroeconomic problems, and not to protect sectors in which Brazil had no comparative advantage.

The trade liberalization process was initiated in 1988, with most non-tariff barriers being replaced by tariffs, and it was intensified by a new government in 1990, in conjunction with the implementation of a regional trade block, Mercosul. The average tariff level was below 14% by November 1995, compared with over 42% in 1988. There has been no major tariffs changes since 1995. Table 1 shows the evolution of nominal tariffs from 1988 to 1999.

Figure 7 shows that tariffs have declined slightly more in the more skill-

⁵Remember that this was not a problem for U.S. data, as shown by Krueger (1997) and Slaughter (2000).

Figure 6: Tariffs and Skill Shares (1988)



Nominal tariffs	88	89	90	91	92	93
Simple average	42.6	35.2	33.1	21.5	17.0	14.4
Weighted average*	43.6	36.1	34.4	22.5	17.9	15.2
Standard deviation	12.6	12.6	11.9	8.4	6.6	5.2
Nominal tariffs	94	95	96	97	98	99
Simple average	12.3	13.4	13.3	16.4	16.5	16.1
Weighted average*	12.6	14.4	14.6	17.8	17.7	17.0
Standard deviation	5.6	6.2	6.6	5.6	5.5	4.7

(*) Weighted by the value added in 1988. Source: Kume (2002).

Table 1: Nominal and effective tariffs, 1988-1995

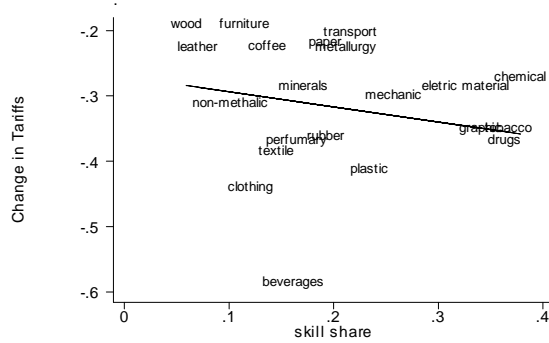
intensive sectors, although not dramatically so, a pattern that will be further investigated below.⁶ This contrasts sharply with what was observed in Mexico. Hanson and Harrison (1999) and Robertson (2004), for example, show that Mexican tariffs were relatively lower in skill-intensive sectors before trade liberalization, and decreased less in those sectors.

3 Theoretical Considerations

In a Heckscher-Ohlin world, international trade is completely specialized, that is, countries import only goods in which they have no comparative advantage. Moreover, in these models, trade liberalization affects relative wages through its

⁶Nonproduction-production employment ratios in 1988 are negatively correlated with 1988 tariffs levels, but are not correlated with 1988-1995 tariffs changes.

Figure 7: Tariffs Changes (1988-1995) and Skill Shares (1988)



direct effect on relative domestic prices. However, data are usually collected at the sectorial level, and, in general, sectors are composed of imported, exported and non-traded goods. Hence, sectors do not present complete specialization and, more importantly, the impact from tariffs changes to sectorial relative prices is not as straightforward.

In order to investigate the effect of tariffs changes on relative sector prices, we present a H-O type of model with a continuum of goods and no complete trade specialization in each sector, building on a version of Dornbusch *et al.* (1980) by adding to it import tariffs and by aggregating goods into sectors. The model predicts that the pass-through from tariffs to prices depends on the share of imported goods in each sector. The model also delivers the Stolper-Samuelson result that trade liberalization increases the relative price of the relatively abundant production factor.

Consider two economies, South and North, producing and consuming a continuum of goods, as in Dornbusch *et al.* (1980), but aggregated into sectors. There is a continuum of sectors k in the interval $[u, 1 - u]$, u being a constant in the $(0, \frac{1}{2})$ interval. Each sector k comprises a continuum of goods z , in the range $[k - u, k + u]$, hence $z \in [0, 1]$. Goods are indexed both by their type, z , and by the sector to which they belong, k .

Following Romalis (2004), we assume Cobb-Douglas production functions

with two production factors, skilled and unskilled labor, which are mobile across sectors but not across countries. We assume that South is relatively abundant in unskilled labor. The marginal cost of production of good z from sector k in the South is given by:

$$MgC(q(k, z)) = A(k) s^z w^{1-z}, \quad (1)$$

where $A(k)$ is a technological parameter equal for all goods in sector k , s and w are skilled- and unskilled-labor wages, respectively, and $q(k, z)$ is the quantity produced of good (k, z) . Note that the parameter z also represents the good's skill intensity: goods with higher z are more skill intensive. Both countries use the same technology, but their relative wages may differ.

We assume that South imposes import tariffs, $\tau(k)$, which is the same for all goods in sector k , but may differ across sectors. South imports a good (k, z) whenever its domestic price exceeds the price in North plus the import tariff, that is, when $p(k, z) \geq (1 + \tau(k)) p^*(k, z)$, where $p(k, z)$ and $p^*(k, z)$ are domestic and foreign producer prices, respectively. As markets are competitive, prices equal marginal cost, hence the inequality becomes:

$$s^z w^{1-z} \geq (1 + \tau(k)) s^{*z} w^{*1-z}, \quad (2)$$

where s^* and w^* are skilled- and unskilled-labor wages in North, respectively.⁷ Equation (2) implicitly defines a cutoff value for z , $\bar{z}(k)$, such that all goods $z \geq \bar{z}(k)$ in sector k are imported.⁸

Analogously, South exports a good when $p(k, z) \leq p^*(k, z)$,⁹ so that:

$$s^z w^{1-z} \leq s^{*z} w^{*1-z}. \quad (3)$$

Equation (3) implicitly defines a good \underline{z} , such that all goods $z \leq \underline{z}$ in sector k are exported. Clearly, goods $\underline{z} < z < \bar{z}(k)$ are non-traded.

⁷Dornbusch *et al.* (1980) show that, if factor endowments are not very different across countries, then there is factor price equalization. Here we assume that relative factor endowments are sufficiently dissimilar so that factor price equalization does not occur.

⁸Note that $\bar{z}(k)$ is a lower bound for imported goods following our assumption that South is relatively abundant in unskilled labor, which implies that $\frac{s}{s^*} > \frac{w}{w^*}$. $\frac{s}{s^*} > 1$ and $\frac{w}{w^*} < 1$ ensure that $\bar{z}(k) < 1$ and $\underline{z} > 0$, respectively (\underline{z} defined below).

⁹Remember that North does not have import tariffs.

Now we derive the price index in each sector. The wholesale price index is defined as:¹⁰

$$\log P(k) = \int_{k-u}^{k+u} d(k, z) \log p^d(k, z) dz, \quad (4)$$

where $d(k, z)$ is the good's transactions share of total sector's transactions, including both domestically produced and imported products, with $\int_{k-u}^{k+u} d(k, z) dz = 1$. $p^d(k, z)$ is the domestic price, which equals $p(k, z)$ if the good is produced domestically or $(1 + \tau(k))p^*(k, z)$ if the good is imported. There are three possible cases. In sectors for which $k + u \leq \bar{z}(k)$, all goods are produced domestically and $p^d(k, z) = p(k, z)$. When $\bar{z}(k) \leq k - u$, all goods in sector k are imported. For these sectors, $p^d(k, z) = (1 + \tau(k))p^*(k, z)$. Finally, when $k - u \leq \bar{z}(k) \leq k + u$, only a portion of the goods is imported. Thus, the price index can be written as:

$$\begin{aligned} \log P(k) &= \int_{k-u}^{k+u} d(k, z) \log p(k, z) dz \text{ for } k \leq \bar{z}(k) - u & (5) \\ &= \int_{k-u}^{\bar{z}(k)} d(k, z) \log p(k, z) dz + \\ &+ \int_{\bar{z}(k)}^{k+u} d(k, z) \log [(1 + \tau(k))p^*(k, z)] dz \text{ for } \bar{z}(k) - u < k < \bar{z}(k) + u \\ &= \log(1 + \tau(k)) + \int_{k-u}^{k+u} d(k, z) \log p^*(k, z) dz \text{ for } k \geq \bar{z}(k) + u \end{aligned}$$

From the sector price indexes in equation (5), we can derive the pass-through from tariffs to prices:

$$\frac{\partial \log P(k)}{\partial \log(1 + \tau(k))} = \begin{cases} 0 & \text{for } k \leq \bar{z}(k) - u \\ \int_{\bar{z}(k)}^{k+u} d(k, z) dz & \text{for } \bar{z}(k) - u < k < \bar{z}(k) + u \\ \int_{k-u}^{k+u} d(k, z) dz = 1 & \text{for } k \geq \bar{z}(k) + u \end{cases} \quad (6)$$

Equation (6) shows that the pass-through from tariffs to prices is not equal across sectors. In sectors with no imports ($k \leq \bar{z}(k) - u$), the pass-through is obviously zero. On the other extreme, in sectors where all goods are imported ($k \geq \bar{z}(k) + u$), the pass-through coefficient is one. For sectors with some

¹⁰We define the price index as the wholesale one because this is the only price index available at the sectorial level in Brazil. Moreover, we employ the same definition for the weight of each good in the price index as in the wholesale price index used in the empirical exercises.

imports, the pass-through from tariffs to prices is equal to the share of imported goods in total transactions in the sector, that is, $\int_{\bar{z}(k)}^{k+u} d(k, z) dz$, which is the sector's import penetration.

This means that the impact of trade liberalization on relative prices depends not only on the change in relative tariffs, but also on the differentiated pass-through coefficients across sectors. When pass-through coefficients are different across sectors, even a homogeneous tariffs decrease may lead to relative price changes.

Note that sectors in which the country has comparative advantages are the ones with lower import penetration¹¹, hence, with lower pass-through. As South does not have comparative advantage in skill-intensive goods, a given tariff decrease should have a larger impact on prices of sectors that use skilled labor more intensively.

This model also delivers the Stolper-Samuelson result, as shown in the appendix. According to the model, in order to be consistent with the reduction in earnings inequality observed in Brazil, the relative prices of skill-intensive sectors should have decreased, and this decrease should have been induced by trade liberalization. The new relative prices incentives would have led to a shift in production from skill- to unskill-intensive sectors. This would have caused a relative decrease in skilled labor demand, implying a fall in the relative wages of skilled labor. The new factor price, in turn, would have induced firms in all sectors to increase the proportion of skilled labor used in production.

In the end, under full employment, one should observe higher relative wages for unskilled labor, an increase in employment and production in unskilled-intensive sectors, and an increase in the use of skilled labor in all sectors. The next section investigates whether the comovements of sectorial variables following Brazilian trade liberalization conform to this trade transmission mechanism.

Additionally, according to the model, changes in relative labor supply also affect relative wages: an increase in skilled-labor relative supply decreases its

¹¹South has comparative advantages in goods that use skilled labor less intensively, which are goods $z \leq \bar{z}(k)$. At the sectorial level, comparative advantages are not well defined, but they clearly should depend on the share of those goods in the sector.

relative earnings. This result is derived in the appendix.

4 Empirical Results

4.1 Within and Between Industry Decomposition

Our empirical exercise begins by analyzing standard decompositions of skilled-labor relative employment shares into *within*- and *between*-industry changes (see Berman *et al.*, 1994, and Autor *et al.*, 1998). As discussed below, trade liberalization and skilled labor supply changes have different implications for the evolution of these decompositions changes. In particular, we investigate whether the increase in skilled labor supply could be the only explanation for the drop in skill earnings differentials observed in Brazil.

Changes in skilled-labor employment share ($\Delta\left(\frac{L_S}{L_U+L_S}\right)$) may be decomposed in two parts:

$$\Delta\left(\frac{L_S}{L_U+L_S}\right) = \sum_k s_k \Delta\left(\frac{L_S}{L_U+L_S}\right)_k + \sum_k \left(\frac{L_S}{L_U+L_S}\right)_k \Delta s_k, \quad (7)$$

which are interpreted as:

1. *within-industry changes*, which are changes in skilled-labor employment within each industry ($\Delta\left(\frac{L_S}{L_U+L_S}\right)_k$), for given industry employment shares ($s_k = \frac{(L_U+L_S)_k}{L_U+L_S}$);
2. *between-industry changes*, which are changes in industry employment shares (Δs_k), for a given skilled-labor employment share in each industry ($\left(\frac{L_S}{L_U+L_S}\right)_k$).

What would be the results of this decomposition exercise if the increase in relative labor supply were the only significant change in the economy? For a small open economy under full employment, an increase in a factor endowment raises the output of industries that use that factor intensively, and decreases other industries' output. This would generate a positive between-industry effect. If there is no factor price equalization, as may be the case in our model, the resulting fall in skilled labor relative wages would shift labor demand towards skilled workers within each industry, that is, a positive within-industry effect.

In terms of equation (7), an increase in skilled-labor supply is represented by a positive left hand side. The two terms on the right hand side should also be positive, representing the positive within- and between-industry effects.

What would be the results of this exercise if trade were the only source behind the changes in earnings inequality? As described in Section 3, trade opening should have caused a decrease in relative prices of skill-intensive sectors in order to produce the observed decrease in earnings inequality.¹² On the one hand, these price incentives would decrease production in those sectors, which denote a negative between-industry effect. On the other hand, as above, the relative wage incentives would yield a positive within-industry effect. With given factor supplies, the two effects should offset each other.

Table 2 presents the skilled-labor employment share decomposition results, using education attainment as a measure of skill from the PNAD dataset. Confirming the labor supply movements displayed in Figure 3, skilled-labor employment share (measured by the high-school threshold) increased 2.67% a year between 1988 and 1995, on average. The decomposition reveals that the *within effect* is positive and the *between effect* is negative, that is, employment shifted from skilled- to unskilled-intensive sectors, and each sector increased its relative share of skilled labor. Two important conclusions emerge: (1) labor supply changes alone cannot account for these results, and (2) the results are compatible with the trade explanation.¹³

	Total	Within Industry	Between Industry
Skilled Labor	0.0267	0.0334	-0.0067
Employment Share	(100%)	(125%)	(-25%)

Table 2: Employment and Wage Bill Shares Decompositions, 1988-95

¹²Note that we are considering an economy that is relatively abundant in unskilled labor.

¹³Results not reported here, using nonproduction share from PIA as a proxy for skill, are also compatible with trade. But in that case, they explain the *increase* in earnings differentials observed for that skill measure. There was an average overall annual decrease of 0.7% in nonproduction employment share. This was decomposed into a negative *within-industry* effect (-1.4%), which outweighed a positive *between-industry* effect (0.7%).

4.2 Consistency Checks

We perform some consistency check exercises to examine the causality path predicted by trade theory. As discussed in Section 3, the following relationships should be investigated to determine whether trade liberalization was responsible for the decrease in skilled labor relative earnings observed in Brazil:

1. *What was the pattern of relative price changes?* To be consistent with the decrease in earnings inequality, one should observe a decrease in the relative prices of the sectors that use skilled labor intensively. This should be reflected in the data through a negative correlation between price changes and skill intensity.
2. *What was the pattern of tariff reduction?* If these changes in relative prices, negatively correlated with skill intensity, were induced by trade liberalization, one should observe that the most skill-intensive sectors experienced the largest tariff reductions and/or that in these sectors the tariffs reduction had a larger impact on prices. As equation (6) shows, tariffs adjusted by the share of imported goods in each sector is the proper measure to be used to investigate the impact of trade liberalization on prices, since it captures both the tariff changes and the differentiated pass-through effect. Therefore, one should test the correlation between skill intensity and adjusted tariff changes.
3. *Was the pattern of price changes induced by tariff changes?* This can be examined through the estimation of price changes equations based on the relationship established in equation (5).

We investigate each of these questions in turn over the next three subsections.

4.2.1 Prices and Skill Intensity

The first step is to check whether the pattern of price changes is consistent with the observed decrease in skilled labor relative earnings. Figure 8 suggests

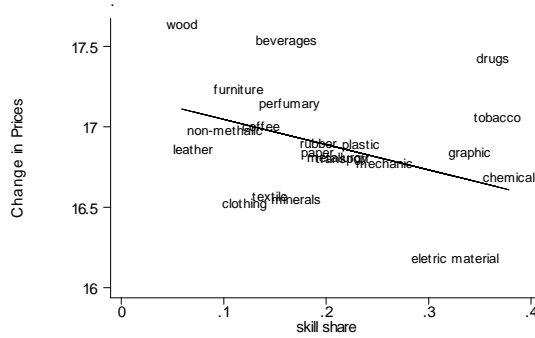
that, between 1988 and 1995, relative prices decreased in sectors with a higher proportion of educated workers.

We test the correlation between prices and the sector skill intensity by estimating:

$$\Delta \log P_{k\tau} = \beta_{0\tau} + \beta_1 \log \left(\frac{L_S}{L_U + L_S} \right)_{k,\tau-1} + \nu_{k\tau}, \quad (8)$$

where $P_{k\tau}$ is the wholesale price for sector k in year τ , and $\left(\frac{L_S}{L_U + L_S} \right)_k$ is the share of skilled labor employed in sector k . The pattern of price changes must deliver a negative value for β_1 , in order to be consistent with the decrease in skilled-labor relative earnings.

Figure 8: Price Changes (1988-1995) and Skill Shares (1988)



Equation (8) is estimated using yearly observations from 1988 to 1995, for a sample of 60 industries (PIA classification). The Brazilian wholesale price index (*Índice de Preços por Atacado - Oferta Global*, IPA-OG),¹⁴ collected by the Fundação Getulio Vargas, was matched to the PIA aggregation. The skilled labor share based on education attainment was computed from the 21-sectors' PNAD data set. When this is the skill measure used, we correct the standard errors of all coefficients for the fact that this variable is more aggregated than the dependent variables.

¹⁴The weight of each good in IPA-OG is given by the good's transactions share of total sector's transactions. The latter is defined as the sum of the sector's total production and imports.

The regression results of equation (8) are presented in Table 3. A significant negative correlation between prices and lagged skill intensity (education-based) is observed in column (1), which uses panel data, showing that relative prices changed in favor of less skill-intensive sectors. Since there is not much variation in skill intensity over time, we estimate a cross-section of the changes in prices from 1988 to 1995 on the skill intensity in 1988. The estimated coefficient, in the second column, is about seven times higher (in absolute value), as expected. In the third column, results of an unweighted regression are presented, which are very similar to those of column (2).

Since most of the empirical literature uses the share of nonproduction workers as a measure of skill intensity, we also estimate equation (8) using that measure. Consistent with the slight rise in occupation wage differentials, the skill-intensity coefficient in column (4) is positive, yet not significant. Finally, in column (5) we aggregate the occupation-based skill definition to the 21-sector level (the same of the education-based definition). The results do not change, so that the differences in the level of aggregation do not seem to be driving the different results for the two skill measures.¹⁵

These results verify the first consistency check: there is a negative and significant correlation between relative price changes and skill intensity. This is true when we use education attainment as a proxy for skill, which is a more accurate proxy for skill than occupation, as discussed in section 2. Hence, the pattern of relative price changes is consistent with the observed decline in earnings differentials.

4.2.2 Tariffs and Skill Intensity

If the changes in relative prices, which were shown to be negatively correlated with skill intensity, were induced by trade liberalization, one should observe ei-

¹⁵A variance decomposition analysis suggests that about 50% of the price variation occurs within sectors (between industries) and 50% occurs between sectors.

	Dependent Variable: Change in Prices				
	(1)	(2)	(3)	(4)	(5)
High Education Employment Share	-0.043 (0.020)	-0.338 (0.061)	-0.299 (0.131)	-	-
Nonproduction Employment Share	-	-	-	0.036 (0.239)	0.062 (0.285)
Constant	3.489 (0.039)	16.240 (0.257)	16.320 (0.241)	16.913 (0.292)	16.947 (0.355)
Observations	420	60	60	60	60
Weighted	Yes	Yes	No	Yes	Yes
Time Dummies	Yes	No	No	No	No

Notes: Panel regression of yearly changes in column (1) and cross-section of 1988-1995 changes in columns (2) to (5). In column (5), nonproduction share is aggregated to sector level. Sector employment shares are used as weights. Robust standard errors are in parentheses.

Table 3: Prices and Skill Intensity, 1988-95

ther that the largest tariff reductions occurred in the most skill-intensive sectors or that the pass-through from tariffs to prices was larger in these sectors.

We first estimate the correlation between tariff changes and skill intensity using the following equation:

$$\Delta \log(1 + t_{k\tau}) = \gamma_{0\tau} + \gamma_1 \log\left(\frac{L_S}{L_U + L_S}\right)_{k,\tau-1} + \eta_{k\tau}, \quad (9)$$

where t_k is the average import tariff for sector k .

The results for cross-section long changes (1988-1995) regressions are presented in columns (1) and (2) of Table 4. Neither skill intensity measure is significantly correlated with the changes in tariffs. Therefore, as already suggested by Figure 7, there is no clear pattern of tariff reductions with relation to skill intensity in Brazil.

According to equation (6), the proper measure to be used to investigate the impact of trade liberalization on prices is tariffs adjusted by the share of imported goods in each sector. This measure captures both the tariff changes and the differentiated pass-through from tariffs to prices. We, then, test the correlation between adjusted tariff changes and skill intensity, using $\alpha_k \Delta \log(1 + t_{k\tau})$

as the dependent variable in equation (9), where α_k is the import penetration. This is measured as the ratio of imports over the sum of imports and total production in each sector in the initial year (1988).

Columns (3) and (4) of Table 4 report the regression results for a panel of yearly changes and for a cross-section of long changes, respectively. Both skill-intensity coefficients are negative and significant, with the long-changes coefficient being about six times larger (in absolute value) than the panel one as expected. The unweighted regression yields the same result, as shown in column (5). Interestingly, the use of nonproduction employment share as an alternative explanatory variable also delivers a negative and statistically significant coefficient (see column (6)). These results indicate that adjusted tariffs fell relatively more in more skill-intensive sectors.

	Dependent Variable					
	Change in Tariffs		Change in Tariffs*Import Shares			
	(1)	(2)	(3)	(4)	(5)	(6)
High Education Employment Share	-0.015 (0.023)	-	-0.002 (0.001)	-0.012 (0.004)	-0.015 (0.005)	-
Nonproduction Employment Share	-	0.002 (0.039)	-	-	-	-0.008 (0.004)
Constant	-0.258 (0.038)	-0.252 (0.045)	-0.004 (0.001)	-0.031 (0.008)	-0.036 (0.009)	-0.019 (0.007)
Observations	60	60	420	60	60	60
Weighted	yes	yes	yes	yes	no	yes
Time Dummies	no	no	yes	no	no	no

Notes: Panel regression of yearly changes in column (3) and cross-section of 1988-1995 changes in the other columns. Sector employment shares are used as weights. Robust standard errors are in parentheses.

Table 4: Tariff Changes and Skill Intensity, 1988-95

Note that these last results contrast with those obtained in columns (1) and (2), where tariff changes were not adjusted by import penetration. These two sets of results together imply that: (i) tariff changes had no relationship with skill intensity, and (ii) import penetration was larger in more skill-intensive sectors, which, according to the arguments in section 3, entails a higher pass-

through from tariffs to prices in these sectors.

This exercise establishes the second consistency check for the causality from trade liberalization to earnings differentials: adjusted tariff changes are negatively correlated with skill intensity.

4.2.3 Prices and Tariffs

We now investigate the relationship between tariff and price changes. Based on equation (5), we estimate:

$$\Delta \log P_{k\tau} = \delta_{0\tau} + \delta_1 \alpha_k \Delta \log (1 + t_{k\tau}) + \delta_2 \beta_k \Delta \log P_{k\tau}^* + \varepsilon_{k\tau}. \quad (10)$$

α_k captures the differentiated pass-through impact from tariffs to prices in sector k , measured by import penetration in 1988. As we do not have data on goods international prices, we use sector international prices $P_{k\tau}^*$ instead, proxied by U.S. prices.¹⁶ β_k , the differentiated pass-through of international prices to domestic sector prices, is measured by the ratio of imported *plus* exported goods over the sum of production and total imports in the sector, which we denote trade exposure.¹⁷

We have assumed away export subsidies and quantitative trade restrictions.¹⁸ Hence, changes in the rents generated by other trade barriers should be captured by an error term, $\varepsilon_{k\tau}$. The effects of other omitted variables are in the time dummies and the error term.

Equation (10) is estimated using a panel of yearly observations from 1988 to 1995, for a sample of 50 industries. The level of aggregation is lower here because we could only match 50 U.S. industries to the PIA classification. U.S. producer price data are from the Bureau of Labor Statistics. In order to identify the causal effect of tariffs on prices, we must assume that the tariffs changes

¹⁶Note that equation (5) considered international prices as measured by the same currency as domestic prices. Were they measured by another currency, any nominal exchange rate changes would be captured by the time dummies $\delta_{0\tau}$.

¹⁷In equation (5), we split the sector into domestically produced and imported goods. However, the domestically produced goods include both nontraded and exported goods, and the prices of the latter also depend on international prices.

¹⁸As discussed in Section 2.2, most non-tariff barriers were replaced by tariffs in the outset of trade liberalization.

are exogenous, that is, not correlated to other (omitted) determinants of price changes. Note, however, that this was a period of substantial policy changes in Brazil. We argue that the introduction of time dummies in equation (10) absorbs the contemporaneous correlation between changes in tariffs and the other policy changes, which is true as long as there is no within-sector correlation among these changes.

We first estimate equation (10) without considering the differentiated pass-through coefficient, that is, we regress price changes on unadjusted tariff changes and U.S. prices changes (with $\alpha_k = 1$ and $\beta_k = 1, \forall k$). The first column of Table 5 presents the estimation results using panel data. The estimated tariff coefficient is positive and statistically different from zero at conventional significance levels. The coefficient for U.S. prices is not precisely estimated in this specification. In the long differences regression, presented in the second column, neither coefficient is significantly different from zero.

Next, we take into account the differentiated pass-through coefficients from tariffs and from international prices to domestic industry prices, as in equation (10). We regress the prices changes on the tariffs changes multiplied by import penetration, α_k , and U.S. price changes times trade exposure, β_k . Both α_k and β_k are measured by 1988 levels. The results of the panel regression, reported in column (3), show that the coefficient of adjusted tariff changes is also positive and statistically significant. Moreover, adjusted international prices turned out to be positive and significant.¹⁹ In column (4) we use the long-differences specification and find that the coefficient of adjusted tariffs is positive but not significant at conventional levels. In an unweighted regression, in column (5), the coefficients of both the adjusted tariffs and adjusted international prices changes are positive and significant.

These results are in accordance with the predictions of the model presented in section 3: relative price changes are positively correlated with tariff changes adjusted by import penetration and with international prices adjusted by trade

¹⁹One cannot compare the magnitude of the estimated coefficients because of the differences in the units of measurement between the two variables.

exposure.²⁰

	Dependent Variable: Price Changes				
	(1)	(2)	(3)	(4)	(5)
Tariff Changes	0.457 (0.237)	0.125 (0.775)	-	-	-
Tariff Changes* Import Penetration	-	-	4.221 (2.194)	5.173 (3.821)	4.035 (2.011)
U.S. Price Changes	0.105 (0.182)	1.446 (0.915)	-	-	-
U.S. Price Changes* Trade Exposure	-	-	0.378 (0.155)	2.031 (1.919)	1.001 (0.472)
Constant	2.882 (0.018)	16.684 (0.215)	2.874 (0.018)	16.857 (0.075)	16.869 (0.070)
Observations	350	50	350	50	50
Weighted	yes	yes	yes	yes	no
Time Dummies	yes	no	yes	no	no

Notes: Panel regression of yearly changes in columns (1) and (3) and cross-section of 1988-1995 changes in the other columns. Sector employment shares are used as weights. Robust standard errors are in parentheses.

Table 5: Price Changes and Tariff Changes, 1988-95

4.3 Mandated Wage Equations

While the pattern of price changes is consistent with the pattern of relative earnings evolution and correlated with tariff changes, we have not as yet examined how much of the drop in skill earnings differentials could be attributed to price changes mandated by trade liberalization. We therefore follow another vein of the trade literature and estimate mandated wage equations (see Baldwin and Cain, 1997, Haskel and Slaughter, 2002, and Robertson, 2004). According to the Stolper-Samuelson theorem, price changes should equal factor price changes,

²⁰There is one caveat in interpreting the results of this regression. The composition of goods within each sector may change over time, and this change may be correlated with changes in trade policy. On the one hand, trade liberalization may reduce or even eliminate domestic production of goods with relatively high domestic production costs. On the other hand, new products may be introduced due to the reduced cost of imported goods. Even though this is a drawback, there is nothing we can do to correct for possible measurement errors caused by it.

weighted by the factor cost share. If the only factors of production used were skilled and unskilled labor, it is easy to show that price changes could be decomposed in two terms:

$$\Delta \log p_k = \frac{\theta_k^S}{\theta_k} (\Delta \log w_S - \Delta \log w_U) + \Delta \log w_U, \quad (11)$$

where θ_k^S is the cost of skilled labor and θ_k is the total cost in sector k . Therefore, regressing price changes on skilled labor cost share should yield an estimate of the economy-wide returns to skill changes.

Our estimation is based on the following regression:

$$\Delta \log p_k = \phi_0 + \phi_1 \left(\frac{w_S L_S}{w_U L_U + w_S L_S} \right)_k + \eta_k, \quad (12)$$

where the estimated coefficient ϕ_1 is interpreted as the changes in skill earnings differentials associated with price changes.²¹

Since we are interested in the effect of prices that resulted from trade liberalization, we follow Haskel and Slaughter (2002) and estimate equation (12) in two steps. First, we estimate the change in prices predicted by the change in tariffs. For this step, we compute two alternative sets of predicted prices that result from the estimation of equation (10): (i) not adjusting tariffs and international price changes for differentiated pass-through across sectors, and (ii) with the adjustments, using both weighted and unweighted regressions. These results were presented, respectively, in columns (2), (4) and (5) of Table 5. In the second step, we estimate equation (12) using the predicted prices, instead of actual prices, as the dependent variable. The estimated coefficient of high-education cost share is interpreted as the changes in skill earnings that are mandated by price changes induced by trade liberalization.

²¹The general form for equation (11) when there are l factors of production is:

$$\Delta \log p_j = \frac{\theta_j^1}{\theta_j} (\Delta \log w_1 - \Delta \log w_2) + \frac{\theta_j^1 + \theta_j^2}{\theta_j} \Delta \log w_2 + \sum_{k=3}^l \left(\frac{\theta_j^k}{\theta_j} \Delta \log w_k \right).$$

In this case, one could still use equation (12), but the coefficient ϕ_1 should equal $\frac{\theta_j^S + \theta_j^U}{\theta_j} (\Delta \log w_S - \Delta \log w_U)$, which would be well estimated if the share of labor in total cost is time invariant. An analogous argument applies for the constant term in equation (12).

Dependent Variable: Change in Prices			
	Predicted by tariff changes	Predicted by tariff changes, adjusted by diff. pass-through	
	(1)	(2)	(3)
High-Education Cost Share	-0.048 (0.039)	-0.294 (0.085)	-0.268 (0.088)
Constant	16.88 (0.021)	16.93 (0.087)	16.94 (0.033)
Auxiliary Regression in Table 5	Col.(2)	Col.(4)	Col.(5)
Actual Change in Log Earnings Diffs	-0.168	-0.168	-0.168
Observations	60	60	60
Weighted Original Regressions	yes	yes	no

Notes: Robust standard errors are in parentheses.

Table 6: Mandated Wages

The results are presented in Table 6. The actual fall in skill earnings differentials observed in Brazil from 1988 to 1995 was 15.5% (which corresponds to the -0.168 log difference). The first column shows that the decline in earnings differentials mandated by the price variation predicted by the (unadjusted) change in tariffs was estimated at 4.7%, but was not significantly different from zero. When we use the price changes predicted by tariffs, allowing for differentiated pass-through coefficients across sectors, weighted in column (2) and unweighted in column (3), we find mandated annualized skill earnings differential declines of 25.5% (-0.294 log difference) and 23.5% (-0.268), respectively.

These results indicate that, if trade were the only change in the Brazilian economy from 1988 to 1995, skill earnings differentials would have fallen by even more (8-10 percentage points) than what was actually observed. Other changes in the economy were responsible for this difference. In particular, skill biased technological changes would have had a positive impact on the differentials. Note, however, that the observed labor supply changes might have reinforced the decline in earnings differentials. It is beyond the scope of this paper to disentangle the contribution of these other factors on the evolution of the skill premium. Nevertheless, this result provides compelling evidence that trade

liberalization played a major role in explaining the decrease in skilled labor relative earnings in Brazil.

5 Conclusion

During the trade liberalization implemented in Brazil from 1988 to 1995, earnings of workers with at least complete high school decreased with respect to earnings of less educated workers. In this paper we present evidence compatible with trade liberalization having played a role in explaining these relative earnings movements.

First, a decomposition analysis of changes in skilled-labor employment share over this period reveals that employment shifted from skilled- to unskilled-intensive sectors, and that each sector increased its relative share of skilled labor. Second, we show that relative prices fell in skill-intensive sectors, and that tariffs reductions, adjusted by import penetration, were larger in those sectors. Furthermore, we find not only that prices and tariffs were positively correlated, but also that the impact of tariffs changes on prices was higher in sectors with larger import penetration. Finally, we show that the decline in skilled earnings differentials mandated by the price variation predicted by trade, allowing for differentiated pass-through coefficients across sectors, was even larger than the observed one. In sum, all steps of the trade transmission mechanism were tested, and the results are compatible with trade liberalization accounting for the observed relative earnings changes in Brazil.

Our results highlight the importance of considering the effects of differentiated pass-through from tariffs to prices across sectors in order to adequately investigate the effects of trade liberalization on relative prices. We develop a theoretical foundation for this through a modified version of Dornbusch *et al.* (1980), which shows that the pass-through from tariffs to prices in each sector depends on the sector's import penetration.

References

- [1] Acemoglu, D.(2002). “Technical Change, Inequality and the Labor Market,” *Journal of Economic Literature*, 50 (1), 7-72.
- [2] Acemoglu, D.(2003). “Patterns of Skill Premia,” *Review of Economic Studies*, 70, 199-230.
- [3] Autor, D., L.Katz and A.Krueger (1998). “Computing Inequality: Have Computers Changed the Labor Market?,” *The Quarterly Journal of Economics*, 113(4): 1169-213.
- [4] Baldwin, R. and G.Cain (1997). “Shifts in U.S. Relative Wages: The Role of Trade, Technology and Factor Endowments,” NBER Working Paper #5934.
- [5] Behrman, J., N.Birdsall and M.Székely (2000). “Economic Reform and Wage Differentials in Latin America,” Inter-American Development Bank, Working Paper #435.
- [6] Berman, E., J.Bound and Z.Griliches (1994). “Changes in the Demand for Skilled Labor within US Manufacturing: Evidence from the Annual Survey of Manufacturers,” *The Quarterly Journal of Economics*, 109(2): 367-98.
- [7] Beyer, H., P.Rojas, and R.Vergara (1999). “Trade Liberalization and Wage Inequality,” *Journal of Development Economics*, 59: 103-23.
- [8] Dornbusch, R., S.Fischer and P.Samuelson (1980). “Heckscher-Ohlin Trade Theory with a Continuum of Goods,” *The Quarterly Journal of Economics*, 95(2): 203-24.
- [9] Hanson, G. and A.Harrison (1999). “Trade Liberalization and Wage Inequality in Mexico,” *Industrial and Labor Relations Review*, 52(2): 272-88.
- [10] Haskel, J. and M.Slaughter (2003). “Have Falling Tariffs and Transportation Costs Raised U.S. Wage Inequality?,” *Review of International Economics*, 11(4): 630-50.
- [11] Duryea, S., R.Robertson and W.Hernani (2002). “Regional Integration and Wage Inequality,” in *Beyond Borders: The New Regionalism in Latin America*, Inter-American Development Bank.
- [12] Krueger, A.(1997). “Labor Market Shifts and The Price Puzzle Revisited,” NBER Working Paper #5924.

- [13] Kume, H.(2002). “A política brasileira de importação no período 1987-99: descrição e avaliação,” May, mimeo.
- [14] Muendler, M., J.Poole, G.Ramey and T.Wajenberg (2004). “Job Concor- dances in Brazil: Mapping the *Classificação Brasileira de Ocupações* to the *International Standard Classification of Occupations*”, UCSD, mimeo.
- [15] Robertson, R.(2004). “Relative Prices and Wage Inequality: Evidence from Mexico,” *Journal of International Economics*, 64(2): 387-409.
- [16] Romalis, J.(2004). “Factor Proportions and the Structure of Commodity Trade,” *The American Economic Review*, 94(1): 67-97.
- [17] Slaughter, M.(2000). “What are the Results of Product-Prices Studies and What Can We Learn from Their Differences?,” in Robert Feenstra (ed.), *The Impact of International Trade on Wages*, NBER Conference Report, Chicago: University of Chicago Press, 129-70.
- [18] Thoenig, M. and T.Verdier (2003). “A Theory of Defensive Skill-Biased In- novation and Globalization,” *American Economic Review*, 93(3):709-28.

6 Appendix

6.1 Stolper-Samuelson Result and the Effect of Labor Supply Changes

Stolper-Samuelson Result We start by deriving the Stolper-Samuelson result in the model developed in section 3. This can more easily be shown in a simplified version of the model with no sectorial aggregation of goods, that is, assuming $q(k, z) \equiv q(z)$.²² Cutoff points \bar{z} and \underline{z} can still be obtained from equations (2) and (3). Equilibrium in this economy is characterized by balanced trade and by full employment of both factors.

Balanced trade requires that:

$$\int_0^{\underline{z}} b(z) (w^* L_U^* + s^* L_S^*) dz = \int_{\bar{z}}^1 \frac{b(z) (w L_U + s L_S)}{1 + \tau} dz, \quad (13)$$

where $b(k)$ is the proportion of income spent on sector- k goods, assuming Cobb-Douglas consumer preferences, L_U (L_U^*) and L_S (L_S^*) are unskilled and skilled labor supplies in the South (North), and tariffs τ are the same for all goods. To

²²Using the sectorial aggregation yields the same results as in this appendix, although the equations are much more cumbersome.

obtain equation (13), we use the fact that preferences imply that the demand for good z by Southern consumers is:

$$q(z) = \frac{b(z)(wL_U + sL_S)}{p^d(z)}, \quad (14)$$

with an equivalent equation for the North.

The condition for skilled labor full employment in South is given by:

$$L_S = \int_0^{\underline{z}} \left[\frac{zw}{(1-z)s} \right]^{1-z} \frac{b(z)}{p(z)} (wL_U + sL_S + w^*L_U^* + s^*L_S^*) dz + \int_{\underline{z}}^{\bar{z}} \left[\frac{zw}{(1-z)s} \right]^{1-z} \frac{b(z)}{p(z)} (wL_U + sL_S) dz, \quad (15)$$

which follows from the demand for skilled labor equation,²³

$$L_S(z) = \left[\frac{zw}{(1-z)s} \right]^{1-z} [q(z) + q^*(z)],$$

and uses the demand conditions in equation (14) and the fact that $p^c(z) = p(z)$ (see footnote 9). Analogously, the full employment equation for unskilled labor is:

$$L_U = \int_0^{\underline{z}} \left[\frac{zw}{(1-z)s} \right]^{-z} \frac{b(z)}{p(z)} (wL_U + sL_S + w^*L_U^* + s^*L_S^*) dz + \int_{\underline{z}}^{\bar{z}} \left[\frac{zw}{(1-z)s} \right]^{-z} \frac{b(z)}{p(z)} (wL_U + sL_S) dz. \quad (16)$$

Substituting the balanced trade condition into equations (15) and (16), and simplifying using the zero profit conditions as in Dornbusch *et al.* (1980), we get:

$$\theta l_s = \int_0^{\underline{z}} \frac{b(z)(\sigma + l_s)}{(\sigma + l_s(z))} l_s(z) dz + \theta \int_{\underline{z}}^{\bar{z}} \frac{b(z)(\sigma + l_s)}{(\sigma + l_s(z))} l_s(z) dz, \quad (17)$$

for skilled labor, and:

$$\theta = \int_0^{\underline{z}} \frac{b(z)(\sigma + l_s)}{(\sigma + l_s(z))} dz + \theta \int_{\underline{z}}^{\bar{z}} \frac{b(z)(\sigma + l_s)}{(\sigma + l_s(z))} dz, \quad (18)$$

for unskilled labor, where $\theta \equiv \frac{(1+\tau) \int_0^{\underline{z}} b(z) dz}{(1+\tau) \int_0^{\underline{z}} b(z) dz + \int_{\underline{z}}^{\bar{z}} b(z) dz}$, $\sigma \equiv \frac{w}{s}$, $l_s(z) \equiv \frac{L_s(z)}{L_u(z)} = \frac{z\sigma}{(1-z)}$ and $l_s \equiv \frac{L_s}{L_u}$. Combining equations (17) and (18), we get:

$$F(\sigma, \tau) \equiv \int_0^{\underline{z}} b(z) [z\sigma - (1-z)l_s] dz + \theta \int_{\underline{z}}^{\bar{z}} b(z) [z\sigma - (1-z)l_s] dz = 0. \quad (19)$$

²³In this simplified version, we assume $A(k) = 1$.

An analogous equation can be derived for the North. With equation (19) and its counterpart for the North one can derive relative wages in the two countries (σ and σ^*).

In this set up, the Stolper-Samuelson result is equivalent to $\frac{d\sigma}{d\tau} < 0$, that is, trade liberalization in South yields an increase in the relative wages of unskilled labor, its relatively abundant factor. This can be derived by applying the implicit function theorem to equation (19).

The numerator of $\frac{d\sigma}{d\tau}$ is:

$$\begin{aligned} \frac{\partial F(\sigma, \tau)}{\partial \tau} &= \frac{\partial \theta}{\partial \tau} \int_{\underline{z}}^{\bar{z}} b(z) (\sigma + l_s) [z\sigma - (1-z)l_s] dz + \\ &\quad - \frac{\theta}{(1+\tau) \log(\sigma/\sigma^*)} b(\bar{z}) (\sigma + l_s) [\bar{z}\sigma - (1-\bar{z})l_s], \end{aligned} \quad (20)$$

where:

$$\frac{\partial \theta}{\partial \tau} = \frac{\theta(1-\theta)}{1+\tau} - \frac{\theta b(\bar{z})}{(1+\tau) \log(\sigma/\sigma^*) \left[(1+\tau) \int_0^{\bar{z}} b(z) dz + \int_{\underline{z}}^1 b(z) dz \right]}.$$

First, note that $\log(\sigma/\sigma^*) < 0$ (see footnote 8), hence, $\frac{\partial \theta}{\partial \tau} > 0$. Second, $\int_{\underline{z}}^{\bar{z}} b(z) (\sigma + l_s) [z\sigma - (1-z)l_s] dz > 0$, for the following reason. This expression is in the second term of $F(\sigma, \tau)$ in equation (19). As $F(\sigma, \tau) = 0$, either its two terms are zero, or one is positive and the other is negative. It cannot be the case that both are zero, since $[z\sigma - (1-z)l_s]$ is monotonically increasing in z . This monotonicity also implies that the first term cannot be positive. Hence, the only possibility is the first term being negative and the second positive. Therefore, we can establish that $\frac{\partial F(\sigma, \tau)}{\partial \tau} > 0$.

Finally, the second term in equation (20) is positive, as we show by contradiction that $[\bar{z}\sigma - (1-\bar{z})l_s]$ is positive. Note that $\bar{z}\sigma - (1-\bar{z})l_s = [l_s(\bar{z}) - l_s](1-\bar{z})$. Suppose that $l_s(\bar{z}) - l_s < 0$. Due to its monotonicity in z , we would have that $l_s(z) - l_s < 0, \forall z \leq \bar{z}$, that is, for all goods produced in the country. The full employment in the economy implies that relative labor demand equals relative labor supply, that is, $\frac{\int_0^{\bar{z}} L_S(z) dz}{\int_0^{\bar{z}} L_U(z) dz} = l_s$. The relative labor demand can be rewritten as $\frac{\int_0^{\bar{z}} l_s(z) L_U(z) dz}{\int_0^{\bar{z}} L_U(z) dz}$, which would be smaller than $\frac{\int_0^{\bar{z}} l_s L_U(z) dz}{\int_0^{\bar{z}} L_U(z) dz} = l_s$, under the assumption $l_s(z) < l_s$. Hence, we would have a contradiction.

The denominator of $\frac{d\sigma}{d\tau}$ is:

$$\begin{aligned} \frac{\partial F(\sigma, \tau)}{\partial \sigma} &= \frac{F(\sigma, \tau)}{\sigma + l_s} + \int_0^{\underline{z}} b(z) (\sigma + l_s) z dz + \theta \int_{\underline{z}}^{\bar{z}} b(z) (\sigma + l_s) z dz \\ &+ \frac{(\theta - 1) \underline{z}}{\sigma \log(\sigma/\sigma^*)} b(\underline{z}) (\sigma + l_s) [\underline{z}\sigma - (1 - \underline{z}) l_s] + \\ &- \frac{\theta \bar{z}}{\sigma \log(\sigma/\sigma^*)} b(\bar{z}) (\sigma + l_s) [\bar{z}\sigma - (1 - \bar{z}) l_s]. \end{aligned} \quad (21)$$

The first term in equation (21) is zero, and the second and third are positive. We have already shown that the last term is positive.

The fourth term may be either positive or negative. If $l_s(\underline{z}) - l_s < 0$, then the term is positive and $\frac{\partial F(\sigma, \tau)}{\partial \sigma} > 0$. Otherwise, we can derive the following necessary and sufficient condition for $\frac{\partial F(\sigma, \tau)}{\partial \sigma} > 0$, assuming $b(z)$ constant for all z :²⁴

$$\underline{z} > - \left[\frac{\bar{z}^2 (1 + \tau)}{(1 - \bar{z})} + \frac{l_s (1 + \tau \bar{z}) / (1 - \bar{z})}{\frac{\sigma \log(\sigma/\sigma^*)}{2} - (\sigma + l_s)} \right].$$

We have that both $\frac{\partial F(\sigma, \tau)}{\partial \tau} > 0$ and $\frac{\partial F(\sigma, \tau)}{\partial \sigma} > 0$, then $\frac{d\sigma}{d\tau} < 0$, yielding the Stolper-Samuelson result.

The Effect of Labor Supply Changes The effect of labor supply changes is straightforward. We apply the implicit function theorem to equation (19) to derive $\frac{d\sigma}{dl_s}$. Its denominator, $\frac{\partial F(\sigma, \tau)}{\partial \sigma}$, is the same as in $\frac{d\sigma}{d\tau}$. We have argued above that, under certain conditions, it is positive.

The denominator of $\frac{d\sigma}{dl_s}$ is:

$$\frac{dF(\sigma, \tau)}{dl_s} = \frac{F(\sigma, \tau)}{\sigma + l_s} + \int_0^{\underline{z}} b(z) (\sigma + l_s) (z - 1) dz + \theta \int_{\underline{z}}^{\bar{z}} b(z) (\sigma + l_s) (z - 1) dz. \quad (22)$$

The first term in equation (22) is zero and the other two terms are negative. Hence, we have that $\frac{d\sigma}{dl_s} > 0$, that is, an increase in skilled-labor relative supply decreases skilled-labor relative earnings.

²⁴Note that, if $l_s(\underline{z}) - l_s > 0$, the sign of $\frac{\partial F(\sigma, \tau)}{\partial \sigma}$ can only be established with some restriction on the behavior of $b(z)$. It is reasonable to assume that $b(z)$ is well behaved.

6.2 Data Matching

Industry: PIA	Data matching: PIA vs. PNAD	Sector: PNAD
1 Metal Ore Mining		Minerals
2 Cement Manufacturing		Minerals non-metallic
3 Cement, Concrete and Gypsum Product Manufacturing		Minerals non-metallic
4 Glass and Glass Product Manufacturing		Minerals non-metallic
5 Nonmetallic Mineral Product Manufacturing		Minerals non-metallic
6 Iron Production and Processing		Metallurgy
7 Nonferrous Metals Production and Processing		Metallurgy
8 Steel Production and Processing		Metallurgy
9 Other Metal Products Manufacturing		Metallurgy
10 Machinery, Equipment and Commercial Installation Manufacturing		Mechanic
11 Road Construction Machinery and Tractor Manufacturing		Mechanic
12 Machinery Maintenance, Repairing and Installation		Mechanic
13 Electrical Products Manufacturing for Power Generation and Distribution		Electrical material
14 Electric Conductor and Other Electrical Device Manufacturing		Electrical material
15 Electric Appliance and Equipment Manufacturing (including household appliances)		Electrical material
16 Electronic Components, Electronic Equipment and Communication Apparatus Manufact		Electrical material
17 Audio and Video Equipment Manufacturing		Electrical material
18 Automobile, Truck and Bus Manufacturing		Transport
19 Motor Vehicle Engine and Parts Manufacturing		Transport
20 Ship and Boat Building (including repairing)		Transport
21 Railroad Rolling Stock Manufacturing and Repairing		Transport
22 Other Transportation Equipment Manufacturing		Transport
23 Wood Sawing and Wood Products Manufacturing		Wood
24 Furniture Manufacturing		Furniture
25 Pulp and Paper Production		Paper
26 Pulp, Paper and Paperboard Products Manufacturing		Paper
27 Printing, publishing and allied industries		Graphic
28 Rubber Product Manufacturing		Rubber
29 Non-petrochemical Chemical Manufacturing		Chemicals
30 Alcohol Production		Chemicals
31 Petroleum Refining		Chemicals
32 Basic and Intermediate Petrochemical Manufacturing		Chemicals
33 Resins, Artificial and Synthetic Fibers and Elastomers Manufacturing		Chemicals
34 Fertilizer Manufacturing		Chemicals
35 Miscellaneous Chemical Product Manufacturing		Chemicals
36 Pharmaceutical Manufacturing		Drugs
37 Perfumes, Detergents and Candles Manufacturing		Perfumery
38 Laminated Plastics Plate and Pipe Manufacturing		Plastic
39 Plastics Products Manufacturing		Plastic
40 Natural Fabric Processing, Weaving, Knitting and Finishing"		Textile
41 Artificial and Synthetic Fabric Weaving, Knitting and Coating"		Textile
42 Other Textiles Manufacturing		Textile
43 Apparel and Apparel Accessories Manufacturing		Clothing
44 Leather and Hide Products and Luggage Manufacturing"		Leather
45 Footwear Manufacturing		Leather
46 Coffee Manufacturing		Food
47 Rice Milling and Processing		Food
48 Wheat Milling		Food
49 Fruit and Vegetable Processing and Canning		Food
50 Other Grains and Seeds Milling and Plant Product Manufacturing		Food
51 Tobacco Product Manufacturing		Tobacco
52 Animal (except poultry) Slaughtering and Meat Processing		Food
53 Poultry Slaughtering and Processing		Food
54 Fluid Milk and Dairy Product Manufacturing		Food
55 Sugar Manufacturing		Food
56 Oilseed Milling		Food
57 Seed Oil Refining and Food Fats and Oils Processing		Food
58 Animal Feeds Manufacturing		Food
59 Other Food Manufacturing		Food
60 Beverage Manufacturing		Beverages

Últimos Ensaios Econômicos da EPGE

- [565] Marcelo Casal de Xerez e Marcelo Côrtes Neri. *Desenho de um sistema de metas sociais*. Ensaios Econômicos da EPGE 565, EPGE-FGV, Set 2004.
- [566] Paulo Klinger Monteiro, Rubens Penha Cysne, e Wilfredo Maldonado. *Inflation and Income Inequality: A Shopping-Time Approach (Forthcoming, Journal of Development Economics)*. Ensaios Econômicos da EPGE 566, EPGE-FGV, Set 2004.
- [567] Rubens Penha Cysne. *Solving the Non-Convexity Problem in Some Shopping-Time and Human-Capital Models*. Ensaios Econômicos da EPGE 567, EPGE-FGV, Set 2004.
- [568] Paulo Klinger Monteiro. *First-Price auction symmetric equilibria with a general distribution*. Ensaios Econômicos da EPGE 568, EPGE-FGV, Set 2004.
- [569] Samuel de Abreu Pessôa, Pedro Cavalcanti Gomes Ferreira, e Fernando A. Veloso. *On The Tyranny of Numbers: East Asian Miracles in World Perspective*. Ensaios Econômicos da EPGE 569, EPGE-FGV, Out 2004.
- [570] Rubens Penha Cysne. *On the Statistical Estimation of Diffusion Processes – A Partial Survey (Revised Version, Forthcoming Brazilian Review of Econometrics)*. Ensaios Econômicos da EPGE 570, EPGE-FGV, Out 2004.
- [571] Aloisio Pessoa de Araújo, Humberto Luiz Ataide Moreira, e Luciano I. de Castro Filho. *Pure strategy equilibria of multidimensional and Non-monotonic auctions*. Ensaios Econômicos da EPGE 571, EPGE-FGV, Nov 2004.
- [572] Paulo César Coimbra Lisbôa e Rubens Penha Cysne. *Imposto Inflacionário e Transferências Inflacionárias no Mercosul e nos Estados Unidos*. Ensaios Econômicos da EPGE 572, EPGE-FGV, Nov 2004.
- [573] Renato Galvão Flôres Junior. *Os desafios da integração legal*. Ensaios Econômicos da EPGE 573, EPGE-FGV, Dez 2004.
- [574] Renato Galvão Flôres Junior e Gustavo M. de Athayde. *Do Higher Moments Really Matter in Portfolio Choice?*. Ensaios Econômicos da EPGE 574, EPGE-FGV, Dez 2004.
- [575] Renato Galvão Flôres Junior e Germán Calfat. *The EU-Mercosul free trade agreement: Quantifying mutual gains*. Ensaios Econômicos da EPGE 575, EPGE-FGV, Dez 2004.
- [576] Renato Galvão Flôres Junior e Andrew W. Horowitz. *Beyond indifferent players: On the existence of Prisoners Dilemmas in games with amicable and adversarial preferences*. Ensaios Econômicos da EPGE 576, EPGE-FGV, Dez 2004.

- [577] Rubens Penha Cysne. *Is There a Price Puzzle in Brazil? An Application of Bias-Corrected Bootstrap*. Ensaios Econômicos da EPGE 577, EPGE-FGV, Dez 2004.
- [578] Fernando de Holanda Barbosa, Elvia Mureb Sallum, e Alexandre Barros da Cunha. *Competitive Equilibrium Hyperinflation under Rational Expectations*. Ensaios Econômicos da EPGE 578, EPGE-FGV, Jan 2005.
- [579] Rubens Penha Cysne. *Public Debt Indexation and Denomination, The Case of Brazil: A Comment*. Ensaios Econômicos da EPGE 579, EPGE-FGV, Mar 2005.
- [580] Renato Galvão Flôres Junior, Germán Calfat, e Gina E. Acosta Rojas. *Trade and Infrastructure: evidences from the Andean Community*. Ensaios Econômicos da EPGE 580, EPGE-FGV, Mar 2005.
- [581] Edmundo Maia de Oliveira Ribeiro e Fernando de Holanda Barbosa. *A Demanda de Reservas Bancárias no Brasil*. Ensaios Econômicos da EPGE 581, EPGE-FGV, Mar 2005.
- [582] Fernando de Holanda Barbosa. *A Paridade do Poder de Compra: Existe um Quebra-Cabeça?*. Ensaios Econômicos da EPGE 582, EPGE-FGV, Mar 2005.
- [583] Fabio Araujo, João Victor Issler, e Marcelo Fernandes. *Estimating the Stochastic Discount Factor without a Utility Function*. Ensaios Econômicos da EPGE 583, EPGE-FGV, Mar 2005.
- [584] Rubens Penha Cysne. *What Happens After the Central Bank of Brazil Increases the Target Interbank Rate by 1%?*. Ensaios Econômicos da EPGE 584, EPGE-FGV, Mar 2005.
- [585] Gustavo Gonzaga, Naércio Menezes Filho, e Maria Cristina Trindade Terra. *Trade Liberalization and the Evolution of Skill Earnings Differentials in Brazil*. Ensaios Econômicos da EPGE 585, EPGE-FGV, Abr 2005.
- [586] Rubens Penha Cysne. *Equity-Premium Puzzle: Evidence From Brazilian Data*. Ensaios Econômicos da EPGE 586, EPGE-FGV, Abr 2005.
- [587] Luiz Renato Regis de Oliveira Lima e Andrei Simonassi. *Dinâmica Não-Linear e Sustentabilidade da Dívida Pública Brasileira*. Ensaios Econômicos da EPGE 587, EPGE-FGV, Abr 2005.
- [588] Maria Cristina Trindade Terra e Ana Lucia Vahia de Abreu. *Purchasing Power Parity: The Choice of Price Index*. Ensaios Econômicos da EPGE 588, EPGE-FGV, Abr 2005.
- [589] Osmani Teixeira de Carvalho Guillén, João Victor Issler, e George Athanasopoulos. *Forecasting Accuracy and Estimation Uncertainty using VAR Models with Short- and Long-Term Economic Restrictions: A Monte-Carlo Study*. Ensaios Econômicos da EPGE 589, EPGE-FGV, Abr 2005.