

MPRA

Munich Personal RePEc Archive

Effectiveness of poverty reduction in the EU: A descriptive analysis

Caminada, Koen and Goudswaard, Kees
Department of Economics, Leiden University

2008

Online at <http://mpra.ub.uni-muenchen.de/20167/>
MPRA Paper No. 20167, posted 20. January 2010 / 16:20

Department of Economics Research Memorandum 2008.06

Effectiveness of poverty reduction in the EU: A descriptive analysis

Koen Caminada and Kees Goudswaard

Correspondence to

Leiden Law School
Department of Economics
P.O. Box 9520
2300 RA Leiden
The Netherlands
Phone ++31 71 527 7756 (7855)
Email: economie@law.leidenuniv.nl
Website: www.economie.leidenuniv.nl

Editors

Prof. dr. C.L.J. Caminada
Dr. B.C.J. van Velthoven

Effectiveness of Poverty Reduction in the EU: A Descriptive Analysis. *

Prof. dr. C.L.J. Caminada (Koen)

Leiden Law School
Economics Department, Leiden University
P.O. Box 9520, 2300 RA, The Netherlands
Phone: ++31 71 527 7756
URL: www.hsz.leidenuniv.nl
E-mail: c.l.j.caminada@law.leidenuniv.nl

Professor of Empirical analysis of tax and social policy

Prof. dr. K.P. Goudswaard (Kees)

Leiden Law School
Economics Department, Leiden University
P.O. Box 9520, 2300 RA, The Netherlands
Phone: ++31 71 527 7756
URL: www.hsz.leidenuniv.nl
E-mail: k.p.goudswaard@law.leidenuniv.nl

Professor of Economics and social security

Abstract

The European Union coordinates and encourages Member State actions to combat poverty, and to reform their social protection systems on the basis of policy exchanges and mutual learning ('best practices'). Some EU countries are more effective in poverty reduction than others. What can explain these variations in effectiveness? This paper analyses the effectiveness of welfare state policies and especially social transfers in EU-countries in alleviating poverty. To indicate whether European economic integration may have had any impact on poverty reduction, we also include several non-EU15 countries as a benchmark into our analysis. We analyze on a cross-country basis the relationship between poverty rates and social effort, as measured by social expenditure ratios. We also correct these expenditure ratios for the impact of the tax system and for private social arrangements, using OECD methodology. Next, we compare poverty rates at the levels of market and disposable incomes, that is before and after transfers, in order to analyze the effect of tax and transfer policies in reducing poverty, i.e. to determine the target efficiency of social transfers. We perform several tests with the most recent data (LIS, OECD SOCX, and Eurostat: ECHP/EU-SILC).

Our results are less clear cut than earlier findings. We still find a quite strong negative relationship between the level of social expenditure and poverty among OECD countries. However, for EU-countries this relationship is weaker and there are substantial differences within the EU15. After correcting for the impact of taxes and for private social arrangements, the linkage between social effort and poverty levels becomes even weaker. Also, we do not find a strong relationship between levels of social spending and antipoverty effects of social transfers and taxes. At the program level, family programs and child support alleviate poverty to a large extent.

JEL-codes: H53, H55

Keywords: poverty, welfare states, Lisbon objectives, social indicators

Focus: Macro (primarily)

Draft: 21/11/08

* Revised version of a paper presented at the 66th International Atlantic Economic Conference, Montreal, Canada, October 11th 2008, and at the Nake Research Day, Utrecht, October 24th 2008. We thank John Beirne, Ross Gittel, Henk Nijboer, Ben van Velthoven, Cok Vrooman for useful comments on a earlier draft of this paper. This study is part of the research program 'Reforming Social Security': www.hsz.leidenuniv.nl. Financial support of Stichting Instituut GAK is gratefully acknowledged.

1. Introduction

Poverty alleviation has been a European objective already since the Treaty of Rome in 1957. In 2000 the European Council adopted the goal that besides economic growth also social cohesion should be strengthened in the EU (the Lisbon Agenda). The open method of coordination was introduced as the means of spreading best practices and achieving greater convergence towards the main EU-goals. Social indicators were developed to monitor the improvements with respect to social cohesion.

The Lisbon Agenda has renewed the interest in poverty alleviation across member states. However, still a sizable proportion of the EU15 population lives in poverty (16 percent), although both poverty structure and poverty rates vary across countries (from 10 percent in the Netherlands to about 20 percent in Greece, Spain and Portugal). Moreover, the average at-risk-of-poverty rates – an official EU social cohesion indicator – even have risen since the adoption of the Lisbon Agenda.

Some EU-countries are more effective in poverty reduction than others. What can explain these variations in effectiveness? Obviously, a range of policy strategies may be chosen to tackle poverty, including improving educational outcomes, improving job opportunities and stimulating labor force participation and reducing inequalities in health outcomes. This paper analyses the effectiveness of income transfer policies in EU-countries in alleviating poverty. To indicate whether European economic integration may have had any impact on poverty reduction, we also include several non-EU15 countries as a benchmark into our analysis. We analyze on a cross-country basis the relationship between poverty rates and social effort, as measured by social expenditure ratios. We also correct these expenditure ratios for the impact of the tax system and for private social arrangements, using OECD methodology (Caminada and Goudswaard, 2005). Next, we compare poverty rates at the levels of market and disposable incomes, that is before and after taxes and social transfers, in order to analyze the effect of tax and transfer policies in reducing poverty, i.e. to determine the target efficiency of social transfers. We will perform several tests with data from LIS, OECD SOCX, and Eurostat (ECHP/EU-SILC) and confront our results with earlier findings on cross-country poverty research. This kind of cross-country comparisons may guide us to cross-country differences on poverty alleviation in the EU15.

Finally, we will perform several partial analyses by disaggregating poverty rates to socioeconomic and demographic conditions (using recent data from the European Commission, 2007) in order to investigate to what extent variations at the social program level (such as old age pensions, child benefits) affect the measured effectiveness of the welfare state in alleviating poverty.

The paper is organized as follows. In section 2 we discuss the Europeanization of social policies on poverty alleviation. In section 3 we present the research design. After a descriptive overview of poverty rates in highly-developed welfare states in section 4, the paper investigates the relationship between welfare state effort and poverty rates across countries in several steps. First we address in section 5 the question whether there is a correlation between the size of the welfare state as measured by social expenditure ratios and the incidence of poverty. We also correct these expenditure ratios for the impact of the tax system and for private social arrangements. Are high social expenditure rates associated with low poverty rates? Next (section 6) we turn to the reduction of poverty rates through taxes and transfers and its relationship to welfare state effort. Finally (section 7) we look at two vulnerable age groups: children and the elderly. We present linkages across countries of their poverty rates with expenditures for several social programs as family and child benefits, and public old age pensions and survivor schemes. Section 8 concludes the paper.

2. Policy on poverty alleviation

2.1 Europeanization of social policies

Member states of the EU are still autonomous when it comes to the design and generosity of their social protection systems. Still, member states have accepted a certain degree of commitment in terms of social protection. This commitment is embodied in two recommendations accepted by the

European Council in 1992. The first recommendation, of June 1992, dealt with common criteria concerning sufficient resources and social assistance in social protection systems (92/441/EEC). The second recommendation, of July 1992, addressed the "convergence of social protection objectives and policies" (92/442/EEC). The motivation was that convergence seeks to guarantee the continuation and stimulate the development of social protection within the context of the completion of the internal market. And also that member states face common problems, such as ageing of the population, unemployment, changing family structures and poverty; common objectives must act as pointers to the way social protection systems are modified to take account of these problems.

A new and important step was taken at the European Council in Lisbon 2000. For the EU the strategic goal was set for the decade ending in 2010 to become the most competitive and dynamic knowledge-based economy with sustainable economic growth and greater social cohesion. The economic and social agendas were thus explicitly coupled. To achieve these aims, the social model needs to be modernized. To ensure long-term sustainability of the social security systems in the light of the ageing process, participation rates should be increased.

The Treaty of Nice of 2001 took the social agenda forward. It was agreed to advance social policy on the basis of the open method of coordination, first employed with respect to employment policies. The method recognizes that social policy remains the responsibility of member states, under the principle of subsidiarity. It implies that member states define and evaluate common objectives and learn from each other how to reach these objectives. Best practices are disseminated and benchmarking is used. Coordination is based on evaluation and peer pressure, but does not offer the option of sanctions. In Nice it was decided that member states should implement action plans for combating poverty and social exclusion and to define common objectives on social indicators. The indicators encompass financial poverty, income inequality, long-term unemployment, regional variation in employment rates, life expectancy and poor health.

Some consider these common indicators and the national action plans for social inclusion as significant progress towards integration along the social dimension (Atkinson, 2002). Others question this form of coordination (Leibfried, 2002). At least, this new mode of governance and the Lisbon agenda in general, have renewed the debate on poverty reduction in EU member states.

2.2 Combating poverty

In September/October 2006, member states adopted renewed National Action Plans for Social Inclusion under the new streamlined open method of coordination (OMC) as one chapter of the National Report on Strategies for Social Protection and Social Inclusion. They presented the key priorities in member states efforts to promote greater social inclusion and make a decisive impact on the eradication of poverty and social exclusion (European Commission, 2007). A year later, the Commission gave special attention to the poverty among vulnerable groups, especially children, in their most recent *Joint Report on Social Protection and Social Inclusion 2008* (European Commission, 2008). In most member states children are at greater risk of poverty than the overall population. In some countries more than 25 percent of the children is at risk of poverty. Child poverty may have a strong damaging effect on future life opportunities and also on the future capacity of these children to contribute to society (European Commission 2008, p.6). In general, the Report indicates that social inclusion and social protection remains high on the political agenda for most member states. Some member states have reinforced their commitments by setting quantitative targets to reduce poverty (p.101).

Progress of social inclusion and poverty reduction is monitored considering the performance in each member state on the basis of national indicators, based on the Social Indicators report of Atkinson et al (2002). In the European Union people are said to be in income poverty if their incomes are below 60 per cent of the median disposable income of households in their country, after adjusting for household size (equivalence scales).¹ Based on this EU-criterion, the proportion of the EU-

¹ The evolution of the European Union will lead increasingly to question poverty-issues in a EU-wide perspective, about both Europe-wide data and the underlying concepts (Atkinson, 2002, p. 626). Up till now EU-wide estimates of poverty play no role. A paper of Brandolini (2006) provides the first estimates of poverty in the enlarged European Union as if it was a single country.

population who were at risk of poverty in 2005 is 16 percent. This means that around 72 million citizens are considered as at risk of poverty in the EU25 (Guio, 2005).

The poverty problem is also striking in other highly-developed welfare states. Industrialized countries spend a large share of their income on social security, but poverty and social exclusion have not been eradicated. A sizeable proportion of the population lives in economic poverty in all industrial welfare states. According to the most common standards used in international poverty analyses, on average roughly one in ten households live in relative poverty in OECD countries (cf. Atkinson et al. 1995; Behrendt 2002; Smeeding, 2005).

The persistence of poverty in industrial welfare states calls for an explanation. If these welfare states offer elaborate systems of income maintenance, why is there still a considerable amount of poverty? Why are some countries more effective than others in this respect? What can explain these variations in effectiveness?

3. Research design

This paper will assess the relationship between welfare state effort and poverty alleviation in two steps. First we have to address the question whether there is a correlation between the size of the welfare state and the incidence of poverty. Are high social expenditure rates associated with low poverty rates? Next we turn to the reduction of poverty rates through taxes and transfers and its relationship to welfare state effort. Our research design starts with the data to be used, because poverty rates and social expenditure rates can be collected from several sources. Next we discuss how to measure of social effort and the effect of social transfers on poverty.

3.1 Measuring poverty incidence

For various reasons we use poverty rates from different databases. The official EU-indicator for social cohesion is the at-risk-of-poverty rate after social transfers. This rate is defined as the share of persons with an equivalized disposable income below the risk-of-poverty threshold, which is set at 60 percent of the national median equivalized disposable income. For this indicator Eurostat data (ECHP/EU-SILC) are available for the period 1995-2005, but not for all member states.

For a further comparison, we will also use OECD poverty indicators: the poverty rate and the poverty gap. The OECD poverty rate is defined as the proportion of individuals with equivalized disposable income less than 50 percent of the median income. The poverty gap is the percentage difference between the average income of the poor and the 50 percent of median income poverty threshold. In this paper we will use OECD poverty data from the mid-1980's until the year 2000 (based on Förster and D'Ercole, 2005).²

Finally, we use also data from the Luxembourg Income Study (LIS). The LIS database contains income data files for 32 nations covering the period 1967 to 2005. We can analyze both the level and trend in poverty for a considerable period across a wide range of nations.

Following international standards, we use the relative rather than the absolute approach in measuring income poverty. This means that we define as poor those households that have an equivalent disposable income below a certain threshold representing the level of well-being of the population in a specific country. In our empirical analysis we use several thresholds for a poverty line (40 percent, 50 percent, and 60 percent), because the absolute number and also the structure of poverty differ dramatically depending on the threshold chosen.³ In most comparative studies the poverty threshold has been set at 50 percent of median equivalent disposable income, but we focus especially on the EU's definition of the poverty line. For comparison, the official United States

2 Recently OECD (2008) published their study 'Growing unequal? Income distribution and poverty in OECD countries' with even more recent data on poverty rates across countries up till the mid-2000s. In future research we will incorporate these data as well in our analyses.

3 Hagenaars and De Vos (1987) applied eight definitions for a poverty line to a 1983 household survey for the Netherlands: four definitions based on an absolute approach, three on a subjective and one a relative measure. The derived overall poverty rates ranged from 5.7 to 33.5 percent.

poverty line was just about 27 percent of median United States family pre-tax cash income, and about 32 percent of median United States disposable post-tax household income (Smeeding, 2005). It should be noted that there have been controversial arguments on the issues in the measurement of poverty. These arguments have their own merits and shortcomings, and there has been little professional consensus on the theoretical superiority of a particular way of poverty measure. Moreover, the availability of reliable data restricts what is possible to do, which is especially critical in cross-national studies. The aim of this paper is *not* to review definitional issues that arise in assessing the extent of, and change in, poverty in western industrialized countries. We refer simply to a vast amount of literature on the sensitivity of measured results to the choice of income definitions, poverty lines, appropriate equivalence scales, and other elements that may affect results in comparative poverty research.⁴

3.2 Measuring social effort

The overall result of quantitative studies seems to be that there is strong negative correlation between poverty and social expenditures across European countries over the last 25 years (Behrendt, 2002). We use social expenditure data from the most recent OECD Social Expenditure Database (2007). This database contains aggregate and disaggregated data on social expenditures. The main social policy areas included are old age, survivors, family and other social programs. Both cash benefits and benefits in kind are included. In this study we will perform several tests both at the aggregate level and at the program level. It should be noted that social expenditure indicators at the aggregate level have its limitations (Kühner, 2007): changes in expenditure ratio's may not be caused by policy changes, but simply by the number of beneficiaries as a result of an ageing population or changes in unemployment levels due to cyclical factors (see also section 3.4).

To indicate whether it is Europeanization rather than globalization that has had any impact on poverty (and/or social expenditures), we include not only EU member states, but also other OECD-countries. These non-EU15 countries control for the effects of globalization.⁵

Other problems with social expenditure as an indicator for differences in social protection across countries are related to differences in the public/private mix in the provision of social protection and differences in tax features. Adema (2001) has developed indicators that aim to measure what part of an economy's domestic production recipients of social benefits really draw on, net total social expenditure. This requires capturing private social benefits and the impact of tax systems on social effort. For private programs to be considered 'social', they need to have a social purpose and contain an element of interpersonal redistribution and/or compulsory participation.⁶ The distinction between public and private social protection is made on the basis of whoever controls the relevant financial flows. Private social benefits may be important for our analysis. In so far they contain an element of redistribution they may also have an impact on poverty levels. For example, private but mandatory pensions (in the second pillar) may have effect on poverty incidence among the elderly. However, the impact of private social benefits is likely to be smaller than the impact of public social transfers.

The impact of the tax system on the social effort is threefold. In some countries cash benefits are taxable as a rule, in other countries they are not. In the former countries net social effort is less than suggested by gross spending indicators. Indirect taxation of consumption by benefit recipients

4 Among others, see Atkinson (1987 and 2003), Hagenaars and De Vos (1987), Förster (1993), Atkinson et al (1995), Behrendt (2000), Gottschalk and Smeeding (1997 and 2000), Smeeding et al (2000), Marcus and Danziger (2000), Atkinson and Brandolini (2001), Caminada and Goudswaard (2001), Förster and Pearson (2002), Smeeding (2005), Guio (2005), Förster and d'Ercole (2005), and (other) papers listed in our reference section using data from the Luxembourg Income Study. See Bourguignon et al (2002) for a more elaborated paper on the evaluation of poverty impact of economic policies.

5 It should be mentioned that European non-EU27 countries as Switzerland or Norway may also be influenced by European integration, for example via policy competition.

6 Private social programs can be mandatory or voluntary. Mandatory private benefits are often incapacity related. For example, in several countries employers are obliged to provide sickness benefits. Occupational injuries and accidents ('risque professionnel') can also be covered by mandatory private insurances. A number of EU member states have supplementary employment-based pension plans with mandatory contributions, based on a funding system. Voluntary private social security covers a wide range of programs, of which private pension plans and private social health insurance constitute major components.

is another factor that may blur the picture. When indirect taxes are higher, benefit recipients have less effective purchasing power. And thirdly, the tax system can be used for social purposes. Tax deductions (e.g. family tax allowances) replace direct expenditures in some cases. The Earned Income Tax Credit in the United States is a good example of a tax break, which has the features of a social protection program. To control for the impact of tax systems on social spending, we will use the OECD data on net social expenditure. Unfortunately, these data only cover a relatively short time period (1993-2003) and are not available for all EU member states.

The most recent figures for the net social expenditure as percentage of GDP, based on the 2007 edition of the Net Social Expenditure data, indicate that accounting for the impact of taxes and of private social expenditure has an equalizing effect on levels of social effort across countries; see Caminada and Goudswaard (2005) for details.

3.3 Measuring the effects of taxes and transfers

Usually the impact of social policy on income poverty is calculated in line with the work of Musgrave, Case and Leonard (1974), i.e. statutory or budget incidence analysis. Important issues of tax/transfer shifting and behavioral responses are ignored.⁷ A standard analysis of the anti-poverty effect of taxes and income transfers is to compare pre-tax-transfer poverty and post-tax-transfer poverty. To compare the antipoverty effectiveness of taxes and income transfers among western welfare states, poverty rates will be decomposed into the level of market-generated poverty, the overall level of welfare efforts, and the poverty reduction efficiency of taxes and transfers (cf. Kim, 2000a).

A comparison between the standard at-risk-of-poverty rate and the hypothetical situation where social transfers are absent, other things being equal, shows that such transfers have an important redistributive effect that helps to reduce the number of people who are at risk of poverty.⁸ In the absence of all social transfers, the average poverty risk for EU member states would be considerably higher than it is in reality. It should however be noted that the indicator of poverty risk before social transfers must be interpreted with caution (Kim, 2000b; Nell; 2005). First, no account is taken of measures that, like social cash transfers, can have the effect of raising the disposable incomes of households and individuals, namely transfers in kind, tax credits and tax allowances. Second, the pre-transfer poverty risk is compared to the post-transfer risk keeping all other things equal – namely, assuming unchanged household and labor market structures, thus disregarding any possible behavioral changes that the situation of absence of social transfers would involve. Kim (2000b) showed that both the generosity and efficiency of the tax/transfer system may influence the level of pre-tax-transfer poverty. So this standard approach overestimates the antipoverty effectiveness of generous and/or targeted welfare systems.

3.4 Tests on the linkages between social protection and poverty

National preferences for social protection differ substantially across countries. Especially Anglo-Saxon countries do not seem to be prepared to sustain the high protection levels prevailing in other countries with the same level of income. This may be an expression of cultural differences within the group of OECD countries. These differences could point to variance in the antipoverty nature of social systems as well. Anglo-Saxon welfare states (especially the United States) rely more heavily on social arrangements as far as pensions, health care and other programs are concerned. However, private social programs may generate a more limited redistribution of resources than public ones, and tax advantages towards private pension and health plans are more likely to benefit the rich. Private employment-related social benefits mostly re-allocate income between the (formerly) employed population. The same holds for fiscal advantages related to, for example, supplementary private pension plans. In general, we do expect that private schemes will generate less antipoverty effects than public programs.

We perform a cross-country analysis of the relationship between (public and private) social expenditures and poverty rates at one moment in time. The material presented is only descriptive

⁷ See for a critical survey of efforts to measure budget incidence by Smolensky et al (1987).

⁸ Among others, see Behrendt (2002), Smeeding (2005), Förster and Pearson (2002), Guio (2005) and Förster and d'Ercole (2005).

and does *not* explain poverty levels and poverty structure. Such an analysis should ideally be based on a theory, which would have to address at least the following cross-national differences (cf. Gottschalk and Smeeding, 2000, p.263): differences in labor markets that affect earnings of individual household members; demographic differences, such as the ageing of the population and growth of single parent households, which affect both family needs and labor market decisions; and differences across countries in tax and transfers policies that not only affect family income directly, but also may affect work and investment decisions. Two recent seminal books edited by Kakwani and Silber (2007 and 2008) present the panorama of the many dimensions of poverty from various disciplines. A fully-fledged model should be developed to assess the relative performance of social factors and the economic development. Such a comprehensive approach is far beyond the scope of this paper. We simply employ bi-variate regressions on the relationship between social expenditures and poverty rates, so one could argue that omitted (macroeconomic) variables cause bias. Differences in social effort across countries at one point in time can be the result of cyclical factors.

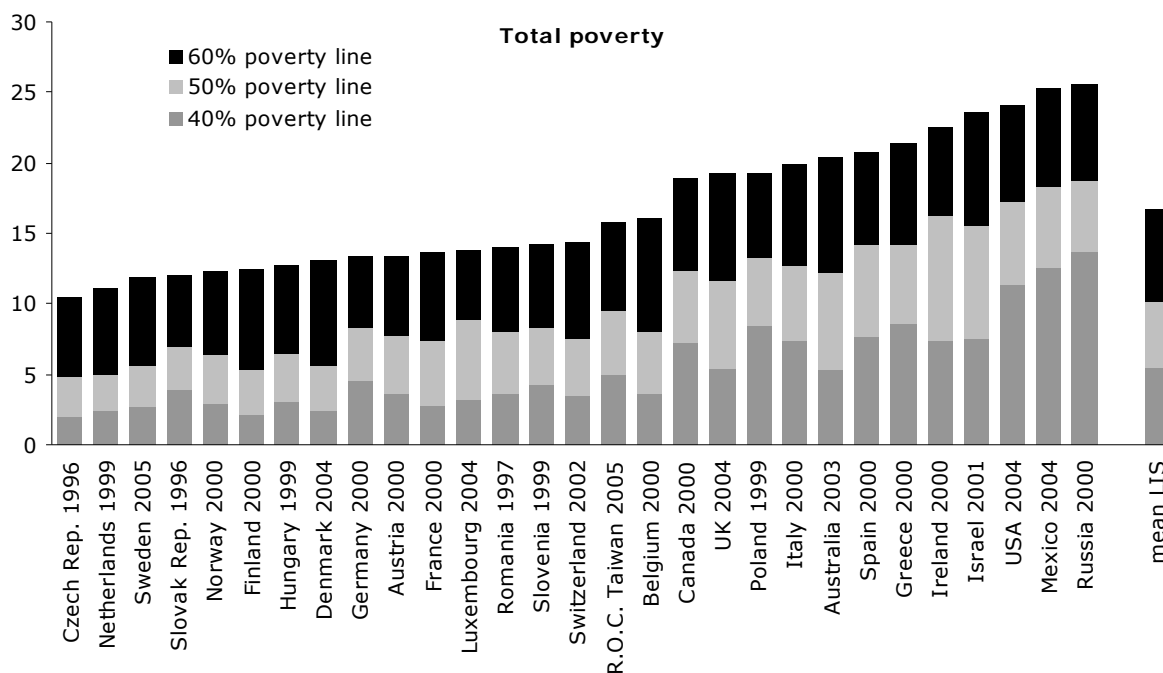
Another important point to keep in mind is that we only analyze the impact of transfers on poverty, while, as we mentioned before, several other strategies can be chosen to alleviate poverty. In fact, several EU member states are increasingly emphasizing strategies to facilitate labor force participation of lower income groups (European Commission, 2008, p.101). This may also be an effective strategy to tackle poverty.

4. Poverty rates: some descriptive statistics

4.1 Poverty level

Figure 1 reports poverty profiles for 30 industrialized countries around the year 2001. Data are taken from LIS. In order to account for different intensities of poverty, three different poverty lines are applied. Households are deemed to live in 'extreme poverty' if their income remains below a poverty line of 40 percent of median equivalent income; a poverty line of 50 percent demarcates 'severe poverty', whereas households with an income between 40 and 50 percent of median equivalent income are considered as living in 'moderate poverty'. Households whose income exceeds the poverty line of 50 percent, but remains below 60 percent of median equivalent income are considered as living 'in poverty'. In Figure 1 countries are ranked according to their poverty rate at the 60 percent level, while the shading of the bars show different intensities of poverty or low income.

Figure 1: Percent poverty for total population in 30 countries, around 2001



Note: Poverty rates are measured as the proportion of individuals with equivalized disposable income less than 40, 50, and 60 percent of the median income of the entire population.

Source: own calculations based on LIS Key figures (www.lisproject.org)

Note that a considerable share of the population lives in relative income poverty in all industrialized welfare states, yet with a large variation of poverty rates and structure across countries. All industrialized countries in this sample display poverty rates between a range of 10.5 to 25.6 percent of the household population if the poverty line is set at 60 percent of median equivalent household income. The lowest poverty rate is found in the Czech Republic, followed by the Netherlands, Sweden, Slovak Republic, Norway, and Finland. At the very bottom of this ranking, we find the United States, Mexico and Russia with a poverty rate of almost a quarter of the household population.

When large proportions of the population are clustered just around the threshold of 60 percent, small changes in their income can lead to large changes in poverty. To examine the sensitivity of results to alternative choices of the poverty line, Figure 1 also shows poverty rates measured with lower thresholds. It turns out that, in all OECD countries reviewed, a significant share of the population is clustered between the 50 and 60 percent thresholds. This explains also why poverty statistics from the OECD (with a threshold of 50 percent) are much lower compared to the official EU-indicator (with a threshold of 60 percent of median equivalized income).

Other poverty indices would alter the country-ranking to some extent. However, the relative poverty patterns found here correspond roughly to the results found in other cross-national comparisons of poverty using income data from the LIS database and/or OECD (see Kim, 2000a). In spite of differences in the measurement of poverty and the databases used, these studies have consistently found that there is a large difference in the extent of poverty among welfare states. In general, Scandinavian and Benelux countries have the lowest poverty rates, followed by continental European countries. Anglo Saxon welfare states have relatively higher poverty rates. Among them, the extent of poverty is highest in the United States.

4.2 Poverty over time

Next, we illustrate trends in several poverty indicators. We employ both the poverty indicator used by the EU and poverty indicators from the OECD. Remarkably, according to the EU-indicator,

poverty barely declined on average between 2000 and 2005. Poverty rates after social transfers even rose in Denmark, Ireland, Luxembourg, and Spain during this period.⁹

Table 1: EU at-risk-of-poverty rates

	1995	2000	2003	2005
Austria	13	12	13	12
Belgium	16	13	15	15
Denmark	10	:	12	12
Finland	:	11	11	12
France	15	16	12	13
Germany	15	10	15	13
Greece	22	20	21	20
Ireland	19	20	20	20
Italy	20	18	:	19
Luxembourg	12	12	10	13
Netherlands	11	11	12	11
Portugal	23	21	19	20
Spain	19	18	19	20
Sweden	:	:	:	9
United Kingdom	20	19	18	19
Mean EU15 Members (14)	16.5	15.5	15.2	15.6
<i>Standard deviation</i>	4.11	3.90	3.66	3.85
<i>Coefficient of variation</i>	0.248	0.252	0.241	0.230

Note: EU15 (14) are all EU15 countries excluding Sweden

Source: Structural Indicators EU - Social Cohesion (Eurostat: ECHP/EU-SILC); and own calculations

Using the OECD definition, poverty rates in the EU even show a rather substantial increase from the mid-1980s until 2000 (Table 2). Poverty rates rose in 75 percent of EU-countries: Austria, Finland, Germany, Greece, Ireland, Italy, Luxembourg, Netherlands, and the United Kingdom.

Our trend findings on relative poverty use half of median income as the definition of poverty, and our findings are similar to those in other recent LIS papers with different percentage of median poverty rates and a (less) wider ranges of countries. In general, relative poverty is higher in most nations at the end of the period compared to the beginning. Several member states (Austria, Germany, Ireland, Italy, Netherlands, and the United Kingdom) experienced a rapid increase in relative poverty over this period.

⁹ This result should be interpreted with caution, because there is a disruption in the time series of poverty indicators presented in Table 1. Until 2001, data were provided by the European Community Household Panel survey (ECHP). Since 2005 all EU-15 countries provide data from the new European Union Statistics on Income and Living Conditions (EU-SILC). During the transitional period poverty indicators were provided by national sources which were harmonized ex-post as closely as possible with EU-SILC definitions by Eurostat. Despite the fact that most EU-SILC variables are defined in the same way as the corresponding ECHP variables, some differences arise; see Guio (2005). See for more details the paper on 'The continuity of indicators during the transition between ECHP and EU-SILC' from Eurostat (2005).

Table 2: OECD poverty rates

	Mid-1980s	Mid-1990s	2000	Change 2000- mid-1980s	Change 2000- mid-1990s
Australia	12.2	9.3	11.2	-1.0	1.9
Austria	6.1	7.4	9.3	3.2	1.9
Canada	11.6	9.5	10.3	-1.3	0.8
Denmark	5.3	3.8	4.3	-1.0	0.6
Finland	5.1	4.9	6.4	1.3	1.5
France	8.0	7.5	7.0	-0.9	-0.4
Germany	6.4	9.1	9.8	3.4	0.6
Greece	13.4	13.9	13.5	0.1	-0.3
Ireland	10.6	11.0	15.4	4.8	4.4
Italy	10.3	14.2	12.9	2.6	-1.3
Japan	11.9	13.7	15.3	3.3	1.6
Luxembourg	5.4	5.5	5.5	0.1	-0.1
Mexico	20.7	21.7	20.3	-0.4	-1.5
Netherlands	3.1	6.3	6.0	2.9	-0.3
New Zealand	5.8	7.8	10.4	4.6	2.6
Norway	6.9	8.0	6.3	-0.6	-1.7
Sweden	6.0	3.7	5.3	-0.7	1.6
Turkey	16.4	16.2	15.9	-0.5	-0.3
United Kingdom	6.9	10.9	11.4	4.5	0.5
United States	17.9	16.7	17.1	-0.9	0.4
Mean OECD-20	9.5	10.1	10.7	1.2	0.6
<i>Standard deviation</i>	4.7	4.6	4.4	-0.3	-0.2
<i>Coefficient of variation</i>	0.492	0.461	0.414	-0.077	-0.048
Mean EU15 Members (12)	7.2	8.2	8.9	1.7	0.7
<i>Standard deviation</i>	2.8	3.5	3.6	0.8	0.0
<i>Coefficient of variation</i>	0.384	0.428	0.399	0.015	-0.029

Notes:

- Poverty rates are measured as the proportion of individuals with equivalized disposable income less than 50 percent of the median income of the entire population.
- "2000" data refer to the year 2000 in all countries except 1999 for Australia, Austria and Greece; 2001 for Germany, Luxembourg, and New Zealand; and 2002 for Mexico and Turkey; "Mid-1990s" data refer to the year 1995 in all countries except 1993 for Austria; 1994 for Australia, Denmark, France, Germany, Greece, Ireland, Japan, Mexico and Turkey; and 1996 for New Zealand; "Mid-1980s" data refer to the year 1983 for Austria, Denmark and Sweden; 1984 for Australia, France, Italy and Mexico; 1985 for Canada, Japan, the Netherlands, Spain and the United Kingdom; 1986 data for Finland, Luxembourg, New Zealand and Norway; 1987 for Ireland and Turkey; 1988 for Greece; and 1989 for the United States.

Source: OECD Poverty Indicator Data based on Förster and D'Ercole (2005); and own calculations

The number of people with a low income is only one way of measuring poverty. Another relevant measure is the intensity of poverty. The poverty gap measures the percentage difference between the average income of the poor and the 50 percent of median income poverty threshold. Also these OECD equity data are available from the mid-1980's until the year 2000 (based on Förster and D'Ercole, 2005). Note that the poverty gap has on average been reduced in the EU from the mid-1980s until 2000. But the reduction of the poverty gap has been larger in OECD-countries outside the EU.

Table 3: OECD poverty gap

	Mid-1980s	Mid-1990s	2000	Change 2000 - mid-1980s	Change 2000 - mid-1990s
Australia	24.2	31.5	26.7	2.5	-4.8
Austria	27.6	20.7	30.0	2.3	9.3
Canada	19.8	29.9	32.0	12.2	2.0
Denmark	22.1	25.6	24.1	2.0	-1.5
Finland	25.9	21.8	20.7	-5.2	-1.0
France	32.9	23.4	25.8	-7.1	2.4
Germany	22.9	23.6	31.7	8.8	8.0
Greece	32.8	29.9	29.7	-3.0	-0.2
Ireland	23.0	12.0	24.0	1.0	12.0
Italy	29.9	37.2	36.5	6.6	-0.7
Japan	0.0	35.0	36.1	36.1	1.0
Luxembourg	18.1	17.7	17.3	-0.7	-0.4
Mexico	36.4	37.1	36.0	-0.4	-1.1
Netherlands	32.4	27.3	29.4	-3.0	2.1
New Zealand	34.2	29.1	23.3	-10.9	-5.8
Norway	22.5	28.1	28.2	5.7	0.1
Sweden	40.2	30.7	26.1	-14.2	-4.6
Turkey	29.2	28.6	27.8	-1.4	-0.8
United Kingdom	16.0	19.6	22.9	6.9	3.3
United States	33.6	34.1	34.7	1.1	0.6
Mean OECD-20	26.2	27.5	28.1	2.0	1.0
<i>Standard deviation</i>	8.7	6.5	5.2	-3.5	-1.3
<i>Coefficient of variation</i>	0.333	0.239	0.185	-0.149	-0.054
Mean EU15 Members (12)	27.0	24.1	26.5	-0.5	2.4
<i>Standard deviation</i>	6.7	6.4	5.0	-1.7	-1.4
<i>Coefficient of variation</i>	0.249	0.264	0.189	-0.060	-0.075

Notes:

- Poverty gaps are measured as the percentage difference between the average income of the poor and the 50 percent of median income poverty threshold.
- "2000" data refer to the year 2000 in all countries except 1999 for Australia, Austria and Greece; 2001 for Germany, Luxembourg, and New Zealand; and 2002 for Mexico and Turkey; "Mid-1990s" data refer to the year 1995 in all countries except 1993 for Austria; 1994 for Australia, Denmark, France, Germany, Greece, Ireland, Japan, Mexico and Turkey; and 1996 for New Zealand; "Mid-1980s" data refer to the year 1983 for Austria, Denmark and Sweden; 1984 for Australia, France, Italy and Mexico; 1985 for Canada, Japan, the Netherlands, Spain and the United Kingdom; 1986 data for Finland, Luxembourg, New Zealand and Norway; 1987 for Ireland and Turkey; 1988 for Greece; and 1989 for the United States.

Source: OECD Poverty Indicator Data based on Förster and D'Ercole (2005); and own calculations

Finally, we present figures of the trend in poverty based on LIS-data for the period 1979-2005. It should be noted that the specific time interval varies by country, because LIS does not contain data for every country each year. Nonetheless, LIS is well suited to compare the trend in poverty over time because of the high quality of the comparability of the data due to their extensive data collection method. Table 4 presents the poverty rates of the national population in the early 1980s and around 2005, using the EU's current definition of poverty – 60 percent of median disposable income adjusted for family size.

Table 4: Poverty for total population in 30 countries, 1979-2005 (poverty line 60% median income)

	Time interval		Poverty rate		Change
	begin	end	begin	end	
Australia	1981	2003	18.4	20.4	2.0
Austria	1987	2000	11.7	13.4	1.7
Belgium	1985	2000	10.5	16.1	5.6
Canada	1981	2000	18.9	18.9	0.0
Czech Republic	1992	1996	6.5	10.5	4.0
Denmark	1987	2004	17.3	13.2	-4.1
Finland	1987	2004	10.1	12.4	2.4
France	1981	2000	13.4	13.7	0.3
Germany	1981	2000	10.6	13.4	2.8
Greece	1995	2000	21.5	21.4	-0.1
Hungary	1991	1999	14.3	12.7	-1.7
Ireland	1987	2000	20.0	22.5	2.5
Israel	1879	2001	18.9	23.5	4.7
Italy	1986	2000	17.4	20.0	2.6
Luxembourg	1985	2004	11.0	13.7	2.7
Mexico	1984	2004	27.5	25.3	-2.3
Netherlands	1983	1999	7.6	11.1	3.5
Norway	1979	2000	12.0	12.3	0.3
Poland	1986	1999	17.0	19.3	2.4
R.O.C. Taiwan	1981	2005	11.8	15.8	4.0
Romania	1995	1997	15.0	14.1	-0.9
Russia	1992	2000	26.0	25.6	-0.4
Slovak Republic	1992	1996	6.3	12.1	5.8
Slovenia	1997	1999	15.3	14.2	-1.1
Spain	1980	2000	19.5	20.8	1.3
Sweden	1981	2005	9.1	12.0	2.8
Switzerland	1982	2002	13.5	14.4	0.8
United Kingdom	1979	2004	17.3	19.2	1.9
United States	1979	2004	21.3	24.1	2.8
Mean LIS-30	1982	2001	15.2	16.8	1.6
<i>Standard deviation</i>			5.3	4.6	2.3
<i>Coefficient of variation</i>			0.35	0.27	1.44
Mean EU15 Members (14)	1985	2001	14.1	15.9	1.9
<i>Standard deviation</i>			4.4	3.8	2.1
<i>Coefficient of variation</i>			0.31	0.24	1.15
Mean non-EU15 countries (15)	1979	2000	16.2	17.5	1.4
<i>Standard deviation</i>			5.8	5.1	2.4
<i>Coefficient of variation</i>			0.36	0.29	1.78

Source: own calculations based on LIS Key figures (www.lisproject.org)

Poverty rates across the 30 selected LIS-countries (applying a 60 percent threshold to calculate poverty rates) increased on average with 1.6 percentage points during this period. Over time cross-country differences did not alter much on average. However, in some countries poverty rose at a remarkably high speed (over 3 percentage points): the Netherlands, Czech Republic, Taiwan, Israel, Belgium, and Slovak Republic.

Country clustering based on poverty rates is quite different from that of welfare state regimes. Among the countries with low poverty rates we find representatives of the social democratic regime and the corporatist regime. Likewise the nations with higher rates of poverty represent several regime types and both members of the EU15 and the new member states.

4.3 Vulnerable groups: Decomposition of poverty by age groups

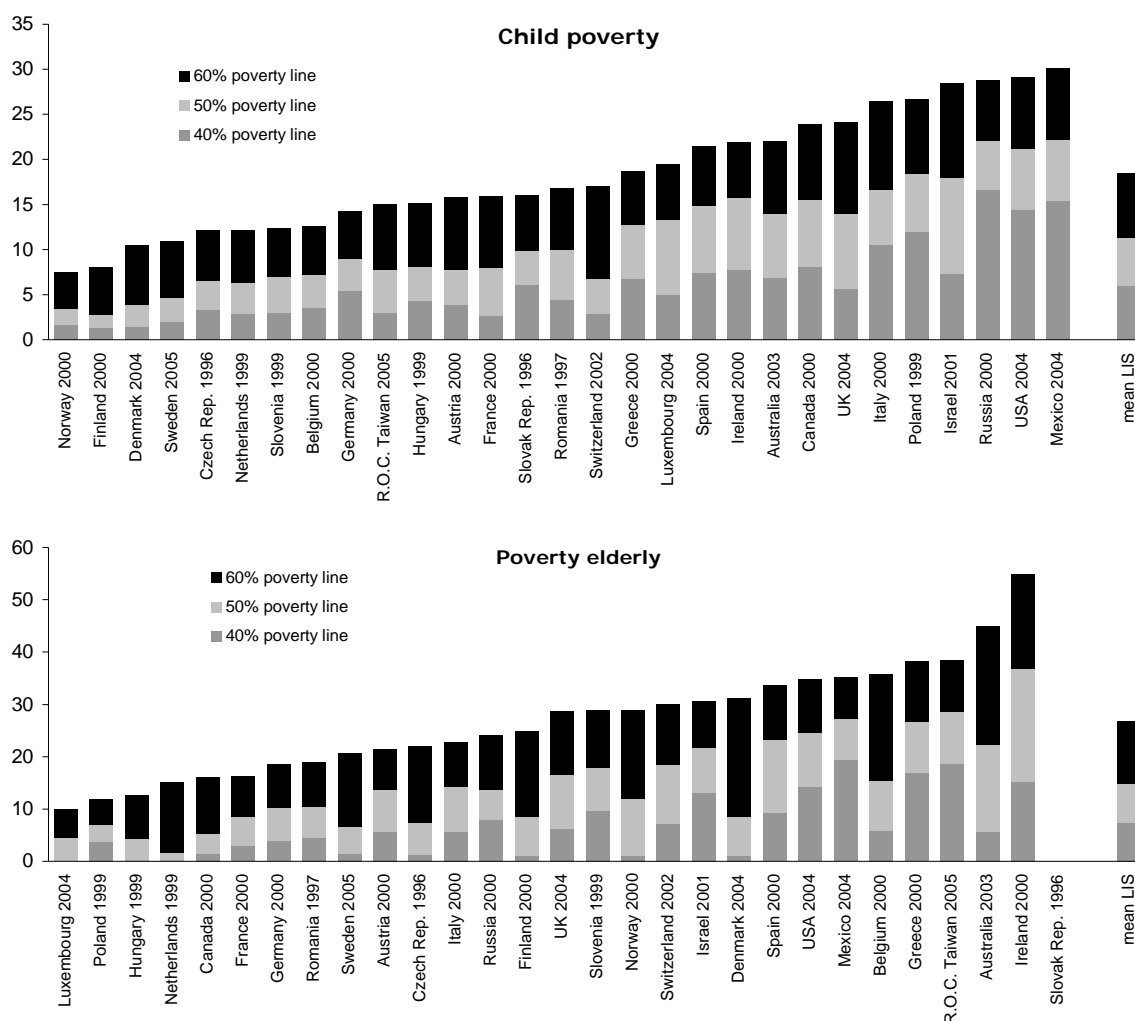
Now we turn to groups typically over-represented among the poor - the vulnerable for whom social programs are supposed to guarantee a minimum income. We are particularly interested in how the social transfers affect their poverty status. For each of the vulnerable groups, we report their poverty rates and then assess the impact of transfers on their poverty rates.

Figure 2 reports poverty profiles for children and elderly for 30 industrialized countries based on LIS-data. Again, three different poverty lines are applied (40, 50 and 60 percent of equivalized

median income). Countries are ranked according to their poverty rate at the 60 percent level; the shading of the bars show different intensities of poverty or low income.

On average, across all countries, around 18.4 percent of all children fell below the 60 percent poverty threshold around 2001. Child poverty rates are especially low in the Nordic countries, where fewer than 10 percent of all children are poor. Child poverty is high in Mexico, the United States, and Russia (around 30 percent), but also in Italy, Ireland, Spain, and the United Kingdom, where it is above 20 percent. In most countries, relative poverty rates among children are also higher than for the entire population (compare Figure 1 with Figure 2), but with much variation across countries. These differences suggest that specific factors increase risks of poverty for children in some OECD countries (cf. Förster and D'Ercole, 2005).

Figure 2: Poverty rates children and elderly in 30 countries, around 2001



Note: Poverty rates are measured as the proportion of individuals with equivalized disposable income less than 40, 50, and 60 percent of the median income of the entire population.

Source: own calculations based on LIS Key figures (www.lisproject.org)

Traditionally also the elderly are seen as a vulnerable group, because their economic wellbeing largely depends on the social protection system. On average, across all countries, 26.7 percent of the elderly live in poverty (60 percent threshold) which is almost twice as high as the average of total population. Cross-country differences are large, with relatively good figures for Luxembourg, Poland, Hungary, and the Netherlands. In several countries poverty exceeds 1/3 of the elderly: in the United States, Mexico, Belgium, Greece, Taiwan, Australia, and Ireland.

To sum up, our analysis of poverty of vulnerable groups identifies serious holes in the safety net of several countries. In several member states the safety net offers little assistance to vulnerable groups (cf. Sainsbury and Morissens, 2002). On average, child poverty is a lesser problem than is the poverty of elderly in these nations. But single parents and their children generally have the highest poverty rates, while those in two-parent units, mixed units, and the childless experience the least poverty.

5. Welfare state effort and the alleviation of poverty: an empirical analysis

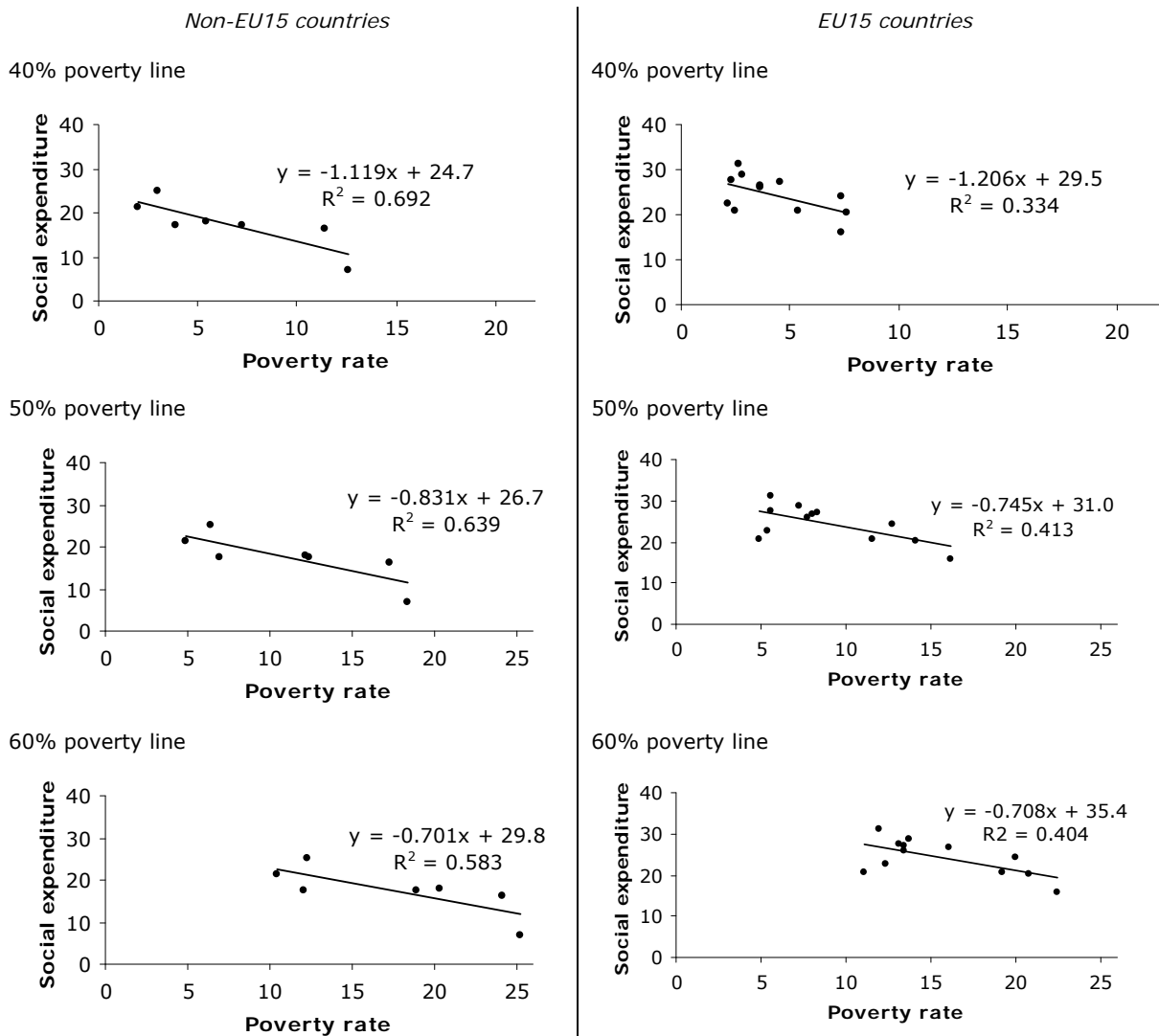
5.1 Linkages between poverty rates and gross social spending

Traditionally, welfare state typologies have been largely based on the overall level of social expenditure. Quantitative studies have found a strong negative relationship between poverty rates and the level of social expenditure over the last 25 years; this finding has now been well established in empirical studies.¹⁰ In other words, countries with a higher level of welfare expenditure are likely to have lower poverty rates.

Figure 4 illustrates that there is indeed a strong significant correlation between the level of *gross public* social expenditure as a percentage of GDP in 2003 and poverty rates across countries around the year 2000 ($p < 0.01$). Countries with higher *gross public* social expenditure ratios in 2003 tend to have lower poverty rates than countries with lower expenditure ratios. So, our simple linkage exercise does confirm the general finding that more social spending generates less poverty across countries. However, our results are less clear cut than earlier findings. We find an effect which is less strong in EU-countries compared to non-EU15 countries, possibly under the influence of welfare state reforms (cf. Adelantado and Caldéron Cuevas, 2006). This result does not depend on the poverty line applied (40, 50 or 60-percent-of-median-income poverty threshold); see Figure 3. Moreover, we did a sensitivity analysis with the OECD poverty data and found the same result: higher *gross public* social expenditure ratios generates less poverty across countries, although this effect is less strong in EU-countries compared to non-EU15 countries.

10 See Förster (1993), Kenworthy (1999), Kangas and Palme (2000), Kim (2000a), Sainsbury and Morissens (2002), Cantillon et al (2002), Behrendt (2002), Förster and Pearson (2002), Brady (2004), Scruggs and Allen (2005), Smeeding (2005), Förster and d'Ercole (2005), and Pestieau (2006, pp.16-17).

Figure 3: Linkage between gross public social expenditure and LIS poverty rates across 19 countries, around 2000-2003



Non-EU15 countries: Australia, Canada, Czech Republic, Mexico, Norway, Slovak Republic, and the United States

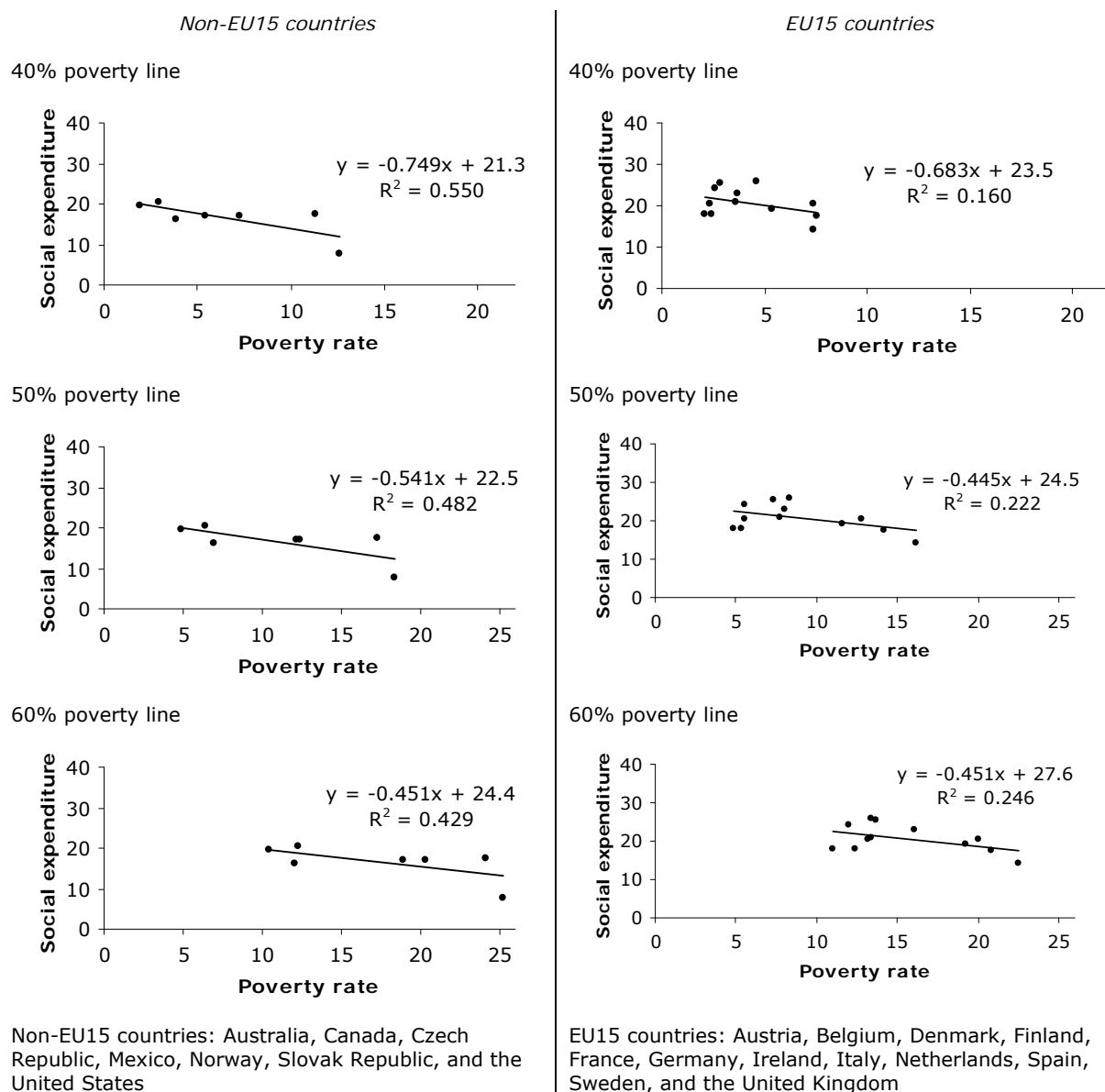
EU15 countries: Austria, Belgium, Denmark, Finland, France, Germany, Ireland, Italy, Netherlands, Spain, Sweden, and the United Kingdom

Source: Net Social Expenditure, 2007 edition from <http://www.oecd.org/dataoecd/14/23/38143827.xls>; LIS Key figures from <http://www.lisproject.org>; and own calculations

5.2 The impact of the tax system

Up till now, our results support the conventional view that extensive social-welfare programs reduce poverty. However, these findings may be influenced by ignoring the impact of the tax system. In Figure 4 we have corrected the expenditure ratios for the impact of the tax system, using the OECD data mentioned earlier. We have linked the poverty rates across countries around the year 2000 to *net* social expenditures of 2003. We again apply the 40-, 50-, and 60-percent-of median income poverty thresholds, and we use LIS-data on poverty.

Figure 4: Linkage between net public social expenditure and LIS poverty rates across 19 countries, around 2000-2003



Source: Net Social Expenditure, 2007 edition from <http://www.oecd.org/dataoecd/14/23/38143827.xls>; LIS Key figures from <http://www.lisproject.org>; and own calculations

At one moment in time, the linkage effect of *net public* social expenditure ratios and poverty rates across countries turns out to be less strong compared to the effect of *gross public* spending (lower correlation coefficients R^2 in all cases). Moreover, in case social expenditures are corrected for the impact of tax systems, we do not find a significant (negative) correlation for both the EU15 countries and the non-EU15 countries separately. Only for all countries together we still find a fit ($p < 0.01$).

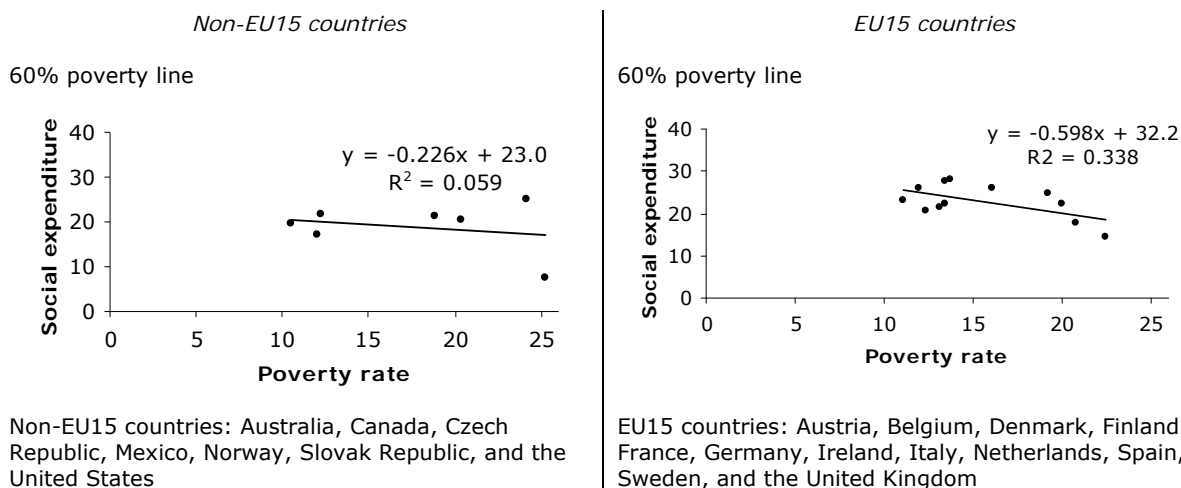
We conclude that the conventional view that welfare spending goes along with less poverty must at least be mitigated. The linkage between the two variables becomes substantially weaker if the expenditure data are corrected for relevant tax features, which gives a more realistic picture.

5.3 The impact of private social expenditure

Another problem with social expenditure as an indicator for differences in social protection across countries is related to variations in the public/private mix in the provision of social protection. In

Figure 5 we have included private social arrangements in our social expenditure indicator for 2003, using the OECD data as developed by Adema (2001). We have linked the poverty rates across countries around 2000 to *net total* social expenditures of 2003. For this plot, we apply the 60-percent-of median income poverty threshold, and we use LIS-data on poverty.

Figure 5: Linkage between net total social expenditure and LIS poverty rates across 19 countries, around 2000-2003



Source: Net Social Expenditure, 2007 edition from <http://www.oecd.org/dataoecd/14/23/38143827.xls>; LIS Key figures from <http://www.lisproject.org>; and own calculations

The results alter considerably in case private social expenditure are included as well. For non-EU15 countries in our sample we do not find any evidence for a negative correlation between the level of net total social spending and the incidence of poverty ($R^2=0.059$). Since there is no clear and strong negative link, more social spending does not offer an easy route to less poverty within these countries. In contrast, for the group of EU15 countries we find a significant fit ($R^2=0.338$; $\rho<0.05$). Private social expenditure does seem to matter as far as poverty alleviation in the EU is concerned.¹¹ Apparently, private social arrangements have more redistributive impact in the EU than in other OECD countries.

Table 5 summarizes our results. It shows the correlation coefficients and significance of all linkages between social expenditure and poverty rates across countries in case different poverty lines and /or data sets are employed. This sensitivity analysis shows more or less the same results in case other poverty lines and/or other databases for poverty are applied (LIS or OECD). However, the results are sensitive for the social indicator used.

Note that we find pretty good fits for gross social expenditures, both for non-EU15 and EU15 countries. However, the impact of the tax systems alters the picture. Still we find a significant negative relationship between net public spending and poverty rates for all countries, but not for EU15 countries or non-EU15 countries separately. For the EU15 we do find a fit again if we include private social expenditure. For the EU15, private social benefits do seem to help to reduce poverty levels. However, the linkage between net total social expenditure and poverty levels is still much weaker than in the case the traditional indicator gross public social spending is used.

11 An OLS-regression shows a coefficient for private social expenditure of -1.214 ($R^2=0.44$; $\rho<0.02$).

Table 5: Correlation coefficient and significance of linkages between social expenditure and poverty rates across countries around 2000-2003

	Non-EU15 countries	EU15 countries	All countries
<i>Gross public social expenditure</i>			
- Poverty line 40, LIS data	0.692 *	0.334 *	0.549 **
- Poverty line 50, LIS data	0.639 *	0.413 *	0.506 **
- Poverty line 50, OECD data	0.772 **	0.362 *	0.616 **
- Poverty line 60, LIS data	0.538 *	0.403 *	0.454 **
<i>Net public social expenditure</i>			
- Poverty line 40, LIS data	0.550 --	0.160 --	0.405 **
- Poverty line 50, LIS data	0.482 --	0.222 --	0.370 **
- Poverty line 50, OECD data	0.527 --	0.125 --	0.396 **
- Poverty line 60, LIS data	0.429 --	0.246 --	0.345 **
<i>Net total social expenditure</i>			
- Poverty line 40, LIS data	0.121 --	0.279 --	0.243 *
- Poverty line 50, LIS data	0.079 --	0.346 --	0.231 *
- Poverty line 50, OECD data	0.193 --	0.205 --	0.293 *
- Poverty line 60, LIS data	0.059 --	0.338 *	0.193 --

Note:

- OLS-regression; ** Social expenditure variable significant at the 0.01 level; * Social expenditure variable significant at 0.05 level, -- Social expenditure variable insignificant at 0.05 level.

Source: see Appendix

6. Antipoverty effect of social transfers and taxes

6.1 Introduction

In every nation, benefits from governments, net of taxes, reduce relative income poverty. The first columns of Table 6 show relative poverty rates calculated for household market income, rather than the earlier calculations that used disposable income after transfers and taxes. Table 6 compares the different at risk-of-poverty rates before and after social transfers and taxes. In each country, these rates are calculated with the same threshold, namely the nationally-defined 60 percent threshold calculated on the basis of total household income, i.e. including all social transfers.

Table 6: EU at-risk-of-poverty rate before and after social transfers and taxes, 1995-2005

	Before social transfers and taxes			After social transfers and taxes		
	1995	2000	2005	1995	2000	2005
Austria	24	22	24	13	12	12
Belgium	27	23	28	16	13	15
Denmark	:	:	31	10	:	12
Finland	:	19	28	:	11	12
France	26	24	26	15	16	13
Germany	22	20	24	15	10	13
Greece	23	22	23	22	20	20
Ireland	34	31	32	19	20	20
Italy	23	21	24	20	18	19
Luxembourg	25	23	23	12	12	13
Netherlands	24	22	22	11	11	11
Portugal	27	27	26	23	21	20
Spain	27	22	24	19	18	20
Sweden	:	:	29	:	:	9
United Kingdom	32	29	:	20	19	19
Mean	26.0	23.0	26.0	17.0	15.0	16.0
<i>Standard deviation</i>	3.48	3.37	3.02	4.11	3.90	3.85
<i>Coefficient of variation</i>	0.133	0.143	0.116	0.248	0.252	0.253

Notes:

- At-risk-of-poverty rate before social transfers: the share of persons with an equivalized disposable income, before social transfers, below the risk-of-poverty threshold, which is set at 60 percent of the national median equivalized disposable income (after social transfers). In the EU data retirement and survivor's pensions are counted as income before transfers and not as social transfers, because the prime role of old age (and survivors') pensions is not to re-distribute income across individuals but rather over the life-cycle of individuals.
- At-risk-of-poverty rate after social transfers: the share of persons with an equivalized disposable income below the risk-of-poverty threshold, which is set at 60 percent of the national median equivalized disposable income

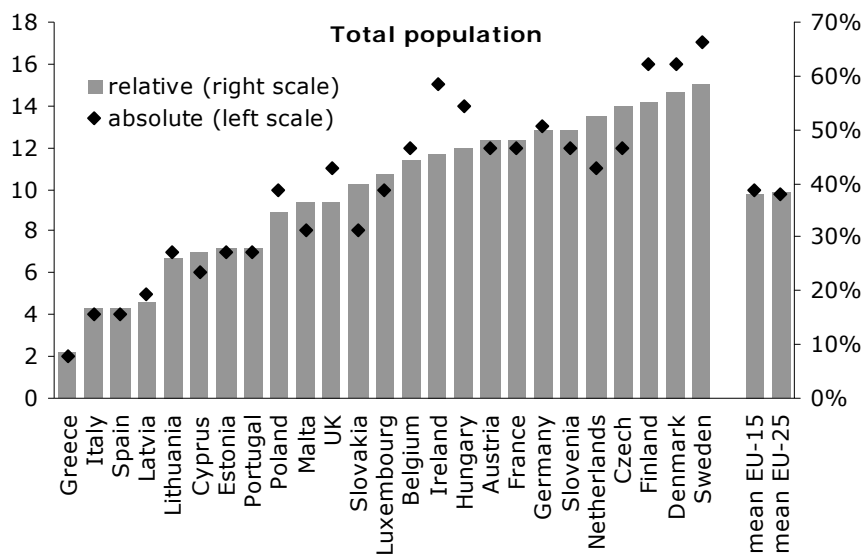
Source: Structural Indicators EU - Social Cohesion (Eurostat: ECHP/EU-SILC); own calculations

We calculate both the absolute and the relative measures of poverty reduction. The absolute antipoverty effect is the percentage point difference between the poverty rate before and after taxes and transfers. The relative effectiveness is measured as: (pre-tax-transfers poverty rate – post-tax-transfers poverty rate) / pre-tax-transfers poverty rate * 100.

Table 6 shows pronounced differences in the performance of the social protection systems of the EU15 countries in reducing poverty. In the absence of all social transfers, the poverty risk for the EU15 population as a whole would be considerably higher than it is in reality (26 percent instead of 16 percent). Moreover, the antipoverty effect amounts 15 to 20 percent points for Nordic countries in 2005; rather poor antipoverty effects are found for Greece, Italy and Spain.

Figure 6 illustrates a broader picture of the 'best-practices' for the EU25 countries in combating poverty. Countries are listed in descending order of the magnitude of their relative antipoverty effect of social transfers.

Figure 6: Absolute and relative poverty reduction, 2005



Note: In all cases the risk-of-poverty threshold (before and after social transfers and taxes) is set at 60 percent of the national median equivalized disposable income. Retirement and survivor's pensions are counted as income before transfers.

Source: Structural Indicators EU - Social Cohesion (Eurostat: EU-SILC); own calculations

Next, we also include five non-EU15 countries as a benchmark into our analysis. We calculated the antipoverty effect of social transfers and taxes, based on up-dated figures from the LIS Fiscal redistribution dataset (see Mahler and Jesuit, 2006). This dataset measures pre- and post-government poverty levels, using a composite measure that reflects both the headcount of those in poverty (the percentage of all persons whose equivalized household income falls below 50 percent of their country's median) and the depth of their poverty (the difference between the median income of the entire population and the mean income of the poor). Countries are listed in descending order of the magnitude of their (absolute) antipoverty effect; see Table 7.

Remarkably enough, the United States relative poverty rate *before* taxes and social transfers is actually below average for the selected countries, even though the United States ranks the highest of all the countries in this comparison group in relative poverty rates *after* taxes and transfers. Given this divergence, it should be no surprise that of the countries listed, the United States (and Ireland) devote the smallest share of its resources to antipoverty income transfer programs (cf. Smeeding, 2005). Best-practices at the top of this list can be found for Belgium, Germany, and the Nordic countries. Moreover, the EU15 countries show on average an antipoverty effect of 20.3 percentage points (or 80 percent), while the other non-EU15-countries produce on average a rather poor effect of 13.4 percentage points among their population (65 percent).

Table 7: Poverty scores of private sector income and disposable income

Country	Year	Private sector income			Disposable income			Poverty reduction	
		HC	GAP	HC*GAP	HC	GAP	HC*GAP	Absolute	Percent
Belgium	1997	32.0	0.91	29.0	8.0	0.63	5.0	24.0	83
Finland	2004	30.3	0.87	26.2	6.5	0.60	3.9	22.3	85
Germany	2000	30.9	0.87	26.8	8.4	0.63	5.3	21.5	80
Sweden	2000	29.8	0.84	24.9	6.5	0.66	4.3	20.6	83
Denmark	2004	28.0	0.86	24.0	5.6	0.62	3.5	20.5	85
France	1994	29.5	0.86	25.3	8.0	0.61	4.9	20.4	81
UK	1999	31.9	0.86	27.5	12.5	0.63	7.9	19.6	71
Ireland	1987	30.4	0.87	26.6	11.1	0.64	7.1	19.5	73
Australia	2003	28.6	0.85	24.4	12.2	0.64	7.8	16.6	68
Norway	2000	24.9	0.82	20.3	6.4	0.64	4.1	16.2	80
Netherlands	1999	21.4	0.82	17.6	4.9	0.64	3.1	14.5	82
Switzerland	2002	20.7	0.85	17.5	7.6	0.63	4.8	12.7	73
Canada	2000	25.2	0.79	20.0	12.4	0.65	8.1	11.9	60
USA	2004	26.6	0.80	21.2	17.3	0.68	11.8	9.4	44
Mean		27.9	0.85	23.7	9.1	0.64	5.8	17.8	75
<i>Standard deviation</i>				3.6			2.3	4.2	11.1
<i>Coefficient of variation</i>				0.15			0.40	0.235	0.15
Mean EU15 (9)		29.4	0.86	25.3	7.9	0.63	5.0	20.3	80
<i>Standard deviation</i>				3.1			1.5	2.5	4.7
<i>Coefficient of variation</i>				0.12			0.30	0.121	0.06
Mean other OECD (5)		25.2	0.82	20.7	11.2	0.65	7.3	13.4	65
<i>Standard deviation</i>				2.2			2.7	2.7	12.2
<i>Coefficient of variation</i>				0.11			0.37	0.203	0.19

Source: LIS Fiscal redistribution dataset based on Mahler and Jesuit (2006); updated figures from <http://www.lisproject.org/publications/fiscalredistdata/fiscresd.htm>; and own calculations

6.2 The impact of welfare state effort

Next we turn to the reduction of poverty rates through taxes and transfers and its relationship to welfare state effort. Table 8 presents the linkage between poverty reduction and social expenditure ratios for 16 European countries where all relevant data items are available. This gives a picture of the targeting of social protection efforts across European countries at one moment in time (around 2003-2005). Table 8 ranks countries according to their 'effectiveness' of combating poverty. Absolute antipoverty effects are divided by social spending ratios to see which country targets best per one point of GDP spent on net social expenditure. Our analysis highlights some cross-country differences of poverty alleviation in the EU15, although the ranking must be interpreted with caution due to cyclical factors. For example, each percentage point of net total public social expenditure alleviates poverty in Ireland and the Scandinavian countries by 0.65-1.05 percentage points, while the lowest scores can be found in Italy, Spain and Portugal (0.18-0.32). Especially the 'top' position of Ireland seems to be influenced by the recent economic performance in this particular country (high economic growth, low unemployment rates, and (therefore) the lowest level of social expenditures).

Relative to their level of net social expenditure, Sweden (26.1 percent of GDP) was expected to have a good performance in alleviating poverty. In contrast, France and Germany realize much less reduction of poverty rates, but on a markedly higher level of net social expenditure (respectively 28.0 and 27.6 percent of GDP).

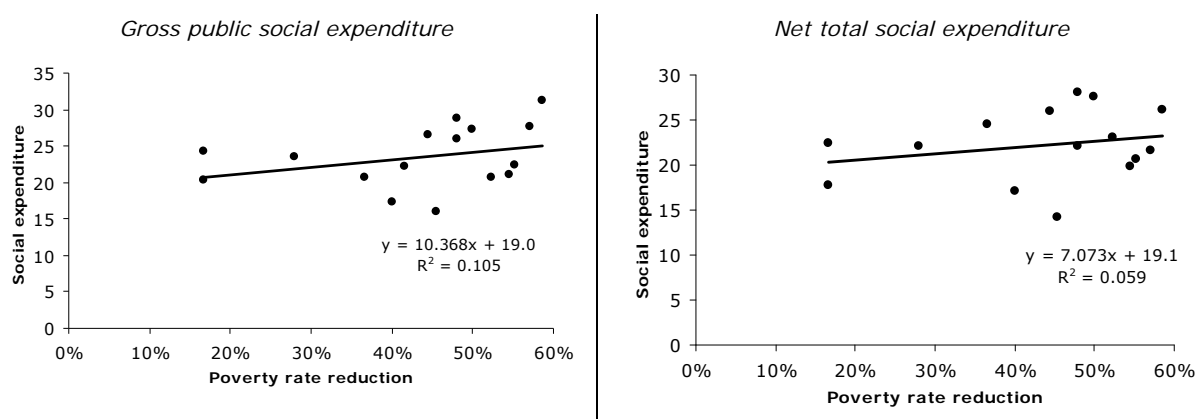
Table 8: Targeting effect of social expenditures on poverty reduction in the EU, around 2003-2005

	<i>Poverty rate total population, 2005 (poverty line at 60% of median income)</i>				<i>Social expenditures, % GDP, 2003</i>		<i>Targeting effect</i>	
	Before social transfers and taxes	After social transfers and taxes	Absolute effect	Relative effect	Gross public	Net total	Absolute	Absolute
	(1)	(2)	(3)	(4)	(5)	(6)	(3):(5)	(3):(6)
Ireland	33	18	15	45%	15.9	14.3	0.94	1.05
Finland	29	13	16	55%	22.5	20.6	0.71	0.78
Denmark	28	12	16	57%	27.6	21.6	0.58	0.74
Sweden	29	12	17	59%	31.3	26.1	0.54	0.65
Czech Republic	22	10	12	55%	21.1	19.8	0.57	0.61
Austria	25	13	12	48%	26.1	22.2	0.46	0.54
Netherlands	21	10	11	52%	20.7	23.1	0.53	0.48
Germany	26	13	13	50%	27.3	27.6	0.48	0.47
Slovakia	20	12	8	40%	17.3	17.0	0.46	0.47
Belgium	27	15	12	44%	26.5	26.0	0.45	0.46
United Kingdom	30	19	11	37%	20.6	24.6	0.53	0.45
Luxembourg	24	14	10	42%	22.2	n.a.	0.45	n.a.
France	25	13	12	48%	28.7	28.0	0.42	0.43
Portugal	25	18	7	28%	23.5	22.1	0.30	0.32
Spain	24	20	4	17%	20.3	17.7	0.20	0.23
Italy	24	20	4	17%	24.2	22.3	0.17	0.18
Mean	25.8	14.5	11.3	44%	23.5	22.2	0.48	0.51

Source: Structural Indicators EU - Social Cohesion (Eurostat: EU-SILC); Net Social Expenditure 2007; and own calculations

Within the group of EU-countries we do not find a significant relationship between (high) levels of social expenditure and (high) antipoverty effects of social transfers and taxes; see Figure 7. Evidently, social spending is not the only determinant of a country's poverty outcome. More factors should be taken into consideration (see Kim, 2000a; and Behrendt, 2002). Market income inequality is obviously an important source of cross-national variation in poverty. Also specific differences in both the social and the tax system should be taken into account in the assessment of the antipoverty effect of welfare states. Moreover, international variations in poverty profiles are driven by variations in socio-demographic and socio-economic structures, as these factors put different restraints on income transfer schemes. And also, besides social transfers, several other policy instruments may be used to alleviate poverty. For example, several countries put relatively much emphasis on improving job opportunities and stimulating labor force participation of lower income groups.

Figure 7: Linkage between social expenditure and relative poverty rate reduction among EU-countries, around 2003-2005



Selected countries: Austria, Belgium, Czech Republic, Denmark, Finland, France, Germany, Ireland, Italy, Luxembourg, Netherlands, Portugal, Slovakia, Spain, Sweden, and the United Kingdom

Source: Structural Indicators EU - Social Cohesion (Eurostat: EU-SILC); Net Social Expenditure 2007; and own calculations

As a benchmark we also include four non-EU15 countries into our analysis. The picture on the targeting of social transfers and taxes on poverty reduction is based upon up-dated figures from the LIS Fiscal redistribution dataset. Each percentage point of net total public social expenditure alleviates poverty in Australia and Norway by 0.75-0.92 percentage points, while the lowest scores can be found in Canada and the United States (0.37-0.56). Especially the targeting effectiveness of the United States is remarkably low, and lies below half of the average of all countries presented in Table 9. It should, however, be noted that these results could be sensitive to the data year chosen (around 2003-2005).

Table 9: Targetting effect of social expenditures on poverty reduction, around 2000-2003

	<i>Poverty rate total population (poverty line at 50% median income)</i>				<i>Social expenditures % GDP, 2003</i>		<i>Targeting effect</i>		
	Year	Private sector income HC*GAP	Disposable income HC*GAP	Absolute effect	Relative effect	Gross public	Net total	Absolute	Absolute
		(1)	(2)	(3)	(4)	(5)	(6)	(3):(5)	(3):(6)
Ireland	1987	26.6	7.1	19.5	73%	15.9	14.3	1.22	1.37
Finland	2004	26.2	3.9	22.3	85%	22.5	20.6	0.99	1.08
Denmark	2004	24.0	3.5	20.5	85%	27.6	21.6	0.74	0.95
Belgium	1997	29.0	5.0	24.0	83%	26.5	26.0	0.91	0.92
Australia	2003	24.4	7.8	16.6	68%	17.9	20.6	0.93	0.81
UK	1999	27.5	7.9	19.6	71%	20.6	24.6	0.95	0.80
Sweden	2000	24.9	4.3	20.6	83%	31.3	26.1	0.66	0.79
Germany	2000	26.8	5.3	21.5	80%	27.3	27.6	0.79	0.78
Norway	2000	20.3	4.1	16.2	80%	25.1	21.7	0.65	0.75
France	1994	25.3	4.9	20.4	81%	28.7	28.0	0.71	0.73
Netherlands	1999	17.6	3.1	14.5	82%	20.7	23.1	0.70	0.63
Canada	2000	20.0	8.1	11.9	60%	17.3	21.2	0.69	0.56
United States	2004	21.2	11.8	9.4	44%	16.2	25.2	0.58	0.37
Mean		24.1	5.9	18.2	76%	22.9	23.1	0.80	0.79

Source: LIS Fiscal redistribution dataset based on Mahler and Jesuit (2006), updated figures, Net Social Expenditure, 2007 edition; and own calculations

Overall, the trends of the components of post-tax-transfer poverty can be summarized as follows. In most of welfare states, pre-tax-transfer poverty has increased during the 1980s and early 1990s. Most countries have increased the size of the welfare state during the same period. However, in many cases, the increase in the size of the welfare state is not large enough to offset the increase in pre-tax-transfer poverty. As a result, post-tax-transfer poverty has also - more or less - increased in these countries (cf. Sainsbury and Morissens, 2002; Kim, 2000a; Smeeding, 2005).

7. Social policy areas

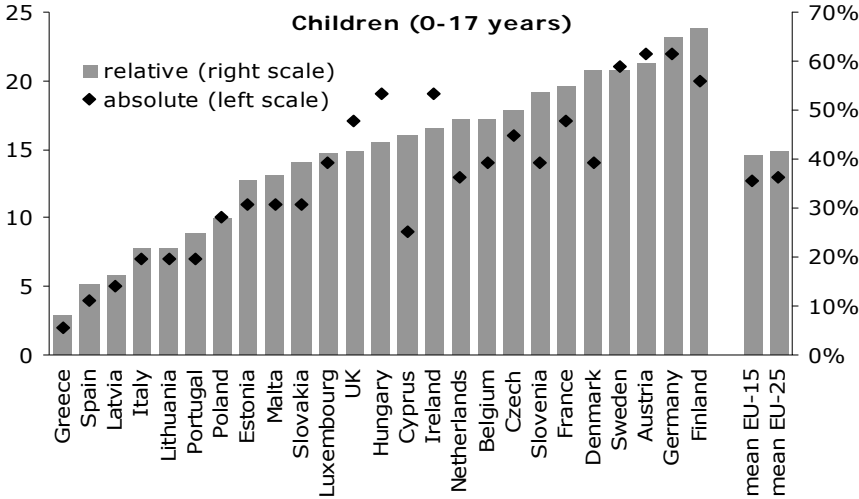
An important critic on aggregated social expenditure data is that it is not possible to see which individual program is responsible for a specific dynamic. Therefore we show social expenditures for various programs. We look at two vulnerable age groups: children and the elderly. We present linkages of their poverty rates with social expenditures for social programs as family and child benefits, and the public old age pensions and survivor schemes.

7.1 Children

In most EU-countries, relative poverty rates among children are higher than for the entire population, but with much variation across countries. In Finland and Denmark child poverty rates are 10 percent, while a quarter of all children lives in poverty in Hungary, Italy, Latvia, Poland, Spain, and in the United Kingdom. These differences suggest that specific factors increase risks of poverty for children in some EU-countries.

We calculated both the absolute and the relative measures of poverty reduction through social transfers and taxes; see Figure 8. Greece, Spain, and Latvia produce rather poor antipoverty effects among children with their tax/transfer system (below 20 percent). The best-practices in 2005 can be found in Finland, Germany, Austria, Denmark, Sweden, France, and Slovenia with antipoverty effects over 50 percent.

Figure 8: Absolute and relative poverty 0-17 years, 2005



Note: In all cases the risk-of-poverty threshold (before and after social transfers and taxes) is set at 60 percent of the national median equivalized disposable income.

Source: Structural Indicators EU - Social Cohesion (Eurostat: EU-SILC); own calculations

The OECD Social Expenditure Database (SOCX) includes internationally comparable statistics on gross public social expenditure at program level. SOCX registers also family programs, i.e. expenditure which supports families (excluding one-person households). This expenditure is often related to the costs associated with raising children or with the support of other dependants. Table 10 presents the linkage between poverty reduction through the tax/transfer system, and social

expenditure for family programs for EU15 countries where all relevant data items are available. This gives a picture of the targeting effectiveness of combating child poverty across European countries. However, the earlier disclaimer applies: the ranking of the countries can be influenced by country specific cyclical factors due the data year 2003-2005 chosen (relatively low/high social expenditures).

Table 10: Targeting effect of social expenditures on child poverty reduction in the EU15, around 2003-2005

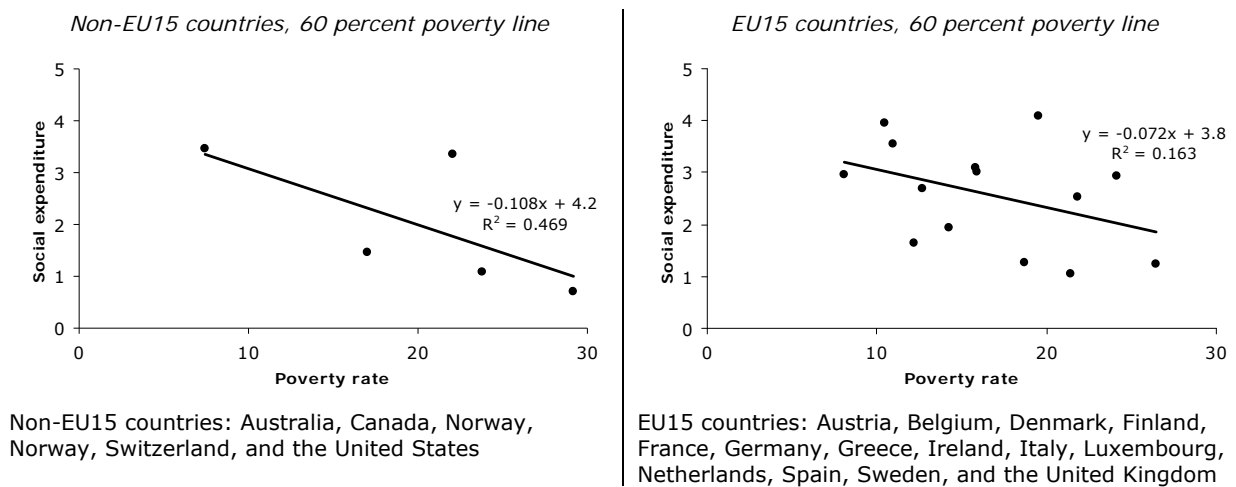
	<i>Poverty rate 0-17 years, 2005 (poverty line at 60% of median income)</i>				<i>Gross social expenditure on family programs, % GDP, 2003</i>	<i>Targeting effect</i>
	Before social transfers and taxes	After social transfers and taxes	Absolute effect	Relative effect		
	(1)	(2)	(3)	(4)		
Austria	37	15	22	59%	3.1	7.1
Belgium	29	15	14	48%	2.7	5.2
Denmark	24	10	14	58%	3.9	3.5
Finland	30	10	20	67%	3.0	6.7
France	31	14	17	55%	3.0	5.6
Germany	34	12	22	65%	1.9	11.3
Ireland	41	22	19	46%	2.5	7.5
Italy	32	25	7	22%	1.2	5.6
Luxembourg	34	20	14	41%	4.1	3.4
Netherlands	27	14	13	48%	1.6	7.9
Portugal	28	21	7	25%	1.6	4.4
Spain	28	24	4	14%	1.0	3.8
Sweden	36	15	21	58%	3.5	5.9
United Kingdom	41	24	17	41%	2.9	5.8
Mean	32.3	17.2	15.1	47%	2.6	5.8

Source: Structural Indicators EU - Social Cohesion (Eurostat: EU-SILC); OECD Social Expenditure Database (SOCX) based on www.oecd.org/els/social/expenditure; and own calculations

Rather good targeting figures of child poverty alleviation per point of GDP social spending can be found in Germany, followed by the Netherlands, Ireland, and Austria. Low scores can be found in Luxembourg, Denmark, and Spain. In these countries each percentage point of social expenditure on family programs alleviates poverty only by 3.4-3.8 percentage points around 2003-2005.

Next we also include Australia, Canada, Norway, Switzerland, and the United States into our analysis. Poverty rates are from LIS, and a 60-percent-of-median-income poverty threshold is applied. For all countries, we find a significant negative relationship between levels of social expenditure on family programs and poverty rates ($R^2=0.285$; $p<0.02$). This correlation is much stronger for non-EU15 countries ($R^2=0.469$) compared with the EU15 countries ($R^2=0.163$). See Figure 9.

Figure 9: Linkage between gross social expenditure on family programs and LIS poverty rates among 19 countries, around 2000-2003



Source: OECD Social Expenditure Database (SOCX) based on www.oecd.org/els/social/expenditure; LIS Key figures from <http://www.lisproject.org>; and own calculations

7.2 Elderly

Given their weight in the disposable income of elderly people, public pensions play a major role in shaping income adequacy and poverty risks for this group of the population. Wu (2005) indicate that without social old age and survivors programs more than half of the older persons would be in poverty.¹² Again we use the OECD Social Expenditure Database. SOCX contains gross social expenditures both on public old age programs (pensions) and on survivor schemes.¹³ However, we will not present the linkage between poverty reduction through the tax/transfer system, and social expenditure for public old age pensions and survivors schemes, because the calculation of the effectiveness of combating poverty among the elderly across countries would be biased. The reason for this is that (public) pensions are considered as primary income in the EU data we use, since Eurostat argue that their role is not only to redistribute resources across income groups but also, and primarily, to redistribute income over the life-cycle of individuals and/or across generations.

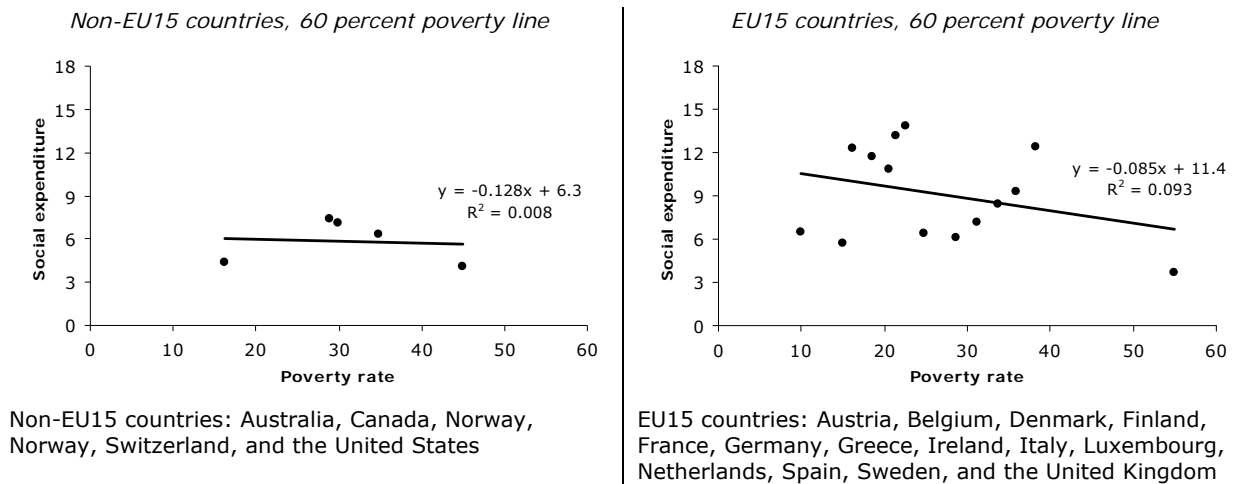
Therefore we take another approach to calculate the targeting effect of social expenditures of both on public old age programs and survivor schemes on poverty rates of the elderly. Poverty rates among the elderly are taken from LIS, and a 60-percent-of-median-income poverty threshold is applied. We do not find a strong (negative) relationship between *levels* of social expenditure on old age and survivors schemes and the *level* of poverty rates across the 19 developed countries ($R^2=0.103$). This weak correlation is found for both the group of non-EU15 countries ($R^2=0.008$) and the group of EU15 countries ($R^2=0.093$). Despite relatively high gross public spending on old-age pensions and survivors schemes some countries experience relatively high poverty rates

12 The analyses of Wu (2005) is based on LIS-data for 15 selected OECD countries; a 50-percent-of-median-income poverty threshold is applied.

13 Old-age: comprises all cash expenditures (including lump-sum payments) on old-age pensions. Old-age cash benefits provide an income for persons retired from the labor market or guarantee incomes when a person has reached a 'standard' pensionable age or fulfilled the necessary contributory requirements. This category also includes early retirement pensions: pensions paid before the beneficiary has reached the 'standard' pensionable age relevant to the program. Excluded are programs concerning early retirement for labor market reasons which are classified under unemployment. Old-age includes supplements for dependants paid to old-age pensioners with dependants under old-age cash benefits. Old age also includes social expenditure on services for the elderly people, services such as day care and rehabilitation services, home-help services and other benefits in kind. It also includes expenditure on the provision of residential care in an institution (for example, the cost of operating homes for the elderly).
Survivors: many countries have social expenditure programs in the public sphere which provide the spouse or dependent of a deceased person with a benefit (either in cash or in kind). Expenditure in this policy area has been grouped under survivors. Allowances and supplements for dependent children of the recipient of a survivors' benefit are also recorded here.

among the elderly, especially in Greece. Rather good figures can be found in Luxembourg, the Netherlands, and Canada. In these countries relatively low poverty rates among the elderly are combined with relatively low figures for gross public social expenditure on old age and survivors.

Figure 10: Linkage between gross social expenditure on old age and survivors programs and LIS poverty rates among 19 countries, around 2000-2003



Source: OECD Social Expenditure Database (SOCX) based on www.oecd.org/els/social/expenditure; LIS Key figures from <http://www.lisproject.org>; and own calculations

8. Conclusion

Poverty alleviation is an important objective of the EU. A wide variety of poverty rates can be found within the EU15 and EU25 countries. Some countries are more effective in poverty reduction than other countries. Remarkably enough, average at-risk-of-poverty rates – an official EU social cohesion indicator – even have risen since the adoption of the Lisbon Agenda. This suggests that recent EU-initiatives regarding combating poverty are not very effective yet. Obviously, several policy strategies may be chosen to combat poverty. This paper analyses the effect of social transfer policies on poverty. We have done various simple bi-variate tests, using several poverty definitions and several indicators for social protection.

Earlier research concluded that high social expenditure levels in welfare states are linked with low levels of poverty. Our results are less clear cut. We still find a quite strong negative relationship between poverty reduction and gross social expenditure across countries. This effect is less strong in the group of EU15 countries compared to non-EU15 countries. Sensitivity analysis shows more or less the same results in case other poverty lines and/or other databases for poverty are applied (LIS or OECD). However, the results are sensitive to the social indicator used. Taking the impact of the tax systems on expenditure statistics into account alters the picture. Still we find a significant negative relationship between net public spending and poverty rates for all countries, but not for EU15 countries or non-EU15 countries separately. This is an important result, because with this correction we have a much better measure of what governments really devote to social spending. Next, we also included private social benefits, which may also have a redistributive impact. In this case we do find a fit again for the EU15. In European countries private social arrangements do seem to help to reduce poverty levels. However, the linkage between net total social expenditure and poverty levels is much weaker than in the case the traditional indicator gross public social spending is used. Thus, the familiar claim that higher social expenditure goes along with lower poverty levels must at least be toned down to some extent.

We also analyzed the reduction of poverty rates through taxes and transfers (the difference between poverty rates calculated for market incomes and poverty rates calculated for disposable incomes) and its relationship to welfare state efforts. Within the group of EU15 countries we do not find a significant relationship between (high) levels of social expenditure and (high) antipoverty

effects of social transfers and taxes. Our analysis highlights some cross-country differences in targeting of social expenditures on poverty alleviation in the EU15 around 2003-2005. Each percentage point of net social expenditure alleviates poverty in Ireland and the Scandinavian countries by 0.7-1.1 percentage points, while the lowest scores can be found in Italy, Spain and Portugal (0.2-0.3). However, it should be noted that these results may be sensitive to cyclical factors.

Finally, we analyzed poverty among vulnerable age groups. Our results show that family programs and child support alleviate poverty among children to a large extent. For public old age and survivors schemes we find only a weak effect on poverty, but further research is needed on this issue.

References

- Adelantado, J., and E. Calderón Cuevas (2006), 'Globalization and the welfare state: the same strategies for similar problems?', *Journal of European Social Policy*, 16(4), pp. 374-386.
- Adema, W. (2001), 'Net Social Expenditure: 2nd edition'. *Labour Market and Social Policy - Occasional Papers*, No. 52, (Paris: OECD).
- Adema, W. and Ledaique, M. (2005), 'Net Social Expenditure, 2005 edition', *OECD Social, Employment and Migration Working Paper 29*, Paris: OECD.
- Atkinson, A.B. (1987), 'On the measurement of poverty', *Econometrica* 55 (4), pp. 749-764.
- Atkinson, T. (2002), 'Social Inclusion and the European Union', *Journal of Common Market Studies* 40 (4), pp. 625-643.
- Atkinson, A.B. (2003), 'Income Inequality in OECD Countries: Data and Explanations', *CESifo Working Paper Series No. 881*.
- Atkinson, A.B., L. Rainwater, and T.M. Smeeding (1995), 'Income Distribution in OECD Countries: Evidence from the Luxembourg Income Study', *OECD Social Policy Studies 18*, Paris.
- Atkinson, A.B., and A. Brandolini (2001), 'Promise and Pitfalls in the Use of Secondary Data-Sets: Income Inequality in OECD Countries as a Case Study', *Journal of Economic Literature* 39 (3) (September), pp. 771-800.
- Atkinson, T., B. Cantillon, E. Marlier and B. Nolan (2002), *Social Indicators. The EU and Social Inclusion*, Oxford: University Press.
- Bäckman, O. (2005), 'Welfare states, social structure and the dynamics of poverty rates. A comparative study of 16 countries, 1980-2000', *Luxembourg Income Study Working Paper Series 408*, Luxembourg.
- Behrendt, Ch. (2000), 'Is there income poverty in Western Europe? Methodological pitfalls in the measurement of poverty in a comparative perspective', *Luxembourg Income Study Working Paper Series 258*, Luxembourg.
- Behrendt, Ch. (2002), 'Holes in the safety net? Social security and the alleviation of poverty in a comparative perspective .', in: R. Sigg and Chr. Behrendt (eds.) *Social Security in the Global Village*, International Social Security Series, Volume 8, Transaction Publishers, New Brunswick / London, pp. 333-358 (also published as *Luxembourg Income Study Working Paper Series 259*, Luxembourg).
- Bourguignon, F., and L. Pereira da Silva and N. Stern (2002), 'Evaluating the Poverty Impact of Economic Policies: Some Analytical Challenges', Stern - Washington DC: The World Bank (Mimeo), 2002.
- Brady, D. (2004), 'The welfare state and relative poverty in rich western democracies, 1967-1997', *Luxembourg Income Study Working Paper Series 390*, Luxembourg.
- Brandolini, A. (2006), 'Measurement of income distribution in supranational entities: The case of the European Union', *Luxembourg Income Study Working Paper Series 452*, Luxembourg.
- Caminada, K. and Goudswaard, K.P. (2001), 'International Trends in Income Inequality and Social Policy', *International Tax and Public Finance* 8 (4), pp. 395-415.
- Caminada, K. and Goudswaard, K.P. (2005), 'Are Public and Private Social Expenditures Complementary?', *International Advances in Economic Research* 11 (2), pp. 175-189.
- Cantillon, B., I. Marx and K. Van den Bosch (2002), 'The puzzle of egalitarianism: About the relationships between employment, wage inequality, social expenditures and poverty', *Luxembourg Income Study Working Paper Series 337*, Luxembourg.
- European Commission (2007), *Joint Report on Social protection and social inclusion 2007. Social inclusion, pensions, healthcare and long term care*, Luxembourg: Office for Official Publications of the European Communities.
- European Commission (2008), *Joint Report on Social protection and social inclusion 2008. Social inclusion, pensions, healthcare and long term care*, Luxembourg: Office for Official Publications of the European Communities.
- Eurostat (2005), 'The continuity of indicators during the transition between ECHP and EU-SILC', Working Paper and Studies, Eurostat.

- Eurostat (2007), Structural Indicators EU - Social Cohesion, <http://epp.eurostat.ec.europa.eu/>
- Förster, M. (1993), 'Comparing Poverty in 13 OECD Countries: Traditional and Synthetic Approaches,' *Luxembourg Income Study Working Paper* 100, Luxembourg.
- Förster, M., and M. Pearson (2002), 'Income distribution and poverty in the OECD area: trends and driving forces', *OECD Economic Studies*, No. 34, 2002/1, OECD, Paris, pp. 7-39.
- Förster, M., and M.M. d'Ercole (2005), 'Income Distribution and Poverty in OECD Countries in the Second Half of the 1990s', *OECD Social, Employment and Migration Working Papers*, no. 22.
- Gottschalk, P., and T.M. Smeeding (1997), 'Cross-National Comparisons of Earnings and Income Inequality', *Journal of Economic Literature* 35 (June), pp. 633-687.
- Gottschalk, P. and T.M. Smeeding (2000), 'Empirical Evidence on Income Inequality in Industrialized Countries', in: A.B. Atkinson and Bourguignon, F. (eds), *Handbook of Income Distribution*, New York: Elsevier-North Holland Publishers, pp. 261-308.
- Guio, A.-C. (2005), 'Income poverty and social exclusion in the EU25', *Statistics in focus: population and social conditions*, 13/2005, pp. 1-7.
- Hagenaars, A., and K. de Vos (1987), 'The definition and measurement of poverty', *The Journal of Human Resources* 23 (2), pp. 211-221.
- Jesuit, D., and V. Mahler (2004), 'State redistribution in comparative perspective: A cross-national analysis of the developed countries', *Luxembourg Income Study Working Paper Series* 392, Luxembourg.
- Kakwani, N., and J. Silber (eds.) (2007), *The Many Dimensions of Poverty*, New York: Palgrave Macmillan.
- Kakwani, N., and J. Silber (eds.) (2008), *Quantitative Approaches to Multidimensional Poverty Measurement*, New York: Palgrave Macmillan.
- Kangas, O. and J. Palme (2000), 'Does Social Policy Matter? Poverty Cycles in OECD Countries', *International Journal of Health Services* 30(2), pp. 335-352.
- Kenworthy, L. (1999), 'Do Social Welfare Policies Reduce Poverty? A Cross-National Assessment', *Social Forces* 77 (3), pp. 1119-1139.
- Kim, H. (2000a), 'Anti-Poverty Effectiveness of Taxes and Income Transfers in Welfare States', *International Social Security Review* 53 (4) , pp. 105-129.
- Kim, H. (2000b), 'Do welfare states reduce poverty? A critical shortcoming in the standard analysis of the anti-poverty effect of welfare states', *Luxembourg Income Study Working Paper Series* 233, Luxembourg.
- Kühner, S. (2007), 'Country-Level Comparisons of Welfare State Change Measures: Another Facet of the Dependent Variable Problem within the Comparative Analysis of the Welfare State?', *Journal of European Social Policy* 17 (1), pp. 5-18.
- Leibfried, S. (2002), 'Some Background Comments on the Extension of the Open Method of Co-ordination', *Belgisch Tijdschrift voor Sociale Zekerheid* 44 (3), pp. 473-479.
- Mahler, V.A., and D.K. Jesuit (2006), 'Fiscal Redistribution in the Developed Countries: New Insights from the Luxembourg Income Study', *Socio-Economic Review* 4, pp. 483-511 (also published as *Luxembourg Income Study Working Paper Series* 392, Luxembourg).
- Marcus, J. and S. Danziger (2000), 'Income Poverty in Advanced Countries', in: A.B. Atkinson, and Bourguignon, F. (eds.), *Handbook of Income Distribution*. New York: Elsevier-North Holland Publishers.
- Musgrave, R.A., K.E. Case and H.B. Leonard, (1974), 'The Distribution of Fiscal Burdens and Benefits', *Public Finance Quarterly* 2 (July), pp. 259-311.
- Nell, G. (2005), 'Prosperity and the welfare state: The effect of benefit generosity and wage coordination on absolute poverty and prosperity in cross-national perspective', *Luxembourg Income Study Working Paper Series* 424, Luxembourg.
- OECD (2007), *Social Expenditure Database 1980-2003* (www.oecd.org/els/social/expenditure); download January 4th, 2008.
- OECD (2008), *Growing unequal? Income distribution and Poverty in OECD Countries*, Paris: OECD.

- Pestieau, P. (2006), *The Welfare State in the European Union: Economic and Social Perspectives*, Oxford: Oxford University Press.
- Sainsbury, D., and A. Morissens (2002), 'European anti-poverty policies in the 1990s: Toward a common safety net', *Luxembourg Income Study Working Paper Series 307*, Luxembourg.
- Scruggs, L., and J.P. Allan (2006), 'The Material Consequences of Welfare States: Benefit Generosity and Absolute Poverty in 16 OECD Countries', *Comparative Political Studies* 39, pp. 880-904 (also published as *Luxembourg Income Study Working Paper Series 409*, Luxembourg).
- Smeeding, T. (2005), 'Poor people in rich nations: The United States in comparative perspective', *Luxembourg Income Study Working Paper Series 419*, Luxembourg.
- Smeeding, T., L. Rainwater, and G. Burtless (2000), 'United States Poverty in a Cross-National Context', *Luxembourg Income Study Working Paper Series 244*, Luxembourg.
- Smolensky, E., W. Hoyt and S. Danziger (1987), 'A Critical Survey of Efforts to Measure Budget Incidence', in: H.M. van de Kar; B.L. Wolfe (eds.), *The Relevance of Public Finance for Policy-Making*, Proceedings IIFP Congress 1985, Detroit, pp. 165-179.
- Wu, K. (2005), 'How Social Security Keeps Older Persons Out of Poverty across Developed Countries', *Luxembourg Income Study Working Paper 410*, Luxembourg.

Appendix: Data and correlation tests across countries

Gross public social expenditure (% GDP)

- OECD-22 and EU-15
- Data years: 1980-2003
 - Total
 - Old age
 - Survivors
 - Family
 - Other social policy areas
- Source: OECD Social Expenditure Database (SOCX)
- URL: www.oecd.org/els/social/expenditure

Gross and net social expenditure (% GDP)

- OECD-24, and EU-15
- Data years: 1993, 1995, 1997, 2001, and 2003
 - Gross public social expenditure
 - Net public social expenditure
 - Gross total social expenditure
 - Net total social expenditure
- Source: Adema (2001); Adema and Ladaique (2005); Net Social Expenditure, 2007 edition
- URL: <http://www.oecd.org/dataoecd/14/23/38143827.xls>

Structural Indicators EU - Social Cohesion

- EU-15, and EU-25
- Data years: 1995, 2000, 2003, and 2005
 - At-risk-of-poverty rate before social transfers
 - At-risk-of-poverty rate after social transfers
 - At-persistent-risk-of-poverty rate
- Source: Eurostat: ECHP/EU-SILC
- URL: <http://epp.eurostat.ec.europa.eu/>

OECD Poverty Indicators

- OECD-18/20, and EU-11/12
- Data years: mid-1980s, mid-1990s, 2000
 - Poverty
 - Poverty gap
- Source: OECD Equity Data based on Förster and Mira D'Ercole (2005)
- URL: <http://www.oecd.org/dataoecd/34/11/34542691.xls>

LIS Key Figures on Poverty

- Over 30 countries
- Data years: between 1979 and 2005 (over 130 LIS surveys conducted in 31 countries between 1979-2005)
 - Poverty rate 40 (poverty line set at 40 percent of equivalized median income)
 - Poverty rate 50 (poverty line set at 50 percent of equivalized median income)
 - Poverty rate 60 (poverty line set at 60 percent of equivalized median income)
- Source: Luxembourg Income Study
- URL: <http://www.lisproject.org>

LIS Fiscal Redistribution Dataset

- OECD-13 (selected countries)
- Data years: between 1979 and 2002 (60 LIS surveys conducted in 13 countries between 1979-2002)
 - Poverty scores pre-government private sector income
 - Poverty scores post-government disposable income
 - Poverty reduction
- Source: LIS data based on V.A. Mahler and D.K. Jesuit (2006); also updated figures.
- URL: <http://www.lisproject.org/publications/fiscalredistdata/fiscres.htm>

Percent poverty for total population, children and the elderly in 30 countries

Dataset(s)	Poverty total population			Poverty Children			Poverty Elderly		
	Poverty line 40%	Poverty line 50%	Poverty line 60%	Poverty line 40%	Poverty line 50%	Poverty line 60%	Poverty line 40%	Poverty line 50%	Poverty line 60%
Czech Republic 1996	2.0	4.9	10.5	3.3	6.6	12.2	1.3	7.4	21.9
Netherlands 1999	2.5	4.9	11.1	2.9	6.3	12.2		1.6	15.0
Sweden 2005	2.6	5.6	12.0	2.0	4.7	10.9	1.5	6.6	20.6
Slovak Republic 1996	3.9	7.0	12.1	6.1	9.8	16.0			
Norway 2000	3.0	6.4	12.3	1.6	3.4	7.5	1.2	11.9	28.8
Finland 2000	2.1	5.4	12.4	1.3	2.8	8.0	1.1	8.5	24.8
Hungary 1999	3.1	6.4	12.7	4.3	8.1	15.2		4.3	12.6
Denmark 2004	2.3	5.6	13.2	1.5	3.9	10.5	1.1	8.5	31.1
Germany 2000	4.6	8.4	13.4	5.5	9.0	14.2	4.0	10.4	18.6
Austria 2000	3.6	7.7	13.4	3.8	7.8	15.9	5.8	13.6	21.4
France 2000	2.8	7.3	13.7	2.6	7.9	15.9	3.0	8.5	16.2
Luxembourg 2004	3.2	8.8	13.7	4.9	13.3	19.5		4.5	10.0
Romania 1997	3.6	8.1	14.1	4.5	10.0	16.8	4.5	10.4	19.0
Slovenia 1999	4.3	8.2	14.2	3.1	6.9	12.3	9.7	17.9	28.8
Switzerland 2002	3.5	7.6	14.4	2.9	6.7	17.0	7.2	18.4	29.9
R.O.C. Taiwan 2005	5.0	9.5	15.8	3.0	7.7	15.0	18.8	28.7	38.5
Belgium 2000	3.7	8.1	16.1	3.5	7.2	12.7	5.8	15.4	35.9
Canada 2000	7.2	12.4	18.9	8.1	15.5	23.8	1.4	5.4	16.2
UK 2004	5.4	11.6	19.2	5.7	14.0	24.2	6.1	16.5	28.6
Poland 1999	8.4	13.2	19.3	11.9	18.5	26.7	3.7	7.0	11.9
Italy 2000	7.4	12.8	20.0	10.5	16.6	26.5	5.6	14.3	22.6
Australia 2003	5.4	12.2	20.4	6.9	14.0	22.1	5.8	22.3	44.9
Spain 2000	7.6	14.2	20.8	7.4	14.9	21.4	9.3	23.3	33.8
Greece 2000	8.6	14.3	21.4	6.7	12.7	18.7	17.0	26.8	38.3
Ireland 2000	7.4	16.2	22.5	7.8	15.8	21.8	15.2	36.8	54.9
Israel 2001	7.5	15.6	23.5	7.3	18.0	28.5	13.1	21.6	30.5
USA 2004	11.4	17.3	24.1	14.4	21.2	29.1	14.3	24.6	34.7
Mexico 2004	12.6	18.4	25.3	15.4	22.2	30.1	19.3	27.3	35.2
Russia 2000	13.7	18.7	25.6	16.6	22.1	28.8	7.9	13.7	24.0
Mean LIS-30	5.5	10.2	16.8	6.1	11.3	18.4	7.3	14.9	26.7

Source: LIS Key figures (www.lisproject.org)

Poverty for total population, children and the elderly in 30 countries, 1979-2005 (poverty line 60% median income)

	Interval		Begin			End			Change		
	Begin	End	Total population	Children	Elderly	Total population	Children	Elderly	Total population	Children	Elderly
Australia	1981	2003	18.4	20.2	49.7	20.4	22.1	44.9	2.0	1.9	-4.8
Austria	1987	2000	11.7	9.9	30.0	13.4	15.9	21.4	1.7	6.0	-8.6
Belgium	1985	2000	10.5	10.7	21.2	16.1	12.7	35.9	5.6	1.9	14.7
Canada	1981	2000	18.9	21.4	39.3	18.9	23.8	16.2	0.0	2.4	-23.2
Czech Republic	1992	1996	6.5	5.4	18.2	10.5	12.2	21.9	4.0	6.7	3.7
Denmark	1987	2004	17.3	8.8	55.9	13.2	10.5	31.1	-4.1	1.6	-24.7
Finland	1987	2004	10.1	4.7	30.9	12.4	8.0	24.8	2.4	3.3	-6.2
France	1981	2000	13.4	13.2	0.0	13.7	15.9	16.2	0.3	2.7	16.2
Germany	1981	2000	10.6	8.1	25.7	13.4	14.2	18.6	2.8	6.1	-7.1
Greece	1995	2000	21.5	19.4	35.6	21.4	18.7	38.3	-0.1	-0.7	2.6
Hungary	1991	1999	14.3	12.0	28.6	12.7	15.2	12.6	-1.7	3.2	-16.1
Ireland	1987	2000	20.0	25.1	25.5	22.5	21.8	54.9	2.5	-3.2	29.4
Israel	1879	2001	18.9	19.3	43.0	23.5	28.5	30.5	4.7	9.1	-12.5
Italy	1986	2000	17.4	19.0	21.8	20.0	26.5	22.6	2.6	7.4	0.9
Luxembourg	1985	2004	11.0	12.9	22.5	13.7	19.5	10.0	2.7	6.6	-12.5
Mexico	1984	2004	27.5	31.6	32.3	25.3	30.1	35.2	-2.3	-1.5	2.9
Netherlands	1983	1999	7.6	6.9	6.8	11.1	12.2	15.0	3.5	5.3	8.2
Norway	1979	2000	12.0	9.1	31.6	12.3	7.5	28.8	0.3	-1.6	-2.8
Poland	1986	1999	17.0	19.7	31.2	19.3	26.7	11.9	2.4	7.0	-19.3
R.O.C. Taiwan	1981	2005	11.8	14.1	22.4	15.8	15.0	38.5	4.0	0.8	16.1
Romania	1995	1997	15.0	18.9	22.0	14.1	16.8	19.0	-0.9	-2.1	-3.0
Russia	1992	2000	26.0	23.6	49.3	25.6	28.8	24.0	-0.4	5.2	-25.3
Slovak Rep.	1992	1996	6.3	5.2	14.8	12.1	16.0	0.0	5.8	10.8	-14.8
Slovenia	1997	1999	15.3	15.2	28.2	14.2	12.3	28.8	-1.1	-2.9	0.6
Spain	1980	2000	19.5	20.4	30.7	20.8	21.4	33.8	1.3	1.0	3.0
Sweden	1981	2005	9.1	7.7	11.8	12.0	10.9	20.6	2.8	3.2	8.7
Switzerland	1982	2002	13.5	9.5	36.8	14.4	17.0	29.9	0.8	7.5	-6.9
UK	1979	2004	17.3	15.3	49.5	19.2	24.2	28.6	1.9	8.9	-21.0
USA	1979	2004	21.3	26.9	37.4	24.1	29.1	34.7	2.8	2.2	-2.7
Mean LIS-30	1982	2001	15.2	15.0	30.3	16.8	18.4	26.7	1.6	3.4	-3.6
<i>Standard deviation</i>			5.3	7.0	12.7	4.6	6.6	11.3	2.3	3.7	13.2
<i>Coefficient of variation</i>			0.35	0.47	0.42	0.27	0.36	0.42	1.44	1.10	-3.67

Source: LIS Key figures (www.lisproject.org), and own calculations

	OECD Poverty Indicators		Gross and net social expenditure in % GDP			
	Poverty rate OECD	Poverty gap OECD	Gross public	Net public	Gross total	Net total
	2000	2000	2003	2003	2003	2003
Australia	11.2	26.7	17.9	17.2	22.4	20.6
Austria	9.3	30.0	26.1	20.6	28.1	22.2
Canada	10.3	32.0	17.3	17.2	22.7	21.2
Denmark	4.3	24.1	27.6	20.3	30.1	21.6
Finland	6.4	20.7	22.5	17.7	27.1	20.6
France	7.0	25.8	28.7	25.5	31.4	28.0
Germany	9.8	31.7	27.3	25.8	30.2	27.6
Ireland	15.4	24.0	15.9	14.0	16.4	14.3
Italy	12.9	36.5	24.2	20.6	26.4	22.3
Japan	15.3	36.1	17.7	17.6	21.0	20.6
Mexico	20.3	36.0	6.8	7.6	7.0	7.5
Netherlands	6.0	29.4	20.7	17.9	28.3	23.1
New Zealand	10.4	23.3	18.0	15.1	18.5	15.5
Norway	6.3	28.2	25.1	20.2	27.7	21.7
Portugal	13.7	24.7	23.5	20.8	25.0	22.1
Sweden	5.3	26.1	31.3	24.3	34.3	26.1
United Kingdom	11.4	22.9	20.6	19.3	27.4	24.6
United States	17.1	34.7	16.2	17.3	26.2	25.2
Mean OECD-18	10.7	28.5	21.5	18.8	25.0	21.4
<i>Standard deviation</i>	4.3	4.9	0.267	0.222	0.248	0.224
<i>Coefficient of variation</i>	0.405	0.172	5.76	4.18	6.19	4.79
Mean EU15 Members (11)	9.2	26.9	24.4	20.6	27.7	23.0
<i>Standard deviation</i>	3.6	4.3	4.2	3.4	4.3	3.6
<i>Coefficient of variation</i>	0.387	0.162	0.171	0.164	0.157	0.158
Mean non-EU15 countries (7)	13.0	31.0	17.0	16.0	20.8	18.9
<i>Standard deviation</i>	4.4	4.7	5.0	3.7	6.3	5.3
<i>Coefficient of variation</i>	0.340	0.150	0.291	0.233	0.303	0.283

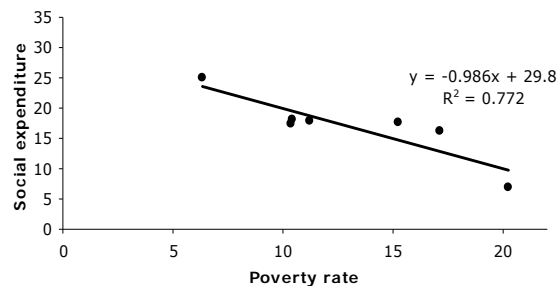
Notes:

- Poverty rates are measured as the proportion of individuals with equivalised disposable income less than 50% of the median income of the entire population.
- Poverty gaps are measured as the percentage difference between the average income of the poor and the 50% of median income poverty threshold.
- "2000" data refer to the year 2000 in all countries except 1999 for Australia, and Austria; 2001 for Germany, and New Zealand.

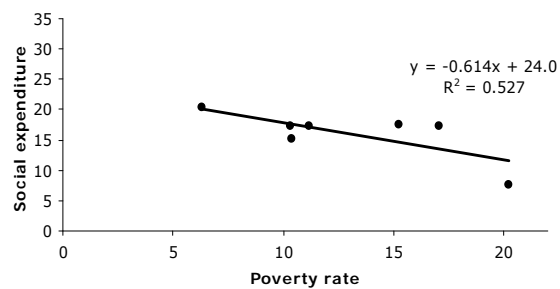
Source: OECD Poverty Indicator Data based on Förster and Mira D'Ercole (2005); Net Social Expenditure, 2007 edition; and own calculations

Non-EU15 countries (50% poverty line)

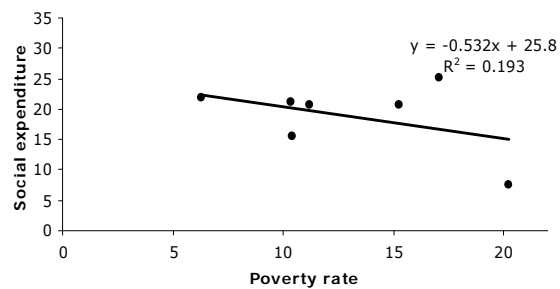
Gross public social expenditure and Poverty rates



Net public social expenditure and Poverty rates

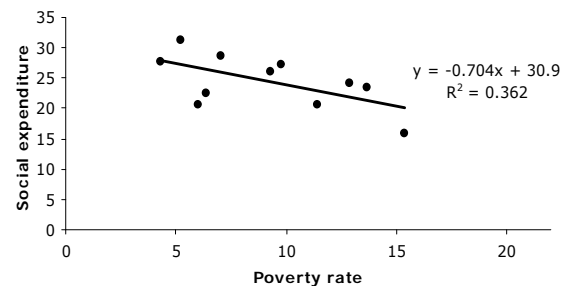


Net total social expenditure and Poverty rates

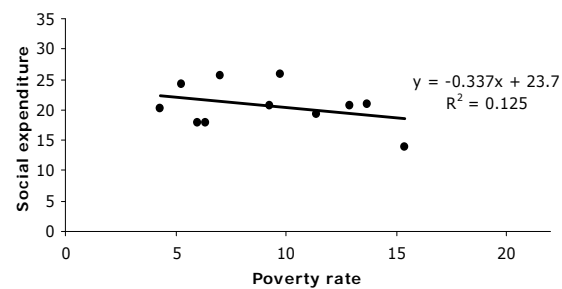


EU15 countries (50% poverty line)

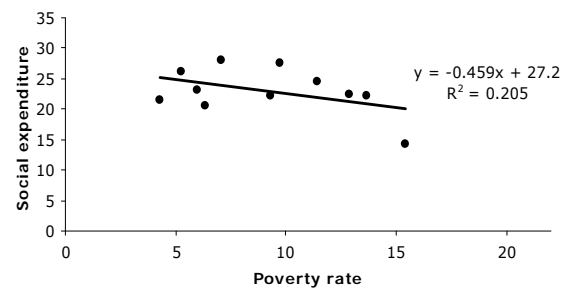
Gross public social expenditure and Poverty rates



Net public social expenditure and Poverty rates



Net total social expenditure and Poverty rates



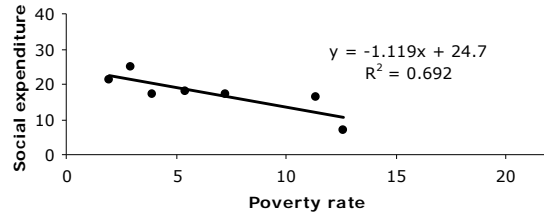
Source: OECD Poverty Indicator Data based on Förster and Mira D'Ercole (2005), Net Social Expenditure, 2007 edition, and own calculations

		LIS Database			Gross and net social expenditure in % GDP			
		Poverty rate LIS (40%)	Poverty rate LIS (50%)	Poverty rate LIS (60%)	Gross public	Net public	Gross total	Net total
		around 2000	around 2000	around 2000	2003	2003	2003	2003
Australia	Australia 2003	5.4	12.2	20.4	17.9	17.2	22.4	20.6
Austria	Austria 2000	3.6	7.7	13.4	26.1	20.6	28.1	22.2
Belgium	Belgium 2000	3.7	8.1	16.1	26.5	22.9	30.4	26.0
Canada	Canada 2000	7.2	12.4	18.9	17.3	17.2	22.7	21.2
Czech Republic	Czech Rep. 1996	2.0	4.9	10.5	21.1	19.5	21.5	19.8
Denmark	Denmark 2004	2.3	5.6	13.2	27.6	20.3	30.1	21.6
Finland	Finland 2000	2.1	5.4	12.4	22.5	17.7	27.1	20.6
France	France 2000	2.8	7.3	13.7	28.7	25.5	31.4	28.0
Germany	Germany 2000	4.6	8.4	13.4	27.3	25.8	30.2	27.6
Ireland	Ireland 2000	7.4	16.2	22.5	15.9	14.0	16.4	14.3
Italy	Italy 2000	7.4	12.8	20.0	24.2	20.6	26.4	22.3
Mexico	Mexico 2004	12.6	18.4	25.3	6.8	7.6	7.0	7.5
Netherlands	Netherlands 1999	2.5	4.9	11.1	20.7	17.9	28.3	23.1
Norway	Norway 2000	3.0	6.4	12.3	25.1	20.2	27.7	21.7
Slovak Republic	Slovak Rep. 1996	3.9	7.0	12.1	17.3	16.1	18.6	17.0
Spain	Spain 2000	7.6	14.2	20.8	20.3	17.6	20.6	17.7
Sweden	Sweden 2005	2.6	5.6	12.0	31.3	24.3	34.3	26.1
United Kingdom	UK 2004	5.4	11.6	19.2	20.6	19.3	27.4	24.6
United States	USA 2004	11.4	17.3	24.1	16.2	17.3	26.2	25.2
Mean OECD-19		5.1	9.8	16.4	21.8	19.0	25.1	21.4
<i>Standard deviation</i>		3.0	4.3	4.6	5.7	4.1	6.2	4.8
<i>Coefficient of variation</i>		0.587	0.439	0.283	0.260	0.216	0.247	0.223
Mean EU15 Members (12)		4.3	9.0	15.7	24.3	20.6	27.6	22.8
<i>Standard deviation</i>		2.0	3.6	3.8	4.2	3.4	4.6	3.9
<i>Coefficient of variation</i>		0.464	0.404	0.241	0.173	0.167	0.168	0.170
Mean non-EU15 countries (7)		6.5	11.2	17.6	17.4	16.4	20.9	19.0
<i>Standard deviation</i>		3.8	5.0	5.6	5.2	3.9	6.3	5.2
<i>Coefficient of variation</i>		0.590	0.442	0.318	0.297	0.235	0.302	0.273

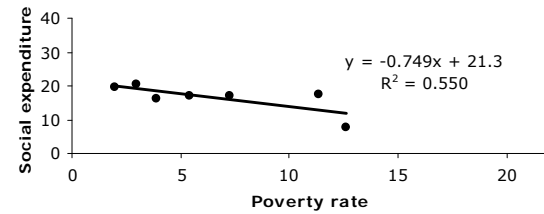
Source: Net Social Expenditure, 2007 edition; LIS Key figures from <http://www.lisproject.org>; and own calculations

Non-EU15 countries (40% poverty line)

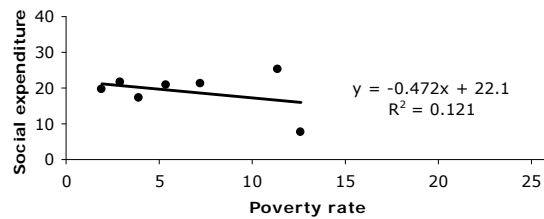
Gross public social expenditure and Poverty rates



Net public social expenditure and Poverty rates

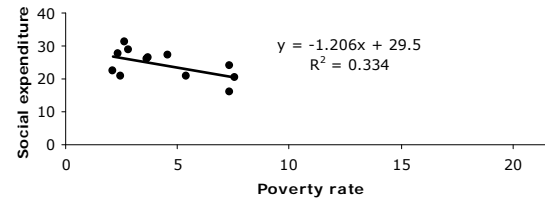


Net total social expenditure and Poverty rates

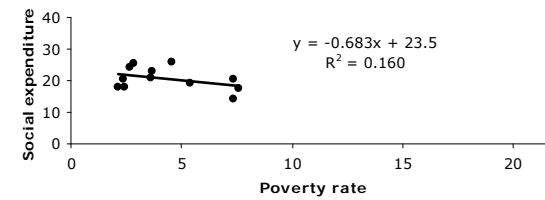


EU15 countries (40% poverty line)

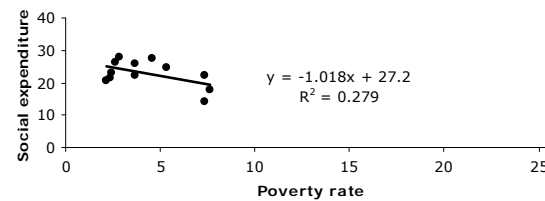
Gross public social expenditure and Poverty rates



Net public social expenditure and Poverty rates



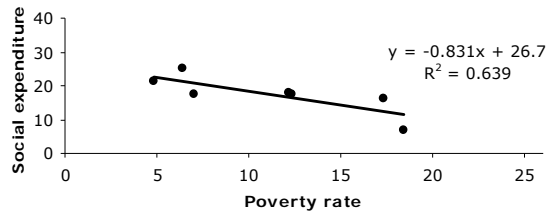
Net total social expenditure and Poverty rates



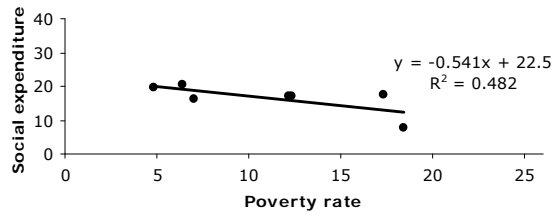
Source: Net Social Expenditure, 2007 edition; LIS Key figures from <http://www.lisproject.org>; and own calculations.

Non-EU15 countries (50% poverty line)

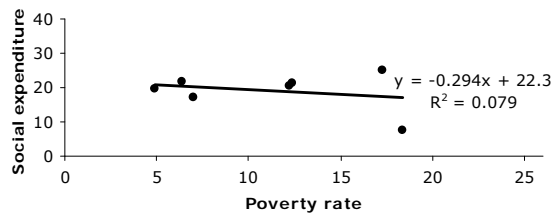
Gross public social expenditure and Poverty rates



Net public social expenditure and Poverty rates

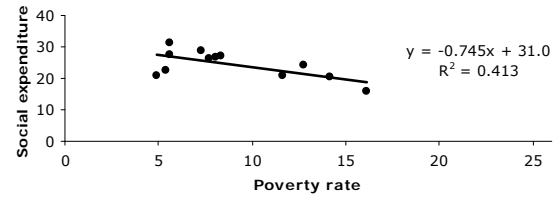


Net total social expenditure and Poverty rates

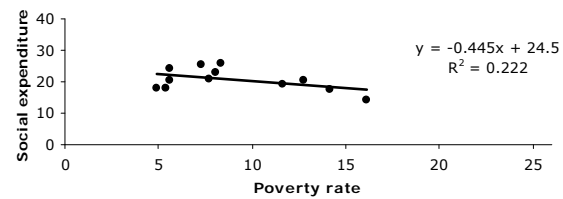


EU15 countries (50% poverty line)

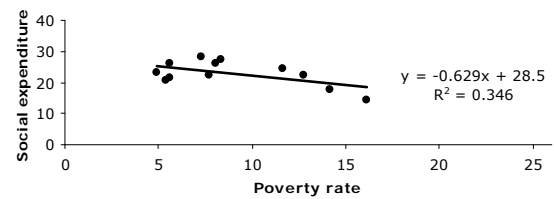
Gross public social expenditure and Poverty rates



Net public social expenditure and Poverty rates



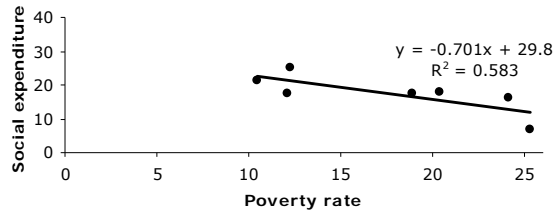
Net total social expenditure and Poverty rates



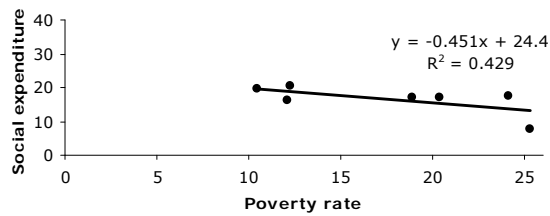
Source: Net Social Expenditure, 2007 edition; LIS Key figures from <http://www.lisproject.org>; and own calculations.

Non-EU15 countries (60% poverty line)

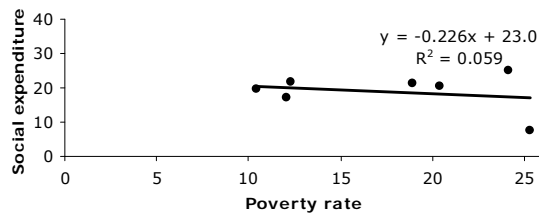
Gross public social expenditure and Poverty rates



Net public social expenditure and Poverty rates

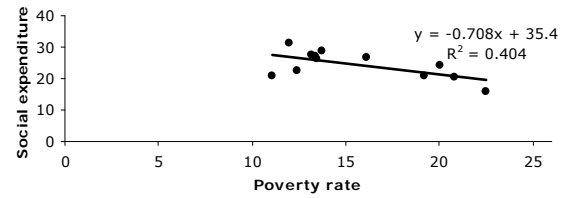


Net total social expenditure and Poverty rates

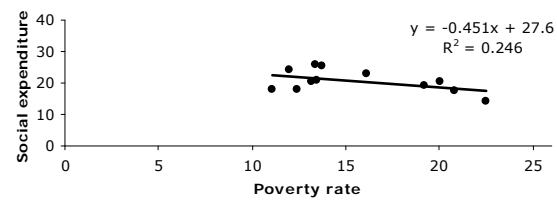


EU15 countries (60% poverty line)

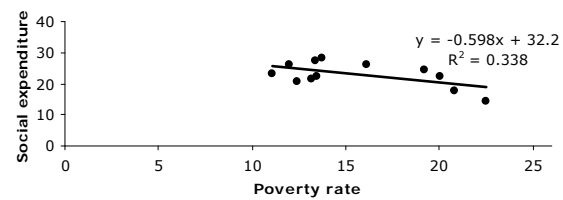
Gross public social expenditure and Poverty rates



Net public social expenditure and Poverty rates



Net total social expenditure and Poverty rates



Source: Net Social Expenditure, 2007 edition; LIS Key figures from <http://www.lisproject.org>; and own calculations.

	OECD Poverty Indicators: Poverty				
	mid-1980s	mid-1990s	2000	change 2000 - mid-1980s	change 2000 - mid-1990s
Australia	12.2	9.3	11.2	-1.0	1.9
Austria	6.1	7.4	9.3	3.2	1.9
Canada	11.6	9.5	10.3	-1.3	0.8
Denmark	5.3	3.8	4.3	-1.0	0.5
Finland	5.1	4.9	6.4	1.3	1.5
France	8.0	7.5	7.0	-1.0	-0.5
Germany	6.4	9.1	9.8	3.4	0.7
Greece	13.4	13.9	13.5	0.1	-0.4
Ireland	10.6	11.0	15.4	4.8	4.4
Italy	10.3	14.2	12.9	2.6	-1.3
Japan	11.9	13.7	15.3	3.4	1.6
Luxembourg	5.4	5.5	5.5	0.1	0.0
Netherlands	3.1	6.3	6.0	2.9	-0.3
New Zealand	5.8	7.8	10.4	4.6	2.6
Norway	6.9	8.0	6.3	-0.6	-1.7
Sweden	6.0	3.7	5.3	-0.7	1.6
United Kingdom	6.9	10.9	11.4	4.5	0.5
United States	17.9	16.7	17.1	-0.8	0.4
Mean OECD-20	8.5	9.1	9.9	1.4	0.8
<i>Standard deviation</i>	3.69	3.64	3.79	0.1	0.1
<i>Coefficient of variation</i>	0.434	0.402	0.385	-0.049	-0.017
Mean EU15 Members (12)	7.2	8.2	8.9	1.7	0.7
<i>Standard deviation</i>	2.8	3.5	3.5	0.8	0.0
<i>Coefficient of variation</i>	0.383	0.428	0.398	0.015	-0.030

	Gross Public Social Expenditure, % GDP					
	1980	1990	2000	2003	change 1980-2000	change 1990-2000
	10.9	14.1	17.9	17.9	6.9	3.8
	22.6	23.7	25.3	26.1	2.8	1.6
	14.1	18.4	16.7	17.3	2.6	-1.7
	25.2	25.5	25.8	27.6	0.6	0.3
	18.4	24.5	21.3	22.5	3.0	-3.2
	20.8	25.3	27.6	28.7	6.7	2.3
	23.0	22.5	26.3	27.3	3.3	3.8
	11.5	18.6	21.3	21.3	9.8	2.7
	16.8	15.5	13.6	15.9	-3.1	-1.9
	18.0	19.9	23.2	24.2	5.2	3.2
	10.3	11.2	16.1	17.7	5.8	4.9
	23.6	21.9	20.4	22.2	-3.2	-1.5
	24.1	24.4	19.3	20.7	-4.8	-5.0
	17.1	21.8	19.1	18.0	2.0	-2.7
	16.9	22.6	22.2	25.1	5.4	-0.4
	28.6	30.5	28.8	31.3	0.2	-1.8
	16.6	17.2	19.1	20.6	2.6	2.0
	13.3	13.4	14.6	16.2	1.3	1.2
	18.4	20.6	21.0	22.2	2.6	0.4
	5.15	4.85	4.32	4.52	-0.83	-0.53
	0.280	0.235	0.205	0.203	-0.074	-0.030
	20.8	22.5	22.7	24.0	1.9	0.2
	4.5	4.0	4.1	4.1	-0.36	0.16
	0.216	0.177	0.182	0.171	-0.034	0.005

Notes:

- Poverty rates are measured as the proportion of individuals with equalized disposable income less than 50% of the median income of the entire population.

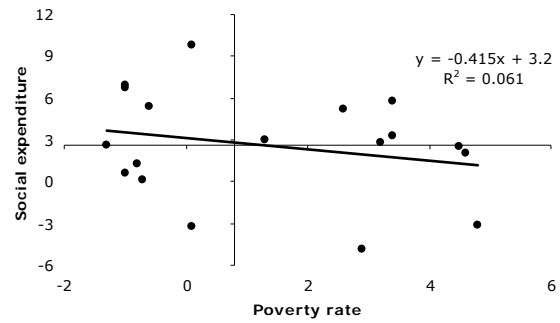
- "2000" data refer to the year 2000 in all countries except 1999 for Australia, Austria and Greece; 2001 for Germany, Luxembourg, and New Zealand; and 2002 for Mexico

and Turkey; "Mid-1990s" data refer to the year 1995 in all countries except 1993 for Austria; 1994 for Australia, Denmark, France, Germany, Greece, Ireland, Japan, Mexico and Turkey; and 1996 for New Zealand; "Mid-1980s" data refer to the year 1983 for Austria, Denmark and Sweden; 1984 for Australia, France, Italy and Mexico;

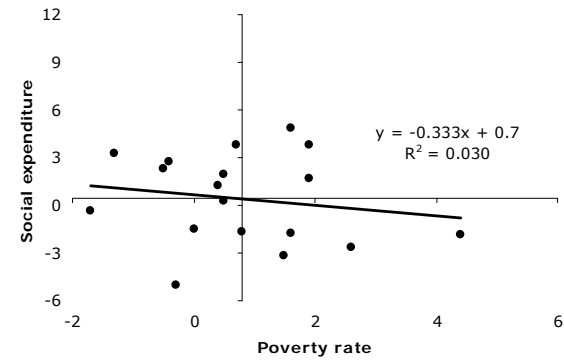
1985 for Canada, Japan, the Netherlands, Spain and the United Kingdom; 1986 data for Finland, Luxembourg, New Zealand and Norway; 1987 for Ireland and Turkey; 1988 for Greece; and 1989 for the United States.

Source: OECD Poverty Indicator Data based on Förster and Mira D'Ercole (2005); OECD Social Expenditure Database (SOCX); and own calculations

All countries: Change in Gross public social expenditure and Change in Poverty rate (mid 1980's - 2000)



All countries: Change in Gross public social expenditure and Change in Poverty rate (mid 1990's - 2000)

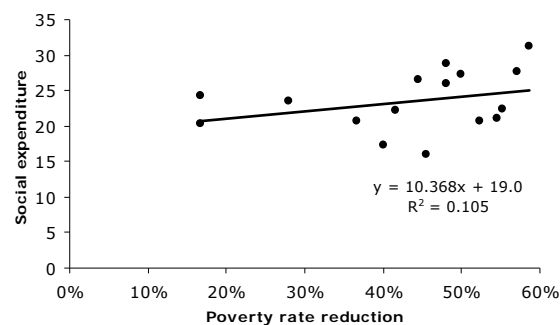


Source: OECD Poverty Indicator Data based on Förster and Mira D'Ercole (2005); OECD Social Expenditure Database (SOCX); and own calculations

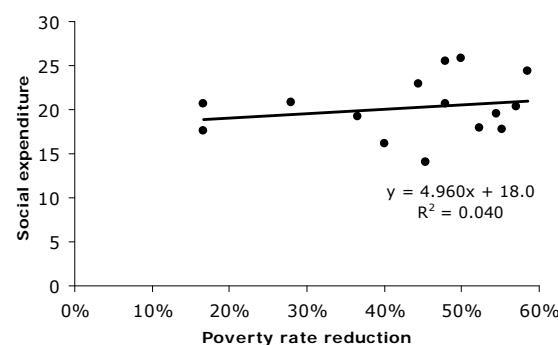
Effectiveness of poverty reduction in the EU, around 2003-2005

	Poverty rate total population, 2005 (poverty line at 60% median income)				Social expenditures in % GDP, 2003			
	Before social transfers and taxes	After social transfers and taxes	Effect social transfers and taxes	Reduction in %	Gross public	Net public	Gross total	Net total
Austria	25	13	12	48%	26.1	20.6	28.1	22.2
Belgium	27	15	12	44%	26.5	22.9	30.4	26.0
Czech Republic	22	10	12	55%	21.1	19.5	21.5	19.8
Denmark	28	12	16	57%	27.6	20.3	30.1	21.6
Finland	29	13	16	55%	22.5	17.7	27.1	20.6
France	25	13	12	48%	28.7	25.5	31.4	28.0
Germany	26	13	13	50%	27.3	25.8	30.2	27.6
Ireland	33	18	15	45%	15.9	14.0	16.4	14.3
Italy	24	20	4	17%	24.2	20.6	26.4	22.3
Luxembourg	24	14	10	42%	22.2	n.a.	n.a.	n.a.
Netherlands	21	10	11	52%	20.7	17.9	28.3	23.1
Portugal	25	18	7	28%	23.5	20.8	25.0	22.1
Slovakia	20	12	8	40%	17.3	16.1	18.6	17.0
Spain	24	20	4	17%	20.3	17.6	20.6	17.7
Sweden	29	12	17	59%	31.3	24.3	34.3	26.1
UK	30	19	11	37%	20.6	19.3	27.4	24.6
Mean	25.8	14.5	11.3	44%	23.5	20.2	26.4	22.2

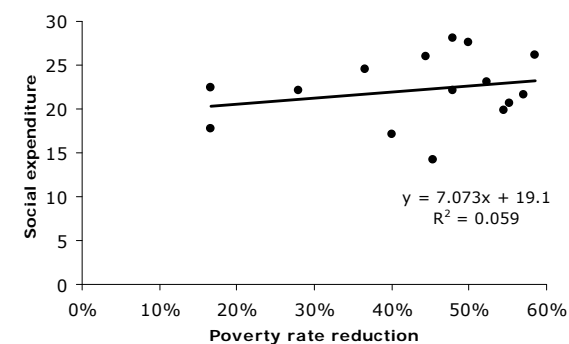
EU-countries: Gross public social expenditure and Poverty rate reduction



EU-countries: Net public social expenditure and Poverty rate reduction



EU-countries: Net total social expenditure and Poverty rate reduction

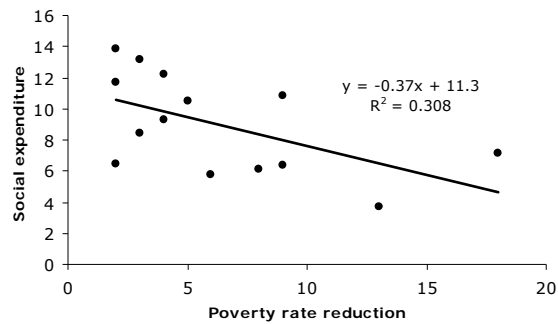


Source: Eurostat: EU-SILC; Net Social Expenditure, 2007 edition; OECD Social Expenditure Database (SOCX); and own calculations

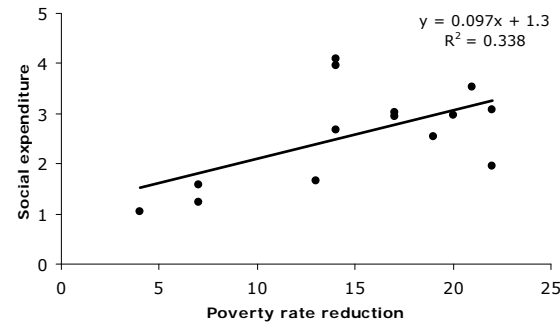
Effectiveness of poverty reduction elderly and children in the EU, around 2003-2005

	<i>Poverty rate elderly, 2005 (poverty line at 60% median income)</i>				<i>Poverty rate children, 2005 (poverty line at 60% median income)</i>				<i>Gross social expenditure in % GDP, 2003 (social programs)</i>				OA + S
	Before social transfers and taxes	After social transfers and taxes	Effect social transfers and taxes	Reduction in %	Before social transfers and taxes	After social transfers and taxes	Effect social transfers and taxes	Reduction in %	Old age	Survivors	Family	Other	
Austria	19	16	bias	bias	37	15	22	59%	12.8	0.4	3.1	20.7	13.2
Belgium	27	23	bias	bias	29	15	14	48%	7.2	2.1	2.7	17.0	9.3
Denmark	35	17	bias	bias	24	10	14	58%	7.2	0.0	3.9	12.9	7.2
Finland	31	22	bias	bias	30	10	20	67%	5.8	0.6	3.0	20.6	6.4
France	20	16	bias	bias	31	14	17	55%	10.5	1.8	3.0	15.7	12.3
Germany	15	13	bias	bias	34	12	22	65%	11.3	0.4	1.9	20.3	11.7
Ireland	40	27	bias	bias	41	22	19	46%	2.9	0.8	2.5	34.8	3.7
Italy	24	22	bias	bias	32	25	7	22%	11.4	2.5	1.2	16.9	13.9
Luxembourg	10	8	bias	bias	34	20	14	41%	4.5	2.0	4.1	23.4	6.5
Netherlands	12	6	bias	bias	27	14	13	48%	5.4	0.4	1.6	19.6	5.8
Portugal	31	26	bias	bias	28	21	7	25%	8.8	1.6	1.6	16.0	10.5
Spain	34	31	bias	bias	28	24	4	14%	7.9	0.6	1.0	18.5	8.4
Sweden	21	12	bias	bias	36	15	21	58%	10.1	0.7	3.5	21.7	10.8
UK	36	28	bias	bias	41	24	17	41%	5.9	0.2	2.9	32.0	6.1
Mean	25.4	19.1	bias	bias	32.3	17.2	15.1	47%	8.0	1.0	2.6	20.7	9.0

EU-countries: Gross public social expenditure for old age and survivors and Poverty rate reduction elderly
Biased



EU-countries: Gross public social expenditure for family programs and Poverty rate reduction children



Source: Eurostat: EU-SILC; Net Social Expenditure, 2007 edition; OECD Social Expenditure Database (SOCX); and own calculations

**Percent poverty for total population, children en the elderly in 30 countries;
poverty line at 40%, 50% and 60% median income**

	Total population			Children			Elderly		
	40%	50%	60%	40%	50%	60%	40%	50%	60%
EU15 (14)									
Austria 2000	3.6	7.7	13.4	3.8	7.8	15.9	5.8	13.6	21.4
Belgium 2000	3.7	8.1	16.1	3.5	7.2	12.7	5.8	15.4	35.9
Denmark 2004	2.3	5.6	13.2	1.5	3.9	10.5	1.1	8.5	31.1
Finland 2000	2.1	5.4	12.4	1.3	2.8	8.0	1.1	8.5	24.8
France 2000	2.8	7.3	13.7	2.6	7.9	15.9	3.0	8.5	16.2
Germany 2000	4.6	8.4	13.4	5.5	9.0	14.2	4.0	10.4	18.6
Greece 2000	8.6	14.3	21.4	6.7	12.7	18.7	17.0	26.8	38.3
Ireland 2000	7.4	16.2	22.5	7.8	15.8	21.8	15.2	36.8	54.9
Italy 2000	7.4	12.8	20.0	10.5	16.6	26.5	5.6	14.3	22.6
Luxembourg 2004	3.2	8.8	13.7	4.9	13.3	19.5		4.5	10.0
Netherlands 1999	2.5	4.9	11.1	2.9	6.3	12.2		1.6	15.0
Spain 2000	7.6	14.2	20.8	7.4	14.9	21.4	9.3	23.3	33.8
Sweden 2005	2.6	5.6	12.0	2.0	4.7	10.9	1.5	6.6	20.6
UK 2004	5.4	11.6	19.2	5.7	14.0	24.2	6.1	16.5	28.6
OECD (5)									
Australia 2003	5.4	12.2	20.4	6.9	14.0	22.1	5.8	22.3	44.9
Canada 2000	7.2	12.4	18.9	8.1	15.5	23.8	1.4	5.4	16.2
Norway 2000	3.0	6.4	12.3	1.6	3.4	7.5	1.2	11.9	28.8
Switzerland 2002	3.5	7.6	14.4	2.9	6.7	17.0	7.2	18.4	29.9
USA 2004	11.4	17.3	24.1	14.4	21.2	29.1	14.3	24.6	34.7

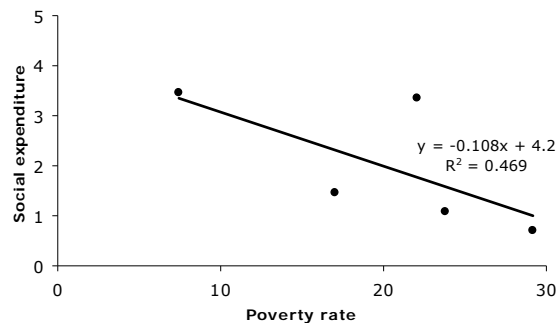
Gross Public Social Expenditure, % GDP, 2003; social programs

EU15 (14)	total	old age	survivors	family	other
Austria	26.1	12.8	0.4	3.1	9.8
Belgium	26.5	7.2	2.1	2.7	14.5
Denmark	27.6	7.2	0.0	3.9	16.5
Finland	22.5	5.8	0.6	3.0	13.1
France	28.7	10.5	1.8	3.0	13.4
Germany	27.3	11.3	0.4	1.9	13.6
Greece	21.3	11.5	0.8	1.3	7.7
Ireland	15.9	2.9	0.8	2.5	9.7
Italy	24.2	11.4	2.5	1.2	9.1
Luxembourg	22.2	4.5	2.0	4.1	11.7
Netherlands	20.7	5.4	0.4	1.6	13.3
Spain	20.3	7.9	0.6	1.0	10.8
Sweden	31.3	10.1	0.7	3.5	16.9
UK	20.6	5.9	0.2	2.9	11.6
OECD (5)					
Australia	17.9	3.9	0.2	3.3	10.4
Canada	17.3	4.0	0.4	1.1	11.8
Norway	25.1	7.0	0.3	3.4	14.3
Switzerland	20.5	6.8	0.4	1.5	11.9
USA	16.2	5.5	0.8	0.7	9.2

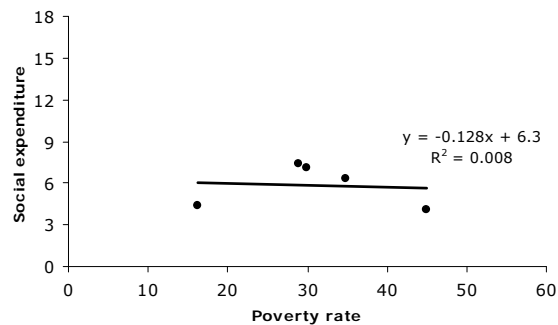
Source: LIS Key figures from <http://www.lisproject.org>; Net Social Expenditure, 2007 edition from <http://www.oecd.org/dataoecd/14/23/38143827.xls>; OECD Social Expenditure Database (SOCX) based on www.oecd.org/els/social/expenditure; and own calculations

Non-EU15 countries (60% poverty line)

Gross public social expenditure of family programs and Poverty rates children

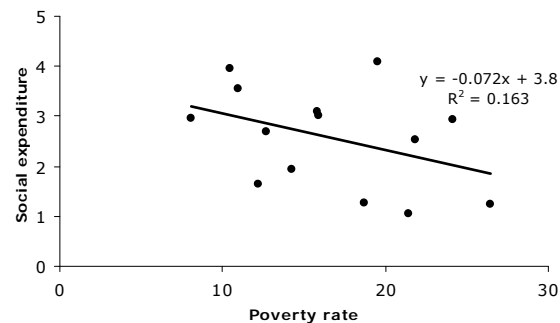


Gross public social expenditure of old age and survivors programs and Poverty rates elderly

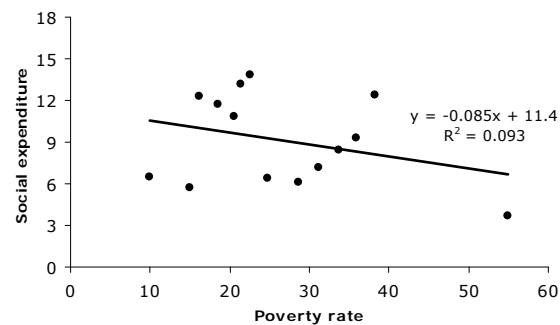


EU15 countries (60% poverty line)

Gross public social expenditure of family programs and Poverty rates children



Gross public social expenditure of old age and survivors programs and Poverty rates elderly



Source: LIS Key figures from <http://www.lisproject.org>; OECD Social Expenditure Database (SOCX) based on www.oecd.org/els/social/expenditure; and own calculations

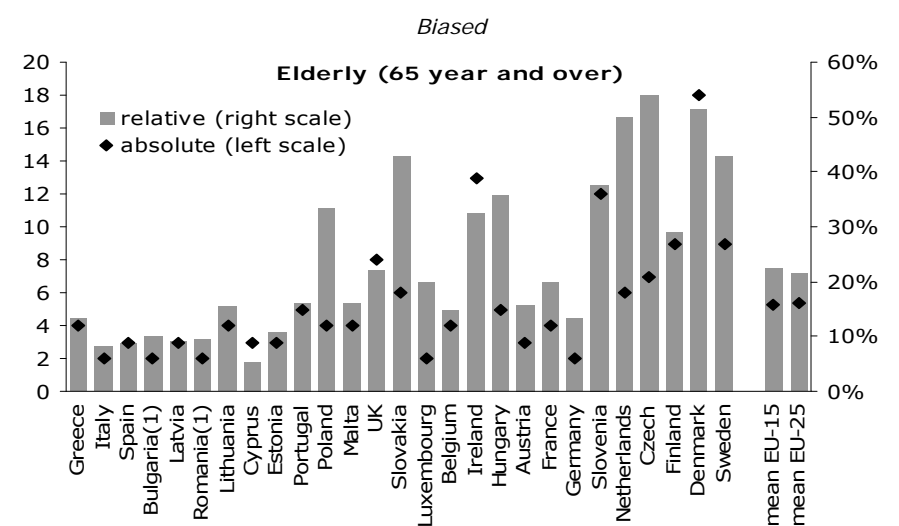
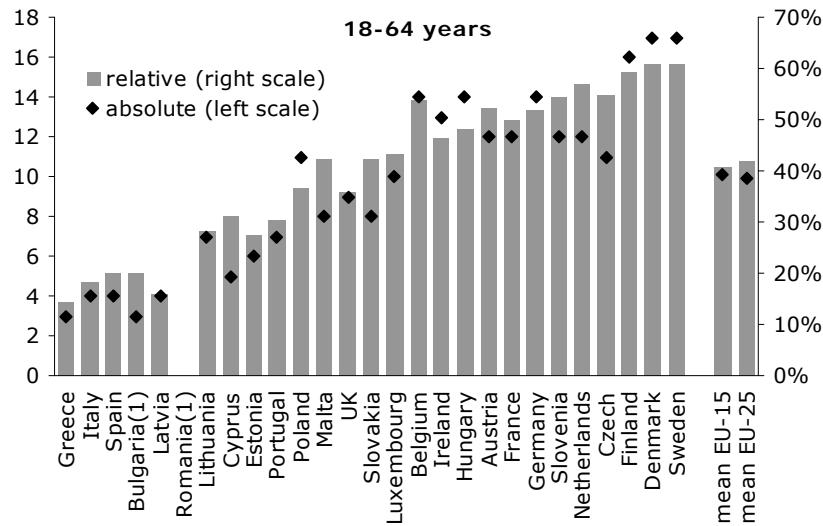
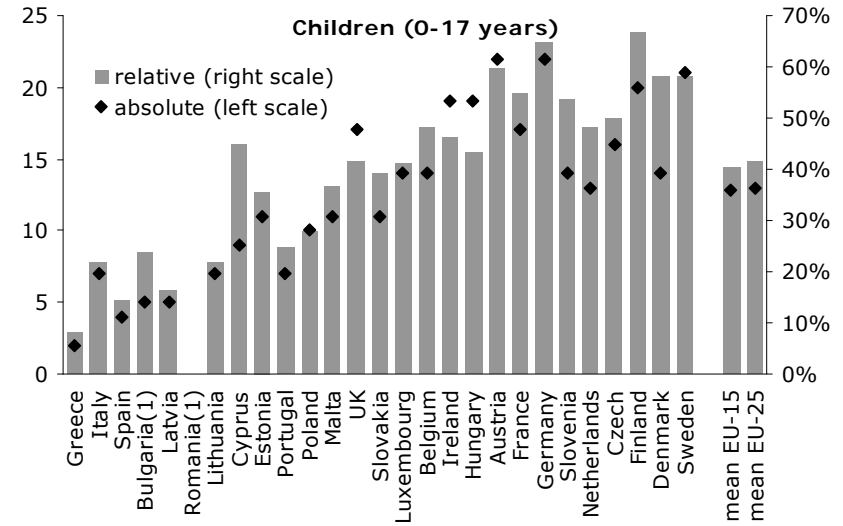
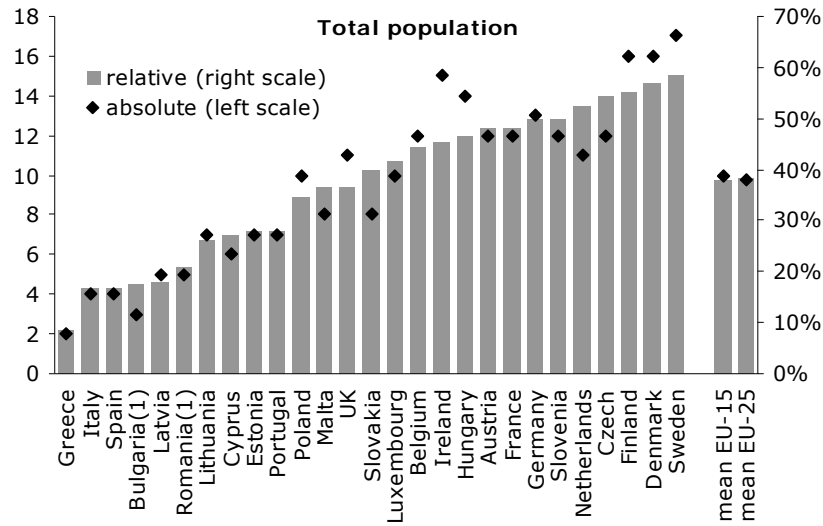
At-risk-of-poverty rate before and after social transfers and taxes by age, 2005

	<i>Before all social transfers (except old-age and survivors' benefits)</i>				<i>After social transfers and taxes</i>				<i>Effect of social transfers and taxes</i>				<i>Relative antipoverty effect</i>			
	Overall	0-17 years	18-64 years	65 year and over	Overall	0-17 years	18-64 years	65 year and over	Overall	0-17 years	18-64 years	65 year and over	Overall	0-17 years	18-64 years	65 year and over
Austria	25	37	23	19	13	15	11	16	12	22	12	bias	48%	59%	52%	bias
Belgium	27	29	26	27	15	15	12	23	12	14	14	bias	44%	48%	54%	bias
Bulgaria ⁽¹⁾	17	21	15	20	14	16	12	18	3	5	3	bias	18%	24%	20%	bias
Cyprus	22	20	16	55	16	11	11	52	6	9	5	bias	27%	45%	31%	bias
Czech Republic	22	32	20	13	10	16	9	6	12	16	11	bias	55%	50%	55%	bias
Denmark	28	24	28	35	12	10	11	17	16	14	17	bias	57%	58%	61%	bias
Estonia	25	31	22	28	18	20	16	25	7	11	6	bias	28%	35%	27%	bias
Finland	29	30	27	31	13	10	11	22	16	20	16	bias	55%	67%	59%	bias
France	25	31	24	20	13	14	12	16	12	17	12	bias	48%	55%	50%	bias
Germany	26	34	27	15	13	12	13	13	13	22	14	bias	50%	65%	52%	bias
Greece	23	25	21	30	21	23	18	26	2	2	3	bias	9%	8%	14%	bias
Hungary	30	44	29	14	16	25	15	9	14	19	14	bias	47%	43%	48%	bias
Ireland	33	41	28	40	18	22	15	27	15	19	13	bias	45%	46%	46%	bias
Italy	24	32	22	24	20	25	18	22	4	7	4	bias	17%	22%	18%	bias
Latvia	28	31	25	33	23	26	21	30	5	5	4	bias	18%	16%	16%	bias
Lithuania	27	32	25	26	20	25	18	22	7	7	7	bias	26%	22%	28%	bias
Luxembourg	24	34	23	10	14	20	13	8	10	14	10	bias	42%	41%	43%	bias
Malta	22	30	19	25	14	19	11	21	8	11	8	bias	36%	37%	42%	bias
Netherlands	21	27	21	12	10	14	9	6	11	13	12	bias	52%	48%	57%	bias
Poland	29	36	30	12	19	26	19	8	10	10	11	bias	34%	28%	37%	bias
Portugal	25	28	23	31	18	21	16	26	7	7	7	bias	28%	25%	30%	bias
Romania ⁽¹⁾	24			21	19			19	5			bias	21%			bias
Slovakia	20	28	19	14	12	17	11	8	8	11	8	bias	40%	39%	42%	bias
Slovenia	24	26	22	32	12	12	10	20	12	14	12	bias	50%	54%	55%	bias
Spain	24	28	20	34	20	24	16	31	4	4	4	bias	17%	14%	20%	bias
Sweden	29	36	28	21	12	15	11	12	17	21	17	bias	59%	58%	61%	bias
United Kingdom	30	41	25	36	19	24	16	28	11	17	9	bias	37%	41%	36%	bias
Mean EU15	24.8	30.8	22.4	26.6	15.7	18.1	13.6	22.0	9.1	12.6	8.9	bias	37%	41%	39%	bias
Mean EU25	25.3	32.5	24.3	25.2	15.6	19.3	14.3	19.6	9.7	13.2	10.0	bias	38%	41%	41%	bias

Note: Bulgaria and Romania National HBS 2006, income data 2006.

Source: Eurostat: EU-SILC, Income data 2005; except for UK, income year 2006 and for Ireland moving income reference period (2005-2006)

Antipoverty effect of social transfers and taxes by age group, 2005



Source: Eurostat: EU-SILC, Income data 2005; except for UK, income year 2006 and for Ireland moving income reference period (2005-2006)

Correlation tests: Linkages between LIS poverty rates and gross and net social spending

	Poverty line	Gross public social expenditure			Net public social expenditure			Net total social expenditure		
		Intercept	X1	R ²	Intercept	X1	R ²	Intercept	X1	R ²
Non-EU15	40%, LIS	24.659 (9.80)** 0.000	-1.119 (-3.35)* 0.020	0.692 (0.631)	21.290 (9.32)** 0.000	-0.748 (-2.47) 0.056	0.550 (0.460)	22.068 (5.15)** 0.004	-0.472 (-0.83) 0.444	0.121 (-0.054)
EU15 countries	40%, LIS	29.521 (11.46)** 0.000	-1.206 (-2.24)* 0.049	0.334 (0.267)	23.511 (9.97)** 0.000	-0.683 (-1.38) 0.197	0.160 (0.077)	27.247 (11.02)** 0.000	-1.018 (-1.97) 0.077	0.279 (0.207)
All 19 countries	40%, LIS	28.896 (15.86)** 0.000	-1.393 (-4.55)** 0.000	0.549 (0.522)	23.492 (15.47)** 0.000	-0.869 (-3.40)** 0.003	0.405 (0.370)	25.436 (12.756)** 0.000	-0.783 (-2.334)* 0.032	0.243 (0.198)
Non-EU15	50%, LIS	26.715 (7.80)** 0.001	-0.831 (-2.98)* 0.031	0.639 (0.567)	22.502 (7.31)** 0.001	-0.541 (-2.16) 0.084	0.482 (0.378)	22.300 (4.042)** 0.010	-0.294 (-0.654) 0.542	0.079 (-0.105)
EU15 countries	50%, LIS	30.976** (11.41) 0.000	-0.745 (-2.65)* 0.024	0.413 (0.355)	24.549 (9.63)** 0.000	-0.445 (-1.69) 0.122	0.222 (0.144)	28.474 (10.763)** 0.000	-0.629 (-2.298)* 0.044	0.346 (0.280)
All 19 countries	50%, LIS	30.910** (12.89) 0.000	-0.935 (-4.17)** 0.001	0.506 (0.477)	24.722 (12.58)** 0.000	-0.580 (-3.16)** 0.006	0.370 (0.333)	26.649 (10.54)** 0.000	-0.533 (-2.26)* 0.037	0.231 (0.185)
Non-EU15	60%, LIS	29.758 (6.06)** 0.002	-0.701 (-2.64)* 0.046	0.583 (0.499)	24.390 (5.66)** 0.002	-0.451 (-1.94) 0.110	0.429 (0.315)	22.977 (3.09)* 0.027	-0.225 (-0.56) 0.599	0.059 (-0.129)
EU15 countries	60%, LIS	35.374 (8.07)** 0.000	-0.708 (-2.60)* 0.026	0.403 (0.344)	27.608 (6.87)** 0.000	-0.451 (-1.81) 0.101	0.246 (0.170)	32.195 (7.56)** 0.000	-0.598 (-2.26)* 0.047	0.338 (0.272)
All 19 countries	60%, LIS	35.224 (9.45)** 0.000	-0.822 (-3.76)** 0.002	0.454 (0.421)	27.560 (9.30)** 0.000	-0.520 (-2.99)** 0.008	0.345 (0.306)	28.854 (7.54)** 0.000	-0.454 (-2.02) 0.060	0.193 (0.146)

Notes:

- OLS-regression; t-statistics in parentheses; **p-value in red**. ** Significant at the 0.01 level; * significant at 0.05 level.
- Correlation coefficient R²; adjusted R² in parentheses
- Selected countries: Australia, Austria, Belgium, Czech Republic, Denmark, Finland, France, Germany, Ireland, Italy, Mexico, Netherlands, Norway, Spain, Slovak Republic, Sweden, the United Kingdom, and the United States

Source: Net Social Expenditure, 2007 edition from <http://www.oecd.org/dataoecd/14/23/38143827.xls>; LIS Key figures from <http://www.lisproject.org>; and own calculations

Correlation tests: Linkages between OECD-poverty rates and gross and net social spending

	Poverty line	Gross public social expenditure			Net public social expenditure			Net total social expenditure		
		Intercept	X1	R ²	Intercept	X1	R ²	Intercept	X1	R ²
Non-EU15	50% OECD	29.809 (9.06)** 0.000	-0.986 (-4.11)** 0.009	0.772 (0.726)	23.988 (6.73)** 0.001	-0.614 (-2.36) 0.065	0.527 (0.433)	25.796 (3.87)* 0.012	-0.532 (-1.09) 0.324	0.193 (0.031)
EU15 countries	50% OECD	30.879 (10.03)** 0.000	-0.704 (-2.26)* 0.050	0.362 (0.291)	23.735 (8.09)** 0.000	-0.337 (-1.14) 0.285	0.125 (0.028)	27.185 (33.93)** 0.000	-0.459 (-1.52) 0.162	0.205 (0.117)
All 18 countries	50% OECD	32.678 (13.75)** 0.000	-1.045 (-5.07)** 0.000	0.616 (0.592)	25.340 (11.70)** 0.000	-0.609 (-3.24)** 0.005	0.396 (0.358)	27.782 (33.48)** 0.000	-0.600 (-2.57)* 0.020	0.293 (0.249)

Notes:

- OLS-regression; t-statistics in parentheses; **p-value in red**. ** Significant at the 0.01 level; * significant at 0.05 level.
- Correlation coefficient R²; adjusted R² in parentheses
- Selected countries: Australia, Austria, Canada, Denmark, Finland, France, Germany, Greece, Ireland, Italy, Japan, Luxembourg, Netherlands, New Zealand, Norway, Sweden, the United Kingdom, and the United States

Source: Net Social Expenditure, 2007 edition from <http://www.oecd.org/dataoecd/14/23/38143827.xls>; OECD Poverty Indicator Data based on Förster and Mira D'Ercole (2005); and own calculations

Correlation tests: Linkage change gross public social expenditure and change OECD poverty rates among 18 countries, mid 1980's - 2000

We link the changes in gross public social expenditure ratios to the changes in OECD poverty rates, applying a 50 percent-of-median-income poverty threshold. Only 18 countries are included; they were selected when both data items were available. We find poor fits, both for the whole time-period mid 1980's - 2000 (R²=0.061) as for the sub-period mid 1990's - 2000 (R²=0.030).

	Poverty line	Change poverty rates			% Change poverty rates		
		intercept	X1	R ²	intercept	X1	R ²
All 18 countries mid 1980-2000	50% OECD	3.171 (3.01)** 0.008	-0.415 (-1.02) 0.322	0.061 (0.003)	3.471 (3.40)** 0.004	-3.939 (-1.57) 0.135	0.134 (0.080)
All 18 countries mid 1990-2000	50% OECD	0.689 (0.89) 0.385	-0.333 (-0.70) 0.492	0.030 (-0.031)	0.891 (1.15) 0.267	-4.266 (-1.14) 0.273	0.075 (0.017)

Notes:

- OLS-regression; t-statistics in parentheses; **p-value in red**. ** Significant at the 0.01 level; * significant at 0.05 level.
- Correlation coefficient R²; adjusted R² in parentheses
- Selected countries: Australia, Austria, Canada, Denmark, Finland, France, Germany, Greece, Ireland, Italy, Japan, Luxembourg, Netherlands, New Zealand, Norway, Sweden, the United Kingdom, and the United States

Source: OECD Poverty Indicator Data based on Förster and Mira D'Ercole (2005); OECD Social Expenditure Database (SOCX); and own calculations

Correlation tests: Linkage between social expenditure and relative poverty rate reduction among EU-countries, around 2003-2005

Between EU-countries we do not find a significant relationship between (high) levels of social expenditure and (high) antipoverty effects of social transfers and taxes.

	Poverty line	Gross public social expenditure			Net public social expenditure			Net total social expenditure		
		intercept	X1	R ²	intercept	X1	R ²	intercept	X1	R ²
EU15	60% SILC	18.990 (5.19)** 0.000	10.368 (1.28) 0.221	0.105 (0.041)	18.000 (5.97)** 0.000	4.960 (0.77) 0.454	0.040 (-0.028)	19.124 (5.39)** 0.000	7.073 (0.91) 0.382	0.059 (-0.013)

Notes:

- OLS-regression; t-statistics in parentheses; **p-value in red**. ** Significant at the 0.01 level; * significant at 0.05 level.
- Correlation coefficient R²; adjusted R² in parentheses
- Selected countries: Austria, Belgium, Czech Republic, Denmark, Finland, France, Germany, Ireland, Italy, Luxembourg, Netherlands, Portugal, Slovakia, Spain, Sweden, and the United Kingdom

Source: Structural Indicators EU - Social Cohesion (Eurostat: EU-SILC; Net Social Expenditure 2007; and own calculations)

Correlation tests: Linkage between gross social expenditure on family programs and LIS poverty rates among 19 countries, around 2000-2003

We present the linkage between poverty rates for children (0-17 years) and social expenditure for family programs for all countries where all relevant data items are available. For all countries we find a rather strong negative relationship. This correlation is much stronger for non-EU15 countries (R²=0.469) compared with the EU15 countries (R²=0.163).

	Poverty line	intercept	X1	R ²
Non-EU15 countries	60% LIS	4.163 (2.95)* 0.060	-0.108 (-1.63) 0.202	0.469 (0.292)
EU15 countries	60% LIS	3.768 (4.55)** 0.001	-0.072 (-1.53) 0.153	(0.162) (0.093)
All 19 countries	60% LIS	4.017 (6.18)** 0.000	-0.091 (-2.60)* 0.018	0.285 (0.243)

Notes:

- OLS-regression; t-statistics in parentheses; **p-value in red**. ** Significant at the 0.01 level; * significant at 0.05 level.
- Correlation coefficient R²; adjusted R² in parentheses
- Selected countries: Australia, Austria, Belgium, Canada, Denmark, Finland, France, Germany, Greece, Ireland, Italy, Luxembourg, Netherlands, Norway, Spain, Sweden, Switzerland, the United Kingdom, and the United States

Source: OECD Social Expenditure Database (SOCX; LIS Key figures from <http://www.lisproject.org>; and own calculations)

Correlation tests: Linkage between gross social expenditure on old age and survivors programs and LIS poverty rates among 19 countries, around 2000-2003

We present the linkage between poverty rates for the elderly (65 years and over) and social expenditure for public old age pensions and survivors schemes for all countries where all relevant data items are available. There seems to be ample (negative) relationship across the 19 developed countries ($R^2=0.103$). This insignificant correlation is found for both the group of non-EU15 countries ($R^2=0.008$) and the group of EU15 countries ($R^2=0.093$).

	Poverty line	intercept	X1	R ²
Non-EU15 countries	60% LIS	6.262	-0.013	0.008
		(2.31)	(-0.15)	(-0.323)
		0.104	0.888	
EU15 countries	60% LIS	11.370	-0.085	0.093
		(5.13)**	(-1.11)	0.017
		0.000	0.289	
All 19 countries	60% LIS	10.794	-0.092	0.103
		(5.51)**	(-1.39)	0.050
		0.000	0.181	

Notes:

- OLS-regression; t-statistics in parentheses; **p-value in red**. ** Significant at the 0.01 level; * significant at 0.05 level.
- Correlation coefficient R^2 ; adjusted R^2 in parentheses
- Selected countries: Australia, Austria, Belgium, Canada, Denmark, Finland, France, Germany, Greece, Ireland, Italy, Luxembourg, Netherlands, Norway, Spain, Sweden, Switzerland, the United Kingdom, and the United States

Source: OECD Social Expenditure Database (SOCX; LIS Key figures from <http://www.lisproject.org>; and own calculations

Research Memorandum Department of Economics

Research Memoranda

- are available from Department of Economics homepage at : <http://www.economie.leidenuniv.nl>
- can be ordered at Leiden University, Department of Economics, P.O. Box 9520, 2300 RA Leiden, The Netherlands Phone ++71 527 7756 / 7855; E-mail: conomie@law.leidenuniv.nl

- 2008.06 Koen Caminada and Kees Goudswaard
Effectiveness of poverty reduction in the EU. A descriptive analysis.
- 2008.05 Koen, Caminada, Kees Goudswaard and Olaf van Vliet
Patterns of welfare state indicators in the EU. Is there convergence?
- 2008.04 Kees Goudswaard and Koen Caminada
The redistributive impact of public and private social expenditure.
- 2008.03 Karen M. Anderson and Michael Kaeding
Pension systems in the European Union: Variable patterns of influence in Italy, the Netherlands and Belgium.
- 2008.02 Maroesjka Versantvoort
Time use during the life course in USA, Norway and the Netherlands: a HAPC-analysis.
- 2008.01 Maroesjka Versantvoort
Studying time use variations in 18 countries applying a life course perspective.
- 2007.06 Olaf van Vliet and Michael Kaeding
Globalisation, European Integration and Social Protection – Patterns of Change or Continuity?
- 2007.05 Ben van Velthoven
Kosten-batenanalyse van criminaliteitsbeleid. Over de methodiek in het algemeen en Nederlandse toepassingen in het bijzonder.
- 2007.04 Ben van Velthoven
Rechtseconomie tussen instrumentaliteit en normativiteit.
- 2007.03 Guido Suurmond
Compliance to fire safety regulation. The effects of the enforcement strategy.
- 2007.02 Maroesjka Versantvoort
Een schets van de sociaal-economische effecten van verlof en de beleidsmatige dilemma's die daaruit volgen.
- 2007.01 Henk Nijboer
A Social Europe: Political Utopia or Efficient Economics? An assessment from a public economic approach.
- 2006.04 Aldo Spanjer
European gas regulation: A change of focus.
- 2006.03 Joop de Kort and Rilka Dragneva
Russia's Role in Fostering the CIS Trade Regime.
- 2006.02 Ben van Velthoven
Incassoproblemen in het licht van de rechtspraak.
- 2006.01 Jurjen Kamphorst en Ben van Velthoven
De tweede feitelijke instantie in de belastingrechtspraak.
- 2005.03 Koen Caminada and Kees Goudswaard
Budgetary costs of tax facilities for pension savings: an empirical analysis.
- 2005.02 Henk Vording en Allard Lubbers
How to limit the budgetary impact of the European Court's tax decisions?
- 2005.01 Guido Suurmond en Ben van Velthoven
Een beginselplicht tot handhaving: liever regels dan discretionaire vrijheid.
- 2004.04 Ben van Velthoven en Marijke ter Voert
Paths to Justice in the Netherlands. Looking for signs of social exclusion.

- 2004.03 Guido Suurmond
Brandveiligheid in de horeca. Een economische analyse van de handhaving in een representatieve gemeente.
- 2004.02 Kees Goudswaard, Koen Caminada en Henk Vording
Naar een transparanter loonstrookje?
- 2004.01 Koen Caminada and Kees Goudswaard
Are public and private social expenditures complementary?
- 2003.01 Joop de Kort
De mythe van de globalisering. Mondialisering, regionalisering of gewoon internationale economie?
- 2002.04 Koen Caminada en Kees Goudswaard
Inkomensgevolgen van veranderingen in de arbeidsongeschiktheidsregelingen en het nabestaandenpensioen.
- 2002.03 Kees Goudswaard
Houdbare solidariteit.
- 2002.02 Ben van Velthoven
Civiele en administratieve rechtspleging in Nederland 1951-2000; deel 1: tijdreeksanalyse.
- 2002.01 Ben van Velthoven
Civiele en administratieve rechtspleging in Nederland 1951-2000; deel 2: tijdreeksdata.
- 2001.03 Koen Caminada and Kees Goudswaard
International Trends in Income Inequality and Social Policy.
- 2001.02 Peter Cornelisse and Kees Goudswaard
On the Convergence of Social Protection Systems in the European Union.
- 2001.01 Ben van Velthoven
De rechtsbijstandsubsidie onderzocht. En hoe nu verder?
- 2000.01 Koen Caminada
Pensioenopbouw via de derde pijler. Ontwikkeling, omvang en verdeling van premies lijfrenten volgens de Inkomensstatistiek.
- 1999.03 Koen Caminada and Kees Goudswaard
Social Policy and Income Distribution. An Empirical Analysis for the Netherlands.
- 1999.02 Koen Caminada
Aftrekpost eigen woning: wie profiteert in welke mate? Ontwikkeling, omvang en verdeling van de hypotheekrenteaftrek en de bijtelling fiscale huurwaarde.
- 1999.01 Ben van Velthoven and Peter van Wijck
Legal cost insurance under risk-neutrality.
- 1998.02 Koen Caminada and Kees Goudswaard
Inkomensherverdeling door sociale zekerheid: de verdeling van uitkeringen en premieheffing in 1990 en 1995.
- 1998.01 Cees van Beers
Biased Estimates of Economic Integration Effects in the Trade Flow Equation.
- 1997.04 Koen Caminada and Kees Goudswaard
Distributional effects of a flat tax: an empirical analysis for the Netherlands.
- 1997.03 Ernst Verwaal
Compliance costs of intra-community business transactions. Magnitude, determinants and policy implications.
- 1997.02 Julia Lane, Jules Theeuwes and David Stevens
High and low earnings jobs: the fortunes of employers and workers.
- 1997.01 Marcel Kerkhofs and Maarten Lindeboom
Age related health dynamics and changes in labour and market status.
- 1996.07 Henk Vording
The case for equivalent taxation of social security benefits in Europe.
- 1996.06 Kees Goudswaard and Henk Vording
Is harmonisation of income transfer policies in the European Union feasible?

- 1996.05 Cees van Beers and Jeroen C.J.M. van den Bergh
The impact of environmental policy on trade flows: an empirical analysis.
- 1996.04 P.W. van Wijck en B.C.J. van Velthoven
Een economische analyse van het Amerikaanse en het continentale systeem van proceskostentoe rekening.
- 1996.03 Arjan Heyma
Retirement and choice constraints: a dynamic programming approach.
- 1996.02 B.C.J. van Velthoven en P.W. van Wijck
De economie van civiele geschillen; rechtsbijstand versus no cure no pay.
- 1996.01 Jan Kees Winters
Unemployment in many-to-one matching models.
- 1995.05 Maarten Lindeboom and Marcel Kerkhofs
Time patterns of work and sickness absence. Unobserved effects in a multi-state duration model.
- 1995.04 Koen Caminada en Kees Goudswaard
De endogene ontwikkeling van de belastingdruk: een macro-analyse voor de periode 1960-1994.
- 1995.03 Henk Vording and Kees Goudswaard
Legal indexation of social security benefits: an international comparison of systems and their effects.
- 1995.02 Cees van Beers and Guido Biessen
Trade potential and structure of foreign trade: the case of Hungary and Poland.
- 1995.01 Isolde Woittiez and Jules Theeuwes
Well-being and labour market status.
- 1994.10 K.P. Goudswaard
Naar een beheersing van de Antilliaanse overheidsschuld.
- 1994.09 Kees P. Goudswaard, Philip R. de Jong and Victor Halberstadt
The realpolitik of social assistance: The Dutch experience in international comparison.
- 1994.08 Ben van Velthoven
De economie van misdaad en straf, een overzicht en evaluatie van de literatuur.
- 1994.07 Jules Theeuwes en Ben van Velthoven
De ontwikkeling van de criminaliteit in Nederland, 1950-1990: een economische analyse.
- 1994.06 Gerard J. van den Berg and Maarten Lindeboom
Durations in panel data subject to attrition: a note on estimation in the case of a stock sample.
- 1994.05 Marcel Kerkhofs and Maarten Lindeboom
Subjective health measures and state dependent reporting errors.
- 1994.04 Gerard J. van den Berg and Maarten Lindeboom
Attrition in panel data and the estimation of dynamic labor market models.
- 1994.03 Wim Groot
Wage and productivity effects of enterprise-related training.
- 1994.02 Wim Groot
Type specific returns to enterprise-related training.
- 1994.01 Marcel Kerkhofs
A Quadratic model of home production decisions.