

NBER WORKING PAPER SERIES

WHAT CAN THE PRICE GAP BETWEEN BRANDED AND PRIVATE LABEL PRODUCTS TELL US ABOUT MARKUPS?

Robert Barsky
Mark Bergen
Shantanu Dutta
Daniel Levy

Working Paper 8426
<http://www.nber.org/papers/w8426>

NATIONAL BUREAU OF ECONOMIC RESEARCH
1050 Massachusetts Avenue
Cambridge, MA 02138
August 2001

We are grateful to the paper's discussant, Julio Rotemberg for his insightful comments, which played a fundamental role in the restructuring and strengthening of the argument. Susanto Basu and Matthew Shapiro provided numerous valuable suggestions and essential advice. We would like to thank also Ning Liu for her outstanding research assistance under a very tight schedule, Owen Beelders, Ernie Berndt, Hashem Dezhbakhsh, Jim Hess, Kai-uwe Kuhn, Jim Levinsohn, Peter Rossi, and Steve Salant for many helpful discussions, Robert Feenstra for comments, Steve Hoch for providing us with his survey data on national brand/private label quality differences, and Jong Kim for his help with computations. We thank the participants of the NBER-CRIW conference, the 2001 Midwest Marketing Camp, and seminar participants at the University of Michigan and the University of Minnesota. Finally, we thank both the University of Chicago and Dominick's for providing us with the data. The views expressed herein are those of the authors and not necessarily those of the National Bureau of Economic Research.

© 2001 by Robert Barsky, Mark Bergen, Shantanu Dutta and Daniel Levy. All rights reserved. Short sections of text, not to exceed two paragraphs, may be quoted without explicit permission provided that full credit, including © notice, is given to the source.

What Can the Price Gap between Branded and Private Label Products
Tell Us about Markups?

Robert Barsky, Mark Bergen, Shantanu Dutta and Daniel Levy

NBER Working Paper No. 8426

August 2001

ABSTRACT

In this paper we investigate the size of markups for nationally branded products sold in the U.S. retail grocery industry. Using scanner data from a large Midwestern supermarket chain, we compute several measures of upper and lower bounds on markup ratios for over 230 nationally branded products in 19 categories. Our method is based on the insight that retail and wholesale prices of private label products provide information on marginal costs that are also applicable to the appropriately matched nationally branded products. Under reasonable assumptions - the accuracy of which we consider in some detail - the wholesale price of a private label product is an upper bound for the marginal manufacturing cost of its nationally branded equivalent, while the retailer's margin on the national brand is an upper bound on the retailer's marginal handling cost for both the brand and private label versions. We find that lower bounds on the "full" markup ratio range from 3.44 for toothbrushes and 2.23 for soft drinks to about 1.15-1.20 for canned tuna and frozen entrees, with the majority of categories falling in the range 1.40-2.10. Lower bounds on manufacturers' markups are even higher. Thus the data indicate that markups on nationally branded products sold in U.S. supermarkets are large.

Robert Barsky, University of Michigan and NBER

Mark Bergen, University of Minnesota

Shantanu Dutta, University of Southern California

Daniel Levy, Bar-Ilan University and Emory University

I. Introduction

The magnitude of marginal costs, and markups over marginal cost are empirical questions of considerable general interest in economics. Microeconomists are interested in markups because they bear on such questions as the relevance of alternative models of imperfect competition, the welfare consequences of market power, and the benefits of new product introduction. In recent macroeconomic research as well, markups play a central role. Although macroeconomic discourse most often focuses on the cyclicity rather than the level of markups, the degree of cyclicity is often limited by the absolute size of the markup (Rotemberg and Saloner, 1986).

The estimation of markups is difficult because marginal cost is not directly observable. There are essentially two ways in which inference about markups and marginal cost is approached in the econometric literature. One approach is via the cost function, which is either inferred directly from engineering data or estimated from cross-sectional or time series market data. The other is to estimate consumer demand functions, and compute the markup based on estimated demand elasticities, in combination with a model of market equilibrium.

This paper takes a quite different approach to measurement of marginal costs and markup ratios. We argue that the price of a “private label” equivalent or near-equivalent product provides valuable information about the marginal cost of the nationally branded product. In particular, because the private label version would not sell at a price less than its marginal cost, the ratio of the price of the branded product to that of the private label serves as a lower bound on the markup ratio. The high relative price of national brands is thus indicative of substantial markups over marginal cost.

Underlying our approach is the notion that private label products are more or less physically identical to nationally branded products, but the branded product commands a higher market price due to characteristics not related to marginal costs of either manufacturing or retail handling. Many of the promotional expenses which vertically differentiate the branded product from its private label counterpart appear largely as sunk, or at least fixed, costs. Essentially the same is true of expenditure on research and development. To the extent that marginal costs of private label goods diverge from those

of the branded versions, we present evidence that suggests that manufacturing costs for the private labels are if anything higher on the margin than those for the corresponding brands.

Informed by the above considerations and in possession of data on both retail prices and the retailer's margins over wholesale, we take the wholesale price of the private label product as an upper bound for the marginal manufacturing cost of its branded counterpart. The presumption that retailers' margins must at least cover marginal handling costs allows inference about the contribution of the retail channel to full marginal cost. We present several ratios that, under reasonable assumptions, bound the true marginal cost of manufacturing and selling the branded product from above as well as below.

We emphasize the lower bound measure of the true markup. To briefly summarize our main results, markups computed in this manner are consistent with, but on the high side of, those found in previous studies, for the few products for which such studies exist. Markups for national brands sold in supermarkets are large. Lower bounds on markup ratios measured this way range from 3.44 for toothbrushes and 2.23 for soft drinks to about 1.15–1.20 for canned tuna and frozen entrees, with the majority of categories falling in the range 1.40–2.10.

The ratio of brand to private label retail prices has on occasion been used in the literature as a measure of the markup. The texts by Scherer (1980) and Carlton and Perloff (1994) present some informally collected data of this sort. A recent paper by Nevo (1997) computes the retail price ratio as a check on structural estimation of markups on breakfast cereals, and finds a markup ratio of about 1.30, very much in accord with the estimates from the structural approach. Our data indicate, in accord with results from previous studies, that retailers earn higher margins on private labels than on national brands. This suggests that the retailer's margin on the branded variety is most likely the best indicator of actual marginal handling cost at the retail level. If this is the case, ratios of retail prices understate national brand markups over the "true" marginal cost of providing goods to the consumer.

We apply our approach to products in the grocery industry, in which there are many

“private label” or “store brand” products in a wide variety of categories.¹ We compute our markup ratios using scanner data from the Chicago area supermarket chain Dominick’s Finer Foods.² The Dominick’s data include both retail prices and the retailer’s “margin” (and hence, implicitly, wholesale prices) for both national brands and the store brand. This allows us to decompose ratios of the retail prices into a manufacturer’s markup and a retailer’s markup on wholesale prices – an exercise that will prove to be important in our efforts to bound the “true” markup from above and below. The product descriptions are sufficiently detailed that we are able to identify many pairs of national brand and private label offerings that are comparable in both quality and package size.

The paper is structured as follows. In the next section we present our conceptual framework. In subsection II-a, we present a simple vertical differentiation model emphasizing the role of sunk advertising costs, consumer heterogeneity, and competition for “niche” in carving out a role for private labels and determining the size of the equilibrium markup. In section II-b, we highlight the role of retail stores and point out how advertising and competition between retailers leads to an inverse relation between wholesale and retail margins. In section II-c, the most critical part of the analytical section, we develop a set of inequalities involving the various price ratios, and show how we can bound the true markup both above and below.

In section III we answer some possible objections about the comparability of national brand and private label products. Evidence suggests that to the extent that there are differences, they point in the direction that prices of private label products *overestimate* the marginal cost of national brands - suggesting that our assumptions are in fact conservative. In section IV we introduce the data and discuss measurement methods. In section V we present five different but related “markup” ratios, covering both the

¹ Fitzell (1998) recounts that private labels go back to the late nineteenth century, and gradually developed from the sale of bulk commodity staples. From the beginning, the main focus of private label manufacturers has been on packaged goods - packaged teas, sugar, flour, spices, etc. Early in the twentieth century, private label manufacturers expanded their activity by offering also canned vegetables and fruits, frozen foods, bakery and dairy products. Later, the private label industry expanded to include paper products, detergents, deli items, soft drinks, health and beauty care products, and more recently even “untouchable” products such as cosmetics, baby food, natural health products, and gourmet delicacies.

² This data set has been used by Chevalier, et al. (2000), Müller, et al. (2001), Dutta, et al. (2001), and Levy, et al. (2001).

wholesale and retail levels, for over 230 comparable nationally branded-private label product pairs representing 19 categories. Computing the lower bound on markup ratios developed in section II, we document that the markups for national brands are large. In section VI we briefly discuss our findings, linking the variation in the magnitude of the markup ratios to the materials share in production cost. We conclude the paper in section VII.

II. Inferring Marginal Cost and Markups From Private Labels: Theory

a. Vertical Differentiation and the Coexistence of Brands and Private Labels

We begin with a very stylized example of a market with two firms, best thought of as integrated manufacturers and sellers,³ one producing a branded product, the other offering a physically identical unbranded product. This example is an adaptation of Tirole (1989, p. 296-98), which in turn follows Shaked and Sutton's (1982) model of vertical differentiation and price competition. Following Sutton (1991), we regard "perceived quality" as a function of the stock of past advertising A ("brand capital"). No horizontal differentiation is possible. The two firms both produce at the constant unit cost c . Under conditions that guarantee that the market will support both the brand and the private label product, we derive product prices (and thus margins), as well as profits for the two firms.

Firm 1 enters the game with a stock of "brand equity" $A = \bar{A}$, which can be thought of as the return to past expenditure on advertising. Firm 2 has no brand equity: $A_2 = 0$. Though all consumers prefer the branded product at the same price, willingness to pay for the characteristics associated with the branding differs across individuals. Let this heterogeneity, which we might associate either with taste or with income differences, be parameterized by $\mathbf{q} \sim U(\mathbf{q}_0, \mathbf{q}_1)$, where $\mathbf{q}_0 \geq 0$, and $\mathbf{q}_1 = \mathbf{q}_0 + 1$. The utility of a type \mathbf{q} consumer is $U = \mathbf{q}(1 + A) - p$ if the consumer purchases one unit of the good with brand equity A at price p , and 0 otherwise. The type θ consumer is thus indifferent between the branded and the private label good when $\mathbf{q}(1 + \bar{A}) - p_1 = \mathbf{q} - p_2$.

Using a result from Tirole (1989), demands for the two firms as a function of the

prices p_1 and p_2 are then

$$D_1(p_1, p_2) = q_1 - \frac{p_1 - p_2}{\bar{A}}, \text{ and } D_2(p_1, p_2) = \frac{p_1 - p_2}{\bar{A}} - q_0$$

As \bar{A} becomes large, the products become less and less substitutable, and the relative demand less and less price-sensitive.

Nash equilibrium occurs when firm i maximizes $(p_i - c)D_i(p_i, p_j)$ with respect to p_j ($i, j=1, 2$). The prices, quantities demanded, and profits in the Nash equilibrium are:

$$p_1 = c + \frac{2q_1 - q_0}{3} \bar{A} \quad p_2 = c + \frac{q_1 - 2q_0}{3} \bar{A} < p_1$$

$$D_1 = (2q_1 - q_0)/3 \quad D_2 = (q_1 - 2q_0)/3$$

$$P_1 = (2q_1 - q_0)^2 \bar{A} / 9 \quad P_2 = (q_1 - 2q_0)^2 \bar{A} / 9$$

Thus the qualitative results are:

- Firm 1, the nationally branded incumbent, charges a higher price than the “private label” firm 2. However, both charge above marginal cost.
- The excess of price over marginal cost, and the profits of both the brand and the private label producer, are increasing in the degree of heterogeneity in the population and in firm 1’s stock of brand capital.⁴
- Both firms make some profit, although the national brand makes more.

b. Adding the Retail Sector

The stylized model above illustrates the role of brand capital and heterogeneous tastes for “perceived quality” in providing a market niche for private labels, and their effect on markups, quantity sold, and profits. However, we must now add a specific role for retailers, which are obviously central to our empirical analysis of the supermarket data. Lal and Narasimhan (1996) construct a model along the lines of the above example, but with two manufacturing firms, two retailers, and a composite outside good. Their model

³ We introduce retailers in the next subsection.

⁴ That the margin of the private label supplier is increasing in firm 1’s stock of brand equity reflects the “principle of maximal differentiation,” which is not entirely robust (Tirole, 1989).

is intended to explain why under some conditions a manufacturer's advertising can “squeeze”, i.e., lower the retail margin while simultaneously increasing the wholesale margin, a point stressed previously by Steiner (1993).

Stores carry many products, and on any given purchase occasion a typical consumer buys only a subset of the products. Retailers, Lal and Narasimhan (1996) hypothesize, therefore tend to compete more aggressively based on the prices of a selected set of well-recognized nationally branded items by advertising these prices to consumers. Since the contribution to profit from any customer is the sum of revenue from advertised and unadvertised items, the intensity of retail competition, as evident from the prices of these items, increases with the amount the consumer will expend on the unadvertised items once at the store. This aggressiveness therefore translates into lower retail margins on these selected items since the retailers expect that consumers, once inside a store, will also buy non-advertised products on which the retailers receive high margins. Manufacturers who, via advertising, have established a stock of well-recognized products, are able to charge high prices to retailers. The higher margin earned by retailers on their private label products compared with national brands is an important feature of the data we examine.

If the retail level of the channel is very competitive, retail margins are not likely to be much larger than handling costs. Many authors such as Levy, et al. (1998, 2001) suggest that the retail grocery industry is indeed very competitive. Retail margins on branded products are in fact very small for most product groups in our data set.

c. Lower Bounds for Markups: Algebra⁵

The “ideal” measure of the markup ratio - that which measures the extent to which quantity consumed falls short of the first best optimum - is the price paid by the consumer relative to the full marginal cost of supplying an extra unit. Denote the marginal production cost faced by the brand manufacturer as c_b^p and the marginal cost the retailer faces in stocking and selling the branded product – the “marginal handling cost” – as c_b^h .⁶ The “full” marginal cost of providing a unit of the branded product is

⁵ This section owes a major debt to our discussant, Julio Rotemberg.

⁶ Note that we do not make the assumption that c_b^p and c_b^h are constant unit costs. We do not need

thus:

$$(1) \quad c_b = c_b^p + c_b^h.$$

Consequently, we define the *true markup* as

$$(2) \quad \mathbf{m}^* \equiv \frac{p_b^r}{c_b^p + c_b^h},$$

where p_b^r denotes the retail price of the branded product. In this subsection, we show how to bound this ideal measure in terms of quantities that we are able to observe directly in the data on retail price and store margins.

In line with evidence presented in section III, we postulate that the marginal production cost of the private label (denoted by g) is not less than that of the brand, i.e.

$$(3) \quad c_b^p \leq c_g^p.$$

Because the manufacturer of the private label will not normally sell at a wholesale price less than its marginal production cost, we have:

$$(4) \quad c_g^p \leq p_g^w$$

Combining (3) and (4), we have:

$$(5) \quad c_b^p \leq p_g^w.$$

Thus the wholesale price of the private label is an upper bound on the marginal manufacturing cost of the brand.

Likewise, the retailer's margin on the branded product should at least cover the marginal handling costs. Letting

$$(6) \quad m_b^r \equiv p_b^r - p_b^w,$$

where p_b^w denotes the wholesale price of the branded product, we have:

$$(7) \quad c_b^h \leq m_b^r.$$

The degree to which m_b^r overstates marginal handling costs depends on the ability of

this assumption in our empirical work, because we are using price data to make bounding arguments rather than to arrive at point estimates of marginal costs. In particular, if there are fixed costs in production and/or selling that must be covered, the wholesale price and the retail price will overestimate marginal costs.

the brand manufacturer to extract, on the margin, the rents associated with its brand equity. In the limit, the brand manufacturer extracts all of the rents, and m_b^r equals the retailer's true marginal handling cost.⁷ However, since we are seeking *lower bounds* for the “true” markup, the logic of our argument does not in any way depend on such an assumption. Our bounds will of course be tighter if the marginal profit earned by the store on brand name goods is small. This is normally the case in practice since, as we will see in section V, for all but a few product categories the observed m_b^r - which must be the sum of true marginal handling cost and the store's marginal profit - is itself small.

Adding (5) and (7), we see that

$$(8) \quad c_b \equiv c_b^p + c_b^h \leq p_g^w + m_b^r.$$

Defining a new ratio \hat{m} as

$$(9) \quad \hat{m} \equiv \frac{p_b^r}{p_g^w + m_b^r},$$

and recalling the definition of the unobservable “true” markup as $m^* \equiv \frac{p_b^r}{c_b^p + c_b^h}$ from

equation (2), the inequality in (8) implies that

$$(10) \quad \hat{m} \leq m^*.$$

Equation (10) is the result most central to our empirical analysis because it implies that \hat{m} is a lower bound on the “true” or “ideal” markup. Moreover, it shows how to construct a lower bound on the markup ratio using data directly available in the Dominick's dataset. We will refer to the ratio \hat{m} as our *preferred lower bound markup* because, as we show immediately below, it is a tighter lower bound for m^* than is the ratio of the retail prices.

⁷ There exist some handling cost data in marketing studies that focus on direct product profitability issues. While we have not yet obtained these cost data, they would allow us to see just how conservative our assumptions about handling cost are. Because our primary focus in this paper is on constructing a lower bound on the “ideal” markup, the main thrust of the paper would remain unchanged. See Chen, et al. (1999) and Marsh Super Study Special Report (*Progressive Grocer*, December 1992, and January 1993) for details. We thank Jim Hess for informing us about the existence of such data.

Relationship of $\hat{\mathbf{m}}$ and \mathbf{m}^ to Retail and Wholesale Price Ratios*

It is interesting to compare the preferred markup measure $\hat{\mathbf{m}}$ to the retail price ratio $\frac{P_b^r}{P_g^r}$ and to the wholesale price ratio $\frac{P_b^w}{P_g^w}$ - the former because retail prices are available in a wide variety of datasets (whereas data on retailer's margins are less common), and the latter because it is a lower bound for the *manufacturer's* markup over marginal production cost; i.e. $\frac{P_b^w}{P_g^w} \leq \frac{P_b^r}{c_b^p}$. Let $m_g^r \equiv p_g^r - p_g^w$. As section V shows, in the data it is almost always the case that:

$$(11) \quad m_b^r \leq m_g^r,$$

i.e. the retailer earns less revenue net of the wholesale price from selling a unit of the national brand than from selling a unit of the comparable private label. When (11) holds, we can see, by combining (8) and (11), and using (5) and (7), that:

$$(12) \quad c_b \equiv c_b^p + c_b^h \leq c_b^p + m_b^r \leq p_g^w + m_g^r = p_g^r.$$

The retail price of the private label is an upper bound for the full marginal cost of the brand; it is, however, a less tight upper bound than the preferred marginal cost measure that appears in the denominator of $\hat{\mathbf{m}}$. Hence the markup measure based on retail prices, $\mathbf{m}^r \equiv \frac{P_b^r}{P_g^r}$, is a lower bound for the true markup \mathbf{m}^* , and understates \mathbf{m}^* to a greater extent than does $\hat{\mathbf{m}}$.

Finally, it is easy to see that the markup measure based on wholesale prices,

$$\mathbf{m}^w \equiv \frac{P_b^w}{P_g^w}, \text{ satisfies } \mathbf{m}^w \geq \hat{\mathbf{m}}. \text{ Recall that } \hat{\mathbf{m}} \equiv \frac{P_b^r}{p_g^w + m_b^r}.$$

To go from $\hat{\mathbf{m}}$ to \mathbf{m}^w , we subtract m_b^r from both the numerator and the denominator. Since markup ratios exceed unity, the subtraction has a larger percentage effect on the denominator than the numerator. It is not, however, possible to say that \mathbf{m}^w is unambiguously an upper bound

for m^* , because we don't know the extent to which p_g^w and m_b^r exceed, respectively, the true marginal production cost and marginal handling cost of the national brand.

In summary, we report five markup ratios:

a) $\hat{m} \equiv \frac{p_b^r}{p_g^w + m_b^r}$, the “preferred” lower bound measure of the full markup on the brand,

b) $m^r \equiv \frac{p_b^r}{p_g^r}$, the lower bound measure of the full markup based on retail prices,

c) $m^w \equiv \frac{p_b^w}{p_g^w}$, the lower bound measure of the manufacture's markup ratio based on

wholesale prices,

d) $m_b \equiv \frac{p_b^r}{p_b^w} \equiv \frac{m_b^r}{p_b^w} + 1$, the “retailer's markup” ratio on the brand,

and finally,

e) $m_g \equiv \frac{p_g^r}{p_g^w} \equiv \frac{m_g^r}{p_g^w} + 1$, the “retailer's markup” ratio on the private label.

The first three ratios, along with the “true” underlying markup ratio $m^* \equiv \frac{p_b^r}{c_b^p + c_b^h}$,

satisfy the inequalities:

$$m^r \leq \hat{m} \leq m^w$$

and

$$m^r \leq \hat{m} \leq m^*.$$

III. Branded and Private Label Products: Issues of Comparability

In section II, we established algebraic conditions under which the ratios we report can be considered lower bounds on the true markup. The usefulness of our arguments depends, however, on the maintained hypothesis that neither the marginal production cost

nor the marginal handling cost of the branded product exceeds that of the private label version. The appropriateness of this assumption is an empirical question whose answer may differ across product categories. In this section we consider three potential objections to the approach in this paper:

- a) Private label goods are inferior products produced at lower cost using cheap, low quality inputs (the “physical quality” objection).
- b) Differences in production technique, scale, and factor prices make variable costs in the manufacturing process non-comparable even when the final outputs are comparable (the “production method” objection).
- c) Even if the private label product is *physically* comparable to the nationally branded version, the activities of advertising and otherwise promoting the national brand (and perhaps also expenditures on research and development) may create additional marginal costs for national brands (the “marketing cost” objection).

All three of these objections concern the comparability of the national brand and the store brand versions, and all potentially call into question the supposition that marginal production and marketing costs for the private label product are at least as great as those for their branded counterparts. In the three subsections that we follow, we take up these objections in turn.

a. Physical Quality

This subsection has two purposes. First, it presents evidence that private label products are not in general of lower physical quality than the corresponding national brands. For the purposes of this paper, this is of interest not in and of itself, but because a finding of low quality in tests by quality control managers and consumer organizations might indicate the use of lower quality inputs, and hence lower marginal cost.

Second, though private label products are not in general physically inferior, there is some evidence of variation in the relative quality of brands and private labels across product categories. Thus we discuss in this section our efforts to weed out categories in

which there are in fact problems of comparability that make it difficult to construct matching pairs of physically identical products.

Branded and private label versions of a product cannot be *economically identical*, as that would violate the law of one price. Objection a) concerns possible differences in the quality of the *physical* product and not differences in “perceived quality” associated with sunk advertising costs, as discussed by Sutton (1991). Further, because the relevant concern is with differences in marginal costs, it is in fact not necessary that the private label product be of equal physical quality in all respects. Superior designs or propriety formulas that do not affect marginal cost do not pose a problem.⁸ We focus on “quality” to the extent that low quality of the private label product is suggestive of the use of lower cost inputs. We identify product categories in which this appears to be an issue, and we avoid these in the empirical work reported in sections IV and V.⁹

Hoch and Banerji (1993), noting the absence of secondary data source on private label quality comprehensive enough to cover all the SAMI product categories,¹⁰ undertook a survey of quality assurance managers at the fifty largest supermarket chains and grocery wholesalers in the United States (according to Thomas Food Industry Register). These experts typically have graduate education in food science and have wide experience testing numerous product categories. For each of the original SAMI categories the managers were asked: “How does the quality of the best private label supplier compare to the leading national brands in the product category?” The respondents gave a rating on a five point scale: a “1” suggests that private labels are much worse in quality than the national brands while a “5” suggests that the private label quality is fully comparable to that of the national brand.¹¹ In Exhibit I, we report the means of these

⁸ See the section below on soft drinks.

⁹ It turns out that the only product category with a questionable qualitative comparability is bathroom tissues.

¹⁰ For example, *Consumer Reports* does not have quality ratings for all the products included in our data set.

¹¹ Hoch and Banerji contacted each of these managers by telephone to solicit their participation, and followed up with a questionnaire. Thirty-two people (64%) returned the survey, resulting in twenty-five usable sets of responses (50%). The experts received a one-page set of instructions explaining what is meant by each question and how to use the scales. They were instructed to evaluate “objective” quality rather than quality as perceived by customers.

survey-based quality ratings for each of the categories that we examine in the Dominick’s data.

Exhibit 1: Product Quality Ratings by Category

Product Category	Quality Rating of Private Label
Analgesics	4.8
Toothbrushes	4.7
Frozen Juices	4.7
Cereals	4.7
Oatmeal	4.7
Crackers	4.6
Cheeses	4.6
Frozen Entrees	4.6
Canned Tuna	4.5
Fabric Softeners	4.5
Bottled Juices	4.5
Laundry Detergents	4.4
Snack Crackers	4.4
Cookies	4.3
Grooming Products	4.3
Dish Detergents	4.2
Toothpaste	4.2
Canned Soup	4.1
Bathroom Tissues	4.1
Soft Drinks	4.0

Source: Hoch and Banerji (1993), unpublished data.

Hoch and Banerji’s (1993, p. 62) own evaluation of the evidence is that “the overriding sentiment of these experts was that quality of the best private label was quite close to that of the national brands.” This is consistent with industry observers (e.g. Quelch and Harding, 1996; Fitzell, 1998) who suggest that while over the long haul private label products have not consistently exhibited the uniformly high quality standards as national brands, in recent years private label products have significantly improved in quality and packaging enhancements, making them comparable to the national brands. The quality comparability of private label products in these categories is further reinforced by a survey that asks consumers about their perceptions of the quality premium that national brands offer relative to private labels (Sethuraman and Cole, 1997). This study finds consumers are willing to pay a price premium for national brands even though they are aware that the price premiums do not reflect corresponding quality differences.

It is important to stress that the label “Dominick’s Finer Foods” is in itself a kind of branding which differentiates the supermarket chain’s products from true generics. The very particular sort of branding practiced by Dominick’s and other supermarket chains, makes no attempt to provide the utility-yielding associations that is the object of much national advertising. It may, however, do a very good job of assuring physical quality. According to Fitzell (1998), private label owners do not compromise on quality because they cannot really afford to put a store name or their own brand name on a product that may be considered inferior. Use of a name such as Dominick’s serves a bonding function: if one good (or the services of one store) proves to be inferior or unpalatable, there is a spillover on the credibility of all goods and all stores carrying that label.

Finally, we can use Hoch and Banerji’s private label quality ratings along with other information to identify categories where quality differences are more likely so that we can learn whether or not the quality differences are likely to indicate lower variable costs for the private label version. To that end we undertook further study of the two product categories that were ranked lowest by Hoch and Banerji’s survey and that are also included in the Dominick’s data: bathroom tissue and soft drinks.

Bathroom Tissue

This was one of the lowest rated categories in terms of quality comparability. Thus the higher markups may, in this category, represent true input quality differences and therefore differences in marginal costs. There exists a recent *Consumer Reports* article on bathroom tissue as well as recent academic paper by Hausman (1999) on the category. Both of these, as well as a survey of consumer perceptions by Sethuraman and Cole (1997), reinforced the belief that this category does indeed have significant quality variation. The *Consumer Reports* article reported studies of many products that ranged broadly from Ultra Plush Charmin to low quality private labels products and Scott tissue. Hausman (1999) echoes the claim that some brands are of low quality while others are of high quality. Consistent with this, Sethuraman and Cole (1997) find that consumers rate bathroom tissue as one of the two product categories for which the quality gap as perceived by consumers is highest. Further, Hausman (1999) suggests that this is due to

real differences in input quality in the pulp used to make the paper, which is likely to lead to higher costs for higher quality branded manufacturers in this category. We thought this might allow us to compare the private label Scott, but Scott turns out to have many more sheets per roll than the private label, making it possible that Scott faces higher costs because of the additional sheets, even if the input costs are the same or lower. In the end this additional information led us to drop the bathroom tissue category from this paper (though the price ratios in this category averaged above 2.0). We were not able to find national brand/private label pairs that were of comparable quality and for which we were confident that the private label product was not cheaper to produce on the margin.

Soft Drinks

According to our quality experts, soft drinks are one of the least comparable in terms of quality based on quality control manager's perceptions. To the degree that the quality differences relate to cost savings for the private label, this would inflate our markup estimates. Yet to the degree that the differences in quality are in terms of taste or other inputs into the syrup, they are unlike to lead to substantial differences in variable costs. We include soft drinks in this paper because knowledge of the nature of soft drink production and distribution suggests that the sources of quality differences were not likely to be related to the marginal costs faced by soft drink manufacturers. In this category the majority of the costs are bottling and distribution. The cost of the syrup is only a very small portion of the cost of producing soft drinks.

b. Production Methods, Scale, Factor Prices, and Other Cost Differences

Even if the final products are physically identical, marginal manufacturing costs may differ because of differences in production technology, scale, or the prices paid for labor and/or materials. We report here some observations concerning differences between national brand manufacturers and manufacturing firms that supply output for sale under private labels – referred to in the industry as “co-packers.”

We interviewed a number of industry experts on private labels. Their general sense was that for products of equal quality, the variable costs of producing private labels were

likely to be at least as high, and probably higher, than the corresponding costs for national brands. The general tenor of the responses we received is captured by the following comment from the vice president of a major private label food broker:

“National brands should be able to physically produce at a lower cost ... they are able to negotiate lower prices on components and vertically integrate to carry out processes themselves rather than having to buy at higher marginal cost...”

Below we describe in more detail the nature of manufacturing by co-packers, and its implications for marginal costs.

Types of Private Label Manufacturers

As spelled out on the web page of the Private Labels Manufacturers Association, private label manufactures fall into four categories. They are:

- 1) Large national brand manufacturers that utilize excess plant capacity to supply store brands.
- 2) Small, quality manufacturers who specialize in particular product lines and concentrate on producing store brands almost exclusively. Often, these companies are owned by corporations that also produce national brands.
- 3) Major retailers and wholesalers that own their own manufacturing facilities and provide store brand products for themselves.
- 4) Regional brand manufacturers that produce private label products for specific markets.

In general, private label manufacturers are smaller, more regional and more fragmented than their national brand counterparts. Indeed, according to Fitzell (1998), as the private label manufacturing evolved in the US, the trend has been more toward smaller manufacturers/processors. As a result, the national brand business, with its high costs of product development and marketing, was left to the larger manufacturers. For example, some of the producers for TOPCO (which handles distribution for what is perhaps the largest private label program in the country) are large enough to produce and market products successfully under their own brands. In many cases, however, it turns out that they are small or medium sized producers that lack the necessary financial strength or

organizational structure to market their own brand products effectively when facing strong national competitors (Fitzell, 1998).

We interviewed at some length a production manager at a large branded manufacturer in the consumer packaged goods industry. Though he preferred to remain anonymous, he expressed the belief that everything he shared with us is common knowledge in the industry.

This manager noted that at one time or another, most co-packers produce for branded manufacturers. To that end, private label manufacturers would have access to the same equipment and techniques as manufacturers of the brand because they must meet the quality standards of the national brand manufacturers for which they produce. Further, he said, branded manufacturers supply some of the equipment for their co-packers. These observations are also found in the FTC complaint against the proposed merger of General Mills with Ralcorp, which was at the time (1997) both the fifth largest supplier of ready to eat breakfast cereal for sale under a national brand name, and the largest producer of private label cereals.

Our interviewee described three major considerations determining relative production cost that he called “*throughput*,” “*crewing*,” and *wage rates*. “Throughput” appears to be industry terminology for number of units produced per hour, while “crewing” apparently refers to labor intensity. It is not clear that these are entirely separate considerations from the point of view of microeconomic theory, but we will try to stick as closely as possible to the terminology used by the interviewee.

The manager contended that throughput for branded manufacturers is significantly higher than for co-packers, while crewing is indicative of greater automation and lower labor intensity in production of branded products. First and foremost, private label manufactures are smaller in scale. Second, private label manufacturers by the nature of their business need to be more flexible with respect to the quantities they produce. They often supply multiple private labels, and uncertain demand calls for a degree of flexibility that limits their ability to benefit from large-scale production runs and the economies of scale of the brand manufacturer. This leads to lower line speeds and lower “throughput” for private label manufacturers.

As to “crewing,” branded product factories have greater automation than private label factories, an observation that the manager regarded as central to his belief that brand manufacturers produce at a lower variable cost. Relative to the private label manufacturers, branded firms have fewer employees and more equipment per unit of output. Wage rates, on the other hand, work in the opposite direction: here, brand manufacturers are at a cost disadvantage. They are more likely to use union workers, which raises cost, in terms of wages and benefits. This is closely related to the “large firm effect” on wages in the academic literature (Brown and Medoff, 1989). The manager’s sense was that the throughput advantage roughly offset the wage disadvantage for an equal crew size. But the branded manufacturer had a sufficiently lower labor intensity – a “crewing” advantage - that more than offset the higher wages.

The value of size for national brands has been noted in academic studies as well. For example, Schmalensee (1978) has shown that national brands benefit from the substantial economies of scale in production and advertising that accrue through national distribution in the cereal category. Likewise, Brown and Medoff (1990) have shown that larger buyers receive substantial quantity discounts on their purchases, although this advantage is again offset to a greater or lesser extent by higher wage costs.

In sum, industry experts as well as academic articles regard the preponderance of the evidence as indicating that marginal costs for private label products are at least as high—and in many cases higher—than marginal costs for the national brands with which they are paired. This conclusion supports our use of wholesale prices of private label goods as *upper bounds* for the marginal manufacturing cost of the corresponding brand name products.

c. The Marketing Cost Issue

A third potential difference between national brands and private labels concerns costs of product introduction and marketing. Industry sources indicate that in general private label manufacturers do far less in terms of R&D, advertising, trade promotion and consumer promotion than national brands. For example, Fitzell (1998) states that national brand businesses have high costs of product development and marketing.

This leaves us with the remaining question of how large these costs are and whether they are fixed or variable costs in nature. We argue that R&D is a sunk cost, and that national advertising expenditure constitutes predominantly a fixed cost, much but not all of which can be regarded as sunk in the sense of Sutton (1991). This leaves trade promotion spending and consumer promotion spending as possible variable cost differences we must consider. Notice that the largest effect of both trade promotions and consumer promotions is the reduced price the manufacturer receives from the promotions. Thus they aren't marginal cost differences, but adjustments to the prices the manufacturer receives that we must consider. There are additional costs of implementing the promotional programs that we should also consider.

Research & Development

R&D is one area where private labels and national brands differ substantially. For example, according to Fitzell (1982), research and development expenditures of private label manufacturers usually are substantially lower than the expenditures of the national brand manufacturers. The managers of national brands see these kinds of expenditures as critical to maintaining their brand equity. Clearly R&D spending for new product development is not marginal for products being sold in grocery chains. According to Monroe (1990), as well as many other authors, research and development costs do not vary with the (sales) activity and are not easily traceable to a product or segment, and therefore should be treated as fixed from our perspectives.

Advertising

Advertising spending is another major difference between national brands and private labels. National brands invest large amounts of money in advertising. For example, in the Survey of Leading National Advertisers in *Advertising Age* magazine (2000), it is reported that advertising spending for major brands is substantial. Further, many brands have been doing this for many years. Indeed, according to Quelch and Harding (1996), it took over decades of advertising by the strongest national brands to build their consumer equities. As another example, it seems that restrictions on television advertising may help explain

the strength of private labels in Europe relative to the U.S. because regulated television markets mean that cumulative advertising for brand names does not approach the U.S. levels" (Quelch and Harding, 1996).

This has not been true for most private labels because their owners could not afford the expense of building their own brand equity by adopting multi-million dollar advertising campaigns (Fitzell, 1998). In the case of the specific retailer we are studying, we know that it did not invest anywhere near the amounts spent by the national brand manufacturers of comparable products, even on a per-unit sold or sales basis, on advertising to build brands.

The question then is whether it is more reasonable to treat advertising expenditures by manufacturers as a fixed cost or variable cost. If we suppose for a moment that the branded variant is heavily advertised while the private label version is not, the average cost of a unit sold (which includes costs incurred by the "marketing department" in addition to those of the "production department") would be higher for the branded product. The question, put differently, then becomes whether advertising should be seen as a marginal cost as opposed to a fixed or sunk cost.

The best evidence we could find on this question in the literature is from the Cox Annual Survey of Promotional Practices (1996). It surveys consumers, packaged goods manufacturers and grocery retailers on issues of promotion practice and usage. The particular survey was conducted in 1995 and its participants included 34% larger firms (i.e., those with annual sales of \$1 billion or more) and 66% smaller firms (i.e., those with annual sales of less than \$1 billion).

When asked about the share of national advertising programs designed to support and build brand equity, consumer and trade promotions, etc., the survey participants state that they view their advertising expenses as mostly aimed at building brand equity, which is more of a fixed or long run cost. According to the survey results, the packaged goods manufacturers believe that at least 66% of their advertising spending is meant to build their brand equity only. Of the remaining 34%, 14% of their advertising spending is devoted to both brand equity and consumer promotions, 7% to both brand equity and trade promotions, and the remaining 13% to brand equity, trade and consumer

promotions. It follows that up to 80% of advertising is related to brand equity. Morton and Zettelmeyer (2000) also emphasize the difference in fixed costs between national and store brands. The advertising required to support national brands, they argue, implies that national brand manufacturers have substantially higher average costs than their marginal costs of production. This is consistent with the idea that advertising by national brands may be viewed as a fixed, rather than variable, cost.

Trade Promotions

Manufacturers also invest heavily in trade promotions. In the Cox survey they report some industry averages on how firms in the grocery industry allocate their promotional dollars. It looks to be about 50% trade promotions, 25% national advertising and 25% consumer promotions. So trade promotions are the largest component of manufacturer spending. Private label manufacturers do not undertake nearly as much trade spending, so this is another major difference between national brands and private labels.

Fortunately the Dominick's data already incorporates some of the trade spending in its wholesale prices, so we have already taken part of manufacturer's trade promotion spending into account in our measurement of national brand markups. It is likely that there are trade promotions that are not captured by the wholesale prices in our data. These are most likely lumpy payments such as slotting allowances, cooperative advertising allowances, and various case-discounts and spiffs the manufacturer gives to the retailer. To the degree that they are lumpy, and not incorporated into the wholesale price that retailers are using in their pricing decisions, however, it is not clear that these expenses are truly variable. So these unreported trade expenditures may not be as relevant as the trade promotions incorporated into the data we use in this paper. But to the degree that the unreported trade spending is variable, and substantial, our measure of markups will be overstated.

Consumer Promotions

This is also a major difference between national brands and private labels. Private

labels tend to not coupon or promote to consumers.¹² While branded manufacturers spend, on average, 25% of their promotional expenses on consumer promotions. That is about on par with the amount spent on national advertising.

These activities are likely to be either reductions in the price manufacturers receive (as with redeemed coupons) or variable expenses to run the promotion. Although scanner data sets often include some measures of usage of manufacturers' coupons, that is not true in this data set. To give the reader some sense of how important these may be by category, we report the percentage of sales made using a coupon for all product categories in our paper in Exhibit 2.

Exhibit 2. Manufacturer Coupon Usage by Product Category

Product Category	% Sales with Manufacturers Coupon
Analgesics	10.6
Toothbrushes	12.5
Frozen Juices	1.7 – 5.9
Cereals	16.5
Oatmeal	9.9
Crackers	0.8 – 5.3
Cheeses	2.6 – 6.6
Frozen Entrees	2.5 – 16.5
Canned Tuna	0.6
Fabric Softeners	14.2 – 16.3
Bottled Juices	0.7-2.1
Laundry Detergents	14.0
Snack Crackers	6.4
Cookies	3.9
Grooming Products	9.4
Dish Detergents	12.3
Toothpastes	13.6
Canned Soup	6.5
Bathroom Tissues	4.8
Soft Drinks	2.2

Source: *Supermarket Business*, 16th Annual Product Preference Study (1993).

In summary, we believe there is enough evidence to suggest that using private label product prices to infer national brand costs is a reasonable assumption in this industry. There is reason to believe, therefore, that this measure of markup can be appropriate for at least some categories and products in this industry. Further, since the private label will have some markup, and the nationally branded products have advantages on size and scale in production, packaging and negotiation on input prices, we believe that private label

¹² Slade (1998) offers some possible reasons for the lack of promotional activity for private label products.

product prices provide a conservative measure of these costs.

IV. Data

We use scanner data from Dominick's Finer Food (DFF), which is one of the largest retail supermarket chains in the larger Chicago metropolitan area, operating 94 stores with a market share of about 25 percent. Large multi-store U.S. Supermarket chains of this type made up about \$310,146,666,000 in total annual sales in 1992, which was 86.3% of total retail grocery sales (*Supermarket Business*, 1993). In 1999 the retail grocery sales has reached \$435 billion (Chevalier, Kashyap, and Rossi, 2000). Thus the chain we study is a representative of a major class of the retail grocery trade. Moreover, Dominick's type multi-store supermarket chains' sales constitute about 14 percent of the total retail sales of about \$2,250 billion in the US. Since retail sales account for about 9.3 percent of the GDP, our data set is a representative of as much as 1.28 percent of the GDP, which seems substantial. Thus the market we are studying has a quantitative economic significance as well.

The original Dominick's data consist of up to 400 weekly observations of actual transaction prices in 29 different categories, covering the period from September 14, 1989 to May 8, 1997. The length of individual product price time series, however, varies depending on when the data collection for the specific category began and ended.¹³ The data come from the chain's scanner database which contains actual retail transaction prices of the products along with the profit margin the supermarket makes on each one of them. From the information on retail prices and the profit margin, we have constructed the weekly time series of wholesale prices.

The retail prices are the actual transaction prices: the price customers paid at the cash register each week. If the item was on sale, then the price data we have reflect the sale price. Although the retail prices are set on a chain-wide basis at the corporate headquarters of Dominick's, there may still be some price variation across the stores

¹³ As Chevalier, et al. (2000) indicate, Dominick's UPC-level database does not include all products the chain sells. The database we use represents approximately 30 percent of Dominick's revenues.

depending on the competitive market structure in and around the location of the stores (Levy, et al., 1998). According to Chevalier, et al. (2000), Dominick's maintains three such price zones. Thus, for example, if a particular store of the chain is located in the vicinity of a Cub Food store, then the store may be designated a "Cub-fighter" and as such, it may pursue a more aggressive pricing policy in comparison to the stores located in other zones. In the analysis described below we have used all the data available from all stores by properly aggregating them across the stores.¹⁴

The wholesale prices, which measure the direct cost to the retailer, are computed by combining the retail price data with the information provided by the retailer on their weekly gross margins for each product and using the relation, $\text{wholesale price} = (1 - \text{gross margin \%})$ multiplied by the retail price. The wholesale prices DFF uses for computing their gross margin series are constructed by the retailer as a weighted average of the amount the retailer paid for all its inventory. For example, a profit margin of 25.3 means that DFF makes 25.3 cents on the dollar for each item sold which yields a cost of good sold of 74.7 cents. If the retailer bought its current stock of a Kellogg's Corn Flakes, 18oz, in two transactions, then its wholesale price is computed as the average of these two transaction prices (no FIFO or LIFO accounting rules are used in these computations).¹⁵

For the purpose of this study, we went through the entire DFF's data set and identified pairs of national brand and private label products. Of the approximately 350 pairs we were able to locate in the 29 product categories, we have eliminated a portion of

¹⁴ Aggregation issues are discussed in detail below in this section. We should note that our retail prices reflect any retailer's coupons or discounts, but, as mentioned above, do not include manufacturer coupons.

¹⁵ Thus, the wholesale costs in the data do not correspond exactly to the replacement cost or the last transaction price. Instead we have the average acquisition cost (ACC) of the items in inventory. So the supermarket chain sets retail prices for the next week and also determines AAC at the end of each week, t , according to the formula

$$\text{AAC}(t+1) = (\text{Inventory bought in } t) \text{ Price paid}(t) + (\text{Inventory, end of } t-1-\text{sales}(t)) \text{ AAC}(t).$$

There are two main sources of discrepancy between replacement cost and AAC. The first is the familiar one of sluggish adjustment. A wholesale price cut today only gradually works itself into AAC as old, higher priced inventory is sold off. The second arises from the occasional practice of manufacturers to inform the buyer in advance of an impending temporary price reduction. This permits the buyer to completely deplete inventory and then "overstock" at the lower price. In this case AAC declines precipitously to the lower price and stays there until the large inventory acquired at that price runs off. Thus, the accounting cost shows the low price for some time after the replacement cost has gone back up.

them because of substantial size differences. For example, if say in cereals category we compare Kellog's Corn Flakes to DFF's Corn Flakes, but the national brand comes in 32oz box (which is a family size) while DFF's product comes in 18oz box, then the two products are not really comparable as they are targeted to two different kinds of customers, and computing prices per oz would not necessarily eliminate this fundamental problem. Other pairs were eliminated because many non-private label brands did not really qualify as national brand products as these products are marketed only regionally (and some even locally only) or they did not have substantial market share. Still other pairs were eliminated because of our uncertainty about equality of their quality. Finally, we have imposed a minimum on the length of the weekly time series for them to be informative.

Thus, the results we report in this paper are for national brand-private label product pairs, such that (1) the national brand product is clearly marketed nationally, (2) the national brand product is widely recognized, (3) the national brand product has a non-trivial market share, (4) the national brand-private label product pair is comparable in size, quality, and packaging, and (5) the price time series for the product pairs are available for at least 24-week period for each of the three price zones.

The product pairs that pass these criteria represent 19 categories, which include Analgesics, Bottled Juices, Cereals, Cheeses, Cookies, Crackers, Canned Soups, Dish Detergent, Frozen Entrees, Frozen Juices, Fabric Softeners, Grooming Products, Laundry Detergent, Oatmeal, Snack Crackers, Toothbrush, Tooth Pastes, Soft Drinks, and Canned Tuna. In the case of the Soft Drinks category, it should be noted that most of the nationally branded products included in this category are handled by their manufacturers through various Direct Store Delivery arrangements.¹⁶ Thus, the "handling costs" of these nationally branded products are incurred by their manufacturers.¹⁷ Therefore, to get a

¹⁶ Most big retail supermarket stores use some kind of dedicated warehouse channel distribution system for their product replenishment. However, for number of reasons, the retailers often find it preferable to obtain some products directly from the suppliers/manufacturers who deliver them directly to the store, rather than via their normal warehouse channel. The products handled through such Direct Store Delivery mechanisms usually are high-volume, fast-moving, and/or perishable products. See Levy, et al. (1998) for further details on Direct Store Delivery arrangements at multi-product retail settings.

¹⁷ In the remaining ten categories, which include Bath Soap, Beer, Cigarettes, Front-End-Candies, Frozen Dinners, Paper Towels, Refrigerated Juices, Shampoos, Soaps, and Bathroom Tissues, we were unable to find comparable national brand-private label pairs. I.e., in these categories we were unable to find any national brand-private label product pair that met all five criteria listed above.

markup ratio, in this case, we would take the ratio of the retail price of the nationally branded product over our estimate of the marginal cost of the branded product, calculated as the sum of the wholesale price of the private label product and our estimate of the retailer handling cost. We, however, choose to treat the Soft Drink products and the rest of the products in an identical fashion by using the same formula for measuring the markup ratio. Therefore, by including in the denominator of the markup ratio the retailer's margin on the nationally branded product, we are overestimating the retailer's handling cost by counting the retailer's profit as part of the marginal cost. The resulting markup measure for the soft drink products will, therefore, be even more conservative than for the rest of the categories.

To compute the average markup figures for each category, which we report in Tables 1–4, we had to compress the data by three different weighted-averaging procedures. First, we have computed weighted-average of all weekly price series across all the chain's stores to get a single weekly wholesale and retail price series for each of the national brand and private label products chosen for the analysis. The purpose of the weighing procedure we have implemented is to ensure that the price series coming from the stores that sell proportionally more than others, receive higher weight. This averaging was done by weighing the national brand and private label price series from each store according to the store's sales share in the total DFF's sale where the sales are measured by the weekly sales figures of the specific national brand and private label products, respectively. Since the scanner database does not include information on the quantities purchased at the wholesale level, we used the retail sales figures as its proxy. This procedure likely introduces a noise in the generated series because the retail sales are more spread over time in comparison to wholesale purchases, which occur with lower frequency. The noise, however, will mostly affect the weekly volatility properties of the price series, but the average values are unlikely to be affected from this procedure in a significant way.

Next, we computed the weighted average weekly values of the above across-store weighted averaged series by taking each price series for the sample period it was available and computing its weekly average value by weighing each weekly observation according

to the share of that week's quantity sold in the total quantity sold over the entire sample period. As before, the purpose of this weighing is to give higher weight to observations (i.e., weeks) that represent higher sales volume measured in terms of products' quantity (such as oz's). In each case the prices of national brand products were weighed using the sales volume of that specific national brand product while the price series of the private label products were correspondingly weighed by sales volume of the private label products. These series then were used to compute various markup measures reported in Tables 5–8 and A1–A15.

It should be noted that an alternative way of computing these weekly average markup values for each national brand-private label product pair is to first compute weekly markup series for the entire sample period covered by each product pair and then compute their weekly weighted average using the procedure outlined above. The calculations performed using this procedure have yielded similar quantitative results in terms of the average markup figures. The procedure we use, however, has the advantage that by first computing the markup ratios and then averaging them over time (instead of first averaging them over time and then computing the markup ratios) makes it possible to explore the time series variability in each individual markup series and perhaps also to provide some measure of over time variability associated with the markup.

Finally, we have taken the above-calculated average markup figures for each product pair and computed the average markup for each of the 19 product categories included in our sample. As before, these category averages were also calculated as weighted averages. However, unlike the previous steps, here the weighing was done according to the share of the *dollar* value of the sales for each product pair in the *dollar* value of the total sales in the category. For example, if in the analgesics category we have 24 national brand-private label product pairs, to compute the category average markup, we took the markup figures for the 24 product pairs (listed in Table 6) and computed their weighted average, where the weights are the ratios of the total dollar sales of the pair to the total dollar sales in the category. The weights here use dollar sales rather than unit sales in order to avoid the problem of “adding apples to oranges.” The resulting category averages figures are reported in Tables 1–4.

Along with the average markup ratio measures we also report their inter-quartile ranges. The inter-quartile range figures reported for individual product pairs within each category (Tables 5-8 and A1-A15) are computed by using the weekly time series of the corresponding markup ratios and determining the range in which 50 percent of these weekly markups fall for each product pair. The inter-quartile range figures reported for category averages (Tables 1–4) are computed by considering the average weekly markups for each product pair and determining the range in which 50 percent of them fall for each category.¹⁸

In the individual category tables (Tables 5–8 and A1-A15), we identify each national brand-private label product pair by the name of the branded products because the private label equivalents of the nationally branded products listed in these tables are always the Dominick’s store brand products. Note also that in these tables, some brand names appear more than once. This is because they refer to different sizes. For example, in the analgesics category reported in Table 5, Advil (with the corresponding private label product) is listed three times because it comes in three different sizes (“counts”), 10, 50, and 100.

V. Empirical Findings

In this section we report computations of the five markup ratios derived in section II-c above. Our primary objective is to offer the tightest possible lower bound on \mathbf{m}^* , the “ideal” full markup ratio for the nationally branded product. Our second goal is to provide a sense of the quantitative relationships between the five markup ratios that we derived in II-c. These ratios offer insight into the anatomy of $\hat{\mathbf{m}}$; and because they have interpretations as markups at specific stages of the production and distribution processes, they are of interest in their own right.

¹⁸ Although not reported to save space, we have also computed two additional measures of variation of markup ratios over time. First, we have estimated the standard deviation of the markup ratio for each product pair. Second, we have estimated the weighted standard deviation of the markup ratio for each product pair. The latter differs from the former in that it assigns variable weights to the $[x(i) - \bar{x}]^2$ terms unlike the common procedure, which assigns the same weight, $1/n$ or $1/(n-1)$, to each $[x(i) - \bar{x}]^2$ term.

In section V-a, we report the results for category averages. We begin with the “bottom line,” the “preferred” measure \hat{m} , our tightest lower bound on m^* . We then move on to m^w , the ratio of the wholesale prices, which usually exceeds \hat{m} , and is a lower bound on the manufacturer’s markup. Next, we discuss m_b and m_g , the retailer’s markups over wholesale price for branded and private label products, respectively. These provide the link from m^w to the more commonly observed markup ratio computed using retail prices, m^r , which is the last of the five ratios that we report. Finally, we close section V-a with the presentation of a graph that shows \hat{m} flanked by m^w and m^r , and thus offers an empirical counterpart to the bounding inequalities derived in section II-c.

In section V-b we focus in more detail on selected product categories. The category of ready-to-eat breakfast cereals, in particular, has been the object of several studies in the econometric literature, and we are able to compare our results with available structural estimates. Finally, examining closely several product pairs in representative categories, we obtain some insight into within-category variation of the markups.

V-a. Results for Category Averages

The “Preferred” Lower Bound Markup Measure \hat{m}

In Table 1 and Figure 1 we report our “preferred” lower bound markup measure labeled \hat{m} in II-c. The table shows that in four product categories - toothbrushes, soft drinks, crackers, and grooming products - the mean lower bound markup ratio \hat{m} is on the order of 2.0 or higher. In three categories - analgesics, canned soups, and fabric softeners – \hat{m} averages between 1.60 and 2.00, while in six categories - oatmeal, cookies, snack crackers, tooth paste, cereals, and dish detergent – mean \hat{m} falls approximately in the range 1.40–1.60. For the remaining six categories - bottled juice, cheese, frozen juice, laundry detergents, frozen entrees, and canned tuna - the average lower bound markup ratio is less than 1.40. The categories with smallest \hat{m} are canned tuna (1.16), frozen entrees (1.21), and laundry detergents (1.22).

Table 1 and Figure 1 provide a good deal of evidence that nationally branded products are sold at a substantial markup. In more than half of the categories, the average lower bound on the markup ratio is at least 1.40. Since the measure we report here is conservative, true markup ratios are likely to be even higher.

Manufacturer's Markup: Lower Bound Based on Wholesale Prices

As discussed in sections II and III, m^w - the ratio of the wholesale prices - provides a lower bound for the brand manufacturer's markup. In Table 2 we present average m^w by category. A comparison of the figures in Tables 1 and 2 indicates that with the exception of the toothbrush and crackers categories, the two markup ratios m^w and \hat{m} , are of similar magnitude. For ten categories - fabric softeners, oatmeal, toothpaste, cereal, dish detergent, bottled juice, cheese, laundry detergent, frozen entrees, and canned tuna - the difference between the two measures is less than 0.1. For seven categories - soft drinks, grooming products, analgesics, canned soups, cookies, snacks crackers and frozen juice - the difference between the two measures is between 0.10 and 0.20. Nationally branded products that have a large manufacturer's markup according to Table 2, also have large full markups according to Table 1. This should not be surprising, as we obtained \hat{m} from m^w by adding m_b^r - the retailer's margin on the brand - to both the numerator and the denominator of m^w , and as we show immediately below, with a few exceptions, the retail margins on branded products are quite small.¹⁹

As we move down the list to categories with lower markup ratios, the gap between the two markup measures becomes particularly small, a direct result of the algebraic relationship between \hat{m} and m^w . Thus, although the conservative treatment of the retailer's handling cost embodied in \hat{m} is theoretically appealing, its actual quantitative significance is not overwhelming.

¹⁹This conclusion also holds, for the most part, within individual categories, as Tables 5–8 and A1–A15 indicate.

Retailer's Markups on Private Labels and National Brands

In Table 3 and Figure 3 we report the retailer's markup – the ratio of retail price to wholesale price - for the private label (m_g), and nationally branded products (m), by category. According to Table 3, for all but three products, the retailer's markup ratios for the nationally branded products are all less than 1.20. The exceptions are canned soups (1.46), toothbrushes (1.37), and frozen juice (1.31). Moreover, the retailer's markups on nationally branded product are small both in comparison to \hat{m} and m^w (see Figure 4), and in comparison to retailer's markup on the private label. Specifically, in all but one category (frozen entrees), retail markups are higher for private labels than for national brands. Second, in all but one category (frozen juice), the retail markups for nationally branded products are lower than the manufacturers' markups.

According to the figures in Table 3, the retailer's markup ratios for nationally branded products range from 1.03 for laundry detergent to 1.46 for canned soups. For more than one third of categories - grooming products, analgesics, fabric softeners, toothpaste, cereal, dish detergents, and laundry detergents – the average retailer's markup ratio on the brand is less than 1.10.

In contrast, the retailer's markup ratios for private label products are substantially higher. Omitting the puzzling case of the toothbrush category (with a measured retailer's markup ratio of 4.87), the average retailer's markup on the private label version ranges from 1.07 for laundry detergents to 1.76 for soft drinks. Only in the categories of laundry detergents, dish detergents, cereals, and frozen entrees are retailer's private label markup ratios less than 1.20.

Thus we find clear evidence that retailers' markups are higher for private labels than national brands. This fact is well known in the trade. For example, according to Morton and Zettelmeyer (2000), retailers "...achieve higher price-cost margins [on private label products] than those earned with national brands. Industry observers, the popular press and academic work all indicate that this effect can be quite large." According to Hoch and Banerji (1993) "Industry sources suggest that retailer gross margins on private labels are

20% to 30% higher than on national brands.”²⁰

Lower Bound Measure of the Full Markup Based on Retail Prices

Previous authors, such as Scherer (1980), Carlton and Perloff (1994), and Nevo, (2001), have focused on the ratio of retail prices m^r . Though we have made the case that \hat{m} is a better measure than m^r of the markup paid by consumers over full marginal cost, it is useful to report m^r as well, both for comparison with these previous studies, and because retail prices are becoming increasingly available with the development of new technologies in computers, electronic scanners, etc.

Table 4 shows the markup ratios for national brands based on the retail prices of nationally branded products and private labels, m^r . The markup ratios range from a high of 2.33 for toothbrushes to a low of 1.14 for canned tuna. The majority of the markups are below 1.4, the only exceptions being crackers (2.00), grooming products (1.75), analgesics (1.63), fabric softeners (1.52), and cookies (1.49), as well as the aforementioned toothbrushes (2.33). This is in general true within the individual categories as well, again with the exception of the above categories. Recall that m^r underestimates the full markup to a greater extent than does \hat{m} , because m^r treats the handling cost more conservatively by using as its proxy the retailer’s margin on the private label product.

V-b. Detailed Results for Some Selected Categories and Products

In Tables 5–8, we report detailed tabulations of all five markup ratios derived in section II-c, for each national brand/private label pair in the toothbrushes, analgesics, cereal, and crackers categories, respectively. In Tables A1-A15 of the appendix, we report

²⁰ See also Slade (1998). This divergence between retailer’s margins on branded and private label products is associated with differences between the profitability of American and European supermarkets. “In European supermarkets, higher private-label sales result in higher average pretax profits. U.S. supermarkets average only 15% of sales from private labels, they average 2% pre-tax profits from all sales. By contrast, European grocery stores such as Sainsbury’s, with 54% of its sales coming from private

similar results for the remaining 15 categories.

Among the 19 categories included in our dataset, the toothbrush category (Table 5) attains the highest average value of our “preferred” lower bound markup ratio with a category average of 3.44. Within the category, four types of Crest Toothbrush (of different size and strength) attain a markup ratio in the range of 5.48-5.80, and two types of Reach Toothbrush attain markup values of 4.36 and 4.56. The results for the remaining products in this category suggest more moderate market power with markup ratios in the range of 1.56 for Johnson and Johnson Floss Wax Mint and 1.49 for Pepsodent Toothbrush.

The manufacturers’ lower bound markup ratios calculated using the wholesale prices attain even higher values. For example, for the four Crest and two Reach toothbrushes, m^w falls in the range of 13.00-19.84. Overall, the category average of these markup figures is 10.43. The reasons for these very high measured markup figures, unique to the toothbrush category, remain a mystery.

The figures in the last two columns of Table 5 suggest that the retailer’s markup on private label products in this category far exceeds its markup ratio on the corresponding nationally branded product by nearly an order of magnitude. For example, for the highest markup brand, the Crest Toothbrush, the retailer’s markup ratio is only 1.14, while the markup ratio on the corresponding private label is 7.03. Overall, the retailer’s average markup ratio for nationally branded products in this category, equals 1.37, while the average markup ratio for private label products equals 4.87.

Finally, the lower bound markup ratios calculated using the retail prices are more moderate, although for the top four products, the ratio still exceeds 3.00 and for another two products it is close to 3.00. The category average for this ratio is 2.33.

For the remaining 18 categories we find more moderate markup figures. Nevertheless, in most categories they are quite substantial. For example, for the analgesics category reported in Table 6, the average of our “preferred” lower bound markup ratio is 1.84. Several products in this category have especially high markup ratios. For example, the “preferred” lower bound on the markup ratio for Children’s Anacin-3 Tablets is 4.99

labels, and Tesco, with 41%, average 7% pretax profits” (Quelch and Harding, 1996).

(column 1). Four other products with especially high markup ratios are Panadol Children's Tablets with the lower bound markup ratio of 3.91, followed by Tylenol Extra Strength Caplets with 2.53, Tylenol Tablets (Regular) with 2.44, and Bayer Children's Aspirin with a markup ratio of 2.28.²¹

Turning to the manufacturers' markup ratios calculated using the wholesale prices (column 2), we find that they are quantitatively very similar to the values of \hat{m} , with the exception of Children's Anacin-3 Tablets, with a manufacturer's lower bound markup ratio of 7.62, and Panadol Children's Tablets, with a manufacturer's lower bound markup ratio of 6.73. Further, as we move down the list from the highest "preferred" lower bound to the lowest, the discrepancy between the two ratios essentially disappears, as expected. Overall, the lower bound manufacturers' markup ratios calculated using wholesale prices are high. For example, the figures in the table indicate that for 7 of the 24 products in this category, the manufacturers' lower bound markup ratio exceeds 2.00, and for another 10 products the ratio exceeds 1.7. Only for two products, both Tylenol Extra-Strength Tablets (different sizes), is m^w below 1.2. Overall, the average manufacturer's lower bound markup ratio for this category equals 2.01.

The figures in the third column of Table 6, which measure the lower bound on the full markup using retail prices, are smaller than the first two ratios, as predicted by the inequalities derived in section II-c. Still, the markup ratios we obtain for the analgesics category are large. For example, of the 24 products, for three products, Children's Anacin-3 Tablets, Panadol Children's Tablets, and Tylenol Extra Strength Caplet, the markup ratio calculated using only the retail prices exceeds 2.0, for 10 other products the ratio exceeds 1.6, and for another 8 products the markup ratio exceeds 1.3. The average markup ratio using retail prices for the analgesics category, equals 1.63.

Finally, the retailer's markup on the national brand systematically exceeds its markup on the private label. For example, for 23 of the 24 products (Bayer Children's Aspirin being the only exception), the retailer's markup on nationally branded products in this category is less than 1.15, with an overall average of only 1.04. In contrast, the markup

²¹Ernie Berndt noted that the extraordinarily high markups on children's medicine might possibly be explained by parents' risk aversion regarding their children's health.

ratio on the private label is substantially higher, averaging 1.25.

Next consider the cereals category. According to Table 7, all of the markup figures we find in this category are smaller than those we reported for the analgesics category. As the figures in the first column of the table suggest, here the “preferred” lower bound markup ratio falls in the range 1.27-1.57 with an average of 1.41, again suggestive of very substantial market power. Total Raisin Bran attains the highest lower bound value with 1.57, followed by Kellog’s Corn Flakes with 1.54, and Post Raisin Bran and Kellog’s Nut & Honey, each with a lower bound markup ratio of 1.41.

The manufacturers’ markup figures reported in the second column of Table 7 are only slightly higher than the “preferred” lower bound figures. For example, for Total Raisin Bran, the lower bound on the manufacturer’s markup ratio equals 1.61, in comparison to the “preferred” lower bound of 1.57. The manufacturers’ markup and the “preferred” markup figures are equally close for the remaining products of the category. Overall, cereal manufacturers on average mark up their branded product prices to 1.43 of their marginal cost.

According to the third column of Table 7, the markup ratios we obtain using retail prices average 1.26 for the cereal’s category. Total Raisin Bran still attains the highest value with 1.46, while Kellog’s Corn Flakes’ markup ratio is a distant second with a value of 1.23. Finally, comparing the retailer’s markup ratio on branded products and to its markup ratio on private labels, we again find that the latter, 1.19 on average, exceeds the former, 1.07 on average.

It is instructive to compare our markup figures in this category to existing econometric estimates. The category of breakfast cereals has been a subject of several recent studies, such as Hausman (1997) and Nevo (2001). Nevo presents estimates of price-marginal cost margins under different assumptions on market structure, and finds that they range from about a 1.3 to as high as 2.0, very much consistent with the lower bound measures reported here.

As a final example, consider the crackers category, in which we were able to find 10 matching pairs of national brand-private label products. According to Table 8, our “preferred” lower bound markup figures are relatively high, with the highest ratio for

Nabisco Premium Saltines (2.84), and the lowest for Salerno Graham Cracker (1.34); the overall category average is 2.07. For four branded products, two Nabisco Premium Saltines (different sizes) and two Salerno Saltines (also different sizes), the ratio exceeds 2.00. Only for two products is the lower bound markup ratio less than 1.40.

The manufacturers' lower bound markup ratios (second column of Table 8) substantially exceed the "preferred" lower bound figures. For example, the category average of the manufacturers' lower bound markup equals 2.57, which is about 25 percent higher than the "preferred" lower bound. Further, for Nabisco Premium Saltines, the manufacturer's lower bound markup ratio is 4.22, about 50 percent higher than the corresponding "preferred" lower bound.

It turns out that in the crackers category we obtain especially high markup figures even if we consider the lower bound on the full markup ratio calculated using only the retail prices. For example, according to Table 8 (column 3), the category average of this markup ratio is 2.00, which is the second highest (the toothbrush category being first) amongst all 19 categories included in our study. Individual product markup ratios calculated using the retail prices range from the highest ratio of 3.12 for Nabisco Premium Saltine to 1.20 for Salerno Graham Cracker.

Finally, if we consider the retailer's markup on the nationally branded and private label products, we find that as before, the retailer's markup on the private label is systematically higher than its markup on the nationally branded product, with an average of 1.50 in contrast to 1.15, a difference of about 20 percent.²²

Next, consider some specific products that stand out in other categories. In the canned soup category (Table A1), the only nationally branded product with a "preferred" lower bound markup ratio in excess of two is Campbell's Tomato Soup with a ratio of 2.61. The remaining products in this category attain a markup value of less than 2.00. In the cookies category (Table A2), two brand name products, Nutter Butter Peanut Butter and Cameo Crème Sandwich, each attain a "preferred" lower bound markup ratio of about

²² Slade (1998) assumes a 20 percent retail markup for Saltine crackers in her study of price adjustment costs at several Pennsylvania grocery stores. This is equivalent to a retailer's markup ratio of 1.20. The average retailer's markup ratio on the nationally branded product we report is 1.15 with the inter-quartile range of (1.12-1.17), indeed very close to what Slade assumes.

2.70, and another ten products attain markup values exceeding 1.40. In the snack cracker category (Table A3), Nabisco Ritz Cracker attains the highest “preferred” lower bound markup ratio of 1.74, followed by Nabisco Ritz Bits with a ratio of 1.58.

In the soft drinks category (Table A4), we find that Coca-Cola Classic and Pepsi Cola attain “preferred” lower bound markup values of 3.83 and 2.36, respectively. Other branded products with particularly high lower bound markup ratios in the soft drink category are Schweppes Ginger Ale with 3.52, Snapple Strawberry and Snapple Pink Lemonade with 2.88 and 2.47, respectively, Pepsi Diet with 2.28, and Seagrams Ginger Ale with 2.18. Diet Coke attains a more moderate lower bound markup ratio of 1.69.

Finally, the nationally branded products attaining the highest “preferred” lower bound markup ratios in the remaining categories include Motts Apple Juice in the bottled juice category, Minute Maid Pink Lemonade in the frozen juice category, Crest Regular in the toothpaste category, Kraft Soft Philly Cream Cheese in the cheese category, Dawn Lemon in the dish detergent category, L.C. Bakes Cheese Ravioli in the frozen entrees category, Bounce Single Scented in the fabric softener category, Trac II Plus Cart 10 in the grooming products category, Ultra Ivory-Snow in the laundry detergent category, Quick Quaker Oats in the oatmeal category, and C.O.S. Lite Tuna in Water in the canned tuna category.

VI. Discussion

It might be worthwhile to hypothesize as to the determinants of cross-category and within-category variation in the magnitude of markup ratios. Consider first the within-category variation. In most categories, we find that more heavily branded and well-known products achieve higher markups. For example, Kellogg’s Corn Flakes, Nabisco Premium Saltine crackers, Crest, Coca-Cola Classic, Motts Apple Juice, Nutter Butter Peanut Butter, Nabisco Ritz Crackers, Kraft Cream Cheese, Dawn Lemon dish detergent, Bounce Single Scented fabric softener, etc., which have the highest markups within respective categories, all are heavily advertised and widely recognized nationally branded products.

Perhaps a more interesting issue is the variation in markup ratios across product categories. Basu and Fernald (1997) and Rotemberg and Woodford (1996) provide the

following formula linking the gross output markups that are the focus of this paper to the value added markups, via products material share:

$$m^v = \frac{m(1-s)}{1-m},$$

where m^v denotes the markup on real value added, s denotes the intermediate inputs share in total revenue, and m denotes the gross output markup. The formula implies that if the value added markup is to be finite, the gross output markup must not exceed $1/s$.

Nevo (2001) using data from the Annual Survey of Manufacturers over the period 1988-1992, provides materials share figures for Ready-to-Eat Cereals (SIC 2043) and for the food industry overall (SIC 20). For cereals, he reports a materials share of 26.5 percent, which from the above formula implies that the gross output markup should not exceed $1/0.265 = 3.77$. Indeed, according to our findings (see Table 1), the “preferred” lower bound markup ratio for the cereals category equals 1.41, well below the upper bound imposed by the above formula.

For the entire food industry, Nevo reports a materials share of 63.4 percent. This imposes an upper bound of 1.58 on the gross output markup ratio. Twelve of the 19 categories we study would be classified as food. These are soft drinks, crackers, canned soups, oatmeal, cookies, snack crackers, cereals, bottled juice, cheese, frozen juice, frozen entrees, and canned tuna. Of these 12 categories, the numerical values of the “preferred” markup ratios for the last 8 categories fall below 1.58. For two additional categories (oatmeal and canned soups), the markup ratio is only slightly higher than 1.58. For only two categories (crackers and soft drinks), does the markup ratio exceed 1.58 substantially. This suggests that materials share in these two categories must be smaller than 26.5 percent, which seems reasonable.²³

Finally, without having actual data on the cost shares of intermediate inputs used by manufacturers of individual food categories, we strongly suspect that the products with the lowest markup ratios, such as canned tuna, frozen entrees, cheese, frozen juice, and

²³ Moreover, the inter-quartile ranges we report indicate that the great majority of the products in each one of the 12 categories satisfy this constraint.

bottled juice, also have the highest share of materials.²⁴

VII. Concluding Remarks

In this paper we study the size of markups for nationally branded products sold in a large U.S. retail supermarket chain. Our approach, which we hope will serve as a complement to more structural econometric approaches, treats the wholesale price of a comparable private label product as an upper bound on the marginal costs faced by the brand manufacturer. Using scanner data from a large Midwestern chain, we have computed various upper and lower bound markup ratios for over 230 products in 19 categories. We found that markup ratios measured this way range from 3.44 for toothbrushes and 2.23 for soft drinks to about 1.15–1.20 for canned tuna and frozen entrees, with the majority of categories falling in the range 1.40–2.10. Lower bounds on manufacturers' markups are even higher. Thus the data indicate that markups on nationally branded products sold in U.S. supermarkets are large.

Our approach offers several benefits. Because it involves only a simple computation (once the data have been assembled), the method permits calculation of markups for a large variety of products. It is transparent and intuitive, and it offers a benchmark comparison for more structural approaches.

Particularly in light of the importance of markups in recent macroeconomic discourse, one might ask whether the finding of high markups for heavily advertised differentiated products generalizes to the economy at large. In this direction, it is worth noting that many “commodity” products such as automotive parts, personal computers and their components, and many other producers' goods come in both branded and non-branded (OEM) versions, and that the price gap for those products is comparable to that for the supermarket goods we have studied. This is also true for other consumer goods sold outside the supermarket industry, home and office supply products being one example.

²⁴ We are grateful to Susanto Basu for calling our attention to the above formula and its implications.

²⁵ Ernie Berndt noted that the extraordinarily high markups on children's medicine might possibly be explained by parents' risk aversion regarding their children's health.

References

- Basu, Susanto, and John Fernald (1997), "Are Apparent Productive Spillovers a Figment of Specification Error?" *Journal of Monetary Economics* 36(1), December, 165-188.
- Bils, Mark J. (1986) "The Cyclical Behavior of Marginal Cost and Price," *American Economic Review* 77, 838-857.
- Brown, Charles and James Medoff (1989), "The Employer Size-Wage Effect," *Journal of Political Economy* 97, October, 1027-1059.
- Brown, Charles and James Medoff (1990), "Cheaper by the Dozen," Working Paper.
- Carlton, Dennis W. and Jeffrey M. Perloff (1994), *Modern Industrial Organization* (Harper Collins, NY).
- Chen, Yuxin, James D. Hess, Ronald T. Wilcox, and Z. John Zhang (1999), "Accounting Profits Versus Marketing Profits: A Relevant Metric for Category Management," *Marketing Science* 18, No. 3, 208-229.
- Chevalier Judith, Anil K. Kashyap and Peter E. Rossi (2000), "Why Don't Prices Rise During Periods of Peak Demand? Evidence From Scanner Data," NBER Working Paper, No. 7981.
- Cox Eighteenth Annual Promotional Practice (1996).
- Dutta, Shantanu, Mark Bergen, and Daniel Levy (2001), "Price Flexibility in Channels of Distribution: Evidence From Scanner Data," *Journal of Economic Dynamics and Control*, forthcoming.
- Fitzell, Philip (1982), *Private Labels: Store Brands and Generic Products*, AVI Publishing Company, Inc., Westport, Connecticut.
- Fitzell, Philip (1998), *The Explosive Growth of Private Labels in North America*, Global Books, LLC, New York.
- Hall, Robert E. (1986), "Market Structure and Macroeconomic Fluctuations," *Brookings Papers on Economic Activity*, No. 2, 285-322.
- Hall, Robert E. (1988), "The Relation Between Price and Marginal Cost in U.S. Industry," *Journal of Political Economy* 96, 921-947.
- Hausman, Jerry A. (1997), "Valuation of New Goods Under Perfect and Imperfect Competition," in *The Economics of New Goods*, Timothy Bresnahan and Robert J. Gordon ed., National Bureau of Economic Research Studies in Income and Wealth, Vol.

58 (Chicago: University of Chicago Press), 209-237.

Hausman, Jerry A. and Leonard Gregory K. (1999), "The Competitive Effect of a New Product Introduction: A Case Study," MIT Working Paper.

Hoch, Steve, J. S. Kim, Alan Montgomery and Peter Rossi (1995), "Determinants of Store-Level Price Elasticity," *Journal of Marketing Research* 32, February, pp.43-75.

Hoch, Steve and Shumeet Banerji (1993), "When Do Private Labels Succeed?" *Sloan Management Review*, Summer.

Hoch, Steve (1995), "How Should National Brands Think About Private Labels," Working Paper, University of Chicago.

Lal, Rajiv and Chakravarthi Narasimhan (1996), "The inverse relationship between manufacturer and retailer margins: A Theory," *Marketing Science*, Vol. 15, No. 2, pp. 132-151.

Levy, Daniel, Shantanu Dutta, and Mark Bergen (2001), "Heterogeneity in Price Rigidity: Evidence from a Case Study Using Micro-Level Data," *Journal of Money, Credit and Banking*, forthcoming.

Levy, Daniel, Shantanu Dutta, Mark Bergen, and Robert Venable (1998), "Price Adjustment at Multiproduct Retailers," *Managerial and Decision Economics*, Vol. 19, 81-120.

Levy, Daniel and Andrew Young (2001), "'The Real Thing:' Nominal Price Rigidity of the Nickel Coke, 1886-1959," manuscript.

Monroe, Kent, E. (1990), *A Guide to Strategic Pricing*.

Morton, Feona Scott and Florian Zettelmeyer (2000), "The Strategic Use of Store Brand In Retailer-Manufacturer Bargaining," Working Paper, U.C. Berkeley.

Müller, Georg, Mark Bergen, Shantanu Dutta and Daniel Levy (2001), "Price Rigidity During Holiday Periods: The Role of Price Adjustment Costs," Working Paper.

Nevo, Aviv (1997), "Demand for Ready to Eat Cereal and Its Implications for Price Competition, Merger Analysis and Valuation of New Brands," Harvard University, Ph.D. dissertation.

Nevo, Aviv (2001), "Measuring Market Power in the Ready-To-Eat Cereal Industry," *Econometrica* 69(2), March, 265-306.

Quelch, John A. and David Harding (1996), *Harvard Business Review*, Jan.-Feb., reprint

#96109.

Rotemberg, Julio, and G. Saloner (1986), "A Supergame-Theoretic Model of Business Cycle and Price Wars During Booms," *American Economic Review*, June, 76, 390–407.

Rotemberg, Julio, and Michael Woodford (1996), "Imperfect Competition and the Effects of Energy Price Increases on Economic Activity," *Journal of Money, Credit, and Banking* 28 (4), November, 549-577.

Scherer, F. M. (1980), *Industrial Market Structure and Economic Performance*, 2ed, Houghton-Mifflin, Boston.

Schmalensee, Richard (1978), "Entry Deterrence In The Ready To Eat Breakfast Cereal Industry," *Bell Journal of Economics* 9, 305–327.

Sethuraman, Raj and Catherine Cole (1997), "Why Do Consumers Pay More For National Brands than for Store Brands," Marketing Science Institute, Report # 97-126.

Slade, Margaret E. (1998), "Optimal Pricing with Costly Adjustment: Evidence from Retail-Grocery Prices," *Review of Economic Studies* 65, 87-107.

Steiner, Robert L. (1993), "The Inverse Association Between the Margins of Manufacturers and Retailers," *Review of Industrial Organization*, Vol. 8, 717–740.

Supermarket Business (1993), "Consumer Expenditures Study," XLVIII, 52.

Sutton, John (1991), *Sunk Cost and Market Structure* (Cambridge, MA: MIT Press).

Tirole, Jean (1989), *The Theory of Industrial Organization* (Cambridge, MA: MIT Press).

Table 1. Full Markup Ratio for Branded Products: “Preferred” Lower Bound (\hat{m})

Category	\hat{m}
Toothbrush	3.44 (1.55, 5.57)
Soft Drink	2.23 (1.56, 2.13)
Crackers	2.07 (1.52, 2.11)
Grooming Products	2.00 (1.63, 2.29)
Analgesics	1.84 (1.56, 1.92)
Canned Soups	1.77 (1.23, 1.53)
Fabric Softeners	1.66 (1.49, 1.77)
Oatmeal	1.62 (1.36, 1.43)
Cookies	1.58 (1.29, 1.64)
Snack Crackers	1.57 (1.46, 1.58)
Toothpaste	1.54 (1.36, 1.75)
Cereals	1.41 (1.35, 1.41)
Dish Detergent	1.38 (1.29, 1.53)
Bottled Juice	1.31 (1.21, 1.40)
Cheese	1.30 (1.16, 1.32)
Frozen Juice	1.28 (1.16, 1.44)
Laundry Detergent	1.22 (1.05, 1.44)
Frozen Entrees	1.21 (1.06, 1.32)
Canned Tuna	1.16 (1.09, 1.50)

- Notes:
1. The figures in the table correspond to measure (a) in section II-c of the paper.
 2. The figures in the parentheses indicate the inter-quartile range. See the text for details.

Table 2. Manufacturer's Markup Ratio for Branded Products: Lower Bound Based on Wholesale Prices (m^w)

Category	m^w
Toothbrush	10.43 (2.05, 19.26)
Soft Drink	2.09 (1.72, 2.29)
Crackers	2.57 (1.63, 2.75)
Grooming Products	2.17 (1.77, 2.43)
Analgesics	2.01 (1.58, 2.06)
Canned Soups	1.61 (1.29, 1.73)
Fabric Softeners	1.73 (1.55, 1.87)
Oatmeal	1.52 (1.40, 1.47)
Cookies	1.77 (1.34, 1.78)
Snack Crackers	1.68 (1.59, 1.70)
Toothpaste	1.61 (1.40, 1.92)
Cereals	1.43 (1.38, 1.45)
Dish Detergent	1.42 (1.31, 1.58)
Bottled Juice	1.38 (1.23, 1.49)
Cheese	1.38 (1.22, 1.40)
Frozen Juice	1.44 (1.26, 1.80)
Laundry Detergent	1.23 (1.05, 1.47)
Frozen Entrees	1.27 (1.08, 1.40)
Canned Tuna	1.23 (1.10, 1.91)

Notes: 1. The figures in the table correspond to measure (c) in section II-c of the paper.
 2. The figures in the parentheses indicate the inter-quartile range.

Table 3. Retailer's Markups on National Brand (m_b) and Private Label (m_g)

Category	m_b	m_g
Toothbrush	1.37 (1.14, 1.42)	4.87 (1.93, 7.03)
Soft Drink	1.18 (1.14, 1.37)	1.76 (1.70, 1.99)
Crackers	1.15 (1.12, 1.17)	1.50 (1.37, 1.63)
Grooming Products	1.07 (1.04, 1.09)	1.33 (1.24, 1.25)
Analgesics	1.04 (1.02, 1.07)	1.25 (1.13, 1.32)
Canned Soups	1.46 (1.24, 1.44)	1.56 (1.31, 1.72)
Fabric Softeners	1.06 (1.05, 1.08)	1.21 (1.12, 1.28)
Oatmeal	1.11 (1.10, 1.11)	1.39 (1.29, 1.29)
Cookies	1.13 (1.11, 1.16)	1.33 (1.24, 1.40)
Snack Crackers	1.12 (1.12, 1.17)	1.37 (1.32, 1.44)
Toothpaste	1.10 (1.06, 1.11)	1.28 (1.21, 1.41)
Cereals	1.07 (1.03, 1.09)	1.19 (1.15, 1.17)
Dish Detergent	1.07 (1.05, 1.09)	1.15 (1.13, 1.18)
Bottled Juice	1.14 (1.08, 1.21)	1.24 (1.15, 1.49)
Cheese	1.15 (1.14, 1.18)	1.27 (1.27, 1.34)
Frozen Juice	1.31 (1.21, 1.49)	1.60 (1.38, 1.80)
Laundry Detergent	1.03 (1.02, 1.04)	1.07 (1.05, 1.14)
Frozen Entrees	1.17 (1.15, 1.19)	1.16 (1.14, 1.16)
Canned Tuna	1.15 (1.12, 1.26)	1.22 (1.14, 1.61)

- Notes:
1. The figures in column one correspond to markup measure (d) and in column two--to markup measure (e), in section II-c of the paper.
 2. The figures in the parentheses indicate the inter-quartile range.

Table 4. Markup Ratio for Branded Products: Lower Bound Based on Retail Prices (m^l)

Category	m^l
Toothbrush	2.33 (1.51, 3.31)
Soft Drink	1.38 (1.19, 1.48)
Crackers	2.00 (1.31, 2.32)
Grooming Products	1.75 (1.55, 1.77)
Analgesics	1.63 (1.40, 1.75)
Canned Soups	1.34 (1.23, 1.52)
Fabric Softeners	1.52 (1.42, 1.57)
Oatmeal	1.20 (1.18, 1.20)
Cookies	1.49 (1.18, 1.44)
Snack Crackers	1.36 (1.30, 1.36)
Toothpaste	1.36 (1.23, 1.56)
Cereals	1.26 (1.23, 1.33)
Dish Detergent	1.34 (1.14, 1.48)
Bottled Juice	1.26 (1.13, 1.38)
Cheese	1.25 (1.11, 1.28)
Frozen Juice	1.18 (1.17, 1.31)
Laundry Detergent	1.18 (1.02, 1.41)
Frozen Entrees	1.30 (1.13, 1.44)
Canned Tuna	1.14 (1.08, 1.46)

- Notes:
1. The figures in the table correspond to measure (b) in section II-c of the paper.
 2. The figures in the parentheses indicate the inter-quartile range.

Table 5. Toothbrush

Product Pair	Full Markup: “Preferred” Lower Bound (\hat{m})	Manufacturer’s Markup: Lower Bound based on WP (m^v)	Lower Bound for Full Markup Based on RP (m^r)	Retailer’s Markup on National Brand (m_b)	Retailer’s Markup on Private Label (m_g)	Sample Size
CREST T.B. #5 SOFT S	5.80 (4.55, 6.35)	19.84 (8.64, 41.23)	3.33 (2.88, 3.75)	1.14 (1.12, 1.16)	7.03 (3.26, 13.17)	170
CREST T.B. #1 MED ST	5.75 (4.68, 6.40)	23.70 (8.64, 41.23)	3.34 (2.88, 3.75)	1.14 (1.12, 1.16)	8.01 (3.26, 13.17)	170
CREST T.B. #2 MED ST	5.57 (4.55, 6.35)	19.26 (8.64, 39.86)	3.31 (2.88, 3.75)	1.14 (1.12, 1.16)	6.65 (3.26, 13.17)	170
CREST T.B. #6 SOFT S	5.48 (4.55, 6.35)	16.20 (8.64, 38.91)	3.28 (2.88, 3.75)	1.14 (1.12, 1.16)	5.78 (3.26, 13.17)	170
REACH BETWEEN SOFT	4.56 (3.79, 5.19)	17.97 (8.27, 34.60)	2.92 (2.59, 3.32)	1.21 (1.20, 1.22)	7.70 (3.26, 13.17)	170
REACH BETWEEN MEDIUM	4.36 (3.79, 5.13)	13.00 (8.96, 29.79)	2.92 (2.52, 3.32)	1.21 (1.20, 1.22)	5.77 (3.26, 13.17)	170
J&J FLOSS WAX MINT	1.56 (1.54, 1.63)	2.05 (2.02, 2.24)	1.54 (1.50, 1.75)	1.41 (1.41, 1.45)	1.90 (1.87, 1.94)	164
J&J FLOSS WAX REG	1.55 (1.54, 1.63)	2.05 (2.02, 2.25)	1.52 (1.49, 1.71)	1.42 (1.41, 1.45)	1.92 (1.87, 1.94)	163
J&J FLOSS UNW REG	1.55 (1.53, 1.64)	2.04 (2.00, 2.26)	1.51 (1.49, 1.71)	1.42 (1.41, 1.45)	1.93 (1.90, 1.94)	164
PEPSODENT T/B MEDIUM	1.50 (1.37, 1.73)	3.33 (1.96, 7.39)	1.17 (1.00, 1.43)	2.04 (1.97, 2.02)	5.65 (3.26, 13.17)	170
PEPSODENT T/B SOFT P	1.49 (1.34, 1.76)	3.16 (1.93, 7.85)	1.16 (1.00, 1.43)	1.95 (1.95, 2.00)	5.52 (2.92, 13.17)	170
Weighted Average	3.44 (1.55, 5.57)	10.43 (2.05, 19.26)	2.33 (1.51, 3.31)	1.37 (1.14, 1.42)	4.87 (1.93, 7.03)	

- Notes:
1. In Tables 6-8 and A1-A15, column one corresponds to markup measure (a), column two—to markup measure (c), column three—to markup measure (b), column four—to markup measure (d), and column five—to markup measure (e).
 2. In each table, the figures in the parentheses indicate the inter-quartile range. See text for details.

Table 6. Analgesics

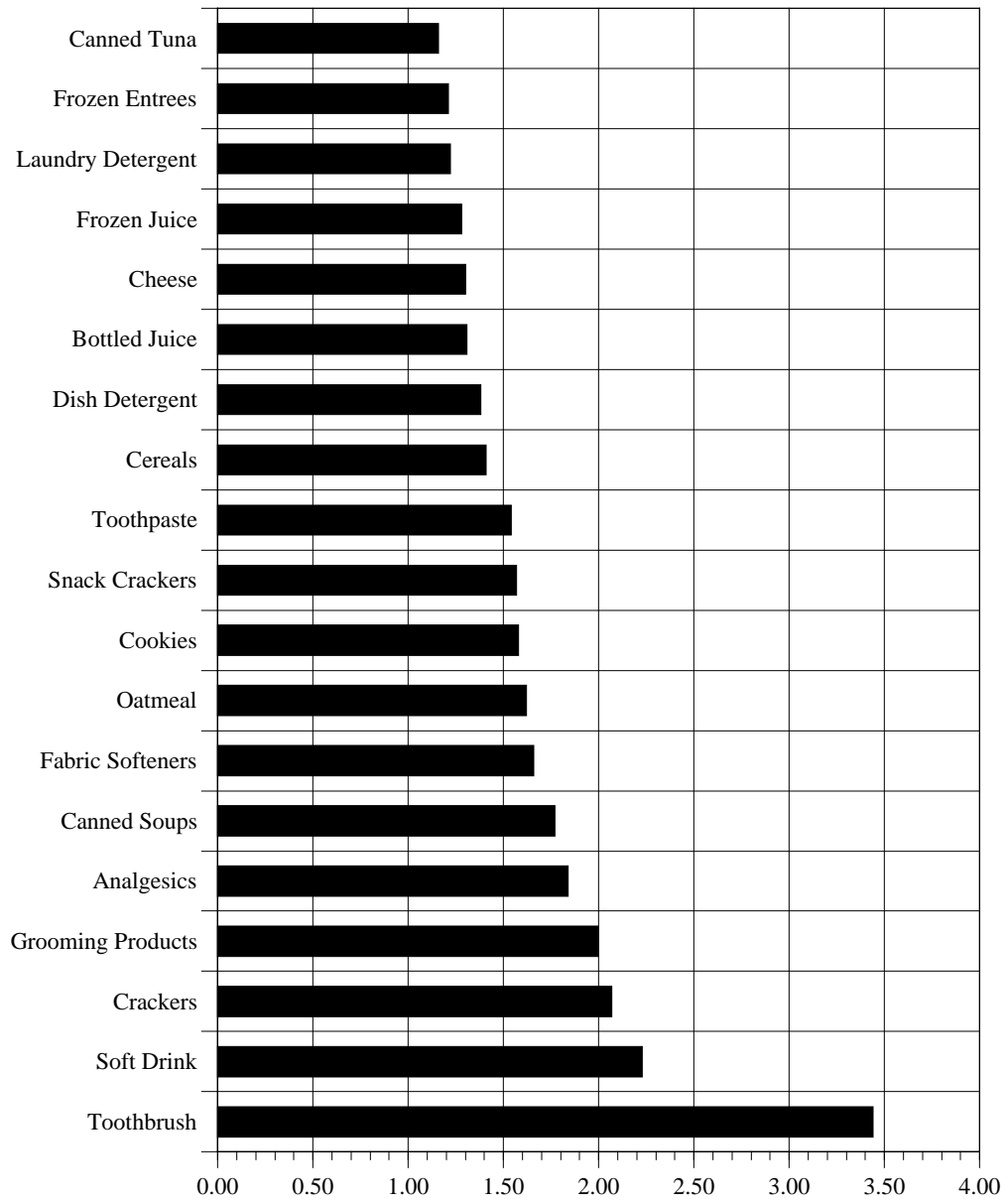
Product Pair	Full Markup: “Preferred” Lower Bound (\hat{m})	Manufacturer’s Markup: Lower Bound based on WP (m^w)	Lower Bound for Full Markup Based on RP (m^r)	Retailer’s Markup on National Brand (m_b)	Retailer’s Markup on Private Label (m_g)	Sample Size
ANACIN-3 CHILDREN TA	4.99 (4.90, 5.03)	7.62 (7.41, 7.84)	3.77 (3.65, 3.94)	1.09 (1.08, 1.10)	2.20 (2.18, 2.20)	40
PANADOL CHILD TABS	3.91 (3.84, 3.93)	6.73 (6.75, 7.25)	3.51 (3.51, 3.78)	1.14 (1.14, 1.16)	2.20 (2.18, 2.20)	43
TYLENOL X/S CAPLET	2.53 (2.24, 2.76)	2.81 (2.38, 3.08)	2.23 (1.91, 2.46)	1.06 (1.05, 1.06)	1.33 (1.29, 1.35)	392
TYLENOL TABLETS REG	2.44 (1.66, 3.29)	2.50 (1.68, 3.37)	1.92 (1.40, 2.42)	1.02 (1.01, 1.02)	1.30 (1.23, 1.38)	392
BAYER CHILD ASPIRIN	2.28 (2.16, 2.36)	3.23 (3.04, 3.36)	1.81 (1.72, 1.91)	1.23 (1.22, 1.25)	2.19 (2.18, 2.20)	43
TYLENOL INFANT DROPS	1.94 (1.87, 1.91)	2.09 (2.01, 2.05)	1.71 (1.67, 1.68)	1.07 (1.07, 1.08)	1.31 (1.30, 1.31)	114
~EXCEDRIN IB CAPLETS	1.91 (1.78, 1.98)	2.04 (1.86, 2.14)	1.78 (1.63, 1.89)	1.07 (1.06, 1.07)	1.22 (1.22, 1.23)	89
~EXCEDRIN IB TABS 50	1.86 (1.69, 1.97)	1.97 (1.77, 2.11)	1.68 (1.54, 1.84)	1.06 (1.06, 1.07)	1.24 (1.22, 1.26)	67
ADVIL	1.84 (1.68, 1.91)	1.91 (1.73, 1.98)	1.62 (1.49, 1.69)	1.04 (1.03, 1.05)	1.22 (1.21, 1.24)	349
TYLENOL X/S GELCAPS	1.82 (1.55, 2.09)	1.86 (1.57, 2.13)	1.69 (1.45, 1.93)	1.02 (1.02, 1.03)	1.12 (1.11, 1.13)	365
MOTRIN IB GELCAPS	1.79 (1.68, 1.82)	1.86 (1.74, 1.88)	1.60 (1.53, 1.61)	1.04 (1.04, 1.05)	1.21 (1.20, 1.21)	134
ALEVE CAPLETS	1.79 (1.67, 1.85)	1.86 (1.72, 1.94)	1.61 (1.50, 1.69)	1.05 (1.04, 1.05)	1.21 (1.20, 1.22)	145
~EXCEDRIN IB TABS 50	1.79 (1.65, 1.95)	1.89 (1.72, 2.08)	1.63 (1.47, 1.80)	1.06 (1.06, 1.08)	1.24 (1.22, 1.26)	109
TYLENOL X/S TABLETS	1.79 (1.53, 1.85)	1.81 (1.55, 1.87)	1.56 (1.37, 1.60)	1.01 (1.01, 1.02)	1.18 (1.12, 1.21)	349
ADVIL	1.69 (1.57, 1.85)	1.72 (1.58, 1.90)	1.56 (1.43, 1.72)	1.02 (1.01, 1.03)	1.13 (1.12, 1.13)	365
CHILD CHEW FRT TYLE	1.67 (1.60, 1.79)	1.83 (1.72, 2.00)	1.40 (1.32, 1.53)	1.13 (1.12, 1.14)	1.47 (1.44, 1.49)	71
CHILD CHEW GRAP TYLE	1.66 (1.54, 1.79)	1.82 (1.66, 2.00)	1.39 (1.30, 1.53)	1.13 (1.12, 1.14)	1.47 (1.44, 1.49)	68
ADVIL	1.59 (1.41, 1.69)	1.61 (1.42, 1.71)	1.46 (1.29, 1.55)	1.02 (1.02, 1.02)	1.12 (1.12, 1.13)	39
MOTRIN IB CAPLETS	1.53 (1.47, 1.55)	1.55 (1.48, 1.57)	1.42 (1.35, 1.43)	1.02 (1.02, 1.03)	1.12 (1.12, 1.12)	248
~EXCEDRIN IB CAPLETS	1.46 (1.28, 1.51)	1.48 (1.29, 1.54)	1.36 (1.19, 1.42)	1.03 (1.03, 1.04)	1.13 (1.12, 1.13)	75
~EXCEDRIN IB TAB 100	1.44 (1.38, 1.49)	1.47 (1.40, 1.52)	1.35 (1.29, 1.39)	1.03 (1.03, 1.04)	1.13 (1.13, 1.13)	95
ADVIL CAPLETS	1.41 (1.37, 1.47)	1.42 (1.37, 1.49)	1.28 (1.24, 1.35)	1.02 (1.01, 1.02)	1.12 (1.12, 1.12)	245
TYLENOL X/S TABLETS	1.18 (1.12, 1.19)	1.18 (1.12, 1.20)	1.02 (0.98, 1.04)	1.03 (1.03, 1.03)	1.19 (1.17, 1.20)	239
TYLENOL X/S TABLETS	1.17 (1.11, 1.19)	1.18 (1.12, 1.20)	1.02 (0.98, 1.04)	1.03 (1.03, 1.03)	1.19 (1.17, 1.19)	238
Weighted Average	1.84 (1.56, 1.92)	2.01 (1.58, 2.06)	1.63 (1.40, 1.75)	1.04 (1.02, 1.07)	1.25 (1.13, 1.32)	

Table 7. Cereals

Product Pair	Full Markup: “Preferred” Lower Bound (\hat{m})	Manufacturer’s Markup: Lower Bound based on WP (m^w)	Lower Bound for Full Markup Based on RP (m^r)	Retailer’s Markup on National Brand (m_b)	Retailer’s Markup on Private Label (m_g)	Sample Size
TOTAL RAISIN BRAN	1.57 (1.39, 1.53)	1.61 (1.42, 1.57)	1.46 (1.30, 1.39)	1.05 (1.04, 1.05)	1.15 (1.15, 1.17)	88
KELLOGGS CORN FLAKES	1.54 (1.52, 1.80)	1.50 (1.59, 1.93)	1.23 (1.29, 1.65)	1.21 (1.06, 1.10)	1.28 (1.24, 1.32)	333
POST RAISIN BRAN	1.41 (1.44, 1.72)	1.45 (1.48, 1.80)	1.33 (1.34, 1.65)	1.06 (1.04, 1.06)	1.15 (1.14, 1.16)	334
KELLOGGS NUT & HONEY	1.41 (1.32, 1.50)	1.45 (1.34, 1.54)	1.28 (1.22, 1.39)	1.04 (1.04, 1.06)	1.17 (1.13, 1.19)	229
KELLOGGS RAISIN BRAN	1.39 (1.38, 1.63)	1.41 (1.40, 1.67)	1.28 (1.27, 1.52)	1.03 (1.04, 1.05)	1.15 (1.14, 1.16)	334
W.C. X-RAISIN BRAN C	1.38 (1.32, 1.41)	1.44 (1.37, 1.46)	1.36 (1.32, 1.38)	1.09 (1.07, 1.11)	1.15 (1.14, 1.15)	76
APPLE CINNAMON CHERR	1.35 (1.37, 1.56)	1.38 (1.41, 1.61)	1.23 (1.29, 1.49)	1.02 (1.05, 1.07)	1.16 (1.13, 1.18)	239
KLLG LWFT GRANOLA W/	1.33 (1.27, 1.38)	1.38 (1.29, 1.46)	1.22 (1.15, 1.17)	1.09 (1.08, 1.08)	1.23 (1.21, 1.23)	28
HONEY NUT CHEERIOS	1.27 (1.37, 1.57)	1.29 (1.40, 1.61)	1.14 (1.30, 1.48)	1.02 (1.04, 1.06)	1.16 (1.13, 1.18)	239
Weighted Average	1.41 (1.35, 1.41)	1.43 (1.38, 1.45)	1.26 (1.23, 1.33)	1.07 (1.03, 1.09)	1.19 (1.15, 1.17)	

Table 8. Crackers

Product Pair	Full Markup: "Preferred" Lower Bound (\hat{m})	Manufacturer's Markup: Lower Bound based on WP (m^w)	Lower Bound for Full Markup Based on RP (m^r)	Retailer's Markup on National Brand (m_b)	Retailer's Markup on Private Label (m_g)	Sample Size
NAB PREMIUM SALTINES	2.84 (2.62, 3.12)	4.22 (3.71, 4.51)	3.12 (2.27, 3.86)	1.17 (1.14, 1.18)	1.63 (1.36, 1.81)	125
NAB PREMIUM SALTINES	2.30 (2.14, 2.43)	2.75 (2.50, 3.08)	2.32 (2.14, 2.61)	1.15 (1.11, 1.17)	1.35 (1.20, 1.57)	82
SALERNO SALTINES	2.11 (2.05, 2.23)	2.47 (2.34, 2.68)	2.11 (1.89, 2.40)	1.13 (1.10, 1.16)	1.34 (1.20, 1.57)	82
SALERNO SALTINES	2.03 (1.72, 2.42)	2.97 (2.47, 3.51)	2.39 (1.90, 2.98)	1.28 (1.17, 1.36)	1.63 (1.36, 1.81)	125
NAB PREMIUM SALTINES	1.83 (1.60, 2.04)	2.08 (1.77, 2.39)	1.44 (1.20, 1.65)	1.16 (1.13, 1.18)	1.68 (1.58, 1.71)	372
HONEY MAID GRAHAM-S-L	1.67 (1.55, 1.69)	1.81 (1.65, 1.82)	1.45 (1.37, 1.42)	1.11 (1.10, 1.12)	1.38 (1.32, 1.42)	90
KEEBLER GRAHAM CRACK	1.58 (1.48, 1.69)	1.70 (1.58, 1.83)	1.39 (1.27, 1.50)	1.12 (1.10, 1.13)	1.37 (1.32, 1.42)	380
NAB GRAHAM CRACKERS	1.52 (1.43, 1.64)	1.63 (1.50, 1.76)	1.31 (1.22, 1.41)	1.10 (1.10, 1.12)	1.37 (1.32, 1.42)	380
SALERNO SALTINES	1.37 (1.24, 1.56)	1.52 (1.34, 1.77)	1.14 (1.00, 1.30)	1.27 (1.17, 1.36)	1.67 (1.59, 1.71)	372
SALERNO GRAHAM CRACK	1.34 (1.26, 1.41)	1.42 (1.32, 1.50)	1.20 (1.12, 1.23)	1.15 (1.14, 1.18)	1.37 (1.32, 1.41)	380
Weighted Average	2.07 (1.52, 2.11)	2.57 (1.63, 2.75)	2.00 (1.31, 2.32)	1.15 (1.12, 1.17)	1.50 (1.37, 1.63)	



μ

Figure 1. Markup Ratio for Branded Products: "Preferred"
Lower Bound (Measure a)

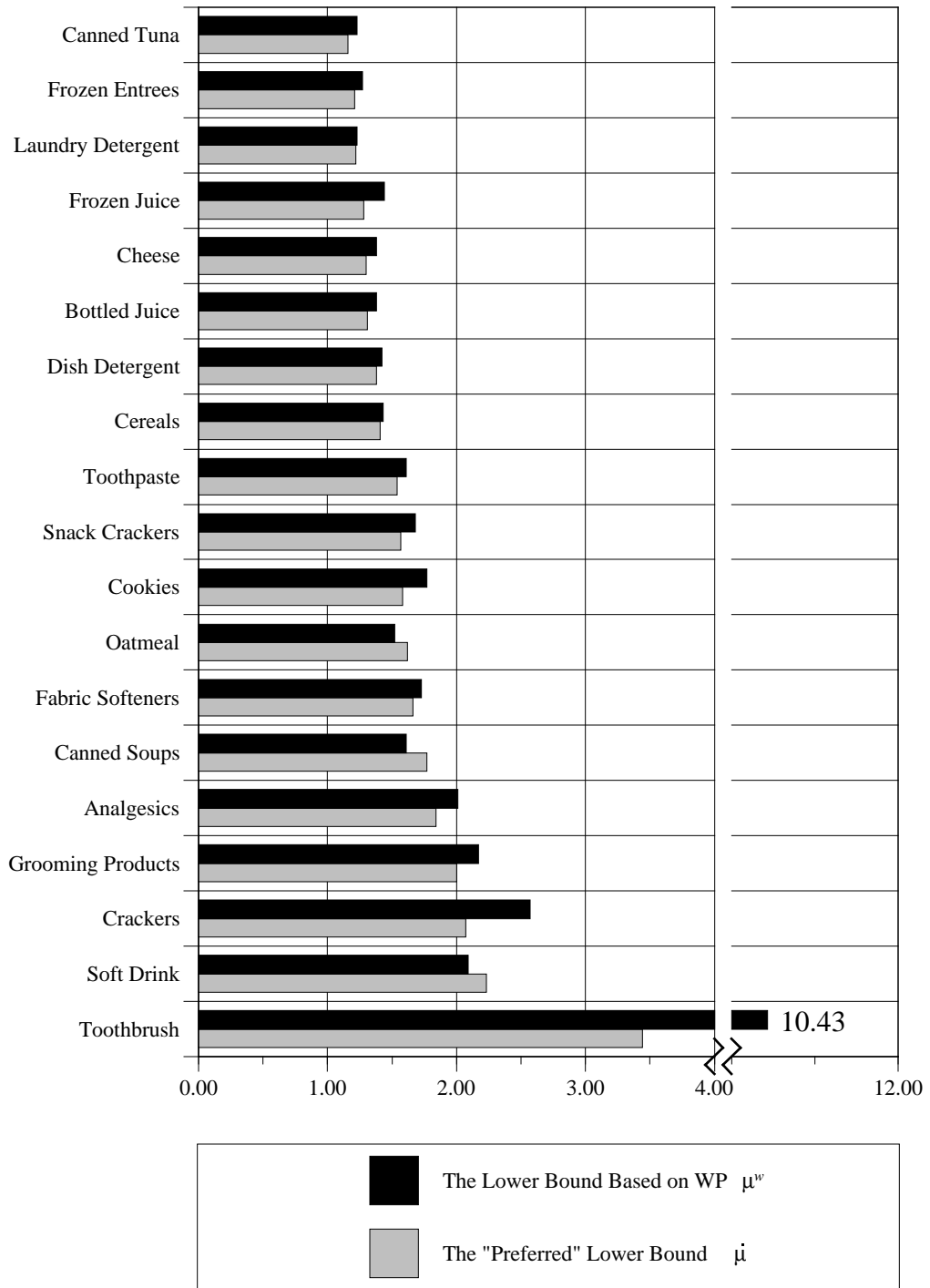


Figure 2. National Brand Markup: The "Preferred" Lower Bound (Measure a) vs the Lower Bound Based on Wholesale Prices (Measure c)

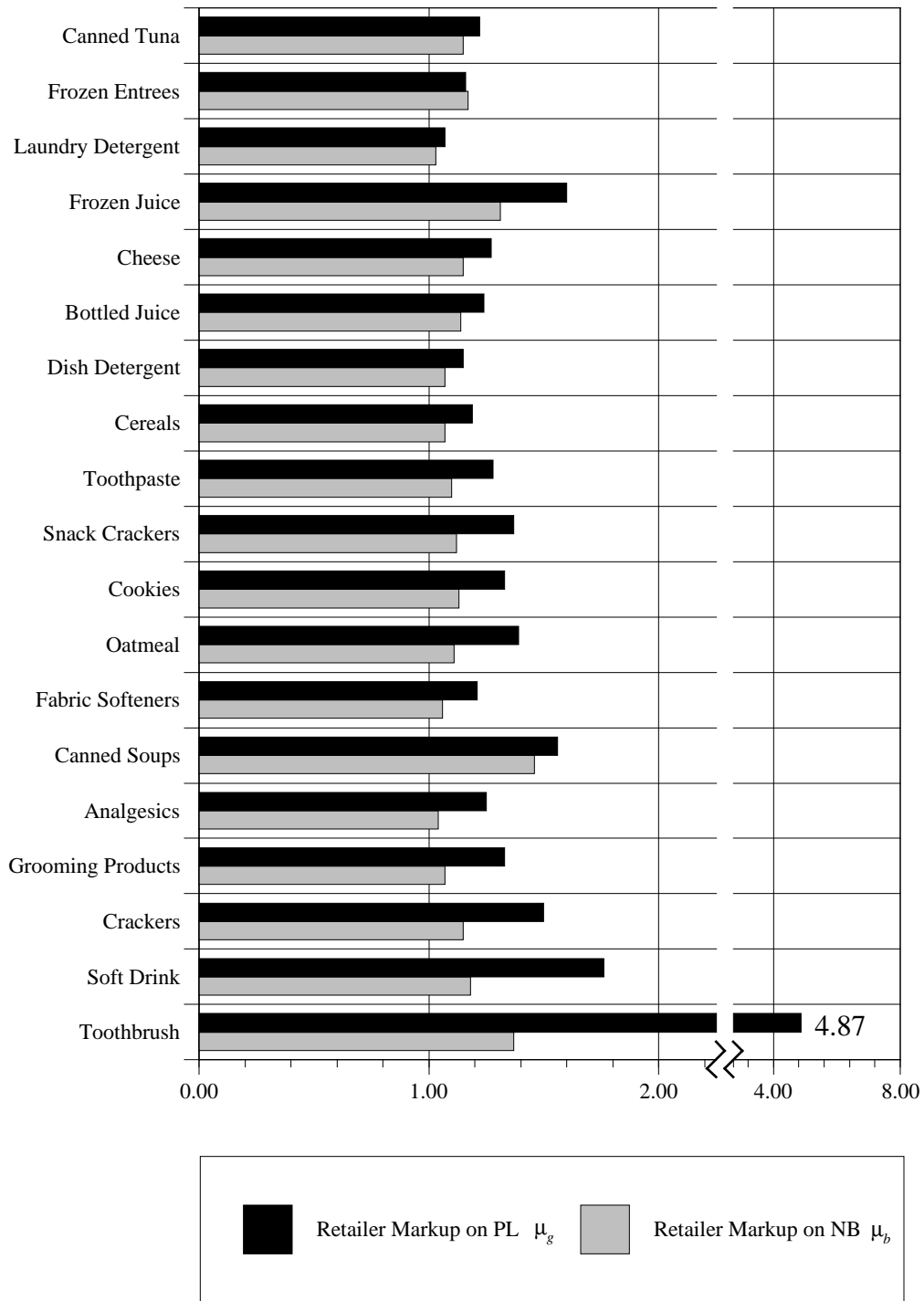


Figure 3. Retailer's Markup Ratio on National Brand (Measure d) and Private Label (Measure e)

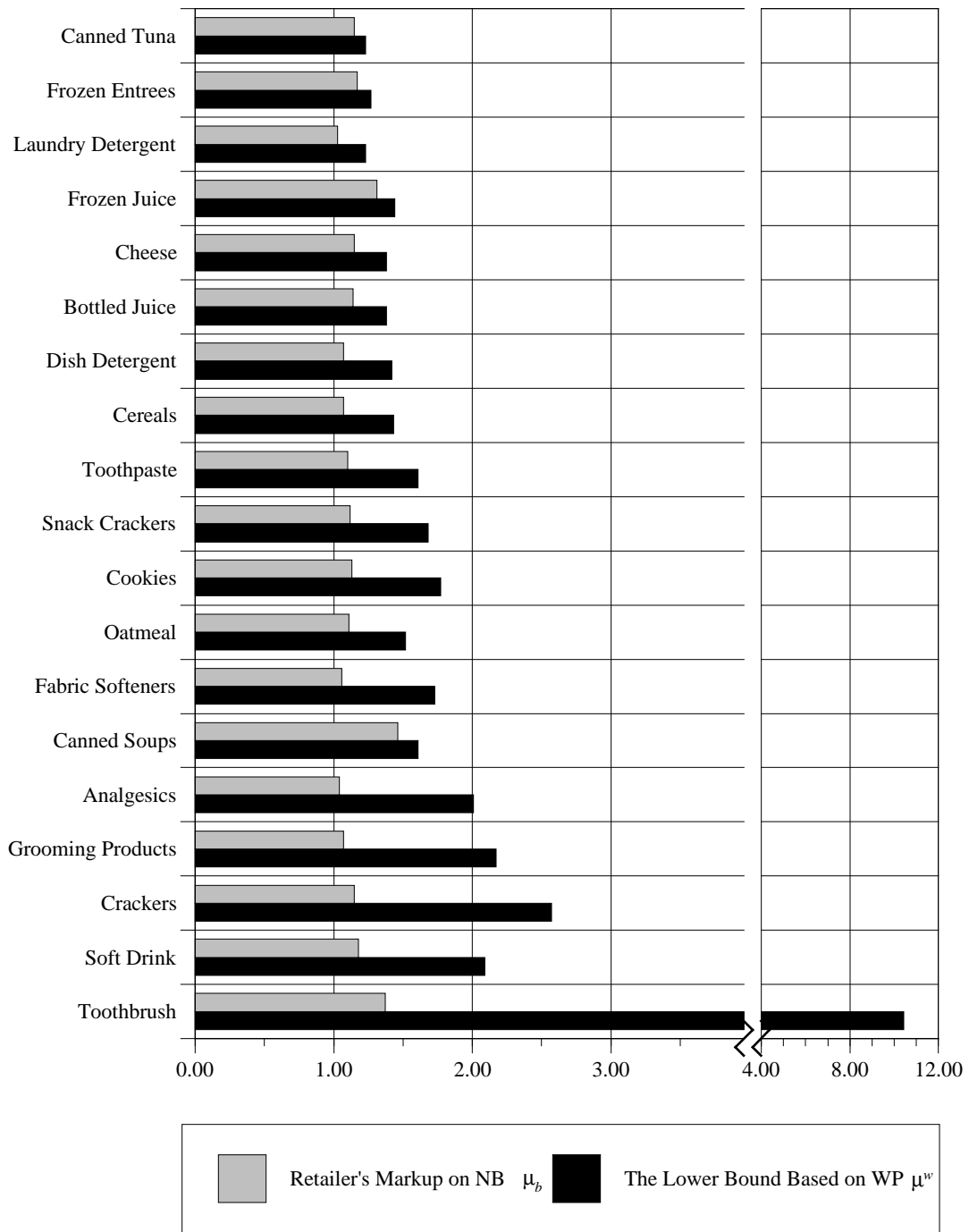


Figure 4. The Lower Bound Markup Based on Wholesale Prices (Measure c) vs Retailer's Markup on NB (Measure d)

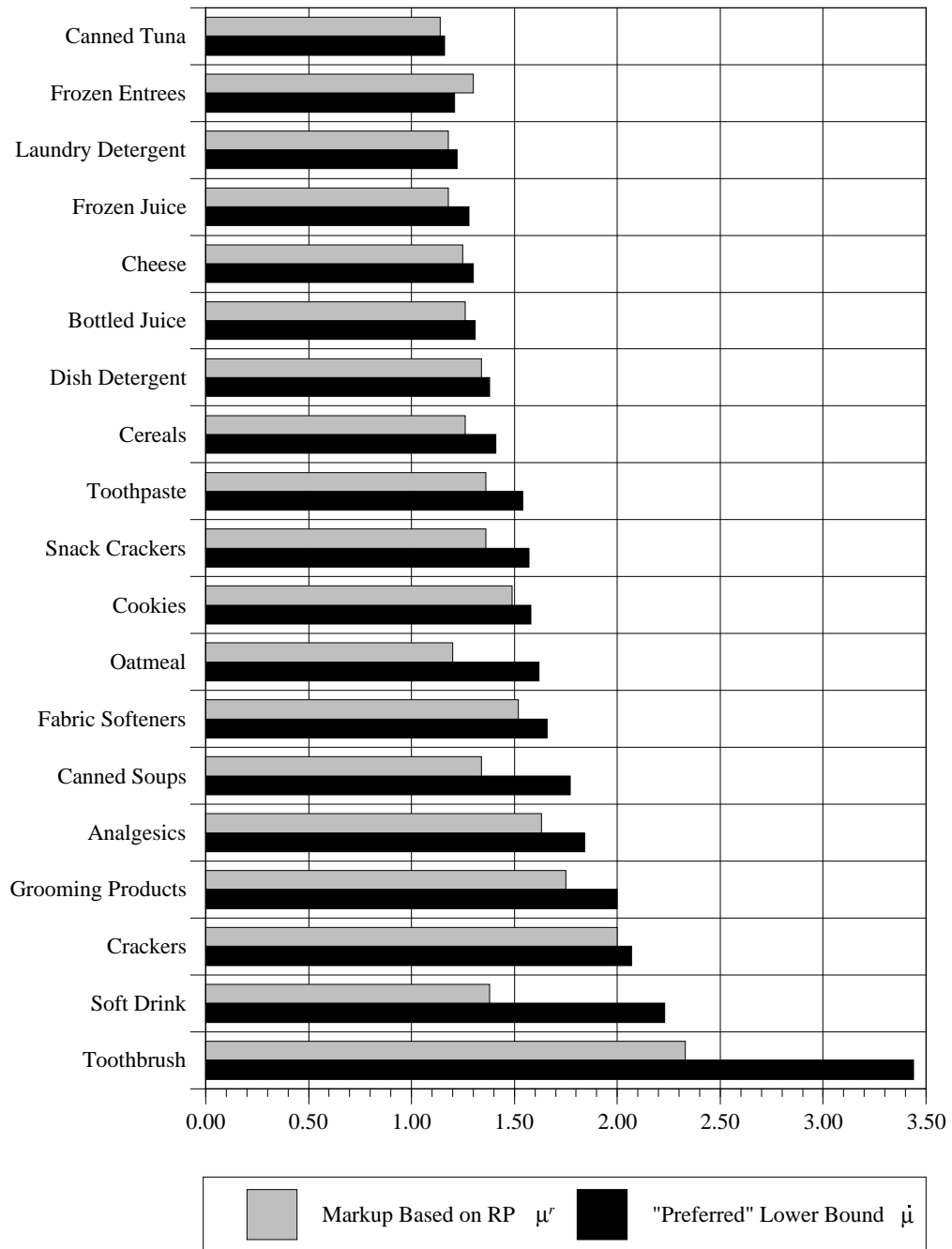


Figure 5. National Brand Markup: The "Preferred" Lower Bound (Measure a) vs the Lower Bound Measure Based on Retail Price (Measure b)

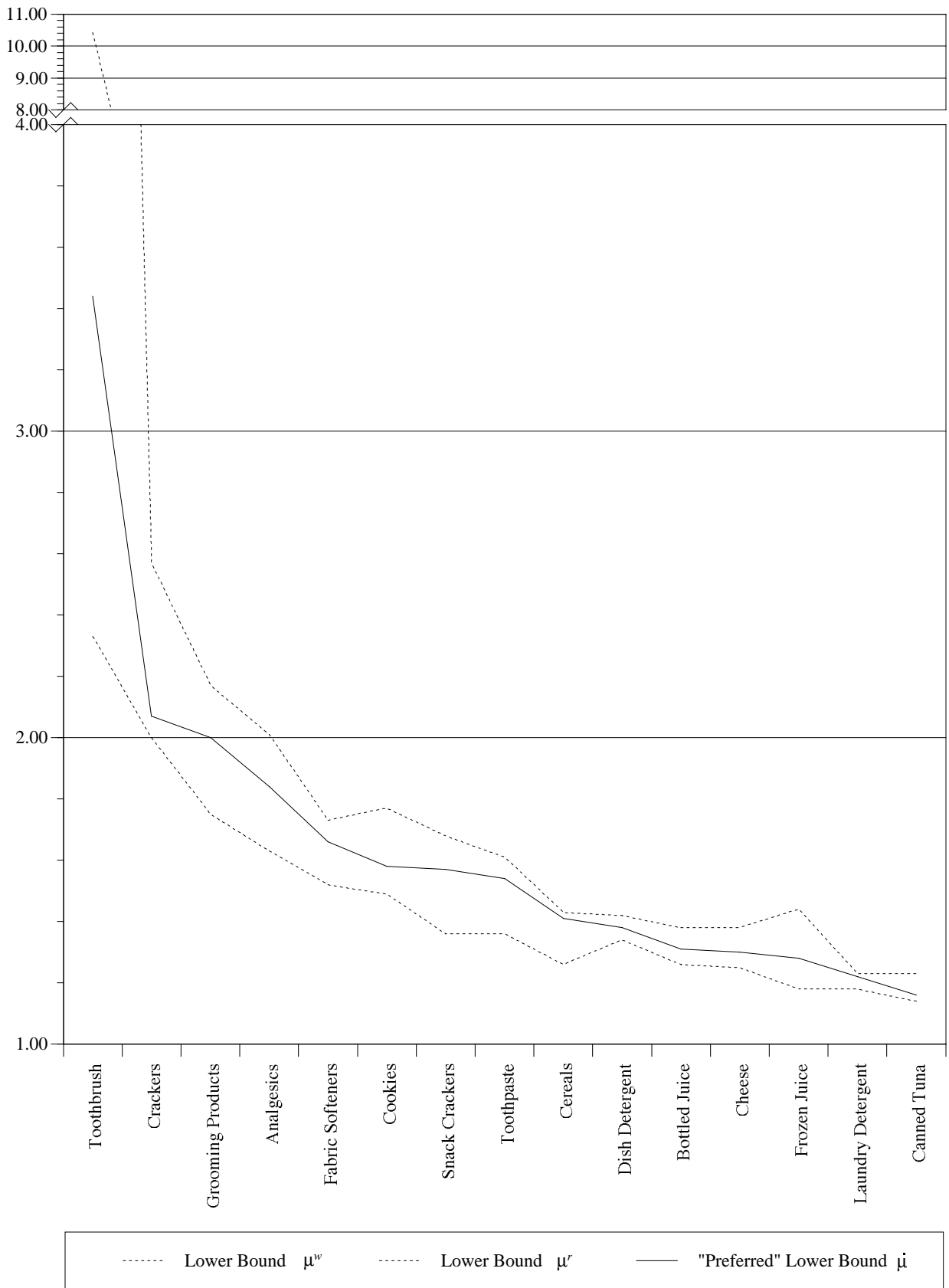


Figure 6. National Brand Manufacturers Markup Ratio with Bounds:
 The "Preferred" Markup Ratio on the Brand (Measure a), the Lower Bound Measure of the Markup Based on WP (Measure c), and the Lower Bound Measure of the Markup Based on RP (Measure b)

Table A1. Canned Soup

Product Pair	Full Markup: “Preferred” Lower Bound (\hat{m})	Manufacturer’s Markup: Lower Bound based on WP (m^w)	Lower Bound for Full Markup Based on RP (m^r)	Retailer’s Markup on National Brand (m_b)	Retailer’s Markup on Private Label (m_g)	Sample Size
CAMP TOMATO SOUP	2.61 (1.22, 1.69)	1.76 (1.30, 2.03)	1.37 (1.09, 1.22)	1.73 (1.10, 1.44)	1.58 (1.40, 2.17)	377
PROG ZESTY MINESTRON	1.78 (1.63, 1.73)	2.07 (1.87, 2.02)	1.82 (1.67, 1.88)	1.20 (1.19, 1.22)	1.35 (1.28, 1.38)	114
ROKEACH VEGETABLE SO	1.67 (1.61, 1.81)	2.32 (2.09, 2.55)	1.92 (1.65, 2.06)	1.45 (1.22, 1.43)	1.75 (1.58, 1.88)	372
HOME COOKIN' TOMATO	1.57 (1.43, 1.74)	2.09 (1.80, 2.57)	1.81 (1.60, 1.90)	1.48 (1.44, 1.55)	1.86 (1.50, 2.17)	321
CAMP VEGETABLE BEEF	1.54 (1.42, 1.61)	1.59 (1.62, 1.98)	1.58 (1.49, 1.65)	1.31 (1.27, 1.34)	1.29 (1.38, 1.61)	377
CAMP CREAM OF CELERY	1.53 (1.11, 1.32)	1.73 (1.16, 1.52)	1.21 (1.04, 1.16)	1.36 (1.30, 1.47)	1.87 (1.40, 1.87)	377
CAMP BROCC CHEESE SO	1.46 (1.16, 1.28)	1.63 (1.22, 1.42)	1.49 (1.15, 1.37)	1.34 (1.29, 1.43)	1.45 (1.39, 1.54)	246
CHUNKY CHICKEN NOODL	1.41 (1.62, 1.83)	2.26 (2.05, 2.50)	2.00 (1.98, 2.19)	1.30 (1.28, 1.37)	1.46 (1.25, 1.61)	321
HEALTHY REQ. VEGETAB	1.41 (1.38, 1.49)	1.66 (1.55, 1.83)	1.52 (1.38, 1.77)	1.35 (1.27, 1.41)	1.48 (1.45, 1.54)	182
CAMP CHICKEN WITH RI	1.40 (1.16, 1.30)	1.58 (1.23, 1.48)	1.23 (1.07, 1.22)	1.38 (1.29, 1.44)	1.72 (1.35, 1.96)	377
SWAN CHIX BROTH	1.39 (1.17, 1.34)	1.61 (1.30, 1.70)	1.11 (1.11, 1.25)	1.55 (1.53, 1.68)	2.24 (1.78, 2.24)	269
CAMPBELL CHICKEN & S	1.37 (1.13, 1.28)	1.52 (1.19, 1.42)	1.30 (1.12, 1.27)	1.35 (1.29, 1.41)	1.50 (1.35, 1.56)	377
CHUNKY VEGETABLE SOU	1.34 (1.19, 1.27)	1.47 (1.34, 1.49)	1.36 (1.29, 1.41)	1.49 (1.44, 1.61)	1.60 (1.45, 1.70)	321
CHUNKY VEGETABLE	1.25 (1.23, 1.32)	1.33 (1.30, 1.43)	1.23 (1.20, 1.36)	1.24 (1.23, 1.29)	1.33 (1.31, 1.38)	216
PROG VEGETABLE SOUP	1.25 (1.21, 1.28)	1.35 (1.30, 1.41)	1.28 (1.22, 1.39)	1.31 (1.29, 1.34)	1.39 (1.32, 1.45)	115
PROG CHICKEN NOODLE	1.24 (1.20, 1.30)	1.30 (1.26, 1.39)	1.24 (1.21, 1.40)	1.17 (1.19, 1.23)	1.23 (1.19, 1.26)	217
PROG CHICKEN RICE W/	1.24 (1.20, 1.29)	1.29 (1.25, 1.38)	1.23 (1.19, 1.40)	1.16 (1.18, 1.22)	1.23 (1.19, 1.25)	217
CAMP BEAN W/BACON SO	1.23 (1.20, 1.31)	1.38 (1.34, 1.48)	1.05 (1.03, 1.12)	1.44 (1.38, 1.49)	1.88 (1.75, 1.96)	82
CHUNKY CHICKEN NOODL	1.23 (1.19, 1.29)	1.28 (1.24, 1.36)	1.23 (1.19, 1.34)	1.17 (1.17, 1.22)	1.22 (1.19, 1.26)	216
CHUNKY MINESTRONE SO	1.22 (1.21, 1.29)	1.29 (1.26, 1.40)	1.23 (1.20, 1.36)	1.24 (1.23, 1.30)	1.31 (1.24, 1.35)	215
CHUNKY CHICKEN RICE	1.21 (1.21, 1.29)	1.26 (1.26, 1.36)	1.22 (1.19, 1.34)	1.17 (1.17, 1.20)	1.22 (1.19, 1.25)	215
HOME COOKIN MINESTRO	1.19 (1.21, 1.27)	1.25 (1.26, 1.36)	1.19 (1.20, 1.34)	1.25 (1.24, 1.29)	1.32 (1.24, 1.35)	216
PROG MINESTRONE SOUP	1.19 (1.18, 1.29)	1.27 (1.25, 1.41)	1.26 (1.26, 1.41)	1.31 (1.27, 1.35)	1.31 (1.24, 1.35)	217
Weighted Average	1.77 (1.23, 1.53)	1.61 (1.29, 1.73)	1.34 (1.23, 1.52)	1.46 (1.24, 1.44)	1.56 (1.31, 1.72)	

Table A2. Cookies

Product Pair	Full Markup: “Preferred” Lower Bound (\hat{m})	Manufacturer’s Markup: Lower Bound based on WP (m^w)	Lower Bound for Full Markup Based on RP (m^r)	Retailer’s Markup on National Brand (m_b)	Retailer’s Markup on Private Label (m_g)	Sample Size
NUTTER BUTTER PNT BT	2.71 (2.66, 2.78)	3.37 (3.28, 3.49)	2.71 (2.62, 2.79)	1.11 (1.11, 1.12)	1.40 (1.37, 1.43)	262
CAMEO CREME SANDWICH	2.70 (2.66, 2.78)	3.38 (3.29, 3.47)	2.70 (2.62, 2.73)	1.12 (1.11, 1.12)	1.40 (1.38, 1.43)	233
FAM AMOS CHOC CHIP W	1.70 (1.64, 1.79)	1.93 (1.83, 2.03)	1.64 (1.50, 1.67)	1.16 (1.14, 1.18)	1.38 (1.37, 1.42)	169
ALMOST HOME CHOCOLAT	1.67 (1.58, 1.72)	1.81 (1.70, 1.88)	1.49 (1.34, 1.62)	1.12 (1.10, 1.15)	1.36 (1.35, 1.40)	89
FAM AMOS CHOC CHIP C	1.66 (1.58, 1.77)	1.88 (1.77, 2.03)	1.61 (1.50, 1.67)	1.18 (1.16, 1.19)	1.38 (1.37, 1.42)	169
ALMOST HOME OATMEAL	1.64 (1.56, 1.72)	1.78 (1.67, 1.88)	1.43 (1.32, 1.54)	1.12 (1.12, 1.12)	1.39 (1.37, 1.42)	43
KLBR SUGAR WAFERS-VA	1.62 (1.63, 1.70)	1.75 (1.74, 1.83)	1.41 (1.40, 1.40)	1.12 (1.10, 1.10)	1.39 (1.37, 1.44)	10
SALERNO VANLLA WAFER	1.59 (1.46, 1.64)	1.73 (1.56, 1.80)	1.42 (1.28, 1.50)	1.15 (1.13, 1.17)	1.40 (1.38, 1.42)	357
~ARCHWAY CHOCO CHIP&	1.48 (1.41, 1.50)	1.56 (1.50, 1.60)	1.29 (1.24, 1.34)	1.11 (1.13, 1.13)	1.35 (1.34, 1.38)	53
SALERNO MINT CREAM P	1.41 (1.37, 1.50)	1.52 (1.47, 1.62)	1.44 (1.39, 1.49)	1.18 (1.15, 1.20)	1.24 (1.25, 1.25)	96
~ARCHWAY FATFREE AP	1.40 (1.28, 1.54)	1.46 (1.32, 1.61)	1.40 (1.22, 1.56)	1.09 (1.09, 1.10)	1.14 (1.12, 1.19)	62
SALERNO ROYAL GRAHAM	1.39 (1.35, 1.44)	1.47 (1.44, 1.52)	1.28 (1.30, 1.30)	1.14 (1.13, 1.17)	1.31 (1.32, 1.32)	80
FAMOUS AMOS CHOC CRE	1.32 (1.40, 1.58)	1.37 (1.49, 1.67)	1.22 (1.29, 1.50)	1.08 (1.10, 1.16)	1.23 (1.22, 1.26)	94
SUPER MARIO CHOCOLAT	1.31 (1.27, 1.38)	1.40 (1.33, 1.46)	1.17 (1.11, 1.18)	1.17 (1.15, 1.19)	1.40 (1.38, 1.42)	61
MINI CHOCOLATE CHIP-	1.30 (1.24, 1.38)	1.34 (1.25, 1.46)	1.03 (0.88, 1.18)	1.07 (1.01, 1.15)	1.40 (1.39, 1.42)	99
ARCHWAY FF FIG BARS	1.29 (1.15, 1.47)	1.31 (1.16, 1.52)	1.19 (1.05, 1.34)	1.06 (1.06, 1.07)	1.18 (1.16, 1.20)	90
SALERNO CHOC GRAHAMS	1.28 (1.22, 1.35)	1.34 (1.27, 1.41)	1.18 (1.11, 1.20)	1.15 (1.12, 1.17)	1.31 (1.32, 1.32)	74
HONEY MAID CHOCOLATE	1.22 (1.20, 1.26)	1.25 (1.23, 1.29)	1.19 (1.18, 1.24)	1.11 (1.10, 1.12)	1.17 (1.16, 1.18)	43
SALERNO BUTTER COOKI	1.21 (1.31, 1.52)	1.28 (1.41, 1.71)	1.07 (1.22, 1.39)	1.18 (1.18, 1.25)	1.43 (1.37, 1.45)	147
ARCHWAY CHOC CHIP &	1.18 (1.14, 1.31)	1.22 (1.17, 1.37)	1.07 (1.00, 1.14)	1.19 (1.17, 1.19)	1.37 (1.36, 1.42)	215
FAMOUS AMOS CHOC CHI	1.17 (1.20, 1.29)	1.20 (1.24, 1.33)	1.09 (1.20, 1.24)	1.06 (1.10, 1.13)	1.19 (1.18, 1.20)	172
Weighted Average	1.58 (1.29, 1.64)	1.77 (1.34, 1.78)	1.49 (1.18, 1.44)	1.13 (1.11, 1.16)	1.33 (1.24, 1.40)	

Table A3. Snack Crackers

Product Pair	Full Markup: “Preferred” Lower Bound (\hat{m})	Manufacturer’s Markup: Lower Bound based on WP (m^w)	Lower Bound for Full Markup Based on RP (m^r)	Retailer’s Markup on National Brand (m_b)	Retailer’s Markup on Private Label (m_g)	Sample Size
NABISCO RITZ CRACKER	1.74 (1.64, 1.78)	1.92 (1.78, 1.98)	1.50 (1.41, 1.50)	1.13 (1.12, 1.13)	1.45 (1.40, 1.52)	41
~NABISCO RITZ BITS	1.58 (1.53, 1.64)	1.70 (1.63, 1.78)	1.36 (1.21, 1.43)	1.12 (1.12, 1.14)	1.41 (1.38, 1.46)	204
NABISCO RITZ CRACKER	1.54 (1.40, 1.70)	1.62 (1.45, 1.82)	1.33 (1.22, 1.53)	1.08 (1.09, 1.11)	1.32 (1.26, 1.35)	197
NABISCO CHEESE NIPS	1.51 (1.44, 1.53)	1.66 (1.56, 1.66)	1.35 (1.25, 1.34)	1.17 (1.15, 1.18)	1.44 (1.39, 1.52)	87
SUNSHINE CHEEZ IT	1.50 (1.38, 1.68)	1.64 (1.47, 1.85)	1.35 (1.22, 1.44)	1.17 (1.13, 1.19)	1.43 (1.38, 1.52)	236
TOWN HOUSE CHEDDAR J	1.46 (1.43, 1.49)	1.59 (1.55, 1.64)	1.30 (1.28, 1.36)	1.17 (1.17, 1.18)	1.44 (1.42, 1.43)	25
KEEBLER CLUB CRACKER	1.34 (1.23, 1.50)	1.40 (1.26, 1.61)	1.20 (1.09, 1.31)	1.15 (1.11, 1.14)	1.31 (1.26, 1.35)	197
Weighted Average	1.57 (1.46, 1.58)	1.68 (1.59, 1.70)	1.36 (1.30, 1.36)	1.12 (1.12, 1.17)	1.37 (1.32, 1.44)	

Table A4. Soft Drink

Product Pair	Full Markup: “Preferred” Lower Bound (\hat{m})	Manufacturer’s Markup: Lower Bound based on WP (m^w)	Lower Bound for Full Markup Based on RP (m^r)	Retailer's Markup on National Brand (m_b)	Retailer's Markup on Private Label (m_g)	Sample Size
COCA-COLA CLASSIC	3.83 (1.84, 2.55)	2.35 (2.10, 3.07)	1.38 (1.20, 1.89)	1.15 (1.03, 1.24)	1.91 (1.41, 2.10)	389
SCHWEPES GINGER ALE	3.52 (1.07, 2.14)	2.17 (1.69, 2.96)	1.30 (1.11, 1.71)	1.15 (0.96, 1.26)	1.74 (1.41, 2.05)	390
SNAPPLE STRAW KIWI	2.88 (1.49, 1.75)	2.36 (2.13, 2.72)	1.02 (1.22, 1.51)	1.20 (1.47, 1.68)	2.88 (2.55, 3.05)	108
SNAPPLE PINK LEMONAD	2.47 (1.49, 1.75)	2.26 (2.13, 2.74)	1.06 (1.22, 1.51)	1.27 (1.47, 1.68)	2.83 (2.55, 3.05)	122
PEPSI COLA N/R	2.36 (1.90, 2.73)	2.23 (2.19, 3.21)	1.38 (1.22, 1.89)	1.18 (1.03, 1.18)	1.83 (1.41, 2.10)	390
PEPSI DIET N/R	2.28 (1.86, 2.69)	2.25 (2.15, 3.14)	1.41 (1.22, 1.90)	1.14 (1.03, 1.18)	1.78 (1.40, 2.09)	390
SEAGRAMS GINGERALE 1	2.18 (1.81, 2.48)	2.47 (2.48, 2.91)	1.37 (1.25, 1.68)	1.21 (1.07, 1.39)	2.13 (2.03, 2.30)	75
PEPSI COLA	2.07 (1.70, 2.23)	2.07 (1.87, 2.25)	1.53 (1.42, 1.71)	1.06 (1.02, 1.15)	1.42 (1.38, 1.46)	222
SCHWEPES LIME SELTZ	2.06 (1.47, 2.61)	1.97 (1.48, 2.55)	1.23 (1.20, 1.20)	1.20 (1.01, 1.37)	1.88 (1.63, 2.15)	36
SEAGRAMS TONIC 1 LIT	2.05 (1.78, 1.89)	2.52 (2.43, 2.70)	1.44 (1.32, 1.59)	1.26 (1.32, 1.35)	2.20 (2.13, 2.28)	125
BARQ'S ROOT BEER	1.95 (1.63, 2.26)	2.00 (1.86, 2.48)	1.39 (1.12, 1.80)	1.26 (1.03, 1.30)	1.76 (1.45, 2.04)	364
SCHWEPES TONIC N/R	1.94 (1.36, 2.25)	2.28 (1.75, 2.73)	1.36 (1.19, 1.51)	1.37 (1.06, 1.47)	2.09 (1.87, 2.39)	388
SCHWEPES DIET TONIC	1.93 (1.36, 2.23)	2.29 (1.75, 2.73)	1.35 (1.19, 1.51)	1.37 (1.06, 1.47)	2.10 (1.87, 2.39)	388
R.C. COLA	1.89 (1.46, 2.48)	1.88 (1.75, 2.85)	1.19 (1.11, 1.61)	1.32 (1.03, 1.26)	1.75 (1.40, 2.05)	389
A&W ROOTBEER REG	1.86 (1.30, 2.13)	1.78 (1.49, 2.54)	1.16 (1.02, 1.51)	1.14 (1.02, 1.26)	1.68 (1.40, 2.02)	389
MIN MAID FRUIT PUNCH	1.80 (1.66, 1.97)	2.33 (2.01, 2.62)	1.48 (1.25, 1.75)	1.18 (1.15, 1.30)	1.97 (1.79, 2.32)	86
A&W ROOTBEER	1.79 (1.73, 2.01)	1.80 (1.77, 2.07)	1.68 (1.60, 1.98)	1.01 (0.99, 1.07)	1.09 (1.08, 1.12)	253
NEW YORK SELTZER COL	1.77 (1.16, 2.04)	2.66 (1.23, 3.26)	1.70 (1.19, 1.95)	1.35 (1.36, 1.36)	2.03 (1.40, 2.34)	34
SNAPPLE KIWI STRAW S	1.75 (1.40, 1.74)	2.38 (2.12, 2.74)	1.29 (1.22, 1.37)	1.47 (1.48, 1.74)	2.93 (2.80, 3.05)	36
SUNKIST ORANGE	1.75 (1.17, 2.17)	1.46 (1.40, 2.46)	1.10 (1.00, 1.48)	1.64 (1.03, 1.32)	1.79 (1.45, 2.05)	390
SCHWEPES GINGER ALE	1.73 (1.29, 2.10)	2.06 (1.60, 2.67)	1.31 (1.14, 1.47)	1.49 (1.21, 1.68)	2.06 (1.80, 2.43)	340
CANADA DRY GINGER AL	1.72 (1.34, 1.93)	2.36 (1.76, 2.50)	1.48 (1.27, 1.52)	1.47 (1.30, 1.55)	2.09 (1.81, 2.43)	305
A&W ROOTBEER SF	1.70 (1.25, 2.08)	1.72 (1.44, 2.54)	1.18 (1.06, 1.51)	1.19 (1.02, 1.26)	1.67 (1.41, 2.02)	389
DIET COKE	1.69 (1.84, 2.53)	2.25 (2.12, 3.03)	1.42 (1.21, 1.89)	1.14 (1.03, 1.24)	1.80 (1.40, 2.09)	389
CANADA DRY TONIC WAT	1.69 (1.39, 1.90)	2.42 (1.80, 2.55)	1.48 (1.29, 1.59)	1.47 (1.30, 1.50)	2.11 (1.91, 2.39)	355
MINUTE MAID ORANGE	1.69 (1.38, 2.12)	1.72 (1.45, 2.11)	1.67 (1.50, 2.01)	1.08 (1.01, 1.12)	1.09 (1.08, 1.13)	52
OCEAN SPRAY KIWI STR	1.67 (1.60, 1.79)	2.66 (2.49, 2.96)	1.54 (1.48, 1.68)	1.56 (1.52, 1.64)	2.74 (2.22, 3.05)	73
CRYSTAL LIGHT KIWI S	1.65 (1.55, 1.75)	2.54 (2.36, 2.80)	1.39 (1.34, 1.59)	1.54 (1.47, 1.65)	2.89 (2.55, 3.05)	81
PEPSI COLA CANS	1.63 (1.66, 2.06)	1.65 (1.64, 2.09)	1.58 (1.50, 2.01)	1.05 (1.00, 1.04)	1.09 (1.07, 1.10)	202
FRUITOPIA PINK LEMON	1.61 (1.58, 1.65)	2.43 (2.45, 2.54)	1.42 (1.31, 1.51)	1.56 (1.51, 1.65)	2.81 (2.80, 3.05)	102
SUNKIST ORANGE	1.58 (1.59, 1.79)	1.62 (1.66, 1.85)	1.53 (1.60, 1.81)	1.03 (1.03, 1.06)	1.10 (1.08, 1.12)	254
BARQ'S DIET RT BEER	1.56 (1.71, 2.29)	2.12 (1.92, 2.40)	1.27 (1.03, 1.40)	1.06 (1.02, 1.19)	1.86 (1.57, 2.12)	62
ROYAL CROWN COLA	1.56 (1.54, 1.87)	1.65 (1.67, 2.08)	1.30 (1.31, 1.71)	1.12 (1.10, 1.18)	1.42 (1.38, 1.46)	222
MINUTE MAID ORANGE	1.55 (1.47, 1.72)	1.81 (1.62, 2.03)	1.23 (1.11, 1.34)	1.19 (1.14, 1.26)	1.76 (1.40, 2.02)	137
SEAGRAMS GINGR ALE\$	1.44 (1.46, 1.96)	1.99 (1.74, 2.39)	1.37 (1.12, 1.79)	1.33 (1.09, 1.40)	1.88 (1.57, 2.12)	177
BARQ'S ROOT BEER	1.40 (1.74, 2.38)	2.20 (1.99, 2.49)	1.22 (1.03, 1.40)	1.06 (1.02, 1.21)	1.97 (1.79, 2.12)	56
BARQ'S ROOT BEER	1.36 (1.32, 1.49)	1.48 (1.44, 1.64)	1.01 (0.96, 1.12)	1.19 (1.14, 1.27)	1.75 (1.41, 2.01)	31
SEAGRAM'S LEMON LIME	1.04 (1.43, 1.65)	1.75 (1.67, 2.00)	1.31 (1.12, 1.20)	1.29 (1.18, 1.39)	1.81 (1.64, 2.12)	50
Weighted Average	2.23 (1.56, 2.13)	2.09 (1.72, 2.29)	1.38 (1.19, 1.48)	1.18 (1.14, 1.37)	1.76 (1.70, 1.99)	

Table A5. Bottled Juice

Product Pair	Full Markup: “Preferred” Lower Bound (\hat{m})	Manufacturer’s Markup: Lower Bound based on WP (m^w)	Lower Bound for Full Markup Based on RP (m^r)	Retailer’s Markup on National Brand (m_b)	Retailer’s Markup on Private Label (m_g)	Sample Size
MOTTS APPLE JUICE	1.61 (1.09, 2.16)	2.09 (1.17, 3.19)	2.09 (1.55, 2.97)	1.57 (1.30, 1.86)	1.43 (1.35, 1.52)	80
SENECA APPLE JUICE	1.60 (1.22, 1.38)	1.86 (1.32, 1.56)	1.39 (1.09, 1.28)	1.30 (1.29, 1.36)	1.67 (1.59, 1.74)	59
NORTHERN CRAN/APPLE	1.44 (1.39, 1.57)	1.49 (1.43, 1.64)	1.41 (1.33, 1.54)	1.08 (1.08, 1.08)	1.15 (1.14, 1.16)	68
NORTHERN CRAN/RASP	1.44 (1.39, 1.57)	1.50 (1.45, 1.64)	1.41 (1.35, 1.54)	1.08 (1.07, 1.09)	1.15 (1.14, 1.16)	68
FLAVOR FRESH APPLE J	1.43 (1.39, 1.47)	1.57 (1.51, 1.64)	1.13 (1.10, 1.16)	1.21 (1.19, 1.23)	1.67 (1.66, 1.68)	53
O.S. RUBY RED GRAPEF	1.40 (1.40, 1.44)	1.43 (1.42, 1.46)	1.24 (1.23, 1.27)	1.04 (1.04, 1.04)	1.20 (1.21, 1.21)	41
~TREE TOP APPLE JUIC	1.40 (1.17, 1.40)	1.53 (1.22, 1.51)	1.16 (0.96, 1.17)	1.21 (1.15, 1.21)	1.58 (1.48, 1.58)	391
MUSSELMAN APPLE JUIC	1.38 (1.31, 1.43)	1.46 (1.38, 1.53)	1.13 (1.10, 1.16)	1.16 (1.14, 1.17)	1.49 (1.49, 1.51)	55
O S CRANAPPLE DRINK	1.35 (1.31, 1.48)	1.40 (1.33, 1.55)	1.31 (1.25, 1.45)	1.08 (1.08, 1.09)	1.16 (1.15, 1.17)	134
O S CRANRASPBERRY DR	1.34 (1.30, 1.48)	1.39 (1.33, 1.55)	1.30 (1.25, 1.45)	1.09 (1.08, 1.09)	1.16 (1.15, 1.17)	134
~MM NATL. APPLE JUIC	1.34 (1.26, 1.44)	1.39 (1.30, 1.52)	1.05 (0.96, 1.15)	1.12 (1.11, 1.13)	1.50 (1.48, 1.53)	151
O S PINK GRAPEFRUIT	1.33 (1.31, 1.42)	1.39 (1.36, 1.50)	1.28 (1.26, 1.38)	1.13 (1.12, 1.14)	1.22 (1.21, 1.24)	173
~NORTHLAND CRANBERRY	1.32 (1.31, 1.35)	1.35 (1.35, 1.39)	1.38 (1.38, 1.42)	1.08 (1.07, 1.08)	1.06 (1.06, 1.06)	48
NORTHLAND CRANBERRY	1.31 (1.32, 1.35)	1.34 (1.35, 1.38)	1.38 (1.38, 1.42)	1.09 (1.08, 1.10)	1.06 (1.06, 1.06)	48
O S GRAPEFRUIT JUICE	1.31 (1.22, 1.35)	1.35 (1.26, 1.41)	1.24 (1.15, 1.30)	1.12 (1.12, 1.15)	1.23 (1.21, 1.24)	339
O S CRANBERRY JUICE	1.22 (1.23, 1.30)	1.23 (1.24, 1.32)	1.21 (1.22, 1.30)	1.04 (1.04, 1.04)	1.06 (1.06, 1.06)	48
SPEAS FARM APPLE JUI	1.21 (1.24, 1.40)	1.30 (1.35, 1.53)	1.08 (1.11, 1.24)	1.34 (1.19, 1.36)	1.63 (1.52, 1.68)	109
WELCH'S GRAPE JUICE	1.20 (1.14, 1.22)	1.22 (1.16, 1.24)	1.20 (1.14, 1.21)	1.10 (1.09, 1.11)	1.13 (1.13, 1.13)	58
SUNSWEET PRUNE JUICE	1.16 (1.10, 1.23)	1.21 (1.12, 1.30)	1.13 (1.11, 1.18)	1.23 (1.21, 1.24)	1.31 (1.24, 1.38)	391
~VERYFINE R/RED GRPF	1.15 (1.12, 1.23)	1.18 (1.14, 1.26)	1.15 (1.05, 1.17)	1.15 (1.13, 1.16)	1.18 (1.21, 1.24)	90
~VERYFINE CRANBERRY	1.11 (1.11, 1.18)	1.12 (1.12, 1.20)	1.16 (1.15, 1.23)	1.09 (1.09, 1.09)	1.06 (1.06, 1.06)	47
DEL MONTE PRUNE JCE/	1.01 (1.01, 1.12)	1.01 (1.02, 1.15)	1.08 (1.06, 1.13)	1.36 (1.23, 1.31)	1.25 (1.25, 1.26)	39
Weighted Average	1.31 (1.21, 1.40)	1.38 (1.23, 1.49)	1.26 (1.13, 1.38)	1.14 (1.08, 1.21)	1.24 (1.15, 1.49)	

Table A6. Frozen Juice

Product Pair	Full Markup: “Preferred” Lower Bound (\hat{m})	Manufacturer’s Markup: Lower Bound based on WP (m^w)	Lower Bound for Full Markup Based on RP (m^r)	Retailer's Markup on National Brand (m_b)	Retailer's Markup on Private Label (m_g)	Sample Size
MM PINK LEMONADE	2.26 (1.97, 2.20)	3.67 (3.12, 3.89)	1.87 (1.92, 2.00)	1.33 (1.31, 1.43)	2.64 (2.33, 2.63)	36
WELCH'S 100% WHITE G	1.78 (1.74, 1.81)	2.23 (2.19, 2.33)	1.60 (1.56, 1.70)	1.27 (1.26, 1.30)	1.76 (1.72, 1.80)	104
MM LEMONADE	1.76 (1.49, 1.75)	2.37 (1.95, 2.68)	1.35 (1.12, 1.48)	1.48 (1.42, 1.52)	2.50 (2.30, 2.80)	396
MM PINK LEMONADE	1.68 (1.50, 1.75)	2.33 (1.96, 2.65)	1.32 (1.13, 1.49)	1.49 (1.42, 1.51)	2.54 (2.32, 2.82)	394
~MM ORANGE JUICE	1.52 (1.44, 1.67)	2.11 (1.84, 2.56)	1.27 (1.13, 1.31)	1.50 (1.45, 1.59)	2.60 (2.21, 3.33)	396
MINUTE MAID GRAPEFRU	1.37 (1.30, 1.39)	1.50 (1.40, 1.53)	1.29 (1.19, 1.31)	1.24 (1.22, 1.24)	1.44 (1.37, 1.55)	115
MM ORANGE JUICE	1.34 (1.28, 1.40)	1.43 (1.35, 1.50)	1.31 (1.24, 1.37)	1.17 (1.16, 1.19)	1.28 (1.25, 1.33)	396
WELCH'S CRAN/RASP JC	1.34 (1.27, 1.42)	1.44 (1.35, 1.55)	1.36 (1.32, 1.43)	1.21 (1.20, 1.22)	1.28 (1.25, 1.33)	111
DOLE PINEAPPLE ORANG	1.31 (1.25, 1.37)	1.43 (1.35, 1.53)	1.27 (1.24, 1.34)	1.29 (1.27, 1.32)	1.46 (1.40, 1.50)	195
MM ORANGE JUICE	1.21 (1.20, 1.37)	1.28 (1.26, 1.52)	1.08 (1.09, 1.36)	1.21 (1.22, 1.34)	1.45 (1.32, 1.55)	396
TROP ORANGE JUICE	1.20 (1.15, 1.30)	1.26 (1.19, 1.38)	1.18 (1.12, 1.26)	1.20 (1.18, 1.22)	1.28 (1.25, 1.33)	395
WELCH 100% GRAPE JCE	1.19 (1.17, 1.24)	1.26 (1.23, 1.33)	1.20 (1.17, 1.30)	1.27 (1.27, 1.30)	1.35 (1.32, 1.37)	195
MM ORANGE JUICE W/CA	1.19 (1.16, 1.38)	1.27 (1.22, 1.55)	1.18 (1.14, 1.36)	1.30 (1.25, 1.32)	1.43 (1.32, 1.52)	114
TREE TOP APPLE JUICE	1.19 (1.12, 1.28)	1.29 (1.17, 1.44)	1.20 (1.14, 1.36)	1.42 (1.32, 1.45)	1.55 (1.36, 1.73)	396
WELCH'S WHITE GRAPE	1.16 (1.13, 1.23)	1.26 (1.22, 1.38)	1.10 (1.09, 1.17)	1.56 (1.43, 1.62)	1.76 (1.72, 1.80)	104
CITRUS HILL ORANGE J	1.16 (1.10, 1.21)	1.20 (1.12, 1.25)	1.17 (1.11, 1.25)	1.20 (1.17, 1.22)	1.23 (1.22, 1.25)	43
TROP SB ORANGE JUICE	1.15 (1.11, 1.27)	1.20 (1.15, 1.38)	1.02 (1.03, 1.30)	1.21 (1.26, 1.36)	1.44 (1.32, 1.55)	395
TREE TOP APPLE JUICE	1.14 (1.06, 1.25)	1.27 (1.12, 1.45)	1.26 (1.20, 1.38)	1.83 (1.57, 1.91)	1.85 (1.74, 1.93)	33
WELCH'S GRAPE JUICE	1.13 (1.09, 1.22)	1.19 (1.15, 1.37)	1.03 (1.04, 1.19)	1.47 (1.47, 1.59)	1.73 (1.67, 1.80)	396
MM PINK GRAPEFRUIT J	1.08 (1.03, 1.16)	1.13 (1.04, 1.27)	1.21 (1.14, 1.33)	1.52 (1.52, 1.57)	1.41 (1.36, 1.47)	148
Weighted Average	1.28 (1.16, 1.44)	1.44 (1.26, 1.80)	1.18 (1.17, 1.31)	1.31 (1.21, 1.49)	1.60 (1.38, 1.80)	

Table A7. Tooth Paste

Product Pair	Full Markup: “Preferred” Lower Bound (\hat{m})	Manufacturer’s Markup: Lower Bound based on WP (m^w)	Lower Bound for Full Markup Based on RP (m^r)	Retailer's Markup on National Brand (m_b)	Retailer's Markup on Private Label (m_g)	Sample Size
*CREST REG	2.15 (2.05, 2.26)	2.22 (2.20, 2.27)	1.61 (1.59, 1.61)	1.03 (1.00, 1.05)	1.42 (1.41, 1.47)	75
*AQUA FRESH TOOTHPAS	2.03 (2.04, 2.27)	2.16 (2.16, 2.35)	1.65 (1.71, 1.71)	1.10 (1.03, 1.07)	1.41 (1.41, 1.42)	25
AQUAFRESH TOOTHPASTE	2.00 (2.06, 2.06)	2.05 (2.07, 2.07)	1.49 (1.47, 1.47)	1.03 (1.01, 1.06)	1.41 (1.41, 1.41)	38
ARM & HAMMER DENTAL	1.75 (1.85, 1.90)	1.92 (2.04, 2.09)	1.59 (1.68, 1.72)	1.11 (1.09, 1.11)	1.34 (1.34, 1.34)	44
ARM & HAMMER DENTAL	1.67 (1.57, 1.85)	1.78 (1.66, 2.02)	1.50 (1.40, 1.68)	1.09 (1.09, 1.10)	1.29 (1.28, 1.29)	248
~COLGATE TARTER GEL	1.61 (1.62, 1.68)	1.70 (1.71, 1.80)	1.56 (1.53, 1.65)	1.08 (1.08, 1.10)	1.18 (1.17, 1.21)	107
ARM & HAMMER DENTAL	1.59 (1.57, 1.71)	1.71 (1.69, 1.87)	1.49 (1.48, 1.66)	1.11 (1.12, 1.14)	1.29 (1.29, 1.29)	211
*CREST TRT GEL	1.38 (1.31, 1.56)	1.41 (1.34, 1.61)	1.24 (1.18, 1.39)	1.06 (1.06, 1.09)	1.21 (1.18, 1.24)	349
*COLGATE TARTAR REG	1.38 (1.30, 1.45)	1.41 (1.32, 1.51)	1.22 (1.15, 1.39)	1.06 (1.05, 1.09)	1.22 (1.18, 1.23)	359
*COLGATE TARTAR GEL	1.36 (1.31, 1.52)	1.40 (1.34, 1.58)	1.23 (1.15, 1.39)	1.06 (1.06, 1.09)	1.20 (1.18, 1.24)	349
*CREST TRT REG	1.36 (1.29, 1.42)	1.39 (1.33, 1.46)	1.22 (1.18, 1.32)	1.06 (1.06, 1.09)	1.21 (1.18, 1.23)	357
~COLGATE TARTER GEL	1.34 (1.32, 1.37)	1.39 (1.36, 1.41)	1.24 (1.21, 1.28)	1.08 (1.08, 1.08)	1.21 (1.20, 1.21)	35
PEPSODENT W/FLORIDE	1.32 (1.32, 1.51)	1.51 (1.61, 1.95)	1.45 (1.60, 1.80)	1.44 (1.34, 1.55)	1.45 (1.41, 1.48)	73
CLOSE-UP TARTAR CONT	1.20 (1.20, 1.34)	1.23 (1.21, 1.40)	1.15 (1.13, 1.34)	1.12 (1.10, 1.15)	1.19 (1.18, 1.23)	359
Weighted Average	1.54 (1.36, 1.75)	1.61 (1.40, 1.92)	1.36 (1.23, 1.56)	1.10 (1.06, 1.11)	1.28 (1.21, 1.41)	

Table A8. Cheese

Product Pair	Full Markup: “Preferred” Lower Bound (\hat{m})	Manufacturer’s Markup: Lower Bound based on WP (m^w)	Lower Bound for Full Markup Based on RP (m^r)	Retailer’s Markup on National Brand (m_b)	Retailer’s Markup on Private Label (m_g)	Sample Size
KR SOFT PHILLY CREAM	1.55 (1.43, 1.71)	1.82 (1.60, 2.07)	1.50 (1.32, 1.71)	1.25 (1.23, 1.28)	1.52 (1.43, 1.61)	392
KR LT NAT SHRED MOZZ	1.34 (1.27, 1.47)	1.45 (1.34, 1.61)	1.28 (1.20, 1.43)	1.18 (1.18, 1.21)	1.34 (1.32, 1.37)	237
KR SL MUENSTER RESEA	1.32 (1.28, 1.36)	1.40 (1.35, 1.46)	1.28 (1.23, 1.36)	1.18 (1.17, 1.19)	1.29 (1.26, 1.30)	27
KR LT/NAT SWISS CHUN	1.30 (1.23, 1.38)	1.37 (1.28, 1.47)	1.24 (1.17, 1.31)	1.15 (1.15, 1.18)	1.27 (1.26, 1.30)	163
KR GR TD PARMESAN	1.28 (1.25, 1.34)	1.31 (1.28, 1.38)	1.25 (1.21, 1.33)	1.09 (1.08, 1.10)	1.14 (1.12, 1.15)	392
KR KLN SLICED SWISS	1.27 (1.21, 1.34)	1.33 (1.24, 1.41)	1.19 (1.13, 1.28)	1.14 (1.13, 1.16)	1.28 (1.26, 1.30)	198
KR SHRED MILD CHEDDA	1.24 (1.18, 1.40)	1.32 (1.21, 1.53)	1.17 (1.09, 1.36)	1.19 (1.18, 1.23)	1.34 (1.33, 1.38)	309
KR MILD COLBY	1.22 (1.14, 1.34)	1.29 (1.17, 1.43)	1.11 (1.03, 1.25)	1.18 (1.18, 1.23)	1.37 (1.34, 1.43)	175
KR SHRED MOZZARELLA	1.16 (1.13, 1.32)	1.22 (1.16, 1.42)	1.08 (1.05, 1.25)	1.17 (1.18, 1.23)	1.33 (1.32, 1.37)	392
KRAFT FINELY SHREDDE	1.15 (1.16, 1.28)	1.19 (1.20, 1.36)	1.08 (1.11, 1.23)	1.18 (1.18, 1.20)	1.30 (1.28, 1.33)	80
~KRAFT SHREDDED MOZZ	1.14 (1.11, 1.21)	1.16 (1.13, 1.25)	1.14 (1.13, 1.21)	1.13 (1.13, 1.14)	1.15 (1.15, 1.16)	48
Weighted Average	1.30 (1.16, 1.32)	1.38 (1.22, 1.40)	1.25 (1.11, 1.28)	1.15 (1.14, 1.18)	1.27 (1.27, 1.34)	

Table A9. Dish Detergents

Product Pair	Full Markup: “Preferred” Lower Bound (\hat{m})	Manufacturer’s Markup: Lower Bound based on WP (m^w)	Lower Bound for Full Markup Based on RP (m^r)	Retailer’s Markup on National Brand (m_b)	Retailer’s Markup on Private Label (m_g)	Sample Size
DAWN LEMON	1.80 (1.91, 2.03)	1.92 (2.07, 2.21)	1.80 (1.83, 2.13)	1.08 (1.07, 1.09)	1.16 (1.10, 1.23)	90
SUNLIGHT AUTO DISH	1.64 (1.63, 1.72)	1.70 (1.69, 1.77)	1.61 (1.56, 1.66)	1.06 (1.04, 1.07)	1.12 (1.11, 1.13)	183
PALMOLIVE AUTO DISH	1.53 (1.40, 1.69)	1.58 (1.44, 1.73)	1.48 (1.37, 1.63)	1.05 (1.04, 1.07)	1.12 (1.11, 1.14)	264
JOY LEMON	1.47 (1.41, 1.51)	1.53 (1.47, 1.58)	1.42 (1.28, 1.56)	1.09 (1.09, 1.09)	1.18 (1.10, 1.24)	63
LEMON DAWN	1.31 (1.33, 1.42)	1.33 (1.36, 1.46)	1.21 (1.24, 1.35)	1.04 (1.05, 1.08)	1.16 (1.13, 1.19)	142
SUNLIGHT AUTO DISH	1.31 (1.27, 1.35)	1.35 (1.30, 1.39)	1.30 (1.25, 1.31)	1.09 (1.08, 1.09)	1.13 (1.11, 1.15)	318
SUNLIGHT AUTO DISH	1.31 (1.27, 1.35)	1.35 (1.30, 1.39)	1.30 (1.25, 1.31)	1.09 (1.08, 1.09)	1.13 (1.11, 1.15)	320
DIAL AUTO DISH DETER	1.29 (1.26, 1.35)	1.31 (1.30, 1.39)	1.14 (1.19, 1.22)	1.05 (1.07, 1.08)	1.21 (1.16, 1.24)	97
SUNLIGHT AUTO GEL	1.17 (1.05, 1.40)	1.18 (1.05, 1.43)	1.11 (0.92, 1.45)	1.06 (1.05, 1.07)	1.16 (0.99, 1.23)	82
PALMOLIVE AUTO GEL	1.12 (1.09, 1.18)	1.14 (1.11, 1.21)	1.07 (1.03, 1.15)	1.11 (1.11, 1.11)	1.18 (1.17, 1.19)	86
Weighted Average	1.38 (1.29, 1.53)	1.42 (1.31, 1.58)	1.34 (1.14, 1.48)	1.07 (1.05, 1.09)	1.15 (1.13, 1.18)	

Table A10. Frozen Entrees

Product Pair	Full Markup: “Preferred” Lower Bound (\hat{m})	Manufacturer’s Markup: Lower Bound based on WP (m^w)	Lower Bound for Full Markup Based on RP (m^r)	Retailer's Markup on National Brand (m_b)	Retailer's Markup on Private Label (m_g)	Sample Size
L.C. BAKED CHEESE RA	1.36 (1.43, 1.64)	1.47 (1.58, 1.92)	1.44 (1.72, 2.02)	1.11 (1.20, 1.22)	1.17 (1.13, 1.20)	39
MRS BELGO'S CHEESE R	1.32 (1.27, 1.41)	1.40 (1.33, 1.51)	1.45 (1.30, 1.55)	1.17 (1.17, 1.17)	1.15 (1.13, 1.19)	38
MRS BELGO'S MEAT RAV	1.32 (1.27, 1.41)	1.40 (1.33, 1.51)	1.45 (1.30, 1.55)	1.17 (1.17, 1.17)	1.15 (1.13, 1.19)	37
STFR LXP CHEESE RAVI	1.20 (1.17, 1.40)	1.26 (1.21, 1.59)	1.31 (1.19, 1.77)	1.18 (1.22, 1.28)	1.17 (1.13, 1.20)	39
ORE-IDA CHEESE TORTE	1.10 (1.10, 1.22)	1.12 (1.12, 1.27)	1.15 (1.14, 1.38)	1.14 (1.14, 1.19)	1.14 (1.09, 1.17)	38
ITALIA MEAT TORTELLI	1.09 (1.18, 1.31)	1.14 (1.26, 1.44)	1.30 (1.33, 1.67)	1.27 (1.20, 1.33)	1.13 (1.09, 1.17)	38
ITALIA CHEESE RAVIOL	1.04 (1.01, 1.10)	1.05 (1.01, 1.12)	1.11 (1.00, 1.18)	1.19 (1.17, 1.22)	1.15 (1.13, 1.20)	39
ITALIA MEAT RAVIOLI	1.03 (0.99, 1.09)	1.03 (0.99, 1.12)	1.10 (0.99, 1.18)	1.19 (1.18, 1.22)	1.15 (1.13, 1.20)	39
Weighted Average	1.21 (1.06, 1.32)	1.27 (1.08, 1.40)	1.30 (1.13, 1.44)	1.17 (1.15, 1.19)	1.16 (1.14, 1.16)	

Table A11. Fabric Softeners

Product Pair	Full Markup: “Preferred” Lower Bound (\hat{m})	Manufacturer’s Markup: Lower Bound based on WP (m^w)	Lower Bound for Full Markup Based on RP (m^r)	Retailer's Markup on National Brand (m_b)	Retailer's Markup on Private Label (m_g)	Sample Size
BOUNCE SINGLE SCENTE	1.96 (1.95, 1.95)	2.01 (2.00, 2.00)	1.89 (1.88, 1.88)	1.03 (1.03, 1.03)	1.09 (1.09, 1.09)	29
~DOWNY REG REFILL	1.78 (1.58, 1.63)	1.89 (1.67, 1.71)	1.58 (1.42, 1.44)	1.08 (1.07, 1.10)	1.28 (1.29, 1.29)	40
~DOWNY REG REFILL	1.77 (1.57, 1.62)	1.87 (1.67, 1.71)	1.57 (1.42, 1.44)	1.08 (1.07, 1.10)	1.28 (1.29, 1.29)	46
~DOWNY SUNRISE REFIL	1.76 (1.57, 1.63)	1.87 (1.67, 1.71)	1.57 (1.42, 1.44)	1.08 (1.08, 1.10)	1.28 (1.29, 1.29)	55
~DOWNY SUNRISE REFIL	1.75 (1.57, 1.61)	1.86 (1.67, 1.70)	1.56 (1.42, 1.44)	1.08 (1.08, 1.10)	1.28 (1.29, 1.29)	52
DOWNY ULTRA REFILL B	1.54 (1.40, 1.71)	1.58 (1.43, 1.77)	1.45 (1.31, 1.66)	1.05 (1.04, 1.05)	1.14 (1.14, 1.15)	209
DOWNY ULTRA REFILL S	1.53 (1.40, 1.71)	1.57 (1.43, 1.76)	1.45 (1.31, 1.62)	1.05 (1.04, 1.05)	1.14 (1.14, 1.15)	209
DOWNY ULTRA REFILL	1.51 (1.31, 1.60)	1.59 (1.34, 1.69)	1.41 (1.15, 1.50)	1.09 (1.09, 1.10)	1.25 (1.26, 1.29)	182
~DOWNY ULTRA REFILL	1.50 (1.31, 1.61)	1.58 (1.34, 1.69)	1.39 (1.15, 1.51)	1.09 (1.09, 1.10)	1.25 (1.26, 1.29)	176
BOUNCE	1.48 (1.39, 1.71)	1.52 (1.43, 1.81)	1.37 (1.29, 1.64)	1.04 (1.04, 1.05)	1.16 (1.16, 1.16)	52
DOWNY ULTRA REFILL B	1.47 (1.33, 1.63)	1.50 (1.35, 1.68)	1.44 (1.29, 1.67)	1.05 (1.04, 1.05)	1.09 (1.08, 1.11)	209
DOWNY ULTRA REFILL S	1.46 (1.33, 1.63)	1.49 (1.35, 1.66)	1.44 (1.29, 1.61)	1.05 (1.04, 1.05)	1.09 (1.08, 1.11)	209
Weighted Average	1.66 (1.49, 1.77)	1.73 (1.55, 1.87)	1.52 (1.42, 1.57)	1.06 (1.05, 1.08)	1.21 (1.12, 1.28)	

Table A12. Grooming Products

Product Pair	Full Markup: “Preferred” Lower Bound (\hat{m})	Manufacturer’s Markup: Lower Bound based on WP (m^w)	Lower Bound for Full Markup Based on RP (m^r)	Retailer's Markup on National Brand (m_b)	Retailer's Markup on Private Label (m_g)	Sample Size
TRAC II PLUS CART 10	2.30 (2.13, 2.45)	2.43 (2.22, 2.60)	2.04 (1.88, 2.16)	1.04 (1.04, 1.04)	1.24 (1.24, 1.26)	80
SLIM TWIN DISP PPD \$	2.29 (1.78, 2.57)	2.86 (2.47, 3.18)	1.77 (1.68, 1.89)	1.18 (1.12, 1.17)	1.89 (1.91, 1.93)	211
~SLIM TWIN CARTRIDGE	1.96 (1.94, 1.97)	2.04 (2.02, 2.05)	1.70 (1.69, 1.72)	1.04 (1.04, 1.04)	1.24 (1.24, 1.25)	73
GOOD NEWS PIVOT PLS	1.63 (1.35, 2.02)	1.77 (1.41, 2.27)	1.55 (1.23, 1.95)	1.09 (1.09, 1.11)	1.25 (1.24, 1.27)	100
GOOD NEWS PIVOT PLUS	1.47 (1.30, 1.42)	1.55 (1.33, 1.50)	1.35 (1.17, 1.38)	1.08 (1.07, 1.10)	1.24 (1.24, 1.24)	115
Weighted Average	2.00 (1.63, 2.29)	2.17 (1.77, 2.43)	1.75 (1.55, 1.77)	1.07 (1.04, 1.09)	1.33 (1.24, 1.25)	

Table A13. Laundry Detergents

Product Pair	Full Markup: “Preferred” Lower Bound (\hat{m})	Manufacturer’s Markup: Lower Bound based on WP (m^w)	Lower Bound for Full Markup Based on RP (m^r)	Retailer's Markup on National Brand (m_b)	Retailer's Markup on Private Label (m_g)	Sample Size
ULTRA IVORY-SNOW	1.78 (1.69, 1.81)	1.82 (1.72, 1.87)	1.62 (1.50, 1.66)	1.03 (1.02, 1.03)	1.15 (1.15, 1.17)	182
ERA H D LIQ DETERG	1.67 (1.46, 1.89)	1.70 (1.50, 1.93)	1.60 (1.44, 1.78)	1.03 (1.01, 1.05)	1.10 (1.09, 1.11)	166
WOOLITE LIQUID	1.56 (1.50, 1.65)	1.67 (1.60, 1.78)	1.42 (1.35, 1.55)	1.11 (1.10, 1.13)	1.30 (1.30, 1.32)	293
SOLO HD LIQ DETG	1.44 (1.41, 1.49)	1.47 (1.43, 1.53)	1.40 (1.36, 1.46)	1.05 (1.04, 1.06)	1.10 (1.09, 1.11)	168
~ULTRA TDE W/BLCH	1.44 (1.39, 1.53)	1.47 (1.41, 1.56)	1.34 (1.31, 1.40)	1.04 (1.04, 1.04)	1.14 (1.11, 1.17)	212
NON PHOS CONC ALL DE	1.43 (1.35, 1.51)	1.45 (1.37, 1.55)	1.41 (1.32, 1.56)	1.03 (1.01, 1.04)	1.05 (1.05, 1.06)	108
WOOLITE LIQUID	1.41 (1.32, 1.66)	1.45 (1.35, 1.74)	1.30 (1.24, 1.57)	1.06 (1.05, 1.07)	1.18 (1.18, 1.19)	108
TIDE W/BLEACH ULTRA	1.30 (1.35, 1.39)	1.31 (1.37, 1.40)	1.26 (1.30, 1.34)	1.02 (1.02, 1.03)	1.07 (1.07, 1.07)	50
~ULTRA TIDE W/BLEACH	1.26 (1.28, 1.36)	1.27 (1.29, 1.37)	1.22 (1.24, 1.32)	1.01 (1.02, 1.02)	1.05 (1.05, 1.07)	217
NP WISK HD LIQ DET	1.10 (1.15, 1.38)	1.10 (1.15, 1.40)	1.07 (1.12, 1.39)	1.00 (1.01, 1.02)	1.04 (1.03, 1.05)	148
ULTRA WISK W/BLEACH	1.05 (1.15, 1.28)	1.05 (1.16, 1.29)	1.01 (1.12, 1.23)	1.02 (1.02, 1.03)	1.07 (1.06, 1.07)	99
ULTRA BOLD	1.05 (1.02, 1.07)	1.05 (1.02, 1.07)	1.02 (1.00, 1.05)	1.02 (1.02, 1.03)	1.05 (1.04, 1.06)	197
~ULTRA SURF LIQ	1.03 (1.07, 1.19)	1.03 (1.07, 1.20)	1.02 (1.03, 1.18)	1.04 (1.03, 1.03)	1.06 (1.05, 1.07)	99
SOLO HD LIQUID DETG.	1.03 (0.95, 1.14)	1.03 (0.95, 1.14)	1.02 (0.93, 1.14)	1.03 (1.03, 1.03)	1.04 (1.04, 1.05)	37
ERA H D LIQ DETERG	1.02 (0.93, 1.12)	1.02 (0.93, 1.13)	1.01 (0.91, 1.12)	1.03 (1.02, 1.03)	1.04 (1.04, 1.05)	36
Weighted Average	1.22 (1.05, 1.44)	1.23 (1.05, 1.47)	1.18 (1.02, 1.41)	1.03 (1.02, 1.04)	1.07 (1.05, 1.14)	

Table A14. Oatmeal

Product Pair	Full Markup: “Preferred” Lower Bound (\hat{m})	Manufacturer’s Markup: Lower Bound based on WP (m^w)	Lower Bound for Full Markup Based on RP (m^r)	Retailer's Markup on National Brand (m_b)	Retailer's Markup on Private Label (m_g)	Sample Size
QUICK QUAKER OATS	2.20 (1.63, 2.06)	1.77 (1.78, 2.38)	1.19 (1.24, 1.55)	1.12 (1.12, 1.14)	1.65 (1.63, 1.66)	184
QUICK QUAKER OATS	1.43 (1.35, 1.53)	1.47 (1.38, 1.57)	1.27 (1.19, 1.32)	1.08 (1.07, 1.08)	1.25 (1.25, 1.25)	184
QUAKER INSTANT OATME	1.37 (1.41, 1.77)	1.41 (1.46, 1.89)	1.20 (1.24, 1.58)	1.11 (1.08, 1.10)	1.29 (1.29, 1.30)	184
QUAKER INST OATML RS	1.36 (1.44, 1.76)	1.40 (1.48, 1.89)	1.18 (1.24, 1.58)	1.10 (1.07, 1.09)	1.29 (1.29, 1.30)	184
QUAKER INST OATML MP	1.34 (1.42, 1.76)	1.37 (1.47, 1.89)	1.16 (1.24, 1.58)	1.11 (1.07, 1.09)	1.29 (1.29, 1.30)	184
Weighted Average	1.62 (1.36, 1.43)	1.52 (1.40, 1.47)	1.20 (1.18, 1.20)	1.11 (1.10, 1.11)	1.39 (1.29, 1.29)	

Table A15. Canned Tuna

Product Pair	Full Markup: “Preferred” Lower Bound (\hat{m})	Manufacturer’s Markup: Lower Bound based on WP (m^w)	Lower Bound for Full Markup Based on RP (m^r)	Retailer's Markup on National Brand (m_b)	Retailer's Markup on Private Label (m_g)	Sample Size
C O S LITE TUNA - WA	1.53 (1.46, 1.60)	1.78 (1.66, 1.85)	1.43 (1.23, 1.63)	1.24 (1.21, 1.25)	1.55 (1.35, 1.70)	129
C O S LITE TUNA - WA	1.50 (1.40, 1.58)	1.91 (1.59, 1.83)	1.46 (1.23, 1.67)	1.26 (1.22, 1.32)	1.61 (1.36, 1.70)	140
C O S LITE TUNA - WA	1.48 (1.33, 1.53)	1.94 (1.55, 1.81)	1.51 (1.22, 1.67)	1.32 (1.25, 1.43)	1.65 (1.34, 1.82)	66
C O S CHUNK LIGHT WA	1.10 (1.03, 1.18)	1.11 (1.04, 1.21)	1.09 (1.02, 1.19)	1.12 (1.09, 1.17)	1.14 (1.12, 1.20)	267
C O S CHUNK LIGHT WA	1.09 (1.07, 1.14)	1.10 (1.07, 1.16)	1.06 (1.04, 1.12)	1.08 (1.04, 1.10)	1.11 (1.05, 1.17)	106
C O S SOLID WHITE -	1.07 (1.00, 1.21)	1.08 (1.00, 1.25)	1.08 (1.01, 1.22)	1.21 (1.15, 1.21)	1.20 (1.17, 1.23)	198
Weighted Average	1.16 (1.09, 1.50)	1.23 (1.10, 1.91)	1.14 (1.08, 1.46)	1.15 (1.12, 1.26)	1.22 (1.14, 1.61)	