

Der Open-Access-Publikationsserver der ZBW – Leibniz-Informationzentrum Wirtschaft  
*The Open Access Publication Server of the ZBW – Leibniz Information Centre for Economics*

Drakos, Konstantinos; Kutan, Ali M.

Working Paper

## Opposites attract: The case of Greek and Turkish financial markets

ZEI working paper, No. B 06-2001

**Provided in cooperation with:**

Rheinische Friedrich-Wilhelms-Universität Bonn

Suggested citation: Drakos, Konstantinos; Kutan, Ali M. (2001) : Opposites attract: The case of Greek and Turkish financial markets, ZEI working paper, No. B 06-2001, <http://hdl.handle.net/10419/39587>

**Nutzungsbedingungen:**

Die ZBW räumt Ihnen als Nutzerin/Nutzer das unentgeltliche, räumlich unbeschränkte und zeitlich auf die Dauer des Schutzrechts beschränkte einfache Recht ein, das ausgewählte Werk im Rahmen der unter

→ <http://www.econstor.eu/dspace/Nutzungsbedingungen> nachzulesenden vollständigen Nutzungsbedingungen zu vervielfältigen, mit denen die Nutzerin/der Nutzer sich durch die erste Nutzung einverstanden erklärt.

**Terms of use:**

*The ZBW grants you, the user, the non-exclusive right to use the selected work free of charge, territorially unrestricted and within the time limit of the term of the property rights according to the terms specified at*

→ <http://www.econstor.eu/dspace/Nutzungsbedingungen>  
*By the first use of the selected work the user agrees and declares to comply with these terms of use.*

Zentrum für Europäische Integrationsforschung  
Center for European Integration Studies  
Rheinische Friedrich-Wilhelms-Universität Bonn



Konstantinos Drakos and Ali M. Kutan

**Opposites Attract: The Case  
of Greek and Turkish  
Financial Markets**

**Working Paper**

**B 06  
2001**

# **Opposites Attract:**

## **The Case of Greek and Turkish Financial Markets**

**By**

**Konstantinos Drakos\* and Ali M. Kutan\*\***

---

The authors would like to express their gratitude to Rik Hafer, Roy Bailey and Panayiotis Theodossiou whose comments and insights helped improving the quality of the paper. The usual disclaimer applies.

\* Center for International Capital Markets (CICM), London Guildhall University and European Consortium of Political Research (ECPR), University of Essex. 31 Jewry Street, London EC3N 2EY, UK. Email: [drakos@lgu.ac.uk](mailto:drakos@lgu.ac.uk), Tel: (++44) 0207 320 3096.

\*\* Department of Economics and Finance, Southern Illinois University Edwardsville and Center for European Integration (ZEI), University of Bonn. E-mail: [akutan@siue.edu](mailto:akutan@siue.edu)

**Opposites Attract:  
The Case of Greek and Turkish Financial Markets**

**Abstract**

We investigate the presence of financial linkages between Turkey and Greece. In particular, we estimate bivariate vector error correction systems between the Greek and Turkish stock markets and then between the Greek Drachma and the Turkish Lira to test for long and short run causality and interdependence. The findings indicate that interdependence and a long-run causal relationship are indeed present. Given the apparent evidence for nominal linkages, we test a number of possible propagation mechanisms that could produce these linkages, such as real linkages, trade linkages, common balance of payments shocks, and contagion. Our findings suggest that the observed comovement of the two markets can be primarily attributed to the increased real integration of both countries, as well as the fact that they share a common set of trade and FDI partners. We also find evidence of contagion effects between the Drachma and Lira markets, but not between the stock markets. Finally, we conclude with a discussion of the implications of our findings.

**Keywords:** Cointegration, Contagion, Interdependence, and Market Linkages.

# 1. Introduction

The empirical literature on the transmission of financial shocks has defined interdependence as the presence of cross-market linkages in financial returns (Rigobon, 1999; Rigobon and Forbes, 1999). Linkages that tie markets together should ultimately result in their comovement. This study is a first attempt to investigate the extent to which the Turkish and Greek financial markets are interdependent. In particular, we address the following questions:

- Is there long-term financial interdependence between Turkish and Greek markets in the sense that the equilibrium for the Turkish (Greek) financial market depends on the equilibrium for the Greek (Turkish) market?
- Is there short-term interdependence between Turkish and Greek financial markets? In other words, do short-term fluctuations in one market spill over to the other?
- What is the direction of causality (in the Granger (1969) sense) between the two financial markets? Can we identify one market as being the 'cause' and the other the 'effect'?

The Greek and Turkish markets might be linked because of their geographical proximity, trade and foreign direct investment linkages, common macroeconomic shocks, or contagion. These questions are addressed by focusing on a set of two key financial variables: stock market indices and exchange rates.<sup>1</sup> Initially, we test whether there are any linkages present between the general indices of the Istanbul Stock Exchange (hereafter, ISE) and the Athens Stock Exchange (hereafter, ASE). Then we test for the presence of any linkages between the Turkish Lira (hereafter, TL) and the Greek Drachma (hereafter, GD).

There is a scant literature on the two emerging markets (Greece and Turkey). All the available work focuses on the individual stock markets, examining a variety of issues, such as market efficiency, behaviour of returns, volatility, and wealth effects.<sup>2</sup> There is no study that integrates the two literatures. We extend this literature in two directions. First, we provide initial evidence from foreign exchange markets. Second, we merge the two separate literatures on the stock market.

This paper is organized as follows. In the next section we explain our methodology and, in Section 2, we present our empirical findings. In Section 3 we examine the potential sources of financial market linkages between the Turkish and Greek markets, while we discuss policy implications of our findings in Section 4. Section 5 concludes the paper.

## **2. Econometric Methodology: Cointegration**

To test for long-run financial linkages between Turkey and Greece, we employ the Johansen procedure (Johansen, 1988, 1991, 1995). Short-run linkages are investigated using a vector error-correction model (VECM), which allows us to test for temporal causal chains (in the Granger sense) linking the variables. Cointegration, as an ‘equilibrium’ concept, implies that there must be some causation between the cointegrated series to provide the necessary dynamics for attaining this equilibrium (Granger, 1986, 1988). In other words, stationary linear combination(s) of the data in levels must Granger-cause the change in at least one of the cointegrated variables. A closely related issue is that of exogeneity (see Ericsson, 1992 and Engle et. al., 1983).

In the context of cointegrated systems there exists a direct interpretation (or a definition rather) of the notions of weak and strong exogeneity in terms of the parameters of the VECM. In the context of cointegrated systems weak exogeneity (also usually called<sup>3</sup> *Long-Run Granger non-causality*) is a long run notion of

exogeneity implying that the long run relations are block triangular. Weak exogeneity means no long-term feedback (insignificance of the speed of adjustment coefficients) towards the relevant (say the  $i$ th) variable exists and implies a 'weak' form of Granger non-causality. Finally, weak exogeneity of a variable in conjunction with absence of Granger-causality in the short run (insignificance of the differences) establishes strong exogeneity for that particular variable.

## **2.1 Data Issues and Stationarity tests**

The analysis employs the closing prices of the Istanbul Stock Exchange and the Athens Stock Exchange general indices, expressed in domestic currency, and the Turkish Lira and Greek Drachma dollar exchange rates. Exchange rate series are sampled monthly from 1986:03 to 2000:12 providing 178 observations. Stock market indices are available only from 1988:10 to 2000:12 providing 147 observations.

Prior to testing for cointegration we conducted unit root tests (Dickey and Fuller, 1979, 1981; Phillips and Perron, 1988) for the series<sup>4</sup>. As expected, the null of non-stationarity is not rejected for the levels of all four series implying that standard asymptotic theory cannot be applied. In contrast, the null of non-stationarity was rejected for the first differences of the series leading to the conclusion that all four series are integrated of order one [I(1)]. These results are rather commonplace and therefore are not reported for space considerations, but they are available upon request.

## **3. Empirical Results**

The finding that the series are I(1) allows one to use the Johansen procedure. The Johansen procedure is known to be sensitive to deviations from 'whiteness' in the residuals. In particular, autocorrelation has adverse effects on inference. For that reason the lag length was chosen to guarantee absence of autocorrelation.

Additionally, a vector of dummy variables is included to account for periods of excessive turbulence or systemic shocks that might distort the estimation and inference<sup>5</sup>. Table 1 summarizes the tests for the cointegration rank of the bivariate systems (stock markets/exchange rates), which we have restricted to include a constant in the cointegration space<sup>6</sup>, based on the Johansen test procedure. The systems dynamics are of order six for the stock markets system and four for the exchange rates. Applying a battery of multivariate autocorrelation tests and univariate heteroscedasticity tests, we establish residual 'whiteness' in both the exchange rates and stock markets systems.

**[Table 1]**

As far as the cointegration rank of the bivariate systems is concerned, both the maximum eigenvalue and trace statistics in Table 1 indicate that there exists one cointegration vector in each of the two bivariate systems. In particular, the null of no cointegration was rejected in both cases, whereas the null that the cointegration rank of each system is one was not possible to reject at the 5% level of significance. Given the presence of one cointegration vector between each of the two pairs of variables we conclude that there exists one common stochastic trend between them. In other words, the ISE and ASE price indices share a common stochastic trend, as do the TL and GD. On the basis of this evidence, we cannot reject the hypothesis that a long run dynamic linkage between the Turkish and Greek financial markets exists.

The finding of cointegration implies that the two financial markets exhibit long run interdependence. The restricted cointegration analysis delivers the following estimates of the long-run error correction mechanisms<sup>7</sup>:



<b>System</b>	<b>ECM</b>
<b>Stock Markets</b>	<i>ASE - 0.16 * ISE - 3.1</i>
<b>Exchange Rates</b>	<i>GD - 0.2* TL - 2.4</i>

Notice the similarity of the cointegration vectors between the two systems. The long-run elasticity of the Greek stock market with respect to that of Turkish market is positive and significant at the 1 percent level. A 10% increase in the Istanbul stock market returns raises the Greek market returns by 1.6 percent, *ceteris paribus*. The corresponding long-run exchange rate is elasticity is 0.20 and statistically significant. We interpret this finding as suggesting that the long run relationship that ties financial variables from the two countries is quite uniform across different types of financial markets<sup>8</sup>. The dynamic behaviour of the two long run (statistical) equilibrium relationships as measured by the cointegration vectors is shown in figures 1 and 2.

### [Figures 1 and 2]

Visual inspection of the graphs reveals, as expected, that the error correction vectors exhibited significant variation around the (benchmark) zero line. One point though deserves our attention. The cointegration vector for the exchange rates contains an exceptionally high deviation from equilibrium at the period corresponding to the summer '94 crisis in the Turkish economy (that is also mirrored at the residuals obtained from the TL equation). It should be noted that the analysis used an impulse dummy in order to account for this, attempt that was rather limited although to some extent the model captures such eventualities.

### **3.1 Temporal Causality**

The finding of cointegration in each of the bivariate systems implies that a Granger causal chain is in place. In other words, causality in at least one direction is guaranteed with the potential for feedback to be present (bi-directional causality). Identifying 'causes' and 'effects' in the long run sense is achieved by testing for the

significance of the adjustment coefficients. Panel A of Table 2 summarizes the relevant statistics.

**[Table 2]**

In both systems we cannot reject the null hypothesis that the Greek series (stock market, exchange rate) is not Granger-caused by the Turkish series in the long run. In contrast, the symmetric null (for the Turkish series) is rejected. This implying that in the long run, changes in the Greek financial market are the 'cause' and movements in the Turkish market the 'effect'. In other words, the Greek financial market is found to be weakly exogenous to the Turkish market. Such a finding implies that although both countries' markets take part in an equilibrium relationship that ties them together, it is mainly the Turkish market that adjusts to achieve equilibrium. The Turkish financial market acts as a receptor of the shock and in a sense absorbs it so as to eliminate the realized equilibrium error. Short run causal chains are taking place through the significance of the lagged differenced terms in (2).

Panel B of Table 2 reports the statistics for the relevant tests. The null of no short run causality is rejected in only one out of four cases. In particular, the only short run causal chain found was from the Athens Stock Exchange to the Istanbul Stock Exchange. Interpreting Granger-causality as predictability, our findings imply that using information from the Greek stock market can lead to improved forecasts for the movement in the Turkish stock market.

The overall results suggest that the Greek financial market is strongly exogenous with respect to the parameters of the system. A clear picture emerges from inspection of the above-mentioned tests. The empirical findings imply that the Greek financial market is the 'Granger-cause' and the Turkish financial market the 'effect'. Given that Greece is a member of the European Union (EU), one could interpret the

result through that prism. The Greek financial market is relatively more exposed to shocks in the international financial markets and in particular to European ones, which are then at least partly transmitted to the Turkish market through the established linkage. In other words, it is the Turkish financial market that adjusts so as to 'clear' deviations from the long run statistical relationship that links the two markets<sup>9</sup>.

### **3.2 Discussion of the Empirical Findings**

The existence of cointegration among the Greek and the Turkish stock markets and their exchange rates provides evidence for the presence of a long-run linkage between the two financial markets. What is interesting from a policy-making point of view is the source of this linkage. The finding of comovement is compatible with a number of reasons. In other words, a variety of theoretical models would produce an observationally equivalent outcome.

Forbes and Rigobon (2000) divide these into two groups: *crisis-contingent* and *non-crisis contingent* theories. The first group explain why transmission mechanisms change during a crisis and, as a consequence, cross-market linkages increase after a shock. The second group assumes that transmission mechanisms are the same during a crisis and during more stable periods. In this view, cross-market linkages do not increase after a shock.

According to the same authors crisis-contingent theories of how shocks are transmitted can be divided into three mechanisms: multiple equilibria, endogenous liquidity, and political economy. The first mechanism takes place when a crisis in one country functions as sunspot for other countries. The second category asserts that a crisis in one country can reduce the liquidity of market participants. Depending on the severity of the liquidity shock this could force investors to a reshuffling of their portfolio composition where essentially investors liquidate their assets in order to

cope with the apparent credit rationing. The third mechanism, political contagion, describes a co-ordinated switch in policy due to reduced political costs. The common feature of all three mechanisms is that the crisis causes a structural shift, which opens up a channel for shock propagation that did not exist before (in relatively stable periods).

In contrast, non-crisis contingent theories advocate that the transmission mechanisms after a shock are not different to that before the crisis. These channels are often called '*real linkages*' since they identify economic fundamentals as their basis. For instance, if two countries share a common set of trading partners these real linkages may be related to competitiveness where as a consequence shocks in one country's balance of payments and/or foreign direct investment may be transmitted to the other country. Additionally, if the two countries are directly close trade partners themselves an even stronger effect is expected. Another potentially important mechanism argues that random aggregate or global shocks may simultaneously affect the fundamentals of several countries. This may become even more dramatic in the case of geographically neighbouring economies and/or economies of the same structure and status (for instance emerging markets).

Therefore, if one wants to pin down the source of the existence of cross-market linkages has to somehow distinguish among the above-discussed possibilities. *It should be noted however, although Rigobon and Forbes do not discuss this possibility, a coexistence of the crisis-contingent and non-crisis contingent theories could be in place. It is perfectly admissible that a number of mechanisms are active in the presence or not of a crisis while at the same time a crisis may trigger a 'new' mechanism that otherwise would be inactive.*

In our analysis, we will consider a number of possibilities from those discussed. In particular, in order to assess whether the crisis-contingent theories are a better description of the Turkish-Greek case we explore how cross-market correlations in returns behaved before and after the Asian and Russian Crises. Furthermore, in order to assess the relevance of 'real linkages' we consider an 'informal' indicator and a 'formal' one. The 'informal' one consists of analysing the structure of Turkey's and Greece's trading partners in search of a common set of those as well as their direct trade. The 'formal' one basically tests whether the two countries' real fundamentals are tied together. The next section presents the results from this analysis.

## **4. An Inquiry into the Sources of Financial Market Linkages**

### **4.1. *Bilateral Trade Linkages?***

One avenue via which real shocks are transmitted across markets is that country-specific shocks influence the economic fundamentals in other countries (Eichengreen, Rose and Wyplosz, 1996). Trade linkages are one such source of transmission (Gerlach and Smets, 1995). In case of strong trade linkages between countries, a recession in one country hurts the exports of the other country, reducing economic growth in the latter country as well. Thus, the two markets experience a common downward trend in stock markets as they both observe declines in their economic growth. Table 3 reports the bilateral export and import shares of Turkey with respect to Greece since 1985. The exports and imports figures in Table 3 clearly indicate that no strong trade linkage exists between the two countries. Turkey's exports to Greece (Greece's imports from Turkey) make up only about 1 percent of

Turkey's total exports while the import shares are even smaller. Thus, bilateral trade flows cannot explain the observed financial market linkages between the markets.

[Table 3]

#### **4.2. Common Balance of Payments Shocks?**

Another channel via which country-specific shocks would influence the economic fundamentals in other countries is that both Greece and Turkey have similar trading partners. Table 4 and 5 report the top 10 trading partners of Turkey and Greece for exports and imports, respectively. The results indicate that the U.S., Germany and other EU countries are the most significant trading partners of both countries. A significant drop (increase) in EU income would affect both the Greek and Turkish trade with the EU, bringing about a slow down (increase) in GDP growth in both countries. As a result, both countries' stock markets would tend to move together or exhibit cointegration, everything else constant.

[Tables 4 and 5]

Yet another potential channel is the source of foreign direct investment. Table 6 lists the top foreign direct investors and reports the amount of foreign direct investment (FDI) inflows from these countries to Greece and Turkey in 1999. The U.S. and EU countries are the main investors in both countries. This evidence suggests that FDI linkages can also be a very significant source of the transmission of global shocks from these countries to Turkey and Greece, which would affect economic fundamentals in both countries (Masson, 1997 and Fleming et. al., 1998). A sudden worldwide reduction (increase) of FDI by EU members would slow (speed) economic growth in both Greece and Turkey. As growth declines (increases), both stock markets would share a common downward (upward) trend over time in their stock markets and hence they would be cointegrated. In summary, the balance of

payments shocks seem to be an important source of the observed financial linkages between the two countries.

[Table 6]

### **4.3. Real Linkages?**

In addition to trade and investment, linkages between real interest rates, real exchange rates and output may cause stock market co-movements, reflecting the increasingly integrated nature of the world real economy (Dickinson, 2000). The existence of real linkages among Turkey and Greece would also imply that their fundamentals should move together over time and therefore be cointegrated. To investigate the existence of such real linkages, we test whether real exchange rates, real interest rates and real income, which is proxied by an industrial production index, are cointegrated.

#### **4.3.1. Data**

Quarterly data on nominal Turkish Lira (against the DM and the US) and the real effective rate of Greek Drachma were collected. Greek and Turkish Consumer Price Index (CPI), Real Industrial Production (GDP) and short-term interest rates (3-month rates) were also collected. The data were sampled for different time periods due to their unavailability. In particular, exchange rates and the CPI were sampled from 1980:Q1 to 1999:Q1, interest rates from 1985:Q3 to 2000:Q1. Data were collected from the IFS CD-ROM database. Since real series (apart from the Drachma real effective exchange rate) were not directly available, they were constructed. Ex post real interest rates ( $r$ ) were constructed by subtracting the realized inflation rate ( $p$ ) from the nominal interest rate ( $i$ ) as follows:

$$r = i - p \tag{1}$$

Finally, for Turkey the real exchange rate was constructed by taking into account the fact that the Central Bank of Turkey computes the effective lira nominal exchange rate (TL) as a weighted average of the DM and US dollar in the following fashion:

$$TL = 0.75 * DM + 0.25 * US\$ \quad (2)$$

Therefore, we constructed the real exchange rate ( $q$ ) for Turkey using the formula in equation (3) below:

$$q = \frac{e * P}{P^*} \quad (3)$$

where  $e$  is the effective nominal exchange rate, and  $P$  and  $P^*$  are the domestic and foreign price levels, respectively. Note that  $P^*$  is given by:

$$P^* = 0.75 * CPI_{Germany} + 0.25 * CPI_{US} \quad (4)$$

#### **4.3.2. Real Linkages: Empirical Results**

Prior to testing for long-term real linkages among variables, the stationarity tests are conducted for the real fundamentals.<sup>10</sup> The tests indicated that all the series are I(1) and thus we can proceed with the cointegration tests.

Table 7 summarizes the empirical results from the Johansen procedure. Among all three bivariate systems the null that no cointegration vector exists between the two countries fundamentals was rejected in favour of the alternative that one cointegration vector is present. Therefore, the comovement of real fundamentals provides evidence, at least to some extent, for real integration between the two countries. Geographical proximity, exposure to common shocks, and close economic cooperation between the two countries may account for this comovement. For the latter, both countries are members of the Black Sea Economic Cooperation Organization (BSECO), which involves joint efforts between Turkey, Greece, and its



other members to plan and to finance infrastructure projects in the region, including telecommunications and energy. The members include the following countries: Turkey, Greece, Ukraine, Georgia, Russia, and others in the region. Greece and Turkey are also members of the Organization for Economic Cooperation and Development (OECD), representing the world's biggest economies.

[Table 7]

#### **4.4. Contagion effects?**

In order to test for the relevance of the crisis-contingent theories we focus on the linear correlations among daily percentage changes in nominal exchange rates and daily nominal stock market returns before and after two major international crises. We identify two dates associated with these crises. First is July 1997 corresponding to the Asian Crisis and second is August 1998 corresponding to the Russian Crisis. The former had a worldwide significant effect on financial markets while Russia has significant economic linkages with both countries (Tables 4-6). Thus, studying the correlation structure before and after the crises should provide some reasonable evidence about the significance of contagion. The results are reported in Table 8.

[Table 8]

Starting with the exchange rates a shift in their correlation structure is apparent. In the pre-Asian Crisis period the Drachma and the Lira exhibited no significant correlation where as in the post-Asian Crisis period their correlation becomes significant. Similar behaviour is found when the benchmark used is the Russian Crisis. Note that the correlation is relatively higher for the post-Russian crisis period. To some extent a stronger effect for the post-Russian crisis is expected for two reasons. First, the Russian Crisis followed the Asian Crisis and therefore may have caused a cumulative effect to an already turbulent period. Secondly, both countries have strong economic

relationships with Russia. In summary, the behaviour of exchange rate correlations point to contagion effects between the two markets.

Moving to stock markets a different pattern altogether emerges. Not only cross-market correlation does not increase following a crisis, but it actually declines. In the case of both crises identified in our sample correlation reduces in the post-shock period bearing no relevance to the crisis-contingent theories. All in all, if indeed contagion effects are in operation between the two markets the transmission mechanism is described by the exchange rates rather than the stock markets.<sup>11</sup> For the latter, real linkages might provide better answer for the observed linkages between the two markets. This is interesting evidence. It would be useful to see whether this evidence that foreign exchange markets are subject to more contagion than stock markets holds for other emerging market economies.

## **5. Implications of Research Findings**

Our empirical results have implications for pricing assets in emerging markets. Our findings suggest that information contained in the Greek market is relevant for the pricing of securities traded in the Istanbul stock market. This is the result of the observed real integration of the two financial markets as well as the increased globalisation of the Turkish and Greek markets, especially since 1980s, following the start of the economic liberalization in Turkey.

Concerning investors, our results suggest that the benefits associated with portfolio diversification can be quite small in a region with significant geographic linkages, such as Eastern Europe, where countries like Turkey and Greece share close common trading and business partners. However, understanding the ways in which the two financial markets interact allows investors in both countries to carry out hedging and trading strategies more effectively.

Our finding of contagion between the Turkish and Greek foreign exchange markets is important information for international institutions such as the IMF, because contagion may require significant IMF intervention and dedication of funds to stabilize affected economies. Furthermore, contagion may spread to other countries in the region such as Russia, which has significant economic linkages with both Turkey and Greece (Tables 4-6). Given the frequent financial crises in both Russia and Turkey, this is a significant source of information for the IMF.

Finally, our findings are encouraging for Turkey's entry chances to the European Monetary System (EMS) and the European Union. Turkey and the EU signed the Customs Union agreement in January 1996, providing the first key step for full membership in the EU. The evidence that Turkish economy shares nominal and real linkages with that of Greece indicates that Turkish economy has made significant progress in terms of satisfying some of the policy convergence criteria necessary for joining the EMS.

## **6. Conclusions**

We have examined the long- and short-run linkages between the Greek and Turkish financial markets linking the two separate literatures on these markets. To our best knowledge, this is the first attempt in the literature to study the transmission of information between the markets. We have found that the Greek and Turkish markets are interdependent in both long and short run, while there is evidence of contagion between the Greek and Turkish foreign exchange markets. The observed financial market linkages especially between the two stock markets seem to be a reflection of close links between real economic fundamentals in both countries as well similar trading partners and common foreign direct investors.

Our results also suggest that crisis-contingent theories may hold better for explaining foreign exchange market linkages, while stock market linkages can be better explained by non-crisis contingent theories. Therefore, more evidence is needed from other countries to better understand the exact channels in which information is transmitted between the emerging markets.

## References

- Alexakis, P. and Petrakis, P. (1991). "Analysing Stock Market Behavior in a Small Capital Market", *Journal of Banking and Finance*, 15(3), 471-483.
- Alexakis, P. and Xanthakis, M. (1995). "Day of the Week Effect on the Greek Stock Market", *Applied Financial Economics*, 5(1), 43-50.
- Barkoulas, J.T.; Baum, C.F.; and Travlos, N. (2000). "Long Memory in the Greek Stock Market", *Applied Financial Economics*, 10(2), 177-184.
- Basci, E.; Ozyildirim, S.; and Aydogan, K. (1996). "A Note on Price-Volume Dynamics in An Emerging Stock Market", *Journal of Banking and Finance*, 20(2), 389-400.
- Bonfiglioli, A. and Favero, C.A. (2000). "Measuring Co-Movements Between US and European Stock Markets", Centre for Economic Policy Research, Working Paper No:2517.
- Chortareas, G.; McDermott, J.B.; and Ritsatos, T.E. (2000). "Stock Market Volatility in an Emerging Market: Further Evidence from the Athens stock Exchange", *Journal of Business Finance and Accounting*, 27(7/8), 983-1002.
- Connolly, R. A. and Wang, A. F. (2000). "On Stock Market Return Co-Movements: Macroeconomic News, Dispersion of Beliefs, and Contagion", Paper Presented at the 2001 ASSA Meetings, New Orleans, January 3-5, 2001.
- Couts, J.A.; Kaplanidis, C.; and Roberts, J. (2000). "Security Price Anomalies in An Emerging Market: The Case of the Athens Stock Exchange", *Applied Financial Economics*, 10(5), 561-571.
- Demos, A. and Parissi, S. (1998). "Testing Asset Pricing Models: The Case of the Athens Stock Exchange", *Multinational Finance Journal*, 2(3), 189-223.
- Dickey, D., and Fuller, W. (1979). "Distribution of Estimators for Autoregressive Time Series with a Unit Root", *Journal of the American Statistical Association*, 84, 427-431.
- Dickey, D., and Fuller, W. (1981). "Likelihood Ratio Statistics for Autoregressive Time Series with a Unit Root", *Econometrica*, 49, 1057-1072.
- Dickinson, D. G. (2000). "Stock Market Integration and Macroeconomic Fundamentals: An Empirical Analysis, 1980-95", *Applied Financial Economics*, 10(3):261-76.
- Eichengreen, B., Rose, A., and Wyplosz, C. (1996). "Contagion Currency Crises", NBER Working Paper 5681.
- Engle, R., Hendry, D., and Richard, J., (1983). "Exogeneity", *Econometrica*, 51, 2, 277-304.
- Ericsson, N., (1992). "Cointegration, Exogeneity, and Policy Analysis: An Overview", *Journal for Policy Modelling*, 14, 3, 251-280.
- Fleming, J., Kirby, C., and Ostdiek, B. (1998). "Information and Volatility Linkages in the Stock, Bond, and Money Markets", *Journal of Financial Economics*, 49:111-37.
- Forbes, K. and Rigobon, R. (1999). "On the Measurement of the International Propagation Shocks", mimeo, MIT.

- Gerlach, S. and Smets, F. (1995). "Contagious Speculative Attacks", *European Journal of Political Economy*, 11:45-63.
- Granger, C., (1969). "Investigating Causal Relations by Econometric Models and Cross-Spectral Methods", *Econometrica*, 36, 424-438.
- Granger, C., (1986). "Developments in the Study of Cointegrated Variables", *Oxford Bulletin of Economics and Statistics*, 48, 213-228.
- Granger, C., (1988). "Some Recent Developments in a Concept of Causality", *Journal of Econometrics*, 39, 199-211.
- Hamilton, J.D. (1994). *Time Series Analysis*, Princeton University Press, Princeton.
- Hansen, H. and Juselius, K. (1995) *CATS in RATS Manual*, Estima, Evanston, Illinois, USA.
- Johansen, S. (1988). "Statistical Analysis of Cointegration Vectors", *Journal of Economic Dynamics and Control*, 12(2), 231-254.
- Johansen, S. (1991). "Estimation and Hypothesis Testing of Cointegration Vectors in Gaussian Vector Autoregressive Models", *Econometrica*, 59, 1551-1580.
- Johansen, S. (1995). *Likelihood-Based Inference in Cointegrated Vector Autoregressive Models*, Oxford University Press, Oxford.
- Johansen, S. and Juselius, K. (1990). "Maximum Likelihood Estimation and Inference on Cointegration-With Application to the Demand for Money", *Oxford Bulletin of Economics and Statistics*, 52, 169-210.
- Lutkepohl, H. and Reimers, H-E. (1992). "Granger-Causality in Cointegrated VAR processes: the case of the term structure", *Economic Letters*, 40, 263-268.
- Masson, P. (1997). "Monsoonal Effects, Spillovers, and Contagion", IMF mimeo.
- Mills, T.C.; Siriopoulos, C.; and Markellos, R.N. (2000). "Seasonality in the Athens Stock Exchange", *Applied Financial Economics*, 10(2), 137-142.
- Muradoglu, Y.G. and Metin, K. (1996). "Efficiency of Turkish Stock Exchange with Respect to Monetary Variables: A Cointegration Analysis", *European Journal of Operational Research*, 90(3), 566-576.
- Niarchos, N. and Alexakis, C. (1998). "Stock Market Prices, Causality and Efficiency: Evidence from the Athens Stock Exchange", *Applied Financial Economics*, 8(2), 167-174.
- Niarchos, N.; Tse, Y.; Wu, C.; and Young, A. (1999). "International Transmission of Information: A Study of the Relationship between the U.S. and Greek stock Markets", *Multinational Finance Journal*, 3(1), 19-40.
- Osterwald-Lenum, M. (1992). "A Note with Quantiles of the Asymptotic Distribution of the Maximum Likelihood Cointegration Rank Test Statistics", *Oxford Bulletin of Economics and Statistics*, 54, 461-472.
- Phillips, P.C.B. and Perron, P. (1988). "Testing for a Unit Root in Time Series Regression", *Biometrika*, 75, 335-346.

Rigobon, R. (1999). "On the Measurement of the International Propagation of Shocks", downloadable from <http://www.web.mit.edu/rigobon/www/>.

Rigobon, R, and Forbes, K. (1999). "On the measurement of the International Propagation of Shocks", mimeo MIT.

Rigobon, R. (1999). "Identification through Heteroscedasticity: Measuring "Contagion" between Argentinean and Mexican Sovereign Bonds", mimeo, MIT.

Tsangarakis, N.V. (1996). "Shareholder Wealth Effects of Equity Issues in Emerging Markets: Evidence from Rights Offering in Greece", *Financial Management*, 25, 21-32.

White, H. (1980). "A Heteroskedasticity-Consistent Covariance Matrix Estimator and a Direct Test for Heteroskedasticity", *Econometrica*, vol. 48(4), 817-838.

**Table 1: Johansen tests for cointegration<sup>a</sup>**

<b>Stock Markets</b>						
			max		tr	
Null	Alt/ve	Test Statistic	Critical value	Alt/ve	Test Statistic	Critical value
r = 0	r = 1	16.87*	15.75	r = 1	20.63*	20.16
r = 1	r = 2	3.75	9.09	r = 2	3.75	9.09
<b>ECM = (ASE - 0.16 * ISE - 3.1)</b>						
<b>Diagnostics</b>						
<b>R<sup>2</sup> (ASE)</b>	0.15		<b>R<sup>2</sup> (ISE)</b>	0.19		
<b>Multivariate Residual Analysis</b>						
<b>L-B(35)</b>				0.73* (p-value)		
<b>LM(1)</b>				0.61* (p-value)		
<b>LM(4)</b>				0.9* (p-value)		
<b>ARCH(6) (ASE)</b>				3.7		
<b>ARCH(6) (ISE)</b>				3.8		
<b>Exchange Rates</b>						
r = 0	r = 1	44.8*	15.75	r = 1	47.53*	20.16
r = 1	r = 2	2.73	9.09	r = 2	2.73	9.09
<b>ECM = (GD - 0.2*TL - 2.4)</b>						
<b>Diagnostics</b>						
<b>R<sup>2</sup> (GD)</b>	0.09		<b>R<sup>2</sup> (TL)</b>	0.24		
<b>Multivariate Residual Analysis</b>						
<b>L-B(36)</b>				0.64* (p-value)		
<b>LM(1)</b>				0.54* (p-value)		
<b>LM(4)</b>				0.19* (p-value)		
<b>ARCH(6) (GD)</b>				10.8		
<b>ARCH(6) (TL)</b>				12.3		

Notes: a. The asterisk denotes significance at the 5% level. The estimation included an intercept restricted in the cointegration space. Six dummy variables were also included in each system in order to account for the following events: crisis in Turkish economy (early 1994), Asian crisis (July 1997), speculative attack on Drachma (late 1997), Brazilian crisis (late 1998 and early 1999), Russian crisis (August 1998), and finally the earthquake in Turkey (summer 1999). For the maximal eigenvalue test the null is for at most  $r$  cointegration vectors, against the alternative of  $r + 1$  cointegration vectors. For the trace test the null is at most  $r$  cointegration vectors, with more than  $r$  vectors under the alternative. L-B stands for the Ljung-Box autocorrelation statistic. LM stands for the Lagrange Multiplier autocorrelation statistic.



**Table 2: Causality tests<sup>a</sup>**

<b>Temporal causality</b>	<b>Stock markets</b>		<b>Exchange rates</b>	
<b>Null</b>	ISE does not cause ASE	ASE does not cause ISE	TL does not cause GD	GD does not cause TL
<b>Panel A</b>				
<b>Long run causality</b>	-1.49 (0.13)	-3.94* (0.00)	-1.83 (0.07)	-3.09* (0.00)
<b>Panel B</b>				
<b>Short run causality</b>	17.62* (0.00)	4.77 (0.57)	4.84 (0.43)	5.98 (0.3)

Notes: a. The asterisk denotes significance at the 5% level. The long run tests (Panel A) are based on a t-statistic, corrected for heteroscedasticity by White's method (White, 1980). The short run tests are based on a Wald test distributed with six degrees of freedom for the stock markets and four for the exchange rates.

**Table 3: Bilateral Trade Linkages: Percentage Shares (%)**

	<b>Turkey's exports to Greece (%)<sup>a</sup></b>	<b>Turkey's imports from Greece (%)<sup>b</sup></b>
<b>1985</b>	0.96	0.42
<b>1986</b>	1.01	0.71
<b>1987</b>	0.57	0.86
<b>1988</b>	0.82	0.56
<b>1989</b>	1.06	0.59
<b>1990</b>	1.04	0.54
<b>1991</b>	1.05	0.36
<b>1992</b>	1.00	0.36
<b>1993</b>	0.77	0.41
<b>1994</b>	1.06	0.45
<b>1995</b>	0.97	0.56
<b>1996</b>	1.02	0.65
<b>1997</b>	1.14	0.88
<b>1998</b>	1.37	0.70

Notes: a. Exports to Greece/total Turkish Exports  
b. Imports from Greece/total Turkish imports

Numbers are in Millions of U.S. dollars.  
Source: Direction of Trade Statistics, IMF.

**Table 4: Top 10 export partners: Percentage Shares (%)**

**Panel A: Turkey**

<b>Year</b>	<b>1</b>	<b>2</b>	<b>3</b>	<b>4</b>	<b>5</b>	<b>6</b>	<b>7</b>	<b>8</b>	<b>9</b>	<b>10</b>
<b>1985</b>	Germany	Iran	Iraq	UK	US	Italy	Saudi A.	France	Nether.	Russia
<b>Share</b>	17.48	13.56	12.08	6.77	6.36	6.31	5.4	2.7	2.68	2.39
<b>1990</b>	Germany	Italy	US	UK	France	Russia	Iran	Nether.	Saudi A.	Belgi-Lux
<b>Share</b>	22.99	8.24	7.21	5.55	5.49	3.96	3.69	3.24	2.52	2.32
<b>1995</b>	Germany	US	Italy	Russia	UK	France	Nether.	Saudi A.	Belgi-Lux	Bolivia
<b>Share</b>	23.26	6.99	6.73	5.72	5.25	4.77	3.4	2.17	2.09	2.03
<b>1998</b>	Germany	US	UK	Italy	Russia	France	Nether.	Belgi-Lux	Spain	Algeria
<b>Share</b>	20.24	8.28	6.45	5.77	5	4.85	3.3	2.48	1.92	1.79
<b>Total</b>	Germany	US	Italy	UK	France	Russia	Nether.	Saudi A.	Iran	Iraq
<b>85-98</b>	21.81	7.34	6.59	5.53	4.80	4.77	3.27	2.91	2.83	2.30

**Panel B: Greece**

<b>Year</b>	<b>1</b>	<b>2</b>	<b>3</b>	<b>4</b>	<b>5</b>	<b>6</b>	<b>7</b>	<b>8</b>	<b>9</b>	<b>10</b>
<b>1985</b>	Germany	Italy	US	France	UK	Nether.	Saudi A.	Russia	Egypt	Belgi-Lux
<b>Share</b>	20.06	11.25	8.13	7.91	6.95	4.01	3.97	3.11	3.11	1.84
<b>1990</b>	Germany	Italy	France	UK	US	Nether.	Cyprus	Yugos.	Belgi-Lux	Sweden
<b>Share</b>	22.31	16.66	9.62	7.32	5.63	3.46	2.51	2.25	2.04	1.61
<b>1995</b>	Germany	Italy	UK	France	Bulgaria	Spain	US	Cyprus	Nether.	Russia
<b>Share</b>	22.32	14.23	6.15	5.50	4.11	3.51	3.17	2.97	2.74	2.17
<b>1998</b>	Germany	Italy	UK	France	US	Bulgaria	Cyprus	Turkey	Nether.	Spain
<b>Share</b>	18.41	11.86	6.72	4.61	4.46	4.09	3.81	3.14	3.02	2.65
<b>Total</b>	Germany	Italy	UK	France	US	Nether.	Cyprus	Bulgaria	Russia	Spain
<b>85-98</b>	21.46	14.64	6.67	6.64	5.01	3.12	2.91	2.40	2.10	2.10

Notes: All numbers are in millions of US dollars

Data is collected from the Direction of Trade Statistics, IMF

Data given for Russia for the years 1985-1991 are originally for USSR

Abbreviations: Belgi-Lux (Belgium-Luxemburg), Nether. (The Netherlands), Saudi A. (Saudi Arabia), Switz. (Switzerland), UK (United Kingdom), US (United States), Yugos. (Yugoslavia).

**Table 5: Top 10 import partners: Percentage Shares (%)****Panel A: Turkey**

<b>Year</b>	<b>1</b>	<b>2</b>	<b>3</b>	<b>4</b>	<b>5</b>	<b>6</b>	<b>7</b>	<b>8</b>	<b>9</b>	<b>10</b>
<b>1985</b>	Germany	Iran	Iraq	US	Italy	Libya	France	Japan	UK	Spain
<b>Share</b>	11.88	11.22	10.09	10.08	5.81	5.51	4.53	4.47	4.12	2.86
<b>1990</b>	Germany	US	Italy	France	Russia	Japan	Iraq	UK	Saudi A.	Nether.
<b>Share</b>	14.71	9.52	7.21	5.59	5.2	4.67	4.37	4.23	3.02	2.39
<b>1995</b>	Germany	US	Italy	Russia	France	UK	Japan	Saudi A.	Nether.	Belgi-Lux
<b>Share</b>	15.54	10.43	8.94	5.83	5.59	5.12	3.92	3.88	3.04	2.55
<b>1998</b>	Germany	Italy	US	France	UK	Russia	Japan	Nether.	Spain	Belgi-Lux
<b>Share</b>	16.13	9.33	8.94	6.69	5.91	4.75	4.51	3.19	2.81	2.65
<b>Total</b>	Germany	US	Italy	France	UK	Russia	Japan	Saudi A.	Nether.	Belgi-Lux
<b>85-98</b>	15.58	9.78	8.48	5.85	5.22	4.45	4.38	3.48	2.59	2.52

**Panel B: Greece**

<b>Year</b>	<b>1</b>	<b>2</b>	<b>3</b>	<b>4</b>	<b>5</b>	<b>6</b>	<b>7</b>	<b>8</b>	<b>9</b>	<b>10</b>
<b>1985</b>	Germany	Italy	Saudi A.	France	Japan	Nether.	Libya	Russia	Iraq	UK
<b>Share</b>	16.99	9.39	7.99	6.46	6.13	5.86	5.53	4.94	4.57	3.81
<b>1990</b>	Germany	Italy	France	Nether.	Japan	UK	Belgi-Lux	US	Spain	Iran
<b>Share</b>	20.80	15.40	8.09	6.73	5.92	5.26	3.74	3.68	2.02	1.91
<b>1995</b>	Italy	Germany	France	Nether.	UK	Belgi-Lux	Spain	US	Japan	Russia
<b>Share</b>	18.85	16.60	8.21	6.97	6.51	3.64	3.40	3.25	2.65	2.51
<b>1998</b>	Italy	Germany	France	UK	Nether.	US	Spain	Japan	Iran	Korea
<b>Share</b>	16.31	15.34	8.70	6.42	6.33	3.96	3.67	3.23	2.12	2.07
<b>Total</b>	Germany	Italy	France	Nether.	UK	Japan	US	Belgi-Lux	Spain	Russia
<b>85-98</b>	17.62	15.25	7.94	6.60	5.81	4.82	3.57	2.81	2.65	2.14

Note: See Table 4.

**Table 6: Top Foreign Investors: FDI figures (1999)**

GREECE		TURKEY	
Country	Investment in mil \$	Country	Investment in mil \$
Germany	74.3	Germany	407.31
United States	51.7	United States	292.51
Italy	31.8	Netherlands	234.57
France	22.6	France	146.72
United Kingdom	14.3	Italy	95.22
Denmark	10.5	United Kingdom	88.40
Belgium	9.2	Switzerland	50.89
Netherlands	7.5	Belgium	23.41
Russia	6.6	Sweden	16.41
Cyprus	6.3	Saudi Arabia	14.47
Switzerland	6.1	Japan	13.85
Total sum of foreign investment proposals approved	240.9		1,700.51

**Table 7: Johansen tests for cointegration among real fundamentals**

$\lambda_{\max}$ (5% critical value) <sup>a,b,c</sup>			
Null (alt/ve)	Real Exchange Rates (GD, TL)	Real Interest Rates (GI, TI)	Real Income (GY, TY)
<b>r = 0 (r = 1)</b>	34.9* (19.96)	27.88* (25.32)	17.24* (15.41)
<b>r = 1 (r = 2)</b>	7.15 (9.24)	7.46 (12.25)	2.93 (3.76)
<b>Error Correction Mechanisms</b>			
$ECM1 = RGD - 4.25*RTL$ (-2.06 <sup>S</sup> )			
$ECM2 = RGI - 0.26*RTI - 14.75 + 0.3*t$ (-3.3 <sup>S</sup> )			
$ECM3 = RGY - 0.21*RTY + 1.16$ (-15.04 <sup>S</sup> )			

- Notes: a. Critical values differ due to differences in the deterministic components included in the Johansen tests. Parentheses next to the  $\lambda_{\max}$  correspond to the critical values at the 5% significance level. Numbers in the parenthesis below the ECM's report the t-statistic for the relevant coefficient. Finally, ♣ denotes significance at the 5% level.
- b. For brevity we report only the Maximal Eigenvalue statistic (identical conclusions are reached by using the Trace statistic), which tests the null that at most  $r$  cointegration vectors are present, against the alternative of  $r + 1$  cointegration vectors. GD stands for Greek Drachma; TL stands for Turkish Lira, GI and TI stand for Greek Interest Rate and Turkish Interest Rate respectively; GY and TY stand for Greek GDP and Turkish GDP respectively and finally,  $t$  stands for a linear time trend.
- c. Critical values differ due to differences in the deterministic components included in the Johansen tests. Parentheses next to the  $\lambda_{\max}$  correspond to the critical values at the 5% significance level. Numbers in the parenthesis below the ECM's report the t-statistic for the relevant coefficient. Finally, ♣ denotes significance at the 5% level.

**Table 8: Conditional Correlations (Regression-based)<sup>a</sup> [Daily % changes in nominal Drachma and Lira, and daily stock market returns (ASE, ISE)]**

$$\% \Delta(GD_t) = a + b_{1,xr} \% \Delta(TL_t) + u_{t,xr}$$

$$\% \Delta(TL_t) = a + b_{2,xr} \% \Delta(GD_t) + e_{t,xr}$$

$$\% \Delta(ASE_t) = a + b_{1,sm} \% \Delta(ISE_t) + u_{t,sm}$$

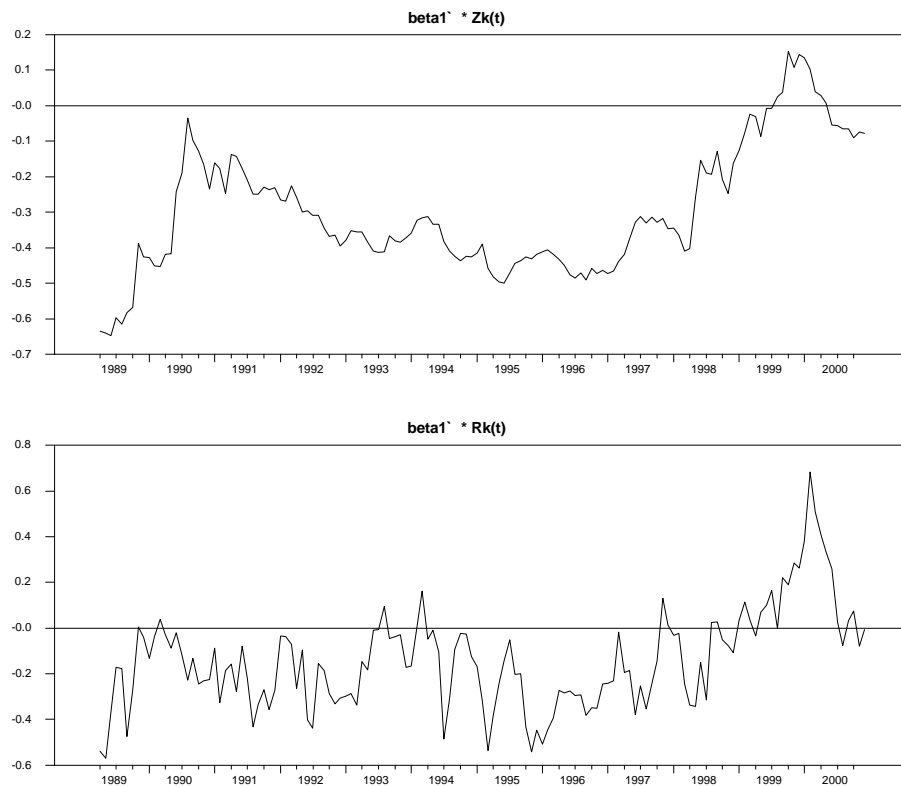
$$\% \Delta(ISE_t) = a + b_{2,sm} \% \Delta(ASE_t) + e_{t,sm}$$

	Exchange Rates	Stock markets
<b>Pre-Asian Crisis<sup>b</sup></b>		
$b_{1,j}$	0.08 (0.78)	0.17 (2.76)*
$b_{2,j}$	0.27 (1.51)	0.5 (2.06)*
<b>Post Asian Crisis</b>		
$b_{1,j}$	0.76 (3.56)*	0.12 (1.39)
$b_{2,j}$	0.24 (3.08)*	0.39 (1.47)
<b>Pre-Russian Crisis</b>		
$b_{1,j}$	0.08 (0.83)	0.19 (3.31)*
$b_{2,j}$	0.26 (1.64)	0.50 (2.43)*
<b>Post Russian Crisis</b>		
$b_{1,j}$	0.80 (4.22)*	0.03 (0.62)
$b_{2,j}$	0.36 (3.24)*	0.23 (0.60)

Notes: a. Numbers in parentheses report the White adjusted for heteroscedasticity t-statistic (White, 1980). The asterisk denotes significance at the 5% significance level. The index j denotes exchange rates (xr) and stock markets (sm).

b. The periods identified correspond to the following: Beginning of our sample until 1997:6 (Pre-Asian Crisis), 1997:7 until end of our sample (Post-Asian Crisis), Beginning of our sample until 1998:7 (Pre-Russian Crisis), 1998:8 until end of our sample (Post-Russian Crisis).

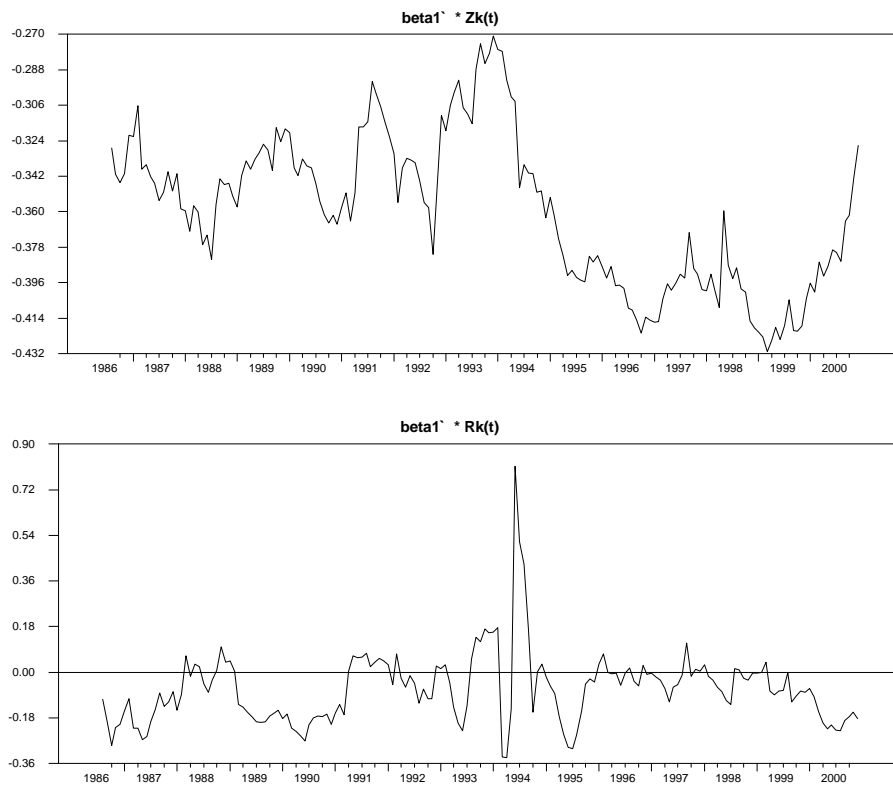
**Figure 1: Cointegration vector (stock markets)**



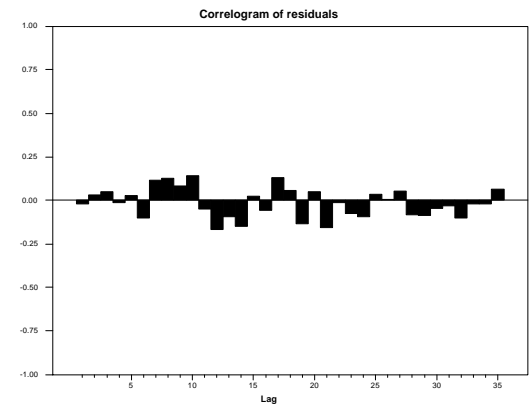
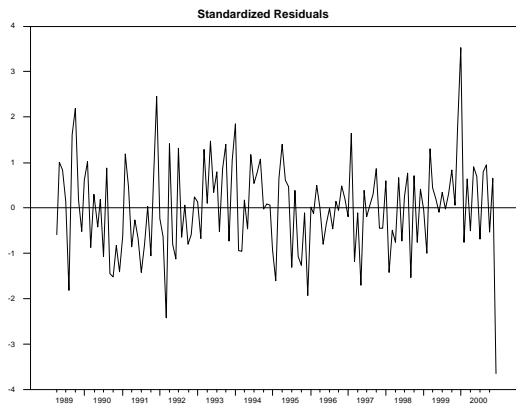
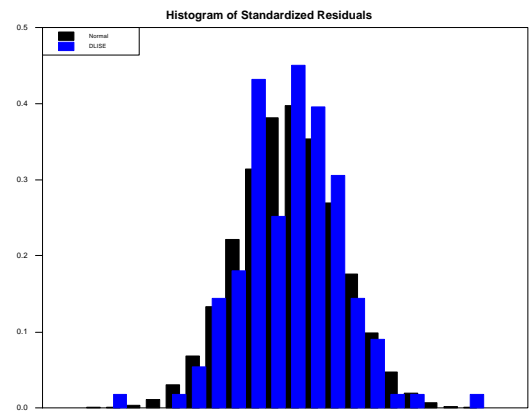
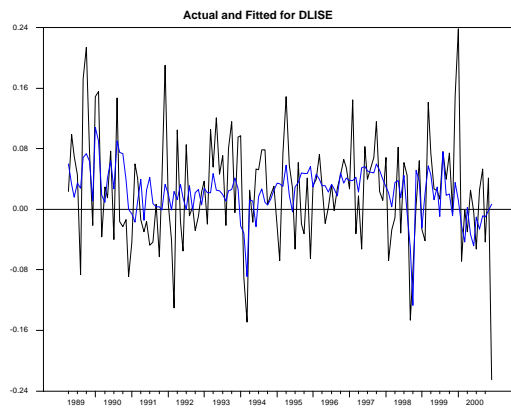
Notes: The difference between the upper and the lower graphs is that  $\beta_1' Z_k(t)$  pictures the actual disequilibrium as a function of all short-run dynamics including the dummies. Whereas  $\beta_1' R_k(t)$  is corrected for the short-run effects, and pictures the 'clean' disequilibrium. It is the series in the lower graph that is actually tested for stationarity and thus determines  $r$  in the maximum likelihood procedure. (for more details see Hansen and Juselius, 1995).



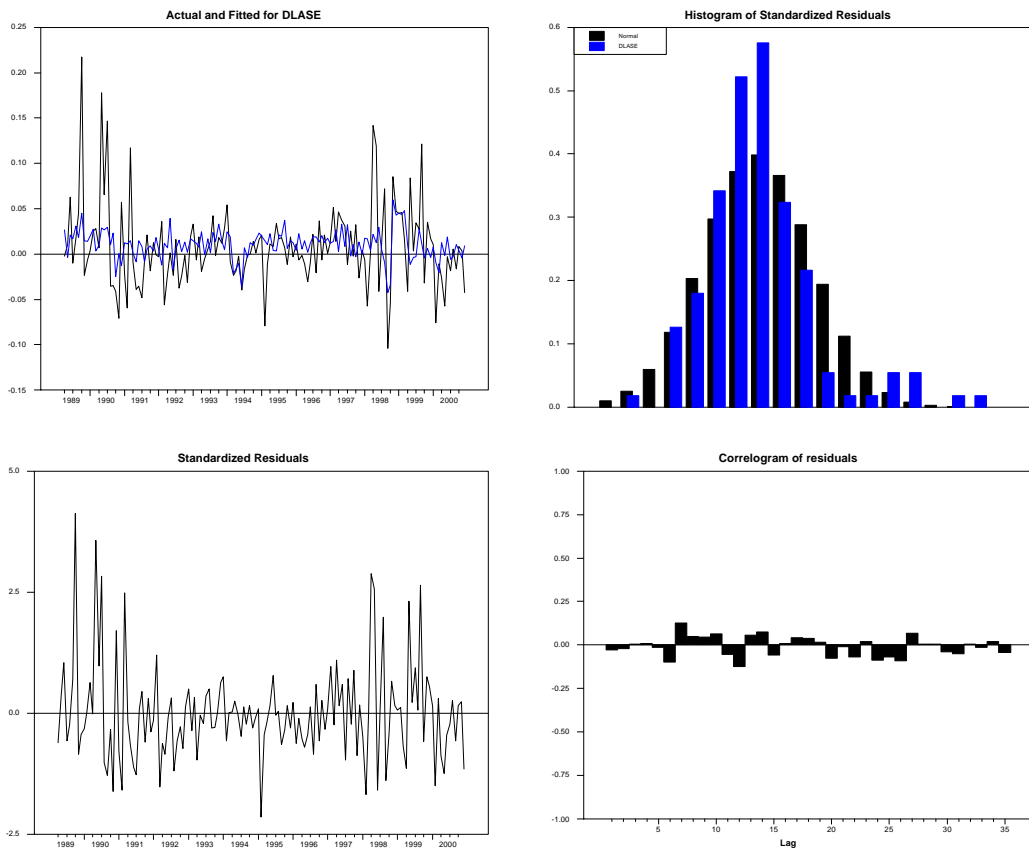
**Figure 2: Cointegration vector (exchange rates)**



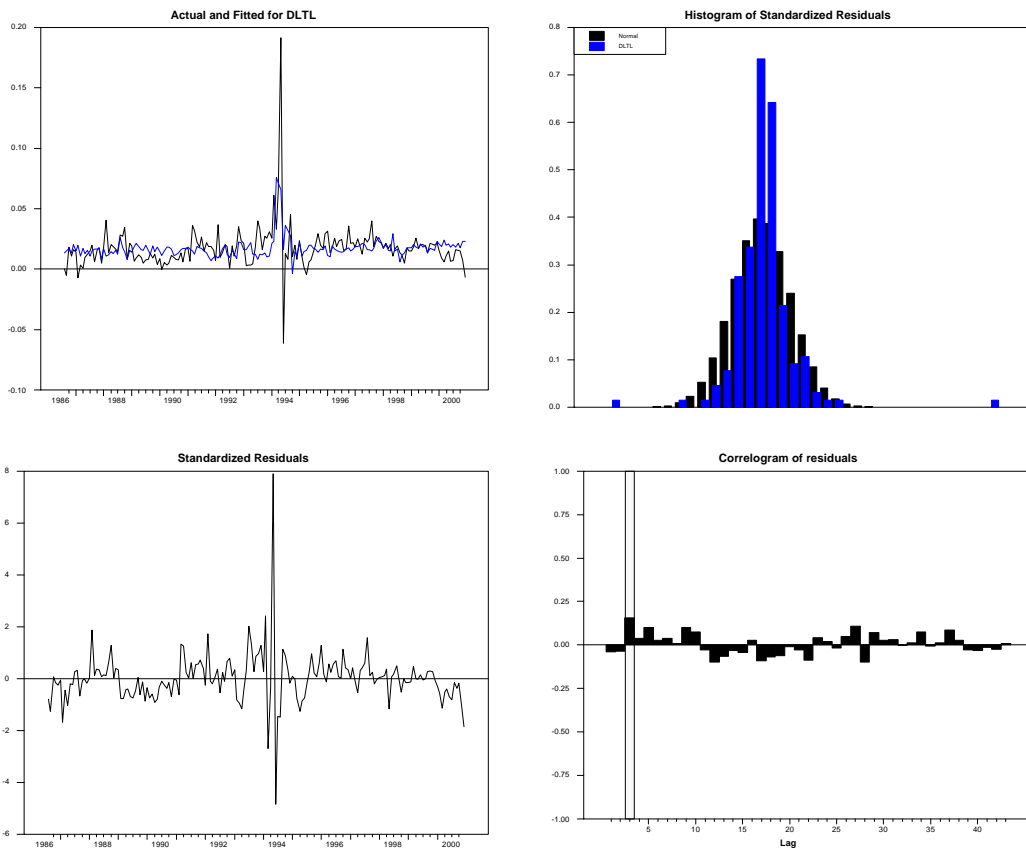
**Figure 3: Residuals (Istanbul Stock Exchange)**



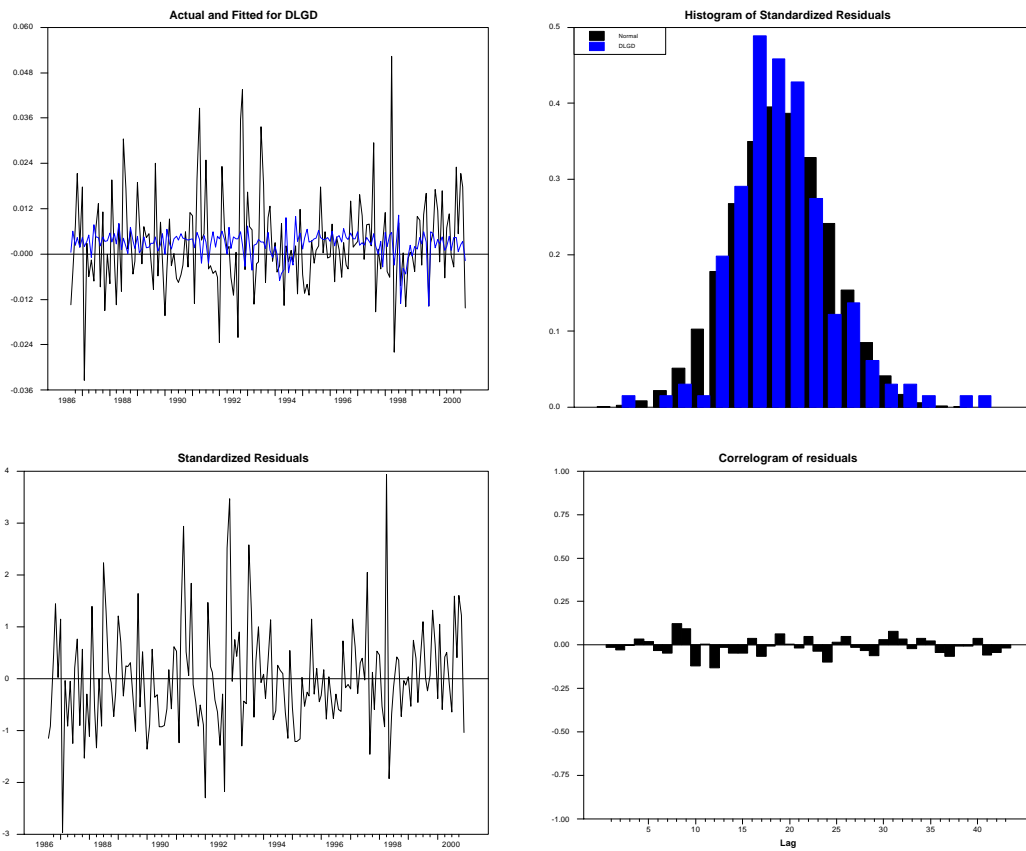
**Figure 4: Residuals (Athens Stock Exchange)**



**Figure 5: Residuals (Turkish Lira foreign exchange market)**



**Figure 6: Residuals (Greek Drachma foreign exchange market)**



## ENDNOTES

---

1 Interest rates are not used in this paper for two reasons. First is that changes in interest rates typically reflect monetary policy stance, rather than market conditions. Second, they are heavily controlled by the government, in particular in Turkey.

<sup>2</sup> Studies on Turkish stock market include Basci et. al., (1996) and Muradoglu and Metin (1996), while Alexakis and Petrakis (1991), Alexakis and Xanthakis (1996), Barkoulas et. al., (2000), Coutts et. al., (2000) Niarchos and Alexakis (1998), Niarchos et. al., (1996), and Tsangarakis study the Athens stock market. Niarchos et. al., (1996) examine the transmission of information from U.S. stock market to that of Greece and find no evidence of transmission.

3 These two terms will be used interchangeably in the remaining of the paper.

4 The logarithm of all series is used.

5 A detailed list of the dummies used appears in Table 1.

6 Given the nature of the time series we have opted for omitting deterministic trends from our VAR models.

7 Coefficients on the Greek series are normalized to unity.

8 Such an argument is informal and bears relevance more to intuition than formal evidence.

<sup>9</sup> An apparent drawback of the temporal causality tests is that, strictly speaking, they are *'in-sample'* tests. As a complement to our causal analysis we also conducted variance decompositions (VDCs) that essentially provide information regarding the *'out-of-sample'* causal structure of the systems. The VDCs are calculated by first assuming that the VAR(p) has a vector Moving Average (MA) representation (see Hamilton, 1994; Lutkepohl and Reimers, 1992). All in all, the VDC analysis confirmed our causality findings suggesting that the Greek money market is exogenous and in fact is a Granger-cause for the Turkish market. We found that the Greek markets have stronger predictive power for the Turkish market especially at relatively shorter horizons. For instance, the results indicated that the ASE market shocks can explain about 17.3 % changes in the ISE at a 10-month horizon, whereas at a 5-month horizon, the GD innovations account for about 14 % of changes in the TL.

10 The results are available upon request from the authors.

<sup>11</sup> We also computed the standard simple correlations for the two sub-samples generated before and after each of the crisis. The results, which are available upon request, were consistent with the results reported in Table 8.

<b>2008</b>		
B01-08	<b>Euro-Diplomatie durch gemeinsame „Wirtschaftsregierung“</b>	<i>Martin Seidel</i>
<b>2007</b>		
B03-07	<b>Löhne und Steuern im Systemwettbewerb der Mitgliedstaaten der Europäischen Union</b>	<i>Martin Seidel</i>
B02-07	<b>Konsolidierung und Reform der Europäischen Union</b>	<i>Martin Seidel</i>
B01-07	<b>The Ratification of European Treaties - Legal and Constitutional Basis of a European Referendum.</b>	<i>Martin Seidel</i>
<b>2006</b>		
B03-06	<b>Financial Frictions, Capital Reallocation, and Aggregate Fluctuations</b>	<i>Jürgen von Hagen, Haiping Zhang</i>
B02-06	<b>Financial Openness and Macroeconomic Volatility</b>	<i>Jürgen von Hagen, Haiping Zhang</i>
B01-06	<b>A Welfare Analysis of Capital Account Liberalization</b>	<i>Jürgen von Hagen, Haiping Zhang</i>
<b>2005</b>		
B11-05	<b>Das Kompetenz- und Entscheidungssystem des Vertrages von Rom im Wandel seiner Funktion und Verfassung</b>	<i>Martin Seidel</i>
B10-05	<b>Die Schutzklauseln der Beitrittsverträge</b>	<i>Martin Seidel</i>
B09-05	<b>Measuring Tax Burdens in Europe</b>	<i>Guntram B. Wolff</i>
B08-05	<b>Remittances as Investment in the Absence of Altruism</b>	<i>Gabriel González-König</i>
B07-05	<b>Economic Integration in a Multicore World?</b>	<i>Christian Volpe Martincus, Jennifer Pédussel Wu</i>
B06-05	<b>Banking Sector (Under?)Development in Central and Eastern Europe</b>	<i>Jürgen von Hagen, Valeriya Dinger</i>
B05-05	<b>Regulatory Standards Can Lead to Predation</b>	<i>Stefan Lutz</i>
B04-05	<b>Währungspolitik als Sozialpolitik</b>	<i>Martin Seidel</i>
B03-05	<b>Public Education in an Integrated Europe: Studying to Migrate and Teaching to Stay?</b>	<i>Panu Poutvaara</i>
B02-05	<b>Voice of the Diaspora: An Analysis of Migrant Voting Behavior</b>	<i>Jan Fidrmuc, Orla Doyle</i>
B01-05	<b>Macroeconomic Adjustment in the New EU Member States</b>	<i>Jürgen von Hagen, Iulia Traistaru</i>
<b>2004</b>		
B33-04	<b>The Effects of Transition and Political Instability On Foreign Direct Investment Inflows: Central Europe and the Balkans</b>	<i>Josef C. Brada, Ali M. Kutan, Tanner M. Yigit</i>
B32-04	<b>The Choice of Exchange Rate Regimes in Developing Countries: A Multinomial Panel Analysis</b>	<i>Jürgen von Hagen, Jizhong Zhou</i>
B31-04	<b>Fear of Floating and Fear of Pegging: An Empirical Analysis of De Facto Exchange Rate Regimes in Developing Countries</b>	<i>Jürgen von Hagen, Jizhong Zhou</i>
B30-04	<b>Der Vollzug von Gemeinschaftsrecht über die Mitgliedstaaten und seine Rolle für die EU und den Beitrittsprozess</b>	<i>Martin Seidel</i>
B29-04	<b>Deutschlands Wirtschaft, seine Schulden und die Unzulänglichkeiten der einheitlichen Geldpolitik im Eurosystem</b>	<i>Dieter Spethmann, Otto Steiger</i>
B28-04	<b>Fiscal Crises in U.S. Cities: Structural and Non-structural Causes</b>	<i>Guntram B. Wolff</i>
B27-04	<b>Firm Performance and Privatization in Ukraine</b>	<i>Galyna Grygorenko, Stefan Lutz</i>
B26-04	<b>Analyzing Trade Opening in Ukraine: Effects of a Customs Union with the EU</b>	<i>Oksana Harbuzyuk, Stefan Lutz</i>
B25-04	<b>Exchange Rate Risk and Convergence to the Euro</b>	<i>Lucjan T. Orlowski</i>
B24-04	<b>The Endogeneity of Money and the Eurosystem</b>	<i>Otto Steiger</i>
B23-04	<b>Which Lender of Last Resort for the Eurosystem?</b>	<i>Otto Steiger</i>
B22-04	<b>Non-Discretionary Monetary Policy: The Answer for Transition Economies?</b>	<i>Elham-Mafi Kreft, Steven F. Kreft</i>
B21-04	<b>The Effectiveness of Subsidies Revisited: Accounting for Wage and Employment Effects in Business R+D</b>	<i>Volker Reinthaler, Guntram B. Wolff</i>
B20-04	<b>Money Market Pressure and the Determinants of Banking Crises</b>	<i>Jürgen von Hagen, Tai-kuang Ho</i>
B19-04	<b>Die Stellung der Europäischen Zentralbank nach dem Verfassungsvertrag</b>	<i>Martin Seidel</i>

B18-04	<b>Transmission Channels of Business Cycles Synchronization in an Enlarged EMU</b>	<i>Iulia Traistaru</i>
B17-04	<b>Foreign Exchange Regime, the Real Exchange Rate and Current Account Sustainability: The Case of Turkey</b>	<i>Sübidey Togan, Hasan Ersel</i>
B16-04	<b>Does It Matter Where Immigrants Work? Traded Goods, Non-traded Goods, and Sector Specific Employment</b>	<i>Harry P. Bowen, Jennifer Pédussel Wu</i>
B15-04	<b>Do Economic Integration and Fiscal Competition Help to Explain Local Patterns?</b>	<i>Christian Volpe Martincus</i>
B14-04	<b>Euro Adoption and Maastricht Criteria: Rules or Discretion?</b>	<i>Jiri Jonas</i>
B13-04	<b>The Role of Electoral and Party Systems in the Development of Fiscal Institutions in the Central and Eastern European Countries</b>	<i>Sami Yläoutinen</i>
B12-04	<b>Measuring and Explaining Levels of Regional Economic Integration</b>	<i>Jennifer Pédussel Wu</i>
B11-04	<b>Economic Integration and Location of Manufacturing Activities: Evidence from MERCOSUR</b>	<i>Pablo Sanguinetti, Iulia Traistaru, Christian Volpe Martincus</i>
B10-04	<b>Economic Integration and Industry Location in Transition Countries</b>	<i>Laura Resmini</i>
B09-04	<b>Testing Creditor Moral Hazard in Sovereign Bond Markets: A Unified Theoretical Approach and Empirical Evidence</b>	<i>Ayse Y. Evrensel, Ali M. Kutan</i>
B08-04	<b>European Integration, Productivity Growth and Real Convergence</b>	<i>Taner M. Yigit, Ali M. Kutan</i>
B07-04	<b>The Contribution of Income, Social Capital, and Institutions to Human Well-being in Africa</b>	<i>Mina Balamoune-Lutz, Stefan H. Lutz</i>
B06-04	<b>Rural Urban Inequality in Africa: A Panel Study of the Effects of Trade Liberalization and Financial Deepening</b>	<i>Mina Balamoune-Lutz, Stefan H. Lutz</i>
B05-04	<b>Money Rules for the Eurozone Candidate Countries</b>	<i>Lucjan T. Orłowski</i>
B04-04	<b>Who is in Favor of Enlargement? Determinants of Support for EU Membership in the Candidate Countries' Referenda</b>	<i>Orla Doyle, Jan Fidrmuc</i>
B03-04	<b>Over- and Underbidding in Central Bank Open Market Operations Conducted as Fixed Rate Tender</b>	<i>Ulrich Bindseil</i>
B02-04	<b>Total Factor Productivity and Economic Freedom Implications for EU Enlargement</b>	<i>Ronald L. Moomaw, Euy Seok Yang</i>
B01-04	<b>Die neuen Schutzklauseln der Artikel 38 und 39 des Beitrittsvertrages: Schutz der alten Mitgliedstaaten vor Störungen durch die neuen Mitgliedstaaten</b>	<i>Martin Seidel</i>
<b>2003</b>		
B29-03	<b>Macroeconomic Implications of Low Inflation in the Euro Area</b>	<i>Jürgen von Hagen, Boris Hofmann</i>
B28-03	<b>The Effects of Transition and Political Instability on Foreign Direct Investment: Central Europe and the Balkans</b>	<i>Josef C. Brada, Ali M. Kutan, Taner M. Yigit</i>
B27-03	<b>The Performance of the Euribor Futures Market: Efficiency and the Impact of ECB Policy Announcements (Electronic Version of International Finance)</b>	<i>Kerstin Bernoth, Juergen von Hagen</i>
B26-03	<b>Sovereign Risk Premia in the European Government Bond Market (überarbeitete Version zum Herunterladen)</b>	<i>Kerstin Bernoth, Juergen von Hagen, Ludger Schulknecht</i>
B25-03	<b>How Flexible are Wages in EU Accession Countries?</b>	<i>Anna Iara, Iulia Traistaru</i>
B24-03	<b>Monetary Policy Reaction Functions: ECB versus Bundesbank</b>	<i>Bernd Hayo, Boris Hofmann</i>
B23-03	<b>Economic Integration and Manufacturing Concentration Patterns: Evidence from Mercosur</b>	<i>Iulia Traistaru, Christian Volpe Martincus</i>
B22-03	<b>Reformzwänge innerhalb der EU angesichts der Osterweiterung</b>	<i>Martin Seidel</i>
B21-03	<b>Reputation Flows: Contractual Disputes and the Channels for Inter-Firm Communication</b>	<i>William Pyle</i>
B20-03	<b>Urban Primacy, Gigantism, and International Trade: Evidence from Asia and the Americas</b>	<i>Ronald L. Moomaw, Mohammed A. Alwosabi</i>
B19-03	<b>An Empirical Analysis of Competing Explanations of Urban Primacy Evidence from Asia and the Americas</b>	<i>Ronald L. Moomaw, Mohammed A. Alwosabi</i>



B18-03	<b>The Effects of Regional and Industry-Wide FDI Spillovers on Export of Ukrainian Firms</b>	<i>Stefan H. Lutz, Oleksandr Talavera, Sang-Min Park</i>
B17-03	<b>Determinants of Inter-Regional Migration in the Baltic States</b>	<i>Mihails Hazans</i>
B16-03	<b>South-East Europe: Economic Performance, Perspectives, and Policy Challenges</b>	<i>Iulia Traistaru, Jürgen von Hagen</i>
B15-03	<b>Employed and Unemployed Search: The Marginal Willingness to Pay for Attributes in Lithuania, the US and the Netherlands</b>	<i>Jos van Ommeren, Mihails Hazans</i>
B14-03	<b>FCIs and Economic Activity: Some International Evidence</b>	<i>Charles Goodhart, Boris Hofmann</i>
B13-03	<b>The IS Curve and the Transmission of Monetary Policy: Is there a Puzzle?</b>	<i>Charles Goodhart, Boris Hofmann</i>
B12-03	<b>What Makes Regions in Eastern Europe Catching Up? The Role of Foreign Investment, Human Resources, and Geography</b>	<i>Gabriele Tondl, Goran Vuksic</i>
B11-03	<b>Die Weisungs- und Herrschaftsmacht der Europäischen Zentralbank im europäischen System der Zentralbanken - eine rechtliche Analyse</b>	<i>Martin Seidel</i>
B10-03	<b>Foreign Direct Investment and Perceptions of Vulnerability to Foreign Exchange Crises: Evidence from Transition Economies</b>	<i>Josef C. Brada, Vladimír Tomsík</i>
B09-03	<b>The European Central Bank and the Eurosystem: An Analysis of the Missing Central Monetary Institution in European Monetary Union</b>	<i>Gunnar Heinsohn, Otto Steiger</i>
B08-03	<b>The Determination of Capital Controls: Which Role Do Exchange Rate Regimes Play?</b>	<i>Jürgen von Hagen, Jizhong Zhou</i>
B07-03	<b>Nach Nizza und Stockholm: Stand des Binnenmarktes und Prioritäten für die Zukunft</b>	<i>Martin Seidel</i>
B06-03	<b>Fiscal Discipline and Growth in Euroland. Experiences with the Stability and Growth Pact</b>	<i>Jürgen von Hagen</i>
B05-03	<b>Reconsidering the Evidence: Are Eurozone Business Cycles Converging?</b>	<i>Michael Massmann, James Mitchell</i>
B04-03	<b>Do Ukrainian Firms Benefit from FDI?</b>	<i>Stefan H. Lutz, Oleksandr Talavera</i>
B03-03	<b>Europäische Steuerkoordination und die Schweiz</b>	<i>Stefan H. Lutz</i>
B02-03	<b>Commuting in the Baltic States: Patterns, Determinants, and Gains</b>	<i>Mihails Hazans</i>
B01-03	<b>Die Wirtschafts- und Währungsunion im rechtlichen und politischen Gefüge der Europäischen Union</b>	<i>Martin Seidel</i>
<b>2002</b>		
B30-02	<b>An Adverse Selection Model of Optimal Unemployment Assurance</b>	<i>Marcus Hagedorn, Ashok Kaul, Tim Mennel</i>
B29B-02	<b>Trade Agreements as Self-protection</b>	<i>Jennifer Pédussel Wu</i>
B29A-02	<b>Growth and Business Cycles with Imperfect Credit Markets</b>	<i>Debajyoti Chakrabarty</i>
B28-02	<b>Inequality, Politics and Economic Growth</b>	<i>Debajyoti Chakrabarty</i>
B27-02	<b>Poverty Traps and Growth in a Model of Endogenous Time Preference</b>	<i>Debajyoti Chakrabarty</i>
B26-02	<b>Monetary Convergence and Risk Premiums in the EU Candidate Countries</b>	<i>Lucjan T. Orlowski</i>
B25-02	<b>Trade Policy: Institutional Vs. Economic Factors</b>	<i>Stefan Lutz</i>
B24-02	<b>The Effects of Quotas on Vertical Intra-industry Trade</b>	<i>Stefan Lutz</i>
B23-02	<b>Legal Aspects of European Economic and Monetary Union</b>	<i>Martin Seidel</i>
B22-02	<b>Der Staat als Lender of Last Resort - oder: Die Achillesverse des Eurosystems</b>	<i>Otto Steiger</i>
B21-02	<b>Nominal and Real Stochastic Convergence Within the Transition Economies and to the European Union: Evidence from Panel Data</b>	<i>Ali M. Kutan, Taner M. Yigit</i>
B20-02	<b>The Impact of News, Oil Prices, and International Spillovers on Russian Financial Markets</b>	<i>Bernd Hayo, Ali M. Kutan</i>

B19-02	<b>East Germany: Transition with Unification, Experiments and Experiences</b>	<i>Jürgen von Hagen, Rolf R. Strauch, Guntram B. Wolff</i>
B18-02	<b>Regional Specialization and Employment Dynamics in Transition Countries</b>	<i>Iulia Traistaru, Guntram B. Wolff</i>
B17-02	<b>Specialization and Growth Patterns in Border Regions of Accession Countries</b>	<i>Laura Resmini</i>
B16-02	<b>Regional Specialization and Concentration of Industrial Activity in Accession Countries</b>	<i>Iulia Traistaru, Peter Nijkamp, Simonetta Longhi</i>
B15-02	<b>Does Broad Money Matter for Interest Rate Policy?</b>	<i>Matthias Brückner, Andreas Schaber</i>
B14-02	<b>The Long and Short of It: Global Liberalization, Poverty and Inequality</b>	<i>Christian E. Weller, Adam Hersch</i>
B13-02	<b>De Facto and Official Exchange Rate Regimes in Transition Economies</b>	<i>Jürgen von Hagen, Jizhong Zhou</i>
B12-02	<b>Argentina: The Anatomy of A Crisis</b>	<i>Jiri Jonas</i>
B11-02	<b>The Eurosystem and the Art of Central Banking</b>	<i>Gunnar Heinsohn, Otto Steiger</i>
B10-02	<b>National Origins of European Law: Towards an Autonomous System of European Law?</b>	<i>Martin Seidel</i>
B09-02	<b>Monetary Policy in the Euro Area - Lessons from the First Years</b>	<i>Volker Clausen, Bernd Hayo</i>
B08-02	<b>Has the Link Between the Spot and Forward Exchange Rates Broken Down? Evidence From Rolling Cointegration Tests</b>	<i>Ali M. Kutan, Su Zhou</i>
B07-02	<b>Perspektiven der Erweiterung der Europäischen Union</b>	<i>Martin Seidel</i>
B06-02	<b>Is There Asymmetry in Forward Exchange Rate Bias? Multi-Country Evidence</b>	<i>Su Zhou, Ali M. Kutan</i>
B05-02	<b>Real and Monetary Convergence Within the European Union and Between the European Union and Candidate Countries: A Rolling Cointegration Approach</b>	<i>Josef C. Brada, Ali M. Kutan, Su Zhou</i>
B04-02	<b>Asymmetric Monetary Policy Effects in EMU</b>	<i>Volker Clausen, Bernd Hayo</i>
B03-02	<b>The Choice of Exchange Rate Regimes: An Empirical Analysis for Transition Economies</b>	<i>Jürgen von Hagen, Jizhong Zhou</i>
B02-02	<b>The Euro System and the Federal Reserve System Compared: Facts and Challenges</b>	<i>Karlheinz Ruckriegel, Franz Seitz</i>
B01-02	<b>Does Inflation Targeting Matter?</b>	<i>Manfred J. M. Neumann, Jürgen von Hagen</i>
<b>2001</b>		
B29-01	<b>Is Kazakhstan Vulnerable to the Dutch Disease?</b>	<i>Karlygash Kuralbayeva, Ali M. Kutan, Michael L. Wyzan</i>
B28-01	<b>Political Economy of the Nice Treaty: Rebalancing the EU Council. The Future of European Agricultural Policies</b>	<i>Deutsch-Französisches Wirtschaftspolitisches Forum</i>
B27-01	<b>Investor Panic, IMF Actions, and Emerging Stock Market Returns and Volatility: A Panel Investigation</b>	<i>Bernd Hayo, Ali M. Kutan</i>
B26-01	<b>Regional Effects of Terrorism on Tourism: Evidence from Three Mediterranean Countries</b>	<i>Konstantinos Drakos, Ali M. Kutan</i>
B25-01	<b>Monetary Convergence of the EU Candidates to the Euro: A Theoretical Framework and Policy Implications</b>	<i>Lucjan T. Orłowski</i>
B24-01	<b>Disintegration and Trade</b>	<i>Jarko and Jan Fidrmuc</i>
B23-01	<b>Migration and Adjustment to Shocks in Transition Economies</b>	<i>Jan Fidrmuc</i>
B22-01	<b>Strategic Delegation and International Capital Taxation</b>	<i>Matthias Brückner</i>
B21-01	<b>Balkan and Mediterranean Candidates for European Union Membership: The Convergence of Their Monetary Policy With That of the European Central Bank</b>	<i>Josef C. Brada, Ali M. Kutan</i>
B20-01	<b>An Empirical Inquiry of the Efficiency of Intergovernmental Transfers for Water Projects Based on the WRDA Data</b>	<i>Anna Rubinchik-Pessach</i>
B19-01	<b>Detrending and the Money-Output Link: International Evidence</b>	<i>R.W. Hafer, Ali M. Kutan</i>

B18-01	<b>Monetary Policy in Unknown Territory. The European Central Bank in the Early Years</b>	<i>Jürgen von Hagen, Matthias Brückner</i>
B17-01	<b>Executive Authority, the Personal Vote, and Budget Discipline in Latin American and Caribbean Countries</b>	<i>Mark Hallerberg, Patrick Marier</i>
B16-01	<b>Sources of Inflation and Output Fluctuations in Poland and Hungary: Implications for Full Membership in the European Union</b>	<i>Selahattin Dibooglu, Ali M. Kutan</i>
B15-01	<b>Programs Without Alternative: Public Pensions in the OECD</b>	<i>Christian E. Weller</i>
B14-01	<b>Formal Fiscal Restraints and Budget Processes As Solutions to a Deficit and Spending Bias in Public Finances - U.S. Experience and Possible Lessons for EMU</b>	<i>Rolf R. Strauch, Jürgen von Hagen</i>
B13-01	<b>German Public Finances: Recent Experiences and Future Challenges</b>	<i>Jürgen von Hagen, Rolf R. Strauch</i>
B12-01	<b>The Impact of Eastern Enlargement On EU-Labour Markets. Pensions Reform Between Economic and Political Problems</b>	<i>Deutsch-Französisches Wirtschaftspolitisches Forum</i>
B11-01	<b>Inflationary Performance in a Monetary Union With Large Wage Setters</b>	<i>Lilia Cavallar</i>
B10-01	<b>Integration of the Baltic States into the EU and Institutions of Fiscal Convergence: A Critical Evaluation of Key Issues and Empirical Evidence</b>	<i>Ali M. Kutan, Niina Pautola-Mol</i>
B09-01	<b>Democracy in Transition Economies: Grease or Sand in the Wheels of Growth?</b>	<i>Jan Fidrmuc</i>
B08-01	<b>The Functioning of Economic Policy Coordination</b>	<i>Jürgen von Hagen, Susanne Mundschenk</i>
B07-01	<b>The Convergence of Monetary Policy Between Candidate Countries and the European Union</b>	<i>Josef C. Brada, Ali M. Kutan</i>
B06-01	<b>Opposites Attract: The Case of Greek and Turkish Financial Markets</b>	<i>Konstantinos Drakos, Ali M. Kutan</i>
B05-01	<b>Trade Rules and Global Governance: A Long Term Agenda. The Future of Banking.</b>	<i>Deutsch-Französisches Wirtschaftspolitisches Forum</i>
B04-01	<b>The Determination of Unemployment Benefits</b>	<i>Rafael di Tella, Robert J. McCulloch</i>
B03-01	<b>Preferences Over Inflation and Unemployment: Evidence from Surveys of Happiness</b>	<i>Rafael di Tella, Robert J. McCulloch, Andrew J. Oswald</i>
B02-01	<b>The Konstanz Seminar on Monetary Theory and Policy at Thirty</b>	<i>Michele Fratianni, Jürgen von Hagen</i>
B01-01	<b>Divided Boards: Partisanship Through Delegated Monetary Policy</b>	<i>Etienne Farvaque, Gael Lagadec</i>
<b>2000</b>		
B20-00	<b>Breakin-up a Nation, From the Inside</b>	<i>Etienne Farvaque</i>
B19-00	<b>Income Dynamics and Stability in the Transition Process, general Reflections applied to the Czech Republic</b>	<i>Jens Hölscher</i>
B18-00	<b>Budget Processes: Theory and Experimental Evidence</b>	<i>Karl-Martin Ehrhart, Roy Gardner, Jürgen von Hagen, Claudia Keser</i>
B17-00	<b>Rückführung der Landwirtschaftspolitik in die Verantwortung der Mitgliedsstaaten? - Rechts- und Verfassungsfragen des Gemeinschaftsrechts</b>	<i>Martin Seidel</i>
B16-00	<b>The European Central Bank: Independence and Accountability</b>	<i>Christa Randzio-Plath, Tomasso Padoa-Schioppa</i>
B15-00	<b>Regional Risk Sharing and Redistribution in the German Federation</b>	<i>Jürgen von Hagen, Ralf Hepp</i>
B14-00	<b>Sources of Real Exchange Rate Fluctuations in Transition Economies: The Case of Poland and Hungary</b>	<i>Selahattin Dibooglu, Ali M. Kutan</i>
B13-00	<b>Back to the Future: The Growth Prospects of Transition Economies Reconsidered</b>	<i>Nauro F. Campos</i>

B12-00	<b>Rechtsetzung und Rechtsangleichung als Folge der Einheitlichen Europäischen Wahrung</b>	<i>Martin Seidel</i>
B11-00	<b>A Dynamic Approach to Inflation Targeting in Transition Economies</b>	<i>Lucjan T. Orlowski</i>
B10-00	<b>The Importance of Domestic Political Institutions: Why and How Belgium Qualified for EMU</b>	<i>Marc Hallerberg</i>
B09-00	<b>Rational Institutions Yield Hysteresis</b>	<i>Rafael Di Tella, Robert MacCulloch</i>
B08-00	<b>The Effectiveness of Self-Protection Policies for Safeguarding Emerging Market Economies from Crises</b>	<i>Kenneth Kletzer</i>
B07-00	<b>Financial Supervision and Policy Coordination in The EMU</b>	<i>Deutsch-Franzosisches Wirtschaftspolitisches Forum</i>
B06-00	<b>The Demand for Money in Austria</b>	<i>Bernd Hayo</i>
B05-00	<b>Liberalization, Democracy and Economic Performance during Transition</b>	<i>Jan Fidrmuc</i>
B04-00	<b>A New Political Culture in The EU - Democratic Accountability of the ECB</b>	<i>Christa Randzio-Plath</i>
B03-00	<b>Integration, Disintegration and Trade in Europe: Evolution of Trade Relations during the 1990's</b>	<i>Jarko Fidrmuc, Jan Fidrmuc</i>
B02-00	<b>Inflation Bias and Productivity Shocks in Transition Economies: The Case of the Czech Republic</b>	<i>Josef C. Brada, Arthur E. King, Ali M. Kutan</i>
B01-00	<b>Monetary Union and Fiscal Federalism</b>	<i>Kenneth Kletzer, Jurgen von Hagen</i>
<b>1999</b>		
B26-99	<b>Skills, Labour Costs, and Vertically Differentiated Industries: A General Equilibrium Analysis</b>	<i>Stefan Lutz, Alessandro Turrini</i>
B25-99	<b>Micro and Macro Determinants of Public Support for Market Reforms in Eastern Europe</b>	<i>Bernd Hayo</i>
B24-99	<b>What Makes a Revolution?</b>	<i>Robert MacCulloch</i>
B23-99	<b>Informal Family Insurance and the Design of the Welfare State</b>	<i>Rafael Di Tella, Robert MacCulloch</i>
B22-99	<b>Partisan Social Happiness</b>	<i>Rafael Di Tella, Robert MacCulloch</i>
B21-99	<b>The End of Moderate Inflation in Three Transition Economies?</b>	<i>Josef C. Brada, Ali M. Kutan</i>
B20-99	<b>Subnational Government Bailouts in Germany</b>	<i>Helmut Seitz</i>
B19-99	<b>The Evolution of Monetary Policy in Transition Economies</b>	<i>Ali M. Kutan, Josef C. Brada</i>
B18-99	<b>Why are Eastern Europe's Banks not failing when everybody else's are?</b>	<i>Christian E. Weller, Bernard Morzuch</i>
B17-99	<b>Stability of Monetary Unions: Lessons from the Break-Up of Czechoslovakia</b>	<i>Jan Fidrmuc, Julius Horvath and Jarko Fidrmuc</i>
B16-99	<b>Multinational Banks and Development Finance</b>	<i>Christian E. Weller and Mark J. Scher</i>
B15-99	<b>Financial Crises after Financial Liberalization: Exceptional Circumstances or Structural Weakness?</b>	<i>Christian E. Weller</i>
B14-99	<b>Industry Effects of Monetary Policy in Germany</b>	<i>Bernd Hayo and Birgit Uhlenbrock</i>
B13-99	<b>Financial Fragility or What Went Right and What Could Go Wrong in Central European Banking?</b>	<i>Christian E. Weller and Jurgen von Hagen</i>
B12 -99	<b>Size Distortions of Tests of the Null Hypothesis of Stationarity: Evidence and Implications for Applied Work</b>	<i>Mehmet Caner and Lutz Kilian</i>
B11-99	<b>Financial Supervision and Policy Coordination in the EMU</b>	<i>Deutsch-Franzosisches Wirtschaftspolitisches Forum</i>
B10-99	<b>Financial Liberalization, Multinational Banks and Credit Supply: The Case of Poland</b>	<i>Christian Weller</i>
B09-99	<b>Monetary Policy, Parameter Uncertainty and Optimal Learning</b>	<i>Volker Wieland</i>
B08-99	<b>The Connection between more Multinational Banks and less Real Credit in Transition Economies</b>	<i>Christian Weller</i>

- B07-99 **Comovement and Catch-up in Productivity across Sectors: Evidence from the OECD** *Christopher M. Cornwell and Jens-Uwe Wächter*
- B06-99 **Productivity Convergence and Economic Growth: A Frontier Production Function Approach** *Christopher M. Cornwell and Jens-Uwe Wächter*
- B05-99 **Tumbling Giant: Germany's Experience with the Maastricht Fiscal Criteria** *Jürgen von Hagen and Rolf Strauch*
- B04-99 **The Finance-Investment Link in a Transition Economy: Evidence for Poland from Panel Data** *Christian Weller*
- B03-99 **The Macroeconomics of Happiness** *Rafael Di Tella, Robert McCulloch and Andrew J. Oswald*
- B02-99 **The Consequences of Labour Market Flexibility: Panel Evidence Based on Survey Data** *Rafael Di Tella and Robert McCulloch*
- B01-99 **The Excess Volatility of Foreign Exchange Rates: Statistical Puzzle or Theoretical Artifact?** *Robert B.H. Hauswald*
- 1998**
- B16-98 **Labour Market + Tax Policy in the EMU** *Deutsch-Französisches Wirtschaftspolitisches Forum*
- B15-98 **Can Taxing Foreign Competition Harm the Domestic Industry?** *Stefan Lutz*
- B14-98 **Free Trade and Arms Races: Some Thoughts Regarding EU-Russian Trade** *Rafael Reuveny and John Maxwell*
- B13-98 **Fiscal Policy and Intranational Risk-Sharing** *Jürgen von Hagen*
- B12-98 **Price Stability and Monetary Policy Effectiveness when Nominal Interest Rates are Bounded at Zero** *Athanasios Orphanides and Volker Wieland*
- B11A-98 **Die Bewertung der "dauerhaft tragbaren öffentlichen Finanzlage" der EU Mitgliedstaaten beim Übergang zur dritten Stufe der EWWU** *Rolf Strauch*
- B11-98 **Exchange Rate Regimes in the Transition Economies: Case Study of the Czech Republic: 1990-1997** *Julius Horvath and Jiri Jonas*
- B10-98 **Der Wettbewerb der Rechts- und politischen Systeme in der Europäischen Union** *Martin Seidel*
- B09-98 **U.S. Monetary Policy and Monetary Policy and the ESCB** *Robert L. Hetzel*
- B08-98 **Money-Output Granger Causality Revisited: An Empirical Analysis of EU Countries (überarbeitete Version zum Herunterladen)** *Bernd Hayo*
- B07-98 **Designing Voluntary Environmental Agreements in Europe: Some Lessons from the U.S. EPA's 33/50 Program** *John W. Maxwell*
- B06-98 **Monetary Union, Asymmetric Productivity Shocks and Fiscal Insurance: an Analytical Discussion of Welfare Issues** *Kenneth Kletzer*
- B05-98 **Estimating a European Demand for Money (überarbeitete Version zum Herunterladen)** *Bernd Hayo*
- B04-98 **The EMU's Exchange Rate Policy** *Deutsch-Französisches Wirtschaftspolitisches Forum*
- B03-98 **Central Bank Policy in a More Perfect Financial System** *Jürgen von Hagen / Ingo Fender*
- B02-98 **Trade with Low-Wage Countries and Wage Inequality** *Jaleel Ahmad*
- B01-98 **Budgeting Institutions for Aggregate Fiscal Discipline** *Jürgen von Hagen*
- 1997**
- B04-97 **Macroeconomic Stabilization with a Common Currency: Does European Monetary Unification Create a Need for Fiscal Insurance or Federalism?** *Kenneth Kletzer*
- B-03-97 **Liberalising European Markets for Energy and Telecommunications: Some Lessons from the US Electric Utility Industry** *Tom Lyon / John Mayo*
- B02-97 **Employment and EMU** *Deutsch-Französisches Wirtschaftspolitisches Forum*
- B01-97 **A Stability Pact for Europe** *(a Forum organized by ZEI)*

---

ISSN 1436 - 6053

---

Zentrum für Europäische Integrationsforschung  
Center for European Integration Studies  
Rheinische Friedrich-Wilhelms-Universität Bonn

Walter-Flex-Strasse 3  
D-53113 Bonn  
Germany

Tel.: +49-228-73-1732  
Fax: +49-228-73-1809  
[www.zei.de](http://www.zei.de)