

IFN Working Paper No. 722, 2007

Wealth Concentration over the Path of Development: Sweden, 1873–2006

Jesper Roine and Daniel Waldenström

Wealth Concentration over the Path of Development: Sweden, 1873–2006*

Jesper Roine* and Daniel Waldenström†

June 13, 2008

Abstract:

We study the development of wealth concentration in Sweden over 130 years, from the beginning of industrialization until present day. Our series are based on a wide array of new evidence from estate- and wealth tax data, estimates of foreign and domestic family firm-wealth and of pension and social security wealth. We find that the Swedish wealth concentration was at a historically high level in the agrarian state and that it did not change much during early industrialization. From World War I up until about 1950, the richest percentile lost ground to the rest of the top wealth decile where relatively income rich households accumulated new wealth. In the postwar period, the entire top decile lost out relative to the rest of the population. Around 1980, wealth compression stopped and inequality increased. We introduce new ways of approximating the effects of international flows and find that the recent increase in Swedish wealth inequality is likely to be larger than what official estimates suggest.

Keywords: Wealth concentration, Wealth distribution, Inequality, Income distribution, Sweden, Welfare state, Pension wealth, Augmented wealth

JEL codes: D14, D31, N33, N34

* We would like to thank Bo Bergman, Gunnar Blomberg, Annika Sundén, two anonymous referees and the editor as well as participants at the European Historical Economics Society Conference in Lund, 2007 for suggestions and comments. A special thanks to Henry Ohlsson who has been a valuable contributor to parts of this project.

* SITE, Stockholm School of Economics, P.O. Box 6501, SE-113 83 Stockholm, Ph: +46-8-7369682, E-mail: jesper.roine@hhs.se

† IFN, P.O. Box 55665, SE-102 15 Stockholm, Sweden, Ph: +46-8-6654500, E-mail: daniel.waldenstrom@ifn.se

1 Introduction

Theories about the dynamics of wealth distribution are typically concerned with the long run, as most famously exemplified by Kuznets' hypothesis about the rise and fall of inequality over development. However, comparable data covering sufficiently long periods to evaluate such theories are scarce.¹ The main contribution of this paper is to provide new series of wealth concentration in Sweden for the years 1873–2005, thus covering a period from the beginning of industrialization to present day. By constructing alternative series using both estates and wealth tax data we believe our series give a robust representation of the developments over time.²

Besides allowing us to study changes in inequality over the transition from an agrarian to an industrial economy, there are other reasons for why the case of Sweden is particularly interesting. First, over the 20th century Sweden developed the world's most extensive welfare state with a strong egalitarian emphasis. Putting wealth equalization in historical perspective is crucial for understanding the achievements of the Swedish welfare state but also to get further insights to the society in which it gained popular support. Second, comparing wealth concentration over time in Sweden with the patterns for France (Piketty, Postel-Vinay and Rosenthal, 2006), Switzerland (Dell, Piketty and Saez 2007), and the United States (Kopczuk and Saez, 2004) is interesting as Sweden was not affected by the main economic and geopolitical shocks that have been identified as major causes of decreased top wealth shares in these countries.³

Several important findings come out of our analysis. Our main series suggest that the period 1873–2005 can be divided into three broad phases based on how wealth concentration has

¹ Recent studies on long run wealth concentration are Piketty, Postel-Vinay and Rosenthal, 2006 (France); Dell, Piketty and Saez, 2007 (Switzerland); and Kopczuk and Saez, 2004 (US). Out of these it is only the data for France that covers the whole industrialization. Lindert (2000) provides an overview of previous work on historical wealth statistics.

² Spanning 130 years our series are the longest available estimates of the evolution of wealth distribution in Sweden to date. Spånt (1979, 1987) cover the years 1920–1983. Our main series are, due to availability of data, limited to shares of total wealth held by the top decile of the distribution (and fractiles within this group). This is, however, not very restrictive in terms of capturing most of the wealth since concentration has been very high for most of the period. Furthermore, the share held by the rest of the population is of course captured as a residual.

³ Sweden did not participate in any of the World Wars and was not affected much by the great depression (but did experience a different stock-market crash in 1932 with important consequences for top wealth holders). Switzerland, of course, did not participate in the World Wars either but on the other hand Sweden and Switzerland differ on many other accounts, in particular with respect to the size of government

evolved. First, though data are scarce for the period before World War I, our estimates suggest that wealth was concentrated in the agrarian economy but also that it did not change much during the initial phase of industrialization. The slight increase that we find is limited to the top one percent gaining at the expense of the other groups, hence, giving only limited support to the idea that inequality increases in the early stages of industrialization. Second, from the 1910s up to the early 1980s, wealth became significantly less concentrated. In the beginning of this period a number of major institutional changes in society took place. The franchise was extended, first to all men in 1907 and then universally in 1921, progressive taxation was introduced, first for income, in 1903, and then extended to include wealth in 1911. However, none of these changes seem directly related to the initial phase of wealth compression, which was characterized by wealth being more evenly spread within the top decile as the top percentile lost out to the following nine. Instead it looks as if the development before 1950 was mainly driven by accumulation among groups with relatively high incomes but little previous wealth. Thanks to the way in which income and wealth taxes were reported we can calculate the wealth share for different income groups and we find that the wealth shares of high income earners - but not for the very top - increase in the first half of the twentieth century. After 1950 the wealth compression looks different, with sharp increases in “popular wealth” (mainly owner-occupied housing) among the broader population (the P0–90 group). Between 1950 and 1980, the entire top decile loses ground to the rest of the population. Overall, this development of gradual leveling, first based on accumulation among relatively income rich groups and then moving down the distribution, is consistent with a Kuznets-type process.

While we do not have sufficient data to explicitly test the relative importance of changes in, for example, income distribution, savings behavior and real income growth, we can study distributional changes and changes in wealth composition to see which explanations seem most likely.⁴ Our conclusion is that this process was most likely driven mainly by economic growth which gradually allowed more and more individuals to start to accumulate wealth, but the leveling was also affected by the income distribution becoming more equal as well as by progressive taxation and various government programs (especially generously subsidized

⁴ See, e.g. Champernowne and Cowell (1998) and Davies and Shorrocks (2000) for overviews on theories of wealth distribution. See also Berg (1988) which contains an explicit model of savings and wealth dynamics for Sweden 1954-1986.

loans for owner occupied housing).⁵ Furthermore, our results for the period 1910-1980 also suggests that what happened in Sweden was different, from, for example, the French experience where the decline was mainly driven by exogenous shocks as shown by Piketty et al. (2006).

Finally, in the early 1980s the long period of wealth leveling came to a halt. According to official wealth tax-based estimates inequality has, however, remained at historically low levels with only slight increases in the past decades. At the same time there are reasons to believe that these statistics underestimate the recent increases in wealth concentration. In the period after 1985 capital controls were removed and stock market-listed financial assets (known to be concentrated in ownership) surged in value, increasing by over 20 percent per year in real terms. There is also plenty of anecdotal evidence of Swedes having moved themselves or their wealth abroad to avoid high wealth and inheritance taxes. We use the official national statistics over the balance of payments and the financial accounts to estimate the size of “unexplained” financial savings (or “capital flight”) of households and use these estimates to get a sense of their possible impact on wealth inequality. Naturally, the great uncertainty associated with these numbers forces us to present a collection of estimates where we use alternative sources and different assumptions about the size and the distribution of foreign wealth, as well as rates of return on accumulated foreign holdings. Our basic finding is that official statistics are likely to underestimate the recent increase in wealth concentration, possibly quite substantially, and that we may have entered a new phase of increased wealth concentration where the measurement of this becomes more difficult as capital in more internationalized.⁶

2 Measurement issues and data

2.1 Measurement issues

Our main *concept of wealth* is net worth, or net marketable wealth, which is defined as the sum of market-valued real and financial assets less debts. This is the standard measure of personal wealth in wealth inequality research and it is also the by far most common measure in

⁵ As we will discuss further below the major changes in wealth shares for various groups in the distribution do not seem to correspond to changes in their income shares. This suggests that the gains in wealth shares must come from changed savings behavior or changes in returns (higher compared to the average) or some kind of policy driven advantage, unless there was an increase in income mobility.

⁶ Here one can also note that our analysis point to a number of more conceptual problems with measuring wealth (or income) inequality of a country when residency and even citizenship may be “internationalized”.

historical tax-based sources of wealth inequality for most countries.⁷ In the case of Sweden, net worth is what has been specified in the taxation of estates and of wealth.⁸ One item not included in net worth is pension wealth. Pension rights are relatively important in the Swedish case which influences both international comparisons and historical analyses as these systems have grown from non-existence to being important parts of personal wealth. For this reason we also present new estimates of the recent trends in Swedish *augmented wealth* concentration, i.e., top wealth shares when both net worth and contributions into pension schemes and future social security payments are included.

Measuring net worth is sensitive to the valuation of assets. For example, in the early years taxation values are observed and these may deviate from market values. But if this discrepancy is similar across the distribution – and historically this was arguably the case – the biasing effect of valuation on wealth *shares* should be small. In order to get a sense of the effect of valuation on our results, however, we make use of several alternative estimates of aggregate wealth (based on either tax or market values as well as including items which have not been taxable) and also different assumptions about the distribution of the difference between these alternative reference totals and our baseline. This exercise indicates that there are some differences in the levels of wealth shares over the period, but the trends in wealth concentration remain unchanged. Overall, we believe that the comparability of our estimated shares is good over time, while the comparability of the absolute values over time could be more problematic.

The *concept of wealth owner* used in the study varies depending on what data source is used. When we use wealth tax-based data we refer to “households”. For the most part, this means tax households where married couples count as one, as do children 18 years or older living at home. For the years after 1975, however, households are defined as cost households, the major difference being that adult children living at home are included in parents’ household. The

⁷ For an overview of international wealth concentration data, see Ohlsson et al. (2006).

⁸ Naturally, there is a discrepancy between the conceptual and practical contents of net worth. Although they include the same *items* there are potentially vast differences in how they have been *valued*. Spånt (1979) discusses how the differences between market values and tax-assessed values have influenced the composition of wealth. Historically, however, the distributional differences turn out to be relatively small in the aggregate for most items. In the robustness section of the paper we also address the impact of this on our estimated wealth shares.

estate tax data are individual-based.⁹ Top shares estimated at the individual level may be different from top shares estimated at the household level. The size and direction this difference depends on the extent to which wealth is distributed among spouses within families. In a formal discussion of this issue, Atkinson (2007) shows that for a given top wealth share in the household distribution, the share would be about 20 percent higher in the individual distribution if all the wealthy are unmarried or have spouses with no wealth and about 20 percent lower if all the rich are married to each other and their wealth distributed equally between spouses. As our series below will show, the recorded shifts in Swedish top wealth shares in both the household and individual distributions during the period we study are large enough for them not to be sensitive to the issues discussed by Atkinson.¹⁰

Our main *measure of wealth concentration* is the wealth share held by various fractions of the population, i.e., the share of total wealth held by the wealthiest five percent or the wealthiest one percent of the population. As is typically the case when using historical data we face a problem with measuring the reference total of net personal wealth of the whole population. The wealth tax data typically only cover the households in the top five percentiles that have paid wealth tax and we must therefore limit our observations to years when attempts to measure the corresponding total for the whole population have been made. This has been done in some of the past Censuses and in a few special public investigations but there are many years for which we have distributional information for the top but no reliable reference total.¹¹

2.2 Data

Our main series on the Swedish wealth concentration are based on information about personal wealth statements in estate tax returns (various years during 1873–2003) and wealth tax returns, complemented by bank and public registry statements about people’s wealth (various years during 1911–2006).¹² Both wealth tax and estate tax data are problematic in several ways (as we discuss below), but they are the only viable alternatives for studying wealth con-

⁹ In some cases the estate reports, however, include joint property if there is a surviving spouse and the property of a deceased spouse that has not previously been transferred to heirs.

¹⁰ See also, Kopczuk and Saez (2004) who discuss possible differences between individual based and household based series concluding that the magnitude is not likely to be such that it would explain the large changes in wealth distribution in the US over the century.

¹¹ For example, Flodström (1914) presents data on the very top for the year 1912 and for all years since 1945 Statistics Sweden published annual reports on wealth tax returns for the top, but with no indications about reliable reference totals for net personal wealth.

¹² There are some other sources of wealth data, in particular household surveys, which we do not use. The reason is mainly that they contain too few observations to allow a comprehensive analysis of the top of the distribution.

centration over longer time periods. Comparing the trends of the series based on wealth tax and estate tax data, respectively, is also interesting as it arguably gives a richer picture of the development. In addition to these standard sources, our study also introduces the use of estimated foreign wealth holdings of households drawing on statistical estimates in the balance of payments and the financial accounts from the 1970s. As a consequence of Sweden's high wealth taxes and liberalized capital account (after 1989) these foreign holdings have been claimed to be substantial. Moreover, we use journalistic estimates of wealth of super rich Swedes in order to assess the possible influence of very large closely held family firms (that do not show up on tax returns) on the standard measures of inequality. Finally, we present estimates of the level and trend of augmented wealth concentration.

2.2.1 Estate data

Estate data is a common source for deriving measures of wealth distribution. The time of death is often the only time when an individual's total assets and debts are revealed for the purpose of estate division and estate or inheritance taxation. Assuming that those who die in any given year constitute a random sample of the living population of the same sex and age, one can convert the distribution of wealth among those who died into the distribution for the living using a mortality multiplier, which weights the individual estates in different age groups (controlling for sex and sometimes also for social status) by the death rates in the respective groups.¹³

Our Swedish estate data are in the form of grouped distributions for the deceased. They draw on estate tax reports, beginning in 1873-77, which are the earliest years for which tabulated estate distributions are available, and continuing with observations for the periods 1906-08, 1942-43, 1954/55, 1967, and 2002-03, covering a total of 130 years.¹⁴ Only for the year 1908 we have the distribution of estates adjusted with mortality multipliers, i.e., when each estate is multiplied by the inverse age-based mortality rate based on the age of the deceased individual.¹⁵ This allows us to calculate wealth shares for the living population on top of that of the deceased population. Whether these two distributions differ much in terms of level or trends is an open question. Judging from the behavior of our estate series in comparison to our wealth

¹³ For a detailed discussion of mortality multipliers, see Atkinson and Harrison (1978, ch. 3).

¹⁴ The sources of the estate data are the Ministry of Finance (1879, 1910) and SOU (1946, 1957, 1969, 2004).

¹⁵ For details of the application of the estate multiplier method on the 1908 data, see Ministry of Finance (1910, pp. 14-34).

tax-based series for periods when they overlap the effect seems to be marginal, at least in terms of representing the long-run inequality trends.¹⁶

Another issue with analyzing estate data is that for single years large individual estates may have a disproportionate impact on estimated wealth shares, especially in the top. As we are able to use consecutive years the risk of having influential outliers becomes smaller.¹⁷

2.2.2 Wealth tax data

Compared to estimating the wealth distribution based on estate data, wealth tax data is a more direct way to measure what we really wish to estimate: the distribution of wealth in the (living) population. Wealth tax returns have also been the main source for studies of Swedish wealth inequality due to its relative availability. However, there are important problems associated with this data source which severely impedes the study of wealth concentration. First, only a minority of the population has paid wealth taxes and the construction of reference wealth totals for the whole population is therefore problematic.¹⁸ Second, consumer durables are quite imperfectly covered in the wealth tax returns, which could imply a significant underestimation of “popular wealth”.¹⁹ Third, pension wealth is not included in our analysis mainly because it is mostly not controlled directly by the households but rather a claim of future cash flows (net of tax). This is perhaps our most problematic coverage issue since tentative analyses suggest that pension wealth could reduce the concentration of wealth most substantially. Fourth, the wedge between tax-assessed and market-based values of personal assets has varied over time. Prior to the 1980s market values in the heavily regulated Swedish

¹⁶ According to data from France in Piketty et al. (2006) the differences seem to be marginal. Atkinson (2008), however, point to British wealth studies using estates where the differences have been sizeable.

¹⁷ The sources of the estate data are the Ministry of Finance (1879, 1910) and SOU (1946, 1957, 1969, 2004). Only for the year 1908 is there data based on applying the estate multiplier method to the estate data, see the Ministry of Finance (1910: 14-34). For the other years we can only calculate top wealth shares at death. Estate taxes were being levied already in the eighteenth century but from these early years there is no compiled distributional evidence available on the national level (see Ohlsson, 2006).

¹⁸ Survey data are better since the survey can be designed so as to include (or exclude) items regardless of the tax law and the sample can be drawn so as to represent the whole distribution, but at the same time this particular feature is a major problem when it comes to studying wealth concentration. Wealth is typically very concentrated and, therefore, a randomized sample of the whole population must be very large to cover sufficiently many in the very top to get a reliable picture.

¹⁹ The absence of consumer durables (furniture, household appliances, machinery, art, antiques etc) could reduce wealth concentration notably. Estimates in Jansson and Johansson (1988, ch. 7) indicate that they would decrease the top wealth percentile's share in 1985 by a third. This is, however based on the assumption that durables not included in the tax material are relatively evenly distributed in the population, which we do not think is likely to be the case (see the further discussion below).

economy were in general not much above tax-assessed values, but after 1980 market values have increased dramatically.²⁰

Our main series are based on market value-adjusted wealth data computed by Statistics Sweden for various years from 1975 onwards. Data for 1975 come from Spånt (1979). For the period 1978–2006 we use data based on micro-data evidence from the HINK/HEK database run by Statistics Sweden. This database consists of a representative sample of about 10,000–20,000 households for which wealth tax returns and interview material are available, with a full sampling of the richest households.²¹ Before 1999, wealth records are entirely based on tax returns with real and financial assets only roughly adjusted to market values. From 1999 onwards, wealth information drawn from the Wealth Register (*Förmögenhetsregistret*), an individual-based database using personal tax assessment and control information from authorities, banks and so forth (see further Statistics Sweden, 2005, 2006, 2007).

Although the post-1975 data are arguably the most reliable in the entire period, they are not without problems. One is that the market values of condominiums are notoriously difficult to assess (see further Jansson and Johansson, 1988, pp. 68-73, 140-141). Another is that closely held companies are almost completely missing. Yet another problem is that the sample population HINK/HEK is constructed for analyzing the distribution of income, not wealth. One consequence is that the oversampling of the richest household is made using an income-based proxy of wealth, realized capital gains, which may or may not be perfect in this respect.

For the historical data before 1975, we use grouped distributions reported in the Censuses in 1920, 1930, 1935, 1945, 1951 and finally some specific investigations from 1966 and 1970.²² Notable is that in all of these surveys, rich households are oversampled (based on taxable wealth) and their coverage for studying wealth concentration is hence likely to be good.

²⁰ Spånt (1979, pp. 87-93) gives estimates for real asset values based on Census information and miscellaneous historical price statistics. In the case of financial asset values, Waldenström (forthcoming) shows that the deflated composite stock price index at the Stockholm Stock Exchange was a basically constant level between the first observation in 1906 and 1986 when prices took off.

²¹ The sources are Jansson and Johansson (1988), Jansson and Johansson (2000) for the period 1978-1997 and specific tabulations by Statistics Sweden for the years 1999-2006.

²² Sources are wealth tax tabulations in Statistics Sweden (1927, 1937, 1938, 1940, 1951, 1956), SOU (1969) and Spånt (1975).

2.2.3 Foreign household wealth data

In 1989, Sweden removed its capital controls barring capital flows in and out of the country but kept its internationally high taxes on wealth and inheritance intact. This could easily lead to a situation where the rich move their capital overseas for tax avoidance reasons, and if so domestic wealth inequality could be severely underestimated. In this study, we therefore introduce an approach to analyze this by combining the official domestic household wealth distribution data (presented above) with similarly standard estimates of foreign household wealth from the Balance of Payments (B.o.P) and the Financial Accounts (F.A.) (see Table A1 in Appendix A for details).²³ A third source of foreign household wealth is the super rich Swedes who have taken both their wealth and themselves out of the country, but since they do not live and reside in Sweden they are not formally part of the domestic tax population that we examine.²⁴

Our computations of foreign household wealth are based on the exact same data and methodologies as are used by the producers of the underlying data, the Swedish Riksbank and Statistics Sweden. The basic approach rests on deriving residuals between observed balance sheet entries. In the case of the B.o.P., real sector savings (in the current and capital accounts) should equal net financial flows (in the financial account) each year.²⁵ This was also the case up until the late 1980s. At that point, the residual, called *net errors and omissions*, started growing negative year after year, signaling continuing unaccounted net capital outflows. About a third of these outflows are not actual outflows but rather accounting and valuation errors when compiling the current, capital or financial accounts. For this reason we use only 65 percent of the observed net errors and omissions as our estimate of foreign household wealth.²⁶ In the case of the F.A., the residual is called *unexplained financial savings* and is

²³ Jansson and Johansson (1988, pp. 163-165) come the closest in their discussion of how the emigration of 100 rich families (assuming different sizes of their wealth) would affect domestic wealth inequality. Unlike them, we analyze the foreign wealth of households that have remained in Sweden (i.e., residents). Moreover, we actually do analyze the emigrated Swedes as well in the robustness section, and then make use of the journalistic estimates of the wealth of the about 30-50 named super rich Swedish households residing in foreign countries. In their study of wealth concentration in Switzerland, Dell et al. (2007) data on foreigner's wealth in the 1990s as reported to Swiss authorities are analyzed. However, the wealth is not related to country of citizenship or systematically linked to inequality estimates in other countries.

²⁴ In the robustness section we analyze the wealth of super rich Swedes living abroad. Examples of rich Swedes living abroad are Ingvar Kamprad (owner of IKEA, living in Switzerland) and the Rausing family (owners of Tetra Pak, living in England and Denmark).

²⁵ Data on net errors and omissions for Sweden since 1975 come from the Swedish Riksbank.

²⁶ This particular figure has been reached through discussions with those who compile these data. Blomberg et al. (2003) are able to attribute about 14 percent of the net errors and omissions to known valuation errors in the

derived from comparing financial savings in the National Accounts (the difference between disposable income and the sum of private consumption and investment) and financial savings in the Financial Accounts (the aggregate value of bank deposits, securities portfolios, cash etc).²⁷

Next we need to decide who the Swedish residents holding overseas wealth are. This group should be fairly wealthy, both because the costs of establishing connections with foreign banks in tax havens are non-negligible (especially so a few years ago) and because wealth taxes have been fairly progressive. Throughout we attribute the estimates of foreign wealth to the households in the domestic top wealth percentile, which are 40–50,000 households (varying over time). This number has been reached after discussions with people at Statistics Sweden and the Swedish Riksbank who work with these numbers. If anything, the top percentile may be slightly too large concerning the 1980s and early 1990s (before the internet) whereas it may be slightly too small in the years thereafter.²⁸ Naturally, we also add the foreign wealth to the reference wealth total in the denominator.

2.2.4 Journalistic wealth estimates for the super rich

Tax authorities have great problems assessing the wealth of citizens who own large closely held companies. These wealthy households therefore often end up paying very low or no wealth taxes at all.²⁹ In the absence of objective information on these fortunes, journalists in several countries have created alternative wealth estimates of the wealth of the super rich based on subjective valuations. Examples of such listings are the *Forbes 400* in the U.S. and the *Sunday Times Rich List* for the U.K. Because of their subjectivity in the valuation of the fortunes one must treat these numbers with great caution.³⁰ Yet when carefully treated these

export statistics. Above from that, the authors believe that there are other errors of at least those amounts. We decide to remove 35 percent of the observed sums for our estimated household share.

²⁷ Bergman and Rylander (1984), Persson (2002) and SOU 2002 (p. 298) all use the unexplained savings in the F.A. for analyzing the size of foreign household wealth. We use the newly revised figures for the financial savings in the National Accounts.

²⁸ There are clearly a number of objections that can be raised to these assumptions. Our main purpose is, however, not to come up with an alternative measure of wealth concentration but rather to get a sense of the order of magnitude by which foreign wealth could affect the distribution.

²⁹ In Sweden, some large family firm-owners (those who owned more than 25 percent of a company's shares by the end of 1991) were even exempt from wealth taxation in the Wealth Tax Act of 1997 (1997:233). This rule is generally considered to have been specifically designed for the Persson family (main owners of H&M).

³⁰ For example, their methods comprise of a subjective and typically undisclosed selection of valuation techniques and comparisons with similar companies for which financial information is more openly disclosed. Jour-

lists hold information not otherwise available and they have been used previously by researchers interested in studying the wealth of the super rich (e.g., Kopczuk and Saez, 2004 and Edlund and Kopczuk, 2008).

We use data on the wealth of super rich Swedes reported in “rich lists” published by the Swedish business magazines *Affärsvärlden*, *Månadens Affärer* and *Veckans Affärer* for single years between 1983 and 2006.³¹ Based on these listings, we retrieve information about two groups of super rich for our analysis: Swedish households living in Sweden with wealth in closely held companies (hence not included in the official statistics) and Swedish households living abroad. As Table A2 in Appendix A shows, the named residents owning non-listed wealth are between 100 and 300 in the 1980s and 1990s owning about half a billion SEK. In the 2000s, the lists only include between 40 and 60 of them with an average wealth between 2-3 billion SEK. As for the foreigners, they have been between 10 and 50 in the listings with average fortunes between 3 and 17 billion SEK.

2.2.5 Retirement wealth data

Pension wealth and social security wealth are important sources of income for most people at their retirement. For this reason, researchers sometimes add estimates of retirement wealth to the net marketable wealth of households, yielding what is often called *augmented wealth*.³² Conceptually, it is not unproblematic to include retirement wealth in the personal wealth. On one hand, it is a fairly well-defined future benefit stream accruing to each individual in society that highly influences the incentives of individuals to save for retirement. On the other hand, individuals cannot freely access their pension wealth (e.g., to realize it before retirement age), which violates one of the fundamental aspects of private property rights to personal assets. For this reason, the distribution of *augmented wealth* should be treated separately from the conventional wealth inequality measurement.

nalists collect most of their information from publicly available sources such as newspapers, company reports and financial market prices, but at times also interviews with the rich themselves are used. See further the discussions in Davies and Shorrocks (2000) and Atkinson (2008)

³¹ In fact, earlier calculations of the richest Swedish families were done by Hermansson (1959, 1962) and by the public investigation SOU 1968:7. In all these cases, tax returns formed the basis of personal wealth which is reasonably comparable with today’s market-valued numbers as we argue elsewhere in this paper.

³² This approach was first suggested by Feldstein (1976) and has then been applied by several others.

Our estimates of the distribution of augmented wealth come from different sources. Generally speaking, historical data on Swedish retirement wealth and its distribution are scarce. We use in this paper three point estimates that have been made with specific application to the distribution of net personal wealth: Ståhlberg (1981) for 1978, Jansson and Johansson (1988) for 1985 (largely building on Ståhlberg's estimate), and our own (rough) estimate for 2004. The calculations are based on arriving at net present values of all individuals' current and future claims on the different parts of the pension system. For details on the 1978 and 1985 estimates, see Appendix B.

3 Wealth concentration 1873–2006

This section presents our main results. We begin by showing the long-run evolution of wealth concentration for groups in the top of the Swedish distribution over the entire period. Then we divide the 130 years into three subperiods based mainly on the observed patterns but also on instances of important structural changes in the Swedish society. For the first period, 1870–1910 which roughly corresponds to the industrial take-off, we rely entirely on estate tax data. In the subsequent period, the 1910–1980 which covers the entire build-up and expansion of the Welfare State, we can compare results from estate data with wealth tax data. Finally, in the period after 1980 when internationalization increased and capital flows were liberalized we also make use of our estimates of foreign household wealth as well as journalistic sources.

3.1 Long-run trends

Figure 1 shows the development of the wealth share for the top decile over the period 1873–2006. According to this measure wealth concentration was stable at a high level which lasted almost until 1945, with only a small drop in the 1930s (visible in the wealth tax data). Given that 1930s marks the start of the long era of Social Democratic rule under which the welfare state was created (with much of the early implementation interrupted by World War II) this seems to fit well with broad stylized facts.

[Figure 1 about here]

However, as has been pointed out several times in recent work on top incomes and wealth, when only looking at the evolution of top decile, one typically fails to see a number of important aspects of the data. Figure 2 shows the development of the top percentile (P99–100), the

next nine per cent (P90–99) and the residual remaining population (P0–90), revealing a number of interesting facts. The development between the 1870s and the 1900s is now characterized by a slight increase for the top percentile at the expense of the rest of the population. From the 1910s and onward, until around 1980, the wealth share of the top percentile drops by a factor of three. Until around 1950, however, this leveling happens *within* the top decile, giving the impression – seen in Figure 1 above – that no big changes occur. In the period 1910 to 1950 the wealth share of the P90–99 increases by a factor of 1.5 while the share of the top percentile is divided by about as much. The rise of “popular wealth”, mainly owner-occupied housing held by the lower nine deciles (P0–90), seems to start around 1930 with the major increases coming after the Second World War, and after 1950 the increase for the P0–90 group happens at the expense of the entire top decile. Around 1980 the leveling seems to come to a halt, and the wealth shares for the top groups have increased slightly in the recent past.

[Figure 2 about here]

Our data also allow us to analyze the long-run patterns of wealth shares in the very top of the wealth distribution. Figure 3 displays the shares of groups within the top vintile: the lowest four percentiles (P95–99), the bottom nine tenths of the top percentile (P99–99.9), the top 0.1 percentile (P99.9–100) and the top 0.01 percentile (P99.99–100).³³ It confirms the previous finding of the very rich losing ground throughout the twentieth century and gives more information about the order of magnitude by which this compression took place. The top 0.1 percentile’s share plummeted from 28.1 percent in 1908 to only 5.1 in 1978. The fall of the top 0.01 percentile was even more drastic, from 13.6 percent to 1.7 percent. This pattern becomes even the more striking when contrasted against P95–99 which increased its share until 1950, then experienced a relative fall until around 1980, and has then recovered only to land at a wealth share in 2000 which is almost exactly the same as in 1908.

[Figure 3 about here]

³³ The estimates for the richest groups may be associated with some uncertainty in the earlier periods as they consist of only some 300–500 households. Recall though that the shares for 1975 onwards draw on complete sampling of roughly the top 0.1 percentile.

Overall the Swedish development suggests a gradual process, with wealth slowly trickling down from the top as development progresses, possibly with a period of slightly increasing concentration in the first phase of industrialization, much in line with Kuznets' basic idea. Even though our data does not allow us to identify precisely what has been driving this process we can get a number of clues and also get a more precise picture by analyzing the data in some more detail. We do so by looking separately at three sub-periods: 1870–1910, 1910–1980, and 1980–2006.

3.2 1870–1910: Wealth concentration during the industrial take-off

Sweden was a latecomer in the process of industrialization, with its industrial take-off being dated sometime in the second half of the nineteenth century.³⁴ Since our first observation of wealth concentration is 1873 our series capture the evolution of wealth concentration over the whole era of industrialization in Sweden.³⁵ This is particularly important since Kuznets' influential hypothesis about industrialization is explicit about inequality increasing during the initial stages of economic development.

Our data suggest that between the 1870s and the first decade of the 20th century, the top one percent increased their wealth share by approximately five percentage points from about 55 percent to around 60. The losses for the rest of the population was relatively evenly spread with the share for the P90–99 and P0–90 groups dropping by about three and two percentage points respectively. While these movements are small they indicate a development consistent with the idea that industrialization initially created wealth which was concentrated in the top of the distribution.³⁶ However, it should also be noted that for this period we have to rely on estate data without being able to make any mortality multiplier adjustments.

³⁴ For example, according to the growth-rate based definition in Maddison's (1982) 'Phases of capitalist development' Sweden achieved growth rates averaging above one percent for the first time in the 1850s and 1860s.

³⁵ There exists one isolated observation from a wealth survey in 1800 thanks to Soltow (1985). We have not been able to study the data underlying that estimate and we have therefore not incorporated it in this analysis.

³⁶ While we study very different aspects of inequality, our findings are compatible with Söderberg (1991) who finds an increasing inequality in salaries over the period 1850-1914. However, at this time it is not likely that the top percentile in the wealth distribution was affected much by increased salaries. Rather, a more likely interpretation is that the reason for why the top percentile in the wealth distribution did not go up more, was that some of the gains from industrialization actually went to skilled workers.

3.3 1910–1980: Wealth equalization and the rise of “popular wealth”

Between the 1910s and the years around 1980, Sweden experienced a substantial equalization of the personal wealth distribution. For example, the top percentile went from owning about 60 percent of all wealth in 1908 to owning less than 20 percent in 1980. As Figure 3 reveals, however, between 1908 and 1950 it was only the households in the top 0.1 percentile that experienced a steady decrease whereas the wealth share of the next 0.9 percent (P99–99.9) remained constant until 1930 whereas the 4 next percentiles (P95–99) even increased their wealth shares.

These heterogeneous patterns within the top indicate two things about the possible causes of wealth compression. First, the economic and financial shocks in the early 1920s (a banking and deflation crisis) and the early 1930s (the Kreuger-crash of 1932) had a negative effect on top fortunes. However, this effect seems to have been more limited in Sweden than the effects of the world wars and the Great Depression in other countries where a larger share of the wealth was affected (see Ohlsson et al., 2008). Second, a more important driver behind the changed distribution of wealth seems to have been the new wealth creation occurring among the relatively income rich who previously held less wealth. This can be seen by studying a unique feature in Swedish tax data between the years 1911 and 1948 when Sweden practiced a form of progressive income and wealth tax which operated through adding a fraction of taxable wealth (in principal equal to net wealth) to individual income to calculate what was called the “taxable amount”.³⁷ This information on the size of wealth holdings by income class is tabulated for a number of years and gives important information on changes in wealth concentration. Table 1 shows how the wealth share of top percentile in the income distribution decreased before 1950, in particular in the interwar period. By contrast, the “high-wage” income earners in the P90–95 income fractile increased their wealth share substantially over the same period, mainly in the 1910s and 1930s. The natural interpretation of these changes is that wealth as a source of income for the very rich declined in this period while, at the same time, moderately rich groups with high incomes accumulated new wealth. Historically, these patterns are in line with the descriptions in Glete (1994, ch. 2 and 3) about the emergence of new corporate owners during the expansive 1910s and the successes of corporate executives in the 1930s.

³⁷ For details on the Swedish historical income tax, see Roine and Waldenström (2008).

An additional clue to how this came about can be found from looking at the historical series of income distribution in Roine and Waldenström (2008). These show that the income share of P90-95 – the group that more than doubled their wealth share between 1911-1948 – increased very little over this period. This suggests that the increase in their wealth share probably did not come from income equalization but rather from increased income mobility or changes in savings behavior.³⁸

[Table 1 about here]

After 1950 the trend of increased accumulation continues down the distribution. The equalization of incomes certainly contributed to this development. Already in 1950 Sweden had established its position as one of the most equal countries in the world in terms of incomes and this trend continued until around 1980.³⁹ Other sources of continued wealth equalization can be found in the composition of total wealth. Between 1950 and 1980 the share of owner occupied housing in total wealth increases from being 17 percent of all wealth to 45 percent in 1975.⁴⁰ This was partly due to increasing values of existing housing (which in turn was partly based on increased infrastructure investment) but mainly due to new developments of owner occupied housing for which the government provided generously subsidized loans.⁴¹ At the same time the fraction of rental property as well as that of shares (listed and unlisted), both highly concentrated in the very top of the distribution, decreased from 17 to 4, and from 14 to 7 percent respectively. The combined effect of these changes was an increase in the share held by the nine “poorest” deciles (P0-90) from just above 20 percent in 1950 to around 45 percent in 1980, with a corresponding fall in the share held by the richest decile (P90–100).

³⁸ Yet another possibility would be changes in policies that disproportionately benefited this group but at this time such an explanation seems unlikely.

³⁹ See Roine and Waldenström (forthcoming).

⁴⁰ This share has remained relatively constant since when adding owner occupied apartments, houses, and vacation homes (consumer durables also increased a lot but stay a relatively small share of the total), see Spång (1979, pp 78-80) and Jansson and Johansson (2000, pp 19-21).

⁴¹ See Englund (1993).

3.4 1980-2006: Globalization and higher concentration

Around 1980 the long period of wealth compression came to a halt. A number of previous studies have analyzed Swedish wealth inequality in this period, finding the lowest inequality in the early 1980s and a moderate increase thereafter.⁴² Much of the fluctuations in wealth shares in the period after 1980 have been found to depend on asset price movements, with increases in real estate values reducing inequality since many Swedes own their houses, while increases in share prices make the top shares larger as share ownership is concentrated. Still, the official estimates of top wealth shares do not seem to capture the dramatic increases in stock returns at the Stockholm Stock Exchange between 1980 and 2000, with an average annual real rate of return of more than 20 percent.⁴³

We believe that there are two main reasons for why some of the potentially most important changes in the Swedish wealth distribution are not captured in the tax statistics (or in surveys). First, over the past decades there has been a substantial increase in wealth holdings outside of Sweden and second, there are large privately held family firms (not captured by the tax statistics) which have grown in value over this same period. We examine the potential impact of these non-disclosed fortunes on the official wealth inequality estimates of Statistics Sweden by adding estimated sums of foreign household wealth (from the net errors and omissions in the Balance of Payments) and of domestic wealth of super rich residents (from the journalistic listings) to the observed domestic wealth of the top wealth percentile in the official statistics. Table 2 shows these sums for years between 1978 and 2006 together with the corresponding official wealth amounts of the whole Swedish household population and its top percentile. The net errors and omissions were basically zero before 1989 after which they started to increase, landing at an accumulated outflow in 2006 of 432 billion SEK, or 66 billion USD in constant 2006 prices.⁴⁴ The unexplained financial savings in the F.A. also exhibit

⁴² According to the official estimates at Statistics Sweden (Jansson and Johansson, 2000, and Ohlsson et al., forthcoming), the wealth share of the top percentile increased about ten percent over the 25-year period between 1978 (16.6 percent) and 2002 (18.4 percent). For other recent studies of the Swedish wealth inequality, see Spånt (1987); Jansson and Johansson (1988); Kashefi (1989); Bager-Sjögren and Klevmarken (1998) and Klevmarken (2004, 2006).

⁴³ The remarkable value growth at the Stockholm Stock Exchange is not dependent on choice of starting or ending year. In fact, the real stock returns index (see Waldenström, forthcoming) at year-end were 75.4 in 1980, 689.0 in 1990, 4826.3 in 2000 and 5817.5 in 2005, which results in average increases of between 20 and 25 percent per year.

⁴⁴ The fact that the net errors and omissions are zero in 1978 does not imply that there was no Swedish private capital placed abroad for tax reasons. It only means that there were practically no “omitted” capital outflows in the balance of payments statistics during this period, since the Swedish Riksbank had indeed approved of some very large capital transfers by private individuals (see further Lindkvist, 1990).

substantial outflows, but they start already in the early 1980s which might reflect increased domestic unobserved wealth.⁴⁵

[Table 2 here]

Figure 4 displays the distributional effect from adding foreign and domestic closely held super-rich wealth to the officially disclosed wealth of the richest percentile in the domestic wealth distribution. This adjustment causes a notable trend break in the share of the top percentile around 1980, with the share increasing from about 20 percent to almost 30 percent by in the early 2000s. Much of this increase occurs in connection with Sweden's financial liberalization in 1989 and continues thereafter, in line with the amounts presented in Table 2. Note that these data do not contain any assumed accumulated interests on the foreign capital, why they should be interpreted as cautious estimates. Note also the increasing wedge between the new series and the basically flat trend in the official wealth tax-based series.

The sizeable impact of foreign wealth on the wealth concentration is probably a phenomenon that is, if not unique, unusually important for Sweden (and possibly for the other Nordic countries). The combination of high taxation of wealth, large increases in especially financial wealth beginning in the early 1980s and the lowered cost of avoiding wealth taxes by moving wealth abroad would suffice to explain the observed patterns. When doing the same additions for the U.S., i.e., adding foreign wealth (in the net errors and omissions in the Balance of Payments) and the often closely held wealth of the super-rich (in the Forbes listings), there is no similar effect on the domestic wealth concentration.⁴⁶

[Figure 4 about here]

⁴⁵ Another potential explanation is, of course, statistical errors in the calculations. See Rylander and Bergman (1989) for an analysis of how valuations of different assets could matter for the calculation of the aggregates.

⁴⁶ Adding these wealth items increases the 2004 share of the U.S. top wealth percentile increases its share from 33.4 to 34.6, an increase of about 3 percent which is to be compared to the more 50 percent increase in the Swedish case. The calculation is based on top wealth share in the Survey of Consumer Finances (Kennickell, 2006). Then we add 80 percent (assumed share of capital owned by households) of the accumulated net errors and omissions ("Statistical Discrepancy") in the U.S. international transactions accounts data (Bureau of Economic Analysis, 2007), with no rate of return on foreign wealth. Second we add the domestic wealth of the top 400 individuals in the Forbes 400, and an additional 1.2 percent of their wealth which is the assumed amount held by rich Americans abroad (based on comparisons between the Forbes 400 and the Americans living abroad in the Forbes listings of the world's richest people).

4 Robustness of our estimates and alternative measures of concentration

4.1 Taxation values or market values, taxable wealth or “all” wealth

As discussed above there are a number of potential problems with translating data to wealth shares. When using tax data, the main types of concern stem from differences between tax values and actual (market) values and differences in what items are included in the wealth taxation. Both of these aspects can (but do not necessarily) affect the wealth shares. While our main series after 1975 are wealth shares calculated based on market values (arguably what should be used), such data do not exist for the period before. There are, however, estimates of the market value of the total (taxed) wealth starting in 1935 as well as the effects of market valuation on the wealth shares in 1975.⁴⁷ There are also estimates of market values of “all” household wealth (including items which are not part of taxable wealth) for the period 1950–1987.⁴⁸ Using these alternative reference totals and various assumptions about the distribution of the difference between our main reference total and these alternatives we can get a sense of how our main series could change.

In table 3 we show the difference in reference totals and what we consider to be the lower bound for the top percentile share, P99–100 (the qualitative differences are the same for all top shares). The shares are based on the assumption that the amounts which are not included in the tax data (or the difference between tax and market values) are distributed according to the income distribution (we think that the true distribution is likely to be more uneven but this gives a lower bound to the estimates). We also include shares based on the assumption that the difference between tax values and market values are the same as in 1975. The resulting shares are lower than our main series, especially when looking at the alternative based on “all wealth” including what is not taxed.⁴⁹ This is hardly surprising given that the totals according to Berg (1988) are about twice our reference total and we assume that the difference is distributed according to income. However, as can be seen by the percentage changes between years, the trend is very similar over time.

[Table 3 about here]

⁴⁷ Spånt (1979) where historical figures from 1945 onwards are based on actual data while the values for 1935 are calculated using the relations in 1945.

⁴⁸ Berg (1988) gives a detailed account of how these data have been constructed.

⁴⁹ The substantially lower shares when including “all wealth” (including consumer durables) are in line with what the findings in Jansson and Johansson (1988).

4.2 Comparing our series with findings in other studies of wealth concentration

An important check of our findings is to contrast them with previous estimates of the Swedish wealth concentration based on slightly different methodologies or sources. Earlier attempts to estimate the distribution of household wealth have used either the same wealth tax sources as we do or completely different sources based on household surveys. Figure 6 shows three alternative wealth tax-based estimates of the top wealth percentile (P99–100) and the next nine wealth percentiles in the top decile (P90–99): our main series, those of Spånt (1979) for 1920–1975 and those of Kashefi (1989) of 1983–1985. The main trends and levels are basically the same in all three cases, which maybe is not so surprising given the fact that they all derive from the same wealth data source. Yet it is worth noting that the differences in interpolation techniques, reference wealth and population totals do not seem to have an important impact on the estimates.

[Figure 5 about here]

4.3 Shares within shares

Our top wealth shares may contain measurement error through the estimated reference total wealth held by the full population. An alternative way of studying wealth concentration without having to rely on the reference wealth total of the whole population is to express the concentration in terms of the wealth share of certain top groups within the wealth share of another, larger, top group. For example, by dividing the top wealth percentile by the top wealth decile, P99–100/P90–100, we get a “shares within shares” ratio that eliminates the reference total.⁵⁰

[Figure 6 about here]

Figure 5 depicts the evolution of wealth concentration using shares within shares estimates and hence without any potentially bias from reference wealth totals. Overall, the patterns confirm some of our previous conclusions. The very top of the distribution experience a falling share relative to the group just below, especially in the first half of the century. However, the magnitudes are similar to those observed in our main series, i.e., when the top is related to the

⁵⁰ Too see that this removes the influence of reference totals, note that $P99-100 = W_{Top1}/W_{All}$ (with $W = \text{Wealth}$) and $P90-100 = W_{Top10}/W_{All}$. Hence, $P99-100/P90-100 = (W_{Top1}/W_{All})/(W_{Top10}/W_{All}) = W_{Top1}/W_{Top10}$.

wealth of the whole population, implying that the group below the very top behaves similarly to the rest of the population. After around 1950 there is much less change in the concentration within the top group, while top wealth shares in our main series fall. This implies that in this period most of the change is driven not by the changes of the very top in relation to those just below, but by the change of the entire top decile in relation to the rest of the population.

4.4 Altering the definitions of foreign wealth and super rich wealth

Our main analysis showed that foreign household wealth and large domestic family-firm fortunes have a first-order effect on the Swedish wealth concentration after 1980. As was stated, however, the added series were only a subset of all available estimates and also based on restrictive assumptions regarding the return to foreign capital. In the present section we therefore present a number of alternative series using combinations of all available wealth sources (both B.o.P. and F.A. foreign household wealth series as well as journalistic estimates of foreign and domestic wealth of super rich Swedes) and different assumptions about the yield of foreign capital (zero and five percent nominal rate of return).

Figure 7 depicts the evolution of the top wealth percentile since World War II when different alternative measures of foreign household and domestic family firm wealth are added to the market valued wealth tax data.⁵¹ The results confirm the sizeable impact on Swedish wealth inequality since 1980, but the degree of impact across the series is quite varying. For example, while the top percentile's share in the unadjusted domestic wealth series is 18.4 percent in 2002, it is 23.9 after adding the (mainly) family-firm wealth of super rich residing in Sweden. Overall, these alternative measures suggest that the impact of foreign wealth and closely held firms is significant and also that the choice of how to view citizens of a country residing abroad can have a very large impact on measures of top wealth concentration.⁵²

[Figure 7 about here]

⁵¹ The domestic benchmark wealth, based on market-valued wealth tax-based data, is denoted "W". Our alternative series then come from adding combinations of different foreign and domestic wealth types to W of the top percentile (P99–100) and, of course, to the reference total. We use the following acronyms: BP (B.o.P.-based estimates of foreign household wealth), FA (F.A.-based estimates of foreign household wealth), BPI and FAI (the two previous but when a 5 percent rate of return is added), DSR (closely held wealth of super rich living in Sweden), and SR (sum of all listed wealth of super rich Swedes living in Sweden and abroad). There are discontinuous jumps in some of the series, in 1978 for those containing F.A.-based foreign wealth (for which we have data from 1978) and in 1983 for those containing domestic super rich wealth for the same reason.

⁵² This point is also made by Atkinson (2008).

4.5 The role of pension and social security wealth

So far we have considered the distribution of net *marketable wealth*, i.e., market-valued real and financial assets less debts. However, as discussed in Section 2 researchers have sometimes added the net present value of all current and future claims on the pension and social security systems to the net worth, creating a distribution of *augmented wealth*. The effect of adding the retirement wealth to marketable wealth has typically resulted in a most considerable equalization of wealth (see, e.g., Feldstein, 1976; Feinstein, 1996; Wolff, 2005). For example, the top percentile in the U.K. in 1991 owned 17 percent of marketable wealth but only 10 percent of augmented wealth.

Figure 8 depicts the top one percent wealth share in Sweden between 1978 and 2005 using three different concepts of wealth: net marketable wealth, augmented wealth and, to be able to compare the distributional impacts of retirement wealth and foreign wealth, the sum of augmented and foreign wealth. Two findings stand out. First, adding retirement wealth generates, as expected, a much lower level of concentration. Second, the increasing trend in wealth concentration found when adding foreign wealth to the top percentile is *not* affected by also considering retirement wealth. The trend in augmented wealth concentration follows the largely flat trend in marketable wealth concentration, whereas adding foreign wealth to augmented wealth (the dotted line in the figure) shows that the increasing trend remains unaffected.⁵³

[Figure 8 about here]

5 International comparison

How does the Swedish wealth concentration over the path of development match similar evidence for other countries? In particular, was the distributional impact of industrialization as marginal elsewhere as it seems to have been in Sweden? And was the dramatic wealth compression over the twentieth century a specific Swedish phenomenon based on the development of the extensive welfare state? In this section we make an attempt to address these ques-

⁵³ In fact, the trend increase between 1985 and 2004 is larger when using augmented wealth than when using marketable wealth. A similar result that the equalizing role of retirement wealth has diminished over the past decades has been found for the U.S. in Wolff (2006). However, due to the great uncertainty in the Swedish estimates we refrain from making such a conclusion and confine ourselves with the observation that the trend is basically flat in both the marketable wealth and augmented wealth cases.

tions by mapping the Swedish long-run experience on that of three other major Western countries: France, the United Kingdom and the United States.

Figure 9 depicts the top wealth percentile in these four countries between 1740 and today. The extraordinarily long time period is motivated by the fact that the English industrialization began in the second half of the eighteenth century while it started some 50-100 years later in the U.S. and France and more than 100 years later in Sweden. Clearly, great caution should be taken when comparing these series as they are not based on the same wealth data sources and in all cases but France the outcome of splices between different compilations. Still we are not the first to combine these pieces of evidence and therefore believe that some conclusions can be drawn about the long-run developments we study here.

[Figure 9 about here]

Two broad results can be drawn from the series. First, we do not think that the evidence unambiguously supports the idea that wealth inequality increases in the early stages of industrialization. Looking at the development of the wealth share of the top percentile among the countries analyzed here, the Swedish series exhibit a fairly stable inequality level over the initial stages of industrialization (in the late nineteenth century). The U.K. series (England and Wales) show increasing wealth shares for the top percentile in the period of the two industrial revolutions (1740–1911), as do the U.S. and French series over the nineteenth century. Overall this suggests that going from a rural to an industrial society, with entirely new stocks and types of wealth being created, may, but does not necessarily, give rise to a large increase in wealth concentration.

Second, while the series do not indicate a clear common pattern over the nineteenth century when industrialization took place the development over the twentieth century seems more uniform. The top percentile wealth share decreased sharply in all countries studied and the order of magnitude seems to be a decrease by about a factor two on average (from around 40-50 per cent in the beginning of the century to around 20–25 per cent today). It also seems that the lowest point in most countries was around 1980 and that the top percentile wealth share has increased in most countries after that. The exception is the U.S. household series which

first increases up to 1929, then falls sharply up to 1950 and then goes up and down up to the 1980s when it stabilizes on an internationally high level.

6 Concluding remarks

This paper has presented new evidence on trends in wealth concentration in Sweden over the period 1873–2005. Spanning such a long period of time our series allow us to address questions regarding the dynamics of wealth distribution over the path of Sweden’s development from an agrarian to a modern economy. It also allows us to put the achievements and the role of the welfare state, as well as the recent increases in wealth concentration, in historical perspective.

The picture that emerges is one of a development with many similarities to what has been found in previous studies for other countries, but also one with some important differences. Overall, our findings suggests that over the path of transition from being a poor agrarian economy to a rich industrialized one, wealth *gradually* spread to wider and wider groups. In terms of how Sweden differs from other countries, and in particular when it comes to the role of the welfare state in explaining this process, two aspects stand out. On the one hand, welfare state policies certainly played an important role in the latter stages of this development and the expansion of the welfare state after World War II coincides with much of the equalization when looking at the relation between wealth shares held by the top decile and the rest of the population. Even if we can not explicitly test their individual influence, data on income equalization, progressive taxation and policies such as subsidized loans to owner occupied housing suggest that these all disproportionately benefited the population below the top ten percent. On the other hand, the gradual Swedish wealth levelling started much before that. Already around 1910 we see evidence of the groups just below the very top increasing their wealth share and over time the increases move down the distribution. These changes can not be attributed mainly to exogenous shocks to top wealth holders – making the Swedish case different from France, the U.K. and the U.S. – but it is also hard to see what kind of policies enacted in the first half of the century that would cause this pattern. When looking at the wealth holdings of the P90-95 group in the income distribution, their share more than doubles between 1911-1948. However, during this period the income share of this group remains almost unchanged making it unlikely that the increased wealth share is a reflection of their increased income share. Possible explanations that remain are increased savings in this group or

increased income mobility but unfortunately there is very little information on these aspects.⁵⁴ What we can say is that, our results once again show the importance of studying developments for smaller subgroups within the top.⁵⁵ Looking only at the shares of the top decile and the rest indicates that wealth levelling started around 1950, but a finer decomposition of the shifts within the top decile show that the process of gradual wealth levelling started well before the expansion of the welfare state.

After 1980 wealth concentration has increased, but only slightly according to standard official estimates. The commonly held view is that wealth concentration is still at a historically low level. At the same time there has been an ongoing debate about much of wealth leaving the country (mainly for tax reasons) and also of much wealth being concealed through closely held family firms not captured in tax statistics. Adding what we believe to be cautious estimates of the accumulated wealth that has left the country over the past 25 years as well as estimating the impact of the wealth in large family firms we have shown that Swedish wealth concentration has probably increased by more than what is revealed in the official estimates. We also think that these effects are more important in Sweden than in many other countries. Beside attempting to estimate the magnitudes of these well-known, but typically neglected aspects, these figures also raise some increasingly important questions about how to treat foreign wealth (and income) when thinking about questions of economic inequality. Should we consider the distribution of all wealth in a country or of those who live in a country (including their wealth abroad) or should we consider the wealth of all citizens of a country regardless of where they live or have placed their wealth? Regardless of what position one takes on issues such as these, our estimates of recent changes in Sweden suggest that the answer matters a lot for the picture one gets of the wealth distribution.

References

Atkinson, Anthony B., and Alan Harrison (1978), *The Distribution of Personal Wealth in Britain*, Cambridge University Press: Cambridge.

⁵⁴ If the individuals we observe (at a few points in time) in the income group P90-95, so to speak, spend some years in higher income brackets this could explain how they can accumulate wealth even if the income group P90-95 has a constant share of total income. A similar argument has been put forward by Kopczuk and Saez to explain why the very high income inequality over the past decades in the US does not seem to have led to increased wealth inequality

⁵⁵ Something which is pointed out in many of the recent papers on top incomes including Roine and Waldenström (2008) on Swedish top incomes over the Twentieth Century.

- Atkinson, A. B. (2007), "Measuring Top Incomes: Methodological Issues", in A.B. Atkinson and T. Piketty (eds.), *Top Incomes Over the Twentieth Century. A Contrast Between Continental European and English-Speaking Countries*, Oxford, Oxford University Press.
- Atkinson, A. B. (2008), "Concentration among the Rich", in J. B. Davies (ed.), *Personal Wealth from a Global Perspective*, Oxford, Oxford University Press.
- Bager-Sjögren, L. and N. A. Klevmarken (1998), "Inequality and Mobility of Wealth in Sweden 1983/84–1992/93", *Review of Income and Wealth* 44(4): 473–495.
- Berg, L. (1988), "Hushållens sparande och konsumtion", Expertrapport till Sparutredningen, 1988. Allmänna Förlaget, Stockholm.
- Blomberg, G., L. Forss and I. Karlsson (2003), "Restposten i betalningsbalansen - ett problem?", *Penning- och valutapolitik* No. 2, 40–49.
- Cameron, R. and L. Neal (2003), *A Concise Economic History of the World. From Paleolithic Times to the Present*. Fourth Edition, Oxford University Press: Oxford.
- Champernowne, D. G., and F. A. Cowell (1998), *Economic Inequality and Income Distribution*, Cambridge University Press, Cambridge, U.K.
- Davies, J. B. and A. F. Shorrocks, (2000), "The distribution of wealth" in: A.B. Atkinson & F. Bourguignon (ed.), *Handbook of Income Distribution*, edition 1, volume 1, chapter 11, pages 605-675 Elsevier.
- Edlund, L. and W. Kopczuk (2008), "Women, Wealth and Mobility", *American Economic Review* (forthcoming).
- Englund, P. (1993), "Bostadsfinansieringen och penningpolitiken" in Werin, L. (ed.), *Från räntereglering till inflationsnorm*, SNS, Stockholm.
- Feldstein, M. (1976), "Social Security and the Distribution of Wealth". *Journal of the American Statistical Association*, 71, 800-7.
- Feinstein, C. (1996), "The Equalizing of Wealth in Britain since the Second World War", *Oxford Review of Economic Policy* 12(1), 96–105.
- Glete, J. (1994), *Nätverk i näringslivet. Ägande och industriell omvandling i det mogna industrisamhället 1920–1990*, SNS, Stockholm.
- Hermansson, C.H., (1959), *Koncentration och Storföretag*. Arbetarkulturs förlag, Stockholm
- Hermansson, C.H., (1962), *Monopol och Storfinans*. Arbetarkulturs förlag, Stockholm
- Jansson, K. and S. Johansson (1988), *Förmögenhetsfördelningen 1975 - 1987*, Statistics Sweden, Stockholm.
- Jansson, K. and L. Johansson (2000), *Förmögenhetsfördelningen i Sverige 1997 med tillbakablick till 1975*, SCB Rapport 2000, Statistics Sweden: Stockholm.

- Kaldor, N. (1956), "Alternative Theories of Distribution", *Review of Economic Studies*, 23(2): 83-100.
- Kashefi, B. (1988) "Hushållens förmögenhet och sparande 1983-1985" in Agell, J., B. Kashefi and P.-A. Edin, *Hushållens portföljval och förmögenhetsfördelning*, SOU 1989:11, del 3, Allmänna förlaget, Stockholm.
- Kennickell, Arthur (2006), "Currents and Undercurrents: Changes in the Distribution of Wealth, 1989–2004", FRB Working paper 2006-13.
- Klevmarcken, N. A. (2004), "On the Wealth Dynamics of Swedish Families: 1984-98", *Review of Income and Wealth* 50(4): 469-91.
- Klevmarcken, N. A. (2006). "On Household Wealth Trends in Sweden over the 1990s", in E.N. Wolff (ed.) *International Perspectives on Household Wealth*, Edward Elgar Publishing Ltd.: Northampton MA.
- Kopczuk, W., and E. Saez (2004), "Top Wealth Shares in the United States, 1916-2000: Evidence from Estate Tax Returns", *National Tax Journal* 57(2): 445-87.
- Lindert, P.H. (1986), "Unequal English Wealth since 1670", *Journal of Political Economy* 94(6): 1127-62.
- Lindert, P.H. (2000), "Three Centuries of Inequality in Britain and America", in A.B. Atkinson and F. Bourguignon (eds), *Handbook of Income Distribution*, volume 1, North-Holland: Amsterdam.
- Lindkvist, H. (1990), *Kapitalemigration*, Stockholm School of Economics, EFI, Stockholm.
- Maddison, A. (1982), *Phases of capitalist development*, Oxford University Press: Oxford.
- Ministry of Finance (1879). *Sammandrag öfver stämpelafgifterna för lagfarter, in-teckningar, äktenskapsförord, morgongåfvobref och afhandlingar om lösöresköp under år 1877 samt för bouppteckningar under åren 1873-1877*. Finansdepartementet: Stockholm.
- Ministry of Finance (1910). *Bouppteckningar efter aflidna, inregistrerade vid vederbörande domstolar åren 1906-1908*, del 3 av Finansstatistiska utredningar, Finansdepartementet: Stockholm.
- Ohlsson, H., J. Roine and D. Waldenström (2008), "Long-Run Changes in the Concentration of Wealth: An Overview of Recent Findings", in J. B. Davies (ed.), *Personal Wealth from a Global Perspective*, Oxford, Oxford University Press.
- Persson, A. (2002), "Oroliga skattebaser: Riskområden för skattefel med internationell anknytning", Expertbilaga 1 till SOU 2002:47.
- Piketty, T., G. Postel-Vinay, and J.-L. Rosenthal (2006). "Wealth Concentration in a Developing Economy: Paris and France, 1807-1994", *American Economic Review* 96(1): 236-56.

- Roine, J. and D. Waldenström (2008), "The Evolution of Top Incomes in an Egalitarian Society: Sweden, 1903–2004", *Journal of Public Economics* 92(1-2), 366-387.
- Soltow, L. (1985). "The Swedish Census of Wealth at the Beginning of the 19th Century", *Scandinavian Economic History Review* 33(1): 1-24.
- SOU (1942). *Förutsättningarna för och verkningarna av en engångsskatt å förmögenhet i Sverige*, SOU 1942: 52, Finansdepartementet: Stockholm.
- SOU (1946). *Betänkande med förslag till omläggning av den direkta statsbeskattningen samt angående kvarlåtenskapsbeskattning m. m.*, 1945 års Statsskatteberedning, SOU 1946: 79, Finansdepartementet: Stockholm.
- SOU (1957). *Arvsbeskattning*, betänkande av Arvsskattesakkunniga, SOU 1957: 48, Finansdepartementet: Stockholm.
- SOU (1969). *Kapitalbeskattningen*, betänkande av Kapitalskatteberedningen., SOU 1969: 54, Norstedt: Stockholm.
- SOU (2002), *Våra skatter?*, betänkande från Skattebasutredningen, SOU 2002:47, Fritzes: Stockholm.
- SOU (2004). *Egendomsskatter: reform av arvs- och gåvoskatter*, slutbetänkande av Egen-
domsskattekommittén SOU 2004: 66, Fritzes: Stockholm.
- Spånt, R. (1978). "The Distribution of Household Wealth in Some Developed Countries", CREP-INSEE International Meeting, July, Paris.
- Spånt, R. (1979). *Den svenska förmögenhetsfördelningens utveckling*, SOU 1979: 9.
- Spånt, R. (1981). "The Development of the Distribution of Wealth in Sweden", *Review of Income and Wealth* 27(1): 65-74
- Spånt, R. (1987) *Wealth Distribution in Sweden: 1920-1983*, in E. Wolff (ed.), *International Comparisons of the Distribution of Household Wealth*, 51-71, Oxford University Press, New York.
- Ståhlberg, A.-C. (1981), "Pensionstillgångarna i Sverige och deras fördelning", *Statistisk Tidskrift*, No. 1, 438-447.
- Statistics Sweden (1927), *Folkräkningen den 31 december 1920. V. Yrkesräkningen, 2: yrke, inkomst och förmögenhet kombinerade inbördes samt med kön, civilstånd och ålder*, P.A. Norstedt & Söner: Stockholm.
- Statistics Sweden (1937), *Folkräkningen den 31 december 1930. VII. Folkmängden efter yrke, inkomst och förmögenhet: 2 avd.*, P.A. Norstedt & Söner Stockholm.
- Statistics Sweden (1938), *Folkräkningen den 31 december 1930. VIII. Folkmängden efter yrke, inkomst och förmögenhet: 3 avd.*, P.A. Norstedt & Söner: Stockholm.

- Statistics Sweden (1940), *Särskilda folkräkningen 1935/36. VIII. Partiella folkräkningen i mars 1936: Yrke. Yrkesväxling. Skol- och yrkesutbildning. Inkomst och förmögenhet*, P.A. Norstedt & Söner: Stockholm.
- Statistics Sweden (1951), *Folkräkningen den 31 december 1945. VIII:1. Partiella undersökningar (bottensamplingen). Behandlar delar av statistiken över inkomst*. Sveriges Officiella Statistik: Folkmängden och dess förändringar, K.L. Beckmans Boktryckeri: Stockholm.
- Statistics Sweden (1956), *Folkräkningen den 31 december 1950. VII. Urvalsundersökningar. Statistiken över inkomst*. Sveriges Officiella Statistik: Folkmängden och dess förändringar, Statistiska Centralbyrån: Stockholm.
- Statistics Sweden (2004), *Förmögenhetsstatistik 2002, Sammansättning och fördelning*.
- Statistics Sweden (2006a), *Förmögenhetsstatistik 2004, Sammansättning och fördelning*.
- Statistics Sweden (2006b), Facts about wealth statistics, (downloaded on May 20, 2007): <http://www.scb.se/statistik/HE/HE0104/dokument/Faktastat2004%20eng.doc>.
- Steinmo, S. (1993). *Taxation and Democracy*, Yale University Press: New Haven.
- Swedish National Tax Board (2008), *Skattefelskarta för Sverige. Hur togs den fram och hur kan den användas?*, Rapport 2008:1, Skatteverket.
- Söderberg, J. (1991). *Wage differentials in Sweden, 1725-1950*, in Brenner Y. S., H. Kaelble and M. Thomas (Eds.), *Income distribution in historical perspective*, Cambridge University Press, Cambridge.
- Waldenström, D. (forthcoming), "Swedish stock returns and bond yields, 1856–2006", in Edvinsson, R, T. Jacobsson and D. Waldenström (Eds.), *Swedish Historical Monetary Statistics, 1668-2008*, Swedish Riksbank, Stockholm.
- Wolff, E. N. (2006), "The Retirement Wealth of the Baby Boom Generation", mimeo, New York University.

Appendix A: Wealth concentration in Sweden, 1873-2006, main series.

Table A1: Top marketable wealth shares, wealth and estate tax data, 1873-2006

Net worth (net marketable wealth)										
Year	Wealth tax data, market values					Estate tax data, tax values				
	P90-100	P95-100	P99-100	P99.9-100	P99.99-100	P90-100	P95-100	P99-100	P99.9-100	P99.99-100
1873						88.34	81.19	60.46	35.60	5.75
1874						85.82	77.35	52.82	24.23	4.41
1875						85.83	77.49	54.18	24.46	6.79
1876						86.14	77.66	55.69	23.15	7.40
1877						85.99	77.39	54.07	23.55	5.60
1906						87.38	78.37	57.75	26.14	4.36
1907						88.32	79.88	61.29	31.70	11.19
1908*	86.04	76.17	53.79	28.13	13.64	88.15	79.44	61.10	27.01	3.57
1920	91.69	79.25	51.51	25.37	9.60					
1930	89.49	77.35	50.02	22.35	9.23					
1935	83.55	70.74	42.77	18.73	7.28					
1937			42.74	19.13	6.97					
1945	83.17	65.94	37.69	15.13	5.44	90.93	76.87	44.14	17.70	6.85
1946	81.38	65.77	37.66	14.84	5.32					
1947	79.58	63.45	34.71	13.11	4.51					
1948	80.71	63.11	34.07	12.50	4.36					
1949	79.13	61.82	33.17	12.13	4.27					
1950	77.29	60.62	32.81	12.12	4.22					
1951	74.96	58.98	32.15	12.05	4.37					
1954						74.55	56.63	27.83	9.65	2.41
1966	63.23	46.92	23.41	9.00	3.53					
1967						56.16	42.67	21.95	8.17	2.59
1970	57.90	42.07	20.06	7.45	2.94					
1975	54.00	38.00	17.00	6.00	2.20					
1978	54.50	38.60	16.60	5.10	1.70					
1983	54.50	38.40	17.70	6.70	2.80					
1985	53.40	37.00	16.50	6.50	2.40					
1988	56.60	40.10	18.40	7.30	3.00					
1990	58.70	42.60	20.70	8.60	3.10					
1992	57.70	40.90	19.50	7.90	2.90					
1997	61.10	44.10	20.30	7.30	2.80					
1999	60.34	44.02	19.29	5.45	1.29					
2000	59.93	44.36	21.89	9.26	3.94					
2001	57.69	42.09	19.74	6.41	1.58					
2002	57.27	41.16	17.97	5.29	1.30	51.38	36.55	17.02	6.70	2.64
2003	56.60	40.73	17.93	6.13	2.60	50.33	34.57	14.50	5.35	2.78
2004	57.81	42.69	20.48	7.77	3.06					
2005	58.37	43.58	19.71	7.26	3.67					
2006	55.86	39.98	18.53	7.21	3.19					

Notes and sources: The shares based on estate tax data are for the population of the deceased. In 1908, however, there are mortality adjusted shares (marked with an *) and placed in the wealth tax data columns since they show the distribution for the living population.

Table A2: Top percentile share of marketable wealth after adding foreign, super-rich and retirement wealth, 1975–2006.

	Marketable wealth								Augmented wealth	
	W	WBP	WBPI	WFA	WFAI	WBPIDSR	WFAIDSR	WFAISR	AW	AWBPIDSR
1975	17.00	17.94	17.94	17.00	17.00	17.94	17.00	17.00		
1978	16.60	17.08	17.17	20.52	20.52	17.17	20.52	20.52	7.82	8.09
1983	17.70	17.59	17.72	23.03	23.97	20.11	26.01	28.36		
1985	16.50	16.87	17.00	22.60	23.81	20.36	26.65	30.25	6.68	8.27
1988	18.40	19.20	19.34	25.45	26.96	22.52	29.58	33.11		
1990	20.70	22.96	23.18	26.21	28.02	26.28	30.74	33.74		
1992	19.50	21.64	22.11	27.36	29.90	25.20	32.42	35.04		
1997	20.30	24.87	25.75	26.96	31.10	27.37	32.49	36.59		
1999	19.29	23.79	24.95	23.81	28.13	25.72	28.83	36.54		
2000	21.89	26.93	28.22	26.33	30.70	30.45	32.78	42.10		
2001	19.74	25.55	27.14	24.73	29.53	29.45	31.69	41.63		
2002	17.97	25.12	27.07	23.83	29.20	29.48	31.47	41.54		
2003	17.93	24.89	27.05	23.61	29.01	29.14	30.99	40.08		
2004	20.48	26.52	28.81	26.42	31.52	30.83	33.39	43.15	13.75	20.69
2005	19.71	25.01	27.37	25.42	30.34	29.47	32.27	41.26		
2006	18.53	22.36	24.68	23.97	28.47	26.89	30.46	39.61		

Note: W (Marketable net worth) = Domestic market valued wealth tax-based wealth; WBP = W + Foreign wealth of B.o.P.; WFA = W + Foreign wealth of F.A.; WBPI = WBP + 5% annual interest; WFAI = WFA + 5% annual interest; WBPIDSR = WBP + Domestic super wealth; WBPISR = WBPI + Foreign and Domestic super wealth; WFAISR = WFAI + Foreign and Domestic super wealth; AW (Augmented wealth) = W + pension and social security wealth; AWBPIDSR = AW + WBPIDSR – W.

Sources: See the text.

Appendix B: Estimates of foreign and domestic closely held wealth

Table B1: Foreign household wealth estimates, 1975-2006 (Billion SEK, 2006 prices)

Year	Net errors and omissions (Balance of Payments, B.o.P)			Unexplained financial savings (Financial Accounts, F.A.)		
	Annual flow	Accumulated	Accumulated (+ 5% interest)	Annual flow	Accumulated	Accumulated (+ 5% interest)
1975	-2	19	19			
1976	1	16	17			
1977	4	10	12			
1978	-1	10	12		87	87
1979	0	9	12	-13	95	99
1980	4	4	7	-12	95	103
1981	1	3	6	-20	105	117
1982	5	-2	0	-9	106	122
1983	0	-2	0	-10	107	128
1984	-6	5	7	31	68	93
1985	-3	7	10	-63	126	153
1986	-7	14	16	-59	179	213
1987	0	13	17	-32	204	247
1988	-10	23	27	-24	217	269
1989	-32	53	58	26	178	239
1990	-24	72	80	-23	184	250
1991	25	41	52	1	167	240
1992	-15	56	68	-57	221	303
1993	16	38	53	-68	279	372
1994	-28	65	82	-20	292	402
1995	-18	81	102	-6	291	417
1996	-14	94	120	39	251	397
1997	-60	153	185	20	230	395
1998	-36	190	231	6	224	409
1999	-1	190	243	32	191	396
2000	-41	229	293	-12	201	423
2001	-32	256	332	-21	217	455
2002	-48	299	390	-28	241	496
2003	-18	311	420	-14	250	524
2004	4	306	435	-51	300	600
2005	0	304	455	-31	330	658
2006	39	261	432	-53	378	735

Table B2: Wealth of super rich Swedes in Sweden and abroad, 1983-2006.

	Domestic closely held wealth			Foreign wealth			Listed fortunes:		Source
	Sum BSEK	Households N	Average BSEK	Sum BSEK	Households N	Average BSEK	Lowest BSEK	Largest BSEK	
1983	46	99	0.47	26	10	3	0.21	15	Afv
1988	95	174	0.55	85	32	3	0.14	40	Afv
1991	110	299	0.37	74	42	2	0.13	38	Afv
1992	87	261	0.34	65	38	2	0.12	32	VA
1994	56	147	0.38	123	29	4	0.17	69	MA
1996	107	144	0.74	104	21	5	0.39	44	MA
1997	60	65	0.93	145	21	7	0.44	50	MA
1999	36	20	1.79	343	20	17	1.1	138	VA
2000	117	41	2.84	483	34	14	1.09	273	VA
2001	118	38	3.11	536	34	16	1.06	319	VA
2002	120	47	2.56	541	39	14	1.04	313	VA
2003	111	43	2.59	515	38	14	0.61	307	VA
2004	122	41	2.96	656	38	17	0.81	407	VA
2005	141	45	3.14	651	38	17	1.01	385	VA
2006	173	56	3.08	797	49	16	1	461	VA

Notes and sources: In the years not displayed there were no wealth listings made. The wealth concept is net worth in all years except 1983 and 1988 when it is gross wealth. BSEK = Billion SEK (2006 prices), Afv = *Afvärlden*, VA = *Veckans Affärer* and MA = *Månadens Affärer*.

Appendix C: Calculating the Swedish augmented wealth concentration, 1978-2004

There are many conceptual and practical problems associated with measuring retirement wealth and its distribution. First, parts of it are defined in collective form and hence not well-defined for all individuals (or households) in the system. Second, the calculation of today's claims on future pensions concerns a number of complex assumptions of people's life expectancy, future rates of return on the capital markets and so forth. Third, there are public and private parts of the pension system, funded and un-funded parts, and some of these are more easily observed and measured than others, which may create systematic measurement errors in the data. Fourth, the distributional features of the different parts of the pension system differ considerably and are also complicated to measure, e.g., in the case of mapping the pensions across the income distribution onto households in the contemporaneous wealth distribution.

Our estimates of the augmented wealth distribution are based on the estimate by Ståhlberg (1981) for 1978, Jansson and Johansson (1988) for 1985 (largely building on Ståhlberg's estimate), and a rough estimate by ourselves for 2004. For details on the historical estimates see the respective sources. The estimated Swedish augmented wealth concentration in 2004 was computed in the following four steps. First, we take the estimated public pension wealth (*pensionsskuld*) of all Swedes in the old-age pension system as calculated by the Swedish Social Insurance Agency (Swedish Social Insurance Agency, 2006, pp. 21-23, 74). This amount includes the sum of current and estimated future pensions in the basic and supplementary (ATP) pensions as well as the sum of the funded part (PPM), in total 6,244 billion SEK (2004 current prices). From this we subtract a latent tax debt of 30 percent since pensions are treated as taxable income, resulting in a net-of-tax public pension wealth of 4,271 billion SEK.

Second, we take the sum of all funds in the private pension-related complementary benefits system (ITP). This amounts to almost 887 billion SEK as reported by Sjögren Lindquist and Wadensjö (2007). Specifically, these include funds without individual options of 478 billion SEK in the AFA and Alecta funds (table 6.2, p. 170) and all funds with individual options summing to about 408 billion SEK (table 6.5, pp. 177ff). In total, the public and private Swedish pension wealth net-of-tax amounts to 4,991 billion SEK.

Third, we calculate the shares that accrue to the top percentile for all of these different amounts. To do this, we use tabulated data on the Swedish labor income distribution in 2004 from Roine and Waldenström (2007). In the public system (basic, ATP and PPM) all income earners receive about a fifth (18.5% for all and an additional 4.5% for the top nine deciles) of their earned income up to 317,250 SEK (7.5 basic income amounts, *inkomstbasbelopp*) as public pension. In the private system (ITP), income earners get 30 percent of their incomes above 294,750 SEK in pension. Since 317,250 SEK in 2004 represented the income of the 75th percentile in the income distribution, this means that only the highest quartile received pensions in the ITP system. By combining all this distributional data for both public and private systems, we land at the following retirement wealth shares in 2004. In the case of public (public + private = total) pension wealth, the share was for P0-75 51.6% (31.7%), for P75-90 22.7% (15.2%), for P90-99 20.3% (17.4%) and for P99-100 5.4% (5.8%). In other words, the total retirement wealth was slightly more unequally distributed than the public retirement wealth only.

Fourth, and finally, we compute the augmented wealth distribution by adding these amounts of retirement wealth for the fractiles in the *income distribution* to the net marketable wealth of the respective fractiles in the *wealth distribution*, hence assuming that they are approximately the same.

Table 1: Shares of wealth owned by top income earners

Income fractile:	P90-95		P95-99		P99-100	
	Mainly high-wage earners		High-wage earners and rentiers		Mainly rentiers	
	Wealth share	Pct. change	Wealth share	Pct. change	Wealth share	Pct. change
1911	3.5		10.8		33.8	
1920	6.7	90.7	16.6	53.9	41.9	23.8
1930	6.4	-4.6	15.3	-8.2	38.0	-9.3
1941	13.2	104.6	18.2	19.3	26.5	-30.3

Note: We denote the P90-95 in the income distribution “high-wage earners” since their wealth on average in 1911 was not large enough to live off. According to the data used in Roine and Waldenström (2007), it would generate an annual capital income (assumed as five percent nominal return of the observed wealth) of roughly SEK 200, or about a third of the average income in the country as a whole (which was about SEK 700). By contrast, the wealth of income earners in the top percentile, the rentiers as we call them, would on average generate about SEK 6,500, or more than nine times the average income.

Table 2: Sums of foreign and super-rich wealth after 1978 (billion SEK, 2006 prices).

Year	Domestic wealth		Foreign and family firm wealth			
	Total wealth	P99-100	Foreign wealth (B.o.P.)	Foreign wealth (F.A.)	Wealth of super-rich Swedes living <i>in Sweden</i>	Wealth of super- rich Swedes living <i>abroad</i>
1978	1,766	293	12	87	–	–
1983	1,549	274	0	128	46	27
1990	2,464	510	80	250	107	78
1997	2,521	512	185	395	60	147
2006	5,288	980	432	735	173	797

Notes: All sums are in current SEK billion. For sources and details, see the text. We add a five percent annual rate of return on the accumulated foreign wealth as estimated from the Balance of Payments (B.o.P.) and the Financial Accounts (F.A.). The 1990 sums of super-rich wealth are from 1991 because no estimates were made for 1990. Most likely, the 1991 numbers are smaller than the 1990 ones due to the Swedish financial crisis which erupted in 1991. Note that of the 797 billion SEK owned by super-rich Swedes living abroad in 2006 as much as 461 billion SEK, about 65 billion USD, adhere to IKEA founder Ingvar Kamprad.

Table 3: Alternative reference wealth totals, 1930–1985.

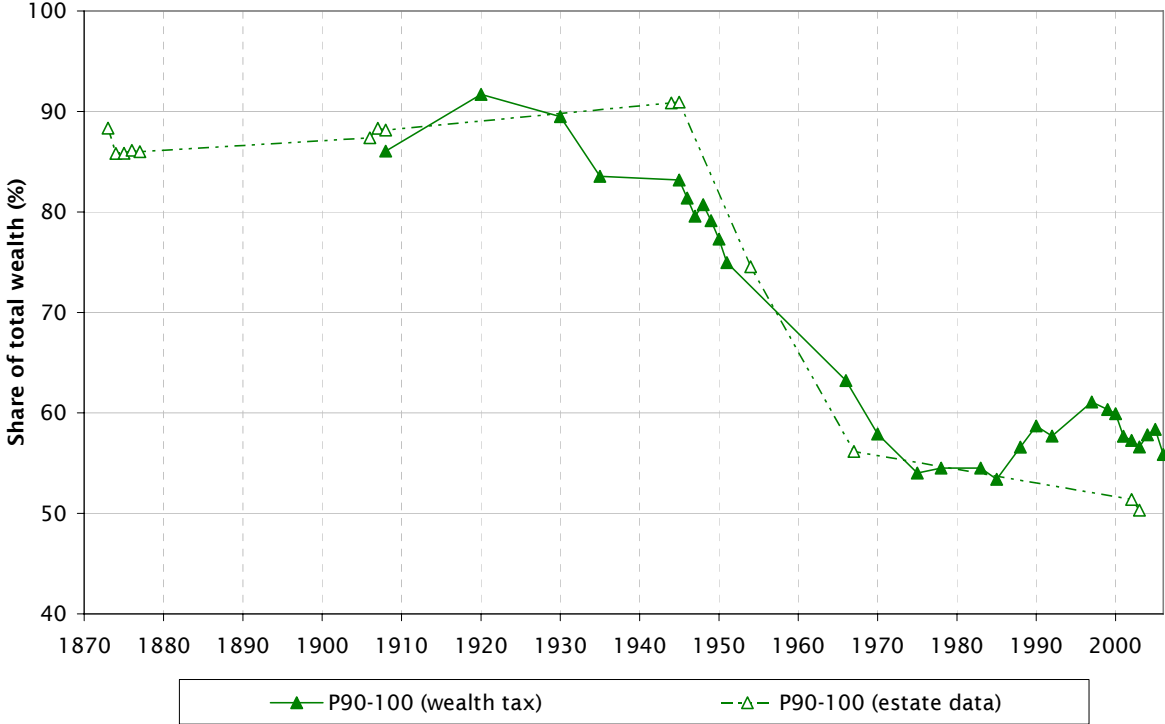
a) Levels

Year	Alternative wealth totals (million SEK)			Alternative shares for P99–100			
	Tax values	Market values (Spånt 1979)	"All wealth" (Berg 1988)	Main series	Market-tax distributed as in 1975	Market-tax distributed as income	All wealth-tax distributed as income
1930	15,304	20,404		50.02	42.52	40.96	
1935	17,600	23,460		42.77	36.35	35.16	
1945	25,290	33,500		37.69	32.03	30.85	
1951	32,950	53,300	77,141	32.15	27.33	22.71	17.99
1966	103,180	144,300	232,611	23.41	19.90	18.57	13.95
1970	147,760	190,200	358,106	20.06	17.05	16.98	11.95
1975	358,700	508,000	622,939	17.00	14.45	13.59	12.08
1985	864,213		1,599,307	16.50			11.03

a) Changes

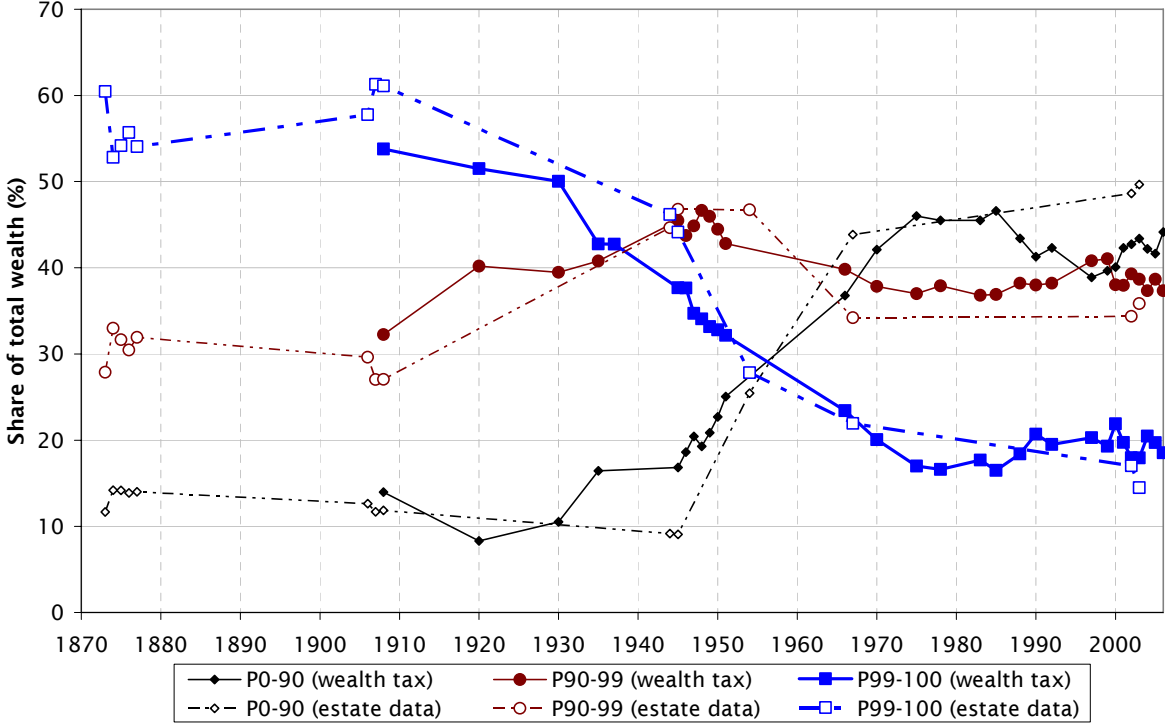
Years	Percentage change of P99–100 (%)			
	Main series	Market-tax distributed as in 1975	Market-tax distributed as income	All wealth-tax distrib- uted as income
1930-35	-14.5	-14.5	-14.1	
1935-45	-11.9	-11.9	-12.3	
1945-51	-14.7	-14.7	-26.4	
1951-66	-27.2	-27.2	-18.2	-22.4
1966-70	-14.3	-14.3	-8.6	-14.4
1970-75	-27.4	-27.4	-26.8	-13.4
1975-85	-2.9			-8.8

Figure 1: Wealth share of top decile using wealth tax and estate tax data, 1873-2006.



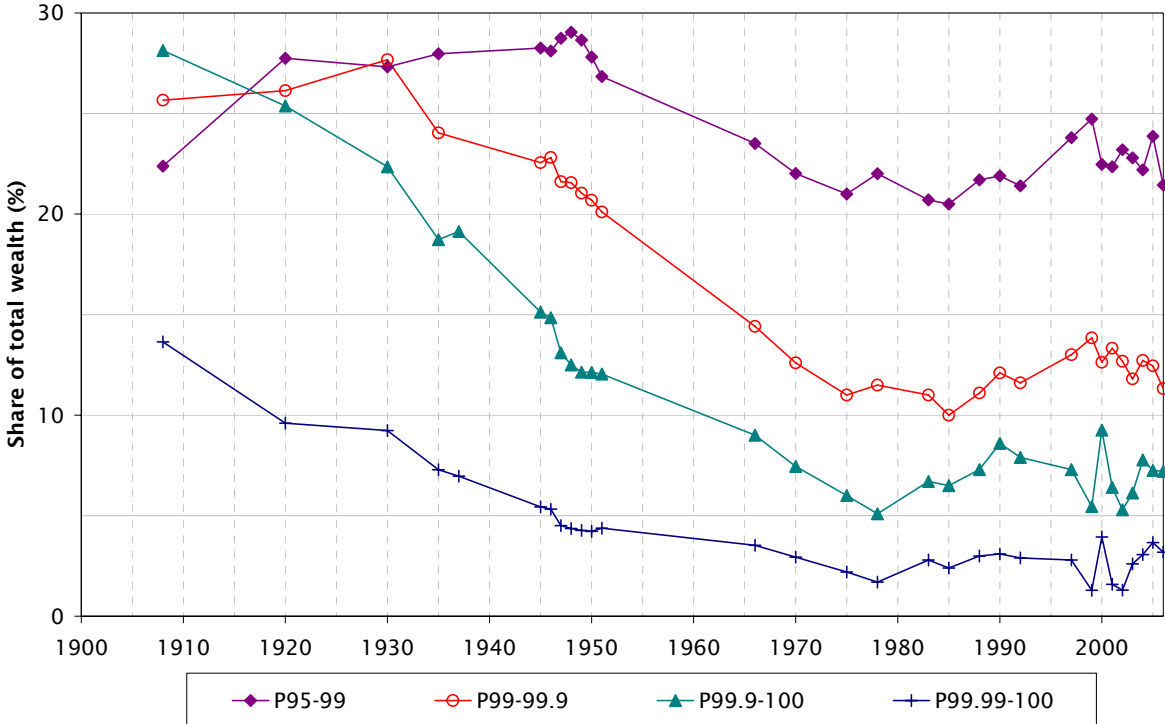
Source: Table A1.

Figure 2: Wealth shares of top percentile, rest of top decile and bottom nine deciles using wealth tax and estate data, 1870-2006.



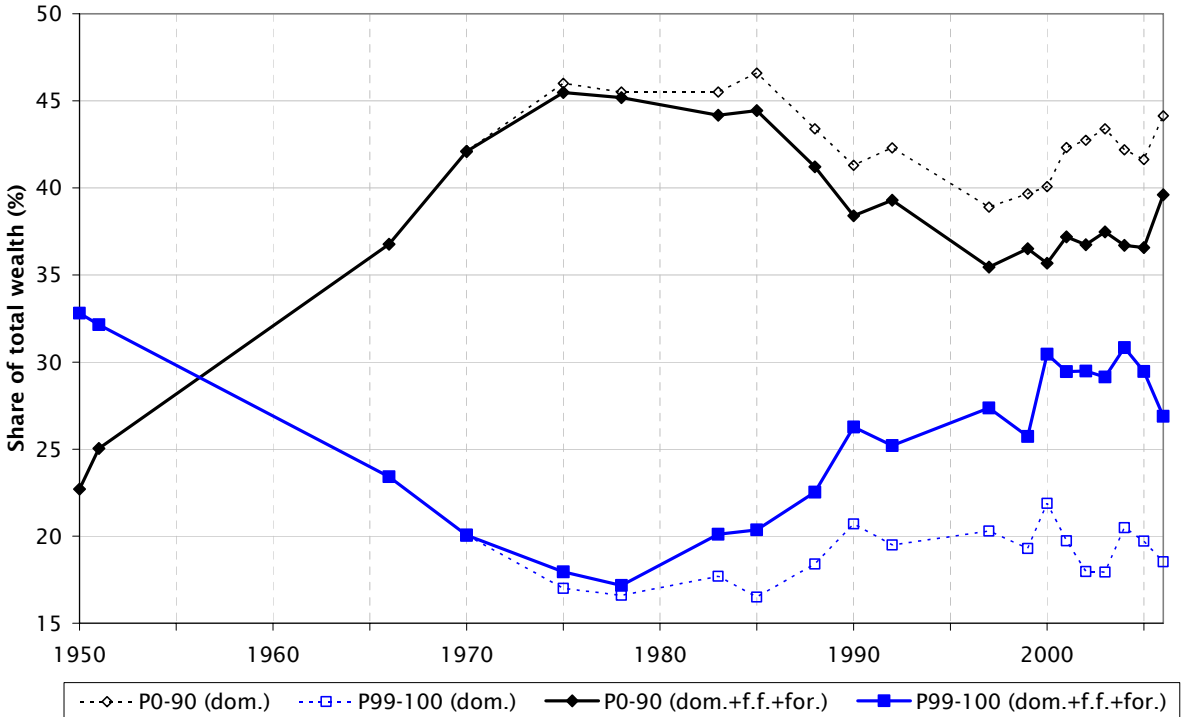
Source: Table A1.

Figure 3: Wealth shares groups within the top wealth vintile, 1908–2006.



Source: Table A1.

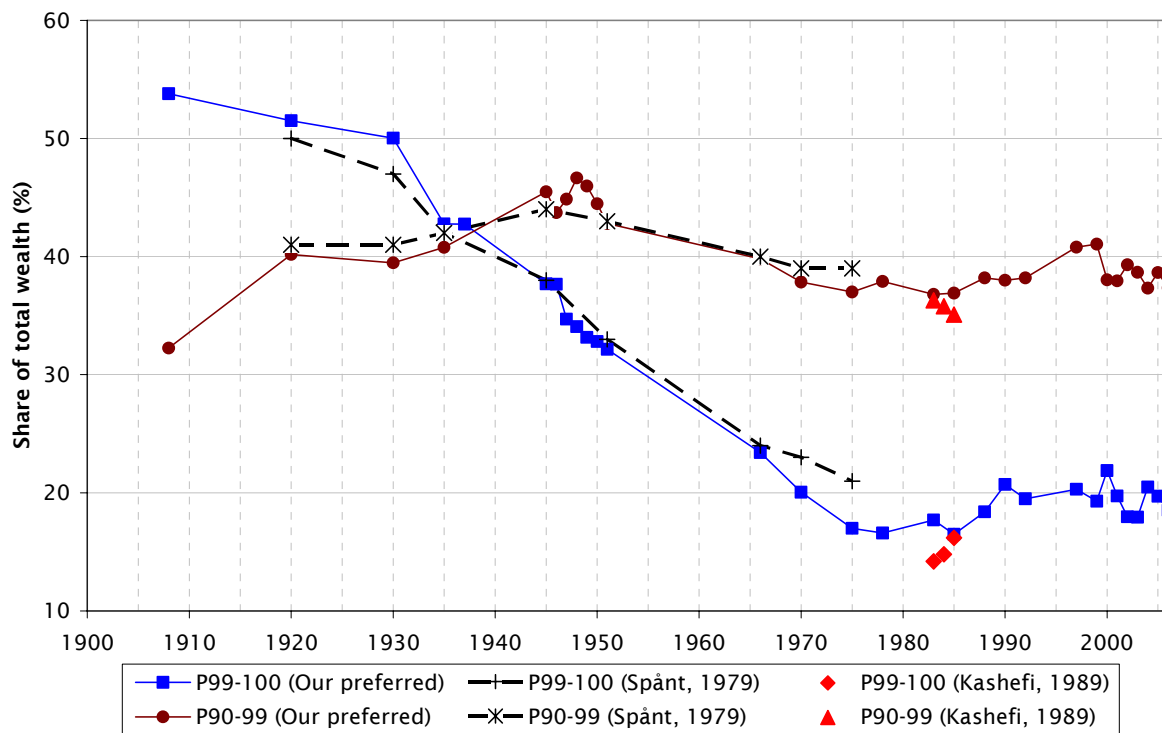
Figure 4: Adding foreign and super-rich wealth to the top percentile, 1950–2006.



Note: The notation “dom.” means wealth shares when using the market-valued wealth tax-based domestic wealth, “f.f.” the mainly closely held family firm wealth owned by super rich residents, and “for.” means the addition of foreign household wealth estimated from the B.o.P. (see text for further details).

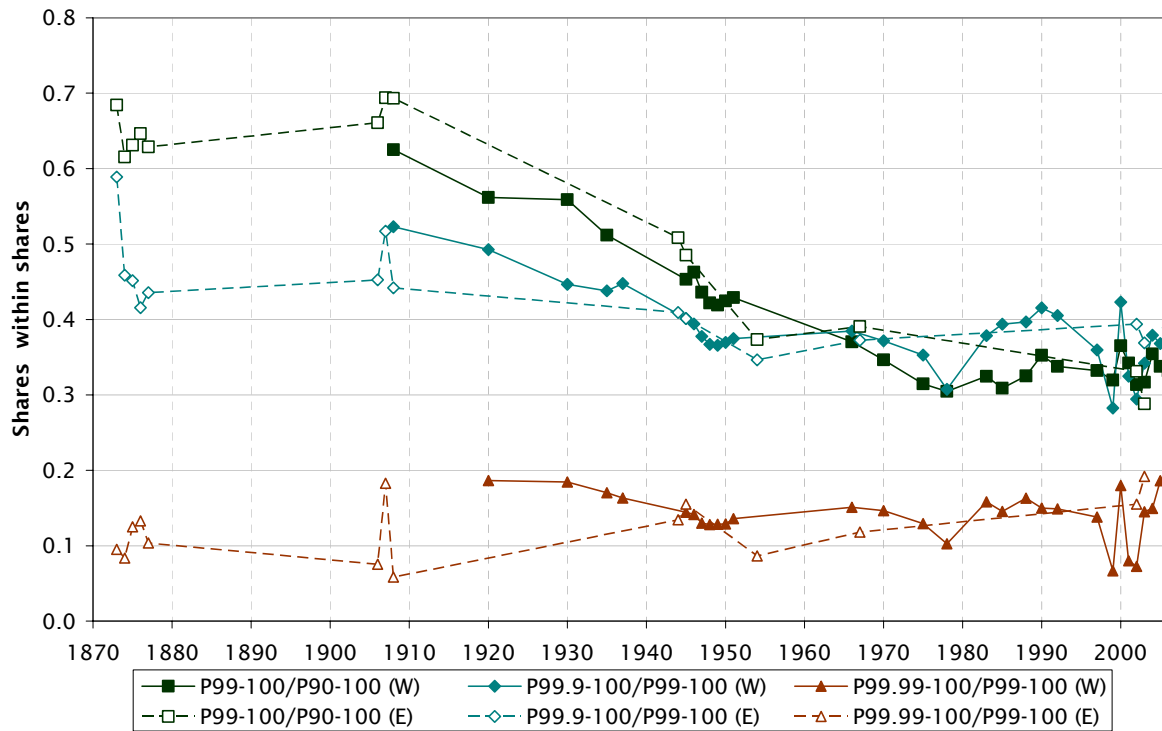
Sources: Tables A1 and A2.

Figure 5: Comparison between our series and previous studies.



Note: All series are based on wealth tax statistics. “Our preferred” is the main series presented in Figure 2.

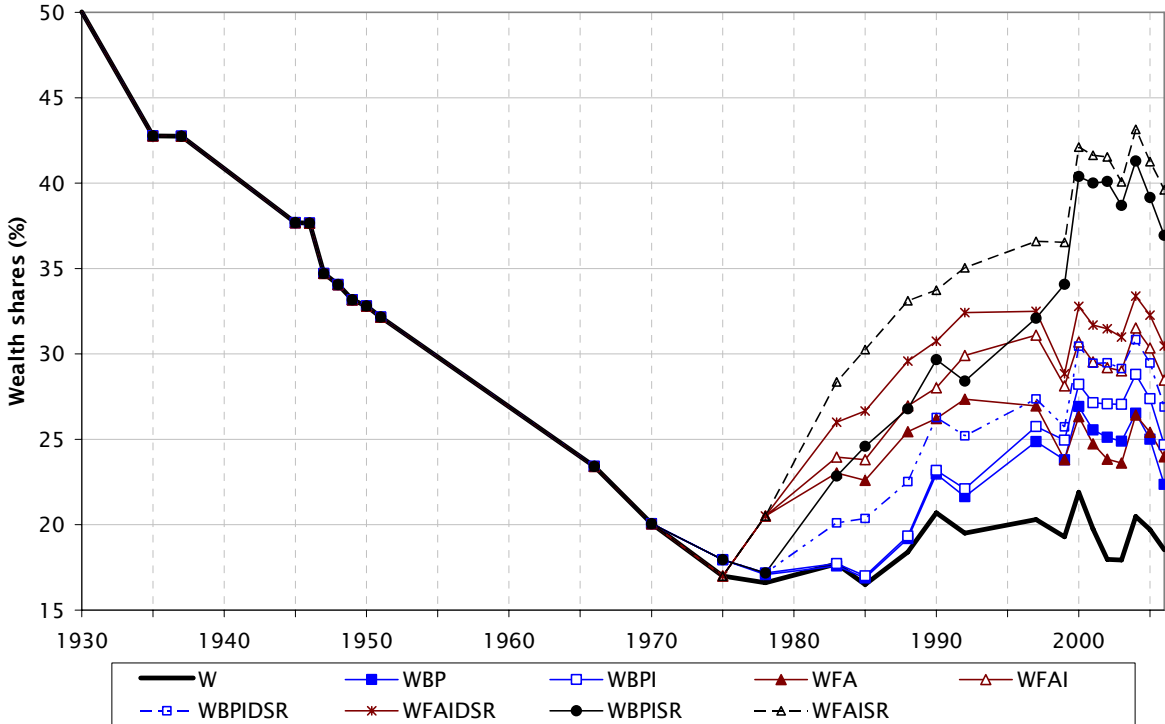
Figure 6: Shares within shares-estimates of the wealth concentration.



Note: The notation “W” and “E” refers to wealth tax and estate tax data sources, respectively.

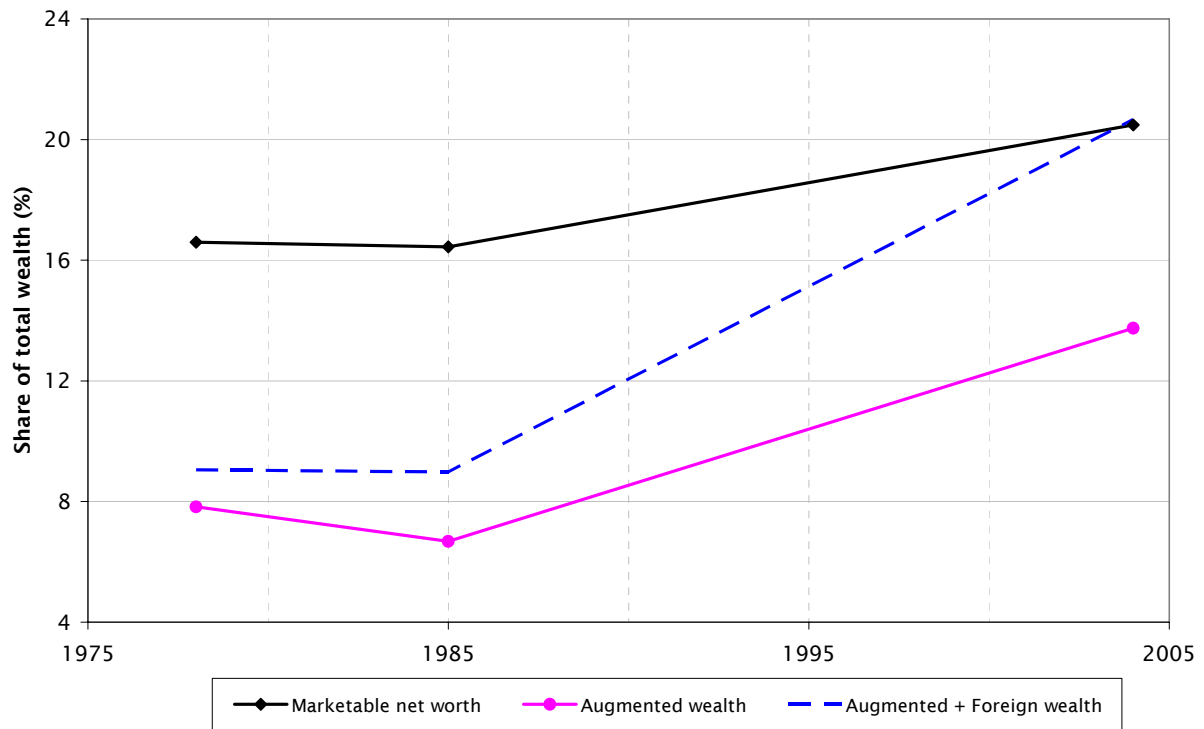
Sources: Calculations based on shares in Table A1.

Figure 7: Varying the definition of foreign and journalistic wealth.



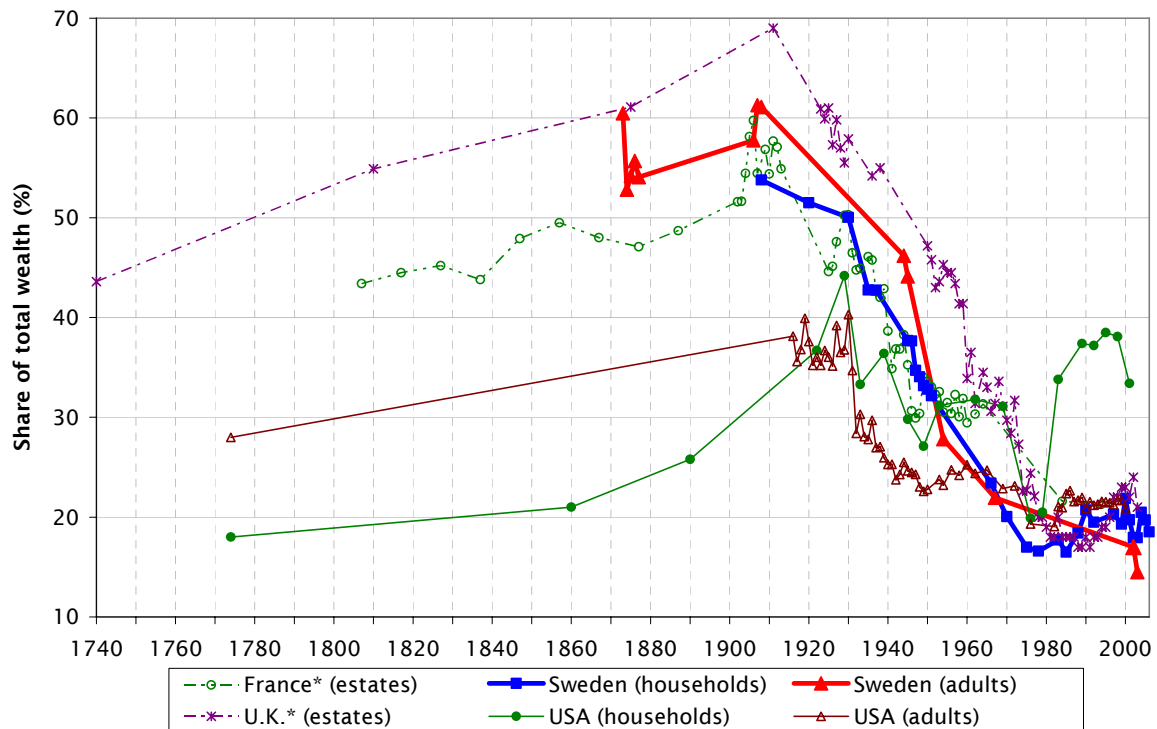
Note: The acronyms in the figure are defined as follows: W (Marketable net worth) = Domestic net worth (wealth tax-based), WBP = W + Foreign wealth in B.o.P.; WFA = W + Foreign wealth in F.A.; WBPI = WBP + 5% annual interest on foreign wealth; WFAI = WFA + 5% annual interest on foreign wealth; WBPIDSR = WBP + Domestic closely held super-rich wealth; WBPISR = WBPI + Foreign and Domestic closely held super-rich wealth; WFAISR = WFAI + Foreign and Domestic closely held super-rich wealth. See text for details.
Sources: Table 2.

Figure 8: Top percentile share of marketable, augmented and foreign wealth, 1978–2004.



Sources: Table A2.

Figure 9: Top wealth percentile in four countries, 1740–2006.



Notes and sources: The estate series for the U.S. (adults and households before 1960) and the U.K. (U.K.* denoting England/Wales up to 1939 and U.K. thereafter) are mortality-adjusted while the Swedish and French ones are not. For U.S. (households) after 1960 survey data were used. For details, see Ohlsson et al. (2008) and Table 1 (this paper).