

MPRA

Munich Personal RePEc Archive

Do pension wealth, pension cost and the nature of pension system affect coverage? Evidence from a country where pay-as-you-go and funded systems coexist

Carpio, Miguel Angel
Universidad de Piura

21. November 2011

Online at <http://mpra.ub.uni-muenchen.de/34926/>
MPRA Paper No. 34926, posted 21. November 2011 / 21:23

Do pension wealth, pension cost and the nature
of pension system affect coverage? Evidence from
a country where pay-as-you-go and funded
systems coexist

Miguel Ángel Carpio*

November 15, 2011

Abstract

This paper proposes a nested model, based on an additive random utility model, to analyze whether pension wealth and pension cost affect the probability that a worker affiliates to a pension program, and to observe differentiated effects regarding the nature of the pension system (pay-as-you-go or funded). The analysis focuses on Peru because the peculiar coexistence of a pay-as-you-go and a funded system allows observing first whether a worker is subscribed or not, and then his choice between pay-as-you-go and funded system. The data consists in five cross sections from the ENAHO between 2005 and 2009. Results show that changes on costs have a greater impact over the probability of affiliation than changes on benefits, and that changes affect more when applied to the funded system than when applied to the pay-as-you-go. Variables related with the contracting firm have a large impact. Hence, this paper provides a tool to evaluate measures to solve the coverage problems of pension programs.

JEL codes: H55; J32; J82

Keywords: pension; coverage; pay-as-you-go; funded; nested; pension wealth.

* Associate Professor, Department of Economics, Universidad de Piura. Email address: miguel.carpio@udep.pe. Andrea Salazar Sosaya and María Eugenia Guerrero provided excellent research assistance. This research was supported by the Economic and Social Research Consortium (CIES).

1 Introduction

The performance of a pension program is usually assessed by considering its coverage, which can be defined twofold. On one hand, coverage refers to the proportion of the elderly population protected by the program. On the other hand, coverage refers to the proportion of young adults affiliated to the program or, if the indicator looks to predict future protection more effectively, to the proportion of those paying contributions to the program. This paper focuses on coverage of young adults.

The coverage of pension programs is low in several countries, with special emphasis in Latin America. Rofman, Lucchetti and Ourens (2008), who collected information on coverage based on households surveys, show that less than 40% of the labor force made regular contributions to pension systems in eleven of the fifteen Latin American countries considered in the mid 2000s. It is noteworthy that low coverage is a problem that neither countries that preserved pay-as-you-go systems nor countries that introduced funded pension systems have solved. How would the uncovered workers finance their consumption when they retire? Would the traditional intergenerational arrangements be enough in a context of population aging?

There is little empirical evidence useful to increase coverage because of two problems. First, the lack of microeconomic data on expected benefits and costs of the pension programs has led the analysis to focus on probability models that include many explanatory variables related to the individual (mainly, income and age) and its labor position. This strategy does not help to improve the design of pension programs because it does not identify whether the effect of these variables operates through benefits, costs or other channel. Second, the fact that Peru and Colombia are the only countries where the pay-as-you-go and the funded systems coexist has led the literature to analyze the coverage problem for one system or the other, but not in a comparative way.

This paper analyzes empirically whether the probability that a worker is covered by the Peruvian pension program is determined by pension wealth, pension cost and the nature of the pension system. The analysis is conducted for Peru because, as opposed to other countries, the pension reform of 1993 established that a worker has the opportunity to choose between a pay-as-you-go system and a funded system. The coexistence of these systems is unusual since a group of reforming countries introduced a funded system by phasing out the preexisting pay-as-you-go system and another group created a unified multiple pillars system. The data consists in five cross sections of a Peruvian household survey carried out by the Peruvian Statistics Institute between 2005 and 2009.

The first stage implies estimating pension wealth and pension cost because the data do not provide information on them, neither in the pay-as-you-go system nor in the funded system. Pension wealth, defined as the discounted sum of

future benefits from retirement, is constructed for each worker in the survey under the three possible alternatives: not subscribed to any pension system, subscribed to the pay-as-you-go system and subscribed to the funded system. Pension cost, defined as the discounted sum of contributions until retirement, is computed similarly. In both cases, the analysis focuses on workers that receive monetary income, including wage workers and self-employed workers.

The second stage proposes a nested model, based on an additive random utility model, to analyze the subscription of the worker to the pension program, observing first whether he is subscribed or not, and then his choice between the pay-as-you-go and the funded systems. An additional model observes first whether the worker is contributing to the pension program or not, and then what system receives the contributions. The explanatory variables of interest are pension wealth and pension cost, which vary over the worker and the alternative. A set of controls that vary over the worker are also included, such as income, age and characteristics of the employer.

Results from both models are similar. On one hand, the affiliation model confirms that pension wealth has a positive impact on affiliation, while pension cost has a negative impact. The marginal effects' analysis reveals additional patterns. First, a small change on pension cost has a greater impact over affiliation than the same change on pension wealth, which holds in both the pay-as-you-go system and the funded. Second, changes over the funded system have larger impact over affiliation than changes over the pay-as-you-go system, which is true for both pension wealth and pension cost. Hence, the nature of the pension system (whether it is pay-as-you-go or funded) affects the impact of pension wealth and cost over affiliation. On the other hand, the contribution model shows that pension wealth does not have a significant impact on contribution, while pension cost does have a negative impact. Again, the marginal effects' analysis reveals that a change on pension cost has a larger impact in the funded system than in the pay-as-you-go. Finally, a number of control variables have a significant impact over affiliation and contribution, such as income, age, as well as self-employment, number of workers and economic sector of the contracting firm.

The literature review confirms that the analysis of pension programs does not incorporate information on benefits and costs, and that research has focused in each system in isolation. Holzmann, Packard y Cuesta (2000) use a cross section for Chile and Argentina. Auerbach, Genoni y Pagés (2007) use many cross sections for Brazil, Chile, Colombia, Costa Rica, El Salvador, Nicaragua and Peru. The results show that the income and age variables are significant, but do not establish whether they affect the subscription directly or through expected benefits or costs.

Chacaltana (2004) used three cross sections for the Peruvian case. The contribution of the paper is that, in addition to a binomial model for the coverage of the social security, he presents a multinomial model for the following al-

ternatives: subscribed to the pay-as-you-go system, subscribed to the funded system and not subscribed at all. Although this document does explore the differential effects taking into account the nature of the regimes, the explanatory variables do not include specific characteristics of the pension systems. Besides, the author points out that the multinomial model used is not econometrically appropriate because there is substitution between the alternatives, and he proposes a nested model as a future line of research.

This paper contributes to the literature on three dimensions. First, it constructs variables associated with benefits and costs of pension programs, for both pay-as-you-go and funded system. These variables allow the direct evaluation of its impact over affiliation and contribution to pension programs. Second, the paper uses the coexistence of the two systems in Peru to find differentiated effects of changes on benefits and costs over affiliation and contribution. Finally, it provides an econometric tool to evaluate the possible impact of policy measures to solve the low coverage of pension programs.

This paper is organized as follows. Section 2 explains the Peruvian regulatory framework at the time of analysis. Section 3 presents a simple theoretical model, modified from Galiani and Weinschelbaum (2007). Section 4 briefly presents the database. Section 5 describes the empirical methodology. Section 6 presents the estimation strategy and results of the construction of pension wealth and cost. Section 7 presents the results. Finally, section 8 concludes.

2 Institutional framework

The Peruvian pension model consists of three independent regimes: the pay-as-you-go system¹, the funded system² and the military and police pension system. The first two are aimed at civilian workers from both private and public sectors, while the latter is aimed exclusively at police and armed forces. There is a fourth system aimed at particular groups of civil servants³, but it was closed to new members due to severe financial problems. In short, a civilian worker currently has the pay-as-you-go system and the funded system available for membership.

The pay-as-you-go system provides benefits set through a legal formula that yields pensions proportional to an average of final salaries. It includes minimum and maximum pensions, which had the purpose of introducing income redistribution. This system is managed by a public office attached to the Ministry of Economics and Finance. Despite a series of modifications on its parameters (age of retirement, minimum contribution period, contribution rate, etc.) this

¹Created by Law Decree N°19990.

²Created by Supreme Decree N°054-97-EF.

³Created by Law Decree N°20530.

regime is in financial deficit⁴.

The funded system was introduced in 1993 as part of a structural reform. Peru was the second country to privatize social security, a reform conducted by 28 countries in the last years. The funded system provides benefits based on the contributions made by the worker along its individual career, so that pensions are the result of individual saving and the return on those savings. This system does not have a redistribution purpose. It is managed by private pension funds administrators under the supervision of a public agency.

The coexistence of the pay-as-you-go and the funded systems is an almost unique characteristic of the Peruvian pension model. Mesa-Lago (2002) divides the structural pension reforms implemented on Latin-American on three groups: 1) substitution model, which involves the closure of the pre-existing pay-as-you-go system and the opening of a fully funded system (Chile, Bolivia, El Salvador, Mexico); 2) mixed model, which introduces a funded pillar within the pre-existing pay-as-you-go system (Argentina and Uruguay); and 3) parallel model, which maintains the pay-as-you-go system and introduces the funded system as an alternative (Peru and Colombia).

Membership to pension systems is legally compulsory for wage employees and voluntary for self-employed workers. For a wage worker, the employer is required to withhold pension contribution from his wage and pay this amount to the pay-as-you-go system or to the funded system, accordingly. For a self-employee, he must report the contribution that corresponds to his wage and pay this amount to the corresponding system.

What are the affiliation and transfer rules between systems? Newcomers in the labor force are able to choose between the pay-as-you-go and funded system, while individuals in the labor force at the time of reform were allowed to stay in the pay-as-you-go system and to switch to the funded system. Individuals switching from the pay-as-you-go to the funded system are entitled to recognition bonds if they have made a minimum number of past contributions, which increases their future pensions. The return from the funded system to the pay-as-you-go system is allowed only for special cases specifically included in the legal framework, such as workers affiliated without their explicit consent or workers that had fulfilled the requirements for a pay-as-you-go pension at the time of their affiliation to the funded system.

The costs applicable to the members of both systems are similar. The pay-as-you-go system applies a rate of 13% to wage. The funded system applies a contribution rate to the pension fund equal to 10% of wage (however, successive laws set the contribution rate at 8% from 1997 to 2005). Additionally, the

⁴For detailed information on the financial situation of the pay-as-you-go system, see the final report of the public technical committee established by Law N°28991.

funded system applies a commission rate for the pension funds administrator and an insurance premium rate that covers the risks of death and disability. These two rates are freely determined by each institution. The sum of the rates is, in all cases, somewhat lower than 13%.

Retirement age is 65 in both systems and the mechanisms of pension benefits computation within the pay-as-you-go and funded systems are explained in detail in the next sections.

The calculation of the pensions is different in each system. In the pay-as-you-go, pensions are calculated using a legal formula and require a minimum of 20 years of contributions. In the funded system, pensions are calculated as a direct function of the accumulated resources in an individual account during the working life and do not require a minimum number of years of contributions. Appendix A explains in detail the computation of pensions within systems.

3 Theoretical Framework

This model departs from Galiani and Weinschelbaum (2007). They develop a model that, as opposed to the pre-existing literature, includes worker's decisions as a determinant of the formality level of the economy, where formality is defined as the right to exercise health insurance as a socially mandated benefit. This model defines formality as the right to exercise retirement pensions and allows two coexisting pension systems. Hence, the model helps observing the determinants of the formality level of the economy and the size of the pay-as-you-go and the funded systems, including pension benefits and costs of each system.

The model assumes that there are four types of agents: firms, workers, government and pension funds administrator. Firms, heterogeneous in their managerial ability, maximize profits by choosing between formality and informality, and by hiring labor. Workers, heterogeneous in their human capital endowment, maximize utility by choosing whether to work in the formal or informal sector. If they work in the formal sector, they also have to choose between the pay-as-you-go and the funded system. The government collects payroll taxes, provides pensions based on the pay-as-you-go system and discourages informal activities. The pension funds administrator collects contributions and provides pensions based on the funded system. The behavior of the former two agents is not modeled.

3.1 Firms

The framework of the firms corresponds exactly to the original model. Firms produce a homogenous good using managerial ability (a) and homogenous units of labor (l). Firms differ according to an innate managerial ability, which is

distributed according to the density function $g(a)$ in the R_+ support.

Each firm takes two decisions: the number of units of labor hired and the market where they operate. On one hand, if a firm opts for the formal market, the profit function is given by:

$$\pi_f(l) = pf(a, l) - w_f l(1 + t) - \tau \quad (6)$$

Where p is the price, $f(a, l)$ is the production function, w_f is the wage per unit of labor paid in the formal market, t is the tax levied on firms⁵ and τ is the fixed cost of operating formally. On the other hand, if a firm opts for the informal market, the expected profit function is:

$$\pi_i(l) = [pf(a, l) - w_i l] * (1 - q) \quad (7)$$

Where w_i represents the wage per unit of labor paid in the informal market and q represents the probability that the government detect the informal firm, in which case the firm loses profits.

The model assumes that the homogeneous good is sold in a competitive market and that, for simplicity, its price is equal to one. In the same way, the labor market is assumed to be competitive. Finally, the production function is Cobb-Douglas with constant returns to scale: $f(a, l) = a^\beta l^{1-\beta}$

Firms maximize profit by choosing the quantity of labor demanded. A firm with managerial ability a has the following demand functions, as operating formally or informally:

$$l^f = a \left(\frac{1 - \beta}{w_f(1 + t)} \right)^{1/\beta} \quad (8)$$

$$l^i = a \left(\frac{1 - \beta}{w_i} \right)^{1/\beta} \quad (9)$$

Note that both derived demand functions are linear in managerial ability.

The profit functions $\Pi_f(a)$ y $\Pi_i(a)$ can be easily obtained inserting the demand functions (8) and (9) in the equations (6) and (7), respectively. Figure 1 shows how the functions depend on the inherent managerial ability.

⁵In Peru, this tax finances, for instance, unemployment and health insurances.

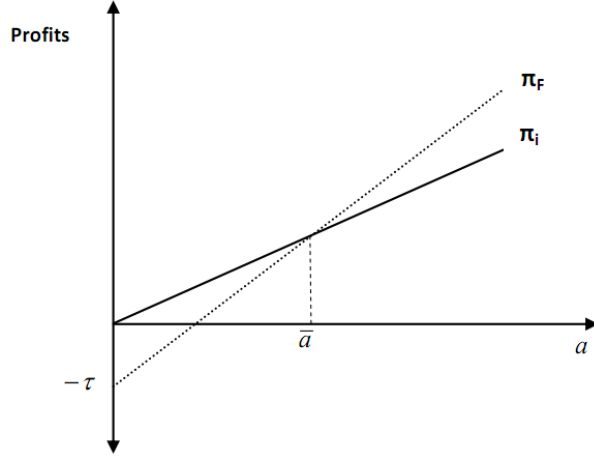


Figure 1: Profits as a function of managerial ability

The fixed cost τ of formality determines that firms with less managerial ability find more profitable to operate in the informal sector. To the extent that a firm has more managerial ability, the profits of operating formally increase relative to the profits of operating informally if the condition $\frac{d\Pi_f(a)}{da} > \frac{d\Pi_i(a)}{da}$ holds, which means:

$$\left[\frac{1}{w_f(1+t)} \right]^{\frac{1-\beta}{\beta}} > (1-q) \left(\frac{1}{w_i} \right)^{\frac{1-\beta}{\beta}} \quad (10)$$

The condition (10) is necessary for the existence of the formal and the informal sector, as it is observed.

From the equality $\Pi_i(\bar{a}) = \Pi_f(\bar{a})$, is possible to implicitly define the critical point \bar{a} that determines two groups: 1) the firms with managerial ability $a < \bar{a}$, which informally operate, and 2) the firms with managerial ability $a > \bar{a}$, which formally operate.

The total labor demand is composed of the formal market demand and the informal market demand, according to the following expression:

$$L_d(w_f, w_i) = l_d^f(w_f, w_i) + l_d^i(w_f, w_i)$$

where:

$$l_d^f(w_f, w_i) = \int_{\bar{a}}^{\infty} a \left(\frac{1-\beta}{w_f(1+t)} \right)^{1/\beta} \cdot g(a) da$$

$$l_d^i(w_f, w_i) = \int_0^{\bar{a}} a \left(\frac{1-\beta}{w_i} \right)^{1/\beta} \cdot g(a) da$$

3.2 Workers

Workers are endowed with units of homogeneous labor (l), which are distributed by the density function $h(l)$ in the R_+ support. In order to consider social protection against old age, the original model is converted to a two-period model. In the first period, the worker has to adopt a unique decision: whether to sell the units of labor to a formal firm or to an informal firm. However, if he decides to sell to a formal firm, the employee must further decide whether to affiliate to the pay-as-you-go system or to the funded system. In the second period, the worker in the formal sector receives a pension according to the chosen system and the worker in the informal sector does not receive any pension.

The utility function of a formal worker who opts for the pay-as-you-go system is:

$$u_{payg}(l) = w_f l (1 - t_{payg}) - \gamma + \frac{b_{payg}}{1 + \rho} \quad (11)$$

Where w_f is the wage per unit of labor, l is the total assigned and sold units of labor, t_{payg} is the contribution to the pay-as-you-go system, γ is the fixed cost for working in the formal sector, b_{payg} is the pension provided by the pay-as-you-go system in the second period and ρ is the intertemporal discount rate. According to the nature of the pay-as-you-go system, the future pension is assumed to be constant and financed by contributions collected from young workers in the second period.

The utility function of a formal employee who chooses the funded system is:

$$u_{funded}(l) = w_f l (1 - t_{funded}) - \gamma + \frac{b_{funded}}{1 + \rho} \quad (12)$$

where:

$$b_{funded} = (1 + r)t_{funded}w_f l$$

where t_{funded} denotes the rate of contribution to the pension fund and b_{funded} represents the pension received. Note that, according to the nature of the funded system, this pension is equal to the contribution made in the first period multiplied by the return rate r offered by the pension funds administrator⁶. Finally, the expected utility of a worker who chooses the informal sector is:

⁶For simplicity, it is assumed that the return rate is risk free, i.e. not random.

$$u_i(l) = w_i l(1 - q) \quad (13)$$

where w_i represents the wages per unit of labor in the informal sector and q represents again the probability that the government detects the informal firm, in which case the firm closes and the worker does not receive any payment⁷.

Obviously, the worker chooses the alternative that means getting the highest utility. Figure 2 shows how the utility functions given by (11), (12) and (13) depend on the number of units of labor innate to each worker. The present value of the pay-as-you-go pension is assumed to be smaller than the fixed cost associated to formality, i.e., $\frac{b_{payg}}{1+\rho} < \gamma$. In this framework, since clearly $\frac{du_{payg}(l)}{dl} < \frac{du_{funded}(l)}{dl}$, it is possible to have workers spread over the three alternatives only if $\frac{du_i(l)}{dl}$ is smaller than a certain critical value. This critical value is equal to the slope of the ray joining the origin to the intersection where $u_{payg}(l) = u_{funded}(l)$. It can be shown that this condition is equivalent to the following expression:

$$\frac{du_i}{dl} < \frac{du_{payg}(l)}{dl} + w_f t_{funded}(1+r) \left(\frac{1}{1+\rho} - \frac{\gamma}{b_{payg}} \right) + w_f (t_{payg} - t_{funded}) \left(1 - \frac{\gamma(1+\rho)}{b_{payg}} \right) \quad (14)$$

Condition (14) is necessary to allow the formal and the informal sectors to co-exist, as well as the pay-as-you-go and the funded systems. Intuitively, if the payroll tax of the pay-as-you-go system is bigger or equal to the rate of contribution of the funded system, condition (14) can be interpreted as follows: a labor market with a funded system would demand a parallel pay-as-you-go system if, for example, the pension in this system (b_{payg}) is high enough, or if the fixed cost associated with working in the formal sector (γ) is low enough.

⁷The model excludes alternative mechanisms to the pension systems to finance retirement.

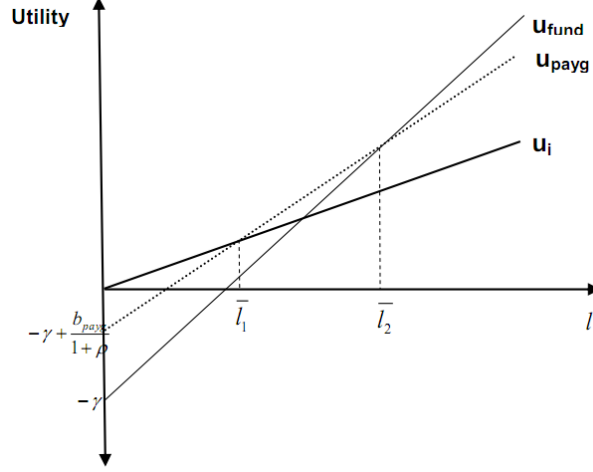


Figure 2: Utility as a function of the labor units

The fixed cost associated with formality determines that workers with a low endowment of labor find more profitable the informal market. To the extent that labor endowment increases, the utility of working formally rises in both systems. However, the marginal utility is greater in the funded system than in the pay-as-you-go system because more labor in the former system not only allows a higher salary in the first period, but also a higher pension in the second period.

From the equalities $u_i(\bar{l}_1) = u_{payg}(\bar{l}_1)$ and $u_i(\bar{l}_2) = u_{funded}(\bar{l}_2)$, it is possible to explicitly define two critical points \bar{l}_1 and \bar{l}_2 that determine three groups: 1) workers with labor endowment $l < \bar{l}_1$, who work informally; 2) workers with labor endowment $\bar{l}_1 < l < \bar{l}_2$, who work formally and choose the pay-as-you-go system; and 3) the workers with labor endowment $l > \bar{l}_2$, who work formally and choose the funded system.

The listed critical values correspond to the following expressions:

$$\bar{l}_1 = \frac{\gamma - \frac{b_{payg}}{1+\rho}}{w_f(1 - t_{payg}) - w_i(1 - q)} \quad (15)$$

$$\bar{l}_2 = \frac{b_{payg}}{w_f(1 + r)t_{funded} + w_f(1 + \rho)(t_{payg} - t_{funded})}$$

This analysis, as previously noted, assumes that the time-discounted pay-as-you-go pension is smaller than the fixed cost associated to formality. Assuming otherwise, it is possible to have workers spread over the three alternatives only if $\frac{du_i(l)}{dl}$ is smaller than the aforementioned critical value, i.e., if and only if the

condition given by (14) holds. This case will not be discussed in this paper ⁸.

The total labor supply consists of the formal sector supply and the informal sector supply, according to the following expression:

$$L_s(w_f, w_i) = l_s^f(w_f, w_i) + l_s^i(w_f, w_i) = L_s$$

where:

$$l_s^f(w_f, w_i) = \int_{\bar{l}_1}^{\bar{l}_2} lf(l)dl + \int_{\bar{l}_2}^{\infty} lf(l)dl$$

$$l_s^i(w_f, w_i) = \int_0^{\bar{l}_1} lf(l)dl$$

Since labor is inelastically offered (the individual does not choose how much to work, only in which sector), wages do not determine the total number of supplied hours, but only the composition between formal and informal sectors.

3.3 Equilibrium

An equilibrium is a $[w_f, w_i, l_s^f, l_s^i, l_d^f, l_d^i]$ vector such that there is a market clearing in both the formal and informal sectors:

$$l_s^f(w_f, w_i) = l_d^f(w_f, w_i) \quad (17)$$

$$l_s^i(w_f, w_i) = l_d^i(w_f, w_i) \quad (18)$$

The analysis is restricted to equilibriums where, according to reality, formal and informal markets exist, so as the pay-as-you-go and the funded systems. Hence, wages are assumed to fulfill conditions (10) y (14).

In order to provide a graphical representation of equilibrium, we first draw the locus of wages $w_f(w_i)$ where the total labor demand is equal to the total labor supply, that is $L_d(w_f, w_i) = L_s$. As it can be shown by deriving this equality with respect to w_i , the curve $w_f(w_i)$ is downward-sloping as long as the derivative of the total demand function with respect to each wage is negative.

The graphical representation of equilibrium is completed by drawing the wage pairs $w_f(w_i)$ where labor demand and labor supply are equal within each sector of the economy. If equations (17) and (18) are derived with respect to w_i , the following expressions can be obtained for the formal and the informal sector, respectively:

⁸The interest of this case is only theoretical since it implies that individuals with less labor endowment do not choose the informal market but the pay-as-you-go system, which is not observed empirically.

$$\frac{dw_f}{dw_i} = -\frac{\frac{\partial l_s^f(w_f, w_i)}{\partial w_i} - \frac{\partial l_d^f(w_f, w_i)}{\partial w_i}}{\frac{\partial l_s^f(w_f, w_i)}{\partial w_f} - \frac{\partial l_d^f(w_f, w_i)}{\partial w_f}} \quad (19)$$

$$\frac{dw_f}{dw_i} = -\frac{\frac{\partial l_s^i(w_f, w_i)}{\partial w_i} - \frac{\partial l_d^i(w_f, w_i)}{\partial w_i}}{\frac{\partial l_s^i(w_f, w_i)}{\partial w_f} - \frac{\partial l_d^i(w_f, w_i)}{\partial w_f}} \quad (20)$$

Although it is easy to conclude analytically that both derivatives are positive, determine further which one is bigger requires two additional observations. First, given that total labor supply is inelastic, changes in wages only generate migration from one market to another, that is:

$$\frac{\partial l_s^f(w_f, w_i)}{\partial w_f} = -\frac{\partial l_s^i(w_f, w_i)}{\partial w_f}$$

$$\frac{\partial l_s^f(w_f, w_i)}{\partial w_i} = -\frac{\partial l_s^i(w_f, w_i)}{\partial w_i}$$

Second, since total labor demand is assumed negative with respect to wages, a wage increase in one market implies a decrease in labor demand in that market that exceeds the increase in labor demand in the other market. Specifically:

$$-\frac{\partial l_d^f(w_f, w_i)}{\partial w_f} > \frac{\partial l_d^i(w_f, w_i)}{\partial w_f}$$

$$\frac{\partial l_d^f(w_f, w_i)}{\partial w_i} < -\frac{\partial l_d^i(w_f, w_i)}{\partial w_i}$$

The two previous observations allow to conclude analytically that the derivative described in (19) is smaller than the derivative described in (20), i.e., that the equilibrium combinations of the formal market is less downward-sloping than the equilibrium combinations of the informal market. Hence, the representation of the equilibrium of this economy is given by Figure 3.

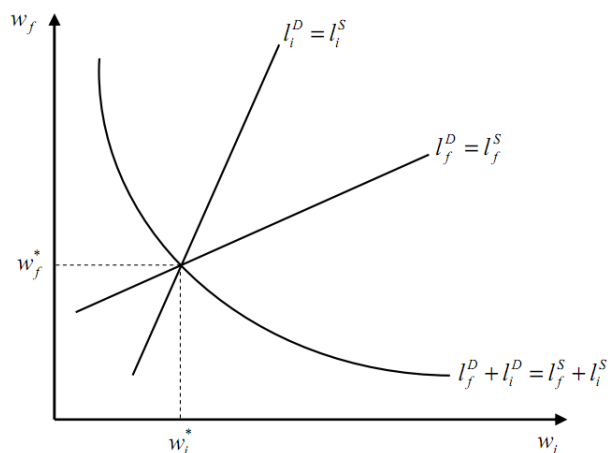


Figure 3: Equilibrium wages in the formal and informal markets

The model formally identifies a number of factors that affect coverage of pension programs, as well as the choice between the pay-as-you-go and the funded system. Productivity of workers, which is directly related with their wages, ensures a minimum income to face the costs of formality, but also increases contributions to pension systems and raises pension levels. Since these changes have effects of different sign over the probability of being formal, an empirical model on coverage should simultaneously include income, pension wealth and pension cost. Another identified factor is managerial ability of firms, which is directly related with the number of hired workers, because allows affording the fixed and variable costs of formality. Finally, the probability that a firm is caught operating informally also affects formal hiring. Hence, an empirical model on coverage has to account for all these effects.

4 Database

Microdata used in this study consists in five cross sections of a Peruvian household survey called "Encuesta Nacional de Hogares" (National Household Survey, ENAHO), carried out by the Peruvian Statistics Institute (INEI) since 1997, of which we have used databases from 2005 to 2009. This survey, applied throughout the Peruvian territory, has approximately 400 questions on demography; family income and family spend; wealth and education of their members, housing characteristics, social programs access, among other variables.

The ENAHO includes two questions on pension systems, applicable to employed and unemployed individuals: 1) pension system of which is affiliated, and 2) last month and year of contribution. These questions were included in the questionnaire of the ENAHO since July 2004, which explains why this

paper considers surveys only from year 2005⁹.

The ENAHO has an annual sample size equal to twenty thousand households and allows obtaining estimations for different levels of inference that reach the 24 departments of Peru, each one as a domain study. The methodology of estimation to process the data of the ENAHO involves the use of a weighting factor for each register.

The unit of analysis in this study is the individual of the labor force, occupied and paid, with age between 25 and 65 and residents of urban areas of Peru. The analysis excludes workers that receive only non-monetary compensations because the design of pension systems assumes the receipt of monetary income¹⁰. The lower limit of 25 years is established because, as explained below, the construction of the pension wealth variable requires assuming that the educational level does not change across time. The upper limit of 65 years is introduced because the analysis is oriented to active workers, but not to the retired ones. Residents of rural areas are excluded because their economic activities are informal and oriented to the self consumption. Hence, social security has historically excluded them or has reached them with social assistance programs. Finally, the analysis excludes the members of the military and police pension system and the members of the special system aimed at particular groups of civil servants because the affiliation to these systems has a different nature from the pay-as-you-go pension system and to the funded pension system.

The resulting database for the five years of observation contains information for 79.717 individuals, which 21.664 claim to be affiliated to the funded system, 6.984 to the pay-as-you-go system and 51.069 unaffiliated. The section 7.1.1 will show the descriptive statistics about these groups.

5 General methodology

5.1 Additive random utility model

An Additive Random Utility Model (ARUM) for pension status is described, based on the theoretical model described in section 3. This theoretical model considers that a worker has a utility level associated to deterministic factors for each of the following three situations: unaffiliated to a pension system, affiliated to the pay-as-you-go system and affiliated to the funded system. The proposed ARUM adds an unobserved random component to each utility, with mean zero

⁹Questionnaires of the ENAHO from 1999 to June 2004 asked if the individual was affiliated to any pension system (without specifying to what system) and under what labor condition was affiliated (salaried or independent). The ENAHO of 1999 and 2000 additionally asked the pension funds administrator to which he was affiliated.

¹⁰The problems of the unemployed (job placement, outplacement, lack of income) correspond to other social programs.

and variance equal to one, such that the equations (11), (12) and (13) can be reexpressed as:

$$u_{payg}(l) = w_f l(1 - t_{payg}) - \gamma + \frac{b_{payg}}{1 + \rho} + \epsilon_{payg} \quad (11')$$

$$u_{funded}(l) = w_f l(1 - t_{funded}) - \gamma + \frac{b_{funded}}{1 + \rho} + \epsilon_{funded} \quad (12')$$

$$u_i(l) = w_i l(1 - q) + \epsilon_i \quad (13')$$

The structural model of interest is characterized by equations (11'), (12') and (13'). Recall that wages of the formal and informal sector, represented by variables w_f and w_i respectively, come from equalizing labor demand and labor supply in the formal and informal sectors. Hence, the parameters that characterized the profit-maximization of firms (benefits and pension costs, detection probability, taxes to the employer, fixed cost of operating formally, etc.) are found in the above equations through the equilibrium wage.

The empirical analysis is performed on a simplified structural model, assuming linear relationships between the utility levels and the variables considered. Let index $t \in [1, n]$ denote the worker and index $j \in \{1, 2, 3\}$ denote the alternative as: unaffiliated to a pension system, affiliated to the pay-as-you-go system and affiliated to the funded system.

$$u_{t,1}(l) = v_{t,1} + \epsilon_{t,1} \quad (21)$$

$$u_{t,2}(l) = v_{t,2} + \epsilon_{t,2} \quad (22)$$

$$u_{t,3}(l) = v_{t,3} + \epsilon_{t,3} \quad (23)$$

The deterministic model is given by $v_{t,j} = x'_{t,j}\beta + z'_t\delta_j$, where $x_{t,j}$ are the set of variables that change with the worker and the specific alternative, while z_t are the set of variables that change only with the worker. The subsection 5.2 presents the explanatory variables.

The empirical model implies observing the dependent variable $y_t = j$ if that alternative has the bigger utility. Hence, the probability for a worker t to be in alternative j , conditional to the explanatory variables $x_{t,j}$ and z_t , is:

$$\begin{aligned}
P_{ij} &= Pr(y_t = j) \\
&= Pr(u_{t,j} \geq u_{t,k}) && \text{for all } k \\
&= Pr(u_{t,k} - u_{t,j} \leq 0) && \text{for all } k \\
&= Pr(\epsilon_{t,k} - \epsilon_{t,j} \leq v_{t,j} - v_{t,k}) && \text{for all } k
\end{aligned}$$

The model is estimated by maximum likelihood. The density function for worker t is:

$$f(y_t) = p_{t,1}^{y_{t,1}} * p_{t,2}^{y_{t,2}} * p_{t,3}^{y_{t,3}} \quad (24)$$

where $y_{t,1}$, $y_{t,2}$, $y_{t,3}$ are indicator variables with $y_{t,1} = 1$ if $y_t = j$ and $y_{t,1} = 0$ otherwise. That is, for each worker only one variable of the set $y_{t,1}$, $y_{t,2}$, $y_{t,3}$ is equal to one.

The maximum likelihood function for a sample of n observations is the product of n densities, so that $L = \prod_{t=1}^n \prod_{j=1}^3 p_{t,j}^{y_{t,j}}$. The maximum likelihood estimator $[\hat{\beta}, \hat{\delta}_j]$ maximizes the logarithm of the maximum likelihood function:

$$\ln L(\beta, \delta_j) = \sum_{t=1}^n \sum_{j=1}^3 y_{t,j} \cdot \ln F_j(x_{t,j}, z_t, \beta, \delta_j) \quad (25)$$

The estimation is based on a nested model. This model requires specifying the nesting structure that separates the alternatives in groups, where the errors of the ARUM model are correlated within groups, but not between groups. The proposed model considers a tree where the first level is to be affiliated to a pension system or not to be, while the second level (applied only for affiliates) is to be affiliate to the pay-as-you-go or to the funded systems.

The first advantage of the nested model is that assumes that there is an elasticity of substitution estimable between the pension alternatives, which differs from the elasticity between the choice of affiliating or not. This exceeds the multinomial and conditional logit models, which must assume that the disturbances are independent and identically distributed. Chacaltana (2004) says that in the Peruvian pension context the multinomial model "do not consider the overwhelming evidence that in the last decade there has been a huge process of transferring people from one system to another. That is, there is substitution between alternatives in pension system". This author proposes as a future line of research using nested logit model with the same structure as used herein.

The second advantage of the nested model is that includes not only variables that change with the worker, but also variables that change within workers and

specific alternatives. This paper specifically seeks to build variables associated benefits and costs for each worker under the three possible alternatives: affiliated to a pay-as-you-go system, affiliated to a funded system and unaffiliated.

5.2 Dependent and explanatory variables

A model for affiliation and a model for contribution are estimated, where the difference relies on the dependent variable. The affiliation model uses a categorical dependent variable where each worker can be whether not subscribed to any pension system, subscribed to the pay-as-you-go system or subscribed to the funded system. The contribution model uses a categorical dependent variable where each worker can be whether not contributing to any pension system, contributing to the pay-as-you-go system or contributing to the funded system.

The explanatory variables were selected according to the model proposed in section 3. This allowed the identification of determinants of worker's pension status, some related to pension systems (benefits and pension costs), other related with the contracting firm (managerial ability, probability of informality detection and costs associated to productivity), and other associated to workers (productivity).

The explanatory variables of interest are those directly related to the pension systems: **pension wealth**, defined as the present value of expected retirement benefits, and **pension costs**, defined as the present value of the expected future contributions until retirement. These variables, whose construction is explained in detail in Appendix B, change with the individual and the alternative. There are three estimations for pension wealth: one assuming that he is not affiliated to any pension system (i.e., zero), other assuming that he is affiliated to the pay-as-you-go and the last one assuming his affiliation to the funded system. Similarly, each worker has an estimated pension cost in three possible scenarios.

A first set of control variables seeks to capture microeconomic determinants not incorporated in the simple theoretical model. It includes the **logarithm of labor income**, **age**, **age squared**, **years of education**, **gender** and a dummy variable if the worker lives in **Lima**. Previous literature has income as the main explanatory variable because it determines pension wealth. The theoretical model of section 3, however, explained that productivity of workers has three roles: 1) ensures a minimum income to overcome the costs of formality; 2) increases the contributions to pension systems and 3) raises the level of pensions. Hence, this paper directly introduces pension wealth and pension cost, while income and age only control for additional effects. Dummies for occupational groups are also included.

A second set of control variables is related to the employer. **Number of workers** of the contracting firm should be decisive since the theoretical model concludes that it has a direct relationship with its managerial ability. Hence, an

employee of a large firm should be more likely to be affiliated to a pension system than an employee of a small firm. **Sector of economic activity** of the contracting firm is also included using dummies. Each economic sector has different level of technology and faces different detection probability, elements present in the theoretical model. For example, a mining company is capital intensive and has a higher probability of being detected if informal, than a services company. For the same reasons, a dummy for the **worker's employment status** (salaried/independent) is included.

The last group of control variables are dummies for each year of analysis. It seeks to control a possible trend in the worker's behavior that responds to macroeconomic factors, consists of dummies for each .

Table 1 provides information on the units of measurement of the explanatory variables.

Table 1: Characteristics of the explanatory variables

Variables	Units	Nature of change	
		Individual/ alternative	Individual
Worker characteristics on pension systems			
Pension wealth	Thousands of Peruvian M.U. of June 2004	X	X
Pension cost	Thousands of Peruvian M.U. of June 2004	X	X
Worker characteristics			
Gender	Woman=1		X
Age and square	Years		X
Education	Years		X
Logarithm of labor income	Peruvian M.U. of June 2004		X
Place of residence	Lima=1		X
Years of observation	2005=1 (excluded), 2006=1, 2007=1, 2008=1, 2009=1, 2010=1		X
Occupational group	White collar=1, Services=1, Blue collar=1 (excluded)		X
Employer characteristics			
Number of workers	More than 100 workers=1		X
Sector of economic activity	Extraction=1, Industry=1, Construction=1, Trade=1, Transport=1 (excluded)		X
Employment status	Dependent=1		X

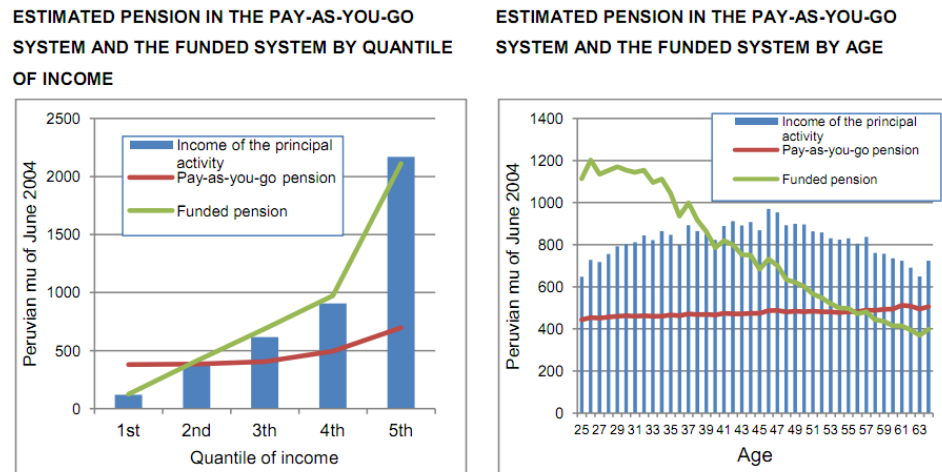
Note: The White collar occupational group includes managers, professionals, scientists and intellectuals and middle-level technicians; and the services group includes heads and office employees, skilled workers in personal services and sellers; and the Blue collar group includes all other occupations such as laborers and unskilled workers.

6 Pension wealth and pension cost

This section presents descriptive statistics for the constructed pension wealth and cost variables, whose construction is explained in detail in Appendix B. Figure 4 shows the estimated pensions if workers were affiliated to the pay-as-you-go system and to the funded system¹¹. The left panel shows the average

¹¹Note that, to facilitate the presentation, the analysis corresponds to the pension estimated, not to the pension wealth variable.

estimated pension in both systems by income quintiles. Pension in the pay-as-you-go system is relatively stable to different levels of income, consistently with its redistributive nature. Pension in the funded system is a direct function of income, which is consistent with its capitalization nature. The right panel presents the average estimated pension in both systems by age. Pension in the pay-as-you-go system is again relatively stable to different levels of income, while pension in the funded system has a negative relation with the age because the investment horizon of young individuals allows a larger capitalization.



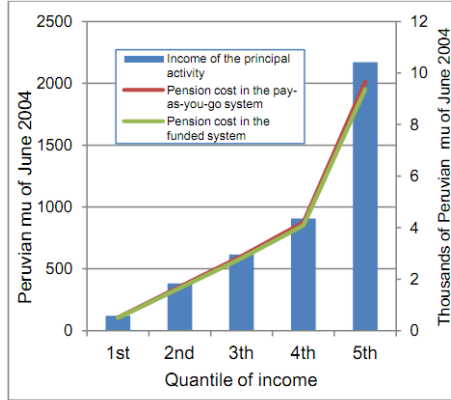
Note: The numbers presented are weighted.

Figure 4: Estimated pension

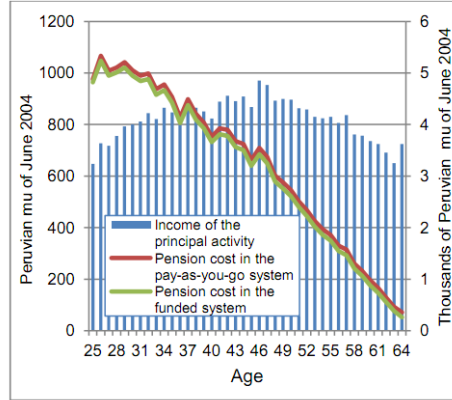
Figure 4 gives preliminary information about worker’s preferences on pension systems by age and income. Note that, without control variables, pay-as-you-go pension wealth dominates funded pension wealth in the first income quintile; dominance is reversed from the third income quintile and increases in the next quintiles. Similarly, again without controlling, funded pension wealth dominates pay-as-you-go pension wealth until 55 years, but the situation is opposite for the workers older than 56 years. In short, older workers with low income would prefer the pay-as-you-go system and the younger workers with high income would prefer the funded system.

Figure 5 contrasts average pension cost in the pay-as-you-go and in funded system, again by age and income. Since the contribution rate is always smaller in the funded system than the pay-as-you-go, the cost of the first system is smaller than the cost of the second system in all cases. The first panel shows that, given that contributions are calculated as a rate over wage, obviously exist a direct relation. The second panel reveals that cost decreases with the worker’s age, given that it has been calculated as a present value.

ESTIMATED PENSION COST IN TH PAY-AS-YOU-GO AND THE FUNDED SYSTEM BY QUANTILE OF INCOME



ESTIMATED PENSION COST IN TH PAY-AS-YOU-GO AND THE FUNDED SYSTEM BY AGE



Note: The numbers presented are weighted.

Figure 5: Average of the pension cost

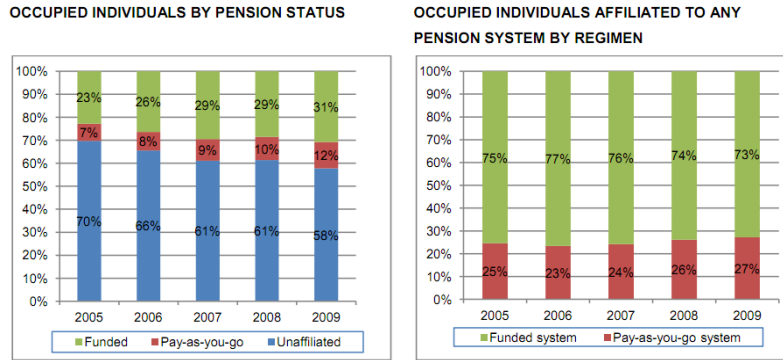
7 Results

7.1 Affiliation model

7.1.1 Descriptive statistics

This section presents descriptive statistics of the three identified groups: affiliated to the pay-as-you-go system, to the funded system and not affiliated. Weights available in the ENAHO have been used.

Figure 6 shows how the participation of the three identified groups evolves during the period of analysis. The left panel shows that the percentage of affiliates to the pay-as-you-go system has increased from 7% in 2005 to 12% in 2009 and the percentage of affiliates to the funded system has increased from 23% in 2005 to 31% in 2009, which has determined the decrease of the non-affiliated workers from 70% to 58%. The right panel excludes the non-affiliated workers. The percentage of affiliates to the pay-as-you-go system, contrary to what is expected of a system with a financial deficit, increased from 25% in 2005 to 27% in 2009.



Note: The numbers presented are weighted.

Figure 6: Occupied individuals by previsional status

Table 2 presents descriptive statistics for pension wealth and pension cost for the three identified groups. On one hand, the first row shows that the average pension wealth obtained by affiliating to the pay-as-you-go is bigger for workers affiliated to the pay-as-you-go system (54.43 thousand monetary units) than for workers affiliated to the funded system (46.35 thousand monetary units). The second row shows that the average pension wealth generated by affiliating to the funded system is bigger for workers of the funded system (106.66 thousand monetary units) than for workers of the pay-as-you-go (81.27 thousand monetary units). On the other hand, these patterns do not exist for pension cost. This variable is always bigger for workers affiliated to the funded system because they have the highest income level and the lowest age.

Table 2: Descriptive statistics for the pension wealth and pension cost variables

VARIABLES	UNAFFILIATED	PAY-AS-YOU-GO	FUNDED
<u>Pension wealth</u>			
If were affiliated to the pay-as-you-go system	39,55	54,43	46,35
	18,21	25,85	23,03
If were affiliated to the funded system	55,85	81,27	106,66
	90,07	84,57	109,86
If were not-affiliated	0,00	0,00	0,00
	0,00	0,00	0,00
<u>Pension cost</u>			
If were affiliated to the pay-as-you-go system	2,96	3,61	6,13
	6,16	4,17	7,04
If were affiliated to the funded system	2,88	3,48	5,96
	6,04	4,05	6,87
If were not-affiliated	0,00	0,00	0,00
	0,00	0,00	0,00

Note: The pension wealth and pension cost variables were constructed using the methodology explained in section 6. The numbers presented are weighted.

Table 3 presents descriptive statistics for the control variables, which are also consistent with the conclusions of the theoretical model. On first place, the model concluded that firms with low managerial ability find more profitable operating informally and that there was a direct relation between managerial ability and the number of hired workers. Table 4 shows that only 6,4% of the non-affiliated employees work in firms that have more than 100 workers, while the 42,1% of the workers of the pay-as-you-go system work in firms that have more than 100 workers and the 53,9% of the workers of the funded system work in firms that have more than 100 workers. On second place, the model concludes that the greater productivity, the worker could be unaffiliated, affiliated to the pay-as-you-go or affiliated to the funded system, in that order (see Figure 2). Table 4 shows that the average income of the unaffiliated workers is 646 monetary units, while the average for pay-as-you-go workers is 1016 monetary units and the average of funded workers is 1319 monetary units. Similarly, the average of years of education of the unaffiliated workers, the workers affiliated to the pay-as-you-go system and the ones affiliated to the funded system is 9.5, 12.41 and 13.11, respectively.

Table 3: Descriptive statistics of the explanatory variables

VARIABLES	UNAFFILIATED	PAY-AS-YOU-GO	FUNDED
<u>Worker characteristics</u>			
Labor income (Peruvian M.U. of June 2004)	645,511 <i>1.061,009</i>	1.015,735 <i>1.422,765</i>	1.319,376 <i>1.517,555</i>
Age (years)	40,273 <i>10,432</i>	46,452 <i>10,286</i>	39,334 <i>9,517</i>
Education (years)	9,503 <i>3,968</i>	12,410 <i>3,833</i>	13,109 <i>3,196</i>
Gender (woman=1)	0,515 <i>0,500</i>	0,363 <i>0,481</i>	0,340 <i>0,474</i>
Place of residence (Lima=1)	0,424 <i>0,494</i>	0,484 <i>0,500</i>	0,499 <i>0,500</i>
Occupational group			
White collar	0,107 <i>0,309</i>	0,378 <i>0,485</i>	0,403 <i>0,490</i>
Services	0,239 <i>0,426</i>	0,180 <i>0,384</i>	0,225 <i>0,418</i>
Blue collar	0,654 <i>0,476</i>	0,442 <i>0,497</i>	0,372 <i>0,483</i>
<u>Employer characteristics</u>			
Economic sector			
Extraction	0,091 <i>0,287</i>	0,065 <i>0,246</i>	0,065 <i>0,246</i>
Industry	0,128 <i>0,334</i>	0,127 <i>0,333</i>	0,156 <i>0,363</i>
Construction	0,059 <i>0,235</i>	0,057 <i>0,231</i>	0,061 <i>0,239</i>
Trade	0,293 <i>0,455</i>	0,137 <i>0,344</i>	0,129 <i>0,335</i>
Transport	0,430 <i>0,495</i>	0,614 <i>0,487</i>	0,589 <i>0,492</i>
Number of workers	0,064 <i>0,244</i>	0,421 <i>0,494</i>	0,539 <i>0,498</i>
Employment status (dependent=1)	0,349 <i>0,477</i>	0,667 <i>0,471</i>	0,836 <i>0,370</i>

Note: The numbers presented are weighted. The standard deviations are in cursive. For additional details read the text.

7.1.2 Econometric results

The first column of Table 4 presents a multinomial logit that can be compared with previous literature, which relied on income and age to recover the effect of pension wealth and pension cost on coverage. The second column presents a conditional logit, which includes pension wealth and pension cost, but assumes that the perturbations $\epsilon_{t,1}, \epsilon_{t,2}, \epsilon_{t,3}$ are independent. The third column presents a slight variation of the previous model: a conditional logit model with fixed effects per worker. The fourth column presents the estimation of the proposed nested model, which is considered more appropriated because it includes pension wealth and pension cost variables and it allows dependent disturbances. The interpretation of the results exclusively focuses on this nested model.

The coefficients related to the pension wealth and pension cost are highly significant and have the correct signs. The positive sign of pension wealth means that, if the variable is increased for any of the three options considered, then this option is more likely to be selected by workers. The negative sign of pension cost means that, if the variable is increased for any of the three options considered, then this option is less selected by workers. It is noteworthy that the coefficients of pension wealth and pension cost have opposite signs despite of their positive correlation (0.69)¹².

¹²Although the correlation does not have a level that can generate collinearity, as a precaution other models have been estimated by subsampling. No volatility was observed in the estimates.

Table 4: Estimation of the nested model

VARIABLES	MULTINOMIAL	CONDITIONAL	CONDITIONAL (FIXED EFFECTS)	NESTED
Pension wealth		0,0012 *** 0,0004	0,0036 *** 0,0002	0,0018 *** 0,0005
Pension cost		-0,0168 *** 0,0052	-0,1052 *** 0,0040	-0,0369 *** 0,0089
Category: unaffiliated	(omitted)	(omitted)		(omitted)
Category: Pay-as-you-go				
<u>Worker characteristics</u>				
Logarithm of labor income	0,145 *** 0,020	0,185 *** 0,024		-0,207 *** 0,065
Age (years)	0,089 *** 0,015	0,087 *** 0,015		0,163 *** 0,032
Age squared (years)	0,000 0,000	0,000 0,000		0,000 0,000
Education (years)	0,179 *** 0,006	0,180 *** 0,006		0,196 *** 0,013
Gender (woman=1)	-0,448 *** 0,043	-0,439 *** 0,043		-0,590 *** 0,098
Place of residence (Lima=1)	0,104 *** 0,038	0,111 *** 0,038		0,104 0,071
Occupational group				
White collar	0,291 *** 0,057	0,309 *** 0,057		0,318 *** 0,107
Services	-0,088 0,056	-0,078 0,056		-0,460 *** 0,120
<u>Employer characteristics</u>				
Economic sector				
Extraction	-0,128 * 0,069	-0,099 0,070		-0,540 *** 0,154
Industry	-0,030 0,059	-0,023 0,059		-0,539 *** 0,142
Construction	-0,096 0,085	-0,091 0,085		-0,325 * 0,169
Trade	-0,275 *** 0,056	-0,269 *** 0,056		-0,497 *** 0,110
Number of workers	1,530 *** 0,054	1,529 *** 0,054		1,423 *** 0,113
Employment status (dependent=1)	0,680 *** 0,049	0,663 *** 0,049		0,050 0,131
Constant	-9,369 *** 0,350	-9,509 *** 0,355		-12,248 *** 0,792

This table continues on next page

VARIABLES	MULTINOMIAL	CONDITIONAL	CONDITIONAL (FIXED EFFECTS)	NESTED
Category: Funded				
<u>Worker characteristics</u>				
Logarithm of labor income	0,458 *** <i>0,020</i>	0,423 *** <i>0,027</i>		0,715 *** <i>0,057</i>
Age (years)	0,096 *** <i>0,011</i>	0,096 *** <i>0,011</i>		0,172 *** <i>0,018</i>
Age squared (years)	-0,001 *** <i>0,000</i>	-0,001 *** <i>0,000</i>		-0,002 *** <i>0,000</i>
Education (years)	0,173 *** <i>0,005</i>	0,175 *** <i>0,005</i>		0,166 *** <i>0,008</i>
Gender (woman=1)	-0,534 *** <i>0,032</i>	-0,533 *** <i>0,032</i>		-0,459 *** <i>0,048</i>
Place of residence (Lima=1)	0,117 *** <i>0,028</i>	0,116 *** <i>0,028</i>		0,101 *** <i>0,036</i>
Occupational group				
White collar	0,256 *** <i>0,043</i>	0,257 *** <i>0,043</i>		0,266 *** <i>0,056</i>
Services	0,150 *** <i>0,040</i>	0,148 *** <i>0,040</i>		0,272 *** <i>0,056</i>
<u>Employer characteristics</u>				
Economic sector				
Extraction	0,065 <i>0,054</i>	0,057 <i>0,054</i>		0,056 ** <i>0,272</i>
Industry	0,247 *** <i>0,041</i>	0,243 *** <i>0,041</i>		0,056 *** <i>0,193</i>
Construction	0,152 *** <i>0,058</i>	0,150 *** <i>0,058</i>		0,078 *** <i>0,409</i>
Trade	-0,077 * <i>0,039</i>	-0,079 ** <i>0,039</i>		0,062 <i>0,231</i>
Number of workers	1,668 *** <i>0,037</i>	1,671 *** <i>0,037</i>		0,080 *** <i>0,005</i>
Employment status (dependent=1)	1,209 *** <i>0,035</i>	1,217 *** <i>0,035</i>		0,055 *** <i>1,674</i>
Constant	-9,510 *** <i>0,259</i>	-9,286 *** <i>0,278</i>		0,047 *** <i>1,500</i>
<u>Statistics</u>				
N	79.590	238.770	239.151	238.770
LI	-18038629	-18032554	-31185550	-18010089
Aic	36077333	36065189	62371103	36020260
Bic	36077686	36065604	62371124	36020685

Notes: The estimations presented are weighted. The standard deviations are in cursive. Macroeconomic effects are controlled with dummies for the years of observation. The multinomial models are estimated for the alternative of unaffiliated. Dummy variables for blue collar occupational group and transport economic sector are excluded. Legend: *p<0.10;**p<0.05;***p<0.01.

The individual characteristics have been included as controls. Affiliation strongly increases with the income, the age and the education of a worker. Notice that, given that pension wealth and pension cost are included, the coefficients of these variables recover effects not related with pension systems. Additionally, women tend to contribute less than males. Finally, occupational group plays an important role. For instance, relatively to the probability of being unaffiliated to any pension system, a white-collar worker has a higher probability than a blue-collar worker of being both in pay-as-you-go and funded system.

Job characteristics are also important in determining affiliation probability. On first place, variables related to the economic sectors are important. Coefficients for each sector (with the exception of trade) are significant, showing that the characteristics of the contracting firm affect pension status, as the theoretical model concluded. On second place, the size of the firm has a significant and positive coefficient in the pay-as-you-go category and in the funded category. This confirms that firms with little managerial ability find more profitable operating informally. Finally, while the regulatory framework in Peru establishes that membership to the pension program is compulsory for wage workers and voluntary for self-employed workers, results confirm that the variable for employment status is statistically significant in the funded category. However, it is not significant in the pay-as-you-go category.

Finally, it should be noted that the nested model, besides its conceptual advantages, has better statistical indicators. Based on the information criterion (AIC and BIC), which prefers lower values, the best model is the nested model. Using as the test of maximum likelihood ratio, also the nested model is the best.

7.1.3 Average marginal effects

Table 5 shows the average marginal effects using the nested model, so that each cell must be read as the marginal change of the variable that appears in the row on the average probability that the workers belong to the regime that appears in the column. Notice that the sum of changes in probabilities is one for each variable whose modification is simulated.

Table 5: Average marginal effects using the nested model

VARIABLES	UNAFFILIATED	PAY-AS-YOU-GO	FUNDED
<u>Pension wealth</u>			
Unaffiliated	0.00026	-0.00007	-0.00018
Pay-as-you-go	-0.00007	0.00007	0.00001
Funded	-0.00018	0.00001	0.00018
<u>Pension cost</u>			
Unaffiliated	-0.00516	0.00146	0.00370
Pay-as-you-go	0.00146	-0.00135	-0.00012
Funded	0.00370	-0.00012	-0.00358
<u>Worker characteristics</u>			
Logarithm of labor income	-0.06334	-0.00529	0.06863
Age (years)	-0.02369	0.00649	0.01720
Age squared (years)	0.00023	-0.00001	-0.00022
Education (years)	-0.02436	0.00765	0.01671
Gender (woman=1)	0.06930	-0.02297	-0.04633
Place of residence (Lima=1)	-0.01425	0.00412	0.01013
Occupational group			
White collar	-0.03923	0.01243	0.02680
Services	-0.00905	-0.01592	0.02497
<u>Employer characteristics</u>			
Economic sector			
Extraction	0.00203	-0.01909	0.01706
Industry	-0.01957	-0.01837	0.03794
Construction	-0.01022	-0.01112	0.02134
Trade	0.01925	-0.01812	-0.00112
Number of workers	-0.22397	0.05716	0.16681
Employment status (dependent=1)	-0.15215	0.00655	0.14560
<u>Macroeconomic effect</u>			
Year 2006	-0.02293	0.00386	0.01907
Year 2007	-0.05091	0.01596	0.03494
Year 2008	-0.04338	0.01692	0.02646
Year 2009	-0.06697	0.02672	0.04024

Note: The estimations presented are weighted.

The first simulation is a change of one unit in the pension wealth variable, that is, a change of 1000 monetary units of June 2004 in the present value of the lifetime pensions received from 65 years old on¹³. An increase of 1000 monetary units of pension wealth under the option of not being affiliated (the reader may think, for example, in a non-contributory pension for the elderly) would increase the average probability of not being affiliated to any pension system (0.00026) and would simultaneously decrease the average probability of being affiliated to the pay-as-you-go system (-0.00007) as to the funded system (-0.000018)¹⁴. An increase in pension wealth in the pay-as-you-go system (for example, by a change in the legal formula) would decrease the probability of being affiliated to the funded system (0.00001). An increase in pension wealth in the funded system (for example, by a higher return on pension funds) would decrease the probability of not being affiliated to any pension system (-0.00018), would marginally increase the probability of being affiliated to the pay-as-you-go system (0.00001) and would increase the probability of being affiliated to the funded system (0.00018).

The second simulation is a change of one unit on the pension cost, that is, a change of 1000 monetary units of June 2004 in the present value of the contributions realized from the period of observation to the retirement year¹⁵. An increase of 1000 monetary units of the pay-as-you-go pension cost (for example, by a decrease in the contribution rate) would increase the probability of not being covered by any system (0.00146), would decrease the probability of being affiliated to the funded system (-0.00135) and also would marginally decrease the probability of being affiliated to the funded system (-0.00012). An increase in the funded pension cost (for example, by increasing the commission of the pension funds administrators) would increase the probability of not being affiliated to any pension system (0.00370), would decrease the probability of being affiliated to the funded system (-0.00012) and would decrease the probability of being affiliated to the funded system (-0.00358).

The analysis of marginal effects shows three additional results. First, measures implemented on the funded system more efficiently increase social protection against old age than measures applied on the pay-as-you-go. Notice that an increase on funded pension wealth is almost three times more effective rising affiliation (0.00018) than a similar increase on the pay-as-you-go (0.00007); also, a decrease in funded pension cost is almost three times more effective rising membership (0.00358) to any pension system than a similar decrease on the pay-as-you-go (0.00135). Second, the average probability of affiliation is more sensitive to changes on pension cost than to changes in pension wealth in all cases (for example in the case of not affiliation, 0.00026 is less than 0.00516). This is

¹³Consider for instance that, for a 40 years old worker, 1000 monetary units of pension wealth equal to a lifetime pension of S/.12

¹⁴Note that the sum of these changes on probabilities is one.

¹⁵For example, in the case of the worker of 40 years old, 1000 monetary units of pension cost equal to 4.65 monetary units less of monthly contribution

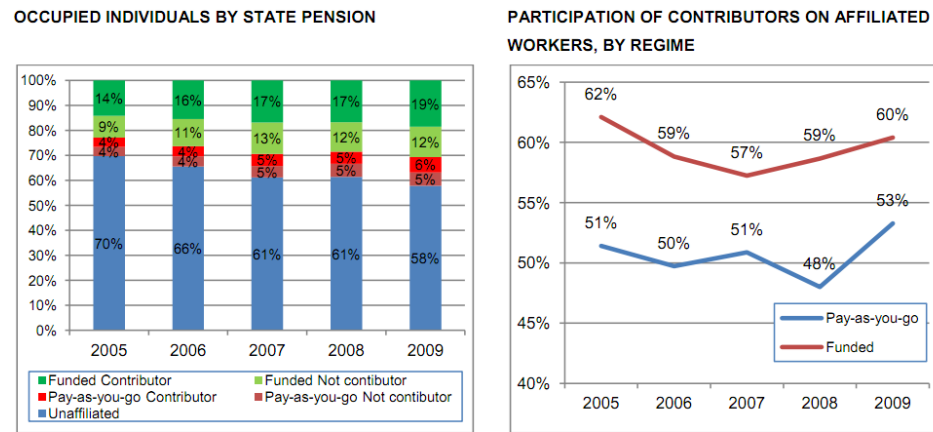
probably related to an intertemporal myopia that would make the perception of an increase in future pension more diffuse than a decline in contributions. Third, econometric evidence shows that the pay-as-you-go and the funded system do not compete with each other for members because, for instance, an increase in pension wealth on one system does not decrease membership to the other system, but slightly increases it. This is consistent with the utilization of a nested model.

7.2 Contribution model

7.2.1 Descriptive statistics

This section presents descriptive statistics for three different groups: contributors to the pay-as-you-go system, contributors to the funded system and not contributors to any system. To the purposes of this paper, a worker is considered contributor if he reports having paid his last contribution in the month prior to the implementation of the survey.

Figure 7 shows how the participation of the three identified groups evolves during the period of analysis. The left panel shows that, although there was a positive evolution in both the pay-as-you-go and the funded system, the coverage problem is still serious. Only 25% of workers contributed in 2009, representing 59% of the affiliated workers. Moreover, the right panel shows that the participation of the contributors in the total of affiliates has decreased in the case of the funded system.



Note: The numbers presented are weighted.

Figure 7: Contributors evolution

7.2.2 Econometric results

Table 6 shows the results of the contribution model. The columns show again the estimates according to the multinomial logit model, conditional logit model, conditional logit model with fixed effects and nested model. The interpretation is again made on the results of the nested model.

The coefficients of pension wealth and pension cost have different results. Pension wealth has no significant coefficient, which means it does not affect the probability of contributing. Pension cost, as happened in the affiliation model, has a significant and negative coefficient. This means that, if this variable increases for any of the three alternatives considered, then workers contribute less in that alternative.

The coefficients of all variables associated to the contracting firm are highly significant in both categories. This emphasizes that, beyond the design of the pension systems, the labor market has an important role in contribution.

In sum, the empirical analysis shows that contributions do not depend on the benefits offered by pension systems, probably because of intertemporal myopia. However, contributions do depend on the costs they impose on workers.

Table 6: Contribution model

VARIABLES	MULTINOMIAL	CONDITIONAL	CONDITIONAL (FIXED EFFECTS)	NESTED
Pension wealth		0.0005 0.0006	-0.0054 *** 0.0004	-0.0006 0.0012
Pension cost		-0.0367 *** 0.0088	-0.1313 *** 0.0052	-0.0382 *** 0.0140
Category: unaffiliated	(omitted)	(omitted)		(omitted)
Category: Pay-as-you-go				
<u>Worker characteristics</u>				
Logarithm of labor income	0.346 *** 0.033	0.501 *** 0.050		-0.151 0.126
Age (years)	0.086 *** 0.020	0.082 *** 0.020		0.202 *** 0.055
Age squared (years)	0.000 0.000	0.000 0.000		-0.001 0.001
Education(years)	0.110 *** 0.010	0.111 *** 0.010		0.166 *** 0.024
Gender (woman=1)	0.067 0.055	0.080 0.055		0.285 ** 0.142
Place of residence (Lima=1)	-0.003 0.051	0.003 0.051		-0.097 0.123
Occupational group				
White collar	0.366 *** 0.078	0.390 *** 0.078		0.443 ** 0.181
Services	-0.090 0.082	-0.078 0.082		-0.789 *** 0.261
<u>Employer characteristics</u>				
Economic sector				
Extraction	-0.052 0.099	-0.007 0.100		-0.606 ** 0.267
Industry	0.052 0.083	0.058 0.083		-0.726 *** 0.250
Construction	-0.653 *** 0.150	-0.645 *** 0.150		-1.229 *** 0.452
Trade	-0.292 *** 0.099	-0.285 *** 0.100		-1.071 *** 0.291
Number of workers	1.457 *** 0.063	1.452 *** 0.063		1.520 *** 0.196
Employment status (dependent=1)	1.562 *** 0.088	1.523 *** 0.088		0.194 0.268
Constant	-11.188 *** 0.480	-11.846 *** 0.514		-14.588 *** 1.389

This table continues on next page.

VARIABLES	MULTINOMIAL	CONDITIONAL	CONDITIONAL (FIXED EFFECTS)	NESTED
Category: Pay-as-you-go				
<u>Worker characteristics</u>				
Logarithm of labor income	0.806 *** <i>0.031</i>	0.960 *** <i>0.063</i>		1.362 *** <i>0.108</i>
Age (years)	0.073 *** <i>0.015</i>	0.069 *** <i>0.015</i>		0.088 *** <i>0.023</i>
Age squared (years)	-0.001 *** <i>0.000</i>	-0.001 *** <i>0.000</i>		-0.001 *** <i>0.000</i>
Education(years)	0.080 *** <i>0.007</i>	0.080 *** <i>0.007</i>		0.057 *** <i>0.010</i>
Gender (woman=1)	-0.040 <i>0.040</i>	-0.027 <i>0.040</i>		-0.078 <i>0.059</i>
Place of residence (Lima=1)	0.085 ** <i>0.035</i>	0.087 ** <i>0.035</i>		0.104 ** <i>0.048</i>
Occupational group				
White collar	0.316 *** <i>0.054</i>	0.333 *** <i>0.054</i>		0.324 *** <i>0.077</i>
Services	0.228 *** <i>0.052</i>	0.232 *** <i>0.051</i>		0.428 *** <i>0.084</i>
<u>Employer characteristics</u>				
Economic sector				
Extraction	0.145 ** <i>0.070</i>	0.158 ** <i>0.070</i>		0.077 *** <i>0.428</i>
Industry	0.440 *** <i>0.054</i>	0.435 *** <i>0.054</i>		0.084 *** <i>0.323</i>
Construction	-0.358 *** <i>0.088</i>	-0.360 *** <i>0.087</i>		0.103 <i>0.654</i>
Trade	0.198 *** <i>0.057</i>	0.196 *** <i>0.057</i>		0.085 *** <i>-0.202</i>
Number of workers	1.585 *** <i>0.040</i>	1.579 *** <i>0.040</i>		0.136 *** <i>0.415</i>
Employment status (dependent=1)	2.782 *** <i>0.078</i>	2.742 *** <i>0.078</i>		0.087 *** <i>1.541</i>
Constant	-12.672 *** <i>0.369</i>	-13.353 *** <i>0.446</i>		0.065 *** <i>3.349</i>
<u>Statistics</u>				
N	79590	238770	239151	238770
ll	-11883942	-11866663	-28597802	-11845605
aic	23767961	23733406	57195607	23691292
bic	23768314	23733822	57195628	23691717

Notes: The estimations presented are weighted. The standard deviations are in cursive. Macroeconomic effects are controlled with dummies for the years of observation. The multinomial models are estimated for the alternative of unaffiliated. Dummy variables for blue collar occupational group and transport economic sector are excluded. Legend: *p<0.10;**p<0.05;***p<0.01.

7.2.3 Average marginal effects

Table 7 presents marginal effects calculated from the nested model. As opposed to the affiliation model, pension wealth has an almost null effect on contribution. Pension cost does have an effect on contribution, but it is smaller than its effect on affiliation.

By contrast, the relevance of the variables associated to the contracting firm remains and in some cases increases. The importance of the labor situation (wage worker /self-employed), for example, is greater in the contribution model (-0.25011) than in the affiliation model (-0.15215). Hence, a marginal increase in the participation of the wage workers on the total would favor a greater contribution to the pension program. This is because the employer of a wage worker is legally forced to withhold pension contribution from his wage and pay it to the pension program, while this responsibility relies on the worker in the case of self-employed.

Table 7: Marginal effects using the nested model

VARIABLES	UNAFFILIATED	PAY-AS-YOU-GO	FUNDED
<u>Pension wealth</u>			
Unaffiliated	-0.00058	0.00012	0.00046
Pay-as-you-go	0.00012	-0.00005	-0.00006
Funded	0.00046	-0.00006	-0.00040
<u>Pension cost</u>			
Unaffiliated	-0.00884	0.00178	0.00706
Pay-as-you-go	0.00178	-0.00079	-0.00098
Funded	0.00706	-0.00098	-0.00608
<u>Worker characteristics</u>			
Logarithm of labor income	-0.22774	0.01143	0.21631
Age (years)	-0.02096	0.00790	0.01306
Age squared (years)	0.00023	-0.00006	-0.00018
Education (years)	-0.01144	0.00386	0.00757
Gender (woman=1)	-0.00169	0.00147	0.00021
Place of residence (Lima=1)	-0.00482	-0.00939	0.01421
Occupational group			
White collar	-0.05081	0.01339	0.03742
Services	-0.03475	-0.01085	0.04560
<u>Employer characteristics</u>			
Economic sector			
Extraction	-0.02399	-0.01655	0.04054
Industry	-0.07378	0.00112	0.07266
Construction	0.10275	-0.05799	-0.04476
Trade	-0.01349	-0.02510	0.03859
Number of workers	-0.25513	0.06217	0.19296
<u>Macroeconomic effect</u>			
Year 2006	-0.00065	-0.00468	0.00533
Year 2007	-0.01698	0.00228	0.01470
Year 2008	-0.01330	0.00632	0.00698
Year 2009	-0.04940	0.01570	0.03369

8 Conclusions

This paper, on the basis of an ARUM micro-founded model, empirically analyses the subscription and the contribution of the Peruvian workers to the pension program, taking advantage of the almost unique coexistence between a pay-as-you-go and a funded system. The estimated model is a nested whose first stage determines if a worker is affiliated to a pension system or not, and whose second stage involves choosing between the pay-as-you-go and the funded system. In order to have variables that change over alternatives, the paper constructs pension wealth and pension cost.

The nested model confirms that pension wealth has a significant positive impact on affiliation, while pension cost has a significant negative impact. The marginal effects reveal that a marginal change on benefits has less impact on affiliation than a marginal change on costs, which is consistent with an intertemporal myopia; also, marginal effects reveal that a marginal change on the funded system has a higher impact than a marginal change on the pay-as-you-go system, which reveals different behaviors in each system.

This paper carries important implications for pension policies as it provides a tool to estimate the impact of a number of policy measures on coverage. To illustrate how, appendix C discusses the non contributory pension scheme recently launched by the Peruvian President Ollanta Humala¹⁶. The program "Pension 65", as branded by Humala, will provide 125 Peruvian monetary units (about US\$46) to older people over 65 years who live in poverty. A simple application of the estimated marginal effects allows predicting that "Pension 65" would cause approximately 400 urban workers to become informal, from which 30% would come from the pay-as-you-go and 70% from the funded system.

In general terms, the marginal effects are useful to predict the impact of several policies including subsidies on pension contributions of young workers, deduction of pension contributions from income tax, non contributory pension schemes and subsidies on hiring. Marginal effects are a tool to estimate the number of workers that migrate from informality to the pay-as-you-go or to the funded system, or that leave the pension systems to become informal. It is also useful to estimate the number of workers that would start or stop contributing to the pension system. An early Spanish version of this paper (Carpio 2009) presents preliminary estimates of the impact of other policy measures using a similar strategy. A line of future research is adapting this general framework to specific proposals in order to obtain more accurate estimations.

¹⁶Created by Supreme Decree N° 081-2011-PCM.

Appendices

A Legal framework for calculation of pensions

This appendix explains how pensions are computed within the pay-as-you-go and the funded system.

A.1 Pay-as-you-go pension

The pay-as-you-go system requires, in general terms, a minimum of 20 years of contributions to be eligible for benefits. Pensions are set using the legal formula that corresponds. Previously to 2002, the pension was calculated as the 50% of a "reference wage" plus an extra of 4% for each additional year of contribution to the minimum required (20 years). This reference wage was established as the income average of the last five years for those individuals with 20 to 24 years of contribution, the income average of the last four years for those individuals with 25 to 29 years of contribution, and the income average of the last three years for those individuals with more than 30 years of contribution. The following equation shows the formula explained above:

$$\begin{aligned} P_{payg} &= 0.5 * rw + 0.04 * rw * (q - 20) && \text{if } q \geq 20 \\ &= 0 && \text{if } q < 20 \end{aligned}$$

where rw is the reference wage and q is the number of years of contribution.

Legal norms issued in 2002¹⁷ established a new condition for individuals younger than 55 years old at the date of publication. On one hand, reference wage became equal to the average income of the last five years, independently of the number of years of contribution. On the other hand, formulas were introduced differentiated according to age at the time of publication.

$$\begin{aligned} P_{payg} &= 0.30 * rw' + 0.02 * rw' * (q - 20) && \text{if } q \geq 20 \text{ and } age_{2002} < 30 \\ &= 0.35 * rw' + 0.02 * rw' * (q - 20) && \text{if } q \geq 20 \text{ and } age_{2002} \in [30, 40) \\ &= 0.40 * rw' + 0.02 * rw' * (q - 20) && \text{if } q \geq 20 \text{ and } age_{2002} \in [40, 50) \\ &= 0.45 * rw' + 0.02 * rw' * (q - 20) && \text{if } q \geq 20 \text{ and } age_{2002} \in [50, 55) \\ &= 0 && \text{if } q < 20 \end{aligned}$$

¹⁷Law N° 27617 and Supreme Decree N°099-202-EF.

where rw' is the reference wage for individuals younger than The computation of pensions in the pay-as-you-go system includes minimum and maximum limits, which generate redistribution within this regimen. The legal framework in force¹⁸ establishes that the maximum pension is equal to 857 Peruvian monetary units (about US\$ 246,41), while the minimum pension is equal to 415 Peruvian monetary units (about US\$119,32), which applies only if the time of contribution is more than twenty years¹⁹.

A.2 Funded pension

Pensions in the funded system are calculated as a direct function of the accumulated resources in the Individual Capitalization Account (ICA) during working life. As opposed to the pay-as-you-go, the funded system does not require a minimum number of contributions. The following formula calculates the expected value of the ICA at the age of retirement, which is 65 years regardless of the gender:

$$ICA = \left(\sum_{t=t_0}^T \frac{a_t * e_t}{v_t} \right) * v_T \quad (3)$$

Where a_t is the rate of contribution, e_t is the annual wage and v_t is the pension fund price per share. Additionally, t_0 is the period of affiliation to the funded system and T is the period of retirement. Thus, the final level of the ICA is the total number of periodically purchased fund shares, multiplied by the pension fund price per share at the period of retirement.

The funded system temporarily includes a recognition bond, a governmental transfer given in recognition for the contributions made to the pay-as-you-go system. Individuals switching from the pay-as-you-go to the funded system are entitled to these recognition bonds if they have made a minimum number of past contributions. The face value of the bonds is given by the following formula:

$$B = 0.1831 * rw'' * m \quad (4)$$

where rw'' is the reference wage for the calculation of the recognition bond, calculated as the average of the wages of the last year, and m is the number of months of contributions in the pay-as-you-go system. The value of a recognition bond has an upper limit equal to 60.000 Peruvian monetary units (about US\$17.251,30) of December of 1992, which is updated periodically with a consumer price index.

¹⁸Decree of Urgency N°105-2001 and Supreme Decree N°028-2002-EF.

¹⁹The pay-as-you-go system includes an early retirement pension. The amount of the pension is reduced 4% for each year advance respect to the 65 years.

Finally, the pension is computed as a direct function of the sum of the ICA and the recognition bond:

$$P_{funded} = \frac{ICA + B}{URC} \quad (5)$$

where URC is the unit required capital, i.e., the amount of money necessary to deliver one monetary unit as a life-time pension. The table of this URC, which depends on age and gender of the individual, is established in the regulatory framework and meets actuarial computations.

B. Estimation of pension variables

This appendix explains the construction of the explanatory variables used in the analysis.

B.1 Income profile and occupation probability estimation

The calculation of pension wealth and cost for each worker requires not only the current wage, but the entire income profile, which is not available in the surveys. While one alternative is assuming that the reported wage does not change over time, this paper simulates earning histories by taking the reported wage of each worker as one point of his income profile and then applying a set of growth rates to this wage backwards and forwards²⁰

The growth rates' sets are computed from estimated group-income profiles, whose computation requires a number of steps. First, the available data is used to estimate a Mincer's earnings equation of human capital (1958, 1974) with selection bias correction by employment status²¹. Specifically, the logarithm of income from the main occupation is regressed on years of education, years of occupational experience (equal to current age minus age at the final year of education) and a number of controls. Second, groups are defined as all possible combinations of the explanatory variables different from years of occupational experience (i.e. years of education and other controls). Third, for each defined group, the estimated equation is used to obtain the predicted logarithm of income that correspond to simulated years of occupational experience. Finally, every group-income profile allows computing one set of growth rates. Hence, every worker will receive the growth rate set that corresponds to the group he belongs

²⁰Mincer and Ofek (1982), Blundell, Meghir and Smith (2002), Banks, Emmerson and Tetlow (2005), Quintanilla (2008) and Carpio (2008) present alternative methodologies for the estimation of earning profiles and pension wealth.

²¹Heckman, Lochner and Todd (2003) present a report on the current state of Mincer's equation.

to.

The Mincer's equation used to estimate group-income profiles includes the occupational experience variable alone, to the square and interacted with dummies for education level. The square is included to recover a plausible non linear effect. The interactions are included because a year of occupational experience has different effects on income regarding the educational level of the worker. This procedure is consistent with Murphy and Welch (1992), who reported differences in income profiles for different educational levels in the United States.

The results of the Mincer's regression are presented by Table 8²². The first column presents the outcome equation. Notice that the returns to occupational experience do depend on the educational attainment as five from the eight considered interactions are statistically significant. The control variables are also highly significant. The second column shows the selection equation. Note that almost all the explanatory variables are significant, including marital status and its interaction with gender. The opposite signs of these two variables reveal that being married increases the probability of working for males, but decreases it for females.

²²The results are in line with Yamada (2007) and Calónico and Ñopo (2008), who have conducted other applications of Mincer's equation to Peru.

Table 8: Mincer's equation for the estimation of income profiles

VARIABLES	OUTCOME EQ.	SELECTION EQ.
<u>Occupational experience</u>		
Experience	-0.0460 *** <i>0.0063</i>	0.0835 ** <i>0.0046</i>
Experience squared	0.0004 *** <i>0.0001</i>	-0.0010 *** <i>0.0001</i>
Experience x primary education	-0.0177 *** <i>0.0066</i>	0.0350 *** <i>0.0048</i>
Experience squared x primary education	0.0007 *** <i>0.0001</i>	-0.0011 *** <i>0.0001</i>
Experience x secondary education	0.0129 ** <i>0.0066</i>	0.0000 <i>0.0049</i>
Experience squared x secondary education	0.0004 *** <i>0.0001</i>	-0.0008 *** <i>0.0001</i>
Experience x non-universitary higher education	0.0423 *** <i>0.0072</i>	-0.0024 <i>0.0055</i>
Experience squared x non-universitary higher education	-0.0001 <i>0.0001</i>	-0.0010 *** <i>0.0001</i>
Experience x university higher education	0.0293 *** <i>0.0074</i>	0.0354 *** <i>0.0056</i>
Experience squared x university higher education	0.0002 <i>0.0001</i>	-0.0018 *** <i>0.0001</i>
<u>Control variables</u>		
Primary education	-0.3653 *** <i>0.1022</i>	0.5190 **** <i>0.0726</i>
Secondary education	-0.6889 *** <i>0.1021</i>	1.1301 *** <i>0.0728</i>
Non-university higher education	-0.8093 *** <i>0.1040</i>	1.4165 *** <i>0.0745</i>
University education	-0.2592 ** <i>0.1047</i>	1.0924 *** <i>0.0745</i>
Woman	-0.2100 *** <i>0.0097</i>	-0.0670 *** <i>0.0096</i>
Marriage		0.4032 *** <i>0.0109</i>
Marriage x woman		-0.6619 *** <i>0.0148</i>
Lima	0.3226 *** <i>0.0097</i>	-0.1081 *** <i>0.0083</i>
Constant	7.7309 *** <i>0.1026</i>	-1.6551 *** <i>0.0721</i>
<u>Statistics</u>		
Uncensored observations / N	103610	179603
Wald X ² (20)		5424

Notes: The estimations presented are weighted. Macroeconomic effects are controlled with dummies for the years of observation. The standard deviations are in cursive. Legend: *p<0.10;**p<0.05;***p<0.01.

The previous regression is the main input to construct the group-income profiles. First, groups are defined as every possible combination of the control variables (for instance, a group is composed by single males from Lima with primary education, whose survey was applied in 2005). Second, for each group, the predicted logarithm of income is estimated by considering different levels of occupational experience²³. Third, the predicted income is obtained by taking antilogarithm to the previous estimations. Once the group-income profiles are available, the growth rates' sets are computed for each group.

The income profiles are then computed by taking the reported wage of each worker as a point of the income profile and using the growth rates' sets corresponding to his group. Each profile is delimited from the first year in the labor market (six plus years of schooling) to the retirement age. Figure 8 illustrates the construction of the income profiles for four specific individuals that belong to three different groups. The methodology allows not resigning to the variability provided by the income variable.

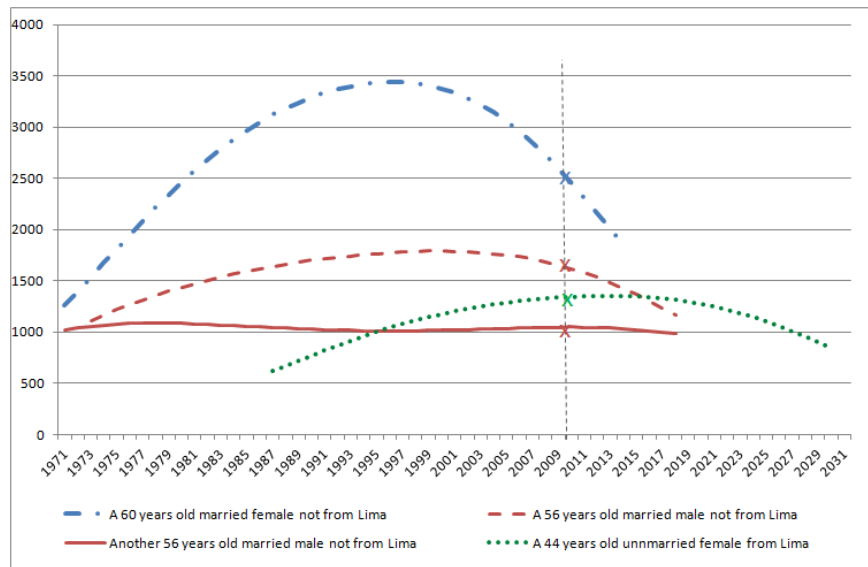


Figure 8: Reported wages and constructed income profiles

The calculation of pension wealth also requires profiles of the probability of working. The selection equation of the Mincer's model allows obtaining group-probability of working profiles. First, groups are defined as all possible combinations of the explanatory variables different from occupational experience. Second, for each group, the predicted probability is obtained by simulating

²³Notice that the Mills ratio also changes with occupational experience, which has been taken into account

different years of occupational experience. Finally, every worker receives the probability of working profile that corresponds to his group.

In short, each individual of the four surveys receives an income profile, denoted $\{e_i\}$ and a profile of the probability of being occupied, denoted $\{p_i\}$.

B.2 Pay-as-you-go pension

Section 2 explained that a worker must contribute for a minimum number of years to be eligible for pay-as-you-go pension and that this pension is calculated by applying a legal formula. This section explains how this regulatory framework was applied to the individuals of the survey.

In order to evaluate whether a worker will complete the minimum number of contribution years, the number of years from the beginning of his working life (equal to six plus his years of education) to the legal retirement age (equal to 65) is computed. Since the worker may experience unemployment for some years, the previous number of years is multiplied by the average probability of working, obtained from series $\{p_i\}$. This product, the expected number of years of employment, is used to check whether the worker fulfill the required years of contribution.

Pay-as-you-go pension for eligible workers is calculated by applying the legal formula in force during the year of observation. The legal formula requires a reference wage, which is calculated taking the last wages from the income profiles $\{e_i\}$. Once the pension is calculated, it is restricted to the minimum and maximum in force.

B.3 Funded pension

Section 2 also explained that the funded pension is computed as a direct function of the contributed resources plus the return obtained by pension funds administrators. Moreover, a Recognition Bond is added if a worker started to work before the pension reform of 1993 and if he fulfills a minimum number of contribution years. This section explains how funded pensions are estimated for the individuals of the survey.

Two methods are applied depending on the first year of working, which is assumed to be six plus the years of education of each individual. For those that have started to work after the reform of 1993, the funded pension depends only on the resources accumulated in the ICA. For those that have started to work before the reform, the estimated funded pension assumes that they have contributed to the pay-as-you-go system until 1993 and that they have switched to the funded system in that year. Hence, the funded pension depends on the ICA and, if the worker is eligible, also on the Recognition Bond.

The ICA is calculated by applying equation 3 to the income profile $\{e_i\}$ in the equation 3, which requires assuming a rate of contribution and a rate of growth in share value. The contribution rate, consistently with the regulatory framework, is assumed 10% for contributions from 1993 to 1996, 8% for contributions from 1997 to 2005 and 10% for contributions from 2006 onwards. The rate of growth in share value is assumed to be risk-less and equal to 6

Recognition Bond is estimated in two stages. First, to evaluate whether a worker fulfills the minimum number of contribution years, the number of years between the beginning of working life and 1992 (last year of recognition according to the law) is multiplied by the average probability of working in the same period (computed from $\{p_i\}$). Second, the bond is computed for eligible workers by using equation 4, which requires estimating reference wage from income profiles e_i and accounting for the upper limit of $S/.60000$ monetary units of December 1992.

The monthly pension of the individual is directly estimated using equation 5, that is, as the sum of the resources of the ICA and the Recognition Bond, divided by the corresponding URC. According to the legal table, the URC is 168 for 65 years-old men and 168 for 65 years-old women.

B.4 Pension wealth and pension cost

Pension wealth, both in the pay-as-you-go and the funded system, is estimated as the present value of pensions that each individual would receive from retirement until decease. Operatively, pension wealth in the funded systems is simply the sum of the ICA resources and the Recognition Bond, discounted from the retirement year to the year of observation. Similarly, pension wealth in the pay-as-you-go is the product of the calculated pension and the URC, discounted from the retirement year to the year of observation. Finally, pension wealth is equal to zero in the scenario of not being affiliated to any pension system.

Pension cost in the pay-as-you-go system is calculated as the present value of contributions from the year of observation to the retirement year. Hence, a contribution rate of 13% is applied to the income profile e_i . Pension cost in the funded system is calculated similarly, but using the contribution rate of 10% plus the average commission and premium applied by the AFP in the period of observation. The total rate increases is 11.15% , 12.78% , 12.69% , 12.67% and 12.82% in the years 2005, 2006, 2007, 2008 and 2009, respectively.

C. "Pension 65"

The Peruvian President Ollanta Humala recently launched the non contributory pension scheme "Pension 65"²⁴. This program will provide 125 Peruvian

²⁴Created by Supreme Decree N° 081-2011-PCM.

monetary units (about US\$46) to older people over 65 years who live in poverty.

This program may affect the incentives to affiliate to pension systems of workers under 65 years old who live in poverty, as they can expect to receive a pension in the future without contributing. This appendix estimates how many urban workers living in poverty may have incentives to leave formality.

Table 9: Effect of the non contributory pension scheme "Pension 65"

Age group	Change on pension wealth	Number of workers	Marginal effects (from Table 5)			Change on the number of workers		
			Unaffiliated	Pay-as-you-go	Funded	Unaffiliated	Pay-as-you-go	Funded
25-35	6.39	57,441	0.00026	-0.00007	-0.00018	95	-27	-68
35-45	8.59	61,058	0.00026	-0.00007	-0.00018	135	-38	-97
45-55	11.55	33,565	0.00026	-0.00007	-0.00018	100	-28	-72
55-65	15.52	14,691	0.00026	-0.00007	-0.00018	59	-17	-42
Total		166,755				389	-110	-278

References

- [1] Banks, J., C. Emmerson, & G. Tetlow 2005 *Estimating Pension Wealth of ELSA Respondents*. Working Papers 05/09. The Institute for Fiscal Studies.
- [2] Blundell, R., C. Meghir, S. Smith 2002 *Pension Incentives and the Pattern of Early Retirement*. In *Social Security Programs and Retirement around the World: Micro-Estimation*. Ed. Gruber and Wise. The University of Chicago Press.
- [3] Calónico, S. & Ñopo, H. 2008. *Where did you go to school? Private-Public differences in schooling trajectories and their role on earnings*. *Well-being and Social Policy*, n° 1, vol. 3, pp. 25-46.
- [4] Carpio, M. 2008. *The effects of social security privatization on consumption, saving and welfare: evidence from Peru*. Department of Economics. Universitat Pompeu Fabra.
- [5] Carpio, M. 2009. *Análisis de la cobertura del sistema de pensiones en Perú y la elección entre los regímenes de reparto y capitalización*. Proyecto Mediano. CIES.
- [6] Chacaltana, J. 2004. *Afiliación a pensiones en un sistema reformado*. En: *Políticas de empleo en Perú; Diagnóstico y Propuesta 11*. Lima: Consorcio de Investigación Económica y Social.
- [7] Galiani, S. & Weinschelbaum, F. 2007. *Modeling Informality Formally: Households and Firms*. Documento no publicado.
- [8] Heckman, J., Lochner, L. & Todd, P. 2003. *Fifty years of Mincer Earnings Regressions*. IZA Discussion Paper No. 775.
- [9] Holzmann, R., Packard, T. & Cuesta, J. 2000. *Extending coverage in multi-pillar pension systems: Constraints and hypotheses, preliminary evidence and future*. Oxford University Press for The World Bank.
- [10] Mesa-Lago, C. 2002. *Myth and Reality of Pension Reform: The Latin American Evidence*. *World Development*, n° 8, vol. 30, pp. 1309-1321.
- [11] Mincer, J. 1958. *Investment in Human Capital and Personal Income Distribution*. *The Journal of Political Economy*, n° 4, vol. 66, pp. 281-302.
- [12] Mincer, J. 1974. *Schooling Experience and Earnings*. New York: NBER Press.
- [13] Mincer, J., Ofek, Haim. 1982 *Interrupted Work Careers: Depreciation and Restoration of Human Capital* *The Journal of Human Resources*, Vol. 17, No. 1, pp. 3-24

- [14] Ministerio de Economía y Finanzas de Perú. 2007. *Informe Final de la Comisión Técnica* establecida por la ley N° 28991-Decreto Supremo N° 051-2007-EF.
- [15] Quintanilla, Ximena. 2008 *The Effect of the Chilean Pension Reform on Wealth Accumulation*. Workshop on the Economics of Ageing, CeRP, Collegio CarloAlberto. May, 2007. Turin, Italy.
- [16] Rofman, R., Lucchetti, L., & Ourens, G.2008. *Pension systems in Latin America: Concepts and Measurements of Coverage*. World Bank Discussion paper No. 0616.
- [17] Yamada,G. 2007. *Retornos a la educación superior en el mercado laboral: ¿vale la pena el esfuerzo?* Diagnóstico y Propuesta del Consorcio de Investigación Económica y Social (CIES). No.30.