

Der Open-Access-Publikationsserver der ZBW – Leibniz-Informationzentrum Wirtschaft
The Open Access Publication Server of the ZBW – Leibniz Information Centre for Economics

Chakrabarty, Debajyoti

Working Paper

Poverty traps and growth in a model of endogenous time preference

ZEI working paper, No. B 27-2002

Provided in cooperation with:

Rheinische Friedrich-Wilhelms-Universität Bonn

Suggested citation: Chakrabarty, Debajyoti (2002) : Poverty traps and growth in a model of endogenous time preference, ZEI working paper, No. B 27-2002, <http://hdl.handle.net/10419/39509>

Nutzungsbedingungen:

Die ZBW räumt Ihnen als Nutzerin/Nutzer das unentgeltliche, räumlich unbeschränkte und zeitlich auf die Dauer des Schutzrechts beschränkte einfache Recht ein, das ausgewählte Werk im Rahmen der unter

→ <http://www.econstor.eu/dspace/Nutzungsbedingungen> nachzulesenden vollständigen Nutzungsbedingungen zu vervielfältigen, mit denen die Nutzerin/der Nutzer sich durch die erste Nutzung einverstanden erklärt.

Terms of use:

The ZBW grants you, the user, the non-exclusive right to use the selected work free of charge, territorially unrestricted and within the time limit of the term of the property rights according to the terms specified at

→ <http://www.econstor.eu/dspace/Nutzungsbedingungen>
By the first use of the selected work the user agrees and declares to comply with these terms of use.

Zentrum für Europäische Integrationsforschung
Center for European Integration Studies
Rheinische Friedrich-Wilhelms-Universität Bonn



Debajyoti Chakrabarty

**Poverty Traps and Growth
in a Model of Endogenous
Time Preference**

Working Paper

**B 27
2002**

Poverty traps and Growth in a model of Endogenous Time Preference*

Debajyoti Chakrabarty[†]

November 2002

Abstract

We study the effect of endogenous time preference in a simple neo-classical model of growth. The variation of time preference causes the economy to have multiple steady states, some of which are similar to poverty traps. The stability properties of these steady states are analyzed. The results are interpreted in light of the growth experiences of developing economies. The model can explain why two economies that have identical production technologies and identical preferences may converge to different levels of income depending on initial conditions.

Keywords: Intertemporal choice, Saving, Growth, Local stability, Poverty traps

JEL classification: D91, E21, C62, O40

*I am thankful to Ira Gang, Stephanie Schmitt-Grohe, Juergen von Hagen and Martin Uribe for several helpful comments and discussions. I would also like to acknowledge suggestions made by seminar participants at University of Bonn, University of Essex, Institute for Advanced Studies, Vienna, IZA, Rutgers University, and University of Sydney.

[†]Center for European Integration Studies (ZEI), University of Bonn, Walter-Flex-Str. 3, 53113 Bonn, Germany, e-mail: dchakrab@uni-bonn.de, phone +49 228 1821, fax +49 228 1809.

1 Introduction

The consumption-saving choices of economic agents are driven by intertemporal utility trade-offs between current and future consumption. Any inter-temporal decision making process can be broken down into basically two components: First, the rate of time preference, i.e., how much importance agents give to the future, and second, the rate of return on savings, i.e., the reward for foregoing current consumption. Economic theory predicts that individuals who give more importance to future would defer consumption of a larger portion their current income to future. The consumption foregone can be utilized for investment in a productive activity which would increase consumption possibilities in the future.

Solow's ([12]) neo-classical model of growth, which is also the benchmark model for analyzing growth related issues focuses on the second aspect of this economic decision making process. According to the neo-classical model, when an economy is poor, that is, it has very little capital to work with, the rate of return on investment is very high. This induces people to save and invest more, and the economy embarks on the process of growth and development. As societies accumulate more capital the return on investment declines and hence people become less thrifty. The process of accumulation of capital goes on until the society reaches its desired level of capital and output.

An important implication of the neo-classical model is that poorer economies would grow at a more rapid rate than richer economies provided they have access to the same technology. In long run, all economies converge to the same level of capital and output. The initial conditions of an economy do not play any role in determining the long-run level of affluence of an economy. This implication of the neo-classical model is commonly referred to as the convergence hypothesis. Subsequent empirical studies have failed to vindicate the convergence hypothesis, however, there is evidence of convergence among the OECD countries. This phenomenon called club convergence implies that rates of growth rates of economies with similar levels of affluence will tend to converge.

One of the common features of most models of growth is that all individuals give the same amount of importance to the future and that weight is assumed to be an exogenously given parameter called subjective discount factor. Usually it is assumed that the discount factor is less than one, implying that people give less importance to future

consumption in comparison to current consumption. One possible economic rationale behind this assumption may be that there is a chance that an agent may not survive to the future period to reap the benefits of his current savings. However, assuming the discount factor to be same for all agents requires some careful analysis. Treating the discount factor as an exogenously given parameter, makes the preferences of agents separable over time and hence greatly simplifies the analysis of their optimal consumption-savings decisions. This technical simplicity comes at a cost of economic plausibility. Uzawa([13]) and Koopmans([7]) first introduced the possibility of discount factors to be determined endogenously by allowing the preferences of agents to be recursive. Their approach was extended and studied in greater detail by Epstein([4]), Iwai([6]) and Obstfeld([10]). Both Epstein and Obstfeld assumed the discount factor of agents to be decreasing in the level of consumption. This behavioral assumption regarding the discount factors basically implies that agents become more impatient as they grow richer and their level of consumption rises. While they acknowledge that there may be equally compelling reasons to believe that people become more patient as they grow richer, they work with this behavior of discount rates as it ensures a unique steady state which is also stable. They conclude that the long-run level of consumption and output of an economy is unique and independent of the initial conditions, a result very similar to the neo-classical model.

In this paper, we interpret the discount rate as the probability of an agent surviving to the next period. We allow this probability of survival to be determined endogenously. The probability of survival is increasing as the agents current level of consumption increases. Hence, the importance given to the future is influenced by his endowment of wealth and other productive factors. We draw this relationship from the vast literature in development economics which have recorded the effect of malnutrition and undernourishment on the economic behavior of individuals. Individuals who cannot afford certain subsistence level of consumption are trapped in poverty and save very little. On the other hand, there is another section of population called the “middle class” which have recorded significant improvements in their real income in the development experience of countries like India. We attempt to explain these by studying the effect of initial endowment of wealth on the saving investment choice of individuals when the rate of time preference is allowed to vary.

At this point we would like to point out that the basic difference of our paper from

rest of the literature. In our model, an individual's probability of surviving to a future period is increasing with his current level of consumption. This has the effect of decreasing the rate of time preference as current consumption of an individual rises. This assumption is not only has a certain economic rationale, it also has been found to be true in empirical studies. Ogaki and Atkeson([11]) in their study of panel data on three village districts in India, find that the inter-temporal elasticity of substitution rises with the level of wealth. The rate of time preference is not allowed to differ according to their model. Lawrance([8]) in her study on inter-temporal preferences based on U.S. panel data finds that subjective rate of time preference is about three to five percentage points higher for households with lower incomes than those with higher incomes. Controlling for race and education widens this difference even more. These results suggest one possible explanation for the observed heterogeneity in savings behavior across socioeconomic classes within a society as well as across different societies with different levels of affluence. This kind of behavior also has significant policy implications. Higher rates of time preference may reduce investment in education and thereby induce a negative relation between time preference and long-run income. Also, poor households will give less importance to the future and have a higher marginal propensity to consume which would adversely affect their savings-investment behavior.

A similar theoretical approach as ours was taken by Mantel([9]), where he studies the impact of decreasing rate of time preference on the optimal growth path of an economy. However, Mantel's primary focus was to study the monotonicity properties of optimal consumption and investment paths.

The paper is organized as follows. The next section describes our model and presents our basic results. Results concerning the steady states are presented in section 3. In section 4 we study the stability properties of the steady states. Section 5 provides a discussion of the results and we conclude in section 6 with some possible research questions.

2 The Model

Consider a closed economy in a one-good world. The good can be used for either consumption or investment. The production of this good requires two kinds of inputs, labor(N)

and capital(K). There are a large number of competitive firms having the same constant returns to scale production technology. The aggregate production function of the economy in every period is described by

$$Y_t = F(K_t, N) \quad (1)$$

Our economy consists of a representative agent who seeks to maximize his lifetime welfare. The agent derives his income from selling productive factors in every period. The agent's endowment of labor is assumed to be constant in every period. However, the capital can change over time depending on the savings decision of the agent. The agent, given the initial endowment of capital, has to decide his consumption and savings.

At any period t there is a chance that the agent will not survive to the next period $t+1$. The agent's probability of surviving to the next period depends on his current period consumption. If the agent's current period consumption is below a certain subsistence level of consumption(\underline{C}), then the agent's probability of survival is extremely low($\underline{\beta}$). As the consumption increases from this subsistence level the probability of survival also increases until consumption rises to a level of basic comfort(\bar{C}), where the agent's probability of survival reaches a maximum($\bar{\beta}$) and becomes insensitive to the changes in consumption. Thus, the probability of survival($\rho_{t,t+1}$) from any period t to period $t+1$ is a continuous function of consumption at time t in the following way:

$$\rho_{t,t+1} = \begin{cases} \underline{\beta} < 1 & \text{if } C_t < \underline{C} \\ \beta(C_t) & \text{if } C_t \in [\underline{C}, \bar{C}] \\ \bar{\beta} < 1 & \text{if } C_t > \bar{C} \end{cases} \quad (2)$$

where $\beta'(C_t) > 0$, if $C_t \in [\underline{C}, \bar{C}]$ and $\underline{\beta} < \bar{\beta}$. Suppose the agent has to choose a path of consumption and savings at period 0 to maximize his lifetime welfare. The weight given to future consumption will depend on the agent's probability of surviving to that future date. Let the probability of surviving to period t be denoted by $\rho_{0,t}$. These probabilities are the discount factors of the agent in his intertemporal maximization problem. Let us take note of some properties of the discount factors $\rho_{0,t}$ which will help in simplifying our analysis in future.

(P1) $\rho_{0,0} = 1, \rho_{0,t} = \beta(C_0)\beta(C_1)\dots\dots\dots\beta(C_{t-1})$

(P2) $\rho_{0,t+1} = \rho_{0,t} \beta(C_t)$

(P3) $\left(\frac{\rho_{0,s}}{\rho_{0,t}}\right) = \rho_{t,s}$.

The maximization problem faced by the agent is

$$\max \sum_{t=0}^{\infty} \rho_{0,t} U(C_t) ,$$

subject to

$$K_{t+1} = F(K_t, N) + (1 - \delta)K_t - C_t ,$$

and a transversality condition

$$\lim_{t \rightarrow \infty} \rho_{0,t} K_t \geq 0 . \quad (\text{TC})$$

The agent's period utility function is $U(C_t)$ and δ is the depreciation rate of capital where, $0 < \delta < 1$. At this point we make some assumptions concerning the functions $U(\cdot)$ and $\beta(\cdot)$ to ensure that the necessary conditions for maximum are also sufficient.

(A1) $U(C_t) > 0, U'(C_t) > 0, U''(C_t) < 0$.

(A2) $0 < \beta(C_t) < 1, \beta'(C_t) > 0$ and $\beta''(C_t) < 0$ for $C_t \in [\underline{C}, \bar{C}]$.

(A3) $F(0, 0) = 0, F_K(\cdot) > 0, F_{KK}(\cdot) < 0, \lim_{K \rightarrow 0} F_K(\cdot) = \infty$

The Lagrangian for the agent's problem can be written as

$$\mathcal{L} = \sum_{t=0}^{\infty} \{ \rho_{0,t} U(C_t) + \tilde{\lambda}_t [F(K_t, N) + (1 - \delta)K_t - C_t - K_{t+1}] \} .$$

The first-order conditions for maximum are

$$\rho_{0,t} U'(C_t) + \sum_{s=t+1}^{\infty} \frac{\partial \rho_{0,s}}{\partial C_t} U(C_s) = \tilde{\lambda}_t ,$$

$$\tilde{\lambda}_t = \tilde{\lambda}_{t+1} [F_K(K_{t+1}, N) + 1 - \delta] .$$

and the transversality condition holding with equality. Let $\left(\frac{\tilde{\lambda}_t}{\rho_{0,t}}\right) = \lambda_t$ and $\sum_{s=t+1}^{\infty} \rho_{t+1,s} U(C_s) = \phi_{t+1}$, where ϕ_{t+1} is the present discounted value of future consumption from period $t + 1$ onwards. The first order conditions can now be re-written as

$$U'(C_t) + \beta'(C_t) \phi_{t+1} = \lambda_t , \quad (3)$$

$$\lambda_t = \lambda_{t+1} \beta(C_t) [F_K(K_{t+1}, N) + 1 - \delta] , \quad (4)$$

and

$$K_{t+1} = F(K_t, N) + (1 - \delta)K_t - C_t . \quad (5)$$

Note that $U''(C_t) + \beta''(C_t) \phi_{t+1} < 0$ since the functions $U(\cdot)$ and $\beta(\cdot)$ are concave. Thus the second order condition for maximum is also satisfied. Substituting (3) in (4) we get,

$$\frac{U'(C_t) + \beta'(C_t) \phi_{t+1}}{\beta(C_t)[U'(C_{t+1}) + \beta'(C_{t+1}) \phi_{t+2}]} = [F_K(K_{t+1}, N) + 1 - \delta] . \quad (6)$$

Notice that the variable ϕ_t , the present discounted value of utilities from period t onwards, evolves in the following fashion:

$$\phi_t = U(C_t) + \beta(C_t) \phi_{t+1} \quad \text{for all } t \geq 1 . \quad (7)$$

Definition 1 A perfect foresight equilibrium (PFE) of this economy are sequences $\{C_t\}_{t=0}^{\infty}$, $\{K_{t+1}\}_{t=0}^{\infty}$, $\{\phi_t\}_{t=1}^{\infty}$ such that (5), (6), (7) and TC hold for a given K_0 .

Equation (5) is the intertemporal budget constraint of the agent. Equation (6) which is derived from (3) and (4) tells us that the loss in welfare due to foregoing consumption in period t has to equal the discounted value of gain in welfare from period $t + 1$ onwards. This condition is commonly referred to as the Fisher equation.

3 Steady-state Equilibria

Let us first study the steady state solutions to the difference equations (5), (6), (7) . In a steady state $C_t = C_{t+1} = C$, $K_t = K_{t+1} = K$ and $\phi = \frac{U(C)}{1-\beta(C)}$ for all t . In a steady state, equations (5) and (6) reduce to

$$C = F(K, N) - \delta K , \quad (\text{BC})$$

and

$$\beta(C) [F_K(K, N) + 1 - \delta] = 1 . \quad (\text{RR})$$

Equation (RR) is the steady state counterpart of the Fisher's intertemporal optimum. Equation (BC) gives us the locus of points along which the agent's consumption and capital stock are constant and satisfy the budget constraint. We are going to restrict our attention to only the positively sloped part of the BC curve¹. The slope of RR curve in consumption-capital plane is given by $\frac{-F_{KK}(K, N)\beta^2}{\beta'(C)}$ which is always positive from our assumptions. We will soon derive the conditions for the existence of a steady state equilibrium. However, assuming those conditions hold, plotting BC and RR curves on consumption-capital plane shows that there could be multiple steady state solutions to the agent's problem(see **Figure 1**). We characterize the steady states as two types. A steady state is of type "H" (or SS_H) if the slope of RR curve is greater than BC curve and of type "L" (or SS_L) otherwise. The existence of various kinds of steady states is characterized in a series of lemmas and propositions. The first lemma provides us with a bound on the steady state levels of capital.

Lemma 1 *In any steady state solution to the agent's problem the steady state level of capital stock $K \in [\underline{K}, \bar{K}]$, where \underline{K} satisfies $[F_K(\cdot, N) + (1 - \delta)] \underline{\beta} = 1$ and \bar{K} satisfies $[F_K(\cdot, N) + (1 - \delta)] \bar{\beta} = 1$.*

Proof: See the appendix. ■

The result follows from the steady state equation (RR) and says that the possible steady state capital levels are bounded within an interval which is determined by the minimum and maximum value of the discount factors. However between these bounds there may be more than one steady state equilibrium. The next proposition characterizes the number and type of such equilibria.

Proposition 1 *If the subsistence level of consumption(\underline{C}) is equal to zero, then the steady state level of capital is strictly greater than \underline{K} . There exists at least one steady state of*

¹The slope of BC curve is $F_K(K, N) - \delta$. This slope is positive for low values of capital and becomes negative after capital increases beyond the point where $F_K(K, N) = \delta$. According to RR in a steady state $F_K(K, N) + 1 - \delta = [\beta(C)]^{-1}$. If $F_K(K, N) < \delta$ then $F_K(K, N) + 1 - \delta < 1$, which is a contradiction since $[\beta(C)]^{-1}$ is always greater than one.

type “H”. If there exists “ n ” steady states of type “H”, then there must be “ $(n-1)$ ” steady states of type “L”.

Proof: See the appendix. ■

The following lemma establishes a sufficient condition for the existence of at least one steady state of type “L”.

Lemma 2 *Let $\underline{C} = 0$ and $F_K(\bar{K}, N) > \delta$ and K^1 denote the lowest steady state level of capital. If there exists a $K' > K^1$ such that $\beta^{-1}(\frac{1}{F_K(K', N)+1-\delta}) < F(K', N) - \delta K'$; then there exists at least one steady state of type “L” and two steady states of type “H”.*

Proof: See the appendix. ■

In the subsequent analysis we are going to assume the requirement of lemma 2 is satisfied and the economy has two steady states of type “H” with an intermediate steady state of type “L”. All the interesting qualitative properties of the model can be studied within such a setup. We first study the local stability properties of the steady states.

4 Local equilibria

The stability of the steady states will depend on the behavior of the C , K and ϕ around steady state. Log-linearization of the first order conditions around steady state yields a system of difference equations in \hat{C}_t , $\hat{\phi}_t$ and \hat{K}_t where ‘^’ denotes percentage deviation of the variable from its steady state value. The dynamical system can be expressed as

$$\begin{bmatrix} \hat{C}_{t+1} \\ \hat{\phi}_{t+1} \\ \hat{K}_{t+1} \end{bmatrix} = M \begin{bmatrix} \hat{C}_t \\ \hat{\phi}_t \\ \hat{K}_t \end{bmatrix}, \quad (8)$$

where

$$M = \begin{bmatrix} M_{11} & M_{12} & M_{13} \\ -\beta^{-1}\Delta_2 & \beta^{-1} & 0 \\ s_1 & 0 & \beta^{-1} \end{bmatrix},$$

and Δ_2 is a weighted average of the elasticity of the period utility function and the discount factor at the steady state. Details of the derivation of equation (8) and the components of matrix M are provided in the appendix. The roots of the polynomial $\det[M - \mu I]$ are going to determine the local stability properties of any steady state equilibrium. In this context we have the following proposition.

Proposition 2 *Any steady state of type “H” is a saddle path and locally unique. Any steady state of type “L” is locally unstable.*

Proof: See the appendix. ■

If an economy is endowed with a level of capital stock close to a steady state capital of type “H” then the economy will converge to that steady state level of capital. However the steady states of type “L” are unstable. So far we have assumed that the agent is perfectly informed about the effect of his current consumption on his probability of survival. However, the results will not change he fails to internalize this effect.

Proposition 3 *If the agent fails to internalize the effect of consumption on the probability of survival, the possible steady state equilibria to the agent’s optimization problem and their local stability properties are unaffected.*

Proof: See the appendix. ■

5 Long run output and Poverty traps

Depending on the initial level of capital, the economy might have three possible steady states. The pair (K_p, C_p) denotes a situation like poverty trap. On the other hand the pair (K_h, C_h) is the high level equilibrium. Both these steady states are locally stable and unique. The pair (K_u, C_u) is the unstable steady state (see **Figure 2**). This kind of behavior is very similar to Becker, Murphy and Tamura ([3]) model with endogenous fertility. In the first part of their paper, human capital was the only accumulable factor. If the initial level of human capital was too low, it resulted in investment in education of children being too expensive as opposed to having more children. If the initial capital stock is sufficiently high then individuals have less children and invest on their education. There was an intermediate unstable steady state. The long run fertility behavior of the economy was dependent on the initial capital stock. In the latter half of their paper

they introduced another accumulable factor in form of physical capital. It is shown that depending on initial level of human capital the economy may have two different growth rates. If the initial endowment of human capital is very low the economy exhibits an under-development equilibrium, in which there is no investment in human capital and there is no growth. If the initial endowment of human capital is above a critical level the economy invests in both the productive assets and shows a steady long run growth. The introduction of human capital accumulation of the kind assumed in Becker, Murphy and Tamura([3]) would result in the possibility of two distinct growth rates in our model also. A detailed discussion of that scenario falls beyond the scope of the present essay.

In our model the causes of an economy falling into a poverty trap are slightly different. If an individual is extremely poor, then he gives less weight to future and hence his saving and investment behavior is adversely effected. The economy may be stuck at a low-level equilibrium as a result of perfectly rational intertemporal decision process. This kind of behavior is called investment in patience by Becker and Mulligan([2]).

The population and hence the labor force is assumed to be constant in our economy. It means that each agent is replaced with another on his death. An alternative interpretation of our set up is that every individual lives for one period and at the end of that period he leaves behind some bequest. This bequest depends on the importance given to the welfare of the future generations. For individuals who are poor this altruistic motive is weaker, and future generations of their dynasty are hence trapped in poverty. This was the motivation behind the Galor and Zierra ([5]) paper. In their model certain individuals are not able to invest in human capital and hence get trapped in poverty because their previous generations didn't leave any bequest. At this point we should point out that their qualitative results are very similar to what we derive.

So far we have assumed that the subsistence level of consumption (\underline{C}) is zero. However, if this level of consumption becomes too high then the steady state level of capital will be at its lowest possible level. The following proposition formalizes impact of subsistence and basic comfort level of consumptions on the steady state equilibria.

Proposition 4 *If the subsistence level of consumption(\underline{C}) is greater than the $F(\underline{K}, N) - \delta\underline{K}$ then there exists a steady state equilibrium where $K = \underline{K}$ and $C = F(\underline{K}, N) - \delta\underline{K}$. If the level of basic comfort(\overline{C}) is less than $F(\overline{K}, N) - \delta\overline{K}$ then there exists a steady state*

equilibrium where $K = \bar{K}$ and $C = F(\bar{K}, N) - \delta\bar{K}$. Moreover both the steady states are saddle paths and locally unique.

Proof: See the appendix. ■

If the subsistence level of consumption is very high compared to the initial capital stock of the economy there is little incentive to save and accumulate capital. The economy will find itself stuck at a low level equilibrium with the lowest possible level of capital and output. On the other hand once the probability of survival reaches its maximum possible level the additional incentive to save goes away and the economy is content to be at its highest desirable capital stock \bar{K} .

If this economy was a small open economy which could borrow any amount of funds at a given world interest rate, then there would be a unique steady state. The arbitrage opportunities would imply that the world interest rate equals domestic rate return on capital. However, if the economy faces credit rationing then possibility of multiple steady states would arise.

6 Conclusion

The traditional theories of development predict that as an economy embarks on growth path the size of its backward sector is going to decline. However experiences in Latin American, African and some Asian countries have shown that the presence of the backward sector has been very persistent. The neo-classical growth model predicts improvement in welfare as the economy accumulates more capital. Those models assume exogenous time preference and hence the possibility of poverty traps completely escape their purview. We have provided an alternative motivation behind an economy getting trapped at a low-level equilibrium.

We show that it may be possible that a economy with very little capital and output shows no growth at all while a richer economy exhibits a positive rate of growth. This occurs because the poorer economy may be trapped in a low level equilibrium while the richer economy shows positive growth in its endeavour to attain a higher level of steady state output. Unlike the neo-classical model history of an economy has an important role in the process of development.

An interesting avenue for future research would be to allow the economy to be comprised of heterogeneous individuals in terms of their endowment of capital and study growth related issues in that framework. The endogeneity of time preference might cause the distribution of income to change as an economy embarks on its growth path.

Appendix

Proof of Lemma 1:

In order for the RR equation to be satisfied the marginal product of capital can never fall below $\underline{\beta}^{-1} + \delta - 1$. This in turn implies that in any steady state equilibria the level of capital has to exceed \underline{K} from the strict concavity of $F(., N)$. A similar argument applies for \overline{K} . ■

Proof of Proposition 1:

If $\underline{C} = 0$, then along the RR curve as $K \rightarrow \underline{K}$, $C \rightarrow 0$. From the assumptions made about the functions $F(K, N)$ and $\beta(C)$ we know that along the RR curve as $K \rightarrow \overline{K}$, $C \rightarrow \infty$. Hence there would exist at least one steady state and that steady state is of type “H”. From the nature of the RR curve it follows that there must be one steady state of type “L” between two steady states of type “H”. ■

Proof of Lemma 2:

The existence of a type “H” steady state capital like K^1 follows from Proposition 1. If $\beta^{-1}(\frac{1}{F_K(K', N) + 1 - \delta}) < F(K', N) - \delta K'$ then there is some value of capital for which the RR curve is below the BC curve. Thus there is a steady state of type “L”. The assumption of $F_K(\overline{K}, N) > \delta$ then guarantees the existence of the second steady state of type “H”. ■

Derivation of Equation 8:

Log-linearization of (5) around a steady state yields

$$\widehat{K}_{t+1} = \beta^{-1} \widehat{K}_t + s_1 \widehat{C}_t, \quad (\text{I})$$

where ‘^’ denotes percentage deviation of the variable from its steady state value and $s_1 = -C/K$ at steady state. From (3), we have

$$[s_2 \sigma(C) + s_3 \eta_\beta(C) \phi] \widehat{C}_t + s_3 \widehat{\phi}_{t+1} = \widehat{\lambda}_t,$$

where $\sigma(C) = \left(\frac{U''(C) C}{U'(C)}\right) < 0$ and $\eta_\beta(C) = \left(\frac{\beta''(C) C}{\beta'(C)}\right) < 0$. $s_2 = \left(\frac{U'(C)}{\lambda}\right)$ and $s_3 = 1 - s_2$. We write the above equation more compactly as

$$\Delta_1 \widehat{C}_t + s_3 \widehat{\phi}_{t+1} = \widehat{\lambda}_t, \quad (\text{II})$$

where $\Delta_1 = [s_2\sigma(C) + s_3\eta_\beta(C)\phi] < 0$, from our previous assumptions.

From (4) we have

$$\widehat{\lambda}_t - \widehat{\lambda}_{t+1} = \epsilon_\beta(C) \widehat{C}_t + \tau_K \eta_F(K, N) \widehat{K}_{t+1}, \quad (\text{III})$$

where $\epsilon_\beta(C) = \left(\frac{\beta'(C) C}{\beta(C)}\right) > 0$, $\eta_F(K, N) = \left(\frac{F_{KK}(K, N) K}{F_K(K, N)}\right) < 0$, and $\tau_K = F_K(K, N)\beta(C) > 0$.

From (7) we get

$$\widehat{\phi}_t = [(1 - \beta)\epsilon_U(C) + \beta\epsilon_\beta(C)] \widehat{C}_t + \beta \widehat{\phi}_{t+1}, \quad (\text{IV})$$

where $\epsilon_U(C) = \left(\frac{U'(C) C}{U(C)}\right) > 0$. We rewrite the above equation as

$$\widehat{\phi}_{t+2} - \widehat{\phi}_{t+1} = -\beta^{-1}\Delta_2 \widehat{C}_{t+1} + (\beta^{-1} - 1) \widehat{\phi}_{t+1}, \quad (\text{V})$$

where $\Delta_2 = (1 - \beta)\epsilon_U(C) + \beta\epsilon_\beta(C) > 0$. We can now use equations (I)-(V) to write a system of difference equations in \widehat{C}_t , $\widehat{\phi}_t$ and \widehat{K}_t where the dynamical system can be expressed as

$$\begin{bmatrix} \widehat{C}_{t+1} \\ \widehat{\phi}_{t+1} \\ \widehat{K}_{t+1} \end{bmatrix} = M \begin{bmatrix} \widehat{C}_t \\ \widehat{\phi}_t \\ \widehat{K}_t \end{bmatrix}, \quad (9)$$

where

$$M = \begin{bmatrix} M_{11} & M_{12} & M_{13} \\ -\beta^{-1}\Delta_2 & \beta^{-1} & 0 \\ s_1 & 0 & \beta^{-1} \end{bmatrix},$$

$$M_{11} = \left(\frac{\epsilon_\beta(2 - \beta^{-1}) + s_1\tau_K \eta_F - \Delta_1}{s_3\beta^{-1}\Delta_2 - \Delta_1} \right), M_{12} = \left(\frac{s_3(\beta^{-1} - 1) \beta^{-1}}{s_3\beta^{-1}\Delta_2 - \Delta_1} \right), \text{ and } M_{13} = \left(\frac{\tau_K \eta_F \beta^{-1}}{s_3\beta^{-1}\Delta_2 - \Delta_1} \right).$$

■

Proof of Proposition 2:

The roots of the polynomial $\det[M - \mu I] = 0$, will determine the behavior of the above system.

$$\begin{aligned} \det[M - \mu I] &= (\beta^{-1} - \mu)[(M_{11} - \mu)(\beta^{-1} - \mu) + M_{12}\beta^{-1}\Delta_2] - s_1M_{13}(\beta^{-1} - \mu) \\ &= (\beta^{-1} - \mu)[(M_{11} - \mu)(\beta^{-1} - \mu) - s_1M_{13}]. \end{aligned}$$

Therefore $\mu_1 = \beta^{-1}$ is one of the roots of the polynomial. The other two roots of $\det[M - \mu I]$ are the roots of the polynomial,

$$P(\mu) = \mu^2 - (M_{11} + \beta^{-1})\mu + (\beta^{-1}M_{11} + M_{12}\beta^{-1}\Delta_2 - s_1M_{13}).$$

Now let us consider s_3 . From our definition

$$s_3 = \frac{\beta'(C) \phi}{U'(C) + \beta'(C) \phi} = \frac{\beta'(C)}{U'(C)/\phi + \beta'(C)}.$$

Now using the fact that at steady state

$$\begin{aligned} \phi &= \frac{U(C)}{1 - \beta(C)} \\ \implies s_3 &= \frac{\beta\epsilon_\beta}{(1 - \beta)\epsilon_U(C) + \beta\epsilon_\beta(C)} \\ &= \frac{\beta\epsilon_\beta}{\Delta_2}. \end{aligned}$$

Therefore, we can write $M_{11} = \left(\frac{\epsilon_\beta + \epsilon_\beta(1 - \beta^{-1}) + s_1\tau_K \eta_F - \Delta_1}{\epsilon_\beta - \Delta_1} \right)$, $M_{12} = \left(\frac{\epsilon_\beta(\beta^{-1} - 1)\Delta_2^{-1}}{\epsilon_\beta - \Delta_1} \right)$,

and $M_{13} = \left(\frac{\tau_K \eta_F \beta^{-1}}{\epsilon_\beta - \Delta_1} \right)$. Now consider the one kind of steady state SS_H . In SS_H the slope of the RR curve is greater than the slope of the BC curve. That is

$$\frac{-F_{KK}(\cdot)\beta(C)^2}{\beta'(C)} > (\beta^{-1} - 1) \implies \frac{s_1\tau_K \eta_F}{\epsilon_\beta} > (\beta^{-1} - 1)$$

or $s_1\tau_K \eta_F + \epsilon_\beta(1 - \beta^{-1}) > 0$. Conversely in the other kind of steady state SS_L , $s_1\tau_K \eta_F + \epsilon_\beta(1 - \beta^{-1}) < 0$. Therefore for SS_H $M_{11} > 1$ and $P(0) = \beta^{-1}M_{11} + M_{12}\beta^{-1}\Delta_2 - s_1M_{13} =$

$\beta^{-1} > 0$, if real roots of the polynomial $P(\mu)$ exist then they must be positive. $P(1) = 1 - \beta^{-1} - M_{11} + \beta^{-1} = 1 - M_{11} < 0$. Therefore around SS_H there exists one eigenroot μ_3 which is less than one in absolute value. It is easy to show that the eigenroot μ_2 will be greater than one. Hence, SS_H is a saddle path and the system is locally unique around the steady state. For the second part of the lemma, we split up the analysis of the roots into various cases. Firstly, we note that

$$M_{11} + \beta^{-1} = \frac{\epsilon_\beta(\beta^{-1} - 1) + \epsilon_\beta(1 - \beta^{-1}) + s_1\tau_K \eta_F - \Delta_1(1 + \beta^{-1})}{\epsilon_\beta - \Delta_1} > 0 .$$

Case 1 (Imaginary roots). The polynomial $P(\mu)$ will have imaginary roots if $(M_{11} + \beta^{-1})^2 < 4\beta^{-1}$. The modulus of the imaginary roots will be $\sqrt{\beta^{-1}} > 1$.

Case 2. (Real and distinct roots) The polynomial $P(\mu)$ will have real and distinct roots if $(M_{11} + \beta^{-1})^2 > 4\beta^{-1}$. Around SS_L , $s_1\tau_K \eta_F + \epsilon_\beta(1 - \beta^{-1}) < 0$, hence, $M_{11} < 1$. Therefore, $P(0) = \beta^{-1} > 0$, $P(1) = 1 - M_{11} > 0$. The polynomial $P(\mu)$ attains a minimum at $\frac{M_{11} + \beta^{-1}}{2}$. Hence the roots will be greater than one in absolute value.

Case 3. (Real and repeated roots) The polynomial $P(\mu)$ will have real and repeated roots if $(M_{11} + \beta^{-1})^2 = 4\beta^{-1}$. This implies that $M_{11} + \beta^{-1} > 2$. Hence the roots will be greater than 1.

So SS_L is a source and the system is locally unstable. ■

Proof of Proposition 3:

If the agent does not take into account the effect of current consumption on the probability of survival then the first order conditions for an optimum would have to satisfy

$$U'(C_t) = \lambda_t , \quad (3')$$

(4) and (5). The steady state solutions to the agent's problem would have to satisfy equations (BC) and (RR). Hence the existence of possible steady states is not affected. Log-linearizing the first order conditions around steady state yields the following dynamical system

$$\begin{bmatrix} \widehat{C}_{t+1} \\ \widehat{\phi}_{t+1} \\ \widehat{K}_{t+1} \end{bmatrix} = \begin{bmatrix} M_{11} & 0 & M_{13} \\ -\beta^{-1}(1 - \beta)\epsilon_U & \beta^{-1} & 0 \\ s_1 & 0 & \beta^{-1} \end{bmatrix} \begin{bmatrix} \widehat{C}_t \\ \widehat{\phi}_t \\ \widehat{K}_t \end{bmatrix} , \quad (10)$$

where $M_{11} = \frac{\sigma(C) - \tau_K \eta_F s_1 - \epsilon_\beta}{\sigma(C)} > 1$ and $M_{13} = -\frac{\tau_K \eta_F \beta^{-1}}{\sigma(C)} < 0$. The roots of the polynomial $\det[M - \mu I] = 0$, will determine the behavior of the above system where

$$\det[M - \mu I] = (\beta^{-1} - \mu)[(M_{11} - \mu)(\beta^{-1} - \mu) - s_1 M_{13}].$$

Therefore $\mu_1 = \beta^{-1}$ is one of the roots of the polynomial. The other two roots of $\det[M - \mu I]$ are the roots of the polynomial,

$$P(\mu) = \mu^2 - (M_{11} + \beta^{-1})\mu + \beta^{-1}(1 - \epsilon_\beta/\sigma(C)).$$

Note that $1 - \epsilon_\beta/\sigma(C) < \frac{\sigma(C) - \tau_K \eta_F s_1 - \epsilon_\beta}{\sigma(C)} = M_{11}$. The discriminant of the above quadratic equation is $D = (M_{11} + \beta^{-1})^2 - 4\beta^{-1}(1 - \epsilon_\beta/\sigma(C)) > (M_{11} + \beta^{-1})^2 - 4\beta^{-1}M_{11} = (M_{11} - \beta^{-1})^2 \geq 0$. Therefore real roots exist. One of the roots of the polynomial $P(\mu)$, $\mu_2 = \frac{M_{11} + \beta^{-1} + \sqrt{D}}{2} > 1$. In order to show that the third root μ_3 is less than one, note that $P(0) = \beta^{-1}(1 - \epsilon_\beta/\sigma(C)) > 0$. $P(1) = 1 - \beta^{-1} - M_{11} + \beta^{-1}(1 - \epsilon_\beta/\sigma(C)) < 0$ if and only if $\tau_K \eta_F s_1 > (\beta^{-1} - 1)\epsilon_\beta$. So steady states of type ‘‘H’’ are locally stable and steady states of type ‘‘L’’ are unstable. ■

Proof of Proposition 4:

From Lemma 1, we know that the steady state capital stock can never be less than \underline{K} . The (RR) curve is a vertical line until the subsistence level of consumption is reached. If $\underline{C} > F(\underline{K}, N) - \delta\underline{K}$, it implies that the (RR) curve will intersect the (BC) curve at $C = F(\underline{K}, N) - \delta\underline{K}$ and hence $K = \underline{K}$, $C = F(\underline{K}, N) - \delta\underline{K}$ will be a steady state equilibrium. Log-linearization of the first order conditions around steady state yields the following dynamical system

$$\begin{bmatrix} \widehat{C}_{t+1} \\ \widehat{\phi}_{t+1} \\ \widehat{K}_{t+1} \end{bmatrix} = \begin{bmatrix} M_{11} & 0 & M_{13} \\ -\underline{\beta}^{-1}(1 - \beta)\epsilon_U & \underline{\beta}^{-1} & 0 \\ s_1 & 0 & \underline{\beta}^{-1} \end{bmatrix} \begin{bmatrix} \widehat{C}_t \\ \widehat{\phi}_t \\ \widehat{K}_t \end{bmatrix}, \quad (11)$$

where $M_{11} = \frac{\sigma(C) - \tau_K \eta_F s_1}{\sigma(C)} > 1$ and $M_{13} = -\frac{\tau_K \eta_F^{-1} \beta}{\sigma(C)} < 0$. It is easy to check that that two roots of the polynomial $\det[M - \mu I] = 0$ are strictly greater than 1 and one root is strictly less than 1. A similar argument applies for the steady state equilibrium $K = \overline{K}$, $C = F(\overline{K}, N) - \delta\overline{K}$. ■

References

- [1] Azariadis, C and Drazen, A., (1990) Threshold Externalities in Economic Development, *Quarterly Journal of Economics* 105 (2), 501-26.
- [2] Becker, G. and Mulligan, C.B.,(1997) The Endogenous Determination of Time Preference, *Quarterly Journal of Economics* 112, 729-758.
- [3] Becker, G., Murphy, K. and Tamura, R.(1990) Human Capital, Fertility and Economic Growth, *Journal of Political Economy* 98(5), S12-S37.
- [4] Epstein, L.G. (1983) Stationary Cardinal Utility and Optimal Growth under Uncertainty, *Journal of Economic Theory* 31, 133-152.
- [5] Galor, O. and Zeira, J.(1993) Income Distribution and Macroeconomics, *Review of Economic Studies* 60, 35-52.
- [6] Iwai, K. (1972) Optimal Economic Growth and Stationary Ordinal Utility-A Fisherian Approach, *Journal of Economic Theory* 5, 121-151.
- [7] Koopmans, T. C. (1963) Stationary Ordinal Utility and Impatience, *Econometrica* 28, 287-309.
- [8] Lawrance, E.C. (1991) Poverty and the Rate of Time preference: Evidence from the panel data, *Journal of Political Economy* 99 (February), 54-77.
- [9] Mantel, R. R. (1998) Optimal economic growth with recursive preferences: Decreasing rate of time preference, *Estudios de Economía* 25(2), 161-178.
- [10] Obstfeld, M. (1990) Intertemporal dependence, impatience and dynamics, *Journal of Monetary Economics* 26, 45-75.
- [11] Ogaki, M. and Atkeson, A. (1997) Rate of Time preference, Intertemporal elasticity of substitution and Level of Wealth, *Review of Economics and Statistics* 79 (November), 564-72.
- [12] Solow, R.M. (1956) A contribution to the theory of Economic Growth, *Quarterly Journal of Economics* 70 (February), 65-94.

- [13] Uzawa, H. (1968) Time preference, the consumption function, and optimum asset holdings, chapter 21 in J. N. Wolfe, ed., *Value, Capital, and Growth*. Papers in honor of Sir John Hicks. Edinburgh: University Press, 485-504.

Figure 1

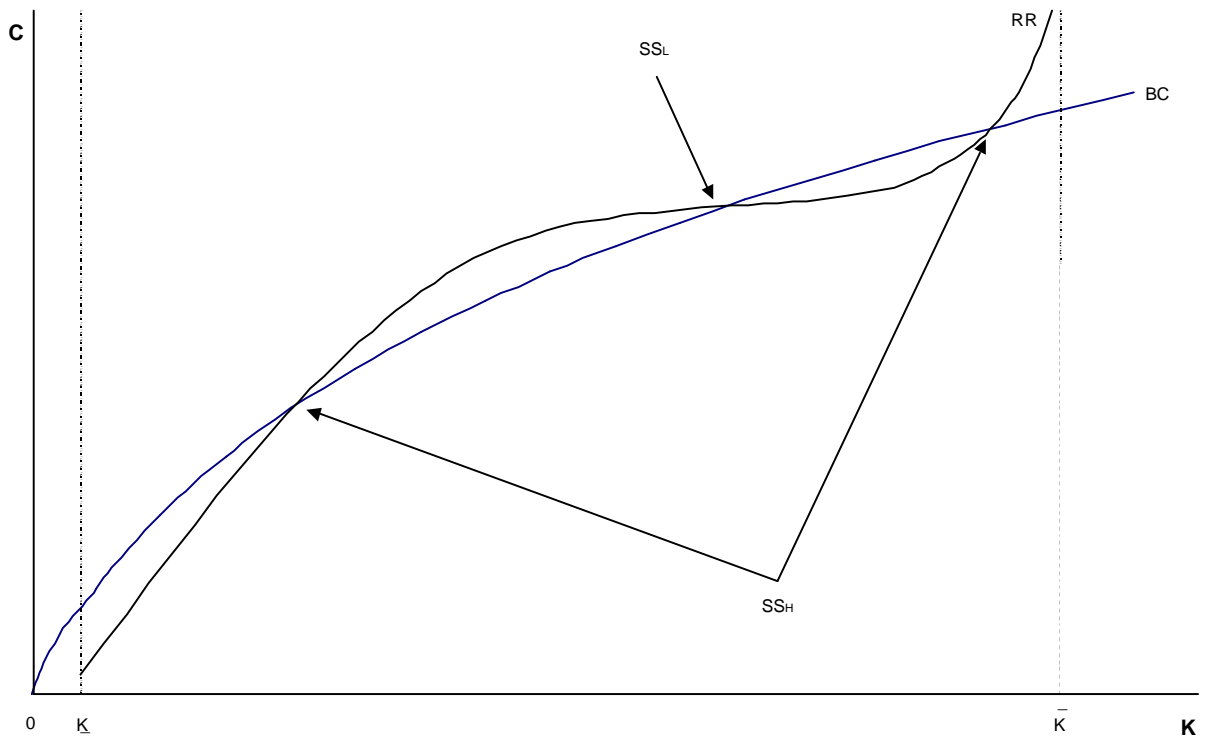
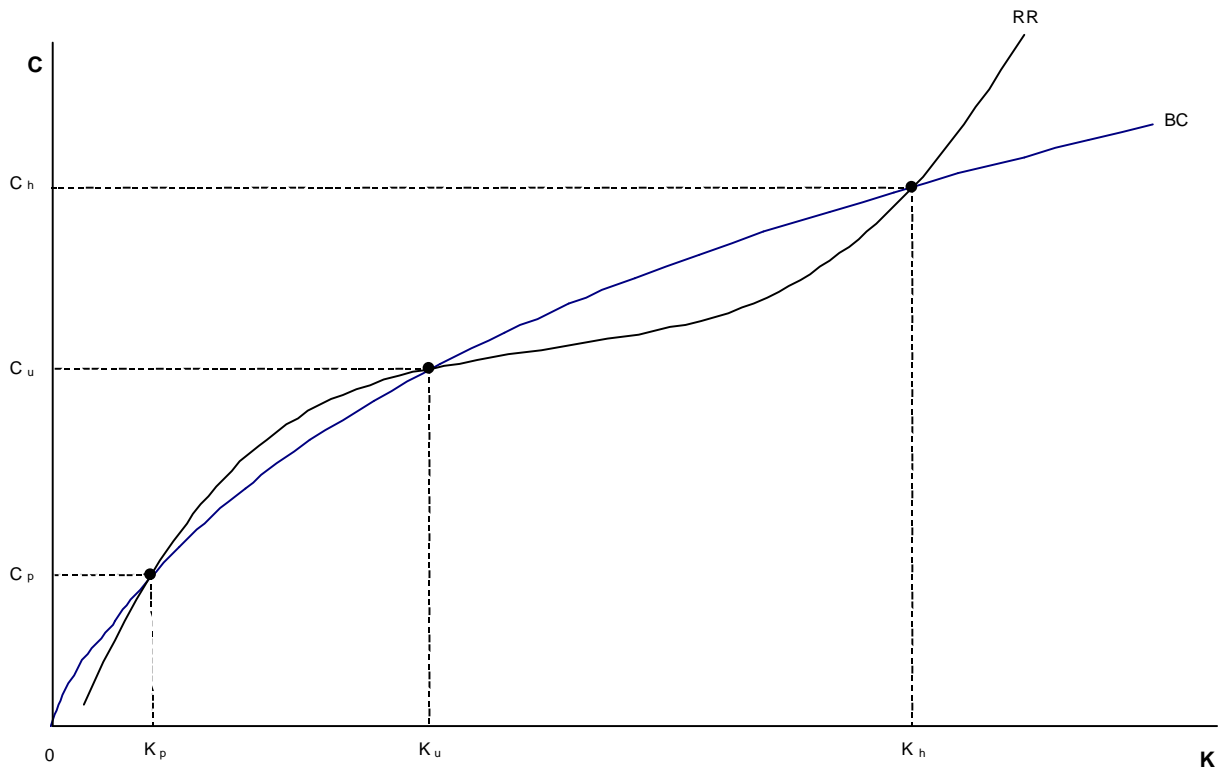


Figure 2



2008		
B01-08	Euro-Diplomatie durch gemeinsame „Wirtschaftsregierung“	<i>Martin Seidel</i>
2007		
B03-07	Löhne und Steuern im Systemwettbewerb der Mitgliedstaaten der Europäischen Union	<i>Martin Seidel</i>
B02-07	Konsolidierung und Reform der Europäischen Union	<i>Martin Seidel</i>
B01-07	The Ratification of European Treaties - Legal and Constitutional Basis of a European Referendum.	<i>Martin Seidel</i>
2006		
B03-06	Financial Frictions, Capital Reallocation, and Aggregate Fluctuations	<i>Jürgen von Hagen, Haiping Zhang</i>
B02-06	Financial Openness and Macroeconomic Volatility	<i>Jürgen von Hagen, Haiping Zhang</i>
B01-06	A Welfare Analysis of Capital Account Liberalization	<i>Jürgen von Hagen, Haiping Zhang</i>
2005		
B11-05	Das Kompetenz- und Entscheidungssystem des Vertrages von Rom im Wandel seiner Funktion und Verfassung	<i>Martin Seidel</i>
B10-05	Die Schutzklauseln der Beitrittsverträge	<i>Martin Seidel</i>
B09-05	Measuring Tax Burdens in Europe	<i>Guntram B. Wolff</i>
B08-05	Remittances as Investment in the Absence of Altruism	<i>Gabriel González-König</i>
B07-05	Economic Integration in a Multicore World?	<i>Christian Volpe Martinicus, Jennifer Pédussel Wu</i>
B06-05	Banking Sector (Under?)Development in Central and Eastern Europe	<i>Jürgen von Hagen, Valeriya Dinger</i>
B05-05	Regulatory Standards Can Lead to Predation	<i>Stefan Lutz</i>
B04-05	Währungspolitik als Sozialpolitik	<i>Martin Seidel</i>
B03-05	Public Education in an Integrated Europe: Studying to Migrate and Teaching to Stay?	<i>Panu Poutvaara</i>
B02-05	Voice of the Diaspora: An Analysis of Migrant Voting Behavior	<i>Jan Fidrmuc, Orla Doyle</i>
B01-05	Macroeconomic Adjustment in the New EU Member States	<i>Jürgen von Hagen, Iulia Traistaru</i>
2004		
B33-04	The Effects of Transition and Political Instability On Foreign Direct Investment Inflows: Central Europe and the Balkans	<i>Josef C. Brada, Ali M. Kutan, Tanner M. Yigit</i>
B32-04	The Choice of Exchange Rate Regimes in Developing Countries: A Multinomial Panel Analysis	<i>Jürgen von Hagen, Jizhong Zhou</i>
B31-04	Fear of Floating and Fear of Pegging: An Empirical Analysis of De Facto Exchange Rate Regimes in Developing Countries	<i>Jürgen von Hagen, Jizhong Zhou</i>
B30-04	Der Vollzug von Gemeinschaftsrecht über die Mitgliedstaaten und seine Rolle für die EU und den Beitrittsprozess	<i>Martin Seidel</i>
B29-04	Deutschlands Wirtschaft, seine Schulden und die Unzulänglichkeiten der einheitlichen Geldpolitik im Eurosystem	<i>Dieter Spethmann, Otto Steiger</i>
B28-04	Fiscal Crises in U.S. Cities: Structural and Non-structural Causes	<i>Guntram B. Wolff</i>
B27-04	Firm Performance and Privatization in Ukraine	<i>Galyna Grygorenko, Stefan Lutz</i>
B26-04	Analyzing Trade Opening in Ukraine: Effects of a Customs Union with the EU	<i>Oksana Harbuzyuk, Stefan Lutz</i>
B25-04	Exchange Rate Risk and Convergence to the Euro	<i>Lucjan T. Orlowski</i>
B24-04	The Endogeneity of Money and the Eurosystem	<i>Otto Steiger</i>
B23-04	Which Lender of Last Resort for the Eurosystem?	<i>Otto Steiger</i>
B22-04	Non-Discretionary Monetary Policy: The Answer for Transition Economies?	<i>Elham-Mafi Kreft, Steven F. Kreft</i>
B21-04	The Effectiveness of Subsidies Revisited: Accounting for Wage and Employment Effects in Business R+D	<i>Volker Reinthaler, Guntram B. Wolff</i>
B20-04	Money Market Pressure and the Determinants of Banking Crises	<i>Jürgen von Hagen, Tai-kuang Ho</i>
B19-04	Die Stellung der Europäischen Zentralbank nach dem Verfassungsvertrag	<i>Martin Seidel</i>

B18-04	Transmission Channels of Business Cycles Synchronization in an Enlarged EMU	<i>Iulia Traistaru</i>
B17-04	Foreign Exchange Regime, the Real Exchange Rate and Current Account Sustainability: The Case of Turkey	<i>Sübüdey Togan, Hasan Ersel</i>
B16-04	Does It Matter Where Immigrants Work? Traded Goods, Non-traded Goods, and Sector Specific Employment	<i>Harry P. Bowen, Jennifer Pédussel Wu</i>
B15-04	Do Economic Integration and Fiscal Competition Help to Explain Local Patterns?	<i>Christian Volpe Martincus</i>
B14-04	Euro Adoption and Maastricht Criteria: Rules or Discretion?	<i>Jiri Jonas</i>
B13-04	The Role of Electoral and Party Systems in the Development of Fiscal Institutions in the Central and Eastern European Countries	<i>Sami Yläoutinen</i>
B12-04	Measuring and Explaining Levels of Regional Economic Integration	<i>Jennifer Pédussel Wu</i>
B11-04	Economic Integration and Location of Manufacturing Activities: Evidence from MERCOSUR	<i>Pablo Sanguinetti, Iulia Traistaru, Christian Volpe Martincus</i>
B10-04	Economic Integration and Industry Location in Transition Countries	<i>Laura Resmini</i>
B09-04	Testing Creditor Moral Hazard in Sovereign Bond Markets: A Unified Theoretical Approach and Empirical Evidence	<i>Ayse Y. Evrensel, Ali M. Kutan</i>
B08-04	European Integration, Productivity Growth and Real Convergence	<i>Taner M. Yigit, Ali M. Kutan</i>
B07-04	The Contribution of Income, Social Capital, and Institutions to Human Well-being in Africa	<i>Mina Balamoune-Lutz, Stefan H. Lutz</i>
B06-04	Rural Urban Inequality in Africa: A Panel Study of the Effects of Trade Liberalization and Financial Deepening	<i>Mina Balamoune-Lutz, Stefan H. Lutz</i>
B05-04	Money Rules for the Eurozone Candidate Countries	<i>Lucjan T. Orłowski</i>
B04-04	Who is in Favor of Enlargement? Determinants of Support for EU Membership in the Candidate Countries' Referenda	<i>Orla Doyle, Jan Fidrmuc</i>
B03-04	Over- and Underbidding in Central Bank Open Market Operations Conducted as Fixed Rate Tender	<i>Ulrich Bindseil</i>
B02-04	Total Factor Productivity and Economic Freedom Implications for EU Enlargement	<i>Ronald L. Moomaw, Euy Seok Yang</i>
B01-04	Die neuen Schutzklauseln der Artikel 38 und 39 des Beitrittsvertrages: Schutz der alten Mitgliedstaaten vor Störungen durch die neuen Mitgliedstaaten	<i>Martin Seidel</i>
2003		
B29-03	Macroeconomic Implications of Low Inflation in the Euro Area	<i>Jürgen von Hagen, Boris Hofmann</i>
B28-03	The Effects of Transition and Political Instability on Foreign Direct Investment: Central Europe and the Balkans	<i>Josef C. Brada, Ali M. Kutan, Taner M. Yigit</i>
B27-03	The Performance of the Euribor Futures Market: Efficiency and the Impact of ECB Policy Announcements (Electronic Version of International Finance)	<i>Kerstin Bernoth, Juergen von Hagen</i>
B26-03	Sovereign Risk Premia in the European Government Bond Market (überarbeitete Version zum Herunterladen)	<i>Kerstin Bernoth, Juergen von Hagen, Ludger Schulknecht</i>
B25-03	How Flexible are Wages in EU Accession Countries?	<i>Anna Iara, Iulia Traistaru</i>
B24-03	Monetary Policy Reaction Functions: ECB versus Bundesbank	<i>Bernd Hayo, Boris Hofmann</i>
B23-03	Economic Integration and Manufacturing Concentration Patterns: Evidence from Mercosur	<i>Iulia Traistaru, Christian Volpe Martincus</i>
B22-03	Reformzwänge innerhalb der EU angesichts der Osterweiterung	<i>Martin Seidel</i>
B21-03	Reputation Flows: Contractual Disputes and the Channels for Inter-Firm Communication	<i>William Pyle</i>
B20-03	Urban Primacy, Gigantism, and International Trade: Evidence from Asia and the Americas	<i>Ronald L. Moomaw, Mohammed A. Alwosabi</i>
B19-03	An Empirical Analysis of Competing Explanations of Urban Primacy Evidence from Asia and the Americas	<i>Ronald L. Moomaw, Mohammed A. Alwosabi</i>

B18-03	The Effects of Regional and Industry-Wide FDI Spillovers on Export of Ukrainian Firms	<i>Stefan H. Lutz, Oleksandr Talavera, Sang-Min Park</i>
B17-03	Determinants of Inter-Regional Migration in the Baltic States	<i>Mihails Hazans</i>
B16-03	South-East Europe: Economic Performance, Perspectives, and Policy Challenges	<i>Iulia Traistaru, Jürgen von Hagen</i>
B15-03	Employed and Unemployed Search: The Marginal Willingness to Pay for Attributes in Lithuania, the US and the Netherlands	<i>Jos van Ommeren, Mihails Hazans</i>
B14-03	FICs and Economic Activity: Some International Evidence	<i>Charles Goodhart, Boris Hofmann</i>
B13-03	The IS Curve and the Transmission of Monetary Policy: Is there a Puzzle?	<i>Charles Goodhart, Boris Hofmann</i>
B12-03	What Makes Regions in Eastern Europe Catching Up? The Role of Foreign Investment, Human Resources, and Geography	<i>Gabriele Tondl, Goran Vuksic</i>
B11-03	Die Weisungs- und Herrschaftsmacht der Europäischen Zentralbank im europäischen System der Zentralbanken - eine rechtliche Analyse	<i>Martin Seidel</i>
B10-03	Foreign Direct Investment and Perceptions of Vulnerability to Foreign Exchange Crises: Evidence from Transition Economies	<i>Josef C. Brada, Vladimír Tomsík</i>
B09-03	The European Central Bank and the Eurosystem: An Analysis of the Missing Central Monetary Institution in European Monetary Union	<i>Gunnar Heinsohn, Otto Steiger</i>
B08-03	The Determination of Capital Controls: Which Role Do Exchange Rate Regimes Play?	<i>Jürgen von Hagen, Jizhong Zhou</i>
B07-03	Nach Nizza und Stockholm: Stand des Binnenmarktes und Prioritäten für die Zukunft	<i>Martin Seidel</i>
B06-03	Fiscal Discipline and Growth in Euroland. Experiences with the Stability and Growth Pact	<i>Jürgen von Hagen</i>
B05-03	Reconsidering the Evidence: Are Eurozone Business Cycles Converging?	<i>Michael Massmann, James Mitchell</i>
B04-03	Do Ukrainian Firms Benefit from FDI?	<i>Stefan H. Lutz, Oleksandr Talavera</i>
B03-03	Europäische Steuerkoordination und die Schweiz	<i>Stefan H. Lutz</i>
B02-03	Commuting in the Baltic States: Patterns, Determinants, and Gains	<i>Mihails Hazans</i>
B01-03	Die Wirtschafts- und Währungsunion im rechtlichen und politischen Gefüge der Europäischen Union	<i>Martin Seidel</i>
2002		
B30-02	An Adverse Selection Model of Optimal Unemployment Assurance	<i>Marcus Hagedorn, Ashok Kaul, Tim Mennel</i>
B29B-02	Trade Agreements as Self-protection	<i>Jennifer Pédussel Wu</i>
B29A-02	Growth and Business Cycles with Imperfect Credit Markets	<i>Debajyoti Chakrabarty</i>
B28-02	Inequality, Politics and Economic Growth	<i>Debajyoti Chakrabarty</i>
B27-02	Poverty Traps and Growth in a Model of Endogenous Time Preference	<i>Debajyoti Chakrabarty</i>
B26-02	Monetary Convergence and Risk Premiums in the EU Candidate Countries	<i>Lucjan T. Orlowski</i>
B25-02	Trade Policy: Institutional Vs. Economic Factors	<i>Stefan Lutz</i>
B24-02	The Effects of Quotas on Vertical Intra-industry Trade	<i>Stefan Lutz</i>
B23-02	Legal Aspects of European Economic and Monetary Union	<i>Martin Seidel</i>
B22-02	Der Staat als Lender of Last Resort - oder: Die Achillesverse des Eurosystems	<i>Otto Steiger</i>
B21-02	Nominal and Real Stochastic Convergence Within the Transition Economies and to the European Union: Evidence from Panel Data	<i>Ali M. Kutan, Taner M. Yigit</i>
B20-02	The Impact of News, Oil Prices, and International Spillovers on Russian Financial Markets	<i>Bernd Hayo, Ali M. Kutan</i>

B19-02	East Germany: Transition with Unification, Experiments and Experiences	<i>Jürgen von Hagen, Rolf R. Strauch, Guntram B. Wolff</i>
B18-02	Regional Specialization and Employment Dynamics in Transition Countries	<i>Iulia Traistaru, Guntram B. Wolff</i>
B17-02	Specialization and Growth Patterns in Border Regions of Accession Countries	<i>Laura Resmini</i>
B16-02	Regional Specialization and Concentration of Industrial Activity in Accession Countries	<i>Iulia Traistaru, Peter Nijkamp, Simonetta Longhi</i>
B15-02	Does Broad Money Matter for Interest Rate Policy?	<i>Matthias Brückner, Andreas Schaber</i>
B14-02	The Long and Short of It: Global Liberalization, Poverty and Inequality	<i>Christian E. Weller, Adam Hersch</i>
B13-02	De Facto and Official Exchange Rate Regimes in Transition Economies	<i>Jürgen von Hagen, Jizhong Zhou</i>
B12-02	Argentina: The Anatomy of A Crisis	<i>Jiri Jonas</i>
B11-02	The Eurosystem and the Art of Central Banking	<i>Gunnar Heinsohn, Otto Steiger</i>
B10-02	National Origins of European Law: Towards an Autonomous System of European Law?	<i>Martin Seidel</i>
B09-02	Monetary Policy in the Euro Area - Lessons from the First Years	<i>Volker Clausen, Bernd Hayo</i>
B08-02	Has the Link Between the Spot and Forward Exchange Rates Broken Down? Evidence From Rolling Cointegration Tests	<i>Ali M. Kutan, Su Zhou</i>
B07-02	Perspektiven der Erweiterung der Europäischen Union	<i>Martin Seidel</i>
B06-02	Is There Asymmetry in Forward Exchange Rate Bias? Multi-Country Evidence	<i>Su Zhou, Ali M. Kutan</i>
B05-02	Real and Monetary Convergence Within the European Union and Between the European Union and Candidate Countries: A Rolling Cointegration Approach	<i>Josef C. Brada, Ali M. Kutan, Su Zhou</i>
B04-02	Asymmetric Monetary Policy Effects in EMU	<i>Volker Clausen, Bernd Hayo</i>
B03-02	The Choice of Exchange Rate Regimes: An Empirical Analysis for Transition Economies	<i>Jürgen von Hagen, Jizhong Zhou</i>
B02-02	The Euro System and the Federal Reserve System Compared: Facts and Challenges	<i>Karlheinz Ruckriegel, Franz Seitz</i>
B01-02	Does Inflation Targeting Matter?	<i>Manfred J. M. Neumann, Jürgen von Hagen</i>
2001		
B29-01	Is Kazakhstan Vulnerable to the Dutch Disease?	<i>Karlygash Kuralbayeva, Ali M. Kutan, Michael L. Wyzan</i>
B28-01	Political Economy of the Nice Treaty: Rebalancing the EU Council. The Future of European Agricultural Policies	<i>Deutsch-Französisches Wirtschaftspolitisches Forum</i>
B27-01	Investor Panic, IMF Actions, and Emerging Stock Market Returns and Volatility: A Panel Investigation	<i>Bernd Hayo, Ali M. Kutan</i>
B26-01	Regional Effects of Terrorism on Tourism: Evidence from Three Mediterranean Countries	<i>Konstantinos Drakos, Ali M. Kutan</i>
B25-01	Monetary Convergence of the EU Candidates to the Euro: A Theoretical Framework and Policy Implications	<i>Lucjan T. Orłowski</i>
B24-01	Disintegration and Trade	<i>Jarko and Jan Fidrmuc</i>
B23-01	Migration and Adjustment to Shocks in Transition Economies	<i>Jan Fidrmuc</i>
B22-01	Strategic Delegation and International Capital Taxation	<i>Matthias Brückner</i>
B21-01	Balkan and Mediterranean Candidates for European Union Membership: The Convergence of Their Monetary Policy With That of the European Central Bank	<i>Josef C. Brada, Ali M. Kutan</i>
B20-01	An Empirical Inquiry of the Efficiency of Intergovernmental Transfers for Water Projects Based on the WRDA Data	<i>Anna Rubinchik-Pessach</i>
B19-01	Detrending and the Money-Output Link: International Evidence	<i>R.W. Hafer, Ali M. Kutan</i>

B18-01	Monetary Policy in Unknown Territory. The European Central Bank in the Early Years	<i>Jürgen von Hagen, Matthias Brückner</i>
B17-01	Executive Authority, the Personal Vote, and Budget Discipline in Latin American and Caribbean Countries	<i>Mark Hallerberg, Patrick Marier</i>
B16-01	Sources of Inflation and Output Fluctuations in Poland and Hungary: Implications for Full Membership in the European Union	<i>Selahattin Dibooglu, Ali M. Kutan</i>
B15-01	Programs Without Alternative: Public Pensions in the OECD	<i>Christian E. Weller</i>
B14-01	Formal Fiscal Restraints and Budget Processes As Solutions to a Deficit and Spending Bias in Public Finances - U.S. Experience and Possible Lessons for EMU	<i>Rolf R. Strauch, Jürgen von Hagen</i>
B13-01	German Public Finances: Recent Experiences and Future Challenges	<i>Jürgen von Hagen, Rolf R. Strauch</i>
B12-01	The Impact of Eastern Enlargement On EU-Labour Markets. Pensions Reform Between Economic and Political Problems	<i>Deutsch-Französisches Wirtschaftspolitisches Forum</i>
B11-01	Inflationary Performance in a Monetary Union With Large Wage Setters	<i>Lilia Cavallar</i>
B10-01	Integration of the Baltic States into the EU and Institutions of Fiscal Convergence: A Critical Evaluation of Key Issues and Empirical Evidence	<i>Ali M. Kutan, Niina Pautola-Mol</i>
B09-01	Democracy in Transition Economies: Grease or Sand in the Wheels of Growth?	<i>Jan Fidrmuc</i>
B08-01	The Functioning of Economic Policy Coordination	<i>Jürgen von Hagen, Susanne Mundschenk</i>
B07-01	The Convergence of Monetary Policy Between Candidate Countries and the European Union	<i>Josef C. Brada, Ali M. Kutan</i>
B06-01	Opposites Attract: The Case of Greek and Turkish Financial Markets	<i>Konstantinos Drakos, Ali M. Kutan</i>
B05-01	Trade Rules and Global Governance: A Long Term Agenda. The Future of Banking.	<i>Deutsch-Französisches Wirtschaftspolitisches Forum</i>
B04-01	The Determination of Unemployment Benefits	<i>Rafael di Tella, Robert J. McCulloch</i>
B03-01	Preferences Over Inflation and Unemployment: Evidence from Surveys of Happiness	<i>Rafael di Tella, Robert J. McCulloch, Andrew J. Oswald</i>
B02-01	The Konstanz Seminar on Monetary Theory and Policy at Thirty	<i>Michele Fratianni, Jürgen von Hagen</i>
B01-01	Divided Boards: Partisanship Through Delegated Monetary Policy	<i>Etienne Farvaque, Gael Lagadec</i>
2000		
B20-00	Breakin-up a Nation, From the Inside	<i>Etienne Farvaque</i>
B19-00	Income Dynamics and Stability in the Transition Process, general Reflections applied to the Czech Republic	<i>Jens Hölscher</i>
B18-00	Budget Processes: Theory and Experimental Evidence	<i>Karl-Martin Ehrhart, Roy Gardner, Jürgen von Hagen, Claudia Keser</i>
B17-00	Rückführung der Landwirtschaftspolitik in die Verantwortung der Mitgliedsstaaten? - Rechts- und Verfassungsfragen des Gemeinschaftsrechts	<i>Martin Seidel</i>
B16-00	The European Central Bank: Independence and Accountability	<i>Christa Randzio-Plath, Tomasso Padoa-Schioppa</i>
B15-00	Regional Risk Sharing and Redistribution in the German Federation	<i>Jürgen von Hagen, Ralf Hepp</i>
B14-00	Sources of Real Exchange Rate Fluctuations in Transition Economies: The Case of Poland and Hungary	<i>Selahattin Dibooglu, Ali M. Kutan</i>
B13-00	Back to the Future: The Growth Prospects of Transition Economies Reconsidered	<i>Nauro F. Campos</i>

B12-00	Rechtsetzung und Rechtsangleichung als Folge der Einheitlichen Europäischen Wahrung	<i>Martin Seidel</i>
B11-00	A Dynamic Approach to Inflation Targeting in Transition Economies	<i>Lucjan T. Orłowski</i>
B10-00	The Importance of Domestic Political Institutions: Why and How Belgium Qualified for EMU	<i>Marc Hallerberg</i>
B09-00	Rational Institutions Yield Hysteresis	<i>Rafael Di Tella, Robert MacCulloch</i>
B08-00	The Effectiveness of Self-Protection Policies for Safeguarding Emerging Market Economies from Crises	<i>Kenneth Kletzer</i>
B07-00	Financial Supervision and Policy Coordination in The EMU	<i>Deutsch-Franzosisches Wirtschaftspolitisches Forum</i>
B06-00	The Demand for Money in Austria	<i>Bernd Hayo</i>
B05-00	Liberalization, Democracy and Economic Performance during Transition	<i>Jan Fidrmuc</i>
B04-00	A New Political Culture in The EU - Democratic Accountability of the ECB	<i>Christa Randzio-Plath</i>
B03-00	Integration, Disintegration and Trade in Europe: Evolution of Trade Relations during the 1990's	<i>Jarko Fidrmuc, Jan Fidrmuc</i>
B02-00	Inflation Bias and Productivity Shocks in Transition Economies: The Case of the Czech Republic	<i>Josef C. Brada, Arthur E. King, Ali M. Kutan</i>
B01-00	Monetary Union and Fiscal Federalism	<i>Kenneth Kletzer, Jurgen von Hagen</i>
1999		
B26-99	Skills, Labour Costs, and Vertically Differentiated Industries: A General Equilibrium Analysis	<i>Stefan Lutz, Alessandro Turrini</i>
B25-99	Micro and Macro Determinants of Public Support for Market Reforms in Eastern Europe	<i>Bernd Hayo</i>
B24-99	What Makes a Revolution?	<i>Robert MacCulloch</i>
B23-99	Informal Family Insurance and the Design of the Welfare State	<i>Rafael Di Tella, Robert MacCulloch</i>
B22-99	Partisan Social Happiness	<i>Rafael Di Tella, Robert MacCulloch</i>
B21-99	The End of Moderate Inflation in Three Transition Economies?	<i>Josef C. Brada, Ali M. Kutan</i>
B20-99	Subnational Government Bailouts in Germany	<i>Helmut Seitz</i>
B19-99	The Evolution of Monetary Policy in Transition Economies	<i>Ali M. Kutan, Josef C. Brada</i>
B18-99	Why are Eastern Europe's Banks not failing when everybody else's are?	<i>Christian E. Weller, Bernard Morzuch</i>
B17-99	Stability of Monetary Unions: Lessons from the Break-Up of Czechoslovakia	<i>Jan Fidrmuc, Julius Horvath and Jarko Fidrmuc</i>
B16-99	Multinational Banks and Development Finance	<i>Christian E. Weller and Mark J. Scher</i>
B15-99	Financial Crises after Financial Liberalization: Exceptional Circumstances or Structural Weakness?	<i>Christian E. Weller</i>
B14-99	Industry Effects of Monetary Policy in Germany	<i>Bernd Hayo and Birgit Uhlenbrock</i>
B13-99	Financial Fragility or What Went Right and What Could Go Wrong in Central European Banking?	<i>Christian E. Weller and Jurgen von Hagen</i>
B12-99	Size Distortions of Tests of the Null Hypothesis of Stationarity: Evidence and Implications for Applied Work	<i>Mehmet Caner and Lutz Kilian</i>
B11-99	Financial Supervision and Policy Coordination in the EMU	<i>Deutsch-Franzosisches Wirtschaftspolitisches Forum</i>
B10-99	Financial Liberalization, Multinational Banks and Credit Supply: The Case of Poland	<i>Christian Weller</i>
B09-99	Monetary Policy, Parameter Uncertainty and Optimal Learning	<i>Volker Wieland</i>
B08-99	The Connection between more Multinational Banks and less Real Credit in Transition Economies	<i>Christian Weller</i>

- B07-99 **Comovement and Catch-up in Productivity across Sectors: Evidence from the OECD** *Christopher M. Cornwell and Jens-Uwe Wächter*
- B06-99 **Productivity Convergence and Economic Growth: A Frontier Production Function Approach** *Christopher M. Cornwell and Jens-Uwe Wächter*
- B05-99 **Tumbling Giant: Germany's Experience with the Maastricht Fiscal Criteria** *Jürgen von Hagen and Rolf Strauch*
- B04-99 **The Finance-Investment Link in a Transition Economy: Evidence for Poland from Panel Data** *Christian Weller*
- B03-99 **The Macroeconomics of Happiness** *Rafael Di Tella, Robert McCulloch and Andrew J. Oswald*
- B02-99 **The Consequences of Labour Market Flexibility: Panel Evidence Based on Survey Data** *Rafael Di Tella and Robert McCulloch*
- B01-99 **The Excess Volatility of Foreign Exchange Rates: Statistical Puzzle or Theoretical Artifact?** *Robert B.H. Hauswald*
- 1998**
- B16-98 **Labour Market + Tax Policy in the EMU** *Deutsch-Französisches Wirtschaftspolitisches Forum*
- B15-98 **Can Taxing Foreign Competition Harm the Domestic Industry?** *Stefan Lutz*
- B14-98 **Free Trade and Arms Races: Some Thoughts Regarding EU-Russian Trade** *Rafael Reuveny and John Maxwell*
- B13-98 **Fiscal Policy and Intranational Risk-Sharing** *Jürgen von Hagen*
- B12-98 **Price Stability and Monetary Policy Effectiveness when Nominal Interest Rates are Bounded at Zero** *Athanasios Orphanides and Volker Wieland*
- B11A-98 **Die Bewertung der "dauerhaft tragbaren öffentlichen Finanzlage" der EU Mitgliedstaaten beim Übergang zur dritten Stufe der EWWU** *Rolf Strauch*
- B11-98 **Exchange Rate Regimes in the Transition Economies: Case Study of the Czech Republic: 1990-1997** *Julius Horvath and Jiri Jonas*
- B10-98 **Der Wettbewerb der Rechts- und politischen Systeme in der Europäischen Union** *Martin Seidel*
- B09-98 **U.S. Monetary Policy and Monetary Policy and the ESCB** *Robert L. Hetzel*
- B08-98 **Money-Output Granger Causality Revisited: An Empirical Analysis of EU Countries (überarbeitete Version zum Herunterladen)** *Bernd Hayo*
- B07-98 **Designing Voluntary Environmental Agreements in Europe: Some Lessons from the U.S. EPA's 33/50 Program** *John W. Maxwell*
- B06-98 **Monetary Union, Asymmetric Productivity Shocks and Fiscal Insurance: an Analytical Discussion of Welfare Issues** *Kenneth Kletzer*
- B05-98 **Estimating a European Demand for Money (überarbeitete Version zum Herunterladen)** *Bernd Hayo*
- B04-98 **The EMU's Exchange Rate Policy** *Deutsch-Französisches Wirtschaftspolitisches Forum*
- B03-98 **Central Bank Policy in a More Perfect Financial System** *Jürgen von Hagen / Ingo Fender*
- B02-98 **Trade with Low-Wage Countries and Wage Inequality** *Jaleel Ahmad*
- B01-98 **Budgeting Institutions for Aggregate Fiscal Discipline** *Jürgen von Hagen*
- 1997**
- B04-97 **Macroeconomic Stabilization with a Common Currency: Does European Monetary Unification Create a Need for Fiscal Insurance or Federalism?** *Kenneth Kletzer*
- B-03-97 **Liberalising European Markets for Energy and Telecommunications: Some Lessons from the US Electric Utility Industry** *Tom Lyon / John Mayo*
- B02-97 **Employment and EMU** *Deutsch-Französisches Wirtschaftspolitisches Forum*
- B01-97 **A Stability Pact for Europe** *(a Forum organized by ZEI)*

ISSN 1436 - 6053

Zentrum für Europäische Integrationsforschung
Center for European Integration Studies
Rheinische Friedrich-Wilhelms-Universität Bonn

Walter-Flex-Strasse 3
D-53113 Bonn
Germany

Tel.: +49-228-73-1732
Fax: +49-228-73-1809
www.zei.de