



WORKING PAPER SERIES

Common Stochastic Trends, Common Cycles, and Asymmetry in Economic Fluctuations

Chang-Jin Kim and Jeremy M. Piger

Working Paper 2001-014A
<http://research.stlouisfed.org/wp/2001/2001-014.pdf>

October 2001

FEDERAL RESERVE BANK OF ST. LOUIS
Research Division
411 Locust Street
St. Louis, MO 63102

The views expressed are those of the individual authors and do not necessarily reflect official positions of the Federal Reserve Bank of St. Louis, the Federal Reserve System, or the Board of Governors.

Federal Reserve Bank of St. Louis Working Papers are preliminary materials circulated to stimulate discussion and critical comment. References in publications to Federal Reserve Bank of St. Louis Working Papers (other than an acknowledgment that the writer has had access to unpublished material) should be cleared with the author or authors.

Photo courtesy of The Gateway Arch, St. Louis, MO. www.gatewayarch.com

Common stochastic trends, common cycles, and asymmetry in economic fluctuations

Chang-Jin Kim,^a Jeremy Piger^{*,b}

^aKorea University, Anam-Dong, Seongbuk-ku, Seoul, 136-701, KOREA

^{*,b}Federal Reserve Bank of St. Louis, 411 Locust St., St. Louis, MO 63102

Abstract

This paper investigates the nature of U.S. business cycle asymmetry using a dynamic factor model of output, investment, and consumption. We identify a common stochastic trend and common transitory component by embedding the permanent income hypothesis within a simple growth model. Markov-switching in each component captures two types of asymmetry: Shifts in the growth rate of the common stochastic trend, having permanent effects, and "plucking" deviations from the common stochastic trend, having only transitory effects. Statistical tests suggest both asymmetries were present in post-war recessions, although the shifts in trend are less severe than found in the received literature.

Key words: Asymmetry, Business Cycles, Common Shocks, Markov-Switching, Productivity Slowdown

J.E.L classification: C32, E32

* Corresponding Author: Jeremy M. Piger, Federal Reserve Bank of St. Louis, 411 Locust St., St. Louis, MO 63102; Telephone: 314-444-8718; Fax: 314-444-8731; E-mail: piger@stls.frb.org

Kim acknowledges financial support from the National Science Foundation under grant SES9818789 and Piger from the Grover and Creta Ensley Fellowship in Economic Policy. This paper is based on chapter 2 of Piger's Ph.D. dissertation at the University of Washington. We thank, without implicating, an anonymous referee, James Morley, Charles Nelson, Jessica Rutledge, Dick Startz, Eric Zivot and seminar participants at the Federal Reserve Board and the Federal Reserve Banks of Dallas, St. Louis and Kansas City for useful comments. The opinions expressed in this paper are those of the authors and do not necessarily reflect those of the Federal Reserve Bank of St. Louis or the Federal Reserve System.

Running Headline: Common Stochastic Trends

The question of whether the dynamics of recessions are different from those of expansions has a long history. Early students of the business cycle, including Mitchell (1927), Keynes (1936), and Burns and Mitchell (1946) noted that declines in economic activity take hold quicker, are steeper, and last for a shorter amount of time than expansions. To these observers, recessions appeared to come from a different regime than booms. Recent interest in this type of asymmetry was sparked by Salih Neftci (1984), who presented evidence that increases in the unemployment rate are sharper and shorter than declines.

Since that time, two parametric time-series models of U.S. output were proposed that are capable of capturing steep, short recessions. However, they are fundamentally different in their implications for the effects of recessions on the long run level of output. In other words, the hypothesized persistence of shocks that lead to recessions is very different in the two models. The first model, due to Hamilton (1989), divides the business cycle into two phases, negative trend growth and positive trend growth, with the economy switching back and forth according to a latent state variable. This two phase business cycle implies that following the trough of a recession, output switches back to the expansion growth phase, never regaining the ground lost during the downturn. Recessions will therefore have permanent effects on the level of output. The second model, having its roots in work by Friedman (1964, 1993) and recently formalized in an econometric model by Kim and Nelson (1999a), suggests that recessions are periods where output is hit by large negative transitory shocks, labeled “plucks” by Friedman. Following the trough, output enters a high growth recovery phase, returning to the trend. This “bounce-back effect” or “peak-reversion” is the critical phase of Friedman’s model. Output then begins a normal, slower growth, expansion phase. Thus, Friedman’s view is that recessions are entirely transitory deviations from trend, not movements in the trend itself.

Both forms of asymmetry have received substantial attention in the empirical literature, with conflicting conclusions. Using classical likelihood based tests, Hansen (1992) and Garcia (1998) both fail to reject a linear autoregressive model in favor of Hamilton's model for U.S. GNP. Kim and Nelson (2001) reach a similar conclusion using Bayesian methods. On the other hand, both Chib (1995) and Koop and Potter (1999) find evidence in favor of Hamilton's model using Bayesian techniques. Support for the peak-reversion implication of Friedman's model is given by Wynne and Balke (1992, 1996), Sichel (1993, 1994), and Beaudry and Koop (1993). However, Elwood (1998) argues that the evidence in favor of peak-reversion has been overstated. Specifically, Elwood presents evidence that negative shocks are not significantly less persistent than positive ones for U.S. GNP. A shortcoming of this empirical literature is that most authors have analyzed the two forms of asymmetry separately from one another. That is, little attention is paid to evaluating the marginal significance of the two forms of asymmetry.¹ An additional shortcoming is the literature's domination by univariate analysis. As pointed out by Kim and Nelson (2001), tests based on univariate models have low power in detecting a specific form of asymmetry in the business cycle as the data may be obscured by idiosyncratic variation.

In this paper, we estimate a dynamic two-factor model of real private GNP, fixed investment, and consumption of non-durables and services that incorporates the common stochastic trend suggested by neoclassical growth theory and a common transitory component. Building on work by Cochrane (1994) and Fama (1992) we define consumption as the common

¹ An exception is Kim and Murray (1999), who estimate an experimental coincident index of economic activity which incorporates both types of asymmetry discussed above. However, their investigation employs economic indicators that are not cointegrated. Also, they do not investigate the implications of their model for the dynamics of real GNP.

stochastic trend. As we discuss below, this assumption can help to eliminate bias that may arise when using Hamilton's model to capture shifts in trend growth rate. We model the Hamilton and Friedman types of asymmetry through regime switching in the permanent and transitory components respectively. This method allows tests of the marginal significance of one type of asymmetry while the other is allowed to be present. As a byproduct of the estimation we consider the possibility of a one-time structural break in the growth rate of the common stochastic trend (a productivity slowdown). We search for the date of this break using a multivariate version of a technique suggested by Chib (1998).

Section 1 of the paper presents a review of the Hamilton and Friedman types of asymmetry in business cycle dynamics. Section 2 discusses the theory supporting a common stochastic trend and a common cyclical component in output, investment and consumption, and presents the formal empirical model. Section 3 presents estimation results and statistical tests of the importance of the two types of asymmetry. Such tests suggest that both types of asymmetry have played a significant role in post-war recessions, although the nature of shifts in the growth rate of trend is different than the received literature suggests. In particular, we find evidence of reduced, but still positive, growth rates in trend during recessions, not the negative trend growth suggested by Hamilton (1989). We present some simulation evidence that this discrepancy may be caused by a potential bias in applying Hamilton's model to data which displays "plucking" type recessions. The investigation of a one-time structural break in the average growth rate of trend is suggestive of a productivity slowdown, the estimated date of which is centered around 1971. Section 4 summarizes and concludes.

1. A Review of the Hamilton and Friedman Models

1.1 Hamilton's (1989) Model

In an influential 1989 *Econometrica* paper, James Hamilton proposed a model in which the growth rate of the trend function of U.S. GNP switches between two different states according to a first order Markov process. Hamilton's results suggest the two states correspond to business cycle dynamics, the first being normal growth and the second recession. Figure 1 contains a stylized graph of a business cycle characterized by Hamilton type asymmetry. Note that following the recession output does not rebound back to its level had the recession not occurred. Instead, because recessions are movements in the trend of the series, output is *permanently* lower. Specifically, Hamilton's results suggest that a typical economic recession is characterized by a 3% permanent drop in the level of GNP. Thus, while the Hamilton model is capable of explaining a business cycle in which recessions are quick, steep drops in economic activity, it also has a dire implication for the welfare effects of recessions.

Evaluation of Hamilton's model is complicated by the fact that standard distribution theory for hypothesis testing does not apply to Markov-switching models. Testing the Markov-switching model vs. linear alternatives is troubled by the familiar Davies' (1977) problem, in which a nuisance parameter is not identified under the null hypothesis. Hamilton's original paper offers suggestive evidence that the two state Markov-switching model outperforms linear models in terms of forecasts, but no statistical tests. Hansen (1992) and Garcia (1998) use classical likelihood based test procedures designed to deal with the Davies' problem and find that linear autoregressive models cannot be rejected for real GNP. Kim and Nelson (2001) confirm this result using Bayesian techniques. Also using Bayesian techniques, Chib (1995) and Koop and

Potter (1999) find evidence that the Markov-switching model outperforms linear models. Thus, the empirical evidence regarding Hamilton's model is mixed and incomplete.

Hamilton's model has been followed by a growing volume of theoretical work in which the economy undergoes endogenous switching between "good" and "bad" states. Specifically, Howitt and McAfee (1992) employ a model of switching consumer confidence which leads to multiple equilibria with statistical properties well characterized by Markov-switching. In Cooper (1994), agents choose between multiple equilibria and then remain in the chosen equilibrium until a large shock induces a switch. Acemoglu and Scott (1997) and Startz (1998) also employ models in which shocks generate endogenous switching between growth states. However, negative growth states, such as those found by Hamilton (1989) during recessions, are not generated by these models in general. For example, in Startz (1998) the economy switches between two positive growth states.

1.2 Friedman's (1964, 1993) "Plucking" Model

Friedman (1964, 1993), argued for a type of business cycle asymmetry that, while yielding steep recessions, has very different implications for the long run effects of recessions than Hamilton's model.² Specifically, in Friedman's "plucking" model, recessions are caused by large negative transitory shocks that yield steep recessions. Following these shocks output "bounces back" or "peak reverts" to trend. This is commonly referred to as the high growth recovery phase. Finally, output begins a normal, slower growth, expansion.³ Figure 2 contains a stylized graph of a business cycle characterized by "plucking".

² The behavior described in this paragraph is also consistent with De Long and Summers (1988).

³ Friedman's "plucking" model has another strong implication - that deviations from trend are only negative, meaning increases in output are permanent. In this paper we do not attempt to model this feature. Instead we focus on the peak reversion of recessions, or the tendency of output to "bounce back".

The literature contains many statistical tests of various implications of Friedman's model. Here we focus on the literature surrounding the peak-reverting nature of recessions. Wynne and Balke (1992, 1996) find that the deeper the recession the stronger the ensuing recovery while Sichel (1994) finds evidence of a high growth recovery phase following recessions, both implications of peak reversion. Another implication of peak reversion is that negative shocks are less persistent than positive shocks.⁴ Beaudry and Koop (1993) showed that a variable measuring the depth of real GNP below its historic high was useful for predicting changes in output. They use this variable to investigate impulse response functions for negative vs. positive shocks, and show that negative shocks are much less persistent. Elwood (1998) took issue with Beaudry and Koop's techniques, arguing that by considering only shocks which reduce the level of GNP they ignore a large number of negative shocks that fail to reduce the level of the series. Elwood uses an unobserved components model capable of identifying all negative and positive shocks and finds that negative shocks are not statistically significantly less persistent than positive shocks. This controversy is suggestive of two kinds of negative shocks to the economy: large, asymmetric, recession causing shocks and smaller shocks that come from a symmetric process. Beaudry and Koop's analysis proxies for the large negative shocks by considering only shocks that actually reduce the level of GNP. On the other hand, Elwood's analysis smears the effects of large and small negative shocks together by assuming all negative shocks have the same variance. In this paper we take the approach of Kim and Nelson (1999a) and allow for both continuous, symmetric transitory shocks and infrequent, asymmetric transitory shocks, which we model as coming from a Markov-switching process.

⁴ If recessions are entirely transitory, as Friedman's model suggests, while expansions, being driven in part by a stochastic trend, have a permanent component, negative shocks will have less persistence than positive shocks.

The bounce-back effect in Friedman's model is consistent with a wide variety of economic models. In demand side models, output might be driven into recession by a large infrequent demand shock. Following the recession, output grows faster than when at trend because resources are underutilized. Walrasian models can also generate a high growth recovery phase if recessions are partially absorbed by running down the capital stock. Then, just as in the Solow growth model, the economy will experience faster growth until the capital stock is restored to its new steady state value.

1.3 Do Both Types of Asymmetry Matter?

Empirical work has focused on either the Hamilton or Friedman type of asymmetry separately, a consequence of the prevalence of univariate techniques. However, since the two types of asymmetry both capture the steep, sharp nature of recessions, both might provide improvement over linear models if considered alone. For example, in Section 3 we present simulation evidence that Hamilton's model will fit data generated with Friedman type asymmetry with a positive and negative growth state in the stochastic trend, even though all recessionary shocks are transitory. To evaluate whether both types of asymmetry are important one must employ a model that separates the two types of asymmetry from one another. In the following section we present a model capable of achieving this separation and test the marginal significance of each type of asymmetry when the other is present.

2. Model Motivation and Specification

2.1 Common Permanent and Transitory Components - Theory

The concept of trend vs. cycle plays an important role in defining the Hamilton and Friedman types of asymmetry. One advantage of our multivariate model of output, investment

and consumption is its natural interpretation of trend provided by neoclassical growth theory. To see this, consider a basic one-sector model of capital accumulation based on that in King, Plosser, and Rebelo (1988). Output is produced by two factors, capital and labor, and is subject to exogenous growth in labor augmenting technology, A_t :

$$Y_t = F(K_t, A_t L_t) \quad (1)$$

Each representative agent in the economy has identical preferences over the consumption of goods, C_t and leisure, R_t given by:

$$U = \sum_{t=0}^{\infty} \beta^t u(C_t, R_t) \quad (2)$$

where utility is increasing in both consumption and leisure. Finally, the capital accumulation process is:

$$K_{t+1} = (1-d)K_t + I_t \quad (3)$$

where d is the rate of depreciation on capital and I_t is investment. The economy is also subject to constraints on the amount of time a worker has to allocate between work and leisure and the amount of consumption and investment possible for a given level of output. If a steady state exists in this model it will be one in which the logarithms of output, investment, and consumption grow at a rate determined by labor augmenting technological progress. In the case where there are permanent technology shocks, as is the case if the logarithm of A_t follows a random walk, these three quantities share a common stochastic trend.⁵ Each series is then

⁵ A steady state under random walk productivity growth, called a stochastic steady state, will obtain under restrictions on preferences and production technology, (Cobb-Douglas production is not required). The interested reader is referred to King, Plosser and Rebelo (1988) and King and Rebelo (1987) for details.

individually integrated but the ratio of any two is stationary. In the terminology of Engle and Granger (1987), the logarithms of output, fixed investment and consumption are cointegrated with cointegrating vectors $(1, -1, 0)'$ and $(1, 0, -1)'$.

In this paper we employ consumption as a proxy for the common stochastic trend in the system. The recent literature, for example Fama (1992) and Cochrane (1994), suggests that while consumption does seem to contain a statistically significant transitory component, it is so small as to be economically insignificant. Based on this result, Fama (1992) chooses to define consumption as the common stochastic trend in output, investment, and consumption.

Cochrane (1994) argues that consumption is an effective measure of the trend in output by presenting evidence that shocks to GNP holding consumption constant are almost entirely transitory, a result consistent with simple versions of the permanent income hypothesis. Defining consumption as the trend serves a useful purpose in this paper. As we argued above, because both the Hamilton and Friedman models are capable of capturing the steep nature of recessions, either may fit the data well even if the data exhibits only one type of asymmetry. Simulation evidence in Section 3 support this conclusion. Thus, in order to separate the two forms of asymmetry, we would like to define the Hamilton type of asymmetry on a series that proxies for only the trend and does not undergo the transitory Friedman type asymmetry. Consumption is a useful proxy for this trend.

In the neoclassical growth model, movements in the stochastic trend account for all of the movement in output, investment, and consumption in the long-run. However, at business cycle horizons transitory deviations from this stochastic trend are likely to be important. For example, many real business cycle models, such as Kydland and Prescott (1982), extend the model

presented above in ways that allow technology shocks to induce transitory dynamics as the economy moves towards the new steady state. Transitory deviations from a long run stochastic trend might also come from more traditional demand-side nominal shocks. Regardless of whether transitory shocks stem from Walrasian or Keynesian sources however, it is likely that some portion of the shocks will come from sources that are common to output, investment, and consumption. For example, if shocks to the money supply have real, albeit transitory, effects, one would expect that these effects would be pervasive across macroeconomic time series. Likewise, if general productivity shocks induce transitory dynamics, these dynamics should be felt economy-wide. Thus, in addition to the common stochastic trend suggested by neoclassical growth theory, we would also expect common sources of transitory dynamics at business cycle horizons.

2.2 A Dynamic Two-Factor Regime Switching Model

The above discussion is suggestive of a general empirical model in which the logarithms of output, y_t , and investment, i_t , are influenced by shocks to a common stochastic trend, defined as the logarithm of consumption, c_t , a common transitory component, and idiosyncratic transitory shocks. The common stochastic trend and common transitory component are captured by two dynamic factors, labeled x_t and z_t :

$$\begin{aligned}
 y_t &= a_y + \gamma_y x_t + \lambda_y z_t + e_{yt} \\
 i_t &= a_i + \gamma_i x_t + \lambda_i z_t + e_{it} \\
 c_t &= a_c + \gamma_c x_t
 \end{aligned}
 \tag{4}$$

The e_{jt} , $j = y, i$ are stationary residuals that capture idiosyncratic transitory variation in y_t and i_t . γ_j and λ_j are factor loadings on the common stochastic trend and the common transitory component respectively. For identification, γ_y and λ_y are normalized to one. Consistent with our

specification of log consumption as the random walk trend in the system, c_t does not contain any transitory component, common or idiosyncratic. In addition to the reasons for this modeling choice provided in Section 2.1, it is worth pointing out that any transitory dynamics in c_t that do exist are small enough to be difficult to identify in this already highly parameterized model.

We are now ready to discuss how the two types of asymmetry are incorporated in the model. We begin with the Hamilton type asymmetry, which we incorporate as in Hamilton (1989). Recall, the Hamilton type asymmetry involves shifts in the growth rate of the trend function between two different states. Thus, we allow the common stochastic trend, x_t , to follow a random walk with a switching drift term:

$$x_t = \mu_1 S_t + \mu_{0t}^* + x_{t-1} + v_t \quad (5)$$

where $v_t \sim N(0, \sigma_v^2)$, and $S_t = \{0,1\}$ indicates the state of the economy. We assume that S_t is driven by a first order Markov process with transition probabilities given by:

$$\begin{aligned} P(S_t = 1 | S_{t-1} = 1) &= p_{11} \\ P(S_t = 0 | S_{t-1} = 0) &= p_{00} \end{aligned} \quad (6)$$

To incorporate the Friedman type asymmetry we allow the idiosyncratic transitory component of output and investment to undergo regime switching as in Kim and Nelson (1999a). Formally:

$$\psi_j(L)e_{jt} = \varepsilon_{jt} + \tau_j S_t, \quad j = y, i \quad (7)$$

where $\varepsilon_{jt} \sim N(0, \sigma_{\varepsilon_j}^2)$, $\psi_j(L)$ has all roots outside the unit circle, and $\tau_j < 0$ is a term which “plucks” output and investment down when $S_t = 1$. When the economy returns to normal times

the economy reverts back to the stochastic trend. The farther the economy is plucked down, the faster the growth of the economy as it “bounces back” to trend.⁶

To complete the model we must specify the dynamics of the common transitory component z_t :

$$\phi(L)z_t = \omega_t \tag{8}$$

where $\omega_t \sim N(0, \sigma_\omega^2)$, and $\phi(L)$ is a lag polynomial with roots that lie outside the unit circle.

For identification we assume that v_t , ω_t , ε_{yt} , and ε_{it} are uncorrelated at all leads and lags.

The model presented above is closely related to a recent literature discussing models which simultaneously capture comovement and asymmetry in business cycle indicator variables. Diebold and Rudebusch (1996) discuss this idea in detail, while Kim and Yoo (1995), Chauvet (1998) and Kim and Murray (1999) all estimate such models. However, this literature is exclusively concerned with the development of a new coincident index of economic activity and not with the dynamics of real GNP. In addition, these papers consider economic variables that are not cointegrated. Finally, with the exception of Kim and Murray (1999), only the Hamilton type regime switching is used to capture asymmetry. Here, by analyzing a cointegrated system with a precise definition of trend we hope to gain a clearer look at the nature of both the Hamilton and Friedman types of asymmetry in the dynamics of U.S. GNP.⁷

⁶ The “plucking” parameter is incorporated in the idiosyncratic transitory component of output and investment to allow for the possibility that the magnitude of the pluck might be different across economic series. However, in interpreting the model the plucks are better characterized as common shocks because they are driven by the same state variable. In other words, when output is plucked down, so is investment.

⁷ Our model is also similar to the “common trends” representation suggested by King, Plosser, Stock and Watson (1991). There, the effects of the common and idiosyncratic transitory components above are combined into

Notice that the two types of regime switching are driven by the same state variable, S_t . In essence, this assumption forces all recessions to have the same relative importance of permanent vs. transitory Markov-switching shocks and can be motivated as an extension of Hamilton (1989) and Kim and Nelson (1999a). In these papers, the authors also force all recessions to have the same relative importance. In Hamilton's paper, recessions are entirely permanent while in Kim and Nelson's they are entirely transitory. Here we extend these results to allow recessions to have both a permanent and transitory component. The assumption is important in that it allows us to test the null hypothesis that one type of asymmetry is marginally statistically insignificant when the other is present. If the two types of asymmetry were driven by separate state variables, testing this null hypothesis would be complicated by the familiar Davies' problem, or the fact that one set of Markov-switching parameters would be unidentified under the null hypothesis.

2.3 A One Time Permanent Structural Break in Average Growth Rate

There is a large literature suggesting that the growth rate of productivity has slowed at some point in the postwar sample, with the predominant view being that this slowdown roughly coincides with the first OPEC oil shock. For example, Perron (1989) identifies 1973 as the date of a break in the trend growth of U.S. quarterly real GNP.⁸ In a recent paper, Bai, Lumsdaine and

an I(0) disturbance which may be correlated across indicators. Their empirical analysis employs a VECM framework to investigate the relative importance of the common stochastic trend in real GNP, fixed investment, and consumption. While a VECM lends itself easily to impulse analysis, incorporation of asymmetry is difficult. Identification of asymmetry in a dynamic factor model is natural, motivating our choice of empirical model.

⁸ Preliminary estimation of our model suggested that if a productivity slowdown is not incorporated the autoregressive dynamics of e_{yt} , e_{it} , and z_t are very persistent. This is consistent with Perron's (1989) finding that unit root tests are biased towards non-rejection if a break in mean growth is not accounted for.

Stock (1998) find evidence in favor of a productivity slowdown beginning somewhere between 1966 and 1971. Their work is particularly relevant here because they employ a multivariate model of quarterly real GNP, fixed investment, and consumption to test for and date a break in the long run growth rate of the common stochastic trend. Here, we will also search for a break in the long run growth rate of the common stochastic trend, μ_{0t}^* .⁹ However, we do so in a model that allows for asymmetries in the business cycle.

We endogenously estimate the date of the structural break using a technique based on Chib (1998). This method consists of defining a separate state variable, D_t , which also undergoes regime switching according to a first order Markov process independent of that for S_t . However, we restrict the switching to occur only from $D_t = 0$ to $D_t = 1$ and not in the opposite direction. This is accomplished by a restriction on the transition probabilities of the Markov process:

$$\begin{aligned} P(D_t = 1 | D_{t-1} = 1) &= 1 \\ P(D_t = 0 | D_{t-1} = 0) &= q_{00} \end{aligned} \tag{9}$$

To investigate a break in the long run growth rate of the trend we define μ_{0t}^* as follows:

$$\mu_{0t}^* = \mu_0 (1 - D_t) + \mu_0^k D_t \tag{10}$$

⁹ Several recent papers, including Kim and Nelson (1999b) and McConnell and Perez-Quiros (2000) have documented a reduction in the variance of U.S. GDP starting in 1984. Preliminary estimation suggested allowing for such a break did not change the results regarding the nature of business cycle asymmetry substantively.

3. Estimation Results

3.1 A Look at the Data

The data are quarterly observations on 100 times the logarithm of real U.S. private GNP, or GNP less government expenditures, U.S. gross private domestic fixed investment, and U.S. real consumption on non-durables and services. All data was obtained from the DRI Basics Economic database and span from the first quarter of 1952 to the third quarter of 1998.¹⁰

The model presented in Section 2 imposes a common stochastic trend in the logarithms of output, investment and consumption. Thus, we are interested in the empirical evidence regarding the integration and cointegration properties of the data. First of all, using standard univariate unit root tests developed by Dickey and Fuller (1979), we fail to reject the null hypothesis that the logarithm of GNP, fixed investment, and consumption are integrated.¹¹ Table 1 contains results of Johansen (1991, 1995) cointegration tests performed with 6 lags in levels. The tests indicate

¹⁰ The neoclassical growth models that underlie our empirical specification, such as King, Plosser and Rebelo (1988), are generally models of private sector behavior in closed economies. To capture private sector behavior only we use estimates of private GNP, consistent with King, Plosser, Stock and Watson (1991). However, our measure of private GNP includes net exports and our measures of fixed investment and consumption of non-durables and services include expenditures on foreign produced goods. Net exports in the United States are a highly stationary series, suggesting that its inclusion will be captured by the common and idiosyncratic transitory component of private GNP. We also compute the correlation of the growth rates of the investment and consumption series we use with the growth rates of these same series net of purchases of foreign goods. These correlations are above 0.97, suggesting that the deviation between our data and that suggested by the neoclassical growth model is not large.

¹¹ The ADF tests included a constant and time trend. The number of lags were chosen using the backward selection procedure in Campbell and Perron (1991). The ADF t-statistic for log GNP was -2.22 (lags = 1), for log consumption of non-durables and services was -1.71 (lags=4) and for log fixed investment was -1.79 (lags=2).

that the null hypothesis of no cointegrating vectors is rejected at the 1% level, while the null hypothesis of at most 1 cointegrating vector is rejected at the 5% level. The null hypothesis of at most 2 cointegrating vectors is not rejected, suggesting there are 2 cointegrating relationships and therefore a single common stochastic trend in the system. This is consistent with the results of other investigations of the cointegration properties of output, investment, and consumption, such as King, Plosser, Stock and Watson (1991) and Bai et al. (1998).¹²

The cointegrating relationship between output, investment and consumption, along with the assumption that consumption is the trend, can help us gain further intuition into the types of asymmetry we are investigating. In particular, we can plot graphs of the trend and deviations from trend for our model, the components we use to investigate the two types of asymmetry. Figure 3 plots non-durables and services consumption, which up to a scaling factor is the trend in our system. To investigate asymmetry in the trend, the model in Section 2 allows for Markov-switching in the trend growth rate of this consumption series. Deviations from trend can be obtained by simply estimating the following cointegrating equations:

$$y_t = \pi_y + b_y c_t + (\text{equilibrium error})_y \quad (11)$$

$$i_t = \pi_i + b_i c_t + (\text{equilibrium error})_i \quad (12)$$

where the equilibrium errors are, referring back to the model in Section 2, the counterparts of $\lambda_y z_t + e_{yt}$ for output and $\lambda_i z_t + e_{it}$ for investment. Estimating (11) and (12) by OLS and forming these equilibrium errors gives us Figure 4. The model in Section 2 divides these equilibrium errors into shared, z_t , and idiosyncratic components, e_{yt} and e_{it} . We search for the

¹² Evans and Lewis (1993) show that cointegration tests can be biased in favor of the null hypothesis if a series in the cointegrating equation undergoes Markov regime switching. Since we reject the null hypothesis this does not seem to be a significant problem in this case.

transitory type of asymmetry in the equilibrium errors by allowing for large, infrequent, shocks, τ_y and τ_i , driven by a latent Markov-switching variable.

3.2 Estimation Results and Hypothesis Tests

We estimate three versions of the model given above. Model 1 is our benchmark model with no further restrictions. Model 2 is a version that does not allow for the “plucking” type asymmetry, that is $\tau_y = \tau_i = 0$. Model 3 does not allow for switches in the growth rate of the stochastic trend, that is $\mu_1 = 0$. All models are estimated via Kim’s (1993a, 1993b, 1994) approximate maximum likelihood algorithm. Table 2 contains the estimated parameters and standard errors for Models 1-3.¹³ Our discussion will focus on model 1, the benchmark model. The other models are of primary interest in performing hypothesis tests regarding the presence of asymmetry.

In the preceding discussion, asymmetry was defined as differences in the dynamics of a macroeconomic time series during recessions vs. expansions. In our model, the dynamics change when the state variable $S_t = 1$. Thus, we are interested in whether the estimated filtered and smoothed probabilities that $S_t = 1$, $P(S_t = 1)$, coincides with the timing of recessions for the U.S. economy. Figures 5 and 6 show these probabilities along with the NBER recession dating. During every recession $P(S_t = 1)$ spikes up, but is essentially zero during expansions. Thus, our model is identifying recessions as periods where output, investment, and consumption undergo changes in dynamics.

Next, we move to the topic of main interest in this paper, the marginal significance of the Hamilton and Friedman types of asymmetries. We begin with the Hamilton type of asymmetry,

¹³ After various diagnostic checks, we settled on an AR(2) representation for all transitory dynamics.

shifts in the common stochastic trend. The estimation results suggest that the common stochastic trend is well characterized by regime switching in its growth rate. The parameter μ_1 is large in absolute value suggesting two distinct growth states in the common stochastic trend. By comparing Models 1 and 3 we are able to perform a likelihood ratio test of the null hypothesis that $\mu_1 = 0$, given that the Friedman type asymmetry exists. This null hypothesis is rejected at any reasonable significance level with a p-value of .004.

While the Hamilton type asymmetry does seem to play a significant role in the data, the parameter estimates for μ_0 , μ_0^k and μ_1 are suggestive of a different type of switching than that found by Hamilton (1989). In Hamilton's original paper, as well as in much subsequent work, the growth rate of the stochastic trend of U.S. GNP is positive during booms and negative during recessions. With the definition of the trend in GNP employed here, that being consumption, the growth rate of the stochastic trend simply slows during recessions. For example, the growth rate during booms when $D_t = 0$ is 1.12 while it is 0.87 when $D_t = 1$. The growth rates during recessions are $1.12 - .68 = 0.44$ when $D_t = 0$ and $0.87 - 0.68 = 0.19$ when $D_t = 1$. In the framework of the growth model presented in Section 2 recessions are periods of slowdown in the rate of growth of total factor productivity. Thus, our model is not indicative of an economy with negative permanent shocks large enough to lower the *level* of the common stochastic trend.

There are several possible explanations for the discrepancy between the results obtained by Hamilton and those presented here. First, it may be that in fact GNP does undergo large permanent drops in level during recessions but consumers respond by smoothing their consumption through these episodes. In this scenario, consumption growth might simply slow during recessions instead of turning negative. This however would imply economically significant predictive power of the output-consumption ratio for future changes in consumption,

a result that is not supported by the results of Fama (1992) or Cochrane (1994). Another possibility is that the large permanent drops in GNP suggested by Hamilton's results are due to the lack of a mechanism to capture transitory types of asymmetry. If output undergoes large negative shocks that are followed by a high growth recovery phase, a Hamilton type model might provide improvement over linear models by labeling the large "plucking" shocks as a negative trend growth state and melding the high growth and normal growth phases of the recovery into a single expansion phase. Such a bias will not be present in the consumption series if movements in trend completely explain movements in consumption.

To investigate this second possibility we perform a limited Monte Carlo experiment with 500 simulations. In each simulation we generated a data series, G_t , using a version of Kim and Nelson's (1999a) Markov-switching implementation of Friedman's "plucking" model. This data generating process is as follows:

$$\begin{aligned}
 G_t &= \delta_t + \xi_t \\
 \delta_t &= \alpha + \delta_{t-1} + \eta_t \\
 \gamma(L)\xi_t &= \tau S_t^* + \varepsilon_t
 \end{aligned} \tag{13}$$

where S_t^* follows a first order Markov-switching process with transition probabilities p_{11}^* and p_{00}^* , η_t and ε_t are both i.i.d normally distributed random variables, and $\gamma(L)$ has all roots outside the unit circle. We calibrated the data generating process using estimates from Kim and Nelson (1999a) for the log of U.S. real GDP multiplied by 100. Specifically, we set $\alpha = 1.0$, $\tau = -1.5$, $\sigma_\eta^2 = .7$, $\sigma_\varepsilon^2 = .3$, $p_{11}^* = .74$, $p_{00}^* = .93$, and the lag order of $\gamma(L)$ equal to 2 with $\gamma_1 = 1.3$ and $\gamma_2 = -0.46$. The key thing to notice in this model is that recessions are caused by large transitory shocks, τ , not changes in trend growth rate. We then fit the generated data to Hamilton's (1989) model:

$$\theta(L)(\Delta G_t - \tilde{\mu}_t) = \kappa_t \quad (14)$$

where $\tilde{\mu}_t = \tilde{\mu}_0(1 - \tilde{S}_t) + \tilde{\mu}_1\tilde{S}_t$, \tilde{S}_t follows a Markov-switching process with transition probabilities \tilde{p}_{11} and \tilde{p}_{00} , κ_t is an i.i.d. normally distributed random variable, and $\theta(L)$ has all roots outside the unit circle and a lag order equal to 4¹⁴. The mean and median of the parameter estimates from the 500 simulations, presented in Table 3, are supportive of the hypothesis of a potential bias in the application of Hamilton's model to U.S. GNP. Note that the Hamilton model attempts to fit the three phase Friedman model with two phase switching in mean growth rate. The mean and median of the point estimates of $\tilde{\mu}_0$ is larger than $\alpha = 1.0$, suggesting the Hamilton model is averaging the high growth recovery phase following an episode of "plucking" with the normal growth phase after G_t has returned to trend. Perhaps more interesting, the mean and median of the point estimates of $\tilde{\mu}_1$ is negative, suggesting the Hamilton model is labeling the plucks as a negative trend growth state. Given the mounting evidence suggesting that recessions contain a significant peak-reverting component this evidence is suggestive of a possible bias if Hamilton's model is fit to U.S. GNP.

Before leaving the behavior of the common stochastic trend we should discuss the estimate of the two cointegrating vectors in the system. Recall, the theoretical cointegrating vectors for y_t, i_t, c_t are $(1, -1, 0)'$ and $(1, 0, -1)'$. From Table 2 we see that the estimated cointegrating vectors are $(1, -1.08, 0)'$ and $(1, 0, -.93)'$ which are very close to those suggested by theory. The fact that γ_c is less than unity is consistent with the fact that the ratio of consumption of non-durables and services to private GNP drifted down approximately 10% over

¹⁴ The lag order was set equal to 4 to be consistent with Hamilton's original (1989) model for real GNP. However, lag orders of 2 and 3 yielded similar results.

the sample. However, as pointed out by Bai et al. (1998), the ratio of total consumption to GNP has drifted up over the sample. This discrepancy is due to a rise in the share of consumption allocated to durable goods.

Now we consider the other type of asymmetry, transitory deviations of output below the common stochastic trend. Such “plucking” behavior is well supported by the parameter estimates. The null hypothesis that $\tau_y = \tau_i = 0$, performed by comparing the log-likelihood from models 1 and 2, is rejected with a p-value equal to zero to 3 decimal places. Thus, there is strong evidence that, even after accounting for switching in trend growth rate, there is a “bounce-back” effect in real GNP and fixed investment. These transitory deviations are driven by large negative shocks, or plucks. However, there also appears to be a role for symmetric shocks. The variances of the symmetric shocks in the common transitory component and the idiosyncratic components are both large and statistically significant at the 1% level using Wald tests.

The parameter estimates are also suggestive of a one-time structural break in the long run growth rate of the common stochastic trend. Our estimation results suggest a productivity slowdown – the estimate of μ_{0t}^* is 1.12 when $D_t = 0$ vs. 0.87 when $D_t = 1$. The estimated date of the structural break is centered around 1971. This can be seen graphically in Figure 7 which presents the smoothed probabilities that $D_t = 1$. The graphs are suggestive of a gradual structural break which began in the late 1960’s.

There is another potential explanation for the reduction in μ_{0t}^* that is related to the permanence of recessions, a topic of primary interest in this paper. Suppose that the drops in output during the recessions of the 1970’s were more permanent than other recessions. In this case because our model, as does that of Hamilton (1989) and Kim and Nelson (1999a), forces every recession to have the same relative permanence, the fit might be improved by lowering the

long run trend growth of the model during the 1970's. While certainly plausible, there are reasons to believe this is not the case. If the reduction in trend growth rate were solely a result of the relative permanence of recessions in the 1970's, we might expect to find evidence of a subsequent increase in trend growth in the early 1980's. Indeed, while several authors who use Hamilton's (1989) model, including Kim and Nelson (1999b) and McConnell and Perez-Quiros (2000), have found evidence of a reduction in the volatility of output growth in the early 1980's, neither find any evidence of an increase in trend growth rate. Indeed, Kim and Nelson (1999b) find that the reduction in volatility has coincided with lower trend growth rates during expansions since 1984.

Our model also can comment on the relative responsiveness of fixed investment and real GNP to transitory shocks. In this sample the standard deviation of growth rates of fixed investment is 2.5, nearly twice that of output. Given that fixed investment and GNP have almost identical responses to the common stochastic trend, this increased variability can only come from an increased responsiveness to symmetric common transitory shocks, $\lambda_i > \lambda_y = 1$, relatively larger symmetric idiosyncratic shocks, $\sigma_{ei}^2 > \sigma_{ey}^2$, or relatively larger "plucks", $\tau_i > \tau_y$. The parameter estimates provide evidence for all three explanations. Fixed investment is 2.2 times as responsive to symmetric common transitory shocks as GNP. Also, the variance of idiosyncratic symmetric shocks are roughly twice as big for investment relative to GNP. Finally, plucks in investment are twice as large than those for GNP.

Figure 8 presents a stylized graph of the type of business cycle suggested by the parameter estimates of the model. During a recession, during which the economy is hit by a large transitory shock, the trend growth rate of output slows. Thus, when output rebounds back to trend following the recession output is lower than it would have been had the recession not

occurred. However, there are no permanent decreases in output from its position before the recession began.

4. Summary and Conclusion

Many recent papers have presented evidence regarding two types of business cycle asymmetry, shifts in a stochastic trend having permanent effects on the level of output, and transitory “plucks” downward away from a stochastic trend. We have presented a model to investigate these two types of asymmetry which improves on the existing literature in two main ways: 1) it is a multivariate model of real GNP, fixed investment and consumption which allows us to separate out the two types of asymmetry under a precise definition of trend and 2) it allows for tests of the marginal statistical significance of each type of asymmetry when the other is allowed to be present. Hypothesis tests suggest that both types of asymmetry played a role in postwar recessions. However, shifts in the growth rate of the stochastic trend suggest productivity slowdowns during recessions, not the productivity reductions implied by the received literature. We explore a possible explanation for this discrepancy, that Hamilton’s (1989) model is biased when applied to U.S. GNP by its failure to account for a transitory type of asymmetry, with a limited Monte Carlo experiment. The experiment is supportive of the hypothesis. We also search for a structural break in the growth rate of the common stochastic trend. This search yields evidence of a productivity slowdown, the estimated date of which is centered at 1971.

Appendix: State Space Representation

In this section of the appendix we present the state-space representation of the model given by equations 4-10 for the case where all transitory dynamics are AR(2).

Observation Equation:

$$\begin{bmatrix} \Delta y_t \\ \Delta i_t \\ \Delta c_t \end{bmatrix} = \begin{bmatrix} \gamma_y^* (\mu_1 S_t + \mu_{0t}^*) \\ \gamma_i^* (\mu_1 S_t + \mu_{0t}^*) \\ \gamma_c^* (\mu_1 S_t + \mu_{0t}^*) \end{bmatrix} + \begin{bmatrix} \lambda_y & -\lambda_y & 1 & 0 & -1 & 0 \\ \lambda_i & -\lambda_i & 0 & 1 & 0 & -1 \\ 0 & 0 & 0 & 0 & 0 & 0 \end{bmatrix} * \begin{bmatrix} z_t \\ z_{t-1} \\ e_{yt} \\ e_{it} \\ e_{yt-1} \\ e_{it-1} \end{bmatrix} + \begin{bmatrix} \gamma_y^* (v_t) \\ \gamma_i^* (v_t) \\ \gamma_c^* (v_t) \end{bmatrix}$$

Transition Equation:

$$\begin{bmatrix} z_t \\ z_{t-1} \\ e_{yt} \\ e_{it} \\ e_{yt-1} \\ e_{it-1} \end{bmatrix} = \begin{bmatrix} 0 \\ 0 \\ \tau_y^* S_t \\ \tau_i^* S_t \\ 0 \\ 0 \end{bmatrix} + \begin{bmatrix} \phi_1 & \phi_2 & 0 & 0 & 0 & 0 \\ 1 & 0 & 0 & 0 & 0 & 0 \\ 0 & 0 & \psi_{y1} & 0 & \psi_{y2} & 0 \\ 0 & 0 & 0 & \psi_{y1} & 0 & \psi_{y2} \\ 0 & 0 & 1 & 0 & 0 & 0 \\ 0 & 0 & 0 & 1 & 0 & 0 \end{bmatrix} * \begin{bmatrix} z_{t-1} \\ z_{t-2} \\ e_{yt-1} \\ e_{it-1} \\ e_{yt-2} \\ e_{it-2} \end{bmatrix} + \begin{bmatrix} \omega_t \\ 0 \\ \varepsilon_{yt} \\ \varepsilon_{it} \\ 0 \\ 0 \end{bmatrix}$$

where, μ_0^* is defined in equation 10. The covariance matrix of the disturbance vector in the observation equation is given by:

$$E \left(\begin{bmatrix} \gamma_y^* (v_t) \\ \gamma_i^* (v_t) \\ \gamma_c^* (v_t) \end{bmatrix} * \begin{bmatrix} \gamma_y^* (v_t) & \gamma_i^* (v_t) & \gamma_c^* (v_t) \end{bmatrix} \right) = \begin{bmatrix} \gamma_y^2 * \sigma_v^2 & \gamma_y^* \gamma_i^* \sigma_v^2 & \gamma_y^* \gamma_c^* \sigma_v^2 \\ \gamma_i^* \gamma_y^* \sigma_v^2 & \gamma_i^2 * \sigma_v^2 & \gamma_i^* \gamma_c^* \sigma_v^2 \\ \gamma_c^* \gamma_y^* \sigma_v^2 & \gamma_c^* \gamma_i^* \sigma_v^2 & \gamma_c^2 * \sigma_v^2 \end{bmatrix}$$

Finally, we have the covariance matrix of the disturbance vector in the transition equation:

$$E \left(\begin{bmatrix} \omega_t \\ 0 \\ \varepsilon_{yt} \\ \varepsilon_{it} \\ 0 \\ 0 \end{bmatrix} * \begin{bmatrix} \omega_t & 0 & \varepsilon_{yt} & \varepsilon_{it} & 0 & 0 \end{bmatrix} \right) = \begin{bmatrix} \sigma_\omega^2 & 0 & 0 & 0 & 0 & 0 \\ 0 & 0 & 0 & 0 & 0 & 0 \\ 0 & 0 & \sigma_{\varepsilon_y}^2 & 0 & 0 & 0 \\ 0 & 0 & 0 & \sigma_{\varepsilon_i}^2 & 0 & 0 \\ 0 & 0 & 0 & 0 & 0 & 0 \\ 0 & 0 & 0 & 0 & 0 & 0 \end{bmatrix}$$

References

- Acemoglu, D. and A. Scott, 1997, Asymmetric business cycles: Theory and time-series evidence, *Journal of Monetary Economics* 40, 501-533.
- Bai, J., R.L. Lumsdaine and J.H. Stock, 1998, Testing for and dating common breaks in multivariate time series, *Review of Economic Studies* 65, 395-432.
- Beaudry, P. and G. Koop, 1993, Do recessions permanently change output?, *Journal of Monetary Economics* 31, 149-163.
- Burns, A.F. and W.A. Mitchell, 1946, *Measuring business cycles* (NBER, New York).
- Campbell, J.Y. and P. Perron, 1991, Pitfalls and opportunities: what macroeconomists should know about unit roots, *NBER Macroeconomics Annual*, 141-201.
- Chauvet, M., 1998, An econometric characterization of business cycle dynamics with factor structure and regime switching, *International Economic Review* 39, 969-996.
- Chib, S., 1995, Marginal likelihood from the Gibbs output, *Journal of the American Statistical Association* 90, 1313-1321.
- Chib, S., 1998, Estimation and comparison of multiple change-point models, *Journal of Econometrics* 86, 221-241.
- Cochrane, J.H., 1994, Permanent and transitory components of GNP and stock prices, *Quarterly Journal of Economics* 109, 241-263.
- Cooper, R., 1994, Equilibrium selection in imperfectly competitive economies with multiple Equilibria, *Economic Journal* 104, 1106-1122.
- Davies, R.B., 1977, Hypothesis testing when a nuisance parameter is present only under the alternative, *Biometrika* 64, 247-254.

- De Long, J.B. and L.H. Summers, 1988, How does macroeconomic policy affect output?, in: W.C. Brainard and G.L. Perry, eds., *Brookings papers on economic activity* (The Brookings Institution, Washington, DC) 433-494.
- Dickey, D.A. and W.A. Fuller, 1979, Distribution of the estimators for autoregressive time series with a unit root, *Journal of the American Statistical Association* 74, 427-31.
- Diebold, F.X. and G.D. Rudebusch, 1996, Measuring business cycles: A modern perspective, *The Review of Economics and Statistics* 78, 67-77.
- Elwood, S.K., 1998, Is the persistence of shocks to output asymmetric?, *Journal of Monetary Economics* 41, 411-426.
- Engle, R.F. and C.W.J. Granger, 1987, Cointegration and error correction: Representation, estimation, and testing, *Econometrica* 55, 251-276.
- Evans, M.D.D. and K.K. Lewis, 1993, Trend in excess returns in currency and bond markets, *European Economic Review* 37, 1005-1019.
- Fama, E.F., 1992, Transitory variation in investment and output, *Journal of Monetary Economics* 30, 467-480.
- Friedman, M., 1964, *Monetary Studies of the National Bureau*, the National Bureau enters its 45th Year, 44th Annual Report, 7-25 (NBER, New York); Reprinted in Friedman, M., 1969, *The optimum quantity of money and other essays* (Aldine, Chicago).
- Friedman, M. 1993, The “plucking model” of business fluctuations revisited, *Economic Inquiry* 31, 171-177.
- Garcia, R., 1998, Asymptotic null distribution of the likelihood ratio test in Markov switching models, *International Economic Review* 39, 763-788.

- Hamilton, J.D., 1989, A new approach to the economic analysis of nonstationary time series and the business cycle, *Econometrica* 57, 357-384.
- Hansen, B.E., 1992, The likelihood ratio test under nonstandard conditions: testing the Markov switching model of GNP, *Journal of Applied Econometrics* 7, S61-S82.
- Howitt, P. and P. McAfee, 1992, Animal spirits, *American Economic Review* 82, 493-507.
- Johansen, S., 1991, Estimation and hypothesis testing of cointegration vectors in Gaussian vector autoregressive models, *Econometrica* 59, 1551–1580.
- Johansen, S., 1995, *Likelihood-based inference in cointegrated vector autoregressive models* (Oxford University Press, Oxford).
- Keynes, J.M., 1936, *The general theory of employment, interest, and money* (Macmillan, London).
- Kim, C.-J., 1993a, Unobserved-component time series models with Markov-switching heteroskedasticity: Changes in regime and the link between inflation rates and inflation uncertainty, *Journal of Business and Economic Statistics* 11, 341-349.
- Kim, C.-J., 1993b, Sources of monetary growth uncertainty and economic activity: The time varying parameter model with heteroskedastic disturbances, *Review of Economics and Statistics* 75, 483-492.
- Kim, C.-J., 1994, Dynamic linear models with Markov-switching, *Journal of Econometrics* 60, 1-22.
- Kim, C.-J. and C.J. Murray, 1999, *Permanent and transitory components of recessions*, Discussion Paper, Department of Economics, University of Washington.
- Kim, C.-J. and C.R. Nelson, 2001, A Bayesian approach to testing for Markov-switching in univariate and dynamic factor models, *International Economic Review*, Forthcoming.

- Kim, C.-J. and C.R. Nelson, 1999a, Friedman's plucking model of business fluctuations: Tests and estimates of permanent and transitory components, *Journal of Money, Credit and Banking* 31, 317-34.
- Kim, C.-J. and C.R. Nelson, 1999b, Has the U.S. economy become more stable? A Bayesian based approach based on a Markov switching model of the business cycle, *Review of Economics and Statistics* 81, 608-616.
- Kim, M.-J. and J.-S. Yoo, 1995, New index of coincident indicators: A multivariate Markov switching factor model approach, *Journal of Monetary Economics* 36, 607-630.
- King, R.G., C.I. Plosser and S.T. Rebelo, 1988, Production, growth and business cycles: II. new directions, *Journal of Monetary Economics* 21, 309-341.
- King, R.G., C.I. Plosser, J.H. Stock and M.W. Watson, 1991, Stochastic trends and economic fluctuations, *American Economic Review* 81, 819-840.
- King, R.G. and S.T. Rebelo, 1987, Stochastic steady states, Unpublished Manuscript, Department of Economics, University of Rochester.
- Koop, G. and S.M. Potter, 1999, Bayes factors and nonlinearity: evidence from economic time series, *Journal of Econometrics* 88, 251-281.
- Kydland, F.E. and E.C. Prescott, 1982, Time to build and aggregate fluctuations, *Econometrica* 50, 1345-1370.
- McConnell, M.M. and G.P. Quiros, 2000, Output fluctuations in the United States: What has changed since the early 1980s?, *American Economic Review* 90, 1464-1476.
- Mitchell, W.A., 1927, *Business cycles: The problem and its setting* (NBER, New York).
- Neftci, S. N., 1984, Are economic time series asymmetric over the business cycle?, *Journal of Political Economy* 92, 307-328.

- Perron, P., 1989, The great crash, the oil shock and the unit root hypothesis, *Econometrica* 57, 1361-1401.
- Sichel, D.E., 1993, Business cycle asymmetry: A deeper look, *Economic Inquiry* 31, 224-236.
- Sichel, D. E., 1994, Inventories and the three phases of the business cycle, *Journal of Business and Economic Statistics* 12, 269-277.
- Startz, R., 1998, Growth states and shocks, *Journal of Economic Growth* 3, 203-215.
- Wynne, M.A. and N.S. Balke, 1992, Are deep recessions followed by strong recoveries?, *Economics Letters* 39, 183-189.
- Wynne, M.A. and N.S. Balke, 1996, Are deep recessions followed by strong recoveries? Results for the G-7 countries, *Applied Economics* 28, 889-897.

Table 1: Johansen (1991, 1995) Cointegration Tests
Quarterly data from 1952:1 – 1998:3

Null Hypothesis	Test Statistic¹⁵	5% Critical Value	1% Critical Value
No Cointegrating Vectors	36.51 ⁺⁺	29.68	35.65
At Most One Cointegrating Vector	16.95 ⁺	15.41	20.04
At Most Two Cointegrating Vectors	2.44	3.76	6.65

¹⁵ The test statistic is the Likelihood Ratio statistic discussed in Johansen (1991, 1995) and calculated in Eviews using a levels lag order of 6. As in King, Plosser, Stock and Watson (1991), we assume that each series has a linear trend but the cointegrating equation has only intercepts.

⁺⁺ Rejected at the 1% significance level.

⁺ Rejected at the 5% significance level.

Table 2: Maximum Likelihood Estimates of Models 1 – 3
Quarterly data from 1952:1 – 1998:3
(Standard Errors in Parentheses)

Parameter	Unrestricted			Hamilton Only			“Plucking” Only		
$\gamma_y, \gamma_i, \gamma_c$	1*	1.08	0.93	1*	1.06	0.93	1*	1.04	0.95
	---	(0.04)	(0.01)	---	(0.03)	(0.02)	---	(0.03)	(0.01)
λ_y, λ_i	1*	2.17		1*	2.85		1*	2.14	
	---	(0.29)		---	(0.32)		---	(0.35)	
σ_v, σ_ω	0.43	0.73		0.41	0.66		0.49	0.71	
	(0.03)	(0.08)		(0.03)	(0.07)		(0.03)	(0.07)	
σ_y, σ_i	0.65	1.13		0.78	0.75		0.42	1.30	
	(0.09)	(0.17)		(0.06)	(0.34)		(0.12)	(0.19)	
ϕ_1, ϕ_2	1.34	-0.45		1.44	-0.52		1.32	-0.44	
	(0.07)	(0.05)		(0.06)	(0.04)		(0.08)	(0.05)	
ψ_{y1}, ψ_{y2}	0.57	0.12		0.77	0.13		0.43	0.43	
	(0.16)	(0.10)		(0.09)	(0.09)		(0.05)	(0.07)	
ψ_{i1}, ψ_{i2}	1.03	-0.10		0.66	0.28		1.19	-0.26	
	(0.13)	(0.12)		(0.38)	(0.34)		(0.09)	(0.09)	
μ_0, μ_0^k	1.12	0.87		1.12	0.85		1.02	0.72	
	(0.05)	(0.08)		(0.07)	(0.07)		(0.06)	(0.05)	
μ_1	-0.68			-0.77			---		
	(0.11)			(0.17)					
τ_y, τ_i	-0.93	-2.01		---	---		-2.92	-3.20	
	(0.44)	(0.76)					(0.39)	(0.65)	
p_{00}, p_{11}	0.95	0.79		0.95	0.73		0.96	0.43	
	(0.02)	(0.09)		(0.02)	(0.14)		(0.02)	(0.15)	
q_{00}	0.99			0.99			0.99		
	(0.01)			(0.01)			(0.01)		
Log Likelihood	-227.33			-234.72			-231.48		

* Normalized to unity for identification.

Table 3: Mean and Median Parameter Estimates for Hamilton's (1989) Model Applied to Data Generated with “Plucking” Recessions (Mean and Median based on 500 Monte Carlo Simulations)

Parameter	Mean of Estimate	Median of Estimate	Std. Error of 500 Estimates
$\tilde{\mu}_0$	1.25	1.23	0.20
$\tilde{\mu}_1$	-0.25	-0.33	0.71
\tilde{p}_{11}	0.57	0.62	0.19
\tilde{p}_{00}	0.90	0.94	0.10
θ_1	0.39	0.37	0.15
θ_2	0.10	0.11	0.13
θ_3	-0.02	-0.02	0.12
θ_4	-0.09	-0.09	0.11
σ_x^2	0.85	0.84	0.11

Figure 1:
A Recession With Only Hamilton Type Asymmetry
(Solid lines indicate trend, dashed lines indicate deviations from trend)

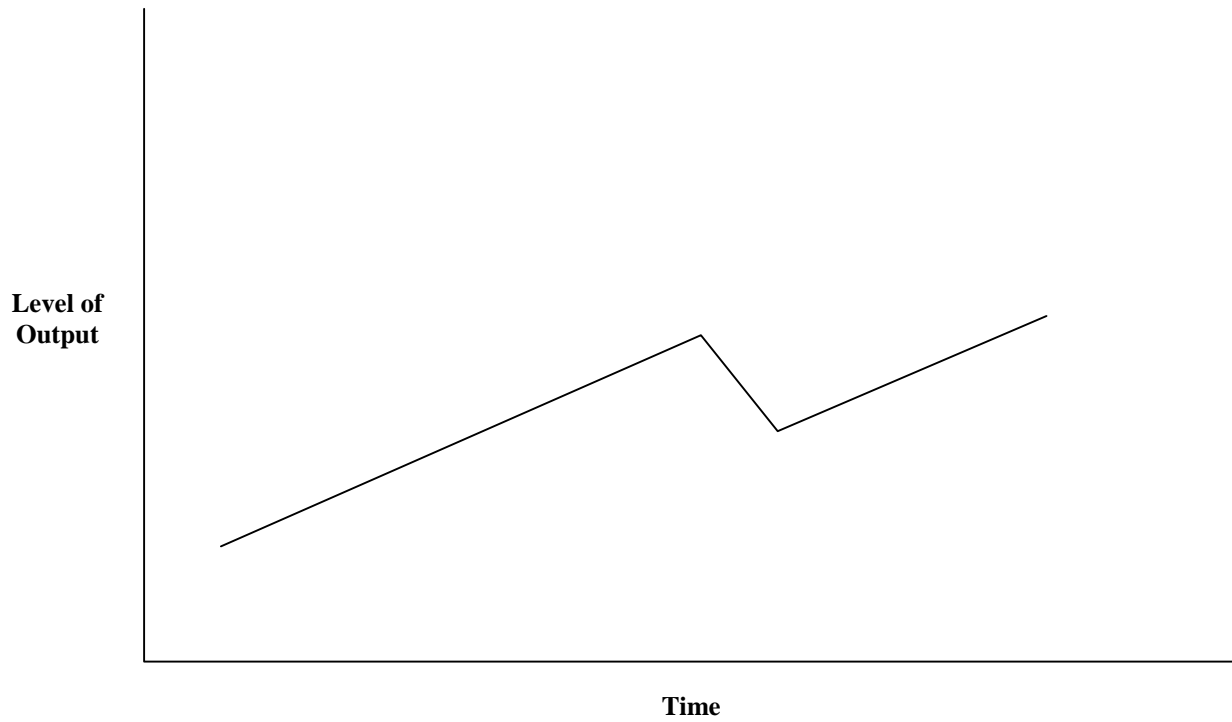


Figure 2:
A Recession With Only “Plucking” Type Asymmetry
(Solid lines indicate trend, dashed lines indicate deviations from trend)

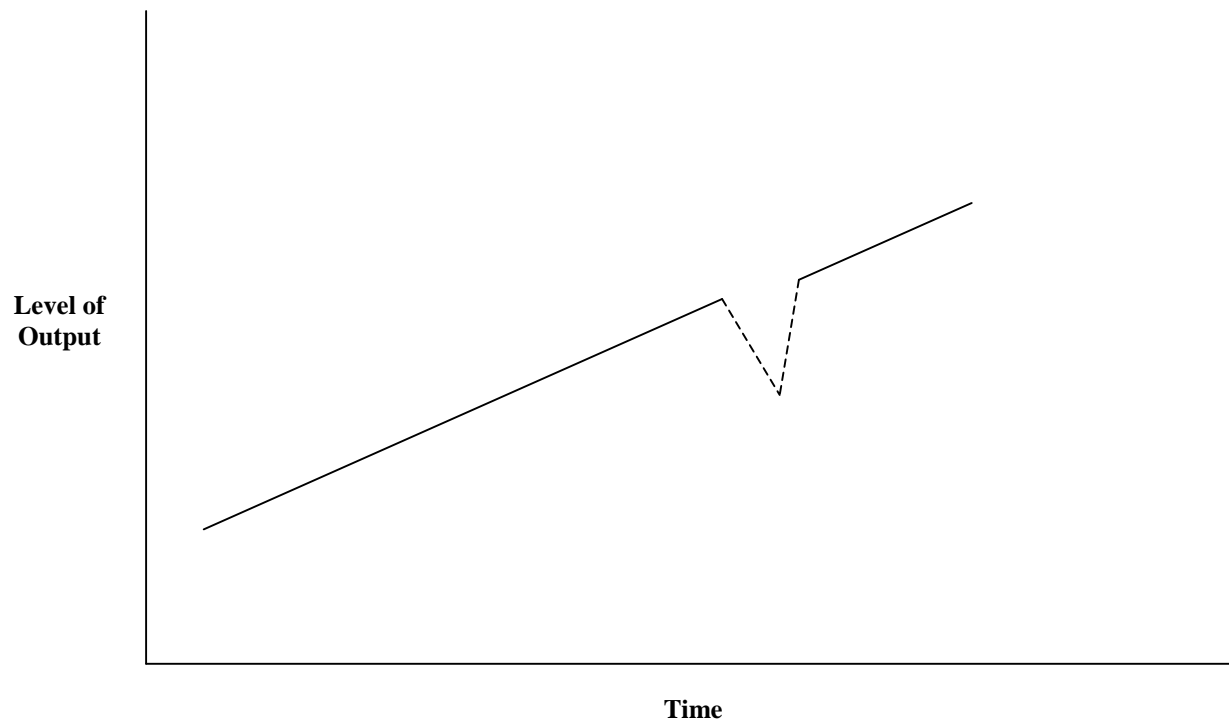


Figure 3:
Log Consumption of Non-Durables and Services
(Shaded Areas Indicate NBER Recession Dates)

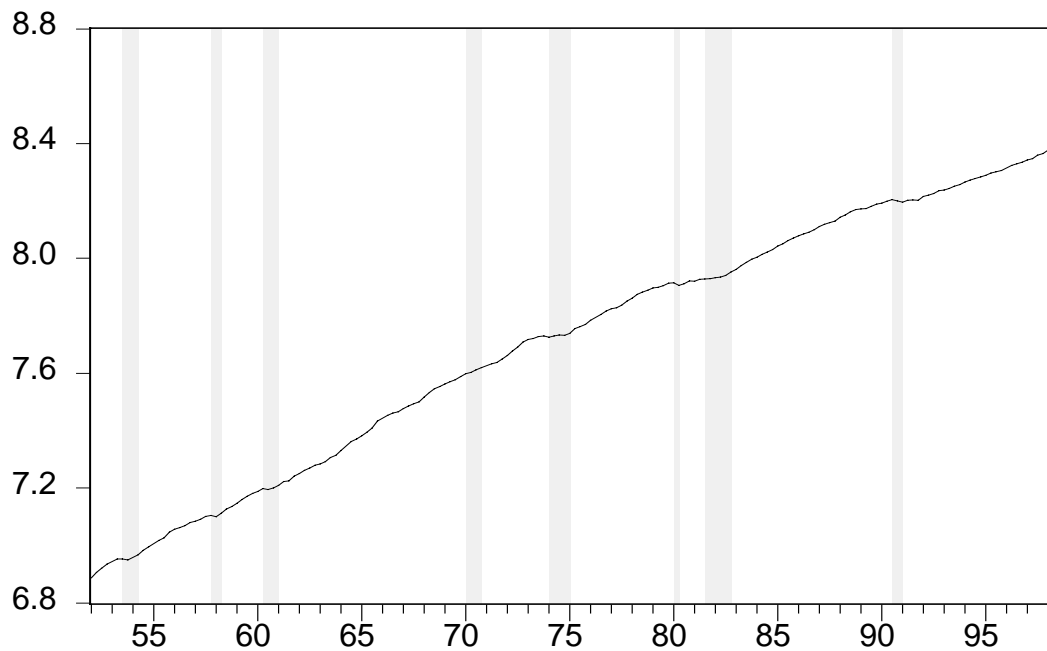


Figure 4:
Equilibrium Errors for Log Private GNP and Log Investment
(Shaded Areas Indicate NBER Recession Dates)

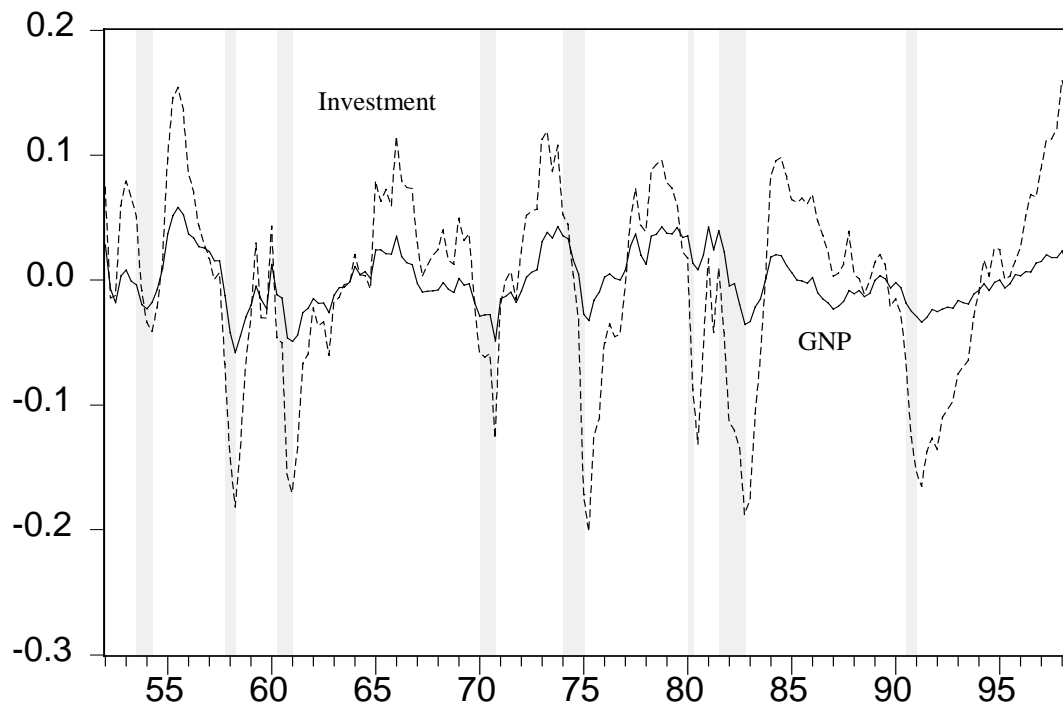


Figure 5:
Filtered Probability that $S_t = 1$
(Shaded Areas Indicate NBER Recession Dates)

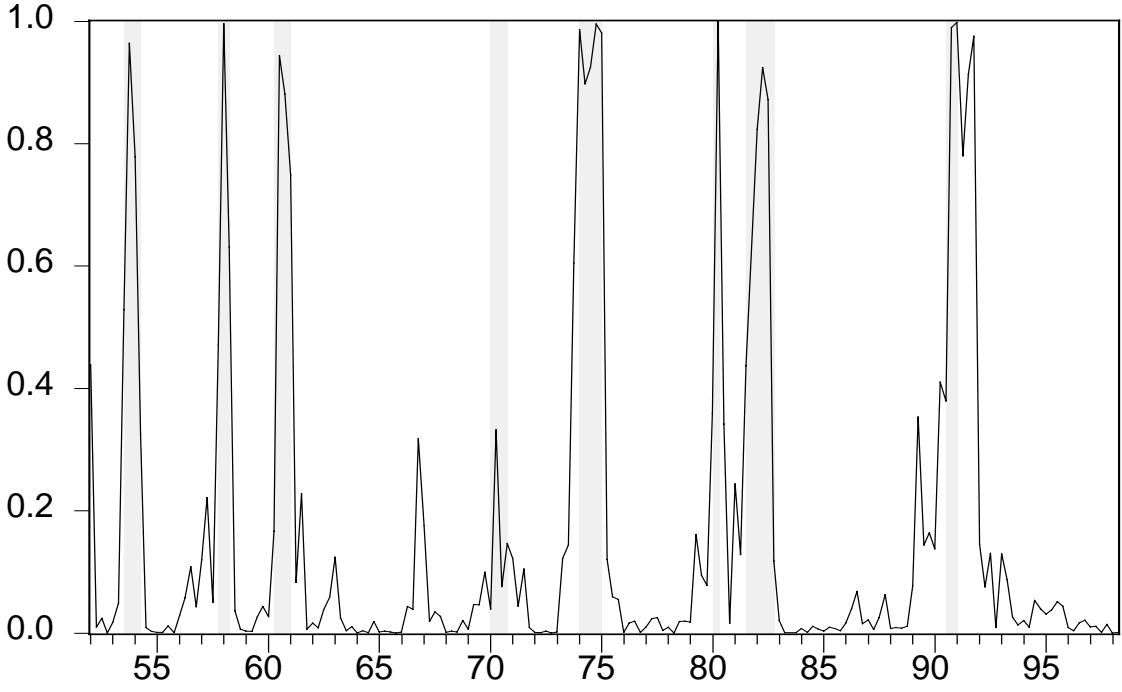


Figure 6:
Smoothed Probability that $S_t = 1$
(Shaded Areas Indicate NBER Recession Dates)

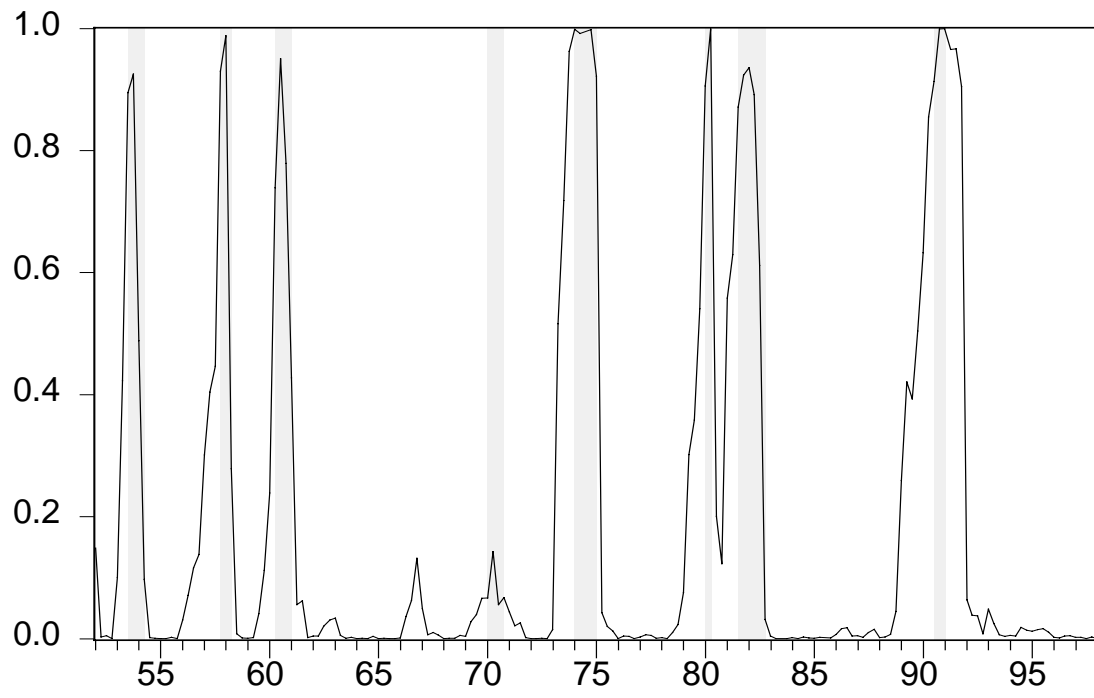


Figure 7:
Smoothed Probability that $D_t = 1$

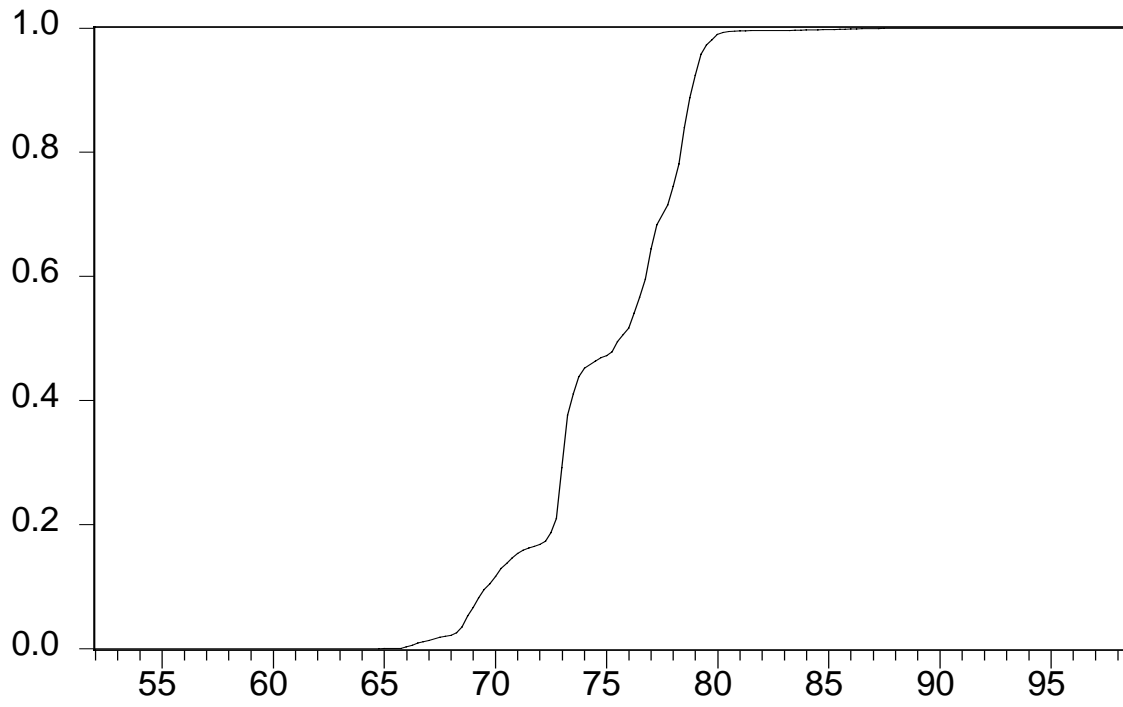


Figure 8:
A Recession with Both Hamilton and “Plucking” Types of Asymmetry
(Solid lines indicate trend, dashed lines indicate deviations from trend)

