

**ESTIMATING INTERTEMPORAL AND INTRATEMPORAL
SUBSTITUTIONS
WHEN BOTH INCOME AND SUBSTITUTION EFFECTS ARE
PRESENT:
THE ROLE OF DURABLE GOODS**

MARCH 2009

MICHAL PAKOŠ

THE 4TH REVISION

FOR

THE JOURNAL OF BUSINESS AND ECONOMIC STATISTICS

Affiliation: Tepper School of Business, Carnegie Mellon University, 5000 Forbes Avenue, Pittsburgh, PA 15213, USA. Phone: (412) 268-4063, Cell: (412) 496-0776, Email: misko@andrew.cmu.edu. This paper is an outgrowth of Chapter 1 of my Ph.D. Dissertation at the Graduate School of Business, University of Chicago. I am grateful for the advice and encouragement from my thesis committee: John Cochrane, John Heaton (chair), Monika Piazzesi, and Pietro Veronesi. My thanks also go to Gary Becker and Kevin Murphy from whom I have learned so much. In addition, I have benefitted from helpful comments by Peter Bossaerts, John Campbell, George Constantinides, George-Levi Gayle, Rick Green, Lior Menzly, Masao Ogaki, Jonathan Parker, Lukasz Pomorski, Ruy Ribeiro, Nick Roussanov, Sergei Sarkissian, Fallaw Sowell, Chris Telmer, Stan Zin, and the Editor, the anonymous Associate Editor in charge, and two anonymous referees. Research support from the Oscar Mayer Foundation is gratefully acknowledged; any opinions expressed herein are the author's and not necessarily those of the Oscar Mayer Foundation. Remaining errors are my own responsibility.

ABSTRACT. Hall (1988) estimates the intertemporal substitutability for non-durable goods economically and statistically insignificant. Ogaki and Reinhart (1998) introduce the service flow from durable goods using within-period-nonseparable homothetic preference specification. They estimate the intertemporal substitutability significant - around 0.4, and the intratemporal substitutability greater than one. I show that homotheticity induces a surprisingly dramatic statistical bias in the estimates of the intratemporal and intertemporal substitutions. Using aggregate consumption data, I discover that the estimate of the intertemporal substitutability is economically quite negligible - on the order of 0.04, a magnitude close to Hall's original estimate. In addition, I estimate the intratemporal substitutability between nondurable goods and service flow from the stock of consumer durable goods economically small as well - around 0.18. In addition, I find potent support in favor of nonhomotheticity, with nondurable goods being necessities and durable goods luxuries. Despite that, due to the secular decline of the rental cost, the budget share of consumer durable goods appears trendless.

Keywords: Durable Goods, Nonhomotheticity, Intertemporal Substitution, Intratemporal Substitution

JEL: E21, D12

I. INTRODUCTION

The elasticities of intertemporal (across time) and intratemporal (within period and across goods) substitutions are the two central parameter inputs into all modern macroeconomic models. They dramatically influence the quantitative implications of various economic policy decisions (Hall 1988). First, the degree of the intertemporal substitutability is by far the most important determinant of the response of saving and consumption to predictable changes in the real interest rate. If expectations of real interest rates shift, there ought to be a corresponding shift in the *rate* of change of consumption expenditures, and hence the amount of consumption itself. The magnitude of this intertemporal substitutability, denoted EIS, is measured by the percentage response of the total consumption expenditures to a percentage change in the real interest rate expectations, *ceteris paribus*.

Furthermore, in a two-good economy with consumer durable goods, and, more generally, in multi-good economies, the magnitude of the intratemporal substitution *indirectly* affects the measure of the intertemporal substitution. A commonly advanced but fallacious argument is that the real interest rate positively affects the user cost of consumer durables, and therefore a surge in interest rates leads to an increase in the user cost, with consumers rationally substituting from the service flow yielded by the durable goods to nondurable consumption. However, intertemporal substitutability is a *ceteris paribus* measure, and it is straightforward to show that as long as the consumption index over the nondurable goods and the service flow from durable goods is homogeneous of degree one, intratemporal substitutability does *not* affect intertemporal substitutability. The situation, however, is diametrically opposite in the case of nonhomotheticity (nonhomogeneous consumption index) wherein the Engel's income expansion paths are nonlinear functions.

Second, the magnitude of the elasticity of intratemporal substitution may be important for asset pricing. It, in addition to the coefficient of risk aversion, determines the variability of the marginal utility and hence asset risk premia. In fact, low substitutability between consumption goods means that a small variation in nondurable consumption translates into dramatic fluctuations in marginal utility. This raises the intriguing question whether the consumption risk of the stock market is really as small as the single-good economies seem to imply.

A large literature focuses on the estimation of these two parameters. In his provocative paper, Hall presents estimates of the elasticity of the intertemporal substitution "... that are small. Most of them are also quite precise, supporting the strong conclusion that the elasticity is unlikely to be much above 0.1, and may well be zero." Using improved inference methods, Hansen and Singleton (1983) find that there is less precision and even obtain estimates that are negative. Using international data, Campbell (2003) estimates the elasticity of intertemporal substitution statistically and economically insignificant. However, these studies assume that the felicity function is separable over nondurables and durables (see Lewbel 1987 for another criticism of Hall's model). In response, Mankiw (1982,

1985) and Ogaki and Reinhart (1998) enrich the model by explicitly introducing the service flow from consumer durables but unfortunately assume linear Engel curves. Mankiw finds that the service flow from consumer durables is itself more responsive to the interest rates, and estimates a large elasticity of substitution for durable goods. Focusing on non-separability across goods, Ogaki and Reinhart find that there is quite a large intertemporal substitutability when both nondurable and durable goods are considered.

One important criticism of the Ogaki and Reinhart's empirical results is that they work with homothetic preferences and thus their relative demand function for durable goods is free from potentially significant income effects. The correct modeling of nonhomotheticity in such relative demand turns out to be essential in order to obtain unbiased estimates of the magnitudes of the intratemporal and intertemporal substitutions. Empirically, the ratio of durables over nondurables has been trending up secularly (see Figure 1). The mainstream interpretation is that investors optimally substituted (in the sense of Hicks) consumer durables for nondurable goods in response to their falling price, with income effects playing no role whatsoever (Eichenbaum and Hansen 1990, Ogaki and Reinhart 1998). However, durable goods may not have an easy substitute, and therefore we would expect *a priori* the Hicksian price effects to be relatively small. I illustrate this point with an example. Suppose the consumer faces the choice of commuting to work by either taxi or by renting a car. If the car rental cost increases relative to the cost of taxi, the consumer gets a compensation in order to hold his real income constant, and he alters his consumption of car services little relative to the taxi, the Hicksian price effect is small. Note that it is important to compensate the consumer so that we isolate the pure price effect. It is common to use the word "substitute" in the sense of "serving in place of another" (Oxford Dictionary). However, that is not the technical meaning of the word. It confuses income versus substitution effects precisely because in both cases consumers use another consumption good in place of the original one. But these two effects are distinct reaction channels to a price change. The presented empirical results appear to indicate that the Hicksian substitution effects are smaller than we thought, and thus the income effects should be very important to fit the relative demand function for durable goods.

In order to see the effects of this misspecification, I use the two-step cointegration-Euler equation approach pioneered by Cooley and Ogaki (1996) and Ogaki and Reinhart (1998), and allow for (i) nonseparability across goods (nondurables and the service flow from consumer durables) and (ii) a fairly general form¹ of non-homotheticity in the relative demand function for durables by generalizing the constant-elasticity-of-substitution (CES) felicity function. In the first step, using cointegration techniques, I obtain super-consistent estimates of the elasticity of intratemporal substitution and the ratio of within-period expenditure elasticities. In

¹In fact, my proposed preference specification allows for time-varying expenditure elasticities of nondurable goods and the service flow from consumer durables as long as their ratio is a constant.

the second step, I invoke the Hansen's (1982) Generalized Method of Moments to efficiently estimate the rest of the preference parameter vector, and formally test the model. Then, following Atkeson and Ogaki (1996), I define the elasticity of intertemporal substitution EIS as the inverse of the elasticity of the marginal utility of the total consumption expenditures. This step requires a numerical solution of the second stage of two-stage budgeting to construct the indirect felicity function and its partial derivatives.

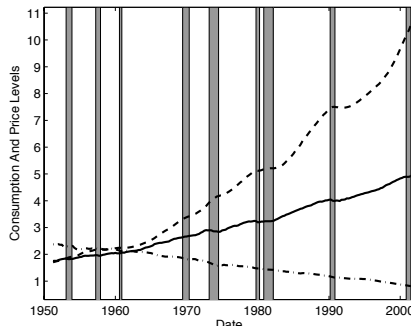
The results of the paper are intriguing. First, consistent with microeconomic studies, I find that the Engel curves are not linear, and hence the preferences exhibit nonhomotheticity, with durable goods being luxury goods and nondurable goods necessary goods. Second, the budget share of durable goods is time-varying, living between 7.3% and 20.4%. It appears trendless, despite the corresponding income elasticity being greater than one, precisely as the rental cost of durables trends down secularly. Hall estimates the EIS for nondurables close to zero whereas Mankiw estimates the EIS for consumer durable goods economically significant. Because the consumption basket is a weighted average of nondurable goods (negligible EIS) and durable goods (significant EIS), and the budget share of durable goods is comparatively small, I confirm the intuitive result that the elasticity of intertemporal substitution EIS for the total consumption expenditures is economically small as well.

It is well-known that adjustment costs play an essential role in the consumption of durable goods (Bernanke 1984, Lam 1989, Grossman and Laroque 1990, Eberly 1994). Mankiw (1985) concludes that "...future work should pay closer attention to the role of adjustment costs. The model that took account of the adjustment process would be better suited for examining the effects of shorter term fluctuations in the real interest rate." Ogaki and Reinhart (1998) correctly point out that one of the big advantages of the two-stage cointegration-Euler equations approach is that "... it is robust to various specifications of adjustment costs, relying on the cointegration properties between the observed and the desired stock of durables in the presence of adjustment costs, which is discussed in Caballero (1993)". The inference based on the cointegrating regressions yields consistent estimates as long as adjustment costs do not affect the long-run behavior of the service flow from consumer durables. Furthermore, it can be shown that the Euler equation for nondurable consumption is robust to various forms of adjustment costs for durable goods consumption. Unfortunately, many related studies, such as Eichenbaum and Hansen (1990), among others, do not allow implicitly nor explicitly in their estimation for adjustment costs.

II. THEORETICAL FRAMEWORK

A. **Model.** Consider an endowment economy populated with homogeneous households of measure one. Suppose further that their preferences are representable by the Von Neuman-Morgenstern time-separable expected utility functional, defined

FIGURE 1. Historical Consumption Series and Their Relative Price



NOTES. The plot portrays the time-series of the real nondurable consumption (solid line), the stock of durable goods (dashed line), and their relative price (dash-dot line). Bars represent NBER recessions. Sample size 1951.I : 2001.IV

over the stream of consumption $\{C_t\}_{t \geq 0}$. Formally

$$(II.1) \quad U \left(\{C_t\}_{t \geq 0} \right) \triangleq \mathbb{E} \left\{ \sum_{t=0}^{\infty} \beta^t u(C_t) \right\}$$

I denote by $\beta \in (0, 1)$ the subjective rate of time preference. The felicity function $u : \mathbb{R}^+ \rightarrow \mathbb{R}^+$ is of the following isoelastic form

$$u(C_t) = \frac{1}{1 - 1/\sigma} C_t^{1-1/\sigma}$$

where the parameter $\sigma > 0$ is a (biased under nonhomotheticity) measure of the elasticity of intertemporal substitution (EIS). Next, I specify the consumption index $C : \mathbb{R}^+ \times \mathbb{R}^+ \rightarrow \mathbb{R}^+$ over the nondurable goods c_t and the service flow s_t from consumer durables as

$$C(c_t, s_t) \triangleq \left\{ (1 - \tilde{a}) \times c_t^{1-\frac{1}{\theta}} + \tilde{a} \times s_t^{1-\frac{\eta}{\theta}} \right\}^{\frac{\theta}{\theta-1}}$$

where $\tilde{a} \in (0, 1)$ is the preference weight. Observe that the consumption index $C(c_t, s_t)$ allows for potential *nonhomotheticity*. Dunn and Singleton (1986) impose that the consumption index $C(c_t, s_t)$ is homothetic and Cobb-Douglas; their implied parameters $\theta = 1$ and $\eta = 1$. Eichenbaum and Hansen (1990), and Ogaki and Reinhart (1998), relax the restrictive elasticity constraint that the intratemporal substitution $\theta = 1$, but still keep the homotheticity postulate $\eta = 1$. As it will become clear later on, nonhomotheticity, by lifting the assumption of no income effects, turns out to be economically, but also statistically, significant feature of the data. It markedly improves the fit of the relative demand for consumer durables.

Using the second stage of two-stage budgeting, I interpret the parameter $\eta \in \mathbb{R}$ as the ratio of within-period expenditure elasticities of nondurables and services flow. Empirically, I find $\eta < 1$, and hence durable goods are luxuries and nondurable goods necessities. Homothetic preferences correspond to the restriction $\eta = 1$. On the technical side, it is also to be noted that this preference specification easily

accommodates variable within-period expenditure elasticities of both goods as long as their ratio remains constant.

Many studies implicitly use durable goods by assuming that nondurable consumption and the service flow from durables enter the felicity function separably (Hansen and Singleton 1982, 1983). Eichenbaum and Hansen (1990) find empirical evidence in favor of nonseparability. Fleissig, Gallant and Seater (2000) derive a semiparametric utility function with both nondurable goods and consumer durable goods, and find that CRRA preferences defined only over nondurable goods are severely misspecified. They also discover evidence in favor of significant nonseparabilities across the consumption goods.

I interpret the parameter $\theta > 0$ as a measure of the intratemporal substitution, which itself is precisely gauged by the elasticity of intratemporal substitution, denoted ES . The two, however, are related by the condition derived in Appendix, $ES = \theta + \varepsilon_{dd}^* \times (\eta - 1)$, where ε_{dd}^* is the Hicksian own-price elasticity of the demand for the service flow from durable goods. I shall discuss this point deeper hereafter.

The law of motion of the consumer durables d_t is given by the linear difference equation

$$d_t = (1 - \delta) d_{t-1} + i_t$$

where i_t denotes durable goods investment, and $\delta \in (0, 1)$ is the corresponding depreciation rate. The flow of services s_t itself is produced by a linear household production function (Stigler and Becker 1977, Mankiw 1985), which is time- and state-independent, $s_t \triangleq A \times d_t$, $A > 0$. The budget constraint is standard and it is not displayed here.

Note that the preference weight \tilde{a} and the household productivity A cannot be separately identified. As a result, I take a monotonic transformation of the utility function, reparametrizing the consumption index as

$$(II.2) \quad C \triangleq C(c_t, d_t) = \left\{ c_t^{1-\frac{1}{\theta}} + a d_t^{1-\frac{\eta}{\theta}} \right\}^{\frac{\theta}{\theta-1}}$$

where I denote $a \triangleq \tilde{a} A^{1-\eta/\theta} / (1 - \tilde{a}) > 0$.

B. First-Order Conditions. The intertemporal marginal rate of substitution m_{t+1} is given by the ratio the marginal utilities of nondurable goods,

$$\begin{aligned} m_{t+1} &\triangleq \frac{\beta U_c(c_{t+1}, d_{t+1})}{U_c(c_t, d_t)} = \\ &= \beta \left(\frac{c_{t+1}}{c_t} \right)^{-1/\sigma} \times \left(\frac{f_{t+1}}{f_t} \right)^{-\frac{\theta-\sigma}{\sigma(\theta-1)}} \end{aligned}$$

where f_t is defined as $f_t \triangleq 1 + a d_t^{1-\eta/\theta} / c_t^{1-\frac{1}{\theta}}$.

My model with nonhomothetic preferences does imply that the intertemporal marginal rate of substitution is stationary despite Assumption 1.

Assumption 1. *The vector time series*

$$[\log c_t, \log d_t, \log q_t]'$$

are integrated of order one, that is, $I(1)$.

Proposition 2. *The marginal rate of substitution m_{t+1} is stationary.*

Proof. See Appendix. □

Intuitively, m_{t+1} is the growth rate of the marginal utility $\beta^t U_c(c_t, d_t)$, and if indeed it were integrated of order 1, the marginal utility would have to be integrated of order 2. Hence, the nonlinear function, the marginal utility, would turn an $I(1)$ variable into $I(2)$ one, which is impossible.

Standard variational argument implies that the intertemporal first-order condition is the following ubiquitous Euler equation

$$(II.3) \quad 1 = \mathbb{E}_t [m_{t+1} R_{it+1}]$$

where R_{it+1} is the (gross) return on test asset i .

The intratemporal first-order condition states that the marginal utility per last dollar spent must be the same across all consumption categories. Formally,

$$(II.4) \quad \frac{U_c(c_t, d_t)}{1} = \frac{U_d(c_t, d_t)}{rc_t}$$

where rc_t stands for the rental cost of consumer durables. Note that nondurable goods are the numeraire. Rearranging, we obtain the familiar condition that the marginal rate of substitution equals the relative price

$$\frac{U_d(c_t, d_t)}{U_c(c_t, d_t)} = rc_t$$

No arbitrage, consequently, links the rental cost of durable goods rc_t and their relative “cum-dividend” price q_t by means of the following present-value formula

$$(II.5) \quad rc_t = q_t - (1 - \delta) \mathbb{E}_t \{m_{t+1} q_{t+1}\}$$

Intuitively, suppose we purchase one unit of durable goods at price q_t , which after one period depreciates to $1 - \delta$. We can sell it for $(1 - \delta) q_{t+1}$. The implicit rental cost rc_t is the net present value (NPV) of this transaction, that is,

$$(II.6) \quad rc_t = q_t - (1 - \delta) \mathbb{E}_t \{m_{t+1} q_{t+1}\}$$

where the stochastic discount factor just equals the intertemporal marginal rate of substitution.

My model implies, under mild conditions, a certain long-run relationship between nondurable consumption, the stock of consumer durable goods, and their relative

price. To prove that, I appeal to the well-established fact in empirical macroeconomics that the asset prices to current income flows, such as price-dividend ratios of common stocks, are stationary, that is, $I(0)$. Durable goods may be thought of as assets that pay a regular stream of rental costs, and hence one naturally conjectures that the corresponding price-rental cost ratio ought to be $I(0)$. That the presented model inherently implies such a long-run relationship is proved in the following proposition.

Proposition 3. *The log of the rental cost of durable goods $\log rc_t$ and the log of the durable goods price $\log q_t$ share a common stochastic trend, with the cointegrating vector $[1, -1]'$.*

Proof. See Appendix. □

The next proposition turns out to be key in the empirical section. It allows me to estimate a subset of preference parameters, namely θ and η , superconsistently by applying the Johansen (1991) methodology, and thus immensely simplifies the econometric analysis of the model-implied conditional Euler equations by reducing the cardinality of the parameter space.

Proposition 4. *The log of nondurable consumption, the log of the stock of durable goods and their relative price share a single common stochastic trend, with the corresponding cointegrating vector*

$$[1, -\eta, -\theta]'$$

Proof. Direct calculation of the intratemporal marginal rate of substitution yields that

$$rc_t = a \times d_t^{-\eta/\theta} / c_t^{-1/\theta}$$

Taking natural logarithm of both sides,

$$\log(rc_t) \propto (1/\theta) \log c_t - (\eta/\theta) \log d_t.$$

Proposition 3 tells us that

$$\log rc_t - \log q_t \sim I(0).$$

Upon substitution, and rearranging, I obtain the claimed long-run relationship

$$\log c_t - \theta \log q_t - \eta \log d_t \sim I(0).$$

Evidently, the cointegrating vector is $[1, -\eta, -\theta]'$. The uniqueness is implied by the fact that θ and η are structural preference parameters. QED. □

C. Interpretation of the Parameters θ and η . The preference parameters θ and η are easily interpreted in the case of deterministic setup using the second stage of two-stage budgeting, which holds due to the weak separability of the consumer preferences (Deaton and Muellbauer 1980). I here summarize the results and refer the interested reader to Appendix for formal derivations.

TABLE 1. Tests for the Null of Difference Stationarity

Time Series	Test Statistics		
	ERS Test	DFGLS Test	MPP Test
$\log d_t$	6.380	-2.487	-2.663
$\log c_t$	8.340	-2.246	-2.330
$\log q_t$	48.219	-0.006	-0.076

NOTES. The null hypothesis is that the respective series contain a unit root. The alternative hypothesis is that there is a linear time trend. Tests are as follows. ERS is the Elliott-Rothenberg-Stock Test, DFGLS is the DF test with GLS detrending, and MPP is the modified Phillips-Perron Test. None of the presented statistics are significant at conventional significance levels.

Each period the consumer optimally chooses his consumption expenditure e_t . Then, depending on the rental cost of consumer durables, she chooses her allocation of nondurable consumption and the service flow from renting consumer durables. The elasticity of intratemporal substitution ES - substitution across goods within a given time-period holding the real income constant, gauges how much the relative Hicksian demand for durable goods changes in response to a percent change in the rental cost of consumer durables rc . In the model, its yardstick, but not a precise measure, is the parameter θ . The two are related by the equation $ES = \theta + \varepsilon_{dd}^* \times (\eta - 1)$, where ε_{dd}^* is the Hicksian own-price elasticity of the demand for the service flow of durable goods. Furthermore, the expenditure elasticity measures how much the demand for a consumption good changes in a response to a 1% rise in expenditures, *ceteris paribus*. For future reference, I denote the expenditure elasticity of nondurable consumption η_c and that of the service flow η_d . It turns out that the parameter η is a ratio of these two elasticities, namely, $\eta = \eta_c / \eta_d$. That these claims hold true may be easily verified by comparing the slopes in the cointegrating regressions based on (i) the intratemporal first-order condition and (ii) the first-order condition from the second stage of two-stage budgeting (D.18), derived in Appendix.

When both income and substitution effects are present, the relative demand function takes the form

$$d \log (c_t / d_t) = \underbrace{ES \times d \log rc_t}_{\text{substitution effect}} + \underbrace{(\eta_c - \eta_d) \times d \log \hat{e}_t}_{\text{income effect}}$$

The parameter \hat{e}_t denotes the real expenditure on both consumption goods, measured in terms of the composite good (see also Appendix). This equation shows that the relative demand changes are either due to substitution effect or due to income effect. It offers a framework to understand the secular rise in the consumption

of durable goods relative to nondurable goods. The typical interpretation is that consumers substituted (in the sense of Hicks) to durable goods in response to their falling relative price, with income effects playing no role at all. This corresponds to the case where elasticity of substitution ES is large² and the preferences are homothetic, which automatically eliminates the income effect. Formally,

$$(II.7) \quad d \log (c_t/d_t) = ES \times d \log r c_t$$

As the empirical results in later sections indicate, after correcting for the income effects, the substitutability ES between the services flow and nondurables is smaller than estimated by Hansen and Eichenbaum (1990) and Ogaki and Reinhart (1998), and hence significant nonhomotheticity is dictated. Formally, $(\eta_c - \eta_d) \times d \log \hat{e}_t$ is not negligible, and thus affects the estimates of both the intra- and inter-temporal substitutions.

The real income in the U.S. economy has been rising steadily and thus the previous equation suggests that $\eta_c - \eta_d < 0$. Because the average income elasticity must be one, we get the plausible result that durable goods are luxury goods and nondurable goods are necessary goods, i.e. $\eta_c < 1 < \eta_d$. Empirically, I estimate $\eta_d \in [1.460, 1.579]$ and $\eta_c \in [0.882, 0.954]$. For comparison, Costa (2001) estimates the income elasticities for food at home 0.47 in 1960-94 and 0.62 in 1917-35. Those for total food are 0.65 in 1960-94 and 0.68 in 1917-35 and in 1888-1917.

III. EMPIRICAL SECTION

A. Consumption and Asset Return Data. Quarterly consumption data are from the U.S. national accounts as available from the Federal Reserve Bank of St. Louis. I measure nondurable consumption c_t as the sum of real personal consumption expenditures (PCE) on nondurable goods and services. Consumer durables include furniture, motor vehicles, and jewelry and watches. The data were kindly provided to me by Motohiro Yogo of Wharton. Note that these time-series, after aggregated to annual quantities, are *exactly consistent* with the year-end estimates of the chained quantity index for net stock of consumer durables as published by the Bureau of Economic Analysis (BEA). The implied depreciation rate for the durable goods as a whole is approximately 6% per quarter. Both nondurable goods and services, and durable goods are converted to per-capita values by dividing by the population size. The relative price of consumer durables q is calculated as the ratio of the price index for PCE on durable goods to the price index for PCE on nondurable goods and services. The data are available for the period 1951:I - 2001:IV.

The asset return data consist of the time series of the monthly return on the U.S. Treasury Bills, and the value-weighted return on all NYSE, AMEX, and NASDAQ stocks (from CRSP), both converted to quarterly values. The real returns are

²Eichenbaum and Hansen's (1990) estimate is $ES = 0.91$. Ogaki and Reinhart's (1998) estimate is greater than one, $ES > 1$.

TABLE 2. Analysis of Cointegration

Panel A. Johansen's Likelihood Ratio Tests

No. Coint. Vectors r	Test Statistics			
	$LR_{trace}(r)$	95% CV, $LR_{trace}(r)$	$LR_{max}(r)$	95% CV, $LR_{max}(r)$
0	30.899*	29.680	24.587*	20.970
1	6.313	15.410	6.308	14.070
2	0.005	3.760	0.005	3.760

Panel B. Estimated Vector Error-Correction Model

	Intercept	$\log c_{t-1} - \hat{\eta} \log d_{t-1} - \hat{\theta} \log q_{t-1}$	$\Delta \log c_{t-1}$	$\Delta \log d_{t-1}$	$\Delta \log q_{t-1}$	R^2 (in %)
$\Delta \log c_t$	-0.002 (0.003)	0.035 (0.020)	0.261 (0.075)	-0.063 (0.078)	0.051 (0.054)	11.490
$\Delta \log d_t$	-0.006 (0.002)	0.039 (0.009)	0.090 (0.035)	0.774 (0.036)	0.002 (0.025)	80.730
$\Delta \log q_t$	0.008 (0.004)	-0.065 (0.026)	0.041 (0.097)	0.008 (0.101)	0.256 (0.070)	13.530

Panel C. Estimated Cointegrating Vector

Johansen's Analysis			Swensen's Bootstrap Estimates		
Preference Parameter	Est.	Asym. s.e.	Preference Parameter	Est.	Asym. s.e.
θ	0.083	(0.075)	θ	0.082	(0.080)
η	0.604	(0.041)	η	0.605	(0.013)

NOTES. CV stands for critical value. Both Bayesian Information (BIC) and Hannan-Quinn (HQ) criteria suggest that the vector $(\log c_t, \log d_t, \log q_t)'$ follows a $VAR(2)$. The log-likelihood function attains a maximum of 2458.18, with 202 degrees of freedom. Sample period 1951.I - 2001.IV. Analysis performed using the S-plus' Finmetrics library. Standard errors are in parentheses.

computed by deflating the nominal returns with the consumer price index (CPI), obtained from the Federal Reserve Bank of St. Louis.

B. Intratemporal First-Order Condition.

Intratemporal First-Order Condition as a Cointegrating Regression. As shown in the theoretical section, Proposition 4, the intratemporal first-order condition is inherently loglinear,

$$\log c_t \propto \theta \log q_t + \eta \log d_t + \varepsilon_t$$

and the disturbance term ε_t is statistically stationary, that is, $\varepsilon_t \sim I(0)$. Therefore, the model implies a certain single long-run relationship between nondurable goods, consumer durables, and their relative price. Hence, I am able to estimate the parameters θ and η superconsistently by extracting the information from the trends.

This idea is borrowed from the related paper by Ogaki and Reinhart (1998), who also estimate the elasticity of intratemporal substitution in the presence of durable goods. They focus on the homothetic case $\eta = 1$, in which the true elasticity of intratemporal substitution $ES = \theta$. Their regression specification is as follows

$$\log(c_t/d_t) \propto \theta \log q_t + \varepsilon_t$$

The presence of significant nonhomotheticity biases upward the estimate of the intratemporal substitutability. The relative demand for consumer durable goods may change either due to income effect or due to substitution effect. Homotheticity dictates that it was Hicksian substitution in response to a secular change in the relative price that led consumers to purchase more durable goods. Neglecting income effects forces the substitution effects to be larger to fit the secular trend in the consumption of durable goods relative to nondurable goods. In general, considering income effects may be important, in particular for goods with large expenditure shares and/or no easy substitutes such as housing or consumer durables, as Slutsky equation says that the income effects are proportional to the expenditure shares. Empirically, Eichenbaum and Hansen (1990) use CES aggregator over nondurables and durables but impose homotheticity. They estimate both intratemporal and intertemporal equations jointly using GMM and get the elasticity of intratemporal substitution $ES = 0.91$. Using the same preference specification but estimating the elasticity of substitution using cointegration techniques, Ogaki and Reinhart (1998) cannot reject the null hypothesis $H_0 : \theta \geq 1$. As argued before, neglecting income effects biases upward the estimate of the elasticity of substitution ES, and thus the parameter θ . This observation is confirmed empirically hereafter.

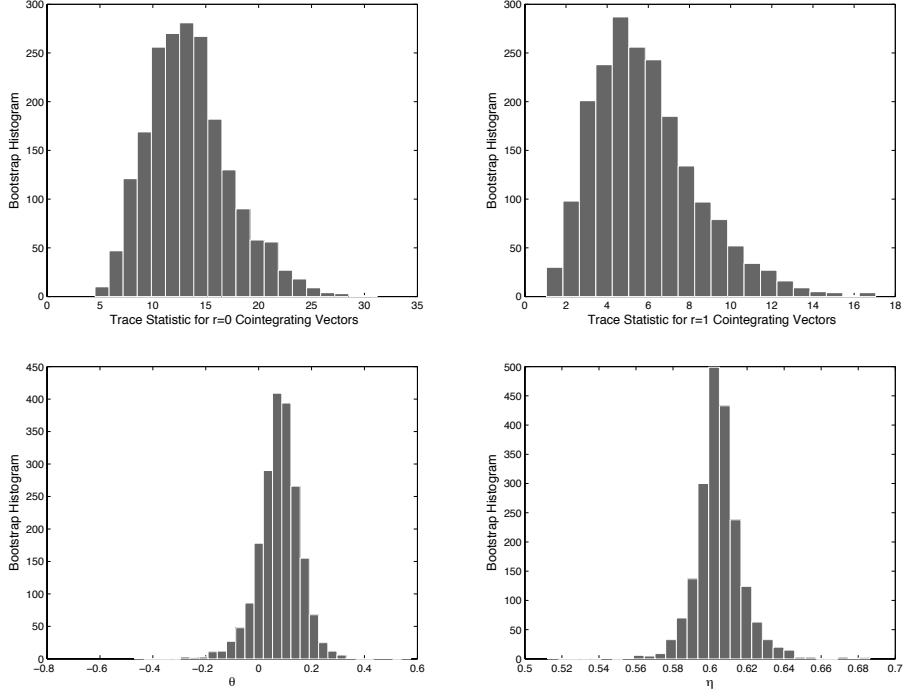
Unit Roots. I test the null hypothesis that the natural logarithm of the series, $\log c_t$, $\log d_t$ and $\log q_t$, are difference stationary against the alternative hypothesis of trend stationarity, invoking the efficient unit root tests of Elliott, Rothenberg and Stock (2001), and Ng and Perron (2001). In all cases, I am unable to reject the hypothesis that the data are difference stationary at conventional significance levels (see Table 1).

Johansen's (1991) Cointegration Methodology. Both Bayesian Information (BIC) and Hannan-Quinn (HQ) criteria suggest that the 3×1 vector

$$(\log c_t, \log d_t, \log q_t)'$$

follows a vector autoregression of order 2, VAR(2), in levels. The lag length p for the vector error correction model (VECM) is then $p = 2 - 1 = 1$. Since the vector time series are trending, the Johansen Likelihood Ratio (LR) tests are computed assuming unrestricted constant. Denote $H_0(r) : r = r_0$ the null hypothesis of exactly r_0 cointegrating vectors, and $H_1(r) : r > r_0$ the alternative hypothesis of more than r_0 such vectors. Based on Table 2, Panel A, I cannot accept the null hypothesis $H_0(0)$ at the 5% significance level, but I accept $H_0(1)$. Therefore, according

FIGURE 2. Histograms: Swensen's Bootstrap



NOTES. 2000 bootstrap experiments performed in Splus.

the Johansen's trace statistic, there is exactly one cointegrating vector. Johansen's maximum eigenvalue statistic LR_{max} leads to exactly the same conclusion, providing an additional support for the single long-run relationship between the logs of nondurable goods, consumer durable goods and their relative price.

Swensen's (2006) Bootstrap Algorithm for Determining the Cointegration Rank.

It is well-known that the asymptotic approximations to the Johansen's trace and maximum eigenvalue tests are not always accurate. Swensen suggests a bootstrap algorithm as an alternative, and I implement it as an important robustness check. Due to their high costs, I perform 2000 experiments, and subsequently compute the percentile confidence intervals and p-values for the trace statistic. I easily reject the hypothesis of no-cointegration, with the corresponding p-value being $5e-4$. Hence, there is at least one cointegrating vector. I test the null hypothesis $H_0(1) : r = 1$ versus the alternative of at least two cointegrating vectors. The resultant p-value equals 0.381, and I am unable to reject the null, providing further empirical support in favor of a single stochastic trend in the logs of nondurable consumption, the stock of consumer durable goods and their relative price (see also Figure 2). Note that this result is essential as the model in fact predicts that these variables are cointegrated, and therefore a failure to find evidence in favor thereof would lead to outright rejection of the model.

Estimated Cointegrating Vector: Johansen Methodology. I estimate the corresponding vector error correction model by the method of maximum likelihood. The estimates are reported in Table 2, Panel C. The nonhomotheticity measure η comes economically and statistically less than one, providing evidence against the null hypothesis of homotheticity. The substitutability yardstick θ is estimated economically small, around 0.08, and statistically less than the estimates of Ogaki and Reinhart (1998). I am able to easily reject the hypothesis that the consumption index $C(c_t, s_t)$ is of the homogeneous Cobb-Douglas functional form.

Estimated Cointegrating Vector: Swensen Methodology. As a by-product of bootstrapping the cointegration rank, I obtain estimates of the empirical distributions for the preference parameters θ and η , which enables me to construct the corresponding bootstrap percentile confidence intervals. Figure 2 displays the corresponding histograms. Table 2, Panel C, presents the results. As may be observed, both methods lead to essentially the same point estimates.

Robustness Check: Failure of Model-Implied Cointegration Under Postulated Homotheticity. The model implies a single long-run relationship between the logs of the nondurable goods, the stock of durable goods, and their relative price. Note that the case of homotheticity $\eta = 1$ is a nested model. I show hereafter that imposing artificially this constraint empirically breaks down this long-run relationship. In detail, both Bayesian Information (BIC) and Hannan-Quinn (HQ) criteria suggest that the 2×1 vector $(\log c_t - \log d_t, \log q_t)'$ follows a second-order vector autoregressive process, VAR(2). The lag length p for the vector error-correction model (VECM) is thus $p = 2 - 1 = 1$. The null hypothesis of zero cointegrating vector against the alternative of at least 1 cannot be accepted at 5% significance level, using both Johansen's trace statistic LR_{trace} and the Johansen's maximum eigenvalue statistic LR_{max} . In detail, $LR_{trace}(0) = 12.81 < 15.41 = 95\%$ critical value, and $LR_{max}(0) = 8.36 < 14.07 = 95\%$ critical value. In addition, the extremized log-likelihood function is about 1489.21, dramatically below 2458.18 obtained by not artificially forcing homotheticity on the data.

My model implies a single cointegrating long-run relationship. The fact that the empirical evidence in favor thereof is minimal in case of homothetic preferences indicates that artificially imposing the restriction of no income effects upon the relative demand function would lead to an outright rejection of the model.

Overall, it appears fair to conclude that there is an overwhelming evidence in favor of nonhomotheticity in the relative demand function for consumer durables.

Plausible Magnitude of the Parameter α : Implications of the Intratemporal First-Order Condition. Durable goods may be thought of as assets with the price q_t paying a regular stream of rental costs rc_t . Note that q_t is the "cum-dividend" price. To illuminate the analysis, define $p_t = q_t - rc_t$ as the "ex-dividend" price.

The no-arbitrage condition

$$rc_t = q_t - (1 - \delta) \mathbb{E}_t \{m_{t+1} q_{t+1}\}$$

may be expressed equivalently in the form more familiar from empirical finance as

$$p_t = (1 - \delta) \mathbb{E}_t \{m_{t+1} [p_{t+1} + rc_{t+1}]\}$$

or

$$1 = \mathbb{E}_t \{m_{t+1} (1 - \delta) [p_{t+1} + rc_{t+1}] / p_t\}$$

where m_{t+1} plays the role of the stochastic discount factor. The implied rate of return on the durable goods is then evidently

$$R_{t+1}^{durables} = (1 - \delta) (p_{t+1} + rc_{t+1}) / p_t$$

and we obtain the familiar Euler equation

$$\mathbb{E}_t [m_{t+1} R_{t+1}^{durables}] = 1$$

In order to make progress in constructing the rental cost of consumer durable goods, I make the following plausible assumption.

Assumption 5. *The risk premium on the durable goods, $R_{t+1}^{durables} - R_t^f$, is negligible (zero).*

The following simple lemma is useful.

Lemma 6. *The risk premium on durable goods is given by the formula*

$$\mathbb{E}_t [R_{t+1}^{durables} - R_t^f] = -R_t^f \times \text{cov}_t [m_{t+1}, R_{t+1}^{durables}]$$

Proof. Straightforward using the definition of the conditional covariance

$$\begin{aligned} \text{cov}_t [X_{t+1}, Y_{t+1}] &= \mathbb{E}_t [X_{t+1} Y_{t+1}] - \\ &\quad - \mathbb{E}_t [X_{t+1}] \mathbb{E}_t [Y_{t+1}]. \end{aligned}$$

□

In view of Assumption 5 and Lemma 6, note that the rental cost price ratio satisfies

$$\begin{aligned} \frac{rc_t}{q_t} &= 1 - (1 - \delta) \mathbb{E}_t \left[m_{t+1} \left(\frac{q_{t+1}}{q_t} \right) \right] \\ &= 1 - (1 - \delta) \mathbb{E}_t [m_{t+1}] \mathbb{E}_t \left[\left(\frac{q_{t+1}}{q_t} \right) \right] \\ &\approx 1 - (1 - \delta) \left(R_t^f \right)^{-1} \times \\ &\quad \times \exp \left(\mathbb{E}_t \left[\log \left(\frac{q_{t+1}}{q_t} \right) \right] \right) \times \\ &\quad \times \exp \left(\frac{1}{2} \text{var}_t \left[\log \left(\frac{q_{t+1}}{q_t} \right) \right] \right) \end{aligned}$$

where I invoke $\mathbb{E}_t [m_{t+1}] = \left(R_t^f\right)^{-1}$.

As shown in the subsection dealing with the Johansen's cointegration methodology, the vector time-series $[\log c_t, \log d_t, \log q_t]'$ follows a cointegrated $VAR(2)$, and hence I estimate the corresponding vector error-correction model (see Table 2, Panel B) to forecast the growth rate in the (log) durable goods price one quarter ahead, and consequently estimate the rental cost of consumer durable goods from the above formula. Empirically, it turns out that multivariate and univariate forecasts (from $AR(1)$) are practically identical. In addition, I fit $GARCH(1,1)$ model³ to the log of the durable goods price to model the variation in the conditional second moment.

Subsequently, having constructed the rental-cost to price ratio from the above formula, I estimate the preference parameter $a > 0$ from the intratemporal first-order condition

$$\frac{a \times d_t^{-\eta/\theta}}{c_t^{-1/\theta}} = rc_t$$

as

$$(III.1) \quad a = \frac{1}{T} \sum_{t=1}^T \frac{rc_t \times c_t^{-1/\hat{\theta}}}{d_t^{-\hat{\eta}/\hat{\theta}}}$$

where $\hat{\theta}$ and $\hat{\eta}$ are the superconsistent estimates. I find empirically that the parameter $a \approx 0.007$.

This back-of-the-envelope calculation of the magnitude of the parameter a serves as an important check when I estimate the rest of the preference parameter vector (σ, β, a) by the efficient method of moments.

C. Estimation of the Rest of the Parameter Vector: Euler Equations Approach.

Methodology. My approach to the estimation and the inference of the rest of the preference parameter vector $\Theta = (\sigma, \beta, a) \in \mathbb{R}^+ \times (0, 1) \times \mathbb{R}^+$ follows Ogaki and Reinhart (1998). These authors show how to modify the analysis of Hansen and Singleton (1982) to allow for multiple consumption goods. The primary testable asset pricing implications of the model are the set of intertemporal Euler equations

$$(III.2) \quad \mathbb{E}_t [m_{t+1} R_{i,t+1}] = 1$$

³I perform several diagnostic checks. I test for the ARCH effects in the residuals. Then, I estimate $GARCH(1,1)$ assuming a Gaussian distribution. Quantile-to-quantile plot for standardized residuals rejects this distributional assumption, and so does the Kolmogoroff-Smirnoff test. Hence, I assume that the errors come from the t distribution, the degree of which is also estimated. Quantile to Quantile plot supports this distributional assumption. Further results available upon request.

TABLE 3. GMM Results

Instruments	σ	β	a	J_T
$Const, I_{t-2}^{(1)}, I_{t-3}^{(1)}, I_t^{(2)}, I_{t-1}^{(2)}$	0.039 (0.001)	0.988 (0.002)	0.007 (0.000)	28.223 (0.079)
$Const, I_{t-2}^{(1)}, I_{t-3}^{(1)}, R_t^f, R_{t-1}^f$	0.038 (0.001)	0.986 (0.002)	0.007 (0.000)	40.397 (0.000)
$Const, I_{t-2}^{(2)}, I_{t-3}^{(2)}, R_t^f, R_{t-1}^f$	(0.038) (0.001)	0.985 (0.002)	0.007 (0.000)	35.515 (0.000)
$Const, I_{t-2}^{(1)}, I_{t-3}^{(1)}, I_{t-2}^{(2)}, I_{t-3}^{(2)}, R_t^f, R_{t-1}^f$	0.038 (0.000)	0.987 (0.002)	0.007 (0.000)	42.643 (0.008)

NOTES. Two-step efficient GMM with the depreciation rate 6% used. The spectral density matrix estimated by means of quadratic spectral kernel with Andrews (19xx) automatic bandwidth selection and a VAR(1) prewhitening procedure of Andrews and Monahan (19xx). The notation for instrument sets is as follows: $I_t^{(1)} = \{(C_t/C_{t-1}), (D_{t+1}/D_t), (Q_t/Q_{t-1})\}$, $I_t^{(2)} = \{(U_t^{(1)}/U_{t-1}^{(1)}), (U_t^{(2)}/U_{t-1}^{(2)})\}$, where $U_t^{(1)}$ stands for the number of unemployed less than 5 weeks, and $U_t^{(2)}$ stands for the number of unemployed more than 15 weeks. Sample size 1951.I - 2001.IV. Standard errors and p-values in parentheses.

where m_{t+1} is the intertemporal marginal rate of substitution,

$$(III.3) \quad m_{t+1} = \frac{\beta U_c(c_{t+1}, d_{t+1})}{U_c(c_t, d_t)}$$

and $R_{i,t+1}$ is the gross return on an asset i .

In addition, we have the intratemporal first-order condition (II.5). Recall from the previous section that the cointegrating regression yields superconsistent estimates for parameters θ and η but does not pin down the preference weight a that enters the formula (II.5). Therefore, it is essential to include the intratemporal first-order condition in the GMM estimation, that is, to include

$$(III.4) \quad \mathbb{E}_t \{U_{dt} / (q_t U_{ct}) - (rc_t/q_t)\} = 0$$

where

$$rc_t = q_t - (1 - \delta) \mathbb{E}_t \{m_{t+1} q_{t+1}\}$$

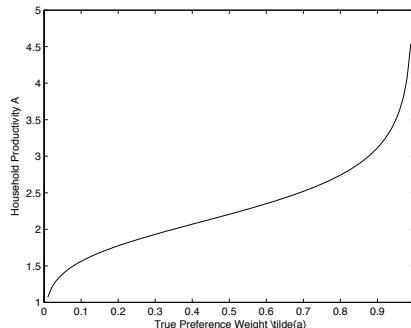
Let z_t be a vector of variables in the consumers' information set at time t . Using the components of z_t as instruments, I form the vector-valued function

$$g_T(\Theta) \triangleq \mathbb{E}_T \left\{ \begin{bmatrix} m_{t+1} R_{i,t+1} - 1 \\ U_{dt} / (q_t U_{ct}) - (rc_t/q_t) \end{bmatrix} \otimes z_t \right\}$$

and use the Hansen's (1982) notation $\mathbb{E}_T \triangleq T^{-1} \sum_{t=1}^T$.

I calibrate the parameters θ and η using the super-consistent estimates obtained by the cointegration approach as $\hat{\theta} = 0.082$ and $\hat{\eta} = 0.604$. I estimate the rest of the preference parameter vector $\hat{\Theta}$ by the choice of Θ that makes the sample moment condition $g_T(\Theta)$ close to zero in the sense of minimizing the quadratic

FIGURE 3. Implied Preference Weight and Household Productivity



form

$$\hat{\Theta} = \arg \min_{\Theta \in \mathbb{R}_+^3} g_T'(\Theta) \hat{S}_T^{-1} g_T(\Theta)$$

where \hat{S}_T is the estimated spectral density matrix at frequency zero. I use the two-step version of the efficient GMM.

In my analysis I consider several instrumental variables. First, I use the lagged nondurable consumption growth rate, the lagged growth rate of the stock of durable goods and the lagged growth rate in the durables price. These are lagged at least twice to take care of the cash-in-advance constraint inherent in explicitly monetary models (see also Ogaki and Reinhart). Secondly, a natural choice for the instrumental variables are both the growth rate of the number of civilians unemployed less than 5 weeks and the growth rate of the number of civilians unemployed more or equal 15 weeks. Finally, I also use the lagged real return on the U.S. Treasury Bills itself as an instrument.

Interpretation of the Empirical Results. Table 3 presents the GMM estimates for four different sets of instruments when the test asset is the U.S. Treasury Bill. The subjective discount factor β is estimated around 0.986. The estimate is also quite precise, and I am easily able to reject the hypothesis $H_0 : \beta \geq 1$.

The parameter a is estimated to be 0.007. The point estimate is also quite precise, with the asymptotic standard error less than 0.001. Note that the point estimate obtained from the efficient method of moments coincides with the back-of-the-envelope calculation based purely on the intratemporal first-order condition as described in a subsection above. Figure 3 plots the combinations of the true preference weight \tilde{a} and the household productivity A which are consistent with $a = 0.007$. For example, if the productivity $A = 1.5$, consumer durable goods have about 10% weight in the households' preferences.

The preference parameter σ is estimated from 0.038 up to 0.039, and statistically significant although economically small. Again, the asymptotic standard error is quite small.

The test of the over-identifying restriction statistically rejects the model, except for the first row in Table 3. However, it is well-known that asymptotic normality may provide a rather poor approximation to the sampling distribution of GMM estimators (Tauchen 1986, Kocherlakota 1990, West and Wilcox 1994, Hansen, Heaton and Yaron 1996). For example, the sampling distribution of GMM estimators can be skewed and can have heavy tails, and tests of overidentifying restrictions can exhibit substantial size distortions. To check the robustness of my results, I follow Hall and Horowitz (1996) who develop a small-sample bootstrap approximations to the distributions of GMM estimators.

Robustness Check: Hall and Horowitz (1996) Bootstrap. Due to a quite high computational burden, I perform only 1000 bootstrap experiments, focusing only on the last row of Table 3. The 95% quantile of the empirical distribution comes about 54.73, which is greater than the corresponding J_T statistic of about 42.64, and hence the model is not statistically rejected. I conclude that the asymptotic Gaussian distribution provides a rather poor approximation to the true sampling distribution of the J_T statistic.

Robustness Check: Depreciation Rate of the Durable Goods. Yogo (2006) in his empirical study carefully constructs the stock of durable goods so that the annual stock equals exactly the estimate of the Bureau of Economic Analysis (BEA). He consequently finds that the implied depreciation rate is about, but not exactly, 6%.

I estimate the model assuming the depreciation rate equals 5.5% and 6.5%. The results are presented in Table 4, Panels A and B, respectively. It is to be noted that the point estimates change minimally from the results in Table 3. I therefore conclude that the statistical analysis is robust to economically relevant variation in the depreciation rate.

Robustness Check: Test Assets. As a further robustness check, I also include the real value-weighted return of all NYSE, AMEX and NASDAQ stocks. Table 4, Panel C, presents the GMM estimates when the only test asset is the market return. The point estimates of the parameter vector (σ, β, a) are not statistically different from the estimates in Table 3. Finally, I include both the 3-month Treasury Bill and the market return. As may be observed from Table 4, Panel D, the point estimates again do not differ statistically from Table 3.

IV. THE BUDGET SHARE, THE RENTAL COST AND THE EXPENDITURE ELASTICITY OF DURABLE GOODS

Table 3, last row, allows me to construct the time series of (i) the implied rental cost of consumer durables rc_t , (ii) the budget share of the durable goods expenditures $s_{d,t}$ in total expenditures $e_t = c_t + rc_t \times d_t$, and (iii) the nondurables and the durables expenditure elasticities $\eta_{c,t}$ and $\eta_{d,t}$. First, I construct the implied rental cost of durables as the intratemporal marginal rate of substitution between

TABLE 4. GMM: Robustness Check

Panel A. Case of 5.5% Depreciation Rate

Instruments	σ	β	a	J_T
$Const, I_{t-2}^{(1)}, I_{t-3}^{(1)}, I_{t-2}^{(2)}, I_{t-3}^{(2)}$	0.039 (0.001)	0.989 (0.002)	0.007 (0.000)	27.964 (0.084)
$Const, I_{t-2}^{(1)}, I_{t-3}^{(1)}, R_{t-1}^f, R_{t-2}^f$	0.038 (0.001)	0.986 (0.002)	0.007 (0.000)	40.227 (0.000)
$Const, I_{t-2}^{(2)}, I_{t-3}^{(2)}, R_{t-1}^f, R_{t-2}^f$	0.038 (0.001)	0.984 (0.003)	0.007 (0.000)	35.337 (0.000)
$Const, I_{t-2}^{(1)}, I_{t-3}^{(1)}, I_{t-2}^{(2)}, I_{t-3}^{(2)}, R_{t-1}^f, R_{t-2}^f$	0.038 (0.000)	0.986 (0.002)	0.007 (0.000)	42.328 (0.008)

Panel B. Case of 6.5% Depreciation Rate

Instruments	σ	β	a	J_T
$Const, I_{t-2}^{(1)}, I_{t-3}^{(1)}, I_{t-2}^{(2)}, I_{t-1}^{(2)}$	0.039 (0.000)	0.989 (0.002)	0.008 (0.000)	28.366 (0.077)
$Const, I_{t-2}^{(1)}, I_{t-3}^{(1)}, R_t^f, R_{t-1}^f$	0.038 (0.001)	0.987 (0.002)	0.008 (0.000)	40.540 (0.000)
$Const, I_{t-2}^{(2)}, I_{t-3}^{(2)}, R_t^f, R_{t-1}^f$	0.038 (0.001)	0.985 (0.002)	0.008 (0.000)	35.489 (0.000)
$Const, I_{t-2}^{(1)}, I_{t-3}^{(1)}, I_{t-2}^{(2)}, I_{t-3}^{(2)}, R_t^f, R_{t-1}^f$	0.038 (0.000)	0.987 (0.002)	0.008 (0.000)	42.844 (0.007)

Panel C. Market Return as a Test Asset

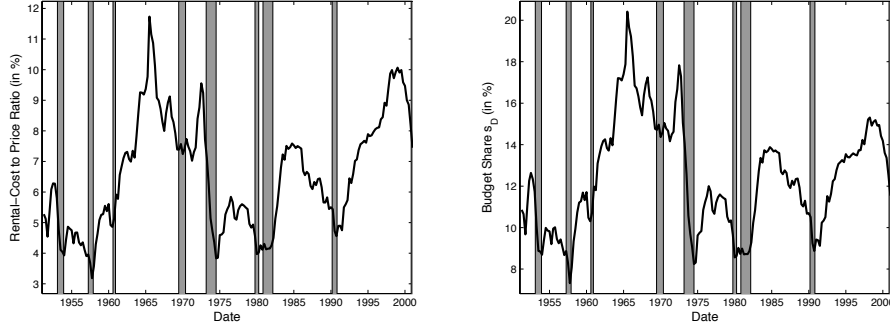
Instruments	σ	β	a	J_T
$Const, I_{t-2}^{(1)}, I_{t-3}^{(1)}, I_{t-2}^{(2)}, I_{t-3}^{(2)}$	0.042 (0.002)	0.986 (0.007)	0.008 (0.001)	24.080 (0.193)
$Const, I_{t-2}^{(1)}, I_{t-3}^{(1)}, R_t^f, R_{t-1}^f$	0.044 (0.002)	0.993 (0.006)	0.008 (0.001)	26.055 (0.038)
$Const, I_{t-2}^{(2)}, I_{t-3}^{(2)}, R_t^f, R_{t-1}^f$	0.043 (0.002)	0.986 (0.008)	0.008 (0.001)	18.038 (0.081)
$Const, I_{t-2}^{(1)}, I_{t-3}^{(1)}, I_{t-2}^{(2)}, I_{t-3}^{(2)}, R_t^f, R_{t-1}^f$	0.043 (0.002)	0.989 (0.006)	0.008 (0.001)	29.965 (0.150)

Panel D. Market Return and Risk-Free Rate as Test Assets

Instruments	σ	β	a	J_T
$Const, I_{t-2}^{(1)}, I_{t-2}^{(2)}$	0.044 (0.003)	0.999 (0.007)	0.008 (0.000)	24.403 (0.059)
$Const, I_{t-2}^{(1)}, R_t^f$	0.043 (0.003)	0.996 (0.007)	0.008 (0.000)	29.814 (0.003)
$Const, I_{t-2}^{(2)}, R_t^f$	0.045 (0.008)	0.999 (0.021)	0.007 (0.000)	25.927 (0.002)
$Const, I_{t-2}^{(1)}, I_{t-2}^{(2)}, R_t^f$	0.044 (0.003)	0.997 (0.007)	0.008 (0.000)	33.122 (0.016)

NOTES. Depreciation rate 6.0% used in Panels C and D. See also notes for Table 3.

FIGURE 4. Historical Time Series of the Rental Cost of Consumer Durable Goods and the Corresponding Budget Share



NOTES. Bars represent NBER recessions. Sample size 1951.I : 2001.IV

the service flow from durable goods and nondurable goods,

$$(IV.1) \quad rc_t = \frac{U_d(c_t, d_t)}{U_c(c_t, d_t)}$$

It is displayed in Figure 4, left panel. Empirically, it turns out that the rental cost is between 3.18% to 11.74% of the durable goods price per quarter, depending on the exact date, which appears to be a plausible magnitude. Furthermore, the model implies, and the econometric analysis further confirms that the ratio rc_t / q_t is stationary, and hence both the real rental cost rc_t and the real durables price q_t decline secularly in the post-war U.S. economy (see also Figure 1). This has an essential implication for the budget share of durable goods $s_{d,t}$, which in fact appear trendless, despite the fact that durable goods are luxury goods. Formally, one may easily show by log-differentiating the definition formula for the budget share $s_{d,t}$ that

$$\begin{aligned} d \log s_{d,t} &= (1 + \varepsilon_{dd,t}) \times d \log rc_t + \\ &+ (\eta_{d,t} - 1) \times d \log e_t \end{aligned}$$

Back of the envelope calculation, along with the Slutsky equation $\varepsilon_{dd,t} = \varepsilon_{dd,t}^* - s_{d,t} \times \eta_{d,t}$, suggest that indeed the budget share of durable goods appears trendless over time (see also Figure 4, right panel).

In detail, the Marshallian price elasticity $\varepsilon_{dd,t}$ is small and negative. First, the Hicksian price elasticity $\varepsilon_{dd,t}^*$ is small and negative. Durable goods do not have easy substitutes and, in addition, the substitution matrix is negative semidefinite and hence all diagonal terms are nonpositive. Second, all consumption goods categories in the model are normal, with expenditure elasticities positive. Third, the budget share of durable goods is relatively small, and, hence, the term $(1 + \varepsilon_{dd,t}) \approx 1$. The term $(\eta_{d,t} - 1) \approx 0.5$, which is less than one. This suggests, and Figure 4 confirms empirically, that despite the nonhomotheticity and the secular increase in the total consumption expenditures (i.e. $d \log e_t > 0$), the budget share of durable goods

appears trendless precisely because the rental cost of durables declines so steeply, that is, $d \log rc_t \ll 0$, fully offsetting the corresponding income effect.

The intraperiod budget constraint implies that the weighted average of expenditure elasticities must be one

$$(IV.2) \quad s_{c,t} \times \eta_{c,t} + s_{d,t} \times \eta_{d,t} = 1$$

where $s_{c,t}$ and $s_{d,t}$ are the shares of nondurables and durables, respectively, in total within-period consumption expenditures $e_t = c_t + rc_t \times d_t$. I find that $\eta_d \in [1.460, 1.579]$ and $\eta_c \in [0.882, 0.954]$, see also Figure 5, bottom two panels. Evidently, durable goods are luxury goods and nondurable goods are necessary goods.

V. THE INTRATEMPORAL ELASTICITY OF SUBSTITUTION ES

Although it is tempting to refer to the preference parameter θ as a yardstick of the intratemporal substitutability, its true measure is given by the relationship $ES = \theta + \varepsilon_{dd}^* \times (\eta - 1)$, where ε_{dd}^* is the Hicksian own-price elasticity of the demand for the service flow of durable goods. Figure 5, top left panel, portrays the estimated time-series of the elasticity of the intratemporal substitution ES , which lies in the interval of $[0.172, 0.194]$.

VI. THE INTERTEMPORAL ELASTICITY OF SUBSTITUTION IES

The elasticity of intertemporal substitution IES is an essential input into many dynamic macroeconomic models. Because the preference specification features non-homotheticity, the elasticity of intertemporal substitution EIS does not equal the parameter σ exactly as is the case under homotheticity. In fact, EIS tells how much the total consumption expenditure, or the saving, if you like, changes in response to predictable changes in the real interest rate. Appendix shows that, under deterministic setup, the intratemporal first-order condition is a solution of the second-stage of two-stage budgeting, and the indirect felicity function $V(e, rc)$ is the value function of the following concave program

$$(VI.1) \quad V(e, rc) = \max_{\{(c, d) \in \mathbb{R}_+^2\}} U[C(c, d)]$$

subject to the budget constraint

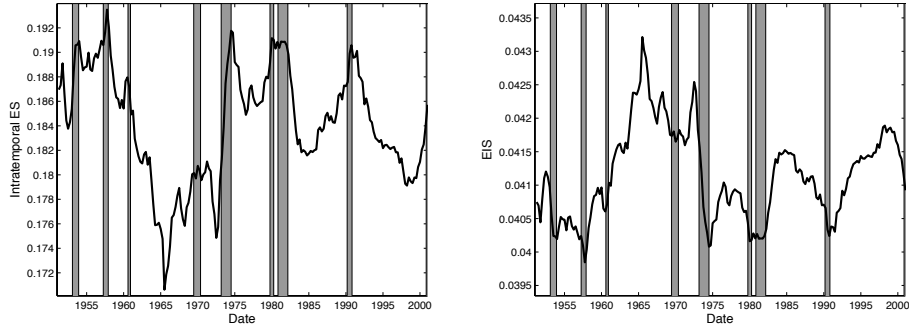
$$(VI.2) \quad c + rc \times d \leq e$$

where e is the total consumption expenditure within the period and rc is the rental cost of consumer durables.

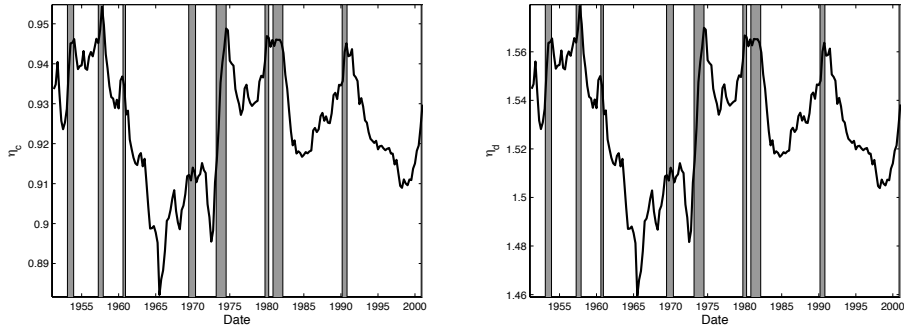
Following Atkeson and Ogaki (1996), I define the intertemporal elasticity of substitution IES as the inverse of the elasticity of the marginal utility $V_e(e, rc)$ of

FIGURE 5. Estimated Elasticities

Panel A. Historical Time Series of the Intratemporal and Intertemporal Elasticities of Substitution



Panel B. Historical Time Series of the Expenditure Elasticities



NOTES. Bars represent NBER recessions. Sample size 1951.I : 2001.IV

the total consumption expenditures e ,

$$(VI.3) \quad IES = - \left(\frac{\partial \log V_e(e, rc)}{\partial \log e} \right)^{-1}$$

$$(VI.4) \quad = - \frac{V_e(e, rc)}{e \times V_{ee}(e, rc)}$$

Intuitively, suppose the elasticity of the marginal utility V_e of the total consumption expenditures e is large. That means that a small change in e leads to a large change in the corresponding marginal utility V_e . Because consumers strive to spread their consumption expenditures e over time, depending on their forecasts of the real interest rate, in order to maximize their welfare, they will alter their spending plans minimally; otherwise, there will be a dramatic variation in marginal utility V_e across time that cannot be possibly optimal. As a result, the intertemporal elasticity of substitution IES is small and a predictable change in the real interest rate will give occasion to a relatively small change in the consumption expenditures e .

As the preferences are nonhomothetic, a closed-form solution for $V(e, rc)$ may not exist. However, a numerical solution, described in Appendix, is rather straightforward. See Hanoch (1977) for a different treatment.

Figure 5 portrays the time-series of the estimated IES for the preference parameter calibrations based on the super-consistent estimates from the intratemporal first-order condition and the GMM estimates from Table 3, row 4. As may be observed, the IES is economically negligible.

The economically inconsequential magnitude of the IES for the total consumption expenditures makes intuitive sense. In fact, the budget share of durable goods is only about 7.32% - 20.41%. As the bulk of consumption is composed predominantly of nondurable goods with practically zero IES (Hall 1988), it comes as no surprise to discover that considering durable goods that themselves in fact do have high IES (Mankiw 1982) does not raise the overall IES for the total consumption. The time-variation in the IES is a direct consequence of the preference nonhomotheticity.

VII. CONCLUSION

This paper argues that ignoring the income effects (nonhomotheticity) in the relative demand function for durable goods induces a striking bias in the estimates of the magnitude of the intertemporal and intratemporal substitutions. When I correct for nonhomotheticity, I find the magnitude of the elasticity of intertemporal substitution EIS to be small, on the order of magnitude 0.04. In addition, I find compelling evidence against the separability across consumption goods in the felicity function. However, in contrast to Eichenbaum and Hansen's (1990) value of 0.91 and Ogaki and Reinhart's (1998) value greater than one, my estimate of the elasticity of intratemporal substitution, after careful correction for nonhomotheticity, is around 0.18. Last, I have found strong evidence in favor of nonhomotheticity in the aggregate consumption data. Nondurable consumption is a necessary good and the service flow from durables is a luxury good, with the within-period expenditure elasticity greater than one. This is consistent with the results in Ogaki (1992) and Costa (2001).

REFERENCES

- [1] Atkeson, A., and Ogaki, M. (1996), "Wealth Varying Intertemporal Elasticities of Substitution: Evidence from Panel and Aggregate Data", *Journal of Monetary Economics*, 38, 507-534.
- [2] Bernanke, S. B. (1984), "Permanent Income, Liquidity, and Expenditure on Automobiles: Evidence from Panel Data", *Quarterly Journal of Economics* 99, 587-614
- [3] Brockwell, Peter J. and Richard A. Davis (1991), *Time Series: Theory and Methods*, Springer Series in Statistics
- [4] Caballero, J. R. (1993), "Durable Goods: An Explanation for Their Slow Adjustment", *Journal of Political Economy* 101, 351-384

- [5] Campbell, John Y., and Robert J. Shiller (1988), "Stock Prices, Earnings, and Expected Dividends", *Journal of Finance*, Vol. 43, No. 3, 661-676
- [6] Costa, L. D. (2001), "Estimating Real Income in the United States from 1988 to 1994: Correcting CPI Bias Using Engel Curves", *Journal of Political Economy* 109, 1288-1310
- [7] Cooley, F. T. and Ogaki, M. (1996), "A Time Series Analysis of Real Wages, Consumption, and Asset Returns", *Journal of Applied Econometrics* 11, 119-34
- [8] Deaton, A., and Muellbauer, J. (1980), *Economics and Consumer Behavior*, Cambridge University Press
- [9] Eberly, C. J. (1994), "Adjustment of Consumers' Durables Stocks: Evidence from Automobile Purchases", *Journal of Political Economy* 102, 403-436
- [10] Eichenbaum, M., and Hansen, P. L. (1990), "Estimating Models With Intertemporal Substitution Using Aggregate Time Series Data", *Journal of Business and Economic Statistics* 8, 53-69
- [11] Elliott, Graham, Thomas J. Rothenberg, and James H. Stock (1996), "Efficient Tests for an Autoregressive Unit Root", *Econometrica*, No. 4, 813-836
- [12] Fleissig, R. A., Gallant, R. A., and Seater, J. J. (2000), "Separability, Aggregation, and Euler Equation Estimation", *Macroeconomic Dynamics* 4, 547-572
- [13] Hall, E. R. (1988), "Intertemporal Substitution in Consumption", *Journal of Political Economy* 96, 339-357
- [14] Hall Peter, and Joel L. Horowitz (1996), "Bootstrap Critical Values for Tests Based on Generalized-Method-of-Moments Estimators", *Econometrica*, Vol. 64, No. 4, 891-916
- [15] Hansen, P. L., Heaton, J., and Yaron, A. (1996), "Finite Sample Properties of Some Alternative GMM Estimators", *Journal of Business and Economic Statistics* 14, 262-280
- [16] Hansen, P. L., and Singleton, K. (1982b), "Generalized Instrumental Variables Estimation of Nonlinear Rational Expectations Models", *Econometrica* 50, 1269-1286
- [17] Houthakker, S. H. (1957), "An International Comparison of Household Expenditure Patterns, Commemorating the Centenary of Engel's Law", *Econometrica* 25, 532-551
- [18] – and Lester, D. T. (1970), *Consumer Demand in the United States: Analyses and Projections*, 2nd ed., Cambridge, Mass: Harvard University Press
- [19] Kocherlakota, N. (1990), "On Tests of Representative Consumer Asset Pricing Models", *Journal of Monetary Economics* 26, 285-304
- [20] Johansen, S. (1988), "Statistical Analysis of Cointegration Vectors", *Journal of Economic Dynamics and Control* 12, 231-254
- [21] – (1991), "Estimation and Hypothesis Testing of Cointegration Vectors in Gaussian Vector Autoregressive Models", *Econometrica* 59, 1551-1580

- [22] Lam, P. S. (1989), "Irreversibility and Consumer Durables Expenditures", *Journal of Monetary Economics* 23, 135-150
- [23] Lewbel, A. (1987), "Bliss Levels That Aren't", *Journal of Political Economy* 95, 211-215
- [24] Mankiw, N. G. (1982), "Hall's Consumption Hypothesis and Durable Goods", *Journal of Monetary Economics* 10, 417-425
- [25] – (1985), "Consumer Durables and the Real Interest Rate", *Review of Economics and Statistics* 67, 353-62
- [26] Musgrave, C. J. (1979), "Durable Goods Owned by Consumers in the United States, 1925-77", *Survey of Current Business* 59, 17-25
- [27] Newey, W., and West, K. (1987), "A Simple Positive Semi-Definite Heteroscedasticity and Autocorrelation Consistent Covariance Matrix", *Econometrica* 55, 703-708
- [28] Ng, Serena, and Pierre Perron (2001), "Lag Selection and the Construction of Unit Root Tests with Good Size and Power", *Econometrica*, Vol. 69, No. 6, 1519-1554
- [29] Ogaki, M. (1992), "Engel's Law and Cointegration", *Journal of Political Economy* 100, 1027-1046
- [30] Ogaki, M., and Carmen, R. M. (1998), "Measuring Intertemporal Substitution: The Role of Durable Goods", *Journal of Political Economy* 106, 1078-1098
- [31] Prais, S. J., and Houthakker, H. S. (1971), *The Analysis of Family Budgets*, Cambridge: Cambridge University Press
- [32] Startz, R. (1989), "The Stochastic Behavior of Durable and Nondurable Consumption", *Review of Economics and Statistics*, 71, 356-363
- [33] Stigler, G., and Becker, G. (1977), "De Gustibus Non Est Disputandum", *American Economic Review* 67, 76-90
- [34] Stock, H. J., and Wright, H. J. (2000), GMM with Weak Identification, *Econometrica* 68, 1055-1096
- [35] Stock, H. J., Wright, H. J., and Yogo, M. (2002), A Survey of Weak Instruments and Weak Identification in Generalized Method of Moments, *Journal of Business and Economic Statistics* 20, 518-529
- [36] Tauchen, G. (1986), "Statistical Properties of Generalized Method of Moments Estimators of Structural Parameters Obtained from Financial Market Data", *Journal of Business and Economic Statistics*, 4, 397-425
- [37] West, K. D., and Wilcox, D. W. (1994), "Some Evidence on Finite Sample Distributions of an Instrumental Variables Estimator of the Linear Quadratic Inventory Model", *Inventory Cycles and Monetary Policy*, ed. by Fiorito, R., Berlin: Springer-Verlag, 253-282
- [38] Wilcox, D.W. (1992), "The Construction of U.S. Consumption Data: Some Facts and Their Implications for Empirical Work", *American Economic Review* 82, 922-941
- [39] Yogo, Motohiro (2006), "A Consumption-Based Explanation of Expected Stock Returns", *Journal of Finance*, Vol. 61, No. 2, 539-580

APPENDIX A. IDENTIFICATION AND BACK OF THE ENVELOPE CALCULATION OF
THE PLAUSIBLE VALUES OF THE PREFERENCE PARAMETER a

In the empirical part, I reparametrize the consumption index so that all the parameters are identified. For example, we cannot separately identify the preference weight \tilde{a} and the coefficient A from the household production function. In detail, suppose we keep the parametrization of the consumption index as

$$(A.1) \quad C(c, d) = \left\{ (1 - \tilde{a}) c^{1 - \frac{1}{\theta}} + \tilde{a} (A \times d)^{1 - \frac{\eta}{\theta}} \right\}^{\frac{\theta}{\theta - 1}}$$

Clearly, $\tilde{a} \in (0, 1)$ and $A \in \mathbb{R}^+$. "Taking out" the number $1 - \tilde{a}$ from the consumption index, and rearranging the terms yields

$$(A.2) \quad C(c, d) = (1 - \tilde{a})^{\frac{\theta}{\theta - 1}} \left\{ c^{1 - \frac{1}{\theta}} + \frac{\tilde{a} A^{1 - \frac{\eta}{\theta}}}{1 - \tilde{a}} d^{1 - \frac{\eta}{\theta}} \right\}^{\frac{\theta}{\theta - 1}}$$

Because applying a strictly increasing operator (i.e. multiplying by a positive number in our case) does not change the preference ordering, I may drop the term $(1 - \tilde{a})^{\frac{\theta}{\theta - 1}}$. In addition, I denote

$$(A.3) \quad a = \frac{\tilde{a} A^{1 - \frac{\eta}{\theta}}}{1 - \tilde{a}}$$

to obtain

$$(A.4) \quad C(c, d) = \left\{ c^{1 - \frac{1}{\theta}} + a \times d^{1 - \frac{\eta}{\theta}} \right\}^{\frac{\theta}{\theta - 1}},$$

the preference specification that I actually use in the GMM estimation.

There is a deep reason for using this "simpler" consumption index (A.4). In fact, as may be easily inferred from the analysis above, the indices (A.1) and (A.4) are observationally equivalent and generate exactly the same preference orderings. However, as econometricians, we clearly cannot separately identify the preference weight \tilde{a} and the household production function coefficient A ; only the parameter a is econometrically identified. Unfortunately, a hurried reader tends to have a strong prior on the plausible magnitudes of the parameter a , which seemingly looks like a preference weight, and thus wrongly expects magnitudes $a \in (0, 1)$.

APPENDIX B. PROOF OF PROPOSITION 2

First, in order to work with linear time-series, I follow Campbell and Shiller (1988), and log-linearize the log of the intertemporal marginal rate of substitution. In detail, the first-order approximation of the function $F(x) = \log [1 + \exp(x)]$ around a point \bar{x} is

$$\begin{aligned} F(x) &\approx F(\bar{x}) + F'(\bar{x})(x - \bar{x}) \\ &\approx \log [1 + \exp(\bar{x})] + \frac{\exp(\bar{x})}{1 + \exp(\bar{x})} (x - \bar{x}) \\ &\propto kx \end{aligned}$$

As a result, the log of f_t is approximately

$$\log f_t \approx k \left[\left(1 - \frac{\eta}{\theta}\right) \log d_t + \left(1 - \frac{1}{\theta}\right) \log c_t \right]$$

Recall that the (log) intertemporal marginal rate of substitution m_{t+1} is defined as

$$\begin{aligned} \log m_{t+1} &\propto \left(-\frac{1}{\sigma}\right) (1 - L) \log c_t - \frac{\theta - \sigma}{\sigma(\theta - 1)} (1 - L) \log f_t \\ &\propto \left(-\frac{1}{\sigma}\right) (1 - L) \log c_t - \frac{k(\theta - \sigma)}{\sigma(\theta - 1)} (1 - L) \left[\left(1 - \frac{\eta}{\theta}\right) \log d_t + \left(1 - \frac{1}{\theta}\right) \log c_t \right] \end{aligned}$$

where L is the lag, or backshift, operator. According to Assumption 1, all terms are covariance stationary as they involve growth rates of I(1) variables.

APPENDIX C. PROOF OF PROPOSITION 3

Equilibrium requires a lack of arbitrage in all markets, including the market for durable goods. The no-arbitrage condition in the goods market is embodied in the following condition

$$rc_t = q_t - (1 - \delta) \mathbb{E}_t [m_{t+1} q_{t+1}]$$

as explained in the main text. I shall prove the existence of a single long-run relationship between $\log rc_t$ and $\log q_t$ by following Campbell and Shiller (1988). Note that durable goods price to rental cost is the exact analogue to the price-dividend ratio in the model of common stocks. In detail, rearranging the previous no-arbitrage condition yields

$$\begin{aligned} \log \left(1 - \frac{rc_t}{q_t} \right) &= \log(1 - \delta) + \log \mathbb{E}_t [m_{t+1} q_{t+1} / q_t] \\ &\propto \log \mathbb{E}_t [\exp \{ \log m_{t+1} + \log (q_{t+1} / q_t) \}] \\ &\propto \mathbb{E}_t [\log m_{t+1} + \log (q_{t+1} / q_t)] \end{aligned}$$

where I assumed in the last step that the time series is Gaussian as not much is known about nonlinear time series.

According to Assumption 1, the log-durable goods price $\log q_t \sim I(1)$, and according to Proposition 2 $\log m_{t+1} \sim I(0)$. Define the 4×1 vector

$$\xi_t = [(1 - L) \log c_t, (1 - L) \log d_t, (1 - L) \log q_t, \log m_t]'$$

Wold representation theorem [e.g. Brockwell and Davis (1991), p. 187] says that the stochastic process ξ_t has MA(∞) representation as follows

$$\xi_t = \mu + \Psi(L) \varepsilon_t = \mu + \sum_{j \in \mathbb{N}} \Psi_j \varepsilon_{t-j}$$

where $\varepsilon_t \sim WN(0, \Omega_\varepsilon)$ and $\{\Psi_j\}_{j \in \mathbb{N}}$ is a square summable matrix series. I assume that the forecast errors ε_t are Gaussian. In addition, I invoke the following simple lemma.

Lemma 7. *Let the filtration $\{\mathcal{F}_t\}_{t \in \mathbb{N}}$ be defined as $\mathcal{F}_t = \sigma(\{c_s, d_s, q_s : 0 \leq s \leq t\})$. Then, the stochastic process $\{\mathbb{E}(\xi_{t+1} | \mathcal{F}_t)\}_{t \in \mathbb{N}}$ is a covariance stationary process.*

Proof. Direct calculation shows that

$$\mathbb{E}(\xi_{t+1} | \mathcal{F}_t) = \mu + \sum_{j \in \mathbb{N}} \Psi_{j+1} \varepsilon_{t-j}$$

and that the matrix series $\{\Psi_{j+1}\}_{j \in \mathbb{N}}$ is square summable as $\{\Psi_j\}_{j \in \mathbb{N}}$ itself is. QED. □

In view of this, we have that

$$\log \left(1 - \frac{rc_t}{q_t} \right) = [0, 0, 1, 1] \times \mathbb{E}_t [\xi_{t+1}] \sim I(0)$$

Finally, log-linearize, following Campbell and Shiller, the relationship $\log \left(1 - \frac{rc_t}{q_t} \right)$ by defining $x_t = \log(rc_t/q_t)$

$$\log(1 - \exp\{x_t\}) \approx \log[1 - \exp(\bar{x})] - \frac{\exp(\bar{x})}{1 - \exp(\bar{x})} (x - \bar{x})$$

This analysis shows that $\log rc_t - \log q_t \approx [0, 0, 1, 1] \times \mathbb{E}_t [\xi_{t+1}] \sim I(0)$. Hence, the model implies a single cointegrating vector $[1, -1]$.

APPENDIX D. INTERPRETATION OF THE PREFERENCE PARAMETERS IN A DETERMINISTIC SETUP

The preference parameters θ and η are most easily interpreted in the deterministic setup. Let us think of consumers as renting their stock of durables d_t in a perfect rental market, with the rental cost rc_t given by the right-hand side of equation (II.5), namely,

$$(D.1) \quad rc_t = q_t - (1 - \delta) E_t \{m_{t+1} q_{t+1}\}$$

In a deterministic setup, the risk-free interest rate $1 + r_t^f = m_{t+1}^{-1}$ and the rental cost of capital satisfies $rc_t = q_t - (1 - \delta) (1 + r_t^f)^{-1} q_{t+1}$. Viewed this way, the preferences over nondurables and durables are weakly separable. Weak separability is a necessary and a sufficient condition for the second-stage of two-stage budgeting to hold (Deaton and Muellbauer 1980). Intuitively, suppose the consumer has already chosen his optimal within-period t total consumption expenditure e_t , expressed in terms of nondurable consumption, which is a numeraire throughout unless stated otherwise. The level of the nondurable consumption c_t and the stock of durable goods to be rented d_t are then chosen so that the second-stage optimization holds, formally,

$$(D.2) \quad (c_t, d_t) = \arg \max_{\{(\tilde{c}_t, \tilde{d}_t) \in R_+^2\}} U \left[C(\tilde{c}_t, \tilde{d}_t) \right]$$

subject to the budget constraint

$$(D.3) \quad \tilde{c}_t + rc_t \times \tilde{d}_t \leq e_t$$

Note that the expenditures e_t in other periods t are unaffected and the consumer thereby maximizes his lifetime well-being.

The first-order condition associated with the second stage is helpful to interpret the preference parameters. The Marshallian demands are functions of the relative price rc_t and the expenditure e_t ,

$$(D.4) \quad c_t = c(rc_t, e_t)$$

$$(D.5) \quad d_t = d(rc_t, e_t)$$

Log-differentiating yields

$$(D.6) \quad d \log c_t = \varepsilon_{cd} \times d \log rc_t + \eta_c \times d \log e_t$$

$$(D.7) \quad d \log d_t = \varepsilon_{dd} \times d \log rc_t + \eta_d \times d \log e_t$$

The parameters η_c and η_d are the expenditure elasticities associated with the within-period t expenditure level e_t . They tell us how much the demands c_t and d_t change (in percentage terms) in response to a 1% rise in the total within-period t expenditure level e_t , *ceteris paribus*. Formally, they are defined as percentage changes in the Marshallian demands in response to a percentage change in expenditures, $\eta_c = \partial \log c_t / \partial \log e_t$ and $\eta_d = \partial \log d_t / \partial \log e_t$. The budget constraint (D.3) implies that the weighted average of these elasticities must be one. The parameters ε_{cd} and ε_{dd} are Marshallian price elasticities. Subtracting one equation from the other, using Slutsky equation $\varepsilon_{ij} = \varepsilon_{ij}^* - \eta_i s_j$, where s_j is the share of good $j \in \{c, d\}$ in expenditures e_t , and ε_{ij}^* is the compensated Hicksian price elasticity, implies that the relative demand function satisfies

$$(D.8) \quad d \log (c_t / d_t) = \underbrace{ES \times d \log rc_t}_{\text{substitution effect}} + \underbrace{(\eta_c - \eta_d) \times d \log \hat{e}_t}_{\text{income effect}}$$

where $ES \equiv \varepsilon_{cd}^* - \varepsilon_{dd}^*$ denotes the elasticity of intratemporal substitution (see the discussion below). The variable e_t is the expenditure on both consumption goods, expressed in terms of nondurable goods whereas what I call the real expenditure \hat{e}_t is expressed in terms of the *composite* good, with the implicitly defined price index. In fact, it is defined as $d \log \hat{e}_t = d \log e_t - s_d d \log rc_t$. The appropriate price index is $p_t = 1^{s_c} \times rc_t^{s_d}$, and hence the *real* expenditure satisfies $d \log \hat{e}_t = d \log (e_t / p_t)$.

The elasticity of substitution ES is defined as a percentage change in the relative Hicksian demand in response to a percentage change in the relative price,

$$(D.9) \quad ES = \partial \log (c_t^* / d_t^*) / \partial \log rc_t = \varepsilon_{cd}^* - \varepsilon_{dd}^*$$

and it is a measure of the concavity of the indifference curves. For instance, $ES = 0$ for Leontief preferences and thus the indifference curves are extremely concave. It may be shown by combining the equations in this appendix that

$$(D.10) \quad ES = \theta + \varepsilon_{dd}^* \times (\eta - 1)$$

where in anticipation of a future result, I define

$$(D.11) \quad \theta = (\varepsilon_{cd}^* - \varepsilon_{dd}^* \eta)$$

$$(D.12) \quad \eta = \eta_c / \eta_d.$$

Based on a back of the envelope calculation, the parameter θ underestimates the true elasticity of intratemporal substitution ES . That is, ε_{dd}^* is non-positive because the substitution matrix is negative semidefinite, and the parameter η is less than one, empirically. As a result,

$$(D.13) \quad ES \geq \theta$$

but I still refer to θ as a yardstick of intratemporal substitutability.

I now derive the deterministic equivalent of the intratemporal first-order condition. Eliminate the expenditure e_t in the system of the Marshallian demands to get the conditional demand

$$(D.14) \quad d \log c_t = (\varepsilon_{cd}^* - \varepsilon_{dd}^* \eta) \times d \log rc_t + \left(\frac{\eta_c}{\eta_d} \right) \times d \log d_t$$

or, using the definition of θ and η in equations (D.11) and (D.12),

$$(D.15) \quad d \log c_t = \theta \times d \log rc_t + \eta \times d \log d_t$$

One may integrate the equation - the parameters θ and η are constant - to obtain

$$(D.16) \quad \log c_t \propto \theta \times \log rc_t + \eta \times \log d_t$$

Let us link the rental cost of durables rc_t to the price of durables q_t

$$(D.17) \quad \log rc_t = \log q_t + \log \left(1 - E_t \left\{ m_{t+1} \frac{q_{t+1}}{q_t} \right\} \right)$$

where the second term on the right hand side is assumed to be stationary to obtain the intratemporal first-order condition

$$(D.18) \quad \log c_t \propto \theta \times \log q_t + \eta \times \log d_t + error$$

If stochastic setting is considered explicitly, all stochastic terms go into the error term.

APPENDIX E. THE VALUE FUNCTION OF THE SECOND STAGE OF TWO STAGE BUDGETING

In order to find the intertemporal elasticity of substitution IES, one needs first to compute the value function $V(e, rc)$, that is, to solve the following optimization problem

$$(E.1) \quad V(e_t, rc_t) = \max_{\{(c_t, d_t) \in \mathbb{R}_+^2\}} U[C(c_t, d_t)]$$

subject to the budget constraint

$$(E.2) \quad c_t + rc_t \times d_t \leq e_t$$

The IES parameter is then defined (Atkeson and Ogaki (1996)) as

$$(E.3) \quad IES = - \frac{\partial V(e, rc) / \partial e}{e \times \partial^2 V(e, rc) / \partial e^2}$$

Technically, I substitute the budget constraint into the objective function and then use *MATLAB* function **fminbnd** applied to the minus of the objective function. I impose the constraints that $d > 0$ and $d < e/rc$ so that the implied $c > 0$. In addition, I construct the rental cost of consumer durable goods as

$$(E.4) \quad rc_t = \frac{U_d(c_t, d_t)}{U_c(c_t, d_t)}$$

To evaluate the partial derivatives necessary to compute IES, I use the following finite-difference approximations

$$(E.5) \quad \frac{\partial V(e, rc)}{\partial e} = \frac{V(e + \Delta e, rc) - V(e - \Delta e, rc)}{2 \times \Delta e} + O((\Delta e)^2)$$

$$(E.6) \quad \frac{\partial^2 V(e, rc)}{\partial e^2} = \frac{V(e + \Delta e, rc) - 2 \times V(e, rc) + V(e - \Delta e, rc)}{(\Delta e)^2} + O((\Delta e)^2),$$

and I choose $\Delta e = 10^{-5}$.