



BANCA D'ITALIA  
EUROSISTEMA

# Temi di discussione

(Working papers)

The euro and firm restructuring

by Matteo Bugamelli, Fabiano Schivardi and Roberta Zizza

June 2009

Number

716





BANCA D'ITALIA  
EUROSISTEMA

# Temi di discussione

(Working papers)

The euro and firm restructuring

by Matteo Bugamelli, Fabiano Schivardi and Roberta Zizza

Number 716 - June 2009

*The purpose of the Temi di discussione series is to promote the circulation of working papers prepared within the Bank of Italy or presented in Bank seminars by outside economists with the aim of stimulating comments and suggestions.*

*The views expressed in the articles are those of the authors and do not involve the responsibility of the Bank.*

*Editorial Board:* PATRIZIO PAGANO, ALFONSO ROSOLIA, UGO ALBERTAZZI, ANDREA NERI, GIULIO NICOLETTI, PAOLO PINOTTI, ENRICO SETTE, MARCO TABOGA, PIETRO TOMMASINO, FABRIZIO VENDITTI.

*Editorial Assistants:* ROBERTO MARANO, NICOLETTA OLIVANTI.

# THE EURO AND FIRM RESTRUCTURING

by Matteo Bugamelli\*, Fabiano Schivardi\* and Roberta Zizza\*

## Abstract

We test whether and how the adoption of the euro, narrowly defined as the end of competitive devaluations, has affected member states' productive structures, distinguishing between within and across sector reallocation. We find evidence that the euro has been accompanied by a reallocation of activity within rather than across sectors. Since its adoption, productivity growth has been relatively stronger in country-sectors that once relied more on competitive devaluations to regain price competitiveness. This effect is robust to potential omitted-variable bias and correlated effects. Firm-level evidence from Italian manufacturing confirms that low-tech businesses, which arguably benefited most from devaluations, have been restructuring more since the adoption of the euro. Restructuring has entailed a shift of business focus from production to upstream and downstream activities, such as product design, advertising, marketing and distribution, and a corresponding reduction in the share of blue collar workers.

**JEL Classification:** F33, J24, L16, O47.

**Keywords:** euro, devaluations, productivity growth, firm restructuring, skill intensity.

## Contents

1. Introduction.....	5
2. Cross-sectoral reallocation.....	9
3. Within sectoral reallocation.....	13
3.1. The empirical approach and the data.....	13
3.2. Results.....	17
4. Firm-level evidence of restructuring: the case of Italian manufacturing.....	22
4.1. Case studies.....	22
4.2. Quantitative evidence from manufacturing firms.....	25
4.3. Restructuring and firm performance.....	29
5. Conclusion.....	32
References.....	32
Tables and figures.....	35
Appendix.....	51

---

\* Bank of Italy, Department for Structural Economic Analysis.

\* University of Cagliari and EIEF.



# 1 Introduction<sup>1</sup>

One of the main drivers of European integration was the idea that a more integrated European economy would promote economic efficiency, allowing countries to fully exploit their competitive advantages, fostering factor mobility and increasing allocational efficiency (European Commission 1993). The euro was a crucial milestone along this path. Ten years after its launch, we can start to assess the effects of such a radical institutional change. In this paper, we focus on whether the introduction of the euro – narrowly defined as the end of competitive devaluations – has induced significant changes in the productive structure of the euro area (EA) member states.<sup>2</sup>

When the euro was introduced in 1999, the European productive structure was sharply differentiated across member states, with a group of southern countries specialized in traditional, low-human-capital activities. Firms in these countries took advantage of recurrent devaluations to cope with international competition, especially from the low wage economies. The basic idea underlying our analysis is that the end of competitive devaluations should have had differential effects by country and sector. For one thing, before the introduction of the euro, countries had adopted different strategies in terms of devaluation vis-a-vis the Deutsche mark (DM) (Giavazzi & Giovannini 1989). Second, in some sectors competition is mainly in prices, so changes in the terms of trade are a fundamental determinant of performance; in other sectors, product differentiation is more pronounced, so prices are just one factor of competitiveness, alongside product quality, brand name, technological content, etc.. Our initial hypothesis is that the euro should have been a greater shock for the sectors competing mostly in prices and the countries that made a more intense use of competitive devaluations. We therefore expect that restructuring has been more intense in

---

<sup>1</sup>Prepared for the NBER Conference on Europe and the Euro, October 17 & 18, 2008. We have benefited from discussions and comments from Alberto Alesina, Tito Boeri, Andrea Brandolini, Paola Caselli, Francesco Giavazzi, Francesca Lotti, Marco Magnani, Gianmarco Ottaviano, Daniela Puggioni, Paolo Sesitto and seminar participants at the Bank of Italy, at NBER conference and at “10 Years of the euro” conference (Braga, May 7 & 8, 2009). The views expressed here are our own and do not necessarily reflect those of the Bank of Italy. Correspondence: [matteo.bugamelli@bancaditalia.it](mailto:matteo.bugamelli@bancaditalia.it); [fschivardi@unica.it](mailto:fschivardi@unica.it); [roberta.zizza@bancaditalia.it](mailto:roberta.zizza@bancaditalia.it).

<sup>2</sup>Competitive devaluations are in principle a possible option even in the post-euro era. Nevertheless, the euro has put an end to the possibility of trade advantages with respect to the rest of the EA, which accounts for a significant fraction of exports for all members. Further, as the euro is a stronger currency, the risk of sharp devaluations is lower.

these country-sectors.

We analyze restructuring along two dimensions. First, we consider whether there has been a reallocation of factors away from the sectors that presumably had relied more heavily on devaluations (between sectoral reallocation process). Second, we consider to what extent the reallocation has occurred within sectors. As the recent body of literature on trade and productivity has shown (Melitz 2003, Bernard, Jensen & Schott 2006*a*), most of the productivity gains from trade opening are achieved via the reallocation of production from less to more efficient firms within the same sector.

The between sectoral analysis is based on standard techniques of convergence/divergence of productive structures. We find very weak support for the proposition that the euro has induced a reallocation of activities between sectors. Specifically, Krugman dissimilarity indices show that intersectoral reallocation in the post-euro era has been almost nil for most of the EA countries and modest for the rest. Although a finer sectoral classification might give a somewhat different picture, we think it is plausible that a substantial process of reallocation should be visible even using the 22 two-digit manufacturing sectors of the NACE rev. 3 classification system.<sup>3</sup>

We then move on to consider whether there is evidence of within sectoral reallocation. Ideally, one would like to test this hypothesis directly with firm-level data. Unfortunately, such data are not available at the cross-country level. Our analysis is therefore based on sectoral data and on indirect measures of restructuring, in particular productivity growth. We follow the approach introduced by Rajan & Zingales (1998). We rank countries by how heavily they relied on devaluations, considering both nominal and real devaluation vis-a-vis the DM over the 1980-98 period. We classify sectors according to how important devaluations were for competitiveness using a series of indicators of the sectoral skill content, with the idea that low skill content implies more price competition. An alternative ranking is to look directly at the importance of emerging economies in world trade in each sector.

---

<sup>3</sup>The 'end of competitive devaluation' is not the only channel through which the euro could have stimulated factor reallocation. A 'trade integration' channel within the EA countries must be also acknowledged. The benefits from the use of a common currency - lower transaction costs, no exchange rate risk, better price and cost transparency - are expected to enhance openness to trade and investment, as well as to foster competition. Indeed, since the launch of the euro, bilateral trade among EA members has expanded far more rapidly than trade with other EU countries (European Commission 2008, Baldwin 2006, de Nardis, De Santis & Vicarelli 2008). Our results suggest that these channels too have had little impact on sectoral reallocation.



The variable we track is China’s export share. The interaction between the country-level devaluation measure and the sectoral skill content measure constitutes the indicator of how much a country-sector should have been affected by the euro.

We find clear support for the hypothesis that the euro has induced relatively strong intrasectoral restructuring. Productivity growth has been fastest in the sectors with low skill content and the countries that had relied more on competitive devaluations. This result is robust to a series of checks. In particular, to address potential omitted-variable bias we not only include country and sector dummies but also a control group of countries that are broadly similar to the EA countries except for adoption of the euro, namely Denmark, Sweden and the UK. We also show that our results are not driven by some underlying autocorrelated process, independent of the euro. Moreover, restructuring seems to have had little negative effect on employment. The exception is when we rank sectors according to the Chinese export share, in which case a clear negative effect on employment emerges. Note that this is only a within country and sector comparison, so it does not allow to draw conclusions on aggregate growth differentials between the countries or the sectors. All we can say is that, *relatively to the country and sector averages*, the productivity growth differential between low- and high-skill sectors was higher in a high devaluation country than in a low devaluation one.

To obtain direct evidence on the restructuring process, we then turn to firm-level evidence from Italian manufacturing. We first review a series of 40 in-depth interviews with entrepreneurs conducted by researchers of the Bank of Italy in 2007, in the spirit of the NBER/Sloan “Pin factory” project (Borenstein, Farrell & Jaffe 1998). The interviews offer “soft” evidence on the restructuring process. They suggest that, since the adoption of the euro, firms have shifted their business focus from production to upstream and downstream activities, such as R&D, product design, marketing and distribution. These activities, in fact, can procure a certain degree of market power and enable firms to escape the pure cost competition. Moreover, the shift is more dramatic in traditional, low-tech activities, in line with the aggregate evidence. Finally, it emerges that restructuring is an ongoing process, not a single episode with a beginning and an end.

The insights from the interviews are corroborated by the “hard”, quantitative evidence

provided by a database of manufacturing firms representative of the population of firms with at least 50 employees. First, the cross-sectional dispersion in both productivity and profitability has increased steadily since 1999, as one would expect during restructuring episodes. And there is a marked decline in the share of blue-collar workers, consistent with the thesis that firms are shifting the focus away from production. The decline is sharper, the lower the technological content of the sector. Interestingly, in the pre-euro era the opposite was the case: low-tech firms used devaluations to recoup price competitiveness and intensified their reliance on low-skilled workers. We do not find that job flows intensified after the introduction of the euro; the restructuring process seems to entail a reallocation of workers within rather than between firms.

To close the circle, finally we consider whether the restructuring firms actually perform better than the others, regressing value added and productivity growth on indicators of restructuring at the firm level derived from ad hoc questions on the importance of trade marks and of changes in the mix of goods produced. We also include the share of blue-collar workers. The results confirm that the firms that undertook restructuring recorded higher growth rates both in value added and in productivity.

A number of papers are considering the effects of the euro on member countries, ten years after its inception. Alesina, Ardagna & Galasso (2009) show that the common currency has contributed to building political consensus for restructuring in the product markets, markedly through liberalization in the energy and communication sectors, but not in the labor market. Bertola (2007) finds an association between the euro adoption and the improvements in terms of employment and equilibrium unemployment. Our work is more broadly related to the growing body of literature that considers the effects of international competition on national productive structure (Chen, Imbs & Scott 2007). The paper closest to our sectoral analysis is Auer & Fischer (2008), on the effects on US industry of import penetration from emerging economies. They also find that the US sectors most exposed to competition from emerging countries recorded higher productivity growth, as well as lower price inflation. The same result on productivity is found by Bugamelli & Rosolia (2006) on Italian data. Using US firm-level data, Bernard et al. (2006*a*) find that industries' exposure to imports from low-wage countries is correlated positively with the probability of plant

death and negatively with employment growth. In a companion paper, Bernard, Jensen & Schott (2006*b*) show that a reduction of inbound trade costs is positively associated with industry productivity (TFP), the probability of plant death, the probability of entry of new exporters, and export growth by incumbent exporters. For Italy, Bugamelli, Fabiani & Sette (2008) show that greater exposure to Chinese export penetration has diminished the pace of firms' output price increases.

The rest of the paper is organized as follows. In section 2 we describe the data and perform the between sector analysis. Section 3 explains the econometric approach to test for within sector reallocation and discusses the results. Section 4 deals with the firm-level evidence for Italian manufacturing firms and Section 5 concludes.

## 2 Cross-sectoral reallocation

In this section we analyze the productive structure of the European Union (EU) member countries and its evolution over time; given the need for a sufficiently long period after the introduction of the euro and data availability, we focus on the EU15 countries, i.e. the 11 that adopted the euro on its inception (Austria, Belgium, Finland, France, Germany, Ireland, Italy, Luxembourg, the Netherlands, Portugal and Spain) plus Greece (entering the EA in 2002) and Denmark, Sweden and the UK, which have not adopted the euro. Following Bertola (2007), the three non-EA countries constitute the control group.<sup>4</sup> Despite its evident shortcomings, this is the best control group available.<sup>5</sup> We assess whether the introduction of the euro has induced a reallocation of production between sectors and, if so, whether the intersectoral change has been more dramatic in the countries that had previously made

---

<sup>4</sup>Bertola (2007) uses a diff-in-diff approach to test the effects of the euro on income dispersion.

<sup>5</sup>Ideally, the control group should have more than three countries, to avoid that idiosyncratic country patterns affect the results. However, what is really crucial is that the control group (non-EA members) is comparable with the treatment group (EA members). As EU membership involves many factors not available to the econometrician (laws, regulation, etc.), a control group with only EU countries should provide the best guarantees in terms of similarity (Baldwin 2006), whereas including non-EU countries seems more problematic. One could also object that the treatment is not fully exogenous, as in principle the three non-euro members could have deliberately opted-out in order not to preclude future competitive devaluations. This does not seem to be the case, however. For example, in the context of the assessment made by HM Treasury on the case for the UK to join the eurozone, Buiter & Grafe (2003) conclude that monetary independence has not been instrumental to maintain (or regain) competitiveness; indeed, "the UK exchange rate during the 1990s and until well into 2002 has been a source of competitive misalignment" (page 35).

greater use of competitive devaluations. The main data source we rely upon in this and the next section is the March 2008 release of the EU KLEMS database (Timmer, O’Mahony & van Ark 2007). The manufacturing sector’s share of value added in 2005 stood at around 20% for most countries, with lower values in France, Denmark, Greece and Luxembourg. Following the secular decline in manufacturing, the share decreased somewhat between 1998 and 2005 in most countries; Ireland and the UK experienced the most pronounced downsizing of the sector.

From now on, we concentrate on manufacturing, as the effects we are considering work through the terms of trade and so are important mostly for tradeable goods. Data on value added, employment and capital stock for the manufacturing sector are available for all EU15 countries with a breakdown into 22 industries corresponding as a rule to the two-digit NACE classification. Southern countries, like Italy, Greece and Portugal, still have a large share of their value added in traditional sectors like textiles, apparel, leather goods and footwear. The other countries concentrate their production in more technologically advanced sectors: machinery in Germany (but in Italy, too), chemicals in a host of countries (Belgium, France, Germany, the Netherlands, Ireland and the UK), radio, television and communication equipment in the Nordic countries (Finland and Sweden in particular).

In order to facilitate the comparison of productive structures among countries and over time, we first characterize sectors by their skill, R&D and ICT intensity and then group them into intensity classes. Figures are computed from US data, which we use in the regression analysis to avoid problems of endogeneity. Skill intensity is proxied by hours worked by high-skilled persons, defined as those with at least a college degree, as a share in total hours; R&D intensity is R&D expenditure over value added; ICT intensity is the ratio of ICT capital stock to the total capital stock, both in real terms.<sup>6</sup>

As Table 1 shows, the machinery and the electrical and optical equipment sectors exhibit the highest ICT content; together with “other transport equipment”, they spend a relatively higher fraction of their value added on R&D and employ relatively more skilled persons. As a rule, traditional sectors (producing food, textiles, leather and wood products) are characterized by low values of the three indicators. Intensity classes (low, medium-low,

---

<sup>6</sup>ICT and skill intensity have been derived from EU KLEMS, R&D intensity comes from the OECD STAN database.

medium-high, high) are then defined according to quartiles in the distribution of each indicator (see Table A.1 in Appendix A for the matching of sectors into skill, ICT and R&D categories). A glance at the value added shares broken down by skill content in 1998 and 2005 (Figure 1) suggests that sectoral modifications were modest in the period. Only in Finland and Sweden reallocation towards high-skill activities has been substantial; Ireland stands out as the country where high-skill activities are prominent; if anything, Italy and Spain have increased their share in low-intensity activities.

To address sectoral modification in a more synthetic way, we apply standard techniques of convergence/divergence of productive structures. In particular, we calculate bilateral dissimilarity indices based on value added shares broken down by industry and by skill, R&D and ICT intensity according to the classification in Table A.1. Dissimilarity between country A and country B is captured by the following index á la Krugman:

$$\text{Dis}_{AB} = \left( \frac{1}{2} \sum_i |a_i - b_i| \right) \quad (1)$$

where  $a$  and  $b$  are the corresponding shares. The index ranges from 0 (perfect similarity) to 1 (perfect dissimilarity). The productive structure of each country is compared with that of the EA, net of the country's own economy for EA members only; indices are calculated for 1998 and 2005. Table 1 shows that, within the EA, the most highly dissimilar countries are, apart from Ireland and Luxembourg, which are exceptionally small, the southern countries still specialized in low-skill activities. There is no sign of a uniform tendency either towards convergence or divergence: some countries increased and others decreased their similarity with the rest of the area. This is clear from Figure 2, where we take an average of the indicators and plot the value for 2005 against that for 1998. Countries above (below) the 45-degree line are those diverging from (converging to) the EA average sectoral structure. In line with previous evidence of very limited sectoral modification for almost all countries, we find little convergence/divergence; if anything, there is a slight tendency toward heterogeneity.

We also evaluate, for each country, the dissimilarity index between 1998 and 2005 to assess the extent of intersectoral change over the period. Irrespective of the sectoral break-

down, the extent of sectoral reallocation proves to be fairly modest (Table 3). The dissimilarity index never goes beyond the first half of its range. The countries that changed their structure most are Sweden and Finland, followed by Greece.

It is interesting to see whether the degree of intersectoral reallocation, though mild, is related to competitive devaluations. We construct two measures of devaluation, nominal and real (DEVNOM and DEVREAL, respectively), calculated as the cumulated difference between January 1980 and December 1998 of the logarithm of each country's nominal/real effective exchange rate as a deviation from that of Germany. In principle, a negative sign indicates a depreciation relative to the DM; the absolute number refers to the intensity of the cumulative depreciation or appreciation. But for ease of interpretation we invert the signs, so that a higher value of the indicator reflects more intensive resort to competitive devaluations. Table 4 reports the values for DEVNOM and DEVREAL. The difference between the two ( $\Delta P$ ) is the cumulated change in relative producer prices. Both the nominal and the real indicators have been computed with respect to 62 countries, including the main emerging and developing economies. Both their exchange rates and their producer prices have entered the indicator with a weight computed on the basis of trade flows (see Finicelli, Lippi & Sbracia (2005) for the methodology).

We find that, when devaluation is measured in nominal terms (Figure 3), the countries relying most heavily on devaluations are those most specialized in low-skill activities. This positive relationship vanishes when we consider devaluation in real terms. We also find some weak evidence that countries relying more heavily on devaluations exhibit relatively more pronounced signs of intersectoral reallocation, as shown by Figure 4, where we plot the dissimilarity index between 1998 and 2005 (reported in the first column of Table 3) against real devaluation; this evidence does not depend on the choice of the indicator (nominal versus real and different sectoral breakdowns).

On the whole, we can conclude that the euro has not induced a structural break in member countries' specialization patterns. Let us now move on to assess whether a process of within sectoral restructuring characterized EA firms in the first part of this decade, and in particular whether this process was driven by the introduction of the euro, which eliminated competitive devaluations.

### 3 Within sectoral reallocation

In this section we use sectoral data to test the hypothesis that the end of competitive devaluations has induced a restructuring process in the EA firms. We begin by describing the empirical approach and the data, then move on to the results and finally perform a series of extensions and robustness checks.

#### 3.1 The empirical approach and the data

We test the effects of the euro on within sectoral restructuring using sectoral data from different countries. Ideally, one would like to use direct measures of reallocation, such as job creation and destruction, entry, exit, etc.. Unfortunately, such measures can only be constructed from firm-level data and so are not available for a cross section of countries.<sup>7</sup> Accordingly, we use an outcome variable that should be closely related to reallocation, i.e. productivity growth. In fact, if reallocation and restructuring bring about productivity increases,<sup>8</sup> then the country-sectors that restructured more should have recorded a higher growth rate of productivity. We measure productivity as real value added per hour worked. We also consider growth in employment (more precisely, number of hours worked) growth: in fact, productivity increases might have been due simply to a reduction in the employment level, connected with the exit of the less productive plants and workers, the reorganization of production and offshoring. Descriptive statistics by country for the outcome variables are provided in Table A.2 in Appendix A.

We follow the approach introduced by Rajan & Zingales (1998) in their paper on the effects of financial development on growth. The idea is to exploit both cross-country and cross-sectoral variability to test the effects of the euro on productivity growth. First, we determine how heavily the various countries had relied on devaluations ( $DEV_i$ ): we expect that the greater this reliance, the stronger the effects of the euro. Second, we propose a measure  $S_j$  of how important devaluations were for sectoral competitiveness before the euro: in some sectors competition is mainly price competition, so movements in the terms

---

<sup>7</sup>See Davis, Haltiwanger & Schu (1996) for an overview of a large body of literature developed in the nineties regarding sectoral reallocation. Bartelsmann, Scarpetta & Schivardi (2005) compute sectoral statistics of reallocation for 9 OECD countries, but their time span stops at the end of the nineties at best.

<sup>8</sup>The literature on productivity growth decomposition has identified various sources of productivity increases related to reallocation and restructuring; see Foster, Haltiwanger & Krizan (2001) for a survey.

of trade are a fundamental determinant of performance; for others, product differentiation may be more pronounced, so that prices could be just one in a series of other factors in competitiveness, such as product quality, brand name and technological content. If the euro has had any effect in terms of restructuring, we expect it to be strongest in the country-sectors that relied more intensively on competitive devaluations, as measured by the interaction between the country and the sectoral indicators,  $DEV_i * S_j$ . We can test our argument through the following regression:

$$\Delta \ln y_{ij9805} = \alpha_0 + \alpha_1 DEV_i * S_j + \alpha_2' \mathbf{X}_{ij} + DC_i + DS_j + u_{ij} \quad (2)$$

where  $\Delta \ln y_{ij9805}$  is average yearly productivity growth in country  $i$  and sector  $j$  between 1998 and 2005,  $\mathbf{X}_{ij}$  are additional controls and  $DC_i$  and  $DS_j$  are country and sector dummies respectively. Our prediction concerns the coefficient  $\alpha_1$ : if  $\alpha_1 > 0$ , the higher the country-sector reliance on devaluations, the stronger the effects of the euro on productivity:  $\alpha_1 = \partial^2 \Delta \ln y_{ij} / \partial DEV_i \partial S_j$ .

One important feature of this approach is the inclusion of both country and sector dummies. Country dummies ensure that the results are not driven by specific country characteristics that might potentially be related to the devaluation measure: rather, we use within country differences in sectoral growth rates to identify the parameters of interest. The same applies to sectors: we do not compare different growth rates of productivity across sectors, as these might be dictated by sectoral characteristics potentially related to the variables we use to classify them. As such, this approach is robust to the main criticisms of the cross-country regressions with aggregate data, such as omitted-variable bias and reverse causality.<sup>9</sup>

Although the inclusion of country and sector dummies controls for the most likely omitted variable problems, one could still argue that we might just be capturing an underlying process that would have occurred even without the euro. For example, the intensifying competition from emerging countries might have forced restructuring regardless. Such a

---

<sup>9</sup>Reverse causality could occur if productivity growth were persistent and low-productivity-growth sectors were determining the devaluation pattern before the euro. In this case, the correlation would actually be because productivity growth causes DEV. However, if anything, this should bias our estimates downward, inducing a negative correlation between DEV and productivity growth.



process might have been more pronounced precisely in those countries and sectors that relied more on competitive devaluations, potentially more vulnerable to such competition. This is indeed a very serious concern. To address it, we take the three countries that did not adopt the euro as a control group and compute the effect of the interaction for the EA in deviation from non-EA countries. Formally, our regression framework is represented by:

$$\begin{aligned} \Delta \ln y_{ij9805} = & \beta_0 + \beta_1 DEV_i * S_j + \beta_2 EA_i * DEV_i * S_j + \\ & + \beta_3' \mathbf{X}_{ij} + DC_i + DS_j + u_{ij} \end{aligned} \quad (3)$$

where  $EA_i$  is a dummy equal to 1 for the EA countries. In this specification, the coefficient  $\beta_2$  measures the deviation of the EA effect from that of the non EA countries,  $\beta_1$ . The idea is that the latter countries did not give up the possibility of devaluing, but are similar to the EA countries from an economic point of view, because as members of the EU they are subject to identical foreign trade rules, with the exception of the exchange rate. Differences in the degree of restructuring according to the interaction term can therefore be attributed to the euro. As discussed above (see footnote 5), this control group is probably the best available, although it can be criticized both for its small size and its not necessarily random selection. To make sure that our results are not totally dependent on the control group, we also estimate equation (2) on EA members only, that is considering the absolute effect rather than the deviation from the control group. In this case, we are not controlling for potential confounding factors. However, we still control for fixed country and sectoral attributes, so that these estimates allow us to assess the extent to which our results depend on the control group.

In terms of the country-level indicator, we want to capture the reliance on competitive devaluations. From the theoretical standpoint, it is unclear whether real or nominal devaluation is the relevant variable. Consider a country that kept a fixed nominal exchange rate with the DM but gained competitiveness by curbing price rises. For it, the euro should not represent much of a change, as the exchange rate was already stable, and using real devaluation might overstate its reliance on devaluations. On the other side, consider a country with relatively rapid price inflation, that used devaluations to limit the effects on competitiveness. For such a country, appreciation was already under way before the euro, and using

the nominal exchange rate would overstate the reliance on devaluations. These examples suggest that the ideal indicator should consider real devaluations that were due to changes in the nominal exchange rate. To capture this, in our basic specification we introduce both the nominal exchange rate and the degree of relative producer price inflation, to allow for potentially different dynamics of the two components of the real exchange rate. We test whether the coefficients of the two variables are opposite in sign and equal in absolute value, in which case the real exchange rate can be used directly.

For the sectoral indicators, we assume that price competition is more relevant in activities with a low human capital content, i.e. in which low-skilled workers are prevalent. The products of low-skill activities are likely to compete more in price than quality, relative to high-skill products. For a sector with low human capital content, the end of devaluations should have represented a stronger incentive to restructure; other things being equal, these sectors should have recorded higher productivity increases. Our main indicator is thus the skill content at the sectoral level. Following Rajan & Zingales (1998), to avoid endogeneity problems we use the US measure, on the assumption that skill content is largely a technological characteristic, so that the measure computed for the US also applies to other countries. This assumption is particularly suitable for the EA countries, whose level of development is comparable to the US. In accordance with our interpretation, we use sectoral low-skill intensity, that is (1-skill intensity). This makes it easier to read the regression results.

We also experiment with other measures of sectoral dependence on devaluation. Following the same reasoning as above, high-R&D activities should also compete less on price and more on quality and technological content, reducing the price sensitivity of demand and hence the effects of exchange rate movements. Low-R&D activities should be characterized by greater price elasticity of demand, intensifying the response to terms of trade movements. We also use ICT intensity, on the assumption that this is related to technological content. As before, we define sectors in terms of low R&D and ICT intensity: (1-R&D content) and (1-ICT intensity), again computed for US sectors.

Underlying our approach is the idea that in low-human-capital activities, the end to competitive devaluations has deprived EA countries of an instrument for meeting the competition from low-wage emerging economies. An alternative way to rank sectors, then, is

to look directly at the importance of those economies in world trade. We take the most important of them, China, and compute its share of world exports in 1998. In this case, we are testing whether restructuring has been more intensive in countries that had relied on devaluations more heavily and in sectors where China's export share was larger.

The bottom part of Table 1 reports the correlation coefficients between the sectoral indicators. As expected, the correlation between the first three indicators is high, ranging from 0.6 to 0.8. That between the China's world market share and the others is negative. That is, the Chinese share is inversely related to the human capital content of production, but correlation is low in absolute terms: -0.3 with ICT and skill intensity and -0.1 with R&D intensity, suggesting that to see China simply as a low-human-capital good exporter might be to miss some important features of its economy.

We also run the same regression for EA countries in the period before the introduction of the euro. The assumption is that at that time the competitive pressures were mitigated by competitive devaluations. In this case, we expect no particular difference between the study and the control group. In the language of the policy evaluation literature, we make sure that we are not simply capturing pre-existing trends, and that the euro did indeed induce a structural break.

## 3.2 Results

Our main regression is based on equation (3), where the outcome is average annual productivity growth for the period 1998-2005. In addition to sectoral and country dummies, we include the log of the initial value of the dependent variable and, to control for any country-sector trend, its growth rate in the period 1995-98. Moreover, unless otherwise stated, to avoid endogeneity problems we weight observations according to sectoral employment in 1998. We run weighted regressions for two reasons. First, accounting for the importance of the sector gives an estimated coefficient representative of the population effect. Second, sectoral data could suffer from measurement error, which is likely to be negatively correlated with the size of the sector itself. In particular, mismeasurement of employment or value added in some small sectors might have a powerful impact on the estimates.<sup>10</sup> Finally, all

---

<sup>10</sup>For example, in 1998 the 'Office, accounting and computing machinery' sector only had 1,500 employees in Austria, 800 in Belgium and 300 in Greece; the 'Leather, leather products and footwear' sector only 1,300

standard errors are computed using the White robust correction.

Table 5 reports the results of estimating equation (3) when the sectoral dependence on devaluations is gauged by low-skill intensity. Panel A shows the estimates for productivity growth. The first column includes the interaction of skill intensity both with nominal devaluation ( $DEVNOM$ ) and with relative producer price inflation ( $\Delta P$ ). The estimates for the control group are not significantly different from zero, in line with the idea that for these countries the euro has not brought a structural break. Relative to the control group, the EA countries that had devalued more before the euro show relatively sharper productivity growth in low-skill-intensive sectors, while the reverse holds for the interaction with producer price inflation. The two coefficients are opposite in sign and very similar in absolute value (1.17 vs. -1.05) and we fail to reject the hypothesis that one is equal to the negative of the other. We interpret this as an indication that, while our earlier questions concerning the best measure of devaluation may be important in principle, in practice real devaluation is a sufficient statistic for our purposes. We therefore concentrate on it in the other columns.

In column 2 we give the basic specification, with the interaction term constructed with the real exchange rate ( $DEVREAL$ ). For the three non-EA countries we find a negative coefficient, significant at 10%. This implies that productivity in sectors with less skill intensity grew relatively less the greater the real devaluation vis-a-vis the DM in the 1980-98 period. The interaction with the EA dummy gives a positive coefficient (1.01), significant at 5% (standard error equal to 0.40): compared to the control group, among the EA countries productivity growth has been stronger, the greater real devaluation in the 1980-98 period and the lower the sectoral skill intensity. The other controls have the expected sign; in particular, productivity growth is positively serially correlated and displays mean reversion.

To evaluate the magnitude of the effects, we use the growth differential, defined as:

$$GD \equiv \beta_2 * (DEV_{75} - DEV_{25}) * (S_{75} - S_{25})$$

where  $DEV_{75}$  is the value of  $DEV$  for the country at the 75<sup>th</sup> percentile of the distribution (Spain) and  $DEV_{25}$  at the 25<sup>th</sup> percentile (France),  $S_{75}$  is the sector at the 75<sup>th</sup> percentile in Ireland.

of the skill distribution (other non metallic mineral products) and  $S_{25}$  at the 25<sup>th</sup> percentile (other transport equipment). GD measures how much more productivity grew in a low-skill sector (namely, at the 75<sup>th</sup> percentile of the skill distribution) compared to a high-skill one (at the 25<sup>th</sup> percentile) in a country that relied heavily on devaluations (at the 75<sup>th</sup> percentile) compared to one that did not (at the 25<sup>th</sup> percentile). For  $\beta_2 = 1.01$ , the growth differential is 1.7%, a sizeable effect, equal to the median yearly productivity growth and just below the mean (2.1%). It is important to note that this is only a within country and sector comparison, so it does not allow to draw conclusions on growth differential between the countries or the sectors. For example, it might well be that average productivity growth in Spain has been lower than in France: this would be captured by the country dummy. Similarly, average productivity growth in low-skill intensity sectors might have been lower than in high intensity ones. All we can say is that, *relatively to the country and sector averages*, the productivity growth differential between low- and high-skill sectors was higher in Spain than in France.

We then perform a series of robustness checks of this basic result. In column 3 we repeat the exercise without weights. The estimate of the coefficient drops to 0.7 and the standard error increases slightly, so that the p-value is equal to 0.16. This indicates that the weighting scheme is important to obtain a significant coefficient, suggesting that the results have to be taken with due caution. Still, the value is positive and the p-stat reasonably low.

One could argue that firms require some time to adjust to the change of regime brought about by the euro. Moreover, even if restructuring started early on, such processes might take some time to result in productivity gains. According to this interpretation, one should find that the effects of restructuring are more visible in the latter part of the post-euro period, so we repeat the exercise calculating productivity growth for the 2002-05 period.<sup>11</sup> The coefficient does increase substantially, to 1.5, and is significant at 1%, lending support to the view that the effects of the euro on European firms did take some time to become appreciable. In fact, if we run the exercise for the 1998-2002 period (unreported), we get a substantially lower coefficient (0.36) not significantly different from 0 (standard error equal

---

<sup>11</sup>To maximize comparability with the other regressions, we use the same initial value and pre-euro growth rate as for the other columns. Results are unchanged if we use the log of productivity in 2002 and the growth rate in the 1998-2002 period.

to 0.26).

As argued above, a possible criticism relates to the control group, only made up of three countries. In column 5 we run regression (2) only for the EA countries. In this case, we are not controlling for potential confounding factors; still, given that both sector and country dummies are included, we are controlling for fixed attributes on both levels. We find a positive and significant coefficient, although smaller, in accordance with the fact that the effect was negative for the control group. According to this estimate, the growth differential is 0.96%. This allows us to exclude the possibility that our results are simply driven by some idiosyncratic characteristics of the control group: within the EA countries, productivity grew faster exactly in those country-sectors that are most likely to be hit by the introduction of the fixed exchange rate regime.

As observed earlier, one might expect that productivity growth has been achieved through downsizing and offshoring, in which case it should go hand in hand with a reduction in employment. In Panel B we repeat the exercise using employment growth as the dependent variable. Contrary to this proposition, we find no clear relation between our interaction measure and employment growth. The coefficient of the interaction is generally negative, but is small in absolute value and not significantly different from zero. According to this finding, restructuring does not seem to have had a downside in terms of job losses.

These basic patterns are confirmed when using R&D and ICT intensity as sectoral indicators of the importance of devaluations.<sup>12</sup> In Table 6 we report the results for the R&D indicator. As before, the coefficient of the interaction is positive and significant, again with the exception of the unweighed regression. The effect increases in the second sub-period and still holds when computed on the EA countries only. The growth differential implied by the estimate in column 1 is similar in magnitude to that using skill intensity (1.6% productivity growth increase per year). Again, no clear effect on employment emerge, if anything, there is some evidence of a positive impact.

Similar results hold for ICT intensity, although the estimates tend to be less precise. The growth differential is 1.2% per year (Table 7). With this indicator, we get a significant coefficient also in the unweighed case, while no evidence of a stronger effect in the second

---

<sup>12</sup>As for skill intensity, the specification with DEVNOM and  $\Delta P$  confirms that DEVREAL is a sufficient statistic for our purposes. According, that specification is not reported.

sub-period emerges. The employment regressions again suggest no effect of the interaction term.

Findings are somewhat different when the sectoral indicator is the export share of China (Table 8). In this case, the productivity estimates tend to be less clear-cut. First, they are only significant for the baseline specification and for the unweighed one. The effect disappears when we exclude the control group, suggesting that these results are to be treated with even more caution than the others. In any case, according to the baseline specification, the growth differential is 0.5% where the sectors at the 25<sup>th</sup> and 75<sup>th</sup> percentiles are, respectively, chemicals and chemical products and rubber and plastic products. More interestingly, a negative effect on employment emerges. In the basic specification we get a coefficient of -1.77, significant at 5%. The implied growth differential is -0.6%.

As a final check, we run the same regressions as above for the period over which we computed the devaluation indicators, 1980-98. This is to make sure that we are not just capturing some underlying autocorrelated process that was already operating before the euro.<sup>13</sup> To save on space, we report only the main specification, with DEVREAL. There is no support for this hypothesis (Table 9). Neither the effect for the control group nor the deviation for the EA countries is significant for productivity or for employment for any of the sectoral indicators. This further substantiates the argument that our results really are capturing a specific effect of the euro, not some other concomitant factor.

All in all, these regressions suggest that the end of competitive devaluations has had a positive impact on productivity growth in those countries and sectors that had presumably relied more on them. Moreover, there does not appear to be any downside in terms of jobs: reallocation does not seem to have come at the expenses of employment growth. A clear exception to this is the regression using the Chinese export share. This analysis begs the question of how productivity growth was achieved, i.e. how restructuring occurred. We tackle this issue in the next section.

---

<sup>13</sup>The inclusion of lagged growth in the regressions should already account for this.

## 4 Firm-level evidence of restructuring: the case of Italian manufacturing

In this section we turn to firm-level evidence on the response to the euro, drawn mostly from a survey of Italian manufacturing firms run by the Bank of Italy (INVIND). Restricting attention to Italy clearly limits the generality of the results, but Italy is an interesting case, as it had relied heavily on competitive devaluations and is specialized in traditional, low-tech activities, which according to the evidence set out above should have been most severely affected by the introduction of the common currency. We first review some insights from a series of case studies, then consider the time-series evolution of various measures of reallocation activities and, finally, study the correlation between restructuring and performance at the level of the firm.

### 4.1 Case studies

In the spring of 2007, the Bank of Italy conducted in-depth interviews with entrepreneurs and CEOs of some 40 Italian firms, mostly in the manufacturing sector. Like the NBER/Sloan “Pin factory” project (Borenstein et al. 1998), the survey involved long interviews (between 2 and 4 hours). The interviewers, always researchers of the Bank of Italy, followed a set schema, but most of the interview was left for the entrepreneurs to elaborate freely. The main goal was to assess whether the firms were restructuring and in what forms. Of course, 40 interviews cannot be statistically representative. The aim was to understand what forces were driving the process and how firms were responding, in order among other things to guide subsequent quantitative analysis. The main findings were summarized in an internal report by Omiccioli & Schivardi (2007), on which this section is based; the report has not yet been made public for confidentiality reasons.

One clear insight from the interviews is that success stories are invariably based on some degree of market power. Entrepreneurs are generally very clear that, given the growing role of low-wage countries in the world trade, competition based on production costs is rapidly becoming unsustainable, so the production of homogeneous, undifferentiated goods is less and less viable. All the firms that were surviving or even prospering in the globalized



economy offered products that had a certain degree of differentiation and thus escaped pure cost competition. The challenge is to build up and maintain such market power.

The experiences reviewed were highly differentiated in a number of dimensions; by product, firm size, and the entrepreneur's personal history. But all the cases of successful restructuring had one feature in common: the firms had invested in activities not directly involving production. These activities may be classed as:

- Upstream: product creation (R&D, design) and brand establishment (advertising, marketing).
- Auxiliary: organization of production, often partly or wholly outside the firm (through outsourcing and offshoring); generally based on intensive use of ICT.
- Downstream: sales network, post-sales assistance.

These activities are not important only for high-tech products. Rather, the importance of each component varies with the particular business considered. For final goods producers, the crucial needs are the establishment of a brand, the organization of production and the creation of a sales network. For high-tech activities, the creation of the product, particularly through R&D, remains the main route to competitive advantage. For producers of intermediate goods, customers require constant assistance, particularly for firms producing industrial machineries.

We interviewed some firms operating in the traditional sectors of clothing and shoes. The success stories entailed a shift of the business focus away from production towards brand creation and product design, maintaining a coordinating role in production, which was mostly outsourced, often abroad.<sup>14</sup> Out of 800 workers of a firm producing machines for tile making, only 70 were employed in the plant, the rest divided between product design (200) and marketing and administration. The prototypes of successful firms suggest that competitive strength is built outside the factory, by workers not directly involved in the production process. We will use this insight in our subsequent empirical analysis:

---

<sup>14</sup>An entrepreneur in the shoe sector defined his firm as “a services firm that collects information from the market, elaborates it, designs products and dictates instructions to the other firms on how to produce them.” Until 1999 this firm, which now employs 260 workers and produces only the models internally, was a traditional shoe-maker that produced for other brands.

restructuring means a greater reliance on non-production workers and, consequently, entails a reduction of the share of blue-collar workers in the workforce.

In terms of cross-sectoral differences, the process seems to be most intensive for low-tech activities. Most of the high-tech firms did not perceive either the euro or the globalization as a discontinuity in the competitive landscape. For them, in fact, competition focuses mostly on innovation and R&D. For example, an entrepreneur producing electrical machinery said that his firm had a 3-year lead over its Chinese competitors in technology and contended that was the key competitive edge to be maintained, rather than lowering production costs. Another firm in the medical and precision instrument field saw its main competitors as located in Germany and Japan; the strong euro had created the opportunity for an important acquisition in the US.

For low-tech firms, particularly those operating in the traditional sectors such as clothing and leather, the change was much more profound. All the entrepreneurs in these sectors stressed that a dramatic change in the competitive environment had occurred with the introduction of the euro. Some had changed their business model radically (see footnote 14); those who had not were clearly struggling. This anecdotic evidence squares with the results of the previous section: the euro was a greater shock for activities of low skill content. It also suggests that the lower the technological content of the activity, the sharper the shift away from production is likely to be.

Further, the entrepreneurs do not think that the restructuring process is over. They all believed that the international landscape will keep changing fast in the coming years. Also, changes in the business model depend crucially on the individual histories of the firms. In particular, for family firms (almost all those interviewed could be classified as such) radical change tends to coincide with generational succession. Finally, restructuring itself is an ongoing, sequential activity, not a zero/one event. For example, many firms had been introducing business software, particularly some form of Enterprise Resource Planning (ERP), but this was mostly done in steps, first digitalizing accounting, then BtoB transactions, then production and so on. In fact, we interviewed firms with very different degrees of penetration of business software. All in all, therefore, we expect restructuring to be a smooth, ongoing process rather than concentrated in a short period of time.

## 4.2 Quantitative evidence from manufacturing firms<sup>15</sup>

The increasing availability of data-sets with firm-level information has spurred a vast literature on restructuring (Davis et al. 1996). The basic idea, following the seminal work of Lilien (1982), is that periods of restructuring are characterized by intense factor reallocation and increased dispersion of firms' performance. In fact, when a shock hits the economy, some firms adapt and some do not, so that their performance diverges and factors are reallocated to successful restructurers. In this section we use the insights from this literature and the case studies reviewed above to assess the degree of restructuring of the Italian manufacturing sector following the introduction of the euro.

The data come from the Bank of Italy's annual survey of manufacturing firms (INVIND). INVIND is an open panel of around 1,200 firms per year representative of manufacturing firms with at least 50 employees. It contains detailed information on firms' characteristics, including industrial sector, nationality, year of creation, number of employees, value of shipments, value of exports and investment. The questionnaire contains a fixed part and a rotating part used to investigate topics of special interest in the year. The resulting database has been used extensively (for a description of the database see, among others, Fabiani, Schivardi & Trento 2005, Guiso & Parigi 1999, Iranzo, Schivardi & Tosetti 2008).

If not all firms are equally successful at restructuring, performance should become more highly dispersed. Following up on the aggregate analysis, we consider productivity, measured as log of sales per worker,<sup>16</sup> and check whether its dispersion increased after the introduction of the euro. Figure 5 shows that in fact it did: the cross-firm dispersion of sales per worker goes from around 0.64 in the first part of the nineties to around 0.70 in the euro period.<sup>17</sup> Moreover, the dispersion increases almost monotonically up to the last available year (2007), suggesting that the process is still very much under way: in fact, if the restructuring wave were over, we would expect dispersion to revert to "business as usual" levels. We have also computed the dispersion of gross operating profits (EBITDA, earnings

---

<sup>15</sup>This subsection draws on the M.A. dissertation of Daniela Puggioni (2008) at the University of Cagliari.

<sup>16</sup>Usually productivity is measured as value added per worker, but this is not available for a sufficiently long time span. However, given that part of the restructuring activity might entail the offshoring of some part of the production process, sales per worker might capture such reorganization of the production chain better.

<sup>17</sup>To make sure that results are not driven by outliers, we have also computed various interquartile ranges, finding exactly the same pattern.

before interest, taxes, depreciation and amortization) over value added, drawn from the Cerved data-set.<sup>18</sup> In fact, Foster, Haltiwanger & Syverson (2008) show that selection and reallocation are due more to differences in profitability than in productivity. In Figure 5 we therefore also plot the standard deviation of profits, finding that they follow a similar pattern to productivity.

We next consider reallocation measures based on job flows.<sup>19</sup> The job creation rate (JC) is defined as

$$JC_t = \frac{\sum_{f \in E^+} \Delta E_{ft}}{\frac{1}{2}(E_t + E_{t-1})}$$

where  $\Delta E_{ft}$  is the change in employment for firm  $f$  at time  $t$ ,  $E^+$  is the set of firms that expand employment and  $E_t$  is aggregate employment.<sup>20</sup> The job destruction rate (JD) is defined similarly:

$$JD_t = \frac{\sum_{f \in E^-} |\Delta E_{ft}|}{\frac{1}{2}(E_t + E_{t-1})}$$

where  $E^-$  is the set of firms that reduce employment; net employment growth is  $EG_t = JC_t - JD_t$ ; job reallocation is the sum of job creation and destruction,  $JR_t = JC_t + JD_t$ . Finally we also construct a measure of excess job reallocation,  $ER_t = JR_t - |EG_t|$  which measures the job reallocation in excess of that required to reach a given change in net employment; for example, a sector might be constantly expanding employment and at the same time reallocating production among existing units: ER measures the job flow rate net of that due to sectoral employment expansion.

In Figure 6 we report JC, JD and EG. Job destruction peaks in 1993, when employment in the sample contracted by more than 5%. After that, both JC and JD remain fairly stable at values between 2% and 4%. Consistent with the downward trend in manufacturing employment, EG is negative in most years. Job reallocation also peaks in 1993, then reverts to a fairly stable level of around 6%. ER shows a modest upward trend since 1998, with a peak in 2000 but again with fairly modest variations. Thus the traditional measures of

<sup>18</sup>INVIND does not allow computation of profitability measures. We have therefore used Cerved, a database with balance-sheet information for almost all Italian limited liability companies, available since 1996. Cerved has no information on employment and therefore cannot be used for the other analysis in this section.

<sup>19</sup>See Davis et al. (1996) for a detailed explanation of job flow measures.

<sup>20</sup>The normalization by  $\frac{1}{2}(E_t + E_{t-1})$  rather than  $E_{t-1}$  constrains JC between -2 and 2 rather than -1 and  $\infty$ . The distribution is symmetric around 0 and easier to interpret graphically.

restructuring offer little support to the hypothesis of an increase in restructuring after the euro. All the indicators of job reallocation (with the exception of ER) peak in the recession of the early nineties and then level off. This occurs at the same time as the increase in productivity and profitability dispersion which suggests two things. First, the reallocation process induced by the euro has a smooth, ongoing character, especially when compared to that related to the deep recession of 1993; in particular, it seems to have little effect on the reallocation of factors across firms, possibly because of the degree of flexibility of the factor markets. Second, and strictly related, the post-euro restructuring might be of a different type from that of the early nineties and require different indicators: in particular, rather than showing up in job flows across firms, it might have induced more within firm changes in workforce composition.<sup>21</sup>

The case studies suggest that the firms that did well tended to shift from production to upstream and downstream activities, such as R&D, design, marketing and distribution chains. In terms of workforce composition, this implies that we should see a decrease in the share of blue-collar workers. Their average share decreased from 0.69 in 1990 to 0.62 in 2007 (Figure 7). This pattern reflects a secular trend, common to all developed economies, but with a clear break around the 1992 devaluation: from 1992 to 1998, the share stays roughly constant at around 0.67. It starts declining rapidly in 1999, falling to 0.62 in 2007. This evidence is consistent with the thesis that the devaluation of 1992 allowed firms to gain cost competitiveness, boosting the relative importance of production. With the euro, this possibility is ruled out and firms had to adapt their strategy, shifting away from production and therefore reducing the share of blue-collar workers. This interpretation is further corroborated by the analysis of the cross-firm variance in the share of blue-collar. Up to 1998 there is no clear trend in the cross sectional dispersion of this share.<sup>22</sup> Consistent with the hypothesis that the euro has forced a shift away from low-skill activities, and that the process has not been uniform across firms, starting in 1999 the standard deviation of the share of blue-collar workers increases steadily, from around 0.18 to 0.21.

---

<sup>21</sup>Unfortunately, due to the lack of information on entry and exit, we can not compute the decomposition of productivity growth into the within firm, between firm and net entry components.

<sup>22</sup>This graphical evidence is supported by the more formal analysis of Iranzo et al. (2008), who study the within and between firm skill dispersion using the same sample for the period 1980-97, finding a very stable time series pattern for the cross-firm component of skill dispersion, i.e. no evidence of an increase in dispersion.

According to the insights of the cross-country analysis of the previous section, the shift away from low-skill workers should have been stronger in low-tech activities, which had relied more on competitive devaluations. To check whether this is indeed the case, we have grouped firms according to the OECD classification system (OECD 2003), dividing them into 4 classes: low, medium-low, medium-high and high tech. Figure 8 reports the time series for the share of blue-collar workers for the 4 groups of firms. In general, the paths are similar to the aggregate, with a pause in the decrease after the 1992 devaluation and an acceleration starting in 1999. A clear exception is the group of high-tech firms, for which no clear pattern emerges, while the decrease is sharpest among the low-tech firms, which reduced the share of blue-collar workers by around 8 percentage points between 1999 and 2007. A similar picture emerges when considering the cross-firm dispersion in the share of blue-collar workers: again the largest increases are recorded by low and medium-low tech firms.

To corroborate the graphical analysis, we have run some diff-in-diff regressions of the following form:

$$\text{ShBlue}_{ft} = \alpha_0 + \alpha_1 * \text{LOW}_f * \text{POST}_t + \alpha_2 \text{LOW}_f + \alpha_3 X_{ft} + \text{YEAR}_t + \varepsilon_{ft}, \quad (4)$$

where  $\text{ShBlue}_{ft}$  is the share of blue-collar workers in firm  $f$  at time  $t$ ,  $\text{LOW}$  is a dummy equal to 1 if the firm belongs to the low-tech group,  $\text{POST}$  is a dummy equal to 1 for the years 1999-2007,  $\text{YEAR}$  is a full set of year dummies and  $X_{ft}$  includes firm size (log of total employment) and 4 regional dummies (north-west, north-east, center and south). The  $\text{LOW}$  dummy controls for fixed group attributes, in particular for the fact that low-tech firms have a higher share of blue-collar workers than other firms; the year dummies control for possible time trends. The coefficient  $\alpha_1$  therefore measures the change in the share of blue-collar workers for the firms in the  $\text{LOW}$  group before and after the euro, as a deviation from the change for firms in the control group (firms not in the  $\text{LOW}$  group). As such, it can be interpreted as the extra effect of the euro on the  $\text{LOW}$  firms, compared to the control group. The results reported in Table 10 clearly confirm the graphical analysis. The first column applies only the dummy for the low-tech firms; the control group therefore comprises all other firms. The coefficient indicates the decrease in the share of blue-collar workers

has been 3 percentage points greater among low-tech firms than among other since 1999, with a strong statistical significance. In the second column we also include a MEDIUM-LOW\*POST dummy, so that now the control group consists of medium-high and high-tech firms. Again, we find that low and medium-low-tech firms decreased the share of blue-collar workers more substantially; and the same occurs when we include a dummy for medium-high-tech firms as well (column 3). The intensity of the decrease is inversely related to the technological content. Consistent with the findings of the previous section, the effect of the euro on workforce composition decreases monotonically with technological intensity. These results are very robust to changes in the specification. We have also included additional firm controls, such as indicators of productivity, export propensity and sales (as an alternative measure of size), finding no significant differences in the results.

One important objection to this exercise is that we might be capturing differences in trends in the occupational mix. That is, it might simply be that low-tech firms were already reducing blue-collar workers more intensively before the euro launch. For a limited number of firms, we can reconstruct the technological classification since 1984. To check whether we are picking up differences in trends, we have re-run regression (4) for the period 1984-90, with the POST dummy equal to 1 for 1988-90 and 0 before (this splits the sample approximately equally). If we are simply capturing differences in underlying trends, we should then find that  $\alpha_1$  is negative also in the eighties, when competitive devaluations were still possible. But columns (4-6) of Table 10 show that, if anything, in the eighties low-tech firms were actually increasing the blue-collar intensity of the workforce compared to the high-tech ones. These findings are robust to changes in the year of definition of the post-period and to including years up to 1998. We can conclude that before the euro low-tech firms used devaluations to regain price competitiveness and intensified their reliance on low-skilled workers; on the contrary, high-tech firms competed mostly in other dimensions and so were increasing the relative skill content of their workforce.

### 4.3 Restructuring and firm performance

Was restructuring effective in terms of firms performance? We measure performance in terms of growth of value added and productivity and rely on a simple cross-sectional em-

pirical specification of the following form:

$$g_{i,t_0t} = \beta_0 + \beta_1 * RES_{i,t_0} + \beta_2 X_{i,t_0} + YEAR_{t_0} + \varepsilon_i, \quad (5)$$

where  $g_{i,t_0t}$  is the firms average growth rate of real value added or productivity (value added per employee) in the period  $t_0t$  and  $t_0$  is the first available year for a firm in the sample, starting in 2000. To maximize the number of firms, we do not limit the sample to those that are surveyed both in 2000 and 2005, but also include firms sampled for at least a pair of consecutive years during the period. To net out cyclical effects, we compute the growth rate as the residual of a preliminary regression of the raw growth rate data on year dummies and the initial value of value added or productivity. The starting year is 2000 instead of 1999 because some of our proxies for restructuring take 2000 as the reference year (the results do not change using 1999).  $YEAR_{t_0}$  is a set of dummies for the first year in which a firm is in the data-set;  $X_{it_0}$  includes firm size (log of total employment), sectoral dummies at two digits of the NACE rev. 1 classification and the usual 4 regional dummies, all computed at  $t_0$ . We focus on the coefficient of RES, a measure of restructuring activity, for which we use different proxies. The first comes directly from the previous analysis and refers to the share of blue-collar workers: here we check both the initial level of the share (ShBlue) and its average annual change in 2000-06 ( $\Delta ShBlue$ ). If the reduced reliance on low-skilled workers has indeed been one of the dominant strategies to regain competitiveness after the introduction of the euro, we should find a negative relationship between this variable and firm performance. There is a clear negative effect of the initial share of blue-collar workers on value added and productivity growth (Table 11, columns 2 and 5), while the coefficient of the contemporaneous change in that share is not significantly different from zero (columns 1 and 4). The former result confirms the idea that if we control for sectoral differences in technology firms that focused more on non-production activities, through a larger share of white-collar workers, have performed better. Given the likely smooth and ongoing nature of the restructuring process, it is not surprising that our contemporaneous indicator is not able to fully capture the impact of restructuring on performance.

We then search for a heterogeneous effect of restructuring across sectors. As pointed out in the previous section, we might expect that, controlling for average sectoral differences



in the blue-collar share, firm heterogeneity in performance is more strongly linked to the share in low-tech sectors. The data do not support this thesis, possibly because of lack of sufficient statistical power (the coefficient is negative but statistically insignificant).

We check whether the effect of the blue-collar share on performance is indeed related to the euro by running similar regressions for the period 1990-95, when Italian firms could rely on devaluation to gain international competitiveness. Over this period we would expect no role for restructuring and the results (columns 3 and 6) show that this is indeed the case.

In the INVIND questionnaire referring to 2006, firms were asked about their business strategies, in particular about significant changes since 2000. The changes refer to significant renewals of the product menu and to greater reliance on branding strategies.<sup>23</sup> We exploit this information in two steps. First, we construct a dummy variable NEWSTRAT which is equal to 1 when a firm claims to have been either changing the product menu or investing more resources in product branding, and 0 otherwise. As shown in columns 1 and 5 of Table 12, the dummy variable does have a significantly positive effect on performance; the effect also survives the introduction of the share of blue-collar workers (columns 2 and 6), which indicates that the performance improvement following the new strategy is realized on the top of that coming from the workforce composition. More detailed information on the intensity of the product change is then used to distinguish firms that renewed products within the same sectoral grouping (SMALLCH) from those that started producing products so new as actually changed productive sector (LARGECH)<sup>24</sup>. The control group here consists of firms that between 2000 and 2006 kept on producing almost the same products. As shown in columns 3 and 4 for value added growth and 7 and 8 for productivity growth, the strongest boost to performance has come from significant changes in the product menu. As for the blue-collar share, again we find no sectoral heterogeneity in the effect of product change and branding on performance (not reported).

All in all, the evidence of this section indicates that firms that undertook restructuring

---

<sup>23</sup>More precisely, firms were asked the following question: "Which of the following statements better describe your strategic behavior during the 2000-06 period? 1=the firm has not changed strategy; 2=the firm has changed strategy, mostly by introducing relevant changes in the product menu; 3=the firm has changed strategy, mostly by investing more resources on its own brand; 4=the firm has changed strategy mostly by internationalizing its activity".

<sup>24</sup>The exact question asked to the firms is as follows: "With respect to your product menu in 2000, now you produce mostly: 1=the same products; 2= slightly different products that fall into a similar sectoral category; 3= products that are so different to fall into a completely different sectoral category".

activities recorded a higher growth of both value added and productivity growth. Although more work will be required to establish a clear causal relation between restructuring and performance, this evidence squares with and complements the results previously discussed in the paper.

## 5 Conclusion

We have shown that the euro has been accompanied by a process of within sector reallocation, consistent with the hypothesis that the end of devaluations has forced restructuring in the countries and sectors that had depended most heavily on them. We used productivity growth as an indirect indicator of reallocation. This begs the question of how restructuring actually took place. We therefore use firm-level data for Italy with detailed information on restructuring activity. A series of interviews with entrepreneurs suggested that since the adoption of the euro firms have shifted their business focus from production to upstream and downstream activities related to R&D, product design, marketing, distribution and post sale assistance. This search for market power has been stronger in the traditional, low-tech industries. Hard quantitative evidence on a sample of Italian manufacturing firms showed that the process has entailed a reallocation of workers mainly within rather than across firms, with a decrease in the share of blue-collar workers. Finally, we found that restructuring has improved performance.

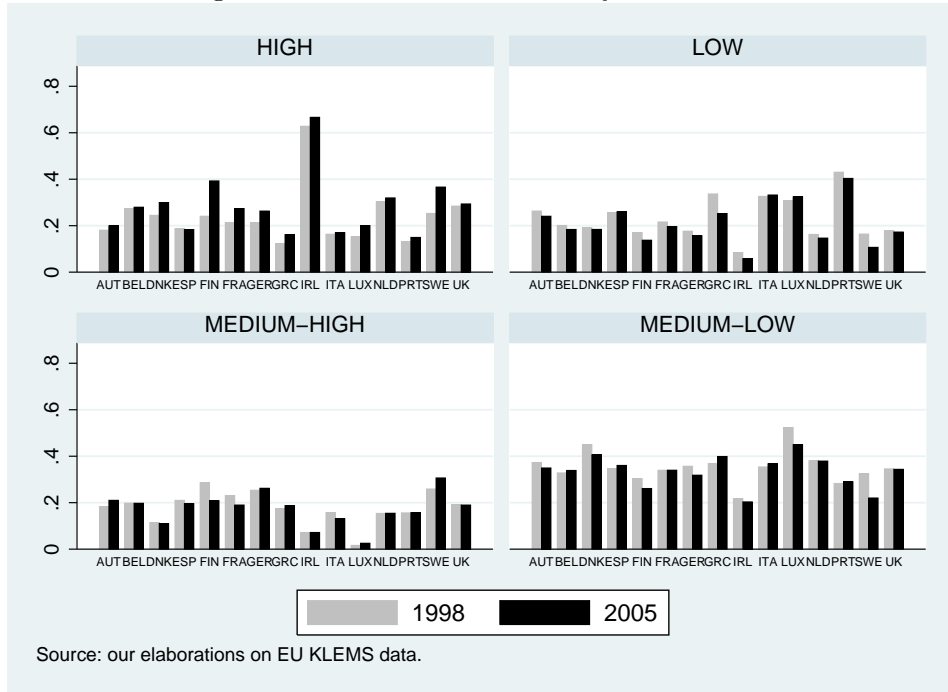
## References

- Alesina, A., Ardagna, S. & Galasso, V. (2009), The euro and structural reforms, *in* A. Alesina & F. Giavazzi, eds, 'Europe and the Euro', University of Chicago Press, Chicago, IL.
- Auer, R. & Fischer, A. (2008), The effects of trade with low-income countries on US industry. CEPR DP No. 6819.
- Baldwin, R. (2006), The euro's trade effects. European Central Bank WP No. 594.
- Bartelsmann, E., Scarpetta, S. & Schivardi, F. (2005), 'Comparative analysis of firm demographics and survival: Micro-level evidence for the OECD countries', *Industrial and Corporate Change* **14**, 365–391.

- Bernard, A., Jensen, J. & Schott, P. (2006a), ‘Survival of the best fit: Exposure to low-wage countries and the (uneven) growth of US manufacturing plants’, *Journal of International Economics* **68**, 219–237.
- Bernard, A., Jensen, J. & Schott, P. (2006b), ‘Trade costs, firms and productivity’, *Journal of Monetary Economics* **53**, 917–937.
- Bertola, G. (2007), Economic integration, growth, distribution: Does the euro make a difference? Mimeo, University of Turin.
- Borenstein, S., Farrell, J. & Jaffe, A. (1998), ‘Inside the pin-factory: Empirical studies augmented by manager interviews’, *Special Issue, Journal of Industrial Economics* **46**.
- Bugamelli, M., Fabiani, S. & Sette, E. (2008), The pro-competitive effect of imports from china: an analysis on firm-level price data. Mimeo, Bank of Italy.
- Bugamelli, M. & Rosolia, A. (2006), ‘Produttività e concorrenza estera’, *Rivista di Politica Economica* **9-10**, 55–87.
- Buiter, W. & Grafe, C. (2003), Emu or ostrich?, *in* H. M. Treasury, ed., ‘Submissions on EMU from leading academics’, EMU study.
- Chen, N., Imbs, J. & Scott, A. (2007), The dynamics of trade and competition. Mimeo, HEC Lausanne.
- Davis, S., Haltiwanger, J. & Schu, S. (1996), *Job Creation and Destruction*, MIT Press, Cambridge Ma.
- de Nardis, S., De Santis, R. & Vicarelli, C. (2008), ‘The euro’s effects on trade in a dynamic setting’, *The European Journal of Comparative Economics* **5**, 73–85.
- European Commission (1993), *White Book of growth, competitiveness and employment*, European Commission.
- European Commission (2008), *EMU@10: successes and challenges after 10 years of Economic and Monetary Union*, European Commission.
- Fabiani, S., Schivardi, F. & Trento, S. (2005), ‘ICT adoption in Italian manufacturing: firm-level evidence’, *Industrial and Corporate Change* **14**, 225–249.
- Finicelli, A., Liccardi, A. & Sbracia, M. (2005), A new indicator of competitiveness for Italy and the main industrial and emerging countries. Bank of Italy, Supplements to the Statistical Bulletin, vol. XV, No. 66.
- Foster, L., Haltiwanger, J. & Krizan, C. (2001), Aggregate productivity growth: Lessons from microeconomic evidence, *in* E. Dean, M. Harper & C. Hulten, eds, ‘New Directions in Productivity Analysis’, University of Chicago Press, Chicago, IL.
- Foster, L., Haltiwanger, J. & Syverson, C. (2008), ‘Reallocation, firm turnover, and efficiency: Selection on productivity or profitability?’, *American Economic Review* **98**, 394–425.

- Giavazzi, F. & Giovannini, A. (1989), *Limiting exchange rate flexibility: the European monetary system*, MIT Press.
- Guiso, L. & Parigi, G. (1999), 'Investment and demand uncertainty', *Quarterly Journal of Economics* **114**, 185–227.
- Iranzo, S., Schivardi, F. & Tosetti, E. (2008), 'Skill dispersion and productivity: an analysis with matched data', *Journal of Labor Economics* **26**, 247–285.
- Lilien, D. (1982), 'Sectoral shifts and cyclical unemployment', *Journal of Political Economy* **90**, 777–793.
- Melitz, M. (2003), 'The impact of trade on intra-industry reallocations and aggregate industry productivity', *Econometrica* **71**, 1695–1725.
- OECD (2003), *OECD Science, Technology and Industry Scoreboard, Annex 1*, OECD.
- Omiccioli, M. & Schivardi, F. (2007), *Le trasformazioni in atto nel sistema produttivo italiano: cosa fanno le imprese italiane per competere?* Internal report, Bank of Italy.
- Puggioni, D. (2008), *Il processo di ristrutturazione dell'industria manifatturiera italiana*. M.A. Dissertation, University of Cagliari.
- Rajan, R. & Zingales, L. (1998), 'Financial dependence and growth', *American Economic Review* **88**, 559–586.
- Timmer, M., O'Mahony, M. & van Ark, B. (2007), *The EU KLEMS growth and productivity accounts: an overview*. University of Groningen & University of Birmingham; downloadable at [www.euklems.net](http://www.euklems.net).

Figure 1: Share of value added by skill content



Source: our elaborations on EU KLEMS data.

Figure 2: Dissimilarity index with respect to euro area average: 1998 and 2005

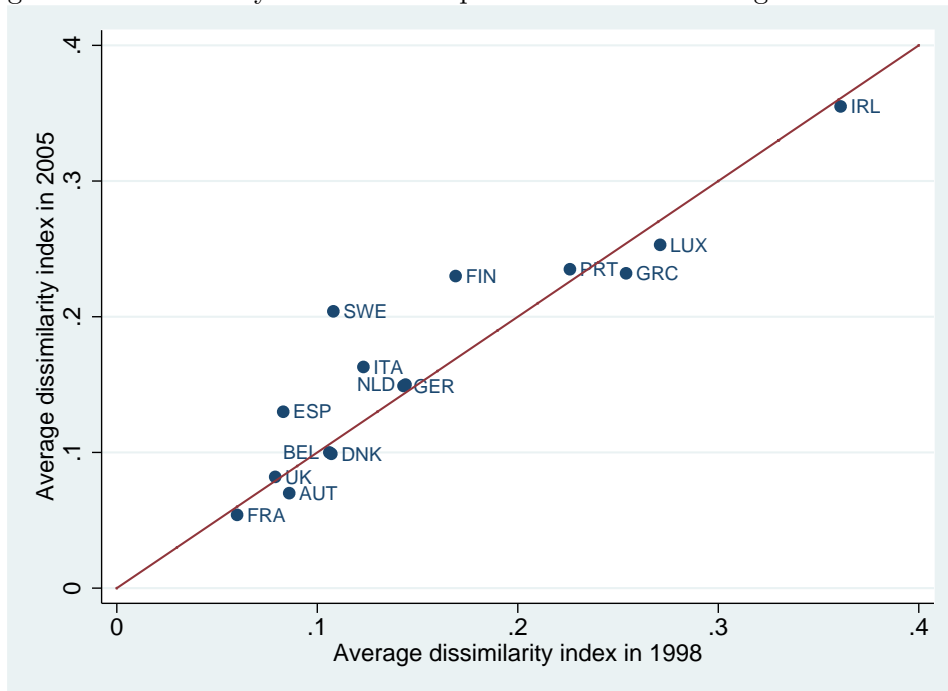


Figure 3: Size of low-skill activities and devaluation in nominal terms

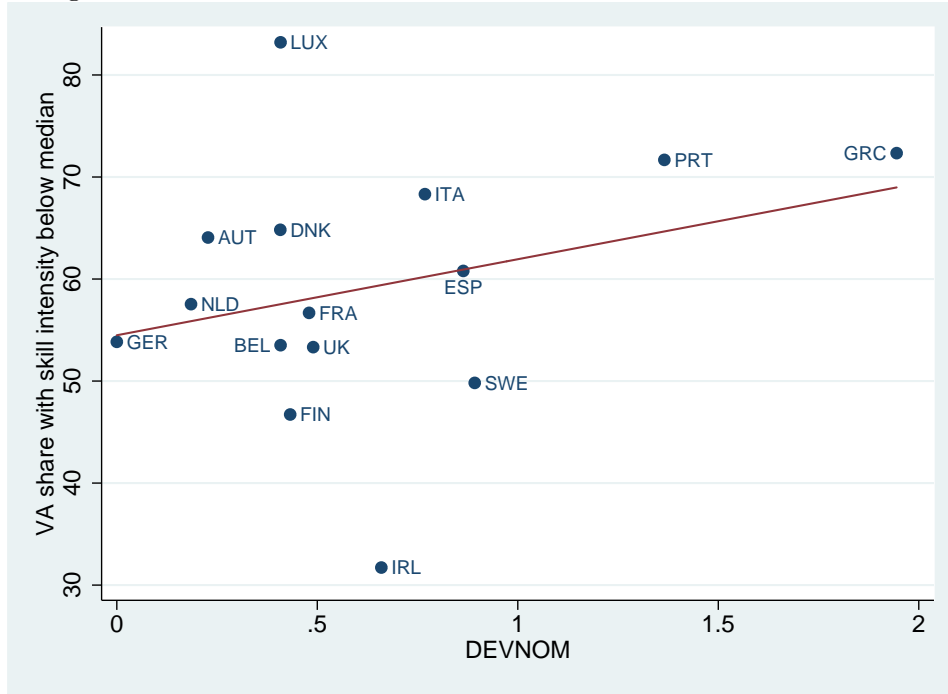


Figure 4: Dissimilarity index (by skill intensity) and real devaluation

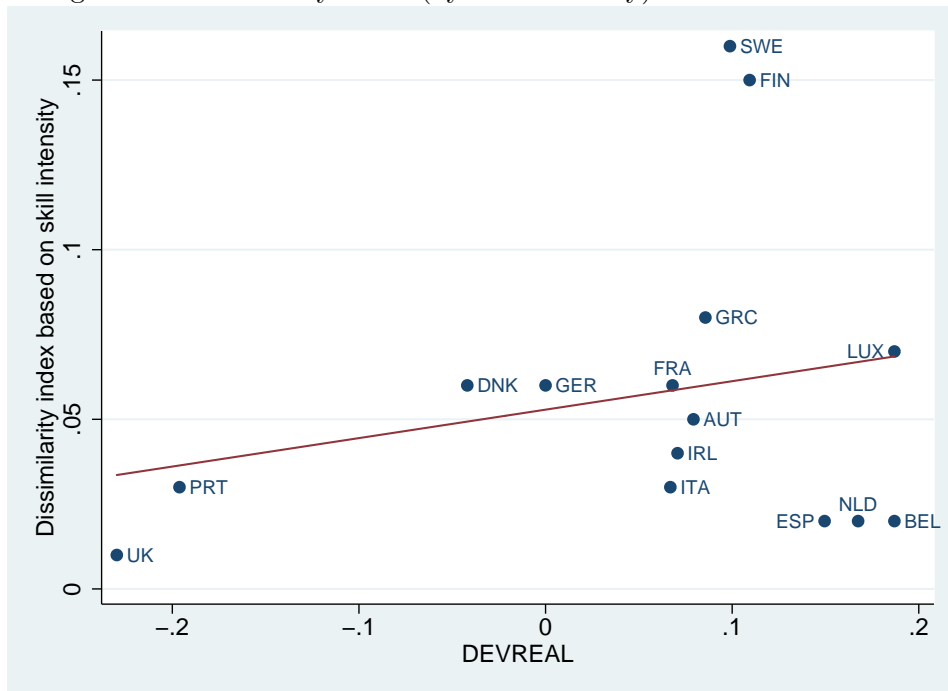
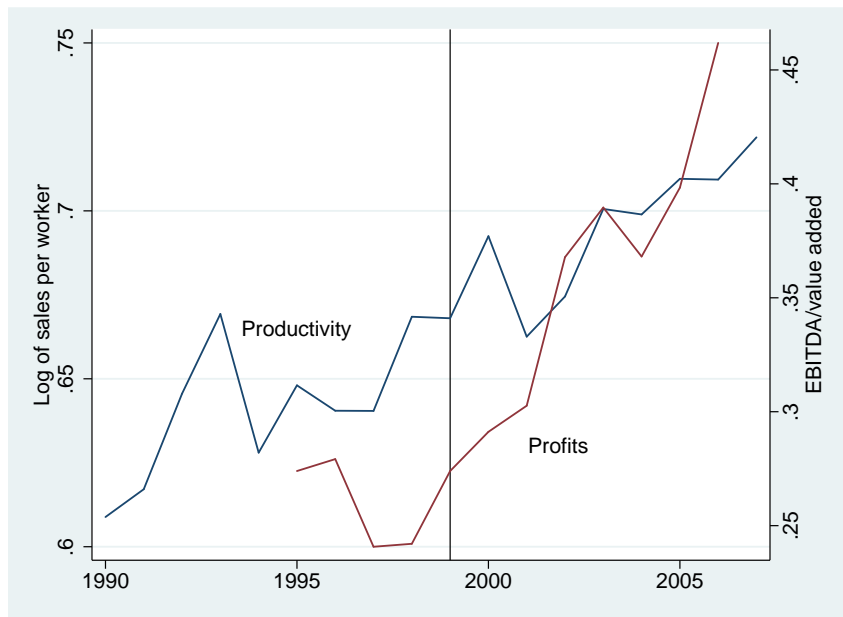
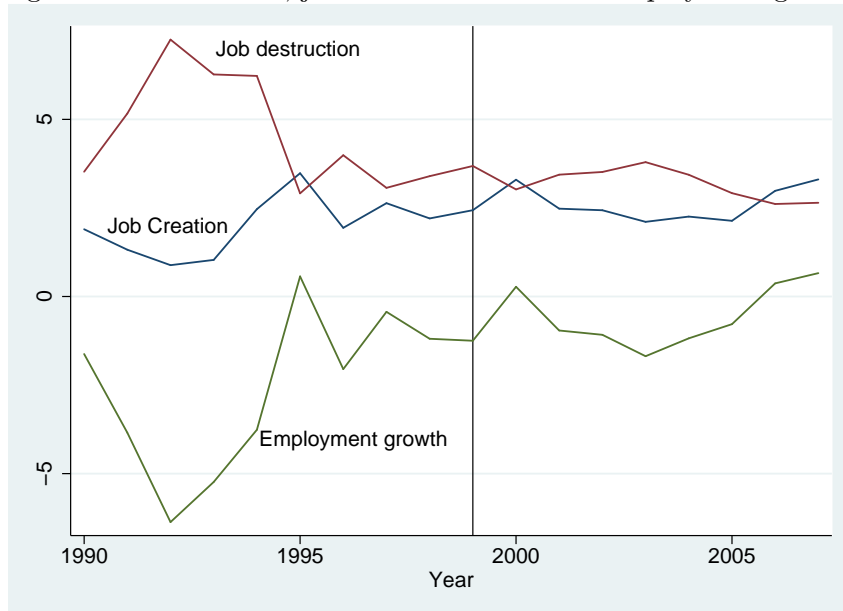


Figure 5: Standard deviation of productivity and profits



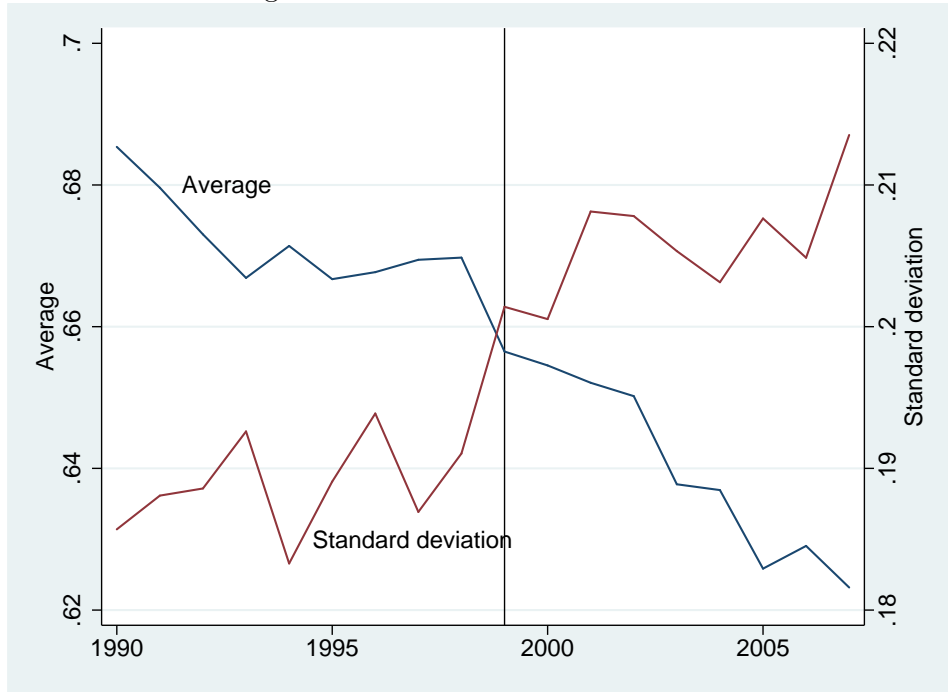
Note: productivity is measured as log of sales per workers (left scale) in the INVIND database. Profitability is EBITDA/value added (right scale) in the Cerved database. In this and the following graphs a vertical bar is drawn corresponding to 1999, year of the euro introduction.

Figure 6: Job creation, job destruction and net employment growth



Source: Based on INVIND database.

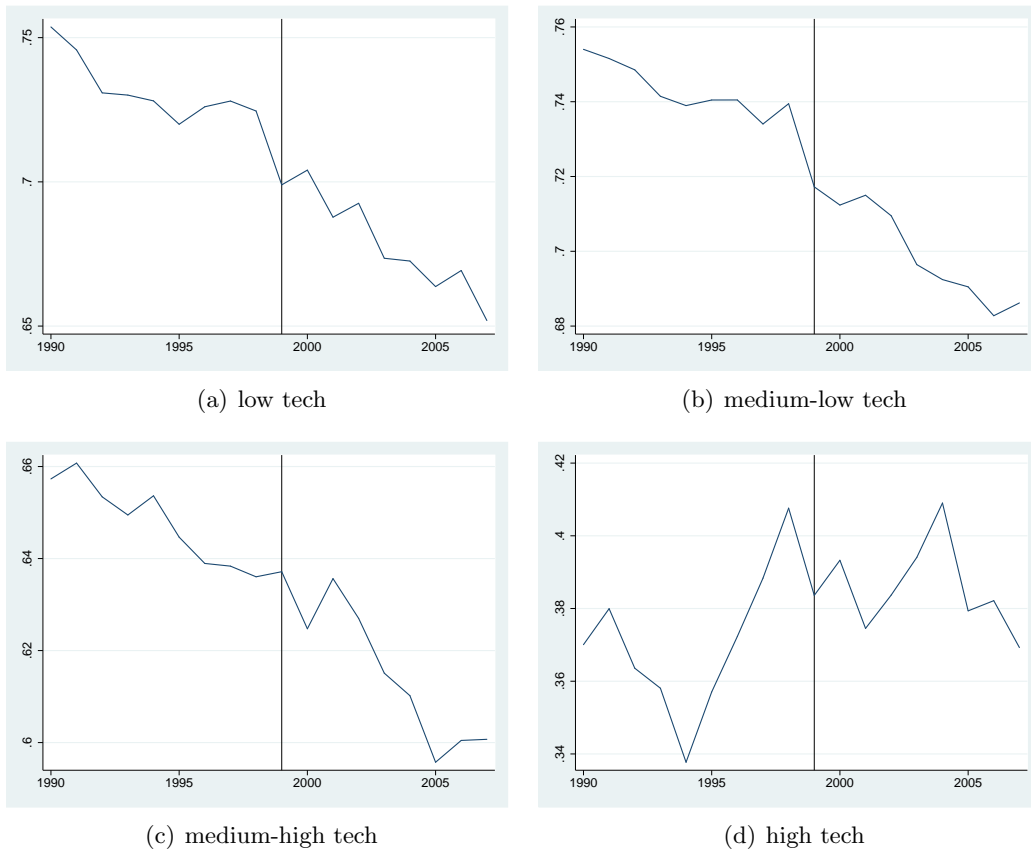
Figure 7: Cross-firm average and standard deviation of the share of blue-collar workers



Source: Based on INVIND database.



Figure 8: Share of blue-collar workers by technological intensity



Source: our elaborations on INVIND database.

Table 1: ICT, R&D, and skill intensities in the US and China's world market share by sector of economic activity

Sector (NACE code in parenthesis)	ICT intensity	R&D intensity	Skill intensity	Chinese share
<i>Food products and beverages (15)</i>	0.06	0.01	0.16	0.03
<i>Tobacco products (16)</i>	0.06	0.01	0.27	0.02
<i>Textiles (17)</i>	0.05	0.01	0.10	0.09
<i>Wearing apparel, dressing (18)</i>	0.05	0.01	0.14	0.16
<i>Leather, leather products and footwear (19)</i>	0.05	0.01	0.09	0.20
<i>Wood and products of wood and cork (20)</i>	0.04	0.01	0.08	0.03
<i>Pulp, paper and paper products (21)</i>	0.10	0.02	0.17	0.01
<i>Printing, publishing and reproduction (22)</i>	0.10	0.02	0.34	0.01
<i>Coke, refined petroleum products and nuclear fuel (23)</i>	0.05	0.06	0.31	0.05
<i>Chemicals and chemical products (24)</i>	0.12	0.14	0.41	0.02
<i>Rubber and plastics products (25)</i>	0.04	0.03	0.15	0.06
<i>Other non-metallic mineral products (26)</i>	0.07	0.02	0.14	0.05
<i>Basic metals (27)</i>	0.06	0.02	0.14	0.03
<i>Fabricated metal products (28)</i>	0.06	0.02	0.12	0.05
<i>Machinery, n.e.c. (29)</i>	0.18	0.06	0.16	0.02
<i>Office, accounting and computing machinery (30)</i>	0.16	0.42	0.49	0.03
<i>Electrical machinery (31)</i>	0.16	0.12	0.21	0.04
<i>Radio, television and communication equipment (32)</i>	0.16	0.22	0.36	0.05
<i>Medical, precision and optical instruments (33)</i>	0.16	0.36	0.38	0.03
<i>Motor vehicles, trailers and semi-trailers (34)</i>	0.14	0.13	0.20	0.00
<i>Other transport equipment (35)</i>	0.14	0.24	0.33	0.12
<i>Manufacturing n.e.c.; recycling (36, 37)</i>	0.09	-	0.16	0.09
Correlation matrix				
ICT intensity	1.0	0.7	0.6	-0.3
R&D intensity		1.0	0.8	-0.1
Skill intensity			1.0	-0.3
Chinese share				1.0

Source: Based on EU KLEMS, OECD STAN and United Nations data. Year 1998.

Table 2: Krugman dissimilarity indices vis-a-vis the euro area

	<i>Skill intensity</i>		<i>ICT intensity</i>		<i>R&amp;D intensity</i>		<i>NACE</i>	
	<i>1998</i>	<i>2005</i>	<i>1998</i>	<i>2005</i>	<i>1998</i>	<i>2005</i>	<i>1998</i>	<i>2005</i>
<i>Euro area</i>								
Austria	0.06	0.06	0.07	0.04	0.06	0.07	0.15	0.11
Belgium	0.06	0.03	0.10	0.13	0.07	0.06	0.20	0.19
Finland	0.10	0.15	0.11	0.20	0.16	0.19	0.31	0.39
France	0.02	0.03	0.05	0.03	0.06	0.05	0.11	0.11
Germany	0.08	0.10	0.14	0.14	0.16	0.17	0.20	0.19
Greece	0.13	0.11	0.26	0.21	0.27	0.24	0.36	0.37
Ireland	0.42	0.42	0.21	0.18	0.35	0.34	0.47	0.47
Italy	0.13	0.19	0.11	0.12	0.09	0.13	0.16	0.21
Luxembourg	0.26	0.23	0.30	0.27	0.18	0.17	0.34	0.34
Netherlands	0.13	0.11	0.12	0.14	0.12	0.11	0.21	0.24
Portugal	0.21	0.20	0.18	0.19	0.24	0.26	0.28	0.29
Spain	0.03	0.09	0.09	0.13	0.08	0.14	0.12	0.15
<i>Non-euro area</i>								
Denmark	0.13	0.11	0.07	0.03	0.06	0.06	0.18	0.19
Sweden	0.09	0.21	0.10	0.18	0.09	0.15	0.15	0.28
United Kingdom	0.07	0.05	0.05	0.07	0.06	0.06	0.14	0.15

Source: Based on EU KLEMS and STAN OECD data. Note: dissimilarity indices are calculated for each country with respect to the EA, net of the country itself for EA members.

Table 3: Krugman dissimilarity indices, 1998-2005

	<i>Skill intensity</i>	<i>ICT intensity</i>	<i>R&amp;D intensity</i>	<i>NACE</i>
United Kingdom	0.01	0.02	0.02	0.06
Netherlands	0.02	0.02	0.04	0.06
Belgium	0.02	0.02	0.02	0.04
Spain	0.02	0.03	0.05	0.07
Italy	0.03	0.05	0.04	0.07
Portugal	0.03	0.04	0.03	0.06
Ireland	0.04	0.09	0.04	0.11
Austria	0.05	0.04	0.04	0.07
Denmark	0.06	0.04	0.04	0.09
Germany	0.06	0.03	0.07	0.07
France	0.06	0.06	0.06	0.10
Luxembourg	0.07	0.06	0.05	0.10
Greece	0.08	0.09	0.13	0.14
Finland	0.15	0.16	0.16	0.20
Sweden	0.16	0.19	0.18	0.27

Source: Based on EU KLEMS and STAN OECD data. Note: countries are ordered according to the indices based on skill intensity.

Table 4: Nominal and real measures of devaluation and price changes

	<i>DEVNOM</i>	<i>DEVREAL</i>	$\Delta P$
Austria	0.227	0.079	0.148
Belgium	0.408	0.187	0.222
Denmark	0.408	-0.042	0.450
Finland	0.432	0.109	0.323
France	0.479	0.068	0.411
Germany	0.000	0.000	0.000
Greece	1.945	0.086	1.859
Ireland	0.660	0.071	0.589
Italy	0.768	0.067	0.701
Luxembourg	0.408	0.187	0.222
Netherlands	0.185	0.167	0.018
Portugal	1.366	-0.196	1.562
Spain	0.864	0.150	0.715
Sweden	0.893	0.099	0.794
United Kingdom	0.490	-0.230	0.720

Source: Bank of Italy's calculations (see Finicelli et al. (2005)).

Table 5: Low skill intensity and devaluations

<b>Panel A: productivity growth</b>					
	(1)	(2)	(3)	(4)	(5)
$DEV * SK * EA$	1.17** (0.56)	1.01** (0.40)	0.71 (0.50)	1.50*** (0.53)	0.55** (0.26)
$DEV * SK$	-0.64 (0.50)	-0.41* (0.23)	-0.23 (0.37)	-0.66** (0.31)	
$\Delta P * SK * EA$	-1.05** (0.45)				
$\Delta P * SK$	0.58 (0.37)				
$\ln(prod_{98})$	-0.05*** (0.01)	-0.05*** (0.01)	-0.05*** (0.01)	-0.05*** (0.02)	-0.05*** (0.01)
$\Delta prod_{9598}$	0.16** (0.07)	0.16** (0.08)	0.07 (0.08)	0.09 (0.11)	0.11* (0.06)
Observations	321	321	321	321	256
$R^2$	0.54	0.53	0.37	0.43	0.51
<b>Panel B: employment growth</b>					
$DEV * SK * EA$	-0.19 (0.23)	-0.06 (0.24)	-0.06 (0.27)	-0.11 (0.31)	0.07 (0.13)
$DEV * SK$	0.24 (0.19)	0.07 (0.19)	0.10 (0.21)	-0.03 (0.25)	
$\Delta P * SK * EA$	0.12 (0.23)				
$\Delta P * SK$	-0.16 (0.19)				
$\ln(emp_{98})$	0.01*** (0.00)	0.01*** (0.00)	-0.01** (0.00)	0.01* (0.00)	0.01*** (0.00)
$\Delta emp_{9598}$	0.21*** (0.07)	0.20*** (0.07)	0.29*** (0.10)	0.16* (0.08)	0.17** (0.07)
Observations	323	323	323	323	258
$R^2$	0.71	0.71	0.50	0.63	0.65

$DEV$  is the indicator of nominal devaluation ( $DEVNOM$ ) in column 1 and of real devaluation ( $DEVREAL$ ) in all other columns, computed over the period 1980-1998;  $SK$  is low-skill intensity;  $EA$  is a dummy equal to 1 for the euro area countries;  $\Delta P$  is the relative growth rate in producer prices (see the main text for details);  $\ln(prod_{98})$  ( $\ln(emp_{98})$ ) is initial productivity (employment) and  $\Delta prod_{9598}$  ( $\Delta emp_{9598}$ ) is productivity (employment) growth in the 1995-98 period. Outcome growth rates are computed for 1998-2005 in all columns except column 4, where it is computed for 2002-05. All regressions are weighted with the sectoral employment apart from that in column 3, which is unweighted. Robust standard errors in parentheses. \*\*\*  $p < 0.01$ , \*\*  $p < 0.05$ , \*  $p < 0.1$ .

Table 6: Low R&amp;D intensity and devaluation

<b>Panel A: productivity growth</b>				
	(1)	(2)	(3)	(4)
$DEV * RD * EA$	1.51** (0.59)	0.62 (0.52)	1.63** (0.73)	1.01*** (0.36)
$DEV * RD$	-0.43 (0.34)	-0.08 (0.39)	-0.52 (0.37)	
$\ln(prod_{98})$	-0.06*** (0.01)	-0.06*** (0.01)	-0.06*** (0.02)	-0.05*** (0.01)
$\Delta prod_{9598}$	0.16** (0.08)	0.07 (0.08)	0.10 (0.11)	0.11* (0.06)
Observations	306	306	306	244
$R^2$	0.56	0.38	0.46	0.54

<b>Panel B: employment growth</b>				
	(1)	(2)	(3)	(4)
$DEV * RD * EA$	0.36 (0.30)	0.05 (0.24)	0.48 (0.43)	0.18 (0.19)
$DEV * RD$	-0.27 (0.20)	-0.09 (0.17)	-0.43 (0.31)	
$\ln(emp_{98})$	0.01*** (0.00)	-0.01** (0.00)	0.01** (0.00)	0.01*** (0.00)
$\Delta emp_{9598}$	0.22*** (0.07)	0.29*** (0.10)	0.19** (0.09)	0.17** (0.07)
Observations	308	308	308	246
$R^2$	0.71	0.50	0.64	0.65

$DEV$  is the indicator of real devaluation ( $DEVREAL$ ), computed over the period 1980-1998;  $RD$  is low R&D intensity;  $EA$  is a dummy equal to 1 for the EA countries;  $\ln(prod_{98})$  ( $\ln(emp_{98})$ ) is initial productivity (employment) and  $\Delta prod_{9598}$  ( $\Delta emp_{9598}$ ) is productivity (employment) growth in the 1995-98 period. Outcome growth rates are computed for 1998-2005 in all columns except column 3, where it is computed for 2002-05. All regressions are weighted with the sectoral employment apart from that in column 2, which is unweighted. Robust standard errors in parentheses. \*\*\*  $p < 0.01$ , \*\*  $p < 0.05$ , \*  $p < 0.1$ .

Table 7: Low ICT intensity and devaluation

<b>Panel A: productivity growth</b>				
	(1)	(2)	(3)	(4)
<i>DEV * ICT * EA</i>	1.64*	2.78**	1.35	0.83
	(0.91)	(1.34)	(1.37)	(0.51)
<i>DEV * ICT</i>	-0.66	-1.24	-0.68	
	(0.58)	(0.99)	(0.95)	
$\ln(prod_{98})$	-0.06***	-0.05***	-0.06***	-0.05***
	(0.01)	(0.01)	(0.02)	(0.01)
$\Delta prod_{9598}$	0.16*	0.07	0.09	0.10*
	(0.08)	(0.07)	(0.12)	(0.06)
Observations	321	321	321	256
$R^2$	0.53	0.37	0.42	0.50

<b>Panel B: employment growth</b>				
	(1)	(2)	(3)	(4)
<i>DEV * ICT * EA</i>	0.29	-0.38	0.49	0.06
	(0.57)	(0.64)	(0.65)	(0.35)
<i>DEV * ICT</i>	-0.32	0.01	-0.56	
	(0.39)	(0.46)	(0.48)	
$\ln(emp_{98})$	0.01***	-0.01**	0.01*	0.01***
	(0.00)	(0.00)	(0.00)	(0.00)
$\Delta emp_{9598}$	0.21***	0.30***	0.16**	0.17**
	(0.06)	(0.10)	(0.08)	(0.07)
Observations	323	323	323	258
$R^2$	0.71	0.50	0.63	0.65

*DEV* is the indicator of real devaluation (DEVREAL), computed over the period 1980-98; *ICT* is low ICT intensity; *EA* is a dummy equal to 1 for the EA countries;  $\ln(prod_{98})$  ( $\ln(emp_{98})$ ) is initial productivity (employment) and  $\Delta prod_{9598}$  ( $\Delta emp_{9598}$ ) is productivity (employment) growth in the 1995-98 period. Outcome growth rates are computed for 1998-2005 in all columns except column 3, where it is computed for 2002-05. All regressions are weighted with the sectoral employment apart from that in column 2, which is unweighted. Robust standard errors in parentheses. \*\*\* p<0.01, \*\* p<0.05, \* p<0.1.

Table 8: Chinese export share and devaluation

<b>Panel A: productivity growth</b>				
	(1)	(2)	(3)	(4)
$DEV * CH * EA$	1.34** (0.67)	1.52** (0.70)	0.98 (1.19)	0.27 (0.38)
$DEV * CH$	-1.06** (0.48)	-0.82 (0.52)	-0.97 (1.10)	
$\ln(prod_{98})$	-0.06*** (0.01)	-0.05*** (0.01)	-0.06*** (0.02)	-0.05*** (0.01)
$\Delta prod_{9598}$	0.16* (0.09)	0.07 (0.08)	0.09 (0.12)	0.11* (0.06)
Observations	321	321	321	256
$R^2$	0.53	0.36	0.42	0.49

<b>Panel B: employment growth</b>				
	(1)	(2)	(3)	(4)
$DEV * CH * EA$	-1.77** (0.69)	-1.01 (0.67)	-1.75** (0.77)	-0.39* (0.23)
$DEV * CH$	1.38** (0.64)	1.11*** (0.41)	1.22* (0.71)	
$\ln(emp_{98})$	0.01*** (0.00)	-0.01** (0.00)	0.01* (0.00)	0.01*** (0.00)
$\Delta emp_{9598}$	0.21*** (0.06)	0.29*** (0.10)	0.16** (0.08)	0.19*** (0.07)
Observations	323	323	323	258
$R^2$	0.73	0.51	0.64	0.65

$DEV$  is the indicator of real devaluation (DEVREAL), computed for the period 1980-98;  $CH$  is China's world export share;  $EA$  is a dummy equal to 1 for the EA countries;  $\ln(prod_{98})$  ( $\ln(emp_{98})$ ) is initial productivity (employment) and  $\Delta prod_{9598}$  ( $\Delta emp_{9598}$ ) is productivity (employment) growth in the 1995-98 period. Outcome growth rates are computed for 1998-2005 in all columns except column 3, where it is computed for 2002-05. All regressions are weighted with the sectoral employment apart from that in column 2, which is unweighted. Robust standard errors in parentheses. \*\*\*  $p < 0.01$ , \*\*  $p < 0.05$ , \*  $p < 0.1$ .



Table 9: Pre-regressions

	(1)	(2)	(3)	(4)	(5)	(6)	(7)	(8)
	SKILLS		R&D		ICT		CHINA	
	PROD	EMP	PROD	EMP	PROD	EMP	PROD	EMP
$DEV * SECT * EA$	-0.11 (0.09)	-0.13 (0.10)	0.05 (0.10)	0.00 (0.12)	0.29 (0.19)	0.09 (0.19)	0.20 (0.19)	0.08 (0.42)
$DEV * SECT$	0.07 (0.05)	0.08 (0.06)	-0.01 (0.05)	0.02 (0.07)	-0.10 (0.10)	-0.04 (0.10)	-0.11 (0.11)	-0.12 (0.18)
$\ln(prod_{80})$	-0.03*** (0.00)		-0.03*** (0.00)		-0.03*** (0.00)		-0.03*** (0.00)	
$\Delta prod_{7080}$	0.40*** (0.02)		0.40*** (0.03)		0.40*** (0.02)		0.40*** (0.02)	
$\ln(emp_{80})$		-0.00*** (0.00)		-0.00*** (0.00)		-0.00*** (0.00)		-0.00*** (0.00)
$\Delta emp_{7080}$		0.69*** (0.06)		0.69*** (0.06)		0.69*** (0.06)		0.69*** (0.05)
Observations	293	302	278	287	293	302	293	302
$R^2$	0.96	0.85	0.96	0.85	0.96	0.85	0.96	0.85

$DEV$  is the indicator of real devaluation (DEVREAL), computed for the period 1980-98;  $SECT$  is the sectoral indicator, indicating low-skill intensity in columns 1 and 2, low-R&D intensity in columns 3 and 4, low-ICT intensity in columns 5 and 6 and China's world export share in columns 7 and 8;  $EA$  is a dummy equal to 1 for the EA countries;  $\ln(prod_{80})$  ( $\ln(emp_{80})$ ) is initial productivity (employment) and  $\Delta prod_{7080}$  ( $\Delta emp_{7080}$ ) is productivity (employment) growth in the 1970-80 period. Outcome growth rates are computed for 1980-98. All regressions are weighted with sectoral employment. Robust standard errors in parentheses. \*\*\*  $p < 0.01$ , \*\*  $p < 0.05$ , \*  $p < 0.1$ .

Table 10: Share of blue-collar workers

	(1)	(2)	(3)	(4)	(5)	(6)
	Period: 1990-2007			Period: 1984-1990		
<i>LOW * POST</i>	-0.031*** (0.005)	-0.031*** (0.006)	-0.072*** (0.013)	0.003 (0.009)	0.004 (0.011)	0.038* (0.021)
<i>MED – LOW * POST</i>		-0.019*** (0.006)	-0.059*** (0.013)		-0.006 (0.010)	0.029 (0.021)
<i>MED – HIGH * POST</i>			-0.050*** (0.013)			0.036* (0.021)
<i>LOW</i>	0.076*** (0.004)	0.132*** (0.005)	0.336*** (0.010)	0.073*** (0.007)	0.127*** (0.008)	0.304*** (0.015)
<i>MED – LOW</i>		0.135*** (0.004)	0.339*** (0.010)		0.135*** (0.007)	0.310*** (0.014)
<i>MED – HIGH</i>			0.242*** (0.010)			0.215*** (0.015)
$\ln(emp)$	-0.030*** (0.001)	-0.024*** (0.001)	-0.018*** (0.001)	-0.035*** (0.002)	-0.029*** (0.002)	-0.021*** (0.002)
Observations	24143	24143	24143	5142	5142	5142
$R^2$	0.09	0.15	0.20	0.14	0.22	0.32

The dependent variable is the share of blue-collar workers at the level of the firm.  $\ln(emp)$  is the log of total employment. *LOW* is a dummy equal to 1 for low-tech firms, and similarly for *MED-LOW* and *MED-HIGH*. *POST* is a dummy equal to 1 for the post 1998 years. Robust standard errors in parentheses. \*\*\*  $p < 0.01$ , \*\*  $p < 0.05$ , \*  $p < 0.1$ .

Table 11: Firm performance and share of blue-collar workers

	(1)	(2)	(3)	(4)	(5)	(6)
	Value added growth			Productivity growth		
$\ln(emp)$	0.013*** (0.004)	0.016*** (0.004)	-0.001 (0.006)	0.012*** (0.004)	0.017*** (0.004)	0.002 (0.006)
$\Delta ShBlue$	-0.022 (0.072)			0.017 (0.052)		
ShBlue		-0.055** (0.023)	-0.055 (0.036)		-0.094*** (0.020)	-0.035 (0.035)
Observations	3042	3178	1008	3044	3181	1009
$R^2$	0.030	0.044	0.063	0.034	0.053	0.076

Regressions are run over the period 2000-06 except for columns 3 and 6, where the period is 1990-95. The dependent variable is the annual average real growth rate of value added/labor productivity in the two periods.  $\ln(emp)$  is the log of total employment as of 2000. ShBlue is the share of blue-collar workers over the total number of employees as of 2000.  $\Delta ShBlue$  is the average annual change in the share of blue-collar workers between 2000 and 2006. Robust standard errors in parentheses \*\*\*  $p < 0.01$ , \*\*  $p < 0.05$ , \*  $p < 0.1$ .

Table 12: Firm performance and restructuring

	(1)	(2)	(3)	(4)	(5)	(6)	(7)	(8)
	Value added growth				Productivity growth			
$\ln(emp)$	0.017*** (0.005)	0.018*** (0.005)	0.016*** (0.005)	0.016*** (0.005)	0.017*** (0.005)	0.018*** (0.005)	0.016*** (0.005)	0.016*** (0.005)
NEWSTRAT	0.016* (0.009)	0.015* (0.009)			0.013* (0.008)	0.011 (0.007)		
ShBlue		-0.099*** (0.027)		-0.080*** (0.027)		-0.138*** (0.023)		-0.107*** (0.022)
SMALLCH			-0.004 (0.013)	-0.004 (0.013)			0.001 (0.014)	0.001 (0.013)
LARGECH			0.119** (0.050)	0.112** (0.049)			0.066* (0.036)	0.057* (0.032)
Observations	1989	1989	2159	2159	1987	1987	2157	2157
$R^2$	0.043	0.060	0.058	0.067	0.050	0.087	0.060	0.081

The dependent variable is the annual average real growth rate of value added/labor productivity over the period 2000-06.  $\ln(emp)$  is the log of total employment as of 2000. ShBlue is the share of blue-collar workers over the total number of employees as of 2000. NEWSTRAT is a dummy variable equal to 1 if a firm has claimed to have significantly changed its strategy over the 2000-06 period mostly by changing the product menu or investing more resources in product branding, and 0 otherwise. SMALLCH is a dummy variable equal to 1 if a firm's product menu in 2006 results to be slightly (i.e., still falling in a similar sectoral grouping) renewed with respect to what it was in 2000 and 0 otherwise. LARGECH is a dummy variable equal to 1 if a firm's product menu in 2006 results to be significantly (i.e., falling in a different sectoral grouping) renewed with respect to what it was in 2000 and 0 otherwise. Robust standard errors in parentheses \*\*\*  $p < 0.01$ , \*\*  $p < 0.05$ , \*  $p < 0.1$ .

## A Appendix

Table A.1: Classification of NACE sectors into skill, ICT and R&amp;D intensity classes

<b>Sector (NACE code in parenthesis)</b>	<b>Skill content</b>	<b>ICT content</b>	<b>R&amp;D content</b>
Food products and beverages (15)	MEDIUM-LOW	MEDIUM-LOW	LOW
Tobacco products (16)	MEDIUM-HIGH	MEDIUM-LOW	LOW
Textiles (17)	LOW	LOW	LOW
Wearing apparel, dressing (18)	LOW	LOW	LOW
Leather, leather products and footwear (19)	LOW	LOW	LOW
Wood and products of wood and cork (20)	LOW	LOW	LOW
Pulp, paper and paper products (21)	MEDIUM-HIGH	MEDIUM-HIGH	MEDIUM-LOW
Printing, publishing and reproduction (22)	HIGH	MEDIUM-HIGH	MEDIUM-LOW
Coke, refined petroleum products and nuclear fuel (23)	MEDIUM-HIGH	LOW	MEDIUM-HIGH
Chemicals and chemical products (24)	HIGH	MEDIUM-HIGH	HIGH
Rubber and plastics products (25)	MEDIUM-LOW	LOW	MEDIUM-HIGH
Other non-metallic mineral products (26)	LOW	MEDIUM-LOW	MEDIUM-LOW
Basic metals (27)	MEDIUM-LOW	MEDIUM-LOW	MEDIUM-LOW
Fabricated metal products (28)	LOW	MEDIUM-LOW	MEDIUM-LOW
Machinery, n.e.c. (29)	MEDIUM-LOW	HIGH	MEDIUM-HIGH
Office, accounting and computing machinery (30)	HIGH	HIGH	HIGH
Electrical machinery (31)	MEDIUM-HIGH	HIGH	MEDIUM-HIGH
Radio, television and communication equipment (32)	HIGH	HIGH	HIGH
Medical, precision and optical instruments (33)	HIGH	HIGH	HIGH
Motor vehicles, trailers and semi-trailers (34)	MEDIUM-HIGH	MEDIUM-HIGH	MEDIUM-HIGH
Other transport equipment (35)	MEDIUM-HIGH	MEDIUM-HIGH	HIGH
Manufacturing n.e.c.; recycling (36, 37)	MEDIUM-LOW	MEDIUM-HIGH	not allocated

Source: Based on EU KLEMS data.

Table A.2: Descriptive statistics, dependent variables (percentage points)

Country	Productivity growth			Employment growth		
	mean	median	st. dev.	mean	median	st. dev.
Austria	4.2	3.9	2.3	-1.1	-0.9	2.5
Belgium	2.2	1.9	1.5	-1.4	-1.2	1.9
Denmark	1.9	1.2	2.4	-2.9	-2.4	2.9
Finland	4.5	3.2	4.9	-0.5	-0.4	2.8
France	3.6	2.8	4.2	-1.4	-0.9	2.5
Germany	2.6	1.7	3.2	-1.2	-0.6	1.8
Greece	1.7	0.2	4.8	-1.8	-1.0	2.4
Ireland	7.5	6.0	6.2	-1.2	-0.2	4.3
Italy	0.1	0.1	2.2	-0.4	-0.2	1.5
Luxembourg	2.6	1.9	3.9	-0.5	0.6	3.2
Netherlands	3.1	2.6	2.1	-1.7	-1.2	1.8
Portugal	1.1	0.9	2.1	-1.8	-1.5	1.7
Spain	1.0	0.4	1.3	1.4	1.7	2.6
Sweden	6.6	3.4	10.1	-1.5	-1.3	1.7
United Kingdom	4.4	3.8	2.1	-4.6	-3.5	3.7

Source: Based on EU KLEMS data. Note: manufacturing sector. Average growth across sector, weighted with sectoral employment, calculated over the period 1998-2005.

RECENTLY PUBLISHED “TEMI” (\*)

- N. 690 – *Nonlinearities in the dynamics of the euro area demand for M1*, by Alessandro Calza and Andrea Zaghini (Settembre 2008).
- N. 691 – *Educational choices and the selection process before and after compulsory schooling*, by Sauro Mocetti (Settembre 2008).
- N. 692 – *Investors' risk attitude and risky behavior: a Bayesian approach with imperfect information*, by Stefano Iezzi (Settembre 2008).
- N. 693 – *Competing influence*, by Enrico Sette (Settembre 2008).
- N. 694 – *La relazione tra gettito tributario e quadro macroeconomico in Italia*, by Alberto Locarno and Alessandra Staderini (Dicembre 2008).
- N. 695 – *Immigrant earnings in the Italian labour market*, by Antonio Accetturo and Luigi Infante (Dicembre 2008).
- N. 696 – *Reservation wages: explaining some puzzling regional patterns*, by Paolo Sestito and Eliana Viviano (Dicembre 2008).
- N. 697 – *Technological change and the demand for currency: an analysis with household data*, by Francesco Lippi and Alessandro Secchi (Dicembre 2008).
- N. 698 – *Immigration and crime: an empirical analysis*, by Milo Bianchi, Paolo Buonanno and Paolo Pinotti (Dicembre 2008).
- N. 699 – *Bond risk premia, macroeconomic fundamentals and the exchange rate*, by Marcello Pericoli and Marco Taboga (Gennaio 2009).
- N. 700 – *What determines debt intolerance? The role of political and monetary institutions*, by Raffaella Giordano and Pietro Tommasino (Gennaio 2009).
- N. 701 – *On analysing the world distribution of income*, by Anthony B. Atkinson and Andrea Brandolini (Gennaio 2009).
- N. 702 – *Dropping the books and working off the books*, by Rita Cappariello and Roberta Zizza (Gennaio 2009).
- N. 703 – *Measuring wealth mobility*, by Andrea Neri (Gennaio 2009).
- N. 704 – *Oil and the macroeconomy: a quantitative structural analysis*, by Francesco Lippi and Andrea Nobili (Marzo 2009).
- N. 705 – *The (mis)specification of discrete duration models with unobserved heterogeneity: a Monte Carlo study*, by Cheti Nicoletti and Concetta Rondinelli (Marzo 2009).
- N. 706 – *Macroeconomic effects of grater competition in the service sector: the case of Italy*, by Lorenzo Forni, Andrea Gerali and Massimiliano Pisani (Marzo 2009).
- N. 707 – *What determines the size of bank loans in industrialized countries? The role of government debt*, by Riccardo De Bonis and Massimiliano Stacchini (Marzo 2009).
- N. 708 – *Trend inflation, Taylor principle and indeterminacy*, by Guido Ascari and Tiziano Ropele (May 2009).
- N. 709 – *Politicians at work. The private returns and social costs of political connection*, by Federico Cingano and Paolo Pinotti (May 2009).
- N. 710 – *Gradualism, transparency and the improved operational framework: a look at the overnight volatility transmission*, by Silvio Colarossi and Andrea Zaghini (May 2009).
- N. 711 – *The topology of the interbank market: developments in Italy since 1990*, by Carmela Iazzetta and Michele Manna (May 2009).
- N. 712 – *Bank risk and monetary policy*, by Yener Altunbas, Leonardo Gambacorta and David Marqués-Ibáñez (May 2009).
- N. 713 – *Composite indicators for monetary analysis*, by Andrea Nobili (May 2009).

---

(\*) Requests for copies should be sent to:  
 Banca d'Italia – Servizio Studi di struttura economica e finanziaria – Divisione Biblioteca e Archivio storico – Via Nazionale, 91 – 00184 Rome – (fax 0039 06 47922059). They are available on the Internet [www.bancaditalia.it](http://www.bancaditalia.it).



2006

- F. Busetti, *Tests of seasonal integration and cointegration in multivariate unobserved component models*, Journal of Applied Econometrics, Vol. 21, 4, pp. 419-438, **TD No. 476 (June 2003)**.
- C. Biancotti, *A polarization of inequality? The distribution of national Gini coefficients 1970-1996*, Journal of Economic Inequality, Vol. 4, 1, pp. 1-32, **TD No. 487 (March 2004)**.
- L. Cannari and S. Chiri, *La bilancia dei pagamenti di parte corrente Nord-Sud (1998-2000)*, in L. Cannari, F. Panetta (a cura di), *Il sistema finanziario e il Mezzogiorno: squilibri strutturali e divari finanziari*, Bari, Cacucci, **TD No. 490 (March 2004)**.
- M. Bofondi and G. Gobbi, *Information barriers to entry into credit markets*, Review of Finance, Vol. 10, 1, pp. 39-67, **TD No. 509 (July 2004)**.
- W. Fuchs and Lippi F., *Monetary union with voluntary participation*, Review of Economic Studies, Vol. 73, pp. 437-457 **TD No. 512 (July 2004)**.
- E. Gaiotti and A. Secchi, *Is there a cost channel of monetary transmission? An investigation into the pricing behaviour of 2000 firms*, Journal of Money, Credit and Banking, Vol. 38, 8, pp. 2013-2038 **TD No. 525 (December 2004)**.
- A. Brandolini, P. Cipollone and E. Viviano, *Does the ILO definition capture all unemployment?*, Journal of the European Economic Association, Vol. 4, 1, pp. 153-179, **TD No. 529 (December 2004)**.
- A. Brandolini, L. Cannari, G. D'Alessio and I. Faiella, *Household wealth distribution in Italy in the 1990s*, in E. N. Wolff (ed.) *International Perspectives on Household Wealth*, Cheltenham, Edward Elgar, **TD No. 530 (December 2004)**.
- P. Del Giovane and R. Sabbatini, *Perceived and measured inflation after the launch of the Euro: Explaining the gap in Italy*, Giornale degli economisti e annali di economia, Vol. 65, 2, pp. 155-192, **TD No. 532 (December 2004)**.
- M. Caruso, *Monetary policy impulses, local output and the transmission mechanism*, Giornale degli economisti e annali di economia, Vol. 65, 1, pp. 1-30, **TD No. 537 (December 2004)**.
- L. Guiso and M. Paiella, *The role of risk aversion in predicting individual behavior*, In P. A. Chiappori e C. Gollier (eds.) *Competitive Failures in Insurance Markets: Theory and Policy Implications*, Monaco, CESifo, **TD No. 546 (February 2005)**.
- G. M. Tomat, *Prices product differentiation and quality measurement: A comparison between hedonic and matched model methods*, Research in Economics, Vol. 60, 1, pp. 54-68, **TD No. 547 (February 2005)**.
- L. Guiso, M. Paiella and I. Visco, *Do capital gains affect consumption? Estimates of wealth effects from Italian household's behavior*, in L. Klein (ed), *Long Run Growth and Short Run Stabilization: Essays in Memory of Albert Ando (1929-2002)*, Cheltenham, Elgar, **TD No. 555 (June 2005)**.
- F. Busetti, S. Fabiani and A. Harvey, *Convergence of prices and rates of inflation*, Oxford Bulletin of Economics and Statistics, Vol. 68, 1, pp. 863-878, **TD No. 575 (February 2006)**.
- M. Caruso, *Stock market fluctuations and money demand in Italy, 1913 - 2003*, Economic Notes, Vol. 35, 1, pp. 1-47, **TD No. 576 (February 2006)**.
- R. Bronzini and G. De Blasio, *Evaluating the impact of investment incentives: The case of Italy's Law 488/92*. Journal of Urban Economics, Vol. 60, 2, pp. 327-349, **TD No. 582 (March 2006)**.
- R. Bronzini and G. De Blasio, *Una valutazione degli incentivi pubblici agli investimenti*, Rivista Italiana degli Economisti, Vol. 11, 3, pp. 331-362, **TD No. 582 (March 2006)**.
- A. Di Cesare, *Do market-based indicators anticipate rating agencies? Evidence for international banks*, Economic Notes, Vol. 35, pp. 121-150, **TD No. 593 (May 2006)**.
- R. Golinelli and S. Momigliano, *Real-time determinants of fiscal policies in the euro area*, Journal of Policy Modeling, Vol. 28, 9, pp. 943-964, **TD No. 609 (December 2006)**.

- S. SIVIERO and D. TERLIZZESE, *Macroeconomic forecasting: Debunking a few old wives' tales*, Journal of Business Cycle Measurement and Analysis, v. 3, 3, pp. 287-316, **TD No. 395 (February 2001)**.
- S. MAGRI, *Italian households' debt: The participation to the debt market and the size of the loan*, Empirical Economics, v. 33, 3, pp. 401-426, **TD No. 454 (October 2002)**.
- L. CASOLARO and G. GOBBI, *Information technology and productivity changes in the banking industry*, Economic Notes, Vol. 36, 1, pp. 43-76, **TD No. 489 (March 2004)**.
- G. FERRERO, *Monetary policy, learning and the speed of convergence*, Journal of Economic Dynamics and Control, v. 31, 9, pp. 3006-3041, **TD No. 499 (June 2004)**.
- M. PAIELLA, *Does wealth affect consumption? Evidence for Italy*, Journal of Macroeconomics, Vol. 29, 1, pp. 189-205, **TD No. 510 (July 2004)**.
- F. LIPPI and S. NERI, *Information variables for monetary policy in a small structural model of the euro area*, Journal of Monetary Economics, Vol. 54, 4, pp. 1256-1270, **TD No. 511 (July 2004)**.
- A. ANZUINI and A. LEVY, *Monetary policy shocks in the new EU members: A VAR approach*, Applied Economics, Vol. 39, 9, pp. 1147-1161, **TD No. 514 (July 2004)**.
- D. JR. MARCHETTI and F. Nucci, *Pricing behavior and the response of hours to productivity shocks*, Journal of Money Credit and Banking, v. 39, 7, pp. 1587-1611, **TD No. 524 (December 2004)**.
- R. BRONZINI, *FDI Inflows, agglomeration and host country firms' size: Evidence from Italy*, Regional Studies, Vol. 41, 7, pp. 963-978, **TD No. 526 (December 2004)**.
- L. MONTEFORTE, *Aggregation bias in macro models: Does it matter for the euro area?*, Economic Modelling, 24, pp. 236-261, **TD No. 534 (December 2004)**.
- A. NOBILI, *Assessing the predictive power of financial spreads in the euro area: does parameters instability matter?*, Empirical Economics, Vol. 31, 1, pp. 177-195, **TD No. 544 (February 2005)**.
- A. DALMAZZO and G. DE BLASIO, *Production and consumption externalities of human capital: An empirical study for Italy*, Journal of Population Economics, Vol. 20, 2, pp. 359-382, **TD No. 554 (June 2005)**.
- M. BUGAMELLI and R. TEDESCHI, *Le strategie di prezzo delle imprese esportatrici italiane*, Politica Economica, v. 23, 3, pp. 321-350, **TD No. 563 (November 2005)**.
- L. GAMBACORTA and S. IANNOTTI, *Are there asymmetries in the response of bank interest rates to monetary shocks?*, Applied Economics, v. 39, 19, pp. 2503-2517, **TD No. 566 (November 2005)**.
- P. ANGELINI and F. LIPPI, *Did prices really soar after the euro cash changeover? Evidence from ATM withdrawals*, International Journal of Central Banking, Vol. 3, 4, pp. 1-22, **TD No. 581 (March 2006)**.
- A. LOCARNO, *Imperfect knowledge, adaptive learning and the bias against activist monetary policies*, International Journal of Central Banking, v. 3, 3, pp. 47-85, **TD No. 590 (May 2006)**.
- F. LOTTI and J. MARCUCCI, *Revisiting the empirical evidence on firms' money demand*, Journal of Economics and Business, Vol. 59, 1, pp. 51-73, **TD No. 595 (May 2006)**.
- P. CIPOLLONE and A. ROSOLIA, *Social interactions in high school: Lessons from an earthquake*, American Economic Review, Vol. 97, 3, pp. 948-965, **TD No. 596 (September 2006)**.
- L. DEDOLA and S. NERI, *What does a technology shock do? A VAR analysis with model-based sign restrictions*, Journal of Monetary Economics, Vol. 54, 2, pp. 512-549, **TD No. 607 (December 2006)**.
- F. VERGARA CAFFARELLI, *Merge and compete: strategic incentives for vertical integration*, Rivista di politica economica, v. 97, 9-10, serie 3, pp. 203-243, **TD No. 608 (December 2006)**.
- A. BRANDOLINI, *Measurement of income distribution in supranational entities: The case of the European Union*, in S. P. Jenkins e J. Micklewright (eds.), *Inequality and Poverty Re-examined*, Oxford, Oxford University Press, **TD No. 623 (April 2007)**.
- M. PAIELLA, *The foregone gains of incomplete portfolios*, Review of Financial Studies, Vol. 20, 5, pp. 1623-1646, **TD No. 625 (April 2007)**.
- K. BEHRENS, A. R. LAMORGESE, G.I.P. OTTAVIANO and T. TABUCHI, *Changes in transport and non transport costs: local vs. global impacts in a spatial network*, Regional Science and Urban Economics, Vol. 37, 6, pp. 625-648, **TD No. 628 (April 2007)**.
- M. BUGAMELLI, *Prezzi delle esportazioni, qualità dei prodotti e caratteristiche di impresa: analisi su un campione di imprese italiane*, v. 34, 3, pp. 71-103, *Economia e Politica Industriale*, **TD No. 634 (June 2007)**.
- G. ASCARI and T. ROPELE, *Optimal monetary policy under low trend inflation*, Journal of Monetary Economics, v. 54, 8, pp. 2568-2583, **TD No. 647 (November 2007)**.

- R. GIORDANO, S. MOMIGLIANO, S. NERI and R. PEROTTI, *The Effects of Fiscal Policy in Italy: Evidence from a VAR Model*, European Journal of Political Economy, Vol. 23, 3, pp. 707-733, **TD No. 656 (January 2008)**.
- B. ROFFIA and A. ZAGHINI, *Excess money growth and inflation dynamics*, International Finance, v. 10, 3, pp. 241-280, **TD No. 657 (January 2008)**.
- G. BARBIERI, P. CIPOLLONE and P. SESTITO, *Labour market for teachers: demographic characteristics and allocative mechanisms*, Giornale degli economisti e annali di economia, v. 66, 3, pp. 335-373, **TD No. 672 (June 2008)**.
- E. BREDA, R. CAPPARIELLO and R. ZIZZA, *Vertical specialisation in Europe: evidence from the import content of exports*, Rivista di politica economica, numero monografico, **TD No. 682 (August 2008)**.

2008

- P. ANGELINI, *Liquidity and announcement effects in the euro area*, Giornale degli Economisti e Annali di Economia, v. 67, 1, pp. 1-20, **TD No. 451 (October 2002)**.
- P. ANGELINI, P. DEL GIOVANE, S. SIVIERO and D. TERLIZZESE, *Monetary policy in a monetary union: What role for regional information?*, International Journal of Central Banking, v. 4, 3, pp. 1-28, **TD No. 457 (December 2002)**.
- F. SCHIVARDI and R. TORRINI, *Identifying the effects of firing restrictions through size-contingent Differences in regulation*, Labour Economics, v. 15, 3, pp. 482-511, **TD No. 504 (June 2004)**.
- L. GUIISO and M. PAIELLA, *Risk aversion, wealth and background risk*, Journal of the European Economic Association, v. 6, 6, pp. 1109-1150, **TD No. 483 (September 2003)**.
- C. BIANCOTTI, G. D'ALESSIO and A. NERI, *Measurement errors in the Bank of Italy's survey of household income and wealth*, Review of Income and Wealth, v. 54, 3, pp. 466-493, **TD No. 520 (October 2004)**.
- S. MOMIGLIANO, J. HENRY and P. HERNÁNDEZ DE COS, *The impact of government budget on prices: Evidence from macroeconomic models*, Journal of Policy Modelling, v. 30, 1, pp. 123-143 **TD No. 523 (October 2004)**.
- L. GAMBACORTA, *How do banks set interest rates?*, European Economic Review, v. 52, 5, pp. 792-819, **TD No. 542 (February 2005)**.
- P. ANGELINI and A. GENERALE, *On the evolution of firm size distributions*, American Economic Review, v. 98, 1, pp. 426-438, **TD No. 549 (June 2005)**.
- R. FELICI and M. PAGNINI, *Distance, bank heterogeneity and entry in local banking markets*, The Journal of Industrial Economics, v. 56, 3, pp. 500-534, **No. 557 (June 2005)**.
- S. DI ADDARIO and E. PATACCHINI, *Wages and the city. Evidence from Italy*, Labour Economics, v.15, 5, pp. 1040-1061, **TD No. 570 (January 2006)**.
- M. PERICOLI and M. TABOGA, *Canonical term-structure models with observable factors and the dynamics of bond risk premia*, Journal of Money, Credit and Banking, v. 40, 7, pp. 1471-88, **TD No. 580 (February 2006)**.
- E. VIVIANO, *Entry regulations and labour market outcomes. Evidence from the Italian retail trade sector*, Labour Economics, v. 15, 6, pp. 1200-1222, **TD No. 594 (May 2006)**.
- S. FEDERICO and G. A. MINERVA, *Outward FDI and local employment growth in Italy*, Review of World Economics, Journal of Money, Credit and Banking, v. 144, 2, pp. 295-324, **TD No. 613 (February 2007)**.
- F. Busetti and A. HARVEY, *Testing for trend*, Econometric Theory, v. 24, 1, pp. 72-87, **TD No. 614 (February 2007)**.
- V. CESTARI, P. DEL GIOVANE and C. ROSSI-ARNAUD, *Memory for prices and the Euro cash changeover: an analysis for cinema prices in Italy*, In P. Del Giovane e R. Sabbatini (eds.), The Euro Inflation and Consumers' Perceptions. Lessons from Italy, Berlin-Heidelberg, Springer, **TD No. 619 (February 2007)**.
- B. H. HALL, F. LOTTI and J. MAIRESSE, *Employment, innovation and productivity: evidence from Italian manufacturing microdata*, Industrial and Corporate Change, v. 17, 4, pp. 813-839, **TD No. 622 (April 2007)**.

- J. SOUSA and A. ZAGHINI, *Monetary policy shocks in the Euro Area and global liquidity spillovers*, International Journal of Finance and Economics, v.13, 3, pp. 205-218, **TD No. 629 (June 2007)**.
- M. DEL GATTO, GIANMARCO I. P. OTTAVIANO and M. PAGNINI, *Openness to trade and industry cost dispersion: Evidence from a panel of Italian firms*, Journal of Regional Science, v. 48, 1, pp. 97-129, **TD No. 635 (June 2007)**.
- P. DEL GIOVANE, S. FABIANI and R. SABBATINI, *What's behind "inflation perceptions"? A survey-based analysis of Italian consumers*, in P. Del Giovane e R. Sabbatini (eds.), *The Euro Inflation and Consumers' Perceptions. Lessons from Italy*, Berlin-Heidelberg, Springer, **TD No. 655 (January 2008)**.
- B. BORTOLOTTI, and P. PINOTTI, *Delayed privatization*, Public Choice, v. 136, 3-4, pp. 331-351, **TD No. 663 (April 2008)**.
- R. BONCI and F. COLUMBA, *Monetary policy effects: New evidence from the Italian flow of funds*, Applied Economics, v. 40, 21, pp. 2803-2818, **TD No. 678 (June 2008)**.
- M. CUCCULELLI, and G. MICUCCI, *Family Succession and firm performance: evidence from Italian family firms*, Journal of Corporate Finance, v. 14, 1, pp. 17-31, **TD No. 680 (June 2008)**.
- A. SILVESTRINI and D. VEREDAS, *Temporal aggregation of univariate and multivariate time series models: a survey*, Journal of Economic Surveys, v. 22, 3, pp. 458-497, **TD No. 685 (August 2008)**.

2009

- S. MAGRI, *The financing of small innovative firms: the Italian case*, Economics of Innovation and New Technology, v. 18, 2, pp. 181-204, **TD No. 640 (September 2007)**.
- S. MAGRI, *The financing of small entrepreneurs in Italy*, Annals of Finance, v. 5, 3-4, pp. 397-419, **TD No. 640 (September 2007)**.
- R. GOLINELLI and S. MOMIGLIANO, *The Cyclical Reaction of Fiscal Policies in the Euro Area. A Critical Survey of Empirical Research*, Fiscal Studies, v. 30, 1, pp. 39-72, **TD No. 654 (January 2008)**.
- L. ARCIERO, C. BIANCOTTI, L. D'AURIZIO and C. IMPENNA, *Exploring agent-based methods for the analysis of payment systems: A crisis model for StarLogo TNG*, Journal of Artificial Societies and Social Simulation, v. 12, 1, **TD No. 686 (August 2008)**.
- A. CALZA and A. ZAGHINI, *Nonlinearities in the dynamics of the euro area demand for M1*, Macroeconomic Dynamics, v. 13, 1, pp. 1-19, **TD No. 690 (September 2008)**.
- L. FRANCESCO and A. SECCHI, *Technological change and the households' demand for currency*, Journal of Monetary Economics, v. 56, 2, pp. 222-230, **TD No. 697 (December 2008)**.

FORTHCOMING

- L. MONTEFORTE and S. SIVIERO, *The Economic Consequences of Euro Area Modelling Shortcuts*, Applied Economics, **TD No. 458 (December 2002)**.
- M. BUGAMELLI and A. ROSOLIA, *Produttività e concorrenza estera*, Rivista di politica economica, **TD No. 578 (February 2006)**.
- M. PERICOLI and M. SBRACIA, *The CAPM and the risk appetite index: theoretical differences, empirical similarities, and implementation problems*, International Finance, **TD No. 586 (March 2006)**.
- R. BRONZINI and P. PISELLI, *Determinants of long-run regional productivity with geographical spillovers: the role of R&D, human capital and public infrastructure*, Regional Science and Urban Economics, **TD No. 597 (September 2006)**.
- E. IOSSA and G. PALUMBO, *Over-optimism and lender liability in the consumer credit market*, Oxford Economic Papers, **TD No. 598 (September 2006)**.
- U. ALBERTAZZI and L. GAMBACORTA, *Bank profitability and the business cycle*, Journal of Financial Stability, **TD No. 601 (September 2006)**.
- A. CIARLONE, P. PISELLI and G. TREBESCHI, *Emerging Markets' Spreads and Global Financial Conditions*, Journal of International Financial Markets, Institutions & Money, **TD No. 637 (June 2007)**.

- V. DI GIACINTO and G. MICUCCI, *The producer service sector in Italy: long-term growth and its local determinants*, Spatial Economic Analysis, **TD No. 643 (September 2007)**.
- L. FORNI, L. MONTEFORTE and L. SESSA, *The general equilibrium effects of fiscal policy: Estimates for the euro area*, Journal of Public Economics, **TD No. 652 (November 2007)**.
- Y. ALTUNBAS, L. GAMBACORTA and D. MARQUÉS, *Securitisation and the bank lending channel*, European Economic Review, **TD No. 653 (November 2007)**.
- P. DEL GIOVANE, S. FABIANI and R. SABBATINI, *What's behind "Inflation Perceptions"? A survey-based analysis of Italian consumers*, Giornale degli Economisti e Annali di Economia, **TD No. 655 (January 2008)**.
- A. ACCETTURO, *Agglomeration and growth: the effects of commuting costs*, Papers in Regional Science, **TD No. 688 (September 2008)**.
- L. FORNI, A. GERALI and M. PISANI, *Macroeconomic effects of greater competition in the service sector: the case of Italy*, Macroeconomic Dynamics, **TD No. 706 (March 2009)**.