



Centre for International  
Economic Studies

Discussion Paper  
No. 1003

**Global Distortions to Agricultural Markets:  
New Indicators of Trade and Welfare Impacts,  
1960 to 2007**

**Peter J. Lloyd, Johanna Croser and Kym Anderson**

**January 2010**

**University of Adelaide  
Adelaide 5005 Australia**

## **CENTRE FOR INTERNATIONAL ECONOMIC STUDIES**

The Centre was established in 1989 by the Economics Department of the Adelaide University to strengthen teaching and research in the field of international economics and closely related disciplines. Its specific objectives are:

- to promote individual and group research by scholars within and outside the Adelaide University
- to strengthen undergraduate and post-graduate education in this field
- to provide shorter training programs in Australia and elsewhere
- to conduct seminars, workshops and conferences for academics and for the wider community
- to publish and promote research results
- to provide specialised consulting services
- to improve public understanding of international economic issues, especially among policy makers and shapers

Both theoretical and empirical, policy-oriented studies are emphasised, with a particular focus on developments within, or of relevance to, the Asia-Pacific region. The Centre's Acting Director is Dr Ernesto Valenzuela ([ernesto.valenzuela@adelaide.edu.au](mailto:ernesto.valenzuela@adelaide.edu.au)).

Further details are available from:

CIES  
School of Economics  
Adelaide University  
SA 5005 AUSTRALIA  
Telephone: (+61 8) 8303 5672  
Facsimile: (+61 8) 8223 1460  
Email: [cies@adelaide.edu.au](mailto:cies@adelaide.edu.au)

Most publications can be downloaded from our Home page:  
<http://www.adelaide.edu.au/cies/>

ISSN 1444-4534 series, electronic publication

# **Global Distortions to Agricultural Markets: New Indicators of Trade and Welfare Impacts, 1960 to 2007**

**Peter J. Lloyd**

University of Melbourne  
[pjlloyd@unimelb.edu.au](mailto:pjlloyd@unimelb.edu.au)

**Johanna Croser**

University of Adelaide  
[johlou@gmail.com](mailto:johlou@gmail.com)

and

**Kym Anderson**

University of Adelaide  
[kym.anderson@adelaide.edu.au](mailto:kym.anderson@adelaide.edu.au)

January 2010

This is a product of a World Bank research project on Distortions to Agricultural Incentives (see [www.worldbank.org/agdistortions](http://www.worldbank.org/agdistortions)). The authors are grateful for invaluable help with data compilation by Esteban Jara, Marianne Kurzweil, Signe Nelgen and Ernesto Valenzuela, and for helpful comments from the referees. Funding from World Bank Trust Funds provided by the governments of the Netherlands (BNPP) and the United Kingdom DfID), and from the Australian Research Council, is gratefully acknowledged. Views expressed are the authors' alone and not necessarily those of the World Bank. Forthcoming in the *Review of Development Economics* 14(2), May 2010.

# **Global Distortions to Agricultural Markets: New Indicators of Trade and Welfare Impacts, 1960 to 2007**

## **Abstract**

Despite recent reforms, world agricultural markets remain highly distorted by government policies. Traditional indicators of those price distortions such as producer and consumer support estimates (PSEs and CSEs) can be poor guides to the policies' economic effects. Recent theoretical literature provides scalar index numbers of trade- and welfare-reducing effects of price and trade policies which this paper builds on to develop more-satisfactory indexes that can be generated using no more than the data used to generate PSEs and CSEs. We then exploit a new Agricultural Distortion database to provide time series estimates of index numbers for 75 developing and high-income countries over the past half century.

**Key words:** Agricultural policies, distorted commodity markets, trade restrictiveness index

**JEL classifications:** F13, F14, Q17, Q18

**Author contact:**

Kym Anderson  
School of Economics  
University of Adelaide  
Adelaide SA 5005 Australia  
Phone +61 8303 4712  
Fax +61 8223 1460  
kym.anderson@adelaide.edu.au

# Global Distortions to Agricultural Markets: New Indicators of Trade and Welfare Impacts, 1960 to 2007

## 1. Introduction

Despite reforms over the past quarter-century, world agricultural markets remain highly distorted, and international trade in farm products has grown much slower than trade in non-farm goods.<sup>1</sup> Traditional indicators such as the nominal rate of tariff protection from import competition understate the degree of distortion if there are other border taxes or subsidies or quantitative restrictions, and even more so if there are also domestic producer or consumer taxes or subsidies on farm products. Better indicators are provided by the producer and consumer support estimates (PSEs and CSEs) of the OECD (2008) based on domestic to border price comparisons for high-income countries, and by the World Bank's new comparable estimates of nominal rates of assistance and consumer tax equivalents (NRAs and CTEs) for both high-income and developing countries as summarized by Anderson (2009).<sup>2</sup> Those estimates can be used in national and global computable general equilibrium models to provide an indication of the true trade and welfare effects of such distortionary policies. However, such models typically are calibrated only for a recent (or not-so-recent) year, and so are incapable of providing estimates of trends over time; and they are not yet available for many smaller and poorer economies.

There is thus a need for better indicators over time of the trade- and welfare-reducing effects of price-distorting policies than the existing weighted average NRA/CTE (or PSE/CSE)

---

<sup>1</sup> Based on a sample of 75 countries comprising more than 90% of global agriculture and 95% of the world's economy, Anderson (2009) estimates that the share of global production of agricultural goods that is exported has increased from 11% in the 1960s and 1970s to just 16% in 1990-2004. When intra-EU trade is excluded, agriculture's share of global production exported was just 8% in 2004, compared with 31% for other primary products and 25% for all other goods, according to the GTAP Version 7 database ([www.gtap.org](http://www.gtap.org)).

<sup>2</sup> The main difference between the PSE/CSE and NRA/CTE concepts is that the former are expressed as a percentage of the distorted price whereas the latter are a percentage of the undistorted price (and the CSE has the opposite sign to the CTE). The NRA and CTE values are identical if the only government interventions are at a country's border (such as a tariff on imports). In the case of agriculture, however, typically there are some domestic production or consumption taxes or subsidies also in place, so the NRA often differs from the CTE.

estimates for the farm sector of a country. The key reason is that the process of generating those weighted averages can hide the fact that distortions vary across industries within the sector. This is especially problematic in cases where some industry NRAs are negative, as when trade taxes apply also to exports or when dual exchange rates operate. In those cases the sectoral mean NRA may be close to zero even though the trade- and welfare-reducing effects of the sector's interventions could be substantial. Further, the sectoral mean NRA may be the same in two countries and yet, if the variance of the NRA across industries within that sector is greater in one country, so too will be the welfare cost of its policies for that sector.

Recent theoretical literature provides partial equilibrium indicators of the trade- and welfare-reducing effects of import policies that belong to a family of indexes under the catch-all name of trade restrictiveness indexes. The purpose of this paper is to draw on that literature in order to develop indexes to capture national, regional and global distortions to sectoral incentives that are based directly on national estimates of individual product NRAs and CTEs. We then exploit the Agricultural Distortion database recently compiled by the World Bank to generate a time series of estimates of consistent indexes for the agricultural sector for both developing and high-income countries over the past half century. The World Bank global panel dataset, compiled by Anderson and Valenzuela (2008), contains comparable estimates of annual NRAs and CTEs for a wide range of agricultural products (covering around 70 percent of national agricultural production) for around 75 countries that together account for all but one-tenth of the world's population, GDP and agricultural output. Applying our indexes to these new data takes us much closer to understanding the true trade and welfare effects of farm policies without needing a detailed economy wide model.

These better approximations of the trade and welfare effects of sectoral policies are generated with simplifying assumptions about price elasticities that mean we need no more than the same price and quantity data compiled to generate traditional indicators of price distortions such as the NRA and CTE. By assuming domestic price elasticities of supply are equal across commodities within a country, and likewise for elasticities of demand, the formula simplifies to a share-weighted function with shares of production and consumption as weights. This is the main contribution of this paper: to demonstrate how better indicators of sectoral policy distortions can be generated by policy analysts using a simple, elegant and theoretically meaningful methodology and no more data than simpler widely-used indicators. Our aim with these new

measures is not to produce a substitute for detailed results from economy wide or sectoral models, but rather to provide better stand-alone indicators of the trade- and welfare-distorting effects of policies than are currently being generated with price and quantity data. Since these new indicators avoid having to select a pair of price elasticity estimates for each product of each country, they could be attractive and politically uncontroversial supplements to the current policy monitoring indicators generated by multilateral institutions such as the OECD and WTO.

The remainder of the paper is structured as follows. After a brief literature review the following section presents the theory for estimating trade- and welfare-reduction indexes in the import-competing sub-sector. This is then extended to cover the exportables sub-sector. The World Bank's Agricultural Distortions database is then discussed, followed by presentations of the trade- and welfare-reduction indexes for all 75 countries studied in the Agricultural Distortions project and for key geographic regions and the world as a whole. We also decompose the contributions of individual countries and commodities to the global welfare reduction index. Some concluding observations including caveats and directions for further research complete the paper.

## **2. The recent literature**

There is a growing theoretical literature that identifies ways to measure the trade- and welfare-reducing effects of international trade policy in scalar index numbers. This literature serves a key purpose: it overcomes aggregation problems (across different intervention measures and across industries) by using a theoretically sound aggregation procedure to answer precise questions regarding the trade or welfare reductions imposed by each country's trade policies. The literature has developed considerably over the past two decades, particularly with the theoretical advances by Anderson and Neary (summarized in and extended beyond their 2005 book) and the partial equilibrium simplifications by Feenstra (1995).

Notwithstanding these advances, few consistently estimated indexes have yet been estimated across time, and even fewer across countries. A prominent exception is the work of Kee, Nicita and Olarreaga (2008, 2009) who, following the approach of Feenstra, estimate a series for developing and developed countries. However, those authors provide estimates only

for a snapshot in time (the mid-2000s) and based only on import barriers.<sup>3</sup> Most other studies have been country specific, such as an application by Anderson, Bannister and Neary (1995) to Mexican agriculture in the late 1980s.

The indicators we estimate are well grounded in the theory of trade restrictiveness indexes first developed by Anderson and Neary (2005). Specifically, we define two indexes, and coin terms for them that are precise descriptors. The names we provide are a trade reduction index (TRI) and a welfare reduction index (WRI).<sup>4</sup> The TRI and WRI are computed from sub-indexes of the production and consumption sides of the market, which are derived from NRA and CTE estimates, respectively, across product groups. NRAs to producers and CTEs to consumers are required whenever there are domestic subsidies or taxes on production or consumption in addition to border measures – as so often is the case for foods and other farm products. Thus the indexes we estimate capture the aggregate trade- and welfare-reducing effects of all policies directly affecting consumer and producer prices of farm products from all sectoral price-distorting policy measures in place.<sup>5</sup>

### **3. Defining the welfare and trade reduction indexes**

The initial theoretical work by Anderson and Neary, leading to their 2005 book, sought to derive a general equilibrium measure of the welfare-reducing effects of trade restrictions in a country's import-competing sector. They call this the Trade Restrictiveness Index. The work is important in that it solved the problem of how to aggregate assistance across commodities in a theoretically meaningful way. They do so for a small, open economy in which imports are restricted by tariffs and non-tariff measures (NTMs). They then provide variants of the Trade

---

<sup>3</sup> Those estimates, which rely mostly on reported tariff rates but include also estimated tariff equivalents of some non-tariff import measures, have been reported in the World Bank's *Global Monitoring Report* (e.g., World Bank 2008, pp. 121-23). The present estimates, by contrast, rely on domestic to border price comparisons for each product and so directly capture the effects of all border measures as well as domestic behind-the-border price subsidies or taxes.

<sup>4</sup> Our WRI measure is the Anderson and Neary (2005) trade restrictiveness index, and our TRI measure is their mercantilist trade restrictiveness index, with an extension to allow for differences between the NRA and the CTE rates for each good.

<sup>5</sup> It should be kept in mind that these are partial equilibrium measures: relations of substitutability and complementarity between pairs of goods are all set to zero, and the indirect effects of policy measures applying to non-agricultural sectors are ignored. Also, we assume there are no externalities or market failures, hence no divergences between private and social marginal costs and benefits, including from such things as underinvestment in public goods.



Restrictiveness Index, including one based not on a welfare criterion but instead on an import volume criterion, which they call the Mercantilist Trade Restrictiveness Index.

We develop versions of each of those two indexes for situations where, in addition to import measures, there may be also export measures and/or direct domestic producer and consumer price distortions resulting from behind-the-border measures.<sup>6</sup> While these versions are less general than the Anderson and Neary indexes, in that they are partial rather than general equilibrium measures, they have the important advantage (particularly for agriculture) of being more comprehensive in terms of policy instrument coverage. Here they are developed first for agriculture's import-competing sub-sector and then for its exporting sub-sector.

### *The import-competing sub-sector*

We take a particular country and assume it has a small open economy in which all markets are competitive. However, the market for an import good may be distorted by a tariff and/or other non-tariff border measures and/or behind-the-border measures such as domestic subsidies and price controls. An example is depicted in Figure 1.

[INSERT Figure 1 here]

We first measure the effect of a country's distortions on its import volume, the TRI. This is defined as the uniform tariff rate which, if applied to all goods in the place of all actual border and behind-the-border price distortions, would result in the same reduction in the volume of imports (summed across products by valuing them at the undistorted border price) as the actual distortions.

Consider the market for one good, good  $i$ , which is distorted by a combination of measures that distort its consumer and producer prices. For the producers of the good, the distorted domestic producer price,  $p_i^P$ , is related to the border price,  $p_i^*$ , by the relation,  $p_i^P = p_i^*(1 + s_i)$  where  $s_i$  is the rate of distortion of the producer price in proportional terms. For the consumers of the good, the distorted domestic consumer price,  $p_i^C$ , is related to the border price by the relation,  $p_i^C = p_i^*(1 + r_i)$  where  $r_i$  is the rate of distortion of the consumer price in

---

<sup>6</sup> Anderson and Neary (2005, Ch. 12) deal with the theory of domestic distortions in a general equilibrium model, but not in the simplifying partial equilibrium format used here.

proportional terms. In general,  $r_i \neq s_i$ . Using these relations, the change in the value of imports in the market for good  $i$  is given by:<sup>7</sup>

$$\begin{aligned}\Delta M_i &= p_i^* \Delta x_i - p_i^* \Delta y_i \\ &= p_i^{*2} dx_i / dp_i^C r_i - p_i^{*2} dy_i / dp_i^P s_i\end{aligned}\quad (1)$$

where the quantities of good  $i$  demanded and supplied,  $x_i$  and  $y_i$ , are functions just of their own domestic price:  $x_i = x_i(p_i^C)$  and  $y_i = y_i(p_i^P)$ . (The neglect of cross-price effects, among other things, is what makes the analysis partial equilibrium.)

Strictly speaking, this result holds only for small distortions. In reality rates of distortion may not be small. If, however, the demand and supply functions are linear over the relevant price range, the effect on imports is given by equation (1) with constant slopes of the demand and supply curves in Figure 1 ( $dx_i / dp_i^C$  and  $dy_i / dp_i^P$ , respectively). If the functions are not linear, this expression provides an approximation to the loss.

With  $n$  importable goods subject to different levels of distortions, the aggregate reduction in imports, in the absence of cross-price effects in all markets, is given by:

$$\Delta M = \sum_{i=1}^n p_i^{*2} dx_i / dp_i^C r_i - \sum_{i=1}^n p_i^{*2} dy_i / dp_i^P s_i \quad (2)$$

Setting the result equal to the reduction in imports from a uniform tariff,  $T$ , we have

$$\sum_{i=1}^n p_i^{*2} dx_i / dp_i^C r_i - \sum_{i=1}^n p_i^{*2} dy_i / dp_i^P s_i = \sum_{i=1}^n p_i^{*2} dm_i / dp_i T$$

Solving for  $T$ , we get

$$T = \{Ra + Sb\} \quad (3a)$$

$$\text{where } R = \left[ \sum_{i=1}^n r_i u_i \right] \quad \text{with } u_i = p_i^{*2} dx_i / dp_i^C / \sum_i p_i^{*2} dx_i / dp_i^C, \quad (3b)$$

$$S = \left[ \sum_{i=1}^n s_i v_i \right] \quad \text{with } v_i = p_i^{*2} dy_i / dp_i^P / \sum_i p_i^{*2} dy_i / dp_i^P, \quad \text{and} \quad (3c)$$

$$a = \sum_i p_i^{*2} dx_i / dp_i^C / \sum_i p_i^{*2} dm_i / dp_i \quad \text{and} \quad b = -\sum_i p_i^{*2} dy_i / dp_i^P / \sum_i p_i^{*2} dm_i / dp_i \quad (3d)$$

---

<sup>7</sup> If the demand and supply curves happened to be linear, this would be the sum of the areas of the two shaded rectangles in Figure 1.

$R$  and  $S$  are indices of average consumer and producer price distortions. They are arithmetic means. In the empirical section below, these are based respectively on Consumer Tax Equivalents (CTEs) and Nominal Rates of Assistance (NRAs) of various farm products.

Evidently, the uniform tariff  $T$  can be written as a weighted average of the level of distortions of consumer and producer prices. An important advantage of using this decomposition of the index into producer and consumer effects is that it treats correctly the effects of NTMs and domestic distortions that affect the two sides of the market differently.

In equation 3c (equation 3b), the weights for each commodity are proportional to the marginal response of domestic production (consumption) to changes in international free-trade prices. These weights can be written as, among other things, functions of the domestic price elasticities (at the protected trade situation) of supply and demand ( $\sigma_i$  and  $\rho_i$ , respectively):<sup>8</sup>

$$(5) \quad u_i = \rho_i (p_i^* x_i) / \sum_i^n \rho_i (p_i^* x_i) \quad \text{and} \quad v_i = \sigma_i (p_i^* y_i) / \sum_i^n \sigma_i (p_i^* y_i) \quad (4)$$

From a practical viewpoint, the next two steps are key to the contribution of this paper. In the first step, if one is willing to assume domestic price elasticities of supply (demand) are equal across commodities — as is implicitly done when calculating the weighted average NRA (CTE) across industries within a sector or sub-sector — then the elasticities in the numerator and denominator of equation 4 cancel. This powerful simplifying assumption allows us (in the empirical section below) to find  $R$  ( $S$ ) simply by aggregating the change in consumer (producer) prices across commodities and using as weights the sectoral share of each commodity's domestic value of consumption (production) at undistorted prices. That is, with this elasticity assumption,  $R$  and  $S$  are attainable with the same information as used to estimate the CTE and NRA – but they provide a better indication of the trade-distorting effect of those producer or consumer price measures.

The second step involves the weights  $a$  and  $b$  (equation 3d), which are required in addition to  $R$  and  $S$  for estimating  $T$  in equation 3a. The weight  $a$  ( $b$ ) is proportional to the ratio of the marginal response of domestic demand (supply) to a price change relative to the marginal

---

<sup>8</sup> These expressions can also be written as functions of, among other things, the domestic price elasticities at the free trade points.

response of imports to a price change. If we assume the marginal responses of supply and demand to a price change are the same in aggregate for this country, then  $a=b=0.5$ .<sup>9</sup>

With this additional elasticity assumption about the sector's aggregate supply and demand responsiveness to price changes, our methodology is capable of readily providing the net trade-distortion index T as supplement to the traditional NRA/CTE (or PSE/CSE) indicators of agricultural policy distortions. Ideally policy analysts would incorporate elasticity estimates where available but, where they are not available, these three indicators (R, S and T) are nonetheless superior to the existing widely-used agricultural policy measures of trade distortions.

As a special case, if  $r_i = s_i$  for all  $i$ , that is, if tariff rates are the only distortion, equation (3) reduces to a much simpler form:

$$T = \sum_{i=1}^n t_i w_i \quad w_i = \varepsilon_i^* (p_i^* m_i^*) / \sum_i \varepsilon_i^* (p_i^* m_i^*) \quad (5)$$

Here  $t_i$  is the ad valorem tariff rate, which is equal to the rate of distortion of both consumer and producer prices, and  $\varepsilon_i^*$  is the elasticity of import demand at the free trade point. T is the mean of the tariff rates. This case can be used to obtain an alternative expression for the general case. But one must be careful, as this alternative form requires computing an import-equivalent tariff rate for each tariff item when there is some distortion other than an ad valorem tariff. (The Appendix in Lloyd, Croser and Anderson (2009) derives the import-equivalent tariff and the alternative expression.)

Now we turn to the measure of the effect of a country's distortions on its economic welfare, the WRI. The derivation follows the same steps as in the derivation of the TRI. This leads to a simple comparison of the two indexes.

The distortions in the market for good  $i$  create a welfare loss,  $L_i$ . This loss is given by the sum of the change in producer plus consumer surplus net of the tariff revenue. This loss of producer and consumer surplus is given by:<sup>10</sup>

$$L_i = \frac{1}{2} \{ (p_i^* s_i)^2 dy_i / dp_i^P - (p_i^* r_i)^2 dx_i / dp_i^C \} \quad (6)$$

<sup>9</sup> If the aggregate demand and supply curves are linear, this would equate to an assumption that the aggregate demand and supply curves have the same slope, so that each side of the market contributes equally to the country-specific TRI.

<sup>10</sup> If the demand and supply curves happened to be linear, this would be the areas of the two triangles  $jcd$  and  $gfe$  in Figure 1.

where the quantities of good  $i$  demanded and supplied,  $x_i$  and  $y_i$ , are again functions of own domestic price alone.

Strictly speaking, this result too holds only for small distortions. With non-trivial rates of distortion, the welfare losses are defined by the triangular-shaped areas under the demand and supply curves for the good. These areas can be obtained by integration. On the assumption that the demand and supply functions are linear as in Figure 1, the welfare loss is again given by equation (6) with  $dx_i / dp_i^C$  and  $dy_i / dp_i^P$  being constant. If the functions are not linear, this expression provides an approximation to the loss.

In the special case where  $r_i = s_i = t_i$ , the expression reduces to

$$L_i = -\frac{1}{2}(p_i^* t_i)^2 dx_i / dp_i \quad (7)$$

Equation (7) yields the fundamental result that the loss from a tariff is proportional to the square of the tariff rate. This holds because the tariff rate determines both the price adjustment and the quantity response to this adjustment.<sup>11</sup> If  $r_i \neq s_i$ , as is frequently true in agricultural markets, the expression in equation (6) yields the result that the consumer and the producer losses are each proportional to the square of the rate of distortion of the consumer or producer price, respectively.

With  $n$  importable goods subject to different levels of distortions, the aggregate welfare loss, in the absence of cross-price effects in all markets, is given by:

$$L = \frac{1}{2} \left\{ \sum_{i=1}^n (p_i^* s_i)^2 dy_i / dp_i^P - \sum_{i=1}^n (p_i^* r_i)^2 dx_i / dp_i^C \right\} \quad (8)$$

The uniform tariff rate,  $W$ , that generates an aggregate deadweight loss identical with that of the differentiated set of tariffs is determined by the following equation:

$$\sum_{i=1}^n (p_i^* s_i)^2 dy_i / dp_i^P - \sum_{i=1}^n (p_i^* r_i)^2 dx_i / dp_i^C = -\sum_{i=1}^n (p_i^* W)^2 dm_i / dp_i \quad (9)$$

$W$  is thus the uniform tariff which, if applied to all goods in the place of all actual tariffs and NTMs and other distortions, would result in the same aggregate loss of welfare as the actual distortions. Solving for  $W$ , we have:

$$W = \{R'^2 a + S'^2 b\}^{1/2} \quad (10a)$$

---

<sup>11</sup> This insight is usually attributed to Harberger (1959). In fact, it was discovered by Dupuit (1844), more than 100 years before Harberger, while analysing the welfare loss resulting from commodity taxation. In his words, “the loss of utility increases as the square of the tax” (Dupuit 1844, p. 281). Dupuit’s contribution to welfare analysis is considered in Humphrey (1992).

$$\text{where } R' = [\sum_{i=1}^n r_i^2 u_i]^{\frac{1}{2}} \quad (10b)$$

$$S' = [\sum_{i=1}^n s_i^2 v_i]^{\frac{1}{2}} \quad (10c)$$

with  $u_i$ ,  $v_i$ ,  $a$  and  $b$  as defined for equation 3 above.  $W$  is the desired Welfare Reduction Index, while  $R'$  and  $S'$  are the contributions to  $W$  from consumer and producer price distortions, respectively. They, like their appropriately weighted average  $W$ , are means of order two. As with the index  $T$ , we can deal with, and analyse, the production and consumption sides of the sector separately. That is,  $R'$  and  $S'$  are attainable with the same information as used to estimate the CTE and NRA given the earlier price elasticity assumption – but they provide a better indication of the welfare-distorting effect of the traditional consumer or producer price measures.

In equations 3 and 10, the weights in the construction of  $R'$ ,  $S'$  and  $W$  are the same as the weights for  $R$ ,  $S$  and  $T$  except that, in the case of the TRI, arithmetic means of order one are constructed whereas in the case of the WRI they are means of order two.<sup>12</sup> This difference is due to the fact that the losses of import volume in each market are all proportional to the distortion rate whereas the losses of welfare are proportional to the squares of the distortions rates (compare equation 1 with equation 6). The tariff rate enters only once in the determination of the import loss, as the base of the rectangles in Figure 1, whereas the tariff rate enters twice in the determination of the welfare loss, once in the base and once in the height of the triangles  $jcd$  and  $gfe$  in Figure 1.

In the special case where  $r_i = s_i = t_i$  for all  $i$ , equation 10 reduces to a much simpler form:

$$W = [\sum_{i=1}^n (t_i)^2 w_i]^{1/2} \quad w_i = \varepsilon_i^*(p_i^* m_i^*) / \sum_i \varepsilon_i^*(p_i^* m_i^*) \quad (11)$$

Further, if we assume that the elasticities of import demand for the various products are all equal, the weights are the share of imports of each good in total imports. This case can be used to obtain an alternative expression of the general case of the WRI. This is done in the Appendix in Lloyd, Croser and Anderson (2009).

---

<sup>12</sup> Anderson and Neary (2005, p. 21) note that the expressions for their measures of trade restriction and welfare reduction use the same weights too.

### *Adding the exportables sub-sector*

The indexes can each be extended to include the exportables sub-sector. An export subsidy in the exportable sub-sector reduces welfare in the same way as an import tax in the import-competing sub-sector, but it increases trade whereas the import tariff reduces trade. For this reason, it is necessary to keep track of import and export price distortions separately, for both producers and consumers, for the purpose of estimating the full welfare and trade reduction indexes. In essence, this extension is done by extending the commodity set and keeping separate track of the subsets of import-competing and exportable goods.

The WRI for the whole tradables sector can be written as an expansion of equation 10 in which goods 1 to  $n$  are import-competing products and goods  $n+1$  to  $z$  are exportables:

$$W = \{(R'_M \omega_{PM} + R'_X \omega_{PX})a + (S'_M \omega_{CM} + S'_X \omega_{CX})b\}^{1/2} \quad (12a)$$

where the  $\omega$  values are shares of the value of production (consumption) imported or exported as defined by:

$$\text{where } \omega_{PX} = \frac{\sum_{i=n+1}^z y_i P_i}{\sum_{i=1}^z y_i P_i}, \quad \omega_{PM} = \frac{\sum_{i=1}^n y_i P_i}{\sum_{i=1}^z y_i P_i}, \quad \omega_{CX} = \frac{\sum_{i=n+1}^z x_i P_i}{\sum_{i=1}^z x_i P_i}, \quad \omega_{CM} = \frac{\sum_{i=1}^n x_i P_i}{\sum_{i=1}^z x_i P_i} \quad (12b)$$

It can be seen that when including both import-competing and exportable sub-sectors, we continue to first aggregate for producers and consumers separately, where the weights for each sub-sector are the share of the sub-sectors' value of production (consumption) in the total value of production (consumption). Producer and consumer distortions are aggregated in the last step with the assumption that each of the two sides of the economy contributes equally to the overall WRI.

The resulting measure can be regarded as the import tax/export subsidy which, if applied uniformly to all products in the sector, would give the same loss of welfare as the combination of measures distorting consumer and producer prices in the import-competing and exportable sub-sectors.

The TRI can be similarly decomposed as follows:

$$T = (R_M \omega_{PM} + R_X \omega_{PX})a + (S_M \omega_{CM} + S_X \omega_{CX})b \quad (13)$$

where  $\omega$ ,  $a$  and  $b$  are as already defined,  $R_M$  and  $S_M$  are  $R$  and  $S$  from equation 3b and 3c, and

$$R_X = \left[ \sum_{i=1+n}^z -r_i u_i \right] \text{ and } S_X = \left[ \sum_{i=1+n}^z -s_i v_i \right]. \quad (14)$$

The aggregates in equation (14) are the weighted average levels of distortions to consumer and producer prices in the exportables sub-sector, respectively, with weights  $u_i$  and  $v_i$  given in equation 3b and 3c. Importantly, distortions to the exportables sub-sector enter equation 14 as negative values. This is because whilst a lowering of  $r_i$  (the distortion of the consumer price of good  $i$ ) or  $s_i$  (the distortion of the producer price of good  $i$ ) in the import-competing sub-sector reduces the trade reduction index, a lowering of  $r_i$  or  $s_i$  in the exportables sub-sector increases it.

These extensions of the TRI and the WRI for the exportables sub-sector have precisely the same properties as the indexes for the import-competing sector.

#### 4. World Bank's Agricultural Distortions database

The database generated by the World Bank's Agricultural Distortions project compiled by Anderson and Valenzuela (2008), using a methodology summarized in Anderson et al. (2008), provides a timely opportunity to estimate a time series of national, regional and global welfare and trade reduction indexes. The database contains consistent estimates of annual NRAs to the agricultural sector and the same number of CTEs for 75 countries over a time period between 1955 and 2007. The series contains data at the commodity level, for a sub-set of agricultural products (called covered products) that account for around 70% of total agricultural production in the focus countries, which in turn account for 92% of global agricultural GDP. Aggregate NRAs and CTEs for various sectors and sub-sectors (including import-competing and exporting sub-sectors) are estimated, using as weights the values of production and consumption, respectively, at undistorted prices.

The range of measures included in the Agricultural Distortions database NRA estimates is wide. By calculating domestic-to-border price ratios the estimates include assistance provided by all tariff and non-tariff trade measures, plus any domestic price-distorting measures (positive or negative), plus an adjustment for the output-price equivalent of direct interventions on inputs. Where multiple exchange rates operate, an estimate of the import or export tax equivalents of that distortion are included as well. The range of measures included



in the CTE estimates include both domestic consumer taxes/subsidies plus trade and exchange rate policies, all of which drive a wedge between the price that consumers pay for each commodity and the international price at the country's border.

The most aggregated summaries of NRA and CTE estimates for covered products for developing and high-income countries are presented in Tables 1 and 2. These support the widely held views that developing country governments had in place agricultural policies that effectively taxed their farmers through to the 1980s, and that the extent of those disincentives has lessened since then. The extent of taxation was of the order of 15+% from the early 1960s to the mid-1980s. Since then it has not only diminished but, on average, has become slightly positive. Table 1 also supports the view that the growth of agricultural protection in high-income countries has been going on since the 1950s, and began to reverse only in the latter 1980s. It is clear from Table 2 that consumers have experienced changes similar to producers in recent years. In developing countries, taxation was negative (i.e. consumer subsidization was positive) for most of the last 50 years. This has lessened since the 1990s. In high-income countries, the implicit taxation of consumers from agricultural support rose until the early 1990s but has fallen since then.

[INSERT Tables 1 and 2 here]

Tables 1 and 2 also show the trends in NRAs and CTEs, respectively, for four closely studied regions: Africa, Asia, Latin America and Europe's transition economies. On the production side, Africa is where there has been least tendency to reduce the taxing of farmers and subsidizing of consumers of farm products. Indeed its average NRA has been negative in all 5-year periods except in the mid-1980s when international prices of farm products reached an all-time low in real terms. By contrast, for both Asia and Latin America their average NRAs crossed over from negative to positive after the 1980s. And in Europe's transition economies, the nominal assistance to farmers has trended upward following their initial shock in the early 1990s. For consumers in all four regions, agricultural policies have almost always involved some consumer subsidization. Since the 1980s, however, food consumer subsidization in Asia, Latin America and Europe's transition economies has gradually disappeared and is now replaced by a small degree of taxation on average.

Within the farm sector of all regions, the average NRA for the import-competing sub-sector is well above that for the export sector, meaning there is an anti-trade bias in the structure

of distortions. In the case of developing countries where the former NRA is positive and the latter negative, the two tend to offset each other such that the overall sectoral NRA is close to zero. Such a sectoral average can thus be misleading as an indication of the extent of distortion within the sector. It can also be misleading when compared across countries that have varying degrees of dispersion in their NRAs for different farm industries.

## 5. Measures of the welfare and trade reduction indexes

Table 3 reports the TRIs for agricultural import-competing products, exportables, and all covered tradable farm products from 1960 to 2007 for the five main studied regions and for the world as a whole.<sup>13</sup> For developing countries as a group, the trade restrictiveness of agricultural policy was roughly constant or slightly rising until the early 1990s and thereafter it declined, for all regions – Africa, Asia and Latin America. For high-income countries the TRI time path was similar. The aggregate results for developing countries are driven by the exportables sub-sector which is being taxed and the import-competing sub-sector which is being protected (albeit by less than in high-income countries – see Tables 1 and 3). For high-income countries, policies support both exporting and import-competing agricultural products and, even though they favour the latter much more heavily, the assistance to exporters offsets somewhat the anti-trade bias from the protection of import-competing producers in terms of their impacts on those countries' aggregate volume of trade in farm products. This is reflected in much smaller TRIs for high-income countries in the third as compared with the first row for high-income countries in Table 3.

[INSERT Table 3 here]

The TRI correctly aggregates the restrictiveness of sub-sector policies that are masked in aggregate NRA and CTE measures, because they offset one another. Using the example of Africa in 1985-89 when the NRA was closest to zero, the TRI peaks at this time in a way that correctly identifies the trade-reducing effect of positive protection to the import-competing sub-sector and disprotection to the exportables sub-sector.

---

<sup>13</sup> National TRIs and WRIs are aggregated across countries using an average of the value of consumption and production at undistorted prices. National and regional indexes for the 5-year periods are unweighted averages of the annual indexes.

Table 4 reports the WRIs, again for agricultural import-competing products, exportables, and all covered tradable farm products from 1960 to 2007 for the five main studied regions and for the world as a whole. The WRI results for covered products show a similar pattern over the five regions: there is a constant or increasing tendency for policies to reduce welfare from the 1960s to the mid-1980s, but thereafter the opposite occurs in almost all regions. This pattern is generated by different policy regimes in different regions. In high-income countries, agriculture was assisted throughout the period, although it peaked in the 1980s (at around 60%) and thereafter fell. By contrast, in developing countries, agriculture was disprotected until the mid-1980s, and only thereafter did taxation of developing country farmers decline to the point that they received positive assistance by the turn of the century. The first point to note about the WRI, then, is that it has the desirable property of correctly identifying the welfare consequences that result from both positive and negative assistance regimes for the sector.

[INSERT Table 4 here]

A second point to note is that the WRI provides a better indicator of the welfare cost of distortions than the average level of assistance or taxation in the Agricultural Distortions database (NRA and CTE in Tables 1 and 2). Although the latter are a significant contribution in their own right, they can be misleading as a pair of indicators of the extent of the welfare costs of assistance or taxation. This is due to the inclusion in the WRI of the ‘power of two’. That is, a weighted arithmetic mean NRA and CTE does not fully reflect the welfare effects of agricultural distortions because the dispersion of that support or taxation across products has been ignored. By contrast, the WRI captures the higher welfare costs of high and peak levels of assistance or taxation. A good example of this is the WRI for high-income countries: the NRA series for high-income countries is everywhere positive, but the WRI series lies above the NRA series owing to its capturing of the dispersion of the NRA. That is, the WRI captures the so-called ‘disparity’ issue discussed in Lloyd (1974): the larger the variance in assistance levels within a sector, the greater the potential for resources to be used in activities which do not maximize economic welfare.

A third point to note is that the WRI and its two components — unlike the arithmetic mean measures of assistance/taxation (the NRA and CTE) — reflect the true welfare cost of agricultural policies when they have offsetting components. This can be seen most clearly for

the case of Africa where, in the latter half of 1980s, it was still taxing exportables but had moved (temporarily) from low to very high positive levels of protection for import-competing farm products (Table 1). In 1985-89 the weighted average NRA for African import-competing and exporting farmers was close to zero, yet the WRI for Africa peaks in that time period. That is, while at the aggregate level African farmers received almost no government assistance then, the welfare cost of the mixture of agricultural programs as a whole was at its highest.

The TRI generally shows greater variance than the WRI series. This is because the TRI measure is sensitive to switches from negative to positive rates of assistance. For example, a move from -30 to +30% rates of assistance would have little or no effect on the welfare consequences of the policy, but it could have a significant effect on trade restrictiveness: net imports of farm products would be greater when the NRA is negative than when it is positive, *ceteris paribus*.

What can be said about agricultural distortions in the world as a whole? The fact that NRAs for high-income and developing countries diverged (in opposite ways) away from zero in the first half of the period under study, and then converged toward zero in the most recent quarter-century, meant that their weighted average NRA traced out a fairly flat trend for the world, with a dip in the early 1980s. By contrast, Figure 2 shows the WRI and TRI for the world as a whole tracing out a hill-shaped path and thus providing less misleading indicators of the evolving disarray in world agricultural markets. Figure 2 suggests that the global welfare cost of distortions has been much higher than implied by the NRA, but more so in earlier decades than in the current one. Both the WRI and TRI for the world suggest that the disarray in world agricultural markets was slightly less by the early 2000s than it was in the early 1960s.

[INSERT Figure 2 here]

Which countries or commodities contributed most to the decline in the WRI since the latter 1980s? Overall, the global WRI fell by nearly half from 1985–89 to 2000–04 (46%, whether measured in percentage terms or constant US dollars).<sup>14</sup> Table 5 reports the

---

<sup>14</sup> To measure the global WRI in constant US dollars, we sum the national WRIs in constant dollars of all countries (obtained by multiplying the country WRIs in percentage terms by the average of the national value of production and consumption in constant 2000 \$US, measured at undistorted prices). The fall in the WRI in constant dollar terms could be greater than the fall in the WRI in percentage terms if there was a real increase in the value of global agricultural production over time. Both our percentage and constant dollar falls in the WRI are 46%, indicating that the real value of global agriculture was stable over the period analysed.

decomposition of this fall by region, country and agricultural commodity. At a regional level, the fall was due mostly to decreases in the welfare restrictiveness of policies in high-income countries and Asia. High-income countries contributed over half of the change in the WRI, and Asia more than one-third (last column of Table 5). The higher agricultural output value of high-income countries meant that even though the change in the WRI for Asia was greater at 58%, as compared to 42% for high-income countries, the latter still contributed the most to the global WRI reduction. In high-income countries, the period under analysis was a time of moving some product-specific assistance to decoupled assistance. This potentially explains some of the fall in covered product assistance over the time period. As noted below, one area for further research would be to decompose the WRI by policy instrument, which would shed light on this aspect of the results. Among the Asian developing countries, China (and to a much lesser extent India) contributed most significantly to the reduction in the global WRI, in line with the pursuit of other economic reforms. Some countries contributed to an increase in the global WRI, such as Korea, but their contributions are not listed in Table 5 if they were less than 2% of the overall global change. The bottom part of Table 5 shows that milk, rice and the horticultural sub-sector were the most significant contributors by product to the decline in the WRI globally over the time period shown, accounting for around 70% of the total reduction, with meat accounting for another one-sixth.<sup>15</sup>

[INSERT Table 5 here]

## 6. Concluding comments

This paper contributes to the theoretical and empirical literature on trade and welfare reduction indexes. On the theory side, it develops a method of calculating the TRI and WRI directly from estimates of the rates of distortion of producer and consumer prices. The Appendix in Lloyd, Croser and Anderson (2009) shows that these calculations of the TRI and the WRI are equivalent to an alternative method using, for each good, a calculation of the trade-equivalent and the welfare-equivalent rates of trade taxation. The main contribution of the theoretical component of the paper is to demonstrate that policy analysts can estimate national, regional

---

<sup>15</sup> To compute the commodity contributions, we first work at the national level to obtain the constant dollar contribution of each commodity to the respective national WRIs. We then sum these contributions in constant dollar terms across all countries for each commodity.

and global measures of distortions to agricultural markets that are superior to and yet use the same data as existing indicators, provided one is willing to make some simplifying assumptions about price elasticities. Furthermore, changes over time in the global indexes can be decomposed to reveal underlying contributions by country and commodity.

Empirically, the paper's contribution is to apply the methodology to generate time series of indexes for agricultural goods that are well-grounded in trade theory, account for different forms of price distortions, and can be decomposed into their component producer assistance and consumer tax measures. These indexes – full details of which have been made freely available by Anderson and Croser (2009) for all 75 developing and developed countries over the past half-century – are useful supplements to aggregate NRAs and CTEs (and the PSEs and CSEs generated by the OECD) for monitoring national policy developments and making cross-country comparisons. They also provide better global indicators of the trade and welfare effects of food and agricultural price and trade policies, given that developing and high-income countries' NRAs or CTEs have tended in the past to offset each other. Current TRIs could be also useful for trade negotiators seeking trading partner 'concessions' that are equal in terms of trade expansion.

Both the WRI and TRI for the world as a whole trace out a hill-shaped path between 1960 and 2004, suggesting that the disarray in world agricultural markets worsened in the first half of that period but has improved considerably since then such that there are slightly less distortions now than in the early 1960s. Our decomposition underscores the importance of China in reducing global welfare distortions from agricultural policies since the 1980s, but the European Union and Japan have also contributed non-trivially to a fall in the global WRI over the past quarter-century.

Methodologically it would not be difficult to re-calculate the WRIs and TRIs that include actual own-price elasticity of supply and demand estimates once reliable commodity-specific estimates for each country become available.<sup>16</sup> Kee, Nicita and Olarreaga (2009)

---

<sup>16</sup> It is not clear, a priori, what the effect is of this simplifying assumption, because the effects across markets and on the consumption and production sides of the economy could offset each other. However, relaxing the assumption would entail a move to 'marginal welfare weights', instead of production or consumption share weights when estimating the producer or consumer components of the indexes, respectively. The additional assumption that a country's sectoral aggregate elasticities of supply and demand are equal (i.e.  $a=b=0.5$ ) turns out empirically to matter very little because our data are such that estimates of the production and consumption distortion indexes are similar in magnitude (reflecting the fact that the vast majority of distortions come from border measures). Sensitivity analysis undertaken to test the importance of the assumption that  $a$  equals  $b$  confirmed that expectation: by assuming

provide a methodology for estimating trade elasticities, so that may be able to be adapted to the agricultural distortions case. Further complexity could be added by including cross-price elasticities, although for agriculture the available estimates suggest that, apart from a few obvious exceptions, these are very low. One example is provided by Tyers and Anderson (1992, Appendix Tables A2 to A4).

In the meantime, we believe the transparency of the method in this paper, notwithstanding its simplifying elasticity assumption, has the potential to add significant value to many policy analyses. In developing countries especially, where input-output tables and associated CGE models are scarce or inaccurate and yet time series indicators of welfare and trade reducing effects of policies are desired for monitoring purposes, our approach could prove to be a very useful and low-cost substitute for such modeling.

An extension to this work could involve using the same methodology to construct index numbers of distortions not from the perspective of a single country but rather from a global view of individual commodity markets. A related extension could be to drill down to further understand the trends in the WRI and TRI presented above. We have decomposed the results to a regional, country and commodity level, but the NRA and CTE measures underlying the WRI and TRI are themselves derived from prices and different policy instruments. The relative contribution of international price movements, and of different instruments, could improve our understanding of the history of food and agriculture policies and provide more insights for on-going national policy dialogues and future rounds of agricultural trade negotiations.

## References

- Anderson, James E., Geoffrey J. Bannister and J. Peter Neary, “Domestic Distortions and International Trade”, *International Economics Review*, 36(1995): 139–57.
- Anderson, James E. and J. Peter Neary, *Measuring the Restrictiveness of International Trade Policy*, Cambridge MA: MIT Press, 2005.

---

instead that  $a$  is half or twice as large as  $b$ , the estimated regional TRIs and WRIs were altered by less than one-twentieth.

- Anderson, Kym (ed.), *Distortions to Agricultural Incentives: A Global Perspective, 1955-2007*, London: Palgrave Macmillan and Washington DC: World Bank, 2009.
- Anderson, Kym and Johanna L. Croser, “National and Global Agricultural Trade and Welfare Reduction Indexes, 1955 to 2007”, World Bank, Washington DC, available from April 2009 on the Database page at [www.worldbank.org/agdistortions](http://www.worldbank.org/agdistortions).
- Anderson, Kym, Marianne Kurzweil, Will Martin, Damiano Sandri and Ernesto Valenzuela, “Measuring Distortions to Agricultural Incentives, Revisited”, *World Trade Review* 7(2008): 1-30, October.
- Anderson, Kym and Ernesto Valenzuela, *Estimates of Global Distortions to Agricultural Incentives, 1955 to 2007*, core database at [www.worldbank.org/agdistortions](http://www.worldbank.org/agdistortions), 2008.
- Dupuit, Jules, “On the Measurement of Utility of Public Works”, *Annals des Ponts et Chaussées*, 2<sup>nd</sup> series, Vol. 8, 1844.
- Feenstra, Robert C., “Estimating the Effects of Trade Policy” in Gene N. Grossman and Ken Rogoff (eds), *Handbook of International Economics, Vol. 3*, Amsterdam: Elsevier, 1995.
- Harberger, Arnold C., “Using the Resources at Hand More Effectively”, *American Economic Review* 49(1959): 134-46, May.
- Humphrey, Thomas M., “Marshallian Cross Diagrams and Their Uses Before Alfred Marshall: the Origins of Demand and Supply Geometry”, *Economic Review*, Federal Reserve Bank of Richmond, Richmond VA, 1992.
- Kee, Hiau Looi, Alessandro Nicita and Marcelo Olearraga, “Import Demand Elasticities and Trade Distortions”, *Review of Economics and Statistics* 90(2008): 666-82, November.
- Kee, Hiau Looi, Alessandro Nicita and Marcelo Olearraga, “Estimating Trade Restrictiveness Indexes”, *Economic Journal* 119(2009): 172-99, January.
- Lloyd, Peter J., “A More General Theory of Price Distortions in an Open Economy”, *Journal of International Economics* 4(1974): 365-86, November.
- Lloyd, Peter J., Johanna Croser and Kym Anderson, "Global Distortions to Agricultural Markets: New Indicators of Trade and Welfare Impacts, 1960 to 2007", Working Paper 2009-13, School of Economics, University of Adelaide, Adelaide, October 2009, at <http://webdev.economics.adelaide.edu.au/research/papers/>



OECD, PSE-CSE Database (Producer and Consumer Support Estimates, OECD Database 1986–2007), Organisation for Economic Co-operation and Development, 2008.

[www.oecd.org/document/55/0,3343,en\\_2649\\_33727\\_36956855\\_1\\_1\\_1\\_1,00.html](http://www.oecd.org/document/55/0,3343,en_2649_33727_36956855_1_1_1_1,00.html)

Tyers, Rod and Kym Anderson, *Disarray in World Food Markets: A Quantitative Assessment*, Cambridge and New York: Cambridge University Press, 1992.

World Bank, *Global Monitoring Report 2008*, Washington DC: World Bank, 2008.

	1960-64	1965-69	1970-74	1975-79	1980-84	1985-89	1990-94	1995-99	2000-04	2005-07
<b>Covered import-competing products</b>										
Africa	12	4	-7	8	8	65	2	7	3	na
Asia	4	34	26	31	21	45	28	28	35	na
Latin America	20	3	-4	2	10	4	17	9	19	na
All developing countries	11	26	17	23	17	39	22	22	28	na
Europe's transition economies <sup>b</sup>	na	na	na	na	na	na	31	34	34	30
High-income countries	54	59	42	56	70	84	73	64	60	31
World	48	50	37	46	46	66	51	43	44	na
<b>Covered exportables</b>										
Africa	-31	-39	-44	-45	-36	-36	-39	-26	-28	na
Asia	-13	-26	-20	-25	-44	-39	-19	-4	0	na
Latin America	-23	-17	-30	-26	-27	-24	-9	-3	-4	na
All developing countries	-25	-29	-29	-30	-40	-37	-19	-5	-3	na
Europe's transition economies <sup>b</sup>	na	na	na	na	na	na	-4	-1	0	15
High-income countries	4	10	8	7	8	17	13	6	5	3
World	-2	-4	-7	-11	-24	-21	-8	-1	0	na
<b>All covered farm products (incl. nontradables)</b>										
Africa	-13	-18	-22	-20	-12	1	-12	-7	-9	na
Asia	-3	3	0	0	-21	-15	-5	6	10	na
Latin America	-13	-13	-25	-20	-15	-14	1	1	3	na
All developing countries	-9	-5	-9	-8	-20	-13	-5	4	7	na
Europe's transition economies <sup>b</sup>	na	na	na	na	na	na	7	15	15	21
High-income countries	32	39	29	36	43	58	49	36	32	16
World	24	24	15	18	6	16	18	16	16	na
<b>All agriculture (incl. non-covered products)</b>										
Africa	-8	-11	-15	-13	-8	-1	-9	-6	-7	na
Asia	-27	-25	-25	-24	-21	-9	-2	8	12	na
Latin America	-8	-7	-21	-18	-13	-11	4	5	5	na
All developing countries	-23	-22	-24	-22	-18	-8	-2	6	9	na
Europe's transition economies <sup>b</sup>	na	na	na	na	na	na	10	18	18	25
High-income countries	29	35	25	32	41	53	46	35	32	17
World	22	21	13	15	8	17	18	17	18	na

Table 1: Nominal Rates of Assistance,<sup>a</sup> Africa, Asia, Latin America, European Transition Economies and High-income Regions, All Farm Products, 1960 to 2007 (%)

Source: Anderson and Valenzuela (2008)

<sup>a</sup> Weighted using the value of production at undistorted prices.

<sup>b</sup> For Europe's transition economies, estimates start only in 1992.

	1960-64	1965-69	1970-74	1975-79	1980-84	1985-89	1990-94	1995-99	2000-04	2005-07
<b>Import-competing products</b>										
Africa	7	0	-8	7	3	76	5	9	5	na
Asia	1	14	8	24	24	44	32	27	35	na
Latin America	23	11	0	8	4	1	28	11	18	na
All developing countries	6	11	4	18	17	39	29	22	27	na
Europe's transition economies <sup>c</sup>	na	na	na	na	na	na	12	21	31	30
High-income countries	53	56	41	54	65	66	57	55	50	30
World	46	44	32	43	43	55	41	38	39	na
<b>Exportable products</b>										
Africa	-29	-36	-42	-34	-28	-31	-38	-20	-24	na
Asia	-3	-38	-29	-32	-42	-40	-20	-5	0	na
Latin America	-25	-14	-25	-24	-27	-21	-12	1	0	na
All developing countries	-23	-36	-33	-30	-38	-37	-20	-5	-1	na
Europe's transition economies <sup>c</sup>	na	na	na	na	na	na	-6	-4	2	-1
High-income countries	4	11	9	9	6	11	8	-2	-3	0
World	0	-8	-9	-11	-24	-24	-11	-4	-2	na
<b>All covered farm products<sup>b</sup></b>										
Africa	-8	-12	-16	-9	-6	16	-8	0	-3	na
Asia	0	-12	-15	-2	-15	-14	-3	5	10	na
Latin America	-7	-7	-18	-13	-12	-10	13	6	8	na
All developing countries	-5	-12	-16	-5	-14	-10	0	5	8	na
Europe's transition economies <sup>c</sup>	na	na	na	na	na	na	-2	9	17	11
High-income countries	35	42	30	40	45	49	41	32	27	16
World	28	23	14	21	10	15	16	15	16	na

Table 2: Consumer Tax Equivalents<sup>a</sup>, Africa, Asia, Latin America, European Transition Economies and High-income Regions, All Covered Farm Products, 1960 to 2007 (%)

Source: Anderson and Valenzuela (2008)

<sup>a</sup> Weighted using the value of consumption at undistorted prices.

<sup>b</sup> Includes nontradables.

<sup>c</sup> For Europe's transition economies, estimates start only in 1992.

	1960-64	1965-69	1970-74	1975-79	1980-84	1985-89	1990-94	1995-99	2000-04	2005-07
<b>Import-competing products</b>										
Africa	9	2	-7	7	5	71	4	8	4	—
Asia	3	24	17	27	22	45	31	28	36	—
Latin America	22	8	-2	5	7	2	23	10	19	—
All developing countries	8	19	11	21	17	39	26	22	28	—
Europe's transition economies <sup>b</sup>	—	—	—	—	—	—	22	28	33	30
High-income countries	51	56	40	54	68	75	66	60	56	31
World	45	46	33	44	45	61	46	41	42	—
<b>Exportable products</b>										
Africa	30	38	43	39	32	33	38	23	26	—
Asia	9	32	24	28	42	40	20	4	0	—
Latin America	24	15	28	24	26	22	10	1	2	—
All developing countries	23	31	30	29	39	37	20	5	2	—
Europe's transition economies <sup>b</sup>	—	—	—	—	—	—	5	2	-2	-9
High-income countries	-3	-10	-8	-7	-7	-14	-11	-2	-1	-2
World	2	6	8	11	24	22	10	3	1	—
<b>All covered farm tradables</b>										
Africa	21	22	21	26	18	50	18	14	14	—
Asia	7	29	27	28	35	41	23	12	11	—
Latin America	24	14	21	18	19	14	17	5	8	—
All developing countries	17	26	24	26	31	38	22	11	11	—
Europe's transition economies <sup>b</sup>	—	—	—	—	—	—	8	14	14	6
High-income countries	30	33	23	32	40	45	39	33	29	15
World	27	30	23	30	34	41	28	20	18	—

Table 3: Trade Reduction Indexes, Asian, African, Latin American, Europe's Transition Economies and High-income Regions<sup>a</sup>, All Covered Tradable Farm Products, 1960 to 2007 (%)

Source: Authors' calculations based on product NRAs and CTEs in Anderson and Valenzuela (2008).

<sup>a</sup> Regional aggregates are weighted using the average of the value of production and the value of consumption at undistorted prices.

<sup>b</sup> For Europe's transition economies, estimates start only in 1992.

	1960-64	1965-69	1970-74	1975-79	1980-84	1985-89	1990-94	1995-99	2000-04	2005-07
<b>Import-competing products</b>										
Africa	59	52	53	47	51	98	43	32	30	—
Asia	36	45	46	50	48	62	48	44	48	—
Latin America	54	34	27	37	47	40	46	26	32	—
All developing countries	47	45	45	47	48	62	48	40	43	—
Europe's transition economies <sup>b</sup>	—	—	—	—	—	—	60	44	45	43
High-income countries	77	85	69	99	106	123	102	91	87	50
World	72	75	64	84	81	100	78	65	65	—
<b>Exportable products</b>										
Africa	37	44	48	49	48	55	58	41	40	—
Asia	24	43	34	34	48	45	24	10	7	—
Latin America	28	22	36	32	36	33	29	12	15	—
All developing countries	31	39	38	36	46	44	27	11	10	—
Europe's transition economies <sup>b</sup>	—	—	—	—	—	—	37	33	31	42
High-income countries	11	19	15	12	11	25	22	11	11	10
World	15	26	25	24	34	39	26	13	12	—
<b>All covered farm tradables</b>										
Africa	51	51	52	49	50	80	52	37	36	—
Asia	32	45	44	45	50	51	33	23	21	—
Latin America	37	26	36	35	42	37	39	18	22	—
All developing countries	41	43	44	43	48	51	36	23	22	—
Europe's transition economies <sup>b</sup>	—	—	—	—	—	—	47	40	40	44
High-income countries	55	66	54	73	77	95	77	60	58	33
World	53	59	51	62	61	70	54	39	38	—

Table 4: Welfare Reduction Indexes, Asian, African, Latin American, Europe's Transition Economies and High-income Regions<sup>a</sup>, all Covered Tradable Farm Products, 1960 to 2007 (%)

Source: Authors' calculations based on product NRAs and CTEs in Anderson and Valenzuela (2008).

<sup>a</sup> Regional aggregates are weighted using the average of the value of production and the value of consumption at undistorted prices.

<sup>b</sup> For Europe's transition economies, estimates start only in 1992.

	WRI in 1985-89	WRI in 2000-04	% change in WRI (measured in constant dollars), 1985-89 to 2000-04	% contribution to change in global WRI (measured in constant dollars), 1985-89 to 2000-04
<b>All countries/regions<sup>a</sup></b>	<b>70.2</b>	<b>37.7</b>	<b>-45.9</b>	<b>100.0</b>
High-income countries	95.3	57.5	-41.6	55.0
Asia (excl. Japan)	50.7	21.2	-58.0	38.9
Latin America	36.6	21.6	-34.2	3.3
Africa	79.8	35.9	-52.0	5.6
<b>Specific countries:<sup>b</sup></b>				
China	47.9	8.0	-84.5	36.0
EU-15	110.8	50.5	-51.4	29.0
Japan	247.5	213.2	-22.0	9.2
US	34.9	24.9	-30.5	5.4
India	86.7	26.7	-44.9	4.3
Egypt	133.4	21.6	-84.6	3.9
Brazil	39.5	6.7	-83.8	3.8
Canada	89.8	42.0	-55.0	2.9
<b>Specific products globally:<sup>b</sup></b>				
Milk			-66.7	37.4
Fruits and vegetables			-80.0	21.7
Rice			-25.4	12.2
Pigmeat			-74.3	8.6
Wheat			-47.7	4.8
Beef			-28.8	4.7
Barley			-83.1	3.3
Sheepmeat			-87.1	3.0
Sugar			-21.1	2.5

Table 5: Decomposition of the Global Reduction in the Welfare Reduction Index, by Region/country and by Commodity,<sup>a</sup> 1985-89 to 2000-04 (%)

Source: Authors' calculations based on product NRAs and CTEs in Anderson and Valenzuela (2008)

<sup>a</sup> European transition economies are not included as their data are unreliable prior to 1992.

<sup>b</sup> Countries/commodities with a contribution to the decline in the global WRI in the range +2 to -2% are not shown. Some countries and commodities make a negative contribution (though none more than 2%) if their WRI (or share of the global WRI) increases over time, instead of decreasing in line with the overall global reduction. Since we sum across products at the country level to generate the TRI and WRI indexes, there are no estimates to insert in columns 1 and 2.

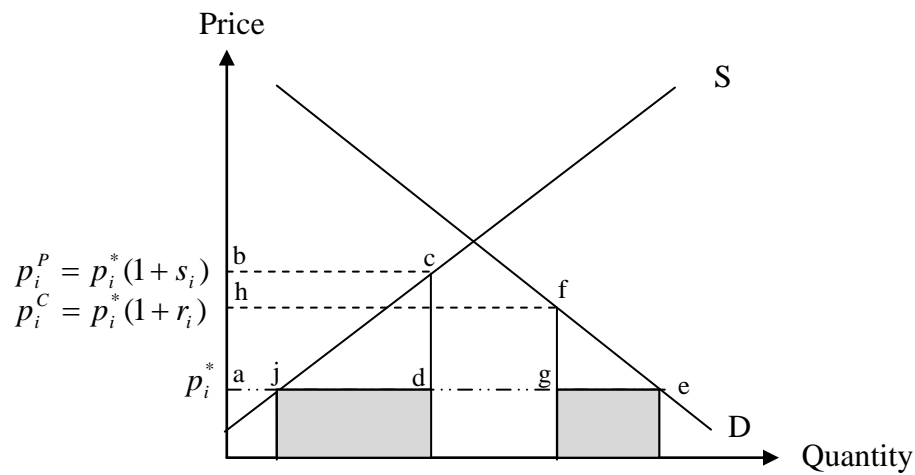


Figure 1: Trade and Welfare Losses for an Import-Competing Product Subjected to Differing Rates of Distortion to Production and Consumption in a Small Open Economy

Source: Authors' depiction.

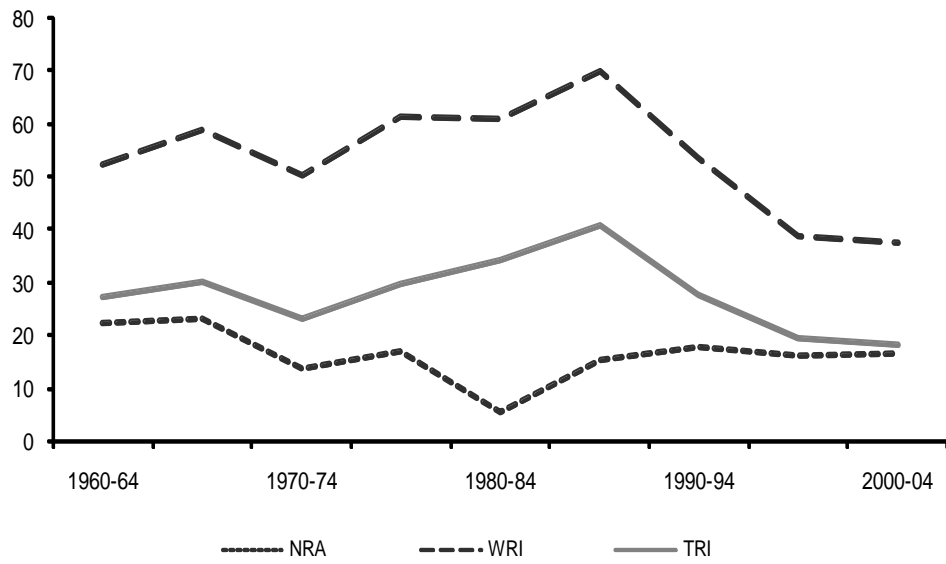


Figure 2: Nominal Rate of Assistance and Trade and Welfare Reduction Indexes for Covered Tradable Farm Products, World, 1960 to 2004 (%)

Source: Authors' calculations based on product NRAs and CTEs in Anderson and Valenzuela (2008).