

Discussion Papers in Economics

# Bertrand Competition with Non-Rigid Capacity Constraints

Prabal Roy Chowdhury

January 2009

Discussion Paper 09-02



Indian Statistical Institute, Delhi  
Planning Unit  
7, S. J. S. Sansanwal Marg, New Delhi 110016, India

# Bertrand Competition with Non-rigid Capacity Constraints

Prabal Roy Chowdhury  
(Indian Statistical Institute)

*Abstract:* We examine a model of Bertrand competition with non-rigid capacity constraints, so that by incurring an additional per unit cost of capacity expansion, firms can produce beyond capacity. We find that there is an interval of prices such that a price can be sustained as a pure strategy Nash equilibrium if and only if it lies in this interval. We then examine the properties of this set as (a) the number of firms becomes large and (b) the capacity cost increases.

*Key words:* Bertrand competition, capacity constraint.

*JEL Classification No.:* D4, L1.

---

**Address for Communication:**

Indian Statistical Institute, Delhi Center,

7 - S.J.S. Sansanwal Marg,

New Delhi - 110016, INDIA.

**e-mail:** prabalrc1@gmail.com

**Fax:** 91-11-41493981.

**Phone:** 91-11-41493930.

# 1 Introduction

We consider price competition between capacity constrained firms. Capacity constraints are not rigid though, and, by incurring an additional per unit cost of capacity expansion, firms can produce beyond capacity. As pointed out by Boccard and Wauthy (2000, 2004), allowing for such non-rigid capacity costs is important and, in their generalization of Kreps and Scheinkman (1983), they explicitly follow this approach.<sup>1</sup> Further, we focus on Bertrand competition, i.e. price competition where firms supply all demand. This framework can be traced back to Chamberlin (1933) and is appropriate when the costs of turning away customers are high (see, for example, Vives (1999)).<sup>2</sup>

We find that there is an interval of prices such that any price in this interval can be sustained as a symmetric Nash equilibrium. Moreover, no other price can be sustained as an equilibrium. We then examine some comparative statics properties of this interval. First, as the number of firms tends to infinity, the set of equilibrium prices converge to a non-degenerate interval. While the competitive price is the lowest price in this set, it contains other prices also. Second, as the cost of capacity expansion increases, the maximal price that is sustainable in equilibrium increases.

Turning to the literature, this paper complements Boccard and Wauthy (2000, 2004), who also examine non-rigid capacity costs, though for the case where firms are free to supply less than the quantity demanded. Another interesting class of models examines capacity constrained firms with rigid capacity where, given prices, firms are willing to supply till capacity. Papers in this framework include, among others, Allen and Hellwig (1986), Dasgupta and Maskin (1986), and Vives (1986). The present paper clearly traces its ancestry to both these streams of the literature.

---

<sup>1</sup>Other papers to allow for non-rigid capacity constraints include Dixit (1980).

<sup>2</sup>The literature on Bertrand competition is a relatively recent one. It includes, among others, Dastidar (1995), Maggi (1996), Novshek and Roy Chowdhury (2003), Ray Chaudhuri (1996), Roy Chowdhury and Sengupta (2004), etc.

## 2 The Model

The market comprises  $n$  ( $\geq 2$ ) identical firms, all producing a single homogeneous good, and having the same cost function,  $C(q)$ . The firms are capacity constrained with a (non-rigid) capacity level of  $k$ . Thus the cost function

$$C(q) = \begin{cases} cq, & \text{if } 0 \leq q \leq k, \\ ck + c'(q - k), & \text{if } q > k, \end{cases}$$

where  $c' > c > 0$  and  $(c' - c)$  represents the per unit cost of capacity expansion. Interestingly the cost function is somewhat non-standard in that it is not only discontinuous at  $q = k > 0$ , but is convexo-concave (i.e. can be approximated by convexo-concave functions).

The market demand function  $f(p)$  satisfies the following assumption.

**Assumption 1.** (i)  $f : [0, \infty) \rightarrow [0, \infty)$  is twice differentiable. Moreover,  $f(p)$  is negatively sloped and weakly concave  $\forall p$  such that  $f(p) > 0$ .

(ii) Also,  $\lim_{p \rightarrow \infty} f(p) < c$ ,  $f^{-1}(0) > c'$  and  $f(c) > k$ .

Assumption 1(ii) ensures that we focus on the case of interest. For ease of exposition, we also assume that  $\frac{f(c')}{n} < k$ .<sup>3</sup>

Let  $D_i(p_1, \dots, p_i, \dots, p_n)$  denote the demand facing firm  $i$  as a function of the announced price vector  $(p_1, \dots, p_i, \dots, p_n)$  so that

$$D_i(p_1, \dots, p_i, \dots, p_n) = \begin{cases} 0, & \text{if } p_i > p_j, \text{ for some } j, \\ \frac{f(p_i)}{m}, & \text{if } p_i \leq p_j, \forall j, \text{ and } \#(l : p_l = p_i) = m. \end{cases}$$

Thus the profit of the  $i$ -th firm

$$\pi_i(p_1, \dots, p_n) = (p_i - AC(D_i(p_1, \dots, p_n)))D_i(p_1, \dots, p_n).$$

We examine a game of Bertrand competition where the firms simultaneously announce their prices and supply all demand. We solve for pure strategy Nash equilibria in prices.

---

<sup>3</sup>As we argue later though, the analysis goes through qualitatively even if  $\frac{f(c')}{n} \geq k$ .

### 3 The Analysis

We begin by characterizing the set of Nash equilibria. Let us introduce some notations.

**Definition.** Let  $\pi(p)$  denote the profit of any firm that undercuts all other firms by charging  $p$ , where  $c \leq p \leq c'$ . Formally,

$$\pi(p) = f(p)p - ck - c'[f(p) - k]. \quad (1)$$

Lemma 1 below summarizes some properties of  $\pi(p)$ . The proofs of all the lemmas are in the Appendix.

**Lemma 1.**

- (i)  $\pi(p)$  is increasing in  $p$ ,  $\forall p \in [c, c']$ .
- (ii)  $\pi(c) = (k - f(c))(c' - c) < 0$  and  $\pi(c') = k(c' - c) > 0$ .

We require another

**Definition.** Let  $\pi(p, n)$  denote the profit of any firm if all firms charge the same price  $p$ , where  $c \leq p \leq c'$ . Thus

$$\pi(p, n) = \begin{cases} \frac{f(p)}{n}(p - c), & \text{if } \frac{f(p)}{n} \leq k, \\ \frac{pf(p)}{n} - ck - c'[\frac{f(p)}{n} - k], & \text{if } \frac{f(p)}{n} > k. \end{cases} \quad (2)$$

In case  $\frac{f(c)}{n} > k$ , let  $\underline{p}$  solve  $\frac{f(\underline{p})}{n} = k$  ( $\underline{p}$  is clearly well defined). We then discuss some properties of  $\pi(p, n)$ .

**Lemma 2.**

- (i)  $\frac{\partial \pi(p, n)}{\partial p} \Big|_{p=c} > 0$ .
- (ii)  $\pi(p, n)$  has a unique maximum and is increasing (respectively decreasing) to the left (respectively right) of this maximal price.
- (iii)  $\pi(c', n) = \frac{f(c')}{n}(c' - c) > 0$ .
- (iv)  $\pi(c, n) = \begin{cases} 0, & \text{if } \frac{f(c)}{n} \leq k, \\ (k - \frac{f(c)}{n})(c' - c) < 0, & \text{if } \frac{f(c)}{n} > k. \end{cases}$

Given Lemmas 1 and 2 we have the following

**Lemma 3.**

- (i)  $\pi(c') > \pi(c', n)$ .
- (ii)  $\pi(c, n) > \pi(c)$ .
- (iii)  $\frac{\partial \pi(p, n)}{\partial p} < \frac{\partial \pi(p)}{\partial p}, \forall p \in [c, c']$ .

Given the preceding lemmas we have the following definitions.

**Definition.** Let  $p''$  be the unique  $p$  that satisfies  $\pi(p, n) = \pi'(p)$ .<sup>4</sup>

Further, from Lemmas 3(i) and 3(ii), we have that  $c < p'' < c'$ .

**Definition.** For  $\frac{f(c)}{n} > k$ ,  $\tilde{p}$  denotes the minimum  $p$  such that  $\pi(p, n) = 0$ .<sup>5</sup>

**Definition.** Finally, let

$$p' = \begin{cases} c, & \text{if } \frac{f(c)}{n} \leq k, \\ \tilde{p}, & \text{otherwise.} \end{cases}$$

The last lemma follows from the preceding discussion.

**Lemma 4.**

- (i)  $\tilde{p}$  solves  $\frac{pf(p)}{n} - ck - c'[\frac{f(p)}{n} - k] = 0$ .
- (ii)  $\tilde{p}(n)$  is decreasing in  $n$ .
- (iii)  $p''(n)$  is decreasing in  $n$ .
- (iv) For all  $p \in [c, c']$ ,  $\pi(p, n) \geq \pi(p)$  if and only if  $p \in [c, p'']$ .

The preceding definitions and lemmas have been conveniently depicted in Figures 1 and 2.

We are now in a position to characterize the set of equilibrium prices. Proposition 1 below demonstrates that there is an interval such that any price in this interval can be sustained as a symmetric Nash equilibrium.

**Proposition 1.** *Let Assumption 1 hold. Any price  $p \in [p', p'']$  can be sustained as a symmetric Nash equilibrium. No other price can be sustained as an equilibrium.*

---

<sup>4</sup>That such a  $p''$  exists follows from Lemmas 3(i) and 3(ii), and the intermediate value theorem. Uniqueness follows from Lemma 3(iii).

<sup>5</sup>From Lemma 2(iii) and 2(iv),  $\tilde{p}$  is well defined.

*Proof:* (a) We first demonstrate that any price  $p \in [p', p'']$  can be sustained as a symmetric equilibrium where all firms charge the price  $p$ .

We argue that no firm can deviate by charging a higher price compared to  $p$ , and gain. From the definition of  $p'$ , all firms make zero profits at  $p'$ . We then argue that  $\pi(p, n) \geq 0$  for all  $p \in [c, p'']$ . Suppose to the contrary, there exists some  $p \in (c, p'']$  for which  $\pi(p, n) < 0$ . Given Lemma 2(ii), this implies that  $\pi(p'', n) < 0$ . This in turn implies that  $\pi(c', n) < 0$ , which contradicts Lemma 2(iii). Whereas any firm that deviates and charges a higher price has no demand, and thus obtains a zero profit.

We next argue that any firm that undercuts and charges  $p - \epsilon$ ,  $\epsilon > 0$ , has a lower profit. This follows since

$$\pi(p - \epsilon) < \pi(p) \leq \pi(p, n),$$

where the first inequality follows as  $\pi(p)$  is increasing in  $p$  (Lemma 1(i)), and the second inequality follows from Lemma 4(iv).

(b) We then argue that no other price can be sustained as an equilibrium.

We first demonstrate that no price  $p < p'$  can be sustained. If  $p' = c$  this is obvious. So let  $p' > c$  and suppose to the contrary that a price less than  $p'$  can be sustained. But then the number of firms charging this price must be less than  $n$  (otherwise they have a loss). But this implies that  $\bar{p}$  is increasing in  $n$ , a contradiction to Lemma 4(i).

Finally, consider some price  $c' \geq p > p''$ . In case all  $n$  firms charge this price, one of the firms can undercut by a small enough amount and gain, since at  $p > p''$  we have that  $\pi(p) > \pi(p, n)$  (Lemma 4(iv)). Whereas if the number of firms charging this price is strictly less than  $n$ , then one of the firms who charges a higher price, can undercut by a small enough amount and get a strictly positive profit. This follows from the fact that since  $\pi(p'') = \pi(p'', n) > 0$  and  $\pi(p)$  is increasing,  $\pi(p)$  is strictly positive for all  $c' \geq p \geq p''$ . Finally, if  $p > c'$ , then any firm that undercuts makes a gain. ■

We then examine some interesting comparative statics properties. We first examine the limit properties of the equilibrium set, i.e.  $[p'(n), p''(n)]$ , as  $n$  goes to infinity. We need one final assumption.

**Assumption 2.** There exists a choke-off price  $\hat{p}$ , such that  $f(p) = 0$   $\forall p \geq \hat{p}$  and  $f(p) > 0 \forall p < \hat{p}$ .

Interestingly, even for  $n$  arbitrarily large, the set of equilibrium prices turns out to be a non-degenerate interval in the limit. Interpreting  $c$  as the competitive price, we find that the competitive price is only one element of the limit equilibrium set. This is interesting since in models with rigid capacity, Allen and Hellwig (1986) and Vives (1986), both find that for  $n$  large, the equilibrium prices converge, at least in distribution,<sup>6</sup> to the competitive price.

**Proposition 2.** *Let Assumptions 1 and 2 hold. Then  $\lim_{n \rightarrow \infty} [p'(n), p''(n)] = [c, \bar{p}]$ , where  $c' > \bar{p} > c$ .*

*Proof.* (i) Note that for  $n$  large  $\frac{f(c)}{n} \leq k$ . Consequently,  $p''(n)$  solves

$$\frac{f(p)}{n}(p - c) = pf(p) - ck - c'(f(p) - k).$$

Given Assumptions 1 and 2,  $f(p)(p - c)$  is bounded above by  $f(0)(\hat{p} - c)$ . Therefore as  $n$  becomes large, the LHS goes to zero. Thus in the limit we must have

$$f(\bar{p})(c' - \bar{p}) = k(c' - c).$$

Hence if  $\bar{p} = c$ , then from the preceding equation,  $f(c) = k$ , which is a contradiction. Finally note that if  $\bar{p} > c'$ , then for  $p$  close to  $\bar{p}$  the firms can profitably undercut.

(ii) For  $n$  large,  $\frac{f(c)}{n} < k$ , so that from Lemmas 2 and 3,  $\pi(c, n) > \pi(c)$ , and  $\pi(c, n) = 0$ . Thus  $p' = c$ . ■

We finally examine the effect of an increase in the capacity costs, i.e.  $c'$ , on the equilibrium outcome. Interestingly, as the capacity costs increase, higher prices can be sustained in equilibrium.

**Proposition 3.** *Let Assumption 1 hold. If capacity costs  $c'$  increases then*

---

<sup>6</sup>In Vives (1986), the convergence is in support also.



- (a)  $p''$  increases, and  
(b)  $p'$  increases if  $\frac{f(c)}{n} > k$  and remains unaffected otherwise.

*Proof.* From equation (1),  $\pi(p)$  is decreasing in  $c'$ . Whereas  $\pi(p, n)$  is decreasing in  $c'$  if  $\frac{f(p)}{n} > k$ . Otherwise,  $\pi(p, n)$  does not depend on  $c'$ . Thus, with an increase in  $c'$ ,  $p''$  increases. If  $\frac{f(c)}{n} > k$ , then  $p' = c$ , otherwise  $p' = \tilde{p}$ . The result now follows from Lemma 4(i). ■

*Remark.* How critical is the assumption that  $\frac{f(c')}{n} < k$ ? In case  $\frac{f(c')}{n} \geq k$ , it is easy to see that Proposition 1 goes through with the modification that  $p''$  is replaced by  $c'$ .<sup>7</sup> Thus the only result that is qualitatively affected is that the maximal price becomes independent of the number of firms as well as the demand parameters, though still dependent on the costs of capacity expansion.

## 4 Conclusion

We examine a model of Bertrand competition with non-rigid capacity constraints, so that by incurring an additional cost, firms can produce beyond capacity. We find that there is an interval of prices such that a price can be sustained as a pure strategy Nash equilibrium if and only if it lies in this interval. We then examine the properties of this set as (a) the number of firms becomes large and (b) the capacity cost increases. For  $n$  large, the equilibrium set converges to a non-degenerate interval, with the competitive price being the lowest price in this interval. Further, as the capacity cost increases we find that the maximum possible price that can be sustained as an equilibrium increases.

---

<sup>7</sup>This follows since in this case  $\pi(c', n) \geq \pi(c')$  (see the proof of Lemma 3(i)).

## 5 Appendix

*Proof of Lemma 1.* (i)  $\frac{\partial \pi(p)}{\partial p} = f'(p)(p - c') + f(p) > 0$  (since  $p \leq c'$ ).

(ii) Follows from (1). ■

*Proof of Lemma 2.* (i)  $\frac{\partial \pi(p, n)}{\partial p}|_{p=c}$  equals  $\frac{f(c)}{n} > 0$  if  $\frac{f(c)}{n} \leq k$  and equals  $\frac{f'(c)}{n}(c - c') + \frac{f(c)}{n}$  otherwise.

(ii) For  $\frac{f(c)}{n} \leq k$ , we have that  $\frac{f(p)}{n} \leq k \forall p \geq c$ . Thus

$$\frac{\partial^2 \pi(p, n)}{\partial p^2} = 2f'(p) + f''(p)(p - c) \leq 0.$$

Next consider  $\frac{f(c)}{n} > k$ . First note that for  $p \in [c, \underline{p}]$ ,  $\pi'(p, n) = \frac{1}{n}[f(p) + f'(p)(p - c')] > 0$ , so that  $\pi(p, n)$  is increasing over the whole interval  $[c, \underline{p}]$ . From the first part of the argument,  $\pi(p, n)$  is concave over  $[\underline{p}, c']$ . Finally, note that the left hand derivative of  $\pi(p, n)$  at  $\underline{p}$ , i.e.  $\frac{1}{n}[f(\underline{p}) + f'(\underline{p})(\underline{p} - c')]$ , is greater than the right hand derivative at  $\underline{p}$ , i.e.  $\frac{1}{n}[f(\underline{p}) + f'(\underline{p})(\underline{p} - c)]$ .

(iii) and (iv) Follows from equation (2). ■

*Proof of Lemma 3.* (i) Note that  $\pi(c') = k(c' - c)$ . Further, since  $\frac{f(c')}{n} < k$ ,  $\pi(c', n) = \frac{f(c')}{n}(c' - c)$ . Thus  $\pi(c') > \pi(c', n)$ .

(ii) Note that  $\pi(c) = (c' - c)(k - f(c)) < 0$ . Moreover, if  $\frac{f(c)}{n} \leq k$ , then  $\pi(c, n) = 0 > \pi(c)$ . Whereas, if  $\frac{f(c)}{n} > k$ , then  $\pi(c, n) = (c' - c)[k - \frac{f(c)}{n}] > \pi(c)$ .

(iii) If  $\frac{f(p)}{n} > k$ , then from (1) and (2),  $\frac{\partial \pi(p, n)}{\partial p} = \frac{\pi'(p)}{n}$ . Since  $\pi'(p) > 0$ ,  $\frac{\partial \pi(p, n)}{\partial p} < \pi'(p)$ . Next, for  $\frac{f(p)}{n} \leq k$ , note that  $\frac{\partial \pi(p, n)}{\partial p} \leq \frac{1}{n}[f'(p)(p - c') + f(p)] < \pi'(p)$ . ■

*Proof of Lemma 4.* (i) Suppose  $\frac{f(c)}{n} > k$ . The result follows since  $\pi(p, n)$  is increasing over  $[c, \underline{p}]$  and

$$\pi(\underline{p}, n) = \frac{f(\underline{p})}{n}(\underline{p} - c) > 0.$$

(ii) Follows since  $\tilde{p}$  solves

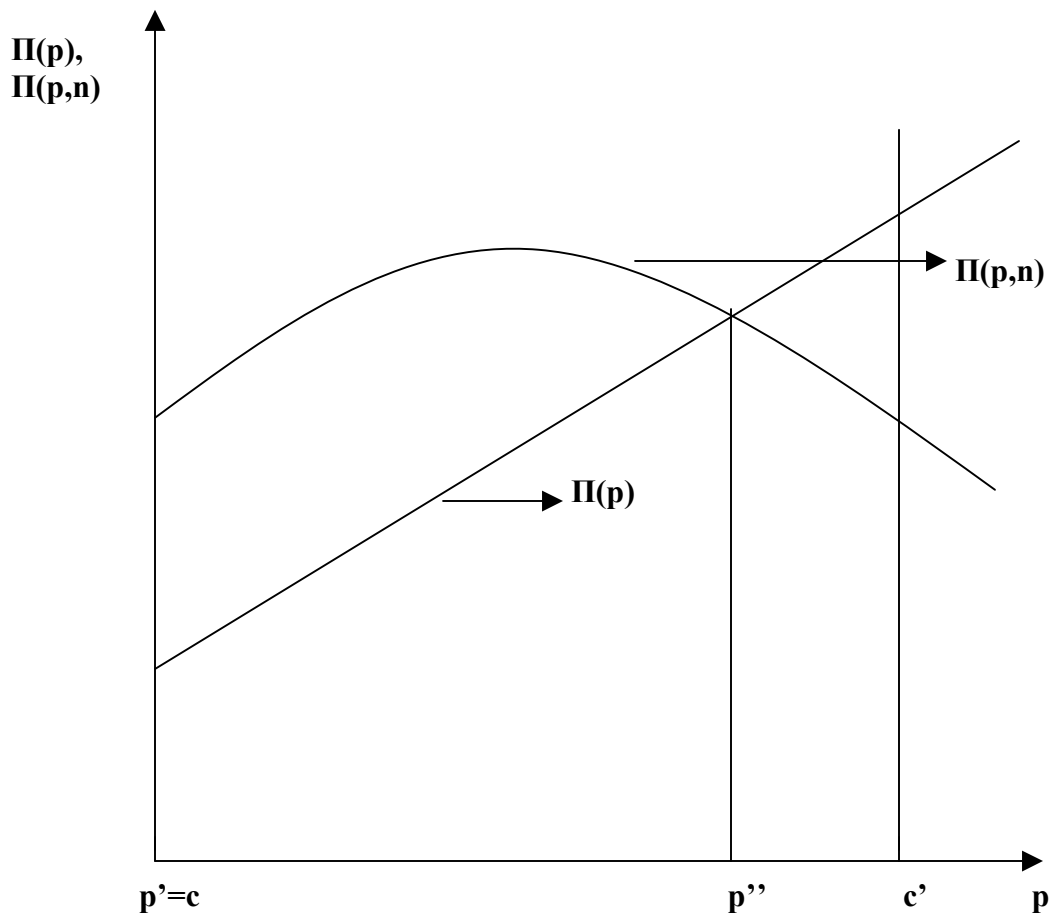
$$k(c' - c) = \frac{f(\tilde{p})}{n}(c' - \tilde{p}).$$

(iii) Since  $\frac{f(p'')}{n} < k$ ,  $\pi(p'', n) = \frac{f(p'')}{n}(p'' - c)$ .

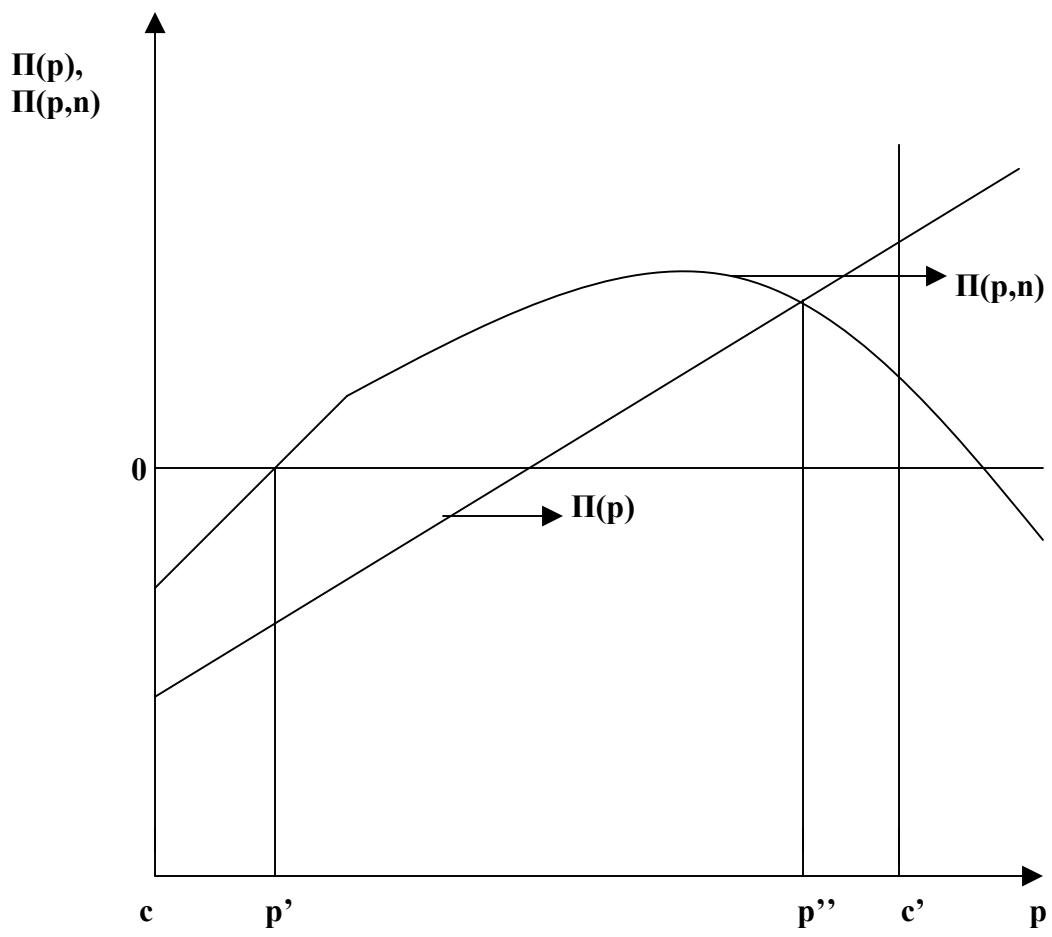
(iv) Follows from Lemmas 1, 2 and 3 (please see Figures 1 and 2). ■

## 6 References

- Allen B., Hellwig, M. Bertrand-Edgeworth oligopoly in large markets. *Review of Economic Studies* 1986; 53; 175-204.
- Boccard, N., Wauthy, X. Bertrand competition and Cournot outcomes: further results. *Economics Letters* 2000; 68; 279-285.
- Boccard, N., Wauthy, X. Bertrand competition and Cournot outcomes: a correction. *Economics Letters* 2004; 84; 163-166.
- Chamberlin, E.H. *The Theory of Monopolistic Competition*. Harvard University Press: Cambridge, Massachusetts; 1933.
- Dasgupta, P., Maskin, E. The existence of equilibrium in discontinuous economic games, II: Applications. *Review of Economic Studies* 1986; 53; 27-41.
- Dastidar, K.G. On the existence of pure strategy Bertrand equilibrium. *Economic Theory* 1995; 5; 19-32.
- Dixit, A. The role of investment in entry deterrence. *Economic Journal* 1980; 90; 95-106.
- Kreps, D.M., Scheinkman, J.A. Cournot pre-commitment and Bertrand competition yield Cournot outcomes. *Bell Journal of Economics* 1983; 14; 326-337.
- Maggi, G. Strategic trade policies with endogenous mode of competition. *American Economic Review* 1996; 86; 237-258.
- Novshek, W., Roy Chowdhury, P. Bertrand equilibria with entry: limit results. *International Journal of Industrial Organization* 2003; 21; 795-808.
- Ray Chaudhuri, P. The contestable outcome as a Bertrand equilibrium. *Economics Letters* 1996; 50; 237-242.
- Roy Chowdhury, P., Sengupta K. Coalition-proof Bertrand equilibria. *Economic Theory* 2004; 24; 307-324.
- Vives, X. Rationing rules and Bertrand-Edgeworth equilibria in large markets. *Economics Letters* 1986; 21; 113-116.
- Vives, X. *Oligopoly pricing: Old ideas and new tools*. MIT Press: Cambridge, Massachusetts, London, England; 1999.



**Figure 1:  $f(c)/n \leq k$**



**Figure 2:  $f(c)/n > k$**