

International Agricultural Trade  
Research Consortium

Optimal Trade Policies for a  
Developing Country Under Uncertainty

by

E. Kwan Choi and Harvey E. Lapan\*

Working Paper #90-2

The International Agricultural Trade Research Consortium is an informal association of university and government economists interested in agricultural trade. Its purpose is to foster interaction, improve research capacity and to focus on relevant trade policy issues. It is financed by USDA, ERS and FAS, Agriculture Canada and the participating institutions.

The IATRC Working Paper series provides members an opportunity to circulate their work at the advanced draft stage through limited distribution within the research and analysis community. The IATRC takes no political positions or responsibility for the accuracy of the data or validity of the conclusions presented by working paper authors. Further, policy recommendations and opinions expressed by the authors do not necessarily reflect those of the IATRC.

This paper should not be quoted without the author(s) permission.

\*E. Kwan Choi is an Associate Professor and Harvey E. Lapan a Professor in the Department of Economics, Iowa State University.

Correspondence or requests for additional copies of this paper should be addressed to:

Dr. E. Kwan Choi  
Department of Economics  
Iowa State University  
Ames, Iowa 50011

January 1990

# OPTIMAL TRADE POLICIES FOR A DEVELOPING COUNTRY UNDER UNCERTAINTY

## **Executive Summary**

This paper investigates optimal trade policies for a developing small open economy which faces international price uncertainty. Trade taxes are used to finance provision of a public good, which enters the utility function of consumers. If demands for private goods are independent of the public good, the optimal composite tariff dominates the optimal quota. If the optimal state-contingent tariff increases with the foreign price, the optimal specific tariff also dominates the optimal quota, regardless of risk aversion. However, the ranking of the optimal specific tariff and the optimal quota generally depends on risk attitudes as well as ordinal preferences.

## OPTIMAL TRADE POLICIES FOR A DEVELOPING COUNTRY UNDER UNCERTAINTY

Free trade is rarely practiced by developing countries despite its well known optimality for small open economies. Staiger and Tabellini (1987, p. 823) observed that "active protectionist programs are widely pursued by countries with little or no apparent world market power." The tariff was the principal source of federal revenue in the U.S. during the nineteenth century, and was not displaced until the income tax was adopted. The works of Boadway, Maital and Prachowny (1973), Vanek (1971), and Feehan (1988) suggest that tariff revenue may be the main source of financing public goods in LDCs. Ethier (1988) cited for example that the government of Uganda derived two thirds of revenue from trade taxes in 1984, and Lesotho raised about 69 percent of its revenue from trade restrictions in 1983. Thus, trade taxes may be justified for the provision of public goods in LDCs. An important question is whether the governments of LDCs should use taxes or quotas.

A substantial amount has been written concerning the ranking of tariffs and quotas under uncertainty. In a seminal paper, Fishelson and Flatters (1975) pointed out that the equivalence between policy instruments breaks down under uncertainty, and initiated a study of ranking tariffs and quotas.<sup>1</sup> The optimal tariff for a small country is zero except under factor market distortions (Batra and Naqvi, 1987) or under variable returns to scale (Choi and Yu, 1984).<sup>2</sup> Thus, the literature — apart from that dealing with the large country case — has developed by imposing a constraint on expected imports or on expected government revenue, and comparing consumer surpluses under alternative regimes. For example, Pelcovitz (1976) and Young and Anderson (1980) compared quotas with tariffs that yield the same level of expected import.<sup>3</sup>

Young and Anderson's (1982) more recent work represents a landmark in the literature of ranking of trade policies under uncertainty for two reasons. First, they employed expected utility analysis, rather than expected surplus area which is known to be a valid

welfare criterion under restrictive conditions.<sup>4</sup> Second, they showed that the ranking of ex ante policies depends crucially on the property of the optimal state-contingent policy. Their analysis suggests that the policy with an implicit tariff which moves in the same direction, rather than in the opposite direction, as the optimal state-contingent policy is the dominant policy.

An important criticism of the existing literature concerns the lack of rationale for trade restrictions. If the tariff revenue is rebated to consumers, as is conventionally assumed, there is no intrinsic rationale for trade restrictions and hence the optimal tariff is zero. On the other hand, if the tariff or quota revenue is used to finance government purchases of public goods, the ranking of tariff and quota must be based, not just on the mean, but on the entire distribution of government revenue.

The purpose of this paper is to investigate optimal trade policies for an LDC which uses trade taxes for provision of the public good. The model extends Young and Anderson (1982) and Feehan (1988) in two important ways. First, we employ Feehan's (1988) assumption that the government provides a public good which enters the utility function of consumers and that all trade taxes are used to purchase the public good.<sup>5</sup> Second, we adopt Young and Anderson's (1982) expected utility framework to investigate the ranking of alternative policies.

The plan of this paper is as follows. Section I constructs a general equilibrium model which links trade and provision of the public good. Section II investigates the properties of the optimal state-contingent policy while section III analyzes the properties of ex ante optimal quota and tariff schedules. Section IV shows that under weak separability the optimal composite tariff dominates the optimal quota. When a single instrument is used, the ranking of ex ante second best policies requires information about cardinal, as well as ordinal, preferences. Section V provides a brief summary and concluding remarks.

## I. Trade and Provision of the Public Good

Consider an open economy which uses trade taxes to finance provision of the public good. A general equilibrium model is developed employing the following assumptions.

- (i) The domestic economy consists of  $N$  identical consumers.<sup>6</sup>
- (ii) Two private goods, the exportable  $Z$  (numeraire) and the importable  $Y$  are produced and consumed domestically.
- (iii) For all realizations of the foreign price of the importable,  $p^*$ , the economy imports  $Y$ .
- (iv) The economy is small and the distribution of the world price is exogenous.
- (v) One unit of the exportable produces one unit of the public good. Provision of the public good is solely financed by tariff/quota revenue. Since  $N$  is large, each consumer ignores the impact of his consumption decisions on government revenue.
- (vi) Domestic demands for traded goods are independent of the public good, i.e., consumer preferences are weakly separable in private goods and the public good.
- (vii) The public good is not traded.

The exportable  $Z$  is the numeraire and its price is unity. Let  $p^*$  and  $p$  denote the world price and the domestic price of the importable  $Y$ , respectively. Production decisions are made after the foreign and domestic prices are known. The production possibility frontier of the private goods, in per capita form, is given by

$$Z = F(Y), F' < 0, F'' < 0, \tag{1}$$

where  $Y$  and  $Z$  denote the per capita domestic production of the importable and the exportable, respectively. Recall that one unit of the exportable is required to produce one unit of the public good,  $G$ , i.e.,  $Z$  is an intermediate input to produce the public good  $G$ . Thus,  $Z$  represents the gross production of the exportable, the net output of the exportable is  $Z - G$ , and private income is  $(Z - G) + G + pY = Z + pY$ . Producers of the private

goods choose  $Y$  and  $Z$  to maximize private income,  $I = Z + pY$ . The first order condition is

$$p + F' = 0. \quad (2)$$

The domestic per capita supply of the importable,  $Y(p)$ , is positively sloped since  $Y'(p) = -1/F'' > 0$ . While consumer income is endogenous,  $dI/dp = Y$  by the Envelope Theorem, and hence private income  $I = Z + pY(p)$  increases with  $p$ .

Consumer preferences are represented by a monotone increasing von Neumann-Morgenstern utility function  $u(C,X,G)$ , where  $C$  and  $X$  denote the individual consumption of the exportable and the importable, respectively. If consumer demands for private goods are independent of the public good, consumer preferences can be represented by a weakly separable function,

$$U(C,X,G) = U[f(C,X),G] . \quad (3)$$

Unlike the conventional trade models, tariff revenue is not rebated to consumers but is used to purchase the public good  $G$ . The representative consumer makes consumption decisions after observing the domestic price  $p$ . Since consumer income is spent only on private consumption goods, the budget constraint is

$$C + pX = I. \quad (4)$$

The first order condition is

$$U_X(C,X,G)/U_C(C,X,G) = p.$$

However, the marginal rate of substitution between private goods is independent of the public good by weak separability. Thus, the demand functions of the representative consumer can be written as

$$C = C(p,I,G) = C(p,I), \quad X = X(p,I,G) = X(p,I) \quad (5)$$

and  $C_G = X_G = 0$ . Substituting the demand functions into (3) gives the indirect utility function,

$$V[p, I, G] \equiv U[f(C(p, I), X(p, I)), G] . \quad (6)$$

Using the endogenous income,  $I(p) = F(Y) + pY(p)$ , the per capita import demand function can be written as

$$Q(p) \equiv M(p, I(p)) = X(p, I(p)) - Y(p). \quad (7)$$

Observe that since the domestic supply  $Y(p)$  depends only on its price,  $M_I = X_I$ . The per capita net export of the exportable is  $(Z - G - C)$ .<sup>7</sup> Recall that trade taxes are the only source of financing the provision of the public good. Thus, the total government revenue, in terms of the numeraire, is  $N(p - p^*)Q(p)$ . Moreover, one unit of the numeraire  $Z$  is required to produce one unit of the public good.<sup>8</sup> Thus, the total quantity of the public good provided is equal to government revenue

$$G = tNQ(p), \quad (8)$$

where  $t \equiv p - p^*$  is the specific tariff.

## II. Optimal State-Contingent Policy

The first best policy for optimal provision of the public good may be taxes on income, production or consumption. However, tariffs are the major revenue sources for the governments of most LDCs. Thus, we begin by considering the optimal state-contingent tariff. It should be noted that since trade restriction by a tariff or a quota is assumed to be the sole means of raising revenue, the "optimal" policy here is a second best policy.

Weitzman (1974, p. 481) points out that "an ideal instrument of central control would be a contingent message whose instructions depend on which state of the world is revealed." Since the optimal state-contingent policies — specific and ad valorem tariffs and quotas —

are chosen under conditions of certainty, they are all equivalent for any desired level of the public good.

After the world price is known, the policy maker's problem is to choose  $p$  to maximize

$$J(p, p^*) = V[p, F(Y) + pY, N(p - p^*)Q(p)] . \quad (9)$$

Note that by Roy's identity,  $V_p = -V_I X$ , and  $p + F' = 0$ . Differentiating (9) with respect to  $p$  yields  $J_p = V_p + V_I(I_p) + V_G(G_p)$ . Moreover, that for a given level of the public good  $G$ ,  $dV/dp = V_p + V_I(I_p) = -V_I Q$ , and  $d^2V/dp^2 = V_{II}Q^2 + V_I(X_I Q - Q')$ . If  $G$  is given and the consumer is risk neutral ( $V_{II} = 0$ ), then  $V$  is convex (concave) in  $p$  if  $X_I Q - Q'$  is positive (negative) or  $\eta + \epsilon/s > (<) 0$ , where  $\epsilon \equiv - (dQ/dp)(p/Q)$  is the price elasticity of import demand,  $\eta \equiv (\partial Q/\partial I)(I/Q) = (\partial X/\partial I)(I/Q)$  is the income elasticity of import demand, and  $s \equiv pQ/I$  is the budget share of the imports. Thus, the first order condition is written

$$J_p = -V_I Q + V_G(G_p) = 0 ; \quad G_p = N(Q + (p - p^*)Q') . \quad (10)$$

This implies that  $G_p$  is positive in equilibrium. The second order condition requires that  $J_{pp} < 0$ . If the left side of (10) is evaluated at the revenue maximizing tariff, then  $G_p = 0$  and  $J_p < 0$ . Thus, the optimal state-contingent tariff is always less than the revenue-maximizing tariff, i.e.,

$$t < p/\epsilon \quad (11)$$

Rearranging (10) yields an alternative expression for the equilibrium condition,

$$N(V_G/V_I) = Q/(Q + tQ') ; \quad \text{or} \quad V_G/V_I = \theta \equiv Q/N(Q + tQ') \quad (12)$$

where  $V_G/V_I$  is the individual marginal rate of substitution (MRS) of the public good  $G$  for private expenditure  $I$ , and  $\theta(Q) \equiv Q/(Q + tQ')$  reflects the social marginal cost of "providing" the public good via trade taxes. The presence of  $N$  in (12) indicates the pure public good



characteristic of  $G$ . Optimality requires equating the sum of individual MRS to the social marginal cost of the public good.<sup>9</sup> Alternatively, the condition  $V_G/V_I = \Theta$  means that the individual MRS must be equated to the per capita social marginal cost of the public good  $\Theta$ .

Since one unit of the numeraire good produces one unit of the public good, the social marginal cost of providing the public good should be unity if a nondistortionary method of financing  $G$  were available. Except when the import demand is totally price inelastic ( $Q' = 0$ ), a tariff necessarily distorts the relative price between the private goods. The fact that only a distortionary tariff or quota is employed implies that  $N(V_G/V_I)$  exceeds unity at an optimum.

To illustrate the link between the optimal state-contingent tariff and optimal provision of the public good, consider the following problem of a policy maker to choose the optimal mix of the public good  $G$  and private expenditure  $I$ :

$$\text{maximize } V(p,I,G) \quad \text{subject to } B = I + \Theta G \quad (13)$$

where  $\Theta$  is the price or tax each consumer must pay to consume the public good or the per capita social marginal cost of the public good each consumer bears, and  $B$  is full income. In addition to money income, "full income" includes the value of nonmarket goods (e.g. public goods). Unlike private consumption goods, the price of the public good  $\Theta$  is endogenous, and depends on the prices,  $p$  and  $p^*$ . However, for given  $p$  and  $p^*$ , the price of the public good  $\Theta$  is constant, and the full income constraint is linear in private expenditure  $I$  and the public good  $G$ .<sup>10</sup> Optimality requires that the indifference curve  $V(p,I,G)$  be tangent to the full income constraint in  $(I,G)$  space, i.e.,  $V_G/V_I = \Theta$ . Thus, the per capita social marginal cost of the public good in (12) can be viewed as the price of the public good each consumer pays through trade taxes. It can be shown that  $I$  is a normal good ( $\partial I/\partial B \geq 0$ ) if  $\Theta V_{IG} - V_{GG} \geq 0$  and  $G$  is a normal good ( $\partial G/\partial B \geq 0$ ) if  $V_{IG} - \Theta V_{II} \geq 0$ .

We now investigate how an increase in the world price of the importable affects the

optimal state-contingent policy. Let  $t^f$  be the optimal state-contingent tariff and  $p^f = p^* + t^f(p^*)$  be the optimal state-contingent domestic price of the importable. Observe that the signs of  $dt^f/dp^*$  and  $dp^f/dp^*$  are independent of  $N$ . Without loss of generality, we assume  $N = 1$  in the rest of the paper. Differentiating (10) totally gives  $J_{pp^*}dp^* + J_{pp}dp = 0$ , or

$$dp^f/dp^* = - J_{pp^*}/J_{pp}$$

where  $J_{pp} < 0$  by the second order condition, and

$$J_{pp^*} = - QV_{IG}(G_{p^*}) + V_{GG}(G_{p^*}G_p) - V_GQ'$$

Using  $G_p = Q/\theta$  from (10) and  $G_{p^*} = -Q$ , we obtain

$$J_{pp^*} = (\theta V_{IG} - V_{GG})Q^2/\theta - V_GQ' \quad (14)$$

Recall from the implicit maximization problem in (13), the first term in (14) is greater than or equal to zero if private expenditure  $I$  is a normal good. The following proposition indicates that  $dt^f/dp^*$  is bounded from below,  $dt^f/dp^* > -1$ .

**PROPOSITION 1:** Assume that private expenditure  $I$  is a normal good ( $\partial I/\partial B \geq 0$ ). Then the optimal state-contingent domestic price of the importable increases with the world price,  $dp^f/dp^* > 0$ .

Next, how does the optimal state-contingent tariff respond to a change in the world price  $p^*$ ? Using  $t^f = p^f - p^*$ , we have

$$dt^f/dp^* = - (J_{pp^*} + J_{pp})/J_{pp}$$

where using  $V_{Ip} = -V_{II}X - V_{IX}I$  and  $V_{Gp} = -V_{IG}X$  (due to weak separability),

$$J_{pp} = (\theta V_{II} - V_{IG})Q^2/\theta + V_I(X_IQ - Q') \quad (15)$$

$$+ (-\theta V_{IG} + V_{GG})Q^2/\theta^2 + V_G(2Q' + tQ'').$$

Using  $(\partial I/\partial B) + \theta(\partial G/\partial B) = 1$  and rearranging terms, we have

$$\begin{aligned} J_{pp} + J_{pp}^* &= [\theta(\partial I/\partial B) - 1]Q^2H/\theta^2 + V_I(X_I Q - Q') + V_G(Q' + tQ'') \\ &= (\tau\epsilon - m)Q^2H/\theta + V_I(X_I Q - Q') + V_G(Q' + tQ'') \end{aligned} \quad (16)$$

where  $\tau \equiv t/p$  is the ad valorem tariff in terms of the domestic price,  $m \equiv \theta(\partial G/\partial B)$  is the marginal propensity to consume the public good, and  $H \equiv 2\theta V_{IG} - V_{GG} - \theta^2 V_{II} > 0$  and is the Hessian of the maximization problem in (13). The sum of the terms in (16) is positive, if  $\tau\epsilon - m > 0$ ,  $\eta + \epsilon/s > 0$  and  $-tQ''/Q' > 1$ .

**PROPOSITION 2:** Sufficient conditions for the optimal state-contingent tariff to increase (decrease) with  $p^*$  are:

- (i)  $\tau\epsilon$  is greater (less) than  $m$ ,
- (ii)  $-tQ''/Q'$  is greater (less) than unity, and
- (iii)  $\eta + \epsilon/s$  is greater (less) than zero.

Intuitively, if the product of the ad valorem tariff rate  $\gamma$  and the price elasticity of the import demand  $\epsilon$  is large relative to the marginal propensity to consume ( $\gamma\epsilon > m$ ), the import demand function is sufficiently convex in price ( $-tQ''/Q' \geq 1$ ), and the weighted sum of elasticities ( $\eta + \epsilon/s$ ) is positive, then the optimal state-contingent tariff increases with  $p^*$ .

### III. Properties of Ex Ante Second Best Policies

The main difficulty with implementing the optimal state-contingent policy is that the policy maker must have full information, without delay, about the state of the world. If information is costly to obtain or is not available instantaneously, the burden of full information is likely to outweigh the potential gains from the optimal state-contingent

policy. Weitzman (1974, p. 481) thus observed that "it is infeasible for the centre to transmit an entire schedule of ideal prices or quantities," because "the contingent message is complicated, expensive to draw up and hard to understand."

For this reason, we focus on two widely used second best policies, ex ante tariffs and quotas.<sup>11</sup> The policy maker is assumed to choose, before observing the foreign price, either (a) a fixed quota, or (b) a combination of a specific tariff and an ad valorem tariff. We now investigate the properties of second best policies, and demonstrate that the effects of price uncertainty on the levels of second best instruments generally depend on cardinal preferences.

### Optimal Quota

When a quota is imposed, government revenue  $(p - p^*)Q$  is raised by auctioning the quota rights. Although government revenue depends on the realized foreign price  $p^*$ , the import demand is independent of  $G$  due to weak separability, and hence is unaffected by random fluctuations of the foreign price  $p^*$ . Thus, fixing an import quota is equivalent to fixing the domestic price. Let  $Q_o$  denote the optimal quota and  $p_o$  be the corresponding domestic price of the importable, i.e.,  $Q_o = Q(p_o)$ . The policy maker's problem is to choose  $p_o$  to maximize the expected indirect utility

$$E[J(p_o, p^*)] = E\{V[p_o, I_o, (p_o - p^*)Q(p_o)]\} \quad (17)$$

where  $I_o = F(Y(p_o)) + p_o Y(p_o)$  is the private expenditure under the optimal quota. The first order condition is

$$E[J_p] \equiv -E[V_I]Q_o + E[V_G(Q_o + (p_o - p^*)Q')] = 0. \quad (18)$$

Two interrelated questions are: how do increases in price uncertainty and risk attitudes affect the optimal quota? Differentiating (17) with respect to  $p^*$  twice yields

$$J_{pp^*} = Q[QV_{IG} - (Q + tQ)V_{GG}] - V_G Q' \quad (19)$$

$$J_{pp^*p^*} = V_{GGG}Q^2(Q + tQ) - Q^3V_{IGG} + 2V_{GG}QQ' \quad (20)$$

Note that  $J_{pp^*}$  in (19) is evaluated at the optimal quota  $Q_o$  (whereas  $J_{pp^*}$  in (14) is evaluated at the optimal state-contingent tariff).

Let  $p_c$  and  $Q_c$  denote the optimal domestic price and quota, respectively, when the world price equals  $E(p^*)$  with certainty. If  $J_{pp^*p^*}$  is everywhere positive (negative), then  $E[J_p(p, p^*)]$  is greater (less) than  $J_p(p, E(p^*))$ , and hence the left side of the equation in (18) is positive (negative) when evaluated at  $p_c$ . It follows immediately that  $p_o \geq (<) p_c$  and  $Q_o \leq (>) Q_c$  as  $J_{pp^*p^*} \geq (<) 0$ . If the consumer is "risk neutral" in the public good ( $V_{GG} = 0$ ), then  $V_{IGG} = V_{GGG} = 0$  and  $J_{pp^*p^*} = 0$ . In this case,  $p_o = p_c$  and  $Q_o = Q_c$ . On the other hand, if the consumer is "risk averse" in the public good ( $V_{GG} < 0$ ), and  $V_{GGG} \geq 0 \geq V_{IGG}$ , then  $J_{pp^*p^*} > 0$ .

**PROPOSITION 3:** Assume that the optimal quota  $Q_o$  is chosen before the foreign price is known. Then (i) if the consumer is risk neutral in the public good ( $V_{GG} = 0$ ), then  $p_o = p_c$  and  $Q_o = Q_c$ , and (ii) if the consumer is risk averse in the public good ( $V_{GG} < 0$ ) and  $V_{GGG} \geq 0 \geq V_{IGG}$ , then  $p_o > p_c$  and  $Q_o < Q_c$ .

Observe that the conditions for the second part of the proposition are not as restrictive as they might appear. For instance, decreasing absolute risk aversion in the public good implies  $V_{GGG} \geq 0$ , and strong separability between private goods and the public good implies  $V_{IG} = V_{IGG} = 0$ . Thus, strong separability and decreasing absolute risk aversion in the public good suffice to imply  $p_o > p_c$ .

Next, consider a monotone increasing and concave transformation of  $V(p, I, G)$  that preserves ordinal preferences but increases risk aversion:

$$H(p, p^*) = w[J(p, p^*)]; \quad w' > 0 > w'' \quad (21)$$

Then

$$E[H_p] \equiv E[w'J_p] \equiv E[w']E[J_p] + \text{Cov}(w', J_p). \quad (22)$$

Note that  $dw'/dp^* = w''J_{p^*} > 0$ . Evaluating  $E[H_p]$  at  $p_o$  yields

$$E[H_p(p_o, p^*)] \geq (<) 0 \quad \text{as } J_{pp^*} \geq (<) 0, \quad (23)$$

where  $J_{pp^*}$  is given in (19).

**PROPOSITION 4:** Assume that  $V_{IG} \geq 0 \geq V_{GG}$ . Then as the consumer becomes more (less) risk averse, the optimal domestic price  $p_o$  increases (decreases) and the optimal quota  $Q_o$  decreases (increases).

Observe that if  $V_{IG} \geq 0 \geq V_{GG}$ , then from the implicit maximization problem in (13) for the optimal state-contingent policy, private expenditure  $I$  becomes a normal good.

### Optimal Tariff

Since the foreign price  $p^*$  is readily verifiable ex post, some simple state-contingent rules can be established ex ante. Popular forms of state-contingent policies are (i) a specific tariff, (ii) an ad valorem tariff, and (iii) a combination of a specific tariff and an ad valorem tariff. Since the former two instruments are special cases of a composite tariff, we will consider the latter. The domestic price of the importable is given by

$$p = k + (1 + \alpha)p^*,$$

where  $k$  is a specific tariff,  $\alpha$  is an ad valorem tariff, and the total tariff schedule is  $t = k + \alpha p^*$ .

Expected utility with an optimal tariff schedule is

$$E[J(t, p^*)] = E\{V[p^* + t, I(p^* + t), tQ(p)]\}; t = k + \alpha p^*. \quad (24)$$

Optimizing over  $k$  and  $\alpha$  gives

$$E[J_k] \equiv E[J_t] \equiv E[-V_I Q + V_G(Q + tQ')] = 0. \quad (25a)$$

$$E[EJ_\alpha] \equiv E[p^* J_t] \equiv E[p^*(-V_I Q + V_G(Q + tQ'))] = 0. \quad (25b)$$

We now investigate the properties of the second best tariff schedule. Suppose that only a specific tariff can be used (i.e.,  $\alpha$  is constrained to zero), and denote the optimal ex ante specific tariff by  $k_o$ . Assume that the optimal state-contingent tariff  $t^f(p^*)$  is monotone in  $p^*$ . Then there exists a world price, denoted  $p_o^*$ , for which  $k_o$  is the optimal state-contingent tariff, i.e.,  $k_o = t^f(p_o^*)$  at  $p_o^*$ .<sup>12</sup> Assume also that the second order condition,  $J_{tt} < 0$ , is globally satisfied. Then  $J_t(k_o, p^*) \leq (>) 0$  as  $t^f(p^*) \leq (>) k_o$ , since  $J_t(t^f(p^*), p^*) = 0$ . If  $t^f(p^*)$  is monotonically increasing in  $p^*$ , then  $J_t(k_o, p^*) \geq (<) 0$  as  $p^* \geq (<) p_o^*$ . On the other hand, if  $t^f(p^*)$  is monotonically decreasing in  $p^*$ , then  $J_t(k_o, p^*) \geq (<) 0$  as  $p_o^* \geq (<) p^*$ . Evaluating the left side of the equality in (25b) at  $(\alpha, k) = (0, k_o)$  and using (25a), we obtain

$$E[J_\alpha] = E[p^* J_t] = E[(p^* - p_o^*) J_t] \quad (26)$$

since  $p_o^* E[J_t] = 0$  for the optimal specific tariff  $k_o$ . If the optimal state-contingent tariff is monotone increasing (decreasing) in  $p^*$ , then  $(p^* - p_o^*) J_t$  is positive (negative) for all  $p^* \neq p_o^*$ . Thus,  $E[J_\alpha]$  evaluated at  $(\alpha, k) = (0, k_o)$  is positive (negative) if  $dt^f/dp^*$  is positive (negative).

**PROPOSITION 5:** The second best linear tariff schedule includes a positive (negative) ad valorem tariff if  $\gamma\epsilon > (<) m$ ,  $-tQ''/Q' > (<) 1$  and  $\eta + \epsilon/s > (<) 0$ .

Intuitively, this proposition indicates that the second best tariff schedule tends to mimic the optimal state-contingent tariff by moving in the same direction as the latter. It should also be noted that since the proof of the proposition depends only upon the properties of the optimal state-contingent tariff, the qualitative properties of the second best tariff schedule

are determined only by ordinal preferences.

#### IV. Ranking of Second Best Policies

We have indicated earlier the difficulty of implementing the optimal state-contingent policy in response to changes in the foreign price. Although the preceding analysis of the optimal state-contingent tariff is interesting in its own right, its main value is not in implementation but in facilitating a comparison of second best policies. The ranking of second best policies depends on how each policy behaves relative to the optimal state-contingent policy. The policy that maximizes expected utility will most closely approximate the optimal state-contingent policy and will be deemed the superior second best policy.

We have assumed that consumer preferences are weakly separable in private goods and the public good. If weak separability is relaxed, marginal rate of substitution between the private goods is generally affected by changes in the quantity of the public good. Thus, in the general case, the public good is a determinant of the domestic demand for the importable, i.e.,  $X = X(p, I, G)$ . This implies that a change in the foreign price  $p^*$  — which affects the level of the public good  $(p - p^*)Q$  — results in a "shift" in the import demand schedule. If weak separability is assumed, the domestic demand for the importable reduces to  $X(p, I)$ . Accordingly, the import demand function,  $Q(p) = X(p, I(p)) - Y(p)$ , is independent of the foreign price. Thus, under weak separability an import quota  $Q_0$  is equivalent to fixing the domestic price of the importable at  $p_0$  such that  $Q_0 = Q(p_0)$ .

From the expression of the domestic price,  $p = k + (1 + \alpha)p^*$ , if the ad valorem tariff  $\alpha$  were equal to  $(-1)$ , then the composite tariff schedule results in a stable target price,  $p = k$ . That is, an import quota, which is equivalent to (domestic) target pricing of the importable, can be viewed as a special case of the composite tariff where  $\alpha = -1$ . Thus, the optimal composite tariff schedule dominates the optimal quota.

We now investigate the ranking of a second best specific tariff  $k_0$  and a second best quota  $Q_0$  (which stabilizes the domestic price at  $p_0$ ). Suppose that the optimal state-



contingent tariff  $t^f(p^*)$  is monotonically increasing in  $p^*$ . From the analysis of the previous section, it is immediately apparent that the second best specific tariff  $k_o$  dominates the second best quota, since (i) a quota is equivalent to a composite tariff with the ad valorem tariff  $\alpha = -1$ , whereas (ii) the optimal composite tariff entails a positive ad valorem tariff.

More formally, let  $p_o$  be the domestic price under the optimal quota, and  $p^f(p^*)$  be the optimal state-contingent domestic price of the importable. Then there exists a world price, denoted  $\hat{p}^*$ , for which  $p_o$  is the optimal state-contingent price, as shown in Figure I. Let  $k = p^f(p^*) - \hat{p}^*$ , and let  $p^k = (p^* + k)$  denote the domestic price under a constant specific tariff  $k$ . Since  $dt^f/dp^* > 0$ , it follows that  $p_o > p^k > p^f$  for  $p^* < \hat{p}^*$  and  $p^f > p^k > p_o$  for  $p^* > \hat{p}^*$ . Thus, the domestic price  $p^k$  under the specific tariff  $k$  is everywhere closer to the optimal state-contingent price  $p^f$  than is the target price  $p_o$  under the optimal quota  $Q_o$ . Since this specific tariff  $k$  dominates the optimal quota, the optimal specific tariff  $k_o$  must also dominate the latter.

**PROPOSITION 6:** If  $\gamma\epsilon > m$ ,  $-tQ''/Q' > 1$  and  $\eta + \epsilon/s > 0$ , then the optimal specific tariff  $k_o$  dominates the optimal quota  $Q_o$ , regardless of risk aversion.

Note that the proposition is independent of cardinal preferences, as the behavior of the optimal state-contingent tariff is determined only by ordinal preferences. Changes in risk attitudes do not affect  $(dt^f/dp^*)$ , and hence cannot reverse the ranking of second best policies where  $(dt^f/dp^*)$  is positive.

### **Risk Aversion**

If the optimal state-contingent tariff is monotone decreasing or not monotone in  $p^*$  everywhere, then information about ordinal preferences is insufficient to rank the second best policies. We now illustrate how cardinal preferences may affect the ranking of second best policies. Let  $J^k = J(p^*+k, p^*)$ ,  $J^o = J(p_o, p^*)$  and  $J^f = J(p^*+t^f, p^*)$  denote the realized utility under a specific tariff  $k$ , a quota  $Q_o$ , and the optimal state-contingent tariff  $t^f$ ,

respectively. First, we investigate the general conditions under which the optimal specific tariff dominates the optimal quota. If  $Q_o$  is the optimal quota, there exists a world price, denoted  $\bar{p}^*$ , for which  $(p_o - \bar{p}^*)$  is the optimal state-contingent tariff, i.e.,  $t^f(\bar{p}^*) = p_o - \bar{p}^* \equiv k$ . Moreover,  $\bar{p}^*$  is unique, since  $dp^f/dp^* > 0$  by Proposition 1. If the constant specific tariff  $k$  dominates the optimal quota, then the optimal specific tariff must also dominate the latter.

Differentiating the realized utilities with respect to  $p^*$  yields

$$J_{p^*}^k = -V_I Q + V_G k Q' \quad (27a)$$

$$J_{p^*}^o = -V_G Q_o \quad (27b)$$

$$J_{p^*}^f = -V_G Q(p^f). \quad (27c)$$

Recall that at  $\bar{p}^*$ ,  $p_o = \bar{p}^* + k = \bar{p}^* + t^f(\bar{p}^*)$ , and hence  $J^k = J^o = J^f$ . Moreover, when evaluated at  $\bar{p}^*$ ,  $J_{p^*}^k = J_{p^*}^o = J_{p^*}^f$ ; but  $J^f \geq J^k$  and  $J^f \geq J^o$  everywhere. Thus, these functions are monotone decreasing in  $p^*$  and are tangent at  $\bar{p}^*$ , as shown in Figure II. Thus, a comparison of the curvatures of  $J^k$  and  $J^o$  could reveal which policy yields a higher utility ex post.

Differentiating (27a) and (27b) with respect to  $p^*$  yields

$$J_{p^*p^*}^k = [V_{II} Q^2 + V_I X_I Q - V_I Q'] - 2 V_{IG} k Q Q' + V_{GG} (k Q')^2 + V_G k Q'' \quad (28a)$$

$$J_{p^*p^*}^o = V_{GG}^o Q_o^2; \quad V_{GG}^o = V_{GG}[p_o, I_o, (p_o - p^*) Q_o]. \quad (28b)$$

If the consumer is risk averse (neutral) in the public good, then the indirect utility  $J^o$  under the optimal quota is concave (linear) in  $p^*$ , but the curvature of  $J^k$  is generally ambiguous.

To compare the curvatures of  $J^k$  and  $J^o$ , let  $\Delta \equiv J_{p^*p^*}^k - J_{p^*p^*}^o$ . Then

$$\Delta \equiv (\eta + \epsilon/s - R) V_I Q^2 / I - 2 V_{IG} k Q Q' + [V_{GG} (k Q')^2 - V_{GG}^o Q_o^2] + V_G k Q'' \quad (29)$$

where  $R \equiv -IV_{II}/V_I$  is the relative risk aversion index. If  $\Delta$  is positive, then  $(J^k - J^o)$  is convex in  $p^*$ . Since  $J^k$  and  $J^o$  are tangent at  $\tilde{p}^*$ ,  $(J^k - J^o)$  obtains a (global) minimum at  $\tilde{p}^*$ . Moreover,  $J^k > J^o$  for all  $p^* \neq \tilde{p}^*$  and hence  $J^k = J^o$  at  $\tilde{p}^*$ , the specific tariff  $k$  dominates the optimal quota (See Figure II). A fortiori, the optimal specific tariff dominates the optimal quota.

**PROPOSITION 7:** If  $V_{GG} = 0 \leq V_{IG}$ ,  $Q'' \geq 0$ , and  $\eta + \epsilon/s \geq R$ , then the optimal specific tariff dominates the optimal quota. Alternatively, if  $V_{GG} = 0 \geq V_{IG}$ ,  $Q'' \leq 0$ , and  $\eta + \epsilon/s \leq R$ , then the optimal quota dominates the optimal specific tariff.

In contrast to Proposition 6, this proposition allows the ranking of ex ante second best policies when the representative consumer is risk averse. Moreover, its assumptions correspond to those in the expected revenue constraint models considered by Dasgupta and Stiglitz (1977), and Young (1980a, 1980b).<sup>13</sup> If the policy maker is comparing policies with the same expected revenue and dispersion of revenue does not matter, the representative consumer is implicitly assumed to be risk neutral in the public good ( $V_{GG} = 0$ ). Moreover, for expected consumer surplus to be a valid welfare measure under uncertainty, the marginal utility of income must be invariant with respect to the random price, i.e.,  $V_{Ip} = -V_{II}X - V_I X_I = 0$  or  $R = \eta$  (Turnovsky, Shalit and Schmitz, 1980), as well as with respect to the random public good, i.e.,  $V_{IG} = 0$  (See Rogerson, 1980).<sup>14</sup> Finally, if the import demand is linear, then  $Q'' = 0$ . With these assumptions and additive disturbances Young (1980b) demonstrated that the optimal specific tariff is superior to the optimal quota. While the sufficient conditions in Proposition 7 are more general, they are certainly satisfied by the implicit assumptions in the expected revenue constraint models. Observe also that when  $V_{IG} < 0 = V_{GG}$ , private expenditure is an inferior good ( $\partial I/\partial B < 0$ ). This suggests that insofar as private expenditure is a normal good it is unlikely for the optimal quota to dominate the optimal specific tariff.

## V. Concluding Remarks

Despite its well known optimality free trade is rarely practiced by LDCs. The literature has compared tariffs and quotas under uncertainty for a small country with a constraint on expected import or expected government revenue. This paper emphasizes the revenue motive for trade taxes in LDCs, and investigates optimal trade policies when trade taxes are used to finance public goods. Specifically, we investigated the properties of optimal state-contingent policy and ex ante policies. While the optimal state-contingent policy is difficult to implement, its properties provide valuable information on the ranking of second best policies.

If demands for private goods are independent of the public good, a change in the foreign price does not shift the import demand function. An import quota is then equivalent to a fixed domestic price of the importable even in the presence of the foreign price uncertainty. Since the specific tariff is state-independent, a supplementary ad valorem tariff can be utilized to enable the second best tariff schedule to better approximate the optimal state-contingent tariff. Moreover, the optimal composite tariff always dominates the optimal quota. When a single instrument is used, the ranking of specific tariffs and quotas is generally ambiguous, and depends on the curvatures of the indirect utility function (with respect to income and the public good) and the import demand function. When the optimal state-contingent tariff is monotonically increasing in the foreign price, the optimal specific tariff dominates the optimal quota, regardless of risk aversion. If the optimal state-contingent tariff is not increasing in the foreign price everywhere or the behavior of the optimal state-contingent tariff is difficult to ascertain, risk attitudes and ordinal preferences jointly determine the ranking of second best policies.

## REFERENCES

- Anderson, J. E. and Riley, J. G., "International Trade with Fluctuating Prices," International Economic Review 17 (1976), 76-97.
- Batra, R. N. and Naqvi, N., "Urban Unemployment and the Gains from Trade," Economica 54 (1987), 381-395.
- Becker, G., "A Theory of the Allocation of Time," Economic Journal 75 (1965), 493-517.
- Bhagwati, J., "On the Equivalence of Tariffs and Quotas," in R. E. Baldwin et. al., eds., Trade, Growth and the Balance of Payments - Essays in Honor of G. Haberler (1965), Rand McNally, Chicago, 53-67.
- Bhagwati, J., "More on the Equivalence of Tariffs and Quotas," American Economic Review 58 (1968), 142-146.
- Boadway, R., S. Maital and M. Prachowny, "Optimal Tariffs, Optimal Taxes and Public Goods," Journal of Public Economics 2 (1973), 391-403.
- Cassing, J. H. and Hillman, A. L., "Political Influence Motives and the Choice between Tariffs and Quotas," Journal of International Economics 19 (1985), 279-90.
- Choi, J. Y. and E. S. H. Yu, "Gains from Trade under Variable Returns to Scale," Southern Economic Journal 50 (1984), 979-992.
- Choi, E. K. and S. R. Johnson, "Consumer's Surplus and Price Uncertainty," International Economic Review 28 (1987), 407-411.
- Dasgupta, P. and Stiglitz, J. E., "Tariffs vs. Quotas as Revenue-Generating Devices under Uncertainty," American Economic Review 67 (1977), 976-81.
- Eaton, J. and Grossman, G. M., "Tariffs as Insurance: Optimal Commercial Policy when Domestic Markets are Incomplete," Canadian Journal of Economics 18 (1985), 258-72.
- Eaton, J. and Panagariya, A., "Gains from Trade under Variable Returns to Scale, Commodity Taxation, Tariffs and Factor Market Distortions," Journal of International Economics 9 (1979), 481-501.
- Ethier, Wilfred J., Modern International Economics (2nd ed.), W. W. Norton & Company, New York, 1988.
- Feehan, J. P., "Efficient Tariff Financing of Public Goods," Journal of International Economics 25 (1988), 155-164.
- Fishelson, G. and Flatters, F., "The (Non)Equivalence of Optimal Tariffs and Quotas under Uncertainty," Journal of International Economics 5 (1975), 385-93.
- Lapan, H. E., "The Optimal Tariff, Production Lags, and Time Consistency," American Economic Review 78 (1988), 395-401.
- Ohta, H., "On the Ranking of Price and Quantity Controls under Uncertainty," Journal of

- International Economics 8 (1978), 543-550.
- Pelcovitz, M. D., "Quotas versus Tariffs," Journal of International Economics 6 (1976), 363-70.
- Rodriguez, C., "The Non-Equivalence of Tariffs and Quotas under Retaliation," Journal of International Economics 4 (1974), 295-298.
- Rogerson, W. P., "Aggregate Expected Consumer Surplus as a Welfare Index with an Application to Price Stabilization," Econometrica 48 (1980), 432-46.
- Staiger, R. W. and G. Tabellini, "Discretionary Trade Policy and Excessive Protection," American Economic Review 77 (1987), 823-837.
- Turnovsky, S. J., Shalit, H. and Schmitz, A., "Consumer's Surplus, Price Instability, and Consumer Welfare," Econometrica 48 (1980), 133-52.
- Vanek, J., "Tariffs, Economic Welfare and Development Potential," Economic Journal 81 (1971), 904-913.
- Weitzman, M. L., "Prices vs. Quantities," Review of Economic Studies 41 (1974), 50-65.
- Young, L., "Tariffs vs. Quotas under Uncertainty: An Extension," American Economic Review 70 (1980a), 522-27.
- Young, L., "Optimal Revenue-Raising Trade Restrictions under Uncertainty," Journal of International Economics 10 (1980b), 425-39.
- Young, L. and Anderson, J. E., "The Optimal Policies for Restricting Trade under Uncertainty," Review of Economic Studies 47 (1980), 927-32.
- Young, L. and Anderson, J. E., "Risk Aversion and Optimal Trade Restrictions," Review of Economic Studies 49 (1982), 291-305.

#### FOOTNOTES

1. Bhagwati (1965, 1968) has shown that under certain competitive conditions import quotas and tariffs are equivalent. Equivalence does not hold under retaliation (Rodriguez, 1974). However, equivalence holds if foreign demand is uncertainty-free even when domestic markets are subject to uncertainty (Ohta, 1978).
2. However, Batra and Naqvi (1987) emphasize that the first best policy is a wage subsidy, rather than a tariff. For further analyses of variable returns to scale, see for example Eaton and Panagariya (1979).
3. The ranking of trade policies under an expected revenue constraint has also been investigated. For instance, using social surplus areas Dasgupta and Stiglitz (1977) and Young (1980) compared quotas and ad valorem tariffs that yield the same expected revenue.

4. Turnovsky, Shalit and Schmitz (1980) showed that expected surplus criterion is a valid welfare measure only if the marginal utility of income is constant. For this reason Young and Anderson (1982) employ expected utility.

5. Naturally, a first best policy for raising revenue would involve taxes on resources in fixed supply. Alternatively, if we imagine an economy with a production possibility curve using resources in fixed supply, a simultaneous consumption (or production) tax on both goods would raise revenue without distorting relative prices. Presumably, the rationale for trade taxes is either that such domestic taxes are infeasible or that factor supplies are endogenous. If factor taxes are feasible and factor supplies are endogenous, then optimal policy would in general require a mix of trade and factor taxes as in Boadway, Maital and Prachowny (1973).

6. See Eaton and Grossman (1985) for models with different agents. Cassing and Hillman (1985) analyze political influence motives in trade policies with an implicit assumption of different agents.

7. The income of the consumer is  $I = Z + pY(p)$ . If  $T$  denotes the amount of  $Z$  exported, domestic consumption of the exportable is  $C = Z - G - T$ . If trade is balanced,  $T = p^*Q$ , then the total expenditure is  $C + pX = (Z - G - T) + p(Q + Y) = Z + pY$ , equal to national income.

8. This assumption of constant marginal rate of transformation (MRT) between the exportable and the public good is not as restrictive as it appears. If  $G = tNQ$  is government revenue and  $g$  represents the quantity of the public good produced, then for a general transformation function  $g = g(G)$  MRT varies as  $G$  changes,  $g'(G) > 0$ . In this case, the direct utility function can be rewritten

$$U[f(C,X),g(G)] \equiv u[f(C,X),G],$$

where the new utility function  $u(\cdot)$  is expressed in terms of government expenditure  $G$ , rather than the public good  $g$ . The corresponding indirect utility can also be written

$$V[p,I,g(G)] \equiv v[p,I,G].$$

With this modification, all the results of the paper hold when  $V$  is replaced by  $v$ .

9. It is interesting to note that  $\sum MRS = N(V_G/V_I) = 1/(1 + e_t^m)$ , where  $e_t^m \equiv (\partial Q/\partial t)(t/Q)$  is the elasticity of imports with respect to the tariff. This is a special case of a more general result in Feehan (1988, p. 160). However, we sacrifice some generality here to obtain a ranking of second best policies under uncertainty.

10. See Becker (1965) for the notion of full income. For the typical consumer utility maximization problem, money income is independent of price changes. However, with the utility maximization problem with the full income constraint, "full income" is dependent on the relative price  $\Theta$  of the public good.

11. See Fishelson and Flatters (1975) for nonequivalence of tariffs and quotas under uncertainty.

12. Let  $t_a = t^f(p_a^*)$  and  $t_b = t^f(p_b^*)$  be the minimum and the maximum of the first best tariff, occurring at  $p_a^*$  and  $p_b^*$ , respectively. If  $k_o$  is less than  $t_a$  (greater than  $t_b$ ), then

$J_t(k_o, p^*)$  is positive (negative) everywhere and hence  $E[J_t(k_o, p^*)]$  is positive (negative). This violates the first order condition (25a). Thus,  $t_a \leq k_o \leq t_b$ . Since  $t^f(p^*)$  is a continuous function, there must be a price  $p_o^*$  in the interval between  $p_a^*$  and  $p_b^*$  ( $p_a^* >$  or  $< p_b^*$ ), for which  $t^f(p_o^*) = k_o$ .

13. Young (1980a) demonstrated that the ranking of ad valorem tariffs and quotas under an expected revenue constraint is generally ambiguous.

14. Rogerson (1980) further states that for expected consumer surplus to be a valid welfare criterion under uncertainty the marginal utility of income must be invariant with respect all random variables. Choi and Johnson (1987) show that expected equivalent variation is a better measure than expected consumer surplus.



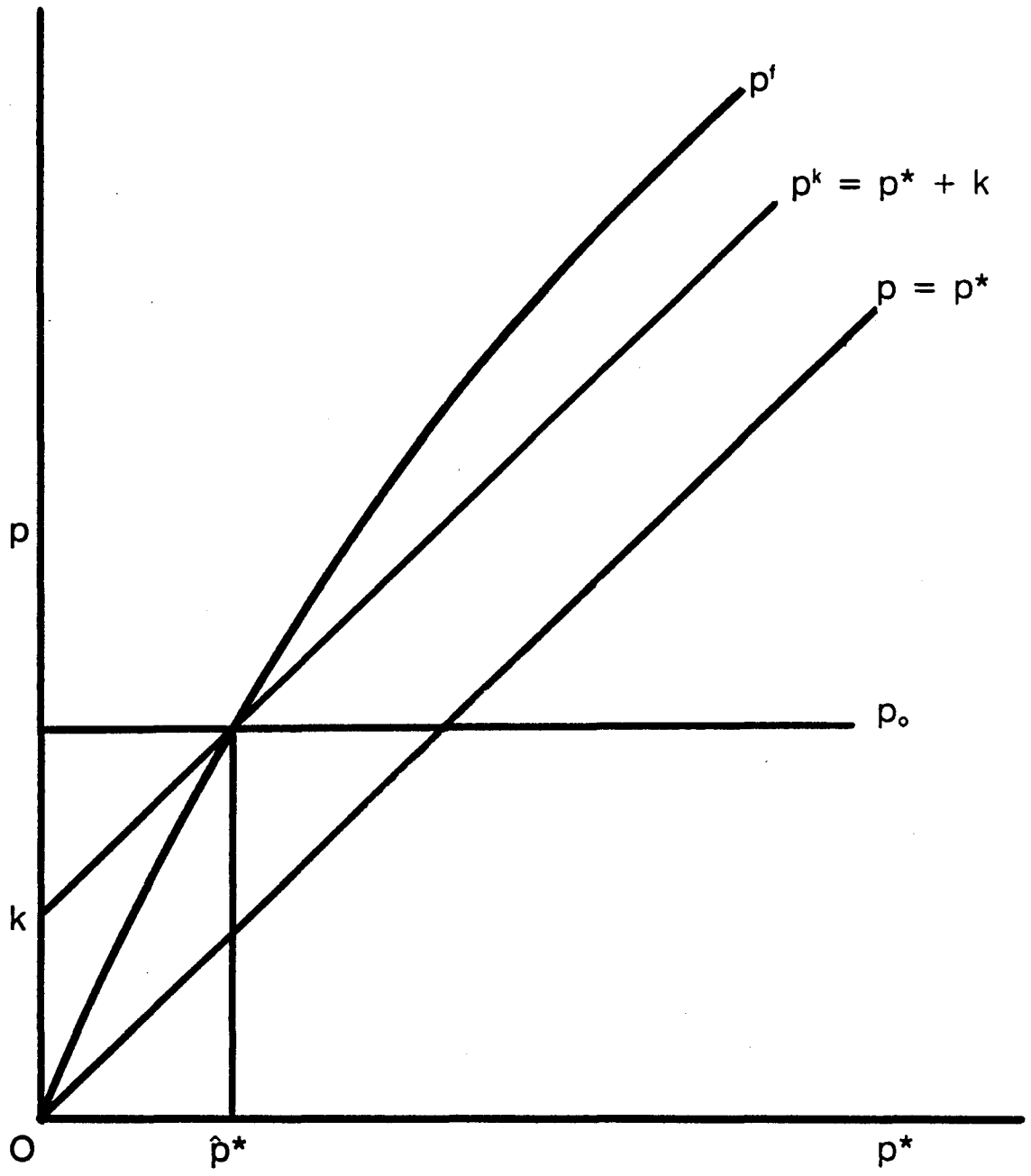


Figure 1. Specific Tariff Versus Quota

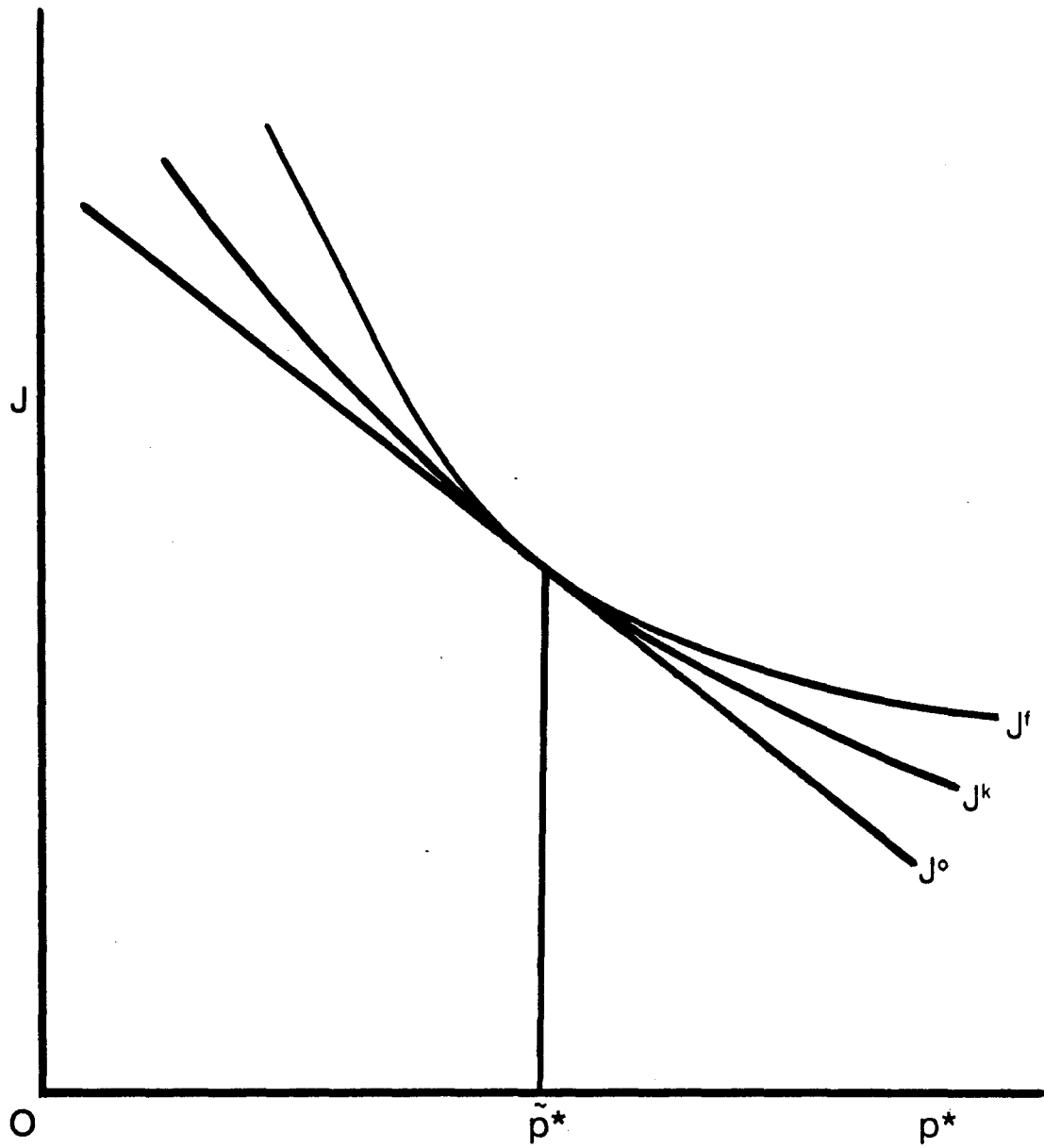


Figure II. Risk Aversion, Specific Tariff and Quota

February 6, 1990

INTERNATIONAL AGRICULTURAL TRADE RESEARCH CONSORTIUM\*

Working Papers Series

<u>Number</u>	<u>Title</u>	<u>Author(s)</u>	<u>Send correspondence or requests for copies to:</u>
85-1	Do Macroeconomic Variables Affect the Ag Trade Sector? An Elasticities Analysis	McCalla, Alex Pick, Daniel	Dr Alex McCalla Dept of Ag Econ U of California Davis, CA 95616
86-1	Basic Economics of an Export Bonus Scheme	Houck, James	Dr James Houck Dept of Ag Econ U of Minnesota St Paul, MN 55108
86-2	Risk Aversion in a Dynamic Trading Game	Karp, Larry	Dr Larry Karp Dept of Ag & Resource Econ/U of California Berkeley, CA 94720
86-3	An Econometric Model of the European Economic Community's Wheat Sector	de Gorter, Harry Meilke, Karl	Dr Karl Meilke Dept of Ag Econ U of Guelph Guelph, Ontario CANADA N1J 1S1
86-4	Targeted Ag Export Subsidies and Social Welfare	Abbott, Philip Paarlberg, Philip Sharples, Jerry	Dr Philip Abbott Dept of Ag Econ Purdue University W Lafayette, IN 47907
86-5	Optimum Tariffs in a Distorted Economy: An Application to U.S. Agriculture	Karp, Larry Beghin, John	Dr Larry Karp Dept of Ag & Resource Econ/U of California Berkeley, CA 94720
87-1	Estimating Gains from Less Distorted Ag Trade	Sharples, Jerry	Dr Jerry Sharples USDA/ERS/IED/ETP 628f NYAVEBG 1301 New York Ave NW Washington, DC 20005-4788

<u>Number</u>	<u>Title</u>	<u>Author(s)</u>	<u>Send correspondence or requests for copies to:</u>
87-2	Comparative Advantage, Competitive Advantage, and U.S. Agricultural Trade	White, Kelley	Dr Kelley White USDA/ERS/IED 732 NYAVEBG 1301 New York Ave NW Washington, DC 20005-4788
87-3	International Negotiations on Farm Support Levels: The Role of PSEs	Tangermann, Stefan Josling, Tim Pearson, Scott	Dr Tim Josling Food Research Institute Stanford University Stanford, CA 94305
87-4	The Effect of Protection and Exchange Rate Policies on Agricultural Trade: Implications for Argentina, Brazil, and Mexico	Krissoff, Barry Ballenger, Nicole	Dr Barry Krissoff USDA/ERS/ATAD 624 NYAVEBG 1301 New York Ave NW Washington, DC 20005-4788
87-5	Deficits and Agriculture: An Alternative Parable	Just, Richard Chambers, Robert	Dr Robert Chambers Dept of Ag & Resource Economics Univ of Maryland College Park, MD 20742
87-6	An Analysis of Canadian Demand for Imported Tomatoes: One Market or Many?	Darko-Mensah, Kwame Prentice, Barry	Dr Barry Prentice Dept of Ag Econ & Farm Mgmt University of Manitoba Winnipeg, Manitoba CANADA R3T 2N2
87-7	Japanese Beef Policy and GATT Negotiations: An Analysis of Reducing Assistance to Beef Producers	Wahl, Thomas Hayes, Dermot Williams, Gary	Dr Dermot Hayes Dept of Economics Meat Export Research Center Iowa State University Ames, IA 50011
87-8	Grain Markets and the United States: Trade Wars, Export Subsidies, and Price Rivalry	Houck, James	Dr James Houck Dept of Ag Econ Univ of Minnesota St Paul, MN 55108
87-9	Agricultural Trade Liberalization in a Multi-Sector World Model	Krissoff, Barry Ballenger, Nicole	Dr Barry Krissoff USDA/ERS/ATAD 624 NYAVEBG 1301 New York Ave NW Washington, DC 20005-4788

<u>Number</u>	<u>Title</u>	<u>Author(s)</u>	<u>Send correspondence or requests for copies to:</u>
88-1	Developing Country Agriculture in the Uruguay Round: What the North Might Miss	Mabbs-Zeno, Carl Ballenger, Nicole	Dr Nicole Ballenger USDA/ERS/ATAD 624 NYAVEBG 1301 New York Ave NW Washington, DC 20005-4788
88-2	Two-Stage Agricultural Import Demand Models Theory and Applications	Carter, Colin Green, Richard Pick, Daniel	Dr Colin Carter Dept of Ag Economics Univ of California Davis, CA 95616
88-3	Determinants of U.S. Wheat Producer Support Price: A Time Series Analysis	von Witzke, Harald	Dr Harald von Witzke Dept of Ag Economics Univ of Minnesota St Paul, MN 55108
88-4	Effect of Sugar Price Policy on U.S. Imports of Processed Sugar-containing Foods	Jabara, Cathy	Dr Cathy Jabara Office of Econ Policy U.S. Treasury Dept 15th & Pennsylvania Ave NW Washington, DC 20220
88-5	Market Effects of In-Kind Subsidies	Houck, James	Dr James Houck Dept of Ag Economics University of Minnesota St Paul, MN 55108
88-6	A Comparison of Tariffs and Quotas in a Strategic Setting	Karp, Larry	Dr Larry Karp Dept of Ag & Resource Econ/U of California Berkeley, CA 94720
88-7	Targeted and Global Export Subsidies and Welfare Impacts	Bohman, Mary Carter, Colin Dortman, Jeffrey	Dr Colin Carter Dept of Ag Economics U of California, Davis Davis, CA 95616
89-1	Who Determines Farm Programs? Agribusiness and the Making of Farm Policy	Alston, Julian Carter, Colin Wholgenant, M.	Dr Colin Carter Dept of Ag Economics U of California, Davis Davis, CA 95616
89-2	Report of ESCOP Subcommittee on Domestic and International Markets and Policy	Abbott, P.C. Johnson, D.G. Johnson, R.S. Meyers, W.H. Rossmiller, G.E. White, T.K. McCalla, A.F.	Dr Alex McCalla Dept of Ag Economics U of California-Davis Davis, CA 95616

<u>Number</u>	<u>Title</u>	<u>Author(s)</u>	<u>Send correspondence or requests for copies to:</u>
89-3	Does Arbitraging Matter? Spatial Trade Models and Discriminatory Trade Policies	Anania, Giovanni McCalla, Alex	Dr Alex McCalla Dept of Ag Economics U of California-Davis Davis, CA 95616
89-4	Export Supply and Import Demand Elasticities in the Japanese Textile Industry: A Production Theory Approach	Pick, Daniel Park, Timothy	Daniel Pick USDA/ERS/ATAD 1301 New York Ave. N.W. Washington, DC 20005-4788
89-5	The Welfare Effects of Imperfect Harmonization of Trade and Industrial Policy	Gatsios, K. Karp, Larry	Dr. Larry Karp Dept. of Ag & Resource Econ/U of California Berkeley, CA 94720
89-6	Report of the Task Force on Tariffication and Rebalancing	Josling, Tim Chair	Dr. Timothy Josling Food Research Institute Stanford University Stanford, CA 94305-6084
89-7	Report of the Task Force on Reinstrumentation of Agricultural Policies	Magiera, Stephen Chair	Stephen L. Magiera USDA/ERS/ATAD 1301 New York Ave., Rm 624 Washington, D.C. 20005-4788
89-8	Report of the Task Force on The Aggregate Means of Support: Potential Use by GATT for Agriculture	Rossmiller, G.E. Chair	Dr. G. Edward Rossmiller Resources for the Future Nat'l Ctr for Food/Ag Policy 1616 P Street N.W. Washington, D.C. 20036
89-9	Agricultural Policy Adjustments in East Asia: The Korean Rice Economy	Kwon, Yong Dae Yamauchi, Hiroshi	Dr. Hiroshi Yamauchi Dept. of Ag & Res. Econ. University of Hawaii 3050 Maile Way Gilmore Hall Honolulu, Hawaii 96822
90-1	Background Papers for Report of the Task Force on the Potential Use by GATT for Agriculture	Rossmiller, G.E. Chair	Dr. G. Edward Rossmiller Resources for the Future Nat'l Ctr for Food/Ag Policy 1616 P Street N.W. Washington, D.C. 20036
90-2	Optimal Trade Policies for a Developing Country Under Uncertainty	Choi, E. Kwan Lapan, Harvey E.	Dr. E. Kwan Choi Dept. of Economics Iowa State University Ames, Iowa 50011

\*The International Agricultural Trade Research Consortium is an informal association of university and government economists interested in agricultural trade. Its purpose is to foster interaction, improve research capacity and to focus on relevant trade policy issues. It is financed by the USDA, ERS and FAS, Agriculture Canada and the participating institutions.

The IATRC Working Paper Series provides members an opportunity to circulate their work at the advanced draft stage through limited distribution within the research and analysis community. The IATRC takes no political positions or responsibility

for the accuracy of the data or validity of the conclusions presented by working paper authors. Further, policy recommendations and opinions expressed by the authors do not necessarily reflect those of the IATRC.

Correspondence or requests for copies of working papers should be addressed to the authors at the addresses listed above.

A current list of IATRC publications is available from:

Laura Bipes, Administrative Director  
Department of Agricultural & Applied Economics  
University of Minnesota  
St. Paul, MN 55108  
U.S.A.