

# The Forecasting Properties of Survey-Based Wage-Growth Expectations

Thomas Jonsson<sup>#</sup>

Pär Österholm<sup>\*</sup>

---

<sup>#</sup> National Institute of Economic Research, Box 3116, 103 62 Stockholm, Sweden  
e-mail: [thomas.jonsson@konj.se](mailto:thomas.jonsson@konj.se) Phone: +46 8 453 5934

<sup>\*</sup> National Institute of Economic Research, Box 3116, 103 62 Stockholm, Sweden  
e-mail: [par.osterholm@konj.se](mailto:par.osterholm@konj.se) Phone: +46 8 453 5972

**NIER** prepares analyses and forecasts of the Swedish and international economy and conducts related research. **NIER** is a government agency accountable to the Ministry of Finance and is financed largely by Swedish government funds. Like other government agencies, **NIER** has an independent status and is responsible for the assessments that it publishes.

The **Working Paper** series consists of publications of research reports and other detailed analyses. The reports may concern macroeconomic issues related to the forecasts of the institute, research in environmental economics, or problems of economic and statistical methods. Some of these reports are published in their final form in this series, whereas others are previews of articles that are subsequently published in international scholarly journals under the heading of **Reprints**. Reports in both of these series can be ordered free of charge. Most publications can also be downloaded directly from the **NIER** home page.

# Abstract

In this paper, we evaluate survey-based wage-growth expectations in Sweden. Results show that the expectations are neither unbiased nor efficient forecasts. Evaluating out-of-sample forecasting performance, we find that the survey participants generally perform worse than a constant forecast based on reasonable assumptions regarding the inflation target and productivity growth. Our findings indicate that caution should be exercised when relying on these data for policymaking.

*JEL Classification:* E52, J30

*Keywords:* Survey data



# Contents

1. Introduction .....	7
2. Data .....	7
3. Empirical analysis .....	8
3.1 Unbiasedness and efficiency .....	9
3.2 Forecast accuracy .....	11
4. Conclusions .....	12
Appendix .....	14



# 1. Introduction

Wage growth is widely considered an important determinant for inflation. For example, in the expectations-augmented Phillips-curve model – which is a highly popular model of inflation in both theoretical and empirical work – it is often assumed that prices are set as a markup over productivity-adjusted labour costs. As pointed out by Mehra (1977, p. 1227), it is also intuitive that “*industry money wages via their effects upon industry product prices may have significant effects upon the consumer price index*”. Given this importance of wage growth for inflation, and the forward-looking nature of monetary policy making, wage-growth expectations are of much interest to central banks. However, for a central bank to be able to conduct good monetary policy, it is important that it has access to wage expectations that are of high quality. In this paper, we therefore assess properties of an important measure of wage-growth expectations in Sweden.

More specifically, the survey-based wage-growth expectations provided by Prospera on behalf of Sveriges Riksbank are evaluated from a forecasting perspective. First, we conduct tests for bias and efficiency. Second, the predictive ability of the wage-growth expectations is investigated. Results suggest that the expectations are biased and not efficient. In addition, the forecast precision of the survey-based wage-growth expectations tends to be lower than that associated with a forecast that at all points in time says that wage growth will be 3.5 percent.

The remainder of this paper is organised as follows: Data are described in Section 2. In Section 3, the empirical analysis is conducted and the results are discussed. Section 4 concludes.

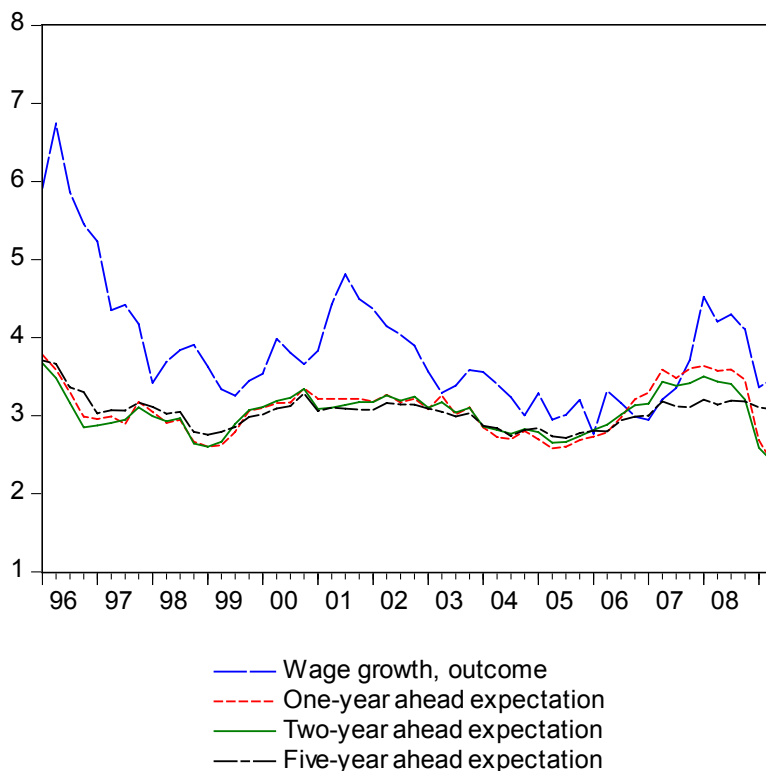
## 2. Data

Data on twelve-month-ended wage growth from 1996Q1 to 2009Q2 are given in Figure 1.<sup>1</sup> In the same figure, one-, two- and five-year ahead overall mean wage-growth expectations from the Prospera survey are shown. The survey is conducted each quarter – all series hence consists of 54 observations.<sup>2</sup> In the survey, a large number of businesses and organisations are asked about their wage expectations. The results of the survey are aggregated in an overall measure and into four subcategories: employee organisations, employer organisations, manufacturing companies and trade companies. Figures A1 to A3 in the Appendix show one-, two- and five-year mean wage-growth expectations by subcategory.

---

<sup>1</sup> The short term-wage statistics (total economy) from the National Mediation Office is used as the measure of the wage.

<sup>2</sup> While the survey is conducted four times per year, the interval is not fixed. We discuss this issue further below when relevant.

**Figure 1. Wage growth and overall wage-growth expectations.**

Note: The dates for the expectations refer to when they were collected.

It can be seen from Figure 1 and Figures A1 to A3 that wage-growth expectations appear to vary over time with the actual wage-growth and as would be expected, the expectations vary less the longer the horizon. It also seems reasonably clear that expectations under-predict actual wage growth. We next investigate the empirical properties of the survey-based wage-growth expectations to – among other things – see whether there exists a significant bias in the expectations.

### 3. Empirical analysis

Our empirical analysis of the survey-based wage-growth expectations are divided into two parts. First, tests for unbiasedness and efficiency are conducted. Such tests are fairly common in the literature aiming to evaluate expectations; see, for example, Egginton (1999), Thomas (1999), Mehra (2002) and Baghestani (2008). Second, the predictive ability of the wage-growth expectations is contrasted with those of a simple alternative, namely a constant forecast. We believe that the comparison of forecast accuracy – while not as commonly conducted in the literature as tests for bias and efficiency – is very interesting since it can be used to assess the properties of the expectations from another angle. For example, if the forecast precision of the expectations is lower than that of



a simple alternative, one has to question how the expectations are formed – or measured – even if they pass tests for unbiasedness and efficiency.

### 3.1 Unbiasedness and efficiency

Table 1 reports the mean errors (ME) associated with the overall forecast and the four subcategories. All of the MEs are located in the range 0.25 to 0.70, which must be considered fairly large. Having quantified the extent of the under-prediction, we ask whether this under-prediction constitutes a significant bias. This can be tested by running the regression

$$\Delta w_{t+h} - \Delta w_{t+h|t}^e = \lambda + \omega_t, \quad (1)$$

where  $\Delta w_{t+h}$  and  $\Delta w_{t+h|t}^e$  are wage growth and wage-growth expectations respectively and  $\omega_t$  is a mean zero error term. The null hypothesis  $H_0 : \lambda = 0$  is then tested using a standard  $t$ -test.<sup>3</sup> As can be seen from Table 1, it is concluded that all expectations except the five-year ahead expectation for employee organisations are biased.

**Table 1. Results from tests of bias.**

One-, two- and five-year ahead wage-growth expectations.

	ME
<b>1 year</b>	
Overall	0.62**
Employee	0.36**
Employer	0.43**
Manufacturing	0.67**
Trade	0.70**
<b>2 years</b>	
Overall	0.60**
Employee	0.35*
Employer	0.48**
Manufacturing	0.63**
Trade	0.68**
<b>5 years</b>	
Overall	0.53**
Employee	0.25
Employer	0.58**
Manufacturing	0.58**
Trade	0.56**

Note: ME is the mean error which is equal to  $\hat{\lambda}$ . \*\* and \* indicate significance at the one and five percent level respectively. Regressions have 50, 46 and 34 observations at the one-, two- and five-year horizons.

<sup>3</sup> Newey-West standard errors are used to address the serial correlation in the residuals.

The finding that the survey expectations are biased does not come as a complete surprise though. The literature on survey expectations tends to find evidence against unbiasedness; see, for example, Croushore (1997), Roberts (1997) and Mankiw *et al.* (2003). It is somewhat disturbing that forecasts are biased though, for example since it constitutes a violation of rational expectations under the assumption of a symmetric quadratic loss function. However, since we in reality never know the loss function of the forecasters, we do not make such a claim here.<sup>4</sup> Instead we simply note that this result should be considered a warning sign regarding the rationality of the formation of expectations.

We next turn to the issue of efficient use of macroeconomic data when forming wage-growth expectations. Standard models suggest that the unemployment rate should be useful when predicting wage growth. A straightforward test of efficient use of data can therefore be based on the regression

$$\Delta w_{t+h} - \Delta w_{t+h|t}^e = \beta_0 + \beta_1 u_{t-1} + \beta_2 u_{t-2} + \beta_3 u_{t-3} + \beta_4 u_{t-4} + v_t, \quad (2)$$

where  $u_t$  is the unemployment rate at time  $t$ . The null hypothesis  $H_0 : \beta_1 = \beta_2 = \beta_3 = \beta_4 = 0$  is tested using a standard  $F$ -test. Results are given in Table 2 and show that the wage-growth expectations for all categories at all horizons do not sufficiently take into account the unemployment rate when formed. Regarding the interpretation of our results, it can be noted that while bias – as noted above – is not necessarily a sign of lack of rationality, inefficient use of data is incompatible with rational expectations.

---

<sup>4</sup> Recall that biased forecasts can be rational, for example if the forecasters have asymmetric loss functions; see Elliott *et al.* (2008).

**Table 2. Results from estimation of equation (2).**

One-, two- and five-year ahead wage-growth expectations.

	F
<b>1 year</b>	
Overall	5.67**
Employee	4.07**
Employer	5.21**
Manufacturing	4.64**
Trade	6.66**
<b>2 years</b>	
Overall	4.42**
Employee	4.72**
Employer	4.48**
Manufacturing	3.89**
Trade	4.70**
<b>5 years</b>	
Overall	7.51**
Employee	7.90**
Employer	6.79**
Manufacturing	7.41**
Trade	7.23**

Note: Entries are the test statistics from the F-test of all slope coefficients in equation (2) being zero. \*\* and \* indicate significance at the one and five percent level respectively. Regressions have 50, 46 and 34 observations at the one-, two- and five-year horizons.

### 3.2 Forecast accuracy

As the last step in our assessment of the wage-growth expectations, we finally compare the forecasting precision of the Prospera survey expectations with that of a simple alternative forecast. The alternative forecast is a constant forecast of 3.5 percent, based on the assumption that nominal wages in equilibrium should grow by the sum of Sveriges Riksbank's inflation target and productivity growth. While the inflation target is clearly stated as two percent CPI inflation, a productivity growth of 1.5 percent per year is admittedly a more controversial assumption. However, this number can easily be motivated as a reasonable, also in real time; see, for example, Pehkonen (1995) for an empirical study supporting the assumption. The results in Table 3 show that the constant forecast performs best at all horizons, except for the one-year horizon where employee organisations have a lower RMSE.

**Table 3. RMSEs from different forecasts.**

	1 year	2 years	5 years
Constant	0.568	0.491	0.551
Overall	0.747	0.806	0.733
Employee	0.533	0.643	0.594
Employer	0.653	0.749	0.777
Manufacturing	0.789	0.833	0.780
Trade	0.829	0.873	0.743

Note: 50, 46 and 34 forecasts are evaluated at the one-, two- and five-year horizons respectively.

Considering the forecast accuracy of different subcategories of respondents, Table 3 shows that employee organisations have a lower RMSE at all horizons than other subcategories. The fact that employee organisations are good at forecasting wage growth can probably be partly explained by the fact that wages in Sweden are largely determined in negotiations between employer organisations and employee organisations.<sup>5</sup> It could thus be presumed that labour-market parties may have some unique knowledge about the future growth of wages and thus are better forecasters than other agents in the economy. This is to some extent confirmed since also employer organisations have lower RMSEs than other categories – employee organisations excluded – at the one- and two-year horizons. Still, the employee organisations stand out as substantially better than the other categories. It is interesting to note that this is consistent with the theoretical framework of Blanchard and Summers (1986) in which unions decide upon the wage and firms on employment.

In order to assess whether the difference in forecasting precision is significant, we employ a Diebold-Mariano test (Diebold and Mariano, 1995) under the assumption of a quadratic loss function. We test the null hypothesis that the forecasting accuracy of the subcategory in question is equal to that of employee organisations. Results are provided in Table 4 and show that the null hypothesis of equal forecasting accuracy is rejected in all cases at the five percent level. We hence conclude that the forecasting accuracy of employee organisations is significantly higher than that of the other subcategories.

---

<sup>5</sup> Through the 1960s, 1970s and early 1980s, Sweden was dominated by highly centralised and stable forms of wage negotiations. Since 1983 all negotiations are conducted at the industry and sector level.

**Table 4. Results from Diebold-Mariano test.**

	1 year	2 years	5 years
Overall	-4.26**	-3.16**	-2.42*
Employer	-2.72**	-2.13*	-2.45**
Manufacturing	-4.46**	-3.27**	-2.53**
Trade	-4.33**	-3.49**	-2.66**

Note: The null hypothesis is that the forecasting accuracy of the subcategory in question is equal to that of employee organisations. \*\* and \* indicate significance at the one and five percent level respectively. 50, 46 and 34 observations are used at the one-, two- and five-year horizons respectively.

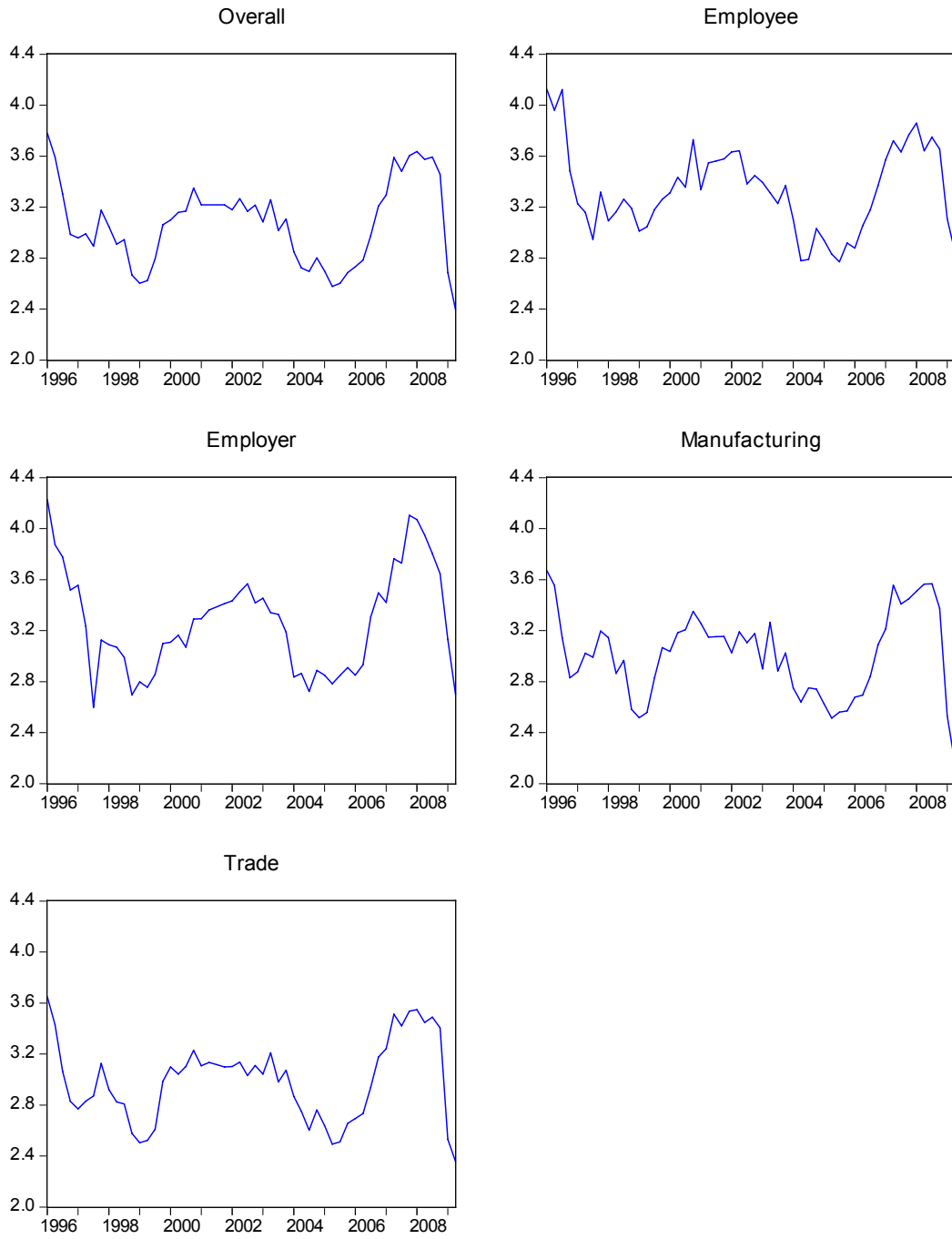
## 4. Conclusions

In this paper, we have evaluated survey-based wage-growth expectations in Sweden. Results show that the expectations are neither unbiased nor efficient forecasts. Evaluating out-of-sample forecasting performance, we find that the participants in the Prospera survey generally perform worse than a constant forecast which combines an inflation target of two percent with a productivity growth rate of 1.5 percent.

The fact that survey-based expectations studied in this paper have some questionable properties is by no means highly surprising and could, for example, be due to expectations being adaptive rather than rational. It is, however, also possible that the established shortcomings are found because the data provide imperfect measures of the true wage-growth expectations. Survey-based measures of expectations are commonly criticised since the respondents have small incentives to give well thought answers; see, for example, Wolfers and Leigh (2002) and Gürkaynak and Wolfers (2005). It is troublesome to policymakers and forecasters who rely on these expectations as input in their analysis if it is indeed the case that the Prospera survey fails to record the true wage-growth expectations in Sweden. Being aware of the potential shortcomings of the data is an important first step though and by taking the results presented in this paper into account, the worst pitfalls can hopefully be avoided.

Appendix

**Figure A1. One-year ahead wage-growth expectations.**



**Figure A2. Two-year ahead wage-growth expectations.**

Figure A3. Five-year ahead wage-growth expectations.





## References

- Baghestani, H. (2008), "Federal Reserve versus Private Information: Who Is the Best Unemployment Rate Predictor?", *Journal of Policy Modeling* 30, 101-110.
- Blanchard, O. J. and Summers, L. H. (1986), "Hysteresis and the European Unemployment Problem", *NBER Macroeconomics Annual* 1, 15-78.
- Croushore, D. (1997), "The Livingstone Survey: Still Useful after All These Years", *Federal Reserve Bank of Philadelphia Business Review*, 1-12.
- Diebold F. X. and Mariano R. S. (1995), "Comparing Predictive Accuracy", *Journal of Business and Economic Statistics* 13, 253-263.
- Egginton, D. M. (1999), "Testing the Efficiency and Rationality of City Forecasts", *International Journal of Forecasting* 15, 57-66.
- Elliott, G., Komunjer, I. and Timmermann, A. (2008), "Biases in Macroeconomic Forecasts: Irrationality or Asymmetric Loss?", *Journal of the European Economic Association* 6, 122-157
- Gürkaynak, R. and Wolfers, J. (2005), "Macroeconomic Derivatives: An Initial Analysis of Market-Based Macro Forecasts, Uncertainty and Risk", In: Frankel, J. and Pissarides, C. (eds), *NBER International Seminar on Macroeconomics*, MIT Press, Boston.
- Jonsson, T. and Österholm, P. (2009), "The Properties of Survey-Based Inflation Expectations in Sweden", Forthcoming in *Empirical Economics*.
- Mankiw, N. G., Reis, R., Wolfers, J. (2003), "Disagreements about Inflation Expectations", *NBER Macroeconomics Annual* 18, 209-248.
- Mehra, Y. P. (1977), "Money Wages, Prices and Causality", *Journal of Political Economy* 85, 1227-1244.
- Mehra, Y. P. (2002), "Survey Measures of Expected Inflation: Revisiting the Issues of Predictive Content and Rationality", *Federal Reserve Bank of Richmond Quarterly Review* 88, 17-36.
- Pehkonen, J. (1995), "Wages and Productivity Growth in the Nordic Countries", *European Economic Review* 39, 1181-1196.
- Roberts, J. M. (1997), "Is Inflation Sticky?", *Journal of Monetary Economics* 39, 176-196.
- Thomas, L. B., (1999) "Survey Measures of Expected U.S. Inflation", *Journal of Economic Perspectives* 13, 125-144.
- Wolfers, J. and Leigh, A. (2002), "Three Tools for Forecasting Federal Elections: Lessons from 2001", *Australian Journal of Political Science* 37, 223-240.

## Titles in the Working Paper Series

No	Author	Title	Year
1	Warne, Anders and Anders Vredin	Current Account and Business Cycles: Stylized Facts for Sweden	1989
2	Östblom, Göran	Change in Technical Structure of the Swedish Economy	1989
3	Söderling, Paul	Mamtax. A Dynamic CGE Model for Tax Reform Simulations	1989
4	Kanis, Alfred and Aleksander Markowski	The Supply Side of the Econometric Model of the NIER	1990
5	Berg, Lennart	The Financial Sector in the SNEPQ Model	1991
6	Ågren, Anders and Bo Jonsson	Consumer Attitudes, Buying Intentions and Consumption Expenditures. An Analysis of the Swedish Household Survey Data	1991
7	Berg, Lennart and Reinhold Bergström	A Quarterly Consumption Function for Sweden 1979-1989	1991
8	Öller, Lars-Erik	Good Business Cycle Forecasts- A Must for Stabilization Policies	1992
9	Jonsson, Bo and Anders Ågren	Forecasting Car Expenditures Using Household Survey Data	1992
10	Löfgren, Karl-Gustaf, Bo Ranneby and Sara Sjöstedt	Forecasting the Business Cycle Not Using Minimum Autocorrelation Factors	1992
11	Gerlach, Stefan	Current Quarter Forecasts of Swedish GNP Using Monthly Variables	1992
12	Bergström, Reinhold	The Relationship Between Manufacturing Production and Different Business Survey Series in Sweden	1992
13	Edlund, Per-Olov and Sune Karlsson	Forecasting the Swedish Unemployment Rate: VAR vs. Transfer Function Modelling	1992
14	Rahiala, Markku and Timo Teräsvirta	Business Survey Data in Forecasting the Output of Swedish and Finnish Metal and Engineering Industries: A Kalman Filter Approach	1992
15	Christofferson, Anders, Roland Roberts and Ulla Eriksson	The Relationship Between Manufacturing and Various BTS Series in Sweden Illuminated by Frequency and Complex Demodulate Methods	1992
16	Jonsson, Bo	Sample Based Proportions as Values on an Independent Variable in a Regression Model	1992
17	Öller, Lars-Erik	Eliciting Turning Point Warnings from Business Surveys	1992
18	Forster, Margaret M	Volatility, Trading Mechanisms and International Cross-Listing	1992
19	Jonsson, Bo	Prediction with a Linear Regression Model and Errors in a Regressor	1992
20	Gorton, Gary and Richard Rosen	Corporate Control, Portfolio Choice, and the Decline of Banking	1993
21	Gustafsson, Claes-Håkan and Åke Holmén	The Index of Industrial Production – A Formal Description of the Process Behind it	1993

22	Karlsson, Tohmas	A General Equilibrium Analysis of the Swedish Tax Reforms 1989-1991	1993
23	Jonsson, Bo	Forecasting Car Expenditures Using Household Survey Data- A Comparison of Different Predictors	1993
24	Gennotte, Gerard and Hayne Leland	Low Margins, Derivative Securites and Volatility	1993
25	Boot, Arnoud W.A. and Stuart I. Greenbaum	Discretion in the Regulation of U.S. Banking	1993
26	Spiegel, Matthew and Deane J. Seppi	Does Round-the-Clock Trading Result in Pareto Improvements?	1993
27	Seppi, Deane J.	How Important are Block Trades in the Price Discovery Process?	1993
28	Glosten, Lawrence R.	Equilibrium in an Electronic Open Limit Order Book	1993
29	Boot, Arnoud W.A., Stuart I Greenbaum and Anjan V. Thakor	Reputation and Discretion in Financial Contracting	1993
30a	Bergström, Reinhold	The Full Tricotomous Scale Compared with Net Balances in Qualitative Business Survey Data – Experiences from the Swedish Business Tendency Surveys	1993
30b	Bergström, Reinhold	Quantitative Production Series Compared with Qualitative Business Survey Series for Five Sectors of the Swedish Manufacturing Industry	1993
31	Lin, Chien-Fu Jeff and Timo Teräsvirta	Testing the Constancy of Regression Parameters Against Continous Change	1993
32	Markowski, Aleksander and Parameswar Nandakumar	A Long-Run Equilibrium Model for Sweden. The Theory Behind the Long-Run Solution to the Econometric Model KOSMOS	1993
33	Markowski, Aleksander and Tony Persson	Capital Rental Cost and the Adjustment for the Effects of the Investment Fund System in the Econometric Model Kosmos	1993
34	Kanis, Alfred and Bharat Barot	On Determinants of Private Consumption in Sweden	1993
35	Kääntä, Pekka and Christer Tallbom	Using Business Survey Data for Forecasting Swedish Quantitative Business Cycle Variable. A Kalman Filter Approach	1993
36	Ohlsson, Henry and Anders Vredin	Political Cycles and Cyclical Policies. A New Test Approach Using Fiscal Forecasts	1993
37	Markowski, Aleksander and Lars Ernsäter	The Supply Side in the Econometric Model KOSMOS	1994
38	Gustafsson, Claes-Håkan	On the Consistency of Data on Production, Deliveries, and Inventories in the Swedish Manufacturing Industry	1994
39	Rahiala, Markku and Tapani Kovalainen	Modelling Wages Subject to Both Contracted Increments and Drift by Means of a Simultaneous-Equations Model with Non-Standard Error Structure	1994
40	Öller, Lars-Erik and Christer Tallbom	Hybrid Indicators for the Swedish Economy Based on Noisy Statistical Data and the Business Tendency Survey	1994

41	Östblom, Göran	A Converging Triangularization Algorithm and the Intertemporal Similarity of Production Structures	1994
42a	Markowski, Aleksander	Labour Supply, Hours Worked and Unemployment in the Econometric Model KOSMOS	1994
42b	Markowski, Aleksander	Wage Rate Determination in the Econometric Model KOSMOS	1994
43	Ahlroth, Sofia, Anders Björklund and Anders Forslund	The Output of the Swedish Education Sector	1994
44a	Markowski, Aleksander	Private Consumption Expenditure in the Econometric Model KOSMOS	1994
44b	Markowski, Aleksander	The Input-Output Core: Determination of Inventory Investment and Other Business Output in the Econometric Model KOSMOS	1994
45	Bergström, Reinhold	The Accuracy of the Swedish National Budget Forecasts 1955-92	1995
46	Sjöö, Boo	Dynamic Adjustment and Long-Run Economic Stability	1995
47a	Markowski, Aleksander	Determination of the Effective Exchange Rate in the Econometric Model KOSMOS	1995
47b	Markowski, Aleksander	Interest Rate Determination in the Econometric Model KOSMOS	1995
48	Barot, Bharat	Estimating the Effects of Wealth, Interest Rates and Unemployment on Private Consumption in Sweden	1995
49	Lundvik, Petter	Generational Accounting in a Small Open Economy	1996
50	Eriksson, Kimmo, Johan Karlander and Lars-Erik Öller	Hierarchical Assignments: Stability and Fairness	1996
51	Url, Thomas	Internationalists, Regionalists, or Eurocentrists	1996
52	Ruist, Erik	Temporal Aggregation of an Econometric Equation	1996
53	Markowski, Aleksander	The Financial Block in the Econometric Model KOSMOS	1996
54	Östblom, Göran	Emissions to the Air and the Allocation of GDP: Medium Term Projections for Sweden. In Conflict with the Goals of SO <sub>2</sub> , SO <sub>2</sub> and NOX Emissions for Year 2000	1996
55	Koskinen, Lasse, Aleksander Markowski, Parameswar Nandakumar and Lars-Erik Öller	Three Seminar Papers on Output Gap	1997
56	Oke, Timothy and Lars-Erik Öller	Testing for Short Memory in a VARMA Process	1997
57	Johansson, Anders and Karl-Markus Modén	Investment Plan Revisions and Share Price Volatility	1997
58	Lyhagen, Johan	The Effect of Precautionary Saving on Consumption in Sweden	1998
59	Koskinen, Lasse and Lars-Erik Öller	A Hidden Markov Model as a Dynamic Bayesian Classifier, with an Application to Forecasting Busi-	1998

		ness-Cycle Turning Points	
60	Kragh, Börje and Aleksander Markowski	Kofi – a Macromodel of the Swedish Financial Markets	1998
61	Gajda, Jan B. and Aleksander Markowski	Model Evaluation Using Stochastic Simulations: The Case of the Econometric Model KOSMOS	1998
62	Johansson, Kerstin	Exports in the Econometric Model KOSMOS	1998
63	Johansson, Kerstin	Permanent Shocks and Spillovers: A Sectoral Approach Using a Structural VAR	1998
64	Öller, Lars-Erik and Bharat Barot	Comparing the Accuracy of European GDP Forecasts	1999
65	Huhtala, Anni and Eva Samakovlis	Does International Harmonization of Environmental Policy Instruments Make Economic Sense? The Case of Paper Recycling in Europe	1999
66	Nilsson, Charlotte	A Unilateral Versus a Multilateral Carbon Dioxide Tax - A Numerical Analysis With The European Model GEM-E3	1999
67	Braconier, Henrik and Steinar Holden	The Public Budget Balance – Fiscal Indicators and Cyclical Sensitivity in the Nordic Countries	1999
68	Nilsson, Kristian	Alternative Measures of the Swedish Real Exchange Rate	1999
69	Östblom, Göran	An Environmental Medium Term Economic Model – EMEC	1999
70	Johnsson, Helena and Peter Kaplan	An Econometric Study of Private Consumption Expenditure in Sweden	1999
71	Arai, Mahmood and Fredrik Heyman	Permanent and Temporary Labour: Job and Worker Flows in Sweden 1989-1998	2000
72	Öller, Lars-Erik and Bharat Barot	The Accuracy of European Growth and Inflation Forecasts	2000
73	Ahlroth, Sofia	Correcting Net Domestic Product for Sulphur Dioxide and Nitrogen Oxide Emissions: Implementation of a Theoretical Model in Practice	2000
74	Andersson, Michael K. And Mikael P. Gredenhoff	Improving Fractional Integration Tests with Bootstrap Distribution	2000
75	Nilsson, Charlotte and Anni Huhtala	Is CO <sub>2</sub> Trading Always Beneficial? A CGE-Model Analysis on Secondary Environmental Benefits	2000
76	Skånberg, Kristian	Constructing a Partially Environmentally Adjusted Net Domestic Product for Sweden 1993 and 1997	2001
77	Huhtala, Anni, Annie Toppinen and Mattias Boman,	An Environmental Accountant's Dilemma: Are Stumpage Prices Reliable Indicators of Resource Scarcity?	2001
78	Nilsson, Kristian	Do Fundamentals Explain the Behavior of the Real Effective Exchange Rate?	2002
79	Bharat, Barot	Growth and Business Cycles for the Swedish Economy	2002
80	Bharat, Barot	House Prices and Housing Investment in Sweden and the United Kingdom. Econometric Analysis for the Period 1970-1998	2002
81	Hjelm, Göran	Simultaneous Determination of NAIRU, Output Gaps and Structural Budget Balances: Swedish Evi-	2003

		dence	
82	Huhtala, Anni and Eva Samalkovis	Green Accounting, Air Pollution and Health	2003
83	Lindström, Tomas	The Role of High-Tech Capital Formation for Swedish Productivity Growth	2003
84	Hansson, Jesper, Per Jansson and Märten Löf	Business survey data: do they help in forecasting the macro economy?	2003
85	Boman, Mattias, Anni Huhtala, Charlotte Nilsson, Sofia Ahlroth, Göran Bostedt, Leif Mattson and Peichen Gong	Applying the Contingent Valuation Method in Resource Accounting: A Bold Proposal	
86	Gren, Ing-Marie	Monetary Green Accounting and Ecosystem Services	2003
87	Samakovlis, Eva, Anni Huhtala, Tom Bellander and Magnus Svartengren	Air Quality and Morbidity: Concentration-response Relationships for Sweden	2004
88	Alsterlind, Jan, Alek Markowski and Kristian Nilsson	Modelling the Foreign Sector in a Macroeconometric Model of Sweden	2004
89	Lindén, Johan	The Labor Market in KIMOD	2004
90	Braconier, Henrik and Tomas Forsfält	A New Method for Constructing a Cyclically Adjusted Budget Balance: the Case of Sweden	2004
91	Hansen, Sten and Tomas Lindström	Is Rising Returns to Scale a Figment of Poor Data?	2004
92	Hjelm, Göran	When Are Fiscal Contractions Successful? Lessons for Countries Within and Outside the EMU	2004
93	Östblom, Göran and Samakovlis, Eva	Costs of Climate Policy when Pollution Affects Health and Labour Productivity. A General Equilibrium Analysis Applied to Sweden	2004
94	Forslund Johanna, Eva Samakovlis and Maria Vredin Johansson	Matters Risk? The Allocation of Government Subsidies for Remediation of Contaminated Sites under the Local Investment Programme	2006
95	Erlandsson Mattias and Alek Markowski	The Effective Exchange Rate Index KIX - Theory and Practice	2006
96	Östblom Göran and Charlotte Berg	The EMEC model: Version 2.0	2006
97	Hammar, Henrik, Tommy Lundgren and Magnus Sjöström	The significance of transport costs in the Swedish forest industry	2006
98	Barot, Bharat	Empirical Studies in Consumption, House Prices and the Accuracy of European Growth and Inflation Forecasts	2006
99	Hjelm, Göran	Kan arbetsmarknadens parter minska jämviktsarbetslösheten? Teori och modellsimuleringar	2006
100	Bergvall, Anders, Tomas Forsfält, Göran	KIMOD 1.0 Documentation of NIER's Dynamic Macroeconomic General Equilibrium Model of the	2007

	Hjelm, Jonny Nilsson and Juhana Vartiainen	Swedish Economy	
101	Östblom, Göran	Nitrogen and Sulphur Outcomes of a Carbon Emissions Target Excluding Traded Allowances - An Input-Output Analysis of the Swedish Case	2007
102	Hammar, Henrik and Åsa Löfgren	Explaining adoption of end of pipe solutions and clean technologies – Determinants of firms' investments for reducing emissions to air in four sectors in Sweden	2007
103	Östblom, Göran and Henrik Hammar	Outcomes of a Swedish Kilometre Tax. An Analysis of Economic Effects and Effects on NOx Emissions	2007
104	Forsfält, Tomas, Johnny Nilsson and Juhana Vartiainen	Modellansatser i Konjunkturinstitutets medelfristprognoser	208
105	Samakovlis, Eva	How are Green National Accounts Produced in Practice?	2008
107	Forslund, Johanna, Per Johansson, Eva Samakovlis and Maria Vredin Johansson	Can we by time? Evaluation. Evaluation of the government's directed grant to remediation in Sweden	2009
108	Forslund, Johanna Eva Samakovlis, Maria Vredin Johansson and Lars Barregård	Does Remediation Save Lives? On the Cost of Cleaning Up Arsenic-Contaminated Sites in Sweden	2009
109	Sjöström, Magnus and Göran Östblom	Future Waste Scenarios for Sweden on the Basis of a CGE-model	2009
110	Österholm, Pär	The Effect on the Swedish Real Economy of the Financial Crisis	2009
111	Forsfält, Tomas	KIMOD 2.0 Documentation of changes in the model from January 2007 to January 2009	2009
112	Österholm, Pär	Improving Unemployment Rate Forecasts Using Survey Data	2009
113	Österholm, Pär	Unemployment and Labour-Force Participation in Sweden	2009
114	Jonsson, Thomas and Pär Österholm	The Properties of Survey-Based Inflation Expectations in Sweden	2009
115	Hjelm, Göran and Kristian Jönsson	In Search of a Method for Measuring the Output Gap of the Swedish Economy	2010
116	Vartiainen, Juhana	Interpreting Wage Bargaining Norms	2010
117	Mossfeldt, Marcus and Pär Österholm	The Persistent Labour-Market Effects of the Financial Crisis	2010
118	Östblom, Göran, Maria Ljunggren Söderman and Magnus Sjöström	Analysing future solid waste generation – Soft linking a model of waste management with a CGE-model for Sweden	2010
119	Broberg, Thomas, Per-Olov Marklund , Eva Samakovlisa and Henrik Hammar	Does environmental leadership pay off for Swedish industry? - Analyzing the effects of environmental investments on efficiency	2010

120	Gustavsson, Magnus and Pär Österholm	Labor-Force Participation Rates and the Informational Value of Unemployment Rates: Evi- dence from Disaggregated US Data	2010
-----	---	--	------