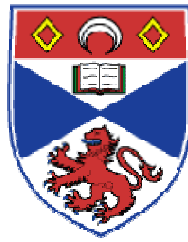


CENTRE FOR DYNAMIC MACROECONOMIC ANALYSIS
WORKING PAPER SERIES



CDMA10/13

Economic Crisis and Economic Theory

Mark Weder^{*†}
University of Adelaide, CDMA and CEPR

JULY, 2010

ABSTRACT

Two dynamic general equilibrium economies compete in explaining the United States' interwar business cycles. Despite the demand driven contender's slight advantages, the results remain too close to call a clear winner.

JEL Classification: E32, N12

Keywords: Great Depression, Dynamic General Equilibrium.

*I would like to thank Robert Shimer and Lisa Topelmann for helpful comments. All remaining errors are, of course, my own.

† School of Economics, The University of Adelaide, Adelaide SA 5005, Australia, mark.weder@adelaide.edu.au.

1 Introduction

"The amazing lesson from this depression is that no one knows much about the real causes and effects of ANYTHING." W. M. Kiplinger, financial expert.

What caused the Great Depression in the United States? Contrary to the ongoing critique on the Economics profession for not having anticipated the Global Financial Crisis, the macroeconomics community over the past decade has produced extensive work on other major depressions. In particular, in recent years, there has been a resurgence in interest in the Great Depression. This work was initiated by Cole and Ohanian (1999) who have entertained the idea that the economic disaster stemmed from real supply shocks such as innovations or changes in regulations. Others like Bordo, Erceg and Evans (2000) have considered monetary factors such as price trends, interest rates and monetary policy. And in Harrison and Weder (2006) and Weder (2001, 2006) a decline in aggregate spending has formed the foundation of analysis.

These varied approaches have two central ideas in common: (i) they apply dynamic general equilibrium modelling, and (ii) they calibrate models and use these calibrated models to generate artificial data that are then compared with actual data.

Nevertheless, there is still no general agreement about the causes of the Great Depression in the United States. This paper contributes to the debate contrasting competing theories of the business cycle. In particular, I am going to examine and compare a real business cycle approach which focusses on supply disturbances with another model which puts shifts in real demand at the centerstage. By running a Fair and Shiller-like (1990) test, some new insights regarding these theories' efficacy to explain US interwar business cycles will be provided.

Before looking at these artificial economies, it is worthwhile to restate some facts about the Great Depression in the United States which will be critical when evaluating the theories. Figure 1 presents US per capita GDP from 1889 to 2006 (original source of data: Kendrick, 1961, Maddison, 1991 and NIPA). The Figure also plots the fitted long run trend and cyclical deviations from this estimated trend. The residuals constitute what is generally understood as business cycle fluctuations. These fluctuations, and the interwar years in particular, are the focus of the present paper. The lower part of Figure 1 shows that GDP per capita fell by about 40 percent from trend between 1929 and 1933 and it suggests that the US economy failed to recover until the outbreak of the Second World War. In fact, (detrended) 1939 GDP was some twenty percent lower than that of 1929 (This tepid recovery turns

out to be very problematic to explain.) Furthermore, the US economy experienced another big recession during 1937-38 – the third largest in the 20th century.

In the next three Sections, I will outline how two competing ideas of business cycles are able to account for these Depression facts.

Figure 1 about here

2 Supply shocks

It is well known that the real business cycle model performs fairly well in explaining postwar US business cycles. The idea to look at historical episodes and, in particular, to confront real business cycle theory and the Great Depression stems from Cole and Ohanian (1999). They took a plain vanilla real business cycle model off the shelf and tested the hypothesis of if the Great Depression had been caused by negative technology shocks. Cole and Ohanian's idea is not trivial. Figure 2 plots the path of US total factor productivity (TFP) from 1892 to 1941 (original source of data: Kendrick, 1961). The Figure's lower graph shows the percentage deviations of TFP from the prewar trend. TFP deteriorated after 1928, and from 1929 to 1933, there was a near-twenty percent drop in TFP. Hence, everything boils down to if a drop of this size is sufficient to have created the Great Depression.

Their model is outlined as follows. A representative household has preferences ordered by

$$U = E_0 \sum_{t=0}^{\infty} \beta^t [\log c_t + \eta \log(1 - h_t)].$$

Here c_t denotes consumption, h_t stands for hours worked and β is the discount factor. $0 < \beta < 1$, $\eta > 0$. Physical capital accumulation is described by

$$k_{t+1} = (1 - \delta)k_t + y_t - c_t$$

where k_t is the capital stock and δ its constant rate of physical depreciation. $0 < \delta < 1$. Finally, firms have access to a constant returns to scale technology

$$y_t = z_t k_t^\alpha h_t^{1-\alpha}$$

to produce output y_t ; z_t is a random variable that shifts the production function, i.e. cyclical TFP. TFP which will be the only driving force in this model. $0 < \alpha < 1$. All markets are perfectly competitive and they clear

at all times. Then a series of technology shocks (like the one reported in the lower panel of Figure 2) is fed into the model to generate a sequence of artificial GDP. The real business cycle story encapsulates the first years of the Great Depression fairly well: artificial GDP falls from 1929 through to 1933 and the economy turns around sometime in 1933 before recovering. The predicted free-fall of output is about half as deep as US GDP, hence, a large portion of the Depression can be explained. More problematic, however, is the very tepid recovery of the US economy. The model simply cannot replicate the slow process of recovery: the artificial GDP swiftly returns to trend by 1935. The reason behind this failure is the rapid rise of TFP, which hovers significantly above its long-run average from 1935 onwards (see Figure 2). In the artificial real business cycles economy, this TFP pattern translates into a counterfactual boom during the second half of the thirties. (Monetary models in the footsteps of Friedman and Schwartz, 1963, face a parallel conundrum as is shown by Bordo, Erceg and Evans, 2000, who simulated a sticky price model which suggests that expansionary policies by the Federal Reserve after 1932 should have induced a quickly rebounding economy.) In a view initially formulated by Wanniski (1979), Cole and Ohanian (2004) have moved towards a more agnostic view of what productivity distortions stand-in for. In particular, they analyze the wedges created by institutional changes arising from New Deal cartelization policies, and they suggest that this improves matters as now their model explains much of the second half of the 1930s. Nevertheless, their technology-driven model misses the 1937-1938 recession.

Figure 2 about here

3 Will the real demand shock please stand up?

In this Section, I will approach the Great Depression from a different perspective.¹ My point of departure is Temin's (1976) emphasis on contractions of real aggregate demand beginning with the market crash and continuing through the first years of the thirties. Temin's argument rests on an episodic pattern of consumption which bears no resemblance to that of other recessions. He reports that consumption fell by a whopping 5.4 percent from 1929 to 1930 – a unique fall compared to other economic downturns. For example, during the 1920-1921 recession, consumption had *increased* by 6.4

¹This Section draws on Weder (2001, 2006).

percent. Temin identifies large negative residuals from estimated Keynesian consumption functions for the onset of the Great Depression, and stresses that investment took similar sudden hits. (Gordon and Veitch, 1986, provide additional support for Temin’s position.). In an old-fashioned interpretation, Temin classifies these residuals as the collapse of autonomous spending. Temin’s original formulation remains within the confines of the old Keynesian apparatus. In contrast, my model is framed within methodological standards that are set and met by the real business cycle approach. The model applies Temin’s interpretation to a fully articulated dynamic general equilibrium framework in which only demand shocks drive economic fluctuations. If the Great Depression was such an equilibrium, the model should be able to replicate the behavior of key macroeconomic aggregates during that time.

The intriguing aspect of this approach is that it takes the basic real business cycle model as a point of departure while considering only one minor alteration: the representative household has period utility of the form

$$\log(c_t - \Delta_t) + \eta \log(1 - h_t)$$

where Δ_t alters preferences to allow for shifts to the marginal utility of consumption – a taste shock or a real demand shock.² The household’s optimal plan involves the static condition

$$\eta \frac{c_t - \Delta_t}{1 - h_t} = w_t \tag{1}$$

from which, since data for consumption, hours works and real wage, w_t , are available, a sequence of demand shocks can be backed out (original wage data taken from Hanes, 1996). In fact, this concept is much like the Solow (1957) residual. The dynamics for Δ_t are best described by a low order autoregressive process.

From the Euler equation (1), one is able to identify a series of unusually large pervasive shifts in demand that hit the US economy post-1929. (Weder, 2001, conducted a battery of causality tests and found that neither monetary nor fiscal variables stand behind these disturbances.) These shocks correspond to Temin’s account of a drop in aggregate demand. I feed these measured demand shocks into the outlined dynamic general equilibrium model. Figure 3 plots detrended US GDP and the artificially generated output series (1929=100). To show that the model’s predictive power is not limited to the Great Depression, I report the complete interwar years of the simulation. A few aspects come to light. First, the size and sequence of

²See also Baxter and King (1991) and Hall (1986).

shocks can generate a pattern of the model GDP that is not unlike data: the artificial economy is able to account for almost all of the decline in economic activity. Secondly, it is also able to exaggerate a realistic pattern of persistence as both the slow recovery as well as the 1937-38 recessions are replicated. Thirdly, the artificial economy's trough is one year too late – probably the effect of the New Deal. Fourthly, Figure 3 also shows that demand shocks drove a lion's share of the boom during the twenties as well as the 1920-21 Depression. And lastly, but not shown here, Weder (2006) has reported that by adding variable capital utilization and modestly increasing returns to scale in the production technology, the demand-driven model can endogenously replicate most of the path of data TFP. Hence, the real business cycle model is contained as a special part within the demand-driven economy.

Figure 3 about here

4 Supply versus demand

So far this analysis has followed the existing literature and has simply evaluated success via "aesthetic R^2 s". We have seen that there appears to be support for both approaches, so this Section will apply a test that aims to discern model performances. Here I follow Fair and Shiller (1990) who check the forecasting ability of various econometric models by evaluating the information content of endogenous model output through the lens of a regression.

Table 1 about here

In particular, I apply their test to assess the information contained in the supply-driven and in the demand-driven models' forecasts. It is well known that time series econometrics allows data to be distinguished in atheoretical ways. For example, modelling aggregate output as a low-order autoregressive or moving-average process generates reasonable fits. Now, if any of the two theories bear anything unique about the US economy, they must bestow some advantages relative to atheoretical time series models. I implement this investigation by estimating equations of the following form

$$\ln y_t^{\text{US}} = \alpha + \sum_{i=1}^n \beta_i \ln y_{t-i}^{\text{US}} + \sum_{i=0}^h \gamma_i \ln y_{t-i}^{\text{m}} + \epsilon_t.$$

Here y_t^{US} denotes linearly-detrended per capita US GDP (20th century trend) and y_t^{m} stands for simulated model output. The idea behind conducting these

tests is that by adding output from the models to the regression, one obtains a measure of to what extent supply and demand shocks respectively provide additional informational content. I begin with the autoregressive model. Data covers 1919-1941. A lag length of $n = 1$ was chosen since other lags are not significant (t -statistics in parentheses):

$$\ln y_t^{\text{US}} = 0.514 + 0.882 \ln y_{t-1}^{\text{US}}.$$

(1.12) (8.60)

Table 1 shows that the time series model explains over 79 percent of the variation in output one year hence. So, to what extent do the model realizations provide additional informational content? Table 1 reports that both considered models contain incremental explanatory power on output. The standard errors of the regressions fall, and the probability that the explanatory power is produced by pure chance is essentially nil (see the p -values of the F -statistic and the log likelihood ratio in Regressions 2 and 3). If anything there exists a slight advantage in favor of the demand driven model: \bar{R}^2 rises by more (i.e. the informational content appears to be larger), and actual lagged US output is no longer significant at the fourteen percent level.

Next, I next add both models simultaneously to the regression. This is reported in Regression 1 in Table 2. Again, both models contribute significantly as indicated by the t -statistics (since actual data would no longer be significant, I have omitted it). However, if I consider the Twenties (Regression 2) and Thirties (Regression 3) separately, the picture changes somewhat. It now appears that the Roaring Twenties were predominantly driven by demand shocks: the real business cycles' regression coefficient becomes negative and insignificant. Finally, a mix of supply and demand shifts can explain almost all of the Great Depression (\bar{R}^2 approaches one in Regression 4).³ Overall, this analysis suggests that both supply and demand driven models contribute to our understanding of the Great Depression.

Table 2 about here

5 Conclusion

There exists still no general agreement about the causes of the Great Depression in the United States. In this paper two dynamic general equilibrium economies compete in explaining the US interwar business cycles. The analysis remains inconclusive with respect to which theory performs better; it is too close to call a clear winner.

³This parallels the Chari, Kehoe and McGrattan (2008) claim that almost all of the Great Depression can be explained by efficiency and labor wedges.

References

- [1] Baxter, M. and King, R.G. (1991), 'Productive Externalities and Business Cycles', Discussion Paper No. 53, Federal Reserve Bank of Minneapolis / University of Minnesota Institute for Empirical Macroeconomics.
- [2] Bordo, M.D., Erceg, C.J. and Evans, C.L. (2000), 'Money, Sticky Wages and the Great Depression', *American Economic Review*, **90**, 1447-1463.
- [3] Chari, V.V., Kehoe, P.J. and McGrattan E.R. (2002), 'Business Cycle Accounting', *Econometrica*, **75**, 781-836.
- [4] Cole, H.L. and Ohanian, L.E. (1999), 'The Great Depression in the United States From a Neoclassical Perspective', *Federal Reserve Bank of Minneapolis Quarterly Review*, **23**, 2-24.
- [5] Cole, H.L. and Ohanian, L.E. (2004), 'New Deal Policies and the Persistence of the Great Depression: A General Equilibrium Analysis', *Journal of Political Economy*, **112**, 779-816.
- [6] Fair, R.C. and Shiller, R.J. (1990). 'Comparing Information in Forecasts from Econometric Models', *American Economic Review*, **80**, 375-89.
- [7] Friedman, M. and Schwartz, A.J. (1963). *A Monetary History of the United States, 1867-1960.*, Princeton University Press for NBER, Princeton.
- [8] Gordon, R.J. and Veitch, J. (1986). 'Fixed Investment in the American Business Cycle, 1919-83', in Gordon, R.J. (ed), *The American Business Cycle: Continuity and Change*, University of Chicago Press, Chicago, 267-358.
- [9] Hall, R.E. (1986), 'The Role of Consumption in Economic Fluctuations', in Gordon, R.J. (ed), *The American Business Cycle: Continuity and Change*, University of Chicago Press, Chicago, 237-266.
- [10] Hanes, C. (1996), 'Changes in the Cyclical Behavior of Real Wage Rates, 1870-1990', *Journal of Economic History*, **56**, 837-861.
- [11] Harrison, S.G. and Weder, M. (2006), 'Did Sunspot Forces Cause the Great Depression?', *Journal of Monetary Economics*, **53**, 1327-1339.

- [12] Harrison, S.G. and Weder, M. (2009), 'Technological Change and the Roaring Twenties: A Neoclassical Perspective', *Journal of Macroeconomics*, **41**, 363-375.
- [13] Kendrick, J.W. (1961), *Productivity Trends in the United States*, Princeton University Press, Princeton.
- [14] Maddison, A. (1991), *Dynamic Forces in Capitalist Development: A Long-Run Comparative View*, Oxford University Press, Oxford.
- [15] Solow, R. (1957), 'Technical Change and the Aggregate Production Function', *Review of Economics and Statistics*, **39**, 312-320.
- [16] Temin, P. (1976), *Did Monetary Forces Cause the Great Depression?*, W.W. Norton & Company, New York.
- [17] Wanniski, J. (1979), *The Way the World Works – How Economies Fail and Succeed*, Knopf, New York.
- [18] Weder, M. (2001), 'The Great Demand Depression', CEPR Discussion Paper #3067.
- [19] Weder, M. (2006), 'The Role of Preference Shocks and Capital Utilization in the Great Depression', *International Economic Review*, **47**, 1247-1268.

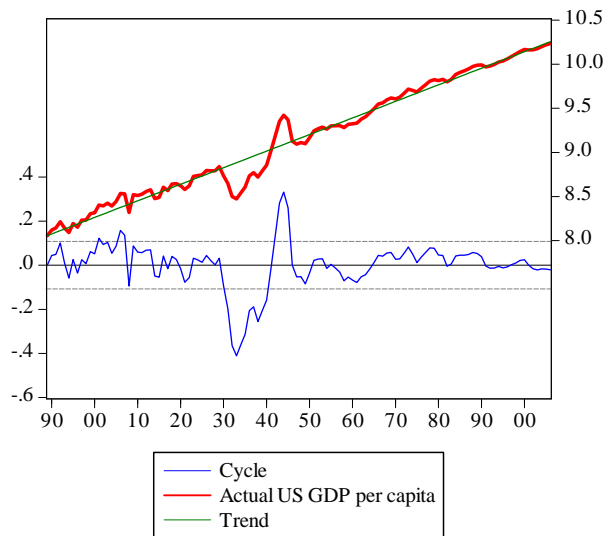


Figure 1: US per capita GDP, 1889-2006, logarithmic scale The lower part of the Figure shows the deviations from constant time trend.

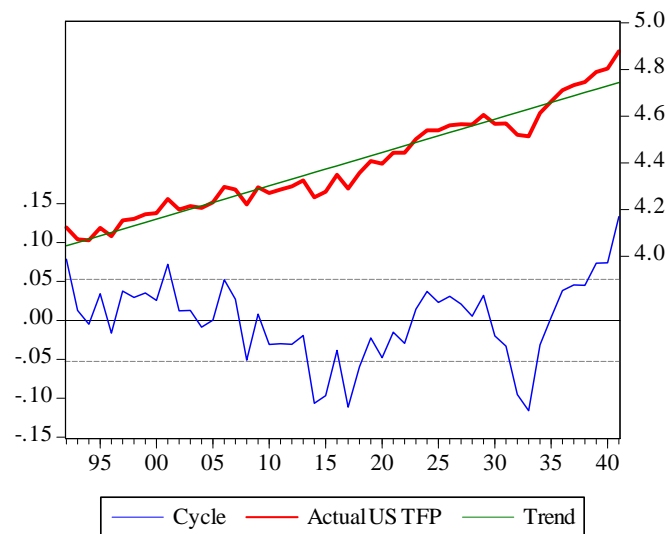


Figure 2: US TFP, 1892-1941, logarithmic scale The lower part of the Figure shows the deviations from constant time trend.

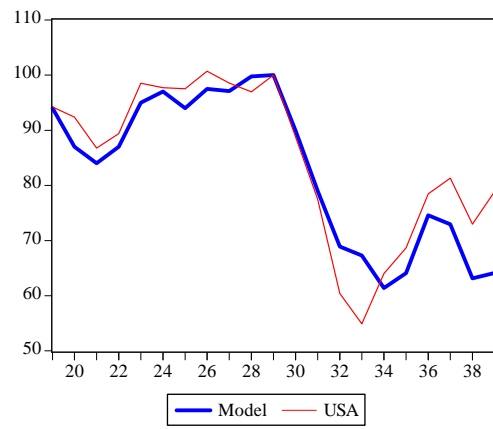


Figure 3: Artificial and US GDPs (detrended, 1929=100).

Table 1						
Regression results ($h = 0$)						
Regression	Variable	Coefficient (t -value)	\overline{R}^2	S.E.R.	F -statistic (variable)	Log likelihood ratio
1	-	-	0.794	0.0697	-	-
2	y_t^{RBC}	0.475 (3.55)	0.857	0.0543	0.0024	0.0008
3	y_t^{Demand}	0.662 (3.44)	0.871	0.0551	0.0031	0.0011

S.E.R. = standard errors of regression, last two columns test for redundant variables: test statistics are the F -statistic and the Log likelihood ratio (χ^2); probability values reported.

Table 2						
Regression results ($h = 0$)						
Regression	Variable	Coefficient (t -value)	\overline{R}^2	S.E.R.	F -statistic (variable)	Log likelihood ratio
1	y_t^{RBC}	0.429 (4.46)	0.932	0.0397	0.0002	0.0001
	y_t^{Demand}	0.837 (13.36)			0.0000	0.0000
2	y_t^{RBC}	-0.108 (-0.54)	0.687	0.0216	0.5992	0.5250
	y_t^{Demand}	0.727 (11.98)			0.0112	0.0022
3	y_t^{RBC}	0.547 (12.24)	0.982	0.0172	0.0000	0.0000
	y_t^{Demand}	0.676 (16.36)			0.0000	0.0000

ABOUT THE CDMA

The **Centre for Dynamic Macroeconomic Analysis** was established by a direct grant from the University of St Andrews in 2003. The Centre funds PhD students and facilitates a programme of research centred on macroeconomic theory and policy. The Centre has research interests in areas such as: characterising the key stylised facts of the business cycle; constructing theoretical models that can match these business cycles; using theoretical models to understand the normative and positive aspects of the macroeconomic policymakers' stabilisation problem, in both open and closed economies; understanding the conduct of monetary/macroeconomic policy in the UK and other countries; analyzing the impact of globalization and policy reform on the macroeconomy; and analyzing the impact of financial factors on the long-run growth of the UK economy, from both an historical and a theoretical perspective. The Centre also has interests in developing numerical techniques for analyzing dynamic stochastic general equilibrium models. Its affiliated members are Faculty members at St Andrews and elsewhere with interests in the broad area of dynamic macroeconomics. Its international Advisory Board comprises a group of leading macroeconomists and, ex officio, the University's Principal.

Affiliated Members of the School

Dr Fabio Aricò.
Dr Arnab Bhattacharjee.
Dr Tatiana Damjanovic.
Dr Vladislav Damjanovic.
Prof George Evans.
Dr Gonzalo Forgue-Puccio.
Dr. Michal Horvath
Dr Laurence Lassele.
Dr Peter Macmillan.
Prof Rod McCrorie.
Prof Kaushik Mitra.
Dr. Elisa Newby
Prof Charles Nolan (Director).
Dr Geetha Selvaretnam.
Dr Ozge Senay.
Dr Gary Shea.
Prof Alan Sutherland.
Dr Kannika Thampanishvong.
Dr Christoph Thoenissen.
Dr Alex Trew.

Senior Research Fellow

Prof Andrew Hughes Hallett, Professor of Economics,
Vanderbilt University.

Research Affiliates

Prof Keith Blackburn, Manchester University.
Prof David Cobham, Heriot-Watt University.
Dr Luisa Corrado, Università degli Studi di Roma.
Prof Huw Dixon, Cardiff University.
Dr Anthony Garratt, Birkbeck College London.
Dr Sugata Ghosh, Brunel University.
Dr Aditya Goenka, Essex University.
Dr Michal Horvath, University of Oxford.
Prof Campbell Leith, Glasgow University.
Prof Paul Levine, University of Surrey.
Dr Richard Mash, New College, Oxford.
Prof Patrick Minford, Cardiff Business School.
Dr Elisa Newby, University of Cambridge.

Dr Gulcin Ozkan, York University.
Prof Joe Pearlman, London Metropolitan University.
Prof Neil Rankin, Warwick University.
Prof Lucio Sarno, Warwick University.
Prof Eric Schaling, South African Reserve Bank and
Tilburg University.
Prof Peter N. Smith, York University.
Dr Frank Smets, European Central Bank.
Prof Robert Sollis, Newcastle University.
Prof Peter Tinsley, Birkbeck College, London.
Dr Mark Weder, University of Adelaide.

Research Associates

Mr Nikola Bokan.
Mr Farid Boumediene.
Miss Jinyu Chen.
Mr Johannes Geissler.
Mr Ansgar Rannenberg.
Mr Qi Sun.

Advisory Board

Prof Sumru Altug, Koç University.
Prof V V Chari, Minnesota University.
Prof John Driffill, Birkbeck College London.
Dr Sean Holly, Director of the Department of Applied
Economics, Cambridge University.
Prof Seppo Honkapohja, Bank of Finland and
Cambridge University.
Dr Brian Lang, Principal of St Andrews University.
Prof Anton Muscatelli, Heriot-Watt University.
Prof Charles Nolan, St Andrews University.
Prof Peter Sinclair, Birmingham University and Bank of
England.
Prof Stephen J Turnovsky, Washington University.
Dr Martin Weale, CBE, Director of the National
Institute of Economic and Social Research.
Prof Michael Wickens, York University.
Prof Simon Wren-Lewis, Oxford University.

**RECENT WORKING PAPERS FROM THE
CENTRE FOR DYNAMIC MACROECONOMIC ANALYSIS**

Number	Title	Author(s)
CDMA08/10	Financial Shocks and the US Business Cycle	Charles Nolan (St Andrews) and Christoph Thoenissen (St Andrews)
CDMA09/01	Technological Change and the Roaring Twenties: A Neoclassical Perspective	Sharon Harrison (Columbia) Mark Weder (Adeleide)
CDMA09/02	A Model of Near-Rational Exuberance	George Evans (Oregon and St Andrews), Seppo Honkapohja (Bank of Finland and Cambridge) and James Bullard (St Louis Fed)
CDMA09/03	Shocks, Monetary Policy and Institutions: Explaining Unemployment Persistence in “Europe” and the United States	Ansgar Rannenberg (St Andrews)
CDMA09/04	Contracting Institutions and Growth	Alex Trew (St Andrews)
CDMA09/05	International Business Cycles and the Relative Price of Investment Goods	Parantap Basu (Durham) and Christoph Thoenissen (St Andrews)
CDMA09/06	Institutions and the Scale Effect	Alex Trew (St Andrews)
CDMA09/07	Second Order Accurate Approximation to the Rotemberg Model Around a Distorted Steady State	Tatiana Damjanovic (St Andrews) and Charles Nolan (St Andrews)
CDMA09/08	Both Sides of the Story: Skill-biased Technological Change, Labour Market Frictions, and Endogenous Two-Sided Heterogeneity	Fabio R. Aricó (St Andrews)
CDMA09/09	The Taylor Principle and (In-) Determinacy in a New Keynesian Model with hiring Frictions and Skill Loss	Ansgar Rannenberg (St Andrews)
CDMA10/01	Sunspots and Credit Frictions	Sharon Harrison (Columbia) and Mark Weder (Adelaide, CDMA and CEPR)
CDMA10/02	Endogenous Persistence in an Estimated DSGE Model under Imperfect Information	Paul Levine (Surrey), Joseph Pearlman (London Metropolitan), George Perendia (London Metropolitan) and Bo Yang (Surrey)

CDMA10/03	Structural Interactions in Spatial Panels	Arnab Bhattacharjee (St Andrews) and Sean Holly (Cambridge and St Andrews)
CAMA10/04	Understanding Interactions in Social Networks and Committees	Arnab Bhattacharjee (St Andrews) and Sean Holly (Cambridge and St Andrews)
CDMA10/05	Local Currency Pricing, Foreign Monetary Shocks and Exchange Rate Policy	Ozge Senay (St Andrews) and Alan Sutherland (St Andrews and CEPR)
CDMA10/06	The Timing of Asset Trade and Optimal Policy in Dynamic Open Economies	Ozge Senay (St Andrews) and Alan Sutherland (St Andrews and CEPR)
CDMA10/07	Endogenous Price Flexibility and Optimal Monetary Policy	Ozge Senay (St Andrews) and Alan Sutherland (St Andrews and CEPR)
CDMA10/08	Does Ricardian Equivalence Hold When Expectations are not Rational?	George W. Evans (Oregon and St Andrews), Seppo Honkapohja (Bank of Finland) and Kaushik Mitra (St Andrews)
CDMA10/09	Scotland: A New Fiscal Settlement	Andrew Hughes Hallett (St Andrews and George Mason) and Drew Scott (Edinburgh)
CDMA10/10	Learning about Risk and Return: A Simple Model of Bubbles and Crashes	William A. Branch (California) and George W. Evans (Oregon and St Andrews)
CDMA10/11	Monetary Policy and Heterogeneous Expectations	William A. Branch (California) and George W. Evans (Oregon and St Andrews)
CDMA10/12	Finance and Balanced Growth	Alex Trew (St Andrews)

For information or copies of working papers in this series, or to subscribe to email notification, contact:

Jinyu Chen
Castlecliffe, School of Economics and Finance
University of St Andrews
Fife, UK, KY16 9AL
Email: jc736@at-andrews.ac.uk; Phone: +44 (0)1334 462445; Fax: +44 (0)1334 462444.