

WORKING PAPER SERIES 9

8

Petr Jakubík and Christian Schieder:
Stress Testing Credit Risk: Is the Czech Republic Different from Germany?

0

0

2

WORKING PAPER SERIES

Stress Testing Credit Risk: Is the Czech Republic Different from Germany?

Petr Jakubík
Christian Schmieder

9/2008

CNB WORKING PAPER SERIES

The Working Paper Series of the Czech National Bank (CNB) is intended to disseminate the results of the CNB's research projects as well as the other research activities of both the staff of the CNB and collaborating outside contributor, including invited speakers. The Series aims to present original research contributions relevant to central banks. It is refereed internationally. The referee process is managed by the CNB Research Department. The working papers are circulated to stimulate discussion. The views expressed are those of the authors and do not necessarily reflect the official views of the CNB.

Printed and distributed by the Czech National Bank. Available at <http://www.cnb.cz>.

Reviewed by: Miroslav Singer	(Czech National Bank)
Vladimír Pikora	(Next Finance)
Christoph Memmel	(Deutsche Bundesbank)

Project Coordinator: Michal Hlaváček

© Czech National Bank, December 2008
Petr Jakubík, Christian Schmieder

Stress Testing Credit Risk: Is the Czech Republic Different from Germany?

Petr Jakubík and Christian Schmieder *

Abstract

This study deals with credit risk modelling and stress testing within the context of a Merton-type one-factor model. We analyse the corporate and household sectors of the Czech Republic and Germany to find determining variables of credit risk in both countries. We find that a set of similar variables explains corporate credit risk in both countries despite substantial differences in the default rate pattern. This does not apply to households, where further research seems to be necessary. Next, we establish a framework for the stress testing of credit risk. We use a country specific stress scenario that shocks macroeconomic variables with medium severity. The test results in credit risk increasing by more than 100% in the Czech Republic and by roughly 40% in Germany. The two outcomes are not fully comparable since the shocks are calibrated according to the historical development of the time series considered and the size of the shocks for the Czech Republic was driven by the transformation period.

JEL Codes: G21, G28, G33.

Keywords: Credit risk, credit risk modelling, stress testing.

* Petr Jakubík, Czech National Bank and Institute of Economic Studies, Charles University in Prague (e-mail: Petr.Jakubik@cnb.cz);

Christian Schmieder, Deutsche Bundesbank and European Investment Bank (e-mail:C.Schmieder@eib.org).

This work was supported by Czech National Bank Research Project No. C2/07.

The data analysis for this paper was generated using Base SAS and SAS/STAT software, Version 9.1.3. of the SAS System for Windows. Copyright © 2002-2003 SAS Institute Inc. SAS and all other SAS Institute Inc. product or service names are registered trademarks or trademarks of SAS Institute Inc., Cary, NC, USA.

The findings, interpretations and conclusions expressed in this paper are entirely those of the authors and do not represent the views of any of the authors' institutions. We thank Miroslav Singer, Michal Hlaváček, Vladimír Pikora, Jan Frait, Kateřina Šmídková, Thilo Liebig, Christoph Memmel and Pierre Tychon for their valuable comments and support. The financial support provided for this project by the Czech National Bank is gratefully acknowledged.

Nontechnical Summary

This study deals with two major aspects of credit risk, namely its measurement and management. We seek to measure credit risk on the ‘macro’ level by investigating the two major elements of non-bank credit in economies: corporate credit and household credit. For that purpose, we use a relatively simple credit model whereby credit losses can be explained by the development of key macroeconomic factors such as GDP growth and inflation. Accordingly, we estimate separate models for corporate credit and household credit. Next, we make use of these models to predict potential future levels of credit losses for firms and households, commonly known as *stress testing*. The outcome of these forecasts on a macro level is then used for predicting a stress scenario of a typical bank credit portfolio. In this way, the study takes a comprehensive view of credit risk.

The analysis is carried out for two countries, Germany and the Czech Republic. The application of the method to two countries is the key contribution of this study. The main questions are as follows.

- Which factors are the most important macroeconomic drivers of credit risk?
- Are they the same for the two (very different) economies?
- How vulnerable are these two economies and banks in economic stress periods?

Why are these questions relevant? The recent financial crisis originated mainly from severe problems in the US household credit sector (the so-called US subprime crisis). It adds one more chapter to the history of past financial crises which have been caused primarily by an accumulation of non-bank credit losses, be it corporate or household debt. It is striking that despite the awareness that credit risk is the most important threat to financial stability, the complexity of this risk type is so high that crisis prevention remains a key challenge for the future. This results particularly from the increasing complexity of financial markets and their international dimensions, which requires worldwide cooperation.

This is the purpose of this study, namely to add insights to the important subject of financial stability. It thus contributes to the recent recommendations issued in April 2008 by a key international forum for fostering financial stability, the Financial Stability Forum, which recommends a *strengthening of authorities’ responsiveness to risks* and an *improvement of stress-testing practices and capital planning processes by banks*.

We use a common indicator to explain credit risk, namely non-performing loans. We find that our model is useful for explaining credit risk for firm debt and that similar macroeconomic variables explain the corporate default rates of the Czech Republic and Germany. Given their different cyclical patterns, this is a surprising outcome. For household debt, our model is less useful for both countries, which leaves some challenges for future research.

Afterwards, we assess how future recessions could influence corporate credit and household credit losses by referring to historical stress scenarios. We use the macroeconomic situation at the end of 2006 and predict an economic downturn for 2007 for both countries. We use stress levels of similar severity for both countries from a historical perspective, including the last decade, and find that even relatively light stress can lead to a substantial increase in the corporate default rate

(more than 100% for the Czech Republic; up to 40% for Germany). As a caveat, the sensitivity of the corporate sector default rates for the Czech Republic was driven by the high volatility of macroeconomic indicators during the transition period of the late 1990s, so the results have to be interpreted carefully. For households, sensitivity to the macroeconomic environment is less pronounced, unlike what the recent US subprime crisis might suggest, and seems to confirm the observation that the financial crisis has not had a considerable effect on the Czech and German household sector so far.

In the last step, the stress scenarios for the economies are applied to a hypothetical, but realistic average credit portfolio that could be held by a Czech or German bank. The credit risk models for both countries employ similar variables and the size of the shocks is calibrated according to the past development of the given time series. It is clearly shown that macroeconomic shocks can significantly increase the portfolio risk measured by the Basel II regulatory IRB minimum capital requirements in both countries.

The methods and procedure presented in this study can be used by regulatory bodies to be able to take measures to safeguard financial stability. For banks, the framework elaborated may contribute to the introduction of Basel II-type micro stress testing. In any case, future research is needed on the highly complex issues discussed in this paper.

1. Introduction

In quantitative terms, credit risk is the most important risk in banking books. This has recently been shown clearly again in the US subprime crisis. Moreover, the crisis occurred despite various improvements in credit risk management, for example progress in the field of credit risk analysis applied by banks on the portfolio level – spurred by Basel II¹ – as well as the increasing availability of a wide range of instruments that make credit risk more liquid, for example securitisation and credit derivatives. Hence, credit risk remains a major threat to financial stability in the globalised financial world, where cross-border contagion of crises particularly threatens countries with weak banking sectors.

Credit risk analysis for the financial sector as a whole can be seen as a crucial means of preventing financial instability. This can be realised by means of a regular robustness test on a country's banking sector against credit risk, for example by means of stress tests carried out by supervisory bodies and central banks, providing hints for detecting financial system fragility.²

Within the framework of credit risk modelling and stress testing, this study investigates and compares two countries, a new EU member state – the Czech Republic – and the largest EU economy – Germany. We seek to provide answers to various questions, notably: which macroeconomic variables are the most important for explaining credit risk; whether there are country-specific differences; and what impact unfavourable macroeconomic circumstances can have on the macro and micro (portfolio) level.

The data employed in this study cover a period of eight years from 1998 to 2006 for the Czech Republic and twelve years from 1994 to 2006 for Germany. The investigated time period covers multiple periods of severe macroeconomic stress, namely the consequences of the Asian crisis in 1997 and the Russian crisis in 1998, as well as the crisis in the financial markets after 11 September 2001.

When it comes to credit risk analysis for the Central and Eastern European transition economies (and also for many other transformation economies and developing countries), a key limitation is the availability of data, as the time series are usually (still) relatively short and have various structural breaks. Accordingly, the data in this study were selected very carefully to prevent misinterpretation.³ In order to arrive at a meaningful comparison between the Czech Republic and Germany, equivalent data was sought.

We investigate both the corporate sector and the household sector and find that credit risk for corporates can be modelled based on similar macroeconomic variables for both countries, despite fundamental differences in the default rate (time) pattern. Credit risk modelling for the household sector turns out to be more challenging for both countries, as there are apparently other variables than solely economic ones explaining the default rate pattern. These findings do, in general, confirm previous studies.

¹ See BCBS (2006), European Commission (2006) and the national transpositions of Basel II.

² The importance of this mission is underlined, for example, by the fact that the Basel Committee on Banking Supervision has mandated a working group of the Research Task Force to further investigate stress testing.

³ We draw on the findings of the analysis carried out by Jakubík (2007a and 2007b).

In the second step, we use the outcome of our credit risk modelling for macro stress testing purposes. In the third step, we translate the outcome of the macro stress tests into a Basel II-type micro stress test of a hypothetical, but realistic, credit portfolio. We find that the impact of the macroeconomic shocks we study is substantially higher in the Czech Republic than in Germany, on both the macro and micro levels. For a stress test of medium severity, we find an increase in aggregate corporate default rates of more than 100% and a rise in the Basel II internal ratings-based (IRB⁴) minimum capital requirements on the credit portfolio level of up to 60% in the Czech case within one year. The figures for Germany are an increase in corporate default rates of 40% and an augmentation of the IRB minimum capital requirements of roughly 30% for the same credit portfolio. For the household sectors of both countries, the impact is much less pronounced compared to corporates, with a higher impact in the German case, but the outcome is less robust and therefore has to be interpreted carefully.

Our contribution to the literature is two-fold: first, we provide a comprehensive framework for stress testing; second, we directly compare a new EU member state with one of the large “old” EU economies. While there is no directly comparable study in the literature, we confirm the finding of previous studies that stress events have a more material effect in less developed economies.

The paper is organised as follows. Section 2 provides an overview of related studies. Section 3 describes the model used to analyse credit risk for the corporate and household sectors. In Section 4, the underlying data are presented. Next, the corporate and household models are calibrated for the Czech Republic and Germany in sections 5 and 6 respectively. Section 7 is devoted to stress testing. Finally, section 8 provides conclusions.

2. Related Literature

A key motivation for this study originates from the Basel II framework, concluded in 2006, which seeks to provide a more meaningful framework for the solvency of financial institutions and financial stability compared to the previous Basel Accord dating back to 1988.⁵ Within this framework, our focus is on the investigation of business cycle effects on the aggregate default rate of corporates and households and the link to banks’ capital requirements.

Various studies have been carried out in this domain. On the micro level, a comprehensive survey of the literature dealing with cyclical effects on the major credit risk parameters, namely the probability of default (PD), loss given default (LGD) and the exposure at default (EAD), has been provided by Allen and Saunders (2004). Accordingly, all three credit risk parameters are found to be highly exposed to cyclical effects, implying a considerable impact on portfolio credit risk and capital requirements.⁶ In a recent study carried out by Düllmann et al. (2008), this has also been demonstrated to hold true for credit correlations.

⁴ Credit Portfolio Risk in this study is measured based on the Basel II minimum capital requirements, which closely resemble the Credit Value-at-Risk figures. We refer to the internal ratings-based (IRB) approach – see BCBS (2006), para. 272.

⁵ Another important catalyst for stress testing was the Financial Sector Assessment Program (FSAP) of the International Monetary Fund (IMF) and the World Bank initiated in the late 1990s.

⁶ The study by Catarineu-Rabell et al. (2003), for example, was an early one to show that the choice of a Point-in-Time (PIT) rating system can evoke procyclicality of capital requirements, whereas Through-the-Cycle (TTC) rating systems are more neutral. Through a comparison of PIT rating systems and TTC systems, Löffler (2004)

While most of the numerous studies on the cyclicity of portfolio credit risk have been carried out for developed countries, the outcome that capital requirements vary strongly with the economic cycle and are driven by a complex interaction of different credit risk parameters does also hold true for developing countries, although pertinent empirical evidence remains more limited to date. Vallés (2006), for example, finds that the implementation of a through-the-cycle (TTC) rating system in emerging countries would be very difficult due to the high volatility of credit risk, indicating that portfolio credit risk might fluctuate even more strongly than in the developed world.

Despite the numerous contributions on how credit risk parameters fluctuate over the business cycle, stress testing of (real) credit portfolios remains relatively limited to date, particularly due to the limited data that is publicly available. Among the few contributions are Peura and Jokivuolle (2004) and Rösch and Scheule (2007).

There is a wide range of research on the macroeconomic perspective of credit risk. The seminal question is how to model the aggregated credit risk of an economy or specific sectors such as corporates and households. Various approaches have been followed in the literature, such as applying econometric analysis on a firm-specific level including macroeconomic variables (Bunn and Redwood 2003) and using multi-factor credit portfolio models. A seminal model in the latter context was proposed by Wilson (1997a, 1997b), known as Credit Portfolio ViewTM, which has been used for macro stress testing by Virolainen (2004), for example. In terms of the dependent variable, macro stress tests have typically been analysed based on loan loss provisions (LLPs) or non-performing loans (NPLs). A recent review of different modelling methodologies has been provided by Sorge and Virolainen (2006).

Various macroeconomic variables have been found to be relevant as drivers of credit risk, the main drivers for corporate credit risk being GDP growth and interest rates (Virolainen, 2004). Other relevant variables were corporate indebtedness, inflation, industrial production, real wages, the stock index and the oil price (Virolainen, 2004). For the household sector, empirical evidence is more limited, with unemployment and interest rates being among the most relevant variables referred to.

Stress testing is commonly used by central banks and regulatory bodies to identify vulnerabilities of the financial sector overall or to determine specific risks for individual institutions.⁷ This can generally be realised in a top-down manner or by referring to a bottom-up framework.⁸ Sorge and

finds that the differences are mainly driven by cyclical components of default risk. Bangia et al. (2002) and Trück and Rachev (2005), for example, have shown that there is a substantial impact of default probabilities and rating transitions on portfolio credit risk.

⁷ Macro stress tests are also carried out by the regulatory bodies of the two countries analysed in this study, the Czech National Bank and the Deutsche Bundesbank. In the Czech case, the stress testing framework has been gradually elaborated since 2004 by Čihák (2004) and Čihák et al. (2007). Based on a forecast of the macroeconomic environment in terms of historical worst-case scenarios, credit risk models as developed by Jakubík (2007) are applied. The Deutsche Bundesbank takes a two-step approach: besides using aggregate data available in the central bank to analyse financial stability (top-down approach), it also uses information collected from single institutions via a survey (bottom-up approach) (Deutsche Bundesbank, 2007). In the first case, which is similar to the current study, the Bundesbank uses a macro module to define macroeconomic stress events via macroeconomic variables, which are then fed into a microeconomic module (the so-called banking module) to assess which banks would run into difficulties (Deutsche Bundesbank, 2007, p. 106f.).

⁸ For an overview of stress tests applied by German banks, see Deutsche Bundesbank (2004) and Deutsche Bundesbank (2007).

Virolainen (2006) provide a literature overview of analytical approaches to macro stress tests and apply these models to the case of Finland (see also Jones et al., 2004, and Sorge, 2004). Boss et al. (2006) give an overview of the stress testing framework followed by the Austrian central bank. The rationale is to explain industry-specific default rates by means of macroeconomic risk factor changes in order to be able to apply industry sector-specific stress tests. Credit risk models with macroeconomic variables are also employed in stress test exercises carried out by the Bank of England. Within this framework, Pain (2003) found an empirical relationship between banks' loan loss provisions and macroeconomic indicators such as GDP growth, real interest rates, credit growth and the concentration of the domestic loan portfolio. For the new EU member states, studies remain more limited. Overall, previous studies find that a relatively limited number of macroeconomic factors permit credit risk for the corporate sector to be explained in a meaningful way, including at times of financial turbulence.⁹

3 Credit Risk Modelling with Macroeconomic Variables

In this study, we refer to the loaded one-factor credit risk model, which is also the basis for calculating the Basel II capital requirements for credit risk (Gordy, 2003). To explain credit risk, the idea is to model the aggregated credit risk conditional on the macroeconomic environment, whereby the model becomes a quasi multi-factor model while keeping its conceptual simplicity. The one-factor model has been employed for credit risk modelling by several authors, for example Hamerle et al. (2004), Rösch (2005) and Jakubík (2007). Unlike linear models, this relatively simple non-linear model better captures the highly complex relationships of economies, which are hardly linear in the real world. Subsequently, the basic cornerstones of the model and the ways it will be used for credit risk modelling are outlined.

A random variable with a standard normal distribution is assumed for the standardised logarithmic asset returns of firm i at time t :

$$R_{it} = \sqrt{\rho}F_t + \sqrt{1-\rho}U_{it} \tag{1}$$

where R_{it} denotes the logarithmic asset return for each firm i of an economy at time t , and F_t corresponds to the logarithmic asset return of the economy at time t , which is assumed to be a random variable with a standard normal distribution. This variable represents the part of the asset return which is not firm-specific and can thus denote the general economic conditions for the profitability and creditworthiness of firms in the economy. U_{it} denotes the firm-specific asset return, which is again assumed to be random with a standard normal distribution. The two random variables are assumed to be serially independent. The portion of risk that is systematic is defined by ρ_i , the correlation of the firm's asset return with the systematic factor F_t .

Given these assumptions, the logarithmic asset return of firm i at time t is also standard normally distributed. The model is based on the Merton model, according to which a default occurs if the return on a firm's assets falls below a certain barrier T , the default threshold. Formally,

$$P(Y_{it} = 1) = P(R_{it} < T), \tag{2}$$

⁹ See Borio et al. (2001), for example.

where Y denotes a binary random variable with two potential states, borrower i defaults (1), or does not default (0), at time t and T is the default threshold.

In order to model aggregate credit risk by means of different macroeconomic indicators, it is further assumed – unlike in the case of Gordy’s Basel II one-factor-model (Gordy, 2003) – that the value of the default threshold T depends on the economic cycle. This is modelled by taking a linear combination of macroeconomic variables (x_{jt}) to represent the value of the default threshold T .

The final form of the macroeconomic one-factor credit risk model used in this study is shown in equation (3), where Ψ denotes the distribution function of the standard normal distribution that represents the impact of changes in the macroeconomic indicators, β_0 is a constant and β_j are the coefficients of the macroeconomic variables, x_{jt} :

$$p_{it} = P(R_{it} < T) = P(\sqrt{\rho}F_t + \sqrt{1-\rho}U_{it} < \beta_0 + \sum_{j=1}^K \beta_j x_{jt}) = \Psi(\beta_0 + \sum_{j=1}^K \beta_j x_{jt}) \quad (3)$$

The default probability conditional on the realisation F_t of a random unobservable factor representing the state of the economy at time t corresponding to the default probability (3) is given by formula (4).

$$p_i(f_t) = P(U_{it} < \frac{\beta_0 + \sum_{j=1}^K \beta_j x_{jt} - \sqrt{\rho}f_t}{\sqrt{1-\rho}}) = \Psi\left(\frac{\beta_0 + \sum_{j=1}^K \beta_j x_{jt} - \sqrt{\rho}f_t}{\sqrt{1-\rho}}\right) \quad (4)$$

If we furthermore assume a homogeneous portfolio of firms in the economy whose asset returns follow process (1), the default rate in the economy is – based on the law of large numbers – equivalent to the firm’s default probabilities. Accordingly, the model may then be applied to homogeneous sub-sectors of the economy such as the corporate sector and the household sector.

Accordingly, the specification of the model resulting from (3) is as follows:

$$df_t = \psi(c + \sum_i \beta_i x_i) \quad (5)$$

where df_t denotes the dependent variable of the model (i.e. the default rate based on NPL inflows), β is the coefficient vector, x is the vector of the macroeconomic variables and c is a constant.

Due to recalculation by the cumulative distribution function of a normal distribution, the coefficients of equation (5) cannot be interpreted as the commonly used elasticities of the impacts

of the relevant macroeconomic factors on credit risk. Rather, the joint effect of a change in a different dimension is measured.¹⁰

In order to estimate model (3), a relationship with a conditional number of defaults of firms depending on the realisation of random variable F , the latent factor f_i is used. This number is, under the given assumptions, again random and has a binomial distribution with the conditional probability $p_i(f_i)$ given by equation (4) and the number of firms N_i .

$$D(f_i) \approx Bi(N_i, p(f_i)) \quad (6)$$

The model is then calibrated by maximising a likelihood function. To ensure that it is robust, and in particular to avoid calibration bias, the residuals obtained are tested for autocorrelation and heteroscedasticity.

4. Data

Next, the composition of the dependent variable, the inflow of non-performing loans¹¹ (NPLs), and the macroeconomic indicators will be outlined for both the Czech Republic and Germany. The data are generally annual observations derived from one-year sliding windows on quarterly data.

4.1 Data for the Czech Republic

In the case of the Czech Republic, the inflow of the NPLs was not separately available for the household and corporate sectors. Moreover, the original raw data taken from the Czech National Bank (CNB, 2007) were quarterly sectoral NPL stocks. In order to obtain sectoral NPL flows, the NPL stocks were adjusted for write-offs, sales and the enforcement of such exposures in the banks' books. Accordingly, the total annual NPL flows were split into corporate, household and other credit. This was done based on expert judgment, facilitated by robustness checks based on credit register data, where the actual monthly data have been available since November 2002. Finally, the annual NPL flows (henceforth also default rates) used as the dependent variable of this study were calculated.

The relatively volatile time patterns of the corporate and household default rates for the Czech Republic are shown in Figure 1 and Figure 3 respectively.

The macroeconomic data for the Czech Republic were taken from the time series archives (ARAD) of the Czech National Bank. Similarly to the existing literature (see section 2), we considered the annual growth rate of real GDP of the Czech economy and its most important trade partner economies (Germany, EU-12, EU-15, EU-25), the level of real exchange rates, nominal

¹⁰ For this reason, we cannot calculate the elasticities of the macroeconomic factors employed by the final specification of the model. The impact of these indicators on the sectoral default probability can only be evaluated conditional upon the other factors. By consequence, the effect of the change of the selected factor is different according to the level of the other macroeconomic indicators incorporated into the model.

¹¹ In fact, we first calculated the inflow of NPLs on a quarterly basis. Second, we derived the annual default rate by dividing the sum of the quarterly NPL inflows by the average volume of outstanding loans during the relevant one-year sliding window. As already outlined in the literature review, bankruptcy data-based insolvency rates could also be used as the dependent variable. This approach was used, for example, by Virolainen (2004) and Boss et al. (2006).

and real interest rates (PRIBOR1M, PRIBOR3M, PRIBOR6M, PRIBOR1Y¹²), inflation, the unemployment rate and the ratio of corporate loans to GDP for the corporate model. For the level of real exchange rates, nominal and real interest rates and inflation we used seasonally adjusted data.¹³ Descriptive statistics on the macroeconomic variables included in the final corporate model for the Czech Republic are shown below.

Table 1: Descriptive Statistics for the Macroeconomic Variables for the Czech Republic

Variable	Notation	Mean	StD(%)	Min	Max
Real Exchange Rate	E	0.934	0.07	0.805	1.046
Inflation (%)	π	2.70	2.44	-0.40	12.00
Nominal Interest Rate (%) ¹⁴	ir	2.87	2.64	1.75	13.90
Real GDP Growth (%)	gdp	3.59	1.89	-0.38	6.66
Industrial Production (%)	$indprod$	5.85	5.41	-8.80	13.60
Corporate Credit to GDP (%)	$debt$	23.82	11.99	16.51	50.24

For the household model, the unemployment rate, nominal and real interest rates, inflation, the interest rate gap, the real GDP growth rate, the output gap, the ratio of loans to GDP, and the ratio of interest paid to income or disposable income were considered for the specification of the model.¹⁵

The macroeconomic variables for the corporate model were available from 1998 Q3 and thus shorter than the dependent variable, so the model was estimated for the time period from 1998 Q3 to 2006 Q4 (see Table 3). For the household sector, the dataset used for the calibration of the model spans the period from 1997 Q3 to 2006 Q4 (see Table 3).

4.2 Data for Germany

For the German economy, the availability of data is, in general, more favourable than for the Czech Republic, although the time series have been impacted by German re-unification and by the introduction of the euro. However, data for the dependent variable, NPLs, were available only fairly recently for regulatory purposes, spurred by the stress testing framework of the IMF and the World Bank, and thus not accessible to the public. Overall, the rationale for the German case was to attempt at referring to analogous variables as in the Czech case, in order to enable a meaningful comparison.

The NPL inflows for the German economy used in this study are based on the data reported to the Deutsche Bundesbank in the framework of regulatory reporting since 1994.¹⁶ In order to arrive at quarterly data, the annual amounts were interpolated and then divided by the sum of the corporate

¹² PRIBOR denotes Prague InterBank Offered Rate; 1M denotes one month, 3M three months, 6M six months and 1Y one year.

¹³ i.e. deflated by the consumer price index (CPI) and the production price index (PPI).

¹⁴ PRIBOR1M is reported in Table 1.

¹⁵ Disposable income was modelled using average wages and household consumption. Interest paid was modelled as the product of the credit volume and the annual PRIBOR plus a specific interest rate spread paid by households according to CNB data.

¹⁶ These data were compiled from the figures reported by the German banks in the framework of banking supervision and are not publicly available.

and household credit volumes for the given quarter.¹⁷ The NPLs were again not available separately for corporates and households. The disaggregation was realised as follows: first, the shares of household and corporate credit in the total non-bank credit volume in Germany for the relevant quarter were taken.¹⁸ Next, these shares were combined with the insolvency rate¹⁹ to disentangle the ratio into corporate and household NPLs. In this way, the quarterly NPLs for German corporates and households were available for the period from 1994 to 2006.²⁰

The NPLs for German corporate loans remain approximately on the same level during the 1990s, then there is a steady increase until 2002 and a substantial and continuous decrease afterwards (Figure 2). For the NPLs of household credit, we observe a steady increase over the whole observation period.²¹ This is reflected in a rapid and continuous increase in the insolvency rates for households, although the default level remains relatively low.²²

The macroeconomic data for Germany were taken from the time series archives of the Deutsche Bundesbank and Eurostat.²³ For corporates, various indicators were taken into account, namely the level of nominal interest rates²⁴, real GDP growth, the change in the real effective exchange rate²⁵, the inflation rate, the unemployment rate, the development of industrial production, the inflow of order bookings in industry and the corporate credit²⁶ to GDP ratio. Like in the Czech case, we generally used annualised quarterly data that have been adjusted for seasonality.²⁷ Descriptive statistics on the macroeconomic variables included in the final model for Germany are shown below.

¹⁷ This was done by taking the reported NPLs for the relevant period as the reference value for the second quarter. Subsequently, the figures for the other periods were interpolated and extrapolated for the data in the first and last year respectively.

¹⁸ Corporate debt is thus referred to both as corporate debt and the debt of self-employed persons, amounting to 37% and 17% respectively of the total debt to non-banks in 2007.

¹⁹ Given that the insolvency rate for the household sector is only available since its introduction in 1999, the insolvency rate of 1999 was also used for 1994 to 1998. The generally very low level of household insolvencies at this time can justify this approach. For the period after 1999, the annual insolvencies recorded by CreditReform were referred to and were subsequently interpolated to arrive at quarterly data. For the corporate sector, annualised quarterly insolvency rates recorded by the German statistical office were used.

²⁰ In the same way as for the Czech Republic, the NPL inflows were adjusted for the public sector and entrepreneurs.

²¹ A private insolvency code was only introduced in 1999. One of the reasons for the increase in the private default rate may also have been that this opportunity was only gradually “discovered” by the population.

²² The relatively low level of household default rates for Germany reflects the very benign economic development of the German economy after the Second World War, at least until German re-unification, as well as the economic model followed, namely the social market economy (“Soziale Marktwirtschaft”). This economic model has brought forward a very solid middle-class population participating in growth and a comparably minor low social class, further facilitated by a low level of unemployment and a strong role of social systems. Given that the market for securitisation in Germany is relatively limited, it can also be ruled out that household defaults were “hidden” in the securitisation data and thus not captured in the credit register data.

²³ We took the GDP values from the Eurostat archive and the remaining time series from the Deutsche Bundesbank.

²⁴ Until 1999, we used one-month annual German interbank rates and afterwards we used one-month annual EURIBOR rates.

²⁵ We used the real effective exchange rate with the EER-44 group.

²⁶ We referred to the amount lent to non-banks as reported in the monthly report of the Deutsche Bundesbank.

²⁷ For data of monthly frequency we referred to the mean value in the relevant quarter.

Table 2: Descriptive Statistics for the Macroeconomic Variables for Germany

Variable	Notation	Mean	StD(%)	Min	Max
Real Exchange Rate	E	0.978	0.07	0.818	1.073
Inflation (%)	π	1.60	0.59	0.20	3.17
Nominal Interest Rate (%)	ir	4.49	2.14	2.08	9.70
Real GDP Growth (%)	gdp	1.72	1.65	-1.96	7.69
Industrial Production (%)	$indprod$	1.30	3.54	-8.89	6.95
Corporate Credit to GDP	$debt$	56.64	3.19	51.49	62.01

For the household sector, five indicators were considered in particular, namely the unemployment rate, the nominal and real interest rate (EURIBOR), the household credit to GDP ratio, net household income in nominal terms and the household savings rate.

The table below provides an overview of the time span of the data available for the two models and two country specifications. As shown in the table, the time series for Germany date back three to four years longer than in the Czech case.

Table 3: Overview of the Time Series Available to Calibrate the Model per Sector and Country

Model	Czech Republic Households	Czech Republic Corporates	Germany Households	Germany Corporates
Timeframe	1997 Q3 – 2006 Q4	1998 Q3 – 2006 Q4	1994 Q1 – 2006 Q4	1994 Q1 – 2006 Q4

5 A Credit Risk Model for the Corporate Sector

The key macroeconomic determinants used to explain the development of the corporate default rate in an economy are, among others, (real) interest rates (1), exchange rates (2), inflation (3), the state of the economy and that of key business partners, denoted by the growth rate (4), as well as the level of corporate indebtedness (5).²⁸ For both countries, at least one variable from each “domain” was considered.

After testing various specifications based on expert judgment, namely by seeking to include at least one variable from all five domains discussed above and by considering meaningful time lags, we arrived at country-specific models being most useful to depict the historic default rates. The inclusion of as few variables as possible facilitates stress testing, which will be performed in the next step. For both countries, the model contains four variables, two of which are the same for both countries with the same time lags as shown in Table .

For the Czech Republic, the model comprises the real exchange rate (e), inflation (π), GDP (gdp), and the indebtedness of the corporate sector as a proportion of gdp ($debt$), with the time lags as shown below:

$$df_t = \psi(c + \beta_2 e_{t-2} + \beta_3 \pi_{t-1} + \beta_{4,1} gdp_t + \beta_5 debt_{t-4}) \quad (7)$$

²⁸ Other relevant factors include the legal environment of a country, and particularly also forward-looking factors such as the slope of the yield curve and stock indices. Key macroeconomic determinants of the profitability of non-financial firms are discussed in CNB (2007), for example.

In order to take into account that the time period considered constitutes a transition period for the Czech economy, we also explicitly controlled for potential structural breaks. This was done by recursively running the model and consecutively including longer time periods in the estimation. Accordingly, we analysed whether the coefficients were stable. The outcome is shown in the Appendix, including two standard error bands around the estimated coefficients. As shown in the graph, the coefficients exhibit relatively high instability by the end of 2003 and beginning of 2004, which points to the presence of a structural break at that time.²⁹ To further trace this observation, we added a dummy variable to the model, defined as 1 for the first period and 0 otherwise (see formula 8 below). It could be shown that the dummy variable was highly significant and the performance of the model increased when we chose the first period until the third quarter of 2003.³⁰

As further elaborated below, in terms of the impact of these findings on the results, we found that the sensitivity of the corporate credit model for the Czech Republic to macroeconomic changes is lower since 2003, as the Czech economy had moved towards being a low risk post-transition economy by that time. One reason for that is that inefficient firms increasingly did not survive as the economy matured. Besides, the structural break was driven by bank privatisations that resulted in a restructuring of banks' internal processes, especially lending.

$$df_t = \psi(c + \beta_2 e_{t-2} + \beta_3 \pi_{t-1} + \beta_{4,1} gdp_t + \beta_5 debt_{t-4} + \beta_6 dum_t) \quad (8)$$

For Germany, the final model looks as follows:

$$df_t = \psi(c + \beta_1 ir_{t-1} + \beta_{4,1} gdp_t + \beta_{4,2} indprod_{t-3} + \beta_5 debt_{t-4}) \quad (9)$$

The German model comprises the nominal interest rate (*ir*), GDP (*gdp*), industrial production (*indprod*) and the debt to GDP ratio (*debt*). It is striking that the lag for the two variables included in both models, GDP and the debt ratio, turned out to be the same.

The table below summarises the variables included, with the coefficients, the time lag, the significance level and the standard error.

²⁹ This was confirmed by Chow tests, which rejected the hypothesis of no structural break at a confidence level of less than 1%.

³⁰ No further structural break was identified. This was confirmed by additional Chow tests.

Table 4: Macroeconomic Credit Risk Model for Czech and German Corporates

Variable	Notation	Czech case			German case		
		Lag	Coefficient	Std. error	Lag	Coefficient	Std. Error
Constant			-3.060***	0.358		-2.6997***	0.07141
Nominal Interest Rate (β_1)	<i>ir</i>		---		-1	2.2194***	0.4919
Real Exchange Rate (β_2)	<i>e</i>	-2	1.062***	0.323		---	
Inflation (β_3)	π	-1	-4.850***	0.636		---	
GDP ($\beta_{4,1}$)	<i>gdp</i>		-4.609***	1.079	0	-3.3677***	0.3280
Industrial Production ($\beta_{4,2}$)	<i>indprod</i>		---		-3	-0.8215***	0.1464
Credit-to-GDP Ratio (β_5)	<i>debt</i>	-4	3.006***	0.246	-4	1.0871***	0.1213
Dummy Variable (β_6)	<i>dum</i>		0.238***	0.043	0	0.0400***	0.0125

Note: Significance level: **: Significant at 5% level; ***: Significant at 1% level.

As shown in the table, the outcome of our empirical analysis demonstrates a substantial influence of the real *exchange rate* on corporate credit risk in the Czech Republic. This effect is in line with our expectations, as it particularly applies to export-oriented countries.³¹ We used the real effective exchange rates of the Czech koruna deflated by the consumer price index (CPI) lagged by two quarters. The sign of the coefficients indicates, as expected, that a stronger real exchange rate of the domestic currency affects corporate credit risk positively, i.e. the default rate increases with appreciation of the koruna.

The negative impact of *inflation*³² on firms' default rate, being less evident than the effect of other variables, was also confirmed. The reasoning for this is as follows. While companies can also be negatively affected by the increase in the prices of their inputs, an increase in the market prices of firms' outputs will, by contrast, affect firms in the opposite way. From a debtor point of view, the increase in the price level in the economy corresponds to a decrease of the real value of a credit obligation. Although permanent inflation leads to additional costs and harms the economy, inflation tends to improve the financial situation of debtors in the short run and *ceteris paribus* leads to a decrease of companies' default rates.

An economic boom will definitely influence default rates in the corporate sector as the demand for goods and services produced by non-financial firms increases. Consequently, the profit of companies increases and corporate default rates decrease. Perhaps not surprisingly, therefore, the

³¹ The reason is as follows. An appreciated exchange rate raises the prices of domestic goods in foreign currency so that firms become less competitive outside the country of origin. Given that, in general, the price of goods in foreign currency in the world market is highly determined by the cost/profit ratio of firms, appreciated exchange rates ultimately tend to result in higher default rates in the corporate sector. This effect can be assumed to be substantially higher for Czech firms than for German firms, the main reason being that German firms benefit in this context from the "domestic" euro area, where most of the German exports are located. The negative correlation for the Czech Republic has been empirically found by CNB (2007), for example.

³² As given by the 4-quarter change in the consumer price index (CPI).

outcome of the regression shows that the corporate default rate in the Czech economy depends negatively on the growth rate of real *GDP*³³ over the previous year.

The vulnerability of the corporate sector would be expected to depend on the extent of its indebtedness. The size of the effect would be expected to depend on how much higher financial leverage increases default probabilities, which will particularly occur in the case of an unexpected macroeconomic shock, denoted by the corporate debt to *GDP* ratio (*credit-to-GDP*). As regards this indicator, we found that a lag of four quarters turned out to be the best specification, with a positive effect on the corporate default rate.³⁴

Moreover, it turned out that neither real and nominal interest rates, nor the real *GDP* growth rate in the EU-15, EU-25, EA-12 and Germany, nor the unemployment rate were among the most important explanatory variables. Although some of them had significant univariate prediction power for the corporate default rate, they did not contribute to the prediction power of the multivariate model in a meaningful way, as they were correlated with other variables included in the model specification. This applies particularly to nominal interest rates, which were not included in the Czech model as expected due to the correlation with the exchange rates.

For Germany, the nominal *interest rate*³⁵ is found to be a key macroeconomic variable.³⁶ There are several reasons for that, one notably being that traditional long-term financing via bank debt plays an important role in the German economy. This particularly applies to German SMEs (the “Mittelstand”), which often have a close relationship with one or a small number of house bank(s). An increase in interest rates results in a prompt increase in the funding rates of corporates and thus to a worsening of firms’ ability to meet their financial obligations due to more expensive financial resources. Unlike in the case of the Czech Republic, neither the real exchange rate nor the inflation rate was among the most significant variables. In the first case, the introduction of the euro seems to have made an important contribution to reducing foreign exchange rate dependency for German firms. Similarly, given that economic growth in Germany was relatively low during the period considered, inflation was generally relatively low and thus not significant.

In the same way as for the Czech Republic, the unlagged real *GDP* growth rate significantly contributed to explaining the German corporate default rate. In addition, the *industrial production* variable contributed as a cyclical indicator to the explanation of the default rate.³⁷ Unlike all the other macroeconomic variables considered in this study, the latter indicator has the specific characteristic of being forward looking. However, it turned out that this variable resulted in autocorrelation, so it was not considered for the final specification.

Also, the corporate *credit-to-GDP ratio* with a lag of four quarters was included in the final specification for Germany. This clearly indicates that the aggregated level of corporate indebtedness plays a crucial role in the prediction of corporate default rates.

³³ We consider the growth of *GDP* compared to the same quarter in the prior year.

³⁴ Debt is defined as total outstanding bank loans to the non-financial corporate sector.

³⁵ Until 1999, we used one-month annual German interbank rates and afterwards we used one-month annual EURIBOR rates.

³⁶ The level of interest rates has a substantial effect on corporate credit financing, especially for credit with short-term duration, constituting a substantial portion of newly granted credit particularly in the Czech Republic, but also in Germany.

³⁷ We used annual changes of the index value relative to the quarter in the year before.

When estimating both models, the latent factor was significant. This implies that the corporate default rate in the economy is affected by additional factors other than those included in the model. Nevertheless, the graphs below clearly show that the calibration based on a limited number of variables was relatively successful.

Figure 1 demonstrates the performance of the estimated model for the Czech corporate sector. The figure clearly shows the decrease of the corporate NPL-based default rate from a very high level of around 20% at the end of the 1990s to a level of 10% from 2000 to 2002, before the NPL rate decreased to an intensity of 3% from 2004 on, the time pattern being captured by the model in a meaningful way. The decline in the historical high levels of the default rate was caused by privatisation of the banks and the subsequent improvement in their credit risk management methods. Most of the banks implemented rating models at the beginning of the new millennium. In addition, after the currency crisis in May 1997 and consecutive banking crisis they started lending in a very careful way.

Figure 1: Performance of the Model for the Czech Corporate Sector³⁸

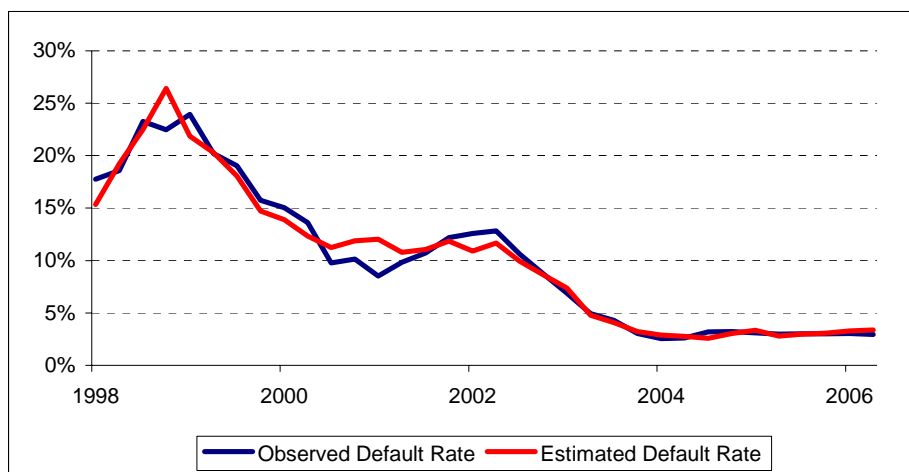
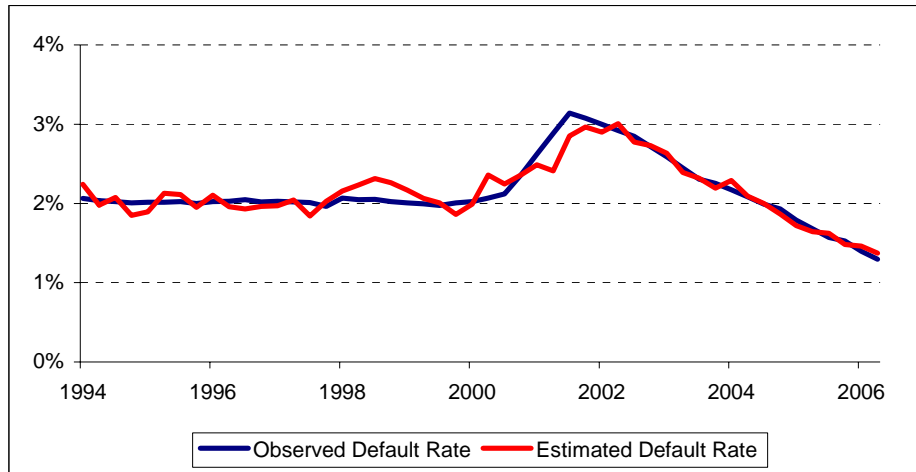


Figure 2 shows the equivalent outcome of the model calibration for Germany. The NPL inflow rate for German corporates fluctuates around 2% until 2000, reaches a peak of around 3% in 2002 and decreases again to the previous level and then further to 1.5% afterwards. As shown in the graph, the model is able to explain the increase in the default rate and the subsequent decrease. In addition, the model predicts some slight increases, particularly around the time of the Asian and Russian crises in 1998/1999, which, however, cannot be seen in the corporate default rate in Germany.

³⁸ The default rate denotes the non-performing loan inflow rate.

Figure 2: Performance of the Model for the German Corporate Sector



Due to the non-linearities of the models, the estimated β coefficients cannot be interpreted as the elasticity of the default rates with respect to the specific macroeconomic indicator change. In order to capture the sensitivity of the default rates, we can calculate mean elasticities that represent the effect of changes of macroeconomic indicators (x_i) on the aggregated default rate (df). In a general way, the formula for the elasticities can be expressed by the following equation (10), where $\psi(c + \sum_{i=1}^k \beta_i x_i)$ represents the estimated equation for the default rate according to formula (5).

$$E_i = \frac{\frac{\partial df}{\partial x_i}}{\frac{df}{x_i}} = \frac{\frac{\partial \psi(c + \sum_{i=1}^k \beta_i x_i)}{\partial x_i}}{\frac{\psi(c + \sum_{i=1}^k \beta_i x_i)}{x_i}} = \beta_i \phi(c + \sum_{i=1}^k \beta_i x_i) \cdot \frac{x_i}{\psi(c + \sum_{i=1}^k \beta_i x_i)} \quad (10)$$

Table 5 shows the elasticities of the macroeconomic indicators (x_i) at their mean values. The signs of the elasticities are all in line with the signs of the coefficients (β_i). The default rate for the Czech economy is much more sensitive to changes in GDP than in the German case. Furthermore, contrary to Germany, the corporate default rate in the Czech economy is very sensitive to exchange rate changes.

Table 5: Mean Elasticities for the Included Variables for the Czech and German Corporate Models

Czech Republic				
Variables	<i>gdp</i>	<i>e</i>	π	<i>Debt</i>
Elasticities	-0.29	1.80	-0.28	1.58
Germany				
Variables	<i>gdp</i>	<i>indprod</i>	<i>ir</i>	<i>Debt</i>
Elasticities	-0.14	-0.03	0.28	1.7

The robustness of the specifications was ensured by means of three tests: first, a likelihood test (chi-square test); second, a test of autocorrelation in the residuals; third, a test of heteroscedasticity in the residuals. All these tests were also a means of verifying the assumptions made. Accordingly, it was found that the corporate models are relatively robust for both countries. More specifically, the likelihood test was performed to evaluate the quality of the model. For both countries, the test rejected the null hypothesis at a confidence level of less than 1%. In addition, the non-linearity of the model was taken into account by investigating the pseudo-coefficients suggested by Estrella (1998), Cragg-Uhler (1970) and Veall-Zimmermann (1992), yielding values of close to one and thus supporting the quality of the model. The test of autocorrelation of the model was done by using the Q-statistics. Autocorrelation in the residuals is absent at the 5% confidence level. Moreover, potential heteroscedasticity was investigated by means of the Breusch-Pagan test. For both countries, the presence of heteroscedasticity was not indicated, implying that both models can be assumed to be unbiased.

In the last step, we investigated whether this kind of model remains reliable for periods that were not used for the calibration, i.e. in an out-of-sample context. This was done by using data until 2004 to calibrate the models and more recent data to test the forecasting ability of the models. More precisely, the corporate credit risk model was calibrated for the period 1998 Q3 to 2004 Q4 in the case of the Czech economy and the period 1994 Q1 to 2004 Q4 in the German case. Then we generated forecasts for the period 2004 Q1 to 2006 Q4 for both models and calculated the forecast bias, standard forecast error and mean square forecast error. Next, these evaluation statistics were compared with a random walk model. The outcome shows that the models also perform relatively well in an out-of-sample context, as shown in Table 6 and **Figure 6** in the Appendix. The better performance of the random walk model in the Czech case was driven by the low volatility of the corporate default rate in the period considered (2004–2006).

Table 6: Out-of-Sample Tests for the Corporate Sector

2004 1Q – 2006 4Q	Czech case		German case	
	Forecast	Random walk	Forecast	Random walk
Forecast bias	0.000439	0.000441	0.000033	0.000986
Standard forecast error	0.003441	0.002113	0.000588	0.000298
Mean square forecast error	0.000012	0.000005	0.000000	0.000001

6. A Credit Risk Model for the Household Sector

For the analysis of credit risk for households, we refer to the same aggregate top-down model as in the case of corporates.

Overall, there are at least three different economic factors that are particularly relevant for the prediction and explanation of household default rates, namely household income (1), the level of indebtedness (2) and the macroeconomic environment in a broader sense (3).

In general, a financial crisis for households usually occurs as follows: if disposable household income falls below a certain threshold, households have to sell their assets. If there are no assets left to be sold, a default event occurs.

From the set of variables considered for households (see the data section), two macroeconomic variables were included in the models for the Czech Republic and for Germany. However, the variables included were from different domains: while those in the Czech case are both “purely” macroeconomic variables (i.e. from the third domain), those in the German case refer to household income and level of indebtedness as shown in Table 7.

For the Czech model calibrated for the time period from 1997 Q3 to 2006 Q3³⁹, it was found that both the unemployment rate (u) and the real interest rate (r) have a positive effect on household default rates. For Germany (1994 Q1 – 2006 Q4), the two most significant variables were household income (inc) and the household debt to GDP ratio ($debthouse$) with, respectively, a negative and positive effect on the private default rate.

Table 7: Macroeconomic Credit Risk Model for Czech and German Households

Variable	Notation	Czech case			German case		
		Lag	Coefficient	Std. error	Lag	Coefficient	Std. error
Constant			-2.224***	0.071		-5.5656***	0.1072
Household Income (β_1)	inc		---	---	0	-5.7912***	0.9244
Credit-to-GDP Ratio (β_2)	$debthouse$		---	---	-4	5.7186***	0.2788
Unemployment Rate ($\beta_{3,1}$)	u	-4	3.695***	0.846	---	---	---
Real Interest Rate ($\beta_{3,2}$)	r	-3	1.808**	0.596	---	---	---

Note: Significance level: **: Significant at 5% level; ***: Significant at 1% level.

The most important macroeconomic driver for household default is the *unemployment rate*, as it significantly affects households’ income. If the key breadwinner of a heavily indebted household loses his/her job, for example, the household is not usually able to compensate for this deficit, so default becomes highly likely. In the Czech case, the *unemployment rate* was found to be relevant with a lag of four quarters, which corresponds to the lagged impact on payment discipline in the event of loss of employment.⁴⁰ In the case of the real interest rate, the statistically best results were achieved for a lag of three quarters – apparently the duration of an altered interest rate fixing on household defaults. The real *interest rate* was calculated by deflating the annual PRIBOR by annual changes in the CPI. The relevance of real interest rates is highly driven by the fact that a substantial portion of household debt is based on floating interest rates. In addition, the use of this variable allows the impacts of interest rates and inflation to be captured simultaneously. It is worth noting that the National Bank of Denmark uses the same variables as found for the Czech Republic (Danmarks Nationalbank, 2007). The other variables considered, such as nominal

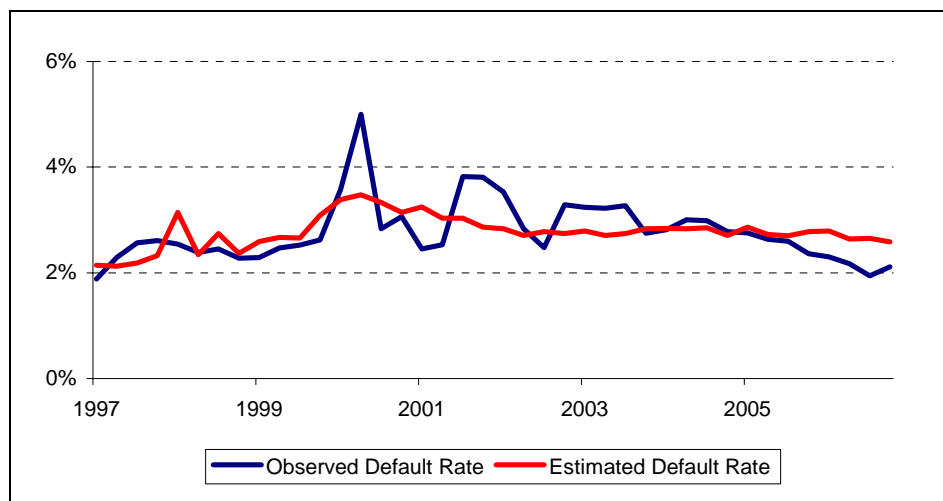
³⁹ The quarterly time series of the annual default rate was generated from the monthly series of the annual default rate calculated using relationship (2) by averaging the three monthly figures corresponding to the relevant quarter. Although the default rate obtained using equation (2) was available from 1994, the time series on which the model was estimated had to be shortened as a result of some lags in the model and due to the shorter series of the other macroeconomic indicators included in the model.

⁴⁰ The loan is initially repaid from savings or the redundancy payment; payment discipline is affected only after that.

interest rates, inflation, the interest rate gap, the real GDP growth rate, the output gap and the ratio of interest paid to income or disposable income, were not significant.

The development of the Czech household default rate is shown graphically below. It exhibits a much less volatile time pattern than the corporate default rate for the country.

Figure 3: Performance of the Model for the Czech Household Sector



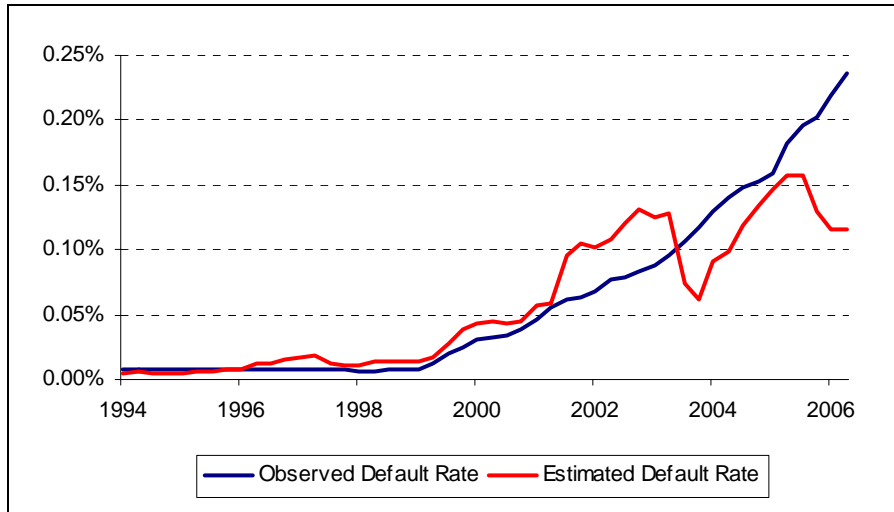
For Germany as well, the calibration of the model turned out to be less straightforward than for the corporate case. In the German case, the *credit-to-GDP ratio*, i.e. the aggregate level of household debt relative to GDP, had by far the strongest effect on the household default rate, being the only ratio that reflects the immense and continuous increase in the household default rate in Germany during the last ten years. It is important to highlight at this point that an official household default code has existed only since 1999, and that its existence has become known only fairly recently, so the increase in the default rate may be partially driven by more and more people becoming aware of this opportunity. Hence, the results for the German household sector have to be interpreted with caution.

Moreover, the decent economic development in Germany during the last decade was also partially reflected in *household income*. Household income constitutes the primary source of financing of credit, so it plays a crucial role in household default.⁴¹

The other structural economic indicators that were considered, for example the savings rate and interest rate levels, did not reflect the general development and therefore were not included in the model.

⁴¹ More specifically, the income to instalment ratio is relevant, given that this ratio is usually relatively stable over time, as households typically have a regular income in the form of a salary or pension. In addition, households often possess financial assets, for example real estate or personal assets, which can be liquidated in the case of a financial shortcoming.

Figure 4: Performance of the Model for the German Household Sector



To sum up, the outcome for both countries reveals that the aggregate household models were less successful in explaining household default compared to the corporate case, and there were apparently less similarities across countries. An important reason could be that there were apparently developments beyond the economic sphere explaining the evolution of the household default rate, these being of a socio-economic nature. In the German case, for example, there was, similar to other western European countries, a tendency toward a decline in the welfare of many private households, particularly in the case of unemployment, notably also due to a reduction of social contributions. Combined with a change in family structures, namely an increasing divorce rate, this led to an increasing level of single-person households and migration into larger cities, where rents were increasing, etc.

Subsequently, mean elasticities were calculated for both models as previously done for the corporate sector. This indicator is supposed to reveal the sensitivity of default rates to macroeconomic variables. We found very low elasticities of the Czech household default rate particularly with respect to real interest rates. In the German case, the elasticities were much higher. Nevertheless, further tests outlined below point to a possible bias of the estimates of the German model and a poor performance of the models for households overall.

Table 8: Mean Elasticities for the Considered Variables for the Czech and German Household Models

Czech case		
Variables	<i>u</i>	<i>r</i>
Elasticities	0.12	0.01
German case		
Variables	<i>inc</i>	<i>debt</i>
Elasticities	-0.23	8.13

The previous considerations were further investigated by means of robustness tests. The outcome of these tests shows that the household models were less robust, which has to be taken into account when it comes to stress testing. More specifically, the absence of autocorrelation can be confirmed for the Czech case at the 5% significance level, while this is not possible for the

German case. In the latter case, this means that the model may be biased and that the dependent variable may not be properly explained by the considered macroeconomic indicators only. In addition, a test for the presence of heteroscedasticity in the residuals shows that the estimated standard errors of the coefficients may be biased.

7. Stress Testing

Next, the credit risk models are used for stress testing, which is important both as a tool to ensure financial stability and for Basel II purposes on a micro level. This has also become evident in terms of the US subprime crisis. Its effects are likely to remain a threat to financial stability, although the countries considered in this study, especially Germany, seem to have been affected only moderately through banks' investments in US real estate securities (with the exception of specific financial institutions). The major effect resulting from the crisis may be a worsening worldwide economic environment due to a potential recession in the United States. Stress testing allows simulation of various scenarios to help banks and regulators identify and prevent potential risks.

The key challenge for stress testing is the choice of scenarios. Ideally, a stress testing exercise begins with an assumed adverse macroeconomic event that is then endogenously translated into a credit risk scenario in terms of different risk factors. However, such comprehensive and complex risk modelling frameworks hardly exist in banks, so banks (and regulatory bodies) are likely to apply other methods, namely regression analysis, historical simulation and sensitivity analysis.⁴²

For the purpose of stress testing the financial system as a whole, so-called macro stress testing, we will refer to historical simulation type stress testing, as we use adverse events during the observed period to predict stress scenarios in the future, as further elaborated below.

In the next step, the outcome of our macro stress tests is used for Basel II-type stress testing at the firm level, which we will refer to as micro stress testing. The stress test type applied in the case of the IRB approach is sensitivity analysis and historical simulation of the IRB credit parameters rather than a single risk factor which has been pre-calibrated in terms of stress.

7.1 Macro Stress Tests for Czech and German Corporates

For both the corporate and household sector, we deal with the challenge of selecting appropriate scenarios. We will use both historic simulation-based scenarios and expert judgment-based scenarios to arrive at appropriate macro stress tests.⁴³

In the underlying case with a stress test forecast period of one year, some of the variables would not have to be forecasted due to their lag of up to four quarters. However, this is not the usual case, particularly if one seeks to arrive at a longer prediction horizon. In that case, forecast models

⁴² For an overview of the stress tests applied by German banks see Bundesbank (2004).

⁴³ In the latter case, one could use the macroeconomic forecast of the relevant central banks, for example, in the Czech case the CNB's quarterly macroeconomic forecast (CNB, 2003) and in the German case the macroeconomic forecast of the Deutsche Bundesbank and the European Central Bank, and then add some additional stress at one's discretion.

such as panel regression models or the vector error correction model (VEC) can be used either to directly model credit growth, for example, or to estimate it through macroeconomic variables.⁴⁴

For all four models, we simulate a stress test based on end-2006 data (2006 Q4) for the end-2007 situation. Accordingly, an inflation rate of 2.9%, a real effective exchange rate of 1.046, a real GDP growth rate of 5.81% and a corporate credit-to-GDP ratio of 17.69% yield a model-inferred default rate of 3.5% for Czech corporates at the end of 2006, very close to the actual value.

Next, we define two quantile-based stress scenarios of a moderate and more severe intensity, which are used for all four models and thus allow for meaningful comparisons. We assume that the quantiles of all macroeconomic variables change by 10 percentage points (moderate stress scenario, **HS 10%**) and 20 percentage points (severe stress scenario, **HS 20%**), respectively, in the unfavourable direction. In two cases where the highest historical levels applied, we did not apply full adjustment of the parameter (i.e. a 10% and 20% increase or decrease), but used the 100% quantile value for the HS 10% scenario and rounded the parameter up for the HS 20% scenario. Descriptive statistics of the historical values for all variables included in the Czech corporate model are shown in Table 1. In the moderate stress scenario (HS 10%), for example, the real effective exchange rate remains at 1.046 given that this is the maximum observed historical value, inflation decreases to 2.5%, GDP growth decreases to 4.27% and the credit-to-GDP ratio increases to 19.67%. In addition, we add an expert-based scenario which takes into account the recent development of the variables. The stress parameter values used for the three scenarios are displayed below.

Table 9: Macro Stress Tests Applied to Czech Corporates

	Real effective FX rate	Inflation (%)	GDP growth (%)	Credit-to-GDP (%)	Corporate Default rate	Relative to 2006 Q4
2006 Q4 value (quantile, %)	1.046 (100.0)	2.90% (54.5)	5.81% (81.8)	17.69% (33.3)	3.5%	---
HS 10% scenario	1.046 ⁴⁵	2.50%	4.27%	19.67%	5.5%	+57%
HS 20% scenario	1.1 ⁴⁶	2.30%	3.88%	28.46%	10.6%	+204% ⁴⁷
Expert-based	1.1	2.50%	4.00%	23.00%	8%	+128%

Note: HS 10% (20%) represents a moderate (severe) stress test scenario in which the quantiles of all macroeconomic variables change by 10 (20) percentage points in the unfavourable direction.

⁴⁴ Alternatively, the most important parameter used in this study – (sector-specific) credit growth – can be forecasted by means of panel regression models (for the CEECs see Cottarelli et al., 2003, and Duenwald et al., 2005). Besides, VEC models have been used to arrive at forecasts for single countries as well as for aggregate data for several countries, for example by Hofmann (2001) and Schadler et al. (2005).

⁴⁵ This value was used because the quantile value for the current scenario is already at 100%.

⁴⁶ For the 20% scenario, we assumed that the level of the real effective exchange rate would increase to 1.1, taking into account the very high level of the variable, and so we did not stick strictly to the quantile rule.

⁴⁷ If the quantile rule had been strictly applied, the default rate would have been 11.6% and the respective increase 233%.

As shown in Table 9, the Czech corporate default rates increase substantially for all three stress scenarios, by 57% in the HS 10% case (to 5.5%), by 128% in the expert-based scenario and by 204% in the HS 20% scenario. For the historical quantile-based scenarios, it is particularly the credit-to-GDP ratio that accounts for a very high increase in the default rate. Given that the level of this variable has constantly been below 20% since the second quarter of 2003, the corresponding historical-based value of the HS 20% scenario (28.46%) seems to be relatively high, so the expert-based value was chosen in a less conservative way. While the HS 20% scenario may be regarded as a rather unlikely severe scenario, it shows the volatility of the corporate default rate for Czech corporates in an illustrative way.

The outcome of the corresponding stress tests for Germany is shown below.

Table 10: Macro Stress Tests Applied to German Corporates

	Nominal interest rate (%)	GDP growth (%)	Industrial production change (%)	Credit-to- GDP (%)	Corporate default rate	Relative to 2006 Q4
2006 Q4 value (quantile, %)	3.54% (41.5)	3.95% (95.3)	3.92% (79.6)	53.45% (9.6)	1.4%	---
HS 10% scenario	3.83%	3.34%	2.96%	54.18%	1.6%	+13%
HS 20% scenario	4.25%	2.59%	2.05%	54.46%	1.9%	+29%
Expert-based	4.50%	2.00%	3.00%	55.00%	2.0%	+38%

Note: HS 10% (20%) represents a moderate (severe) stress test scenario in which the quantiles of all macroeconomic variables change by 10 (20) percentage points.

As the table shows clearly, the impact of the scenarios on the default rate of German corporates is much lower than in the Czech case, the increase remaining below 30% for the historical scenarios (even for the HS 20% scenario), while the expert-based scenario, which was chosen in a slightly more conservative way (especially in the case of GDP growth), yields an increase of 38%.

The outcome that the multivariate impact of the stress test is much more severe for the Czech Republic can also be seen in the resulting stress values of each of the macroeconomic variables of the two corporate models: in the German case, they do not diverge too far from the actual value when stressed by 10% or 20%, while the stress level in the Czech case results in more substantial differences. Nevertheless, the full range of the historical values for Germany does also show that a more severe stress event could potentially yield a more substantial increase in the corporate default rate. If one applies a stress level of 30% (HS 30%) and 40% (HS 40%) to further investigate whether the stress effect tends to be non-linear, the resulting increase in the default rate by 44% and 66% respectively shows that the impact remains relatively moderate compared to the Czech case, so this is not the case.

7.2 Macro Stress Tests for Czech and German Households

For the stress tests of the household sector, one first has to take into account that the performance of the model was considerably weaker than for the corporate sector, so the stress testing exercise will be less precise and one is more likely to over- or under-estimate the effect of a stress event. Taking a conservative stance, one may add some cushion to the actual outcome in both directions. Hence, we will only apply the same historical, quantile-based scenarios for households without

additionally using an expert-based scenario, also in order not to stretch the use of household models too much.

The outcome of the stress tests applied to Czech households is displayed below. The result of an increase in the default rate of only 4% for the HS 10% scenario and 6% for the HS 20% scenario suggests a relatively low sensitivity of the household default rate to changes in the economic variables. As pointed out before, not all effects shown in the empirical default rates are fully captured in the model, so the result has to be interpreted with care.

Table 11: Macro Stress Tests Applied to Czech Households

	Unemployment Rate (%)	Real Interest Rate (%)	Household Default Rate	Relative to 2006 Q4
2006 Q4 value (quantile, %)	7.77% (43.2)	-0.47% (0.0)	2.59%	---
HS 10% scenario	8.02%	0.01%	2.69%	+4%
HS 20% scenario	8.19%	0.15%	2.75%	+6%

Note: HS 10% (20%) represents a moderate (severe) stress test scenario in which the quantiles of all macroeconomic variables change by 10 (20) percentage points.

The outcome of the macro stress test for German households is displayed below. The increase in the default rate is higher than for the Czech case, with 11% for the HS 10% scenario and 28%⁴⁸ for the HS 20% scenario. It is worth noting that the size of the default-rate increase for the two stress scenarios is very similar to the case for German corporates. While this outcome may be striking at first glance, it again reflects the continuous and rapid increase in German household default rates in recent years. Again, one should take into account that the model specification is less robust than for the corporate case.

Table 12: Macro Stress Tests Applied to German Households

	Household Income Change (%)	Credit-to-GDP (%)	Household Default Rate	Relative to 2006 Q4
2006 Q4 value (quantile)	1.09% (50.8)	45.13% (98.3)	0.115%	---
HS 10% scenario	0.62%	45.20% ⁴⁹	0.128%	+11%
HS 20% scenario	0.15%	45.50% ⁵⁰	0.148%	+28%

Note: HS 10% (20%) represents a moderate (severe) stress test scenario in which the quantiles of all macroeconomic variables change by 10 (20) percentage points.

⁴⁸ If the 100% quantile had been applied to the credit-to-GDP ratio (45.20% as for the HS 10% scenario), the default rate would have increased by 21%.

⁴⁹ Given that the quantile value for the current scenario is already 98.3%, we applied the 100% quantile.

⁵⁰ In the same way as for Czech corporates, a higher value was applied in the 20% scenario than foreseen by the formal treatment.

7.3 Stress Test Applied to a Hypothetical Bank Portfolio

In the Basel II framework (BCBS, 2006), stress testing is part of Pillar I and Pillar II, where banks are asked, in a broader sense, to analyse possible future scenarios that may threaten their solvency. In the case of credit risk, this includes in particular an assessment of economic or industry sector-specific downturn events, which must be chosen in a “meaningful” and “reasonably conservative” way and thus represent at least “mild recession scenarios”, but not necessarily a “worst-case scenario” (BCBS, 2006, para. 435). In order to keep the stress tests flexible and thus match the specific requirements of each bank, the challenging task of choosing stress scenarios is at the discretion of banks and has to be justified to the supervisory body.

Within the Basel II framework, a stress test on credit risk would comprise all IRB credit risk parameters, namely the Probability of Default (PD) (those of both borrowers and guarantors), the Loss Given Default (LGD) and the Exposure at Default (EAD).⁵¹ If a bank applying either the Foundation IRB (FIRB)⁵² or the Advanced IRB (AIRB) approach additionally uses an economic capital model, then stress testing would typically additionally comprise an assessment of credit correlations and portfolio industry sector concentration or geographic concentrations.⁵³

Next, we use the outcome of the macro stress testing exercise in a top-down manner for Basel II-type micro stress testing based on a hypothetical credit portfolio.⁵⁴ The portfolio comprises 6,000 loans, with 50% of the credit exposure being granted to corporates and 50% to households. This decomposes into 462 loans made to corporates and 5,538 to households, with a relative exposure size of corporate exposures to retail (household) exposures of 12:1.⁵⁵

In terms of the credit portfolio risk measure, we refer to the Basel II minimum capital requirements under the IRB approach. In this way, the regulatory capital requirements – in their role as a Value-at-Risk ratio for a one-year horizon and a confidence level of 99.9% – are used as an indicator of the inherent credit risk in the portfolio.⁵⁶ For corporate loans, we apply the Basel II

⁵¹ In addition, the Maturity (M) could also be subject to stress testing.

⁵² IRB stands for internal ratings-based approach.

⁵³ Basel II-type microeconomic stress testing is also applied in supervisory bodies. In the Deutsche Bundesbank, for example, Basel II-type microeconomic stress tests are carried out in two different forms: first, in terms of sensitivity analysis to simulate macroeconomic effects on specific credit risk parameters, carried out in the framework of the Quantitative Impact Studies (QIS); and second, in terms of scenario analysis, based on a stochastic multi-factor model using data from the German credit register, for example to arrive at further insights into sectoral concentrations. For further information see Deutsche Bundesbank (2007, p. 102f.).

⁵⁴ We sought to make the portfolio as realistic as possible. This was supported by expert judgment in various dimensions, so that the values are meaningful for both countries. It is important to highlight that a real portfolio would be non-homogeneous in terms of PD and EAD (but also in terms of LGD and, if the data allow for that, in credit correlations), which would alter the results. The direction of the changes depends on the actual portfolio, namely whether it contains mostly SMEs with similar risk characteristics or a mixture of large, medium-sized and small corporates, the industry-sector distribution, etc.

⁵⁵ This size ratio was revealed as follows. We calculated the average corporate credit by dividing the total corporate credit volume in Germany by the number of corporate firms in 2007 and then assumed that the firms' credit is spread equally over two banks. For the household sector, we similarly took the total household credit volume in Germany and divided it by the number of German households. The resulting absolute numbers were 209,000 EUR for the corporate sector and 17,000 EUR for the household sector. In terms of size ratio, we thus assume that 12/13 (n=5538.5) of the loans are granted to households and 1/13 (n=461.5) to corporates. See Deutsche Bundesbank (2007), p. 54/55.

⁵⁶ Further information on Basel II can be found in BCBS (2006) and the relevant national regulations, in the European Union coming from EC (2006).

IRB formula for corporates (BCBS, 2006, para. 272) based on four inputs, namely PD, LGD, EAD and Maturity (M). For loans to households, the formula for other retail exposure (BCBS, 2006, para. 330) is applied, so the maturity is not needed.

In order to allow for a meaningful comparison between the two countries, we use the two historical, quantile-based macroeconomic stress scenarios elaborated in the last section (HS 10%, HS 20%) as the basis for portfolio stress testing (i.e. for a stress on the PD) and measure the relative effect for the two countries for the same credit portfolio. We need to take into account that these scenarios are not fully comparable, as their calibration may be driven by the transformation period in the Czech case, since the volatility of the relevant time series is considerable higher than for Germany. Furthermore, we stress slightly different macroeconomic variables in each case, as the credit risk models are country specific.

We further assume that the portfolio is homogeneous in terms of PDs and exposures within the corporate and household sectors respectively. In the first case (1), the LGD is fixed at 45% and the maturity at 2.5 years as foreseen under the Foundation IRB approach for senior unsecured debt.⁵⁷ Second (2), the LGD will be increased by 20% in relative terms (from 45% to 54%) in order to take into account a potential positive correlation between the PD and the LGD.

The resulting Herfindahl-Hirshmann-Index (HHI) of 0.00059 indicates that the credit portfolio referred to is granular in terms of EAD⁵⁸, implying that there is only minor name concentration. Furthermore, it is assumed that the corporate portfolio is also diversified across industries and geographical sectors, so the basic assumptions for the use of the Basel II one-factor model are fulfilled. While these assumptions facilitate the use of the Basel II IRB model, the resulting credit risk requirements thus tend to be a lower bound for the actual portfolio credit risk.

The regulatory IRB capital requirements for this hypothetical credit portfolio are displayed in the table below, listing the outcome for the two stress tests without and with LGD stress for the two countries.⁵⁹ The capital requirements are measured relative to the portfolio exposure and are highlighted in bold.

The table shows various results. First, the unstressed minimum capital requirements are 7.82% of the exposure in the Czech case, compared to 4.66% in the German case, implying that the portfolio credit risk in the Czech Republic exceeds the portfolio credit risk in Germany by a considerable 68% due to higher default rates.⁶⁰ Second, the table also shows that the impact of a univariate macroeconomic stress on default probabilities (when keeping recovery rates at the same level, i.e. case 1) is much higher for the Czech portfolio, yielding an increase in the capital requirements of 10.7% compared to 4.5% for Germany in the case of stress scenario HS 10% and 32.6% versus 9.2% for the more severe stress scenario HS 20% (case 2). This outcome shows that

⁵⁷ In some jurisdictions, the effective maturity is used in the same way as in the case of the AIRB and is thus not fixed at 2.5 years.

⁵⁸ In the study of Gordy and Lütkebohmert (2007), an average HHI of 0.001 was determined for credit portfolios of large German banks based on data from the German credit register.

⁵⁹ It is worth noting that we assume that the same levels of stress (i.e. HS 10% and HS 20%) occur simultaneously for households and corporates in each case.

⁶⁰ Although we focus on the relative impact of the stress tests, it is worth noting that the ratio is below the loaded 8% level in both cases, reflecting the fact that the portfolio quality is above average overall based on the end-2006 parameters.

the impact of a macroeconomic stress event for default rates translates into a 2.4 times (HS 10%) and 3.5 times (HS 20%) higher impact on capital requirements in the Czech case, driven mostly by the higher volatility of default rates in the corporate sector.

Table 13: Impact of Macro Stress Tests on IRB Minimum Capital Requirements (CR) for a Hypothetical Portfolio: Comparison for the Czech Republic and Germany (CR are measured in % of exposure)

	Stress Scenario	Parameter	End-2006 portfolio (unstressed)	Forecasted 2007 stress portfolio	
				PD stress only (case 1)	PD and LGD stress (case 2)
Czech Republic	HS 10%	Corporate-PD (%)	3.50	5.5	
		Household-PD (%)	2.59	2.69	
		LGD (%)	45	45	54
		Capital Requirements (%)	7.82	8.66 (+10.7%)	10.39 (+32.9%)
	HS 20%	Corporate-PD (%)	3.50	10.60	
		Household-PD (%)	2.59	2.75	
		LGD (%)	45	45	54
		Capital Requirements (%)	7.82	10.37 (32.6%)	12.45 (59.2%)
Germany	HS 10%	Corporate-PD (%)	1.43	1.63	
		Household-PD (%)	0.115	0.128	
		LGD (%)	45	45	54
		Capital Requirements (%)	4.66	4.87 (+4.5%)	5.84 (25.3%)
	HS 20%	Corporate-PD (%)	1.43	1.85	
		Household-PD (%)	0.115	0.148	
		LGD (%)	45	45	54
		Capital Requirements (%)	4.66	5.09 (+9.2%)	6.11 (31.1%)

Third, if one adds a potential stress level of the LGD of 20%⁶¹ in order to arrive at a more comprehensive impact of the capital requirements for the credit portfolio (case 2), then the increase in the capital requirements is around 33% (HS 10%) and 59% (HS 20%) for the two stress cases on the Czech portfolio and 25% and 31% for the German portfolio. In a study based on a large European corporate credit portfolio for a similar time period, Düllmann et al. (2008) find a maximum increase in the IRB minimum capital requirements of 34% on an annual basis, which is in the same range as for the German case. However, for an economic capital model additionally taking into account the variation of credit correlations, the authors find that the economic capital increase may be more than twice as high as for the IRB capital. If this was translated into the outcome of the current study, then a credit portfolio in the Czech Republic may be exposed to an increase in (economic) capital requirements of more than 100%, despite the “smoothing” effect of Czech households.

To sum up, macro stress scenarios translated into micro stress tests may lead to a considerable increase in capital requirements even for a homogeneous and well-diversified portfolio that

⁶¹ From a methodological perspective, an increase in the LGD has a linear effect on the Basel II capital requirements, implying that the impact is higher than for the PD.

reflects the average macroeconomic conditions of the economy as in the underlying case. Hence, the effect can be assumed to multiply for a concentrated, heterogeneous portfolio with a higher ratio of corporate credit as in the underlying case, so that the increase in default rates and recovery rates are higher than for the average bank portfolio.

8. Conclusion

In this study, macroeconomic credit risk modelling for the corporate sector and the household sector was applied to both the Czech and the German economies. In the first step, reliable and comparable data were generated, yielding a time frame of eight years from 1998 to 2006 for the Czech Republic and 12 years from 1994 to 2006 for Germany based on annualised quarterly data. Furthermore, it was ensured throughout the study that the results for the two countries were comparable in order to work out and explain potential differences.

Next, a Merton-type one-factor credit risk model was used to estimate aggregate corporate and household default rates based on non-performing loans. We found that modelling was meaningful for the corporate sector, while this was not entirely the case for the household sector. Moreover, the outcome that similar variables can explain the default rates for two economies with a different default rate and volatility pattern suggests that corporate credit risk can obviously be explained by a limited set of similar variables for different economies. By contrast, further research seems to be necessary in order to better explain the time pattern of household default rates. The use of bottom-up models as applied by some regulatory bodies is promising provided that data are available.

Subsequently, macro stress testing was applied, indicating that there can be a substantial increase in the corporate default rate (more than 100% for the Czech Republic; up to 40% for Germany). However, the sensitivity of the corporate sector default rates for the Czech Republic was driven by the high volatility of the macroeconomic indicators during the transition period of the late 1990s, so the results have to be interpreted carefully. Due to this fact, as well as to the different explanatory variables which were employed in the country-specific credit risk models, the results are not fully comparable. For households, sensitivity to the macroeconomic environment is less pronounced, unlike what the recent US subprime crisis might suggest. This outcome, which also holds true for the credit portfolio level, has to be interpreted with caution, as the robustness of the household model is substantially lower than that for the corporate sector, but it might also be seen as an indication that both economies are more robust to shocks in the household sector. The latter assumption seems to be reflected in the fact that the financial crisis has not had a considerable effect on the Czech and German household sectors.

In the third step, the outcome of macro stress testing was used for top-down Basel II-type micro stress testing of the same hypothetical credit loan portfolio for both countries. It turned out that the increase in portfolio risk induced by a macroeconomic shock is more than twice as high for the Czech Republic as for Germany. Based on the regulatory IRB capital requirements, the portfolio credit risk of an average bank would increase by up to 60% in the Czech case and by roughly 30% for Germany. However, we need to take into account the above-mentioned limitations of our analysis (mainly the transition period in the Czech case), which do not allow a full comparison of the two countries. Nevertheless, our analysis indicated that a small, open, export-oriented economy is probably more sensitive to adverse macroeconomic shocks. Moreover, in the case of portfolios concentrated in names or sectors and/or when using an

economic capital model that additionally takes into account potential variations of credit correlations, the increase in capital requirements could be much higher.

To sum up, it has been clearly shown how important a comprehensive analysis of credit risk is in order for regulatory bodies to be able to take measures to safeguard financial stability. Besides the numerical results of this study for the two underlying countries, we provided a template for investigating the credit risk environment of an economy. In this way, the underlying study can serve as a starting point for other countries to monitor credit risk in their financial systems and thus contribute to the detection of potential fragility of the banking sector as a means of preventing financial crises. Given that central banks and supervisory bodies usually have data on the credit portfolios of domestic banks (for example via a credit register), macroeconomic stress scenarios can be readily translated in a top-down manner for micro stress testing, in particular for those banks that are relevant from a systemic perspective. For the industry, the framework elaborated may contribute to the introduction of Basel II-type micro stress testing.

In any case, future research is needed on the highly complex issues discussed in this paper. There are various approaches by different regulatory bodies pointing in the same direction from a methodological viewpoint. However, the most fundamental issue is to ensure reliable databases with a long-term horizon, which are not available in most countries. Improvements are also needed particularly for the household sector, where the modelling turned out to go beyond the economic dimension.

References

- ALLEN, L. AND A. SAUNDERS (2004): "Incorporating Systemic Influences Into Risk Measurements: A Survey of the Literature." *Journal of Financial Services Research* 26(2). pp. 161-91.
- BANGIA, A., F. X. DIEBOLD, A. KRONIMUS, C. SCHAGEN, AND T. SCHUERMAN (2002): "Ratings Migration and the Business Cycle, with Application to Credit Portfolio Stress Testing." *Journal of Banking and Finance* 26, pp. 445-474.
- BASEL COMMITTEE ON BANKING SUPERVISION (BCBS) (2006): "Basel II: International Convergence of Capital Measurement and Capital Standards." A Revised Framework, Comprehensive Version, BIS, June.
- BORIO, C., C. FURFINE, AND P. LOWE (2001): "Procyclicality of the Financial System and Financial Stability Issues and Policy Options." BIS Papers No. 1.
- BOSS, M., C. KRENN, C. PUHR, AND M. SUMMER (2006): "Systematic Risk Monitor: A Model for Systematic Risk Analysis and Stress Testing of Banking Systems." Financial Stability Report 11, Austrian National Bank.
- BUNN, P. AND V. REDWOOD (2003): "Company Accounts Based Modelling of Business Failures and the Implications for Financial Stability." Working Paper No. 210, Bank of England.
- CATARINEU-RABELL, E., P. JACKSON, AND D. TSOMOCOS (2003): "Procyclicality and the New Basel Accord: Banks' Choice of Loan Rating System." Working Paper No. 181, Bank of England.

- CORICELLI, F. AND I. MASTEN (2004): "Growth and Volatility in Transition Countries: The Role of Credit." Festschrift in Honour of Guillermo A. Calvo, April 15–16, IMF.
- COTTARELLI, C., G. DELL'ARICCIA, AND I. VLADKOVA HOLLAR (2003): "Early Birds, Late Risers, and Sleeping Beauties: Bank Credit Growth to the Private Sector in Central and Eastern Europe and the Balkans." IMF Working Paper No. 03/213.
- CRAGG, J. G. AND R. UHLER (1970): "The Demand for Automobiles." *Canadian Journal of Economics* 3, pp. 386–406.
- ČIHÁK, M. (2004): "Designing Stress Tests for the Czech Banking System." Research and Policy Note 3, Czech National Bank, Research Department.
- ČIHÁK, M., J. HEŘMÁNEK, AND M. HLAVÁČEK (2007): "New Approaches to the Stress Testing of the Czech Banking Sector." *Czech Journal of Economics and Finance* 2, pp.41-59.
- CNB (2003): *The Czech National Bank's Forecasting and Policy Analysis System*. Czech National Bank.
- CNB (2007): *Financial Stability Report 2006*. Czech National Bank.
- DANMARKS NATIONALBANK (2007): *Financial Stability Review*.
- DEUTSCHE BUNDESBANK (2004): "Stress Tests at German Banks – Methods and Results." Monthly Report, Deutsche Bundesbank, October.
- DEUTSCHE BUNDESBANK (2007): "Stress Tests: Methods and Areas of Application." Deutsche Bundesbank, Financial Stability Review 2007, pp. 97–112.
- DÜLLMANN, K., M. SCHEICHER, AND C. SCHMIEDER (2008): "Asset Correlations and Credit Portfolio Risk: An Empirical Analysis." *Journal of Credit Risk* 4(2), pp. 37–62.
- DUENWALD, C., N. GUEORGUIEV, AND A. SCHAECHTER (2005): "Too Much of a Good Thing? Credit Booms in Transition Economies: The Cases of Bulgaria, Romania, and Ukraine." IMF Working Paper 05/128.
- ESTRELLA, A (1998): "A New Measure of Fit for Equations with Dichotomous Dependent Variables." *Journal of Business and Economic Statistics* 16(2), pp. 198–205.
- EUROPEAN COMMISSION (2006): Directive 2006/48/EC of the European Parliament and of the Council of 14 June 2006 relating to the taking up and pursuit of the business of credit institutions (recast), June.
- GORDY, M. (2003): "A Risk-factor Model Foundation for Ratings-based Bank Capital Rules." *Journal of Financial Intermediation* 12, pp. 199–232.
- GORDY, M. B. AND E. LÜTKEBOHMERT (2007): "Granularity Adjustment for Basel II." Discussion Paper, Deutsche Bundesbank.
- HAMERLE, A., T. LIEBIG, AND H. SCHEULE (2004): "Forecasting Credit Portfolio Risk." Deutsche Bundesbank Discussion Paper Series 2, No. 01.
- HOFMANN, B. (2001): "The Determinants of Private Sector Credit in Industrialised Countries: Do Property Prices Matter?" BIS Working Paper No. 108.
- JAKUBÍK, P. (2007): "Macroeconomic Environment and Credit Risk." *Czech Journal of Economics and Finance* 57(1–2), pp. 41–59.

- JONES, M. T., P. HILBERS, AND G. SLACK (2004): “Stress Testing Financial Systems: What to Do When the Governor Calls.” IMF Working Paper WP/04/127, July.
- LÖFFLER, G. (2004): “An Anatomy of Rating through the Cycle.” *Journal of Banking and Finance* 28, pp. 695–720.
- PAIN, D. (2003): “The Provisioning Experience of the Major UK Banks? A Small Panel Investigation.” Working Paper No. 177, Bank of England, January.
- PEURA, S. AND E. JOKIVUOLLE (2004): “Simulation Based Stress Tests of Banks’ Regulatory Capital Adequacy.” *Journal of Banking and Finance* 28, pp. 1801–1824.
- RÖSCH, D. (2005): “An Empirical Comparison of Default Risk Forecast from Alternative Credit Rating Philosophies.” *International Journal of Forecasting* 21, pp. 37–51.
- RÖSCH, D. AND H. SCHEULE (2007): “Stress-Testing Credit Risk Parameters: An Application to Retail Loan Portfolios.” *Journal of Risk Model Validation* 1(1), pp. 55–75.
- SCHADLER, S., Z. MURGASOVA, AND R. ELKAN (2005): “Credit Booms, Demand Booms, and Euro Adoption: Challenges for Central Banks in an Enlarged EMU.” Springer Vienna, Volume 9.
- SORGE, M. (2004): “Stress-testing Financial Systems: An Overview of Current Methodologies.” BIS Working Paper No. 165, December.
- SORGE, M. AND K. VIROLAINEN (2006): “A Comparative Analysis of Macro Stress-testing Methodologies with Application to Finland.” *Journal of Financial Stability* 2, pp. 113–151.
- TRÜCK, S. AND S. RACHEV (2005): “Credit Portfolio Risk and Probability of Default Confidence Sets through the Business Cycle.” *Journal of Credit Risk* 1(4), pp. 61–88.
- VALLÉS, V. (2006): “Stability of a “Through-the-Cycle” Rating System during Financial Crisis.” BIS Financial Stability Institute, September.
- VEALL, M. R. AND K. F. ZIMMERMANN (1992): “Pseudo-R²’s in the Ordinal Probit Model.” *Journal of Mathematical Sociology* 16, pp. 333–342.
- VIROLAINEN, K. (2004): “Macro Stress Testing with a Macroeconomic Credit Risk Model for Finland.” Discussion Paper No. 18, Bank of Finland.
- WILSON, T. C. (1997a): “Portfolio Credit Risk (I).” *Risk*, September, Reprinted in *Credit Risk Models and Management*, 2004, 2nd edition, edited by David Shimko, Risk Books.
- WILSON, T. C. (1997b): “Portfolio Credit Risk (II).” *Risk*, October, Reprinted in *Credit Risk Models and Management*, 2004, 2nd edition, edited by David Shimko, Risk Books.

Appendix

Figure 5: Analysis of Coefficient Stability for the Czech Corporate Credit Risk Model
(model without dummy variable for a structural break)

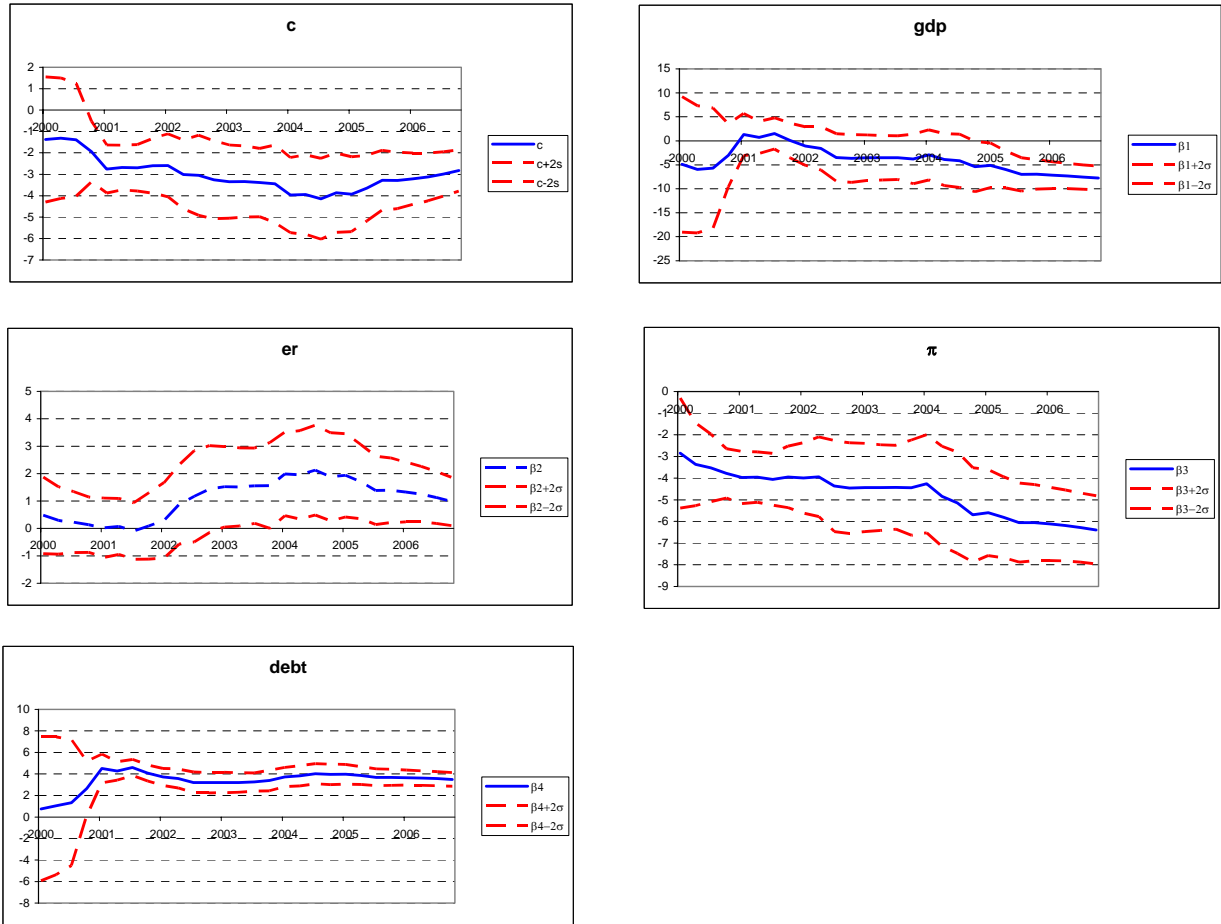
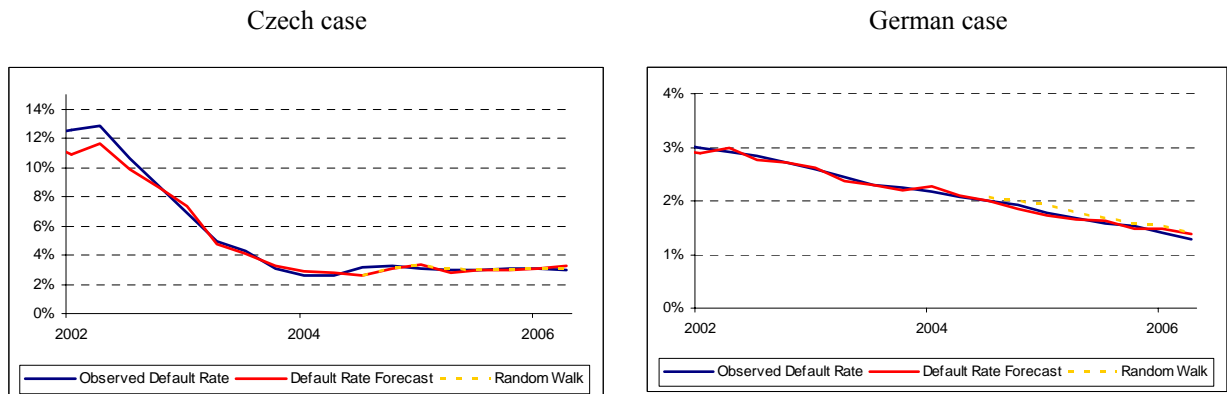


Figure 6: Out-of-sample Test for the Czech and German Corporate Credit Risk Model



CNB WORKING PAPER SERIES

9/2008	Petr Jakubík Christian Schmieder	<i>Stress testing credit risk: Is the Czech Republic different from Germany?</i>
8/2008	Sofia Bauducco Aleš Bulíř Martin Čihák	<i>Monetary policy rules with financial instability</i>
7/2008	Jan Brůha Jiří Podpiera	<i>The origins of global imbalances</i>
6/2008	Jiří Podpiera Marie Raková	<i>The price effects of an emerging retail market</i>
5/2008	Kamil Dybczak David Voňka Nico van der Windt	<i>The effect of oil price shocks on the Czech economy</i>
4/2008	Magdalena M. Borys Roman Horváth	<i>The effects of monetary policy in the Czech Republic: An empirical study</i>
3/2008	Martin Cincibuch Tomáš Holub Jaromír Hurník	<i>Central bank losses and economic convergence</i>
2/2008	Jiří Podpiera	<i>Policy rate decisions and unbiased parameter estimation in conventionally estimated monetary policy rules</i>
1/2008	Balázs Égert Doubravko Mihaljek	<i>Determinants of house prices in Central and Eastern Europe</i>
17/2007	Pedro Portugal	<i>U.S. unemployment duration: Has long become longer or short become shorter?</i>
16/2007	Yuliya Rychalovská	<i>Welfare-based optimal monetary policy in a two-sector small open economy</i>
15/2007	Juraj Antal František Brázdík	<i>The effects of anticipated future change in the monetary policy regime</i>
14/2007	Aleš Bulíř Kateřina Šmídková Viktor Kotlán David Navrátil	<i>Inflation targeting and communication: Should the public read inflation reports or tea leaves?</i>
13/2007	Martin Cincibuch Martina Horníková	<i>Measuring the financial markets' perception of EMU enlargement: The role of ambiguity aversion</i>
12/2007	Oxana Babetskaia- Kukharchuk	<i>Transmission of exchange rate shocks into domestic inflation: The case of the Czech Republic</i>
11/2007	Jan Filáček	<i>Why and how to assess inflation target fulfilment</i>
10/2007	Michal Franta Branislav Saxa Kateřina Šmídková	<i>Inflation persistence in new EU member states: Is it different than in the Euro area members?</i>
9/2007	Kamil Galuščák Jan Pavel	<i>Unemployment and inactivity traps in the Czech Republic: Incentive effects of policies</i>
8/2007	Adam Geršl Ieva Rubene Tina Zumer	<i>Foreign direct investment and productivity spillovers: Updated evidence from Central and Eastern Europe</i>
7/2007	Ian Babetskii Luboš Komárek Zlataše Komárková	<i>Financial integration of stock markets among new EU member states and the euro area</i>

6/2007	Anca Pruteanu-Podpiera Laurent Weill Franziska Schobert	<i>Market power and efficiency in the Czech banking sector</i>
5/2007	Jiří Podpiera Laurent Weill	<i>Bad luck or bad management? Emerging banking market experience</i>
4/2007	Roman Horváth	<i>The time-varying policy neutral rate in real time: A predictor for future inflation?</i>
3/2007	Jan Brůha Jiří Podpiera Stanislav Polák	<i>The convergence of a transition economy: The case of the Czech Republic</i>
2/2007	Ian Babetskii Nauro F. Campos	<i>Does reform work? An econometric examination of the reform-growth puzzle</i>
1/2007	Ian Babetskii Fabrizio Coricelli Roman Horváth	<i>Measuring and explaining inflation persistence: Disaggregate evidence on the Czech Republic</i>
13/2006	Frederic S. Mishkin Klaus Schmidt-Hebbel	<i>Does inflation targeting make a difference?</i>
12/2006	Richard Disney Sarah Bridges John Gathergood	<i>Housing wealth and household indebtedness: Is there a household 'financial accelerator'?</i>
11/2006	Michel Juillard Ondřej Kameník Michael Kumhof Douglas Laxton	<i>Measures of potential output from an estimated DSGE model of the United States</i>
10/2006	Jiří Podpiera Marie Raková	<i>Degree of competition and export-production relative prices when the exchange rate changes: Evidence from a panel of Czech exporting companies</i>
9/2006	Alexis Derviz Jiří Podpiera	<i>Cross-border lending contagion in multinational banks</i>
8/2006	Aleš Bulíř Jaromír Hurník	<i>The Maastricht inflation criterion: "Saints" and "Sinners"</i>
7/2006	Alena Bičáková Jiří Slačálek Michal Slavík	<i>Fiscal implications of personal tax adjustments in the Czech Republic</i>
6/2006	Martin Fukač Adrian Pagan	<i>Issues in adopting DSGE models for use in the policy process</i>
5/2006	Martin Fukač	<i>New Keynesian model dynamics under heterogeneous expectations and adaptive learning</i>
4/2006	Kamil Dybczak Vladislav Flek Dana Hájková Jaromír Hurník	<i>Supply-side performance and structure in the Czech Republic (1995–2005)</i>
3/2006	Aleš Krejdl	<i>Fiscal sustainability – definition, indicators and assessment of Czech public finance sustainability</i>
2/2006	Kamil Dybczak	<i>Generational accounts in the Czech Republic</i>
1/2006	Ian Babetskii	<i>Aggregate wage flexibility in selected new EU member states</i>

14/2005	Stephen G. Cecchetti	<i>The brave new world of central banking: The policy challenges posed by asset price booms and busts</i>
13/2005	Robert F. Engle Jose Gonzalo Rangel	<i>The spline GARCH model for unconditional volatility and its global macroeconomic causes</i>
12/2005	Jaromír Beneš Tibor Hlédik Michael Kumhof David Vávra	<i>An economy in transition and DSGE: What the Czech national bank's new projection model needs</i>
11/2005	Marek Hlaváček Michael Koňák Josef Čada	<i>The application of structured feedforward neural networks to the modelling of daily series of currency in circulation</i>
10/2005	Ondřej Kameník	<i>Solving SDGE models: A new algorithm for the sylvester equation</i>
9/2005	Roman Šustek	<i>Plant-level nonconvexities and the monetary transmission mechanism</i>
8/2005	Roman Horváth	<i>Exchange rate variability, pressures and optimum currency area criteria: Implications for the central and eastern european countries</i>
7/2005	Balázs Égert Luboš Komárek	<i>Foreign exchange interventions and interest rate policy in the Czech Republic: Hand in glove?</i>
6/2005	Anca Podpiera Jiří Podpiera	<i>Deteriorating cost efficiency in commercial banks signals an increasing risk of failure</i>
5/2005	Luboš Komárek Martin Melecký	<i>The behavioural equilibrium exchange rate of the Czech koruna</i>
4/2005	Kateřina Arnoštová Jaromír Hurník	<i>The monetary transmission mechanism in the Czech Republic (evidence from VAR analysis)</i>
3/2005	Vladimír Benáček Jiří Podpiera Ladislav Prokop	<i>Determining factors of Czech foreign trade: A cross-section time series perspective</i>
2/2005	Kamil Galuščák Daniel Münich	<i>Structural and cyclical unemployment: What can we derive from the matching function?</i>
1/2005	Ivan Babouček Martin Jančar	<i>Effects of macroeconomic shocks to the quality of the aggregate loan portfolio</i>

10/2004	Aleš Bulíř Kateřina Šmídková	<i>Exchange rates in the new EU accession countries: What have we learned from the forerunners</i>
9/2004	Martin Cincibuch Jiří Podpiera	<i>Beyond Balassa-Samuelson: Real appreciation in tradables in transition countries</i>
8/2004	Jaromír Beneš David Vávra	<i>Eigenvalue decomposition of time series with application to the Czech business cycle</i>
7/2004	Vladislav Flek, ed.	<i>Anatomy of the Czech labour market: From over-employment to under-employment in ten years?</i>
6/2004	Narcisa Kadlčáková Joerg Keplinger	<i>Credit risk and bank lending in the Czech Republic</i>
5/2004	Petr Král	<i>Identification and measurement of relationships concerning inflow of FDI: The case of the Czech Republic</i>
4/2004	Jiří Podpiera	<i>Consumers, consumer prices and the Czech business cycle identification</i>

3/2004	Anca Pruteanu	<i>The role of banks in the Czech monetary policy transmission mechanism</i>
2/2004	Ian Babetskii	<i>EU enlargement and endogeneity of some OCA criteria: Evidence from the CEECs</i>
1/2004	Alexis Derviz Jiří Podpiera	<i>Predicting bank CAMELS and S&P ratings: The case of the Czech Republic</i>

CNB RESEARCH AND POLICY NOTES

2/2007	Carl E. Walsh	<i>Inflation targeting and the role of real objectives</i>
1/2007	Vojtěch Benda Luboš Růžička	<i>Short-term forecasting methods based on the LEI approach: The case of the Czech Republic</i>
2/2006	Garry J. Schinasi	<i>Private finance and public policy</i>
1/2006	Ondřej Schneider	<i>The EU budget dispute – A blessing in disguise?</i>
5/2005	Jan Stráský	<i>Optimal forward-looking policy rules in the quarterly projection model of the Czech National Bank</i>
4/2005	Vít Bárta	<i>Fulfilment of the Maastricht inflation criterion by the Czech Republic: Potential costs and policy options</i>
3/2005	Helena Sůvová Eva Kozelková David Zeman Jaroslava Bauerová	<i>Eligibility of external credit assessment institutions</i>
2/2005	Martin Čihák Jaroslav Heřmánek	<i>Stress testing the Czech banking system: Where are we? Where are we going?</i>
1/2005	David Navrátil Viktor Kotlán	<i>The CNB's policy decisions – Are they priced in by the markets?</i>
4/2004	Aleš Bulíř	<i>External and fiscal sustainability of the Czech economy: A quick look through the IMF's night-vision goggles</i>
3/2004	Martin Čihák	<i>Designing stress tests for the Czech banking system</i>
2/2004	Martin Čihák	<i>Stress testing: A review of key concepts</i>
1/2004	Tomáš Holub	<i>Foreign exchange interventions under inflation targeting: The Czech experience</i>

CNB ECONOMIC RESEARCH BULLETIN

November 2008	<i>Inflation Targeting and DSGE Models</i>
April 2008	<i>Ten years of inflation targeting</i>
December 2007	<i>Fiscal policy and its sustainability</i>
August 2007	<i>Financial stability in a transforming economy</i>
November 2006	<i>ERM II and euro adoption</i>
August 2006	<i>Research priorities and central banks</i>
November 2005	<i>Financial stability</i>
May 2005	<i>Potential output</i>
October 2004	<i>Fiscal issues</i>
May 2004	<i>Inflation targeting</i>
December 2003	<i>Equilibrium exchange rate</i>

Czech National Bank
Economic Research Department
Na Příkopě 28, 115 03 Praha 1
Czech Republic
phone: +420 2 244 12 321
fax: +420 2 244 14 278
<http://www.cnb.cz>
e-mail: research@cnb.cz
ISSN 1803-7070