

NBER WORKING PAPER SERIES

FOOD PRICES AND THE DYNAMICS OF BODY WEIGHT

Dana Goldman  
Darius Lakdawalla  
Yuhui Zheng

Working Paper 15096  
<http://www.nber.org/papers/w15096>

NATIONAL BUREAU OF ECONOMIC RESEARCH  
1050 Massachusetts Avenue  
Cambridge, MA 02138  
June 2009

We are grateful to participants at the November 2008 Economics of Obesity Conference, as well as Michael Anderson, Michael Grossman, and Bob Kaestner for comments. We thank the National Institute on Aging for funding. All errors are ours. The views expressed herein are those of the author(s) and do not necessarily reflect the views of the National Bureau of Economic Research.

NBER working papers are circulated for discussion and comment purposes. They have not been peer-reviewed or been subject to the review by the NBER Board of Directors that accompanies official NBER publications.

© 2009 by Dana Goldman, Darius Lakdawalla, and Yuhui Zheng. All rights reserved. Short sections of text, not to exceed two paragraphs, may be quoted without explicit permission provided that full credit, including © notice, is given to the source.

Food Prices and the Dynamics of Body Weight  
Dana Goldman, Darius Lakdawalla, and Yuhui Zheng  
NBER Working Paper No. 15096  
June 2009  
JEL No. I1

**ABSTRACT**

A popular policy option for addressing the growth in weight has been the imposition of a “fat tax” on selected foods that are deemed to promote obesity. Understanding the public economics of “fat taxes” requires an understanding of how or even whether individuals respond to changes in food prices over the long-term. We study the short- and long-run body weight consequences of changing food prices, in the Health and Retirement Study (HRS). We found very modest short-term effects of price per calorie on body weight, and the magnitudes align with the previous literature. The long-term effect is much bigger, but it takes a long time for the effect to reach the full scale. Within 30 years, a 10% permanent reduction in price per calorie would lead to a BMI increase of 1.5 units (or 3.6%). The long term effect is an increase of 1.9 units of BMI (or 4.2%). From a policy perspective, these results suggest that policies raising the price of calories will have little effect on weight in the short term, but might curb the rate of weight growth and achieve weight reduction over a very long period of time.

Dana Goldman  
RAND Corporation  
1776 Main Street  
P.O. Box 2138  
Santa Monica, CA 90407-2138  
and NBER  
dgoldman@rand.org

Yuhui Zheng  
RAND Corporation  
zheng@rand.org

Darius Lakdawalla  
The RAND Corporation  
1776 Main Street  
Santa Monica, CA 90407-2138  
and NBER  
darius@rand.org

## **A. Introduction**

Body weight has risen dramatically in the US since 1978. In 2005, for example, over one-third of the adult population was obese, approximately three times the rate observed before 1980. The Center for Disease Control declared that obesity is one of its top public health priorities (2000).

A great many policy approaches to the obesity epidemic have been proposed. A popular choice among these has been the imposition of a “fat tax” on selected foods that are deemed to promote obesity, as a result of high caloric density, low nutritional value, or high fat content (Jacobson and Brownell 2000; Nestle and Jacobson 2000). In the year 2000, for example, there were 19 states and cities in the United States that imposed taxes on less nutritious foods, like soft drinks, sweets, or snack foods (Jacobson and Brownell 2000). In the past, policymakers viewed these primarily as “sin taxes” designed to raise revenue rather than influence health. Most localities use revenues for general purposes. Others earmark them for specific purposes, like violence prevention (Washington), Medicaid (Arkansas), or medical schools (West Virginia). Such taxes were strongly opposed by the soft drink and food industries. Perhaps as a result, 12 localities have reduced or repealed such taxes in recent years.

Understanding the public economics of “fat taxes” requires an understanding of how or even whether individuals respond to changes in food prices. Regardless of whether municipalities intend to influence health, there may be health effects that need to be quantified. To meet this public policy need, a literature on food prices and obesity has emerged in health economics. Chou, Grossman, and Saffer (Chou, Grossman et al. 2004) found that the real fast-food restaurant price, the real food at home price and the real full-service restaurant price were negatively associated with weight in an adult population. Lakdawalla and Philipson (Lakdawalla and Philipson 2002) find qualitatively similar, but larger, effects on a population of young adults. Another study found that the real price of fast food is negatively related to body weight among adolescents, while the real price of fruits and vegetables food is positively associated (Auld and Powell 2008). Among U.S. children from kindergarten to the third grade, lower real food prices of fruits and

vegetables are significantly associated with lower weight gain (Sturm and Datar 2005; Sturm and Datar 2008).

Economic theory suggests that food prices affect food intake. Biology suggests that food intake affects both the level of current weight, and the rate at which weight changes. Therefore, manipulating the price of food has both short- and long-run consequences for body weight. This effect is reinforced by inertia in body weight (Heo, Faith et al. 2002).

Most of the economic literature to date has examined the contemporaneous relationship between food prices and body weight either in a cross-sectional setting or panel data setting.<sup>1</sup> However, the long-run consequences of food prices may be quite different.

To fill this gap in the literature, we study the short- and long-run body weight consequences of changing food prices. We use the Health and Retirement Study (HRS), a panel of US adults aged 50 and over. The use of the HRS is motivated both by its panel features, which facilitate the study of long-run consequences, and by the particular importance of studying health and health care expenditures in this population.

The rest of the paper is organized as follows: Section B outlines the conceptual framework. Section C describes the data, and Section D the methods. Section E reports the results, and Section F concludes.

## **B. Conceptual framework**

We conceptualize the determination of body weight as a dynamic problem, with body weight as a state variable and food intake as a control variable. Consider an individual who maximizes lifetime utility by choosing food consumption and non-food consumption, subject to a budget constraint. Changes in body weight are driven by current food intake, and current body weight. Current body weight directly affects utility either by affecting health or body image. This problem is formalized as:

---

<sup>1</sup> Exceptions are the studies by Sturm and Datar (2005, 2008).

$$\begin{aligned}
& \max \int_{t_0}^{t_1} e^{-rt} U(W(t), F(t), C(t)) dt \\
& \text{s.t. } W' = \frac{dW}{dt} = g(W(t), F(t)) \\
& W(t_0) = W_0 \\
& t_0, t_1 \text{ fixed} \\
& C(t) + p_t F(t) \leq I_t
\end{aligned} \tag{1}$$

$r$  is the one-period discount rate.  $W(t)$  is body weight at time  $t$ .  $F(t)$  is the amount of food intake at time  $t$ ;  $p_t$  is the relative price of food.  $C(t)$  is the non-food consumption at time  $t$ .  $I_t$  is the income.  $C(t)$  can be written as  $I_t - p_t F(t)$ .

We assume that utility is concave in food intake ( $U_{FF} < 0$ ), that eating more leads to weight gain ( $g_F > 0$ ), and that a given level of food intake results in less weight gain for heavier people ( $g_W < 0$ ).

The Hamiltonian for this optimal control problem is:

$$H(t, W, F, \lambda) = e^{-rt} U(W(t), F(t), I_t - p_t F(t)) + \lambda g(W(t), F(t)) \tag{2}$$

If  $W^*(t)$  and  $F^*(t)$  maximize the objective function, the necessary conditions include:

$$H_F = e^{-rt} (U_W W_F + U_F - p_t U_C) + \lambda g_F = 0 \tag{3}$$

The second order condition can be written as:

$$H_{FF} = e^{-rt} (U_{WF} W_F + U_W W_{FF} + U_{FF} - p_t U_{CF}) + \lambda g_{FF} < 0 \tag{4}$$

It is straightforward to show that the demand for food is downward-sloping in this model, or that  $\frac{\partial F^*}{\partial p_t} < 0$ .<sup>2</sup> Second, since  $g_F > 0$ , weight gain will be larger as  $F^*(t)$

increases. Finally, the steady-state body weight will also rise with food consumption.<sup>3</sup>

---

<sup>2</sup> Computing the derivative of equation (3) with respect to  $p_t$ , we obtain

$$H_{FF} \frac{\partial F^*}{\partial p_t} = e^{-rt} U_C. \text{ According to (4), } H_{FF} < 0. \text{ Since } U_C > 0, \text{ it implies that } \frac{\partial F^*}{\partial p_t} < 0.$$

<sup>3</sup> Since  $g_W < 0$ , body weight will increase at a diminishing rate until it reaches a steady state. This steady-state body weight  $W_s$  will satisfy  $g(W_s, F^*(t)) = 0$ . Differentiating this

Based on the analysis above, we raise the following two hypotheses that will be subject to empirical test:

- (1) Increases in the relative price of food lower the rate of body weight gain.
- (2) Increases in the relative price of food lower the steady-state level of body weight.

## C. Data

### C.1 Health and Retirement Study Data

We use the Health and Retirement Study (HRS), a biennial survey of the population over age 50, to carry out the analysis. The original HRS cohort – first interviewed in 1992 – was a nationally representative sample of approximately 7,600 households ( $n = 12,654$  individuals) with at least one member who was born between 1931 and 1941. In every interview wave, HRS respondents are asked detailed questions about demographics, employment, occupation, income and wealth, and health insurance. Questions were also asked about self-reported general health status, prevalence and incidence of chronic conditions, functional status and disability, and self-reported body height and weight. County residence is available also, on a restricted-use basis; this allows us to link geographical information on food prices, as discussed below.

Body mass index in HRS is constructed from self-reported weight and height. Earlier research has identified systematic error in measurement for these variables; to address this issue, we employ the correction method developed by Cawley (1999). The Cawley procedure relies on the availability of external data on both actual and self-reported heights and weights. The relationship between the self-reported and actual numbers is then used to adjust the self-reported values.

Objectively measured height and weight data are available for a subsample of the HRS. In the year 2006, HRS randomly selected half its households and measured their

---

expression with respect to  $F^*(t)$  yields:  $g_F(W_s, F^*(t)) + g_w(W_s, F^*(t)) \frac{\partial W_s}{\partial F^*(t)} = 0$ .

Since  $g_F(W_s, F^*(t)) > 0$ , and  $g_w(W_s, F^*(t)) < 0$ , it must be true that  $\frac{\partial W_s}{\partial F^*(t)} > 0$ .

weight and height. The self-reported weight and height is also available for these households. Using these variables, we regress actual weight on reported weight and its square, age and age squared, separately for the following eight sub-groups: white male non-Hispanic, white female non-Hispanic, black male non-Hispanic, black female non-Hispanic, Hispanic male, Hispanic female, other male, and other female. Figure A- 1 to Figure A- 4 shows the relationship between predicted weight and height versus self-reported weight and height. Non-Hispanic white (male and female) and black female tend to under-report weight when self-reported weight is high. There is a slight over-report of height across all race-gender groups, especially among “other male”.

## **C.2 Food Price Data**

We obtain prices for food and other goods from the ACCRA Cost of Living data, published quarterly by the American Chamber of Commerce Researchers Association (ACCRA), for more than 200 cities. We use data from 1992 to 2003.

ACCRA collects prices for 59 distinct but standardized items, which are all listed in Table B - 1 to Table B - 3. Some examples include: 5 lb bag of sugar, cane or beet; 3 lb can of Crisco brand shortening; 12 oz can of Minute Maid brand frozen concentrated orange juice. For each city, ACCRA collects mean prices for each of the 59 items. It also reports the expenditure weight of each item in the budget of a nationally representative household with a “middle-management” lifestyle.

Since the ACCRA data are reported quarterly, we average prices over the available quarters to obtain annual prices. ACCRA reports prices at the level of metropolitan areas, but the HRS data codes residence at the county-level. Therefore, we use the population-weighted averages of city prices to construct prices at the county-level. We calculate “real” prices by deflating using the Bureau of Labor Statistics (BLS) consumer price index for all goods.

Using the ACCRA data, we calculate the following prices: price per calorie, price of cigarettes, and price of gasoline.

### **C.2.1 Individual Item Prices**

We use the price of cigarettes and of gasoline, as collected by ACCRA. The price of gasoline is the cash price at a self-service pump, if available, for one gallon of regular

unleaded, national brand gasoline, inclusive of all taxes. The price of cigarettes is calculated as the price of a carton of Winston king-size (85mm) cigarettes.

### **C.2.2 Price Indices**

There are two basic types of food price indices. Laspeyres index measures the changes in the cost of a fixed basket of goods from a base period. It presumes that consumers do not substitute one good within the basket for another, as a result of relative price changes. As a result of substitution behavior, it overestimates the true growth in the price of composite consumption. An alternative is the Paasche index, which weights prices by current consumption patterns. This index likely overstates substitution and thus underestimates the true growth in the price of composite consumption. The two indices can be viewed as the “upper bound” and “lower bound” of the price change.

There is also a “blended” choice between the Laspeyres and Paasche indices. These are called “superlative” indices (Hill 2006). A detailed description of the three superlative indices is in Appendix C. In this study we construct both Laspeyres-type price indices and Paasche-type price indices. Estimates for the two sets of price indices will provide upper and lower bounds for the true price effects.

A composite food price index like the price of food at home does not take into account differential impacts on body weight of consuming various foods. For example, using this price index the impact of a 10% price increase in vegetables on body weight would be equal to that of a 10% increase in the price of butter, if the expenditure shares of the two goods are the same. A better alternative is to put more weight on foods that are more calorie-dense than others. Therefore we construct a measure of the price per calorie. Increases in this index we interpret as relative increases in the price of high-calorie foods.

To construct this index, we need information on calories per unit of food purchased. We obtain these data from the USDA website of “What's In The Foods You Eat *Search Tool*.”<sup>4</sup> For each item  $j$ , we obtain calories per purchase unit, unit prices across areas and years, and its share in expenditure. Based on these variables, our price per calorie measure is constructed as:

---

<sup>4</sup> <http://www.ars.usda.gov/Services/docs.htm?docid=17032>



$$price\_percal_{at} = \frac{1}{\sum_{j=1}^{27} exp\_share_{tj} \times \frac{Calories\_per\_purchase\_unit_j}{price_{atj}}}$$

a : area  
 t : year  
 j : food item (5)  
 $exp\_share_{tj}$  : share of item j in all expenditure at time t  
 $Calories\_per\_purchased\_unit_j$  : Calories per unit of purchase for food j  
 $price_{atj}$  : Price per unit of purchase for food j at area a and time t

Price per calories in area  $a$  and time  $t$  is a calorie- and expenditure-weighted average of food prices in area  $a$  and time  $t$ .

### C.3 Analytic Sample

We begin with 9,733 HRS respondents born between 1931 and 1941, first interviewed in 1992 and with positive HRS sampling weight. Those who did not die or drop out of the sample were followed biennially until 2004. Due to the nature of the analysis, we exclude several segments of the sample. First, we exclude individuals residing in counties for which ACCRA collects no data. Second, we exclude individuals with missing values for any of the variables used in the regression analysis. Third, we exclude observations with non-adjacent waves of data. For example, if an individual was interviewed in wave 1, wave 3, and wave 4, we exclude the wave 1 data, but retain the data from waves 3 and 4. Finally, we exclude individuals who moved from one county to another. These individuals moved at some point between interviews, which are spaced 24 months apart. Given the substantial between-city variation in food prices, this induces considerable error in measuring the “true” price that the individual faces over the relevant time-frame. The detailed sample selection process is shown in Figure 1. 3,111 individuals are included in the final analytic sample. Below, we investigate the possibility of sample selection bias.

## D. Methods

### D.1 Econometric analysis

The conceptual framework implies that current body weight is a function of past body weight, and factors that affect energy intake and energy expenditure. A reduced-form equation is the following dynamic linear panel model:

$$W_{igt} = \beta_0 + \sum_{k=0}^{t-1} \gamma_k W_{ig,k} + P_{gt} \beta_1 + Z_{gt} \beta_2 + X_{igt} \beta_3 + \alpha_i + \tau_t + \varepsilon_{igt} \quad (6)$$

$W_{igt}$  is the weight for individual  $i$  in geographic region  $g$  at time  $t$ .  $W_{ig,k}$  are body weight in previous periods; more than one previous period could affect current body weight. But including too many periods will greatly reduce the sample size. We minimize the number of periods to include, while ensuring there is no serial correlation in the error term  $\varepsilon_{igt}$ , which is a necessary assumption for the model estimation we will use.  $P_{gt}$  represents food prices;  $Z_{gt}$  stands for other regional variables;  $\alpha_i$  is individual fixed-effect; while  $\tau_t$  are year fixed-effects.

To estimate equation (9), we use system generalized method of moments (GMM) (Arellano and Bond 1991; Arellano and Bover 1995; Blundell and Bond 1998), which combines the moment conditions of the differenced equation with moment conditions for the model in levels. The following moment conditions are jointly estimated using the “xtabond2” command in Stata 10:

$$\begin{aligned} E(W_{ig,k} \Delta \varepsilon_{igt}) &= 0, k = 1, 2, \dots, t-2, t = 1, \dots, T \\ E(\Delta W_{ig,q} (\alpha_i + \varepsilon_{igt})) &= 0, q = 1, 2, \dots, t-1 \\ E(\Delta P_{gt} \Delta \varepsilon_{igt}) &= 0 \\ E(\Delta Z_{gt} \Delta \varepsilon_{igt}) &= 0 \\ E(\Delta X_{igt} \Delta \varepsilon_{igt}) &= 0 \end{aligned} \quad (7)$$

### **D.1.1 *County Characteristics***

Apart from the food price vectors, we include the following county-level characteristics in the regressions: log of price of cigarettes, log of price of gasoline, and log of price of non-food goods (excluding cigarettes and gasoline).

Following Chou, Grossman, and Saffer (2004), we include cigarette prices in the weight equation, since cigarettes may serve a weight-control function. If smoking reduces weight, cheaper cigarettes might contribute to weight-reduction, holding food prices constant.

The effects of gasoline prices are more complex. On the one hand, it affects the cost of transportation and the incentives for exercise. For instance, in areas where gasoline is expensive, people may choose to live closer to work, and take public transportation, both of which involves more exercise than driving. The price of gasoline is also correlated with the cost of agricultural output. In principle, this could also absorb some of the cost-driven variation in the price of food: increases in the price of gasoline may increase the cost of producing and transporting food; this may have different effects in different parts of the country. In practice, however, including the price of gasoline had little impact on the estimated effects of food price variation.

Finally, the price of non-food goods captures the substitution and income effects that occur when the overall cost of living rises.

### **D.1.2 *Individual Characteristics***

We include the following time-varying individual characteristics in our regression models: age, self-reported diagnosis of chronic conditions (cancer, diabetes, heart disease, hypertension, lung disease, stroke, arthritis, mental problems), whether self-rated health is fair or poor; marital status, whether the respondent is working for pay, total household income, total household wealth, and health insurance status.

## **D.2 *Correction for sample attrition bias***

Since we include only 32.0% of the initial sample (3,111 out of 9,733) in our analysis, sample selection bias may be an issue, in the sense that our analytic sample may no longer be representative of the study population. In particular, the question is whether our sample selection criteria are correlated with food price and weight changes.

To address sample selection bias, we adjust the sampling weights to account for our secondary selection criteria. We first estimate a probit model of whether an individual in the study sample will appear in the analytic sample. Regressors include demographics, health, and economic status at the 1992 interview. We then predict the probability of sample inclusion for those in the analytic sample, and multiply the sampling weight by the inverse of the predicted probability. All descriptive and regression analyses are carried out using the modified sampling weight. This procedure addresses selection bias on the basis of observables, but we may still suffer from selection on the basis of unobservables (Wooldridge 2002).

The selection model is presented in Table 1. It shows that residing in rural areas greatly decreases the probability of being included in the analytic sample. This is because the ACCRA price data is only collected in cities. Even though we aggregate data at the county level, those in rural counties are excluded. Individuals with diabetes at the baseline interview are also less likely to appear in the analytic sample. In addition, non-Hispanic blacks, Hispanic, and those with less than high school education are more likely to be included. Finally, those with higher household wealth are also more likely to appear in the analytic sample.

The original sampling weight has a mean of 2,340, standard deviation of 1,048, a minimum of 563 and a maximum of 7,710. After multiplying by the inverse of the probability, the mean is raised to 5,813, the standard deviation 3,560, the minimum 921, and the maximum is 26,687. Descriptive statistics of the analytic sample is shown in Table 2.

## **E. Results**

The key outcome variable is either BMI, or the natural logarithm of BMI. When the outcome variable is BMI, BMI in the previous two periods are included as right-hand side variables in equation (6). Including two periods is the minimum necessary for an error term without autocorrelation. When the outcome is the natural log of BMI, the natural log of BMI in the previous two periods are included. All regressions also include the following variables: log of price of cigarettes, log of price of gasoline, log of price of non-food goods excluding cigarettes and gasoline, self-reported diagnosis of chronic

conditions, self-rated health, marital status, whether working for pay, total household income, total household wealth, health insurance status, and time dummies. We estimated food price effects based on both Laspeyres and Paasche type of price indices. The results are very similar. Below we only present results based on Laspeyres type of price indices.

We are also interested in examining whether there will be heterogeneous food price effects across demographic and socioeconomic sub-groups. First, we examine whether individuals who are obese ( $BMI \geq 30 \text{ kg/m}^2$ ) at baseline are more or less responsive to price change. If they are more responsive then a food tax policy would be more effective in address the obesity problem. We add interactions of being obese at baseline with price variables to re-estimate equation (6). We are also concerned that the poor may be more price-elastic. We thus include the interaction terms of being at the bottom tercile of household wealth at baseline with food price variables to re-estimate equation (6).

### **E.1 Price per calorie and BMI**

First we examine the effect of price per calorie on BMI or log BMI. Table 3 analyzes the impact of price per calorie on BMI. The first column shows model estimation without any interaction effects. BMI during the past two periods are both highly significant, demonstrating the persistence of BMI. The coefficient of log of price per calorie is negative and statistically significant at the 5% level. A 10% reduction in price per calorie would lead to a BMI increase of approximately 0.22 units within two years. Coefficients for the other price variables are insignificant.

The second column of Table 3 shows estimation results with interaction terms between being obese at baseline and price variables. Both the main and the interaction term of log of price per calorie become insignificant and suggest the absence of differential effects of food price by baseline obesity status. Estimation in the last column of Table 3 includes interaction terms between being poor at baseline – defined as being at the bottom tercile of the household distribution – and price variables. Both the main and interaction term of log of per calorie are negative, but insignificant.

Table 4 shows the effect of price per calorie on log BMI. Since the food price variables are also in log form, the coefficients can be interpreted as elasticities. The first

column shows the estimation without any interaction terms. The coefficient on the log of price per calorie is negatively and statistically significant at 1% level. Quantitatively, a 10% reduction in price per calorie would lead to a 0.6% reduction in BMI within two years. The next two columns confirm the results in Table 4 that the food price effect does not differ by either baseline BMI status or baseline household wealth.

The short-term effect of price per calorie on BMI is relatively small. A 10% price reduction would lead to a BMI increase of 0.22 units, or 0.6%. By way of comparison, clinical guidelines suggest 10% reductions as the minimum necessary for clinically meaningful health benefits to overweight individuals. However, the long-run effect of price per calorie is much larger. Figure 2 and Figure 3 show the simulated change in BMI, both in levels and in percentages, due to a permanent 10% reduction in price per calorie. After 30 years, the price reduction will lead to a BMI increase of 1.5 units (or 3.6%). The long-term effect is an increase of 1.9 units of BMI (or 4.2%).

## **E.2 Comparisons to the Previous Literature**

The majority of the previous literature has examined the short-term effects of food prices on body weight. Our results for the short-term impact of prices on BMI appear to be roughly in line with the literature that focuses on other subpopulations. We estimate that the short-term elasticity between the price of calories and body weight is -0.063. For at-home food, Chou, Grossman, and Saffer (Chou, Grossman et al. 2004) estimated a price elasticity of -0.04. Gelbach et al (Gelbach, Klick et al. 2007) find that doubling the price of “unhealthy” food is associated with about 1 percent less BMI.

We found that the effect of food prices on weight grow over time. Sturm and Datar (2008) also found that the effect of food prices on body weight gain among children became larger during a 5-year period, relative to the effect during a 3-year period.

## **E.3 Identification**

Our models are identified by local trends in food prices. The data reveal substantial variation across regions in local price trends. It is natural to inquire into the sources of these, but quite difficult to pinpoint an exact origin. We investigated several hypotheses.

Several studies have found that store formats are important in explaining cross-sectional regional price variations. One study found that food sold at Wal-Mart are on average about 15%-25% cheaper than traditional supermarkets (Hausman and Leibtag 2004). Another study examined the effects of Wal-Mart entry on the city-level prices of several non-food retail items, including aspirin, cigarettes, coke, detergent, and others. The author found negative price effects of Wal-Mart entrance (Basker 2005). Motivated by this result, we assessed whether geographic variation in the appearance of Wal-Mart entry generated significant differences in local price trends. This failed to provide much if any explanatory power.

Second, we tested the hypothesis that some areas were more exposed to increases in transportation costs for food. To test this, we tested for systematic price trend differences across states with large and small shares of agricultural land. To be sure, this is a fairly crude measure of local transportation costs. Perhaps due to this error in measurement, we failed to find systematic differences in price trends across areas with more or less agricultural land and agricultural output.

A third option, related to transportation costs, exploits variation in the price of gasoline (Gelbach, Klick and Stratmann, 2007). The Gelbach et al study has found that census-region level price variation in gasoline influence the relative price of healthy food. Moreover, while gasoline can affect incentives to exercise, its effects on the cost of transporting goods should vary systematically across the country, depending on how far retailers are from production sites. This serves as a source of identification that “nets out” the common impact on exercise, and isolates the impact on transportation costs.

Following this reasoning, we used the interactions of gasoline price and approximate measures of per capita food production (proportion of population employed in food manufacturing, and per capita farm area, proportion of land arable) as the instruments for food prices. First-stage results were roughly consistent with our assumptions – the interactions of gasoline price and per capita food output measures have significant and negative effects on price per calorie. However, including the interactions as instruments in the system GMM estimation raised the standard error substantially and the effect of price per calorie becomes positive and statistically insignificant. One interpretation is that the gasoline instrument introduces too much noise to be useful.

The failure to identify a clean source of variation begs the question of whether price trends are correlated with other economic or social factors that also influence weight. As a partial test of this, we assessed the impact of including observable health and economic factors on the price coefficients of interest. We re-estimated models for the effect of price per calorie on BMI by dropping all health and economic factors. The results are shown in Table D - 1. They are very similar to those in Table 3. The effect of price per calorie on log BMI is also very robust to inclusion or exclusion of health and economic factors (results not shown).

#### **E.4 Limitations**

There are a number of limitations imposed by the data and the nature of the problem. First, as discussed above, local variation in food prices might not be exogenous. If the supply of food is upward-sloping (i.e., if food prices are not primarily cost-driven), the resulting simultaneity between supply and demand would create downward bias in our estimated price effects. Testing this possibility would require a plausibly valid instrument, but these are in short supply here. We explored several candidates. First, fuel prices may influence the supply of food and ultimately body weight. However, they may also influence incentives for exercise, and thus the demand for weight. Moreover, the first-stage relationships between local trends in fuel prices and local trends in food prices are – perhaps not surprisingly – quite weak. A second candidate is local weather variation, particularly extreme weather events. These may affect the costs of distribution and transportation of food. However, such major events also have a variety of additional causal effects that can impact exercise, metabolism, and economic status. In the absence of an instrument, we have presented evidence that observed variation in economic and demographic factors are unrelated to local trends in price. It remains possible that unobserved variation in these factors is still correlated with price.

As is typically the case with the analysis of price effects, measurement error is another important issue. ACCRA price data are based on sampling a number of local stores, but intra-city price variation may not be adequately captured. More generally, it is



quite difficult to measure the basket of prices faced by a particular individual who lives in a particular part of a city. This also results in downward bias.

Finally, we have the common problem of measurement error in weight. Our approach was to correct for self-reporting bias using a subsample of HRS respondents for whom data are available on measured weight and self-reported weight. Following Cawley (2004), we impute the expected measurement error in self-reported weight for the rest of the sample. Naturally, this strategy does not purge the measurement error; it merely mitigates it, to the extent that our imputation contains some relevant information. This would be a problem if error in reporting were correlated with price trends. Unfortunately, we cannot test this directly, because we do not have a panel of data on reporting error, which is only measured in one wave of the HRS data.

## **F. Conclusions**

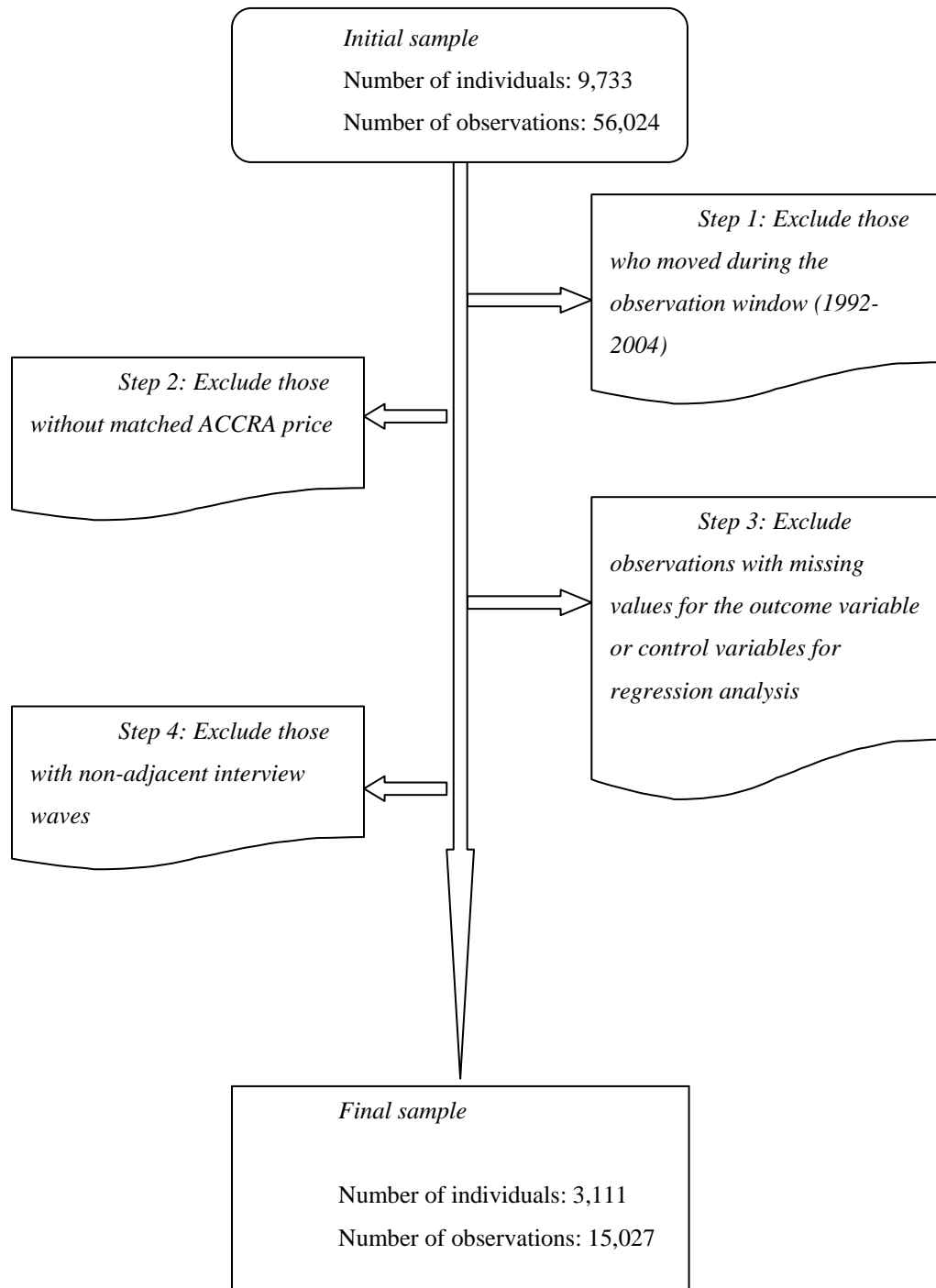
We examined both the short-term and long-term relationship between food prices of various kinds and body weight. We found very modest short-term effects of price per calorie on body weight, and the magnitudes align with the previous literature. We do not find differential effects of price per calorie by baseline obesity or baseline household wealth. Empirically, our results are best viewed as lower bounds on the true effects, due to the possibility of measurement error and simultaneity bias.

The long-term effect is much bigger, but it takes a long time for the effect to reach the full scale. Within 30 years, a 10% permanent reduction in price per calorie would lead to a BMI increase of 1.5 units (or 3.6%). The long term effect is an increase of 1.9 units of BMI (or 4.2%).

From a policy perspective, these results suggest that policies raising the price of calories will have little effect on weight in the short term, but might curb the rate of weight growth and achieve weight reduction over a very long period of time. From 1980 to 2000 the average BMI of American adults increased by about 2.7 BMI units (Chou, Grossman, Saffer, 2004). Based on our estimates, a 10% increase in the price per calorie would have the potential of reducing average BMI among 51 years and older by 1.2 BMI units within 20 years, which is about 45% of the average BMI increase from 1980 to 2000.

At a minimum, policymakers interested in reducing body weight will not find a “fat tax” to be a quickly effective solution. Indeed, significant weight-reductions are likely to post-date the decisionmaking horizon of an elected official. However, from a positive point of view, our results suggests the importance of treating weight as a dynamic process, and emphasize the cumulative effects of economic incentives on body weight.

**Figure 1. Flow chart of forming the analytic sample**



**Table 1. Probit Model of whether being included in the analytic sample**

<b>Covariate</b>	<b>Being included in the analytic sample</b>
Male	-0.025 (0.029)
Non-Hispanic black	0.303*** (0.039)
Hispanic	0.374*** (0.051)
Less than high school	0.095** (0.037)
Some college and above	0.044 (0.032)
Suburban area	-0.038 (0.031)
Rural area	-0.775*** (0.036)
Initial Cancer	0.094 (0.063)
Initial Diabetes	-0.105** (0.048)
Initial Heart disease	-0.015 (0.047)
Initial Hypertension	0.002 (0.030)
Initial Lung disease	0.020 (0.061)
Initial Stroke	-0.085 (0.088)
Initial Arthritis	0.026 (0.030)
Initial Psyche problems	0.019 (0.054)
Initial Current smoking	-0.006 (0.031)
Initial Self-rated health is fair/poor	0.001 (0.040)
Initial Physical activity	-0.013 (0.034)
Initial Age	0.426*** (0.161)
Initial Age squared	-0.004*** (0.001)
Initial Log of household income	-0.010 (0.011)
Initial Non-positive household wealth	0.042 (0.111)
Initial Log of household wealth	0.022** (0.010)

Initial Widowed	-0.022 (0.059)
Initial Single	0.080** (0.039)
Initial R working for pay	0.014 (0.033)
Initial Any health insurance	-0.017 (0.041)
Constant	-12.266*** (4.460)
N	9,492

\* p<0.10, \*\* p<0.05, \*\*\* p<0.01

Data source: Health and Retirement Study 1992-2004, ACCRA 1992-2003

Note: A probit model is used to model the probability that a HRS respondent who is born between year 1931 and 1941 is included in the analytic sample.

**Table 2. Summary statistics**

<b>Variable</b>	<b>Mean</b>	<b>Standard deviation</b>
Body mass index (kg/m <sup>2</sup> )	28.65	6.01
Prices (Laspeyres type of price index)		
Price per 1,000 Calories	0.79	0.07
Price per 100 grams of fat	1.79	0.21
Price of cigarettes	15.16	4.74
Price of gasoline	0.78	0.08
Price of non-food items excl.cigarettes and gasoline	229.39	91.41
Demographics		
Age at interview	61.4	4.9
Male	46.6%	49.9%
Hispanic	6.8%	25.1%
Non-Hispanic black	11.2%	31.5%
Less than high school	21.6%	41.2%
Some college and above	40.3%	49.1%
Widowed	9.7%	29.5%
Single	16.9%	37.5%
Health conditions		
Cancer	9.1%	28.8%
Diabetes	14.2%	34.9%
Heart disease	16.8%	37.4%
Hypertension	43.3%	49.6%
Lung disease	7.4%	26.2%
Stroke	4.2%	20.0%
Arthritis	48.1%	50.0%
Psyche problems	11.2%	31.5%
Self-rated Health is Fair/Poor	22.8%	41.9%
Demographics		
Age at interview	61.28	4.91
Widowed	10.6%	30.8%
Single	19.3%	39.5%
Economic conditions		
R working for pay	51.4%	50.0%
Any health insurance	91.3%	28.2%
HH total income	36,407	49,739
HH wealth	242,413	1,201,071

Number of individuals: 3,111; Number of observations: 15,027

Data source: HRS 1992-2004, ACCRA 1992-2003.

**Table 3. Effect of price per calorie on BMI**

Independent variable	Model Specification		
	I	II	III
BMI two years ago	0.672*** (0.031)	0.654*** (0.036)	0.657*** (0.031)
BMI four years ago	0.210*** (0.026)	0.192*** (0.027)	0.205*** (0.024)
Log of price per calorie	-2.239** (1.027)	-1.472 (1.024)	-1.207 (1.161)
Log of price per calorie * (obese at baseline)		-1.003 (2.651)	
Log of price per calorie * (poor at baseline)			-2.669 (2.188)
Log of cigarettes price	0.572 (0.698)	0.485 (0.649)	0.604 (0.697)
Log of cigarettes price * (obese at baseline)		0.391 (0.530)	
Log of cigarettes price * (poor at baseline)			-0.267 (0.451)
Log of gasoline Price	0.093 (1.070)	-0.234 (0.939)	0.404 (1.089)
Log of gasoline Price * (obese at baseline)		0.849 (1.592)	
Log of gasoline Price * (poor at baseline)			-0.411 (1.340)
Log of non-food price	0.660 (0.573)	0.341 (0.507)	0.246 (0.579)
Log of non-food price * (obese at baseline)		-0.780* (0.451)	
Log of non-food price * (poor at baseline)			0.820* (0.472)
N	8,231	8,231	8,231

\* p<0.10, \*\* p<0.05, \*\*\* p<0.01

Data source: Health and Retirement Study, 1992-2004, ACCRA price data, 1992-2003.

Models are estimated using system GMM. All models also include the following variables: self-rated health, chronic conditions, working status, marital status, household income and household wealth, health insurance status, and year dummies.

**Table 4. Effect of price per calorie on log BMI**

Independent variable	Model Specification		
	I	II	III
Log of BMI two years ago	0.656*** (0.030)	0.597*** (0.048)	0.642*** (0.031)
Log of BMI four years ago	0.195*** (0.023)	0.170*** (0.025)	0.200*** (0.023)
Log of price per calorie	-0.063* (0.033)	-0.045 (0.036)	-0.032 (0.037)
Log of price per calorie * (obese at baseline)		-0.026 (0.078)	
Log of price per calorie * (poor at baseline)			-0.098 (0.070)
Log of cigarettes price	0.020 (0.023)	0.015 (0.022)	0.021 (0.023)
Log of cigarettes price * (obese at baseline)		0.013 (0.014)	
Log of cigarettes price * (poor at baseline)			-0.010 (0.014)
Log of gasoline Price	-0.005 (0.033)	-0.014 (0.031)	0.001 (0.034)
Log of gasoline Price * (obese at baseline)		0.029 (0.044)	
Log of gasoline Price * (poor at baseline)			0.003 (0.041)
Log of non-food price	0.019 (0.018)	0.015 (0.017)	0.003 (0.018)
Log of non-food price * (obese at baseline)		-0.028** (0.013)	
Log of non-food price * (poor at baseline)			0.028** (0.014)
N	8,231	8,231	8,231

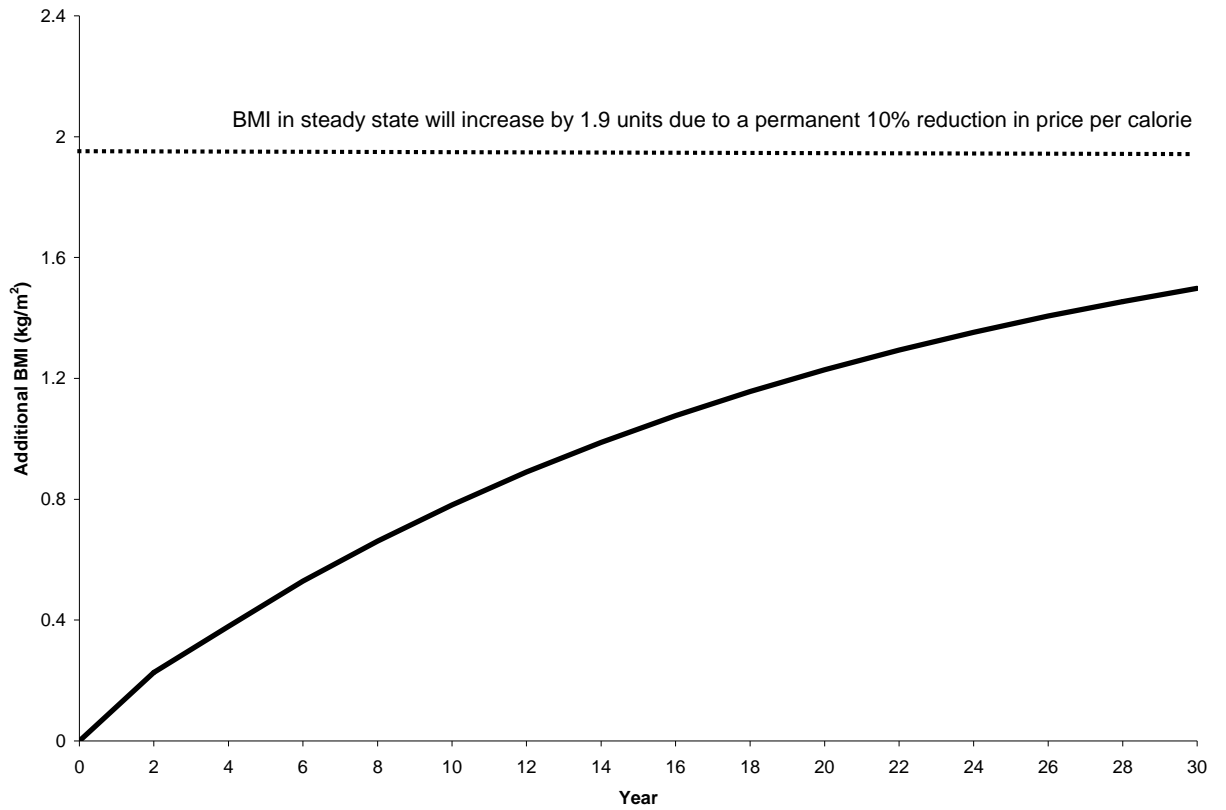
\* p<0.10, \*\* p<0.05, \*\*\* p<0.01

Data source: Health and Retirement Study, 1992-2004, ACCRA price data, 1992-2003.

Models are estimated using system GMM. All models also include the following variables: self-rated health, chronic conditions, working status, marital status, household income and household wealth, health insurance status, and year dummies.

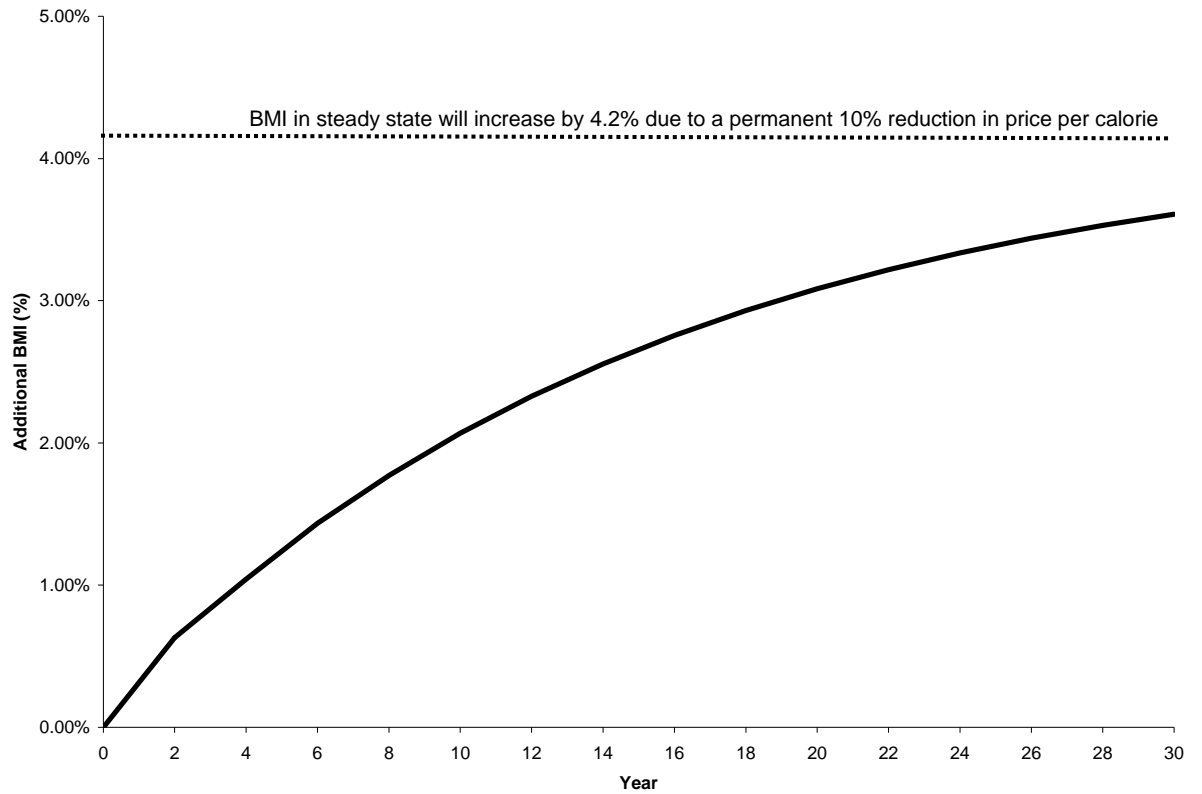


**Figure 2. Additional BMI due to a permanent 10% reduction in price per calorie**



Note: This figure shows the simulated effect of a permanent 10% reduction in price per calorie on BMI trajectory over thirty years, based on the estimates shown in the first column of Table 3.

**Figure 3. Additional BMI as a percentage of total BMI due to a permanent 10% reduction in price per calorie**



Note: This figure shows the simulated effect of a permanent 10% reduction in price per calorie on additional BMI as a percentage of total BMI, over thirty years, based on the estimates shown in the first column of Table 4.

## Appendix A

Figure A- 1. Compare predicted and self-reported weight among females

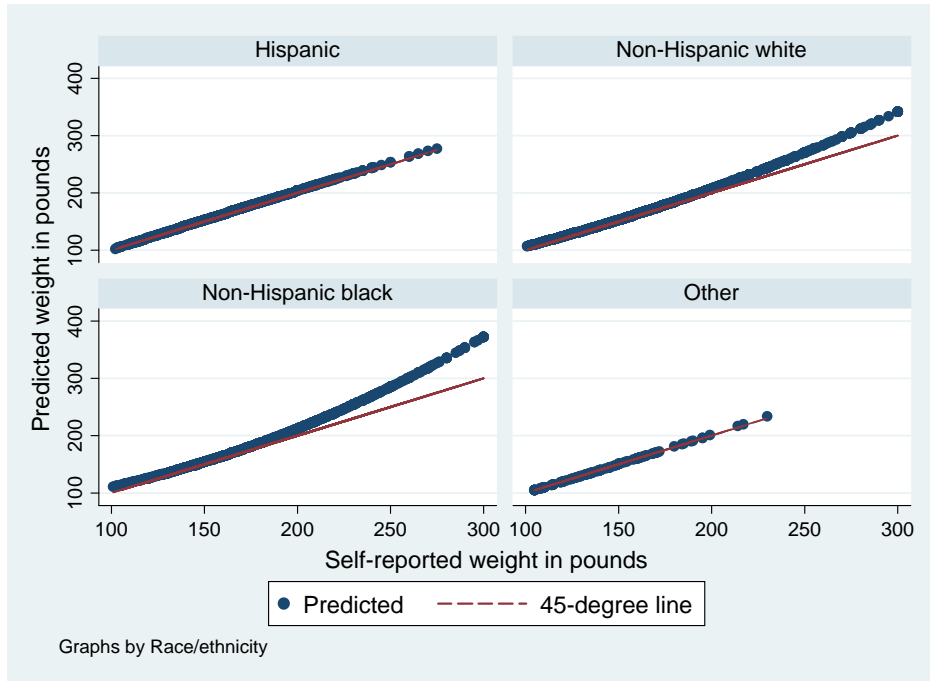
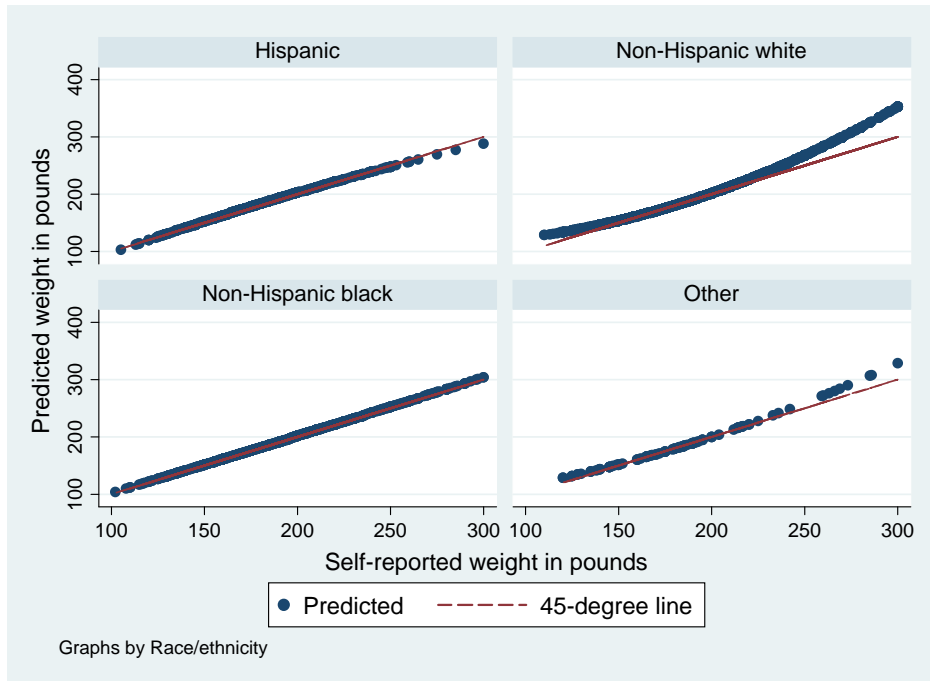
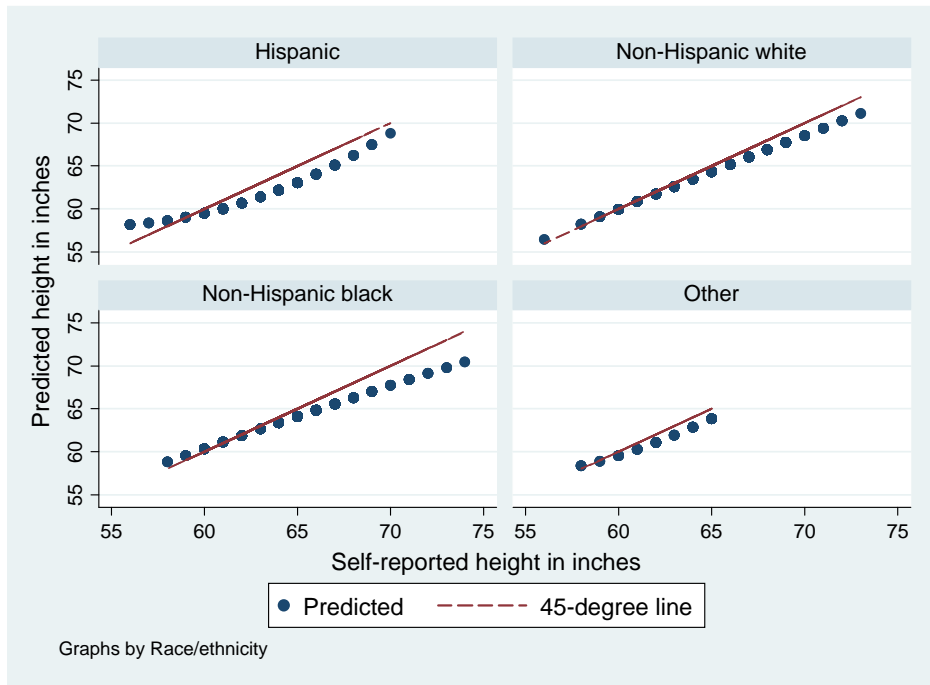


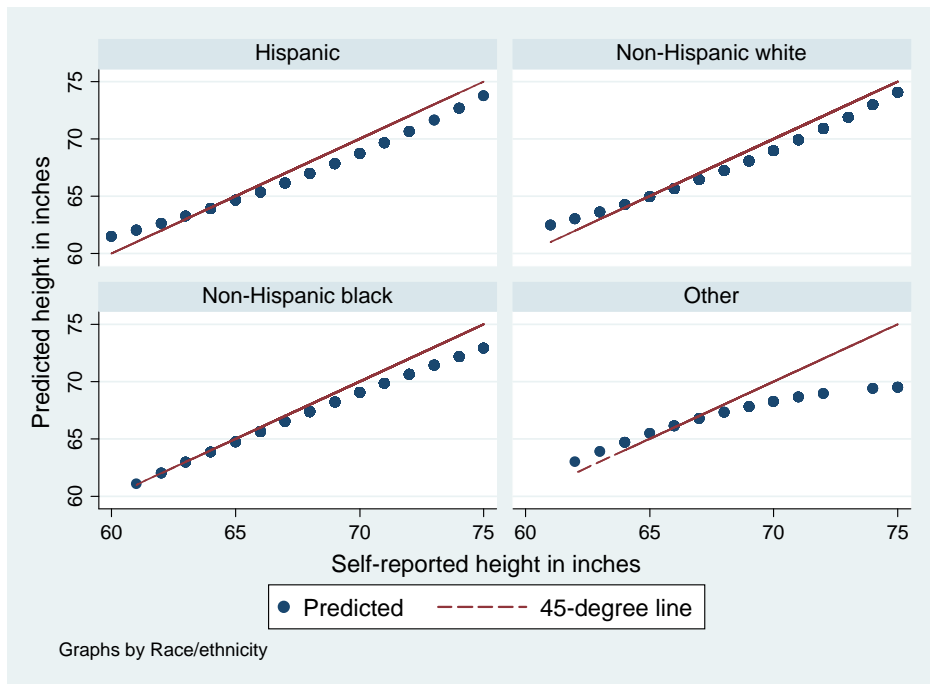
Figure A- 2. Compare predicted and self-reported weight among males



**Figure A- 3. Compare predicted and self-reported height among females**



**Figure A- 4. Compare predicted and self-reported height among males**



Note:

Weight prediction is based on the OLS regressions of measured weight against self-reported weight and self-reported weight squared, age and age squared, and predicted at the mean age, by gender and race. The estimation sample includes respondents aged 52 and over in the 2006 HRS survey and with both self-reported and measured weight. Height prediction is based on the OLS regressions of measured height against self-reported height and self-reported height squared, age and age squared, and predicted at the mean age, by gender and races. The estimation sample includes respondents aged 52 and over in the 2006 HRS survey and with both self-reported and measured height.

## Appendix B

**Table B - 1. Items, descriptions, and expenditure shares for ACCRA data collected in year**

**1992**

Expenditure share within each category	Item	ItemDescription
<b>Grocery (expenditure share 13%)</b>		
0.0527	T-Bone Steak	Price per pound
0.0527	Ground Beef or hamburger	Price per pound, lowest price
0.0492	Sausage	Price per pound; Jimmy Dean 100% pork
0.0371	Frying Chicken	Price per pound, whole fryer
0.0306	Chunk Light Tuna	6.125-6.5 oz can, Starkist or Chicken of the Sea, packed in oil
0.0494	Whole Milk	Half-Gallon carton
0.009	Eggs	One Dozen, Grade A, Large
0.0376	Margarine	One Pound, cubes, Blue Bonnet or Parkay
0.0376	Parmesan Cheese, Grated	8 oz. Canister, Kraft Brand
0.0228	Potatoes	10 pound sack, white or red
0.0474	Bananas	Price per pound
0.0228	Iceberg Lettuce	Head, approximately 1.25 pounds
0.0818	Bread, White	24 oz. loaf, lowest price, or prorated 24-oz. equivalent, lowest price
0.0748	Cigarettes	Carton, Winston, king-size (85 mm.)
0.0513	Coffee, Vacuum-Packed	13 oz. can, Maxwell House, Hills Brothers, or Foldgers
0.0314	Sugar	5 pounds, Cane or Beet, lowest price
0.0419	Corn Flakes	18 oz., Kellogg's or Post Toasties
0.0072	Sweet Peas	15-17 oz. can, Del Monte or Green Giant
0.0072	Tomatoes	14-1/2 oz. can, Hunts or Del Monte
0.0333	Peaches	29 oz. can, Hunt's, Del Monte, or Libby's, halves or slices
0.0221	Facial Tissues	175-count box, Kleenex brand
0.0417	Washing Powder	42 oz. ("Ultra"), Tide, Bold, or Cheer
0.0184	Shortening	3 pound can, all-vegetable, Crisco brand
0.0384	Frozen Orange Juice	12 oz. can, Minute Maid brand
0.0072	Frozen Corn	10 oz., Whole Kernel, lowest price
0.056	Baby Food	4-4.5 oz. jar, strained vegetables, lowest price
0.0384	Soft Drink	2 liter Coca Cola, excluding any deposit
<b>Housing (expenditure share 28%)</b>		
0.2631	Apartment, Monthly Rent	Two-Bedroom, unfurnished, excluding all utilities except water, 1-1/2 baths, approximately 950 sq.ft.
	Total Purchase Price	1,800 sq.ft. living area new house, 8,000 sq.ft. lot, urban area with all utilities
	Mortgage rate	Effective rate, including points and origination fee, for 30-year conventional fixed- or adjustable-rate mortgage
0.7369	Monthly Payment	Principal and Interest, using mortgage rate from Item 29B and assuming 25% down payment

**Table B - 2. Items, descriptions, and expenditure shares for ACCRA data collected in year**

**1992 (cont.)**

Expenditure share within each category	Item	ItemDescription
<b>Utilities (expenditure share 9%)</b>		
0.9	Total Home Energy Cost	Monthly Cost, at current rates, for average monthly consumption of all types of energy during the previous 12 months for the type of home specified in item 29A Average monthly cost for all-electric homes is shown in column 30A; average monthly cost for homes using other types of energy as well is shown in column 30B
	Electricity	Average monthly cost at current rates for natural gas, fuel oil, coal, wood and any other forms of energy except electricity
	Other Home Energy	
0.1	Telephone	Private residential line; Customer owns instruments. Price includes: basic monthly rate; additional local use charges, if any, incurred by a family of four; Touch Tone fee; all other mandatory monthly charges, such as long distance access fee and 911 fee; and all taxes foregoing
<b>Transportation (expenditure share 10%)</b>		
0.1	Commuter Fare	One-way commuting fare, up to ten miles
0.3541	Auto Maintenance	Average price to computer- or spin balance- one front wheel
0.5459	Gasoline	One Gallon regular unleaded, national brand, including all taxes; cash price at self service pump if available
<b>HealthCare (expenditure share 5%)</b>		
0.175	Hospital room	Average cost per day for semi-private room
0.3509	Office Visit, Doctor	American Medical Association procedure 90050: general practitioner's routine examination of established patient
0.3509	Office Visit, Dentist	American Dental Association procedure 1110 (adult teeth cleaning) and 0120 (periodic oral examination)
0.1232	Aspirin	100 tablet bottle, Bayer brand, 325-mg., tablets

**Table B - 3. Items, descriptions, and expenditure shares for ACCRA data collected in year**

**1992 (cont.)**

Expenditure share within each category	Item	ItemDescription
<b>Miscellaneous (expenditure share 35%)</b>		
0.095	Hamburger Sandwich	1/4 pound patty with cheese, pickle, onion, mustard, and catsup. McDonald's Quarter-Pounder with Cheese, where available
0.095	Pizza	12"-13" thin crust cheese pizza. Pizza Hut or Pizza Inn, where available
0.095	Fried Chicken	Thigh and Drumstick, with or without extras, whichever is less expensive. Kentucky Fried Chicken or Church's, where available
0.0174	Haircut	Mans barber shop haircut, no styling
0.0174	Beauty Salon	Woman's shampoo, trim, and blow dry
0.0174	Toothpaste	6 oz.-7oz. tube, crest or colgate
0.0174	Shampoo	15 oz. Bottle, Alberto VO-5
0.0174	Dry Cleaning	Man's two-piece suit
0.115	Man's Dress Shirt	Arrow, Enro, Van Huesen, or J.C Penny's Stafford. White, cotton/polyester blend (at least 55% cotton), long sleeves
0.0523	Boy's Underwear	Package of three briefs, size 10-14, cotton, lowest price
0.115	Man's Denim Jeans	Levi's Brand, 501s or 505s, rinsed washed or bleached, size 28/30-34/36
0.0742	Major Appliance repair	Home service call, clothes washing machine; minimum labor charge, excluding parts
0.0271	Newspaper Subscription	Daily and Sunday home delivery, large-city newspaper
0.0459	Movie	First-run, indoor, evening, no discount
0.0459	Bowling	Price per line (game), evening rate
0.0654	Tennis Balls	Can of three extra duty, yellow, Wilson or Penn Brand
0.0384	Board Game	Parquet Brothers "Monopoly", No. 9 edition
0.0163	Liquor	J&B Scotch, 750-ml. bottle
0.0162	Beer	Budweiser or Miller Lite, 6-pack, 12 oz. containers, excluding any deposit
0.0163	Wine	Gallo chablis blanc, 1.5-liter bottle

Data source: Council for Community and Economic Research (C2ER) - formerly known as ACCRA



## Appendix C

### Superlative price indices:

People also use one of three price indexes that stands in-between the Laspeyres index and the Paasche index. These are called superlative indices and there is no conclusion about which one is better<sup>5</sup>.

The three price indices are:

(1) Fisher Ideal index: the geometric mean of the Laspeyres and Paasche indexes (the square root of their product)

(2) **The Tornqvist index<sup>6</sup>: Tornqvist index** is a discrete approximation to a continuous Divisia index. A Divisia index is a weighted sum of the growth rates of the various components, where the weights are the component's shares in total value. When a Tornqvist index is used as an approximation to the continuous Divisia index, the growth rates are defined as the difference in natural logarithms of successive observations of the components and the weights are equal to the mean of the factor shares of the components in the corresponding pair of years.  $D_t$  is the price index in year t, and  $D_{t-1}$  is the price index in year t-1;  $s_{i,t}$  and  $p_{i,t}$  are budget share and price for component i at year t.

$$\log(D_t) - \log(D_{t-1}) = \sum_{i=1}^n \frac{1}{2} [s_{i,t} + s_{i,t-1}] [\log(p_{i,t}) - \log(p_{i,t-1})],$$

where

$$s_{i,t} = \frac{q_{i,t} p_{i,t}}{\sum_{j=1}^n q_{j,t} p_{j,t}} \quad (i = 1, \dots, n).$$

**3) The Walsh index<sup>7</sup>: the formula is as equation XXX.**

---

<sup>5</sup> Robert J. Hill, Superlative index numbers: not all of them are super, Journal of Econometrics, Volume 130, Issue 1, , January 2006, Pages 25-43.

<sup>6</sup> Hulten CR. Divisia Index numbers, 1973

<sup>7</sup> IMF, new Export and Import Price Index Manual. Chapter 16.

<https://www.imf.org/external/np/sta/tegeipi/>

$$D_t = \frac{\sum_{i=1}^n (p_{i,t} / \sqrt{p_{i,0} p_{i,t}}) \sqrt{s_{i,0} s_{i,t}}}{\sum_{i=1}^n (p_{i,0} / \sqrt{p_{i,0} p_{i,t}}) \sqrt{s_{i,0} s_{i,t}}}$$

## Appendix D

**Table D - 1. Effect of price per gram of calorie on log BMI, without controlling for health or demographic variables**

Independent variable	Model Specification		
	I	II	III
BMI two years ago	0.681*** (0.029)	0.656*** (0.034)	0.663*** (0.030)
BMI four years ago	0.216*** (0.025)	0.196*** (0.027)	0.208*** (0.024)
Log of price per calorie	-2.187** (1.037)	-1.520 (1.022)	-1.072 (1.177)
Log of price per calorie * (obese at baseline)		-0.663 (2.656)	
Log of price per calorie * (poor at baseline)			-2.628 (2.186)
Log of cigarettes price	0.541 (0.713)	0.415 (0.654)	0.596 (0.705)
Log of cigarettes price * (obese at baseline)		0.256 (0.533)	
Log of cigarettes price * (poor at baseline)			-0.449 (0.441)
Log of gasoline Price	-0.028 (1.082)	-0.216 (0.949)	0.289 (1.111)
Log of gasoline Price * (obese at baseline)		0.661 (1.608)	
Log of gasoline Price * (poor at baseline)			-0.290 (1.321)
Log of non-food price	0.765 (0.583)	0.401 (0.509)	0.257 (0.579)
Log of non-food price * (obese at baseline)		-0.853** (0.426)	
Log of non-food price * (poor at baseline)			0.967** (0.447)
N	8,231	8,231	8,231

\* p<0.10, \*\* p<0.05, \*\*\* p<0.01

Data source: Health and Retirement Study, 1992-2004, ACCRA price data, 1992-2003

Notes: All models also include the following variables: year dummies, self-rated health, chronic conditions, working status, marital status, household income and household wealth.

## Bibliography

- Arellano, M. and S. Bond (1991). "Some Tests of Specification for Panel Data: Monte Carlo Evidence and an Application to Employment Equations." Review of Economic Studies **58**(2): 277-97.
- Arellano, M. and O. Bover (1995). "Another Look at the Instrumental Variable Estimation of Error-Components Models." Journal of Econometrics **68**(1): 29-51.
- Auld, M. and L. Powell (2008). "Economics of food energy density and adolescent body weight." Economica.
- Basker, E. (2005). "Selling a Cheaper Mousetrap: Wal-Mart's Effect on Retail Prices." Journal of Urban Economics **58**(2): 203-29.
- Blundell, R. and S. Bond (1998). "Initial Conditions and Moment Restrictions in Dynamic Panel Data Models." Journal of Econometrics **87**(1): 115-43.
- Chou, S.-Y., M. Grossman, et al. (2004). "An economic analysis of adult obesity: results from the Behavioral Risk Factor Surveillance System." Journal of Health Economics **23**(3): 565-87.
- Gelbach, J. B., J. Klick, et al. (2007). Cheap Donuts and Expensive Broccoli: The Effect of Relative Prices on Obesity, FSU College of Law
- Hausman, J. and E. Leibtag (2004). CPI Bias from Supercenters: Does the BLS Know that Wal-Mart Exists?, National Bureau of Economic Research, Inc, NBER Working Papers: 10712.
- Heo, M., M. S. Faith, et al. (2002). "Resistance to change of adulthood body mass index." International journal of obesity and related metabolic disorders : journal of the International Association for the Study of Obesity **26**(10): 1404-5.
- Hill, R. J. (2006). "Superlative Index Numbers: Not All of Them Are Super." Journal of Econometrics **130**(1): 25-43.
- Jacobson, M. F. and K. D. Brownell (2000). "Small taxes on soft drinks and snack foods to promote health." Am J Public Health **90**(6): 854-7.
- Lakdawalla, D. N. and T. J. Philipson (2002). Technological Change and the Growth of Obesity. Cambridge, MA, National Bureau of Economic Research.
- National Institutes of Health (1998). Clinical Guidelines on the Identification, Evaluation, and Treatment of Overweight and Obesity in Adults.
- Nestle, M. and M. F. Jacobson (2000). "Halting the obesity epidemic: a public health policy approach." Public Health Rep **115**(1): 12-24.
- Sturm, R. and A. Datar (2005). "Body mass index in elementary school children, metropolitan area food prices and food outlet density." Public Health **119**(12): 1059-68.
- Sturm, R. and A. Datar (2008). "Food prices and weight gain during elementary school: 5-year update." Public health **122**(11): 1140-3.
- Wooldridge, J. M. (2002). Econometric analysis of cross section and panel data, Cambridge and London: MIT Press.