

RESEARCH SEMINAR IN INTERNATIONAL ECONOMICS

Gerald R. Ford School of Public Policy  
The University of Michigan  
Ann Arbor, Michigan 48109-3091

Discussion Paper No. 592

**The Collapse of International Trade  
During the 2008-2009 Crisis:  
In Search of the Smoking Gun**

**Andrei A. Levchenko**  
University of Michigan

**Logan Lewis**  
University of Michigan

**Linda L. Tesar**  
University of Michigan & NBER

October 14, 2009

Recent RSIE Discussion Papers are available on the World Wide Web at:  
<http://www.fordschool.umich.edu/rsie/workingpapers/wp.html>

# The Collapse of International Trade During the 2008-2009 Crisis: In Search of the Smoking Gun\*

Andrei A. Levchenko  
University of Michigan

Logan Lewis  
University of Michigan

Linda L. Tesar  
University of Michigan and NBER

October 14, 2009

## Abstract

One of the most striking aspects of the recent recession is the collapse in international trade. This paper uses disaggregated quarterly and monthly data on U.S. imports and exports to shed light on the anatomy of this collapse. We find that the recent reduction in trade relative to overall economic activity is far larger than in previous downturns. Information on quantities and prices of both domestic absorption and imports reveals a more than 50% shortfall in imports, relative to what would be predicted by a simple import demand relationship. In a sample of imports and exports disaggregated at the 6-digit NAICS level, we find that sectors used as intermediate inputs experienced significantly higher percentage reductions in both imports and exports. We also find support for compositional effects: sectors with larger reductions in domestic output had larger drops in trade. By contrast, we find no support for the hypothesis that trade credit played a role in the recent trade collapse.

*JEL Classifications:* F41, F42

*Keywords:* 2008-2009 Crisis, International Trade

---

\*We are grateful to David Weinstein and workshop participants at the University of Michigan for helpful suggestions. E-mail: [alev@umich.edu](mailto:alev@umich.edu), [ltlewis@umich.edu](mailto:ltlewis@umich.edu), [ltesar@umich.edu](mailto:ltesar@umich.edu).

# 1 Introduction

A remarkable feature of the recent crisis is the collapse in international trade. This collapse is global in nature (WTO 2009), and dramatic in magnitude. To give one example, while the U.S. GDP has so far declined by 3.9% from its peak, real U.S. imports fell by 18.6% and real exports fell by 15.2% over the same period. Though protectionist pressures inevitably increased over the course of the recent crisis, it is widely believed that the collapse is not due to newly erected trade barriers (Baldwin and Evenett 2009).

While these broad facts are well known, we currently lack both a nuanced empirical understanding of the patterns and a successful economic explanation for them. This paper has three main parts. In the first, we use high-frequency (quarterly and monthly) foreign trade data for the United States to document the patterns of collapse at a disaggregated level. We focus on the U.S. in part due to its central role in the global downturn and because it offers up-to-date, detailed monthly data. We first use historical data to reveal whether the recent collapse in international trade relative to the level of economic activity is exceptional by historical standards, or just an amplified version of what has happened in earlier downturns. We then establish whether the recent reduction in international trade is especially pronounced in certain sectors. For instance, are intermediate inputs, investment, or consumption goods experiencing the largest drops? Durables vs. nondurables? Goods or services? We also determine with which countries U.S. trade has fallen the most. Is it with the closest trade partners, such as Canada and Mexico? With newly important trade partners such as China, India, or Southeast Asian countries? With Europe, Latin America, or Africa? Finally, we separate movements in prices and quantities, to examine whether the fall is mainly real or nominal.

In the second part, use data on domestic absorption, sectoral price levels, as well as quantities and prices of imports to perform a simple “trade wedge” exercise in the spirit of Cole and Ohanian (2002) and Chari, Kehoe and McGrattan (2007). A model that features CES aggregation of domestic and foreign varieties in a particular sector – that is, virtually any model in international macroeconomics – has implications for the joint behavior of domestic absorption, domestic prices, and import prices and quantities. Using this simple optimality condition allows us to explore two questions: first, is the recent trade collapse truly a puzzle? That is, the wedge exercise that accounts for both domestic and foreign prices and quantities is the appropriate benchmark to evaluate whether the recent decrease in international trade is in any sense “extraordinary.” Second, by pitting against the data conditions that would have to hold period-by-period in virtually any quantitative model of international transmission, we can offer a preliminary view on whether – and which – DSGE models can have some hope of matching the magnitude of the recent collapse in international trade.

Finally, the third part uses monthly sector-level data to examine a range of potential explanations for the trade collapse proposed in the policy literature. We record the percentage changes in exports and imports during the recent crisis at the 6-digit NAICS level of disaggregation (about 450 distinct sectors). We then relate the variation in these changes to sectoral characteristics that would proxy for the leading explanations. The first is that trade may be collapsing because of the transmission of shocks through vertical production linkages. When there is a drop in final output, the demand for intermediate inputs will suffer, leading to a more than proportional drop in trade flows.<sup>1</sup> To test for this possibility, we build several measures of intermediate input linkages at the detailed sector level based on the U.S. Input-Output tables, as well as measures of production sharing based on data on exports and imports within multinational firms. The second explanation we evaluate is trade credit: if during the recent crisis, firms in the U.S. are less willing to extend trade credit to partners abroad, trade may be disrupted.<sup>2</sup> We therefore use U.S. firm-level data to construct measures of the intensity of trade credit use in each sector. Finally, the collapse in trade could be due to compositional effects. That is, if international trade happens disproportionately in sectors whose domestic absorption (or production) collapsed the most, that would explain why trade fell more than GDP. Two special cases of the compositional story are investment goods (Boileau 1999, Erceg, Guerrieri and Gust 2008) and durable goods (Engel and Wang 2009). Since investment and durables consumption are several times more volatile than GDP, trade in investment and durable goods would be expected to experience larger swings than GDP as well. Thus, we collect measures of domestic output at the most disaggregated available level, and check whether international trade fell systematically more in sectors that also experienced the greatest reductions in domestic output. In addition, we build an indicator for whether a sector produces durable goods.

Our main findings can be summarized as follows. The recent collapse in international trade is indeed exceptional by historical standards. Relative to economic activity, the drop in trade is an order of magnitude larger than what was observed in the previous postwar recessions, with the exception of 2001. The collapse appears to be broad-based across trading partners: trade with virtually all parts of the world decreased by a similar order of magnitude. The sharpest percentage drops in trade are in automobiles, durable industrial supplies and capital goods. Those categories also account for most of the absolute decrease in trade as well.

Another way to assess whether the recent trade collapse is exceptional is to use information on prices and examine the wedges. The time series behavior of the international trade wedge does

---

<sup>1</sup>Hummels, Ishii and Yi (2001) and Yi (2003) document the dramatic growth in vertical trade in recent decades, and di Giovanni and Levchenko (2009) demonstrate that greater sector-level vertical linkages play a role in the transmission of shocks between countries.

<sup>2</sup>Raddatz (2009) shows that there is greater comovement between sectors that have stronger trade credit links, while Iacovone and Zavacka (2009) demonstrate that in countries experiencing banking crises, export fell systematically more in financially dependent industries. Amiti and Weinstein (2009) show that exports by Japanese firms in the 1990s declined when the bank commonly recognized as providing trade finance to the firm was in distress.

reveal a drastic deviation from the norm during the recent episode. In the recent episode, the overall trade wedge has reached  $-54\%$ , revealing a collapse in trade well in excess of what is predicted by the pace of economic activity and prices. This is indeed exceptional: over the past 25 years the mean value of the wedge is less than  $9\%$ , with a standard deviation of  $8.7\%$ . We conclude from this exercise that the recent trade collapse does represent a puzzle, in the sense that any import demand function derived from CES aggregation would predict a far smaller drop in imports given observed overall economic activity and prices.<sup>3</sup>

Finally, using detailed trade data, we shed light on which explanations are consistent with cross-sectoral variation in trade flow changes. We find some support for the vertical linkages view, as well as for compositional effects. Sectors that are used intensively as intermediate inputs, and those with greater reductions in domestic output experienced significantly greater reductions in trade, after controlling for a variety of other sectoral characteristics. By contrast, trade credit does not appear to play a significant role: more trade credit-intensive sectors did not experience greater trade flow reductions.

The rest of this paper is organized as follows. Section 2 presents a set of stylized facts on the recent trade collapse using detailed quarterly data on U.S. imports and exports. Section 3 describes a framework to build the international trade wedges, and presents the behavior of those wedges over time and in different sectors. Section 4 uses detailed data on sectoral characteristics to assess whether the variation across sectors is consistent with the main explanations proposed in the policy literature. Section 5 concludes.

## 2 Facts

This section uses disaggregated quarterly data on U.S. imports and exports to establish a number of striking patterns in the data. We discuss three aspects of the recent episode: (i) its magnitude relative to historical experience; (ii) the sector- and destination- level breakdown; and (iii) the behavior of prices and quantities separately. The total imports, exports, and GDP data come from the U.S. National Income and Product Accounts (NIPA). The trade flows and prices disaggregated by sector are from the Bureau of Economic Analysis' Trade in Goods and Services Database, while trade flows disaggregated by partner are from the U.S. International Trade Commission's Tariffs and Trade Database.

**Fact 1** *As a share of economic activity, the collapse in U.S. exports and imports in the recent*

---

<sup>3</sup>Chinn (2009) estimates an econometric model of U.S. exports, and shows that the recent level of exports is far below what would be predicted by the model. Freund (2009) analyzes the behavior of trade in previous global downturns, and shows that the elasticity of trade to GDP has increased in recent decades, predicting a reduction in global trade in the current downturn of about  $15\%$ . Our methodology looks at U.S. imports rather than U.S. or global exports, and takes explicit account of domestic and import prices at the quarterly frequency.

*downturn is exceptional by historical standards. Only the 2001 recession is comparable.*

Figure 1(a) plots quarterly values of imports and exports normalized by GDP over the past 62 years, along with the recession bars. Visually, the 2008-09 collapse appears larger than most changes experienced in the past.<sup>4</sup> It is also clear, however, that a similar drop occurred in 2001, a fact that appears underappreciated. Table 1 reports the change in the ratios of imports and exports to GDP during the 2008 and 2001 recessions, as well as the average changes in those variables during the recessions that occurred between 1950 and 2000. For the 2008 and 2001 recessions, the total declines are calculated both during the official NBER recession dates, and with respect to the peak value of trade/GDP around the onset of the recession. It is apparent that both the imports and exports to GDP decline by 14 to 30% during the last two recessions, depending on the measure. By contrast, in all the pre-2000 recessions, the average decline in exports is less than 1 percentage point, and the average change in imports is virtually nil. As an alternative way of presenting the historical series, Figure 1(b) plots the deviations from trend in real imports, exports, and GDP over the same period. To detrend the series, we use the Hodrick-Prescott filter with the standard parameter of 1600. The recent period is characterized by large negative deviations from trend for both imports and exports. We can see that these are greater in magnitude than the deviation from trend in GDP.

**Fact 2** *For both U.S. exports and imports, the sharpest percentage drops are in the automotive and industrial supplies sectors, with consumer goods trade experiencing a far smaller percentage decrease. For imports, the decrease in petroleum category alone accounts for one third of the total decline.*

Panel A of Table 2 reports the reductions in exports and imports by sector for the recent trade collapse. While the overall reduction in nominal exports is about 26%, exports in the automotive sector (which comprises both vehicles and parts) drop by 47%, and in industrial supplies by 34%. By contrast, exports of consumer goods (-12%), agricultural output (-19%), and capital goods (-20%) experience less than average percentage reductions. The table also reports the share of each of these sectors in total exports at the outset of the crisis, as well as the absolute reductions in trade. It is clear that industrial supplies and automotive sectors accounted for almost 40% of all U.S. goods exports, and their combined decrease accounts for more than half of the total collapse of U.S. exports.

Total imports decline by 34%. The petroleum and products category has the largest percentage decrease at -54%. It also accounts for some 20% of the pre-crisis imports, and about 1/3 of the

---

<sup>4</sup>The concurrent change in the exchange rate is relatively subdued. Appendix Figure A1 plots the long-run path of the nominal and real effective exchange rates for the United States. Over the period coinciding with the trade collapse, the U.S. dollar appreciated slightly in real terms, but the change has been less than 10%.

total absolute decline. As with exports, the next largest percentage declines are in the automotive (−49%) and industrial supplies (−47%) sectors. By contrast, consumer goods decrease by only 15%, and agricultural products by 9%.

Figures 2 and 3 illustrate the collapse in real trade over time. Figure 2 displays the trade in real goods and services separately. We can see that goods trade is both larger in volume, and the decrease is more pronounced than in services. Figure 3 breaks total goods trade into real durables and non-durables, to highlight that the reduction in the trade categories considered durable is more pronounced, for both imports and exports. These figures indicate that in order to understand the collapse in real trade flows, it is reasonable to focus on goods trade and examine durable goods more closely. We follow this strategy in Sections 3 and 4.

**Fact 3** *The recent collapse in U.S. foreign trade is roughly similar in magnitude across all major U.S. trading partners.*

Panel B of Table 2 reports the reduction, in absolute and percentage terms, of exports and imports to and from the main regions of the world and the most important individual partners within those regions. To be precise, the first three columns, under “Exports,” report the exports from the U.S. to the various countries and regions. Correspondingly, the columns labeled “Imports” report the imports to the U.S. from these countries. What is remarkable is how broad-based the collapse is. With virtually every major partner, U.S. exports are dropping by more than 20% (with China and India being the notable exceptions), while imports are dropping by 30% or more (with once again China as the exception at −16%).

**Fact 4** *Both quantities and prices of exports and imports decreased, with changes in real quantities explaining the majority of the nominal decrease in trade.*

Figure 4 plots both nominal and real trade, each normalized to its 2005q1 value. While nominal exports fall by 26% from its peak, the fall in real exports accounts for about three quarters of that decline, 19%. For imports, the role of declining import prices is greater. In addition, the peak in real imports occurred 3 quarters earlier than the peak of nominal imports, due largely to the timing of the oil price collapse. Nonetheless, real quantities account for about 60% of the total nominal decline in imports. Table 3 presents the nominal, real, and price level changes in each export and import category. It is remarkable that in some important sectors, such as automotive, capital goods, and consumer goods, the prices did not move much at all, and the entire decline in nominal exports and imports is accounted for by real quantities. By contrast, prices moved the most in industrial supplies, especially petroleum. Figure 5 presents the contrast between nominal and real graphically. It plots the nominal declines in each sector against the real ones, along with the 45-degree line. For points on the 45-degree line, all of the nominal decrease in trade is accounted

for by movements in real quantities, with no change in prices. For points farther from the line, price changes account for more of the nominal change in trade. There are several things to take away from this figure. First, we can see that some important sectors are at or very near the 45-degree line: all of the change in nominal trade in those sectors comes from quantities. Second, petroleum imports is by far the biggest exception, as the only sector in which most of the change comes from prices. Finally, in most cases import and export prices experienced a drop – the bulk of the points are below the 45-degree line. This implies that in the recent episode, trade prices and quantities are moving in the same direction.

### 3 Wedges

The discussion of nominal and real quantities foreshadows the exercise in this section. In particular, we ask, is there any way to assess whether the trade changes during the recent crisis are in some sense “exceptional” or “abnormal”? That is, how would we expect trade flows to behave in the recent recession? To provide a model-based benchmark for the behavior of trade flows, we follow the “wedge” methodology of Cole and Ohanian (2002) and Chari et al. (2007). We set down an import demand equation that would be true in virtually any International Real Business Cycle (IRBC) model, and check how the deviation from this condition, which we call the “trade wedge” behaves in the recent crisis relative to historical experience.

Let us begin with the simplest 2-good IRBC model of Backus, Kehoe and Kydland (1995). There are two countries, Home and Foreign, and two intermediate goods, one produced in Home, the other in Foreign. There is one final good, used for both consumption and investment. The resource constraint of the Home country in each period is given by:

$$C_t + I_t = \left[ \omega^{\frac{1}{\varepsilon}} \left( y_t^h \right)^{\frac{\varepsilon-1}{\varepsilon}} + (1 - \omega)^{\frac{1}{\varepsilon}} \left( y_t^f \right)^{\frac{\varepsilon-1}{\varepsilon}} \right]^{\frac{\varepsilon}{\varepsilon-1}}, \quad (1)$$

where  $C_t$  is Home consumption,  $I_t$  is Home investment,  $y_t^h$  is the output of the Home intermediate good that is used in Home production, and  $y_t^f$  is the amount of the Foreign intermediate used in Home production. In this standard formulation, consumption and investment are perfect substitutes, and Home and Foreign goods are aggregated in a CES production function. The parameter  $\omega$  allows for a home bias in preferences.

The household (or, equivalently, a perfectly competitive final goods producer), chooses the mix



of Home and Foreign intermediates optimally:

$$\begin{aligned} & \min_{y_t^h, y_t^f} \left\{ p_t^h y_t^h + p_t^f y_t^f \right\} \\ & s.t. \\ & C_t + I_t \leq \left[ \omega^{\frac{1}{\varepsilon}} \left( y_t^h \right)^{\frac{\varepsilon-1}{\varepsilon}} + (1-\omega)^{\frac{1}{\varepsilon}} \left( y_t^f \right)^{\frac{\varepsilon-1}{\varepsilon}} \right]^{\frac{\varepsilon}{\varepsilon-1}} \end{aligned}$$

where  $p_t^h$  is the price of the domestically-produced good and  $p_t^f$  is the price of the imported good, both expressed in the home country's currency. This yields the standard demand equations:

$$\begin{aligned} y_t^h &= \omega \left( \frac{P_t}{p_t^h} \right)^\varepsilon (C_t + I_t) \\ y_t^f &= (1-\omega) \left( \frac{P_t}{p_t^f} \right)^\varepsilon (C_t + I_t), \end{aligned}$$

where  $P_t$  is the standard CES price level:

$$P_t = \left[ \omega \left( p_t^h \right)^{1-\varepsilon} + (1-\omega) \left( p_t^f \right)^{1-\varepsilon} \right]^{\frac{1}{1-\varepsilon}}.$$

Log-linearizing these, we obtain the following relationship in log changes, denoted by a caret:

$$\widehat{y}^f = \varepsilon \left( \widehat{P} - \widehat{p}^f \right) + \widehat{(C + I)}. \quad (2)$$

This equation provides a benchmark for evaluating whether the recent trade collapse represents a large deviation from business as usual. They will hold exactly in any model that features the relationship of the type given by (1), a quite common one in the IRBC literature. Economically, it ties real import demand to (i) overall real domestic absorption ( $C + I$ ); (ii) the overall domestic price level ( $P$ ); and (iii) import prices  $p^f$ . Since all of these are observable, we proceed by using equation (2) to compute the log deviation from it holding exactly, calling it the “trade wedge.” On the left-hand side is the log change in real imports. The term  $\widehat{(C + I)}$  is captured by the log change in the sum of real consumption and real investment in the national accounts data;  $\widehat{P}$  is the change in the GDP deflator,<sup>5</sup> and  $\widehat{p}^f$  is the change in the import price deflator. We must also choose a value of the elasticity of substitution  $\varepsilon$ . We report results for two values:  $\varepsilon = 1.5$ , which is the “classic” IRBC value of the elasticity of substitution between domestic and foreign goods (Backus et al. 1995); and  $\varepsilon = 6$ , which is a common value in the trade literature (Anderson and van Wincoop 2004).<sup>6</sup>

<sup>5</sup>We also constructed a price index for just consumption and investment based on the consumption and investment prices in the National Income and Product Accounts, and used that instead of the GDP deflator. The results were virtually unchanged.

<sup>6</sup>Throughout this section, we assume that the taste parameter  $\omega$  is not changing. If  $\omega$  is thought of as a taste shock

We use quarterly data and compute year-to-year log changes in each variable. Column 1 in Table 4 presents the current value of the year-to-year wedge (in this case, the wedge computed 2009q2 relative to 2008q2) for the two elasticities. The wedge is indeed quite large, at  $-54\%$  for the more conservative choice of  $\varepsilon$ . The negative value indicates, not surprisingly, that imports fell by  $54\%$  *more* than overall U.S. domestic demand and price movements would predict. To get a sense whether the current level of the wedge is out of the ordinary, Figure 6 plots the quarterly values of the year-on-year wedge for the period 1968 to the present. The recent period is indeed exceptional. Over the entire sample period going back to 1968, the long-run average of the wedge is actually slightly positive, at  $9.5\%$ , with a standard deviation of  $11.5\%$ .<sup>7</sup> After 1984 – a year widely considered to be a structural break, also evident in Figure 6 – the average wedge is  $8.5\%$ , with a standard deviation of  $8.7\%$ . Thus, the current value of the wedge is 7 standard deviations away from the mean, and 6 standard deviations away from zero, when compared to the post-1984 period. Note that a more muted instance of the “collapse in the wedge” occurred in the 2001 recession. However, in that episode the wedge reached  $-20\%$ , well short of the current value.<sup>8</sup>

We can also determine whether price or quantity movements make up the bulk of the current wedge. Real imports (the left-hand side of equation 2) fell by  $21\%$ , while the total final demand ( $\widehat{C + I}$ ) fell by  $6.7\%$ . This implies that in the absence of any relative price movements, the wedge would have been about  $-14\%$ . The price movements conditioned by the elasticity of substitution make up the rest of the difference: the GDP deflator went up by  $1.5\%$ , while import prices actually fell by  $16\%$ .

### 3.1 Durable Goods

Beyond the simple structure of the canonical IRBC model, this methodology can be applied to construct a wedge for any sector that would be modeled as a CES aggregate of domestic and foreign varieties. The key data limitation that prevents the construction of wedges for disaggregated indus-

---

in the demand for foreign goods, an alternative interpretation of the wedge would be that it reveals what this taste shock must be in each period to satisfy the first-order condition for import demand perfectly. In the IRBC literature, the parameter  $\omega$  is sometimes thought of as a trade cost, and its value calibrated to the observed share of imports to GDP. Under this interpretation, it may be that during this crisis trade costs went up, thereby lowering imports. While we do not have comprehensive data on total trade costs at high frequencies, anecdotal evidence suggests that if anything shipping costs decreased dramatically in the course of the recent crisis, due in part to the oil price collapse (Economist 2009). Thus, taking explicit account of shipping costs would make the wedge even larger.

<sup>7</sup>We conjecture that the positive long-run average value over this period may reflect a secular reduction in trade costs, which we do not incorporate explicitly into our exercise.

<sup>8</sup>In the baseline analysis we compute the wedges based on log changes over time – in our case, year-on-year changes in quarterly data. An alternative would be to compute them based on deviations from trend in each variable. To do this, we HP-detrended each series, and built a wedge using equation (2) such that the caret means the log deviation from trend. This procedure yields qualitatively similar results. In 2009q2 the overall wedge stands at  $-24\%$ . This is considerably smaller in magnitude than the baseline value we report. However, it is still quite exceptional by historical standards. In the post-1984 period, the standard deviation of the deviation-from-trend wedge is  $4.3\%$ , and its mean is zero. This implies that the value of 2009q2 wedge is 5.6 standard deviations away from the historical average.

tries is the availability of domestic absorption and price levels at the detailed level. We can make progress, however, for one important sector: durable goods. Engel and Wang (2009) demonstrate that both imports and exports are about 3 times more volatile than GDP in OECD countries, and propose a compositional explanation. It is well known that durable goods consumption is more volatile than overall consumption, and that much of international trade is in durable goods. Putting the two together provides a reason for why trade is more volatile than GDP: it is composed of the more volatile durables. This hypothesis can be extended to apply to the recent crisis. It may be that imports and exports fell so much relative to GDP because their composition is different from the composition of GDP.

The wedges methodology can be used to shed light on the potential for this explanation to work. If the reason for the fall in trade is compositional, then the wedges should disappear (or at least get smaller) when we compute them on the durable goods separately. In particular, suppose that durable goods consumption in the Home country,  $D_t$ , is an aggregate of Home and Foreign durable varieties:

$$D_t = \left[ \omega^{\frac{1}{\varepsilon}} d_t^h \frac{\varepsilon-1}{\varepsilon} + (1-\omega)^{\frac{1}{\varepsilon}} d_t^f \frac{\varepsilon-1}{\varepsilon} \right]^{\frac{\varepsilon}{\varepsilon-1}}, \quad (3)$$

where  $d_t^h$  is the domestic durable variety consumed in Home, and  $d_t^f$  is the Foreign durable variety consumed in Home. In other words, a “final durable goods” producer aggregates domestically-produced durable intermediates with foreign-produced durable intermediates to create a durable good that can be used either as purchases of new durable consumption goods or capital investment.<sup>9</sup> By standard CES cost minimization, the “durable trade wedge” has the familiar form:

$$\widehat{d}^f = \varepsilon \left( \widehat{P}_D - \widehat{p}_D^f \right) + \widehat{D},$$

where, as above,  $P_D$  is the domestic price level of the durable spending, and  $p_D^f$  is the price of the foreign durables. To construct the durable wedge, we use the BEA definition of durable goods imports.<sup>10</sup> Using sector-level price and quantity import data, we construct the log change in real durable imports  $\widehat{d}^f$  and in the prices of durable imports  $\widehat{p}_D^f$ . To proxy for real durable demand  $\widehat{D}$  we combine domestic spending on consumer durables and fixed investment, building the corresponding

---

<sup>9</sup>This formulation may appear to sidestep the special feature of durable goods, namely that it is the stock of durables that enters utility. In our formulation, equation (3) defines the flow of new durable goods, rather than the stock. Our assumption is then that the flow of new durable goods is a CES aggregate of the *flows* of foreign and domestic durable purchases,  $d_t^h$  and  $d_t^f$ . We can then define the stock of durables by its evolution  $\mathcal{D}_t = (1-\delta)\mathcal{D}_{t-1} + D_t$ , with the stock  $\mathcal{D}_t$  entering the utility function. An alternative assumption would be that foreign and domestic durables have separate *stocks*, and consumer utility depends on a CES aggregate of domestic and foreign durable stocks (this is the assumption adopted by Engel and Wang 2009). A priori, we find no economic reason to favor one set of assumptions over the other, while our formulation is much more amenable to analyzing prices and quantities jointly. This is because statistical agencies record quantities and prices of purchases, which are flows.

<sup>10</sup>This roughly corresponds to the sum of capital goods; automotive vehicles, engines, and parts; consumer durables; and durable industrial supplies and materials.

domestic durable price level.<sup>11</sup>

The second column of Table 4 reports the current (2009q2) value of the year-to-year wedge. It is clear that the durable wedge is just as pronounced as the overall wedge: for  $\varepsilon = 1.5$ , it stands at  $-57\%$ . Thus, the trade collapse puzzle persists even when we consider the durable sector exclusively, suggesting that the compositional explanation relying on durables trade is not likely to fully account for the recent episode. Note that the level of the durable wedge is also exceptional by historical standards, as Figure 6 demonstrates. The durable wedge actually tracks the overall wedge quite closely, albeit with a slightly higher mean (12% post-1984), and standard deviation (11.5%). The contribution of the real quantities to the current level of the wedge is also similar to the overall wedge. Real durable imports fell by 34%, while the real durable domestic spending fell by 18%. This implies that in the complete absence of relative price movements, the “quantity wedge” would be about 16%. The rest of the wedge comes from relative prices.

### 3.2 Final Goods

We can make progress in shedding light on the compositional explanations in another way. It may be that equation (1) is not a good description of the production structure of the economy. One immediate possibility is that consumption and investment goods are very different. Indeed, Section 2 shows that consumption and capital goods experienced different price and quantity movements. We can glean further where the data diverge from the model by positing a production structure in which investment and consumption goods are different, but both are produced from domestic and foreign varieties (see, e.g., Boileau 1999, Erceg et al. 2008):

$$C_t = \left[ \omega^{\frac{1}{\varepsilon}} \left( c_t^d \right)^{\frac{\varepsilon-1}{\varepsilon}} + (1-\omega)^{\frac{1}{\varepsilon}} \left( c_t^f \right)^{\frac{\varepsilon-1}{\varepsilon}} \right]^{\frac{\varepsilon}{\varepsilon-1}},$$

$$I_t = \left[ \zeta^{\frac{1}{\sigma}} \left( i_t^d \right)^{\frac{\sigma-1}{\sigma}} + (1-\zeta)^{\frac{1}{\sigma}} \left( i_t^f \right)^{\frac{\sigma-1}{\sigma}} \right]^{\frac{\sigma}{\sigma-1}}.$$

In this formulation, domestic consumption goods  $c_t^d$  are different from domestic investment goods  $i_t^d$ , and the same holds for the foreign consumption and investment goods. Note that we allow home bias and the elasticity of substitution to be different for the consumption and investment sectors. Going through the same cost minimization calculation, we obtain the import demands for consumption and investment goods expressed in log changes:

$$\widehat{c}^f = \varepsilon \left( \widehat{P}_C - \widehat{p}_C^f \right) + \widehat{C},$$

$$\widehat{i}^f = \sigma \left( \widehat{P}_I - \widehat{p}_I^f \right) + \widehat{I}.$$

---

<sup>11</sup>Our calculation includes in  $\widehat{D}$  structures and residential investment in addition to machinery and equipment. This inclusion tends to make the durable wedge smaller, as real estate prices fell more than overall investment goods prices, shrinking the price component of the durable wedge.

These equations now relate the real reduction in consumption goods imports to the overall domestic real consumption, the consumption price index, and the price index of imported consumption goods, and same for investment. Provided that we have data on all of these prices and quantities, we can calculate the “consumption trade wedge” and the “investment trade wedge,” and determine which one reveals greater deviations from the theoretical benchmark.

To construct these, we isolate imports of consumer goods (about 20% of total U.S. imports at the outset of the crisis), and compute the real change in consumer goods imports  $\hat{c}^f$ , and the corresponding import price change  $\hat{p}_C^f$ . We then match these up to the change in real consumption expenditures on goods  $\hat{C}$ , and the domestic consumption price index. Column 3 of Table 4 reports the results. The consumption wedge is much smaller, at  $-6.2\%$ . Figure 7 displays the time path of the year-on-year consumption wedge since 1968. It is clear that the recent episode is completely unexceptional if we confine our attention to consumer goods trade. Historically, the consumption wedge is closer to zero, with a post-1984 mean of  $4.5\%$  and a standard deviation of  $5.5\%$ .

To construct the investment trade wedge, we isolate imports of capital goods (also about 20% of U.S. imports at the outset of the crisis), and match them up with investment data in the National Accounts. Column 4 of Table 4 presents the results. The investment wedge is also quite small, at  $-10\%$ . As Figure 7 shows, it is unexceptional by historical standards: the mean investment wedge post-1984 is  $2\%$ , with a standard deviation of  $9.3\%$ . This implies that the current level of the investment wedge is about one standard deviation away from the historical mean, or from the model implied value of zero.

These results tell us that the puzzle in the recent trade collapse is not in final goods, be it consumption or investment. Instead, the discrepancy between the large overall wedge and the small consumption and investment wedges appears to be in the intermediate goods sectors, and these partially overlap with durable goods. This suggests that modeling exercises that focus on movements in the final domestic demand are unlikely to match the data well. Instead, explanations that focus on trade in intermediates appear potentially more fruitful.

## 4 Empirical Evidence

In this section, we investigate whether the patterns of trade collapse at the detailed industry level are consistent with a variety of explanations proposed in the policy debate. In order to carry out empirical analysis, we collect monthly nominal data for U.S. imports and exports vis-à-vis the rest of the world at the NAICS 6-digit level of disaggregation from the USITC. This the most finely disaggregated NAICS trade data available at the monthly frequency, yielding about 450 distinct sectors. For each sector, we compute the percentage drop in trade flows over the course of a year

ending in June 2009 (most recent available data), and estimate the following specification:

$$\gamma_i^{trade} = \alpha_0 + \alpha_1 \text{CHAR}_i + \beta \times \mathbf{X}_i + \epsilon_i.$$

In this estimating equation  $i$  indexes sectors,  $\gamma_i^{trade}$  is the percentage change in the trade flow, which can be exports or imports, and  $\text{CHAR}_i$  is the sector-level variable meant to capture a particular explanation proposed in the literature.<sup>12</sup> We include a vector of controls  $\mathbf{X}_i$  in each specification. Our strategy is to exploit variation in sectoral characteristics to evaluate three main hypotheses: vertical production linkages, trade credit, and compositional effects/durables demand. We now describe each of them in turn.

The vertical linkages view, most often associated with Yi (2003), suggests that since much of international trade is in intermediate inputs, and intermediates at different stages of processing often cross borders multiple times, a drop in final consumption demand associated with the recession will decrease cross-border trade in intermediate goods. This can matter for the business cycle: di Giovanni and Levchenko (2009) show that trade in intermediate inputs leads to higher comovement between countries, both at sectoral and aggregate levels. The simplest way to test the vertical linkage hypothesis is to classify goods according to the intensity with which they are used as intermediate inputs. We start with the 2002 benchmark version of the detailed U.S. Input-Output matrix available from the Bureau of Economic Analysis, and construct our measures using the Direct Requirements Table. The  $(i, j)$ th cell in the Direct Requirements Table records the amount of a commodity in row  $i$  required to produce one dollar of final output in column  $j$ . By construction, no cell in the Total Requirements Table can take on values greater than 1. To build an indicator of “downstream vertical linkages,” we record the average use of a commodity in row  $i$  in all downstream industries  $j$ : the average of the elements across all columns in row  $i$ . This measure gives the average amount of good  $i$  required to produce one dollar worth of output across all the possible final output sectors. In other words, it is the intensity with which good  $i$  is used as an intermediate input by other sectors.

We build two additional indicators of downstream vertical linkages: the simple number of sectors that use input  $i$  as an intermediate, and the Herfindahl index of downstream intermediate use. The former is computed by simply counting the number of industries for which the use of intermediate input  $i$  is positive. The latter is an index of diversity with which different sectors use good  $i$ : it will take the maximum value of 1 when only one sector uses good  $i$  as an input, and will take the minimum value when all sectors use input  $i$  with the same intensity.

---

<sup>12</sup>The change in trade is computed using the total values of exports and imports in each sector, implying that it is a nominal change. As an alternative, we used import price data from the BLS at the most disaggregated available level to deflate the nominal flows. The shortcoming of this approach is that the import price indices are only available at a more coarse level of aggregation (about 4-digit NAICS). This implies that multiple 6-digit trade flows are deflated using the same price index, potentially introducing measurement error. Nonetheless, the main results were unchanged.

A related type of the vertical linkage story is the “disorganization” hypothesis (Kremer 1993, Blanchard and Kremer 1997). In a production economy where intermediate inputs are essential, following a disruption such as the financial crisis, shocks to even a small set of intermediate inputs can create a large drop in output. For instance, Blanchard and Kremer (1997) document that during the collapse of the Soviet Union, output in more complex industries – those that use a greater number of intermediate inputs – fell by more than output in less complex ones. This view suggests that we should construct measures of “upstream vertical linkages,” that would capture the intensity and the pattern of intermediate good use by industry (in column)  $j$ . The three indices we construct parallel the downstream measures described above. We record the intensity of intermediate good use by industry  $j$  as total spending on intermediates per dollar of final output. We also measure an industry’s complexity in two ways: by counting the total number of intermediate inputs used by industry  $j$ , and by computing the Herfindahl index of intermediate use shares in industry  $j$ .<sup>13</sup>

Burstein, Kurz and Tesar (2008) propose another version of the vertical linkage hypothesis. They argue that it is not trade in intermediate inputs per se, but how production is organized. Under “production sharing,” inputs are customized and the factory in one country depends crucially on output from a particular factory in another country. In effect, inputs produced on different sides of the border become essential, and a shock to one severely reduces the output of the other. To build indicators of production sharing, we follow Burstein et al. (2008) and use data on shipments by multinationals from the BEA. In particular, we record imports from foreign affiliates by their U.S. parent plus imports from a foreign parent company by its U.S. affiliate as a share of total U.S. imports in a sector. Similarly, we record exports to the foreign affiliate from their U.S. parents plus exports to a foreign parent from a U.S. affiliate as a share of total U.S. exports. In effect, these measures of production sharing are measures of intra-firm trade relative to total trade in a sector. We use the BEA multinational data at the finest level of disaggregation that is publicly available, which is about 2 or 3 digit NAICS, and take the average over the period 2002-2006 (the latest available years).

The second suggested explanation for the collapse in international trade is a contraction in trade credit (see, e.g., Auboin 2009, IMF 2009). Under this view, international trade is being disrupted because the domestic companies that are buying imports are no longer extending trade credit to their foreign counterparties. Without trade credit, foreign firms are unable to produce and imports do not take place. Indeed, there is some evidence that sectors more closely linked by trade credit relationships experience greater comovement (Raddatz 2009). To test this hypothesis, we used Compustat data to build standard measures of trade credit by industry. The first is accounts payable/cost of goods sold. This variable records the amount of credit that is extended to the firm by suppliers, relative to the cost of production. The second is accounts receivable/sales. This

---

<sup>13</sup>For more on these product complexity measures, see Cowan and Neut (2007) and Levchenko (2007).

is a measure of how much the firm is extending credit to its customers. These are the two most standard indices in the trade credit literature (see, e.g., Love, Preve and Sarria-Allende 2007). To construct them, we obtain quarterly data on all firms in Compustat from 2000 to 2008, compute these ratios for each firm in each quarter, and then take the median value for each firm across all the quarters for which data are available. We then take the median of this value across firms in each industry.<sup>14</sup> Since coverage is uneven across sectors, we ensure that we have at least 10 firms over which we calculate trade credit intensity. This implies that sometimes the level of variation is at the 5-, 4-, and even 3-digit level, though the trade data are at the 6-digit NAICS level of disaggregation.<sup>15</sup>

Finally, another explanation for the collapse of international trade has to do with composition. It may be that trade fell by more than GDP simply because international trade occurs systematically in sectors that fell more than overall GDP. A way to evaluate this explanation would be to control for domestic absorption in each sector. While we do not have domestic absorption data, especially at this level of aggregation, we instead proxy for it using industrial production indices. These indices are compiled by the Federal Reserve, and are available monthly at about the 4-digit NAICS level of disaggregation. They are not measured in the same units as import and export data, since industrial production is an index number. Our dependent variables, however, are percentage reductions in imports and exports, thus we can control for the percentage reduction in industrial production to measure the compositional effect. Two special cases of the compositional channel are due to Boileau (1999), Erceg et al. (2008), and Engel and Wang (2009). These authors point out that a large share of U.S. trade is in investment and durable goods, which tend to be more volatile than other components of GDP. In order to explore this possibility, we classify goods according to whether they are durable or not, and examine whether durable exports indeed fell by more than nondurable ones.<sup>16</sup>

We use several controls in the baseline estimation. To control for sector size, we include each industry's share in total imports (resp. exports) over the period 2002-2007, the elasticity of substitution between varieties in a sector from Broda and Weinstein (2006), as well as labor intensity computed from the U.S. Input-Output table. These are indicators available for both non-manufacturing and manufacturing industries. To check robustness, we also control for skill and capital intensity

---

<sup>14</sup>We take medians to reduce the impact of outliers, which tend to be large in firm-level data. Taking the means instead leaves the results unchanged.

<sup>15</sup>Amiti and Weinstein (2009) emphasize that trade credit in the accounting sense and trade finance are distinct. Trade credit refers to payments owed to firms, while trade finance refers to short-term loans and guarantees used to cover international transactions. We are not aware of any reliable sector-level measures of trade finance used by U.S. firms engaged in international trade.

<sup>16</sup>We created a very rough classification of durables at the 3-digit NAICS level. Durable sectors include 23X (construction) and 325-339 (chemical, plastics, mineral, metal, machinery, computer/electronic, transportation, and miscellaneous manufacturing). All other 1XX, 2XX, and 3XX NAICS categories are considered non-durable for this exercise.



sourced from the NBER productivity database, and the level of inventories from the BEA, which are unfortunately only available for manufacturing industries. Appendix Table A1 reports the summary statistics for all the dependent and independent variables used in estimation.

## 4.1 Vertical Linkages

Table 5 describes the results of testing for the role of downstream vertical linkages in the reduction in trade. In this and all other tables, the dependent variable is the percentage reduction in imports (Panel *A*) or exports (Panel *B*) from June 2008 to June 2009.<sup>17</sup> There is evidence that downstream linkages play a role in the reduction in international trade, especially for imports into the United States. Goods that are used intensely as intermediates (“Average Downstream Use”) experienced larger percentage drops in imports and exports. In addition, other proxies such as the number of sectors that use an industry as an intermediate input as well as the Herfindahl index of downstream intermediate use, are significant for imports, though not for exports. On the other hand, there is no evidence that measures of production sharing based on trade within the multinational firms are significantly correlated with a drop in international trade. Table 6 examines instead the role of upstream vertical linkages, with more mixed results. While some of the measures are significant for either imports or exports, and all have the expected signs, there is no robust pattern of significance.

## 4.2 Trade Credit

Table 7 examines the hypothesis that trade credit played a role in the collapse of international trade. In particular, it tests for whether imports and exports experienced greater percentage reductions in industries that use trade credit intensively. As above, Panel *A* reports the results for imports, and Panel *B* for exports. There appears to be no evidence that sectors that either use, or extend, trade credit more intensively exhibited larger changes in trade flows.

We can also examine the time evolution of trade credit directly. The Compustat database contains information on accounts payable up to and including the first quarter of 2009 for a substantial number of firms. While there are between 7,000 and 8,000 firms per quarter with accounts payable data in the Compustat database over the period 2007-2008, there are 6,250 firms for which this variable is available for 2009q1. While this does represent a drop-off in coverage that may be non-random, it is still informative to look at what happens to trade credit for those firms over time. With this selection caveat in mind, we construct a panel of firms over 2000-2009q1 for which data are available at the end of the period, and trace out the evolution of accounts payable as a share of cost of goods sold. The median value of this variable across firms in each period is plotted in

---

<sup>17</sup>The peak of both total nominal imports and total nominal exports in the recent crisis is August 2008. An alternative dependent variable would be the percentage drop from the peak to the present. However, that measure is more noisy because of seasonality. Therefore, we consider a year-on-year reduction, sidestepping seasonal adjustment issues.

Figure 8(a). The dashed line represents the raw series. There is substantial seasonality in the raw series, so the solid black line reports it after seasonal adjustment. The horizontal line plots the mean value of this variable over the entire period.<sup>18</sup> There is indeed a contraction in trade credit during the recent crisis, but its magnitude is very small. The 2009q1 value of this variable is 55.2%, just 1.3% below the period average of 56.5%, and only 3 percentage points below the most recent peak of 58.1% in 2007q4. We conclude from this that the typical firm in Compustat experienced at most a small contraction in trade credit it receives from other firms.<sup>19</sup>

Figure 8(b) presents the median of the other trade credit indicator, accounts receivable/sales over the period 2004q1-2009q1. The coverage for this variable is not as good: there are very few firms that report it before 2004, and there are only around 6,000 observations per quarter in 2007-2008. In 2009q1, there are 4,967 firms that report this variable, and we use this sample of firms to construct the time series for the median accounts receivable. Once again, the decrease during the recent crisis is very small: the 2009q1 value of 56.3% is only 1 percentage point below the period average of 57.3%, and just 2 percentage points below the 2007q4 peak of 58.5%. Indirectly, accounts receivable may be a better measure of the trade credit conditions faced by the typical firm in the economy, as it measures the credit extended by big Compustat firms to (presumably) smaller counterparts. But the picture that emerges from looking at the two series is quite consistent: there is at most a small reduction in trade credit during the recent downturn.

### 4.3 Composition

Finally, Table 8 tackles the issue of composition and durability. There appears to be robust evidence that compositional effects play a role. Both exports and imports tend to collapse more in industries where industrial production contracted more. In addition, the simple durable 0/1 dummy variable is highly significant, implying that on average imports in durable sectors contracted by 7.2 percentage points more than non-durable ones, and exports in durable sectors contracted by 5.5 percentage points more.

There is an alternative way to examine how much composition matters. We can compare the data on percentage reductions in exports and imports with data on industrial production at sector level. According to the compositional explanation, imports and exports will drop relative to the level of overall economic activity if international trade flows are systematically biased towards

---

<sup>18</sup>It is suggestive from examining the raw data that there is no time trend in this variable. We confirm this by regressing it on a time trend: the coefficient on the time trend turns out to be very close to zero, and not statistically significant.

<sup>19</sup>It may be that while the impact on the median firm is small, there is still a large aggregate effect due to an uneven distribution of trade credit across firms. To check for this possibility, we built the aggregate accounts payable/cost of goods sold series, by computing the ratio of total accounts payable for all the firms to the sum of all cost of goods sold for the same firms. The results from using this series are even more stark: it shows an increase during the crisis, and its 2009q1 value actually stands above its long-run average.

sectors in which domestic absorption fell the most. Composition will account for all of the reduction in imports and exports relative to economic activity if at sector level, reductions in trade perfectly matched reductions in domestic absorption, and all that was different between international trade and economic activity was the shares going to each sector. By contrast, composition will account for none of the reduction in trade relative to output if there are no systematic differences in the trade shares relative to output shares, at least along the volatility dimension. Alternatively, composition will not explain the drop in trade if imports and exports simply experienced larger drops within each sector than did total absorption.

With this logic in mind, we construct a hypothetical reduction in total trade that is implied purely by compositional effects:

$$\tilde{\gamma}^{trade} = \sum_{i=1}^{\mathcal{I}} a_i^{trade} \gamma_i^{IP}.$$

In this expression,  $i = 1, \dots, \mathcal{I}$  indexes sectors,  $a_i^{trade}$  is the initial share of sector  $i$  in the total trade flows, and  $\gamma_i^{IP}$  is the percentage change in industrial production over the period of interest. That is,  $\tilde{\gamma}^{trade}$  is the percentage reduction in overall trade that would occur if in each sector, trade was reduced by exactly as much as industrial production. Following the rest of the empirical exercise in this section, we compute  $\gamma_i^{IP}$  over the period from June 2008 to June 2009, and apply the trade shares  $a_i^{trade}$  as they were in June 2008.

Table 9 reports the results. For both imports and exports, the first column reports the percentage change in nominal trade, the second column the percentage change in real trade, and the third column reports  $\tilde{\gamma}^{trade}$ , the hypothetical reduction in trade that would occur if in each sector, trade fell by exactly as much as industrial production. Because trade data are available for a greater range of sectors than industrial production data, the last column reports the share of total U.S. trade flows that can be matched to industrial production. We can see that we can match 88% of exports and 94% of imports to sectors with IP data. Nonetheless, the fact that this table does not capture all trade flows explains the difference between the values reported there and in Table 2. For ease of comparison, the last line of the table reports the percentage change in the total industrial production. By construction, the actual and implied values are identical.

We can see that industrial production fell by 13.4%, while the matching nominal imports and exports fell by 33% and 35%, respectively. Comparing the actual changes in nominal trade to the implied ones in column 3, we can see that composition explains about half: the implied reduction in exports is 17.6%, and the implied reduction in imports 16.4%. As expected, both of these are larger than the reduction in industrial production itself, so it is true that trade is systematically biased towards sectors with larger reductions in domestic output. The real reductions in trade (column 2) are smaller, as we saw above. Thus, the compositional effect accounts for about two-thirds of the real reduction in exports, and almost the entire reduction in real imports.

We conclude from this exercise that compositional effects are an important part of the story: depending on the measure used, they account for between 50% and almost 100% of the actual drop in trade flows. Several caveats are of course in order to interpret the results. First and foremost, this is an accounting exercise rather than an economic explanation. We do not know why trade flows are systematically biased towards sectors that experienced larger output reductions, nor do we have a good sense of why some sectors experienced larger output drops than others.<sup>20</sup> It also does not explain why the trade collapse during this recession is so different from most previous recessions. And second, industrial production may not be an entirely appropriate benchmark, since it captures domestic output, while a more conceptually correct measure would be domestic absorption. Nonetheless, our exercise does provide suggestive evidence of compositional effects.

To combine the above results together, Table 10 reports specifications in which all the distinct explanations are included together. The first column presents results for all sectors and the baseline set of control variables. The second column reports the results for manufacturing sectors only, which allows us to include additional controls such as capital and skill intensity. The bottom line is essentially unchanged: both downstream linkages and compositional effects are significant for imports, while upstream linkages and trade credit are not. For exports, compositional effects continue to matter, while evidence on other channels is inconclusive.

In the subsample of the manufacturing sectors in columns 2 and 4, we also control for inventories. We use monthly inventory data for 3-digit NAICS sectors from the BEA. Unfortunately, this coarse level of aggregation implies that we only have 20 distinct sectors for which we can record inventory levels. The particular variable we use is the ratio of inventories to imports (resp., exports) at the beginning of the period, June 2008.<sup>21</sup> The initial level of inventories is significant, but its inclusion leaves the rest of the results unchanged. In addition, it appears to have the “wrong” sign: sectors with larger initial inventories had *smaller* reductions in imports, all else equal. These estimates are not supportive of the hypothesis that imports collapsed partly because agents decided to deplete inventories as a substitute to buying more from abroad.

## 5 Conclusion

This paper uses highly disaggregated monthly data on U.S. imports and exports to examine the anatomy of the recent collapse in international trade. We show that this collapse is exceptional in

---

<sup>20</sup>Indeed, benchmarking the trade drop to the drop in industrial production leaves open the question of why the reduction in industrial production itself is so much larger than in GDP: while total GDP contracted by 4% in the recent episode, industrial production fell by 13.4%.

<sup>21</sup>Alternatively, we used the average level of inventories to imports (resp., exports) over the longer period, 2001-2007, and the results were unchanged. We also used the percentage change in inventories that happened contemporaneously with the reduction in trade, and the coefficient was insignificant: it appears that there is no relationship between changes in inventories and changes in trade flows over this period.

two ways: it is far larger relative to economic activity than what has been observed in previous U.S. downturns; and it is far larger than what would be predicted by the evolution of domestic absorption and prices over the same period. Clearly, the behavior of international trade over this period is evidence of a widespread disruption. Cross-sectional patterns of declines are consistent with vertical specialization and compositional effects as (at least partial) explanations for the collapse. By contrast, we do not detect any impact of trade credit on the reduction in international trade.

An important next step in this research agenda is to develop a theoretical framework that can be quantitatively successful at replicating this collapse in trade. Doing so will enable us to use this episode as a laboratory to distinguish between the different models of international transmission. Our hope is that the empirical results in this paper can offer some guidance as to which channels are likely to be most promising.

## References

- Amiti, Mary and David E. Weinstein, "Exports and Financial Shocks," September 2009. mimeo, Federal Reserve Bank of New York and Columbia University.
- Anderson, James and Eric van Wincoop, "Trade Costs," *Journal of Economic Literature*, 2004, 42 (3), 691–751.
- Auboin, Marc, "Restoring Trade Finance: What the G20 Can Do," in Richard Baldwin and Simon Evenett, eds., *The Collapse of Global Trade, Murky Protectionism, and the Crisis: Recommendations for the G20*, London: CEPR, 2009, chapter 15, pp. 75–80.
- Backus, David K., Patrick J. Kehoe, and Finn E. Kydland, "International Business Cycles: Theory and Evidence," in Thomas Cooley, ed., *Frontiers of business cycle research*, Princeton: Princeton University Press, 1995, pp. 331–356.
- Baldwin, Richard and Simon Evenett, "Introduction and Recommendations for the G20," in Richard Baldwin and Simon Evenett, eds., *The Collapse of Global Trade, Murky Protectionism, and the Crisis: Recommendations for the G20*, London: CEPR, 2009, chapter 1, pp. 1–9.
- Blanchard, Olivier and Michael Kremer, "Disorganization," *Quarterly Journal of Economics*, 1997, 112, 1091–1126.
- Boileau, Martin, "Trade in capital goods and the volatility of net exports and the terms of trade," *Journal of International Economics*, August 1999, 48 (2), 347–365.
- Broda, Christian and David Weinstein, "Globalization and the Gains from Variety," *Quarterly Journal of Economics*, May 2006, 121 (2), 541–85.
- Burstein, Ariel, Christopher Kurz, and Linda L. Tesar, "Trade, Production Sharing, and the International Transmission of Business Cycles," *Journal of Monetary Economics*, 2008, 55, 775–795.
- Chari, V.V., Patrick J. Kehoe, and Ellen R. McGrattan, "Business Cycle Accounting," *Econometrica*, May 2007, 75 (3), 781–836.
- Chinn, Menzie, "What Does the Collapse of US Imports and Exports Signify?," June 23 2009.
- Cole, Harold and Lee Ohanian, "The U.S. and U.K. Great Depressions through the Lens of Neoclassical Growth Theory," *American Economic Review, P&P*, May 2002, 92 (2), 28–32.
- Cowan, Kevin and Alejandro Neut, "Intermediate Goods, Institutions, and Output Per Worker," 2007. Central Bank of Chile Working Paper No. 420.
- di Giovanni, Julian and Andrei A. Levchenko, "Putting the Parts Together: Trade, Vertical Linkages, and Business Cycle Comovement," July 2009. Forthcoming, *American Economic Journal: Macroeconomics*.
- Economist, "Shipping in the Downturn: Sea of Troubles," June 30 2009.
- Engel, Charles and Jian Wang, "International Trade in Durable Goods: Understanding Volatility, Cyclicalities, and Elasticities," July 2009. mimeo, University of Wisconsin and Federal Reserve Bank of Dallas.
- Erceg, Christopher J., Luca Guerrieri, and Christopher Gust, "Trade adjustment and the composition of trade," *Journal of Economic Dynamics and Control*, August 2008, 32 (8), 2622–2650.
- Freund, Caroline, "The Trade Response to the Global Downturn: Historical Evidence," August 2009. World Bank Policy Research Working Paper 5015.
- Hummels, David, Jun Ishii, and Kei-Mu Yi, "The Nature and Growth of Vertical Specialization in World Trade," *Journal of International Economics*, June 2001, 54, 75–96.

- Iacovone, Leonardo and Veronika Zavacka, "Banking Crises and Exports: Lessons from the Past," May 2009. World Bank Policy Research Working Paper 5016.
- IMF, "Survey of Private Sector Trade Credit Developments," February 2009. memorandum.
- Kremer, Michael, "The O-Ring Theory of Economic Development," *Quarterly Journal of Economics*, August 1993, *108* (3), 551–75.
- Levchenko, Andrei A., "Institutional Quality and International Trade," *Review of Economic Studies*, 2007, *74* (3), 791–819.
- Love, Inessa, Lorenzo A. Preve, and Virginia Sarria-Allende, "Trade Credit and Bank Credit: Evidence from Recent Financial Crises," *Journal of Financial Economics*, 2007, *83*, 453–469.
- Raddatz, Claudio, "Credit Chains and Sectoral Comovement: Does the Use of Trade Credit Amplify Sectoral Shocks?," 2009. Forthcoming, *Review of Economics and Statistics*.
- WTO, "World Trade Report," July 2009.
- Yi, Kei-Mu, "Can Vertical Specialization Explain the Growth of World Trade?," *Journal of Political Economy*, February 2003, *111* (1), 52–102.

**Table 1.** Changes in Exports/GDP and Imports/GDP during Recessions

	2008	
	Recession	From Peak
Exports/GDP	-14.6%	-19.6%
Imports/GDP	-25.0%	-29.5%

	2001	
	Recession	From Peak
Exports/GDP	-14.2%	-17.1%
Imports/GDP	-13.5%	-16.0%

	Average 1950s-1990s
	Recession
Exports/GDP	-0.9%
Imports/GDP	-0.3%

Notes: This table reports the percent reductions in Exports/GDP and Imports/GDP during the 2008 and 2001 recessions and the average for all the downturns from 1950 to 2000. Column “Recession” reports the change in the trade variables during the official NBER recession (2007-2009 recession to date). Column “From Peak” reports the change from the peak of the trade ratios to the trough (for 2001), and to date (2008-09). Source: National Income and Product Accounts.



**Table 2.** Disaggregated Trade Flows, Nominal

	Exports		Imports			
	Share of Total	Absolute Change	Percent Change	Share of Total	Absolute Change	Percent Change
Total	1.00	-348.5	-26%	1.00	-766.2	-34%
<i>Panel A: By Sector</i>						
Foods, feeds, and beverages	0.09	-21.5	-19%	0.04	-8.2	-9%
Industrial supplies and materials	0.30	-135.0	-34%	0.15	-155.2	-47%
Durable goods	0.10	-50.3	-36%	0.08	-84.5	-50%
Nondurable goods	0.20	-84.6	-33%	0.07	-70.7	-44%
Petroleum and products				0.22	-270.3	-54%
Capital goods, except automotive	0.35	-94.6	-20%	0.21	-123.8	-26%
Civilian aircraft, engines, and parts	0.06	-3.7	-5%	0.02	-6.6	-17%
Computers, peripherals, and parts	0.04	-11.0	-24%	0.05	-23.7	-22%
Other	0.26	-79.9	-23%	0.15	-93.5	-29%
Automotive vehicles, engines, and parts	0.09	-58.1	-47%	0.11	-121.6	-49%
Consumer goods, except automotive	0.12	-19.5	-12%	0.22	-75.2	-15%
Durable goods	0.07	-23.0	-24%	0.12	-50.1	-18%
Nondurable goods	0.05	3.6	5%	0.10	-25.1	-11%
Other	0.04	-19.9	-35%	0.04	-11.8	-12%
<i>Panel B: By Destination</i>						
Canada	0.19	-80.6	-33%	0.17	-157.7	-43%
Asia	0.25	-80.2	-26%	0.34	-170.2	-24%
China	0.06	-10.5	-15%	0.15	-51.4	-16%
India	0.01	-2.3	-13%	0.01	-5.1	-21%
Japan	0.05	-20.3	-31%	0.07	-61.2	-42%
Taiwan	0.02	-10.9	-42%	0.02	-10.0	-28%
EU25	0.22	-68.0	-25%	0.18	-120.1	-31%
Germany	0.04	-16.2	-30%	0.05	-40.5	-39%
United Kingdom	0.04	-13.8	-25%	0.03	-17.1	-28%
Eastern Europe	0.01	-4.8	-49%	0.01	-3.8	-31%
Latin America	0.21	-76.8	-29%	0.18	-132.6	-33%
Brazil	0.02	-7.8	-28%	0.01	-13.9	-43%
Mexico	0.11	-37.6	-28%	0.11	-67.3	-29%
OPEC	0.04	-9.9	-18%	0.10	-146.5	-60%
Australia	0.02	-5.5	-26%	0.00	-4.0	-35%

Notes: This table reports the percentage decrease in nominal U.S. exports and imports over the period 2008q2 to 2009q2, disaggregated by sector (Panel A) and by destination (Panel B). Source: National Income and Product Accounts and U.S. International Trade Commission.

**Table 3.** Nominal Trade Flows, Real Trade Flows, and Prices

	<b>Exports</b>		<b>Imports</b>	
	Nominal	Real	Nominal	Real
Total	-26.3%	-19.0%	-34.4%	-21.4%
Foods, feeds, and beverages	-18.5%	-6.8%	-9.1%	-4.7%
Industrial supplies and materials	-34.0%	-13.9%	-47.1%	-30.3%
Durable goods	-36.4%	-20.3%	-50.4%	-35.1%
Nondurable goods	-32.6%	-10.3%	-43.7%	-25.5%
Petroleum and products			-54.3%	-7.2%
Capital goods, except automotive	-20.2%	-19.2%	-26.4%	-25.3%
Civilian aircraft, engines, and parts	-4.8%	-9.4%	-17.3%	-21.6%
Computers, peripherals, and parts	-23.7%	-16.8%	-21.9%	-16.3%
Other	-23.2%	-22.0%	-28.9%	-28.6%
Automotive vehicles, engines, and parts	-46.6%	-46.8%	-49.0%	-49.2%
Consumer goods, except automotive	-11.9%	-11.4%	-15.1%	-14.5%
Durable goods	-24.5%	-25.0%	-18.4%	-17.0%
Nondurable goods	5.2%	7.5%	-11.2%	-11.4%
Other	-35.2%	-29.2%	-12.4%	-11.4%
				-16.5%
				-4.8%
				-24.1%
				-23.4%
				-24.5%
				-50.7%
				-1.4%
				5.3%
				-6.7%
				-0.4%
				0.3%
				-0.8%
				-1.6%
				0.2%
				-1.2%

Notes: This table reports the percentage decrease in nominal U.S. exports and imports over the period 2008q2 to 2009q2, the percentage change in real U.S. exports and imports, and the percentage change in the price of exports and imports, by sector.

**Table 4.** Trade Wedges

$\varepsilon$	Overall	Durable	Consumption	Investment
1.5	-0.536	-0.5706	-0.062	-0.102
6	-1.327	-0.710	0.075	-0.203

Notes: This table reports the wedges calculated for 2009q2 with respect to 2008q2 (year-on-year). Source: National Income and Product Accounts and authors' calculations.

**Table 5.** Trade Changes and Downstream Production Linkages

	(1)	(2)	(3)	(4)	(5)	(6)	(7)	(8)
	Panel A: Percentage Reduction in Imports				Panel B: Percentage Reduction in Exports			
Average Downstream Use	-27.463*** (5.686)				-9.835** (4.916)			
Number of Downstream Industries		-0.333*** (0.103)				-0.076 (0.101)		
Downstream Herfindahl			0.137*** (0.050)				-0.026 (0.056)	
Production Sharing				-0.117 (0.080)				0.111 (0.104)
Share in Total	-2.145* (1.145)	-2.724*** (0.993)	-3.848*** (0.994)	-3.074*** (1.084)	-9.598*** (3.099)	-10.288*** (2.945)	-10.547*** (2.792)	-11.671*** (2.903)
Elasticity of Substitution	-0.001 (0.002)	-0.001 (0.002)	-0.001 (0.002)	0.000 (0.002)	-0.002 (0.001)	-0.002 (0.001)	-0.001 (0.001)	-0.001 (0.001)
Labor Intensity	-0.120** (0.061)	-0.108* (0.062)	-0.121* (0.063)	-0.106* (0.061)	-0.116** (0.056)	-0.115** (0.057)	-0.123** (0.058)	-0.136** (0.054)
Constant	-0.114** (0.047)	-0.120** (0.049)	-0.174*** (0.050)	-0.141*** (0.048)	-0.079** (0.040)	-0.083** (0.040)	-0.080* (0.046)	-0.096** (0.044)
Observations	436	436	436	442	435	435	435	441
R-squared	0.06	0.04	0.03	0.02	0.07	0.06	0.06	0.07

Notes: Robust standard errors in parentheses; \* significant at 10%; \*\* significant at 5%; \*\*\* significant at 1%. The dependent variable is the percentage reduction in U.S. Imports (Panel A) and the percentage reduction in exports (Panel B) in a 6-digit NAICS category from 2008m6 to 2009m6 (year-to-year). *Average Downstream Use* is the average usage output in a sector as an intermediate input in other sectors; *Number of Downstream Industries* is the number of industries that use a sector as an intermediate; *Downstream Herfindahl* is the Herfindahl index of the usage of a sector as an intermediate in other sectors. These three indicators are computed based on the U.S. 2002 Benchmark Input-Output Table. *Production Sharing* is the share of intra-firm imports in total U.S. imports (Panel A), or the share of intra-firm exports in total U.S. exports (Panel B), computed from the BEA multinationals data, and averaged over the period 2002-2006. *Share in Total* is the share of a sector in total U.S. imports (Panel A), or exports (Panel B). *Elasticity of Substitution* between varieties in a sector is sourced from Broda and Weinstein (2006). *Labor Intensity* is the compensation of employees as a share of value added, from the U.S. 2002 Benchmark Input-Output Table.

**Table 6.** Trade Changes and Upstream Production Linkages

	(1)	(2)	(3)	(4)	(5)	(6)
	<i>Panel A: Percentage Reduction in Imports</i>			<i>Panel B: Percentage Reduction in Exports</i>		
Intermediate Use Intensity	-0.225*			-0.071		
	(0.133)			(0.116)		
Number of Intermediates Used		-0.739*			-1.198**	
		(0.425)			(0.470)	
Herfindahl of Intermediate Use			-0.102			0.020
			(0.171)			(0.174)
Share in Total	-2.988***	-2.944***	-3.265***	-10.576***	-8.920***	-10.824***
	(1.080)	(1.036)	(1.079)	(2.852)	(3.023)	(2.857)
Elasticity of Substitution	-0.001	0.000	0.000	-0.001	-0.002	-0.001
	(0.002)	(0.002)	(0.002)	(0.001)	(0.001)	(0.001)
Labor Intensity	-0.075	-0.093	-0.125**	-0.111*	-0.083	-0.125**
	(0.069)	(0.062)	(0.061)	(0.063)	(0.059)	(0.056)
Constant	-0.035	-0.083	-0.136***	-0.048	0.023	-0.086*
	(0.077)	(0.064)	(0.050)	(0.066)	(0.056)	(0.044)
Observations	442	442	442	441	441	441
R-squared	0.03	0.02	0.02	0.06	0.08	0.06

Notes: Robust standard errors in parentheses; \* significant at 10%; \*\* significant at 5%; \*\*\* significant at 1%. The dependent variable is the percentage reduction in U.S. Imports (Panel A) and the percentage reduction in exports (Panel B) in a 6-digit NAICS category from 2008m6 to 2009m6 (year-to-year). *Intermediate Use Intensity* is spending on intermediate inputs per dollar of final sales; *Number of Intermediates Used* is the number intermediates a sector uses in production; *Herfindahl of Intermediate Use* is the Herfindahl index of the intermediate good usage in a sector. These three indicators are computed based on the U.S. 2002 Benchmark Input-Output Table. *Share in Total* is the share of a sector in total U.S. imports (Panel A), or exports (Panel B). *Elasticity of Substitution* between varieties in a sector is sourced from Broda and Weinstein (2006). *Labor Intensity* is the compensation of employees as a share of value added, from the U.S. 2002 Benchmark Input-Output Table.

**Table 7.** Trade Changes and Trade Credit Intensity

	(1)	(2)	(3)	(4)
	<i>Panel A: Percentage Reduction in Imports</i>		<i>Panel B: Percentage Reduction in Exports</i>	
Accounts Payable/Cost of Goods Sold	-0.003 (0.112)		-0.119 (0.084)	
Accounts Receivable/Sales		-0.013 (0.110)		0.041 (0.098)
Share in Total	-3.830*** (1.291)	-3.827*** (1.031)	-10.313*** (2.918)	-10.803*** (2.824)
Elasticity of Substitution	0.000 (0.002)	0.000 (0.002)	-0.001 (0.001)	-0.001 (0.001)
Labor Intensity	-0.164** (0.064)	-0.164** (0.066)	-0.149*** (0.053)	-0.133*** (0.051)
Constant	-0.114 (0.074)	-0.109 (0.068)	-0.016 (0.062)	-0.103 (0.065)
Observations	418	418	418	418
R-squared	0.03	0.03	0.07	0.07

Notes: Robust standard errors in parentheses; \* significant at 10%; \*\* significant at 5%; \*\*\* significant at 1%. The dependent variable is the percentage reduction in U.S. Imports (Panel A) and the percentage reduction in exports (Panel B) in a 6-digit NAICS category from 2008m6 to 2009m6 (year-to-year). *Accounts Payable/Cost of Goods Sold* and *accounts receivable/sales* are measures of trade credit used and extended, respectively, computed using firm-level information from the Compustat database. *Share in Total* is the share of a sector in total U.S. imports (Panel A), or exports (Panel B). *Elasticity of Substitution* between varieties in a sector is sourced from Broda and Weinstein (2006). *Labor Intensity* is the compensation of employees as a share of value added, from the U.S. 2002 Benchmark Input-Output Table.

**Table 8.** Trade Changes and Compositional Effects

	(1)	(2)	(3)	(4)
	<i>Panel A: Percentage Reduction in Imports</i>		<i>Panel B: Percentage Reduction in Exports</i>	
Percentage Change in Industrial Production	0.554*** (0.092)		0.469*** (0.095)	
Durable dummy		-0.072*** (0.025)		-0.055** (0.024)
Share in Total	-3.120** (1.529)	-2.945*** (1.133)	-10.655*** (3.185)	-9.635*** (2.834)
Elasticity of Substitution	0.000 (0.002)	-0.001 (0.002)	-0.001 (0.001)	-0.002 (0.001)
Labor Intensity	-0.098 (0.062)	-0.076 (0.060)	-0.056 (0.058)	-0.092* (0.056)
Constant	-0.068 (0.044)	-0.134*** (0.048)	-0.049 (0.040)	-0.074* (0.041)
Observations	394	442	395	441
R-squared	0.1	0.03	0.12	0.07

Notes: Robust standard errors in parentheses; \* significant at 10%; \*\* significant at 5%; \*\*\* significant at 1%. The dependent variable is the percentage reduction in U.S. Imports (Panel A) and the percentage reduction in exports (Panel B) in a 6-digit NAICS category from 2008m6 to 2009m6 (year-to-year). *Percentage Change in Industrial Production* is the decline in the index of industrial production in a sector; *Share in Total* is the share of a sector in total U.S. imports (Panel A), or exports (Panel B). *Elasticity of Substitution* between varieties in a sector is sourced from Broda and Weinstein (2006). *Labor Intensity* is the compensation of employees as a share of value added, from the U.S. 2002 Benchmark Input-Output Table.

**Table 9.** Compositional Effects: Change in Trade Flows as Implied by Industrial Production.

	Nominal Change	Real Change	Implied by IP change ( $\tilde{\gamma}^{trade}$ )	Share of Trade Corresponding to IP
Exports	-34.5%	-24.7%	-17.6%	0.88
Imports	-32.9%	-17.6%	-16.4%	0.94
IP		-13.4%	-13.4%	1.00

Notes: Changes in nominal and real exports over 2008m6 to 2009m6 for NAICS sectors where industrial production (IP) data are available. Weights calculated from share of nominal trade and used to generate the third column. The fourth column indicates the fraction of overall nominal trade that can be matched to IP data.

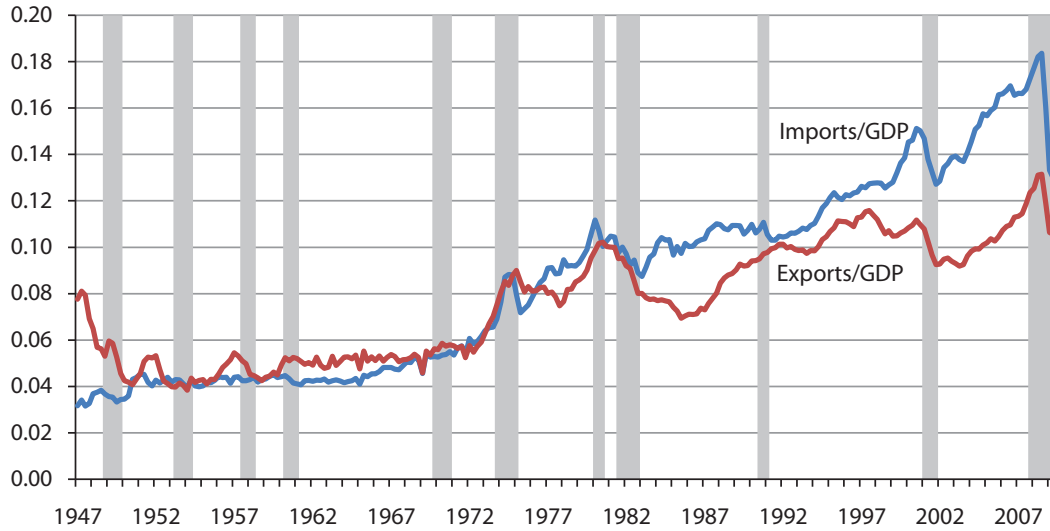


**Table 10.** Trade Changes and All Explanatory Variables Together

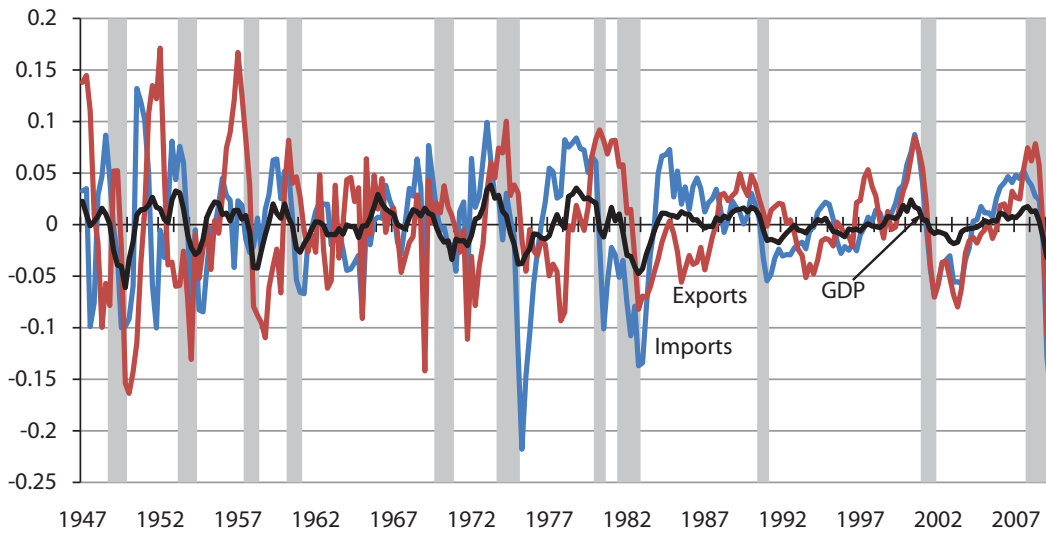
	(1)	(2)	(3)	(4)
	Panel A: Percentage Reduction in Imports		Panel B: Percentage Reduction in Exports	
Average Downstream Use	-23.842*** (5.787)	-21.367*** (5.465)	-8.017 (5.040)	-0.112 (5.729)
Intermediate Use Intensity	-0.200 (0.144)	-0.215 (0.222)	-0.105 (0.129)	-0.146 (0.186)
Accounts Payable/Cost of Goods Sold	0.061 (0.133)	0.387*** (0.149)	-(0.082) (0.097)	0.247 (0.166)
Durable Dummy	-0.089*** (0.031)	-0.133*** (0.029)	-0.052* (0.029)	-0.138*** (0.034)
Share in Total	-2.109 (1.611)	0.325 (1.698)	-2.109 (1.611)	-10.470*** (2.995)
Elasticity of Substitution	-0.001 (0.002)	-0.001 (0.002)	-0.001 (0.002)	-0.001 (0.001)
Labor Intensity	-0.065 (0.074)	-0.083 (0.249)	-0.093 (0.067)	-0.293 (0.317)
Capital Intensity		0.179 (0.304)		0.204 (0.322)
Skill Intensity		-0.062 (0.617)		0.986 (1.176)
Inventories		0.009* (0.005)		0.000 (0.002)
Constant	0.004 (0.100)	-0.23 (0.306)	0.037 (0.085)	-0.111 (0.308)
Observations	414	350	414	351
R-squared	0.09	0.18	0.09	0.17

Notes: Robust standard errors in parentheses; \* significant at 10%; \*\* significant at 5%; \*\*\* significant at 1%. The dependent variable is the percentage reduction in U.S. Imports (Panel A) and the percentage reduction in exports (Panel B) in a 6-digit NAICS category from 2008m6 to 2009m6 (year-to-year). *Average Downstream Use* is the average usage output in a sector as an intermediate input in other sectors; *Intermediate Use Intensity* is spending on intermediate inputs per dollar of final sales; *Accounts Payable/Cost of Goods Sold* is a measure of trade credit; *Share in Total* is the share of a sector in total U.S. imports (Panel A), or exports (Panel B). *Elasticity of Substitution* between varieties in a sector is sourced from Broda and Weinstein (2006). *Labor Intensity* is the compensation of employees as a share of value added, from the U.S. 2002 Benchmark Input-Output Table. *Capital Intensity* = 1 - (total compensation) / (value added); *Skill Intensity* = [(nonproduction workers) / (total employment)] \* (1 - capital intensity). These two indicators are computed using the NBER Productivity Database. *Inventories* is the beginning-of-period level of inventories relative to imports (resp., exports).

**Figure 1.** Historical Trends in Aggregate Trade, 1947-2009.



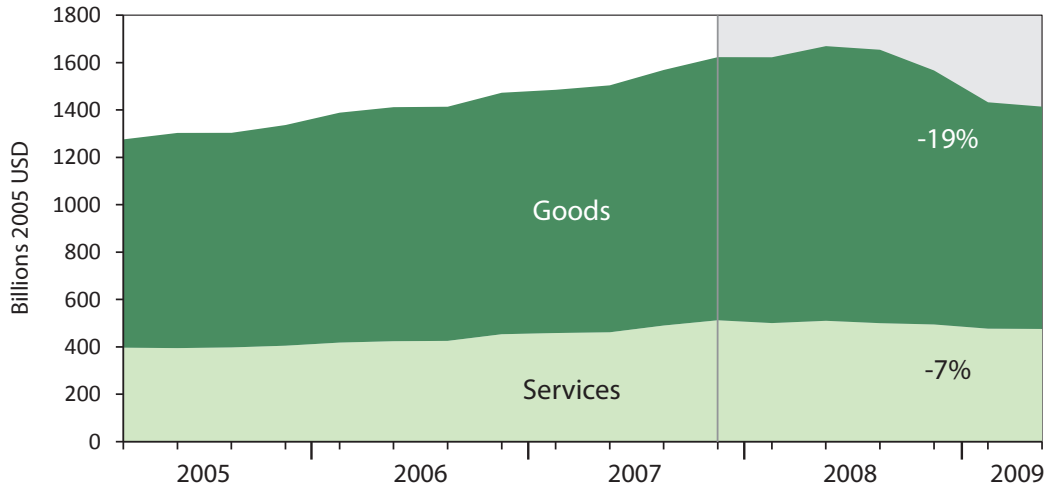
(a) Imports/GDP and Exports/GDP



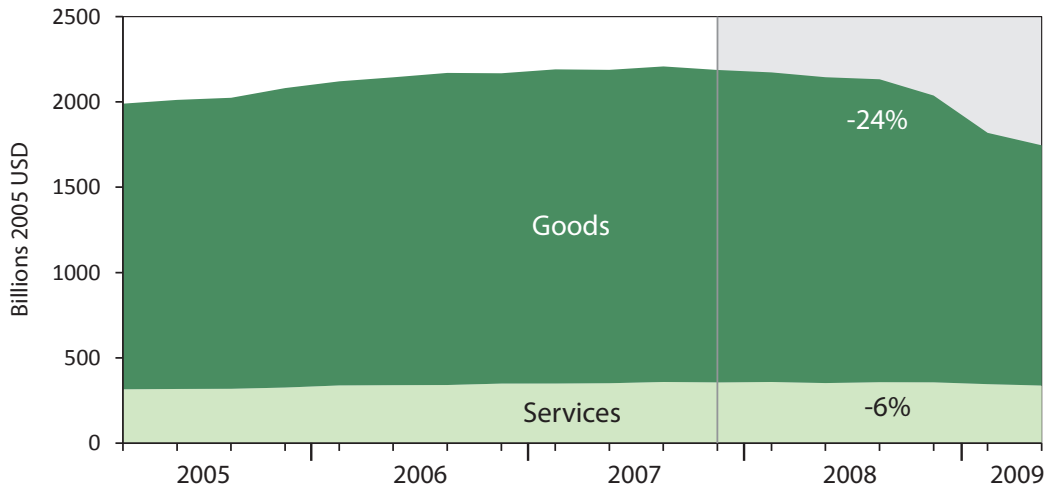
(b) Imports, Exports, and GDP in Deviations from Trend

Notes: The top panel plots the ratios of imports/GDP and exports/GDP for the U.S., along with the NBER recession bars. The bottom panel plots total imports, exports, and GDP in deviations from HP trend with parameter 1600. Source: National Income and Product Accounts.

**Figure 2.** Goods and Services Trade



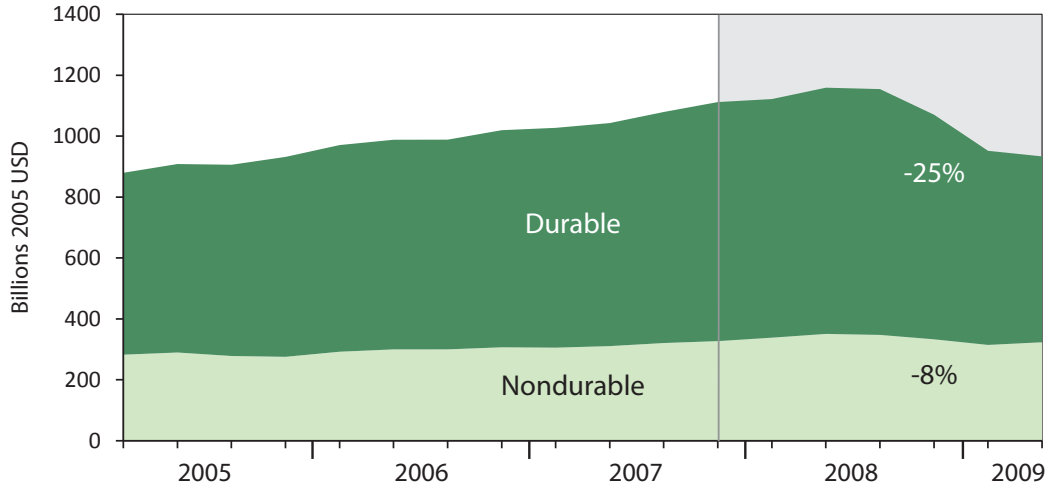
(a) Exports



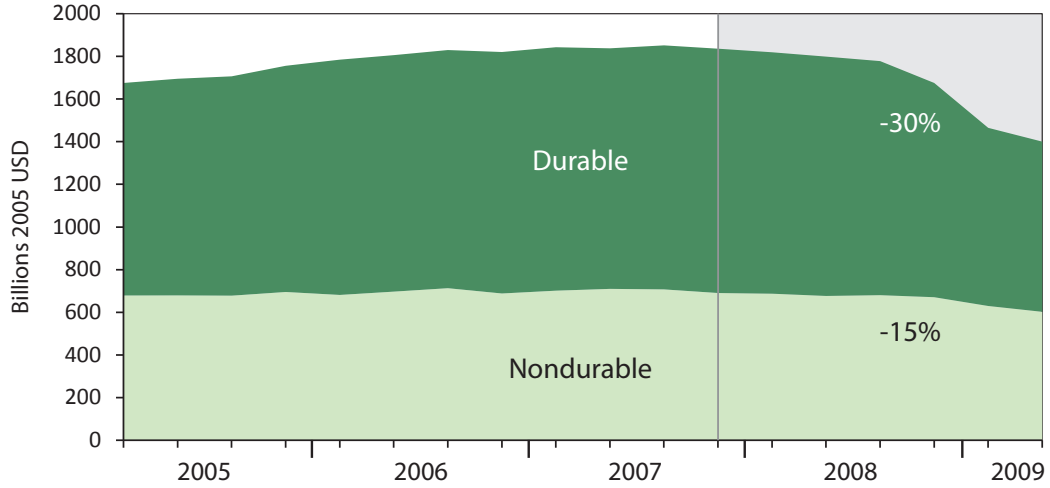
(b) Imports

Notes: This Figure reports the total real exports (top panel) and real imports (bottom panel), of both goods and services. Source: National Income and Product Accounts.

**Figure 3. Durables and Non-Durables Trade**



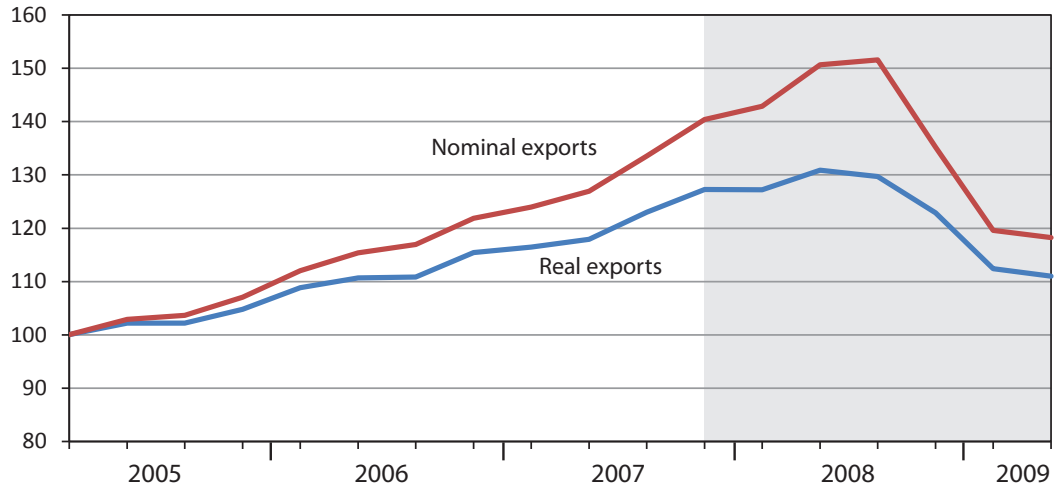
(a) Exports



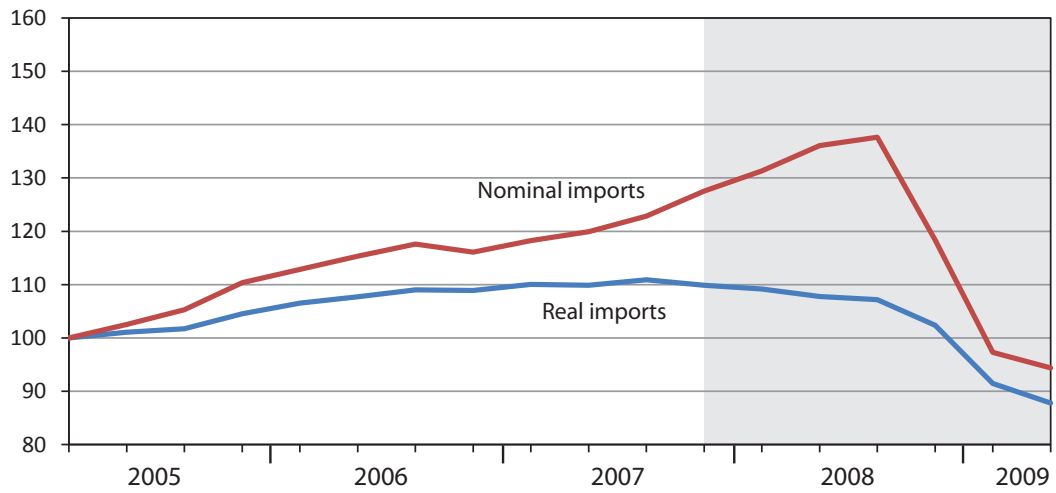
(b) Imports

Notes: This Figure reports the total real exports (top panel) and real imports (bottom panel), of both durable and non-durable goods. Source: National Income and Product Accounts.

**Figure 4.** Real and Nominal Trade



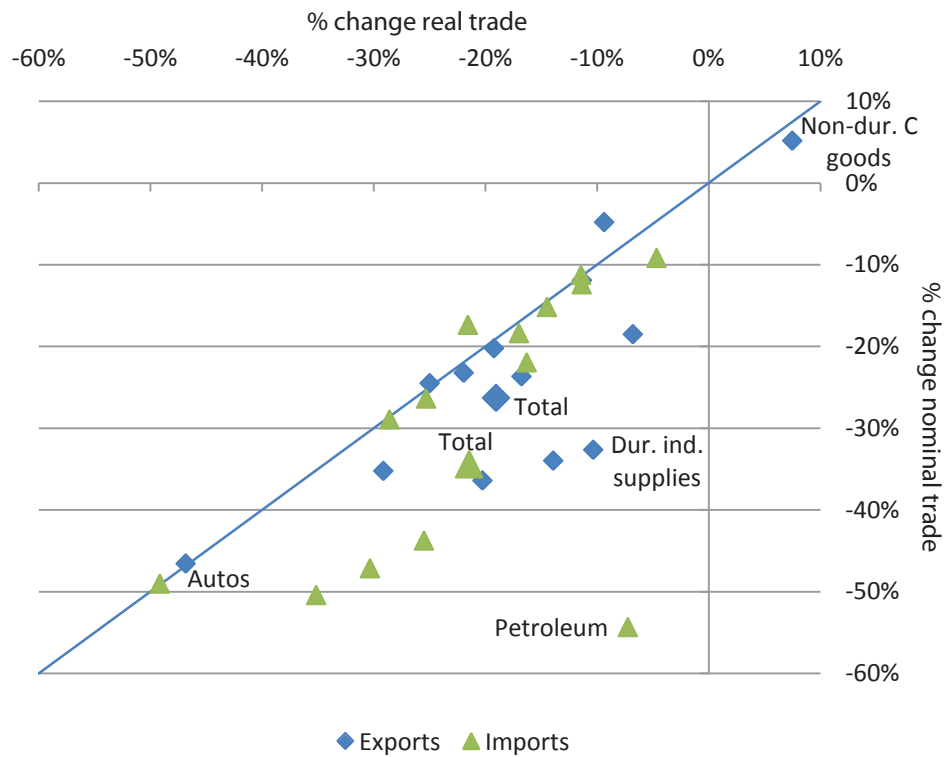
(a) Exports



(b) Imports

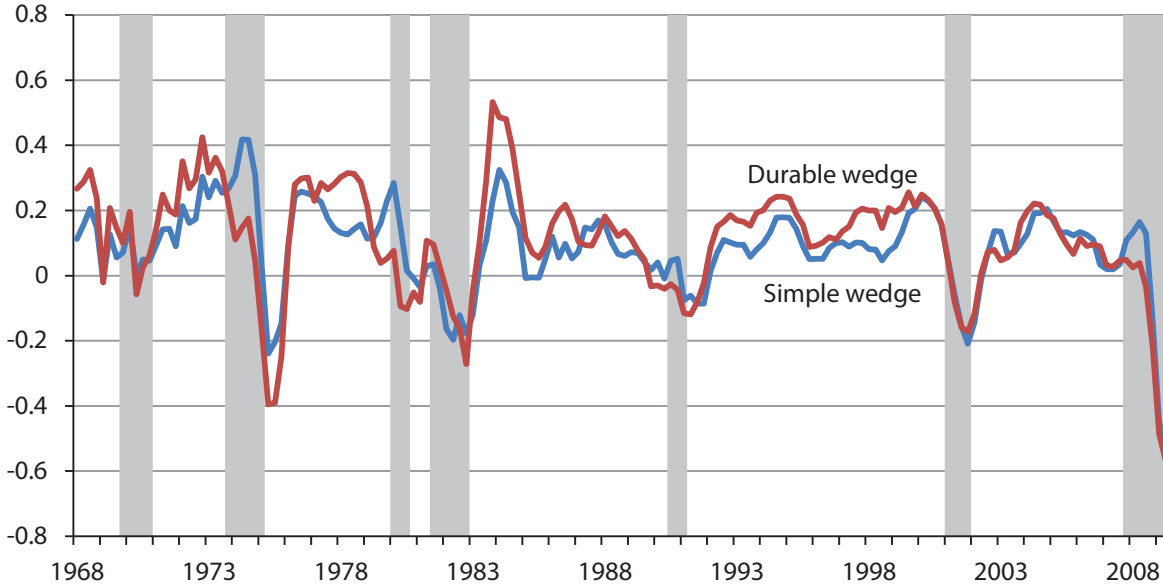
Notes: This Figure reports the evolution of nominal and real exports (top panel) and imports (bottom panel). Both the nominal and real series are normalized to 2005. Source: National Income and Product Accounts.

**Figure 5.** Real and Nominal Changes in Trade, by Sector



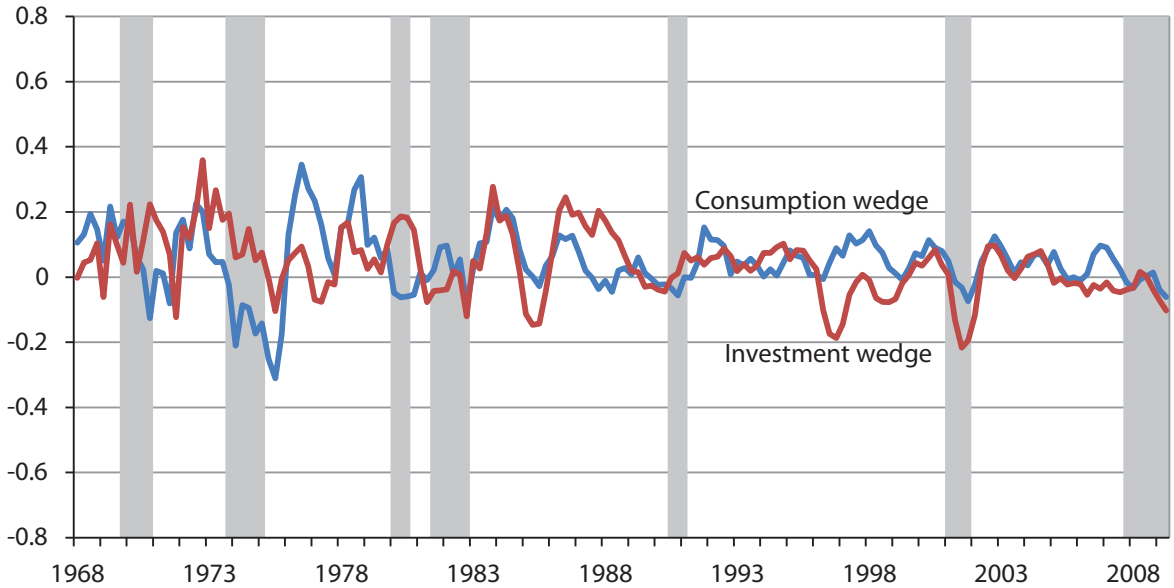
Notes: This figure plots the percentage changes in real imports and exports against the percentage changes in nominal imports and exports, by EndUse sector, along with a 45-degree line. Source: National Income and Product Accounts.

**Figure 6. Overall and Durable Wedges**



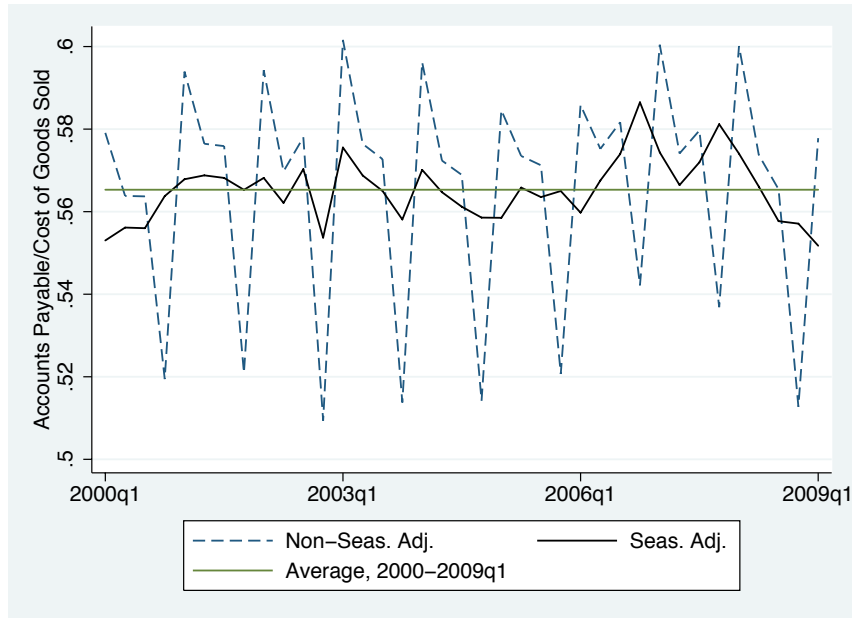
Notes: This figure plots the wedges for total imports and the durable imports. Source: National Income and Product Accounts and authors' calculations.

**Figure 7. Consumption and Investment Wedges**

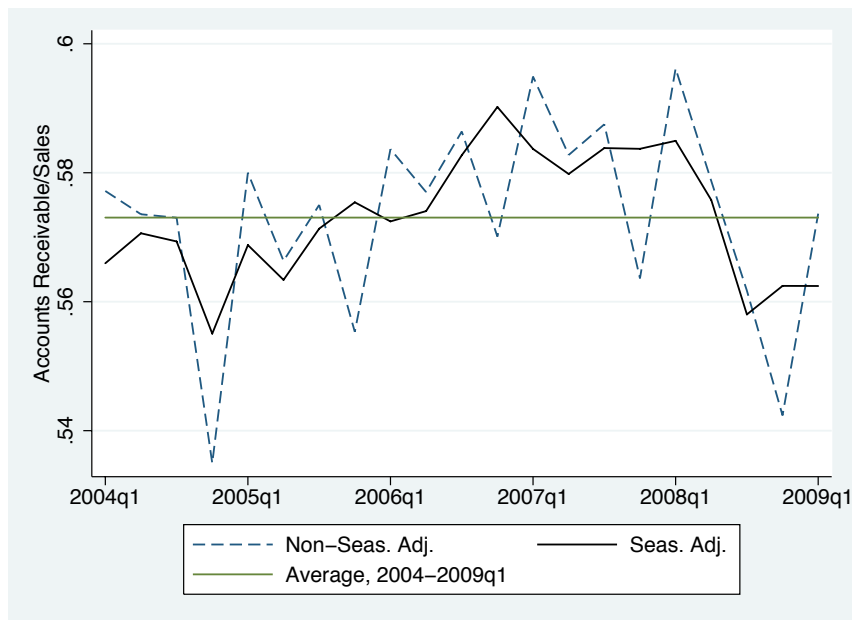


Notes: This figure plots the wedges for consumption imports and investment imports. Source: National Income and Product Accounts and authors' calculations.

**Figure 8. The Evolution of Trade Credit**



(a) Accounts Payable/Cost of Goods Sold



(b) Accounts Receivable/Sales

Notes: The top panel of this figure displays the median value of accounts payable/cost of goods sold across firms in each period. The bottom panel reports the median value of accounts receivable/sales across firms in each period. Source: Compustat.

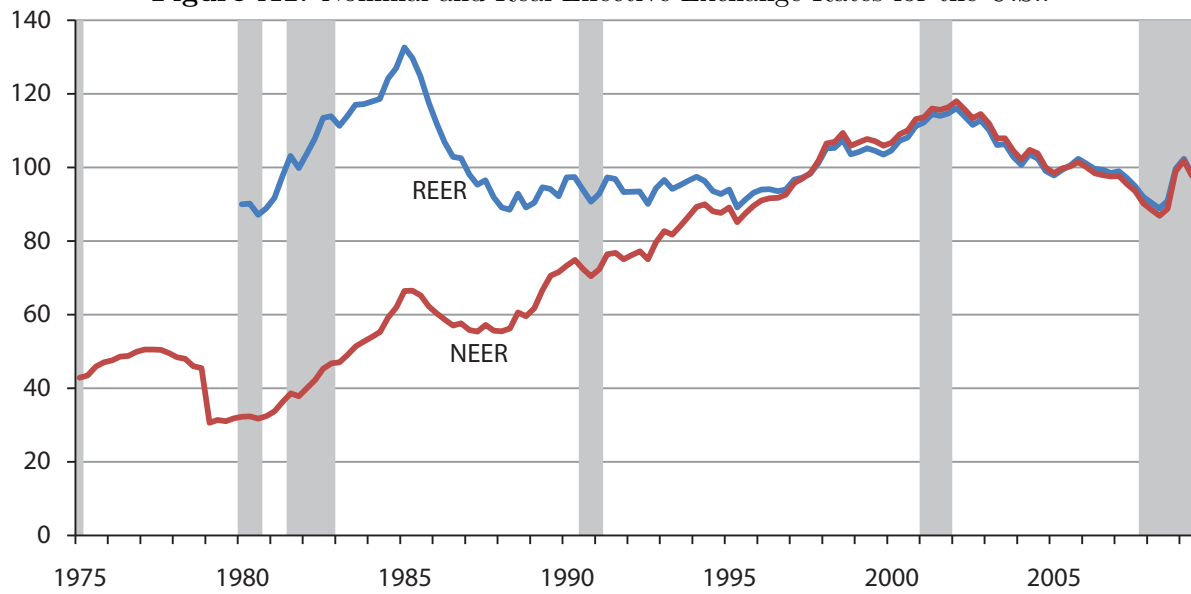


**Table A1.** Summary Statistics

	Mean	Std. Dev.	Min	Max
<b>Independent Variables</b>				
Percentage Change in Imports	-0.235	0.264	-1.000	0.995
Percentage Change in Exports	-0.199	0.238	-0.956	0.965
<b>Downstream Indicators</b>				
Average Downstream Use	0.001	0.002	0.000	0.013
Number of Downstream Industries	102	111	1	419
Downstream Herfindahl	0.220	0.223	0.009	1.000
Production Sharing (exports)	0.196	0.133	0.005	0.612
Production Sharing (imports)	0.150	0.139	0.000	0.577
<b>Upstream Indicators</b>				
Intermediate Use Intensity	0.631	0.122	0.254	0.949
Number of Intermediates Used	113	26	46	218
Herfindahl of Intermediate Use	0.094	0.066	0.028	0.532
<b>Trade Credit Indicators</b>				
Accounts Payable/Cost of Goods Sold	0.469	0.141	0.194	1.733
Accounts Receivable/Sales	0.532	0.131	0.156	0.817
<b>Compositional Indicators</b>				
Percentage Change in Industrial Production	-0.180	0.119	-0.836	0.069
Durable dummy	0.588	0.493	0	1
<b>Control Variables</b>				
Share in Total Imports	0.002	0.007	0.000	0.088
Share in Total Exports	0.002	0.005	0.000	0.045
Elasticity of Substitution	6.8	10.7	1.2	103
Labor Intensity	0.633	0.229	0.049	0.998

Notes: This table presents the summary statistics for the variables used in the estimation. Variable definitions and sources are described in detail in the text.

**Figure A1.** Nominal and Real Effective Exchange Rates for the U.S..



Notes: This figure displays the Nominal Effective Exchange Rate and the Real Effective Exchange Rate for the United States. Source: IMF.