



BANCO CENTRAL DO BRASIL

Working Paper Series **255**

**An Empirical Analysis of the External Finance Premium of
Public Non-Financial Corporations in Brazil**

Fernando N. de Oliveira and Alberto Ronchi Neto

November, 2011

ISSN 1518-3548
CGC 00.038.166/0001-05

Working Paper Series	Brasília	n. 255	Nov.	2011	p. 1-51
----------------------	----------	--------	------	------	---------

Working Paper Series

Edited by Research Department (Depep) – E-mail: workingpaper@bcb.gov.br

Editor: Benjamin Miranda Tabak – E-mail: benjamin.tabak@bcb.gov.br

Editorial Assistant: Jane Sofia Moita – E-mail: jane.sofia@bcb.gov.br

Head of Research Department: Adriana Soares Sales – E-mail: adriana.sales@bcb.gov.br

The Banco Central do Brasil Working Papers are all evaluated in double blind referee process.

Reproduction is permitted only if source is stated as follows: Working Paper n. 255.

Authorized by Carlos Hamilton Vasconcelos Araújo, Deputy Governor for Economic Policy.

General Control of Publications

Banco Central do Brasil

Secre/Comun/Cogiv

SBS – Quadra 3 – Bloco B – Edifício-Sede – 1º andar

Caixa Postal 8.670

70074-900 Brasília – DF – Brazil

Phones: +55 (61) 3414-3710 and 3414-3565

Fax: +55 (61) 3414-3626

E-mail: editor@bcb.gov.br

The views expressed in this work are those of the authors and do not necessarily reflect those of the Banco Central or its members.

Although these Working Papers often represent preliminary work, citation of source is required when used or reproduced.

As opiniões expressas neste trabalho são exclusivamente do(s) autor(es) e não refletem, necessariamente, a visão do Banco Central do Brasil.

Ainda que este artigo represente trabalho preliminar, é requerida a citação da fonte, mesmo quando reproduzido parcialmente.

Consumer Complaints and Public Enquiries Center

Banco Central do Brasil

Secre/Surel/Diate

SBS – Quadra 3 – Bloco B – Edifício-Sede – 2º subsolo

70074-900 Brasília – DF – Brazil

Fax: +55 (61) 3414-2553

Internet: <http://www.bcb.gov.br/?english>

An Empirical Analysis of the External Finance Premium of Public Non-Financial Corporations in Brazil

Fernando N. de Oliveira^{*}
Alberto Ronchi Neto^{**}

The Working Papers should not be reported as representing the views of the Banco Central do Brasil. The views expressed in the papers are those of the author(s) and do not necessarily reflect those of the Banco Central do Brasil.

Abstract

Our objective in this paper is to analyze empirically the relationship between the external finance premium of non-financial corporations in Brazil with their default probability and with their demand for inventories. As for the former relation, we find that corporations that have greater external finance premium have greater probability of default. As for the latter, we find that the external finance premium is positive and statistically significantly correlated. The results confirm previous results of the literature that indicate that the balance sheet channel of monetary policy is relevant in Brazil.

Keywords: Monetary Transmission Mechanism, Credit Channel, Balance Sheet Channel.

JEL Classification: G30, G32

* Banco Central do Brasil, Research Department.

** Caixa de Previdência dos Funcionários do Banco do Brasil.

1. Introduction

In Brazil, the credit channel is a recent phenomenon. The high inflation before the Real Plan prevented credit market's development. Even after the economy reached price stability, the real interest rate high volatility and the internal and external shocks that were commonplace in Brazil dampened this process. Over the last years, however, the gradual removal of some factors that used to make the country susceptible to these shocks allowed the interest rate reductions and the credit supply expansion. In this context, the credit channel grows in importance.

The credit channel theory enhances how credit market imperfections amplify monetary policy effects. In this framework, the external finance premium is the key variable, defined as the difference between the cost of raising funds externally and the opportunity cost of internal funds. However, as Graeve (2008) depicts, a major problem for empirical studies in this area is that the external finance premium is unobservable.

In this way, great part of empirical work that tries to test this monetary transmission mechanism set proxies to external finance premium and verifies differences in business cycle responses and corporate investments between groups of firms separated according to constraints faced in credit market access. Gertler and Gilchrist (1994) and Oliveira (2009), for example, used financial indicators to reflect the external finance premium dynamic and the firm size to measure the credit market access, focusing on firms from United States and Brazil respectively. Both papers show that small firms have a more sensitive business cycle to changes in external finance premium. This result is considered an evidence of credit channel working in these economies.

In this paper, we use financial indicators usually related with credit market imperfections to show the existence of common factors between the external finance premium and the firm's default probability and study the sensitivity of business cycle, represented by inventories, to the external finance premium.

Our database comes from Economática and Comissão Valores Mobiliários (CVM). Our database consist of a unbalanced panel data formed with information of non-financial publicly held companies listed at Bovespa from the third quarter of 1994 to third quarter of 2009. Insolvency and global long-term debt rating were the criteria that we chose to measure the firm's credit market access. The concept of insolvency adopted was the beginning of a bankruptcy or recovery legal procedure. This information was obtained from Bovespa's Daily Information Bulletin (Boletim Diário de Informações - BDI) and CVM's publicly held

companies register. The rating's information was obtained in Fitch Ratings, Moodys and Standard & Poors release list. The sample consists of 332 firms, of which 12 are insolvent firms and 37 are firms with ratings for its long-term debt.

Considering that companies that became insolvent through time must have faced more constraints in credit market access, the default probability must be directly proportional to external finance premium. Using Logit and Complementary Log Log regressions to relate a dummy variable created for the insolvent companies and indicators related with the external finance premium, we have obtained evidence supporting this hypothesis.

We selected our credit constrained sample based on our credit restriction criteria and used this sample to relate firm's inventories and the external finance premium, by estimating a dynamic panel data model System GMM. Our results showed that: (1) the credit channel in Brazil gained strength after the introduction of primary fiscal surplus, inflation targets and free-floating exchange rate in 1999; (2) insolvent and no rating firms have the inventories more elastic to the external finance premium; (3) firms with financing operations directly obtained at the BNDES have inventories less sensitive to the external finance premium; and (4) economic sectors often highlighted as formed by firms with small scale, history of financial problems and high level of external and unfair competition showed more elasticity of inventories to the external finance premium.

Our paper contributes to the literature in two manners. In the first one, we did not find any similar and recent empirical research in the literature that analysis the relationship between the external finance premium and default probability. In the second one, our identification of credit market restrictions using the insolvency criteria is also original.¹

The rest of the paper is structured as follows. Section 2 reviews existing literature focusing on the description of credit channel theory and characteristics often designed to measure credit market access. Section 3 provides data description. Section 4 presents the empirical work. Section 5 does robustness analysis. Section 6 concludes.

2. Theoretical Background

Following Bernanke and Gertler (1995), there are two mechanisms connecting monetary shocks and the external finance premium. The first one, the bank-lending channel, emphasizes how monetary policy affects bank's credit supply. The second one, the balance

¹ As for the debt ratings as a criterion to measure the credit market access, Gilchrist and Himmelberg (1995, 1998) used this criteria for the north-American economy. However, we didn't find any empirical papers using this criterion for Brazil.

sheet channel, explores the monetary policy impacts over borrower's balance sheet. These mechanisms are broadly called as the credit channel.

In bank lending channel, a monetary contraction causes a decrease in demand deposits, reducing the bank's loans supply. Even if this reduction doesn't imply a total restriction to credit costs associated with the establishment of relationships and capture of resources with new lenders would increase the agency costs in loan contracts and raise the external finance premium. Considering that bank deposits do not have a perfect substitute, the capital replacement by banks would generate additional costs that also could raise the external finance premium. In turn, the higher external finance premium would decrease the credit demand, the investment's level and the economic growth level.

In the balance sheet channel, a tighten monetary policy would affect adversely the firm's financial position at least in three ways: (1) reduces the asset prices, diminishing the value of collateral available as guarantee for new and actual loans; (2) raises the interest expenses, decreasing the company's cash flow; e (3) decreases the consumption level, affecting profits and impacting the company's cash flow again.

The firm's deteriorated balance sheet raises the counterparty risk for lenders and scrutinizes new credit contracts. Moreover, the reduction in firms net worth increases the moral hazard involved in companies' management once the owners share value is lower, encouraging riskier investments. This movement raises the external finance premium and restricts the credit supply, the investments level and the aggregate demand.

According to Mishkin (1995), between these mechanisms, the balance sheet channel has been highlighted by its background theory rationality. Among the elements that stand this mechanism out are the further rationale for asset price effects emphasized in monetarist thinking and the fact that unlike the traditional view in the monetary policy transmission is the short term nominal interest rate, not the long term real interest rate, which drives the monetary shocks effects to real economy.

Great part of empirical works found in literature tries to gauge at the existence of an active credit channel through the balance sheet channel background. The usual way tries to obtain proofs about the financial accelerator importance to corporative sector distinguishing the behavior of business cycle and investment decisions between different groups of firms separated according to financial constraints faced in credit market access.

Gertler and Gilchrist (1994) follow this strategy appraising the importance of financial factors over a non-financial group of firms in United States. This study used firm's size measured through the total assets as the criteria to indicate the firm's credit market access. They chose four firm's financial indicators to analyze: inventories, sales, short-term debt and

coverage ratio.² The sales level take into account nonfinancial factors related to changes on demand. The inventories levels are set to explain effects related to credit market frictions that forbids firms to smooth production when sales decline. The short-term debt considers the financing structure role on credit market access. The coverage ratio is a proxy to firm's overall financial positions. After some empirical exercises, Gertler and Gilchrist conclude that balance sheet effects can be more relevant form smaller firms.

Oliveira (2009) undertakes a similar work as Gertler e Gilchrist (1994) adopting the firm's size as a measure of credit market access. This study concentrates on Brazil's economy. The empirical analysis was conducted over a database of public and private firms firms between the third quarter of 1994 and the third quarter of 2007. One point to emphasize in this article is the addition of some factors in order to describe firm's characteristics related to another agency costs. Besides the usual variables linked to nonfinancial and financial issues (operational revenues, inventories, short term debt and coverage ratio), the ratio of market value to the book value (Market to Book) and the ratio of fixed assets to total assets are considered to capture firm's growth capacity and level of collateral respectively. Following Gertler and Gilchrist (1994), Oliveira (2009) indicate that smaller firms are more sensitive to balance sheet effects.

Gilchrist and Himmelberg (1995, 1998) investigate the influence of fundamental (expected return and present value) and financial (availability of internal and external funds) factors on firms investment decisions considering capital market imperfections. Among others characteristics, the authors adopted the existence of debt rating as a criterion to measure the credit market imperfections. According to the authors, considering that most companies that issues public debt obtains a bond rating, this strategy permits to split the sample into firms that have, or not, issued public debt in the past. If the company didn't issue debt it must have faced more constraints in credit market access. Their empirical analyses indicated that non-rating firms are more sensitive to financial factors.

3. Data

Our data comes from Economática and CVM. We had originally collected balance sheet information of 628 non-financial publicly held companies from third quarter of 1994 to third quarter of 2009.

² The ratio of cash flow to total interest payments.

For each company, we build the following ratios: Financial Expenses/EBIT³, Market Value/Book Value, Fixed Assets/Long-Term Liability, Short Term Debt/Total Assets, Net Operational Revenues/Total Assets, and Inventories/Total Assets.

The ratios Financial Expenses/EBIT and Short Term Debt/Total Assets aim to control for firm's financial position and debt structure respectively. The ratios Market Value/Book Value and Fixed Assets/Long-Term Liability are set to express agency costs. These four financial indicators were used as a proxy to the external finance premium. The ratios Net Operational Revenues/Total Assets and Inventories/Total Assets were used to obtain a robust business cycle measure over both financial and non financial factors.

We chose the insolvency and global long-term debt rating as the criteria to measure firm's credit market access. The concept of insolvency adopted was the beginning of a bankruptcy or recovery legal procedures. This information was obtained from Bovespa's Daily Information Bulletin (Boletim Diário de Informações - BDI) and CVM's publicly held companies register. We defined the default moment the quarter when the firm appeared as *concordatária*⁴ in BDI or bankrupted in CVM's register. We called these firms "insolvents". We created a dummy variable equal to one if the company was insolvent and zero otherwise. The assumption is that firms that became insolvent would have face greater agency costs through time.

The debt rated firms were identified at Fitch Ratings, Moodys and Standard & Poors release list. We created a dummy variable for this criteria assigning the value one if the firm has a rating for its long term debt released at least in two of the three credit rating agencies and zero otherwise. Considering that firms with rating have access to a greater number of funding sources, these companies must be less sensitive to credit market imperfections.

We exclude from our sample: (1) companies that didn't have in any quarter available information to calculate the indicators selected for the analysis; (2) companies from financial sectors (banks, insurance companies, etc.), that have a very different financing structure comparing to non financial companies; and (3) companies that belong to Telecommunication and Electric Energy sectors, that in Brazil are traditionally characterized by a strong resilience of business cycle at times of crises.

Table 1 shows a summary statistics to the total sample and the sample separated according to insolvency and rating criteria. Panel A of Table 1 shows the existence of outliers into the data. In order to avoid problems we also excluded from the sample 0.2

³ Earnings before interest and taxes.

⁴ This is the term in Brazilian Business Recovery Law for companies that have opened a recovery legal procedure due to insolvency problems.

percentile from all indicators. Panel B of Table 1 displays the data description after the outliers' exclusion.

After all exclusions, we obtained an unbalanced panel covering 332 firms. Of these, we identified 12 insolvent and 37 with rating. Table 2 indicates the amount of firms found in each criterion as well the sector it is part of. We adopted *Economática*'s sector classification.

Table 3 presents the indicators correlation matrix. With the exception of the correlation observed between the ratios Net Operational Revenues/Total Assets and Inventories/Total Assets, all the correlations were below 0.1.

Tables 4 and 5 reveal the test's results to appraise the difference between the indicators averages accordingly with the criteria adopted to measure the firm's credit market access. Comparing solvent and insolvent firms, considering a 10% significance level, the tests indicated that the averages of the ratios Financial Expenses/EBIT, Short Term Debt/Total Assets, Net Operational Revenues/Total Assets, and Inventories/Total Assets for insolvent firms are superior to the averages for the solvent ones. Contrary to this result, the averages of the ratios Market Value/Book Value and Fixed Assets/Long-Term Liability for solvent firms are superior to the averages obtained for the insolvent ones. All these results are as expected.

Considering the rating criterion, the tests indicated that the average of the ratios Fixed Assets/Long-Term Liability, Inventories/Total Assets, Short Term Debt/Total Assets, and Net Operational Revenues/Total Assets for firms without rating are superior to the averages obtained for the ones with rating. In the case of the ratios Financial Expenses/EBIT and Market Value/Book Value the averages for the firms with rating are superior to the average obtained for the ones without rating. Although the results found for the ratios Fixed Assets/Long-Term Liability and Financial Expenses/EBIT were unlike the expected, they can be minimized considering that the medians for firms with and without rating are very similar.⁵

Due to the small amount of insolvent companies in our sample we employed the Kaplan Meier estimator as a non-parametric test to confirm the parametric tests results.⁶ Figure 2 displays the result of Kaplan Meier estimator to the total sample. Figure 3 contains the result of Kaplan Meier estimator splitting the sample between solvent and insolvent firms.

The results of this test show that the probability for companies to go from solvent to insolvent state decreases as time goes by. This dynamic demonstrates the greater insolvency probability expected for younger companies, which in turn poses one of the primitive factors related to firm's credit market access commented by Gertler and Gilchrist (1994)⁷. As a

⁵ This can be observed in Table 1.

⁶ According to Torabi and Ding (1998), non parametric tests are indicated in small sample environments.

⁷ Gertler and Gilchrist (1994) enhance that the informational frictions that affects the external finance premium apply mainly to younger firms, firms with a high degree of idiosyncratic risk, and firms that are not well

second result, the Kaplan Meier estimator between insolvent firms is very different from the measure obtained for the solvent firms and total sample.

4. Empirical Analysis

4.1. The relationship between the external finance premium and the default probability

According to credit channel's theory there is an inversely proportional relationship between the firm's financial position and the external finance premium. Furthermore, many researchers have demonstrated that commonly used indicators to denote the firm's balance sheet condition has predictive power to identify the credit risk in corporative sector⁸. These relationships suggest the existence of common factors between the external finance premium and the firm's default probability.

In order to test this hypothesis we applied the non-linear probability models Logit and Complementary Log Log to relate the insolvency dummy variable and the indicators selected to denote the credit market imperfections. The result of this exercise could present favorable evidences to the use of insolvency as a criterion to measure credit market access and confirm the indicators selected to denote the external finance premium dynamic.

The Logit regression is the commonly used technique in bankruptcy prediction, presenting advantages over others techniques⁹. In order for its implementation, the dependent variable suffers a logistic transformation, been converted in an odds ratio and after in a log base variable¹⁰. Our Logit model has the following form:

$$\ln\left(\frac{p}{1-p}\right) = \beta_0 + \beta_1 i + \beta_2 fee + \beta_3 mb + \beta_4 cl + \beta_5 std + v \quad (1)$$

where:

i = The ratio Inventories/Total Assets, in order to denote business cycle dynamics;

fee = The ratio Financial Expenses/EBIT (the inverse of coverage ratio), in order to control for firms financial position;

collateralized. They justify the use of the firm's size criterion to split their sample of companies asserting that the firm's size is strong correlated with this three "primitive factors".

⁸ Sanvincente and Minardi (1998) and Brito and Neto (2008) are some of the papers that presented researches that used some indicators usually related to credit market imperfections to bankruptcy prediction in Brazil.

⁹ Brito e Neto (2008).

¹⁰ The logistic transformation has the following form: $Pr(d=1/X) = \exp(X\beta)/(1 + \exp(X\beta))$.

mb = The ratio Market Value/Book Value (Market to Book), in order to control to the growth potential that the market attributes for companies;

cl = The ratio Fixed Assets/Long-Term Liability, in order to control for the level of collateral available as a guarantee for new and actual loans;

std = The ratio Short Term Debt/Total Assets, in order to control for the firm's financing structure;

ν = random error component.

According to Cameron and Trivedi (2005), the Complementary Log Log regression is more appropriate when one of the outcomes is rare.¹¹ This technique assumes an asymmetric distribution for the random error component. In order for its implementation the dependent variable also suffers a transformation, been converted in a set of exponential terms and after in a log base variable.¹² Our Complementary Log Log model has the following form:

$$\ln(-\ln(1 - p)) = \beta_0 + \beta_1 i + \beta_2 fee + \beta_3 mb + \beta_4 cl + \beta_5 std + \nu \quad (2)$$

We estimated the equations as a pool of cross sections and allowing for intragroup correlation in standard errors (cluster robust standard errors). Table 6 displays the estimated coefficients for the Logit and Complementary Log Log regressions. The results were very similar. With the exception of the ratio Fixed Assets/Long-Term Liability, both models presented all variables significant at 10% level. Under credit channel's background, all the coefficients revealed the expected signal.

The coefficients of the ratios Market Value/Book Value and Fixed Assets/Long Term Liability have a negative signal. This indicates that the higher the value of this indicators, the smaller the default probability. The coefficients of the ratios Financial Expenses/EBIT, Short Term Debt/Total Assets, and Inventories/Total Assets have a positive signal. This indicates that the higher the value of this indicators, the higher the default probability. Among all the independent variables the ratio Inventories/Total Assets presented the higher coefficient.

Figures 4 and 6 display these relationships in a clearly way. For each indicator we calculated the default's conditional probability keeping the others equal to the average. In others words, the figures presents the default's conditional probability for a representative

¹¹ Typically, the Logit regression is more accurate to measure marginal effects and obtain probability prediction when the analyzed events have a proportion close to ½. Considering that in our final sample we have identified just 12 insolvent firms against 320 solvent firms, providing 92 insolvency events against 6690 solvency events, the application of this technique for comparing effects is recommended.

¹² The Complementary Log Log transformation has the form: $Pr(d=1/X) = 1 - \exp(-\exp(X\beta))$. For small values of probability, the Complementary Log Log transformation is close to the logistic transformation. As this probability increases, the transformation approaches infinity more slowly than logistic transformation.

firm with an average value for all the indicators except the one that is emphasized. For each indicator the probabilities obtained from both Logit and Complementary Log Log model can be compared.

4.2. Inventories and the external finance premium

In order to appraise the relationship between inventories and the external finance premium we employed the two stage dynamic panel data model developed by Arellano and Bover (1995) and Blundell and Bond (1998), also known as System GMM. This method is an extension of the Arellano-Bond estimator.¹³

The System GMM combines the original equation at first differences from Arellano-Bond estimator with an equation at levels in a system of equations and employs both lagged levels and differences as instruments. This strategy permits to solve problems that arise in Arellano-Bond estimator when instruments are weakly correlated with the independent variables.¹⁴

We chose the ratio Inventories/Total Assets to denote the corporative business cycle variable. We estimated a first order univariate process (AR (1)) for this variable using the total sample (1994Q3-2009Q3) and we obtained a coefficient for the autoregressive term around 0.3, demonstrating some persistence degree in this ratio¹⁵. This result implies that the first difference of the ratio Inventories/Total Assets must present a lower correlation with the lags in level, what could result in weak instruments' problems. In our exercise, the time dimension couldn't be considered small, reducing the risk of bias. Nevertheless, we believe that using System GMM we can at least obtain an efficiency gain. The next equation presents our base model:

$$I_{i,t} = \beta_0 + \beta_1 I_{i,t-1} + \beta_2 NOR_{i,t} + \beta_3 FEE_{i,t-1} + \beta_4 MB_{i,t-1} + \beta_5 CL_{i,t-1} + \delta_6 STD_{i,t-1} + \eta_i + v_{it} \quad (3)$$

¹³ Holt-Eakin, Newey, and Rosen (1988) and Arellano and Bond (1991) developed the Arellano-Bond estimator, also known as Difference GMM.

¹⁴A recognized and widespread fact in dynamic panel data models' literature is that the larger the series persistence, the lower the correlation between the first difference of this series and the lag of levels. In turn, the use of weak instruments affects the performance of the Arellano-Bond estimator in large and small samples. In large samples, the variance of the estimated coefficients increases asymptotically. In small samples, particularly when the time dimension is reduced, the use of weak instruments may provide bias in coefficients. The System GMM supposes additional assumptions to Arellano-Bond estimator, like the inexistence of correlation between the first difference of instrumental variables and the fixed effects. This assumption allows the use of more instruments, providing estimation advantages comparing with its precursor. Bobba and Coviello (2006) and Biondi e Toneto (2008) enhances this points originally raised by Blundell and Bond (1998). Roodman (2009) provides a revision of GMM dynamic panel data model and shows how to implement these estimators with Stata.

¹⁵ These results weren't presented entirely due to space limitations, but we can provide this information at request.

where:

$I_{i,t}$ = The ratio Inventories/Total Assets, in order to denote business cycle dynamics;

$NOR_{i,t}$ = The ratio Net Operational Revenues/Total Assets, in order to control for non financial factors that could explain differences in firms with different levels of credit market access;¹⁶

$FEE_{i,t}$ = The ratio Financial Expenses/EBIT (the inverse of coverage ratio), in order to control for firms financial position. This is our balance sheet variable;

$MB_{i,t}$ = The ratio Market Value/Book Value (Market to Book), in order to control to the growth potential that the market attributes for companies;

$CL_{i,t}$ = The ratio Fixed Assets/Long-Term Liability, in order to control for the level of collateral available as a guarantee for new and actual loans;

$STD_{i,t}$ = The ratio Short Term Debt/Total Assets, in order to control for the firm's financing structure;

η_i = firm's fixed effect;

v_{it} = random error component.

We avoided seasonality problems considering all variables as changes over the same quarter of the past year. In order to remove universal time related shocks from the errors we included time dummies in the model.¹⁷ All the specifications were estimated with robust and Windmeijer correction for standard errors. The model is subject to the following assumptions:

$$E(v_{it}) = E(v_{it} \times \eta_i) = E(v_{it} \times v_{js}) = 0 \text{ for all } i, j, t, s, i \neq j.$$

Besides the lag of the ratio Inventories/Total Assets, we also treat the ratio Net Operational Revenues/Total Assets as a predetermined variable. In this way, in order to validate the System GMM instruments, the following additional moment conditions must be satisfied: $E(I_{i,t-1} \Delta v_{it}) = 0$, for all $t = 3, \dots, T$; $E(\Delta I_{i,t-1} (\eta_i + v_{it})) = 0$, for all $t = 4, \dots, T$; $E(NOR_{i,t-1} \Delta v_{it}) = 0$ for all $t = 2, \dots, T$; and $E(\Delta NOR_{i,t-1} (\eta_i + v_{it})) = 0$ for all $t = 3, \dots, T$; where Δ denotes the first difference operator. This identification strategy permits some

¹⁶ Gertler e Gilchrist (1994) enhance that non financial factors, such as contracting out and others industry effects, could explain changes in firm's business cycle. In this way, including controls for these non financial factors would provide a better measure of variations in firm's business cycle due to financial factors.

¹⁷ According to Roodman (2009), the inclusion of time dummies make more likely the assumption that the errors are not correlated across them.

advantages. Allowing these weak exogeneity assumptions the inventories can be viewed as a forward-looking variable that takes into account the expected level of inventories and demand.

Besides the “internal instruments”¹⁸, we also include time dummies and the short term nominal interest rate (Selic) as instruments. In order to avoid the instrument proliferation, the instruments were limited to two lags.¹⁹

Table 7 displays the estimated parameters. The Hansen test has as null hypothesis the validity of the instruments. The Difference-in-Hansen test has as null hypothesis the validity of the additional System GMM moment conditions. Both tests don't reject the null hypothesis.²⁰ Considering a 90% confidence level, the ratios Net Operational Revenues/Total Assets, Market Value/Book Value and Fixed Assets/Long-Term Liability didn't present statistically significant coefficients.

The lag of the ratio Inventories/Total Assets presented a significant coefficient with a value between zero and one (0.339). This result indicates that the firm's inventories level follows a stationary process and demonstrates persistence in its dynamic.

The ratios Financial Expenses/EBIT and Short Term Debt/Total Assets also presented significant coefficients with positive signal. The higher these ratios, the higher the sensitiveness of business cycle measured by the dynamics of inventories.

The others indicators didn't present coefficient statistically significant.

4.3. The corporative business cycle sensitiveness according to firm's credit market access

We analyzed the corporative business cycle sensitiveness accordingly to firm's credit market access, measured by insolvency and global long-term debt rating. Firms that face more constraints in credit market access must demonstrate greater sensitiveness to balance sheet effects. In order to test this hypothesis we created the following dummies variables:

- *D*: dummy variable equal to one if the firm have become insolvent during the period and zero otherwise;
- *r*: dummy variable equal to one if the firm obtained a rating for its long term debt and zero otherwise.

¹⁸ The lagged levels and the lagged differences from the predetermined variables.

¹⁹ According to Cameron e Trivedi (2005), for moderate or large time dimension there may be a maximum lag of the dependent variable that is used as an instrument, such as not more than its fourth lag.

²⁰ Both tests Hansen and Difference-in-Hansen lose confidence as the number of instruments increases. However, we did these tests for a reduced number of instruments and the validity was remained.

For each criterion we built a specification of the base model presented in last section including an interaction term obtained from the cross product between the dummies variable and the indicators related to credit market access. We are interested in the significance and signal of these interaction terms and indicators. The equations (4) and (5) denote these specifications:

$$I_{i,t} = \delta_0 + \delta_1 I_{i,t-1} + \delta_2 NOR_{i,t} + \delta_3 FEE_{i,t-1} + \delta_4 (D * FEE_{i,t-1}) + \delta_5 MB_{i,t-1} + \delta_6 (D * MB_{i,t-1}) + \delta_7 CL_{i,t-1} + \delta_8 (D * CL_{i,t-1}) + \delta_9 STD_{i,t-1} + \delta_{10} (D * STD_{i,t-1}) + \eta_i + v_{it} \quad (4)$$

$$I_{i,t} = \delta_0 + \delta_1 I_{i,t-1} + \delta_2 NOR_{i,t} + \delta_3 FEE_{i,t-1} + \delta_4 (r * FEE_{i,t-1}) + \delta_5 MB_{i,t-1} + \delta_6 (r * MB_{i,t-1}) + \delta_7 CL_{i,t-1} + \delta_8 (r * CL_{i,t-1}) + \delta_9 STD_{i,t-1} + \delta_{10} (r * STD_{i,t-1}) + \eta_i + v_{it} \quad (5)$$

The specifications were estimated just for the period following the economic policy tripod establishment.

Considering the specification (4), that includes a dummy variable equal to one for insolvent firms, we expect that the interaction term present the same signal of the respective indicator. Regarding the specification (5), that includes a dummy variable equal to one for debt rate firms, we expect that the interaction term present the opposite signal of the respective indicator. We will take these results as evidences of balance sheet effects, which amplify the monetary policy shocks over corporative business cycle.

Table 9 reveals the estimated parameters. All the indicators coefficients kept the significance and signal observed in base model. In order to appraise the significance of the interaction term and respective indicator, besides the individual significance test, we also applied the Wald test to assess the jointly significance of the variables. Tables 10 and 11 summarize the tests results and coefficients of these variables.

We classified the coefficients according to significance and signal obtained. The coefficients that presented individual or joint significance with the expected signal were classified as “valid” (V). The coefficients that presented individual or joint significance with signal against our expectation were classified as “not valid” (NV). The coefficients that didn’t present individual or joint significance were classified as “not conclusive” (NC).

In the specification considering the insolvency criterion, we obtained valid results for the ratios Financial Expenses/EBIT and Fixed Assets/Long-Term Liability. The ratio Market

Value/Book Value presented a not conclusive result. The ratio Short Term Debt/Total Assets presented a not valid result. In the specification considering the rating criterion, the ratios Fixed Assets/Long-Term Liability and Short Term Debt/Total Assets presented valid results. The other ratios presented not conclusive results. Except for the ratio Market Value/Book Value, all the ratios presented at least one valid result at the adopted criterions.

5. Robustness Analysis

In order to appraise the dynamic panel data model that we have presented in last section, we conducted four experiments in this section:

1. We estimated the model preceding and following the economic policy “tripod” establishment in Brazil, based on primary fiscal surplus, inflation targets and free-floating exchange rate. This period consider the sample after the fourth quarter of 1999;
2. We analyzed the “BNDES” effect;
3. We analyzed inventories sensitiveness accordingly with the sectors.

The specifications constructed in order to appraise these experiments are presented next. They followed the same assumptions and instruments’ rule choice assumed in base model.

5.1 The relationship between the corporative business cycle and the external finance premium preceding and following the establishment of the economic policy “tripod” in Brazil

We estimated the base model preceding and following the economic policy “tripod” establishment in Brazil, based on primary fiscal surplus, inflation targets and free-floating exchange rate. This issue is important for credit channel, once the monetary policy suffered significant changes after this event. Table 8 displays the results for both specifications.

The only significant variables in the period preceding the tripod establishment were the lag of the dependent variable and the ratio Net Operational Revenues/Total Assets. The coefficients of indicators introduced to denote the external finance premium weren’t significant.

In the period following the tripod establishment, considering a 90% confidence level, only the ratio Net Operational Revenues/Total Assets didn’t present a significant coefficient. The coefficients of all ratios related with external finance premium were significant and

presented signal as expected. We interpreted this result as evidence that the credit channel gained strength after the tripod establishment.

5.2 The “BNDES effect” analysis

A particular feature about Brazil’s credit market is the involvement of BNDES (The Brazilian Development Bank). This institution is a key player in the implementation of government’s industrial policy and the main long term financing provider. The funds offered by BNDES have better cost and maturity conditions compared with other financing agents from Brazil’s credit market. Furthermore, the long term interest rate charged for funds obtained in the development bank²¹ are just marginally affected by the short term interest rate that Central Bank controls. In such a context, firms that have more access to BNDES funds must present more resilience to external finance premium variation.

In order to evaluate this hypothesis we used the same method applied in last subsection. We collected available information about BNDES’s direct operations and identified in our sample the firms that obtained finance lines for large-scale investment projects in the institution. Table 12 reveals these companies according to its sector. We used this information to create the following dummy variable:

- *BNDES*: dummy variable equal to one if the firm obtained finance line for large-scale investments and zero otherwise.

The equation (6) denotes a model specification including the interaction term calculated as the cross product between the dummy variable and the indicators related to balance sheet effects:

$$\begin{aligned}
 I_{i,t} = & \gamma_0 + \gamma_1 I_{i,t-1} + \gamma_2 NOR_{i,t} + \gamma_3 FEE_{i,t-1} + \gamma_4 (BNDES * FEE_{i,t-1}) + \gamma_5 MB_{i,t-1} \\
 & + \gamma_6 (BNDES * MB_{i,t-1}) + \gamma_7 CL_{i,t-1} + \gamma_8 (BNDES * CL_{i,t-1}) + \gamma_9 STD_{i,t-1} + \\
 & \gamma_{10} (BNDES * STD_{i,t-1}) + \eta_i + v_{it}
 \end{aligned} \tag{6}$$

Once again, we are interested in the significance and signal of the interaction terms and respective indicators. Due to the rule considered in the dummy variable creation, we expect that the interaction terms present the opposite signal revealed by the indicators. This result would indicate that firms in our sample that obtained funds with BNDES to finance large-scale investments presented more resilience to credit market imperfections.

²¹ TJLP – Taxa de Juros de Longo Prazo (Long Term Interest Rate).

Table 13 shows the estimated parameters. We also estimated this specification for the period after the tripod establishment in Brazil. Comparing these results with the ones that we obtained in the base model estimation, the ratio Financial Expenses/EBIT was the only indicator that lost significance.

Table 14 summarizes the coefficients and significance tests for the indicators related to credit market imperfections. We classified the indicators following the same rule applied in the experiment from the last subsection: the coefficients that presented individual or joint significance with the expected signal were classified as “valid” (V). The coefficients that presented individual or joint significance with signal against our expectation were classified as “not valid” (NV). The coefficients that didn’t present individual or joint significance were classified as “not conclusive” (NC).

While the ratio Financial Expenses/EBIT didn’t present individual significance, the Wald test pointed that the indicator and its interaction term are jointly significant. With this result, we considered the ratio Financial Expenses/EBIT as valid. We also obtained a valid result for the ratio Fixed Assets/Long-Term Liability. The others ratios presented not conclusive results.

5.3 The sector’s corporative business cycle sensitiveness

After the identification of a credit channel working, the discussions must be addressed to micro issues. In such context the knowledge about how the different sectors in economy behave facing credit market imperfections grows in importance for monetary and industrial policies. In order to contribute with this issue, in this subsection we intend to rank the sectors accordingly with the sensitiveness to the external finance premium.

Our sample represents 15 sectors: agriculture and fisheries, foods and beverages, retail, construction, electro-electronics, industrial machinery, mining, non-metallic minerals, pulp and paper, oil and gas, chemical, metallurgy and steelmaking, textile, transportation, and vehicles and spare parts. Following the methodology applied in last subsections, we calculated interaction terms crossing a dummy variable created for each sector in our sample with the indicators related to the credit market imperfections.

In order to obtain the sector’s sensitiveness we estimated one specification for each sector. We kept the same indicators and instruments in all specifications to provide comparable results. The equation (7) denotes the general specification:

$$\begin{aligned}
I_{i,t} = & \gamma_0 + \gamma_1 I_{i,t-1} + \gamma_2 NOR_{i,t} + \gamma_3 FEE_{i,t-1} + \gamma_4 (S * FEE_{i,t-1}) + \gamma_5 MB_{i,t-1} \\
& + \gamma_6 (S * MB_{i,t-1}) + \gamma_7 CL_{i,t-1} + \gamma_8 (S * CL_{i,t-1}) + \gamma_9 STD_{i,t-1} \\
& + \gamma_{10} (S * STD_{i,t-1}) + \eta_i + v_{it}
\end{aligned} \tag{7}$$

The dummy sector is represented in equation with the term “S”. After we evaluate the coefficient’s significance of the indicator and interaction terms, we added the coefficients if they were individually or jointly significant (“valid” – V) and disregard if they didn’t present significant coefficients (“not conclusive” – NC).

Due to space restrictions, we opted to expose just the coefficients indicators related to credit market imperfections and interaction terms for each sector’s specification.²² Summarizing the results that we didn’t present, in all specifications the coefficient of the ratio Inventories/Total Assets have kept the significance, positive signal and value between zero and one. The ratio Net Operational Revenues/Total assets remained not significant. The Hansen and Difference-in-Hansen tests have continued to indicate the validity of instruments and System GMM moments conditions.

Tables 15 to 18 denote the estimated parameters for the ratios Financial Expenses/EBIT, Market Value/Book Value, Fixed Assets/Long-Term Liability, and Short Term Debt/Total Assets. Tables 19 and 20 reveal for each indicator the sector’s ranking classification according to the total marginal effect obtained adding the coefficients of the indicator itself and respective interaction term.

The sector that appeared in more ranks with positive sensitiveness was the textile, with three indicators (Market Value/Book Value, Fixed Assets/Long-Term Liability, and Short Term Debt/Total Assets). The sectors that appeared two times were foods and beverages (Financial Expenses/EBIT and Short Term Debt/Total Assets), chemical (Financial Expenses/EBIT and Market Value/Book Value), transportation (Market Value/Book Value and Fixed Assets/Long-Term Liability), vehicles and spare parts (Fixed Assets/Long-Term Liability and Short Term Debt/Total Assets), and paper and pulp (Fixed Assets/Long-Term Liability and Short Term Debt/Total Assets). The sectors agriculture and fisheries (Financial Expenses/EBIT), electro-electronics (Market Value/Book Value), and construction (Fixed Assets/Long-Term Liability) appeared once.

The sectors that appeared in more ranks with negative signal were electro-electronics (Financial Expenses/EBIT and Short Term Debt/Total Assets), construction (Financial Expenses/EBIT and Market Value/Book Value), retail (Market Value/Book Value and Fixed Assets/Long-Term Liability), foods and beverages (Market Value/Book Value and Fixed

²² We can provide these results at request.

Assets/Long-Term Liability), and agriculture and fisheries (Fixed Assets/Long-Term Liability and Short Term Debt/Total Assets). The sectors mining (Fixed Assets/Long-Term Liability), paper and pulp (Financial Expenses/EBIT), and metallurgy and steelmaking (Fixed Assets/Long-Term Liability), appeared just once.

6. Conclusion

In this paper we investigated the relationship between the external finance premium and firm's default probability and appraised in different levels the sensitivity of corporative business cycle to the external finance premium.

Using Logit and Complementary Log Log regressions we found that some commonly indicators used to express the external finance premium present an explanatory power for the firm's default probability. We interpret this result as evidence supporting the insolvency as a good proxy to credit market access and the external finance premium. This result is important once we didn't identify the use of this criterion in literature.

We used the System GMM estimator to appraise the relationship between the business cycle and external finance premium. The additional moment conditions that this estimator assumes permits to avoid weak instruments' problems arising when variables with persistence are employed. Moreover, our identification strategy allowed us to treat inventories as a forward- looking variable considering the expected inventory itself and sales. This strategy avoided us to assume the stronger assumption of exogeneity between inventories and sales.

When we estimated the base model splitting our sample preceding and following the tripod establishment in Brazil, we found results indicating a stronger credit channel after this event. Considering that after this event the Brazilian credit market have developed significantly, assuming a trajectory of reduction for interest rates and expansion in credit volume, this result seems coherent. This also indicates a better effectiveness of monetary policy through credit channel in the more recent period.

We also found results showing that firms with direct operations in BNDES presents business cycle less sensitive to the indicators that we used as proxy for external finance premium. We considered this result favorable evidence to the fact that, once the long term interest rate charged for BNDES funds are just marginally affected by the short term interest rate that Central Bank controls, the expansion of this funds in economy weakens the monetary policy power. Also, the indicators that presented a valid relationship in this exercise were the ones linked to firm's financial position and capacity to provide collateral. We considered this result intuitive once the better condition of BNDES funds and the use of these resources for

investments must provide a better financial condition and capacity to new investments, easing the balance sheet effects over the firms.

Our analyses using the insolvency and the existence of rating for firm's long term debt to separate the sample according to the credit market access indicated that insolvent and no rating firms are more sensitive to the external finance premium. Companies that face different levels of constraints in credit market access demonstrate a different response to monetary policy shocks through credit channel.

For us, the results in this paper make it clear as well as confirm previous results in the literature, such as Oliveira (2009), showing that the balance sheet channel is relevant in Brazil to explain the effects of monetary policy on the real sector of the economy.

References

- ARELLANO, M.; BOND, S. (1991). **Some tests of specification for panel data: Monte Carlo evidence and an application to employment equations.** Review of Economic Studies, n. 58, p. 277-297. London.
- ARELLANO, M.; BOVER, O. (1995) **Another look at the instrumental-variable estimation of error-components models.** Journal of Econometrics, n. 68, p. 29-52.
- BERNANKE, B. S.; GERTLER, M. (1995). **Inside the Black Box: The Credit Channel of Monetary Policy Transmission.** Journal of Economic Perspectives, v. 9, n. 4, p. 3-10, Fall 1995.
- BERNANKE, B. S.; GERTLER, M.; GILCHRIST, S. (1999). **The Financial Accelerator in a Quantitative Business Cycle Framework.** The Handbook of Macroeconomics, v. 1c, New York: Elsevier Science Ltd.
- BIONDI, R. L.; TONETO JR., R. (2008). **Regime de metas inflacionárias: os impactos sobre o desempenho econômico dos países.** Estudos Econômicos, v. 38, n. 4, p. 873-903. São Paulo (SP).
- BLUNDELL, R.; BOND, S. (1998). **Initial conditions and moment restrictions in dynamic panel data models.** Journal of Econometrics, n. 87, p. 115-143.
- BOBBA, M.; COVIELLO, D. (2006). **Weak instruments and weak identification in estimating the effects of education on democracy.** Inter-American Development Bank (IADB), Working Paper n. 569.
- BOND, S. (2002). **Dynamic panel data models: A guide to micro data methods and practice.** Institute for Fiscal Studies. Working Paper CWP09/02. London.
- BRITO, G. A. S.; ASSAF NETO, A. (2008). **Modelo de Classificação de Risco de Crédito de Empresas.** Revista Contabilidade & Finanças, v. 19, n. 46, p. 18-29.
- CAMERON, A. C.; TRIVEDI, P. K. (2005). **Microeconometrics: Methods and Applications.** First edition. Cambridge. Cambridge University Press.
- CAMERON, A. C.; TRIVEDI, P. K. (2009). **Microeconometrics using Stata.** Stata Press. College Station. Texas.
- GILCHRIST, S.; HIMMELBERG, C. P. (1995). **Evidence on the Role of Cash Flow for Investment.** Journal of Monetary Economics, n. 36, p. 541-572.
- GILCHRIST, S.; HIMMELBERG, C. P. (1998). **Investment, Fundamentals, and Finance.** National Bureau of Economic Research. NBER Working paper series 6652.
- GRAEVE, F. D. (2008). **The External Finance Premium and the Macroeconomy: US post-WWII Evidence.** Federal Reserve Bank of Dallas, Working Paper n° 0809.
- HALL, S. (2001). **Credit channel effects in the monetary transmission mechanism.** Bank of England Quarterly Bulletin, Winter, p. 442-448.
- HOLTZ-EAKIN, D.; NEWEY, W.; ROSEN, H. S. (1988). **Estimating vector autoregressions with panel data.** Econometrica, v. 56, n. 6, p. 1371-1395.
- HUBBARD, R. G. (1995). **Is There a Credit Channel for Monetary Policy?** Federal Reserve Bank of St. Louis Review, v. 77, n. 3, p. 63-77.
- MISHKIN, F. S. (1995). **Symposium on the Monetary Transmission Mechanism.** Journal of Economic Perspectives, v. 9, n. 4, p. 27-48, Fall 1995.

- MISHKIN, F. S. (1996). **The Channels of Monetary Transmission: Lessons for Monetary Policy**. National Bureau of Economic Research. NBER Working paper series 5464.
- OLIVEIRA, F. N. (2009). **Effects of Monetary Policy on Corporations in Brazil: An Empirical Analysis of the Balance Sheet Channel**. Brazilian Review of Econometrics, Forthcoming.
- RAJAN, R. G.; ZINGALES, L. (1998). **Financial Dependence and Growth**. American Economic Review, v.88, p. 559-586.
- ROODMAN, D. (2009). **How to do xtabond2: An introduction to difference and System GMM in Stata**. The Stata Journal, v. 9, n. 1, p. 86-136.
- SANVICENTE, A. Z.; MINARDI, A. (1998). **Identificação de indicadores contábeis significativos para a previsão de concordata de empresas**. Instituto Brasileiro de Mercado de Capitais, Working Paper, 1998.
- TORABI, M. R., D. K. (1998). **Selected measurement and statistical issues in health education evaluation and research**. The International Electronic Journal of Health Education, v.1, p. 26-38.
- WINDMEIJER, F. (2005). **A finite sample correction for the variance of linear efficient two-step GMM estimators**. Journal of Econometrics, n. 126, p. 25- 51.

Figure 1 – Financial Indicators time series.

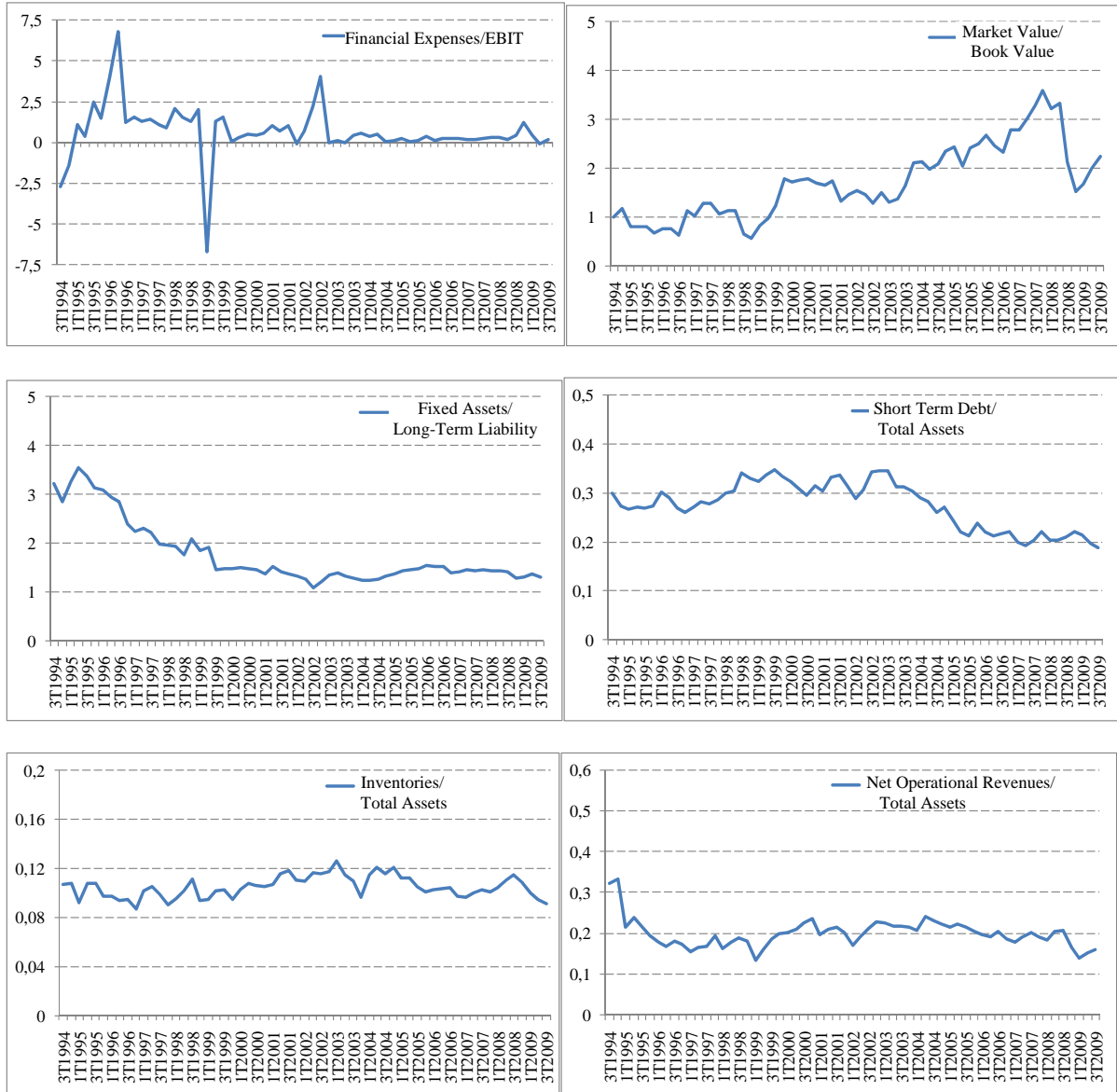


Table 1 – Financial indicator’s descriptive statistics

Panel A: Data description - with outliers								
Firms	N	μ	s	min	25%	50%	75%	max
Total Sample								
Financial Expenses/EBIT	10072	0,60	126,57	-2539	-0,36	0,33	1,15	11321,6
Market Value/Book	10976	1,89	14,07	-323,99	0,37	0,85	1,81	985,2
Fixed Assets/Long-Term	14189	6,85	115,56	6,9E-05	0,57	1,31	2,51	8528,8
Short Term Debt/Total Assets	14923	1,53	71,55	3,8E-07	0,19	0,31	0,49	8555,3
Inventories/Total Assets	11974	0,11	0,10	3,3E-06	3,1E-02	9,6E-02	0,17	0,72
Net Op. Revenues/Total Assets	11247	0,22	0,24	-14,02	0,10	0,19	0,28	2,00
Solvents								
Financial Expenses/EBIT	9915	0,58	127,56	-2539	-0,35	0,33	1,14	11321,6
Market Value/Book	9650	1,79	10,06	-323,99	0,37	0,86	1,84	501,6
Fixed Assets/Long-Term	12500	6,17	88,75	6,9E-05	0,51	1,33	2,60	5349,0
Short Term Debt/Total Assets	13199	1,68	76,08	3,8E-07	0,20	0,32	0,51	8555,3
Inventories/Total Assets	10441	0,13	9,8E-02	3,3E-06	5,4E-02	1,13E-01	0,18	0,72
Net Op. Revenues/Total Assets	9755	0,23	0,25	-14,02	0,11	0,20	0,30	2,00
Insolvents								
Financial Expenses/EBIT	157	1,79	11,00	-24,16	-0,92	0,38	2,28	88,92
Market Value/Book	125	-0,26	5,39	-32,36	-0,42	-5,7E-02	0,50	13,54
Fixed Assets/Long-Term	197	0,94	0,89	7,7E-03	0,22	0,73	1,47	7,18
Short Term Debt/Total Assets	197	0,89	1,51	0,10	0,38	0,58	0,86	13,88
Inventories/Total Assets	183	0,15	0,12	3,13E-04	6,4E-02	9,3E-02	0,24	0,52
Net Op. Revenues/Total Assets	158	0,27	0,22	-0,20	1,3E-01	0,23	0,40	1,05
With rating								
Financial Expenses/EBIT	1097	6,16E-01	17,24	-289,25	0,06	0,33	0,95	334,33
Market Value/Book	1172	2,17	3,58	-26,42	0,73	1,51	2,78	73,18
Fixed Assets/Long-Term	1206	1,97	5,16	1,7E-03	0,81	1,31	2,00	138,02
Short Term Debt/Total Assets	1240	0,26	0,30	3,8E-07	0,16	0,23	0,31	9,75
Inventories/Total Assets	1176	0,10	8,3E-02	1,4E-03	4,1E-02	8,4E-02	0,14	0,51
Net Op. Revenues/Total Assets	1087	0,20	0,18	-8,3E-06	0,10	0,17	0,23	1,25
No rating								
Financial Expenses/EBIT	8975	5,94E-01	133,95	-3E+03	-4,7E-01	0,33	1,19	11321,60
Market Value/Book	8603	1,71	10,59	-323,99	0,33	0,78	1,67	501,59
Fixed Assets/Long-Term	11491	6,52	92,55	6,9E-05	0,46	1,32	2,67	5349,00
Short Term Debt/Total Assets	12156	1,82	79,28	1,9E-05	0,20	0,34	0,54	8555,29
Inventories/Total Assets	9448	0,13	9,9E-02	3,3E-06	5,7E-02	1,16E-01	0,19	0,72
Net Op. Revenues/Total Assets	8826	0,23	0,25	-1,4E+01	0,11	0,21	0,31	2,00

Table 1– Financial indicator’s descriptive statistics (continuation)

Panel B: Data description - without outliers*								
Firms	N	μ	s	min	25%	50%	75%	max
Total Sample								
Financial Expenses/EBIT	10032	-0,12	13,66	-264,1	-0,35	0,33	1,15	145,9
Market Value/Book	9745	1,58	3,96	-22,72	0,37	0,85	1,81	73,2
Fixed Assets/Long-Term	12651	3,24	11,32	7,9E-04	0,51	1,32	2,56	385,2
Short Term Debt/Total Assets	13244	0,44	0,54	1,9E-04	0,20	0,32	0,51	7,8
Inventories/Total Assets	10591	0,13	0,10	2,2E-05	5,4E-02	1,12E-01	0,18	0,5
Net Op. Revenues/Total Assets	9869	0,23	0,18	-0,05	0,11	0,20	0,30	1,7
Solvents								
Financial Expenses/EBIT	9875	-0,15	13,70	-264,1	-0,34	0,33	1,14	145,9
Market Value/Book	9622	1,60	3,96	-22,72	0,38	0,86	1,83	73,18
Fixed Assets/Long-Term	12454	3,28	11,41	7,9E-04	0,51	1,33	2,59	385,2
Short Term Debt/Total Assets	13050	0,43	0,54	1,9E-04	0,20	0,32	0,50	7,8
Inventories/Total Assets	10410	0,13	0,10	2,2E-05	5,4E-02	1,12E-01	0,18	0,48
Net Op. Revenues/Total Assets	9713	0,23	0,18	-0,05	0,11	0,20	0,30	1,72
Insolvents								
Financial Expenses/EBIT	157	1,79	11,00	-24,16	-0,92	0,38	2,28	88,92
Market Value/Book	123	0,23	3,81	-20,60	-0,42	-4,6E-02	0,50	13,54
Fixed Assets/Long-Term	197	0,94	0,89	7,7E-03	0,22	0,73	1,47	7,18
Short Term Debt/Total Assets	194	0,73	0,67	0,10	0,37	0,57	0,81	5,92
Inventories/Total Assets	181	0,14	0,11	3,1E-04	6,4E-02	9,2E-02	0,24	0,47
Net Op. Revenues/Total Assets	156	0,28	0,21	2,1E-04	0,13	0,23	0,40	1,05
With rating								
Financial Expenses/EBIT	1095	5,8E-01	10,92	-208,69	0,06	0,33	0,95	144,40
Market Value/Book	1170	2,22	3,40	-13,04	0,73	1,52	2,78	73,18
Fixed Assets/Long-Term	1206	1,97	5,16	1,7E-03	0,81	1,31	2,00	138,02
Short Term Debt/Total Assets	1231	0,25	0,13	3,3E-04	0,17	0,23	0,32	0,88
Inventories/Total Assets	1174	0,10	0,08	1,4E-03	4,1E-02	8,4E-02	0,14	0,44
Net Op. Revenues/Total Assets	1087	0,20	0,18	-8,3E-06	0,10	0,17	0,23	1,25
No rating								
Financial Expenses/EBIT	8937	-2,1E-01	13,96	-3E+02	-4,6E-01	0,33	1,18	145,94
Market Value/Book	8575	1,50	4,02	-22,72	0,33	0,78	1,66	72,14
Fixed Assets/Long-Term	11445	3,38	11,78	7,9E-04	0,47	1,32	2,66	385,24
Short Term Debt/Total Assets	12013	0,46	0,56	1,9E-04	0,20	0,34	0,53	7,76
Inventories/Total Assets	9417	0,13	0,10	2,2E-05	5,7E-02	1,16E-01	0,19	0,48
Net Op. Revenues/Total Assets	8782	0,23	0,18	-5,3E-02	0,11	0,21	0,31	1,72

* We excluded 0.2 percentiles from the financial

Note: We have obtained our data on Economática and CVM databases. Our database consist of a unbalanced panel data formed with information of non financial publicly held companies listed at Bovespa from third quarter of 1994 to third quarter of 2009. Table 1 provides the descriptive statistics preceding and following the outliers removal.

Table 2 – Firm’s description according to sectors and credit market access criterion.

Sector	Solvents	Insolvents	With rating	Without rating
Foods and beverages	36	1	7	30
Retail	17	0	0	17
Construction	30	0	4	26
Electro-electronics	14	2	0	16
Industrial machinery	7	0	0	7
Mining	6	0	2	4
Non-metallic minerals	3	1	0	4
Pulp and paper	9	0	3	6
Oil and gas	9	0	2	7
Chemical	25	3	3	25
Metallurgy and steelmaking	40	0	6	34
Textile	34	0	1	33
Transportation	14	1	4	11
Vehicles and Spare Parts	21	1	1	21
Agriculture and fisheries	5	0	0	5
Others	50	3	4	49
Total	320	12	37	295

Note: We exclude from our sample: (1) companies that didn’t have in any quarter available information to calculate the indicators selected for the analysis; (2) financial sector companies (banks, insurance companies, etc.), that have a very different financing structure comparing to non financial companies; and (3) companies that belong to Telecommunication and Electric Energy sectors, that in Brazil are traditionally characterized by a strong resilience of business cycle at times of crises. Besides that, in order to avoid problems we exclude from the sample 0.2 percentile from all indicators. After all exclusions we obtained an unbalanced panel covering 332 firms. Of these, we identified 12 insolvent and 37 with debt rate. Table 2 indicates the amount of firms found in each criterion as well the sector it is part of.

Table 3 – Financial indicators correlation matrix

	Financial Expenses/ EBIT	Market Value/Book Value	Fixed Assets/Long-Term Liability	Short Term Debt/Total Assets	Inventories/ Total Assets	Net Op. Revenues/ Total Assets
Financial Expenses/EBIT	1					
Market Value/Book Value	0,0195	1				
Fixed Assets/Long-Term Liability	-0,0054	-0,0352	1			
Short Term Debt/Total Assets	-0,0342	-0,0486	-0,0424	1		
Inventories/ Total Assets	-0,0115	0,0397	0,0062	0,072	1	
Net Op. Revenues/ Total Assets	0,0069	0,0496	0,0142	0,1193	0,2712	1

Table 4 – Equality test of the mean: solvents x insolvents

$H_0: \mu_{\text{solvents}} - \mu_{\text{insolvents}} = 0$

Financial Expenses/EBIT

Firms	N	μ	<i>p</i> Value		
			($H_A: \mu_s - \mu_i \neq 0$)	($H_A: \mu_s - \mu_i < 0$)	($H_A: \mu_s - \mu_i > 0$)
Total sample	10032	-0,12			
Solvents	9875	-0,15	0,077	0,038	0,962
Insolvents	157	1,79			

Table 4 – Equality test of the mean: solvents x insolvents (continuation)

Market Value/Book Value

Firms	N	μ	<i>p</i> Value		
			$(H_A: \mu_s - \mu_i \neq 0)$	$(H_A: \mu_s - \mu_i < 0)$	$(H_A: \mu_s - \mu_i > 0)$
Total sample	9745	1,58			
Solvents	9622	1,60	0,000	1,000	0,000
Insolvents	123	0,23			

Fixed Assets/Long-Term Liability

Firms	N	μ	<i>p</i> Value		
			$(H_A: \mu_s - \mu_i \neq 0)$	$(H_A: \mu_s - \mu_i < 0)$	$(H_A: \mu_s - \mu_i > 0)$
Total sample	12651	3,24			
Solvents	12454	3,28	0,004	0,998	0,002
Insolvents	197	0,94			

Short Term Debt/Total Assets

Firms	N	μ	<i>p</i> Value		
			$(H_A: \mu_s - \mu_i \neq 0)$	$(H_A: \mu_s - \mu_i < 0)$	$(H_A: \mu_s - \mu_i > 0)$
Total sample	13244	0,44			
Solvents	13050	0,43	0,000	0,000	1,000
Insolvents	194	0,73			

Inventories/Total Assets

Firms	N	μ	<i>p</i> Value		
			$(H_A: \mu_s - \mu_i \neq 0)$	$(H_A: \mu_s - \mu_i < 0)$	$(H_A: \mu_s - \mu_i > 0)$
Total sample	10591	0,128			
Solvents	10410	0,127	0,015	0,007	0,993
Insolvents	181	0,145			

Net Op. Revenues/Total Assets

Firms	N	μ	<i>p</i> Value		
			$(H_A: \mu_s - \mu_i \neq 0)$	$(H_A: \mu_s - \mu_i < 0)$	$(H_A: \mu_s - \mu_i > 0)$
Total sample	9869	0,229			
Solvents	9713	0,228	0,001	0,000	1,000
Insolvents	156	0,278			

Note: Table 4 reveals the test's results to appraise the difference between the indicators means accordingly with the insolvency criteria. The null hypothesis that insolvent and solvent firms have indicators with the same mean are appraised against three alternative hypothesis: the means are equal; the mean for insolvent firms is larger than solvent firms; and the mean of insolvent firms is lower than solvent firms.

Table 5 – Equality test of the mean: rating x no rating firms.

$$H_0: \mu_{no\ rating} - \mu_{rating} = 0$$

Financial Expenses/EBIT

Firms	N	μ	p Value		
			($H_A: \mu_{nr} - \mu_r \neq 0$)	($H_A: \mu_{nr} - \mu_r < 0$)	($H_A: \mu_{nr} - \mu_r > 0$)
Total sample	10032	-0,12			
Rating	1095	0,58	0,073	0,037	0,964
No rating	8937	-0,21			

Market Value/Book Value

Firms	N	μ	p Value		
			($H_A: \mu_{nr} - \mu_r \neq 0$)	($H_A: \mu_{nr} - \mu_r < 0$)	($H_A: \mu_{nr} - \mu_r > 0$)
Total sample	9745	1,58			
Rating	1170	2,22	0,000	0,000	1,000
No rating	8575	1,50			

Fixed Assets/Long-Term Liability

Firms	N	μ	p Value		
			($H_A: \mu_{nr} - \mu_r \neq 0$)	($H_A: \mu_{nr} - \mu_r < 0$)	($H_A: \mu_{nr} - \mu_r > 0$)
Total sample	12651	3,24			
Rating	1206	1,97	0,000	1,000	0,000
No rating	11445	3,38			

Short Term Debt/Total Assets

Firms	N	μ	p Value		
			($H_A: \mu_{nr} - \mu_r \neq 0$)	($H_A: \mu_{nr} - \mu_r < 0$)	($H_A: \mu_{nr} - \mu_r > 0$)
Total sample	13244	0,44			
Rating	1231	0,25	0,000	1,000	0,000
No rating	12013	0,46			

Inventories/Total Assets

Firms	N	μ	p Value		
			($H_A: \mu_{nr} - \mu_r \neq 0$)	($H_A: \mu_{nr} - \mu_r < 0$)	($H_A: \mu_{nr} - \mu_r > 0$)
Total sample	10591	0,13			
Rating	1174	0,10	0,000	1,000	0,000
No rating	9417	0,13			

Table 5 – Equality test of the mean: rating x no rating firms. (continuation)

Net Op. Revenues/Total Assets					
Firms	N	μ	<i>p</i> Value		
			($H_A: \mu_{nr} - \mu_r \neq 0$)	($H_A: \mu_{nr} - \mu_r < 0$)	($H_A: \mu_{nr} - \mu_r > 0$)
Total sample	9869	0,23			
Rating	1087	0,20	0,000	1,000	0,000
No rating	8782	0,23			

Note: Table 5 reveal the test's results to appraise the difference between the indicators means accordingly with the rating criteria. The null hypothesis that rating and no rating firms have indicators with the same mean are appraised against three alternative hypothesis: the means are equal; the mean for rating firms is larger than no rating firms; and the mean of rating firms is lower than no rating firms.

Figure 2 –Kaplan Meier function appraising the default probability to event’s duration for total sample

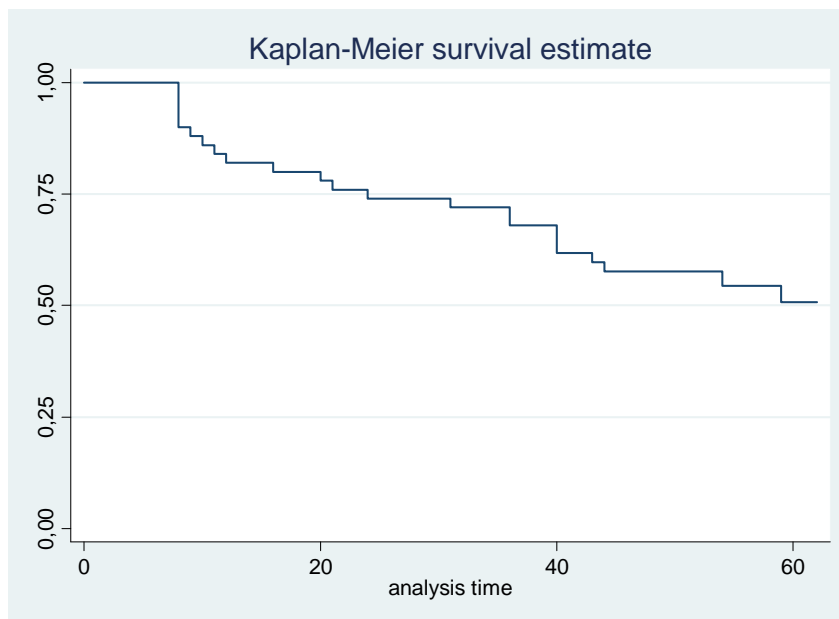
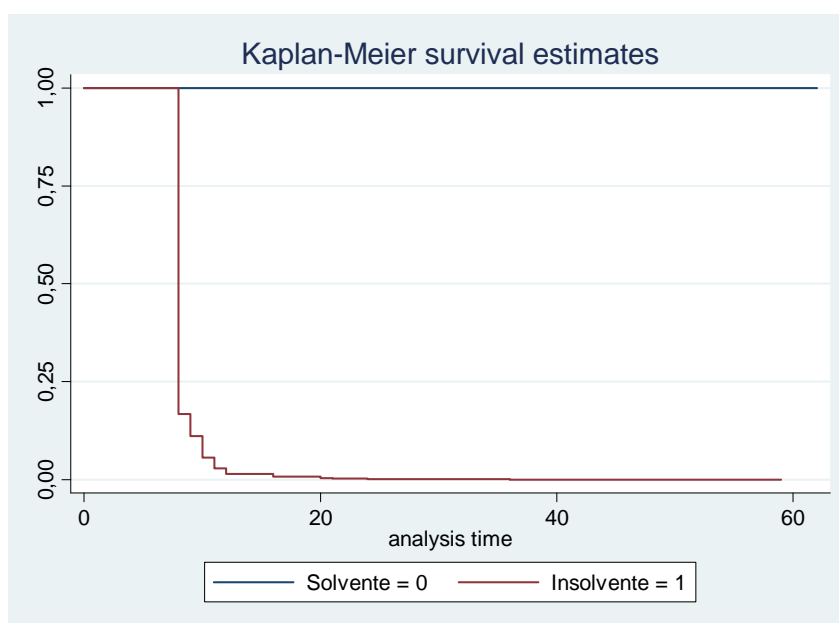


Figure 3 – Kaplan Meier function appraising the default probability to event’s duration between solvent and insolvent firms



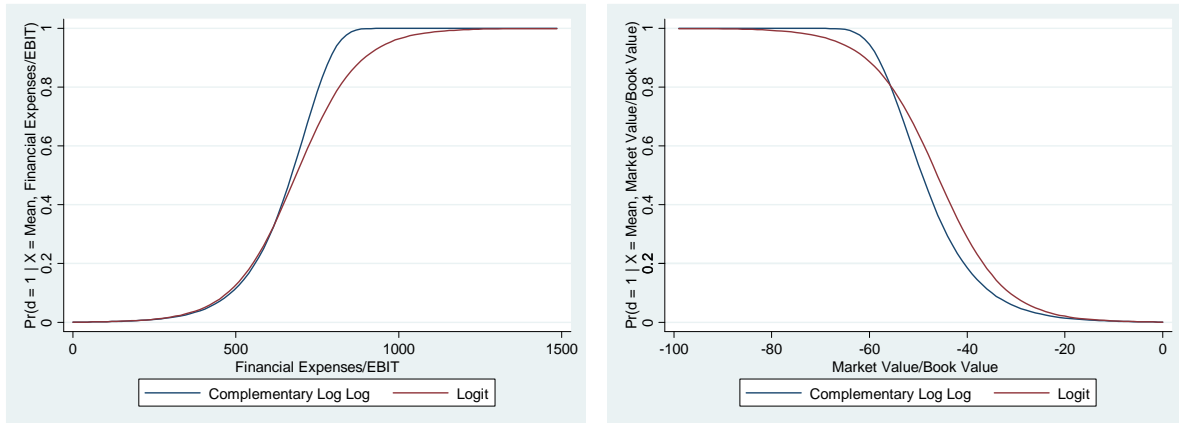
Note: Due to the small amount of insolvent companies we employed the Kaplan Meier estimator as a non parametric test to confirm the parametric tests results. According to Torabi and Ding (1998), non parametric tests are indicated in small sample environments. Figure 2 displays the result of Kaplan Meier estimator to the total sample. Figure 3 contains the result of Kaplan Meier estimator splitting the sample between solvent and insolvent firms. The results of this test show that the probability for companies to go from solvent to insolvent state decreases as times goes by. This dynamics demonstrate the greater insolvency probability expected for younger companies, which in turn poses one of the primitive factors related to firm’s credit market access commented by Gertler and Gilchrist (1994). As a second result, the Kaplan Meier estimator between insolvent firms is very different from the measure obtained for the solvent firms and total sample.

Table 6 – Non linear probability models to appraise the existence of common factors between the external finance premium and the firm’s default probability

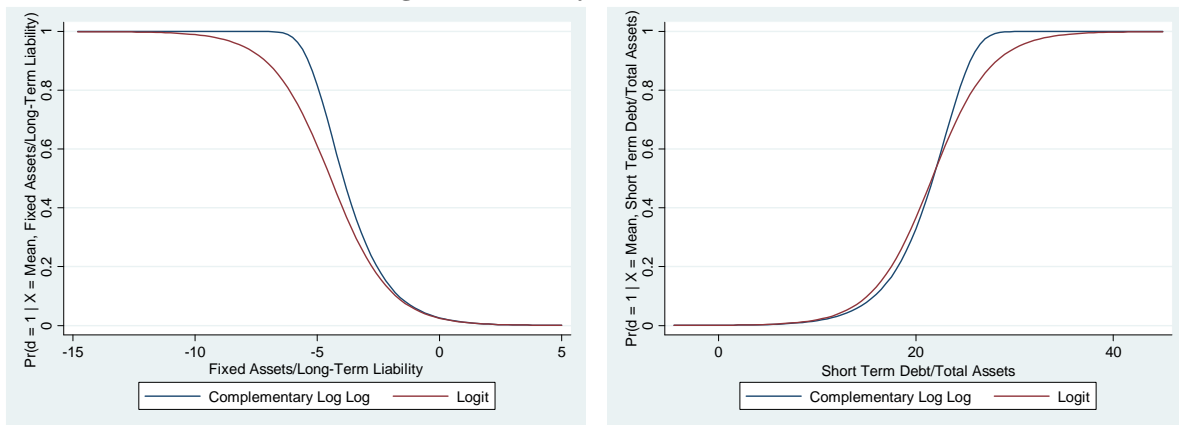
Model Dependent Variable	<i>Logit</i> ln(p/(1-p))	<i>Complementary Log Log:</i> ln(-ln(1-p))
Constant	-4,067 (0,000)	-4,037 (0,000)
Financial Expenses/EBIT	0,0104 (0,024)	0,010 (0,023)
Market Value/Book Value	-0,148 (0,011)	-0,132 (0,000)
Fixed Assets/Long-Term Liability	-0,822 (0,107)	-0,831 (0,118)
Short Term Debt/Total Assets	0,336 (0,033)	0,317 (0,021)
Inventories/Total Assets	4,934 (0,087)	4,705 (0,069)
Wald chi-quadrado(5)	26,43	26,43
Sample	3Q1994 - 3Q2009	3Q1994 - 3Q2009

Note: We estimated the equations as a pool of cross sections and allowing for intragroup correlation in standard errors (cluster robust standard errors). Table 6 displays the estimated coefficients for the Logit and Complementary Log Log regressions. The results were very similar. With the exception of the ratio Fixed Assets/Long-Term Liability, both models present all variables significant at 10% level. Appraising this result under credit channel’s background, all the coefficients have the expected signal.

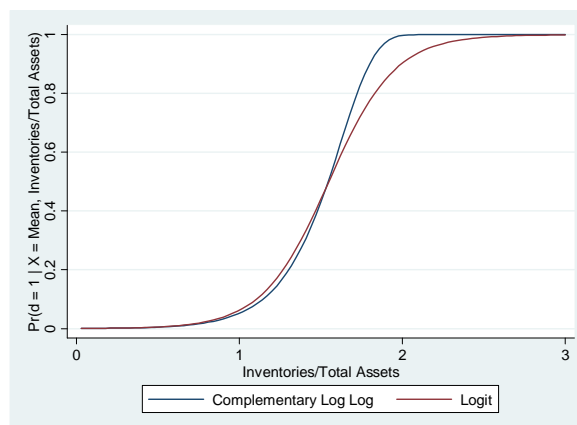
**Figure 4 – Graphs for the conditional default’s probability evaluated at averages:
Financial Expenses/EBIT and Market Value/Book Value**



**Figure 5 – Graphs for the conditional default’s probability evaluated at averages:
Fixed Assets/Long-Term Liability and Short Term Debt/Total Assets**



**Figure 6 – Graph for the conditional default’s probability evaluated at averages:
Inventories/Total Assets**



Note: For each indicator we calculated the default’s conditional probability keeping the others equal to the averages. Figures 4 to 6 display these relationships. In others words, the figures presents the default’s conditional probability for a representative firm with an average value for all the indicators except the one that is emphasized. For each indicator the probabilities obtained from both Logit and Complementary Log Log model can be compared. We can note that the higher the ratios Financial Expenses/EBIT, Short Term Debt/Total Assets, and Inventories/Total Assets, the higher the default’s probability. The ratios Market Value/Book Value and Fixed Assets/Long-Term Liability present an inverse relation with the default’s probability.

Table 7 – Base model: dynamic panel data model: studying the relationship between the corporative business cycle and the external finance premium

Dependent Variable	Inventories/Total Assets (1)
Constant	-0,112 (0,000)
Inventories/Total Assets (-1)	0,339 (0,002)
Net Op. Revenues/Total Assets	-1,03E-03 (0,859)
Financial Expenses/EBIT (-1)	1,69E-05 (0,007)
Market Value/Book Value (-1)	-7,79E-05 (0,124)
Fixed Assets/Long-Term Liability (-1)	-0,005 (0,368)
Short Term Debt/Total Assets (-1)	0,197 (0,033)
Hansen	(0,184)
Difference-in-Hansen	(0,682)
Autocorrelation test A. Bond (1 ^a . order) / (2 ^a . order)	(0,004) / (0,402)
Total number of instruments	232
Sample	n = 248 4Q94 - 3Q09

Note: We estimated a two stage dynamic panel data model developed by Arellano and Bover (1995) and Blundell and Bond (1998), also known as System GMM, in order to appraise the relationship between the corporative business cycle and the external finance premium. We avoid seasonality problems considering all variables as changes over the same quarter of the past year. In order to remove universal time related shocks from the errors we include time dummies in the model. All the specifications were estimated with robust and Windmeijer correction for standard errors. Besides the lag of the ratio Inventories/Total Assets, we also treat the ratio Net Operational Revenues/Total Assets as a predetermined variable. Besides the “internal instruments”, we also include the time dummies and the short term nominal interest rate (Selic) as instruments. In order to avoid the instrument proliferation, the instruments were limited to two lags. Table 7 displays the estimated parameters.

Table 8 – Base model estimated preceding and following the economic policy “tripod” establishment in Brazil, based on primary fiscal surplus, inflation targets and free-floating exchange rate.

Dependent Variable	Inventories/Total Assets	
	(2)	(3)
Constant	-0,019 (0,722)	-2,540 (0,503)
Inventories/Total Assets (-1)	0,163 (0,000)	0,529 (0,000)
Net Op. Revenues/Total Assets	4,76E-01 (0,001)	-6,17E-03 (0,392)
Financial Expenses/EBIT (-1)	2,62E-04 (0,271)	2,41E-05 (0,085)
Market Value/Book Value (-1)	-1,12E-03 (0,855)	-8,92E-05 (0,068)
Fixed Assets/Long-Term Liability (-1)	0,045 (0,286)	-0,011 (0,040)
Short Term Debt/Total Assets (-1)	0,182 (0,170)	0,186 (0,083)
Hansen	(0,387)	(0,274)
Difference-in-Hansen	(0,686)	(0,418)
Autocorrelation test A. Bond (1 ^a . order) / (2 ^a . order)	(0,104) / (0,828)	(0,005) / (0,304)
Total number of instruments	60	165
Sample	n = 70 4Q94 - 4Q98	n = 214 4Q99 - 3Q09

Note: We estimated the base model presented in table 7 preceding and following the economic policy “tripod” establishment in Brazil, based on primary fiscal surplus, inflation targets and free-floating exchange rate. This issue is important for credit channel, once the monetary policy suffered significant changes after this event. Table 8 displays the results for both specifications.

Table 9 – Firm’s business cycle sensitiveness according to the credit market access measured through the insolvency and the existence of global rating for the long term debt.

Dependent Variable	Inventories/Total Assets	
	Insolvency	Rating
Constant	-2,365 (0,522)	-2,667 (0,504)
Inventories/Total Assets (-1)	0,527 (0,000)	0,534 (0,000)
Net Op. Revenues/Total Assets	-6,07E-03 (0,395)	-6,43E-03 (0,378)
Financial Expenses/EBIT (-1)	2,41E-05 (0,082)	2,49E-05 (0,120)
(Financial Expenses/EBIT) x Dummy (-1)	4,61E-02 (0,024)	-5,75E-05 (0,481)
Market Value/Book Value (-1)	-8,95E-05 (0,066)	-9,28E-05 (0,055)
(Market Value/Book Value) x Dummy (-1)	-1,03E-01 (0,502)	-3,26E-02 (0,365)
Fixed Assets/Long-Term Liability (-1)	-0,011 (0,040)	-0,012 (0,018)
(Fixed Assets/Long-Term Liability) x Dummy (-1)	-0,437 (0,225)	0,027 (0,027)
Short Term Debt/Total Assets (-1)	0,187 (0,083)	0,201 (0,073)
(Short Term Debt/Total Assets) x Dummy (-1)	-0,276 (0,648)	-0,185 (0,082)
Hansen	(0,277)	(0,290)
Difference-in-Hansen	(0,287)	(0,406)
Autocorrelation test A. Bond (1 ^a order) / (2 ^a order)	(0,006) / (0,331)	(0,005) / (0,331)
Total number of instruments	169	169
Sample	n = 214 4Q99 - 3Q09	N = 3560

Note: We estimated the base model presented in table 7 including an interaction term obtained from the cross product between dummies variable created for the adopted credit market access criterions (insolvency and existence of long term debt rate) and respective indicators. We used the sample period after the tripod establishment in Brazil. Table 9 displays the results for both specifications.

Table 10 –Wald Test: including an interaction term obtained from the cross product between dummies variable created for the insolvency criterion and respective indicators

Including dummy of insolvency

Sector	Indicator coefficient (A)	Interaction coefficient (B)	Wald Test H0: A = B = 0	Tests Conclusion
Financial Expenses / EBIT (-1)	2,41E-05 (0,082)	4,61E-02 (0,024)	0,0002	V
Market Value / Book Value (-1)	-8,95E-05 (0,066)	-1,03E-01 (0,502)	0,1235	NC
Fixed Assets/ Long-Term Liability (-1)	-0,011 (0,040)	-0,437 (0,225)	0,0293	V
Short Term Debt/ Total Assets (-1)	0,187 (0,083)	-0,276 (0,648)	0,0834	NV

Table 11 – Wald Test: including an interaction term obtained from the cross product between dummies variable created for the rating criterion and respective indicators

Including dummy of rating for the long term debt

Sector	Indicator coefficient (A)	Interaction coefficient (B)	Wald Test H0: A = B = 0	Tests Conclusion
Financial Expenses / EBIT (-1)	2,49E-05 (0,120)	-5,75E-05 (0,481)	0,2163	NC
Market Value / Book Value (-1)	-9,28E-05 (0,055)	-3,26E-02 (0,365)	0,1051	NC
Fixed Assets/ Long-Term Liability (-1)	-0,012 (0,018)	0,027 (0,027)	0,0308	V
Short Term Debt/ Total Assets (-1)	0,201 (0,073)	-0,185 (0,082)	0,1989	V

Note: In order to appraise the significance of the interaction term and respective indicator, besides the individual significance test, we also applied the Wald test to assess the jointly significance of the variables. Tables 10 and 11 summarize the tests results and coefficients of these variables for the adopted credit market access criterions (insolvency and existence of long term debt rate). We classified the coefficients according to significance and signal obtained. The coefficients that presented individual or joint significance with the expected signal were classified as “valid” (V). The coefficients that presented individual or joint significance with signal against our expectation were classified as “not valid” (NV). The coefficients that didn’t present individual or joint significance were classified as “not conclusive” (NC).

Table 12 – Firms in our sample that obtained BNDES’s finance lines for large-scale investment projects

Sector	BNDES	No BNDES
Foods and beverages	15	22
Retail	7	10
Construction	3	27
Electro-electronics	3	13
Industrial machinery	3	4
Mining	4	2
Non-metallic minerals	0	4
Pulp and paper	5	4
Oil and gas	6	3
Chemical	11	17
Metallurgy and steelmaking	11	29
Textile	3	31
Transportation	4	11
Vehicles and Spare Parts	3	19
Agriculture and fisheries	0	5
Others	9	44
Total	87	245

Note: In order to evaluate this hypothesis we used the same method applied in last subsection. We collected available information about BNDES’s direct operations and identified in our sample the firms that obtained finance lines for large-scale investment projects in the institution. Table 12 reveals these companies according to its sector.

Table 13 – Appraising the “BNDES effect”

Dependent Variable	Inventories/Total Assets (3) BNDES
Constant	-2,729 (0,513)
Inventories/Total Assets (-1)	0,529 (0,000)
Net Op. Revenues/Total Assets	-6,74E-03 (0,386)
Financial Expenses/EBIT (-1)	1,27E-04 (0,683)
(Financial Expenses/EBIT) x Dummy (-1)	-1,09E-04 (0,724)
Market Value/Book Value (-1)	-9,02E-05 (0,077)
(Market Value/Book Value) x Dummy (-1)	-2,59E-02 (0,338)
Fixed Assets/Long-Term Liability (-1)	-0,011 (0,034)
(Fixed Assets/Long-Term Liability) x Dummy (-1)	0,025 (0,012)
Short Term Debt/Total Assets (-1)	0,212 0,083
(Short Term Debt/Total Assets) x Dummy (-1)	-0,178 0,142
Hansen	(0,405)
Difference-in-Hansen	(0,472)
Autocorrelation test A. Bond (1 ^a . order) / (2 ^a . order)	(0,005) / (0,336)
Total number of instruments	169
Sample	n = 214 4Q99 - 3Q09 N = 3560

Note: We estimated the base model presented in table 7 including an interaction term obtained from the cross product between the BNDES’s dummy variable and respective indicators. We used the sample period after the tripod establishment in Brazil. Table 13 displays the results for the specification.

Table 14 – Wald Test: including an interaction term obtained from the cross product between BNDES’s dummy variable and respective indicators

Including BNDES's dummy

Sector	Indicator coefficient (A)	Interaction coefficient (B)	Wald Test H0: A = B = 0	Tests Conclusion
Financial Expenses / EBIT (-1)	1,27E-04 (0,683)	-1,09E-04 (0,724)	0,0237	V
Market Value / Book Value (-1)	-9,02E-05 (0,077)	-2,59E-02 (0,338)	0,1173	NC
Fixed Assets/ Long-Term Liability (-1)	-0,011 (0,034)	0,025 (0,012)	0,0183	V
Short Term Debt/ Total Assets (-1)	0,212 0,083	-0,178 0,142	0,1713	NC

Note: In order to appraise the significance of the interaction term and respective indicator, besides the individual significance test, we also applied the Wald test to assess the jointly significance of the variables. Table 14 summarizes the tests results and coefficients of these variables for specification including an interaction term obtained from the cross product between BNDES’s dummy variable and respective indicators. We classified the coefficients according to significance and signal obtained. The coefficients that presented individual or joint significance with the expected signal were classified as “valid” (V). The coefficients that presented individual or joint significance with signal against our expectation were classified as “not valid” (NV). The coefficients that didn’t present individual or joint significance were classified as “not conclusive” (NC).

Note: In order to obtain the sector's sensitiveness we calculated interaction terms crossing a dummy variable created for each sector in our sample with the indicators related to the credit market imperfections and estimated one specification for each sector. We kept the same indicators and instruments in all specifications to provide comparable results. Due to space restrictions, we opted to expose just the coefficients indicators related to credit market imperfections and interaction terms for each sector's specification. After we evaluate the coefficient's significance of the indicator and interaction term, we added the coefficients if they were individually or jointly significant ("valid" – V) and disregard if they didn't present significant coefficients ("not conclusive" – NC). Tables 15 to 18 denote the estimated parameters for the financial indicators.

Table 15 – Sector's sensitiveness to credit market imperfections: Financial Expenses/EBIT

Sector	Indicator coefficient (A)	Interaction coefficient (B)	Wald Test H0: A = B = 0	(A+B)
Foods and beverages	1,83E-05 (0,010)	9,31E-05 (0,571)	(0,026)	1,11E-04
Retail	2,57E-05 (0,154)	-2,02E-04 (0,840)	(0,338)	--
Construction	2,62E-05 (0,153)	-4,92E-04 (0,000)	(0,000)	-4,66E-04
Electro-electronics	2,67E-05 (0,163)	-9,64E-05 (0,017)	(0,059)	-6,97E-05
Industrial machinery	2,56E-05 (0,151)	-4,93E-04 (0,318)	(0,220)	--
Mining	2,58E-05 (0,190)	2,11E-03 (0,263)	(0,410)	--
Non-metallic minerals	2,59E-05 (0,201)	1,42E-05 (0,747)	(0,277)	--
Pulp and paper	2,59E-05 (0,156)	-4,68E-04 (0,030)	(0,036)	-4,42E-04
Oil and gas	2,55E-05 (0,119)	2,54E-03 (0,730)	(0,285)	--
Chemical	7,24E-05 (0,479)	-5,21E-05 (0,612)	(0,001)	2,03E-05
Metallurgy and steelmaking	2,71E-05 (0,167)	-6,43E-05 (0,196)	(0,368)	--
Textile	2,54E-05 (0,151)	6,42E-05 (0,791)	(0,327)	--
Transportation	2,54E-05 (0,119)	-2,92E-04 (0,866)	(0,282)	--
Vehicles and Spare Parts	2,55E-05 (0,143)	2,99E-04 (0,760)	(0,280)	--
Agriculture and fisheries	2,59E-05 (0,166)	4,10E-03 (0,526)	(0,332)	--

Table 16 – Appraising the sector’s sensitiveness to credit market imperfections:

Market Value/Book Value				
Sector	Indicator coefficient (A)	Interaction coefficient (B)	Wald Test H0: A = B = 0	(A+B)
Foods and beverages	1,23E-04 (0,844)	-2,22E-04 (0,736)	(0,060)	-9,91E-05
Retail	-9,41E-05 (0,032)	9,06E-05 (0,550)	(0,0959)	-3,50E-06
Construction	-9,23E-05 (0,029)	-4,06E-04 (0,992)	(0,091)	-4,98E-04
Electro-electronics	-9,26E-05 (0,040)	5,49E-03 (0,068)	(0,0181)	5,40E-03
Industrial machinery	-9,23E-05 (0,070)	-6,68E-02 (0,383)	(0,1380)	--
Mining	-9,04E-05 (0,162)	-6,15E-02 (0,471)	(0,271)	--
Non-metallic minerals	-8,99E-05 (0,430)	-1,72E-02 (0,548)	(0,563)	--
Pulp and paper	-9,21E-05 0,056	-4,30E-03 (0,779)	(0,153)	--
Oil and gas	-9,11E-05 (0,106)	-1,27E-02 (0,887)	(0,218)	--
Chemical	-9,55E-05 (0,000)	6,08E-03 (0,034)	(0,000)	5,98E-03
Metallurgy and steelmaking	-9,18E-05 (0,059)	3,57E-04 (0,851)	(0,167)	--
Textile	-9,27E-05 (0,000)	2,49E-03 (0,735)	(0,000)	2,40E-03
Transportation	-9,43E-05 (0,046)	6,14E-02 (0,004)	(0,002)	6,13E-02
Vehicles and Spare Parts	-9,04E-05 (0,069)	-2,02E-03 (0,547)	(0,138)	--
Agriculture and fisheries	-9,24E-05 (0,053)	2,12E-02 (0,000)	(0,000)	2,11E-02

Table 17 – Appraising the sector’s sensitiveness to credit market imperfections:

Fixed Assets/Long-Term Liability

Sector	Indicator coefficient (A)	Interaction coefficient (B)	Wald Test H0: A = B = 0	(A+B)
Foods and beverages	-1,02E-02 (0,057)	-9,45E-02 (0,437)	(0,091)	-1,05E-01
Retail	-1,22E-02 (0,029)	1,01E-02 (0,137)	(0,089)	-2,05E-03
Construction	-1,35E-02 (0,003)	3,50E-02 (0,001)	(0,000)	2,15E-02
Electro-electronics	-1,06E-02 (0,043)	-3,75E-03 (0,973)	(0,119)	--
Industrial machinery	-1,07E-02 (0,036)	3,84E-02 (0,653)	(0,106)	--
Mining	-2,63E-03 0,711	-1,45E-02 (0,219)	(0,0173)	-1,71E-02
Non-metallic minerals	-1,07E-02 (0,037)	3,13E-03 (0,977)	(0,103)	--
Pulp and paper	-1,07E-02 (0,036)	2,47E-02 (0,520)	(0,060)	1,41E-02
Oil and gas	-1,06E-02 (0,037)	-3,85E-03 (0,968)	(0,104)	--
Chemical	-1,04E-02 (0,045)	-2,41E-02 (0,413)	(0,065)	-3,45E-02
Metallurgy and steelmaking	-9,62E-03 (0,121)	-7,04E-03 (0,520)	(0,012)	-1,67E-02
Textile	-1,13E-02 (0,023)	5,20E-02 (0,077)	(0,028)	4,07E-02
Transportation	-1,10E-02 (0,028)	4,86E-02 (0,391)	(0,068)	3,76E-02
Vehicles and Spare Parts	-1,12E-02 (0,022)	1,20E-01 (0,055)	(0,009)	1,09E-01
Agriculture and fisheries	-1,04E-02 0,045	-4,29E-02 0,119	(0,028)	-5,34E-02

Table 18 – Appraising the sector’s sensitiveness to credit market imperfections:**Short Term Debt/Total Assets**

Sector	Indicator coefficient (A)	Interaction coefficient (B)	Wald Test H0: A = B = 0	(A+B)
Foods and beverages	2,67E-02 (0,501)	5,61E-01 (0,000)	(0,000)	5,88E-01
Retail	1,97E-01 (0,060)	-2,60E-01 (0,154)	(0,157)	--
Construction	1,99E-01 (0,063)	-9,82E-02 (0,421)	(0,172)	--
Electro-electronics	2,06E-01 (0,048)	-3,60E-01 (0,003)	(0,013)	-1,54E-01
Industrial machinery	1,93E-01 (0,061)	-1,95E-01 (0,222)	(0,169)	--
Mining	1,91E-01 (0,060)	-7,60E-02 (0,558)	(0,141)	--
Non-metallic minerals	1,91E-01 (0,061)	-1,14E-02 (0,923)	(0,132)	--
Pulp and paper	1,99E-01 (0,057)	-1,41E-01 (0,109)	(0,161)	5,82E-02
Oil and gas	1,89E-01 (0,069)	5,86E-02 (0,735)	(0,114)	--
Chemical	2,03E-01 (0,059)	-1,18E-01 (0,171)	(0,168)	--
Metallurgy and steelmaking	1,99E-01 (0,067)	-8,45E-02 (0,515)	(0,114)	--
Textile	2,35E-01 (0,036)	-2,20E-01 (0,050)	(0,112)	1,49E-02
Transportation	1,97E-01 (0,062)	-1,68E-01 (0,308)	(0,174)	--
Vehicles and Spare Parts	1,94E-01 (0,072)	-4,86E-02 (0,667)	(0,000)	1,45E-01
Agriculture and fisheries	1,94E-01 (0,058)	-2,94E-01 (0,016)	(0,052)	-9,95E-02

Note: The results presented in tables 15 to 18 were organized in tables 19 and 20. We present the sector's business cycle sensitiveness according to each indicator. We reveal for each indicator the sector's ranking classification according to the total marginal effect obtained adding the coefficients of the indicator itself and respective interaction term.

Table 19 – Ranking of the sectors according to business cycle sensitiveness to credit market imperfections:

Financial Expenses/EBIT and Market Value/Book Value

Financial Expenses / EBIT			Market Value/Book Value		
Ranking	Sector	(A+B)	Ranking	Sector	(A+B)
1	Agriculture and fisheries	2,11E-02	1	Transportation	6,13E-02
2	Foods and beverages	1,11E-04	2	Chemical	5,98E-03
3	Chemical	2,03E-05	3	Electro-electronics	5,40E-03
4	Electro-electronics	-6,97E-05	4	Textile	2,40E-03
5	Pulp and paper	-4,42E-04	5	Retail	-3,50E-06
6	Construction	-4,66E-04	6	Foods and beverages	-9,91E-05
--	Retail	--	7	Construction	-4,98E-04
--	Industrial machinery	--	--	Agriculture and fisheries	--
--	Mining	--	--	Industrial machinery	--
--	Non-metallic minerals	--	--	Mining	--
--	Oil and gas	--	--	Non-metallic minerals	--
--	Metallurgy and steelmaking	--	--	Pulp and paper	--
--	Textile	--	--	Oil and gas	--
--	Transportation	--	--	Metallurgy and steelmaking	--
--	Vehicles and Spare Parts	--	--	Vehicles and Spare Parts	--

**Table 20 – Ranking of the sectors according to business cycle sensitiveness to credit market imperfections:
Fixed Assets/Long-Term Liability and Short Term Debt/Total Assets**

Fixed Assets/Long-Term Liability			Short Term Debt/Total Assets		
Ranking	Sector	(A+B)	Ranking	Sector	(A+B)
1	Vehicles and Spare Parts	1,09E-01	1	Foods and beverages	5,88E-01
2	Textile	4,07E-02	2	Vehicles and Spare Parts	1,45E-01
3	Transportation	3,76E-02	3	Pulp and paper	5,82E-02
4	Construction	2,15E-02	4	Textile	1,49E-02
5	Pulp and paper	1,41E-02	5	Agriculture and fisheries	-9,95E-02
6	Retail	-2,05E-03	6	Electro-electronics	-1,54E-01
7	Metallurgy and steelmaking	-1,67E-02	--	Retail	--
8	Mining	-1,71E-02	--	Construction	--
9	Chemical	-3,45E-02	--	Industrial machinery	--
10	Agriculture and fisheries	-5,34E-02	--	Mining	--
11	Foods and beverages	-1,05E-01	--	Non-metallic minerals	--
--	Electro-electronics	--	--	Oil and gas	--
--	Industrial machinery	--	--	Chemical	--
--	Non-metallic minerals	--	--	Metallurgy and steelmaking	--
--	Oil and gas	--	--	Transportation	--

Banco Central do Brasil

Trabalhos para Discussão

Os Trabalhos para Discussão do Banco Central do Brasil estão disponíveis para download no website
<http://www.bcb.gov.br/?TRABDISCLISTA>

Working Paper Series

The Working Paper Series of the Central Bank of Brazil are available for download at
<http://www.bcb.gov.br/?WORKINGPAPERS>

- | | | |
|-----|--|----------|
| 221 | Financial Instability and Credit Constraint: evidence from the cost of bank financing
<i>Bruno S. Martins</i> | Nov/2010 |
| 222 | O Comportamento Cíclico do Capital dos Bancos Brasileiros
<i>R. A. Ferreira, A. C. Noronha, B. M. Tabak e D. O. Cajueiro</i> | Nov/2010 |
| 223 | Forecasting the Yield Curve with Linear Factor Models
<i>Marco Shinobu Matsumura, Ajax Reynaldo Bello Moreira and José Valentim Machado Vicente</i> | Nov/2010 |
| 224 | Emerging Floaters: pass-throughs and (some) new commodity currencies
<i>Emanuel Kohlscheen</i> | Nov/2010 |
| 225 | Expectativas Inflacionárias e Inflação Implícita no Mercado Brasileiro
<i>Flávio de Freitas Val, Claudio Henrique da Silveira Barbedo e Marcelo Verdini Maia</i> | Nov/2010 |
| 226 | A Macro Stress Test Model of Credit Risk for the Brazilian Banking Sector
<i>Francisco Vazquez, Benjamin M. Tabak and Marcos Souto</i> | Nov/2010 |
| 227 | Uma Nota sobre Erros de Previsão da Inflação de Curto Prazo
<i>Emanuel Kohlscheen</i> | Nov/2010 |
| 228 | Forecasting Brazilian Inflation Using a Large Data Set
<i>Francisco Marcos Rodrigues Figueiredo</i> | Dec/2010 |
| 229 | Financial Fragility in a General Equilibrium Model: the Brazilian case
<i>Benjamin M. Tabak, Daniel O. Cajueiro and Dimas M. Fazio</i> | Dec/2010 |
| 230 | Is Inflation Persistence Over?
<i>Fernando N. de Oliveira and Myrian Petrassi</i> | Dec/2010 |
| 231 | Capital Requirements and Business Cycles with Credit Market Imperfections
<i>P. R. Agénor, K. Alper and L. Pereira da Silva</i> | Jan/2011 |
| 232 | Modeling Default Probabilities: the case of Brazil
<i>Benjamin M. Tabak, Daniel O. Cajueiro and A. Ludovice</i> | Jan/2011 |

233	Emerging Floaters: pass-throughs and (some) new commodity currencies <i>Emanuel Kohlscheen</i>	Jan/2011
234	Cyclical Effects of Bank Capital Requirements with Imperfect Credit Markets <i>Pierre-Richard Agénor and Luiz A. Pereira da Silva</i>	Jan/2011
235	Revisiting bank pricing policies in Brazil: Evidence from loan and deposit markets <i>Leonardo S. Alencar</i>	Mar/2011
236	Optimal costs of sovereign default <i>Leonardo Pio Perez</i>	Apr/2011
237	Capital Regulation, Monetary Policy and Financial Stability <i>P.R. Agénor, K. Alper, and L. Pereira da Silva</i>	Apr/2011
238	Choques não Antecipados de Política Monetária e a Estrutura a Termo das Taxas de Juros no Brasil <i>Fernando N. de Oliveira e Leonardo Ramos</i>	Abr/2011
239	SAMBA: Stochastic Analytical Model with a Bayesian Approach <i>Marcos R. de Castro, Solange N. Gouvea, André Minella, Rafael C. Santos and Nelson F. Souza-Sobrinho</i>	Apr/2011
240	Fiscal Policy in Brazil through the Lens of an Estimated DSGE Model <i>Fabia A. de Carvalho and Marcos Valli</i>	Apr/2011
241	Macro Stress Testing of Credit Risk Focused on the Tails <i>Ricardo Schechtman and Wagner Piazza Gaglianone</i>	May/2011
242	Determinantes do Spread Bancário Ex-Post no Mercado Brasileiro <i>José Alves Dantas, Otávio Ribeiro de Medeiros e Lúcio Rodrigues Capelletto</i>	Maio/2011
243	Economic Activity and Financial Institutional Risk: an empirical analysis for the Brazilian banking industry <i>Helder Ferreira de Mendonça, Délio José Cordeiro Galvão and Renato Falci Villela Loures</i>	May/2011
244	Profit, Cost and Scale Efficiency for Latin American Banks: concentration-performance relationship <i>Benjamin M. Tabak, Dimas M. Fazio and Daniel O. Cajueiro</i>	May/2011
245	Pesquisa Trimestral de Condições de Crédito no Brasil <i>Clodoaldo Aparecido Annibal e Sérgio Mikio Koyama</i>	Jun/2011
246	Impacto do Sistema Cooperativo de Crédito na Eficiência do Sistema Financeiro Nacional <i>Michel Alexandre da Silva</i>	Ago/2011
247	Forecasting the Yield Curve for the Euro Region <i>Benjamin M. Tabak, Daniel O. Cajueiro and Alexandre B. Sollaci</i>	Aug/2011
248	Financial regulation and transparency of information: first steps on new land <i>Helder Ferreira de Mendonça, Délio José Cordeiro Galvão and Renato Falci Villela Loures</i>	Aug/2011

- 249 Directed clustering coefficient as a measure of systemic risk in complex banking networks** Aug/2011
B. M. Tabak, M. Takami, J. M. C. Rocha and D. O. Cajueiro
- 250 Recolhimentos Compulsórios e o Crédito Bancário Brasileiro** Ago/2011
Paulo Evandro Dawid e Tony Takeda
- 251 Um Exame sobre como os Bancos Ajustam seu Índice de Basileia no Brasil** Ago/2011
Leonardo S. Alencar
- 252 Comparação da Eficiência de Custo para BRICs e América Latina** Set/2011
Lycia M. G. Araujo, Guilherme M. R. Gomes, Solange M. Guerra e Benjamin M. Tabak
- 253 Bank Efficiency and Default in Brazil: causality tests** Oct/2011
Benjamin M. Tabak, Giovana L. Craveiro and Daniel O. Cajueiro
- 254 Macroprudential Regulation and the Monetary Transmission Mechanism** Nov/2011
Pierre-Richard Agénor and Luiz A. Pereira da Silva