

# *ALEA*

## *Tech Reports*

---

### Determinants of the implied volatility function on the Italian Stock Market

Alessandro Beber

Tech Report Nr. 10  
Marzo 2001

---

**Alea - Centro di ricerca sui rischi finanziari**  
Dipartimento di informatica e studi aziendali  
Università di Trento - Via Inama 5 - 38100 - Trento  
<http://www.aleaweb.org/>

*ALEA, Centro di ricerca sui rischi finanziari è un centro di ricerca indipendente costituito presso il Dipartimento di informatica e studi aziendali dell'Università di Trento. Il centro si propone di elaborare conoscenze innovative in materia di risk management, e di favorirne la diffusione mediante pubblicazioni e programmi di formazione. Il centro è diretto dal prof. Luca Erzegovesi. Nella collana ALEA Tech Reports sono raccolti lavori di compendio e rassegna della letteratura e della prassi operativa su tematiche fondamentali di risk management.*

Alessandro Beber(\*)

# Determinants of the implied volatility function on the Italian Stock Market

## Abstract

*This paper describes the implied volatility function computed from options on the Italian stock market index between 1995 and 1998 and tries to find out potential explanatory variables. We find that the typical smirk observed for S&P500 stock index characterizes also Mib30 stock index. When potential determinants are investigated by a linear Granger Causality test, the important role played by option's time to expiration, transacted volumes and historical volatility is detected. A possible proxy of portfolio insurance activity does poorly in explaining the observed pattern. Further analysis shows that the dynamic interrelation between the implied volatility function and some determinants could be, to a certain extent, non-linear.*

JEL classification: G10; G12 ; G13.

First draft: July 2000

This revision: February 2001

(\*) LEM – Laboratory of Economics and Management, St. Anna School of Advanced Studies, Pisa – Italy. Visiting scholar – Department of Finance, The Wharton School – University of Pennsylvania, Philadelphia – USA

The author acknowledges the helpful comments and suggestions of Carlo Bianchi, Luca Erzegovesi, Kenneth Kavajecz. Any remaining errors are the author's responsibility. Please e.mail comments and suggestions to: [abeber@wharton.upenn.edu](mailto:abeber@wharton.upenn.edu).

## Summary

1. Introduction .....	5
2. Data and sampling procedure .....	7
3. The implied volatility function.....	14
4. Identifying the potential determinants.....	17
5. Conclusions .....	23
References .....	25
Figures .....	28
Tables .....	32

## 1. Introduction

Since October 1987 stock market crash, it is well known that implied volatilities computed from options on stock market indices using Black and Scholes (1973) formula vary across strike prices and maturities. In particular, on the US stock market, a decreasing profile of implied volatility with respect to moneyness has been invariably observed<sup>1</sup>; this is the so-called “volatility smile” or “smirk”, owing to asymmetric shape. As regards European stock markets, there is evidence of similar patterns, e.g. for the German equity market as illustrated by Tompkins (1999), but also of fairly symmetric “volatility smiles”, as pointed out by Pena et al. (1999) for the Spanish index.

Given the assumptions of Black and Scholes model, all the options with the same maturity and on the same underlying asset should have the same implied volatility, notwithstanding different strike prices; the presence of a volatility smile determines the roughness of Black and Scholes formula in the valuation of options with different moneyness.

Financial literature handled this empirical evidence of not constant implied volatility with two broad classes of methods. The first could be labelled “deterministic volatility methods”; in general it refers to the use of a pricing model in which the parameter of constant volatility is replaced by a deterministic volatility function: different examples of this type of models are the approach of Shimko (1993), the implied binomial tree or lattice approach developed by Derman and Kani (1994) and Rubinstein (1994), the non-parametric kernel regression approach of Ait-Sahalia and Lo (1998). The second class of methods could be labelled “two factors models”; besides the risk of the market price of underlying asset, the valuation models price additional non-traded sources of risk, such as the volatility of volatility or market price jumps or even both. One of the first examples belonging to this general class was the stochastic volatility model of Hull and White (1987); more recent advances are, among others, the stochastic volatility model of Heston (1993), the random jump model of Bates (1996) and the multifactor model of Bates (2000).

The relation between the implied volatility smile and some potential explanatory variables is examined for the Italian options market. This study differs from previous research along two primary dimensions. First, in order to get a reliable evidence of the smile shape during the examined period, I perform an extensive analysis considering different subperiods, different sets

---

<sup>1</sup> See among the others Rubinstein (1994), Jackwerth and Rubinstein (1996), Dumas et al. (1998) who illustrated that the implied volatility of the S&P500 index options decreases monotonically as the strike price increases with respect to the current level of the underlying asset.

of options and different measures of moneyness. The aim is to establish whether the smile's profile is characterized by a negative slope, as in the US market, or whether it is symmetric, like the smile observed on the Spanish options market.

A second difference relative to previous work is that I try to find out potential determinants of the shape of the volatility smile; the direct explanation of these determinants has been an omitted topic in the extant literature. A formal categorization of explanatory variables can help not only to improve options' pricing models, but also to enhance the methodologies extracting probability density function of the underlying from option prices<sup>2</sup>. I follow the methodological approach of Pena et al. (1999), who employed a linear Granger causality test to characterize the relation between the parameters of the interpolated volatility function and some explanatory variables; however this study differs substantially in the specific choice of the potential determinants and in the inference drawn from the findings. Moreover the analysis is extended through a non-linear Granger causality test.

The empirical results show that on the Italian options market a persistent asymmetric implied volatility function is observed, similar to the US evidence. This phenomena is well approximated by a simple quadratic function of moneyness, with a negative linear term and a small degree of convexity. When I try to relate the smile shape to potential determinants, I find that a prominent role is played by time to expiration, liquidity of the option market and historical volatility. A non-linear effect on the implied volatility function is present for all the explanatory variables employed in this analysis.

The paper is organized as follows. Section 2 discusses briefly the features of the Italian options market, describes data and explanatory variables employed in the analysis and provide descriptive statistics for these series. The revealed volatility smile is illustrated in Section 3 and an interpreting model is derived. Section 4 explains the theoretical framework of the linear and non-linear Granger causality tests and presents the empirical results for potential determinants. Finally Section 5 offers a brief summary and provides conclusions and suggested areas for further research.

---

<sup>2</sup> For a comprehensive survey of the literature about probability density function implied by option prices, see Jackwerth (1999).

## 2. Data and sampling procedure

This empirical analysis focuses on Mibo30 stock index options and on some potential explanatory variables extrapolated either from the same market or from the market for the underlying asset.

### 2.1 Italian Mibo30 Index options

Mibo30 are options written on the Italian stock market index Mib30, which comprises the 30 most liquid and capitalized stocks; they were introduced on the Italian Derivatives Market (IDEM) on the 15<sup>th</sup> of November 1995. The volume traded on Mibo30 options represented 46% of the volume traded on all Italian equities in 1996, 72% in 1997 and 63% in 1998; the Mibo30 number of contracts relative to the French and Spanish stock index options was respectively 24% and 136% in 1997.

Mibo30 options are *european style* options, which means that exercise is possible only at maturity. The market price is stated in index points, each one worth 2.5 euro (called *contract multiplier*). The contract dimension (*notional value*) is determined by the product between the *multiplier* and the strike price (expressed in index points).

Mibo30 options contracts have supplementary expiration dates with respect to the correspondent Fib30 future contract: besides quarterly maturities, there are also monthly maturities. The option contract expires the third Friday of the expiration month at 9.30 a.m. For each maturity, nine different strike prices are quoted: four out of the money, four in the money and one at the money. The lowest price interval between strike prices is fixed at 500 index-points.

The closing prices are determined daily by the *Clearing House* (Cassa di Compensazione e Garanzia). The *settlement price* corresponds to the value of Mib30 index calculated on expiration date's opening prices of the 30 stocks composing the index. The contract settlement is carried out by cash as the difference between option's strike price and Mib30 settlement price, taking into account the number of contracts, the *multiplier* value and by means of the *Clearing House*.

### 2.2 Sampling procedure

The dataset is composed by the closing prices of call and put options on the Mib30 Index traded daily on IDEM during the period November 1995-March 1998<sup>3</sup>.

---

<sup>3</sup> I gratefully acknowledge the Italian Stock Market "Borsa Italiana SpA" for making available the dataset.

In order to consider only liquid prices, which is an extremely important issue when high frequency data are not available, the daily set of observations is filtered according to four criteria.

First, the closing prices of options with no transactions during the trading day are taken out of sample. Second, the dataset is filtered to include only calls and puts with the same expiration date of the corresponding stock index future. Hence I consider only the March, June, September and December maturity; in the dataset the average monthly transaction volume for options with quarterly expiration dates turns out to be about 12% higher than the average transaction volume on options with monthly maturities.

The third criteria is to exclude options with less than 5 and more than 90 trading days to expiration, which may induce liquidity-related biases. The shorter term options have relatively small time premiums, hence the estimation of volatility is extremely sensitive to any possible measurement error, particularly if options are not at the money, as Hentschel (2000) shows; other liquidity biases can arise for example because of fund manager's positions rolling over. The longer term options, on the other hand, are simply less traded<sup>4</sup>.

Finally, arbitrage exclusion criteria are employed in order to avoid errors or microstructure effects such as non synchronous prices between options and the underlying<sup>5</sup>.

This filtering procedure reduces the data from 20146, corresponding to 600 trading sessions, to 7963 observations (3600 for call and 4363 for put options), with an average of 13 liquid prices per day. Moreover in the most relevant part of this study only out of the money put and call options are going to be employed: thus the more involved and active part of the market is considered (e.g. the portfolio insurance activity or the sale of covered call by fund managers). For instance in this dataset the average daily number of contracts on the out of the money options is nearly twice the volume on the in the money options. In this way the dataset is reduced to 4818 observations, with an average of 8 liquid prices per day.

Even if the underlying of the Mibo30 options is the Mib30 stock cash index, in this analysis I consider the prices of the corresponding future Fib30 and the Black (1976) version of the option

---

<sup>4</sup> Similar exclusionary criteria are applied among others by Bakshi et. al (1997) or by Dumas et al. (1998).

<sup>5</sup> The value of a European call option like the Mibo30 considered in this analysis should respect the following applied boundary and strike price conditions:

$$C \geq \max(0, (F - K)R^{-t}); \quad C(K_1) > C(K_2) \text{ where } K_1 < K_2; \quad (K_2 - K_1)R^{-t} \geq C(K_1) - C(K_2) > 0.$$

where  $C$  is the call price,  $K$  is the strike price,  $F$  is the forward price and  $R$  is a capitalization factor. I apply the same arbitrage exclusionary criteria to put options.



pricing formula<sup>6</sup>. This approach is far more simple, because the estimation of the dividend yield which is compounded in the price of the future contract can be avoided. Moreover during the period under analysis (Nov. 1995 – Mar. 1998) the settlement price of Mib30 stock index was non synchronous with respect to the derivatives market: in fact the closing price of Mib30 index was fixed at 5.00 p.m. while IDEM closed at 5.30 p.m.. For this reason considering a future price instead of an index price as underlying eliminates a large measurement error typically coming from using closing prices for the options and index that are measured half an hour apart (Hentschel, 2000).

From each observed option closing price  $C_{it}$  I compute implied volatility  $\sigma_{it}$  by numerically solving the Black (1976) formula:

$$C_{it} = e^{-r(T-t)}[F_t N(d_1) - KN(d_2)]$$

$$d_1 = \frac{\ln(F_t/K) + \sigma_{it}^2(T-t)/2}{\sigma_{it}\sqrt{T-t}}$$

$$d_2 = d_1 - \sigma_{it}\sqrt{T-t}$$

where, as usual,  $K$  is the strike price,  $F_t$  is the future price at time  $t$ ,  $T$  is option's expiration date,  $r$  is the risk free interest rate and  $N$  represents the normal cumulative density function.

To proxy the risk free interest rate I use the one-month interbank interest rate for options with residual time to maturity between 5 and 45 trading days and the two month interbank interest rate for options with residual time to maturity between 45 and 90 trading days.

Options' moneyness is computed with three alternative methodologies. First, I take the ratio of the strike price to the underlying future price<sup>7</sup>, following the frequent market convention of quoting (and hedging) the options in term of the future rather than the cash index. This method is straightforward, but it doesn't consider that moneyness should be evaluated considering also the volatility of underlying asset and the option's time to maturity. For this reason the second approach to moneyness takes into account explicitly these variables: the natural logarithm of the

---

<sup>6</sup> At the maturity of the future, the future price equals the asset's spot price. Thus a European option on the asset has the same value as a European option on the future contract with the same maturity. As a result the Black and Scholes formula can be rewritten as shown by Black (1976) and afterwards in this section.

<sup>7</sup> Jackwerth and Rubinstein (1996) used the same approach.

ratio of the strike price on the underlying future price is divided by the product of at the money implied volatility and the square root of the time to maturity<sup>8</sup>:

$$\frac{\ln\left(\frac{K_{it}}{F_t}\right)}{\sigma_{atm,t}\sqrt{T-t}}$$

To compute at the money implied volatility I use the average of implied volatility of a call and a put option with a strike price  $K^*$  as close as possible to index level, such that:

$$K^* = \arg \min_K |S_t / K - 1|$$

The third approach to compute moneyness is to use directly the options' *Delta*. This measure considers in fact both time to maturity and volatility and at the same time is coherent with the Black and Scholes model. To avoid dependencies between the measure of moneyness and the implied volatility of options with different strike prices, at the money implied volatility is inserted in the *Delta*'s formula for each option as the volatility input.

It is convenient to normalize option's *Delta* between zero and one in order to represent in the same way either call and put options; this can be achieved taking the absolute value of put option's *Delta* and the complement to one of call option's *Delta*, so as to obtain normalized values that increase with the strike.

In the reminder of this study I employ mainly this normalized *Delta* as the measure of moneyness, even if the robustness of the results is always checked also with the other two measures of moneyness.

### 2.3 Potential determinants definition

I look for the potential determinants of the volatility smile' profile among three categories of variables. First, the specific features of the options market is illustrated, in order to obtain a reasonable estimate of general liquidity and potential links between smile effect and implied volatility term structure; hence I aim to explain options' mispricings with the existence of market frictions. Second, the underlying asset dynamic is represented, in order to detect likely dependencies between the implied volatility function and relevant characteristics of the

---

<sup>8</sup> Similar methodologies to compute moneyness are used in Natenberg (1994), Dumas et. al (1998), Tompkins (1999).

underlying asset<sup>9</sup>; options' mispricings are explained by an investor assessments of the underlying stochastic process which is different from Black and Scholes hypothesis. Finally, I try to describe investors behavior, in order to reflect market practises which could have an impact on the implied volatility function as a consequence of relative trading activity in calls *versus* puts of all strike prices; thus, as argued by option market practitioners, heavy demand for out of the money put options drives up prices.

In the first category of options' market specific variables the option's residual time to expiration is employed, calculated as the ratio between the number of working days to the expiration date and the conventional working days in one year (252):

$$TEXP_t = \frac{\text{expiration date} - \text{trading date}}{252}$$

Clearly I am trying to take into account the potential effect of the time horizon on the implied risk neutral density function.

The volume of transactions on options is also used, expressed as the simple number of traded contracts and either as number of traded options weighted by the value of the specific option's contract<sup>10</sup>:

$$NOPT_t = \sum_{i=1}^m n_i$$

$$VOPT_t = c \sum_{i=1}^m n_i K_i$$

where  $n_i$  is the number of contracts traded on  $i$ -option,  $K_i$  is the  $i$ -option strike price,  $c$  is a constant scaling factor and  $m$  is the number of different options traded each day of the sample. I want to proxy the liquidity in the market in the most general way.

The explanatory variables of the second category representing underlying asset's dynamic are the market momentum, calculated as the natural logarithm of the ratio between the future price (Fib30) and a 50-day simple moving average:

$$MOM_t = \ln \frac{F_t}{\frac{1}{50} \sum_{i=t-49}^t F_i}$$

---

<sup>9</sup> I don't employ any variable related to interest rates owing to the small pricing improvement which is usually obtained for stock index options when a time varying interest rates is considered. See among others Bakshi et al. (1997).

where  $F_t$  is the future price at time  $t$ . This ratio is positive (negative) in a bullish (bearish) market<sup>11</sup>. Even if this measure is something like arbitrary, the aim is to gauge if the trend of the underlying has any effects on the steepness of the smile profile, given that it is well known that a *leverage* effect is present for the general level of volatility (e.g. Schwert (1989)).

A second potential explanatory variable is the volume of market transactions, expressed as the number of contracts traded each day on the stock index future contract ( $NFUT_t$ ); this is taken as a measure of the general market activity in the underlying. This variable is correlated with conditional volatility and can influence the leverage effect (Gallant et. al. (1992)).

The level of historical volatility is also considered, calculated during the previous 20 trading days as the annualised standard deviation of logarithmic returns on Fib30 settlement prices:

$$HVOL_t = [\sigma(r_t, \dots, r_{t-19})] \sqrt{252}$$

where  $\sigma(x, \dots, y)$  is the standard deviation of values between  $x$  and  $y$  and  $r_t$  is the daily logarithmic return on Fib30 settlement prices. The potential effect of different levels of volatility on the smile profile would suggest that an obvious pricing improvement is to relax the assumption of constant volatility.

As a last variable of the second category the volatility of volatility is employed, computed during the previous 20 trading days like the standard deviation of the historical volatility shown before:

$$VVOL_t = [\sigma(HVOL_t, \dots, HVOL_{t-19})]$$

where  $\sigma(x, \dots, y)$  is the standard deviation of values between  $x$  and  $y$ . This variable could be a good proxy for the *vega* risk in hedging activity, that may affect the pricing of certain type of options.

The third category of potential determinants related to investor behaviour comprises one variable: the number of contracts written on out of the money put options as a percentage of total reported out of the money call and put transactions, in order to obtain a sort of measure of the portfolio insurance activity of fund managers<sup>12</sup>:

---

<sup>10</sup> The value of an option's contract is usually calculated multiplying the strike price by a standard coefficient, called *contract multiplier*, in order to convert index point prices in real values. During the period under analysis (1995-1998) the contract multiplier for Mibo30 options corresponded to 5 euros.

<sup>11</sup> Pena et al. (1999) employ the inverse of this ratio with a different time span for the moving average.

<sup>12</sup> Grossman and Zhou (1996) show an equilibrium model of risk sharing between portfolio insurers and other investors that generate also negatively skewed implicit distributions. In Platen and Schweitzer (1998) the relatively heavy hedging of out of the money put options accentuates volatility/price level feedbacks and make implicit distribution more negatively skewed.

$$VPUT_t = \frac{\sum_{i=1}^k nput_i}{\sum_{i=1}^m n_i}$$

where  $n_i$  is as usual the number of contracts traded on  $i$ -option and  $nput_i$  is the number of contracts traded on  $i$ -put option, where  $k$  of the total  $m$  out of the money options are puts<sup>13</sup>.

## 2.4 Descriptive statistics

Table I presents the main features of the options' data set. Notice that mean and standard deviation of at the money implied volatility are both lower than the correspondent moment for implied volatility.

In Table II the results of correlation analysis between explanatory variables are presented. The high correlation coefficient between the two measures of transaction volume in the option market suggests to drop one of them; I decide to keep the variable "number of contracts". The magnitude of the other correlation coefficients allows to maintain the other explanatory variables in the subsequent analysis.

In order to assess the stationarity of the employed variables, which is a crucial point, as we will see, in the application of the methodology of this paper, the first step is the calculation of the sample autocorrelation coefficients; as illustrated in Table III, the variables "historical volatility" and the "momentum" exhibit the most relevant degree of persistence. Given the importance of this issue, it is clear that a formal testing procedure is required to determine the order of integration. I conduct augmented Dickey Fuller tests, allowing for the possibility that the data-generation process contains a constant drift term and additional lagged terms for the dependent variables. The results, reported in the last column of Table III, suggest that indeed "historical volatility" and "momentum"<sup>14</sup> can be integrated variables.

In order to get deeper understanding of the potential non stationarity of these time series, I follow the strategy proposed by Dolado et. al (1990) for testing for unit roots in the presence of possible trends. The procedure leads to the same previous results, that the existence of a unit root in "momentum" and "historical volatility" can not be rejected<sup>15</sup>. I conclude that these time

---

<sup>13</sup> Bates (2000) shows graphically that the moneyness bias in the post-crash period is strongly related to a percentage of out of the money call transactions on the total out of the money call and put transactions.

<sup>14</sup> The coefficient for the variable "momentum" is very close to the boundary for the rejection of the null hypothesis; since the true data-generating process is unknown and hence the test can potentially be misspecified, I do not reject the hypothesis of a unit root for "momentum" variable.

<sup>15</sup> Similar results are obtained if the logarithm of historical volatility is employed instead of the original historical volatility time series.

series are integrated of order one, since the same tests on the first differences reject definitely the presence of a unit root.

### 3. The implied volatility function

In this section the data are analysed in order to get a formal description of the empirical implied volatility function.

#### 3.1 The pattern in the data

In order to determine the kind of model which could best fit option's implied volatility with respect to option's moneyness, it is useful to present a graphical plot of the data (see Figure 1).

However, owing to the time varying general level of volatility, the picture is not so clear. Hence the option data is divided into several categories, according to either moneyness or time to expiration. By moneyness an option contract can be classified as: deep out of (in) the money put (call), out of (in) the money put (call), at the money put (call), in (out of) the money put (call), deep in (out of) the money put (call); the boundaries of the categories are chosen in order to have the same number of observations in each class<sup>16</sup>. By the time to expiration options are grouped in a short term category (<50 days) and medium term category (50-90 days). The proposed moneyness and maturity classification generates 12 categories; I equally weigh the implied volatility of each option in a given category to produce an average implied volatility per class. The results are summarized in Table IV and plotted in Figure 2.

The average implied volatility function presents the characteristic asymmetric profile (*smirk*): regardless the time to expiration, the Black's implied volatility exhibits a strong decreasing pattern as the put option goes from deep out of the money, to at the money and then deep in the money or as the call goes from deep in the money, to at the money and then deep out of the money. Furthermore the different level of Black's implied volatility between short and medium term options suggests the presence of a term structure of implied volatility.

To avoid possible misspecifications due to illiquid prices or unexploited arbitrage opportunities, the same graphical analysis is performed using only out of the money call and put options, which are traded more frequently and are not suitable for some arbitrage strategies. The results are fairly the same: the *smirk* presents only a smoother profile (see Table V and Figure 3). I also

---

<sup>16</sup> This choice depends on the descriptive purpose of this section; hence the focus is not on the precise meaning of moneyness, for which I should set typical moneyness intervals, but rather on a reliable representation of implied volatility in each specified category.

verify the persistency of this pattern throughout the period considered in this analysis. The breaking up in three sub-periods of about nine months<sup>17</sup> shows that the implied volatility function is always characterized by an asymmetric smile, with a smoother profile in the latest period (see figure 4). Looking at the differences in y-axis values, the plot provides also an empirical evidence of the time varying general level of implied volatility.

These findings of clear moneyness-related and maturity related biases are consistent with those in the existing literature; the evidence of a steeper smile for short term options reported in the literature depends on a measure of moneyness which doesn't take into account option's time to expiration (e.g. the ratio between the strike price and the future price), as pointed out also in Dumas et. al (1998). Actually almost the same pattern for the implied volatility function is obtained using the other typical measures of options' moneyness instead of options' *Delta*, except for a steeper smile for short term options when moneyness measure is time independent<sup>18</sup>.

### 3.2 Model's estimation

The shape of implied volatility function suggests to fit the data with the typical linear and quadratic model used previously in the literature (see Shimko (1993) or Dumas et al. (1998))<sup>19</sup>:

$$\text{Model 1: } Y = \beta_0 + \beta_1 X + \varepsilon$$

$$\text{Model 2: } Y = \beta_0 + \beta_1 X + \beta_2 X^2 + \varepsilon$$

where  $Y$ , the dependent variable, represents the implied volatility and  $X$  the moneyness of the options. The simplicity of the two models is determined by the endeavour to avoid overparametrization in order to gain better estimates' stability over time; moreover some other techniques, such as kernel regression (Ait-Sahalia (1998)), are not suitable in this study, because in that case the model is estimated only once on the whole dataset.

Specifically the time to maturity is not used in the models as one of the independent variables, owing to the lack of explanatory power and to the potential source of overfitting showed in the literature (e.g. Dumas et al. (1998)); anyway time to maturity is considered in the reminder of this analysis as one of the potential determinants of the specific profile of the implied volatility

---

<sup>17</sup> The first sub-period is between 15.11.1995 and 21.08.1996, the second sub-period is between 22.08.1996 and 28.05.1997, the third is between 29.05.1997 and 03.03.1998.

<sup>18</sup> To save space I do not insert the alternative plots and tables in this paper.

<sup>19</sup> For the important analogies between the deterministic volatility function that I will use in this approach and the implied binomial tree approach of Rubinstein (1994) or Derman and Kani (1994), see again Dumas et al. (1998).

function. Moreover I decide to give the same weight to each observation, regardless the moneyness, as the strategy to assign less weight to the deep out of the money options owing to the higher volatility has not proven to be satisfactory ( see Jackwerth and Rubinstein (1996)).

However these models can hardly be estimated on the given dataset, because the general level of volatility is time-varying, as the plot of figure 1 easily shows<sup>20</sup>.

There are two possible procedures to neutralize the non-stationarity of volatility. First, the implied volatility can be standardized with respect to the daily level of at the money volatility, like in Tompkins (1999); the ratio between the actual level of implied volatility and at the money volatility of the same trading day turns out to be a stationary time series. However using this approach can lose, in a further analysis of the model, the potential effect of the level of volatility on the shape of the implied volatility function.

The second possible approach, that actually is employed in this study, is to fit the models separately on every trading day with sufficient observations; I implicitly assume that implied volatility is stationary during the day. Then, in order to obtain representative models' parameters for the whole period, the average of the daily estimates is computed. I don't need any at the money implied volatility estimate and information about the general level of volatility is retained.

Hence the models can slightly be rearranged to consider this approach:

$$\text{Model 1: } Y_{t,\tau} = \beta_0 + \beta_1 X_{t,\tau} + \varepsilon_{t,\tau} \quad \forall t \in (0, T], \forall \tau \in [5, 90]$$

$$\text{Model 2: } Y_{t,\tau} = \beta_0 + \beta_1 X_{t,\tau} + \beta_2 X_{t,\tau}^2 + \varepsilon_{t,\tau} \quad \forall t \in (0, T], \forall \tau \in [5, 90]$$

where  $Y$  represents implied volatility and  $X$  the moneyness expressed as the *normalized* Delta measure<sup>21</sup>, while  $t$  denotes trading days and  $\tau$  options' time to maturity. A single model is estimated for each trading day considering options with the same time to maturity; typically two models are estimated for each trading day.

The results obtained by *OLS* fitting procedure are shown in Table VI. The reported parameters' estimates are averages for the whole period and so it is for the adjusted  $R^2$ . The  $t$ -statistics on which the  $p$ -values are computed use the average value of the parameter and average standard error, instead of averaging the  $t$ -values of each model<sup>22</sup>.

---

<sup>20</sup> Trying to fit Model 1 on the raw dataset returns an  $R^2$  of 0.07.

<sup>21</sup> The results are similar when different measures of moneyness are employed.

<sup>22</sup> This approach to hypothesis testing in presence of aggregation problems is used also in the literature on "event-study analysis" when cumulative abnormal return observations are evaluated. For a comprehensive reference see Campbell, Lo and MacKinlay (1997 p. 160-163).



The differences between Model 1 and Model 2 in the number of *OLS* estimations and in the average number of observations used in each inference are explained obviously by the higher observations requirement of Model 2 with respect to Model 1. The economic interpretation of the values obtained for the parameters is straightforward:  $\bar{\beta}_0$  represents a general level of volatility which localizes the implied volatility function,  $\bar{\beta}_1$  characterizes the negative profile which is responsible for the asymmetry in the risk neutral probability density function and  $\bar{\beta}_2$  provides, in Model 2, a certain degree of curvature in the implied volatility function. Hence the average risk neutral *PDF* on the Italian stock market is fat tailed and negatively skewed.

From the analysis of the *p*-values reported in Table VI, all the estimated parameters but  $\bar{\beta}_2$  can be considered significant. This can cast some doubts on the opportunity to use Model 2 in the remainder of the analysis, even though the adjusted  $R^2$  exhibits a substantial difference. For this reason a Lagrange Multiplier (*LM*) statistic is performed to test whether the coefficient associated with the quadratic term is statistically different from zero; the restricted model turns out to be Model 1 and the *LM* test is asymptotically distributed as a chi-squared with one degree of freedom. The value obtained for the *LM* statistic is 528.91 (*p*-value 0.0000); this implies that the null hypothesis of  $\bar{\beta}_2$  equal to zero is rejected and hence Model 2 is employed in the subsequent part of this study.

#### **4. Identifying the potential determinants**

In the previous section it was shown that the average implied volatility function is fitted rather well by a quadratic model with a negative coefficient of asymmetry.

In order to identify which explanatory variables can potentially determine the observed profile of the implied volatility smile, a linear and non-linear Granger Causality test is performed between the estimated parameters of Model 2 and the potential determinants described in Section 2. I will try to find a relation between the degree of asymmetry ( $\beta_1$ ), the degree of curvature ( $\beta_2$ ) and seven explanatory variables. In some sense the contract specific variables should help to detect cross sectional pricing biases, whereas the other variables serve to indicate whether the smile profile over time, which means the Black and Scholes pricing error, is related to the dynamically changing market conditions.

## 4.1 Linear Granger Causality

In this paragraph I discuss the definition of Granger causality and the basic approach used to test for its presence. Because this approach is well known, only a brief discussion is offered here.

As originally specified, the general formalization of Granger (1969) causality for the case of two scalar valued, stationary time series  $\{ X_t \}$  and  $\{ Y_t \}$  is defined as follows. Let  $F(X_t|Y_{t-1})$  be the conditional probability distribution of  $X_t$  given the bivariate information set  $I_{t-1}$  of an  $lx$ -length lagged vector of  $X_t$ , say  $X_{t-lx}^{t-1} \equiv (X_{t-lx}, X_{t-lx+1}, \dots, X_{t-1})$ , and an  $ly$ -length lagged vector of  $Y_t$ , say  $Y_{t-ly}^{t-1} \equiv (Y_{t-ly}, Y_{t-ly+1}, \dots, Y_{t-1})$ . Given lags  $lx$  and  $ly$ , the time series  $\{ Y_t \}$  does not strictly Granger cause  $\{ X_t \}$  if:

$$F(X_t|I_{t-1}) = F(X_t|I_{t-1} - Y_{t-ly}^{t-1}) \quad t = 1, 2, \dots \quad (1)$$

If the equality in equation (1) does not hold, then knowledge of past  $Y$  values helps to predict current and future  $X$  values, and  $Y$  is said to strictly Granger cause  $X$ . Similarly, a lack of instantaneous Granger causality from  $Y$  to  $X$  occurs if:

$$F(X_t|I_{t-1}) = F(X_t|I_{t-1} + Y_t) \quad (2)$$

where the bivariate information set is modified to include the current value of  $Y$ . If the equality in equation (2) does not hold, then  $Y$  is said to instantaneously Granger cause  $X$ .

Strict Granger causality relates to the past of one time series influencing the present and future of another time series, whereas instantaneous causality refers to the present of one time series influencing the present of another time series<sup>23</sup>.

The well-known test for Granger causality involves the estimation of a linear reduced form vector autoregression (VAR):

$$\begin{aligned} \beta_{it} &= \alpha_1 + B_{11}(L)\beta_{it} + B_{12}(L)E_{kt} + u_{1,t} \\ E_{it} &= \alpha_2 + B_{21}(L)\beta_{it} + B_{22}(L)E_{kt} + u_{2,t} \end{aligned} \quad (3)$$

for  $t=1, 2, \dots$   $i=1, 2$  and  $k=1, \dots, 7$

where  $\beta_{it}$  is alternatively the coefficient of asymmetry or the degree of curvature,  $E_{kt}$  is a single explanatory variable,  $B_{11}(L)$ ,  $B_{12}(L)$ ,  $B_{21}(L)$  and  $B_{22}(L)$  are one sided lag polynomials in the lag

---

<sup>23</sup> See Geweke, Meese and Dent (1983), Granger and Newbold (1986) and Hendry and Mizon (1999) for a discussion of Granger causality testing procedures and issues relative to omitted variables bias, measurement errors and aggregation bias.

operator  $L$ . The regression errors  $\{u_{1,t}\}$  and  $\{u_{2,t}\}$  are assumed to be mutually independent and individually i.i.d. with zero mean and constant variance.

To test for strict Granger causality from  $Y$  to  $X$  a standard joint test ( $F$ - or  $\chi^2$  - test) of exclusion restriction is used to determine whether lagged  $Y$  has significant linear predictive power for current  $X$ . The null hypothesis that  $Y$  does not strictly Granger cause  $X$  is rejected if the coefficients on the elements in  $B_{12}(L)$ , i.e.  $B_{12,i}$  ( $i=1,\dots,m$ ) are jointly significantly different from zero. Feedback (or bi-directional) causality exists if Granger causality runs in both directions, in which case the coefficients on the elements in both  $B_{12}(L)$ ,  $B_{21}(L)$  are jointly different from zero.

Among the variety of causality tests that have been proposed, the simplest and straightforward approach uses an autoregressive specification<sup>24</sup>. To implement this test, I assume a particular lag length  $L$  and estimate by *OLS* :

$$\beta_{it} = \alpha_1 + b_1\beta_{it-1} + b_2\beta_{it-2} + \dots + b_L\beta_{it-L} + c_1E_{kt-1} + c_2E_{kt-2} + \dots + c_LE_{kt-L} + u_t \quad (4)$$

$$\beta_{it} = \alpha_2 + d_1\beta_{it-1} + d_2\beta_{it-2} + \dots + d_L\beta_{it-L} + e_t \quad (5)$$

I compute the sum of squared residuals from (4) and (5),

$$RSS_1 = \sum_{t=1}^T \hat{u}_t^2$$

$$RSS_0 = \sum_{t=1}^T \hat{e}_t^2$$

if

$$S_1 = \frac{T(RSS_0 - RSS_1)}{RSS_1}$$

is greater than the 5% critical value for a  $\chi^2(L)$  variable, then the null hypothesis that  $E$  does not Granger-cause  $\beta$  is rejected; that is, if  $S_1$  is sufficiently large, I conclude that  $E$  does Granger-cause  $\beta$ .

## 4.2 Nonlinear Granger Causality

Baek and Brock (1992) proposed a nonparametric statistical method for detecting nonlinear causal relations between two time series. This method was modified by Hiemstra and Jones (1994) to allow each series to display weak temporal dependence. To define nonlinear Granger

---

<sup>24</sup> Based on Monte Carlo simulations, Geweke, Meese and Dent (1983) suggest that the causality test I am going to use may well be the best.

causality, assume there are two strictly stationary and weakly dependent scalar time series  $\{W_t\}$  and  $\{V_t\}$ . As in the previous paragraph, define the  $m$ -length lead vector of  $W_t$  by  $W_t^m$ , and the  $Lw$ -length and  $Lv$ -length lag vectors of  $W_t$  and  $V_t$ , respectively, by  $W_t^m \equiv (W_t, W_{t+1}, \dots, W_{t+m-1})$ ,  $W_{t-Lw}^{Lw} \equiv (W_{t-Lw}, W_{t-Lw+1}, \dots, W_{t-1})$  and  $V_{t-Lv}^{Lv} \equiv (V_{t-Lv}, V_{t-Lv+1}, \dots, V_{t-1})$ .

The definition of nonlinear Granger noncausality is given by Eq. (6):

$$\begin{aligned} & \Pr\left(\|W_t^m - W_s^m\| < e \mid \|W_{t-Lw}^{Lw} - W_{s-Lw}^{Lw}\| < e, \|V_{t-Lv}^{Lv} - V_{s-Lv}^{Lv}\| < e\right) \\ &= \Pr\left(\|W_t^m - W_s^m\| < e \mid \|W_{t-Lw}^{Lw} - W_{s-Lw}^{Lw}\| < e\right) \end{aligned} \quad (6)$$

where  $\Pr\{\cdot\}$  denotes probability and  $\|\cdot\|$  is the maximum norm. If Eq. (6) holds, for given values of  $m$ ,  $Lw$ , and  $Lv$  and for  $e$ , then  $\{V_t\}$  does not strictly Granger cause  $\{W_t\}$ . This definition of nonlinear Granger causality is based on two conditional probabilities. The probability on the left hand side of Eq. (6) can be interpreted as the conditional probability that any two arbitrary  $m$ -length lead vectors of  $\{W_t\}$  are within a metric  $e$  of each other, given that the corresponding  $Lw$ -length lag vectors of  $\{W_t\}$  and  $Lv$ -length lag vectors of  $\{V_t\}$  are within a distance  $e$  of each other. The probability on the right hand side of Eq. (6) can be interpreted in a similar way: the conditional probability that any two arbitrary  $m$ -length lead vectors of  $\{W_t\}$  are within a metric  $e$  of each other, given that the corresponding  $Lw$ -length lag vectors of  $\{W_t\}$  are within a distance  $e$  of each other. The null hypothesis is that  $\{V_t\}$  does not nonlinearly Granger cause  $\{W_t\}$ . Under the null hypothesis, and for given values of  $m$ ,  $Lw$  and  $Lv \geq 1$  and  $e > 0$ , it can be shown that the statistic:

$$\sqrt{n} \left( \frac{C1(m+Lw, Lv, e, n)}{C2(Lw, Lv, e, n)} - \frac{C3(m+Lw, e, n)}{C4(Lw, e, n)} \right) \sim aN(0, \sigma^2(m, Lx, Ly, e)) \quad (7)$$

where  $C1(m+Lw, Lv, e, n)$ ,  $C2(Lw, Lv, e, n)$ ,  $C3(m+Lw, e, n)$ , and  $C4(Lw, e, n)$  are correlation-integral estimators of the point probabilities corresponding to the left hand side and right hand side of Eq. (6)<sup>25</sup>. This test has very good power properties against a variety of nonlinear Granger causal and noncausal relations, and its asymptotic distribution is the same if the test is applied to the estimated residuals from a vector autoregressive (VAR) model (Hiemstra and Jones (1994)).

---

<sup>25</sup> For a more detailed discussion of correlation integral estimators and the derivation of the estimator for the variance  $\sigma^2(m, Lw, Lv, e)$  see Hiemstra and Jones (1994).

### 4.3 Linear Granger test results

Since hypothesis tests are sensitive to the truncation of the lag polynomials on the dependent and independent variable, lag lengths must be chosen carefully<sup>26</sup>. In order to determine the optimal lag, two of the typical information criteria: Akaike Information Criteria and Schwarz Information Criteria are employed that share the common aim to trade off the bias associated with a parsimonious parametrization against the inefficiency associated with overparametrization. In the few cases in which the suggested optimal lag is not the same, I follow the Schwarz result that seems to be more parsimonious and stable.

A second issue is related to the non stationary of the variables employed in this analysis; in Section 2.4 it was shown that the variables “momentum” and “historical volatility” are integrated of order one ( $I(1)$ ), so that first differences are individually stationary and hence suitable for modelling in a Vector AutoRegression framework. However Engle and Granger (1987) show that if two nonstationary variables are cointegrated, a VAR in the first differences is misspecified. For two series of prices to be cointegrated, each one must be  $I(1)$  and there exists a linear combination which is stationary. As in the employed model one of the dependent variables is always a parameter of the implied volatility function,  $\beta_1$  or  $\beta_2$ , first of all the order of integration of these series of parameters is determined. Applying the same augmented Dickey Fuller test of Section 2.4, I find that each series is  $I(0)$  or, in other words, is stationary. This means that the presence of cointegration is always rejected and the VAR model in the differences is correctly specified.

Table VII reports the results of the linear Granger causality tests between the asymmetry parameter  $\beta_1$  and the explanatory variables and between the curvature parameter  $\beta_2$  and the explanatory variables<sup>27</sup>. Beside the optimal lag determined by the usual information criteria, the value of chi-squared statistic and the correspondent  $p$ -value is indicated.

The first evidence is the prominent role played by the time to expiration variable. This is consistent with findings in the literature about the presence of a term structure of implied volatility and hence confirms that Black and Scholes pricing errors are different for options with different expiration dates. This effect is apparent even if *Delta* has been employed as a measure

---

<sup>26</sup> For a discussion and statistical comparison of alternative techniques to set lag lengths while conducting causality tests, see Thornton and Batten (1985).

<sup>27</sup> I do not report in the tables the results of linear causality between the intercept of the model  $\beta_0$  and the explanatory variables; in fact an economic interpretation of  $\beta_0$  as a proxy for the general level of implied volatility can be misleading and is not particularly useful for the implications of this paper. Only for the sake of completeness, I found that each of the employed potential determinants significantly causes  $\beta_0$ , except momentum, volatility of volatility and the percentage of out of the money put options on the total of transacted options.

of moneyness, neutralizing in this way a typical moneyness misspecification. The effect of option's time to expiration is evident both on the asymmetry and on the curvature parameter, hence influencing both skewness and kurtosis of the implied risk neutral *PDF*.

A second evidence can be inferred by the results obtained for the variable “number of option contracts”; a liquidity story seems to apply also in the relative mispricing of Black and Scholes model with respect to moneyness. This result is even more significant than previous findings relative to the bid-ask spread (e.g. Pena et. al (1999)); in fact this measure is not related directly with moneyness and hence is not subject to the chance of being significant simply because it is picking up part of the moneyness effect<sup>28</sup>. Both time to expiration and number of contracts show significant feedback effect from the correspondent smile coefficient: hence bi-directional Granger causality is ascertained.

The historical volatility of the underlying is found to be significant in determining the asymmetry parameter  $\beta_1$ ; this evidence provides further matter for the adoption of pricing model with stochastic volatility and of models estimated exploiting jointly the dynamics of options prices and underlying asset (e.g. Pan, 2000).

The fact that the variable *VPUT*, which is the ratio between out of the money put options on total transacted options, does not Granger cause the profile of the smile could be consistent with the problems in finding reliable proxies of the portfolio insurance activity of fund managers; in fact this activity is usually carried out over the counter, owing to big amounts involved and needs of longer maturities. This could also be consistent with a limited portfolio insurance activity carried out by Italian fund managers during the period under analysis.

The other potential explanatory variables are not found to significantly cause the asymmetry and curvature of the volatility smile.

#### **4.4 Modified Baek and Brock test results**

In this paper the modified Baek and Brock test is applied on the estimated residuals from Eq. (3) (i.e.  $\{u_{1,t}\}$  and  $\{u_{2,t}\}$ ) and not on the original series. The estimated residuals do not contain any linear causality structure since they are filtered series obtained from the VARs.

The next step, before applying the modified Baek and Brock test, is to establish the value for the lead length  $m$ , the lag lengths  $L_w$  and  $L_v$  and the scale parameter  $e$ . Unlike linear causality

---

<sup>28</sup> Bakshi et al. (1997) show that in a regression of percentage pricing error on some explanatory variables, the coefficient for the bid-ask spread is of high magnitude for Black e Scholes model and of lower magnitude for a simple stochastic volatility models; a possible explanation is that the bid-ask spread is actually picking up part of the moneyness effect.

testing, there is no literature on the appropriate way to specify these values optimally. On the basis of the Monte Carlo tests cited in Hiemstra and Jones (1994), I set for all cases,  $m=1$  using common lag lengths of 1 to 7 lags. Moreover, for all cases, the test is applied to standardized series, using the scale parameter  $e = 1.5\sigma$ , where  $\sigma = 1$  denotes the standard deviation of the standardized time series; in conducting the test similar results are obtained using scale parameter values of  $1.0\sigma$  and  $0.5\sigma$ .

The results from nonlinear Granger causality testing between the parameter  $\beta_1$  and the seven explanatory variables are reported in Table VIII. A significant nonlinear causality relation is found for each variable; these results are robust to changes in the employed lag. Moreover all the explanatory variables seem also to nonlinearly Granger cause the curvature parameter  $\beta_2$ , even if this evidence is slightly less significant. The nonlinear inverse causality is rejected for both  $\beta_1$  and  $\beta_2$  when the explanatory variable is the time to expiration, the historical volatility or the momentum.

The straightforward interpretation of these results is that the dynamic relation between the implied volatility function and variables related to the underlying, to investor behaviour or to the options market itself is to some extent nonlinear. This finding may suggest that future research should consider nonlinear theoretical mechanism when developing or assessing models of options' pricing or joint dynamics between *true* and *risk neutral* processes.

## 5. Conclusions

This study analyses the potential determinants of the volatility smile, i.e. the well known pattern of implied volatilities with respect to moneyness. The employed database is comprised by daily closing prices of call and put options on Mib30 Italian stock index from November 1995 to March 1998. I find that the Italian stock market tends to show a rather straight decreasing profile consistently throughout the sample period, similarly to the US market; this pattern is well interpreted by a simple quadratic model of implied volatility in moneyness.

Linear and nonlinear Granger causality test are performed in order to find potential explanatory variables of the observed pattern of implied volatilities. The results show a linear causal relation of the time to expiration, the number of transacted option contracts and historical volatility on the asymmetry of the *smile* profile; this evidence confirms both the importance of the term structure of implied volatility on Black and Scholes mispricings, the role of market liquidity and the requirement of stochastic volatility in any option pricing model. The findings of the

nonlinear Granger causality tests suggest that for the other explanatory variables the effect on the implied volatility function could be nonlinear.

Although the linear and nonlinear approach of causality testing presented in this paper can detect causal dependence with high power, it provides no guidance regarding the source of this dependence. Such guidance should be left to theory, which may propose specific models. However the results of this paper suggest that these models ought to deal with at least time to expiration and stochastic volatility. As this doesn't seem to be sufficient to explain Black and Scholes biases, as Bakshi et al. (1997) and Bates (2000) show, a promising way to take in to account some of the other dependencies found in the present study could be to analyse jointly the dynamics of the *true* and risk neutral process. In particular the introduction of risk premiums (see Pan, 2000) can explain some puzzling evidence.



## References

- Aït-Sahalia, Y. and A.W. Lo (1998), “Nonparametric Estimation of State-Price Densities Implicit in Financial Asset Prices”, in *Journal of Finance*, vol. 53, nr. 2, April, pp. 499-548.
- Baek E., and W. Brock (1992), “A general test for nonlinear Granger causality: Bivariate model”, Working paper, Iowa State University University Wisconsin Madison.
- Bakshi, G., C. Cao and Z. Chen (1997), “Empirical Performance of Alternative Option Pricing Models”, in *Journal of Finance*, vol. 52, no. 5, December, pp. 2003-2049.
- Bates, D. (1996), “Jumps and Stochastic Volatility: Exchange Rate Processes Implicit in DeutscheMark Options”, in *Review of Financial Studies*, vol. 9 Spring pp.69-107.
- Bates, D. (2000), “Post-'87 crash fears in the S&P 500 futures option market”, in *Journal of Econometrics*, vol. 94 pp. 181-238.
- Black, F. (1976), “The Pricing of Commodity Contracts”, in *Journal of Financial Economics*, vol. 3, nr. 3, pp. 167-179.
- Black, F. and M. Scholes (1973), “The Pricing of Options and Corporate Liabilities”, in *Journal of Political Economy*, vol. 81, May-June, pp. 637-654.
- Campbell J.Y., A.W. Lo and A.C. MacKinlay (1997), *The Econometrics of Financial Markets*, Princeton University Press, Princeton, New Jersey.
- Derman, E. and I. Kani (1994), “Riding on a Smile”, in *Risk*, vol. 7, nr. 2, February, pp.32-39.
- Dolado, J.J., T. Jenkinson and S. Sosvilla-Rivero (1990), “Cointegration and Unit Roots”, in *Journal of Economic Surveys*, 4, pp. 249-273.
- Dumas, B., J. Fleming and R.E. Whaley (1998), “Implied Volatility Functions: Empirical Tests”, in *Journal of Finance*, vol. 53, nr. 6, December, pp. 2059-2106.
- Engle, R. and C. Granger (1987), “Co-Integration and Error Correction: Representation, Estimation, Testing”, in *Econometrica*, 55, pp. 251-276.
- Gallant A.R., P. E. Rossi and G. Tauchen (1992), “Stock Prices and Volume”, in *Review of Financial Studies*, vol. 5, pp. 199-242.
- Geweke J., R. Meese and W. Dent (1983), “Comparing alternative tests of causality in temporal systems”, in *Journal of Econometrics*, vol. 21, pp. 161-194.
- Granger, C. (1969), “Investigating causal relations by econometric models and cross-spectral methods, in *Econometrica*, vol. 37, pp. 424-438.

- Granger, C. and P. Newbold (1986), *Forecasting economic time series*, Academic Press Inc. 2<sup>nd</sup> ed., San Diego.
- Greene, W.H. (2000), *Econometric Analysis*, Upper Saddle River, New Jersey, Prentice-Hall.
- Grossman S.J. and Z. Zhou (1996), "Equilibrium Analysis of Portfolio Insurance", in *Journal of Finance*, vol. 51 nr. 4, September, pp. 1379-1403.
- Fuller, W. A. (1976), *Introduction to Statistical Time Series*, Wiley, New York, New York.
- Hamilton, J.D. (1994), *Time Series Analysis*, Princeton University Press, Princeton, New Jersey.
- Hendry D.F. and G.E. Mizon (1999), The Pervasiveness of Granger Causality in Econometrics, in Engle R. and H. White (editors), *Cointegration, Causality and Forecasting: A Festschrift in Honour of Clive W.J. Granger*, Oxford University Press, Oxford, New York.
- Hentschel, L. (2000), "Errors in Implied Volatility Estimation", Working Paper, Simon School, University of Rochester.
- Heston, S. (1993), "A Closed-Form Solution for Options with Stochastic Volatility with Applications to Bond and Currency Options" in *Review of Financial Studies*, vol. 6 nr. 2, pp. 327-343.
- Hiemstra C. and J. D. Jones (1994), "Testing for linear and nonlinear Granger causality in the stock price-volume relation" , in *Journal of Finance*, vol. 49, pp. 1639-1664.
- Hull, J. and A. White (1987), "The Pricing of Options on Assets with Stochastic Volatilities" in *Journal of Finance*, vol. 42, pp.281-300.
- Jackwerth, J.C. (1999), "Option-implied Risk-neutral Distributions and Implied Binomial Trees: A Literature Review", in *Journal of Derivatives* 7, No. 2, pp. 66-82.
- Jackwerth, J.C. and M. Rubinstein (1996), "Recovering Probability Distributions from Option Prices", in *Journal of Finance*, vol. 51, pp. 1611-1631.
- Natenberg, S. (1994), *Option Volatility and Pricing: Advanced Trading Strategies and Techniques*, Probus Publishing, Chicago, Illinois.
- Pan, J. (2000), "Integrated Time-Series Analysis of Spot and Option Prices", Working Paper, MIT.
- Pena, I., G. Rubio, G. Serna (1999), "Why do we smile? On the determinants of the implied volatility function", in *Journal of Banking & Finance*, vol. 23, pp. 1151-1179.
- Platen, E., Schweitzer, M. (1998), "On feedback effects from hedging derivatives", in *Mathematical Finance*, vol. 8, pp. 67-84.
- Rubinstein, M. (1994), "Implied Binomial Trees", in *Journal of Finance*, vol. 49, nr. 3, July, pp. 771-818.

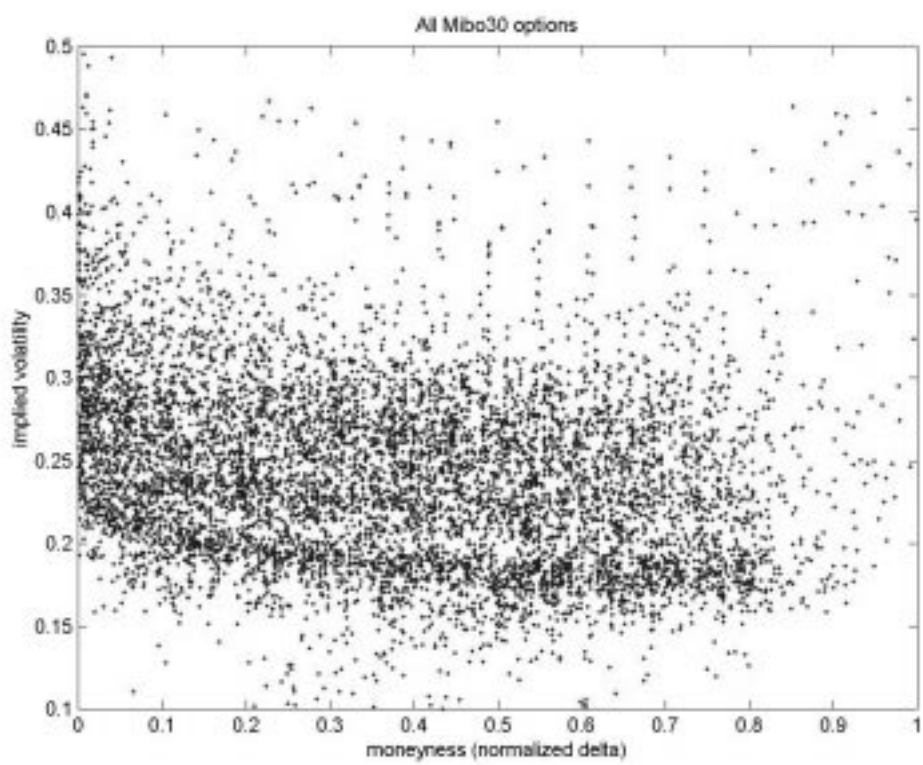
Schwert, G. W. (1989), "Why Does Stock Market Volatility Change Over Time?", in *Journal of Finance*, vol. 44, pp. 1115-1153.

Shimko, D. (1993), "Bounds of Probability", in *Risk*, vol.6, nr. 4, April, pp. 33-37.

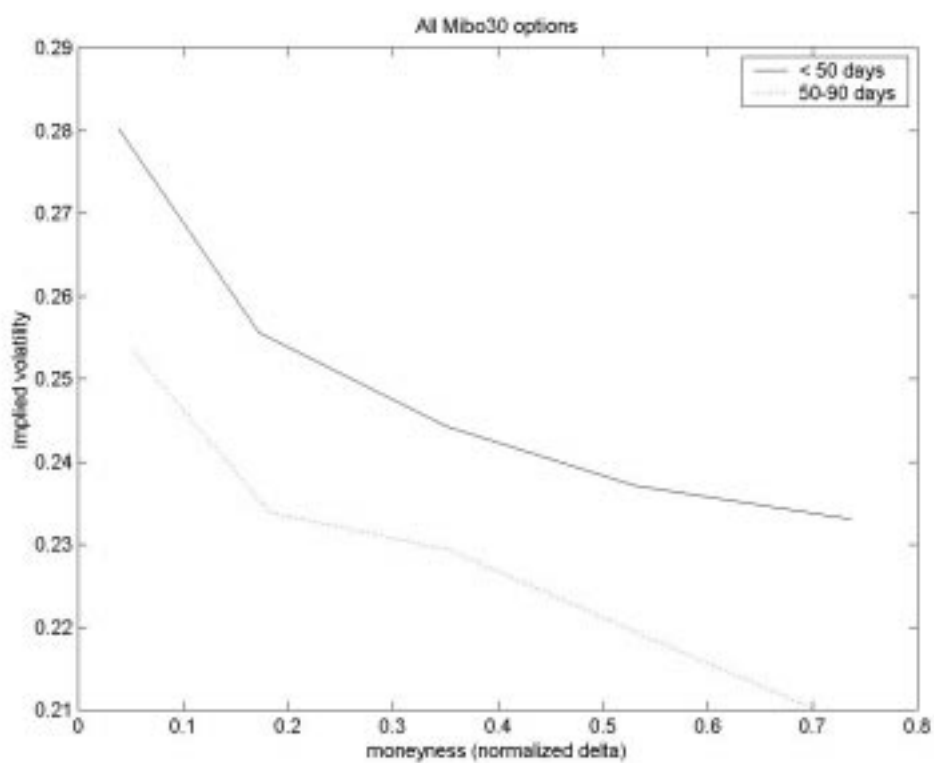
Thornton D. and D. Batten (1985), "Lag-Length Selection and Tests of Granger Causality Between Money and Income", in *Journal of Money, Credit and Banking*, vol. 17, pp. 164-178.

Tompkins, R.G. (1999), *Implied Volatility Surfaces: Uncovering Regularities for Options on Financial Futures*, Working Paper No. 49, University of Vienna.

## Figures

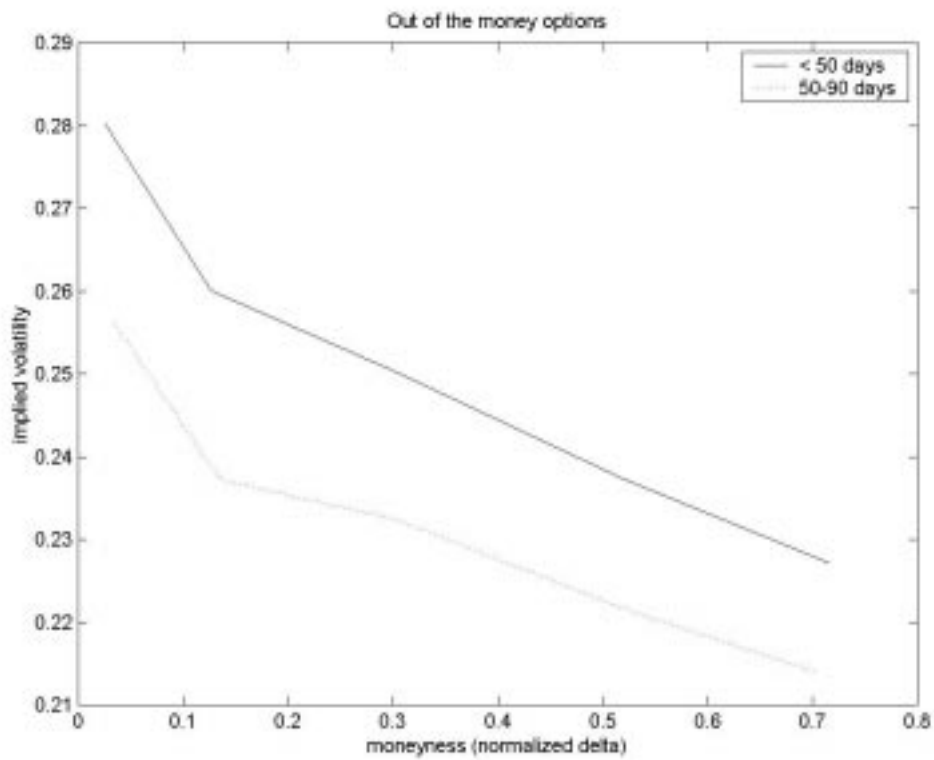


**Figure 1:** Plot of implied volatilities of filtered data.



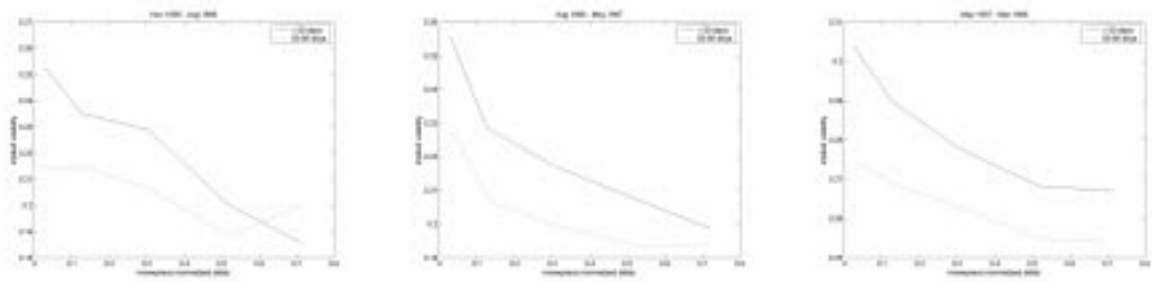
**Figure 2:** Average implied volatilities for classes of moneyness-time to expiration.

In order to have the same number of observations in each of the 5 moneyness' classes I determine the following intervals: 0-0.092; 0.092-0.264; 0.264-0.438; 0.438-0.623; 0.623-1.



**Figure 3:** Average implied volatilities of out of the money options.

Also in this case, in order to have the same number of observations in each of the 5 moneyness' classes, I have determined the following intervals: 0-0.061; 0.061-0.206; 0.206-0.405; 0.405-0.627; 0.627-1.



**Figure 4:** Implied volatility functions of out of the money options in three sub-periods.

The intervals of moneyness' classes are the following: for the first sub-period 0-0.072; 0.072-0.21; 0.21-0.414; 0.414-0.624; 0.624-1. For the second sub-period 0-0.075; 0.075-0.22; 0.22-0.438; 0.438-0.669; 0.669-1. For the third sub-period 0-0.046; 0.046-0.19; 0.19-0.379; 0.379-0.607; 0.607-1.

The first sub-period is between 15.11.1995 and 21.08.1996, the second sub-period is between 22.08.1996 and 28.05.1997, the third is between 29.05.1997 and 03.03.1998.

## Tables

**Table I**  
**Summary Statistics for Mib30 Index Options Data**

Variable	Mean	Std. D	Min.	Percentiles					Max
				5%	10%	50%	90%	95%	
Implied $\sigma$ (%)	24.20	5.59	10.03	16.62	17.70	23.70	31.03	33.89	49.54
Implied ATM $\sigma$	23.65	4.53	14.77	17.30	18.52	22.78	29.76	31.42	41.85
$\tau$ (trading days)	40.92	21.24	5.00	10.00	14.00	39.00	71.00	80.00	90.00
$K$ (index points)	19049.84	4401.11	12500	13500	14000	18500	25000	27500	31500
$F$ (index points)	18304.03	4181.79	13484	14028	14234	16268	24122	27091	29913
$r$ (%)	8.11	1.36	6.13	6.25	6.69	7.56	10.13	10.56	10.81

Summary statistics for the filtered sample of traded Mibo30 daily call and put option prices on the Mib30 index in the period November 15, 1995 to March 3, 1998 (7.963 observations). “Implied  $\sigma$ ” denotes the implied volatility of the option, and “Implied ATM  $\sigma$ ” denotes the implied volatility of at the money options.  $\tau$  denotes the options time to expiration,  $r$  the riskless rate,  $K$  the options strike price and  $F$  the Fib30 stock index future value. “Std. D.” denotes the sample standard deviation of the variable.



**Table II**  
**Correlation coefficients between explanatory variables**

	TEXP	NOPT	VOPT	MOM	NFUT	HVOL	VVOL	VPUT
TEXP	1.0000	-0.5871	-0.6219	0.0176	0.0875	0.1764	-0.1118	0.0423
NOPT		1.00	0.9488	0.0883	0.2721	0.0566	0.0409	0.0284
VOPT			1.00	0.0382	0.2484	-0.0541	0.0490	0.0106
MOM				1.00	0.3667	0.0800	-0.0734	0.2230
NFUT					1.00	0.2405	0.0241	0.1808
HVOL						1.00	0.1757	-0.0114
VVOL							1.00	0.0384
VPUT								1.00

Correlation coefficients between the explanatory variables in the same period of options' observations (November 15, 1995 to March 3, 1998). These variables are labelled and defined as in Section 2.3.

**Table III**  
**Descriptive statistics of explanatory variables**

	Mean	Std. Dev.	$\rho(1)$	$\rho(5)$	$\rho(10)$	ADF
TEXP	41.9415	20.7454	0.9219	0.6358	0.3666	-4.5234*
NOPT	823.3981	1013.5480	0.6523	0.4942	0.2295	-7.3852*
MOM	0.0346	0.0566	0.9558	0.7758	0.5393	-3.5118*
NFUT	14217.93	5822.566	0.6738	0.3944	0.3454	-7.8913*
HVOL	0.2099	0.0616	0.9664	0.8070	0.6019	-3.3988
VVOL	0.0279	0.0175	0.9396	0.5632	0.1925	-4.3541*
VPUT	0.5517	0.2037	0.1701	0.1553	0.1443	-11.9977*

Descriptive statistics for the explanatory variables in the same period of options' observations (November 15, 1995 to March 3, 1998). "Mean" denotes the sample mean of the variable, "Std. Dev." denotes the sample standard deviation of the variable and " $\rho(k)$ " denotes the sample autocorrelation coefficient at lag  $k$  of the variable. "ADF" denotes the value for the augmented Dickey Fuller test; the star represents the cases in which the null hypothesis of a unit root is rejected at the 0.99 confidence level (the empirical cumulative distribution for this test is reported in Fuller (1976)).

**Table IV**

**Implied volatility per classes of moneyness/time to expiration**

All options	Deep OTM put	OTM put	ATM put	ITM put	Deep ITM put
	Deep ITM call	ITM call	ATM call	OTM call	Deep OTM call
< 50 days	0.2801	0.2556	0.2443	0.2371	0.2330
50 – 90 days	0.2532	0.2338	0.2293	0.2199	0.2101

I represent an average implied volatility for each category obtained by equally weighting each observation. The moneyness intervals, chosen to have the same number of observations in each class, are the following (expressed as a *normalized Delta*): 0-0.092; 0.092-0.264; 0.264-0.438; 0.438-0.623; 0.623-1.

**Table V**  
**Implied volatility per classes of moneyness/time to expiration**

OTM options	Deep OTM put	OTM put	ATM put	OTM call	Deep OTM call
< 50 days	0.2802	0.2601	0.2502	0.2373	0.2272
50 – 90 days	0.2561	0.2373	0.2325	0.2214	0.2140

I represent an average implied volatility for each category obtained by equally weighting each observation, but considering only out of the money options. The moneyness intervals, chosen to have the same number of observations in each class, are the following (expressed as a *normalized Delta*): 0-0.061; 0.061-0.206; 0.206-0.405; 0.405-0.627; 0.627-1. Notice that the process of normalization allows to have on the same axis both out of the money call and put options, with the moneyness increasing with the strike price.

**Table VI**  
**Model estimation statistics**

	N. of estimated OLS models	Average obs.	$\bar{\beta}_0$ ( <i>p</i> -value)	$\bar{\beta}_1$ ( <i>p</i> -value)	$\bar{\beta}_2$ ( <i>p</i> -value)	Adj. $\bar{R}^2$
Model 1	592	8.1166	0.2524 (0.0000)	-0.0646 (0.0049)	====	0.6452
Model 2	530	8.5981	0.2628 (0.0000)	-0.1373 (0.0672)	0.1031 (0.1908)	0.7866

The “N. of estimated OLS models” refers to the number of implied volatility function estimated each day for options with the same expiration. “Average obs.” denotes the average number of observations available in each implied volatility smile estimation. The numbers in parentheses are the *p*-values of the correspondent average  $\beta$  coefficients for the *t*-statistics. The adjusted  $R^2$  accounts for the degree of freedoms and is computed as an average of the adjusted  $R^2$  coefficient in each model.

**Table VII**  
**Linear Granger Causality test results**

Direction of causality	$L$	$\chi^2$	$p$ -value	Direction of causality	$L$	$\chi^2$	$p$ -value
TEXP $\rightarrow \beta_1$ *	2	29.0657	0.0000	$\beta_1 \rightarrow$ TEXP *	2	9.7870	0.0075
NOPT $\rightarrow \beta_1$ *	3	33.4650	0.0000	$\beta_1 \rightarrow$ NOPT *	3	10.5256	0.0146
MOM $\rightarrow \beta_1$	2	2.0840	0.3527	$\beta_1 \rightarrow$ MOM	2	3.5304	0.1712
NFUT $\rightarrow \beta_1$	2	1.6038	0.4485	$\beta_1 \rightarrow$ NFUT *	2	7.2693	0.0264
HVOL $\rightarrow \beta_1$ *	2	10.5588	0.0051	$\beta_1 \rightarrow$ HVOL	2	4.5384	0.1034
VVOL $\rightarrow \beta_1$	3	3.3246	0.3442	$\beta_1 \rightarrow$ VVOL *	3	20.4356	0.0001
VPUT $\rightarrow \beta_1$	2	1.8296	0.4006	$\beta_1 \rightarrow$ VPUT	2	2.3766	0.3047
TEXP $\rightarrow \beta_2$ *	2	18.9259	0.0001	$\beta_2 \rightarrow$ TEXP *	2	7.8936	0.0193
NOPT $\rightarrow \beta_2$ *	3	30.0152	0.0000	$\beta_2 \rightarrow$ NOPT *	3	10.0087	0.0185
MOM $\rightarrow \beta_2$	2	4.6966	0.0955	$\beta_2 \rightarrow$ MOM	2	4.8328	0.0892
NFUT $\rightarrow \beta_2$	3	0.3770	0.9450	$\beta_2 \rightarrow$ NFUT *	3	10.771	0.0130
HVOL $\rightarrow \beta_2$	2	5.5399	0.0627	$\beta_2 \rightarrow$ HVOL	2	2.9807	0.2253
VVOL $\rightarrow \beta_2$	3	4.7240	0.1932	$\beta_2 \rightarrow$ VVOL*	3	13.9190	0.0030
VPUT $\rightarrow \beta_2$	2	1.3157	0.5180	$\beta_2 \rightarrow$ VPUT	2	2.3236	0.3129

This table reports the results of the linear Granger causality tests. The left panel presents the findings for the main direction of causality and the right panel for the feedback effects.  $L$  denotes the optimal lag determined with Schwarz and Akaike Information Criteria. The  $p$ -value is computed in a chi-squared distribution with  $L$  degrees of freedom.

**Table VIII**  
**Nonlinear Granger Causality test results**

$Lw=Lv$	TEXP → $\beta_1$	NOPT → $\beta_1$	MOM → $\beta_1$	NFUT → $\beta_1$	HVOL → $\beta_1$	VVOL → $\beta_1$	VPUT → $\beta_1$
1	4.3138	5.6042	4.7188	4.5922	4.2309	5.1310	4.3092
	0.0644	0.0993	0.0703	0.0700	0.0580	0.0807	0.0602
2	4.3945	5.5990	4.4189	3.9949	4.3752	5.0960	3.9703
	0.0638	0.1004	0.0639	0.0668	0.0546	0.0793	0.0546
3	4.0310	5.2674	4.0472	4.1504	3.2438	4.5165	3.7739
	0.0614	0.1013	0.0556	0.0663	0.0411	0.0738	0.0540
4	3.9265	4.8696	4.5197	4.6077	3.8990	4.7228	3.4498
	0.0568	0.0914	0.0599	0.0675	0.0487	0.0761	0.0509
5	3.9394	4.6461	3.6777	4.4424	4.2914	4.6885	3.5941
	0.0594	0.0907	0.0514	0.0672	0.0617	0.0827	0.0533
6	3.7564	4.9600	3.1812	4.2123	3.2708	4.3171	3.8782
	0.0558	0.1009	0.0431	0.0640	0.0457	0.0744	0.0596
7	3.8601	4.8334	3.2834	4.0772	3.1713	4.5477	3.9485
	0.0586	0.0966	0.0450	0.0617	0.0427	0.0764	0.0601

This table reports the results of the modified Baek and Brock non linear Granger causality test applied to the VAR residuals correspondent to the relation between the asymmetry parameter  $\beta_1$  and the seven explanatory variables.  $Lw=Lv$  denotes the number of lags on the residual series used in the test. In all cases the test are applied to unconditionally standardized series,  $m$  is set to one and the scale parameter  $e$  is set to 1.5. The values reported in each cell denote respectively the standardized test statistic of equation (7) and the difference between the two conditional probabilities in equation (6). Under the null hypothesis of nonlinear Granger noncausality, the test statistic is asymptotically distributed  $N(0,1)$ .

## Collana ALEA Tech Reports

- Nr.1 F. Sguera, *Valutazione e copertura delle opzioni binarie e a barriera*, Marzo 1999.
- Nr.2 A. Beber, *Introduzione all'analisi tecnica*, Marzo 1999.
- Nr.3 A. Beber, *Il dibattito su dignità ed efficacia dell'analisi tecnica nell'economia finanziaria*, Marzo 1999.
- Nr. 4 L. Erzegovesi, *Capire la volatilità con il modello binomiale*, Luglio 1999.
- Nr. 5 G. Degasperì, *La dinamica delle crisi finanziarie: i modelli di Minsky e Kindleberger*, Agosto 1999
- Nr. 6 L. Erzegovesi, *Rischio e incertezza in finanza: classificazione e logiche di gestione*, Settembre 1999
- Nr. 7 G. Degasperì, L. Erzegovesi, *I mercati finanziari come sistemi complessi: il modello di Vaga*, Settembre 1999.
- Nr.8 A.Beber e L.Erzegovesi, *Distribuzioni di probabilità implicite nei prezzi delle opzioni*, dicembre 1999.
- Nr.9 M.Filagrana, *Le obbligazioni strutturate nel mercato italiano: principali tipologie e problematiche di valutazione e di rischio*, marzo 2000.
- Nr.10 A.Beber, *Determinants of the implied volatility function on the Italian Stock Market*, marzo 2001.

I Tech Reports possono essere scaricati gratuitamente dal sito di ALEA:  
<http://www.aleaweb.org>