

**CEP Discussion Paper No 788**

**Cr tki4229"**

**Americans Do I.T. Better:  
US Multinationals and the Productivity Miracle**

**Nick Bloom, Raffaella Sadun and John Van Reenen**

## **Abstract**

The US has experienced a sustained increase in productivity growth since the mid-1990s, particularly in sectors that intensively use information technologies (IT). This has not occurred in Europe. If the US “productivity miracle” is due to a natural advantage of being located in the US then we would *not* expect to see any evidence of it for US establishments located abroad. This paper shows in fact that US multinationals operating in the UK do have higher productivity than non-US multinationals in the UK, and this is primarily due to the higher productivity of their IT. Furthermore, establishments that are taken over by US multinationals increase the productivity of their IT, whereas observationally identical establishments taken over by non-US multinationals do not. One explanation for these patterns is that US firms are organized in a way that allows them to use new technologies more efficiently. A model of endogenously chosen organizational form and IT is developed to explain these new micro and macro findings.

**Keywords:** Productivity, Information Technology, multinationals, organization

**JEL Classifications:** E22, O3, O47, O52

This paper was produced as part of the Centre’s Productivity and Innovation Programme. The Centre for Economic Performance is financed by the Economic and Social Research Council.

## **Acknowledgements**

This is a revised version of the mimeo “It Ain’t what you do but the way that you do I.T.” We would like to thank our formal discussants (Susanto Basu, Erik Brynjolfsson, Johannes von Biesebroeck and Stephen Yeaple), Tony Clayton and Mary O’ Mahony and the participants at seminars at Berkeley, Cambridge, CEPR, Columbia, Hebrew, John Hopkins, LSE, Maryland, the NBER, Northwestern, Oxford, Stanford, Tel-Aviv, UBC, UCL, UCSD and Yale. We would also like to thank the Department of Trade and Industry and the Economic and Social Research Council for financial support.

This work contains statistical data from the Office of National Statistics (ONS) which is Crown copyright and reproduced with the permission of the controller of HMSO and Queens Printer for Scotland. The use of the ONS statistical data in this work does not imply the endorsement of the ONS in relation to the interpretation or analysis of the statistical data.

Nick Bloom is an Associate of the Centre for Economic Performance, London School of Economics and an Assistant Professor, Department of Economics, Stanford University, CA. Raffaella Sadun is a Research Economist at the Centre for Economic Performance, LSE. John Van Reenen is Director of the Centre for Economic Performance and Professor of Economics, London School of Economics.

Published by  
Centre for Economic Performance  
London School of Economics and Political Science  
Houghton Street  
London WC2A 2AE

All rights reserved. No part of this publication may be reproduced, stored in a retrieval system or transmitted in any form or by any means without the prior permission in writing of the publisher nor be issued to the public or circulated in any form other than that in which it is published.

Requests for permission to reproduce any article or part of the Working Paper should be sent to the editor at the above address.

© N. Bloom, R. Sadun and J. Van Reenen, submitted 2007 and revised 2011

ISBN 978 0 85328 164 1

**AMERICANS DO I.T. BETTER:  
US MULTINATIONALS AND THE PRODUCTIVITY MIRACLE**

**Nicholas Bloom, Raffaella Sadun and John Van Reenen \***

Unlike Europe, US productivity accelerated after 1995, particularly in sectors that intensively use information technologies (IT). Using two new micro panel datasets we show that US multinationals operating in Europe also experienced a “productivity miracle”. US multinationals obtained higher productivity from IT than non US multinationals, particularly in sectors responsible for the US productivity acceleration. Furthermore, establishments taken over by US multinationals (but not non US multinationals) increased the productivity of their IT. Combining pan-European firm-level IT data with our management practices survey, we find that the US IT related productivity advantage is primarily due to its tougher “people management” practices.

(JEL O47, F23, E22, O3)

One of the most startling economic facts of recent years has been the reversal in the long-standing catch-up of Europe’s productivity level with the United States. American labor productivity growth slowed after the early 1970s Oil Shocks but accelerated sharply after 1995. Although European productivity growth experienced the same slowdown, it has not enjoyed the

---

\* Bloom: Department of Economics, Stanford University, 579 Serra Mall, Stanford, CA 94305-6072, USA, Centre for Economic Performance and NBER (email: nbloom@stanford.edu); Sadun: Harvard Business School, Soldiers Field, Morgan Hall 235, Boston MA 02163, USA, Centre for Economic Performance and NBER (email: rsadun@hbs.edu); Van Reenen: London School of Economics, Centre for Economic Performance, Houghton Street, London WC2A 2AE, UK, CEPR and NBER (email: j.vanreenen@lse.ac.uk). This is a revised version of NBER Working Paper, No. 13085 “Americans do I.T. Better: US Multinationals and the Productivity Miracle” and the mimeo “It ain’t what you do but the way that you do I.T.” We would like to thank our formal discussants (Susanto Basu, Erik Brynjolfsson, Johannes von Biesebroeck, John Fernald, Bart Hobijn and Stephen Yeaple), Tony Clayton, Chiara Criscuolo, Mary O’ Mahony, Ralf Martin and the participants at seminars at Berkeley, Cambridge, Cape Town, CEPR, Chicago GSB, Columbia, Dartmouth, ECARE, Hass, Hebrew, John Hopkins, LSE, Maryland, MIT, NBER EF&G, International and Productivity groups, Northwestern, Oxford, Stanford, Sveriges Riksbank, Tel-Aviv, UBC, UCL, UCSD and Yale. We would also like to thank the Department of Trade and Industry, the Economic and Social Research Council and the Kauffman Foundation for financial support. This work contains statistical data from the Office of National Statistics (ONS) which is Crown copyright and reproduced with the permission of the controller of HMSO and Queens Printer for

same rebound (see Figure 1)<sup>1</sup>. For example, Robert Inklaar, Marcel Timmer and Bart van Ark (2008) show that US GDP per hour growth accelerated from 1.3 percent 1980-1995 to 2.2 percent 1995-2006, whereas in Europe productivity growth slowed from 2.3 percent to 1.4 percent. Although some part of the observed European slowdown may be due to labor market reforms getting less skilled workers into jobs, most analysts agree there was still a substantial gap in productivity growth between the US and EU that has persisted. Nor has the recent recession changed this picture: US productivity growth appears to have continued to outstrip that in Europe (Robert Gordon 2010).

[Figure 1 and Figure 2 about here]

Decompositions of US productivity growth show that a large fraction of this recent growth occurred in those sectors that either produce IT (information technologies) or intensively use IT. Closer analysis has shown that European countries had a similar productivity acceleration as the US in IT *producing* sectors (such as semi conductors and computers) but failed to achieve the spectacular levels of productivity growth in the sectors that *used* IT intensively - predominantly market service sectors, including wholesale, retail and financial services (e.g. van Ark, Mary O'Mahony and Timmer 2008). In the light of the credit crunch, the measured productivity gains in finance may prove illusory - which is why we focus on non financial firms in the paper - but the productivity gains in other sectors like retail and wholesale are likely to be real and persistent. Consistent with these trends, Figure 2 shows that IT intensity appears to be substantially higher in the US than Europe and this gap has not narrowed over time. Given the

---

Scotland. The use of the ONS statistical data in this work does not imply the endorsement of the ONS in relation to the interpretation or analysis of the statistical data.

<sup>1</sup> Examples of early studies include Dale Jorgenson (2001) and Stephen Oliner and Daniel Sichel (2000). Looking at more recent data, Jorgenson, Mun Ho and Kevin Stiroh (2008) document that average annual US labor productivity growth was similar in the 2000-2006 period to the 1995-2000 period (and well above the 1.5 percent of 1973-1995). Only after 2005 is there any sign of a return to more "normal" levels of productivity growth as IT prices declines have slowed.

common availability of IT throughout the world at broadly similar prices, it is a major puzzle why these IT related productivity effects have not been more widespread in Europe.

There are at least two broad classes of explanation for this puzzle. First, there may be some “natural advantage” to being located in the US, enabling firms to make better use of the opportunity that comes from rapidly falling IT prices. These natural advantages could be tougher product market competition, lower regulation, better access to risk capital, more educated<sup>2</sup> or younger workers, larger market size, greater geographical space, or a host of other factors. A second class of explanations stresses that it is not the US environment *per se* that matters but rather the way that US firms are managed that enables better exploitation of IT (“the US management hypothesis”)<sup>3</sup>.

These explanations are not mutually exclusive. In this paper we sketch a model that has elements of both (see Appendix B and Nicholas Bloom, Raffaella Sadun and John Van Reenen 2007). Nevertheless, one straightforward way to test whether the US management hypothesis has any validity is to *examine the IT performance of US owned organizations in a European environment*. If US multinationals partially transfer their business models to their overseas affiliates— and a walk into McDonald’s or Starbucks anywhere in Europe suggests that this is not an unreasonable assumption – then analyzing the IT performance of US multinational establishments in Europe should be informative. Finding a systematically better use of IT by American firms outside the US suggests that we should take the US management hypothesis seriously. Such a test could not be easily performed only with data on plants located in the US

---

<sup>2</sup> For example, if IT is complementary with human capital, then the larger stock of college educated workers in the US than Europe may mean that productivity grows faster in the US when IT prices are falling rapidly.

<sup>3</sup> Another possibility is international differences in productivity measurement (Olivier Blanchard 2004). This is possible, but the careful work of O’Mahony and Van Ark (2003) focusing on the same sectors in the US and EU, using common adjustments for hedonic prices, software capitalization and demand conditions, still find a difference in US-EU relative productivity growth rates.

because any findings of higher efficiency of plants owned by US multinationals might arise because of the advantage of operating on the multinational's home turf ("home bias")<sup>4</sup>.

In this paper, we examine the differences in IT related productivity between establishments owned by US multinationals, establishments owned by non US multinationals and purely domestic establishments. We exploit two distinct rich and original panel datasets. The first is from the UK Census Bureau (the Office of National Statistics, ONS) and contains over 11,000 establishments. The UK is a useful testing ground because (a) it has extensive foreign ownership with frequent ownership changes and (b) the UK Census Bureau has collected panel data on IT expenditure and productivity in both manufacturing and services since the mid-1990s. The second dataset is a firm-level panel covering seven European countries and combines our own international survey of management practices, a private sector IT survey and company accounting data. Although this European dataset is smaller, the use of observable measures of management practices allows a more direct test of the theory.

We report that foreign affiliates of US multinationals appear to obtain higher productivity than non US multinationals (and domestic firms) from their IT capital and are also more IT intensive. This is true in both the UK establishment-level dataset and the European firm-level dataset. These findings are robust to a number of tests, including an examination of establishments before and after they are taken over by a US multinational compared to those taken over by a non US multinational. Using our new international management practices dataset we then show that American firms have higher scores on "people management" practices defined in terms of promotions, rewards, hiring and firing<sup>5</sup>. This holds true for both domestically based US firms as well as US multinationals operating in Europe. Using our European firm-level panel

---

<sup>4</sup> Mark Doms and Bradford Jensen (1998) find that plants owned by US multinationals have higher productivity than non US multinationals. But since this study was based only on located in the US, it could just be a reflection of home bias.

we find these management practices account for most of the higher output elasticity of IT of US firms. This appears to be because people management practices enable US firms to exploit IT better.

Our paper is related to several other literatures. First, there is a large body of work on the impact of IT on productivity at the aggregate or industry-level<sup>6</sup>. Second, there is growing evidence that the returns to IT are linked to the internal organization of firms. On the econometric side, Eve Caroli and Van Reenen (2001), Tim Bresnahan, Erik Brynjolfsson and Lorin Hitt (2002) and Gustavo Crespi, Chiara Criscuolo and Jonathan Haskel (2006) find that internal organization and other complementary factors, such as human capital, are important in generating significant returns to IT. On the case study side, there is also a large range of evidence<sup>7</sup>. Third, in a reversal of the Solow Paradox, the firm-level productivity literature describes returns to IT that are larger than one would expect under the standard growth accounting assumptions. Brynjolfsson and Hitt (2003) argue that this is due to complementary investments in “organizational capital” that are reflected in the coefficients on IT capital. Fourth, there is a literature on the superior establishment-level productivity of US multinationals versus non US multinationals, both in the US and in other countries<sup>8</sup>. We suggest that the main reason for this difference is the way in which US multinationals use new technologies more effectively than other multinationals. Finally, our paper is linked to the literature on multinationals and comparative advantage. A recent body of theoretical work emphasizes the importance of firm-

---

<sup>5</sup> It is plausible that higher scores reflect “better” management, but we do not assume this. All we claim is that American firms have different people management practices than European firms, and these are complementary with IT.

<sup>6</sup> See, for example, Susanto Basu, John G. Fernald, Nicholas Oulton and Sylaja Srinivasan (2003) and Kevin Stiroh (2002, 2004).

<sup>7</sup> Blanchard et al. (2002) discuss a number of industry-specific examples. George Baker and Thomas Hubbard (2004) is an excellent example of applying econometric techniques to a case study of on-board computers in the US trucking industry.

<sup>8</sup> See, for example, Doms and Jensen (1998) on US plants, John Haltiwanger, Ron Jarmin and Thorsten Schank (2003) on German plants, Criscuolo and Ralf Martin (2005) on British plants and Luigi Benfratello and Alessandro Sembenelli (2006) on Italian plants.

level comparative advantage in multinationals<sup>9</sup>. In these models firms have some productivity advantage, which their multinationals transplant to their overseas affiliates. Our evidence on the systematically different people management practices of US overseas affiliates provides empirical support for this assumption. Interestingly, these results are also consistent with the literature reporting that US multinationals appear to be earning extremely high rates of return abroad from intangible capital (“dark matter”), particularly since the mid 1990s (e.g. Ellen McGrattan and Edward Prescott 2008). Our results suggest one factor could be that the management practices of US multinationals enable them to more effectively use of IT.

The structure of this paper is as follows. Section I describes the empirical framework, the UK establishment-level data is described in Section II and the results from this panel are presented in Section III. The European firm-level data is described in Section IV and the results from this panel are presented in Section V. Section VI offers some concluding remarks. Appendices are all available on the AER website.

## **I. Empirical Modelling Strategy**

We sketch our basic modelling strategy with more formal details in Appendix B. Here, sub-section A describes the basic approach, sub-section B describes the equations we can estimate when we do not directly observe management practices, as is standard in most economic datasets (this is the case for our UK establishment-level panel). By contrast, sub-section C describes the equations we are able to estimate when we *do* directly observe management practices (this can be implemented on our pan-European firm-level panel).

---

<sup>9</sup> For example, Elhanan Helpman, Marc Melitz and Stephen Yeaple (2004), Pol Antras, Luis Garicano and Esteban Rossi-Hansberg (2008) and Ariel Burstein and Alexander Monge (2009).



### A. Basic Empirical Model

Consider the following production function:

$$(1) \quad Q_{it} = A_{it} O_{it}^{\alpha^O} C_{it}^{\alpha^C + \sigma O_{it}} L_{it}^{\alpha^L - \sigma O_{it}} K_{it}^{\alpha^K} M_{it}^{\alpha^M}$$

where  $Q$  denotes gross output of establishment (or firm)  $i$  in year  $t$ .  $A$  is a Hicks-neutral efficiency term,  $M$  denotes materials/intermediate inputs,  $L$  denotes labor,  $K$  denotes non IT capital,  $C$  denotes computer/IT capital and  $O$  is a measure of the firms' management/organizational capital that is complementary with IT capital. This specification of the production function in equation (1) is a simple way of capturing the notion that IT ( $C$ ) and management ( $O$ ) are complementary if  $\sigma > 0$  (Bresnahan et al. 2002). Equation (1) should be regarded as an approximation of a more flexible production function: we examine these more general production functions (such as the translog) in the empirical section and show that equation (1) is consistent with the empirical results<sup>10</sup>. We assume that all the exponents on the factor inputs are bounded by zero and unity to make sure the firm's optimization problem is well behaved (i.e.  $0 \leq \{\alpha^L - \sigma O, \alpha^C + \sigma O, \alpha^K, \alpha^M, \alpha^O\} \leq 1$ ). This means the value of  $\sigma$ ,  $\alpha^L$  and  $\alpha^C$  are dependent on the scaling of  $O$ , so that for example doubling the units on  $O$  would halve the units on  $\sigma$ . Note that  $\alpha^O$  could be equal to zero, so that increasing  $O$  would have no direct effect on firm output. Finally, we will generally consider  $O$  to be fixed in the short run (sub-section D relaxes this assumption).

---

<sup>10</sup> A more flexible translog production relationship would be:

$$\ln Q = \sum_{J=\{O,M,L,K,C\}} \alpha^J \ln X^J + \sum_{J=\{O,M,L,K,C\}} \left( \sum_{Z=\{O,M,L,K,C\}} \alpha^{JZ} \ln X^J \ln X^Z \right)$$

where a superscript denotes a factor input so  $X^L = L =$  labor, etc. The second term on the right hand side of this equation contains the term  $\ln(X^O) * \ln(X^C)$ , the interaction between management and IT, which we find to be crucial in the empirical work.

We use lower case letters to indicate that a variable is transformed into natural logarithms, so  $q_{it} \equiv \ln Q_{it}$ , etc., and consider parameterizing the establishment-specific efficiency in equation (1) as  $a_{it} = a_i + \gamma' z_{it} + \xi_{kt} + u_{it}$  where  $z$  are other observable factors influencing productivity – e.g. establishment age, region and whether the establishment is part of a multi-plant group. The  $\xi_{kt}$  are industry-time specific shocks that we will control for with a full set of three-digit industry ( $k$ ) dummies interacted with a full set of time dummies<sup>11</sup>. Under these assumptions, equation (1) can be written:

$$(2) \quad (q - l)_{it} = \alpha^C (c - l)_{it} + \alpha^K (k - l)_{it} + \alpha^M (m - l)_{it} + (\alpha^C + \alpha^L + \alpha^M + \alpha^K - 1) l_{it} \\ + \sigma[(c - l)_{it} * O_{it}] + \alpha^O \ln O_{it} + a_i + \gamma' z_{it} + \xi_{kt} + u_{it}$$

Note that we choose to normalize on labor as this makes it straightforward to test for constant returns by examining whether the coefficient on labor in equation (2) is significantly different from zero. In Appendix C and Bloom, Sadun and Van Reenen (2007) we consider the non normalized version (as in footnote 10) showing similar results.

Another implication of the idea that IT capital is complementary with specific types of management practices is that, ceteris paribus, firms with higher levels of  $O$  will have a greater demand for IT capital. We consider the IT intensity equation<sup>12</sup>:

$$(3) \quad (c - l)_{it} = \beta^O O_{it} + \varphi_h' w_{it} + \zeta_{kt} + e_{it}$$

<sup>11</sup> We also experimented with year-specific four digit dummies and explicit measures of output prices (up to the five-digit level) which generated very similar results to our baseline model with year-specific three-digit industry dummies.

<sup>12</sup> This is a first-order approximation to the non linear factor demand equation (B7) for IT in Appendix B where the factor prices are common across firms in an industry for a given year. If  $\sigma > 0$  then  $\beta^O > 0$ .

where  $w_{it}$  are controls,  $\zeta_{kt}$  are the industry-time shocks,  $e_{it}$  is an error term and we expect  $\beta^O$  to be positive under complementarity of IT and  $O$ . It is worth noting that the estimates of equation (2) and (3) embody alternative identification assumptions. For example, assume that there is exogenous variation in  $O_i$  across firms, but no exogenous variation in IT capital. Complementarity will imply that the factor demand equation for IT is a positive, but deterministic function of  $O_i$ . Thus, equations of the form of (3) are useful to identify complementarity. By contrast, it will not be possible to identify the coefficient on IT capital (nor  $\sigma$ , the coefficient on its interaction with  $O_i$ ) in the production function because IT capital has no firm-level variation conditional on  $O_i$ . In practice, however, the production function coefficients can be identified from adjustment costs or shocks to IT capital arising from falling prices and optimization errors (see Appendix C). But examining the IT demand equation is a useful cross check on these results.

A key idea in this paper is that  $\bar{O}^{USA} > \bar{O}^{MNE} > \bar{O}^{DOM}$ , where  $\bar{O}^{USA}$  is the mean level of management in US firms,  $\bar{O}^{MNE}$ , the mean level in non US multinationals and  $\bar{O}^{DOM}$ , the mean level in domestic firms. We describe below two different empirical strategies to test this hypothesis, which vary according to the availability of data on  $O$ .

### ***B. Testing the Model when $O$ is unobserved***

*Basic Production Function* - When  $O$  is unobserved, given its complementarity with IT, we expect to see systematic differences in the elasticity of output with respect to IT capital in equation (2) between US and other firms. In order to test this hypothesis we estimate the following production function for different sectors (e.g. IT intensive and non IT intensive)<sup>13</sup>

---

<sup>13</sup> In the robustness section we estimate equation (4) separately across different two and three digit industries.

$$(4) \quad (q-l)_{it} = \alpha^{C,DOM}(c-l)_{it} + \alpha^K(k-l)_{it} + \alpha^M(m-l)_{it} + (\alpha^{C,DOM} + \alpha^L + \alpha^M + \alpha^K - 1)l_{it} + \\ + \alpha^{C,USA}[(c-l) * D^{USA}]_{it} + \alpha^{C,MNE}[(c-l) * D^{MNE}]_{it} + a_i + \delta^{USA} D_{it}^{USA} + \delta^{MNE} D_{it}^{MNE} + \gamma' z_{it} + \xi_{kt} + u_{it}$$

where  $D_{it}^{USA}$  denotes that the establishment is owned by a US firm in year  $t$  and  $D_{it}^{MNE}$  denotes that the establishment is owned by a non US multinational enterprise (the omitted base is that the establishment belongs to a non multinational domestic firm denoted “DOM”<sup>14</sup>). If our model is correct then empirically when we estimate equation (4) we should find  $\hat{\alpha}^{C,USA} > \hat{\alpha}^{C,MNE} > \hat{\alpha}^{C,DOM}$ , i.e. a greater productivity effect of IT in US multinationals than non US multinationals or domestic establishments<sup>15</sup>. Note that the final inequality ( $\hat{\alpha}^{C,MNE} > \hat{\alpha}^{C,DOM}$ ) is less of a clean test as domestic firms may be quite different from multinationals on a number of dimensions, whereas non US multinationals are a more credible “control group” for US multinationals. A related hypothesis is that US multinationals are more productive than non US multinationals and domestic firms, i.e.

$$\hat{\delta}^{C,USA} + \hat{\alpha}^{C,USA}(c-l)_{it} > \hat{\delta}^{C,MNE} + \hat{\alpha}^{C,MNE}(c-l)_{it} > \hat{\delta}^{C,DOM} + \hat{\alpha}^{C,DOM}(c-l)_{it}.$$

This has to be evaluated at a particular level of IT intensity, but since the overall mean of  $\ln(C/L)$  is close to zero, a test of the equality of the multinational dummies is presented at the base of every table.

---

<sup>14</sup> We could not reject the hypothesis that UK multinationals had the same productivity and output elasticity of IT capital as other non US multinationals.

<sup>15</sup> A more general form of the production function is one where we allow all the factor inputs ( $x_{it}^J$ ) to differ by ownership status:

$$q_{it} = \sum_{J=\{M,L,K,C\}} \alpha^{J,DOM} x_{it}^J + \sum_{J=\{M,L,K,C\}} \alpha^{J,USA} D_{it}^{USA} x_{it}^J + \sum_{J=\{M,L,K,C\}} \alpha^{J,MNE} D_{it}^{MNE} x_{it}^J + a_i + \delta^{USA} D_{it}^{USA} + \delta^{MNE} D_{it}^{MNE} + \gamma' z_{it} + \xi_{kt} + u_{it}$$

Note, that although we will estimate this equation in some specifications, empirically the interactions between the non IT factor inputs and ownership status are not significantly different from zero. The one interaction that does stand out is between the US ownership dummy and IT capital: the coefficient on IT capital is significantly higher for US establishments than for other multinationals or domestic establishments. We also cannot reject the hypothesis that all ownership types have the same return to scale parameter so we generally impose this.

Another implication of the idea that US firms have an advantage in the use of IT is that, *ceteris paribus*, they will have a greater demand for IT capital. Consequently we estimate the IT intensity equation equivalent to equation (3):

$$(5) \quad (c-l)_{it} = \beta^{USA} D_{it}^{USA} + \beta^{MNE} D_{it}^{MNE} + \varphi' w_{it} + \zeta_{kt} + e_{it}$$

Where  $w_{it}$  are controls,  $\zeta_{kt}$  the industry-time shocks and  $e_{it}$  is an error term. The hypothesis of interest is, of course, whether  $\beta^{USA} > \beta^{MNE} > 0$  with a focus on the first inequality ( $\beta^{USA} > \beta^{MNE}$ ).

Since the significance of the  $US*\ln(C/L)$  interaction (the  $\alpha^{C,USA}$  coefficient in equation (4)) may capture unobservable factors beyond managerial differences, we perform an extensive range of tests to check the robustness of our results. These are detailed below.

*Sub-sample of establishments who are taken over* - One concern with our empirical strategy is that US firms may “cherry pick” the establishments with the highest IT productivity. This would generate a higher IT coefficient for American firms, but this would only be due to positive selection. To tackle this issue we focus on a sub-sample of UK establishments that have been taken over at some point in the sample period. Prior to the takeover we find no evidence of differential coefficients on IT in establishments subsequently targeted by US firm versus non US firms. But after the takeover we find that establishments acquired by US firms have significantly higher IT productivity than those taken over by other firms.

*Unobserved Heterogeneity* - In all specifications, we choose a general structure of the error term that allows for arbitrary heteroskedasticity and autocorrelation over time. But, there could still be establishment-specific unobserved heterogeneity. So, we also generally include a full set of establishment-level fixed effects (the “within-groups” estimator). The fixed-effects

estimators are more demanding, as there may be many unobservable omitted variables correlated with IT that generate an upwards bias for the coefficient on IT capital.

One aspect of unobserved heterogeneity is establishment-specific prices which will not be fully controlled for by the fixed effects and the industry dummies interacted with time dummies (see Lucia Foster, Haltiwanger and Chad Syverson, 2008). Empirically, the dependent variable in equation (4) is revenue not physical units, so we are estimating “revenue productivity” equations rather than physical productivity equations and we should interpret the coefficients on the factor inputs as reflecting both the technological parameters and a mark-up term.

To investigate this we will estimate the “revenue productivity function” allowing for monopolistic competition following Tor Klette and Zvi Griliches (1996) and Jan De Loecker (2007). Essentially this implies including additional terms for four digit output interacted by ownership type to the empirical analogue of equation (4). Note, however, differential mark-ups for American firms cannot easily explain one of our findings that the coefficient on IT is significantly larger for US firms *but the other factor coefficients appear to be the same across multinationals types*. If US firms are able to command a higher output price for IT capital this is consistent with the idea that IT improves quality (rather than simply increasing output) by more for American multinationals than other multinationals. This higher IT related quality would be reflected in a firm-specific higher mark-up for IT intensive US firms. This is consistent with our theoretical story.

*Endogeneity of the Factor Inputs* - We take several approaches to check the robustness of our results to the endogeneity issue, accepting that there is no “magic bullet” to this problem which is still an active area of econometric research (see Daniel Akerberg et al. 2008, for a survey). In particular, we present results using a version of the Olley-Pakes estimator (1996) allowing for multiple capital inputs, and the “System GMM” estimator of Richard Blundell and

Steve Bond (1998, 2000). In both cases we find a much higher IT coefficient for US firms in the production function. We also present IT intensity equations derived from the first-order conditions of the model and find that US firms have significantly higher IT capital intensities than other firms, especially in the IT intensive sectors.

*Heterogeneity in the coefficients by industry* - We allow for considerable heterogeneity by including fixed effects and industry effects interacted with time dummies. But the fact that the gap in US-EU productivity growth is so concentrated in the so-called “IT intensive sectors” suggests breaking down the regression estimates along these lines. We follow exactly the same classification as Stiroh (2002) to divide our sample into those which intensively *use* IT versus the rest of the sample (he based these on the flow of IT services in total capital services). These are predominantly service sectors such as wholesale, retail and business services, but also include several manufacturing sectors such as printing and publishing (see Table A1). We interpret this sectoral breakdown as indicating which sectors in Europe have the greatest *potential* (i.e. highest  $\sigma$ ) to benefit from IT enabled innovations if firms are able to adopt the appropriate complementary organizational practices<sup>16</sup>. Blanchard (2004) and Blanchard et al. (2002) give many examples of these from various in-depth case studies. One could argue, for example, whether or not Stiroh was correct in classifying retail in the IT intensive sector or not, but this is beside the point - retail is a sector that had fast productivity growth in the US post 1995 and Europe did not. Our hypothesis is that part of this difference was due to different management practices which enabled US retailers to efficiently exploit IT enabled innovations in retail<sup>17</sup>. If that was the case, than estimating equation (4) by different industry sectors should reveal a much

---

<sup>16</sup> We think this division is most appropriate as it does not rely on our subjective judgement. We consider other sectoral breakdowns such as using the industry level IT services share in Europe rather than the US and the IT to value added ratio. We obtain similar results from this. We also looked at a finer level of disaggregation by industry (such as splitting out retail and wholesale – see Section III).

stronger  $US*ln(C/L)$  interaction in the “IT intensive sectors” than the other industries. We also go further estimating the productions functions separately by each two digit sector, in particular breaking down the IT intensive sector into sub-industries such as retail and wholesale.

### ***C. Testing the Model using Direct Measurement of Firm Management Practices***

A more direct way to test whether US firms have higher levels of  $O$  (i.e.  $\bar{O}^{USA} > \bar{O}^{MNE}$ ) is to use explicit measures of management. For this purpose, we collected our own data on management practices based on the methodology in Bloom and Van Reenen (2007). We empirically measure  $O$  by an index of the “people management” in the firm which combines indicators of best practice in hiring, promotions, pay, retention and removing under performers (see below and Appendix A). We focus on these people management aspects of firm organization because the econometric and case-study evidence suggest that these features are particularly important for IT. The successful deployment of IT requires substantial changes in the way that employees work, including the ability to decentralize decision making so employees can experiment. High outcomes on our people management scores will reflect this<sup>18</sup>.

We show that this index of people management is higher in US multinationals than in non US multinationals (and domestic firms). In particular, US firms tend to be more aggressive in promoting and rewarding high performing workers and removing under performing workers<sup>19</sup>.

---

<sup>17</sup> Retailing has shifted from a low tech industry focused on shifting boxes from producer to consumer to an industry whose main activity is trading information by matching goods to consumer demand on a near continuous basis, where IT is an integral part of this process.

<sup>18</sup> For example, the organizational measure in Bresnahan, Brynjolfsson and Hitt (2002) covers six measures which relate to the way that employees are managed (three questions on team-work, two on decentralization over pace and methods of work and one on employee involvement).

<sup>19</sup> The econometric and case-study evidence suggest that these features of people management are particularly important for IT. The successful deployment of IT requires substantial changes in the way that employees’ work, which is highly intensive in people management. For example, Larry Hunter et al. (2001) describe how IT radically changed the organization of US banks in the 1980s. The introduction of ATMs substantially reduced the need for tellers. At the same time PCs allowed staff to locate on the bank floor and directly sell customers mortgages, loans and insurance, replacing bank managers as the primary sales channel for these products. IT also enabled regional managers to remotely monitor branches. This led to a huge reduction in branch-level



We combine the measures of people management with firm-level panel data from accounting information and an alternative source of IT data described below. Using this new European firm-level panel database we estimate an augmented form of equation (4):

$$\begin{aligned}
 (q-l)_{it} &= \alpha^{C,DOM} (c-l)_{it} + \alpha^K (k-l)_{it} + \alpha^M (m-l)_{it} + \sigma[(c-l)_{it} * O_i] + \alpha^O \ln O_i + \\
 (6) \quad &+ (\alpha^{C,DOM} + \alpha^L + \alpha^K + \alpha^M - 1)l_{it} + \alpha^{C,USA} [(c-l) * D^{USA}]_{it} + \alpha^{C,MNE} [(c-l) * D^{MNE}]_{it} + \\
 &+ a_i + \delta^{USA} D_{it}^{USA} + \delta^{MNE} D_{it}^{MNE} + \gamma' z_{it} + \xi_{kt} + u_{h,it}
 \end{aligned}$$

If our hypotheses is correct that the higher coefficient on IT in the production function for US multinationals is due to their management practices then we would predict that  $\sigma > 0$  and that  $\alpha^{C,USA}$ , the coefficient on the interaction between IT intensity and the US multinational dummy,  $[(c-l) * D^{USA}]_{it}$ , would be insignificant once we condition on  $[(c-l)_{it} * O_i]$ . We will show that this is indeed the case in our European panel dataset. Note that this does not imply that management is unimportant without IT, nor that management only matters in certain sectors. Rather we are arguing these practices may be particularly important when combined with IT enabled innovations in the high productivity growth sectors of the “productivity miracle” period.

#### ***D. Models of adjusting Management Practices***

To what extent does  $O$  change over time at the firm level? There is limited empirical evidence here, but many case studies suggest that management practices are difficult to change for incumbents. Micro-econometric studies of responses to external shocks such as deregulation (e.g. Olley and Pakes, 1996) or trade liberalization (e.g. Nina Pavnik 2002) suggest that much aggregate change in productivity is driven by reallocation, entry and exit rather than simply incumbent plants increasing their productivity. Some theoretical models are built on the

---

management, and an extensive realignment of job responsibilities, major human-resources reorganization for senior bank managers. We discuss in more detail the empirical measures in the Data Section.

assumption that the efficiency of establishments is fixed at birth (e.g. Boyan Jovanovic 1982; Melitz, 2003). So, in the short-run, the assumption of quasi-fixed management practices seems plausible and we exploit this in our estimation.

In the longer-run, however, management practices are variable to some degree. Appendix B discusses some formal models where we allow management practices to be endogenously chosen by the firm. The first extension is to allow practices to be transferred when one firm takes over another firm. As with recent trade theory (e.g. Antras, Garicano and Rossi-Hansberg 2008) we assume that a multinational can transfer its management practices overseas (subject to some cost). This generates predictions of a distinctive dynamic pattern for the productivity-IT relationship for establishments taken over by US multinationals, which we find in the takeover sub-sample (see sub-section I.B above).

Appendix B also discusses allowing management practices to be adjustable even for establishments which are not taken over (with and without adjustment costs) and shows that the key predictions are robust to this extension. We also discuss how our modelling structure relates to Basu et al. (2003) who also consider a formal model of productivity dynamics when there is complementarity between IT and organization<sup>20</sup>.

## **II. Establishment-level Panel Data from the UK Census**

We use two main datasets in the paper which are drawn from several sources. A full description of the datasets appears in Appendix A. Both are original and have not been previously exploited in empirical work. The first is an original UK establishment level panel constructed from combining multiple datasets within the UK Census Bureau. We present results from this data in

---

<sup>20</sup> In Appendix B of Bloom, Sadun and Van Reenen (2007) we show how IT adjustment costs could help rationalize these TFP dynamics. See also Basu et al. (2003).

Section III. The second is a firm-level panel dataset across seven European countries. This combines our own survey of management practices, an establishment-level IT panel and European firm-level accounting data. We describe the data in detail in Section IV and present the results in Section V. Both datasets are unbalanced panels – i.e. we do not condition on the subsample of firms who are alive throughout the time period.

The basis of the UK data is a panel of establishments covering all sectors of the UK private sector called the Annual Business Inquiry (ABI). It does not include financial services, which is a virtue given the difficulty of measuring productivity in these sectors, as the financial crisis has amply demonstrated. It is similar in structure and content to the US Longitudinal Research Database (LRD), and it contains detailed information on revenues, investment, employment and material/intermediate inputs. However, unlike the US LRD it also covers the non manufacturing sector from the mid-1990s onwards. This is important, because the majority of the sectors responsible for the US productivity acceleration are outside manufacturing, such as retailing and wholesaling<sup>21</sup>. We were also able to obtain access to several surveys of establishment-level IT expenditure conducted annually by the UK Census Bureau, which we then matched into the ABI using the establishment's reference number. The dataset is unique in containing such a large sample of establishment-level longitudinal information on IT and productivity.

We build IT capital stocks from IT expenditure flows using the perpetual inventory method and following Jorgenson (2001), keeping to US assumptions about depreciation rates and hedonic prices. We considered several experiments by changing our assumptions concerning the construction of the IT capital stock using alternative assumptions over depreciation rates and

---

<sup>21</sup> The new US Longitudinal Business Database includes services but does not have information on IT or non IT investment (see Davis et al. 2006).

initial conditions<sup>22</sup>. Furthermore, we present results using an entirely different measure of IT usage based on the number of workers in the establishment who use computers (taken from a different survey, the E-Commerce Survey). Qualitatively similar results were obtained from all methods.

Our final dataset runs from 1995 through 2003, but there are many more observations after 1999. After cleaning, we are left with 21,746 observations with positive values for all the factor inputs. The results are robust to conditioning on three continuous time series observations per firm, but are weaker if we start conditioning on many more observations as we induce increasing amounts of selection bias.

There are many small and medium sized establishments in our sample<sup>23</sup> - the median establishment employs 238 workers. The establishments are larger than average for the UK economy because the sampling frames for the ABI and, in particular the IT surveys, deliberately over sample larger units. We did not find evidence that this causes any sample selection bias for a comparison of US multinational to non US multinationals<sup>24</sup>. Average IT capital is about 1 percent of gross output at the unweighted mean (1.5 percent if weighted by size) or 2.5 percent of value added. These estimates are similar to the UK economy-wide means in Basu et al. (2003).

We have large numbers of multinational establishments in the sample. We can identify ownership using the Annual Foreign Direct Investment registry, which we also use to identify takeovers (from changes in ownership). About 8 percent of the establishments are US owned, 31

---

<sup>22</sup> First, because there is uncertainty over the exact depreciation rate for IT capital, we experimented with a number of alternative values. Second, we do not know the initial IT capital stock for ongoing establishments the first time they enter the sample. Our baseline method is to impute the initial year's IT stock using as a weight the establishment's observed IT investment relative to the industry IT investment. An alternative is to assume that the plant's share of the industry IT stock is the same as its share of employment in the industry. All methods gave similar results.

<sup>23</sup> Table A2 sets out the basic summary statistics of the sample.

<sup>24</sup> See sub-section A8 in Appendix A. There was some evidence that response rates were lower for small domestic firms, however, suggesting we have a disproportionate number of the larger domestic firms. Since these larger establishments are likely to be more productive, it will be harder to reject our hypothesis that domestic establishments have lower productivity than multinationals. Nevertheless, we are more confident in the comparison within the multinational set (i.e. US vs. non US) than between multinationals and domestic establishments.

percent are owned by non US multinationals and 61 percent are purely domestic. Multinationals' share of employment is even higher and their share of output higher still. Table 1 presents some descriptive statistics for the different types of ownership, all relative to the three-digit industry average. Labor productivity, as measured by output per employee, is 24 percent higher than average for US multinational establishments and 15 percent higher than average for non US multinational establishments. This suggests a nine percentage point productivity premium for US establishments as compared to other multinationals. But US establishments also look systematically larger and more intensive in their non labor input usage than other multinationals. US establishments have 14 percentage points more employees, use about 8 percentage points more intermediate inputs per employee and 9 percentage points more non IT capital per employee than other multinationals. Most interesting for our purposes, though, the largest gap in factor intensity is for IT: US establishments are 32 percentage points more IT intensive than other multinationals. Hence, establishments owned by US multinationals are notably more IT intensive than other multinationals in the same industry.

[Table 1 about here]

### **III. Results from the UK Establishment Panel**

#### ***A. Main Results***

In Table 2 we examine the output elasticity of IT in the standard production function framework described in Section II (these are all different implementations of equation (4)). Column (1) estimates the basic production function, including dummy variables for whether or not the plant is owned by a US multinational (“USA”) or a non US multinational (“MNE”) with domestic establishments being the omitted base. US establishments are 7.1 percent more productive than

UK domestic establishments and non US multinationals are 3.9 percent more productive. This 3.2 percent ( $= 0.0712 - 0.0392$ ) difference between the US and non US multinationals coefficients is also significant at the 5 percent level ( $p$ -value = 0.021) as reported at the base of the column<sup>25</sup>.

[Table 2 about here]

The second column of Table 2 includes the IT capital measure. This enters positively and significantly and reduces the coefficients on the ownership dummies. US establishments are more IT intensive than other establishments, but this only accounts for about 0.2 percentage points of the initial 3.2 percent productivity gap between US and non US multinational establishments. Column (3) includes two interaction terms: one between IT capital and the US multinational dummy and the other between IT capital and the non US multinational dummy. These turn out to be very revealing. The interaction between the US dummy and IT capital is positive and significant at conventional levels. According to column (3) doubling the IT stock is associated with an increase in productivity of 6.3 percent ( $=0.0428 + 0.0202$ ) for a US multinational but only 4.6 percent ( $=0.0428 + 0.0036$ ) for a non US multinational. Note that non US multinationals are not significantly different from domestic UK establishments in this respect: we cannot reject the possibility that the coefficients on IT are equal for domestic UK establishments and non US multinationals. It is the US establishments that are distinctly different. The reported  $US*ln(C/L)$  interaction tests for significant differences in the output-IT elasticity between US multinationals and UK domestic establishments. The key test, however, is whether the IT coefficient for US multinationals is significantly different from the IT coefficient for other multinationals. The row at the bottom of Table 3 reports the  $p$ -value of tests on the equality between the  $US*ln(C/L)$  and

---

<sup>25</sup> This implies that about two-thirds (6 percentage points of the 9 percentage point gap) of the observed labor productivity gap between US and other multinationals shown in Table 1 can be accounted for by our observables, such as greater non IT capital intensity in the US establishments, but a significant gap remains.

the  $MNE*ln(C/L)$  coefficient (i.e.  $H_0: \alpha^{C,USA} = \alpha^{C,MNE}$ ), showing that the coefficients are significantly different at the 5 percent level.

[Table 3 about here]

To investigate the industries that appear to account for the majority of the productivity acceleration in the US we split the sample into “IT using intensive sectors” in column (4) and “Other sectors” in column (5). Sectors that use IT intensively account for most of the US productivity growth between 1995 and 2003. These include retail, wholesale, business services and hi-tech manufacturing like printing/publishing. The US interaction with IT capital is much stronger in the IT using sectors, and it is not significantly different from zero in the other sectors (even though we have twice as many observations in those industries). The final three columns include a full set of establishment fixed effects. The earlier pattern of results is repeated; in particular, column (7) demonstrates that US establishments appear to have a significantly higher coefficient on their IT capital stocks than other multinationals (and domestic firms)<sup>26</sup>. A doubling of the IT capital stock is associated with 1.2 percent higher productivity for a domestic or non US multinational, but 4.9 percent higher productivity for an establishment owned by a US multinational<sup>27</sup>.

*Quantification* - The results in column (7) of Table 2 report a US coefficient on IT capital stock that is about 3.7 percent higher than for domestic firms or non US multinationals. Given that IT intensity over the period of 1995 to 2004 was rising at about 22 percent per year in both the US and EU (Timmer and van Ark, 2005), this implies a faster growth rate of labor productivity of US establishments in the IT intensive sector of about 0.81 percentage points per

---

<sup>26</sup> We were also concerned that the IT interaction could be driven by the presence of labor in the denominator of both the dependent variable and the interaction so we re-estimated without normalizing any of the variables by labor. The US interaction with IT was still significantly different from the non US multinational interaction with IT (p-value = 0.040). See also the results in Bloom, Sadun and Van Reenen (2007).

year ( $=0.22 \times 3.7$  percent). IT intensive industries account for about half of aggregate employment so that this higher coefficient – if applied to the US economy – would imply that aggregate US labor productivity would rise at about 0.4 percent a year faster than in Europe ( $= 0.5 \times 0.81$ ) between 1995 and 2004. Since actual US labor productivity growth over this period was at least 0.8 percent higher than in Europe, this coefficient would suggest that about half of the US productivity miracle was related to the stronger relationship between productivity and IT in the US than in Europe.

### ***B. Robustness Tests of the production function results***

Table 3 presents a series of tests showing the robustness of the main results - we focus on the fixed effects specification, which is the most demanding, and on the IT intensive sectors, which we have shown to be crucial in driving our result. The first column represents our baseline production function results from column (7) in Table 2. The results are similar if we use value-added-based specifications (see column (2)), so we stay with the more general specification using gross output as the dependent variable.

*Transfer Pricing and mark-ups* - Since we are using multinational data, could transfer pricing be a reason for the results we obtain? If US firms shifted more of their accounting profits to the UK than other multinationals this could cause us to overestimate their productivity. But this would suggest that the factor coefficients on other inputs, particularly on materials, would also be systematically different for US establishments (see the discussion on establishment-specific prices above). To test this, column (3) estimates the production function with a full set of interactions between the US multinational dummy and *all* the factor inputs (and the non US

---

<sup>27</sup> At the overall sample mean of IT intensity, the implied productivity premium of US multinationals over non US multinationals is 2.6 percent, but this rises to 5.0 percent when evaluated at the IT intensity of the average US multinational establishment.



multinational dummy and all the factor inputs). None of the additional non IT factor input interactions are individually significant, and the joint test at the bottom of the column of the additional interactions shows that they are jointly insignificant<sup>28</sup>. We cannot reject the specification of equation (4) in column (1) as a good representation of the data versus the more general interactive models of column (3)<sup>29</sup>. This experiment also rejects the general idea that the productivity advantage of the US is attributable to differential mark-ups, because then we would expect to see significantly different coefficients on *all* the factor inputs, not just on the IT variable.

As a second test of differential mark-ups we follow Klette and Griliches (1996) and De Loecker (2007) by controlling for four-digit industry output (disaggregated by ownership type). The estimated mark-ups (inverse elasticities of demand) were significantly higher for multinationals than domestic firms, but the US multinationals did not have significantly higher mark-ups than non multinationals (p-value of difference = 0.404). More importantly, the US IT coefficient remained significantly greater than the non US multinational coefficient (p-value of difference = 0.010)<sup>30</sup>.

*Mismeasurement of IT capital stock?* - One concern is that we may be underestimating the true IT stock of US multinationals and this could generate a positive coefficient on the interaction term, because of greater measurement error for the US establishments. For example, US multinationals may pay lower prices for IT than non US multinationals. To tackle this issue we turn to an alternative IT survey (the E-commerce Survey, see Appendix A) that has data on the proportion of workers in the establishment who are using computers. This is a pure “stock”

---

<sup>28</sup> For example, the joint test of the all the US interactions except the IT interaction has a p-value of 0.62.

<sup>29</sup> The p-value = 0.38 on this test. We also investigated whether the coefficients in the production function regressions differ by ownership type and sector (IT intensive or not). Running the six separate regressions (three ownership types by two sectors) we found that the F-test rejected at the 1 percent level the pooling of the US multinationals with the other firms in the IT intensive

measure so it is unaffected by the initial conditions concern<sup>31</sup>. In column (4) we replace our IT capital stock measure with a measure of the computers per worker. Reassuringly, we still find a positive and significant coefficient on the US interaction with computer usage.

*Functional Forms* - We tried including a much broader set of interactions and higher order terms (a “translog” specification) but these were generally individually insignificant. Column (5) shows the results of including all the pair-wise interactions of materials, labor, IT capital, and non IT capital and the square of each of these factors. The additional terms are jointly significant but the key US interaction with the IT term remains basically unchanged (it falls slightly from 0.0368 in the baseline specification to 0.0334) and remains significant.

*Stronger selection effects for US multinationals because of greater distance from the UK?*  
- A further issue is that US firms may be more productive in the UK because the US is geographically further away than the average non US multinational (in our data most foreign multinationals are European if they are not American). This would generate a strong US selection bias if only the most productive firms are able to overcome the greater fixed costs of distance. To test this we divide the non US multinational dummy into European versus non European firms. Under the distance argument, the non European firms would have to be more productive to be able to set up greenfield establishments in the UK. According to column (6) however, the IT coefficient for the US multinationals is significantly higher than the IT coefficient for the non European multinationals (p-value = 0.012), as well as higher than the IT coefficient on the European multinationals. Again, it is the US multinationals that appear to be different.

---

sectors. In the non IT intensive sectors, by contrast, the pooling restrictions were not rejected. Details are available from the authors on request.

<sup>30</sup> See Appendix Table A7.

<sup>31</sup> Our IT capital stock measure is theoretically more appropriate as it is built analogously to the non IT stock and is comparable to best practice existing work. The E-Commerce Survey is available for three years (2001 to 2003), but the vast majority of the sample is observed only for one period, so we do not control for fixed effects.

*Industry heterogeneity* - We allow for industry heterogeneity by including fixed effects, industry dummies interacted with time dummies and estimating separately for IT using sectors. We also considered further heterogeneity of the IT coefficients by estimating the production functions separately by each two digit and three-digit industry, but did not find much further systematic heterogeneity<sup>32</sup>. For example, in the two digit estimations 70 percent of the IT using sectors had positive  $US*ln(C/L)$  interactions compared to only 42 percent of the “non IT sectors”<sup>33</sup>.

One experiment was to estimate separately for the retail and wholesale sector, which have been large contributors to faster US productivity growth since 1995. For these 3,846 observations, the coefficient on the  $US*ln(C/L)$  interaction is 0.0413 with a standard error of 0.0208<sup>34</sup>. In the remaining IT intensive sectors outside retail/wholesale the coefficient on the  $US*ln(C/L)$  interaction is 0.0347 with a standard error of 0.0181. Consequently, our results are not simply driven by the retail and wholesale sector<sup>35</sup>.

*Controlling for endogenous inputs* – We are also concerned about the endogeneity of the factor inputs attributable to unobserved transitory shocks. It is worth noting, however, that for endogeneity to rationalize our empirical results this would need to arise: (i) *only* for IT capital and not the other factor inputs; (ii) *only* for US multinationals; and (iii) *only* in the sectors

---

<sup>32</sup> We also estimated production functions separately for the IT producing sectors (see Appendix Table A1). We could not reject that these could be pooled with the non IT intensive sectors when estimating the baseline specification (p-value = 0.619).

<sup>33</sup> Furthermore, the only significantly negative interactions between IT and the US multinational dummy were for some non IT using sectors. See Appendix Table A8.

<sup>34</sup> This is reassuring as manipulating the transfer prices of intermediate inputs is more difficult in retail/wholesale than in manufacturing, as intermediate inputs generally are purchased from independent suppliers.

<sup>35</sup> See columns (1) and (2) of Appendix Table A9. Another possible explanation for the apparently higher productivity of IT is that US multinationals may be disproportionately represented in specific industries in which the output elasticity of IT is particularly high. The interaction of IT capital with the US dummy then would capture omitted industry characteristics rather than a “true” effect linked to US ownership. To test for this, we include in our regression as an additional control the percentage of US multinationals in the specific four-digit industry and its interaction with IT. The interaction was positive, but statistically insignificant, and the coefficient on the  $US*ln(C/L)$  interaction remains significant and largely unchanged with a coefficient (standard error) of 0.035 (0.015).

responsible for the US productivity miracle. Such a bias is possible, of course, but it is not obvious what alternative hypothesis would induce exactly these types of correlations.

Nevertheless, we re-estimated the production functions using a version of the Olley-Pakes estimator (1996) that allows for two observable capital stocks, IT and non IT (a straightforward extension of the basic model as discussed in Akerberg et al. 2008). We also used the “System GMM” estimator of Blundell and Bond (1998, 2000) which relies on a different set of identification assumptions to address the endogeneity of the factor inputs. These estimators are discussed in Appendix C with the results presented in Appendix Table C1. In both cases the main finding - that the output-elasticity of IT for US multinationals is much larger than the output-elasticity of IT for non US multinationals - is robust, even though the coefficients are estimated less precisely than under our baseline within-groups estimates<sup>36</sup>.

*Multiple establishments belonging to the same parent* – some establishments may belong to the same multinational (or domestic) corporation, even at a point of time. As a robustness test we allowed the standard errors to be clustered at this higher level, with little difference to the results (e.g. the p-value on the test of the difference in the  $US*ln(C/L)$  interaction effects was 0.004). We also collapsed the data to this higher level of aggregation and re-estimated which again gave similar results.<sup>37</sup> This is unsurprising as 84 percent of the observations were single-firm establishments.

*Unmeasured software inputs for US establishments* - Could the  $US*ln(C/L)$  interaction reflect greater unmeasured software inputs for US establishments? Although this is certainly possible when we compare US multinationals with domestic establishments it is less likely when

---

<sup>36</sup> The coefficient on the  $US*ln(C/L)$  interaction in the GMM system estimator is 0.0524 with a standard error of 0.0192 and this is significantly different from the non US multinational interaction at the 10 percent level. The underlying theoretical model of Olley-Pakes does not allow us to simply include interactions, so we estimated the production function separately for the three ownership types (US multinationals, non US multinationals and domestic UK establishments). The output-IT elasticity for US multinationals is twice as large as that of non US multinationals.

we compare US multinationals with non US multinationals because *a priori* there is no reason to believe that they have higher levels of software. It could, however, be a problem if US firms were globally larger than other multinationals (software has a large fixed cost component so will be cheaper per unit for larger firms than smaller firms). To address this issue, we included a measure of the “global size” of the multinational parent of our establishments. In our UK ABI data, US and non US multinationals are similar in their median global employment size. As a more direct test, we introduce an explicit interaction term between the global size of the parent firm (defined as the log of the total number of worldwide employees) and IT capital in a specification identical to baseline specification in column (1) of Table 3. The interaction between global size and IT is insignificant and the US interaction with IT remained significant (at the 1 percent level) and significantly different from the non US multinational interaction with IT at the 10 percent level<sup>38</sup>. So this does not appear to support a large role for software inputs driving the superior US productivity of IT<sup>39</sup>. Nevertheless, to address this issue more directly we will use explicit measures of management practices in Section IV.

[Table 4 about here]

### ***C. Estimation of the IT Intensity Equation***

Table 4 examines the regressions where the dependent variable is IT intensity (the log of the IT capital stock per worker). Column (1) shows that IT intensity is significantly higher in US firms than in both domestic firms and non US multinationals as was already suggested by Table 1.

---

<sup>37</sup> For example, the coefficient (standard error) on the key US and IT interaction in column (1) of Table 3 was 0.0456 (0.183).

<sup>38</sup> The global size variable was only available for a sub-sample of 2,205 observations (from the baseline sample of 7,784). When we re-ran the baseline specification on this smaller sub-sample, the US interaction with IT was 0.042 (instead of 0.037 in the baseline) and significant at the 1 percent level. When we include the global size term the point estimate rose to 0.043 (the point estimate on the global size\*IT interaction was -0.0015, insignificant at conventional levels). See Appendix Table A9, column (5).

<sup>39</sup> We also used a measure of software capital constructed analogously to our main IT capital variable (see Appendix A). In our data, software expenditure includes a charge for software acquired from the multinational’s parent. The IT capital interaction is robust to the inclusion of this measure of software capital (and its interaction with ownership status). For example, when we added software capital to a specification identical to column (1) of Table 4 the standard IT interaction with the US remained positive and significant. In the pan-European database in the next section we have explicit measures of software applications such as ERP and Databases and also find our results robust to using these measures of software.

Column (2) presents the same regression for the sectors which intensively use IT and column (3) for the other sectors. The difference between US and non US multinationals is significant at the 10 percent level for the IT using industries, but insignificant for the other sectors. The last three columns repeat the specifications but include a longer list of controls. The same pattern emerges: US firms are more IT intensive, especially in the IT using sectors.

Our estimates of the production function and IT demand equation generates the same finding – US firms appear to have some advantage in their use of IT as revealed both by the higher coefficient on IT in the production function and their greater usage of IT capital.

#### ***D. US Multinational Takeovers of UK Establishments***

One concern with our empirical strategy is that US firms may “cherry pick” the best UK establishments. In other words, it is not the US multinational’s management that generates a higher IT coefficient but rather that American firms systematically take over UK establishments with higher output-IT elasticities. To look at this issue, we examined the sub-sample of establishments that were, at some point in our sample period, taken over by another firm in the IT intensive sectors. We considered both US and non US acquirers<sup>40</sup>.

Note that the identification assumption here is not that establishments that are taken over are the same as establishments that are not taken over. We condition on a sample of establishments who are all taken over at some point in the sample period. Thus, we assume that US multinationals are not systematically taking over establishments that are more productive in their use of IT than non US multinationals. We can empirically test this assumption by examining the characteristics - such as the IT level, IT growth and IT productivity - of establishments who

---

<sup>40</sup> We have a larger number of observations “post-takeover” than “pre-takeover” as there was a takeover wave at the beginning of our sample in the late 1990s associated with the stock market bubble and high tech boom. For these establishments, we

will be taken over by US multinationals in the pre-takeover period relative to non US multinationals. We will show that there is no evidence of such positive selection<sup>41</sup>.

In column (1) of Table 5, we start by estimating our standard production functions, for all establishments that are eventually taken over in their *pre-takeover* years (this is labelled “before takeover”). The coefficients on the observable factor inputs are similar to those for the whole sample in column (2) of Table 3. Unlike the full sample, though, the US and non US ownership dummies are insignificant, suggesting that the establishments taken over by multinationals are not *ex ante* more productive than those acquired by domestic UK firms.

[Table 5 about here]

In column (2) of Table 5 we interact the IT capital stock with a US and a non US multinational ownership dummy, again estimated on the *pre-takeover* data. We see that neither interaction is significant – that is *before* establishments are taken over by US firms they do not have unusually high IT coefficients. So, US firms also do not appear to be selecting establishments that already provide higher IT productivity. In column (3) we estimate production function specifications identical to columns (1) but on the *post-takeover* sample. The US multinational ownership coefficient has now moved from being negative in the pre-takeover period to being positive, implying a change in productivity of 10.1 percent. By contrast the non US multinational coefficient hardly changes (it actually falls by 2 percent).

Column (4) is the post-takeover version of column (2) where we allow the coefficient on IT to differ by ownership status. As in the earlier results of Table 2, the interaction between IT

---

necessarily have a lot more post takeover information than pre-takeover information. We drop takeovers which resulted in no change of ownership status (e.g. a US multinational taking over another US multinational subsidiary – see Appendix A).

<sup>41</sup> If US multinationals have higher IT productivity why do we not observe some systematic selection of US firms taking over particular UK establishments? We show there is some weak evidence of negative selection which is consistent with a simple model (discussed below and in Appendix B) of international transfer of management practices with a fixed costs. It is likely this incentive is small in magnitude compared to the many other causes of international merger and acquisitions. Statistically, the only variable which was significant in a takeover model was size: US multinationals were more likely to take over larger plants than non US multinationals. IT and other factors were insignificant.

and US ownership is positive and significant at the 5 percent level (and is significantly different from the IT coefficient of non US multinationals at the 10 percent level). The test of the difference of the  $US*ln(C/L)$  interaction before and after the takeover is significant at the 10 percent level (p-value=0.097)<sup>42</sup>.

The fifth column of Table 5 breaks down the post takeover period into the first year after the takeover and the subsequent years<sup>43</sup>. The greater productivity of IT capital in establishments taken over by US multinationals is revealed only two and three years after takeover (this interaction is significant at the 5 percent level whereas the interaction in the first year is insignificant). This is consistent with the idea that US firms take some time to reorganize before obtaining higher productivity gains from IT. Domestic and other multinationals again reveal no pattern, with all the dummies and interactions remaining insignificant.

The sample in Table 5 includes some multinational firms that are taken over by domestic UK firms, so a stronger test is to drop these observations and consider only takeovers by multinational firms. In column (6) we replicate the specification of column (5) for this smaller sample and again find that establishments taken over by US multinationals have a significantly higher coefficient on IT capital after two or more years than non multinational takeovers.

Although there is no evidence that US firms are “cherry picking” the better UK establishments, it is noticeable that the point estimates in column (1) and (2) are consistent with the idea that US firms may select the UK establishments that have *lower* IT coefficients in the production function, a form of negative selection. Although these point estimates are statistically insignificant, negative selection is consistent with a model where US firms are able to transfer

---

<sup>42</sup> We examined whether the US productivity advantage was because they were more aggressive at closing down less efficient establishments. Foster, Haltiwanger and C.J. Krizan (2006), show that almost all aggregate US retail labor productivity growth in their sample is through this type of restructuring. In our data, although multinationals did close down more establishments post-takeover than domestic takeovers, American firms did not seem to do this significantly more than other multinationals.



their management practices to the plants they acquire. If this transfer has an element of fixed disruption cost, US firms will have a greater incentive to reorganize firms after takeover and so will be more willing to purchase badly managed firms that they can “turnaround”. Appendix B discusses an extension to our basic model that has this feature.

#### **IV. Firm-level Panel Data from Seven European Countries**

A disadvantage of the UK establishment level panel is that it does not contain direct information on management practices. To remedy this we constructed a second panel dataset across seven European countries that combined three main sources: the Center for Economic Performance (CEP) management survey, the Harte-Hanks IT panel and the Amadeus database of firm accounts.

*The CEP management survey* - In the summer of 2006 a team of 51 interviewers ran a management practices survey from the CEP in London on 4,003 firms across Europe, the US and Asia. In this paper we use data on the 1,633 firms from seven European countries (France, Germany, Italy, Poland, Portugal, Sweden and the UK). Appendix A provides a detailed data description for the full sample, but we summarize relevant details here.

The management data was collected using the survey tool developed in Bloom and Van Reenen (2007). This survey collects information on 18 questions grouped into four broad areas of management practices. In this paper we focus on the four *people management* questions covering promotions, rewards, hiring and fixing/firing bad performers. The reason for this focus is because of the case study and econometric evidence that effective use of IT requires changing several elements of the way that people are managed. First, there is an abundance of empirical evidence

---

<sup>43</sup> Note that throughout the table we drop the takeover year itself as we cannot determine the exact timing within the year when the takeover occurred.

that IT is on average skill biased and requires shedding less skilled workers, hiring more skilled workers and re-training incumbent workers. In addition to this skill upgrading, IT enabled improvements usually require more worker flexibility inside the firm with workers taking on new roles. Secondly, some theoretical work emphasizes that when there is uncertainty over how best to use a new technology, giving more discretion to employees with higher powered rewards may be a way to efficiently exploit their private knowledge. Canice Prendergast (2002) emphasized that higher powered incentives (such as output-based remuneration rather than flat-rate salary) may be more common when the principal has uncertainty over what tasks an agent should be performing. Daron Acemoglu et al. (2007) argue that delegation becomes more attractive when there is uncertainty about the best way to use a new technology.

To operationalize these ideas we focus on four questions designed to pick up managerial attention to fixing/firing under performers, aggressively promoting higher effort/ability employees (rather than just using tenure), offering higher powered incentives to employees and management effort in hiring talent. The questions emphasize the management of human capital similarly to the questions used by Bresnahan, Brynjolfsson and Hitt (2002). We also present robustness tests looking at other forms of management and organization (such as lean techniques, target-setting and monitoring) and show that it is really people management that seems to matter for IT.

Firms are scored from a 1 to 5 basis on each question, with the scores then normalized into z-scores using the complete sample<sup>44</sup> so the questions can be aggregated together. Although it is plausible that higher scores reflect “better” management, we do not assume this. All we claim is that American firms have, on average, *different* people management practices than European firms, and these types of practices are complementary with IT. The survey uses a

*double-blind* technique to try and obtain unbiased accurate responses to the management survey questions. One part of this double-blind methodology is that managers were not told they were being scored during the telephone survey. This enabled scoring to be based on the interviewer's evaluation of the firm's actual practices, rather than their aspirations, the manager's perceptions or the interviewer's impressions. To run this "blind" scoring we introduced the exercise as an interview about management practices, using open questions (i.e. "can you tell me how you promote your employees"), rather than closed questions (i.e. "do you promote your employees on tenure [yes/no]?"). Furthermore, these questions target actual practices and examples, with the discussion continuing until the interviewer can make an accurate assessment of the firm's typical practices based on these examples. Bloom and Van Reenen (2007) present extensive tests of the reliability of these management measures and their robustness to many different forms of psychological bias<sup>45</sup>.

*The Harte-Hanks establishment level IT Panel* - We use an establishment level IT data panel that comes from the European Ci Technology Database (CiDB) produced by the marketing and information company Harte-Hanks (H-H)<sup>46</sup>. The H-H data has been collected annually for over 160,000 establishments across 14 European countries since the mid-1990s. They target all firms with 100 or more employees, obtaining about a 45 percent response rate. We use the data only for the firms we matched to those in the management survey (i.e. in France, Germany, Italy, Poland, Portugal, Sweden and the UK). Bresnahan, Brynjolfsson and Hitt (2002), Brynjolfsson and Hitt (2003) and Chris Forman, Avi Goldfarb and Shane Greenstein (2009) among others

---

<sup>44</sup> The scores are normalized to have a mean of zero and a standard deviation of one across the sample of 4,003 firms.

<sup>45</sup> An alternative and complementary way to measuring management is the "organizational capital" approach of Carol Corrado, Charles Hulten and Sichel (2005). This follows the approach of cumulating inputs (such as managerial time) analogously to the way we construct the IT capital stock for the UK establishment data.

<sup>46</sup> H-H is a multinational that collects IT data primarily for the purpose of selling on to large producers and suppliers of IT. The fact that H-H sells this data on to major firms like IBM and Cisco exerts a strong market discipline on the data quality. Major discrepancies in the data are likely to be rapidly picked up when H-H customers' sales force placed calls using the survey data.

have also previously used the US H-H data, typically matching the US data to a sub-sample of large publicly quoted firms in Compustat.

The H-H survey contains detailed hardware, equipment and software information at the establishment level. We focus on using computers (PCs plus laptops) per worker as our key measure of IT intensity because this is available for all the establishments and is measured in a comparable way across time and countries. This computer per worker measure of IT has also been used by other papers in the micro-literature on technological change (e.g. Paul Beaudry, Doms and Ethan Lewis 2006) and is highly correlated with other measures of IT use like the firm's total IT capital stock per worker<sup>47</sup>. We aggregate across establishments to form an estimate of the firm-level number of computers per worker.

*The AMADEUS firm-level Accounts Panel* - The AMADEUS accounts database provides company accounts on essentially the population of public and private firms in Europe. It has information for most companies on sales, employment and fixed-assets, and has been used in previous papers to estimate production functions (e.g. Bloom and Van Reenen, 2007 and de Loecker, 2007). AMADEUS is constructed primarily from the mandatory national registries of companies.

*The combined European firm-level panel dataset* - We match 720 of the firms in our management survey to the H-H data and accounting data. There appeared to be no sample selection bias in comparing US vs. non US multinationals (see Appendix A). In particular, better managed firms and more productive firms were no more likely to be in the IT sub-sample compared to the rest of the CEP survey. We estimate our regressions over the years 1999 to 2006. Panel C of Table A2 presents some descriptive statistics. As with the UK establishment database,

---

<sup>47</sup> For example, in our establishment level data a regression of  $\ln(\text{IT capital stock per employee})$  on the  $\ln(\text{proportion of employees using computers})$  gives a coefficient of 0.63.

compared to other multinationals, US multinationals are larger, more productive and have higher IT intensity. They also tend to have better people management scores (see next section). We also have information on the proportion of college educated workers which is also higher in the US than elsewhere. Consequently, as a robustness check for technology-skill complementarity, we control for human capital and its interaction with IT in some regressions.

## **V. Results from a Cross-European Firm-level Panel**

The results so far suggest that US owned establishments have a higher elasticity of output with respect to IT, even after taking over existing establishments. This implies there may be an unobserved factor that is more abundant in American firms and that is complementary with IT. In this section we explore the idea that people management practices constitute this previously unobserved factor and use our survey instrument to measure it. In the first sub-section we discuss some descriptive statistics and in the second sub-section we offer some econometric results consistent with our key hypothesis.

### ***A. People Management in US firms Compared to other Countries***

Before we present the results it is worth considering some supporting evidence on the different internal management of American firms compared to those in Europe and Asia. Remember that we choose these people management aspects because the econometric and case-study evidence suggest that these features of the firm are particularly important for effectively using IT, which frequently requires substantial changes in the way that employees work.

In Figure 3, panels 3a and 3b provide new evidence on the people management scores of 4,003 firms in the US, Asia and Europe. In Figure 3a, we see that firms based in the US have much higher scores than firms in other countries – about half a standard deviation on average. In

Figure 3b we examine a sub-sample of the data, plotting the average people management scores of subsidiaries located in our seven European countries by multinational origin<sup>48</sup>. Interestingly, the affiliates of US multinationals in Europe tend to have much higher people management scores than other countries. This is consistent with the idea that US firms are able to transfer some of their practices overseas to their subsidiary operations<sup>49</sup>. Local labor market regulations influence people management practices, but do not completely determine them. If they did, there would be no systematic difference in the management practices of US subsidiaries in Europe compared to other firms.

[Table 6 and Figure 3 about here]

## ***B. Results***

*Basic results*- Table 6 contain the results from the European panel. In columns (1) to (6) we estimate the production function and in the final two columns the IT intensity equation. Column (1) estimates a basic productivity equation controlling only for capital, labor, ownership status and some basic controls (country dummies interacted with time dummies, three digit industry dummies and listing status). As with the UK establishment data, US multinational subsidiaries have higher measured total factor productivity than other multinationals (and domestic firms). The data is consistent with constant returns to scale (i.e. the coefficient on labor is insignificant). The point estimates are much larger than for the establishment level data because materials is not included as an explanatory variable as this is not available in most company accounts. If

---

<sup>48</sup> A multinational source country had to have at least 25 subsidiaries in the sample to be included in the graph.

<sup>49</sup> The high people management ratings for some countries such as Germany may appear surprising given their high degree of labor market regulation. This arises because the average scores for management practices as a whole in Germany are high (although they are relatively higher in operations). Bloom and Van Reenen (2007) relate this to a combination of relatively high skill levels and few primo geniture family firms.

materials are included the point estimates on the sub-sample look similar to those for the establishment level data<sup>50</sup>.

The second column of Table 6 uses the sub-sample of the data where we observe IT (i.e. the sample that overlaps with the H-H dataset). First we follow Table 2 and simply interact the ownership dummies with the IT measure. Exactly as we saw in the UK establishment panel the coefficient on IT is significantly higher for US multinationals compared to non US multinationals (and also to domestic firms). Column (3) replaces the multinational interactions with IT with our measures of people management practices and their interaction with IT intensity. As the model predicts, there is a positive and significant interaction between people management and IT intensity. Column (4) is the key column which includes both sets of interactions. We find that conditional on the management interactions, the coefficient on the interaction of IT and US ownership has dropped by more than half in magnitude and is now insignificantly different from zero. This is a key result: it suggests that the reason that we observed a higher coefficient on IT for US multinationals in column (2) was because: (i) they have higher levels of people management and (ii) there is a complementarity between IT and people management<sup>51</sup>.

Column (5) of Table 6 repeats the specification from column (4) but now includes a full set of firm fixed effects. The pattern is broadly the same, although the precision of the estimates has fallen, as would be expected when we rely solely on within-firm variation<sup>52</sup>. The interaction between IT and people management remains significant at the 10 percent level, whereas the

---

<sup>50</sup> For example, including materials in column (1) specification reduces the sample size to 4,577 observations. The coefficient (standard-errors) on capital, US and non US multinational ownership, and materials were 0.1106 (0.0135), 0.1128 (0.0421), 0.0574 (0.0220) and 0.5269 (0.0229) respectively. If computers are included in the regression, the coefficient (standard error) on this variable is 0.0254 (0.0185).

<sup>51</sup> If we drop the interactions and ownership variable, the people management score in levels is positively and significantly related to productivity at the 10 percent level: a coefficient of 0.039 with a standard error of 0.023.

<sup>52</sup> Note that the management and ownership status variables are cross sectional so the linear terms are absorbed by the fixed effects, even though their interaction with IT is still identified.

coefficient on the interaction between IT and US ownership is now only 0.052 and completely insignificant.

The final two columns of Table 6 present the regressions where IT intensity is the dependent variable. Column (7) shows that US firms are much more IT intensive than other multinationals and domestic firms. The people management variable also has a strong and positive correlation with IT intensity as shown in the column (8). In this final column the US coefficient falls from 0.260 to 0.215, indicating that part of the higher IT intensity in US multinationals is due to the higher levels of people management.

*Technology-skill complementarity* - There is a large literature showing that new technologies are complementary with skills (e.g. David Autor, Larry Katz and Alan Krueger 1998). If US firms have higher levels of skills, could this simply explain our results? Fortunately, the CEP management survey contained a measure of the proportion of employees with college degrees. We include this variable throughout Table 6 and find it to be consistently positive in the production function, as we would expect from basic human capital theory. In column (6) we also include the interaction of this human capital measure with IT. The IT\*skills interaction enters with a positive but insignificant coefficient, but the management interaction with IT remains robust to this extra interaction.

In the UK establishment panel the main control for labor quality is the inclusion of establishment-specific fixed effects as we have no direct measure of skill. As an alternative, we assume that wages reflect marginal products of workers, so that conditioning on the average wage in the establishment is sufficient to control for human capital<sup>53</sup>. When entered into a specification identical to that of column (1) of Table 3, the average wage is highly significant and the

---

<sup>53</sup> The problem is that wages may control for “too much”, as some proportion of wages may be related to non human capital variables. For example, in many bargaining models, firms with high productivity will reward even homogenous workers with higher wages (for example, see Van Reenen 1996, on sharing the quasi-rents from new technologies).



interaction between the average wage and IT capital is positive and significant at the 10 percent level, consistent with technology-skill complementarity. The interaction between the US dummy and average wages in the establishment is significant at the 10 percent level (a coefficient of 0.0119 and a standard error of 0.0063). Nevertheless, even in the presence of these skills controls, the coefficient on the US ownership and IT interaction remains significantly positive (0.0279 with a standard error of 0.0133). Consequently we do not believe that our results only reflect technology-skill complementarity.

*Other dimensions of management practice* - We argued on *ex ante* grounds that people management was likely to be an organizational feature complementary to IT. In Table A5 we examine the interactions of IT with other aspects of management such as shopfloor operations, targets, monitoring and combinations across all 18 questions. Although these interactions are positive, none are significant or as strong as the people management interaction.

*Other confounding factors* – We checked for a large number of other confounding factors that could be correlated with management practices and be driving the results on the interaction with IT. These included average hours worked, union strength, different types of software (e.g. Enterprise Resource Planning). Although these were systematically different in European and US firms, they did not change the IT and management results.

So in summary, the evidence from the European panel has the same basic pattern of results we saw in the UK establishment panel. US firms appear to have some advantage in IT. The new piece of information is that this advantage appears to be linked with their superior people management practices that are complementary with IT and this explains the higher coefficient on IT for US firms observed in the earlier tables.

## **VI. Conclusions**

Why did Europe not follow the American IT led productivity acceleration after 1995? We provide econometric evidence in line with the hypothesis that US people management practices were a reason for this difference as has been suggested by Blanchard (2004) and others. Using two rich micro-panels, we show robust evidence that US multinationals obtain higher productivity from IT than non US multinationals (or domestic firms) in Europe. In the first dataset (of UK establishments), we found that the stronger association of IT with productivity for US firms is focused in the same “IT using intensive” industries, such as retail and wholesale, that largely accounted for the US productivity acceleration since the mid 1990s. These results were robust to examining establishments that were taken over by other firms: US firms who took over establishments have significantly greater IT productivity relative to non US multinationals who took over statistically similar establishments. In the second dataset of firms across seven European countries, we showed that US firms had higher levels of people management (which was complementary with IT) and this accounted for the American advantage in IT use.

Taken together, this suggests that part of the IT related productivity gains underlying the post-1995 period is related to the management practices of US firms rather than simple natural advantage (geographical, institutional or otherwise) of being located in the US environment. US firms appear to have transplanted these management practices abroad, so that their overseas subsidiaries also enjoyed a productivity miracle. Back of the envelope calculations suggest that we can account for about half of the US-EU difference in productivity growth since 1995 using our estimates.

There remain many outstanding issues and research questions. First, understanding what are the determinants of the heterogeneous management practices between firms, industries and nations is a vitally important question. Theory has out-run econometric work here, but this is currently an area of our active research.

A second and related question is why do US firms have different people management practices from Europe? One result from Bloom and Van Reenen (2007) is that US firms are “better managed” in general, because of the higher levels of competition in their domestic markets and the more limited involvement of *primo geniture* family firms. But US firms also appear to be particularly strong on people management. One reason seems to be the greater supply of human capital in the US. Across firms and industries the intensity of graduate-level employees is strongly associated with better people-management practices. Another reason seems to be lower levels of labor market regulation in the US: labor flexibility is significantly and positively correlated with better people-management across countries in our data.<sup>54</sup>

This management gap also appears to be a long-standing phenomenon. For example, the Marshall Plan productivity mission of 1947 wrote: “*Efficient management is the single most significant factor in the American productivity advantage*”. This implies the US productivity surge was the effect of a rapid increase in IT intensity, driven by the accelerating fall in IT prices since 1995, which better suited US firms with their strong people management skills. The rate of decline of IT prices appears to have slowed since 2005 and this may have brought an end to the US productivity miracle. If this period is historically specific, then the wave of US takeovers in Europe may slow down or be reversed. Alternatively, if another wave of rapid technological change occurs then our results suggest that US firms may once again enjoy a period of accelerated productivity growth as their people management practices allow them to better exploit new technologies.

---

<sup>54</sup> See Juan Botero et al. (2004) or Christopher Gust and Jaime Marquez (2004) on cross-country labor regulations. In our data we find a cross-country correlation of 0.71 between the World Bank index of employment flexibility and people management practices.

A final remark is that our framework has implications for firms outside Europe. For example, we would expect to see the same US productivity advantage in IT for American multinationals in the US (or indeed Asia) compared to non US multinationals.

Despite this need for further research we believe our paper has made some inroads into one of the most puzzling episodes in the last two decades: the explanation of the US “productivity miracle”.

## REFERENCES

**Acemoglu, Daron, Philippe Aghion, Claire Lelarge, John Van Reenen, and Fabrizio Zilibotti.** 2007. “Technology, Information and the Decentralization of the Firm.” *Quarterly Journal of Economics*, 122(4): 1759–99.

**Ackerberg, Daniel, C. Lanier Benkard, Steven Berry and Ariel Pakes.** 2008. “Econometric Tools for Analyzing Market Outcomes.” In *Handbook of Econometrics Volume 6A*, ed. James Heckman and Edward Leamer, 4171-276. Amsterdam: North-Holland.

**Antras, Pol, Luis Garicano, and Esteban Rossi-Hansberg.** 2008. “Organizing Offshoring: Middle Managers and Communication Costs.” In *The Organization of Firms in a Global Economy*, ed. Elhanan Helpman, Dalia. Marin, and Thierry Verdier, Cambridge: Harvard University Press.

**Autor, David, Larry Katz, and Alan Krueger.** 1998. “Computing Inequality: How Computers have Changed the Labor Market.” *Quarterly Journal of Economics*, 113(4): 1161-1213.

**Baker, George and Thomas Hubbard.** 2004. “Contractibility and Asset Ownership: On Board Computers and Governance in US Trucking.” *Quarterly Journal of Economics*, 119(4): 1443-79.

**Basu, Susanto, John G. Fernald, Nicholas Oulton, and Sylaja Srinivasan.** 2003. “The Case of the Missing Productivity Growth: Or, does Information Technology Explain Why Productivity

Accelerated in the United States but not the United Kingdom?” *NBER Macro-economics Annual*, 9-64.

**Beaudry, Paul, Mark Doms, and Ethan Lewis.** 2006. “Endogenous Skill Bias in Technology Adoption: City-Level Evidence from the IT Revolution.” NBER Working Paper 1251.

**Benfratello, Luigi and Alessandro Sembenelli.** 2006. “Foreign Ownership and Productivity: Is the Direction of Causality so Obvious?” *International Journal of Industrial Organization*, 24(4): 733-51.

**Blanchard, Olivier.** 2004. “The Economic Future of Europe”, *Journal of Economic Perspectives*, 18(4): 3-26.

**Blanchard, Olivier, Martin Bailey, Hans Gersbach, Monika Schnitzer, and Jean Tirole.** 2002. *Reaching Higher Productivity Growth in France and Germany, Sector case: Retail Trade*, McKinsey Global Institute.

**Bloom, Nicholas, and John Van Reenen.** 2007. “Measuring and Explaining Management Practices Across Firms and Countries.” *Quarterly Journal of Economics*, 122(4): 1351-408.

**Bloom, Nicholas, Raffaella Sadun, and John Van Reenen.** 2007. “Americans do I.T. Better: US Multinationals and the Productivity Miracle.” NBER Working Paper 13085.

**Blundell, Richard and Steve Bond.** 1998. "Initial Conditions and Moment Restrictions in Dynamic Panel Data Models." *Journal of Econometrics*, 87(1): 115-43.

**Blundell, Richard and Steve Bond.** 2000. "GMM Estimation with Persistent Panel Data: An Application to Production Functions." *Econometric Reviews*, 19(3): 321-40.

**Botero, Juan, Simeon Djankov, Rafael Porta, Florencio Lopez-De-Silanes, and Andrei Schleifer.** 2004. "The Regulation of Labor." *Quarterly Journal of Economics*, 119(4): 1339-82.

**Bresnahan, Tim, Erik Brynjolfsson, and Lorin Hitt.** 2002. "Information Technology, Workplace Organization and the Demand for Skilled Labor." *Quarterly Journal of Economics*, 117(1): 339-76.

**Brynjolfsson, Erik and Lorin Hitt.** 2003. "Computing Productivity: Firm level Evidence." *Review of Economics and Statistics*, 85(4): 793-808.

**Burstein, Ariel and Alexander Monge.** 2009. "Foreign Know-how, Firm Control, and the Income of Developing Countries." *Quarterly Journal of Economics*, 124(1): 149-95.

**Caroli, Eve, and John Van Reenen.** 2001. "Skill Biased Organizational Change? Evidence from British and French Establishments." *Quarterly Journal of Economics*, 116(4): 1449-92.

**Corrado, Carol, Charles Hulten, and Daniel Sichel.** 2005. "Measuring Capital and Technology: An Expanded Framework." In *Measuring Capital in the New Economy*, ed. Carol

Corrado, John Haltiwanger, and Daniel Sichel, 11-46. NBER Studies in Wealth and Income, 65, Chicago: Chicago University Press.

**Crespi, Gustavo, Chiara Criscuolo, and Jonathan Haskel.** 2006. “Information Technology, Organizational Change and Growth: Evidence from UK Firms.” CEPR Discussion Paper 6105.

**Criscuolo, Chiara and Ralf Martin.** 2009. “Multinationals and US Productivity Leadership: Evidence from Great Britain.” *Review of Economics and Statistics*, 91(2): 263-81.

**Davis, Steven, John Haltiwanger, Ron Jarmin, and Javier Miranda.** 2006. “Volatility and Dispersion in Business Growth Rates: Publicly Traded Versus Privately Traded Firms.” In *NBER Macroeconomics Annual Volume 21*, ed. Daron Acemoglu, Kenneth Rogoff, and Michael Woodford. Cambridge MA: MIT Press.

**De Loecker, Jan.** 2007. “Product Differentiation, Multi-product Firms and Estimating the Impact of Trade Liberalization on Productivity.” NBER Working Paper 13155.

**Doms, Mark and Bradford Jensen.** 1998. “Comparing Wages, Skills and Productivity Between Domestically Owned Manufacturing Establishments in the United States.” In *Geography and Ownership as Basis for Economic Accounting*, ed. Robert Baldwin, Robert Lipsey and J. David Richards. Chicago: Chicago University Press.

**Forman, Chris, Avi Goldfarb, and Shane Greenstein.** 2009. “The Internet and Local Wages: Convergence or Divergence.” Northwestern University mimeo.



**Foster, Lucia, John Haltiwanger, and C.J. Krizan.** 2006. “Market Selection, Reallocation, and Restructuring in the US Retail Trade Sector in the 1990s.” *Review of Economics and Statistics*, 88(4): 748-58.

**Foster, Lucia, John Haltiwanger, and Chad Syverson.** 2008. “Reallocation, Firm Turnover and Efficiency: Selection on Productivity or Profitability?” *American Economic Review*, 98(1): 394-425

**Gordon, Robert.** 2010. “Revisiting Productivity Growth over the Past Century with a View of the Future.” NBER Working Paper 15834.

**Gust, Christopher and Jaime Marquez.** 2004. “International Comparisons of Productivity Growth: the Role of Information Technology.” *Labor Economics*, 11(1): 33-58.

**Haltiwanger, John, Ron Jarmin, and Thorsten Schank.** 2003. “Productivity, Investment in ICT and Market Experimentation: Micro Evidence from Germany and the U.S.” Center for Economic Studies Discussion Paper 03-06.

**Helpman, Elhanan, Marc Melitz, and Stephen Yeaple.** 2004. “Export Versus FDI with Heterogeneous Firms.” *American Economic Review*, 94(1): 300-16.

**Hunter, Larry, Annette Bernhardt, Katherine Hughes, and Eva Skuratowicz.** 2001. "It's Not Just the ATMs: Technology, Firm Strategies, Jobs and Earnings in Retail Banking." *Industrial and Labor Relations Review*, 54(2). 402-24.

**Inklaar, Robert, Marcel Timmer, and Bart van Ark.** 2008. "Market Services Productivity Across Europe and the US." *Economic Policy*, 23(53):139-94.

**Jorgenson, Dale.** 2001. "Information Technology and the U.S. Economy." *American Economic Review*, 91(1): 1-32.

**Jorgenson, Dale, Mun Ho, and Kevin Stiroh.** 2008. "A Retrospective Look at the US Productivity Growth Resurgence." *Journal of Economic Perspectives*, 22(1): 3-24.

**Jovanovic, Boyan.** 1982. "Selection and the Evolution of Industry." *Econometrica*, 50(3): 649-70.

**Klette, Tor and Zvi Griliches.** 1996. "The Inconsistency of Common Scale Estimators When Output Prices are Unobserved and Endogenous." *Journal of Applied Econometrics*, 11(4): 343-61.

**McGrattan, Ellen and Edward Prescott.** 2008. "Technology Capital and the U.S. Current Account." Federal Reserve Bank of Minneapolis Working Paper 646.

**Melitz, Mark.** 2003. “The Impact of Trade on Intra-industry Reallocations and Aggregate Industry Productivity.” *Econometrica*, 71(6): 1695–725.

**Oliner, Stephen and Daniel Sichel.** 2000. “The Resurgence of Growth in the Late 1990s: Is Information Technology the Story?” *Journal of Economic Perspectives*, 14(4): 3-22.

**Olley, Steven and Ariel Pakes.** 1996. “The Dynamics of Productivity in the Telecommunications Industry.” *Econometrica*, 64(6): 1263-97.

**O'Mahony, Mary and Bart van Ark.** 2003. *EU Productivity and Competitiveness: An Industry Perspective. Can Europe Resume the Catching-up Process?* Luxembourg: Office for Official Publications of the European Communities.

**Pavnik, Nina.** 2002. “Trade Liberalization, Exit and Productivity Improvement: Evidence from Chilean Plants.” *Review of Economic Studies*, 69(1): 245-76.

**Prendergast, Canice.** 2002. “The Tenuous Trade-Off Between Risk and Incentives.” *Journal of Political Economy*, 110(5): 1071-102.

**Stiroh, Kevin.** 2002. “Information Technology and the US Productivity Revival: What do the Industry Data Say?” *American Economic Review*, 92(5): 1559-76.

**Stiroh, Kevin.** 2004. “Reassessing the Role of IT in the Production Function: A Meta Analysis.” *Federal Reserve Bank of New York*, mimeo.

**Timmer, Marcel and Bart van Ark.** 2005. “Does Information and Communication Technology Drive EU-US Productivity Growth Differentials?” *Oxford Economic Papers*, 57(4): 693-716.

**van Ark, Bart, Mary O’Mahony, and Marcel Timmer.** 2008. “The Productivity Gap Between Europe and the United States: Trends and Causes.” *Journal of Economic Perspectives*, 22(1): 25-44.

**Van Reenen, John.** 1996. “The Creation and Capture of Economic Rents: Wages and Innovation in a Panel of UK Companies.” *Quarterly Journal of Economics*, 111(1): 195-226.

**TABLE 1 – UK DESCRIPTIVE STATISTICS BROKEN DOWN BY MULTINATIONAL STATUS**

(Normalized to 100 for the 3-digit SIC and year average)

	Employment	Value added per Employee	Gross output per Employee	Non IT Capital per Employee	Materials per Employee	IT Capital per Employee
<b>US Multinationals</b>						
<b>Mean</b>	162.26	127.96	123.63	129.61	123.81	152.13
<b>St. Deviation</b>	297.58	163.17	104.81	133.91	123.35	234.41
<b>Observations</b>	569	569	569	569	569	569
<b>Other Multinationals</b>						
<b>Mean</b>	148.58	113.71	115.22	120.65	116.02	119.58
<b>St. Deviation</b>	246.35	107.87	86.50	126.83	107.63	180.34
<b>Observations</b>	2,119	2,119	2,119	2,119	2,119	2,119
<b>UK domestic</b>						
<b>Mean</b>	68.78	89.86	89.69	86.33	89.29	83.95
<b>St. Deviation</b>	137.72	104.50	102.09	127.16	129.37	188.30

<b>Observations</b>	4,433	4,433	4,433	4,433	4,433	4,433
---------------------	-------	-------	-------	-------	-------	-------

---

**Notes:** These are 2001 values from our sample of 7,121 establishments in the UK data (ABI matched with IT data from QICE, BSCI and FAR).

**TABLE 2 – ESTIMATES OF THE UK PRODUCTION FUNCTION ALLOWING THE I.T. COEFFICIENT TO DIFFER BY OWNERSHIP**

	STATUS							
	(1)	(2)	(3)	(4)	(5)	(6)	(7)	(8)
<b>Dependent variable:</b>								
<b>ln(Output/L)</b>	<b>ln(Q/L)</b>	<b>ln(Q/L)</b>	<b>ln(Q/L)</b>	<b>ln(Q/L)</b>	<b>ln(Q/L)</b>	<b>ln(Q/L)</b>	<b>ln(Q/L)</b>	<b>ln(Q/L)</b>
				IT Using			IT Using	
<b>Sectors</b>	All Sectors	All Sectors	All Sectors	Intensive Sectors	Other Sectors	All Sectors	Intensive Sectors	Other Sectors
<b>Fixed effects</b>	<b>NO</b>	<b>NO</b>	<b>NO</b>	<b>NO</b>	<b>NO</b>	<b>YES</b>	<b>YES</b>	<b>YES</b>
<b>USA *ln(C/L)</b>			0.0202***	0.0380***	0.0120	0.0093	0.0368**	-0.0060
<b>USA ownership*IT capital per employee</b>			(0.0072)	(0.0128)	(0.0084)	(0.0085)	(0.0144)	(0.0098)
<b>MNE*ln(C/L)</b>			0.0036	-0.0011	0.0062	0.0010	-0.0003	0.0008
<b>Non US multinational *IT capital per employee</b>			(0.0045)	(0.0062)	(0.0060)	(0.0042)	(0.0064)	(0.0053)
<b>ln(C/L)</b>		0.0457***	0.0428***	0.0373***	0.0457***	0.0152***	0.0123**	0.0157***
<b>IT capital per employee</b>		(0.0024)	(0.0029)	(0.0038)	(0.0039)	(0.0030)	(0.0051)	(0.0036)
<b>ln(M/L)</b>	0.5575***	0.5474***	0.5477***	0.6216***	0.5067***	0.4031***	0.5018***	0.3606***
<b>Materials per employee</b>	(0.0084)	(0.0083)	(0.0083)	(0.0142)	(0.0104)	(0.0178)	(0.0279)	(0.0210)
<b>ln(K/L)</b>	0.1388***	0.1268***	0.1268***	0.1106***	0.1459***	0.0900***	0.1056***	0.0666***
<b>Non IT Capital per employee</b>	(0.0071)	(0.0068)	(0.0068)	(0.0093)	(0.0092)	(0.0159)	(0.0228)	(0.0209)
<b>ln(L)</b>	-0.0052*	-0.0112***	-0.0111***	-0.0094**	-0.0121***	-0.1986***	-0.1279***	-0.2466***
<b>Labor</b>	(0.0027)	(0.0027)	(0.0027)	(0.0037)	(0.0036)	(0.0217)	(0.0319)	(0.0279)
<b>USA</b>	0.0711***	0.0641***	0.0733***	53 0.0440**	0.0892***	0.0214	0.0451	-0.0070
<b>USA Ownership</b>	(0.0140)	(0.0135)	(0.0144)	(0.0213)	(0.0189)	(0.0224)	(0.0366)	(0.0242)

**Notes:** \* significant at 10 percent; \*\* significant at 5 percent; \*\*\* significant at 1 percent. The dependent variable in all columns is the log of gross output per employee. The time period is 1995-2003. The estimation method in all columns is OLS. Columns (6) to (8) include establishment level fixed effects. Standard errors in brackets under coefficients in all columns are clustered by establishment (i.e. robust to heteroskedasticity and autocorrelation of unknown form). All columns include a full set of three digit industry dummies interacted with a full set of time dummies and as additional controls: dummies for establishment age (interacted with a manufacturing dummy), region, multi-establishment group (interacted with ownership type) and a dummy for IT survey. See online Table A1 for definition of IT using intensive sectors. “Test  $USA \cdot \ln(C/L) = MNE \cdot \ln(C/L)$ ” is test of whether the coefficient on  $USA \cdot \ln(C/L)$  is significantly different from the coefficient on  $MNE \cdot \ln(C/L)$ . etc.



**TABLE 3 – ROBUSTNESS TESTS OF THE UK PRODUCTION FUNCTION**

	(1)	(2)	(3)	(4)	(5)	(6)
Experiment	Baseline	Value	All Inputs	Alternative	Full	EU and
	Specification	Added	Interacted	IT measure	“Translog”	Non EU
					interactions	MNEs
ln(Output per employee)	ln(Q/L)	ln(VA/L)	ln(Q/L)	ln(Q/L)	ln(Q/L)	ln(Q/L)
USA*ln(C/L)	0.0368**	0.0681**	0.0328**	0.0672**	0.0334**	0.0376***
USA ownership*IT capital per employee	(0.0144)	(0.0319)	(0.0141)	(0.0258)	(0.0140)	(0.0145)
MNE*ln(C/L)	-0.0003	-0.0179	0.0002	0.0070	-0.0012	
Non US multinational*IT capital per employee	(0.0064)	(0.0166)	(0.0065)	(0.0126)	(0.0062)	
Ln(C/L)	0.0123**	0.0290***	0.0126**	0.0262***	0.0330	0.0120**
IT capital per employee	(0.0051)	(0.0110)	(0.0050)	(0.0082)	(0.0460)	(0.0051)
USA*ln(M/L)			0.0334			
USA ownership*materials per employee			(0.0376)			
MNE*ln(M/L)			0.0080			
Non US multinational *materials per employee			(0.0236)			
USA*ln(K/L)			0.0241			
USA ownership*Non IT capital per employee			(0.0368)			
MNE*ln(K/L)			-0.0142			
Non US *Non IT capital per employee			(0.0134)			
EU MNE						0.0063
EU ownership						(0.0198)
NON EU MNE						-0.0603
Non EU-NON USA Ownership						(0.0489)
EU MNE*ln(C/L)						0.0016
EU ownership*IT Capital per						(0.0064)

employee						
NON EU MNE*ln(C/L)						-0.0140
Non EU-NON USA *IT capital per employee						(0.0157)
Observations	7,784	7,784	7,784	2,155	7,784	7,784
<hr/>						
<b>Test</b>						
USA*ln(C)=MNE*ln(C), p- value	0.0094	0.0103	0.0224	0.0216	0.0138	
Test USA=MNE, p-value	0.4301	0.9638	0.3620	0.2244	0.3852	
Test on joint significance of all the interaction terms, excluding IT interactions (p- value)			0.3752			
Test on joint significance of all the US interaction terms, excluding IT per employee (p-value)			0.6216			
Test on all the other MNE's interaction terms, excluding IT per employee (p-value)			0.2723			
Test on additional “translog” terms, p-value					0.0000	
Test USA=EU, p-value						0.3216
Test USA=NON EU, p-value						0.0815
Test [USA*ln(C/L)] = [EU*ln(C/L)], p-value						0.0120
Test [USA*ln(C/L)] = [NON EU*ln(C/L)], p-value						0.0123

**Notes:** \* significant at 10 percent; \*\* significant at 5 percent; \*\*\* significant at 1 percent. The dependent variable in all columns is the log of gross output per employee. All columns are for only the sectors that use IT intensively (see Appendix A1). The time period is 1995-2003. The estimation method is OLS. All columns also include (the log of) non IT capital per worker (K/L), materials per worker (M/L) and labor (L). All columns except (4) include establishment fixed effects. Standard errors in brackets under coefficients are clustered by establishment (i.e. robust to heteroskedasticity and autocorrelation of

unknown form). All columns include a full set of three digit industry dummies interacted with a full set of time dummies and as additional controls: dummies for establishment age (interacted with a manufacturing sector dummy), region, multi-establishment group (interacted with ownership type) and IT survey (except column (4)). The IT measure in column (4) is the  $\ln(\text{fraction of workers using computers})$ . Column (5) includes all the pair-wise interactions of materials, labor, IT capital, and non IT capital and the square of each of these factors. “Test  $\text{USA}*\ln(C/L) = \text{MNE}*\ln(C/L)$ ” is test of whether the coefficient on  $\text{USA}*\ln(C/L)$  is significantly different from the coefficient on  $\text{MNE}*\ln(C/L)$ , etc.

**TABLE 4 – UK IT INTENSITY EQUATIONS**

	(1)	(2)	(3)	(4)	(5)	(6)
<b>Dependent variable: ln(IT capita l per employee)</b>	<b>ln(C/L)</b>	<b>ln(C/L)</b>	<b>ln(C/L)</b>	<b>ln(C/L)</b>	<b>ln(C/L)</b>	<b>ln(C/L)</b>
<b>Sectors</b>	<b>All Sectors</b>	<b>IT Using Intensive Sectors</b>	<b>Other Sectors</b>	<b>All Sectors</b>	<b>IT Using Intensive Sectors</b>	<b>Other Sectors</b>
<b>USA</b>	0.2629***	0.3393***	0.2085***	0.2406***	0.3129***	0.1927***
<b>USA Ownership</b>	(0.0461)	(0.0717)	(0.0600)	(0.0463)	(0.0717)	(0.0604)
<b>MNE</b>	0.1632***	0.2117***	0.1332***	0.1506***	0.1939***	0.1228***
<b>Non US multinational</b>	(0.0287)	(0.0440)	(0.0375)	(0.0291)	(0.0452)	(0.0380)
<b>Additional controls</b>	<b>NO</b>	<b>NO</b>	<b>NO</b>	<b>YES</b>	<b>YES</b>	<b>YES</b>
<b>Observations</b>	21,746	7,784	13,962	21,746	7,784	13,962
<b>Test USA=MNE, p-value</b>	0.0310	0.0758	0.2108	0.0528	0.0970	0.2508

**Notes:** \* significant at 10 percent; \*\* significant at 5 percent; \*\*\* significant at 1 percent. The dependent variable in all columns is the log of IT capital per employee. The time period is 1995-2003. The estimation method in all columns is OLS. Standard errors in brackets under coefficients in all columns are clustered by establishment (i.e. robust to heteroskedasticity and autocorrelation of unknown form). All columns include a full set of three digit industry dummies interacted with a full set of time dummies and the log of gross output. Additional controls include dummies for establishment age (interacted with a manufacturing dummy), region, multi-establishment group (interacted with ownership type) and IT survey. See online Table A1 for definition of IT using intensive sectors. “Test USA=MNE” is test of whether the coefficient on USA is significantly different from the coefficient on MNE.

**TABLE 5 – UK PRODUCTION FUNCTIONS BEFORE AND AFTER TAKEOVERS**

	(1)	(2)	(3)	(4)	(5)	(6)
Sample	Before Takeover	Before Takeover	After Takeover	After Takeover	After Takeover	After Takeover (drop UK domestic acquirers)
Dependent Variable: ln(Output per employee)	ln(Q/L)	ln(Q/L)	ln(Q/L)	ln(Q/L)	ln(Q/L)	ln(Q/L)
USA *ln(C/L)		-0.0672		0.0541**		
USA Takeover*IT capital per employee		(0.0749)		(0.0273)		
MNE*ln(C/L)		-0.0432		0.0073		
Non US multinational Takeover*IT capital per employee		(0.0463)		(0.0150)		
USA	-0.0661	-0.1055	0.0353	0.0619		
USA Takeover	(0.0663)	(0.0863)	(0.0402)	(0.0461)		
MNE	0.0321	-0.0009	0.0117	0.0205		
Non US multinational Takeover	(0.0565)	(0.0710)	(0.0298)	(0.0342)		
USA *ln(C/L) one year after takeover					0.0192	0.0191
					(0.0378)	(0.0562)
USA *ln(C/L) two and three years after takeover					0.0661**	0.1303**
					(0.0294)	(0.0573)
MNE*ln(C/L) one year after takeover					-0.0091	
					(0.0197)	
MNE*ln(C/L) two and three years after takeover					0.0115	
					(0.0162)	
USA one year after takeover					0.0019	0.0014
					(0.0542)	(0.0716)
USA two and three years after takeover					0.0934*	0.0942
					(0.0485)	(0.0856)
MNE one year after takeover					-0.0178	
					(0.0411)	

<b>MNE two and three years after takeover</b>					0.0327	
					(0.0361)	
<b>ln(C/L)</b>	0.0744**	0.0935**	0.0395***	0.0287***	0.0288***	0.0282
<b>IT capital per employee</b>	(0.0299)	(0.0432)	(0.0079)	(0.0088)	(0.0088)	(0.0224)
<b>ln(M/L)</b>	0.5486***	0.5487***	0.6871***	0.6892***	0.6886***	0.7323***
<b>Materials per employee</b>	(0.0489)	(0.0481)	(0.0173)	(0.0173)	(0.0172)	(0.0292)
<b>ln(K/L)</b>	0.1759***	0.1718***	0.0350**	0.0350**	0.0353**	-0.0108
<b>Non IT Capital per employee</b>	(0.0343)	(0.0335)	(0.0160)	(0.0159)	(0.0159)	(0.0431)
<b>ln(L)</b>	-0.0185	-0.0215	-0.0117	-0.0111	-0.0112	-0.0358*
<b>Labor</b>	(0.0292)	(0.0276)	(0.0108)	(0.0108)	(0.0107)	(0.0213)
<b>Observations</b>	261	261	1,006	1,006	1,006	241
<b>Test USA*ln(C/L) = MNE*ln(C/L), p-value</b>		0.7037		0.0965		
<b>Test USA = MNE, p-value</b>	0.1637	0.1773	0.5979	0.4056		
<b>Test (USA one year)*ln(C/L) =</b>					0.4948	
<b>(MNE one year)*ln(C/L), p-value</b>						
<b>Test (USA two plus years)*ln(C/L) =</b>					0.0734	
<b>(MNE two plus years)*ln(C/L), p-value</b>						
<b>Test USA one year = MNE one year, p-value</b>					0.7463	
<b>Test USA two plus years = MNE two plus years, p-value</b>					0.2481	

**Notes:** \* significant at 10 percent; \*\* significant at 5 percent; \*\*\* significant at 1 percent. The sample is all establishments in the IT intensive sectors (online Table A1) who were taken over at some point (omitted base is “domestic takeovers” – a UK firms taking over another firm). We drop takeovers that do not result in a change of ownership category (e.g. US takeovers of US firms, non US MNE takeovers of non US MNEs and domestic takeovers of domestic firms). The dependent variable is the log of gross output per employee. The time period is 1995-2003. The estimation method is OLS. Standard errors in brackets under coefficients are clustered by establishment. A takeover is defined as a change in the establishment foreign ownership marker or - for UK domestic establishment - as a change in the enterprise group marker. The "before" period is defined as the interval between one and three years before the takeover takes place. The "after" period is defined as the interval between one and three years after the takeover takes place. The year in which the takeover takes place is excluded from the sample. All columns include a full set of two digit industry dummies interacted with time dummies and as additional controls: age, region dummies, a multi-establishment group dummy, an IT survey dummy and controls for total takeover activity over the sample period. “Test USA\*ln(C/L) =MNE\*ln(C/L)” is test of whether the coefficient on USA\*ln(C/L) is significantly different from the coefficient on MNE\*ln(C/L), etc.

**TABLE 6 - EUROPEAN FIRM-LEVEL PANEL DATA WITH DIRECT MEASURES OF  
MANAGEMENT**

	(1)	(2)	(3)	(4)	(5)	(6)	(7)	(8)
<b>Dependent Variable</b>	<b>Ln(Q/L)</b>	<b>Ln(Q/L)</b>	<b>Ln(Q/L)</b>	<b>Ln(Q/L)</b>	<b>Ln(Q/L)</b>	<b>Ln(Q/L)</b>	<b>Ln(C/L)</b>	<b>Ln(C/L)</b>
<b>Fixed Effects</b>	NO	NO	NO	NO	YES	YES	NO	NO
<b>USA*ln(C/L)</b>		0.1790**		0.0784	0.0518	0.0192		
<b>USA ownership*Computers per employee</b>		(0.0733)		(0.0720)	(0.0713)	(0.0785)		
<b>MNE*ln(C/L)</b>		-0.0263		-0.0235	0.0218	0.0235		
<b>Non US multinational*Computers per employee</b>		(0.0586)		(0.0553)	(0.0547)	(0.0550)		
<b>People Management</b>			0.0271	0.0271				0.1268***
<b>People management</b>			(0.0219)	(0.0219)				(0.0353)
<b>People Management*ln(C/L)</b>			0.1451***	0.1404***	0.1284*	0.0994*		
<b>People management*Computers per employee</b>			(0.0331)	(0.0344)	(0.0773)	(0.0581)		
<b>ln (K/L)</b>	0.2401***	0.1838***	0.1782***	0.1791***	0.2347**	0.2316***		
<b>Non IT Capital per employee</b>	(0.0163)	(0.0284)	(0.0276)	(0.0276)	(0.0926)	(0.0882)		
<b>ln(L)</b>	-0.0182	0.0421	0.0421	0.0409	-0.2182	-0.2347		
<b>Labor</b>	(0.0162)	(0.0360)	(0.0344)	(0.0349)	(0.2600)	(0.2497)		
<b>ln(C/L)</b>		0.1256***	0.1430***	0.1463***	-0.0493	-0.2282		
<b>Computers per employee</b>		(0.031)	(0.0284)	(0.0303)	(0.0596)	(0.1738)		
<b>USA</b>	0.2548***	0.0779	0.1111**	0.0837*			0.2601***	0.2150***
<b>USA Ownership</b>	(0.0438)	(0.0481)	(0.0446)	(0.046)			(0.0742)	(0.0732)
<b>MNE</b>	0.1909***	0.1597***	0.1604***	0.1618***			0.0492	0.0367
<b>Non US multinational</b>	(0.0304)	(0.0363)	(0.0355)	(0.0357)			(0.0596)	(0.0591)
<b>ln(Degree)</b>		0.0433**	0.0375**	0.0370**			0.0585**	0.0359
<b>Percentage employees with a college degree</b>		(0.0183)	(0.0184)	(0.0184)			(0.0293)	(0.0296)
<b>ln(Degree)*ln(C/L)</b>						0.0700		

<b>Percentage employees with a college degree*Computers per employee</b>						(0.0484)		
<b>Observations</b>	9,463	2,555	2,555	2,555	2,555	2,555	2,555	2,555
<b>Test USA*ln(C/L)=</b>								
<b>MNE*ln(C/L), p-value</b>		0.0189		0.2419	0.6360	0.9565		
<b>Test USA=MNE, p-value</b>	0.1789	0.1206	0.3094	0.1264			0.0095	0.0253

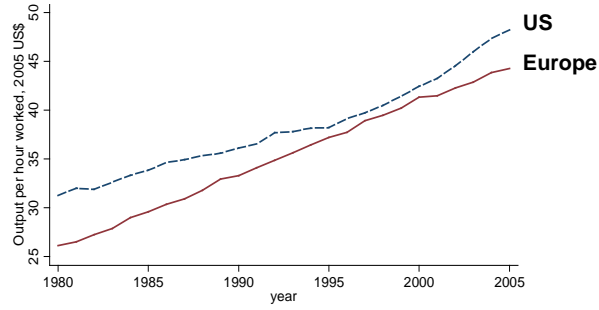
**Notes:** \* significant at 10 percent; \*\* significant at 5 percent; \*\*\* significant at 1 percent. The dependent variable in all columns (1) to (6) is the log of sales per employee, and in columns (7) and (8) is the log of computers per employee. The time period is 1999-2006, containing data from France, Germany, Italy, Poland, Portugal, Sweden and the UK. The estimation method in all columns is OLS. Columns (5) and (6) include firm level fixed effects. Standard errors in brackets under coefficients in all columns are clustered by firm (i.e. robust to heteroskedasticity and autocorrelation of unknown form). All columns include a full set of three digit industry dummies, country dummies interacted with a full set of time dummies and a public listing indicator. Columns (2) to (8) are weighted by the survey coverage rate in the Harte-Hanks data, plus include a 5th order Taylor expansion for the coverage ratio to control for any potential survey bias. “Test USA\*ln(C/L)=MNE\*ln(C/L)” is test of whether the coefficient on USA\*ln(C/L) is significantly different from the coefficient on MNE\*ln(C/L), etc. 720 firms in all columns except column (1) where there are 1,828 firms.



## FIGURES

### FIGURES 1 & 2

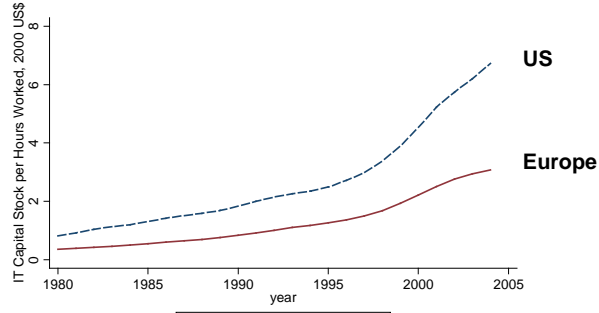
**Figure 1: Output per hour in Europe and the US, 1980-2005**



Notes: Productivity measured by GDP per hour in 2005 US \$ PPPs. The countries included in the "EU 15" group are: Austria, Belgium, Denmark, Finland, France, Germany, UK, Greece, Italy, Ireland, Luxembourg, Portugal, Spain, Sweden, and Netherlands. Labor productivity per hour worked in 2005 US\$.

Source: The Conference Board and Groningen Growth and Development Centre, Total Economy Database.

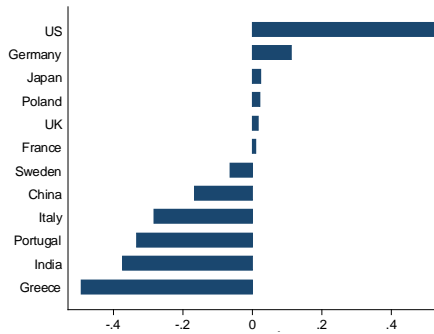
**Figure 2: IT capital per hour in Europe and the US, 1980-2005**



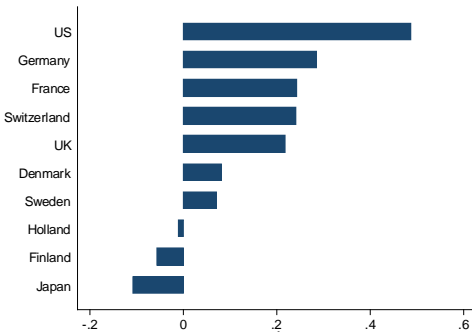
Notes: IT capital stock (in unit dollars) per hour worked. IT capital stock measured using perpetual inventory method and common assumptions on hedonics and depreciation. 2005 US \$ PPPs. The countries included in the "EU 15" group are: Austria, Belgium, Denmark, Finland, France, Germany, UK, Greece, Italy, Ireland, Luxembourg, Portugal, Spain, Sweden and the Netherlands. Labour productivity per hour worked in 2005 US\$ using PPPs. Source: Marcel P. Timmer, Gerard Ypma and Bart van Ark, "IT in the European Union: Driving Productivity Convergence?", Research Memorandum GD-67, Groningen Growth and Development Centre, October 2003, Appendix Tables, updated June 2005.

### FIGURES 3A & 3B

**Figure 3a: People management z-scores, all firms by country of location**



**Figure 3b: People management z-scores, multinationals by country of origin**



Notes: In Figures 3a and 3b the "People management z-score" is the average z-score score for the 4 management practices on people management, covering "Managing human capital", "Rewarding high performance", "Removing poor performers" and "Promoting high performers". This is normalized to have a firm level standard deviation of 1. The sample in Figure 3a is all 4,003 firms sorted according to country of location. The sample in Figure 3b is the subset of 631 multinational subsidiaries located in France, Germany, Italy, Poland, Portugal, Sweden and the UK, sorted according to country of origin and only plotted for origin countries with at least 25 firms in the sample.