

## SONDERFORSCHUNGSBEREICH 504

Rationalitätskonzepte,  
Entscheidungsverhalten und  
ökonomische Modellierung

No. 02-46

### **Foreshadowing LTCM: The Crisis of 1763**

Schnabel, Isabel\*  
and Shin, Hyun Song\*\*

December 2001

We are indebted to Steve Cecchetti, Charles Goodhart, Martin Hellwig, Nobu Kiyotaki, Jamie McAndrews, Will Roberds and Peter Sinclair for their comments on earlier drafts. We thank Rainer Metz, Hans-Jürgen Gerhard and Alexander Engel for their support in the collection of the commodity price data. We have benefited from the comments of participants at the Bank of England conference on capital flows and seminar participants at the University of Mannheim and the Bank for International Settlements.

\*Department of Economics, University of Mannheim, email: [isabel@econ.uni-mannheim.de](mailto:isabel@econ.uni-mannheim.de)

\*\*Department of Economics and Finance, London School of Economics, email: [H.S.Shin@lse.ac.uk](mailto:H.S.Shin@lse.ac.uk)



Universität Mannheim  
L 13,15  
68131 Mannheim

# Foreshadowing LTCM: The Crisis of 1763\*

Isabel Schnabel<sup>†</sup>  
University of Mannheim

Hyun Song Shin<sup>‡</sup>  
London School of Economics

Revised, July 2002

## Abstract

The financial crisis that swept across northern Europe in 1763 bears an uncanny resemblance to more recent episodes of financial market turbulence - in particular, to the events of autumn 1998 when mature financial markets were caught in a severe liquidity crisis, culminating in the near collapse of Long-Term Capital Management. We highlight the salient features of the 1763 crisis, propose a stylized model of the events, and draw parallels between the events of 1763 and 1998. Whilst the financial landscape has changed fundamentally in the intervening two hundred or so years, the policy lessons have a resonance that transcend this gap in time. The potentially devastating effects of liquidity risk, the limits to hedging and financial engineering, and the importance of timely crisis management by the authorities are all lessons that have currency today as they did in 1763.

---

\*We are indebted to Steve Cecchetti, Charles Goodhart, Martin Hellwig, Nobu Kiyotaki, Jamie McAndrews, Will Roberds and Peter Sinclair for their comments on earlier drafts. We thank Rainer Metz, Hans-Jürgen Gerhard and Alexander Engel for their support in the collection of the commodity price data. We have benefited from the comments of participants at the Bank of England conference on capital flows and seminar participants at the University of Mannheim and the Bank for International Settlements.

<sup>†</sup>E-mail: [isabel@econ.uni-mannheim.de](mailto:isabel@econ.uni-mannheim.de)

<sup>‡</sup>E-mail: [h.s.shin@lse.ac.uk](mailto:h.s.shin@lse.ac.uk)

## 1. Introduction

At the end of the Seven Years War, the whole of northern Europe was gripped by a financial crisis that has been described by one commentator as “a pest epidemic, spreading with raving speed from house to house”<sup>1</sup>. Although the institutions governing financial markets looked very different in 1763 compared to today, the crisis shows many features that would be familiar to an observer of recent financial crises. Indeed, many of the hotly debated topics of the last few years, such as the role of highly leveraged institutions, liquidity drains in times of crisis, and the intertwining of credit risk and market risk, are clearly evident in 1763. We see financial innovations that allowed nimble market players to increase leverage in a buoyant financial market and amass rapid gains at the expense of increased fragility of the system. We see these same players finally breaking down, inducing fire sales of assets and widespread failures, with severe repercussions for all market participants and the economy as a whole. In contrast to other historical episodes, the events of 1763 have received surprisingly little attention, even though they might be considered key to a better understanding of more recent events.

From a theoretical perspective, the crisis of 1763 poses a challenge to our current models of financial crises. Banks in the eighteenth century were underdeveloped by today’s standards. It was uncommon for them to take retail deposits and extend loans. Their primary role was in the payments system associated with the trade in goods. The most prominent bankers were also merchants, hence the origin of the term “merchant banker”. Thus, the financial crisis of 1763 does not fall neatly into the textbook bank run model where the main issue is the vulnerability of a deposit funded bank that has a maturity mismatch of liabilities and assets.

Agency-based theories that emphasize debtor moral hazard fare little better. Holland was the main creditor nation at the time, home to plentiful capital accumulated during its heyday as the pre-eminent trading nation of Europe. Meanwhile, Prussia would be familiar to many bankers today as a typical “emerging market” debtor country. Hamburg played an intermediary role between Amsterdam and Berlin, channeling funds and exploiting the interest rate differences that existed between Holland and Prussia. However, in contrast to the predictions of the agency-based theories, the first wave of failures occurred in Amsterdam, followed by failures in Hamburg some two weeks later. The financial crisis in Berlin was severe, but it arrived several weeks after the crises in Amsterdam and Hamburg. More significantly, most of the merchant bankers that failed in Amsterdam and Hamburg were able to re-open their doors within months, suggesting that the crisis was one of liquidity rather than fundamental solvency. In

---

<sup>1</sup>Skalweit (1937 p. 47).

any event, agency-based theories sit uncomfortably in an environment with unlimited liability, where the penalties for default (imprisonment and personal ruin) were harsh by modern standards. We need to search elsewhere for a satisfactory account of the events.

The increased leverage in the balance sheets of the major market participants that paved the way for the 1763 crisis was made possible by financial innovations to bills of exchange that expanded the universe of contracting possibilities between counterparties across large distances and across jurisdictions. Bills of exchange (as their name implies) first emerged as instruments in the payment system, facilitating trade in goods (Usher, 1914, Kohn, 1999). However, by the 18th century, they had evolved into a sophisticated instrument of credit that allowed capital to be raised on the established financial centres of Amsterdam and Hamburg to finance trade and manufacturing in the newly emerging markets further east, such as Prussia (Mansvelt, 1922). Reputable bankers in the financial centres would make their own creditworthiness available by allowing other persons to draw bills on them, which could then be used for payments to third parties, or be sold on the bills market to raise capital. All the contracting parties' interests were tied together through rigorously enforced laws on the transferability and negotiability of bills, which meant that contracting parties were better able to commit to repay. This commitment power had the virtuous effect of expanding the universe of possible contracts between interested parties separated by large distances. However, there was also a dark side. The interlocking sets of claims and liabilities bound many market participants together through their balance sheets, even though there were no underlying transactions in terms of trade in goods between them. The combination of highly leveraged balance sheets and interlocking claims and liabilities proved to be vulnerable to a downturn in economic activity that came with the end of the war.

Complex balance sheet interlinkages and the high implicit leverage inherent in such arrangements have figured prominently in the diagnosis of the 1998 crisis, which culminated in the near failure of Long Term Capital Management (see BIS, 1999, and IMF, 1998, Chapter III). Indeed, we will argue in this paper that the events of 1763 have much in common with the events of 1998. Just as LTCM took centre stage in the 1998 crisis, the events of 1763 are inextricably bound up with the exploits of one banking house—de Neufville Brothers. De Neufville's business practices were initially viewed with suspicion, but their apparent triumphs ensured their meteoric rise in banking circles and gave rise to many imitators. This had been equally true for LTCM, whose trading strategies were similarly the subject of much emulation by numerous copycat funds, and by the proprietary trading desks of large banks. We will argue that the analogy runs deeper than simply the role of a prominent market player. Two features stand

out:

- The increased size of balance sheets and the attendant increase in leverage was not viewed with alarm in 1763 due to the offsetting nature of the claims and liabilities. In modern parlance, the balance sheets were “perfectly hedged” to the extent that each liability was exactly offset by an equal and opposite claim on another party. This is reminiscent of the *convergence* or *arbitrage trades* much favoured by modern traders.
- The contagious effects of the 1763 crisis were exacerbated by the forced sales of assets to meet liabilities. Merchants suffered *direct* losses when their counterparties went bankrupt, but they were also affected *indirectly* through the price declines resulting from the fire sales. The actions of distressed parties attempting to reduce the size of their balance sheets had an impact on the value of others’ assets. Weakened balance sheets generated further forced sales, feeding the vicious circle. The liquidity squeeze generated by such forced sales has received particular attention in the aftermath of the LTCM crisis (see, e.g., the ‘Johnson report’, BIS, 1999, referred to earlier).

This second point underscores an important distinction. The modern treatment of bank runs emphasizes the negative externalities on the *liabilities* side of the balance sheet - it is the run by depositors that precipitates the crisis. In contrast, the crises of 1763 and 1998 are instances of contagion on the *asset* side of the balance sheet. The negative externality that flows from one economic agent to another is through the impact on the prices of assets. Liabilities side explanation for crises has received the bulk of the attention in the literature, reflecting the importance of banks in their modern role of intermediating between savers and borrowers. Explanations that focus on the asset side have been comparatively rare. We hope to take a small step toward redressing the balance.

Notwithstanding the similarities between the crises of 1763 and 1998, there is one important contrast. In 1998, the feared meltdown in the financial system prompted the intervention of the authorities (the New York Fed) who coordinated a buyout of LTCM by its main creditors. In 1763, there was no such intervention by the public authorities in Amsterdam to rescue de Neufville. Although there were attempts to prevent the failure of de Neufville on the part of some of its counterparties, they did not muster enough support. The importance of timely intervention in crisis management, and the coordinating role of a crisis manager are important lessons to be drawn from this contrast.

The outline of the paper is as follows. In the following section, we begin with a description of the financial institutions and macroeconomic backdrop to the 1763 crisis. In section 3, we present a stylized model of the crisis and develop a hypothesis about the origin and propagation of the crisis. In section 4, we confront this hypothesis with the evidence from price series and from the balance sheets of the major players in the market. We conclude in section 5, in which we develop further the analogies between the crises of 1763 and 1998, and draw a number of policy conclusions.

## 2. Background

### 2.1. Financial Market Institutions

The eighteenth century marked the slow, but steady decline of the Netherlands as Europe's dominant trading nation. Nevertheless Amsterdam remained the major financial centre of northern Europe, followed by London and Hamburg. The enormous wealth accumulation of the past and a lack of domestic investment opportunities made Holland one of the major capital exporters of the time, both to foreign governments and to private firms (Baasch, 1927).

Following the example of towns like Venice, Seville and Antwerp, Amsterdam had developed financial institutions that were crucial to the city's development as a global financial centre. The most important of these institutions was the *Exchange Bank of Amsterdam*, which was a publicly guaranteed deposit and giro bank (i.e., a payment bank). Adam Smith's *Wealth of Nations* has a celebrated description of the Bank of Amsterdam<sup>2</sup>, which remains a classic exposition of the functioning of a giro bank in the 18th century. Accounts were kept in a notional currency, called *bank money*, the largest part of which was backed with the holding of gold or silver. By law, bills of exchange had to be settled in bank money by a transfer from one account to another. Due to the impeccable reputation of Amsterdam bank money, it soon emerged as the key currency in international finance. The convenience and security afforded to account holders meant that bank money normally traded at a premium (or *agio*) to the circulating currency. Similar institutions were introduced in other countries, most notably in Hamburg whose financial institutions were almost one-to-one copies of the ones in Amsterdam.

At the time of the 1763 crisis, banking activities were much more restricted than they are today. It was still uncommon to take retail deposits and extend cash loans.

---

<sup>2</sup>See his "Digression Concerning Banks of Deposit, Particularly that of Amsterdam" Book IV, Chapter III, Part I.

Rather, banking activities arose from the need for payments in trade transactions, and hence the typical banker of the day operated his banking activities alongside his trading and (to a lesser extent) industrial activities. The financial markets in northern continental Europe were organized around the two financial centres, Amsterdam and Hamburg, while Berlin was still a provincial backwater in the 18th century, just beginning its integration into the world economy. Berlin's second rung status was also reflected in prevailing interest rates. Interest rates in Prussia were much higher than in Amsterdam and Hamburg.<sup>3</sup> A network of wealthy merchant bankers in Amsterdam and Hamburg maintained correspondent relationships to other financial and trade centres. One important function of these bankers was the intermediation between different financial centres. A need for such intermediation arose from the fact that loans were always based on personal relationships, and there were only few bankers with sufficient contacts and international reputation. There are numerous examples for this kind of intermediation activities. The financial business between Russia and England ran almost exclusively through Amsterdam. More importantly for our purpose, financial transactions between Amsterdam and Berlin were intermediated by Hamburg bankers.<sup>4</sup> Financial transactions mirrored trade connections. The fact that a large part of Prussian trade ran through Hamburg also meant that commodities and other assets of the Berlin merchant passing through Hamburg could be pledged as collateral. Similarly, trade between Hamburg and Amsterdam had traditionally been strong.

## 2.2. Bills of Exchange and Acceptance Loans

In contrast to a standard creditor-debtor relationship, which is a bilateral contract, there are typically at least *four* interested parties in a loan contract involving a bill of exchange:

- The *drawer* of the bill,
- the *drawee* of the bill,
- the *beneficiary* of the bill,
- and the *holder* of the bill.

Under the terms of the bill, the *drawer* requires the *drawee* to pay the *beneficiary* a sum of money at a given point in time. The bill carries the signatures of both the

---

<sup>3</sup>Rachel, Papritz and Wallich (1934 p. 510).

<sup>4</sup>Skalweit (1937 p. 26).

drawer and the drawee. By signing the bill, the drawee “accepts” the bill, thereby entering into the obligation to the beneficiary. Bills were negotiable instruments - i.e., they were freely transferable and their transfer was governed by widely accepted rules for settlement that were rigorously enforced.

One aspect of negotiability is the practice of *endorsement*, which has survived to today in the regulations governing the settlement of cheques. The beneficiary of the bill can sell the accepted bill in the open market after adding his signature to the bill (by ‘endorsing’ the bill). Indeed, any subsequent owner can endorse the bill and sell it on the open market. The new bill *holder* acquires a claim on the drawee for the amount stated on the bill. Furthermore, the purchaser also acquires claims on the other signatories of the bill in the event that the drawee is unable to pay. If the drawee was unable to honour the bill, then the drawer and all endorsers of the bill became jointly liable. Thus, the drawer and any endorsers of the bill incurred contingent liabilities towards the owner of the bill by signing the bill. In effect, when the beneficiary sells the bill by endorsing it, he is selling the claim on the drawee within a “credit insurance wrapper”. The beneficiary is promising to insure the buyer of the bill against default by the drawee of the bill.

The institution of endorsement was designed to guard against the passing on of lower quality or fraudulent bills. It was complemented by a legal institution known as *Wechselstreng*, which ensured that claims from bills of exchange were enforced quickly and rigorously, backed up by sanctions that went as far as imprisonment. The evolution of *Wechselstreng* has been described extensively by Sedatis (1967). In a more recent theoretical treatment, Kahn and Roberds (2002) argue that the commitment power embedded in the practice of endorsement allows efficient contracting outcomes that could not have been achieved without it. The economic logic for such institutions can be seen from the endogenous appearance of bill-like instruments in jurisdictions that have poor contract enforcement features. Ickes (1998) describes the workings of the *veksel* (a bill-like instrument) in Russia in the 1990s which emerged as a response to the poor contract enforcement environment at the time.

In the run-up to the events of 1763, the cast of characters in a typical acceptance credit transaction would consist of the following parties:

Drawer of bill	Hamburg merchant banker
Drawee of bill	Amsterdam merchant banker
Beneficiary / endorser of bill	Berlin merchant
Purchaser / holder of bill	Amsterdam investor



The Berlin merchant has a project – whether in manufacturing or in the trading of commodities – but has little capital of his own. He would like to borrow money from investors in rich countries such as the Netherlands where there is a ready stock of capital seeking investment opportunities. However, a direct loan contract between the investor in Amsterdam and the Berlin merchant is not feasible due to the lack of enforcement powers across jurisdictions. Also, given the large distances involved, the use of collateral assets to secure the loan is ruled out. To the extent that the Berlin merchant lacks a commitment device to pay back the creditor in Amsterdam, the contractual possibilities are much reduced. For the cautious Amsterdam investor, lending money to an emerging market borrower in return for a promise of uncertain quality would be a risky undertaking. This is so even if the investment opportunities of the Berlin merchant is commonly recognized to be sound. This is a dilemma that would be familiar to investors in emerging markets in the 21st century. In the absence of a well-developed legal and accounting infrastructure as protection, investors are wary of committing money.

So, how can credit from Amsterdam be channeled to Berlin? The acceptance loan is an ingenious financial contract that binds together a string of promises using intermediaries that manages to replicate a loan from Amsterdam to Berlin. The Hamburg merchant banker (the drawer of the bill) plays a pivotal role as an intermediary. Hamburg lies on the Elbe—the main waterway west from Berlin—and the Hamburg merchant banker has regular dealings with the Berlin merchant. Such day to day dealings mean that commodities and other assets of the Berlin merchant that may be pledged as collateral pass through Hamburg.

The geographical position of Hamburg also confers the advantage of being close to the Netherlands, in that the Hamburg merchant banker has trading and banking relationships with the Amsterdam merchant banker. The Amsterdam merchant banker operates in (for its day) a sophisticated financial market, governed by well-developed codes of conduct and laws on contracts. Even for the most cautious investor from Amsterdam, a promise from the Amsterdam merchant banker would constitute a good promise against which to lend money. In addition, investors undoubtedly preferred the bills to be denominated in Amsterdam bank money, which could only be provided by someone who had an account at the Bank of Amsterdam, i.e., mostly Amsterdam bankers.

Against this background, the interested parties could enter into the following set of transactions. The Hamburg merchant banker draws a bill on the Amsterdam merchant banker, with the Berlin merchant as the beneficiary. The beneficiary receives the accepted bill, endorses it, and then sells this bill to the ultimate creditor—the Am-

sterdam investor. In practice, the bill would in most cases pass through the Hamburg bill market, but would eventually end up in Amsterdam where most of the capital was. Bill traders in Hamburg could thus exploit the interest differences that existed between Amsterdam, Hamburg and Berlin.

The Amsterdam merchant banker accepts the bill on the understanding that the Hamburg banker will pay the sum of money necessary to redeem the bill before the redemption date. This promise by the Hamburg merchant banker would be secured (at least partly) on collateral. The Amsterdam merchant banker receives a commission for its service in accepting the bill. This commission typically was very small (around 1/3 of a percent<sup>5</sup>), indicating that the incurred risks were judged to be negligible. For its part, the Berlin merchant promises to repay the Hamburg merchant banker before the redemption date of the bill so that this sum can be passed on to the Amsterdam merchant banker before redemption of the bill. This promise would also typically be secured on collateral, and the Hamburg merchant banker would receive commission from the Berlin merchant for its role in drawing up the bill. In addition, the Berlin merchant would have to pay interest when discounting the bill in the market. Since the bill was secured by the signatures of the Amsterdam and the Hamburg bankers, discount rates would be relatively low compared to the rates that the merchant would have to pay otherwise. Figure 2.1 displays the contractual relationships between the involved parties resulting from the described stylized transaction.

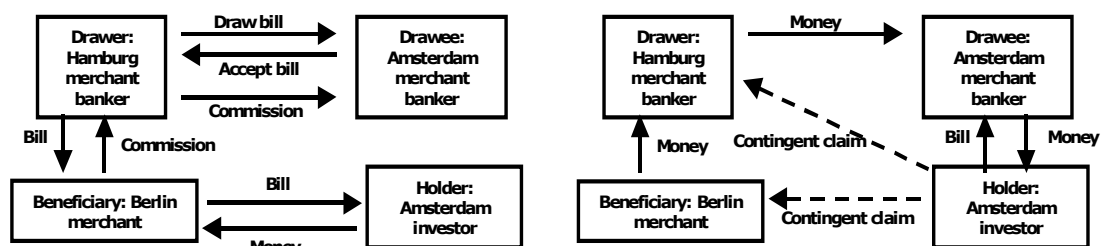


Figure 2.1: Contractual relationships in an acceptance loan at the inception of contract (left panel) and at maturity (right panel).

As a result of this sequence of transactions, credit has flowed from the investor in Amsterdam to the merchant in Berlin, and the intermediaries have balance sheets in which the liabilities are exactly matched by claims on other parties. The balance sheets of the four interested parties resulting from the transactions are as follows:

<sup>5</sup>Büsch (1797 p. 121), Rachel, Papritz, and Wallich (1934 p. 513).

Amsterdam merchant banker (drawee)

Assets	Liabilities
+ Acceptance loan to Hamburg banker	+ Acceptance liability toward bill holder

Hamburg merchant banker (drawer)

Assets	Liabilities
+ Claim on Berlin merchant	+ Liability toward Amsterdam banker

+ *Contingent liability toward bill holder*

Berlin merchant (endorser, ultimate debtor)

Assets	Liabilities
+ Bill (as beneficiary)	+ Liability toward Hamburg merchant banker
- Bill (from sale)	
+ Cash (from sale)	

+ *Contingent liability toward bill holder*

Amsterdam investor (bill holder)

Assets	Liabilities
+ Bill = Claim on Amsterdam banker	
- Cash	

+ *Contingent claims on Hamburg banker and Berlin merchant*

On the balance sheets of the intermediaries, there is an increase on both the assets and the liabilities side, reflecting the increase in leverage. The Amsterdam merchant banker owes money to the holder of the bill, but this liability is matched by his claim on the Hamburg merchant banker. The Hamburg merchant banker also has an extended

balance sheet in which the liability towards the Amsterdam banker is matched by a claim against the ultimate borrower – the Berlin merchant. The intermediaries are remunerated for their increased leverage and credit risk arising from this transaction by the commissions received for drawing up the bill.

In reality, transactions were, of course, much more complicated and manifold than the stylized transaction described above. The chains of interlinking obligations typically were much longer, because bills were heavily traded at exchanges, changing hands frequently. In particular, Hamburg bankers participated very actively in the trading of bills, benefiting from the difference in interest rates across markets. So a second important revenue component for the intermediaries was the negative cost of carry. In Berlin, there also would be merchant bankers intermediating loans, just as there also were merchants in Hamburg and Amsterdam who were in need of financing, and investors in Hamburg and Berlin. However, the stylized transaction described above is designed to illustrate the overall direction of capital flows as well as the nature of the interlinking obligations.

Key to understanding the events of 1763 is the element in Wechselstrenge that provided for the legal separation of the bill from the underlying commercial transaction, which ensured quick enforcement of the claim. This is an aspect of the *holder in due course* provision for bills that has survived into modern times. It is best to illustrate this feature with a concrete example. Suppose that the Hamburg banker (the drawer of the bill) had repaid the Amsterdam banker (the drawee of the bill) prior to the maturity of the bill, but that the Amsterdam banker goes bust before the bill is redeemed. Then, the holder of the bill has the right to take the protested bill to the Hamburg banker and demand payment, since the legal claim of the bill is in force as long as the bill is outstanding. Thus, from the point of view of the Hamburg banker, he is being asked to “pay twice” for the same bill - once to the (now failed) Amsterdam banker, and once to the owner of the bill. As we will see below, there is ample evidence that many of the Hamburg bank failures arose from this feature of bills, and our model of the crisis builds on this feature.

The holder in due course provision remains a lively topic of debate with the advent of the internet and the status of digital signatures (Winn, 1998). Kahn and Roberds (2002) draw wider lessons for the operation of the settlement system. The economic rationale for the stringent implicit commitments embedded in bills of exchange are clear. They allow interested parties to make credible promises, and hence expand the contracting possibilities of diverse parties by stringing together long sequences of commitments. However, when the economic downturn came at the end of the Seven Years War, the same stringent commitments became a source for contagion that destabilized

the entire financial system.

### **2.3. The Seven Years War and the Rise of Gebroeders de Neufville**

The Seven Years War brought an economic boom not only to the neutral states, such as Holland and Hamburg, but also to antagonist states such as Prussia. This boom was accompanied by a strong expansion of credit through bills of exchange. At the same time inflation became a widespread phenomenon in northern Europe, as many German states and other countries like Sweden financed the war by debasing their currencies. Rapid price changes and price uncertainty formed the backdrop to speculative activities which were very often carried out on the basis of bills of exchange by people with little capital of their own. Not everybody profited from the war boom to the same extent: huge gains could be made in the money trade, which became more and more popular among merchant bankers, or in the trade of war goods and exotic goods from the West Indies. However, these profitable activities also were the most risky ones, as the price volatility of exotic and war goods was particularly high. In addition, trade in exotic goods necessitated expensive investment in shipping (much like the capital intensive telecom equipment industry today), so that traders in these goods were particularly vulnerable to a fall in prices.

The key advantage enjoyed by de Neufville and other Amsterdam banks was their base in a mature financial market with a legal infrastructure which provided the commitment power to borrow. This was a feature that entrepreneurs operating in Berlin and other less well developed financial centres, or even the Hamburg merchant bankers did not have. Although the Hamburg bankers may have been wealthy enough to lend directly to the borrowers in Berlin and elsewhere, the range of services that de Neufville was able to offer—such as access to the Amsterdam bills market—was certainly very valuable to the Hamburg bankers. Indeed, market commentators observing the modern market in credit default swaps and other instruments observe how the larger international banks that can offer credit as well as investment banking services (such as Deutsche Bank, Citicorp Salomon Smith Barney, J. P. Morgan Chase) have a competitive advantage over the specialized investment banks (Rule, 2001). This explains why most financial transactions at some stage involved a banking house in Amsterdam and underlines the importance of the Amsterdam financial market for the neighbouring countries.

Jong-Keesing (1939) distinguishes three types of banking houses in Amsterdam at the time: the *traders*, the *bankers*, and the *speculators*. ‘Traders’ specialized in the trade of certain traditional goods that did not profit as much from the war conjuncture.

For them, banking transactions were always closely related to their trading business and never became an independent branch of business. The ‘bankers’ consisted of the well-established old banking houses of Amsterdam who strongly extended their banking activities during the war. In contrast, ‘speculators’ were newcomers in the market who employed aggressive, highly leveraged transactions designed to capitalize on opportunities for making fast profits, whether it be in the trade of exotic goods or in the money market.

The most celebrated of this latter group was the banking house of de Neufville Brothers, whose name is inextricably linked with the crisis of 1763. This banking house was founded in 1751 by Leendert Pieter de Neufville, who was 21 years old at the time. It was no more than a medium-sized firm at the beginning the war. However, during the war they were catapulted into being one of the richest and most prestigious banking houses of Amsterdam by taking full advantage of the opportunities that the buoyant war economy provided. De Neufville’s balance sheet reveals an extensive range of projects—in manufacturing, goods trading, shipping, in insurance and other financial activities. Thus, as well as being a banker who acts as the guarantor of a loan (i.e., being the drawee of bills), de Neufville was a debt-financed entrepreneur in its own right.

De Neufville’s business practices were initially viewed with suspicion, but their apparent triumphs ensured their growing prominence in banking circles and gave rise to many imitators. Skalweit (1937 p. 41) notes how

“They succeeded in outdoing their competitors by extending loans in a particularly broad-minded way ... Whoever wanted to keep up with them had to adjust to their terms, and so they became the engine of the increasing expansion of Amsterdam bill credit. Again and again ... [they] succeeded in maintaining their predominance by inventing methods that were at first considered revolutionary, but soon imitated by other merchants. In the end, they even sold bills on credit for a time span of eight days or more, which was unheard of in a time when discounting just started to be established and when prompt payment in bank money was common practice.”

The glamour and fascination associated with such success would be familiar to contemporary observers of the excesses of the late 1990s bull market. Leendert Pieter’s opulent lifestyle was the subject of much comment and gossip. The furnishings of his house were said to be of the finest quality, including chests of drawers made from walnut wood, a drawing room from yellow silk, and a fine collection of paintings. He owned several coaches, horses, a yacht, a manor, but (reputedly) not a single book.

De Neufville's commercial interests were wide, both in the range of goods he traded in, but also in the wide geographical spread of his business activities. One project in particular deserves special mention, both as an illustration of the geographical spread of de Neufville's interests, but also as a contributory factor in his downfall. After the conclusion of peace in February 1763 (the Peace of Hubertusburg), de Neufville was party to a major speculative deal with the Berlin merchant banker Gotzkowsky, who was the pivotal financier and entrepreneur in Berlin of the day.<sup>6</sup> The deal (which involved two other Berlin merchants Leveaux and Stein, both of whom went bust in the crisis) involved buying up a large quantity of grain from the granaries of the departing Russian army in Poland. The purchase price was one million Dutch guilders. To gain an idea of the sums involved, it should be borne in mind that any bank with capital of one million guilders was considered to be a large bank in Amsterdam at the time. The largest Amsterdam bank, Hope & Co. (which survived the crisis largely unscathed) had a total capital of 4.3 million guilders in 1762.<sup>7</sup> As we will see in more detail later in our paper, grain prices collapsed in Berlin, falling 75 percent between May and August. Although de Neufville's equity stake in the project was small (only 6 percent), the fallout from the crash in grain prices may have been much larger. The details of the financing of the deal is not well documented, but if, as is likely, de Neufville had financed a substantial part of the deal for his partners by extending acceptance loans himself or by drawing bills on other Amsterdam bankers, the losses resulting from the Berlin grain price collapse would have been substantial.

#### **2.4. Chronology**

Speculative trading activities associated with the war boom began to come under strain after the conclusion of peace in February 1763. Jong-Keesing (1939 pp. 88) reports that

“In March [1763] the merchant letters [in Amsterdam] were full of expectations that trade would thanks to the peace become more favourable. ... In May, people discovered that they depended on the economic recovery in Germany and that this took longer than one had thought in the beginning. In June, merchant letters are full of reports of falling prices, unmarketable goods, the generally weak situation and the scarcity of money. ... In July it is realized that the peace has not brought what one had hoped.”

---

<sup>6</sup>Skalweit (1937 pp. 94), Rachel, Papritz, and Wallich (1934 pp. 447).

<sup>7</sup>Buist (1974 p. 520).

The crisis finally came to a head in Amsterdam on July 29th. The first to fail were the Amsterdam houses of Aron Joseph & Co. and, most spectacularly, de Neufville. Some bankers attempted to organize support for de Neufville, but this attempt met with strong opposition from some of the traditional banking houses. The two failures were immediately followed by other failures in Amsterdam, not only by other speculators, but also by some of the old-established banking houses who had been creditors of de Neufville. Two weeks later, on August 11, there was a first wave of bank failures in Hamburg. This was in spite of the frenetic activity on the part of Hamburg merchant bankers to organize an officially sanctioned bail-out of the failed bankers in Amsterdam. These failures in Hamburg were in turn followed by a second wave of failures in Amsterdam, which were attributable to the Hamburg failures (see Figure 2.2).<sup>8</sup>

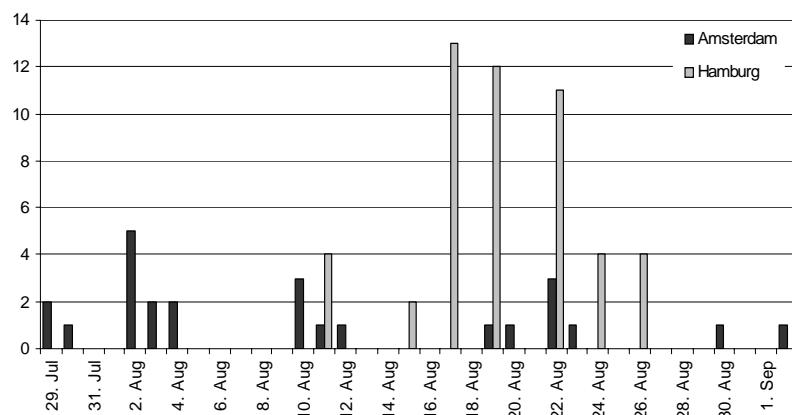


Figure 2.2: The number of failures in Amsterdam and Hamburg in July and August.

The propagation of the crisis followed the links established by the tight web of bills of exchange. When de Neufville and other Amsterdam houses declared themselves bankrupt, the bills drawn on them were protested immediately and presented to the endorsers or drawers of the bills. Due to Wechselstrenge, the Hamburg bankers could not refuse payment even if they had sent remittances to the Amsterdam house to settle the obligations from an acceptance loan, with the implication that they had to pay their obligation “twice”.<sup>9</sup> In this manner, Hamburg bankers received protested bills from Amsterdam, forcing many of them to close down. In turn, Berlin bankers received

<sup>8</sup>Jong-Keesing (1939 p. 95).

<sup>9</sup>Skalweit (1937 p. 50), Rachel, Papritz, and Wallich (1938 p. 513).



protested bills from Hamburg, and by this means, the wave of bankruptcies spread contagiously from Amsterdam to Hamburg, Berlin and other places. In the end, more than one hundred banks succumbed to the crisis, most of which were located in Hamburg.

In Berlin, the number of initial failures was relatively low. This was due to the fact that Friedrich II – in violation of Wechselstrenge – imposed a payments standstill on outstanding bills and even organized outright bail-outs. However, many of the Berlin bankers who had just averted bankruptcy in 1763 collapsed in the following depression.<sup>10</sup> In Amsterdam and Hamburg, there was no direct public intervention, but the respective giro banks tried to fight the liquidity crisis through the extension of additional lombard loans. However, the banks' hands were tied by the provision that the ratio of bank money to gold and silver holdings should be kept close to one, and their support was but a drop in the ocean. Nevertheless, it may have helped to interrupt the vicious circle of pending illiquidity and fire sales of goods.

A natural place to search for the culprit for the 1763 crisis according to the current literature on financial crises would be the agency problems generated in the credit relationship, and the moral hazard on the part of the ultimate borrowers. However, a striking feature of the crisis of 1763 was the sequence in which the main protagonists encountered difficulties. The first to fail were the Amsterdam houses, followed by the Hamburg bankers some two weeks later, while the ultimate borrowers in Berlin were initially spared from widespread failures. This sequence of events suggests a more complex diagnosis of the crisis than the simple “emerging market debtor moral hazard” scenario.

Another remarkable feature of the crisis is the observation that many banks in Amsterdam and Hamburg reopened after the crisis, particularly the ones that Jong-Keesing names ‘bankers’. This indicates that the underlying problem of the crisis was one of *illiquidity* and not of fundamental insolvency. This will be one of the main ingredients in our stylized model of the crisis. The model illustrates how the decline of goods prices at the end of war and the overextended balance sheets of merchant bankers who engaged in acceptance loans but also held speculative positions in commodities rendered the financial system very fragile. The institution of acceptance credit, and the chain of obligations induced are the decisive elements of the model.

---

<sup>10</sup>Skalweit (1937 pp. 109), Rachel, Papritz, and Wallich (1938 pp. 463).

### 3. A Stylized Model of the Crisis

#### 3.1. Model Setup

Our stylized model emphasizes *asset side* externalities as a source of contagion, rather than the *liabilities side* externalities of bank run models. We should emphasize the word “stylized” in the section title. The intention is not to build a fully rigorous theoretical model, but rather to provide a thumbnail sketch of the possible ingredients of such a fully developed theory. The model rests on two features – the contingent obligations embedded in bills, and the externalities generated by liquidity risk in which sales by distressed parties lowers prices for others.

Keeping to the description of the institution of bills of exchange in section 2, there are three active players in our account—the Amsterdam merchant banker (AMB), the Hamburg merchant banker (HMB), and the Berlin merchant (BM). There are two commodities—*sugar* and *grain*. These goods form the main part of the asset side of the traders’ balance sheets. Let us suppose that the only player trading in both commodities is the Amsterdam merchant banker who could be thought of as one of the ‘speculators’, such as de Neufville. *Sugar* represents the type of good which necessitates large capital outlays and hence is traded by only a small number of traders, while *grain* typifies those traditional goods that were traded more widely, and hence which appears on the balance sheets of many traders.

To emphasize the endogenous nature of contagion and systemic collapse, we will suppose that the fundamentals governing the returns of the two assets are independent. We denote by  $\theta$  the revenue received by the Amsterdam merchant banker from the sale of sugar at the redemption date of the bill. We denote by  $x$  the “fundamental” value of grain and contrast it with the price at which grain can be disposed immediately to raise revenue. The interpretation is that potential purchasers of grain can be found, but only at the cost of lowering the price below the fundamental, long term value. Potential purchasers are willing to absorb the net supply, but only at an advantageous price. If  $L$  is the aggregate distress sale of grain, we assume that the price is driven down to

$$p = xe^{-\lambda L}$$

where  $\lambda > 0$  is a constant.

In our discussion here, we will take the parameter  $\lambda$  as being exogenous. One way of rationalizing the residual demand curve above would be to postulate that some traders have short decision horizons induced by bankruptcy constraints, but that traders with somewhat longer horizons - those who absorb the increased supply - are risk

averse. Then, the willingness on the part of long horizon traders to absorb the increased supply would be limited by their risk-aversion. Bernardo and Welch (2002) presents a version of this story that rest on unforeseen consumption needs. Allen and Gale (2002) model the endogenous response to asset prices within the standard Diamond and Dybvig framework.

The constant  $e^{-\lambda L} \leq 1$  could be called the *liquidity discount factor*. Given fundamental value  $x$ , the realized market price is a fraction of  $x$  given by this discount factor. The parameter  $\lambda$  represents the degree of illiquidity in the market for grain, reflecting the degree of reluctance of deep-pocketed individuals to cushion the price fall. The larger is  $\lambda$ , the steeper is the aggregate demand curve, and hence the greater is the price impact of a non-zero net supply. Although the sale pushes down the price, we will suppose that the sellers extract the full surplus, so that total revenue from a sale of  $L$  is the area under the demand curve, namely

$$\begin{aligned} x \int_0^L e^{-\lambda z} dz &= x \left( \frac{1 - e^{-\lambda L}}{\lambda} \right) \\ &\leq \frac{x}{\lambda} \end{aligned}$$

Thus, total revenue from the sale is bounded by  $\frac{x}{\lambda}$ . We can interpret this upper bound as the aggregate amount of money that can be raised in the market through sales. In the 18th century, this could be thought of as the circulation of species money in the economy. The implication is that there is a limit to how much revenue can be generated by disposing of grain. The higher is the illiquidity parameter  $\lambda$ , the lower is the sum that can be raised for any given realization of the asset's fundamental value  $x$  and for any net supply  $L$ . Clearly, this revenue is always smaller than the revenue that could be raised in the absence of liquidity risk, which is  $xL$ .

In addition to the holding of commodities, the agents hold cash and debt. The three parties are linked by a chain of obligations arising from an acceptance loan as described before: HMB has drawn a bill of exchange on AMB in favour of BM who has endorsed the bill and sold it in the market. The face value of the bill is  $F$ . The interlocking obligations from this transaction can be represented by the following matrix, where the  $(i, j)$ -th entry represents the claim of  $i$  towards  $j$ :

	AMB	HMB	BM	AI	Total claim
Amsterdam merchant banker		$F$			$F$
Hamburg merchant banker			$F$		$F$
Berlin merchant					0
Amsterdam investor	$F$				$F$
Total debt	$-F$	$-F$	$-F$	0	
Net position	0	0	$-F$	$F$	

As can be seen from the matrix, the net positions of both AMB and HMB are balanced, while the Berlin merchant has incurred a net liability. The proceeds of the sale of the bill show up as cash on BM's balance sheet. In addition, we assume that AMB has borrowed the sum  $F$  to finance his position in the two commodities, and must pay this sum back to some other agent. By assumption, the other agents have not borrowed otherwise. Then the holdings of the three players of the two commodities as well as cash and debt are as follows:

	AMB	HMB	BM
Sugar	1	0	0
Grain	$L_A$	$L_H$	$L_B$
Cash	0	0	$F$
Debt	$-F$	0	$-F$

In accordance with our discussion in section 2, HMB and BM pay their debts as scheduled shortly before the maturity date of the bill. However, instead of holding back this money in order to repay the acceptance liability, AMB has paid back his other debt. The holdings of the three agents after these payments, but immediately before the maturity of the bill are as follows:

	AMB	HMB	BM
Sugar	1	0	0
Grain	$L_A$	$L_H$	$L_B$
Cash	0	0	0
Debt	$-F$	0	0

The term  $-F$  above represents the outstanding bill of exchange. Provided that the Amsterdam merchant banker can pay back the amount  $F$  from the proceeds of his holdings of grain and sugar, no further repercussions result. However, if the Amsterdam merchant banker is unable to meet his obligations, the bill will be unpaid, and the players further down the chain will become liable by the rules of Wechselstrenge. As was mentioned before, such instances of bankers “paying twice” for a bill are frequently cited by the commentators on this crisis.

If  $\theta < F$ , the proceeds from the sale of sugar alone are not sufficient to redeem the bill. Some disposal of grain is necessary. Denote by  $S$  the shortfall that must be financed by the sale of grain.

$$S = \max\{0, F - \theta\}$$

Then, the required liquidation  $L$  of grain to meet this shortfall is

$$S = x \left( \frac{1 - e^{-\lambda L}}{\lambda} \right)$$

which gives

$$L = \frac{1}{\lambda} \log \left( \frac{x}{x - \lambda S} \right).$$

The price impact on grain arising from shortfall  $S$  can be obtained by substituting this expression into the demand curve. Thus the price of grain arising from the shortfall  $S$  is given by

$$\begin{aligned} p &= x \exp \left\{ -\lambda \cdot \frac{1}{\lambda} \log \left( \frac{x}{x - \lambda S} \right) \right\} \\ &= x - \lambda S. \end{aligned}$$

Expressed in terms of  $\theta$  and  $F$ , the price of grain is given by

$$p = \begin{cases} x & \text{if } \theta \geq F \\ x - \lambda(F - \theta) & \text{if } \theta < F \end{cases}.$$

Figure 3.1 plots  $p$  against  $\theta$ . Even though the fundamentals determining the values of sugar and grain are independent, the liquidity risk injects positive correlation into the prices of the two assets when the outcome  $\theta$  is bad. This feature is reminiscent of many studies that have documented changes in the correlation of returns across assets, and where the correlation increases when asset prices have fallen, and is a feature that appeared with a vengeance in the LTCM crisis of 1998.

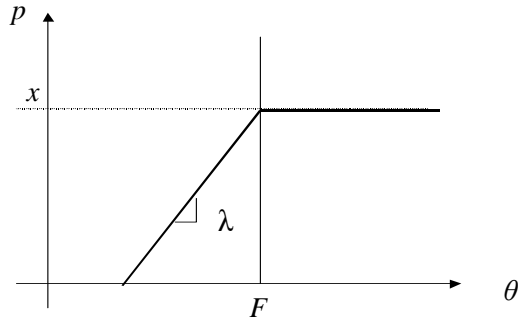


Figure 3.1: Correlation of asset prices induced by liquidity risk.

Note that the correlation between the prices of grain and sugar is likely to be high when the prices of both are low. The correlation is low (indeed, non-existent) when the prices of the two goods are high. Such asymmetric behaviour of correlations has been noted by many observers of financial markets. The recent literature on *copulas* has been an attempt to find a better statistical summary of such asymmetries of correlations. See, for instance, Embrechts, Hoeing and Juri (2001). We will see later in our paper that increased correlations of prices during the crisis period is a key piece of the evidence from 1763.

### 3.2. Sequence of Failures

The Amsterdam merchant banker is solvent if the shortfall  $S$  can be met by the disposal of grain. Since his holding of grain is given by  $L_A$ , he is solvent whenever the shortfall is not so large that it exceeds the amount that can be generated by selling grain. Thus, AMB is solvent if and only if

$$F - \theta \leq x \left( \frac{1 - e^{-\lambda L_A}}{\lambda} \right).$$

In  $(\theta, x)$ -space, which represents the pairs of fundamental asset values, the solvency boundary for the Amsterdam merchant banker can be represented by the highest downward-sloping boundary in figure 3.2. The correlation of asset values generated for low outcomes of  $\theta$  is reflected in the fact that the solvency boundary is steeper than it would be in the absence of liquidity risk. This means that there are combinations of  $\theta$  and  $x$  where the Amsterdam merchant banker becomes insolvent only because grain is not

valued at its fundamental value. One might say that in this case AMB is “intrinsically solvent”, but illiquid.

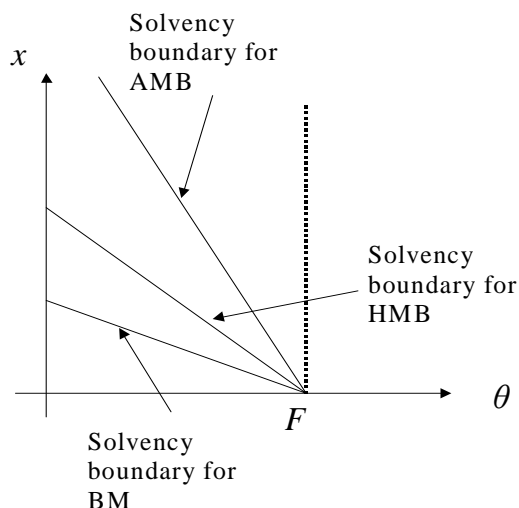


Figure 3.2: Solvency boundaries of the three agents.

If the Amsterdam merchant banker fails to honour the full amount  $F$  promised by the bill, the drawer and the endorser become jointly liable. We will assume that the Amsterdam bill holder will turn to the Hamburg merchant banker first, which is compatible with the observed behaviour in the crisis. This is, in fact, highly plausible because the Hamburg banker would have been closer at hand and because it would have been much more cumbersome and time-consuming to turn to the Berlin merchant.

So the Hamburg merchant banker (as the drawer of the bill) becomes liable to pay the defaulted amount. The defaulted amount is

$$F - \theta - x \left( \frac{1 - e^{-\lambda L_A}}{\lambda} \right).$$

Since the Hamburg banker has no cash on hand, this sum must be met by disposal of grain at the new lower price. The amount of grain that must be sold to meet this obligation is the value of  $L$  that solves:

$$x \int_{L_A}^{L_A+L} e^{-\lambda z} dz = F - \theta - x \left( \frac{1 - e^{-\lambda L_A}}{\lambda} \right)$$

or

$$x \left( \frac{1 - e^{-\lambda(L_A+L)}}{\lambda} \right) = F - \theta \quad (3.1)$$

If this  $L$  is larger than the Hamburg merchant banker's holding of grain, then HMB becomes insolvent. Substituting in  $L_H$  for  $L$  in equation (3.1) then defines the solvency boundary for the Hamburg merchant banker in the  $(\theta, x)$ -space (see figure 3.2):

$$F - \theta \leq x \left( \frac{1 - e^{-\lambda(L_A+L_H)}}{\lambda} \right)$$

The interpretation of this solvency constraint is that the Hamburg merchant banker is solvent if and only if he and AMB are *jointly* solvent. Similarly, the solvency constraint for the Berlin merchant can be derived by calculating the amount of grain that must be disposed to meet the unpaid obligations in the case HMB defaults. The Berlin merchant's solvency condition is given by

$$F - \theta \leq x \left( \frac{1 - e^{-\lambda(L_A+L_H+L_B)}}{\lambda} \right).$$

Note the positioning of the three solvency boundaries. The Berlin merchant fails only if both the Amsterdam and the Hamburg merchant banker fail. Similarly, the Hamburg merchant banker fails only if the Amsterdam merchant banker fails. Hence, our model is able to explain the observed sequence of failures, given that the initial shock hit the Amsterdam banker.<sup>11</sup> The ranking of the solvency conditions of the three players is a consequence of the way that the institution of bills of exchange generates the cascading sequence of obligations. Contagion works through the interaction of contractual arrangements and changes in market prices, which induces correlations of market, credit, and counterparty risks in the chain of claims. Note that there are parameter constellations for which all three agents would be solvent in the absence of liquidity risk, but are insolvent due to the discount in grain prices.

One might ask why the Hamburg and Berlin merchant bankers would not anticipate AMB's distress sales and would not try to be the first to sell grain. In fact, it would not help any of the players to try to anticipate the forced sales of players further up the chain by pre-emptively selling grain. If the Hamburg banker were to sell grain ahead of the Amsterdam banker, this would result in higher revenue from the sale of the Hamburg grain, but would mean lower revenue for the Amsterdam banker. The

---

<sup>11</sup>If instead the initial shock had hit the Berlin merchant, the chain might just as well have unraveled from the other side.



increased default that cascades down to the Hamburg banker exactly offsets the greater revenue generated by pre-emptive selling. The same comment applies to the Berlin merchant. The Berlin merchant does not benefit from pre-emptive sales. Finally, to the extent that the illiquidity constant represents distressed selling, there is no incentive on the part of any of the three players to sell grain pre-emptively in the event that none of the players are facing failure. Thus, in our model, there are no strategic gains to pre-emption, and all effects are captured in the solvency constraints above. Therefore, the model is fully consistent with strategic behaviour. Pre-emptive selling wouldn't affect the outcome, and the simple accounting outcome identified above is the only equilibrium outcome.

The main insight from our model can be summarized as follows: In a liquidity crisis, goods whose prices are uncorrelated in normal times become highly correlated due to forced distress sales of market participants. Contagion works through the combination of direct interlinkages between agents and generalized price declines induced by fire sales, which can cause the failure of agents that would be solvent in the absence of liquidity risk. In the following section, we will confront this “distressed sales hypothesis” with the empirical evidence.

## **4. Examining the Evidence**

### **4.1. A Note on Sources**

In piecing together the events of 1763, we have drawn on a number of commentaries of the events in Amsterdam, Hamburg and Berlin, and on commodity price and exchange rate data series for the period compiled by various authors. For Amsterdam, where the crisis originated, a detailed picture of the institutions and chronology is contained in Kluit (1865) and especially Jong-Keesing (1939), which also presents balance sheet information on the major market participants. Early attempts of an interpretation of events can be found in van Dillen (1922) and Mansvelt (1922), and the broader perspective is set out by Baasch (1927). Büsch (1797) is an account by a contemporary observer who paints a vivid picture of events, especially in Hamburg, which has been summarized and supplemented by Wirth (1890). Further accounts on the Hamburg crisis include Soetbeer (1855). Skalweit (1937) presents an illuminating account of the events surrounding the crisis in Berlin, while Rachel, Papritz and Wallich (1938) provide a broader picture of the emergence of Berlin as a major economic centre. There also exist a number of individual accounts of certain banking houses, such as Buist (1974) on Hope & Co. in Amsterdam, Schramm (1949) on Berenberg in Hamburg,

and Lenz and Unholtz (1912) on Schickler in Berlin. These accounts proved to be very helpful in that they contain some interesting archival information on the scale and scope of the banks' businesses.

The quality of quantitative information varies widely between Amsterdam, Hamburg and Berlin. The most detailed information can be found on Amsterdam, which boasted a sophisticated financial system including organized exchanges for bills and major commodities. Jong-Keesing's study contains an extensive collection of data on individual banks, drawn from the archives of the court of bankruptcy as well as other private archives. The picture in Hamburg is less clear, although Jong-Keesing also provides balance sheet information on some of the Hamburg bankers who were counterparties to Amsterdam bankers. The financial system in Berlin was underdeveloped - it had no established public payment banks as in Amsterdam and Hamburg, nor major organized exchanges. Nevertheless, salient features of the crisis can be pieced together from the qualitative information contained in the above sources, especially for those players who were major counterparties to Amsterdam bankers such as de Neufville.

For commodity prices in Amsterdam, Posthumus (1946) is an excellent source. We collected the price series for Hamburg directly from the records of the Hamburg exchange. The data on Berlin is much less plentiful, but Skalweit (1931) has monthly price series for types of grain in Berlin that cover several years, including the crisis period. Exchange rates and the *agio* on Amsterdam and Hamburg bank money were obtained from von Schrötter (1910) and Schneider, Schwarzer and Schnelzer (1993).

## 4.2. Evidence from Prices

In this section, we will confront the "distressed sales hypothesis" with the evidence from price data. First, we will show that there was a generalized price decline of goods widely traded by merchant bankers, and second, we will present some evidence on increasing correlations of goods prices in the crisis period.

As the buoyant war economy gave way to more subdued conditions, commodity prices came under downward pressure. Of particular interest are the prices in exotic goods, such as cocoa, tea, and sugar, which appear to have started falling well before the end of the war. Figure 4.1 plots monthly price indices for sugar in Amsterdam and Hamburg.<sup>12</sup>

Figure 4.1 reveals close co-movement of sugar prices in the two locations, suggesting a high degree of integration of the two sugar markets. The fall in sugar prices

---

<sup>12</sup>Unfortunately, we have not been able to obtain sugar prices for Berlin.

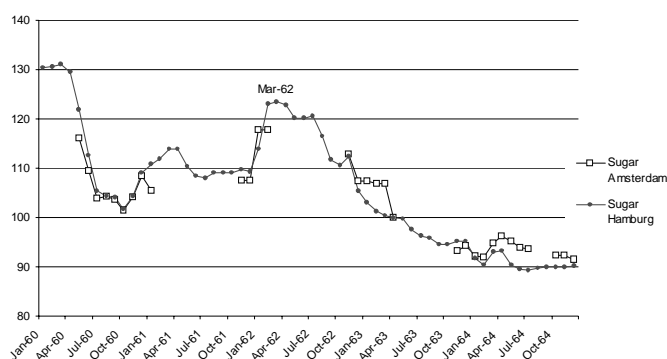


Figure 4.1: Sugar prices in Amsterdam and Hamburg, April 1763 = 100.

started well before the end of the war. From its peak in early 1762, the price of sugar declined by over 25%. Due to the capital intensive nature of trade in sugar (with heavy investment in shipping), we may conjecture that a price decline of this magnitude posed problems for speculators in sugar. It seems that the initial decrease in sugar prices was largely exogenous to the crisis and might actually have been its trigger. Yet, the end of war, the reopening of transport routes, and the crisis itself probably exacerbated and prolonged the downward movement.

Grain prices showed a similar pattern to sugar prices, but the decrease started only towards the end of war.<sup>13</sup> Figure 4.2 shows how grain prices in Amsterdam and Hamburg seemed to stabilize around April, but then continued to decrease sharply at the onset of the crisis. In October, there was a pronounced rebound of prices.<sup>14</sup>

Most dramatic, however, is the evidence on the collapse of the price of grain in Berlin after the conclusion of peace in February 1763. Figure 4.3 plots the monthly series of grain prices in Berlin, taken from Skalweit.<sup>15</sup>

Grain prices fell by 75 percent between April and August in Berlin, with the sharpest fall in June (we will comment below on the price adjustment for the “cleaned” series). Such a dramatic fall in price would have caused acute distress for heavily leveraged speculators (such as de Neufville’s partners in Berlin) who had stockpiles of grain. As

<sup>13</sup>Note that the peace between England and France was concluded already in November 1762.

<sup>14</sup>In the graphs we used the prices of rye. Other types of grain show similar patterns.

<sup>15</sup>In absolute terms, the price of Berlin grain briefly exceeded the Amsterdam price at the peak of bubble in the spring of 63, but the price of Berlin grain in the pre-crisis period (1761-1762) was much lower than in Amsterdam. Hamburg prices were generally closer to Berlin prices than to Amsterdam prices.

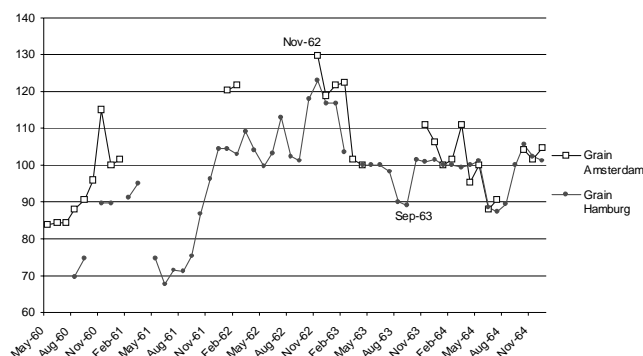


Figure 4.2: Grain prices in Amsterdam and Hamburg, April 1763 = 100.

balance sheet positions weakened and bank money holdings fell, it would have been necessary for the speculators to liquidate their holdings, thereby flooding the already depressed market with additional supply. As speculators were unwinding their grain positions, this would have caused repercussions for other market participants dealing in grain. The distressed sales by large players would have inflicted unwelcome price shocks for other, smaller players in Hamburg and Amsterdam. The more highly leveraged players would have had to liquidate their positions too, thereby exacerbating the price declines. The parallels with the LTCM crisis in 1998 are very clear. In the summer of 1998, the forced unwinding of large leveraged portfolios by LTCM and other copycat funds caused adverse price moves, which in turn forced further unwinding that amplified these adverse price moves. When traders have short horizons due to bankruptcy constraints, liquidity problems quickly translate into solvency problems. This is one of the major insights from our stylized model presented above.

We must exercise some caution in interpreting the price data from Berlin due to the fluctuations in the value of the currency that arose from debasement and major currency reforms that were introduced as a consequence. Figure 4.4 plots the Berlin exchange rate in terms of the number of “Reichsthaler preussisch Kurant” (i.e., the circulating Prussian Reichsthaler) that could be bought per unit of circulating currency in Amsterdam and Hamburg - that is, Amsterdam and Hamburg “Kurant”. Thus, higher numbers in figure 4.4 denote a weak Prussian currency, while low numbers denote a strong Prussian currency.

We find that the Prussian currency depreciated until the end of 1762, but started appreciating thereafter, until April 1763. This appreciation might already reflect the

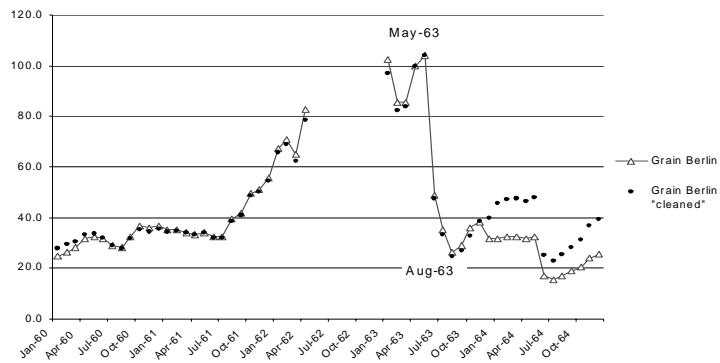


Figure 4.3: Berlin grain prices, April 1763 = 100. “Cleaned” prices are adjusted for exchange rate.

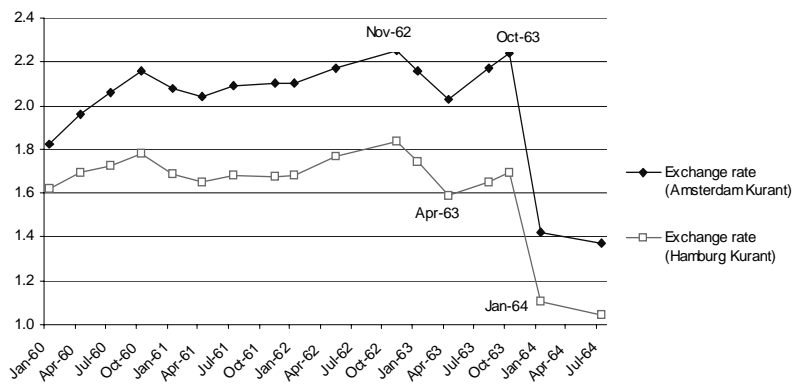


Figure 4.4: Berlin exchange rate (Prussian units per Amsterdam and Hamburg Kurant)

looming coin reform, even if the official decree was released only in May. However, the appreciation was interrupted by a renewed depreciation, which might be explained by the huge demand for Amsterdam and Hamburg currency during the crisis months in order to settle bills of exchange that were redeemable in Amsterdam and Hamburg. This hypothesis receives support from the fact that the Amsterdam Kurant appreciated more during this period as compared to the Hamburg Kurant. This has all the hallmarks of a “flight to quality”. The depreciation came to a halt only in October. The subsequent strong appreciation in the Prussian currency must in large part be attributed to the second coin reform when Prussia returned to the old silver standard of 1750 (“Graumannscher Münzfuß”) and when the official silver content of coins was increased by 41 percent.

On the basis of this evidence, it is clear that the collapse in Berlin grain prices observed in 1763 cannot be attributed to the Prussian coin reforms as the currency was actually depreciating in the critical period. Besides the nominal Berlin grain prices, figure 4.3 also depicts the respective “cleaned” price series for comparison. If anything, the adjustment of grain prices for the exchange rate accentuates the sharp fall and the subsequent “rebound” in prices that are characteristic of short term speculative attacks.

The main conclusion thus stands. There was a dramatic collapse in the prices of commodities that were prime speculative instruments for the largest players in the market at the time. Such declines are hard to attribute simply to the underlying macroeconomic fundamentals of the economy, albeit one that was entering a period of peace. It seems reasonable to attribute part of this price collapse to the unwinding of speculative positions, much of it under distressed circumstances.

In order to cast additional light on the “distressed sales hypothesis”, it is instructive to examine the changes in correlations of prices across different goods during the crisis episodes. Unfortunately, we were unable to obtain data on prices in Amsterdam between May and October 1763, so that the calculated correlations understate actual correlations if Amsterdam experienced similar price declines as the other places during this period. Nevertheless, the evidence is striking. Correlations of (monthly) prices generally increased across goods at all three places.<sup>16</sup> The increases in correlations are even more striking for Hamburg and Berlin for which the price data are more complete. For instance, the correlation in monthly prices in Hamburg between wheat and barley is negative during normal times (given by -0.23), but turns positive and rises to 0.97 during the crisis period. The same correlation coefficients from Berlin are even more striking. During normal times, the two prices are highly negatively correlated (-0.86), but become highly *positively* correlated (0.95) during the crisis period. This is con-

---

<sup>16</sup>There are two correlations in Amsterdam that actually decreased.

sistent with the hypothesis that the general scramble for liquidity led to distress selling of merchandise. The analogy with the LTCM crisis of 1998 are quite clear. Assets that were highly positively correlated (such as treasury bonds and mortgage backed securities) suddenly exhibited highly perverse behaviour in which their returns became negatively correlated, causing the convergence or relative value trades to lose on both legs of the trade.

	Barley	Oats	Rye	Wheat	Sugar
Barley	1.00				
Oats	<i>0.46</i> 0.82	1.00			
Rye	<i>0.50</i> <i>0.86</i>	<i>0.94</i> 0.84	1.00		
Wheat	<i>0.77</i> 0.22	<i>0.47</i> 0.04	<i>0.70</i> 0.64	1.00	
Sugar	<i>0.81</i> 0.26	<i>0.78</i> 0.50	<i>0.79</i> 0.07	<i>0.75</i> -0.75	1.00

Table 1: Correlations of commodity prices in Amsterdam during the crisis (11/62-4/63) (in italics) and at other times (1760-1764 excluding crisis period).

	Barley	Oats	Rye	Wheat	Sugar
Barley	1.00				
Oats	<i>0.85</i> 0.80	1.00			
Rye	<i>0.96</i> <i>0.59</i>	<i>0.51</i> 0.21	1.00		
Wheat	<i>0.97</i> -0.23	<i>0.32</i> -0.31	<i>0.93</i> 0.43	1.00	
Sugar	<i>0.90</i> 0.79	<i>0.60</i> 0.39	<i>0.93</i> 0.05	<i>0.83</i> -0.44	1.00

Table 2: Correlations of commodity prices in Hamburg during the crisis (11/62-9/62) (in italics) and at other times (1760-1764 excluding crisis period).

	Barley	Oats	Rye	Wheat
Barley	1.00			
Oats	<i>0.96</i> 0.90	1.00		
Rye	<i>0.97</i> 0.93	<i>0.99</i> 0.91	1.00	
Wheat	<i>0.95</i> -0.86	<i>0.97</i> -0.74	<i>0.96</i> 0.81	1.00

Table 3: Correlations of “cleaned” commodity prices in Berlin during the crisis (1/63-9/62) (in italics) and at other times (1760-1764 excluding crisis period).

Of course, the liquidity crisis should also show up in the credit market. As a matter of fact, the decline in prices was accompanied by a tightening of the credit market. In

past decades, discount rates in Amsterdam had been in the range of 2 to 3 percent in normal times.<sup>17</sup> Now they had risen to more than 4 percent, which was highly unusual for the Dutch market, and fluctuated wildly (see table 4). The strain on liquidity was most keenly felt by speculators like de Neufville and Aron Joseph, the two firms to fail first in 1763. Already at the beginning of the year, both firms had been forced to borrow at spreads as high as 1.5 to 3%.<sup>18</sup> These spreads were surely related to their difficult economic situations, but also to the huge size of these loans.

1763	March	May 31	June 7	July 8	July 16	July 29/30	August 9
Discount rate	4%	5%	4.25%	4%	3.5-4%	no trade	6%, little trade

Table 4: Evolution of interest rates in Amsterdam. Source: Jong-Keesing (1939 pp. 93, 166).

The Hamburg credit market showed similar signs of distress. Büsch (1797 p. 122) tells us that the liquidity situation tightened dramatically in the run-up to the crisis, raising discount rates to 12 percent at a place where normal rates were around 4 percent.

We may conclude that the evidence from prices is consistent with the “distressed sales hypothesis” developed in our stylized model. It remains to show the impact of the evolution of prices on individual balance sheets.

### 4.3. Balance Sheet Information

We are fortunate in that Jong-Keesing provides a snapshot of de Neufville’s balance sheet at the time of bankruptcy. We also have bank money holdings figures for June 30th. This was a full month before the failure of de Neufville, but by this time, the full force of the price collapse in Berlin grain prices will have taken its toll. Table 5 gives some summary statistics for three banks in Amsterdam. We can compare de Neufville’s balance sheet with two other banks - *Grill & Zonen* and *Hope & Co.* These two banks are representative of two classes - those that failed but re-opened their doors some months later, and those that did not fail. Additionally, we report the averages for the failed banks in Jong-Keesing’s sample, distinguishing between those that re-opened and those that did not. In reading the following table, the reader should bear in mind that the denomination for a bill was typically around 2,000 guilders, and maturity was no more than 3 months.

<sup>17</sup>Homer and Sylla (1991 pp. 175).

<sup>18</sup>Jong-Keesing (1937 pp. 93).



The most striking feature of de Neufville's balance sheet was the low level of liquidity as measured by the ratio of bank money at the Bank of Amsterdam to the total liabilities. As compared to Grill & Zonen, de Neufville's liquidity was only 1/40 as large. As compared to the overall average of failing banks in Amsterdam, de Neufville's liquidity was 1/18. As another measure of liquidity we can examine the size of bank money holding as a proportion of the number of bill transactions. De Neufville's holding of bank money at the Bank of Amsterdam at the end of June 1763 had dwindled to about the same amount as it had in 1751. Meanwhile, the number of bill transactions had increased by a factor of 14. Hence, the ratio of bank money holdings to the number of bill transactions was below 6 at de Neufville, while at Hope & Co., this ratio was well above 300.<sup>19</sup> Note that bank money holdings at Hope & Co. were, in fact, higher than the total of all failing banks. It is clear that such a level of liquidity reserves could serve as a safe cushion in a liquidity crisis and reduced the need for fire sales. This might explain why Hope & Co. managed to increase their profits in the year 1763 in spite of the crisis. There is little information on banks' leverage, and the existing estimates differ widely according to the source. For de Neufville, estimates of the ratio of total liabilities to capital range from 8 to 23<sup>20</sup>, while at Grill & Zonen, the leverage ratio was at most 3, given that their capital was above one million.

---

<sup>19</sup>Jong-Keesing (1937 pp. 70, 98).

<sup>20</sup>Rachel and Wallich (1938 p. 450), Jong-Keesing (1939 p. 121).

	Individual banks			Full sample of failures (average)	
	De Neufville	Grill & Zonen	Hope & Co.	(21 failures)	(16 failures)
Failure date	30th July	4th August, re-opened	Did not fail	various dates, re-opened	various dates, not re-opened
Bank money as at June 30th (thousand guilders)	8	120	793	15	3
Total liabilities at failure date (thousand guilders)	9,643	3,000	n.a.	669	802
Liquidity (= bank money/ total liabilities)	0.1%	4.0%	n.a.	2.1%	1.5%
# of bill transactions (first half of 1763)	1,395	777	2,151	241	255
Recovery rate (= accord at court of bankruptcy)	11%	70%	—	43%	10%

Table 5. Balance sheet snapshot. Source: Jong-Keesing (1939).

The snapshot of de Neufville's balance sheet at the end of June betrays all the symptoms of a leveraged trader in distress. The wafer thin level of liquidity would have compelled the distressed sales of assets, especially the liquid assets such as grain, and thereby contributing to the sharp fall in the Berlin grain price documented above. In fact, Jong-Keesing (1939 p. 90) tells us that many merchants were forced to sell their goods in public auctions at very low prices in order to stay liquid. This supports our view that distressed selling by merchants exacerbated the downward movement of prices. Unfortunately, the available data does not allow us to directly establish the link between falling prices and the banks' balance sheets.

Jong-Keesing provides additional information on a total of 37 failing Amsterdam banks. Among these banks, there were many of the largest and most renowned Amsterdam houses. 24 banks had a capital of more than one million Dutch guilders. Our claim that the crisis was one of liquidity, rather than fundamental solvency, is supported by the observation that more than half of the failing banks in Jong-Keesing's sample continued their businesses later on. Recovery rates at surviving banks were much higher than at the banks closing down for good, sometimes as high as 100 percent. 31 of the 37 banks reported to have been directly affected by other failures, which underlines

the importance of “contagion” through contractual relationships. However, the sums involved often were not large enough to explain the failure of banks. Grill & Zonen, for instance, failed relatively early on, and suffered comparatively high losses from the default of de Neufville. Still the loan sum to de Neufville amounted to less than 23 percent of the bank’s capital and, thus, cannot by itself explain the bank’s failure.<sup>21</sup> Therefore, a contagion story based on interbank liabilities alone is not able to explain the observed failures and has to be supplemented by another explanation, such as the one we provide in this paper.

## **5. Analogies with LTCM Crisis and Policy Lessons**

The crisis of 1763 foreshadowed many of the events surrounding the turbulence in financial markets in the summer and autumn of 1998. In this section we point out the similarities between the two episodes, and draw a number of general policy conclusions. Contrary to some popular accounts of the LTCM crisis that emphasize the mystique surrounding modern financial theory, we claim that the main themes are rather timeless and that the essentials of the LTCM crisis are well illustrated by its venerable predecessor of 1763.

There is, by now, a large literature on the origins, personalities and the trading strategies employed by LTCM. Besides the official documents such as the ‘Johnson report’ (BIS, 1999), and IMF (1998, Chapter III), there are lengthy accounts of the activities of LTCM and the main protagonists surrounding it, such as the book by Lowenstein (2000). Jorion (2000) attempts to reconstruct statistical features such as the value at risk of LTCM’s portfolio from publicly available information. LTCM’s vulnerability arose from its extremely high leverage. Jorion (2000) estimated LTCM’s leverage to be around 25 at the beginning of 1998, but to rise rapidly to over 50 at the height of the crisis as LTCM suffered dramatic losses on its portfolio. In the end, the Federal Reserve Bank of New York managed to organize a collective rescue by fourteen of LTCM’s major creditors and counterparties, which prevented a disorderly unwinding of the fund’s positions and further failures.

Neither the 1763 nor the 1998 crises fit well the traditional models used to explain financial crises. They do not fall into the standard bank run model of Diamond and Dybvig (1983), nor do they seem to conform to agency models that emphasize debtor moral hazard. In both crises, the institutions involved were not deposit banks financed

---

<sup>21</sup>The loan amounted to 229 thousand guilders, and capital was above – and possibly well above – one million guilders.

through demand deposits with sequential service constraints. The borrowing of de Neufville and LTCM was at maturities of several months; in addition, investors' capital was locked in for a minimum of three years at LTCM.<sup>22</sup> Neither crisis was precipitated by nervous investors who suddenly withdrew their money and thereby provoked the breakdown of an institution doing maturity transformation. A moral-hazard story does not fit the events either. The institutions' creditors do not conform to the picture of many small, uninformed individuals that usually appear in such models. Rather, the creditors and counterparties were a small number of wealthy and sophisticated market participants who were able, and who had an incentive, to monitor the debtor due to the large sums involved. In addition, the managers had a lot to lose. First of all they could lose their capital. In 1763, there typically was no separation between the manager and the owner, and the owner was liable with his entire wealth. In 1998, it was common that fund managers received large incentive fees and that they put a substantial amount of their own wealth in the fund.<sup>23</sup> Even worse, the bank or fund ran the risk of losing future rents (the "charter value"), which presumably were quite high due to the reputation built up in previous years. This is even clearer in the 1763 case where barriers to entry were high in the financial market. In addition, the non-payment of bills was drastically penalized, often by sending the debtor to prison. Finally, there was no reason to believe that a bank or a hedge fund would be bailed out in case of a crisis. Amsterdam was very much a free-market environment in the 18th century, and official interventions were unthinkable and, in fact, did not take place. At the same time, private attempts for a bail-out failed. The situation was somewhat different in Prussia, where we actually did see some bailing-out activity. However, the crisis of 1763 did not start in the "emerging market" Prussia, but in Amsterdam, which suggests that the moral-hazard explanation does not go very far. Therefore, we have to turn to alternative explanations of the two crises.

Liquidity risk appears to be at the core of both crises. We see a drying up of liquidity in the market, forcing distressed agents to sell their assets at prices below their fundamental values. In 1998, it seems clear that the high spreads observed in financial markets cannot be explained by credit risk alone, but have to be attributed at least partly to liquidity risk.<sup>24</sup> Assets that used to be uncorrelated in normal times, suddenly showed a high degree of correlation as traders were forced into liquidating their portfolios. The fact that many traders had accumulated similar positions meant that such liquidations had a detrimental feedback effect on other traders' portfolios. The feedback effect also

---

<sup>22</sup>Economist (1998a).

<sup>23</sup>Edwards (1999 pp. 195).

<sup>24</sup>Scholes (2000 p. 18).

lowered the value of collateral assets, which magnified the financial distress further. When the New York Fed organized LTCM's rescue by its creditors, it was for fears of systemic repercussions. First of all, LTCM's counterparties would incur direct losses as their contracts remained unfulfilled. Secondly, and this was a much more serious threat, a disorderly unwinding of LTCM's positions would lead to an even stronger downward movement of asset prices, which would affect even those banks who did not maintain direct relationships with LTCM. This danger was amplified by the fact that many other firms had followed very similar strategies as LTCM and were, thus, subject to the same risks. It seems that these were not so much other hedge funds, but the proprietary trading desks of large banks.<sup>25</sup> In fact, other companies seem to have copied LTCM's trading strategies and this copycat behaviour of banks and security firms led to the built-up of very similar trading positions at a large number of firms.<sup>26</sup> This is reminiscent of de Neufville who invented new methods of making money, which were then copied by its competitors.

In the 1998 crisis, we cannot observe whether there really was the danger of a systemic meltdown. Some recent literature has suggested that the fear of systemic risk might have been exaggerated.<sup>27</sup> In the case of the 1763 crisis, we can see what happened in the absence of such a rescue. We see a complete breakdown of the financial system, spreading internationally as far as Sweden and England. The crisis was followed by a period of falling industrial production, a stagnation of credit activities in the whole of northern Europe and further bank failures, especially in Prussia.<sup>28</sup> This indicates that a systemic meltdown is, in fact, a real possibility in a situation where banks are connected through interlocking obligations and, in addition, have very similar trading positions. "Hedging" and collateral lose much of their reliability when market and credit risks are correlated, and this has to be taken into account in risk management.

Aggregate risk inheres in the system as a whole, no matter how ingenious individual market participants have been in attempting to hedge their individual exposures. Let us consider the situation as described in section 2 in which the Hamburg merchant banker has drawn a bill on the Amsterdam merchant banker, and the bill eventually finds its way into the hands of an Amsterdam investor. On the face of it, the extension of an acceptance loan seems to be a relatively secure undertaking for all parties. The Amsterdam investor has transferred the credit risk from the bill to the two intermediaries, and implicitly pays for this service by accepting a lower interest rate on the loan. This can

---

<sup>25</sup>The Economist (1998b).

<sup>26</sup>Edwards (1999 p. 206).

<sup>27</sup>Kho, Lee and Stulz (2000), Furfine (2001).

<sup>28</sup>Skalweit (1937 pp. 104).

be interpreted as a purchase of *default insurance*. There are two layers of protection for the investor: Only if both the Hamburg and the Amsterdam bankers are unable to cover the Berlin merchant's bill, will the Amsterdam investor incur a loss. The two intermediaries take limited risks by selling default insurance against a commission. The Hamburg banker promises to pay in case the Berlin merchant is unable to honour the bill at maturity, and the Amsterdam banker covers the residual risk that both the Berlin merchant and the Hamburg banker cannot redeem the bill. However, even though the risk has been subdivided among several parties, the *aggregate risk* is nevertheless present. There is a limit to how much risk can be hedged away. This is reminiscent of the thought experiment suggested by Hellwig (1995) in order to emphasize the limits to individual hedging<sup>29</sup>:

“... consider an institution that finances itself by issuing fixed-interest securities with a maturity of  $n$  months and that invests in fixed-interest rate securities with a maturity of  $n + 1$  months. On the face of it, maturity transformation is small, and interest risk exposure is minimal. Suppose, however that we have 479 such institutions. These institutions may be transforming a one-month deposit into a forty year fixed interest rate mortgage, with significant interest rate risk exposure of the system as a whole. The interest rate risk exposure of the system as a whole is not visible to the individual institution unless it knows that it is but an element of a cascade and that credit risks in the cascade are correlated.”

Hellwig touches upon the important issue of correlation of risks in the cascade of obligation, such as the one built up in an acceptance loan. Counterparty risks in the default insurance are correlated with the underlying risks to be hedged, especially since the assets held by the different parties were very similar: The merchants in Berlin would hold similar goods as the intermediaries in Hamburg and Amsterdam, who themselves ran their own merchant's businesses alongside their banking activities. As we have seen above, even the best laid hedges will come unstuck when price correlations change so as to thwart the trader.

We draw two policy conclusions from the events of 1763 that have wider significance.

- There are limits to how much risk can be hedged away. Aggregate risk inheres in the financial system even though each individual trader may believe that his own

---

<sup>29</sup>See Summer (2000) for further discussion of this issue, and a survey of related literature.

risks have been hedged away. At the critical moment, the tensions finally manifest themselves in the form of increased comovement of prices, and the increased correlation between credit risk and counterparty risk. The over-confidence in financial engineering was as dangerous in 1763 as it is today.

- Liquidity risk can have a devastating effect on a financial system populated with traders with highly leveraged, and similar balance sheets. As one trader attempts to repair his balance sheet by disposing of assets, the negative price impact of this action impacts on the balance sheets of all other traders in the financial system. This negative feedback effect has the potential to trigger a self-fulfilling flight to liquidity, and the consequent damage to potentially healthy balance sheets. In distressed market conditions, traders that are intrinsically solvent may nevertheless be pushed into failure. Scholes (2000) has argued for institutions that grant “liquidity insurance”. To the extent that our first bullet point above has any force, such institutions must be regarded as providing only imperfect protection against a widespread flight to liquidity.

## References

- [1] Allen, Franklin, and Douglas Gale (2002): “Financial Fragility,” Working Paper 01-37, Wharton Financial Institutions Center, University of Pennsylvania, <http://fic.wharton.upenn.edu/fic/papers/01/0137.pdf>.
- [2] Baasch, Ernst (1927): *Holländische Wirtschaftsgeschichte*. Jena: Fischer.
- [3] Bank for International Settlements (1999): “A Review of Financial Market Events in Autumn 1998”, CGFS Publication Number 12, Bank for International Settlements, <http://www.bis.org/publ/cgfs12.htm>.
- [4] Bernardo, Antonio and Ivo Welch (2002) “Financial Market Runs” working paper, Yale School of Management
- [5] Buist, Marten G. (1974): *At spes non fracta: Hope & Co. 1770-1815, merchant bankers and diplomats at work*. Den Haag: Martinus Nijhoff.
- [6] Büsch, Johann Georg (1797): *Versuch einer Geschichte der Hamburgischen Handlung nebst 2 kleineren Schriften verwandten Inhalts*. Hamburg.
- [7] Diamond, D.W., and P. Dybvig (1983): “Bank Runs, Deposit Insurance, and Liquidity,” *Journal of Political Economy*, 91, 401-419.

- [8] Dillen, Johannes G. van (1922): “De Beurscrisis te Amsterdam in 1763,” *Tijdschrift voor Geschiedenis*, 37, 241-253.
- [9] Economist, The (1998a): *Long-term sickness?*, October 3. London.
- [10] Economist, The (1998b): *Turmoil in financial markets: The risk business*, October 17. London.
- [11] Edwards, Franklin R. (1999): “Hedge Funds and the Collapse of Long-Term Capital Management,” *Journal of Economic Perspectives*, 13(2), 189-210.
- [12] Embrechts, P., Hoeing, A., Juri, A. (2001) “Using Copulae to bound the Value-at-Risk for functions of dependent risk” working paper, Technical University of Zurich, <http://www.math.ethz.ch/~baltes/ftp/EHJ.pdf>
- [13] Furfine, Craig (2001): “The Costs and Benefits of Moral Suasion: Evidence from the Rescue of Long-Term Capital Management,” Bank for International Settlements, mimeo.
- [14] Hellwig, Martin (1995): “Systemic Aspects of Risk Management in Banking and Finance,” *Schweizerische Zeitschrift für Volkswirtschaft und Statistik*, 131, 4(2), 723-737.
- [15] Homer, Sidney, and Richard Sylla (1991): *A History of Interest Rates*. New Brunswick : Rutgers University Press, 3rd edition.
- [16] Ickes, Barry (1998) “Notes on Veksels” unpublished paper, Pennsylvania State University, <http://econ.la.psu.edu/~bickes/ickres.htm>.
- [17] International Monetary Fund (1998): *World Economic Outlook and International Capital Markets: Interim Assessment*. December 1998, <http://www.imf.org/external/pubs/ft/weo/weo1298/index.htm>.
- [18] Jong-Keesing, Elisabeth Emmy de (1939): *De Economische Crisis van 1763 te Amsterdam*. Amsterdam: N.V. Intern. Uitgevers en h. Mij.
- [19] Jorion, Philippe (2000): “Risk Management Lessons from Long-Term Capital Management,” *European Financial Management*, 6, 277-300.
- [20] Kahn, Charles, and William Roberds (2002): “Transferability, Finality and Debt Settlement,” Research Department, Federal Reserve Bank of Atlanta, mimeo.



- [21] Kho, Bong-Chan, Dong Lee, and René M. Stulz (2000): “U.S. Banks, Crises, and Bailouts: From Mexico to LTCM,” *American Economic Review, Papers and Proceedings*, 90(2), 28-32.
- [22] Kluit, W. P. Sautijn (1865): *De Amsterdamsche Beurs in 1763 en 1773*. Amsterdam: Zeelt.
- [23] Kohn, Meir (1999) “Bills of Exchange and the Money Market to 1600” Department of Economics, Dartmouth College, working paper 99-04.
- [24] Lenz, Friedrich, and Otto Unholtz (1912): *Die Geschichte des Bankhauses Gebrüder Schickler*. Berlin.
- [25] Lowenstein, Roger (2000): *When Genius Failed – The Rise and Fall of Long-Term Capital Management*. New York: Random House.
- [26] Mansvelt, W.M.F. (1922): “Het Amsterdamsche acceptbedrijf en creditwezen in de 18e eeuw,” *Tijdschrift voor Geschiedenes*, 37, 400-404.
- [27] Posthumus, Nicolaas W. (1946): *Inquiry into the history of prices in Holland, Volume 1: Wholesale prices at the exchange of Amsterdam 1585-1914. Rates of exchange at Amsterdam 1609-1914*. Leiden: Brill.
- [28] Rachel, Hugo, Johannes Papritz, and Paul Wallich (1938): *Berliner Großkaufleute und Kapitalisten, Band 2: Die Zeit des Merkantilismus 1648-1806*. Berlin: De Gruyter.
- [29] Rule, David (2001): “The Credit Derivatives Market: its Development and Possible Implications for Financial Stability” *Financial Stability Review*, Bank of England, June 2001, 117-140, <http://www.bankofengland.co.uk/fsr/fsr10art3.pdf>
- [30] Schneider, Jürgen, Oskar Schwarzer, and Petra Schnelzer (1993): *Statistik der Geld- und Wechselkurse in Deutschland und im Ostseeraum (18. und 19. Jahrhundert)*. St. Katharinen: Scripta-Mercaturae-Verlag.
- [31] Scholes, Myron S. (2000): “Crisis and Risk Management,” *American Economic Review, Papers and Proceedings*, 90(2), 17-21.
- [32] Schramm, Percy Ernst (1949): *Kaufleute zu Haus und über See. Hamburgische Zeugnisse des 17., 18. und 19. Jahrhunderts*. Hamburg: Hoffmann und Campe Verlag.

- [33] Schrötter, Friedrich von (1910): *Das preußische Münzwesen im 18. Jahrhundert, Band 3: Das Geld des siebenjährigen Krieges und die Münzreform nach dem Frieden, münzgeschichtlicher Teil 1755-1765*. Berlin: Acta Borussia.
- [34] Sedatis, Lutz (1967): *Über den Ursprung der Wechselstrenge: Eine historisch-dogmatische Untersuchung der Lehre vom rigor cambialis*. Berlin: Duncker & Humblot.
- [35] Skalweit, Stephan (1931): *Die Getreidehandelspolitik und Kriegsmagazinverwaltung Preußens 1756-1806*. Berlin: Acta Borussia.
- [36] Skalweit, Stephan (1937): *Die Berliner Wirtschaftskrise von 1763 und ihre Hintergründe*. Stuttgart-Berlin: W. Kohlhammer.
- [37] Smith, Adam (1991): *The Wealth of Nations*, reprint. New York: Random House.
- [38] Soetbeer, Adolph (1855): “Die Handelskrise des Jahres 1763”, in: *Beiträge und Materialien zur Beurtheilung von Geld- und Banken-Fragen mit besonderer Rücksicht auf Hamburg*, Hamburg.
- [39] Summer, Martin (2000): “A Survey of Systemic Risk” mimeo, Austrian National Bank.
- [40] Usher, A. P. (1914): “The Origin of the Bill of Exchange” *Journal of Political Economy*, 22, 566-76.
- [41] Winn, Jane (1998) “Couriers without Luggage: Negotiable Instruments and Digital Signatures” 29 *South Carolina Law Review* 739, <http://faculty.smu.edu/jwinn/>.
- [42] Wirth, Max (1890): *Geschichte der Handelskrisen*. Frankfurt am Main: Sauerländer.

**SONDERFORSCHUNGSBereich 504 WORKING PAPER SERIES**

Nr.	Author	Title
02-46	Isabel Schnabel Hyun Song Shin	Foreshadowing LTCM: The Crisis of 1763
02-45	Ulrich Koch	Inkrementaler Wandel und adaptive Dynamik in Regelsystemen
02-44	Alexander Klos	Die Risikoprämie am deutschen Kapitalmarkt
02-43	Markus Glaser Martin Weber	Momentum and Turnover: Evidence from the German Stock Market
02-42	Mohammed Abdellaoui Frank Voßmann Martin Weber	An Experimental Analysis of Decision Weights in Cumulative Prospect Theory under Uncertainty
02-41	Carlo Kraemer Martin Weber	To buy or not to buy: Why do people buy too much information?
02-40	Nikolaus Beck	Kumulation und Verweildauerabhängigkeit von Regeländerungen
02-39	Eric Igou	The Role of Lay Theories of Affect Progressions in Affective Forecasting
02-38	Eric Igou Herbert Bless	My future emotions versus your future emotions: The self-other effect in affective forecasting
02-37	Stefan Schwarz Dagmar Stahlberg Sabine Sczesny	Denying the foreseeability of an event as a means of self-protection. The impact of self-threatening outcome information on the strength of the hindsight bias
02-36	Susanne Abele Herbert Bless Karl-Martin Ehrhart	Social Information Processing in Strategic Decision Making: Why Timing Matters
02-35	Joachim Winter	Bracketing effects in categorized survey questions and the measurement of economic quantities
02-34	Joachim Winter	Design effects in survey-based measures of household consumption