

# **Extreme Risk and Fat-tails Distribution Model: Empirical Analysis**

**Ibrahim Onour**

API/WPS 0911

## **Correspondence**

Dr. Ibrahim Onour , The Arab Planning Institute, P.O. Box: 5834 Safat. 13059  
Kuwait, Tel: (965) 24843130, Fax: (965) 24842935, E-mail: [onour@api.org.kw](mailto:onour@api.org.kw).

# Extreme Risk and Fat-tails Distribution Model: Empirical Analysis

Ibrahim Onour

## Abstract

This paper investigates estimation of extreme risk in a number of stock markets in the Gulf Cooperation Council (GCC) countries<sup>(1)</sup>, Saudi, Kuwait, and United Arab Emirates, in addition to S& P 500 stock index, using the Generalized Pareto Distribution (GPD) model. The estimated tails parameter values for stock returns of Kuwait, Saudi, and Dubai, markets show the likelihood of significant extreme losses as well as significant extreme gains, compared to the case of more mature S&P 500 stock returns, which exhibit possibility of significant extreme losses with insignificant gain prospects.

## قياس المخاطر العظمى في أسواق الأسهم الخليجية والأسواق الأمريكية

### ملخص

يتناول البحث قياس المخاطر العظمى، النادرة الحدوث، في بعض أسواق الأسهم الخليجية والسوق الأمريكي متمثلاً في مؤشر ( S&P 500 ) الذي يضم أسهم أكبر خمسمائة شركة أمريكية متداولة في أسواق الأسهم الأمريكية. توضح نتائج البحث أن الاستثمارات في الأسواق الخليجية - الكويت، السعودية، دبي - بالرغم أنها معرضة لتحقيق خسائر كبيرة إلا أنها في ذات الوقت تحمل فرص تحقيق هوامش ربحية عالية كهيئة تعويض الخسائر الكبيرة في حال حدوثها، بينما السوق الأمريكي يحمل مخاطر عالية ذات خسائر كبيرة دون احتمال تحقيق عوائد ربحية مجزية. هذه النتيجة تدعم أهمية تجنب الاستثمارات العربية (خاصة الصناديق السيادية منها) الاستثمار في الأسهم الأمريكية للتوجه نحو الاستثمار في الأسواق الناشئة، منها بالطبع أسواق الأسهم الخليجية المذكورة.

---

GCC countries include Saudi Arabia, Kuwait, United Arab Emirates, Qatar, Sultanate Oman, and Bahrain.

## 1. Introduction

Stock markets are subject to all types of financial risks that affect business institutions, such as credit risk, operational risk, and liquidity risk<sup>(1)</sup>. Monitoring financial risk is important for financial institutions as well as capital market regulators, because it helps devising and re-structuring risk management strategies. In recent years, Value at Risk (VaR) has gained momentum and became the standard measure of financial risk analysis. VaR is defined as the maximum possible loss to a portfolio or a security with a given probability over a certain time horizon. In other words, VaR, reflects how much an investor can lose with a probability, say  $p$  over a certain period of time.

Though, there has been voluminous research on VaR in financial markets, the task of estimating VaR still remains challenging. The major challenge lies in modeling the return distribution which is characterized as fat tailed and skewed in empirical research. While there are different approaches of modeling financial risk, in recent years VaR method attracted more attention in the financial literature. The main purpose in this paper to estimate VaR values of GCC stock markets using Extreme Value Theory (EVT). There are two alternative approaches of modeling VaR based on EVT. Hill's (1975) estimation approach, employed by Embrechts, Kluppelberg and Mikosch, 1997; Danielsson and de Vries, 1997; and the high threshold approach that employs fat-tailed distributions models such as the Generalized Pareto Distribution (GPD).

Extreme risk analysis using GPD model gained momentum in the past two decades, after high swings of stock prices volatility and stock markets crashes in a number of developed and emerging markets. McNeil (1997, 1998) investigates estimation of extreme risks in financial time series, using EVT. Embrechts (1999, 2000a) show robustness of EVT in risk estimates. McNeil and Frey (2000) extend the analysis of extreme risk using heteroskedastic financial time series. Mullar et al (1998), and Pictet et al (1998) study extreme risk in foreign exchange markets using GARCH models. Gencay and Selcuk (2004) investigate the relative performance of VaR models using EVT, in a number of emerging markets after the Asian financial crisis of 1998. Giot and Laurent (2003) model VaR using a number of parametric univariate and multivariate models of ARCH class with skewed Student density.

The main strength of employing Generalized Pareto Distribution model is parameterizing the tails of asset price returns, and its flexibility, as GPD embeds a number of commonly used distributions, such as Cauchy, Student-t, Pareto, and Log-gamma. However, the use of GPD is not without cost. The assumption of independent, identical distribution (iid) of observations seem to be at odds with the characteristics of financial data, although generalization to include the case of dependent observations has been proposed by Embrechts et al (1997). In addition, the selection of the cut-off point that determines the number of observations at the tail of the GPD is not established yet in theory, as there is no well defined statistical criteria to choose the threshold point.

Then a question to be answered is: Why extreme risk analysis is needed for risk estimates in GCC stock markets? A number of factors that have been occurring in the past few years highlight the relevance and importance of extreme distribution analysis in GCC stock markets. As GCC capital markets become increasingly open to the outside world during the past five years, they become more susceptible to shocks in international markets, and thus become more volatile. Also the increasing

cointegration among GCC markets, increased the spillover effect of shocks among these markets, which in turn contributed towards increasing volatility in GCC markets. It is also to be noted that, due to lack of sound regulatory and transparent policy framework, in some of GCC markets hyping, dumping, and rumors are the main driving forces behind the frequent changes in stock price. In addition, as GCC economies depend largely on crude oil revenue, extreme oil price changes in the past few years instigated extreme stock price volatility in these markets.

The remaining parts of the paper includes the following. Section two illustrates descriptive statistics. Section three presents the methodology of the research. Section four includes estimation results. The final section concludes the study.

## 2. Descriptive statistics

Table (1) present several descriptive statistics on stock returns defined as  $100[(p_t) - (p_{t-1})]/(p_{t-1})$ , where  $p_t$  is the log of weekly price index<sup>(2)</sup>. The sample period of the research covers from Jan/1/2004 to June/7/2008. After excluding the weekend holiday periods the sample size constitutes 223 observations<sup>(3)</sup>. The weekly stock return series presented in the table display positive mean returns, but with negatively skewed distribution for all markets except the two UAE markets, which yield insignificant skewness coefficients. The maximum and minimum statistics show Saudi and Dubai stock returns exhibit highest range of variation among the group, as Saudi stock returns vary between (0.97 percent) as maximum gain and (-2.31 percent) maximum loss, and for Dubai market the maximum gain is (1.60 percent), and the maximum loss is (-1.37). The Ljung-Box Q-statistics of order 15 on the squared residual series reflect a high serial correlation in the second moments or variance. The excess kurtosis coefficient indicates significant leptokurtotic (fat-tailedness) for Kuwait, Saudi and Abu-Dhabi markets<sup>(4)</sup>. However, descriptive plots in the appendix, indicate the QQ-plots of returns against the two thin tailed distributions of the Exponential and Normal distributions, show departure of the return quantiles, from the thin tailed Normal distribution for all markets<sup>(5)</sup>.

**Table (1): Descriptive Statistics**

	Kuwait	Saudi	Abu Dhabi	Dubai	S&P 500
Mean	0.054	0.04	0.059	0.10	0.013
St.deviation	0.19	0.44	0.36	0.45	0.18
minimum	-0.74	-2.31	-1.01	-1.37	-0.50
maximum	0.56	0.97	1.70	1.60	0.39
Jarque-Bera (p-value)	18.14* (0.00)	469* (0.00)	66.4* (0.00)	4.75 (0.09)	9.41* (0.01)
skewness	-0.35	-1.63	0.08	0.065	-0.51
Ex.kurtosis	1.26	6.53	2.76	0.75	0.21
$Q^2(15)$ (p-value)	76.8* (0.00)	19.8 (0.17)	55.04* (0.00)	27.17* (0.02)	74.3* (0.00)

\* Significant at 5% significance level.

Notes:  $Q^2(15)$  is the Ljung-Box Q-statistic of order 15 on the squared series.

### 3. Methodology

In the financial literature, it is widely believed that returns of high frequency data, are characterized with fatter tails compared to the Normal distribution returns. The fat tailedness phenomena of stock returns have popularized use of Extreme Value Theorem (EVT) which justify use of Generalized Pareto Distribution (GPD) to capture the influence of extreme returns on stock markets risk. The basic assumption underlying EVT is that the tails of every fat tailed distribution converge asymptotically (as the sample size increases) to the tails of Pareto distribution<sup>(6)</sup>. The tails estimate based on GPD can be expressed as:

$$F(x) = [1 - F(u)]G_{\alpha,\beta}(x - u) + F(u) \quad (1)$$

Where  $F(x)$  is the distribution function of exceedance of  $x$  over a high threshold  $u$ , and  $x$  is all points of returns above a threshold point,  $u$ , so that  $x > u$ , and  $G_{\alpha,\beta}(x)$  is the two parameters GPD distribution function:

$$G_{\alpha,\beta}(x) = \begin{cases} 1 - (1 + \alpha x / \beta)^{-1/\alpha} & \alpha \neq 0 \\ 1 - e^{(-x/\beta)} & \alpha = 0 \end{cases} \quad (2)$$

Where  $\alpha$  is the tail index, and  $\beta > 0$  is the scale parameter. The case of  $\alpha > 0$  is relevant for extreme risk modeling of stock returns. For  $\alpha > 0$ ,  $E(x^k)$  is infinite for  $k \geq 1/\alpha$ . For example, the GPD has an infinite variance when  $\alpha = 0.5$ , and for  $\alpha = 0.25$ , it has an infinite fourth moment. Usually, for high frequency asset returns, the estimates of  $\alpha$  can be less than 0.5, implying that returns have finite variance (Dacorogna et al., 2001). In the case of  $\alpha = 0$ , the GPD corresponds to the Exponential distribution, and when  $\alpha < 0$  it is known as Pareto II type distribution.

Following McNeil (1999), setting  $F(u) = \frac{N-n}{N}$ , where  $N$  is the total sample observations,  $n$  is the number of observations above the threshold level, and substituting  $G_{\alpha,\beta}(x)$  from (2) into equation (1), for  $\alpha > 0$ , the tail estimate can be stated as:

$$\hat{F}(x) = 1 - \frac{n}{N} \left( 1 + \hat{\alpha} \frac{x - \mu}{\hat{\beta}} \right)^{-1/\hat{\alpha}} \quad (3)$$

for a given probability  $q$ , then VaR estimate is computed by inverting (3) to get:

$$\hat{VaR}_q = u + \frac{\hat{\beta}}{\hat{\alpha}} \left\{ \left( \frac{N}{n} (1 - q) \right)^{-\hat{\alpha}} - 1 \right\} \quad (4)$$

vigilant specification of the threshold value is considered necessary for reliable estimates of GPD parameters. There is a trade-off between setting a high threshold value that reduce the sample size to insufficient level to meet the asymptotic properties of ETV, and setting a low threshold level that end up with

sizable sample size but with more of the non-extreme values in the estimation process.

Given that VaR represents a high quantile of the distribution of losses, i.e., 95<sup>th</sup> or 99<sup>th</sup> percentile, it stand for the maximum loss that is only exceeded on a small proportion of occasions.

Artzner, Delbaen, Eber and Heath (1997), have criticized VaR as a measure of risk on the basis that it fails to capture the potential losses that exceeds VaR value. They propose the use of Expected Shortfall (ES) as a measure of the expected size of a loss that exceeds VaR. It should be realized that ES is not an alternative estimation method for VaR, but only useful when we want to answer a question like: When VaR values underestimate risk, what is the size of the expected loss ? Thus, ES is a measure of the likelihood of high unusual loss. The Expected Shortfall can be estimated as:

$$ES_q = VaR_q + E(X - VaR_q) \mid x > VaR_q \quad (5)$$

Equation (5) can be simplified into (see McNeil (1998)):

$$\hat{ES}_q = \frac{V\hat{a}R}{1-\hat{\alpha}} + \frac{\hat{\beta} - \hat{\alpha} u}{1-\hat{\alpha}} \quad (6)$$

Following McNeil (1998), dynamic VaR and dynamic Expected shortfall values, can be determined as:

$$VaR_k^t = u_{t+k} + \sigma_{t+k} VaR(e_t)_q \quad (7)$$

$$ES_k^t = u_{t+k} + \sigma_{t+k} ES(e_t)_q \quad (8)$$

where  $k = 1, 2, \dots$

Where  $VaR(e_t)_q$  denotes the qth quantile of a noise variable  $e_t$  and  $ES(e_t)_q$  is the corresponding expected shortfall. The simplest approach to estimating a dynamic  $VaR_k^t$  from equations (7) and (8) is to estimate conditional expected return  $u_{t+k}$  and conditional volatility  $\sigma_{t+k}$ , k-periods ahead using GARCH model and then apply GPD method on the residuals to estimate  $VaR(e)_q$  and  $ES(e)_q$  as shown in the previous section<sup>(7)</sup>.

#### **4. Results**

The maximum likelihood estimates of the lower and upper tail index values,  $\alpha_L$  and  $\alpha_U$ , with corresponding standard errors are presented in table (2). The estimated values of the right and left tails parameters of Kuwait, Saudi, and Dubai stock returns indicate extreme losses and extreme gains are both significant and of equal probability of occurrence. However, such equal chances of extreme losses and gains are not apparent in the more mature S&P 500 stock returns, which show higher likelihood of extreme losses compared to chances of extreme gains. It is also to be noted that the equal chances of extreme losses and extreme gains observed in the three GCC markets is unaffected by the holding period of the assets in these markets.

Unlike the other GCC markets, Abu-Dhabi stock market show the likelihood of significant extreme losses compared to extreme gain prospects.

Table (3) present estimation results of VaR and ES based on a single day, one week, and five weeks holding periods<sup>(8)</sup>. Estimated risk values of VaR and ES indicate GCC markets in general exhibit higher risk than S&P 500, stock returns. Among the four GCC markets, Kuwait is the least subject to extreme losses, and Saudi is the most susceptible to extreme losses.

To check the accuracy of estimated VaR values an often employed criteria of backtesting, is comparing k-period ahead VaR estimates with the actual loss values computed from the data set. Given that VaR estimates indicate one-day holding period with 95% confidence level, for example, we expect only around 5 failure ( actual losses exceed estimated VaR values) in every 100 trading days. If the number of failures (or violations) exceed significantly such a limit, then the model under estimates VaR values, and the opposite is true when the number of violations is significantly smaller than the expected level. In general, the ideal model yield estimates of failure rates close to stipulated significance level to pass the back-testing requirement. Table (4), report results of back-testing for VaR and ES estimates, and indicate that at 95% confidence level, the VaR and ES values reported in table (3) yield violation rate equal or less than the expected 5% tolerance level.

**Table (2) : Maximum likelihood estimates (MLE) of the parameters of lower and upper tails of the Generalized Pareto Distribution (GPD)**

	1-day holding		1-week holding		5-weeks holding	
	$\hat{\alpha}_L$	$\hat{\alpha}_U$	$\hat{\alpha}_L$	$\hat{\alpha}_U$	$\hat{\alpha}_L$	$\hat{\alpha}_U$
Kuwait (std. error)	0.50* (0.09)	0.58* (0.08)	0.37* (0.21)	0.48* (0.19)	0.36* (0.21)	0.51* (0.14)
Saudi (std. error)	0.37* (0.36)	0.45* (0.13)	0.53* (0.18)	0.51* (0.17)	0.53* (0.18)	0.51* (0.17)
Dubai (std. error)	0.45* (0.20)	0.43* (0.19)	0.53* (0.14)	0.57* (0.12)	0.53* (0.14)	0.57* (0.12)
Abu-Dhabi (std. error)	0.44* (0.17)	0.44* (0.12)	0.52* (0.21)	0.36 (5.25)	0.52* (0.21)	0.36 (5.2)
S&P 500 (std. error)	0.44* (0.17)	0.30 (17.7)	0.45* (0.20)	0.38 (0.40)	0.45* (0.20)	0.38 (0.40)

\*significant at 5% significance level.

Note:  $\hat{\alpha}_L$  is lower tail, and  $\hat{\alpha}_U$  is the upper tail index. GPD parameters estimated using shazam programming procedure. The MLE estimation procedure carried out using the nonlinear David-Fletcher-Powell algorithm.

**Table (3): Risk estimates**

	VaR (GPD)			Expected shortfall		
	1-day holding	1-week holding	5-weeks holding	1-day holding	1-week holding	5-weeks holding
Kuwait	0.078	0.22	0.11	0.15	0.23	0.12
Saudi	0.18	0.63	0.28	0.26	0.63	0.28
Dubai	0.16	0.42	0.29	0.24	0.42	0.29
Abu-Dhabi	0.12	0.36	0.24	0.18	0.37	0.25
S&P 500	0.09	0.17	0.17	0.13	0.17	0.17

Note: VaR and ES values estimated using nonlinear MLE method, using the nonlinear David-Fletcher-Powell algorithm. Shazam programming procedure employed to carry-out computations.

**Table ( 4): Back-Testing Results**

	VaR (GPD)		Expected shortfall	
	Daily series	Weekly series	Daily series	Weekly series
Kuwait	0.001	0.035	0.003	0.017
Saudi	0.005	0.026	0.004	0.022
Dubai	0.008	0.058	0.006	0.031
Abu-Dhabi	0.01	0.040	0.004	0.022
S&P 500	0.02	0.035	0.004	0.022

Note: Number in each cell indicate the percentage number of days and weeks, in which actual loss exceeds estimated VaR values, at a given significance level of 0.05.

## 5. Concluding remarks

This paper investigates estimation of risk in the major GCC stock markets, Saudi, Kuwait, Abu-Dhabi, and Dubai, beside S&P 500 index, using the Generalized Pareto Distribution (GPD) model.

The estimated values of the right and left tails parameters of Kuwait, Saudi, and Dubai stock returns indicate extreme losses and extreme gains are both significant and of equal probability of occurrence. However, such equal chances of extreme losses and extreme gains are not apparent in the more mature S&P 500 stock returns, which reveal higher chances of extreme losses compared to chances of extreme gains. The paper also indicates, the symmetry of extreme losses and extreme gains observed in the three GCC markets is unaffected by the holding period of the assets in these markets. Unlike the other GCC markets, Abu-Dhabi stock market show the likelihood of significant extreme losses with insignificant extreme gain prospects.

Estimated risk values of VaR and ES indicate GCC markets in general exhibit higher risk than S&P 500, stock returns. Among the four GCC markets, Kuwait is the least subject to extreme losses, and Saudi is the most susceptible to extreme losses.



## Footnotes

(1) Credit risk reflects the risk of incurring a loss due to a default on the part of a debtor to meet his/her obligations at a designated time. Operational risk includes the risk of fraud and regulatory risk which results from errors made when instructing payments or settling transactions. Liquidity risk is caused by an unexpected large negative cash flow over a short period of time, causing failure of a firm to meet its liquidity needs arising in the short runs, and thereby subject the firm to the sale of some of its assets at a discount.

(2) The price series are daily prices indexes, but the aggregation on weekly basis is computed based on computation of the average of each five trading days of each week. The aggregation on weekly basis and log transformation of the price series aim to remove systematic day-of-the-week effect. The stock returns, as defined here, is not a total market return since dividends are not included. However, in empirical work on the S&P 500 index, by Gallant, Rossi, and Tauchen (1992) indicate results are invariant to inclusion or exclusion of dividends in stock returns.

(3) This sample period excludes the sharp downfall of GCC stock markets due to the international financial crisis which impacted on them from Mid-September-2009.

(4) These statistics calculated using the formulas  $sk = \frac{m_3}{(m_2)^{3/2}}$ , and  $k = \frac{m_4}{(m_2)^2} - 3$ , where  $m_j$  stands for the jth moment around the mean. Under the null-hypothesis of normality, the two statistics are normally distributed with standard errors,  $\sigma_{sk} = \frac{\sqrt{6}}{N}$ , and  $\sigma_k = \frac{\sqrt{24}}{N}$ , where N is the sample size.

(5) If the data is from an exponential distribution, the points on the graph would lie along positively sloped straight line. If there is a concave presence, it is an indication that of fat-tailed distribution, whereas a convex shape indicates short-tailed distribution.

(6) In this paper we apply the "Peaks – Over – Threshold" (POT) model following McNeil and Frey, (2000). The POT model is based on the "Pickands – Balkema-de Haan Theorem" which state that the distribution of observations in excess of certain high threshold can be approximated by a Generalized Pareto Distribution (GDP).

(7) This approach may not yield reliable results if the conditional variance of GARCH model is not stationary and therefore it can produce inconsistent results. Another alternative approach of estimating multi-period VaR and ES can be specified as:

$$R(k) = \begin{cases} \sqrt[k]{R(1)} \\ \sqrt{k}R(1) \end{cases}$$

where R(k) stand for VaR, or ES for k holding period. But this latest approach also suffer from the implicit assumption that risk is uniformly distributed across the holding multi-period, k.

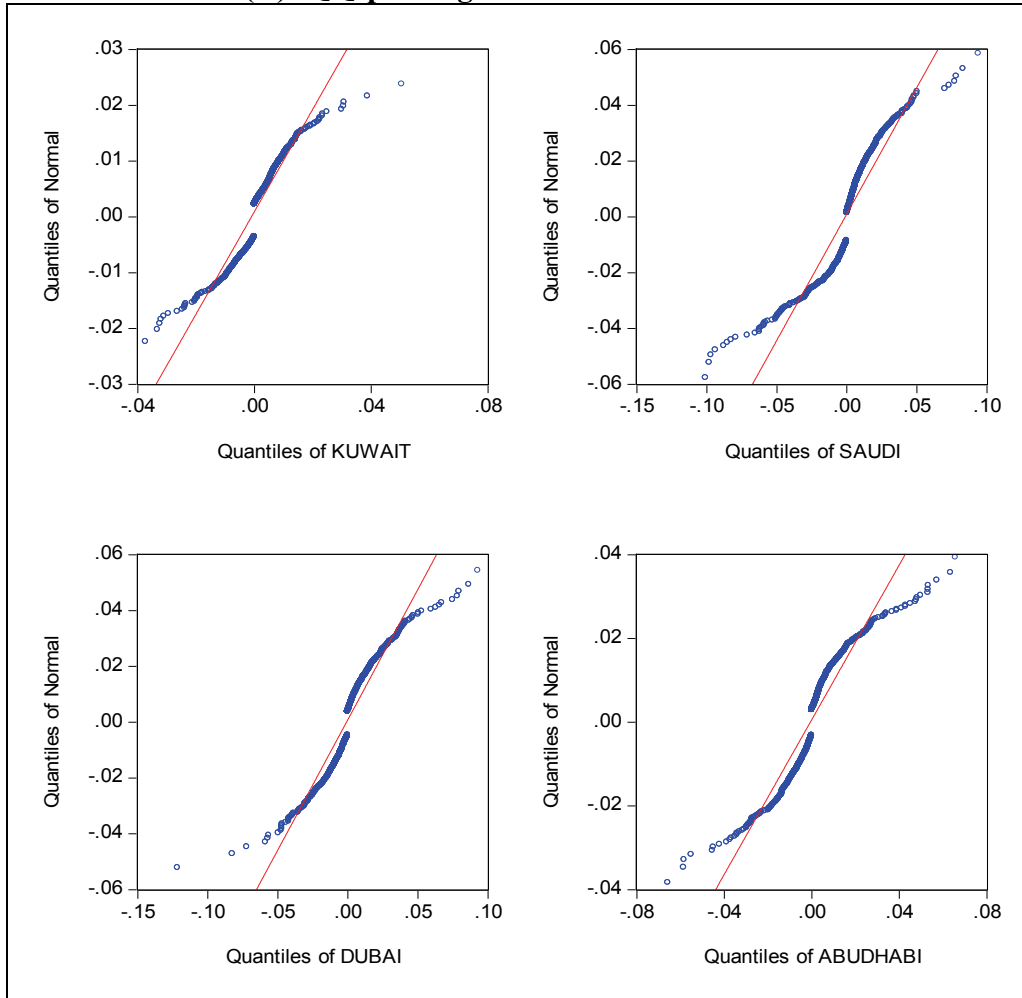
(8) In fact, VaR and ES values provided in table (3) are in percentage form, and thus they can be termed as the relative VaR and ES numbers, as they refer to the percentage of a portfolio value that can be lost after h-holding period with a probability of 0.05, (or confidence level of 0.95). It is not straight forward to deduce the absolute values of VaR and ES from the log transformed relative values.

## References

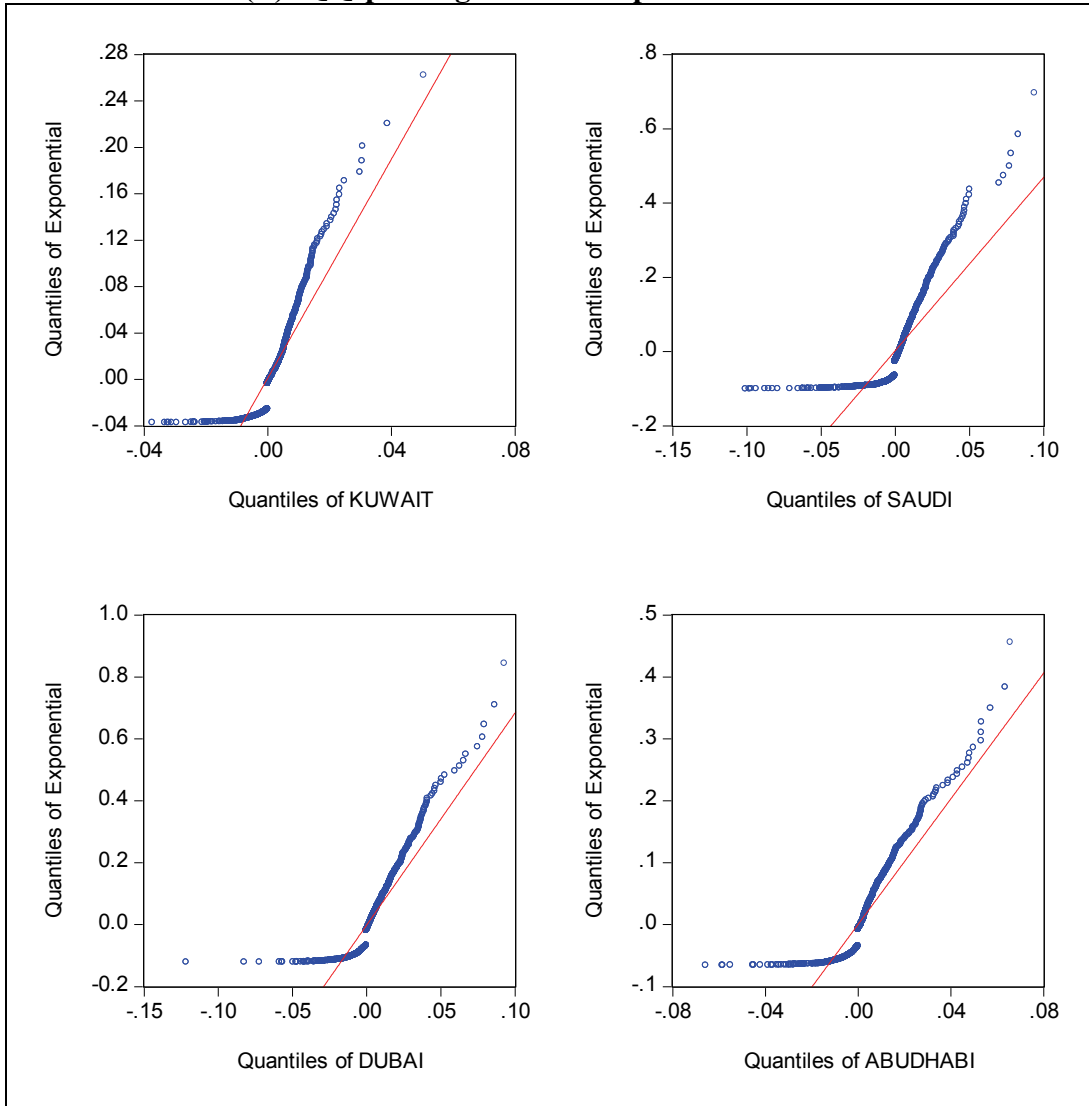
- Artzner, P., Delbaen, F., and Heath D., (1997) "Thinking Coherently" Risk, 10(11), pp.68-71.
- Danielsson J., and de Vries, C., (1997) "Tail Index and Quantile Estimation with very High Frequency data" Journal of Empirical Finance, 4, pp.241-257.
- Embrechts, P., Kluppelberg C., and Mikosch T., (1997) "Modelling Extreme Events for Insurance and Finance" Berlin: Springer.
- Embrechts P., (1999) "Extreme Value Theory in Finance and Insurance", Manuscript, Zurich, Switzerland: Department of Mathematics, ETH, Swiss Federal Technical University.
- Embrechts P., (2000a) "Extreme Value Theory: Potentials and Limitations as an Integrated Risk Management Tool. Manuscript, Zurich, Switzerland: Department of Mathematics, ETH, Swiss Federal Technical University.
- Gencay R., and Selcuk, F., (2004) "Extreme Value Theory and Value-at-Risk: Relative Performance in Emerging Markets" International Journal of Forecasting, 20, pp.287-303.
- Giot P., Laurent S., (2003) "Value-at-Risk for Long and Short Trading Positions" Journal of Applied Econometrics, 18, pp.641 – 664.
- Hill, B., (1975) "A Simple General Approach to Inference About the Tail of a Distribution" Annals of Statistics, 3, pp1163 – 1174.
- Kupiec, P. (1995) "Techniques for Verifying the Accuracy of Risk Measurement Models" Journal of Derivatives, 2, pp.174 -184.
- McNeil A., (1997) "Estimating The Tails of Loss Severity Distributions Using Extreme Value Theory" ASTIN Bulletin, 27, pp.1117 -1137.
- McNeil A., (1998) "Calculating Quantile Risk Measures for Financial Time Series Using Extreme Value Theory" Manuscript, Zurich, Switzerland, Department of Mathematics, ETH, Swiss Federal Technical University.
- McNeil A., and Frey R., (2000) "Estimation of Tail-Related Risk Measures for Heteroscedastic Financial Time Series: An Extreme Value Approach" Journal of Empirical Finance, 7, pp.271 – 300.
- Muller U., Dacorogna M., and Pictet O., (1998) "Heavy Tails in High Frequency Financial Data, in R.J. Adler, R. E. Feldman and M.S. Taggu (Eds), A Practical Guide to Heavy Tails: Statistical Techniques and Applications, (pages 55-77), Boston: Birkhauser.
- Pictet O., Dacorogna M., and Muller U., (1998) "Hill, Bootstrap and Jackknife estimators for Heavy Tails. In Taqqu, M., (Ed.), A Practical Guide to Heavy Tails: Statistical Techniques and Applications (pp.283-310). Boston, MA: Birkhauser.

# **Appendix**

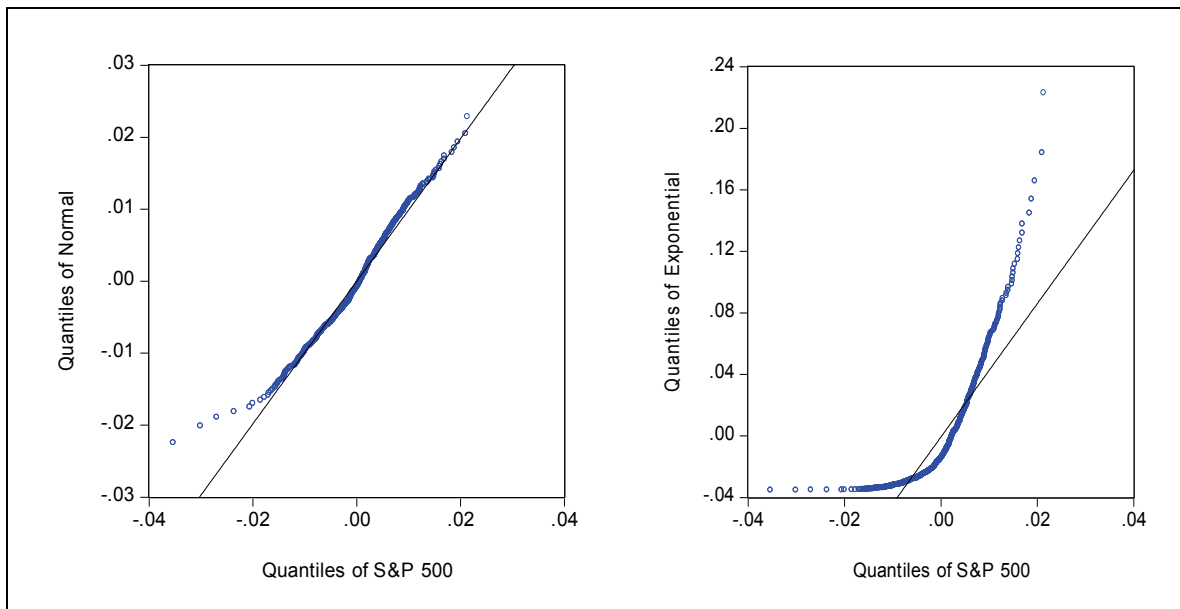
**Plots (A): QQ-plots against the Normal distribution**



**Plots (B): QQ-plots against the Exponential distribution**



**Plots (C): QQ-plots against the Normal and exponential distribution for S&P 500**



## Previous Publications

No	Author	Title
API/WPS 9701	جميل طاهر	النفط والتنمية المستدامة في الأقطار العربية : الفرص والتحديات
API/WPS 9702	Riad Dahel	Project Financing and Risk Analysis
API/WPS 9801	Imed Limam	A SOCIO-ECONOMIC TAXONOMY OF ARAB COUNTRIES
API/WPS 9802	محمد عدنان وديع بلقاسم العباس	منظومات المعلومات لأسواق العمل لخليجية
API/WPS 9803	Adil Abdalla	The Impact of Euro-Mediterranean Partnerships on Trade Interests of the OIC Countries
API/WPS 9804	رياض دهاال حسن الحاج	حول طرق الخصخصة
API/WPS 9805	Ujjayant Chakravorty Fereidun Fesharaki Shuoying Zhou	DOMESTIC DEMAND FOR PETROLEUM PRODUCTS IN OPEC
API/WPS 9806	Imed Limam Adil Abdalla	Inter-Arab Trade and the Potential Success of AFTA
API/WPS 9901	Karima Aly Korayem	Priorities of Social Policy Measures and the Interest of Low-Income People; the Egyptian Case
API/WPS 9902	Sami Bibi	A Welfare Analysis of the Price System Reforms' Effects on Poverty in Tunisia
API/WPS 9903	Samy Ben Naceur Mohamed Goaid	The Value Creation Process in The Tunisia Stock Exchange
API/WPS 9904	نجاة النيش	تكاليف التدهور البيئي وشحة الموارد الطبيعية: بين النظرية وقابلية التطبيق في الدول العربية
API/WPS 9905	Riad Dahel	Volatility in Arab Stock Markets
API/WPS 9906	Yousef Al-Ebraheem Bassim Shebeb	IMPORTED INTERMEDIATE INPUTS: IMPACT ON ECONOMIC GROWTH
API/WPS 9907	Magda Kandil	Determinants and Implications of Asymmetric Fluctuations: Empirical Evidence and Policy Implications Across MENA Countries
API/WPS 9908	M. Nagy Eltony	Oil Price Fluctuations and their Impact on the Macroeconomic Variables of Kuwait: A Case Study Using a VAR Model
API/WPS 9909	علي عبد القادر	إعادة رؤوس الأموال العربية إلى الوطن العربي بين الأمان والواقع
API/WPS 0001	محمد عدنان وديع	التنمية البشرية ، تنمية الموارد البشرية والإحلال في الدول الخليجية
API/WPS 0002	محمد ناجي التوني	برامج الأقساط : بعض التجارب العربية
API/WPS 0003	Riad Dahel	On the Predictability of Currency Crises: The Use of Indicators in the Case of Arab Countries
API/WPS 0004	نسرين بركات عادل العلي	مفهوم التنافسية والتجارب الناجحة في النفاذ إلى الأسواق الدولية

No	Author	Title
API/WPS 0101	Imed Limam	Measuring Technical Efficiency Of Kuwaiti Banks
API/WPS 0102	Ali Abdel Gadir Ali	Internal Sustainability And Economic Growth In The Arab States
API/WPS 0103	Belkacem Laabas	Poverty Dynamics In Algeria
API/WPS 0104	محمد عدنان وديع	حالة الكويت-التعليم وسوق العمل : ضرورات الاصلاح
API/WPS 0105	محمد ناجي التوني	دور وآفاق القطاع السياحي في اقتصادات الأقطار العربية
API/WPS 0106	نجاة النيش	الطاقة والبيئة والتنمية المستدامة : آفاق ومستجدات
API/WPS 0107	Riad Dahel	Telecommunications Privatization in Arab Countries: An Overview
API/WPS 0108	علي عبد القادر	أسس العلاقة بين التعليم وسوق العمل وقياس عوائد الاستثمار البشري
API/WPS 0201	أحمد الكواز	مناهج تقدير المداخل المختلفة في الأقطار العربية
API/WPS 0202	سليمان شعبان القدسي	الكفاءة التوزيعية لشبكات التكافل الاجتماعي في الاقتصاد العربي
API/WPS 0203	Belkacem Laabas and Imed Limam	Are GCC Countries Ready for Currency Union?
API/WPS 0204	محمد ناجي التوني	سياسات العمل والتنمية البشرية في الأقطار العربية : تحليل للتجربة الكويتية
API/WPS 0205	Mustafa Babiker	Taxation and Labor Supply Decisions: The Implications of Human Capital Accumulation
API/WPS 0206	Ibrahim A. Elbadawi	Reviving Growth in the Arab World
API/WPS 0207	M. Nagy Eltony	The Determinants of Tax Effort in Arab Countries
API/WPS 0208	أحمد الكواز	السياسات الاقتصادية ورأس المال البشري
API/WPS 0209	Mustafa Babiker	The Impact of Environmental Regulations on Exports: A Case Study of Kuwait Chemical and Petrochemical Industry
API/WPS 0301	Samir Makdisi, Zeki Fattah and Imed Limam	Determinants Of Growth In The Mena Countries
API/WPS 0302	طارق نوير	دور الحكومة الداعم للتنافسية "حالة مصر"
API/WPS 0303	M. Nagy Eltony	Quantitative Measures of Financial Sector Reform in the Arab Countries
API/WPS 0304	Ali Abdel Gadir Ali	Can the Sudan Reduce Poverty by Half by the Year 2015?
API/WPS 0305	Ali Abdel Gadir Ali	Conflict Resolution and Wealth Sharing in Sudan: Towards an Allocation Formula
API/WPS 0306	Mustafa Babiker	Environment and Development in Arab Countries: Economic Impacts of Climate Change Policies in the GCC Region
API/WPS 0307	Ali Abdel Gadir Ali	Globalization and Inequality in the Arab Region
API/WPS 0308	علي عبد القادر علي	تقييم سياسات وإستراتيجيات الإقلال من الفقر في عينة من الدول العربية



No	Author	Title
API/WPS 0401	Belkacem Laabas and Imed Limam	Impact of Public Policies on Poverty, Income Distribution and Growth
API/WPS 0402	Ali Abdel Gadir Ali	Poverty in the Arab Region: A Selective Review
API/WPS 0403	Mustafa Babiker	Impacts of Public Policy on Poverty in Arab Countries: Review of the CGE Literature
API/WPS 0404	Ali Abdel Gadir Ali	On Financing Post-Conflict Development in Sudan
API/WPS 0501	Ali Abdel Gadir Ali	On the Challenges of Economic Development in Post-Conflict Sudan
API/WPS 0601	Ali Abdel Gadir Ali	Growth, Poverty and Institutions: Is there a Missing Link?
API/WPS 0602	Ali Abdel Gadir Ali	On Human Capital in Post-Conflict Sudan: Some Exploratory Results
API/WPS 0603	Ahmad Telfah	Optimal Asset Allocation in Stochastic Environment: Evidence on the Horizon and Hedging Effects
API/WPS 0604	Ahmad Telfah	Do Financial Planners Take Financial Crashes In Their Advice: Dynamic Asset Allocation under Thick Tails and Fast volatility Updating
API/WPS 0701	Ali Abdel Gadir Ali	Child Poverty: Concept and Measurement
API/WPS 0702	حاتم مهران	التضخم في دول مجلس التعاون الخليجي ودور صناديق النفط في الاستقرار الاقتصادي
API/WPS 0801	Weshah Razzak	In the Middle of the Heat The GCC Countries Between Rising Oil Prices and the Sliding Greenback
API/WPS 0802	Rabie Nasser	Could New Growth Cross-Country Empirics Explain the Single Country Growth of Syria During 1965-2004?
API/WPS 0803	Sufian Eltayeb Mohamed	Finance-Growth Nexus in Sudan: Empirical Assessment Based on an Application of the Autoregressive Distributed Lag (ARDL) Model
API/WPS 0804	Weshah Razzak	Self Selection versus Learning-by-Exporting Four Arab Economies
API/WPS 0805	رشا مصطفى	اتفاقية أعاذير: نحو بيئة أعمال أفضل
API/WPS 0806	Mohamed Osman Suliman & Mahmoud Sami Nabi	Unemployment and Labor Market Institutions: Theory and Evidence from the GCC
API/WPS 0901	Weshah Razzak & Rabie Nasser	A Nonparametric Approach to Evaluating Inflation-Targeting Regimes
API/WPS 0902	Ali Abdel Gadir Ali	A Note on Economic Insecurity in the Arab Countries
API/WPS 0903	وشاح رزاق	الازمة المالية الحالية
API/WPS 0904	Ali Abdel Gadir Ali	The Political Economy of Inequality in the Arab Region and Relevant Development Policies
API/WPS 0905	Belkacem Laabas Walid Abdmoulah	Determinants of Arab Intra-regional Foreign Direct Investments
API/WPS 0906	Ibrahim Onour	North Africa Stock Markets: Analysis of Unit Root and Long Memory Process
API/WPS 0907	Walid Abdmoulah	Testing the Evolving Efficiency of 11 Arab Stock Markets
API/WPS 0908	Ibrahim Onour	Financial Integration of North Africa Stock Markets
API/WPS 0909	Weshah Razzak	An Empirical Glimpse on MSEs Four MENA Countries
API/WPS 0910	Weshah Razzak	On the GCC Currency Union