



---

# Journal of Statistical Software

April 2010, Volume 34, Issue 2.

<http://www.jstatsoft.org/>

---

## Beta Regression in R

Francisco Cribari-Neto

Universidade Federal de Pernambuco

Achim Zeileis

Universität Innsbruck

---

### Abstract

The class of beta regression models is commonly used by practitioners to model variables that assume values in the standard unit interval  $(0, 1)$ . It is based on the assumption that the dependent variable is beta-distributed and that its mean is related to a set of regressors through a linear predictor with unknown coefficients and a link function. The model also includes a precision parameter which may be constant or depend on a (potentially different) set of regressors through a link function as well. This approach naturally incorporates features such as heteroskedasticity or skewness which are commonly observed in data taking values in the standard unit interval, such as rates or proportions. This paper describes the **betareg** package which provides the class of beta regressions in the R system for statistical computing. The underlying theory is briefly outlined, the implementation discussed and illustrated in various replication exercises.

*Keywords:* beta regression, rates, proportions, R.

---

## 1. Introduction

How should one perform a regression analysis in which the dependent variable (or response variable),  $y$ , assumes values in the standard unit interval  $(0, 1)$ ? The usual practice used to be to transform the data so that the transformed response, say  $\tilde{y}$ , assumes values in the real line and then apply a standard linear regression analysis. A commonly used transformation is the logit,  $\tilde{y} = \log(y/(1 - y))$ . This approach, nonetheless, has shortcomings. First, the regression parameters are interpretable in terms of the mean of  $\tilde{y}$ , and not in terms of the mean of  $y$  (given Jensen's inequality). Second, regressions involving data from the unit interval such as rates and proportions are typically heteroskedastic: they display more variation around the mean and less variation as we approach the lower and upper limits of the standard unit interval. Finally, the distributions of rates and proportions are typically asymmetric, and thus Gaussian-based approximations for interval estimation and hypothesis testing can be quite inaccurate in small samples. Ferrari and Cribari-Neto (2004) proposed a regression

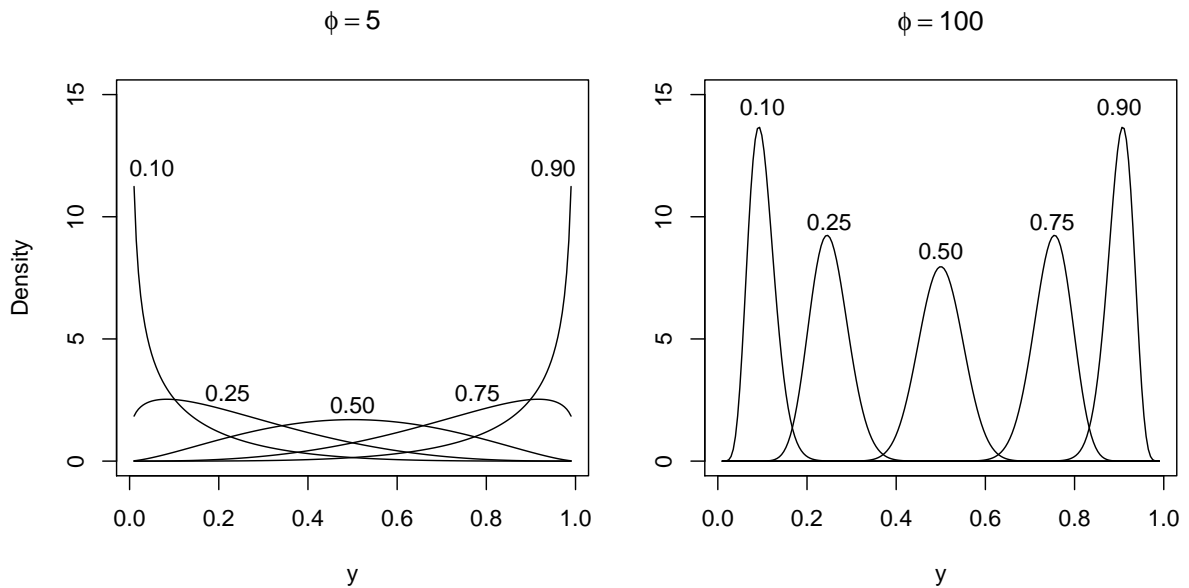


Figure 1: Probability density functions for beta distributions with varying parameters  $\mu = 0.10, 0.25, 0.50, 0.75, 0.90$  and  $\phi = 5$  (left) and  $\phi = 100$  (right).

model for continuous variates that assume values in the standard unit interval, e.g., rates, proportions, or concentration indices. Since the model is based on the assumption that the response is beta-distributed, they called their model *the beta regression model*. In their model, the regression parameters are interpretable in terms of the mean of  $y$  (the variable of interest) and the model is naturally heteroskedastic and easily accommodates asymmetries. A variant of the beta regression model that allows for nonlinearities and variable dispersion was proposed by [Simas, Barreto-Souza, and Rocha \(2010\)](#). In particular, in this more general model, the parameter accounting for the precision of the data is not assumed to be constant across observations but it is allowed to vary, leading to the *variable dispersion beta regression model*.

The chief motivation for the beta regression model lies in the flexibility delivered by the assumed beta law. The beta density can assume a number of different shapes depending on the combination of parameter values, including left- and right-skewed or the flat shape of the uniform density (which is a special case of the more general beta density). This is illustrated in [Figure 1](#) which depicts several different beta densities. Following [Ferrari and Cribari-Neto \(2004\)](#), the densities are parameterized in terms of the mean  $\mu$  and the precision parameter  $\phi$ ; all details are explained in the next section. The evident flexibility makes the beta distribution an attractive candidate for data-driven statistical modeling.

The idea underlying beta regression models dates back to earlier approaches such as [Williams \(1982\)](#) or [Prentice \(1986\)](#). The initial motivation was to model binomial random variables with extra variation. The model postulated for the (discrete) variate of interest included a more flexible variation structure determined by independent beta-distributed variables which are related to a set of independent variables through a regression structure. However, unlike the more recent literature, the main focus was to model binomial random variables. Our interest in what follows will be more closely related to the recent literature, i.e., modeling continuous

random variables that assume values in  $(0, 1)$ , such as rates, proportions, and concentration or inequality indices (e.g., Gini).

In this paper, we describe the **betareg** package which can be used to perform inference in both fixed and variable dispersion beta regressions. The package is implemented in the R system for statistical computing (R Development Core Team 2009) and available from the Comprehensive R Archive Network (CRAN) at <http://CRAN.R-project.org/package=betareg>. The initial version of the package was written by Simas and Rocha (2006) up to version 1.2 which was orphaned and archived on CRAN in mid-2009. Starting from version 2.0-0, Achim Zeileis took over maintenance after rewriting/extending the package's functionality.

The paper unfolds as follows: Section 2 outlines the theory underlying the beta regression model before Section 3 describes its implementation in R. Sections 4 and 5 provide various empirical applications: The former focuses on illustrating various aspects of beta regressions in practice while the latter provides further replications of previously published empirical research. Finally, Section 6 contains concluding remarks and directions for future research and implementation.

## 2. Beta regression

The class of beta regression models, as introduced by Ferrari and Cribari-Neto (2004), is useful for modeling continuous variables  $y$  that assume values in the open standard unit interval  $(0, 1)$ . Note that if the variable takes on values in  $(a, b)$  (with  $a < b$  known) one can model  $(y - a)/(b - a)$ . Furthermore, if  $y$  also assumes the extremes 0 and 1, a useful transformation in practice is  $(y \cdot (n - 1) + 0.5)/n$  where  $n$  is the sample size (Smithson and Verkuilen 2006).

The beta regression model is based on an alternative parameterization of the beta density in terms of the variate mean and a precision parameter. The beta density is usually expressed as

$$f(y; p, q) = \frac{\Gamma(p + q)}{\Gamma(p)\Gamma(q)} y^{p-1} (1 - y)^{q-1}, \quad 0 < y < 1,$$

where  $p, q > 0$  and  $\Gamma(\cdot)$  is the gamma function.<sup>1</sup> Ferrari and Cribari-Neto (2004) proposed a different parameterization by setting  $\mu = p/(p + q)$  and  $\phi = p + q$ :

$$f(y; \mu, \phi) = \frac{\Gamma(\phi)}{\Gamma(\mu\phi)\Gamma((1 - \mu)\phi)} y^{\mu\phi-1} (1 - y)^{(1-\mu)\phi-1}, \quad 0 < y < 1,$$

with  $0 < \mu < 1$  and  $\phi > 0$ . We write  $y \sim \mathcal{B}(\mu, \phi)$ . Here,  $E(y) = \mu$  and  $\text{VAR}(y) = \mu(1 - \mu)/(1 + \phi)$ . The parameter  $\phi$  is known as the precision parameter since, for fixed  $\mu$ , the larger  $\phi$  the smaller the variance of  $y$ ;  $\phi^{-1}$  is a dispersion parameter.

Let  $y_1, \dots, y_n$  be a random sample such that  $y_i \sim \mathcal{B}(\mu_i, \phi)$ ,  $i = 1, \dots, n$ . The beta regression model is defined as

$$g(\mu_i) = x_i^\top \beta = \eta_i,$$

where  $\beta = (\beta_1, \dots, \beta_k)^\top$  is a  $k \times 1$  vector of unknown regression parameters ( $k < n$ ),  $x_i = (x_{i1}, \dots, x_{ik})^\top$  is the vector of  $k$  regressors (or independent variables or covariates) and  $\eta_i$  is

---

<sup>1</sup>A beta regression model based on this parameterization was proposed by Vasconcellos and Cribari-Neto (2005). We shall, however, focus on the parameterization indexed by the mean and a precision parameter.

a linear predictor (i.e.,  $\eta_i = \beta_1 x_{i1} + \dots + \beta_k x_{ik}$ ; usually  $x_{i1} = 1$  for all  $i$  so that the model has an intercept). Here,  $g(\cdot) : (0, 1) \mapsto \mathbb{R}$  is a link function, which is strictly increasing and twice differentiable. The main motivation for using a link function in the regression structure is twofold. First, both sides of the regression equation assume values in the real line when a link function is applied to  $\mu_i$ . Second, there is an added flexibility since the practitioner can choose the function that yields the best fit. Some useful link functions are: logit  $g(\mu) = \log(\mu/(1-\mu))$ ; probit  $g(\mu) = \Phi^{-1}(\mu)$ , where  $\Phi(\cdot)$  is the standard normal distribution function; complementary log-log  $g(\mu) = \log\{-\log(1-\mu)\}$ ; log-log  $g(\mu) = -\log\{-\log(\mu)\}$ ; and Cauchy  $g(\mu) = \tan\{\pi(\mu - 0.5)\}$ . Note that the variance of  $y$  is a function of  $\mu$  which renders the regression model based on this parameterization naturally heteroskedastic. In particular,

$$\text{VAR}(y_i) = \frac{\mu_i(1-\mu_i)}{1+\phi} = \frac{g^{-1}(x_i^\top \beta)[1-g^{-1}(x_i^\top \beta)]}{1+\phi}. \quad (1)$$

The log-likelihood function is  $\ell(\beta, \phi) = \sum_{i=1}^n \ell_i(\mu_i, \phi)$ , where

$$\begin{aligned} \ell_i(\mu_i, \phi) &= \log \Gamma(\phi) - \log \Gamma(\mu_i \phi) - \log \Gamma((1-\mu_i)\phi) + (\mu_i \phi - 1) \log y_i \\ &\quad + \{(1-\mu_i)\phi - 1\} \log(1-y_i). \end{aligned} \quad (2)$$

Notice that  $\mu_i = g^{-1}(x_i^\top \beta)$  is a function of  $\beta$ , the vector of regression parameters. Parameter estimation is performed by maximum likelihood (ML).

An extension of the beta regression model above which was employed by [Smithson and Verkuilen \(2006\)](#) and formally introduced (along with further extensions) by [Simas \*et al.\* \(2010\)](#) is the variable dispersion beta regression model. In this model the precision parameter is not constant for all observations but instead modeled in a similar fashion as the mean parameter. More specifically,  $y_i \sim \mathcal{B}(\mu_i, \phi_i)$  independently,  $i = 1, \dots, n$ , and

$$g_1(\mu_i) = \eta_{1i} = x_i^\top \beta, \quad (3)$$

$$g_2(\phi_i) = \eta_{2i} = z_i^\top \gamma, \quad (4)$$

where  $\beta = (\beta_1, \dots, \beta_k)^\top$ ,  $\gamma = (\gamma_1, \dots, \gamma_h)^\top$ ,  $k+h < n$ , are the sets of regression coefficients in the two equations,  $\eta_{1i}$  and  $\eta_{2i}$  are the linear predictors, and  $x_i$  and  $z_i$  are regressor vectors. As before, both coefficient vectors are estimated by ML, simply replacing  $\phi$  by  $\phi_i$  in Equation 2.

[Simas \*et al.\* \(2010\)](#) further extend the model above by allowing nonlinear predictors in Equations 3 and 4. Also, they have obtained analytical bias corrections for the ML estimators of the parameters, thus generalizing the results of [Ospina, Cribari-Neto, and Vasconcellos \(2006\)](#), who derived bias corrections for fixed dispersion beta regressions. However, as these extensions are not (yet) part of the **betareg** package, we confine ourselves to these short references and do not provide detailed formulas.

Various types of residuals are available for beta regression models. The raw response residuals  $y_i - \hat{\mu}_i$  are typically not used due to the heteroskedasticity inherent in the model (see Equation 1). Hence, a natural alternative are *Pearson residuals* which [Ferrari and Cribari-Neto \(2004\)](#) call *standardized ordinary residuals* and define as

$$r_{P,i} = \frac{y_i - \hat{\mu}_i}{\sqrt{\widehat{\text{VAR}}(y_i)}}, \quad (5)$$

where  $\widehat{\text{VAR}}(y_i) = \hat{\mu}_i(1 - \hat{\mu}_i)/(1 + \hat{\phi}_i)$ ,  $\hat{\mu}_i = g_1^{-1}(x_i^\top \hat{\beta})$ , and  $\hat{\phi}_i = g_2^{-1}(z_i^\top \hat{\gamma})$ . Similarly, deviance residuals can be defined in the standard way via signed contributions to the excess likelihood. Further residuals were proposed by [Espinheira, Ferrari, and Cribari-Neto \(2008b\)](#), in particular one residual with better properties that they named *standardized weighted residual 2*:

$$r_{\text{sw2},i} = \frac{y_i^* - \hat{\mu}_i^*}{\sqrt{\hat{v}_i(1 - h_{ii})}}, \quad (6)$$

where  $y_i^* = \log\{y_i/(1 - y_i)\}$  and  $\mu_i^* = \psi(\mu_i\phi) - \psi((1 - \mu_i)\phi)$ ,  $\psi(\cdot)$  denoting the digamma function. Standardization is then by  $v_i = \{\psi'(\mu_i\phi) + \psi'((1 - \mu_i)\phi)\}$  and  $h_{ii}$ , the  $i$ th diagonal element of the hat matrix (for details see [Ferrari and Cribari-Neto 2004](#); [Espinheira et al. 2008b](#)). Hats denote evaluation at the ML estimates.

It is noteworthy that the beta regression model described above was developed to allow practitioners to model continuous variates that assume values in the unit interval such as rates, proportions, and concentration or inequality indices (e.g., Gini). However, the data types that can be modeled using beta regressions also encompass proportions of “successes” from a number of trials, if the number of trials is large enough to justify a continuous model. In this case, beta regression is similar to a binomial generalized linear model (GLM) but provides some more flexibility – in particular when the trials are not independent and the standard binomial model might be too strict. In such a situation, the fixed dispersion beta regression is similar to the quasi-binomial model ([McCullagh and Nelder 1989](#)) but fully parametric. Furthermore, it can be naturally extended to variable dispersions.

### 3. Implementation in R

To turn the conceptual model from the previous section into computational tools in R, it helps to emphasize some properties of the model: It is a standard maximum likelihood (ML) task for which there is no closed-form solution but numerical optimization is required. Furthermore, the model shares some properties (such as linear predictor, link function, dispersion parameter) with generalized linear models (GLMs; [McCullagh and Nelder 1989](#)), but it is not a special case of this framework (not even for fixed dispersion). There are various models with implementations in R that have similar features, in particular including the family of models implemented in `gamlss` ([Stasinopoulos and Rigby 2007](#)), also providing beta regression, albeit with a different approach for modeling the variance. Here, we specifically reuse some of the ideas employed for generalized count data regression by [Zeileis, Kleiber, and Jackman \(2008\)](#).

The main model-fitting function in `betareg` is `betareg()` which takes a fairly standard approach for implementing ML regression models in R: `formula` plus `data` is used for model and data specification, then the likelihood and corresponding gradient (or estimating function) is set up, `optim()` is called for maximizing the likelihood, and finally an object of S3 class “`betareg`” is returned for which a large set of methods to standard generics is available. The workhorse function is `betareg.fit()` which provides the core computations without `formula`-related data pre- and post-processing.

The model-fitting function `betareg()` and its associated class are designed to be as similar as possible to the standard `glm()` function ([R Development Core Team 2009](#)) for fitting GLMs. An important difference is that there are potentially two equations for mean and precision (Equations 3 and 4, respectively), and consequently two regressor matrices, two

linear predictors, two sets of coefficients, etc. In this respect, the design of `betareg()` is similar to the functions described by Zeileis *et al.* (2008) for fitting zero-inflation and hurdle models which also have two model components. The arguments of `betareg()` are

```
betareg(formula, data, subset, na.action, weights, offset,
        link = "logit", link.phi = NULL, control = betareg.control(...),
        model = TRUE, y = TRUE, x = FALSE, ...)
```

where the first line contains the standard model-frame specifications (see Chambers and Hastie 1992), the second line has the arguments specific to beta regression models and the arguments in the last line control some components of the return value.

If a `formula` of type  $y \sim x_1 + x_2$  is supplied, it describes  $y_i$  and  $x_i$  for the mean equation of the beta regression (3). In this case a constant  $\phi_i$  is assumed, i.e.,  $z_i = 1$  and  $g_2$  is the identity link, corresponding to the basic beta regression model as introduced in Ferrari and Cribari-Neto (2004). However, a second set of regressors can be specified by a two-part formula of type  $y \sim x_1 + x_2 \mid z_1 + z_2 + z_3$  as provided in the **Formula** package (Zeileis and Croissant 2010). This model has the same mean equation as above but the regressors  $z_i$  in the precision equation (4) are taken from the  $\sim z_1 + z_2 + z_3$  part. The default link function in this case is the log link  $g_2(\cdot) = \log(\cdot)$ . Consequently,  $y \sim x_1 + x_2$  and  $y \sim x_1 + x_2 \mid 1$  correspond to equivalent beta likelihoods but use different parametrizations for  $\phi_i$ : simply  $\phi_i = \gamma_1$  in the former case and  $\log(\phi_i) = \gamma_1$  in the latter case. The link for the  $\phi_i$  precision equation can be changed by `link.phi` in both cases where "identity", "log", and "sqrt" are allowed as admissible values. The default for the  $\mu_i$  mean equation is always the logit link but all link functions for the binomial family in `glm()` are allowed as well as the log-log link: "logit", "probit", "cloglog", "cauchit", "log", and "loglog".

ML estimation of all parameters employing analytical gradients is carried out using R's `optim()` with control options set in `betareg.control()`. All of `optim()`'s methods are available but the default is "BFGS", which is typically regarded to be the best-performing method (Mittelhammer, Judge, and Miller 2000, Section 8.13) with the most effective updating formula of all quasi-Newton methods (Nocedal and Wright 1999, p. 197). Starting values can be user-supplied, otherwise the  $\beta$  starting values are estimated by a regression of  $g_1(y_i)$  on  $x_i$ . The starting values for the  $\gamma$  intercept are chosen as described in (Ferrari and Cribari-Neto 2004, p. 805), corresponding to a constant  $\phi_i$  (plus a link transformation, if any). All further  $\gamma$  coefficients (if any) are initially set to zero. The covariance matrix estimate is derived analytically as in Simas *et al.* (2010). However, by setting `hessian = TRUE` the numerical Hessian matrix returned by `optim()` can also be obtained.

The returned fitted-model object of class "betareg" is a list similar to "glm" objects. Some of its elements – such as `coefficients` or `terms` – are lists with a mean and precision component, respectively. A set of standard extractor functions for fitted model objects is available for objects of class "betareg", including the usual `summary()` method that includes partial Wald tests for all coefficients. No `anova()` method is provided, but the general `coefTest()` and `waldtest()` from `lmtest` (Zeileis and Hothorn 2002), and `linear.hypothesis()` from `car` (Fox 2002) can be used for Wald tests while `lrtest()` from `lmtest` provides for likelihood-ratio tests of nested models. See Table 1 for a list of all available methods. Most of these are standard in base R, however, methods to a few less standard generics are also provided. Specifically, there are tools related to specification testing and computation of sandwich covariance matrices



Function	Description
<code>print()</code> <code>summary()</code>	simple printed display with coefficient estimates standard regression output (coefficient estimates, standard errors, partial Wald tests); returns an object of class “ <code>summary.betareg</code> ” containing the relevant summary statistics (which has a <code>print()</code> method)
<code>coef()</code> <code>vcov()</code> <code>predict()</code> <code>fitted()</code> <code>residuals()</code>  <code>estfun()</code>  <code>bread()</code>	extract coefficients of model (full, mean, or precision components), a single vector of all coefficients by default associated covariance matrix (with matching names) predictions (of means $\mu_i$ , linear predictors $\eta_{1i}$ , precision parameter $\phi_i$ , or variances $\mu_i(1 - \mu_i)/(1 + \phi_i)$ ) for new data fitted means for observed data extract residuals (deviance, Pearson, response, or different weighted residuals, see <a href="#">Espinheira et al. 2008b</a> ), defaulting to standardized weighted residuals 2 from Equation 6 compute empirical estimating functions (or score functions), evaluated at observed data and estimated parameters (see <a href="#">Zeileis 2006b</a> ) extract “bread” matrix for sandwich estimators (see <a href="#">Zeileis 2006b</a> )
<code>terms()</code> <code>model.matrix()</code> <code>model.frame()</code> <code>logLik()</code>	extract terms of model components extract model matrix of model components extract full original model frame extract fitted log-likelihood
<code>plot()</code> <code>hatvalues()</code> <code>cooks.distance()</code> <code>gleverage()</code>	diagnostic plots of residuals, predictions, leverages etc. hat values (diagonal of hat matrix) (approximation of) Cook’s distance compute generalized leverage ( <a href="#">Wei, Hu, and Fung 1998</a> ; <a href="#">Rocha and Simas 2010</a> )
<code>coeftest()</code> <code>waldtest()</code> <code>linear.hypothesis()</code> <code>lrtest()</code> <code>AIC()</code>	partial Wald tests of coefficients Wald tests of nested models Wald tests of linear hypotheses likelihood ratio tests of nested models compute information criteria (AIC, BIC, ...)

Table 1: Functions and methods for objects of class “`betareg`”. The first four blocks refer to methods, the last block contains generic functions whose default methods work because of the information supplied by the methods above.

as discussed by [Zeileis \(2004, 2006b\)](#) as well as a method to a new generic for computing generalized leverages ([Wei et al. 1998](#)).

## 4. Beta regression in practice

To illustrate the usage of `betareg` in practice we replicate and slightly extend some of the analyses from the original papers that suggested the methodology. More specifically, we

estimate and compare various flavors of beta regression models for the gasoline yield data of [Prater \(1956\)](#), see Figure 2, and for the household food expenditure data taken from [Griffiths, Hill, and Judge \(1993\)](#), see Figure 4. Further pure replication exercises are provided in Section 5.

#### 4.1. The basic model: Estimation, inference, diagnostics

##### *Prater's gasoline yield data*

The basic beta regression model as suggested by [Ferrari and Cribari-Neto \(2004\)](#) is illustrated in Section 4 of their paper using two empirical examples. The first example employs the well-known gasoline yield data taken from [Prater \(1956\)](#). The variable of interest is `yield`, the proportion of crude oil converted to gasoline after distillation and fractionation, for which a beta regression model is rather natural. [Ferrari and Cribari-Neto \(2004\)](#) employ two explanatory variables: `temp`, the temperature (in degrees Fahrenheit) at which all gasoline has vaporized, and `batch`, a factor indicating ten unique batches of conditions in the experiments (depending on further variables). The data, encompassing 32 observations, is visualized in Figure 2.

[Ferrari and Cribari-Neto \(2004\)](#) start out with a model where `yield` depends on `batch` and `temp`, employing the standard logit link. In `betareg`, this can be fitted via

```
R> data("GasolineYield", package = "betareg")
R> gy_logit <- betareg(yield ~ batch + temp, data = GasolineYield)
R> summary(gy_logit)
```

Call:

```
betareg(formula = yield ~ batch + temp, data = GasolineYield)
```

Standardized weighted residuals 2:

Min	1Q	Median	3Q	Max
-2.8750	-0.8149	0.1601	0.8384	2.0483

Coefficients (mean model with logit link):

	Estimate	Std. Error	z value	Pr(> z )	
(Intercept)	-6.1595710	0.1823247	-33.784	< 2e-16	***
batch1	1.7277289	0.1012294	17.067	< 2e-16	***
batch2	1.3225969	0.1179021	11.218	< 2e-16	***
batch3	1.5723099	0.1161045	13.542	< 2e-16	***
batch4	1.0597141	0.1023598	10.353	< 2e-16	***
batch5	1.1337518	0.1035232	10.952	< 2e-16	***
batch6	1.0401618	0.1060365	9.809	< 2e-16	***
batch7	0.5436922	0.1091275	4.982	6.29e-07	***
batch8	0.4959007	0.1089257	4.553	5.30e-06	***
batch9	0.3857929	0.1185933	3.253	0.00114	**
temp	0.0109669	0.0004126	26.577	< 2e-16	***

Phi coefficients (precision model with identity link):



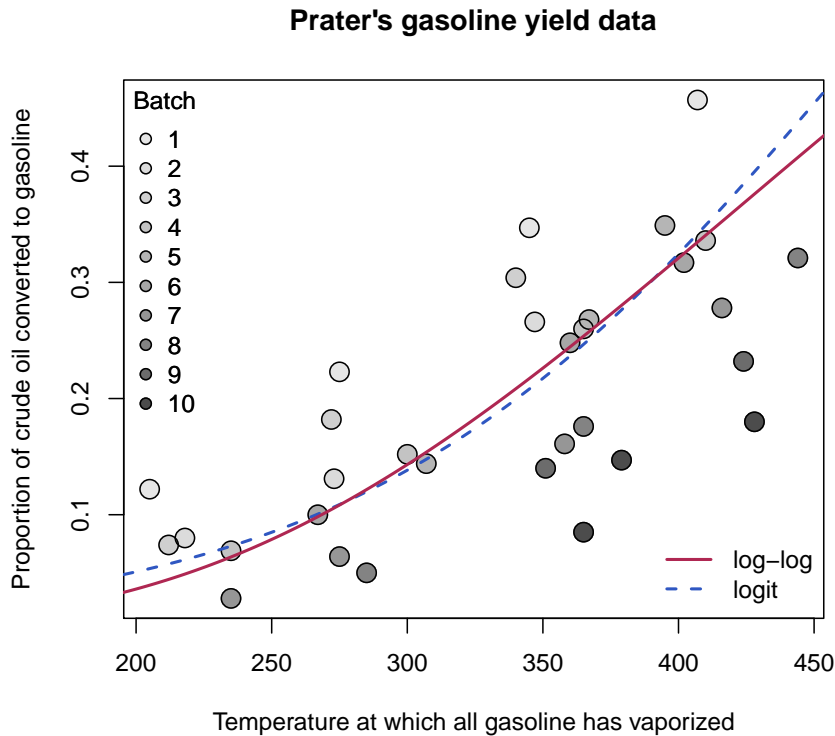


Figure 2: Gasoline yield data from [Prater \(1956\)](#): Proportion of crude oil converted to gasoline explained by temperature (in degrees Fahrenheit) at which all gasoline has vaporized and given batch (indicated by gray level). Fitted curves correspond to beta regressions `gy_loglog` with log-log link (solid, red) and `gy_logit` with logit link (dashed, blue). Both curves were evaluated at varying temperature with the intercept for batch 6 (i.e., roughly the average intercept).

```

      Estimate Std. Error z value Pr(>|z|)
(phi)   440.3      110.0   4.002 6.29e-05 ***
---
Signif. codes:  0 '***' 0.001 '**' 0.01 '*' 0.05 '.' 0.1 ' ' 1

```

```

Log-likelihood:  84.8 on 12 Df
Pseudo R-squared: 0.9617
Number of iterations in BFGS optimization: 51

```

which replicates their Table 1. The goodness of fit is assessed using different types of diagnostic displays shown in their Figure 2. This graphic can be reproduced (in a slightly different order) using the `plot()` method for “betareg” objects, see Figure 3.

```

R> set.seed(123)
R> plot(gy_logit, which = 1:4, type = "pearson")

```

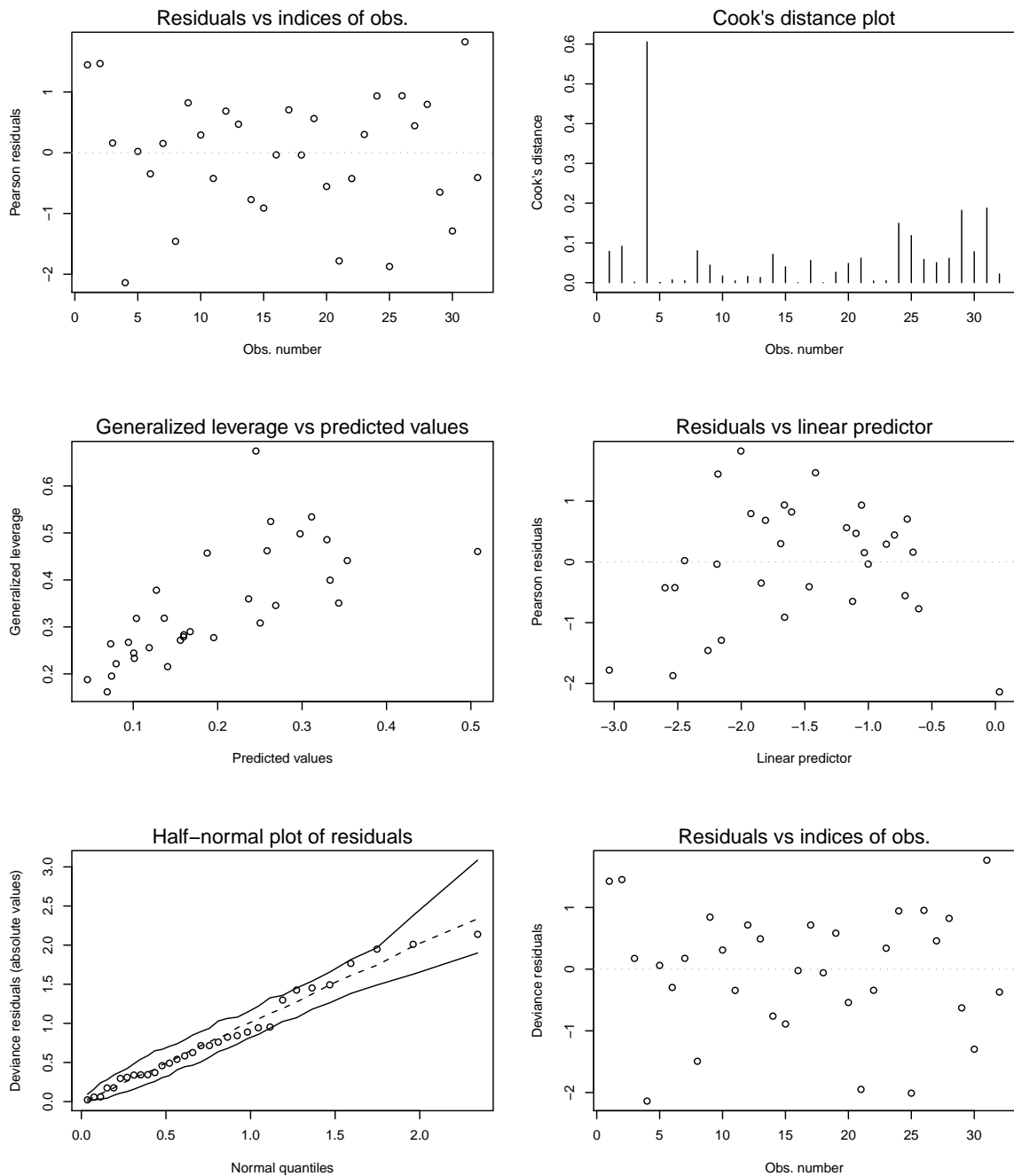


Figure 3: Diagnostic plots for beta regression model `gy_logit`.

```
R> plot(gy_logit, which = 5, type = "deviance", sub.caption = "")
R> plot(gy_logit, which = 1, type = "deviance", sub.caption = "")
```

As observation 4 corresponds to a large Cook's distance and large residual, [Ferrari and Cribari-Neto \(2004\)](#) decided to refit the model excluding this observation. While this does not change

the coefficients in the mean model very much, the precision parameter  $\phi$  increases clearly.

```
R> gy_logit4 <- update(gy_logit, subset = -4)
R> coef(gy_logit, model = "precision")
```

```
(phi)
440.2783
```

```
R> coef(gy_logit4, model = "precision")
```

```
(phi)
577.7907
```

### *Household food expenditures*

Ferrari and Cribari-Neto (2004) also consider a second example: household food expenditure data for 38 households taken from Griffiths *et al.* (1993, Table 15.4). The dependent variable is `food/income`, the proportion of household income spent on food. Two explanatory variables are available: the previously mentioned household income and the number of persons living in the household. All three variables are visualized in Figure 4.

To start their analysis, Ferrari and Cribari-Neto (2004) consider a simple linear regression model fitted by ordinary least squares (OLS):

```
R> data("FoodExpenditure", package = "betareg")
R> fe_lm <- lm(I(food/income) ~ income + persons, data = FoodExpenditure)
```

To show that this model exhibits heteroskedasticity, they employ the studentized Breusch and Pagan (1979) test of Koenker (1981) which is available in R in the `lmtest` package (Zeileis and Hothorn 2002).

```
R> library("lmtest")
R> bptest(fe_lm)
```

```
studentized Breusch-Pagan test
```

```
data: fe_lm
BP = 5.9348, df = 2, p-value = 0.05144
```

One alternative would be to consider a logit-transformed response in a traditional OLS regression but this would make the residuals asymmetric. However, both issues – heteroskedasticity and skewness – can be alleviated when a beta regression model with a logit link for the mean is used.

```
R> fe_beta <- betareg(I(food/income) ~ income + persons,
+ data = FoodExpenditure)
R> summary(fe_beta)
```

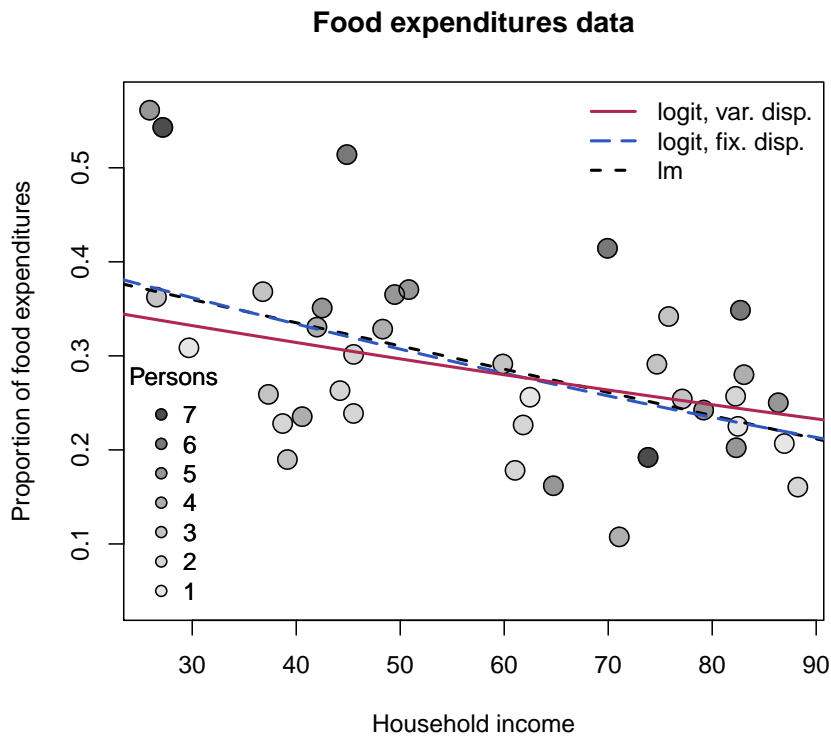


Figure 4: Household food expenditure data from [Griffiths \*et al.\* \(1993\)](#): Proportion of household income spent on food explained by household income and number of persons in household (indicated by gray level). Fitted curves correspond to beta regressions `fe_beta` with fixed dispersion (long-dashed, blue), `fe_beta2` with variable dispersion (solid, red), and the linear regression `fe_lin` (dashed, black). All curves were evaluated at varying income with the intercept for mean number of persons (= 3.58).

Call:

```
betareg(formula = I(food/income) ~ income + persons, data = FoodExpenditure)
```

Standardized weighted residuals 2:

	Min	1Q	Median	3Q	Max
	-2.7818	-0.4445	0.2024	0.6852	1.8755

Coefficients (mean model with logit link):

	Estimate	Std. Error	z value	Pr(> z )	
(Intercept)	-0.622547	0.223853	-2.781	0.005418	**
income	-0.012299	0.003036	-4.052	5.09e-05	***
persons	0.118462	0.035341	3.352	0.000802	***

Phi coefficients (precision model with identity link):

	Estimate	Std. Error	z value	Pr(> z )	
(phi)	35.61	8.08	4.407	1.05e-05	***

---

Signif. codes: 0 '\*\*\*' 0.001 '\*\*' 0.01 '\*' 0.05 '.' 0.1 ' ' 1

Log-likelihood: 45.33 on 4 Df

Pseudo R-squared: 0.3878

Number of iterations in BFGS optimization: 28

This replicates Table 2 from [Ferrari and Cribari-Neto \(2004\)](#). The predicted means of the linear and the beta regression model, respectively, are very similar: the proportion of household income spent on food decreases with the overall income level but increases in the number of persons in the household (see also [Figure 4](#)).

Below, further extended models will be considered for these data sets and hence all model comparisons are deferred.

## 4.2. Variable dispersion model

### *Prater's gasoline yield data*

Although the beta model already incorporates naturally a certain pattern in the variances of the response (see [Equation 1](#)), it might be necessary to incorporate further regressors to account for heteroskedasticity as in [Equation 4](#) ([Simas et al. 2010](#)). For illustration of this approach, the example from [Section 3](#) of the online supplements to [Simas et al. \(2010\)](#) is considered. This investigates Prater's gasoline yield data based on the same mean equation as above, but now with temperature `temp` as an additional regressor for the precision parameter  $\phi_i$ :

```
R> gy_logit2 <- betareg(yield ~ batch + temp | temp, data = GasolineYield)
```

for which `summary(gy_logit2)` yields the MLE column in [Table 19](#) of [Simas et al. \(2010\)](#). To save space, only the parameters pertaining to  $\phi_i$  are reported here

	Estimate	Std. Error	z value	Pr(> z )
(Intercept)	1.3641103	1.2257813	1.1128	0.2658
temp	0.0145703	0.0036183	4.0268	5.653e-05 ***

---

Signif. codes: 0 '\*\*\*' 0.001 '\*\*' 0.01 '\*' 0.05 '.' 0.1 ' ' 1

which signal a significant improvement by including the `temp` regressor. Instead of using this Wald test, the models can also be compared by means of a likelihood-ratio test (see their [Table 18](#)) that confirms the results:

```
R> lrtest(gy_logit, gy_logit2)
```

Likelihood ratio test

Model 1: yield ~ batch + temp

Model 2: yield ~ batch + temp | temp

```

#Df LogLik Df Chisq Pr(>Chisq)
1  12 84.798
2  13 86.977  1 4.359    0.03681 *
---
Signif. codes:  0 '***' 0.001 '**' 0.01 '*' 0.05 '.' 0.1 ' ' 1

```

Note that this can also be interpreted as testing the null hypothesis of equidispersion against a specific alternative of variable dispersion.

### *Household food expenditures*

For the household food expenditure data, the Breusch-Pagan test carried out above illustrated that there is heteroskedasticity that can be captured by the regressors `income` and `persons`. Closer investigation reveals that this is mostly due to the number of persons in the household, also brought out graphically by some of the outliers with high values in this variable in Figure 4. Hence, it seems natural to consider the model employed above with `persons` as an additional regressor in the precision equation.

```

R> fe_beta2 <- betareg(I(food/income) ~ income + persons | persons,
+   data = FoodExpenditure)

```

This leads to significant improvements in terms of the likelihood and the associated BIC.<sup>2</sup>

```

R> lrtest(fe_beta, fe_beta2)

```

Likelihood ratio test

```

Model 1: I(food/income) ~ income + persons
Model 2: I(food/income) ~ income + persons | persons
#Df LogLik Df Chisq Pr(>Chisq)
1   4 45.334
2   5 49.185  1 7.7029  0.005513 **
---
Signif. codes:  0 '***' 0.001 '**' 0.01 '*' 0.05 '.' 0.1 ' ' 1

```

```

R> AIC(fe_beta, fe_beta2, k = log(nrow(FoodExpenditure)))

```

	df	AIC
<code>fe_beta</code>	4	-76.11667
<code>fe_beta2</code>	5	-80.18198

Thus, there is evidence for variable dispersion and model `fe_beta2` seems to be preferable. As visualized in Figure 4, it describes a similar relationship between response and explanatory variables although with a somewhat shrunken `income` slope.

<sup>2</sup>In R, the BIC can be computed by means of `AIC()` when `log(n)` is supplied as the penalty term `k`

### 4.3. Selection of different link functions

#### *Prater's gasoline yield data*

As in binomial GLMs, selection of an appropriate link function can greatly improve the model fit (McCullagh and Nelder 1989), especially if extreme proportions (close to 0 or 1) have been observed in the data. To illustrate this problem in beta regressions, we replicate parts of the analysis in Section 5 of Cribari-Neto and Lima (2007). This reconsiders Prater's gasoline yield data but employs a log-log link instead of the previously used (default) logit link

```
R> gy_loglog <- betareg(yield ~ batch + temp, data = GasolineYield,
+   link = "loglog")
```

which clearly improves the pseudo  $R^2$  of the model:

```
R> summary(gy_logit)$pseudo.r.squared
```

```
[1] 0.9617312
```

```
R> summary(gy_loglog)$pseudo.r.squared
```

```
[1] 0.9852334
```

Similarly, the AIC<sup>3</sup> (and BIC) of the fitted model is not only superior to the logit model with fixed dispersion `gy_logit` but also to the logit model with variable dispersion `gy_logit2` considered in the previous section.

```
R> AIC(gy_logit, gy_logit2, gy_loglog)
```

	df	AIC
<code>gy_logit</code>	12	-145.5951
<code>gy_logit2</code>	13	-147.9541
<code>gy_loglog</code>	12	-168.3101

Moreover, if `temp` were included as a regressor in the precision equation of `gy_loglog`, it would no longer yield significant improvements. Thus, improvement of the model fit in the mean equation by adoption of the log-log link has waived the need for a variable precision equation.

To underline the appropriateness of the log-log specification, Cribari-Neto and Lima (2007) consider a sequence of diagnostic tests inspired by the RESET (regression specification error test; Ramsey 1969) in linear regression models. To check for misspecifications, they consider powers of fitted means or linear predictors to be included as auxiliary regressors in the mean equation. In well-specified models, these should not yield significant improvements. For the gasoline yield model, this can only be obtained for the log-log link while all other link functions result in significant results indicating misspecification. Below, this is exemplified for a likelihood-ratio test of squared linear predictors. Analogous results can be obtained for `type = "response"` or higher powers.

<sup>3</sup>Note that Cribari-Neto and Lima (2007) did not account for estimation of  $\phi$  in their degrees of freedom. Hence, their reported AICs differ by 2.



```
R> lrtest(gy_logit, . ~ . + I(predict(gy_logit, type = "link")^2))
```

Likelihood ratio test

Model 1: yield ~ batch + temp

Model 2: yield ~ batch + temp + I(predict(gy\_logit, type = "link")^2)

	#Df	LogLik	Df	Chisq	Pr(>Chisq)
1	12	84.798			
2	13	96.001	1	22.407	2.205e-06 ***

---

Signif. codes: 0 '\*\*\*' 0.001 '\*\*' 0.01 '\*' 0.05 '.' 0.1 ' ' 1

```
R> lrtest(gy_loglog, . ~ . + I(predict(gy_loglog, type = "link")^2))
```

Likelihood ratio test

Model 1: yield ~ batch + temp

Model 2: yield ~ batch + temp + I(predict(gy\_loglog, type = "link")^2)

	#Df	LogLik	Df	Chisq	Pr(>Chisq)
1	12	96.155			
2	13	96.989	1	1.6671	0.1966

The improvement of the model fit can also be brought out graphically by comparing absolute raw residuals (i.e.,  $y_i - \hat{\mu}_i$ ) from both models as in Figure 5.

```
R> plot(abs(residuals(gy_loglog, type = "response")),
+       abs(residuals(gy_logit, type = "response")))
R> abline(0, 1, lty = 2)
```

This shows that there are a few observations clearly above the diagonal (where the log-log-link fits better than the logit link) whereas there are fewer such observations below the diagonal. A different diagnostic display that is useful in this situation (and is employed by [Cribari-Neto and Lima 2007](#)) is a plot of predicted values ( $\hat{\mu}_i$ ) vs. observed values ( $y_i$ ) for each model. This can be created by `plot(gy_logit, which = 6)` and `plot(gy_loglog, which = 6)`, respectively.

In principle, the link function  $g_2$  in the precision equation could also influence the model fit. However, as the best-fitting model `gy_loglog` has a constant  $\phi$ , all links  $g_2$  lead to equivalent estimates of  $\phi$  and thus to equivalent fitted log-likelihoods. However, the link function can have consequences in terms of the inference about  $\phi$  and in terms of convergence of the optimization. Typically, a log-link leads to somewhat improved quadratic approximations of the likelihood and less iterations in the optimization. For example, refitting `gy_loglog` with  $g_2(\cdot) = \log(\cdot)$  converges more quickly:

```
R> gy_loglog2 <- update(gy_loglog, link.phi = "log")
R> summary(gy_loglog2)$iterations
```

[1] 21

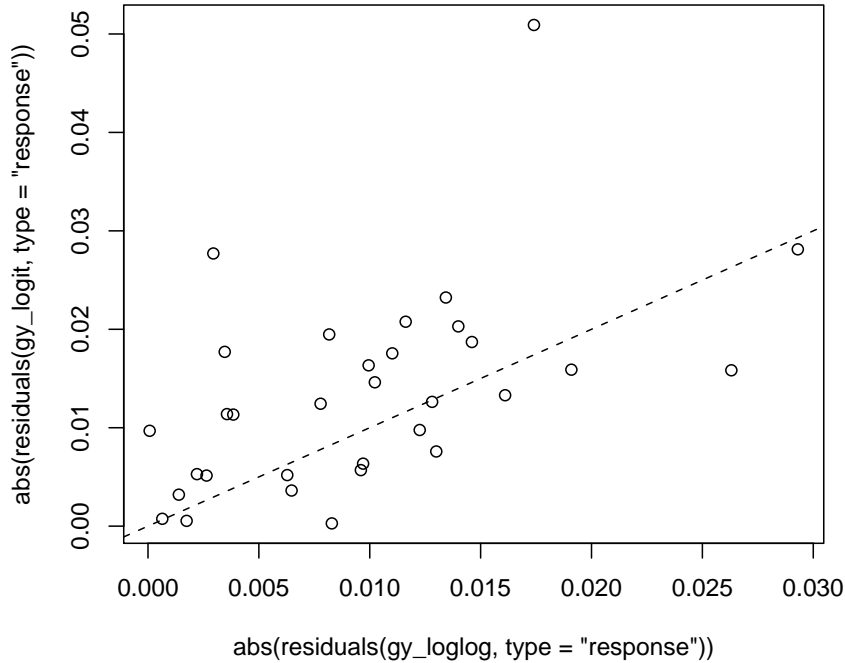


Figure 5: Scatterplot comparing the absolute raw residuals from beta regression modes with log-log link (x-axis) and logit link (y-axis).

with a lower number of iterations than for `gy_loglog` which had 51 iterations.

### *Household food expenditures*

One could conduct a similar analysis as above for the household food expenditure data. However, as the response takes less extreme observations than for the gasoline yield data, the choice of link function is less important. In fact, refitting the model with various link functions shows no large differences in the resulting log-likelihoods. These can be easily extracted from fitted models using the `logLik()` function, e.g., `logLik(fe_beta2)`. Below we use a compact `sapply()` call to obtain this for updated versions of `fe_beta2` with all available link functions.

```
R> sapply(c("logit", "probit", "cloglog", "cauchit", "loglog"),
+        function(x) logLik(update(fe_beta2, link = x)))
```

```
   logit  probit  cloglog  cauchit  loglog
49.18495 49.08044 49.35888 50.01105 48.86718
```

Only the Cauchy link performs somewhat better than the logit link and might hence deserve further investigation.

## 5. Further replication exercises

In this section, further empirical illustrations of beta regressions are provided. While the emphasis in the previous section was to present how the various features of `betareg` can be used in practice, we focus more narrowly on replication of previously published research articles below.

### 5.1. Dyslexia and IQ predicting reading accuracy

We consider an application that analyzes reading accuracy data for nondyslexic and dyslexic Australian children (Smithson and Verkuilen 2006). The variable of interest is `accuracy` providing the scores on a test of reading accuracy taken by 44 children, which is predicted by the two regressors `dyslexia` (a factor with sum contrasts separating a dyslexic and a control group) and nonverbal intelligent quotient (`iq`, converted to  $z$  scores), see Figure 6 for a visualization. The sample includes 19 dyslexics and 25 controls who were recruited from primary schools in the Australian Capital Territory. The children's ages ranged from eight years five months to twelve years three months; mean reading accuracy was 0.606 for dyslexic readers and 0.900 for controls.

Smithson and Verkuilen (2006) set out to investigate whether `dyslexia` contributes to the explanation of `accuracy` even when corrected for `iq` score (which is on average lower for dyslexics). Hence, they consider separate regressions for the two groups fitted by the interaction of both regressors. To show that OLS regression is no suitable tool in this situation, they first fit a linear regression of the logit-transformed response:

```
R> data("ReadingSkills", package = "betareg")
R> rs_ols <- lm(qlogis(accuracy) ~ dyslexia * iq, data = ReadingSkills)
R> coeftest(rs_ols)
```

t test of coefficients:

	Estimate	Std. Error	t value	Pr(> t )	
(Intercept)	1.60107	0.22586	7.0888	1.411e-08	***
dyslexia	-1.20563	0.22586	-5.3380	4.011e-06	***
iq	0.35945	0.22548	1.5941	0.11878	
dyslexia:iq	-0.42286	0.22548	-1.8754	0.06805	.

---

Signif. codes: 0 '\*\*\*' 0.001 '\*\*' 0.01 '\*' 0.05 '.' 0.1 ' ' 1

The interaction effect does not appear to be significant, however this is a result of the poor fit of the linear regression as will be shown below. Figure 6 clearly shows that the data are asymmetric and heteroskedastic (especially in the control group). Hence, Smithson and Verkuilen (2006) fit a beta regression model, again with separate means for both groups, but they also allow the dispersion to depend on the main effects of both variables.

```
R> rs_beta <- betareg(accuracy ~ dyslexia * iq | dyslexia + iq,
+ data = ReadingSkills, hessian = TRUE)
R> coeftest(rs_beta)
```

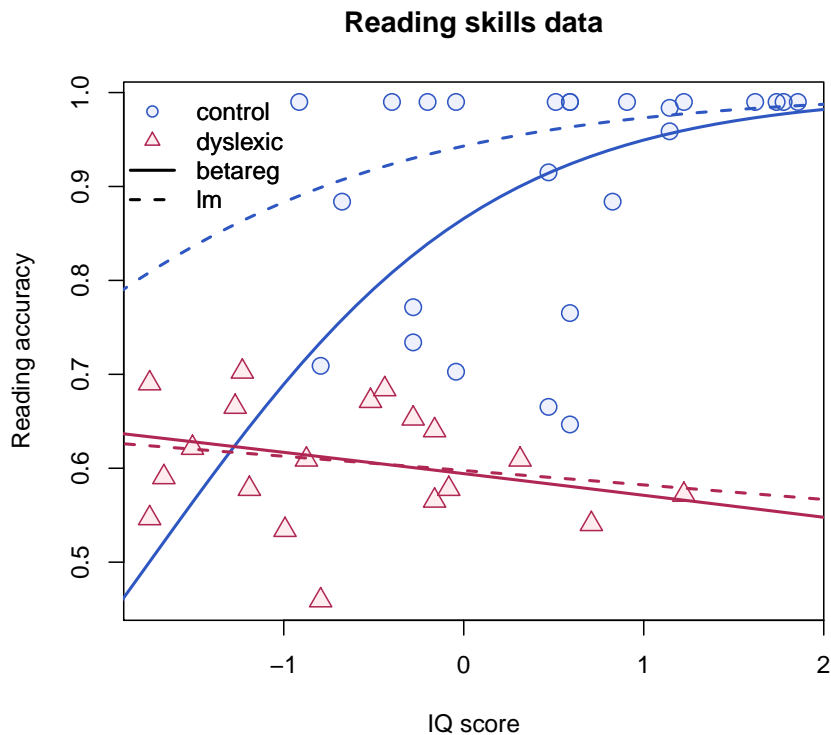


Figure 6: Reading skills data from [Smithson and Verkuilen \(2006\)](#): Linearly transformed reading accuracy by IQ score and dyslexia status (control, blue vs. dyslexic, red). Fitted curves correspond to beta regression `rs_beta` (solid) and OLS regression with logit-transformed dependent variable `rs_ols` (dashed).

z test of coefficients:

	Estimate	Std. Error	z value	Pr(> z )	
(Intercept)	1.12323	0.15089	7.4441	9.758e-14	***
dyslexia	-0.74165	0.15145	-4.8969	9.736e-07	***
iq	0.48637	0.16708	2.9109	0.0036034	**
dyslexia:iq	-0.58126	0.17258	-3.3681	0.0007568	***
(phi)_(Intercept)	3.30443	0.22650	14.5890	< 2.2e-16	***
(phi)_dyslexia	1.74656	0.29398	5.9410	2.832e-09	***
(phi)_iq	1.22907	0.45957	2.6744	0.0074862	**

---

Signif. codes: 0 '\*\*\*' 0.001 '\*\*' 0.01 '\*' 0.05 '.' 0.1 ' ' 1

This shows that precision increases with `iq` and is lower for controls while in the mean equation there is a significant interaction between `iq` and `dyslexia`. As [Figure 6](#) illustrates, the beta regression fit does not differ much from the OLS fit for the dyslexics group (with responses close to 0.5) but fits much better in the control group (with responses close to 1).

The estimates above replicate those in [Table 5](#) of [Smithson and Verkuilen \(2006\)](#), except for

the signs of the coefficients of the dispersion submodel which they defined in the opposite way. Note that their results have been obtained with numeric rather than analytic standard errors hence `hessian = TRUE` is set above for replication. The results are also confirmed by [Espinheira, Ferrari, and Cribari-Neto \(2008a\)](#), who have also concluded that the dispersion is variable. As pointed out in Section 4.2, to formally test equidispersion against variable dispersion `lrtest(rs_beta, . ~ . | 1)` (or the analogous `waldtest()`) can be used.

[Smithson and Verkuilen \(2006\)](#) also consider two other psychometric applications of beta regressions the data for which are also provided in the `betareg` package: see `?MockJurors` and `?StressAnxiety`. Furthermore, `demo("SmithsonVerkuilen2006", package = "betareg")` is a complete replication script with comments.

## 5.2. Structural change testing in beta regressions

As already illustrated in Section 4, “`betareg`” objects can be plugged into various inference functions from other packages because they provide suitable methods to standard generic functions (see Table 1). Hence `lrtest()` could be used for performing likelihood-ratio testing inference and similarly `coefstest()`, `waldtest()` from `lmtest` ([Zeileis and Hothorn 2002](#)) and `linear.hypothesis()` from `car` ([Fox 2002](#)) can be employed for carrying out different flavors of Wald tests.

In this section, we illustrate yet another generic inference approach implemented in the `strucchange` package for structural change testing. This is concerned with a different testing problem compared to the functions above: It assesses whether the model parameters are stable throughout the entire sample or whether they change over the observations  $i = 1, \dots, n$ . This is of particular interest in time series applications where the regression coefficients  $\beta$  and  $\gamma$  change at some unknown time in the sample period (see [Zeileis 2006a](#), for more details and references to the literature).

While originally written for linear regression models ([Zeileis, Leisch, Hornik, and Kleiber 2002](#)), `strucchange` was extended by [Zeileis \(2006a\)](#) to compute generalized fluctuation tests for structural change in models that are based on suitable estimating functions. The idea is to capture systematic deviations from parameter stability by cumulative sums of the empirical estimating functions: If the parameters are stable, the cumulative sum process should fluctuate randomly around zero. However, if there is an abrupt shift in the parameters, the cumulative sums will deviate clearly from zero and have a peak at around the time of the shift. If the estimating functions can be extracted by an `estfun()` method (as for “`betareg`” objects), models can simply be plugged into the `gefp()` function for computing these cumulative sums (also known as generalized empirical fluctuation processes). To illustrate this, we replicate the example from Section 5.3 in [Zeileis \(2006a\)](#).

Two artificial data sets are considered: a series `y1` with a change in the mean  $\mu$ , and a series `y2` with a change in the precision  $\phi$ . Both simulated series start with the parameters  $\mu = 0.3$  and  $\phi = 4$  and for the first series  $\mu$  changes to 0.5 after 75% of the observations while  $\phi$  remains constant whereas for the second series  $\phi$  changes to 8 after 50% of the observations and  $\mu$  remains constant.

```
R> set.seed(123)
R> y1 <- c(rbeta(150, 0.3 * 4, 0.7 * 4), rbeta(50, 0.5 * 4, 0.5 * 4))
R> y2 <- c(rbeta(100, 0.3 * 4, 0.7 * 4), rbeta(100, 0.3 * 8, 0.7 * 8))
```

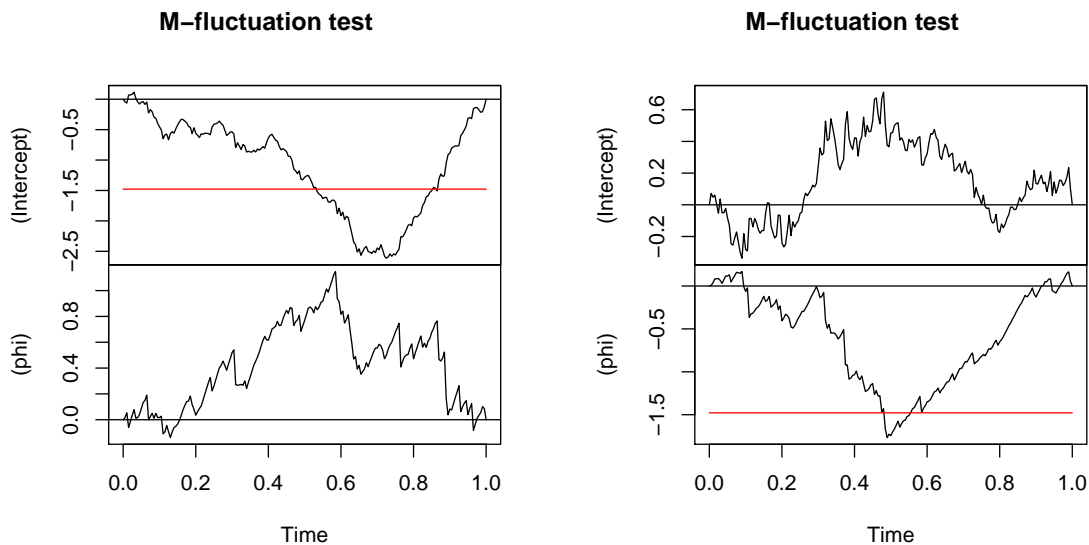


Figure 7: Structural change tests for artificial data  $y_1$  with change in  $\mu$  (left) and  $y_2$  with change in  $\phi$  (right).

To capture instabilities in the parameters over “time” (i.e., the ordering of the observations), the generalized empirical fluctuation processes can be derived via

```
R> library("strucchange")
R> y1_gefp <- gefp(y1 ~ 1, fit = betareg)
R> y2_gefp <- gefp(y2 ~ 1, fit = betareg)
```

and visualized by

```
R> plot(y1_gefp, aggregate = FALSE)
R> plot(y2_gefp, aggregate = FALSE)
```

The resulting Figure 7 (replicating Figure 4 from Zeileis 2006a) shows two 2-dimensional fluctuation processes: one for  $y_1$  (left) and one for  $y_2$  (right). Both fluctuation processes behave as expected: There is no excessive fluctuation of the process pertaining to the parameter that remained constant while there is a clear peak at about the time of the change in the parameter with the shift. In both series the structural change is significant due to the crossing of the red boundary that corresponds to the 5% critical value. For further details see Zeileis (2006a).

## 6. Summary

This paper addressed the R implementation of the class of beta regression models available in the **betareg** package. We have presented the fixed and variable dispersion beta regression models, described how one can model rates and proportions using **betareg** and presented

several empirical examples reproducing previously published results. Future research and implementation shall focus on the situation where the data contain zeros and/or ones (see e.g., Kieschnick and McCullough 2003; Stasinopoulos and Rigby 2007). An additional line of research and implementation is that of dynamic beta regression models, such as the class of  $\beta$ ARMA models proposed by Rocha and Cribari-Neto (2009).

## Acknowledgments

FCN gratefully acknowledges financial support from CNPq/Brazil. Both authors are grateful to A.B. Simas and A.V. Rocha for their work on the previous versions of the **betareg** package (up to version 1.2). Furthermore, detailed and constructive feedback from two anonymous reviewers, the associated editor, as well as from B. Grün was very helpful for enhancing both software and manuscript.

## References

- Breusch TS, Pagan AR (1979). “A Simple Test for Heteroscedasticity and Random Coefficient Variation.” *Econometrica*, **47**, 1287–1294.
- Chambers JM, Hastie TJ (eds.) (1992). *Statistical Models in S*. Chapman & Hall, London.
- Cribari-Neto F, Lima LB (2007). “A Misspecification Test for Beta Regressions.” *Technical report*.
- Espinheira PL, Ferrari SLP, Cribari-Neto F (2008a). “Influence Diagnostics in Beta Regression.” *Computational Statistics & Data Analysis*, **52**(9), 4417–4431.
- Espinheira PL, Ferrari SLP, Cribari-Neto F (2008b). “On Beta Regression Residuals.” *Journal of Applied Statistics*, **35**(4), 407–419.
- Ferrari SLP, Cribari-Neto F (2004). “Beta Regression for Modelling Rates and Proportions.” *Journal of Applied Statistics*, **31**(7), 799–815.
- Fox J (2002). *An R and S-PLUS Companion to Applied Regression*. Sage Publications, Thousand Oaks, CA.
- Griffiths WE, Hill RC, Judge GG (1993). *Learning and Practicing Econometrics*. John Wiley & Sons, New York.
- Kieschnick R, McCullough BD (2003). “Regression Analysis of Variates Observed on (0, 1): Percentages, Proportions and Fractions.” *Statistical Modelling*, **3**(3), 193–213.
- Koenker R (1981). “A Note on Studentizing a Test for Heteroscedasticity.” *Journal of Econometrics*, **17**, 107–112.
- McCullagh P, Nelder JA (1989). *Generalized Linear Models*. 2nd edition. Chapman & Hall, London.



- Mittelhammer RC, Judge GG, Miller DJ (2000). *Econometric Foundations*. Cambridge University Press, New York.
- Nocedal J, Wright SJ (1999). *Numerical Optimization*. Springer-Verlag, New York.
- Ospina R, Cribari-Neto F, Vasconcellos KLP (2006). “Improved Point and Interval Estimation for a Beta Regression Model.” *Computational Statistics & Data Analysis*, **51**(2), 960–981.
- Prater NH (1956). “Estimate Gasoline Yields from Crudes.” *Petroleum Refiner*, **35**(5), 236–238.
- Prentice RL (1986). “Binary Regression Using an Extended Beta-Binomial Distribution, With Discussion of Correlation Induced by Covariate Measurement.” *Journal of the American Statistical Association*, **81**(394), 321–327.
- Ramsey JB (1969). “Tests for Specification Error in Classical Linear Least Squares Regression Analysis.” *Journal of the Royal Statistical Society B*, **31**, 350–371.
- R Development Core Team (2009). *R: A Language and Environment for Statistical Computing*. R Foundation for Statistical Computing, Vienna, Austria. ISBN 3-900051-07-0, URL <http://www.R-project.org/>.
- Rocha AV, Cribari-Neto F (2009). “Beta Autoregressive Moving Average Models.” *Test*, **18**, 529–545.
- Rocha AV, Simas AB (2010). “Influence Diagnostics in a General Class of Beta Regression Models.” *Test*. doi:10.1007/s11749-010-0189-z. Forthcoming.
- Simas AB, Barreto-Souza W, Rocha AV (2010). “Improved Estimators for a General Class of Beta Regression Models.” *Computational Statistics & Data Analysis*, **54**(2), 348–366.
- Simas AB, Rocha AV (2006). *betareg: Beta Regression*. R package version 1.2, URL <http://CRAN.R-project.org/src/contrib/Archive/betareg/>.
- Smithson M, Verkuilen J (2006). “A Better Lemon Squeezer? Maximum-Likelihood Regression with Beta-Distributed Dependent Variables.” *Psychological Methods*, **11**(1), 54–71.
- Stasinopoulos DM, Rigby RA (2007). “Generalized Additive Models for Location Scale and Shape (GAMLSS) in R.” *Journal of Statistical Software*, **23**(7), 1–46. URL <http://www.jstatsoft.org/v23/i07/>.
- Vasconcellos KLP, Cribari-Neto F (2005). “Improved Maximum Likelihood Estimation in a New Class of Beta Regression Models.” *Brazilian Journal of Probability and Statistics*, **19**(1), 13–31.
- Wei BC, Hu YQ, Fung WK (1998). “Generalized Leverage and Its Applications.” *Scandinavian Journal of Statistics*, **25**(1), 25–37.
- Williams DA (1982). “Extra Binomial Variation in Logistic Linear Models.” *Applied Statistics*, **31**(2), 144–148.
- Zeileis A (2004). “Econometric Computing with HC and HAC Covariance Matrix Estimators.” *Journal of Statistical Software*, **11**(10), 1–17. URL <http://www.jstatsoft.org/v11/i10/>.

- Zeileis A (2006a). “Implementing a Class of Structural Change Tests: An Econometric Computing Approach.” *Computational Statistics & Data Analysis*, **50**(11), 2987–3008.
- Zeileis A (2006b). “Object-Oriented Computation of Sandwich Estimators.” *Journal of Statistical Software*, **16**(9), 1–16. URL <http://www.jstatsoft.org/v16/i09/>.
- Zeileis A, Croissant Y (2010). “Extended Model Formulas in R: Multiple Parts and Multiple Responses.” *Journal of Statistical Software*, **34**(1), 1–13. URL <http://www.jstatsoft.org/v34/i01/>.
- Zeileis A, Hothorn T (2002). “Diagnostic Checking in Regression Relationships.” *R News*, **2**(3), 7–10. URL <http://CRAN.R-project.org/doc/Rnews/>.
- Zeileis A, Kleiber C, Jackman S (2008). “Regression Models for Count Data in R.” *Journal of Statistical Software*, **27**(8), 1–25. URL <http://www.jstatsoft.org/v27/i08/>.
- Zeileis A, Leisch F, Hornik K, Kleiber C (2002). “**strucchange**: An R Package for Testing for Structural Change in Linear Regression Models.” *Journal of Statistical Software*, **7**(2), 1–38. URL <http://www.jstatsoft.org/v07/i02/>.

**Affiliation:**

Francisco Cribari-Neto  
Departamento de Estatística, CCEN  
Universidade Federal de Pernambuco  
Cidade Universitária  
Recife/PE 50740-540, Brazil  
E-mail: [cribari@ufpe.br](mailto:cribari@ufpe.br)  
URL: <http://www.de.ufpe.br/~cribari/>

Achim Zeileis  
Department of Statistics  
Universität Innsbruck  
Universitätsstr. 15  
6020 Innsbruck, Austria  
E-mail: [Achim.Zeileis@R-project.org](mailto:Achim.Zeileis@R-project.org)  
URL: <http://statmath.wu.ac.at/~zeileis/>