



Working Paper No. 2009-08

Water Allocation Under Distribution Losses: Comparing Alternative Institutions

U. Chakravorty
University of Alberta

E. Hochman
Hebrew University of Jerusalem

C. Umetsu
Research Institute for Humanity and Nature, Kyoto

D. Zilberman
University of California at Berkeley

February, 2009

Copyright to papers in this working paper series rests with the authors and their assignees. Papers may be downloaded for personal use. Downloading of papers for any other activity may not be done without the written consent of the authors.

Short excerpts of these working papers may be quoted without explicit permission provided that full credit is given to the source.

The Department of Economics, The Institute for Public Economics, and the University of Alberta accept no responsibility for the accuracy or point of view represented in this work in progress.

WATER ALLOCATION UNDER DISTRIBUTION LOSSES:
COMPARING ALTERNATIVE INSTITUTIONS

by

Ujjayant Chakravorty, Eithan Hochman, Chieko Umetsu and David Zilberman¹

Abstract

The distribution of water resources is characterized by increasing returns to scale. Distribution systems link water generation to its end-use. Standard economic analysis overlooks the interaction among these micro-markets – generation, distribution and end-use. We compare water allocation when there is market power in each micro-market. These outcomes are compared with benchmark cases - social planning and a competitive business-as-usual regime. Simulations suggest that institutions with market power in generation and end-use generate significantly higher welfare than the distribution monopoly and the competitive regime. However, if the policy goal is to maximize the size of the grid, a distribution monopoly is preferred.

Keywords: Infrastructure, Market Power, Spatial Models, Vertical Integration, Water Markets
JEL Codes: H41, Q25, Q28

¹ Respectively, Department of Economics, University of Central Florida, Orlando; Department of Agricultural Economics, Hebrew University of Jerusalem, Rehovot, Israel; Research Institute for Humanity and Nature, Kyoto, Japan; Department of Agricultural and Resource Economics, University of California at Berkeley. Corresponding author: Chakravorty, email: uchakravorty@bus.ucf.edu, phone: 407 823 4728, fax: 407 823 3269.

1. Introduction

Water management has been called the most significant challenge of the 21st century. Most water is publicly provided by vertically integrated state utilities because the distribution of water is characterized by increasing returns to scale. Various studies have shown that public ownership and management of water have led to serious inefficiencies including “weak incentives to reduce costs, implement marginal cost pricing or maintain water systems” [Cowan and Cowan (1998)].²

Water reform has often meant the creation of water markets at the downstream end where water users may buy and sell water as well as the management of generation and distribution facilities. However, market behavior downstream is closely linked to the upstream generation and distribution of water. Market power may occur at the supply, distribution or end-use stage. The organizational structure in any given micro-market affects the performance of the system as a whole. The focus of this paper is the integrated analysis of the microstructure of such markets in which the overall effect of market power in any one segment of the market can be examined.

There is a significant body of literature that suggests the existence of market power in the generation, distribution, and end-use of water. Agricultural water districts in California buy water from the government and the Bureau of Reclamation and often wield monopsony power in the water market.³ Global water companies such as Vivendi of France operate in over 100 countries and are essentially distribution monopolies that supply water to users. Giant agribusiness firms as well as producer cooperatives in the U.S. which by law are exempt from anti-trust regulation, organize production and have market power in the output market.⁴ In this paper we develop a model that examines how market power in water generation, distribution, and end-use affects social welfare, equilibrium output and price, volume of service and grid size. We compare these stylized institutions to two polar cases: social planning and a competitive regime characterized by market failure in distribution. The main policy implication is that given

² They suggest that the record of governmental provision in the water sector is “extremely poor.” In developing countries, tariffs are routinely set below cost recovery levels, often less than half the water supplied is paid for by beneficiaries, and large segments of the population are not connected to the grid.

³ About 70% of global water use is in the farming sector [International Year of Freshwater (2003)].

⁴ The historical role of these organizations in developing water resources and civilization in the arid Western US has been vividly described by Reisner (1986).

increasing returns to scale in distribution, the introduction of water markets need not automatically lead to efficiency. The choice of a second-best institutional regime may depend upon the precise characteristics of the microstructure of the water market.

In our spatial framework, water is generated at a given location and sold to a utility that maintains the distribution network. This utility supplies water to firms located along the distribution system, which in turn use it to produce output. The analysis focuses on market power in generation, distribution, and in the final product market. We show that under competition in distribution and an end-use monopoly, less water is likely to be provided in the aggregate. Both regimes result in a higher end-use price, lower output, and a smaller-than-optimal service area. To produce the same aggregate output, the monopoly uses less water than the competitive regime.

Simulations with stylized data suggest that institutions with market power in generation and end-use generate significantly higher welfare than the distribution monopoly and business-as-usual regime. However, the distribution monopoly maximizes service area coverage. Using the same amount of water, it services twice the geographical area than an output cartel. If the policy objective is maximizing the service area and bringing more consumers into the grid, the distribution monopoly may be preferred even though it generates lower welfare. It may be the regime of choice in water scarce regions. The analysis suggests that proposals for intervention in water markets must be informed by the choice of an appropriate institutional delivery system. Which institution performs better depends upon the conditions in each of the micro-markets and their interlinkages through technology.⁵

Section 2 describes a vertically integrated water model with distribution. In section 3, we examine the specific institutional alternatives and compare their characteristics. Section 4 provides an illustration. Section 5 concludes the paper.

⁵ Not recognizing these technology linkages may result in unanticipated policy failures. Electricity privatization in California failed partly because of inadequate appreciation of the technological features of electricity transmission, which led to partial privatization and the consequent failure of privatized markets to induce investment in increasing transmission capacity [Wilson (2002)].

2. The Model

For ease of exposition, we develop the model for water distribution in farming, which is by far the largest user of water.⁶ The insights hold for other commodities and services distributed over space. The basic structure of the model is similar to that of Chakravorty, Hochman, and Zilberman (1995), here referred to as CHZ. We extend their framework by modeling market structure at the generation, distribution and end-use markets.⁷ Consider a simple one-period model in which water is generated at a point source, e.g., a dam or a diversion in a river or a groundwater source. Let $z(0)$ denote the amount of water generated at this location at cost $g(z(0))$, assumed to be an increasing, differentiable, convex function, $g'(z(0)) > 0$, $g''(z(0)) > 0$. If there are multiple sources, then the cheapest source is selected for each marginal unit generated. This water is sold to the canal authority which manages the distribution system.⁸ Generation and distribution may be operated independently or by one vertically integrated firm.

The canal company supplies water to identical users located at distance x over a continuum on either side of the canal, where x is measured from the source. Let r be the opportunity rent per unit area of land. Without loss of generality, let the constant width of land be unity. Each firm occupies a unit of land, so that the number of producers is proportional to the length of the canal. Let the price of water charged by the canal company at any location x be $p_w(x)$ and the quantity delivered be $q(x)$. The fraction of water lost in distribution per unit length of canal is $a(x)$. Let $z(x)$ be the residual water in the canal at location x . Then

$$z'(x) = -q(x) - a(x)z(x) \tag{1}$$

where the right-hand side sums the water delivered and lost in distribution at x . The residual flow

⁶ Distribution losses in farming are sometimes of the order of 50% of the water carried.

⁷ Their focus is on water use and technology choice by firms located spatially under alternative water-pricing mechanisms. We simplify their framework by abstracting from endogenous choice of conservation technology by firms, which complicates the analytics without yielding much new insight.

⁸ Water may be generated at a remote location and transported through barges or supertankers. Transport of water over large distances is common.

of water in the canal must decrease with x , $z'(x) \leq 0$. Let X be the canal length to be determined.

Then $z(0) = \int_0^x [q(x) + a(x)z(x)]dx$ so that $z(X) = 0$. The loss function $a(x)$ depends on $k(x)$,

defined as the annualized capital and operation and maintenance expenditure in distribution, which varies with location. Let the reduction in the distribution loss rate be given by $m(k(x))$.

Then

$$a(x) = a(0) - m(k(x)), \quad (2)$$

where $m(\cdot)$ is assumed to be increasing with decreasing returns to scale in k , i.e., $m'(k) > 0$,

$m''(k) < 0$.⁹ Firms located along the canal use water $q(x)$ to produce output $y = f(q)$ where $f(\cdot)$

is concave, i.e., $f'(q) > 0$, $f''(q) < 0$, and $\lim_{q \rightarrow 0} f'(q) = \infty$. The production technology is assumed to

exhibit constant returns to scale with respect to all other inputs. Let Y denote aggregate output

given by $Y = \int_0^x f(q(x))dx$.

Resource Allocation by an Integrated Water Utility

Let the social planner's total cost of producing a given output level Y be $C(Y)$, which can be expressed as the sum of the cost of water generation, distribution and land rent:

$$C(Y) = g(z(0)) + \int_0^x [k(x) + r]dx. \quad (3)$$

The planner minimizes the cost of producing a given output level Y by choosing $q(x)$, $k(x)$ and values for X and $z(0)$ as follows:

⁹ Let $m(0) = 0$ and $\lim_{k \rightarrow 0} m'(k) = \infty$, which suggests that marginal returns to distribution investments approach infinity as k goes to zero, and $a(x) = a(0)$ when $k = 0$. Then $0 \leq a(x) \leq a(0)$.

$$\underset{q(x),k(x),z(0),X}{\text{Minimize}} \quad g(z(0)) + \int_0^x [k(x) + r]dx \quad 4(a)$$

subject to

$$z'(x) = -q(x) - a(x)z(x) \quad 4(b)$$

$$Y'(x) = f(q), \text{ and} \quad 4(c)$$

$$z(0) \text{ free}, z(X) = 0, X \text{ free.} \quad 4(d)$$

The corresponding Lagrangian is

$$L = k + r + \lambda_w(q + az) - \lambda_y f(q) \quad (5)$$

where $\lambda_w(x)$ and $\lambda_y(x)$ are shadow prices of water and output associated with 4(b,c). The necessary conditions for an interior solution are

$$\lambda_y f'(q) - \lambda_w = 0 \quad (6)$$

$$\lambda_w z m'(k) - 1 = 0 \quad (7)$$

$$\lambda_w'(x) = \lambda_w(x) a(x) \quad (8)$$

$$\lambda_y'(x) = 0 \quad (9)$$

$$\lambda_y = C'(Y) \quad (10)$$

$$\lambda_w(0) = g'(z(0)), \text{ and} \quad (11)$$

$$L(X) = 0. \quad (12)$$

Let $C^*(Y)$ denote the solution to the above problem.¹¹ Define the consumers' inverse demand

¹⁰ At the boundary, $\lambda_w(X^-) - \lambda_y(X) = \beta$, where β is a constant.

¹¹ The assumptions on $f'(0)$ and $m'(0)$ suggest that $q(x) > 0$ and $k(x) > 0$ and thus (6) and (7) hold with equality. We avoid unnecessary complications by not attaching a multiplier to the state constraint $z(x) \geq 0$.

function for aggregate output Y as $D^{-1}(Y)$ with $D^{-1\prime}(Y) < 0$. The equilibrium aggregate output

Y^* and price p^* (see Fig. 1) solve $Max_Y \int_0^Y D^{-1}(\theta) d\theta - C^*(Y)$ which yields

$$D^{-1}(Y^*) - C^{*\prime}(Y^*) = 0. \quad (13)$$

i.e., price equal to marginal cost.¹² From the maximum principle, $\lambda_w(x)$ is continuous on $[0, X)$, and $q(x)$ and $k(x)$ are continuous except at $x = X$. We interpret $\lambda_w(x)$ as the shadow price of delivered water at location x and (8) says that it increases away from the source because of the cost of distribution. As established by CHZ, water use, output, and investment in distribution decrease away from the water source. An increase in the shadow price of water from head to tail causes a decrease in water use by firms. The marginal product of water ($\lambda_y f'(q(x)) = \lambda_w(x)$) increases with distance so output falls. The shadow price increases, but the volume of water carried by the distribution system decreases at a higher rate because of water withdrawals by firms and distribution losses. The net effect is a decrease in the "value" of the residual water flowing in the system, causing a decrease in distribution investment. At the boundary of the grid X , (12) gives $L(X) = k(X) + r + \lambda_w(X)[q(X) + az(X)] - \lambda_y f(q(X)) - \lambda_z(X)z(X) = 0$.

Substituting $z(X) = 0$ and $k(X) = 0$ and rearranging, yields

$$\lambda_y f(q(X)) - \lambda_w q(X) = r \quad (14)$$

which implies that net benefits from expanding service by one unit must equal the opportunity rent of land, r . A lower r would imply a greater service area measured by X .

Since $z(x)$ is decreasing, the state constraint is never tight except possibly at $x = X$. Since $g(z(0))$ is strictly convex, $-a(z)$ is convex in k for given z , and $\lambda_w(x)$ and $\lambda_y(x)$ are nonnegative, so the control problem satisfies the Mangasarian sufficiency theorem. Strict convexity implies uniqueness.

¹² For sufficiency we must have $D^{-1\prime}(Y^*) - C^{*\prime\prime}(Y^*) < 0$. Since $f'(0)$ is large for small q , $D^{-1}(0) > g'(0)$ ensures that a positive aggregate output will be produced.

3. Alternative Regimes for Water Management

We now discuss the systemwide effects of alternative institutional mechanisms for the generation, distribution and end-use of water. If government intervention is prohibitively costly or infeasible (e.g., when the government is weak), then this socially optimal allocation may not be achieved. The alternative institutions we consider may emerge through reform or because of some evolutionary process that we take as given. A polar extreme may entail total decentralization in which a utility may supply water but the distribution of water is delegated to individual firms at each location. Because of increasing returns to scale each firm will compete and attempt to free-ride by underinvesting in distribution. We compare the social planner and the competitive solution above with three regimes with market power in either water generation, distribution or end-use. These are: a water-users association, which has market power in water generation and maintains the distribution system while charging each firm the true marginal cost of supplying water [Dosi and Easter (2003)]; a canal operator that owns the generation facility (or buys water competitively) but is a monopoly seller of water to individual firms; and finally, a vertically integrated utility that buys water competitively or owns the generation facility, supplies water at competitive prices to firms, and buys the output for sale in the product market, where it may have market power.¹³ These three cases highlight the effect of market power in the three micro-markets - water generation, distribution, and end-use - on welfare and resource allocation in the entire system.

Table 1 provides a taxonomy of the different institutional arrangements. For example, the model with competition in distribution (CID) may involve average or marginal cost pricing of water at each location. We consider different combinations of market microstructures (competition and monopoly) in the generation, distribution, and end-use markets. Below we discuss only a small subset of those shown in the table.

a. Competition in Distribution (CID)

¹³ In reality, these various forms of organization may have some degree of market power in both factor and output markets. An alternative formulation may involve an oligopolistic structure in the input and output markets, left for

This is the benchmark model that aims to capture the situation when there is no centralized distribution of water.¹⁴ Firms withdraw water from a rudimentary distribution system and make private investments in distribution taking investment by other firms as given. As we show below, this causes the usual free-rider problems since firms do not accrue all the benefits from their investment in distribution. Water losses in distribution will be higher than under social planning. For convenience, we assume that individual firms can engage in trading in water rights and thus pay spot shadow prices for water at each location.¹⁵ Equivalently the water agency charges firms the marginal cost of water at each location and uses the proceeds to maintain a basic distribution system. Both of these arrangements yield equivalent outcomes. Each firm is atomistic in the end-use market, which is modeled as a competitive industry.

Individual firms act competitively by buying water from the water utility at its marginal cost at source.¹⁶ Their investment in distribution $k(x)$ is chosen assuming other firms' investment as given. Let firm i be located at distance x . It receives its allocation of water $q_i(x)$. If the price of water at source charged to the firm is $\lambda(x)$ and the loss rate of water is $a(x)$, then the value of water at any location in the interval $l \in [0, x]$ is given by $a(l)z_i(l)\lambda(l)$ where $z_i(l)$ is the water carried at location l for delivery to firm i . Firm i invests $k_i(l)$ and takes aggregate investment by all other firms $k_{-i}(l)$ as given. Firm i solves

$$\text{Max}_{q(x), k_i(l)} pf(q(x)) - \lambda_w [q(x) + a(x)z(x)] - k_i(l) \quad (15)$$

where $a(l) = a(0) - m(k_i(l) + k_{-i}(l))$. The necessary condition for $q(x)$ yields

$$pf'(q(x)) = \lambda_w(x). \text{ Investment at each location } l \text{ is given by } m'(k_i(l) + k_{-i}(l))z_i(l)\lambda(l) = I.$$

future work.

¹⁴ Wade (1987) provides evidence on the gradual breakdown of a canal system in South India because of corruption and rent-seeking. Poor maintenance of canals induces losses from leakage as well as theft. Often the upstream beneficiaries steal water from the canals, depriving downstream users of their entitlements. Ray and Williams (2002) discuss the incentives for water theft and cooperation along a canal.

¹⁵ An alternative model with uniform pricing over space, e.g., a water charge in the form of a land or output tax, has been examined by CHZ. Our assumption of marginal cost pricing is conservative, since uniform pricing is less efficient and will lead to greater inefficiencies.

Firm i chooses k_i to satisfy the above condition. Adding over all i , the condition for investment in distribution at any location $x \in [0, X]$ is $m'(\sum k_i(x))z(x)\lambda(x) = 1$. Compare this condition to socially optimal investment in distribution given by (7), rewritten as $\lambda_w^* z^* m'(k) = 1$, where ‘*’ represents the values of variables in the optimal model. CHZ show that $\lambda_w^* > \lambda_w$, and $z^*(0) > z(0)$, i.e., the shadow price of water at source as well as aggregate water stock is higher in the optimal model. Then at locations close to the source, we have $m'(\sum k_i(x)) > m'(k)$ so that $\sum k_i(x) < k(x)$ since $m''(k) < 0$. Since $z(x)$ declines faster than $z^*(x)$, λ_w increases faster than $\lambda_w^*(x)$ by (8), and there is sub-optimal investment in water distribution in the CID model.

Let the cost function for aggregate output be $C^d(Y)$. Equilibrium aggregate output Y^d and

price p^d are then obtained as $\text{Max}_Y \int_0^Y D^{-1}(\theta) d\theta - C^d(Y)$ which as in (13) yields

$D^{-1}(Y^d) - C^{d'}(Y^d) = 0$ and $D^{-1'}(Y^d) - C^{d''}(Y^d) < 0$. For the CID case, output price equals the constrained marginal cost of producing output with sub-optimal distribution.

b. The Water Users Association (WUA) – an Input Monopsony

The Water Users Association is a mirror image of the monopolist in that its market power lies in the market for water generation and it is a price-taker in the output market. This represents a setting in which the number of buyers of water is small. We compare the Water Users Association with the output cartel and show how market power in the input and output markets may differentially affect resource allocation. An example of such an “input cooperative” are California water districts which acquire and store water and allocate it to users. “These quasi-governmental entities can appropriate water, construct reservoirs and distribution systems, and enter into contracts with federal or state local suppliers” [Congressional Budget Office (1997)]. The biggest serves more than half a million acres. They contract to buy surface water supplies from either the state or the Bureau of Reclamation. “Water is allocated in large blocks controlled

¹⁶ Each firm buys water at cost at the source and chooses investment in distribution.

by strong local districts. They influence the terms under which virtually all of the water in California's Central Valley is used" [National Research Council (1992)]. In other states, the most common type of water supply organization is a mutual water (or ditch) company. "Mutuals" are non-profit cooperative organizations that generally sell stocks or shares to members. These organizations determine retail water prices. They recover their costs by charging prices that may or may not be independent of the quantity used. More importantly, retail prices may be much higher than what the districts pay to suppliers such as the Bureau of Reclamation [Congressional Budget Office (1997)].

The water-users association is a monopsonist that buys $z(0)$ units of water to maximize total net

benefits given by $\int_0^{z(0)} D^w(\tau) d\tau - C'(z(0))z(0)$ where $D^w(z(0))$ is the derived demand for

aggregate water for the association. The necessary condition is:

$$D^w(z^w(0)) = C''(z^w(0))z^w(0) + C'(z^w(0)) \equiv MFC(z^w(0)) \quad (16)$$

where $MFC(z(0))$ is the marginal factor cost of $z(0)$ and $z^w(0)$ is the solution to the above problem (see Fig. 2). The WUA allocates this aggregate level of service $z^w(0)$ efficiently in production. Given the imperfect input market, the cost of producing aggregate output may be higher than for the social planner. The WUA is competitive in the output market so that price equals marginal cost of output.

c. The Canal Operator – a Distribution Monopoly (DM)

The canal operator owns the canal, buys water from the generator and sells it as a monopolist to individual firms along the canal.¹⁷ The operator manages the distribution system. Firm output is sold competitively. There is substantial evidence to suggest that past privatization efforts in

¹⁷ This model is similar to the Independent System Operator (ISO) with market power in electricity transmission [see Joskow and Tirole (2000)]. Bardhan and Mukherjee (2006) examine an infrastructure delivery model in which a local government procures the service (e.g., water or electricity) from the utility and allocates it to heterogenous groups (rich and poor) of users. Their focus is on financial decentralization and the effect of bureaucratic capture on service delivery.

water have meant the sale of distribution assets from state-owned utilities to private monopolies that own and manage the canal system. For example, British Waterways, a state-owned water utility is seeking private partners for its 2000-mile national water network. Its privatization will lead to sales of water to industrial users and other water businesses and restore “stretches of the canal system” to move water to areas including Wales and Scotland [Beautiful Britain (2004)]. Suez Lyonnaise, and Vivendi, two French Fortune 100 companies are major private distributors of water and have acquired several U.S. water distribution companies including United Water Resources and U.S. Filter Corporation. At one time, Enron acquired several water companies around the globe in a botched attempt at water privatization.¹⁸

Let $\lambda_w^c(x)$ be the marginal cost of water at location ‘ x ’ and p^c be the equilibrium output price. The operator is a water monopoly and charges price $p_w^c(x)$ for water at each location. It chooses aggregate water use $z^c(0)$, distribution investment $k^c(x)$ and water supplied at each location

$q^c(x)$ to solve $Maximize_{z^c(0), k^c(x), q^c(x)} \int_0^{x^c} [p_w(q)q(x) - k(x)]dx - g(z(0))$ subject to conditions (1) and (2),

where $p_w(q)$ is the derived demand for water at each location given by $D^{-1}(Y)f'(q)q$. The necessary condition for $q^c(x)$ is $p^c f''(q^c)q^c + p^c f'(q^c) = \lambda_w^c(x)$, which implies that the marginal revenue at each location equals marginal cost which changes with location.¹⁹

Investment in distribution is given by (7), with $\lambda_w^c(x)$ as the relevant marginal cost. Aggregate water use is determined by $\lambda_w^c(0) = g'(z^c(0))$. Aggregate output Y^c is determined by

$D^{-1}(Y) - C^c'(Y) = 0$ where $C^c'(Y)$ is the marginal cost of output for the operator.

d. The Producer Cartel (PC) – An Output Monopoly

The producer cartel organizes water distribution and production. It may either own the generation facility, or equivalently, buy aggregate water at marginal cost. It supplies water at

¹⁸ Enron’s efforts to set up markets for trading water are described in Smith and Lucchetti (2000).

¹⁹ Sufficiency implies $p^c f'''(q^c)q^c + 2p^c f'' < 0$.

each location through a trading or rationing scheme and has market power in the end-use market where it operates as a monopoly. Examples of such market power include large agribusiness firms such as Archer Daniels Midland, Dole Pineapple, Tyson Chicken, ConAgra, Cargill and the European dairy giant Parmalat, as well as various producer cooperatives.²⁰ The Capper-Volstead Act of 1922 grants anti-trust exemption to producer cooperatives in the U.S. so that they could overcome “destructive competition” among independent farmers.²¹

For each output level Y , both the social planner and the producer cartel solve problem 4(a)-4(d). Their total cost of producing Y is identical since both allocate internal resources efficiently, including in distribution. Hence the monopoly cost function is also given by $C^*(Y)$. Cartel output Y^p is obtained by maximizing profits $\Pi^p = D^{-1}(Y)Y - C^*(Y)$ so that Y^p solves

$MR(Y^p) - C^{*\prime}(Y^p) = 0$ and $MR'(Y^p) - C^{*\prime\prime}(Y^p) < 0$. Let p^p be the output price for the cartel. Then $p^p = D^{-1\prime}(Y^p)$.

e. Comparison of Alternative Institutions

We first compare the cost functions for each regime. This can be stated as:

PROPOSITION 1: *For any aggregate output level Y : (a) the producer cartel has the same cost as the social planner, i.e., $C^p(Y) \equiv C^*(Y)$; (b) the total and marginal costs of the competitive regime, the canal operator, and the water users association are higher than for the social planner. The slope of their marginal cost functions is also greater; i.e.,*

$C^i(Y) \geq C^*(Y), C^{i\prime}(Y) \geq C^{*\prime}(Y)$, and $C^{i\prime\prime}(Y) \geq C^{*\prime\prime}(Y)$, where superscript i denotes any of the three regimes; (c) the marginal cost functions $C^{d\prime}(Y), C^{c\prime}(Y), C^{w\prime}(Y)$ and $C^{*\prime}(Y)$ are positively sloped.

²⁰ Total net business volume of U.S. producer cooperatives in 2000 was over \$100 billion [USDA (2002)].

²¹ A recent anti-trust analysis of dairy cooperatives states “we now see a small number of huge cooperatives, that have extended their power beyond the assemblage of farmers, stretching vertically by ownership and alliances through the chain of production and distribution, all the way to the retail level...we are finding higher and higher levels of concentration...that increasingly present a model quite different from market competition” [Miyakawa (2004)].

Proof: See Appendix. ▀

Marginal costs for the social planner and the competitive (CID) case are shown in Fig. 1.

Marginal costs for both the social planner and the producer cartel are given by $C^*(Y)$. The marginal cost of output for CID is everywhere higher than optimal. The equilibrium price and output for the three regimes is also shown. The cartel produces a higher output at a lower price than the CID regime. The converse could also happen. The cartel could charge a higher price than the CID model if demand were relatively inelastic or if water losses contributed significantly to raising the marginal cost of output, or returns to investments in distribution were low. We now compare the CID model with social planning:

PROPOSITION 2: Competitive distribution leads to lower than optimal output at a higher price, less aggregate water use and it serves a smaller number of firms.

Proof: See Appendix. ▀

Poor distribution not only implies a lower level of service (less aggregate water use) but a higher price in the end-use market since the cost of producing a given level of service is higher. The geographical coverage is smaller than optimal. The following compares the cartel to the socially optimal and CID regimes:

PROPOSITION 3: (a) The cartel produces less output at a higher price relative to the social planner. It uses less aggregate water and services fewer firms. (b) To produce the same level of output, the cartel uses less aggregate water and services fewer firms than the CID regime.

Proof: See Appendix. ▀

Given its market power in the end-use market, the cartel will price its product higher. However, the level of aggregate service (quantity of water) provided by the cartel is also lower, and service is restricted to a smaller area than for the social planner. This is true even though the cartel is not a monopoly either in the market for water generation or distribution. The cartel provides more water at each location than in the model with poor distribution, because it enjoys higher water

efficiencies.

The relationship between the water users association and the social planner is shown in Fig. 2. The aggregate marginal net benefit when water is distributed optimally is given by $D^w(z(0))$. The WUA chooses the aggregate stock using (16) and pays the supplier price p_w which is lower than the optimal price $\lambda_w^*(0)$ and reflects its monopsony power. Aggregate water use is smaller than optimal. Aggregate output and grid size will also be lower than optimal. It is not clear if its output is lower or higher than the cartel or the CID regime. This depends on the specific characteristics of the input and end-use markets and the cost of distribution. If the cost of water generation is relatively elastic (flat $g(z(0))$), then the WUA may have a smaller degree of market power in the input market. Its behavior will be closer to that of the social planner. If the generation cost is inelastic, water use will be significantly below optimal, and grid size will be smaller.

Which regime may be a preferred second-best outcome? If the factor market is relatively elastic, as may happen in a region with abundant water resources, the buying price of water will be low even though the aggregate water use is lower. Thus, by (8), the price of water paid by a firm at any location will also be relatively low. This will mean a higher output at each location. If the returns from distribution investments are high, then the marginal benefit from using a larger stock of aggregate water is likely to be high (see Fig. 2) leading to a relatively flat marginal benefit curve. In that case monopsony power in the input market will lead to a significant shrinking of the service area. If end-use markets are elastic, as in the case of an export market, the cartel may perform better than other second-best alternatives since deadweight losses in the retail end are likely to be lower. On the other hand, in regions where distribution losses are relatively low (e.g., less porous soils) or the returns from distribution investments are small (high construction or maintenance costs relative to the cost of water),²² a CID regime might be an acceptable substitute for costly deadweight losses in an institution with market power. Even with market failure in distribution, a low maintenance competitive system may outperform a

²² In this case, the Nash Equilibrium investment at each location may be close to the optimal.

privatized system with market distortions. This may also happen if both input and output markets are relatively inelastic.

An important issue is the transition from a *status quo* distribution system (CID) to one with market power. If the CID regime were replaced by a producer cartel, it is not clear whether aggregate delivery of water would increase. But in order to produce the same level of output, water allocation would be more intensive, leading to a shrinking of the grid. Thus, moving from CID to an output cartel producing the same aggregate service will mean increased delivery at each location but a smaller grid. Imperfect competition in both water generation and the output market may mean an even smaller size.

The reform process could be facilitated by a proposed distribution of surplus from generation and distribution of water. However the set of firms *ex ante* and *ex post* of reform may be different. For instance, the CID regime may be replaced upon privatization by a cartel, which may shrink the number of firms serviced by the project. Ownership shares could be allotted to beneficiaries according to some neutral criteria, such as historical use. They could be traded, in which case, the price of the shares equals the marginal cost of water. If the *ex post* supply of water is lower than *ex ante*, then the number of shares traded will decline, and the utility may buy back and retire surplus shares. Firms which were in the market before but do not receive water *ex post*, may sell their shares and exit the industry.

4. An Illustration

This section presents a simple illustration of the various institutional alternatives using typical cost and demand parameters for the Western United States. The purpose is to show that the differences in welfare and resource allocation across the various models may actually be quite significant. Firm demand for water is derived from a quadratic production function for California cotton²³ in terms of water q such that a maximum yield of 1,500 lbs. is obtained with 3.3 acre-

²³ Cotton is one of the most important cash crops in the world, grown in over 70 countries. It is grown in 17 states in the United States, which along with China ranks as the world's two largest producers.

feet of water, and a yield of 1,200 lbs. with 2.2 acre-feet [Hanemann (1987)].²⁴ The production function (in lbs.) is given by $f(q) = -0.2965 + 1.3134q - 0.6463q^2$ where q is in m^2 of water. Differentiating gives the marginal product $f'(q) = 1.3134 - 1.2926q$. Firm fixed costs denoted by F are \$433 per acre or $\$0.107/m^2$ [University of California (1988)]. A quadratic function for distribution investment was constructed from average lining and piping costs in 17 states in Western United States [U.S. Department of Interior (1979), Table 15, p. 87].²⁵ An investment of \$200 per meter length of canal in piped systems is assumed to lead to zero distribution losses in the system. Concrete lining with an investment of $\$100/m$ attains a loss factor of $10^{-5}/m$ or a distribution efficiency of 0.8 over a distance of 20 km. When $k = 0$, the loss factor is $4 \cdot 10^{-5} / m$ yielding an overall distribution efficiency of 0.2. We get

$$a = 4 \cdot 10^{-5} - (4 \cdot 10^{-7}k - 10^{-9}k^2) \quad (17)$$

so that from (3), $a(0) = 4 \cdot 10^{-5}$, and

$$m(k) = 4 \cdot 10^{-7}k - 10^{-9}k^2, \quad 0 \leq k \leq 200. \quad (18)$$

A rising long-run marginal cost function for water supply was constructed from average water supply cost data from 18 projects in the Western United States [Wahl (1985)] as

$$g'(z(0)) = 0.003785 + (3.785 \cdot 10^{-11}z(0)) \quad (19)$$

where marginal cost is in U.S. dollars and $z(0)$ is in cu.m. A linear functional form was assumed for simplicity. It gives a marginal cost of $\$0.003785/m^3$ (\$4.67 per acre-foot) when $z(0) = 0$,

²⁴ We assume a field efficiency of 0.9, i.e., only 10 percent of the water allotted to the firm is lost through leakage etc.

²⁵ These numbers for construction costs, although somewhat dated, do not change appreciably over time. Even if they did, it is not the level of costs but the variation across alternative regimes which is important for our comparisons. We also perform sensitivity analysis with higher distribution costs, see below.

²⁶ The exact loss coefficient, however, would depend on environmental factors such as soil characteristics, ambient temperatures, etc. The results were found to be generally insensitive to variations in the value of $a(0)$.

and values in the range $\$0.083$ to $\$0.193 /m^3$ ($\$102.76$ to $\$238.16 /acre-foot$) for the various models analyzed (see Table 2). For computational purposes, the water district is assumed to be of constant width $\alpha = 10^5$ m. The width does not affect the relative orders of magnitude across models.

An iso-elastic demand function for cotton is constructed for elasticities ranging from -2 to -4 such that demand when price is $\$0.75$ is given by $17.7 \cdot 10^8$ lbs. Demand is of the form $Y = AP^{-\varepsilon}$ where A is a constant ($= 13.725 \cdot 10^8$) and ε is the absolute value of demand elasticity. To solve for the social planner, the algorithm assumes an initial value of output price p and $z(0)$, and computes $\lambda_w(0)$ from (11). At $x = 0$, (8) gives $m'(k)$. By iterating on k , we compute $k(x)$ that satisfies the derivative of (18), and (17) gives $a(x)$. Using $\lambda_w(0)$, (6) and (7) used simultaneously yield $q(x)$ and $y(x)$. When $x = 1$, using $a(0)$ and $\lambda_w(0)$ in the solution to (8) gives $\lambda_w(1)$, and $z(1)$ is obtained from (1) by subtracting the water used up previously. Next we get $k(1)$ from (7) and the cycle is repeated to obtain $q(1)$, etc. The process is continued with increasing values of x until exhaustion of $z(0)$ terminates the cycle, and a new $z(0)$ is assumed. The algorithm selects the $z(0)$ that minimizes total cost (given by (4(a))). For each vector $(p, z(0))$, output Y is computed to generate the supply function $Y(p)$. Finally, the equilibrium price and quantity is computed from (13). The algorithm was modified suitably for the other models. For the CID case, given the relatively high cost of distribution, the Nash Equilibrium investment $k(x)$ is zero, i.e., $k_i(1) \equiv 0$ is a corner solution to (15). For the output monopoly, supply equals marginal revenue in the output market. For the input monopsony, the price of water equals the marginal cost at a given $z(0)$, but the shadow price of water at source equals the corresponding marginal factor cost. The canal monopolist charges a water price $p_w^c(x)$ at each location. It turns out empirically that firms are not able to recover their fixed costs at that price. So, the monopolist is assumed to engage in perfect price discrimination, charging price \bar{p}_w^c at which each firm exactly covers its total cost and makes zero profit. This pricing mechanism will not change any of the institutional comparisons developed earlier, since the quantity of water allocated at each location is still the same.

Simulation Results

The institutional differences are evaluated when demand for the end-use becomes more elastic, which may be representative of water use in another region or an end-use with different production characteristics, see Table 2 and Figs. 4 and 5. Welfare effects are obviously highest under a social planner, but are closely followed by the producer cartel and the water users association.²⁷ The distribution monopoly yields the lowest total welfare in all four cases. Looking at the components of social welfare, surplus from water generation is maximized under the water users association, while distribution surplus peaks when there is a distribution monopoly. The generation surplus is also high under social planning, mainly because of the large quantity of aggregate water used, which creates a cost surplus over the intra-marginal units. The distribution monopoly uses nearly half the water under social planning, but covers nearly the same area when elasticity is low (-2). This is because the former allocates low volumes of water at each location. If land availability is an issue, then this regime may not be the appropriate institutional choice. Except for the distribution monopoly, water use at each location is quite homogenous across all regimes.

As output demand becomes more elastic, the producer cartel increases output and reduces commodity prices, while both price and output for the CID decline. Aggregate welfare is always higher under a producer cartel than for CID. With increasing demand elasticity, the cartel covers a larger area and uses more water in the aggregate. The cartel always generates higher social welfare than the WUA, and performs almost like the social planner when elasticity is high (-4). In this case, a cartel may produce greater output than the WUA. Therefore, for high elasticity in

²⁷ Aggregate welfare for the social planner is decomposed into consumer surplus given by $\int_0^Y D^{-1}(\theta)d\theta - D^{-1}(Y)Y$,

and aggregate producer surplus into three individual components:

$$D^{-1}(Y)Y - C(Y) = \left[\int_0^X \{(D^{-1}(Y)f(q) - I)\alpha - F - \lambda(x)q(x)\}dx \right] + [\lambda(x)q(x) - k(x) - g'(z(0))z(0)] + [g'(z(0))z(0) -$$

i.e., the aggregate surplus accruing to producing firms, the distribution authority and the generator, shown in brackets. These expressions can be modified appropriately for the other regimes. The models were also run for unit demand elasticity, and the general differences preserved.

the end-use market (e.g., production for export), the producer cartel may be a preferred alternative not only from a welfare consideration but also in terms of aggregate output.

The distribution monopoly and the CID model are consistently the weak performers, even in the high elasticity case (-4). However, the CID regime always performs better of the two. This suggests that poor distribution may be preferred to monopoly power in distribution. Water in the CID regime is relatively expensive since transmission losses are high. Thus, the equilibrium price of the end-use commodity is high, and at higher demand elasticities, consumer surplus declines rapidly. As demand becomes more elastic, the underperformance of both these regimes is more pronounced.²⁸

It is likely that higher water prices under a distribution monopoly will lead to increased conservation through use of more efficient technology, not modeled in this paper. This may lead to more efficient use of water. Water prices are also high for the social planner because of the higher marginal cost associated with aggregate water generation. However, if the goal is to connect more consumers to the grid, the distribution monopoly with its superior geographical reach may be preferred.

End-use commodity prices are always highest in the CID regime. Any institutional reform is likely to reduce commodity prices, because of the resulting investment in distribution. Privatization for example, mostly results in an *increase* in water prices, because *ex-ante*, water prices are lower than the true marginal cost because of policy distortions. Moving from the CID to any of the regimes with distribution investments significantly increases (by as much as 70-80%) the efficiency of water use as measured by output per unit water generated. In general, consumer surplus also increases significantly from reform, even though the move to a distribution monopoly generates the smallest gain.²⁹

²⁸ If water prices were based on average costs in the CID case, it may underperform relative to the distribution monopoly. Trading of water rights even with competitive distribution improves CID resource allocation.

²⁹ We have performed sensitivity analysis with an outward shift in demand which may represent changing demand conditions over time, and with an increase in the cost of water generation and distribution. The order of performance is generally preserved. The effect of increases in generation and distribution costs is to shift up the supply curve which in turn means a higher output price. The WUA is most impacted because with an increase in the

Design of Appropriate Regulatory Policies

It may be useful to discuss the type of regulatory policies that can be adopted to achieve second best outcomes. For example, it is unreasonable to expect that the canal operator will not have full monopoly power and may be subject to some form of price cap or rate of return regulation. For example, the government may specify a fixed water price plus a conveyance fee that the DM can charge to customers. Investment in distribution by the DM will then depend upon how this fee is specified. Given that each consumer may be charged a different price because of location, the regulation may be related to an average price. Alternatively, rate of return regulation that guarantees the monopoly a designated rate of return on investment may lead to overinvestment in conveyance, which given the rapid decline in marginal benefits from distribution, will lead to a misallocation of resources. Because investment in distribution is observable at low cost, rate of return regulation may be feasible, especially if the contract period is sufficiently large so that the distribution monopoly can recoup costs. It is easy to make prices contingent on investment in assets rather than unverifiable expenditures or investment in less useful assets (such as higher salaries and perks). In the case of water distribution, yardstick regulation could apply, in which case price is set equal to the average cost of comparable utilities. Since water generation is often local or regional and distribution is costly, comparable facilities may be easily identified, especially in other commodities with significant distribution costs such as electricity.

Rate of return regulation applied to a monopoly generator of water is likely to increase water generation, and thus lead to a bigger service area and lower output prices, whatever the market structure in the downstream end. In comparison to monopoly power in distribution, this latter policy option may generate higher benefits. Regulation of a generation monopsony may involve legislating long term contracts so that frequent hold-up problems do not occur. Another option both in generation and distribution may be to auction off franchises that transfer ownership of the assets for a limited period of time, sufficiently long to induce firm investment.

cost of water generation, there is a 30% decline in aggregate water use. Increased distribution costs affect the optimal model the most by reducing aggregate water use and service area. The complete sensitivity analysis results are available separately from the authors.

Since investments in water distribution have a relatively long life, it is important to discuss how the alternative regimes may compare in a dynamic context. Without explicitly developing a dynamic model, it may be useful to make some informed speculation based on the static results above (see also Chakravorty and Umetsu (2003)). One important reason for preferring the CID regime over the DM is in settings where the lost water can be reused at relatively low cost. The consideration of these third party effects may make CID the preferred arrangement, even though DM is the dominant regime for the project in question. If the demand for water were to increase in the future, then the value of this externality will also increase, and CID may dominate even more. A dynamic model may also be able to capture the opportunity rent of land, which may change exogenously. For example, an increasing land rent function (say in alternative uses) will imply that over time, the system may shrink, possibly after the DM has upgraded the system. In this case, the monopolist may not be able to recoup their sunk costs. These dynamic issues may need to be considered during *ex ante* contracting.

5. Concluding Remarks

The production of water has often been viewed as one monolithic entity. The standard recommendation made is that the introduction of water markets leads to efficiency. However, increasing returns to scale in water distribution suggests that a water market will not lead to optimal resource allocation. Improving water management may mean a variety of alternative institutional choices. This paper shows that the choice of an institutional regime, in turn, may depend upon the characteristics of the microstructure of the water market. The analysis is relevant for the delivery of any infrastructure service (water, sanitation, electricity, natural gas, etc.) that entails significant distribution costs.

The paper yields insights into which institutional alternatives may be appropriate in a given situation. For example, when generation of the service is relatively elastic, a users association with market power in generation may perform closer to the optimal solution. On the other hand, elastic demand for the final product may indicate that a cartel or cooperative with market power in the output market may be preferred to the *status quo*. Similarly in locations where the scale of the service is important, a distribution monopoly may ensure delivery over a relatively large

service area, even though it performs poorly according to conventional welfare measures. Monopoly power in distribution may also induce private conservation. Often a competitive distribution mechanism characterized by market failure may be preferred to a monopoly in distribution.

The empirical model shows that institutions may have differential impacts upon the geography of the region. Moving from competition to a distribution monopoly may mean that the service area may expand significantly, yet output may increase only marginally and welfare may fall. Maximizing the number of beneficiaries and maximizing welfare may be divergent goals. The distribution monopoly always maximizes the extensive margin yet performs poorly in the aggregate welfare and production measures. Relative to competition, a privatized regime with market power in the input or output market is always Pareto-improving. This suggests that laws that support water users associations or provide anti-trust exemption to output cartels may generate ancillary benefits in terms of mitigating problems associated with natural monopolies.

A major assumption of the model is that the water lost cannot be retrieved elsewhere. The value of this externality may depend on specific factors such as pumping costs. These considerations should improve the performance of the CID regime. The dynamics of water use and its possible treatment as a renewable or a nonrenewable resource (e.g., groundwater) may also complicate the analysis. Multiple uses of water as in power generation and hydroelectricity under imperfect competition could also be considered in future work [Crampes and Moreaux (2001)].

Appendix: Proofs of Propositions

Proposition 1: (a) To produce a given output Y , both regimes allocate resources efficiently and therefore have the same cost. (b) The cost function $C^d(Y)$ is the total cost of producing output Y when investment in distribution $k(x)$ is sub-optimal. $C^*(Y)$ is the minimum cost of producing Y . Therefore, $C^*(Y)$ must be no greater than $C^d(Y)$. Similarly, the canal operator is a monopoly in distribution, and the water users association is a monopsony in generation.

Hence, $C^*(Y)$ must be no greater than $C^c(Y)$ and $C^w(Y)$. To establish the second inequality, for the same level of aggregate output Y , the CID model uses more aggregate input, $z^d(0) \geq z^*(0)$ because investments in water distribution are sub-optimal. Since $g''(z(0)) > 0$, we have

$g'(z^d(0)) \geq g'(z^*(0))$, i.e., the CID marginal cost of water generation is greater than optimal.

We can write the identity $C^d'(Y) \equiv \frac{dC^d}{dz^d(0)} \cdot \frac{dz^d(0)}{dY} = g'(z^d(0)) \cdot \frac{dz^d(0)}{dY}$. Similarly,

$C^*(Y) \equiv g'(z^*(0)) \cdot \frac{dz^*(0)}{dY}$. But $g'(z^d(0)) \geq g'(z^*(0))$ and sub-optimal distribution investment

implies more water is required to produce incremental output in the CID case, i.e.,

$\frac{dz^d(0)}{dY} \geq \frac{dz^*(0)}{dY}$. This yields $C^d'(Y) \geq C^*(Y)$. Finally, the slope of the unconstrained

marginal cost function must be lower than the slope of the constrained marginal cost function since the former is an envelope of the latter [Silberberg (1990, p. 254)]. The proof of the other

two cases is similar. (c) The relation $C'(Y) \equiv g'(z(0)) \cdot \frac{dz(0)}{dY}$ and the discussion in (b) above

imply that $C^*(Y)$ is positive. The remaining cases are similar. ■

Proposition 2: The first part follows from Proposition 1 and is clear from Fig.1. Since the marginal cost function in the CID case $C^d'(Y)$ is everywhere higher than the optimal $C^*(Y)$, the equilibrium output price under CID management is higher and aggregate output is lower than optimal. For the second part, CHZ show that a model with no conveyance is likely to have lower

aggregate marginal benefits which cuts the marginal cost curve below the optimal, leading to a lower value of $z^d(0)$, *i.e.*, $z^d(0) < z^*(0)$. By (13), this implies a lower marginal cost of water at the source, *i.e.*, $\lambda_w^d(0) \leq \lambda_w^*(0)$. Applying (14) to the respective boundaries of the two regimes we have $[p^* f(q^*) - \lambda^* q^*]_{x=X^*} = [p^d f(q^d) - \lambda^d q^d]_{x=X^d}$. Assume $\lambda_w(X^*) \leq \lambda_w(X^d)$.

Since $p^* > p^d$, and $q(x)$ is a monotone decreasing function, $p^* f(q^*) > p^d f(q^d)$. Since the product λq increases with λ , $\lambda^* q^* < \lambda^d q^d$.³⁰ Substituting these inequalities suggests that the boundary condition will not be satisfied which is a contradiction. Thus, $\lambda_w(X^*) > \lambda_w(X^d)$.

Now let $X^d > X^*$. Since λ_w^d is lower than λ_w^* at the beginning and at the boundary, then

$$Y^d = \int_0^{X^d} y^d(x) dx > \int_0^{X^*} y^*(x) dx = Y^*, \text{ which is a contradiction. Hence } X^d \leq X^* \cdot$$

Proposition 3: (a) The first part is obvious since the cartel is a monopolist in the output market. For the second part, both the cartel and social planner allocate resources efficiently. Since the former produces less aggregate output it uses less aggregate water. Thus, $z^p(0) < z^*(0)$. Finally we show that the cartel uses less land area. Suppose $X^p \geq X^*$. Then $\lambda_w^p(0) < \lambda_w^*(0)$ by (13).

Since $\lambda_w(x)$ is continuous on $[0, X)$, $\lambda_w^p(x) < \lambda_w^*(x)$ at locations close to the source. A higher price of water implies less water use, hence $q^p(x) > q^*(x)$. But this implies that output at every location close to the source is higher in the cartel case. Since its aggregate output is lower than socially optimal, and $X^p \geq X^*$, there must exist an interval $L \subseteq [0, X^p] \cap [0, X^*]$ where socially optimal output is higher for all $x \in L$. By continuity of $\lambda_w(x)$, $\lambda_w^p(x)$ and $\lambda_w^*(x)$ must cross. Thus, socially optimal output is lower than cartel output upstream but higher downstream

of the water source. Since $Y^p < Y^*$, we have $\int_0^{X^p} y^p(x) dx = \int_0^{X^*} y^p(x) dx + \int_{X^*}^{X^p} y^p(x) dx < \int_0^{X^*} y^*(x) dx$ so

that $\int_{X^*}^{X^p} y^p(x) dx < \int_0^{X^*} (y^*(x) - y^p(x)) dx$. The terms in the last integral are non-negative. That is,

³⁰ That $q(\lambda)$ is monotone decreasing and $\lambda q(\lambda)$ is monotone increasing follows immediately from the proofs of

cartel production beyond X^* , in the interval $M = [X^*, X^p]$ is lower than the deficit in production in the cartel (relative to optimal) in the interval $N = [0, X^*]$. Thus, the cartel can mimic the optimal allocation of resources by transferring production from area N to area M , and save on distribution losses since interval N is closer to the source. The last inequality implies that this rearrangement is feasible. Therefore the cartel is not efficient to begin with, which is a contradiction. So $X^p \leq X^*$. (b) The first part of the proof is straightforward. To produce the same level of output relative to CID, the monopolist invests efficiently in water distribution. Aggregate water losses are therefore lower, so that to produce the same output, the monopolist must use a lower aggregate amount of water. Hence, $z^p(0) \leq z^d(0)$. Next, we need to show that $X^p \leq X^d$. Assume $X^p > X^d$. Then (13) and the last inequality yields $\lambda_w^p(0) = g'(z^p(0)) \leq g'(z^d(0)) = \lambda_w^d(0)$. As in the proof of part (a), $\lambda_w^p(x) < \lambda_w^d(x)$ at locations close to the source, which implies $q^p(x) > q^d(x)$. Since the aggregate outputs are equal, and $X^p > X^d$, there must exist an interval $S \subseteq [0, X^p] \cap [0, X^d]$ where CID output is higher, i.e., $q^p(x) < q^d(x)$ and $y^p(x) < y^d(x)$ for all $x \in S$. Let X^1 be the location at which $\lambda_w^p(x)$ and $\lambda_w^d(x)$ cross. Since $Y^p = Y^d$, we have

$$\int_0^{X^1} y^p(x) dx + \int_{X^1}^{X^d} y^p(x) dx + \int_{X^d}^{X^p} y^p(x) dx = \int_0^{X^1} y^d(x) dx + \int_{X^1}^{X^d} y^d(x) dx$$

so that

$$\int_{X^d}^{X^p} y^p(x) dx = \int_0^{X^1} (y^d(x) - y^p(x)) dx + \int_{X^1}^{X^d} (y^d(x) - y^p(x)) dx < \int_{X^1}^{X^d} (y^d(x) - y^p(x)) dx$$

since the first term on the right of the equality sign is strictly positive. The cartel produces in the region $U = [X^d, X^p]$ while the CID does not, and this output is lower than the deficit in production in the cartel relative to the CID in the interval $V = [X^1, X^d]$. Thus, the cartel can mimic the CID allocation of resources by transferring production from area U to area V , and save on distribution losses since V is closer to the source. The last inequality implies that this rearrangement is feasible. Thus the cartel is not efficient to begin with, which is a contradiction. So, $X^p \leq X^d$. ■

REFERENCES

- Bardhan, Pranab, and Dilip Mukherjee, "Decentralization and Accountability in Infrastructure Delivery in Developing Countries," *Economic Journal* 116, 101-27 (2006).
- Beautiful Britain. British Waterways – Canal Grid (2004),
http://www.beautifulbritain.co.uk/canal_grid.htm
- Chakravorty, Ujjayant, Eithan Hochman and David Zilberman, "A Spatial Model of Optimal Water Conveyance," *Journal of Environmental Economics and Management* 29, 25-41 (1995).
- Chakravorty, Ujjayant, and Chieko Umetsu, "Basinwide Water Management: A Spatial Model," *Journal of Environmental Economics and Management* 45, 1-23 (2003).
- Congressional Budget Office, *Water Use Conflicts in the West: Implications of Reforming the Bureau of Reclamation's Water Supply Policies*, The Congress of the United States (1997).
- Cowen, Penelope B., and Tyler Cowen, "Deregulated Private Water Supply: A Policy Option for Developing Countries," *Cato Journal* 18(1), Spring/Summer (1998).
- Crampes, Claude and Michel Moreaux, "Water Resource and Power Generation," *International Journal of Industrial Organization*, 19(6), 975-97 (2001).
- Dosi, Cesare, and K. William Easter, "Market Failure and Role of Markets and Privatization in Alleviating Water Scarcity," *International Journal of Public Administration* 26(3), 265-90 (2003).
- Hanemann, W. Michael, et al., "Economic Implications of Regulating Agricultural Drainage to the San Joaquin River," Technical Committee Report, State Water Resources Control Board, Sacramento, California (1987).
- International Year of Freshwater, *Facts and Figures: The Different Water Users* (2003).
<http://www.wateryear2003.org/>
- Joskow, Paul, and Jean Tirole, "Transmission Rights and Market Power on Electric Power Networks," *Rand Journal of Economics* 31(3), 450-487, Autumn (2000).
- Miyakawa, Hiromitsu, "Competitive Issues in the Dairy Industry: The Pending DFA/NDH/Hood Transaction," Washington, D.C.: American Antitrust Institute, February (2004).
- National Research Council, "California's Central Valley: Fear and Loathing in Potential Water Markets," Ch. 10 in *Water Transfers in the West: Efficiency, Equity and the Environment*, National Academy Press (1992).
- Orwin, Alexander, *The Privatization of Water and Wastewater Utilities: An International Survey*, Environment Probe, August (1999).
- Ray, Isha, and Jeffrey Williams, "Locational Asymmetry and the Potential for Cooperation on a Canal," *Journal of Development Economics* (67), 129-55 (2002).

Reisner, Marc, *Cadillac Desert: The American West and its Disappearing Water*, New York: Viking (1986).

Silberberg, Eugene, *The Structure of Economics*, New York: Prentice Hall (1991).

Smith, Rebecca, and Aaron Lucchetti, "Rebecca Mark's Exit Leaves Azurix Treading Deep Water," *The Wall Street Journal*, page 1 feature, August 28 (2000).

Stanislaw, Joseph, and Daniel Yergin, *The Commanding Heights: the Battle between the Government and the Marketplace that is Remaking the Modern World*, New York: Simon and Schuster (1998).

U.S. Department of Agriculture, *Agriculture Cooperatives in the 21st Century*, Rural Business Cooperative Service, Cooperative Information Report 60, November (2002).

U.S. Department of the Interior/U.S. Department of Agriculture/Environmental Protection Agency, *Irrigation Water Use and Management: An Interagency Task Force Report*, Washington, D.C. (1979).

University of California, *Associated Costs of Drainage Water Reduction*, Committee of Consultants on Drainage Water Reduction, Salinity/Drainage Task Force and Water Resources Center (1988).

Wade, Robert, "The Management of Common Property Resources: Collective Action as an Alternative to Privatization or State Regulation," *Cambridge Journal of Economics* 11, 95-106 (1987).

Wahl, R.W., "Full Cost Pricing Option," in Department of the Interior, Bureau of Reclamation, *Westside Report on Acreage Limitation: Draft Environmental Impact Statement*, Appendix G, Washington, D.C. (1985).

Wilson, Robert, "Architecture of Power Markets," *Econometrica*, 70(4), 1299-1340, July (2002).

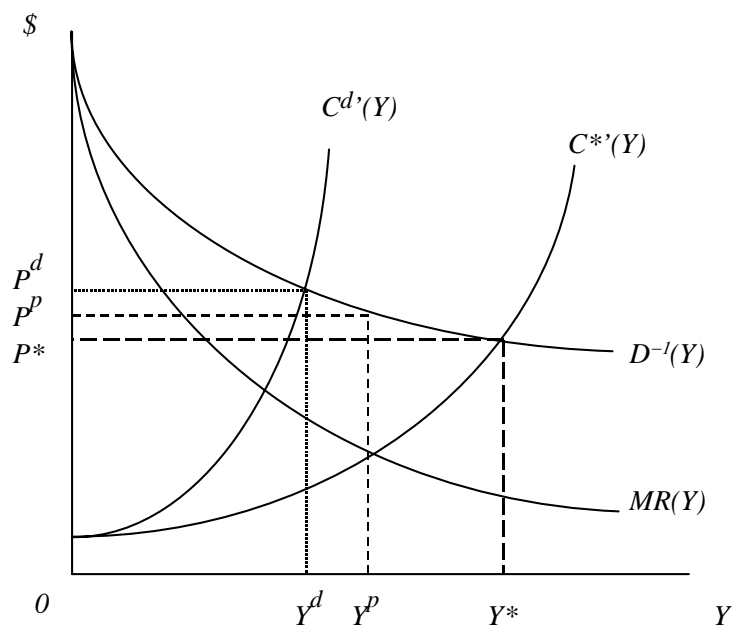


Figure 1. Equilibrium price and quantity under social planner, competitive and producer cartel

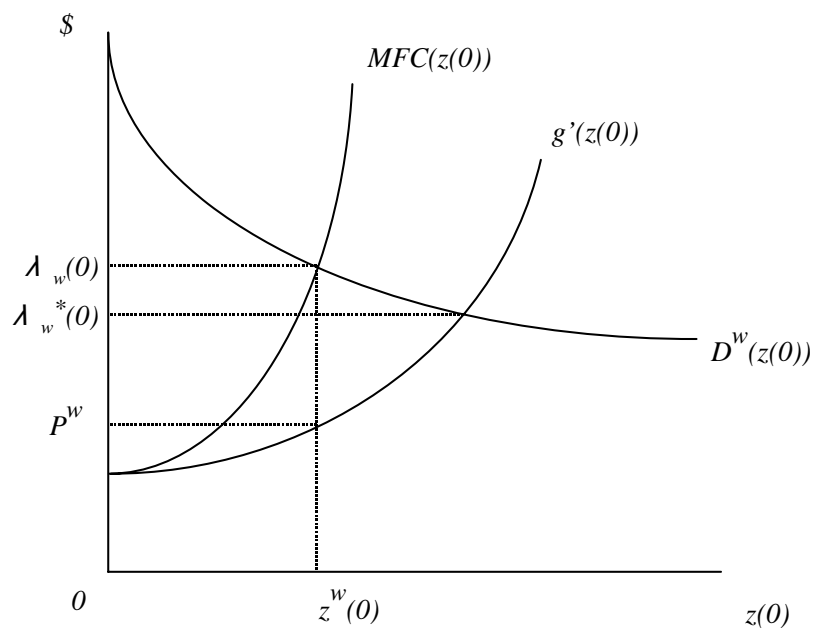


Figure 2. Price and marginal cost of water for the input monopsony

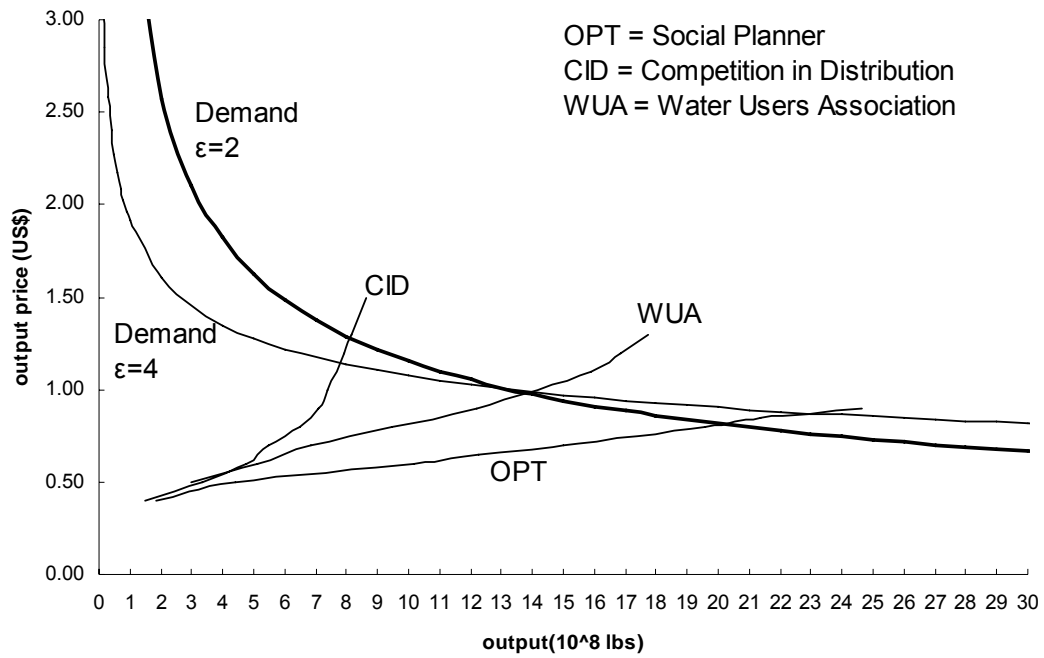


Fig. 3. Social Planner, Competitive and WUA Supply

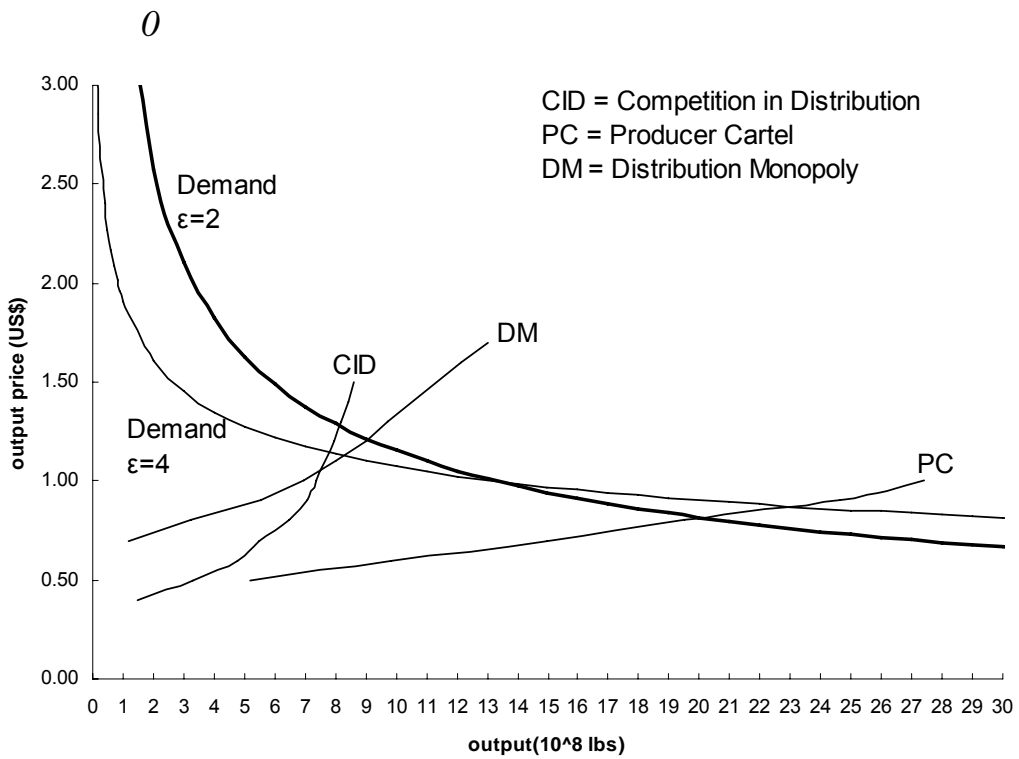


Fig. 4. Competitive, Distribution Monopoly and Producer Cartel Supply

Table 1. Market Power in Water Generation,
Distribution and End-Use

	Institution	Generation	Distribution	End-use	Water pricing to user
			CID		
CHZ	CID utility	Competitive	Minimal	Competitive	Average cost
X	CID water market	Competitive	Minimal	Competitive	Marginal cost
			Privatization		
X	Social Planner	Competitive	Competitive	Competitive	Marginal cost
X	Water Users Assoc (WUA)	<i>Monopsony</i>	Competitive	Competitive	Marginal cost
	Water seller	<i>Monopoly</i>	Competitive	Competitive	Marginal cost
X	Canal operator	Competitive	<i>Monopoly</i>	Competitive	Monopoly pricing
	Integrated water company	<i>Monopoly</i>	<i>Monopoly</i>	Competitive	Monopoly pricing
X	Producer cartel	Competitive	Competitive	<i>Monopoly</i>	Marginal cost
	WUA + cartel	<i>Monopsony</i>	Competitive	<i>Monopoly</i>	Marginal cost

Note: The institutions marked 'X' are analyzed in the paper. Markets with market power are shown in italics.

TABLE 2. Simulation Results under Different Demand Elasticities

	$\varepsilon=2$					$\varepsilon=3$					$\varepsilon=4$				
	OPT	CID	WUA	DM	PC	OPT	CID	WUA	DM	PC	OPT	CID	WUA	DM	PC
p (\$/lb.)	0.80	1.30	0.98	1.21	1.20	0.85	1.20	0.99	1.16	1.01	0.87	1.15	0.99	1.15	0.97
Y (10^8 lbs.)	19.53	8.18	13.59	9.02	9.84	21.39	7.93	13.59	8.02	13.31	21.39	7.93	13.59	8.02	15.00
A (10^3 ha.)	550	230	400	520	260	610	220	400	450	360	610	220	400	450	410
$z(0)$ (10^8 cu.m.)	46	31	31	24	24	50	30	31	21	32	50	29.7	31	21	36
R_L (10^8 \$)	0.22	3.77	0.58	0	0.13	0.53	3.12	0.72	0	0.12	0.96	2.72	0.72	0	0.34
CS (10^8 \$)	16.59	10.21	13.55	10.97	11.06	9.19	4.61	6.77	4.93	6.51	6.72	2.91	4.56	2.91	4.85
PS (10^8 \$)	4.23	5.63	4.28	2.91	7.15	5.26	4.82	4.41	2.47	6.62	5.69	4.42	4.11	2.39	6.54
GS (10^8 \$)	4.00	1.82	5.46	1.09	1.09	4.73	1.70	5.46	0.83	1.94	4.73	1.67	5.46	0.84	2.45
DS (10^8 \$)	0.01	0.04	-1.76	1.82	0.03	0	0	-1.77	1.64	0.03	0.01	0.03	-1.77	1.55	0.00
PR (10^8 \$)	0.22	3.77	0.58	0	6.03	0.53	3.12	0.72	0	4.65	0.96	2.72	0.72	0	4.09
Aggr. Welfare	20.82	15.84	17.83	13.88	18.21	14.45	9.43	11.18	7.40	13.13	12.41	7.33	11.18	5.30	11.39
R_h (10^6 \$)	0.397	23.30	1.756	0	0.475	0.854	20.24	1.756	0	0.329	1.543	18.44	1.756	0	0.806
R_t (10^6 \$)	0.376	5.69	1.739	0	0.437	0.833	4.93	1.739	0	0.297	1.523	3.345	1.739	0	0.783
Y_h (10^8 lbs.)	0.349	0.360	0.332	0.170	0.364	0.345	0.361	0.331	0.174	0.360	0.345	0.361	0.331	0.174	0.357
Y_t (10^8 lbs.)	0.349	0.306	0.331	0.170	0.364	0.345	0.317	0.331	0.174	0.360	0.345	0.317	0.331	0.174	0.357
q_h (m/sq.m.)	0.832	0.890	0.770	0.459	0.918	0.817	0.896	0.770	0.465	0.887	0.817	0.896	0.770	0.465	0.872
q_t (m/sq.m.)	0.832	0.701	0.770	0.459	0.918	0.817	0.727	0.770	0.464	0.887	0.817	0.727	0.770	0.464	0.871
K_h (\$/m.)	199.39	0	199.32	197.80	197.80	198.79	0	199.32	197.14	198.75	199.48	0	199.32	197.14	199.01
λ_h (\$/cu.m.)	0.1779	0.1219	0.2385	0.0946	0.0946	0.1930	0.1162	0.2385	0.0833	0.1249	0.1930	0.1162	0.2385	0.0833	0.1400
λ_t (\$/cu.m.)	0.1781	0.3058	0.2387	0.0961	0.0950	0.1933	0.2801	0.2387	0.0852	0.1253	0.1933	0.2801	0.2387	0.0852	0.1403
\bar{p}_{wh}^c (\$/cu.m.)				0.172					0.162					0.158	
\bar{p}_{wt}^c (\$/cu.m.)				0.171					0.161					0.157	

Notes: OPT=social planner; CID=competition in distribution; WUA=water users association; DM=distribution monopoly; PC=producer cartel; GS=generation surplus; DS=distribution surplus; PR=producer rent (output); h=head; t=tail; \bar{p}_w^c water price charged by DM. The tails in each model may be located at different distances.

Department of Economics, University of Alberta Working Paper Series

http://www.economics.ualberta.ca/working_papers.cfm

Recent Working Papers

2009-07 A Comparative Analysis of the Returns on Provincial and Federal Canadian Bonds – Galvani, Behnamian
2009-06 Portfolio Diversification in Energy Markets – Galvani, Plourde
2009-05 Spanning with Zero-Price Investment Assets – Galvani, Plourde
2009-04 Options and Efficiency in Spaces of Bounded Claims – Galvani, Troitsky
2009-03 Identifying the Poorest Older Americans – Fisher, Johnson, Marchand , Smeeding, Boyle Torrey
2009-02 Time-Saving Innovations, Time Allocation, and Energy Use: Evidence from Canadian Households – Brenčić, Young
2009-01 Trigger Happy or Gun Shy? Dissolving Common-Value Partnerships with Texas Shootouts – Brooks, Landeo , Spier

Department of Economics
8-14 HM Tory
University of Alberta
Edmonton, AB
T6G 2H4
Canada

Telephone (780) 492-3406
Fax (780) 492-3300
www.ualberta.ca/economics

