



**Spatial Analysis: Development of
Descriptive and Normative
Methods with Applications to
Economic-Ecological Modelling**

William Brock and Anastasios Xepapadeas

NOTA DI LAVORO 159.2004

DECEMBER 2004

ETA – Economic Theory and Applications

William Brock, *Department of Economics, University of Wisconsin*
Anastasios Xepapadeas, *Department of Economics, University of Crete*

This paper can be downloaded without charge at:

The Fondazione Eni Enrico Mattei Note di Lavoro Series Index:
<http://www.feem.it/Feem/Pub/Publications/WPapers/default.htm>

Social Science Research Network Electronic Paper Collection:
<http://ssrn.com/abstract=643761>

The opinions expressed in this paper do not necessarily reflect the position of
Fondazione Eni Enrico Mattei
Corso Magenta, 63, 20123 Milano (I), web site: www.feem.it, e-mail: working.papers@feem.it

Spatial Analysis: Development of Descriptive and Normative Methods with Applications to Economic-Ecological Modelling

Summary

This paper adapts Turing analysis and applies it to dynamic bioeconomic problems where the interaction of coupled economic and ecological dynamics over space endogenously creates (or destroys) spatial heterogeneity. It also extends Turing analysis to standard recursive optimal control frameworks in economic analysis and applies it to dynamic bioeconomic problems where the interaction of coupled economic and ecological dynamics under optimal control over space creates a challenge to analytical tractability. We show how an appropriate formulation of the problem reduces analysis to a tractable extension of linearization methods applied to the spatial analog of the well known costate/state dynamics. We illustrate the usefulness of our methods on bioeconomic applications, but the methods have more general economic applications where spatial considerations are important. We believe that the extension of Turing analysis and the theory associated with dispersion relationship to recursive infinite horizon optimal control settings is new.

Keywords: Spatial analysis, Economic-ecological modelling

JEL Classification: Q2, C6

An earlier version of this paper was presented at the Workshop on "Spatial-Dynamic Models of Economic and Eco-Systems, Beijer Institute, FEEM and ICTP, Trieste, Italy, April 2004. We would like to thank the workshop participants for valuable comments. Anastasios Xepapadeas thanks the Secretariat for Research, University of Crete, Research Program 1266.

Address for correspondence:

Anastasios Xepapadeas
Department of Economics
University of Crete
University Campus
Rethymno 74100
Greece
E-mail: xepapad@econ.soc.uoc.gr

1 Introduction

In economics the importance of space has long been recognized in the context of location theory,¹ although as noted by Paul Krugman (1998) there has been neglect in a systematic analysis of spatial economics, associated mainly with difficulties in developing tractable models of imperfect competition which are essential in the analysis of location patterns. After the early 1990's there was a renewed interest in spatial economics mainly in the context of *new economic geography*,² which concentrates on issues such as the determinants of regional growth and regional interactions, or the location and size of cities (e.g. Paul Krugman, 1993).

In environmental and resource management problems the majority of the analysis has been concentrated on taking into account the temporal variation of the phenomena, and has been focused on issues such as the transition dynamics towards a steady state, or the steady-state stability characteristics. However, it is clear that when renewable and especially biological resources are analyzed, the spatial variation of the phenomenon is also important. Biological resources tend to disperse in space under forces promoting "spreading", or "concentrating" (Akira Okubo, 2001); these processes along with intra and inter species interactions induce the formation of spatial patterns for species. In the management of economic-ecological problems, the importance of introducing the spatial dimension can be associated with a few attempts to incorporate spatial issues, such as resource management in patchy environments (James Sanchirico and James Wilen 1999, 2001; Sanchirico, 2004; William Brock and Anastasios Xepapadeas, 2002), the study of control models for interacting species (Suzanne Lenhart and Mahadev Bhat (1992), Lenhart et al. 1999) or the control of

¹ See for example Alfred Weber (1909), Harold Hotelling (1929), Walter Christaller (1933), and August Lösch (1940) for early analysis.

² Paul Krugman (1998) attributes this new research to: the ability to model monopolistic competition using the well known model of Avinash Dixit and Joseph Stiglitz (1977); the proper modeling of transaction costs; the use of evolutionary game theory; and the use of computers for numerical examples.

surface contamination in water bodies (Bhat et al. 1999)

In the economic-ecological context, a central issue that this paper is trying to explore, is under what conditions interacting processes characterizing movements of biological resources, and economic variables which reflect human effects on the resource (e.g. harvesting effort) could generate steady-state spatial patterns for the resource and the economic variables. That is, a steady-state concentration of the resource and the economic variable which is different at different points in a given spatial domain. We will call this formation of spatial patterns *spatial heterogeneity*, in contrast to *spatial homogeneity* which implies that the steady state concentration of the resource and the economic variable is the same at all points in a given spatial domain.³

A central concept in modelling the dispersal of biological resources is that of *diffusion*. Diffusion is defined as a process where the microscopic irregular movement of particles such as cells, bacteria, chemicals, or animals results in some macroscopic regular motion of the group (Okubo and Simon Levin, 2001; James Murray, 1993, 2003). Biological diffusion is based on random walk models, which when coupled with population growth equations, leads to general reaction-diffusion systems.⁴ In general a diffusion process in an ecosystem tends to produce a uniform population density, that is spatial homogeneity. Thus it might be expected that diffusion would "stabilize" ecosystems where species disperse and humans intervene through harvesting.

There is however one exception known as *diffusion induced instability*, or *diffusive instability* (Okubo et al., 2001). It was Alan Turing (1952) who suggested that under certain conditions reaction-diffusion systems can generate spatially heterogeneous patterns. This is

³ All dynamic models where spatial characteristics and dispersal are ignored leads to spatial homogeneity.

⁴ When only one species is examined the coupling of classical diffusion with a logistic growth function leads to the so-called Fisher-Kolmogorov equation.

the so-called *Turing mechanism* for generating diffusion instability.

The purpose of this paper is to explore the impact of the Turing mechanism in the emergence of diffusive instability in unified economic/ecological models of resource management. This is a different approach to the one most commonly used to address spatial issues, which is the use of metapopulation models in discrete patchy environments with dispersal among patches. We believe that the use of the Turing mechanism allows us to analyze in detail conditions under which diffusion could produce spatial heterogeneity and generation of spatial patterns, or spatial homogeneity. Thus the Turing mechanism can be used to uncover conditions which generate spatial heterogeneity in models where ecological variables interact with economic variables. When spatial heterogeneity emerges the concentration of variables of interest (e.g. resource stock and level of harvesting effort), in a steady state, are different in different locations of a given spatial domain. Once the mechanism is uncovered the impact of regulation in promoting or eliminating spatial heterogeneity can also be analyzed.

The importance of the Turing mechanism in spatial economics has been recognized by Masahisa Fujita et al. (1999, chapter 6) in the analysis of core-periphery models. Our analysis extends this approach mainly by: explicit modelling of diffusion processes governing interacting economic and ecological state variables in continuous time space; deriving explicit conditions depending on economic-ecological variables, under which diffusion could generate spatial patterns, and probably more importantly by developing the ideas for the emergence of spatial heterogeneity in an optimizing context by an appropriate modification of Pontryagin's maximum principle.

In this context, first we present a descriptive model where the biomass of a renewable resource (e.g. fish) diffuses in a finite one-dimensional spatial domain, and harvesting effort diffuses in the same domain, attracted in locations where profits per boat are higher. We

examine conditions under which: (i) open-access equilibrium generates traveling waves for the resource biomass, and (ii) the Turing mechanism can induce spatial heterogeneity, in the sense that the steady-state fishing stock and fishing effort are different at different points of the spatial domain. We also show how regulation can promote or eliminate spatial heterogeneity.

Second we consider the emergence of spatial heterogeneity in the context of an optimizing model, where the objective of a social planner is to maximize a welfare criterion subject to resource dynamics that include a diffusion process. We present a suggestion for extending Pontryagin's maximum principle to the optimal control of diffusion. Although conditions for the optimal control of partial differential equations have been derived either in abstract settings (e.g. Jacques-Louis Lions 1971) or for specific problems,⁵ our derivation, not only makes the paper self contained, but it is also close to the optimal control formalism used by economists, so it can be used for analyzing other types of economic problems, where state variables are governed by diffusion processes. Furthermore, the Pontryagin principle developed in this paper allows for an extension of the Turing mechanism for generation of spatial patterns, to the optimal control of systems under diffusion.

A new, to our knowledge, characteristic of our continuous space-time approach is that we are able to embed Turing analysis in an optimal control recursive infinite horizon approach in a way that allows us to locate sufficient conditions on parameters of the system (for example, the discount rate on the future, and interaction terms in the dynamics) for diffusive instability to emerge even in systems that are being optimally controlled. This mathematically challenging problem becomes tractible by exploiting the recursive structure of the utility and the dynamics in our continuous space/time framework in contrast to the more traditional approach of discrete patch optimizing models. This is so because the symmetries in the spatial

⁵ See for example Lenhart and Bhat, (1992); Lenhart et al., (1999); Bhat et al., (1999); Jean-Pierre Raymond and Housnaa.Zidani, (1998, 1999)

structure coupled with the recursivity in the temporal structure of our framework reduce the potentially very large number of state and costate variables to a pair of "sufficient" variables that describe the dynamics of the whole system. We believe that our framework will be quite easily adaptable to other applications, including an extension of the classical Ramsey Solow growth model to include spatial externalities. Colin Clark's classic volume (1990) as well as the work of Sanchirico and Wilen (1999, 2001) is very suggestive, but they do not contain the unification of Turing analysis with infinite horizon temporally recursive optimal control problems that we present here. We set the stage by analysis of some descriptive frameworks before turning to optimal control counterparts

Here, we use our methodology to study an optimal fishery management problem and a bioinvasion problem under diffusion. For the fishery problem, our results suggest that diffusion could alter the usual saddle point characteristics of the spatially homogeneous steady state as defined by the modified Hamiltonian dynamic system. In an analogue to the Turing mechanism for an optimizing system, spatial heterogeneity in a steady state could be the result of optimal management. On the other hand diffusion could stabilize, in the saddle point sense, an unstable steady state of an optimal control problem. For the bioinvasion problem we develop a most rapid approach path (MRAP) solution to the optimal control of diffusion processes with linear structure, and derive conditions under which it is optimal: to fight the invasion to the maximum when it first occurs; to do nothing at all, or to attain a spatially differentiated target biomass of the invasive species as rapidly as possible.

2 Diffusion and Spatial Heterogeneity in Descriptive Models of Resource Management

2.1 Spatial Open Access Equilibrium with Resource Biomass Diffusion

We start by considering the case where resource biomass diffuses in a spatial domain and harvesting takes place in an open access way. Let $x(z, t)$ denote the concentration of the biomass of a renewable resource (e.g. fish) at spatial point $z \in Z$, at time t . We assume that biomass grows according to a standard growth function $F(x)$ which determines the resource's kinetics but also disperses in space with a constant diffusion coefficient D_x .⁶

$$\frac{\partial x(z, t)}{\partial t} = F(x(z, t)) + D_x \nabla^2 x(z, t) \quad (1)$$

Harvesting $H(z, t)$ of the resource is determined as $H(z, t) = qx(z, t)E(z, t)$, where $E(z, t)$ denotes the concentration of harvesting effort (e.g. boats) at spatial point z and time t , and q is catchability coefficient. Assuming that the harvest is sold at a fixed world price, profits accruing at location z are defined as

$$pqx(z, t)E(z, t) - C(E(z, t)) \quad (2)$$

where $C(E(z, t))$ is the total cost of applying effort $E(z, t)$ at location z . We assume that effort is attracted by profits per boat and that effort (boats) diffuses in the spatial domain infinitely fast so that profits are equated in every site. Then in open access equilibrium with boats allowed to enter from "outside", profits are driven to zero at each site, or

$$pqxE - C(E) = 0 \text{ or } (pqx - AC(E))E = 0 \text{ for all } z \quad (3)$$

⁶ In addition to standard notation we denote derivatives with respect to the spatial variable z , by $\nabla^d y = \frac{\partial^d y}{\partial z^d}$, $d = 1, 2$.

where $AC(E)$ denotes average costs. Assuming linear increasing average cost or $AC(E) = c_0 + (c_1/2)E$, profit dissipation implies, using (3), that effort is determined as

$$\bar{E}(t, z) = \frac{2(pqx(t, z) - c_0)}{c_1} > 0 \text{ if } pqx - c_0 > 0 \quad (4)$$

$$\bar{E}(t, z) = 0 \text{ otherwise} \quad (5)$$

Thus with harvesting, logistic growth $F(x) = x(s - rx)$,⁷ and open access equilibrium at all sites, biomass diffuses according to the following Fisher-Kolmogorov equation:⁸

$$\frac{\partial x}{\partial t} = x(s - rx) - qEx + D_x \nabla^2 x \quad (6)$$

or using (4),

$$\frac{\partial x}{\partial t} = s'x(1 - ax) + D_x \frac{\partial^2 x}{\partial z^2} \quad (7)$$

$$s' = \left(s + \frac{2qc_0}{c_1} \right), \quad r' = \left(r + \frac{2q^2p}{c_1} \right), \quad a = \frac{r'}{s'} \quad (8)$$

If we introduce harvesting and open access equilibrium at all sites then biomass diffuses according to the Fisher-Kolmogorov equation (7).⁹ Following Murray (1993), rescaling (7) by writing $t^* = s't$ and $z^* = z \left(\frac{s'}{D_x} \right)^{1/2}$ and omitting asterisks, we obtain

$$\frac{\partial x}{\partial t} = x(1 - ax) + \frac{\partial^2 x}{\partial z^2} \quad (9)$$

with spatially homogeneous states 0 and $1/a$, which are unstable and stable respectively. In this case the positive equilibrium carrying capacity is defined as

$$K = \frac{1}{a} \quad (10)$$

As shown by Murray (1993), (9) has a traveling wave solution which can be written as

$$x(z, t) = X(v), \quad v = z - ct \quad (11)$$

⁷ We write x instead of $x(z, t)$ to simplify notation.

⁸ See Murray (1993 Chapter 11.2 page 277).

⁹ See Murray (1993, Chapter 11.2 page 277).

where c is the speed of the wave. For a traveling wave to exist, the speed c must exceed the *minimum* wave speed which under Kolmogorov initial conditions is determined for the dimensional equation (7) by

$$c \geq c_{\min} = 2 \left(s' D_x \right)^{1/2} = 2 \left[\left(s + \frac{2qc_0}{c_1} \right) D_x \right]^{1/2} \quad (12)$$

The wave front solution is depicted in figure 1.

[Figure 1]

These results can be summarized in the following proposition:

Proposition 1 *When biomass disperses in space according to (1), then open access harvesting, with harvesting effort diffusing fast and resulting in zero profit spatial equilibrium, induces convergence to a traveling wave solution for the biomass $X(v)$, with corresponding effort $\bar{E}(v) = \frac{2(pqX(v)-c_0)}{c_1}$.*

From (12) it can be seen that the wave speed depends on both ecological and economic parameters. In particular it is increasing in s , the catchability coefficient q , the initial marginal effort cost c_0 , but declining in the slope of marginal effort cost c_1 .

Our model can be used to analyze the impact of regulation. Assume that regulation involves linear spatially homogeneous taxes on effort (e.g. number or size of boats) or harvesting. Under an effort tax, zero profit condition and open access effort become

$$pqxE - \tau E - C(E) = 0 \text{ or } [pqx - \tau - AC(E)] E = 0 \text{ for all } z, \quad (13)$$

$$\bar{E}(t, z; \tau) = \frac{2(pqx(t, z) - c_0 - \tau)}{c_1} \quad (14)$$

respectively. Under a linear spatially homogeneous harvesting tax they become

$$pqxE - \tau qEx - C(E) = 0 \text{ or } [(p - \tau)qx - AC(E)] E = 0 \text{ for all } z \quad (15)$$

$$\bar{E}(t, z; \tau) = \frac{2[(p - \tau)qx(t, z) - c_0]}{c_1} \quad (16)$$

respectively. Given the above equations the effects of regulation are obtained in the following proposition.

Proposition 2 *A spatially homogeneous linear tax on effort will increase the wave speed c , and the equilibrium carrying capacity K , while a spatially homogeneous linear tax on harvesting will increase the equilibrium carrying capacity K but leave the wave speed c unchanged.*

For Proof see Appendix.

2.2 Biomass-Effort Reaction Diffusion and Pattern Formation

In the previous section we assumed that in an unbounded spatial domain effort diffuses fast to dissipate profits under open access across all sites. In this section we consider a bounded spatial domain $Z = [0, \alpha]$ and we assume that effort does not diffuse infinitely fast in search of profits. This assumption allows us to study the interactions between biomass and effort diffusion and the generation of spatial patterns where biomass and effort exhibit different concentrations.

We assume that effort is attracted by profits per boat and that effort (boats) disperses in the spatial domain with a constant diffusion coefficient D_E . Although boats could move fast in open access property regimes, movements could be restricted in communal property regimes (e.g. Fikret Berkes 1996), where due to institutional arrangements, there is exclusion of boats from certain areas and general frictions in the movement of boats towards the biomass. The structure of the model implies that the movement of biomass and effort in time and space can be described by the following reaction diffusion system

$$\frac{\partial x}{\partial t} = x(s - rx) - qEx + D_x \nabla^2 x \quad (17)$$

$$\frac{\partial E}{\partial t} = \delta E(pqx - AC(E)) + D_E \nabla^2 E, \quad \delta > 0 \quad (18)$$

$$x(z, 0), E(z, 0) \text{ given, } \nabla x = \nabla E = 0 \text{ for } z = 0, \alpha \quad (19)$$

where $AC(E)$ is the average cost curve, assumed to be U-shaped. By (19) it is assumed

that there is no external biomass or effort input on the boundary of the spatial domain.¹⁰

Given the system of (17) and (18) we examine conditions under which the Turing mechanism induces diffusive driven instability and creates a heterogeneous spatial pattern of resource biomass and harvesting effort.

2.2.1 Biomass-Effort Spatial Patterns

In analyzing diffusion induced instability we start from a system which, in the absence of diffusion, exhibits stable spatially homogeneous steady states. The spatially homogeneous system of (17) and (18), with $D_x = D_E = 0$ is defined as:

$$\dot{x} = x(s - rx) - qEx \quad (20)$$

$$\dot{E} = \delta E(pqx - AC(E)), \delta > 0 \quad (21)$$

where a steady state $(x^*, E^*) > 0$ for the spatial homogeneous is determined as the solution of $\dot{x} = \dot{E} = 0$. The homogeneous steady state is defined by the intersection of the isocines

$$x|_{\dot{x}=0} = \frac{s}{r} - \frac{q}{r}E \quad (22)$$

$$x|_{\dot{E}=0} = \frac{AC(E)}{pq} \quad (23)$$

where (22) is linear with a negative slope, while (23) is U-shaped with $E^0 = \arg \min AC(E)$ being the effort minimizing average cost. Assume that two steady states E_1^* and E_2^* exist. As shown in figure 3 it holds that

$$0 < E_1^* < E_2^* \text{ where } AC'(E_1^*) < 0, AC'(E_2^*) \geq 0. \quad (24)$$

Furthermore, as indicated by the flows of the phase diagram, the high effort steady state is stable while the low effort is unstable.

¹⁰ This is a zero flux boundary conditions which is imposed so that the organizing pattern between biomass and effort is emerging as a result of their interactions, is self-organizing and not driven by boundary conditions (Murray 2003, Vol II, p.82).

[Figure 2]

Linearizing around a steady state (x^*, E^*) ,¹¹ the linearized spatial homogeneous system can be written as

$$\dot{\mathbf{w}} = J\mathbf{w}, \quad \mathbf{w} = \begin{pmatrix} x - x^* \\ E - E^* \end{pmatrix}$$

where the linearization matrix J around a steady state is defined as

$$J = \begin{bmatrix} -rx^* & -qx^* \\ \delta pqE^* & -\delta E^* AC'(E^*) \end{bmatrix} = \begin{bmatrix} a_{11} & a_{12} \\ a_{21} & a_{22} \end{bmatrix} \quad (25)$$

At the stable steady state:

$$\begin{aligned} tr(J) &= (-rx^* - \delta E^* AC'(E^*)) < 0 \\ Det(J) &= \delta E^* x^* (rAC'(E^*) + pq^2) > 0 \end{aligned}$$

If the stable steady state is at the increasing part of the average cost then $a_{11}a_{22} > 0$, while $a_{12}a_{21} < 0$. If the stable steady state is at the decreasing part of the average cost then $a_{11}a_{22} < 0$, $a_{12}a_{21} < 0$. Since for diffusive instability we require opposite signs between a_{11} and a_{22} and between a_{12} and a_{21} ,¹² we consider the high effort steady state occurring at the declining part of $AC(E)$. In this case the sign pattern for J is $(a_{11}, a_{12}) < 0$, $(a_{21}, a_{22}) > 0$.

Linearizing the full system (17) and (18) we obtain

$$\begin{aligned} \mathbf{w}_t &= J\mathbf{w} + D\nabla^2\mathbf{w}, \\ \mathbf{w}_t &= \begin{pmatrix} \partial x / \partial t \\ \partial E / \partial t \end{pmatrix}, D = \begin{pmatrix} D_x & 0 \\ 0 & D_E \end{pmatrix} \end{aligned} \quad (26)$$

Following Murray (2003) we consider the time-independent solution of the spatial eigenvalue problem

$$\nabla^2\mathbf{W} + k^2\mathbf{W} = 0, \quad \nabla\mathbf{W} = \mathbf{0}, \text{ for } z = 0, a \quad (27)$$

¹¹ We follow Murray (2003, Vol II, Ch. 2.3).

¹² Okubo et al., (2001, pp. 350-351).

where k is the eigenvalue. For the one-dimensional domain $[0, a]$ we have solutions for (27) which are of the form

$$\mathbf{W}_k(z) = \mathbf{A}_n \cos\left(\frac{n\pi z}{a}\right), \quad n = \pm 1, \pm 2, \dots, \quad (28)$$

where \mathbf{A}_n are arbitrary constants. Solution (28) satisfies the zero flux condition at $z = 0$ and $z = a$. The eigenvalue is $k = n\pi/a$ and $1/k = a/n\pi$ is a measure of the wave like pattern. The eigenvalue k is called the *wavenumber* and $1/k$ is proportional to the wavelength $\omega : \omega = 2\pi/k = 2a/n$. Let $\mathbf{W}_k(z)$ be the eigenfunction corresponding to the wavenumber k , we look for solutions of (26) of the form

$$\mathbf{w}(z, t) = \sum_k c_k e^{\lambda t} \mathbf{W}_k(z) \quad (29)$$

Substituting (29) into (26), using (27) and canceling $e^{\lambda t}$ we obtain for each k or equivalently each n , $\lambda \mathbf{W}_k = J \mathbf{W}_k - D k^2 \mathbf{W}_k$. Since we require non trivial solutions for \mathbf{W}_k , λ is determined by

$$|\lambda I - J - D k^2| = 0$$

Then the eigenvalue $\lambda(k)$ as a function of the wavenumber is obtained as the roots of

$$\lambda^2 + [(D_x + D_E) k^2 - (a_{11} + a_{22})] \lambda + h(k^2) = 0 \quad (30)$$

$$h(k^2) = D_x D_E k^4 - (D_x a_{22} + D_E a_{11}) k^2 + \text{Det}(J) \quad (31)$$

Since the spatially homogeneous steady state (x^*, E^*) , is stable it holds that $\text{Re } \lambda(k^2 = 0) < 0$. For the steady state to be unstable in spatial disturbances it is required that $\text{Re } \lambda(k) > 0$ for some $k \neq 0$. But $\text{Re } \lambda(k^2) > 0$ only if $h(k^2) < 0$. The minimum of $h(k^2)$ occurs at k_c^2 obtained after differentiating (31) as $k_m^2 = \frac{(D_x a_{22} + D_E a_{11})}{2D_x D_E}$ which implies that for diffusive instability we need $h(k_m^2) < 0$. The final condition for diffusive instability becomes (Okubo et al., 2001)¹³

¹³ The assumption of friction in the boat movements because of institutional reasons, implies that δ is sufficiently low to sustain the spatial pattern.

$$a_{11}D_E + a_{22}D_x > 2(a_{11}a_{22} - a_{12}a_{21})^{1/2} (D_E D_x)^{1/2} > 0 \quad (32)$$

Assuming that this condition is satisfied at the spatially homogeneous steady state, then the spatially heterogeneous solution is the sum of the unstable modes with $\text{Re } \lambda(k^2) > 0$, or

$$\mathbf{w}(z, t) \sim \sum_{n_1}^{n_2} \mathbf{C}_n \exp \left[\lambda \left(\frac{n^2 \pi^2}{a^2} \right) t \right] \cos \frac{n\pi z}{a}, k^2 = \left(\frac{n\pi}{a} \right)^2 \quad (33)$$

where λ are the positive solutions of the quadratic (30), n_1 is the smallest integer greater or equal to ak_1/π and n_2 is the largest integer less than or equal to ak_2/π . The wavenumbers k_1 and k_2 are such that $k_1^2 < k_m^2 < k_2^2$, with $h(k_1^2) = h(k_2^2) = 0$ and $h(k^2) < 0$ for $k^2 \in (k_1^2, k_2^2)$. That is, (k_1, k_2) is the range of unstable wavenumbers for which $\text{Re } \lambda(k^2) > 0$.

To obtain an idea of the solution described by (33), we follow Murray (2003) and assume that the range of unstable wave numbers (k_1^2, k_2^2) is such there exists only one corresponding $n = 1$, then the only unstable mode is $\cos(\pi z/a)$ and

$$\mathbf{w}(z, t) \sim \mathbf{C}_1 \exp \left[\lambda \left(\frac{\pi^2}{a^2} \right) t \right] \cos \frac{\pi z}{a}, k^2 = \left(\frac{\pi}{a} \right)^2 \quad (34)$$

The solution for the biomass and effort assuming small positive $\mathbf{C}_1 = (\varepsilon_x, \varepsilon_E)'$ take the form

$$x(z, t) \sim x^* + \varepsilon_x \exp \left[\lambda \left(\frac{\pi^2}{a^2} \right) t \right] \cos \frac{\pi z}{a} \quad (35)$$

$$E(z, t) \sim E^* + \varepsilon_E \exp \left[\lambda \left(\frac{\pi^2}{a^2} \right) t \right] \cos \frac{\pi z}{a} \quad (36)$$

Since $\lambda \left(\frac{\pi^2}{a^2} \right) > 0$, as t increases the deviation from the spatial homogeneous solution does not die out and could eventually be transformed into a spatial pattern which is like a single cosine mode. If the domain is sufficiently large to include a larger number of unstable wavenumbers then the spatial pattern is more complex. With exponentially growing solutions for all time for (35) and (36), then $x \rightarrow \infty$ and $E \rightarrow \infty$ as $t \rightarrow \infty$ would be implied. However it is assumed that the linear unstable eigenfunctions are bounded by the nonlinear terms and

that a spatially heterogeneous steady state will emerge. The main assumption here is the existence of a bounding domain for the kinetics of (17) and (18) in the positive quadrant (Murray, 2003, Vol II p. 87). Thus the bounding set that constrains the kinetics will also contain the solutions (35) and (36) when diffusion is present. Then the growing solution approaches, as $t \rightarrow \infty$, a cosine like spatial pattern, which implies spatial heterogeneity of the steady state. Figure 4, draws on Murray (2003 Vol II, pp. 94-95) to represent one possible spatial pattern for $x(z, t)$. Shaded areas represent spatial biomass concentration above x^* , while non shaded areas represent spatial biomass concentration below x^* .

[Figure 3]

The interactions between effort and biomass are shown in figure 5. Assume that effort increases and reduces biomass below the steady state x^* . This would result in a flux of biomass from neighboring regions which would reduce the effort in these regions, causing fish biomass to increase and so on until a spatial pattern is reached.

[Figure 4]

As we show above the reaction diffusion mechanism characterized by (17) and (18) might be diffusionally unstable, but the solution could evolve to a spatially heterogenous steady state defined by:

$$x_s(z), E_s(z) \text{ as } t \rightarrow \infty$$

Then, setting $(\partial x/\partial t, \partial E/\partial t) = 0$ in (17) and (18), we obtain that $x_s(z), E_s(z)$ should satisfy

$$0 = x(z)(s - rx(z)) - qE(z)x(z) + D_x x''(z) \quad (37)$$

$$0 = \delta E(z)(pqx(z) - AC(E(z))) + D_E E''(z) \quad (38)$$

$$x'(0) = x'(a) = E'(0) = E'(a) = 0 \quad (39)$$

Then a measure of spatial heterogeneity at the steady state is given by the heterogeneity function which is defined as

$$\mathcal{G} = \int_0^a (x'^2 + E'^2) dz \geq 0 \quad (40)$$

Integrating by parts (40) and using the zero flux condition (39) we obtain

$$\mathcal{G} = - \int_0^a (xx'' + EE'') dz$$

which becomes, using (37) and (38),

$$\mathcal{G} = \int_0^a \left[\frac{x^2}{D_x} (s - rx - qE) + \frac{\delta E}{D_E} (pqx - AC(E)) \right] dz \quad (41)$$

if there is no spatial patterning $s - rx - qE = 0$ and $pqx - AC(E) = 0$, which are the spatially homogeneous solutions, and $\mathcal{G} = 0$.

2.3 Spatial Heterogeneity and Regulation

As we showed in the previous section, the adaptive biomass-effort system is likely to create spatial heterogeneity under an appropriate institutional regime inducing certain parameter constellation. This implies, for example, that in the case presented in figures 4 and 5 the biomass concentration, effort and profits will be different at different locations of our spatial domain. This can emerge in situations where, because of institutional allocation of the "rights to fish" which restricts boats from certain patches, fish biomass and boat movements are compatible in speed for the Turing mechanism to create spatial patterns and potential spatial inequalities. The measure of inequality can be given for example by the heterogeneity function (40), then social justice would require regulation to support spatial homogeneity. The problem then is reduced to that of finding instruments that will prevent diffusive instability.

As indicated in the previous section, diffusive instability cannot occur if the sign pattern of the linearization matrix (25) does not show opposition of signs between a_{11} and a_{22} and

between a_{12} and a_{21} . Thus given (25), the target is to change the sign structure, through a regulatory instrument, in a way that will prevent diffusive instability. An instrument affecting harvesting behavior will affect profits and consequently the second row of (25).

We consider feedback control instruments in the general form of a non linear tax on effort (e.g. boat size or boat numbers) or on harvesting $\tau(x, E)$, with the property that when the tax is applied, then either a_{21} or a_{22} will change sign so that diffusive instability is not supported.

Proposition 3 *A spatially homogeneous non linear tax on effort of the feedback form $\tau(E)$ with $\tau'(E) > 0$ and $\tau'(E^+) + AC'(E^+) > 0$, where E^+ is the regulated spatially homogeneous steady state for effort, will prevent the emergence of spatial heterogeneity.*

For proof see Appendix.

The effect of the nonlinear tax on effort is to shift the average cost curve, or equivalently the $x|_{\dot{E}=0}$ curve so that the intersection with the $x|_{\dot{x}=0}$ curve, takes place at the increasing part of the average cost curve as shown in Figure 3, where the new curve is AC_{reg} .

A feedback tax on harvesting can also be used as a regulatory instrument.

Proposition 4 *A spatially homogeneous non linear tax on harvesting of the feedback form $\tau(E, x)$ with $p - \tau(E, x) > 0$, $\frac{\partial \tau}{\partial E} > 0$, $\frac{\partial \tau}{\partial x} < 0$ and $\frac{\partial \tau(E^+, x^+)}{\partial E} qx^+ + AC'(E^+) > 0$, where (E^+, x^+) is the regulated spatially homogeneous steady state for effort, will prevent the emergence of spatial heterogeneity.*

For proof see Appendix.

The effect of the nonlinear tax on effort is to shift the $x|_{\dot{E}=0}$ curve so that the intersection with the $x|_{\dot{x}=0}$ curve takes place at the increasing part of the average cost curve as shown in Figure 3.

It is interesting to note from these two propositions that a feedback tax on harvesting which depends on biomass alone, that is a tax $\tau(x)$, cannot exclude diffusive instability, because in this case the a_{21} element is positive, but the a_{22} element is now $-\delta E^+ AC'(E^+)$. Thus intersections at the decreasing part of the average cost curve cannot be excluded.

On the other hand consider the introduction of a new technology, say because of subsidization, that increases the catchability coefficient q , and assume that with the old technology the $x|_{\dot{x}=0}$ isocline was intersecting the $x|_{\dot{E}=0}$ at the increasing part of the average cost curve, point S in figure 2, so that diffusive instability was not possible. The increase in q rotates the $x|_{\dot{x}=0}$ isocline towards the origin so that the new steady state could take place at the decreasing part of the average cost curve. Then, as has been shown above, diffusive instability is possible. Thus,

Proposition 5 *In the model of biomass and effort diffusion described above, an increase in the catchability coefficient might generate spatial heterogeneity.*

3 On the Optimal Control of Diffusion: An Extension of Pontryagin's Principle

In the previous section we analyzed descriptive models of biomass effort diffusion and examined, in the context of these models, the emergence of spatial heterogeneity through the Turing mechanism. In this section we explicitly introduce optimization and we analyze the effects of the optimal control of diffusion processes in the emergence of spatial heterogeneity.

We start by considering the optimal control problem defined in the spatial domain $z \in [z_0, z_1]$

$$\max_{\{u(t,z)\}} \int_{z_0}^{z_1} \int_{t_0}^{t_1} f(x(t,z), u(t,z)) dt dz \quad (42)$$

$$\text{s.t. } \frac{\partial x(t,z)}{\partial t} = g(x(t,z), u(t,z)) + D \frac{\partial^2 x(t,z)}{\partial z^2} \quad (43)$$

$$x(t_0, z_0) \text{ given, } \left. \frac{\partial x}{\partial z} \right|_{z_0} = \left. \frac{\partial x}{\partial z} \right|_{z_1} = 0 \text{ zero flux} \quad (44)$$

The first part of (44) provides initial conditions, while the second part is a zero flux condition similar to (19). Problem (42) to (44) has been analyzed in more general forms (e.g. Jacques-Louis Lions, 1971). We however choose to present here an extension of Pontryagin's principle for this problem, because it is in the spirit of optimal control formalism used by

economists, and thus can be used for other applications, but also because it makes the whole analysis in the paper self contained.¹⁴ Furthermore, as noted in the introduction, the use of Pontryagin's principle in continuous time space allows for a drastic reduction of the dimensionality of the dynamic system describing the phenomenon and makes the problem tractable. Our results are presented below, with proofs in the Appendix.

Maximum Principle under diffusion: Necessary Conditions - Finite time horizon (MPD-FT). *Let $u^* = u^*(t, z)$ be a choice of instrument that solves problem (42) to (44) and let $x^* = x^*(t, z)$ be the associate path for the state variable. Then there exists a function $\lambda(t, z)$ such that for each t and z*

1. $u^* = u^*(t, z)$ maximizes the generalized Hamiltonian function

$$\mathcal{H}(x(t, z), u, \lambda(t, z)) = f(x, u) + \lambda \left[g(x, u) + D \frac{\partial x^2}{\partial z^2} \right]$$

or

$$f_u + \lambda g_u = 0 \tag{45}$$

- 2.

$$\begin{aligned} \frac{\partial \lambda}{\partial t} &= -\frac{\partial \mathcal{H}}{\partial x} - D \frac{\partial^2 \lambda}{\partial z^2} = -\left(f_x + \lambda g_x + D \frac{\partial^2 \lambda}{\partial z^2} \right) \\ \frac{\partial x}{\partial t} &= g(x, u^*) + D \frac{\partial^2 x}{\partial z^2} \end{aligned} \tag{46}$$

evaluated at $u^* = u^*(x(t, z), \lambda(t, z))$.

3. *The following transversality conditions hold*

$$\lambda(t_1) = 0, \quad \frac{\partial \lambda(z_1)}{\partial z} = \frac{\partial \lambda(z_0)}{\partial z} = 0 \tag{47}$$

The result can also be extended to infinite time horizon problems with discounting. In

¹⁴ Similar conditions have been derived for other cases such as the control of parabolic equations (Jean-Pierr Raymond and Housmaa Zidani.1998,1999), boundary control (Lenhart et al. 1999), or distributed parameter control (Dean Carlson et al. 1991; Lenhart and Bhat 1992)

this case the problem is:

$$\int_{z_0}^{z_1} \int_{t_0}^{\infty} e^{-\rho t} f(x(t, z), u(t, z)) dt dz, \rho > 0. \quad (48)$$

$$s.t \quad \frac{\partial x}{\partial t} = g(x(t, z), u(t, z)) + D \frac{\partial^2 x}{\partial z^2} \quad (49)$$

$$x(t_0, z_0) \text{ given, } \left. \frac{\partial x}{\partial z} \right|_{z_0} = \left. \frac{\partial x}{\partial z} \right|_{z_1} = 0 \text{ zero flux} \quad (50)$$

Maximum Principle under diffusion: Necessary Conditions - Infinite time horizon (MPD-IT). Let $u^* = u^*(t, z)$ be a choice of instrument that solves problem (42) to (44) and let $x^* = x^*(t, z)$ be the associate path for the state variable. Then there exists a function $\lambda(t, z)$ such that for each t and z

1. $u^* = u^*(t, z)$ maximizes the generalized current value Hamiltonian function $\mathcal{H}(x(t, z), u, \lambda(t, z)) = f(x, u) + \lambda \left[g(x, u) + D \frac{\partial^2 x}{\partial z^2} \right]$, or

$$f_u + \lambda g_u = 0 \quad (51)$$

2.

$$\frac{\partial \lambda}{\partial t} = \rho \lambda - \frac{\partial \mathcal{H}}{\partial x} - D \frac{\partial^2 \lambda}{\partial z^2} = \rho \lambda - \left(f_x + \lambda g_x + D \frac{\partial^2 \lambda}{\partial z^2} \right) \quad (52)$$

$$\frac{\partial x}{\partial t} = g(x, u^*) + D \frac{\partial^2 x}{\partial z^2} \quad (53)$$

evaluated at $u^* = u^*(x(t, z), \lambda(t, z))$

3. The following transversality conditions hold

$$\frac{\partial \lambda(z_1)}{\partial z} = \frac{\partial \lambda(z_0)}{\partial z} = 0 \quad (54)$$

It is clear that the pair of (46) or (52) can characterize the whole dynamic system in continuous time space. Conditions (45) - (47) are essentially necessary conditions. Sufficiency conditions can also be derived by extending sufficiency theorems of optimal control. Proofs are provided in the Appendix.

Maximum Principle under diffusion: Sufficient conditions - Finite time horizon

Assume that functions $f(x, u)$ and $g(x, u)$ are concave differentiable functions for problem (42) to (44) and suppose that functions $x^*(t, z)$, $u^*(t, z)$ and $\lambda(t, z)$ satisfy necessary conditions (45) - (47) and (43) for all $t \in [t_0, t_1]$, $z \in [z_0, z_1]$ and that $x(t, z)$ and $\lambda(t, z)$ are continuous with

$$\lambda(t, z) \geq 0 \text{ for all } t \text{ and } z \quad (55)$$

Then the functions $x^*(t, z)$, $u^*(t, z)$ solve the problem (42) to (44). That is the necessary conditions (45) - (47) are also sufficient.

The result can also be extended along the lines of Arrow's sufficiency theorem. We state here the infinite horizon case.

Maximum Principle under diffusion: Sufficient conditions - Infinite time horizon

Let \mathcal{H}^0 denote the maximized Hamiltonian, or

$$\mathcal{H}^0(x, \lambda) = \max_u \mathcal{H}(x, u, \lambda) \quad (56)$$

If the maximized Hamiltonian is a concave function of x for given λ then functions $x^*(t, z)$, $u^*(t, z)$ and $\lambda(t, z)$ that satisfy conditions (45) - (47) and (43) for all $z \in [z_0, z_1]$ and the transversality conditions

$$\lim_{t \rightarrow \infty} e^{-\rho t} \lambda(t, z) \geq 0, \quad \lim_{t \rightarrow \infty} e^{-\rho t} \lambda(t, z) x(t, z) = 0 \quad (57)$$

solve the problem (42) to (44).

3.1 Optimal Harvesting under Biomass Diffusion

Having established the optimality conditions, we are interested in the implications of diffusion on optimally controlled systems regarding mainly the possibility of emergence of spatial

heterogeneity under optimal control, but also the possibility of diffusion acting as a stabilizing force for unstable steady states under optimal control. Let as before $x(z, t)$ denote the concentration of the biomass of a renewable resource (e.g. fish) at spatial point $z \in Z$, at time t . We assume a one-dimensional domain $0 \leq z \leq a$ with zero flux at $z = 0$ and $z = a$ or $\frac{\partial x}{\partial z}|_0 = \frac{\partial x}{\partial z}|_a = 0$. Biomass grows according to a standard growth function $F(x)$ and disperses in space with a constant diffusion coefficient D , or

$$\frac{\partial x(z, t)}{\partial t} = F(x(z, t)) - H(z, t) + D\nabla^2 x \quad (58)$$

where harvesting $H(z, t)$ of the resource is determined as $H(z, t) = qx(z, t)E(z, t)$, $E(z, t)$ denotes the concentration of harvesting effort (e.g. boats) at spatial point z and time t , and q is catchability coefficient. The total cost of applying effort $E(z, t)$ at location z is given by an increasing and convex function $c(E(z, t), z)$, so if we apply the effort further from the origin, cost increases. Let benefits from harvesting at each point on space be $S(H(z, t))$.

The optimal harvesting problem is then defined as:

$$\begin{aligned} & \max_{E(z, t)} \int_0^\infty \int_Z e^{-\rho t} [S(H(z, t)) - c(E(z, t), z)] dt dz \quad (59) \\ \text{s.t. } & \frac{\partial x(t, z)}{\partial t} = F(x(t, z)) - qx(t, z)E(t, z) + D\frac{\partial^2 x(t, z)}{\partial z^2} \\ & x(0, z) \text{ given, and zero flux on } 0, a \end{aligned}$$

Following the section above, MPD-IT implies that the optimal control maximizes the generalized Hamiltonian for each location z ,

$$\begin{aligned} \mathcal{H} &= S(H(z, t)) - c(E(z, t), z) + \quad (60) \\ & \mu(t, z) \left[x(t, z)(s - rx(t, z)) - qx(t, z)E(t, z) + D\frac{\partial^2 x^2}{\partial z^2} \right] \end{aligned}$$

Setting $S'(H(z, t)) = p(z) > 0$, necessary conditions for the MPD-IT, omitting t to simplify,

imply

$$\frac{\partial \mathcal{H}}{\partial E(z)} = p(z)qx(z) - c'(E(z)) - \mu(z)qx(z) \Rightarrow (p - \mu)qx = c'(E) \quad (61)$$

$$E^0(z) = E(x(z), \mu(z)), \quad E^0(z) \geq 0, \quad \text{if } p(z) - \mu(z) \geq 0,$$

$$\frac{\partial E}{\partial x} = \frac{(p - \mu)q}{c''} > 0, \quad \frac{\partial E}{\partial \mu} = -\frac{qx}{c''} < 0 \quad \text{for all } z.$$

Then, the Hamiltonian system becomes:

$$\frac{\partial x}{\partial t} = F(x) - qx E(x, \mu) + D \frac{\partial x^2}{\partial z^2} = G_1(x, \mu) + D \frac{\partial x^2}{\partial z^2} \quad (62)$$

$$\frac{\partial \mu}{\partial t} = \left[\rho - F'(x) + qE(x, \mu) \right] \mu - pqE(x, \mu) - D \frac{\partial \mu^2}{\partial z^2} = G_2(x, \mu) - D \frac{\partial \mu^2}{\partial z^2} \quad (63)$$

A spatially homogeneous (or "flat") system is defined from (62) and (63) for $D = 0$. A "flat" steady state (x^*, μ^*) for this system is determined as the solution of $\frac{\partial x}{\partial t} = \frac{\partial \mu}{\partial t} = 0$.¹⁵ Given the nonlinear nature of (62) and (63), more than one steady state is expected. Assume that such a steady state with $(x^*, \mu^*) > 0$, $E^0 > 0$ exists, and consider the linearization matrix around the steady state

$$J = \begin{bmatrix} G_{1x}(x^*, \mu^*) & G_{1\mu}(x^*, \mu^*) \\ G_{2x}(x^*, \mu^*) & G_{2\mu}(x^*, \mu^*) \end{bmatrix} \quad (64)$$

$$\begin{aligned} G_{1x} &= F'(x^*) - qx^* E(x^*, \mu^*) - qx^* \frac{\partial E(x^*, \mu^*)}{\partial x} \\ G_{1\mu} &= -qx^* \frac{\partial E(x^*, \mu^*)}{\partial \mu} \\ G_{2x} &= \left[-F''(x^*) + q \frac{\partial E(x^*, \mu^*)}{\partial x} \right] \mu^* - pq \frac{\partial E(x^*, \mu^*)}{\partial x} \\ G_{2\mu} &= \rho - F'(x^*) + qx^* E + qx^* \frac{\partial E(x^*, \mu^*)}{\partial x} = \rho - G_{1x} \end{aligned} \quad (65)$$

For the flat steady state we have $\text{tr}J = G_{1x} + G_{2\mu} = \rho > 0$. Therefore if $\det J > 0$ the steady state is unstable, while if $\det J < 0$ the steady state has the local saddle point property. In the saddle point case there is a one-dimensional manifold such that for any

¹⁵ See, for example, Clark (1990) for the analysis of this problem.

initial value of μ there is an initial value for x , such that the system converges to the steady state along the manifold.

To analyze the impact of diffusion we follow section 2.2. We have, for the linearization of the full system (62) and (63):

$$\begin{aligned} \mathbf{w}_t &= J\mathbf{w} + \tilde{D}\nabla^2\mathbf{w}, \\ \mathbf{w} &= \begin{pmatrix} x(z, t) - x^* \\ \mu(z, t) - \mu^* \end{pmatrix}, \quad \mathbf{w}_t = \begin{pmatrix} \partial x / \partial t \\ \partial \mu / \partial t \end{pmatrix}, \quad \tilde{D} = \begin{pmatrix} D & 0 \\ 0 & -D \end{pmatrix} \end{aligned} \quad (66)$$

and λ must solve

$$\left| \lambda I - J - \tilde{D}k^2 \right| = 0$$

Then the eigenvalue $\lambda(k)$ as a function of the wavenumber is obtained as the roots of

$$\lambda^2 - \rho\lambda + h(k^2) = 0 \quad (67)$$

$$h(k^2) = -D^2k^4 - D[2G_{1x}(x^*, \mu^*) - \rho]k^2 + \det J \quad (68)$$

where the roots are given by:

$$\lambda_{1,2}(k^2) = \frac{1}{2} \left(\rho \pm \sqrt{\rho^2 - 4h(k^2)} \right) \quad (69)$$

It should be noted that the flat (no diffusion) case corresponds to $k^2 = 0$, so that $h(k^2 = 0) = \det J$, and $\lambda_{1,2} = \frac{1}{2} \left(\rho \pm \sqrt{\rho^2 - 4\det J} \right)$. We examine the implication of diffusion in two cases

3.1.1 Case I: The Spatially homogeneous steady state is a saddle point $\lambda_2 < 0 < \lambda_1$ for $k^2 = 0$ - Diffusion generates spatial heterogeneity.

In this case $\det J < 0$ and since furthermore $\text{tr} J > 0$ there is a one-dimensional stable manifold with negative slope. On this manifold and in the neighborhood of the steady state, for any initial value of x there is an initial value of μ such that the spatially homogeneous system converges to the flat steady state (x^*, μ^*) . For the optimally-controlled system the

solutions are such that

$$\begin{pmatrix} \hat{x}(z, t) \\ \hat{\mu}(z, t) \end{pmatrix} \sim C_2 \mathbf{v}_2 e^{\lambda_2 t}, \text{ for all } z \quad (70)$$

where C_2 is constant determined by initial conditions and \mathbf{v}_2 is the eigenvector corresponding to λ_2 .¹⁶ The path for the optimal control E is given by $\hat{E}^0 = E(\hat{x}(z, t), \hat{\mu}(z, t))$ for all z .

Under diffusion the smallest root is given by

$$\lambda_2 = \frac{1}{2} \left(\rho - \sqrt{\rho^2 - 4h(k^2)} \right) \quad (71)$$

1. If $0 < h(k^2) < \rho^2/4$, for some k , then this root becomes real and positive.
2. If $h(k^2) > \rho^2/4$, for some k , then both roots are complex with positive real parts.

In both cases above, the system is unstable with both roots having positive real parts. Therefore if $h(k^2) > 0$ for some k , then the Hamiltonian system is unstable, in the neighborhood of the flat steady state, to spatial perturbations. From (68) the quadratic function $h(k^2)$ is concave, and therefore has a maximum. Furthermore $h(0) = \det J < 0$ ¹⁷ and $h'(0) = -(2G_{1x} - \rho) > 0$ if the steady state is on the declining part of $F(x)$, or $F'(x^*) < 0$. Then $h(k^2)$ has a maximum for

$$k_{\max}^2 : h'(k_{\max}^2) = 0, \text{ or } k_{\max}^2 = -\frac{[2G_{1x}(x^*, \mu^*) - \rho]}{2D} > 0, \text{ for } (2G_{1x} - \rho) < 0 \quad (72)$$

If $h(k_{\max}^2) > 0$ or $-D^2 k_{\max}^4 - D[2G_{1x}(x^*, \mu^*) - \rho] k_{\max}^2 + \det J > 0$, there exist two positive roots $k_1^2 < k_2^2$ such that $h(k^2) > 0$ for $k^2 \in (k_1^2, k_2^2)$. Figure 5a depicts $h(k^2)$ for this case.

This is the dispersion relationship associated with the optimal control problem.¹⁸

[Figure 5]

¹⁶ Since we want the controlled system to converge to the optimal steady state, the constant C_1 associated with the positive root λ_1 is set at zero.

¹⁷ This is because the flat steady state has the saddle point property.

¹⁸ For a detailed analysis of the dispersion relationship in problems without optimization, see Murray, (2003).

When diffusion renders both roots positive, diffusive instability emerges in the optimal control problem, in a way similar to the diffusive instability emerging from the Turing mechanism in systems without optimization. In this case the solution (70) for the controlled system becomes, following section 2.2,

$$\hat{x}(z, t) \sim x^* + \varepsilon_x \sum_{n_1}^{n_2} \mathbf{C}_n \exp \left[\lambda_2 \left(\frac{n^2 \pi^2}{a^2} \right) t \right] \cos \frac{n\pi z}{a}, k^2 = \left(\frac{n\pi}{a} \right)^2 \quad (73)$$

$$\hat{\mu}(z, t) \sim x^* + \varepsilon_\mu \sum_{n_1}^{n_2} \mathbf{C}_n \exp \left[\lambda_2 \left(\frac{n^2 \pi^2}{a^2} \right) t \right] \cos \frac{n\pi z}{a}, \quad (74)$$

where $\lambda_2 \left(\frac{n^2 \pi^2}{a^2} \right)$ is the root that is positive due to diffusion, n_1 is the smallest integer greater than or equal to ak_1^2/π , and n_2 is the largest integer less than or equal to ak_2^2/π . The path for optimal effort will be $E^0(z, t) = E(\hat{x}(z, t), \hat{\mu}(z, t))$. Since $\lambda_2 > 0$ the spatial patterns do not decay as t increases. Thus, provided that the kinetics of the Hamiltonian system have a confined set, the solution converges at the steady state to a spatial pattern. This implies that for a subset of the spatial domain the resource stock and its shadow value are above the flat steady state levels and for another subset they are below the flat steady state levels, similar to figures 3 or 4. This result can be summarized in the following proposition.

Proposition 6 *For an optimal harvesting system which exhibits a saddle point property in the absence of diffusion, it is optimal, under biomass diffusion and for a certain set parameter values, to have emergence of diffusive instability leading to a spatially heterogeneous steady state for the biomass stock, its shadow value and the corresponding optimal harvesting effort.*

The significance of this proposition, which extends the concept of the Turing mechanism to the optimal control of diffusion, is that spatial heterogeneity and pattern formation, resulting from diffusive instability, might be an optimal outcome under certain circumstances.

For regulation purposes and for the harvesting problem examined above, it is clear that the spatially heterogeneous steady state shadow value of the resource stock, and the corresponding harvesting effort, can be used to define *optimal regional* fees or quotas.

3.1.2 Case II: The Spatially homogeneous steady state is unstable $\text{Re } \lambda_{1,2} > 0$ for $k^2 = 0$ - Diffusion Stabilizes

Since $\text{tr}J > 0$, this implies that $\det J > 0$. Let $\Delta_D = \rho^2 - 4 \det J > 0$ so the we have two positive real roots at the flat steady state. Diffusion can stabilize the system in the sense of producing a negative root. For the smallest root to turn negative or $\lambda_2 < 0$ it is sufficient that

$$h(k^2) < 0 \quad (75)$$

The quadratic function (68) is concave, and therefore has a maximum. Furthermore $h(0) = \det J > 0$ and $h'(0) = -(2G_{1x} - \rho) > 0$ if the steady state is on the declining part of $F(x)$, or $F'(x^*) < 0$. Thus there is a root $k_2^2 > 0$ (see figure 5b) such that for $k^2 > k_2^2$, we have $\lambda_2 < 0$. The solutions for $x(z, t)$ and $\mu(z, t)$, will be determined by the sum of exponentials of λ_1 and λ_2 . Since we want to stabilize the system we set the constant associated with the positive root λ_1 equal to zero. Then the solution will depend on the sum of unstable and stable modes associated with λ_2 . Following previous results the solutions for x and μ will be of the form:

$$\begin{pmatrix} \hat{x}(z, t) \\ \hat{\mu}(z, t) \end{pmatrix} \sim \begin{pmatrix} x^* \\ \mu^* \end{pmatrix} + \sum_0^{n_2} \mathbf{C}_{\hat{n}} \exp \left[\lambda \left(\frac{n^2 \pi^2}{a^2} \right) t \right] \cos \frac{n\pi z}{a} + \sum_{n_2}^N \mathbf{C}_n \exp \left[\lambda \left(\frac{n^2 \pi^2}{a^2} \right) t \right] \cos \frac{n\pi z}{a}, \quad (76)$$

where n_2 is the smallest integer greater or equal to ak_2^2/π and $N > n_2$ and we choose optimal effort such that $E^0(z, t) = E(\hat{x}(z, t), \hat{\mu}(z, t))$. Since $\lambda \left(\frac{n^2 \pi^2}{a^2} \right) < 0$ for $n > n_2$, all the modes of the third term of (76) decay exponentially. So to converge to the steady state we need to set $\mathbf{C}_{\hat{n}} = 0$, then the spatial patterns corresponding to the third term of (76) will die out with the passage of time and the system will converge to the spatially homogeneous steady state.

This result can be summarized in the following proposition.

Proposition 7 *For an unstable steady state, in the absence of diffusion, of an optimal harvesting problem, it is optimal, under biomass diffusion and for a certain set of parameter values, to stabilize the steady state. Stabilization is in the form of saddle point stability where spatial patterns decay and the system converges along one direction to the previously unstable spatially homogeneous steady state.*

The significance of this proposition is that it shows that under diffusion it is optimal to stabilize a steady state which was unstable under spatial homogeneity.

3.2 On the Optimal Control of Bioinvasions

The framework of the optimization methodology developed in section 3 can be applied to the study of bioinvasion problems which typically involve, along with the temporal dynamics, diffusion in space of an invasive species (e.g. insects). Let the evolution of the biomass of the invasive species given by the diffusion equation

$$\frac{\partial x(z, t)}{\partial t} = F(x(z, t), a) - h(z, t) + D\nabla^2 x \quad (77)$$

where $x(0, 0) = x_0$ denotes the "propagule" of the invasive species which is released at time $t = 0$ at the origin of a one-dimensional space Z . The biological growth function of the invasive species is given by $F(x(z, t), a)$, with a reflecting general environmental interaction with the species in question, and $h(z, t)$ denoting the removal (harvesting) of the invasive species, through for example spraying.

Let $c_1(z)h(z, t)$ be the cost of removing $h(z, t)$ from the invasive species at time t and location z , thus $c_1(z)$ is the site dependent unit removal cost, and $c_2(x(z, t), z)$ the cost or damage associated with the amount of biomass $x(z, t)$ from the invasive species at time t and site z . This cost could be, for example, losses in agricultural production, or treatment cost of those affected by the invasive species.

The bioinvasion control problem for a regulator would be to choose a removal policy $\{h(z, t)\}$ in space/time to minimize the present value of removal and harvesting costs. The

problem can be defined as

$$\min_{\{h(z,t)\}} \int_Z \int_0^\infty e^{-\rho t} [c_1(z) h(z,t) + c_2(x(z,t), z)] dt dz \quad (78)$$

$$\text{s.t. (77) and } x(0,0) = x_0 \quad (79)$$

We exploit the linearity of the objective function and the species dynamics in h to develop a MRAP for the optimal control of diffusions with a linear structure in the control. The MRAP essentially determines an optimal or target invasive species biomass, $x^*(z) \geq 0$ in the following way.

Proposition 8 *The optimal target biomass $x^*(z) \geq 0$ of the invasive species for any $t \in (0, \infty)$ and site $z \in Z = [0, Z_B]$, when the flux of the invasive species on the boundary Z is such that $\frac{\partial x(t,0)}{\partial z} = \frac{\partial x(t,Z_B)}{\partial z}$,¹⁹ is determined as*

$$x^*(z) = \arg \min \{c_1(z) [F(x(z), a) - \rho x(z)] + c_2(x(z), z)\} \quad (80)$$

For proof see Appendix.

Objective (80) is now written in MRAP form which is in the form of a sum of independent terms across space and time which suggests that the optimal thing to do is to approach as rapidly as possible, for each site z , the desired "target" $x^*(z)$ described by optimization (80). If we assume that the objective function in (80) is convex in x for all z in Z , then we can derive some concrete results.

First, it will be optimal to fight an initial bioinvasion, described by $x_0(z)$, as much as possible, if $x^*(z) = 0$ for all z , when (81) below holds,

$$c_1(z)(F'(0, a) - \rho) + c_2'(0, z) \geq 0, \quad \forall z \in Z \quad (81)$$

With the objective (80) convex in x for each z , condition (81) is sufficient for "fighting to the max" to be optimal. Condition (81) is easy to interpret. Assume to simplify things that

¹⁹ This assumption covers the zero flux condition used earlier in this paper.

$F(x, z) = xs(z)$, then condition (81) is

$$c_2'(0, z)/[\rho - s(z)] \geq c_1(z), \quad \forall z \in Z \quad (82)$$

which says that you "fight to the max" the bioinvasion, when the capitalized sum of marginal damages from the biomass of the invasive species (adjusted for the growth rate of the species) is greater than the cost of killing one.

Secondly, it is optimal to do nothing if

$$c_2'(k(z), z)/[\rho - s(z)] \leq c_1(z), \quad \forall z \in Z \quad (83)$$

where $k(z)$ is the carrying capacity of the invasive species at site z . Equation (83) makes sense from the economic point of view. If $c_2(x)$ is convex, marginal damage is increasing in x . Hence, if the largest possible marginal damage is still not enough when capitalized (at the rate adjusted for growth) to cover the current marginal cost of removing one unit of x , it makes sense that it would be optimal to do nothing in the face of bioinvasion.

Third, it is easy to locate the necessary and sufficient conditions for an interior solution to be optimal, given the assumed convexity of the objective function in (80). The optimality condition for the interior solution, $x^*(z)$, will be

$$c_1(z)(F'(x^*(z), a) - \rho) + c_2'(x^*(z), z) \geq 0, \quad \forall z \in Z \quad (84)$$

Then the MRAP to the bioinvasion control, across sites $z \in Z$ and for every t , will take the form

$$h^*(z) = \begin{cases} 0 & \text{if } x(z) < x^*(z) \\ h^{\max} & \text{if } x(z) > x^*(z) \\ F(x^*(z), a) - D\nabla^2 x^*(z) & \text{if } x(z) = x^*(z) \end{cases} \quad (85)$$

Conditions (85) represent an extension of the standard MRAP solution to continuous time space.

4 Conclusions and Suggestions for Future Research

This paper develops methods of control of spatial dynamical systems. In particular it adapts Turing analysis for diffusive instability to bioeconomic problems, and it furthermore extends this analysis to recursive optimal control frameworks. It applies the methods to economic problems of optimal harvesting and optimal control of bioinvasions as illustrations of the potential power of the methods.

In section two of the paper, we formulate a spatial harvesting model in continuous space-time of the Clark (1990), Sanchirico and Wilen (1999, 2001) type, in order to illustrate how the interaction of the Turing mechanism with economic forces can produce travelling wave solutions and spatial heterogeneity in an analytically tractible descriptive framework. We show how this framework could be used to study the interaction of various tax and regulatory policies with the economic dynamics and the biomass dynamics over space-time to produce or to moderate emergent spatial heterogeneity. We use this framework to expose the key role of the dispersion relation in the study of emergent spatial heterogeneity. In section three of the paper, we develop a version of the Pontryagin Maximum Principle for continuous space-time problems that should be useful to economists. While this is not entirely new, we believe the tractible and transparent way in which we develop it should be useful to our fellow economists and other researchers.

We illustrate its usefulness by applying the method to an optimal version of the descriptive problem in section two. We develop the analog of the dispersion relationship for a recursive infinite horizon version of the optimal harvesting problem, and show how one can now easily do local stability analysis by linearization of the analog of the familiar Hamiltonian. We extend the theory associated with the dispersion relationship in descriptive spatial Turing analysis to our recursive infinite horizon optimization framework. This is an extension to

continuous space-time of the economist's familiar infinite horizon framework. We believe this extension of the dispersion relation and Turing analysis is new. In any event it should be useful for many applications involving optimization over space-time in economics and related subjects.

We locate sufficient conditions for diffusion and optimization to induce local instability and, hence, spatial heterogeneity in an originally spatially-homogeneous situation. We also locate sufficient conditions for diffusion and optimization to stabilize and to homogenize an originally spatially-heterogeneous situation.

In addition we show how the optimization framework can be easily modified to analyze "bang-bang" problems which are linear in the control, e.g. MRAP. We illustrate the potential usefulness of this modification to the optimal control of bioinvasions. We give simple, economically-interpretable sufficient conditions for the optimality of various bioinvasion fighting strategies such as "fighting to the max."

We believe that the analytical methods developed in this paper not only provide some useful insights on the optimal control in time-space of some important bioeconomic problems, such as fishery management and control of bioinvasions, but that they can also provide a solid basis for the analysis of a variety of economics problems where spatial considerations are important.

Appendix

Proof of Proposition 2: From the definition of s' and r' we have the following conditions under regulation

$$\begin{aligned} \text{Effort tax:} \quad s' &= \left(s + \frac{2q(c_0 + \tau)}{c_1} \right), \quad r' = \left(r + \frac{2q^2 p}{c_1} \right), \quad K = \frac{1}{a} = \frac{s'}{r'} \\ \text{Harvesting tax:} \quad s' &= \left(s + \frac{2qc_0}{c_1} \right), \quad r' = \left(r + \frac{2q^2(p - \tau)}{c_1} \right), \quad K = \frac{1}{a} = \frac{s'}{r'} \end{aligned}$$

Thus under the effort tax s' , c_{\min} in (12) and K increase, while under the harvesting tax only r' declines and thus K increases. ■

Proof of Proposition 3: Under the tax the evolution of effort for the spatially homogeneous system is described by

$$\dot{E} = \delta E (pqx - \tau(E) - AC(E))$$

The regulated homogeneous steady state is defined by the intersection of the isocines

$$x|_{\dot{x}=0} = \frac{s}{r} - \frac{q}{r} E \quad (86)$$

$$x|_{\dot{E}=0} = \frac{\tau(E) + AC(E)}{pq} \quad (87)$$

Then the linearization matrix at the spatially homogeneous steady state becomes

$$J^+ = \begin{bmatrix} -rx^+ & -qx^+ \\ \delta pqE^+ & -\delta E^* [\tau'(E^+) + AC'(E^+)] \end{bmatrix} = \begin{bmatrix} a_{11} & a_{12} \\ a_{21} & a_{22} \end{bmatrix} : \begin{bmatrix} - & - \\ + & - \end{bmatrix} \quad (88)$$

It is clear that $tr(J^+) < 0$ and $Det(J^+) > 0$ so the regulated steady state is stable and because of the sign order at the steady state no diffusive instability is possible. ■

Proof of Proposition 4: Under the tax the evolution of effort for the spatially homogeneous system is described by

$$\dot{E} = \delta E (pqx - \tau(x, E) qx - AC(E)) \quad (89)$$

The regulated homogeneous steady state is defined by the intersection of the isocines

$$x|_{\dot{x}=0} = \frac{s}{r} - \frac{q}{r}E \quad (90)$$

$$x|_{\dot{E}=0} = \frac{\tau(E) + AC(E)}{(p - \tau(x, E))q} \quad (91)$$

Then the linearization matrix at a spatially homogeneous steady state becomes

$$J^+ = \begin{bmatrix} -rx^+ & -qx^+ \\ \delta(p - \tau - \frac{\partial\tau}{\partial x}x^+)qE^+ & -\delta E^* \left[\frac{\partial\tau}{\partial E}qx^+ + AC'(E^+) \right] \end{bmatrix}, \text{ with } \begin{bmatrix} - & - \\ + & - \end{bmatrix}$$

It is clear that $tr(J^+) < 0$ and $Det(J^+) > 0$ so the regulated steady state is stable and because of the sign order at the steady state no diffusive instability is possible. ■

Extension of Pontryagin's Principle: Necessary conditions

We develop a variational argument along the lines of Morton Kamien and Nancy Schwartz (1981, pp. 115-116). Problem (42) to (44) can be written as:

$$J = \int_{z_0}^{z_1} \int_{t_0}^{t_1} f(x(t, z), u(t, z)) dt dz = \int_{z_0}^{z_1} \int_{t_0}^{t_1} \left\{ f(x(t, z), u(t, z)) + \lambda(t, z) \left[g(x(t, z), u(t, z)) + D \frac{\partial^2 x}{\partial z^2} - \frac{\partial x}{\partial t} \right] \right\} dt dz \quad (92)$$

We integrate by parts the last two terms of (92). The $\lambda(t, z) \frac{\partial x}{\partial t}$ term becomes

$$\begin{aligned} & (-1) \int_{z_0}^{z_1} \int_{t_0}^{t_1} \lambda(t, z) \frac{\partial x}{\partial t} dt = \\ & \int_{z_0}^{z_1} \left[-\lambda(t_1) x(t_1) + \lambda(t_0) x(t_0) + \int_{t_0}^{t_1} x(t, z) \frac{\partial \lambda}{\partial t} dt \right] dz \end{aligned} \quad (93)$$

The $\lambda(t, z) D \frac{\partial^2 x}{\partial z^2}$ becomes

$$\begin{aligned} & D \int_{z_0}^{z_1} \int_{t_0}^{t_1} \lambda(t, z) \frac{\partial^2 x}{\partial z^2} = \\ & D \int_{t_0}^{t_1} \left[\lambda(z_1) \frac{\partial x}{\partial z} \Big|_{z_1} - \lambda(z_0) \frac{\partial x}{\partial z} \Big|_{z_0} - \int_{z_0}^{z_1} \frac{\partial x}{\partial z} \frac{\partial \lambda}{\partial t} dz \right] dt = \\ & -D \int_{t_0}^{t_1} \left[\int_{z_0}^{z_1} \frac{\partial x}{\partial z} \frac{\partial \lambda}{\partial t} dz \right] dt \text{ by zero flux} \end{aligned} \quad (94)$$

integrating by parts once more we have

$$\begin{aligned}
& (-1) D \int_{t_0}^{t_1} \left[\int_{z_0}^{z_1} \frac{\partial x}{\partial z} \frac{\partial \lambda}{\partial t} dz \right] dt = \\
& D \int_{t_0}^{t_1} \left[-\frac{\partial \lambda(z_1)}{\partial z} x(z_1) + \frac{\partial \lambda(z_0)}{\partial z} x(z_0) \right. \\
& \left. + \int_{z_0}^{z_1} x(t, z) \frac{\partial^2 \lambda}{\partial z^2} \right] dz dt
\end{aligned} \tag{95}$$

Thus (92) becomes

$$\begin{aligned}
& \int_{z_0}^{z_1} \int_{t_0}^{t_1} f(x(t, z), u(t, z)) dt dz = \\
& \int_{z_0}^{z_1} \int_{t_0}^{t_1} [f(x(t, z), u(t, z)) + \lambda(t, z) [g(x(t, z), u(t, z))] \\
& + x(t, z) \frac{\partial \lambda}{\partial t} + x(t, z) D \frac{\partial^2 \lambda}{\partial z^2}] dt dz \\
& + \int_{z_0}^{z_1} [-\lambda(t_1) x(t_1) + \lambda(t_0) x(t_0)] dz + \\
& D \int_{t_0}^{t_1} \left[-\frac{\partial \lambda(z_1)}{\partial z} x(z_1) + \frac{\partial \lambda(z_0)}{\partial z} x(z_0) \right] dt
\end{aligned} \tag{96}$$

We consider a one parameter family of comparison controls $u^*(t, z) + \varepsilon \eta(t, z)$, where $u^*(t, z)$ is the optimal control, $\eta(t, z)$ is a fixed function and ε is a small parameter. Let $y(t, z, \varepsilon)$, $t \in [t_0, t_1]$, $z \in [z_0, z_1]$ be the state variable generated by (43) and (44) with control $u^*(t, z) + \varepsilon \eta(t, z)$, $t \in [t_0, t_1]$, $z \in [z_0, z_1]$. We assume that $y(t, z, \varepsilon)$ is a smooth function of all its arguments and the ε enters parametrically. For $\varepsilon = 0$ we have the optimal path $x^*(t, z)$, furthermore all comparison paths must satisfy initial and zero flux conditions. Thus,

$$y(t, z, 0) = x^*(t, z), y(t_0, z_0, \varepsilon) = x(t_0, z_0), \left. \frac{\partial y}{\partial z} \right|_{z_0} = \left. \frac{\partial y}{\partial z} \right|_{z_1} = 0 \tag{97}$$

When the functions u^* , x^* and η are held fixed the value of (42) evaluated along the control function $u^*(t, z) + \varepsilon \eta(t, z)$ and the corresponding state function $y(t, z, \varepsilon)$ depends only on the single parameter ε . Therefore,

$$J(\varepsilon) = \int_{z_0}^{z_1} \int_{t_0}^{t_1} [f(y(t, z, \varepsilon), u^*(t, z) + \varepsilon \eta(t, z))] dt dz \tag{98}$$

or using (96)

$$\begin{aligned}
J(\varepsilon) &= \int_{z_0}^{z_1} \int_{t_0}^{t_1} [f(y(t, z, \varepsilon), u^*(t, z) + \varepsilon\eta(t, z)) \\
&\quad + \lambda(t, z)g(y(t, z, \varepsilon), u^*(t, z) + \varepsilon\eta(t, z)) \\
&\quad + y(t, z, \varepsilon) \frac{\partial \lambda}{\partial t} + Dy(t, z, \varepsilon) \frac{\partial^2 \lambda}{\partial z^2}] dt dz \\
&\quad + \int_{z_0}^{z_1} [-\lambda(t_1)y(t_1, \varepsilon) + \lambda(t_0)y(t_0, \varepsilon)] dz \\
&\quad + D \int_{t_0}^{t_1} \left[-\frac{\partial \lambda(z_1)}{\partial z} y(z_1, \varepsilon) + \frac{\partial \lambda(z_0)}{\partial z} y(z_0, \varepsilon) \right] dt
\end{aligned} \tag{99}$$

Since u^* is a maximizing control the function $J(\varepsilon)$ assumes the maximum when $\varepsilon = 0$. Thus

$$\left. \frac{dJ(\varepsilon)}{d\varepsilon} \right|_{\varepsilon=0} \text{ or}$$

$$\begin{aligned}
\left. \frac{dJ(\varepsilon)}{d\varepsilon} \right|_{\varepsilon=0} &= \\
&\int_{z_0}^{z_1} \int_{t_0}^{t_1} \left[\left(f_x + \lambda g_x + \frac{\partial \lambda}{\partial t} + D \frac{\partial^2 \lambda}{\partial z^2} \right) y_\varepsilon + (f_u + \lambda g_u) \eta \right] dt dz + \\
&\int_{z_0}^{z_1} [-\lambda(t_1)y_\varepsilon(t_1, \varepsilon) + \lambda(t_0)y_\varepsilon(t_0, \varepsilon)] dz + \\
&D \int_{t_0}^{t_1} \left[-\frac{\partial \lambda(z_1)}{\partial z} y_\varepsilon(z_1, \varepsilon) + \frac{\partial \lambda(z_0)}{\partial z} y_\varepsilon(z_0, \varepsilon) \right] dt = 0
\end{aligned} \tag{100}$$

Using the usual transversality condition on λ , we have that $\lambda(t_1) = 0$, furthermore $y_\varepsilon(t_0, \varepsilon) = 0$, since $y(t_0, \varepsilon) = x(t_0, z_0)$ fixed. If we impose zero flux conditions on λ , then,

$\frac{\partial \lambda(z_1)}{\partial z} = \frac{\partial \lambda(z_0)}{\partial z} = 0$, then we obtain from (100)

$$\frac{\partial \lambda}{\partial t} = - \left(f_x + \lambda g_x + D \frac{\partial^2 \lambda}{\partial z^2} \right) \tag{101}$$

$$f_u + \lambda g_u = 0 \tag{102}$$

So if we define a generalized Hamiltonian function

$$\mathcal{H} = f(x, u) + \lambda \left[g(x, u) + D \frac{\partial x^2}{\partial z^2} \right] \tag{103}$$

then by (102) optimality conditions become conditions (45) - (47). The infinite horizon case with discounting is obtained by following Kenneth Arrow and Mordecai Kurz (1970, Chapter

II.6). ■

Extension of Pontryagin's Principle: Sufficiency

Suppose that x^* , u^* , λ satisfy conditions (45) - (47) and (43) and let x , u functions satisfying (43). Let f^*, g^* denote functions evaluated along (x^*, u^*) and let f, g denote functions evaluated along the feasible path (x, u) . To prove sufficiency we need to show that

$$W \equiv \int_{z_0}^{z_1} \int_{t_0}^{t_1} (f^* - f) dt dz \geq 0 \quad (104)$$

From the concavity of f it follows that

$$f^* - f \geq (x^* - x) f_x^* + (u^* - u) f_u^* \quad (105)$$

then

$$W \geq \int_{z_0}^{z_1} \int_{t_0}^{t_1} [(x^* - x) f_x^* + (u^* - u) f_u^*] dt dz \quad (106)$$

$$= \int_{z_0}^{z_1} \int_{t_0}^{t_1} \left[(x^* - x) \left(-\frac{\partial \lambda}{\partial t} - \lambda g_x^* - D \frac{\partial^2 \lambda}{\partial z^2} \right) + (u^* - u) (-\lambda g_u^*) \right] dt dz \quad (107)$$

$$= \int_{z_0}^{z_1} \int_{t_0}^{t_1} \lambda [g^* - g - (x^* - x) g_x^* - (u^* - u) g_u^*] dt dz \geq 0 \quad (108)$$

Condition (107) follows from (106) by using conditions (45) and (46) to substitute for f_x^* and f_u^* . Condition (108) is derived by integrating first by parts the terms involving $\frac{\partial \lambda}{\partial t}$, substituting for $\frac{\partial x}{\partial t}$ from (43), and using the transversality conditions, as has been done in (93), then by integrating twice the terms involving $\frac{\partial^2 \lambda}{\partial z^2}$ and using the zero flux condition as has been done in (95). The non-negativity of the integral in (108) follows from (55) and the concavity of g .

The result can be easily extended along the lines of Arrow's sufficiency theorem (Arrow and Kurz, 1970, Chapter II.6). ■

Proof of Proposition 8: Substitute h from (77) to (78) and then integrate by parts to eliminate the dx/dt term. For this term we obtain

$$\int_0^\infty \{dx/dt \exp(-\rho t)\} dt = \lim_{T \rightarrow \infty} x(T) \exp(-\rho T) - x_0 + \int_0^\infty \{\rho x \exp(-\rho t)\} dt \quad (109)$$

where the "admissible" class of $x(t, z)$ is such that

$$\lim_{T \rightarrow \infty} x(T) \exp(-\rho T) = 0 \quad \forall z \in Z \quad (110)$$

Integrating the term, $D \frac{\partial^2 x}{\partial z^2}$, over $z \in Z$, we obtain

$$\int_Z \left[D \frac{\partial^2 x}{\partial z^2} \right] dz = D \left. \frac{\partial x}{\partial z} \right|_{bdry(Z)} = D \left(\frac{\partial x(t, B)}{\partial z} - \frac{\partial x(t, 0)}{\partial z} \right) \quad (111)$$

where "bdry(Z)" denotes the "boundary of Z ". If Z is, for example, a circle $[0, 2\pi]$ where the derivatives are equal at the "boundary points" 0 and 2π , then the equal flux condition $\frac{\partial x(t, 0)}{\partial z} = \frac{\partial x(t, B)}{\partial z}$, implies $\frac{\partial x(t, 0)}{\partial z} = \frac{\partial x(t, 2\pi)}{\partial z}$ and (111) is zero. Thus, for this special case, the diffusion term vanishes in the objective (78). This will be true for any space Z where we assume that the values of the derivatives $\frac{\partial x}{\partial z}$ are equal at the boundaries. If Z is the infinite real line, let $-B, +B$ be large in absolute value, the equal flux assumption implies $\lim_{B \rightarrow \infty} \left[\frac{\partial x(t, B)}{\partial z} - \frac{\partial x(t, -B)}{\partial z} \right] = 0$.

Thus, collecting all this together we may write the objective as

$$\begin{aligned} TC(0) &= \int \int \{ \exp(-\rho t) \{ c_1(z) [F(x, z) - \rho x] + c_2(x, z) \} dz dt + \int \{ c_1(z) x_0(z) \} . d\zeta \} \\ J(x, z) &: = \{ c_1(z) [F(x, a) - \rho x] + c_2(x, z) \} \end{aligned} \quad (113)$$

Once we get (113) we can optimize "term by term" to obtain (80). ■

References

- Arrow, Kenneth. and Kurz, Mordecai.** *Public Investment, the Rate of Return, and Optimal Fiscal Policy*, Johns Hopkins University Press for Resources for the Future: Baltimore, 1970.
- Berkes, Fikret.** "Social systems, ecological systems, and property rights." in Susan Hanna, Carl, Folke and Karl-Goran, Mäler, eds., *Rights to Nature*, Washington, DC: Island Press, pp. 87-107, 1996.
- Brock, William and Xepapadeas, Anastasios.** "Optimal Ecosystem Management when Species Compete for Limiting Resources." *Journal of Environmental Economics and Management*, September 2002, 44(2), pp. 189-230.
- Carlson, Dean; Haurie, Alain and Leizarowitz, Arie.** *Infinite Horizon Optimal Control*, Second Edition, Springer-Verlag: Berlin, 1991.
- Clark, Colin.** *Mathematical Bioeconomics: The Optimal Management Of Renewable Resources*, Second Edition, New York: Wiley, 1990.
- Christaller, Walter.** *Central Places in Southern Germany*. Fischer: Jena, 1933.
- Dixit, Avinash and Stiglitz, Joseph.** "Monopolistic Competition and Optimum Product Diversity." *American Economic Review*, 1977, 67(3), pp. 297-308.
- Fujita, Masahisa; Krugman Paul and Venables, Anthony.** *The Spatial Economy*, Cambridge Massachusetts: The MIT Press, 1999.
- Hotelling, Harold.** "Stability in Competition," *Economic Journal*, 1929, 39, pp. 41-57.
- Krugman, Paul.** "On the Number and Location of Cities." *European Economic Review*, April 1993(2-3), 37, pp. 293-298.
- Krugman, Paul.** "Space: The Final Frontier," *Journal of Economic Perspectives*, Spring 1998, 12(2), pp. 161-174.
- Lions, Jacques- Louis.** *Optimal Control of Systems Governed by Partial Differential Equations*, New York: Springer - Verlag, 1971.
- Lösch, August.** *The Economics of Location*. Fisher: Jena, 1940
- Murray, James.** *Mathematical Biology*, Second Edition, Berlin, Springer, 1993
- Murray, James.** *Mathematical Biology*, Third Edition, Berlin, Springer, 2003
- Okubo, Akira.** "Introduction: The Mathematics of Ecological Diffusion." in Akira Okubo and Simon Levin, eds., *Diffusion and Ecological Problems: Modern Perspectives*, 2nd Edition, Berlin, Springer, 2001.
- Okubo, Akira; Alan, Hastings and Powell, Thomas.** "Population Dynamics in Temporal and Spatial Domains." in Akira Okubo and Simon Levin, eds., *Diffusion and Ecological Problems: Modern Perspectives*, 2nd Edition, Berlin, Springer, 2001.

Okubo, Akira and Levin, Simon. “The Basics of Diffusion.” in Akira Okubo and Simon Levin, eds., *Diffusion and Ecological Problems: Modern Perspectives*, 2nd Edition, Berlin, Springer, 2001.

Kamien, Morton. and Schwartz, Nancy. *Dynamic Optimization: The Calculus of Variations and Optimal Control in Economics and Management*, Second Edition, New York, North-Holland, 1991.

Raymond, Jean-Pierre and Zidani, Housnaa. “Pontryagin’s Principle for State-Constrained Control Problems Governed by Parabolic Equations with Unbounded Controls.” *SIAM Journal of Control and Optimization*, November 1998 Vol. 36(6), pp. 1853-1879.

—————. “Hamiltonian Pontryagin’s Principles for Control Problems Governed by Semilinear Parabolic Equations.” *Applied Mathematics Optimization*, 1999 39 pp. 143–177.

Sanchirico, James. “Additivity Properties of Metapopulation Models: Implications for the Assessment of Marine Reserves, *Resources for the Future*, Discussion Paper 02-66, *Journal of Environmental Economics and Management*, In Press, Available online 21 August 2004,.

Sanchirico, James and Wilen, James. “Bioeconomics of Spatial Exploitation in a Patchy Environment.” *Journal of Environmental Economics and Management*, March 1999, 37(2), pp. 129-150.

—————. “A Bioeconomic Model of Marine Reserve Creation.” *Journal of Environmental Economics and Management*, November 2001, 42(3), pp. 257-276.

Turing, Alan. “The Chemical Basis of Morphogenesis.” *Philosophical Transactions of the Royal Society of London*, 1955, 237, pp37-72.

Weber, Alfred. *Theory of the Location of Industries*. Chicago: University of Chicago Press, 1909.

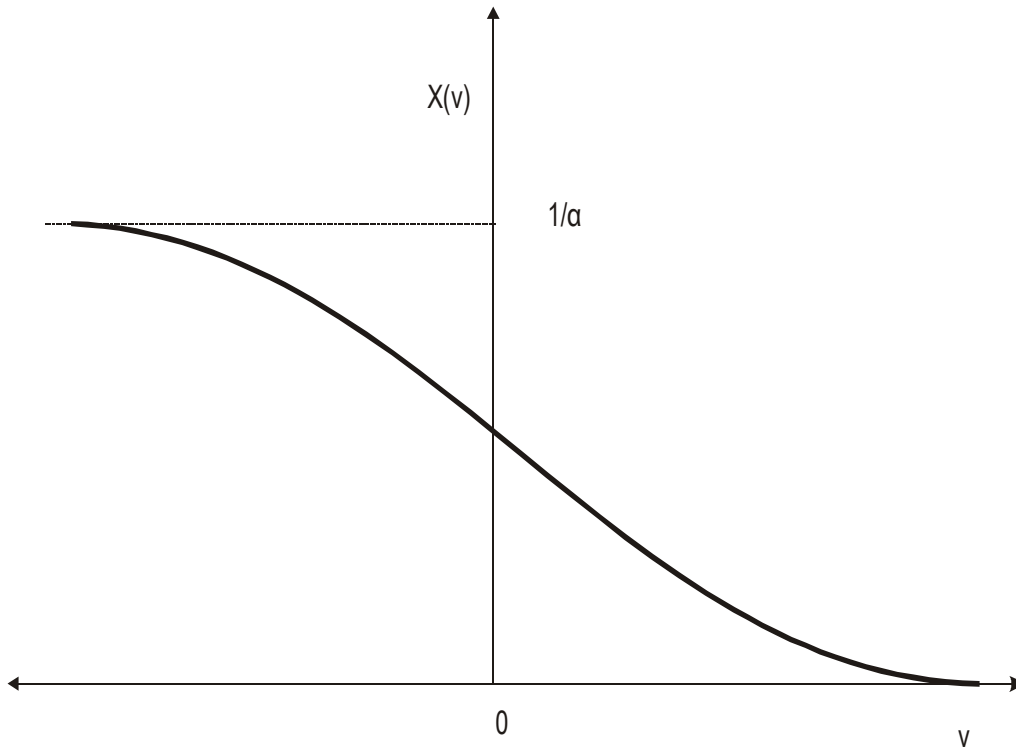


Figure 1: Wavefront solution for biomass in open access equilibrium

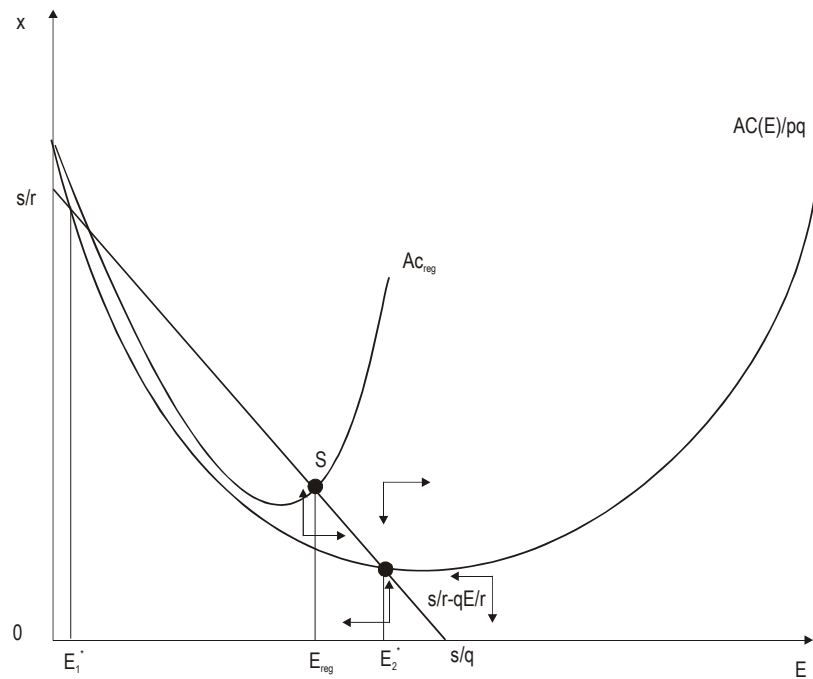


Figure 2: Spatially homogeneous solutions and regulation

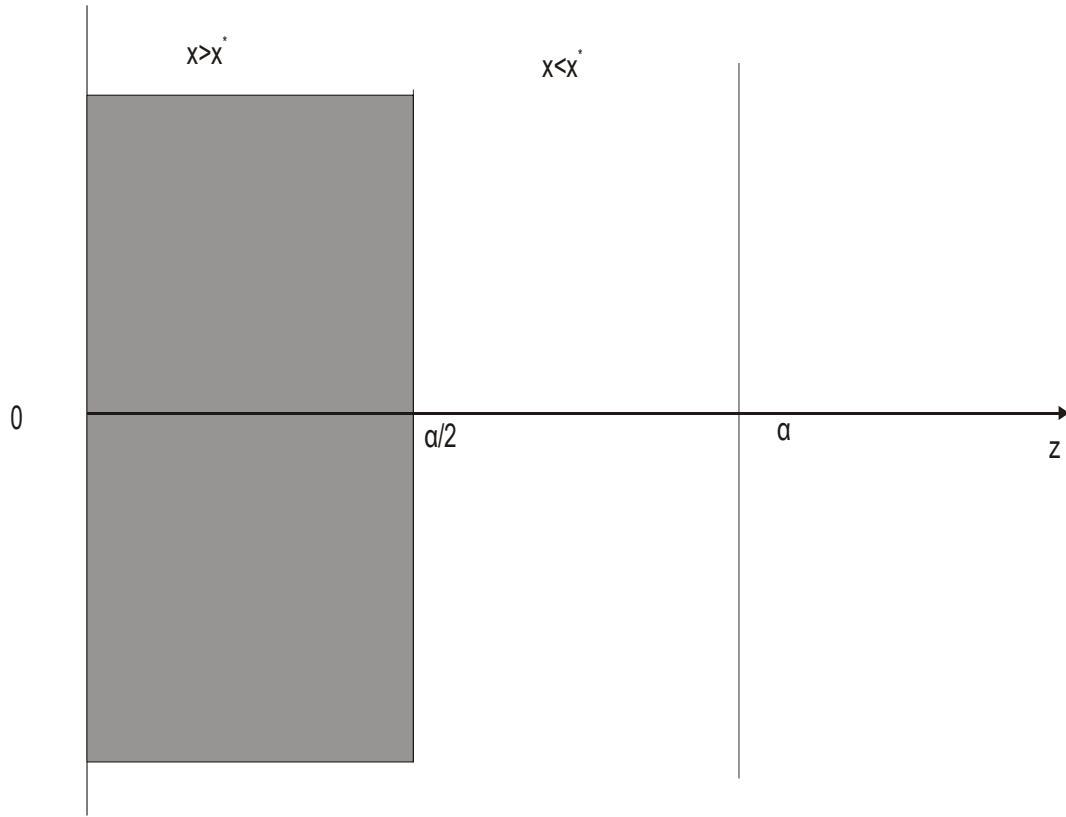


Figure 3: A possible pattern formation for the biomass

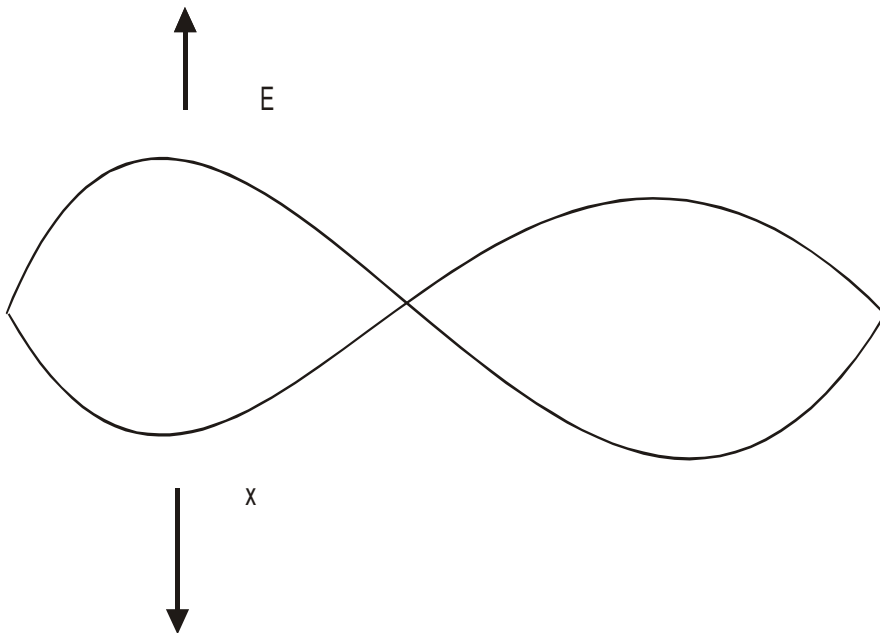


Figure 4: Diffusion driven spatial heterogeneity for biomass and effort

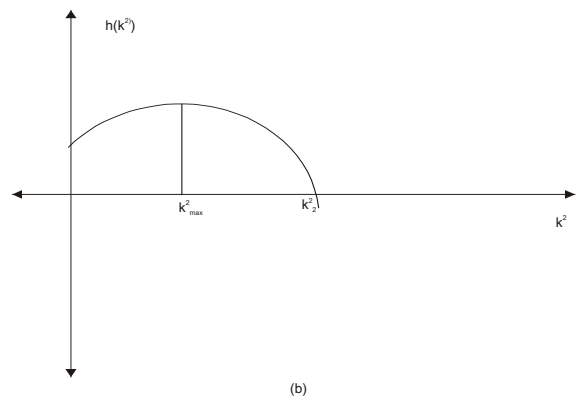
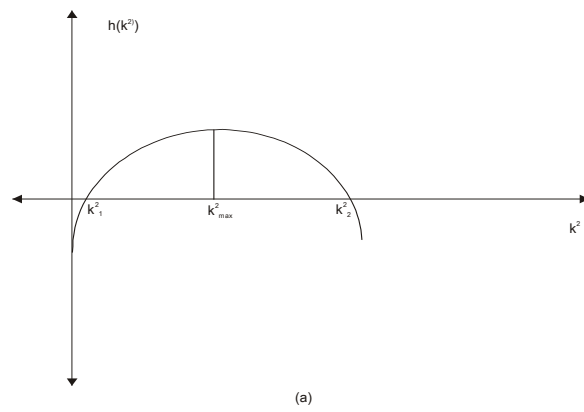


Figure 5: Dispersion relationships

NOTE DI LAVORO DELLA FONDAZIONE ENI ENRICO MATTEI

Fondazione Eni Enrico Mattei Working Paper Series

Our Note di Lavoro are available on the Internet at the following addresses:

<http://www.feem.it/Feem/Pub/Publications/WPapers/default.html>

<http://www.ssrn.com/link/feem.html>

NOTE DI LAVORO PUBLISHED IN 2003

PRIV	1.2003	<i>Gabriella CHIESA and Giovanna NICODANO: <u>Privatization and Financial Market Development: Theoretical Issues</u></i>
PRIV	2.2003	<i>Ibolya SCHINDELE: <u>Theory of Privatization in Eastern Europe: Literature Review</u></i>
PRIV	3.2003	<i>Wietze LISE, Claudia KEMFERT and Richard S.J. TOL: <u>Strategic Action in the Liberalised German Electricity Market</u></i>
CLIM	4.2003	<i>Laura MARSILIANI and Thomas I. RENSTRÖM: <u>Environmental Policy and Capital Movements: The Role of Government Commitment</u></i>
KNOW	5.2003	<i>Reyer GERLAGH: <u>Induced Technological Change under Technological Competition</u></i>
ETA	6.2003	<i>Efrem CASTELNUOVO: <u>Squeezing the Interest Rate Smoothing Weight with a Hybrid Expectations Model</u></i>
SIEV	7.2003	<i>Anna ALBERINI, Alberto LONGO, Stefania TONIN, Francesco TROMBETTA and Margherita TURVANI: <u>The Role of Liability, Regulation and Economic Incentives in Brownfield Remediation and Redevelopment: Evidence from Surveys of Developers</u></i>
NRM	8.2003	<i>Elissaios POPYRAKIS and Reyner GERLAGH: <u>Natural Resources: A Blessing or a Curse?</u></i>
CLIM	9.2003	<i>A. CAPARRÓS, J.-C. PEREAU and T. TAZDAÏT: <u>North-South Climate Change Negotiations: a Sequential Game with Asymmetric Information</u></i>
KNOW	10.2003	<i>Giorgio BRUNELLO and Daniele CHECCHI: <u>School Quality and Family Background in Italy</u></i>
CLIM	11.2003	<i>Efrem CASTELNUOVO and Marzio GALEOTTI: <u>Learning By Doing vs Learning By Researching in a Model of Climate Change Policy Analysis</u></i>
KNOW	12.2003	<i>Carole MAIGNAN, Gianmarco OTTAVIANO and Dino PINELLI (eds.): <u>Economic Growth, Innovation, Cultural Diversity: What are we all talking about? A critical survey of the state-of-the-art</u></i>
KNOW	13.2003	<i>Carole MAIGNAN, Gianmarco OTTAVIANO, Dino PINELLI and Francesco RULLANI (lix): <u>Bio-Ecological Diversity vs. Socio-Economic Diversity. A Comparison of Existing Measures</u></i>
KNOW	14.2003	<i>Maddy JANSSENS and Chris STEYAERT (lix): <u>Theories of Diversity within Organisation Studies: Debates and Future Trajectories</u></i>
KNOW	15.2003	<i>Tuzin BAYCAN LEVENT, Enno MASUREL and Peter NIJKAMP (lix): <u>Diversity in Entrepreneurship: Ethnic and Female Roles in Urban Economic Life</u></i>
KNOW	16.2003	<i>Alexandra BITUSIKOVA (lix): <u>Post-Communist City on its Way from Grey to Colourful: The Case Study from Slovakia</u></i>
KNOW	17.2003	<i>Billy E. VAUGHN and Katarina MLEKOV (lix): <u>A Stage Model of Developing an Inclusive Community</u></i>
KNOW	18.2003	<i>Selma van LONDEN and Arie de RUIJTER (lix): <u>Managing Diversity in a Globalizing World</u></i>
Coalition		
Theory	19.2003	<i>Sergio CURRARINI: <u>On the Stability of Hierarchies in Games with Externalities</u></i>
Network		
PRIV	20.2003	<i>Giacomo CALZOLARI and Alessandro PAVAN (lx): <u>Monopoly with Resale</u></i>
PRIV	21.2003	<i>Claudio MEZZETTI (lx): <u>Auction Design with Interdependent Valuations: The Generalized Revelation Principle, Efficiency, Full Surplus Extraction and Information Acquisition</u></i>
PRIV	22.2003	<i>Marco LiCalzi and Alessandro PAVAN (lx): <u>Tilting the Supply Schedule to Enhance Competition in Uniform-Price Auctions</u></i>
PRIV	23.2003	<i>David ETTINGER (lx): <u>Bidding among Friends and Enemies</u></i>
PRIV	24.2003	<i>Hannu VARTIAINEN (lx): <u>Auction Design without Commitment</u></i>
PRIV	25.2003	<i>Matti KELOHARJU, Kjell G. NYBORG and Kristian RYDQVIST (lx): <u>Strategic Behavior and Underpricing in Uniform Price Auctions: Evidence from Finnish Treasury Auctions</u></i>
PRIV	26.2003	<i>Christine A. PARLOUR and Uday RAJAN (lx): <u>Rationing in IPOs</u></i>
PRIV	27.2003	<i>Kjell G. NYBORG and Ilya A. STREBULAIEV (lx): <u>Multiple Unit Auctions and Short Squeezes</u></i>
PRIV	28.2003	<i>Anders LUNANDER and Jan-Eric NILSSON (lx): <u>Taking the Lab to the Field: Experimental Tests of Alternative Mechanisms to Procure Multiple Contracts</u></i>
PRIV	29.2003	<i>TangaMcDANIEL and Karsten NEUHOFF (lx): <u>Use of Long-term Auctions for Network Investment</u></i>
PRIV	30.2003	<i>Emiel MAASLAND and Sander ONDERSTAL (lx): <u>Auctions with Financial Externalities</u></i>
ETA	31.2003	<i>Michael FINUS and Bianca RUNDSHAGEN: <u>A Non-cooperative Foundation of Core-Stability in Positive Externality NTU-Coalition Games</u></i>
KNOW	32.2003	<i>Michele MORETTO: <u>Competition and Irreversible Investments under Uncertainty</u></i>
PRIV	33.2003	<i>Philippe QUIRION: <u>Relative Quotas: Correct Answer to Uncertainty or Case of Regulatory Capture?</u></i>
KNOW	34.2003	<i>Giuseppe MEDA, Claudio PIGA and Donald SIEGEL: <u>On the Relationship between R&D and Productivity: A Treatment Effect Analysis</u></i>
ETA	35.2003	<i>Alessandra DEL BOCA, Marzio GALEOTTI and Paola ROTA: <u>Non-convexities in the Adjustment of Different Capital Inputs: A Firm-level Investigation</u></i>

GG	36.2003	<i>Matthieu GLACHANT</i> : <u>Voluntary Agreements under Endogenous Legislative Threats</u>
PRIV	37.2003	<i>Narjess BOUBAKRI, Jean-Claude COSSET and Omrane GUEDHAMI</i> : <u>Postprivatization Corporate Governance: the Role of Ownership Structure and Investor Protection</u>
CLIM	38.2003	<i>Rolf GOLOMBEK and Michael HOEL</i> : <u>Climate Policy under Technology Spillovers</u>
KNOW	39.2003	<i>Slim BEN YOUSSEF</i> : <u>Transboundary Pollution, R&D Spillovers and International Trade</u>
CTN	40.2003	<i>Carlo CARRARO and Carmen MARCHIORI</i> : <u>Endogenous Strategic Issue Linkage in International Negotiations</u>
KNOW	41.2003	<i>Sonia OREFFICE</i> : <u>Abortion and Female Power in the Household: Evidence from Labor Supply</u>
KNOW	42.2003	<i>Timo GOESCHL and Timothy SWANSON</i> : <u>On Biology and Technology: The Economics of Managing Biotechnologies</u>
ETA	43.2003	<i>Giorgio Busetti and Matteo MANERA</i> : <u>STAR-GARCH Models for Stock Market Interactions in the Pacific Basin Region, Japan and US</u>
CLIM	44.2003	<i>Katrin MILLOCK and Céline NAUGES</i> : <u>The French Tax on Air Pollution: Some Preliminary Results on its Effectiveness</u>
PRIV	45.2003	<i>Bernardo BORTOLOTTI and Paolo PINOTTI</i> : <u>The Political Economy of Privatization</u>
SIEV	46.2003	<i>Elbert DIJKGRAAF and Herman R.J. VOLLEBERGH</i> : <u>Burn or Bury? A Social Cost Comparison of Final Waste Disposal Methods</u>
ETA	47.2003	<i>Jens HORBACH</i> : <u>Employment and Innovations in the Environmental Sector: Determinants and Econometrical Results for Germany</u>
CLIM	48.2003	<i>Lori SNYDER, Nolan MILLER and Robert STAVINS</i> : <u>The Effects of Environmental Regulation on Technology Diffusion: The Case of Chlorine Manufacturing</u>
CLIM	49.2003	<i>Lori SNYDER, Robert STAVINS and Alexander F. WAGNER</i> : <u>Private Options to Use Public Goods. Exploiting Revealed Preferences to Estimate Environmental Benefits</u>
CTN	50.2003	<i>László Á. KÓCZY and Luc LAUWERS</i> (Ixi): <u>The Minimal Dominant Set is a Non-Empty Core-Extension</u>
CTN	51.2003	<i>Matthew O. JACKSON</i> (Ixi): <u>Allocation Rules for Network Games</u>
CTN	52.2003	<i>Ana MAULEON and Vincent VANNETELBOSCH</i> (Ixi): <u>Farsightedness and Cautiousness in Coalition Formation</u>
CTN	53.2003	<i>Fernando VEGA-REDONDO</i> (Ixi): <u>Building Up Social Capital in a Changing World: a network approach</u>
CTN	54.2003	<i>Matthew HAAG and Roger LAGUNOFF</i> (Ixi): <u>On the Size and Structure of Group Cooperation</u>
CTN	55.2003	<i>Tajji FURUSAWA and Hideo KONISHI</i> (Ixi): <u>Free Trade Networks</u>
CTN	56.2003	<i>Halis Murat YILDIZ</i> (Ixi): <u>National Versus International Mergers and Trade Liberalization</u>
CTN	57.2003	<i>Santiago RUBIO and Alistair ULPH</i> (Ixi): <u>An Infinite-Horizon Model of Dynamic Membership of International Environmental Agreements</u>
KNOW	58.2003	<i>Carole MAIGNAN, Dino PINELLI and Gianmarco I.P. OTTAVIANO</i> : <u>ICT, Clusters and Regional Cohesion: A Summary of Theoretical and Empirical Research</u>
KNOW	59.2003	<i>Giorgio BELLETTINI and Gianmarco I.P. OTTAVIANO</i> : <u>Special Interests and Technological Change</u>
ETA	60.2003	<i>Ronnie SCHÖB</i> : <u>The Double Dividend Hypothesis of Environmental Taxes: A Survey</u>
CLIM	61.2003	<i>Michael FINUS, Ekko van IERLAND and Robert DELLINK</i> : <u>Stability of Climate Coalitions in a Cartel Formation Game</u>
GG	62.2003	<i>Michael FINUS and Bianca RUNDSHAGEN</i> : <u>How the Rules of Coalition Formation Affect Stability of International Environmental Agreements</u>
SIEV	63.2003	<i>Alberto PETRUCCI</i> : <u>Taxing Land Rent in an Open Economy</u>
CLIM	64.2003	<i>Joseph E. ALDY, Scott BARRETT and Robert N. STAVINS</i> : <u>Thirteen Plus One: A Comparison of Global Climate Policy Architectures</u>
SIEV	65.2003	<i>Edi DEFRANCESCO</i> : <u>The Beginning of Organic Fish Farming in Italy</u>
SIEV	66.2003	<i>Klaus CONRAD</i> : <u>Price Competition and Product Differentiation when Consumers Care for the Environment</u>
SIEV	67.2003	<i>Paulo A.L.D. NUNES, Luca ROSSETTO, Arianne DE BLAEIJ</i> : <u>Monetary Value Assessment of Clam Fishing Management Practices in the Venice Lagoon: Results from a Stated Choice Exercise</u>
CLIM	68.2003	<i>ZhongXiang ZHANG</i> : <u>Open Trade with the U.S. Without Compromising Canada's Ability to Comply with its Kyoto Target</u>
KNOW	69.2003	<i>David FRANTZ</i> (Iix): <u>Lorenzo Market between Diversity and Mutation</u>
KNOW	70.2003	<i>Ercole SORI</i> (Iix): <u>Mapping Diversity in Social History</u>
KNOW	71.2003	<i>Ljiljana DERU SIMIC</i> (Ixi): <u>What is Specific about Art/Cultural Projects?</u>
KNOW	72.2003	<i>Natalya V. TARANOVA</i> (Ixi): <u>The Role of the City in Fostering Intergroup Communication in a Multicultural Environment: Saint-Petersburg's Case</u>
KNOW	73.2003	<i>Kristine CRANE</i> (Ixi): <u>The City as an Arena for the Expression of Multiple Identities in the Age of Globalisation and Migration</u>
KNOW	74.2003	<i>Kazuma MATOBA</i> (Ixi): <u>Glocal Dialogue- Transformation through Transcultural Communication</u>
KNOW	75.2003	<i>Catarina REIS OLIVEIRA</i> (Ixi): <u>Immigrants' Entrepreneurial Opportunities: The Case of the Chinese in Portugal</u>
KNOW	76.2003	<i>Sandra WALLMAN</i> (Ixi): <u>The Diversity of Diversity - towards a typology of urban systems</u>
KNOW	77.2003	<i>Richard PEARCE</i> (Ixi): <u>A Biologist's View of Individual Cultural Identity for the Study of Cities</u>
KNOW	78.2003	<i>Vincent MERK</i> (Ixi): <u>Communication Across Cultures: from Cultural Awareness to Reconciliation of the Dilemmas</u>
KNOW	79.2003	<i>Giorgio BELLETTINI, Carlotta BERTI CERONI and Gianmarco I.P. OTTAVIANO</i> : <u>Child Labor and Resistance to Change</u>
ETA	80.2003	<i>Michele MORETTO, Paolo M. PANTEGHINI and Carlo SCARPA</i> : <u>Investment Size and Firm's Value under Profit Sharing Regulation</u>

IEM	81.2003	<i>Alessandro LANZA, Matteo MANERA and Massimo GIOVANNINI: <u>Oil and Product Dynamics in International Petroleum Markets</u></i>
CLIM	82.2003	<i>Y. Hossein FARZIN and Jinhua ZHAO: <u>Pollution Abatement Investment When Firms Lobby Against Environmental Regulation</u></i>
CLIM	83.2003	<i>Giuseppe DI VITA: <u>Is the Discount Rate Relevant in Explaining the Environmental Kuznets Curve?</u></i>
CLIM	84.2003	<i>Reyer GERLAGH and Wietze LISE: <u>Induced Technological Change Under Carbon Taxes</u></i>
NRM	85.2003	<i>Rinaldo BRAU, Alessandro LANZA and Francesco PIGLIARU: <u>How Fast are the Tourism Countries Growing? The cross-country evidence</u></i>
KNOW	86.2003	<i>Elena BELLINI, Gianmarco I.P. OTTAVIANO and Dino PINELLI: <u>The ICT Revolution: opportunities and risks for the Mezzogiorno</u></i>
SIEV	87.2003	<i>Lucas BRETSCGHER and Sjak SMULDERS: <u>Sustainability and Substitution of Exhaustible Natural Resources. How resource prices affect long-term R&D investments</u></i>
CLIM	88.2003	<i>Johan EYCKMANS and Michael FINUS: <u>New Roads to International Environmental Agreements: The Case of Global Warming</u></i>
CLIM	89.2003	<i>Marzio GALEOTTI: <u>Economic Development and Environmental Protection</u></i>
CLIM	90.2003	<i>Marzio GALEOTTI: <u>Environment and Economic Growth: Is Technical Change the Key to Decoupling?</u></i>
CLIM	91.2003	<i>Marzio GALEOTTI and Barbara BUCHNER: <u>Climate Policy and Economic Growth in Developing Countries</u></i>
IEM	92.2003	<i>A. MARKANDYA, A. GOLUB and E. STRUKOVA: <u>The Influence of Climate Change Considerations on Energy Policy: The Case of Russia</u></i>
ETA	93.2003	<i>Andrea BELTRATTI: <u>Socially Responsible Investment in General Equilibrium</u></i>
CTN	94.2003	<i>Parkash CHANDER: <u>The γ-Core and Coalition Formation</u></i>
IEM	95.2003	<i>Matteo MANERA and Angelo MARZULLO: <u>Modelling the Load Curve of Aggregate Electricity Consumption Using Principal Components</u></i>
IEM	96.2003	<i>Alessandro LANZA, Matteo MANERA, Margherita GRASSO and Massimo GIOVANNINI: <u>Long-run Models of Oil Stock Prices</u></i>
CTN	97.2003	<i>Steven J. BRAMS, Michael A. JONES, and D. Marc KILGOUR: <u>Forming Stable Coalitions: The Process Matters</u></i>
KNOW	98.2003	<i>John CROWLEY, Marie-Cecile NAVES (Ixxiii): <u>Anti-Racist Policies in France. From Ideological and Historical Schemes to Socio-Political Realities</u></i>
KNOW	99.2003	<i>Richard THOMPSON FORD (Ixxiii): <u>Cultural Rights and Civic Virtue</u></i>
KNOW	100.2003	<i>Alaknanda PATEL (Ixxiii): <u>Cultural Diversity and Conflict in Multicultural Cities</u></i>
KNOW	101.2003	<i>David MAY (Ixxiii): <u>The Struggle of Becoming Established in a Deprived Inner-City Neighbourhood</u></i>
KNOW	102.2003	<i>Sébastien ARCAND, Danielle JUTEAU, Sirma BILGE, and Francine LEMIRE (Ixxiii) : <u>Municipal Reform on the Island of Montreal: Tensions Between Two Majority Groups in a Multicultural City</u></i>
CLIM	103.2003	<i>Barbara BUCHNER and Carlo CARRARO: <u>China and the Evolution of the Present Climate Regime</u></i>
CLIM	104.2003	<i>Barbara BUCHNER and Carlo CARRARO: <u>Emissions Trading Regimes and Incentives to Participate in International Climate Agreements</u></i>
CLIM	105.2003	<i>Anil MARKANDYA and Dirk T.G. RÜBBELKE: <u>Ancillary Benefits of Climate Policy</u></i>
NRM	106.2003	<i>Anne Sophie CRÉPIN (Ixiv): <u>Management Challenges for Multiple-Species Boreal Forests</u></i>
NRM	107.2003	<i>Anne Sophie CRÉPIN (Ixiv): <u>Threshold Effects in Coral Reef Fisheries</u></i>
SIEV	108.2003	<i>Sara ANIYAR (Ixiv): <u>Estimating the Value of Oil Capital in a Small Open Economy: The Venezuela's Example</u></i>
SIEV	109.2003	<i>Kenneth ARROW, Partha DASGUPTA and Karl-Göran MÄLER(Ixiv): <u>Evaluating Projects and Assessing Sustainable Development in Imperfect Economies</u></i>
NRM	110.2003	<i>Anastasios XEPAPADEAS and Catarina ROSETA-PALMA(Ixiv): <u>Instabilities and Robust Control in Fisheries</u></i>
NRM	111.2003	<i>Charles PERRINGS and Brian WALKER (Ixiv): <u>Conservation and Optimal Use of Rangelands</u></i>
ETA	112.2003	<i>Jack GOODY (Ixiv): <u>Globalisation, Population and Ecology</u></i>
CTN	113.2003	<i>Carlo CARRARO, Carmen MARCHIORI and Sonia OREFFICE: <u>Endogenous Minimum Participation in International Environmental Treaties</u></i>
CTN	114.2003	<i>Guillaume HAERINGER and Myrna WOODERS: <u>Decentralized Job Matching</u></i>
CTN	115.2003	<i>Hideo KONISHI and M. Utku UNVER: <u>Credible Group Stability in Multi-Partner Matching Problems</u></i>
CTN	116.2003	<i>Somdeb LAHIRI: <u>Stable Matchings for the Room-Mates Problem</u></i>
CTN	117.2003	<i>Somdeb LAHIRI: <u>Stable Matchings for a Generalized Marriage Problem</u></i>
CTN	118.2003	<i>Marita LAUKKANEN: <u>Transboundary Fisheries Management under Implementation Uncertainty</u></i>
CTN	119.2003	<i>Edward CARTWRIGHT and Myrna WOODERS: <u>Social Conformity and Bounded Rationality in Arbitrary Games with Incomplete Information: Some First Results</u></i>
CTN	120.2003	<i>Gianluigi VERNASCA: <u>Dynamic Price Competition with Price Adjustment Costs and Product Differentiation</u></i>
CTN	121.2003	<i>Myrna WOODERS, Edward CARTWRIGHT and Reinhard SELTEN: <u>Social Conformity in Games with Many Players</u></i>
CTN	122.2003	<i>Edward CARTWRIGHT and Myrna WOODERS: <u>On Equilibrium in Pure Strategies in Games with Many Players</u></i>
CTN	123.2003	<i>Edward CARTWRIGHT and Myrna WOODERS: <u>Conformity and Bounded Rationality in Games with Many Players</u></i>
	1000	Carlo CARRARO, Alessandro LANZA and Valeria PAPPONETTI: <u>One Thousand Working Papers</u>

NOTE DI LAVORO PUBLISHED IN 2004

IEM	1.2004	<i>Anil MARKANDYA, Suzette PEDROSO and Alexander GOLUB: <u>Empirical Analysis of National Income and So2 Emissions in Selected European Countries</u></i>
ETA	2.2004	<i>Masahisa FUJITA and Shlomo WEBER: <u>Strategic Immigration Policies and Welfare in Heterogeneous Countries</u></i>
PRA	3.2004	<i>Adolfo DI CARLUCCIO, Giovanni FERRI, Cecilia FRALE and Ottavio RICCHI: <u>Do Privatizations Boost Household Shareholding? Evidence from Italy</u></i>
ETA	4.2004	<i>Victor GINSBURGH and Shlomo WEBER: <u>Languages Disenfranchisement in the European Union</u></i>
ETA	5.2004	<i>Romano PIRAS: <u>Growth, Congestion of Public Goods, and Second-Best Optimal Policy</u></i>
CCMP	6.2004	<i>Herman R.J. VOLLEBERGH: <u>Lessons from the Polder: Is Dutch CO2-Taxation Optimal</u></i>
PRA	7.2004	<i>Sandro BRUSCO, Giuseppe LOPOMO and S. VISWANATHAN (lxv): <u>Merger Mechanisms</u></i>
PRA	8.2004	<i>Wolfgang AUSSENEGG, Pegaret PICHLER and Alex STOMPER (lxv): <u>IPO Pricing with Bookbuilding, and a When-Issued Market</u></i>
PRA	9.2004	<i>Pegaret PICHLER and Alex STOMPER (lxv): <u>Primary Market Design: Direct Mechanisms and Markets</u></i>
PRA	10.2004	<i>Florian ENGLMAIER, Pablo GUILLEN, Loreto LLORENTE, Sander ONDERSTAL and Rupert SAUSGRUBER (lxv): <u>The Chopstick Auction: A Study of the Exposure Problem in Multi-Unit Auctions</u></i>
PRA	11.2004	<i>Bjarne BRENDSTRUP and Harry J. PAARSCH (lxv): <u>Nonparametric Identification and Estimation of Multi-Unit, Sequential, Oral, Ascending-Price Auctions With Asymmetric Bidders</u></i>
PRA	12.2004	<i>Ohad KADAN (lxv): <u>Equilibrium in the Two Player, k-Double Auction with Affiliated Private Values</u></i>
PRA	13.2004	<i>Maarten C.W. JANSSEN (lxv): <u>Auctions as Coordination Devices</u></i>
PRA	14.2004	<i>Gadi FIBICH, Arieh GAVIOUS and Aner SELA (lxv): <u>All-Pay Auctions with Weakly Risk-Averse Buyers</u></i>
PRA	15.2004	<i>Orly SADE, Charles SCHNITZLEIN and Jaime F. ZENDER (lxv): <u>Competition and Cooperation in Divisible Good Auctions: An Experimental Examination</u></i>
PRA	16.2004	<i>Marta STRYSZOWSKA (lxv): <u>Late and Multiple Bidding in Competing Second Price Internet Auctions</u></i>
CCMP	17.2004	<i>Slim Ben YOUSSEF: <u>R&D in Cleaner Technology and International Trade</u></i>
NRM	18.2004	<i>Angelo ANTOCI, Simone BORGHESI and Paolo RUSSU (lxvi): <u>Biodiversity and Economic Growth: Stabilization Versus Preservation of the Ecological Dynamics</u></i>
SIEV	19.2004	<i>Anna ALBERINI, Paolo ROSATO, Alberto LONGO and Valentina ZANATTA: <u>Information and Willingness to Pay in a Contingent Valuation Study: The Value of S. Erasmo in the Lagoon of Venice</u></i>
NRM	20.2004	<i>Guido CANDELA and Roberto CELLINI (lxvii): <u>Investment in Tourism Market: A Dynamic Model of Differentiated Oligopoly</u></i>
NRM	21.2004	<i>Jacqueline M. HAMILTON (lxvii): <u>Climate and the Destination Choice of German Tourists</u></i>
NRM	22.2004	<i>Javier Rey-MAQUIEIRA PALMER, Javier LOZANO IBÁÑEZ and Carlos Mario GÓMEZ GÓMEZ (lxvii): <u>Land, Environmental Externalities and Tourism Development</u></i>
NRM	23.2004	<i>Pius ODUNGA and Henk FOLMER (lxvii): <u>Profiling Tourists for Balanced Utilization of Tourism-Based Resources in Kenya</u></i>
NRM	24.2004	<i>Jean-Jacques NOWAK, Mondher SAHLI and Pasquale M. SGRO (lxvii): <u>Tourism, Trade and Domestic Welfare</u></i>
NRM	25.2004	<i>Riaz SHAREEF (lxvii): <u>Country Risk Ratings of Small Island Tourism Economies</u></i>
NRM	26.2004	<i>Juan Luis EUGENIO-MARTÍN, Noelia MARTÍN MORALES and Riccardo SCARPA (lxvii): <u>Tourism and Economic Growth in Latin American Countries: A Panel Data Approach</u></i>
NRM	27.2004	<i>Raúl Hernández MARTÍN (lxvii): <u>Impact of Tourism Consumption on GDP. The Role of Imports</u></i>
CSRM	28.2004	<i>Nicoletta FERRO: <u>Cross-Country Ethical Dilemmas in Business: A Descriptive Framework</u></i>
NRM	29.2004	<i>Marian WEBER (lxvi): <u>Assessing the Effectiveness of Tradable Landuse Rights for Biodiversity Conservation: an Application to Canada's Boreal Mixedwood Forest</u></i>
NRM	30.2004	<i>Trond BJORN DAL, Phoebe KOUNDOURI and Sean PASCOE (lxvi): <u>Output Substitution in Multi-Species Trawl Fisheries: Implications for Quota Setting</u></i>
CCMP	31.2004	<i>Marzio GALEOTTI, Alessandra GORIA, Paolo MOMBRINI and Evi SPANTIDAKI: <u>Weather Impacts on Natural, Social and Economic Systems (WISE) Part I: Sectoral Analysis of Climate Impacts in Italy</u></i>
CCMP	32.2004	<i>Marzio GALEOTTI, Alessandra GORIA, Paolo MOMBRINI and Evi SPANTIDAKI: <u>Weather Impacts on Natural, Social and Economic Systems (WISE) Part II: Individual Perception of Climate Extremes in Italy</u></i>
CTN	33.2004	<i>Wilson PEREZ: <u>Divide and Conquer: Noisy Communication in Networks, Power, and Wealth Distribution</u></i>
KTHC	34.2004	<i>Gianmarco I.P. OTTAVIANO and Giovanni PERI (lxviii): <u>The Economic Value of Cultural Diversity: Evidence from US Cities</u></i>
KTHC	35.2004	<i>Linda CHAIB (lxviii): <u>Immigration and Local Urban Participatory Democracy: A Boston-Paris Comparison</u></i>
KTHC	36.2004	<i>Franca ECKERT COEN and Claudio ROSSI (lxviii): <u>Foreigners, Immigrants, Host Cities: The Policies of Multi-Ethnicity in Rome. Reading Governance in a Local Context</u></i>
KTHC	37.2004	<i>Kristine CRANE (lxviii): <u>Governing Migration: Immigrant Groups' Strategies in Three Italian Cities – Rome, Naples and Bari</u></i>
KTHC	38.2004	<i>Kiflemariam HAMDE (lxviii): <u>Mind in Africa, Body in Europe: The Struggle for Maintaining and Transforming Cultural Identity - A Note from the Experience of Eritrean Immigrants in Stockholm</u></i>
ETA	39.2004	<i>Alberto CAVALIERE: <u>Price Competition with Information Disparities in a Vertically Differentiated Duopoly</u></i>
PRA	40.2004	<i>Andrea BIGANO and Stef PROOST: <u>The Opening of the European Electricity Market and Environmental Policy: Does the Degree of Competition Matter?</u></i>
CCMP	41.2004	<i>Micheal FINUS (lxix): <u>International Cooperation to Resolve International Pollution Problems</u></i>
KTHC	42.2004	<i>Francesco CRESPI: <u>Notes on the Determinants of Innovation: A Multi-Perspective Analysis</u></i>

CTN	43.2004	<i>Sergio CURRARINI and Marco MARINI: <u>Coalition Formation in Games without Synergies</u></i>
CTN	44.2004	<i>Marc ESCRHUELA-VILLAR: <u>Cartel Sustainability and Cartel Stability</u></i>
NRM	45.2004	<i>Sebastian BERVOETS and Nicolas GRAVEL (lxvi): <u>Appraising Diversity with an Ordinal Notion of Similarity: An Axiomatic Approach</u></i>
NRM	46.2004	<i>Signe ANTHON and Bo JELLESMARK THORSEN (lxvi): <u>Optimal Afforestation Contracts with Asymmetric Information on Private Environmental Benefits</u></i>
NRM	47.2004	<i>John MBURU (lxvi): <u>Wildlife Conservation and Management in Kenya: Towards a Co-management Approach</u></i>
NRM	48.2004	<i>Ekin BIROL, Ágnes GYOVAI and Melinda SMALE (lxvi): <u>Using a Choice Experiment to Value Agricultural Biodiversity on Hungarian Small Farms: Agri-Environmental Policies in a Transitional Economy</u></i>
CCMP	49.2004	<i>Gernot KLEPPER and Sonja PETERSON: <u>The EU Emissions Trading Scheme. Allowance Prices, Trade Flows, Competitiveness Effects</u></i>
GG	50.2004	<i>Scott BARRETT and Michael HOEL: <u>Optimal Disease Eradication</u></i>
CTN	51.2004	<i>Dinko DIMITROV, Peter BORM, Ruud HENDRICKX and Shao CHIN SUNG: <u>Simple Priorities and Core Stability in Hedonic Games</u></i>
SIEV	52.2004	<i>Francesco RICCI: <u>Channels of Transmission of Environmental Policy to Economic Growth: A Survey of the Theory</u></i>
SIEV	53.2004	<i>Anna ALBERINI, Maureen CROPPER, Alan KRUPNICK and Nathalie B. SIMON: <u>Willingness to Pay for Mortality Risk Reductions: Does Latency Matter?</u></i>
NRM	54.2004	<i>Ingo BRÄUER and Rainer MARGGRAF (lxvi): <u>Valuation of Ecosystem Services Provided by Biodiversity Conservation: An Integrated Hydrological and Economic Model to Value the Enhanced Nitrogen Retention in Renaturated Streams</u></i>
NRM	55.2004	<i>Timo GOESCHL and Tun LIN (lxvi): <u>Biodiversity Conservation on Private Lands: Information Problems and Regulatory Choices</u></i>
NRM	56.2004	<i>Tom DEDEURWAERDERE (lxvi): <u>Bioprospection: From the Economics of Contracts to Reflexive Governance</u></i>
CCMP	57.2004	<i>Katrin REHDANZ and David MADDISON: <u>The Amenity Value of Climate to German Households</u></i>
CCMP	58.2004	<i>Koen SMEKENS and Bob VAN DER ZWAAN: <u>Environmental Externalities of Geological Carbon Sequestration Effects on Energy Scenarios</u></i>
NRM	59.2004	<i>Valentina BOSETTI, Mariaester CASSINELLI and Alessandro LANZA (lxvii): <u>Using Data Envelopment Analysis to Evaluate Environmentally Conscious Tourism Management</u></i>
NRM	60.2004	<i>Timo GOESCHL and Danilo CAMARGO IGLIORI (lxvi): <u>Property Rights Conservation and Development: An Analysis of Extractive Reserves in the Brazilian Amazon</u></i>
CCMP	61.2004	<i>Barbara BUCHNER and Carlo CARRARO: <u>Economic and Environmental Effectiveness of a Technology-based Climate Protocol</u></i>
NRM	62.2004	<i>Elissaios POPYRAKIS and Reyer GERLAGH: <u>Resource-Abundance and Economic Growth in the U.S.</u></i>
NRM	63.2004	<i>Györgyi BELA, György PATAKI, Melinda SMALE and Mariann HAJDÚ (lxvi): <u>Conserving Crop Genetic Resources on Smallholder Farms in Hungary: Institutional Analysis</u></i>
NRM	64.2004	<i>E.C.M. RUIJGROK and E.E.M. NILLESEN (lxvi): <u>The Socio-Economic Value of Natural Riverbanks in the Netherlands</u></i>
NRM	65.2004	<i>E.C.M. RUIJGROK (lxvi): <u>Reducing Acidification: The Benefits of Increased Nature Quality. Investigating the Possibilities of the Contingent Valuation Method</u></i>
ETA	66.2004	<i>Giannis VARDAS and Anastasios XEPAPADEAS: <u>Uncertainty Aversion, Robust Control and Asset Holdings</u></i>
GG	67.2004	<i>Anastasios XEPAPADEAS and Constadina PASSA: <u>Participation in and Compliance with Public Voluntary Environmental Programs: An Evolutionary Approach</u></i>
GG	68.2004	<i>Michael FINUS: <u>Modesty Pays: Sometimes!</u></i>
NRM	69.2004	<i>Trond BJØRNDAL and Ana BRASÃO: <u>The Northern Atlantic Bluefin Tuna Fisheries: Management and Policy Implications</u></i>
CTN	70.2004	<i>Alejandro CAPARRÓS, Abdelhakim HAMMOUDI and Tarik TAZDAÏT: <u>On Coalition Formation with Heterogeneous Agents</u></i>
IEM	71.2004	<i>Massimo GIOVANNINI, Margherita GRASSO, Alessandro LANZA and Matteo MANERA: <u>Conditional Correlations in the Returns on Oil Companies Stock Prices and Their Determinants</u></i>
IEM	72.2004	<i>Alessandro LANZA, Matteo MANERA and Michael MCALEER: <u>Modelling Dynamic Conditional Correlations in WTI Oil Forward and Futures Returns</u></i>
SIEV	73.2004	<i>Margarita GENIUS and Elisabetta STRAZZERA: <u>The Copula Approach to Sample Selection Modelling: An Application to the Recreational Value of Forests</u></i>
CCMP	74.2004	<i>Rob DELLINK and Ekko van IERLAND: <u>Pollution Abatement in the Netherlands: A Dynamic Applied General Equilibrium Assessment</u></i>
ETA	75.2004	<i>Rosella LEVAGGI and Michele MORETTO: <u>Investment in Hospital Care Technology under Different Purchasing Rules: A Real Option Approach</u></i>
CTN	76.2004	<i>Salvador BARBERÀ and Matthew O. JACKSON (lxx): <u>On the Weights of Nations: Assigning Voting Weights in a Heterogeneous Union</u></i>
CTN	77.2004	<i>Àlex ARENAS, Antonio CABRALES, Albert DÍAZ-GUILERA, Roger GUIMERA and Fernando VEGA-REDONDO (lxx): <u>Optimal Information Transmission in Organizations: Search and Congestion</u></i>
CTN	78.2004	<i>Francis BLOCH and Armando GOMES (lxx): <u>Contracting with Externalities and Outside Options</u></i>
CTN	79.2004	<i>Rabah AMIR, Effrosyni DIAMANTOUDI and Licun XUE (lxx): <u>Merger Performance under Uncertain Efficiency Gains</u></i>
CTN	80.2004	<i>Francis BLOCH and Matthew O. JACKSON (lxx): <u>The Formation of Networks with Transfers among Players</u></i>
CTN	81.2004	<i>Daniel DIERMEIER, Hülya ERASLAN and Antonio MERLO (lxx): <u>Bicameralism and Government Formation</u></i>

CTN	82.2004	<i>Rod GARRATT, James E. PARCO, Cheng-ZHONG QIN and Amnon RAPOPORT</i> (lxx): <u>Potential Maximization and Coalition Government Formation</u>
CTN	83.2004	<i>Kfir ELIAZ, Debraj RAY and Ronny RAZIN</i> (lxx): <u>Group Decision-Making in the Shadow of Disagreement</u>
CTN	84.2004	<i>Sanjeev GOYAL, Marco van der LEIJ and José Luis MORAGA-GONZÁLEZ</i> (lxx): <u>Economics: An Emerging Small World?</u>
CTN	85.2004	<i>Edward CARTWRIGHT</i> (lxx): <u>Learning to Play Approximate Nash Equilibria in Games with Many Players</u>
IEM	86.2004	<i>Finn R. FØRSUND and Michael HOEL</i> : <u>Properties of a Non-Competitive Electricity Market Dominated by Hydroelectric Power</u>
KTHC	87.2004	<i>Elissaios POPYRAKIS and Reyer GERLAGH</i> : <u>Natural Resources, Investment and Long-Term Income</u>
CCMP	88.2004	<i>Marzio GALEOTTI and Claudia KEMFERT</i> : <u>Interactions between Climate and Trade Policies: A Survey</u>
IEM	89.2004	<i>A. MARKANDYA, S. PEDROSO and D. STREIMIKIENE</i> : <u>Energy Efficiency in Transition Economies: Is There Convergence Towards the EU Average?</u>
GG	90.2004	<i>Rolf GOLOMBEK and Michael HOEL</i> : <u>Climate Agreements and Technology Policy</u>
PRA	91.2004	<i>Sergei IZMALKOV</i> (lxx): <u>Multi-Unit Open Ascending Price Efficient Auction</u>
KTHC	92.2004	<i>Gianmarco I.P. OTTAVIANO and Giovanni PERI</i> : <u>Cities and Cultures</u>
KTHC	93.2004	<i>Massimo DEL GATTO</i> : <u>Agglomeration, Integration, and Territorial Authority Scale in a System of Trading Cities. Centralisation versus devolution</u>
CCMP	94.2004	<i>Pierre-André JOUVET, Philippe MICHEL and Gilles ROTILLON</i> : <u>Equilibrium with a Market of Permits</u>
CCMP	95.2004	<i>Bob van der ZWAAN and Reyer GERLAGH</i> : <u>Climate Uncertainty and the Necessity to Transform Global Energy Supply</u>
CCMP	96.2004	<i>Francesco BOSELLO, Marco LAZZARIN, Roberto ROSON and Richard S.J. TOL</i> : <u>Economy-Wide Estimates of the Implications of Climate Change: Sea Level Rise</u>
CTN	97.2004	<i>Gustavo BERGANTIÑOS and Juan J. VIDAL-PUGA</i> : <u>Defining Rules in Cost Spanning Tree Problems Through the Canonical Form</u>
CTN	98.2004	<i>Siddhartha BANDYOPADHYAY and Mandar OAK</i> : <u>Party Formation and Coalitional Bargaining in a Model of Proportional Representation</u>
GG	99.2004	<i>Hans-Peter WEIKARD, Michael FINUS and Juan-Carlos ALTAMIRANO-CABRERA</i> : <u>The Impact of Surplus Sharing on the Stability of International Climate Agreements</u>
SIEV	100.2004	<i>Chiara M. TRAVISI and Peter NIJKAMP</i> : <u>Willingness to Pay for Agricultural Environmental Safety: Evidence from a Survey of Milan, Italy, Residents</u>
SIEV	101.2004	<i>Chiara M. TRAVISI, Raymond J. G. M. FLORAX and Peter NIJKAMP</i> : <u>A Meta-Analysis of the Willingness to Pay for Reductions in Pesticide Risk Exposure</u>
NRM	102.2004	<i>Valentina BOSETTI and David TOMBERLIN</i> : <u>Real Options Analysis of Fishing Fleet Dynamics: A Test</u>
CCMP	103.2004	<i>Alessandra GORIA e Gretel GAMBARELLI</i> : <u>Economic Evaluation of Climate Change Impacts and Adaptability in Italy</u>
PRA	104.2004	<i>Massimo FLORIO and Mara GRASSENTI</i> : <u>The Missing Shock: The Macroeconomic Impact of British Privatisation</u>
PRA	105.2004	<i>John BENNETT, Saul ESTRIN, James MAW and Giovanni URGÀ</i> : <u>Privatisation Methods and Economic Growth in Transition Economies</u>
PRA	106.2004	<i>Kira BÖRNER</i> : <u>The Political Economy of Privatization: Why Do Governments Want Reforms?</u>
PRA	107.2004	<i>Pebr-Johan NORBÄCK and Lars PERSSON</i> : <u>Privatization and Restructuring in Concentrated Markets</u>
SIEV	108.2004	<i>Angela GRANZOTTO, Fabio PRANOVI, Simone LIBRALATO, Patrizia TORRICELLI and Danilo MAINARDI</i> : <u>Comparison between Artisanal Fishery and Manila Clam Harvesting in the Venice Lagoon by Using Ecosystem Indicators: An Ecological Economics Perspective</u>
CTN	109.2004	<i>Somdeb LAHIRI</i> : <u>The Cooperative Theory of Two Sided Matching Problems: A Re-examination of Some Results</u>
NRM	110.2004	<i>Giuseppe DI VITA</i> : <u>Natural Resources Dynamics: Another Look</u>
SIEV	111.2004	<i>Anna ALBERINI, Alistair HUNT and Anil MARKANDYA</i> : <u>Willingness to Pay to Reduce Mortality Risks: Evidence from a Three-Country Contingent Valuation Study</u>
KTHC	112.2004	<i>Valeria PAPPONETTI and Dino PINELLI</i> : <u>Scientific Advice to Public Policy-Making</u>
SIEV	113.2004	<i>Paulo A.L.D. NUNES and Laura ONOFRI</i> : <u>The Economics of Warm Glow: A Note on Consumer's Behavior and Public Policy Implications</u>
IEM	114.2004	<i>Patrick CAYRADE</i> : <u>Investments in Gas Pipelines and Liquefied Natural Gas Infrastructure What is the Impact on the Security of Supply?</u>
IEM	115.2004	<i>Valeria COSTANTINI and Francesco GRACCEVA</i> : <u>Oil Security. Short- and Long-Term Policies</u>
IEM	116.2004	<i>Valeria COSTANTINI and Francesco GRACCEVA</i> : <u>Social Costs of Energy Disruptions</u>
IEM	117.2004	<i>Christian EGENHOFER, Kyriakos GIALOGLOU, Giacomo LUCIANI, Maroeska BOOTS, Martin SCHEEPERS, Valeria COSTANTINI, Francesco GRACCEVA, Anil MARKANDYA and Giorgio VICINI</i> : <u>Market-Based Options for Security of Energy Supply</u>
IEM	118.2004	<i>David FISK</i> : <u>Transport Energy Security. The Unseen Risk?</u>
IEM	119.2004	<i>Giacomo LUCIANI</i> : <u>Security of Supply for Natural Gas Markets. What is it and What is it not?</u>
IEM	120.2004	<i>L.J. de VRIES and R.A. HAKVOORT</i> : <u>The Question of Generation Adequacy in Liberalised Electricity Markets</u>
KTHC	121.2004	<i>Alberto PETRUCCI</i> : <u>Asset Accumulation, Fertility Choice and Nondegenerate Dynamics in a Small Open Economy</u>
NRM	122.2004	<i>Carlo GIUPPONI, Jaroslaw MYSLAK and Anita FASSIO</i> : <u>An Integrated Assessment Framework for Water Resources Management: A DSS Tool and a Pilot Study Application</u>
NRM	123.2004	<i>Margaretha BREIL, Anita FASSIO, Carlo GIUPPONI and Paolo ROSATO</i> : <u>Evaluation of Urban Improvement on the Islands of the Venice Lagoon: A Spatially-Distributed Hedonic-Hierarchical Approach</u>

ETA	124.2004	<i>Paul MENSINK</i> : <u>Instant Efficient Pollution Abatement Under Non-Linear Taxation and Asymmetric Information: The Differential Tax Revisited</u>
NRM	125.2004	<i>Mauro FABIANO, Gabriella CAMARSA, Rosanna DURSI, Roberta IVALDI, Valentina MARIN and Francesca PALMISANI</i> : <u>Integrated Environmental Study for Beach Management: A Methodological Approach</u>
PRA	126.2004	<i>Irena GROSFELD and Iraj HASHI</i> : <u>The Emergence of Large Shareholders in Mass Privatized Firms: Evidence from Poland and the Czech Republic</u>
CCMP	127.2004	<i>Maria BERRITTELLA, Andrea BIGANO, Roberto ROSON and Richard S.J. TOL</i> : <u>A General Equilibrium Analysis of Climate Change Impacts on Tourism</u>
CCMP	128.2004	<i>Reyer GERLAGH</i> : <u>A Climate-Change Policy Induced Shift from Innovations in Energy Production to Energy Savings</u>
NRM	129.2004	<i>Elissaios PAPYRAKIS and Reyer GERLAGH</i> : <u>Natural Resources, Innovation, and Growth</u>
PRA	130.2004	<i>Bernardo BORTOLOTTI and Mara FACCIO</i> : <u>Reluctant Privatization</u>
SIEV	131.2004	<i>Riccardo SCARPA and Mara THIENE</i> : <u>Destination Choice Models for Rock Climbing in the Northeast Alps: A Latent-Class Approach Based on Intensity of Participation</u>
SIEV	132.2004	<i>Riccardo SCARPA, Kenneth G. WILLIS and Melinda ACUTT</i> : <u>Comparing Individual-Specific Benefit Estimates for Public Goods: Finite Versus Continuous Mixing in Logit Models</u>
IEM	133.2004	<i>Santiago J. RUBIO</i> : <u>On Capturing Oil Rents with a National Excise Tax Revisited</u>
ETA	134.2004	<i>Ascensión ANDINA DÍAZ</i> : <u>Political Competition when Media Create Candidates' Charisma</u>
SIEV	135.2004	<i>Anna ALBERINI</i> : <u>Robustness of VSL Values from Contingent Valuation Surveys</u>
CCMP	136.2004	<i>Gernot KLEPPER and Sonja PETERSON</i> : <u>Marginal Abatement Cost Curves in General Equilibrium: The Influence of World Energy Prices</u>
ETA	137.2004	<i>Herbert DAWID, Christophe DEISSENBERG and Pavel ŠEVČÍK</i> : <u>Cheap Talk, Gullibility, and Welfare in an Environmental Taxation Game</u>
CCMP	138.2004	<i>ZhongXiang ZHANG</i> : <u>The World Bank's Prototype Carbon Fund and China</u>
CCMP	139.2004	<i>Reyer GERLAGH and Marjan W. HOFKES</i> : <u>Time Profile of Climate Change Stabilization Policy</u>
NRM	140.2004	<i>Chiara D'ALPAOS and Michele MORETTO</i> : <u>The Value of Flexibility in the Italian Water Service Sector: A Real Option Analysis</u>
PRA	141.2004	<i>Patrick BAJARI, Stephanie HOUGHTON and Steven TADELIS (lxxi)</i> : <u>Bidding for Incomplete Contracts</u>
PRA	142.2004	<i>Susan ATHEY, Jonathan LEVIN and Enrique SEIRA (lxxi)</i> : <u>Comparing Open and Sealed Bid Auctions: Theory and Evidence from Timber Auctions</u>
PRA	143.2004	<i>David GOLDREICH (lxxi)</i> : <u>Behavioral Biases of Dealers in U.S. Treasury Auctions</u>
PRA	144.2004	<i>Roberto BURGUET (lxxi)</i> : <u>Optimal Procurement Auction for a Buyer with Downward Sloping Demand: More Simple Economics</u>
PRA	145.2004	<i>Ali HORTACSU and Samita SAREEN (lxxi)</i> : <u>Order Flow and the Formation of Dealer Bids: An Analysis of Information and Strategic Behavior in the Government of Canada Securities Auctions</u>
PRA	146.2004	<i>Victor GINSBURGH, Patrick LEGROS and Nicolas SAHUGUET (lxxi)</i> : <u>How to Win Twice at an Auction. On the Incidence of Commissions in Auction Markets</u>
PRA	147.2004	<i>Claudio MEZZETTI, Aleksandar PEKEČ and Ilia TSETLIN (lxxi)</i> : <u>Sequential vs. Single-Round Uniform-Price Auctions</u>
PRA	148.2004	<i>John ASKER and Estelle CANTILLON (lxxi)</i> : <u>Equilibrium of Scoring Auctions</u>
PRA	149.2004	<i>Philip A. HAILE, Han HONG and Matthew SHUM (lxxi)</i> : <u>Nonparametric Tests for Common Values in First-Price Sealed-Bid Auctions</u>
PRA	150.2004	<i>François DEGEORGE, François DERRIEN and Kent L. WOMACK (lxxi)</i> : <u>Quid Pro Quo in IPOs: Why Bookbuilding is Dominating Auctions</u>
CCMP	151.2004	<i>Barbara BUCHNER and Silvia DALL'OLIO</i> : <u>Russia: The Long Road to Ratification. Internal Institution and Pressure Groups in the Kyoto Protocol's Adoption Process</u>
CCMP	152.2004	<i>Carlo CARRARO and Marzio GALEOTTI</i> : <u>Does Endogenous Technical Change Make a Difference in Climate Policy Analysis? A Robustness Exercise with the FEEM-RICE Model</u>
PRA	153.2004	<i>Alejandro M. MANELLI and Daniel R. VINCENT (lxxi)</i> : <u>Multidimensional Mechanism Design: Revenue Maximization and the Multiple-Good Monopoly</u>
ETA	154.2004	<i>Nicola ACOCELLA, Giovanni Di BARTOLOMEO and Wilfried PAUWELS</i> : <u>Is there any Scope for Corporatism in Stabilization Policies?</u>
CTN	155.2004	<i>Johan EYCKMANS and Michael FINUS</i> : <u>An Almost Ideal Sharing Scheme for Coalition Games with Externalities</u>
CCMP	156.2004	<i>Cesare DOSI and Michele MORETTO</i> : <u>Environmental Innovation, War of Attrition and Investment Grants</u>
CCMP	157.2004	<i>Valentina BOSETTI, Marzio GALEOTTI and Alessandro LANZA</i> : <u>How Consistent are Alternative Short-Term Climate Policies with Long-Term Goals?</u>
ETA	158.2004	<i>Y. Hossein FARZIN and Ken-Ichi AKAO</i> : <u>Non-pecuniary Value of Employment and Individual Labor Supply</u>
ETA	159.2004	<i>William BROCK and Anastasios XEPAPADEAS</i> : <u>Spatial Analysis: Development of Descriptive and Normative Methods with Applications to Economic-Ecological Modelling</u>

- (lix) This paper was presented at the ENGIME Workshop on “Mapping Diversity”, Leuven, May 16-17, 2002
- (lx) This paper was presented at the EuroConference on “Auctions and Market Design: Theory, Evidence and Applications”, organised by the Fondazione Eni Enrico Mattei, Milan, September 26-28, 2002
- (lxi) This paper was presented at the Eighth Meeting of the Coalition Theory Network organised by the GREQAM, Aix-en-Provence, France, January 24-25, 2003
- (lxii) This paper was presented at the ENGIME Workshop on “Communication across Cultures in Multicultural Cities”, The Hague, November 7-8, 2002
- (lxiii) This paper was presented at the ENGIME Workshop on “Social dynamics and conflicts in multicultural cities”, Milan, March 20-21, 2003
- (lxiv) This paper was presented at the International Conference on “Theoretical Topics in Ecological Economics”, organised by the Abdus Salam International Centre for Theoretical Physics - ICTP, the Beijer International Institute of Ecological Economics, and Fondazione Eni Enrico Mattei – FEEM Trieste, February 10-21, 2003
- (lxv) This paper was presented at the EuroConference on “Auctions and Market Design: Theory, Evidence and Applications” organised by Fondazione Eni Enrico Mattei and sponsored by the EU, Milan, September 25-27, 2003
- (lxvi) This paper has been presented at the 4th BioEcon Workshop on “Economic Analysis of Policies for Biodiversity Conservation” organised on behalf of the BIOECON Network by Fondazione Eni Enrico Mattei, Venice International University (VIU) and University College London (UCL), Venice, August 28-29, 2003
- (lxvii) This paper has been presented at the international conference on “Tourism and Sustainable Economic Development – Macro and Micro Economic Issues” jointly organised by CRENoS (Università di Cagliari e Sassari, Italy) and Fondazione Eni Enrico Mattei, and supported by the World Bank, Sardinia, September 19-20, 2003
- (lxviii) This paper was presented at the ENGIME Workshop on “Governance and Policies in Multicultural Cities”, Rome, June 5-6, 2003
- (lxix) This paper was presented at the Fourth EEP Plenary Workshop and EEP Conference “The Future of Climate Policy”, Cagliari, Italy, 27-28 March 2003
- (lxx) This paper was presented at the 9th Coalition Theory Workshop on "Collective Decisions and Institutional Design" organised by the Universitat Autònoma de Barcelona and held in Barcelona, Spain, January 30-31, 2004
- (lxxi) This paper was presented at the EuroConference on “Auctions and Market Design: Theory, Evidence and Applications”, organised by Fondazione Eni Enrico Mattei and Consip and sponsored by the EU, Rome, September 23-25, 2004

2003 SERIES

CLIM	<i>Climate Change Modelling and Policy</i> (Editor: Marzio Galeotti)
GG	<i>Global Governance</i> (Editor: Carlo Carraro)
SIEV	<i>Sustainability Indicators and Environmental Valuation</i> (Editor: Anna Alberini)
NRM	<i>Natural Resources Management</i> (Editor: Carlo Giupponi)
KNOW	<i>Knowledge, Technology, Human Capital</i> (Editor: Gianmarco Ottaviano)
IEM	<i>International Energy Markets</i> (Editor: Anil Markandya)
CSR	<i>Corporate Social Responsibility and Management</i> (Editor: Sabina Ratti)
PRIV	<i>Privatisation, Regulation, Antitrust</i> (Editor: Bernardo Bortolotti)
ETA	<i>Economic Theory and Applications</i> (Editor: Carlo Carraro)
CTN	<i>Coalition Theory Network</i>

2004 SERIES

CCMP	<i>Climate Change Modelling and Policy</i> (Editor: Marzio Galeotti)
GG	<i>Global Governance</i> (Editor: Carlo Carraro)
SIEV	<i>Sustainability Indicators and Environmental Valuation</i> (Editor: Anna Alberini)
NRM	<i>Natural Resources Management</i> (Editor: Carlo Giupponi)
KTHC	<i>Knowledge, Technology, Human Capital</i> (Editor: Gianmarco Ottaviano)
IEM	<i>International Energy Markets</i> (Editor: Anil Markandya)
CSR	<i>Corporate Social Responsibility and Management</i> (Editor: Sabina Ratti)
PRA	<i>Privatisation, Regulation, Antitrust</i> (Editor: Bernardo Bortolotti)
ETA	<i>Economic Theory and Applications</i> (Editor: Carlo Carraro)
CTN	<i>Coalition Theory Network</i>