



# Engineering of capillary-like structures in tissue constructs by electrochemical detachment of cells

著者	Seto Yuki, Inaba Rina, Okuyama Tomoaki, Sassa Fumihiro, Suzuki Hiroaki, Fukuda Junji
journal or publication title	Biomaterials
volume	31
number	8
page range	2209-2215
year	2010-03
権利	(C) 2009 Elsevier Ltd.
URL	<a href="http://hdl.handle.net/2241/104868">http://hdl.handle.net/2241/104868</a>

doi: 10.1016/j.biomaterials.2009.11.104

1  
2  
3 **Engineering of Capillary-Like Structures in Tissue Constructs by**  
4  
5  
6 **Electrochemical Detachment of Cells**  
7  
8  
9

10  
11  
12 Yuki Seto, Rina Inaba, Tomoaki Okuyama, Fumihiro Sassa, Hiroaki Suzuki, and Junji  
13

14  
15  
16 Fukuda\*  
17

18  
19 Graduate School of Pure and Applied Sciences, University of Tsukuba,  
20

21  
22 1-1-1 Tennodai, Tsukuba, Ibaraki 305-8573, Japan  
23

24  
25 \*Corresponding Author: Tel.: +81-29-853-4995; Fax: +81-29-853-4490; E-mail:  
26

27  
28 fukuda@ims.tsukuba.ac.jp  
29  
30  
31  
32  
33  
34  
35  
36  
37  
38  
39  
40  
41  
42  
43  
44  
45  
46  
47  
48  
49  
50  
51  
52  
53  
54  
55  
56  
57  
58  
59  
60  
61  
62  
63  
64  
65

1  
2  
3 **Abstract**  
4

5  
6 A major challenge in the development of functional thick tissues is the formation of  
7  
8  
9  
10 vascular networks for oxygen and nutrient supply throughout the engineered tissue  
11  
12  
13 constructs. This study describes an electrochemical approach for fabrication of  
14  
15  
16 capillary-like structures, precisely aligned within micrometer distances, whose internal  
17  
18  
19 surfaces are covered with vascular endothelial cells. In this approach, an oligopeptide  
20  
21  
22 containing a cell adhesion domain (RGD) in the center and cysteine residues at both  
23  
24  
25 ends was designed. Cysteine has a thiol group that adsorbs onto a gold surface via a  
26  
27  
28 gold–thiolate bond. The cells attached to the gold surface via the oligopeptide were  
29  
30  
31 readily and noninvasively detached by applying a negative electrical potential and  
32  
33  
34  
35 cleaving the gold–thiolate bond. This approach was applicable not only for a flat surface  
36  
37  
38 but also for various configurations, including cylindrical structures. By applying this  
39  
40  
41 approach to thin gold rods aligned in a spatially controlled manner in a perfusion culture  
42  
43  
44 device, human umbilical vein endothelial cells (HUVECs) were transferred onto the  
45  
46  
47 internal surface of capillary structures in collagen gel. In the subsequent perfusion  
48  
49  
50 culture, the HUVECs grew into the collagen gel and formed luminal structures, thereby  
51  
52  
53 forming vascular networks *in vitro*.  
54  
55  
56  
57  
58  
59  
60  
61  
62  
63  
64  
65

1  
2  
3  
4  
5  
6  
7  
8  
9  
10  
11  
12  
13  
14  
15  
16  
17  
18  
19  
20  
21  
22  
23  
24  
25  
26  
27  
28  
29  
30  
31  
32  
33  
34  
35  
36  
37  
38  
39  
40  
41  
42  
43  
44  
45  
46  
47  
48  
49  
50  
51  
52  
53  
54  
55  
56  
57  
58  
59  
60  
61  
62  
63  
64  
65

**Keywords**

Tissue engineering; blood vessel; peptide; electrochemistry; gold–thiolate bond;  
collagen

## 1. Introduction

One of the major obstacles in engineering more complex and thick tissue constructs such as the liver, kidney, and lung is the need to fabricate vascular networks capable of delivering oxygen and nutrients throughout the tissues [1, 2]. Cells that are located more than a few hundred micrometers away from the nearest capillaries suffer from hypoxia and apoptosis [3, 4]. Thus, technologies for the fabrication of spatially controlled capillaries would be required to make significant progress in tissue engineering. Most approaches to engineering vascularized tissues have relied on neovascularization from the host after transplantation. Previous attempts have involved the use of growth factor-conjugated scaffolds and extracellular matrices and genetically modified cells as vascularization factors [5, 6]. In addition, recent approaches have demonstrated that *in vitro* co-cultures with endothelial cells lead to formation of capillary vessel networks in engineered tissues, and that such prevascularization improves the subsequent *in vivo* performance of the tissue constructs [7]. Although these studies have provided evidence that a part of the vessel network is anastomosed with the host vasculature, the anastomosis processes are generally considered to be too slow to maintain cellular survival: necrotic cell death occurs within minutes or hours, whereas the invasion and anastomosis of host vessels to prevascularized vessels requires

1  
2  
3 days or months [8, 9]. In addition, drawbacks of the previous approaches are  
4  
5  
6 inhomogeneous distribution and inadequate vascular network connections in engineered  
7  
8  
9 tissues, and insufficient blood flow for the supply of oxygen and nutrients throughout  
10  
11  
12 larger tissue constructs.  
13  
14

15  
16 In this study, we propose a technology for the fabrication of the vascular network  
17  
18 with a resolution of a few micrometers (Fig. 1). The key to this approach is the  
19  
20 combination of electrochemical cell detachment and microscale technologies for  
21  
22 uniform localization of endothelial cells on the inner surface of the capillaries. We  
23  
24  
25 previously reported that the cells attached to the gold surface via self-assembled  
26  
27  
28 alkanethiol monolayers were readily detached by applying a negative electrical potential  
29  
30  
31 [10]. In this study, as an alternative to alkanethiol, an oligopeptide was designed on the  
32  
33  
34 basis of the sequence of a natural extracellular matrix (Fig. 1A). By applying this cell  
35  
36  
37 detachment approach to thin gold rods aligned in a spatially controlled manner in a  
38  
39  
40 perfusion culture device, endothelial cells were transferred onto the surface of capillary  
41  
42  
43 structures (Fig. 1B). Although the structure is initially rough and primitive, angiogenesis  
44  
45  
46 from the surface with the endothelial cells eventually induces connections between the  
47  
48  
49 neighboring capillary structures in perfusion culture. This simple technique could  
50  
51  
52 potentially provide a fundamental tool for engineering surgically transplantable  
53  
54  
55  
56  
57  
58  
59  
60  
61  
62  
63  
64  
65

1  
2  
3 vascularized tissues and organs.  
4  
5

## 6 **2. Materials and Methods**

7

### 8 **2.1 Materials and reagents**

9

10 The materials used for the fabrication of culture substrates were as follows: glass  
11  
12 wafers (#7740; diameter, 3 in.; thickness, 500  $\mu\text{m}$ ) from Corning, USA; glass rods  
13  
14 (diameter, 600  $\mu\text{m}$ ; length, 3.2 cm) from Hirschmann Laborgeräte, Germany; L-cysteine  
15  
16 from Wako Pure Chemicals Industries, Japan; and synthetic oligopeptide,  
17  
18 CCRRGDWLC, from Sigma-Aldrich, Japan. The reagents used for cell culture were  
19  
20 obtained from the following commercial sources: HUVEC (CC-2517A), endothelial  
21  
22 basal medium-2 (EBM-2, CC-3156), and SingleQuots growth supplement (CC-3162)  
23  
24 from Cambrex Bio Science, USA; collagen type I (Cellmatrix Type I-A) from Nitta  
25  
26 Gelatin, Inc., Japan; Ham's F12 medium from Invitrogen, Carlsbad, CA, USA;  
27  
28 fluorescent diacetate (FDA) and ethidium bromide (EB) from Wako Pure Chemicals  
29  
30 Industries, Osaka, Japan; phosphate buffer saline (PBS) solution from Invitrogen;  
31  
32 phorbol 12-myristate 13-acetate (PMA) from Sigma-Aldrich. All other chemicals were  
33  
34 purchased from Wako Pure Chemicals Industries, unless otherwise indicated.  
35  
36  
37  
38  
39  
40  
41  
42  
43  
44  
45  
46  
47  
48  
49  
50  
51  
52  
53

### 54 **2.2 Design of the oligopeptide and modification on gold surface**

55

56 The oligopeptide CCRRGDWLC consists of an RGD domain in the center and  
57  
58  
59  
60  
61  
62  
63  
64  
65

1  
2  
3 cysteine residues at both ends. RGD interacts with cell-surface integrins expressed on  
4  
5  
6 various cell types, including vascular endothelial cells [11, 12]. Cysteine has a thiol  
7  
8  
9 group that chemically adsorbs onto a gold surface via a gold–thiolate bond (Fig. 1A).  
10  
11  
12 Thus, the oligopeptide is designed such that it can be used for the adhesion of cells onto  
13  
14  
15 a gold surface. The modification process is very simple and does not require any organic  
16  
17  
18 chemistry. A gold surface was prepared by a sputter coating of a 1-nm layer of Cr and a  
19  
20  
21 40-nm layer of Au on a glass wafer. Then the wafer was cut into small pieces of 15 × 10  
22  
23  
24 mm. The gold substrate was modified by immersing into 1-mM aqueous solutions of the  
25  
26  
27 oligopeptide for 12 h at room temperature. The substrate was then rinsed with pure  
28  
29  
30 water and sterilized with 70% ethanol for cell culture. The amount of the chemically  
31  
32  
33 adsorbed oligopeptide was estimated using a quartz crystal microbalance (QCM,  
34  
35  
36 AFFINIX-QN; Initium, Tokyo, Japan) by determining the change in frequency before  
37  
38  
39 and after the adsorption.  
40  
41  
42  
43

### 44 **2.3 Cyclic voltammetry**

45  
46  
47 Cyclic voltammetry was employed to determine the reductive potential for  
48  
49  
50 desorption of the oligopeptide adsorbed on the gold surface. Immediately before cyclic  
51  
52  
53 voltammetry testing, an electrolyte solution containing 0.5 M KOH was deoxygenated  
54  
55  
56 by bubbling nitrogen gas for 20 min. The oligopeptide-modified gold substrate, a  
57  
58  
59  
60  
61  
62  
63  
64  
65



1  
2  
3 Ag/AgCl reference electrode (#2080 A; Horiba, Tokyo, Japan), and a platinum auxiliary  
4  
5  
6 electrode were set in the electrolyte solution and connected to an electrochemical  
7  
8  
9 measurement system (AUTOLAB; Metrohm Autolab, The Netherlands). In this study,  
10  
11  
12 all potential values refer to those measured with respect to a Ag/AgCl electrode. A  
13  
14  
15 cyclic voltammogram was recorded at the scanning rate of 20 mV/s from 0 to -1.0 V.  
16  
17

## 18 19 **2.4 Cell preparation**

20  
21  
22 HUVECs were cultured in EBM-2 supplemented with SingleQuotes growth  
23  
24  
25 supplement (vascular endothelial growth factor, fibroblast growth factor-B, and fetal  
26  
27  
28 bovine serum) at 37 °C and 5% CO<sub>2</sub> in a humidified incubator. The medium was  
29  
30  
31 changed every other day. Each passage was conducted with a solution of 0.25% trypsin  
32  
33  
34 and 0.02% ethylenediamine tetraacetic acid (EDTA) after 3 to 4 days, when the cells  
35  
36  
37  
38 were resuspended in fresh medium and diluted 1:3. Cells from passages 3 through 8  
39  
40  
41 were used for experiments.  
42  
43

## 44 45 **2.5 Detachment of cells along with electrochemical desorption of the oligopeptide**

46  
47  
48 The substrate modified with the oligopeptide was placed in a typical 35-mm dish,  
49  
50  
51 and HUVECs were seeded at a density of  $1.5 \times 10^5$  cells in 2-mL culture medium. The  
52  
53  
54 cells were cultured for 18 h at 37 °C and 5% CO<sub>2</sub> in a humidified incubator. Then the  
55  
56  
57 substrate was washed with PBS and connected to a potentiostat (HA-151;  
58  
59  
60  
61  
62  
63  
64  
65

1  
2  
3 Hokuto-Denko, Japan). After applying a potential of  $-1.0$  V for 1, 2, 3, 5, and 7 min, the  
4  
5  
6 substrate was washed gently and the remaining cells were counted under a phase  
7  
8  
9 contrast microscope (IX-71; Olympus Co., Japan). For comparison, the same  
10  
11  
12 experiments were conducted without the oligopeptide (cells attached directly to a gold  
13  
14  
15 surface) or by applying a potential of  $-0.5$  V, which is smaller than that required for  
16  
17  
18 desorption of the oligopeptide.  
19  
20  
21

22 To transfer cells to the collagen gel using this approach, adherent cells on the  
23  
24  
25 substrate were covered with collagen solution. The collagen solution was previously  
26  
27  
28 prepared by mixing type I collagen (3.0 mg/mL), 10-fold concentrated Ham's F12  
29  
30  
31 medium, and reconstitution buffer containing 0.05 N NaOH, 200 mM HEPES, and  
32  
33  
34 2.2%  $\text{NaHCO}_3$  at a ratio of 8:1:1 on ice. After gelation of the collagen, the gel layer was  
35  
36  
37 peeled off from the substrate after applying a potential of  $-1.0$  V for 5 min. Cell  
38  
39  
40  
41 viability after the detachment was evaluated with a live/dead fluorometric assay with  
42  
43  
44 FDA and EB [13].  
45  
46

## 47 **2.6 Fabrication of capillary-like structures**

48  
49

50  
51 A thin gold rod was prepared by a sputter coating of layers of Cr and Au on a glass  
52  
53  
54 stick of 600- $\mu\text{m}$  diameter. Similar to the glass wafer surface, the surface of the gold rod  
55  
56  
57 was modified with the oligopeptide. The modified gold rod was then rinsed with pure  
58  
59  
60  
61  
62  
63  
64  
65

1  
2  
3 water and sterilized with 70% ethanol. The gold rods were placed in a cell-nonadherent  
4  
5  
6 35-mm dish (Techno Plastic Products, Switzerland) and HUVECs were seeded at a  
7  
8  
9 density of  $3.0 \times 10^5$  cells in 2-mL culture medium. The cells were attached to the gold  
10  
11  
12 rods and grown to reach confluence for 3 to 4 days.  
13  
14

15  
16 The chamber for perfusion culture (Fig. 1B) was fabricated with a poly(methyl  
17  
18 methacrylate) plate using computer-aided laser machining (Laser PRO C180; GCC,  
19  
20 Taiwan). The volume of the chamber was 1.5 mL. The chamber had three pairs of holes  
21  
22 of 800  $\mu\text{m}$  in diameter at intervals of 500  $\mu\text{m}$  for the guidance of the gold rods. The gold  
23  
24 rods with cells were fixed in the chamber, and 1.5 mL of the collagen solution was then  
25  
26 poured into the chamber. After the gelation of the collagen, the rods were carefully  
27  
28 extracted by applying a potential of  $-1.0$  V for 5 min. Then the chamber was connected  
29  
30 to a microsyringe pump and culture medium was perfused at 10  $\mu\text{L}/\text{min}$ . To accelerate  
31  
32 spontaneous vascularization, PMA was added to the culture medium to give a final  
33  
34 concentration of 20 ng/mL [14, 15].  
35  
36  
37  
38  
39  
40  
41  
42  
43  
44  
45

## 46 47 **2.7 Scanning electron microscopy** 48

49  
50  
51 To observe cells on the gold rods under a scanning electron microscope (SEM), the  
52  
53 culture was washed with PBS thrice and fixed with a mixed solution of 2.5%  
54  
55 glutaraldehyde and 2% formaldehyde in PBS for 1 h at room temperature. Then, the  
56  
57  
58  
59  
60  
61  
62  
63  
64  
65

1  
2  
3 culture was washed with PBS and fixed with 1% osmium tetroxide in PBS for 1 h at  
4  
5  
6 4 °C. The culture was washed with purified water and dehydrated with a graded ethanol  
7  
8  
9 series from 30% to 90% on ice and absolute ethanol substitution three times at room  
10  
11  
12 temperature. The solution was further substituted with 100% *t*-butanol, which was  
13  
14  
15 frozen at 4 °C and dried by vacuum freeze-drying. The cells were observed under a  
16  
17  
18 SEM (ED-SEM; JEOL, Japan) operated at 5 kV.  
19  
20  
21

### 22 **3. Results and Discussion**

#### 23 **3.1 Electrical potential required for desorption of the oligopeptide**

24  
25  
26 The amount of oligopeptide adsorbed on the gold surface was estimated to be  $8.7 \pm$   
27  
28  
29  $1.4 \text{ ng/cm}^2$  from three independent measurements with a QCM. This value corresponds  
30  
31  
32 to  $159 \text{ pmol/cm}^2$ , which is high enough for the adhesion of cells (typical cases have  
33  
34  
35 required a maximum of  $\sim 20 \text{ pmol/cm}^2$ ) [16]. Cyclic voltammetry showed that the peak  
36  
37  
38 potentials for reductive desorption of the oligopeptide and cysteine were approximately  
39  
40  
41  $-0.86 \text{ V}$  and  $-0.70 \text{ V}$ , respectively (Fig. 2). The relationship between the molecular  
42  
43  
44 configurations and the peak potentials required for cleaving the gold–thiolate bonds has  
45  
46  
47 been previously discussed in detail in experiments involving self-assembled alkanethiol  
48  
49  
50 monolayers [17, 18]. The shape and potential of the peak are considered to be closely  
51  
52  
53 associated with a van der Waals interaction between the adsorbed molecules and the  
54  
55  
56  
57  
58  
59  
60  
61  
62  
63  
64  
65

1  
2  
3 steric structure of the molecules [19, 20]. As seen in Fig. 2, the peak for the oligopeptide  
4  
5  
6 is wider than that for cysteine, suggesting that the oligopeptide formed a relatively loose  
7  
8  
9 layer on the surface and had weak interactions with neighboring oligopeptides, probably  
10  
11  
12 because of its bulky structure. In general, the number of adsorbed molecules can be  
13  
14  
15 estimated from both the peak area in a cyclic voltammogram and by using a QCM. The  
16  
17  
18 amount of oligopeptide estimated by using a QCM was five times greater than that  
19  
20  
21 determined from the cyclic voltammogram. This fact suggests that the oligopeptide  
22  
23  
24 possibly forms intermolecular cross-links via disulfide binding, and a part of the thiol  
25  
26  
27 group bonds to the gold surface. Although the details of the surface chemistry are still  
28  
29  
30 unclear, on the basis of the results that the oligopeptide desorbed in the potential range  
31  
32  
33 of  $-0.8$  to  $-1.0$  V,  $-1.0$  V was used for detachment of cells in the subsequent  
34  
35  
36 experiments.  
37  
38  
39  
40

### 41 **3.2 Change in HUVEC morphology during cell detachment**

42  
43  
44 HUVECs were readily attached via the oligopeptide and spreaded out on the gold  
45  
46  
47 surface (Fig. 3A). There was no significant difference in the number of cells attached  
48  
49  
50 onto the gold surface with or without modification with the oligopeptide ( $1.0$  to  $1.5 \times$   
51  
52  
53  $10^4$  cells/cm<sup>2</sup>). At 18 h of culture, the cells attached onto the gold surface with the  
54  
55  
56 oligopeptide were detached by applying a potential of  $-1.0$  V. Figures 3B–J show the  
57  
58  
59  
60  
61  
62  
63  
64  
65

1  
2  
3 change in HUVEC morphology at 20-s intervals during the detachment. The cells were  
4  
5  
6 gradually detached from the adhesive ends and appeared bright and round after the  
7  
8  
9 application of the potential. These cells were identified to be detached after gentle  
10  
11  
12 pipetting (Fig. 3K).  
13  
14

15  
16 To quantitatively analyze the detachment, the number of cells that remained on the  
17  
18 surface was counted at 1, 3, 5, and 7 min after the application of the potential (Fig. 4).  
19  
20  
21  
22 When the oligopeptide and an electrical potential of  $-1.0$  V were used, more than 90%  
23  
24  
25 of the cells detached from the surface within 7 min. On the other hand, the behavior of  
26  
27  
28 the cells was clearly different in the control experiments (conditions of no oligopeptide  
29  
30  
31 or application of a potential of  $-0.5$  V, which is smaller than that required to cleave the  
32  
33  
34 gold–thiolate bond). These results suggest that cell detachment occurs mainly due to the  
35  
36  
37 electrically dependent desorption of the oligopeptide.  
38  
39  
40

41 There are a few reports regarding the electrochemical detachment of cells. A  
42  
43  
44 self-assembled monolayer with electroactive sites that respond to electrical potentials  
45  
46  
47 has been used for micropatterning of cells by detachment of cells from a selective  
48  
49  
50 region [21]. We have also previously shown that cells or cell sheets on the gold surface  
51  
52  
53 modified with alkanethiol could be detached by application of a potential [10]. To  
54  
55  
56 promote the adhesion of cells, the carboxyl terminal of alkanethiol has been coupled  
57  
58  
59  
60  
61  
62  
63  
64  
65

1  
2  
3 with an RGD peptide through carbodiimide-mediated cross-linking. Multilayered  
4  
5  
6 polyelectrolyte films formed by layer-by-layer deposition have also been used to detach  
7  
8  
9 cell sheets [22]. In this approach, the application of the relatively large potential,  $-1.8$  V,  
10  
11  
12 induces electrolysis of water and a local pH change, leading to the dissolution of the  
13  
14  
15 polyelectrolyte film and the detachment of cell sheets. An unsolved issue in these  
16  
17  
18 previous approaches is that molecules and other chemicals may be contained in the  
19  
20  
21 detached tissues and potentially could cause inflammatory responses in the body after  
22  
23  
24 transplantation. To alleviate this problem, we used an oligopeptide in this study. Since  
25  
26  
27 the oligopeptide contains an RGD sequence and spontaneously bonds to a gold surface,  
28  
29  
30 the culture surface could be prepared without the use of coupling agents, simply by  
31  
32  
33 immersing a gold-coated substrate in a peptide solution. This may be advantageous for  
34  
35  
36 the widespread use of this technology in biological and medical laboratories.  
37  
38  
39  
40

### 41 **3.3 Transfer of cells from the gold surface to collagen gel**

42  
43  
44 After the collagen solution was poured and gelled on HUVECs on the gold surface  
45  
46  
47 with or without modification with the oligopeptide, a potential of  $-1.0$  V was applied  
48  
49  
50 for 5 min and the gel layer was peeled off. The cells that were attached to the gold  
51  
52  
53 surface with the oligopeptide were transferred to the gel, whereas in the case where the  
54  
55  
56 oligopeptide was not used only a few cells were transferred. Figures 5B and C show the  
57  
58  
59  
60  
61  
62  
63  
64  
65

1  
2  
3 surface of the substrates after peeling off the gel when the oligopeptide was and was not  
4  
5  
6 used, respectively. We then evaluated the viability of the transferred cells in the gel by  
7  
8  
9 staining live cells with FDA (green) and dead cells with EB (red). Although the gelation  
10  
11  
12 may have trapped the cells in proximity to the electrode surface during the potential  
13  
14  
15 application, almost all the cells transferred were viable and few dead cells were  
16  
17  
18 observed in the gel (Fig. 5D). In the absence of the oligopeptide, only a small number of  
19  
20  
21 cells were transferred to the gel, some of which were dead cells (Fig. 5E). Figure 5F  
22  
23  
24 shows the cells cultured for 24 h after the transfer into the gel. The cells grew and  
25  
26  
27 formed connections with each other on the gel. These results show that this approach  
28  
29  
30 (using an electrochemical reaction) can be used to transfer cells to the collagen gel  
31  
32  
33 noninvasively.  
34  
35  
36  
37

### 38 **3.4 Fabrication of capillary-like structures in collagen gel**

39  
40

41 We applied this approach for the fabrication of capillary-like structures by  
42  
43  
44 transferring cells from thin gold rods to the inner surface of capillaries in a collagen gel  
45  
46  
47 (Fig. 1B). The rods covered with HUVECs (Figs. 6A and B) were aligned in the  
48  
49  
50 chamber and a collagen solution was poured and allowed to form a gel. After applying a  
51  
52  
53 potential of  $-1.0$  V for 5 min, the rods were carefully extracted from the chamber  
54  
55  
56  
57 through guide holes, resulting in the formation of capillaries enveloped with HUVECs.  
58  
59  
60  
61  
62  
63  
64  
65



1  
2  
3 The capillaries were formed at ~500- $\mu$ m intervals (Fig. 6C) and were 16 mm in length  
4  
5  
6 (Fig. 6D).  
7  
8

9  
10 The guide holes were then connected to silicone tubes and the culture medium  
11  
12 containing PMA was perfused through the capillaries at a flow rate of 10  $\mu$ L/min.  
13  
14  
15 Although the perfusion of culture medium was not necessarily required for oxygen  
16  
17 supply in this experiment, when parenchymal cells such as hepatocytes are seeded in the  
18  
19 collagen, a prompt initiation of culture medium flow will be required to satisfy their  
20  
21 oxygen demand. Another approach was reported wherein a channel structure was  
22  
23 constructed in a collagen gel and endothelial cells were then seeded into it to form a  
24  
25 capillary-like structure. However, that approach required that the flow of culture  
26  
27 medium was stopped for a while and the device was rotated to let cells attach to the  
28  
29 inner surface of the channel, thereby making it difficult to stably supply oxygen to  
30  
31 parenchymal cells [23].  
32  
33  
34  
35  
36  
37  
38  
39  
40  
41  
42  
43

44 The flow rate used in this study was relatively low in comparison with those  
45  
46 observed in *in vivo* peripheral vessels. The shear stress caused by the flow was  
47  
48 calculated to be 0.12 dyn/cm<sup>2</sup> in this study, whereas it was 1–5 dyn/cm<sup>2</sup> in the venules  
49  
50  
51 [24]. During the perfusion culture, the HUVECs were oriented in the direction of the  
52  
53  
54 stream at 6 h (Fig. 6F) and partly began to migrate into the collagen gel at 48 h at the  
55  
56  
57  
58  
59  
60  
61  
62  
63  
64  
65

1  
2  
3 earliest (Fig. 6G). The formation of luminal structures in the collagen gel was dependent  
4  
5  
6 on the time and position. In a representative case, the HUVECs began to sprout at 4  
7  
8  
9 days of perfusion culture, and reached the neighboring channels and bridged them with  
10  
11  
12  
13 a luminal structure at ~7 days (Fig. 6J).  
14

15  
16 PMA was required for the induction of sprouting and formation of luminal  
17  
18 structures. Although the culture medium contained vascular endothelial growth factor  
19  
20  
21 and fibroblast growth factor-B, capillary formation was not observed in a highly  
22  
23  
24 reproducible manner, which was in contrast to that observed in the case of the medium  
25  
26  
27 supplemented with PMA. PMA is a potent promoter of tumor development and  
28  
29  
30 progression and activates the signal transduction enzyme protein kinase C because of its  
31  
32  
33 structural similarity to one of the natural activators, diacylglycerol [25, 26]. Although  
34  
35  
36 PMA is currently employed in phase-I clinical trials for the treatment of patients with  
37  
38  
39 hematologic cancer or bone marrow disorder [27], its use should be avoided to prevent  
40  
41  
42 the development of its clinical side effects. Because HUVECs are known to form  
43  
44  
45 capillaries in a collagen gel when cultured in medium containing the abovementioned  
46  
47  
48 growth factors, optimization of the concentrations of these growth factors or their  
49  
50  
51 embedment in the collagen gel may lead to the development of a more suitable approach,  
52  
53  
54  
55  
56  
57 which will eliminate the need for PMA.  
58  
59  
60  
61  
62  
63  
64  
65

#### 4. Conclusion

This study demonstrated an electrochemical technique to fabricate capillaries whose internal surface was covered with vascular endothelial cells in collagen gel. In this approach, HUVECs were attached to a gold surface via an oligopeptide. The cells were detached by applying a negative potential that reductively cleaved the gold–thiolate bonds. This technique allowed for detachment of more than 90% of the attached cells within 7 min of applying the negative potential, and could be used to detach cells not only from flat surfaces but also from thin rods. To fabricate the capillaries, a gold rod enveloped with HUVECs was inserted into a collagen gel. The rod was then extracted by applying a potential of  $-1.0$  V, resulting in the formation of a capillary, which was enveloped with endothelial cells, in the collagen gel. During the subsequent perfusion culture, luminal structures were formed from the HUVECs lining the capillary and they bridged the neighboring capillaries to each other. This approach has potential for engineering vascularized tissues capable of delivering oxygen and nutrients to the entire tissue construct.

#### Acknowledgments

This research has been supported by MEXT (Grant-in-Aid for Young Scientists (A), 20686056), Ministry of Health, Labor and Welfare (H20-Saisei-wakate-010), and

1  
2  
3  
4  
5  
6  
7  
8  
9  
10  
11  
12  
13  
14  
15  
16  
17  
18  
19  
20  
21  
22  
23  
24  
25  
26  
27  
28  
29  
30  
31  
32  
33  
34  
35  
36  
37  
38  
39  
40  
41  
42  
43  
44  
45  
46  
47  
48  
49  
50  
51  
52  
53  
54  
55  
56  
57  
58  
59  
60  
61  
62  
63  
64  
65

NEDO (Industrial Technology Research Grant Program, 06A06014a).

1  
2  
3 **References**  
4

- 5  
6 1. Moon JJ, West JL. Vascularization of engineered tissues: Approaches to promote  
7 angiogenesis in biomaterials. *Curr Top Med Chem* 2008;8(4):300-310.  
8  
9 2. Khademhosseini A, Langer R. Microengineered hydrogels for tissue engineering.  
10 *Biomaterials* 2007;28(34):5087-5092.  
11  
12 3. Patel ZS, Mikos AG. Angiogenesis with biomaterial-based drug- and cell-delivery  
13 systems. *J Biomater Sci Polym Ed* 2004;15(6):701-726.  
14  
15 4. Fukuda J, Mizumoto H, Nakazawa K, Kajiwara T, Funatsu K. Hepatocyte organoid  
16 culture in elliptic hollow fibers to develop a hybrid artificial liver. *Int J Artif*  
17 *Organs* 2004;27(12):1091-1099.  
18  
19 5. Richardson TP, Peters MC, Ennett AB, Mooney DJ. Polymeric system for dual  
20 growth factor delivery. *Nat Biotechnol* 2001;19(11):1029-1034.  
21  
22 6. Lu YX, Shansky J, Del Tatto M, Ferland P, Wang XY, Vandenburgh H. Recombinant  
23 vascular endothelial growth factor secreted from tissue-engineered bioartificial  
24 muscles promotes localized angiogenesis. *Circulation* 2001;104(5):594-599.  
25  
26 7. Levenberg S, Rouwkema J, Macdonald M, Garfein ES, Kohane DS, Darland DC, et  
27 al. Engineering vascularized skeletal muscle tissue. *Nat Biotechnol*  
28 2005;23(7):879-884.  
29  
30 8. Croll TI, Gentz S, Mueller K, Davidson M, O'Connor AJ, Stevens GW, et al.  
31 Modelling oxygen diffusion and cell growth in a porous, vascularising scaffold  
32 for soft tissue engineering applications. *Chem Eng Sci* 2005;60(17):4924-4934.  
33  
34 9. Chen X, Aledia AS, Ghajar CM, Griffith CK, Putnam AJ, Hughes CC, et al.  
35 Prevascularization of a fibrin-based tissue construct accelerates the formation of  
36 functional anastomosis with host vasculature. *Tissue Eng Part A*  
37 2009;15(6):1363-1371.  
38  
39 10. Inaba R, Khademhosseini A, Suzuki H, Fukuda J. Electrochemical desorption of  
40 self-assembled monolayers for engineering cellular tissues. *Biomaterials*  
41 2009;30(21):3573-3579.  
42  
43 11. Healy JM, Haruki M, Kikuchi M. Preferred motif for integrin binding identified  
44 using a library of randomized RGD peptides displayed on phage. *Protein Pept*  
45 *Lett* 1996;3(1):23-30.  
46  
47 12. McMillan R, Meeks B, Bensebaa F, Deslandes Y, Sheardown H. Cell adhesion  
48 peptide modification of gold-coated polyurethanes for vascular endothelial cell  
49 adhesion. *J Biomed Mater Res* 2001;54(2):272-283.  
50  
51 13. Fukuda J, Sakiyama R, Nakazawa K, Ijima H, Yamashita Y, Shimada M, et al. Mass  
52  
53  
54  
55  
56  
57  
58  
59  
60  
61  
62  
63  
64  
65

- 1  
2 preparation of primary porcine hepatocytes and the design of a hybrid artificial  
3 liver module using spheroid culture for a clinical trial. *Int J Artif Organs*  
4 2001;24(11):799-806.  
5  
6  
7 14. Gamble JR, Matthias LJ, Meyer G, Kaur P, Russ G, Faull R, et al. Regulation of in  
8 vitro capillary tube formation by anti-integrin antibodies. *J Cell Biol*  
9 1993;121(4):931-943.  
10  
11 15. Montesano R, Orci L. Tumor-promoting phorbol esters induce angiogenesis in vitro.  
12 *Cell* 1985;42(2):469-477.  
13  
14 16. Houseman BT, Mrksich M. The microenvironment of immobilized Arg-Gly-Asp  
15 peptides is an important determinant of cell adhesion. *Biomaterials*  
16 2001;22(9):943-955.  
17  
18 17. Walczak MM, Popenoe DD, Deinhammer RS, Lamp BD, Chung CK, Porter MD.  
19 Reductive desorption of alkanethiolate monolayers at gold—A measure of  
20 surface coverage. *Langmuir* 1991;7(11):2687-2693.  
21  
22 18. Imabayashi S, Iida M, Hobara D, Feng ZQ, Niki K, Kakiuchi T. Reductive  
23 desorption of carboxylic-acid-terminated alkanethiol monolayers from Au(111)  
24 surfaces. *J Electroanal Chem* 1997;428(1-2):33-38.  
25  
26 19. Widrig CA, Chinkap C, Porter MD. The electrochemical desorption of n-alkanethiol  
27 monolayers from polycrystalline Au and Ag electrodes. *J Electroanal Chem*  
28 1991;310(1-2):335-359.  
29  
30 20. Imabayashi S, Hobara D, Kakiuchi T, Knoll W. Selective replacement of adsorbed  
31 alkanethiols in phase-separated binary self-assembled monolayers by  
32 electrochemical partial desorption. *Langmuir* 1997;13(17):4502-4504.  
33  
34 21. Yeo WS, Mrksich M. Electroactive self-assembled monolayers that permit  
35 orthogonal control over the adhesion of cells to patterned substrates. *Langmuir*  
36 2006;22(25):10816-10820.  
37  
38 22. Guillaume-Gentil O, Akiyama Y, Schuler M, Tang C, Textor M, Yamato M, et al.  
39 Polyelectrolyte coatings with a potential for electronic control and cell sheet  
40 engineering. *Adv Mater* 2008;20(3):560-565.  
41  
42 23. Takei T, Sakai S, Ono T, Ijima H, Kawakami K. Fabrication of endothelialized tube  
43 in collagen gel as starting point for self-developing capillary-like network to  
44 construct three-dimensional organs in vitro. *Biotechnol Bioeng* 2006;95(1):1-7.  
45  
46 24. Pries AR, Secomb TW, Gaetgens P. Design principles of vascular beds. *Circ Res*  
47 1995;77(5):1017-1023.  
48  
49 25. Castagna M, Takai Y, Kaibuchi K, Sano K, Kikkawa U, Nishizuka Y. Direct  
50 Activation of Calcium-Activated, Phospholipid-Dependent Protein-Kinase by  
51  
52  
53  
54  
55  
56  
57  
58  
59  
60  
61  
62  
63  
64  
65

1  
2 Tumor-Promoting Phorbol Esters. J Biol Chem 1982;257(13):7847-7851.

3  
4 26. Murphy RLW, Smith ME. Effects of Diacylglycerol and Phorbol Ester on  
5 Acetylcholine-Release and Action at the Neuromuscular-Junction in Mice. Br J  
6 Pharmacol 1987;90(2):327-334.

7  
8 27. <http://www.clinicaltrials.gov/ct/show/NCT00004058>  
9  
10  
11  
12  
13  
14  
15  
16  
17  
18  
19  
20  
21  
22  
23  
24  
25  
26  
27  
28  
29  
30  
31  
32  
33  
34  
35  
36  
37  
38  
39  
40  
41  
42  
43  
44  
45  
46  
47  
48  
49  
50  
51  
52  
53  
54  
55  
56  
57  
58  
59  
60  
61  
62  
63  
64  
65

### Figure Captions

Figure 1. Cell detachment along with reductive desorption of the oligopeptide. (A) The oligopeptide CCRRGDWLC was chemically adsorbed onto a gold surface at both terminals via a gold–thiolate bond. Cells attached to the surface were detached during the reductive desorption of the oligopeptide. (B) Thin gold rods enveloped with cells were aligned in a spatially controlled manner in a chamber. By applying a potential and extracting the rods from the collagen gel, the cells were transferred onto the surface of capillaries. The device was connected to a microsyringe pump for perfusion of culture medium. The capillaries connect with each other to form luminal structures.

Figure 2. Cyclic voltammogram obtained during the reductive desorption of the oligopeptide. The current peaks for the oligopeptide (○) and L-cysteine (●) were  $-0.86$  V and  $-0.71$  V, respectively. Cyclic voltammograms were recorded at a scanning rate of  $20$  mV/s with respect to a Ag/AgCl reference electrode. The working electrode area was  $1.0$  cm<sup>2</sup>.

Figure 3. Detachment of HUVECs from the gold surface. (A) Cells were readily attached to the gold surface modified with the oligopeptide during culturing for 12 h.



(B)–(J) The change in cell morphology during the application of the electrical potential was observed at 20-s intervals. The cells were gradually detached from the adhesive ends and appeared bright and round after the application of the potential. (K) The cells were withdrawn into a micropipette and found to be detached.

Figure 4. Change in the number of HUVECs remaining on the gold surfaces.

Approximately 90% of cells were detached within 7 min along with the desorption of the oligopeptide (●). Few cells detached from the surface in the absence of the oligopeptide (i.e., cells were directly attached to a gold surface [○] and a potential of  $-0.5$  V, which is smaller than that required to cleave the gold–thiolate bond [□]). The error bars indicate SD calculated from nine independent experiments for each plot.

Figure 5. Transfer of HUVECs to a collagen gel. Cells that attached to the gold surface modified with the oligopeptide (A) were transferred to a collagen gel, and few cells remained on the surface after potential application and peeling off the gel (B). Most of the cells remained attached on the gold surface that was not modified with the peptide even after the same potential was applied and the gel was peeled off (C). The cells transferred to the gel were viable, and few cells that were attached onto the surface

modified with the peptide died (D), whereas only few cells that were attached onto the surface without peptide modification were transferred to the gel (E). The transferred cells grew and spread out on the gel at 1 day of culture (F).

Figure 6. Fabrication of capillary-like structures in collagen gel and formation of vascular networks. HUVECs were attached to the gold rod via the oligopeptide and grown to reach confluence at 3 days of culture (A, B). The capillaries were formed at ~500- $\mu$ m intervals in a collagen gel (C). HUVECs were transferred throughout the capillaries (16-mm length) from the inlet to the outlet (D). The transferred HUVECs (E) oriented in the direction of the stream at 6 h of perfusion culture (F). HUVECs began to partly migrate into the collagen gel as early as 48 h (G). For the most part, HUVECs grew to form a dense cell layer on the surface at 2 days (H), and began to migrate into the collagen gel at ~4 days (I). At ~7 days, the luminal structures extended to the neighboring channels and bridged them (J).

Figure 1  
[Click here to download high resolution image](#)

Fig. 1 Y. Seto, et al.

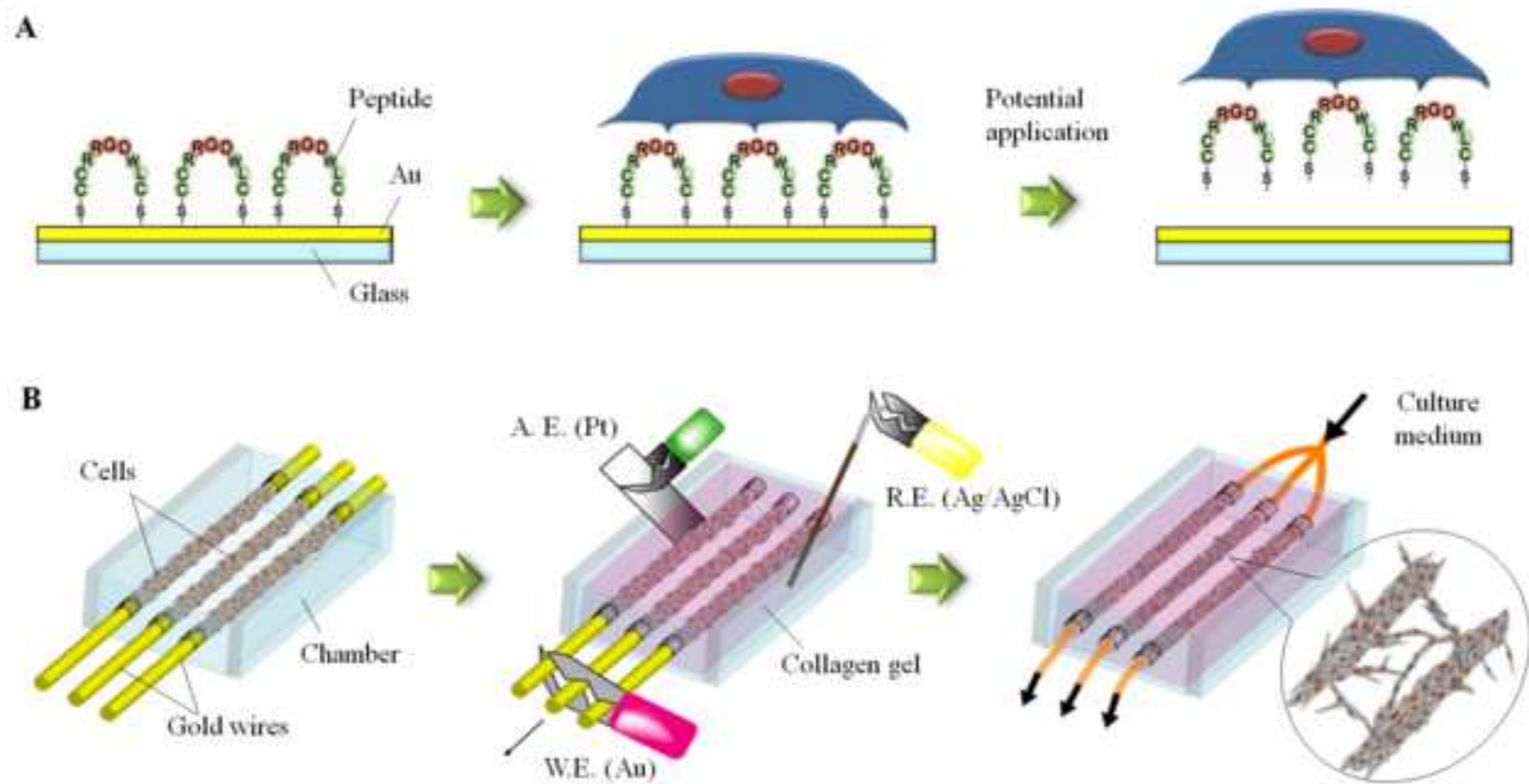


Fig. 2 Y. Seto, et al.

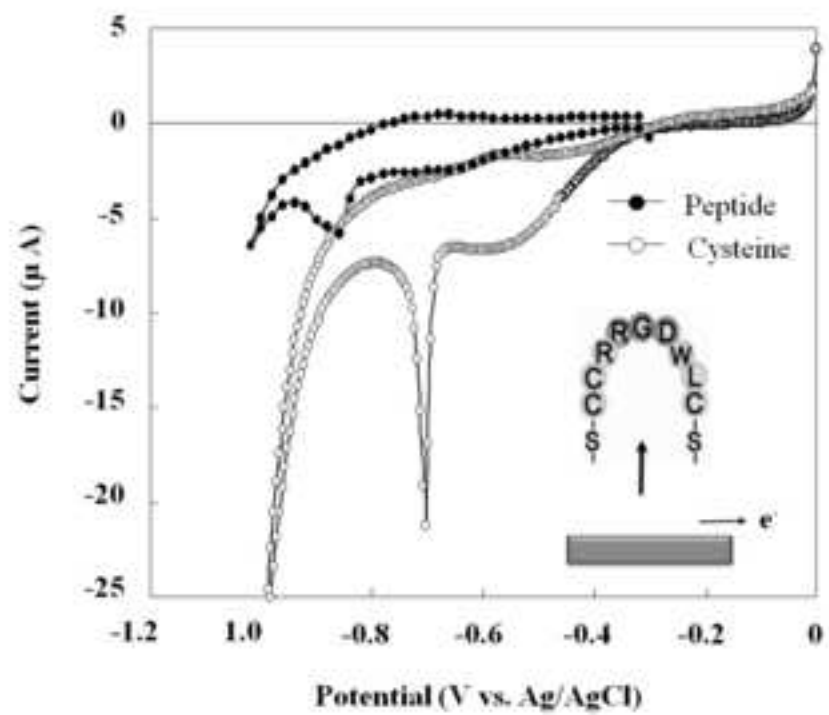


Fig. 3 Y. Seto, et al.

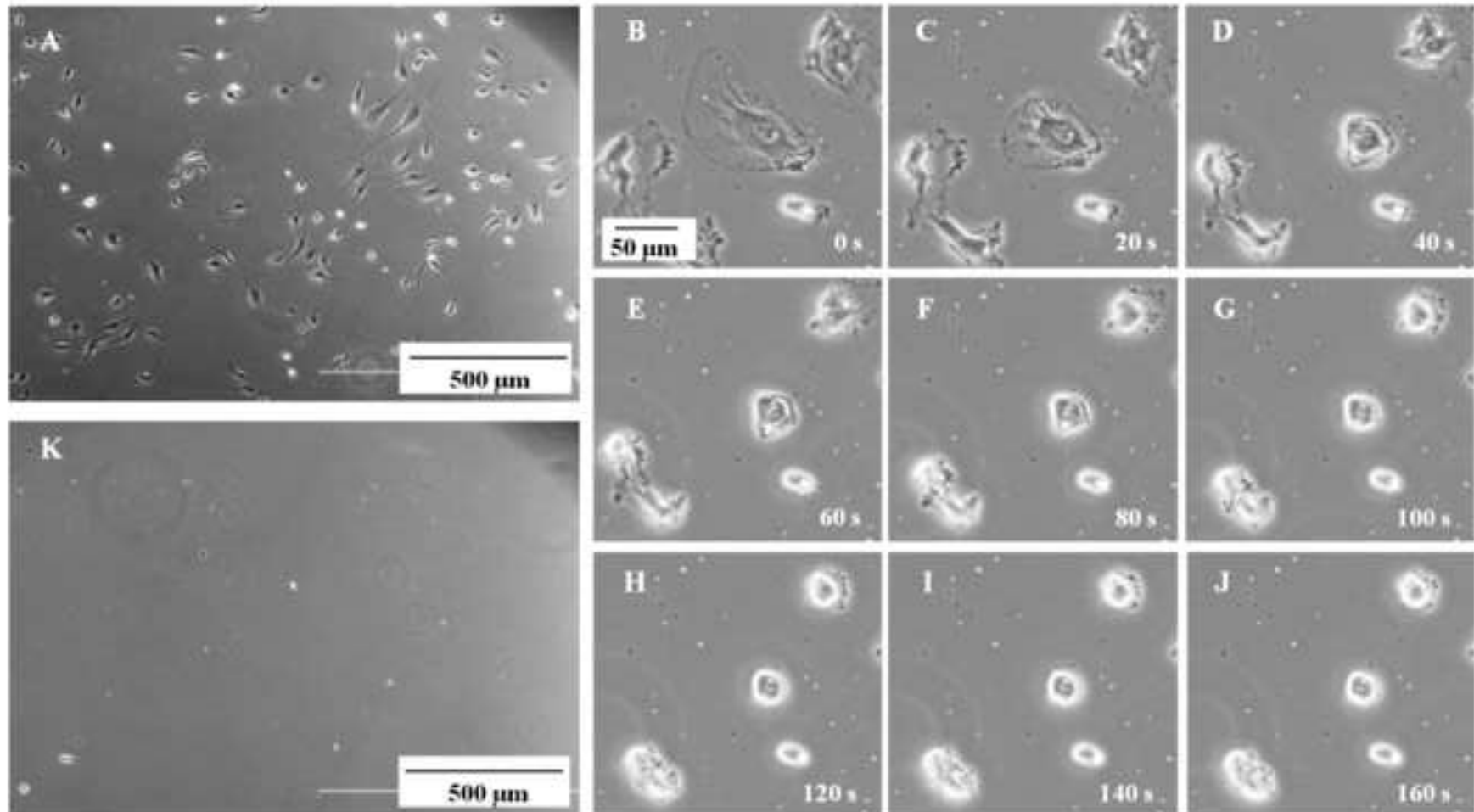


Fig. 4 Y. Seto, et al.

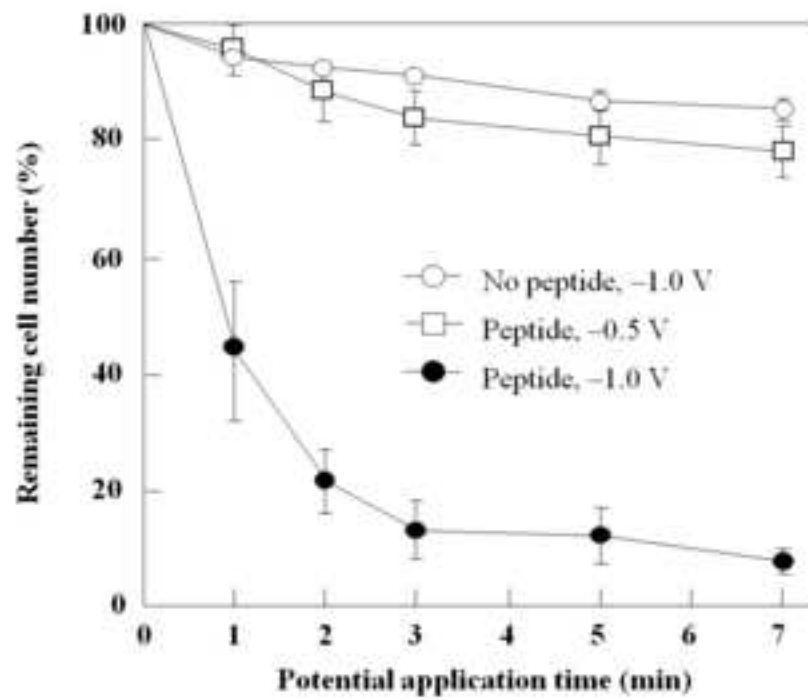


Fig. 5 Y. Seto, et al.

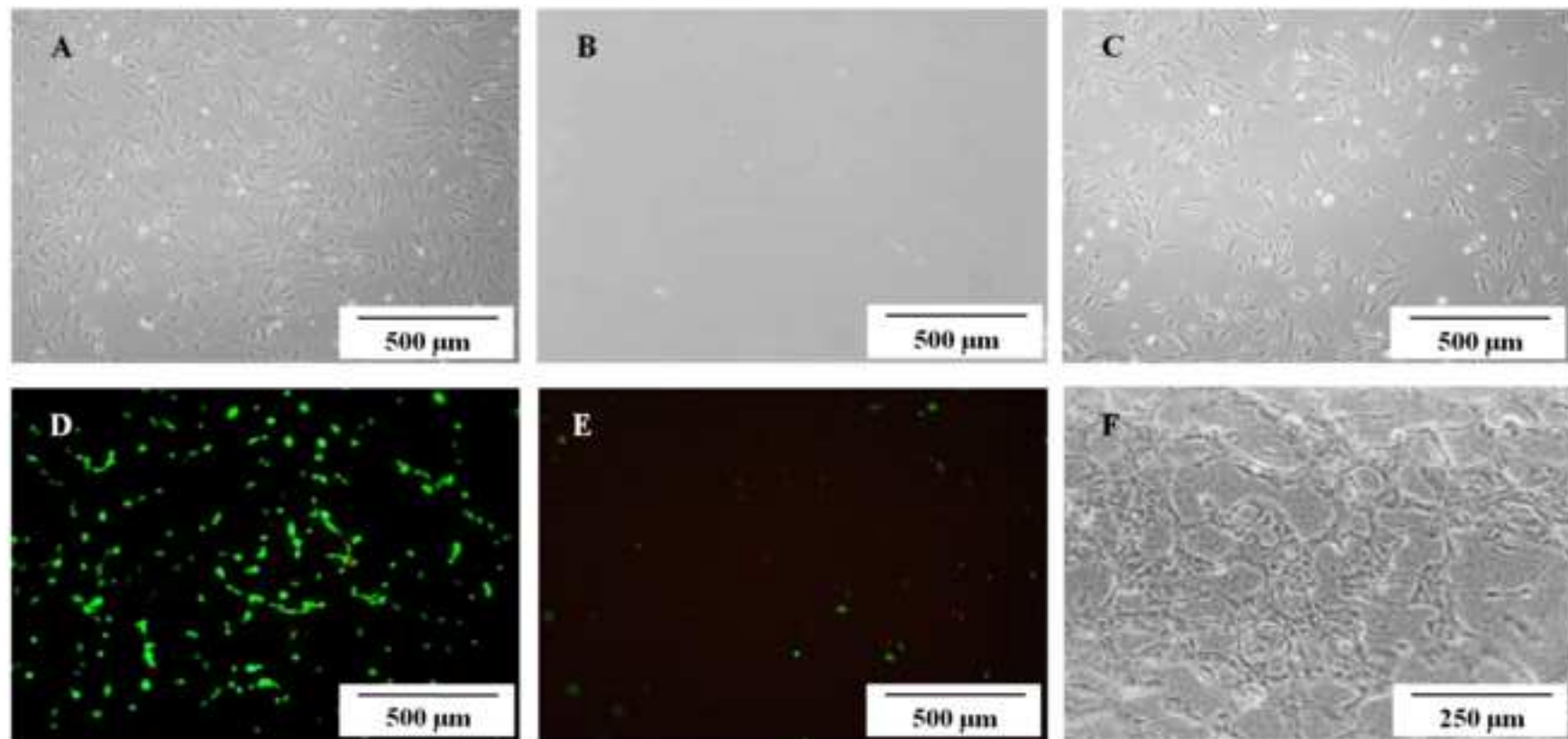
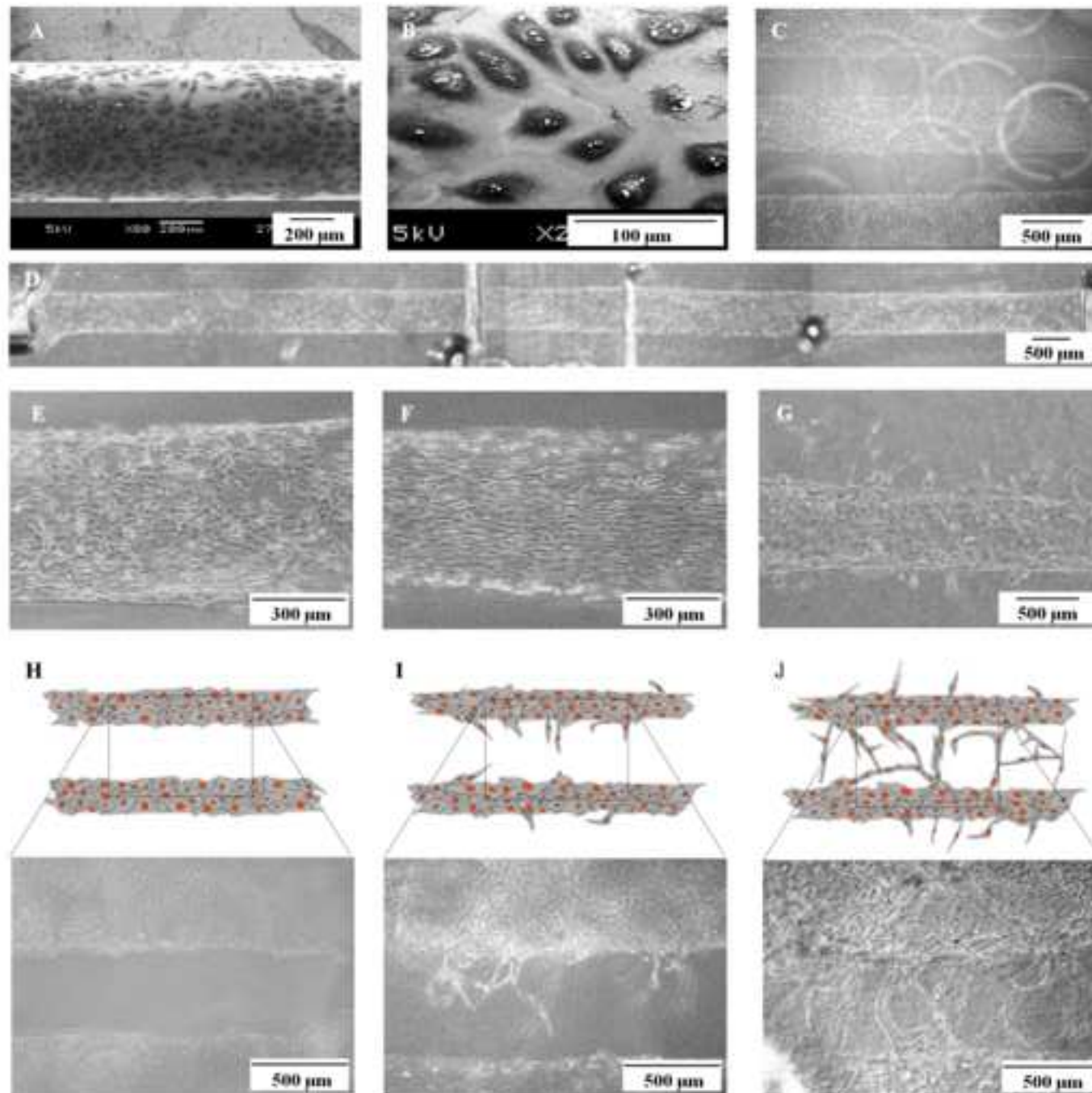


Figure 6  
[Click here to download high resolution image](#)

Fig. 6 Y. Seto, et al.





**Movie/Animation**

[Click here to download Movie/Animation: detachment\\_3min.avi](#)