



EANN 2013
Halkidiki, Greece, 13-16.09.2013
Keynote Speech

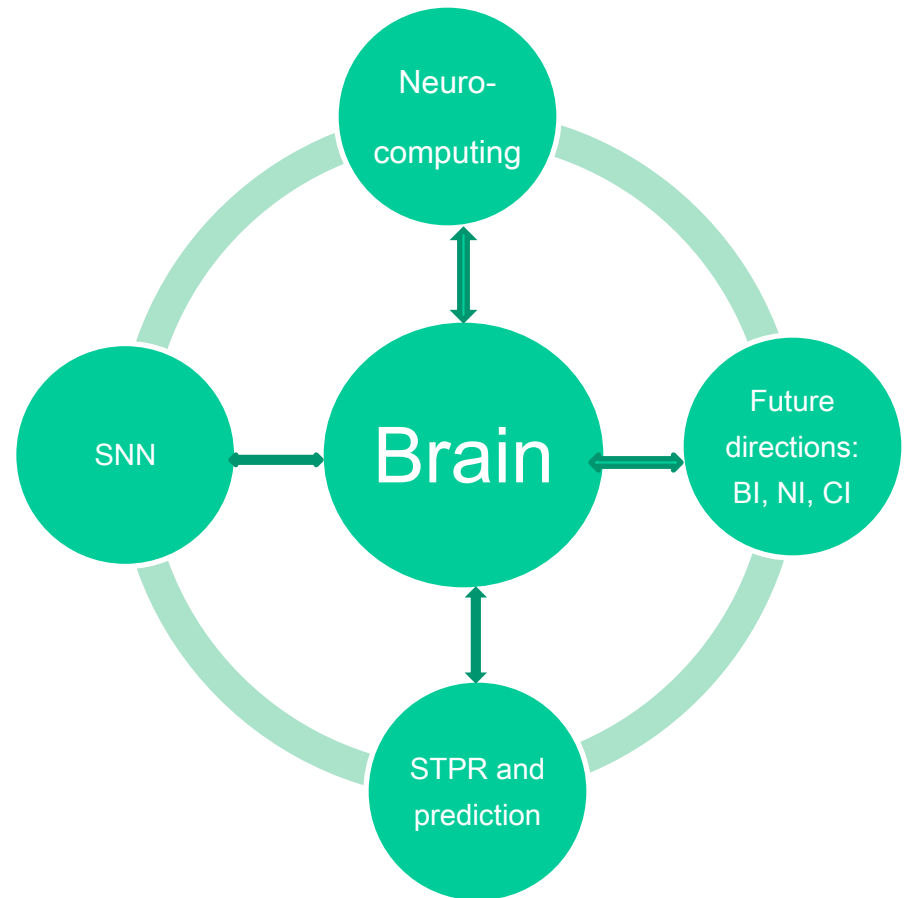
Neurocomputing for Spatio-/Spectro Temporal Pattern Recognition and Early Event Prediction: Methods, Systems, Applications

Nikola Kasabov, FIEEE, FRSNZ,
2013 Royal Academy of Engineering Distinguished Visiting Fellow

Professor and Director,
Knowledge Engineering and Discovery Research Institute (KEDRI),
Auckland University of Technology, New Zealand

Content

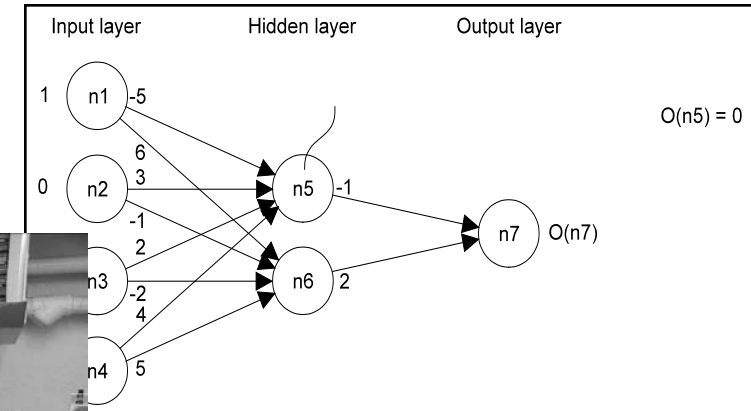
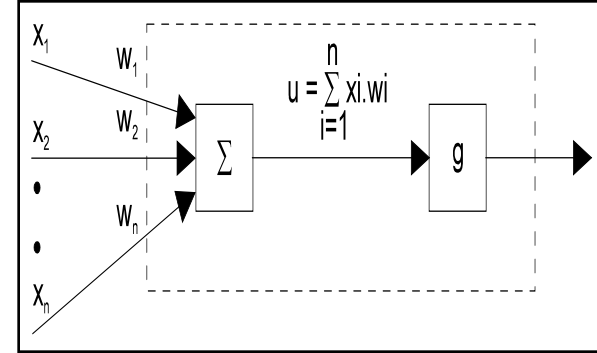
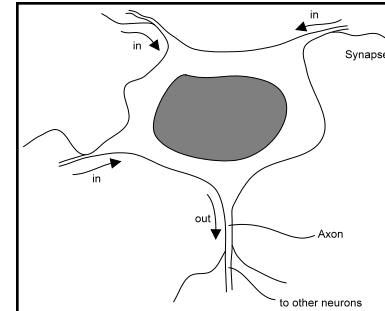
1. Neurocomputing
2. Spiking Neural Networks (SNN)
3. SNN for Spatio/Spectro-Temporal Pattern Recognition
4. SNN for Early Prediction of Events
5. Advantages and limitations of SNN
6. Future Directions



1. Neurocomputing

Neural Networks:

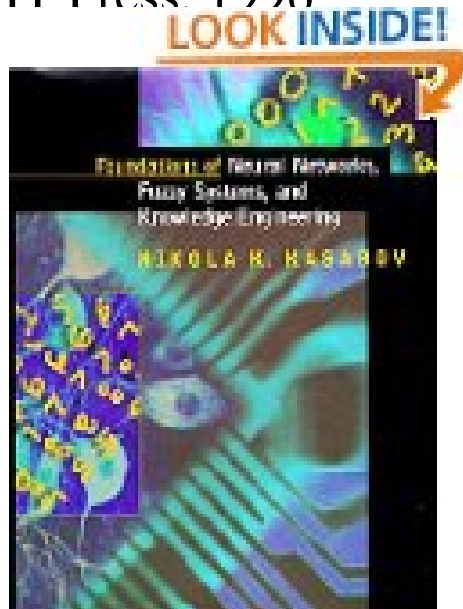
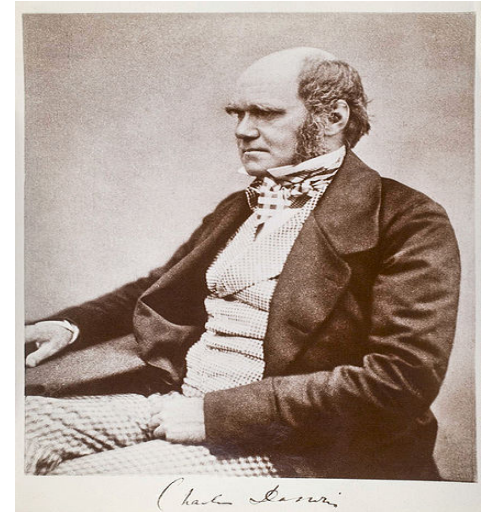
- NN are computational models that mimic the nervous system in its main function of adaptive learning.
- ANN can *learn* from data and make *generalisations*
- ANN are *universal computational models*
- 1943, McCulloch and Pitts
- 1960, Widrow and Hoff-Adelaine
- 1962, Rosenblatt - Perceptron
- 1971- 1986, Amari, Rumelhart and others, Multilayer perceptron



...Neurocomputing

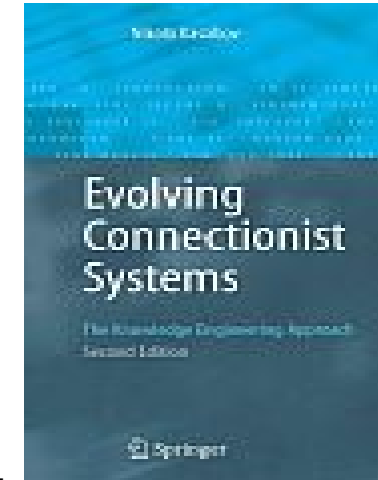
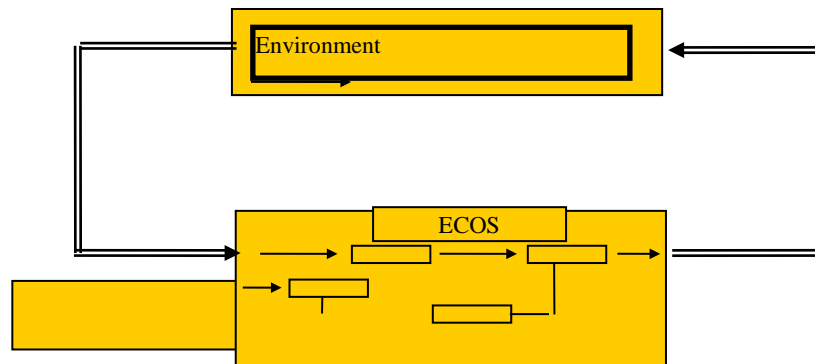
Hybrid neuro-fuzzy, neuro-evolutionary,
and statistical techniques

- Evolutionary computation
- Fuzzy systems and hybrid systems
(Zadeh, 1965; Yamakawa 1989; Kosko 1992; Kasabov 1992)
- Kasabov, Foundations of neural networks, fuzzy systems and knowledge engineering, MIT Press, 1996



Evolving Connectionist Systems (ECOS)

- ECOS are modular connectionist-based systems that **evolve their structure** and functionality in a continuous, self-organised, in on-line, **adaptive**, interactive way from incoming information facilitating **knowledge discovery** (Kasabov, 1998, 2002, 2007).



- Early ECOS models: RAN (J.Platt, 1991) – evolving RBF NN; Incremental FuzzyARTMAP (Carpenter , Grossberg); Growing gas; EFuNN (Kasabov, 1998, 2001); ESOM (Deng and Kasabov, 2002); DENFIS (Kasabov, Song, 2002); EFuRS, eTS (Angelov, 2002;Filev, 2002).
- *M.Watts, Ten years of Kasabov's evolving connectionist systems, IEEE Tr SMC- part B, 2008.*
- New developments: Ensembles of EFuNNs (T. Ljudemir, 2008-); Application oriented ECOS (B.Gabric, R.Duro, McGinitty et al.); Incremental feature selection (Ozawa, Pang, Kasabov, Polikar, Minhu Lee); evolving spiking neural networks (eSNN); computational neuro-genetic systems; quantum inspired eSNN.

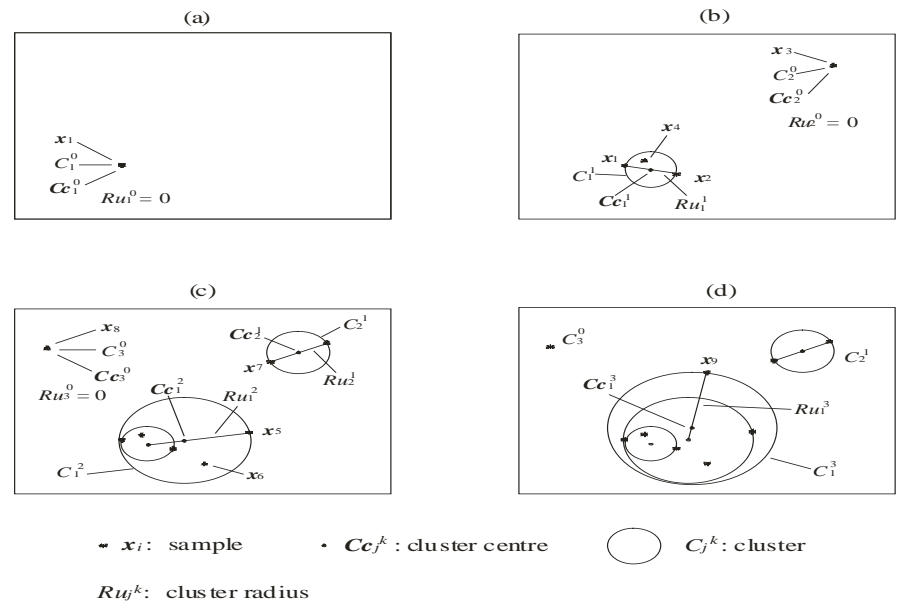
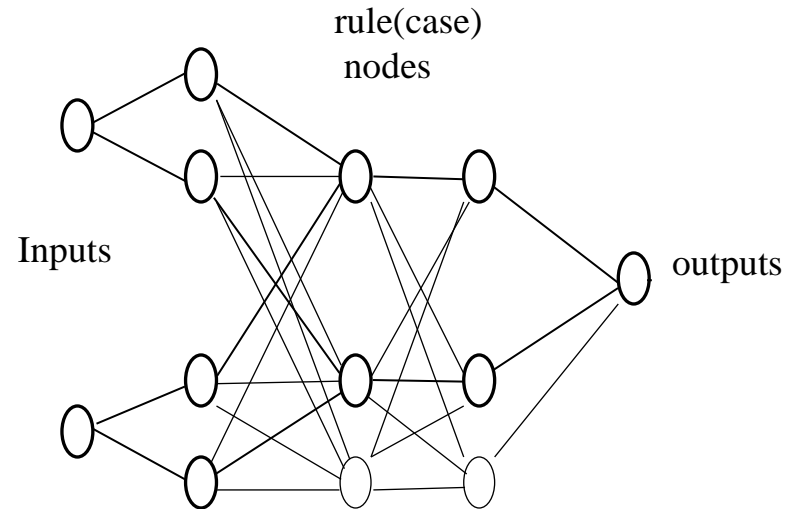
Evolving Fuzzy Neural Network (EFuNN)

- Incremental, supervised clustering
- Input and/or output variables can be non-fuzzy (crisp) or fuzzy
- Hidden nodes evolve to capture clusters (prototypes) of input vectors
- **Input weights change based on *Euclidean distance* between input vectors and prototype nodes (evolving clustering):**

$$\Delta w = \text{irate} * E(x, R_n)$$

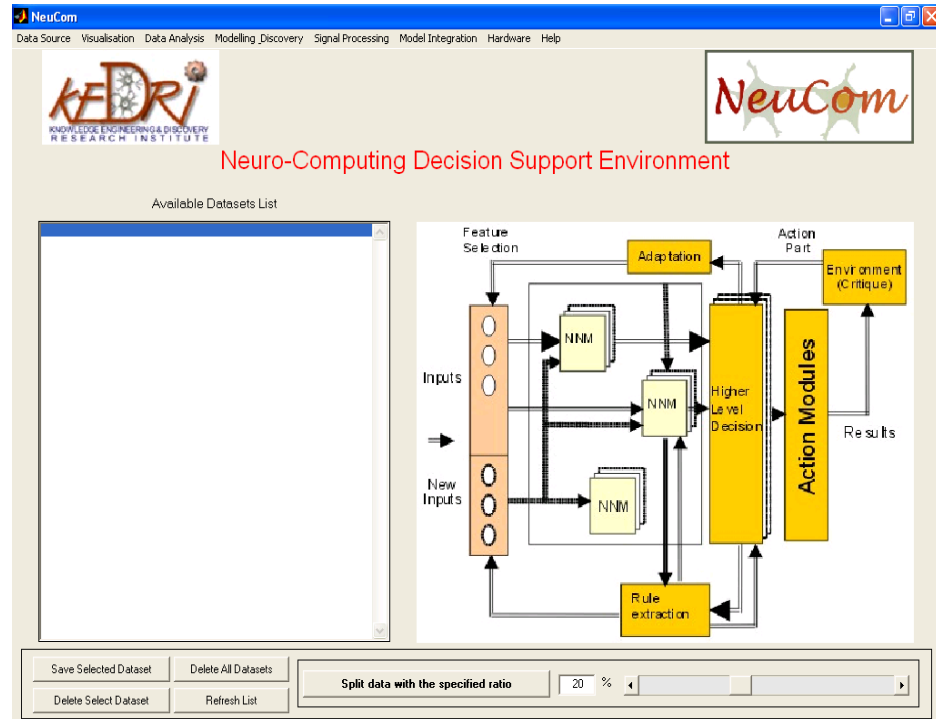
- Output weights evolve to capture local output function and change based on output error.

- EFuNN, N. Kasabov, IEEE Tr SMC, 2001
- DENFIS, N.Kasabov, Q.Song, IEEE Tr FS, 2002
- ECOS Toolbox available in MATLAB
- NeuCom Software available: www.kedri.info



NeuCom: A Software Environment for NeuroComputing, Data Mining and Intelligent System Design (www.theneucom.com)

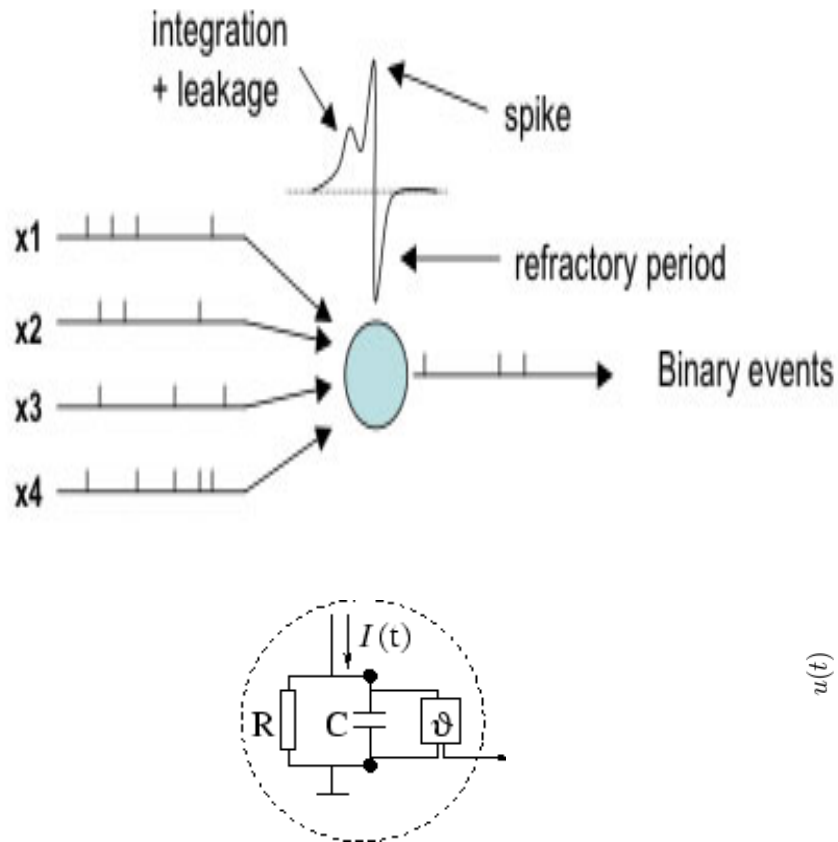
- A generic environment, that incorporates 60 traditional and new techniques for intelligent data analysis and the creation of intelligent systems, including:
 - Statistical methods
 - Neural networks
- Methods for feature selection
- Methods for classification
- Methods for prediction
- Methods for knowledge extraction
- Fast data analysis and visualisation
- Fast model prototyping
- A free copy available for education and research from: www.theneucom.com
- DENFIS for prediction
- ECF for classification



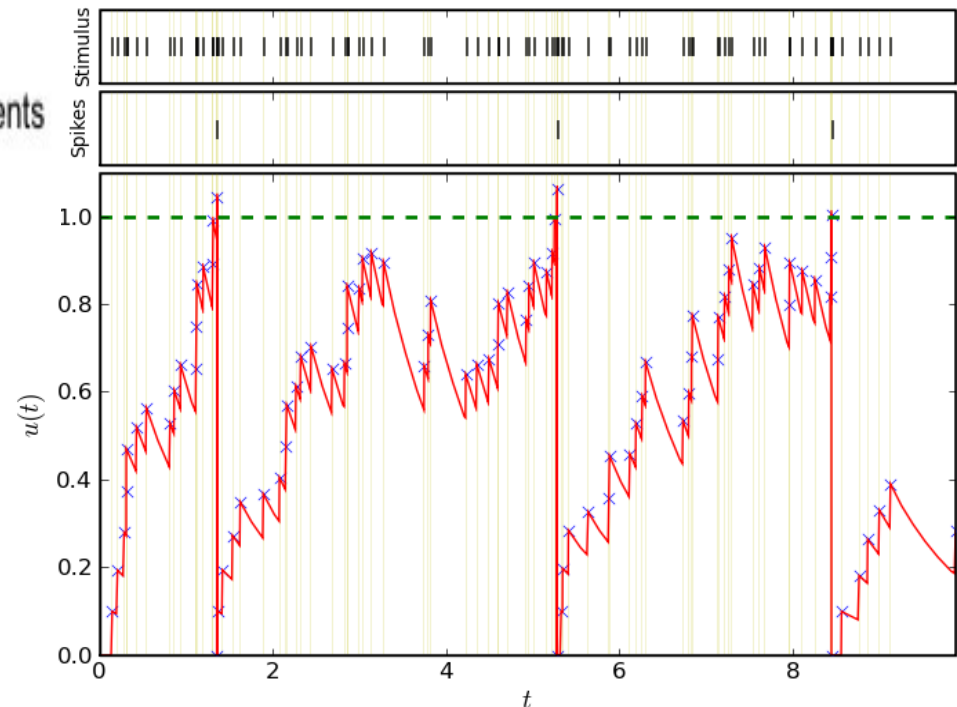
2. Spiking Neural Networks

Models of spiking neurons: (Hodgkin-Huxley 1952; Abbott, 2000; Maas, Izhikevich; other)

Most popular is the Leaky Integrate and Fire Model (LIF) .

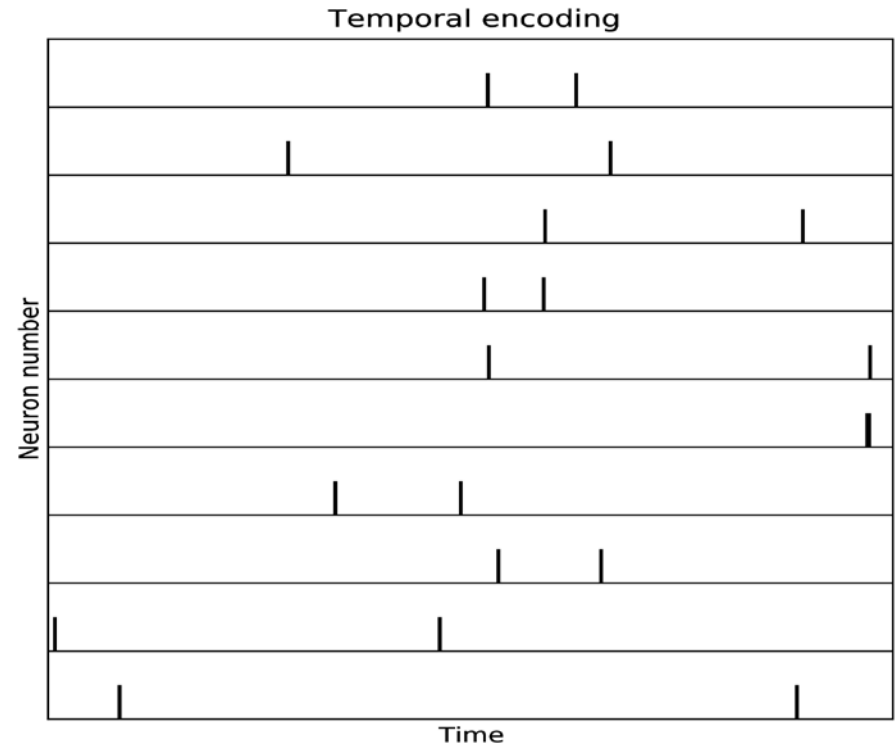
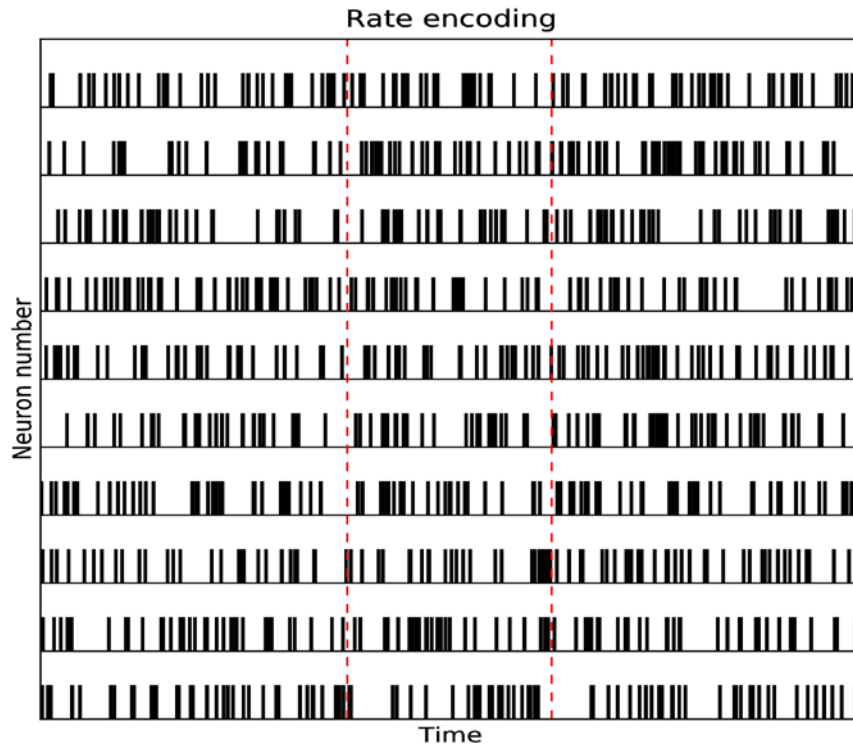


$$\tau_m \frac{du}{dt} = -u(t) + RI(t)$$



Representing information as spikes: Rate vs time-based

- ❖ Rate-based coding: A spiking characteristic within a time interval, e.g. frequency.
- ❖ Time-based (temporal) coding: Information is encoded in the time of spikes. Every spike matters! For example: class A is a spike at time 10 ms, class B is a spike at time 20 ms.

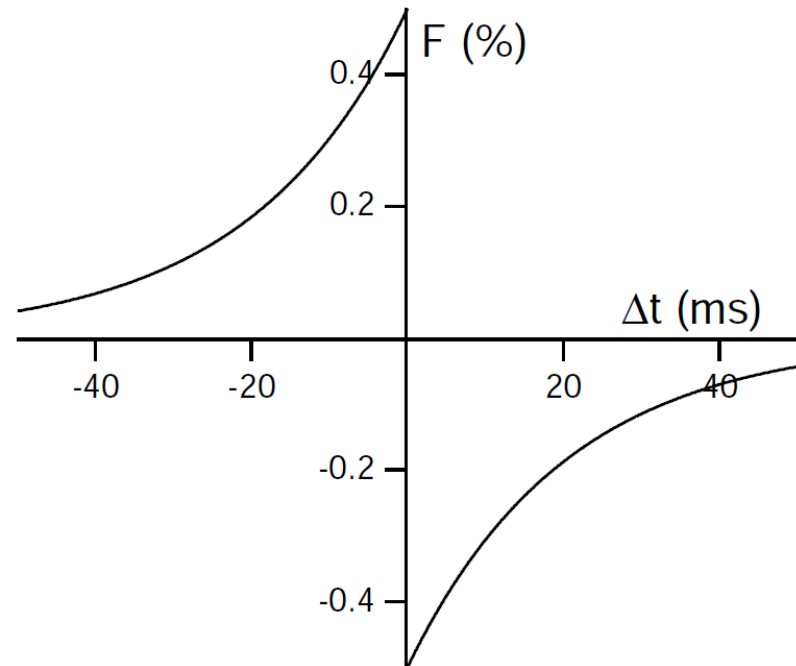


Methods for learning in SNN: Spike-Time Dependent Plasticity (STDP) (Abbott and Nelson, 2000).

- Hebbian form of plasticity in the form of long-term potentiation (LTP) and depression (LTD)
- Effect of synapses are strengthened or weakened based on the **timing** of pre-synaptic spikes and post-synaptic action potential.
- Through STDP connected neurons learn consecutive **temporal** associations from data.

Pre-synaptic activity that precedes post-synaptic firing can induce **LTP**, reversing this temporal order causes **LTD**

$$\Delta t = t_{\text{pre}} - t_{\text{post}}$$



Progress in neuromorphic computation

Hodgin- Huxley model (1952)

Carver Mead (1989): A hardware model of an IF neuron:
The Axon-Hillock circuit;

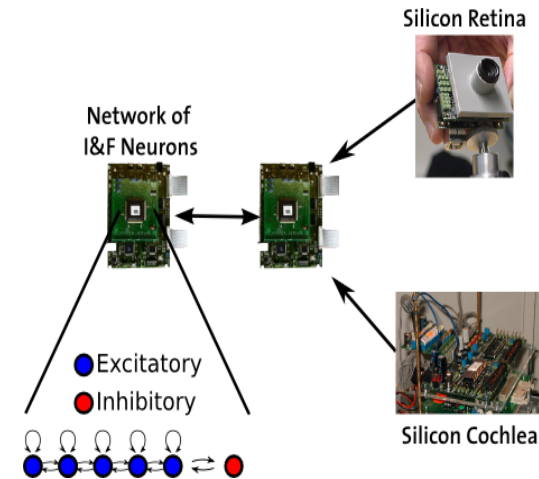
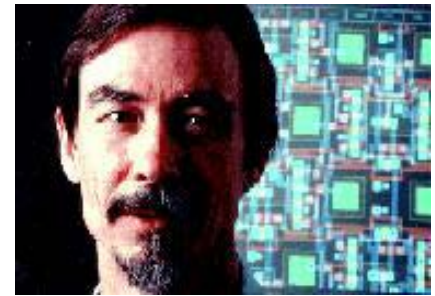
INI Zurich SNN chips (Giacomo Indivero, 2008 and 2012)

FPGA SNN realisations (McGinnity, Ulster, 2010);

The IBM chip (D.Modha, 2012): 256 LIF neurons and 64k synapses in a chip.

U. Manchester SpiNNaker (2^{16} computer chips, 2011; 1 mln neurons 2013) and the Stanford U., NeuroGrid (Kwabena Boahen et al), 1mln neurons on a board, 63 bln connections ; hybrid - analogue /digital)

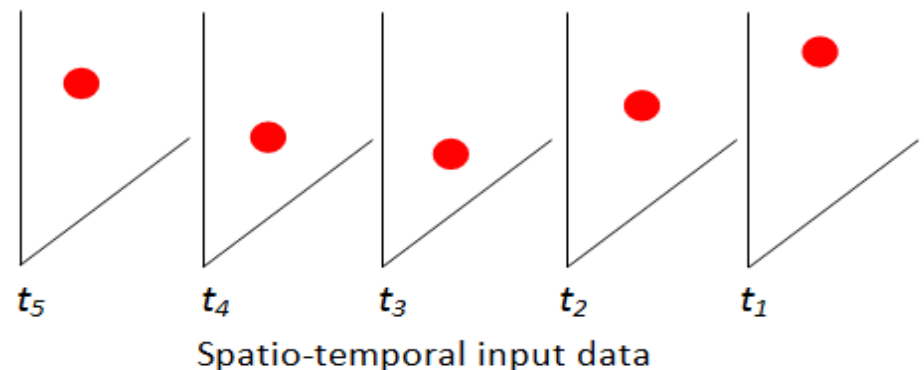
The challenge: Technology is available, but how do we use it for integrated spatio-temporal data modelling and STPR?



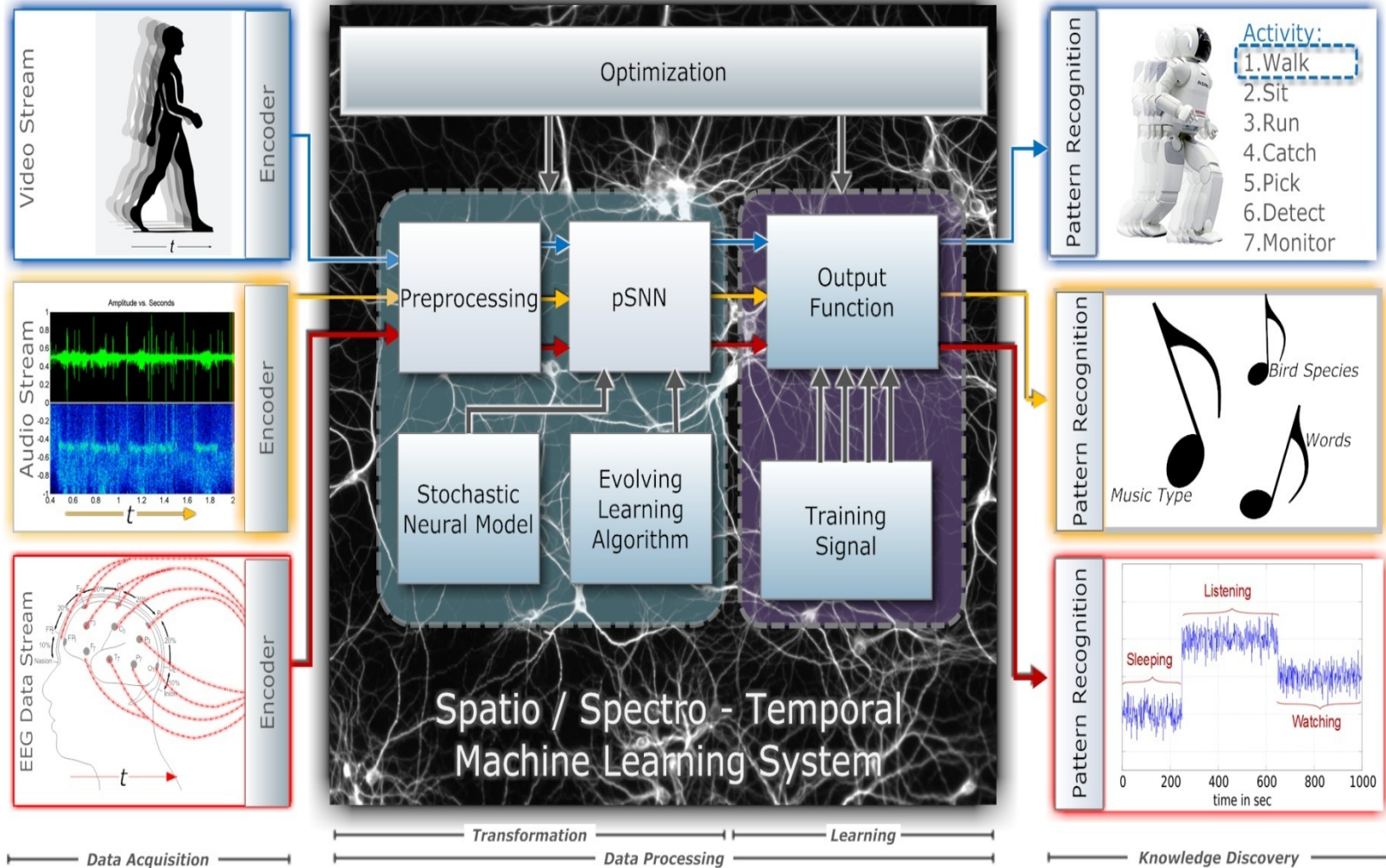
3. Spatio/Spectro-Temporal Pattern Recognition

- Most real world data is spatio- or spectro- temporal.
- In STPR problems spatial and temporal components of the information are interrelated.
- Examples of spatio-temporal data and related problems are:
 - a) Object movement recognition from video data
 - b) Audio/video data modelling
 - c) Multisensor temporal data integration
 - d) Brain signals (EEG, MEG, fMRI)
 - e) Brain- computer interfaces
 - f) Motor control for prosthetics
 - g) Ecological and environmental data, e.g. earthquake prediction
 - h) Robot control
 - i) Cyber-security data

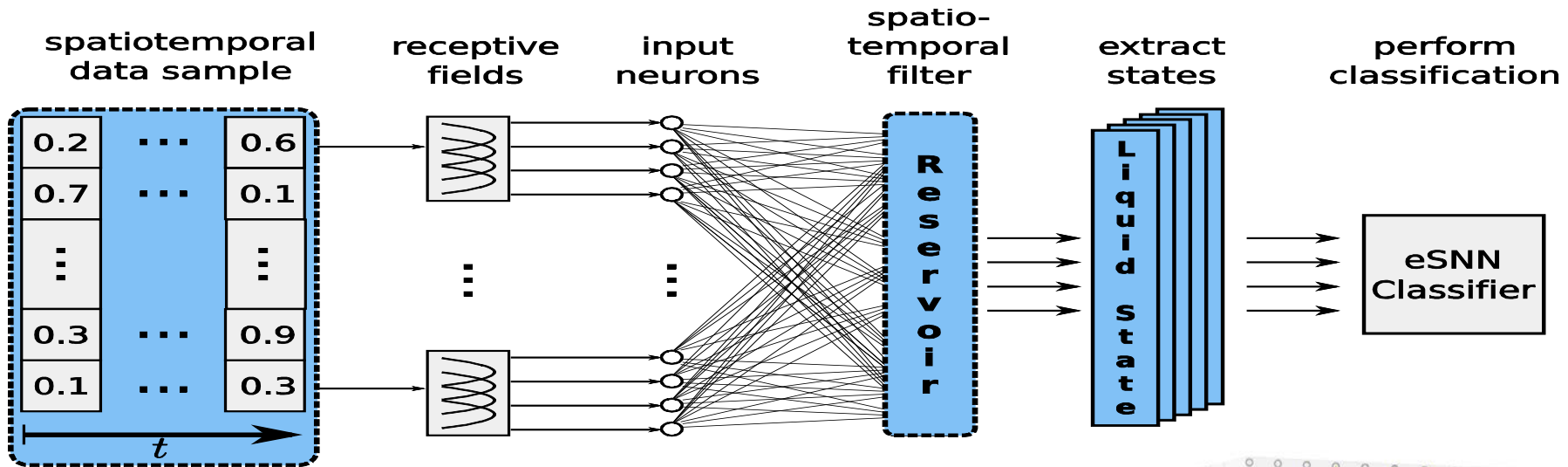
- Goal: Developing new methods



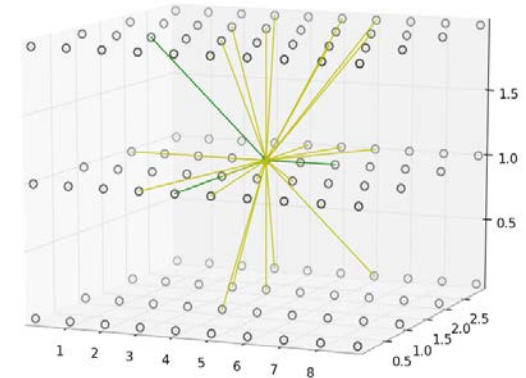
The EvoSpike Project: EU FP7 Marie Curie (<http://ncs.ethz.ch/projects/evospike>)



Reservoir-based eSNN for STPR



- *Maass, W., Natschläger, T., Markram, H.: Real-time computing without stable states, Neur. Comp. 14(11),2002;*
- Input (feature) neurons connected to part of the LSM
- Output neurons connected to part of the LSM
- LSM recurrent connections, e.g. small world connections
- Excitatory 80%, Inhibitory 20%
- **Learning in LSM:** STDP; spike time delay???
- **Polychronization** (Izhikevich): ‘opening the box’?

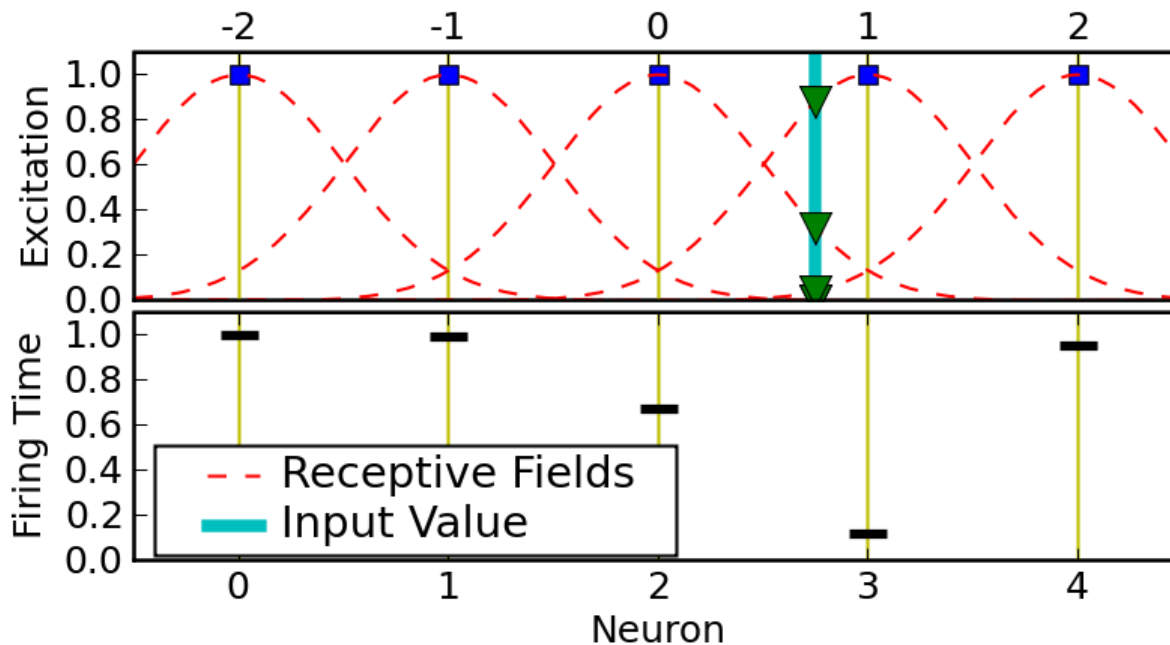


$$p_{a,b} = C \times e^{-D^2_{a,b} / \lambda^2}$$

Encoding input data into spikes

Rank Order Population Encoding

- Distributes a single real input value to multiple neurons and may cause the excitation and firing of several responding neurons
- Implementation based on Gaussian receptive fields introduced by Bothe *et al.* 2002

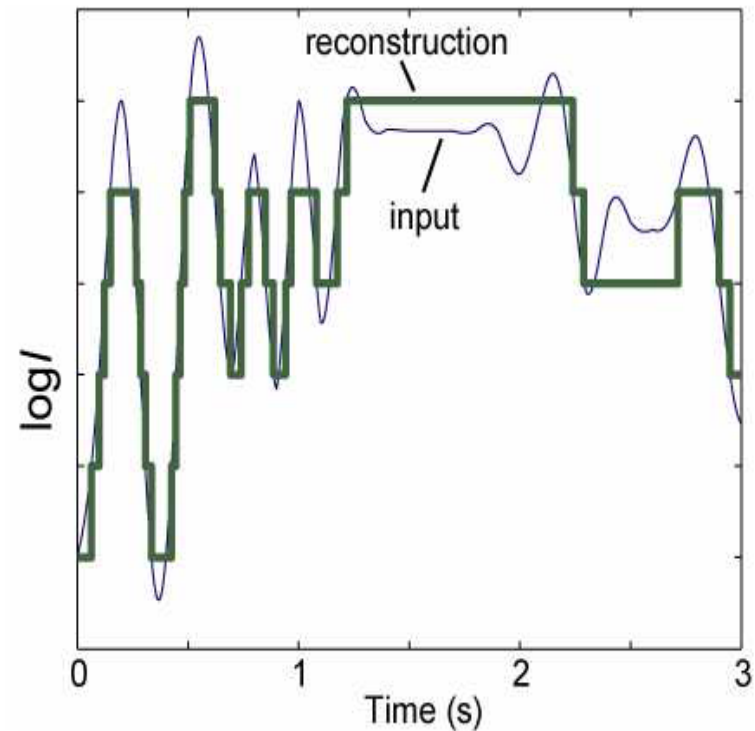
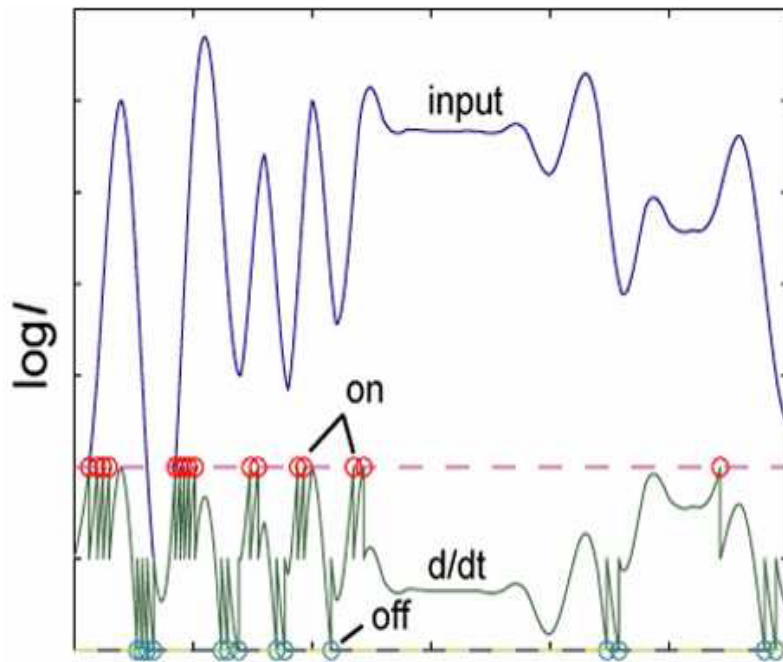


Address Event Representation (AER) Encoding

A spike is generated only if a change in the input data occurs

Silicon Retina (Tobi Delbruck, INI, ETH/UZH, Zurich), DVS128

Silicon Cochlea (Shih-Chii Liu, INI, ETH/UZH, Zurich)



Evolving SNN (eSNN) as a classifier

- eSNN: Creating and merging neurons based on localised information (Kasabov, 2007; Wysoski, Benuskova and Kasabov, 2006-2009)
- Uses the first spike principle (Thorpe et al.) for fast on-line training
- For each input vector

a) Create (evolve) a new output spiking neuron and its connections

b) Propagate the input vector into the network and train the newly created neuron

$$u_i(t) = \begin{cases} 0 & \text{if fired} \\ \sum_{j|f(j)<t} w_{ji} m_i^{\text{order}(j)} & \text{else} \end{cases} \quad \Delta w_{ji} = m^{\text{order}(j)}$$

Weights change based on the spike time arrival

c) Calculate the similarity between weight vectors of newly created neuron and existing neurons: IF similarity > Threshold THEN Merge newly created neuron with the most similar neuron

$$W \leftarrow \frac{W_{new} + NW}{1 + N}$$

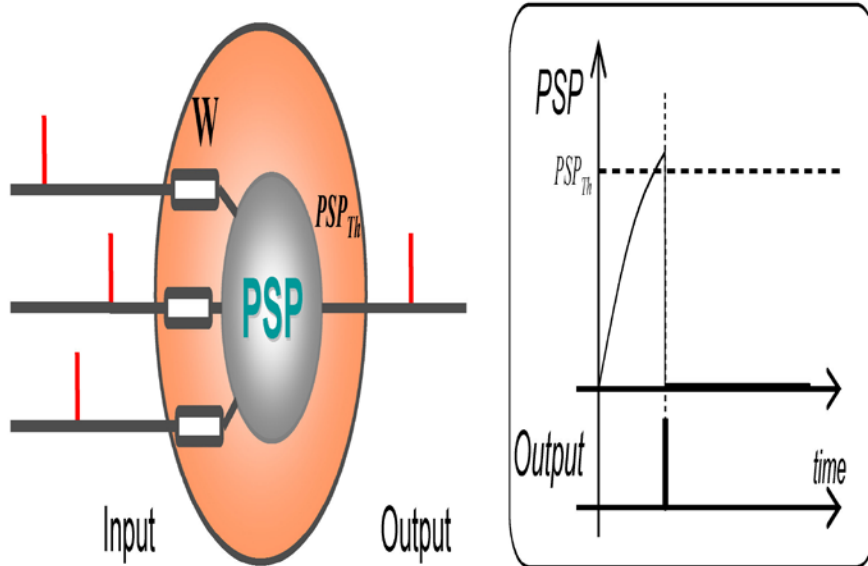
where N is the number of samples previously used to update the respective neuron.

d) Update the corresponding threshold ϑ : $\vartheta \leftarrow \frac{\vartheta_{new} + N\vartheta}{1 + N}$

- Schliebs, S. and N.Kasabov, Evolving spiking neural networks: A Survey, *Evolving Systems*, Springer, 2013.

The rank order (RO) learning rule

(Thorpe et al, 1998)



$$\Delta w_{ji} = m^{\text{order}(j)}$$

$$u_i(t) = \begin{cases} 0 & \text{if fired} \\ \sum_{j|f(j)<t} w_{ji} m_i^{\text{order}(j)} & \text{else} \end{cases}$$

$$\text{PSP max} = \text{SUM} (\text{mod }^{\text{order}(j,i(t))} w_{j,i}(t)), \text{ for } j=1,2\dots, m; t=1,2,\dots,T$$

$$\text{PSP}_{\text{Th}} = C \cdot \text{PSPmax}$$

Dynamic Evolving SNN (deSNN)

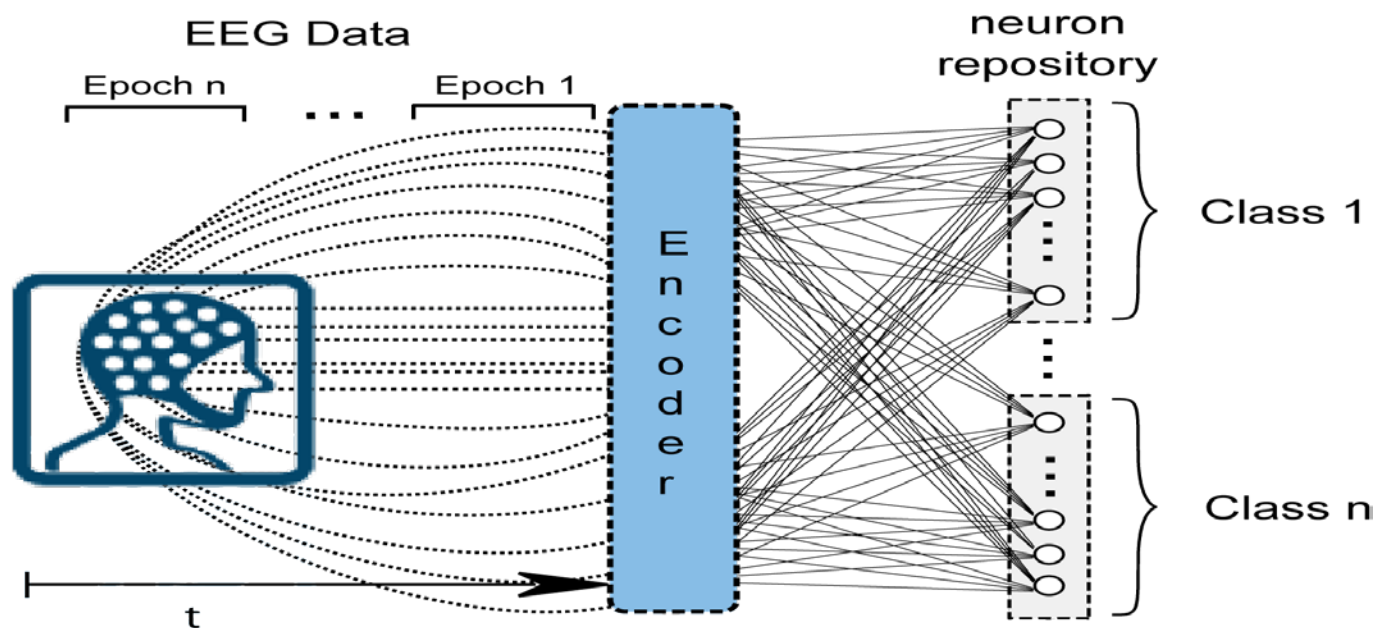
(Kasabov, Dhoble, Nuntalid, Indivery, Neural Networks, 2013)

- Combine: (a) RO learning for weight initialisation based on the first spikes:

$$\Delta w_{ji} = m^{\text{order}(j)}$$

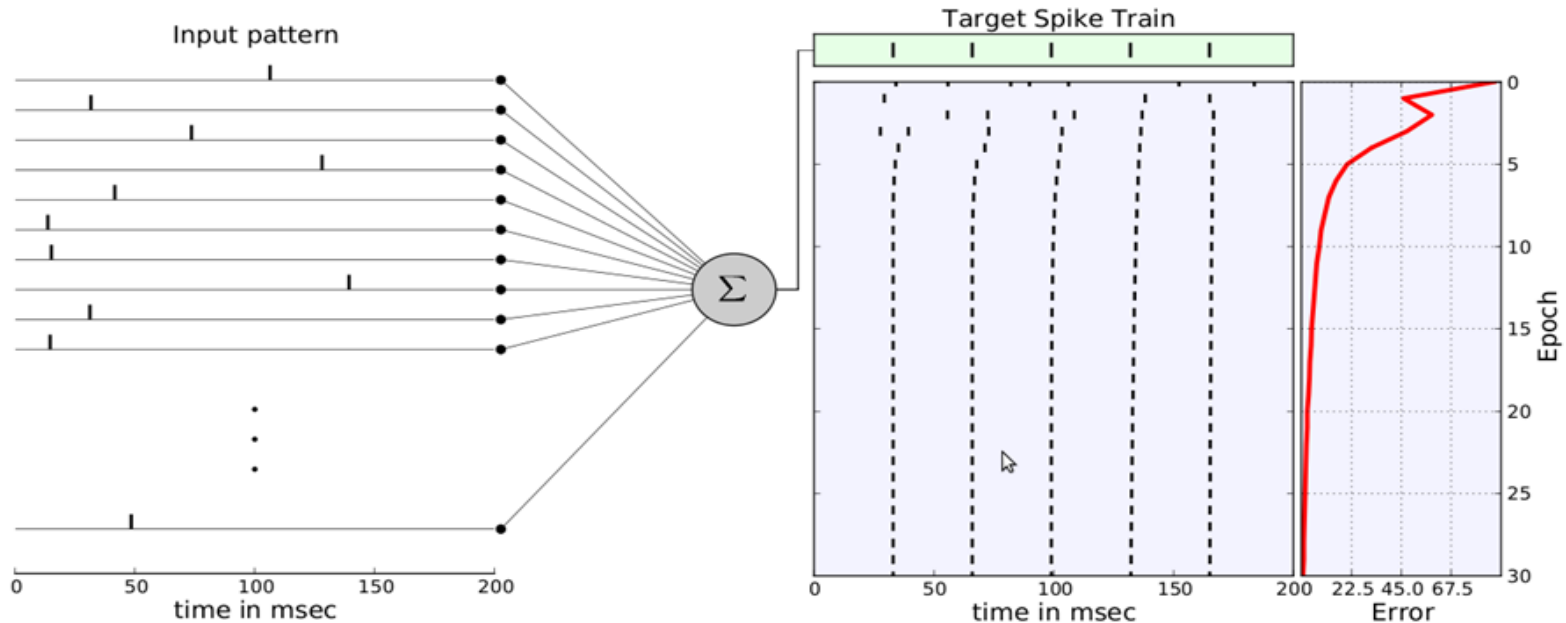
(b) SDSP for learning further input spikes at a synapse.

- A new output neuron is added to a respective output repository for every new input pattern learned. Neurons may merge.
- The figure below shows the deSNN architecture on a case study for EEG STPR.



SPAN: Spike Pattern Association Neuron and the Delta Rule

(A.Mohhemed et al, EANN 2011, ICONIP2011, IJNS, 2012; Neurocomputing, 2012))



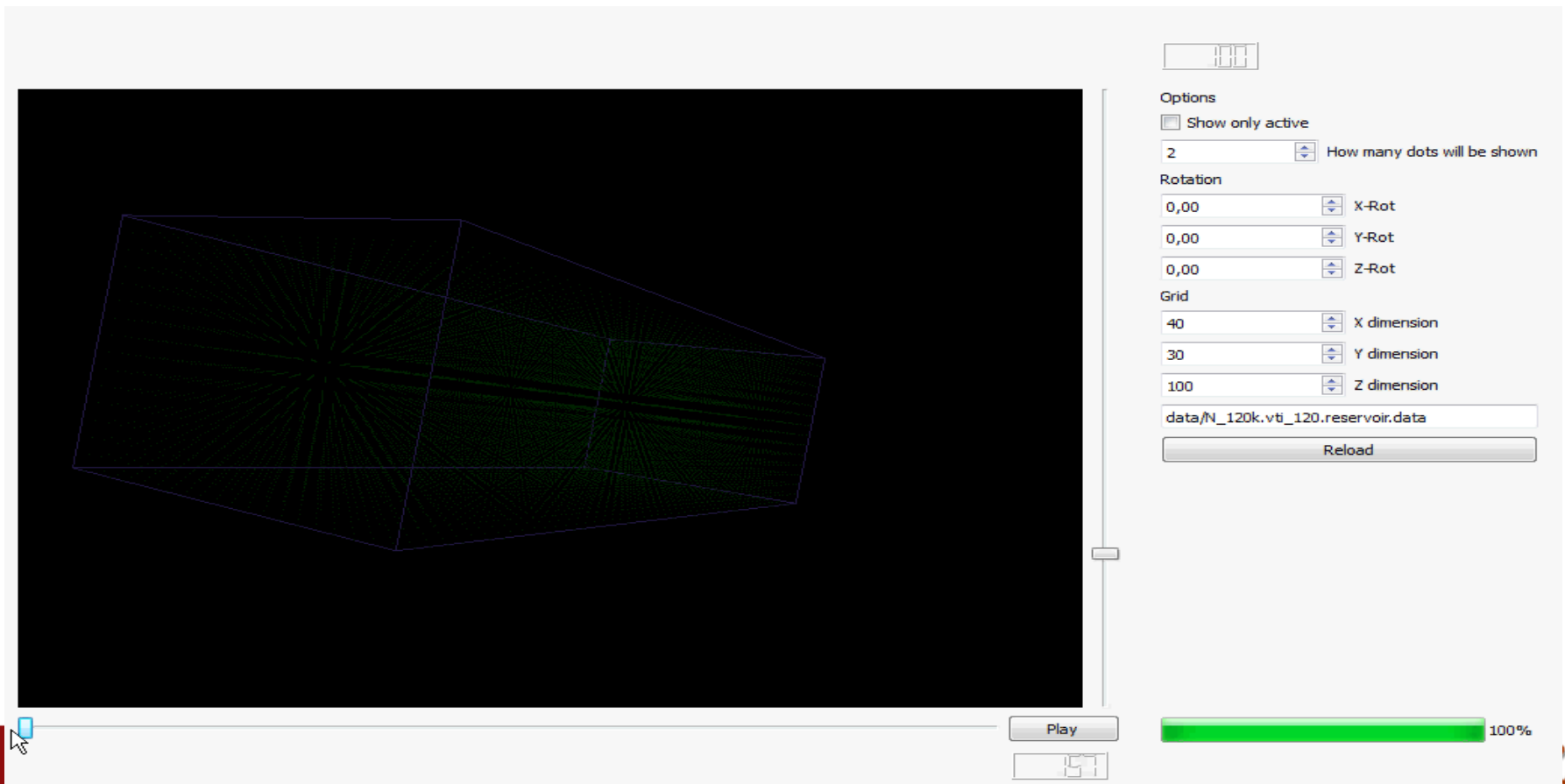
A single output neuron is trained to respond with a temporally precise output spike train to a specific spatio-temporal input.

Spike pattern association neuronal models: SpikeProp; ReSuMe; Tempotron; Chronotron.

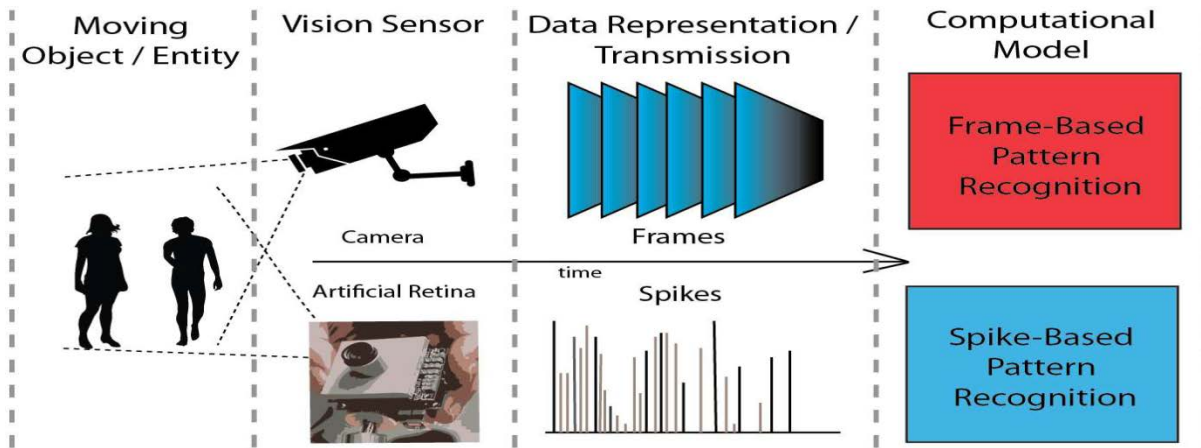
The EvoSpike Simulator

A collection of modules and functions written in Python using functions from Brian library:

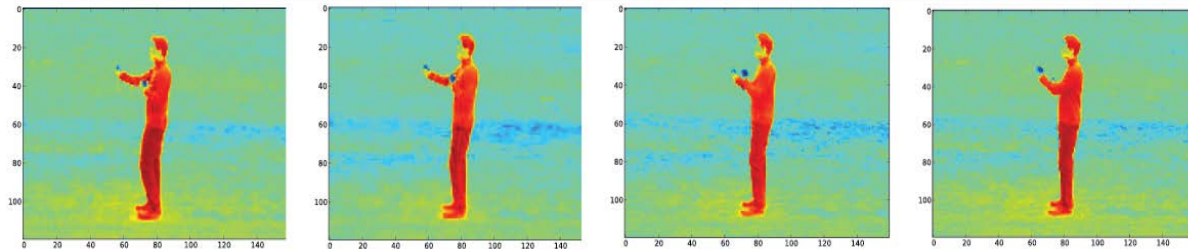
- Converting continuous-value input data into spike trains;
- SNN for spatio-temporal pattern recognition (SPAN, deSNN, LSM deSNN, ...);
- Knowledge extraction from trained eSNN;
- Presenting results and visualisation of learning processes ;
- Connecting software modules with neuromorphic hardware.



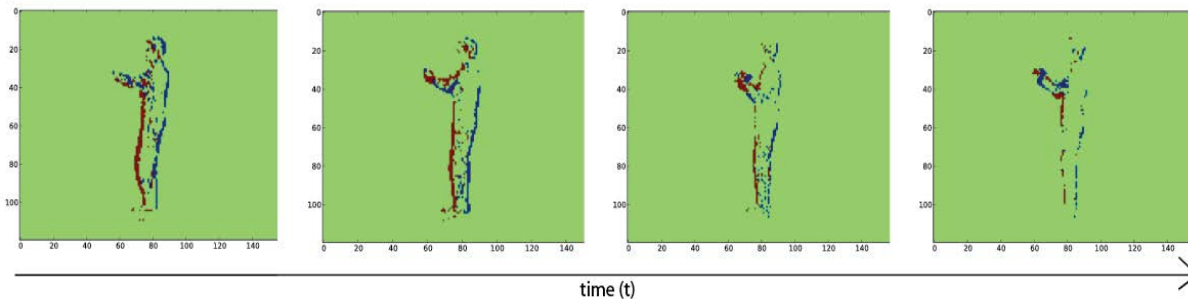
Moving object recognition – frame-based vs AER



a) Disparity Map of a Video Sample



b) Address Event Representation (AER) of the above Video Sample



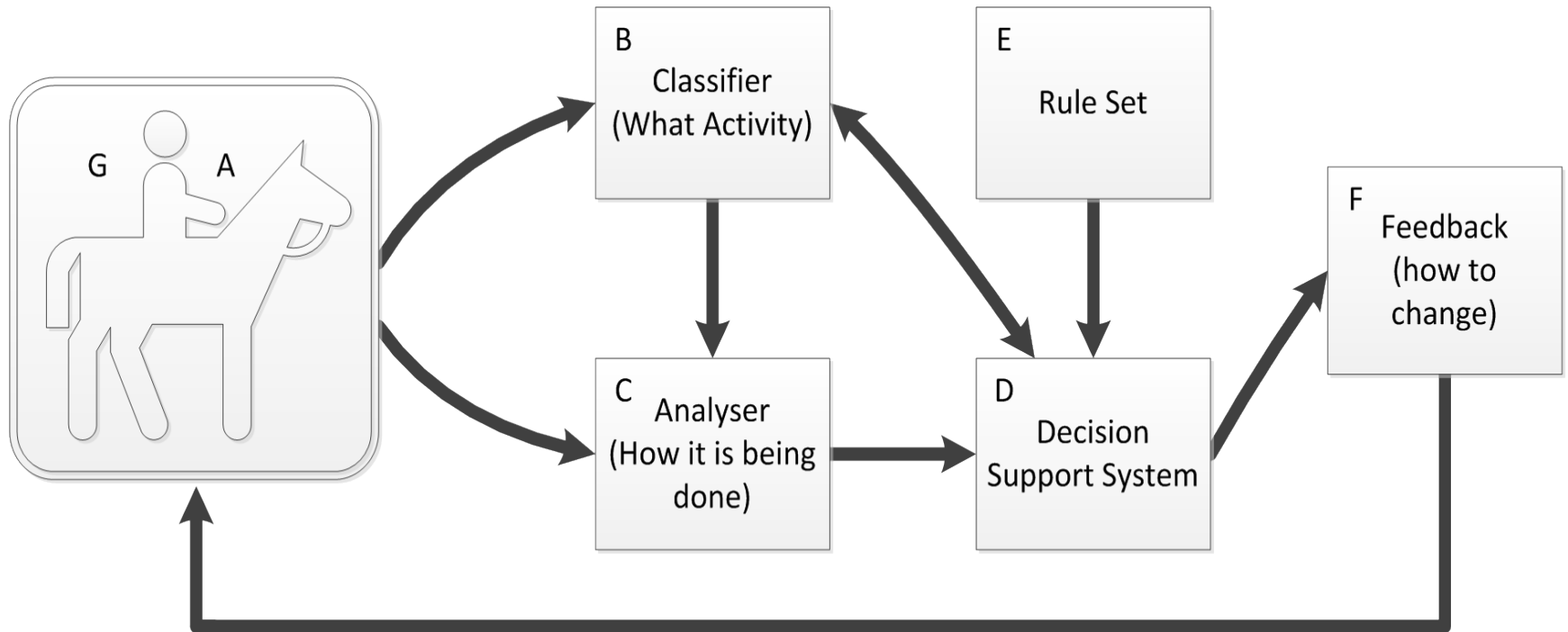
Multi-sensor Integrated Stream Data Classification

- Surveillance
- Medical devices
- Ecological and climate data
- Sport
- Example: classification of horse riding activities



Case study: *Wearable Coach (EANN 2013)*

A - Sensors
G - Feedback



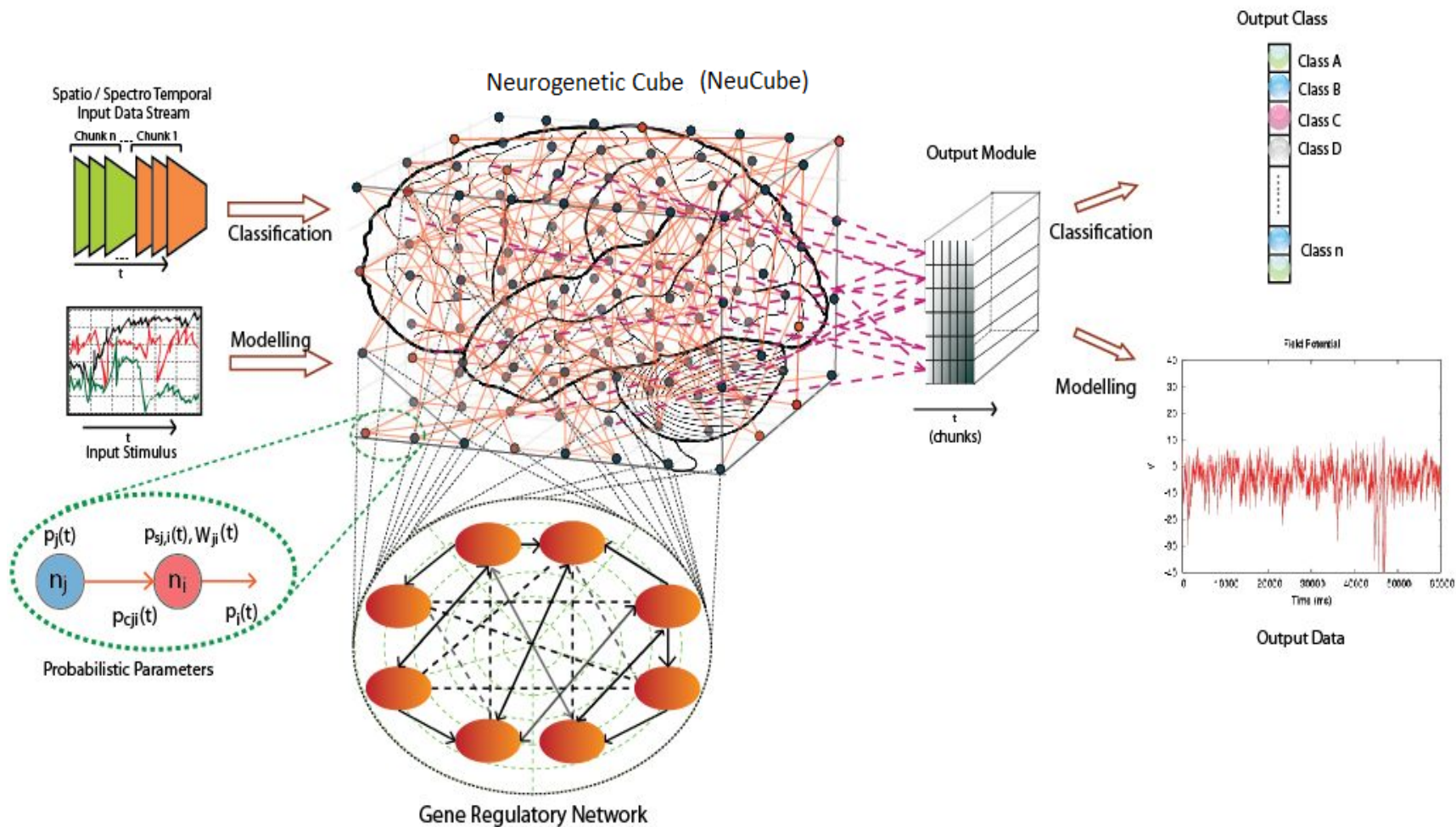
Adaptive, autonomous robot control

(e.g. work by P.Kormushev –IIT, Genoa; R.Duro – U. la Coruna, P.Angelov – U.Lancaster; KIT Japan; U.Ulster, NASA,)



The NeuCube Architecture for Integrated Brain Data Modelling and brain STPR

(Kasabov, Springer LNAI 7477, 2012; Kasabov, NN 2013)



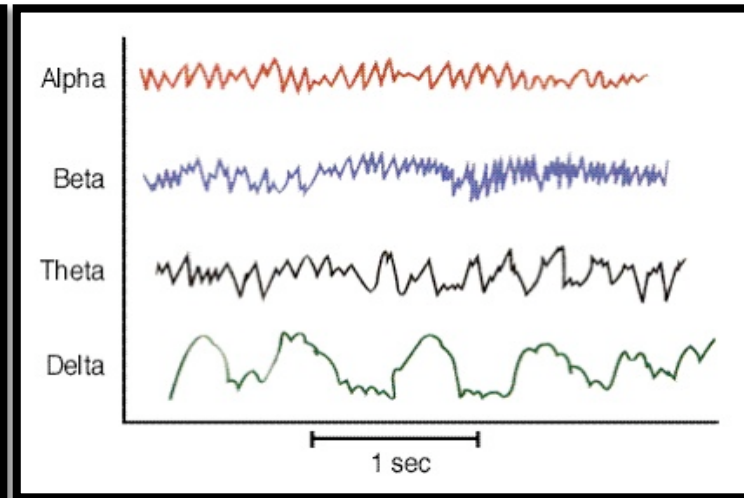
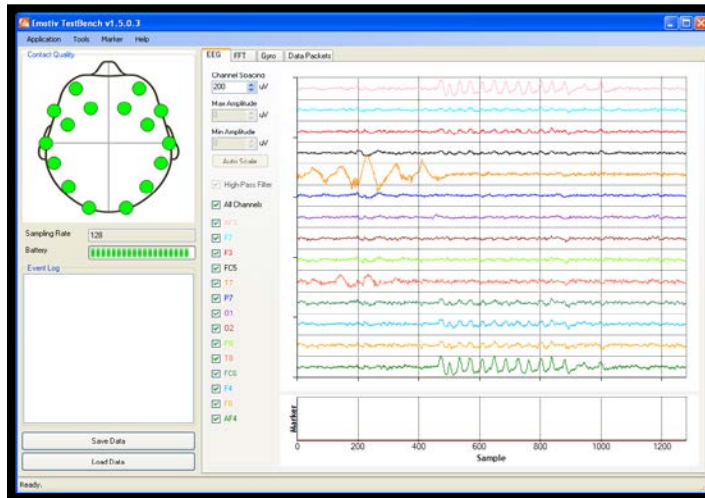
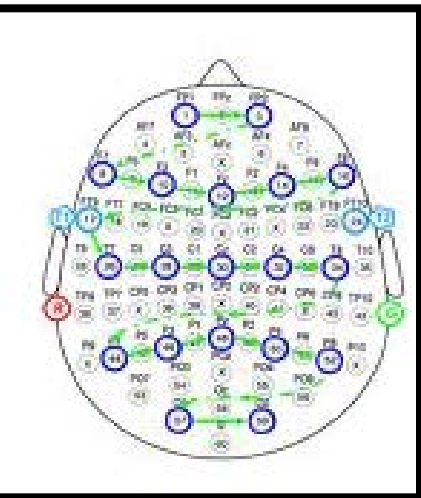
NeuCube Implementation

- Module input data encoding into spikes (e.g. AER)
- Module 3D reservoir (e.g. 1471 neurons)
- Module classifier (e.g. deSNN)

The screenshot displays the NeuCube software interface, which is divided into several functional areas:

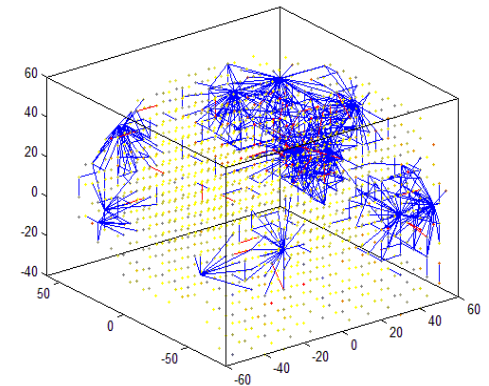
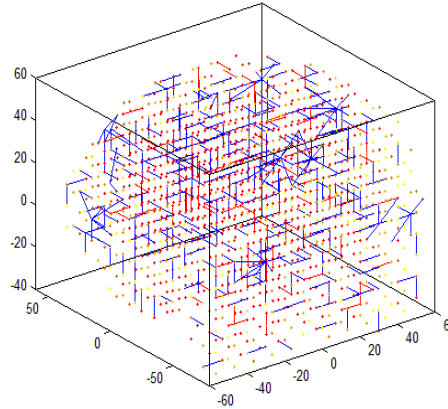
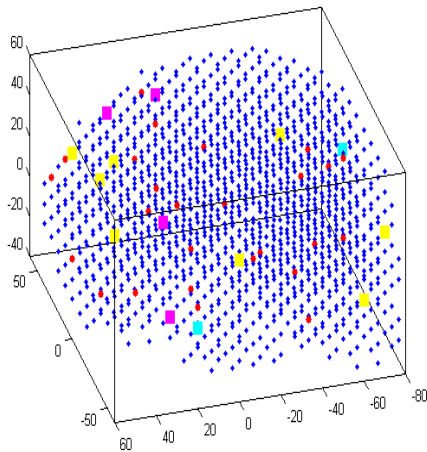
- Setting Panel:** Contains various configuration parameters such as AER encoding threshold (0.1), Percentage of the sample used for training (0.6), Number of Samples (40), Number of classes (2), Activity index (0.276), Visualization (NO), Threshold of neural (0.5), Potential leak rate (0.002), STDP rate (0.01), Time to train (1), and SWC (0.15). It includes buttons for "Load Sample" and "Initialize NeuCube".
- Classifier Panel:** Features a bar chart showing classification results for two classes (1 and 2). The classifier is set to "de...", with Mod (0.4) and Drift (0.25) parameters. A "Cross check" list shows a sequence of 1s and 2s. A "Training and validation" button is present.
- NeuCube Visualization:** A 3D plot showing the internal structure of the reservoir with neurons and connections. The axes range from -50 to 50. Below the plot, it indicates "NeuCube structure" and "Training progress (%): 100".
- Control Panel:** Includes buttons for "Record" (NO), "The neural to be tracked" (555), "Training neuCube", "Save neuCube", "Load neuCube", and "Replay".
- Monitoring Panel:** Shows "Show connection" (0.09), "Activity Level Plot", "Recall" (1), and "Activity Level 3D".
- Display Panel:** Includes "The neural to be displayed" (555), "Weight type" (Pre), and a "Show weight" button.
- Help Panel:** Displays the message "Validation finished".
- Footer:** Includes the logo for Knowledge Engineering & Discovery Research Institute (KEDRI) and the text "AN INSTITUTE OF AUT UNIVERSITY".

EEG STPR in NeuCube

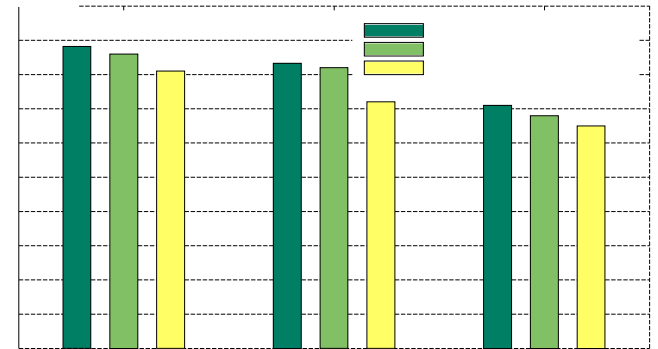
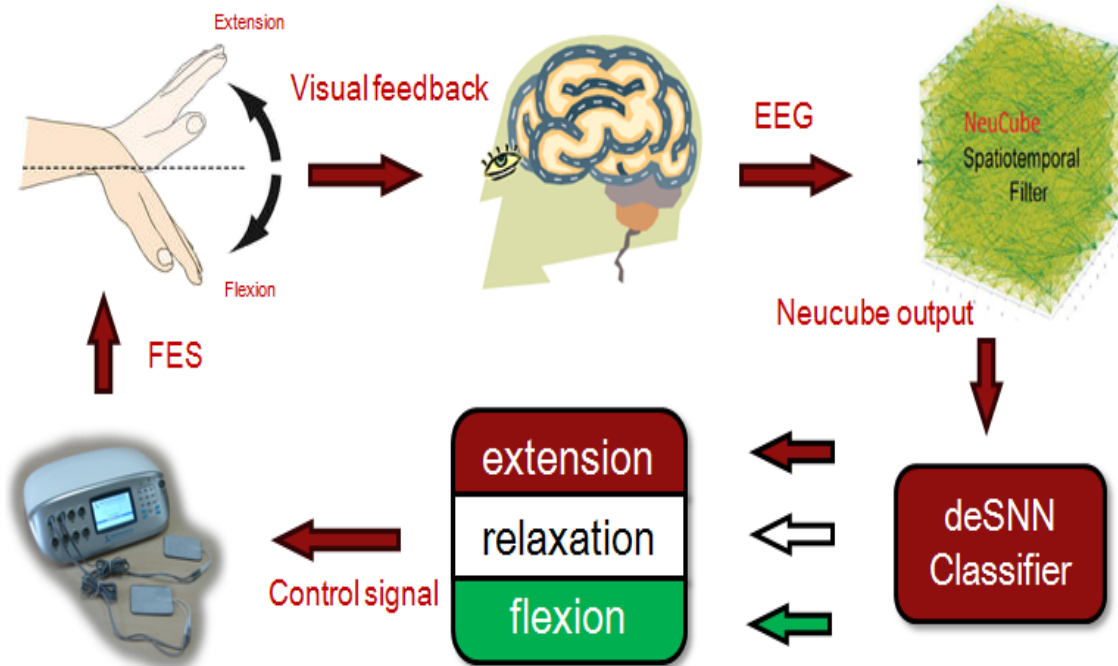


(McFarland, Anderson, Müller, Schlögl, Krusienski, 2006)

<http://www.nuroshop.com>

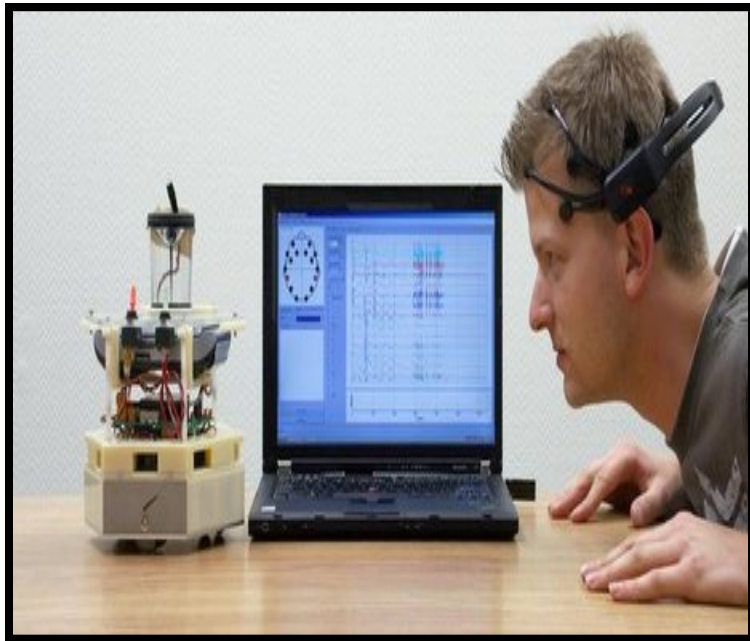


NeuCube for Neurorehabilitation



NeuCube for BCI

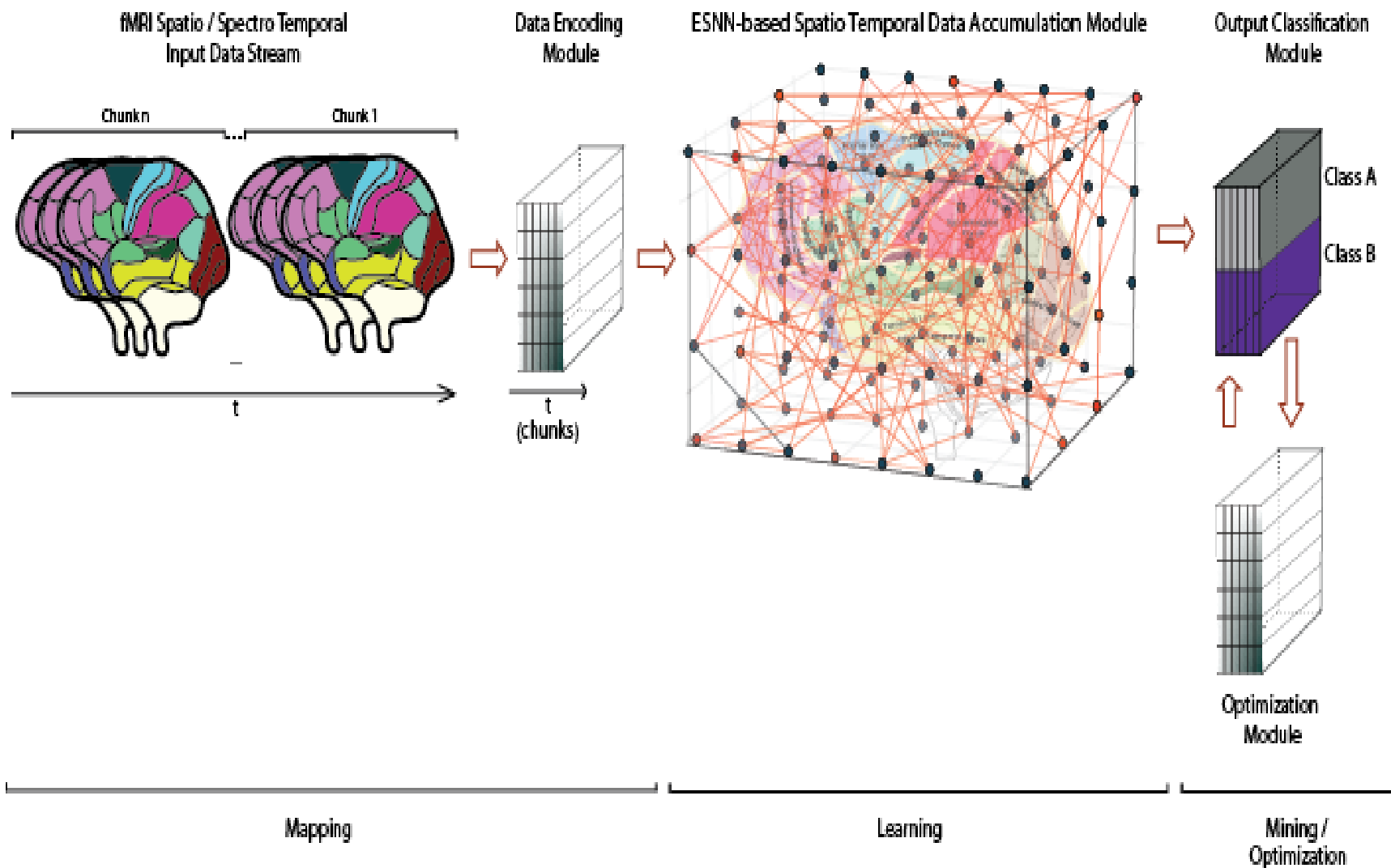
- Brain-Computer Interfaces (BCIs) are interfaces that allow humans to communicate directly with computers or external devices through their brains (e.g. EEG signals)
- Experiments with the WITH robot from KIT, prof. Yamakawa (S.Schliebs)
- Neuro-rehabilitation and neuro-prosthetics (with CAS, Z-G Hou)
- Collaborative work with U.Aveiro (P.Georgieva)



<http://www.nzherald.co.nz>

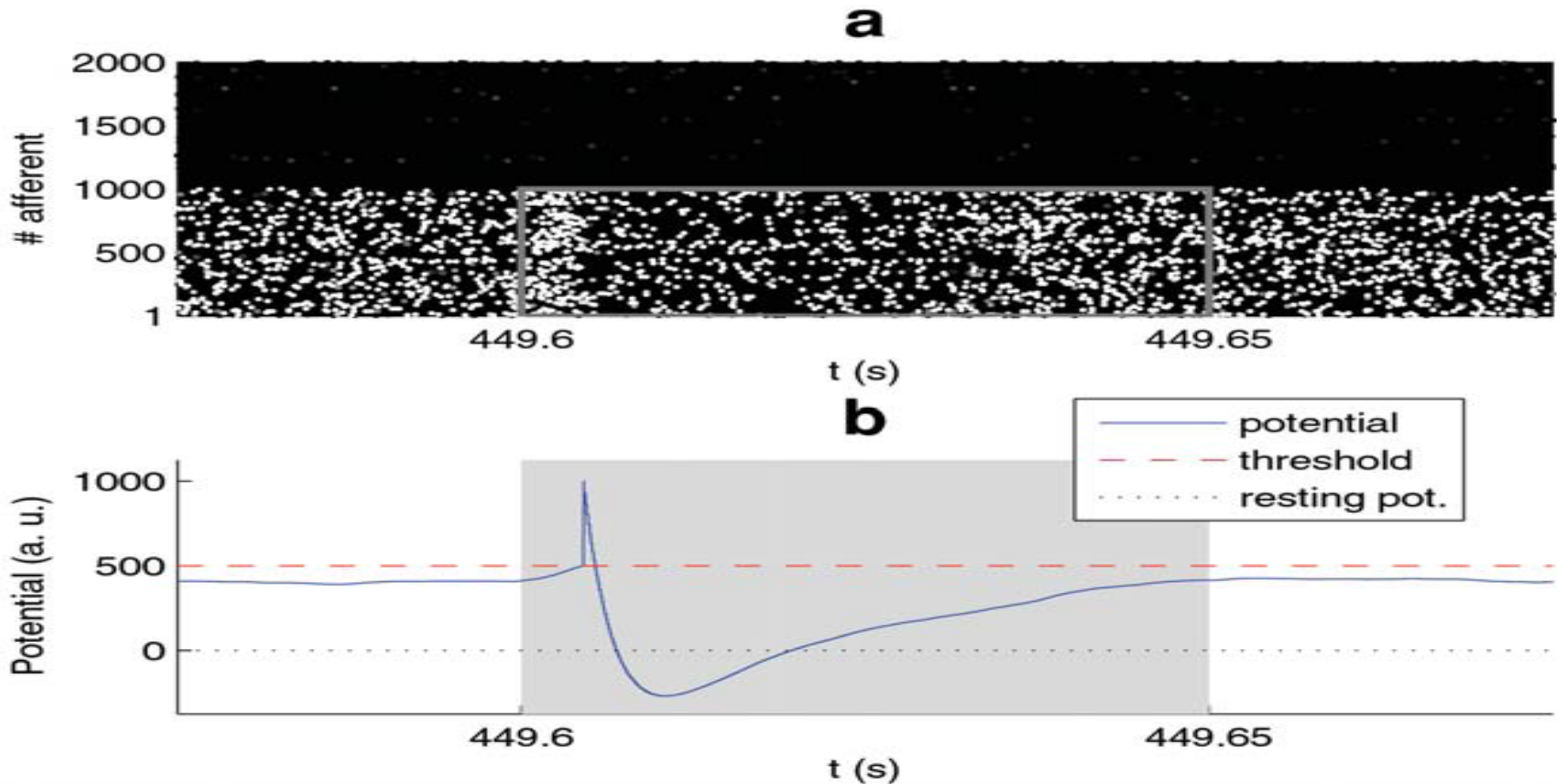


NeuCube for fMRI STBD



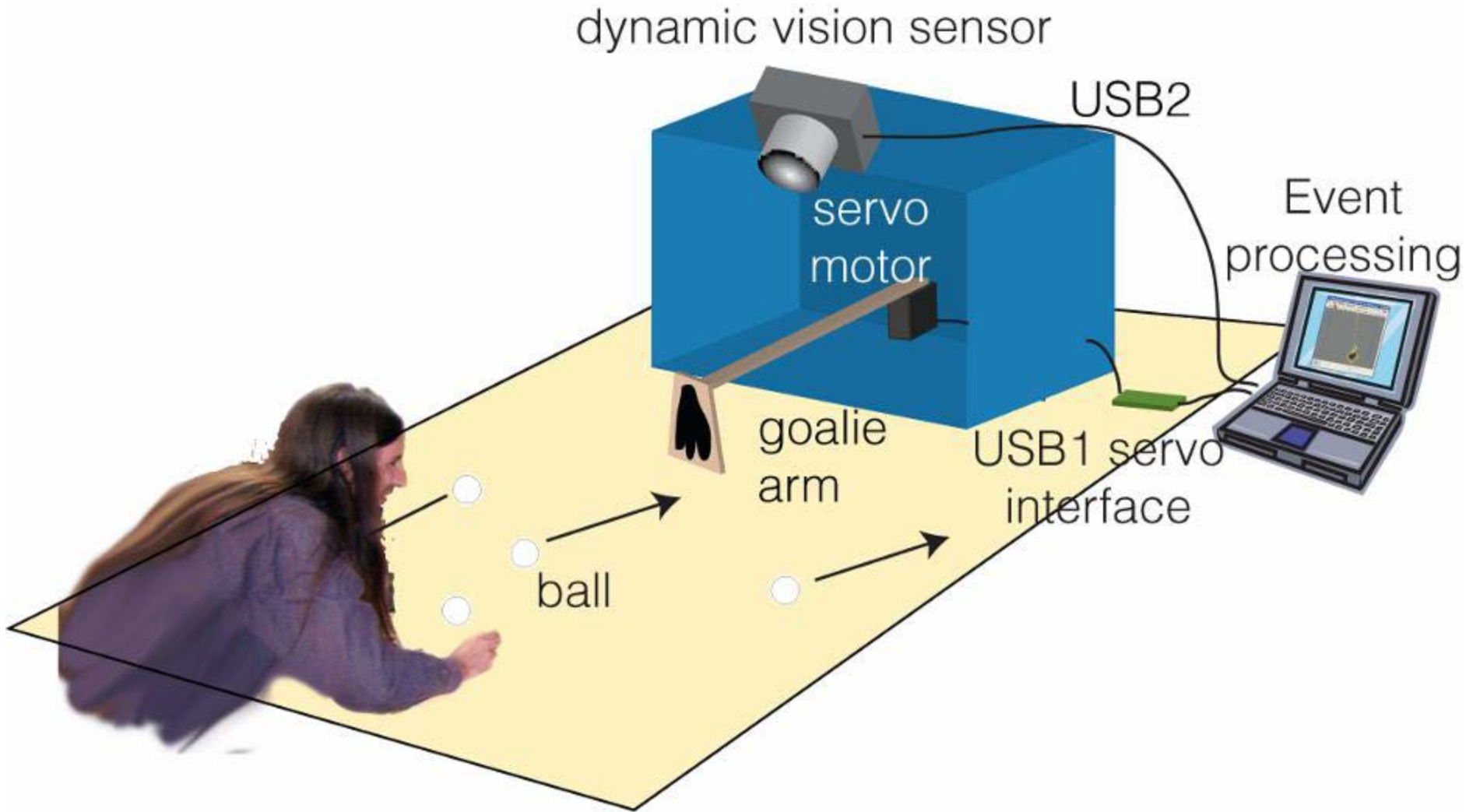
4. Early Detection of Events from Spatio-Temporal Data

A single LIF neuron with simple synapses can be trained with the STDP unsupervised rule to discriminate a repeating pattern of synchronised spike trains of thousands inputs from noise
(T. Masquelier, R. Guyonneau and S. Thorpe, PlosONE, Jan2008))



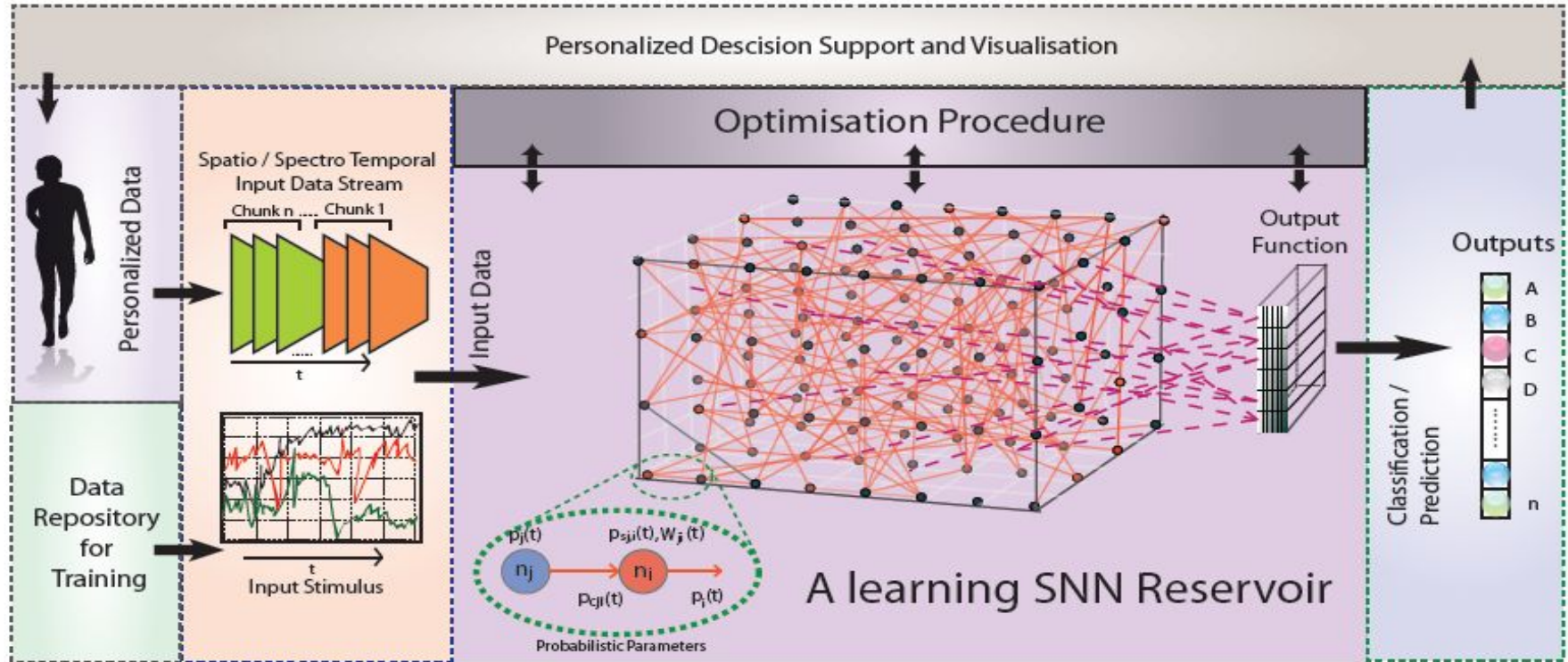
Early detection of a moving object with DVS

(T.Delbruck, INI, ETH. Zurich)



Personalised Predictive Systems

N. Kasabov and R.Hu, Integrated Optimisation Method for Personalised Modelling and Case Study Applications for Medical Decision Support, *J. Functional Informatics and Personalised Medicine*, 2011



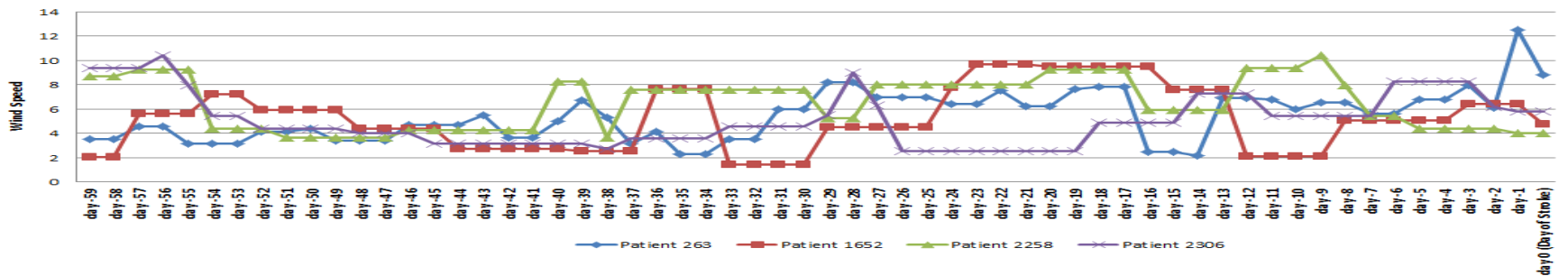
Personalised stroke occurrence prediction

The dataset consists of 11,453 samples (all with first occurrence of stroke).

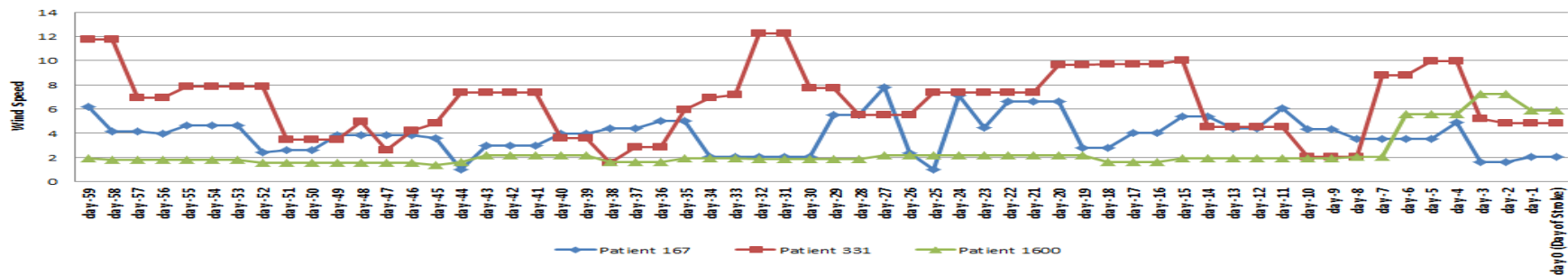
Each sample is described by 9 features/variables:

- 4 static patient clinical features (age, gender, history of hypertension, smoking status, geographical region)
- 5 temporal weather variables: Temperature; Humidity; Atmospheric Pressure (kPA); Wind Speed (Knots) and Wind Chill (Degrees Celsius).
- All of these weather parameters were measured over a 60-day period preceding data of stroke (including the day of stroke occurrence as the last day).

Wind Speed Changes over 60 Days for Age Group 60



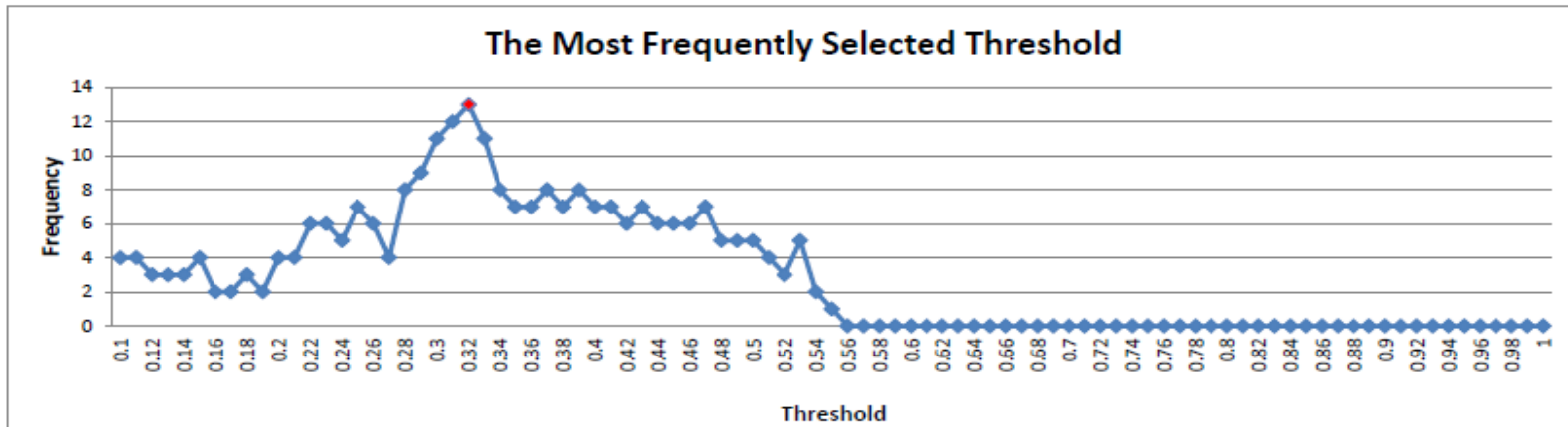
Wind Speed Changes over 60 Days for Age Group 68



Results for personalised early stroke prediction

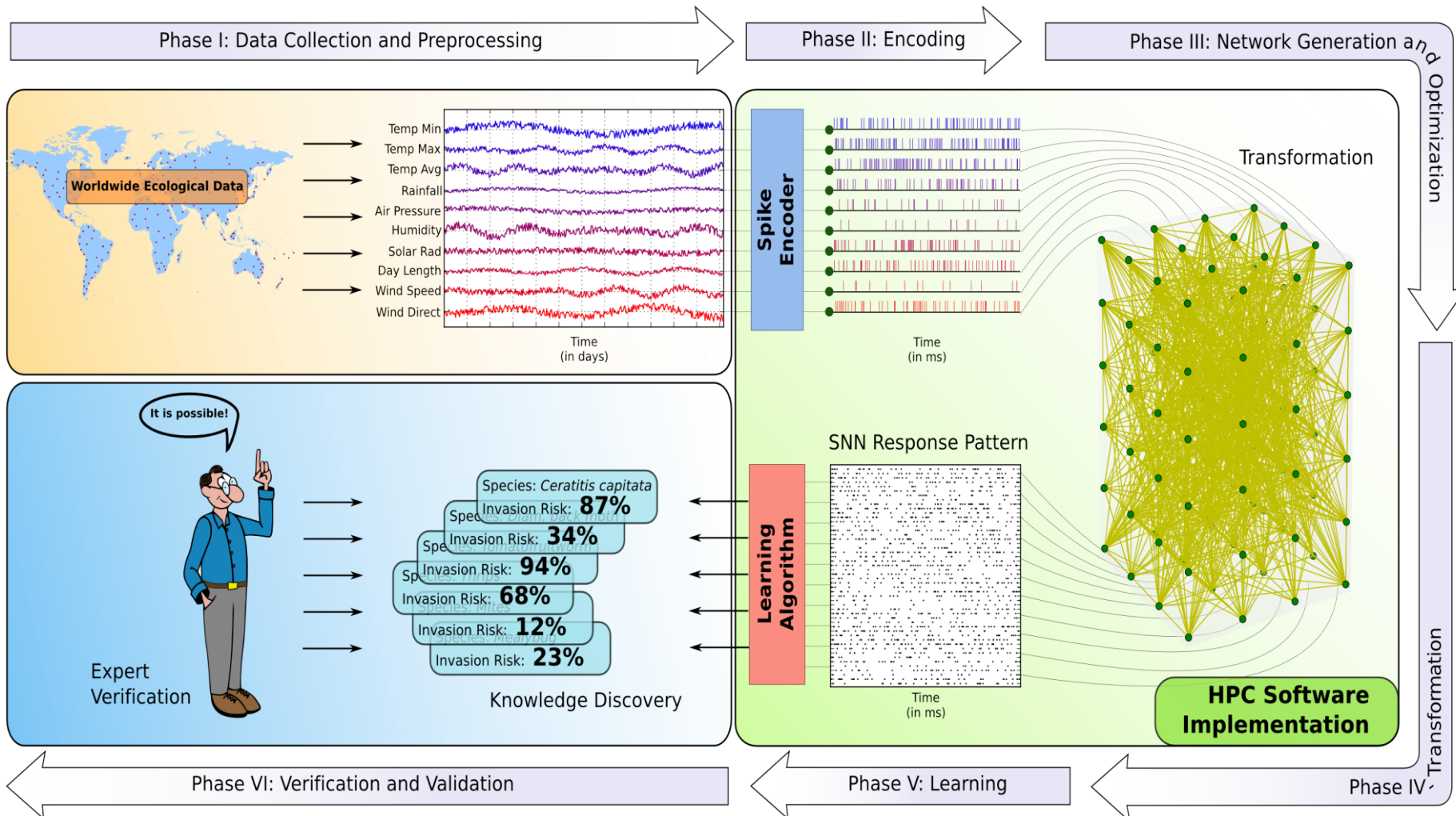
- SNN achieve better accuracy
- SNN predict stroke much earlier than other methods

Method	Overall accuracy (%)	TP – stroke prediction (%)	TN – no stroke (%)
Multiple Linear regression (MLR)	67.50	65	70
SVM	72.5	65	80
MLP	87.5	85	90
PMeSNNr	94	88	100

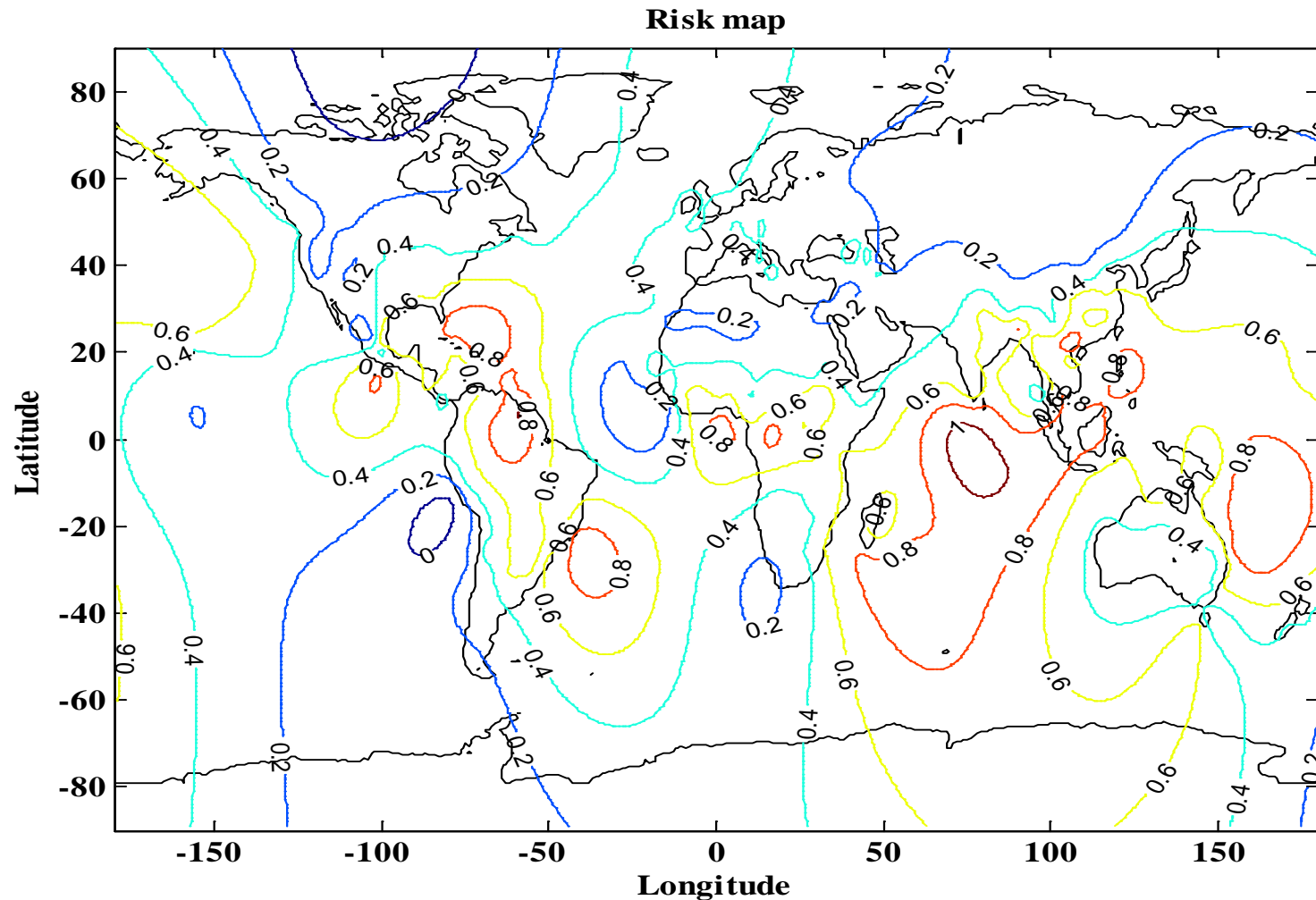


Early estimation of risk of establishment of invasive species on a certain *location* at a certain *time*

(S.Schliebs, Defoin-Platel, N.Kasabov, S.Worner et al, Neural Networks, No.22, 2009)



Example: Through modelling a world map was created for the estimation of the probability of *p.citri* insect establishment



5. Advantages and limitations of SNN

Advantages:

- Universal computational mechanism
- Extendable models, with more biologically related knowledge as it become available (e.g. genes, quantum information)
- Can learn spatio-temporal relationships from spatio-temporal data
- Fast and less computationally demanding (spikes are easy to compute)

Problems and limitations

- Sensitive to parameter values
- Large number of parameters that need to be optimised
- Unknown properties in terms of dealing with different types of spatio-temporal data
- No rigid theory yet

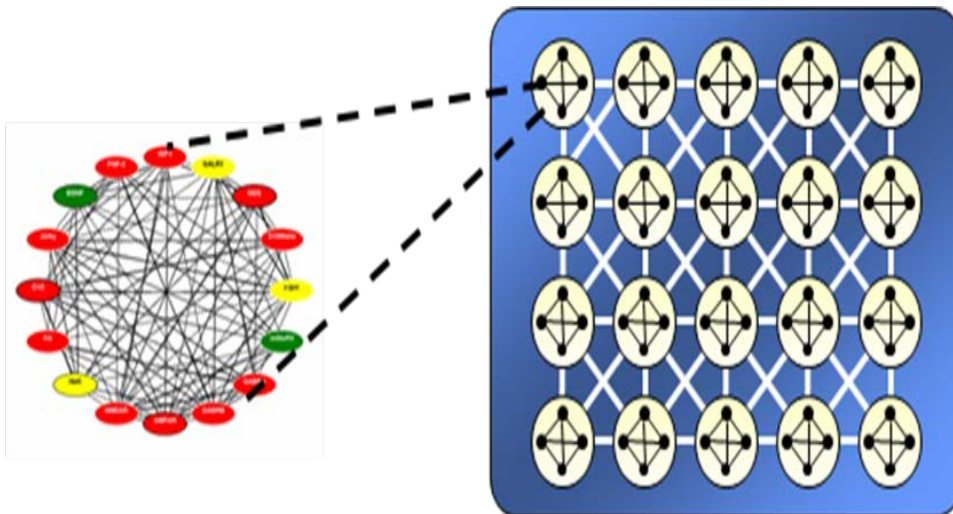
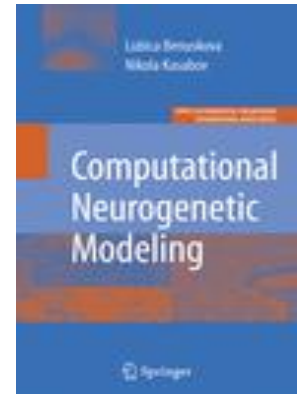
6. Future Directions

Computational Neuro-Genetic Modelling (CNGM)

- Benuskova and Kasabov (2007)

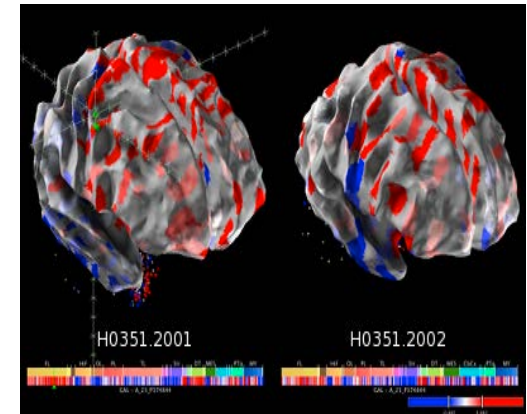
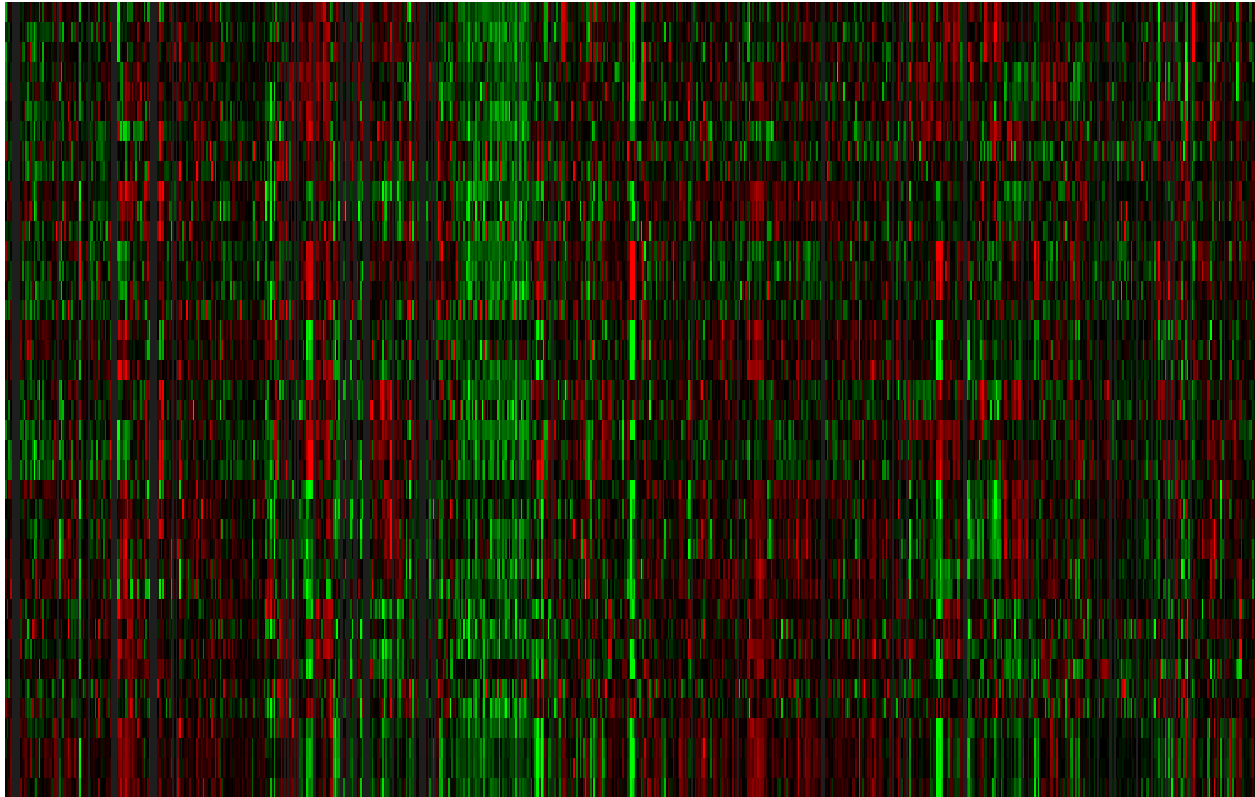
SNN that incorporate a gene regulatory network (GRN) as a dynamic parameter systems to capture dynamic interaction of genes (parameters) related to neuronal activities of the SNN.

- Functions of neurons and neural networks are influenced by internal networks of interacting genes and proteins forming an abstract GRN model.
- The GRN and the SNN function at different time scales.
- Mark Sagar's emotional baby



Neurogenetic STBD: The Allen Brain Institute Map

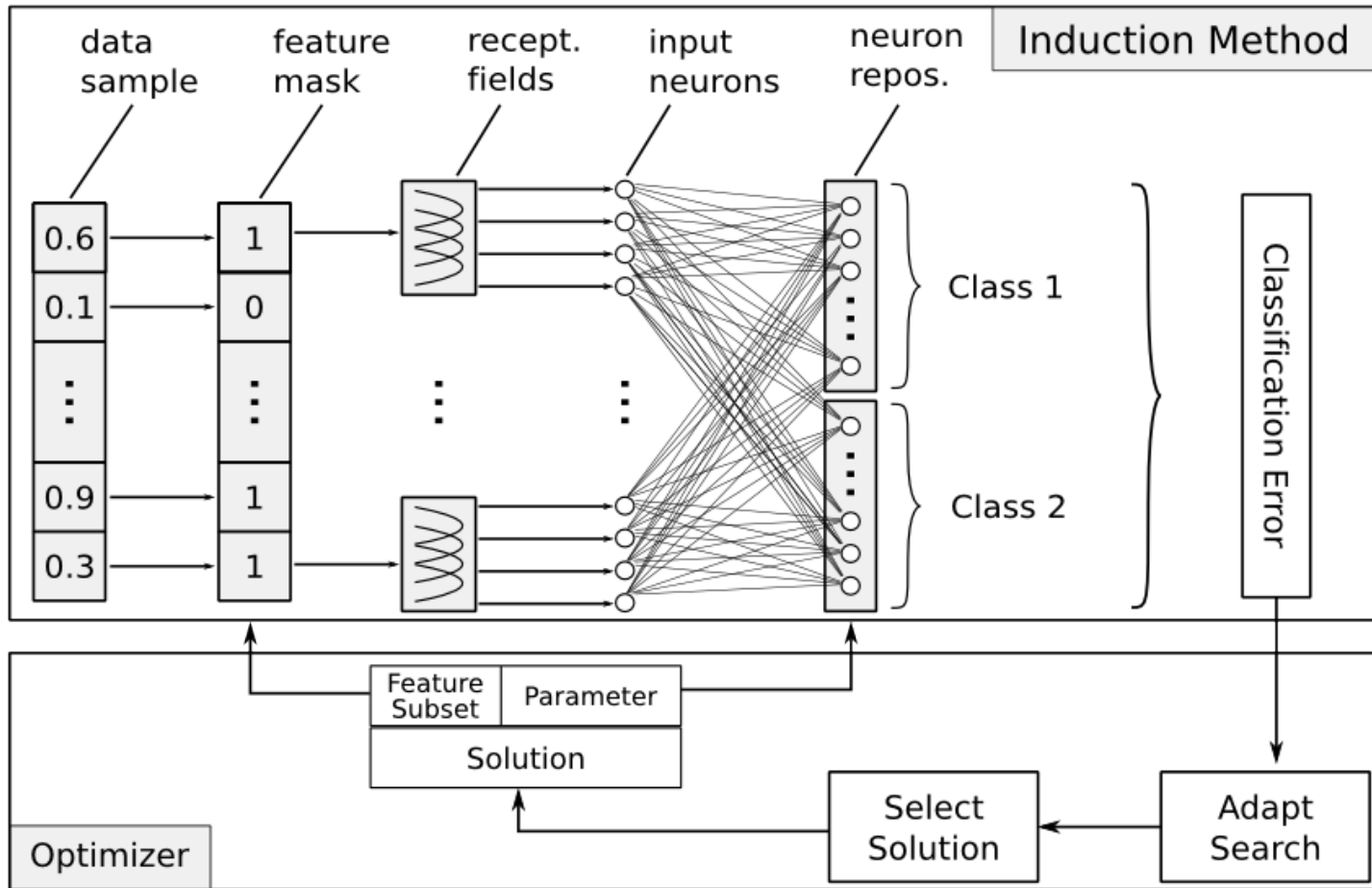
(<http://www.brain-map.org>)



From the Brain Explorer: The Expression level of the genes (on the y-axis): ABAT A_23_P152505, ABAT A_24_P330684, ABAT CUST_52_PI416408490, ALDH5A1 A_24_P115007, ALDH5A1 A_24_P923353, ALDH5A1 A_24_P3761, AR A_23_P113111, AR CUST_16755_PI416261804, AR CUST_85_PI416408490, ARC A_23_P365738, ARC CUST_11672_PI416261804, ARC CUST_86_PI416408490, ARHGEF10 A_23_P216282, ARHGEF10 A_24_P283535, ARHGEF10 CUST_) at different slices of the brain (on the x-axis) (from www.brain-map.org) (<http://www.alleninstitute.org>)

Quantum-inspired EC for the optimisation of eSNN

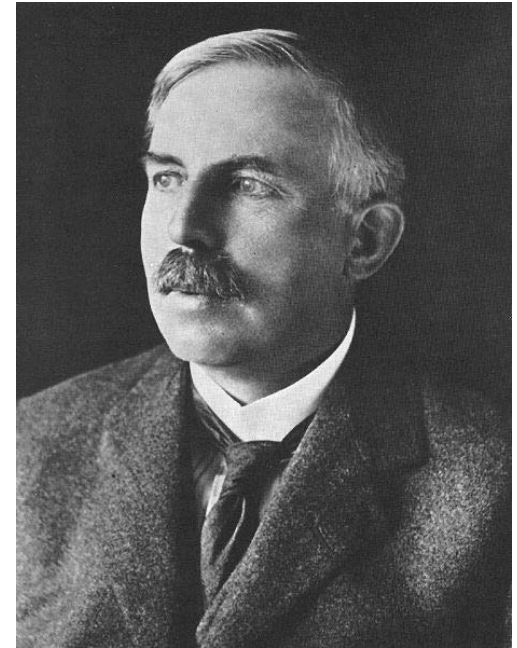
(Kasabov, 2007-2008; S.Schliebs, M.Defoin-Platel and N.Kasabov, 2008)



Quantum Inspired Technologies

- **Quantum principles: superposition; entanglement, interference, parallelism**
 - **Quantum bits (qu-bits)**

$$|\Psi\rangle = \alpha|0\rangle + \beta|1\rangle \quad |\alpha|^2 + |\beta|^2 = 1$$



- **- Quantum vectors (qu-vectors)**

$$\left[\begin{array}{c|c|c|c} \alpha_1 & \alpha_2 & \dots & \alpha_m \\ \beta_1 & \beta_2 & \dots & \beta_m \end{array} \right]$$

- **Quantum gates**

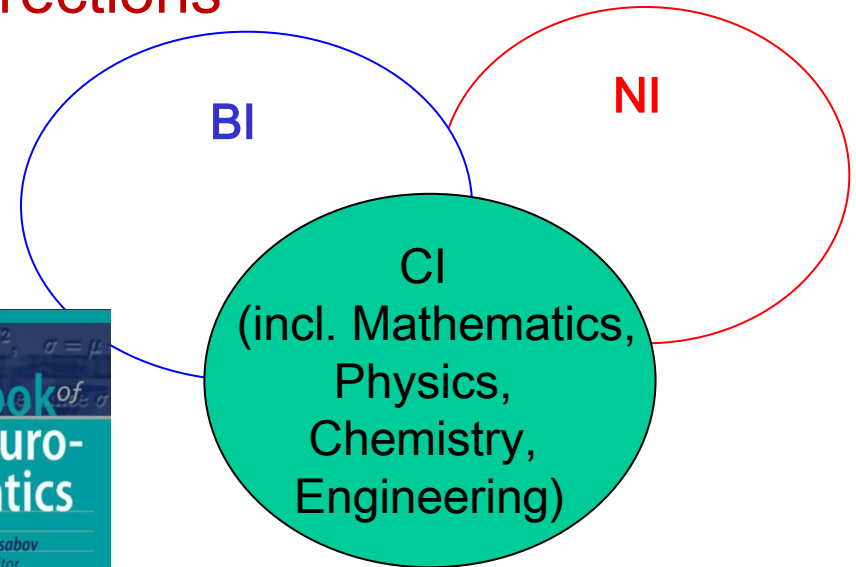
$$\begin{bmatrix} \alpha_i^j(t+1) \\ \beta_i^j(t+1) \end{bmatrix} = \begin{bmatrix} \cos(\Delta\theta) & -\sin(\Delta\theta) \\ \sin(\Delta\theta) & \cos(\Delta\theta) \end{bmatrix} \begin{bmatrix} \alpha_i^j(t) \\ \beta_i^j(t) \end{bmatrix}$$

- **Applications:**

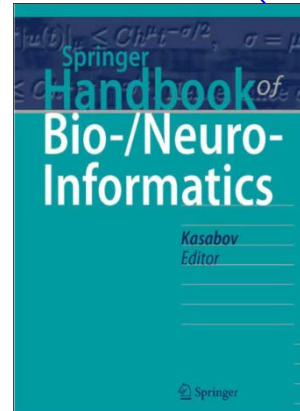
- Specific algorithms with polynomial time complexity for NP-complete problems (e.g. factorising large numbers, Shor, 1997; cryptography)
- Search algorithms (Grover, 1996), $O(N^{1/2})$ vs $O(N)$ complexity)
- Quantum associative memories
- **Quantum inspired evolutionary algorithms and neural networks**

...Future Directions

- Further interdisciplinary research in the three areas of CI, BI and NI



- The Springer Handbook of Bio-Neuroinformatics, 2013 (N.Kasabov, ed)



- The Springer Series in Bio-Neuroinformatics (N.Kasabov, ed)



- Springer journal *Evolving Systems* (ed. Angelov, Filev, Kasabov)



KEDRI: The Knowledge Engineering and Discovery Research Institute at AUT (www.kedri.aut.ac.nz)



References

- [1] N.Kasabov (2007) *Evolving Connectionist Systems: The Knowledge Engineering Approach*, Springer, London (www.springer.de) (first edition published in 2002)
- [2] S.Wysocki, L.Benuskova, N.Kasabov, *Evolving Spiking Neural Networks for Audio-Visual Information Processing*, *Neural Networks*, vol 23, issue 7, pp 819-835, September 2010.
- [3] N.Kasabov, *To spike or not to spike: A probabilistic spiking neural model*, *Neural Networks*, 23, 1, 2010, 16-19.
- [4] Mohemmed,A., Schliebs,S., Kasabov,N.,SPAN: Spike Pattern Association Neuron for Learning Spatio-Temporal Sequences, *Int. J. Neural Systems*, 2012.
- [5] Kasabov, N., Dhoble, K., Nuntalid, N., G. Indiveri, *Dynamic Evolving Spiking Neural Networks for On-line Spatio- and Spectro-Temporal Pattern Recognition*, *Neural Networks*, 41, 2013, 188-201.
- [6] Benuskova, L and N.Kasabov (2007) *Computational Neurogenetic Modelling*, Springer.
- [7] Defoin-Platel, M., S.Schliebs, N.Kasabov, *Quantum-inspired Evolutionary Algorithm: A multi-model EDA*, *IEEE Trans. Evolutionary Computation*, vol.13, No.6, Dec.2009, 1218-1232
- [8] Nuzly, H., N.Kasabov, S.Shamsuddin (2010) *Probabilistic Evolving Spiking Neural Network Optimization Using Dynamic Quantum Inspired Particle Swarm Optimization*, *Proc. ICONIP 2010, Part I, LNCS*, vol.6443.
- [9] S.Soltic, N.Kasabov, *Knowledge extraction from evolving spiking neural networks with a rank order population coding*, *Int.J.Neural Systems*, Vol. 20, No. 6 (2010) 437-445, World Scientific Publ.
- [10] N.Kasabov (ed) (2013) *The Springer Handbook of Bio- and Neuroinformatics*, Springer, September, 2013..
- [11] Schliebs, Michael Defoin Platel, Susan Worner and Nikola Kasabov, *Integrated Feature and Parameter Optimization for Evolving Spiking Neural Networks: Exploring Heterogeneous Probabilistic Models*, *Neural Networks*, 22, 623-632, 2009.
- [12] S. Pang, Tao Ban, Youki Kadobayashi and Nikola K. Kasabov, *LDA Merging and Splitting with Applications to Multi-agent Cooperative Learning and System Alteration*, *IEEE Transactions On Systems, Man And Cybernetics*, -Part B. 42(2): 552-564, 2012.
- [13] Kasabov, N., *NeuroCube EvoSpike Architecture for Spatio-Temporal Modelling and Pattern Recognition of Brain Signals*, in: Mana, Schwenker and Trentin (Eds) *ANNPR, Springer LNAI 7477*, 2012, 225-243
- [14] Furber, S., *To Build a Brain*, *IEEE Spectrum*, vol.49, Number 8, 39-41, 2012.