



University of HUDDERSFIELD

University of Huddersfield Repository

Unver, Ertu, Brown, Carol and Veeragoni, Naresh

3D Art: Andromeda Angel

Original Citation

Unver, Ertu, Brown, Carol and Veeragoni, Naresh (2010) 3D Art: Andromeda Angel. In: University of Huddersfield Research Festival , 8 - 18 March 2010, University of Huddersfield. (Unpublished)

This version is available at <http://eprints.hud.ac.uk/7519/>

The University Repository is a digital collection of the research output of the University, available on Open Access. Copyright and Moral Rights for the items on this site are retained by the individual author and/or other copyright owners. Users may access full items free of charge; copies of full text items generally can be reproduced, displayed or performed and given to third parties in any format or medium for personal research or study, educational or not-for-profit purposes without prior permission or charge, provided:

- The authors, title and full bibliographic details is credited in any copy;
- A hyperlink and/or URL is included for the original metadata page; and
- The content is not changed in any way.

For more information, including our policy and submission procedure, please contact the Repository Team at: E.mailbox@hud.ac.uk.

<http://eprints.hud.ac.uk/>

3D ART : ANDROMEDA ANGEL

This creative art project is a collaboration of Artists and 3D technologists to design and prototype an **Andromeda Angel** using advanced modelling and 3d printing tools.

Story:

Habitants of Andromeda Galaxy created this Angel to remind themselves of the past, pollutions which nearly destroyed their existence. The **Andromeda Galaxy** is a spiral galaxy approximately 2,500,000 light-years. It is often referred to as the *Great Andromeda Nebula*. Andromeda is the nearest spiral galaxy to our own.

Symbols

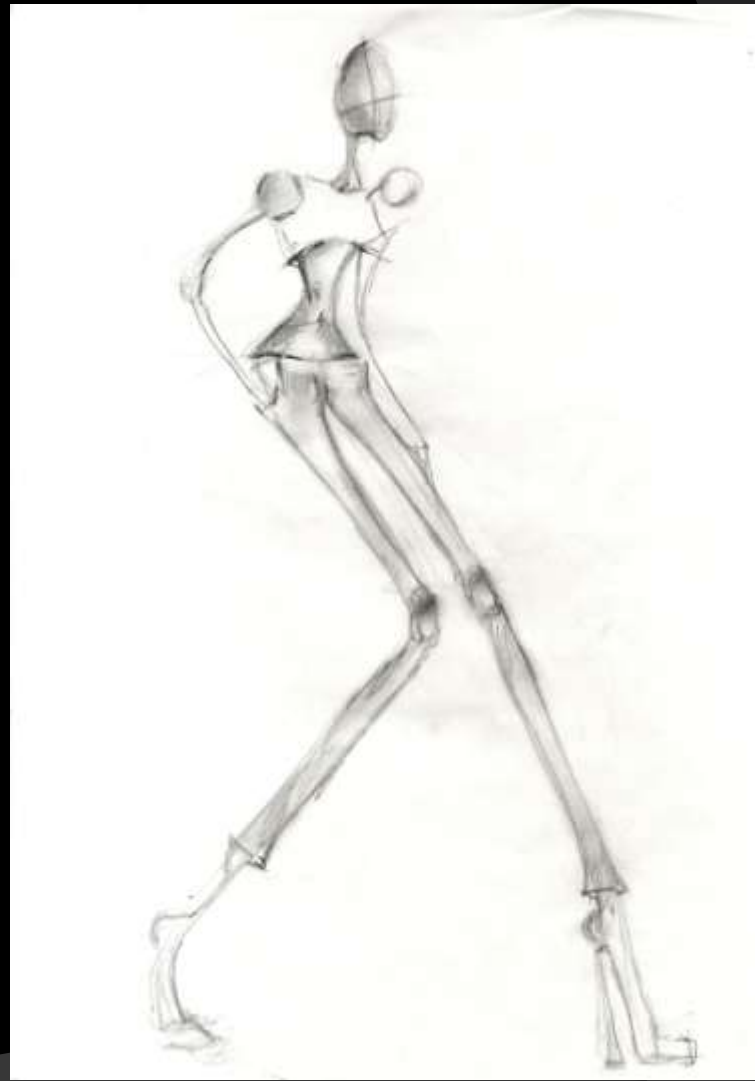
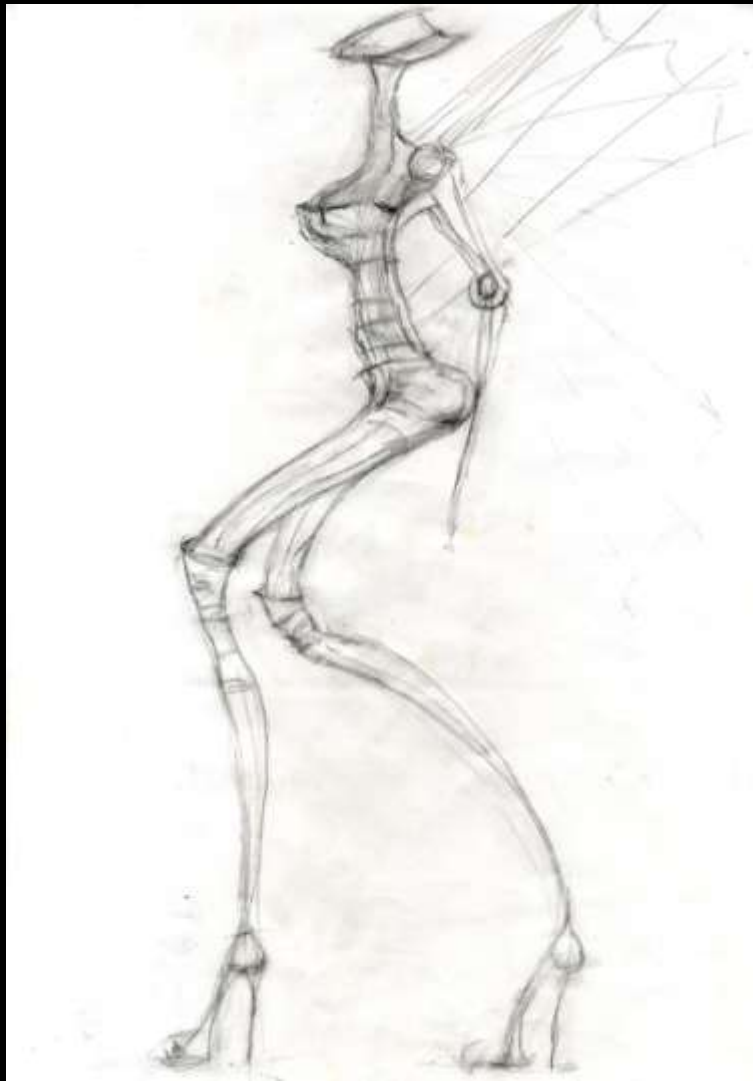
The dried tree is a symbol of the deforestation of their planet,
The Angel is their Guardian and their Protector who saved their planet from extinction

Project:

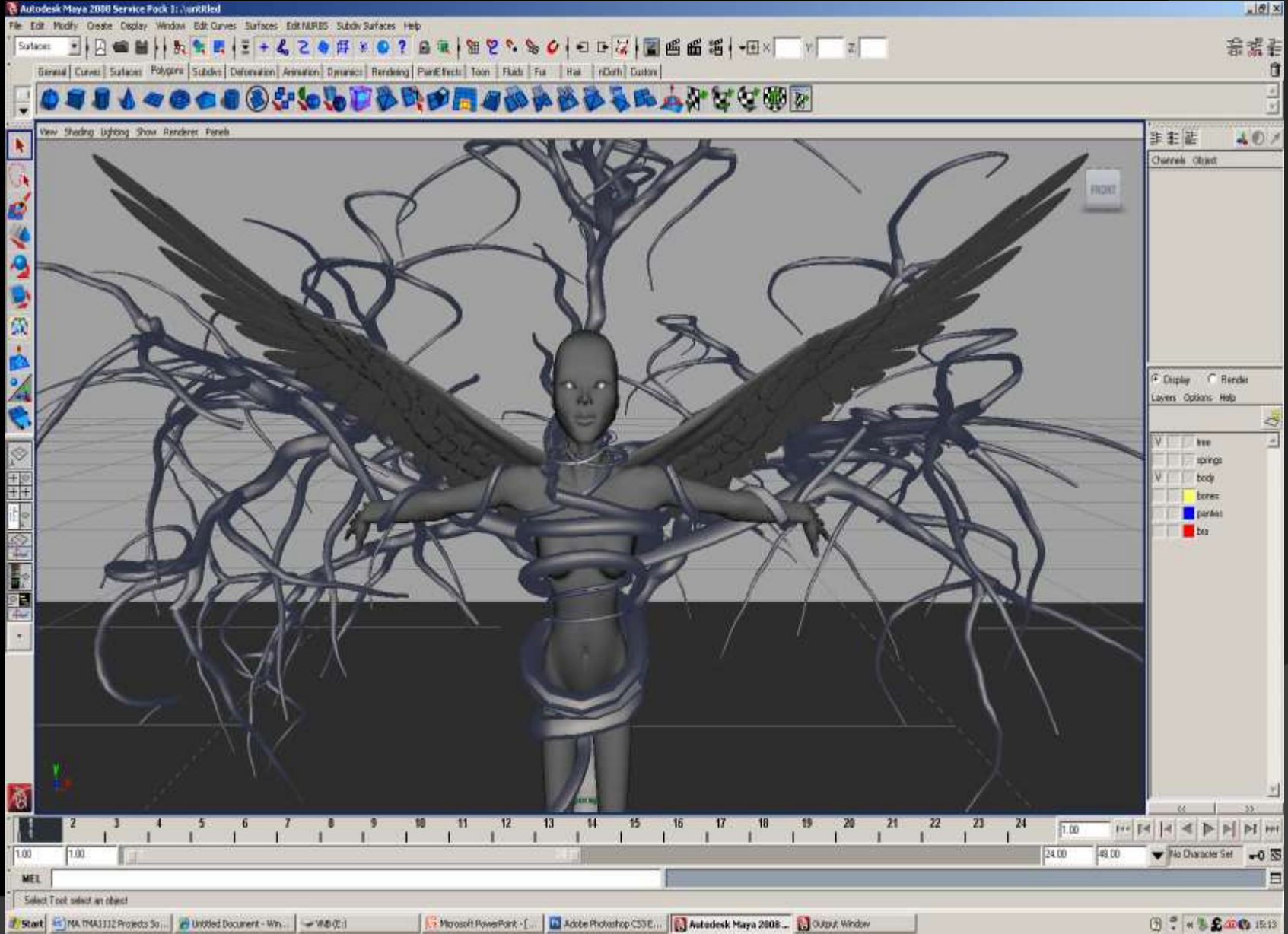
The recent development of advanced 3D digital software for artist and designers and availability of advanced 3D digital printing and manufacturing technologies have revolutionised how artists and designers conceptualise their ideas. Now there is a strong requirement to embrace digital technologies such as CAD software, CAM hardware, Rapid Prototyping and other Information Communication Technologies (ICT) as part of the creative practice.

This project enabled the team to evaluate the challenges to employ the effective methods for using 3D digital techniques to establish the boundaries between of traditional craft production methods and 3D digital technologies.

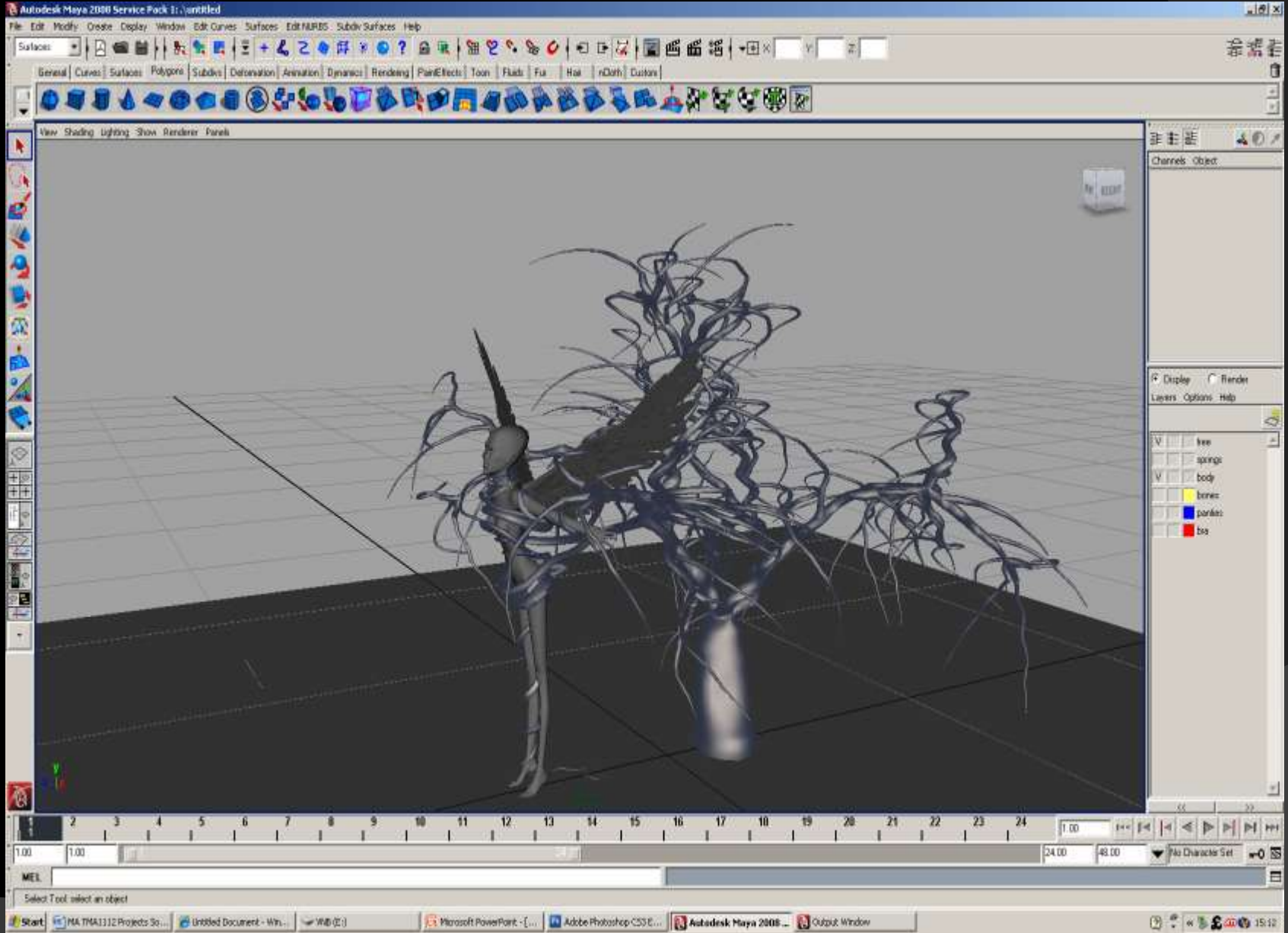
2D Drawings



3D Modelling



3D Modelling



Renderings

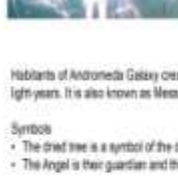


Prototypes



Poster:

Andromeda Angel



The objective of this project is to emphasize the effects of global warming. Global warming is the increase in the average temperature of Earth's near-surface air and oceans since the mid-20th century and its projected continuation. Global surface temperature increased 0.74 ± 0.18 °C between the start and the end of the 20th century. The Intergovernmental Panel on Climate Change concludes that most of the observed temperature increase since the middle of the 20th century was very likely caused by increasing concentrations of greenhouse gases resulting from human activity such as fossil fuel burning and deforestation. Pollution became a popular issue after WW2, conventional catastrophic event The Great Smog of 1952 in London killed at least 8000 people. This massive event prompted some of the first major modern environmental legislation.



Habitants of Andromeda Galaxy created the Angel to remind themselves of the past pollution which nearly destroyed their existence. The Andromeda is a spiral galaxy approximately 2,500,000 light-years. It is also known as Messier 31, M31, or NGC 224, and is often referred to as the Great Andromeda Nebula in older texts. Andromeda is the nearest spiral galaxy to our own.

Symbols

- The dried tree is a symbol of the deforestation of their planet.
- The Angel is their guardian and their protector who saved their planet from extinction.

Using innovative two-dimensional illustrations by Carol Brown, the team created three-dimensional character and the dying tree using advanced 3D modeling tools such as Maya, Qudim, and 3D printing technologies to create this artifact.

Humans on Earth also face similar issues. Growing evidence of local and global pollution and an increasingly informed public over time have given rise to environmentalism and the environmental movement, which generally seek to limit human impact on the environment.

WE MUST ACT NOW TO PROTECT OUR PLANET !!

Research Team:

Nareesh veeragani, MA 3D Digital Design course Carol Brown: Digital Artist with Fashion Dr Ertu Unver Senior Lecturer

Useful informations & web links:

<http://www.autonomic.org.uk/>

<http://www.automake.co.uk/>

<http://www.3ddigital.org.uk/>

<http://www.3dcreationlab.co.uk/>

<http://www.huddersfield3d.co.uk>

<http://usa.autodesk.com/>

<http://www.zcorp.com/>

<http://www.dimensionprinting.com/>

<http://www.3dsystems.com/>

<http://www.objet.com/>

<http://www.shapeways.com/>

<http://www.conceptart.org/>