



## Dear Author

Here are the proofs of your article.

- You can submit your corrections **online**, via **e-mail** or by **fax**.
- For **online** submission please insert your corrections in the online correction form. Always indicate the line number to which the correction refers.
- You can also insert your corrections in the proof PDF and **email** the annotated PDF.
- For **fax** submission, please ensure that your corrections are clearly legible. Use a fine black pen and write the correction in the margin, not too close to the edge of the page.
- Remember to note the **journal title**, **article number**, and **your name** when sending your response via e-mail or fax.
- **Check** the metadata sheet to make sure that the header information, especially author names and the corresponding affiliations are correctly shown.
- **Check** the questions that may have arisen during copy editing and insert your answers/corrections.
- **Check** that the text is complete and that all figures, tables and their legends are included. Also check the accuracy of special characters, equations, and electronic supplementary material if applicable. If necessary refer to the *Edited manuscript*.
- The publication of inaccurate data such as dosages and units can have serious consequences. Please take particular care that all such details are correct.
- Please **do not** make changes that involve only matters of style. We have generally introduced forms that follow the journal's style.
- Substantial changes in content, e.g., new results, corrected values, title and authorship are not allowed without the approval of the responsible editor. In such a case, please contact the Editorial Office and return his/her consent together with the proof.
- If we do not receive your corrections **within 48 hours**, we will send you a reminder.
- Your article will be published **Online First** approximately one week after receipt of your corrected proofs. This is the **official first publication** citable with the DOI. **Further changes are, therefore, not possible.**
- The **printed version** will follow in a forthcoming issue.

### Please note

After online publication, subscribers (personal/institutional) to this journal will have access to the complete article via the DOI using the URL:

<http://dx.doi.org/10.1007/s10863-012-9428-1>

If you would like to know when your article has been published online, take advantage of our free alert service. For registration and further information, go to:

<http://www.springerlink.com>.

Due to the electronic nature of the procedure, the manuscript and the original figures will only be returned to you on special request. When you return your corrections, please inform us, if you would like to have these documents returned.

**Metadata of the article that will be visualized in OnlineFirst**

1	Article Title	<b>Role of monocarboxylate transporters in human cancers: state of the art</b>
2	Article Sub- Title	
3	Article Copyright - Year	<b>Springer Science+Business Media, LLC 2012 (This will be the copyright line in the final PDF)</b>
4	Journal Name	Journal of Bioenergetics and Biomembranes
5		Family Name <b>Baltazar</b>
6		Particle
7		Given Name <b>Fátima</b>
8		Suffix
9		Organization ICVS/3B's - PT Government Associate Laboratory
10	Corresponding Author	Division
11		Address Braga/Guimarães , Portugal
12		Organization University of Minho
13		Division Life and Health Sciences Research Institute (ICVS), School of Health Sciences
14		Address Braga 4710-057, Portugal
15		e-mail fbaltazar@ecsaude.uminho.pt
16		Family Name <b>Pinheiro</b>
17		Particle
18		Given Name <b>Céline</b>
19		Suffix
20		Organization University of Minho
21	Author	Division Life and Health Sciences Research Institute (ICVS), School of Health Sciences
22		Address Braga 4710-057, Portugal
23		Organization ICVS/3B's - PT Government Associate Laboratory
24		Division
25		Address Braga/Guimarães , Portugal
26		e-mail
27		Family Name <b>Longatto-Filho</b>
28	Author	Particle
29		Given Name <b>Adhemar</b>

30		Suffix	
31		Organization	University of Minho
32		Division	Life and Health Sciences Research Institute (ICVS), School of Health Sciences
33		Address	Braga 4710-057, Portugal
34		Organization	ICVS/3B's - PT Government Associate Laboratory
35		Division	
36		Address	Braga/Guimarães , Portugal
37		Organization	University of São Paulo School of Medicine
38		Division	Laboratory of Medical Investigation (LIM) 14, Department of Pathology
39		Address	São Paulo , Brazil
40		e-mail	
<hr/>			
41		Family Name	<b>Azevedo-Silva</b>
42		Particle	
43		Given Name	<b>João</b>
44		Suffix	
45	Author	Organization	University of Minho
46		Division	CBMA - Center of Molecular and Environmental Biology, Department of Biology
47		Address	Campus de Gualtar, Braga 4710-057, Portugal
48		e-mail	
<hr/>			
49		Family Name	<b>Casal</b>
50		Particle	
51		Given Name	<b>Margarida</b>
52		Suffix	
53	Author	Organization	University of Minho
54		Division	CBMA - Center of Molecular and Environmental Biology, Department of Biology
55		Address	Campus de Gualtar, Braga 4710-057, Portugal
56		e-mail	
<hr/>			
57		Family Name	<b>Schmitt</b>
58		Particle	
59		Given Name	<b>Fernando C.</b>
60	Author	Suffix	
61		Organization	University of Porto
62		Division	Medical Faculty
63		Address	Porto , Portugal

64	Organization	Institute of Molecular Pathology and Immunology of University of Porto
65	Division	IPATIMUP
66	Address	Porto , Portugal
67	e-mail	
68	Received	
69	Schedule	Revised
70		Accepted
71	Abstract	
72	Keywords	separated by ' - '
73	Foot note information	

1  
3  
2

MINI-REVIEW

4 **Role of monocarboxylate transporters in human cancers:**  
5 **state of the art**

6 **Céline Pinheiro · Adhemar Longatto-Filho ·**  
7 **João Azevedo-Silva · Margarida Casal ·**  
8 **Fernando C. Schmitt · Fátima Baltazar**

9  
10 © Springer Science+Business Media, LLC 2012

11  
12 **Abstract**

13 **Keywords**

14 **Monocarboxylate transporter family**

15 Monocarboxylic acids play a major role in cellular metabo-  
16 lism, with lactate having a key function (Halestrap & Price  
17 1999). Transport of monocarboxylates through the plasma

membrane was originally thought to be via non-ionic diffu- 18  
sion of the free acid, however, subsequent demonstration 19  
that lactate and pyruvate transport into human erythrocytes 20  
could be strongly inhibited after treatment with some chem- 21  
icals (Halestrap & Denton 1974), a specific monocarboxy- 22  
late transport mechanism was recognized. 23

The monocarboxylate transporter (MCT) family is pres- 24  
ently composed by 14 members, and is encoded by the 25  
*SLC16* gene family (Halestrap & Meredith 2004), which is 26  
conserved among species, including rat, mouse and chicken. 27

Functional and phylogenetic relationship of MCTs 28

According to the Transport Classification Database ([www.tcdb.org](http://www.tcdb.org)), MCTs are members of the Major Facilitator 29  
Superfamily (Saier et al. 2009), belonging to the TC# 2. 30  
A.1.13, the Monocarboxylate Porter (MCP) family. By shar- 31  
ing a high level of conservative amino acid sequences, the 32  
topological prediction of MCTs shows 12 transmembrane 33  
helices (TMs), an intracellular N- and C-terminus and a 34  
large cytosolic loop between TMs 6 and 7, with the most 35  
conserved regions belonging to the TMs domains, and the 36  
most variable ones matching the loops and the C-terminus 37  
(Poole et al. 1996). 38  
39

The 14 human MCT homologue members are assigned as 40  
the solute carrier (SLC16A) gene series by the Human 41  
Genome Organization (HUGO) Nomenclature Committee 42  
Database ([www.genenames.org](http://www.genenames.org)). As shown in Fig. 1, the 43  
phylogenetic analysis provides valuable information regard- 44  
ing the functional clustering of the human MCT family. The 45  
differences in amino acid sequence reflect an evolutionary 46  
divergence associated with their functional role, since 47  
MCT1-4, known to mediate the proton-linked transport of 48  
metabolic monocarboxylic acids, appear associated in the 49  
same cluster. This cluster is further sub-divided into two 50

Q4

C. Pinheiro · A. Longatto-Filho · F. Baltazar  
Life and Health Sciences Research Institute (ICVS),  
School of Health Sciences, University of Minho,  
4710-057 Braga, Portugal

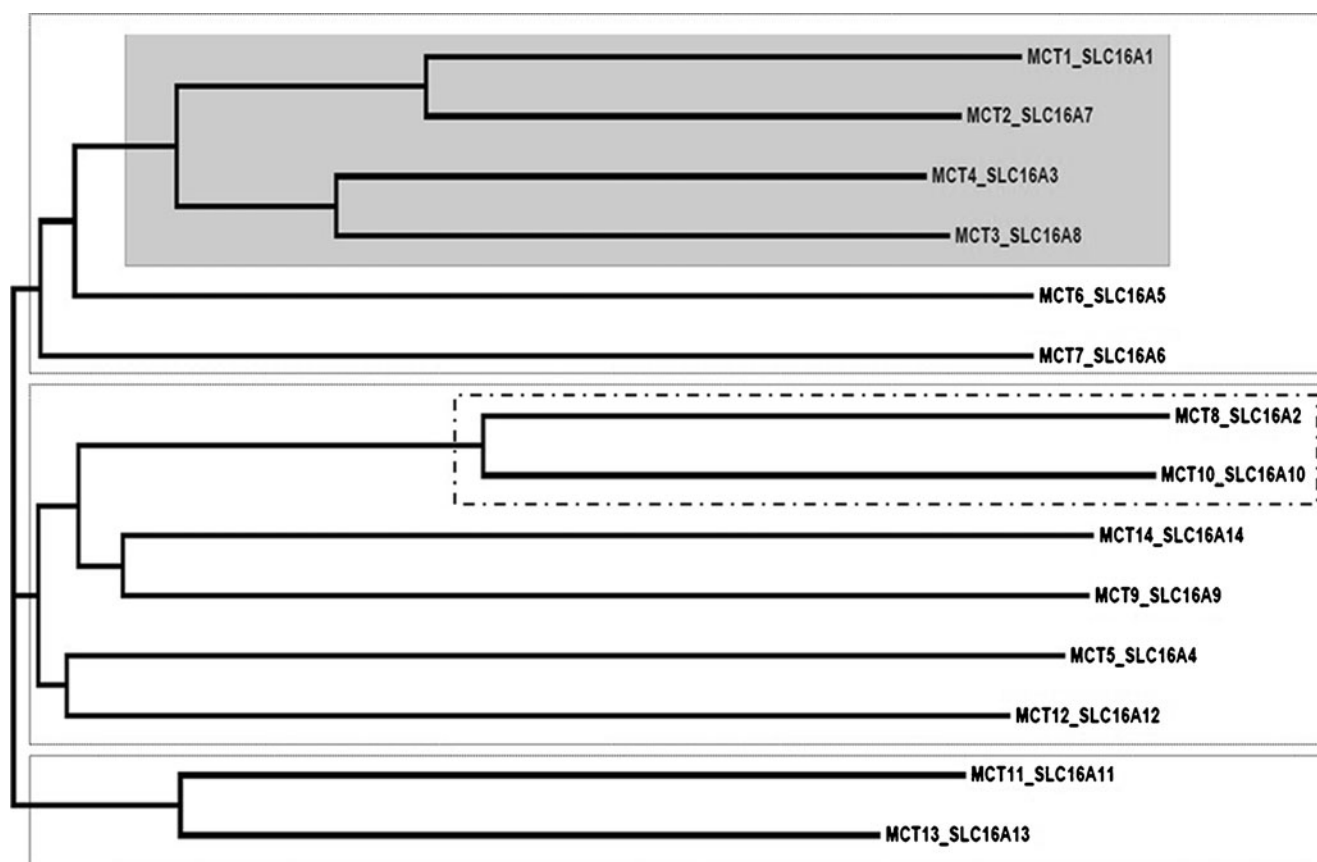
C. Pinheiro · A. Longatto-Filho · F. Baltazar (✉)  
ICVS/3B's - PT Government Associate Laboratory,  
Braga/Guimarães, Portugal  
e-mail: fbaltazar@ecsau.de.uminho.pt

A. Longatto-Filho  
Laboratory of Medical Investigation (LIM) 14, Department of  
Pathology, University of São Paulo School of Medicine,  
São Paulo, Brazil

J. Azevedo-Silva · M. Casal  
CBMA - Center of Molecular and Environmental Biology,  
Department of Biology, University of Minho,  
Campus de Gualtar,  
Braga 4710-057, Portugal

F. C. Schmitt  
Medical Faculty, University of Porto,  
Porto, Portugal

F. C. Schmitt  
IPATIMUP, Institute of Molecular Pathology and  
Immunology of University of Porto,  
Porto, Portugal



**Fig. 1** Human MCT family members' phylogram, based on amino acid sequence. Boxes limited by dots represent three main clusters. In the dotted-dashed box are the thyroid hormone (MCT8) and aromatic amino acids (MCT10) transporters. Solid grey box represent the proton-linked transported cluster (MCT1-4). The amino acid sequences

were analyzed using CLUSTALW and tree plotting was performed using FigTree v1.3.1 (<http://tree.bio.ed.ac.uk/>). MCT1-14 UniProt accession numbers: P53985; O60669; O95907; O15427; O15374; O15375; O15403; P36021; Q7RTY1; Q8TF71; Q8NCK7; Q6ZSM3; Q7RTY0; Q7RTX9

Q3

51 shorter branches, the MCT1-2 and MCT3-4, which correlate  
 52 with their range of substrate specificity and affinities found  
 53 for the mammalian (human, mouse and rat) transporter  
 54 isoforms (Table 1).

MCT1 has a broader distribution and transports a wider  
 range of substrates when compared to other family mem-  
 bers. Its kinetic parameters have been studied for the mouse  
 isoform in tumor cells (Carpenter et al. 1996) and for the rat

55  
 56  
 57  
 58

**Table 1** Km values (mM) of mammalian MCT isoforms for a range of monocarboxylates. (h) – human; (m) – mouse; (r) – rat; (\*)- tumor cells

t1.3  
 t1.4  
 t1.5  
 t1.6  
 t1.7  
 t1.8  
 t1.9  
 t1.10  
 t1.11  
 t1.12

	MCT1 (Carpenter et al. 1996; Broer et al. 1998; Cuff et al. 2002; Kido et al. 2000; Poole et al. 1990)	MCT2 (Broer et al. 1999)	MCT4 (Dimmer et al. 2000; Manning Fox et al. 2000)
L-Lactate	2.2 <sup>(r)</sup> –4.5 <sup>(m*)</sup>	0.7 <sup>(r)</sup>	28.0 <sup>(h)</sup> –34.0 <sup>(r)</sup>
D-Lactate	51.0 <sup>(r)</sup>	–	519.0 <sup>(h)</sup>
Pyruvate	0.6 <sup>(r)</sup> –1.0 <sup>(r)</sup>	0.08 <sup>(r)</sup>	153.0 <sup>(h)</sup>
L-β-hydroxybutyrate	8.1 <sup>(r)</sup> –11.4 <sup>(m*)</sup>	n.d.	824.0 <sup>(h)</sup>
D-β-hydroxybutyrate	8.1 <sup>(r)</sup> –10.1 <sup>(m*)</sup>	1.2 <sup>(r)</sup>	130.0 <sup>(h)</sup>
Butyrate	9.1 <sup>(h*)</sup>	n.d.	n.d.
Acetoacetate	5.5 <sup>(r)</sup>	0.8 <sup>(r)</sup>	n.d.
Benzoate	1.1 <sup>(h)</sup>	n.d.	n.d.
Propionate	1.5 <sup>(r)</sup>	n.d.	n.d.
Acetate	3.7 <sup>(m*)</sup>	n.d.	n.d.

(n.d. not determined)

59 isoform expressed in *Xenopus laevis* oocytes (Broer et al.  
60 1998). The main function of this transporter has been asso-  
61 ciated with the uptake or efflux of monocarboxylates  
62 through the plasma membrane, according to cell metabolic  
63 needs and behaving as a high affinity transporter for L-  
64 lactate, but not for D-lactate, as well as for pyruvate, ace-  
65 tate, propionate, D,L- $\beta$ -hydroxybutyrate and acetoacetate  
66 (Halestrap & Meredith 2004). It has also been implicated  
67 in the transport of butyrate and propionate in human colo-  
68 nocytes (Cuff et al. 2002). Furthermore, its role in the  
69 uptake of benzoate in the human blood–brain barrier, as  
70 well as in vitro, using both immortalized and primary cul-  
71 tured brain capillary endothelial cells, has also been dem-  
72 onstrated (Kido et al. 2000).

73 The MCT2 rat ortholog was characterized by heterolo-  
74 gous expression in *Xenopus laevis* oocytes (Broer et al.  
75 1999), displaying a higher affinity for L-lactate, pyruvate,  
76 D- $\beta$ -hydroxybutyrate and acetoacetate than MCT1. When  
77 expressed in the same tissue, MCT1 and MCT2 are  
78 located in distinct cells as they have been suggested to  
79 play different roles in metabolic shuttles (Garcia et al.  
80 1995; Jackson et al. 1997).

81 MCT3 was first identified in chicken and displays a  
82 tissue-specific expression pattern, being only expressed in  
83 retinal pigment epithelium and choroid plexus epithelia,  
84 mediating the efflux of metabolic lactate in the retina (Philp  
85 et al. 1998; Bergersen et al. 1999). The heterologous ex-  
86 pression of chick-MCT3 in yeast revealed a  $K_m$  of 6 mM  
87 for L-lactate (Grollman et al. 2000).

88 The physiological role of the human MCT4 is mostly  
89 associated with the export of lactate in cells with high  
90 glycolytic rates related to hypoxic energy production  
91 (Dimmer et al. 2000). It was characterized by heterolo-  
92 gous expression in *Xenopus laevis* oocytes (Manning  
93 Fox et al. 2000), exhibiting the highest  $K_m$  values  
94 (Table 1) for most substrates and inhibitors when com-  
95 pared to MCT1 and MCT2.

96 Finally, MCT8 (rat isoform) and MCT10 (mouse iso-  
97 form) mediate the transport of thyroid-hormones (Friesema  
98 et al. 2003) and aromatic amino acids (Kim et al. 2001)  
99 respectively, in a proton and sodium-independent manner.  
100 According to Fig. 1, their human orthologs share a closer  
101 phylogenetic relationship. For the remaining family mem-  
102 bers, few or no information is available about their proper-  
103 ties and functional roles.

104 The role of MCTs in cell homeostasis is widely  
105 recognized and described in detail in some tissues.  
106 However, further work is needed in what concerns their  
107 role in tumor biology. Even so, if one looks at the  
108 microenvironmental scenario and molecular events  
109 occurring in carcinogenesis, it is possible to anticipate  
110 an important contribution of MCTs in the progression to  
111 malignancy.

## Cancer cell metabolic adaptations

112 More than half a century ago, Otto Warburg demonstrated  
113 that cancer cells rapidly convert the majority of glucose into  
114 lactate, even in the presence of sufficient oxygen to support  
115 mitochondrial oxidative phosphorylation (Warburg 1956).  
116 This phenomenon is presently known as “aerobic glycoly-  
117 sis” or “Warburg effect”. Although Warburg’s hypothesis  
118 that impaired mitochondrial metabolism underlies the high  
119 rates of glycolysis has proven incorrect (Wang et al. 1976;  
120 Brand 1985; Moreno-Sanchez et al. 2007), the original  
121 observation of increased glycolysis in tumors has been  
122 confirmed repeatedly. In fact, this increased glucose uptake  
123 by cancer cells is the rationale behind the whole-body non-  
124 invasive  $^{18}\text{F}$ -fluorodeoxyglucose positron emission tomog-  
125 raphy (FdG-PET) technique. This widespread clinical appli-  
126 cation is used for diagnosis, initial staging, restaging,  
127 prediction, monitoring of treatment response and surveil-  
128 lance in a variety of cancers (Jadvar et al. 2009).  
129

130 Early carcinogenesis and development of the malignant  
131 phenotype occur in an avascular environment, and cancer  
132 cells become dependent on glucose and oxygen diffusion  
133 through blood vessels and basement membrane to fulfill  
134 their major metabolic demands (Gatenby & Gillies 2004;  
135 Gillies & Gatenby 2007). Hence, if early hyperplastic  
136 lesions develop further than a few cell layers beyond the  
137 basement membrane, regional development of hypoxia will  
138 occur, limiting cell growth. This intermittent hypoxia will  
139 promote selection for cells with anaerobic glycolysis consti-  
140 tively up-regulated, allowing further cell growth (Gatenby  
141 & Gillies 2004; Gillies & Gatenby 2007; Smallbone et al.  
142 2007). It is widely known that the major regulator of adapta-  
143 tion to hypoxic stress is the transcriptional factor HIF-1 $\alpha$ ,  
144 which has been widely associated with cancer progression  
145 (Semenza 1998a,b, 1999, 2000; 2001; Greijer et al. 2005).  
146 In fact, many enzymes from the glycolytic pathway like  
147 glucose transporter 1 (GLUT1) (Chen et al. 2001; Baumann  
148 et al. 2007), lactate dehydrogenase A (LDH-A) (Firth et al.  
149 1995), among others (Greijer et al. 2005; Hu et al. 2003; Kim  
150 et al. 2006; Papandreou et al. 2006; Warnecke et al. 2004), are  
151 HIF-1 $\alpha$  targets. Besides contributing to the constitutive gly-  
152 colytic metabolism, HIF-1 $\alpha$  also contributes to the acid-  
153 resistant phenotype, by up-regulating, at least, two important  
154 pH regulators, MCT4 (Ullah et al. 2006; de HF et al. 2009)  
155 and CAIX (Wykoff et al. 2000; Svastova et al. 2004; Chiche  
156 et al. 2009). In fact, MCT4 will not only be important for the  
157 acid-resistant phenotype, but also for the hyper-glycolytic  
158 phenotype, by exporting newly formed lactate, allowing con-  
159 tinuous conversion of pyruvate to lactate and, therefore, con-  
160 tinuous aerobic glycolysis.

161 The frequency and severity of tumor hypoxia and its  
162 association with malignant progression make the hypoxia-  
163 induced metabolic adaptations promising targets for cancer

164 therapy (Dang & Semenza 1999). Actually, the development  
 165 of treatments that target tumor metabolism is receiving  
 166 renewed attention, with several potential drugs targeting  
 167 metabolic pathways currently in clinical trials (for review  
 168 see (Porporato et al. 2011)). Importantly, MCT1 is included  
 169 in this list of metabolic targets for cancer therapy.

170 **The biological relevance of lactate transport in cancer**

171 As already mentioned, the acid-resistant phenotype is an  
 172 essential condition for cancer cell survival. Hence, different  
 173 pH regulating systems are present in the plasma membrane  
 174 of cancer cells, including MCTs, the Na<sup>+</sup>/H<sup>+</sup> exchanger 1  
 175 (NHE1), carbonic anhydrase IX (CAIX) and anion exchanger  
 176 1 (AE1). Although MCTs are not the major H<sup>+</sup> transporters,  
 177 they perform a double role in the adaptation to hypoxia: export  
 178 of lactate, essential to the hyper-glycolytic phenotype, and pH  
 179 regulation, important to the acid-resistant phenotype.

180 Besides its role as tumor acidifier, inducing mutagenesis/  
 181 clastogenesis, cancer cell invasive behavior, radio- and che-  
 182 moresistance (Gatenby & Gillies 2004), lactate has other  
 183 properties which can contribute to the malignant behavior of  
 184 cancer cells (Fig. 2). T cell activation is dependent on high  
 185 rates of glycolysis and, therefore, dependent on a rapid  
 186 efflux of lactate from T cells (Frauwirth & Thompson  
 187 2004). However, if the extracellular concentration of lactate  
 188 is high, lactate efflux from T cells will be inhibited. This is  
 189 the case of the tumor micromilieu and, as a consequence, T  
 190 cell metabolism and function will be disturbed, decreasing  
 191 the immune response against tumor cells (Fischer et al.  
 192 2007). Also, evidence shows that both lactate and pyruvate  
 193 regulate hypoxia-inducible gene expression, independently  
 194 from hypoxia, by stimulating the accumulation of HIF-1α  
 195 (Lu et al. 2002). This indicates that, lactate, per se, stimulates  
 196 the hyper-glycolytic phenotype, providing a positive feed-  
 197 back. Moreover, exogenous lactate was demonstrated to in-  
 198 crease cellular motility (Walenta et al. 2002), vascular endo-  
 199 thelial growth factor (VEGF), the major angiogenic factor  
 200 (Spector et al. 2001; Kumar et al. 2007; Hunt et al. 2007), as  
 201 well as hyaluronan and its receptor CD44, which are mole-  
 202 cules involved in the process of cancer invasion and metasti-  
 203 zation (Stern et al. 2002; Rudrabhatla et al. 2006). Altogether,  
 204 this evidence shows the various biological activities of lactate  
 205 that can enhance the malignant phenotype of tumor cells,  
 206 contributing to the association of high tumor lactate concen-  
 207 trations with incidence of metastases (Schwickert et al. 1995;  
 208 Walenta et al. 1997; Walenta et al. 2000; Brizel et al. 2001),  
 209 tumor recurrence, patient survival (Walenta et al. 2000; Brizel  
 210 et al. 2001) and radioresistance (Quennet et al. 2006). As a  
 211 result, MCTs, as the transporters responsible for lactate efflux  
 212 from cancer cells, will be involved in the lactate-induced  
 213 malignant behavior of cancer cells.

Besides being an end-product of different metabolic path- 214  
 ways, lactate may also be a substrate for oxidative phos- 215  
 phosphorylation and, as described in skeletal muscle and brain 216  
 (Juel 1997; Pellerin et al. 1998), a cell-cell lactate shuttle has 217  
 been proposed for cancer cells. Therefore, lactate has been 218  
 recently described as the key metabolic intermediate in a 219  
 metabolic symbiosis between glycolytic and oxidative can- 220  
 cer cells, in which the peripheral and oxygenated oxidative 221  
 cells consume the lactate produced by the central and less 222  
 oxygenated glycolytic cells (Fig. 2) (Sonveaux et al. 2008). 223

224 Although glucose is the major source of lactate in most  
 225 solid tumors, it is important to note that other cancer path-  
 226 ways rather than glycolysis, like glutaminolysis and serinol-  
 227 ysis (Mazurek et al. 2000, 2001a, b; DeBerardinis et al.  
 228 2007), can lead to lactate production. Nevertheless, lactate  
 229 will always be an important metabolic end-product, either  
 230 cancer cells use glycolysis or other energetic pathways for  
 231 energy and biomass production.

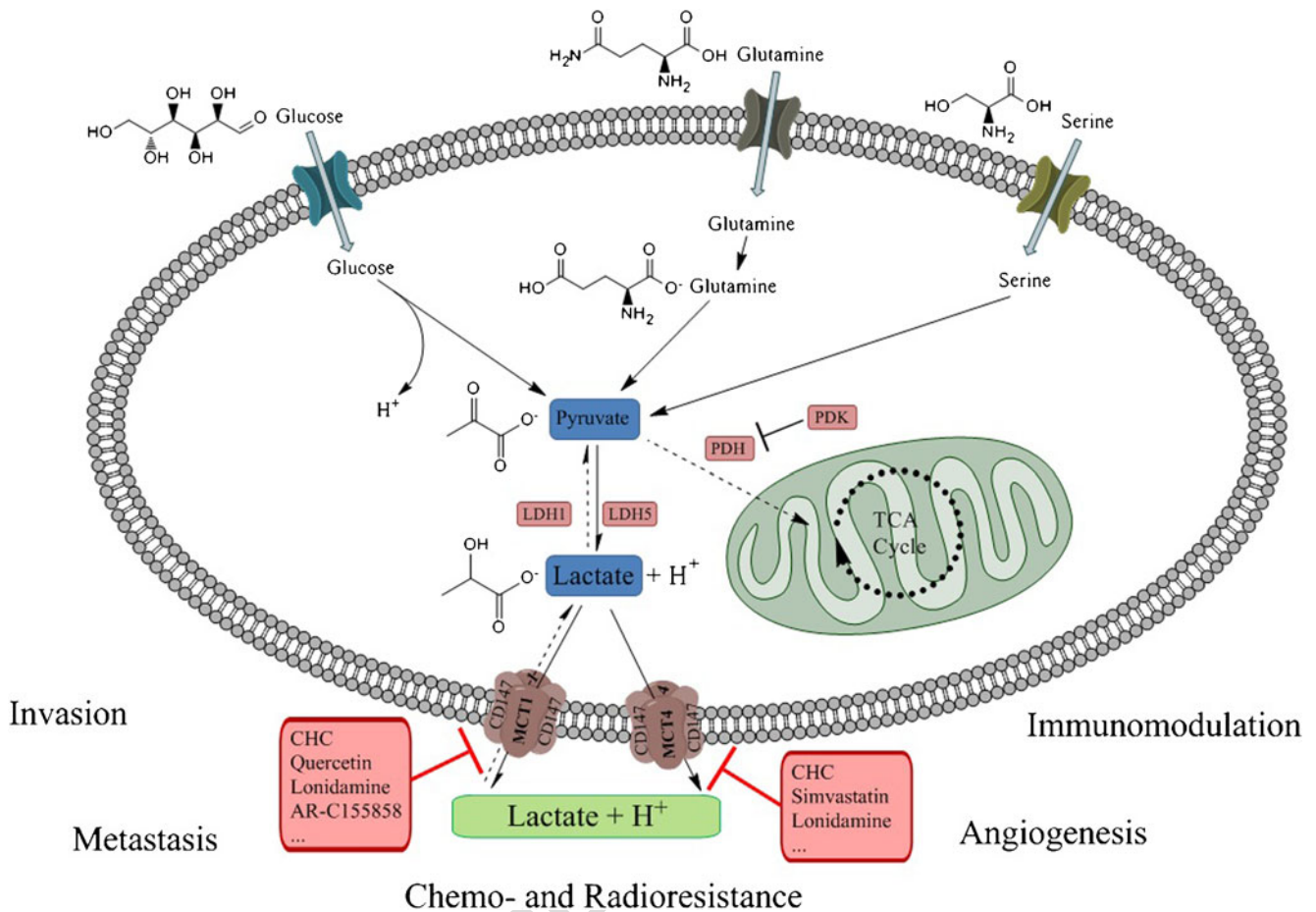
232 **MCT expression in human cancers**

233 Although less explored than other proteins involved in the  
 234 glycolytic phenotype or even than other pH regulators,  
 235 reports on the role of MCTs in cancer are becoming more  
 236 frequent with years (Table 2).

237 **Colon**

238 The first report on MCT expression in human tumor samples  
 239 described a decrease of MCT1 expression (by Western blot) in  
 240 the colonic transition from normality to malignancy (Ritzhaupt  
 241 et al. 1998), which was further supported by a larger study  
 242 analyzing MCT1, MCT2, and MCT4 expressions by North-  
 243 ern blot, Western blot and, immunohistochemistry only for  
 244 MCT1, in healthy colon samples, adenomas and carcino-  
 245 mas. MCT1 protein decrease was confirmed, while MCT2  
 246 and MCT4 protein expression was not detected, despite  
 247 mRNA expression of MCT4 (Lambert et al. 2002). However,  
 248 more recent evidence showed a high expression of MCTs  
 249 in colon adenocarcinoma (Pinheiro et al. 2010a), as well as  
 250 significant increase of MCTs expression in cancer cells when  
 251 comparing to normal colonic samples (Koukourakis et al.  
 252 2006; Pinheiro et al. 2008a). These contradictory results are  
 253 probably due to antibody specificity, with special attention to  
 254 the fact that the first immunohistochemical study failed to show  
 255 MCT1 expression in the plasma membrane of cancer cells,  
 256 which is essential for plasma membrane lactate efflux. In  
 257 opposition, one of these recent studies showed a significant  
 258 increase of MCT1 and MCT4 in the plasma membrane of  
 259 colorectal cancer cells accompanied by a significant decrease  
 260 in MCT2 at the plasma membrane. This finding is in accor-  
 261 dance with the dependence of hyperglycolytic cancer cells in





**Fig. 2** Overview on the metabolic pathways leading to lactate production (continuous lines) and transport across the plasma membrane, as well as strategies of lactate transport inhibition. Discontinuous arrows represent lactate uptake and flow inside oxidative cancer cells.

Abbreviations: CHC,  $\alpha$ -cyano-4-hydroxycinnamic acid; LDH, lactate dehydrogenase; MCT, monocarboxylate transporter; PDH, pyruvate dehydrogenase; PDK1, pyruvate dehydrogenase kinase 1

262 exporting the accumulating lactate through MCT1 and MCT4,  
 263 but not MCT2. Additionally, MCT2 and MCT4 were strongly  
 264 expressed in the cytoplasm of cancer cells indicating a possible  
 265 role of these isoforms in the mitochondrial uptake of pyruvate  
 266 (Pinheiro et al. 2010a; Koukourakis et al. 2006; Pinheiro et al.  
 267 2008a). Importantly, analysis of MCT expression in regard to  
 268 the clinic-pathological parameters showed associations of  
 269 MCT1 plasma membrane expression with vascular invasion,  
 270 which could be explained by the role of extracellular lactate  
 271 and acidity on cancer cell invasion (Pinheiro et al. 2008a),  
 272 which will need further confirmation. Koukourakis and collab-  
 273 orators also found MCT1 expression in tumor-associated fibro-  
 274 blasts, favoring absorption of the accumulating lactate from the  
 275 extracellular matrix, to be used as energy source, as well as lack  
 276 of endothelial MCT1, to avoid lactate absorption and vascular  
 277 destruction by acidosis. Additionally, MCT2 was strongly  
 278 expressed in the cytoplasm of cancer cells and tumor-  
 279 associated fibroblasts, indicating a possible role of MCT2 in  
 280 the mitochondrial uptake of pyruvate. Finally, MCT4 was  
 281 weakly expressed in the tumor micromilieu, suggesting a

minimal role in the metabolic intratumoral communication 282  
 (Koukourakis et al. 2006). 283  
 Central nervous system 284  
 In neoplastic human tissues of the central nervous system, 285  
 the few existing studies point to a possible important role of 286  
 MCT expression, especially MCT1 (Froberg et al. 2001; 287  
 Mathupala et al. 2004; Fang et al. 2006; Li et al. 2009). 288  
 Strong expression of MCT1 was found in ependymomas, 289  
 hemangioblastomas and high grade glial neoplasms (ana- 290  
 plastic astrocytomas and glioblastoma multiforme (GBM)), 291  
 whereas low-grade glial neoplasms (oligodendrogliomas 292  
 and astrocytomas) were either negative or showed weak 293  
 MCT1 expression (Froberg et al. 2001). Additionally, West- 294  
 ern blot analysis in total protein extracts from normal brain 295  
 and primary brain tumors (GBMs) demonstrated that normal 296  
 brain predominantly expressed MCT3, whereas MCT1 and 297  
 MCT2 were the major isoforms present in GBM tumors. 298  
 MCT4 was not detected in any of the tumor tissues 299

**Table 2** Overview on MCT1, MCT2, MCT4 and CD147 expression and prognosis in different tumor types

Tumor site	MCT1 expression	MCT2 expression	MCT4 expression	CD147 expression*
Colon	↓ from normality to malignancy (Ritzhaupt et al. 1998; Lambert et al. 2002)	Not detected in either normal or tumor tissues (Lambert et al. 2002)	Not detected in either normal or tumor tissues (Lambert et al. 2002)	(+) in tumor cells; no significant associations with MCTs (Pinheiro et al. 2010a)
	(+) in tumor cells but (-) normal epithelium (Koukourakis et al. 2006)	+ in tumor cells cytoplasm, but not in plasma membrane (Koukourakis et al. 2006)	Cytoplasm of cancer cells (Koukourakis et al. 2006)	
	↑ in tumor cells, compared to normal epithelium/associated with vascular invasion (Pinheiro et al. 2008a)	↑ in cytoplasm expression but ↓ in tumor cells plasma membrane compared to normal epithelium (Pinheiro et al. 2008a)	↑ in tumor cells, compared to normal epithelium (Pinheiro et al. 2008a)	
	(+) in tumor cells (Pinheiro et al. 2010a)	(+) in tumor cells (Pinheiro et al. 2010a)	(+) in tumor cells (Pinheiro et al. 2010a)	
Central nervous system	Strongest in high grade glial neoplasms, compared to low grade glial neoplasms (Froberg et al. 2001)	↑ in glioblastoma, compared to normal tissue (Mathupala et al. 2004)	(-) in glioblastoma (Mathupala et al. 2004)	
	(+) in glioblastoma and (-) in normal tissue (Mathupala et al. 2004)			
	(+) in neuroblastoma/associated with age >1 year at diagnosis, stage 4 disease, unfavorable Shimada histopathology, DNA diploid index, <i>n-myc</i> amplification and high-risk clinical group (COG criteria) (Fang et al. 2006)			
Breast	↓ due to gene hypermethylation (Asada et al. 2003)	(+) in tumor cells and normal epithelium cytoplasm, but not in plasma membrane (Pinheiro et al. 2010a)	Tendency to be ↑ in tumor cells, compared to normal epithelium (Pinheiro et al. 2010b)	(+) in tumor cells (Pinheiro et al. 2010a; Pinheiro et al. 2010b) and normal epithelium (Pinheiro et al. 2010b); significantly associated with MCT1 (Pinheiro et al. 2010b) and MCT4 (Pinheiro et al. 2010a, b)
	↑ in tumor cells, compared to normal epithelium/associated with basal-like subtype, high histological grade, estrogen and progesterone receptors, cytokeratins 5 and 14 and vimentin (alone or co-expressed with CD147) (Pinheiro et al. 2010b)		↑ in tumor cells, compared to normal epithelium (Pinheiro et al. 2010a)	
Lung	Cytoplasmic accumulation in alveolar soft-part sarcoma (Ladanyi et al. 2002)	(+) in tumor cells but (-) normal epithelium (Koukourakis et al. 2007)	(+) in tumor cells but (-) normal epithelium (Koukourakis et al. 2007)	(+) in tumor cells; tendency to be associated with MCT1 and significantly associated with MCT4 (Pinheiro et al. 2010a)
	(+) in tumor cells but (-) normal epithelium (Koukourakis et al. 2007)	(+) in tumor cells and normal epithelium cytoplasm, but not in plasma membrane (Pinheiro et al. 2010a)	↓ in tumor cells, compared to normal epithelium (Pinheiro et al. 2010a)	
	(+) in tumor cells and normal epithelium (Pinheiro et al. 2010a)			
Gynecologic tract	↑ from preinvasive to invasive cervical cancer/associated with metastases in AC (when co-expressed with CD147) (Pinheiro et al. 2008b)	No progressive change from preinvasive to invasive cervical cancer/↑ ASC (Pinheiro et al. 2008b)	↑ from preinvasive to invasive cervical cancer/↑ AC (Pinheiro et al. 2008b)	↑ from preinvasive to invasive cervical cancer; significant association with MCT1 and MCT4 but not MCT2 (Pinheiro et al. 2009a)

t2.17 **Table 2** (continued)

Tumor site	MCT1 expression	MCT2 expression	MCT4 expression	CD147 expression*
t2.16	(+) in ovarian tumor cells (Pinheiro et al. 2010a; Chen et al. 2010), but (-) in normal and benign epithelium (Chen et al. 2010)/associated with low grade, high FIGO stage, residual tumor, lack of tumor relapse and presence of ascites (Chen et al. 2010)	(+) in ovarian tumor cells cytoplasm, but not in plasma membrane (Pinheiro et al. 2010a)	(+) in ovarian tumor cells (Pinheiro et al. 2010a; Chen et al. 2010), but (-) in normal and benign epithelium (Chen et al. 2010)/associated with high grade, high FIGO stage, residual tumor, tumor relapse and presence of ascites (Chen et al. 2010)	(+) in ovarian tumor cells (Pinheiro et al. 2010a; Chen et al. 2010), but (-) in normal and benign epithelium (Chen et al. 2010); tendency to be associated with MCT1 (Pinheiro et al. 2010a), significantly associated with MCT1 and MCT4 (Chen et al. 2010)
t2.17	Prostate (+) in tumor cells but (-) normal epithelium and PIN lesions/associated with high pretreatment PSA, high Gleason score, high pathological grade and nodal involvement (Hao et al. 2010)	↑ in tumor cells, compared to normal epithelium (Pertega-Gomes et al. 2011)	(+) in tumor cells but (-) normal epithelium and PIN lesions/associated with high pretreatment PSA, high Gleason score, high pathological grade and nodal involvement (Hao et al. 2010)	(+) in tumor cells but (-) normal epithelium and PIN lesions; co-localization with MCT1 and MCT4 (Hao et al. 2010)
t2.18	↓ in tumor cells, compared to normal epithelium/associated with high PSA, absence of perineural invasion and presence of biochemical recurrence (Pertega-Gomes et al. 2011)		↑ in tumor cells, compared to normal epithelium/high PSA levels, advanced tumor stage, higher Gleason score, presence of perineural invasion, and presence of biochemical recurrence (Pertega-Gomes et al. 2011)	(+) in tumor cells and normal epithelium; significantly associated with MCT1 and MCT4, but not MCT2 (Pertega-Gomes et al. 2011)
t2.19	Gastric (+) with no change along progression/associated with advanced gastric cancer, Lauren's intestinal type, stage III+IV and lymph-node metastases when (co-expressed with CD147) (Pinheiro et al. 2009b)		↓ from normal tissue, to primary tumor, to lymph-node metastases/associated with early gastric cancer and Lauren's intestinal type (Pinheiro et al. 2009b)	(+) with no change along progression; significantly associated with MCT1 and MCT4 (Pinheiro et al. 2009b)

300 (Mathupala et al. 2004). A more recent study on the sym-  
 301 pathetic nervous system tumor neuroblastoma, showed, by  
 302 mRNA quantification, that MCT1 expression is also high  
 303 and is associated with age >1 year at diagnosis, stage 4  
 304 disease, unfavorable Shimada histopathology, DNA diploid  
 305 index, *n-myc* amplification and high-risk clinical group  
 306 (Children's Oncology Group criteria) (Fang et al. 2006).  
 307 Finally, expression analysis revealed that *SLC16A1* tran-  
 308 script, encoding for MCT1, was elevated in 90 % of the  
 309 medulloblastomas analyzed (Li et al. 2009).

310 **Breast**

311 Evidence for MCT down-regulation was not only observed  
 312 in colon carcinoma (Ritzhaupt et al. 1998; Lambert et al.  
 313 2002). In fact, silencing of *SLC16A1* by gene promoter  
 314 hypermethylation was suggested in 4 of 20 breast cases  
 315 (20 %), however, the resultant decrease of mRNA and  
 316 protein were not demonstrated (Asada et al. 2003). In fact,  
 317 results from our group showed a significant increase of  
 318 MCT1 cytoplasmic and plasma membrane expression in

breast carcinoma, when comparing to normal breast epithe-  
 lium (Pinheiro et al. 2010a, b). MCT2 and MCT4 were also  
 evaluated, however, while MCT2 was only present in the  
 cytoplasm in a similar frequency in normal and tumor sam-  
 ples, MCT4 only showed a significant increase in tumor  
 samples for cytoplasm expression (Pinheiro et al. 2010a),  
 with no differences in plasma membrane expression (Pinheiro  
 et al. 2010a, b). Importantly, MCT1, alone or in co-expression  
 with CD147, was associated with basal-like subtype (a more  
 aggressive breast cancer group) and other poor prognostic  
 variables, including tumor high grade, pointing at an impor-  
 tant role of MCT1/CD147 in breast carcinoma aggressiveness  
 (Pinheiro et al. 2010b).

**Lung**

The literature is also controversial in lung cancer. In a first  
 study by Koukourakis and collaborators, no expression of  
 MCTs in normal lung was found, while expression of MCT1  
 was found in all tumors examined and both MCT2 and  
 MCT4 were also expressed in cancer cells. This study also

338 analyzed the possible metabolic cooperation between lung  
 339 cancer cells and tumor-associated stroma, however, tumor-  
 340 associated stroma expressed MCTs weakly (Koukourakis et  
 341 al. 2007). In opposition, a recent study by our group showed  
 342 that normal lung presents a high frequency of MCT expression  
 343 and, in fact, MCT4 is less expressed in tumor samples than in  
 344 normal epithelium. However, as this last study was performed  
 345 in a small number of cases, further work is needed to confirm  
 346 these results (Pinheiro et al. 2010a). MCT1, in association  
 347 with its chaperone CD147, was also described in the cyto-  
 348 plasm of alveolar soft part sarcoma (Ladanyi et al. 2002).

349 Gynecologic tract

350 MCT expression has also been described in some gynecolo-  
 351 gical tumors like cervical and ovarian cancer (Pinheiro et  
 352 al. 2010a, b; Chen et al. 2010). In cervical cancer, a signif-  
 353 icant increase in overall and plasma membrane expression  
 354 of MCT1 and MCT4 was observed from pre-invasive to  
 355 invasive squamous lesions and from normal glandular epi-  
 356 thelium to adenocarcinomas. For MCT2, the significant  
 357 alterations in the expression along the progression to the  
 358 invasive phenotype did not follow a clear increase/decrease  
 359 pattern. Also, MCT2 was more frequently observed in squa-  
 360 mous cell carcinomas, while MCT4 was more frequently  
 361 observed in adenocarcinomas. Importantly, high risk HPV-  
 362 positive pre-invasive cases expressed more MCT1 and  
 363 MCT4 than HPV negative pre-invasive cases, and also  
 364 presented more MCT1 in plasma membrane (Pinheiro et  
 365 al. 2008b). Additionally, CD147 was more frequently  
 366 expressed in MCT1 and MCT4 positive cases and co-  
 367 expression of MCT1 and CD147 was significantly associated  
 368 with lymph-node metastasis in adenocarcinomas (Pinheiro et  
 369 al. 2009a). In ovarian cancer, staining for MCT1 and MCT4 as  
 370 well as their chaperone CD147 was not found in normal  
 371 ovarian tissues and benign ovarian tissues, while around  
 372 80 % of epithelial ovarian primary and metastatic tumors  
 373 showed expression of these proteins. MCT1 was significantly  
 374 associated with low grade tumors, high FIGO stage, presence  
 375 of residual tumor, lack of relapse and presence of ascites;  
 376 MCT4 was significantly associated with high grade tumors,  
 377 high FIGO stage, presence of residual tumor, relapse and  
 378 presence of ascites. Importantly, MCT expression was associ-  
 379 ated with the expression of the multidrug resistance markers  
 380 MDR1 and MRP2 (Chen et al. 2010). Our group also reported  
 381 expression of MCT1, MCT2 and MCT4 in ovarian carcino-  
 382 ma, but with a lower frequency for MCT4 (around 45 %) and  
 383 around 95 % for MCT2 (Pinheiro et al. 2010a).

384 Prostate

385 Association of MCTs with MDR1 was also described in  
 386 prostate cancer (Hao et al. 2010). In this study, MCT1 and

MCT4 were found to be expressed in around 90 % of 387  
 prostate cancer cases, with 20 % of positive cases showing 388  
 a weak immunostaining, while no expression was found in 389  
 normal prostate tissues, prostate intraepithelial lesions or in 390  
 non-tumor regions adjacent to primary prostate cancer tis- 391  
 sues. Importantly MCT1 and MCT4 expressions were asso- 392  
 ciated with high pretreatment PSA levels, high Gleason 393  
 score, high pathological stage, and nodal involvement 394  
 (Hao et al. 2010). In another study evaluating the expression 395  
 of MCTs in prostate cancer (Pertega-Gomes et al. 2011), 396  
 MCT1 was expressed in all normal samples and significantly 397  
 less frequently expressed in tumor samples, being accom- 398  
 panied by its chaperone CD147. Conversely, MCT2 and 399  
 MCT4 were significantly more frequently expressed in the 400  
 cytoplasm of tumor cells when compared to normal tissue. 401  
 All MCT isoforms and CD147 were expressed, at different 402  
 frequencies, in PIN lesions. In accordance with some of the 403  
 findings from the first study (Hao et al. 2010), MCT1 404  
 expression was associated with higher PSA levels, absence 405  
 of perineural invasion, and presence of biochemical recur- 406  
 rence, while MCT4 expression was associated higher PSA 407  
 levels, advanced tumor stage, higher Gleason score, pres- 408  
 ence of perineural invasion, and presence of biochemical 409  
 recurrence (Pertega-Gomes et al. 2011). Further studies are 410  
 warranted to better elucidate the expression pattern of MCTs 411  
 in prostate tissues. 412

Stomach 413

In contrast to what was found in the previous types of 414  
 tumors, neither MCT1 nor MCT4 were found to be up- 415  
 regulated in gastric adenocarcinomas (Pinheiro et al. 416  
 2009b). Actually, MCT4 expression was more frequently 417  
 observed in normal gastric mucosa than in gastric cancer 418  
 cells and even less frequently observed in lymph-node me- 419  
 tastasis, indicating a progressive loss of this MCT isoform 420  
 with disease progression. Also, MCT4 expression was as- 421  
 sociated with Lauren's classification of intestinal-type car- 422  
 cinoma. MCT1 was similarly expressed in normal gastric 423  
 mucosa, primary tumors and lymph-node metastasis, being 424  
 present in the majority of samples (around 80 %). These 425  
 findings may indicate that MCT1 has a major contribution 426  
 in gastric homeostasis, which is maintained along carcino- 427  
 genesis (Pinheiro et al. 2009b). 428

Overall, the data available in the literature support the 429  
 hypothesis of a major role of MCTs in the emergence of the 430  
 hyper-glycolytic and acid-resistant phenotypes, as adapta- 431  
 tions to the hypoxic microenvironment. The up-regulation 432  
 of MCTs in the plasma membrane of different type of 433  
 tumors is an adaptive mechanism to allow continuous high 434  
 glycolytic rates, by exporting the accumulating end-product, 435  
 lactate, as well as to counteract acid-induced apoptosis or 436  
 necrosis. However, this may not be the case for all tumor 437

438 types, hence, further studies characterizing MCT expression  
439 in other tumors are warranted.

440 **MCTs as therapeutic targets in cancer**

441 Considering the major role of MCTs in cancer metabolic  
442 adaptations, MCT inhibition will have a direct effect on cell  
443 pH regulation, therefore having an important effect on cancer  
444 cell viability. Also, MCTs have a crucial role as gate-  
445 keepers of the metabolic symbiosis between cancer cells  
446 (Sonveaux et al. 2008), so, targeting these transporters will  
447 “shut-down” the advantageous symbiosis, having an impor-  
448 tant impact on tumor homeostasis. Finally, taking into ac-  
449 count the contribution of lactate to the malignant phenotype,  
450 together with the up-regulation of MCT in some tumors,  
451 MCT inhibition may be a useful therapeutic approach in  
452 cancer. This will then counteract the effects of lactate and,  
453 therefore, increase the immune response against tumor cells  
454 and decrease migration capacity of cells, among others.

455 In fact, it was demonstrated that in vitro MCT1 inhibition  
456 decreases intracellular pH (Sonveaux et al. 2008; Fang et al.  
457 2006; Wahl et al. 2002), leads to cell death (Sonveaux et al.  
458 2008; Mathupala et al. 2004; Fang et al. 2006; Wahl et al.  
459 2002; Colen et al. 2006) and, importantly, enhances cancer  
460 cell radiosensitivity (Colen et al. 2006). Additionally, silenc-  
461 ing of MCT4 results in decreased cancer cell migration  
462 (Gallagher et al. 2007), by mechanisms that also involve  
463 interaction of MCT4 with  $\beta_1$ -integrin (Gallagher et al.  
464 2009). In opposition, another study showed that silencing  
465 of MCT1 or MCT4 inhibited cancer cell invasion, but did not  
466 influence cell migration (Izumi et al. 2011). Importantly, prom-  
467 ising results using in vivo models have also been reported,  
468 where administration of  $\alpha$ -cyano-4-hydroxycinnamic acid  
469 (CHC), a classical non-specific inhibitor of MCT1 (Fig. 1),  
470 retarded tumor growth, rendered tumor cells sensitive to  
471 radiation (Sonveaux et al. 2008), induced tumor necrosis  
472 and decreased tumor invasion (Colen et al. 2011). The  
473 importance of MCTs for in vivo tumor growth was  
474 confirmed by a more specific approach, where combined  
475 silencing of MCT1 and MCT4 or silencing of CD147 sig-  
476 nificantly reduced glycolytic flux and tumor growth (Le et  
477 al. 2011). There are also other MCT inhibitors described  
478 (Fig. 1) (Le et al. 2011; Ovens et al. 2010; Wang & Morris  
479 2007; Belt et al. 1979; Kobayashi et al. 2006; Ben-Horin  
480 et al. 1995; Ben-Yoseph et al. 1998), which are either non-  
481 isoform specific (AR-C155858 targets both MCT1 and  
482 MCT2 (Ovens et al. 2010)) or target other molecules besides  
483 MCTs (e.g., lonidamine primary target is hexokinase II  
484 (Floridi et al. 1981)). However, these compounds have been  
485 little explored as lactate transport inhibitors in the cancer  
486 context (Le et al. 2011; Wang & Morris 2007; Belt et al.  
487 1979; Ben-Yoseph et al. 1998).

**MCT regulation by chaperones**

488  
489 As previously mentioned, functional expression of MCTs is  
490 regulated by accessory proteins, such as CD147, that are  
491 involved in trafficking and anchoring of plasma membrane  
492 proteins.

493 Regulation of MCT1 and MCT4, but not MCT2, by  
494 CD147, was supported by evidence on human tissues  
495 (Pinheiro et al. 2009a, b, 2010a, b), complementing the in  
496 vitro and some in vivo studies previously described  
497 (Gallagher et al. 2007; Kirk et al. 2000; Makuc et al.  
498 2004; Philp et al. 2003; Deora et al. 2005; Wilson et al.  
499 2005). Indeed, the prognostic value of CD147 appears to be  
500 associated with its co-expression with MCT1, as observed in  
501 breast and gastric carcinomas (Pinheiro et al. 2009b, 2010b).  
502 Therefore, targeting CD147, which will also impair MCT  
503 activity, appears to be a rational therapeutic approach  
504 against human cancer, as already described both in vitro  
505 and in vivo (Schneiderhan et al. 2009; Su et al. 2009; Baba  
506 et al. 2008). Besides the role of CD147 as chaperone for  
507 MCT1 and MCT4 plasma membrane trafficking and activ-  
508 ity, these MCT isoforms also have been implicated in  
509 CD147 proper membrane expression (Gallagher et al.  
510 2007; Deora et al. 2005). Thus, the contribution of MCTs  
511 to the malignant phenotype is not limited to their own  
512 function as lactate transporters and pH regulators, but may  
513 also be further enhanced by their role in regulating CD147  
514 expression. If so, MCTs may also have indirect roles in  
515 tumor growth and angiogenesis, as well as cancer cell mi-  
516 gration and invasion (Nabeshima et al. 2006; Yan et al.  
517 2005; Iacono et al. 2007; Slomiany et al. 2009).

518 In vitro studies show that CD44 may also function as a  
519 chaperone for MCT expression (Slomiany et al. 2009).  
520 Additionally, parallel analysis of CD44 and MCTs expres-  
521 sions in human cancer samples, show that CD44 is associ-  
522 ated with MCT1 in lung cancer (Pinheiro et al. 2010a) and  
523 both MCT1 and MCT4 in prostate cancer (Hao et al. 2010).  
524 As a result, MCT expression may also have a role in cell  
525 growth control, adhesion, migration, invasion, and chemo-  
526 resistance (Marhaba & Zoller 2004; Toole & Slomiany  
527 2008a, b), through interaction with CD44.

528 Importantly, there is a relevant number of cases with  
529 MCT plasma membrane expression lacking both CD147  
530 or CD44 in the plasma membrane ~~co-expression~~, suggesting  
531 that a not yet identified chaperone may be involved in MCT  
532 trafficking to the plasma membrane.

**Conclusion**

533  
534 Carcinogenesis has been viewed as a progressive process  
535 described as “somatic evolution” as it requires a sequence of  
536 genetic changes; however, recent models of carcinogenesis

537 integrate the neo-Darwinian evolution, stating that phenotypic  
 538 properties are retained or lost based on their contribution to  
 539 fitness for survival, with cell-environment interactions. This  
 540 new concept of carcinogenesis was applied to explain the  
 541 Warburg phenomenon, i.e., the preference for the glycolytic  
 542 phenotype, even in the presence of oxygen. Thus, as cancer  
 543 progression proceeds, mutations in tumor cells increase and  
 544 traits that are found in invasive cancers, like the hyper-  
 545 glycolytic and acid-resistant phenotypes, arise as adaptive  
 546 mechanisms to environmental proliferative constraints, such  
 547 as hypoxia.

548 Many players have been associated with these cellular  
 549 adaptations; however, although an important role of lactate  
 550 transporters could be anticipated in the context of the Warburg  
 551 effect, the underlying role of MCTs in solid tumors are far  
 552 from being understood. Thus, additional studies characteriz-  
 553 ing MCT expression in tumor types not yet analyzed, confir-  
 554 mation of the results already published as well as additional  
 555 functional studies are needed to reinforce the contribution of  
 556 MCTs for cancer maintenance and aggressiveness.

Q2 558 **References**

559 Asada K, Miyamoto K, Fukutomi T, Tsuda H, Yagi Y, Wakazono K,  
 560 Oishi S, Fukui H, Sugimura T, Ushijima T (2003) Reduced  
 561 expression of GNA11 and silencing of MCT1 in human breast  
 562 cancers. *Oncology* 64:380–8  
 563 Baba M, Inoue M, Itoh K, Nishizawa Y (2008) Blocking CD147  
 564 induces cell death in cancer cells through impairment of  
 565 glycolytic energy metabolism. *Biochem Biophys Res Commun*  
 566 374:111–6  
 567 Baumann MU, Zamudio S, Illsley NP (2007) Hypoxic upregulation of  
 568 glucose transporters in BeWo choriocarcinoma cells is mediated  
 569 by hypoxia-inducible factor-1. *Am J Physiol Cell Physiol* 293:  
 570 C477–C485  
 571 Belt JA, Thomas JA, Buchsbaum RN, Racker E (1979) Inhibition of  
 572 lactate transport and glycolysis in Ehrlich ascites tumor cells by  
 573 bioflavonoids. *Biochemistry* 18:3506–11  
 574 Ben-Horin H, Tassini M, Vivi A, Navon G, Kaplan O (1995) Mechan-  
 575 ism of action of the antineoplastic drug lonidamine: 31P and  
 576 13 C nuclear magnetic resonance studies. *Cancer Res* 55:2814–21  
 577 Ben-Yoseph O, Lyons JC, Song CW, Ross BD (1998) Mechanism of  
 578 action of lonidamine in the 9 L brain tumor model involves  
 579 inhibition of lactate efflux and intracellular acidification. *J Neuro-  
 580 oncol* 36:149–57  
 581 Bergersen L, Johannsson E, Veruki ML, Nagelhus EA, Halestrap A,  
 582 Sejersted OM, Ottersen OP (1999) Cellular and subcellular expres-  
 583 sion of monocarboxylate transporters in the pigment epitheli-  
 584 um and retina of the rat. *Neuroscience* 90:319–31  
 585 Brand K (1985) Glutamine and glucose metabolism during thymocyte  
 586 proliferation. *Pathways of glutamine and glutamate metabolism.*  
 587 *Biochem J* 228:353–61  
 588 Brizel DM, Schroeder T, Scher RL, Walenta S, Clough RW, Dewhirst  
 589 MW, Mueller-Klieser W (2001) Elevated tumor lactate concen-  
 590 trations predict for an increased risk of metastases in head-and-  
 591 neck cancer. *Int J Radiat Oncol Biol Phys* 51:349–53  
 592 Broer S, Schneider HP, Broer A, Rahman B, Hamprecht B, Deitmer  
 593 JW (1998) Characterization of the monocarboxylate transporter 1

expressed in *Xenopus laevis* oocytes by changes in cytosolic pH. *Biochem J* 333(Pt 1):167–74 594  
 Broer S, Broer A, Schneider HP, Stegen C, Halestrap AP, Deitmer JW 595  
 (1999) Characterization of the high-affinity monocarboxylate 596  
 transporter MCT2 in *Xenopus laevis* oocytes. *Biochem J* 341(Pt 597  
 3):529–35 598  
 Carpenter L, Poole RC, Halestrap AP (1996) Cloning and sequencing 600  
 of the monocarboxylate transporter from mouse Ehrlich Lettre 601  
 tumour cell confirms its identity as MCT1 and demonstrates that 602  
 glycosylation is not required for MCT1 function. *Biochim* 603  
*Biophys Acta* 1279:157–63 604  
 Chen C, Pore N, Behrooz A, Ismail-Beigi F, Maity A (2001) Regula- 605  
 tion of glut1 mRNA by hypoxia-inducible factor-1. Interaction 606  
 between H-ras and hypoxia. *J Biol Chem* 276:9519–25 607  
 Chen H, Wang L, Beretov J, Hao J, Xiao W, Li Y (2010) Co- 608  
 expression of CD147/EMMPRIN with monocarboxylate trans- 609  
 porters and multiple drug resistance proteins is associated with 610  
 epithelial ovarian cancer progression. *Clin Exp Metastasis* 611  
 27:557–69 612  
 Chiche J, Ilc K, Laferriere J, Trottier E, Dayan F, Mazure NM, 613  
 Brahimi-Horn MC, Pouyssegur J (2009) Hypoxia-inducible 614  
 carbonic anhydrase IX and XII promote tumor cell growth by 615  
 counteracting acidosis through the regulation of the intracellular 616  
 pH. *Cancer Res* 69:358–68 617  
 Colen CB, Seraji-Bozorgzad N, Marples B, Galloway MP, Sloan AE, 618  
 Mathupala SP (2006) Metabolic remodeling of malignant gliomas 619  
 for enhanced sensitization during radiotherapy: an in vitro study. 620  
*Neurosurgery* 59:1313–23 621  
 Colen CB, Shen Y, Ghoddoussi F, Yu P, Francis TB, Koch BJ, 622  
 Monterey MD, Galloway MP, Sloan AE, Mathupala SP (2011) 623  
 Metabolic targeting of lactate efflux by malignant glioma inhibits 624  
 invasiveness and induces necrosis: an in vivo study. *Neoplasia* 625  
 13:620–32 626  
 Cuff MA, Lambert DW, Shirazi-Beechey SP (2002) Substrate-induced 627  
 regulation of the human colonic monocarboxylate transporter, 628  
 MCT1. *J Physiol* 539:361–71 629  
 Dang CV, Semenza GL (1999) Oncogenic alterations of metabolism. 630  
*Trends Biochem Sci* 24:68–72 631  
 Perez de HF, Wood IS, Trayhurn P (2009) Hypoxia stimulates lactate 632  
 release and modulates monocarboxylate transporter (MCT1, MCT2, 633  
 and MCT4) expression in human adipocytes. *Pflugers Arch* 634  
 DeBerardinis RJ, Mancuso A, Daikhin E, Nissim I, Yudkoff M, Wehrli 635  
 S, Thompson CB (2007) Beyond aerobic glycolysis: transformed 636  
 cells can engage in glutamine metabolism that exceeds the re- 637  
 quirement for protein and nucleotide synthesis. *Proc Natl Acad* 638  
*Sci U S A* 104:19345–50 639  
 Deora AA, Philp N, Hu J, Bok D, Rodriguez-Boulan E (2005) Mech- 640  
 anisms regulating tissue-specific polarity of monocarboxylate 641  
 transporters and their chaperone CD147 in kidney and retinal 642  
 epithelia. *Proc Natl Acad Sci U S A* 102:16245–50 643  
 Dimmer KS, Friedrich B, Lang F, Deitmer JW, Broer S (2000) The 644  
 low-affinity monocarboxylate transporter MCT4 is adapted to the 645  
 export of lactate in highly glycolytic cells. *Biochem J* 350(Pt 646  
 1):219–27 647  
 Fang J, Quinones QJ, Holman TL, Morowitz MJ, Wang Q, Zhao H, 648  
 Sivo F, Maris JM, Wahl ML (2006) The H<sup>+</sup>-linked monocarbox- 649  
 ylate transporter (MCT1/SLC16A1): a potential therapeutic target 650  
 for high-risk neuroblastoma. *Mol Pharmacol* 70:2108–15 651  
 Firth JD, Ebert BL, Ratcliffe PJ (1995) Hypoxic regulation of lactate 652  
 dehydrogenase A. Interaction between hypoxia-inducible factor 1 653  
 and cAMP response elements. *J Biol Chem* 270:21021–7 654  
 Fischer K, Hoffmann P, Voelkl S, Meidenbauer N, Ammer J, Edinger 655  
 M, Gottfried E, Schwarz S, Rothe G, Hoves S, Renner K, 656  
 Timischl B, Mackensen A, Kunz-Schughart L, Andreesen R, 657  
 Krause SW, Kreutz M (2007) Inhibitory effect of tumor cell- 658  
 derived lactic acid on human T cells. *Blood* 109:3812–9 659

660 Floridi A, Paggi MG, Marcante ML, Silvestrini B, Caputo A, De MC  
661 (1981) Lonidamine, a selective inhibitor of aerobic glycolysis of  
662 murine tumor cells. *J Natl Cancer Inst* 66:497–9

663 Frauwirth KA, Thompson CB (2004) Regulation of T lymphocyte  
664 metabolism. *J Immunol* 172:4661–5

665 Friesema EC, Ganguly S, Abdalla A, Manning Fox JE, Halestrap AP,  
666 Visser TJ (2003) Identification of monocarboxylate transporter  
667 8 as a specific thyroid hormone transporter. *J Biol Chem*  
668 278:40128–35

669 Froberg MK, Gerhart DZ, Enerson BE, Manivel C, Guzman-Paz M,  
670 Seacotte N, Drewes LR (2001) Expression of monocarboxylate  
671 transporter MCT1 in normal and neoplastic human CNS tissues.  
672 *Neuroreport* 12:761–5

673 Gallagher SM, Castorino JJ, Wang D, Philp NJ (2007) Monocarbox-  
674 ylate transporter 4 regulates maturation and trafficking of CD147  
675 to the plasma membrane in the metastatic breast cancer cell line  
676 MDA-MB-231. *Cancer Res* 67:4182–9

677 Gallagher SM, Castorino JJ, Philp NJ (2009) Interaction of monocar-  
678 boxylate transporter 4 with  $\beta$ 1-integrin and its role in cell  
679 migration. *Am J Physiol Cell Physiol* 296:C414–C421

680 Garcia CK, Brown MS, Pathak RK, Goldstein JL (1995) cDNA cloning  
681 of MCT2, a second monocarboxylate transporter expressed in  
682 different cells than MCT1. *J Biol Chem* 270:1843–9

683 Gatenby RA, Gillies RJ (2004) Why do cancers have high aerobic  
684 glycolysis? *Nat Rev Cancer* 4:891–9

685 Gillies RJ, Gatenby RA (2007) Adaptive landscapes and emergent  
686 phenotypes: why do cancers have high glycolysis? *J Bioenerg*  
687 *Biomembr* 39:251–7

688 Greijer AE, van der GP, Kemming D, Shvarts A, Semenza GL, Meijer  
689 GA, van de Wiel MA, Belien JA, van Diest PJ, van der WE  
690 (2005) Up-regulation of gene expression by hypoxia is mediated  
691 predominantly by hypoxia-inducible factor 1 (HIF-1). *J Pathol*  
692 206:291–304

693 Grollman EF, Philp NJ, McPhie P, Ward RD, Sauer B (2000) Deter-  
694 mination of transport kinetics of chick MCT3 monocarboxylate  
695 transporter from retinal pigment epithelium by expression in  
696 genetically modified yeast. *Biochemistry* 39:9351–7

697 Halestrap AP, Denton RM (1974) Specific inhibition of pyruvate  
698 transport in rat liver mitochondria and human erythrocytes by  
699 alpha-cyano-4-hydroxycinnamate. *Biochem J* 138:313–6

700 Halestrap AP, Meredith D (2004) The SLC16 gene family—from  
701 monocarboxylate transporters (MCTs) to aromatic amino acid  
702 transporters and beyond. *Pflugers Arch* 447:619–28

703 Halestrap AP, Price NT (1999) The proton-linked monocarboxylate  
704 transporter (MCT) family: structure, function and regulation.  
705 *Biochem J* 343(Pt 2):281–99

706 Hao J, Chen H, Madigan MC, Cozzi PJ, Beretov J, Xiao W, Delprado  
707 WJ, Russell PJ, Li Y (2010) Co-expression of CD147 (EMM-  
708 PRIN), CD44v3-10, MDR1 and monocarboxylate transporters is  
709 associated with prostate cancer drug resistance and progression.  
710 *Br J Cancer* 103:1008–18

711 Hu CJ, Wang LY, Chodosh LA, Keith B, Simon MC (2003) Differen-  
712 tial roles of hypoxia-inducible factor 1alpha (HIF-1alpha) and  
713 HIF-2alpha in hypoxic gene regulation. *Mol Cell Biol*  
714 23:9361–74

715 Hunt TK, Aslam RS, Beckert S, Wagner S, Ghani QP, Hussain MZ,  
716 Roy S, Sen CK (2007) Aerobically derived lactate stimulates  
717 revascularization and tissue repair via redox mechanisms. *Anti-*  
718 *oxid Redox Signal* 9:1115–24

719 Iacono KT, Brown AL, Greene MI, Saouaf SJ (2007) CD147 immu-  
720 noglobulin superfamily receptor function and role in pathology.  
721 *Exp Mol Pathol* 83:283–95

722 Izumi H, Takahashi M, Uramoto H, Nakayama Y, Oyama T, Wang KY,  
723 Sasaguri Y, Nishizawa S, Kohno K (2011) Monocarboxylate  
724 transporters 1 and 4 are involved in the invasion activity of human  
725 lung cancer cells. *Cancer Sci* 102:1007–13

Jackson VN, Price NT, Carpenter L, Halestrap AP (1997) Cloning of  
the monocarboxylate transporter isoform MCT2 from rat testis  
provides evidence that expression in tissues is species-specific  
and may involve post-transcriptional regulation. *Biochem J* 324  
(Pt 2):447–53

Jadvar H, Alavi A, Gambhir SS (2009) 18 F-FDG uptake in lung,  
breast, and colon cancers: molecular biology correlates and  
disease characterization. *J Nucl Med* 50:1820–7

Juel C (1997) Lactate-proton cotransport in skeletal muscle. *Physiol*  
*Rev* 77:321–58

Kido Y, Tamai I, Okamoto M, Suzuki F, Tsuji A (2000) Functional  
clarification of MCT1-mediated transport of monocarboxylic  
acids at the blood-brain barrier using in vitro cultured cells and  
in vivo BUI studies. *Pharm Res* 17:55–62

Kim DK, Kanai Y, Chairoungdua A, Matsuo H, Cha SH, Endou H  
(2001) Expression cloning of a Na<sup>+</sup>-independent aromatic amino  
acid transporter with structural similarity to H<sup>+</sup>/monocarboxylate  
transporters. *J Biol Chem* 276:17221–8

Kim JW, Tchernyshyov I, Semenza GL, Dang CV (2006) HIF-1-  
mediated expression of pyruvate dehydrogenase kinase: a meta-  
bolic switch required for cellular adaptation to hypoxia. *Cell*  
*Metab* 3:177–85

Kirk P, Wilson MC, Heddle C, Brown MH, Barclay AN, Halestrap AP  
(2000) CD147 is tightly associated with lactate transporters  
MCT1 and MCT4 and facilitates their cell surface expression.  
*EMBO J* 19:3896–904

Kobayashi M, Otsuka Y, Itagaki S, Hirano T, Iseki K (2006) Inhibitory  
effects of statins on human monocarboxylate transporter 4. *Int J*  
*Pharm* 317:19–25

Koukourakis MI, Giatromanolaki A, Harris AL, Sivridis E (2006)  
Comparison of metabolic pathways between cancer cells and  
stromal cells in colorectal carcinomas: a metabolic survival role  
for tumor-associated stroma. *Cancer Res* 66:632–7

Koukourakis MI, Giatromanolaki A, Bougioukas G, Sivridis E (2007)  
Lung cancer: a comparative study of metabolism related protein  
expression in cancer cells and tumor associated stroma. *Cancer*  
*Biol Ther* 6:1476–9

Kumar VB, Viji RI, Kiran MS, Sudhakaran PR (2007) Endothelial cell  
response to lactate: implication of PAR modification of VEGF. *J*  
*Cell Physiol* 211:477–85

Ladanyi M, Antonescu CR, Drobnjak M, Baren A, Lui MY, Golde  
DW, Cordon-Cardo C (2002) The precystalline cytoplasmic  
granules of alveolar soft part sarcoma contain monocarboxylate  
transporter 1 and CD147. *Am J Pathol* 160:1215–21

Lambert DW, Wood IS, Ellis A, Shirazi-Beechey SP (2002) Molecular  
changes in the expression of human colonic nutrient transporters  
during the transition from normality to malignancy. *Br J Cancer*  
86:1262–9

Le FR, Chiche J, Marchiq I, Naiken T, Ilk K, Murray CM, Critchlow  
SE, Roux D, Simon MP, Pouyssegur J (2011) CD147 subunit of  
lactate/H<sup>+</sup>symporters MCT1 and hypoxia-inducible MCT4 is  
critical for energetics and growth of glycolytic tumors. *Proc Natl*  
*Acad Sci U S A* 108:16663–8

Li KK, Pang JC, Ching AK, Wong CK, Kong X, Wang Y, Zhou L,  
Chen Z, Ng HK (2009) miR-124 is frequently down-regulated in  
medulloblastoma and is a negative regulator of SLC16A1. *Hum*  
*Pathol* 40:1234–43

Lu H, Forbes RA, Verma A (2002) Hypoxia-inducible factor 1 activa-  
tion by aerobic glycolysis implicates the Warburg effect in carci-  
nogenesis. *J Biol Chem* 277:23111–5

Makuc J, Cappellaro C, Boles E (2004) Co-expression of a mammalian  
accessory trafficking protein enables functional expression of the  
rat MCT1 monocarboxylate transporter in *Saccharomyces cerevisiae*.  
*FEMS Yeast Res* 4:795–801

Manning Fox JE, Meredith D, Halestrap AP (2000) Characterisation of  
human monocarboxylate transporter 4 substantiates its role in

792	lactic acid efflux from skeletal muscle. <i>J Physiol</i> 529(Pt 2):285–93	858
793		859
794	Marhaba R, Zoller M (2004) CD44 in cancer progression: adhesion, migration and growth regulation. <i>J Mol Histol</i> 35:211–31	860
795		861
796	Mathupala SP, Parajuli P, Sloan AE (2004) Silencing of monocarboxylate transporters via small interfering ribonucleic acid inhibits glycolysis and induces cell death in malignant glioma: an in vitro study. <i>Neurosurgery</i> 55:1410–9	862
797		863
798		864
799		865
800	Mazurek S, Grimm H, Oehmke M, Weisse G, Teigelkamp S, Eigenbrodt E (2000) Tumor M2-PK and glutaminolytic enzymes in the metabolic shift of tumor cells. <i>Anticancer Res</i> 20:5151–4	866
801		867
802		868
803	Mazurek S, Zwerschke W, Jansen-Durr P, Eigenbrodt E (2001a) Effects of the human papilloma virus HPV-16 E7 oncoprotein on glycolysis and glutaminolysis: role of pyruvate kinase type M2 and the glycolytic-enzyme complex. <i>Biochem J</i> 356:247–56	869
804		870
805		871
806		872
807		873
808	Mazurek S, Zwerschke W, Jansen-Durr P, Eigenbrodt E (2001b) Metabolic cooperation between different oncogenes during cell transformation: interaction between activated ras and HPV-16 E7. <i>Oncogene</i> 20:6891–8	874
809		875
810		876
811		877
812	Moreno-Sanchez R, Rodriguez-Enriquez S, Marin-Hernandez A, Saavedra E (2007) Energy metabolism in tumor cells. <i>FEBS J</i> 274:1393–418	878
813		879
814		880
815	Nabeshima K, Iwasaki H, Koga K, Hojo H, Suzumiya J, Kikuchi M (2006) Emmprin (basigin/CD147): matrix metalloproteinase modulator and multifunctional cell recognition molecule that plays a critical role in cancer progression. <i>Pathol Int</i> 56:359–67	881
816		882
817		883
818		884
819	Ovens MJ, Davies AJ, Wilson MC, Murray CM, Halestrap AP (2010) AR-C155858 is a potent inhibitor of monocarboxylate transporters MCT1 and MCT2 that binds to an intracellular site involving transmembrane helices 7–10. <i>Biochem J</i> 425:523–30	885
820		886
821		887
822		888
823	Papandreou I, Cairns RA, Fontana L, Lim AL, Denko NC (2006) HIF-1 mediates adaptation to hypoxia by actively downregulating mitochondrial oxygen consumption. <i>Cell Metab</i> 3:187–97	889
824		890
825		891
826	Pellerin L, Pellegrini G, Bittar PG, Charnay Y, Bouras G, Martin JL, Stella N, Magistretti PJ (1998) Evidence supporting the existence of an activity-dependent astrocyte-neuron lactate shuttle. <i>Dev Neurosci</i> 20:291–9	892
827		893
828		894
829		895
830	Pertega-Gomes N, Vizcaino JR, Miranda-Goncalves V, Pinheiro C, Silva J, Pereira H, Monteiro P, Henrique RM, Reis RM, Lopes C, Baltazar F (2011) Monocarboxylate transporter 4 (MCT4) and CD147 overexpression is associated with poor prognosis in prostate cancer. <i>BMC Cancer</i> 11:312	896
831		897
832		898
833		899
834		900
835	Philp NJ, Yoon H, Grollman EF (1998) Monocarboxylate transporter MCT1 is located in the apical membrane and MCT3 in the basal membrane of rat RPE. <i>Am J Physiol</i> 274:R1824–R1828	901
836		902
837		903
838	Philp NJ, Ochrietor JD, Rudoy C, Muramatsu T, Linser PJ (2003) Loss of MCT1, MCT3, and MCT4 expression in the retinal pigment epithelium and neural retina of the 5A11/basigin-null mouse. <i>Invest Ophthalmol Vis Sci</i> 44:1305–11	904
839		905
840		906
841		907
842	Pinheiro C, Longatto-Filho A, Scapulatempo C, Ferreira L, Martins S, Pellerin L, Rodrigues M, Alves VA, Schmitt F, Baltazar F (2008a) Increased expression of monocarboxylate transporters 1, 2, and 4 in colorectal carcinomas. <i>Virchows Arch</i> 452:139–46	908
843		909
844		910
845		911
846	Pinheiro C, Longatto-Filho A, Ferreira L, Pereira SM, Etlinger D, Moreira MA, Jube LF, Queiroz GS, Schmitt F, Baltazar F (2008b) Increasing expression of monocarboxylate transporters 1 and 4 along progression to invasive cervical carcinoma. <i>Int J Gynecol Pathol</i> 27:568–74	912
847		913
848		914
849		915
850		916
851	Pinheiro C, Longatto A, Pereira SMM, Etlinger D, Moreira MAR, Jube LF, Queiroz GS, Schmitt F, Baltazar F (2009a) Monocarboxylate transporters 1 and 4 are associated with CD147 in cervical carcinoma. <i>Disease Markers</i> 26:97–103	917
852		918
853		919
854		920
855	Pinheiro C, Longatto-Filho A, Simoes K, Jacob CE, Bresciani CJ, Zilberstein B, Ceconello I, Alves VA, Schmitt F, Baltazar F (2009b) The prognostic value of CD147/EMMPRIN is associated with monocarboxylate transporter 1 co-expression in gastric cancer. <i>Eur J Cancer</i> 45:2418–24	921
856		922
857		923
	Pinheiro C, Reis RM, Ricardo S, Longatto-Filho A, Schmitt F, Baltazar F (2010a) Expression of monocarboxylate transporters 1, 2, and 4 in human tumours and their association with CD147 and CD44. <i>J Biomed Biotechnol</i> 2010:427694	924
		925
	Pinheiro C, Albergaria A, Paredes J, Sousa B, Dufloth R, Vieira D, Schmitt F, Baltazar F (2010b) Monocarboxylate transporter 1 is up-regulated in basal-like breast carcinoma. <i>Histopathology</i> 56:860–7	926
		927
	Poole RC, Cranmer SL, Halestrap AP, Levi AJ (1990) Substrate and inhibitor specificity of monocarboxylate transport into heart cells and erythrocytes. Further evidence for the existence of two distinct carriers. <i>Biochem J</i> 269:827–9	928
		929
	Poole RC, Sansom CE, Halestrap AP (1996) Studies of the membrane topology of the rat erythrocyte H <sup>+</sup> /lactate cotransporter (MCT1). <i>Biochem J</i> 320(Pt 3):817–24	930
		931
	Porporato PE, Dhup S, Dadhich RK, Copetti T, Sonveaux P (2011) Anticancer targets in the glycolytic metabolism of tumors: a comprehensive review. <i>Front Pharmacol</i> 2:49	932
		933
	Quennet V, Yaromina A, Zips D, Rosner A, Walenta S, Baumann M, Mueller-Klieser W (2006) Tumor lactate content predicts for response to fractionated irradiation of human squamous cell carcinomas in nude mice. <i>Radiother Oncol</i> 81:130–5	934
		935
	Ritzhaupt A, Wood IS, Ellis A, Hosie KB, Shirazi-Beechey SP (1998) Identification of a monocarboxylate transporter isoform type 1 (MCT1) on the luminal membrane of human and pig colon. <i>Biochem Soc Trans</i> 26:S120	936
		937
	Rudrabhatla SR, Mahaffey CL, Mummert ME (2006) Tumor microenvironment modulates hyaluronan expression: the lactate effect. <i>J Invest Dermatol</i> 126:1378–87	938
		939
	Saier MH Jr, Yen MR, Noto K, Tamang DG, Elkan C (2009) The Transporter Classification Database: recent advances. <i>Nucleic Acids Res</i> 37:D274–D278	940
		941
	Schneiderhan W, Scheler M, Holzmann KH, Marx M, Gschwend JE, Buchholz M, Gress TM, Adler G, Seufferlein T, Oswald F (2009) CD147 Silencing Inhibits Lactate Transport and Reduces Malignant Potential of pancreatic cancer cells in in-vivo and in-vitro Models. <i>Gut</i> 58:1391–8	942
		943
	Schwicker G, Walenta S, Sundfor K, Rofstad EK, Mueller-Klieser W (1995) Correlation of high lactate levels in human cervical cancer with incidence of metastasis. <i>Cancer Res</i> 55:4757–9	944
		945
	Semenza GL (1998a) Hypoxia-inducible factor 1 and the molecular physiology of oxygen homeostasis. <i>J Lab Clin Med</i> 131:207–14	946
		947
	Semenza GL (1998b) Hypoxia-inducible factor 1: master regulator of O <sub>2</sub> homeostasis. <i>Curr Opin Genet Dev</i> 8:588–94	948
		949
	Semenza GL (1999) Regulation of mammalian O <sub>2</sub> homeostasis by hypoxia-inducible factor 1. <i>Annu Rev Cell Dev Biol</i> 15:551–78	950
		951
	Semenza GL (2000) Hypoxia, clonal selection, and the role of HIF-1 in tumor progression. <i>Crit Rev Biochem Mol Biol</i> 35:71–103	952
		953
	Semenza GL (2001) Hypoxia-inducible factor 1: control of oxygen homeostasis in health and disease. <i>Pediatr Res</i> 49:614–7	954
		955
	Slomiany MG, Grass GD, Robertson AD, Yang XY, Maria BL, Beeson C, Toole BP (2009) Hyaluronan, CD44, and emmprin regulate lactate efflux and membrane localization of monocarboxylate transporters in human breast carcinoma cells. <i>Cancer Res</i> 69:1293–301	956
		957
	Smallbone K, Gatenby RA, Gillies RJ, Maini PK, Gavaghan DJ (2007) Metabolic changes during carcinogenesis: potential impact on invasiveness. <i>J Theor Biol</i> 244:703–13	958
		959
	Sonveaux P, Vegrin F, Schroeder T, Wergin MC, Verrax J, Rabbani ZN, De Saedeleer CJ, Kennedy KM, Diepart C, Jordan BF, Kelley MJ, Gallez B, Wahl ML, Feron O, Dewhirst MW (2008) Targeting lactate-fueled respiration selectively kills hypoxic tumor cells in mice. <i>J Clin Invest</i> 118:3930–42	960



924 Spector JA, Mehrara BJ, Greenwald JA, Saadeh PB, Steinbrech DS, 957  
 925 Bouletreau PJ, Smith LP, Longaker MT (2001) Osteoblast expres- 958  
 926 sion of vascular endothelial growth factor is modulated by the 959  
 927 extracellular microenvironment. *Am J Physiol Cell Physiol* 280: 960  
 928 C72–C80 961  
 929 Stern R, Shuster S, Neudecker BA, Formby B (2002) Lactate stimulates 962  
 930 fibroblast expression of hyaluronan and CD44: the Warburg effect 963  
 931 revisited. *Exp Cell Res* 276:24–31 964  
 932 Su J, Chen X, Kanekura T (2009) A CD147-targeting siRNA inhibits 965  
 933 the proliferation, invasiveness, and VEGF production of human 966  
 934 malignant melanoma cells by down-regulating glycolysis. *Cancer* 967  
 935 *Lett* 273:140–7 968  
 936 Svastova E, Hulikova A, Rafajova M, Zat'ovicova M, Gibadulinova A, 969  
 937 Casini A, Cecchi A, Scozzafava A, Supuran CT, Pastorek J, 970  
 938 Pastorekova S (2004) Hypoxia activates the capacity of tumor- 971  
 939 associated carbonic anhydrase IX to acidify extracellular pH. 972  
 940 *FEBS Lett* 577:439–45 973  
 941 Toole BP, Slomiany MG (2008a) Hyaluronan: a constitutive regulator 974  
 942 of chemoresistance and malignancy in cancer cells. *Semin Cancer* 975  
 943 *Biol* 18:244–50 976  
 944 Toole BP, Slomiany MG (2008b) Hyaluronan, CD44 and Emmprin: 977  
 945 partners in cancer cell chemoresistance. *Drug Resist Updat* 978  
 946 11:110–21 979  
 947 Ullah MS, Davies AJ, Halestrap AP (2006) The plasma membrane 980  
 948 lactate transporter MCT4, but not MCT1, is up-regulated by 981  
 949 hypoxia through a HIF-1alpha-dependent mechanism. *J Biol* 982  
 950 *Chem* 281:9030–7 983  
 951 Wahl ML, Owen JA, Burd R, Herlands RA, Nogami SS, Rodeck U, 984  
 952 Berd D, Leeper DB, Owen CS (2002) Regulation of intracellular 985  
 953 pH in human melanoma: potential therapeutic implications. *Mol* 986  
 954 *Cancer Ther* 1:617–28 987  
 955 Walenta S, Salameh A, Lyng H, Evensen JF, Mitze M, Rofstad EK, 988  
 956 Mueller-Klieser W (1997) Correlation of high lactate levels in 989  
 head and neck tumors with incidence of metastasis. *Am J Pathol* 957  
 150:409–15 958  
 Walenta S, Wetterling M, Lehrke M, Schwickert G, Sundfor K, Rofstad 959  
 EK, Mueller-Klieser W (2000) High lactate levels predict likeli- 960  
 hood of metastases, tumor recurrence, and restricted patient sur- 961  
 vival in human cervical cancers. *Cancer Res* 60:916–21 962  
 Walenta S, Schroeder T, Mueller-Klieser W (2002) Metabolic mapping 963  
 with bioluminescence: basic and clinical relevance. *Biomol Eng* 964  
 18:249–62 965  
 Wang Q, Morris ME (2007) Flavonoids modulate monocarboxylate 966  
 transporter-1-mediated transport of gamma-hydroxybutyrate in 967  
 vitro and in vivo. *Drug Metab Dispos* 35:201–8 968  
 Wang T, Marquardt C, Foker J (1976) Aerobic glycolysis during 969  
 lymphocyte proliferation. *Nature* 261:702–5 970  
 Warburg O (1956) On the origin of cancer cells. *Science* 123:309–14 971  
 Warnecke C, Zaborowska Z, Kurreck J, Erdmann VA, Frei U, 972  
 Wiesener M, Eckardt KU (2004) Differentiating the functional 973  
 role of hypoxia-inducible factor (HIF)-1alpha and HIF-2alpha 974  
 (EPAS-1) by the use of RNA interference: erythropoietin is a 975  
 HIF-2alpha target gene in Hep3B and Kelly cells. *FASEB J* 976  
 18:1462–4 977  
 Wilson MC, Meredith D, Fox JE, Manoharan C, Davies AJ, Halestrap 978  
 AP (2005) Basigin (CD147) is the target for organomercurial 979  
 inhibition of monocarboxylate transporter isoforms 1 and 4: the 980  
 ancillary protein for the insensitive MCT2 is EMBIGIN (gp70). *J* 981  
*Biol Chem* 280:27213–21 982  
 Wykoff CC, Beasley NJ, Watson PH, Turner KJ, Pastorek J, Sibtain A, 983  
 Wilson GD, Turley H, Talks KL, Maxwell PH, Pugh CW, Rat- 984  
 cliffe PJ, Harris AL (2000) Hypoxia-inducible expression of 985  
 tumor-associated carbonic anhydrases. *Cancer Res* 60:7075–83 986  
 Yan L, Zucker S, Toole BP (2005) Roles of the multifunctional glyco- 987  
 protein, emmprin (basigin; CD147), in tumour progression. 988  
*Thromb Haemost* 93:199–204 989

UNCORRECTED

## AUTHOR QUERIES

### **AUTHOR PLEASE ANSWER ALL QUERIES.**

- Q1. Keywords are desired. Please provide. Otherwise, please confirm if unnecessary.
- Q2. References 95 and 99 based on original manuscript we received were identical. Hence, the latter was deleted and reference list and citations were adjusted. Please check if appropriate.
- Q3. Figure 1 Contains blurry text. Please provide replacement otherwise, please advise if we can proceed with the figure/s as is.
- Q4. Please check captured affiliation if appropriate.

UNCORRECTED PROOF