

A nation-wide E-portfolio: reflections on ambitions and experiences in the Netherlands

José Janssen, Francis Brouns, Harry Vaessen, Gerard Weijnen,
Ellen Huveneers & Rinaldo Hodzelmans

Outline:

- E-portfolio NL
- 10 principles



Theory

- Adoption
- Service centre (SC4L)
- Providers



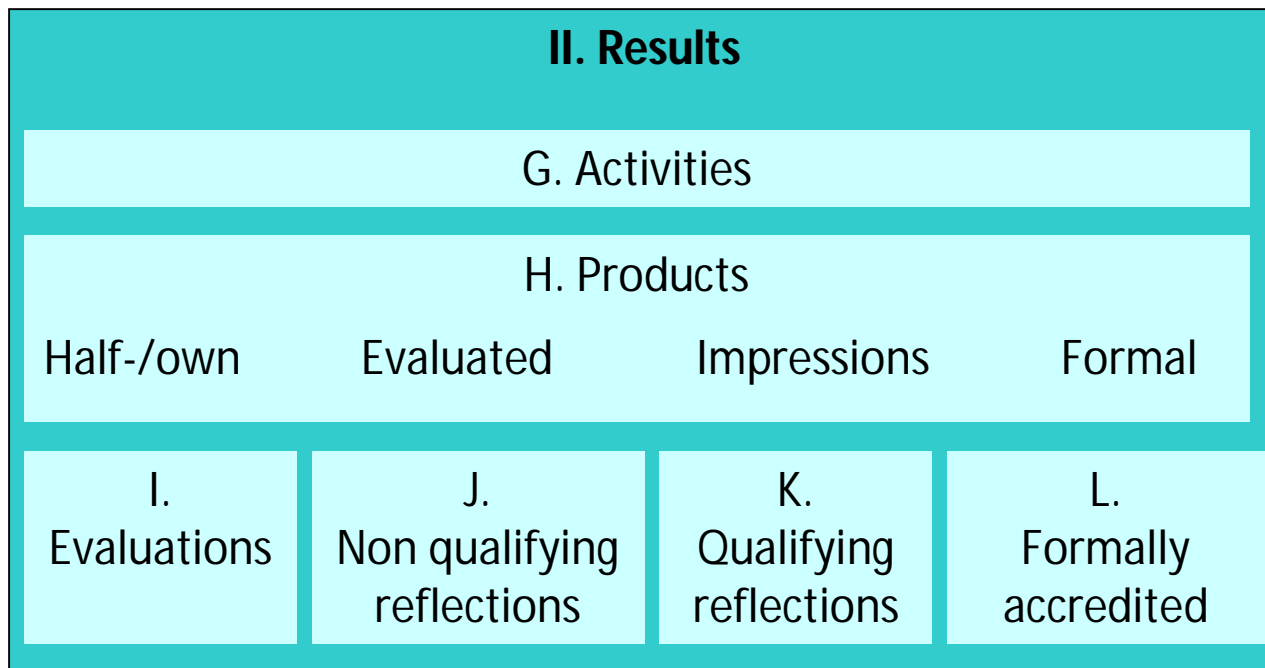
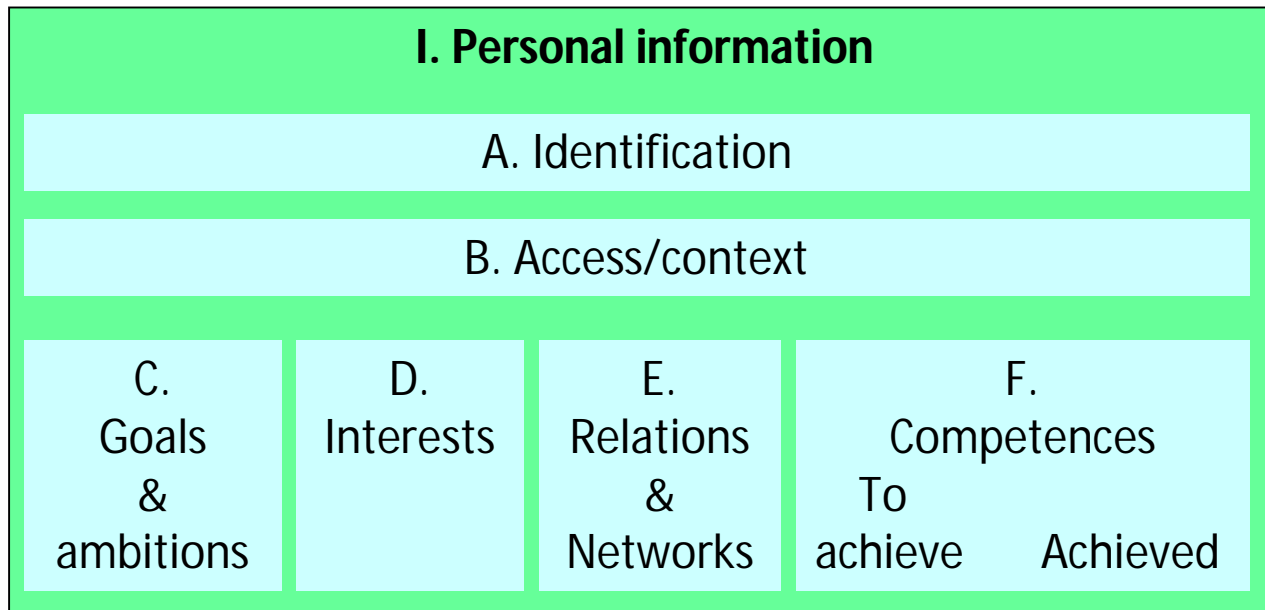
Praxis

E-portfolio NL

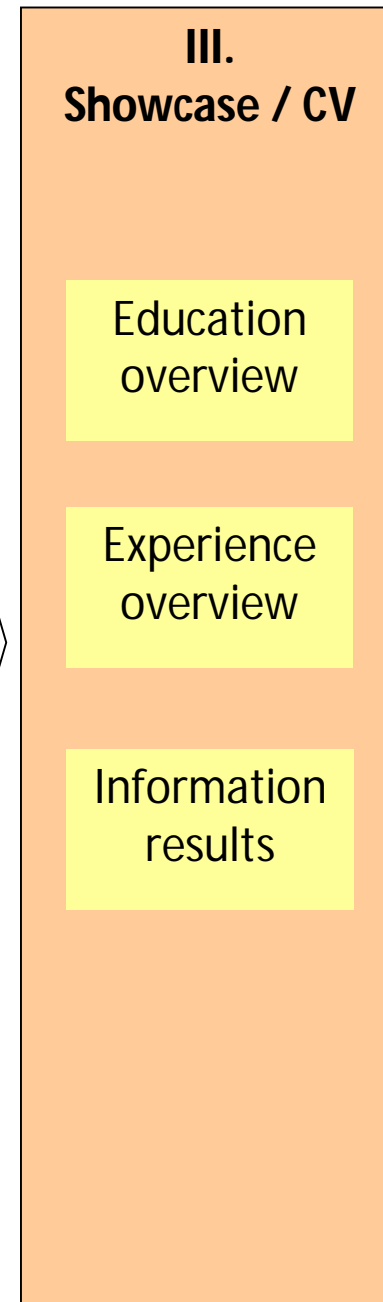
Set of purposefully assembled digital artefacts describing a person's efforts, development and achievements in learning and/or work.

- National Technical Agreement
NTA 2035
- Application profile based on IMS
ePortfolio/IMS LIP





Extraction



10 Principles

1. Individual = owner



2. Organisation = chain partner

3. E-portfolio transcends domains formal/informal education/work

10 Principles

4. Owner chooses evidence (official / unofficial)
5. E-portfolio enables referencing to external sources
6. E-portfolios can be imported and exported

10 Principles

7. Exchange takes place based on a standard (NTA 2035)



8. Chain partners must store information and make it available for transport or sharing on request of the owner

10 Principles

9. Chain partners guarantee privacy and integrity both in storage and transport

10. Chain partners stick to regulation concerning retention of personal data

Lankhorst & Krukkert (2010)

INTEGRATE
applied to E-portfolio NL
standard

ePortfolio — Adoptie in versnelling

Met het adoptie-instrument van INTEGRATE

Marc Lankhorst (Novay)

Dennis Krukkert (TNO)

17 november 2010



Conclusion

Address most influential parties – government role:

- a. Stimulate large companies: financial incentives
- b. Require adoption by public employment agencies

Service Centre Life Long Learning Limburg

Support employers, employment agencies, employees and unemployed people in bridging the gap between labour market supply and demand through competence development.



Not a traditional expertise centre providing services and consultancy, but a network of experts and professionals facilitating knowledge exchange and competence development.

Service Centre for Lifelong Learning Limburg

Virtual Learning Network & digital resources (WP 4)

Career
planning
(WP 2)

APL and LLL
tools
(WP 1)

ePortfolio
exchange
(WP 5)

Flexible
provision
(WP 3)

Factors
affecting
effective
career
planning
Process
improvement

Transparent
and validated
APL tools &
procedures
Assessment-
Portfolio
Training

Exchangeable
ePortfolio for
participating
parties

Customised
job related
trajectories

WP5 E-portfolio exchange:

- a. Investigate current practice in institutions
- b. Investigate current software (Plugfest)
- c. Investigate e-portfolio export functionality LMS

Ad a: Current practice

- E-portfolios widely used
- Integrated in LMS
- Mapping on NTA fairly straightforward*
- Ways to structure numerous

Ad b: Current software

- Plugfest (7 of 20)
- Integrated in LMS (1)
- Covering all categories of E-portfolio NL (0)



Ad c: Export functionality

Considering the many ways LMS e-portfolios can be modelled: how does this affect the transportability / mapping of the export to E-portfolio NL?

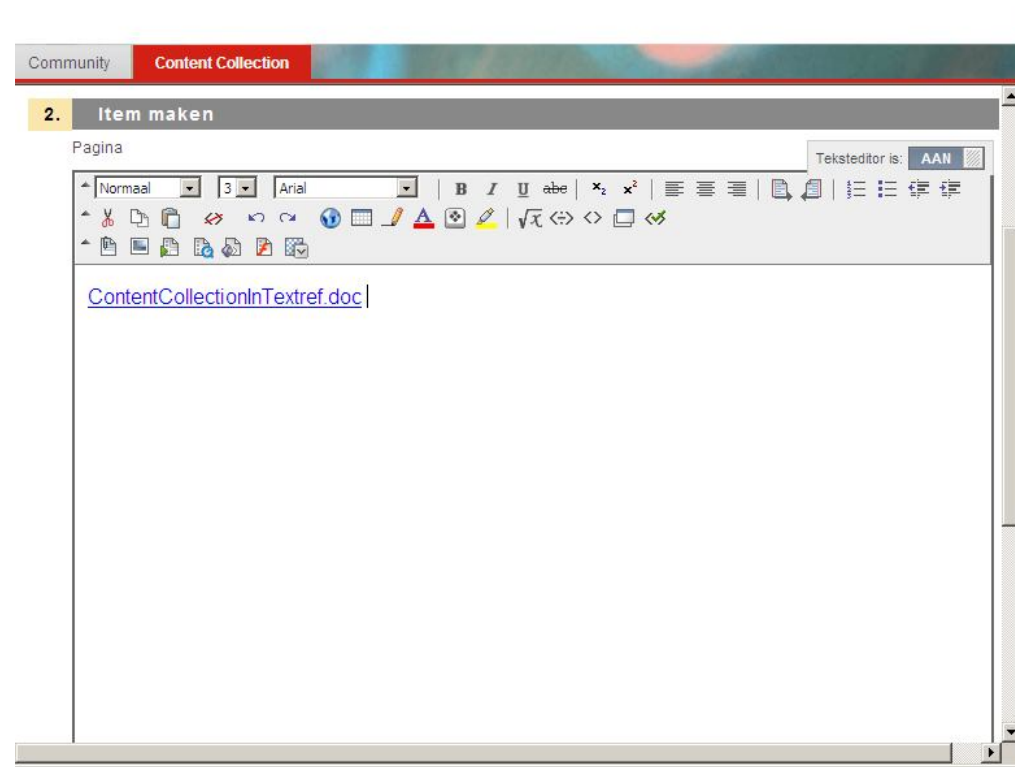
- Blackboard 9.1 (SP4)
- Basic Portfolio vs. Personal Portfolio
- Content Collection vs. local storage

Reference	Scenario		
	BP / CC item	PP / CC item	PP / Local item
In text field	S+N	-- public	--
Sub text field		S+N	N
Content collection	S+N		

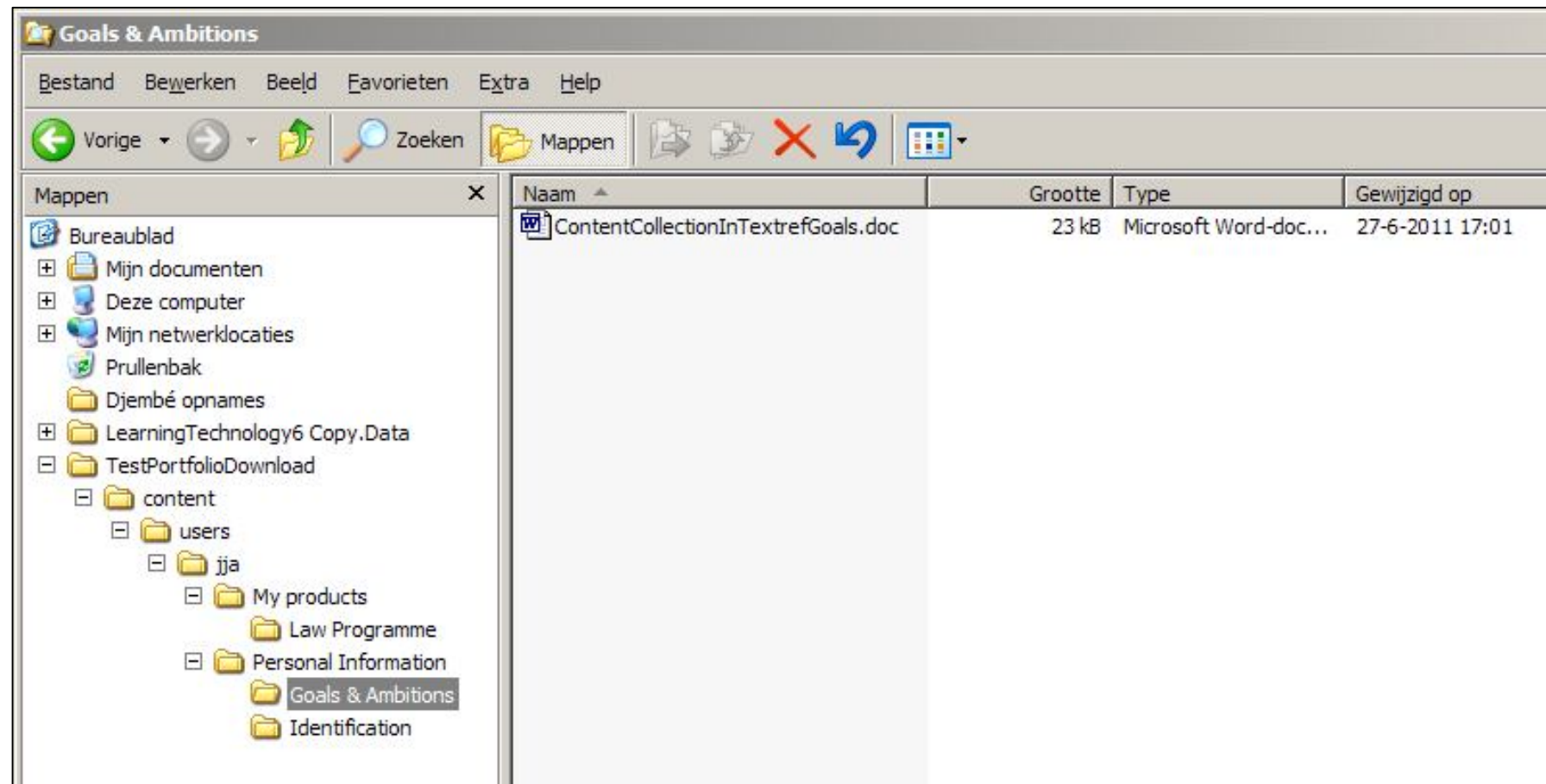
S = original structure

N = original name

Blackboard
Basic
Portfolio
Item



Servicecentrum Leven Lang Leren Limburg



Inhoud

Teksteditor is: AAN

Rich text editor toolbar with options for font (Arial), size (3), bold (B), italic (I), underline (U), and various alignment and list tools.

The products I created during the Law Programme

[LocalDocumentInTextref.doc](#)

[ContentCollectionInTextref.doc](#)

Pad: [body](#) » [g](#)

Bestand bijvoegen

Bladeren in mijn computer

Bladeren in Content Collection

Bijgevoegde bestanden

Bestandsnaam	Titel koppeling	
 ContentCollectionProductsLaw1.doc	<input type="text" value="ContentCollectionProdu"/>	Markeren voor verwijderen
 LocalDocument.doc	<input type="text" value="LocalDocument.doc"/>	Markeren voor verwijderen

Servicecentrum Leven Lang Leren Limburg

Windows Explorer window showing the file **ContentCollectionProductsLaw1.doc** (23 kB, Microsoft Word-doc...) in the directory **C:\Documents and Settings\jja\Desktop\ppportfolio\content\users\jja\My products\Law Programme**.

The left pane shows the folder tree with **Law Programme** selected under **My products**.

Naam	Grootte	Type	Gewijzigd op
ContentCollectionProductsLaw1.doc	23 kB	Microsoft Word-doc...	30-6-2011 9:43

Windows Explorer window showing the contents of the directory **C:\Documents and Settings\jja\Desktop\ppportfolio\content**.

The left pane shows the folder tree with **content** selected.

Naam	Grootte	Type
style_css		Bestandsmap
users		Bestandsmap
e201LocalDocumentinTextref.doc	23 kB	Microsoft Word-doc...
e202ContentCollectionInTextref.doc	23 kB	Microsoft Word-doc...
Exported_Portfolio_1_About_me.html	1 kB	HTML-document
Exported_Portfolio_2_My_Products.html	2 kB	HTML-document
LocalDocument.doc	23 kB	Microsoft Word-doc...

Grand goals
through
piecemeal
engineering



Questions?



Thank you!

Contact:

jja@ou.nl

Servicecentrum Leven Lang Leren Limburg is mede mogelijk gemaakt door een bijdrage uit het Europees Fonds voor Regionale Ontwikkeling in het kader van OP-Zuid, door Provincie Limburg, Parkstad Limburg en Technocentrum Zuid Limburg

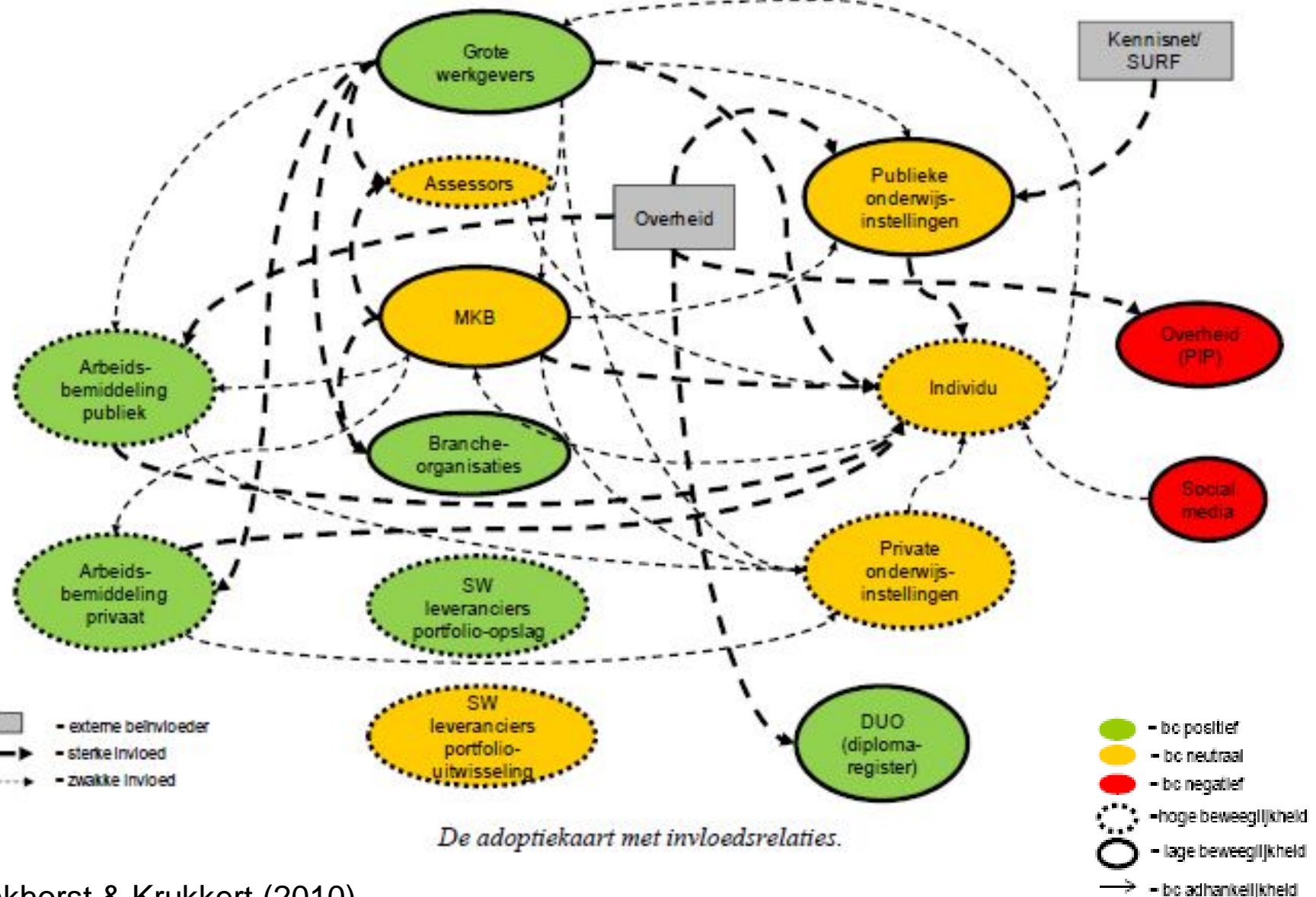


provincie limburg 



Servicecentrum Leven Lang Leren Limburg

Servicecentrum Leven Lang Leren Limburg



Lankhorst & Krukkert (2010)