



Project no. 027087

TENCompetence

Building the European Network for Lifelong Competence Development

Project acronym: Integrated Project TENCompetence

Thematic Priority: 2.4.10

D5.4 Integration results, aggregates internal deliverables ID5.20, ID5.21.1, ID5.21.2, ID5.22 (LearnWeb2.0 v.1.0)

Due date of deliverable: 31-10-2009

Actual submission date: 08-01-2010

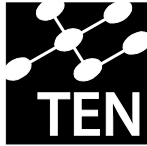
Start date of project: 01-12-2005

Duration: 4 years

Giunti Labs

Version 1.0

Project co-funded by the European Commission within the Sixth Framework Programme (2002-2006)		
Dissemination Level		
PU	Public	X
PP	Restricted to other programme participants (including the Commission Services)	
RE	Restricted to a group specified by the consortium (including the Commission	
CO	Confidential, only for members of the consortium (including the Commission Services)	



Building The European Network for Lifelong Competence Development

Building the European Network
For Lifelong Competence Development

TENCompetence IST-2005-027087

Project Deliverable Report

D5.4 - Integration results, aggregates internal deliverables ID5.20, ID5.21.1, ID5.21.2, ID5.22 (LearnWeb2.0 v.1.0)

Work package	WP5 – Knowledge Resources Sharing and Management		
Task	Task 5.2-5.3-5.4		
Date of delivery	Contractual: 31-10-2009	Actual: 08-01-2010	
Code name	D5.4	Version: 1.0	Draft <input type="checkbox"/> Final <input checked="" type="checkbox"/>
Type of deliverable	Report		
Security (distribution level)	Public		
Contributors			
Authors (Partner)	Alessandro Mazzetti (GIUNTI), Michele Dicerto (GIUNTI), Giuseppe Portelli (GIUNTI), Alexander Grigorov (SU), Atanas Georgiev (SU), Korneliya Yordanova (SU), Sergej Zerr (UHANN), Ricardo Kawase (UHANN), Philipp Kemkes (UHANN), Mar Perez (FBM-UPF), Carlos Mendez (ALTRAN), Bernardo Merino (ALTRAN).		
Contact Person	Alessandro Mazzetti (GIUNTI).		
WP/Task responsible	Giunti Labs		
EC Project Officer	Martin Májek		
Abstract (for dissemination)	This deliverable aggregates the following internal deliverables (as described in DIP-4 Version 1.3): ID5.20: Final Specification of Integrated LearnWeb and KRService, ID5.21.1: Integration of LearnWeb and KRService into TENCompetence (LearnWeb2.0 v.0.4 for conference EC-TEL), ID5.21.2: Final version of LearnWeb and KRService integrated into TENCompetence (LearnWeb2.0 v.1.0), ID5.22: Final Evaluation of the Integrated LearnWeb and KRService.		
Keywords List	WP5, deliverable, LearnWeb2.0, LearnWeb2.0 v.1.0, LearnWeb v.1.0, requirements, specifications, implementation, evaluation, integration, Knowledge Resources, Knowledge Management, Knowledge Sharing, Web2.0.		

TENCompetence Project Coordination at: Open University of the Netherlands
Valkenburgerweg 177, 6419 AT Heerlen, The Netherlands
Tel: +31 45 5762605

Table of Contents

1	EXECUTIVE SUMMARY (GIUNTI)	3
2	INTRODUCTION (GIUNTI)	4
3	ID5.20: FINAL SPECIFICATION OF INTEGRATED LEARNWEB AND KRSERVICE	6
3.1	ABSTRACT AND TOC.....	6
3.2	RELATION WITH OTHERS IDS	8
3.3	COLLABORATIVE DEVELOPMENT	9
3.4	OUTCOME OF THIS ACTIVITY.....	9
4	ID5.21.1: INTEGRATION OF LEARNWEB AND KRSERVICE INTO TENCOMPETENCE (LEARNWEB2.0 V.0.4 FOR CONFERENCE EC-TEL)	10
4.1	DESCRIPTION	10
4.2	RELEASE NOTES OF LEARNWEB v.0.4	11
4.3	COLLABORATIVE DEVELOPMENT	11
4.4	SOURCES	12
4.5	EXECUTABLES	12
4.6	DOCUMENTATION	13
4.7	INSTALLATION KIT	13
4.8	BUGZILLA.....	13
5	ID5.21.2: FINAL VERSION OF LEARNWEB AND KRSERVICE INTEGRATED INTO TENCOMPETENCE (LEARNWEB2.0 V.1.0)	14
5.1	DESCRIPTION	14
5.2	RELEASE NOTES OF LEARNWEB v.1.0	15
5.3	COLLABORATIVE DEVELOPMENT	16
5.4	SOURCES	16
5.5	DEPLOYED RUNNING VERSION	17
5.6	DOCUMENTATION	17
5.7	INSTALLATION KIT	17
5.8	BUGZILLA.....	18
6	ID5.22: FINAL EVALUATION OF THE INTEGRATED LEARNWEB AND KRSERVICE	21
6.1	ABSTRACT AND TOC.....	21
6.2	EVALUATION METHODOLOGY	23
6.3	RELATION WITH OTHERS IDS	24
6.4	COLLABORATIVE DEVELOPMENT	24
6.5	SUMMARY OF QUALITY OF RELEASE v.1.0.....	24
7	CONCLUSIONS	26
8	APPENDIX	27
8.1	LEARNWEB2.0 FLYER.....	27
8.2	LEARNWEB2.0 TUTORIAL-VIDEO	28
8.3	LEARNWEB2.0 QUICK-START GUIDE	28
8.3.1	<i>Starting</i>	28
8.3.2	<i>Viewing</i>	30
8.3.3	<i>Registration and Authentication</i>	31
8.3.4	<i>My Home Page</i>	31

8.3.5	<i>Handling Metadata</i>	32
8.3.6	<i>Adding Resources</i>	33
8.3.7	<i>Toolbars</i>	36
8.3.8	<i>Administration and community</i>	37
8.4	LEARNWEB2.0 PRESENTATION	38

1 Executive Summary (GIUNTI)

This deliverable describes the work of WP5 during the fourth year of the project. As specified in the Detailed Implementation Plan for year 4 (DIP-4), this phase of the project is not addressed to new research issues, but it is specifically focussed on implementation, integration and evaluation of tools.

Particular attention has been given to integration into the TENCompetence framework, thus the adaptability to Liferay has been covered in this phase of the project.

The work has been organized following the software engineering methodology: recommendations from previous evaluation, requirements extraction, functionalities specification, architecture design, software implementation, user documentation, tool evaluation.

The Internal Deliverables described in this document respect the above methodology.

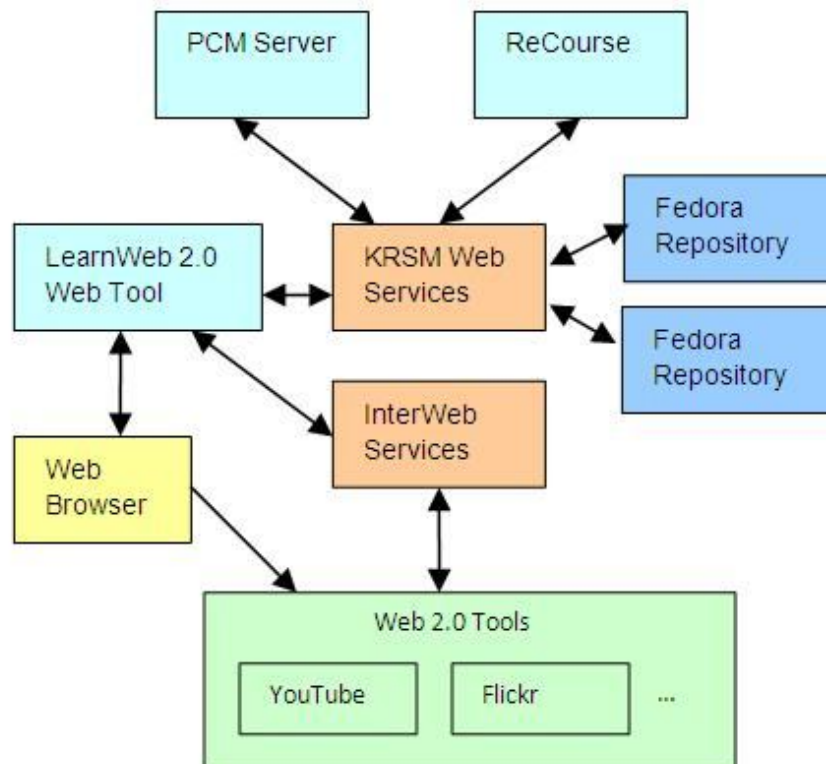
2 Introduction (GIUNTI)

This deliverable aggregates the following internal deliverables (as described in DIP-4 Version 1.3 page 33/60, file name: TENCompetence_DIP4_commissie_v1.3.pdf):

- ID5.20 - Final Specification of Integrated LearnWeb and KRService
- ID5.21.1 - Integration of LearnWeb and KRService into TENCompetence LearnWeb2.0 v.0.4 for conference EC-TEL
- ID5.21.2 - Final version of LearnWeb and KRService integrated into TENCompetence: LearnWeb2.0 v.1.0
- ID5.22 - Final Evaluation of the Integrated LearnWeb and KRService.

A slight deviation from DIP-4 occurred: the implementation phase has been split in two parts for allowing an intermediate version to be presented at the EC-TEL conference in Nice on September 2009 and a final version to be presented at Final Event in Manchester. Therefore the ID5.21 has been split in ID5.21.1 and ID5.21.2.

This deliverable deals mainly with the tools LearnWeb2.0 v.1.0 and KRSM Services v.1.0, which have been integrated into the TENCompetence framework with a modular architecture, here depicted:



This document is organized as an introductory text that refers to the IDs as separate documents with the following format:

- The IDs of type “report” are referenced as pdf files stored in DSpace,
- The IDs of type “prototype” are here described and contain references to:
 - DSpace for the documents
 - URL for the executables
 - Links in DSpace and also references to Sourceforge for the sources.

This document is organized by chronological order of the internal deliverables.

3 ID5.20: Final Specification of Integrated LearnWeb and KRService

This internal deliverable is a document that has been submitted to DSpace on 31-Jul-2009 and then accepted and archived. It is available at this link:

<http://dspace.ou.nl/handle/1820/1998>

This document describes the final specification of a LearnWeb2.0. This system was not always immediately well understood by many users, thus the many recommendations from users.

There are few innovations in the specification described here, because the focus is mainly in robustness and integration.

3.1 *Abstract and ToC*

This document describes the final functionalities for LearnWeb/KRService, which will be implemented in the last versions called V0.4 and V1.0, which will be available in autumn 2009.

This document is organized in four main parts:

- Recommendations: chapters 2, 3, 4, 5
- Architecture: chapter 6
- Specifications: chapters 7, 8, 9
- Roadmap. chapter 10.

The table of contents follows:

1	INTRODUCTION (GIUNTI)	5
2	SUMMARY OF RECOMMENDATIONS FROM EVALUATION (UPF)	5
2.1	RECOMMENDATIONS FROM LOADABILITY TESTS (UPF).....	5
2.2	RECOMMENDATIONS FROM USABILITY TESTS (UPF).....	6
2.3	RECOMMENDATIONS FROM FUNCTIONALITY TESTS (UPF).....	7
3	SUMMARY OF RECOMMENDATIONS FROM DEVELOPERS	9
3.1	PERFORMANCE IMPROVEMENTS (GIUNTI)	9
3.1.1	<i>Computing excellence class on Fedora</i>	9
3.1.2	<i>Improving comments and comment-ratings</i>	9
3.2	WEB2.0 INTEGRATION IMPROVEMENTS (UHANN)	9
3.3	FUNCTIONALITIES IMPROVEMENTS (GIUNTI + SU).....	9
3.3.1	<i>Deleting tags</i>	10
3.3.2	<i>Managing Learning Activity</i>	10
3.3.3	<i>Thumbnail of TENC objects</i>	10
3.3.4	<i>Internationalization</i>	10
3.4	ADMINISTRATION IMPROVEMENTS (GIUNTI)	10
3.4.1	<i>Managing "unfair" users</i>	10
4	RECOMMENDATIONS FROM BUSINESS DEMONSTRATORS	11
4.1	UNIVERSITY OF GENOA (GIUNTI).....	11
4.2	ELSA – UNIVERSITY OF HANNOVER (GIUNTI)	11
5	RECOMMENDATIONS FROM MEETINGS IN UTRECHT AND SESTRI LEVANTE	12
5.1	INTEGRATION IN LIFERAY (SU).....	12
5.2	LIFERAY RESOURCES.....	12
5.3	MULTI-FEDORA ACCESS (UHANN).....	12
6	ARCHITECTURE	13
6.1	AUTHENTICATION (SU).....	13
6.2	AUTHORISATION (SU)	13
6.3	REGISTRATION (SU).....	13
6.4	CALAMITIES (GIUNTI + SU).....	14
6.5	PERFORMANCES IMPROVEMENTS (SU).....	14
7	USER INTERFACE SPECIFICATION	15
7.1	UNDERSTANDABILITY, LEARNABILITY AND OPERABILITY (ALTRAN)	15
7.2	HOME PAGE AND UPPER BAR (ALTRAN).....	16
7.3	TOOLBARS (UHANN).....	17
7.4	METADATA FIELD ENLARGEMENT (GIUNTI)	21

8	FUNCTIONALITIES SPECIFICATION.....	22
8.1	TAG DELETION (GIUNTI + SU).....	22
8.1.1	<i>KRService issues.....</i>	22
8.1.2	<i>LearnWeb issues.....</i>	22
8.2	EXCELLENCE CLASS COMPUTATION (GIUNTI + SU).....	22
8.3	ADMINISTRATION IMPROVEMENTS (GIUNTI).....	22
8.4	INTERWEB AND INTERFEDORA SPECIFICATIONS (UHANN).....	23
8.4.1	<i>Registration and authorization.....</i>	23
8.4.2	<i>Single sign on.....</i>	24
8.4.3	<i>Web resource Search.....</i>	26
8.4.4	<i>Own Web 2.0 resource Search.....</i>	27
8.4.5	<i>Social network.....</i>	28
8.5	MINOR IMPROVEMENTS (GIUNTI).....	29
8.5.1	<i>Localization.....</i>	29
9	INTEGRATION IN TENC FRAMEWORK.....	30
9.1	LIFERAY INTEGRATION (GIUNTI + SU).....	30
9.1.1	<i>Liferay frame (SU).....</i>	30
9.1.2	<i>Liferay repository.....</i>	30
9.1.3	<i>KRService issues.....</i>	30
9.1.4	<i>LearnWeb issues.....</i>	30
9.2	INTEGRATION WITH PDP (GIUNTI + SU).....	30
9.2.1	<i>KRService issues.....</i>	31
9.2.2	<i>LearnWeb issues.....</i>	31
9.3	INTEGRATION WITH TENC OBJECTS (GIUNTI).....	31
10	ROADMAP (GIUNTI).....	33
11	CONCLUSIONS (GIUNTI).....	33
12	REFERENCES.....	34

3.2 Relation with others IDs

ID5.20 refers to the following documents:

- ID5.15 New Core and Integration specifications v2, delivered on 10-04-2009, <http://hdl.handle.net/1820/1905>
- ID5.16 New LearnWeb tool evaluation outcomes, delivered on 27-05-2009, <http://dspace.ou.nl/handle/1820/1943>
- ID5.17 New LearnWeb tool evaluation outcomes, delivered on 11-06-2009, <http://hdl.handle.net/1820/1958>

3.3 Collaborative development

The development of ID5.20 has been carried out in a collaborative way, supported by several WP5-Forums and Skype Chats, among which the most significant are:¹

- Forum for WP5 » ID5.20 - Final Specification (LearnWeb v.0.4)
This forum has been used for coordinating the diverse contributions from each partner:
<http://www.partners.tencompetence.org/mod/forum/discuss.php?d=2979>
- Forum for WP5 » WP5 Skype Chats:
<http://www.partners.tencompetence.org/mod/forum/discuss.php?d=2141#8979>

3.4 Outcome of this activity

The development of ID5.20 has led to the roadmap for the implementation of future LearnWeb2.0 versions.

The implementation schedule is the following:

item	What to do	Ref	Delivered by	Implemented by
1	Authentication	6.1□	28-9-2009	SU
2	Authorization	6.2□	30-10-2009	SU
3	Performance improvements	6.5□	30-10-2009	SU
4	Understandability	7.1□	28-9-2009	Altran
5	Home page and upper bar	7.2□	28-9-2009	Altran
6	Toolbars	7.3□	28-9-2009	UHANN
7	Metadata field enlargement	7.4□	28-9-2009	Giunti
8	Tag deletion	8.1□	30-10-2009	Giunti + SU
9	Excellence class computation	8.2□	30-10-2009	Giunti + SU
10	Administration improvements	8.3□	30-10-2009	Giunti
11	InterWeb	8.4□	28-9-2009	UHANN
12	InterFedora	8.4.2□	30-10-2009	UHANN+SU
13	Localization	8.5.1□	28-9-2009	Giunti+SU+Altran
14	Liferay container	9.1.1□	28-9-2009	SU
15	Liferay repository	9.1.2□	30-10-2009	SU
16	Integration with PDP	9.2□	30-10-2009	Altran+SU
17	Integration with TENC objects	9.3□	30-10-2009	Giunti+SU

¹ Only accessible to consortium partners and associate partners

4 ID5.21.1: Integration of LearnWeb and KRService into TENCompetence (LearnWeb2.0 v.0.4 for conference EC-TEL)

This internal deliverable has been submitted and accepted to DSpace on 6-Oct-2009; it is available on:

<http://hdl.handle.net/1820/2044>

4.1 Description

This document accompanies the release of the new version of LearnWeb2.0, here on called for convenience:

- LearnWeb v.0.4
- KRService v.0.4.

This document refers to the following:

- DIP-4 objectives and tasks, document of 14-Jan-2009
<http://dspace.ou.nl/handle/1820/1733>
- ID5.16 (New version of the Integrated LearnWeb tool) delivered on 27-May-2009
<http://dspace.ou.nl/handle/1820/1943>
- ID5.17 (New LearnWeb tool v.0.3 evaluation outcomes) delivered on 11-Jun-2009
<http://dspace.ou.nl/handle/1820/1958>
- ID5.20 (Final Specification of Integrated LearnWeb and KRService) delivered on 31-Jul-2009 <http://dspace.ou.nl/handle/1820/1998>

For your convenience, find here below the requirement table of this deliverable.

item	What to do	Ref. in ID5.20	Delivered by	Implemented by
4	Understandability	7.1	28/09/2009	Altran
5	Home page and upper bar	7.2	28/09/2009	Altran
18	Localization (spanish)	8.05.01	28/09/2009	Altran
7	Metadata field enlargement	7.4	28/09/2009	Giunti
16	Localization (english)	8.05.01	28/09/2009	Giunti
1	Authentication	6.1	28/09/2009	SU
17	Localization (bulgarian)	8.05.01	28/09/2009	SU
19	Liferay container	9.01.01	28/09/2009	SU
6	Toolbars	7.3	28/09/2009	UHANN
13	InterWeb	8.4	28/09/2009	UHANN

4.2 Release Notes of LearnWeb v.0.4

This document contains the release notes with references to sources and executables. The Table of contents respects this aim of the document.

Table of Contents	
1	INTRODUCTION (GIUNTI)..... 4
2	RELEASE NOTES..... 4
2.1	UNDERSTANDABILITY (ALTRAN).....4
2.2	HOME PAGE AND UPPER BAR (ALTRAN).....4
2.3	LOCALIZATION (ALTRAN+GIUNTI+SU).....4
2.4	METADATA FIELD ENLARGEMENT (GIUNTI).....5
2.5	AUTHENTICATION (SU).....5
2.6	LIFERAY CONTAINER (SU).....5
2.7	TOOLBARS (UHANN).....6
2.8	INTERWEB (UHANN).....8
2.8.1	Registration and authorization.....8
2.8.2	Single sign on.....9
2.8.3	Web resource Search.....10
3	SOURCES (UHANN)11
4	DEPLOYED RUNNING VERSION (SU).....12
5	INSTALLATION KIT (GIUNTI+SU)12
6	CONCLUSIONS (GIUNTI).....12

4.3 Collaborative development

The development of ID5.21.1 has been carried out in a collaborative way, supported by several WP5-Forums and Skype Chats, among which the most significant are:²

- Forum for WP5 “ID5.21 - final implementations of LearnWeb”:
In this forum we talked about several technical details and we collected the various contributions from the partners. This forum is available at:
<http://www.partners.tencompetence.org/mod/forum/discuss.php?d=3045>
- Forum for WP5 » WP5 Skype Chats:
<http://www.partners.tencompetence.org/mod/forum/discuss.php?d=2141#9268>

² Only accessible to consortium partners and associate partners

4.4 Sources

The sources are divided in three categories:

- LearnWeb: this is an interactive system written in PHP
- InterWeb: this is an additional system written in PHP for accessing Web2.0 tools
- KRService: this is the underlying layer for accessing Fedora repository, written in Java.

LearnWeb2.0 tool source

LearnWeb sources are stored in a specific repository, under SourceForge framework.

This facilitates the collaborative development.

Each software module is under a folder accessible through this link:

<http://tencompetence.cvs.sourceforge.net/viewvc/tencompetence/wp5/learnWeb/>

InterWeb tool source

InterWeb sources are stored in a specific repository, under SourceForge framework. This facilitates the collaborative development.

<http://tencompetence.cvs.sourceforge.net/viewvc/tencompetence/wp5/InterWeb/>

LearnWeb2.0 Web Services

This software is in Java language and is stored in the repository at this link:

<http://tencompetence.cvs.sourceforge.net/viewvc/tencompetence/wp5/KrsmServices/>
<http://tencompetence.cvs.sourceforge.net/viewvc/tencompetence/wp5/org.tencompetence.krsm.fedora/src/>

A frozen version of the above sources is also available in DSpace at the following url:

<http://dspace.ou.nl/handle/1820/2044>

4.5 Executables

LearnWeb v.0.4

<http://phpcake.it.fmi.uni-sofia.bg/>

this URL referred to the mentioned release from 1-10-2009 till 10-11-2009.

KRServices v.0.4

<http://gaco.fmi.uni-sofia.bg:8080/FedoraKRSM/fedora/>

this URL referred to the mentioned release from 1-10-2009 till 10-11-2009.

Fedora server

<http://fedora.it.fmi.uni-sofia.bg:8080/fedora/>

This fedora environment is used by test environment of LearnWeb which is accessible at <http://phpcake.it.fmi.uni-sofia.bg>

4.6 Documentation

LearnWeb2.0 v.0.4 Release Notes

The Release Notes of this version is included into the document ID5.21.1, submitted and accepted to DSpace together with the executable files on 6-Oct-2009. The deliverable is accessible through this link (already mentioned above):

<http://dspace.ou.nl/handle/1820/2044>

LearnWeb2.0 Technical Documentation

The technical documentation of this system includes both the standard services description and the new services description. Each document describes the Fedora data model and the light API for accessing and managing the KRSM. Since this version of the software is an evolution of the previous version v.0.3, the documentation about Fedora data model and light API is the same as the previous version, published on DSpace at the following link:

<http://dspace.ou.nl/handle/1820/2044>

4.7 Installation kit

This document is attached to the following files:

- **LearnWeb_v04.zip**: this includes the PHP files and all the other necessary files for installing this version into a new server (e.g. Business Demonstrators' server). Available on <http://dspace.ou.nl/bitstream/1820/2044>
- **KRServices_v04.zip**: his includes the WAR files and all the other necessary files for installing this version into a new server (e.g. Business Demonstrators' server). Available on <http://dspace.ou.nl/bitstream/1820/2044>

4.8 Bugzilla

The Bugzilla report has been created with the name: "LearnWeb 2.0".

This is the link to Bugzilla: <http://wush.net/bugzilla/rulem/>

5 ID5.21.2: Final version of LearnWeb and KRService integrated into TENCompetence (LearnWeb2.0 v.1.0)

This internal deliverable has been submitted and accepted to DSpace on 14-Nov-2009; and it is available on: <http://hdl.handle.net/1820/2129>

5.1 Description

This document accompanies the release of the new version of LearnWeb2.0, from here on called for convenience:

- LearnWeb v.1.0
- KRService v.1.0.

Despite the fact that DIP4 foresaw a single delivery of this software, two versions have been delivered to accomplish the twofold requirement to show updated versions both at EC-TEL in Nice on September and at Manchester Workshop in November.

This document refers to the following:

- DIP-4 objectives and tasks, document of 14-Jan-2009
<http://dspace.ou.nl/handle/1820/1733>
- ID5.16 (New version of the Integrated LearnWeb tool) delivered on 27-May-2009
<http://dspace.ou.nl/handle/1820/1943>
- ID5.17 (New LearnWeb tool v.0.3 evaluation outcomes) delivered on 11-Jun-2009
<http://dspace.ou.nl/handle/1820/1958>
- ID5.20 (Final Specification of Integrated LearnWeb and KRService) delivered on 31-Jul-2009 <http://dspace.ou.nl/handle/1820/1998>
- ID5.21.1 (Integration of LearnWeb and KRService into TENCompetence - LearnWeb2.0 v.0.4) delivered on 6-Oct-2009 <http://hdl.handle.net/1820/2044>

This document contains the release notes with references to sources and executables.

For your convenience, find here below the requirement table of this deliverable.

item	What to do	Ref. in ID5.20	Delivered by	Implemented by
21	Integration with PDP (GUI)	9.2	30/10/2009	Altran
8	Tag deletion (GUI)	8.1	30/10/2009	Giunti
10	Excellence class computation (GUI)	8.2	30/10/2009	Giunti
12	Administration improvements	8.3	30/10/2009	Giunti
23	Integration with TENC objects (GUI)	9.3	30/10/2009	Giunti
2	Authorization	6.2	30/10/2009	SU
3	Performance improvements	6.5	30/10/2009	SU

item	What to do	Ref. in ID5.20	Delivered by	Implemented by
9	Tag deletion (service)	8.1	30/10/2009	SU
11	Excellence class computation (service)	8.2	30/10/2009	SU
15	InterFedora (servcie)	8.04.02	30/10/2009	SU
20	Liferay repository	9.01.02	30/10/2009	SU
22	Integration with PDP (service)	9.2	30/10/2009	SU
24	Integration with TENC objects (service)	9.3	30/10/2009	SU
14	InterFedora (GUI)	8.04.02	30/10/2009	UHANN

5.2 Release Notes of LearnWeb v.1.0

This document contains the release notes with references to sources and executables. The Table of contents respects this aim of the document.

1	INTRODUCTION (GIUNTI)	4
2	RELEASE NOTES	4
2.1	HOME PAGE IMPROVEMENTS (ALTRAN).....	4
2.2	ADMINISTRATION IMPROVEMENTS (GIUNTI).....	4
2.3	AUTHORIZATION (SU).....	5
2.4	EXCELLENCE CLASS COMPUTATION.....	5
2.4.1	Service (SU).....	5
2.4.2	GUI (Giunti).....	5
2.5	INTEGRATION WITH PDP.....	5
2.5.1	Service (SU).....	5
2.5.2	GUI (Giunti).....	6
2.6	INTEGRATION WITH TENC OBJECTS.....	6
2.6.1	Service (SU).....	6
2.6.2	GUI (Giunti).....	6
2.7	INTERFEDORA.....	6
2.7.1	Service (SU).....	6
2.7.2	GUI (UHANN).....	6
2.8	LIFERAY REPOSITORY (SU).....	7
2.9	PERFORMANCE IMPROVEMENTS (SU).....	7
2.10	TAG DELETION.....	7
2.10.1	Service (SU).....	7
2.10.2	GUI (Giunti).....	7
2.11	BUG FIXING (GIUNTI).....	7
3	SOURCES (UHANN)	10
4	DEPLOYED RUNNING VERSION (SU)	10
5	INSTALLATION KIT (GIUNTI+SU)	11
6	CONCLUSIONS (GIUNTI)	11

5.3 Collaborative development

The development of ID5.21.2 has been carried out in a collaborative way, supported by several WP5-Forums and Skype Chats, among which the most significant are:³

- Forum for WP5 “ID5.21 - final implementations of LearnWeb”:
In this forum we talked about several technical details and we collected the various contributions from the partners. This forum is available at:
<http://www.partners.tencompetence.org/mod/forum/discuss.php?d=3045#9518>
- Forum for WP5 » WP5 Skype Chats:
<http://www.partners.tencompetence.org/mod/forum/discuss.php?d=2141#9519>

5.4 Sources

The sources are divided in three categories:

- LearnWeb: this is an interactive system written in PHP
- InterWeb: this is an additional system written in PHP for accessing Web2.0 tools
- KRService: this is the underlying layer for accessing Fedora repository, written in Java.

LearnWeb v.1.0

LearnWeb sources are available at <http://hdl.handle.net/1820/2129> and are also stored in a specific repository, under SourceForge framework. This facilitates the collaborative development.

Each software module is under a folder accessible through this link:

<http://tencompetence.cvs.sourceforge.net/viewvc/tencompetence/wp5/learnWeb/>

InterWeb tool source

InterWeb sources are available at <http://hdl.handle.net/1820/2129> and are also stored in a specific repository, under SourceForge framework. This facilitates the collaborative development.

<http://tencompetence.cvs.sourceforge.net/viewvc/tencompetence/wp5/InterWeb/>

KRServices v.1.0

This software is in Java language and is available at <http://hdl.handle.net/1820/2129> and is also stored in the repository at this link:

<http://tencompetence.cvs.sourceforge.net/viewvc/tencompetence/wp5/KrsmServices/>

³ Only accessible to consortium partners and associate partners

5.5 Deployed running version

Standalone LearnWeb v.1.0

<http://phpcake.it.fmi.uni-sofia.bg/>

this URL refers to the mentioned release since 10-11-2009.

LifeRay server with integrated LearnWeb v.1.0 with CAS authentication

<https://altran-liferay-cas.it.fmi.uni-sofia.bg:6443/>

this URL refers to the mentioned release since 10-11-2009.

LifeRay server with integrated LearnWeb v.1.0 without SSO

<http://liferay.it.fmi.uni-sofia.bg:9090/web/guest/27>

this URL refers to the mentioned release since 10-11-2009.

KRServices v.1.0

<http://gaco.fmi.uni-sofia.bg:8080/FedoraKRSM/fedora/>

this URL refers to the mentioned release since 10-11-2009.

Fedora server

<http://fedora.it.fmi.uni-sofia.bg:8080/fedora/>

this URL refers to the mentioned release since 10-11-2009.

5.6 Documentation

LearnWeb2.0 v.1.0 Release Notes

The Release Notes of this version is included into the document ID5.21.2, submitted to DSpace together with the executable files on 14-Oct-2009 and available on:

<http://hdl.handle.net/1820/2129>

5.7 Installation kit

This document is attached to the following files:

- **LearnWeb_v10.zip**: this includes the PHP files and all the other necessary files for installing this version into a new server (e.g. Business Demonstrators' server). This kit contains both LearnWeb and InterWeb components. This file is available on <http://dspace.ou.nl/bitstream/1820/2129>
- **KRServices_v10.zip**: his includes the WAR files and all the other necessary files for installing this version into a new server (e.g. Business Demonstrators' server). Available on <http://dspace.ou.nl/bitstream/1820/2129>

5.8 Bugzilla

A strong bug-fixing activity has been done for this version of LearnWeb.

After a first deployment on Sofia server, the evaluation activity has been started and carried out by TF15, supervised by FBM-UPF; the document ID5.22 describes entirely the evaluation process.

Each bug has been reported into Bugzilla and assigned to developers.

Here below appears a table extracted by Bugzilla

(<http://wush.net/bugzilla/rulem/index.cgi>)

bug_id	bug_severity	priority	bug_status	resolution	short_desc
394	major	P1	CLOSED	DUPLICATE	Functionality-TagsResourceAccess
384	critical	P1	CLOSED	DUPLICATE	Functionality-My Bookmarcks
326	minor	P5	CLOSED	FIXED	changing user doesn't change MyHomePage
390	critical	P1	CLOSED	FIXED	Functionality-Bookmark This
391	critical	P1	CLOSED	FIXED	Functionality-Rating
392	normal	P3	CLOSED	FIXED	Functionality-CorrelatedResources
403	blocking	P1	CLOSED	FIXED	Functionality-Upload a file
382	normal	P3	CLOSED	FIXED	Functionality-Decrypt Error
383	critical	P1	CLOSED	FIXED	Functionality-Change Photo
433	critical	P1	CLOSED	FIXED	Functionality- Search by category
395	major	P1	CLOSED	FIXED	Functionality-MyComments-ResourceNotFound
560	normal	P3	CLOSED	FIXED	error in registering into InterWeb
385	normal	P3	CLOSED	FIXED	Usability-Title Dublin Core Metadata
386	normal	P3	CLOSED	FIXED	Usability-SaveDublin Core Metadata
397	trivial	P1	CLOSED	FIXED	Functionality-MyGroups
387	major	P2	CLOSED	FIXED	Usability-Page of a Resource
399	critical	P1	CLOSED	FIXED	Functionality-ResourceNotFound
402	critical	P1	CLOSED	LATER	Functionality-Upload an audio
389	critical	P2	CLOSED	WONTFIX	Usability-ErrorMessageStatic
396	normal	P1	CLOSED	WORKSFORME	Functionality-MyRates
484	normal	P3	NEW		My Web 2.0 Resources links to the Advanced Search
599	normal	P3	NEW		2.7.13 Single sign on among Web2.0 services
589	normal	P3	NEW		2.5.2 Toolbar resources
572	critical	P3	NEW		Entering LearnWeb from Liferay
573	normal	P3	NEW		Registration Users
596	normal	P3	NEW		2.7.4 My Web2.0 resources
554	normal	P3	RESOLVED	FIXED	simple-search requires login; but it shouldn't.
400	normal	P1	RESOLVED	FIXED	Functionality-CreateANewGroup
473	minor	P3	RESOLVED	FIXED	preview of UoL; Competences; Profiles;...
576	normal	P3	RESOLVED	FIXED	2.2.1 Home page left panel
587	normal	P3	RESOLVED	FIXED	2.4.2 Ordering search results
566	normal	P3	RESOLVED	FIXED	deleting tag is too strong
474	normal	P3	RESOLVED	FIXED	Login time too long
588	normal	P3	RESOLVED	FIXED	6.6.1 Installation toolbar

bug_id	bug_severity	priority	bug_status	resolution	short_desc
556	normal	P3	RESOLVED	FIXED	the "select date" button doesn't do anything
567	normal	P3	RESOLVED	FIXED	email sent via "share" contains a link not working
486	normal	P3	RESOLVED	FIXED	Not english translation
557	normal	P3	RESOLVED	FIXED	error in searching by category
568	critical	P1	RESOLVED	FIXED	Tool bar is not working
487	normal	P3	RESOLVED	FIXED	Add multimedia resources too slow
590	critical	P3	RESOLVED	FIXED	2.5.3 Toolbar - upload
558	normal	P3	RESOLVED	FIXED	wrong value in column "Tags" in list of found items
569	normal	P3	RESOLVED	FIXED	Usability-No help
477	normal	P3	RESOLVED	FIXED	Add resource different from the normal one
488	normal	P3	RESOLVED	FIXED	Tag Cloud error in MyTags
489	normal	P3	RESOLVED	FIXED	Admin area not accessible
435	normal	P3	RESOLVED	FIXED	Functionality-Registration Refresh Page
571	blocking	P1	RESOLVED	FIXED	Functionality-Allowing applic to access LearnWeb
479	normal	P3	RESOLVED	FIXED	Adding a tag
490	normal	P3	RESOLVED	FIXED	Sharing functionality not visible
561	normal	P3	RESOLVED	FIXED	Toolbars not installable
440	major	P2	RESOLVED	FIXED	Registration Error
480	normal	P3	RESOLVED	FIXED	Adding a tag too slow
491	normal	P3	RESOLVED	FIXED	Toolbars not accessible
594	critical	P3	RESOLVED	FIXED	My groups
562	normal	P3	RESOLVED	FIXED	Concern about how the tag cloud works
441	normal	P3	RESOLVED	FIXED	Registration Label
492	normal	P3	RESOLVED	FIXED	misunderstanding in "share" functionality
398	blocking	P1	RESOLVED	FIXED	Functionality-RegisterFunctionality
595	normal	P3	RESOLVED	FIXED	Upload multimedia
563	normal	P3	RESOLVED	FIXED	Add Resource is shown when View is expected
448	normal	P3	RESOLVED	FIXED	Spanish Translation
606	normal	P3	RESOLVED	FIXED	2.12.9 Share
574	critical	P3	RESOLVED	FIXED	Authorization
388	critical	P3	RESOLVED	FIXED	Functionality-ResourceEdited
585	normal	P3	RESOLVED	FIXED	Mixing advanced search with keywords and category
493	normal	P3	RESOLVED	FIXED	tag cloud incomplete
472	normal	P2	RESOLVED	FIXED	showing "type" in search results
483	normal	P3	RESOLVED	FIXED	Add as my LearnWeb2.0 resource in the Bookmarks
485	normal	P3	RESOLVED	INVALID	WEb 2.0 frends
592	normal	P3	RESOLVED	INVALID	2.6.2 Adding a resource - category
597	normal	P3	RESOLVED	LATER	2.7.6 My bookmarks
598	normal	P3	RESOLVED	LATER	2.7.11 My groups
579	normal	P3	RESOLVED	LATER	2.2.4 Home page upper bar
601	normal	P3	RESOLVED	LATER	2.11.1 Unit of Learning
593	normal	P3	RESOLVED	LATER	2.6.3 Adding a resource - groups
605	normal	P3	RESOLVED	LATER	2.12.1 Thumbnail
607	normal	P3	RESOLVED	LATER	Toolbar installation box is not multilingual
586	normal	P3	RESOLVED	LATER	2.4.1 Correctness of search results list
565	normal	P3	RESOLVED	LATER	Unfair users are still visible
380	normal	P2	RESOLVED	LATER	Usability- Home Page
577	normal	P3	RESOLVED	LATER	2.2.3 Home page right panel

bug_id	bug_severity	priority	bug_status	resolution	short_desc
381	normal	P3	RESOLVED	LATER	Usability-Welcome message My HomePage
578	normal	P3	RESOLVED	LATER	1.1.1 Home page right panel
600	normal	P3	RESOLVED	LATER	6.10.1 New category
393	trivial	P1	RESOLVED	LATER	Usability-ComebackArrows Missing
404	normal	P3	RESOLVED	LATER	Usability-ReorganizationMenuUploadAResource
580	major	P3	RESOLVED	LATER	2.3.1 Search by single keyword
581	normal	P3	RESOLVED	LATER	2.3.2 Search by multiple keywords
481	normal	P3	RESOLVED	LATER	TExt box of the comments not refreshed
482	normal	P3	RESOLVED	LATER	Name of the user not configured
575	normal	P3	RESOLVED	LATER	6.2.4 Functionality as unlogged
555	normal	P3	RESOLVED	REMIND	the advanced search does not filter by type
475	normal	P3	RESOLVED	REMIND	DebugInfo
476	major	P1	RESOLVED	REMIND	Access to Web 2.0 from My Group as not configured
559	normal	P3	RESOLVED	REMIND	wrong preview page
478	critical	P1	RESOLVED	REMIND	Error with Policies
564	normal	P3	RESOLVED	REMIND	entering a tag if you are not logged in
591	normal	P3	RESOLVED	WONTFIX	6.6.5 Toolbar " add this!
401	critical	P1	RESOLVED	WORKSFORME	Functionality-Uploading a picture
602	normal	P3	RESOLVED	WORKSFORME	2.11.2 Competence profiles
570	normal	P3	RESOLVED	WORKSFORME	Functionality-the upload web page does not work
603	normal	P3	RESOLVED	WORKSFORME	2.11.3 Competencies
582	normal	P3	RESOLVED	WORKSFORME	2.3.3 Search by category
604	normal	P3	RESOLVED	WORKSFORME	2.11.4 Learning Activities
583	normal	P3	RESOLVED	WORKSFORME	2.3.5 Advanced search - date
584	normal	P3	RESOLVED	WORKSFORME	2.3.6 Advanced search - settings

6 ID5.22: Final Evaluation of the Integrated LearnWeb and KRService

This internal deliverable is a document that has been submitted to DSpace on 13-Nov-2009 and then accepted and archived. It is available at this link:

<http://dspace.ou.nl/handle/1820/2128>

6.1 *Abstract and ToC*

This document describes the evaluation of the final version of LearnWeb2.0, called: LearnWeb v.1.0 and KRService v.1.0. After a brief introduction, the evaluation methodology is described; a summary of the function follows, with the final outcome of the evaluation process.

This document refers to an evaluation task organized in a functional way. This means that for each LearnWeb2.0 macro-function a list of micro-functions has been defined. This structure is reflected in the Table of Contents, that represents the list of evaluated functions. For each item, possible bugs/improvements have been reported in Bugzilla.

The Table of Contents follows, to show the evaluation item list.

4	INTRODUCTION (GIUNTI)	5
5	EVALUATION METHODOLOGY (UPF)	5
6	FUNCTIONS EVALUATED (UPF+GIUNTI)	5
6.1	ENTERING LEARNWEB FROM LIFERAY.....	6
6.2	USER MANAGEMENT	6
6.2.1	Registration.....	6
6.2.2	Authentication.....	6
6.2.3	Authorization.....	6
6.2.4	Function as not logged user.....	7
6.3	HOME PAGE.....	7
6.3.1	Home page left panel.....	7
6.3.2	Home page central panel.....	7
6.3.3	Home page right panel.....	7
6.3.4	Home page upper bar.....	8
6.4	SEARCH.....	8
6.4.1	Search by single keyword.....	8
6.4.2	Search by multiple keywords.....	8
6.4.3	Search by category.....	8
6.4.4	Advanced search - multimedia.....	9
6.4.5	Advanced search - date.....	9
6.4.6	Advanced search - settings.....	9
6.4.7	Mixing advanced search with keywords and category.....	9
6.5	RESOURCE LIST.....	10
6.5.1	Correctness of search results list.....	10
6.5.2	Ordering search results.....	10
6.5.3	Displaying sources.....	10
6.5.4	Clicking on a resource already added to Fedora.....	10
6.5.5	Clicking on a resource not yet added to Fedora.....	11
6.5.6	Clicking on (+) symbol.....	11
6.6	TOOLBARS.....	11
6.6.1	Installation.....	11
6.6.2	Toolbar - resources.....	11
6.6.3	Toolbar - upload.....	12
6.6.4	Toolbar - spreadCrumbs.....	12
6.6.5	Toolbar - add this!.....	12
6.7	ADDING A RESOURCE.....	12
6.7.1	Adding a resource - metadata.....	12
6.7.2	Adding a resource - category.....	13
6.7.3	Adding a resource - groups.....	13
6.7.4	Adding a resource - tag and comment.....	13
6.8	MYHOMEPAGE.....	13
6.8.1	My Groups.....	13
6.8.2	Upload Multimedia.....	13
6.8.3	Upload other resources.....	14
6.8.4	My Web2.0 resources.....	14

6.8.5	<i>My friends</i>	14
6.8.6	<i>My bookmarks</i>	14
6.8.7	<i>My LearnWeb resources</i>	15
6.8.8	<i>My tags</i>	15
6.8.9	<i>My comments</i>	15
6.8.10	<i>My rates</i>	15
6.8.11	<i>My groups</i>	15
6.8.12	<i>Authorizing Web2.0 services</i>	16
6.8.13	<i>Single sign on among Web2.0 services</i>	16
6.8.14	<i>Authorizing other Fedoras</i>	16
6.9	EXCELLENCE CLASS	16
6.9.1	<i>Computation</i>	16
6.9.2	<i>Visualization</i>	17
6.9.3	<i>Unfair user</i>	17
6.10	ADMIN SECTION	17
6.10.1	<i>New category</i>	17
6.10.2	<i>Edit category</i>	17
6.10.3	<i>Delete category</i>	17
6.10.4	<i>Reassign category</i>	18
6.10.5	<i>Manage user's classes</i>	18
6.11	LOCALIZATION	18
6.11.1	<i>English</i>	18
6.11.2	<i>Spanish</i>	18
6.12	INTEGRATION WITH TENCOMPETENCE OBJECTS	19
6.12.1	<i>Unit of Learning</i>	19
6.12.2	<i>Competence profiles</i>	19
6.12.3	<i>Competencies</i>	20
6.12.4	<i>Learning Activities</i>	20
6.13	RESOURCE VIEW	20
6.13.1	<i>Thumbnail</i>	20
6.13.2	<i>Links (url, embed)</i>	20
6.13.3	<i>Comments (view/insert)</i>	20
6.13.4	<i>Bookmark this</i>	21
6.13.5	<i>Download/view</i>	21
6.13.6	<i>Upload modified version</i>	21
6.13.7	<i>Rate</i>	21
6.13.8	<i>Tags (view/insert)</i>	21
6.13.9	<i>Share</i>	22
6.13.10	<i>Report abuse</i>	22
7	LOADABILITY TESTS	22
8	SUMMARY OF QUALITY OF RELEASE V.1.0 (UPF)	25
9	CONCLUSIONS (UPF+GIUNTI)	26
10	REFERENCES (UPF)	26
	ANNEX (TF-15)	26

6.2 Evaluation Methodology

In order to provide a complete analysis of all the LearnWeb2.0 v1.0 (<http://phpcake.it.fmi.uni-sofia.bg/>) functions we have developed a Unit and Integration tests. The Unit test searches for defects and verifies the functioning of integrated software components that are stable when operating in isolation. The test was performed by a software expert with no previous involvement in the development of this tool. The Integration test consists in verifying if the units are correctly integrated and related

among them: interfaces between units, complete processing chain and relation controls within the system including several modules and /or in combination with database. We also performed a test of the function requirements established in deliverable ID5.15 and ID5.16.

This document provides a list of the errors detected which make up the main evaluation outcomes. A set of suggestions for some of the problems detected are also proposed for those evaluation outcomes that require an improvement in the tool. The details of each of the aspects evaluated are not given but have been already documented via Bugzilla to inform the main developers and speed up the implementation process. A detailed description of each of the evaluated aspects is given in D 4.1 Evaluation Plan (p. 118 and 119).

Also included in the document is a summary of a loadability test performed by a collaborator from the Sofia University. The information and evaluation outcomes of this analysis are given in section 7.

6.3 Relation with others IDs

This deliverable is related with the following deliverables:

- ID5.20 (final requirements), delivered on 31-Jul-2009 <http://hdl.handle.net/1820/1998>
- ID5.21.1 (LearnWeb2.0 v.0.4) delivered on 6-Oct-2009 <http://hdl.handle.net/1820/2044>
- ID5.21.2 (LearnWeb2.0 v.1.0) submitted to DSpace on 14-Nov-2009 <http://hdl.handle.net/1820/2129>

6.4 Collaborative development

The development of ID5.22 has been carried out in a collaborative way, supported by several WP5-Forums and Skype Chats, among which the most significant are:⁴

- Forum for WP5 » ID5.22 Final evaluation of LearnWeb v.1.0: <http://www.partners.tencompetence.org/mod/forum/discuss.php?d=3134>

6.5 Summary of quality of release v.1.0

Having analyzed the main functions provided by the LearnWeb2.0 v1.0 we can conclude that most of the requirements explained in ID5.15 and ID5.20 have been successfully implemented and that most of the critical problems detected in ID5.17 have been solved. New functions added from previous versions and the new the Toolbar LearnWeb application have been tested.

⁴ Only accessible to consortium partners and associate partners

Four different testers from the TF15 have been involved in the evaluation of the available functions. For each of the functions a deep analysis following the methodology described in section 2 was performed. All the problems detected during the evaluation have been reported in detail following a structure proposed by the developers. Finally, a loadability test was also performed.

The results show that LearnWeb v1.0 accomplishes the requirements described in DIP4 of the project. Different evaluations have been performed before this round of evaluations and the tool has evolved well with added functions and solved problems that make it more competitive and user friendly. The system is stable and covers the main needs required by the project. Nevertheless, minor changes should be made before solving those problems detected during the evaluation. In the following, we summarize and comment on the most critical aspects that should be treated:

Function recommendations

1. Solve the functionality problems detected in the analyzed functions, especially referring to the specific items in Bugzilla. These items are mainly relevant to functionality improvements.
2. Solve the relation between the Toolbar application and the Web version of the tool. Upload the user accounts of both applications when managing a new resource.

The foreseen effort for these solutions may span from a few weeks to a few months.

Usability recommendations

3. Solve the coherence problems relating to the icons, typographies and menu locations on all pages.
4. Solve the coherence problems relating to the design of the pages of the Toolbar application and the Web application.
5. Add a help facility in the form of pop-up windows for the different functions to help guide the users.

The foreseen effort for these solutions is a few weeks.

Loadability tests

6. Solve the error reports in the Loadability section.
7. Improve the time response of all functions.

These problems might be overcome through the adoption of empowered hardware.

7 Conclusions

This version v.1.0 of LearnWeb2.0 is the final version delivered as part of the TENCompetence project; it includes full functionalities and must be considered a “reference implementation”, i.e. completed from the scientific/technological point of view even if lacking some aesthetic and performance aspects. In particular, the integration with other TENC objects, portlets and tools is implemented.

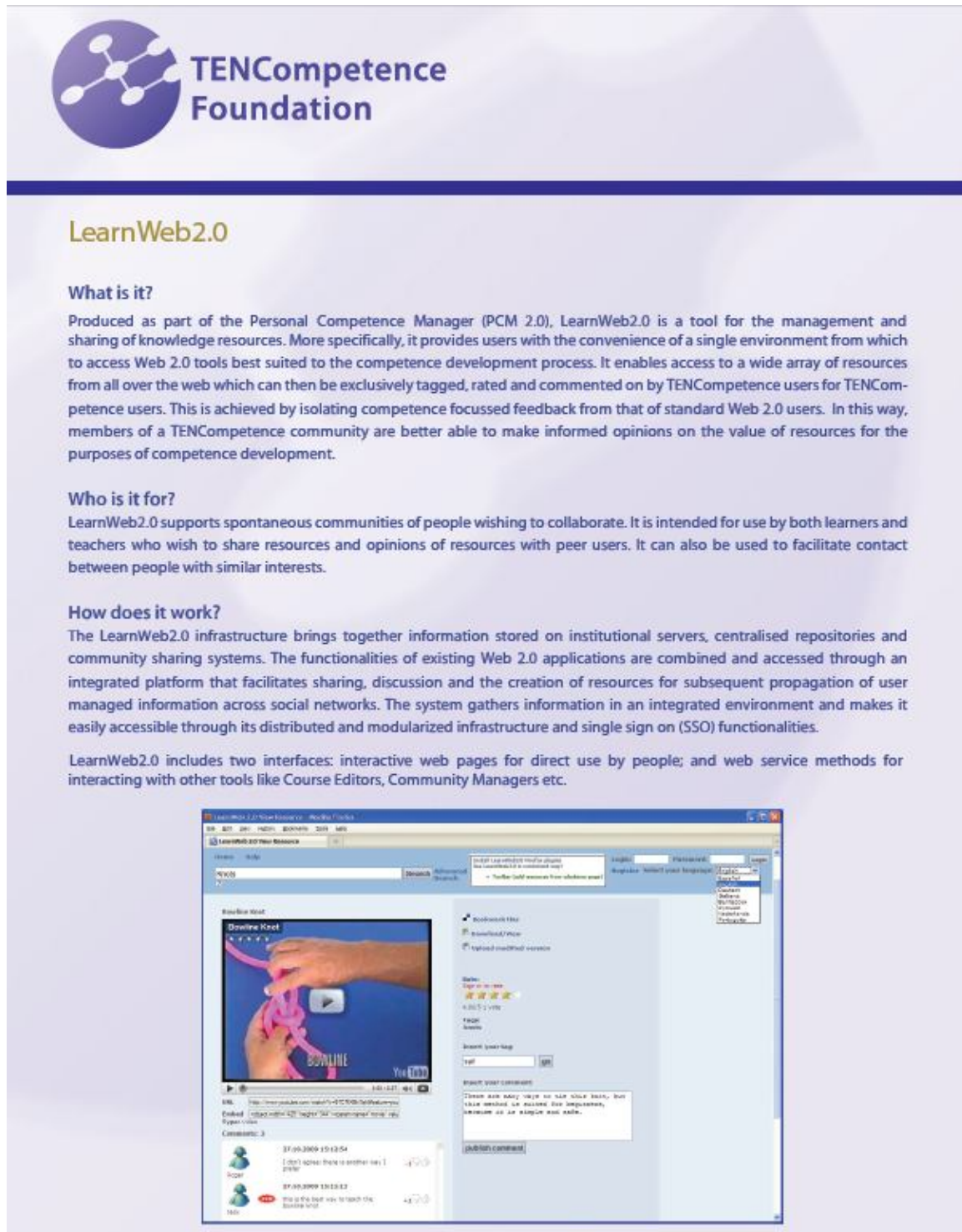
This version was demonstrated at the TENCompetence closing Workshop in Manchester in November 2009.

The evaluation outcomes show that there are some more improvements that could be considered for future versions of the tool after the project termination. These improvements might be carried out by the TENCompetence Foundation.

8 Appendix

8.1 LearnWeb2.0 Flyer

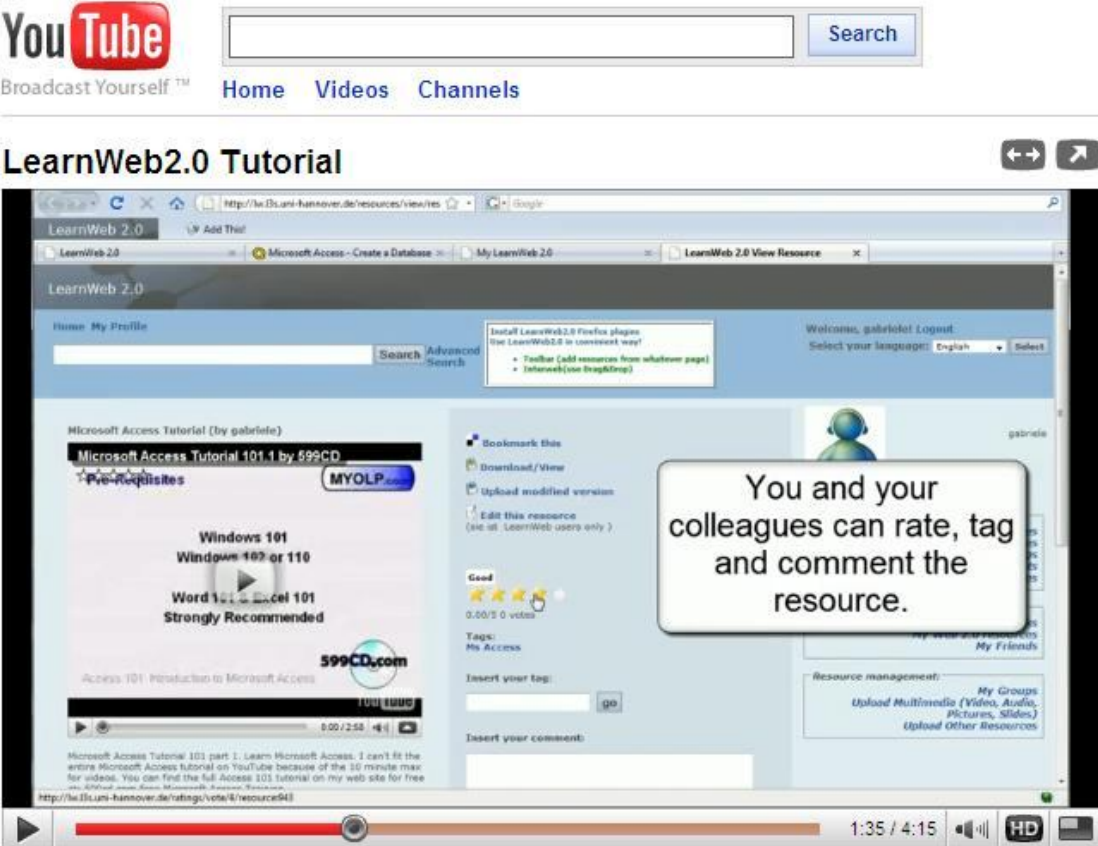
The flyer gives a spot idea of the product: what is it, who is for, how does it work.



The flyer features the TENCompetence Foundation logo at the top left. The main title is "LearnWeb2.0". Below the title, there are three sections: "What is it?", "Who is it for?", and "How does it work?". Each section contains a paragraph of text describing the platform's purpose, user base, and technical infrastructure. At the bottom of the flyer, there is a screenshot of the LearnWeb2.0 web interface. The screenshot shows a video player for a "Bowline Knot" tutorial, a list of comments, and a sidebar with navigation options like "Home", "About", "Search", and "Advanced Search".

8.2 LearnWeb2.0 Tutorial-Video

A Tutorial-Video has been developed, for showing the salient features of the product. The video is available on YouTube at: <http://www.youtube.com/watch?v=tgSbt7GrSzY>



The screenshot shows a YouTube video player for a video titled "LearnWeb2.0 Tutorial". The video content displays a web application interface with a search bar, navigation menu, and a list of resources. A text box overlaid on the video says "You and your colleagues can rate, tag and comment the resource." The video player shows 1 rating and 101 views.

The LearnWeb2.0 Tutorial-Video published on YouTube (click to start it)

8.3 LearnWeb2.0 Quick-start Guide

LearnWeb2.0 v.1.0 can be accessed from Liferay at: <http://liferay.it.fmi.uni-sofia.bg:9090>
 Or in a stand-alone way at: <http://phpcake.it.fmi.uni-sofia.bg>

8.3.1 Starting

You can use LearnWeb2.0 without being registered. Just access <http://liferay.it.fmi.uni-sofia.bg:9090> and click on the LearnWeb2.0 button.

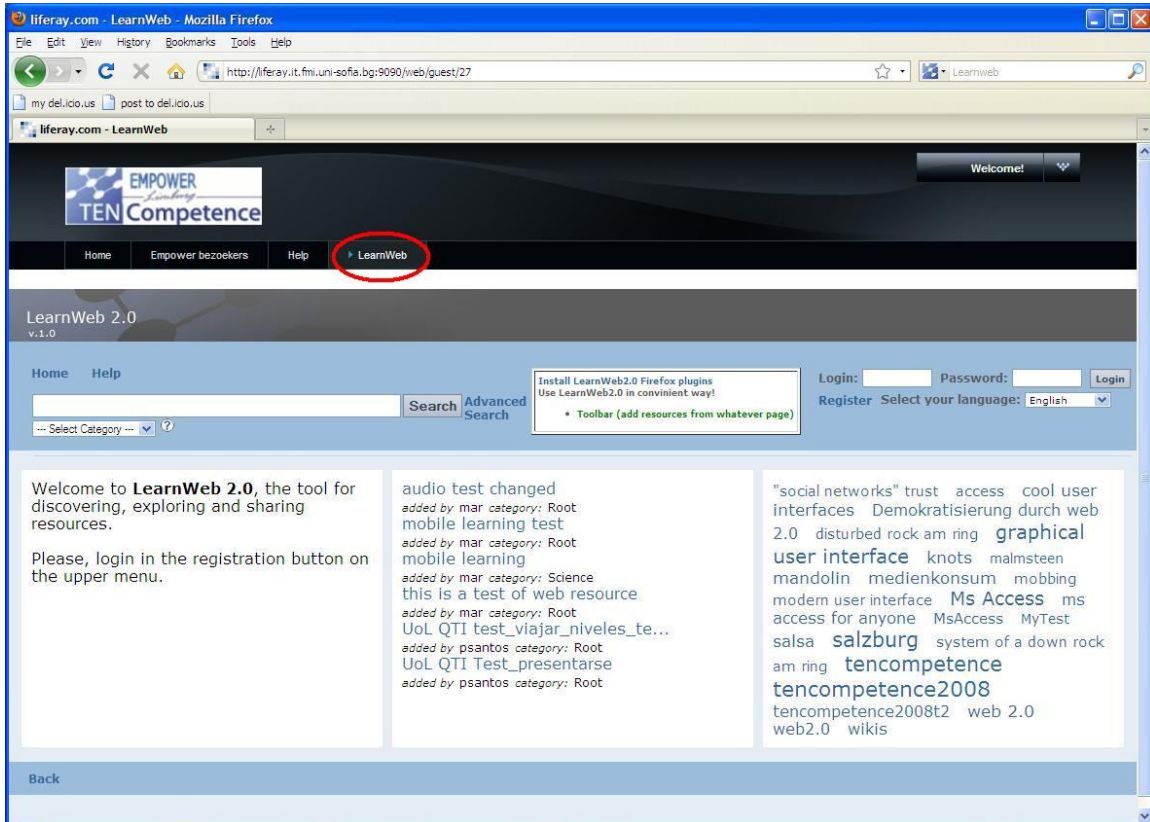


Figure 1 LearnWeb2.0 home page from liferay

The LearnWeb2.0 Home Page shows the search field on top left, the last uploaded resources in the middle and the tag cloud on the right.

You can search for any type of resource by typing a word or a phrase related to the resource you are looking for and then click on the “Search” button. A list of resources related to this word will be displayed. You can also conduct searches by selecting a category from the box below the Search bar.

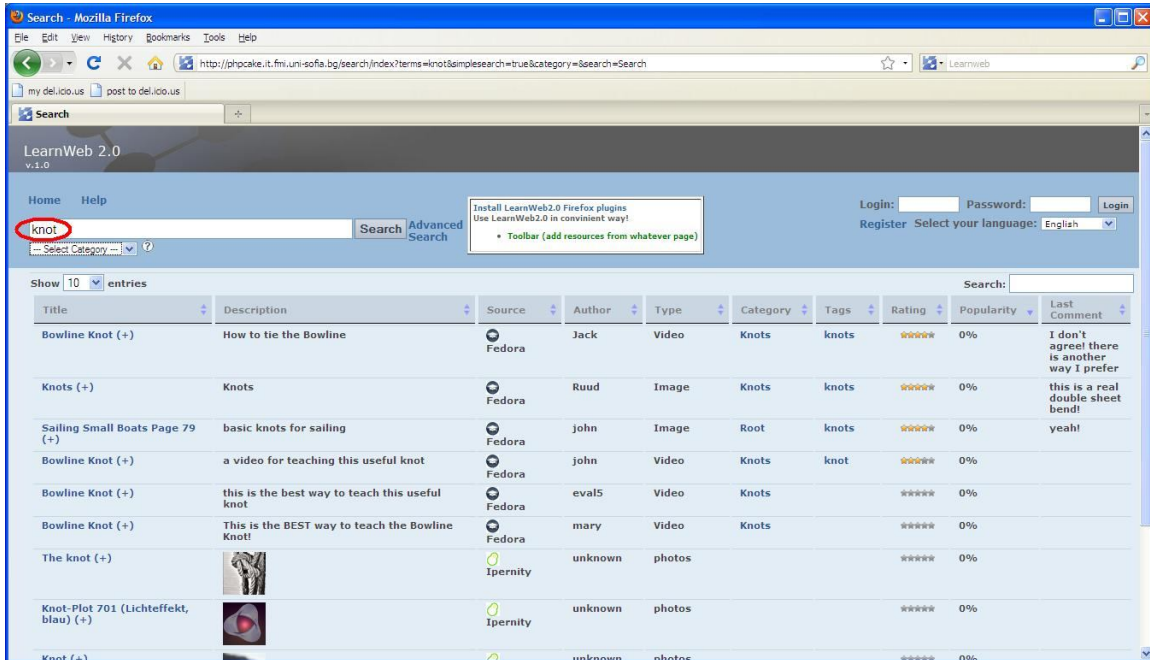


Figure 2 the results of a search by keyword “knot”

You can reorder the list by clicking on the column titles.

8.3.2 Viewing

You can view a resource in two ways:

- By clicking the title, in this case you will get the LearnWeb2.0 View page
- By clicking the “(+)” near the title, in this case you will see the resource in its native environment (e.g. YouTube, Flickr, web site...).

The LearnWeb2.0 View Page is used to preview resources coupled with the tags/comments/rates stored in the LearnWeb2.0 repository (Fedora repository). From this page you can rate a resource and tag it with a new keyword. You can also make new comments about the resource. Note that you must be logged in to use these features.

The resources are previewed by clicking on thumbnails (videos, images and HTML pages) or by clicking on the icons (PDFs and all other resources).

The View page also displays the current rating of the resource, the tags associated with the resource, and the comments of the users about the resource.

To rate the resource, click on the stars for rating. You can rate a resource only once! The system will not allow multiple ratings.

To insert a tag fill in the textbox and press the **Go** button.

To insert a comment, type the comment in the text area and press the **Publish comment** button.

If you are the owner of the resource you can upload a modified version of the resource by clicking on the **Upload modified version** link. An Edit page (similar to the Add/Upload Page) is displayed.

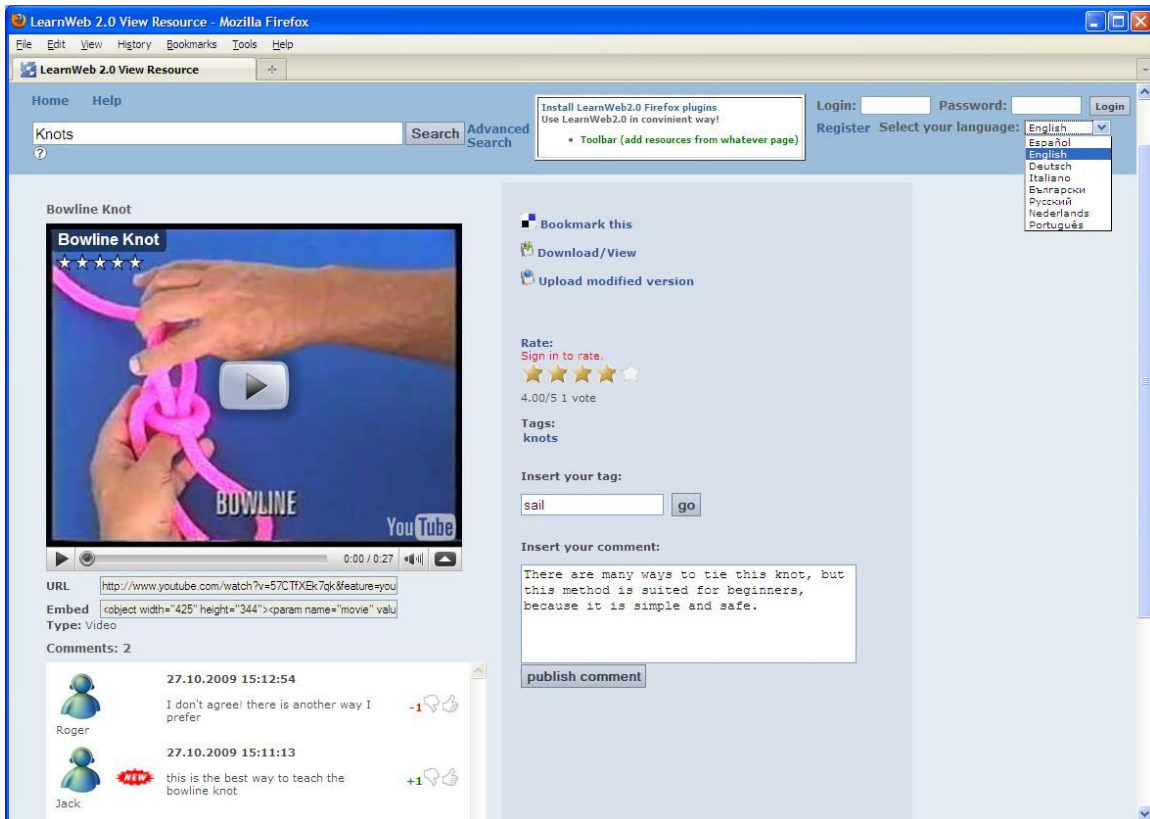


Figure 3 View a resource with comments, tags and rates

8.3.3 Registration and Authentication

In order to add/upload/insert your items, you will need to register by clicking on the top right link “register”. Fill in the different fields and you will be registered to the system. For login, use your login name and password when prompted to complete the login form in the top right corner.

When you upload a resource to a Web2.0 tool (YouTube, GroupMe etc) you will be asked to provide your credentials. Subsequent access to the Web2.0 tools will be automatically authorized.

8.3.4 My Home Page

If your login is successful you should then click “My HomePage” and you will be presented with the following user interface.

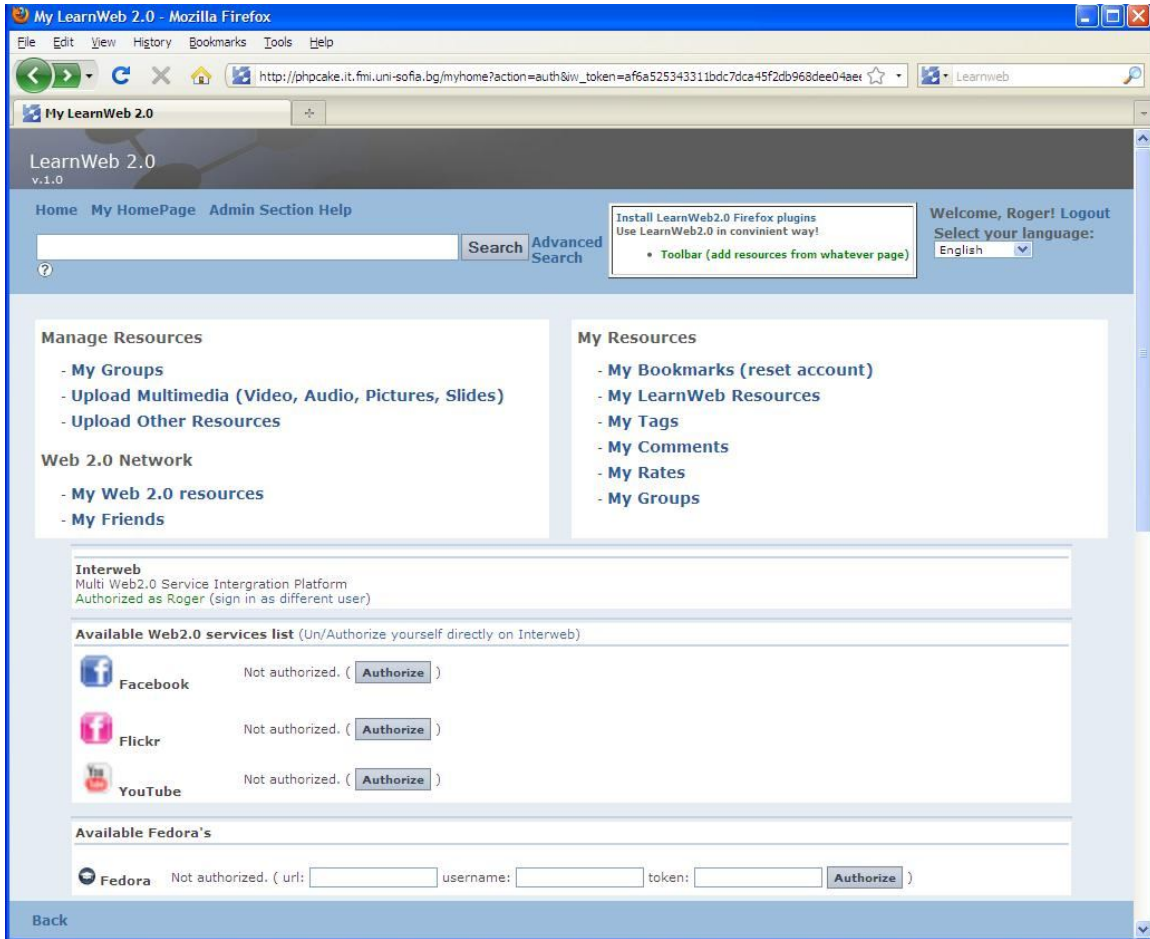


Figure 4 My Home Page, for the management of Web2.0 services, Fedora services and own resources

MyHomePage functionalities include:

- “Manage resources”: for defining groups and uploading resources
- “Web 2.0 Network”: for a direct access to the personal Web2.0 accounts
- “My Resources”: a page from which the user can preview the resources/tags/comments/rates added by him. You can also edit the related metadata.
- “InterWeb”: the tool for direct access to Web2.0 services
- “Available Web2.0 services list”: for managing the authorization to personal Web2.0 accounts
- “Available Fedoras”: for managing the authorization to other TENCompetence Fedoras accounts, different from the current.

8.3.5 Handling Metadata

The Metadata editor is designed to edit/update the Dublin Core metadata that is stored for each resource in the Fedora repository.

LearnWeb2.0 uses resource metadata for searching/discovering resources and for proper view/manipulation of the resources.

In LearnWeb2.0 the owner of the resource stored in the Fedora repository is responsible for supplying the metadata for the resource. Only the owner can use the Metadata editor to edit/fill in the values of Dublin Core elements. You must be logged in with your user name and password to use the metadata editor.

The metadata editor can be accessed from *MyHomepage* -> *My LearnWeb Resources* by clicking on the *Metadata editor* link for a given resource.

8.3.6 Adding Resources

The Add/Upload page is used to add/upload resources to the LearnWeb2.0 repository (Fedora repository). It can be accessed by selecting *My HomePage* -> *Upload Multimedia (or Upload other resources)*. You must be logged in to use this page.

- **Adding** a resource means to add into the LearnWeb2.0 repository (Fedora) the reference to a resource already published on the Web, e.g. a page of a public site, a video of YouTube, a photo of Flickr...
- **Uploading** a resource means to load into Fedora repository a resource from the user computer, e.g. a document, a photo on the user disk, a file on the user file-system.

Each resource is stored under a *Category*. So you must choose a category from the categories tree.

Note: You cannot create categories; they are created by the administrators.

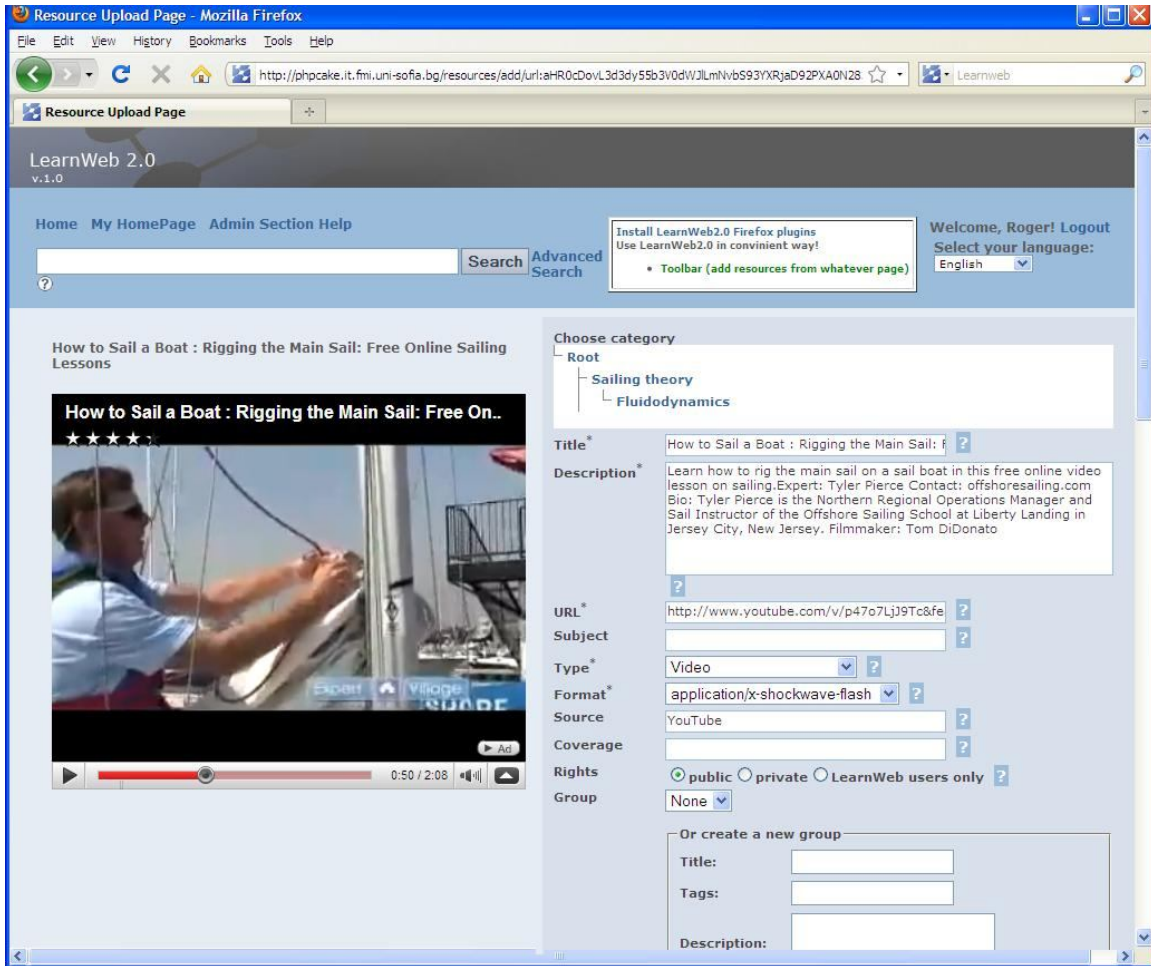


Figure 5 The add/upload page

You must complete the information relating to your resource by filling each of the fields. Some of them are filled by default and only those marked with an asterisk are obligatory. The **Title** and the **Description** of the resource are required fields.

For a proper view and manipulation of resources see **Type** and **Format** in Table 6.1.

For videos in YouTube the **Type** should be *Video* and **Format** should be *application/x-shockwave-flash*.

For images in Flickr the **Type** should be *Image* and **Format** should be *image/jpeg*.

When a resource is taken from a Web 2.0 tool (YouTube, Flickr, etc.) you should fill in the DC field **Source** with the name of the tool (for example *YouTube* or *Flickr*).

Resource Format	DC Type	DC Format
Plain text	Text document	text/plain
Html text	HTML document	text/html
XML text	XML document	text/html
Document “.doc”	Word document	application/msword
Spreadsheet “.xls”	Excel document	application/vnd.ms-excel
Presentation “.ppt”	PowerPoint presentation	application/vnd.ms-powerpoint
Document “.pdf”	PDF document	application/pdf
Image	Image	image/gif image/jpeg image/png image/bmp
Video	Video	application/x-shockwave-flash video/avi video/mpeg video/quicktime
Audio	Audio	audio/mpeg3 audio/wav audio/midi
Recognized binary file (zip, exe...)	ZIP file Executable file	application/zip application/octet-stream
Unrecognized binary file		application/octet-stream
UoLs	Unit of Learning	application/zip

Table 6.1. Recommended Dublin Core Type and Format values

The Upload page is used also for previewing resources that are not stored in the Fedora repository. When you click on the title of a resource found in YouTube, Flickr, etc., the Upload page is loaded with a preview of the resource (if possible). This allows the resource to be viewed and added to the repository.

LearnWeb2.0 is integrated in TENCompetence framework and allows to manage TENCompetence objects: Competence Profiles, Competencies, Unit of Learning, Learning Activities. Where possible, a direct link to other TENCompetence tools is implanted, like in the figure below:

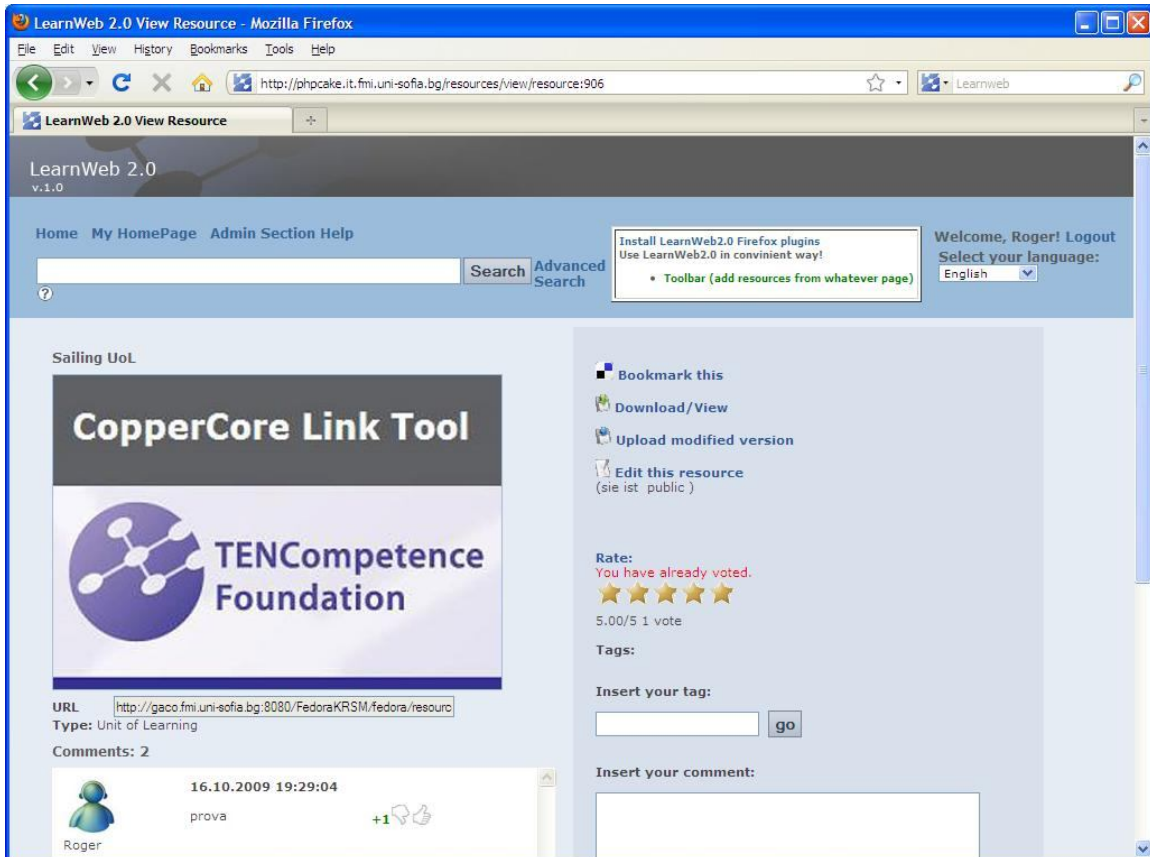


Figure 6 example of integration of LearnWeb2.0 with other TENCompetence tools

8.3.7 Toolbars

From the Home Page you can download the LearnWeb2.0 Toolbars.

The toolbars work as a shortcut interface for the users:

- allowing direct links to LearnWeb2.0 pages and functionalities;
- allowing adding a web resource directly while visiting it, without the burden to search it from LearnWeb2.0;
- allowing LearnWeb2.0 search without entering LearnWeb2.0 home page;
- allowing the integration with the SpreadCrumbs in-context annotation system.

The below figures explain the toolbar functionality:

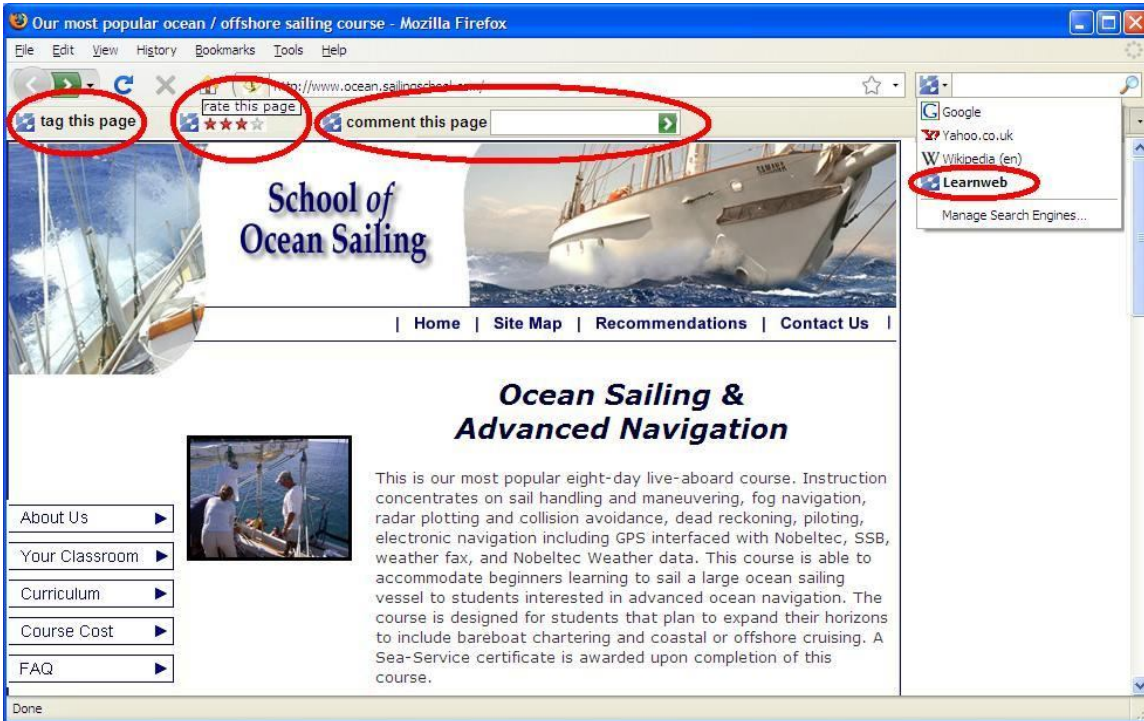


Figure 7 Toolbars allow adding resources directly while visiting them.

8.3.8 Administration and community

The users with the Administrator role have access to an administration page where it is possible to manage the resources and the user.

The below figure depicts the page for declaring an “unfair” user.

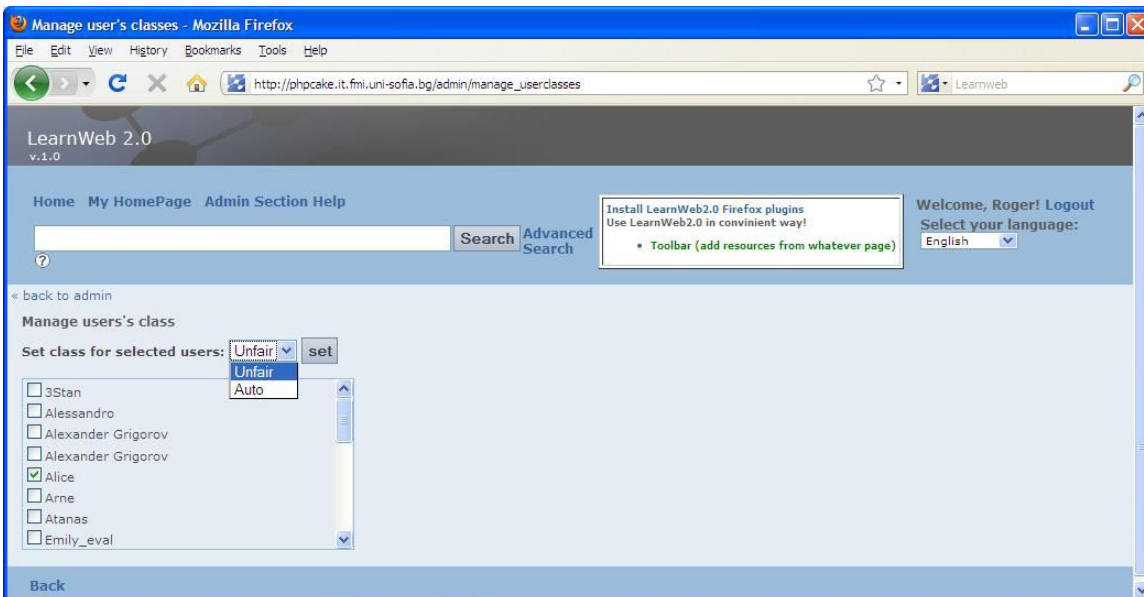


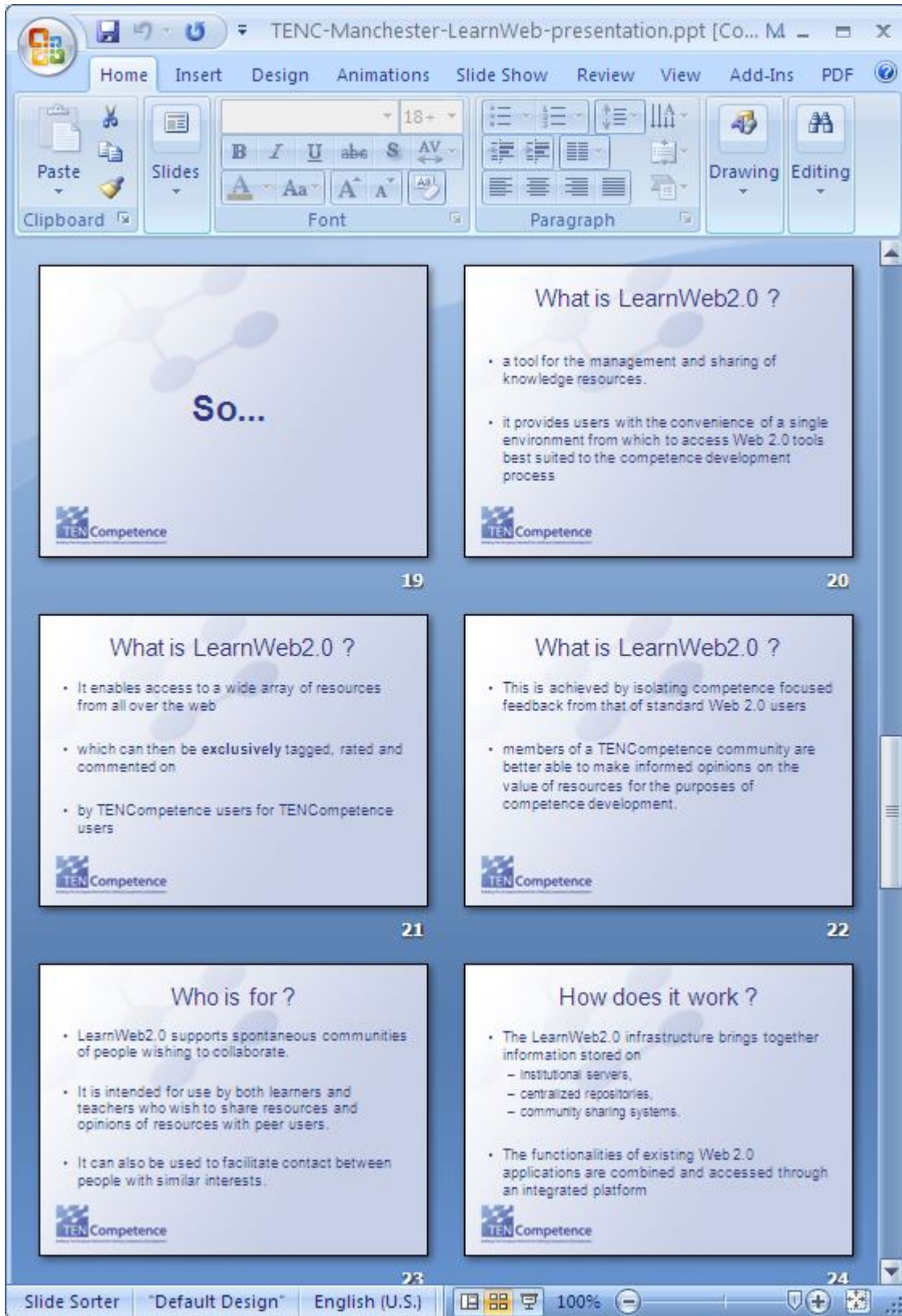
Figure 8 the administration area for managing resources and users

8.4 LearnWeb2.0 presentation

The presentation is focused on the most significant usage scenarios. It will be presented at final TENCompetence Event: the Open Workshop in Manchester on 19th Nov-2009.







TENC-Manchester-LearnWeb-presentation.ppt [Co... M _ ☐ X]

Home Insert Design Animations Slide Show Review View Add-Ins PDF

Paste Slides

Clipboard Font Paragraph Drawing Editing

18

So...

TEN Competence

19

What is LearnWeb2.0 ?

- a tool for the management and sharing of knowledge resources.
- it provides users with the convenience of a single environment from which to access Web 2.0 tools best suited to the competence development process

TEN Competence

20

What is LearnWeb2.0 ?

- It enables access to a wide array of resources from all over the web
- which can then be **exclusively** tagged, rated and commented on
- by TENCompetence users for TENCompetence users

TEN Competence

21

What is LearnWeb2.0 ?

- This is achieved by isolating competence focused feedback from that of standard Web 2.0 users
- members of a TENCompetence community are better able to make informed opinions on the value of resources for the purposes of competence development.

TEN Competence

22

Who is for ?

- LearnWeb2.0 supports spontaneous communities of people wishing to collaborate.
- It is intended for use by both learners and teachers who wish to share resources and opinions of resources with peer users.
- It can also be used to facilitate contact between people with similar interests.

TEN Competence

23

How does it work ?

- The LearnWeb2.0 infrastructure brings together information stored on
 - institutional servers,
 - centralized repositories,
 - community sharing systems.
- The functionalities of existing Web 2.0 applications are combined and accessed through an integrated platform

TEN Competence

24

Slide Sorter "Default Design" English (U.S.) 100%