



TEN Competence

Building The European Network for Lifelong Competence Development

An organisational model for lifelong learning and related tooling

Jocelyn Manderveld, SURFfoundation
Bas Krekels, Logica



TEN Competence

Building The European Network for Lifelong Competence Development

Central Problem

- Knowledge society demands **lifelong learning**
- **Integrated support for informal and formal learning** is missing
- People are responsible for planning their careers – **employability**
- Support of **personal competence development** is required

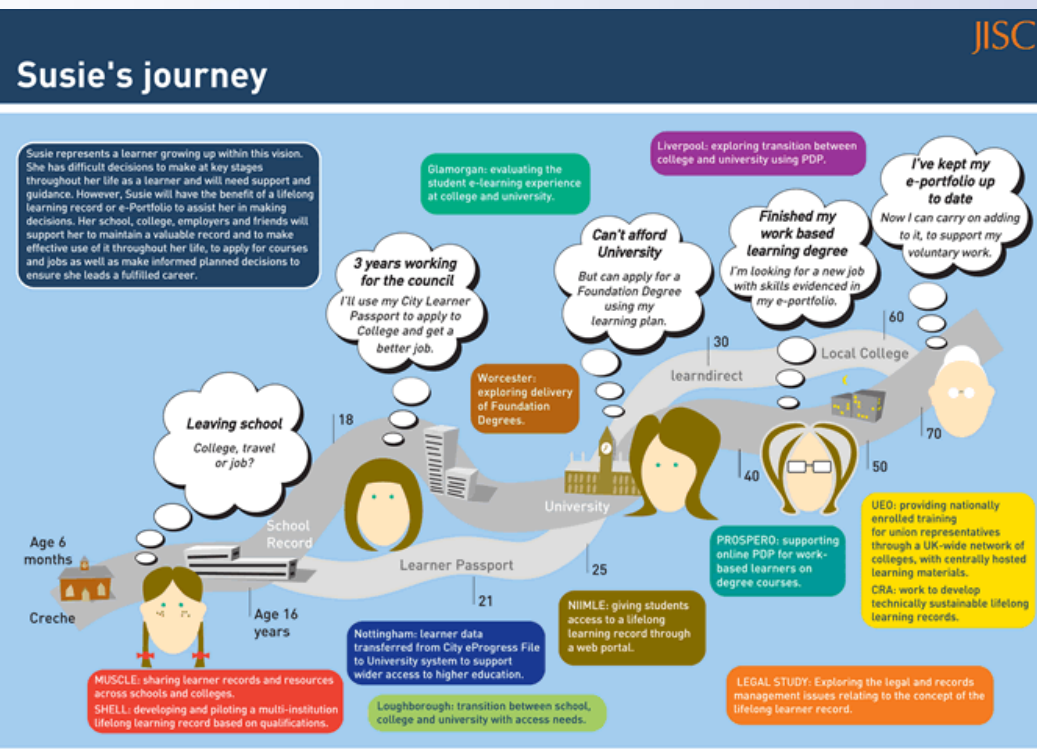


TEN Competence

Building The European Network for Lifelong Competence Development

Lifelong learning & Employability

- In order to support lifelong learning & employability, what are the challenges we are dealing with?



Detailed

- What is needed to support LLL & employability?
- From learner perspective?
- HR/Management perspective?



TEN Competence

Building The European Network for Lifelong Competence Development

Lifelong learning focus

- Supporting **individuals** (and organisations) in development of their competences during their whole life:
 - I want to (further) develop a specific competence
 - I want a better job position
 - I want a new or different job
 - I want to keep my competences up-to-date
- Integration of learning, working, leisure



TEN Competence

Building The European Network for Lifelong Competence Development

Lifelong learning focus

- Focus on personal development planning, instead of focus on curricula
- Personal development plans based on goals
 - Career plans
 - Personal objectives
- Plan can contain a mixture of:
 - Formal degrees
 - Informal learning intentions
 - Non-formal workshops
- Is personal and based on assessment of current competences



Organisational principles of lifelong learning

- Orientation
- Assessment
- Planning
- Learning activities
- Reflection



TEN Competence

Building The European Network for Lifelong Competence Development

Organisation of learning

- Orientation
 - come to know what is there to be learned
 - become aware of their own competences
 - become aware of their own learning needs
 - establish their own learning objectives
- Assessment
 - Self Assessment
 - Competence Assessment



TEN Competence

Building The European Network for Lifelong Competence Development

Organisation of learning

- Planning
 - Learning resources and activities of interest will have to be put into a certain sequence. This sequence can be planned, or it can emerge during learning.
- Learning activities
 - Learning through engagement with the selected learning activities should be integrated with learning that occurs elsewhere. Integration between learning in several places, such as in the learning environment, at home, at work, and learning at a distance. Integration of what was learned previously



Organisation of learning

- Reflection
 - An important part of learning in lifelong competence development occurs through reflection on past learning experiences. Reflection is made possible by various means of recording the learning experiences, but most typically by collecting past learning experiences in a portfolio.

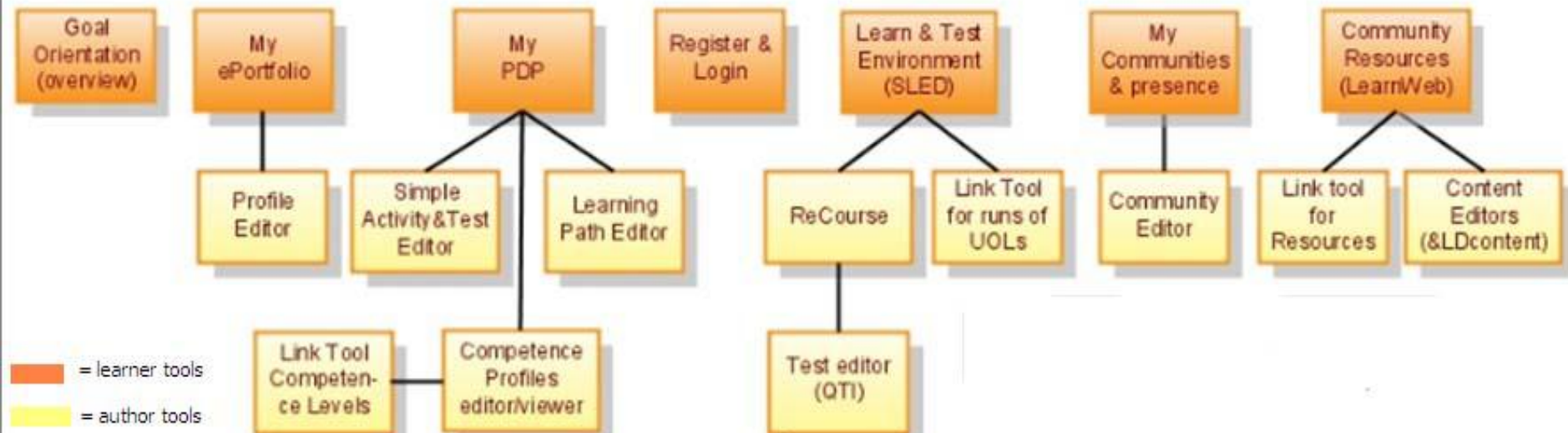


TEN Competence

Building The European Network for Lifelong Competence Development

Tools overview

Integrated User Interface (Environment for Personal Competence Development = PCM 2.0)



TEN Competence

Building The European Network for Lifelong Competence Development

PDP in Liferay environment

TENCompetence **AGORA**

Bienvenido! **PDP** Actividades Auto-Evaluación Diccionarios Foro LearnWeb Manuales

Archivo Ayuda

mail

Seleccionar objetivo

Estado de competencias

Habilitat d'elaborar informes

Nuevo Plan de Desarrollo Personal

Nuevo Plan de Desarrollo Personal

Selecciona la opción que mejor se ajusta a tus objetivos de aprendizaje.

Introduce el título del nuevo plan de desarrollo personal

Mi plan de email

Selecciona un perfil de competencias que mejor se ajuste a tus objetivos

Agora – Inglés nivel básico
Agora - Castellano Nivel Básico
Agora - Gestión de carpetas y ventanas en OFFICE y Ficheros en WORD
Agora - Inglés Nivel Avanzado
Agora - Uso de Internet
Agora - Uso de MS Power Point
Agora - Uso de email
Doblevia - Educador

Agora - Gestión de carpetas y ventanas en

Finish Cancelar

LearnWeb 2.0

The screenshot shows a Mozilla Firefox browser window displaying the LearnWeb 2.0 website. The address bar shows the URL <http://pilot-agora.upf.edu/web/guest/10>. The browser tabs include 'Gmail - Inbox - davinia.hl@gmail.com', 'liferay.com - Welcome', and 'liferay.com - LearnWeb'. The website header features the 'TENCompetence' and 'AGORA' logos, along with a welcome message: 'Bienvenido petra petra petra!'. The main navigation menu includes 'Bienvenido!', 'PDP', 'Actividades Auto-Evaluación', 'Diccionarios', 'Foro', 'LearnWeb', and 'Manuales'. The page title is 'LearnWeb 2.0 v. 0.3'. Below the title, there is a 'Página principal' section with a search bar and a 'Buscar' button. The search bar contains the text 'welcome_home_msg'. To the right of the search bar, there are login fields for 'Nombre de acceso:' and 'Contraseña:', a 'Registrar' button, and a language selection dropdown set to 'Español'. Below the search bar, there is a list of search results or links, including 'El maltrato a las mujeres', 'Upgrading Drupal', '¿Cómo se os presenta este ...', 'prueba', 'vacaciones camino de santiago', and 'tajmahal vacaciones'. The status bar at the bottom of the browser window shows 'Terminado'.

liferay.com - LearnWeb - Mozilla Firefox

Archivo Editar Ver Historial Marcadores Herramientas Ayuda

http://pilot-agora.upf.edu/web/guest/10

Gmail - Search results - davinia.hl@gma... liferay.com - Index liferay.com - LearnWeb

TENCompetence AGORA Bienvenido petra petra petra!

Bienvenido! PDP Actividades Auto-Evaluación Diccionarios Foro LearnWeb Manuales

LearnWeb 2.0
v.0.3

Página principal Mi Página principal Bienvenido, petra! Salir
Selecciona tu idioma: Español

Manage Resources

- Crear un nuevo Grupo
- Subir una fotografía
- Subir un fichero de audio
- Subir un vídeo
- Subir un fichero

Mis Recursos

- Mis Favoritos (reiniciar cuenta)
- Mis Recursos de LearnWeb
- Mis Etiquetas
- Mis comentarios
- Mis valoraciones
- Mis grupos

Back

Terminado

Light an Educational Fire

www.surfnetkids.com

Too often we give our children answers to remember rather than problems to solve.

Roger Lewin
science journalist
and author

YouTube

0:35 - 1:14

Light an Educational Fire

Post comment

- albert.angehrn@insead.edu
A list of interesting quotes related to learning.
- martina.eckert@alpha-simulations.com
I particularly liked IF YOU CAN GIVE YOUR SON OR DAUGHTER ONLY

TENCompetence Video Types

CD CD Opportunities CD Experts

<p>Light an Educational Fire</p> <p>Uploaded by vallappan.arun@gmail.com</p>		<p>Education, Teachers</p> <p>Attach Discuss</p> <p>★★★★☆</p>
<p>The need for intercultural media competence</p> <p>Uploaded by albert.angehrn@insead.edu</p>		<p>Interculture, Competence</p> <p>Attach Discuss</p> <p>★★★★☆</p>
<p>Teachers can change the world</p> <p>Uploaded by</p>		<p>Influence, Competence, Teachers</p> <p>Attach Discuss</p>

tentube Search

Search is done based on Video Titles and tags

Mozilla Firefox

Archivo Editar Ver Historial Marcadores Herramientas Ayuda

http://labs.calt.insead.edu/prototyping/DigitalCinemaTube/DigitalCinemaTube.html

Gmail - Mañana - davinia.h... liferay.com - Index liferay.com - LearnWeb liferay.com - Manuales http://labs...aTube.html

Digital Cinema Tube

jon.bcn86@gmail.com Refresh Logout

Welcome Channel Network Profiles Game Admin Groups Chat[1] Connect ...

Control Panel

Spacing

Show arrows Retain

Search Time Machine

Display Only:

Knows

```

graph LR
    alun --- Marco
    Marco --- Jonathan
    Jonathan --- Patricia
    Jonathan --- Pradee...
    Jonathan --- Inno...
    Patricia --- Pradee...
    Pradee... --- Shrika...
    Pradee... --- Albert...
    Pradee... --- Cultura...
    Inno... --- Compe...
  
```

alun Marco Jonathan Patricia Pradee... Shrika... Albert ... Cultura...

Compe... Inno... Pradee...

Conectando a labs.calt.insead.edu...

Learning path editor

The screenshot shows the 'Learning Path Editor - Design' interface. It features a top navigation bar with 'Overview', 'Metadata', and 'Design' tabs. The main area is divided into three panels:

- COMPETENCES:** A horizontal row of 15 colored circles, each labeled 'Competency 1' through 'Competency 15'. The colors include green, blue, red, and purple.
- ACTIONS:** A large white area containing 9 green circles, each labeled 'Title Action 1' through 'Title Action 9'. A 'NEW ACTION ADDED' box is visible at the bottom left of this panel.
- LEARNING PATH:** A panel on the right showing a sequence of actions. A box contains 'Title Action 2'. To its right is a control panel with a dropdown menu set to 'Fixed Order' and an option for 'Free Order, select:'. Below this panel is a 'Fixed Order: On - Off' toggle and an 'Add' button.

At the bottom of the interface, there are 'Filter' and 'Add' buttons for the actions panel.



TEN Competence

Building The European Network for Lifelong Competence Development

QTI Test-editor

Questionnaire

Title
A final test Report Results

Question 8 of 13 Delete Question Question type Match Add Question Number of choices 4

Match-question Text
Match the following characters to the Shakespeare play they appeared in:

Association List Delete Association Add Association

Source	Target	Score
Capulet	Romeo and Juliet	1.0
Demetrius	A Midsummer-Night's Dream	0.5
Lysander	A Midsummer-Night's Dream	0.5
Prospero	The Tempest	1.0

Source Match Set Add Choice

Choice Text	Selected	Max-match
1: Capulet	<input type="radio"/>	1
2: Demetrius	<input type="radio"/>	1
3: Lysander	<input type="radio"/>	1
4: Prospero	<input type="radio"/>	1

Target Match Set Add Choice

Choice Text	Selected	Max-match
1: A Midsummer-Night's Dream	<input type="radio"/>	4
2: Romeo and Juliet	<input type="radio"/>	4
3: The Tempest	<input type="radio"/>	4



Information

- www.tencompetence.org
- Articles & deliverables:
<http://dspace.ou.nl/>
- Manderveld@surf.nl
- Bas.krekels@logica.com



TEN Competence

Building The European Network for Lifelong Competence Development