

RESEARCH

Open Access

Laser-induced etching of few-layer graphene synthesized by Rapid-Chemical Vapour Deposition on Cu thin films

Marco Piazzini^{1,2*}, Luca Croin^{1,3}, Ettore Vittone² and Giampiero Amato¹**Abstract**

The outstanding electrical and mechanical properties of graphene make it very attractive for several applications, Nanoelectronics above all. However a reproducible and non destructive way to produce high quality, large-scale area, single layer graphene sheets is still lacking. Chemical Vapour Deposition of graphene on Cu catalytic thin films represents a promising method to reach this goal, because of the low temperatures ($T < 950^{\circ}\text{C} - 1000^{\circ}\text{C}$) involved during the process and of the theoretically expected monolayer self-limiting growth. On the contrary such self-limiting growth is not commonly observed in experiments, thus making the development of techniques allowing for a better control of graphene growth highly desirable. Here we report about the local ablation effect, arising in Raman analysis, due to the heat transfer induced by the laser incident beam onto the graphene sample.

Keywords: CVD graphene, Copper, Laser induced etching, Heating ablation effects

PAC Codes: 61.80.Ba, 81.15.Gh, 61.48.Gh, 81.05.ue

Background

Graphene (a single bidimensional layer of carbon atoms arranged in an hexagonal lattice) has attracted a major interest in the last few years because of its astonishing electrical (Castro Neto et al. 2009; Peres 2010; Peres et al. 2006), mechanical (Lee et al. 2008) and chemical properties (Elias et al. 2009; Wang et al. 2009a), that make it a good candidate for the future development of nanoelectronics devices. Although the main properties of this material are nowadays well known from a theoretical point of view, an efficient and highly reproducible method to grow high quality, large-scale area, single layer graphene films, suitable for practical applications, is still lacking. For this reason, several techniques have been developed in the last years in order to achieve this goal: the most important are the epitaxial growth of graphene by thermal sublimation of SiC (de Heer et al. 2007; Emtsev et al. 2009; Hass et al. 2008; Sprinkle et al. 2009; Varchon

et al. 2007), the Chemical Vapour Deposition (CVD) synthesis of graphene on various metal catalysts (Reina et al. 2009; Lee et al. 2010; Liu et al. 2010; Kim et al. 2012; Nandamuri et al. 2010; Somani et al. 2006; Li et al. 2009a; 2009b; Tao et al. 2012) and the chemical reduction of graphene oxide (Gilje et al. 2007; Lee et al. 2009; Paredes et al. 2008; Schniepp et al. 2006). Among these, CVD technique seems to be one of the most promising methods because of the reported possibility (Liu et al. 2010) of obtaining highly uniform, defect-free graphene flakes as large as $\sim 100 \mu\text{m}^2$ in a reproducible, highly accessible and inexpensive way.

Since CVD synthesis needs a catalyst to activate the chemical decomposition of the carbon precursor (usually methane or ethylene) used for graphene growth at low temperatures ($T < 950^{\circ}\text{C} - 1000^{\circ}\text{C}$), the use of many metals (Ir (Coraux et al. 2008), Ru (Martocchia et al. 2008), Pt (Sasaki et al. 2000; Starr et al. 2006), Fe (Kondo et al. 2010), Ag (Di et al. 2008), Ni (Liu et al. 2010; Kim et al. 2009; Obraztsov et al. 2007), Cu (Bae et al. 2010; Li et al. 2009a; Tao et al. 2012) as catalysts during the process has been reported in literature. Cu is one of the most promising catalyst (Mattevi et al. 2011) because of the low C solid solubility in it

*Correspondence: m.piazzini@inrim.it

¹Quantum Research Laboratory, Istituto Nazionale di Ricerca Metrologica, Strada delle Cacce 91, 10135 Turin, Italy

²Department of Physics, NIS Centre of Excellence and CNISM, University of Turin, Via Pietro Giuria 1, 10125 Turin, Italy

Full list of author information is available at the end of the article

(0.001 – 0.008 weight % at $\sim 1084^\circ\text{C}$): this property brings to the formation of only soft (not covalent) bonds between the π electrons of $2p_z$ orbitals of sp^2 hybridized C atoms and the 4s electrons of Cu, without formation of any carbide phase during the growth process. As a consequence, formation of graphene should stop after one single layer has been formed: this makes CVD growth of graphene on Cu very attractive. Nonetheless, many experiments show that actually such a self-limiting behaviour is hardly observed, since few-layered graphitic structures are usually grown on Cu substrates.

For this reason, to obtain monolayer graphene, several post processing techniques have been proposed to selectively etch atomic graphene layers. Among the various approaches (e.g. heat-induced etching by oxygen (Liu et al. 2008), e-beam lithography assisted technique (Novoselov et al. 2004; Zhang et al. 2005), graphene cutting by carbon-soluble metals (Campos et al. 2009; Datta et al. 2008) the thinning of atomic carbon multilayers by laser irradiation (Han et al. 2011) can be a promising method to obtain monolayer graphene. In this last work, authors show how the central rôle in graphene etching is held both by the laser irradiation used for the Confocal Raman Spectroscopy performed on the samples, and by the SiO_2/Si substrate on top of which few-layered graphene has been transferred: the heat produced by the irradiation “burns” (in presence of oxygen) locally the outermost C layers, while the innermost layer (the one bound to the substrate) is left unetched because of the presence of the SiO_2 layer acting as heat sink.

Cu, being a metal, has thermal conductivity higher than SiO_2 and can represent therefore an enhanced heat sink, so it can be expected to observe a similar behaviour also for graphene grown by CVD on it.

Here we report the change in shape and position of the G and 2D peaks observed in Raman spectra acquired at different time intervals on the same spot of a graphene sample synthesized by CVD on Cu thin films: the evolution of the spectra, indicating that the structure of graphene is changing during the exposure to the laser used during Raman analysis, is compatible with a decrease in the number of graphene layers present on the substrate. This decrease may be attributed to the same laser-induced etching effect observed on graphene deposited onto SiO_2/Si substrates. If this is the case, an efficient and easy graphene etching technique can be developed and a promising way to obtain high uniform, large-scale area, monolayer graphene can be envisaged.

Methods

Cu deposition

The samples subjected to CVD process have been prepared by e-beam evaporation of 500 nm Cu thin film on

top of a p-type (100) oriented Si wafer ($\sim 1\text{ cm}^2$) with $\sim 300\text{ nm}$ thermal SiO_2 . The deposition has been carried out in a load-lock chamber at a base pressure of $\sim 10^{-8}$ mbar and deposition pressure of $\sim 10^{-6}$ mbar, with an average growth rate of $3 - 5\text{ \AA/s}$.

The thickness d of deposited Cu film has been chosen in order to limit the known problem (Mattevi et al. 2011) of dewetting occurring on very thin films ($d < 500\text{ nm}$) at temperatures $\gtrsim 800^\circ\text{C}$.

Scanning Electron Microscopy (SEM) images of the samples (taken with a FEI *InspectF* Scanning Electron Microprobe) after Cu deposition show a uniform coverage of the SiO_2 surface characterized by a Cu polycrystalline structure with grains of $\sim 90\text{ nm}$ as typical size (Figure 1(a)). Moreover, Scanning Tunneling Microscopy (STM) scanning an area of $\sim 10^{-2}\text{ }\mu\text{m}^2$ allowed us to evaluate the roughness of the Cu surface (Figure 1(b)). The resulting root mean square (RMS) of $\sim 2\text{ nm}$ (an order of magnitude higher than single layer graphene thickness, $\sim 3.3\text{ \AA}$), together with the topographic behaviours obtained for certain scanning directions (Figure 1(c)), showing among others height variations as small as few angstroms, makes ineffective the use of Atomic Force Microscopy (AFM) to detect any change in the number of graphene layers eventually present on Cu: the changes in height produced by the latter effect would be hardly distinguishable from topographic changes due to the roughness of the substrate's surface.

CVD growth process

Before undergoing CVD process, samples have been carefully cleaned in acetone and isopropanol. CVD has been then performed in a Rapid Thermal Annealing (RTA) system (Jipelec *JetFIRST 100*) suitable for depositions in Low Vacuum conditions ($p_{\text{min}} \sim 10^{-2}$ mbar) up to $T_{\text{max}} \sim 1300^\circ\text{C}$. The system is equipped with four gas lines controlled through mass flow meters and it is characterized by a small heat capacity allowing for fast cooling-down processes, up to $\sim 300^\circ\text{C/min}$ (see Figure 2).

The temperature of the system is controlled by a pyrometer, exposed to the back of the sample holder (a 4" Si wafer) and calibrated by means of a thermocouple in contact with it (Figure 2). The pyrometer sets the power of the lamps. Since the Cu sample undergoing the CVD process is directly exposed to the lamps, the temperature reading by the pyrometer (correct in absence of Cu) is probably lower than the temperature reached by the surface during the process. Therefore, the real deposition temperature may be underestimated. We are performing some studies on this topic in order to solve this ambiguity in the future. However, at the temperature reached during the process as read by the pyrometer dissociation of CH_4 and subsequent graphene formation take place, while the undesired Cu dewetting effect is prevented.

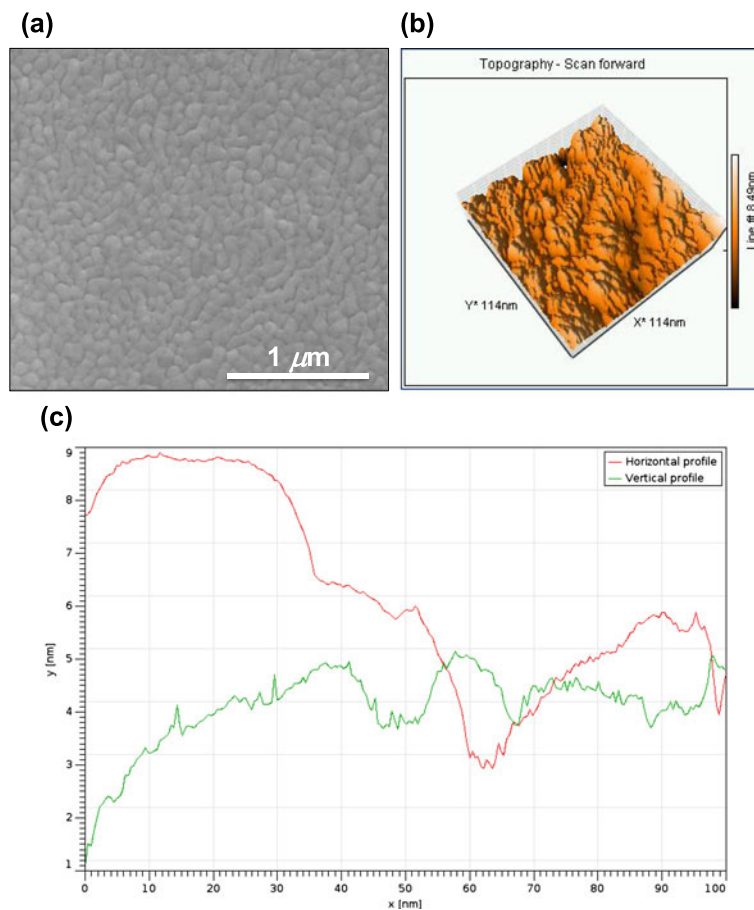


Figure 1 SEM and STM Analyses of e-beam evaporated Cu thin films as deposited. (a) SEM image of the polycrystalline structure of the Cu surface after e-beam evaporation; (b) STM topographic image of a small portion $\sim 10^{-2} \mu\text{m}^2$ of the Cu surface; (c) topographic profiles along two directions (red: horizontal, green: vertical) obtained with STM analysis.

The deposition process started with a fast heating step, increasing the temperature up to 500°C , carried out in vacuum ($p_{\text{chamber}} = 1.2 \cdot 10^{-2}$ mbar). A subsequent annealing step (10 minutes long), bringing the system to 725°C , has been then performed under 40 sccm of H_2 ($p_{\text{chamber}} = 1.65$ mbar). Purpose of this step is to improve

the quality of the Cu film, by increasing the size of the grains present on its surface and, consequently, by inducing a low defective growth of graphene due to the reduced number of grain boundaries. The synthesis of graphene has been performed by flowing ultrahigh purity CH_4 , with a flow rate of 10 sccm, for 5 minutes ($p_{\text{chamber}} = 3.3 \cdot 10^{-1}$

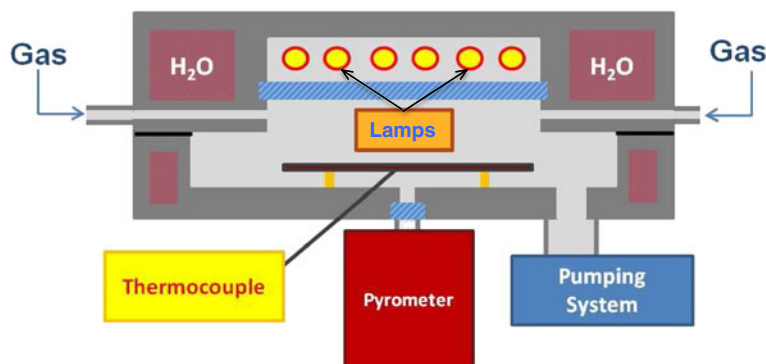


Figure 2 RTA system for graphene deposition. Schematic view of RTA system working principles: heating lamps provide heat only to the sample.

mbar), without any H₂ flow, following (Tao et al. 2012) in which H₂ has been reported to be detrimental for the final quality of graphene sheets when using Cu thin films. After deposition the system has been cooled-down to room temperature in three steps: a first one (at a rate of ~ 42°C/min), down to 450°C in gas-free conditions, a faster one by switching the heaters off (at a rate of ~ 180°C/min), till to ~ 270°C, again in vacuum conditions and a final one carried out in nitrogen atmosphere, to purge the system, down to room temperature. The thermal cycle has been reported in Figure 3 for clarity.

Graphene transfer

Graphene has been transferred from Cu to new insulating (285 nm-SiO₂/Si) substrates by means of a standard chemical etching technique. Approximately 1.5 μm of Poly(methyl-methacrylate) (PMMA) have been firstly deposited on graphene by spinning (at 5000 rpm for 1 minute) and heating (at 165°C for 5 minutes) the samples several times. After PMMA deposition, samples have been dipped in a 0.5 M diluted FeCl₃ etching solution for ~ 4 hours (keeping them at 45°C to enhance etching kinetics). Once Cu has been completely etched away from the samples, PMMA/graphene membranes have been picked up onto 285 nm-SiO₂/Si substrates and PMMA has been finally removed with acetone.

Results and discussion

Graphene samples have been first characterized by SEM analysis and X-Ray Diffraction (XRD, performed with a Philips X'Pert Pro X-ray system using Co radiation beam

at 0.8° incident angle) in order to investigate a change in granulometry and crystallographic orientation of the Cu surface, due to high temperature annealing under hydrogen flow.

SEM image in Figure 4(a) shows that Cu surface reorganized itself at the temperature reached during graphene deposition: an increase of grains average size (from ~ 90 nm to ~ 3 μm) is observed, as expected. Cu still covers uniformly the sample surface, meaning that the temperature during the annealing and deposition processes was low enough and the growth time short enough to prevent dewetting effects on the catalytic film. Nevertheless, early stage formation of Cu droplets is observed (Figure 4(b)).

XRD analysis performed on our samples, in contrast to what observed in other works (Tao et al. 2012), shows (Figure 5) changes in the preferential crystallographic orientation of the grains present on the sample surface after CVD process at the nominal temperature of 725°C, involving both (111) and (220) directions, with a decrease in the I₍₁₁₁₎/I₍₂₂₀₎ intensity ratio after the thermal treatment. This fact can probably be ascribed to the fast cooling-down rate chosen for the experiment.

Samples have been finally characterized with Raman spectroscopy by means of a Renishaw *In-Via Raman Microscope*, equipped with He-Cd blue laser at 442 nm, avoiding this way background plasmon emission of Cu when excited e.g. by green light (Tao et al. 2012). For the acquisition we have used laser power both at 1 mW and 0.1 mW, by varying consequently the exposure time of the samples to laser irradiation (in order to keep the amount

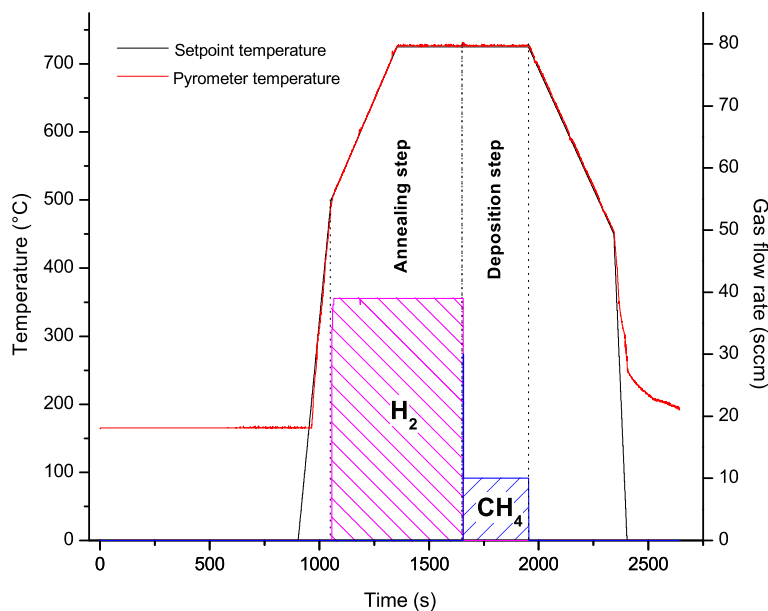
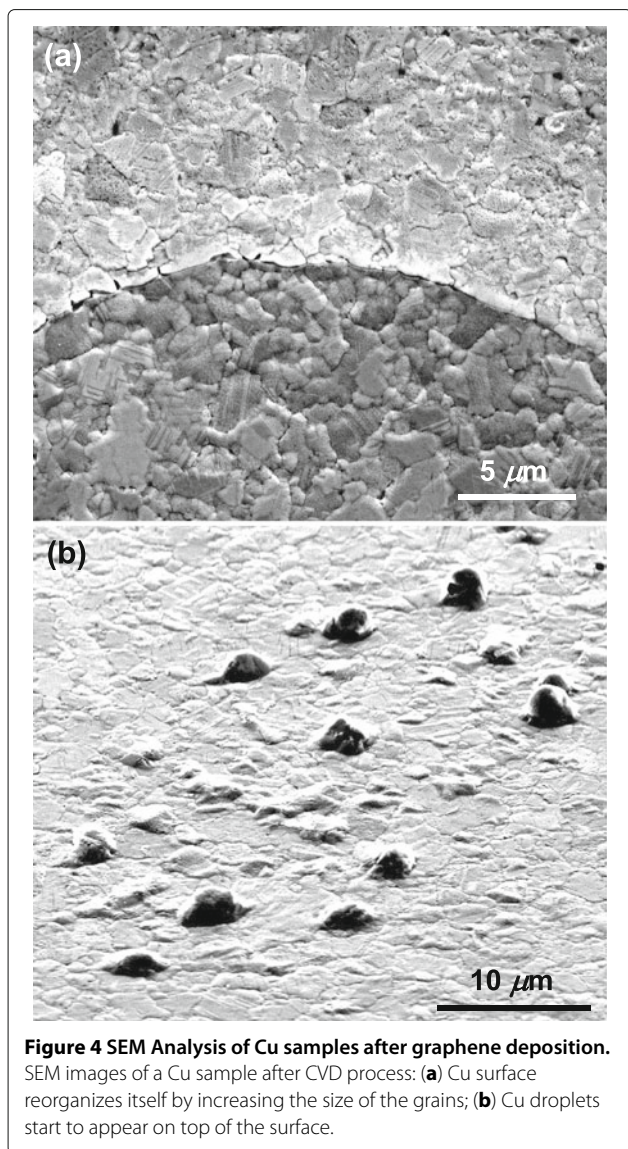


Figure 3 Expected thermal cycle for graphene deposition. Illustration of the thermal process performed for CVD growth of graphene on top of Cu: see text for details.



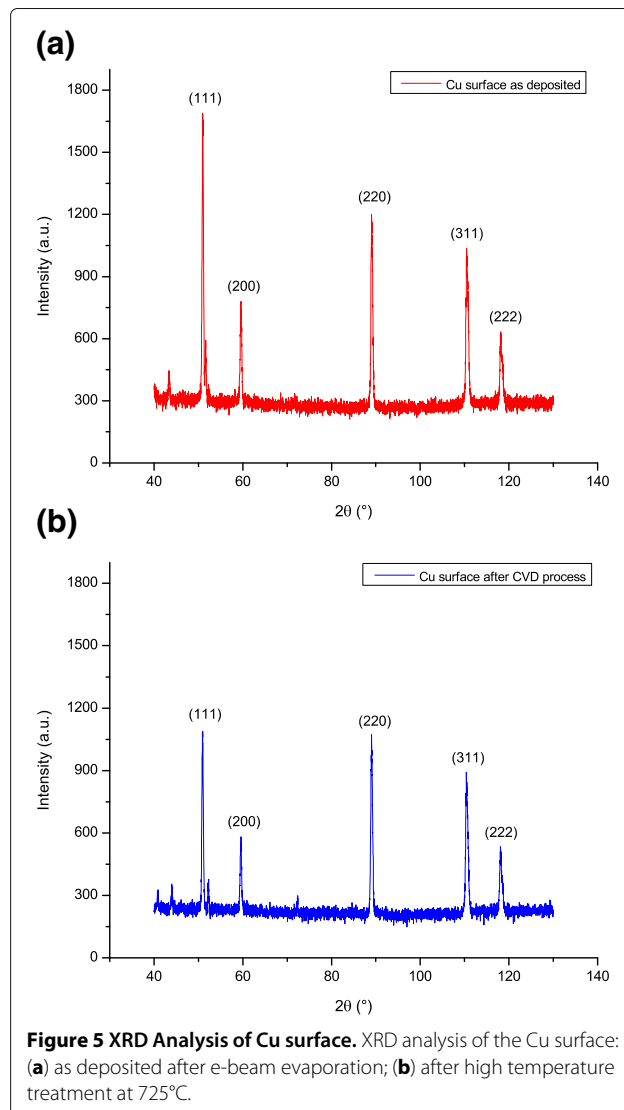
of energy $E = Pt$ transferred from laser light to samples fixed).

The first spectrum (Figure 6) has been acquired by setting the laser at low power (0.1 mW) and by exposing the sample to laser light for $t = 800$ s. By repeating four times the acquisition in the same spot (of the order of $1 \mu\text{m}^2$) at higher power (1 mW) but reduced exposure time ($t = 80$ s), we obtained the spectra of Figure 7(a). Three prominent peaks are visible: (a) the D peak at $\sim 1340 \text{ cm}^{-1}$ associated to a defect induced inter-valley scattering, (b) the G peak at $\sim 1594 \text{ cm}^{-1}$ due to in-plane optical vibrations of carbon atoms in the hexagonal crystalline structure and (c) the 2D peak at a Raman shift varying between $\sim 2698 \text{ cm}^{-1}$ and $\sim 2710 \text{ cm}^{-1}$ due to a double-resonant inter-valley scattering involving two

in-plane optical phonons (Reina et al. 2009; Tao et al. 2012; Ismach et al. 2010; Su et al. 2011; Malard et al. 2009).

It is possible to notice in particular that while the G peak shape and position are unaffected by laser exposure (only a slight increase in intensity is worthy of note), the D and 2D peaks change significantly their structure.

The careful analysis of both the position and the FWHM of the 2D peak for all spectra is reported in Table 1 and Figure 8(a). The results show a significant evolution in the 2D peak shape: this fact may be attributed to some change in the graphene-like structure grown on Cu. The evolution here reported is compatible with a decrease in the number of graphene layers present on the Cu substrate, as suggested by the lowering in the Raman shift position of the peaks centre and by the sharpening of the 2D peaks observed while the exposure to laser light is increased in time. This interpretation is confirmed by the evaluation of



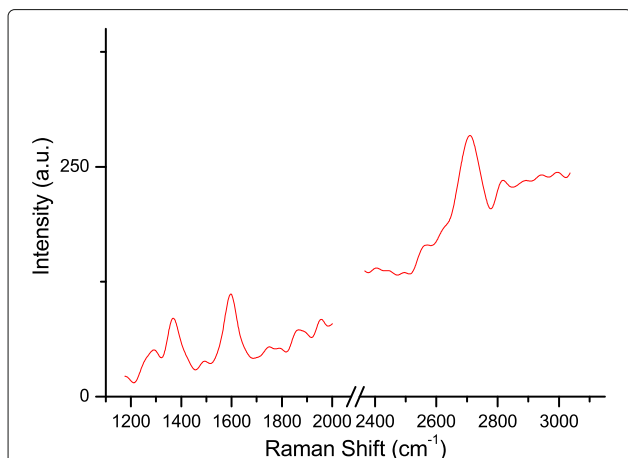


Figure 6 Raman Spectrum of CVD graphene at low power and long acquisition time. First Raman spectrum of not transferred CVD graphene grown on Cu, acquired with laser power 0.1 mW for 800 s. The pronounced baseline is typical of graphene Raman spectra acquired on Cu (Miao et al. 2011).

the I_G/I_{2D} ratio of the four spectra: the ratio is decreasing as expected for a decrease in the number of graphene layers (Reina et al. 2009; Ismach et al. 2010; Malard et al. 2009; Ferrari et al. 2006), as shown in Table 1. However, these results do not permit to make a clear quantitative estimation of the number of graphene layers present on the Cu substrate before and after the exposition to the laser light during Raman analysis, because they do not completely agree with the typical values reported in literature for position and FWHM of 2D peak of mono-, bi- and few-layer graphene.

A possible phenomenological model to explain this effect, as discussed also in (Han et al. 2011), is based on the observation that the laser beam at high power provides an amount of heat sufficient to locally etch away, in presence of oxygen atmosphere, outermost graphene layers grown during CVD process on top of Cu. Although it is known that suspended monolayer graphene shows a room temperature thermal conductivity of up to ~ 5000 W/(mK) (Balandin et al. 2008), the effect of such a huge value can be significantly reduced in our system because of the decrease in the surface area of graphene flakes occurring while increasing number of layers (said $A^{(i)}$ the area of the surface covered by the i -th graphene flake and $A^{(Cu)}$ the area of the underlying Cu grain, $A^{(n)} > A^{(n-1)} > \dots > A^{(2)} > A^{(1)} > A^{(Cu)}$). Moreover, Raman mapping shows different regions with different number of layers on the same sample, corroborating our hypothesis of a terraces-like structure characterizing all the substrate. This fact implies that in-plane heat dissipation through outer graphene layers is largely suppressed by finite-size effects and out-of-plane heat transfer (much lower than the previous one) becomes the dominant heat

transfer channel, resulting in a local overheating and subsequent etching of the layers (the model is schematically represented in Figure 9). On the contrary, the innermost graphene layer directly bound to the Cu surface is protected from this effect by the presence of the substrate acting as heat sink. Indeed, it has been reported (Cai et al. 2010) that Cu lowers the thermal conductivity of CVD monolayer graphene grown on it: a significant change in the enhancement of the temperature and in the G peak shifting as a function of the absorbed laser power by using Cu instead of SiO₂ as a substrate has been reported in this work. As a consequence, graphene-on-Cu and Cu systems have comparable thermal conductivities and the effect of the substrate is not anymore negligible: being Cu a good heat conductor, it provides in turn the dominant contribution to heat dissipation and allows for a more efficient heat exchange through the substrate

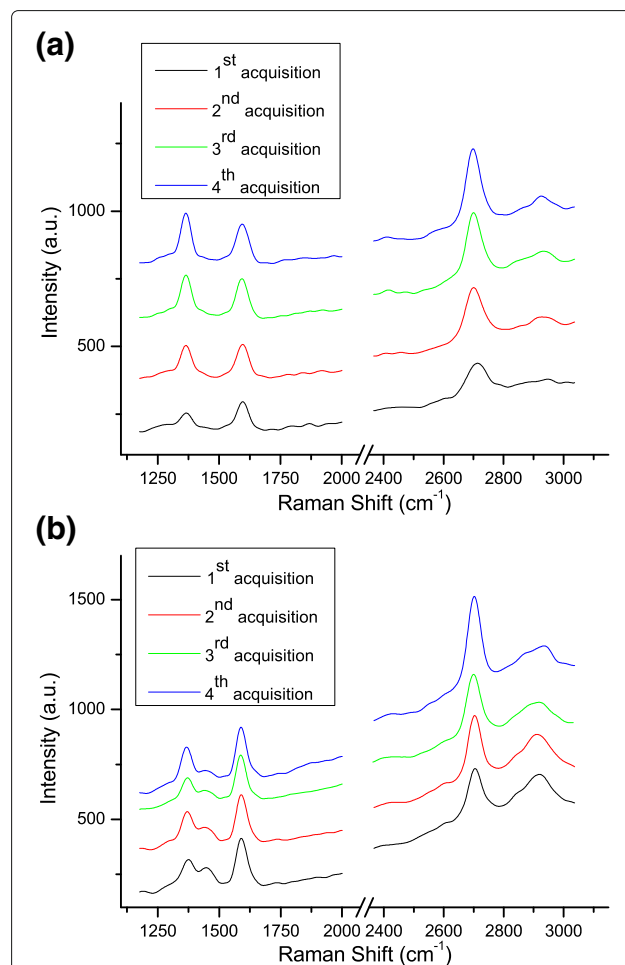


Figure 7 Raman spectra of CVD graphene at high power and fast acquisition time. Raman spectra of CVD graphene grown on Cu acquired on the same spot at following time intervals (all the acquisitions have been performed at 1 mW for 80 s): (a) graphene onto Cu substrate; (b) graphene transferred onto SiO₂ substrate.

Table 1 2D peak position and sharpness, I_G/I_{2D} ratio

Acquisition	Graphene on Cu			Graphene on SiO ₂		
	Raman Shift (cm ⁻¹)	FWHM (cm ⁻¹)	I_G/I_{2D}	Raman Shift (cm ⁻¹)	FWHM (cm ⁻¹)	I_G/I_{2D}
1	2711.4	70.0	0.86	2704.0	40.3	1.01
2	2701.3	60.0	0.60	2702.7	37.7	0.79
3	2699.8	49.2	0.56	2699.0	43.8	0.80
4	2698.2	46.6	0.46	2701.1	38.7	0.61

Comparison of the position and FWHM of 2D peaks of subsequent Raman acquisitions as extracted by a single Lorentzian fit and evolution of the I_G/I_{2D} ratio (spectra from Figure 7, Figure 8). Uncertainties of the order of 0.01 – 0.04% for the 2D peak Raman shifts and of 3 – 6% for 2D peak FWHMs have been estimated. Note: results concerning transferred graphene are affected by a higher uncertainty because of pronounced secondary peaks (possibly due to residual PMMA used for graphene transfer) present in the Raman spectra (see Figure 7(b)), making the fit procedure less accurate.

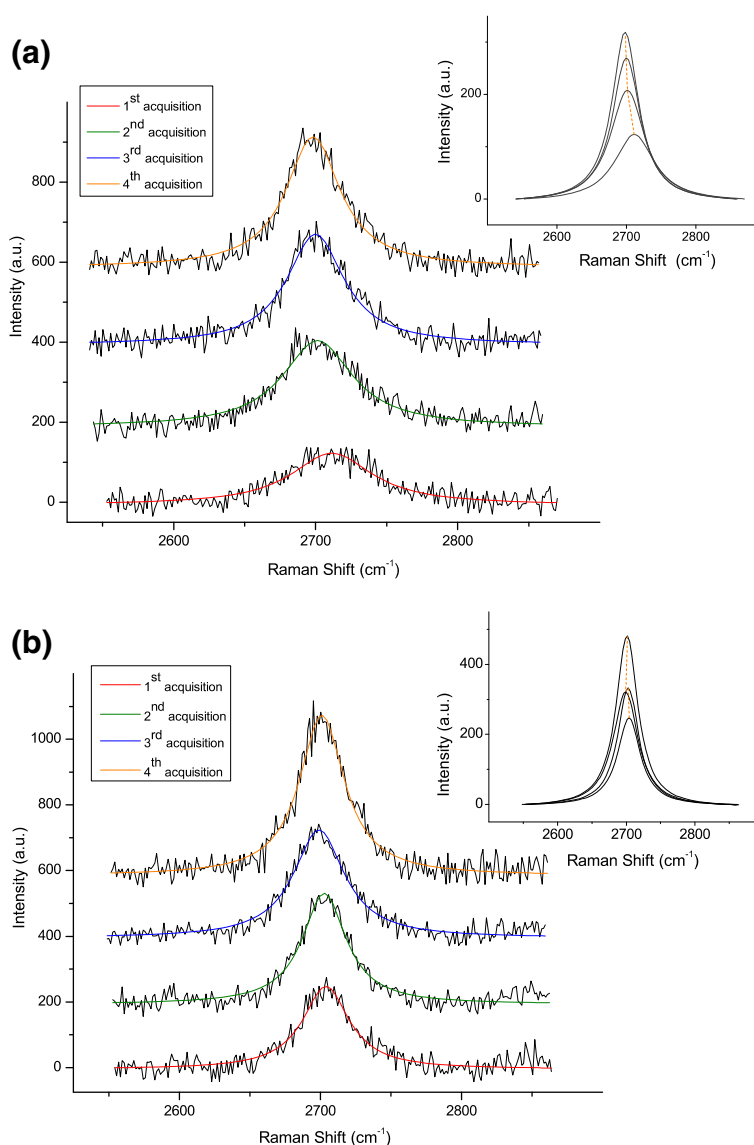


Figure 8 2D peak evolution with number of Raman acquisitions. Behaviour of position and shape of 2D peak of Raman spectra acquired in the same spot of the sample: **(a)** graphene onto Cu substrate; **(b)** graphene transferred onto SiO₂ substrate. (Insets: change in position and intensity of the single Lorentzian curves used to fit the 2D peak of the spectra).

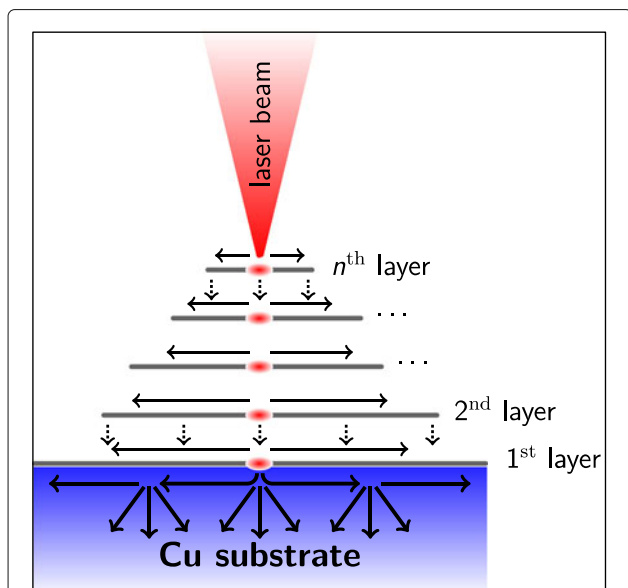


Figure 9 Phenomenological model for local overheating and etching of multilayer graphene. Schematic model representing the possible origin of local overheating and etching of outermost graphene layers grown on Cu films. The heat provided by the focused laser beam is dissipated through in-plane (horizontal arrows) and out-of-plane (vertical arrows) channels. Though the in-plane channel is dominant in graphene, the finite size of outer layers makes out-of-plane dissipation significant and reduces the in-plane contribution, thus causing local overheating and subsequent etching of the layers. The innermost layer is instead prevented from etching by the presence of the Cu substrate acting as heat sink.

with respect to the case of transferred graphene onto SiO₂.

At such photon energies other mechanisms, like molecular desorption of chemical species, cannot be *a priori* excluded, but they can hardly affect the Raman signature and they can be detected through electrical measurements (Sun et al. 2012).

The fact that the G peak position is almost unaffected by the laser irradiation can be explained as a result of two competing effects: the local enhancement of temperature (due to overheating), bringing to a redshift of the G peak (Cai et al. 2010; Calizo et al. 2007) and the decrease in the number of graphene layers (due to etching), resulting instead in a blueshift of the G peak (Wang et al. 2009b).

The unexpected unaltered intensity of the G peak (that should decrease as the number of graphene layers decreases) can be explained in two ways. A first effect, applying to Raman measurements performed both on transferred and not transferred graphene samples, relies on the increase in temperature of graphene layers upon laser irradiation, likely resulting in an effect similar to what observed in experiments concerning the evolution of graphene Raman signature upon controlled annealing

at high temperatures (Ni et al. 2008a). As pointed out in this work, the G peak intensity is not changing between few- and monolayer graphene sheets after the annealing process, meaning that in these experimental conditions G peak intensity cannot be regarded as a fingerprint to distinguish number of graphene layers. A second reasoning, applying only on graphene samples over Cu, relies on the roughness of the Cu surface, determining a light trapping effect close to the substrate's surface that results in an enhanced number of multiple reflections of the laser light between Cu and graphene layers: as a consequence, the number of C atoms detected by the unfocused beam is always comparable to the number of C atoms present in multilayer graphene, although the number of graphene layers is decreasing. As reported in (Ni et al. 2008b) the G band intensity for a number of graphene layers exceeding ~ 15 is in this case decreasing by increasing number of layers and then constant, as observed in our spectra.

The origin of the prominent D peak (increasing in intensity as the number of acquisitions increases) is not completely clear yet: it can be attributed to the acquisition of the spectra on a point of the sample lying on a grain boundary of the Cu substrate (resulting in a change of the crystallographic orientation of graphene flake through it) or to defects (terrace boundaries) produced in graphene crystal structure by the laser etching.

Raman analysis performed on transferred graphene samples using the same experimental setup (laser at 442 nm, power $P = 1$ mW and exposure time $t = 80$ s) confirms the behaviour observed in the spectra acquired on graphene/Cu substrates. A similar evolution in shape and position of the peaks is obtained for subsequent spectrum acquisitions, as shown in Figure 7(b) and Figure 8(b).

Conclusions

In summary, a possible way to locally etch graphene layers based on laser heating released during Raman analysis, has been presented. Graphene structure (crystallization degree and number of layers) evolution can be monitored and inferred by looking at the Raman spectra acquired on the sample. The technique is suitable in particular for etching layers of graphene grown by CVD on a metal catalyst. In our case we have reported results obtained with Cu: by lightening the sample with incident laser light at quite high power ($\gtrsim 1$ mW) for short time periods (~ 80 s) a clear sharpening and lowering of the 2D peak position is observed in Raman spectra, together with a decrease in the I_G/I_{2D} ratio. These results are compatible with a decrease in the number of graphene layers grown on the metallic substrate. D peak increases in intensity as function of the laser exposure, meaning an increasing of defects in the graphene structure.

We believe that the method can be easily applied to other metallic substrates: since the technique deeply relies

on the dispersion of the heat provided by laser irradiation through the substrate, the most important feature required for the substrate is its high thermal conductivity.

Although some catalysts, like Cu, are very promising for CVD synthesis of graphene because of the expected self-limited mono-layered growth of this material on them, a few-layered structure is often found in experiments. Laser etching here reported can therefore provide an *in-situ* technique to get rid of this problem. However, laser can also have an active rôle in inducing unwanted defects, such as vacancies in pristine graphene films: for this reason the proposed method shall be further developed. We finally envisage the application of the photo-etching process here reported to large areas if efficient and uniform illumination conditions, as those used in our RTA system, are employed.

Abbreviations

CVD: Chemical vapour deposition; SEM: Scanning electron microscopy; STM: Scanning tunneling microscopy; RMS: Root mean square; AFM: Atomic force microscopy; RTA: Rapid thermal annealing; PMMA: poly(methyl-methacrylate); XRD: X-Ray diffraction.

Competing interests

The authors declare that they have no competing interests.

Authors' contributions

MP has been responsible for data analysis and modeling and for Cu e-beam evaporation, helping also in the theoretical interpretation of the results. LC coordinated all the experimental work, in particular the Cu e-beam evaporation and the CVD process, participating also in Raman analysis. EV and GA coordinated all the work and have been responsible for the theoretical interpretation of the results. All authors read and approved the final manuscript.

Acknowledgements

The authors acknowledge the Nanofacility Piemonte and the Compagnia di San Paolo for financial supports. Thin films evaporation, graphene deposition and SEM analysis on the samples have been performed at Quantum Laboratories - Nanofacility Piemonte present at I.N.Ri.M. - Turin. Raman characterization has been performed with the help of A. Damin at the NIS Centre of Excellence - University of Turin. The help of A. Battiatto and E. Olivetti with XPS and XRD analyses is gratefully acknowledged.

Author details

¹Quantum Research Laboratory, Istituto Nazionale di Ricerca Metrologica, Strada delle Cacce 91, 10135 Turin, Italy. ²Department of Physics, NIS Centre of Excellence and CNISM, University of Turin, Via Pietro Giuria 1, 10125 Turin, Italy. ³Department of Applied Science and Technology, Politecnico of Turin, Corso Duca degli Abruzzi 24, 10129 Turin, Italy.

Received: 6 August 2012 Accepted: 5 November 2012

Published: 27 November 2012

References

- Bae S, Kim H, Lee Y, Xu X, Park JS, Zheng Y, Balakrishnan J, Lei T, Kim HR, Song YI, Kim YJ, Kim KS, Özyilmaz B, Ahn JH, Hong B H, Iijima S (2010) Roll-to-roll production of 30-inch graphene films for transparent electrodes. *Nat Nanotechnol* 5: 574–578
- Balandin AA, Ghosh S, Bao W, Calizo I, Teweldebrhan D, Miao F, Lau CN (2008) Superior thermal conductivity of single-layer graphene. *Nano Lett* 8: 902–907
- Cai W, Moore AL, Zhu Y, Li X, Chen S, Shi L, Ruoff RS (2010) Thermal transport in suspended and supported monolayer graphene grown by chemical vapor deposition. *Nano Lett* 10: 1645–1651
- Calizo I, Balandin AA, Bao W, Miao F, Lau CN (2007) Temperature dependence of the raman spectra of graphene and graphene multilayers. *Nano Lett* 7: 2645–2649
- Campos LC, Manfrinato VR, Sanchez-Yamagishi JD, Kong J, Jarillo-Herrero P (2009) Anisotropic etching and nanoribbon formation in single-layer graphene. *Nano Lett* 9: 2600–2604
- Castro Neto AH, Guinea F, Peres NMR, Novoselov KS, Geim AK (2009) The electronic properties of graphene. *Rev Mod Phys* 81: 109–162
- Coraux J, N'Diaye AT, Busse C, Michely T (2008) Structural coherency of graphene on Ir(111). *Nano Lett* 8: 565–570
- Datta SS, Strachan DR, Khamis SM, Charlie Johnson A T (2008) Crystallographic etching of few-layer graphene. *Nano Lett* 8: 1912–1915
- de Heer WA, Berger C, Wu X, First PN, Conrad EH, Li X, Li T, Sprinkle M, Hass J, Sadowski ML, Potemski M, Martinez G (2007) Epitaxial graphene. *Solid State Commun* 143: 92–100
- Di C, Wei D, Yu G, Liu Y, Guo Y, Zhu D (2008) Patterned graphene as source/drain electrodes for bottom-contact organic field-effect transistors. *Adv Mater* 20: 3289–3293
- Elias DC, Nair RR, Mohiuddin TMG, Morozov SV, Blake P, Halsall MP, Ferrari AC, Boukhalov DW, Katsnelson MI, Geim AK, Novoselov KS (2009) Control of graphene's properties by reversible hydrogenation: evidence for Graphane. *Science* 323: 610–613
- Emtsev KV, Bostwick A, Horn K, Jobst J, Kellogg GL, Ley L, McChesney JL, Ohta T, Reshanov SA, Röhl J, Rotenberg E, Schmid AK, Waldmann D, Weber HB, Seyller T (2009) Towards wafer-size graphene layers by atmospheric pressure graphitization of silicon carbide. *Nat Mater* 8: 203–207
- Ferrari AC, Meyer JC, Scardaci V, Casiraghi C, Lazzeri M, Mauri F, Piscanec S, Jiang D, Novoselov KS, Roth S, Geim AK (2006) Raman spectrum of graphene and graphene layers. *Phys Rev Lett* 187401(1)–187401(4)
- Gilje S, Han S, Wang M, Wang KL, Kaner RB (2007) A chemical route to graphene for device applications. *Nano Lett* 7: 3394–3398
- Han GH, Chae SJ, Kim ES, Güneş F, Lee IH, Lee SW, Lee SY, Lim SC, Jeong HK, Jeong MS, Lee YH (2011) Laser thinning for monolayer graphene formation: heat sink and interference effect. *ACS Nano* 5: 263–268
- Hass J, de Heer WA, Conrad EH (2008) The growth and morphology of epitaxial multilayer graphene. *J Phys-Condens Mat* 20: 323202(1)–323202(27)
- Ismach A, Druzgalski C, Penwell S, Schwartzberg A, Zheng M, Javey A, Bokor J, Zhang Y (2010) Direct chemical vapor deposition of graphene on dielectric surfaces. *Nano Lett* 10: 1542–1548
- Kim H, Mattevi C, Calvo MR, Oberg JO, Artiglia L, Agnoli S, Hirjibehedin CF, Chhowalla M, Saiz E (2012) Activation energy paths for graphene nucleation and growth on Cu. *ACS Nano* 6: 3614–3623
- Kim KS, Zhao Y, Jang H, Lee SY, Kim JM, Kim KS, Ahn JH, Kim P, Choi JY, Hong BH (2009) Large-scale pattern growth of graphene films for stretchable transparent electrodes. *Nature* 457: 706–710
- Kondo D, Sato S, Yagi K, Harada N, Sato M, Nihei M, Yokoyama N (2010) Low-temperature synthesis of graphene and fabrication of top-gated field effect transistors without using transfer processes. *Appl Phys Expr* 3: 025102(1)–025102(3)
- Lee Y, Bae S, Jang H, Jang S, Zhu SE, Sim SH, Song YI, Hong BH, Ahn JH (2010) Wafer-scale synthesis and transfer of graphene films. *Nano Lett* 10: 490–493
- Lee CG, Park S, Ruoff RS, Dodabalapur A (2009) Integration of reduced graphene oxide into organic field-effect transistors as conducting electrodes and as a metal modification layer. *Appl Phys Lett* 95: 023304(1)–023304(3)
- Lee C, Wei X, Kysar JW, Hone J (2008) Measurement of the elastic properties and intrinsic strength of monolayer graphene. *Science* 321: 385–388
- Li X, Cai W, An J, Kim S, Nah J, Yang D, Piner R, Velamakanni A, Jung I, Tutuc E, Banerjee SK, Colombo L, Ruoff RS (2009a) Large-area synthesis of high-quality and uniform graphene films on copper foils. *Science* 324: 1312–1314
- Li X, Cai W, Colombo L, Ruoff RS (2009b) Evolution of graphene growth on Ni and Cu by carbon isotope labeling. *Nano Lett* 9: 4268–4272
- Liu W, Chung CH, Miao CQ, Wang YJ, Li BY, Ruan LY, Patel K, Park YJ, Woo J, Xie YH (2010) Chemical vapor deposition of large area few layer graphene on Si catalyzed with nickel films. *Thin Solid Films* 518: S128–S132
- Liu L, Ryu S, Tomasik MR, Stolyarova E, Jung N, Hybertsen MS, Steigerwald ML, Brus LE, Flynn GW (2008) Graphene oxidation: thickness-dependent etching and strong chemical doping. *Nano Lett* 8: 1965–1970
- Malard LM, Pimenta MA, Dresselhaus G, Dresselhaus MS (2009) Raman spectroscopy in graphene. *Phys Rep* 473: 51–87

- Martocchia D, Willmott PR, Brugger T, Björck M, Günther S, Schlepütz CM, Cervellino A, Pauli SA, Patterson BD, Marchini S, Wintterlin J, Moritz W, Greber T (2008) Graphene on Ru(0001): a **25 x 25** supercell. *Phys Rev Lett* 101: 126102(1)–126102(4)
- Mattevi C, Kim H, Chhowalla M (2011) A review of chemical vapor deposition of graphene on copper. *J Mater Chem* 21: 3324–3334
- Miao C, Zheng C, Liang Q, Xie YH (2011) Chemical vapor deposition of graphene. In: Mikhailov S (ed) *Physics and applications of graphene - experiments*. In Tech Rijeka, pp 37–54
- Nandamuri G, Roumimov S, Solanki R (2010) Chemical vapor deposition of graphene films. *Nanotechnology* 21: 145604(1)–145604(4)
- Ni ZH, Wang HM, Ma Y, Kasim J, Wu YH, Shen ZX (2008a) Tunable stress and controlled thickness modification in graphene by annealing. *ACS Nano* 2: 1033–1039
- Ni ZH, Wang YY, Yu T, Shen ZX (2008b) Raman spectroscopy and imaging of Graphene. *Nano Res* 1: 273–291
- Novoselov KS, Geim AK, Morozov SV, Jiang D, Zhang Y, Dubonos SV, Grigorieva IV, Firsov AA (2004) Electric field effect in atomically thin carbon films. *Science* 306: 666–669
- Obraztsov AN, Obraztsov EA, Tyurnina AV, Zolotukhin AA (2007) Chemical vapor deposition of thin graphite films of nanometer thickness. *Carbon* 45: 2017–2021
- Paredes JI, Villar-Rodil S, Martínez-Alonso A, Tascón JMD (2008) Graphene oxide dispersions in organic solvents. *Langmuir* 24: 10560–10564
- Peres NMR (2010) The transport properties of graphene: an introduction. *Rev Mod Phys* 82: 2673–2700
- Peres NMR, Guinea F, Castro Neto AH (2006) Electronic properties of disordered two-dimensional carbon. *Phys Rev B* 73: 125411(1)–125411(23)
- Reina A, Jia X, Ho J, Nezich D, Son H, Bulovic V, Dresselhaus MS, Kong J (2009) Large area, few-layer graphene films on arbitrary substrates by chemical vapor deposition. *Nano Lett* 9: 30–35
- Sasaki M, Yamada Y, Ogiwara Y, Yagyu S, Yamamoto S (2000) Moiré contrast in the local tunneling barrier height images of monolayer graphite on Pt(111). *Phys Rev B* 61: 15653–15656
- Schniepp HC, Li JL, McAllister MJ, Sai H, Herrera-Alonso M, Adamson DH, Prud'homme RK, Car R, Saville DA, IAv Aksay (2006) Functionalized single graphene sheets derived from splitting graphite oxide. *J Phys Chem B* 110: 8535–8539
- Somani PR, Somani SP, Umeno M (2006) Planes nano-graphenes from camphor by CVD. *Chem Phys Lett* 430: 56–59
- Sprinkle M, Siegel D, Hu Y, Hicks J, Tejada A, Taleb-Ibrahimi A, Le Fèvre P, Bertran F, Vizzini S, Enriquez H, Chiang S, Soukiassian P, Berger C, de Heer WA, Lanzara A, Conrad EH (2009) First direct observation of a nearly ideal graphene band structure. *Phys Rev Lett* 103: 226803(1)–226803(4)
- Starr DE, Pazhetnov EM, Stadnichenko AI, Boronin AI, Shaikhutdinov SK (2006) Carbon films grown on Pt(111) as supports for model gold catalysts. *Surf Sci* 600: 2688–2695
- Su CY, Lu AY, Wu CY, Li YT, Liu KK, Zhang W, Lin SY, Juang ZY, Zhong YL, Chen FR, Li LJ (2011) Direct formation of wafer scale graphene thin layers on insulating substrates by chemical vapor deposition. *Nano Lett* 11: 3612–3616
- Sun PZ, Zhu M, Wang KL, Zhong ML, Wei JQ, Wu DH, Cheng Y, Zhu HW (2012) Photoinduced molecular desorption from graphene films. *Appl Phys Lett* 101: 053107(1)–053107(4)
- Tao L, Lee J, Chou H, Holt M, Ruoff RS, Akinwande D (2012) Synthesis of high quality monolayer graphene at reduced temperature on hydrogen-enriched evaporated copper (111) films. *ACS Nano* 6: 2319–2325
- Varchon F, Feng R, Hass J, Li X, Ngoc Nguyen B, Naud C, Mallet P, Veuillen JY, Berger C, Conrad EH, Magaud L (2007) Electronic structure of epitaxial graphene layers on SiC: effect of the substrate. *Phys Rev Lett* 99: 126805(1)–126805(4)

- Wang X, Li X, Zhang L, Yoon Y, Weber PK, Wang H, Guo J, Dai H (2009a) N-Doping of graphene through electrothermal reactions with ammonia. *Science* 324: 768–771
- Wang H, Wang Y, Cao X, Feng M, Lan G (2009b) Vibrational properties of graphene and graphene layers. *J Raman Spectrosc* 40: 1791–1796
- Zhang Y, Tan YW, Stormer HL, Kim P (2005) Experimental observation of the quantum hall effect and Berry's phase in graphene. *Nature* 438: 201–204

doi:10.1186/2193-1801-1-52

Cite this article as: Piazzì *et al.*: Laser-induced etching of few-layer graphene synthesized by Rapid-Chemical Vapour Deposition on Cu thin films. *SpringerPlus* 2012 **1**:52.

Submit your manuscript to a SpringerOpen® journal and benefit from:

- Convenient online submission
- Rigorous peer review
- Immediate publication on acceptance
- Open access: articles freely available online
- High visibility within the field
- Retaining the copyright to your article

Submit your next manuscript at ► springeropen.com