

June 2009

RR-06.09

Lucio Bianco, Massimiliano Caramia

A New Lower Bound for the Resource-Constrained
Project Scheduling Problem with Generalized Precedence
Relations

A New Lower Bound for the Resource-Constrained Project Scheduling Problem with Generalized Precedence Relations

Lucio Bianco, Massimiliano Caramia
Dipartimento di Ingegneria dell'Impresa
Via del Politecnico, 1
00133 Roma – Italy
{bianco, caramia}@disp.uniroma2.it

Abstract

In this paper we propose a new lower bound for the resource constrained project scheduling problem with generalized precedence relationships. The lower bound is based on a relaxation of the resource constraints among independent activities and on a solution of the relaxed problem suitably represented by means of an AON acyclic network. Computational results are presented and confirmed a better practical performance of the proposed method with respect to the those present in the literature.

Keywords: Generalized precedence relationships, Lower bound, Project scheduling

1. Introduction

The basic Resource-Constrained Project Scheduling Problem (RCPSP) deals with scheduling project activities subject to finish-to-start precedence constraints with zero time-lags and renewable resources under the minimum makespan objective. The RCPSP is NP-hard in strong sense (see, e.g., Blazewicz *et al.*, 1983). When this kind of temporal constraints are taken into account, an activity can start only as soon as all its predecessors have finished, and, therefore, the resource constraints exist only between two or more independent activities.

However, in a project, it can be necessary to specify other kinds of temporal constraints besides the finish-to-start precedence relationships with zero-time-lags.

According to Elmagraby and Kamburoski (1982) we denote such constraints as Generalized Precedence Relations (GPRs). GPRs allow one to model minimum and maximum time-lags between a pair of activities (see, e.g. Dorndorf, 2002, and, Neumann *et al.*, 2002).

Four types of GPRs can be distinguished, i.e., Start-to-Start (SS), Start-to-Finish (SF), Finish-to-Start (FS), Finish-to-Finish (FF). For each one minimum and maximum time-lags can be considered.

A minimum time-lag between a pair of activities i and j ($SS_{ij}^{\min}(\delta), SF_{ij}^{\min}(\delta), FS_{ij}^{\min}(\delta), FF_{ij}^{\min}(\delta)$) specifies that activity j can start (finish) only if its predecessor i has started (finished) at least δ time units before.

Similarly, a maximum time-lag between i and j ($SS_{ij}^{\max}(\delta), SF_{ij}^{\max}(\delta), FS_{ij}^{\max}(\delta), FF_{ij}^{\max}(\delta)$) imposes that activity j should be started (finished) at most δ time units beyond the starting (finishing) time of activity i .

When no resource constrains is concerned, GPRs can be represented in a so called “standardized” form by transforming them, for instance, in minimum start-to-start precedence relationships (see Bartusch *et al.*, 1988). By applying such transformations to a given AON network with GPRs, we obtain a standardized activity network where with each arc it is associated a label ℓ_{ij} representing the time-lag between activities i and j (De Reyck, 1988). This standardized network may contain cycles, and the minimum completion time can be calculated in polynomial time by computing a longest path from the source to the sink of such a network.

In order to avoid cycles, Bianco and Caramia (2007, 2008) have proposed a transformation of the precedence relationships between each pair of activities in finish-to-start constraints with zero time-lags. In this case between each pair of nodes i and j of the original network, a dummy node is inserted whose duration represents the contribution of GPRs.

In this paper, we study the RCPSp with GPRs. From the complexity viewpoint, the problem is strongly NP-hard and also the easier problem of detecting

whether a feasible solution exists is intractable (NP-complete, Bartusch *et al.*, 1988).

To the best of our knowledge, the exact procedures presented in the literature are the branch-and-bound algorithms by Bartusch *et al.* (1988), Demeulemeester and Herroelen (1997b), and De Reyck and Herroelen (1998). The paper by Bartusch *et al.* (1988) reports a limited computational experience on a case study; the paper by Demeulemeester and Herroelen (1997b) is conceived to work on minimum time-lags only; the third approach, that works with both minimum and maximum time-lags, presents results on projects with 30 activities and percentages of maximum time-lags of 10% and 20% with respect to the total number of generalized precedence relations.

Also lower bounds are available for this problem. In particular, two classes of lower bounds are well known in the literature, i.e., constructive and destructive lower bounds. The first class is formed by those lower bounds associated with relaxations of the mathematical formulation of the problem (for instance, the critical-path lower bound and the basic resource-based lower bound; see, e.g., Demeulemeester and Herroelen, 2002). Destructive lower bounds, instead, are obtained by means of an iterated binary search based routine as reported, e.g., in Klein and Scholl (1999).

Also De Reyck and Herroelen (1998) proposed a lower bound for the RCPSP-GPR denoted with $lb_3\text{-gpr}$ that is the extension of the lower bound lb'_3 proposed by Demeulemeester and Herroelen (1997b) for the RCPSP.

In the following, we propose a new lower bound for the RCPSP-GPR based on a relaxation of the resource constraints among independent activities and on a solution of the relaxed problem suitably represented by means of an AON acyclic network. In particular, for the project scheduling problem with GPRs and scarce resources we exploit the network model proposed in Bianco and Caramia (2007, 2008) and try to get rid of the resource constraints. We restrict our analysis only on those pairs of activities for which a GPR exists to determine a lower bound on the minimum makespan. For each of these pairs we verify whether the amount of resources requested exceeds the resource availability, for at least one resource type. In case of a positive answer, we prove some results which allow the reduction of the problem to a new resource unconstrained project scheduling problem with different lags and additional

disjunctive constraints. This last problem can be formulated as an integer linear program whose linear relaxation can be solved by means of a network flow approach (see also Bianco and Caramia, 2007).

Computational results are presented and confirmed a better practical performance of the proposed lower bound with respect to the aforementioned ones.

The remainder of the paper is the following. In Section 2, the relaxed RCPSP-GPR is considered; Section 3, is devoted to its mathematical formulation and to a primal-dual theoretical analysis on this formulation; finally, in Section 4, computational results to assess the performance of the proposed approach are presented and discussed.

2. A relaxation of RCPSP with GPRs

In this section, we describe some results related to a relaxation of a RCPSP with GPRs obtained by neglecting the resource constraints existing among the independent activities, that is activities not related by temporal constraints. It follows that, in the consequent relaxed problem, there are resource constraints only between pairs of activities constrained by GPRs.

If we could represent this problem on an AON acyclic network with only finish-to-start constraints and zero time-lags, it would be possible to find the optimal solution in $O(m)$ time complexity (where m is the number of arcs, see Bianco and Caramia, 2007). The value of this optimal solution is obviously a lower bound of the optimal solution of the original problem. In the following, we will concentrate our analysis on how to build this acyclic network taking into account those pairs of activities for which both a GPR and a resource incompatibility exists.

2.1. A network representation

In order to represent the relaxed problem mentioned before on an acyclic network, it is necessary to transform all constraints in terms of finish-to-start relations with zero time-lags. To this end let us consider a generic pair of activities (i,j) . The related resource incompatibility imposes that

$$s_j \geq s_i + d_i \quad (a)$$

or, alternatively,

$$s_i \geq s_j + d_j \quad (b)$$

Let us examine now how the resource constraint combines with the different GPRs.

1. Constraint $SS_{ij}^{\min}(\delta)$ can be transformed in $f_i + \hat{\ell}_{ij} \leq s_j$, where

$\hat{\ell}_{ij} = -d_i + \delta$. Two cases must be considered:

(i) $-d_i + \delta \geq 0$, i.e., $SS_{ij}^{\min}(\delta)$ dominates constraint (a);

(ii) $-d_i + \delta < 0$, i.e., constraint (a) dominates $SS_{ij}^{\min}(\delta)$.

Constraint (b) does not play any role since it is not compatible with $SS_{ij}^{\min}(\delta)$. Therefore, a resource incompatibility constraint between i and j joined with a $SS_{ij}^{\min}(\delta)$ relationship can be expressed as a $FS_{ij}^{\min}(\delta')$ relation where, $\delta' = \max(0, \hat{\ell}_{ij})$.

2. Constraint $SF_{ij}^{\min}(\delta)$ can be transformed in $f_i + \hat{\ell}_{ij} \leq s_j$, where

$\hat{\ell}_{ij} = -d_i - d_j + \delta$. Again, two cases must be considered:

(i) $-d_i - d_j + \delta \geq 0$, i.e., $SF_{ij}^{\min}(\delta)$ dominates constraint (a);

(ii) $-d_i - d_j + \delta < 0$, i.e., constraint (a) dominates $SF_{ij}^{\min}(\delta)$.

Also in this case constraint (b) is not compatible with $SF_{ij}^{\min}(\delta)$, and the situation can be expressed as $FS_{ij}^{\min}(\delta')$, where $\delta' = \max(0, \hat{\ell}_{ij})$.

3. Constraint $FS_{ij}^{\min}(\delta)$ implies that $f_i + \delta \leq s_j$, that is, $FS_{ij}^{\min}(\delta)$ dominates

resource incompatibility constraint (a), while constraint (b) is not compatible with this type of GPR. In this case, obviously, $\delta' = \delta$.

4. Let us consider now the last minimum time lag constraint $FF_{ij}^{\min}(\delta)$. It

implies that $f_i + \hat{\ell}_{ij} \leq s_j$, where $\hat{\ell}_{ij} = (\delta - d_j)$. We have the following two cases as in the previous three points:

(i) $(\delta - d_j) \geq 0$, i.e., $FF_{ij}^{\min}(\delta)$ dominates constraint (a),

(ii) $(\delta - d_j) < 0$, i.e., constraint (a) dominates $FF_{ij}^{\min}(\delta)$.

Constraint (b) is not compatible with $FF_{ij}^{\min}(\delta)$. Therefore, the situation can be expressed by $FS_{ij}^{\min}(\delta')$, where $\delta' = \max(0, \hat{\ell}_{ij})$.

The four cases with minimum time-lags can thus be represented on an AON transformed network as depicted in Figure 1.

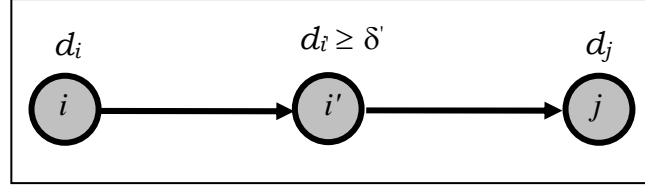


Figure1: Representation of a resource incompatibility constraint and a minimum time-lag in the transformed acyclic network.

In the latter figure, i' is a dummy node and the relations between (i, i') and (i', j) are of the finish-to-start type with zero time-lags. The duration $d_{i'}$ is known only in terms of lower bound.

Let us now examine the maximum time-lag different scenarios.

5. Constraint $SS_{ij}^{\max}(\delta)$ implies that $s_j \leq f_i + \hat{\ell}_{ij}$, where $\hat{\ell}_{ij} = (-d_i + \delta)$. We have two cases:

(i) $-d_i + \delta \geq 0$. In this case $SS_{ij}^{\max}(\delta)$ is compatible with both the relations (a) and (b) related to the resource incompatibility constraints. In fact one of the following two conditions can be verified, i.e., either

$$\begin{cases} s_j \leq f_i + \hat{\ell}_{ij} \\ s_j \geq s_i + d_i \end{cases} \quad (\text{I})$$

or,

$$\begin{cases} s_j \leq f_i + \hat{\ell}_{ij} \\ s_i \geq s_j + d_j \end{cases} \quad (\text{II})$$

Obviously, since $\delta \geq d_i$, in alternative (II) resource incompatibility constraint (b) dominates $SS_{ij}^{\max}(\delta)$.

(ii) $-d_i + \delta < 0$. In this case only alternative (II) is valid since resource incompatibility constraint (a) is not compatible with $SS_{ij}^{\max}(\delta)$. Therefore, resource incompatibility constraint (b) dominates $SS_{ij}^{\max}(\delta)$.

6. Let us consider $SF_{ij}^{\max}(\delta)$. It corresponds to $s_j \leq f_i + \ell_{ij}$, $\hat{\ell}_{ij} = (-d_i - d_j + \delta)$.

Two cases must be considered:

(i) $(-d_i - d_j + \delta) \geq 0$. Both the resource incompatibility constraints are compatible with $SF_{ij}^{\max}(\delta)$. Therefore, both alternatives (I) and (II) previously determined and the related considerations are valid.

(ii) $(-d_i - d_j + \delta) < 0$. Also in this case the dominance rule is the same as in case (i) previously analyzed.

7. Constraint $FS_{ij}^{\max}(\delta)$, that is, $s_j \leq f_i + \delta$ is compatible with both the resource incompatibility constraints and, therefore, both alternatives (I) and (II) must be taken into account.

8. If between i and j there is a constraint $FF_{ij}^{\max}(\delta)$, that is, $s_j \leq f_i + \hat{\ell}_{ij}$, where $\hat{\ell}_{ij} = (\delta - d_j)$ two cases must be distinguished, i.e.,

(i) $(\delta - d_j) \geq 0$. Also in this case both the two alternatives (I) and (II) are possible and the conclusions are the same as those drawn for the aforementioned cases (i).

(ii) $(\delta - d_j) < 0$. The dominance rule is the same as for all cases (ii) previously examined.

All the four GPRs with maximum time-lags correspond to the two finish-to-start scenarios depicted in Figure 2.

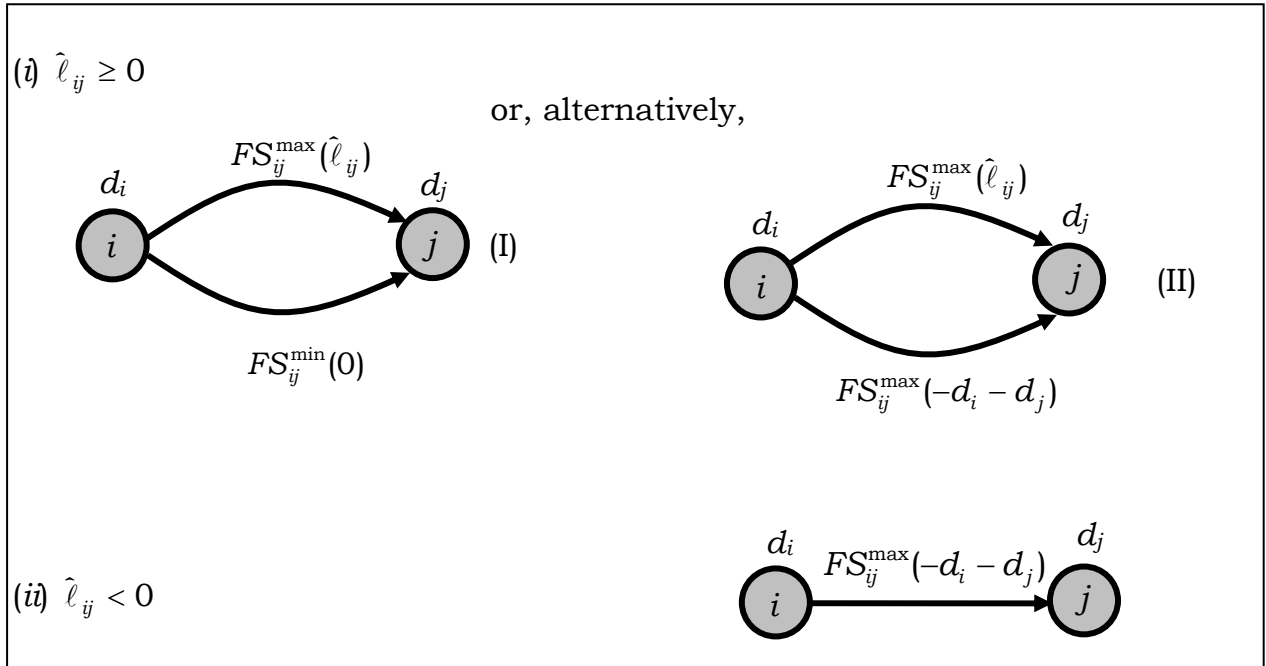


Figure 2: Standardized representation of a resource incompatibility constraint combined with a maximum time-lag in terms of finish-to-start relations

This representation on an AON network can be transformed in a network representation with zero time-lags, as depicted in Figure 3.

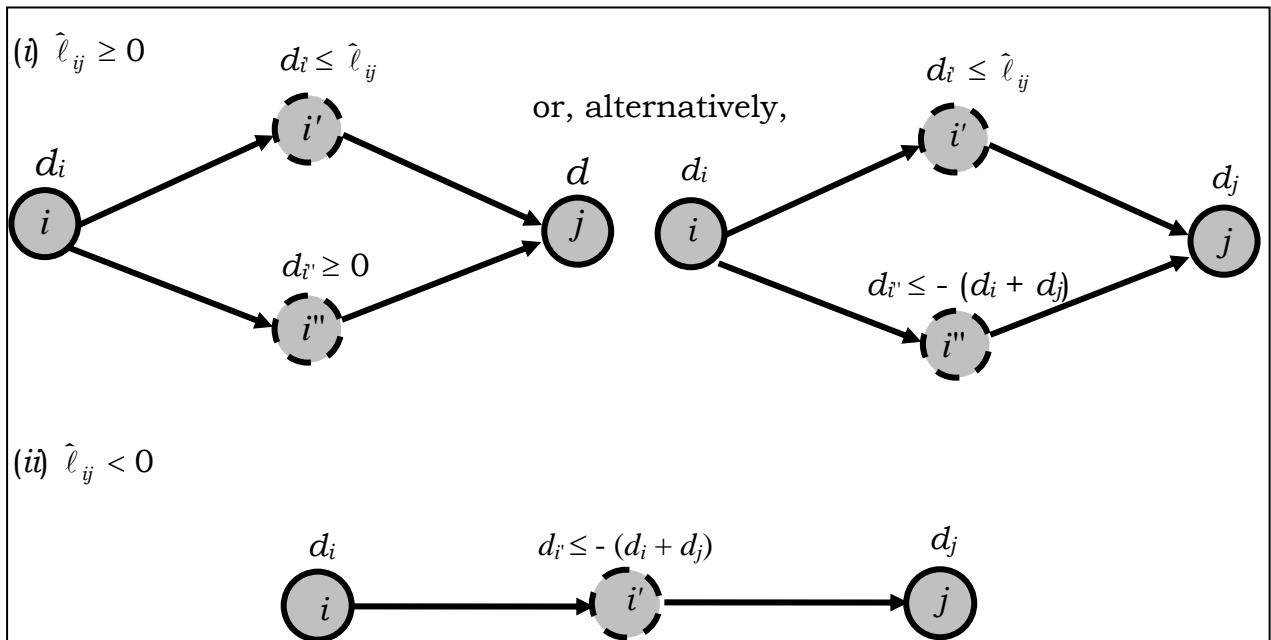


Figure 3: Representation of a resource incompatibility constraint combined with a maximum time-lag in the transformed acyclic network

In the latter picture, the dashed nodes are dummy nodes and the relations between any pair of adjacent nodes is of the type finish-to-start with zero time-lag. The durations associated with the dummy nodes are known only in terms of upper bounds and lower bounds.

2.2. A mathematical programming formulation

Following what we presented in the previous section, given a project with GPRs and resource incompatibility constraints only between pairs of activities with GPRs, we can use the AON network representation, shown in Figure 4, where only temporal constraints of the finish-to-start type with zero time-lags are present.

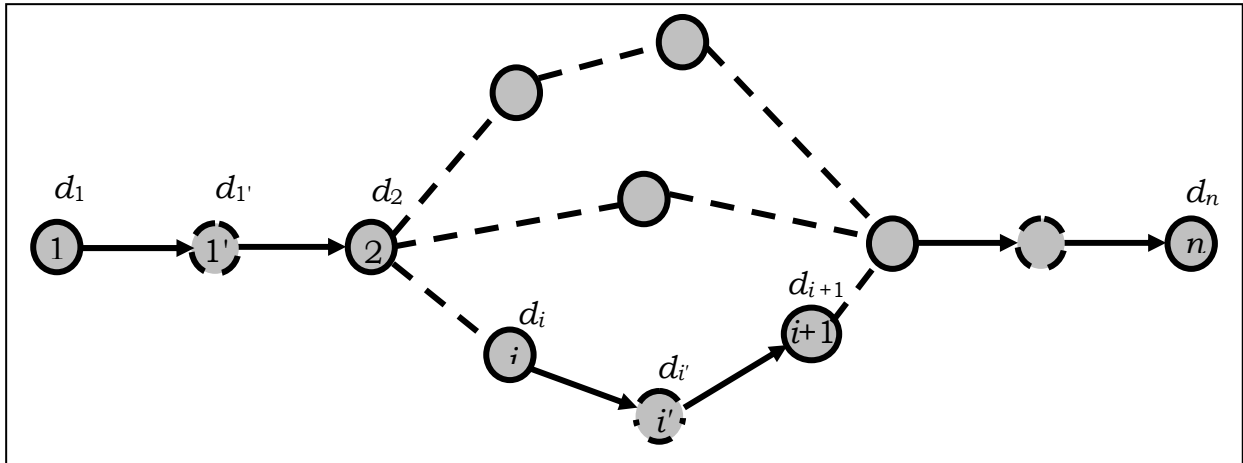


Figure 4: A generic transformed AON acyclic network of the relaxed RCPSG-GPR.

The minimum s_n is the optimal solution of the relaxed RCPSG-GPR, and then a lower bound of the original problem. Let us now denote:

- V the set of the nodes of the original network;
- $\bar{V} = \bar{V}_g \cup \bar{V}_G \cup \bar{V}_m \cup \bar{V}_M$ the set of dummy nodes of the transformed network;
- \bar{V}_g the subset of dummy nodes derived from the GPRs with minimum time-lags among pairs of activities for which no resource incompatibility exist;

- \bar{V}_G the subset of dummy nodes derived from the GPRs with maximum time-lags among pairs of activities for which no resource incompatibility exist;
- \bar{V}_m the subset of dummy nodes derived from the GPRs with minimum time-lags among pairs of activities for which resource incompatibility exist;
- $\bar{V}_M = \bar{V}'_M \cup \bar{V}''_M$ the subset of dummy nodes derived from the GPRs with maximum time-lags among pairs of activities for which resource incompatibility exist;
- \bar{V}'_M the subset of \bar{V}_M such that $\hat{\ell}_{ij} \geq 0$;
- \bar{V}''_M the subset of \bar{V}_M such that $\hat{\ell}_{ij} < 0$.

Moreover, $\bar{V}'_M = \bar{V}'_{M_1} \cup \bar{V}'_{M_2}$ where \bar{V}'_{M_1} is the subset of dummy nodes representing only the maximum time-lag constraints and \bar{V}'_{M_2} is the subset of dummy nodes representing only the resource incompatibility constraints compatible with the GPRs with maximum time lags (see Figure 3). Of course $|\bar{V}'_{M_1}| = |\bar{V}'_{M_2}|$.

Defining a binary variable $w_{i'}$ to model the disjunctive scenarios defined in the previous section, the problem of finding the minimum s_n is that of computing the minimum time to reach node n on that network and can be formulated in terms of mixed integer programming as follows.

min s_n

$$s_{i'} = s_i + d_i, \forall i' \in \bar{V}, i \in P_{i'} \subseteq V \quad (1)$$

$$s_i = s_{i'} + d_{i'}, \forall i \in V, i' \in P_i \subseteq \bar{V} \quad (2)$$

$$d_{i'} \geq \ell_{i'}, \ell_{i'} = \delta', \forall i' \in \bar{V}_m, \ell_{i'} = \hat{\ell}_{ij}, \forall i' \in \bar{V}_g \quad (3)$$

$$d_{i'} \leq \ell_{i'}, \ell_{i'} = \hat{\ell}_{ij}, \forall i' \in \bar{V}'_{M_1} \cup \bar{V}_G \quad (4)$$

$$d_{i'} \geq -Lw_{i'} + \ell_{i'}, \ell_{i'} = 0, \forall i' \in \bar{V}'_{M_2} \quad (5)$$

$$d_{i'} \leq L(1 - w_{i'}) + \ell_{i'}, \ell_{i'} = -(d_i + d_j), \forall i' \in \bar{V}'_{M_2} \quad (6)$$

$$d_{i'} \leq \ell_{i'}, \ell_{i'} = -(d_i + d_j), \forall i' \in \bar{V}''_M \quad (7)$$

$$w_{i'} \in \{0,1\}, \forall i' \in \bar{V}'_{M_2} \quad (8)$$

$$s_{i'} \in R^+, \forall i' \in \bar{V} \quad (9)$$

$$s_i \in R^+, \forall i \in V \setminus \{1\} \quad (10)$$

$$s_1 = 0 \quad (11)$$

Constraints (1) and (2) model the finish-to-start relations in the acyclic network. Constraints (3), (4), (5), (6) and (7) model the bound on the values of $d_{i'}$ found from the analysis in the previous section. In particular, note that constraints (5) and (6) refer to the disjunctive situations depicted in Figures 2 and 3. In these constraints L is a very large positive number such that if $w_{i'} = 1$ constraints (5) are trivially satisfied and constraints (6) are effective; if $w_{i'} = 0$ we have the opposite situation, i.e., constraints (5) are effective and constraints (6) are always satisfied. Constraints (8), (9), (10) and (11) define the range of variability of the decision variables.

Let us consider the linear relaxation of the above formulation, i.e., replacing constraint (8) with

$$w_{i'} \leq 1, \forall i' \in \bar{V}'_{M_2} \quad (8a)$$

$$w_{i'} \geq 0, \forall i' \in \bar{V}'_{M_2} \quad (8b)$$

and let us define the corresponding dual problem. To this end let us define the following dual variables $y_{i' i}, y_{i i'}$, $z_{i'}$, $z_{i'}^a$, $z_{i'}^b$, $\bar{w}_{i'}$ corresponding to constraints (1), (2), ((3),(4) and (7)), (5), (6), ((8a) and (8b)), respectively. The dual formulation of the previous relaxed problem is the following:

$$\max \left\{ \sum_{i \in V} \sum_{i' \in S_i} d_i y_{i' i} + \sum_{i' \in \bar{V}_m \cup \bar{V}_g} \ell_{i'} z_{i'} + \sum_{i' \in \bar{V}_{M_1} \cup \bar{V}_M \cup \bar{V}_G} \ell_{i'} z_{i'} + \sum_{i' \in \bar{V}_{M_2}} (-L + d_i + d_j) z_{i'}^b + \sum_{i' \in \bar{V}_{M_2}} \bar{w}_{i'} \right\}$$

$$\sum_{i \in P_{i'}} y_{i' i} - \sum_{i \in S_{i'}} y_{i i'} \leq 0, \forall i' \in \bar{V} \quad (12)$$

$$\sum_{i \in P_i} y_{i i'} - \sum_{i' \in S_i} y_{i' i} \leq 0, \forall i \in V \setminus \{1, n\} \quad (13)$$

$$\sum_{i \in P_n} y_{i n} \leq 1, \quad (14)$$

$$-y_{i'i} + z_{i'} = 0, \forall i' \in \bar{V}_m \cup \bar{V}_{M_1} \cup \bar{V}_M'' \cup \bar{V}_g \cup \bar{V}_G \quad (15)$$

$$-y_{i'i} + z_{i'}^a - z_{i'}^b = 0, \forall i' \in \bar{V}_{M_2} \quad (16)$$

$$-Lz_{i'}^b + Lz_{i'}^a + \bar{w}_{i'} \leq 0, \forall i' \in \bar{V}_{M_2} \quad (17)$$

$$y_{i'i} \text{ free}, \forall i \in V, i' \in S_i \quad (18)$$

$$y_{i'i} \text{ free}, \forall i' \in \bar{V}, i \in S_{i'} \quad (19)$$

$$z_{i'} \geq 0, \forall i' \in \bar{V}_m \cup \bar{V}_g \quad (20)$$

$$z_{i'} \leq 0, \forall i' \in \bar{V}_{M_1} \cup \bar{V}_M'' \cup \bar{V}_G \quad (21)$$

$$\bar{w}_{i'} \leq 0, \forall i' \in \bar{V}_{M_2} \quad (22)$$

$$z_{i'}^a \geq 0, \forall i' \in \bar{V}_{M_2} \quad (23)$$

$$z_{i'}^b \geq 0, \forall i' \in \bar{V}_{M_2} \quad (24)$$

2.3. Analysis on the primal-dual formulation: main result

In this section, we provide the main result on the possibility to find the optimal solution to the problem in polynomial time $O(m)$.

Exploiting the equality constraints (15) and (16) by substituting (15) in the objective function and (16) in constraint (17), we have the following equivalent mathematical formulation:

$$\max \left\{ \sum_{i \in V} \sum_{i' \in S_i} d_i y_{i'i} + \sum_{i \in S_{i'}} \sum_{i' \in \bar{V}_m \cup \bar{V}_{M_1} \cup \bar{V}_M'' \cup \bar{V}_g \cup \bar{V}_G} \ell_{i'} y_{i'i} + \sum_{i' \in \bar{V}_{M_2}} (-L + d_i + d_j) z_{i'}^b + \sum_{i' \in \bar{V}_{M_2}} \bar{w}_{i'} \right\}$$

$$\sum_{i \in P_{i'}} y_{i'i} - \sum_{i' \in S_i} y_{i'i} \leq 0, \forall i' \in \bar{V} \quad (12)$$

$$\sum_{i' \in P_i} y_{i'i} - \sum_{i' \in S_i} y_{i'i} \leq 0, \forall i \in V \setminus \{1, n\} \quad (13)$$

$$\sum_{i \in P_n} y_{in} \leq 1, \quad (14)$$

$$Ly_{i'i} + \bar{w}_{i'} \leq 0, \forall i' \in \bar{V}_{M_2}, i \in S_{i'} \quad (17a)$$

$$y_{ii'} \text{ free}, \forall i \in V, i' \in S_i \quad (18)$$

$$y_{ii} \geq 0, \forall i' \in \bar{V}_m \cup \bar{V}_g, i \in S_{i'} \quad (19a)$$

$$y_{ii} \leq 0, \forall i' \in \bar{V}_{M_1} \cup \bar{V}_M \cup \bar{V}_G, i \in S_{i'} \quad (19b)$$

$$y_{ii} \text{ free}, \forall i' \in \bar{V}_{M_2}, i \in S_{i'} \quad (19c)$$

$$\bar{w}_{i'} \leq 0, \forall i' \in \bar{V}_{M_2} \quad (22)$$

$$z_{i'}^b \geq 0, \forall i' \in \bar{V}_{M_2} \quad (24)$$

Since L is positive and arbitrarily large and $z_{i'}^b \geq 0$, the objective function is maximized imposing that $z_{i'}^{b*} = 0$, where $z_{i'}^{b*}$ is the optimal value of $z_{i'}^b$. Moreover, for the complementary slackness conditions referred to constraint (17a) we have that:

$$w_{i'}^* (-Ly_{ii}^* - \bar{w}_{i'}^*) = 0, \forall i' \in \bar{V}_{M_2} \quad (i)$$

For node i' we can have either $w_{i'}^* = 0$ or $w_{i'}^* = 1$. Let us examine these two situations separately.

Case a: $w_{i'}^* = 1$.

By (i) we have that

$$\bar{w}_{i'}^* = -Ly_{ii}^*, \forall i' \in \bar{V}_{M_2} \quad (ii)$$

By constraint (22) we have that:

$$y_{ii}^* \geq 0, \forall i' \in \bar{V}_{M_2} \quad (iii)$$

Substituting (ii) and (iii) in the mathematical formulation we have:

$$\max \left\{ \sum_{i \in V} \sum_{i' \in S_i} d_i y_{ii'} + \sum_{i' \in V} \sum_{i \in S_{i'}} \ell_{i'} y_{i'i} \right\}$$

where $\ell_{i'} = -L, \forall i' \in \bar{V}_{M_2}$

$$\sum_{i \in P_{i'}} y_{ii'} - \sum_{i \in S_{i'}} y_{i'i} \leq 0, \forall i' \in \bar{V} \quad (12)$$

$$\sum_{i \in P_i} y_{i'i} - \sum_{i' \in S_i} y_{ii'} \leq 0, \forall i \in V \setminus \{1, n\} \quad (13)$$

$$\sum_{i \in P_n} y_{i'n} \leq 1, \quad (14)$$

$$y_{ii'} \text{ free}, \forall i \in V, i' \in S_i \quad (18)$$

$$y_{i'i} \geq 0, \forall i' \in \bar{V}_m \cup \bar{V}_{M_2} \cup \bar{V}_g, i \in S_{i'} \quad (19d)$$

$$y_{i'i} \leq 0, \forall i' \in \bar{V}_{M_1} \cup \bar{V}_M \cup \bar{V}_G, i \in S_{i'} \quad (19b)$$

Case b: $w_i^* = 0$.

By the complementary slackness property on constraint (8a) we have that

$$\bar{w}_{i'}^* (1 - w_i^*) = 0, \forall i' \in \bar{V}_{M_2}$$

by which we obtain that

$$\bar{w}_{i'}^* = 0, \forall i' \in \bar{V}_{M_2}$$

This implies that, by constraint (17),

$$z_i^{a*} \leq z_i^{b*}, \forall i \in \bar{V}_{M_2}$$

Since the objective function is maximized imposing $z_i^{b*} = 0$, we have that also (see constraint (23))

$$z_i^{a*} = 0, \forall i \in \bar{V}_{M_2}$$

The dual problem then transforms into:

$$\max \left\{ \sum_{i \in V} \sum_{i' \in S_i} d_i y_{ii'} + \sum_{i' \in \bar{V}_m \cup \bar{V}_g} \ell_{i'} z_{i'} + \sum_{i' \in \bar{V}_{M_1} \cup \bar{V}_M \cup \bar{V}_G} \ell_{i'} z_{i'} \right\}$$

$$\sum_{i' \in P_i} y_{ii'} - \sum_{i' \in S_i} y_{i'i} \leq 0, \forall i' \in \bar{V} \quad (12)$$

$$\sum_{i' \in P_i} y_{i'i} - \sum_{i' \in S_i} y_{ii'} \leq 0, \forall i \in V \setminus \{1, n\} \quad (13)$$

$$\sum_{i' \in P_n} y_{i'n} \leq 1, \quad (14)$$

$$-y_{i'i} + z_{i'} = 0, \forall i' \in \bar{V}_m \cup \bar{V}_{M_1} \cup \bar{V}_M \cup \bar{V}_g \cup \bar{V}_G \quad (15)$$

$$-y_{i'i} = 0, \forall i' \in \bar{V}_{M_2} \quad (16a)$$

$$y_{ii'} \text{ free}, \forall i \in V, i' \in S_i \quad (18)$$

$$y_{i'i} \text{ free}, \forall i' \in \bar{V}, i \in S_{i'} \quad (19)$$

$$z_{i'} \geq 0, \forall i' \in \bar{V}_m \cup \bar{V}_g \quad (20)$$

$$z_{i'} \leq 0, \forall i' \in \bar{V}_{M_1} \cup \bar{V}_M \cup \bar{V}_G \quad (21)$$

Substituting now constraints (15) in the objective function we have the following formulation

$$\max \left\{ \sum_{i \in V} \sum_{i' \in S_i} d_i y_{ii'} + \sum_{i' \in V} \sum_{i \in S_{i'}} \ell_{i'} y_{i'i} \right\}$$

where we can assign $\ell_{i'} = -L, \forall i' \in \bar{V}_{M_2}$ being $y_{i'i} = 0 \forall i' \in \bar{V}_{M_2}$ by (16a)

$$\sum_{i' \in P_i} y_{ii'} - \sum_{i' \in S_i} y_{i'i} \leq 0, \forall i' \in \bar{V} \quad (12)$$

$$\sum_{i' \in P_i} y_{i'i} - \sum_{i' \in S_i} y_{ii'} \leq 0, \forall i \in V \setminus \{1, n\} \quad (13)$$

$$\sum_{i \in P_n} y_{i_n} \leq 1, \quad (14)$$

$$y_{i_i} = 0, \forall i' \in \bar{V}_{M_2} \quad (16a)$$

$$y_{i_i} \text{ free}, \forall i \in V, i' \in S_i \quad (18)$$

$$y_{i_i} \geq 0, \forall i' \in \bar{V}_m \cup \bar{V}_g, i \in S_{i'} \quad (19d)$$

$$y_{i_i} \leq 0, \forall i' \in \bar{V}_{M_1} \cup \bar{V}_M \cup \bar{V}_G, i \in S_{i'} \quad (19b)$$

We note that in both the two cases analyzed we achieved the same mathematical formulation, meaning that either $w_{i'}^* = 0$ or $w_{i'}^* = 1$ we can use the same solution strategy. Moreover, we note that this mathematical model obtained is polynomially solvable in $O(m)$ by means of a dynamic programming approach since the formulation has at most two variable per constraint (see Hochbaum and Naor, 1994). Furthermore, this formulation is the same as that found in absence of resource constraints by Bianco and Caramia, 2007. Therefore, there holds the property demonstrated in that paper, i.e., the optimal solution to our relaxed RCPS-P, and therefore the lower bound of the original problem, is an augmenting path of maximum length on the described AON network where unit capacities have been installed on arcs.

3. Computational results

In this section, we show the results of our experimentation. Our algorithm and the other lower-bound algorithms used for comparison have been implemented in the C language. The machine used for the experiments is a Pentium IV PC with a 3GHz processor and 2Gb RAM. All the computing time are negligible (i.e., less than 1 seconds) and therefore are omitted in the presentation of the results.

In order to assess the quality of our lower bound with respect to state-of-the-art lower-bound algorithms, we have experimented the proposed approach on networks with 100 and 500 activities. These networks have been generated at random with the following parameters:

- Maximum number of initial (without predecessors) activities 10;
- Maximum number of terminal (without successors) activities 10;
- Maximum indegree of activities 5;
- Maximum time lag constraints ranging from 0% to 20% of the total number of arcs;

We generated 90 problems for each network size, as done also in the RCPSP-max library, and reported our results in Figure 5 and Figure 6.

The chart in Figure 5 shows the performance of our lower bound, denoted in the following with `Our_LB`, compared to the network based lower bound, denoted with `LB1`, the resource-based lower bound, denoted with `LB2`, and the `lb3-gpr` lower bound, denoted with `LB3`, on 100 activity networks. Figure 6 reports the same comparison on 500 activity networks. Values in the y -axis are reported as base 10 logarithms.

Analyzing in detail the behaviour of `LB1`, `LB2`, and `LB3`, we notice that, as one can expect, `LB2` is quite sensitive to the resource strength factor. Indeed, looking for instance at the chart in Figure 6 (where this appears clearer), we observe that for instances ranging from 1 to 10, from 31 to 40, and from 61 to 70, where the resource strength parameter is zero, `LB2` outperforms `LB1` and `LB3`. For the other instance classes, whose resource strength parameter ranges from 0.25 to 0.5, we have that the values of `LB1` and `LB3` tend to overlap (with `LB3` having a slightly better behaviour) and dominate `LB2`.

Indeed, from a general viewpoint, while it appears that `LB1` and `LB3` tend to outperform `LB2` on projects with 100 activities, it happens that there is not a striking dominance among `LB1`, `LB2`, and `LB3` when 500 activities are considered.

Analysing the behaviour of `Our_LB`, one can note that it is robust to the different input instances, unlike the three competing lower bounds. In fact, `Our_LB` is able to outperform `LB1`, `LB2`, and `LB3` on all the tested instances. In particular, by analysing the computational results, we note that, on 100 activity networks, `Our_LB` improves the best value among `LB1`, `LB2`, and `LB3` by 5.2%, while on projects with 500 activities the improvement is 4.4%.

Moreover, considering the gaps $(\text{Our_LB} - \text{LB}_i) / \text{Our_LB}$, with $i = 1, 2, 3$, we have that `Our_LB` outperforms:

- LB1 by 9.2% for projects with 100 activities and by 22.6 for projects with 500 activities,
- LB2 by 38.4% and by 65.2% in the scenarios with 100 and 500 activities, respectively,
- LB3 by 8.9% on instances with 100 activities and by 21.4% on 500 activities.

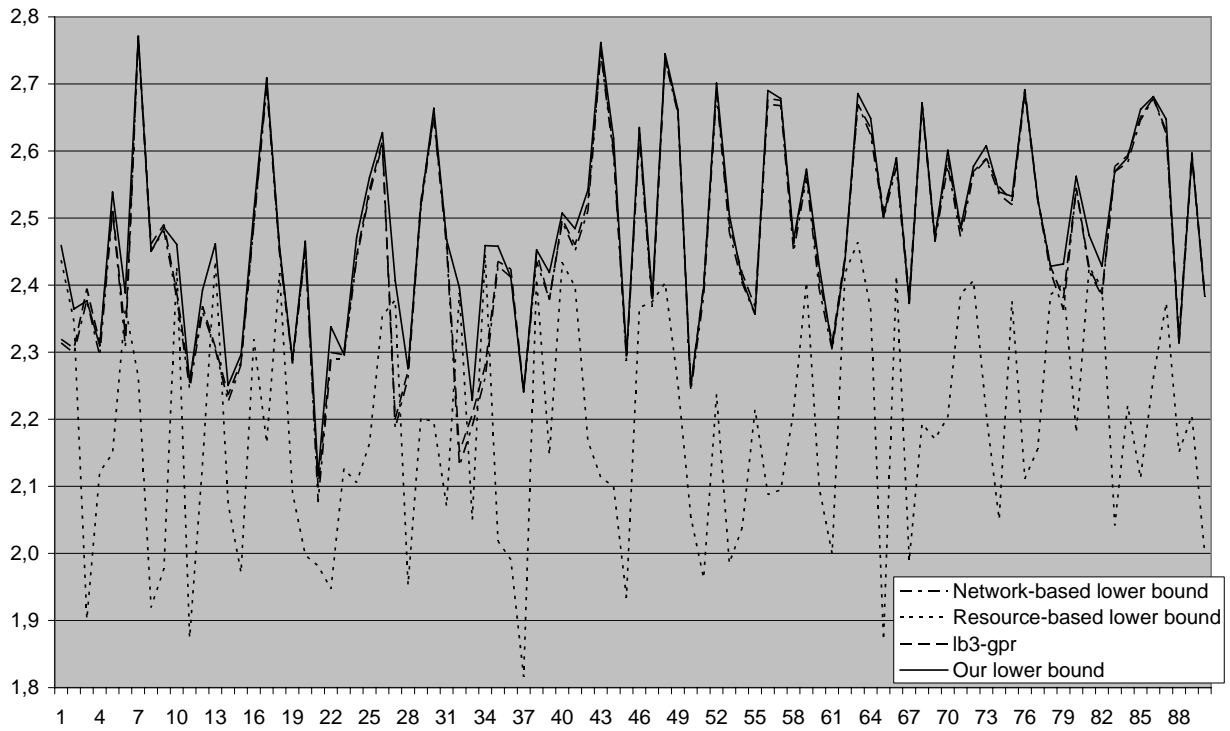


Figure 5: Comparison among our lower bound, the resource-based lower bound, the network-based one, and lb₃-gpr (100 activity networks).

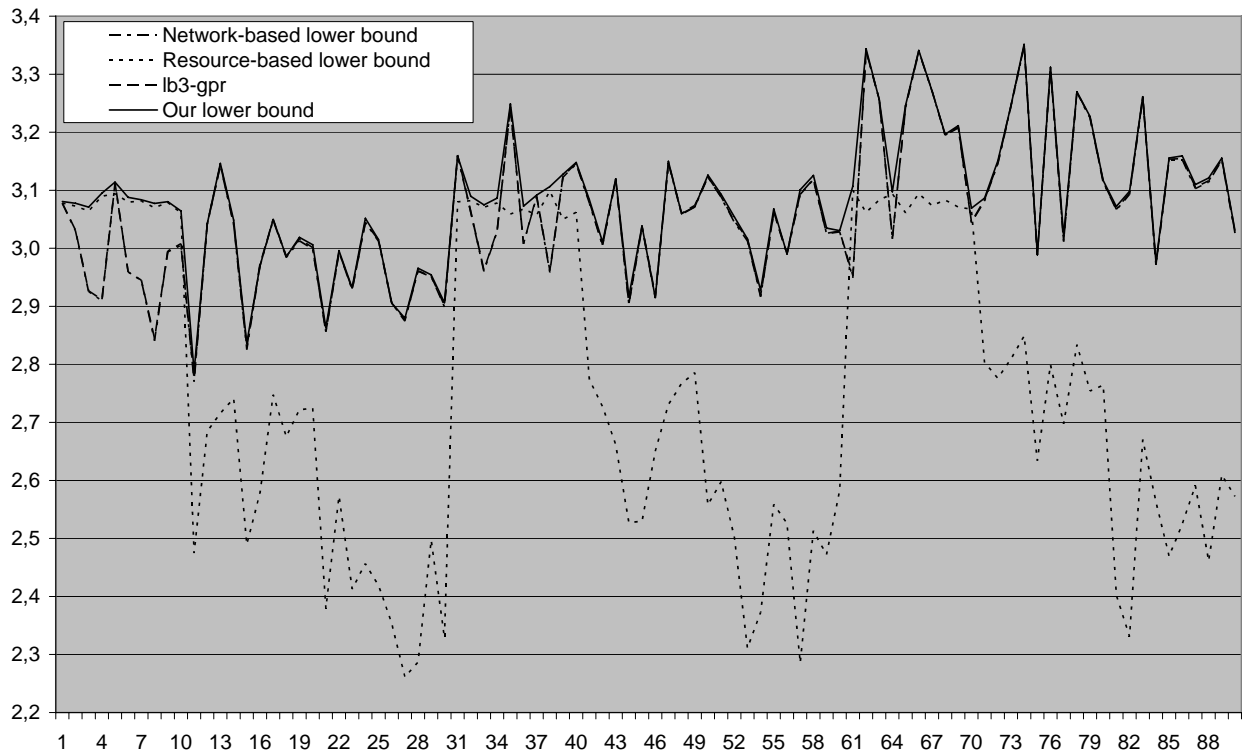


Figure 6: Comparison among our lower bound, the resource-based lower bound, the network-based one, and lb₃-gpr (500 activity networks).

Conclusions

In this paper we studied a new lower bound on the resource-constrained project scheduling problem with generalized precedence relationships. This lower bound is based on a mathematical formulation of a relaxation of the original problem, where only precedence relationships between pairs of activities associated with GPRs are considered. We showed that the proposed lower bound behaves satisfactorily on project networks with different sizes when compared to known lower bounds from the state of the art.

Acknowledgements

The authors are grateful to two anonymous referees for their suggestions and comments that improved the paper.

References

Bartusch, M., R.H. Moring and F.J. Radermacher (1988). Scheduling Project Networks with Resource Constraints and Time Windows. *Annals of Operations Research*, 16, 201-240.

- Bianco, L. and M. Caramia (2007). A New Formulation of the Resource-Unconstrained Project Scheduling Problem with Generalized Precedence Relations to Minimize the Completion Time. *Technical Report DII - University of Rome "Tor Vergata"*, submitted (downloadable from <http://www.dii.uniroma2.it/doc/gprs.pdf>).
- Bianco, L. and M. Caramia (2008). A New Approach for the Project Scheduling Problem with Generalized Precedence Relations. *Proceedings of the 11th International Workshop on Project Management and Scheduling, Istanbul, April 28-30, 2008*.
- Blazewicz, J., J.K. Lenstra and A.H.G. Rinnooy Kan (1983). Scheduling subject to resource constraints: Classification and complexity. *Discrete Applied Mathematics* 5 (1), 11–24.
- Demeulemeester, E.L. and W.S. Herroelen (1997a). New benchmark results for the resource-constrained project scheduling problem. *Management Science* 43 (11), 1485-1492.
- Demeulemeester, E.L. and W.S. Herroelen (1997b). A branch-and-bound procedure for the generalized resource-constrained project scheduling problem. *Operations Research* 45, 201-212.
- Demeulemeester, E.L. and W.S. Herroelen (2002). Project Scheduling - A Research Handbook. *Kluwer Academic Publishers, Boston*.
- De Reyck, B. (1998). Scheduling Projects with Generalized Precedence Relations - Exact and Heuristic Approaches. Ph.D. Thesis, Department of Applied Economics. *Katholieke Universiteit Leuven, Leuven, Belgium*.
- De Reyck, B. and W. Herroelen (1998). A branch-and-bound procedure for the resource-constrained project scheduling problem with generalized precedence relations. *European Journal of Operational Research*, 111 (1), 152-174.
- Dorndorf, U. (2002). Project Scheduling with Time Windows. *Physica-Verlag*.
- Elmaghraby, S.E.E. and J. Kamburowski (1992). The Analysis of Activity Networks under Generalized Precedence Relations (GPRs). *Management Science* 38 (9), 1245-1263.
- Hochbaum, D., J. Naor (1994). Simple and Fast Algorithms for Linear and Integer Programs with Two Variables per Inequality. *SIAM Journal on Computing* 23(6) 1179-1192.

- Klein, R. and A. Scholl, (1999). Computing lower bounds by destructive improvement: An application to resource-constrained project scheduling. *European Journal of Operational Research* 112, 322-346.
- Neumann, K., C. Schwindt and J. Zimmerman (2002). Project Scheduling with Time Windows and Scarce Resources. *Lecture Notes in Economics and Mathematical Systems* 508, Springer, Berlin.